

SERIES V.

NUMBER 1

FEBRUARY 1916

PUBLISHED BY McPHERSON COLLEGE
McPHERSON, KANSAS

BULLETIN
OF
McPHERSON COLLEGE

The College Bulletin is issued in February, May, August and November of each year.

Entered as second class matter Feb. 16, 1912, at the post office at McPherson, Kansas, under Act of July 16, 1894.



REPRODUCING ABOVE MACHINE COPY OF THE ORIGINAL
ORIGINAL IMPROVED.

McPHERSON COLLEGE BULLETIN

SERIES V.

FEBRUARY, 1914

No. 1

ANNUAL MEETING OF THE BOARD OF TRUSTEES, JAN. 24, 1914.

Southwest Kansas represented by Elder J. E. Jones of Wichita, Trustee, and members of the Executive Board: Eld. J. J. Yoder, F. P. Dettar, Dr. H. J. Haraly, J. N. Dresher, J. A. Flory, all of McPherson, Kansas.

Northeast Kansas, Elder W. A. Kinzie, McPherson, Kansas.

Southeast Kansas, G. E. Shirkey, Madison, Kan.

Northwest Kansas, Eld. G. W. Burgin, Waido, Kansas.

Northern Missouri, Eld. E. G. Rodsbaugh, Stet, Missouri.

Middle Missouri, Eld. Jas. M. Mohler, Leeton, Missouri.

Southern Mo. and Arkansas, not represented.

Nebraska, C. J. Lichty, Carleton, Nebraska.

Oklahoma, Eld. A. L. Boyd, Cordell, Okla.

Western Colorado and Utah, F. L. Baker, Fruita, Colorado.

Reorganization of the Board: Eld. J. J. Yoder, President and Treasurer; F. P. Dettar, Vice-President; Dr. H. J. Haraly, Secretary.

Pres. Kurtz, in his report to the Trustees, gave a general survey of the work of the College since his last report, January 25, 1913.

Among other things the President said: "I am happy to announce that the senate of the University of Kansas voted unanimously to remove the discount, and we are now a fully accredited college in the state.

"I visited the Rockefeller Foundation in New York City to get help from them for our endowment. I was treated with the utmost kindness, but was told most frankly that they do not help schools that have less than \$200,000 endowment. We must first show that the people—the Church of the Brethren—are sufficiently interested in this project to support it thoroughly before they would add \$25,000 to \$40,000 to make it more efficient. This visit persuaded me more than ever that we must look to our people first for aid and support.

"I am glad to say that the city of McPherson has responded well toward the school. Every High School graduate that is in College anywhere is in McPherson College.

"The religious spirit of the school is good. The Christian Associations are busy and effective. The revival meetings conducted by Bro. Geo. Flory resulted in thirty-eight conversions, of which fourteen were students. I feel that the general religious sentiment and atmosphere of the school is deeper than it was last year. The moral life of the students seems better."

BIBLE DEPARTMENT

Our Bible Department has been reorganized as follows: A two year's course for students of academy rank; a three year's course leading to the B. S. L. degree which requires a diploma from a High School or academy as foundation; and a four year's course leading to the B. D. degree which cannot be entered without having completed the Sophomore year in college. I believe this is a good thing and should be widely known. It is everywhere recognized that our future ministers and pastors need a thorough academic foundation and a good seminary course to meet the needs of the day. Too many of

our young ministers lack this foundation and preparation. McPherson College is amply equipped to give this, and especially, through the work of Prof. Yoder to fit men for rural communities.

Brother Weiland corresponded with us at different times, and also in private urged affiliation with their school. As a matter of fact affiliation would not make any difference so far as our present practice is concerned. We now give full credit to their work, and they do to ours. But the fact that they do not publish the name of McPherson College in their catalog as being affiliated, as some other colleges are, and that we do not mention the same in our catalog, has caused a misunderstanding which is detrimental to us. Last year forty-six students from our territory attended Bethany. Some of these are now attending North Manchester College and Mt. Morris because they have the mistaken notion that they could not get credit with us. I think it is unfortunate that Bethany Bible School has taken a stand in this matter which is useless and misleading. I want our trustees to fully understand this situation, and use all their influence to have the facts known where they are of significance. All colleges give credit for work done in other colleges of equal standing, without any formal affiliations. A formal affiliation with Bethany would not change matters a single iota. But would appear before the educational world as a strange departure from custom, and would at once raise the suspicion that perhaps there is an apologetic reason back of it. Perhaps it would be wise, for the benefit of our constituency, to clear this matter up in our bulletin.

BROTHER CRUMPACKER

Bro. Crumpacker will have his furlough this coming year. It is my wish that this board give him

a unanimous invitation to spend at least a semester with us at McPherson College, to teach one or two courses in Missions, with full privileges of study for himself.

If satisfactory to Bro. Crumpacker, the Secretary of the Mission Board will give consent to this plan. The good that would come out of such a plan would be great, for it is our purpose that this college shall train workers for the Church and Mission fields. I wish these plans could be consummated at once, so as to publish the same in our new catalog.

DISTRICT MEETINGS

I believe it is a good thing for the college to be represented at our District Meetings. Unfortunately it takes some one away from duty a good deal of the time during the fall term. This year we succeeded in having representatives in each of the ten state districts except one, viz: Middle Missouri. Your President visited the following district meetings: Nebraska at Holmesville; Northeast Kansas at Ottawa; Oklahoma at Wynoka; Northeast Missouri at Jasper; Colorado at Fruita; Northwest Kansas at Fortia.

Prof. Studebaker, Southeast Kansas.

Dr. Harnly, Northern Missouri.

Culler, Yoder, Beckner, Studebaker at Southwest Kansas.

Beckner at Nebraska.

Last fall in one week five of these ten districts held their meetings. In Missouri arrangements have been made to obviate this in the future. As far as I know, educational meetings were held in all of these districts.

OUR TRUSTEES

You who represent the various state districts, seem to me, to have a double function. You are to represent the District in the management of the school. But a perhaps bigger and harder task is to represent the school in your districts, and create in the district a loyal school sentiment. The trustees are the living representatives of the school, and should at all times heartily co-operate with the school in the furtherance of our common cause. What can you do?

1.—Plan a good Educational Meeting at each District Meeting.

2.—Get each local church to have Educational Meetings, school reunions, etc.

3.—Encourage young people to come to college and send us names of those who should come.

4.—Co-operate in financial campaigns.

5.—Send District Meeting minutes to college.

FUTURE POLICY OF SCHOOL

1.—To maintain our standard as an accredited college. To hire no teachers in the future for college work who do not have the Master's degree or its equivalent so as to pass the Committee of K. U.

2.—We expect to comply with recent legislation on the normal and educational causes so as to maintain our standard with the State Educational Board.

3.—McPherson College is a Christian College. We do not expect to hire any teachers unless their faith and practice are exemplary in the Christian life, and we hope to create and maintain a Christian atmosphere of the school to make it easy and nat-

ural for our students to follow and further the Christian cause.

4.—McPherson College is owned and controlled by the Church of the Brethren. The doctrines, the faith and the life of the church are to be taught and exemplified here according to the teachings of Christ and the New Testament. The school is primarily for the Education of our people, for the training of our church workers, and for the inculcation and preservation of our ideals to our children.

5.—We must look to our Church largely for support—in students, in sentiment and in finance:

6.—It has been, and is, my ideal to create in the school a strong church sentiment, so strong that our young people will cheerfully choose the cause of the church and serve her; and also to create in the church a school sentiment, so that the church will use and support the school for the furtherance of the Kingdom of God.

7.—Our real crisis, and the subject that should take most of our time today is the Endowment of the college. Counting our present assets we need, in order to have a \$200,000 endowment, or an annual income of \$10,000 outside of tuitions as demanded by the state, to raise \$125,000. This should be raised by January 1, 1917. This is our immediate problem, and we must meet it now, and meet it effectively.

To the trustees, I wish to say again, I covet your prayers, your interest, your advice, and co-operation in every way possible, to further the interests of this college, which I believe is truly dedicated to the Cause of the Kingdom of God.

FURNISHING NEW DORMITORY ROOMS

The Executive Board was instructed to determine the cost of furnishing the New Dormitory rooms with substantial furniture and to solicit from Ladies' Aid Societies, Sunday Schools and individuals, on the basis of actual cost, including name plate. There will be thirty-six rooms to be furnished, besides the parlors and matron's rooms.

The Ladies' Aid Society, Sunday School, or individual furnishing a room will have its name plate placed on the door.

AN EDUCATIONAL DAY IN ALL THE CHURCHES

The Board of Trusters voted to encourage and urge all churches in McPherson College territory to hold on the third Sunday of June each year an Educational Meeting, and suggest for such program an educational sermon, an educational program at the Christian Workers' meeting, and a free will offering for education, similar to missionary offerings.

The three greatest activities of the Church are the Sunday Schools, Missions, and Education. And Education is the most fundamental; without education, the first two have little power.

We hope the suggestion for an Educational day will be kindly received and that the churches will generally observe the day. Offerings may be sent to the Treasurer of the Board, J. J. Yoder, McPherson, Kansas.

Pres. D. W. Kurtz, Eld. James M. Mobler and Elder E. G. Rodabaugh were appointed to handle the Bethany affiliation problem.

There will not be many changes in the faculty. Prof. E. L. Craik has been granted another year's leave of absence for graduate study.

Prof. E. P. Long and Miss Edna Dettler have resigned. Miss Anna McVey will fill Miss Dettler's place. Prof. Long's place has not yet been filled.

BIBLE INSTITUTE

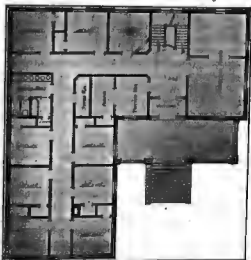
The Bible Institute held from January 18 to 24 enrolled 281, aside from the regular students. Of these 186 were from McPherson, and 95 from forty-four localities representing seven states— Kansas, Nebraska, Oklahoma, Missouri, Illinois, Colorado, and Montana. No one can estimate the value of this week of intrusive Bible Study. From eight to twelve-thirty, from two-thirty to four-thirty, and from eight to nine-thirty the Chapel was crowded.

The lecture on "A Year of War Experience in Germany" by Elmer Culler of Chicago attracted a very large audience. Eld. Galen B. Royer, Secretary of the General Mission Board, was present during



NEW LADIES DORMITORY.

the week and was at his best. His lectures on Russia and Persia were uniquely and peculiarly interesting and occasioned much comment. At the last meeting a missionary offering of \$127.00 was taken.



FLOOR PLAN FOR NEW LADIES DORMITORY.

NEW DORMITORY

Work on the new Dormitory is being delayed on account of the cold weather. The concrete and brick foundation is about complete. Practically all the materials are on the ground and as soon as the weather moderates the work will proceed rapidly. The contract calls for a completed building by July 15.

More than the usual number of new students matriculated at the opening of the 2nd Semester.

W. O. Beckner, General Field Secretary, is enthusiastically and optimistically entering upon his work. Now is the time for all the friends of McPherson College to unite in one supreme effort to raise the \$100,000 of new endowment which the college must have to place it safely and permanently with the Standard Colleges of our state and country, and without which the faculty and equipment of a first class college cannot be maintained. This is not an impossibility, not even a very hard task if we all pull together, each doing his part. Unitedly we are strong. We have a good school, a splendid faculty, a great President, a consecrated Board of Trustees. We are getting the vision. Will you pray, work and give?

McPherson College is contributing much service through its Extension Department to the surrounding churches and communities. We have two men in the field regularly: brother Oliver H. Austin who travels under the direction of the Extension Department, and brother W. O. Beckner, field worker, who directs his own time. Members of our faculty have given as much time as possible to lectures and institutes.

It is not only our purpose to train young men and women who come to us for the greatest usefulness, but also to keep in vital touch with the church, thus giving first handed some of the best things.

This year the demand for workers has been greater than we could supply. We are now arranging for the extension work of next year. It is your privilege to have one or more of our men come to your community if you call sufficiently early. All such calls should be sent to Ellis M. Studebaker, secretary of the Extension Department.

The following list will give some idea of the field work of McPherson College during the school year 1915-16:

DOCTOR D. W. KURTZ

Pres. Kurtz has many, many more calls for lectures, addresses and sermons than he can accept. Since the opening of school, Sept. 8, he gave a series of five lectures at Abilene, Kansas, on Sunday School Ideals. He attended six District meetings, at some of which he gave as many as four and five addresses and lectures. He has addressed three County Sunday School Conventions, one State Sunday School Convention. As president of the General Educational Board he made a trip to California, visiting the Bible School at Los Angeles and Lordsburg College. He attended the General Educational Board meeting at Elgin, Ill. Besides the above he has given some fifteen addresses, lectures and sermons at various places. Feb. 18, Dr. Kurtz addresses the Kansas Central Teachers' Association at Hutchinson. March 21 as president of the General Educational Board Dr. Kurtz will start East and will visit Juniata College at Huntingdon, Pa., Elizabethtown College at Elizabethtown, Pa., Blue Ridge College at New Windsor, Md., Bridgewater College at Bridgewater, Va., and the College at Daleville, Va.

DOCTOR H. J. HARNLY

Bible Institute, Carleton, Nebraska.
Lecture, District Meeting of Northern Missouri.

DOCTOR A. J. CULLER

Bible Institutes, Carleton, Nebraska; Overbrook, Kansas; Conway Springs, Kansas; Hardin, Missouri.
Revival, Morrill, Kansas.
Sunday School Institute, Plattsburg, Missouri.
Lectures, Groveland, Kansas; Lyons, Kansas; Bloom, Kansas; Appanose, Moundridge.

BROTHER OLIVER AUSTIN AND WIFE

Revivals, Lone Star, Kansas; Warrensburg, Missouri; Madison, Kansas; Coyle, Oklahoma; Conway, Kansas; Darlow, Kansas; Nickerson, Kansas; Roanoke, Louisiana; Overbrook, Kansas; Roseland, Nebraska.

BROTHER W. O. BECKNER

Bible Institute, Carleton, Nebraska; also numerous lectures which Brother Beckner is giving as he goes from church to church in the interest of McPherson College.

ANNE O. McVEY

Reading, Sabetha, Kansas; Merrill, Kansas; Rock Creek, Kansas.

COLLEGE QUARTETTE AND ANNE O. McVEY

Entertainment, Carleton, Nebraska; Holmesville, Nebraska.

COLLEGE QUARTETTE

Entertainment, Bloom, Kansas; also an entertainment near McPherson.

PROFESSOR J. J. YODER

Bible Institute, Grenola, Kansas.

Lectures, Carleton, Nebraska; Holmesville, Nebraska.

DOCTOR AMOS M. YANCE

Lecture, Mitchell, Kansas; and six lectures at Groveland, Kansas.

PROFESSOR ELLIS M. STUDEBAKER

Revivals, Marion, Ohio; Nezperce, Idaho.

Bible Institute, Nezperce, Idaho.

Lectures, four lectures at the District Meeting of Southeast Kansas; Wiley, Colorado.

Prof. Yoder, Treasurer and Business Manager, reported the finances of the school in splendid condition, that the improvements made during the summer—including a new heating plant costing approxi-

mately \$3,400—were all paid, that the prospects were excellent to close the year, June 1st, 1916, with the institution out of debt and credit first class.

Of the amount needed to construct the new Ladies' Dormitory, thirteen thousand was subscribed, leaving yet ten thousand to be subscribed. The total cost, with furniture, will reach approximately twenty-three thousand dollars.

WHAT ARE YOU GOING TO DO?

McPherson College is entering upon a new epoch. The character of this epoch, whether it will be a thriving success or not, depends upon you. "According to your faith be it unto you."

McPherson College has struggled for nearly thirty years, through hardships and discouragement, but her faith in the great cause has sustained her till now she is ready to move forward and claim her deserved position in the family of colleges in the land.

Do you know that McPherson College is fully accredited and standardized?

Do you know that the college is owned and controlled by the Church of the Brethren of seven or eight states and has a Brethren constituency of over 10,000 members?

Do you know that McPherson College has the controlled faculty in her history, made up of professors noted for scholarship, character and teaching ability?

Do you know that she has **ELEVEN** thriving departments, fully equipped to do the best up-to-date work in each? viz: College, Bible, Academy, Normal, Voice, Piano, Agriculture, Domestic Science, Bookkeeping, Stenography and Typewriting, and Expression.

Do you know that McPherson College has trained 70 per cent of our missionaries in China, a num-

ber of those in India, and counts as students and Alumni scores of the most successful ministers and educators in the Church and State?

Do you know that we are building a new "Ladies' Dormitory," costing \$23,000 to meet the growing demand? What is your share in this growth?

Do you know that no college can be fully standard unless it has an assured annual income of \$10,000 above tuitions, or an endowment of \$200,000? Do you want McPherson College to have an assured future? Do you know that the assets of the college, for productive endowment are equal to the sum of \$99,000? We need about \$125,000 to satisfy the needs of the dormitory, other improvements and endowment.

Do you know that NOW is the time to act? All this should be raised before January 1, 1917.

Do you know that the college accepts FARMS as well as cash and good notes and bonds?

Do you know that the best investment you can make for MISSIONS, for the CHURCH, for the Kingdom of God, is to endow McPherson College? Do you know that Missionaries and leaders in the church must be trained in Christian colleges and that the colleges are fundamental to all other movements?

Do you know that your talents are for Service, and the greatest service at this time, in all the world, is at McPherson College? Let me hear from you.

Do you know that the new Dormitory will have thirty-six rooms to be furnished at \$60.00 each? What can your Ladies' Aid, or Sunday School class do? A plate on the door will show the name of the donors.

Do you know that we can easily meet the needs of the college (for the Church and the Kingdom) if you will sacrifice as much as some of us—for this cause? What will you do? Do it NOW!