
McPherson College Bulletin

Series XVII

Supplement

Number 2

McPHERSON COLLEGE
SUMMER SCHOOL



ADMINISTRATION BUILDING

The Summer Session, Eight Weeks
June 3 - July 26

Earn Eight Hours Credit

The College Bulletin is issued in July, May, August
and November of each year.

Entered as second class matter June 10, 1911, at the post
office at McPherson, Kansas under act of July 26, 1911.



THE CAMPUS ENTRANCE

McPherson College Summer School

THE TEACHING STAFF

- SCHWALM, V. F., A. M., Ph. D.**
 Manchester College, Columbia University, University of
 Chicago.
President, McPherson College
- HILAIR, J. A., A. B., A. M.**
 Kansas University, Colorado University.
Director of Normal School, Education, and Psychology
- HENSBEY, J. W., M. S., Ph. D.**
 Gettysburg College, Harvard, Johns Hopkins, Chicago
 University.
Science
- MCGAFFEY, EDITH, A. B., A. M.**
 McPherson College, University of Kansas, Graduate Stu-
 dent of Chicago, summer 1921 and 1921.
English
- HYSB, M. A., A. M.**
 Cumberland Valley Normal School, Shippensburg, Pa.,
 Frame College, Collegeville, Pa., University of Pennsyl-
 vania.
Business
- GRAY, OLIVE, Ph. B., A. M.**
 University of Chicago, Teacher, Western State Teachers
 College, Canton, Colorado, Supervisor of Elementary
 Education, Hutchinson, Kansas.
Elementary Education
- WINE, EMERY C., A. B., A. M.**
 McPherson College, Kansas University, George Washing-
 ton University during 1927-28.
History
- FRIES, J. H., A. B.**
 McPherson College.
Business Manager of Normal School
- BROWN, JESSIE, B. M.**
 Bethany Conservatory, Royal Conservatory, Leipzig, Ger-
 many.
Director of Piano Department
- LINGENFELTER, FERN, B. M.**
 McPherson College, Bethany Conservatory, Chicago Mus-
 ical College.
Public School Music, Piano
- COLLINE, CLARA,**
 Private Teacher (Mrs. A. Bass, Wichita, Kansas), Chicago
 Art Institute, 1922. Special Work (Sandron) Bethany
 College. Artists certificate, Bethany College, 1927.

Summer Session, 1929

GENERAL STATEMENT

McPherson College is located at McPherson near the geographical center of the state of Kansas. McPherson is a city of about five thousand population and is famed for its beauty and the spirit of progress which is manifested in all its enterprises. It is easily accessible from all parts of the country, since it is served by the following railroads: Rock Island (main line), Santa Fe, Union Pacific, Missouri Pacific.

A STANDARD ACCREDITED COLLEGE

McPherson College is a standard accredited college. Its work is accepted at par by the State University and the State Department of Public Instruction. Its credits are also acceptable by the state departments in surrounding states and by the leading universities of the country. It is a member of the Association of American Colleges.

ADVANTAGES OF SUMMER STUDY

Summer study is becoming more popular each year. Long vacations are now generally considered uneconomical from the educational as well as from the social and industrial points of view. Most colleges and universities have made the summer term an integral part of the regular college organization with equal standards for academic accomplishment. The courses offered in McPherson College Summer School are similar and in most instances identical with those offered in the regular school year.

The summer school session provided an opportunity for students and teachers to pursue work toward the realization of the following objectives:

- (1). To invest the summer vacation wisely, thereby hastening the completion of the college course.
- (2). To adjust irregularities in courses and fulfill group and major requirements.
- (3). To meet requirements for the renewal of certificates.
- (4). To qualify for a higher grade certificate.



THE LIBRARY

(5). To keep constantly growing in the teaching profession. This must be the primary qualifications of all progressive teachers.

(6). To review the common branches in preparation for the county examinations.

THE FACULTY

We have made an attempt to secure for the summer faculty men and women whose training and experience fit them to be of greatest value to public school teachers. In addition to the regular members of the college faculty we have secured the services of two instructors who are especially trained and experienced to make a real contribution to students and teachers in their particular specialties.

Mr. Emery C. Wine will have charge of the Social Sciences. He graduated with honors from McPherson College with the class of 1922. After teaching a couple years very successfully in the high schools of Kansas was offered a fellowship because of his brilliant college record in Kansas University. He completed work in the History department for the Master of Arts degree and made such an enviable record while there that he was recommended for a teaching fellowship at George Washington University, Washington, D. C.

For elementary education, we have been fortunate to secure the services of Miss Olive Gray, who at present is Assistant Superintendent of Schools and Supervisor of Elementary Education in Hutchinson, Kansas. She holds both her Bachelors and Masters degrees from the University of Chicago. She comes to us with a wealth and variety of experience that will be invaluable to the school room teacher. Miss Gray has taught in elementary and high schools for several years, and for a number of years she was on the faculty of teachers colleges. For some three regular years and seven or eight summers she was on the faculty of the Western State Teachers College at Gunnison, Colorado. She was selected by the University of Chicago to inaugurate the new educational code for Alabama.

Her articles on elementary education have appeared in the *Elementary School Journal* for a number of years. In the recent School superintendent's meeting at Boston, Miss Gray was invited by the U. S. Bureau of Education to join a discussion on problems of the Supervision of Instruction. Miss Gray has for the past seven years been Supervisor of Elementary Education in Hutchinson.

She will offer educational courses of special value to Primary and Elementary teachers during the summer at McPherson.



MISS OLIVE GRAY

Professor Blair will direct the summer school and teach courses in Education and Psychology.

Professor Hess, who has an enviable reputation for thoroughness, will have charge of the review courses preparatory for the county examinations. It will be a distinct privilege for the teachers who find it necessary to write these examinations to have the opportunity of reviewing ten or eleven of the more difficult subjects under his careful direction.

Dr. Hershey, who is remarkably popular with his students, will have charge of the work in science for the summer.

Miss Colline, the regular instructor in art, will offer various types of art work for teachers. This is a new feature for our summer school and one which we believe will prove very popular as well as helpful to primary and intermediate teachers.

Courses in music as well as private work will be provided for summer students. Members of the regular College faculty will teach this work.

CERTIFICATION

The following certificates are issued by the State Board of Education upon the recommendation of McPherson College.

(1) Three year elementary and junior high school certificates are issued upon the completion of sixty semester hours of college work provided the student has included in this sixty hours the following courses in education: General Psychology, three hours, Elementary Methods, three hours, School Management, three hours. The candidate for the certificate must submit a minimum of forty-five hours in non-educational courses.

(2) Three year high school certificates renewable for life are issued to students who have graduated with the Bachelor's degree provided they have included in their college course not less than eighteen semester hours of educational courses. The following courses are required: General Psychology, three hours, Educational Psychology, three hours, High School Administration, three hours. The remaining nine hours may be elective courses in education.

(3) Students may qualify for certificates in



A CAMPUS VIEW

various special lines of work such as Music, Manual Training, Agriculture, Domestic Science, etc. To be eligible for these certificates the candidate must have completed sixty hours of work and have included in these sixty hours a minimum of twenty-eight hours in the special subject. The candidate for a Public School music certificate must submit in addition eight hours of public school music methods.

RENEWAL OF CERTIFICATES

Courses are organized in our Summer School to provide opportunities to complete work for the renewal of the various certificates issued by the State Board. The Normal Training Certificates and the Three year Elementary certificates are renewable upon completion of eight hours of additional work before the expiration of the original certificate.

TEACHERS PLACEMENT BUREAU

McPherson College maintains a Teacher Placement Bureau which is at the services of all teachers who are enrolled in the summer session.

LIVING ACCOMMODATIONS

Dormitories are maintained on the campus for the accommodation of students. These buildings are modern and the rooms are equipped with all needful furnishings except necessities of a personal nature. Each individual student should bring pillows, pillow-cases, sheets, and such blankets as may be needed for the summer season. Board, room, and lighting are provided for summer students at the unusually low rate of \$6.50 per week.





ARNOLD HALL

EXPENSES

The tuition rates are very reasonable. A nominal incidental fee is paid by all who enroll in the academic departments. Items of expense are as follows:

Tuition:

Reviews (no incidental fee)	\$22.00
Sub-Freshman work (in terms)	15.00
College (for each semester hour)	1.00

Music:

Piano and Violin	\$12.50 - \$25.00
Public School Music	12.50 - 50.00

Incidental fee

\$3.00

Laboratory fees:

General Chemistry	\$5.00
Organic Chemistry	5.00
Qualitative Analysis	5.00

Board and room (a week)

5.50



IN McPHERSON PARK

THE COURSES

A list of the courses offered during the 1929 summer session is given below. It may be necessary to make some minor changes to meet the demands which are impossible to anticipate at this date, but such changes will be few. The number of hours credit which each course bears is indicated in parenthesis. B courses are Junior College courses, A courses are Senior College courses.

EDUCATION

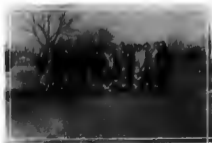
B—Introduction to Psychology—A general survey of the science. The course aims to acquaint the student with the fundamental facts and problems of the science and the method by which new facts in this field are ascertained and evaluated. (3 hours).

A—Educational Psychology—A general course in the study of mental development as related to the learning process and the technique of teaching. (3 hours).

B—Elementary Methods—A course designed to provide training in general methods, for presenting the elementary school subjects in the light of modern principles and investigations. (3 hours).

B—Primary Methods—This course embodies the principles of teaching the subjects in the first three grades. (3 hours).

B—Handwork—Practical work for teachers in



A CLASS WALK

hand work that will correlate with Language, Reading, and Nature Study in Primary grades. (3 hours).

A—High School Methods—A course designed to present to the prospective high school teacher modern and economical methods of high school instruction. Text-book, recitation, library references, and reports. (3 hours).

A—School Administration—This course is a study of the problems of organization and supervision of school systems, including state, county, city, and local units. (3 hours).

B—School Management—A course which attempts to give the student a knowledge of the technique of successful school management in the light of accepted principles. The following and kindred topics are discussed in detail: the problem of attention, the conduct of the recitation, school government, order and discipline, school incentives, offenses and penalties, routine and habit, and testing results. (3 hours).

A—Educational Tests and Measurements—How to measure the results of classroom teaching and how to employ such measurements as a means of improving teaching, constitute the two-fold aim of the course. (3 hours).



SPRING FIELD EVENT



ENTRANCE TO SCIENCE HALL.

SOCIAL SCIENCE

B—United States Government—A course in college civics. A thorough study of American government. It takes up our national governmental organization and that of the states as well, noting the relation of the federal and state governments. A critical study of the present with proposed remedies for defects. Political philosophy and party practice are noted for comparison. (3 hours)

B—United States History, 1789-1865—The richest period of American History. Constitutional development, expansion and conflict, sectionalism, social reforms, political parties, and gigantic personalities are traced through the period. The heritage of political ideals and the development of the American ideal of democracy, along with economic and social factors, are abundant for analysis. (3 hours)

A—Economics—A general course. The principles of economic life are studied with constant reference to the economic aspects of legal and political problems and to the development of the United States. Factors in production, consumption, distribution, exchange, value, labor, capital, monopolies, taxation, etc., are considered. (3 hours)

A—Contemporary European History—A study of the diplomatic background of the World War, and the peace settlement after the war. Twentieth century European affairs are scrutinized chiefly. This course is meant to be a popular and intensive probing of current international problems and developments. (2 hours).

ENGLISH

B—English Literature—An introductory course designated to develop a sense of values and an appreciation for the best in literature through the study of representative writers. Students who plan to study only the minimum requirements in literature are advised to elect this course. (3 hours).

B—American Poets—An intensive study of the

chief American poets from Bryant to Lanier. (2 hours).

A—Modern Drama—A survey course in the field of recent drama. Representative plays of all nations making noteworthy contribution to modern drama are studied. (3 hours).

A—Romantic Poets—A study of selections from the Romantic poets, with special attention to Wordsworth, Coleridge, Byron, Shelley, and Keats. (3 hours).

A—Shakespeare—An introductory study of Shakespeare's plays and of his place in the development of the drama. (2 hours).

SCIENCE

B—Physiology—A cultural and practical study of the human body, its anatomy, physiology and hygiene. The course consists of textbook, lectures, and laboratory demonstrations. This is a very helpful course for all public school teachers. (3 hours).

B—Botany—A general course in plant life. The morphology of the plant is largely emphasized. This course may be taken either with or without the laboratory work. (Given only if a sufficient number request it. (3 or 4 hours).

B—General Chemistry—This course is designed as a prerequisite to all other courses in chemistry and as a subject of general culture. Its aim is to prepare the student for medicine, home economics, agriculture, engineering, pharmacy, etc. Those who have had high school chemistry or Chemistry I may take the second half of the course including qualitative analysis. (3 to 5 hours).

B—Organic Chemistry—This is a general course in organic chemistry for medical students, those taking Home Economics, Agriculture, etc. (3 to 5 hours).

B—Inorganic Chemistry and Qualitative Analysis—Continuation of General Chemistry. Several weeks are devoted to qualitative analysis. Lectures and quizzes, three hours; four hours laboratory work. (5 hours).

Students desiring a course in Quantitative

Analysis can make special arrangements with Dr. Hershey for the same.

B Physics—This is a general college physics course directed towards the following ends: (1) the training of students competent to fill positions as teachers of physics in secondary schools, (2) the training of pre-medical and pre-engineering students, (3) the training of the general student of the physical science in the modern world. (3 or 5 hours)

INDUSTRIAL AND APPLIED ART (NORMAL ART)

B Industrial Arts Problems for Primary Teachers. Methods of using water color, elements of design, black board drawing, weaving, modeling, paper cutting and lettering. (2 hours credit).

B—Industrial Art for Intermediate Teachers. Problems adapted to children from fourth to eighth grades. (2 hours credit).

B Industrial Art for High School Teachers. Problems in design and construction adapted to high school pupils. (2 hours credit)

B Painting—Still life—oil, water colors, pastel. Landscapes—oil, water colors, or pastel. (2 hours credit).

B Charcoal—Drawings from casts, still life, etc. (2 hours credit)

B China Painting. Two hours credit.

B History of Art or Painting. Two hours credit.

MUSIC

The department of Music offers standard courses in Music and is maintained with the express idea of offering the best in the way of aesthetic instruction. Realizing the increased importance of the above course in the college curriculum the system of credits and of work has been regulated best to agree with the requirements of the North Central Association of Colleges. All work is accredited.

Besides its relation with the college department the Music Department offers courses leading to a

Teachers Certificate, which is a recognition of the student's qualifications as a teacher; Diploma, in which the student is recognized as a performer and as a general musician; and Degree, in which the student is qualified to go out as a director of music with the full assurance that the school will stand ready to offer recommendations up to the full limit of the student's power professionally.

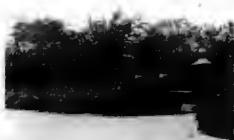
PIANO

The study of the pianoforte is and must remain in a certain sense the most important part of a musical education. It is indispensable to the singer, invaluable to the composer, and a great help to the organist and instructor.

It is the purpose of the department to begin aright. Great stress is laid on slow practice, and much care is taken as to the tone quality. The pupil is well drilled in the different varieties of finger, wrist, and arm touches.

It is the aim of this department to keep closely in touch with the most enlightened methods of instruction, to impart style, finish, and artistic interpretation.

The course of study is divided into Certificate, Diploma, and Degree Courses.



CENTRAL PARK GATE

PUBLIC SCHOOL MUSIC

This course is designed to fill the demand for competent supervisors of music in the public schools. Upon the student's completion of 60 hours (two years above the high school) as outlined by the State Board of Education, a special certificate is issued by this Board.

COURSES OFFERED

Piano, Kindergarten and Class work in Piano, Public School Music Methods, Sight Singing, Ear Training, Appreciation, Conducting, Folk Games, Harmony I-II, Counterpoint, Canon and Fugue, Music Form, Harmonic Analysis, Keyboard Harmony, Piano, Normal Training.

RATES OF TUITION

Tuition rates are quoted for a semester of eighteen weeks, two half hour private lessons weekly. The rate for one-half hour private lesson weekly is one half the semester rate.

Miss Brown, Piano \$25.00

Miss Lingenfelter, Piano \$15.00 or \$18.00

History, Theory, Harmony, Appreciation, Analysis, Counterpoint, Canon and Fugue, Form, Composition, Orchestration, Ear Training, Sight Singing, Conducting.

Rudiments, per semester \$ 5.00

Public School Music. Classes in Music Appreciation, Ear Training, History of Music, Public School Methods, Sight Singing.

Five hours a week, eight weeks equal to two college semester hours.

Summer School Tuition:

One subject, \$12.50

Two subjects, \$25.00

Three subjects, \$38.00

Four subjects, \$50.00

Five subjects, \$50.00



MCPHERSON PARK SCENE