

SERIES XVII.

NUMBER 2.

MAY, 1928

PUBLISHED BY McPHERSON COLLEGE
McPHERSON, KANSAS

BULLETIN
OF
McPHERSON COLLEGE



The College Bulletin is issued in February, May,
August, and November of each year.

Entered as second class matter Feb. 16, 1913, at the post-
office of McPherson, Kansas, under Act of July 16, 1894.

SERIES XVII.

NUMBER 2.

MAY, 1928

PUBLISHED BY McPHERSON COLLEGE
McPHERSON, KANSAS

BULLETIN
OF
McPHERSON COLLEGE



The College Bulletin is issued in February, May,
August, and November of each year.

Entered as second class matter Feb. 14, 1911, at the post-
office of McPherson, Kansas, under Act of July 16, 1894.

A LETTER FROM THE PRESIDENT

Dear Reader:

If you are a High School graduate facing the question of your future, let me address these words directly to you. As you plan your life, do not plan it on a too limited scale. Plan for a big life. Dream of great things you expect to do. "To have greatly dreamed precludes low ends." This means that you will need to improve your time in preparation. To waste a year now hesitating, or in idle pleasure, not only loses your time, but dims your vision and weakens your determination. Now is the time to prepare. Tomorrow's responsibility will be upon you all too soon.

Plan for a life of usefulness, a life of service to humanity. A life lived in pursuit of pleasure, in exploiting nature, or in manipulating men for selfish advantage is hardly worth the living. Be sure that your life plan relates in some way to the enrichment of human personality and contains the idea of service. "Tis not pleasant to arise from the feast of life with the taste of ashes in your mouth." The only satisfying life is a life of service.

The best place for preparation for such a life is in a Christian college, a place where scholarship is second to none, and where Christian ideals of character and service are steadfastly held before young life. Such are the ideals of McPherson College. It is our aim to build here a "School of Quality," in which personal values count for most, where scholarship, character, and service are upheld. If these are your ideals, we invite you, we urge you to cast your lot with us. The year 1928-29 promises to be a great, good year. If you are interested, write us and let us help you plan your program. If you have questions let us answer them. In any case be here for the fall opening, September 10.

Very sincerely,

V. F. SCHWALM.

NEW TEACHER

The Department of Commerce next year is to have the unique distinction of having a woman at its head. The new teacher is Miss Mildred Lamb of Lawrence, Kansas. Miss Lamb graduated from the University of Kansas with her A. B. degree. Though doing full time office work and carrying a full course at the University she won for herself a Phi Beta Kappa key upon graduation. On the basis of her work at Kansas University she won a scholarship at Leland Stanford University, where she did part time teaching and secured her Masters degree. Miss Lamb has had several years of business experience. She possesses a striking, winsome personality. She has been active in church work and in Y. W. C. A. work. She comes very highly recommended both by her University teachers and by her employer. We bespeak for her singular success in her chosen field.

FRESHMAN ORIENTATION PLANS

Every year more Colleges and Universities are adopting the plan of inviting the incoming Freshman class to appear on the campus several days or a week previous to the coming of the upper classmen in order that something may be done by way of acclimating them to the new life into which they are to come. Such orientation efforts usually have endeavored to facilitate acquaintance among the Freshmen, provide for excursions on the campus and through the library and classrooms and to acquaint the Freshmen thoroughly with their campus environment. During these days lectures are offered on curriculum building, and other problems to help the student orient himself thoroughly in his college environment. A certain portion of this time is also used to administer physical examinations and intelligence tests.

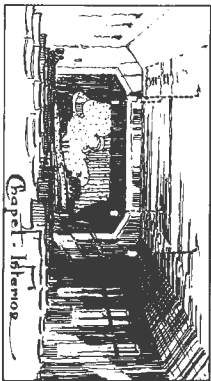
In the past two years McPherson College has tried to do this in a limited way during the first two days of enrollment. For next year the Freshmen are to appear on the campus on Friday evening, September 7. A three day orientation program will be offered. Detailed plans are in the hands of a special committee consisting of Professors Boone, Hess, McGaffey, Williams, and Utrecht. The opening event will be a Freshmen-faculty luncheon on Friday evening, September 7. Interesting programs are planned for Saturday and Sunday, and on Monday the enrollment of the Freshmen will begin. All prospective Freshmen are requested to be on the campus on Friday, September 7.

THE NEW CHAPEL

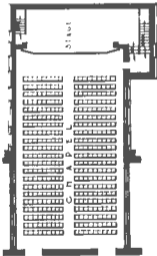
A new Chapel for McPherson College is an assured fact. For many years the old chapel walls have resounded with the songs of many services and from its platform has been heard the eloquence of many speakers. It has well served its day—but the old is to be replaced by a new chapel with new seating, with brightened walls, and a new platform or stage. Beneath the roomy stage will be dressing rooms, and lavatories. The present Y. W. C. A. room will be considerably enlarged.

Money for the new chapel was raised by various groups. The faculty gave generously their gifts amounting to about \$2300.00. The student body, under the able direction of Profs. Hess and Blair, were lead to give about \$2000.00. Friends of the college in McPherson and community gave about \$3200.00. Some alumni have given generously but unfortunately many have not yet sent in their pledges. We still need something over a thousand dollars to complete this building. If you have not yet sent your gift, do it now! The contract has been let and work on the Chapel will go forward at once.

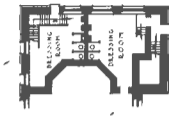
The following cuts will give some idea of the chapel as it will look when completed.



Facing the stage in the proposed McPherson College Chapel.



The floor plan of the McPherson College chapel as it will be when remodeled. It provides seating for 400 people, a split stage for dramatic work, musical programs and debates.



Dressing rooms, etc., below the stage of the new chapel.

SENIOR MEMORIAL

The Senior Class of 1928 were very thoughtful in the gift they left for the College as a memorial. It was a beautiful velvet curtain for the stage of the new chapel. The Trustees, the Faculty and Student Body of the school are grateful for the serviceable gift from this splendid class. When the chapel is completed this gift of the class of 1928 will appear containing the name of the class.

K. U. FELLOWSHIP GOES TO AUTUMN LINDBLOOM

The University of Kansas fellowship of \$400 for graduate study offered to a member of the senior class in McPherson College was given to Autumn Lindbloom of McPherson by a vote of the faculty. Miss Lindbloom will do graduate work in Latin. She has been an outstanding student during her four years in College, maintaining a high standard of academic work and at the same time participating in student activities. She has played first violin in the College Orchestra for several years. During her senior year she has been an earnest and successful president of the Y. W. C. A. The congratulations and good wishes of the College go with Miss Lindbloom as she begins her graduate work.

THE HIGH SCHOOL FESTIVAL

The Seventh Annual High School Senior Festival and Track Meet held at the College on Saturday, April 8, exceeded all previous Festivals in enthusiasm and attendance. Approximately eight hundred students, teachers and coaches from the high schools of Central Kansas were on the College Campus. Ellsworth High School led in the Class A Meet, and Lorraine and Claflin tied for honors in Class B. James Malis of Ellsworth was high point man. Suitable trophies were presented to the winning teams and

individuals. Late in the afternoon the visitors were led on an inspection tour of the Campus. In the evening four hundred high school seniors were entertained at a banquet given in their honor.

The Festival was under the direct supervision of Dean R. E. Mohler.

DEPUTATION TEAMS GIVE MANY PROGRAMS

Thirty students participated in the deputation work during the school year giving sixty programs in fifty-five different churches of Kansas, Missouri, Nebraska, Colorado, and Oklahoma. At all churches offerings were taken to defray the expenses of the teams. The surplus will be sent to the General Mission Board to be used for summer pastoral work.

RETROSPECT AND PROSPECT

Though the past year began with some uncertainties, one by one student successes began to appear. Class work went on as usual. Great religious meetings were held. Victories were won in individual lives. Maybe the old school could go on! Other successes were reported, basketball, debate, music, oratory, track. Gradually a spirit of optimism re-appeared. Following it, came a spirit of rejoicing and then expectancy. As the year closed many declared it had been a good year, others thought it had been their best in college. In all there seemed a spirit of expectancy for next year. Students and faculty were saying: "We expect a large attendance next year. From our town several are sure of coming," and like expressions. More rooms were engaged in the dormitories than before. Let this spirit of expectancy come true, let each student be a booster and bring back others. Let every alumnus send others. Let's make 1928-29 the biggest and best for M. C.—400 college students. Let's go!

McPHERSON COLLEGE WINS THIRD SUCCESSIVE STATE DEBATE CHAMPIONSHIP

The reputation of McPherson College debate teams for winning state championships under the coaching of Professor M. A. Hess was maintained this year by four men, Keith Hayes, Philip Spohn, Ralph Frantz, and Ira Ihde, who were working for the first time on the College team. These men won debates from Kansas Wesleyan University, Sterling College, and Bethel College in the Northern Division without loss of a decision. In the championship debate with Bethel College winner of the Southern Division, they were victorious again, securing the third successive state championship for McPherson by winning decisions from five of the six judges. This is the fourth championship during the eight years of Professor Hess's coaching.

The Second Team carried on the tradition by winning its dual debate with Bresee College, Hutchinson. Other debates were prevented by cancellation. On March 21, the affirmative and negative met in an exhibition debate before the Carlton Literary Society, south of Abilene, before an audience of four hundred.

In Women's debate, the affirmative, Floy Brown and Nina Stull, lost to Bethany at the Marquette High School with the students as judges. The negative, Fern Galle and Ruth Anderson, won the decision of a critic judge at McPherson. A week later the women divided decisions with Kansas Wesleyan, the negative winning in each case.

McPHERSON WINS IN BASKETBALL

Playing fourteen games with thirteen victories to her credit in the Kansas Conference, McPherson College closed the basketball season with the conference title. The excellent coaching of George

Gardner, together with perfect teamwork, and willingness on the part of each player to give his utmost throughout every game, made possible this laurel for the College. The squad was strengthened by several new recruits from the Freshman Class, but the glory of winning the title went to five men who had worn the crimson and white in former years: Melvin Miller, center; Elmer Crumpacker and Earl Kinzie, forwards; and Leo Crumpacker and Ray Nonken, guards. A summary of the scores at the end of the season showed that the Bulldogs had a total score of 484 points while their opponents had only 285.

In recognition of their superior work on the floor, Miller was chosen as center and Leo Crumpacker as guard on the All-Kansas Conference First Team, and Earl Kinzie as forward on the Second Team.

Playing against some of the best basket ball teams of the Middle West, the McPherson team made a commendable record at the National A. A. U. tournament at Kansas City in March. They won the first three games easily from the Peru Normal, the Liberal Lions, and Wichita University, and lost the fourth game to the St. Joseph Hilliards, defending champions of the tournament. At the time of McPherson's fall, Miller was high point man of the tournament. Miller was named as center on the third team of the tournament, and E. Crumpacker was given honorable mention.

SUCCESS COMES TO MUSIC STUDENTS

Four students in the Music Department have brought honor to themselves, their teachers, and the College by winning recognition in various contests. McPherson won three prizes at the Midwest Music Festival at Bethany College, Lindsborg, during Easter week. Miss Olive Weaver placed first and Miss

Una Morine second in a piano contest in which twenty-nine contestants from three states participated. The prizes are \$100 and \$50 scholarships in Bethany College Conservatory. Miss Weaver and Miss Morine are pupils of Miss Brown. At the same Festival Mr. Edwin Johnson, pupil of Professor Doll, won third place in violin. Miss Prudence Ihrig, soprano, pupil of Miss Batchelor won first place in a group of fourteen high school students contesting at Abilene, Kansas.

McPHERSON WINS IN ORATORY

The season in oratory was highly successful. On March 9, Henry Hall, sophomore, placed first with a prize of thirty-five dollars in the State Anti-Tobacco Contest. In four years, McPherson has won three first prizes and a second in this contest. John Whiteneck, senior, placed second in the Kansas Intercollegiate Oratorical Contest. April 20, Henry Hall won another great victory in oratory by taking first place and a prize of sixty dollars in the State Peace Contest. In five years, McPherson has won two first, one second, one third, and one fourth prize.

The General Welfare Board of the Church of the Brethren sponsored a prohibition oratorical contest in the various colleges of the Church, offering prizes of fifteen, ten, and five dollars in gold. At McPherson College these prizes were won respectively by John Whiteneck, Harold Crist, and Lloyd Johnson.

McPHERSON ORCHESTRA IN DEMAND

The McPherson Salon Orchestra, directed by Prof. G. Lewis Doll and composed of a group of the best musicians in the College and the City has been honored by being invited to play in a number of important programs throughout the year. In addition

to a number of appearances in high schools and churches, the Orchestra has given a concert in the McPherson College Chapel, a concert at Bethel College, Newton, a concert at Tabor College, Hillsboro, accompanied the Tabor College Oratorio Society singing Gaul's "Holy City," accompanied the McPherson Community Chorus singing Gounod's "Faust," played at the opening of McPherson's Community Auditorium, at the College Senior Play, and at the concluding program of the Kansas Federation of Music Clubs at Hutchinson, March 22.

PROF. NININGER SPENDS YEAR IN TRAVEL

Professor H. H. Nininger travelled more than twenty thousand miles by auto during the school year with his family and a group of thirteen students, studying natural history subjects in various parts of the United States. The party left Palmer Lake, Colorado, late in August and journeyed westward by way of Yellowstone, Great Salt Lake, and the canyons of Utah and Arizona. After six weeks on the Pacific Coast, the group turned eastward, staying well in the South during the winter months. From Florida the party travelled north along the Atlantic coast as far as Boston. The return trip was made partly through Canada. The students in the group earned a maximum of eighteen hours college credit in geology, zoology, and botany. In addition, they visited many types of mills, mines, and factories, and spent some time in large museums and educational institutions.

MANY SPEAKERS COME TO McPHERSON

The list of speakers who have appeared before McPherson College students during the year includes the names of Miss Sadie J. Miller, Mr. Harlan Smith, and Mr. William Beahn, missionaries on furlough from India, China and Africa, respective-

ly; Mr. Chancey H. Shamberger of the Young People's Department of the Church of the Brethren; Miss Terza Dinsdale, Y. W. C. A. Secretary from Chile; Dean R. A. Schwegler, University of Kansas; Reverend R. H. Miller, North Manchester, Indiana; "Dad" Elliot, Y. M. C. A.; Dr. Dean C. Dutton, University of Oklahoma; Miss Mary Ida Winder, National Council for the Prevention of War; Elder C. Bonsack, Secretary of the General Mission Board of the Church of the Brethren; Dr. D. M. Elliot, Y. M. C. A. Secretary from China; Reverend M. R. Ziegler, Secretary of Home Missions, and Elder J. W. Lear, of the Council of Promotion in the Church of the Brethren.

STUDENT LEADERS ARE CHOSEN

The student organizations have chosen the following leaders for 1928-1929:

President Student Council, Philip Spohn .
President Y. M. C. A., Warren Sisler.
President Y. W. C. A., Lois Dell.
President World Service, Lawrence Lehman.
President Christian Endeavor, Velma Wine.
Editor Spectator, Doris Ballard.
Editor Quadrangle, Robert Puckett.
President W. A. A., Floy Brown.
President Thespian Club, Marvin Steffen.
Cheer Leaders, Alberta Hovis and Ralph Frantz.

SCIENTISTS ATTEND MEETING OF KANSAS ACADEMY

Dr. H. J. Harnly, Dr. J. W. Hershey, and Professor J. L. Bowman represented McPherson College at the meeting of the Kansas Academy of Science at Wichita Municipal University, April 13 and 14. Dr. Hershey read two papers before the Academy; The Effects of Various Mixtures of Argon and Oxygen upon Animal Life, and The Effects of

Various Mixtures of Nitrogen and Oxygen upon Animal Life. Dr. Hershey has been experimenting for several years upon animal life and its relation to the oxygen of the air, and has presented in recent years a number of papers giving the results of this work to the Academy.

FACULTY MEMBERS GIVE COMMENCEMENT ADDRESSES

President V. F. Schwalm, Dean R. E. Mohler, Professor J. A. Blair, and Professor J. H. Heckman have been much in demand for commencement addresses this spring. President Schwalm gave the commencement addresses at Piercesville, Ingalls, Ensign, Windom, Bloom, Roxbury, Enterprise, Covert, and Endsborg High Schools. In addition he gave the addresses for the McPherson County Grade School Commencement, the baccalaureate sermon for the College, and the commencement address at Tabor College, Hillsboro. Dean Mohler spoke at Norborne, Missouri and at Tescott, Zook, Marquette Rozel, and Inman, Kansas. Professor Blair was commencement speaker at Republic City, Sylvia, Gaylord, Vesper, and Assaria. Professor Heckman gave the baccalaureate sermons at Bethany Bible School, Chicago, and Lehigh High School, Kansas.

DELLA HOERNER ESTABLISHES LOAN FUND

Miss Della Hoerner of McPherson has given a hundred dollars as an initial installment on a Rotary Loan Fund for the purpose of helping worthy women students secure a college education. This fund is to be administered by the Management of the College and will be loaned to women students whose applications they approve. It is the hope of Miss Hoerner and the College that other friends will make contributions so that a working fund large enough to aid a number of students may soon be established.

COLLEGE CONDUCTS SUMMER SCHOOLS

McPherson College is again conducting two summer schools. In addition to regular members of the faculty, Supt. Rosa W. Potwin of, McPherson City Schools and Miss Olive Gray, Supervisor of Elementary Education at Hutchinson, Kansas, will teach in the local school.

Miss Sadie Glucklich, Supervisor of Elementary Education at Salina, Kansas, Dr. E. L. Craik of Juniata College, Pennsylvania, and Mrs. Helen Wehe of Washburn College have been secured to supplement regular members of the faculty at Palmer Lake, Colorado. McPherson session of eight weeks opened May 28; the Palmer Lake session of ten weeks, June 11.

ALUMNI NOTES

Mr. Galen Jones, A. B. 1918, goes to Reading, Pennsylvania, about August first as principal of the high school at a salary of \$5,500. Mr. Jones spent a year in Columbia University securing a master's degree there soon after leaving McPherson College. Since that time he has been engaged in school work at Salpurga, Oklahoma, San Antonio and Port Arthur, Texas.

Mr. Emery C. Wine, A. B. 1922, has received an appointment as assistant-instructor in history at the University of Pennsylvania for the year 1928-1929. He will do some teaching while completing work for a Ph. D. degree. Mr. Wine has been in the George Washington University at Washington, D. C., the past year.

Mr. Crawford Brubaker, A. B. 1922, will go to La Verne College, California, in August to head the English Department there. Mr. Brubaker has been in the University of Kansas this year, completing his work for a master's degree.

Miss Nina Swanson, A. B. 1917, holds the position of visiting teacher in the Wichita Public Schools. Miss Swanson spent last year in the New York School for Social Service, in which school she had a \$1200 fellowship granted her because of excellent work in the American Red Cross.

F. E. Mishler, A. B. 1919, with his team from the Santa Monica High School, has had the honor of winning the Southern California Basketball Championship.

A. L. Socolofsky, Com. 1908, of Marion, is seeking the nomination for the office of Secretary of State of Kansas on the Republican ticket.

Recent classes of the College are bringing out publications annually. The latest is The Ladder published by the Class of 1927.

Morris Harnly, A. B. 1918, is completing his work for the doctor's degree in Columbia University. Mr. Harnly has studied in the field of genetics. He will teach in New York University during the school year, 1928-1929.

During the year, three well known alumni have been taken by death: Earl Morris, B. S. 1925, of Arnold, Kansas, A. J. Shaw, Com. '90, of McPherson, and Wm. H. Snyder, Com. '93, of Wichita.

Mr. Walter Thompson, A. B. 1912, who has been teaching for several years in the University of Oklahoma is leaving to accept the position of Associate Professor in Political Science at Leland Stanford University, California.

The Prairie Gardens Company of McPherson is

making a contribution to the beauty of the College Campus by arranging a large experimental iris bed filled with varieties of iris from all parts of the United States. There are now more than two hundred different varieties growing on this plot and within another year many more varieties will have been added.

B. F. McGill, of McPherson, has presented to the College a copy of the British publican *The Spectator*, dated 1712. This gift is an important edition to the list of valuable publications already filed in the library.

Dr. H. J. Harnly was the official representative of the Kansas Academy of Science in the Council of the American Association for the Advancement of Science which met at Nashville, Tennessee, December 26-31, 1927.

Professor G. N. Boone read a paper, "The Preparation of the Manual Arts Teachers for Effective Vocational Guidance," before a conference of Manual Art teachers held at the University of Chicago, in December.

Lois Dell, Alberta Hovis, Ruth Anderson, Nina Hammann, Eunice Longsdorff, Irene Thacker, Earl Kinzie, Marvin Steffen, Warren Sisler, Francis Berkebile, and Harold Melchert plan to attend the Student Y. W. C. A.-Y. M. C. A. Conference at Estes Park, June 6-16, 1928.

Miss Della Lehman of the Department of Expression and Dramatic Art of the College will attend the Faculty section of this conference.

Two standard-sized tennis courts, equipped with steel posts and surrounded by a ten foot netting have been built west of the campus, just south of the two courts already located in that block. These courts are the gift of the Class of '27.

FIELD WORK DURING THE SUMMER

During the summer Mr. Roy B. Teach, Mr. Ray Wagoner, Mr. D. E. Brubaker, and Dean Mohler are in the field in behalf of the college. They report the prospects for students for 1928-29 as most encouraging.

COMMENCEMENT WEEK

Sunday evening the graduates and many friends of the College assembled at the Brethren Church to hear the baccalaureate sermon which was given by President Schwalm. He gave an inspiring challenge to the graduates on the theme "The Way to Greatness," based on Mark 10:35-45.

Tuesday the Senior Class presented Channing Pollock's "The Enemy." A play which makes a powerful and eloquent appeal for peace and was wonderfully well played.

Wednesday morning at ten o'clock the final chapel service for the school year was held. The program consisted of three minutes responses from the students, presentation of Athletic awards by Coach Gardner and Mrs. Utrecht; closing with a fitting summary of the work of the year by President Schwalm.

Thursday at ten o'clock the Senior Class observed Class Day with an interesting program in the chapel. The Annual Alumni banquet was held on Thursday evening with several hundred members of the Alumni Association present to welcome the class of 1928.

Friday morning before a well filled house the Reverend Andreas Bard of Kansas City delivered the commencement address. President Schwalm conferred the degrees, presented the diplomas to the graduates, and with a brief statement of appreciation of cooperation from the faculty, students, and friends of the college announced the close of the school year—a year recognized by all as outstanding in achievement.

CANDIDATES FOR GRADUATION, MAY, 1928

Degree, Bachelor of Arts

| | |
|-------------------|--------------------|
| S. L. Barnhart | Autumn Lindbloom |
| Mabel Beyer (2) | Jewel Newton |
| Viola Bowser | R. W. Nininger |
| Anna Brand | Leona Nyquist |
| Roberta Brown | Ruth Pentecost |
| Kathryn Burgin | Evelyn Richards |
| Arlene Church | Lela Rhodes |
| Cliffe Elbert (2) | Mabelle Roskam |
| June Ellis | Mabel Sangren |
| Melvina Graham | Myrtle Sangren |
| Oma Holderread | Lavelle Saylor |
| Margaret Hughes | Anna Mae Strickler |
| Ira Ihde | Irene Thacker |
| Herbert Kaufman | Portia Vaughan |
| Menno Kaufman | Alvin Voran |
| Howard Keim | John Wall |
| Earl Kinzie | John Whiteneck |

Degree, Bachelor of Science

| | |
|--------------------|---------------------|
| Clark Brumbaugh | Porter Ihrig |
| Marlah Burgin | Lloyd Jamison |
| Jesse Carney | Glen Kilmer |
| Leo Crumpacker | La Verne Martin |
| Leonard Crumpacker | Albert Philippi |
| Franklin Evans | Raymond Trostle (1) |
| Ruth Holderread | Ronald Warren |
| Ruth Hoover (2) | Martin Wise |

Degree, Bachelor of Music

Myrtle Moyers

(1) With Honor.

(2) Honorable Mention.

Diploma, Piano

Thelma Budge

Clara Davis

Vivian Harnly

Teacher's Certificate, Piano

Jessie Daron

Teacher's Certificate, Voice

Jessie Daron

Public School Music Certificate

Jessie Daron

Effie Thompson

Thelma Budge

Jewell Newton

McPherson College

A Standard College

Fully accredited by the State University
and

The State Department of Education, for

a

Four Year College Course

Leading to the Bachelor of Arts,
or the Bachelor of Science Degree

Special work in the Fields of

Manual Arts

Commerce

Debate

Department of Fine Arts,

Offering Courses in Music, leading to
Bachelor of Music Degree

Also work in Art, Dramatic Art,
and Expression

Fall Opening, September 10, 1928

For Inquiry, Write

V. F. SCHWALM, President

McPherson, Kansas

McPherson College

A Standard College

Fully accredited by the State University
and

The State Department of Education, for
a

Four Year College Course

Leading to the Bachelor of Arts,
or the Bachelor of Science Degrees

Special work in the Fields of

Manual Arts

Commerce

Debate

Department of Fine Arts,

Offering Courses in Music, leading to
Bachelor of Music Degree

Also work in Art, Dramatic Art,
and Expression

Fall Opening, September 10, 1928

For Inquiry, Write

V. F. SCHWALM, President

McPherson, Kansas
