

# The Spectator

## BULLDOG TEAM THAT WILL MEET "SWEDES" TOMORROW



### TOMORROW TO BE DAY OF DAYS FOR McPHERSON SQUAD

Team Is In Excellent Physical Condition For Most Important Game Of Season

#### REVIEW OF LINE UP

Bigham To Play His Last Game Of Football For The Canines —Dope Is Even

PROBABLE STARTING LINE UP	
McPherson	Bethany
Hockstesser	Webster
Kaufman	LT
Keck	LG
Mowbray	C
Countryman	RG
King	RT
Slak	RE
Barngrover	HB
Bigham	HE
B. Miller	FB
Binford	Q
	Zimmerman

By The Editor  
Tomorrow—Thanksgiving Day—but also the day the McPherson Bulldogs meet the Bethany "Swedes" on the gridiron in their one big grudge battle of the season. It is the day of days for every loyal Bulldog and the one game of the season that is most desired to be a victory for the Canines.

When the two teams face each other on the Lindsborg field tomorrow they will be evenly matched in both weight and skill—more so than they have been the last three years.

(Continued on Page Three)

### FIRST DEBATE FEB. 20 WITH KANSAS WESLEYAN

#### Three Veterans On Varsity Team—To Winfield Pre-season Tourney

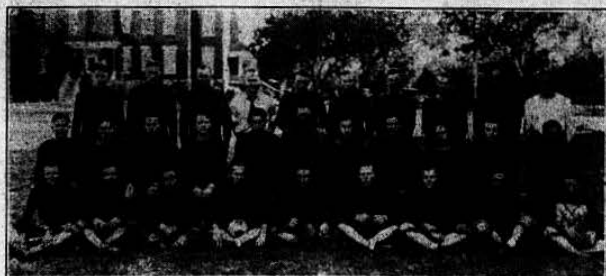
Work on debate is starting in earnest now for on December 5 and 6 the team, consisting of John Lehman, Keith Hayes, Ward Williams and Walter Wollman, will go to Winfield to the debate tournament held by Southwestern college.

The first conference debate will be February 20 with Kansas Wesleyan. On March 6 the team meets Sterling and on March 20 they encounter the Bethany "Swedes".

Prof. Maurice A. Hess is very optimistic regard to the debate outlook this year. This is the second year for John Lehman to gain a berth on the varsity squad, the third year for Keith Hayes, Ward Williams' second, and Walter Wollman's first year. Last year Prof. Hess had entirely new men with whom to work while this year all are experienced varsity debaters with the exception of one man.

#### GIVES CHAPEL PROGRAM

Fri., Nov. 21—The English department, under leadership of Miss Edith McGaffey, conducted the chapel program this morning in fitting with the theme of national book week. Short talks were given on the topic of literature by Vernon Rhoades and Mrs. Marguerite Hubbard. Ethel Sherry was to have given a talk but due to the lack of time, she was unable to do so.



Coach Melvin J. Binford and the team he will lead against the Bethany "Swedes" in the annual grudge battle tomorrow afternoon at Lindsborg. Reading from left to right: Top row, Williams, Tice, L. Miller, H. Miller, Barngrover, Bigham, Anderson, Slak, Zion, Coach Binford. Middle row, H. Binford, Countryman, Hoke, Bowers, Bowman, Mowbray, Keck, McElroy, Cox, Ohmart, Crist. Bottom row, Hill, Broeden, Myers, Voran, Johnston, McPherson, Seitz, Voth, Hochstrasser (captain).

#### WATCH OPPONENTS PLAY

##### Coach Takes Team To Bethany-Bethel Game For Pointers

Fri., Nov. 21—Coach Melvin J. Binford took his Bulldog team to Newton tonight to witness the Bethany-Bethel game. The Bulldogs play the "Swedes" Thanksgiving day and were anxious on getting a number of pointers on the Bethany team. Besides football men a number of other students also attended the game. The game was played at night.

#### "FOWL 'N FIXINS" FOR THANKSGIVING DINNER

##### Dining Hall To Serve Dinner At 11 o'Clock Tomorrow Morning

Roast "fowl" 'n fixins, plus sweet potatoes, gravy, cranberry sauce, green beans and pumpkin pie with whipped cream seems to be the wherewithal with which the dormitory students will celebrate the 27th of this month, Thanksgiving. If plans of the business manager and the cook materialize.

Thanksgiving dinner will be served at 11:00 o'clock this year on account of the afternoon game with the "Swedes". It was learned from the kitchen that only 68 of the 120 regular students who eat in the dining hall will be here for the dinner, the rest leaving for home earlier in the day.

It is evident that a large number of alumni are going to be here for the dinner and it is estimated that there will probably be 100 plates served.

#### BULLETINS ARE ISSUED

##### Published Quarterly By The College—Next Issue To Appear In February

The College Bulletins have recently been issued and sent to graduates and friends of the College throughout the constituency. The Bulletin is published quarterly and the November issue is the last for this year, the next one appearing in February, 1931.

This month's Bulletin contains detailed accounts of the endowment campaign and special articles about the largest individual gifts of the faculty. Also there is campus news and educational notes on religious organizations on the campus.

#### HAVE SPECIAL PROGRAM

Tues., Nov. 25—A special Thanksgiving program was given in the Y. W. C. A. this morning. Mildred Ballard gave a short talk and Una Morline played a piano solo. Edna Hoover followed with a recital for a happy Thanksgiving Day.

#### COMING EVENTS

Wed., Nov. 26—Lycceum.  
Thurs., Nov. 27—Our Day.  
Fri., Nov. 28—Y. M. and Y. W. Party.  
Tues., Dec. 2—Y. M. and Y. W. Wed., Dec. 3—Cantata "Esther".  
Fri., Dec. 5—Chemistry Society Party.

#### WILLIAMS AND LAUVER TO REPRESENT COLLEGE

##### To Attend National Convention In Detroit Christmas Vacation

Prominent Speakers To Be Present—Will Discuss College Life

Mon., Nov. 24—Ward Williams and Philip Lauver have been selected by the students and faculty to represent the College in the National Student-Faculty conference, at Detroit, Michigan, December 27 to 31. The purpose of this conference is to provide an opportunity for consultation and sharing of experience concerning the place of religion and religious agencies in College and University life. It is under the auspices of the national student Y.M.C.A. and Y.W.C.A. Such men as Reinhold Niebuhr, Norman Thomas, and Henry P. VanDusen will take part.

Dr. V. F. Schwalm will also be present as an honorary delegate from McPherson.

#### TO BURN THE "SWEDE" IN HUGE FIRE TONIGHT

##### Williams To Give Funeral Address—Students Urged To Attend

Tonight the traditional "Swede" will be burned to the stake amid a roaring fire of store boxes and kindling wood. It is the hope of those in charge that this will result in the "Swede" losing all his football spirit and the Bulldogs should have no trouble in working the pigskin down the field for touchdowns. This funeral will be a gala affair and great ceremonial rites have been planned for this evening.

#### IN SYMPATHY

The Spectator staff wishes to express its sincere sympathy and heart felts to William H. Bigham, senior, who on Monday, November 17, lost his mother at Topeka after a lingering illness.

—Leland E. Lindell, Editor.

#### PARTY FRIDAY NIGHT

##### The "Y" Sponsoring Event For Students Who Do Not Go Home

Friday night, beginning at 7:30, the Y.W. and Y.M. organizations on the campus will sponsor a social party in the Y.W. room for all students who were unable to go home over the Thanksgiving holiday. It is understood that the evening will be spent in games and a general good time with light refreshments being served.

#### SENIORS WIN FIRST IN QUADRANGLE SALE

##### Two Hundred, Nine Annuals Are Sold—To Make A Thorough Canvass

Wed., Nov. 19—As a result of a sales campaign in chapel this morning conducted by the Quadrangle staff, the seniors were given a prize of \$10 for being the first class to go over 100 per cent purchase of annuals. No class received the second prize of \$7.50 because no other class received 100 per cent.

A total of 209 annuals were sold this morning. The seniors purchased 36, the juniors 44, the sophomores 53, and the freshmen 72. The faculty acquired 3 annuals and from other sources one was purchased.

Henry Zion, editor, states that a concerted effort will be made by his staff in a canvass of students and faculty members who did not secure an annual. The campaign will also be carried to the members of last year's graduating class.

#### TOURNAMENT STARTING

##### W. A. A. To Sponsor Volley Ball Tourney—Teams Evenly Matched

Mon., Nov. 17—Reports on the Wichita conference were given in the last W.A.A. meeting tonight. Those making the trip to the convention were Ethel Jamison, president, Esther Brown, Margaret Stegeman, and Edna Hoover. It was reported that the activities of the College W.A.A. compared favorably with the other organizations represented.

The volley ball tournament finals are to be started as soon next week as possible. This will take some time as the teams are quite evenly matched.

#### IN STUDENT RECITAL

Fri., Nov. 21—At Central college auditorium tonight, Beth Hendrickson, senior at McPherson college, assisted May Sherman in a musical program. Miss Hendrickson read a cutting from "Nothing but the Truth," and Miss Sherman, an accomplished musician and former Bethany student, played selections on piano, violin, and cello.



#### WOMEN'S CLUB TO GIVE THESPIANS PLAY TWO NIGHTS

##### Change Date Of "The Patsy" To December 9 And 10

#### ADMISSION 50 CENTS

Are Making Plans For Initiation Of The 10 New Members

#### BULLETIN

It was announced this morning that the Women's Business and Professional club downtown would sponsor the Thespians play and that it would give the play two nights, Dec. 9 and 10.

Fri., Nov. 21—At a meeting of the Thespians this morning it was voted to set a general admission price of 50 cents for the organization's greatest comedy, "The Patsy." Because of a conflicting date of a basketball game of the College with Sterling on December 16, it was decided to change the date to Wednesday night, December 10.

Various plans of the Club were discussed this morning and a committee named by the president to make plans for the initiation of the 10 new members. No definite date has been set as yet for this ceremony but it is thought that it will be soon after the play is presented. With Mildred Doyle as chairman she has as helpers Ethel Sherry and Lillian Horning.

#### TO GIVE A CHEMICAL DEMONSTRATION DEC. 1

##### Hershey and Gustafson To Talk At Hi-Y Banquet At Y.M.C.A.

Both Dr. J. Willard Hershey and Vernon Gustafson, chemistry assistant will give talks and a demonstration at a Hi-Y banquet held in the Y.M.C.A. building downtown on the night of December 1.

Dr. Hershey will speak on the "Possibilities in Chemistry," in regard to the vocational values, and Mr. Gustafson will give a demonstration of a few of the many chemical phenomena susceptible to the human eye. He will also include some functions of explosions and the manner in which they react.

Sammy, the college shiek, was told by his doctor that he needed exercise, and now Sammy rolls his own cigarettes.

#### JUST LIKE A . . .



Concert may puff a man up, but never prop him up.



### THIRTY-SIX COLLEGES AND UNIVERSITIES ON THE LIST OF EXCHANGES OF SPECTATOR

They Come From Coast To Coast—One From Alaska—Nineteen Are Kansas Publications—Exchanges From 13 States—Gives A Variety Of Ideas

From California to Virginia, and from Oklahoma to Alaska are scattered the 36 colleges and universities which exchange newspapers weekly with the Spectator. In addition to these the school paper exchanges with 58 high school publications, and a daily newspaper, The McPherson Democrat-Opinion, besides a host of others that come to The Spectator.

The farthest distance to be traveled by a paper to take its place on our library racks is the 3500 miles between McPherson and College, Alaska, whence we receive the Farthest North Collegian, from the School of Mines. This is the northernmost college in the world, since it is situated along the north coast of Alaska.

Nineteen of our exchanges are with Kansas publications, and the rest are distributed through twelve states, including Oklahoma, Nebraska, Missouri, Iowa, Illinois, Indiana, Pennsylvania, Virginia, Maryland, Wisconsin, California and Alaska.

An examination of the names by which the papers go reveals an interesting variety of appellations. In some cases school colors, in other a play upon initials and names have been called upon to supply fitting titles. A few of these are the Bak or Orange, the Sterling Star, the Park Stylus, the Hunilton, and the Bridgewater Bee. It might be noted that the name of our own paper comes from the title given to the group of essays based on observations from life, and published under that name by Addison and Steele in the early days of modern English literature.

These exchanges help to keep us in touch with our sister schools, and to take advantage of the best ideas and examples which they have to offer.

### McPHERSON DAY OF DAYS

(Continued from Page One)

In going over the probable starting line-up as has been announced by Coach Melvin J. Binford and telling of each player's strength and ability we find an interesting array of football talent that is well worthy of carrying the laurels of McPherson against the "Swedes."

In the backfield, we will find Bigham, who will play his last football game for the Bulldogs tomorrow. Bigham is a consistent and hard hitting halfback. He is what one might call a "head" player and takes the circumstances as they come. He is a mighty line driver and in the Bethel game with B. Miller, made the greatest number of yards by line plunges. Bigham kicked the extra point in the Bethel game.

Harold Binford, the Coach's husky brother, has a backfield position cinched. Altho a freshman he has lots of "sand" and is the best punter the Bulldogs have.

Blaine Miller, the heavy fullback, has scored all three of McPherson's touchdowns of the season and shows great power in "bucking the line." An ardent sports writer has said that "by the time Miller (who is now a Freshman) is a senior they will have to put hobbles on him to keep him from running wild." Altho bothered with injuries for a short time during the season he is now in excellent shape.

In completing his backfield ball logging machine that will equal any Bethany can put against them, the Coach has two men for one position, that of quarterback. These two men are Barngrover and the midget Cox. In Barngrover there is weight and a good line plinger, while

Bowman and at ends there is Ohmart and Hill.—S. O. S.—Sit On Swolen.

### ALUMNI JOTTINGS

Mercedes M. Chapman, '26, is teaching in the Chicago Teachers college.

Jay Eller, '25, formerly of Wenatchee, Washington, is now located at Swetle, where he is doing pastoral work in the Church of the Brethren and is pursuing graduate study in the University of Washington.

Mayme King, '22, is teaching English and dramatics in the Hutchinson high school.

Geo. W. Burgin, '20, has assumed the pastorate of the Church of the Brethren at Garden City, Kansas.

A daughter was born to Mr. and Mrs. R. M. Zing in Chicago, August 15. Mrs. Zing will be remembered as Mable Brubaker.

### STARTING EXPERIMENT

College Expands Facilities By Offering Courses In Downtown Room

Extension courses for others than students of the College will be given in a downtown room by a group of members of the College faculty. Classes are now being formed, and judging from the interest and the manner in which enrolments are coming in, the venture, purely an experiment, will meet with success.

"Contemporary Europe" and "Representative Americans" will be the courses given by Dr. J. D. Bright; "Ethics" and "Sociology" will be taught by Prof. J. Hugh Heckman; "Social Psychology" will be in charge of Prof. J. A. Blair, and Dean R. E. Mohler will teach "Genetics." Full college credits will be obtainable by those taking these courses.

### QUAD SALE IN CHAPEL

Quadrangle Staff Takes Chapel Period For Sale Of Annuals

Wed., Nov. 19—The largest part of the chapel period this morning was given over to the sale of Quadrangle. Prof. G. N. Boone lead the devotions after which John Lehman gave a sales talk. He told of the merits of the book and insisted that we each wanted one. The Quadrangle staff then took charge of the meeting.

"Beat the Terrible Swedes."

### Union Barber Shop

Back of McPherson & Citizens Bank

If it's New we show it.

### Gordon's Fashion Shop

First of All—Reliability.

Fancy Boxes of Chocolates, Hot Lunches, Home Made Candy

### Palace of Sweets

THE McPherson & Citizens State Bank

of McPherson, Kansas  
Capital and Surplus \$127,000.00

The Problem of the Student is our chance to apply the "Golden Rule." Come in.

Everyman's Library  
Excellent for supplementary reading.  
90 cents a Volume  
Catalogue on request.

Smalley's  
221 North Main 133 Telephone

### MODERN ROMANCE IS SHOWN IN SCIENCE

Chemistry Department Presents A Number Of Reels Of Pictures On Science

Thurs., Nov. 20—Some of the romances and mysteries of the modern industries were brought to the students tonight in four reels of movies shown in the chemistry lecture room by the Chemistry department.

The Romance of Glass, a film showing in detail the manufacture of many common glass articles, Modern Hercules, or the manufacture of dynamite and explosives, was also shown. Two reels on the Story of Bakelite were run.

Interest in these educational films was evidenced by the large group attending, ten Central college students being present. Dr. Hershey obtained the films through the Y. M. C. A. motion picture bureau.

While the various uplift organizations are seeking laws to protect the health and morals of the people, why do they start no crusade against the campaign cigar?

"Why does a woman always add a postscript to her letter?"

"Well, she probably figures out in her own mind that her letter has made you think and then tries to have the last word."

This isn't any grudge battle this year—it will be an entertainment.

Come to the Hawley Barber and Beauty Shop. Where Hospitality and good workmanship prevail. Haircuts from now on will be 40 cents. Phone 199 for appointment at Beauty Shop. Permanent \$5.00 and up.—adv.



### MATTHEWS Thanksgiving Sale

Hats . . . Coats . . . Dresses.  
Snappy New Styles you will appreciate.  
We are Thankful for your Patronage.

McPherson Laundry  
Chas. L. Austin,  
College Agent  
Basket in boy's dorm.

All Silk Wool Lined  
Hand Made Ties

\$1.00

New assortment of Hanover Shirts.

A shirt with Twenty features.

Alliance Exchange Co.

Candy Bars and Gum . . .  
3 For 10c

If these are as welcome to you  
As you are to Us  
Then one thing is certain  
We'll Never Fuss.

THE UNITED STORES COMPANY  
PIGGLY WIGGLY  
KANSAS OWNED INSTITUTIONS—OPERATED BY AND FOR KANSANS

### UPSHAW

Furniture and Undertaking Co.

Ambulance Service Day or Night

S. T. Boston

J. W. Upshaw

Established 1897

Office Phone 197

McPherson, Kansas

### Bulldogs Must Win

We're backing you.

Dress Well for the Swede Game

IN CLOTHES FROM

STROUSE'S  
THE BEST STORE FOR MEN

### BULLDOG BARKS

HANG ON—IT CAN BE DONE

Let us bolster up our pride:  
Beat the "Swedes".  
We need Victory on OUR side;  
Beat the "Swedes".  
Bust a hole a half mile wide  
Thru which Bulldogs swiftly glide,  
Let's take Bethany for a ride;  
Beat the "Swedes".  
Mutually yours,



The Farmers Alliance Insurance Co.  
"Continuous Insurance Service Since 1868".  
McPherson, Kansas

### Hultqvist

College Tailor and Cleaner  
Since 1887  
The Old Reliable  
CASEY VORAN, Agt.

### Carson & Smith

The Cleaners that Satisfy.

College Agents  
"Gene" Dawson  
and  
Kermit Hays.

### Thoro-Bread

Bread is your Best Food.  
Eat more of it.

IDEAL BAKERY

PARKER  
The Life Time Pen  
Almen-Lovett  
Drug Co.

SWEENEY  
BARBER SHOP  
Haircut 35c  
108 1/2 S. Main

Okerlind & Aspegren  
The Clothes Cleaners  
See Elber Tice, College Agent,  
Florence Weaver, College Agent.

FOOTBALL

# SPORTS

## OTTAWA DEFEAT GIVES ST. MARY'S CHAMPIONSHIP

**Bell And Burns Score Touchdowns For The Knights, 20 to 0**

**Bethel Completes 16 Passes But Falls To Score — Bethel Is Superior**

St. Mary's, Kan., Nov. 21—St. Mary's college won undisputed right to the Kansas conference championship today, defeating Ottawa 20 to 0. The Knights started out in championship style, scoring early in the period on an 18-yard run by Bell. Captain Burns reeled off several long gains before he plunged over from the one-yard line for the second touchdown.

Newton, Kan., Nov. 21—The Bethany college "Swedes" defeated the Bethel college eleven here tonight, 26 to 0. Bethany held the upper hand of the play only during the first quarter and half of the second quarter. Bethel, in centering its attack on aerial tactics, completed 16 passes and incompleting nearly the same number. Bethel gained more yards from scrimmage and more first downs than Bethany, however, they were unable to get their scoring machine to function.

## O'BRIEN CARRIES BALL OVER FOR FROSH WIN

**"Fighting Irishman" Intercepts Long Sophomore Pass To Score Victory**

### FRESHMEN 6, SOPHOMORES 0

**Beginners To Discard "Green Caps" Tomorrow Afternoon As A Result of Their Triumph**

Thurs., Nov. 20—Max O'Brien, the "Fighting Irishman" of the freshman class, intercepted a sophomore pass this afternoon and ran 30 yards for a touchdown to give his classmates the privilege of discarding their "green caps" at the sound of the final whistle in the Bethany-McPherson game Thanksgiving Day. The first year men won by a lone touchdown in the third quarter, 6 to 0.

The game was won by the freshmen who did not make a first down and gained only 15 yards from scrimmage while their opponents chalked up a total gain of 45 yards and 2 first downs. The second year men held the upper hand during the first half but were unable to make any substantial gains and the beginners showed their greatest power in the last half, at which time they made their yards from scrimmage.

**Freshmen**  
 McCrate L. E. Austin  
 Peterson L. T. Breeden  
 Seltz L. G. Larsen  
 Yoder C. D. Bowers  
 Flora R. G. Shank  
 Haukin R. T. Bernard  
 Hoke R. E. Nelson  
 O'Brien Q. Stucky  
 Byers R. H. Shackelford  
 Myers L. H. Crist  
 Johnson F. B. Brewer

**Sophomores**  
 Summary: First downs, Freshmen 9, Sophomores 2. Yards from scrimmage, Freshmen 15, Sophomores 45. Yards lost from scrimmage, Freshmen 27, Sophomores 0. Passes, Freshmen, 9 completed, 2 attempted, intercepted 4 for 45 yards. Sophomores, 2 completed for 19 yards, 7 attempts. Punts, Freshmen, 8 for 170 yards, average 21. Sophomores, 5 for 80 yards, average 16. Fumbles, Freshmen 2, Sophomores 2.

Miss Alberta Hovis called on friends in the dormitory Sunday after noon.

Mr. and Mrs. Earl Crumacker and Eunice Marie were Sunday guests at the dining hall.

Miss Hope Nickel spent the week end at her home in Wichita.

N. O. S.—SH On Sweden.

On To Sweden Tomorrow.

### GAMES TOMORROW

Among Conference Schools

McPherson vs Bethany, at Lindsborg.  
 St. Marys vs Rockhurst, at Kansas City.  
 Baker vs Washburn, at Topeka.  
 K-Wesleyan vs Ottawa, at Salina.

### RESULTS

Of Last Weeks Games

Bethany 26, Bethel 0.  
 St. Marys 26, Ottawa 0.

### CONFERENCE STANDINGS

	W	L	T	Pts.	O.P.
St. Marys	5	0	0	1,000	42
Baker	4	1	0	800	68
K-Wesleyan	1	2	1	333	82
Bethany	1	2	1	333	126
McPherson	0	2	0	090	189
Ottawa	0	2	0	000	89



Coach J. Melvin Blinford McPherson



Coach George "Cash" Carlson Bethany

### — DRIPPINGS — from THE DOPE BUCKET

Just Rambling..... It is understood that a football game between the Kansas and Central conferences will be played soon with men from each team in both conferences sending their best players for the two teams. The game is being sponsored by the Capper Publications in Topeka and the money will go to the Capper Crippled Children fund. Leslie Edmonds of the Capital and C. E. McBride of the Kansas City Star will pick the men from each team to play in the all-star game. . . . Kansas Wesleyan is very proud of the fact that they defeated Bethel 49 to 0 and even displayed the fact

**The Wilber Barber Shop**  
 306 N. Main  
 3 Doors North of Euclid.  
**The old reliable**  
 Popular Prices

### MATH ANALYSIS SOLUTION BOOK

Every example worked out. Every step shown with full explanations and diagrams. Great aid to a better understanding of the course. Splendid for review. \$3.75 Postpaid.

DOMAN PUBLISHING CO.  
 104 Lexington Avenue, N. Y. C.


by displaying in a box announcement on their front page. . . Kermit Lange, the Baker lad, has been selected to play on an all-star team to play in California soon. . . Our set saw the Bethany-Bethel game last Friday night and we believe that if Bethel's colored boy had not had an injured shoulder the score might have been another thing. . . Lange is credited with scoring more points for his team this year than any other man in the teams of the nation. . . The Wesleyan Advance will have to originate a new banner head for the announcement of their win over Ottawa whom they play tomorrow. . . The football season should come to a close soon because we reporters are going to freeze to death covering these late games, maybe it would be a good thing if they did. . . It is about ference team this year. . . Washburn has taken the Central conference championship this year for the first time in a good number of years. George Gardner, last year coach time for the sports writers to be handling in their own "personal" all-conference teams. They will probably begin appearing in the Sunday papers. . . It is doubtful if McPherson will place any man on the first All-Conference team this year. . . Washburn, helped coach the Washburn eleven. Gardner is head coach of basketball this year at the Topeka college. . . With Bobby Jones now in "soft" retirement some of those other birds who say they are good golf players will have a chance to show their stuff. . . Weller, the Haskell Indian, is being mentioned along with Lange for All-American timber. Weller and Lange can both kick, pass, and in the open field are nearly impossible to down. . . Tomorrow is our day, so let's make the most of it.

The freshmen are being quite noble with their greetings of "Beat the Swedes" and "S.O.S." and to be certain sweeter music could never be heard than this. . . . Dope means absolutely nothing in the game tomorrow. Victory depends upon the one who puts up the hardest battle, of course with the "breaks" considered. . . The Bulldogs scouted the Swede-Bethel game last Friday night and are more optimistic than ever about the Thanksgiving battle. We sincerely urge every loyal Bulldog to follow the team to Bethany tomorrow and help the Bulldogs win

**PICTURE FRAMES**  
 Made to Order.  
**ORIE J. ABEL**  
 at Smalley's

**Baldwin Music Store**  
 Sheet Music — Accessories  
 Columbia and Victor Records  
 Phone 299

**Ostlund Studio**  
 First Class Photography  
 Kodak Finishing and Supplies  
 Phone 81

The Gift For Her  
  
**Ladies' and Men's wrist and strap watches.**  
**New Waldemar chains, rings and bracelets.**  
**J. Ed. Gustafson**  
 111 N. MAIN STREET

We Believe in  
 Good Work . . .  
 Good Service . . .  
 and Good Materials.  
**Vogt's**  
**Electric Shoe Shop**  
 102 East Euclid

the battle. . . The College slogan for campus painters and designers is: "Whoever smiteth thee on thy right cheek, turn to him also the other."

**McKinster Mercantile Co.**  
 Get the Habit . . .  
 Get It Here.

**THE ROYAL BARBER SHOP**  
 115 North Main

**STUDENTS!**  
 Why not take advantage of our Sale . . . now going on.  
**BOOTS BOOTERY**  
 FOOTWEAR

**CHAS. DARON SHOE SHOP**  
 For Well Finished Work

for all Occasions use **FLOWERS from Maud's Flower Shop**  
 Phone 620

**McPherson Floral Co.**  
 SEND HER A MUM.  
 We cut them Fresh Every Day.  
 Phone 172 501-307 N. Ash

10c, 40c, 75c, \$1.50  
 Free Prompt Delivery  
**JULIA KING'S Mary Ann**  
 Delicious Home Made CANDIES  
 Phone 920  
 Kodak Films Finishing

**NEW FALL SHOES**  
 That please the purse and eye:  
**\$4 to \$10**  
**Lawson-Sweeney**  
 SHOES . . . HOSIERY

**Lake Superior Lumber Company**  
**Building Material and COAL**  
 Phone 40

**BAKER'S CAFE**  
 307 N. Main  
 Meet Your Friends Here  
 Before and After the Game.

**BURKHOLDER LUMBER CO.**  
 Building Material and Coal  
 Phone 16  
 McPherson, Kansas

# BEAT the Swedes

They may paint the campus,

But you know, The town knows, And we all know, That the Nordic Gridiron will be painted red with Swede blood on Next Thursday. Come On Bulldogs!

Compliments of  
  
**The Good Clothes Store**  
 Phone 86 209 N. Main

**Bulldog Barber Shop**  
 West of Community Bldg.  
 112 East Marlin  
 Haircut 25 cents