

McPHERSON



McPHERSON, KANS.



View of McPherson College.



ANNUAL CATALOG

McPherson College

McPherson, Kansas

1907-1908

With Announcements for

1908-1909

Calendar for 1908-1909

1908—September 15, Tuesday,	1st Quarter Begins
“ November 17, Tuesday	2nd Quarter Begins
“ December 25 to January 1, 1909,	Vacation
1909—January 26, Tuesday,	3rd Quarter Begins
“ March 30, Tuesday,	4th Quarter Begins
“ May 23, Sunday Evening,	Baccalaureate Sermon
“ May 24, 25, Monday and Tuesday,	Final Examinations
“ May 25, Tuesday Evening,	Elocution Recital
“ May 26, Wednesday,	Field Day
“ May 26, Wednesday Evening,	Musical Recital
“ May 27, Thursday,	Class Day
“ May 27, Thursday Evening	Alumni Banquet
“ May 28, Friday Morning,	Commencement

¶ The entire object of true education is to make people not merely do right things, but to enjoy right things; not merely industrious, but to love industry; not merely learned, but to love learning; not merely honest but to hunger and thirst after honesty.—Ruskin.

BOARD OF DIRECTORS.

ELDER EDWARD FRANTZ, President, - McPherson, Kan.
S. B. FAHNESTOCK, Vice President, - - McPherson, Kan.
F. A. VANIMAN, Treasurer, - - - - - McPherson, Kan.
H. J. HARNLY, Secretary, - - - - - McPherson, Kan.
ELDER J. J. YODER, - - - - - Conway, Kan.

BOARD OF VISITORS.

ELDER MICHAEL KELLER, - - - - - Larned, Kan.
ELDER GEO. MANON, - - - - - Gypsum, Kan.
ELDER A. C. DAGGETT, - - - - - Covert, Kan.

Faculty and Instructors for 1908-1909.

"I maintain, my friends, that every one of us should seek out the best teacher whom he can find, regardless of expense or anything."

- EDWARD FRANTZ, A. M., President,
Biblical Languages and Literature.
- JOHN A. CLEMENT, A. M., Vice President,
Psychology and Education.
- H. J. HARNLY, A. M., Ph. D.,
Biology and Philosophy.
- S. B. FAHNESTOCK, A. B., M. C., Secretary,
Superintendent Commercial Department; Commercial
Branches and Drawing
- S. J. MILLER, A. M.,*
English and German
- CLAUDE SHIRK, A. M.,
Mathematics, Chemistry and Physics.
- S. C. MILLER, A. M.,
English.
- P. F. TOEVS,
German.
- F. G. MUIR,
Director of Musical Department; Piano, Organ, Har-
mony and Voice Culture.
- B. E. EBEL,
Latin and Greek.
- LOUISE W. JOHNSON,
(Columbia School of Oratory.)
Elocution and Physical Culture.
- MARION STUDEBAKER,
Kansas History and Descriptive Geography.
- LILLIAN HOPE,
Shorthand and Typewriting.
- LULU HILDEBRAND, B. S. D.,
Grammar.
- BERTHA COLLINE,
United States History.
- S. IRA ARNOLD,
Arithmetic.

* (On leave of absence for University study.)

L. A. BRADBURY, M. D.,
Physiology.

JEWETT RUSSELL,
Chemistry.

HOMER LICHTENWALTER,
Laboratory Assistant in Physics.

P. W. SEIDEL, M. Acct.,
Book-keeping.

W. J. SLIFER, B. S. D.,
Book-keeping and Penmanship.

ANNA GARBER,
Spelling.

GROVER BAKER,
Algebra.

DIEDRICH DALKE,
German.

P. W. CLAASSEN,
Assistant in Zoology.

MRS. J. B. STAUFFER,
Director of Model School.

NELLIE HINKSON, B. S. D.
Art and Sloyd.

F. G. MUIR,
Chapel Music.

IRA VANIMAN,
Director of Gymnasium.
(To Be Supplied.)
Matron.

JENNIE BUSH SHIRK,
Librarian.

GENERAL INFORMATION

LOCATION AND ACCESSIBILITY

PURPOSE AND IDEALS

MATERIAL EQUIPMENT

MORAL AND RELIGIOUS INFLUENCES

LITERARY SOCIETIES

DISCIPLINE

EXPENSES

LOCATION AND ACCESSIBILITY.

McPherson, Kansas, is not far from the center of the state, whose geographical and material advantages have been made famous in Governor Hoch's celebrated metaphor, "The rich, juicy meat in the heart of the national sandwich." It is a thriving little city of thirty-five hundred people and is the seat of government of McPherson county. It is a city of prosperous merchants, beautiful homes, parks and shade trees, and is surrounded by waving fields of wheat, corn and alfalfa. The climate is mild and healthful.

McPherson is easily accessible from all parts of the country. The El Paso division of the Rock Island system passes through it, over which run daily through trains between Chicago and California. A branch of the Santa Fe System connects McPherson with the main line about fifty miles distant both east and west. The Union Pacific and Missouri Pacific roads also have branches here.

The College is beautifully situated on an elevation at the eastern end of Euclid street, the principal east and west thoroughfare of the city. The campus is dotted with growing maples, elms and evergreens, and is far enough from the center of business to insure an environment most favorable to student life.

PURPOSE AND IDEALS.

McPherson College was established in order to provide the young people of the Dunker Brethren church with facilities for a thorough, Christian education. However, no denominational test of admission is applied and its doors are open to all persons of good moral character who are in sympathy with the general spirit of the institution.

The conception of education which controls at McPherson is that which regards it as a development of the whole being, body, mind and spirit. While the most thorough and exacting intellectual discipline is demanded, as an examination of the courses in this catalog will show, special care is taken that the whole atmosphere of the school shall be favorable to spiritual culture also. High ideals of character are constantly held forth. True education is held to in-

clude both the acquisition of power and the direction of this power to worthy ends. Equipment for honorable service to humanity and for appreciation of the best things which life can afford are ideas distinctly taught.

The institution stands definitely for the doctrine of "The Simple Life." Modesty in dress and bearing, simplicity in social customs, the dignity of all honest labor, are popular ideas. The rich student who imagines that his wealth will bring him prestige is likely to suffer a painful disillusionment, while the poor one who must work his way through, provided only his work be well done, will find himself honored and respected. No aristocracy, save that of character, is known.

MATERIAL EQUIPMENT.

BUILDINGS. Three large substantial buildings furnish ample accommodations. The main building ninety-four by one hundred and seventeen feet, contains the chapel, recitation rooms, commercial hall, part of the laboratories and the gymnasium.

A second building, forty by one hundred feet, three stories and basement, is used as a dormitory and dining hall. Students' rooms are comfortably furnished, have steam heat and electric lights.

A third building, a Carnegie library, fifty by sixty feet, is equipped with all necessary library conveniences.

The Gymnasium occupies a basement room thirty by seventy feet, with bath and dressing-room annex twenty-five by thirty-five feet. The gymnasium is well equipped with apparatus, tub and shower baths and lockers.

The athletic grounds, occupying the north side of the campus, have been recently put into good condition and are now well equipped for college athletics.

LIBRARY.—The beautiful new library building of pressed brick, stone and concrete, with over sixteen thousand dollars of upkeep endowment, will be ample to meet our library and reading room wants. There are over ten thousand volumes in the library. New books are constantly added. In the reading rooms are found scores of the best newspapers and magazines.

APPARATUS.—In the way of apparatus there is no college in the west better equipped for the work it attempts.

There are fifteen modern microscopes, two microtomes, ovens, paraffine baths, projecting microscope, and all other equipments of a first class biological laboratory.

The chemical laboratories are equipped with modern desks, hoods, balances, gasometers, retorts, chemicals, etc. In fact, everything needed to do first class work.

In the physical laboratories are to be found air pumps, engines, dynamos, motors, galvanometers, spectroscopes, ampere meters, resistance coils and hundreds of other pieces of apparatus too numerous to mention. There is a Chicago model dissolving view stereopticon, also a more modern single stereopticon fitted for either oxy-hydrogen, oxy-ether, acetylene or electric light illumination, with attachments for opaque and microscopic projections.

For astronomy there is a four-inch telescope, and for surveying a transit and other necessary equipments.

THE MUSEUMS.—Here are valuable collections of mammals, birds, birds' nests and eggs, reptiles, corals, shells of various kinds, insects, minerals, rocks and fossils, herbarium, etc., etc. Additions to the collections are solicited.

MORAL AND RELIGIOUS INFLUENCES.

The high ideals and principles for which the college itself stands, together with most favorable surroundings, combine to impart to the student life a moral tone of an exceptionally high order. McPherson has many live churches, a large active Y. M. C. A., a public library, another college beside our own, a choral union, a first class lecture course. It has no saloons, no joints, and no paupers. More than the average city or town it is free from the vices which are liable to prove pitfalls for young people. McPherson is not noted for its mines or manufacturing interests, but is dependent for its prosperity upon the rich agricultural community which surrounds it. It is easy to see how this fact tends to keep away from the city the less desirable classes of inhabitants. It is an ideal college town; just the kind of a place in which it is a pleasure to live and to which it is safe for parents to send their sons and daughters.

In the college itself devotional exercises are held each school day in the chapel, and regular evening prayers are held



H. J. HARNLY, Ph. D.

F. G. MUIR, MUSICAL DIRECTOR

EDWARD FRANTZ, A. M., PRESIDENT

S. B. FAHNESTOCK, M. C., SECY AND TREAS.

S. J. MILLER, A. M.

in the dormitory. The morning watch and systematic daily Bible study are also observed by many. Sunday School and two preaching services are held in the college chapel each Lord's Day. Young people's societies are active and exert a strong Christian influence upon the student body. And what is really of chief significance in determining the religious tone of an educational institution, the teachers are Christian men and women, and their daily work is permeated by the Christian spirit.

LITERARY SOCIETIES.

Three literary societies are sustained by the students of the college. Every student is expected to unite with one of these societies and to participate in the exercises of the society.

THE IRVING SOCIETY is open to the students of the collegiate classes and the senior normals. The sessions are held each Saturday evening in Irving Hall. The hall is well furnished and lighted by electricity.

THE EUREKA SOCIETY is open to sophomore and junior normals and junior and senior academic students. The sessions are held each Saturday evening in the college chapel.

THE ELITE SOCIETY is open to all students below the ranks of the Eurekas and Irvings. They hold their sessions each Monday evening in Irving hall.

Students cannot afford to miss the mental discipline acquired by taking part in these societies. An annual oratorical contest is held under the auspices of the Irving Society.

DISCIPLINE.

The standards of social life and conduct at McPherson College are those which belong to well-bred people everywhere. When young people apply for admission to the college it is assumed that they are ladies and gentlemen, and they are treated and trusted as such until they show themselves unworthy of the trust. If a student shows a disposition not to fall in line with the high standard of conduct which prevails, he is admonished. If he persists, he cannot remain in the institution.

The reformation of young people of vicious habits is a noble work but it is not compatible with the purpose and ideals of McPherson College. The best interests of its constituency demand that its opportunities should be open to ladies and gentlemen only. The patronage of those who want to have a "good

time" is not solicited. When the presence of such is discovered they must choose quickly between a change of program and a departure to other climes. To all who mean business and want the largest returns for time and money expended we extend a hearty welcome and we promise you the best service which it is in our power to give.

EXPENSES.

Cash or 8 per cent note in advance.

One study, half tuition; two or more studies, full tuition.

Tuition, per quarter, (a quarter is nine weeks).....	\$10.75
Tuition, per week	1.25
Tuition, Stenography, per quarter	10.00
Tuition, Stenography, with other studies, per quarter..	5.00
Tuition, Typewriting, per quarter	6.00
Tuition, Full course of Advertising	35.00
Board, one quarter	20.25
Board, less than a quarter, per week	2.50
Holiday vacation, no boarding in the Dormitory	
Fuel, Fall or Spring quarter	1.00
Fuel, Winter quarters, each	4.50
Fuel, per week, Fall or Spring quarters15
Fuel, per week, Winter quarters50
Rooms, including Blinds, Broom, Dust-pan, Slop-pail, Wash-stand, Table, Bowl, Pitcher, two Chairs, Bed, Pillows, Comfort, and Mattress, per week50
All students pay per quarter for Library fee25
Special examination fee	1.00
Private lessons, in advance, each50
Tuition for Post Graduate year	40.00
Board, Fuel, Room Rent, Library Fee, Tuition, Spring and Fall	36.75
Board, Fuel, Room Rent, Library fee, for Winter terms, each	40.25

Students are charged at quarter rates for whole quarters; at week rates for less than a quarter. No reduction for absence of less than two weeks. Text books and stationary are kept on sale at the college office. Students should bring with them any text book they may have on hand. Students wishing to room in the dormitory will bring sheets, pillow-cases, napkins,

blanket, rug and other articles they wish, in order to make their room attractive.

Students voluntarily rooming alone, two rates for room rent and fuel.

Board and room can be had on the Hill or in the City for from \$3.00 to \$3.50 per week.

LABORATORY FEES.

Chemistry, General, per quarter	3.00
Chemistry, Qualitative, per quarter	3.00
Chemistry Quantitative, per quarter	3.00
Chemistry, Organic, per quarter	3.00
Chemistry, Advanced, per quarter	3.00
Physics, Academy, per quarter	1.50
Physics, Advanced, per quarter	2.00
Astronomy, per quarter	2.00
Biological branches other than Biology, per quarter ...	3.00
Biology, per quarter	1.50
Zoology, per quarter	1.00
Botany, per quarter50
Physiology, per quarter	1.00
Geology, per quarter50

GRADUATING FEE, INCLUDING DIPLOMA.

College	5.00
College, Post Graduate	10.00
College, with State Certificate	6.00
Normal	5.00
Normal, with State Certificate	6.00
Elocution	3.00
Music (Certificates)	3.00
Music, (Diploma)	5.00
Commercial	3.00
Commercial (Post Graduate)	5.00
Biblical, (Certificate)	3.00
Biblical, (Collegiate)	5.00
Academic,	3.00
Shorthand,	3.00
Penmanship, (Certificate)	1.00

For further information address, McPherson College, McPherson, Kansas.

COLLEGIATE DEPARTMENT

NATURE AND SCOPE

THE SUBJECTS OF INSTRUCTION

THE TABULATED COURSES

Collegiate Department.

NATURE AND SCOPE.

Two collegiate courses are offered, the classical and scientific, leading to the degrees of Bachelor of Arts and Bachelor of Science. These courses as tabulated, serve to show the nature and amount of the work required for the degree, but it is not to be supposed that the courses of all students must conform exactly to either of them. Reasonable liberty of substitution is allowed, provided the work offered is equal in value to that for which it is substituted. For special pre-medical and pre-engineering courses, see page 34.

ENTRANCE REQUIREMENTS.—Students may be admitted to the college from high schools, academies and preparatory departments of other colleges, as well as on completion of our own academy course. The applicant for admission must present a certificate or a letter from the principal of the school recommending him for admission.

Students from high schools accredited by the high school examiner for the State University will be admitted unconditionally provided that they have the following units to their credit:

1. Three units of English;
2. Two and one-half units of Mathematics;
3. Four units of Latin;
4. One unit of Physical Science;
5. One unit of Biological Science;
6. One unit of History.

A unit is a subject (like Latin, for example) running for one year; that is, not less than thirty-five weeks, five recitations per week, with at least forty minutes for each recitation. Fifteen units are necessary for unconditional entrance, the remaining units being elective.

Following is given the list of accredited high schools as prepared by the State University:

ACCREDITED HIGH SCHOOLS.

CLASS I.

Schools in this list are fully accredited and are working under the most favorable conditions.

NAME OF SCHOOL.

Abilene	Kansas City, Kan.
Academy of Idaho, Pocatella	Labette Co., Altamont
Albuquerque, N. Mex.	La Junta, Colorado
Anthony	*Lawrence
Argentine	*Leavenworth
Arkansas City	Lewis Academy, Wichita
Atchison	Loretta Academy, Kansas City, Mo.
Atchison Co. Effingham	Lyons
Bartlesville, Oklahoma.	Mankato
Beaverhead Co., Dillon, Mont.	Manual Training, Kansas City, Mo.
Beloit	Marion
Burlingame	Marysville
Chanute	McPherson
Chase Co., Cottonwood Falls	Minneapolis
Cherokee Co., Columbus	Montgomery Co., Independ- ence
Clay Co., Clay Center	Newton
Coffeyville	Norton Co., Norton
Concordia	Olathe
Council Grove	Ottawa
Crawford Co., Cherokee	Paola
Decatur Co., Cherokee	Parsons
Decatur Co., Oberlin	Peabody
Dickinson Co., Chapman	Pittsburg
El Dorado	Plainville
Ellsworth	Pratt
El Reno	Proso, K. C., Mo.
Emporia	Rosedale
Eureka	Salina
*Fort Scott	Sedgwick
Galena	Seneca
Garnett	Sheridan Co., Hoxie
Great Bend	Smith Center
Halstead	Southern Kan. Acad., Eureka
Harper	*Sumner Co., Wellington
Herington	St. Joseph, Mo.
Hiawatha	Thomas Co., Colby
Holton	Sterling
Hot Springs, Ark.	*Topeka
Humboldt	Trego Co., Wakeeney
*Hutchinson	Univ. Mil. Acad., Columbia, Mo.
Iola	
Joplin, Mo.	
*Junction City	

Univ. Prep. School, City, Mo.	Kansas Wentworth Mil., Acad., Lexington, Mo.
Urbana University Acad. Urbana, Ill.	Western Mil. Acad., Upper Al- ton, Ill.
Warrensburg, Mo.	*Wichita
Washington	Winfield

*Schools are accredited by the North Central Association of Colleges and Secondary Schools.

CLASS II.

Schools named in this list are fully accredited, but fall short of the most favorable conditions in some respects. (It may be a shortage in laboratory equipment, short school term, or perhaps the teachers are required to carry too many recitations.)

NAME OF SCHOOL

Belleville	LaHarpe
Burlington	La. d
Caldwell	Lyndon
Cherryvale	Neodesha
Clyde	Osage City
Ellis	Osborne
Frankfort	Osawatomie
Garden City	Russell
Gas City	Sabetha
Gove City, Gove	Stockton
Horton	Wamego
Howard	Yates Center

CLASS III.

The schools named in this list fall short of full preparation by not more than three units.

NAME OF SCHOOL

Alma	Colony
Attica	Delphoe
Axtell	Dixon Township, Argonia
Augusta	Dodge City
Belle Plaine	Douglass
Blue Mound	Erie
Bonner Springs	Esbridge
Bronson	Florence
Blue Rapids	Girard
Burton	Glen Elder
Cawker City	Greenleaf
Centralia	Hartford
Clifton	Hill City

Hillsboro
 Kingman
 Kinsley
 LaCygne
 Lecompton
 LeRoy
 Lincoln
 Logan
 Maple Hill
 Moline
 Moran
 Mound City
 Nortonville
 Onaga
 Oskaloosa
 Overbrook
 Phillipsburg

Pleasanton
 Rawlins Co., Atwood
 Reading
 Scranton
 Sedan
 Sherman Co., Goodland
 Solomon
 Stafford
 St. John
 St. Mary's
 Tonganoxie
 Valley Falls
 Waterville
 Waverly
 Weir
 Wetmore
 Wilson

CLASS IV.

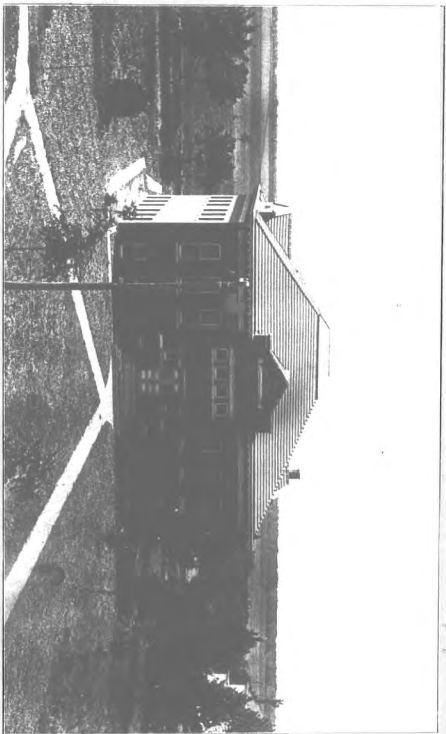
Schools named in this list offer courses that have been approved by the University, but they have not yet fulfilled other conditions for accredited relations.

NAME OF SCHOOL

Altoona
 Boling
 Buffalo
 Burr Oak
 Cheney
 Corning
 Formosa
 Gardner
 Glasco
 Gypsum
 Havensville
 Hoisington
 Irving
 Kincaid
 Lane Co.

Lansing
 Linwood
 Little River
 Lorraine
 Louisburg
 Marquette
 Scandia
 Scott Co.
 Sylvan Grove
 Syracuse
 Wathena
 Wellsville
 Westmoreland
 Williamsburg

STATE CERTIFICATE— Those who complete one of our college courses including the Pedagogy here outlined, will receive from the State Board of Education a State Certificate for three years. After having taught successfully two of the three years and having shown a satisfactory interest in the literature of the profession, a Life Diploma will be issued. The only examinations are those given by the College when the studies are taken. Following is an outline of the Pedagogy required:



McPherson College Carnegie Library.

1. A course of twenty weeks in History of Education.
2. A course of ten weeks in Philosophy of Education.
3. A course of ten weeks in School Law.
4. A course of ten weeks in School Management.
5. A course of ten weeks in Methods of Instruction.

All above courses to be given by the Professor of Pedagogy.

6. One teachers' course of twenty weeks in some other department of the institution, which must include (a) a broad review of the field in which the course is given; (b) a development of the principles involved in the successful teaching of the subject and its correlates in the secondary schools of the state; (c) a study of the comparative value of authorities and methods and the uses of material aids in teaching; and, if possible, (d) actual practice in teaching for not less than ten weeks.

Description of Subjects of Instruction.

ENGLISH.

In the study of English Literature the aims are: to guide the student in the choice of books; to train him in true and skillful literary interpretation; to purify and cultivate his literary taste; to make him acquainted with master minds; to put him in possession of the greatest thoughts expressed in the best language; and, finally, to enable the student to make the most of his own powers of thought and gifts of expression.

1. **RHETORIC.** A study of the principles of rhetoric with original thesis work illustrating the different types of prose composition. Open to college freshmen. First Semester.

2. **AMERICAN POETS.** A study of the prominent poets of America, including their relation to the English poets. Open to college freshmen. Second Semester.

3. **VICTORIAN LITERATURE.** A critical study of Tennyson and Browning. Lectures on the literature of the period. Open to sophomore students. First Semester.

4. **EIGHTEENTH CENTURY POETS.** A study of the representative productions of the prominent poets of the period. Open to junior students. First Quarter.

5. **MILTON.** A thorough study of Paradise Lost. Lectures on the literature of the age of Milton. Open to juniors. Second Quarter.

6. **SHAKESPEARE.** This course is designed to give the student a knowledge of Shakespeare as an artist; his power to portray character; the different types of the drama represented by his works. At least one drama from each type is studied critically. Open to junior students. Second Semester.

7. **ANGLO SAXON PERIOD.** A study of the Anglo-Saxon grammar; Boewulf, Judith and other productions. Open to seniors. All year.

FRENCH.

1. **ELEMENTARY COURSE.** Grammar, (Van Daell and Grandgent) and easy reading. Drill in pronunciation and in forms. First Semester.

2. **ELEMENTARY COURSE.** Continuation of Course 1. Reading of simple prose texts, with exercises in dictation and elementary composition. Second Semester.

3. **MODERN FRENCH PROSE.** Study of Norimee, Gautier, Hugo, Angier, and others. Dictation and practice in composition and conversation. First Semester.

4. **SCIENTIFIC FRENCH.** A course intended for students who wish to prepare for the Scientific field. Second Semester.

LATIN.

FRESHMAN YEAR. Cicero's De Senectute; philosophy of the times; review of the grammar; syntactical drill; outline of the production, first quarter. Cicero's De Amicitia; literary merit; syntactical drill; outline of the production; second quarter. Livy, selections from books I and II; short review of Virgil's Aeneid I-XI; early Roman history; practice in sight reading; syntactical drill; complete outline of Livy, Book I; several passages committed to memory; third and fourth quarters. All conversation in this class will be carried on in the Latin language.

SOPHOMORE YEAR. Horace, selections from the Odes and Epodes; careful study of prosody and practice in metrical reading; political and literary history of the Augustan age; Syntactical work; first quarter. Selections from the Annals of Tacitus, with a study of his style, syntax and diction; political conditions; sight reading; second quarter. Horace, selections from the Epistles and Satires; political history and social conditions

of the times; sight reading; third quarter. Juvenal, selections from the satires; social life and literary history of the times; rapid survey of the preparatory Latin; fourth quarter. All syntactical work and conversation will be carried on in the Latin language.

GREEK.

The emphasis which was formerly placed on the study of the ancient classics has been transferred in modern times to other subjects, such as science, sociology and pedagogy. The effects of this shifting of emphasis have been felt in McPherson College as in all other educational institutions. The educational value of the study of the Greek language is still recognized, however, both as a means of intellectual discipline of the highest worth and as the gateway to an appreciation of the life and civilization of a people which has exerted an immeasurable influence upon modern society. In our classical course three years of good strong work in Greek are offered.

FIRST YEAR. The first year is given to the mastery of the grammatical principles of the language, the acquisition of a vocabulary, and practice in easy historical reading. Open to third year students in the academy.

SECOND YEAR. The first semester is given to the study of Xenophon's Anabasis, and the second semester to that masterpiece of Greek literature, Homer's Iliad. Open to college freshmen.

THIRD YEAR. A quarter each is given to selections from Lysias, Plato, Sophocles and Demosthenes. Open to sophomores.

NEW TESTAMENT. Courses in the Greek New Testament given in the Biblical Department are also open to collegiate students.

HISTORY.

1. **HISTORY OF EDUCATION.** Monroe as text. Olin's and Cubberly's outlines. Lectures by the instructor. First 24 weeks.

2. **GREEK HISTORY.** Myers and West with library reference reading. Lectures. Nine weeks first semester.

3. **ROMAN HISTORY.** Myers, West with library reference reading. Lectures. Nine weeks first semester.

4. **MEDIAEVAL HISTORY.** Robinson's readings, other library reading. Lectures. Nine weeks, second semester.

5. MODERN HISTORY. Robinson, Guizot; lectures; nine weeks, second semester.

6. HISTORY OF PHILOSOPHY. Ancient; emphasis on Socrates, Plato and Aristotle; various texts Wintelband; lectures; first semester.

7. HISTORY OF PHILOSOPHY. Modern; texts, Rogers, Turner, Weber, Wintelband; lectures by instructor; second semester.

8. BIBLE HISTORY. Two years. See collegiate Bible course.

MATHEMATICS AND ASTRONOMY.

(a) Mathematics.

1. UNIVERSITY ALGEBRA. A general review of principles of Algebra is taken up first. The principal topics are quadratics, imaginaries, theory of exponents, ratio and proportion and variation, progression, graphical interpretation of equations, theory of limits, series, methods of undetermined coefficients, binomial theorem, choice and chance, determinants, theory of equations, solution of numerical higher equations by graphic method and Horner's method. One-half of problems required besides all demonstrations. Time, eighteen weeks, first semester, four hours.

2. TRIGONOMETRY, Plane and Spherical.—Careful attention is paid to the consistent and scientific development of the fundamental principles and definitions. The course embraces the relation of the six functions, as ratios, circular measurement of angles, proof of principal formulas, construction and use of trigonometrical tables and the solution of right and oblique triangles. Many practical problems are required to be solved. Time, eighteen weeks, second semester, four hours.

3. ANALYTIC GEOMETRY—Elements of plane analysis, including the geometry of conic sections. Some of the fundamental elements of solid analytics are presented. Smith and Gale's "Introduction to Analytic Geometry," the text. Time, eighteen weeks, first semester, four hours, elective.

4. CALCULUS.—Elementary courses in differential and integral calculus. Fundamental principles and general methods, with practical application to problems. Granvill's "Differential and Integral Calculus" used as text. Time, eighteen weeks, second semester, four hours, elective.

(b) Astronomy.

The department has a four-inch telescope, made by W. D. Mogy & Company, noted telescope makers. It is a high grade instrument and has proven its value in the work of several classes. The instrument is sixty inches focal length, supplied with usual eye-pieces, reaching a power of 300 diameters, besides a solar and a micrometer eye-piece, and spectroscopic attachment. The department has a celestial globe, transit instrument, projection lantern and a large reference list of latest books, magazines and monographs.

1. **DESCRIPTIVE.**—Regular text book work, supplemented by lectures and investigation of special subjects. Course embraces a study of the facts and principles, the earth, moon, planets, comets, stars, nebulae, the structure of the heavens, and the various astronomical theories. Laboratory work, six hours per week. Notes of observations required besides theses and star maps. Time, nine weeks, third quarter, four hours, elective.

2. **DESCRIPTIVE.**—The more theoretical and mathematical part of astronomy is presented. General research and papers on special subjects as history, theories, and use of instruments. Laboratory work, six hours per week. Notes of observations required beside papers. Time, nine weeks, fourth quarter, four hours, elective.

CHEMISTRY.

The chemistry department, located in the basement, is well equipped. The laboratory room for experimental work accommodates forty students working at one time. There are good chemical tables with drawers and lockers. General apparatus includes chemical charts, gas generators, gasometers, gas cylinders, analytical and general balances, spectroscope, spectrometer, projection lantern, drying ovens, water baths, endimeters, burettes, thermometers, besides complete stock of glass-ware, chemicals, and smaller pieces of apparatus. Each student is loaned the apparatus necessary for individual use. An excellent reference library, consisting of principal text books, journals and other publications relating to chemistry, is in an adjoining room. While in the courses given, the text books are used as guides, the instruction is in no case confined to what

is in the book. Students are referred to standard publications bearing on their work. Further, the chief instruction in every course is that given in the laboratory.

1. GENERAL INORGANIC CHEMISTRY.— This course comprises a study of the most important chemical facts: First, the physical and chemical characteristics, the preparation and recognition of the principal elements and their compounds, the fundamental principles, processes, and definitions, and some of the modern chemical theories; second, the practical application of chemistry to every day life and to useful arts. Regular text book work supplemented by lectures and class demonstrations. Course covers the non-metallic elements and their compounds. Physics required as a basis. Laboratory work, four hours per week. Note book of experiments performed and chemical reactions is required, as also thesis and carefully written abstract of lectures. Time, eighteen weeks, first semester, four hours.

2. GENERAL INORGANIC CHEMISTRY.— Continuation of course one. Course embraces a careful study of the laws of the subject; a comprehensive study of the metals, their properties, general reactions, and tests; a solution of many problems of a chemical nature. Note book of experiments performed and chemical reactions is required, as also thesis and abstract of lectures. Laboratory work, four hours per week. Time, eighteen weeks, second semester, four hours.

3. QUALITATIVE CHEMISTRY.—Open to all who have had Course 1. It comprises a study of those reactions of the elements and their compounds that are used in their detection. This is followed by the practical application of the knowledge thus gained to the analysis of unknown substances both in the solid form and in solution. Regular text book work in qualitative analysis and metallurgy, besides lectures and investigative work in chemical subjects. Laboratory work, four hours per week. Notes of experiments and reactions required besides theses. Time, eighteen weeks, first semester, four hours.

4. QUANTITATIVE CHEMISTRY.—Comprises a large number of gravimetric and volumetric determinations, together with the study of the chemistry of the operations involved. Analysis of a number of unknowns. Laboratory work six hours per

week. Recitations on work and processes involved, history of chemistry, and general theories. Notes of experiments and reactions required, besides thesis. Time, eighteen weeks, second semester, four hours.

5. ORGANIC CHEMISTRY.—A study of carbon compounds and their derivatives. Regular text book work supplemented by lectures and investigative work. Laboratory work, six hours per week. Notes of experiments and reactions required besides theses. Time, eighteen weeks, first semester, four hours.

6. ADVANCED INORGANIC.—Course embraces a more extended investigation of the elements, the laws, and the theories of chemistry than given in Course 1. "Ostwald's Principles of Chemistry" used as basis. Laboratory work, six hours per week. Notes of experiments required besides theses. Time, eighteen weeks, second semester, four hours.

PHYSICS.

This department is well supplied with standard apparatus for class demonstration and for both qualitative and quantitative experimental work in dynamics, heat, light, sound, magnetism and electricity. Besides the general supplies, the apparatus includes a linear expansion apparatus, Atwood machine, impact apparatus, tensile strength apparatus, torsion apparatus, elasticity apparatus, torsion pendulum, inertia apparatus, analytical and Jolly balances, spherometer, cathetometer, mechanical powers, centrifugal force apparatus, air pump, hydrometers, calorimeters, barometers aneroid and Fortin, Boyle's law tube, vacuum gauge, thermomultiplier, air thermometer, reflecters, thermometers chemical and differential, maximum and minimum, sonometer, Knudt's apparatus, Chladni's apparatus, manometric flame apparatus with rotator, gratings, photometers, polariscope, voltmeters, ammeters, millivoltmeters, resistance boxes, standard cells, D'Arsonval galvanometer, dynamo, induction coils, Wheatstone bridge, rheostats, transformer, earth inductor, spectroscope, spectrometer, wireless telegraphy outfit, X-ray outfit, Holtz machine. Many new pieces are being added as rapidly as possible. All the ordinary experiments given in a year's course of college physics can be performed. In the library are many standard books and articles relating to the subject.

1. **MECHANICS.**—Open to Sophomore Collegiates and those having had physics I, geometry, trigonometry and university algebra. Course embraces an extended investigation of laws and principles of mechanics, hydrostatics, and pneumatics. Laboratory work, ten hours per week. Drawings and notes of experiments required. Ample practice in solution of practical problems. Time, nine weeks, first quarter, four hours.

2. **HEAT.**—Continuation of Physics I. Course embraces a discussion of laws and principles of expansion, calorimetry, fusion, vaporization, boiling, conduction and radiation, and thermodynamics. Laboratory work, ten hours per week. Drawings and notes of experiments required. Ample practice in solution of practical problems. Time, nine weeks, second quarter, four hours.

3. **SOUND AND LIGHT.**—Continuation of Physics II. Course embraces a study of the principles, laws, and theories, forming the basis of acoustics and optics. Laboratory work, ten hours per week. Drawings and notes of experiments required. Practical problems given. Time, nine weeks, third quarter, four hours.

4. **ELECTRICITY AND MAGNETISM.**—Continuation of Physics III. Course embraces laws and principles underlying electrostatics, magnetism, and current electricity. Laboratory work, six hours per week. Drawings and notes of experiments required. Practical problems given. Time, nine weeks, fourth quarter, four hours.

BIOLOGY.

The material equipment consists of a good supply of modern, Bausch & Lomb, compound microscopes, besides projection microscope, stereoptican, microtomes, paraffine baths and other general apparatus. There is a large and complete supply of staining agents, mounting media, and apparatus necessary for biological and histological work. The student is enabled by taking advantage of the elective work to secure an extended course in zoology along the lines of Cytology, Embryology, Bacteriology, and Comparative Anatomy. For study along these lines, the department has Bausch & Lomb compound microscopes fitted with Abbe condensers, mechanical stages, micrometer eyepieces, and oil immersion lenses, incubators, Arnold

steam sterilizers, Bausch & Lomb automatic microtome, paraffine baths, and other general apparatus. There is a large and complete supply of staining agents, mounting media, and chemicals to make cultures. Many recent and valuable books are in the reference library.

(a) Zoology.

1. GENERAL BIOLOGY.—Open to Junior Collegiates who have had Zoology 1, Academic Course or its equivalent. Course embraces regular recitations and lectures, also a prescribed course in supplemental reading. Laboratory study embraces a study of cell, amoeba, bacteria, star fish, clam, earthworm, frog, both gross and microscopic. Drawings and notes required besides thesis. Time eighteen weeks, first semester.

2. CITOLOGY. A laboratory course, supplemented by recitation, lectures, and readings, which embraces a study of the cell with special reference to the maturation, fertilization, cleavage, and protoplasmic structure. Careful attention given to technique of the subject. Laboratory work six hours per week. Notes and drawings required. Time, eighteen weeks. First semester, four hours.

3. EMBRYOLOGY.—Recitation, lectures, and readings on development of frog, chicken, and human embryos. Laboratory course embraces a study of development of chicken and a study of embryos in the collections. Laboratory work six hours per week. Notes and drawings required, besides thesis. Time, eighteen weeks. First semester, four hours.

4. BACTERIOLOGY.—A study of the typical forms of non-pathogenic and pathogenic bacteria. Course embraces a study of culture processes, sterilization, and other technical methods besides determinative work. Laboratory work six hours per week. Notes and descriptions of experiments required besides drawings. Time, eighteen weeks. Second semester, four hours.

5. COMPARATIVE ANATOMY.—The course embraces a minute study of structure and arrangements of organs and tissues. Recitations, lectures and research work. Laboratory six hours per week. Drawings and mounts required. Throughout the year, four hours.

(b) Botany.

1. GENERAL BIOLOGY.—Continuation of Zoology 1, College Course, and is open to Junior Collegiates who have had

Botany 1, Academic course. The study of Cryptogams is taken up in detail and some time spent on phanerogams. Recitations, lectures, and supplemental reading given. Time, eighteen weeks. Second semester.

PHYSIOLOGY.

The Physiology department is thoroughly equipped with approved modern apparatus for demonstration and experimental work. The apparatus consists of stereopticon with microscope and opaque projections, microscopes, charts, manikin, skeleton, microtome, staining and mounting media, and a large collection of slides. Besides the apparatus, the department possesses a library which contains the latest reference books and other literature pertaining to the subject.

Courses.

1. COLLEGE PHYSIOLOGY.—Open to Senior Normals and Freshman Collegiate students. Requirements Physiology 1 of Academic or its equivalent. Lectures and demonstrations given. Students should have completed at least one course in chemistry and zoology in order to better understand the explanations and the text book. The course embraces a study of the tissues, the skeleton, the digestive and circulatory apparatuses, the muscular, nervous, and other systems, besides the laws and principles underlying the processes of the human body. Laboratory work, which includes mounting, microscopic study, and drawings of the principal tissues of the body, a study of the human skeleton, and dissection work, four hours per week. Notes, drawings, and theses required. Recitations three times per week. Time, thirty-six weeks. First and second semester.

2. HISTOLOGY.—This course embraces preparing, fixing, embedding, sectioning and staining of tissues and all microscopic and histological technique. A careful study is made of the elementary tissues and structure of the organs of animals. It is a laboratory course combined with recitations, lectures, and reading. Notes, drawings, and theses required. Time, eighteen weeks, second semester, four hours.

GEOLOGY.

This department has a collection of about one thousand specimens of minerals and rocks, a large collection of fossils,

a fine collection of corals and seashells, besides a department library of latest books. McPherson county is located in quite interesting and extensive geological formations, as the equus beds, Permian group, and Dakota formation. County is rich in fossils. College is equipped for doing determinative work in minerology.

Courses.

1. GEOLOGY.—Course embraces a study of crystallography, and a study of the common minerals and rocks so that the student may identify them. An elementary knowledge of paleontology is obtained by study of fossils in the collection. Regular text book work embraces a study of physiographical, dynamical and historical geology. Lectures given. Trips to the most important geological formations are taken. A collection of forty rocks and minerals required. Theses required, besides notes of lectures. Time, eighteen weeks, second semester, four hours.

2. MINEROLOGY.—A course offered to those who have had courses in general chemistry and physics. The properties, methods of investigation, and uses of minerals and rocks, a study of crystallography, and the determination of about forty rocks, are included in the course. Laboratory work, four hours per week. Time, eighteen weeks, four hours by appointment.

POLITICAL ECONOMY, POLITICAL SCIENCE AND SOCIOLOGY.

1. ECONOMICS.—This course is introductory, and acquaints the student in a general way with the terms, problems and schools of economy. Four hours. Lectures, text and reference, Walker, Blackmar and Hadley. First semester, Normals and Freshmen.

2. THE STATE.—The origin, nature, function and powers of the state will be investigated. Five hours, second half of first semester. Wilson's "The State" will be the basis, with lectures and reference reading. Juniors.

3. INTERNATIONAL LAW.—Woolsey is made the basis for this course. First half of first semester. Juniors.

4. SOCIOLOGY.—A general introduction to sociology. "Small and Vincent" is made the basis, supplemented by lectures. Special reference reading and thesis. Four hours, second semester. Seniors.

PHILOSOPHY.

1. **ELEMENTARY PSYCHOLOGY.**— A preparatory and normal course. The simple facts and truths of the human mind and its development taught in a practical way. Very helpful to teachers. Text, Angell, lectures, reference reading and laboratory work. Four hours, first semester. Academy and Normals.

2. **PSYCHOLOGY.**— A course in which Dewey, James, ect., are made the basis, supplemented by lectures, laboratory work and theses. Four hours, second semester. Juniors.

3. **HISTORY OF PHILOSOPHY.**— A course in the history of philosophical systems with lectures and discussions as to their values. Text, Rogers and Wintelband, and lectures. Four hours, first and second semesters, Juniors.

4. **METAPHYSICS.**— A study in the theory of thought and knowledge, and of modern philosophy in which an attempt is made to discover the principles which underly the problems in question, and to find, if possible, a conception of being in which the mind can rest. It is a critical study throughout. "Bowne's Theory of Thought and Knowledge" and "Metaphysics" are used as texts, supplemented by lectures, reference readings and thesis. Four hours, first semester. Seniors.

5. **ETHICS.**— The science of human duty. A study of the principles that underly moral obligations, and of the nature of these obligations. Text book, Mackenzie; lectures, thesis. Four hours, second semester. Seniors.

6. **CHRISTIAN THEISM.**— A study of the nature and conditions of the Theistic Proof, and of the philosophical basis of the conception of the Christian God. Four hours. Lectures, text, discussions. Second semester. Seniors.

7. **PHILOSOPHY OF EDUCATION.**—(See Normal.)

A College Course a Study in Philosophy.

It is the purpose of a Collegiate course to give the student a proper foundation for his philosophy of life. In order that he may be given a true conception of reality it is necessary to put him into touch with those great thinkers who have thought so much of truth. It is especially the mission of the Christian College to show in its true significance the influ-

ence of Christ's teachings in the evolution of modern society. The outcome of such a Collegiate Course is not simply a degree to be attached to one's name, nor yet a state of culture, but a true conception of life and a character in harmony therewith.

THE TABULATED COURSES.

Notes on Electives and Substitutions.

(See following tables)

1. In the Freshman year of the Scientific course Political Economy and advanced work in Chemistry may be substituted for French.

2. Students desiring more work in science may elect Bacteriology, Embryology, Cytology and Comparative Anatomy.

3. Candidates for the B. A. degree without Mathematics must have at least four years of Latin.

4. Candidates for the B. S. degree without Latin must elect an extra year of Mathematics.

5. Candidates for the State Certificate must elect a year's work in the professional pedagogical subjects.

6. Students interested in Biblical and Theological subjects may choose their electives from the Collegiate Bible course.

The Tabulated Courses

FRESHMAN YEAR.

		CLASSICAL.	SCIENTIFIC.
		SECOND SEMESTER.	FIRST SEMESTER.
	First Quarter.	Anabasis Gen. Chemistry De Senectute Rhetoric	University Algebra Gen. Chemistry French* Rhetoric
	Second Quarter.	Anabasis Gen. Chemistry De Amicitia Rhetoric	University Algebra Gen. Chemistry French Rhetoric
	Third Quarter.	Homer's Iliad Gen. Chemistry Livy Poets of America	Trigometry Gen. Chemistry French Poets of America
	Fourth Quarter.	Homer's Iliad Gen. Chemistry Livy Poets of America	Trigonometry Gen. Chemistry French Poets of America

*See notes on page 29.

SOPHOMORE YEAR.

	CLASSICAL.	SCIENTIFIC.
FIRST SEMESTER.		
First Quarter.	Memorabilia Advanced Physiology Horace (Odes) 18th Century Literature	Greek History Advanced Physiology History of Education 18th Century Literature
Second Quarter.	Plato (Apology) Advanced Physiology Tacitus 18th Century Literature	Roman History Advanced Physiology History of Education 18th Century Literature
SECOND SEMESTER.		
Third Quarter.	Sophocles Advanced Physiology Horace Victorian Literature	Modern History Advanced Physiology Philosophy of Education Victorian Literature
Fourth Quarter.	Demosthenes De Corona Advanced Physiology Juvenal Victorian Literature	Modern History Advanced Physiology Philosophy of Education Victorian Literature

JUNIOR YEAR.

	CLASSICAL.	SCIENTIFIC.
FIRST SEMESTER.	History of Education Greek History Psychology 16th Century Literature	Biology History of Philosophy Psychology 16th Century Literature
	History of Education Roman History Psychology Milton	Biology History of Philosophy Psychology Milton
SECOND SEMESTER.	Philosophy of Education Modern History Psychology Shakespeare	Biology History of Philosophy Psychology Shakespeare
	Philosophy of Education Modern History Psychology Shakespeare	Biology History of Philosophy Psychology Shakespeare

SENIOR YEAR.

	CLASSICAL.	SCIENTIFIC.
FIRST SEMESTER.		
First Quarter.	Metaphysics Life of Christ Ethics History of Philosophy	Metaphysics Life of Christ Biblical Literature Ethics
Second Quarter.	Metaphysics Life of Christ Ethics History of Philosophy	Metaphysics Life of Christ Biblical Literature Ethics
SECOND SEMESTER.		
Third Quarter.	Sociology Christian Theism Geology History of Philosophy	Sociology Christian Theism Geology Biblical Literature
Fourth Quarter.	Sociology Christian Theism Geology History of Philosophy	Sociology Christian Theism Geology Biblical Literature

Subjects for Admission.

Fifteen units are required for admission, apportioned as follows:

REQUIRED—Mathematics 1, 2, 3, algebra and plane and solid geometry, three units; English 1, 2, 3, three units; Physics, one unit; Free-hand drawing, one unit; Foreign language (may be French or German or Latin; 3 units of one, or 2 units of any one and 1 unit of any other,) three units; a total of 11 units required.

OPTIONAL—Latin 1, 2, 3, three units; German 1, 2, 3, three units; French 1, 2, 3, three units; Greek and Roman History, one unit; English History, one unit; American History, one unit; Chemistry, one unit; Higher Algebra and Plane Trigonometry, one unit; Botany, one unit; Zoology, one unit; Economics, one unit; Manual training, one unit; Physical Geography, one unit; a total of four units optional.

Four units must be chosen from the optional list.

Admission to Advanced Studies of State University.

For any advanced rank, the applicant must have completed all of the studies of the course below the rank for which he applies, including the entrance requirements, or their substantial equivalent.

McPherson College in its scientific work is fully prepared to meet the above requirements to admission and to give credits to students for advanced work. More personal work can be given here than in the larger institutions because our classes are smaller. The standard is just as high and just as careful and precise work is required of the student as in the State University.

Requirements for Admission to Kansas State University Medical College.

When the Medical School was first established, it was considered that the subjects required for entrance to the College of Liberal Arts was sufficient for entrance to the Medical School. The class entering September, 1907, was the last accepted by the University of Kansas on a total of fifteen high-school units. The following years, the Freshman year of college work will be required, and after that the Freshman and Sopho-

Subjects for Admission.

Fifteen units are required for admission, apportioned as follows:

REQUIRED—Mathematics 1, 2, 3, algebra and plane and solid geometry, three units; English 1, 2, 3, three units; Physics, one unit; Free-hand drawing, one unit; Foreign language (may be French or German or Latin; 3 units of one, or 2 units of any one and 1 unit of any other,) three units; a total of 11 units required.

OPTIONAL—Latin 1, 2, 3, three units; German 1, 2, 3, three units; French 1, 2, 3, three units; Greek and Roman History, one unit; English History, one unit; American History, one unit; Chemistry, one unit; Higher Algebra and Plane Trigonometry, one unit; Botany, one unit; Zoology, one unit; Economics, one unit; Manual training, one unit; Physical Geography, one unit; a total of four units optional.

Four units must be chosen from the optional list.

Admission to Advanced Studies of State University.

For any advanced rank, the applicant must have completed all of the studies of the course below the rank for which he applies, including the entrance requirements, or their substantial equivalent.

McPherson College in its scientific work is fully prepared to meet the above requirements to admission and to give credits to students for advanced work. More personal work can be given here than in the larger institutions because our classes are smaller. The standard is just as high and just as careful and precise work is required of the student as in the State University.

Requirements for Admission to Kansas State University Medical College.

When the Medical School was first established, it was considered that the subjects required for entrance to the College of Liberal Arts was sufficient for entrance to the Medical School. The class entering September, 1907, was the last accepted by the University of Kansas on a total of fifteen high-school units. The following years, the Freshman year of college work will be required, and after that the Freshman and Sopho-

more years. This is in accordance with the practice of the best schools of the United States. Even with the requirements placed so high, the student of medicine will need practically all of his time for study, and if he must make a portion of his expenses while in school, unless he has unusual ability, more than four years will be required to finish the course.

STUDIES RECOMMENDED IN THE HIGH SCHOOL.

In the high school, the student who wishes to take the medical course is recommended to get three years of Latin, a course in beginning chemistry, and algebra, geometry and trigonometry. For the other requirements he should consult the general catalogue of the University.

STUDIES RECOMMENDED IN THE COLLEGE.

In his first year, first term, he should take beginning chemistry, if he has not had it in the high school, or a more advanced course, if he has had this, preferably qualitative analysis. He should also take physics and German, French, or English. In the second term he should continue these subjects. In order to obtain a reading knowledge of German, about twenty hours of work are required, which necessitates the study of German throughout the first two years. A single year spent on German is practically wasted. In order to obtain a reading knowledge of French about ten hours are necessary for the average student, but efficiency is greatly increased if fifteen hours are taken.

During the second year organic chemistry should be studied; German and French, the latter, possibly, only the first term. Comparative anatomy or a course in general biology or zoology, with laboratory work, should be pursued throughout the year. McPherson College is fully prepared to meet the above requirements to the State University. (See courses.)

SPECIAL COURSE PREPARATORY TO PRE-MEDICAL AND PRE-ENGINEERING COURSES.

		FIRST YEAR	SECOND YEAR.	THIRD YEAR.
SECOND SEMESTER.	First Quarter.	Algebra Kansas History Rhetoric German	Geometry Ancient History German Elocution Penmanship	American Literature German Physics Zoology
	Second Quarter.	Algebra Civil Government Rhetoric German	Geometry Ancient History German Elocution Penmanship	American Literature German Physics Zoology
	Third Quarter.	Algebra Descriptive Geography Higher Grammar German	Geometry Botany German English History Penmanship	English Literature German Physical Geography Physics
	Fourth Quarter.	Algebra Descriptive Geography Higher Grammar German	Geometry Botany German American History Penmanship	English Literature German Physical Geography Physics

PRE-MEDICAL COURSE.

	FRESHMAN YEAR.	SOPHOMORE YEAR.
FIRST SEMESTER.		
First Quarter.	Advanced Physiology General Chemistry Rhetoric	Mechanics Qualitative Chemistry Biology Psychology
Second Quarter	Advanced Physiology General Chemistry Rhetoric	Sound Qualitative Chemistry Biology Psychology
SECOND SEMESTER.		
Third Quarter.	Histology General Chemistry American Poets	Light Quantitative Chemistry Biology Psychology
Fourth Quarter.	Histology General Chemistry American Poets	Electrics Quantitative Chemistry Biology Psychology

PRE-ENGINEERING COURSE.

THE TABULATED COURSES.

	FRESHMAN YEAR.	SOPHOMORE YEAR
FIRST SEMESTER.	University Algebra General Chemistry Rhetoric	Mechanics Qualitative Chemistry Psychology
	University Algebra General Chemistry Rhetoric	Sound Qualitative Chemistry Psychology
SECOND SEMESTER.	Trigonometry General Chemistry American Poets	Light Quantitative Chemistry Geology Psychology
	Trigonometry General Chemistry American Poets	Electric Quantitative Chemistry Geology Psychology

THE ACADEMY**NATURE AND PURPOSE****SUBJECTS OF INSTRUCTION****THE TABULATED COURSES**

PURPOSE.

The academic courses are intended to prepare students for the corresponding courses in the college. For those who are unable to pursue their education further, these courses will serve as the best preparation for practical life.

Students may be admitted to the first year of the academy on completion of the eighth grade or on presentation of a second grade teacher's certificate.

The courses are three years in length, but to accommodate students who may not be prepared for the first year's work, a sub-academic year is also provided.

Description of Subjects of Instruction.**ENGLISH.**

The courses in the Academic English are the same as those in the Normal English excepting that Course 1 is omitted. See the description of these courses under Normal Department. Courses 4 and 5 must include the reading and study of the classics outlined by the committee on college entrance requirements.

GERMAN.

1. GERMAN, Beginning.—A course in the study of the Grammar together with sight reading and translation and the writing of German script. First semester.

2. Glueck Auf, Carruth's German Reader, conversation and the grammar continued. Second semester.

3. Der Neffe als Onkle, Die Jungfrau von Orleans, Wilhelm Tell, and Herman und Dorothea. All year.

4. Nathan der Weise, Goethe's Faust Parts I and II, and study of grammar. All year.

LATIN.

FIRST YEAR.—Collar and Daniell's First Year Latin. In all written exercises the long vowels will be carefully marked and in all oral work special attention will be given to acquire a correct pronunciation. First, second and third quarters. Twenty pages of Caesar, with prose composition and careful training in the use of the grammar; drawing of maps to indicate the geography of the country, Caesar's campaigns, etc. Fourth quarter. The aim of this year's work is a thor-

ough knowledge of the paradigms, the acquisition of a vocabulary, and practice in reading.

SECOND YEAR.—Caesar continued until four books or their equivalent are finished, with at least one period a week in prose composition; careful drill on constructions and vocabulary of Caesar; systematic study of the grammar throughout the year; and the history he narrates. First chapter of Caesar will be committed to memory, and special attention will again be given to the construction of maps showing the various expeditions of Caesar. First, second and third quarters. Cicero, first three orations against Cataline, with the equivalent of one period a week in prose composition; study of Cicero's style and diction, and historical background; syntactical drill; careful outline of each oration. Fourth quarter.

THIRD YEAR.—Cicero continued; fourth oration against Cataline, the one for the poet Archias, and the one concerning the Manilian law; prose composition; syntactical drill; course in grammar continued; outline of each oration. First quarter. Virgil's Aeneid, six books; systematic study of Murray's mythology; careful practice in metrical reading; prosody; literary merit; syntactical drill and composition. Several passages and numerous mottoes and maxims will be committed to memory. Second, third and fourth quarters.

GREEK.

In our classical course three years of work in Greek are offered, one year of which must be taken in the third year of the Academy course. This first year's work is given to the mastery of the grammatical principles of the language, the acquisition of a vocabulary, and practice in easy historical reading.

MATHEMATICS.

Of the work in mathematics, two things are especially urged: first, that it shall develop in the student a certain degree of mathematical maturity and that it shall make him familiar with the subject matter and methods; second, that it shall furnish him with certain facts, an accurate knowledge of which is indispensable to advancement. Most students fail in work because they are poorly equipped. They can not perform the ordinary operations of Arithmetic or Algebra

either rapidly or accurately. Then, when students enter higher work, they have to spend much of their time in studying those things with which they ought to be familiar, instead of spending their time and energy on the new work. Therefore the students, who enter mathematics, must be careful and not begin too far along and thus be handicapped, and not keep the pace which is set by those properly prepared. It is not sufficient that a student should once have known his mathematical facts, he must know them at the time he begins work. The object of the course in mathematics is twofold: first, to train the mind to habits of logical and independent thought; second, to give to the mind an increase of power.

The work is conducted mainly by recitations from text books. Practical use of mathematics, as well as cultural value is kept in view. Precision, clearness, and neatness are insisted upon. Recitation work will involve a test of the student's ingenuity and of their preparation by original exercises.

1. HIGH SCHOOL ALGEBRA.—In the study of mathematics, future efficient work must be based on thoroughness in Algebra; therefore students should make careful preparation before attempting subsequent work. In almost all cases where students in physics, and advanced mathematics have great difficulty, it has been due to defects in a knowledge of Algebra. Algebra is the corner stone of analytical reasoning, hence comprehension and facility in this study leads to rapid advancement and an understanding and appreciation of higher mathematics.

Course embraces review of fundamental operations, factoring, determination of the least common multiple and the highest common factor, fractions, literal and numerical equations of the first degree with one or several unknown quantities, graph of linear equations, powers and roots, theory of exponents including positive and negative exponents, both fractional and negative. Much supplemental work given. One-half of problems required. Time, eighteen weeks. First semester, four hours.

2. HIGH SCHOOL ALGEBRA.—Continuation of Mathematics one. Course embraces radical quantities, quadratics both numerical and literal with one or two unknown quantities, graphs of quadratics, ratio and proportion, progres-

sions both arithemetical and geometrical with applications, indeterminates and inequalities, variation, fundamental principles and operations of logarithms using a four place table, binomial theorem any exponent, and some elemental work in indeterminate coefficients, series, and supplemental work given. One-half problems required. Time, eighteen weeks. Second semester, four hours.

3. PLANE GEOMETRY.— The prominent aims of geometry are to develop logical reasoning power, clear conception and accurate language, for securing which, this study is unsurpassed. Theoretical demonstrations, construction work, and original exercises given. The usual theorems and constructions which include the general properties of plane rectilinear figures, the circle, the measurement of angles, similar and regular polygons, areas, measurements of circle, loci, symmetry, variables and limits, maxima and minima, and numerical properties of lines and figures. All the original exercises required besides the principles, definitions, axioms, and corollaries. Time, eighteen weeks. First semester, four hours.

4. SOLID GEOMETRY.— The usual theorems and constructions, including the relations of planes and lines in space, the principles of dihedral and polyhedral angles, the properties and measurements of prisms, pyramids, cylinders, cones, spheres, and spherical triangles, the elements of conic sections. Solution of original exercises required. Time, eighteen weeks. Second semester, four hours.

SCIENCE.

The aim of this department is to bring the student into direct contact with nature and its truths and hence while there are regular recitations and lectures to give broad and general views, there is a large amount of laboratory work in which facts are learned first hand, and the methods and manipulations necessary to secure the facts are practised by the student individually. It is believed and experience has shown that the student acquires an intellectual independence and power to acquire knowledge direct from nature by this personal work rather than the use of text books and lectures alone. The observation power and the judgment is exercised and developed by such a process.

(a) Physical Sciences.

Besides the apparatus mentioned under physics in the description in the college department, this department has all the smaller apparatus necessary to perform all experiments in any text in beginning physics. Apparatus; such as simple balances, meter sticks, calipers, pendulums, mechanical powers, simple photometers, lenses, prisms, organ pipes, tuning forks, resonators, color disks, conduction apparatus, connection apparatus, thermometers, magnets, and in fact, all the numerous simple pieces which are used in a qualitative study of the fundamental laws underlying physical phenomena, are in the laboratory. The library contains many standard books and articles relating to the subject. In geography there is a set of wall maps, an excellent mounted set of relief maps, and a fine tellurian. The large collection of rocks and minerals and fossils are accessible for class use.

Courses.

1. **DESCRIPTIVE GEOGRAPHY.**— Course embraces a study of the physical phenomena connected with the earth, a study of the peoples, forms of government, and the natural and political divisions of earth. Regular text book work with reference work. Time, eighteen weeks. Second semester, daily.

2. **PHYSICAL GEOGRAPHY.**—The course lays a foundation for later geological study and calls attention to the forces now affecting the earth's crust. Quite a comprehensive study is given to the solar system and the earth is considered as a celestial body, also the erosion and disintegration of the earth's surface, the formation of soils, and the relation of the physical features of the earth to man. Lectures, recitations, and laboratory work. Spring semester.

3. **ELEMENTARY PHYSICS.**—This course is designed to acquaint the student with the more important phenomena and with the principles involved in their explanation. The elements of mechanics, statics, kinematics, heat, sound, light, magnetism, and electricity are taught. Regular text book work supplemented by lectures. Students are required to keep drawings and notes of experiments, and to work out the problems embracing the principles. Laboratory work

four hours per week. Recitations four hours per week. Time, thirty-six weeks.

(b) **Biological.**

There is a large collection of stuffed animals, and a fine collection of preserved material for illustration, several hundred slides, drawings of all type animals, tables, pans, and complete supply for laboratory work. There has recently been added quite a collection of Lepidoptera, besides a general collection of insects for class work in classification. In Botany there is a large herbarium, slides, and other necessary things for efficient laboratory work. There is a large number of recent and valuable books in the library for reference work. McPherson county is rich in flora and fauna since in it are four or five geologic formations. The basin area is especially rich in protozoa, while two rivers and several running streams, and many springs are rich in cryptogams and lower animal forms.

1. **ELEMENTARY PHYSIOLOGY.**— Course designed to give general principles of physiology and hygiene, and to prepare students for advanced work. Regular text book supplemented by illustrations, dissections, and lectures. Time, eighteen weeks. First semester, daily.

2. **ELEMENTARY BOTANY.**— This course embraces a study of plant relations and structures, plant morphology, and economic Botany. Regular recitations supplemented by lectures. Laboratory work four hours per week. Drawings and notes of experimental work required, besides a collection of classified plants. Time, eighteen weeks. Second semester, four hours.

3. **ELEMENTARY ZOOLOGY.**— The instruction includes regular text book work and lectures on various subjects, embracing systematic zoology, morphology, embryology, and economic, and historical zoology. Laboratory work embraces an examination and dissection of the rabbit, bird, snake, frog, fish, crayfish, clam, earthworm, grasshopper, starfish, hydra, and amoeba. Notes of lectures, drawings of dissections, and collection of insects required. Particular attention is paid to external form and to digestive, nervous, circulatory, respiratory, renal, and reproductive systems in the laboratory work. Time, eighteen weeks. First semester, four hours.

The Tabulated Courses
SUB-ACADEMIC YEAR.

FIRST SEMESTER.	First Quarter.	Arithmetic U. S. History Penmanship Grammar Spelling
	Second Quarter.	Arithmetic U. S. History Penmanship Grammar Spelling
SECOND SEMESTER.	Third Quarter.	Algebra Descriptive Geography Penmanship Spelling Physiology
	* Fourth Quarter.	Algebra Descriptive Geography Penmanship Spelling Physiology

HISTORY--For a description of the academic courses in history see historical courses one to six in the department of education.

FIRST YEAR ACADEMIC.

	CLASSICAL.	SCIENTIFIC.
FIRST SEMESTER. First Quarter.	Algebra Kansas History Rhetoric First Year Latin Book Penmanship	Algebra Kansas History Rhetoric First Year Latin or German Penmanship
Second Quarter	Algebra Civil Government Rhetoric First Year Latin Book Penmanship	Algebra Civil Government Rhetoric First Year Latin or German Penmanship
SECOND SEMESTER. Third Quarter	Algebra Descriptive Geography Higher Grammar First Year Latin Book Penmanship	Algebra Descriptive Geography Higher Grammar First Year Latin or German Penmanship
Fourth Quarter	Algebra Descriptive Geography Higher Grammar Caesar Penmanship	Algebra Descriptive Geography Higher Grammar Caesar or German Penmanship



SECOND YEAR ACADEMIC.

		CLASSICAL.	SCIENTIFIC.
FIRST SEMESTER.	First Quarter.	Geometry Ancient History Caesar Elocution	Geometry Ancient History Caesar or German Elocution
	Second Quarter.	Geometry Ancient History Caesar Elocution	Geometry Ancient History Caesar or German Elocution
SECOND SEMESTER.	Third Quarter.	Geometry Botany Caesar English History	Geometry Botany Caesar or German English History
	Fourth Quarter.	Geometry Botany Cicero American History	Geometry Botany Cicero or German American History

THIRD YEAR ACADEMIC.

	CLASSICAL.	SCIENTIFIC.
FIRST SEMESTER.	American Literature Cicero Greek Physics	American Literature Cicero or German Physics Zoology
	American Literature Virgil Greek Physics	American Literature Virgil or German Physics Zoology
SECOND SEMESTER.	English Literature Virgil Greek Physics	English Literature Virgil or German Physical Geography Physics
	English Literature Virgil Greek Physics	English Literature Virgil or German Physical Geography Physics

Notes on Academic Courses. 1. To be admitted from the Academy to the collegiate department, the candidate must have three years of one foreign language, either Latin or German. 2. Students intending to take either the Pre-medical or the Pre-engineering course should elect German. See the complete schedule of these courses.

THE DEPARTMENT OF EDUCATION.

NATURE AND SCOPE

SUBJECTS OF INSTRUCTION

THE TABULATED COURSE

Nature and Scope.

The department of education is designed for those preparing to teach and also to acquaint those who do not teach with the general field of education. This leads to the degree Bachelor of Scientific Didactics. This course affords every opportunity to teachers to qualify themselves thoroughly for the highest success in their noble calling. To make teaching not a trade, but a profession, a high calling. We aim to meet competition not by cheapening our goods, but by offering superior advantages to all.

The First Three Years' Work has been arranged parallel, as far as possible, with the Academic course, so that any one who has finished an academy course of equal scope and thoroughness can take up the distinctively professional work and so complete the course the more readily.

ENTRANCE REQUIREMENTS.—Students may be admitted to the first year of the Normal course on completion of the eighth grade work when standing is first class, or on the presentation of a second grade teacher's certificate. Students not holding a high grade diploma will need to do the sub-academic or sub-normal work or pass a satisfactory entrance examination with the instructor. Special emphasis is placed not only upon a thorough knowledge of all the common branches but also upon the ability to teach these successfully by the best and latest methods. Entrance will in all cases be subject to the discretion of the head of the department. Students holding third grade certificates are not admitted unconditionally. Their standing will be determined in accordance with the grades recorded. Efficiency will always be the criterion for entrance.

STATE CERTIFICATE.—The Normal course as tabulated is approved by the State Board of Education, and graduates who pass a final examination in the following branches: History of Education, Philosophy of Education, School Law, Methods of Teaching and School Management, receive a certificate valid in any public schools of the state for three years. After teaching successfully at least two years of these three, a life-certificate is issued, superseding all other certificates and examinations.

EDUCATION LIBRARY.—There are between two and three hundred books of pedagogy on the professional branches.

These are up to date books. The texts used in class are the latest editions of the strongest writers. The library method is used largely in the teaching of the professional branches. Special pains are taken to have the student here get an appreciation, and the significance of the whole movement of education, and to get, further, the value of the education as a study in itself. All the best education magazines are accessible to the student.

THE MODEL SCHOOL.—Those having twenty weeks' teaching experience in the Model School will be granted a three years' certificate by the State Board of Education, without taking under the Board, the examinations on the Professional branches. By taking the examinations within the three years and having taught successfully during two of the three years, a life certificate may be gotten. The Model School is not a mere practice school or experiment station as is often supposed. It is under the direction of a competently trained lady instructor, who is also an experienced teacher. Both kindergarten and grade work are thoroughly, neatly and systematically carried out.

OBJECT OF THE COURSE.—It is the object of the department first of all to equip MEN and WOMEN for teaching as a calling. It is also the purpose to give students such a working basis that they can deal not only with present conditions, but with changing and changed conditions. It is our business to give life at its best rather than mere information, believing this education must be dynamic, not static.

Description of Subjects of Instruction.

THE PROFESSIONAL BRANCHES.

The Normal course consists of three years of general work in addition to one year of purely professional work.

PSYCHOLOGY—Furnishing a working basis for teachers. Texts, Angell and James's briefer course. Lectures by instructor. First semester.

HISTORY OF EDUCATION—Ancient and modern. Emphasis on Greece and Rome, also on national school systems of France, Germany, England and the United States. Twenty-four weeks. Texts, Monroe, Cubberly's and Olin's outlines.

PHILOSOPHY OF EDUCATION—Main business of which is to interpret educational doctrines and show their relation to one another. Texts, Horne, Rosenkranz, Spencer's Education, Froebel's Education of man. Lectures. Twelve weeks.

METHODS—Ten weeks. Roark, O'Shea's Adjustment. Lessons outlined by the students for various grades.

MANAGEMENT—Dutton, White. Ten weeks. Social aspect of education interpreted. All the good education magazines such as School Review, Educational Review, Education, Journal of Pedagogy, Pedagogical Seminary, are used.

SCHOOL LAW—State text used as a suggestive guide. Ten weeks. Supplemented by a comparison with other state school laws.

ENGLISH.

The work in Normal English includes Word Analysis, Grammar, Composition, the foundation principles of Rhetoric, and a survey of the History of both English and American Literature. Our course in Grammar is unusually thorough and practical. The object in studying grammar is threefold; to afford mental discipline, to help in unlocking the meaning of sentences, and to aid in acquiring a correct use of our language.

1. **WORD ANALYSIS.**—A thorough study of the formation of words in the English Language.
2. **ENGLISH LANGUAGE.**—A study of the principles of composition, with written exercises. First semester.
3. **ENGLISH GRAMMAR.**—A thorough study of the Grammar of the English Language. Second semester.
4. **AMERICAN LITERATURE.**—A study of the history of American Literature with a study of at least one production from each representative writer. Must be preceded by courses 2 and 3. First semester.
5. **ENGLISH LITERATURE.**—A study of the History of English Literature with a study of at least one production from each representative writer. Preceded by courses 2 and 3. Second semester.

LATIN.

The Normal Course includes two years of Latin as follows:

FIRST YEAR.—Collar & Daniell's First Year Latin;

first, second and third quarters. Twenty pages of Caesar, with prose composition work and careful training in the use of the Grammar; fourth quarter. The aim of this year's work is a thorough knowledge of the paradigms, the acquisition of a vocabulary, and practice in reading.

SECOND YEAR.— Caesar continued until four books or their equivalent are finished, with at least one period a week in prose composition; systematic drill on constructions and vocabulary of Caesar; grammar continued; and the history he narrates; first, second and third quarters. Cicero, first three orations against Cataline, with the equivalent of one period a week in prose work; study of Cicero's style and diction, and historical background; syntactical drill; fourth quarter.

HISTORY.

1. **SUB-NORMAL.**—Preliminary to first year normal. Standard grades from common school and eighth grade diplomas accepted in lieu of the work. Davidson, Montgomery as texts. First semester.

2. **KANSAS HISTORY.**— Prentis and Kansas Historical Collections as basis. Nine weeks, first half of first semester. First year normal.

3. **CIVICS.**—Common school and eighth grade diplomas not accepted. Hinsdale as text. Nine weeks, second half of first semester.

4. **ANCIENT HISTORY.**— Myer's text and instructors, outline first semester. Second year normal.

5. **ENGLISH HISTORY.**—Some standard text. Emphasis on the facts that furnish background for American History. Nine weeks, first half of second semester.

6. **AMERICAN HISTORY.**—McLoughlin; library reading. Nine weeks. To give teachers a broad view of American History. Second half of second semester.

7. **HISTORY OF EDUCATION.**— Monroe as text. Olin's and Cubberly's outlines. Lectures by the instructor. First twenty-four weeks.

MATHEMATICS.

1. **ADVANCED ARITHMETIC.**—This course open to all graduates of common schools and others who have the elementary arithmetic. A student should have the elementary algebra as a basis, for algebraic principles are used in the

solution of many problems, and are presented. A general review of fundamental operations, least common multiple and greatest common divisor, fractions and compound numbers is given first. The important subjects are then thoroughly presented; percentage and its applications, involution, evolution, mensuration, and progressions. Time, nine weeks. Second semester, four hours.

2. **TEACHERS' ARITHMETIC.** — A general review of all the rules and principles is given to prepare students for examinations to secure county certificates. Many problems are worked and principles are fully explained. Time, nine weeks; fourth quarter, daily.

3. **HIGH SCHOOL ALGEBRA.**— Same as outlined under the Academic department course 1.

4. **HIGH SCHOOL ALGEBRA.**—Same as outlined under the Academic department course 2.

5. **PLANE GEOMETRY.**—Same as outlined under the Academic department course 3.

6. **SOLID GEOMETRY.**— Same as outlined under the Academic department course 4.

PHYSICAL SCIENCE.

1. **DESCRIPTIVE GEOGRAPHY.**—Same as outlined under the Academic department course 1.

2. **PHYSICAL GEOGRAPHY.**—Same as outlined under the Academic department course 2.

3. **PHYSICS.**—Same as outlined under the Academic department course 3.

4. **GENERAL INORGANIC CHEMISTRY.**—Same as outlined in College department course 1.

5. **GEOLOGY.**— Same as outlined in College department course 1.

BIOLOGICAL SCIENCES.

1. **BOTANY.**—Same as outlined under Academic department course 1.

2. **ZOOLOGY.**—Same as outlined under Academic department course 2.

3. **PHYSIOLOGY.**—Same as outlined under College department course 1.

The Normal Course Tabulated
SUB-NORMAL YEAR.

FIRST SEMESTER	First Quarter.	Arithmetic U. S. History Penmanship Grammar Spelling
	Second Quarter.	Arithmetic U. S. History Penmanship Grammar Spelling
SECOND SEMESTER.	Third Quarter.	Algebra Descriptive Geography Penmanship Spelling Physiology
	Fourth Quarter.	Algebra Descriptive Geography Penmanship Spelling Physiology

THE NORMAL COURSE.

	FIRST YEAR.	SECOND YEAR.
FIRST SEMESTER.	First Quarter. Algebra Kansas History Rhetoric First Year Latin or German Penmanship	Geometry Ancient History Caesar or 2nd Year German Elocution
	Second Quarter. Algebra Civil Government Rhetoric First Year Latin or German Penmanship	Geometry Ancient History Caesar or 2nd Year German Elocution
SECOND SEMESTER.	Third Quarter. Algebra Descriptive Geography Higher Grammar First Year Latin or German Penmanship	Geometry Botany Caesar or 2nd Year German English History
	Fourth Quarter. Algebra Descriptive Geography Higher Grammar Caesar or German Penmanship	Geometry Botany Cicero or 2nd Year German American History

THE NORMAL COURSE.

	THIRD YEAR.	FOURTH YEAR.
FIRST SEMESTER.	First Quarter. American Literature. Political Economy Physics Zoology	Advanced Physiology General Chemistry History of Education Psychology
	Second Quarter American Literature Political Economy Physics Zoology	Advanced Physiology General Chemistry History of Education Psychology
SECOND SEMESTER.	Third Quarter English Literature Physics Physical Geography Drawing and Bookkeeping	Geology Advanced Physiology Philosophy of Education Management
	Fourth Quarter English Literature Higher Arithmetic Physical Geography Word Analysis	Geology School Law Philosophy of Education Methods

THE NORMAL COURSE.

	FIRST YEAR.	SECOND YEAR.
FIRST SEMESTER.	First Quarter. Algebra Kansas History Rhetoric First Year Latin or German Penmanship	Geometry Ancient History Caesar or 2nd Year German Elocution
	Second Quarter. Algebra Civil Government Rhetoric First Year Latin or German Penmanship	Geometry Ancient History Caesar or 2nd Year German Elocution
SECOND SEMESTER.	Third Quarter. Algebra Descriptive Geography Higher Grammar First Year Latin or German Penmanship	Geometry Botany Caesar or 2nd Year German English History
	Fourth Quarter. Algebra Descriptive Geography Higher Grammar Caesar or German Penmanship	Geometry Botany Cicero or 2nd Year German American History

THE NORMAL COURSE.

	THIRD YEAR.	FOURTH YEAR.
FIRST SEMESTER.	American Literature. Political Economy Physics Zoology	Advanced Physiology General Chemistry History of Education Psychology
	American Literature Political Economy Physics Zoology	Advanced Physiology General Chemistry History of Education Psychology
SECOND SEMESTER.	English Literature Physics Physical Geography Drawing and Bookkeeping	Geology Advanced Physiology Philosophy of Education Management
	English Literature Higher Arithmetic Physical Geography Word Analysis	Geology School Law Philosophy of Education Methods

THE DEPARTMENT OF FINE ARTS.**ELOCUTION.****MUSIC.**

Elocution.

The purpose of this course is to develop the powers of expression in individuals.

One of the highest attributes of man, and that which places him apart from the rest of the animal creation is the power of expression.

We cannot measure men but by what they express, and hence expression is the measure of knowledge.

The ability to tell is next in importance to the ability to conceive since knowledge unexpressed affects the individual only. That which is not expressed lies dormant within ourselves; it is dead to the world and dies to us.

Expression employs the entire man, and hence tends to give a rounded development of body, mind, and spirit.

Ideas cannot be conveyed like material objects; we present only signs of ideas. All expression in itself then is necessary to accurate impression.

VOICE.

The voice is a natural reporter of the conditions, thoughts, and purposes of the individuals.

Correct breathing is fundamental. Shakespeare's method of breath control as applied to the speaking voice is employed to develop strength, freedom, resonance, and beauty of voice.

In conjunction with this technical training, which gives finesse to the instruments of speech, the voice is applied to sentiment, and its various uses and powers demonstrated.

Since the voice is the most wonderful and beautiful of musical instruments, and the finest avenue of human expression, particular stress is laid upon securing a musical, elastic quality of tone. The voice is trained to express spontaneously, genuinely, and easily the varying shades of thought and feeling.

BODILY EXPRESSION.

The study of gesture has been frequently and not without good reason condemned, because in most instances the process used has been purely mechanical and imitative.

Through the methods here employed a general physical response to sensation, thought, and emotion is cultivated in

the individual, leading to power and freedom of movement and preserving withal both spontaneity and individuality.

This training tends to suppress superfluous gesture, and produce a closer adjustment of form to content.

LITERARY INTERPRETATION

As literature is the content of the art of vocal expression it is purposed to arouse a desire in the student to know the best in literature; and to interpret it with a keen appreciation of its artistic qualities.

A careful analysis and interpretation of both prose and poetry are indispensable to all correct reading and recitation. These include the meaning, the motive, the treatment, the principal and subordinate ideas, their relation to each other, the climaxes of various parts, as also the climax of the whole, the grouping, the phrasing, rhythm, color, etc.

To be an intelligent reader is a great accomplishment. Practically considered it is an aid to every other subject belonging to a course of instruction.

PHYSICAL EDUCATION.

Physical education is a valuable adjunct in elocutionary training.

The latest and most approved methods of Educational and Esthetical Physical Culture are employed, formulated from the Emerson, Swedish, and Delsarte Systems.

The educational exercises are for the distinctive purpose of giving tone and vigor to the body, and for general freedom of movement, all of which are conducive to health. The esthetical exercises contribute more specifically to ease of posture and grace of motion, and still further to the training of the body and its members as responsive instruments of expression.

COURSE IN ELOCUTION—Two Years.

JUNIOR YEAR.

First Quarter.

Physical Culture, Voice Culture, Bodily Expression, Literary Interpretation, American Literature, Anatomy, Life Study.

Second Quarter.

Physical Culture, Voice Culture, Bodily Expression, Literary Interpretation, American Literature, Anatomy, Personation.

Third Quarter.

Physical Culture, Voice Culture, Bodily Expression, Literary Interpretation, American Literature, Grammar, Repertoire, Sight Reading.

Fourth Quarter.

Physical Culture, Voice Culture, Bodily Expression, Literary Interpretation, American Literature, Grammar, Repertoire, Phrasing, Chapel Recitals.

SENIOR YEAR.**First Quarter.**

Physical Culture, Voice Culture, Bodily Expression, Oratory, Rhetoric, English Literature, Repertoire, Chapel Recitals.

Second Quarter.

Physical Culture, Voice Culture, Bodily Expression, Oratory, Rhetoric and Extemporaneous Speaking, English Literature, Repertoire, Chapel Recitals.

Third Quarter.

Physical Culture, Voice Culture, Bodily Expression, Bible and Hymn Reading, Psychology, English Literature, Repertoire, Public Recitals.

Fourth Quarter.

Physical Culture, Voice Culture, Bodily Expression, Bible and Hymn Reading, Psychology, English Literature, Repertoire, Public Recitals.

RATES FOR SPECIAL AND PRIVATE LESSONS.

One special class \$5.00 per term in advance; two classes \$35.00 per year. Private lessons \$5.00 per ten lessons, or 75 cents per single lesson.

Music.**PLAN OF INSTRUCTION.**

It is the object of this department to educate the student upon a well regulated and scientific plan.

This course of study has been divided into three departments: Preparatory, Normal, Collegiate.

PREPARATORY COURSE—Piano.

Elements of piano playing, including touch, notation, with melody construction, rythm, elementary harmony. Studies from the National Graded Course, Vol. I, II, and III.—Easy sonatinas, and smaller compositions of the best composers.

Daily technic whose grade in major and minor scales is below 120 M. M. four notes to the beat.

NORMAL DEPARTMENT.

It is true that in many institutions of this country, notwithstanding their general excellence, but little attention is devoted to the preparation of pupils for the profession of teachers. Thus a large number of graduates, although finished performers, are totally ignorant of the art of teaching, and need years of experinece to attain satisfactory results.

This course includes, 1st, The teacher of music; his mission and equipment; the history of the piano; methods of piano instruction; musical training of children; the various kinds of touch and their correct application; the development of technic; rhythm and accent; the art of phrasing, interpretation and expression; musical embellishments, pedal use. This course also includes one year's study of Harmony and Musical History. Studies from the National Graded Course Vol. II and Vol. IV, V, Easier Compositions from Chopin, Mendelssohn, Liszt, Hayden and Mozart, Preludes and Inventions of Bach. Daily Technic whose grade in major and minor scales and Arpeggios is between 120 and 144, M. M. four notes to the beat.

COLLEGIATE DEPARTMENT

This course includes celebrated concert studies from Chopin, McDowel, Brahms, Czerney, Mendelssohn, Grieg, Liszt and others. Selections from Vol. VI, and Vol. VII of the National Graded Course. Daily Technic whose grade must be beyond 144 M. M. four notes to the beat. Musical Analysis, Harmony and History completed.

VOCAL DEPARTMENT.

The most beautiful of all musical accomplishments is that of artistic singing, and yet no department of musical culture is so much abused as the development and training of the voice.

True cultivation of the voice consists in the development of pure tone, correct placing of the voice, correct method of breathing, intonation, attack, legato, accent, with strict attention to phrasing, enunciation and rhythm. Studies in vocal technic both in sustained singing and coloratura. Artistic interpretation of songs and ballads from the best composers. This course is based upon the old Italian School and includes studies from Bonaldi, Marchesi, Concone, Armstrong and others. One year's study of Harmony and History.

For students who are sufficiently advanced, concert and song recitals are given to prepare them for public singing.

STUDENTS' REHEARSALS.

One of the most important advantages of this department is the Monthly Rehearsal, at which students perform such pieces as may be assigned by their teacher, for the purpose of giving them self-control and ease in public appearance.

CERTIFICATES AND DIPLOMAS.

Certificates are given to students who have completed the course as specified in the Normal Department, and have passed successful examination. This includes one year's study of Harmony, and Musical History.

Diplomas are awarded to those who have completed the full Collegiate Course.

Candidates for graduation must pass a satisfactory examination in Piano, Harmony, History, and Musical Analysis.

The time for graduation cannot be fixed in advance. This will depend entirely on the previous knowledge and the capacity of the pupil. Proficiency is the criterion and this can be secured only by variable means adapted in each case to the individual. Results that follow from a systematic training directed with reference to individual necessities, are the only test. Every case must stand upon its own merits, and when the honors of the institution are awarded, it may be assumed with safety that they are deserved.

TUITION.

Piano, Organ	\$10.00
Voice Culture, per term	10.00
Harmony (private lessons), per term	10.00
Single Lessons75
Advanced Chorus Class	2.00
Rent of Piano, per term	\$3.00 to \$5.00

THE BIBLICAL DEPARTMENT.**ITS NATURE AND SCOPE****THE ACADEMIC BIBLE COURSE****THE COLLEGIATE BIBLE COURSE****THE SUBJECTS OF INSTRUCTION****THE TABULATED COURSES**

Nature and Scope of the Biblical Department.

COURSES AND ENTRANCE CONDITIONS.

Two courses of study are offered in this department, the academic and the collegiate. The academic course requires one year of study and is open to all who desire a better knowledge of the Bible, without regard to previous educational attainments. It includes the four subjects which are most fundamental in Bible study. The Life and Teaching of Christ, the Life and Epistles of Paul, Old Testament Prophecy, and also a limited number of literary subjects which are especially helpful to a proper understanding of the English Bible. Other subjects than those given in the tabulated course may be substituted to meet individual requirements.

The collegiate course extends through three years. The work of this course is of a more advanced character, and is open only to students of collegiate rank. Not all of this course is offered in any one year, and students intending to take this work should write for more definite information concerning the subjects to be offered in a given year. Credit is allowed on the regular college course for a limited amount of collegiate Bible work. This arrangement is much appreciated by students who wish to include some Biblical and theological training in their education and have not the time for a full course in addition to their regular Arts course.

PURPOSE AND SPIRIT.

In both of these courses the effort is to lead the student into the deepest and truest acquaintance with the Bible of which he is capable. The ultimate object, of course, is the enrichment of the student's own spiritual experience, and his equipment and inspiration for the most efficient Christian service. The immediate purpose is to understand the message which God has given to mankind in the Holy Scripture. The Bible itself is the subject of study rather than books which men have written about it. The point of view is practical rather than speculative, and the whole work is animated by the deep desire to know the Bible just as it is and to extend that knowledge to others.

GRADUATION.

A certificate will be awarded to those students who complete the academic course. Students who complete the col-

legiate course and present a satisfactory thesis upon some Biblical subject will receive the degree Bachelor of Sacred Literature.

EXPENSES.

The tuition in the Bible Department is the same as in the regular literary courses.

The expense for text books cannot be definitely stated, but as the Bible is the principal text book, this item is small.

For cost of tuition in the literary department, and of board and room, see table of expenses.

Subjects of Instruction.

OLD TESTAMENT HISTORY.—This covers the entire ground of events described in the Old Testament from the Creation to the times of Ezra and Nehemiah, about 445 B. C. A firm grasp of the Biblical history is fundamental to all further Bible study.

BIBLICAL GEOGRAPHY.—The omission of this subject from the schedule does not indicate any lack of attention to it. The geography is carefully studied in all the historical courses, indeed the only proper way to study the Biblical history and geography is to study them together.

HISTORY OF NEW TESTAMENT TIMES.—The political, social, and religious fortunes of the Jewish people from the close of Old Testament history to the destruction of Jerusalem in 70 A. D., with special attention to the Messianic hope of the Jews, and the religious conditions in which Jesus and the Apostles lived and worked. The historical background of the New Testament.

LIFE OF CHRIST.—A thorough study of the events of the life of Jesus in chronological order. The transcendent importance of these events is well worth the effort required to fix them firmly in memory.

TEACHING OF JESUS.—This might be called the "Inner Life of Christ." It is an examination of the teachings of Jesus as contained in his discourses and scattered sayings, particularly in the sermon on the mount and in the parables.

BOOK OF ACTS AND APOSTOLIC AGE.—An introductory treatment of the book of Acts and a historical study of the Apostolic Age, the period from the ascension of Jesus to the death of the Apostle John about 100 A. D.

LIFE AND EPISTLES OF PAUL.—The work of Paul, in its relation of Christianity, stands next to that of Jesus himself. This course includes a thorough study of the life and labors of the great apostle, and also the historical setting and contents of each of the Pauline epistles.

THE GENERAL EPISTLES.—A study of the occasion, purpose, theme, and contents of each of the general epistles of the New Testament.

HOMILETICS AND PASTORAL DUTIES.— This is designed to furnish practical suggestions and help to ministers in the preparation and delivery of sermons, as well as in the performance of the numerous other duties belonging to their sacred office.

HISTORY OF THE ENGLISH BIBLE.—This is the story of the manuscripts and versions, how the sacred documents were brought together and preserved and at last given to us in the convenient form which we now have them.

OLD TESTAMENT LAWS AND INSTITUTIONS.— An introduction to the legal books of the Old Testament, and a classification and systematic study of its laws and institutions.

OLD TESTAMENT WISDOM LITERATURE.— This is a name applied to the books of Job, Proverbs, Ecclesiastes, Song of Solomon, and portions of other Old Testament books. The study of these much neglected books is very profitable and especially interesting.

THE PSALMS.—This is a study of the origin, growth, and use of the Psalter, and an exegetical study of selected Psalms.

OLD TESTAMENT PROPHECY.—Next to the most essential historical facts, there is no more important Old Testament subject than this. The work includes a study, in chronological order, of the historical background and contents of the prophetic books, the nature of the prophetic office, the development of prophetic teaching, Messianic prophecy and its relation to New Testament fulfillment.

CHURCH HISTORY.—This is a study of the history of Christianity from the Apostolic Age to the present time. Special attention is given to the Ante-Nicene and Nicene periods, the Reformation, and the history of the Brethren church.

APOLOGETICS.— An examination of the evidence for

believing that the Bible is a revelation from God, and the Christian religion of divine origin.

ETHICS.—The science of human duty. A study of the principles that underlie moral obligations, and of the nature of those obligations.

CHRISTIAN DOCTRINE.—A systematic study of the fundamental doctrines of the Christian religion.

EXEGESIS.—This is the thorough, critical study of any portion of Scripture. Its object is to discover, not what the passage under consideration might be made to mean, but what the writer actually did mean. The work includes a study of the principles of interpretation, and the application of these principles to select passages in both the Old and New Testaments.

THE BIBLICAL LANGUAGES.—Every Bible teacher should desire to read his Bible, if possible, in the languages in which it was written. The added satisfaction and clearness of thought which comes from the ability to do this, is well worth the time and labor involved. Especially is this true in respect to the New Testament, and even in the case of the Old Testament it is desirable to have at least a sufficient knowledge of Hebrew to enable one to use critical commentaries intelligently.

THE GREEK NEW TESTAMENT.—After a sufficient knowledge of the language has been gained, the work in the Greek New Testament includes, (1) Translation and Rapid Interpretation, (2) Critical Study of selected portions, (3) Textual Criticism.

THE HEBREW OLD TESTAMENT.—This work is similar to that in Greek New Testament, the critical study including also a comparison of the Hebrew text with that of the Septuagint and other ancient versions.

ELECTIVE STUDIES.—The tabulated courses are intended to indicate, in general, the character and amount of the work embraced in them. It is not expected that the courses of all students will conform exactly to this schedule. The field of Biblical knowledge is so vast that even in the three years' course, selections must be made from a large number of important subjects. Other subjects than those mentioned, of

equivalent extent and value, will be offered from time to time. While certain subjects will be regarded as fundamental, reasonable liberty of electing subjects will be granted.

THE STUDENTS' VOLUNTEER MISSION BAND conducts weekly classes in the study of missions. Other special classes in Methods of Christian Work, Sunday School Problems, and various subjects are frequently formed. For all this work due credit is given in the Bible Courses.

LOCAL BIBLE INSTITUTES are conducted in communities desiring them whenever arrangements can be made to do so.

The Tabulated Courses
COLLEGIATE BIBLE COURSE

		FIRST YEAR	SECOND YEAR.	THIRD YEAR.
FIRST SEMESTER.	First Quarter.	O. T. History Life of Christ Church History Greek Language	Book of Acts and Apostolic Age O. T. Laws and Institutions Reading in Greek N. T. Hebrew Language	O. T. Prophecy Reading in Hebrew O. T. Ethics Elective
	Second Quarter.	O. T. History Life of Christ Church History Greek Language	Life and Epistles of Paul O. T. Laws and Institutions Reading in Greek N. T. Hebrew Language	O. T. Prophecy Reading in Hebrew O. T. Ethics Elective
SECOND SEMESTER.	Third Quarter.	History of N. T. Times Teaching of Jesus Church History Greek Language	Life and Epistles of Paul O. T. Wisdom Literature Critical Study in Greek N. T. Hebrew Language	O. T. Prophecy Critical Study Hebrew Text Christian Doctrine Elective
	Fourth Quarter.	History of English Bible Homiletics and Pastoral Duties Church History Greek Language	General Epistles The Psalms N. T. Textual Criticism Hebrew Language	O. T. Prophecy Critical Study Hebrew Text Christian Doctrine Elective

ACADEMIC BIBLE COURSE.

FIRST SEMESTER.	First Quarter.	Old Testament History The Life and Epistles of Paul Preparatory Rhetoric American Literature
	Second Quarter.	Old Testament History The Life and Epistles of Paul Preparatory Rhetoric American Literature
SECOND SEMESTER.	Third Quarter.	Old Testament Prophecy The Life and Work of Christ Higher English Grammar Elocution
	Fourth Quarter.	Old Testament Prophecy The Life and Work of Christ Higher English Grammar Elocution

THE BUSINESS DEPARTMENT**ADVANCED COMMERCIAL****REGULAR COMMERCIAL****ADVERTISING****STENOGRAPHY****PENMANSHIP**

THE BUSINESS DEPARTMENT**ADVANCED COMMERCIAL****REGULAR COMMERCIAL****ADVERTISING****STENOGRAPHY****PENMANSHIP**

er corporation accounting. Actual practice in teaching, two semesters.

POLITICAL ECONOMY.

A study of the laws governing wages, prices and interest, system of taxation, influence of legislation, tariff, free trade, trusts, and a host of other important items influencing commercial development.

ADVERTISING.

What constitutes good advertising, illustrations, relative value of different mediums.

Fifty lessons on the Theory and Practice of How to Advertise.

CIVIL GOVERNMENT.

A study of our systems of national, state and municipal governments, as embodied in their legislative, judicial and executive departments; duties and obligations of citizenship.

PARLIAMENTARY LAW.

Drills, how to call a meeting, organize, conduct public meetings. A very important course for any business man.

COMMERCE AND FINANCE.

History of Banking, Clearing house, transportations. Tuition in this course same as regular tuition. Those completing this course will receive the degree Master of Accounts.

Diploma fee, \$5.00.

Advertising.

WHO SHOULD STUDY ADVERTISING.

FIRST AND FOREMOST.—Any man who is engaged in business (or expects to engage) and more particularly if the business has not assumed such proportions as to warrant the employment of a trained advertising manager. The merchant knows the details of his own business and, when fortified by a thorough knowledge of how to advertise it, can wrest success from failure or become a giant among his competitors who are not similarly endowed. If advertising was the mere writing of copy or the clever juggling of words, pictures and space, its paramount importance to any business man would not be so imperative.

SECOND.—Any woman who expects to support herself or hopes to marry a business man to whom she desires to be

an intelligent helpmeet and companion, fitted ably to share his cares and duties, relieve his responsibilities and assist him in attaining success.

THIRD.— Any salesman, stenographer or clerk who is ambitious to advance to a higher plane of usefulness, who desires to fit himself to work with his employer instead of under him, who wishes to acquire the knowledge which will entitle him to be consulted instead of directed.

FOURTH.— The young man or woman who is desirous of earning an independent livelihood, of being his or her "own boss." There is no pleasanter employment than that of the independent advertisement writer, who produces booklets, circulars, follow-up letters, or plans and executes the advertising campaigns of a number of merchants whose appropriations may be too small to require the entire time of an advertising man. And this is the direct stepping-stone to one of those high-salaried positions with some mammoth house, where the "advertising man" is given credit for the millions of dollars' worth of merchandise disposed of each year.

FIFTH.—He who desires to better understand his neighbors; who wishes to acquire that psychological knowledge, that ability to subtly analyze human character and impulse, which makes it possible for the skilled advertiser to strike unerringly the chord of human desire with the same facility that the trained musician manipulates the strings of his instrument.

Commercial Course.

BOOKKEEPING.

In this department, the science of accounts is treated in a logical manner. The student is thoroughly drilled in the correct and practical use of all the various books used in business.

Transactions and books are varied in accordance with the business in which the student is engaged. This fully prepares him to enter successfully upon the work of the business department, or to take a position as assistant bookkeeper or the inspector. The student is bill clerk.

BUSINESS DEPARTMENT.

The students are themselves obliged to make the transactions, keep the books, and do all the work in the Business Practice.

The methods used in this work are entirely practical, and of the same nature as the duties actually performed by the bookkeeper, or business manager in a business house. We furnish the students from \$3,000 to \$5,000 in College Currency, with which to engage in business.

All the work of the business practice is directed daily by the inspector. The student is supplied with all kinds of commercial blanks, of the same form and style as those used in first class houses.

Among those of the sets designed to illustrate practical bookkeeping are:

1. **RETAIL.**--This is especially adapted for the use of grocers, shop keepers, etc.

2. **RETAIL COAL BUSINESS.**--This illustrates a system of bookkeeping especially adapted to the retail coal business, and in most respects, to any business where a Weigh-Book is required.

3. **PRODUCE COMMISSION BUSINESS.**--The books required in a produce commission house, differ, in form and number, from those in a commission business devoted to the handling of manufactured products, where the sales are made to jobbing trade.

Then we have the Installment House and State Agencies, Joint Stock Companies, etc.

We teach every form of account from that of a TWO COLUMN DAY BOOK TO A SIXTEEN COLUMN EXERCISE BOOK.

BUSINESS FORMS.

Students in this institution learn to draw correctly every kind of paper which they have occasion to use in business.

BANKING.

First National College Bank.

Our system of banking is the one most generally used by all leading Eastern bankers.

DIPLOMA.

Those who complete the prescribed course in a satisfactory manner are awarded an elegant diploma made by our penman.

To be the possessor of a diploma from an Institution of such eminent standing as McPherson College is not only an

unquestioned endorsement, but a token of honor which every young lady and gentleman should strive to obtain.

LETTER WRITING AND BUSINESS CORRESPONDENCE.

The essential points in a business letter are subject matter, expression and mechanical appearance.

The object of instruction in this branch is to familiarise the student with good English forms of expression and with language peculiar to business transactions.

COMMERCIAL LAW.

The young man who is about to engage in business should consider carefully what is necessary to success.

President Garfield said: "Men succeed because they deserve success. Their results are worked out; they do not come to hand ready made. Poets may be born; but success is made."

We labor to equip our students thoroughly for the battle of life by spending sufficient time to explain the laws and customs they are certain to face in after years.

COMMERCIAL ARITHMETIC.

The first element of a business education is the ability to calculate. The best compendium of commercial arithmetic now before the public is the principal text book we use on the subject. It contains useful hints, showing short methods, quick results, and all manner of calculations involving the use of United States Money, Commission, Brokerage, Discount, Loss and Gain, Percentage, etc.

The latest and best methods of computing interest are used, to prepare the student as an expert calculator.



GREGG SHORTHAND

Is today taught in more public and private schools than any other three systems combined; it is equipping the stenographers of today to cope successfully with the ever increasing demands put upon them by modern business and professional needs.

BECAUSE—Gregg Shorthand requires no USELESS study, writers of it are able to outdistance writers of other systems in point of time in learning and practical results accomplished.

BECAUSE— Achievements of today, not deeds of the past, have awakened enthusiasm in young men seeking REPORTORIAL skill. Mr. Raymond P. Kelley, a writer of Gregg shorthand, attained a speed of 235 words a minute in a public test. Mr. Kelley is a mere stripling in shorthand experience—a young man 22 years old—and his record is the highest ever achieved by any one so young.

BECAUSE—Of the wonderful capabilities of Gregg shorthand for the HIGHEST CLASS of reporting, it is receiving such endorsements as these:

COURT REPORTING.

"I have been using Gregg Shorthand in my official capacity as reporter of the several courts of Venengo county, Pennsylvania, for almost three years. The system is amply equal to the demands of my office and I have no hesitation in recommending it. I am able to do all that Pitmanic writers are, and can read my notes more readily than any writer of other systems I have known."
—H. B. Bennett, Franklin, Pa., Official Reporter, Twenty-eighth Judicial District of Pennsylvania.

P P P P P P P P P P P P
K K K K K K K K K K K K
O O O O O O O O O O O O
I I I I I I I I I I I I
P. Plattner



Professional Capitals by S. B. Falmerstock

MEDICAL REPORTING.

Extracts from a letter from Dr. Wilson A. Smith, recording secretary, American Institute of Hemeopathy, in regard to work of a Gregg writer—22 years of age—as reporter of a medical convention:

"This was Mr. Nikolaus' first attempt, and while I will not say that he did any better than the other three—one had twenty years' experience in this line, one had many years' experience, and another had been doing medical reporting for several years—yet I can truthfully say he was exceeded by none. His transcript was of such a high character that of all returned, his had the fewest corrections. When you take into consideration that a good convention reporter should have at least ten years' experience in old line shorthand to undertake convention work of this kind, then recall the fact that Mr. Nikolaus had but five years' experience altogether, that it was his first attempt, and that he had no knowledge of medicine, I have no hesitation in affirming that there is but one system of shorthand which meets the difficulties of technical reporting, and that one is GREGG SHORTHAND."

These are some of the reasons why Gregg shorthand is used by the best schools in America today—the schools that are equipping young men and women, not to do business at the "old stand" but at the new one, where skill and speed and ACCURACY are indispensable.

There are other reasons which we should like to submit for your consideration. A postal will bring full particulars.

TYPEWRITING.

As no stenographer's education is considered complete without a knowledge of typewriting, it is taught in connection with the shorthand, each student being given at least two hours' practice per day.

Students in this department are taught correct fingering, touch and the proper care of the machine.

SHORTHAND IN CONNECTION WITH BOOKKEEPING.

The call for assistance in Business and Professional offices is for a combination of Bookkeeping and Shorthand. One who understands these two branches will not only secure employment more rapidly, but will command a better salary.

Penmanship Department

S. B. Fahnestock.

Good business writing is a very important element in a commercial training. An easy, legible, rapid business hand, always has commercial value. He who possesses a good business handwriting always receives the preference, provided he is equal to his competitors in other respects. About one business man in a dozen writes a passable hand. Very few teachers of our country are competent penmen. Hence the door stands ajar for remunerative employment to those who will make themselves masters of the beautiful art. We impart instruction in the best systems, and guarantee improvement for every faithful effort. Come to McPherson College and make yourself accomplished—a specialist.

This department has all the advantages of experience and skill and is directed by one of the best penmen in the west.

"We have many times during the past few years had occasion to comment favorably upon the pen work of Mr. S. B. Fahnestock, Principal of the Commercial and Penmanship Department of McPherson College, McPherson, Kansas. Mr. Fahnestock is equally clever at script, lettering, and design-

ing, and is an ornament to the penman's profession."—Penman's Art Journal, New York.

"I entertain a very high regard for you and your work. It is a pleasure to examine such beautiful work as that which falls from your skillful pen. Your taste and touch are alike exquisite."

H. W. FLICKINGER, Phila.

"Your penmanship is fine."

WILLIAMS & ROGERS,
Rochester, N. Y.

Columbus, Ohio.

"It gives me pleasure to state that I regard Mr. S. B. Fahnestock one of the ablest teachers of penmanship and the commercial branches in the profession. Moreover he is a perfect gentleman in every respect."

C. P. ZANER,
President Zanerian College.

McPherson College Alumni.

CLASS OF 1891. ACADEMICS.

Harrison W. Miller, Hinton, Okla.
Theodore Sharp, Winnebago, Neb.
Mary Kuns-Kleppinger, Herington, Kansas.

CLASS OF 1892. ACADEMICS.

Hattie Yoder-Gilbert, Los Angeles, Calif.
Myrtle Miller-Netzley, Calhan, Col.
Effa Kuns-Sharp, Winnebago, Neb.
Samuel J. Miller, McPherson, Kan.
*Maurice Sharp, McPherson, Kan.
Sue Slusher-Saylor, Ramona, Kan.

CLASS OF 1893. ACADEMICS.

Theodore Snowberger, Skidmore, Mo.
Hattie Ecker-Sohlberg, Guthrie, Okla.
Elmer E. Vaniman, Virden, Ill.
Laura McQuoid, deceased, 1904.
*Hattie Flickinger-Potter.
Modena Hutchinson-Miller, McPherson, Kan.
Sadie Whitehead-Beaghy,
C. E. Wallace, Yankton, S. Dak.
Francis E. Vaniman, McPherson, Kan.

CLASS OF 1894. ARTS COURSE.

J. Z. Gilbert, Los Angeles, Calif.
NORMAL COURSE.
J. J. Caldwell, Holsington, Kan.
ACADEMIC COURSE.
Z. F. Clear, East St. Louis, Mo.
R. W. Gish, deceased.
A. N. Gray, Raymond, Kan.
Ed. M. Eby, Centerview, Mo.
J. C. Kleppinger, Herington, Kan.
Flo Ramage-Harter, Custer, Mich.
J. J. Yoder, Conway, Kan.

CLASS OF 1895. ARTS COURSE.

Albert C. Wleand, 185 Hastings St., Chicago, Ill.
S. J. Miller, McPherson, Kan.
ACADEMICS.
Carrie Snyder-Lichty, Wellington, Kan.
Myrtle Hoff, North Manchester, Ind.

*Deceased.

M. Bernice Gateka-Ritz, Chickasha, I. T.
Claud J. Shirk, McPherson, Kan.

CLASS OF 1896. ARTS COURSE.

Sue Slusher-Saylor, Ramona, Kan.
S. B. Fahnstock, McPherson, Kan.

ACADEMICS.

C. E. Kemp.
David Harder, Hillsboro, Kan.
Anna Witmore-Strickler
P. F. Duerksen, North Enid, Okla.
J. Harvey Saylor, Ramona, Kan.
G. M. Lauver, 185 Hastings St., Chicago.

Ratie Bowers-Dyck, Moundridge, Kan.
G. B. Darling, Gypsum City, Kan.
H. V. Wiebe, Elk Park, N. C.

CLASS OF 1897. NORMALS.

P. F. Duerksen, North Enid, Okla.
R. W. Powers, Durham, Kan.
Claud J. Shirk, McPherson, Kan.
C. L. Hollem, Lawton, Okla.
J. W. Coons, Canton, Kan.
R. K. Gernet, Cloud Chief, Okla.
J. K. Reish, Los Angeles, Calif.
G. M. Lauver, 185 Hastings St., Chicago.
J. H. Tracy, Sabetha, Kan.
Maud Chisholm-Miller, Roxbury, Kan.

CLASS OF 1898. ARTS COURSE.

C. H. Williams, Kansas City, Mo.
NORMALS.
Mrs. Lillian Matthews, McPherson, Kan.
Dora Sherfy-Steinour, Murtaugh, Idaho.
J. B. Shirkey, Scottville, Mich.
ACADEMICS.
Lester E. Williams, Rydal, Kan.
Mrs. Susie R. Williams, Belleville, Kan.
Anna Fakea, Warrensburg, Mo.
J. E. Studebaker, deceased, 1904 Colony, Kan.
Florence Butler-Shirkey, Scottsville, Mich.
Byron Talhelm, Lawrence, Kan.
E. K. Masterson, Chatsworth, Ill.

CLASS OF 1899.**MASTER'S COURSE, A. M.**

Dr. G. A. Tull, Clay Center, Kan.

BACHELOR'S COURSE, A. B.

C. F. Gustafson, Kansas City, Mo.

NORMAL COURSE.

A. L. Harter, Plainville, Kan.

J. A. G. Shirk, Ottawa, Kan.

Byron Talhelm, Lawrence, Kan.

Flo Ramage-Harter, Custer, Mich.

J. Harvey Saylor, Ramona, Kan.

Lizzie Arnold, Russel, Colo.

H. V. Wiebe, Elk Park, N. C.

W. J. Slifer, McPherson, Kan.

ACADEMIC COURSE.

G. J. Goodsheller, McPherson, Kan.

Laura Harshbarger-Haugh, 185 Hastings St., Chicago.

Emma Horner-Eby, Jalalpor, India.

G. D. Kuns, McLouth, Kan.

J. G. Law, Milton, Kan.

Sallie Shirkey-Miles, Abilene, Kan.

R. C. Smith, Marion, Kan.

I. A. Toeva, McPherson, Kan.

Lizzie Wieand-Kuns, Chicago.

CLASS OF 1900.**NORMAL COURSE.**

Anna Bowman, Grand Junction, Colo.

Anita Metzger, Mount Morris, Ill.

Lizzie Wieand-Kuns, Chicago, Ill.

Anna Fakes, Warrensburg, Mo.

H. C. Slifer, deceased 1903, McPherson, Kan.

Herbert Caldwell, Hinton, Okla.

ACADEMIC COURSE.

E. H. Eby, Jalalpor, India.

H. J. Vaniman, Pomona, Calif.

J. F. Studebaker, Fort Dodge, Iowa.

C. E. Law, deceased 1905, Canton, Kan.

CLASS OF 1901.**BACHELOR'S COURSE.**

Claude J. Shirk, McPherson, Kan.

J. A. G. Shirk, Ottawa, Kan.

Mrs. Lillian Matthews, McPherson, Kan.

J. B. Shirkey, Scottville, Mich.

NORMAL COURSE.

B. B. Baker, Mobile, Ala.

Ethel Bixby-Mackey, McPherson, Kan.

*Deceased.

Ollie Brubaker-Stutzman, McPherson, Kan.

*Mary E. Frantz, McPherson, Kan.

Emma Horner-Eby, Jalalpor, India.

Dr. E. H. Kasey, McPherson, Kan.

S. Enos Miller, McPherson, Kan.

H. M. Stutzman, McPherson, Kan.

Emma Vaniman-Yoder, Conway, Kan.

ACADEMICS.

W. B. Boone, deceased 1904, Lyons, Kan.

Mrs. Retta Glick-Studebaker, 265 Vernon Ave., Chicago, Ill.

Lottie Fisher-Bowker, McPherson, Kan.

Maude Way-Dresher, Lyons, Kan.

B. S. Haugh, 185 Hastings St., Chicago.

J. H. B. V. Vans, Elgin, Ill.

CLASS OF 1902.**MASTER'S COURSE.**

Claude J. Shirk, McPherson, Kan.

J. A. G. Shirk, Ottawa, Kan.

BACHELOR'S COURSE.

John A. Clement, McPherson, Kan.

James H. Clement, Anthony, Kan.

Flo Ramage-Harter, Custer, Mich.

E. K. Masterson, Chatsworth, Ill.

NORMAL COURSE.

E. D. Baldwin, Kansas City, Mo.

Margaret Bishop, Roxbury, Kan.

W. B. Boone, deceased 1904, Lyons, Kan.

G. C. Dreher, Lyons, Kan.

Margaret Goodwin, Holsington, Kan.

David Harder, Hillsboro, Kan.

M. I. Kilmer, Bird City, Kan.

Della McComber, Los Angeles, Calif.

C. H. Slifer, Winslow, Ariz.

Edna Suffield, McPherson, Kan.

Maude Way-Dresher, Lyons, Kan.

ACADEMIC COURSE.

J. E. Wagoner, Red Cloud, Neb.

D. Earl Bowers, McLouth, Kan.

CLASS OF 1903.**COLLEGIATE BIBLE COURSE.**

Mrs. Amanda Fahnstock, McPherson, Kan.

BACHELOR'S COURSE.

F. G. Kauffman, McLouth, Kan.
H. A. Horton, McPherson, Kan.
Alice Johnson, Wichita, Kan.

NORMAL COURSE.

F. H. Crumpacker, McPherson, Kan.

Dottie Wheeler-Clement, McPherson, Kan.

P. C. Hiebert, Dallis, Oregon.
S. V. High, Chicago, Ill.

Ruby Buckman, Conway, Kan.

R. W. Baldwin, Conway, Kan.

D. Earl Bowers, McLouth, Kan.

Anna Newland Crumpacker, McPherson, Kan.

R. C. Strohm, McPherson, Kan.

O. S. Vaniman, McPherson, Kan.

Ella White McFarland, Truesdale, Kan.

Charles Shively, Phillipine Is.

Mrs. Jennie McCourt, Cripple

Creek, Colo.

Corda Clement, Canton, Ohio.

Alice Weaver, Greeley, Colo.

J. J. Frantz, Inman, Kan.

ACADEMIC COURSE

Vernon Vaniman, Virden, Ill.
Orral Matchette, McPherson, Kan.

Jessie Harter-Hylton, Troutville, Va.

Gert Eicker, McPherson, Kan.

Edith Allison, McPherson, Kan.

Ethel Allison, McPherson, Kan.

Fern Kuns-Copehedge, Topeka, Kan.

CLASS OF 1904.

MASTER'S COURSE.

John A. Clement, McPherson, Kan.

H. A. Horton, McPherson, Kan.

*Mary E. Frantz, McPherson, Kan.

Geo. D. Kuns, McLouth, Kan.

Lucetta Johnson, Wichita, Kan.

M. Q. Calvert, Ellenwood, Calif.

H. C. Allen, Kansas City, Kan.

*Anita Metzger, Mount Morris, Ill.

S. Enos Miller, McPherson, Kan.

J. Harvey Saylor, Ramona, Kan.

E. H. Eby, Jalalpor, India.

W. Harter, Custer, Mich.

NORMAL COURSE.

W. O. Beckner, McPherson, Kan.

P. N. Bollinger, Bellgrade, Mont.

H. F. Toews, Moundridge, Kan.

Silvia Miller, McPherson, Kan.

*Deceased.

Chas. J. Davis, Morrill, Kan.

Harvey B. Hoffman, Donegal, Kan.

Harry C. Crumpacker, McPherson, Kan.

W. H. Yoder, Conway, Kan.

Nellie Hinkson, McPherson, Kan.

R. G. Mohler, Lyons, Kan.

Mary E. Brubaker, Lyons, Kan.

Ernest Vaniman, McPherson, Kan.

Mary E. Gibbel, Carthage, Mo.

J. E. Studebaker, deceased 1904, Colony, Kan.

Anna Stutzman, Conway, Kan.

Gert Eicker, McPherson, Kan.

CLASS OF 1905.

BACHELOR'S COURSE.

E. D. Baldwin, Kansas City, Mo.

R. W. Baldwin, Kansas City, Kan.

*H. M. Barwick.

Dr. C. D. Weaver, Galva, Kan.

NORMAL COURSE.

Edith Allison, McPherson, Kan.

Verna Baker-Vaniman, McPherson, Kan.

Melinda Beyer, Inman, Kan.

Adolph Beyer, Inman, Kan.

Clarence D. Caudle, McPherson, Kan.

Anna Colline, McPherson, Kan.

Ralph W. Detter, McPherson, Kan.

Sadie A. Engle-Wagman, Abilene, Kan.

Sarah H. Friesen-Heinrichs, Enid, Okla.

Lulu M. Gilchrist-Moore, Fairfield, Iowa.

Mary McGill, McPherson, Kan.

Jas. R. Rothrock, McPherson, Kan.

Emily F. Shirkey, Rockingham, Mo.

Helen Slosson-Carter, Windom, Kan.

Madge Stafford, McPherson, Kan.

John B. Stutzman, McPherson, Kan.

Jacob M. Stutzman, Conway, Kan.

Florence E. Upshaw-Cline, McPherson, Kan.

Nettie B. Wicklund, McPherson, Kan.

CLASS OF 1906.

MASTER'S COURSE, PH. M.

W. E. Ray, Colby, Kan.

MA-TER'S COURSE A. M.

R. W. Baldwin, Kansas City, Kan.

*Mary E. Frantz, McPherson, Kan.

E. K. Masterson, Chatsworth, Ill.

BACHELOR'S COURSE.

S. C. Miller, McPherson, Kan.

C. H. Slifer, Winslow, Ariz.

P. C. Hiebert, Dallas, Oregon.

J. H. B. Williams, Elgin, Ill.

J. F. Studebaker, Fort Dodge, Iowa.

Minnie M. Bartels, Inman, Kan.

Emma Horning, Grand Junction, Colo.

F. H. Crumpacker, McPherson, Kan.

Anna Newland-Crumpacker McPherson, Kan.

NORMAL COURSE.

Bertha Delp, New Murdock, Kan.

Maude Ball, McPherson, Kan.

P. V. Wiebe, Lehigh, Kan.

Grace Wright, Windom, Kan.

Stella B. Andes, McPherson, Kan.

Martha Bartels, Inman, Kan.

Geo. Edgecomb, McPherson, Kan.

Ada May Caudle, McPherson, Kan.

Ida E. Brubaker, Conway, Kan.

Lulu Hildebrand, McPherson, Kan.

Harvey M. Brubaker, Conway, Kan.

Clara A. Welsthaner, Inman, Kan.

Martha M. Welsthaner, Inman, Kan.

Theodore H. E. Aschman, Inman, Kan.

Roy Caudle, McPherson, Kan.

Ivan G. Herr, Hope, Kan.

Ruby Horton, McPherson, Kan.

Ella I. Jacobs, McPherson, Kan.

Ellen A. Olson, Windom, Kan.

Mary A. Pearson Fort Worth Texas.

Myrtle C. Picking, Abilene, Kan.

Olive May Snyder, McPherson, Kan.

Della S. Vaniman, McPherson, Kan.

Foster W. Cline, Rocky Ford, Colo.

Grace P. Vaniman, McPherson, Kan.

Edna C. Garst, McPherson, Kan.

G. Pearl Blondefield, Solonon, Kan.

CLASS OF 1907.

MASTER'S COURSE.

Geo. D. Kuna, McLouth, Kan.

S. C. Miller, McPherson, Kan.

BACHELOR'S COURSE.

Dottie Wheeler-Clement, McPherson, Kan.

Charles Shively, Grenada, Col.

NORMAL COURSE.

Furman R. Cline, Johnston, Kan.

Margaret M. Dudde.

Raymond C. Flory, Shickley, Neb.

Mary B. Flory, Shickley, Neb.

Frances M. Goodsheller, McPherson, Kan.

Guy T. Hudson, Wiley, Colo.

Leslie M. Klepinger, Conway, Kan.

Bruce A. Miller, Darlow, Kan.

Mary C. Mohler, Red Cloud, Neb.

Mary E. Mohler, Red Cloud, Neb.

Lizzie M. Neher, McPherson, Kan.

Susie C. Neher, McPherson, Kan.

William E. Sterner, Bridgeport, Kan.

CLASS OF 1908

POST GRADUATES.

Crumpacker, Frank H.

COLLEGIATE.

Buckman, Ruby

Clement, Corda

Shirky, Emily

Gillespie, Iva

Crumpacker, Harry

Aschman, Theodore

Lohrenz, Henry W.

Tretbar, Julius J.

NORMAL.

Hiebert, Katie

Cline, Susie

Goodsheller, Helen

Neher, Clara

Jackson, Maude

Stutzman, Mattie

Young, Lillian

Sudersman, J. W.

Barnhill, Gilbert

Ebbert, Ella

Kraybill, Frank S.

Green, Nellie G.

BIBLE.

Crumpacker, Agna Newland

*Deceased.

Student Register 1907-1908

THE BIBLICAL DEPARTMENT.

COLLEGIATE

Aschman, Theodore
 Beckner, W. O.
 Beckner, Emma
 Clement, Corda
 Crumpacker, Anna N.
 Crumpacker, H. C.
 Crumpacker, A. J.
 Detter, R. W.
 Hinkson, Nellie
 Horton, Ruby
 Hoffman, H. B.
 Kuns, Yada
 Lohrenz, H. W.
 Miller, B. A.
 Miller, Silva
 Rothrock, James
 Shirkey, Emily
 Stutzman, H. M.
 Trostle, B. S.
 Vaniman, Ira C.

Crumpacker, Hattie
 Cullen, Mark
 Detter, Edna
 Detrick, Maggie
 Deeter, John W.
 Ebbert, Inez
 Gish, Mabel
 Griffin, Elsie
 Hildebrand, Myrta
 Hull, Vernon
 Janzen, F. F.
 Lichtenwalter, Nettie
 Lohrenz, Kathryn
 Miller, Lizzie V.
 Miller, S. F.
 Miller, Elva
 Netzley, H. F.
 Neufelt, Maria M.
 Nevinger, R. G.
 Newland, Marie
 Pollock, S. A.
 Sherfy, E. F.
 Smith, Bertie L.
 Snowberger, Mary
 Snowberger, Harvey
 Strasbaugh, Mabel
 Strohm, J. A.
 Stump, Levi
 Thomas, H. E.
 Trostle, Avice
 Trostle, Evelyn
 Wagner, Anna
 Zern, Robert

ACADEMIC.

Andes, Lulu
 Bixby, Roy
 Boone, E. T.
 Boone, Lucy
 Bowers, J. E.
 Breon, Katie
 Breon, Jessie
 Bradshaw, Elva
 Bradbury, Mrs. L. A.
 Brubaker, Naason
 Buckman, Glen

Note. The above list does not include students in attendance only during the Bible Institute.

ACADEMY AND NORMAL

FIRST YEAR.

Bowers, J. A.
 Borders, Nellie
 Brunk, Verd
 Boone, Adra
 Breon, Katie
 Ball, Elmer
 Burger, Ella
 Bradbury, Claire
 Bradshaw, Elva
 Bradbury, O. C.
 Brubaker, C. F.
 Carlson, Joseph
 Carstenson, Jacob
 Chatterton, Eva
 Converse, Hazel
 Crumpacker, Jay
 Crumpacker, Hattie
 Dagget, Martha

Dierdorff, Elva
 Decker, Irvin
 Deeter, J. W.
 Dagget, Mary
 Dick, David
 Dycke, Flora
 Ebbert, Inez
 Eash, Perry
 Evans, Myrta
 Ebel, August
 Ford, Carrie
 Funk, Reuben
 Ferris, Ralph
 Garst, Roy
 Gish, Maybelle
 Hope, Louis
 Hoff, Millie
 Hornberger, Lydia
 Hicks, A. J.

Hartman, A. A.
 Jansen, P. C.
 John, J. M.
 Joseph, Essie
 Johnson, Adrian
 Kun, Carrie
 Keller, Ida
 Kendall, R. M.
 Lowell, Harvey
 Mason, Martha
 Moomaw, Modena
 McGiffort, Mabel
 McAvoy, Joseph
 Miller, S. F.
 Martens, Daniel
 Neufeldt, Maria
 Nevinger, R. G.
 Parlin, Leon A.
 Parlin, Lena S.
 Peterson, Clara
 Peyer, Lizzie
 Royer, Clarence
 Stacy, Earl
 Shorb, C. R.
 Schellenberg, Eva
 Schellenberg, Susie
 Showalter, Milton
 Sherfy, Mary
 Socolofsky, A. L.
 Stump, Ida
 Segel, Joseph
 Strohm, John
 Thompson, Ada
 Tawser, Hazel
 Wendt, Arthur
 Wilson, Carrie
 Warkentine, A. F.
 Wallace, Grace
 Wohlgemuth, Edward

SECOND YEAR.

Abel, O. J.
 Boone, Lucy
 Buckman, Elsie
 Buckman, Glen
 Bradley, Wilbur
 Bixby, Roy
 Boyington, Chas.
 Breon, Jessie
 Compton, Flossie
 Carlson, E. E.
 Coulson, Walter
 Cram, Geo.
 Dresher, Stanley
 Doerkson, J. T.
 Goertz, P. S.
 Griffin, Elsie
 Hope, Nannie
 Haugh, Jesse
 Hiebert, Samuel

Hildebrand, Myrtle
 Harms, Tillie
 John, Frank P.
 Jansen, F. F.
 Kreitzer, Pearl
 Lohrenz, G. W.
 McCready, Cecil
 Neff, Dithe
 Nichols, Walter
 Pearson, Ester
 Ring, Bessie
 Ring, Myrtle
 Reyher, Emma
 Sherfy, E. F.
 Stotts, Opal
 Spohn, R. E.
 Stump, Lester
 Slagle, Pearl
 Thompson, Emma
 Ullom, Lulu
 Unruh, Henry
 Wagner, Anna
 Young, Almo

THIRD YEAR.

Auld, Harry
 Burgert, Alice
 Boone, Ezra
 Brubaker, Lulu
 Barnes, C. F.
 Conrad, El Nora
 Carter, T. D.
 Crumpacker, A. J.
 Carlson, D.
 Dotzour, Grover
 Detter, Edna
 Eash, I. E.
 Florsman, Anna
 Garst, Henry
 Gale, Albert
 Hollinger, H. T.
 Hull, Vernon
 Kasey, Howard
 Lichenwalter, Homer
 Lichenwalter, Nettie
 Pollock, S. A.
 Russell, Robert
 Royer, William D.
 Ring, Elma
 Rupp, Maud
 Stump, Levi
 Studsbaker, M. M.
 Slagle, Merle
 Snowberger, Harvey
 Schroeder, J. P.
 Trostle, Evelyn
 Way, Pearl
 Wiebe, F. V.
 Wohlgemuth, Benj.

COLLEGIATE.

SENIORS.

Achman, Theodore
 Crumpacker, H. C.
 Clement, Corda
 Gillespie, Iva
 Lohrenz, H. W.
 Shirkey, Emily
 Tretbar, Julius J.

JUNIORS.

Beckner, W. O.
 Detter, Ralph
 Hoffman, Harvey
 Hedine, A. E.
 Miller, Ruby/Horton
 Rothrock, James

SOPHOMORE.

Fulton, Ava
 Hildebrand, Lulu
 Miller, Bruce A.
 Miller, Sylvia
 Snyder, Olive
 Trostle, B. S.
 Vaniman, Grace
 Vaniman, Earnest

Blackman, Pearl
 Brubaker, Olive
 Bukey, Mary
 Bradshaw, Elva
 Bradshaw, Salmon
 Bradshaw, Mrs.
 Bailey, Hattie
 Berg, Reah
 Breon, Jessie
 Blankenship, Edith
 Crary, Laurine
 Clement, Corda
 Clement, Mrs.
 Chester, May
 Dotsour, Grover
 Detter, Ralph
 Dresher, Stanley
 Dresher, Pearl
 Engborg, Myrtle
 English, Edith
 Ebel, Agnes
 Evans, Hazie
 Frantz, Ruth
 Furguson, Dessa
 Ferris, Lena
 Ferris, Myrtle
 Goodsheller, Gracie
 Green, Mary
 Green, Miss
 Hill, Cora
 Hall, Nora

FRESHMAN.

Baker, R. E.
 Beckner, Emma
 Barnhill, G. E.
 Cram, Robert
 Craik, E. L.
 Cline, Susie
 Dresher, C. H.
 Dalke, Detrich
 Detrick, Herbert
 Ebbert, Ella
 Garber, Anna
 Goodsheller, Helen
 Green, Nellie
 Hope, Lillian
 Hiebert, Katie
 Jackson, Maude
 Jacobs, Jessie
 Kuns, Vada Dilling
 Kraybill, Frank
 Morris, R. E.
 McElvain,
 Neher, Clara
 Vaniman, Ira
 Wiggins, J. F.
 Young, Lillian

MUSICAL DEPARTMENT.

Harms, Tillie
 Hill, Audrey
 Hutchinson, Bula
 Hollinger, Gemma
 Heldstab, Lida
 Hinkson, Miss
 Haberlein, Miss
 Heithecker, Mrs.
 Ingalls, Roscoe
 Jacobs, Fred
 Janzon, F. F.
 Janzon, T. F.
 Kuhn, Carrie
 Maltby, Raymond
 Miller, Maude
 Moomaw, Modena
 Muir, Gladys
 Miller, Mrs. S. J.
 Miller, J. H. B.
 Mugler, Emma
 Miller, Pauline
 Nash, Alice
 Neufeldt, Miss
 Poatt, Miss
 Poatt, Sarah
 Peterson, Annie
 Pollock, Drew
 Pratt, Miss
 Par, Miss
 Pearson, Mary
 Parlin, Leon

Rupp, Mary
 Reiff, Mary
 Suffield, Mable
 Studebaker, Lena
 Stancel, Eller
 Stacy, Earl
 Tipton, Rose
 Tomas, H. E.
 Vaniman, Pauline

Vaniman, Clarence
 Vaniman, Earnest
 Voschell, Miss
 Voschell, Villa
 Whitmer, Elsie
 Whitney, Lucretia
 Wolghmuth, B. O.
 Wallace, Grace
 Yowell, Esther

COMMERCIAL DEPARTMENT

Thomas, Lillian
 Hammar, E. A.
 Kendall, R. M.
 Gale, Albert
 Ford, Florence
 Bowers, J. E.
 Landfair, W. A.
 Berggoen, Harry
 Anderson, Bert R.
 Dobbins, E. F.
 Brubaker, Lester
 Garst, Roy
 Janzen, P. C.
 Walker, L. M.
 Severtson, Earl
 Severtson, Ben
 Seidel, P. W.
 Aule, O. J.
 Carstenson, Jacob
 Groening, Henry
 Ball, Elmer
 Steele, D. C.
 Unruh, Henry H.
 Sandy, Chas. H.
 Wendt, Arthur
 Stump, Lester
 Spohn, R. E.
 Parlin, Leon A.
 Parlin, Lena S.
 Norton, Hugh
 Martens, Daniel
 Hodge, Clyde
 Dick, David
 Funk, Reuben
 Brubaker, Cyrus
 Boyington, Chas.
 Brubaker, Mason
 Andes, Grover
 Lofstead, Alfred P.
 Bowers, J. A.
 McElvaine, Catherine

Ring, Elma
 Dierdorff, Ray
 Brunk, Verd
 Irwin, Decker
 Reyher, Emma
 Reyer, Lizzie
 Pearson, Esther
 Kuhn, Carrie
 Nichols, Walter
 McAvoy, Jas. E.
 Leavell, Harry
 Hicks, A. J.
 Garst, H. H.
 Auld, Harry
 Neuland, Marie
 Morrison, Jas. R.
 Johnson, Ala.
 Breon, Jas.
 Ferris, Ralph
 Cullem, M. E.
 Ring, Myrtle
 Johnson, Adrian
 Borders, Nellie
 Stump, Lester

SHORTHAND.

Andes, Grover
 Evans, Myrta
 Ford, Florence
 Hornberger, Lydia
 Jones, Grace
 Joseph, Essie
 Landfair, Alva
 Mugler, Emma
 Norton, Hugh
 Parlin, Lena
 Pearson, Esther
 Rasp, Albert F.
 Sandy, Chas. H.
 Tawzer, Hazel
 Wohlgemuth, James

ELOCUTION.

SENIORS.
 Hiebert, Katie
 Miller, Elva
 JUNIORS
 Bixby, Roy
 Buckman, Glenn

Carter, Talmage
 Conrad, Nora
 Crumacker, Harry
 Crumacker, Ores
 Curtis, Blanche
 Doerkson, J. T.

Ebel, Agnes
 Gish, Maybelle
 Guy, Olea
 Helstab, Lyda
 Kritzer, Pearl
 Leach, Mabel
 Lohrenz, Katie
 Mason, Martha
 McCready, Cecil

Miller, Silva
 Nevinger, Roy
 Shirky, Emily
 Sherffy, E. F.
 Shorb, Carroll
 Thomas, Halbert
 Wallace, Grace
 Wiebe, Frank

MODEL SCHOOL

Andes, Grover
 Andes, Lulu
 Anderson, Bert
 Brubaker, Hazel
 Brubaker, C. F.
 Bradbury, C.
 Brubaker, Martha
 Breon, Katie
 Bergreen, Harry
 Berkley, Lella
 Blackman, Grace
 Bergert, Alice
 Burger, Ella
 Boone, Lucille
 Ball, Elmer
 Bowers, J. E.
 Crumpacker, Eulah
 Crumpacker, Clyde
 Cline, John
 Cline, Willie
 Curtis, Blanch
 Converse, Hazel
 Carstensen, Jacob
 Cullen, M. E.
 Chatterton, Eva
 Compton, Hazel
 Cram, George
 Crumpacker, J.
 Dick, David
 Dyke, Flora
 Dagget, Mary
 Decker, Irvin
 Ebel, A. R.
 Eash, Perry
 Frantz, Harper
 Frantz, Fidella
 Ford, Carrie
 Ferris, Ralph
 Garst, Ray
 Garber, Anna
 Geyman, Etta
 Groening, John
 Groening, Henry
 Hicks, A. J.
 Hartman, A. A.
 Jansen, P. C.
 Johnston, Ola
 Janzen, F. F.

Johnson, Adrian
 Kendall, A. R.
 Leavel, Harry
 Lohrenz, J. W.
 Lohrenz, Kathrine
 Miller, Pauline
 Miller, Maurine
 Mohler, Marion
 Martens, Daniel
 Moomaw, Modena
 Mason, Martha
 McAvoy, Joseph
 Morrison, James
 McCready, Cecil
 McGiffert, Mabel
 Netsley, Ralph
 Neufeldt, Mary
 Norton, Hugh
 Peterson, Clara
 Parlin, L. A.
 Reyher, Emma
 Reyher, Lizzie
 Royer, Clarence
 Smith, Ralph
 Smith, Guy
 Showalter, Clarence
 Stump, Ida
 Stutzman, Maurine
 Sherfy, Mary
 Shellenberg, Eva
 Stotts, Opal
 Sword, F.
 Stacy, Earl
 Showalter, Milton
 Thompson, Ada
 Thompson, Blanche
 Ullom, Lulu
 Vaniman, Clarence
 Webster, Paul
 Wilson, Carrie
 Wallace, Grave
 Workentine, A. F.
 Wagner, Anna
 Wendt, Arthur
 Wohlgemuth, Edward
 Way, P. B.
 Yowell, Frank