

# McPherson College.

---

1893 - '94.

---

McPHERSON, KANSAS,  
JUNE, 1894.

# CALENDAR FOR 1894-95.

1894.	August 30, Thursday,	Fall Term Begins.
"	November 7, Wednesday,	Fall Term Ends.
"	November 8, Thursday,	Winter Term Begins.
"	December 22 to January 2,	Vacation.
1895.	January 23, Wednesday,	First Winter Term Ends.
"	January 24, Thursday,	Second Winter Term Begins.
"	April 3,	Second Winter Term Ends.
"	April 4,	Spring Term Begins.
"	Oratorical Contest,	Friday, June 7.
"	Joint Meeting of Societies,	Saturday, June 8.
"	Baccalaureate Sermon,	Sunday, June 9.
"	Bible Examination,	Monday, June 10.
"	Annual Address,	Monday evening, June 10.
"	Alumni Reunion,	Tuesday afternoon, June 11.
"	Musical,	Tuesday evening, June 11.
"	Commencement Exercises,	Wednesday, June 12.
"	Summer Vacation begins,	Thursday, June 13.

## BOARD OF DIRECTORS.

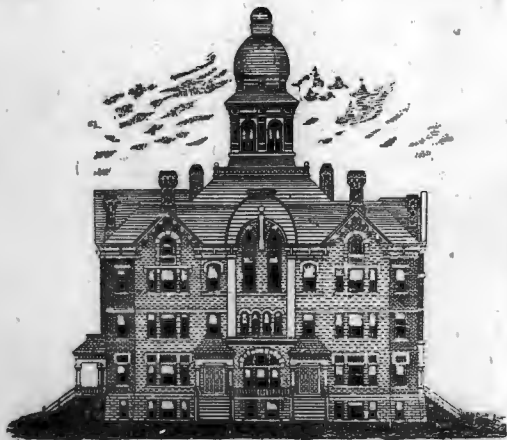
DANIEL VANIMAN, President,	McPherson, Kansas.
HENRY BRUBAKER, Vice-President,	" "
F. A. VANIMAN, Treasurer,	" "
J. L. KUNS,	" "
H. J. HARNLEY, Secretary,	" "
S. Z. SHARP, (Ex-officio)	" "

J. H. PEOK, BUSINESS MANAGER, " "

## ADVISORY BOARD.

Appointed by Annual Meeting.

ELDER EROCK EBY,	Booth, Kansas.
ELDER JOHN WISE,	Conway Springs, Kansas.
ELDER CHAS. M. YBAROIT,	Westphalia, Kansas.



MAIN BUILDING, IN COURSE OF CONSTRUCTION, DRAWN WITH A PEN BY A STUDENT IN  
THE PEN ART DEPARTMENT; TAKEN FROM ARCHITECT'S PLAN.

ANNUAL CATALOGUE

OF

OFFICERS AND STUDENTS

OF

McPHERSON COLLEGE

1893-94.

---

McPHERSON, KANSAS,

McPHERSON DAILY REPUBLICAN, JOB PRINTING OFFICE.

1894.

## FACULTY AND INSTRUCTORS.

S. Z. SHARP, A. M. PRESIDENT.  
*Mental and Moral Science and Bible History.*

LEONARD HUBER, A. M.,  
*Latin, Greek, German, and French.*

H. FRANCES DAVIDSON, A. M.,  
*Latin and English.*

H. J. HARNLY, S. B., A. M.,  
*Natural Science.*

C. E. ARNOLD, A. M.,  
*Mathematics.*

S. B. FAHNESTOCK, M. Accts. SECRETARY,  
*Commercial Department, Drawing, and Pen Art.*

MRS. AMANDA FAHNESTOCK,  
*Stenography and Type-Writing.*

FREEMAN G. MUIR,  
*Instrumental Music, Harmony, and Voice Culture.*

MINNIE WINDLÉ,  
*Oratory and Physical Culture.*

A. C. WIEAND, B. E.,  
*English.*

S. J. MILLER,  
*History and Civil Government.*

J. Z. GILBERT,  
*Geography and Orthography.*

SUSIE SLUSHER, MATRON,  
*Grammar.*

L. D. IKENBERRY,  
*Vocal Music.*

THEO. SNOWBERGER,  
*Arithmetic.*

LAURA S. PECK,  
*Guitar.*

## COURSES OF INSTRUCTION.

## COLLEGIATE DEPARTMENT.

This department embraces three courses—the Classical, the Latin-Scientific, and the Scientific, each requiring four years of study.

The degree, A. B. will be conferred upon those completing the Classical course, and upon those completing either of the others, the degree, Ph. B.

Students, after graduating in this Institution, are ready for post graduate work in our best Universities.

Students from other institutions bringing satisfactory testimonials will receive credit for work done.

## FRESHMAN YEAR.

	CLASSICAL	LATIN-SCIENTIFIC	SCIENTIFIC
FALL TERM 14 weeks.	University Algebra. Geometry. De Anillois. ✓ Herodotus. ✓	University Algebra. Geometry. De Anillois. Biology.	University Algebra. ✓ Geometry. ✓ German. ✓ Biology. ✓
SECOND TERM 10 weeks.	University Algebra. Conic Sections. Livy. ✓ Herodotus. ✓	University Algebra. Conic Sections. Livy. Biology.	University Algebra. ✓ Conic Sections. ✓ German. ✓ Biology. ✓
THIRD TERM 10 weeks.	Trigonometry. Chaucer. ✓ Livy. ✓ Homer's Iliad or Greek Testament.	Trigonometry. Chaucer. Livy. Biology.	Trigonometry. ✓ Chaucer. German Lyrics. ✓ Biology. ✓
FOURTH TERM 10 weeks.	Trigonometry and Surveying. Spenser or Eng. Classics. Horace, (Odes.) ✓ Homer's Iliad. ✓	Trigonometry and Surveying. Spenser or Eng. Classics. Horace, (Odes) Biology.	Trigonometry and Surveying. ✓ Spenser or Eng. Classics. ✓ German Lyrics. ✓ Biology. ✓
	Essay and Orations during the year.		

## SOPHOMORE YEAR.

FALL TERM 10 weeks.	Chemistry. English Classics. German Sight Reading. Memorabilia. ✓	Chemistry. ✓ English Classics. German Sight Reading. Physiology and Hygiene.	Advanced Chemistry. ✓ English Classics. French. ✓ Physiology and Hygiene. ✓
SECOND TERM 10 weeks.	Chemistry. Rhetoric. ✓ Schiller. ✓ Plato (Apology). ✓	Chemistry. ✓ Physiology and Hygiene. Schiller. Thotus. ✓	Advanced Chemistry. ✓ Rhetoric. Fraeb. ✓ Physiology and Hygiene. ✓

THIRD TERM 18 weeks.	Rhetoric. Mineralogy. German Lyric. Sophocles.	Rhetoric. Mineralogy. German Lyric. Horace.	Rhetoric. Mineralogy. French. Structural Botany.
FOURTH TERM 18 weeks.	Demosthenes De Corona. German Lyric. English History. Mineralogy.	Juvenal. German Lyric. English History. Mineralogy.	French. Structural Botany. English History. Mineralogy.

Orations and Theses during the year.

## JUNIOR YEAR.

FALL TERM 10 weeks.	Tacitus. Physiology and Hygiene. French. Biology.	History of Language. General Geometry. French. Mechanics.	History of Language. General Geometry. History of Art. Mechanics.
SECOND TERM 10 weeks.	Horace, (Epistles and Satires). Physiology and Hygiene. French. Biology.	French History. General Geometry. French. Physics.	French History. General Geometry. Mechanical Drawing. Physics.
THIRD TERM 10 weeks.	Latin Poets. Calculus. French. Biology.	Philosophy of Education Calculus. French. Physics.	Philosophy of Education Calculus. French History. Physics.
FOURTH TERM 10 weeks.	Juvenal. Calculus. French. Biology.	English Classics. Calculus. French. Physics.	English Classics. Calculus. Philosophy of Education. Physics.

Theses and Orations during the year

## SENIOR YEAR.

FALL TERM 10 weeks.	Mental Science. Evidences of Christianity English. Geology.	Mental Science. Evidences of Christianity English. Geology.	Mental Science. Evidences of Christianity English. Geology.
SECOND TERM 10 weeks.	Mental Science. Philosophy of History. Ethics. Geology.	Mental Science. Philosophy of History. Ethics. Geology.	Mental Science. Philosophy of History. Ethics. Geology.
THIRD TERM 10 weeks.	Logic. Astronomy. Political Economy. Elective.	Logic. Astronomy. Political Economy. Elective.	Logic. Astronomy. Political Economy. Elective.
FOURTH TERM 10 weeks.	Natural Theology. Elective. Elective. Elective.	Natural Theology. Elective. Elective. Elective.	Natural Theology. Elective. Elective. Elective.

Reviews, Theses and Orations during the year.

# COURSES OF INSTRUCTION

— IN THE —

## PREPARATORY AND NORMAL DEPARTMENTS.

The three courses of study in the Preparatory Department are intended to prepare students for the corresponding courses in the Collegiate Department, or for practical life. The Normal Course is for those preparing to teach, or who wish to obtain *Life Certificates* or *State Diplomas*.

### FIRST YEAR.

	CLASSICAL.	LATIN-SCIENTIFIC.	SCIENTIFIC.	NORMAL.
FALL TERM	Higher Arithmetic. Elocution. Eng. Grammar. Latin.	Higher Arithmetic. Elocution. Eng. Grammar. Latin.	Higher Arithmetic. Elocution. Eng. Grammar. U. S. History.	Higher Arithmetic. Elocution. Eng. Grammar. U. S. History.
10 weeks.	Essay and Declamation.	Essay and Declamation.	Essay and Declamation.	Essay and Declamation.
2ND TERM	Higher Arithmetic. Elocution. Eng. Grammar. Latin.	Higher Arithmetic. Elocution. Eng. Grammar. Latin.	Higher Arithmetic. Elocution. Eng. Grammar. Desc. Geography.	Higher Arithmetic. Elocution. Eng. Grammar. Desc. Geography.
10 weeks.	Essays.	Essays.	Essays.	Essays.
3RD TERM	Algebra. Rhetoric. Latin.	Algebra. Rhetoric. Latin.	Algebra. Rhetoric. Book-keeping.	Algebra. Rhetoric. Book-keeping.
10 weeks.	Physical Geography Essays.	Physical Geography Essays.	Physical Geography Essays.	Physical Geography Essays.
4TH TERM	Algebra. Rhetoric. Latin. Roman History. Essays.	Algebra. Rhetoric. Latin. Roman History. Essays.	Algebra. Rhetoric. Orthography. Drawing. Essays.	Algebra. Rhetoric. Orthography. Drawing. Essays.
10 weeks.				

Penmanship during the year, and Vocal Music one term each.



## SECOND YEAR.

FALL TERM 10 weeks.	Cæsar. General History. Algebra. Greek.	Cæsar. General History. Algebra. Physiology.	German. General History. Algebra. Physiology.	Latin. General History. Algebra. Drawing.
2ND TERM 10 weeks.	Algebra. Cæsar. General History. Greek.	Algebra. Cæsar. General History. Physiology.	Algebra. German. General History. Physiology.	Algebra. Latin. General History. Drawing.
3RD TERM 10 weeks.	Geometry. Physics. Cæsar. Greek.	Geometry. Physics. Cæsar. Botany.	Geometry. Physics. German. Botany.	Geometry. Physics. Latin. Botany.
4TH TERM 10 weeks.	Geometry. Physics. Anabasis. Cicero.	Geometry. Physics. Botany. Cicero.	Geometry. Physics. Botany. German.	Geometry. Physics. Botany. Cæsar.

Essays and Orations during the year.

## THIRD YEAR.

FALL TERM 10 weeks.	English Literature. Anabasis. Cicero. Greek History. German.	English Literature. Bible History. Cicero. German.	English Literature. Bible History. Chemistry. Geology.	English Literature. History of Art. Cæsar or Chemistry.
2ND TERM 10 weeks.	English Literature. Anabasis. Virgil. Greek History. German.	English Literature. Bible History. Virgil. German.	English Literature. Bible History. Chemistry. American Politics.	English Literature. Kindergarten Meth. Cæsar or Chemistry.
3RD TERM 10 weeks.	Virgil. Greek Selections. German. Botany.	Virgil. German. Bible History. Zoology.	Civil Government. Astronomy. Bible History. Zoology.	Methods. Trigonometry. Latin or Astronomy Zoology.
4TH TERM 10 weeks.	German. De Senectute. Greek Selections. Botany.	German. De Senectute. Zoology. Political Economy.	Civil Government. Bible History. Zoology. Political Economy.	Trigonometry and Surveying. Zoology. Latin or Political Economy.

Essays and Orations during the year.

## NORMAL COURSE, FOURTH YEAR.

1ST TERM, 10 WEEKS.	2ND TERM, 10 WEEKS.	3RD TERM, 10 WEEKS.	4TH TERM, 10 WEEKS.
Mental Science. Physiology and Hygiene. Outlines and Re- views. Geology.	Mental Science. Physiology and Hygiene. Outlines and Re- views. American Politics.	History of Educa- tion. Philosophy of Ed- ucation. Teaching and Criti- cism. Reviews.	History of Educa- tion. Civil Law. Teaching and Criti- cism. Geology.



PHOTO ENGRAVED FROM A SPECIMEN DESIGNED AND EXECUTED BY A STUDENT

## COLLEGIATE DEPARTMENT.

### ANCIENT LANGUAGES.

No equivalent for Latin and Greek has yet been found in the curriculum of collegiate instruction. The chief object of a classical course should be culture, which these ancient languages so well afford. In the study of *Latin* the reasoning powers are exercised, the judgment is strengthened, and the mind as a whole is trained to concentration of effort. Both literal and free translations are required after the first principles of the language are understood, and stress is laid on *Latin Prose Composition*.

The study of the *Greek Language* leads to the highest intellectual development, and is indispensable to those who wish to make a critical study of the New Testament. Accent, Etymology, and Syntax are carefully taught at the beginning of the course, after which the student is made acquainted with the idioms of the language.

### MODERN LANGUAGES.

*German* is required in all the courses two years, during which time the student is enabled not only to read the works of the best authors fluently, but also to speak the language and to become familiar with some of the best German literature.

*French* is sufficiently studied to enable the student to read this language fluently and acquaint himself with the literature and sciences of the French people.

*English*. A thorough knowledge of this branch is essential to a finished education, and no student can afford to complete a college course without an intimate acquaintance with the structure of the language and the productions of the best writers. For this reason the same amount of work is required in all the courses.

In the Preparatory Department special attention is given to the grammar of the language. In addition to this, Lockwood's "Lessons in English," Composition, two terms in the study of poems, and outside reading are required.

The Freshman begins with Chaucer as the introduction to the language. This is followed by a critical study of standard productions, History of the Language, and Genung's "Practical Rhetoric."

Students pay a fee for Chemicals as follows: Preparatory course, \$1.50; Advanced course, \$2.25 per term. Breakage extra.

*Botany.* Gray's School and Field Book is used as a text-book. Field practice, preparation of an herbarium, and written analyses of specimens are required in the Preparatory courses.

*Biology.* The first half year is devoted to Botany (the morphology of plants) and the second half year to Zoology. Animal life, from the lowest to the highest forms, is studied. Besides the recitations in the class room, four hours a week are devoted to laboratory work.

*Physiology.* Martin's Human Body is used as a text-book in connection with White's Manikin and frequent dissections are made and illustrations given by means of the microscope.

*Physical Geography.* The Eclectic Physical Geography is used as a text-book. This subject is placed early in the course to accommodate teachers who are required to pass in it. The study is preceded by a few lessons in Elementary Physics to enable the student more readily to understand the Physical phenomena which necessarily belong to this subject.

*Geology* is taught as a history of the earth. Ample facilities are at hand to make this study both interesting and profitable.

A good collection of minerals and fossils is used for illustration.

Due attention is given to the study of *Astronomy*. The constellations and principal stars are studied by actual observation.

---

## NORMAL DEPARTMENT.

---

To enter this department a student must be sixteen years of age, must pass an examination on a grade of 80, or present a second grade county certificate.

The course is that required by the State Board of Education for a three years' State certificate followed by a life certificate. Many persons by teaching a portion of each year, or during alternate years, may finish this course in a reasonable time and become professional teachers.

Besides the branches studied in this course, thorough instruction is given in *physical culture* and the *art of teaching*.

This department is accepted by the State Board of Education, and a satisfactory completion of this course will lead to a *State Diploma*.

Students pay a fee for Chemicals as follows: Preparatory course, \$1.50; Advanced course, \$2.25 per term. Breakage extra.

**Botany.** Gray's School and Field Book is used as a text-book. Field practice, preparation of an herbarium, and written analyses of specimens are required in the Preparatory courses.

**Biology.** The first half year is devoted to Botany (the morphology of plants) and the second half year to Zoology. Animal life, from the lowest to the highest forms, is studied. Besides the recitations in the class room, four hours a week are devoted to laboratory work.

**Physiology.** Martin's Human Body is used as a text-book in connection with White's Manikin and frequent dissections are made and illustrations given by means of the microscope.

**Physical Geography.** The Eclectic Physical Geography is used as a text-book. This subject is placed early in the course to accommodate teachers who are required to pass in it. The study is preceded by a few lessons in Elementary Physics to enable the student more readily to understand the Physical phenomena which necessarily belong to this subject.

**Geology** is taught as a history of the earth. Ample facilities are at hand to make this study both interesting and profitable.

A good collection of minerals and fossils is used for illustration.

Due attention is given to the study of *Astronomy*. The constellations and principal stars are studied by actual observation.

---

## NORMAL DEPARTMENT.

---

To enter this department a student must be sixteen years of age, must pass an examination on a grade of 80, or present a second grade county certificate.

The course is that required by the State Board of Education for a three years' State certificate followed by a life certificate. Many persons by teaching a portion of each year, or during alternate years, may finish this course in a reasonable time and become professional teachers.

Besides the branches studied in this course, thorough instruction is given in *physical culture* and the *art of teaching*.

This department is accepted by the State Board of Education, and a satisfactory completion of this course will lead to a *State Diploma*.

---

**COMMERCIAL DEPARTMENT.**

---

**BOOK-KEEPING, ACTUAL BUSINESS, BUSINESS CORRESPONDENCE  
COMMERCIAL LAW, COMMERCIAL ARITHMETIC, RAPID  
CALCULATIONS, PENMANSHIP, ORTHOGRAPHY,  
AND GRAMMAR.**

---

**BOOK-KEEPING.**

In this department the science of accounts is treated in a logical manner. The student is thoroughly drilled in the correct and practical use of all the various books used in business.

Transactions and books are varied in accordance with the business in which the student is engaged. This fully prepares him to enter successfully upon the work of the business department, or to take a position as assistant book-keeper or bill clerk.

**BUSINESS DEPARTMENT.**

The students are themselves obliged to make the transactions, keep the books, and do all the work in the Business Practice.

The methods used in this work are entirely practical, and of the same nature as the duties actually performed by a book-keeper, or business manager in a business house. We furnish to students from \$3,000 to \$5,000 in College Currency, with which to engage in business.

All the work of the business practice is directed daily by the inspector. The student is supplied with all kinds of commercial blanks, of the same form and style as those used in first class houses.

Among those of the sets designed to illustrate practical book-keeping are 1st, Retail. This is especially adapted to the use of grocers, shop keepers, etc.

2nd, Retail Coal Business. This illustrates a system of book-keeping especially adapted to the retail coal business, and in most respects, to any business where a Weight Book is required.

3rd, Produce Commission Business. The books required in a produce commission house differ, in form and number, from those used in a commission business devoted to the handling of manufactured products, where sales are made to jobbing trade. This is fully illustrated to the student by various books used in the produce commission business.

Then we have the Installment Houses and State Agencies, Joint Stock Companies, etc.

We teach every form of an account from that of a *two column Day-book* to a *sixteen column Exercise book*.

#### BUSINESS FORMS.

Students in this institution learn to draw correctly every kind of paper which they have occasion to use in business, such as, checks, drafts, notes, bills of exchange, statements, deeds, mortgages, leases, powers of attorneys, etc., and learn when, where, and how to use them.

#### BANKING.

FIRST NATIONAL COLLEGE BANK.

Our system of banking is the one most generally used by all leading Eastern bankers.

The books used in this system are Journal, General Ledger, New York Draft Register, Discount Register, Collection Register, Discount Tickler, and Collection Tickler. Other books, such as Offering Book, Dealer's Discount Book, Dealer's Bill Book, Teller's Books, Certificate of Deposit Book, and Statement Books are also used in banks.

#### DIPLOMA.

Those who complete the prescribed course in a satisfactory manner are awarded an elegant diploma made by our penman.

To be possessor of a diploma from an Institution of such eminent standing as McPherson College is not only an unquestioned endorsement, but is a token of honor which every young lady and gentleman should strive to obtain.

#### LETTER WRITING AND BUSINESS CORRESPONDENCE.

The essential points in a business letter are subject matter, expression, and mechanical appearance. *Form, brevity, method of folding note or letter sheet, superscribing envelopes, etc.*, receive that attention which their importance deserves.

The object of instruction in this branch is to familiarize the student with good English forms of expression and with language peculiar to business transactions;

Those who are familiar with this and the other English branches need never fail to fill positions of honor and trust satisfactorily.

#### COMMERCIAL LAW.

The young man who is about to engage in business should consider carefully what is necessary to success.

Pres. Garfield said: "Men succeed because they deserve success. Their results are worked out; they do not come to hand ready made. Poets may be born; but success is made."

We labor to equip our students thoroughly for the battle of life by spending sufficient time to explain the laws and customs they are certain to face in after years.

The student thus becomes competent to decide on all general matters of business transactions in an intelligent manner.

#### COMMERCIAL ARITHMETIC.

The first element of a business education is the ability to calculate. The best compendium of commercial arithmetic now before the public is the principal text-book we use on the subject. It contains useful hints, showing short methods, quick results, and all manner of calculations involving the use of United States Money, Commission, Brokerage, Discount, Loss and Gain, Percentage, etc.

The latest and best methods of computing interest are used, to prepare the student as an expert calculator.

#### PENMANSHIP.

Good business writing is a very important element in a commercial training.—An easy, legible, rapid business hand, always has commercial value. He who possesses a good business handwriting always receives the preference, provided he is equal to his competitors in other respects. About one business man in a dozen writes a passable hand. Very few teachers of our country are competent penmen. Hence the door stands ajar for remunerative employment to those who will make themselves masters of the beautiful art. We impart instruction in the best systems, and guarantee improvement for every faithful effort. Come to McPherson College and make yourself accomplished—a specialist.

This department has all the advantages of experience and skill and is directed by one of the best penmen in the west.



---

**ORNAMENTAL PENMANSHIP.**

Instruction is given in the best systems and most improved styles of plain, artistic, running, shaded base, back-hand, engrossed, and round writing.

**ENGROSSING.**

We teach engrossing as used for resolutions, diplomas, etc.

**PEN 'ART.**

This comprises a greater variety of design and purpose than any other of the fine arts. The discovery of new methods for transferring pen drawings to metal plates, and the great advances made in the mechanical and electric arts, have opened many entirely new fields to the pen artist.

This noble art is taught in such a way as to enable most persons who have no special talent for it, to succeed in a comparatively short time. Instruction is also given in preparing drawings for engraving.

**LETTERING.**

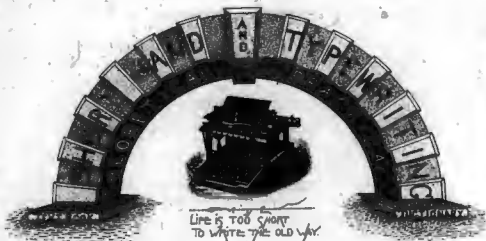
We teach Lettering—plain, ornamental, fancy, and in fact all styles generally used by penmen.

**TUITION.**

One month or less	_____	\$5.00
Per term in advance	_____	9.00

These prices include any one or more of the above branches.

Please note that our rates are about *one-third those of other institutions* and our work not inferior to any.



Every young lady or gentleman desiring to prepare for successful business, should learn Shorthand. It will pay, for it will be found useful in many ways, even though only half the speed necessary for verbatim reporting be attained.

One of the principal advantages of pursuing this study in our school is that of connecting with it other studies, when desired. To all those, therefore, who wish to take up other studies, in connection with shorthand, special combination rates are made, as will be seen by reference to terms.

The system used is the Eclectic. Many of the systems now used by reporters are good; but as it is necessary to decide upon some text-book to study, we recommend the Eclectic, on account of its simplicity, brevity, and general advantage over the more complex systems.

*IT IS EASY TO WRITE,-*

because of its great similarity to longhand writing.

*IT IS EASY TO READ,*

because, unlike many other popular systems, the vowels are freely used, thus giving to each word the vocal element to make it more legible. The first letter of each word is written, so that the reader can at once tell what it is, while, in other systems, words are so written that as a rule it is impossible to tell whether the first letter is a vowel or a consonant.

*IT HAS VERY FEW WORD SIGNS.*

The weeks and months, required by the students of other systems to master these arbitrary characters, are all saved to the student of Eclectic shorthand.

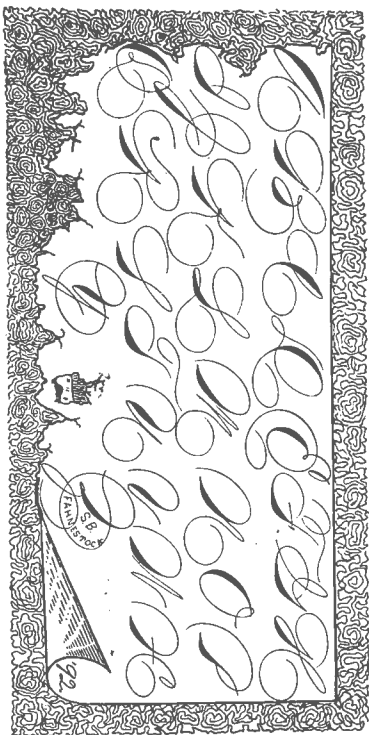


PHOTO-ENGRAVED FROM A SPECIMEN EXECUTED BY S. B. FAHNESTOCK.

This department is under the control of an experienced teacher, and every advantage is offered to all who enter.

Classes will be formed only at the beginning of each term. The rates herein given apply only to students who enter classes. Extra charge for private instruction.

#### TYPEWRITING.

As no stenographer's education is considered complete without a knowledge of typewriting, it is taught in connection with the shorthand, each student being given at least two hours practice per day.

Students in this Department are taught correct fingering, touch, and the proper care of the machine.



#### SHORTHAND IN CONNECTION WITH BOOK-KEEPING.

The call for assistance in Business and Professional offices is for a combination of Book-keeping and Shorthand. One who understands these two branches will not only secure employment more readily, but will command a better salary.

---

## MUSICAL DEPARTMENT.

---

#### OBJECTS.

This department is organized with the following objects in view: (1) To furnish instruction in all branches of Music to Professional and Amateur Students; (2) To use the art of Music as a means of intellectual, Aesthetic, and Moral Culture; (3) To educate teachers.

It is the object of a musical education to awaken and refine sentiment, and, says a writer, "Measure not your progress by the number of pieces you sing or play, but by the *manner* in which you play or sing them, as well as by the *character* of the music you study." It is our aim to use that only which is pure and worthy of attention. Great progress is impossible without a high aim.

## BRANCHES OF STUDY.

These include Piano-Forte, Organ, Voice Culture, Harmony and Counter Point, Literature, History, Drill.

## PIANO-FORTE.

The objects of Piano study are, (1) To cultivate musical discrimination; (2) To afford an intelligent and true interpretation of the works of the great composers in all styles and schools.

To accomplish these results, such exercises, *etudes*, and pieces will be given as will meet the needs of each individual pupil. In the use of exercises and *etudes* the measure of value will be, not their quantity, but their power to correct, improve, and establish the mechanical and mental habits of the pupil.

## COURSES OF STUDY.

FIRST YEAR.—Part I, "Lebert and Stark's Piano School;" E. D. Wagner's Foundation Studies; Compositions from Gurlitt, Duvernoy, Kohler, Lösschorn and Reinecke; Daily Technical Studies.

SECOND YEAR.—Studies from Heller, Bertini, Lösschorn, Cramer; Sonatas from Kulau, Clementi, Hayden, Dusek; Scales and Arpeggios.

THIRD YEAR.—"Lebert and Stark," Part II; Sonatas from Mozart, Schuman, Beethoven, Krause; Select Studies from Chopin, Heller, and Bach's Preludes, Mendelssohn; Czerny's Studies in velocity.

FOURTH YEAR.—Bach's two and three voice inventions; Studies from Le Couppéy and Czerny; Solo Playing; Assembly Playing; Concert pieces by Weber, Mendelssohn, and others; Daily Technics.

## HARMONY.

No one is a musician who is not acquainted with the science of Harmony and Musical Form. The purpose of this course is to give the student a thorough knowledge of the rules and laws which govern a composition; in short, how to compose a piece of music.

## SPECIAL VOICE CULTURE.

The student throughout the course will vocalize studies suited to his voice. This will include study of Tone and its application to words, Articulation, Quality, Quantity of Tone, Color, Timbre, how to preserve the voice, illustrations of the various faulty ways of singing, etc. The study of solos from the opera and oratorio.

## CABINET ORGAN.

Systematic instruction is given in technical execution, in playing church music, short voluntaries and interludes, all of which exercises are intended to fit persons for the various uses of the instrument.

## GUITAR.

Instruction on the guitar embraces, playing by note, correct fingering, and accurate tuning.

The progressive and complete method by N. P. B. Curtis is used.

## CHORUS SINGING.

At the beginning of each term there will be formed two classes in chorus singing, viz: a class for beginners and a class for advanced pupils.

## ADVANCED CHORUS CLASS.

The exercises in this class consist of Solo, Duet, Quartette, and Chorus singing. The leading choruses of our modern composers will be used; also the oratorio, with other works.

## TUITION.

Piano, Organ, or Guitar per term, .....	\$10.00
Single Lesson, .....	.50
Voice Culture, per term, .....	10.00
Harmony in classes, per term, .....	5.00
Advanced Chorus Class, per term, .....	2.00
Rent of Library per term, .....	.50
Rent of Piano per term (2 hours a day), .....	\$3.00 to 5.00

## ELOCUTION, ORATORY, AND PHYSICAL CULTURE.

*Physical Culture*, is intended (1) To give health, strength, and symmetry to the body. (2) To enable teachers to use a convenient and healthful system of calisthenics in their school rooms. (3) To teach proper position of body with ease and grace of gesture in delivery. The Emersonian system is used.

*Elocution* as an art is taught to make good readers. It improves articulation and respiration, cultivates the voice, teaches the elements of vocal expression and their correct grouping in the expression of thought.

Its proper study will make the "family circle and social circle more agreeable, the business man more successful and the professional man more impressive."

The key note of instruction in Bible and Hymn reading, is to read "in spirit and in truth."

*Oratory* as an art rests upon the absolute laws of nature. The aim is to give systematic instruction in the principles upon which the art rests, to cultivate the body, mind, and soul harmoniously, and to enable the student to use the full measure of his powers.

For all impediments of speech, the discoveries of Prof. Alexander Bell in Vocal Physiology are used.

The student is taught to think and feel while on his feet, and to express his own individuality.

## COURSE OF INSTRUCTION.

### JUNIOR YEAR.

**FIRST TERM.**—Physical culture, Drill and Explanations; Voice culture, Drill and Explanations; Articulation; Elementary Gesture; Animation and Abandon in Rendering and Recitations.

**SECOND AND THIRD TERMS.**—Physical culture; Voice culture, Imagination and Personality in Rendering, Relation of Values and Taste. Recitation and Declamation with individual criticism.

**FOURTH TERM**—Physical culture with special reference to Unity; Voice culture; Progressive steps in Rendering, Sight Reading.

### SENIOR YEAR.

**FIRST TERM.**—Physical culture; Voice culture, Advanced Rendering; Responsive Gesture; Rendering of Shakespeare, Merchant of Venice, Recitations; Bible and Hymn Reading.

**SECOND AND THIRD TERMS.**—Physical culture; Voice culture; Advanced Rendering, Responsive Gesture; Rendering of Shakespeare; Bible and Hymn Reading, Recitations; Responsive Gesture; Oratory.

**FOURTH TERM.**—Physical culture; Voice culture; Advanced Rendering; Rendering of Shakespeare, Hamlet; Responsive Gesture, Translation of Gesture at Sight; Bible and Hymn Reading, Practice in Teaching; Pulpit Oratory.

**NOTE.**—Before graduating in this course it is also required of the student to have passing grades in the following studies: English Grammar, Rhetoric, American History, English History, Physiology, and English Literature.

For terms see expenses.

## BIBLE DEPARTMENT.

The design of this department is to afford facilities for a systematic study of the Bible. The course laid down is so arranged that all who wish to avail themselves of it, may be accommodated, whether they pursue it several years or only a few months.

No one is truly educated without a knowledge of the Bible, hence it is studied in all the regular courses of the College.

Ministers, Sunday School workers, and all others engaged in christian work, need a more extensive course of Biblical instruction, and for these our Bible Department affords excellent facilities.

An opportunity is also given to complete the Sunday School Normal course and to receive a diploma.

It is our custom to hold a Bible Normal Institute for one month during the year, tuition *free*, to all who may wish to avail themselves of it. This work will be supplemented by lectures or sermons from able ministers.

Tuition in this department is free to ministers of the gospel, although the College has no adequate endowment for it yet.

The attention of Brethren with means is called to the needs of this department.

### JUNIOR YEAR.

FALL TERM	WINTER TERM	SPRING TERM
Bible Geography.	Old Test. History.	N. Test. History.
Old Test. History.	S. S. Normal Work.	Church History.
S. S. Normal Work.	N. Test. History.	Homiletics.
Mental Science.	Rhetoric.	Rhetoric.
Elocution.	Elocution.	

### SENIOR YEAR.

Old Testament.	Old Testament.	Old Testament.
New Testament.	New Testament.	New Testament.
Homiletics.	Homiletics.	Homiletics.
Ev. Christianity.	Ethics.	Church History.
N. Test. Greek.	N. Test. Greek.	N. Test. Greek.

## GENERAL INFORMATION.

### AIM.

The institution is conducted under the auspices of the German Baptist Brethren (Dunkard) church, but all other denominations are made welcome. Its aim is to provide a thorough Christian education. This implies such intellectual, moral, and religious training as shall harmoniously develop the entire being. It advocates plainness of dress, simplicity in the habits of life and discourages caste, thus making it a home for rich and poor alike.



**LOCATION.**

The college is located on College Place, a beautiful site in the eastern part of the city of McPherson, Kansas. This city may be reached by any of the four leading railways of the West: Rock Island, Santa Fe, Missouri Pacific, and Union Pacific. All coming by the Santa Fe or Rock Island railroads can, by notifying the conductors, stop at College Place within two blocks of the Campus.

**BUILDINGS AND GROUNDS.**

A convenient building, forty feet wide, one hundred feet long, and four stories high, is used as a dormitory. It is equipped for both ladies and gentlemen. Each student's room is well lighted, carpeted, and furnished with spring-bed, mattress, chairs, table, and whatever is needed for convenience and comfort. Bath rooms, hot and cold water, and steam heat are provided for all students rooming in the dormitory. Well prepared food is in abundance and variety for all who come. The main building, ninety-four by one hundred and seventeen feet, is sufficiently far advanced for chapel and recitation purposes, and efforts are being made to complete this building as fast as the means can be collected.

The campus is a plat of ten acres, set in grass, evergreens, and shade trees, and surrounded by a thrifty young hedge.

**ADMISSION.**

The college is open to all persons of good moral character who may wish to avail themselves of its privileges, and who are sufficiently far advanced to prosecute successfully the studies of the course they may wish to enter. Applicants for admission to the various classes will be examined in the previous studies leading to the branches they wish to pursue. Those who present certificates of good standing may be admitted without further examination.

**LIBRARY AND READING ROOM.**

A good collection of books, pamphlets, etc., has already been secured to which additions are continually being made. The friends of education are especially solicited to make further contributions. The Reading Room contains various magazines and periodicals, and the reading of good books is encouraged.

**MUSEUM.**

This consists of more than a thousand geological specimens, representing the various formations of the earth's crust and many forms of ancient life; specimens from the sea, representing a number of the families now living, conchological specimens from nearly every country

on the globe and representing more than two hundred and fifty families; hundreds of mineral specimens; and about one hundred and fifty Indian relics. Arrangements have been made to enlarge this collection during the coming year and the friends of the institution are solicited to aid us in this effort.

#### APPARATUS.

The college is supplied with apparatus for present purposes and additions will be made as the rapid growth of the institution demands. A large amount of apparatus and several good microscopes were added during last year.

#### REPORTS.

A monthly card is issued for each student, giving the standing in each branch pursued and the department during the month. These cards are sent to the parents or guardians when the pupil is under age. A class and department record of each student is kept as a perpetual memorial of the degree of his fidelity and scholarly attainments.

#### GYMNASIUM.

A room in the main building has been set apart as a gymnasium and supplied with apparatus for physical culture.

Physical culture is made a specialty.

#### LITERARY SOCIETIES.

Two flourishing Literary Societies, the Emersonian and the Ciceronian, are conducted by the students under the general direction of the faculty and hold their sessions weekly. One or more societies affording special practice in debating and parliamentary rules, are also well sustained as well as an advanced reading circle.

#### MORAL AND RELIGIOUS INFLUENCES.

It is the aim of the institution not only to cultivate the intellect, but to instil principles of morality and the truths of religion. The public exercises of each day are opened with religious worship. Religious services are held in the chapel both morning and evening on each Lord's Day. A general prayer-meeting is held each Wednesday evening and a student's prayer-meeting each Sunday evening. The students rooming in the dormitory are divided into sections, each section conducting its own evening services before retiring.

#### GOVERNMENT AND DISCIPLINE.

General good conduct, such as becomes true men and women, is expected of all. Every student is encouraged in the formation of character of the highest type. The institution places students upon their honor, and kindly, yet firmly, insists on conduct worthy of their position.

The institution is not a Reformatory. A negligent or immoral student will be kindly admonished, and affectionate personal endeavor will be employed in his behalf, but if this fails, he can not remain connected with the school.

Promptness and fidelity in all college duties are insisted on as a necessary discipline and preparation for a successful life. Disloyal students and those whose presence and influence, in the judgment of the faculty, are detrimental to the highest interests of the institution, may be dismissed from it at any time.

#### RULES AND REGULATIONS.

1. Students should bring with them, besides text-books, a Bible or Testament, Brethren's Hymn-book or Gospel Hymns, towels, a blanket or two, and should have their garments marked with full name.
2. All students are required to be present at chapel exercises and all recitations; also to attend Sunday School and one church service each Lord's day, at the college chapel or at some other place where their parents may direct.
3. Students are required to go to their rooms at the ringing of the study bell, and observe order so as not to disturb others in study.
4. Students from abroad rooming in private houses are subject to the same general regulations as those in the dormitory.
5. Students must extinguish their lights promptly at ten o'clock *a. m.* unless excused by the person in charge of their hall.
6. No lady or gentleman will be allowed to enter the territory of the opposite sex, except by special permission of the President.
7. Students desiring to leave the grounds or to visit other students, must obtain permission from the person in charge of their hall.
8. Ladies and gentlemen will not ride, walk, or play together except by special arrangements with the President.
9. Students will be held responsible for misconduct in their rooms, and damage done to school property.
10. No student shall be absent after ten o'clock *p. m.* unless by permission of the President or person in charge of the hall or building.
11. Students desiring to visit or go to the city, must obtain permission from the President, except on Monday afternoons between the hours of one and five o'clock, when general liberty to go to the city and return is granted.
12. Visitors desiring to call upon students in the building must apply to the President.
13. Ladies and gentlemen from abroad are allowed to room in private houses approved by the faculty, but not both sexes with the same family unless by special arrangement with the faculty.

14. All members of the Brethren or German Baptist church, are expected to conform to the general order of the Brotherhood and should bring with them a certificate of membership. Those who are not members of the German Baptist church are expected to make no display in the use of jewelry and to observe the laws of plainness and simplicity in their apparel.

#### PROHIBITIONS.

(a) Card playing and similar games; (b) the use of tobacco, chewing gum, intoxicants, (c) noisy, disorderly, and all rude and ungentlemanly and unlady like conduct in or about the college building, on the street or at boarding places; (d) theatre going, or dancing; (e) fire arms or weapons, or weapons of any kind; (f) the use of profane or obscene language; (g) visiting immoral places; (h) musical instruments, except such as are used in the musical department; (i) defacing walls or injuring property; (j) running up or down stairs, or through the halls; (k) throwing objects from windows.

#### FINANCES.

It is to the advantage of parents and the student, that spending money be deposited with the Business Manager, to be used as needed.

#### LIST OF TEXT-BOOKS.

ALGEBRA UNIVERSITY—Olney.	HISTORY, U. S.—Barnes.
ALGEBRA—Wentworth.	"    General—Barnes.
AMERICAN POLITICS—Johnson.	"    OF EDU'TN—Painter and Boone.
ANALYTICAL GEOMETRY—Olney.	"    BIBLE—Smith.
ARITHMETIC—Brooks.	"    ENGLISH—Gardiner.
ASTRONOMY—Young.	"    FRENCH—Young.
BIOLOGY—Packard, and Bossey.	"    ROMAN—Barnes.
BOOK-KEEPING—Williams & Rogers.	"    GREEK—Sheldon.
BOTANY—Gray.	"    OF ART—Goodyear.
CALCULUS—Olney.	KINDERGARTEN GUIDE—Wiese.
CHEMISTRY.—Remeen, Graham.	LITERATURE, ENGLISH—Smith.
CIVIL LAW.	"    "    —Hale's.
COMMERCIAL ARITHMETIC—Sadler.	LATIN AND GREEK CLASSICS—Allen,
COMMERCIAL LAW—Bryant.	Greenough & Goodwin.
CONSTITUTION—Andrews.	MENTAL SCIENCE—Brooks, McCosh.
DRAWING—Augsburg.	METHODS OF TEACHING—Brooks.
ELOCUTION—Emerson.	MUSIC—(oral Union).
FRENCH READER—Otto.	ORTHOGRAPHY—Reed.
GERMAN READER—Worman.	PHILOS. OF EDUCATION—Eisenkrantz.
GRAMMAR, ENGLISH—Lockwood, and	PHYSIOLOGY—Martin.
Reed & Kellogg	PHYSICS—Deschanel's.
GEOGRAPHY, DESCRIPTIVE.	POLITICAL ECONOMY—Wayland.
GEOGRAPHY, PHYSICAL—Appleton.	PROSE COMPOSITION—Jones.
GRAMMAR, LATIN—Harkness, New.	RHETORIC—Kellogg, Hill.
"    GREEK—Goodwin.	RHETORIC—Goussin.
"    GERMAN—Worman.	TELEMAQUE.
"    FRENCH—Otto.	TRIGONOMETRY—Wentworth.
GEOMETRY—Wentworth.	SURVEYING—Wentworth.
GEOLOGY—Dana.	ZOOLOGY—Packard.

## EXPENSES.

Tuition, per Term (10 weeks) in advance	\$10 00
Tuition, Two Terms (20 weeks) in advance	19 00
Tuition, Three Terms (30 weeks) in advance	28 00
Tuition, per Year (40 weeks) in advance	36 00
Tuition, Less than a Term, per Week	1 25
Tuition, Single Study, per Week	50
Tuition, Stenography alone, per Week	75
Tuition, Stenography with other Studies, per Term	5 00
Tuition, Typewriting, per Term	4 00
Tuition, Elocution with other Studies, Two Terms	FREE
Tuition, Advanced Elocution alone, per Term	7 50
Tuition, Advanced Elocution with other Studies, per Term	5 00
Library and Reading Room Fee, per Term	25
Board, in advance for the Year, per week \$1.60, (40 weeks)	64 00
Board, Three Terms, (30 weeks)	49 50
Board, Two Terms, (20 weeks)	34 00
Board, One Term, (10 weeks)	17 50
Board, Less than a Term, per Week	2 25
Board, Less than a Week, per Meal	15
Fuel, Fall or Spring Term	1 00
Fuel, Winter Terms, Each	4 50
Fuel, per Year in advance	10 00
Fuel, per Week, Fall or Spring	15
Fuel, per Week, Winter Terms	50
Furnished Rooms per Week	40 to 50
Board, Tuition, Furnished Room and Fuel per year in advance	\$125 to \$130
Graduation fee, Preparatory and Normal	2 50
Graduation Fee, College	5 00
Graduation Fee, Commercial including Pen made Diploma	2 00

All expenses are due and payable one term in advance. Students paying a term or more in advance and having to quit school before the time paid for is expired will be charged at term rates for whole terms, and at weeks' rates for less than a term, and the balance will be refunded. But students whose conduct is such as to require their dismissal, forfeit all claim to money paid by them.

Claims for rebate must be filed with the Business Manager at the time of leaving, and will be paid at the close of that term. No rebates will be paid further back than date of filing claim.

Text-books and stationery are kept on sale at the college office. Most of the books can be rented if desired.

## GENERAL REMARKS.

The merits of this institution deserve to be more widely known. But little has been done to advertise it beyond the limits of the county. Students have been attracted by the favorable reports of those in attendance.

Improvements are made each year on the buildings, and additions to the library and laboratory.

An excellent class of citizens from various states is building homes around the college to educate their sons and daughters and enjoy the educational and religious advantages. About thirty families are located near the college and have erected pleasant dwellings. A more pleasant location would be hard to find in all the west for aged people who desire to spend their declining years in a highly moral community and enjoy the very best of religious advantages.

An endowment fund for the institution and, especially for the Bible Department is greatly needed. This affords a rare opportunity for persons of means to make their money a permanent blessing to future generations. Send to Daniel Vaniman, McPherson, Kansas, all contributions and bequests for this purpose.

## STUDENTS.

## COLLEGIATE DEPARTMENT.

## SENIOR.

Gilbert, James Z. - - - - - North Manchester, Ind.

## JUNIOR

Miller, Harrison McPherson, Kan. | Warsaw, A. C. Madisonburg, Ohio.

## SOPHOMORE.

Clear, J. D. Jewell, Ohio. | Russer, Susie McPherson, Kan.  
Miller, S. J. Monitor, Kan. | Wallace, C. E. Hamlin, Kan.

## FRESHMAN

Kenberry, L. D. Wirtz, Va. | McQuoid, Laura McPherson, Kan.

## PREPARATORY DEPARTMENT.

## SENIOR.

Berkeybile, John  
Clear, Z. F.  
Chisholm, Maud  
Eby, E. M.  
Gish, R. W.

DuBois, Neb.  
Jowell, Ohio.  
McPherson, Kan.  
Centerville, Mo.  
Webster, Kan.

McPherson, Kan.  
McPherson, Kan.  
Little River, Kan.  
Monitor, Kan.

## MIDDLE YEAR.

Bowers, Anna  
Bowers, Alice  
Eiler, Daniel  
Gatska, Bernice  
Hoff, Myrtle  
Hutchison, R. K.

McPherson, Kan.  
McPherson, Kan.  
McPherson, Kan.  
Galva, Kan.  
McPherson, Kan.  
McPherson, Kan.

Canton, Kan.  
Morrill, Kan.  
McPherson, Kan.  
Virdee, Ill.  
McPherson, Kan.

## JUNIOR.

Barber, A. D.  
Clark, B. O.  
Caldwell, Howard  
Davis, Mary E.  
Dickey, J. V.  
Eikenberry, Letta  
Eller, B. J.  
Fisher, Maud A.  
Fisher, May  
Harschberger, Laura  
Hultquist, George

McPherson, Kan.  
Sheridan, Mo.  
McPherson, Kan.  
Sharp's Creek, Kan.  
McPherson, Kan.  
Cerro Gordo, Ill.  
Salem, Va.  
Johnstown, Kan.  
McPherson, Kan.  
Booth, Kan.  
McPherson, Kan.

McPherson, Kan.  
Delmere, Kan.  
McPherson, Kan.  
McPherson, Kan.  
Manvel, Tex.  
McPherson, Kan.  
Alvo, Neb.  
McPherson, Kan.  
Girard, Ill.  
Sabetha, Kan.  
Madisonburg, Ohio.

## NORMAL DEPARTMENT.

## SENIOR.

Armstrong, S. L.  
Caldwell, J. J.  
Pickingler, Hattie

Hartland, Kan.  
Little River, Kan.  
McPherson, Kan.

Miller, Myrtle  
Snowberger, Theodore  
Whitehead, Sadie

McPherson, Kan.  
Leeton, Mo.  
Sabetha, Kan.

## THIRD YEAR.

Davis, O. S.  
Davis, U. S.  
Ecker, Hattie  
Field, Berta

Windom, Kan.  
Morrill, Kan.  
McPherson, Kan.  
McPherson, Kan.

\*Fields, Walter  
Gregson, R. A.  
McFarland, Julia  
Reish, J. K.

McPherson, Kan.  
Galva, Kan.  
Alva, Iowa  
Quinter, Kan.

## SECOND YEAR.

Barkley, George  
Clark, W. O.  
Fretz, D. K.  
Good, J. J.  
Harder, David  
Johnson, W. R.  
Klag, J. D.  
Kamy, E. H.  
McCourt, Jennie  
Maest, Hannah

Wheatland, Kan.  
McPherson, Kan.  
Moundridge, Kan.  
McPherson, Kan.  
Hillsboro, Kan.  
Hoxbury, Kan.  
McPherson, Kan.  
McPherson, Kan.  
McPherson, Kan.  
Galva, Kan.

Plasket, L. P.  
Powers, R. W.  
Schmalzried, Ed  
Shively, O. E.  
Vandyke, I. C.  
Vermillion, C. D.  
White, Rachel  
White, Bernice  
Lauer, George  
Hodman, Florence

McPherson, Kan.  
Canton, Kan.  
McPherson, Kan.  
Kincaid, Kan.  
Sabetha, Kan.  
Bridgeport, Kan.  
McPherson, Kan.  
McPherson, Kan.  
Wade, Kan.  
Idana, Kan.

\* Deceased.

## FIRST YEAR.

Aurell, Joseph	McPherson, Kan.	Mammol, Viola	McPherson, Kan.
Broserman, W. P.	William's Center, Ohio	Miller, Moller	McPherson, Kan.
Balentyne, Clyde	McPherson, Kan.	Morgan, Mary	McPherson, Kan.
Boys, E. F.	Monitor, Kan.	Mowbray, Clara	McPherson, Kan.
Horkland, John	McPherson, Kan.	Mannon, Maude	McPherson, Kan.
Baird, Mary	McPherson, Kan.	Mammol, Clayton	McPherson, Kan.
Blackman, Jesse	McPherson, Kan.	Moon, Hattie	McPherson, Kan.
Blackman, Emmett	McPherson, Kan.	Macomber, Della	McPherson, Kan.
Brubaker, Dora	McPherson, Kan.	New, Chas. E.	McPherson, Kan.
Brubaker, Minnie	McPherson, Kan.	Neiser, Laura	McPherson, Kan.
Bonnell, Austie	Elyria, Kan.	Needfield, A. J.	McPherson, Kan.
Brooks, Eva	La Crosse, Kan.	Peck, Lorena	McPherson, Kan.
Butler, Florence	McPherson, Kan.	Peck, P. W.	McPherson, Kan.
Crumpacker, A. J.	Rhinehart, Mo.	Pfaff, Jennie	McPherson, Kan.
Cullen, Gussie	Holmesville, Neb.	Poole, Lillian	McPherson, Kan.
Cudas, Adda	McPherson, Kan.	Porter, W. E.	McPherson, Kan.
Coover, Burton	McPherson, Kan.	Ramsayer, Emma	McPherson, Kan.
Darling, George	Gypsum City, Kan.	Robertson, May	McPherson, Kan.
Duerksen, J. K.	Hillsboro, Kan.	Stover, H. A.	McPherson, Kan.
Daniel, Margie	McPherson, Kan.	Spiller, Susie	McPherson, Kan.
Emerson, Ora	Neodesha, Kan.	Stookey, Belle	McPherson, Kan.
Emerson, Anna	Neodesha, Kan.	Smith, Carrie	McPherson, Kan.
Eby, Enoch	Summersfield, Kan.	Stowe, C. V.	McPherson, Kan.
Eans, John M.	Buohlar, Kan.	Stowe, C. V.	McPherson, Kan.
Epp, C. C.	Moundridge, Kan.	Studobaker, N. E.	McPherson, Kan.
Fisher, A. J.	Johnstown, Kan.	Saylor, Harvey	McPherson, Kan.
Fisher, Maude L.	Johnstown, Kan.	Strickler, Ellis	McPherson, Kan.
Flickinger, M. C.	Carlston, Neb.	Sherley, Dora	McPherson, Kan.
Gomer, Emma	Sharp's Creek, Kan.	Sypert, Anna	McPherson, Kan.
Garst, F. C.	McPherson, Kan.	Schrader, G. A.	McPherson, Kan.
Greene, May	McPherson, Kan.	Snow, Carrie	McPherson, Kan.
Gibson, Flora	McPherson, Kan.	Shirley, Wilma	McPherson, Kan.
Heaton, W. C.	Holmesville, Neb.	Toews, P. W.	McPherson, Kan.
Henricks, Emma	Conductor, Kan.	Toland, Lena	McPherson, Kan.
Hart, Lottie	McPherson, Kan.	Vandyke, May	McPherson, Kan.
Hartman, S. W.	Canton, Kan.	Van Blaricum, J. W.	McPherson, Kan.
Heidebrecht, J. L.	Inman, Kan.	Webster, Ollie	McPherson, Kan.
Hosetler, Frank	Monitor, Kan.	Webber, Anna	McPherson, Kan.
Holmes, Nellie	Elyria, Kan.	Wiebe, H. V.	McPherson, Kan.
Hill, Robert	McPherson, Kan.	Wiebe, H. H.	McPherson, Kan.
Jackson, Myrtle	McPherson, Kan.	Wing, Nettie	McPherson, Kan.
Kane, P. A.	Sparta, Kan.	Woodrow, Otha	McPherson, Kan.
Kimmel, C. H. P.	Morrill, Kan.	Woodrow, M. M.	McPherson, Kan.
Kerr, H. L.	McPherson, Kan.	Wine, Gop.	McPherson, Kan.
Kemp, C. E.	Bird City, Kan.	Wiss, G. A.	McPherson, Kan.
Lauver, Emma	Wade, Kan.	Weaver, R. M.	McPherson, Kan.
Lanz, Jennie	McPherson, Kan.	Walker, Ethel	McPherson, Kan.
Lauver, Fannie	Wade, Kan.	Walker, Maud	McPherson, Kan.
Landis, Fannie	Canton, Kan.	Yoder, E. E.	McPherson, Kan.
Landis, Annie	Canton, Kan.	Yoder, C. J.	McPherson, Kan.
Miller, J. L.	McPherson, Kan.		

## UNCLASSIFIED.

Abbott, Lillian	Jennings, La.	Garst, Nina	McPherson, Kan.
Armstrong, Ida	McPherson, Kan.	Graves, A. J.	Junction City, Kan.
Burnette, Flora	Connell Grove, Kan.	Hughes, Walter	McPherson, Kan.
Beard, W. J.	McPherson, Kan.	Hutchison, Beniah	McPherson, Kan.
Brown, W. J.	McPherson, Kan.	Hutchison, Loelia	McPherson, Kan.
Babcock, Chas.	McPherson, Kan.	Higgins, Mabel	McPherson, Kan.
Brooks, Laura	La Crosse, Kan.	Heaton, Grace	McPherson, Kan.
Brulla, A. K.	McPherson, Kan.	Hutchison, Madona	McPherson, Kan.
Clark, H. E.	McPherson, Kan.	Hilary, Martha	McPherson, Kan.
Cross, Maude	McPherson, Kan.	Hill, Bertha	McPherson, Kan.
Cross, Lottie	McPherson, Kan.	Hines, Hattie	Rosell, Kan.
Carter, Jennie	Groveland, Kan.	Hart, W. A.	McPherson, Kan.
Chemone, J. W.	Stett, Mo.	Jennings, Clare	McPherson, Kan.
Dodge, J. C.	McPherson, Kan.	Jones, Laura	McPherson, Kan.
Dohner, J. A.	Beatrice, Neb.	Kerr, Earnest	McPherson, Kan.
Forsee, Lillian	McPherson, Kan.	Kuna, Fern	McPherson, Kan.
Freshner, Nellie	McPherson, Kan.	Lucas, Minnie	McPherson, Kan.
Farringer, E. S.	McPherson, Kan.	Larson, Carrie	McPherson, Kan.
Fox, Emma	McPherson, Kan.	Lanning, J. C.	McPherson, Kan.
Fleckinger, J. J.	McPherson, Kan.	Lovangier, Eta	Morrill, Kan.
			McPherson, Kan.



## UNCLASSIFIED CONTINUED.

Martin, Ethel	McPherson, Kan.	Stutzman, Frank	Monitor, Kan.
Moss, May	Elyria, Kan.	*Sharp, M. A.	McPherson, Kan.
Matchette, Oral	McPherson, Kan.	Stabler, Beasia	McPherson, Kan.
Matchette, Mrs. Geo. H.	McPherson, Kan.	Stabler, George	McPherson, Kan.
McVey, Nellie	Chilhowee, Mo.	Sirtz, Arthur	McPherson, Kan.
Myers, George	Windom, Kan.	Starks, R.	Galva, Kan.
Murray, Lizzie	Galva, Kan.	Sprling, Henry	Sparta, Kan.
Morgan, H. C.	Conway, Kan.	Smith, R. C.	McPherson, Kan.
Oxley, Thomas P.	Morrill, Kan.	Stauffer, Cyrus	Newton, Kan.
Peck, Laura S.	McPherson, Kan.	Strickler, May	Ramona, Kan.
Parker, Flora	McPherson, Kan.	Simonson, Mary	McPherson, Kan.
Pitser, J. R.	McPherson, Kan.	Solana, Mitchell	McPherson, Kan.
Perhain, Dora	McPherson, Kan.	Spank, W. A.	McPherson, Kan.
Pitt, E. A.	McPherson, Kan.	Schlatter, G. W.	McPherson, Kan.
Peck, Wida	McPherson, Kan.	Tracey, Henry	McPherson, Kan.
Richey, Floy	McPherson, Kan.	Tilton, Frank	McPherson, Kan.
Roe, Walter	McPherson, Kan.	Thompson, Mrs. E. K.	McPherson, Kan.
Rask, Adda	McPherson, Kan.	Taylor, F. A.	Galva, Kan.
Richey, Alma	McPherson, Kan.	Windle, Orpha	Mount Morris, Ill.
Rwan, Gustie	McPherson, Kan.	Wilson, R. B.	Galva, Kan.
Swanson, Sophia	McPherson, Kan.	Walker, L. M.	Alexander, Kan.
Springtown, Gertie	McPherson, Kan.	Williams, L. E.	Belleville, Kan.
Steele, Laura	Canton, Kan.	Young, Jessie	McPherson, Kan.

## MUSICAL DEPARTMENT.

## INSTRUMENTAL

## PIANO.

Bralin, A. E.	McPherson, Kan.	Lucas, Minnie	McPherson, Kan.
Berkaybille, J. H.	DeBois, Neb.	McCourt, J. A.	McPherson, Kan.
Cress, Lottie	McPherson, Kan.	McQuoid, Laura	McPherson, Kan.
Cress, Maud	McPherson, Kan.	McVey, Nellie	Chilhowee, Mo.
Cloada, Adda	McPherson, Kan.	Matchette, Oral	McPherson, Kan.
Clark, H. E.	McPherson, Kan.	Parker, Floy	Windom, Kan.
Dodge, J. C.	McPherson, Kan.	Peck, Laura	McPherson, Kan.
Ekenberry, Lottie	Cerro Gordo, Ill.	Richey, Alma	McPherson, Kan.
Echer, Hattie	McPherson, Kan.	Staele, Laura	Galva, Kan.
Freeborn, Nellie	McPherson, Kan.	Springborn, Gertie	McPherson, Kan.
Forsee, Lillian	McPherson, Kan.	Swanson, Sophia	McPherson, Kan.
Fisher, Maud	McPherson, Kan.	Rwan, Gustie	McPherson, Kan.
Hutchison, Modena	McPherson, Kan.	Sperling, Sarah	Sabetha, Kan.
Holms, Hattie	Russell, Kan.	Strickler, May	Ramona, Kan.
Hosaton, Grace	McPherson, Kan.	Vandyke, May	Sabetha, Kan.
Higgins, Mabel	McPherson, Kan.	Welsb, Emma	McPherson, Kan.
Jennings, Clare	Elyria, Kan.	Webster, Ollie	McPherson, Kan.
Jackson, Myrtle	McPherson, Kan.	Wing, Nettie	McPherson, Kan.
Kuns, Fern	McPherson, Kan.	Windle, Orpha	Mount Morris, Ill.
Larson, Carrie	McPherson, Kan.		

## ORGAN.

Hutchison, Luella	McPherson, Kan.	Martin, Ethel	Galva, Kan.
Hutchison, Beulah	McPherson, Kan.	Simonson, Mary	McPherson, Kan.
Karr, Ernest	McPherson, Kan.	Stutzman, J. P.	McPherson, Kan.
Moss, May	Elyria, Kan.	VanLona, Levi	Virden, Ill.

## HARMONY.

Garst, Nina	McPherson, Kan.	Berkaybille, J. H.	Fawcett Ctr., Kan.
Higgins, Mabel	McPherson, Kan.	Cress, Lottie	McPherson, Kan.
Hutchison, Modena	McPherson, Kan.	McVey, Nellie	Chilhowee, Mo.
Forsee, Lillian	McPherson, Kan.	Strickler, May	Ramona, Kan.

\* Deceased.

## BOOK-KEEPING.

Berkoyhle, J. H.  
 Butler, Florence  
 Beard, W. J.  
 Burnette, Flora  
 Babcock, Charles  
 Brooks, Eva  
 Brooks, Laura  
 Baird, Mary  
 Barkley, George  
 Brown, W. J.  
 Clemens, J. W.  
 Dohner, J. A.  
 Farringer, E. S.  
 Graves, A. F.  
 Gray, A. N.  
 Hill, Bertha  
 Houston, W. C.  
 Himes, Mattie  
 Hart, W. A.  
 Hart, Lottie  
 Hughes, Walter  
 Harder, David  
 Kane, Peter A.  
 Lanning, J. C.  
 Lanver, George  
 McFarland, Julia  
 Myers, George  
 Morgau, H. C.

Miller, Bertie  
 Mowbray, Clara  
 Pitzer, J. H.  
 Peck, P. W.  
 Perham, Dora  
 Peck, Lorena  
 Plasket, L. P.  
 Richey, Finy  
 Roe, Walter  
 Ramseyer, Emma  
 \*Sharp, M. A.  
 Sontzman, Frank  
 Solana, Mitchell  
 Stabler, George  
 Stabler, Bessie  
 Sitts, Arthur  
 Sperling, Henry  
 Starks, R.  
 Stauffer, R. C.  
 Stodebaker, Noah  
 Smith, H. C.  
 Stover, H. A.  
 Taylor, A. F.  
 Vandyke, May  
 Whitehead, Sadie  
 Williams, L. E.  
 Wilson, R. S.  
 Walker, L. N.

## STENOGRAPHY.

Brooks, Laura  
 Carter, Jennie  
 Dohner, J. A.  
 Farringer, Edward  
 Flickinger, J. J.

Harshbarger, Laura  
 Hillary, Martha  
 Kane, P. A.  
 Stabler, Bessie  
 Stabler, George

## TYPEWRITING.

Carter, Jennie  
 Dohner, J. A.  
 Farringer, E.  
 Hart, M. A.

Hillary, Martha  
 Kane, P. A.  
 Stabler, George  
 Wing, George

## BIBLE DEPARTMENT.

Andes, Levi  
 Arnold, C. E.  
 Arnold, Ella B.  
 Berkoyhle, J. K.  
 Blackman, Stomet  
 Bjorklund, John  
 Bowers, David  
 Bowman, W. D.  
 Brubaker, John  
 Brubaker, Enoch  
 Roseman, J. H.  
 Click, D. M.  
 Dettler, Laura  
 Eby, Enoch  
 Eby, E. M.  
 Eller, Daniel  
 Eller, J. B.  
 Fox, Emma  
 Fornoy, John  
 Fornoy, Benj.  
 Farringer, Seoben  
 Henricks, Zach.  
 Henricks, Emma  
 \*Halstrom, John  
 Klingner, Mary  
 Kuss, Maria  
 Kuss, John L.  
 Lantz, Samuel  
 McCos M.  
 McQuoid, Ellen  
 Miller, Lizzie

Newton, Kan.  
 McPherson, Kan.  
 McPherson, Kan.  
 DuBois, Neb.  
 McPherson, Kan.  
 McPherson, Kan.  
 McPherson, Kan.  
 Webber, Kan.  
 Lyons, Kan.  
 Galva, Kan.  
 McPherson, Kan.  
 Fort Collins, Colo.  
 Nickerson, Kan.  
 Summerfield, Kan.  
 Center View, Mo.  
 McPherson, Kan.  
 Salem, Va.  
 McPherson, Kan.  
 Abilene, Kan.  
 Abilene, Kan.  
 McPherson, Kan.  
 Conductor, Kan.  
 Conductor, Kan.  
 McPherson, Kan.  
 McPherson, Kan.  
 McPherson, Kan.  
 Monitor, Kan.  
 McPherson, Kan.  
 Nickerson, Kan.

Miller, S. J.  
 Mohler, Jesse  
 McVey, Nellie  
 Masterson, Fannie  
 Murray, Lizzie  
 New, Charles  
 Paterbanck, J. P.  
 Price, Ida  
 Reif, J. B.  
 Reber, Katie  
 Reber, Michael  
 Studebaker, N. E.  
 Shirk, J. H.  
 Strickler, Ellis  
 Strickler, John  
 Strickler, May  
 Shick, Jesse  
 Slusher, Ezra  
 Sperline, Sarah  
 Ullom, Honer  
 Ullom, Laura  
 Vaniman, Daniel  
 Vaniman, P. A.  
 Vaniman, Levi  
 Vaniman, Elizabeth  
 Vaniman, Mary  
 Wisand, Lizzie  
 Wisand, A. C.  
 Windle, Minnie  
 Yoder, J. D.

Monitor, Kan.  
 Warrensburg, Mo.  
 Chithowee, Mo.  
 Arkansas City, Kan.  
 Galva, Kan.  
 Conway, Kan.  
 Galva, Kan.  
 Nickerson, Kan.  
 Holmesville, Neb.  
 McPherson, Kan.  
 McPherson, Kan.  
 Moline, Kan.  
 Romona, Kan.  
 Romona, Kan.  
 Romona, Kan.  
 Romona, Kan.  
 Navarre, Kan.  
 McPherson, Kan.  
 Babetha, Kan.  
 Painter, Kan.  
 Painter, Kan.  
 McPherson, Kan.  
 McPherson, Kan.  
 Virden, Ill.  
 McPherson, Kan.  
 McPherson, Kan.  
 Madisonburg, Ohio.  
 Madisonburg, Ohio.  
 Mt Morris, Ill.  
 Monitor, Kan.

\*Deceased.

If you want first class Photographs go to  
**HALLBERG & BARBER,**

Two Doors North of Post Office.

We keep everything up to the times and Guarantee everything.

**SPECIAL RATES TO STUDENTS AND TEACHERS.**

McPHERSON,

KANSAS.

McPHERSON - MARBLE - AND - GRANITE - WORKS,

**J. C. MOON & CO., Proprietors,**

(SUCCESSORS TO GRAHAM & MOON.)

**Importers and Dealers in Foreign and Domestic Marbles and Granites**

AGENTS FOR FORT SCOTT FLAGSTONE.

McPHERSON,

KANSAS.

**H. SCOFIELD & CO.,**

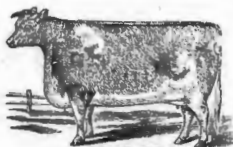
**DRUGS,**

Union Block, - McPherson, Kansas.

Most complete stock of prescription goods and patent medicines  
 in the county. Paints, Oils and glass a full stock.

**VICTOR BICYCLES AT CITY PHARMACY.**

**H. SCOFIELD & CO.**



**Star Meat Market**

C. H. SHIRK, Prop.

**Fresh and Salted Meats**

Highest market price paid for  
 live stock and hides.

Orders Delivered Free in the City.

McPHERSON, KANSAS.

If you want first class Photographs go to  
**HALLBERG & BARBER,**

Two Doors North of Post Office.

We keep everything up to the times and Guarantee everything.

**SPECIAL RATES TO STUDENTS AND TEACHERS.**

McPHERSON,

KANSAS.

**MCPHERSON - MARBLE - AND - GRANITE - WORKS,**

**J. C. MOON & CO., Proprietors,**

(SUCCESSORS TO GRAHAM & MOON.)

**Importers and Dealers in Foreign and Domestic Marbles and Granites**

AGENTS FOR FORT SCOTT FLAGSTONE.

MCPHERSON.

KANSAS.

**H. SCOFIELD & CO.,**

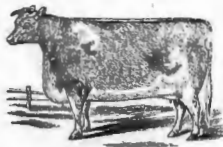
**DRUGS,**

Union Block, - McPherson, Kansas.

Most complete stock of prescription goods and patent medicines  
 in the county. Paints, Oils and glass a full stock.

**VICTOR BICYCLES AT CITY PHARMACY.**

**H. SCOFIELD & CO.**



**Star Meat Market**

C. H. SHIRK, Prop.

**Fresh and Salted Meats**

Highest market price paid for  
 live stock and hides.

Orders Delivered Free in the City.

MCPHERSON. KANSAS.

GO TO

**HEITHECKER'S BOOK STORE**FOR BOOKS, STATIONERY,  
TABLETS, MUSICAL INSTRUMENTS,MISCELLANEOUS BOOKS,  
FINE STATIONERY, TOYS,FANCY GOODS, ALBUMS,  
ODOR CASES, ETC., ETC.

McPherson, " " " "

Kansas.

**Richard Miller,** DIAMONDS, WATCHES, SILVER-  
WARE, JEWELRY, ETC.REPAIRING ON WATCHES, JEWELRY AND  
CLOCKS, PROMPTLY ATTENDED TO.

McPherson, " " Kansas

**E. J. Husband,** 

(GRADUATE PHILA. DENTAL COLLEGE.)

**DENTIST,**

114 SOUTH MAIN STREET,

McPherson, " " Kansas.

**Park Livery, Feed & Sale Stables****SAYLOR & PRATT, PROPS.**GOOD TEAMS AND FINE CARRIAGES AT  
REASONABLE PRICES.

Corner Maple &amp; Euclid St., McPHERSON, KAS.

**DR. MATCHETTE,****Physician and Surgeon**OFFICE ROOMS OVER FIRE-T NAT'L.  
BANK. RESIDENCE 419 SOUTH WAL-  
NUT STREET. CALLS PROMPTLY  
ATTENDED TO DAY OR NIGHT.

McPHERSON, " " KANSAS.

**G. L. CONN,**

ICE CREAM PARLOR,

**CITY - BAKERY  
and Restaurant,***Oyster and Ice Cream Parlor, confec-  
tionary, fruits, cigars, etc.*

McPHERSON, " " KANSAS.

**The McPherson Republican,**

BY S. G. MEAD,

**DAILY AND WEEKLY.**Only Daily on the line of M. & M.  
Special attention paid to the Local News  
of McPherson County.

Largest Weekly Circulation in the Country.

WEEKLY, per year	\$1 00
" three months	25
DAILY, by mail, per year	4 00
" by mail, per month	40
" by mail, per week	10
" by carrier, per week	15

**MRS. VREELAND,  
PHOTOGRAPHER,**

Artistic work finely finished. Groups in large sizes a specialty.  
Reduced rates to teachers and students. Established thirteen years.

**PICTURES : WARRANTED : PERMANENT.**

McPHERSON,

KANSAS.

**CHARLES WHEELER, J. A. FINDLEY,**

WHOLESALE AND RETAIL DEALER IN

TINWARE, STOVES, FARM IMPLEMENTS, FARM AND SPRING WAGONS, BUGGIES, ETC., ETC.

Corner Main St. and Kansas Ave

HANDLES

**BUTTER, EGGS; POULTRY AND GAME,**

SHIPS BUTTER AND EGGS IN CAR LOADS.  
BUYING FROM MERCHANTS IN ALL WESTERN KANSAS.

North Main St., McPherson, Kansas.

BRANCH AT SALINA,

FINDLEY & CO.

**A. SELLERS, PALACE DRUG STORE**

Successor to Sellers & Wright,

**General Hardware.**

Stoves, barbed wire, wagon, buggy and cart repairs, Quick Meal Gasoline Stoves, Barley's Coal Oil Heaters, Rubber Garden Hose, and

*Lisk's Anti-Rusting Tinware.*

Every piece guaranteed not to rust and to outlast three similar pieces of ordinary ware. Prices always as low as the lowest.

**MCPHERSON, KANSAS,**

BIXBY & LINDSAY,

DRUGS, MEDICINES, PAINTS,  
OILS, GLASS, TOILET ARTICLES

East Side Main Street

McPHERSON.

KANSAS.

**VANIMAN BRUBAKER & CO.,**

DEALERS IN

**FURNITURE - AND - UNDERTAKING.**

Bed-room suits from ten dollars up. We also carry a large and very fine stock of picture moulding.

WE MAKE PICTURE FRAMING A SPECIALTY.

Corner Main Street and Kansas Avenue, opposite First National Bank, McPherson, Kansas.

# TO HOME SEEKERS

If you want a home where flowers bloom all the year,  
Where fruits and vegetables in profusion grow,  
And where the people never shovel snow,  
Go to **MANVEL, TEXAS.**

Manvel was started two years ago by a colony of German Baptists, (commonly called Dunkards,) who now have a membership there of about 70 within a radius of three miles, a good meeting house, preaching every Sunday morning and evening, Sunday School every Sunday, and Wednesday evening prayer meeting the year round.

Many of those now there went first for their health, and have been benefitted so that nothing would induce them to return in the cold and changeable north. The soil is as good as any of the coast country of Texas. Prices of land are very reasonable but rapidly advancing. The liquor traffic has already been voted down at Manvel, and as that locality is rapidly settling up with sober-minded people, it is likely to be kept down forever, which is something not found everywhere in Texas.

For further particulars about the country, prices of land, etc., address,

**J. J. WASSAM, Manvel, Texas,**  
**Or J. H. PECK, McPherson, Kansas.**

## "THE MERCANTILE"

CARRIES THE LARGEST AND MOST COMPLETE ASSORTMENT OF

**Dry Goods, Shoes and Notions,**

**Glass and Queensware, Groceries**

EVERY ARTICLE GUARANTEED EXACTLY WHAT WE  
REPRESENT IT TO BE.

**STRICTLY ONE-PRICE.**

**McPHERSON - MERCANTILE - COMPANY.**

ROYAL MATTHEWS,  
President.

S. L. WHITZEL,  
Vice President.

A. E. DWELLE,  
Cashier.

## FIRST NATIONAL BANK

OF McPherson, Kansas.

YOUR BUSINESS SOLICITED.

*All courtesies extended consistent with safe and conservative Banking.*

## MCPHERSON PLANING MILL CO.,

MANUFACTURER OF

DOORS, SASH, BLINDS, STAIR WORK, ETC.,

DO ALL KINDS OF SCROLL SAWING.

AND RETAIL DEALERS IN

## LUMBER COAL AND STONE

*Office and Yards on College Place Addition. Orders from a distance for Planing Mill Work will receive prompt attention.*

**SAMUEL MILLER, Business Manager.**

WHEN IN NEED OF

## DRY ° GOODS ° OR ° CLOTHING

CALL ON THE

RELIABLE ONE-PRICE HOUSE,

OF

## KERN & STROUSE.

*Old Opera Block,*

*McPherson, Kansas.*

## JOHN P. JACOBS,

PROPRIETOR OF

## McPherson Foundry and Machine Shop

BLACKSMITHING AND FLOW WORK A SPECIALTY. STOVE  
CASTING AND MACHINE WORK.

## HIGHEST MARKET Price Paid for OLD IRON.



NOAH KUNS, President.

D. F. KUNS, Cashier.

## Farmers' and Merchants' Bank.

(Incorporated under State Laws.)

PAID UP CAPITAL STOCK,

\$20,000.

TRANSACTS A GENERAL BANKING BUSINESS.

EXCHANGE BOUGHT AND SOLD. INTEREST PAID ON TIME DEPOSITS. YOUR BUSINESS RESPECTFULLY SOLICITED.

McPHERSON.

KANSAS.

A. SOHLBERG,

President.

E. LEKSELL,

Vice President.

E. O. SOHLBERG,

Sec. and Treas.

## A. G. SOHLBERG MERCANTILE COMPANY,

DEALERS IN

\*GENERAL MERCHANDISE,\*

McPherson,

- - - Kansas.

## L. H. BUTLER,

DEALER IN


SECOND HAND FURNITURE,

CLOTHING, BOOTS, SHOES,

QUEENSWARE AND STOVES,

## STOVE REPAIRING A SPECIALTY

McPHERSON, KANSAS.

O. HANNBERG, 

DEALER IN

DIAMONDS, WATCHES, CLOCKS,  
JEWELRY, SPECTACLES, SILVER  
AND PLATED TABLEWARE, ETC.Repairing of Watches, Clocks, and Jewelry  
a Specialty and at Reasonable Rates.

ALL WORK WARRANTED.

McPHERSON. - - - KANSAS.

## THE FREEMAN - VIM,

POTTER & SNYDER,  
EDITORS AND PUBLISHERS.Official paper for McPherson County.  
A county paper for county people

SUBSCRIPTION \$1 PER YEAR.

COMPLETE BOOK AND JOB DEPARTMENT.

McPHERSON, KANSAS.

## J. P. POST,

## MEAT MARKET.

FRESH AND CLEAN MEATS,  
SAUSAGES, ALL KINDS OF  
CURED MEATS ON HAND.East Side Main St., Opposite Union  
Hotel, McPherson, Kans.

# OLSON BROTHERS,

DEALERS IN

## Hardware, Stoves and Tinware.

TIN ROOFING A SPECIALTY.

Agents for the Golden Floral Oak Stove & Superior Cook Stoves & Ranges.

COR. MAIN AND EUCLID STREETS. McPHERSON, KANSAS.



## W. A. SELLERS

DEALER IN

### Bicycles & Supplies, Stoves & Tinware, Plumbing,

AND ALL KINDS OF

### Tin & Sheet Iron Work.

BICYCLE REPAIRING A SPECIALTY

McPHERSON.

KANSAS.

## J. A. Hultquist,

### MERCHANT TAILOR

McPHERSON, KANSAS.

MEMBER OF THE McPHERSON NATIONAL BANK.

## Alliance Exchange Company,

HEADQUARTERS FOR

### Groceries, Oils, Ladies & Gents Fine Shoes, Etc.

H. L. GLOSSON, Manager.

McPHERSON.

KANSAS.

## G. L. McCourt,

MANUFACTURER AND DEALER IN

### Saddles, Harness, Collars, Bridles, Whips

WEST SIDE MAIN STREET.

McPHERSON, Kansas.

## Engborg, Larson & Co.,

PROPRIETORS OF

### CORNER DRUG STORE

DRUGS, MEDICINES, PAINTS,  
OILS, GLASS, TOILET ARTICLES  
ETC.

McPHERSON,

KANSAS.