



# THE MCPHERSON COLLEGE QUADRANGLE 1980

VOLUME 63

MCPHERSON COLLEGE  
MCPHERSON, KANSAS 67460

## TABLE of CONTENTS

Introduction .....	2
Student Life .....	9
Sports .....	31
Organizations .....	57
Academics .....	73
Classes .....	91
Faculty .....	125
Advertisements .....	139
Index .....	150
Closing .....	152



GREGORY H. FENNO  
Editor  
ANGELA HENSON  
Assistant Editor

# Infinity

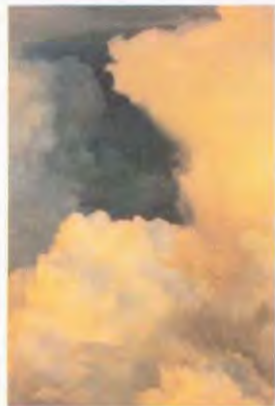
... A Concept

We as people, are infinite. We have infinite capabilities, that we can put to use in the betterment of ourselves as well as mankind.

We have the capability to live each day to its fullest, putting forth our best efforts to achieve the goals we have set for ourselves.

Infinity is a concept just as immortality is. To live infinitely is to achieve immortality. For some of us, this is an important goal, and we strive to achieve it. But alas, we cannot live forever on this earth for our lives here must end, though our memory lingers on.

We, the students, staff, faculty and administration of McPherson College seek to obtain the immortality that comes with the achievement of our goals.



Fans came out and filled the stands in support of the team at the Homecoming game, held October 20, 1979.

Sophomore Scott Young heads back to the huddle while the crowd watches from the stands.





4





1. Sophomore Scott Young shows talent at concert. 2. Brent Willemis, sophomore gives blood. 3. Dawn Goeddert, fr., kisses Dan Leddy, sr.



4. The team is cheered on. 5. Band members were strange attire as shown by Terry Neralicky, senior.

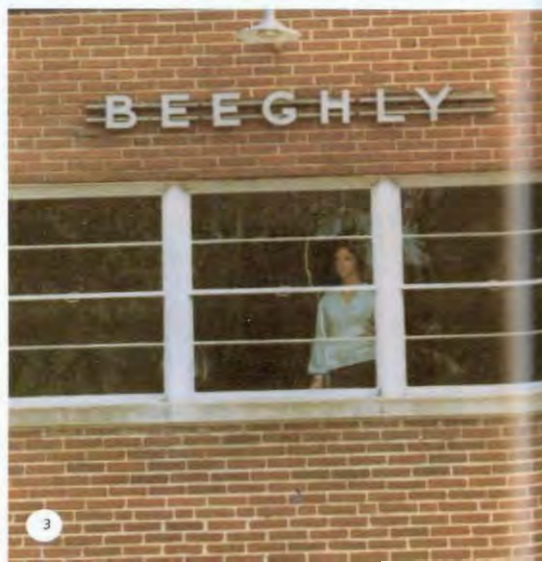
6. At Homecoming game, school mascot, the Bulldog, gives players support. 7. Sophomore Parre Lush uses some big hands to get spirit going.



8. Harnly Hall amidst fall beauty.







1. All along Euclid Street, trees could be seen changing into their fall colors. 2. A spot which could be found in Lakeside park. 3. *Melody Sweeney*, sophomore takes a break from singing to look over campus.





To pattern our lives after a country stream; which curves and bends, overcoming obstructions and obstacles, to empty into the sea, is what we seek. We too must overcome many obstacles and let our lives curve if we are to empty into the vast sea of new ventures.

College is merely one of these bends; for some it is an obstacle; for others simply a way to achieve what we desire.

This yearbook contains the faces, names and events of the 1979-1980 school year at McPherson College. The words and pictures will remain, after we are all gone, to be seen by those in the future, thus creating in its own way of immortality, of infinite life for those of us who were a part of this year at McPherson College.



6. At the luau in September, students sat anywhere and everywhere while they enjoyed their food.



2 Amidst the large crowd that attended the Homecoming game were the many Homecoming royalty candidates.











1. President Hoffman keeps his eye on the Bulldogs. 2. Student listened to music as they ate at the luau. 3. Students help themselves to the food.



## Sadie Hawkins Week

Sadie Hawkins week was started off and dominated with the 2nd Annual Hawaiian Luau sponsored by Sago Food Service on September 14. Music was provided by the McPherson College Singers, the McPherson College Band as well as solo works by senior *Le'anne Royer*, sophomores *Greg Fenno*, *Alan Gumm*, *Joel Miller*, *Scott Young* and freshman *Pam Thies*. Not everything that evening was cheerful.

In an unfortunate incident at the luau, freshman *Doug Hansen* from Omaha, Nebraska, was seriously injured, and had to be hospitalized for several months afterwards. The rest of the week was brightened up, however, with the spirit of Li'l Abner running rampant on campus. There was a leg auction with male contestants, a roller skating party, a Deli night, and, of course, the traditional dance. It was the chance that the guys had been waiting for.



4



4. Many tried some of the fruit that filled a watermelon, which was decorated Hawaiian style

5. Randy Varan, sophomore, puts a nice big dent in the Metzler Hall car at the Homecoming Fair.



5





1. Jim Beck and Kay Evans at the Homecoming dance. 2. Sid Gauby and Kenr Nicholson dressed for the Toga dance. 3. Manster at Halloween dance.





4

4. Suzy Morales and her dare at the Homecoming dance. 5. John Fleming and his dare dance a slow number. 6. Dressed up for the Halloween dance is Jim Kirson. 7. David Apez and Alan Kieffaber eat at Togo dance.



5



6



7

"This one's For You" was the theme for Homecoming 1979. The traditional parade was replaced with a "Fall Fair" in which various organizations had booths in the campus area called the Quadrangle. Most of these booths were for raising money for the groups.

Other activities included an Italian Dinner in the Student Union with the McPherson College Singers providing entertainment. The Drama department presented "The Miracle Worker", the story of *Helen Keller* which was presented Friday and Saturday night.

But, of course, the real heart of Homecoming came with the football game against Kansas Wesleyan. During halftime, *Krisren Goodfellow*, senior, and *Kirk Higgins*, junior, were crowned king and queen. The final score was McPherson - 35; Kansas Wesleyan - 10.







1. Carlton Williams recovers the fumble at the Homecoming game. '2. Burch Jones uses a high kick to move the ball to the other end of the field.

3. Curtis Thill falls victim to the pie man at the fair. 4. Joel Miller slams it into the Merzler Hall car.

5. Sophomore Leda Gard is dunked in the sophomore class dunking machine at the Homecoming fair.





1. Linda van Asselt uses her room to study 2. Sally Kendall and Kathy Doyle splash through Eshelman Street 3. Doug Berg approaches the finish line.

4 "Fanny" sold shirts at the fair. 5 Cindy Royer dressed up from head to toe 6. The Radford & Lewis Band entertain students. 7. Marie Perry and Renee Pettit carve a pumpkin.





# Graduation

The graduation commencement for 1980 was one of reflection and foresight. Filled with much "pomp and circumstance," the 80 member graduating senior class enjoyed a very meaningful ceremony. Music was provided by *Professor Neida Ikenberry* on organ and members of the McPherson College European Choir. The commencement was highlighted by a keynote address from *Dr. Harley Stump*, who retired this year after 23 years of service to McPherson College.

The address, entitled "The Eastern Gate of Eden," pointed out that the graduates should not look upon the occasion as an end, but as a beginning, with many encounters both good and bad ahead. In his moving speech, *Dr. Stump* recited lines from such poets as Emerson and Thoreau.





Facing Page 1. *David Butler, senior*, studies commencement program after the ceremony. 2. The 1980 European Choir sings in honor of the 1980 graduating class.

This Page 1. *President Hoffman* heads the parade. 2. *H. Rachel Johnson, senior*, ready to face the world.





After the ceremony ended, the traditional gathering in the quadrangle area of the campus was held with refreshments being served. Brown Auditorium was filled to capacity during the ceremony and many seniors were caught focusing on the future and "what comes next?"

Dr. Paul Hoffman, President, spoke on the importance of their education at a small college such as McPherson, and assured the graduates that they would have the college's support in the years to come.

1. Seniors Jim Kison and Ray Kiewer discuss future plans

2. "The long and winding road"

3. Brian Cordell: "Congratulations, you made it!"



1. President Paul Halfman congratulates senior Lori Christy on her achievements at McPherson College.



2. *Curis Thill:* "... and tomorrow, I'm going to ..."





1. *Melody Sweeney and Glen Wright* happily dancing away at the local square dance.

2. Students frown and the administration smile as enrollment time swings around.



3. *Walt Gaston* in a most familiar position.



1. *Michael Kelly Blanchard* gave a concert in the Student Union and the students had an enjoyable experience listening to him singing while playing the piano or his guitar. His performance was very well received.

2. Students nervously awaiting their turn at the Bloodmobile.





# "Miracle Worker" Celebrates Anniversary

This year was a landmark for the Drama Department at McPherson College. Starting out the year was the traditional Homecoming production. Yet there was more to this production other than the occasion it was highlighting. This production of "The Miracle Worker" under the direction of Professor Rick Tyler celebrated the 17th anniversary of its first performance on the McPherson College stage in 1962 under the direction of then Professor Una Yader.

The story set in the late 1800's, surrounds the turmoil of a young girl's struggle with her inability to talk; hear or speak. A young woman from Boston who has overcome several of these handicaps herself is called in to help with the tragic dilemma. The production featured Lori Christy, senior as Helen Keller and Pamela Thies, freshman as Annie Sullivan, the heroine who assists Helen in overcoming her handicaps.



1 Captain & Mrs. Keller portrayed by Lytle Lichty and Helen Reynolds, sophomore look on as Helen Keller and Annie Sullivan struggle.



2 Annie Sullivan (Pamela Thies, freshman) consoles Helen Keller (Lori Christy, senior). 3. The cast of "The Runner Stumbles," a tragic story of a romantic liaison between a Roman Catholic priest and a nun.





1. Lisa Irie, sophomore chats with Theresa Nerolicky, senior in "The Runner Stumbles." 2. Pamela Thies and Lori Chrisy battle it out. 3. Melody Sweeney, sophomore ponders before answering the question of Kevin Carman, junior.





1. Thomas Netalicky, freshman and Sue Holderread, freshman from scene in "Under Milkwood" 2. Cast of "The Roar Of The Greasepaint-The Smell Of The Crowd" 3. Alan Gumm, sophomore presents his side of the story in song

4. Kathryn Frantz Whirace, junior and Parrie Lusk, sophomore are given their turn to show their acting and musical abilities 5. The cast of "Under Milkwood."

# Plays Widen Spectrum Of Campus

There were two plays directed by Drama students this year, both of which were unique in their own ways. In late January, Jeff Gumm, senior directed "You Know I Can't Hear You When The Water's Running," a comedy. In February, Lisa Ite, sophomore directed another comedy, "Under Milkwood." These two plays offered a new fresh aspect to drama.

The first musical of the 1979-80 season was a tragic-comedy entitled "The Roar Of The Greasepaint-The Smell Of The Crowd." With a plot playing off the game of life, the production encircles three characters portrayed by Alan Gumm, sophomore, Kathryn Franz Whitacre, junior and Pottie Lusk, sophomore, who show the struggles of achieving acceptance and respect.

Unlike many productions presented at McPherson College, these plays portrayed the harsh realities of life, furthering the college goal to "Discover the World Within You".





## Guys And Dolls

The Drama Department's last production of the year was again assisted by the McPherson Theatre Guild. With a New York flavor, "Guys and Dolls" hit the McPherson College stage with a powerful punch.

Highlighted with a lovely set and costumes to match, this musical comedy was definitely a hit with near capacity crowds.

Because of the links with the Theatre Guild, two Berhany College students received two of the four lead parts. Senior Jeff Gumm from McPherson College portrayed the cold-footed Nathan Detroit, and McPherson College Registrar Karlene Tyler played his "gail" Adelaide.

With a full pit orchestra directed by Professor George Butler, the show was definitely a professional one. New York native Rose Mistrera, now residing in McPherson, provided the choreography. Drama Professor Rick Tyler saw that once again he had a winner on his hands.

1. Gamblers receive their dose of "old time religion" in the Save A-Soul Mission. 2. A very elegant Wendy Rayno, sophomore has her very elegant cigarette lit by Kevin Carman, junior.





1 Nathan Detroit (Jeff Gumm, senior) explains to his girlfriend Adelaide (Karlene Tyler) why it has taken them so long to get married. 2 The Hot Box Dolls perform "Take Back Your Mink" to a very appreciative audience.

3 Tom Neralicky, freshman and Kevin Harshberger, sophomore sing about the various assets of their racing horses. Even bookies can be musical.



# Tour Spreads Goodwill

During interterm, six dramatists hit the road touring five states and giving nearly 60 performances. Members of this group were Professor Rick Tyler; Gregory Fenna, sophomore; Alan Gumm, sophomore; Lisa Irlie, sophomore; Helen Reynolds, sophomore and Ida Yorbrough, freshman.

The group performed five different plays in high schools and churches which were, "A Christmas Memory," "The World of Carl Sandburg," "Spoon River Anthology," "Balloons Belong In Church" and "Kennedy's Children."



1. The Drama Tour group performing "Spoon River Anthology." 2. Alan Gumm, sophomore in a character sketch. 3. Gregory Fenna, sophomore and Ida Yorbrough, freshman in "A Christmas Memory."







# Bulldog Football

Coach Lou Serrone brought the McPherson College Bulldogs together and greatly improved team moral as well as play. The 3-5-0 team record for the Bulldogs told little of the large improvements brought on by Coach Serrone.

Serrone's three stated goals for the team were winning the KCAC championship, participating in a post-season Bowl game and winning a national championship. Such lofty goals were the major cause of team spirit improvements and a desire to make the Bulldogs the best.

The Bulldogs had many excellent games that were lost to the luck of the dice. The game against Bethany was a good example of the Bulldogs rallying against a top rated team, and leading during the first quarter. Despite a disappointing 47-7 final score, the game was indeed rough for Bethany.

As a team, the Bulldogs potential is quite good. Despite the loss of Coach Serrone, the Bulldogs should be stronger and better next year, with no expectations too high.



1. Defensive Ends & Linebackers: Front Row: Kenny Nichols, Darcey Schwindt, Kevin Roesch, Jerry Hunt, Tim Gribben; Back Row: Coach Brooks, Mike Ramsey, Chris Herman, Tom Nevalicky, Bob Lutz, Mark Swick, Ken Funderburk, Coach Fairbank

2. Dennis Teeford, sophomore, scores another six points for the Bulldogs during the Homecoming game. J. War Gaston, freshman, encounters a Coyote opponent.





4. *Quarterbacks & Receivers* Front Row: Tim Piganell, Larry Ruzich, Bruce Grase, Warren Brumley, Larry Hines. Back Row: Robbie Cubbreath, Augustine Gonzales, William "Butch" Jones, Dennis Tedford, Mike Ramsey, Tod Wilson. Coach Robinson.

5. *Defensive Backs* Front Row: Kirk Higgins, Excell Lafayerre, John Hamm, Pat Evans. Back Row: Eric Fox, Everett Bradley, Pierre France, Chris Allgood, George Bailey, Coach Latimer.







1. The Bulldog team is cheered on as it proceeds onto the field 2. Walt Gaston, freshman looks for a way through as an opponent closes in.



3. Offensive Line Front Row: Steve Crook, John Colvin, Robby Linn, Jerry Linn, Bruce Appel.

4. Phil Jones, sophomore, lunges forward as he attempts to stop a Kansas Wesleyan from gaining yardage.



#### BULLDOGS SCOREBOARD

Sr. Mary of the Plains 14	McPherson 21
Ottawa University 27	McPherson 7
Tabor College-28	McPherson 12
Southwestern College-20	McPherson 7
Friends University 30	McPherson 13
Kansas Wesleyan 10	McPherson 35
Berhany College 42	McPherson 7
Sterling College 12	McPherson 23
Deihei College 7	McPherson 0



Back Row: Randy Fisher, Bruce Golden, Darr O'Dwyer, Richard Zimmerman, Cooch Jackson





6. Defensive Line Front Row John Drill, Bubba Bradley, Jeff Perry

Back Row: Joe Tessier, John Weaver, Coach Brooks. 7. George Daley, sophomore, does some quick step ping to avoid a tackled player.



5. With the help of his team mates, Jeff Perry, freshman brings an opponent down.



7

# Volleyball



Dr. Paul Graber headed the volleyball program for the 1979-80 season. The season was one of learning basics and improving skills for a very young squad.

One senior and three sophomores competed along with eleven freshmen. A 3-13 conference mark was good enough for a 7th place tie in the K.C.A.C. The over-all mark stood at 5-20.

Letter winners for the 1979-80 season were Tammy Roesch, sophomore; Sandy Lang, sophomore; Peggy Davis, senior; Debbie Ilin, freshman; Barbara Mann, freshman; Elaine Moore, freshman; Ann Dirksen, freshman; Tracy Griffiths, freshman and Cindy Royer, freshman.

In team voting, Tammy Roesch, sophomore, was voted "most inspirational" team member, Dian Praffitt, freshman, was voted "most improved" team member and Barbara Mann, freshman, was voted "most valuable player."





# Soccer

1. *Curt Thill, senior*, controls the ball as he weaves between two opposing players.

A spirited soccer team led by many international students, won the Division 3 title in 1980. The victory was especially sweet as they captured the crown by defeating arch-rival Bethany College.

Led by captain *Joe Opiyo, sophomore*, the team, including *Charles Ogwang, freshman*, *Grand Odokara, senior*, *Juan Poza, freshman*, and *Procopios Pelayas, freshman*, are looking forward to defending their title next year.





2. Dale Ziegler, sophomore, eyes his opponent after passing the ball.



3. Procopius Pelayas, freshman, and Dale Ziegler, sophomore, at practice as Emily Zavala, sophomore, looks on.







## Cross Country

## Women's Tennis

The 1979-80 harriers finished the fall season with a number of outstanding individual performances. Although the varsity team failed to score at the conference meet due to lack of personnel, senior standout *Jim Kirson* managed to slip into an All-Conference team position by nabbing 5th place. Three other runners rounded the Bulldog squad as *Lyle Grosbach*, sophomore, *Dan Rogers*, freshman, and *Kent Nicholson*, freshman, also competed.

For the first time in several years McPherson sported a woman's cross country team which was led by *Teresa Goodfellow*, freshman, and *Terry Enas*, junior.

Letter winners for the year were *Teresa Goodfellow*, freshman, *Terry Enas*, junior, *Jim Kirson*, senior, and *Dan Rogers*, freshman.

The Women's Tennis Team pulled two upsets to place 4th in the K.C.A.C. tournament, held at the Riverside Tennis Center in Wichita, on October 17 and 18. Point totals in the K.C.A.C. tournament were Southwestern 22, Bethany 12, Bethel 11, McPherson 5, Tabor 4, Friends 0 and Sterling 0.

Two medal winners were *Susie Morales*, freshman, placing second in number two singles and *Diane Wyatt*, senior, placing second in the number three singles. *Dani Powell*, freshman, and *Susie Morales*, freshman, took third place in the number one doubles.

The individual match records in the K.C.A.C. meets are quite good considering the young team. Nearly all the girls had a .5 record or better.

Facing page: 1. *Jim Kirson*, senior; 2. Women's Tennis Team.  
3. Some netters pose without their rackets. This page: Cross Country Team.

*Sports Candidis*



1 Randy Varan, sophomore, and Marie Perry, senior. 2 Larry Larimer. 3 Wylene Goeddert, senior, and Karhy Howell, senior.





1 Rick Schliender, senior and Guy Bourke, senior 2 Wylene Goedder, senior 3 Garchal







1. Field goal attempt by Randy Farres, junior



2. McPherson College Basketball Squad Front Row: Randy Farres, Kent Garrison, Brian Cordel, Doug Gayer, Mike Davis.

Back Row: Kirk Higgins, Tom Crawford, Lindal Cox, Kevin Huddleston, David Malhagen, Jack Koehn, Mike Justus.





1

1. Randy Farres, junior again tries for the much desired goal. 2. Getting up and over the defense.



2

3. Brian Cordel, senior prepares to shoot a free throw. 4. Players congratulate each other.



3

1 Bulldogs prepare for a free-through rebound



2 Bulldog bench conference



3 Bulldogs huddle to establish next play



4 Doug Gayer, junior up to shoot







1 Going for another rebound

2 Mike Davis, senior, shoots around defense.

# Bulldog Basketball

## BULLDOG'S SCOREBOARD

Although disappointed with only six wins this season, Coach Robert Fairbank says it was a very positive season for the Men's Varsity Basketball team. Many players were inexperienced at the beginning of the season, yet the team worked hard, and is making good progress.

Some of the players who gave a little extra to the team were Mike Davis, senior, voted "outstanding" player by his team mates, All-Conference, and a member of the West team in the All-Star game. Brian Cordel, senior, voted by his team mates as the most "inspiring" member of the team, Kevin Huddleston, freshman, was voted "most improved"; Doug Gayer, junior and Kirk Higgins, senior who had the best percentages of free throws and rebounds, respectively.

Ottawa University-68	McPherson-58
Kansas Newman College-87	McPherson-67
Sterling College-73	McPherson-67
St. Mary of the Plains-66	McPherson-47
Bethany College-74	McPherson-77
Fr. Hays State-103	McPherson-60
Colorado College-71	McPherson-56
Denver University-99	McPherson-57
Bethel College-81	McPherson-59
Colorado College-61	McPherson-82
Missouri Valley-78	McPherson-99
Kansas Wesleyan-75	McPherson-66
Southwestern College-85	McPherson-71
Friends University-86	McPherson-90
Bethel College-95	McPherson-81
Tabar College-78	McPherson-68
Sterling College-94	McPherson-86
St. Mary of the Plains-75	McPherson-72
Bethany College-80	McPherson-56
Kansas Wesleyan-67	McPherson-81
Southwestern College-85	McPherson-66

## Varsity Squad Members

NUMBER	NAME	POSITION	HEIGHT
10	Mike Davis	Guard	6'2"
14	Randy Farres	Forward	6'2"
32	Doug Gayer	Guard	6'0"
24	Brian Cordel	Guard	6'0"
40	Lindal Cox	Center	6'7"
54	Darr O'Dwyer	Center	6'3"
44	Kirk Higgins	Forward	6'3"
20	Jack Koehn	Guard	6'2"
52	Kent Garrison	Guard	6'1"
12	Kevin Huddleston	Center	6'1"
34	Tom Crawford	Center	6'5"



1 Doug Gayer, junior, shows jumpshot form.

# J.V. Squad Members

NUMBER	NAME	POSITION	HEIGHT
54	Darr O'Dwyer	Center	6'3"
20	Jack Koehn	Guard	6'2"
20-21	Mike Justus	Guard	6'1"
50	David Mollhagen	Center	6'5"
22-23	Keith Dayer	Guard	5'11"
32-33	Bryce Neher	Forward	6'1"
12	Kent Garrison	Guard	6'1"
52	Kevin Huddleston	Center	6'6"
34	Tom Crawford	Center	6'5"
	Tim Gribben	Guard	5'10"
40-41	Chris Herman	Forward	6'1"
	Druce Bauman	Guard	5'9"

COACHES: Guy Daurke & Durch Jones



1. Darian Cordel, senior, is alert on defense



2. Grandstand referees call the shots.



3. Head Coach, Robert Fairbank



4. Junior Varsity Coaches, Guy Daurke and Durch Jones.





Front L to R  
 Wylene Goeddert, senior  
 Debbie Ilin, freshman  
 Tracy Griffs, freshman  
 Susie Morales, freshman  
 Roxanne Rayno, freshman  
 Barbara Mann, freshman

Back L to R  
 Sandy Lang, sophomore  
 Sue Holderread, freshman  
 Dian Proffit, freshman  
 Sally Kendal, freshman  
 Karhy Howell, senior  
 Pam Tucker, sophomore  
 Peggy Davis, senior, Mgr





## Women's Basketball

*Dr. Paul Graber* began the year with 13 players and by the end of the year only 10 remained. This was the first injuri serback of the year, and many more were to come before the season ended. Due to the introduction of a new system, inexperience, and lack of mobile size on the front line, the Bulldogs found it difficult to win in the K.C.A.C.

The guard random of *Tracy Griffis*, freshman, and *Susie Morales*, freshman, was a bright spot for the ladies. *Tracy* was 3rd in conference scoring, and *Susie* proved to be one of the best dribblers in the conference. The morale of the team was good in spite of its poor record. The outlook for next year is highly optimistic with some surprises in store for everyone.



# Men's Track



The 1980 McPherson College track team finished fifth in the K.C.A.C., which was again dominated by Bethany.

Jim Kitson, senior, led the Mac thindclads by taking first in the 800 meter run and second in the 1500 meter run, which qualified him for competition at the national level.



1 Push up time 2 Lester Finney, senior flies like an eagle.





Coached by Larry Lorimer and Eric Herman, team members included: Charles Ogowang, freshman; Lester Finney, senior; John Hoffman, senior; Kenny Funderburk, junior; Brian Cardell, senior; Kirk Higgins, senior; Evert Bradley, freshman; Lyle Grosbach, sophomore; Jim Kirson, senior; Dan Rogers, freshman; Allan van Asselt, senior; Dave Hodges, senior; Jeff Miller, senior; Walt Gaston, freshman; Ted Stacy, sophomore; Rick Shironaka, freshman.

1. Jerald Legins, senior and Mike Brown, freshman warming up 2. Rabby Culbreath, freshman and Walt Gaston.



## Women's Track

The women's track team took 3rd in the K.C.A.C. meet in 1980. *Sandy Sharp, junior*, led the team, winning three medals in the conference meet, including first in the 3000 meter run, qualifying for further competition.

Other good performances were turned in by *Tracy Griffis, freshman*, in the 400 meter run, and by the 1500 meter relay team of *Griffis, Teresa Goodfellow, freshman, Cindy Dell, freshman*, and *Pam Tucker, sophomore*.

*Dian Profit, freshman*, and *Lucy Martinez, freshman*, competed well in the field events.



1. "Don't stop now. You're only 2 laps away from the finish!"

2. "Hand over that baton!"





1. Tracy Griffis, freshman makes a concerted effort to catch up to her opponent in a track meet. 2. Anguish marks the face of a relay runner.



3. A shot-putter puts all of his might into it.

## Men's Tennis

Coach Gerald Holman and his Men's Tennis team are pleased that they met all of their goals for the 1979-80 season. Playing against schools such as Kansas State University, Emporia State University and Fort Hays State University makes the going rough, but the Bulldogs proved they weren't about to be pushed around.

Don Leddy, senior, Doug Gayer, junior and Jeff Crist, junior were all runners-up in the singles competition at conference. The Bulldogs as a team placed 2nd in the conference, with arch rival Bethany College winning 1st place. Bethany didn't take home all of the medals though as Leddy and Gayer placed 1st in the doubles competition at conference. It is important to note that out of 9 events at the meet, the Bulldogs were in 4 of the finals.



# Golf

Led by senior *Jeff Holderread*, the McPherson College golf team gained valuable experience and skill during the 1980 season.

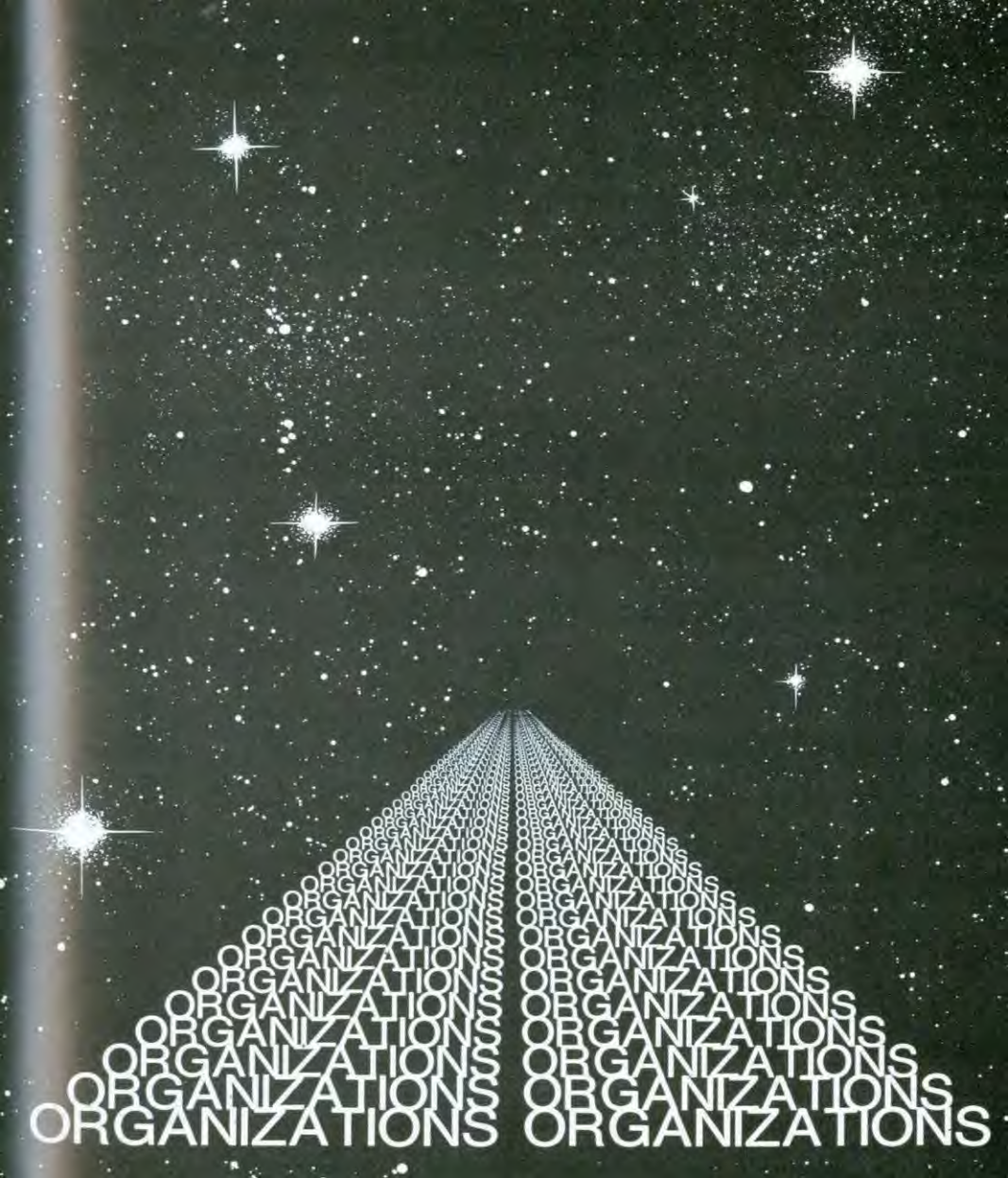
*Dr. Paul Graber*, coach, saw continuous improvement in play and growth in knowledge of the game by all members.

*Susie Morales*, freshman, made sporting history by being the first woman to participate in a golf meet for the Bulldogs.

Other team members included *Kevin Carman*, junior, *Jack Koehn*, sophomore, *Robby Linn*, sophomore, and *Dennis Tedford*, sophomore.

1. *Kevin Carman*, junior - how's that for a slugama-zoo!! 2. Pucker power improved your putt.



















The Quadrangle Staff. Back Row Pam Thies, *Business Manager*; Angie Henson, *Assistant Editor and Sports Editor*; Second Row Karen Stiggins, *photographer*; Tina Schmidt, *Organizations Editor*; Trudy Christy, *photographer and Class Editor*; Kathy Tharrington, *Class Editor*; Elaine Moore, *photographer*; Front Row Elva Dingham, *Faculty Editor*; Sue Halderead, *photographer*; and Gregory Fenno, *Academics Editor and Editor in Chief*.

Board of Publications. Back Row Dr. Norma Tucker, Pam Thies, Don Stinnerre, Gregory Fenno, Cathie Page, Doug Lengel; Front Row Kathy Howell, Alan Gumm, and Curtis Thill.



## ... Keeping the records

Student publications this year have been on shaky ground. People just have not been interested in putting forth the time, work, and responsibility needed to work on the publications. The Quadrangle staff started out a very large group, but slowly lost many of its members. Yearbook members have faced a lot of gruff words about the lack of a book from the year before. Little could be said to the complaining students because only one member this year was carried over from last year. The staff has tried to make its yearbook better, and a credit to the college.

Board of Publications is the regulating force behind both the Quadrangle and the Spectator.







Dressed in traditional concert black, the McPherson College Singers do their best towards entertaining a home audience.

Chair members' daily class routine includes arduous practice sessions.



Galen Reeves, freshman, finds two more people to buy citrus fruit during the Homecoming Fair.



McPherson College Singers: *Back Row* Gregory Fenno, Gene Ewert, Linda van Asselt, John Hoffman, Dan Mason, *Third Row* Aaron Gragg, Kathy Swank, Bruce Dauman, Carol Swank, Dan Masterson, Pam Thies, *Second Row* Galen Reeves, Kathy Cotton, Doug Berg, Stephanie Graber, Kevin Harshberger, Gail Erisman, *Front Row* Karla Marshall, Melady Sweeney, Leanne Royer, and Naomi Durger.

McPherson College Singers/Chair/McPherson College Singers/



## ... music for all our ears

With a college the size of McPherson you can not expect seventy six trombones, but you can find a band and a trombone chair.

Through the year, the McPherson College Band has played at home football games, and has given several concerts with the rest of the music department.

Consisting of seven members, the McPherson College Trombone Chair performs at various functions throughout the year and for an assortment of organizations.



McPherson College Trombone Chair: George Butler, Dan Masterson, Joan Graham, Dan Mason, Galen Reeves, Tim Cox and Ken Frantz. The trombone chair has played several times at the Church of the Brethren here in McPherson. At Christmas time, they accompanied the mass choir at the Brethren Christmas service.



McPherson College Band: Back Row George Butler, Breck Manier, Karla Marshall, Dan Mason, Galen Reeves, Second Row James Janzen, Mary Jane Mason, Paula Lyne, Susan Mullans, Bryan Denison, Theresa Netalicky, Doug Berg, Terri Enos, Alan van Asselt,

Kent Nicholson, David Durler, Ken Frantz, Tim Cox, Joan Graham, Dan Masterson, Front Row Kevin Wilson, Marie Petty, Susan Meila, Stephanie Graber, Sherri Dumm, Sarah McKittrick, Karen Waganier, and Nancy Daley.















Industrial Arts Club Standing Robin Mollhagen, Jerry Hoffman, Peter Darmann, Steve Swartz, Front Row Dennis Stichter, Bill Hall, and Dane Rousseau

Two I.A. members put the finishing touches on their wash job



Robin Mollhagen and Dennis Stichter, juniors, prepare for the annual I.A. car wash



Mac Ambassadors Back Row Alan Gumm, Kathy DeVader, Jim Kitson, Cathy Page; Front Row Beth Drubaker, Aaron Gragg, and Cindy Koehn

## ... rolling the campus along

"Discover the world within you" may be the college's motto, but the Mac Ambassadors help keep the college's world spinning. These students spend some of their spare time in calling and writing potential students. On visitation weekends, they extend their red carpets to make the visitors at home.

The Industrial Arts Club is often thought of in conjunction with the antique cars on campus. There are three major activities that the club had besides these cars. They sponsor a car wash and a dance in the fall, and in spring they plan an olympiad.









Student Activities Board: Harold Briscoe, Lori Christy, Linda Durler, Ann Dirksen, Dan Masterson, Gregory Fenno, Doug Berg, Jim Kitson, Naomi Burger, Glen Wright, Elva Bingham, Cathy Davis, Beth Ferree and Susan Dodson.

## ... keeps the students busy

Giving the students something to do is the basic job of the Student Activities Board. This group arranges for movies and performers to come on campus. Dances are also planned by SAB for the student body.

Alpha Psi Omega is a honorary drama organization, entrance being based on points. Each year there is one Alpha Psi production. Another of the activities they are involved in is first nighters. A meal is prepared on opening night of each production for members of first nighters.



One of the dances sponsored by the Student Activities Board in the fall term was a raga dance.



Alpha Psi Omega: *On Ladder* Pam Moore, Kathy Whitacre, *In Tree* Franchiel Spencer, Theresa Nerolicky, Deb Lolling, Alan Gumm, Lisa Ite, Rick Tyler, *Standing* Rick Patton, Helen Reynolds, Aaron Grogg, Pamie Lusk, Harold Briscoe, Ida Yarbraugh, Evo Deaton and Lori Christy.

Student Activity Board/Alpha Psi Omega/Student Activity Board/Alpha Psi Omega/Student A

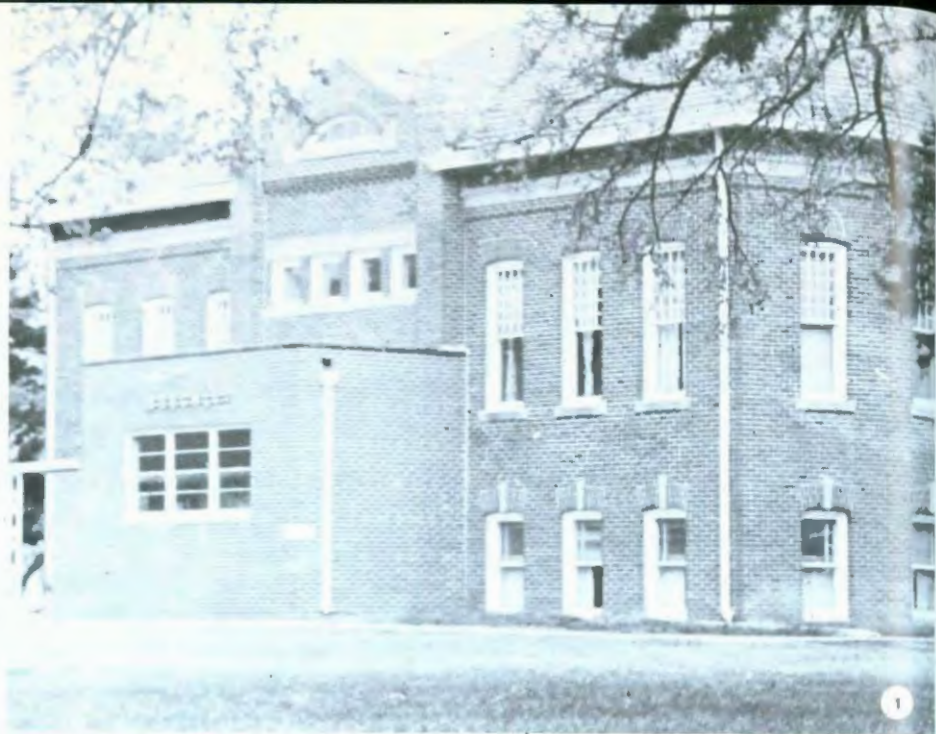






## ACADEMICS





## Facilities Include The Historic

One of the more important aspects to an education at McPherson College are its facilities. McPherson College has a total of 19 buildings on its grounds. Of these, 15 are in use today. Only one from the "infant days" of the college still stands, and interesting enough, it is still very much in use.

This is the old Carnegie Library now known as *Beeghly Music Hall*. Dedicated on September 10, 1907, it cost a whopping \$15,000 to build. Since then, a new entrance and an extension to the rear of the building were added in the early 1950's. In spite of its landmark input to the college in those early days, *Beeghly* is definitely starting to show its age. Unfortunately, its fascinating history does not help the acoustics or climate needed for a music facility.

Dozens of sets of plans have been drawn up for the purpose of renovation in the past ten years to no avail due to the cost. The cheapest one yet is more than ten times the amount it took to construct the building. However, a suitable set of plans are presently being considered, so *Beeghly* may see its finest day yet.



1 Deeghty Music Hall whose walls and floors have served the college for 70 years. 2 Melody Sweeney, sophomore shows the effects of too much studying. 3 Dan Masterson, taking a break. 4 Kevin Harshberger and Naomi Burger, sophomores at Homecoming.

## Union Attracts Students

The present facility known as the *Student Union* was completed in 1961. Its concept is interesting to look back on. The administration, then under the guidance of President D. W. Birringer favored the building to resemble (of all things) a ship! When one thinks of it, this might even seem logical considering the ramps and basic design of the building.

Ship or no ship, the *Student Union* plays a very major role in the every day life of the McPherson College student. This is where the mail is received, the meals are eaten, the publications assembled.

It is probably the only place on campus where every student congregates at one time or another during the day. Togetherness is what McPherson College is all about.



1. Where home away from home doesn't seem so far away—the McPherson College Student Union. 2. Freshmen *Kenny Nichols* and *Rick Shriver* finish off lunch in the Student Union cafeteria.







1. From left to right: Freshman Kent Garrison, sophomore Darr O'Dwyer, juniors Michele Voth and Diane Miller, enjoy their late morning breakfasts in the Student Union cafeteria.



2. With the snow packed in the winter, the ramp can become quite slick as these students may soon find. 3. Freshmen Ann Drissen, Cindy Dell and Elaine Moore jump for joy after winning the "Campus Feud."

## Dormitories Live On

Some refer to them as ideal spook houses for Halloween. Others look upon them as a few remnants of the college's heritage. Yet others look upon them as eye sores. The Fire Marshall looks upon them as death traps.

*Kline* and *Arnold Halls* were both built before most of our parents were born. *Arnold Hall* was built in 1916 for about \$55,000 and was used for female housing. *Kline* was finished on October 25, 1919 at a cost of \$30,000 and was also used for female housing.

As years went by the roles of these dormitories changed. Female, male and at one point both housed married couples. *Arnold* in its last years served as the art building as well as office building for some of the professors. Although both of these buildings look perfectly safe to the naked eye, they are both built almost entirely of wood, which after 60 some years becomes very attractive to fire.

*Arnold* was closed in the middle 1970's and *Kline* was closed in 1977. There has been talk of both renovation and demolition. Both of these options are unseen now.





1. *Kline Hall* which faithfully served the college for nearly 70 years, now sits in retirement 2. *Sprately old Arnold Hall* rests in peaceful solitude 3. *Freshman Carolyn Lengel* shows her glee at being a freshman at McPherson College.



# Gym Needs Help

Built in 1938, the present *Physical Education Building* located in the northern edge of the campus is in bad need of improvements for both inside and out.

This facility was built to replace the old *Alumni Gymnasium-Auditorium* built in 1916. At the time of its completion, it suited the needs of McPherson College very well, but then, athletics did not have the same emphasis or needs as they do today.

As with *Beechly Music Hall*, many sets of plans have been introduced to the administration for consideration; but until the money has been secured, the administration maintains silence, and perhaps rightly so.

Also constructed in 1935 was the *Athletic Field* which was dedicated on October 18, 1935 by Governor Alf Landon. This facility unlike the gym has maintained its quality. The playing surface of the football field is probably the best of its kind in the state.



1. The *Physical Education Building* at McPherson College, which helps the athletic programs of the college. 2. Basketball games are played in the "Roundhouse" at McPherson High School. 3. Beautiful *Miller Library*.



1. The McPherson College Athletic Field is the home ground for the Dartling Bulldogs football team as well as the McPherson High School Bullpups 2. Pam Tucker, sophomore concentrates on finishing her project.

# Harnly Hall Houses Classes And Memories

The blueprints for Harnly Hall were drawn up in 1920. There was much speculation at that time as to whether or not the building would ever become a reality. An ever growing McPherson College, with an enrollment swelling toward 400, badly needed a new science hall.

According to information available, Harnly Hall was dedicated September 10, 1922 and had cost \$150,000 to build.

Perhaps now, in 1980 more than ever, Harnly Hall is a vital part of McPherson College probably because the science department is one of the stronger departments on campus. The Home Economics section of Harnly was recently remodeled, and that department excels as well.

It is probably likely then to assume that as long as there is a McPherson College, there will be a Harnly Hall close by.



1. There are even times at Fahnestock Hall when all things are quiet and peaceful. 2. Professor John Burkholder during one of his daily classes in Harnly Hall. 3. Harnly Hall adds a little bit of the majestic to the McPherson College campus.





4. Professor Stephanie Graber directs the McPherson College Concert Choir, which at one time rehearsed in Harnly Hall. There is still an organ on the fourth floor of Harnly.

1 Alan Gumm, sophomore finds time during the day to work on one of his favorite hobbies, woodworking. 2. Versatile Mohler Hall not only houses classrooms, but administrative offices as well. This building, connected to Brown Auditorium could probably be considered the nucleus of the McPherson College campus.



3. Esther Rediger, freshman and Jeff Gumm, senior, perform what was known at the Homecoming Fair as singing telegram.



2





1. Mark Swick, freshman and sophomores Sandy Lang and Lindall Cox critique a speech given in Mahler Hall. 2. Angie Henson, freshman makes a concerted effort to remain awake during a history lecture in Mahler Hall. 3. Brown Auditorium basking in the morning's sun.

## Brown And Mohler Add Life

After 10 years of saving and raising money, McPherson College built Mahler Hall and Brown Auditorium in 1960. This was part of a 10-year development program to upgrade the college. This was probably the biggest single change in campus appearance ever to take place.

After Mahler Hall and Brown Auditorium were completed, old Sharp Hall which had been in existence since 1901 was demolished. Not only did these two new buildings give the campus a new look, but it also gave it many new vistas.

Brown Auditorium was the new cultural center in town, and has kept that position ever since. At one time, choir and band rehearsals were held in the basement of the building, as well as the offices of the directors of choir, band and drama.

Mahler Hall houses the offices for all of the administration as well as the Admissions Office and the Business Office. The second floor houses classrooms and offices for professors. Little wonder why this building is considered the base of the college.







## Homes Away From Homes

The dormitories at McPherson College probably play the most important part of a student's life at this college. This is the student's home away from home, and if that student isn't careful, one could become more attached to his or her dorm than their normal home.

There are presently four dormitories in use at McPherson College. *Biringer*, *Fahnestock* ("Fanny"), and *Merzler* Halls are for the usage of the males on campus. *Dorzour* Hall is exclusively for the use of the females on campus.

*Fahnestock* Hall is the oldest dorm in use. It was dedicated in 1942 and has housed men since that time. In spite of its age, the men who live in *Fahnestock* seem to be more than happy with it.

*Dorzour* Hall was built and dedicated in 1955, and later on an extension was added, now known as "*Dorzour* New". It has always housed females, and probably always will.

*Merzler* Hall was built in 1964, and has housed the brunt of the male population since then. It can house as many as 150 men.

*Biringer* Hall is the newest of the dormitories. Built in 1967, this building now holds two purposes. It houses the Youth Center as well as upperclassmen who hold grade point averages over 2.0.



1. *Diringer* Hall. First floor houses the Youth Center and second floor is used to house upperclassmen. 2. *Darzour* Hall, the women's residence. Consists of three floors which houses all females living on campus. 3. *Merzler* Hall, where the majority of McPherson College men reside. 4. *Fahnestock* Hall, the oldest dorm in use houses men.





## Frantz Hall

Classes taught at Frantz Hall include Art History, Media Workshop, Ceramics, Lettering, Interior Design, and Art in the Elementary School.

Frantz Hall was built in 1947, for the purpose of supplying the campus with an Industrial Arts department. However as years went by, and the enrollment increased, it was necessary to expand the Industrial Arts facility. During that time, the Art department was housed in various buildings on campus including Arnold Hall. After Templeron Hall was built in 1977, Frantz Hall was renovated to house the Art department.

1. Frantz Hall basking in the mid-morning sunshine.
2. Students enjoy free time after art classes.







This year, the Art Club held its first annual Art Sale. Major renovation was done last year to further the area of ceramics. The future will tell whether these improvements in this facility will indeed better the Art department. However if the trend continues, it is sure that the Art department will be one of the excelling departments on the McPherson College campus.

1. Dr. Gifford Kenberry in consultation.

2. Home Economics Club sell their wares

3. Kathy Carron, senior totals the bill





## Templeron Hall

Templeron Hall and the Billue Center were built in 1977. The complexes are the newest at McPherson College, and they hold one of the best Industrial Arts programs for a small college in the state of Kansas.

The Billue Center specializes in antique car restoration and interior restoration.

Templeron Hall houses the Copy Center, which prints articles, booklets, programs, and other publicity for McPherson College.

1. Some of the more talented Industrial Arts majors spend many hours in this new building.

2. Doug Berg, freshman, explains how to win at pinball.







Seniors  
 Seniors  
 Seniors  
 Seniors  
 Seniors  
 Seniors  
 Seniors

1. *Mike Davis, senior*, browses through the bookstore in search of his favorite textbook.



Darrell Dwayne Ames  
*Salina, Kansas*

Sonja J. Andreas  
*McPherson, Kansas*

Leah Awonrundun  
*Kwara State, Nigeria*

Nancy J. Bailey  
*Morrill, Kansas*

Terry W. Banta  
*McPherson, Kansas*

Douglas G. Burkholder  
*McPherson, Kansas*



Karen E. Burkholder  
Macksville, Kansas

Lori L. Christy  
Marshalltown, Iowa

Peggy Davis  
Quinrer, Kansas

Lester Finney  
Belle Glade, Florida

David L. Butler  
Grundy, Iowa

Brian Cordel  
Tipton, Kansas

Gail Erisman  
Warrensburg, Missouri

Wylene Goeddert  
Inman, Kansas

Cosette Burton  
Conrad, Iowa

Jess Matthew Cunnick  
McPherson, Kansas

Gene P. Ewert  
Marion, Kansas

Jeffrey Gumm  
McPherson, Kansas





Janice Kay Harter  
*Northridge, California*

John M. Hoffman  
*McPherson, Kansas*

Kirk Higgins  
*Albuquerque, New Mexico*

Jeffery Holderread  
*Evergreen, Colorado*

David L. Hodges  
*Kansas City, Kansas*

Kim Thiessen Holderread  
*Wichita, Kansas*







3



4

1. Dan Leddy and Lisa Dixon appear to enjoy the Homecoming Fair. 2. Jeff Gumm struggles with Deth Ferree's newly acquired hair.

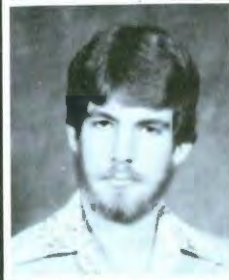
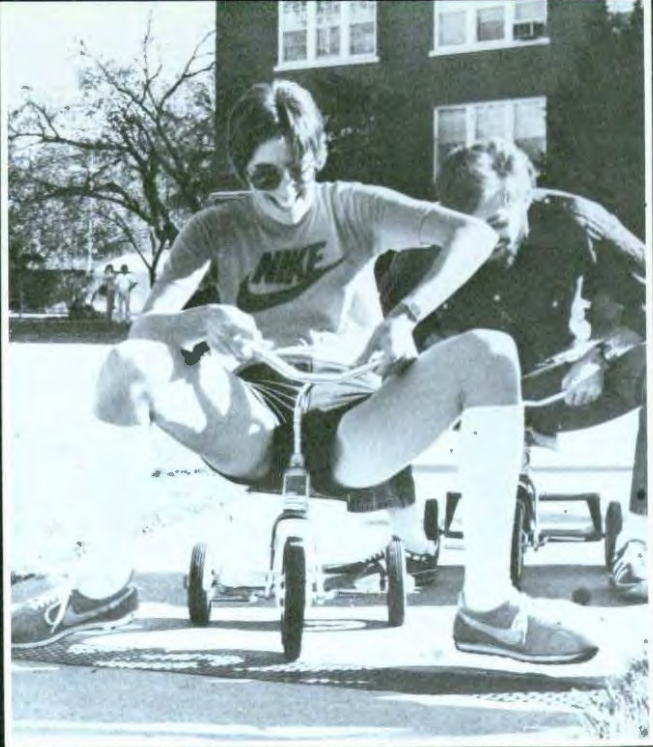
3. Senior Class Officers: Marie Perry, Gene Ewert, and Deb Lalling. 4. Jim Kirson gets into the swing of things.



Kathy Howell  
Conway, Kansas

Helen Rachael Johnson  
McPherson, Kansas

William D. "Burch" Jones  
Melvern, Kansas



Christine B. Juhnke  
McPherson, Kansas

James D. Kilson  
Haven, Kansas

Roy Allen Kiewer  
Hillsboro, Kansas

1. Kathy Howell, senior, trying to escape Professor Coats' charm. 2. Lori Christy, senior, bored with her telephone conversation. 3. LaMonte Rothrock, senior, sings a cheerful telegram.





Don L. Leddy  
*Conway Springs, Kansas*

Deborah R. Lalling  
*McPherson, Kansas*

Jeff T. Miller  
*Rocky Ford, Colorado*

Theresa Netolicky  
*Lisbon, Iowa*

Michael O. Lindblade  
*McPherson, Kansas*

Mary Mason  
*Udell, Iowa*

Gail Myers  
*Holcomb, Kansas*

Grand Doniface Odokara  
*Umuahia, Nigeria*

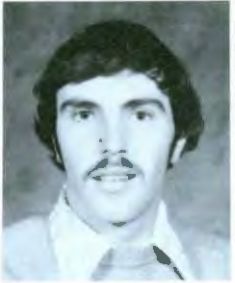
Robert E. Lintecum  
*Buhler, Kansas*

Diane R. Masterson  
*Mt. Morris, Illinois*

Paul Neher  
*Grundy Center, Iowa*

Tom O'Reilly  
*Flushing, New York*





Pamela S. Oxley  
Hutchinson, Kansas

Joni R. Redmond  
Quinter, Kansas

Leanne D. Royer  
Lincoln, Nebraska

Barton Lane Shank  
Dayton, Ohio

David R. Peterson  
Mountain Grove, Missouri

Barbara Jean Rohrer  
McPherson, Kansas

Fredrick Schlender  
Burton, Kansas

Hannah L. Shank  
Dayton, Ohio

Elizabeth Marie Perry  
Essex, Missouri

LaMonte R. Rothrock  
McPherson, Kansas

Steve Schmidt  
Conway, Kansas

Lorette Shepard  
Portland, Oregon



John R. Snell  
*Santa Ana, California*

Curtis C. Thill  
*Adel, Iowa*

Franchiel A. Spencer  
*Kansas City, Kansas*

Allan van Asselt  
*McPherson, Kansas*

Donald R. Stinnette  
*Elizabeth, Colorado*

Christopher Whitacre  
*Golden, Colorado*

Glenda S. Williams  
*Derby, Kansas*

Diane Wyatt  
*Hurichinson, Kansas*

NOT PICTURED

Doris Jeanne Abbott  
*Hurichinson, Kansas*

Dave Edward  
Barnhart  
*Buhler, Kansas*

Guy M. Bourke  
*New York, New York*

Adan Antonio  
Carriaga  
*Albuquerque, New Mexico*

James Clough  
*Upland, Pennsylvania*

Michael C. Davis  
*Baron Rouge, Louisiana*

Eva Dearon  
*Richmond, Indiana*

Kevin Haddock  
*McPherson, Kansas*

John C. Leach  
*McPherson, Kansas*

Earl Larry Maltbie  
*Canton, Kansas*

Annette M. Owens  
*McPherson, Kansas*



*juniors  
juniors  
juniors  
juniors  
juniors  
juniors  
juniors*



1

Todd A. Blake  
LaPorte, Indiana

Harold D. Briscoe  
Kansas City, Missouri

Russell R. Corwell  
Glenenda, Kansas

Carolyn Jean Cole  
Eggs, Illinois

Patricia A. Calvin  
College Point, New York

Kathy Carron  
Topeka, Kansas

Jeffrey Ort  
Gardner, Kansas

Dorinda Crumpecker  
McGurie, Kansas







1. Freshman Esther Redger and Junior Kathy Swank stroll past the Student Union. 2. Junior Class Officers: Kristen Goodfellow, Janer Shoemaker, Tom Mason and Ansalta Kelnner. 3. Harold Discoe gets drink.



Kathleen DeVader  
Sr. Marys, Kansas

Lisa Dixon  
Centerville, Iowa

Kimberly A. Eisele  
Lincoln, Nebraska

Kim Eldridge  
Doubler, Colorado



Teresa Ann Erys  
Manon, Kansas

Tony G. Fawl  
Overbrook, Kansas

Johnny R. Fleming  
Buhler, Kansas

Kenneth D. Frantz  
Windsor, Colorado

Doug Gayer  
Buhler, Kansas

Kristen K. Goodfellow  
Lyons, Kansas

Ralph A. Hamilton  
Deloit, Kansas

Monica D. Heckart  
Orumwa, Iowa



1. Kim Kirkdarter, Junior pleads for customers at the Homecoming Fair.  
2. Students and faculty enjoy the entertainment following the Hawaiian Luau.



Gina D. Heyer  
Downs, Kansas

John Lee Halderood  
Agra, Oklahoma

Keith Hunter  
St. Louis, Missouri

Priscilla Keimer  
Stratford, Missouri







Kim Diann Kridorffer  
Edara, Iowa

Brent V. Koehn  
Galva, Kansas

Jerald C. Legins  
Aurora, Colorado

Patricia J. Lashbaugh  
Dallas, Texas



1. Kristen Goodfellow, junior, and  
Pamie Lusk, sophomore, forget to  
dress for breakfast.

2. Juniors Kim Ebele and Kathy De  
Vader catch their breath before mov-  
ing on in the enrollment line.



Daniel B. Mason  
Moulton, Iowa

Tom E. Mason  
Udell, Iowa

Susan A. Melia  
Tonganoxie, Kansas

Diane Miller  
McPherson, Kansas



Brian Mollhagen  
Lorraine, Kansas

Robert B. Mollhagen  
Lorraine, Kansas

Mike Norris  
Kansas City, Kansas

Martina Odokoro  
Umuahia, Nigeria

Marjorie Overholt  
McPherson, Kansas

Patricia Peck  
Austin, Minnesota

Tenee Petri  
Jala, Wisconsin

Tod W. Persen  
McPherson, Kansas



NOT PICTURED

- James A. Beck, Kansas City, Kansas;  
Rebecca Burr, McPherson, Kansas;  
Charmagne Carrigo, Albuquerque, New Mexico;  
Randall S. Farres, Salina, Kansas;  
Brandt B. Hutchinson, McPherson, Kansas;  
Jo Novatny, McPherson, Kansas;  
Dennis W. Sticher, Wakarusa, Indiana;  
Kathryn A. Thoreen, Pleasant Hill, Ohio;  
Anne Ward, Lincoln, Nebraska.





Brenda Treish  
Egin, Idaho

Philip Alan Rohrer  
McPherson, Kansas

Sandra Sharp  
Eiders, Nebraska

Jonell Shaeffer  
Chadron, Nebraska



Darv L. Schlood  
McPherson, Kansas

Luther Stutz  
Dalenburg, West Germany

Kathy M. Swani  
Papier, Montana

Michelle Voh  
Muskogee, Kansas



Kathryn Franz  
Windsor, Colorado

Jill Yancey  
McPherson, Kansas

Michael Yancey  
McPherson, Kansas

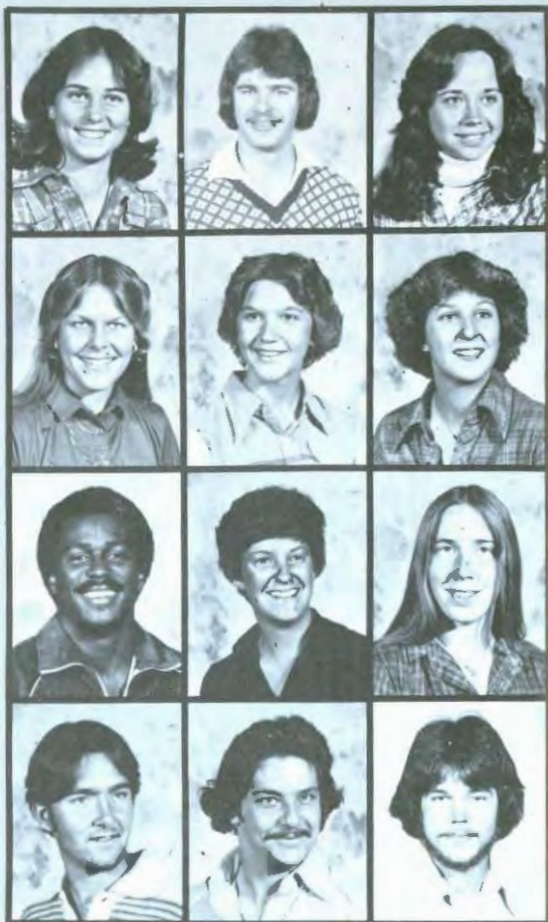


1. Renee Pettit, junior, contemplates the botanical structure of grass. 2. Ronda Switzer, freshman and Racheal Johnson, senior shed winter coats as spring arrives. 3. Terri Enos, junior calculates her financial situation.



sophomores  
 sophomores  
 sophomores  
 sophomores  
 sophomores  
 sophomores  
 sophomores

Joel Miller, sophomore makes a big splash at the Homecoming Fair.



Jill Ackerman  
 Wichita, Kansas

Kelly Dishop  
 Axtell, Kansas

Naomi J. Burger  
 Centerville, Iowa

Gndy M. Bahr  
 Valley Center, Kansas

Amy Sue Brand  
 Valley Center, Kansas

Kathryn E. Burkholder  
 Duhler, Kansas

George K. Dailey  
 Oklahoma City,  
 Oklahoma

Patti L. Brennerman  
 Rocky Ford, Colorado

Elizabeth A. Burns  
 Adel, Iowa

Michael R. Deach  
 Waukesha, Wisconsin

Jahn Drill  
 Ft. Lauderdale, Florida

Kevin Carman  
 McPherson, Kansas





Lianne M. Clark  
Panora, Iowa

Druce L. Fahnestock  
Jonestown,  
Pennsylvania

Kenneth E.  
Funderburk  
Belle Glade, Florida

Aaron L. Gragg  
Quenema, Kansas

Pamela S. Higgins  
Albuquerque, New  
Mexico

Thomas O. Cris  
McPherson, Kansas

Steven W. Feight  
Clyde, Kansas

Leda D. Gard  
Newton, Kansas

Lyle E. Grosbach  
Enders, Nebraska

Lisa Annette Irie  
Warrensburg, Missouri

Kathryn A. Deitz  
Prairie Village, Kansas

Gregory H. Fenno  
Wichita, Kansas

Dean Goering  
Derby, Kansas

Alan J. Gumm  
Prairie City, Iowa

James K. Janzen  
Inman, Kansas

Dryan L. Denison  
Kingman, Kansas

Pierre A. Françe  
Oklahoma City,  
Oklahoma

Terri Gorman  
McPherson, Kansas

Kevin J. Harshberger  
Minneola, Kansas

Michael D. Justus  
Lincoln, Nebraska



Ruth C. Kasadha  
*Jinja, Uganda*

Douglas A. Lengel  
*McPherson, Kansas*

Jacki C. Koehn  
*Galva, Kansas*

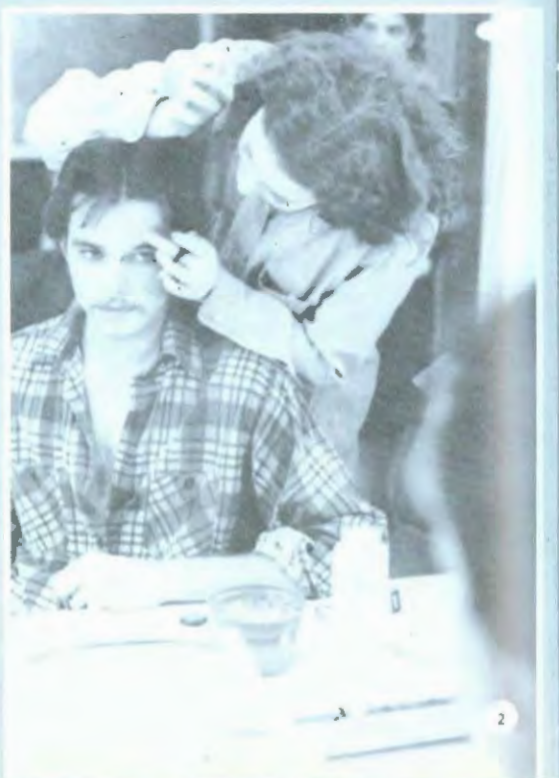
Celeste A. Lewallen  
*Cando, North Dakota*

Seiji Kuwara  
*Tokyo, Japan*

Jerry K. Linn  
*Miami, Oklahoma*

Sandra A. Long  
*Chapman, Kansas*

Robert A. Linn  
*Commerce, Oklahoma*







1. Merna Zavala and Dennis Tedford, sophomores, eat tacos in the Student Union basement. 2. Sophomore Kevin Carman patiently waits to have his make-up finished by freshman Sue Holderread. 3. Kim Royer, sophomore, takes advantage of spring weather to study outside.



Patricia L. Lusk  
Rocky Ford, Colorado

Joel K. Miller  
Rocky Ford, Colorado

Paula J. Lyne  
Davaria, Kansas

Kenneth J. Miller  
Macksville, Kansas

Karla J. Marshall  
Adel, Iowa

David W. Mollhagen  
Lorraine, Kansas

Sarah A. McKirrick  
Rocky Ford, Colorado

Pamela S. Moore  
St. Louis, Missouri





Jon D. Mayer  
Leoti, Kansas

Barron T. O'Dwyer  
Limón, Colorado

Brenda R. Pore  
Wichita, Kansas

Helen K. Reynolds  
Lawrence, Kansas

Sam Rwakoojo  
Kampala, Uganda

Thomas F. Neher  
Quinter, Kansas

Joseph Opiya  
Nairobi, Kenya

Lisa J. Price  
McPherson, Kansas

Tamara I. Roesch  
Quinter, Kansas

Stephen Sawyer  
McPherson, Kansas

Gary Nelson  
McPherson, Kansas

Richard E. Parron  
Camp Verde, Arizona

Wendy M. Rayno  
Mountain Grove,  
Missouri

Dane K. Rousseau  
Anthony, Kansas

Mark A. Soyler  
St. John, Kansas

Andrew Nyakatura  
Nairobi, Kenya

Denny D. Porrer  
Quinter, Kansas

Kathryn Lori Reinhoehl  
Olathe, Kansas

Kimberly Royer  
Tempe, Arizona

Larry D. Schick  
Lawrence, Kansas



Jess L. Schloed  
McPherson, Kansas

Darcey D. Schwindt  
Gunter, Kansas

Jeffrey L. Shelton  
LaPorte City, Iowa

Joanna C. Smyres  
Windom, Kansas



1. Sophomores Robbie Linn and Jerry Linn await to be called into the game  
2. David Mallhagen, sophomore waits for his renith helping as James Janzen, sophomore looks on  
3. The McPherson College Singers entertain a hungry audience







David M. Snell  
McFarland, California

Lynn Sroneback  
Middleburg,  
Pennsylvania

Patti A. Thiessen  
Wichita, Kansas

Karin Sue Wagoner  
Adel, Iowa

Karla D. Wilson  
Valley Center, Kansas

Lloyd D. Snell  
McFarland, California

Carol J. Swank  
Poplar, Montana

Pamela S. Tucker  
McPherson, Kansas

Ron E. Washington  
Kansas City, Missouri

Condoce Wirmer  
McPherson, Kansas

Ted B. Stacy  
Dallas, Texas

Melody Sweeney  
Copper Hill, Virginia

Randal Voran  
McPherson, Kansas

John G. Weaver  
Lansing, New York

Dense G. Wolfe  
Mountain Grove,  
Missouri

Anna Kris Sinnerre  
Arvada, Colorado

Dennis D. Teaford  
Minneola, Kansas

Anne C. Wagner  
Wiley, Colorado

Drent K. Willems  
McPherson, Kansas

Glen Ray Wright  
Kansas City, Kansas





Scott N. Young  
Moscow, Kansas

Emily M. Zavala  
Rocky Ford, Colorado

Dale R. Ziegler  
Elizabethtown,  
Pennsylvania



1. Sophomore class officers from left to right; Helen Reynolds, Lisa Irie, Melody Sweeney and Larry Schick 2. Mark Saylor, sophomore snarfs a caramelized apple. 3. Helen Reynolds in Drama Tour presentation.

Freshmen  
 Freshmen  
 Freshmen  
 Freshmen  
 Freshmen  
 Freshmen  
 Freshmen



1. McPherson College freshmen support their Fanny.

Christopher W. Allgood  
 Commerce, Oklahoma  
 David E. Apetz  
 St. Charles, Missouri  
 Bruce H. Appel  
 Curlew, Iowa  
 Beverly K. Armstrong  
 Bearre, Kansas



Bruce L. Bauman  
 Chapman, Kansas  
 William Alan Beach  
 Waukesha, Wisconsin  
 Douglas D. Berg  
 Andover, Kansas  
 John D. Berquist  
 Loveland, Colorado



Eva J. Bingham  
 Uhrichsville, Ohio  
 Kevin L. Boyer  
 Kent, Illinois  
 Everett Bradley  
 Marion, Indiana  
 George R. Bradley, Jr.  
 Kary, Texas





Lisa R. Brooks  
Kansas City, Missouri  
Warren L. Drumley  
Commerce, Oklahoma  
Berry A. Durie  
McDonald, Kansas  
Linda S. Duner  
McPherson, Kansas



Trudy A. Christy  
Marshalltown, Iowa  
Joel S. Coffman  
South English, Iowa  
Thomas E. Crawford, Jr.  
Cunningham, Kansas  
Cindy A. Crumpacker  
McCune, Kansas



Robby Culbreath  
Oxon Hill, Maryland  
Paul Cunnick  
McPherson, Kansas  
Catherine L. Davis  
Wichita, Kansas  
Douglas Desive  
Crawford, Nebraska



Valissa Dewild  
McPherson, Kansas  
Ann D. Drisen  
Wichita, Kansas  
Joseph A. Disario  
Buffalo, New York  
Katherine Doyle  
Claremore, Oklahoma



Janice R. Ebbert  
Shawnee, Kansas  
Lori Kay Evans  
Columbus, Kansas  
Patrick Evans  
Arvada, Colorado  
E. Beth Ferree  
Panora, Iowa



Jane A. Fulron  
Emporia, Kansas  
Dawn S. Goeddert  
Inman, Kansas  
J. Kent Garrison  
Ulysses, Kansas  
Walter P. Gaston  
Mounds, Oklahoma



Sidney F. Gauby  
Boise, Idaho  
Les P. Glenn  
Conway Springs, Kansas  
Carolyn Goetz  
McPherson, Kansas  
Vaughn H. Goering  
Moundridge, Kansas



Druce Golden  
Coffeyville, Kansas  
Teresa L. Goodfellow  
Lyons, Kansas  
Joan P. Graham  
Halstead, Iowa  
Tim J. Gribben  
Halyoke, Colorado



Tracy L. Griffiths  
McPherson, Kansas  
Bruce G. Grose  
McPherson, Kansas  
Scott C. Hill  
Harper, Kansas  
Teresa L. Hamel  
Clay Center, Kansas



Dayna L. Heim  
Topeka, Kansas  
Angela J. Henson  
Wichita, Kansas  
Chris K. Herman  
Gorham, Kansas  
Jerome Hoffman  
Englewood, Colorado





Sue A. Holderread  
 Evergreen, Colorado  
 Dennis A. Hall  
 Roanoke, Virginia  
 Karen Ann Horn  
 McPherson, Kansas  
 Matt Howell  
 Conway, Kansas



1 Freshman Class Officers Dan Masrerson, Doug Berg, Teresa Goodfellow and Ann Dirksen



2 Freshmen Cindy Dell and Doug Duncan pay tuition one more time



Kevin M. Huddleston  
 Augusta, Kansas  
 Galin D. Humphries  
 Wichita, Kansas  
 Debbie D. Ilin  
 Nampa, Idaho  
 John Janzen  
 Inman, Kansas

Sally Jo Kendall  
 Topeka, Kansas  
 Adriana M. Klement  
 Quincy, California  
 Mark W. Klotz  
 Oakley, Kansas  
 Suarr A. Knall  
 Norton, Kansas



John Lader  
 Canton, North Carolina  
 William F. Luebert  
 Wichita, Kansas  
 Barbara Sue Mann  
 Walkerton, Indiana  
 Linda Jane Marston  
 Abilene, Kansas



Lucy Angela Martinez  
 Firestone, Colorado  
 Daniel J. Masterson  
 Mt. Morris, Illinois  
 James C. McKinnell  
 Rockford, Illinois  
 James Moffitt  
 Washington, Kansas







Dreck Charles Monier  
Lacan, Illinois  
L. Elaine Moore  
Wichita, Kansas  
Susan M. Morales  
Lyons, Kansas  
Susan M. Mullins  
Welda, Kansas

Dryce A. Neher  
Anna, Illinois  
Thomas J. Neralicky  
Lisbon, Iowa  
V. Kerr Nicholson  
Wichita, Kansas  
Elizabeth Odokara  
Umahia, Nigeria

Charles Oigwang  
Lira, Uganda  
Denson Owiny  
Kampala, Uganda  
Catherine A. Page  
St. Louis, Missouri  
John D. Perry  
Axtell, Kansas



3

1. Freshmen Bill Luebbert and Vance Plumert play frisbee for sophomores Carol Swank and Lori Reinhold. 2. Dave Apetz and Tom Neralicky shop in bookstore. 3. Sword fish takes vacation, so paper cousin takes his place. 4. Suzie Morales, Ann Dirksen, Galin Humphires, Cindy Royer, Lucy Martínez and Elaine Moore revert to childhood.



4

Tim A Piganell  
 Pueblo, Colorado  
 Dani Lynae Powell  
 Kingsley, Iowa  
 Juan Pozo  
 Gilbertville, Iowa  
 Dian Y Proffitt  
 Sterling, Kansas



Suzanne J. Roder  
 Phoenix, Arizona  
 Roxanne Rayno  
 Mountain Grove, Missouri  
 Esther Rediger  
 Riehen, Switzerland  
 Galen E. Reeves  
 Boise, Idaho



Kristy L. Regehr  
 Inman, Kansas  
 Sandra Resinger  
 Manheim, Pennsylvania  
 Joe Q. Richerts  
 Greensburg, Kansas  
 William W. Roberts, III  
 Memphis, Tennessee





Kevin W. Roesch  
 Gunter, Kansas  
 Dan R. Rogers  
 Gurhee, Minnesota  
 Cynthia L. Royer  
 Lincoln, Nebraska  
 Ronald H. Sudd  
 Manheim, Pennsylvania



3



4

1 Dan Masterson, freshman cancan trares on the music 2 Freshmen Carolyn Lengel and Cathy Page carve the winning pumpkin

3 The Masked Pieman attacks sophomore Ted Stacy in the face for a healthy profit 4 Pamela Tries, freshman, plays with Edna, the Dorzour Hall Mascot



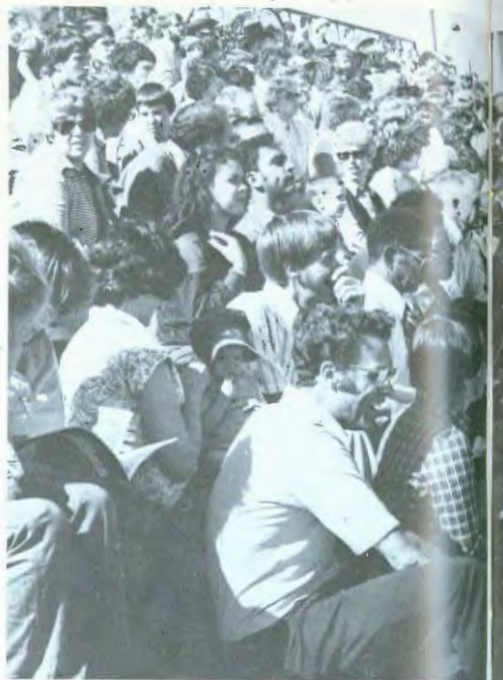
Tina M. Schmiat  
 Newton, Kansas  
 Rick Shironaka  
 Johnson, Kansas  
 Rick Shriver  
 Durham, Kansas  
 Ataloo Snel  
 LaVerne, California

William C. Snyder  
 Cleveland, Ohio  
 Robin Spysker  
 Garber, Oklahoma  
 Dennis W. Srehter  
 Wakrausa, Indiana  
 Karen A. Sriggins  
 Hutchinson, Kansas





1. Vance Plummer, freshman, and Larry Schick, sophomore give Glenda Williams, senior, and Pati Drennerman, sophomore a ride 2. Homecoming crowd anticipates a move from the Bulldogs 3. Cindy Royer, freshman, demonstrates her talent





4 The Varsity Cheerleaders cheer on our battling Bulldogs 5 Doug Berg, freshman, pauses to contemplate life before entering Student Union Cafeteria 6 A quarter gains revenge against Dr Jan van Asselt at the Homecoming Fair



Mark J Swick  
 Burlington, Colorado  
 Ronda L Switzer  
 Hutchinson, Kansas  
 Joseph L Tessler  
 Monument, Colorado  
 Kathy Ann Tharrington  
 Caldwell, Idaho



Pamela Thies  
 Evergreen, Colorado  
 Rebecca S Thompson  
 Council Grove, Kansas  
 Linda van Asselt  
 McPherson, Kansas  
 Mark Vagis  
 Canton, Kansas



Edna L Wierman  
 Lindsborg, Kansas  
 Tod J Wilson  
 Eucha, Oklahoma  
 Stephenie L Wilson  
 San Juan Capistrano,  
 California  
 Ida R Yarbrough  
 Hutchinson, Kansas



Richard Zimmerman  
 Kansas City, Missouri



1. Les Glenn, freshman,  
 demonstrates freshmen study  
 habits.







# Success!!

## *President's Associates*

### *Reach Goals*

Thanks to President Hoffman, the Office of Development, and many kind people from across the United States, McPherson College will be able to rest a little easier.

The *President's Associates* was a program designed to help raise money for the college. In order to become a member of this elite group, one must donate at least \$1,000 to the college.

The original goal was 125 members. The tally to date is over 160 members, with donations amounting to more than \$200,000.

#### PAUL W. HOFFMAN

President of McPherson College

B.S., *Manchester College*

M.Div., *Bethany Theological Seminary*

M.A., *University of Michigan*

Ph.D., *Purdue University*



#### EDWARD R. BUTLER

Vice President of Student Services

B.S., *McPherson College*

Ed.M., *State University of New York at Buffalo*

Ph.D., *State University of New York at Buffalo*



#### MERLIN L. FRANTZ

Vice President of Administrative Services and Dean of Faculty

A.B., *McPherson College*

M.Ed., *University of Nebraska*

Ed.D., *University of Nebraska*



#### NORMA TUCKER

Vice President of Academic Affairs

A.B., *McPherson College*

M.L.S., *University of Oklahoma*

Sp.E., *Wichita State University*

Ed.D., *University of Kansas*



1. Alan Kieffaber, Dr. Doris Coppock and Professor Richard Wright wait in line for the food to serve to the students. 2. Mrs. Joan Hoffman, wife of the President, and James Dodson, Business Manager discuss the outcome of Dialogue Day.



JAMES M. DODSON  
*Business Manager & Treasurer*  
DONALD R. FREDERICK  
*Assistant to the Business Manager*  
ALAN KIEFFABER  
*Campus Minister*



D. EUGENE LICHTY  
*Director of Development & Alumni Affairs*  
ALAN H. McNAMEE  
*Director of Institutional Research*  
KATHLEEN M. McNAMEE  
*Director of Financial Aids*



KARLENE TYLEK  
*Registrar*  
CONNIE ANDES WEDDLE  
*Associate Director of Development*



# Faculty



1 Dr. Norma Tucker stands at the head of the table, waiting for students.



2 Dr. Leland Lengel apparently finds it more relaxing to read a book when he has to help.

## JOHN A. BURDEN

Assistant Prof. of Behavioral Science  
B.A. and M.A., *Western Kentucky University*

## JOHN H. BURKHOLDER

Professor of Biological Science  
A.B., *McPherson College*; Ph.D., *University of Chicago*

## CHARLES COATS

Assistant Prof. of Mathematics  
D.S., *Southwestern State College*; M.A. and M.S.,  
*University of Oklahoma*



## DORIS E. COPPOCK

Professor of Physical Education  
A.B., *McPherson College*; M.A. and Ph.D.,  
*University of Iowa*

## SUSAN CURTIS

Assistant Professor of Music  
B.M. and M.M., *Southern Methodist University*

## WESLEY DECOURSEY

Professor of Physical Science  
B.S., *McPherson College*; Ph.D., *Iowa State University*





**N. ALFRED DUTROW**

Assistant Prof. of Biological Science  
 B.S., *McPherson College*; M.S., *Michigan State University*

**ROBERT FAIRBANK**

Assistant Prof. of Physical Education  
 B.S., *Berhel College*; M.S., *Emporia State University*

**RAYMOND L. FLORY**

Prof. of History and Political Science  
 B.S., *McPherson College*; M.A. and Ph.D., *University of Kansas*



1. Professor Wesley Pauls takes one last glance over the day's material for the Drafting class. 2. Dr. Monroe Hughbanks, who is on Sabbatical leave is still found around campus.



**PAUL N. GRADER**

Assistant Prof. of Physical Education  
 A.B., *St. Olaf College*; M.S., *Fort Hays State University*; Ph.D., *University of Utah*

**STEPHANIE B. GRADER**

Assistant Professor of Music  
 B.M.E. and M.M., *Fort Hays State University*; Ph.D. candidate, *University of Utah*

**BOB R. GREEN**

Associate Professor of English  
 A.A., *Central College*; A.D., *Seattle Pacific College*; M.A., *Kansas State Teachers College*

ALICE HENSON  
Director of Learning Skills  
A.A., Northeastern Oklahoma AGMP D.S.,  
University of Oklahoma, M. Ed., Wichita State  
University.



MONROE HUGHBANKS  
Professor of Education  
A.D., Asbury College, M.Ed., Kansas State Teachers  
College, Ed.D., University of Nebraska.

GILFORD J. IKENDERBERRY, JR.  
Professor of Biological Science  
D.S., McPherson College, M.S., Oklahoma State  
University, Ph.D., Iowa State University.

HERBERT L. JOHNSON  
Dir. of Learning Resources Center  
A.D., McPherson College, M.S., Southern Illinois  
University.



JOAN JOHNSON  
Assistant Librarian  
A.D., McPherson College, M.L.S., Emporia State  
University.

LEORA KLINE  
Assistant Professor of Music  
D.M., Southwestern College, M.M., Eastman School  
of Music.



1 Professor George Butler relaxes and enjoys the company after dinner



**LELAND LENGEL**

Prof. of History and Political Science  
A.B., *McPherson College*; M.A., *Duke University*;  
Ph.D., *University of Oregon*

**ROWENA J. OLSEN**

Head Librarian - Assistant Professor  
D.A., *Kansas Wesleyan University*; M.A., *University of Denver*

**WESLEY PAULS**

Assistant Prof. of Industrial Education  
B.A., *Tabor College*; M.A., *Fresno State University*

**MARY ANN ROBINSON**

Associate Professor of Art  
B.S., *Kansas State University*; M.A., *McCormick Theological Seminary*; M.A., *Wichita State University*

**DAYTON G. ROTHROCK**

Prof. of Education & Psychology  
A.B., *McPherson College*; M.Ed., and Ed.D., *University of Nebraska*

**STEVEN D. SCHWARTZ**

Assistant Prof. of Industrial Education  
A.A., *Hesston College*; B.S., *Pittsburg State University*



1 Professor John Burden listens attentively to a student

**2 HARLEY STUMP**

Professor of English  
A.B., *Southwestern State College*; M.Div., *Bethany Theological Seminary*; Ph.D., *University of Oklahoma*

## Dialogue Day

The faculty and administration of McPherson College are an integral part of the institution.

On April 1, 1980 some of the cumulative efforts put forth by the faculty and the administration paid off. All across campus discussion groups met with faculty members as well as members of the administration listening to all concerns voiced by students on all aspects of campus life.

Tired *Dialogue Day*, the event was so important in the eyes of the faculty and administrators that all classes were cancelled for the day.

While not the typical "gripe session", there were many complaints made by students, but there were many appraisals as well.

The first session which began at 8:45 A.M., centered around the question, "What Is The Ideal College?". Then followed discussion on what participants felt to be the bad and good points of the college (otherwise known as "pinches" and "strokes").

The rest of the day was spent by setting priorities and problem solving. That evening, faculty and administrators served dinner and provided the entertainment as well.



1 Susan Dodson, along with faculty and staff members performed the entertainment for the end of Dialogue Day. 2 Professor Stephanie Graber joins others in singing the evening dinner prayer.

### MARVIN E. SELLDERG

Assistant Prof. of Business & Economics  
A.A., Central College; M.B.A., University of  
Chicago

### SUSAN TAYLOR

Assistant Prof. of English & Journalism  
D.A., McPherson College; M.L.S., Emporia State  
University

### RICK W. TYLER

Assistant Prof. of Speech & Theatre  
A.B., McPherson College; M.A., Emporia State  
University





**JAN van ASSELT**

Professor of German & Linguistics  
D.S., *McPherson College*; M.S., *University of Colorado*; Ph.D., *University of California*

**K. MICHAEL WARNER**

Assistant Prof. of Economics and Business Administration  
B.A. and M.A., *University of Missouri-Kansas City*

**RICHARD A. WRIGHT**

Assistant Prof. of Sociology  
D.S., *Madison College*; M.A., *Ohio University*



1



2

1 Dr. Jan van Asselt enjoys reading German news of the day 2 Dr. Norma Tucker exhibits her name tag during Dialogue Day



**RICHARD P. ZERGER**

Assistant Prof. of Physical Science  
D.A., *Bethel College*; M.S. and Ph.D., *University of Illinois*

**HERBERT D. ZOOK**

Assistant Prof. of Industrial Education  
A.A., *Hesston College*; D.S., *Farr Hays Director*  
Cynthia Koehn  
Admissions Counselor



## Staff



Kathryn Achilles  
*Mail Clerk*

Beth Brubaker  
*Admissions Counselor*

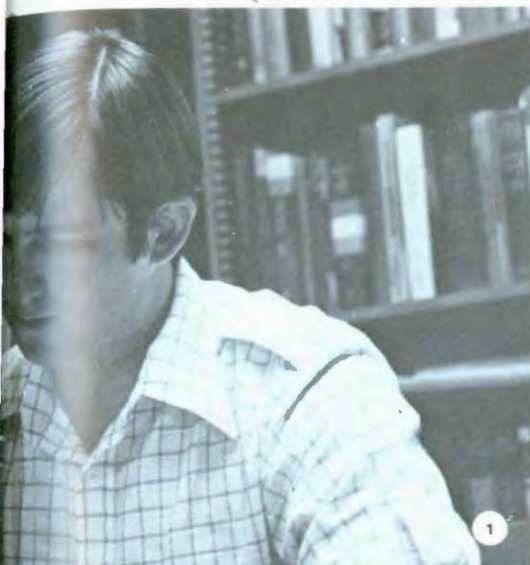
Betty Darchesky  
*Secretary, Academic  
Dean*

Judy Butler  
*NDSL Clerk*

Billie Becker  
*Maintenance*

Roger Carswell  
*Clerical Assistant*





1. Dr. Paul Graber takes care of some paper work. 2. Dr. Dale Goldsmith offers help to students in his office. 3. Dr. Leland Lengel listens to students who make comments on his lectures.



Miriam Dell  
Secretary, Title III

Glen Flory  
Maintenance

Susan Dodson  
Coordinator of  
Student Activities

Judy Faulke  
Bookstore Manager

George Ellrick  
Maintenance

Mary Frizemeier  
Financial Aids Secre-  
tary

Nino Flax  
Clerical Assistant

Lillian Gass  
Maintenance

Merrin Godfrey  
*Superintendent of Grounds*

Jana Goering  
*Accounts Receivable Clerk*

Frances Gustafson  
*Dir. of Development Secretary*



Joanne Hamlin  
*Director of Housing*

Karen Hoch  
*Clerical Assistant*

Anna Mae Hull  
*Alumni Secretary*



Steve Jackson  
*Coordinator of Admissions*

Lewis Kelly  
*Saga Food Service Director*

Cynthia Koehn  
*Admissions Counselor*



1. Professor George Butler gives it everything he's got in the tricycle race at the Homecoming fair.







Maryclare Konicek  
Maintenance  
Secretary  
Larry Latimer  
Athletic Facilities  
Coordinator  
Patricia Lusk  
Secretary to the  
President  
Margaret Parker  
Maintenance

Judy Parsons  
Placement Counselor  
Connie Peterson  
Accounts Payable  
Clerk  
Alyce Replogle  
Switchboard  
Operator  
Rene Seirone  
Business Office Clerk



1. Professor Rick Tyler gets things together for the next Drama performance. 2. The Board of Trustees between meetings during Homecoming week.



1. Dr. Raymond Flary uses the card catalogue to locate information for his history classes. 2. Lou Kelly plans the next week's food menu.



Sidney Smith  
Director of Capital Gifts  
Josephine Stubby  
Admissions Secretary  
Brad Stucky  
Maintenance



Wallace Stucky  
Maintenance  
Connie Swartz  
Student Services Secretary  
Paul Wagoner  
Maintenance



Marcia Walters  
Assistant to the Registrar  
Nadine Weaver  
Continuing Education Secretary  
Marja Williams  
College Nurse











**McPHERSON BANK  
& TRUST**

Downtown and **North Bank**

Member F.D.I.C.



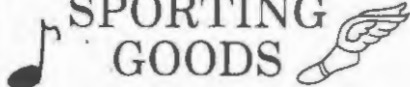
241 0412



## EBAUGH'S GIFTS

Hallmark Cards also Picture Framing  
Infants Wear also Russell Stover Candies  
108 N. Main St. / McPherson, Kansas 67460

## CRABBS TOWN & COUNTRY MUSIC- SPORTING GOODS



325 North Main

241 2300



COLOR TV  
INDIVIDUAL  
HEAT & AIR CONDITIONING

## *El Morocco Motel*

PHONE (316) 241 3240  
1125 WEST KANSAS  
(ON HIGHWAY 56)

VIRGINIA MORRIS  
PROX 155  
McPHERSON, KS 67460

## The Travel Center



"Let Us Plan Your Next Trip"

109 East Kansas

241 5830

# COUNTRY KITCHEN

the EXTRA full place  
right at home place

WHERE YOU ARE NO STRANGER  
AND NEITHER ARE WE

**MORE OF WHAT  
YOU GO OUT FOR.™**

McPHERSON FLORAL

Flowers for all times  
and all occasions



104 S. Main

241-4343

# McNichols SHOES

McPHERSON'S FINEST SHOE STORE

P.O. BOX 448 • 118 NORTH MAIN

McPHERSON, KANSAS 67460



## Plumbing ACE & Heating Co.

420 North Maple  
McPherson, Kansas  
241-1740

CERTAINTED CORP.

500 West First  
McPherson, Kansas

Supplying your needs for

1/2" to 27" PVC Pipe  
and Fittings  
PVC Vinyl Siding in 8", D/4  
T/4 panel and  
Accessories

SWEENEY'S SHOE STORE

Shoes For The Entire Family

117 N. Main

McPherson

ALBERTS, INC. PLUMBING & HEATING

Air Conditioning and Electrical

Herbert Heimbrecht, Owner

1101 W. Kansas

McPherson

## MAXIMILIANS

5 Different Menus To Choose  
From

Everything From

FRESH & TASTY SEAFOOD  
JUICY GREAT  
ZESTY  
HAMBURGERS  
TENDER  
PRIM RIB



## FLOWER FAIR

Remember us when  
you want to share  
with a friend!

305 N. Main

McPherson



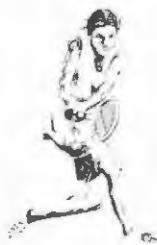
## GRANDMA'S APRON

910 East Kansas Avenue  
McPherson, Kansas 67460  
(316) 241-5505

TAKE OUR CRISP FRIED  
CHICKEN ON YOUR NEXT  
PICNIC!



## Mid Kansas Sports & Awards





# Renberger



## Jewelers & Gifts

FOR THE BEST PLACE TO BUY  
THE GIFT OR DIAMOND FOR  
YOUR SPECIAL ONE

COME TO RENDERGER  
JEWELERS & GIFTS

The Store Where Dreams Are Fulfilled.  
115 N. Main McPherson



# GUY'S SHOP

106 S. Main

McPherson's Store With The

"YOUNG IDEAS

Carrier Of Brand Names



HEADQUARTERS  
FOR

"Bringing You The Best"

DIAMONDS  
WATCHES  
JEWELRY

GEORGE & ROBERTA WILLARD  
OWNERS

REGISTERED JEWELER



AMERICAN GEM SOCIETY

214 North Main

McPherson, Kansas  
241 2294



## RALEIGH'S DRUG STORE

- Ken Cole •
- Larry Smith •
- Scott Riggerbach •

Store Hours 8 a.m. to 10 p.m.

Pharmacists On Duty At All Times

213 N. Main

McPherson

GOOD LUCK CLASS OF 1980!

## JANTZ-KAUFMAN INC.

NOTHING runs like a ...



1411 Dy Pass  
McPherson, Kansas  
241 3553

# MILLER

Duplicating Service  
Office Supplies and  
Furniture

117 East Euclid\* 241,482

## OFFICE SUPPLY

### Hallmark Cards

Home of all  
occasion cards  
and gifts

204 North Main  
McPherson, Kansas

Shopping at its  
Ultimate ...  
Experience it!!!



## THE CLOTHES TREE

Missy Sports Wear, Dresses,  
Coats, Blouses, Slacks

Juniors Sports Wear, Designer  
Jeans, Fashion Tops and  
Bottoms, and all accessories

102 North Main

241 5441

"Helping you look good  
is what we're all about"



"We're coming in for good!"

Sicilian Style

Dine In

We Deliver

Carry Out

2215 East Kansas

241 5588

HARRIS LUMBER  
COMPANY, INC.

Complete Building  
Service

Lumber Paint Hardware

200 West Euclid\*McPherson  
241-4044



# Hardee's

Charbroil Burgers

of McPherson

241 5145



**APPIEGATE'S  
& LANDING**



We serve:

**PASTA** - Chicken Tetrazzini, Manicotti, Lasagna, Gilbertini, Spaghetti

**PIZZA**

**SANDWICHES**

**SALAD BAR**

**DELICIOUS DESERTS** - Cheesecake, Hot Spiced Cider, Bread Pudding, Sundaes

open

Sunday - Thursday 11 A.M. - 11 P.M.  
Friday - Saturday 11 A.M. - 12 A.M.

1st & Mulberry \* 241-2242

YMCA

Open gym, swim, sauna,  
work out room and programs

JOIN THE YMCA

200 N. Walnut

241 0360

*Starlite Lanes*



KEEP 'EM ROLLING

900 W. KANSAS AVE.

241-1200



**SIRLOIN<sup>®</sup>  
STOCKADE**

Junction I-135 & U.S. 56 Highways  
McPherson, Kansas 67460

(316) 241-5343

**The  
Student  
Center.**



Going to McDonald's<sup>®</sup> is almost as much a part of school as going to class. You've made us the place to meet, to talk, to have a good time, to celebrate your victories and help forget defeats.

You've made McDonald's more than just another place to eat. And that's why, at McDonald's, we do it all for you.







**SAVINGS & LOAN  
ASSOCIATION**

Kansas at Maple  
Box 1246 • McPherson



Home of 13 Bulldog  
rooters and the highest-  
saving rates  
in town!

"Where You Save Does Make A Difference"



POOR OLE JOHN

*"POOR JOHN'S  
Appliance Store"*

---

Telephone \* 316 241-2920  
218 North Main Street  
McPherson, Kansas 67460

THANK YOU  
1980 Quadrangle Advertisers

Your support is essential to our  
yearbook. We urge our readers to  
patronize these firms as a way of  
expressing our appreciation.

# Index

## A

ABBOTT, Doris J. 99  
ACHILLES, Kathryn 134  
ACKERMAN, Jill E. 106  
ALLGOOD, Christopher W. 33, 114  
AMES, Darrell Dwayne 92  
ANDREAS, Sonya J. 92  
APETZ, David E. 13, 24, 62, 114, 119  
APPEL, Bruce H. 34, 62, 114  
ARMSTRONG, Beverly K. 114  
AWONTUNDUN, Leah 92

## B

BAHR, Cindy M. 62, 106  
BAILEY, George K. 33, 106  
BAILEY, Nancy J. 62, 64, 92  
BANTA, Terry W. 92  
BARCHESKY, Betty 134  
BARNHART, Dave E. 99  
BAUMAN, Bruce L. 49, 62, 63, 114  
BEACH, Michael R. 106  
BEACH, William Alan 114  
BECK, James A. 12, 104  
BECKER, Billie 134  
BERG, Douglas D. 16, 59, 62, 63, 64, 71, 90, 114, 117, 123  
BERGQUIST, John D. 114  
BINGHAM, Elva J. 61, 68, 71, 114  
BISHOP, Kelly 106  
BLAKE, Todd A. 59, 100  
BORMANN, Peter E. 69  
BOURKE, Guy M. 42, 49, 99  
BOYER, Keith L. 49, 59, 114  
BRADLEY, Everett 33, 53, 70, 114  
BRADLEY, George R. 35, 114  
BRAND, Amy Sue 106  
BRENNEMAN, Pam L. 65, 67, 106, 122  
BRILL, John 35, 106  
BRISCOE, Harold D. 59, 71, 100, 101  
BROOKS, Lisa R. 62, 115  
BRUBAKER, Beth 69, 124  
BRUMLEY, Warren L. 33, 115  
BURDEN, John 128, 131  
BURGER, Naomi J. 58, 62, 63, 71, 75, 106  
BURK, Berry A. 115  
BURKHOLDER, Douglas G. 60, 92  
BURKHOLDER, John 82, 128  
BURKHOLDER, Karen E. 60, 93  
BURKHOLDER, Kathryn E. 106  
BURNS, Elizabeth A. 62, 68, 106  
BUTLER, David L. 19, 60, 62, 64, 93  
BUTLER, Dr. Edward R. 70, 126  
BUTLER, George 64, 130, 136

BUTLER, Judy 134  
BUTLER, Linda S. 62, 71, 115  
BUTTON, Cosette 70, 93

## C

CARMAN, Kevin 24, 25, 43, 56, 106, 109  
CARRIAGA, Adan Antonio 99  
CARRIAGA, Charmaine 104  
CARSWELL, Russell R. 100  
CHRISTIAN, Suzette E. 68  
CHRISTY, Lori L. 21, 24, 58, 71, 93, 96  
CHRISTY, Trudy A. 61, 115  
CLARK, Lianne M. 107  
CLOUGH, James 99  
COATS, Charles 96, 128  
COFFMAN, Joel S. 115  
COLE, Carolyn J. 70, 100  
COLVIN, John F. 34  
COLVIN, Patricia 100  
COPPOCK, Doris E. 127, 128  
CORDEL, Brian 20, 44, 45, 48, 53, 59, 65, 93  
COTTON, Kathy 58, 62, 63, 89, 93, 100  
COX, Lindal R. 44, 48, 85  
COX, Timothy P. 60, 62, 64  
CRAWFORD, Thomas E. 44, 48, 49, 115  
CRIST, Jeffrey 55, 65, 70, 100  
CRIST, Thomas O. 107  
CROOK, Steven W. 34  
CRUMPACKER, Dambi 58, 100  
CRUMPACKER, Cindy A. 115  
CUNNICK, Jess M. 93  
CUNNICK, Paul 115  
CURTIS, Susan 128

## D

DAVIS, Catherine L. 62, 71, 115  
DAVIS, Michael C. 44, 47, 48, 92, 99  
DAVIS, Peggy 27, 36, 50, 65, 93  
DEATON, Eva 71, 99  
DeCOURSEY, Wesley 128  
DEITZ, Kathryn A. 107  
DELL, Miriam 135  
DENISON, Bryan L. 62, 64, 107  
DESIVE, Douglas 115  
DEVADER, Kathleen 58, 69, 101, 103  
DEWILD, Valissa R. 115  
DIRKSEN, Ann D. 36, 67, 71, 77, 115, 117, 119  
DISARNO, Joseph A. 115

DIXON, Lisa 62, 95, 101  
DODSON, James M. 127  
DODSON, Susan 71, 132, 135  
DOYLE, Katherine 16, 70, 115  
DUNCAN, Douglas L. 60, 117  
DUTTROW, Alfred 129

## E

EDDERT, Janice R. 62, 115  
EISELE, Kimberly A. 70, 101, 103  
ELDRIDGE, Kimberly A. 62, 101  
ENOS, Teresa A. 64, 65, 70, 101, 105  
ELLRICK, George 135  
ERISMAN, Gail 58, 62, 63, 93  
EVANS, Lori Kay 12, 115  
EVANS, Patrick 33, 115  
EWERT, Gene P. 59, 62, 63, 70, 93, 95

## F

FAHNESTOCK, Bruce L. 107  
FAIRDANK, Robert 49, 129  
FARRES, Randall S. 44, 45, 48, 104  
FAWL, Tony G. 59, 67, 101  
FEIGHT, Steven W. 107  
FENNO, Gregory H. 1, 11, 30, 61, 62, 63, 71, 107, 152  
FERREE, E. Beth 24, 58, 71, 95, 115  
FINNEY, Lester 52, 53, 70, 93  
FISHER, Randall W. 34  
FLAX, Nina 135  
FLAMING, Johnny R. 13, 24, 101  
FLORY, Glen 135  
FLORY, Raymond L. 129, 138  
FOULKE, Judy 135  
FOX, Eric R. 33  
FRANÇÉ, Pierre A. 33, 107  
FRANTZ, Kenneth D. 62, 64, 101  
FRANTZ, Dr. Merlin 126  
FREDERICK, Donald 127  
FRITZMEIER, Mary 135  
FULTON, Jane A. 62, 116  
FUNDERBURK, Kenneth E. 32, 53, 70, 107

## G

GAEDDERT, Dawn S. 4, 62, 116  
GAEDDERT, Wylene 42, 43, 50, 93  
GARD, Leda D. 15, 107  
GARRISON, J. Kent 44, 48, 49, 77, 116  
GASS, Lillian 135  
GASTON, Walter P. 22, 32, 34, 53, 116

GAUDY, Sidney F.: 12, 60, 62, 116  
GAYER, Doug.: 44, 46, 48, 55, 65,  
102

GLENN, Les P.: 116, 124  
GODFREY, Merrin: 136  
GOELZ, Carolyn: 116  
GOERING, Dean: 107  
GOERING, Jana: 136  
GOERING, Vaughn H.: 116  
GOLDEN, Bruce: 34, 116  
GONZALES, Augustine: 33  
GOODFELLOW, Kristen K.: 14, 58,  
65, 101, 102, 103  
GOODFELLOW, Teresa L.: 41, 54,  
116, 117  
GORMAN, Terri: 107  
GRABER, Paul: 36, 51, 56, 129, 135  
GRABER, Stephanie: 62, 63, 64, 83,  
129, 132  
GRAGG, Aaron L.: 62, 63, 69, 71,  
107

GRAHAM, Joan P.: 64, 116  
GREEN, Bob R.: 129  
GRIBBEN, Tim J.: 32, 49, 116  
GRIFFIS, Tracy L.: 36, 50, 51, 54,  
55, 62, 116  
GROSBACH, Lyle E.: 41, 53, 62, 107  
GROSE, Bruce G.: 33, 116  
GUMM, Alan J.: 11, 26, 30, 61, 62,  
69, 70, 71, 84, 107  
GUMM, Jeffrey: 24, 27, 58, 62, 84,  
93, 95  
GUSTAFSON, Frances: 136

## H

HADDUCK, Kevin  
HALL, Scott C.: 116  
HAMEL, Teresa L.: 116  
HAMILTON, Ralph A.: 59, 70, 102  
HAMLIN, Joanne: 70, 136  
HANSEN, Douglas M.: 11  
HARSHBERGER, Kevin J.: 62, 63, 67,  
75, 107  
HARTER, Janice K.: 62, 68, 94  
HECKART, Monica D.: 68, 102  
HEIM, Dayna L.: 116  
HENSON, Alice: 100  
HENSON, Angela J.: 1, 61, 66, 85,  
116, 152  
HERMAN, Chris K.: 32, 49, 116  
HEYER, Gloria B.: 62, 102  
HIGGINS, Kirk: 14, 33, 44, 48, 53,  
59, 65, 70, 94  
HIGGINS, Pamela S.: 60, 62, 65,  
107  
HOCH, Karen S.: 136  
HODGES, David L.: 50, 59, 65, 94  
HOFFMAN, Jerome: 69, 116  
HOFFMAN, John M.: 53, 62, 63,  
68, 94

HOFFMAN, Dr. Paul W.: 10, 19, 20,  
21, 126  
HOLDERREAD, Jeffery: 66, 94  
HOLDERREAD, John L.: 102  
HOLDERREAD, Kim: 61, 94  
HOLDERREAD, Sue A.: 27, 27, 50,  
62, 109, 117  
HOLL, Dennis A.: 117  
HORN, Karen A.: 117  
HOWELL, Kathy: 40, 50, 58, 70,  
95, 96  
HOWELL, Matthew: 62, 117  
HUDDLESTON, Kevin M.: 44, 48, 49,  
68, 117  
HUGHDANKS, Monroe: 129, 130  
HULL, Anna Mae: 136  
HUMPHRIES, Galin D.: 66, 117, 119  
HUNT, Jerry D.: 32  
HUNTER, Keith: 102  
HUTCHINSON, Brandt D.: 104

## I

IKENDERRY, Gilford: 89, 130  
ILIN, Debbie D.: 36, 50, 117  
IRLE, Lisa A.: 24, 25, 30, 71, 107,  
113

## J

JACKSON, Steven: 34, 136  
JANZEN, James K.: 62, 64, 107, 111  
JANZEN, John: 117  
JOHNSON, Helen Rachael: 19, 58,  
95, 105  
JOHNSON, Herbert: 130  
JOHNSON, Joan: 130  
JONES, Phillip R.: 34  
JONES, William D.: 15, 33, 49, 95  
JUHNIKE, Christine B.: 96  
JUSTUS, Michael D.: 44, 49, 107

## K

KASADHA, Ruth C.: 70, 108  
KELLY, Lou: 136, 138  
KELTNER, Priscilla: 68, 101, 102  
KENDALL, Sally J.: 16, 50, 118  
KIEFFADER, Alan: 13, 127  
KIM, Kira: 62  
KIRKDOFFER, Kim D.: 58, 62, 68,  
102, 103  
KITSON, James D.: 20, 41, 52, 53,  
59, 69, 71, 95, 96  
KLEMENT, Adriana M.: 118  
KLUWER, Roy A.: 20, 59, 96  
KLINE, Leora: 130  
KLOTZ, Mark W.: 118  
KNOLL, Suaver A.: 118  
KOEHN, Brent V.: 103  
KOEHN, Cynthia: 69, 136  
KOEHN, Jack C.: 44, 48, 49, 56

108

KONICEK, Maryclare: 135  
KUWATA, Seiji: 108

## L

LADET, John: 118  
LAFAYETTE, Excell: 33  
LANG, Sandra A.: 36, 50, 85, 108  
LATIMER, Larry: 33, 43, 53, 135  
LEACH, John C.: 99  
LEDDY, Dan L.: 4, 55, 65, 95, 97  
LEGINS, Jerald C.: 53, 70, 103  
LENGEL, Carolyn J.: 65, 79, 121  
LENGEL, Douglas A.: 60, 61, 70, 106  
LENGEL, Leiland: 128, 131, 135  
LEWALLEN, Celeste A.: 108  
LICHTY, D. Eugene: 127  
LINDBLADE, Michael O.: 97  
LINN, Jerry K.: 34, 108, 111  
LINN, Robert A.: 34, 56, 108, 111  
LINTECUM, Robert E.: 97  
LOLLING, Deborah R.: 26, 68, 71,  
95, 97  
LOSHDAUGH, Patricia J.: 103  
LUEDDERT, William F.: 118, 119  
LUSK, Patricia: 135  
LUSK, Patricia L.: 4, 26, 67, 71, 103,  
109  
LUTZ, Robert J.: 32  
LYNE, Paula J.: 58, 64, 109

## M

MALTDIE, Earl L.  
MANGUS, Mario W.  
MANN, Barbara S.: 36, 50, 118  
MARSHALL, Karla J.: 58, 62, 63,  
64, 109  
MARSTON, Linda J.: 118  
MARTINEZ, Lucy A.: 54, 118, 119  
MASON, Daniel D.: 62, 63, 64, 103  
MASON, Mary: 64, 97  
MASON, Tom E.: 60, 101, 103  
MASTERSON, Daniel J.: 62, 63, 64,  
71, 75, 117, 118, 121  
MASTERSON, Diane R.: 97  
McKINNELL, James C.: 59, 62, 70,  
118  
McKITTRICK, Sarah A.: 62, 64, 109  
McNAMEE, Alan: 127  
MELIA, Susan A.: 65, 64, 103  
MILLER, Diane: 62, 65, 68, 77, 103  
MILLER, Jeff T.: 53, 70, 97  
MILLER, Joel K.: 11, 15, 59, 62, 106,  
109  
MILLER, Kenneth J.: 60, 67, 109  
MOFFITT, James: 62, 118  
MOLLHAGEN, Brian: 104  
MOLLHAGEN, David W.: 44, 49, 62,  
109, 111  
MOLLHAGEN, Robin B.: 69, 104



MONIER, Dreck C. 64, 119  
MOORE, L. Elaine 36, 61, 66, 68  
77, 119  
MOORE, Pamela S. 27, 65, 71, 109  
MORALES, Susan M. 13, 41, 50, 51,  
56, 119  
MOYER, Jon D. 62, 110  
MULLINS, Susan M. 62, 64, 119  
MYERS, Gail 62, 97

## N

NEHER, Dryce A. 49, 119  
NEHER, Paul 60, 70, 97  
NEHER, Thomas F. 59, 62, 110  
NELSON, Gary 110  
NETOLICKY, Theresa 4, 24, 25, 26,  
64, 68, 71, 97  
NETOLICKY, Thomas J. 26, 27, 29,  
32, 62, 119  
NICHOLS, Kenny L. 32, 76  
NICHOLSON, V. Kenr. 12, 41, 62,  
64, 119  
NORRIS, Mike 65, 104  
NOVOTNY, Ja 104  
NYAKATURU, Andrew 110

## O

ODOKARA, Elizabeth 119  
ODOKARA, Grand B. 38, 97  
ODOKARA, Marina 70, 104  
O'DWYER, Barron T. 34, 48, 49,  
77, 110  
OGWANG, Charles 38, 53, 119  
OLSEN, Rowena 131  
OPRYC, Joseph 70, 110  
O'REILLY, Tom 97  
OVERHOLT, Margorie 104  
OWENS, Annette M. 99  
OWINY, Benson 119  
OXLEY, Pamela S. 70, 98

## P

PAGEZ, Catherine A. 61, 69, 119,  
121  
PARKER, Margaret 135  
PARSONS, Judy E. 135  
PATTISON, Richard E. 59, 71, 110  
PAULS, Wesley 129, 131  
PECK, Patricia 104  
PERRY, Jeff 35  
PERRY, John D. 119  
PETEYSON, Connie 135  
PETEYSON, David R. 98  
PETTIT, Renee 16, 65, 104, 105  
PETTY, Elizabeth Marie 16, 42, 58,  
62, 64, 95, 98  
PIERSON, Ted W. 104  
PIGANELL, Tim A. 33, 120  
PLUMBERT, Vance 67, 119, 122

PORTER, Denny D. 62, 67, 70, 110  
POTE, Brenda R. 66, 67, 110  
POWELL, Dani L. 41, 120  
POZO, Juan 38, 120  
PRICE, Lisa J. 110  
PROFFITT, Dian Y. 36, 50, 54, 120

## Q

QUILLEN, Billie D.

## R

RADER, Suzanne J. 120  
RAMSEY, Michael D. 32, 33  
RAYNO, Roxanne 26, 50, 66, 120  
RAYNO, Wendy M. 26, 28, 67,  
110  
REDIGER, Esther 62, 84, 101, 120  
REDMOND, Jani R. 65, 98  
REEVES, Galen E. 62, 63, 64, 120  
REGEHR, Kristy L. 120  
REINDEHL, Kathryn L. 62, 110, 119  
REISH, Brenda 105  
REISINGER, Sandra 120  
REPLOGLE, Alyce 62, 135  
REYNOLDS, Helen K. 30, 62, 68,  
71, 110, 113  
RICKETTS, Joe Q. 120  
ROBERTS, William W. 120  
ROBINSON, Mary Ann 131  
ROESCH, Kevin W. 32, 121  
ROESCH, Tamara L. 62, 65, 70, 110  
ROGERS, Dan R. 41, 53, 62, 121  
ROHRER, Barbara J. 68, 98  
ROHRER, Philip A. 104  
ROTHROCK, Dayton 131  
ROTHROCK, Lamonie R. 96, 98  
ROUSSEAU, Dane K. 59, 69, 110  
ROYER, Cynthia L. 16, 36, 68, 119,  
121, 122  
ROYER, Kimberly 67, 109, 110  
ROYER, Leanne D. 11, 62, 63  
RUTLEDGE, John 79  
RUZICH, Laurence R. 33  
RWAKOOJO, Sam 110

## S

SADD, Ronald H. 121  
SAWYER, Stephen 110  
SAYLER, Mark A. 110, 113  
SCHICK, Larry D. 59, 62, 67, 110,  
113, 122  
SCHLENDER, Fredrick 42, 59, 96  
SCHLOAD, Doris L. 105  
SCHLOAD, Jess L. 111  
SCHMIDT, Steve 24, 98  
SCHMIDT, Tina M. 61, 121  
SCHWINDT, Darcey D. 32, 59, 111  
SELLBERG, Marvin 132  
SERRONE, Rene 135  
SHANK, Barron L. 98  
SHANK, Hannah L. 98  
SHARP, Sandra 54, 62, 105  
SHEAFFER, Janer 58, 70, 101, 105  
SHELTON, Jeffrey L. 111  
SHEPARD, Lorette 98  
SHIRONAKA, Rick 53, 121  
SHRIVER, Rick 76, 121  
SMITH, Sid 138  
SMYRES, Joanna C. 111  
SNELL, Aralea 62, 121  
SNELL, David M. 112  
SNELL, John R. 99  
SNELL, Lloyd D. 112  
SNYDER, William C. 121  
SPENCER, Franchiel A. 58, 70, 71,  
99  
SPYKER, Robyn 121  
STACY, Ted B. 53, 112, 121  
STAHL, Lorhar 105  
STATON, Darren E. 70  
STICHTER, Dennis W. 59, 104, 121  
STIGGINS, Karen A. 61, 121  
STINETTE, Anna Kris 62, 112  
STINETTE, Donald R. 60, 61, 65,  
99  
STONEDACK, Lynn 58, 62, 112  
STUBBY, Josephine 138  
STUCKY, Brad 138  
STUCKY, Wallace 138  
SWANK, Carol J. 26, 62, 63, 119,  
112  
SWANK, Kathy M. 62, 63, 101, 105  
SWARTZ, Connie 138  
SWARTZ, Steven 69, 131  
SWEENEY, Melody A. 6, 22, 24,  
25, 62, 63, 75, 112, 113  
SWICK, Mark J. 32, 62, 85, 124  
SWITZER, Ronda L. 62, 105, 124

## T

TAYLOR, Susan 132, 152  
TEDFORD, Dennis D. 32, 33, 56,  
109, 112  
TESSIER, Joseph L. 124  
THARRINGTON, Kathy A. 61, 124  
THIES, Pamela 11, 24, 25, 58, 61,  
62, 63, 121, 124, 152  
THESSSEN, Parti A. 112  
THILL, Curtis C. 15, 16, 21, 61, 99  
THOMPSON, Rebecca S. 62, 124  
THOREN, Kathryn A. 58, 104  
TUCKER, Dr. Norma 61, 70, 126,  
128, 133  
TUCKER, Pamela S. 50, 70, 81, 112  
TYLER, Karlene 28, 29, 127  
TYLER, Rick W. 28, 30, 71, 132,  
137

## V

van ASSELT, Allan 53, 60, 64, 99  
 van ASSELT, Jan 123, 133  
 van ASSELT, Linda 16, 58, 62, 63,  
 65, 124  
 VOGTS, Mark 124  
 VORAN, Randal 11, 42, 62, 112  
 VOTH, Michele 77, 105

## W

WAGNER, Anne C. 62, 112  
 WAGONER, Karin S. 62, 64, 112  
 WAGONER, Paul 138  
 WALTERS, Marcia 138  
 WARD, Anne 104  
 WARNER, Michael K. 27, 133  
 WEAVER, John G. 122

WEAVER, Nadine 138  
 WEDDLE, Connie 127  
 WHITACRE, Christopher 99  
 WHITACRE, Kathryn A. 26, 71, 105  
 WIENMAN, Edna L. 124  
 WILLEMS, Brent K. 4, 62, 112  
 WILLIAMS, Carlton 15  
 WILLIAMS, Glenda S. 67, 99, 122  
 WILLIAMS, Marcia 138  
 WILLSON, Tod J. 33, 124  
 WILSON, Karla D. 67, 112  
 WILSON, Kevin 64  
 WILSON, Stephanie L. 124  
 WITMER, Candace 112  
 WOLFE, Denise G. 112  
 WRIGHT, Glen R. 22, 26, 62, 70,  
 71, 112  
 WRIGHT, Richard 58, 127, 133  
 WYATT, Diane 41, 99

## Y

YANCEY, Jill 105  
 YANCEY, Michael 105  
 YANBROUGH, Ida R. 27, 30, 71,  
 124  
 YOUNG, Scott N. 2, 4, 11, 113

## Z

ZAVALA, Emily M. 39, 109, 113  
 ZERGER, Richard 113  
 ZIEGLER, Dale R. 39, 113  
 ZIMMERMAN, Richard 34, 124  
 ZOOK, Herbert 133

*Editor's Note: To whoever reads this book, may I point out that without the help of the following people, the completion and release of this yearbook would have not been possible: Debbie Bowman, Sandra Carron, Dan Coffman, Cindy Dell, Kevin McAfee, Joel Miller, Thomas Netolicky, Denny Porter, Carol Swank and Susan Taylor*

# Autographs



# To End, Or Not To End . . . . .



As everyone knows, *infinity* is that which never ends. The number of pages in this book now end but you do not. You will continue to add to these pages by living each day of your life one by one year by year and maybe even life by life. Who knows?

Being editor of the 1980 McPherson College Quadrangle has been a privilege as well as an enjoyable and educational experience for me.

Many thanks are due to the administration of McPherson College, my adviser Susan Taylor, my assistant editor Angie Henson, my business manager Pam Thies, the remainder of the 1980 Quadrangle staff, Student Council and all of the wonderful friends who helped me understand what this yearbook should contain and the purpose for it.

I hope that the meaning and essence of *infinity* will be with you as you overcome the obstacles and curves of your life. This book was compiled for you, and many hours of work and love have gone into it for that same purpose, so enjoy *infinity*.

*Greg Senno*



© 1980 McPherson College Quadrangle

