

**THE QUADRANGLE
MCPHERSON COLLEGE**

THE QUADRANGLE 1969

McPHERSON COLLEGE

McPHERSON, KANSAS

Ed Smith



Published by Student Council
Volume 52

Carolyn Dell — Editor
Linda Dean — Assistant Editor
Bruce MacPherson — Business Manager
Jan Rolander — Assistant Business Manager

MOODS OF McPHERSON

Table of Contents

Foreword	•	•	•	•
Buildings	•	•	•	•
Academic Life	•	•	•	•
<i>Administration</i>				
<i>Faculty</i>				
<i>Staff</i>				
Events	•	•	•	•
Organizations	•	•	•	•
Athletics	•	•	•	•
Classes	•	•	•	•
Advertising	•	•	•	•
Index	•	•	•	•

Handwritten text, possibly a signature or title, in the upper right corner.

4

6

12

14
22
11

44

60

90

104

150

162



Moods of McPherson

Night ceases. Sunlight explodes over the Kansas plains. Another day is born at McPherson College. With this day many moods will emerge. Sleepy-eyed students heed the chimes' call and hurry to early-morning classes . . . They read and write in the studious almost-silence of the library . . . They stand in line, patiently and impatiently, waiting for meals . . . Young artists create in corners secluded under Arnold . . . Lights burn late as students struggle in a sea of words, preparing for tests and due-dates of papers and projects.

Often the serious business of study is abandoned, however, for the loud excitement of football and basketball games . . . the traditional gala of the Tug-of-War . . . the hushed excitement of the year's formal dances . . . the fun and laughter of picnics and parties and after-game dances . . . the honest and often spirited exchange of ideas between friends . . .

And always, through the many moods of each day, early morning to late at night, autumn and winter and spring, McPherson College lives in its students and the moods they create. It is not merely a title or a few well-tended acres of lawn and sidewalks and buildings. It is not totally the administration and faculty, attired in academic regalia, although they are a vital part of its life. McPherson College finds its life in its students — talking, listening, studying, eating, sleeping, laughing, and sometimes crying — whether an assertive senior or a diffident freshman, each contributes an essential part to the moods of McPherson.





Photos by
Craig Little



Progress at McPherson College can be seen in comparing this picture of the campus with the 1969 photograph below. Sharp Hall, Arnold Hall, Old Fahnestock and the Library are shown in this 1918 photograph. Arnold and the Library remain today.



Mohler Hall and Harnly Hall in the background are two of the seventeen buildings on the 1969 McPherson College campus. Mohler is an administrative and classroom center, and Harnly's lower floors house five different departments.

Friendship Hall, which features rotating art displays, serves as an entrance to Brown auditorium. During the year, 756 full-time students assemble each Thursday for convocation in this auditorium.



17 Buildings Occupy Campus

With the coming of autumn, winter, and spring to the 35-acre McPherson College campus, buildings possessed a mood of their own. Sunlight glistened on the glass walls of Mohler Hall, and icy rain beat against the windows of Harnly's fourth floor as buildings seemed to change with the seasons.

An enrollment increase filled every dormitory room, and all available corners were used for faculty offices. A college dream began to unfold with an announcement that construction of a new library would begin early in 1969.

Students portrayed their various moods within the walls of every building. A clear, starlit night found ambitious astronomers atop Harnly Hall where a miniature observatory is located. Students found knowledge in the Library, competition in the Gymnasium, friendship in the Student Union, and a few moments of privacy within the dormitories.



Within the walls of Mohler Hall, students stand patiently in long lines during enrollment.

Adjacent to the campus, the McPherson Church of the Brethren, with its 415 members, serves as the college church.



Buildings serve as centers of learning

Designed to resemble a ship, the Student Union offers its visitors the campus book store and student offices.



Often unnoticed because of its small size, the Greenhouse serves as an experimental center for biology students.



Nearly every student finds his way to the Gymnasium to fulfill physical education requirements.



A center of campus academic life with its 40,000 volumes.

meals, meeting places, and recreation, and houses



Hidden behind Harnis, Frantz Hall is the center for industrial arts education.



Arnold basement, once the college cafeteria, provides a creative atmosphere for artists. Administrative and faculty offices are housed in Arnold's upper floors.

Invited and financed by students, the Mac Shack is in its third year as a place away from the pressures of college life.



— The College Library — challenges young minds





By residing in Kline Hall, 26 women have the opportunity to cook meals and practice housekeeping.



A nighttime photograph of Dotzour Hall produces a unique effect of a dormitory which houses 177 women.

Because of a close-knit spirit, similar to that of a fraternity, the men of Edinestock Hall sponsor a "Fare-night" at a football and basketball game at which they and their dates sit and cheer together.



Jo Ann Mowry tucks the west steps of Dotzour an ideal place to shake an oversized rug.





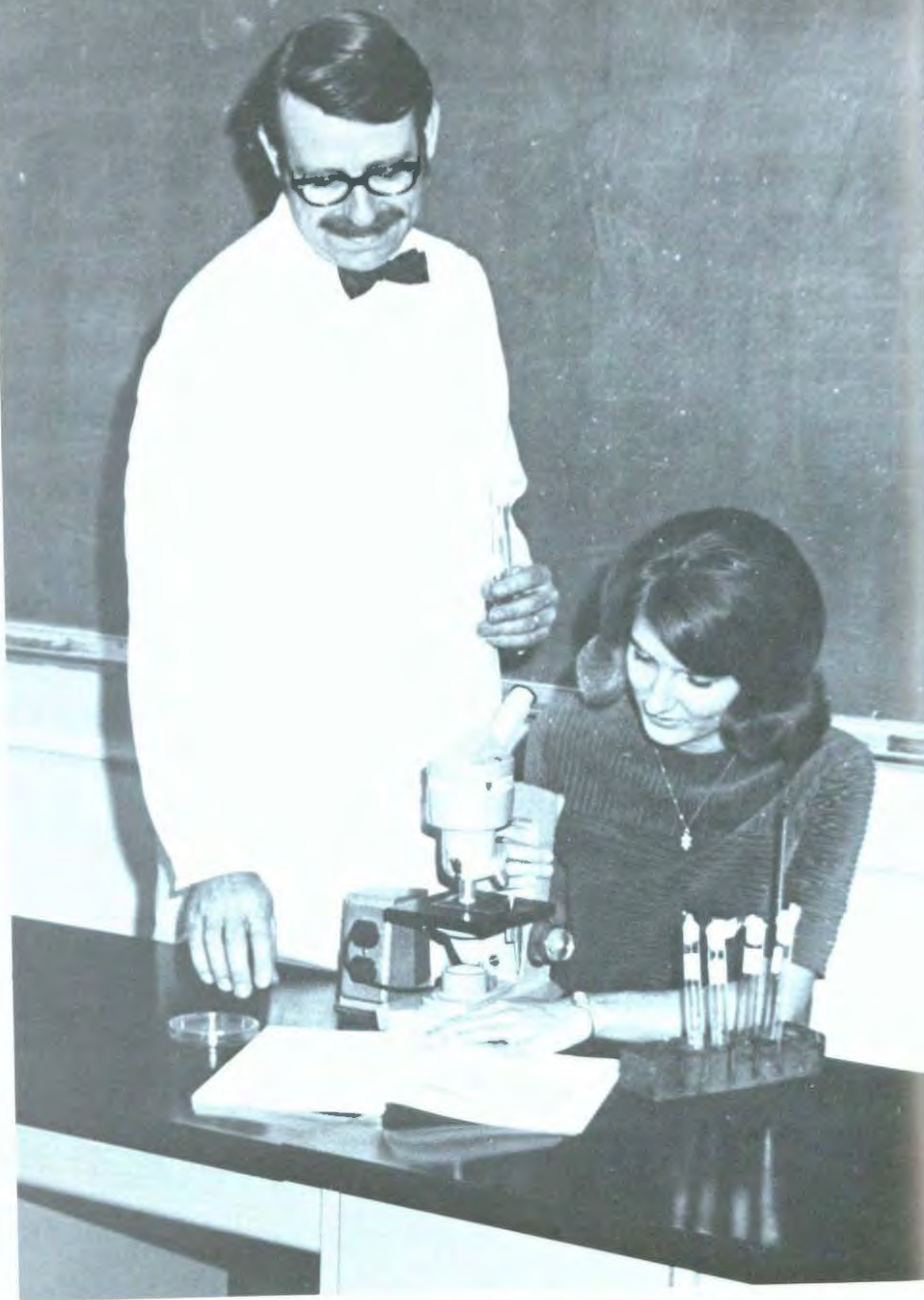
Metzler Hall, named for Dr. Burton Metzler, professor emeritus of philosophy and religion, provides a college home for 120 men.

Married students and their families often begin their homes in one of the 24 apartments in College Courts.



Built in 1966, Bittinger Hall is one of three men's dormitories on campus.







Academic Life

Students walk silently out of class engrossed in fresh thoughts, corner professors after class to explore especially relevant ideas, evaluate attitudes, and discover a growth in tolerance. In these moods young minds forget dreaded term paper research, boring chapters, and the long lectures that seem to never end. Through the joy and frustration of learning, students gain the feeling of freedom that accompanies learning. In their participation, individuals come to realize that academic life is the nucleus of a college existence.



Administration



J. JACK MELHORN, PH.D.
President

President Melhorn begins fourth year

During his fourth year at McPherson College, Dr. J. Jack Melhorn continued to actively promote communications on campus and between the schools in the Associated Colleges of Central Kansas. The interterm and the "hot-line" between ACCCK schools were successful projects of the ACCCK, in which he strongly believes.

Supporting Dr. Melhorn was Dr. Merlin Frantz, Dean of Academic Affairs. With his insight into academic problems, he helped resolve differences between faculty and students. He expressed his concern in individual and group conversations as he promoted the "Forward, McPherson College" theme in all of his activities.

Both of these men were instrumental in developing a revised curriculum and in planning for the future success of McPherson College.



Throwing the first pitch to open a college baseball season is only one of many roles assumed by Dr. Melhorn.



MERLIN I. FRANTZ, ED.D.
Dean of Academic Affairs



RAYMOND J. FLORY
Dean of Student Affairs

MARY ANN ROBINSON
Dean of Women

GALEN R. SNELL
Dean of Men

Administrative personnel aids students

Students shared their moods and opinions with the administrative staff, and the staff, in turn, using the benefit of their specialized training, listened to student needs. As a result of this communication, the life of the campus ran smoother.

Dr. Raymond Flory, Dean of Student Affairs and Head of the History and Political Science Department, handled student problems in his Mohler Hall office. Mary Ann Robinson, Dean of Women and Head of the Art Department, and Dr. Galen Snell, Dean of Men, and Assistant Professor of Psychology, counseled students and conducted dormitory proceedings. Both tried to promote enthusiastic school spirit and personal adjustment by keep-

ing their doors open. Their Arnold Hall offices provided the needed privacy for their confidential business.

Business and financial concerns of the student and the school occupied Business Manager R. Gordon Yoder and his assistant, Paul Sherly. Paul Wagoner again directed Alumni Affairs. A new addition to the staff, Gerald J. Holman from Pasadena, California, replaced Kenneth Yingst as Director of Development. He worked previously as a district manager over a chain of offices for a loan company. In their Mohler Hall offices these men work tirelessly to insure the progress and financial success of the College.



R. GORDEN YODER
Business Manager

PAUL SHIERFY
Assistant Business Manager



Carol Uddy, business office assistant, assists two students with the financial phase of enrollment.

PAUL WAGONER
Associate Director of Development



GERALD HOLMAN
Director of Development





LARRY MARCELLUS
Director of Publicity and Promotion



GUY HAYES
Director of Financial Aids



CHRISTINA FLORY
Assistant, Registrar's Office



DEAN REYNOLDS
Registrar

Dining service offers festive buffets

McPherson College graduates helped increase the usefulness of campus offices while the McPherson College Dining Service in cooperation with Slater Food Service found ways to make meal-time more enjoyable.

Christina Flory, a 1968 McPherson College graduate, was hired by the Registrar's Office as a full-time assistant. This office also purchased a Xerox 914 which copied materials found in bound volumes.

The Publicity Office published *The Mac Communicator* for administration, faculty and staff members and *The Bulletin* for college alumni.

The directors of the Admissions Office spent many hours recruiting students through interviews and trips in Kansas and neighboring states. Four students worked part-time in assisting office personnel.

Guy Hayes began his second year as Director of Financial Aids and continued to assist students in financing their educations.

The McPherson College Dining Service, directed by Ronald Patton, strived to break the tedium of cafeteria meals.

Students enjoyed a Hawaiian dinner with colorful decorations and an assortment of island dishes. The food service also gave an old-fashioned political buffet and a Christmas dinner featuring a four-foot ice Christmas Tree.

Steak cookouts and many more specials were served showing the food service's desire to serve the students in a different way.

These offices and services met the challenges of an increased enrollment by providing students with improved services.



JERRY HEDRICK, JR.
Admissions Counselor



EUGENE MYERS
Director of Admissions



Emma Mease and Diana Garcia are two of fifty students working part-time in the college cafeteria.

JIM WINTERS
Assistant Food Service Director



RON PATTON
Food Service Director





DR. V. R. EASTERLING
President of ACCK

DEAN BACON
ACCK Computer Director

MARJORIE STUCKY
ACCK Administrative Assistant

Mike Loveless pauses to read the names of the six Associated Colleges which appear on the central ACCK office building, located in McPherson.



Installed in July 1968, the ACCK Computer Center at McPherson houses data processing equipment for six colleges.



ACCK personnel serve 6 colleges

Beginning its second full year of operation, the Associated Colleges of Central Kansas has come a long way in realizing its goals of using the combined resources of six area colleges to accomplish much more than each single college could ever expect to do on its own. Simply put, ACCK is "doing together what cannot be done alone."

The six colleges involved in the organization include McPherson College, Bethany College, Bethel College, Kansas Wesleyan University, Sterling College, and Tabor College. All are church-related colleges and all are within a 31-mile radius of McPherson.

One outstanding result has been the government funding under Title III of the Federal Education Act for improvements including the installation of data processing equipment to serve all six schools.

Vaniman Hall houses City - College Museum

Plans for a City-College Museum began to take shape when the city of McPherson received a collection of 450 items from a local German family. Since the College Museum, housing 5000 items, was crowded, the city and the college combined their efforts and established a City-College Museum.

Vaniman Hall, a spacious three-story building west of the campus, was chosen for the location of the new City-College Museum. S. M. Dell, director of the College Museum for the past two years, succeeded in getting much of the museum material moved this year to the new location, in hopes for a late spring opening. The College Museum housed a large number of historic displays, besides many rare and valuable fossils, meteorites, and cultural artifacts.

S. M. DELL, M.S.
Museum Director



Vaniman Hall, located five blocks west of the campus will house the new City-College Museum.



Donna Nkesim and Peggy Slater find a few moments to browse in the present College Museum located on the fourth floor of Hardy Hall.





Finding seclusion in a corner of the Art Department, a student adds finishing touches to an assignment.



MARY ANN ROBINSON, M.A.
Assistant Professor of Art



ROBERT SMITH, B.F.A.
Instructor in Art

Music Department produces touring opera

Basic to a liberal arts institution is its Humanities Division. At McPherson College this classification included the departments of English, Music, Foreign Languages, Art, and Philosophy and Religion. Dr. Harley Stump headed this department.

The Humanities Division, together with the other three college divisions, participated extensively with the Associated Colleges of Central Kansas. This organization includes McPherson College and five other church-related institutions. This organization sponsored the visiting professor program.

In the Music Department Professor Frederick Balazs, from Cincinnati, conducted the College orchestra. Robert Mesrobian, opera star, taught a music theater workshop in which McPherson students and other ACCK students produced a tour-

ing opera during Interterm. The Music Department also organized a McPherson College Chamber Choir which included about 25 female voices.

During the ACCK Interterm, held from January 6 through January 31, each college offered different courses to all ACCK Students. The Interterm was highlighted by field trips in nearly all classes. In the Humanities Division, the English and Speech Departments sponsored a trip to New York City in which students viewed plays they had previously studied. Students enrolled in Exploring the Visual Arts visited the Nelson Art Gallery in Kansas City.

Sponsoring a statewide Language Day attended by nearly 700 high school students, the Language Department of McPherson College continued to promote the study of foreign languages.



JAN VAN ASSELT, PH.D.
Associate Professor of German and Linguistics



JEAN F. MCLANE, JR., M.S.
Assistant Professor of German



LUISA PEQUENO, M.A.
Assistant Professor of Languages



CORINNE S. HUGHBANKS, M.S.
Assistant Professor of Languages

Nessa Fox concentrates on an organ selection as she practices for a pipe organ lesson.



RUTH SNELL, M.M.
Assistant Professor of Music



DONALD R. FREDERICK, M.M.
Professor of Voice and Director
of Choral Organizations



PAUL V. SOLLENBERGER, M.M.
Associate Professor of Music Theory
and String Instruments





ROBERT L. EDWARDS, AL.M.
Assistant Professor of
Piano and Organ

CHARLES W. FISCHER, M.A.
Assistant Professor in
English and Theater



UNA R. YODER, M.A.
Assistant Professor in
English, Speech, and Theater



Mike Loveliss is one of several students who frequently participate in dramatic productions.



SARAH MAY BRUNCK, A.M.
Associate Professor of
English and Journalism



HARLEY STUMP, PH.D.
Professor of English

Journalists publish Interterm Newspaper

Expanding with new and revised courses, the McPherson College English Department continued to offer a challenging area of study to students.

During the first semester, this department welcomed foreign students to its course, English for Foreign Students. In this class, students received invaluable assistance in becoming acquainted with the English language.

During student teaching, six English majors observed and taught in junior high and high school English and literature classes.

American Transcendentalism was taught for the first time during the Interterm as was English Linguistics, a revised course.

In the Interterm, the English Department also offered Introduction to Journalism. Approximately 12 students enrolled in this course and spent a major portion of their time producing an ACCK

Interterm Newspaper which was sent to six colleges. In publishing this paper, students gained practical experience in journalism.

The course was highlighted by a three-day trip to Kansas City to visit publications. Trips were also taken to Topeka, Hutchinson, Newton, and Wichita to observe communication media.

In the Philosophy and Religion Department, David Eiler received his Th.D. The department sponsored a unique course during the Interterm. Students had the opportunity to enroll in World Religions which traveled to Mexico to observe various types of religion.

In these and other areas the English, and Philosophy and Religion Departments made a vital contribution to the academic life of McPherson College.



DAVID J. ELLER, TH.D.
Associate Professor of
Philosophy and Religion

THOMAS W. DEAL, M.A.
Assistant Professor of
Philosophy and Religion

ALMA MOORE, M.A.
Assistant Professor of
Speech and English



BOB B. GREEN, M.A.
Assistant Professor in English





VERDA DE COURSEY, B.S.
Instructor in Design



MILDRED M. SIEK, M.S.
Professor of Home Economics

Home Economics major Lilly Ann Wivell concentrates on a sewing project.



Coeds visit Eastern textile plants

Striving to better prepare students for their future lives in practical tasks were the Departments in the Applied Arts area. In this aspect of the College curriculum, the student advanced his knowledge of useful tasks and learned the most efficient techniques of performing them.

Housed in Frantz Hall, the Industrial Arts and Auto Mechanics students found a haven of wood tools and machinery. They were directed in their activities by Prof. Dennis Dirksen and Prof. Arlie Begier.

Helping to pave the road to a secretarial career was the Secretarial Science curriculum. This area was under the instruction of Mrs. Mildred Olson.

The Health, Physical Education, and Recreation Department offered preparation for a career in teaching, coaching, or recreation. The department

professors were Dr. Doris Coppock, Prof. Sid Smith, Prof. Dwight McSpadden, Prof. Art Ray, and Prof. Don Widrig.

Culinary tasks were stressed in the Home Economics Department. Prof. Mildred Siek and Mrs. Verda DeCoursey guided the future homemakers in this department with a variety of cooking, sewing, design, and interior decorating courses. A highlight for the Home Economics students was the ACCC Interterm field trip to the East coast to visit textile houses.

To prepare students for careers in professional conservation, farm management, and related careers in the government and agriculturally oriented industries was the objective of the Agriculture and Rural Life Department. Prof. Gerald Kiger was the instructor.



GERALD KIGER, M.ED.
Assistant Professor in Agriculture

ARLIT J. BEGER, M.E.
Assistant Professor
of Industrial Arts



MILDRED L. OLSON, B.S.
Instructor in Secretarial Science

DENNIS A. DIRKSEN, M.S.
Assistant Professor
in Industrial Arts Education



Judy Buckwalter and Dave Bowles
in an industrial arts assignment.



DAYTON G. ROTHROCK, ED.D.
Professor of Education and Psychology



MONROE HUGHBANKS, M.ED.
Assistant Professor in Education



DWIGHT E. McSPADDEN, M.A.
Assistant Professor in Education

Student teaching block is revised

Change characterized the Education Department during the 1968-1969 year. Fifty-five students participated in the newly-revised teaching block. For six weeks they studied educational psychology courses, and for eight weeks they actually experienced a teaching situation. For the first time the teaching block was offered both first and second semester.

Students in Introduction to Education were required to serve as student aides to help teachers while observing classroom methods. The future teachers received valuable training and insight into the many divergent areas of activity required of the modern teacher.

In the Interterm session, interested students traveled to Kansas City to observe inner city students and the methods used to educate them. Stu-

dents lived in the inner city and visited all levels of classroom teaching in the ghetto areas.

Dr. Dayton Rothrock, head of the department, supervised the many new projects.

In the Physical Education Department, headed by Doris Coppock, courses continued to provide physical activity for all students and specialized classes prepared future physical education teachers. Students assumed teaching roles in Recreational Leadership during the second half of the course. Each day, several members of the class lead a variety of games.

Doris Coppock brought an unusual experience back to the classroom after returning from two weeks at the 1968 Summer Olympic Games in Mexico City. Miss Coppock was accompanied by Roma Bolston, junior physical education major.



DONALD WIDRIG, M.S.
Associate Professor in Physical Education



SIDNEY L. SMITH, M.S.
Associate Professor in Physical Education



DORIS COPPOCK, PH.D.
Professor of Physical Education

ARTHUR L. BAY, M.S.
Assistant Professor in Physical Education



Judy Peltzman and Marvia Sellberg practice the Highland Fling for Fundamentals of Dance class.



JESSE D. KREHBIEL, M.S.
Associate Professor of Mathematics

VERNON E. FRIESEN, M.S.
Assistant Professor of Mathematics



SAI K. LEE, M.S.
Assistant Professor of Chemistry



Biology students study in Puerto Rico

The Natural Sciences, including the Biology, Chemistry, Physics, and Mathematics Departments, offered challenging courses and experiences to the science students of McPherson College.

The Biology Department was under the direction of Dr. G. J. Ikenberry, Jr., who returned from a year of research at Yale University, and Prof. Larry Welch. Dr. Burkholder was on sabbatical leave at the University of Iowa. The Interterm offered to upper-level biology students a field trip to Puerto Rico in cooperation with the ACCK. The students spent a week in a tropical rain forest and studied marine life off the coast of Puerto Rico.

Also associated with the ACCK was the Interterm course offered by the Mathematics Department. Foundations of Math, a new course in the Department, was the subject of the famed lecturer, Dr. Paul Cohen of Stanford University. Dr. Cohen

is known for his advanced work in mathematics and has received many awards for his efforts. He lectured on the McPherson and Bethel College campuses. The Mathematics Department was staffed this year by Prof. Krehbiel and Prof. Friesen.

The Chemistry Department, under Dr. Decoursey and Prof. Lee, was in the process of completing plans for remodeling another chemistry laboratory so that beginning students could become familiar with more modern laboratory equipment.

Prof. Honeywell, new to the college faculty, directed the Physics Department. Upper level students of chemistry and physics experienced advanced research work at Argonne National Laboratories in Illinois during the Interterm. This is one of the many Interterm courses which gave the students practical experience in the natural sciences.



Craig Jaffe and Tharu Winter test a polygraph in a Vertebrate Physiology laboratory.

EUGENE C. HONEYWELL, M.S.
Assistant Professor in Physics

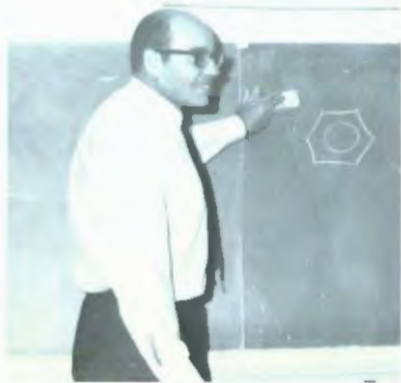


GILFORD J. IKENBERRY, JR., PH.D.
Professor of Biology



LARRY A. WELCH, M.S.
Assistant Professor in Biology

WESLEY DE COURSEY, PH.D.
Professor of Chemistry





FAROUK SHALABY, M.S.
Assistant Professor in
Business Administration and Economics



Accounting students are often required to spend many hours outside of class completing problems.

Students study at mental hospital

Aiming for greater satisfaction of the student's growing needs, the Social Science Division offered new courses, travel opportunities, and instructors. Under the direction of Dr. Raymond Flory, the departments of this division included History, Economics and Business Administration, Psychology, and Sociology.

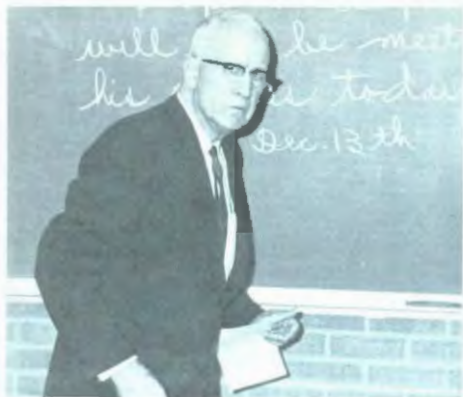
Through the History Department, headed by Dr. Flory, travel to Kansas' historical points was provided for persons being introduced to its history. To better study Mexican history, a trip to Mexico City was offered during the summer session.

Under the leadership of Dr. Oscar Olson, the Economics and Business Administration Department cooperated with the ACCCK in a trip to Wall Street during January. With the installation of the

computer center, students began programming computers.

Expanding under the direction of Dr. Lewis Young, the psychology Department offered the opportunity for four weeks of practical experience in a state mental institution. Among their responsibilities as aides, students ran tests and interviewed patients.

Following the sudden death of Dr. Lorell Weiss last July, Prof. Robert Keim was appointed acting head of the Sociology Department. Visits to prison communities were conducted to better understand their particular problems. Projects involving four weeks work at social service institutions in Chicago, Los Angeles, Kansas, and Delaware were arranged.



O. A. OLSON, PH.D.
Professor of Economics
and Business Administration



Business majors discuss the Interntern trip which will take them to Wall Street.



Students in International Economics contemplate the semester's work as they complete the final test.



EMMA HOFER, M.S.
Assistant Professor in Economics



LEWIS C. YOUNG, PH.D.
Associate Professor of Psychology

GALEN R. SMITH, PH.D.
Assistant Professor in Psychology

A psychology student uses testing equipment in preparing an assignment.





ROBERT E. KEIM, M.A.
Assistant Professor in Sociology



LELAND L. FUNGEL, PH.D.
Associate Professor of
History and Political Science

RAYMOND L. FLORY, PH.D.
Professor of
History and Political Science



KENNETH C. BECHTEL, PH.D.
Professor of
Sociology and Language





JAMES WEAVER, M.Div.
Assistant to the Librarian



VIRGINIA HARRIS, M.L.S.
Librarian



ELLA FRANZ
Clerical Assistant



KATHRYN BECHTEL
Clerical Assistant



CECILE JORDAN
Secretary, Admissions Office

Beeghly Library adds 4,000 volumes

With the addition of four thousand volumes to the shelves of Beeghly Library, the total number of volumes increased to approximately 41,000. Books were purchased in nearly all departments this past year to expand students' sources of research.

One major piece of equipment purchased this year was a projector for loop films. With this device students themselves were able to view films of specific departmental significance. Departments continually added films to increase the current supply.

From eight to ten students assisted Virginia Harris, head librarian, in aiding students with books, references, periodicals, and newspapers. A new addition to the staff was James Weaver.

December 7 marked the groundbreaking ceremonies for the new Miller Library, to be construct-

ed north of Dotzour Hall. Date of completion was set at one calendar year from start of construction.

Much of the efficient operation of McPherson College must be credited to the secretaries. Through the volume of materials they turned out this past year, an impression of competency was given.

New in the admissions Office was Cecile Jordan, who handled records of prospective students. Brenda Walker became the new switchboard operator and was in charge of keeping campus telephone communications in order.

A new addition to the Business Office staff was Dorothy Hubble. In this position she assisted in the smooth operations of the financial aspects of McPherson College.



BETTY BARCHENSKY
Secretary, Dean of
Academic Affairs Office

MIRIAM DELL
Secretary,
President's Office



BRENDA WALKER
Switchboard Operator



FLORENCE HUTCHISON
Secretary, Registrar's Office

DOROTHY HUBBLE **LORETTA HIPTON** **THELMA SHEETS**
Assistants, Business Office



MABIAN HASLETT
Secretary,
Development Office

ANNA MAI HULL
Secretary,
Publicity Office





BETTY OLSON
Nurse



Resident Directors: MABEL MARKHAM, Bittinger; ELIZABETH RUSSELL, Edmestock; MARGUERITE WESTFALL, Metzler;

VIVIAN REA, Dotzour



MARCIA COTTERILL
Manager of Bookstore

ELIZABETH CHRISTENSEN
Student Union Director



Nurse establishes clinic for students

Regular office hours in a clinic in Arnold Hall marked the policy of a newcomer to the college staff, Mrs. Merle Olson, R.N. She offered students diabetic testing, public health information, and various immunizations. Since this was the year for the Hong Kong flu, the new nurse was kept busy.

Caring for students in other ways were the housemothers. Some changes in student life were apparent in the revision of late hours for senior and 24 year old women. New locks were installed at Dotzour and Kline Halls for the new card system.

Posters and some items of clothing were among new merchandise offered students in the College Bookstore. Remodeling in the Student Union meant new draperies and furniture upholstery upstairs and new paint, ceiling, and ping-pong tables in the basement.





ELMER RUISER
Superintendent of
Buildings and Grounds



A. P. BRUNGARDT
Student Union



Maintenance: **STANLEY KNOICEK**, Electrician;
HOMEER BRUNK, Handy Man.



Maintenance: **EIONA FRICKLY** and **CAROLEE DIEDER-
ICH**, Dotzour; **BERTHA GALLAWAY**, Kline.



MARYCLARE KONICEK, Bittinger Hall; **AMANDA
BOISE**, Metzler; and **BILLIE BECKER**, Student Union.

New building houses maintenance crew

The men whose work is never done, the maintenance crew, persisted in their work to keep all building and equipment on campus in top operating order. In addition to numerous minor repairs and upkeep in other buildings, Frantz Hall was completely rewired and painted during the summer.

Student workers repainted the Student Union basement during the summer while maintenance men installed a new ceiling.

A new building was constructed behind Kline Hall to house all Maintenance Department equipment. It serves as the garage for the Department's vehicles and machinery, and is the new location of the Maintenance office.

Throughout the year the personnel of the Maintenance Department strived to provide improved services for McPherson College.

KETH CLINE, Assistant Superintendent; **GEORGE ELL-
RICK**, Campus; **BERNARD CLOUSE**, Carpenter.





ACCK students often rehearse 12 hours a day to present the operatic production "Voyage to the Moon."

Opera production highlights interterm

In January, 1968, following experimental sessions in four of the six associated colleges of central Kansas, the Educational Policies Committee of the ACCK adopted an agreement between five colleges to accept a cooperative interterm. In January, 1969, this agreement became a reality as McPherson College and four other church-related colleges participated in what may prove to be one of the finest educational innovations in recent history.

Students from Bethany College, Kansas Wesleyan University, Tabor College, Sterling College, and McPherson College were given the opportunity to enroll in one course of study for four weeks. The interterm received publicity and recognition because not all of the courses offered were held in a normal campus situation.

Students traveled to Mexico to study Latin American religions, to Puerto Rico to study marine life, to Jamaica to study West Indian culture, to the

Middle East to visit the Holy Lands, to New York City to study investments and the modern stage, and to Larned State Hospital in western Kansas to study psychology.

Numerous courses were also offered on the campuses of each college. Areas of study ranged from Developmental Psychology to Human Biology to Russian Literature to Science in the Elementary School.

A highlight of the interterm was a Music Theater Workshop which produced "Voyage to the Moon." The workshop met each Saturday during first semester, and then the opera was presented at each of the ACCK colleges and a high school in Wichita during interterm.

Through these courses, the ACCK attempted to offer classes to meet students' needs, and at the same time provide experiences not available in a typical college semester.



YUCC students enrolled in the Puerto Rican biology trip visit the site of a 500-ton radio-radar telescope suspended 500 feet in the air.

Carl Bowman, Betty Persons, and Rodney Lusk wait patiently before viewing a radio-radar telescope in Puerto Rico.

Interterm students travel to Puerto Rico and Jamaica

Scenes as the pictures below of native Jamaicans driving burro-drawn carts or hollowing out wooden canoes were often seen by students enrolled in the interterm class. *Southern to the West Indies.*







Events

Throughout the year, numerous moods are portrayed in the events at McPherson College. As the year begins, events provide anticipation for freshmen and tradition for upperclassmen. Students find enthusiastic competition at the Tug-of-war and new friendships at the All-School Party.

Homecoming surpasses all events in creating excitement for queen candidates, float chairmen, coaches, quarterbacks and the alumni who return.

The Winter Formal and Christmas Dinner provide a festive mood and Language and Career Days present anticipation of future plans.

Graduation approaches and seniors experience excitement, sadness and anticipation. As students receive their diplomas many of their memories will be of events of the past year and the moods they created.





Joel Burkholder and Shirley Miller dance to the beat of a four-piece band during the first All-School Dance held in the Student Union basement.



Faces of students express various moods as they patiently wait in enrollment lines.



Edwin Nelson issues the traditional command of "Button Up!" to Richard Brimble.

Many activities greet new students

Memories. Reunions. Orientation. Beginning. These are only a few words that portrayed the atmosphere of the McPherson College campus as the 1968-69 school year began with the arrival of students from all parts of the nation and the world.

For some, September marked a new beginning with well-known friends, doing familiar McPherson College pastimes such as a trip to the Mac Shack or a long "talk" in the Dotzour lounge. To the students on campus for the first time, a new horizon was awaiting, full of strange faces which would later be close friends and new surroundings which would soon be a second home.

Activities during the opening days of school were numerous to give the students a chance to make new acquaintances and to fill the long and lonely first days away from home. For the fresh-

men, there were days of orientation and testing garnished with get-acquainted parties. This was a time of many "firsts," such as the first cafeteria meal, first enrollment line, and the first time to wear a beanie. The red and white beanies decked the heads of freshmen during Orientation Week as they obeyed upperclassmen and dressed outlandishly as only a freshman would. The week was highlighted and ended with the Tug-of-War, which terminated in a draw, and the Freshman Talent Show.

Other not-soon-forgotten events during September days were Howdy Week, the annual Pajama Parade down Main Street, the M-Club Watermelon Feed, the Women's Council Tea, and the A Cappella Choir Retreat.



Ralph Dickerson pulls one end of the rope up a muddy embankment of the Lagoon in preparation for the traditional Freshmen-Sophomore Tag-of-War.



Dressed in full academic regalia, the faculty is presented to 736 odd and new students during the opening convocation.

Opening events portray enthusiastic mood

Suzanne Sell faces the task of moving back into Dotson Hall for a fourth and final year.



Kaynell Houck and Betsy Mayo enthusiastically lead pygmy clad coeds to a parade through downtown McPherson before the first home football game.





By coming to McPherson students and faculty at a pre-Christmas dinner in the cafeteria, the Madrigals help bring the holiday spirit to the campus.

Opening Convocation introduces faculty

Highlighting the first weeks of school was Opening Convocation, during which the student body viewed the faculty in full academic costume. Each faculty member was introduced by his field of study.

Later in the fall a Language Day was held on the campus, at which time 700 prospective foreign language students from Kansas high schools had an opportunity to see what McPherson College offered in the field of languages. Students who have participated in the Brethren Colleges Abroad program spoke to the group of their experiences.

With Christmas vacation only a few days away, the dining service invited faculty members to enjoy a holiday dinner with the students. The Madrigals brought a festive atmosphere to the occasion with their carols.

Luc Troutman and Terry Filer find the Freshman Get Acquainted Party a good place to form new friendships.



Roland Dierham poses with two "goons" as they wait to perform in the Freshman Talent Show.





Relating experiences from his past year in Germany, Rick Baer encourages high school students participating in Language Day to spend their junior years abroad.



A glimpse of the first Kansas snow — a traditional winter event — is seen in an unusual picture taken from the balcony of Brown Auditorium.

McPherson hosts first annual Language Day

Dressed as cheerleaders, John Swanson, Floyd Brown, Jerry Armstrong, Stu Baker and Gary Della Bitta entertain spectators at the POWDER HILL Football Game.

Robley Link informs students on the progress of the Coffee House during a special Student Council Convocation.





Jacqueline Troutman

Diane Merrifield

Ginny Yingst

Coeds reign over 1968 Homecoming

"Great Moments in History" was the theme of this year's festive Homecoming activities. A night of regal splendor was enjoyed by all as Miss Diane Merrifield was crowned Queen to reign over the activities. Miss Merrifield is a junior from Champaign, Illinois and was escorted by Mr. Jim Stauffer.

Miss Merrifield's attendants were Miss Ginny Yngst, a sophomore from McPherson, who was escorted by Mr. John Lane, and Miss Jacqueline Troutman, a freshman from Haddon Heights, New Jersey, who was escorted by Mr. Art Ware.

Also presented at the coronation were several former Homecoming Queens, who were especially invited back to McPherson to enjoy the Homecoming festivities this year. The coronation was emceed by Dr. Leland Lenzel, associate professor of history and political science.



Diane Merrifield graciously accepts the crown signifying she is the 1968 Homecoming queen.

Ginny Yngst smiles nervously during tense moments before the announcement of sophomore attendant.



Jacqueline Troutman states in disbelief as she hears her name being announced as freshman attendant.





In a burst of orange flames against a black sky, the traditional Homecoming Bonfire announces the beginning of a festive week-end.



Jean Winegarden chats with a fellow freshman as she continues stuffing wire mesh on the freshman float.

Homecoming theme highlights history

With the Special Projects Committee's announcement of "Great Moments in History" as the theme of the 1968 Homecoming, feverish plans were begun for the traditional week-end.

With the crowning of Diane Merrifield as 1968 Homecoming Queen, the traditional festivities were ushered in. Following the coronation on Friday evening was the pep rally and bonfire. This year the pep rally was presented from the porch of the Coffee House. As the last flame of the bonfire flickered away, students hurried to a building downtown for last minute preparations on float entires.

Showing much ingenuity and originality in its floats and displays, the Homecoming Parade moved through downtown McPherson on Saturday morning. This was only the second year for the parade. Circle K and Jonquils, the Junior Class, and Bittering Hall received prizes for their float entries.

The McPherson Bulldogs lost their hard-fought battle to Baker, but the students and alumni were high-spirited throughout the whole game. The traditional Homecoming Dance was also held for all students and alumni.



Posing for pictures after the coronation, the Homecoming Queen and court discuss their feelings about being elected.

Dea Unruh, Kathy Beyer and Jane Brubaker find the weather a bit windy as they ride atop the first place float entered by the Jovials and Circle K Clubs.





Mrs. Peurmark attempts to reason with her daughter Rhoda, who has persistently gotten her own way in the past.



Mrs. Daigle laughingly comes to the home of Mrs. Peurmark to inquire about the facts surrounding her son's death.

Senior student directs major production

After a long, lonely summer the McPherson College stage once again enjoyed the company of her players who, after a few short weeks of intense rehearsal, presented their first program of the season, Maxwell Anderson's *The Bad Seed*. This production was the story of a small girl obsessed with selfishness and hatred. The child's hatred eventually caused her to murder a small boy.

Never satisfied with success, the players immediately started casting for their next production, one designed to add a little variety to their romance. Taking the traditional, William Shakespeare's *Measure for Measure* and combining it with the unorthodox music from *Hair*, the players produced a Mod Musical.

In keeping with the untraditional, the stage proudly presented her players in their own endeav-

ors. The first, a December convocation, reminded students and faculty that Christmas is Christ's birthday and, later, an experimental theatre was produced by student directors.

Second semester brought another new concept in educational theatre to McPherson College with the advent of a student directed major production. Senior Tom Nee took charge of the production of *A Thousand Clowns*. He was chosen to direct this play after his direction of a lab theatre production last spring. Casting the play in December, Nee readied the production for a late winter showing.

In all, the year proved to be a magical one for all production members who found that education could be an exciting experience. And the stage waits eagerly for the return of her players.



Before his impending punishment for having to hang too long, Claudio listens to the advice of the Governor.

Shakespearean drama is mod musical

Isabella enters a plea to the judge, begging him not to take her brother Claudio's life, as Lucio observes what is happening.



Student director Tom New looks over the script for *A Thousand Clowns*.





Having earned outstanding success in the fields of concert and night club stages, records, films, and television, Odetta enhances the McPherson Cultural series audience through her expressive singing of folk songs.



Members of the Betty Jones Dancing Group present a dramatic dance number during the Feb. 18 Cultural Series Program.

Folk singer Odetta entertains on campus

Superb performances were presented by four outstanding artists to McPherson College faculty and students during the year.

The performers were brought to campus through the McPherson College Cultural Series.

Norman Farrow, a Canadian baritone, appeared October 6. Farrow has given performances in most of the United States, Canada, Europe, and South America.

An outstanding folk singer, Odetta presented a concert on November 12. She entertained the audience with her freedom and expression in singing.

On February 18, Betty Jones and Dancing Group presented a lively, yet dramatic concert. Concluding the Cultural Series for the year were the Barrs Piano Duo, who performed on March 2.

Although not a part of the Cultural Series, several outstanding artists appeared in Convocations during the year.

Sergio Enca, Romanian violinist, performed at Convocation during the spring of 1968.





During a special Hawaiian Buffet, Verla Jamison, sophomore, serves juice from a steaming volcano.

Campus life expresses student moods

Taking advantage of the warm fall weather, Terri Eschellberger and Linda Taplin study on the campus lawn.



During second semester enrollment, Cindy Barchosky assigns each student a conversation seat.





Among high, a determined Bittinger Hall student attempts a pass to a fellow teammate during an afternoon game of football on the campus lawn.

Adding the finishing touches, Marcia Bryan lights the candleabra at the Winter Formal, appropriately named "Mistletoe Mystique."



Believing in the Student Union basement, Ralph Dickerson, Alex Powell, and Harold Epperson perform their special dance routine for the Quadrangle camera.

Spiral candelas, greenery, and a sleigh enhance the beauty of the Winter Formal held in December.







Organizations

Through organizations students find the medium for expressing their moods and interests.

Students interested in a particular field of study and an academic environment participate in German Club, Phi Alpha Theta or S.E.A.

Alpha Psi Omega, Players Club, and M.E.N.C. create an atmosphere for music and drama.

Leadership roles are assumed in Student Council, Student Court, and the dorm councils.

Athletic enthusiasts find opportunities awaiting in M-Club, Fellowship of Christian Athletes, and W.A.A.

These organizations often create and enhance the many "Moods of McPherson."



Student Council — **TOP ROW:** Esther Bower, Jane Brubaker, Rodney Lusk, Carlos Green. **SECOND ROW:** Pat Pouchet, Peggy Slater, Don Bucher. **THIRD ROW:** George Hoover, Robert Smith, Mike Thompson, Sue Dineenason. **FOURTH**

ROW: Marsha Adkins, David Shepherd, Judy Buckwalter, Marva Sellberg, Hal Hayes. **BOTTOM ROW:** Larry Vernon, Judy Duffy, Galen Kopp, Pat Albin, Lilli Ann Weyell, Charles Jones.

Larry Vernon, Student Council president, and Hal Hayes, vice president, pause after a Stuco meeting to discuss future student government plans.



Stuco sponsors fast for Biafran people

Composed of delegates elected by the Student Body, the Student Council initiated student-sponsored projects on campus and sponsored delegates to participate in the Federated Students of the ACCK organization, which deal with the events on all six ACCK campuses.

Highlighting the activities of the Student Council were the Homecoming celebration, a campus fast for the people of Biafra, and a revision of campus committees.

Among the projects of the Student Council committees were the placement of student members of the Educational Policies Committee, the revision of dorm hour regulations for upperclass girls, Communications Day, new equipment in the Mae Shack, and advertisement procedures for all club activities.

Judicial branch acts on discipline cases

As the judicial portion of the student body, the Student Court interpreted and enforced the students' constitution and acted on student disciplinary cases. Members consisted of three sophomores, four juniors, and five seniors chosen by their respective classes. Gary Blackwell was elected by the student body to serve as chairman.

The court sponsored Freshman Initiation at the beginning of school. The event was revised from previous years to provide a stiffer initiation for those participating.

Supervising the activities of **The Spectator** and **The Quadrangle** was the Board of Publications. During the year, the board recommended to Student Council the names of persons qualified to serve as editors and business managers for the coming year.

Approval was given to **The Spectator** editor-in-chief to personally support a candidate for student body president with equal space given to other candidates.



Student Court — STANDING: Gary Blackwell, Paul Roth, Gary Fox. SITTING: Susan Sell, Sally Laprad, Tomm Young, Cathi Colvin, Jody Dally.

Student Court — Margaret Holderreed, Kent NoBinger, Diana Brubaker.



Board of Publications — Don Macklin, Susan Sell, Mike Thompson, Peggy Slater, Charles Jones, Larry Vernon, David Shephard, Carolyn Dell.





Social Committee — Jane Brubaker, Yvonne Guerl, Monty Ganshorn, John Swanson, Art Ware, Esther Bowen

Committee sponsors big name group

Planning and assisting with all-school functions was the responsibility of the Social Committee. This year the committee sponsored a dance with a live band after nearly every home football and basketball game. The committee decided to sponsor fewer movies so that more money could be spent on showing outstanding productions.

A long range project came true on March 22 when the committee helped sponsor Martha Reeves and the Vandellas as "A Big Name Group."

Coordinating and organizing student endeavors was the purpose of the Special Projects Committee. The main project of the year was planning the Homecoming activities held October 25 to 27. The event centered around the theme, "Great Moments in History."

Homecoming became more memorable when the committee purchased a plaque on which the names of the first three place winners in the float competition were engraved. The plaque was hung in the Student Union so that names of future winners could be added.

Dave Gentry pauses to glance at a picture of Martha Reeves and the Vandellas, a big name group brought to campus by the Social Committee.



Special Projects Committee — Barbara Grasmick, Roma Bobston, Sue Arnesen, Hal Hayes, Chris Grove, Frank Falcicola, Bud Reed





Foods Committee — Larry Schrock, Kay Trover, Robert Smith, Pat Hayes.



Bob Smith, coffee house manager, serves a pop to Linda Drape, one of many students who visit the Mac Shack during an evening.

Foods Committee plans Election Night Buffet

Slater Food Service manager Ron Patton, whose duty it is to feed most of McPherson College's students three times a day, was assisted by the Foods Committee in his attempt to satisfy ravenous appetites and sensitive palates. The committee members met frequently with the food manager to relay student suggestions and complaints and to discuss problems and possible improvements. They approved the plans for such memorable meals as the traditional Homecoming banquet and a new Election Night Buffet, featuring campaign posters, chili, and cider.

In its third year of existence, the Mac Shack has become a favorite student retreat. Every evening it lured students who found it an ideal place for relaxing with a coke, playing cards, or just talking. The students forming the Coffeehouse Committee, headed by Rodney Lusk, were largely responsible for its operation.

Coffeehouse Committee — Glenn Davis, Wayne Applegate, Esther Bower, Rodney Lusk, Sandy Thuesen.





Cultural Program Committee — Una Yoder, Doris Coppock, Paul Wagner, Paul Shertz

Chapel and Convocations Committee — STANDING: Galeo Small, Charles Fischer. SITTING: Carolyn Dell, Robert Smith, Doris Coppock



Committees plan Chapels, Convocations

An opportunity for worship, often led by students or faculty members, was offered to McPherson College students in Tuesday chapel services. Convocations on Thursdays attended by the entire college community — students, faculty, and administration — provided a weekly campus-wide topic of conversation. Faculty and students, led by Chapel and Convocations Committee chairman Dr. Doris Coppock, planned the programs.

Highlighting Convocations during the year were appearances by Colin Jackson, British Parliament member, and a Student Council Convocation in which students expressed opinions on campus life.

Faculty members forming the Cultural Committee, with chairman Robert Edwards, were responsible for scheduling the programs of the Community Cultural Series. These events brought world-famous performers to the campus, including Norman Farrow, Odetta, Betty Jones and Dancing Group, and The Barrs Piano Duo.

Two students join educational committee

A newly formed group, the Student Activities Committee replaced the former Student Union Board. This committee attempted to coordinate all campus activities and discussed projects which the group might sponsor in the future.

Much of the committee's planning concerned facilities of the Student Union. During second semester they discussed the possibility of moving the bookstore to the new library so that additional space could be made available for Student Union recreational activities.

The faculty Educational Policies Committee and the student Academic Affairs Committee became interrelated during the year when the Academic Affairs group proposed that two students be seated on the Educational Policies Committee. In November Ted Livingston and Rodney Lusk were recognized for the first time as voting members of the Educational Policies group.



Student Activities Committee — Gary Fox, Hal Hayes, Esther Bowser, Art Ray, Galen Small, Rita DeCoursey, Elizabeth Christensen

Educational Policies Committee — STANDING: Dayton Rothrock, Merlin Frantz, Dean Reynolds. SITTING: Rodney Lusk, Wesley DeCoursey, Oscar Olson, Virginia Harris.



Academic Affairs Committee — Ted Livingston, Merlin Hoover, Betty Persons, Rodney Lusk, Dennis Martin





EDITOR
Carolyn Dell



ASSISTANT EDITOR
Linda Dean



BUSINESS MANAGER
Bruce MacPherson



ASSISTANT BUSINESS
MANAGER
Jan Rolander



Copywriters — Marilyn Smith, Mary Nell Hoover, Joanna Dell

Staff — June Vinchattle, Diane Merrifield, Mike Lovelace



Members of The Quadrangle staff work feverishly to complete their final deadline.

Yearbook features added color pages

Working feverishly to meet five deadlines, The Quadrangle staff strived to produce a 168-page yearbook which recorded the happenings of the 1968-69 school year.

Carolyn Dell and Linda Dean attended a workshop at Kansas State University the summer of 1968 to learn the fundamentals of yearbook editing, and there the actual planning for The 1969 Quadrangle was begun. An extra feature added to the book this year was a special color section. With their own facilities for developing pictures, Chuck Irwin and Glenn Davis processed the many rolls of film taken by student photographers, headed by Craig Little.

As the final copy was mailed, the staff breathed a sigh of relief and hoped that they had captured the "Moods of McPherson" between the covers of The 1969 Quadrangle.





Copywriters — Nancy Brown, Marcia Sellberg



Typists — Nancy Cox, Indexing — Vignette Goert

Darkroom Assistants — Chuck Irwin, Glenn Davis



Photographers — Larry Moorman, Craig Little





EDITOR-IN-CHIEF
Susan Sell



MANAGING EDITOR
Cindy Barchiesi



CAMPUS EDITOR
Susan Kretzfeld



Assistant Business Manager — Marvin Shepherd; Business
Manager — Don Macklin; Circulation Manager — Joyce Bux

Reporters — Roberta Strickler, Bambi Helman, Claudia Hanson



DIANNE WARNKE
First Semester Editor-in-Chief

Students publish 26 Spectator issues

Under the leadership of Dianne Warnke, first semester editor-in-chief, and Susan Sell, second semester editor, **The Spectator** staff published 26 issues of a four-page campus newspaper. The paper was not published during the four weeks of interterm, but the ACCC Introduction to Journalism class published a newspaper for the six associated colleges participating in interterm.

A new feature of **The Spectator** during second semester was a column entitled "Kansas Campus es." This column provided students with an awareness of what was happening on other campuses.

Throughout the year, **The Spectator** strived to inform students about the total college environment.



Bittinger organizes first constitution

The Netzler, Bittinger and Fahnstock dormitory councils organized various activities for their respective dorms during the academic year.

Fahnstock Hall was led by Kent Nollinger, as president, with seven other members on the council.

Bud Reed, president of Bittinger Hall, with nine other members on the council, were busy organizing a constitution for Bittinger Hall, which is the newest men's dormitory.

Metzler Hall was under the leadership of Denny Martin with seven other residents on the council.

The councils were responsible mainly for fielding complaints from the residents of the dorms and seeing that disciplinary measures were taken when necessary. Each dormitory council also planned a Sunday open house for students and faculty.



Fahnstock Hall Dorm Council — **TOP ROW:** Merrin Godfrey, Doug Luome, Gordon Griffith, Joel Burkholder. **BOTTOM ROW:** Dave Gentry, Kent Nollinger, Ron Meek.

Metzler Hall Dorm Council — **STANDING:** David Shepherd, Wayne Black, Dennis Martin, George Hoover. **SITTING:** Lowell Mlonke, Robert Smith, David Bowly, Dick Stakop.



Bittinger Hall Dorm Council — **SITTING:** Gary Schuster, Jim Carlson, Don Reese, Pasco Binaldi. **STANDING:** Frank Falciola, Bud Reed, Tim Wilson.





Being as king and queen at the Women's Council Holiday of Hearts Dance in February are seniors Judy Dolly and Don Davis.

Women discuss joining national association

This year the Women's Council began study and discussion concerning the possibility of aligning their group with a national association of women college students. Some of the women believed that the new ideas which would be provided by a national magazine and state and national conventions would be advantageous to women on campus.

The traditional Women's Tea and Style Show was sponsored by the Council in September. The Tea, which was for all women connected with the College, gave an opportunity to "practice the social graces," which is one of the aims of Women's Council. Flirt Week, when women had the chance to ask for dates — and to pay for them — was another fall project. In February women invited dates to a semi-formal dance in the Student Union.

Women's Council — STANDING: Michelle Green, Marcia Sellberg, Pat Peaches, Joyce Groff. SITTING: Diane Winter, Lilli Ann Wisell, Donna Brubaker, Marcia Bryan, Mary Nell Hoover, Sue Arnesen, Kathy Bryer.





Dotzour Hall Dorm Council — Michelle Green, Sue Dunsanson, Margaret (Hobler) Reed, Lilli Ann Weyell, Marcia Sellberg



With Kline Hall decorated for Valentines Day, Becky Pugh welcomes Wayne Albright to Open House.

Dormitories install card, key systems

Revision and foresight have been key words for Dotzour and Kline Halls this past year. After much planning and preparation, a card system for Dotzour and a key system for Kline Hall were installed to make it possible for senior women and those 21 years of age and older to regulate dorm hours to their own individual needs.

The two dormitories, each at its respective times, produced a large turn-out of women donned in their warmest winter clothing to "delight" the other dormitory occupants with Christmas carols. Kline Hall became an honor dorm this year with a student, Miss Becky Pugh, being the resident director. Kline Hall held its Open House in February, with Dotzour residents having theirs on a Sunday night in March.

Kline Hall Dorm Council — Diana Garcia, Joyce Good, Sylvia Wine, Peggy Slater, Donna Wenghtman, Donna Nikolina



SEA member teaches in inner city program

Future teachers gained valuable insight into their approaching profession through membership in the Student Education Association.

Approximately 100 students attended monthly meetings which focused on recent innovations and issues concerning the teaching profession. An outstanding program was presented by Charles Rankin who exposed members to the new C.U.T.E. program for educating inner city teachers. During second semester Judy Rego, vice president of SEA, participated in inner city student teaching in Wichita, through the C.U.T.E. program.

A new item added to the constitution stated that SEA membership be listed on a student's transcript as either active or inactive participation.

Beginning its second year, the Industrial Arts Club provided an organization for industrial arts majors and other interested persons. The group joined the state organization during the year and worked toward donating additional fixtures for the industrial arts building.



SEA — **TOP ROW:** Larry Steininger, Don Hershey, Gary Hoskins, Albrod Travaglini, Jim Allen, David Bowditch, Daryl Harris, Ken Dilling. **SECOND ROW:** Wayne Heskett, Ralph Caputo, Linda Hawkins, Martin Stavelly, Diane Warnke, Donald Reese, Boshes Bilo. **THIRD ROW:** Marilyn Smith, Binno Helman, Roberta Strickler, Mary Nell Hoover, June Vimballe, Betis Persons, David Eagles. **FOURTH ROW:** Jean Stern, Pam Burns, Lydia Berg, Mary Kay Brown, Cindy Barchewski, Carolyn Dell, John Lane. **BOTTOM ROW:** David Williams, Michael Truette, Susan Sell, Judy Duffis, Pat Allen.

Industrial Arts Club — **TOP ROW:** Henry McKline, Dale Crawford, Steve Layton, Wayne Heskett, Norman Schmidt, Backlund Regula, Larry Bayson, Dennis Smith, Dean Holloway. **SECOND ROW:** Dennis Dirksen, William Ahearn, Ward Nye,

perl, Jim Cooperider, Pat Ronaldi, Wayne Although, Donald Reese, Michael Johnston, Glenn Presley. **BOTTOM ROW:** Daryl Harris, Charles Coleman, David Bowditch, Larry Martin, Jim Carlson, David Eagles, Arlo Regier.





Home Economics Club — **TOP ROW:** Thelma Johnson, Pat Hayes, Juanna Dell, Karen Allen, Joyce Boye, Linn Martin, Carol Hamilton, Jane Jabay. **SECOND ROW:** Jean Laflity, Gloria Faywallie, Linda Hawkins, Vickie Decker, Kyanna Wilson, Jacqueline Troutman. **THIRD ROW:** Betty Weiner, Joan Svensson, Lina Jo Myers, Janet Mason, Beth Landley, Sally Arnesen, Myrna Klunkertan. **BOTTOM ROW:** Kay Tronzer, Sherry Walker, Sue Arnesen, Judy Buckwalter, Lilli Ann Wivell.

Home Ec Club assists in geriatrics ward

In keeping with this year's theme of "Utilizing our strength in service to families," the Home Economics Club performed several service projects, in addition to meeting monthly. During the Circle K Bloodmobile visit each semester, the club prepared dinners for blood donors and staff workers. At Christmas, members helped patients in the geriatrics ward of the hospital write cards and then entertained them with a musical program. The club also participated in district and state meetings, with Lilli Ann Wivell serving as a state officer.

The Agricultural Club endeavored to promote interest in the rural community. A highlight of this year was touring the Hesston Manufacturing Corporation and viewing films of the plant. The club also worked on a brochure for the Agriculture Department.

Agricultural Club — **TOP ROW:** Eugene Buckingham, Lancel Yoder, Mattson Svensson, George Hoover, Ellis Yoder. **SITTING:** Robert Smith, Galen Kopp, Marston McGowan.





Jonquils — **TOP ROW:** Cynthia McQuilliam, Marilyn Shephard, Johene Schmidt, Mary Frantz, Sally Arnesen, Sue Holloway, Marcia Sellberg, Michelle Green, Judy Beltzman, Jane Brubaker, Esther Bower, Marcia Bryan, Kay Fushing, Cathy Yungst, Cathy Cully, Dea Carub. **SECOND ROW:** Joanna

Dell, Judy Pauls, Joyce Bury, Annette Goerl, Raynell Honck, Estelle Masse, Gwen Brubaker, Pat Prachev, Peggy Fask, Sue Arnesen, Lynn VanWackler. **BOTTOM ROW:** Cindy Barchewky, Carolyn Harbaugh, Jan Naylor, Diane Morrifield, Romi Robison, Dolores Meyers, Jacqueline Troutman, Chris Groves.

Sue Holloway serves punch and cookies to Lynn VanWackler during the tea held at the end of the Jonquils' second-semester membership drive.

Jonquils aid needy by selling cookies

In its second year as an organized club, Jonquils was sponsored by, but not part of, the Beta Omicron Chapter of the Epsilon Sigma Alpha Sorority of McPherson. Being a social service organization for women, they had as main projects this year selling cookies to help welfare families and helping with the Circle K Easter egg hunt for local children.

One of the highlights of the social activities of the Jonquils was the Installation Acceptance Tea, held at the home of one of the sponsors, at which 21 new members were inducted into the club.

Miss Mary Ann Robison served as adviser to the Jonquils, with Mrs. Jack Melhorn being an honorary adviser. Sieglinde Beesk was made an honorary member for this year.



Circle K hosts district conference

Functioning as a service organization for men, the McPherson College Circle K carried out its purpose through several projects. At the beginning of both semesters the club sponsored a used book sale at which students could sell and buy textbooks. The club charged a small commission on the books and used this to hold an Easter egg hunt for under-privileged children.

In February the group sponsored the second of two bloodmobiles held during the year. A highlight of the year came April 19 when the local chapter hosted the Kansas District Circle K conference.

A picnic in September attended by 100 persons gave the McPherson College YMCA-YWCA an enthusiastic beginning. The group functioned under ten committees which provided chapel services, geriatric ward and rest home services, and tutoring in local schools.

"Books for India" was a March project for M.C.Y. The club collected used textbooks from professors and students and sent them to mission fields in India.



Circle K — **TOP ROW:** Charles Irwin, Jody Serenits, Hal Hayes, Craig Little; **SECOND ROW:** John Lane, Bruce Knudt, Gary Hawkins, Donald Byers, Howard Skinner; **THIRD ROW:** Peter Snacksa, Alondy Garbhorn, Dennis Hoskins, Don Bucher, Wayne Black; **BOTTOM ROW:** Jim Stauffer, Bruce MacPherson, Gary Schuster, Jim Carlson.

M.C.Y. — **TOP ROW:** Robert Smith, Jim Stauffer, David Smith, Jerry Schock, Dale Dowd; **SECOND ROW:** Marsha Adams, Susan Kiedel, Diane Merrill, Jo Ann Moore, Yvonne Goert, Nancy Brown, Pat Hayes; **BOTTOM ROW:** Jean Lichy, Shirley Coughlan, Carolyn Dell, Lana Jo Myers, Janet Mason, Barbara Cheek.



Chuck Irwin, chairman of the Circle K used book sale, collects books for sale from Sue Mayer and Gene Both.





Phi Alpha Theta — Ted Livingston, Ric Racine



Pi Kappa Delta — Lilli Ann Wivoff, Marilyn Shepherd

Alpha Psi Omega — Marilyn Smith, Tom Neo, Susan Sell, Jody Scrivens, Nancy Brown, Chris Lippi, Peggy Slater



Fraternity travels to Arizona convention

The Epsilon-Eta chapter of Phi Alpha Theta, the national history fraternity, was established on McPherson College campus in the spring of 1954. The organization honored those students showing exceptional scholarship in history.

Not satisfied with a purely honorary status, Kansas Omicron chapter of Pi Kappa Delta, the national forensics fraternity, served as host for the regional debate tournament for local high schools during Interterm. April brought further activity as several of the members traveled to the national Pi Kappa Delta convention held in Timpi, Arizona.

Members of Players Club having attained fifty points were initiated into Alpha Psi Omega, the national honorary dramatics fraternity. Points were earned by holding acting and production positions.

Students present three major plays

Members of Players Club remained active this year furthering the cultural aspects of McPherson College. Both in the scenes and behind the scenes, members strove to provide a variety of dramatic productions for the college community. The major productions of this year were "The Bad Seed," "Measure for Measure," and "A Thousand Clowns."

Membership was open to all students interested in dramatics, whether as actors or behind-the-stage people. Students could gain points by participating in dramatic productions, which would help make them eligible for membership in the national honorary dramatics fraternity. Charles Fischer served as adviser to Players Club this year.



Players Club — STANDING: Nancy Brown, John Peterson, Terry Johnson, Richard Hartzel, Alan Hory, Chris Lippy, Marilyn Smith. SITTING: Frank Berens, Art Fowall, Mike Knottgen, Tom Nye.

Terry Johnson spends many hours rehearsing for his role in "A Thousand Clowns," directed by Tom Nye.





Collegiate Young Republicans — **TOP ROW:** Scott Carroll, John Swanson, Daniel Williams, Don Hershey, Larry M. Steninger, Joe Miller, John Gagau, Karl Matz, Ralph Dickerson, Laine McGowan, Petrak Hill, Dave Tyler. **SECOND ROW:** Binny Holman, Gary Hoskins, Dave Bell, Jake Jacobs, Alvin Powell, Ralph Caputo, Francis DeMarco, Frank Koane, Arlan Wine, Jim Stauffer, John Corrigan. **THIRD ROW:** Peggy Lusk, Nancy Brown, Mary Frantz, Joanna Doll, Pat Paschley, Becky Durlon, Marilyn Dason, MaryAnn Shepherd, Sue Arnesen, Diane Merrifield, John Lane, David Yoshida. **FOURTH ROW:** Barbara Cheek, Rebecca Adesomo, Ruth Ann Stillwell, Alasha Wilkins, Roberta Struckler, Nancy Ebinger, Esther Bower, Jane Bimbaker, Lydia Berg, Bonnie Robison, Cindy Barchelsky, Dimitro Kulik. **BOTTOM ROW:** Chris Goswa, Terri Kerschmer, Donna Weigeltman, Linda Keim, Harold Epperson, Susan Kuchiel, Julie Poltzman, Janet Cymetel, Vernetta Gowl, Doug Yarris.

Young Democrats — **STANDING:** Howard Skinner, Bruce Kuehl, Jeffery Galarotti, Monte Ganshorn, Alan Flors, Ray Galante. **SITTING:** Don Bucher, Rita DeCoursey, Marilyn Smith, Gary Della Ripa, Frank Berets.



Political Clubs work at party headquarters

The Young Democrats were involved in national election year events. Members of the club worked in the County Democrat Headquarters at McPherson. They supplied the Democrat candidate posters to decorate for the election night banquet sponsored by Slater Food Service.

Collegiate Young Republicans learned politics by working in the County Headquarters and aiding in the campaigns of state candidates and Nixon. During the election, Congressman Garner Shriver was a Homecoming guest of CYR. Senator, Bob Dole spoke at convocation and was greeted by the CYR.

McPherson CYR became quite active, increasing their membership from less than 20 to 100. It also became an important segment of the CYR movement statewide as the most active CYR of any small college in Kansas.

Art Club decorates coffee house room

In the fall, the Art Club sponsored a dance held in the art room in Arnold basement. The profit from this dance supplied materials for their big project of the year, decorating an art room in the coffee-house. The decorating of this room has been going on for several semesters, and the group hoped to complete it this year. They were also responsible for the Spring Art Festival.

Students majoring in German, or those interested in the language, made up the German Club. High-lighting their activities was a candlelight Christmas program at the Church of the Brethren, during which German carols were sung around a Christmas tree decorated in German style. Films and slides relating to Germany were shown at regular meetings throughout the year.



German Club — Phil Stover, Jean Winegardner, Richard Hanley, Katie Albright, Craig Little.

In the Art Club's room in the Mac Shack, Linda Taplin wonders how egg cartons could be used to decorate the ceiling.

Art Club — **STANDING:** Ralph Caputo, Daniel Williams, Deems Hockman, Don Bucher, John Swanson, Robert Smith, Ray Gallante, Monty Ganshorn, Larry Steinger, Howard Skinner. **SITTING:** Jacqueline Troutman, Jean Winegardner, Pat Prochus, Sue Arnesen, Sally Arnesen, Judy Peltzman, Linda Taplin.





Running in track meets for the Topeka Cosmos Club provides excitement and competition for WAA president Kathy Rogers.



WAA — TOP ROW: Estelle Masse, Ann Herbst, Annette Burvan, Leanna Mease, Joanne Todd, Mary Hutchison, Roma Bolston, Raynell Houck. SECOND ROW: Jean Winegarden, Judy Peltzman, Dea Vintch, Peggy Garley, Chris Grove, Betsy Morse, Vincette Goerd. SITTING: Pam Burns, Neva McNicholas, Kathy Rogers.

Sociology Club — STANDING: Nancy Brown, Don Bennett, Gary Standler, Joseph McFarland, Gene Roth, Robert Keim, Lois Frazier, Dhamadul Baranvat. SITTING: Jack Melhorn, Susan Krehbiel, Becky Hall, Rachel Bittle, Betty Weiner, Esther Eby.



WAA sponsors jogging, exercise sessions

Providing physical exercise for women was the primary purpose of the Women's Athletic Association. In carrying out their purpose this year's club sponsored one-hour jogging and exercise sessions three nights a week in the gymnasium.

Several members brought recognition to the club and the college by their participation in track meets in Kansas, Missouri, and Nebraska. Freshmen Mary Hutchison and Alice Smith competed in track meets with junior Kathy Rogers.

As in previous year, WAA sponsored the concession stand at football games and the Powder Puff Football Game between underclass and upperclass coeds.

The Sociology Club was a newly formed group on the McPherson College campus, having been organized in March, 1968. Having no direct affiliation with a national sociology organization, the club was still in the formative stages.

Several members participated in interterm sociology trips to Jamaica and Chicago. A picnic was held in the spring to attract future members.

M-Club requests letter jackets

Advancing their goal of sparking school spirit and interest in athletics and physical fitness, the M-Club sponsored several projects during the year. Traditional events included the Watermelon Feed and the spring M-Club Banquet. The M-Club Carnival was held in February with Jim Mizak and Neysa Fox chosen as king and queen.

A new proposal was presented by the club to the Athletic Board for their approval. The proposal asked that sportsmen earning letters be presented jackets instead of the usual sweaters.

Beginning its second year as a campus organization, the Fellowship of Christian Athletes sponsored a chapel service during second semester. The group met monthly to discuss subjects relating to their purpose of confronting athletes, coaches, and youth with the challenges of the Christian faith.



ECA — Dick Stalcup, David O'dell, Bud Taylor, David Shepherd, Phil Stover, Mike Thompson, Jim Mowry, David Smith, Bruce Cook



Hanging a poster to advertise the February 7 M-Club Carnival, Mike Thompson, M-Club president, explains the annual event to Bruce Koehl.

M-Club — **TOP ROW:** Eric Frederick, Mike Thompson, Greg Quaker, Bruce Cook. **SECOND ROW:** David Smith, Jim Mowry, Bud Taylor, Mike Butsch, John Belser. **BOTTOM ROW:** Dick Stalcup, Walt Pankosch, Prentis Porter, Larry Bacon, Bob Knechtel, Jim Stauffer, Sid Smith, David Shepherd, Norman Schmidt



Coeds promote spirit for sports events

Promoting school spirit and enthusiasm at athletic games was the major responsibility of the Varsity and B-Team cheerleaders. The captain of the Varsity team was Roma Rolston and captain of the B-Team was Shirley Miller.

The year started with the Varsity cheerleaders leading the Pajama Parade before the first home football game. At Homecoming the Varsity cheerleaders sold mum corsages throughout the week.

Leading cheers and generating enthusiasm at football and basketball games was the most important aspect of each cheerleader. Many hours were spent in practice sessions and traveling many miles to away games. This year's cheerleaders also strived to paint and hang large posters promoting every football and basketball game.

A-Team cheerleaders encourage Bulldog support by painting a large poster and hanging it in a hallway in Dutzow.



A-Team Cheerleaders — Lynn VanWickler, Roma Rolston, Raynell Houck, Sue Arnesen.





B-Team Cheerleaders — Terri Pifer, Shirley Miller, Alice Crump, Michelle Green, Janet Mason

Alice Crump leads Bulldog supporters in a yell of encouragement during a McPherson time-out



Raynell Honck displays the pep and agility that got her elected to the position of Varsity cheerleader.





McPherson College Band — TOP ROW: Scott Carroll, Bill Braum. SECOND ROW: Edward Burr, Marvin Tischhauser, Barnes Zook, Louie Hensinkvold, Bruce Winkelmann, Rodney Jantz, Ken Dilling, Paul Tice. THIRD ROW: Winona Achilles, Chris Grove, Ray Larridie, Myrna Klunkerman, Dale Dowdy, Mary Ann Brown, Arlan Wine. BOTTOM ROW: Clifford Danziger, Mary Kay Brown, Ann Linville, Alice Smith, Peggy Gurdie.

MENC — STANDING: Shules Goughnour, Ray Lamb, Mary Ann Brown, Donna Brudaker, Terri Kerschner, Jerry Schrock, Ralph Dickerson, Dale Dowdy, Winona Achilles, Chris Grove. SITTING: Barbara Leeck, Ken Dilling, Linda Keim.

College band performs with famed composer

Trumpets resounding — clarinets harmonizing — trombones boasting — drums accenting — these were the sounds that issued forth from the band room this year. One of the highlights of the year for the McPherson College Band was a combined concert with Tabor College Band for Norman Dello Joio, a famed composer. The band also provided enthusiastic support for the home football and basketball games. Under the direction of Professor Bill Braum, the band completed a successful and interesting year.

MENC, Music Educators National Conference, met monthly to further their musical interests. This year the group went caroling at Christmas and was entertained by Robert Mesrobian, MENC visiting professor. The group also sponsored a chapel program in the spring.



Balazs conducts ACCK orchestra

For the first time, the Associated Colleges of Central Kansas formed an orchestra. This group was made up of students from the six ACCK schools and members of their communities. Under the direction of Frederic Balazs, a visiting artist from Ohio, the Central Kansas Philharmonic Society presented concerts at each of the six ACCK schools. Among the many fascinating and exciting numbers performed by the orchestra, were "Prelude to Die Meistersinger" by Wagner, "Symphony in b minor (unfinished)" by Schubert, and "Jubilation Overture" by Robert Ward. Members of the sixty-piece orchestra rehearsed weekly. With the help of Mr. Balazs, the compositions were rehearsed to perfection and from the diverse locations, the group became a perfect ensemble and united whole.



Frederic Balazs, composer, conductor, and violinist from Ohio conducts the ACCK orchestra.

Band students concentrate on a spirited march during their Wednesday rehearsal.





Madrigals — TOP ROW: Paul Both, Ralph Dickerson, Ray Landis, Jerry Schrock, Marlin Hoover, Ken Dilling
 BOTTOM ROW: Doris Coppock, Shirley Goughnour, Winona Achilles, Mary Ann Brown, Carolyn Brittain, Mary Nell Hoover, Sylvia Wine, Mrs. Jack Melhorn

Concentrating on a musical selection, A Cappella members rehearse for their annual spring tour.



A Cappella performs with opera star

A highlight of the 37th season for the A Cappella Choir was the performance of a number with visiting ACCK professor and opera performer, Robert Mesrobian. The group sang regularly at the Church of the Brethren and presented several concerts on the campus. The Chamber Choir was a new group this year. Membership was open to all qualified women who were willing to spend the time to learn new music. The intention of both choirs was to become familiar with various types of music ranging from sacred to secular, traditional to contemporary.

A spring tour to churches and schools in the Western Region was planned for either the A Cappella Choir or Madrigals. The Madrigals performed for clubs and at banquets as well as at churches. One banquet at which they entertained was the Christmas dinner held in the Student Union cafeteria. Their repertoire contained madrigals, sacred literature, and popular tunes.



A Cappella Choir — **TOP ROW:** Winona Achilles, Dale Dowdy, Kathy Peckover, Jerry Schrock, Chris Lippy, Ralph Dickerson, Leanna Mease, Wayne Albough, Sharyn Parks, Tom Lankley, Marian Stasely. **SECOND ROW:** Donald Frederick, Mary Ann Brown, Paul Both, Sue Donatson, Merrin Godfrey, Annette Bivyan, Roy Rowland, Marge Rowland, Alan Winn, Lilli

Ann Wivell. **THIRD ROW:** Noel Ditmars, Shirley Coughnour, Ken Dilling, Marcia Sellberg, Jolene Schmidt, Don Luovers, Margaret Holdreder, Ward Nippert, Linda Hawkins. **BOTTOM ROW:** Judy Pauls, Ray Landis, Carolyn Bivyan, Tom Elliott, Donnie Budsaker, Larry Banks, Marsha Atkins, Dick Abright.

Chamber Choir — **TOP ROW:** Kay Clark, Lois Frazier, Vannie Arnold, Thelma Johnson, Mirc Smith, Esther Elbes, Kathy Moore. **SECOND ROW:** Beth Smoler, Claudia Hanson, Carolyn Harbangle, Annie Furman, Janet Mason, Rachel Bittle, Michelle Green, Debbie Stralin. **THIRD ROW:** Barbara Clark, Mary Kay Brown, Mary Ellen Biverman, Sandy Cochran, Lydia Berg, Kathryn Albright, Diane Winter. **BOTTOM ROW:** Betty Weimer, Peggy Gurley, Joellen Morlan, Chris Groce, Ruth Brown, Jane Nelson, Janice Bailey, accompanist.







Athletics

From the arching of the first football kickoff to the final swing of a baseball bat in the early spring, McPherson College athletics portray the mood of hard-fought competition.

The crowd displays the moods of joy in victory and agony in defeat and always urges its team on to skillful conquest.

Whether in the gala setting of Homecoming, a roaring cheer in the Roundhouse, or a lonely golfer in a final match, athletics at McPherson College make a vital contribution to the "Moods of McPherson." And in all of the moods student find challenge and growth.



Coach Dwight McSpadden studies the action on the field while trainer John Burns checks equipment.



McPherson quarterback Junior Smith dives through a determined O-E defensive line.



Defensive player Jim Beachell watches with great anticipation as the Bulldog offense takes over.

Bulldog pass defense ranks high in NAIA

The McPherson College Bulldogs improved upon their previous season's record as they recorded a two-win, seven-loss season. This left the Bulldogs in last place in the conference standings, but with an optimistic look at the future. Only six seniors walked the graduation plank from the freshman and sophomore dominated team.

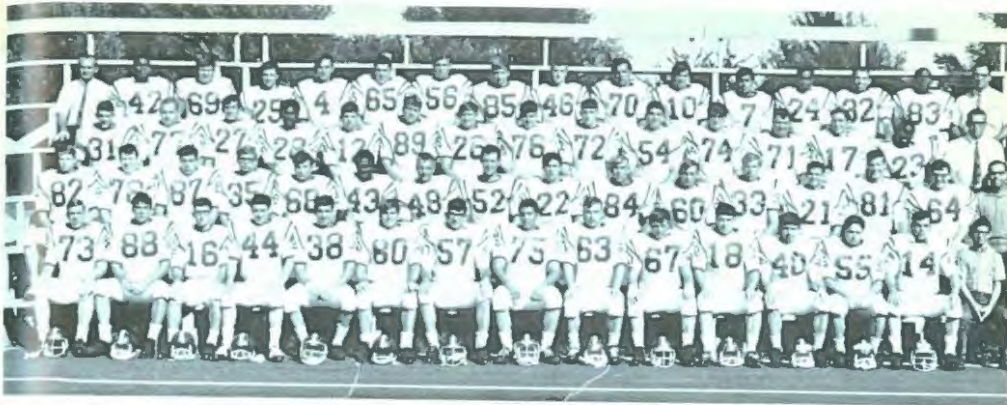
Highlighting the season was the seven-to-six victory over powerful Ottawa and thirteen to six thriller over Bethany that ruined the Swedes' Homecoming.

The offense was the weaker point of the Bulldogs' attack, but provided the fans with thrills on numerous occasions. The defense was one to be proud of, as the pass defense was rated as high as sixth in the nation in the NAIA polls.

John Smith, senior tackle, was rated honorable mention all-league, as he spearheaded the Mc-

Pherson defense. Bruce Cook and Mike Thompson served as co-captains for the year. Southwestern, KWU, and Friends finished as the top three teams in the KCAC.

Mac	KCAC	Opponent
0	College of Emporia	42
6	Kansas Wesleyan	60
0	Southwestern	21
14	Friends	21
13	Bethany	7
0	Baker	15
7	Ottawa	6
6	Bethel	39
13	Sterling	25



1985 Football Squad — TOP ROW: Coach Art Rau, 42 Mike Hooker, 69, Charles McGrade, 25, John Lane, 4, Mike Butsch, 65, Robert Kirkland, 56, Bill Carter, 85, Steve Skinner, 16, Marv Gatten, 70, Francis McShane, 10, Don Davis, 7, Jose Casburna, 24, John English, 32, William Blumhart, 84, Michael Parks, Coach Don Widrig. SECOND ROW: 31, Arnie Olsen, 77, Steve Kiorack, 27, Pat Hill, 28, Carl Cook, 12, Frank Keane, 89, John Smith, 26, John Suminski, 56, Stephen Bartlett, 72, Alan Holmes, 51, Steve Hughes, 71, Charles Fife, 71, Richard Beents, 17, Dave Grove, 24, Harold Epperson, Coach Dwight McSpalden. THIRD ROW: 82, Dean Holloway, 78,

Jack Sigmon, 87, Ken Smith, 35, Clark Duffy, 68, Jerry Frabane, 41, John Woodson, 18, Carls Coering, 32, Carlos Green, 22, John Corrigan, 81, Lonnie Pauls, 60, Jeff Fair, 34, Bud Taylor, 21, Dick Stalenz, 81, Steve Layton, 61, Roger Frisland, Manager, John Burns. BOTTOM ROW: 74, Gary Schuster, 58, Larry Bacon, 16, Phil Aldinger, 44, Hal Wright, 38, Frank Falcicola, 80, Chris Frederick, 57, Bruce Cook, 59, Greg Gnaaken, 68, Mike Thompson, 67, Gary Fox, 18, Jr. Smith, 16, David Fehr, 55, Tim Wrasser, 14, Jim Beachell, Trainer, Stan Jay Kirk.

During the McPherson College of Emporia football game, defensive players Jim Beachell and Carl Cook block a pass to a Col E player.





1969 A — Team: Jerry Grant, Lowell Monke, Steve Highbanks, Larry DeTour, John Smith, Hal Wright, Bill Chonowith, Jim Mowry

Varsity competes in close conference action

McPherson College began its basketball season by entering the McPherson Jaycee Invitational Tournament held November 25-27 and playing three ACCK schools, Baker, Bethany, and Sterling.

As the season progressed, Bulldog fans were thrilled with several games ending in ties and leading to over-times. McPherson defeated KWU 74-73 after a point by point battle to the last few seconds of an over-time.

With the conclusion of the season in late February, Coach Don Widrig had led his Varsity team in nine wins and 14 losses. Junior Jim Mowry and senior John Smith served as co-captains for the Bulldogs who finished seventh in the KCAC conference. Two freshmen, two sophomores, three juniors, and one senior composed the 1968-1969 Varsity team.

MC Scores		Opponent's Score
64	Baker	73
72	Sterling	86
108	Bethany	80
84	Bethel	72
74	KWU	68
80	Friends	87
72	C of E	75
75	Baker	74
64	Southwestern	83
67	Ottawa	76
81	Bethany	89
76	Tabor	69
87	Sterling	77
91	Bethel	97
74	KWU	73
73	Friends	88
83	C of E	94
81	Tabor	77
82	Baker	91
79	Southwestern	80
70	Ottawa	90
78	Bethany	76
94	Sterling	101



Larry DeFour interrupts an attempted College of Emporia basketball goal.

Coach Wuirig explains a new basketball play to B-Team players.





Bill Chemowith attempts a McPherson College basketball goal as Kansas Wesleyan players and Jim Mowry and John Smith freeze in their steps to wait for the rebound or score.



1989 B-Team: Lynn Goss, Jerry Polk, Richard Brindle, Kent Seefeld, Mike Parks, Stu Wright, Tom Connell

B-Team competes against 10 conference teams

Playing in 20 games this season, the McPherson College B-Team met all of the conference teams. The team began their diligent practicing last fall, with the season lasting from December until the last of February. Coaching the team for his third consecutive year was Art Ray.

The team, composed of two sophomores and five freshmen, compiled a season record of 5 wins and 15 losses. Several of their games were lost by close margins, such as the game with Friends 90-87, Southwestern 78-76, and Ottawa 76-73.

By players improving their skills and gaining experience on the court as B-team players, they became more equipped to play for the Varsity team. Several B-Team players lent their skills to the A-Team this year by acting as reserves.

MC Scores	Opponent's Score
64	Bethel 60
55	KWU 74
87	Friends 90
71	C of E 81
60	Baker 85
79	Southwestern 75
77	Ottawa 71
76	Bethany 88
54	Tabor 76
73	Sterling 78
71	Bethel 79
65	KWU 76
68	Friends 92
76	C of E 86
77	Tabor 72
79	Baker 70
76	Southwestern 78
73	Ottawa 76
88	Bethany 92
83	Sterling 93



Up and over describes the action during an intramural volleyball game.

Fahnestock team wins in volleyball

Students participated in volleyball, handball, bowling, and basketball during the 1968-69 intramural program. The program gave interested students a chance to participate in some competitive sport.

The first semester saw action in volleyball, handball, and bowling. Teams were organized by dormitory floors. Third floor Fahnestock won the championship.

During second semester, the gymnasium was the setting for intramural basketball. Teams were composed of players from all three men's dormitories and off campus men. Bowling teams played every week at the Starlite Lanes during both semesters. A handball ladder was again organized for interested students and faculty members.

Action is heavy as an intramural attempts to score.



Tensely watching the basket, intramural basketball players are ready to jump for the rebound.





Women's Basketball Team — TOP ROW: Annette Runyan, Estelle Masse, Leanna Mease, Mary Hutchison, Ann Herbst

BOTTOM ROW: Neva McNicholas, Pam Burns, Kathy Rogers, Diane Winter.

Women participate in basketball

McPherson college women played in an exciting Powder Puff football game early this fall. The freshman-sophomore team consisted of twenty-seven women; the junior-senior team had eighteen women playing for them. The game ended in a tie score of 24-24.

Dr. Doris Coppock, professor of physical education, coached all women's athletic events on campus. The girl's basketball team, consisting of eleven girls, practiced twice a week and participated in two sports days at Emporia and Central College.

The women's tennis team lost both of their matches with Sterling in the Spring of 1968 with 5-4 scores.

For the first time, the ACCK girls sponsored a track meet which was held on the McPherson College campus. McPherson coeds took first place.

During the Powder Puff Football Game, freshmen and sophomore team members wait patiently during a timeout.





Cross Country Team: TOP ROW: Phil Stover, Ivan Torres, David Smith, Balen Brent, Pharis Horton, Richard Buck, BOT- TOM ROW: David Shephard, Bill Rinaldes, John Kedzior, Tom Davis, Wayne Isham

With a last surge of energy, an exhausted David Shephard reaches the finish line of the mile run.



Harriers rank first in six meets

A young cross-country team, consisting of six freshmen and three juniors, finished the successful season with a record of seven first place finishes and two second places. Unfortunately, one of the seconds came in the conference meet. The highlight of the season was participating in the NAU cross-country championship which was held in Oklahoma City where the Bulldogs finished 28th in team competition.

MC Placing	
McPherson Invitational	1st
Quadrangular at McPherson	1st
Triangular at Labor	1st
KWU Invitational	2nd
C of F Invitational	1st
Triangular at McPherson	1st
Dual at Southwestern	1st
KCAC Conference Meet	2nd

Twelve new records set by track men

The track team participated in eleven meets during the past season. During the season, twelve new records were set. Relay teams accounted for five of these by breaking the 440 yard, 880 yard, mile, sprint, medley, and two mile relays.

The individual records were set by Mike Butsch in pole vaulting with a vault of 14' 4". Bob DeTour and Jim Beachell both set the javelin record with identical tosses of 2148' 4". John Smith jumped 42' 11" 2" to set the new triple jump standard. Dave Shepherd set two records with a time of ten minutes 17 seconds in the 3000 meter steeple chase and a time of 16 minutes 9 seconds in the three mile run. Dave Smith also accounted for two records with a 58.1 second clocking in the 440 yard intermediate hurdles, and with a 19.7 second effort in the 440 yard dash.



In intercollegiate competition, a McPherson trackster glides smoothly over a pole vault bar.

1968 Track Team: TOP ROW: Bruce Cook, Bud Taylor, John Smith, Bob DeTour, David Smith. SECOND ROW: Coach Art Bay, Lemayne DeWald, David Eagles, Mike Thompson, Jim Beachell, Ron Westergaard, Larry DeTour. BOT TOM ROW: Carl Cook, Norman S. Smith, Mike Butsch, Dick Staloup, David Yoshida, Mike Prickett, John Lane, David Shepherd.





1968 Baseball Team: TOP ROW: Keith Hommel, Jerry Grant, Mark Fabric, Jim Hakes, Lynn Goss, Steve Puffhoff, John Baker, Coach Mac Spadden. SECOND ROW: Dennis Dalquist, Barry Berger, Manfred Brown, Walter Pankowich, Jim Stauffer, Art

Fivall, Stan Borowski, Tom Ness. BOTTOM ROW: Bruce MacPherson, Joe Lacovara, Gary Lydie, Bob Kuechel, Frank Boyd, Junior Smith.

Baseball joins sports

Because of the interest instigated by baseball enthusiasts, baseball became a part of the regular athletic curriculum of McPherson College in the spring of 1968. In the past the team had been independently organized.

Competing in doubleheaders with surrounding small colleges, the team finished the season with a 4-12 record. Dwight McSpadden served as coach for the team.

A McPherson College baseball player takes a few warm-up swings before he takes his turn at the plate.



MC SCORES		Opponent's Score
5	Sterling	14
3	Sterling	2
4	Bethany	3
3	Bethany	6
6	Baker	2
0	Baker	9
5	KWU	11
4	KWU	15
2	Col E	6
4	Col E	14
6	Sterling	8
6	Sterling	7
6	KWU	3

Golf team scores successful season

During the spring of 1968, students participated in various sports at McPherson College. With baseball added to the athletic curriculum, the men of the college were offered an opportunity to participate in baseball, tennis, golf, and track and field.

Coached by Donald Widring, the tennis team recorded a season of five wins and eleven losses. The team placed well in the conference with Ken Bechtel and Loren Boughman winning number two doubles in the conference. Boughman also won number three singles in the conference.

Aided by experienced players, the golf team participated in nine matches and won in each of them except two. Sid Smith coached this winning team.



1968 Tennis Team: Steve Herrick, Howard Brown, Ken Bechtel, Loren Boughman, Gary Blackwell.

1968 Golf Team: Don Woodcock, Phil Grove, Dave Kenberry, Randy Wadpley, Chris Levy.







Classes

Although each class helped make up the whole student body, every class contributed its own particular mood to the atmosphere of McPherson College.

Freshmen portrayed the usual enthusiasm as they anxiously experienced their first year of college. The sophomores, with the security of a year of college life, made strides forward as a unit in their college careers. Facing many decisions as to their majors and life vocations, the juniors faced more challenging and exciting courses. During their four years at McPherson College, the seniors witnessed numerous moods, many of which they helped create.

SENIORS



NEENA FOX
FLOYD BROWN
MONTE GANSHORN
DENNIS MARTIN

Secretary
Treasurer
Vice President
President

WISONA ACHILLES
Music Education



ALAN AIREY
Chemistry



PATRICIA ALBIN
Education and
Psychology



JAMES ALLEN
History

MARY ATWILL
Sociology

JOHN AYOKO
Agriculture and
Rural Life



JAMES BEACHELL
Industrial Arts
Education



RONALD BEACHLEY
Philosophy and
Religion



MICHAEL BISCEGLIA, JR.
English



GARY BLACKWELL
Physics



STANLEY BOROWSKI
History



Seniors



DAVID BOWLBY
Industrial Arts
Education

FLOYD BROWN, JR.
Economics and
Business Administration

NANCY BROWN
Sociology

DONNA BRUBAKER
Music Education

DONALD BUCHER
Economics and
Business Administration

EUGENE BUCKINGHAM
Agriculture and
Rural Life



BEVERLY BURGER
Education and
Psychology

RICHARD BURGER
Agriculture and Rural Life

WAYNE BURNHAM
Economics and
Business Administration



JOHN BURNS
Sociology

ARTHUR CAMPBELL
Speech and
Theatre

JAMES CARLSON
Industrial Arts
Education

SCOTT CARROLL
Psychology



JOSE CASTERA
Sociology



CHARLES COLEMAN, JR.
Industrial Arts
Education



JOSEPH CRISTOFORI
History

CAROLYN DADISMAN
Psychology

J. ROSS DAESCHNER
Economics and
Business Administration

STANLEY DALTON
Economics and
Business Administration



CLIFFORD DANZIGER
Psychology

DONALD DAVIS
Psychology



WILLIAM DELANEY
Mathematics



CAROLYN DELL
Education and
Psychology



THOMAS DERICCO
Biology



Seniors



ALLEN DETWILER
Agriculture and
Rural Life

KENNETH DILLING
Music Education

JO ELAINE DUFFY
Education and
Psychology

DAVID DUNCAN
Economics and
Business Administration

SUSAN DUNCANSON
Education and
Psychology



WANDA DUSKE
Sociology

DAVID EAGLES
Industrial Arts
Education

MARY EARLY
History



BARBARA ELLIOTT
Sociology

MICHAEL EMMERT
Agriculture and
Rural Life

CRAIG FAIRCHILD
Economics and
Business Administration

FRANK FALCIOIA
Economics and
Business Administration



MYSA LOY
Sociology



MONTY GANSHORN
Economics and
Business Administration



LYDIA GARZA
Spanish

EDWARD GILLETTE
Economics and Business
Administration

VALERIA GRABER
Education and
Psychology



CARLOS GREN
History



WALTER GRIFFITH
Economics and
Business Administration



JOHN HADDEN
Economics and
Business Administration



JAMES HAI DEMAN
Sociology



RICHARD HALL
Sociology



Seniors



DARYL HARRIS
Industrial Arts
Education

HAL HAYES
Economics and
Business Administration

PATRICIA HAYES
Home Economics

MOE HEDJAZI
Agriculture and
Rural Life

JEAN HENDRICKS
English

WAYNE HUSKETT
Industrial Arts
Education



STANLEY HOFFERE
History

GEORGE HOKE
Chemistry

MARVIN HOOVER
Biology



MARY NELL HOOVER
English

GARY HOSKINS
Psychology

DAVID HUBER
Sociology

LANCE HUNGERFORD
History



WARREN HUTCHISON
Mathematics



DAVID IKENBERRY
History



REGIS IOVINO
Economics and Business
Administration

CHARLES BOWEN
Mathematics

GARY JASPER
Industrial Arts
Education

CLYDE JOHNSON
Agriculture and
Rural Life



SAMUEL JOHNSON
Agriculture and
Rural Life



SHIRLEY JOHNSON
Biology



RAYMOND JUMA
Mathematics



JUDITH KETCHAM
English



CAROLE KIMMEL
Sociology



Seniors



STEVE KORBANSK
Sociology

MARK KROGH
History

PEGGY KUEHL
Biology

MENDI KUGLER
Industrial Arts
Education

CLIFFORD LAMBERT
History

LEONARD RAY LANDIS
Music Education



JOHN LANE
Chemistry

JOHN LEABY
History

LINDA LEE
Education and
Psychology



JOHN LUFFMAN
Mathematics

TED LIVINGSTON
History

THOMAS LOOSE
Industrial Arts
Education

GARRY LOUCKS
Philosophy and
Religion



JUDITH LANKLEY
Psychology



BRUCE MACPHERSON
Economics and
Business Administration



ALLAN MADER
Industrial Arts
Education

DENNIS MARTIN
Chemistry

MARSTON MCGWIN
Agriculture and
Rural Life

JOSEPH McPARLAND
Sociology



RONALD MECK
Chemistry



JOSEPH MILLER
Biology



JEANETTE MILLS
Education and
Psychology



JOYCE MILLS
Education and
Psychology



IO ANN MOWRY
Sociology



Seniors



GEORGEY MULLETT
History

JOHN MULUMBA
History

THOMAS NEE
Speech and
Theatre

DONNA NIKODIM
Sociology

KENT NOESINGER
Physics

PAUL OTIS
Sociology



CHEOL PARK
Mathematics

CRAIG PEARSALL
History

BETTY PETERSON
Biology



DANA PETRE
English

SUSAN PIERSON
English

CLODRIC RACINE
History

JIMMIE BAKES
History

DONALD REESE
Industrial Arts
Education

CORNELIA REGIER
Education and
Psychology



JUDITH REGO
Education and
Psychology

ROCKFORD REGLEY
Industrial Arts
Education

WILLIAM REINHART
Biology

RODNEY RIFE
English

PASCORINALDI
Industrial Arts
Education

RONALD ROBBINS
Philosophy and
Religion



EUGENE ROTH
Sociology

JOHN SARBBER
Economics and
Business Administration

GARY SCHUSTER
History



Seniors



ROBERT SEDLACHER
Economics and
Business Administration

SUSAN SELL
English

JOSEPH SERENITS
History

RUSSELL SHEETS
Education and
Psychology

KADIM SHUKER
Chemistry



PEGGY SLATER
Speech and Theatre

DENNIS SMITH
Agriculture and
Rural Life

JANET SMITH
Education and
Psychology



MARILYN SMITH
English

DAVID SOVCHEN
History

DONALD STEAD
Economics and
Business Administration

DIANE SULLIV
Sociology



JOHN SWANSON
Economics and
Business Administration



MARION SYLBERSON
Agriculture and
Rural Life



MICHAEL TRAUTLO
Education and
Psychology

PAT TULLO
History

LARRY VERNON
Mathematics



JUNE VINSCHATTLE
Education and Psychology



RICHARD WAGONER
Sociology



FREDRIC WHEELER
History



SYLVIA WINE
Psychology



WILLIAM WOOD
Economics and
Business Administration



LYNDA WOODCOCK
Education and
Psychology

GARY WORDEN
Industrial Arts
Education

CONNIE WORTHING
Education and
Psychology



DOUGLAS YINGST
Biology

CAROLYN YODER
Home Economics



Kent Nollinger gladly performs the duty of tying together the legs of two freshmen during Initiation Week.

Seniors and Melhorn end four years

Progress, evolution, change. These were the watchwords of the class of 1969 which has initiated and witnessed innovations on the campus. Wearing a '69 beanie with the seniors was Dr. J. Jack Melhorn, president of the College, who entered McPherson College with them in 1965. That year the enrollment first reached the 750 or 800 bracket.

A homecoming bonfire sponsored by the seniors when they were freshmen has become a tradition and as juniors they initiated the Homecoming Parade. The class saw the last compulsory chapel program on campus, and as seniors, class members were instrumental in securing seats on the Educational Policies Committee for two voting student members. Progress and change will continue to be foremost in the lives of these seniors.



English majors Jean Hendricks, Marilyn Smith, and Susan Sell browse through materials available in the Education Room.

Who's Who selects thirteen seniors

The faculty members and administration of McPherson College selected thirteen seniors to be included in the national publication "Who's Who Among Students in American Universities and Colleges." For over 25 years, the College has considered participation in this organization a high honor for any senior.

These students received recognition for scholarship, for participation in extracurricular activities, for their promise of future contributions to society, and for service and leadership while attending McPherson College. Their range of interests is represented by a variety of majors including music, elementary education, history, home economics, English, chemistry, math, and physics. The spectrum of their immediate plans and future is unlimited.



Dennis Martin, chemistry major, is one of many science students who work as laboratory assistants.



Music enthusiasts Winona Achilles and Donna Brubaker pause during their busy schedules to enjoy a few moments at the piano in DeLozier Hall.

Gary Blackwell tosses the air around in calculating a laboratory physics problem.



Home economics major Patricia Hayes spends many leisure moments in biology laboratory in preparation for a nursing career.





Charles Green, history major, enlists the aid of a map in presenting a report in one of his college classes.



Math major Larry Vernon spends numerous hours serving as Student Council President.

Preparing a reading module for student teaching are elementary education majors Carolyn Dell, Josy Duffy, and Pat Allen.



JUNIORS



KATHY ROGERS
MIKE THOMPSON
JIM STAUFFER
GALEN KOPP

Secretary
Vice President
President
Treasurer

Robert Albarison
Wayne Applegate
Sue Arneson
Charles Baraglia
Margo Barrick



David Bell
John Berger
Russell Bennett
Jean Bergstrom
Harold Buttle



Wayne Black
Charleen Bowen
Earl Bowman
Lary Brown
Mary Kay Brown



John Bruzenas
Stanley Bucher
Baldo Caputo
Bruce Cook
Dale Crawford



Robert Culver
Kas Cushing
Stephen Davidson
Dwayne Davis
Tom Davis

Juniors



Galen Davis
Linda Dean
Lowell Dell
Joe Detwiler



Beyer Dobbie
Marilyn Dixon
Sue Enders
John English



Richard Ferris
Alan Gray
Ellen Foy
Charles Frank

Judy Fries
Barbara Gramack
Jeffrey Gulaotti
Emanuel Hagbar



Claudia Hanson
Erinda Hawkins
Harriet Helms
Clara Holstern



Alma Hrabec
Dyck Hill
Margie Hildebrandt
George Hunter



Isolene Howard
Wanda Howard
Thelma Johnson
Charles Jones



Esther Johnson
Ed Kruder
Steve Lagniel
Alan Layallee



Junior Craig Little concentrates on an experiment with a polygraph in a science laboratory course.

Juniors

Gloria Lewallen
Craig Little
Mike Loresless
Don Lucero



Jon Cinkley
Bodney Fisk
Larry E. Martin
Laurence May



Mike McLean
George McNicholas
Neva McNicholas
Diane Merrifield



Janet Meyer
Karen Miller
Patricia Miller
Jim Mowrey



Donna Nefflein
John Nye
Susan Schneider Nye
Dawn O'Dell





George Chellette
Ken O'vill
Steve Payson
Judy Pelton



Barbara Plaugher
Jani Pyle
Greg Quakenbush
Howard Reed



Queen Diane Merrifield and her escort Jim Stauffer are all smiles following the Homecoming Coronation.



Warren Brees
Kathy Rogers
Bonnie Kolston
Dean Subbotin



Paula Sissel
Marian Snavely
Carroll Snyder
Dan Snyder

Juniors



Christine Smith
David Smith
Robert Smith
Jim Stauffer



Larry Steinger
Roberta Strickler
Brian Summerhays
Lawrence Taylor



Erwin Thuesen
Michael Thompson
Paul Tice
Alfred Travaglio

Dea Luntz
David Walker
Sharon Walker



Larry Wallin
Arthur Ward
Dianne Warrick



Don Williams
Stephen Willes
Tom Wilson
Lilli Ann Wisvell



Lilli Ann Wisvell and Galen Kopp find a few moments of relaxation in the Student Union recreation center while enjoying a game of snooker.



Junior float wins prize

As 160 juniors passed the half-way point in their college careers, they began to think more seriously of their vocational goals. Study became more intense as majors were declared and students participated in upper-level courses.

Being upperclassmen, juniors took on new responsibilities by becoming active participants in student government and campus activities. During Homecoming, diligence and cooperation were shown as the junior class won second place for their float, "First Wildcat in Orbit." Reigning as queen over the festivities was Diane Merrifield.

Highlighting the spring of the year was the Junior-Senior Banquet and Prom, planned by the juniors in honor of the senior class. As the year neared an end, the class of 1970 sensed both enthusiasm and apprehension as they paused on the threshold of their last year at McPherson College.

Barbara Plaugher entertains students with her vibratarp at a Hawaiian Luau in the college cafeteria.



SOPHOMORES



JUDY BUCKWALTER
GARY FUM
KATHY COLVIN
GINNY YINGST

Treasurer
President
Vice President
Secretary

Phil Aldinger
Karin Allen
Gerald Armstrong
Larry Bacon



Cindy Bar-Jacki
Frank Bennett
Lydia Berg
Duane Birch



Dixie Bohlmann
Nancy Bontinger
Dora Bower
Cathie Bower



Rudy Brent
Carl Bromowski
Susan Brooke
Joan Brubaker



Larry Bryne
Lynn Brustman
Mary Jo Bryan
Kathy Bryer



Judy Buckwalter
Kenneth Burgen
Pam Burns
Roger Burrie

Sophomores



Maurice Bossertman
Edward Burr
Joyce Bury
Duanna Christensen
Kay Clark



Cathy Colvin
Carl Cook
Janet Courtet
Phillip Crupper
Jani Dabbsman



Donna Daniels
Rita DeLaurie
Gary Della Ripa
Francis DeMarco
Phil Deppenwolf

Lemayne DeWild
Dale Downs
Al Dotrow
Joan Eme



Mark Ealen
Pete Fleming
Kathy Flora
Cary Fox



Art Fosall
Claudia Frazz
Chris Frederick
Raymond Galante



Portno Garcia
David Gault
Merrin Gault
Vincette Gouff
Evan Goss



Shirley Goughnour
Joyce Goff
Christine Grove
Doris Guth
Michael Haldeman



Evan Handcock
Dennis Hockman
Clarence Holler
Dean Holloway
Sue Holloway



Sophomore Vincette Gouff assists senior Ron Meek in selecting the proper class cards to insure enrollment in his chosen courses of study.



Sophomores

Raynell Houck
Carroll Houghton
Haydi Jacobs
Verla Jamison



Terry Johnson
Bob Knechtel
J. Harvey Koehn
Susan Krehbiel



Bruce Kuehl
Dana Kurtz
Innoc Kurtz
Janet Kussart



Sandy Kuyatt
Steve LaChap
Don Leach
Amy Linsville



Clare Lippo
Gary Lydie
Don Macklin
Mohamed Marime



Karl Matz
Bridi Maxwell
Charles McBrink
Eunobia McQuillan





Gardie McIndean
Thane Meyer
Lowell Monke
Candy Morgan



William Morris
Betty Morse
Suzanne Nachtman
Janice Naylor



Cindy Barchelsky greets students as they find class assignments after enrolling.



Edwin Nelson
Ronald Nelson
Kurt Newbold
Linda Nohr



Lanessa Norstrom
Leonard Ogilvie
Walt Paakowich
Judi Pauls

Sophomores



Prentice Porter
Glenn Presley
Bellevue Pugh
Charles Rawstrom
Dorothy Reagin



Marge Roorda
Judy Rowe
Carolyn Royman
Linda Sallman
Larry Schrick



Jan Schwartz
Marcia Sullberg
James Sheets
Marilyn Shepherd
Howard Skinner

Kenneth Smith
Louise Smith
Beth Snader
Dick Staberg



Jean Stern
Linda Taphu
Scott Thussen
Paul Thompson



Gordon Tolle
Kay Trower
Lynn VanWinkle
Kathy Warden



Ben Webster
 Bro. Wersant
 Lynett Wheeler
 Randy Whelples



Diane Winter
 Douglas Yarris
 Ginny Yungst
 Ellis Yeager



Engel Yeager
 Cyrus Zellers
 Ramon Zook



Sophomores defeated in Tug-of-War

With the challenge of new responsibility, the sophomore class, representing 24 states and two foreign countries, made strides forward as a unit and with the security of a year of experience in college life.

Dismay struck the class early in the year when the sophomores were declared technically defeated by the breaking of the rope. "Triumph and Tragedy" was an appropriate theme for their entry in the Homecoming float competition. In the Homecoming festivities, Ginny Yungst served as the sophomore attendant in the royal court.

After the 171 members of the sophomore class had a taste of no longer being the "scrubs" of the athletic teams or the "punks" of the campus, the class was ready to accept the new reins of leadership positions and help to uphold the traditions of McPherson College.

Student Court members Gary Ery and Ginny Yungst carry out their duties during Freshman Initiation by issuing the traditional beams to members of the freshman class.



FR MEN



RALPH DICKERSON
JEAN LICHTY
ANNETTE RYAN
HERROLD SCHROCK

President
Secretary
Treasurer
Vice-President

Michael Adolph
 Rebecca Adams
 Maasia Atkins
 Wayne Albright
 Catherine Albright



Kathryn Albright
 Thomas Anderson
 Linnea Anderson
 Sally Aronson
 Yvonne Arnold



Abigail Aronson
 Janice Bailey
 Susan Baker
 Stephen Bartlett
 Vickie Becker



Alan Beaulieu
 Mary Ellen Berryman
 David Bizer
 Dennis Boller
 Larry Boughman

Richard Braille
 Mary Ann Brown
 Ruth Brown
 Gwen Brudaker
 Carolyn Brundage



Leonardus Brucenas
 Patricia Burns
 Michael Butsch
 Stephen C. Calo
 Christopher Caldiaro



Freshmen



Bill Carter
Barbara Cheek
William Chenoweth
Sandra Cochran
Dennis Coffman



John Conley
Thomas Connell
Ronald Cook
James Cosgrader
John Corrigan



Judy Coughenour
Alice Crampton
Joanna DeBell
Kevin DeWald
Ralph Dickerson

Ned Ditmars
Katherine Dolloff
Rebecca Durham
Roland Durham
Dean Drake



Alex Dziukowski
Russell Eady
Esther Ebel
Terri Eschelberger
Nancy Flonger



Thomas Elliott
Ben English
Harold Epperson
Jeffrey Fair
Kenneth Flota



Luzaro Hines
Cindy Ford
Mary Frank
Luis Frazier
Roger England



Kenneth Ellis
Brian Gallagher
Marty Garen
Diana Garcia
Walter Gibson



Clare Gleason
Cathy Goering
Ray Goss
Daryl Graemick
Kathie Graemick



Michelle Gosson
Gordon Griffith
David Grove
Linda Gwyse
Peggy Gwyles



Tommy Goodson
James Hall
Rebecca Hall
Carol Hamilton
Sara Hamilton



Richard Hander
Stephen Harbison
Carolyn Harbison
Andrea Harris
Gareth Harshman

Freshmen

Mark Heidebrecht
Mark Heremersch
Ann Herbst
Donald Horshen
Lynn Hrusinkewitz



Ernest Holmes
Harry Host
Dennis Houghton
Steven Hughes
Mary Hutchinson



Vaughn Isaacson
Jane Jabay
Lybren Janssen
Deanna Jantz
Richard Jantz



Bruce Johnson
Tudlin Kautawa
Stanley Keak
John Keenan
Linda Keim



Terri Kerchauer
Charles Krause
Marian Klunkerman
Steven Koehn
Steve Koeller



Clayward Kopelson
Robert Krause
Alvin Kurland
Jean Lichte
Barry Linnom





Raymond Ludwig
 Peggy Lusk
 Richard Margreter
 John Mason
 Cass Mattoon



Lane Martin
 Janet Mason
 Estelle Mayne
 Shelia Matile
 Siegfried Mayer

Freshmen Raymond Ludwig and Jean Winegarden participate in one of the laboratory sessions required of biology students.



Glenda McKeon
 Frances McShane
 Leanna Mease
 Shirley Miller
 Connie Minner



James Mizock
 Deborah Mochler
 Kathleen Moses
 Larry Mountain
 Chambers Mowhead

Freshmen



Jan Morgan
Jo Ellen Muelan
Debra Myers
Lana Jo Myers
Bon Naylor



Ward Nippert
Constantine Norkko
Paul Noremaker
David O'Dell
Arnold Olson



Michael Parks
Sharon Parks
Lynne Parry
Patricia Peachey
Kathryn Peckover

Richard Perival
Marlyn Polgott
Theresa Pites
Jerry Polk
William Powlans



Clinton Power
Joan Radtschak
Ralph Ramirez
Gail Ratloff
Brenda Reisinger



Richard Roberts
Keith Reeves
Jan Rolander
Robert Rowles
Annette Rowan



Jolene Schmidt
Norman Schmidt
Jerrald Schrock
Gary Seifak
Daniel Smiller



Jack Sigler
Stewart Skinner
Alex Smith
Melvin Snider
Gary Stauffer



Linda Stevens
Buffy Ann Stillwell
Lita Stutzle
John Stoutmore
Philip Stover



Deborah Stralm
Gary Stumpf
Joan Swanson
James Tangard
Kent Thompson



Matsin Trechlauser
Joanne Todd
Sylvester Tollyer
Ivan Turner
Jane Tower



Jacqueline Troutman
Wayne Tshudy
David Tsyler
David Valentine
Larry Venable

David Viola
 Stacia Vorasarin
 Judi Walker
 Preston Ward
 Dennis Warford



Jean Waruke
 Dennis Wasdel
 John Wahrhain
 Donna Wrightman
 Betty Wytour



Timothy Weese
 Vince Westberg
 Mike Williams
 Kwanna Wilson
 Arlan Wine



Jean Winegardner
 Bruce Winkelman
 Johnnie Woodson
 Susan Yoder



Jacqueline Truittman represents the freshman class as she rides on the queen's float during the Homecoming Parade in downtown McPherson.



232 enter as Freshmen

Suddenly finding themselves reduced in structure from powerful seniors to lowly freshmen, 232 new additions to the campus were forced to cope with the upperclassmen. But the class of '72 took control of their destiny in their first academic year.

The freshman class was officially oriented into the activities of McPherson College during the hectic week of initiation. Red beanies were donned by the humble freshmen, and because of a weak rope, the sophomores were unable to claim their traditional victory in the tug-of-war at the lagoon.

Enthusiasm and ingenuity were displayed by the "frosh" in entertaining their audience at the Annual Freshman Talent Show. With these two qualities, the class of '72 became an integral and beneficial part of the McPherson College Campus.

Four students spend junior year abroad

At semester break, 21 new students became part of the McPherson College student body. Coming from as far away as Thailand, they were either transfer students or students entering as freshmen.

On the campus as an exchange student from Germany was Sieghilde Beesk. During her stay as a student here, she lived with the Melhorn family.

Participating in the Brethren Colleges Abroad program by spending their junior year abroad were Rose Marie Ullom and Sigrid Wagner. While studying at the University of Marburg in Germany, they also took advantage of the opportunities for traveling in Europe. Kathy Taylor spent the first semester of her junior year in Columbia, South America, and she and Lydia Ganza studied in Mexico second semester.



Second Semester Students — Keith Holmes, Paul Ankenman, Frank Crawford

Sieghilde Beesk often speaks to groups about her home country of Germany and her experience of spending a year in the United States.



With the city of Marburg in the background, Rose Marie Ullom and Sigrid Wagner pause before going to class at the University.



Advertising



"Congratulations Graduates"

The Farmers State Bank

Canton, Kansas

THE SHERWIN-WILLIAMS
CO.

Paints, Varnishes, Lacquers, Oils,
Enamels, Brushes and Painters' Specialties

217 North Main McPherson
217 North Main McPherson

ROTH'S MID-KANSAS
PRODUCE

Beef * Poultry * Ice * Eggs

310 N. Oak McPherson



Diane Merrifield and Jim
Stauffer selecting their
diamond from the large
selection at Renbergers.

Renberger
 **JEWELERS**

MORRISON
GRAIN
COMPANY, INC.

"Best Wishes"

to

McPherson, College

Salina, Kansas

MAC PIZZA HOUSE

Students Always Welcome
809 North Main
McPherson

Phone: 241-5322

RUSTY'S DRIVE IN

914 E. Kansas
Phone: 241-1410
Open 11AM — 11PM

*Laundry — you do it
Dry Cleaning — we do it*

NORGE VILLAGE

411 E. Euclid
Dorothy & Earl Marchand



Rocky Ford, Colo.



Lamar, Colo.

Rocky Ford Colorado

CONGRATULATIONS TO THE CLASS

OF '69

— FROM ALL OF US —



Canon City, Colo.

Earl J. Brubaker, Pres.



Pueblo, Colo.

GRAVES DRUGS



Full Time Prescriptions

200 N. Main

241-1625

**TIDY LAUNDRY & DRY
CLEANING**

COMPLETE ONE STOP
CLEANING CENTER

Attendant on Duty
Coin-op Cleaning with Pressing

414 W. Kansas

Call 241-9883

McPHERSON THEATRES

SPIRAL. ***** STARVIEW DRIVE-IN

DUGUID

INVESTMENT CO., INC.

Real Estate Sales * Mortgage Loans
Insurance * Apartment Rentals

113 W. Marlin

McPherson

**HARRIS LUMBER COMPANY,
INC.**

— Lumber — Paint — Hardware —
Complete Building Service

200 W. Euclid

McPherson

**QUIRING — GLIDDEN
FUNERAL HOME**

"Known for Service"

222 W. Euclid

241-2550

BADER CLEANERS

for Professional Cleaning
"Custom Care"

118 E. Kansas McPherson

MALM AUTOMOTIVE SERVICE

Complete Repair Service

210 E. Euclid 241-4035
241-1006

PYLE CONSTRUCTION CO.

911 W. K. McPherson

HOPKINS FLOOR COVERINGS

Draperies Carpets
Linoleum Tile
217 S. Main 241-1600

SHEETS — ADAMS REALTORS

Real Estate ** Insurance
Appraisals

107 W. Marlin McPherson

BEAU MART BEAUTY SALON

MERLE NORMAN COSMETICS

241-3535 207 S. Main

WESTERN AUTO ASSOCIATE STORE

Electronics ** Appliances
Automotive Parts & Accessories

112-114 E. Euclid McPherson

MORRIS & SON

Ladies Sportswear
Men's and Boys' Wear

113 N. Main McPherson

Compliments of the McPherson New Car Dealers

Sid Bacon Motor Co.
Dodge Rambler

Consolidated Motors, Inc.
Buick Cadillac Pontiac

Elton Lobban Motors
Ford Lincoln Mercury

Fred McKenna Chev & Olds, Inc.
Chevrolet Oldsmobile

Marshall-Turner Motor Co.
Chrysler Plymouth



STARLITE RESTAURANT

900 West Kansas Avenue



THE BANK DESIGNED
WITH YOU IN MIND

You

can't

bank

Better

Member F.D.I.C.

We welcome the opportunity
to serve you.

223 North Main
McPherson, Kansas



Peoples

STATE BANK
McPHERSON, | KANSAS 67460



BANK WITH YOUR

McPherson College Alumni

PAUL SARGENT, CHAIRMAN OF
THE BOARD OF DIRECTORS
McPherson College BS 1924

WILBUR YODER, PRESIDENT
McPherson College BS 1934

STAN SARGENT, CASHIER
McPherson College BS 1950

*To meet the needs of
today and tomorrow . . .
helping McPherson
College Students,
Faculty, and Staff,
whom we have
served
since
1898*

Member F.D.I.C.





WE WELCOME STUDENT CHECKING AND SAVINGS ACCOUNTS

Fulfill your college
financial needs at
Citizens — McPherson
County's Largest and
Most Progressive Bank —
Where the little things count.

Member F.D.I.C.

*CHECKING

*SAVINGS

*LOANS



ALLIANCE AGENCY, INC.

"All Lines of Insurance"
Complete Insurance,
Real Estate and
Survey Service.

*Happiness is — Insurance with
Alliance.*

W.D. Underwood Pres.
&
Roy A. Sager



Portraits and Film
Developing Service

DON'S STUDIO & CAMERA SHOP

212 North Main



SAN — ORE CONSTRUCTION CO., INC.

PIONEER Savings & Loan Association

McPherson, Kansas

"Where you save —
does make a
difference"



ELDON'S

*Like thousands of other happy McPherson shoppers ...
"Shop" at ... IGA*

Marquette

Lindsborg

McPherson

McPHERSON COLLEGE DINING SERVICE

Welcomes students to
dining pleasure

SLATER FOOD SERVICE

ARA

DUCKWALL'S

THE COMPLETE ONE STOP
SHOPPING CENTER

109 N. Main

McPherson

SWEENEY'S SHOES

"Your Family Shoe Store"

102 S. Main

McPherson



111 N. Main

Visit our

JUNIOR SHOP

McPherson

McPHERSON FLORAL

Say it ...

with Flowers

515 N. Ash

241-4343





John Swanson shows the latest sports clothes available in
THE CELLAR

Men's Men's Wear McPherson



BRUNK JEWELERS

Brunk's Private Gem Room
A Spot Where You Can
Get Started off Right by Buying Right
Jewelry Headquarters in McPherson

O'DELL'S LAUNDRY

Complete Linen Rentals
All Your Laundry Needs

321 N. Elm McPherson

**CRABB'S
TOWN AND COUNTRY**

Music Sporting Goods
319 N. Main McPherson

EBAUGH'S

Gifts — Hallmark Cards
Picture Framing — Luggage
108 N. Main St.

HARDER

Electric Motor Service
Pulleys — Pumps — Switches
802 East Kansas McPherson

**ACE
PLUMBING & HEATING CO.**

410 N. Maple McPherson



KEMPS

"The best spot in town"

116 South By-Pass

Modern Insulating Co.
Owned and Operated by
GOFF INDUSTRIES, INC.

504 W. Kansas 241-4602



**GIBSON'S
Discount Center**

BOOGAARTS SUPERMARKET

611 North Main Street

"Congratulations to the Class of 1969"

**PETERS
LUMBER CO., INC.**

Builder's Hardware
Paint-Glass
Mgr. W. K. Peters
McPherson, Kansas
316 E. Elizabeth



BEST WESTERN

Wheat State Motel
Duke and Arlene Karnes

**PETITE BEAUTY
SALON**

We Offer a Complete Beauty Service
Including Wigs and Wiglets
807 N. Main 241-1677

**MILLER'S BOOK
STORE**

"Books for everyone"
121 S. Main McPherson

WARREN HOTEL

Maple & Marlin
Call 241-2450

**BALL & SON FUNERAL
HOME**

205 N. Chestnut 241-2442

Quadrangle Directory

Seniors

- Achilles, Winona 107
Airey, Alan 107
Albin, Patricia 107
Allen, James 107
Atwill, Mary 107
Ayoko, John 107
Beachell, James 107
Beachley, Ronald 107
Bisceglia, Michael, Jr. 107
Blackwell, Gary 107
Borowski, Stanley 107
Bowlby, David 108
Brown, Floyd 108
Brown, Nancy 108
Brubaker, Donna 108
Bueher, Donald 108
Buckingham 108
Burger, Bev 108
Burger, Richard 108
Burnham, Wayne 108
Burger, Richard 108
Burnham, Wayne 108
Burns, John 108
Campbell, Arthur 108
Carlson, James 108
Carroll, Scott 109
Castuera, Jose 109
Coleman, Charles, Jr. 109
Cristofori, Joseph 109
Dadisman, Carolyn 109
Daeschner, J. Ross 109
Dalton, Stanley 109
Danziger, Clifford 109
David, Donald 109
DeLaney, William 109
Dell, Carolyn 109
DeRicco, Thomas 109
Detwiler, Allen 110
Dilling, Kenneth 110
Duffy, Jo Elaine 110
Duncan, David 110
Duneanson, Susan 110
Duske, Wanda 110
Eagles, David 110
Early, Mary 110
Elliott, Barbara 110
Emmert, Michael 110
Fairchild, Craig 110
Falcicola, Frank 111
Fox, Neysa 111
Ganshorn, Monty 111
Garza, Lydia 111
Gillette, Edward 111
Grabner, Valerie 111
Green, Carlos 111
Griffith, Walter 111
Hadden, John 111
Haldeeman, James 111
Hall, Richard 111
Harris, Daryl 112
Hayes, Hal 112
Hayes, Patricia 112
Hedjazi, Moe 112
Hendricks, Jean 112
Heskett, Wayne 112
Hoffert, Stanley 112
Hoke, George 112
Hoover, Marlin 112
Hoover, Mary Nell 112
Hoskins, Gary 112
Huber, David 112
Hungerford, Lance 113
Hutchison, Warren 113
Ikenberry, David 113
Iovino, Regis 113
Irwin, Charles 113
Jasper, Gary 113
Johnson, Clyde 113
Johnson, Samuel 113
Johnson, Shirley 113
Juma, Raymond 113
Ketcham, Judith 113
Kimmel, Carole 113
Korrasik, Steve 114
Krogh, Mark 114
Kuehl, Peggy 114
Kugler, Mendal 114
Lambert, Clifford 114
Landis, Leonard Ray 114
Lane, John 114
Leary, John 114
Lee, Linda 114
Lehman, John 114
Livingston, Ted 114
Loose, Thomas 114
Loucks, Gary 115
Lunkley, Judith 115
MacPherson, Bruce 115
Mader, Allan 115
Martin, Dennis 115
McGwin, Marston 115
McParland, Joseph 115
Meek, Ron 115
Miller, Joseph 115
Mills, Jeanette 115
Mills, Joyce 115
Mowry, Jo Ann 115
Mullette, Geoffrey 116
Mulumba, John 116
Nee, Thomas 116
Nikodim, Donna 116
Noffsinger, Kent 116
Otis, Paul 116
Park, Cheryl 116
Pearsall, Craig 116
Persons, Betty 116
Petre, Dana 116
Pierson, Susan 116
Racine, Ulderic 116
Rakes, Jim 117
Reese, Donald 117
Regier, Cornelia 117
Rego, Judith 117
Regula, Rockford 117
Rhinehart, William 117
Rife, Rodney 117
Rinaldi, Pasco 117
Robbins, Ronald 117
Roth, Eugene 117
Sarber, John 117
Schuster, Gary 117
Sedlachek, Robert 118
Sell, Susan 118
Serenitsis, Joseph 118
Sheets, Russell 118
Shuker, Kdiom 118
Slater, Peggy 118
Smith, Dennis 118
Smith, Janet 118
Smith, John 94
Smith, Marilyn 118
Sovchen, David 118
Stead, Donald 118
Sutcliff, Diane 119
Swanson, John 119
Syverson, Marion 119
Traetto, Michael 119
Tullo, Pat 119
Vernon, Larry 119
Vinchattle, June 119
Wagoner, Richard 119
Wheeler, Frederic 119
Wine, Sylvia 119
Wood, William 119
Woodcock, Lynda 120

Worden, Gary 120
Worthing, Connie 120
Yingst, Douglas 120
Yoder, Carolyn 120

Juniors

Albertson, Robert 125
Applegate, Wayne 125
Arnesen, Sue 125
Baraglia, Charles 125
Barrick, Marge 125
Bell, David 125
Belsker, John 125
Benett, Russell 125
Borgstrom, Jean 125
Bittle, Rachel 125
Black, Wayne 125
Bower, Charleen 125
Bowman, Carl 125
Brown, Larry 125
Brown, Mary Kay 125
Bruzenas, John 125
Bucher, Stanley 125
Burkholder, Joel 46
Caputo, Ralph 125
Cook, Bruce 125
Crawford, Dale 125
Culver, Robert 125
Cushing, Kay 125
Davidson, Stephen 125
Davis, Dwayne 125
Davis, Tom 125
Davis, Glenn 126
Dean, Linda 126
Dell, Lowell 126
Detwiler, Joy 126
Dubble, Roger 126
Dyson, Marilyn 126
Embers, Sue 126
English, John 126
Ferris, Richard 126
Flory, Alan 126
Fox, Ellen 126
Frant, Charles 126
Froese, Judy 126
Grasmick, Barbara 126
Gufarotti, Jeffrey 126
Haghi, Esmeel 126
Hanson, Claudia 126
Hawkins, Linda 126
Helman, Harriet 126
Helstern, Chris 126
Hubers, Alma 127
Herrick, Steve 103
Hill, Patrick 127
Holderreed, Margaret 127
Howard, Roberta 127
Howard, Wanda 127
Johnson, Thelma 127
Jones, Charles 127
Juhnke, Esther 127
Kopp, Galen 124
Kreider, Ed 127
Laprad, Steve 127
Lavallee, Alan 127
Lewallen, Gloria 128
Little, Craig 128
Loveless, Mike 128
Lucore, Don 128
Lunkley, Jim 128
Lusk, Rodney 128
Martin, Larry E. 128
May, Lawrence 128
McLain, Mike 128
McNicholas, George 128
McNicholas, Neva 128
Merrifield, Diane 128
Meyer, Janet 128
Miller, Karen 128
Miller, Patricia 128
Mowry, Jim 128
Nettleton, Donna 128
Nigh, John 128
Nwosu, Nwosu Nnadoz 128
O'Dell, Danny 128
Ouellette, George 129
O'vell, Ken 129
Payson, Steve 129
Peltzman, Judy 129
Plaughner, Barbara 129
Pyle, Janis 129
Quakenbush, Greg 129
Reed, Howard 129
Reeves, Warren 129
Rogers, Kathy 129
Rolston, Roma 129
Sablotny, Dean 129
Shepherd, Dave 100
Sissel, Paula 129
Snavey, Marian 129
Snyder, Carroll 129
Snyder, Dan 129
Smith, Christine 130
Smith, David 130
Smith, Junior 130
Smith, Robert 130
Stauffer, Jim 130
Steninger, Larry 130
Strickler, Roberta 130
Summerhays, Brian 130

Taylor, Lawrence 130
Thiessen, Edwin 130
Thompson, Michael 130
Tice, Paul 130
Travaglini, Alfred 130
Cruh, Dea 130
Walker, David 130
Walker, Sherry 130
Walton, Larry 130
Ware, Arthur 130
Warke, Dianne 130
Williams, Dan 131
Willis, Stephen 131
Wilson, Tim 131
Wivell, Lilli Ann 131
Wright, Howard 91

Sophomores

Aldinger, Phil 133
Allen, Karen 133
Armstrong, Gerald 133
Bacon, Larry 133
Barchesky, Cindy 133
Baker, Stewart 49
Bereus, Frank 133
Berg, Lydia 133
Bizek, Duane 133
Blubaugh, Dixie 133
Bontrager, Nancy 133
Bower, Dana 133
Bower, Esther 133
Brent, Ballyn 133
Bronersky, Carl 133
Brooks, Susan 133
Brubaker, Janie 133
Bruce, Larry 133
Brutsman, Lynn 133
Bryan, Marcia 133
Bryer, Kathy 133
Buckwalter, Judy 133
Burgos, Kenneth 133
Burns, Pam 133
Burns, Roger 133
Bosserman, Maurice 134
Burr, Edward 134
Bury, Joyce 134
Christensen, Dianna 134
Clark, Kay 134
Colyn, Cathy 134
Cook, Carl 134
Courtet, Janet 134
Crupper, Phillip 134
Dadisman, Jane 134
Daniels, Donna 134
DeCoursey, Rita 134

Della Ripa, Gary 134
DeMarco, Francis 134
Deppenschmidt, Phil 134
DeWild, Lemayne 134
Dowdy, Dale 134
Dutrow, Al 134
Ems, Joan 134
Elden, Mark 134
Fleming, Pete 134
Flora, Kathy 134
Fox, Gary 134
Fosall, Art 134
Frantz, Claudia 134
Frederick, Chris 134
Galante, Raymond 134
Garcia, Porfirio 135
Gentry, David 135
Godfrey, Merrin 135
Goel, Vincette 135
Goss, Lynn 135
Goughnour, Shirley 135
Grant, Jerry 94
Groff, Joyce 135
Grove, Christine 135
Gurley, Davy 135
Halldeman, Michael 135
Hanzlicek, Lynn 135
Huckman, Dennis 135
Hoffer, Clarence 135
Holloway, Dean 135
Holloway, Sue 135
Honick, Raynell 136
Houghton, Carol 136
Jacobs, Haydn 136
Jamison, Verla 136
Johnson, Terry 136
Kuechler, Bob 136
Kochin, Harvey J. 136
Kreihnel, Susan 136
Kuehl, Bruce 136
Kurtz, Dana 136
Kussart, Janet 136
Kussart, Sandy 136
Layton, Steve 136
Leach, Don 136
Linville, Ann 136
Lippy, Chris 136
Lydic, Gary 136
Macklin, Don 136
Mamie, Mohamed 136
Matz, Karl 136
Mayo, Ricci 136
McBride, Charles 136
McQuilliam, Cynthia 136
Merckean, Carole 137
Meyer, Elaine 137

Monke, Lowell 137
Morgan, Cindy 137
Morris, William 137
Morse, Betsy 137
Nachtigal, Suzanne 137
Naylor, Janice 137
Nelson, Edwin 137
Nelson, Ronald 137
Neufeld, Kent 137
Nihart, Linda 137
Norstrom, Landess 137
Ognibene, Leonard 137
Pankewich, Walt 137
Pauls, Judy 137
Porter, Prentis 138
Presley, Glenn 138
Pugh, Rebecca 138
Rawstrom, Charles 138
Regier, Dorothy 138
Roorda, Marge 138
Rouse, Judy 138
Rumyan, Carolyn 138
Sallman, Linda 138
Schrock, Larry 138
Schwarck, Jan 138
Sellberg, Marcia 138
Sheets, James 138
Shepherd, Marilyn 138
Skinner, Howard 138
Smith, Kenneth 138
Smith, Louise 138
Snader, Beth 138
Stalcup, Dick 138
Stert, Jean 138
Taplin, Linda 138
Thiessen, Sandi 138
Thompson, Paul 138
Tolle, Gordon 138
Troxer, Kay 138
Van Wiekler, Lynn 138
Worden, Kathy 138
Webster, Ron 139
Wryant, Roy 139
Wheeler, Lynett 139
Whelpley, Randy 139
Winter, Diane 139
Yarris, Douglas 139
Yingst, Ginny 139
Yoder, Ellis 139
Yoder, Engel 139
Zellers, Lynn 139
Zook, Raymond 139

Freshmen

Achilles, Michael 141

Adeyemo, Rebecca 141
Adkins, Marsha 141
Albaugh, Wayne 141
Albright, Catherine 141
Albright, Kathryn 141
Ampateme, Thanasar 141
Anderson, Linnea 141
Arensen, Sally 141
Arnold, Vanine 141
Atobileto, Abigail 141
Bailey, Janice 141
Baker, Susan 141
Bartlett, Stephen 141
Becker, Vickie 141
Berndt, Alan 141
Berryman, Mary Ellen 141
Bitzer, David 141
Boughlman, Larry 141
Brindle, Richard 141
Brown, Mary Ann 141
Brubaker, Gwen 141
Brumbaugh, Carolyn 141
Bruzeas, Leonardas 141
Burns, Patricia 141
Burk, Richard 100
Butsch, Michael 141
Cable, Stephen 141
Calahan, Christopher 141
Carter, Bill 141
Check, Barbara 142
Chenoweth, William 142
Cocharn, Sandra 142
Collman, Dennis 142
Conley, John 142
Connell, Thomas 142
Cook, Ronald 142
Coopridge, James 142
Corrigan, John 142
Coughnour, Judy 142
Crimp, Alice 142
Dell, Joanna 142
DeWild, Kevin 142
Dickerson, Ralph 142
Ditmars, Noel 142
Dolloff, Katherine 142
Durlon, Rebecca 142
Durham, Roland 48
Duske, Dean 142
Dziakowski, Alex 142
Early, Russell 142
Ebey, Esther 142
Eichelberger, Terri 142
Ehinger, Nancy 142
Elliott, Thomas 142
English, Ron 142
Epperson, Harold 142

- Fair, Jeffrey 142
 Flora, Kenneth 142
 Flores, Lazaro 142
 Florio, Art 143
 Ford, Cindy 143
 Frantz, Mary 143
 Frazier, Lois 143
 Freeland, Roger 143
 Fuls, Kenneth 143
 Gallagher, Brian 143
 Garren, Marty 143
 Garza, Diana 143
 Gibson, Warren 143
 Gleason, Craig 143
 Goering, Carby 143
 Goss, Ray 143
 Grasmick, Darv 143
 Grasmick, Kathy 143
 Green, Michelle 143
 Griffith, Gordon 143
 Grove, David 143
 Grove, Linda 143
 Gurley, Peggy 143
 Gustafson, Lonnie 143
 Hall, Rebecca 143
 Hall, James 143
 Hamilton, Carol 143
 Hamilton, Susan 143
 Hanley, Richard 143
 Hughbanks, Stephen 143
 Harbaugh, Carolyn 143
 Harris, Andrea 143
 Harshman, Gareth 143
 Heidebrecht, Mark 144
 Hemmerick, Mark 144
 Herbst, Ann 144
 Hershey, Donald 144
 Heusinkveld, Lomis 144
 Hobes, Francis 144
 Hott, Harry 144
 Houghton, Dennis 144
 Hughes, Steven 144
 Hutchison, Mary 144
 Isaacson, Vaughn 144
 Jabay, Jane 144
 Janssen, Jeffrey 144
 Jantz, Deanna 144
 Jantz, Rodney 144
 Johnson, Bruce 144
 Kawawa, Toshio 144
 Keck, Stanley 144
 Kedzof, John 144
 Keim, Linda 144
 Kerschner, Terri 144
 Kesinger, Charles 144
 Klinkerman, Myrna 144
 Koehn, Steven 144
 Koeller, Steve 144
 Kopelson, Howard 144
 Krause, Robert
 Kordonini, Alijan 144
 Lichty, Jean 144
 Linnens, Barry 144
 Ludwig, Raymond 145
 Lusk, Peggy 145
 Margreiter, Richard 145
 Marsau, John 145
 Martens, Cass 145
 Martin, Lana 145
 Mason, Janet 145
 Masse, Estelle 145
 Matile, Shirley 145
 Mayer, Siegfried 145
 McKean, Glenda 145
 McShad, Francis 145
 Mease, Leanna 145
 Miller, Shirley 145
 Minear, Connie 45
 Mizock, James 145
 Moeller, Deborah 145
 Moore, Kathleen 145
 Moorman, Larry 145
 Morehead, Chauncey 145
 Morgan, Jae 146
 Morlan, Jo Ellen 146
 Myers, Delores 146
 Myers, Lana Jo 146
 Naylor, Ron 146
 Nippert, Ward 146
 Nomikos, Constantinos 146
 Nonemaker, Paul 146
 O Dell, David 146
 Olson, Arnold 146
 Parks, Michael 146
 Parks, Sharyn 146
 Pauls, Lonnie 146
 Peachey, Patricia 146
 Peckover, Kathryn 146
 Percival, Richard 146
 Pifer, Theresa 146
 Philpott, Marilyn 146
 Polk, Terry 146
 Povilaitis, William 146
 Powell, Alvin 59
 Power, Clinton 146
 Railsback, Jean 146
 Batzloff, Gail 146
 Reddinger, Brenda 146
 Reents, Richard 146
 Reeves, Keith 146
 Rolander, Jan 146
 Rosales, Robert 146
 Ronyan, Annette 146
 Schmidt, Johene 147
 Schmidt, Norman 147
 Schrock, Jerold 147
 Sedlak, Gary 147
 Sheller, Daniel 147
 Signor, Jack 147
 Skinner, Stewart 147
 Smith, Alice 147
 Snyder, Melvin 147
 Stauffer, Gary 147
 Stevens, Fottie 147
 Stillwell, Ruth Ann 147
 Stinette, Lila 147
 Stroutmore, John 147
 Stover, Philip 147
 Stralin, Deborah 147
 Stump, Gary 147
 Sverson, Joan 147
 Teagarden, James 147
 Thompson, Kent 147
 Fischhauser, Marvin 147
 Todd, Joanne 147
 Torres, Ivate 147
 Tower, Jami 147
 Troutman, Jacqueline 147
 Tshudy, Wayne 147
 Tyler, David 147
 Valentine, David 147
 Venable, Larry 147
 Viola, David 148
 Vorasarun, Sinchai 148
 Walker, Judi 148
 Ward, Preston 148
 Warford, Dennis 148
 Waruke, Jean 148
 Wedel, Dennis
 Wehrheim, John 148
 Weightman, Donna 148
 Weiner, Betty 148
 Weiser, Timothy 148
 Westburg, Vince 148
 Williams, Mike 148
 Wilson, Kyanna 148
 Wine, Arlan 148
 Winegarden, Jean 148
 Winkelman, Bruce 148
 Woodson, Johnnie 148
 Yoder, Susan 148

Administration

- Flory, Raymond L. 16
 Frantz, Merlin L. 15

Hayes, Guy 18
Hedrick, Jerry 19
Holman, Gerald J. 17
Marcellus, Larry W. 18
Melhorn, J. Jack 14
Myers, Eugene 19
Reynolds, Dean F. 18
Sherfy, Paul W. 17
Wagoner, Paul 17
Yoder, Gordon R. 17

Faculty

Bechtel, Kenneth C. 37
Brunk, Sarah May 26
Coppock, Doris E. 31
Deal, Thomas W. 27
DeCoursey, Verda 28
DeCoursey, Wesley 33
Dell, S. M. 21
Dirksen, Dennis A. 29
Edwards, Robert L. 25
Eiler, David L. 27
Fischer, Charles W. 25
Frederick, Donald R. 24
Friesen, Vernon E. 32
Green, Bob B. 27
Harris, Virginia 38
Hoffer, Emma E. 35
Honeywell, Eugene C. 33
Hugbanks, Corrine 23
Hugbanks, Monroe 30
Ikenberry, Gilford J., Jr. 33
Keim, Robert E. 37
Kiger, Gerald M. 29
Krehbiel, Jesse D. 32
Lengel, Leland L. 37
McLane, Jean, Jr. 23
McSpadden, Dwight E. 30
Moore, Alma 27
Olson, Mildred 29
Olson, Oscar A. 35
Pequeno, Luisa M. 23
Ray, Arthur L. 31
Regier, Arlie J. 29
Robinson, Mary Ann 22
Rothrock, Dayton G. 30
Shalaby, Farouk M. 34
Siek, Mildred M. 28
Smith, Robert B. 22
Smith, Sidney L. 31
Snell, Calen R. 36
Snell, Ruth 24
Sollenberger, Paul V. 24
Stump, Harley 26

Van Asselt, Jan 23
Welch, Larry A. 33
Widrig, Donald 31
Yoder, Una 25
Young, Lewis C. 36

Staff

Barchesky, Betty 39
Bechtel, Kathryn 35
Becker, Billie 41
Boese, Amanda 41
Brungardt, A. P. 41
Brunk, Homer 41
Christensen, Elizabeth 40
Cline, Keith 41
Clouse, Bernard 41
Cobb, Carol 17
Cotterill, Marcia 40
Dell, Miriam W. 39
Diederich, Carolee 41
Elfrick, George 41
Flory, Christina 18
Frantz, Ella 38
Frickey, Erna 41
Galloway, Bertha 41
Haslett, Marian 39
Hubble, Dorothy 39
Hull, Anna Mae 39
Hutchison, Florence 39
Jordan, Cecile 38
Konicek, Maryclare 41
Konicek, Stanley 41
Markham, Mabel 40
Olson, Betty 40
Patton, Ron 19
Rea, Vivian 40
Ruhser, Elmer 41
Russell, Elizabeth 40
Sheets, Thelma L. 39
Lipton, Loretta 39
Walker, Brenda 39
Weaver, James 38
Westfall, Margurite 40
Winters, Jim 19

ACCK

Bacon, Dean R. 20
Easterling, V. R. 20
Stucky, Marjorie 20

Buildings

Arnold Hall 6

Beeghly Library 9
Bittering Hall 11
Brown Auditorium 6
Church of the Brethren 7
Coffeehouse 9
College Courts 11
Dotzour Hall 10
Fahnestock Hall 10
Frantz Hall 9
Greenhouse 8
Gymnasium 8
Harnly Hall 6
Kline Hall 10
Metzler Hall 10
Moller Hall 6
Student Union 8
Vaniman Hall 21

Events

All-School Dance 46
Christmas Banquet 48
Cultural Series 56, 57
Enrollment, First Semester 46
Enrollment, Second Semester 58
Freshman Get-Acquainted Party 48
Freshman Initiation 46
Freshman Talent Show 48
Hawaiian Buffet 58
Homecoming 50-53
Language Day 49
Measure For Measure 55
Opening Convocation 47
Pajama Parade 47
Powder Puff Football Game 49
Student Council Convocation 49
The Bad Seed 54
Tug-Of-War 47
Winter Formal 59

Organizations

Academic Affairs Committee 67
A Cappella Choir 59
Agricultural Club 75
Alpha Psi Omega 78
Art Club 81
A-Team Cheerleaders 84
Band 86
Board of Publications 63
Bittering Dorm Council 74
B-Team Cheerleaders

Chamber Choir 89
 Chapel and Convocation
 Committee 66
 Circle K 77
 Coffeehouse Committee 65
 Cultural Program Committee 66
 Dotzour Dorm Council 73
 Educational Policies Committee
 67
 Falmestock Dorm Council 71
 Fellowship of Christian Athletes
 83
 Foods Committee 65
 German Club 81
 Home Economics Club 75
 Industrial Arts Club 74
 Jonquils 76
 Klue Dorm Council 73
 Madrigals 88
 M-Club 83
 McPherson College Y.M.-
 Y.W.C.A. 77
 Metzler Dorm Council 71
 Music Educators National
 Conference 86
 Phi Alpha Theta 78
 Pi Kappa Delta 78
 Players Club 79
 Quadrangle Staff 68,69
 Social Committee 64
 Sociology Club 82
 Special Projects Committee 64
 Spectator Staff 70
 Student Activities Committee 67
 Student Council 62
 Student Court 63
 Student Education Association 74
 Women's Athletic Association 82
 Women's Council 72
 Young Democrats 80
 Young Republicans 80

Athletics

Baseball Team 102
 Basketball, A-Team 94
 Basketball, B-Team 97
 Cross Country Team 100
 Football Team 93
 Golf Team 103
 Tennis Team 103
 Track Team 101
 Women's Basketball Team 99

Advertising

Ace Plumbing and Heating
 Company
 Alliance Agency Inc.
 Bader Cleaners
 Baker Boy Bakery
 Ball and Son Funeral Home
 Bean Mart Beauty Salon
 Boogaarts Supermarket
 Brunk Jewelers
 Crabb's Town and Country
 Don's Studio and Camera Shop
 Duckwall's
 Duguid Investment Company,
 Inc.
 Ebaugh's
 Eldon's IGA
 Gibson's Discount Center
 Graves Drugs
 Harder Electric Motor Service
 Harris Lumber Company, Inc.
 Hawley Hardware
 Home State Bank
 Hopkins Floor Coverings
 Hubbell's Drugstore - Drug Store
 Kemp's Restaurant
 Mac Pizza House
 Malm Automotive Service
 McPherson and Citizens State
 Bank
 McPherson Business Machines
 McPherson College Dining
 Service
 McPherson Floral
 McPherson New Car Dealers
 McPherson Theatres
 Miller's Bookstore
 Modern Insulating Company
 Morris and Son
 Morrison Grain Company, Inc.
 National Cooperative Refinery
 Association
 Norge Village
 O'Dell's Laundry
 Peters Lumber Company, Inc.
 Peoples State Bank
 Petite Beauty Salon
 Pioneer Savings and Loan
 Association
 Pyle Construction Company
 Quiring-Glidden Funeral Home
 Renberger Jewelers
 Roth's Mid-Kansas Produce
 Rusty's Drive In
 San-Ore Construction Company,
 Inc.
 Sheets-Adams Realtors
 Stanley's Fashions
 Starlite Restaurant
 Sweeney's Shoes
 The Farmers State Bank
 The Shersin-Williams Company
 Tidy Laundry and Dry Cleaning
 Valley Concrete Company
 Van's Men's Wear
 Wall-Rogalsky Milling Company
 Warren Hotel
 Western Auto Associate Store
 Wheat State Motel



The 1969 Quadrangle is now completed, after a long year of hard work on the part of many people, and the finished Quadrangle belongs to the students of McPherson College; it is a record of the Moods of McPherson for the school year 1968-1969. More people than it is possible to mention exerted time and effort on the production of this book and I would like to extend my sincere thanks to you. I would like to extend a personal thank you to Linda Dean, assistant editor, who spent endless hours in helping to meet deadlines and to Quadrangle adviser Sarah May Brunk for her never-ending help, advice and patience and to Craig Little and Chuck Irwin for their endless hours spent in producing the photography in this book. Without their assistance, The 1969 Quadrangle would not have been possible.

As you close this book, McPherson College is continuing its search to provide knowledge and understanding for students. With the groundbreaking of Miller Library on December 7, 1968, a dream for a campus center of learning began to unfold. As the year closes, the entire college looks ahead to the completion of this building and the climbing of another step to a higher academic level at McPherson College. As editor, I am proud to end this book with a picture of a new beginning during the Moods of McPherson for 1969.

CAROLYN DELL