

'68

THE QUADRANGLE



THE 1968 QUADRANGLE

McPHERSON COLLEGE

McPHERSON, KANSAS

Published by Student Council
Volume 51

Editor
Peggy Kuehl

Assistant Editor
Jan Pyle

Business Manager
Stan Wollard

Assistant Business Manager
Bruce MacPherson

From north, south, east, and west we have come to McPherson College to further ourselves here on the central Kansas plains. We encounter many crossroads in four years; not only the fresh countryside crossroads in early spring when we go for drives on the muddy gravel roads, but also the life-changing crossroads in activities, organizations, athletics, and encounters with faculty and other students.

The decisions we have made during these days will affect what we will become. But we have not faced our futures alone. We have worked together, struggled together, laughed together, and talked together.

With every crossroads that has challenged, we have changed. We have not remained static. Many turning points have been reached here, and we are not the same as when we unpacked our suitcases as lonely freshmen. We will remember McPherson College as a crossroads where we stopped for a while and learned and grew, and traveled on as wiser and richer people.

CROSSROADS





Contents

| | |
|-------------|-----|
| Buildings | 4 |
| Activities | 10 |
| Groups | 26 |
| Athletics | 54 |
| Students | 68 |
| Faculty | |
| Staff | |
| Advertising | 136 |
| Index | 148 |



On the east edge of campus modern Bitinger Hall attracts the men who want the added luxuries of private baths and carpeting.



In Mohler Hall, the academic and administrative hub, the English, history, speech, business, education and religion classes meet.

Many, varied buildings house campus life

Life on our busy campus could not go on without our many and varied buildings. Within their walls we spend hours in class discussion and lectures, and receive counsel and advice from our professors. Our buildings oversee our work-outs in the gym, our practice for music lessons, and our experiments in science laboratories. In our buildings we meet friends for ping-pong, cokes, or a dance.

The Mac Shack, our coffeehouse, was one year old this spring. The Shack provides a quick retreat from the pressures of school, with rooms for music, art, and refreshments.

Our campus is continually being improved by the addition of new buildings. This year has seen much progress on the site of the new library.

Dormitories and the cafeteria are important buildings in our lives, but the entire campus is our home. We live here.

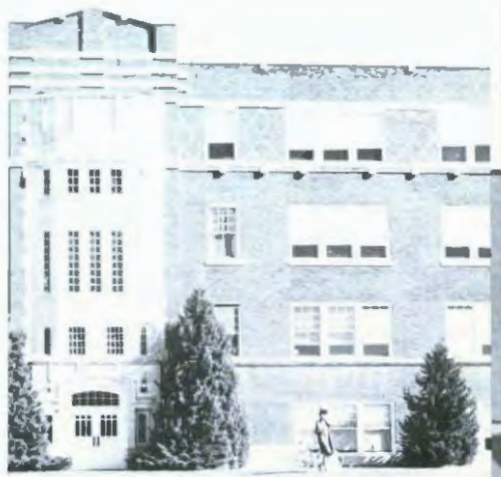


Dotzour Hall is "home" for most of McPherson's women, who enjoy having surprise parties, informal talk sessions, and even time alone within its walls.

Tedious lab work in biology, chemistry, physics, and home economics forces students to apply classroom work to everyday problems.



Part of McPherson's tradition will be lost when dignified Beechly Library is replaced soon by a larger modern structure.





To talk life over and to relax from everyday pressures students meet informally at the coffeehouse, Mac Shack.



Adjoining Brown Auditorium.



Paradoxically, quiet-looking Frantz Hall, industrial arts building, houses the powerful woodworking and welding equipment.



the cultural and literal center of campus, is spacious Friendship Hall.



Competitive spirit runs high in the physical education building as students develop athletic skills and sportsmanship.

A large pine tree guards the entrance to comfortable Metzler Hall, inhabited by three floors of spirited men.





Arnold Hall, previously a men's dormitory, this year gave ample office space to the Deans Robinson and Snell and the Drama Department.



Fahnestock Hall is well known on campus for its close-knit, enthusiastic spirit.

Three times daily students stand in line for nourishment in the Student Union.





Future homemakers practice cooking and housekeeping in homey Kline Hall

Sunday services and weekday religious activities provide a church home for many students





Activities

For all of us there were special days. Committees planned and carried out these events that broke the everyday routine. Our appreciation was expressed by our applause at the end of successful Cultural Series programs, by the anticipation before the Homecoming crowning, and by the pride we felt during Open Houses. Each of us will remember the times when we were proud of McPherson College.





M-Club members are kept busy slicing watermelon for the hungry students at the Watermelon Feed.

Many activities mark opening weeks

The opening weeks of school were some of the most busy and fun-filled days during the school year.

Opening the second week was the Women's Tea sponsored by the Women's Council. Clothing from local stores was modeled by several coeds for the women. On the day classes began, the Men's Council sponsored the Men's Dinner.

The Freshmen Talent Show gave freshmen a chance to display the wide variety of talent that they possessed, besides giving the upperclassmen a chance to become better acquainted with them. In answer to the Freshmen Talent Show was the All-School Talent Show presenting talent ranging from a piano concerto to a cereal commercial. The M — Club served the annual watermelon feed in the gym parking lot following the All-School Talent Show.

The last annual event during the opening weeks of school was the pajama parade and snake dance through downtown McPherson the night before the first home football game.

Something all freshmen and new students must go through is getting their number and being photographed for their ID card.



Big sisters with their little sisters



Freshmen become acquainted with each other by participating in various group games during the Freshman Party.



Concentrating on their harmony, John Lane and Marlin Hoover perform during the All School Talent Show.



file through the serving line at the Women's Tea.



The cheerleaders lead the annual snake dance which weaves and twists through downtown streets.



Steve Laprad works behind the India booth at the MCY sponsored International Fair.



Student Council member Mike Fox checks student I.D.'s at a home basketball game.

Organizations sponsor projects



Connie Kitzel models fashions at the Women's Tea sponsored by the Women's Council.



The Men's Dinner, sponsored by the Men's Council, gives entering freshmen a chance to become better acquainted with other men on campus.



James Renz, director of Community Concerns for Alcoholism, stresses his point to a group of students during an informal discussion at the coffee house.

Campus hosts visiting groups

McPherson was the host for ACCK Career Day held for juniors and seniors from the six ACCK Colleges.



High school teachers and college faculties visited the campus to view the educational television display in Friendship Hall.





1967 Homecoming Queen
WANDA MCDONOUGH



Sophomore Attendant
MARY ANNE MILLER

Freshman Attendant
MARCIA SELLBERG





Wanda McDonough finds that it is hard to keep one's composure while being crowned Homecoming Queen.

Following the theme, "Novel Homecoming," Bittinger Hall's float, "Mutiny on the Bounty," wins first place.



Stan Hoffert escorts 1966 Homecoming Queen Judy Monke on stage at the start of the coronation proceedings.

1967 Homecoming is memorable occasion

Homecoming 1967 was a memorable occasion. It began Friday evening, October 13, with a special program in Brown Auditorium, including a humorous and imaginative skit from each class as well as the beautiful, impressive ceremony of the coronation of the queen. After all of the candidates had been presented, Wanda McDonough was crowned 1967 Homecoming Queen, with attendants Mary Anne Miller, sophomore, and Marcia Selberg, freshman. Following this program, the cheerleaders led a rousing pep rally around the huge traditional bonfire.

Saturday morning a Homecoming Parade of elaborate floats built by the classes and campus organizations proceeded through town. McPherson students and alumni cheered on the Bulldogs at the afternoon Homecoming football game with Bethany College. The festivities culminated that evening with the traditional Homecoming Dance in the beautifully-decorated Student Union.



Like all coeds, Celeste Jasper finds she must allocate some time to wash a week's accumulation of dirty clothing.



Carolyn Dell and Luci Petre decorate their room door in preparation for Dotzour Hall's open house held in Febru-

Many activities occupy students' time

A warm spring day finds Tom DeRicco washing his car with the facilities provided by the side of the heating plant.



Kathy Bryer escapes the noise and distractions of the dorm to concentrate on her studies in the library.





Steve Nettleton leads the chapel program which was conducted each Tuesday for interested students.

A time to relax and think

The Mac Shack provides students with an informal gathering place for discussions, card games, and refreshments.



Students receive the chance to put their best foot forward at the Winter Formal.

Raynell Houck and Gary Della Ripa dance in Arnold Hall basement at an after basketball game-dance.





Mike Loveless runs through a scene for a student directed lab theater production.



Kerry Givens and Mike Loveless rehearse a dream sequence for the lab theater production of "The Seven Year Itch."

Students participate in dramatics



Director Charles Fischer gives the players some new instructions during a break in a rehearsal of "The Fantasticks."

Present three major productions

Three major plays, presented by the McPherson College Players and Alpha Psi Omega, provided entertainment and food for thought. October saw the presentation of the comedy, "The Guardsman," directed by Una Yoder. With Jean Weatherbie and Terry Johnson in the leads, the play helped initiate the annual Homecoming festivities.

December brought Lillian Hellman's "The Little Foxes," a timely tragedy set in the turn of the century South. Directed by Charles Fischer, it featured Kerry Givens, John Smith, and Alex Rygas in the main roles.

"The Fantastics" was presented in March. Originally scheduled for December, the play was postponed while the college had a special covering for the pit constructed so the play could be presented in its proper form in front of the curtain. Also directed by Charles Fischer, the play combined the talents of Carolyn Runyan, Jody Serensits, and Paul Roth in the leads.

A special recognition went to Tom Nee and Michael Loveless who lent their talents to all three productions. Other players included Neva McNicholas and Dixie Blumbaugh in "The Guardsman"; Sue Duncanson, Marilyn Smith, Nick Mosher, and Chris Lippy in "The Little Foxes"; and Susan Sell, Ken Dilling, and Nancy Brown in "The Fantastics."

With squeals of excitement, Birdie tells Cal of the flattering attention the northern businessman has been showing her.



Regina takes the arm of Mr. Marshall as she continues her attempt to flatter him into investing into their factory.





Mama stalks away from The Critic after receiving another barrage of insults from him.



The Actress haughtily turns away as her husband The Actor, questions her about her relationship to the Guardsman.



Marilyn Smith applies eye make-up to Terry Johnson for his role in "The Guardsman."

James Dick begins series programs



ROSCOE DRUMMOND

The McPherson College Cultural Series offered four excellent programs this year. Cultural Series Committee members were Robert Edwards, Paul Sollenberger, Paul Sherfy, Doris Coppock, Una Yoder, and Paul Wagoner. A new policy this year allowed college students to be admitted to the programs by showing their identification cards.

On October 15, Mr. James Dick presented a piano concert which was well-attended by community and college people. Mr. Roscoe Drummond, the well-known journalist and syndicated columnist, lectured on October 23. Second semester programs featured a piano-cello duet on February 19, which was performed by Marilyn Neeley and Joana Dekeyser, and a Yugoslavian Folk Ensemble on March 24. Frula was the name of the folk ensemble, which provided a colorful survey of the folk music and dances of Eastern Europe. The group had performed at EXPO '67 in Montreal, and were on tour through the United States.

JAMES DICK





JOANA DEKEYSER — MARILYN NEELEY

FRULA

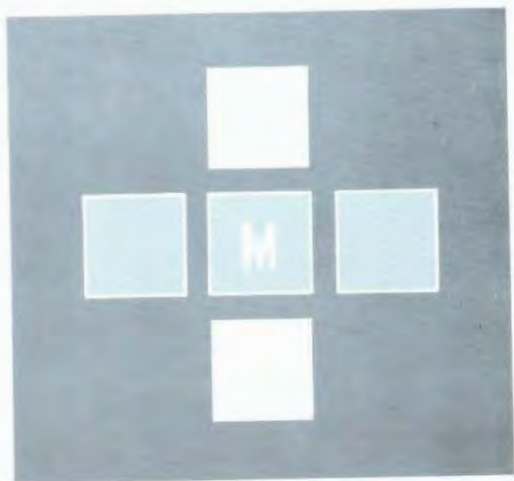






Groups

Groups this year stressed communication. Many organizations questioned their purposes and grew in the process. The International Fair and the Big Brothers program were sponsored by MCY. SNEA'ers read to school children. Student Council and Student Court struggled to iron out internal problems within the school. But, above all, organizations realized their need to unify and to stand for something.





Student Council — TOP ROW: Dean Sheller, George Hoover, Stan Borowski, Charles Jones, Tom Brubaker. SECOND ROW: John Lane, Rodney Lusk, Mike Fox, Dennis Hersey. THIRD ROW: Galen Kopp, Joyce Shellenberger, Jan Burn-

ham, Glee Hoover, Tim Standafer. BOTTOM ROW: Jean Keith, Jane Brubaker, Pat Drury, Marcella Sherfy, Lili Ann Wivell, Carolyn Dell.

STUCO deals with items of concern

The Student Council is a representative group of the Student Body which aims to deal with items which are of concern to the whole Student Body. In order to encourage student support, President Dean Sheller held open meetings during the year. The officers were Dean Sheller, president; John Lane, vice-president; Glee Hoover, secretary; and Tom Brubaker, treasurer.

The Student Academic Affairs Committee made evaluations and constructive criticisms of the academic affairs on campus. Their suggestions were carried to the administration for consideration. Marcella Sherfy headed the committee of five.

A weekly lobster dinner for small groups of from ten to fifteen students was the special project of the Foods Committee. The committee invited the group of students, and Dining Service prepared the meal. Chairman of the com-

mittee was Sue Duncanson.

The Social Committee serves as the coordinating body for all the organizations and committees within the Student Body for the purpose of scheduling events on the Campus Calendar. The committee sponsored dances in the Student Union basement after many home football and basketball games. Cliff Gates headed the committee the first semester, and Monty Ganshorn was chairman the second semester.

Homecoming was one of the responsibilities of the Special Projects and Evaluation Committee. Among the new features added to Homecoming were movable floats and a parade through downtown McPherson the morning of the Homecoming game. The Queen's Coronation was held in Brown Auditorium for the first time this year. John Lane was chairman of the committee.



Special Projects Committee — TOP ROW: Joyce Shellenberger, Charleen Lowe, Pat Drury, John Lane. BOTTOM ROW: Barb Grasmick, Sally Shultz, Carolyn Deli



Academic Affairs Committee — TOP ROW: Gary Flory, Marcella Sherfy, Steve Nettleton. BOTTOM ROW: Diane Warnke, Janice Howell, Elaine Blackwell



Social Committee — TOP ROW: Glenn Davis, Art Ware, Jody Serensits, Jan Burnham, Bob Smith, Monty Ganshorn. BOTTOM ROW: Sandi Fisher, Linda Fleischacker, Jody Duffy



Foods Committee: Chris Levi, Donna Nettleton, George Hoover, Sue Duncanson, Student manager, Bob Smith



Student Court — TOP ROW: Gary Blackwell, Paul Roth, Gary Flory, Craig Miller. SECOND ROW: Susan Sell, Sally Gibson, Donna Haideman, Kathy Shank. BOTTOM ROW: Steve La

grad, Donna Brubaker, Margaret Holderreed, Annette Burkholder.

Board of Publications — TOP ROW: Dean Sheller, Tom Brubaker, Merlin Frantz. SECOND ROW: Rodney Lusk, John Drinen, Charles Jones. BOTTOM ROW: Stan Woltard, Peggy Kuehl, Phil Grove.



Court enforces constitution

The Student Court is responsible for interpreting and enforcing the Student Body Constitution. In cases of student misconduct, the student is first brought before his Dorm Council, which then acts upon the case. The council may then refer the case to the Student Court if they feel it necessary. Gary Flory was chairman of the Student Court.

The Board of Publications serves as an advisory committee to the campus publications. It has control over the policies of both the Spectator and the Quadrangle, chooses editors and business managers, and aims to add continuity to the publications.

The treasurer of the Student Council is the chairman of the committee. Other members are the editors, business managers, faculty advisors, Dean of Academic Affairs, College Business Manager, and five Student Council members including the president and treasurer.

Students serve on faculty committees

Robert Edwards was chairman of the Cultural Series committee. A student representative and several faculty members also served on this committee. Its purpose was to plan and secure numbers for the Community Cultural Series, sponsored each year by McPherson College.

Chairman for the Chapel and Convocations committee was Dr. Doris Coppock. Faculty members and student representatives aided Dr. Coppock in planning programs for the Convocations and Chapel services.

Supervision of the Student Union and its programs was the duty of the Student Union Board, which was headed by Dr. Raymond Flory. Student representatives appointed by the Student Council, the Student Body President, a Social committee member, and faculty members comprised the board.



Student Union Board — TOP ROW: Raymond Flory, Dean Sheller, Craig Little, Galen Snell, Art Ray. BOTTOM ROW: Janice Howell, Linda Moore.

Cultural Committee — TOP ROW: Robert Edwards, Paul Wagoner, Paul Sherly. BOTTOM ROW: Doris Coppock, Una Yoder.

Chapel and Convocations Committee — TOP ROW: Paul Roth, Galen Snell, Dean Sheller, Merlin Frantz. BOTTOM ROW: Jean Hendricks, Doris Coppock, Pat Hayes.





Bittinger Hall Dorm Council: Jim Furnas, Charles Lamb, Stan Wollard, Don Woodcock, Stan Borowski, Pete Siracusa, Don Reese, Gary Sacks, Nicholas Kobe

Fahnestock Hall Dorm Council — TOP ROW: Don Lucore, Carlos Green, Ed Robinson, BOTTOM ROW: Keith Hummel, Paul Roth.



Guidelines set by dorm councils

Dotzour Hall is the newest women's dormitory. The officers were Linda Moore, president; Donna Brubaker, vice-president; Mary Anne Miller, treasurer; Rose Ann Sink, secretary; and Donna Winegarden, freshman representative.

Serving as officers of Kline Hall were Jean Keith, president; Kerry Givens, vice-president; Noula Apostolidou, secretary-treasurer.

Affectionately known as "Fanny" to the men living there, Fahnestock Hall was directed by Ed Robinson, president; Keith Hummel, treasurer; Paul Roth, secretary.

About one hundred fifty men live in Metzler Hall. The officers were Dennis Heisey, president; Dave Shepherd, vice-president; Phil Grove, secretary; John Drinen, treasurer.

Bittinger Hall had the distinction of being the newest dormitory on campus. The elected officers were Gary Sacks, president; Don Woodcock, vice-president; Charles Lamb, secretary; Pete Siracusa, treasurer.



Kline Hall Dorm Council: Noula Apostolidou, Jean Keith, Kerry Givens



Dotzour Hall Dorm Council: Donna Winegarden, Mary Anne Miller, Rose Ann Sink, Donna Brubaker, Linda Moore.

Metzler Hall Dorm Council — TOP ROW: Gene Roth, Wayne Applegate, Phil Grove, John Drinen. BOTTOM ROW: Daryl Harris, Steve Laprad, Dennis Heisey, Dave Shepherd.





Pi Kappa Delta — TOP ROW: Mike Ziemann, Clifford Lambert, Gary Flory, Michael Loveless, Alma Moore. BOTTOM ROW: Ken Stromquist, Lilli Ann Wivell, Paul Christianson, Charles Frank.

Phi Alpha Theta — TOP ROW: Gary Flory, Roger Nettleton, Ted Livingston, Bob Albin, Glenn Walker. BOTTOM ROW: Dave Sovchen, Marcella Sherly.

Fraternities honor scholarship, merit

In the spring of 1954, the Epsilon - Eta Chapter of Phi Alpha Theta, the national history fraternity, was organized on the McPherson campus. The organization, sponsored by Dr. Raymond Flory, honors those students who have shown exceptional scholarship in the field of history. Robert Albin was president; Glenn Walker, vice-president; and Marcella Sherly, secretary-treasurer of the eight-member group.

Sponsored by Alma Moore, the eight-member Kansas Omicron Chapter of Pi Kappa Delta, the national forensics fraternity, was headed by Gary Flory, president; Clifford Lambert, vice-president; and Michael Loveless, secretary-treasurer.

Established on the McPherson campus in the spring of 1942, the organization honors those who have shown particular merit in the field of forensics.



Council sponsors big sister program

Women's Council was headed by Annette Burkholder, and Jean Hendricks acted as vice-president. The other officers were Janet Bruce, treasurer and recording secretary; and Judy Monke, publicity and corresponding secretary. Mary Ann Robinson sponsored the council.

The women, who were appointed by the Dean of Women, represent the various living arrangements and campus organizations for women. They met regularly every other week. Besides helping the new women become acquainted and adjusted to college early in the new year by the Big Sister Program, the council also sponsored Heart Sister Week.

Men's Council was composed of the dorm presidents, the Student Body President, an off-campus student, and the Dean of Men. The council was responsible for organizing all intramural activities, and the members discussed and acted on such problems as campus relationships and cultural development.



Women's Council — TOP ROW: Pat Drury, Jean Hendricks, Sherry Walker, Carol Cobb, Marcia Selberg, Wanda Duske, Judy Monke. SECOND ROW: Mary Atwill, Margaret Holderreed, Lynda Beavers, Donna Brubaker, Lilli Ann Wivell, Marcella Sherry. BOTTOM ROW: Annette Burkholder, Janice Howell, Sue Steffen, Jean Kwok.

Men's Council — TOP ROW: Ed Robinson, Gary Sacks, Galen Snell. BOTTOM ROW: Dean Sheller, Dennis Heisey.





Madrigals — TOP ROW: Ray Landis, Paul Roth, Don McMurray, Mike Fox, Marlin Hoover, Ken Dilling. BOTTOM

ROW: Mary Anne Miller, Gwendolyn Ditmars, Winona Achilles, Glee Hoover, Mary Nell Hoover, Sylvia Wine

Andrea Siple concentrates on her music during a rehearsal of one of the A Cappella color choirs.



Interested students form new group

The April 17 — May 2 tour was the high point of the year for the A Cappella Choir, under the direction of Professor Donald Frederick. The forty-three voice choir performed in churches throughout Iowa and Minnesota. The Annual Spring Concert was May 3, and the group sang once each month at the Church of the Brethren. Officers were Steve Nettleton, Ed Robinson, Sylvia Wine, Rose Ann Sink, Donna Brubaker, and Paul Roth. Accompanists were Kryste Andrews, Jean Hendricks, and Donna Brubaker.

The Mac Madrigals were twelve students who decided they would like to form their own group. They chose Doris Coppock for their director and Mrs. Jack Melhorn for the accompanist. This group sang often at banquets and club meetings.

Chapel Choir, directed by Doris Coppock, performed twice monthly for chapel services on Tuesday mornings. The twenty-six members were accompanied by Lorene Pauls.



Chapel Choir — TOP ROW: Steve Rogers, Ron Adkins, Ronald Beachley, Steve Laprad, John Lane, Ed Myers, Roger Dubble, George Hoover. SECOND ROW: Chris Lippy, Thelma Woertz, Janet Sue Loucks, Jan Wiggins, Becky Pugh, Sher-

re Henke, Kay Clark, Barb Plaughter, Rita DeCoursey. BOT- TOM ROW: Marge Roorda, Donna Winegarden, Claudia Hansen, Shirley Goughnour, Mary Kay Brown, Chris Grove, Lorene Pauls, Lydia Berg.

A Cappella Choir — TOP ROW: Winona Achilles, Jim Haldeman, Sue Duncanson, Rose Ann Sink, Bud Taylor, Jean Hendricks, Lynn Hanzlicek, Kryste Andrews, Don McMurray, Gloria Lewallen, Glee Hoover, Mike Fox, Marian Shavely. SECOND ROW: Sigrid Wagner, Ed Robinson, Sue Steffen, Carolyn Runyan, Ken Dilling, Margaret Holderreed, Gary Flory, Markita Blough, Lilli Ann Wivell, Merrin Godfry,

June Ware. THIRD ROW: Mary Anne Miller, Ray Landis, Carol Smith, Wayne Showmaker, Sylvia Wine, Andrea Siple, Paul Roth, Regina Fillmore, Jim Lunkley, Rose Marie Ullom. BOTTOM ROW: Gwendolyn Ditmars, Steve Nettleton, Lynn Dee Standafer, Ray Medley, Danna Brubaker, Rick Gingrich, Chris Helstern, Richard Albright, Annette Burkholder.





MENC — TOP ROW: Wayne Shoemaker, Chris Lippy, Dale Dowdy, Winona Achilles, Ray Landis. SECOND ROW: Marge Roorda, Ed Myers, Ray Medley, Gwendolyn Ditmars. THIRD ROW: Ken Dilling, Donna Brubaker, Mary Anne Miller, Denny Martin. BOTTOM ROW: Claudia Hanson, Shirley Goughnour, Christine Grove.

McPherson College Band — STANDING: Professor Robert Revell, Marcia Bryan, Ray Medley, Carol Gerber, Charles Skellenger, Ed Myers. SECOND ROW: Roger Ditzler, Craig Baldwin, Ed Burr, Wayne Shoemaker, P. J. Stucky, Pam Burns, Ramon Zook, Bob Smith, Dennis Casebeer, Donald

MENC sponsors recital by mezzo

The McPherson College Band appeared in concert under the direction of Professor Robert Revell. A special feature of the early winter concert was the direction of the band by student conductors.

To provide enthusiastic support for the Bulldogs, the band appeared at most home football and basketball games.

Those whose interest in music surpassed classroom activities had the opportunity to join M.E.N.C., Music Educators National Conference. The chapter held monthly meetings, four of which were under the direction of the music professors. The chapter attended the State Music Educators Conference; sponsored a recital by Elizabeth Patches, a mezzo from Bethany College; and traveled to Wichita to hear the Wichita Symphony Orchestra at a rehearsal.

Officers for the year were president, Winona Achilles; vice-president, Ray Medley; and secretary-treasurer, Donna Brubaker.

Frederick, Lynn Coulter, Ken Dilling, Paul Tice. THIRD ROW: Mary Kay Brown, Leta Horn, Doris Coppock, Winona Achilles, Chris Grove. Ken Steward. FRONT ROW: Cliff Gates, Jane Miller, Lynn Dee Standafer, Marcia Sellberg, Lucia Green, Ray Landis.





SENEA — TOP ROW: Jim Allen, Ed Robinson, Michael Traetto, John Lehman, Gary Flory, Ed Myers, Ray Medley, Ken Dilling. SECOND ROW: Lynda Beavers, Kathy Shank, Joyce Shellenberger, Pat Drury, Jan Burnham, Glee Hoover, Susan Sell, Ricco Mayo, Sue Duncanson, Eileen Butler, THIRD ROW: Jan Schwärck, Linda Moore, Markita Blough, Leta

Weddle, Joyce Mills, Judy Monke, June Vinchattle, Carolyn Dell, Janice Howell, Lorene Pauls. BOTTOM ROW: Annette Burkholder, Christina Flory, Lethia Brown, Judy Rego, Sigrid Wagner, Jody Duffy, Linda Lee, Rose Marie Ulfom, Elaine Blackwell, Deanna Lahman.

Students work with teachers

Students preparing to be teachers learn much about their future profession through membership in the Maurice A. Hess Chapter of the Student National Education Association.

Monthly meetings of the organization, whose membership numbers approximately one hundred students, focused this year on various problems and methods of teaching. A discussion of the issue of teacher salary, a panel on the psychology of discipline, "buzz groups" on grading and testing, and a talk by Professor Charles Fischer about the use of dramatics in teaching were among the programs.

Initiated only this year was a program in which individual students worked with teachers in classrooms or as storytellers.

Officers included Kathy Shank, president; Susan Sell, vice-president; Glenice Miller, secretary; Irvin Albin, treasurer; Judy Rego, publicity; and Lethia Brown, historian. Professor Hughbanks was faculty advisor.

Involving themselves in the realities of the classroom situations, Lynda Beavers and Jody Duffy worked as storytellers in the McPherson grade school system.



Spectator reflects student opinions

To reflect the varied activities and opinions of McPherson College students and to accurately report the many phases of campus life is the goal of the Spectator, the McPherson College newspaper. All those working on the Spectator gained valuable laboratory experience in journalism.

Phil Grove capably handled the demanding job of editor-in-chief for the first semester, assisted by Chris Levi, managing editor, and Susan Pierson, campus editor, and a staff of reporters and writers.

Second semester Chris Levi assumed the role of editor-in-chief. Susan Sell assigned stories and supervised reporters as campus editor. John Drinen served as business manager and Russell Sheets as assistant business manager. Mrs. Homer Brunk was faculty editorial advisor and Gordon Yoder was financial advisor.



Retiring editor-in-chief Phil Grove checks for mistakes on the page proofs with Chris Levi and Susan Sell.

Luci Petre looks on as new reporters Sandy Kussart, Donna Winegarden, and Carolyn Deil discuss the proper format for a story.





Reporters Marilyn Smith, Ken Stromquist, Jane Dadisman, Charles Frank, and Cindy Barchesky find it takes some practice to learn the proper Spectator style.

Business manager John Drinen was assisted in his work by Mike Thompson, circulation manager.



Editor-in-chief Chris Levi gives Susan Sell some suggestions on story assignments.





Photographer Ray Medley explains a fine point of photography to Chuck Irwin and assistant photographer Art Foxall.



Assistant editor Jan Pyle and editor Peggy Kuehl work to complete the copy on a deadline.

Annual staff meets four deadlines

The long hours spent drawing layouts, selling advertisements and writing copy often seemed futile to the Quadrangle staff, but the yearbook gradually took shape as the four deadlines were frantically met.

Peggy Kuehl, editor, attended a conference in Manhattan, Kansas, in the summer of 1966 to learn the rudiments of yearbook editing. Assistant editor, Janis Pyle, learned procedures to help her edit next year's book. Chuck Irwin developed the photographs taken by Ray Medley, head photographer. Stan Wollard, business manager, assisted by Bruce MacPherson, sold advertisements, drew advertising layouts, and helped prepare the budget. Six copy writers wrote about various groups and activities.

A sigh of relief went up the first week in March when the last of the copy was mailed to the plant in Topeka, and the staff members reached another crossroads in their lives.



Assisting with typing and drawing up layouts were Linda Lee, Carolyn Dell, and Neysa Fox.



Business manager Stan Wollard and his assistant Bruce MacPherson could often be seen in downtown McPherson selling ads.



Writing copy for every deadline were reliable copywriters Mary Nell Hoover, Marcia Sellberg, Ricci Mayo, Susan Sell, Margaret Holderreed, and Luci Petre.



M.C.Y. Cabinet — TOP ROW: Bob Albin, Roger Nettleton, Paul Roth, SECOND ROW: Marian Snavelly, Stan Bucher, Bruce MacPherson, THIRD ROW: Pat Drury, Pat Hayes, Joyce Shellenberger, BOTTOM ROW: Ginny Yingst, Sylvia Wine, Carolyn Dell.

Numerous projects sponsored by MCY

The McPherson College YMCA-YWCA is commonly known as the MCY. Its purpose is to provide opportunity for worship, fun, and fellowship, and to stimulate a concern and active awareness of current topics of interest.

Six committees act to perform the motto, "Opportunity." The standing committees are the worship committee, the service committee, Project Concern, the social committee, the International Fair committee, and the Freshman Camp committee.

Various activities and projects of the year included the Big Brother program, the tutorial program, chapel services, a hayrack ride, Y-nights, Freshman Camp, general meetings, and the International Fair.

Nine officers composed the cabinet; co-chairmen, Pat Hayes and Paul Roth; co-vice-chairmen, Pat Drury and Robert Albin; co-secretaries, Marian Snavelly and Roger Nettleton; co-treasurers, Sylvia Wine and Bruce MacPherson; and publicity, Stan Bucher.

M.C.Y.—TOP ROW: Ed Robinson, Prentis Porter, Dale Dowdy, Les Shenefeld, David Smith, Bud Taylor, Balyn Brent, Don Lucore, SECOND ROW: Sue Duncanson, Joyce Bury, Steve Laprad, Marston McGwin, Gary Flory, David Shepherd, Marian Syverson, Ed Myers, Cindy McQuilliam, THIRD ROW: Becky Pugh, Carol Smith, Gwendolyn Ditmars, Cathy

Colyn, Sandy Kussart, Jane Dardisman, Jean Stern, Sally Gibson, Mary Atwill, Margaret Holderreed, BOTTOM ROW: Rose Marie Ullom, Jo Ann Mowry, Esther Bower, Jan Schwark, Donna Winegarden, Nancy Brown, Jane Watkins, Twillia Smalley, Jean Keith.





Circle K — TOP ROW: Don Bucher, Kent Noffsinger, Frank D'Agostino Jr., Mark Krogh, Gary Sacks, James Carlson, James Bower. SECOND ROW: Stanley Borowski, Bruce MacPherson, Gary Schuster, Craig Little, Brian Summer-

hays, Dennis Dahlquist. BOTTOM ROW: Denny Martin, Stan Wollard, Ronald Beachley, Joseph A. Lacovara, Dennis Heisey.

Circle K fulfills goal of service

Circle K's twenty-one members sponsored several projects throughout the year fulfilling their goal of service to the community and the school. Each semester they directed a used-book sale for students, and they organized the Bloodmobile's campaign on October 31. Second semester projects include a Slave Auction through which the men performed odd jobs to raise money for the Circle K. Club members helped the Kiwanis Club of McPherson by selling tickets to their Pancake Feed on March 2. A highlight of the year was the Easter Party given for McPherson's underprivileged children.

Officers of the club were Frank D'Agostino, president; Gary Sacks, vice-president; Cliff Danziger, treasurer; and Stan Wollard, secretary. Applicants for membership must be approved by the membership committee and the board of directors before they may be voted in by the entire club.



Supervising the Circle K sponsored book sale are Kent Noffsinger and Frank D'Agostino.



German Club — TOP ROW: Paul Roth, Mike Ziemann, Roger Nettleton, Don Lucore, Don McMurray. SECOND ROW: J. Harvey Koehn, Donald Schultz, John Zinn, Sandy Kussart.

BOTTOM ROW: Rose Marie Ullom, Sigrid Wagner, Donna Winegardner, Christine Grove.

People-To-People — TOP ROW: Mohamed Manuie, Harriet Krueger, Toshio Kawawa. SECOND ROW: Katsuyuk Genper, Maija Ratia, Shigehisa Sekiye. BOTTOM ROW: Noula Apostolidou, Claudia Hanson.



People-to-People in seventh year

A candlelight Christmas program was the highlight of the year for the members of German Club. During monthly meetings, slides and movies were shown by these students who had visited Germany. A German table was begun early in the second semester. Officers included Mike Ziemann, president; Donna Winegardner, vice-president; and Sigrid Wagner, program chairman.

People-to-People, the International organization on campus, was originated by the town for the college. The club, which was formed in 1961, had forty-one members. The club's purpose is to create relationships among those of other countries within the atmosphere of American homes. The most important activity of the year was a potluck dinner with each student preparing a native dish. Foreign Students were invited individually to various homes in town during the school year.

Republicans promote party ideals

The twenty-nine members of the Collegiate Young Republicans worked hard to interest college students in Republican ideals and beliefs and to create the image of the Republican Party in the minds of the people. Requirements for membership were an interest in the Republican Party and a desire to work for its ends. Harriet Krueger was president of the organization sponsored by Dr. Raymond Flory. She was aided by Patrick Hill, vice-president, and Carol Cobb, treasurer.

Rockford Regula, president, and Teresa Albini, vice-president, led the Art Club, which was founded in the fall of 1965. Secretary Lois Gish and publicity co-chairmen Vincette Goerl and Pat Oswald helped carry out the club's stated purpose of promoting fine arts appreciation on campus. The club was sponsored by Mary Ann Robinson and Robert Smith.



Republicans — TOP ROW: Harriet Krueger, Gary Sacks, Brian Summerhays. SECOND ROW: Gary Flory, John Swanson, Tom Brubaker. THIRD ROW: Carol Cobb, Lynn VanWickler, Jim Furnas. BOTTOM ROW: Judy Peltzman, Ken Stromquist.



Art Club — TOP ROW: Rockford Regula, John Swanson, Jon Strom, Fred Henderson, Brian Summerhays, Ralph Caputo. SECOND ROW: Robert Smith, Mary Ann Robinson, Kryste

Andrews, Dea Unruh, Kathy Bryer, Judy Buckwalter. BOTTOM ROW: Terry Albini, Vincette Goerl, Patricia Oswald, Janet Wiggins, Judy Peltzman.



Players Club — TOP ROW: John Lane, Dan Snyder, Tom Nee, Michael Loveless, Jody Serensits, Nick Mosher, Una Yoder, Charles Fischer, Charleen Lowe, Pat Drury. BOTTOM

ROW: Luci Petre, Sue Duncanson, Marilyn Smith, Susan Sell, Donna Winegarden, Nancy Brown, Kerry Givens.

Alpha Psi Omega — TOP ROW: Charles Fischer, Nancy Brown, Jody Serensits, Tom Nee, Michael Loveless. BOTTOM ROW: Kerry Givens, Marilyn Smith.



Members participate in dramatics

The membership of Players Club includes all students who have participated in drama productions, whether as actors or by filling the many important behind-the-scenes roles. This year the Players Club members, led by Marilyn Smith, president, and Kerry Givens, secretary-treasurer, worked in many capacities with the major dramatics productions. Professor Charles Fischer and Mrs. Una Yoder served as faculty advisors.

Several students were initiated into Alpha Psi Omega, the national honorary dramatics society, during the second semester. Membership in the organization was restricted to those who compile fifty points, evidence of extensive participation in dramatics. Professor Charles Fischer sponsored the group.

Clubs stimulate vocational interests

The successful home economist must learn to combine skill and knowledge with practical judgment to achieve perfection in anything from a buttonhole to a seven-course meal.

Organized in 1953, the Home Economics Chapter helps women interested in home economics to become better trained for their future roles.

Chairman for the year was Glenice Miller; vice-chairman, Christina Flory; secretary, Paula Sissel; treasurer, Karin Frederickson; publicity chairman, Kathy Taylor; and sponsor, Miss Siek.

Under the leadership of Richard Burger, president; Dick Martin, vice-president; Dennis Heisey, secretary-treasurer; and Dr. Ward, sponsor, the McPherson College Agricultural Club was dedicated to pursuing all forms of agrarian occupations. The rural community and its functions were studied at the club meetings.



Agricultural Club — TOP ROW: Alfred Dutrow, Steve Mason, Michael Emmert, Richard Burger. SECOND ROW: Ryan Christiansen, Harvey Leighnor, Marston McGwin, Marion Syverson. BOTTOM ROW: Dick Martin, Dennis Heisey, Galen Kopp, R. Everett J. Horton.

Home Economics Club — TOP ROW: Karen Miller, Cindy Eisenbise, Thelma Woerz, Susan Arnesen, Judy Buckwalter, Sherry Walker, Gloria Lewallen. SECOND ROW: Mildred Siek, Lilli Ann Wivell, Karin Fredrickson, Sharon Hartman,

Lois Gish, Karen Allen, Beth Landis, Sue Steffen. BOTTOM ROW: Jean Kwok, Glenice Miller, Christina Flory, Janice Howell, Dorothy McCuller, Kay Troyer, Paula Sissel.





Fellowship of Christian Athletes — TOP ROW: Bruce Cook, Dave Smith, Steve Layton, Bud Taylor, David Shepherd.
 BOTTOM ROW: Bob Smith, Mike Thompson, John Belser, Dick Staicup, Art Ray.

Skate Club — TOP ROW: Roger Dubble, Daryl Harris, Don Lucore. SECOND ROW: Marion Syverson, Ed Meador, Barbara Plaughter. BOTTOM ROW: Ken Dilling, Christine Grove.



New organization formed on campus

The newly-formed Fellowship of Christian Athletes organization attracted twenty members. The purpose of the organization is to confront athletes and coaches, and through them the youth of the nation, with the challenge and adventure of following Christ in the Fellowship of the Church. The officers elected were Dave Shepherd, president; Bruce Cook, vice-president; and Dick Staicup, poster chairman. Coach Widrig was faculty sponsor. Sixteen members attended a mass rally at Wichita State University on February 2 to hear Rev. Bob Richards and Paul Anderson.

Another active campus organization was Skate Club, which met monthly at skating rinks in Hutchinson, Salina and McPherson. Officers were Roger Dubble, president; Ed Meador, vice-president; and Ken Dilling, publicity chairman. Professor Fraley and Dr. Coppock sponsor the group.

M-Club composed of college athletes

Men lettering in sports at McPherson College may join "M" Club. This year thirty-three members participated in the various activities, including serving the Watermelon Feed and selling concessions at the basketball games. The purpose of the club was two-fold: to promote fellowship within their own group and to aid in building and maintaining an athletic program of which McPherson College may be justly proud. Officers were Tom Brubaker, president; Don Woodcock, vice-president; Irvin Albin, secretary; and Phil Grove, treasurer. Sid Smith sponsored the club.

The Women's Athletic Association awards letters, pins, and blazers to those members who have participated in various seasonal sports and received the required number of points. The organization was headed by Lela Weddle, president; Sally Shetler, vice-president; Kathy Rogers, secretary; Regina Fillmore, treasurer; and Neva McNicholas, publicity. Doris Coppock was group sponsor.



W.A.A. — TOP ROW: Cindy McQuilliam, Regina Fillmore, Neva McNicholas, Carolyn Runyan. SECOND ROW: Roma Rolston, Lela Weddle. BOTTOM ROW: Raynell Houck.

M-Club — TOP ROW: Jim Paul, Wayne Heskett, Dave Smith, Mike Thompson, Tom Brubaker. SECOND ROW: D. Moore, Denny Miller, Jim Beachell, Dale Prochaska. BOTTOM ROW: Phil Grove, Bob Smith, David Shepherd.





A-Team Cheerleaders: Linda Lee, Jody Duffy, Sue Arneson, Paula Sissel Sherry Dirks.

Varsity cheerleaders display the pep and agility that got them elected to their position.

Cheerleaders promote enthusiasm

Promoting school spirit and leading cheers at the football and basketball games was the responsibility of the Varsity and B-team cheerleaders.

Jody Duffy was head cheerleader of the Varsity squad. The Varsity squad was responsible for selling mums at Homecoming, and for helping in the construction of the float on which they rode in the Homecoming parade. With the assistance of the B-team they organized a large pep rally and bonfire during the Homecoming week.

Throughout the year the Varsity squad organized and presented short skits and pep assemblies at the close of Convocations. The squad was also responsible for publicizing games.

In the fall of the year, five B-team cheerleaders were elected by the student body. Lesa Snyder was the head cheerleader of this squad.





Taping up one of the basketball posters that are painted for each game is head cheerleader, Jody Duffy.



B-team cheerleaders Lynn VanWickler and Roma Rolston join the A-team cheerleaders in a cheer at the Homecoming game.

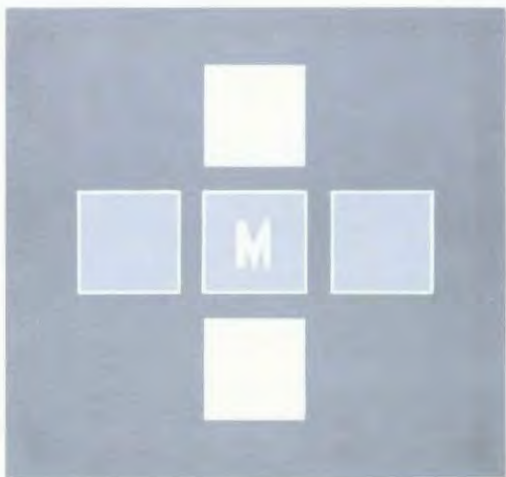
B-Team Cheerleaders: Raynell Houck, Roma Ralston, Lesa Snyder, Ricci Mayo, Lynn VanWickler.





ATHLETICS

The scoreboard cannot always measure the will to win. In the face of defeat our men proved to be real sportsmen by not giving up and by putting their all into the football and basketball competitions. A number of close victories spurred enthusiastic crowds and urged the teams to fight until the final seconds. If courage could have been measured, the McPherson teams would have been winners this 1967-68 season.





1967 Football Squad — TOP ROW: Coach Don Widrig, Coach Art Ray, Larry Bacon, Clark Duffy, Don McMurray, Skip Vandervoort, Manfred Brown, George Gregg, William Rhinehart, Junior Smith, Steve Layton, Manager John Burns, Head Coach Dwight McSpadden. THIRD ROW: Hal Wright, Greg Quackenbush, Bruce Cook, Carl Cook, Don Easter, Martin Norris, D. Moore, Craig Little, Dana Kurtz, Charles Jones, Dick Stalcup, Craig Thornton, Regis Iovino,

SECOND ROW: Phil Aldinger, Steve Kruse, Harvey Longnecker, Ron Pickelsimer, Leo Mekelburg, Keith Stull, Neil Fleckenstein, Roy Weyant, Mike Thompson, Gary Fox, Jim Stauffer, Chris Frederick, Sam Johnson. BOTTOM ROW: Frank Falcicola, Lance Morgan, Bob DeTour, Jim Beacheli, Dan Stockstill, Tom Brubaker, Dennis Miller, Don Woodcock, Gary Shuster, Glen Walker, Deward Shaffer, Steve Karrasick.

The defensive unit display their prowess as they surround a Baker opponent and drop him for a loss of yardage.



McSpadden is new head football coach

Dwight McSpadden was the new head football coach of the McPherson College Bulldogs. The team finished the season with a record of nine losses and no wins, and finished last in the conference. Co-captains of the team were seniors Don Woodcock and Tom Brubaker.

The Bethany, Bethel, and KWU games provided the fans with some close, thrilling games. The Bulldogs had a young team with many freshman and sophomore players. Quarterbacking the team was a freshman, Phil Aldinger.

| Mac | KCAC Rankings | Opponent |
|-----|---------------|----------|
| 6 | Southwestern | 47 |
| 0 | Ottawa | 52 |
| 0 | Baker | 16 |
| 14 | KWU | 20 |
| 7 | C of E | 27 |
| 0 | Friends | 21 |
| 0 | Sterling | 32 |
| 13 | Bethany | 14 |
| 13 | Bethel | 20 |
| | McPherson | |

As the warrior looks on, a Mac defender leaps high to block a C. of E. pass.



Quarterback Phil Aldinger hands off to halfback Hal Wright as Mac goes for needed yardage.



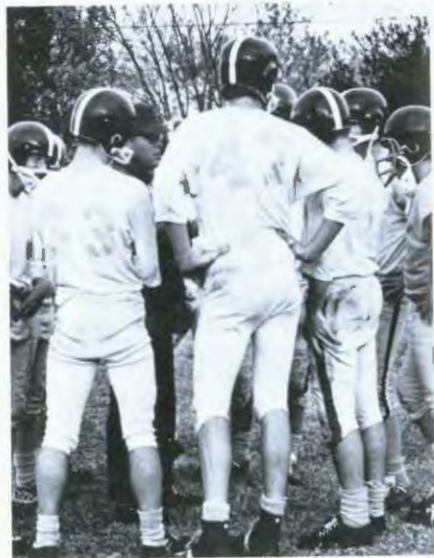
Mac defensive men throw shoulders and body into stopping short a Baker opponent.

Halfback Hal Wright tries to maneuver out of the grasp of a Baker defender during the Homecoming game.



Players-of-the-Week — STANDING: Hal Wright, Dan Stockstill. BOTTOM ROW: D. Moore, Dick Stalcup, Ron Pickett, Denny Miller.

Gathering in a huddle around the coach, players listen to his suggestions and criticisms of their performance during a practice session.



Competitive action in intramurals

Volleyball, handball, bowling, and basketball formed the 1967-68 intramural program. The program gave interested students a chance to participate in some competitive sport.

The first semester saw action in volleyball, handball, and bowling. Third floor Fahnestock became the champion volleyball team by defeating first floor Metzler, second floor Fahnestock, and the College Courts team. The handball ladder closed with Don Widrig in first position, followed by Ron Robbins.

Bowling teams played every Thursday afternoon at the Starlight Lanes during both semesters. Basketball was played the second semester only, and each dormitory floor composed one team.

Gary Loucks challenges Ron Robbins in a game of handball in an attempt to step up on the handball ladder.



Steve Davidson and Russ Early act as scorekeepers for their teams during intramural bowling.



A basketball game early in the second semester pits first floor Bittinger against third floor Fahnestock.

Jim Rakes and Tom Cook attempt to stop a return by Jim Mowry in a volleyball game between College Courts and third floor Fahnestock.





1968 A-Team: Lowell Monke, Jim Mowry, Don Woodcock, Dan Stockstill, Hal Wright, John Smith, Steve Putthoff, Jim Rakes, Jerry Grant, Mark Falen, Larry DeTour.

One of the leading conference scorers, John Smith leaps above the heads of the other players to tip in two points for Mac.



John Smith soars up to lay one over the rim for two points against KWU.

Bulldogs close season on strong note

The McPherson College Bulldogs got off to a slow start in the season. Sparked by John Smith, one of the Kansas Conference individual scoring leaders, the Bulldogs finished the season on a stronger note. Coached by Don Widrig, the Bulldogs lost many of their games by a close margin. The Bulldogs lost to one of the conference leaders, KWU, by three points in an over-time on the home court. The team will lose three senior players: Don Woodcock, Dan Stockstill, and Jim Rakes.

| Here | | Away | |
|------|-----|------|-----|
| Mac | Opp | Mac | Opp |
| 84 | 55 | 53 | 57 |
| 99 | 77 | 64 | 66 |
| 73 | 79 | 74 | 88 |
| 96 | 100 | 78 | 102 |
| 69 | 81 | 61 | 92 |
| 87 | 90 | 77 | 89 |
| 84 | 73 | 79 | 104 |
| 80 | 85 | 60 | 77 |
| 105 | 90 | 69 | 64 |
| 61 | 69 | 70 | 83 |

Eyes riveted to the basket, Larry DeTour sails between two defenders for a layup shot.



Muscles strain as Jim Rakes struggles to bring down a rebound against three Tabor opponents.





Senior Don Woodcock arches a shot over the out-stretched hand of a Tabor player.



Hand paralleling the descent of the ball through the basket, Hal Wright drops to the floor after scoring two points against Ottawa.

Larry DeTour and John Smith race down court to set up a play against KWU coyotes.



B-team players gain experience

The McPherson College B-team was coached by Art Ray. The team was composed of two sophomores and eight freshmen players. The B-team had games with all conference teams except Ottawa, Lowell Monke, Jim Mowry, Mark Falen, Steve Putthoff, and Jerry Grant also lent their skill to the A-team by acting as reserves to the first team.



Jim Mowry attempts a back-handed lay-up against Emporia.

| Here | | | Away | |
|------|-----|--------------|------|-----|
| Mac | Opp | | Mac | Opp |
| 67 | 70 | Baker | 77 | 78 |
| 84 | 75 | Bethany | 77 | 76 |
| 79 | 82 | Bethel | 88 | 112 |
| 97 | 68 | C of E | 83 | 93 |
| 78 | 75 | Friends | 72 | 75 |
| 95 | 118 | KWU | 97 | 109 |
| 80 | 69 | Southwestern | 76 | 104 |
| 90 | 77 | Sterling | 81 | 94 |
| 68 | 103 | Tabor | 67 | 85 |

1968 B-Team: Lowell Monke, Jim Mowry, Kent Neufeld, Mark Falen, Jim Paul, Lynn Goss, Howard Skinner, Steve Putthoff, Gary Lydic, Jerry Grant.





1967 Track Team — TOP ROW: Jim Paul, Bruce Cook, Steve Kruse, Ralph Barr, Tom Worthing, Dave Smith SECOND ROW: Coach Art Ray, John Zinn, Wayne Heskitt, Rod Westergaard, Dave Shepherd, Bob DeTour. BOTTOM ROW: Bob Smith, David Eagles, Arnold Groff, Jim Beachall.

Four new school records set

The McPherson College Cross-Country Team took four first-place, two second-place, and two third-place wins during its 1967 season. The team was composed of one junior, two sophomores, and three freshmen. Wayne Heskett was a returning two-year letterman, and Dave Shepherd and Dave Smith were both returning one-year lettermen. Wayne Heskett set a new school record in the three-mile run with a time of 16:16.

The 1967 Track Team placed second in four meets. Bob DeTour broke the standing javelin record by eleven and a half inches by throwing two hundred eight feet, five and a half inches. Tom Worthing set a new high hurdles record with a time of 59.9, and Dave Eagles broke the old triple jump record with a jump of thirty-eight feet, six inches.

A strained expression covers the face of Dave Shepherd as he breaks the tape ahead of his competitors.





Cross-countryman, Prentis Porter, contemplates the race ahead before the start of a triangular meet.



Muscles tense. Dave Smith leaves the starting block at the beginning of the 440-yard dash

Cross-Country Team: Steve Rogers, Dave Shepherd, Dave Smith, Coach Art Ray, Prentis Porter, Ron Smith, Wayne Heskett.





1967 Tennis Team: Kenny Bechtel, Jim Rakes, Bob Theilman, Loren Boughfmann, Chuck Meyer.



1967 Baseball Team: TOP ROW: John Bruzenas, Bob Albertson, Gary Schuster, Keith Hummel, Gary Akright, Carl Bronersky. BOTTOM ROW: Denny Dahlquist, Terry Faust, Stan Borowski, Ed Lloyd, Andy Becker.

1967 Golf Team: Don Woodcock, David Ikenberry, Chris Levi, Lance Hungerford.



Stan Borowski filled the position of pitcher on the newly organized baseball team.

Golfers second in conference

Highlighted by taking second place in the Kansas Collegiate Athletic Conference, the golfers experienced a very successful year. Lance Hungerford, Chris Levi, and Gene Czaplinski finished in the top ten medalist positions for the conference championship.

Coached by Don Widrig, the tennis team defeated conference and non-conference teams and always had high scores of which they could be proud. These netmen placed third in the Kansas Collegiate Athletic Conference.

Independently organized by students, the McPherson College baseball team participated in only a few games. Team members were looking forward to the spring of 1968 when baseball would be a part of the regular athletic curriculum because of the interest they instigated.

Women participate in various sports

Dr. Doris Coppock, professor of physical education, coached the women's basketball team. This group welcomed any women interested in participating. The team of thirteen members met twice each week for practice. Acting as captains were Barbara Westray and Lela Weddle. The team's record was 2-5, including games played in two sports days at Emporia and Central Colleges.

The women's tennis team won both of its matches with Sterling in the spring of 1967 with 5-4 scores. Team members were Janet Rhinehart, Mary Hill, Lela Weddle, Barbara Westray, and Sue Cook.

Participating in two gymnastics meets at Emporia and Washburn were Michele Vittoria, Roma Rolston, and Raynell Houck.

Two women, Kathy Rogers and Barbara Westray, took part in track meets through the year as representatives of the Cosmos, the Topeka Track Club.



1967 Women's Tennis Team: Janet Rhinehart, Mary Hill, Lela Weddle, Barbara Westray, Sue Cook.

Acting as representatives of the Topeka Track Club, Kathy Rogers and Barb Westray participated in track meets in several states.

1968 Women's Basketball Team — BACK ROW: Pam Burns, Lynne Brutsman, Lela Weddle, Judy Deahl. FRONT ROW: Chris Grove, Regina Fillmore, Neva McNicholas, Diane Christensen.





Students Faculty Staff

Lights burn late as faculty and students struggle to please each other. Both groups learn from each other; both challenge and are challenged. After academic hours the faculty return home to families and the students return to the dorms, the transition point between old family ties and families of their own. This year the communication gap was bridged late in February when the two groups discussed together the problems of McPherson College through the student-organized Project Communication.





J. JACK MELHORN, PH.D.
President

MERLIN L. FRANTZ, ED.D.
Dean of Academic Affairs

Communication channels opened

The 1967-68 academic year marked the third year since the inauguration of J. Jack Melhorn as president of McPherson College. Working to keep the channels of communications open between McPherson and other colleges, Dr. Melhorn was instrumental in the organization and the continued success of the Associated Colleges of Central Kansas. This year saw the development of cooperative programs in the January Interterm as well as the completion of the "hot-line" providing direct dialing to each ACCK faculty member.

Merlin Frantz, Dean of Academic Affairs, had many academic problems brought to his desk by concerned students.

The thirty-member Board of Trustees worked closely with the administrators and considered such problems as anticipated personnel needs, sabbatical leaves and leaves of absence, faculty salary schedules, and the proposed budget for 1968-69.





Trustees: TOP ROW: Milton Morrison, Delbert Lewallen, Quinter Bosserman, Ed Frantz, Paul Jewell, Harvey Lehman, J. Jack Melhorn. BOTTOM ROW: Glenn Harris, Berle

Miller, Wesley Darrow, Royal Yoder, Paul Sargent, S. C. Hoover, Lyle Albright.

Trustees: TOP ROW: Harold Möhler, Gorman Zook, Jack Kough, Herman Sudman, Galen Myers, Paul Rolston, Earl Brubaker. BOTTOM ROW: Ralph Hodgden, R. P. Jamison,

Milford Beeghly, Winston Goering, Donald Ferree, Byron Dell, Ernest Peterson. NOT PICTURED: John Bower, David Burger.





MARY ANN ROBINSON
Dean of Women

GALEN R. SNELL
Dean of Men and Assistant Dean
of Student Affairs.



RAYMOND L. FLORY
Dean of Student Affairs

Specialized staff works together

Each member of McPherson College's administrative staff is specialized and capable in his own job, but they all worked together for the continuing life and success of our college.

Students and their welfare were the primary concern of Dr. Raymond Flory, Dean of Students, also Head of the History and Political Science Department; Mary Ann Robinson, Dean of Women and Head of the Art Department; and Dr. Galen Snell, Dean of Men. Dr. Snell, new this year to our campus, worked hard for and achieved a closer rapport between men students and dorm councils. Miss Robinson's and Dr. Snell's offices were in newly remodeled Arnold Hall.

Managing the school's finances and advising students on money matters was the job of Gordon Yoder, Business Manager, and his assistant, Paul Sherfy. Director of Development Kenneth Yingst, and Director of Alumni Affairs Paul Wagoner, who with their staffs enjoyed remodeled, more efficient office space, planned for the future of our college.



R. GORDEN YODER
Business Manager

KENNETH YINGST
Director of Development



PAUL SHERFY
Assistant Business Manager

PAUL WAGONER
Associate Director of Development





EUGENE MYERS
Director of Admissions

JERRY HEDRICK, JR.
Admissions Counselor



New members expand staff

Probably few MacCollege students, engrossed in study, athletics, and social activities, realized the great amount of study and long hours of work put in by our administrators. These people care a great deal about the success of McPherson College and her students.

Earl M. Frantz was in charge of capital giving; Dean Reynolds served as our very capable registrar; and Larry Marcellus was our busy "public relations man."

There were several new workers on our staff this year. Glenn Lindsey's new assistant in the Slater Food program was Jim Winters. Guy Hayes filled a new position as Director of Financial Aids, advising students on scholarship and grant opportunities. The new Director of Admissions was Gene Myers, and Jerry Hedrick assisted him as Admissions Counselor. An important member of the staff was Merrill Raber, a psychiatric consultant who traveled from Prairie View Clinic for service to students.

GUY HAYES
Director of Financial Aids





LARRY MARCELLUS
Director of Publicity and Promotion

DEAN REYNOLDS
Registrar



MERRILL RABER
Praire View Consultant



Food Service: JIM WINTERS, Assistant Director;
GLENN LINDSEY, Director.

EARL M. FRANTZ
Director of Capital Giving





HARLEY STUMP, PH. D.
Professor of English

CHARLES W. FISCHER
Assistant Professor in
English and Theater



Humanities add specialized courses

Basic to a liberal arts institution is its Humanities Division. Included under this classification at McPherson College are the departments of English, Music, Foreign Languages, Art, and Religion and Philosophy.

Head of the Humanities Division was Dr. Harley Stump, who was also head of the English Department. Bob Green took over classes in the English Department as a new professor at McPherson College. Also new to the Department was Charles Fischer, who taught classes in speech and drama as well as directing some of the dramatic productions presented throughout the year.

Paul Sollenberger was head of the Music Department. New faculty members were Robert Revell, band director, and Ruth Snell, piano.

Jan Van Asselt, head of the Foreign Languages Department, was on leave in Germany during the year. Filling Professor Van Asselt's place as German instructor was Jean McLane. Luisa Pequeno, also a new faculty member, instructed French.

Head of the Art Department was Mary Ann Robinson. Robert Smith joined the Department as a full-time instructor.

Head of the Religion and Philosophy Department was David Eiler. Thomas Deal was the assistant professor in this Department.

Further plans for the Humanities Division include a look at scheduling and removing classes which conflict.

Attempting to expand the departments, professors are striving to eliminate some of the general survey courses by adding more specialized courses, which would cover more areas more thoroughly.



SARAH MAY BRUNK, A.M.
Associate Professor of
English and Journalism

BOB R. GREEN, M.A.
Assistant Professor in English



UNA R. YODER, M.A.
Assistant Professor in
English, Speech, and Theater

ALMA MOORE, A.M.
Assistant Professor in
Speech and English





JEAN F. MCLANE, JR., B.A.
Assistant Professor of German

LUISA PEQUENO, B.A.
Instructor in French



CORINNE N. HUGHBANKS, M.S.
Assistant Professor of Languages

DAVID L. EILER, B.D.
Assistant Professor of
Philosophy and Religion





RUTH SNELL, M.M.
Music



ROBERT SMITH, B.F.A.
Instructor in Art

THOMAS W. DEAL, M.A.
Assistant Professor of
Philosophy and Religion



MARY ANN ROBINSON, M.A.
Assistant Professor of Art





PAUL V. SOLLENBERGER, M.M.
Associate Professor of Music Theory
and String Instruments



ROBERT E. REVELL, M.M.E.
Assistant Professor in Music

DONALD R. FREDERICK, M.M.
Professor of Voice and Director
of Choral Organizations



ROBERT L. EDWARDS, M.M.
Assistant Professor of
Piano and Organ



Major in Psychology is approved

Opening new fields of endeavor as the various departments expand, the area of applied arts and sciences developed significant changes in its staff, curriculum, and equipment during the year.

Dayton Rothrock, director of the Education Department, spent the spring semester on sabbatical leave at Stanford University. In his absence, Monroe Hughbanks and Dwight McSpadden, a new addition to the Department's faculty, assumed Rothrock's teaching responsibilities.

Secondary education methods courses were taught during the January inter-term for the first time. Offering the teaching block during both semesters was approved for 1968-69.

A major in psychology was approved in December, with Lewis Young in charge of the Department. Galen Snell, new in the Psychology Department, taught Developmental Psychology during the spring semester. Experimental equipment, worth six thousand dollars, and two new courses were added to the Department.

New equipment was purchased by the Physical Education Department, under the direction of Doris Coppock. While Sid Smith maintained the position of director of athletics, Dwight McSpadden assumed the responsibilities of head football coach.

On sabbatical leave for the fall semester, Mildred Siek, director of the Home Economics Department, continued to teach part-time.

In the absence of Alvin Willems and Dennis Dirksen, both on sabbatical leave at Utah State University, Arie Regier assumed Willems' position as head of the Industrial Arts Department.

John Ward resumed his responsibilities as professor and head of the Agriculture and Rural Life Department, following a year's sabbatical leave at the University of Nebraska.

Secretarial courses offered by the college were taught by Mildred Olson. Students were provided the opportunity of taking various secretarial courses offered at Central College.



GALEN R. SNELL, PH.D.
Assistant Professor of Psychology

LEWIS C. YOUNG, PH.D.
Associate Professor of Psychology





DENNIS A. DIRKSEN, M.S.
Assistant Professor
in Industrial Arts Education

ARLIE J. REGIER, M.E.
Assistant Professor
in Industrial Arts Education



MILDRED I. OLSON, B.S.
Secretarial Science

S. M. DELL, M.S.
Professor of Industrial Arts





MILDRED M. SIEK, M.S.
Professor of Home Economics



VERDA DECOURSEY, B.S.
Design

Sue Arnesen demonstrates her baking know-how during a Food's lab.



DORIS COPPOCK, PH.D.
Professor of Physical Education
For Women





DAYTON G. ROTHROCK, ED.D.
Professor of Education and Psychology



MONROE HUGHBANKS, M.ED.
Assistant Professor in Education

JOHN K. WARD, PH.D.
Professor of Agriculture
and Rural Life



Dairy husbandry class convenes outside on a fall day for judging of dairy cows.





ARTHUR L. RAY, M.S.
Assistant Professor in
Physical Education



DONALD WIDRIG, M.S.
Associate Professor in
Physical Education

DWIGHT E. MCSPADEN, M.A.
Head Football Coach
Head Baseball Coach



SIDNEY L. SMITH, A.B.
Associate Professor and
Director of Athletics



Natural Sciences challenge students

Many students find the courses offered by the departments within the Natural Science Division to be the most challenging of all. Under the direction of Dr. John Burkholder, the Division includes the departments of Biology, Chemistry, Physics, and Mathematics.

In the Biology Department, under Dr. Burkholder, a new faculty member, Larry Welch, was added. Dr. G. J. Ikenberry, Jr., was on sabbatical leave for the year doing advanced research at Harvard.

Jesse Krehbiel, Head of the Mathematics Department, returned in the fall after a two-year leave of absence. Professor Vernon Friesen, assistant professor, had been directing the Department in Professor Krehbiel's absence.

The Chemistry Department, under Dr. Wesley DeCoursey, continued remodeling by adding an expanded storage area for equipment and new office space for Professor Sai Lee.

Professor Leslie Fraley continued to teach most of the courses offered by the Physics Department.



JOHN H. BURKHOLDER, PH.D.
Professor of Biology

LARRY A. WELCH, M.S.
Assistant Professor of Biology

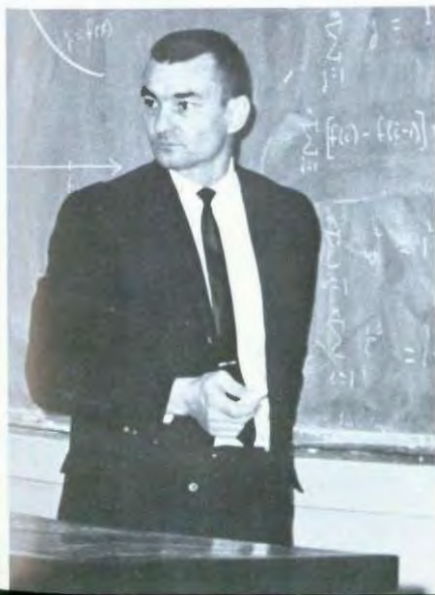
WESLEY DECOURSEY, PH.D.
Professor of Chemistry





SAI K. LEE, M.S.
Assistant Professor of Chemistry

JESSE D. KREHBIEL, M.S.
Associate Professor of Mathematics



LESLIE FRALEY, JR., M.S.
Assistant Professor of Physics

VERNON E. FRIESEN, M.S.
Assistant Professor of
Mathematics



Diverse courses in Social Science area

Furthering the student's opportunity for a liberal education is the Social Science Division under the direction of Dr. Raymond Flory. Included in this division are the departments of History, Sociology, Economics and Business Administration, and Psychology which was added second semester.

The History Department, under the leadership of Dr. Flory, offers a variety of both European and Western history in ancient and contemporary situations. A politics trip to Washington, D. C., was offered during the spring semester.

Dr. Oscar Olson is the head of the Economics and Business Administration Department. Course offerings vary from microeconomics to accounting and banking.

Character and behavior of social groups and the intermingled aspects of marriage are only a few of the diversities presented in sociology courses. Under Dr. Kenneth Bechtel, Dr. Lorell Weiss, Professor Robert Keim, and Dr. J. Jack Melhorn,



RAYMOND L. FLORY, PH.D.
Professor of
History and Political Science

KENNETH C. BECHTEL, PH.D.
Professor of
Sociology and Language



LORELL E. WEISS, PH.D.
Professor of Sociology





LELAND L. LENGEL, M.A.
Assistant Professor of
History and Political Science

ROBERT E. KEIM, M.A.
Assistant Professor in Sociology



MARVIN SELLBERG, M.B.A.
Accounting

O. A. OLSON, PH.D.
Professor of Economics
and Business Administration



DWIGHT H. HILL, B.S.
Accounting





VIRGINIA HARRIS, M.L.S.
Librarian

Library purchases new equipment

Two new pieces of equipment have been added to the facilities of Beeghly Library. The 3M Copyer was obtained so that photocopies of literature could be made. The 3M Reader-Printer makes microfilm readable for the students and also makes microfilm prints of material.

Also for the benefit of the students, there has been an addition of three thousand new volumes. No definite date has been set for the building of the new library, but construction should start sometime in 1968.

Virginia Harris, head librarian, and Myrtle Haughn, assistant librarian, keep the library in convenient order for the use by the students. They receive help from assistants Kathryn Bechtel and Barbara Fraley.



Assistants: BARBARA FRALEY, KATHRYN
BECHTEL

MYRTLE HAUGHN, B.S.L.S.
Assistant Librarian





Secretaries: MIRIAM DELL, President; BETTY BARCHESKY, Dean of Academic Affairs.



Business Office Assistants: THELMA SHEETS, ALICE WININGER, LORETTA TIPTON.

Efficient operation due to secretaries

Behind the scenes of McPherson College are the secretaries who keep the college running competently and smoothly.

New additions were made to the staff this year. Ruth Eiler is a new assistant to the President's Office and Madonna Reynolds filled a vacancy in the personnel offices. Pat Kough is the new switchboard operator. Assisting in the Admissions Office was Claudia Burns.

There are still familiar faces along with the new. Marian Haslett is back again as the secretary in the Office of Development, Anna Mae Hull is again filling her place in the Office of Publicity and Alumni Affairs.

The secretaries are responsible for the efficient operation of the business aspect of McPherson College. Without their aid McPherson College could not function.



Secretaries: PAT KOUGH, Switchboard; CLAUDIA BURNS, Admissions; FLORENCE HUTCHINSON, Registrar; MYRNA HAUCK, Admissions.



Student Union: MARCIA COTTERILL, bookstore; ELIZABETH CHRISTENSEN, Student Union director.



Nurse: JUDY ALBIN

Resident Directors: MABEL MARKHAM, Bittinger; ELIZABETH RUSSELL, Fahnestock; MARGUERITE WESTFALL, Metzler.



New housemother in Dotzour Hall

Several new faces appeared along with the familiar as the school term began. Marcia Cotterill managed the bookstore and kept it stocked with books and supplies. Elizabeth Christensen coordinated various union activities and acted as director and receptionist of the Student Union.

Judy Albin, the new school nurse, accepted many responsibilities as she visited Metzler and Dotzour Halls to tend to the aches and pains of the students.

Mabel Markham, Bittinger Hall, began her second year as resident director. Elizabeth Russell, Fahnestock Hall, and Marguerite Westfall, Metzler Hall, began their seventh years as resident directors.

Vivian Rea, new resident director of Dotzour Hall, had been a fraternity housemother at Kansas State Teachers College. Viola Wilson assumed the duties of resident director of Kline Hall this year. Kline was opened for women students last year.

Resident Directors: VIOLA WILSON, Kline; VIVIAN REA, Dotzour





Buildings and Grounds: ELMER RUHSER, Superintendent; KEITH CLINE, Assistant; ROBERT KAHRS, Maintenance Assistant.



Maintenance: HOMER BRUNK, Harnly Hall; GEORGE ELLRICK, Campus Maintenance; STANLEY KONICEK, Electrician; A.P. BRUNGARDT, Student Union.

Maintenance crews keep campus orderly

We are seldom aware of all the work that goes on behind the scenes to keep the college functioning smoothly. The maintenance and cleaning crews are largely responsible for these vital services.

New to the staff in the spring of 1967 was Stan Konicek who works mainly with the heating systems. Robert Kahr is the newly appointed head of the janitorial personnel.

To the cleaning ladies we owe our thanks for keeping the dorms and classrooms livable. Somehow, they manage to keep ahead of cleaning up after several hundred students and faculty. New to the staff this year were Betty Kahr as a replacement worker and Dorothy Giggly who cleaned mainly in Mohler Hall.

Maintenance: ZELMA WINTROTH, Metzler; EVELYN CARUTHERS, Bittinger; BETTY KAHRS, Replacement Worker; BERTHA GALLAWAY, Fahnestock-Kline; DOROTHY GIGGY, Mohler; FIONA FRICKEY, Dotzour; MARIE STEIBEN, Dotzour; BERNARD CLOUSE, Carpenter; KAY FRICKEY, Dotzour; HOPE RUHSER, Office Secretary.



SENIORS



| | |
|-----------------|----------------|
| MARCELLA SHERRY | Secretary |
| CLIFF GATES | Vice President |
| GARY FLORY | President |
| CINDY EISENBISE | Treasurer |

RON ADKINS
German



IRVIN ALBIN
Education and Psychology



ROBERT ALBIN
History



SANDI ALEXANDER
Education and Psychology



PATRICIA ALLEN
Education and Psychology



LINDA ANDES
English



NOULA APOSTOLIDOU
Economics and Business
Administration

ABDUL AZIZ AZOUZ
Mathematics

ARLAN BENTZ
Mathematics



MARKITA BLOUGH
Education and Psychology

SHARON BLOUGH
Sociology

JAMES HOWER
Biology

Seniors



LETHIA BROWN
Education and Psychology

TOM BRUBAKER
Economics and Business
Administration

ANNETTE BURKHOLDER
Education and Psychology



JAN BURNHAM
Education and Psychology

EILEEN BUTLER
Education and Psychology

MARILYN CABLE
Mathematics

CHARLES B. CAVERT
Industrial Arts Education

LYNN E. CHRISTY
History



CHONG WOON CHUN
History

GARY CLIFTON
Agriculture and Rural Life



CAROL COBB
Economics and Business
Administration



DENNIS CONWELL
Industrial Arts Education



LYNN COULTER
Music Education



JANET CRAGO
Education and Psychology



TOM CRAGO
Mathematics



FRANK D'AGOSTINO, JR.
History



DENNY DAHLQUIST
Economics and Business
Administration



BOB DETOUR
Sociology



JOHN DRINEN
Chemistry



ARTHUR DUSKE
Economics and Business
Administration

Seniors

SHIRLEY EBLING
Education and Psychology

CINDY EISENBISE
Home Economics

CHRISTINE FLORY
Home Economics



GARY FLORY
History

MIKE FOX
Physics

KARIN FREDRICKSON
Home Economics



BONNIE FRUTH
Education and Psychology

JIM FURNAS
Education and Psychology

CLIFFORD C. GATES
Sociology



STANLEY GISH
Sociology

DONNA GOCHENOUR
Sociology

ZOSIA GOLASZEWSKI
Sociology



JANICE GROFF
Spanish

PHIL GROVE
English

RUTH HALL
History



SHARON HARTMAN
Home Economics

DWAINE HAWLEY
Economics and Business
Administration

RACHEL HEIDERBRECHT
Sociology

FRED HENDERSON
Education and Psychology

MAXINE HENRY
Education and Psychology

DAVID HIEBERT
Economics and Business
Administration



GLEE HOOVER
Education and Psychology

R. EVERETT HORTON
Agriculture and Rural Life

JANICE HOWELL
Home Economics



Seniors



MARIA GARZA HUBER
Sociology

KEITH HUMMEL
Agriculture and Rural Life

STANLEY HUNTER
History



MARILYN KAUFFMAN
Education and Psychology

JEAN KEITH
Sociology

CAROLE KIMMEL
Sociology

CONNIE KITZEL
Education and Psychology

BRUCE KLOCKARS
Economics and Business
Administration

ROBERT KLOCKARS
Economics and Business
Administration



NICHOLAS G. KOBE, JR.
History

DONALD R. KUSSART
Sociology

JEAN KWOK
Home Economics



DEANNA LAHMAN
Education and Psychology



CHARLES LAMB
English



GEOFFREY C. LAMBERT
History



HARVEY LEIGNOR
Agriculture and Rural Life



DALE LENGEL
Economics and Business
Administration



CHRIS LEVI
Economics and Business
Administration



RICHARD MARTIN
Agriculture and Rural Life

DOROTHY L. McCULLER
Education and Psychology

CRAIG MILLER
Biology



DENNY MILLER
Mathematics

GLENICE MILLER
Home Economics

JUDY MONKE
Education and Psychology

Seniors

LINDA MOORE
Education and Psychology

LANCE MORGAN
History

REV MYERS
Sociology



EDWARD MYERS
Music Education

CAROL NEAL
Chemistry

ROGER NETTLETON
History



G. STEPHEN NETTLETON
Biology

JUDY NILSON
Education and Psychology

BETTY OLIVER
Education and Psychology



JIM OLIVER
Economics and Business
Administration

PAMELA OTTE
Education and Psychology

LORENE PAULS
Education and Psychology



JAMES W. PRICKETT
Economics and Business
Administration

MAIJA RATIA
English

RUTH REAZIN
Education and Psychology



EDWARD ROBINSON
Industrial Arts Education

TRISHA ROYER
Education and Psychology

ALEX RYGAS
English

GARY L. SACKS
Sociology

ELAINE SALES
Mathematics

CARL SAUER
Economics and Business
Administration



ORVIS SCHECHTER
Economics and Business
Administration

KEITH V. SCHRADEL
Agriculture and Rural Life

DONALD SCHULTZ
Biology



Seniors



KATHY SHANK
Education and Psychology

DEAN SHELLER
Biology

MARCELLA SHERFY
History



GALEN SHIELDS
Economics and Business
Administration

TWILLIA SMALLEY
Sociology

JOHN HYLAS SMITH
Biology

RAYMOND SMITH
Industrial Arts Education

GAYLE SORENSON
Sociology



DANIEL H. STOCKSTILL
Education and Psychology

THOMAS STROM
Economics and Business
Administration



DELORES TAYLOR
Education and Psychology



ARTHUR ULBRICHT
Biology



MILTON VERNICK, JR.
Chemistry



GLENN R WALKER
History



JUNE WARE
Education and Psychology



JANE WATKINS
Sociology



LELA WEDDLE
Physical Education



BARBARA WESTRAY
Physical Education



JUNE WIDRIG
Home Economics



RUTH WIENS
Education and Psychology

JOHN J. WILLIAMS
Industrial Arts Education

TERRY WOKATY
Mathematics

STANLEY WOLLARD
Mathematics



DONALD WOODCOCK
Industrial Arts Education

MIKE ZIEMANN
Biology



Seniors hold key positions

Cliff Gates and Freil Henderson lead the cheers for the upper-class women's team during the second annual Powderpuff Football Game.



To perceive the nucleus of knowledge, to develop one's character through grueling work, and to penetrate the once-overlooked details were some of the barriers that the class of 1968 were forced to overcome.

Holding key positions of responsibility was a major task. Jean Keith, Bob Klockars, Jan Burnham, and Marcella Sherly, senior members of the Student Council, expressed their views on the functioning of the college. Serving as chairman of the Student Court was Gary Flory and as secretary, Donna Gochenour. The representatives were Annette Burkholder, Craig Miller, Kathy Shank, and Jim Prickett.

As they take a backward glance, their memories are fogged with the events that make McPherson College a lasting image. But as they look forward, they see the doors of opportunity before them, opening only with the key of education.

Thirteen named to national publication

Thirteen seniors have been selected by the faculty and administration to be listed as representatives of McPherson College in "Who's Who Among Students in American Universities and Colleges."

Seniors have been selected on the basis of scholarship, leadership and participation in extracurricular and academic activities, service to the school, and promise of future usefulness in business and society.

Students are nominated for the organization by the faculty. Faculty members vote for as many as they wish up to the quota established on the basis of enrollment.

The names of this year's thirteen senior members were printed in the 1967-68 volume of "Who's Who Among Students in American Universities and Colleges."



MIKE FOX
Valley Center, Kansas
Physics



GARY FLORY
McPherson, Kansas
History

MARCELLA SHERFY
McPherson, Kansas
History



STEVE NETTLETON
Albert Lea, Minnesota
Biology

CRAIG MILLER
Waterloo, Iowa
Biology

DEAN SHELLER
Eldora, Iowa
Biology

NORMA TUCKER
McPherson, Kansas
English



GLEE HOOVER
Plattsburg, Missouri
Elementary Education

ANNETTE BURKHOLDER
Preston, Minnesota
Elementary Education



TOM CARGO
LaVerne, California
Mathematics

MARILYN CABLE
McPherson, Kansas
Mathematics



KATHY SHANK
Fayetteville, West Virginia
Elementary Education

CAROLE NEAL
McPherson, Kansas
Chemistry



JUNIORS



MARLIN HOOVER
PAT DRURY
DENNIS MARTIN
RICHARD BURGER

President
Secretary
Treasurer
Vice President



Winona Achilles
 Jim Allen
 Ray Amrine
 Mary Atwill
 John Ayoko



Lynda Beavers
 Frank Bird
 Michael Bisceglia
 Gary Blackwell
 Barrie Binger



Stanley Borowski
 David Bowlby
 Floyd Brown, Jr.
 Nancy E. Brown
 Donna Brubaker

Don Bucher
 Eugene Buckingham
 Barry Buckwalter
 Richard Burger



Jim Carlson
 Tom Cook
 J. Ross Daeschner
 Stanley Dalton



Juniors

Judy Deahl
Johanna Deal
Carolyn Dell
Thomas DeRicco



Allen Detwier
Ken Dilling
Pat Drury
Jody Duffy



David Duncan
Sue Duncanson
David Eagles
Barbara Elliott
Michael Emmert



Craig Fairchild
Frank T. Falciola
Regina Fillmore
Neysa Fox
Monty Ganshorn



Ed Gillette
Lois Gish
Valeria Graber
Carlos Green
Walter R. Griffith



Aiming for the pocket. Larry Vernon concentrates on his pool-shark form.

Trula Gustafson
Jim Halderman
Daryl Harris
Bonnie Harwick
Hal Hayes



Pat Hayes
Dennis Heisey
Jean Hendricks
Wayne Heskett
George E. Hoke



Marlin Hoover
Mary Neil Hoover
Dev Horner
Roberta Howard
Dave Huber



Juniors



John Jones
Sam Johnson
Shirley Johnson
Judy Ketcham
Steve Kruse



Peggy Kuehl
Merdal Kugler
Ray Landis
John Lane
John Leary



Linda Lee
John Lehman
Jean Lemmon
Garry Loucks
Bruce MacPherson

Denny Martin
Wanda McDonough
Marston McGwin
Joseph McParland
Ron Meck



Ray Medley
Joe Miller
Patricia Miller
Jeanette Mills
Joyce Mills





Visions of taking English Review haunt juniors Bev Horner, June Vinchattle, Ray Medley, and Hal Hayes during the English Proficiency Test



Jo Ann Mowry
Geoffrey Mullette
Tom Nee
John Nigh
Denna Nikodim

Paul E. Otis
Robert Parker
Betty Persons
Lucile Petre
Susan Pierson

Juniors

Donald Reese
Judy Rego
Rockford Rezula
Rodney Rife
Ronald Robbins



Eugene E. Roth
Paul Roth
John Sarber
Gary Schuster
Susan Sell



Jody Serensits
Joyce Shellenberger
Russell Sheets
Les Shenefelt
Sally Shetler



Tia Sik Shin
Rose Ann Sink
Peter Siracusa
Marilyn Smith



David Sovchen
Carol Ann Spitz
Donald Stead
George E. Steckly

Diane Sutliff
John W. Swanson
Marion Syverson
Michael Traetto
June Vinchattle



Fred Wheeler
Tom Wheeler
Sylvia Wine
Carolyn Yoder



Juniors define clearer goals

New aims and responsibilities were introduced into the lives of the juniors as they stepped onto the threshold of their roles as upperclassmen. Declared majors and vocational goals started to blossom into reality as specialized courses became a necessity. Clearer goals needed to be defined as the greenness wore off and maturity started to emerge.

The year of transition promised to be a busy one with the English Proficiency Test marking its beginning. Attention focused on the juniors at Homecoming as the class helped honor its queen, Wanda McDonough, and display its float, "The Avengers."

The annual Junior-Senior Banquet and Prom, given in honor of the seniors, awakened a need for money. Through willingness and determination, fund-raising projects were organized, helping the juniors to create a softly romantic atmosphere for this affair.

Having stepped onto the threshold of greater responsibilities, the juniors eagerly turned towards the final year of their college careers, as it glowed with new potential on the horizon.



Gallant Gene Roth carries fair Donna Brubaker across Eshelman Street after a downpour.

SOPHOMORES



RICHARD GINGRICH
JEFF LOUCKS
MARY ANNE MILLER
SANDI FISHER

Vice President
President
Secretary
Treasurer



Susan Arnesen
Larry Banks
Marge Barrick
Ronald Beachley
Kenneth Bechtei



John A. Beiser
Wayne Black
Carl Bronersky
Mary Kay Brown
John Bruzenas



Stanley Bucher
Wayne Burnham
Ralph Caputo
Paul Christianson
Ryan Christiansen



Cam Conley
Bruce Cook
Carl E. Cook, II
Dale Crawford
Kay Cushing

Steve Davidson
Glenn R. Davis
Linda Dean
Lowell Dell



Sherry Dirks
Gwendolyn Ditmars
Jerry Donovan
Roger Dubbie



Sophomores



Marilyn Dyson
Don Easter
Sandi Fisher
Linda Fleischacker



Alan Flory
Charles L. Frank
Dave Gentry
Sally Gibson

Richard Gingrich
Kerry Givens
Barbara Grasmick
Nancy Gwinn
Claudia Hanson



Larry Harbaugh
Gary N. Haster
Chris Helstern
Aima Herbers
Patrick Hill



Margaret Holderreed
Lynette Holloway
George Hoover
Wanda Howard
Charles Irwin



Charles Jones
Tom Keane
Hank Keller
Kay Kittell
Galen Kopp



Ed Kreider
Harriet Krueser
Beth Landes
Stephen Laprad



Deborah Lansinger
Alan M. Lovallee
Gloria Lewallan
Craig Little



Sophomores Joe Lacovara and Larry Martin prepare for the annual Tug-of-War at the lagoon and for the traditional sophomore victory.

Sophomores



Harvey Longanecker
Jeff Loucks
Michael Loveless
Charleen Lowe
Don Lucore



Jim Lunkley
Rod Lusk
Larry E. Martin
Don McMurray
Neva McNicholas



At the Homecoming buffet dinner Sue Arnesen, Steve Davidson, and Bud Reed select their favorite foods from a varied menu.

Phil McNish
Ed Meador
Diane Merrifield
Janet Meyer



Gayle Miller
Karen Miller
Keith Miller
Mary Anne Miller



Calvin Moffitt
D. Moore
Jim Mowry
Jim Paul
Kerry Peet



Judy Peltzman
Barbara Plauzher
Janis Pyle
Greg Quakenbush
Sonja Rausch



Charles Rawstrom
Kathleen Rogers
Stephen Rogers
Roma Rolston
Terry Rupp



David Shepherd
Sarah Shultz
Paula Sissel
Carol Smith
Christine Smith



David Smith
Robert Smith
Marian Snavely
Carroll Snyder



Dan C. Snyder
Lesla Snyder
Lynn Dee Standater
Jim Stauffer



Sophomores

Jon H. Strom
Brian Summerhays
Bud Taylor
Kathy Taylor



Sharon Thiessen
Mike Thompson
Ray C. Thompson
Paul F. Tice



Georgenne Tomlinson
Rose Marie Ulfom
Dea Unruh
Sigrid Wagner
Sherry Walker



Larry Walton
Arthur Ware
Dianne Warnke
Jean Weatherbie
Janet Wiggins



Shooting pool helps sophomores pass time between and after classes.



Tim Wilson
Lilli Ann Wivell
Thelma Woerz
Hal Wright



Richard Yasenchak
David Yoshida
Connie Zimbelman
John Zinn

Sophomores face new responsibilities

With mixed feelings of anticipation and hesitancy, the Class of 1970 embarked on their second year of college. The sophomores looked forward to getting back into college life. At the same time, they began to face up to the difficult questions of their major fields of study, the draft, and their responsibilities.

The responsibilities of the class as a whole began with the construction of a movable float for Homecoming. They found that a mobile float takes more time to build but that it can be a rewarding experience to see a Sophomore Float on parade. Mary Anne Miller, the Sophomore Attendant, added a charming smile to the Queen's Float.

Student Council positions were filled by Galen Kopp and Rodney Lusk. Sally Gibson, Steve Laprad, and Margie Holderreed served on the Student Court. Jeff Loucks, the Class President, worked with the secretary, Mary Anne Miller, and the treasurer, Sandy Fisher.

The students found that by working on each problem as it arose, they could begin to see some plan, some future to their lives. And so they made the transition from Sophomores to Upperclassmen.



Spending a few minutes away from the Sophomore float, Char Lowe and Wanda Howard give Jim Bower some help with the Bittering Hall float.

FRESHMEN



TOM NESS
JANE BRUBAKER
EARL DEHMEY
GARY LYDIC

Vice President
Secretary
President
Treasurer

Richard Albright
 Phil Aldinger
 Karen Allen
 Kryste Andrews
 Jerry Armstrong



Larry Bacon
 Melinda Badgett
 Mike Badgett
 Cindy Barchesky
 Bruce Bates



Daryl Beemer
 Frank Berens
 Lydia Berg
 Mark Bickley
 Duane Bizek



Mike Blickenstaff
 Dixie Blubaugh
 Steve Bode
 Dana Bower
 Esther Bower



Balyn Brent
 Susan Brooks
 Manfred Brown
 Jane Brubaker
 Lynne Brutsman



Marcia Bryan
 Kathy Bryer
 Wayne Buckley
 Judy Buckwalter
 Kenneth Burgos

Freshmen



Pajama-clad freshman girls line downtown McPherson during the annual Pajama Parade.



Pamela Burns
Eddy Burr
Joyce Bury
Dianna Christensen
Kay Clark



Kathy Colyn
Janet Courtlet
Judy Crove
Jane Daulisman
Dona Daniels



Rita DeCoursey
Earl Dehney
Gary J. Detla Ripa
Joy Detweiler
LeMayre DeWild



Robert S. Dickson
Dale Dowdy
Clark Duffy
Alfred Dutrow
Joan Enns



Mark Falen
 Tony Favuzzi
 Neil Fleckenstein
 Gary Fox
 Arthur Foxall



Claudia Frantz
 Chris Frederick
 Ray Galante
 Carole Gerber
 James W. Gillett



Mervin Godfrey
 Vincette Goert
 Lynn Goss
 Shirley Goughnour
 George Gregg

Joyce Grott
 Christine Grove
 Lynn Han, Ilicek
 Dennis Haugen
 Sherrie Henke



Judy Hill
 Dennis Hockman
 Clarence Hoffer
 Sue Hollavisy
 Harry J. Holt



Raynell Houck
 Carrol Houghton
 Dana Inloes
 Gilman Jackson
 Verla Jamison



Freshmen



Celeste Jasper
Terry Johnson
Toshio Kawawa
Steve Kipping
Bob Knechtel



J Harvey Koehn
Jeff Kramer
Bruce Kuehl
Royce Kuriz
Sandy Kussart



Jordan C Lanz
Steve Layton
Ann Linville
Christine Lippy
Darlene Luebke

Gary Lydic
Donald Lynch
Donald Macklin
Bill Marcus
Steve Mason



Ricci Mayo
Charles McBride
Cynthia McQuilliam
Richard Melina
Etarne Meyer



Lowell Monke
Cindy Morgan
William Morris
Nick Mosher
Suzanne Nachtigal





Ronald Nelson
Tommy L. Ness
Kent Newfeld
Barry Newman
Janet Sue Nihart



N. N. Nwosu
Patricia Oswald
Walter S. Pankewich
Dick Paul
Judy Pauls



Freshmen ponder the perplexing procedures of IBM enrollment.

Dixie Pedigo
David Pheanis
Larry Pickett
Kathy Pisher
Prentis Porter



Glenn S. Presley
Mike Prickett
Becky Pugh
Steve Putthoff
Linda Radatz



Freshmen

Jim Ratzlaff
Bob Reed
Jeff Rippon
Marge Roorda
Carolyn Runyan



Phil Rutter
Norman Schmidt
Pam Schradel
Larry Schrock
Jan Schwarck



Marcia Sellberg
Jim Sheets
Marylin Shepherd
Wayne Shoemaker
Howard Skinner



Louise Smith
Ron Smith
Beth Snader
Dick Stalcup
Tim Standifer



Sue Steffen
Jean Stern
Philip Stewart
Ken Stromquist
Linda Taplin



Sandi Thiessen
Gordon Tolle
Skip VanDervoort
Lynn Vanwickler
Michele Vittoria



Linda Walker
Randy Whelpley
Nancy Wilson
Donna Winegardner
Diane Winter



Doug Yarris
Ginny Yingst
Ellis Yoder
Engel Yoder
Ramon Zook

Eager freshmen enter into campus life

Eager and expectant, the freshmen came. Some looking for new challenges, some seeking more knowledge, they entered into the whirlwind of campus life. Anxious to be a part of McPherson College, they delved willingly into the school functions and organizations.

The freshmen joined the gaieties of Initiation Week with much enthusiasm. At the threat of being "M'd" by the upperclassmen, they wore the traditional red beanies. The freshmen became acquainted with the upperclassmen by catering to their various whims. At the climax of the week, the freshmen attempted unsuccessfully to defeat the sophomores in the tug-of-war at the lagoon.

Jane Brubaker and Tim Standafer were the freshmen representatives on the Student Council. The class elected Earl Dehmey, president; Tom Ness, vice-president; Jane Brubaker, secretary; and Gary Lydic, treasurer.

The freshmen entered into the festivities of Homecoming by making a movable float with the theme, "Little Men". They instigated school spirit by enthusiastically attending the Bonfire and Pep Rally.

The year was filled with much laughter and tears, and the years that follow will be filled with the bittersweet memories of freshman days.



Lennie Ognibene concentrates on tuning his guitar before beginning his performance for the Freshman Talent Show.



Second Semester Students — TOP ROW: Andee Siple, Dean Holloway, Bill Povilaitis, Diana Garza, Kay Troyer. BOTTOM ROW: Kathy Flora, Janet Smith, Sharyn Parks, Lydia Garza.

Junior Year Abroad Students: Doug Yingst, Ulderic Racine, William Marcellus, Carolyn Dadisman, Peggy Slater.



New students enter at semester

This year at semester break, a group of sixty-seven new students joined our student body. They were either transfer students or students entering as freshmen. Not only were they faced with becoming used to our college, but also with learning to know a student body who had a semester head-start on becoming acquainted.

McPherson College cooperates in the Brethren Colleges Abroad program, whereby a student in his junior year of college may spend a year of study in either Strasbourg, France, or Marburg, Germany. The five students who went from McPherson were at the University of Marburg. One of the purposes of the program is to give the student a chance to become familiar with a culture quite different from our own. It also gives them the opportunity to study in a foreign language and to travel in Europe.



McPherson College is but a beginning. This 1967-68 Quadrangle has captured some of the confrontations of the varied students. Each of us has met personal crossroads. Some of these encounters have been easy and some difficult.

Through the seasons we have changed; parts of us have blossomed and parts have died out. From our crossroads this year we have gained insight into ourselves that will remain with us throughout the years.

We have chosen to call McPherson College home for a while. And our times here have taught us to live each day as it comes and to meet each crossroads with intelligence and understanding.

The staff hopes that this CROSSROADS will remind McPherson students of what they have gained this year from the crossroads they have encountered, endured, and overcome here on the sun-flowered prairie of Kansas.



THE BANK DESIGNED
WITH YOU IN MIND

*You
can't*

bank

Better

We welcome the opportunity
to serve you.

223 North Main

McPherson, Kansas

Member F.D.I.C.





Rocky Ford, Colo.



Lamar, Colo.

Rocky Ford Colorado
CONGRATULATIONS TO THE CLASS
OF '68

-FROM ALL OF US-
Earl J. Brubaker, Pres.



Canon City, Colo.



Pueblo, Colo.

ALLIANCE AGENCY, INC.

"All Lines of Insurance"
Complete Insurance,
Real Estate, and
Survey Service.

*Happiness is — Insurance with
Alliance.*

W. D. Underwood Pres.
&
Roy A. Sager



McPHERSON COLLEGE

*DINING SERVICE
Welcomes students to
dining pleasure*

*SLATER FOOD SERVICE
ARA*

Peoples
STATE BANK
| - McPHERSON



BANK WITH YOUR

McPherson College Alumni

PAUL SARGENT, CHAIRMAN OF
THE BOARD OF DIRECTORS
McPherson College BS 1924

WILBUR YODER, PRESIDENT
McPherson College BS 1934

STAN SARGENT, CASHIER
McPherson College BS 1950

*To meet the needs of
today and tomorrow . . .
helping McPherson
College Students,
Faculty, and Staff,
whom we have
served
since
1898*

Member F.D.I.C.





STARLITE RESTAURANT

900 West Kansas Avenue

McPHERSON FLORAL

Say it ...

with Flowers



515 N. Ash

241-4343

Modern Insulating Co
Owned and Operated by
**GOFF INDUSTRIES,
INC.**

504 W. Kansas

241-4602

MILLER'S BOOK STORE

"Books for everyone"

121 S. Main

McPherson

HUBBELL'S DRUG STORE

A. E. Staatz-Owner
Rexall Drugs

104 S. Main

Call 241-1440

HARRIS LUMBER COMPANY, INC.

— Lumber — Paint — Hardware
Complete Building Service

200 W Euclid

McPherson

O'DELL'S LAUNDRY

Complete Linen Rentals
All Your Laundry Needs

321 N. Elm

McPherson

EBAUGH'S

Gifts — Hallmark Cards
Picture Framing — Luggage

108 N. Main St.



ACE PLUMBING & HEATING CO.

420 N. Maple McPherson

GRAVES DRUGS



Full Time Prescriptions

200 N. Main

241-1625



NORGE VILLAGE

411 E. Euclid

Dorothy & Earl Marchand, prop.



WE WELCOME STUDENT CHECKING AND SAVINGS ACCOUNTS

Fulfill your college
financial needs at
Citizens — McPherson
County's *Largest and
Most Progressive Bank*—
Where the little things count.

Member F.D.I.C.

**CHECKING*

**SAVINGS*

**LOANS*





ELDON'S

*Like thousands of other happy McPherson shoppers . . .
 "Shop" at IGA*

Marquette

McPherson

Lindsborg

RALEIGH'S DRUG STORE

Reliable Prescriptions
 213 North Main
 241 — 1574
 McPherson, Kansas



ADAMS GROCERY

Choice Quality Meats
Friendly, Courteous Service
 Open 8 AM to 8 PM Daily
 800 E. Kansas McPherson

BONNER'S DONUT SHOP

Open 6 AM to 6 PM
 112 E. Kansas 241-0944

CRABB'S TOWN AND COUNTRY

Music Sporting Goods
 319 N. Main McPherson

McPHERSON BUSINESS MACHINES

109 E. Kansas 241-4630

MORRIS & SON

Ladies Sportswear
Men's and Boy's Wear
 113 N. Main McPherson

KING'S DRUG STORE

Drugs — Sundries
Fountain Service
 207 N. Main





**THE WALL-ROGALSKY
MILLING CO.**

Compliments of the
McPherson
New Car Dealers

Sid Bacon Motor Co.
Dodge Rambler

Consolidated Motors, Inc.
Buick Cadillac Pontiac

Elton Lobban Motors
Ford Lincoln Mercury

Fred McKenna Chev. & Olds., Inc.
Chevrolet Oldsmobile

Marshall-Turner Motor Co.
Chrysler Plymouth

Friends Rexall Drugs



*Here when you need us.

McPherson Phone 241-0346 Kansas



**MERLE NORMAN
COSMETICS**

241-3535 207 S. Main

**COPELAND SUPPLY
INC.**

Structural Steel

520 W. Euclid McPherson

**PYLE CONSTRUCTION
CO.**

911 W. Kansas McPherson

**HOPKINS FLOOR
COVERINGS**

Draperies
Linoleum
217 S. Main

Carpets
Tile
241-1600

HAWLEY HARDWARE

Tools Paint Gifts

219 N. Main Electric Supplies McPherson

**NATIONAL
COOPERATIVE
REFINERY
ASSOCIATION**

A20



NATIONAL COOPERATIVE REFINERY ASSOCIATION

**MORRISON GRAIN
COMPANY, INC.**

“Best Wishes”
to
McPherson College

Salina, Kansas



Your best buys today are at



400 East Kansas

McPherson



KEMPS

"The best spot in town"

116 South By-Pass



SAN — ORE CONSTRUCTION CO., INC.

MALM AUTOMOTIVE SERVICE

Complete Repair Service

241-4035 210 E. Euclid 241-1006

QUIRING — GLIDDEN FUNERAL HOME

"Known for Service"

222 W. Euclid 241-2550

ROTH'S MID-KANSAS PRODUCE

*Beef * Poultry * Ice * Eggs*

310 N. Oak McPherson

BALL & SON FUNERAL HOME

205 N. Chestnut 241-2442

Best Wishes From DUCKWALL'S

Complete Variety &

Luncheonette



Visit our

JUNIOR SHOP

111 N. Main McPherson

BAKER BOY BAKERY

All Kinds of Breads & Rolls

"Wedding Cakes & Party Orders"

108 S. Main McPherson

WESTERN AUTO ASSOCIATE STORE

*Electronics * Appliances*

Automotive Parts & Accessories
112-114 E. Euclid McPherson

At **MARY ANN'S**
the Finest
*Ready-to-Wear * Fabrics*
*Notions * Patterns*
201 N. Main 241-3230

COIFFURES
"Styling with a Flair"
By Tony
300 N. Main 241-4411

MILLER'S SHOES
Brands You Know
*LifeStride * Smartaire*
*Roblee * Pedwin * Buster Brown*
118 N. Main 241-3963

SWEENEY'S SHOES
"Your Family Shoe Store"
102 S. Main McPherson

UNITED DARIES
Milk and Milk Products
609 W. Kansas McPherson

**HUBBELL'S DRUG
STORE**
A. E. Staatz-owner
Rexall Drugs
104 S. Main Call 241-1440

WARREN HOTEL
Maple & Marlin
Call 241-2450

**THOMPSON
TRANSPORT CO. INC.**
Transporters of Motor Fuels
McPherson, Kansas 241-1544

Compliments

PIONEER
Savings & Loan Association

McPherson, Kansas

*"Where you save-
does make a
difference"*



*Portraits and Film
Developing Service*

**STUDIO & CAMERA
SHOP**

212 North Main



Wanda McDonough and Arthur (Butch) Duske selecting their diamond from the large selection at Renberger's.

*Diamonds
China*

*Sterling
Crystal*

Renberger

JEWELERS

*The Store Where Dreams
are Fulfilled*

McPherson 115 N. Main



**TIDY LAUNDRY & DRY
CLEANING**

*COMPLETE ONE STOP
CLEANING CENTER*

Attendant on Duty

Coin-op Cleaning with Pressing

414 W. Kansas Call 241-9883

Penneys
ALWAYS FIRST QUALITY

119 N. Main McPherson, Kansas

BADER CLEANERS

for Professional Cleaning

"Custom Care"

1201 S. Main McPherson

**DUGUID INVESTMENT
CO., INC.**

*Real Estate Sales * Mortgage Loans
Insurance * Apartment Rentals*

113 W. Marlin McPherson

**CULVER'S SPORTING
GOODS**

For Your Athletic Needs

720 W. Kansas McPherson



Brunk Jewelers

Brunk's Private Gem Room

A Spot Where You Can

Get Started off Right by Buying Right.
Jewelry Headquarters in McPherson



John Swanson shows Bob Klockars
the latest sport coats in

THE CELLAR

Van's Men's Wear McPherson

PETERS LUMBER CO., INC.

Builder's Hardware
Paint-Glass
Mgr. W. K. Peters
McPherson, Kansas
316 E. Elizabeth



PETITE BEAUTY SALON

*We Offer a Complete
Beauty Service Including
Wigs and Wiglets*

807 N. Main 241-1677

McPHERSON FARM AND

AUTO CENTER

Full line of automotive parts

113 E. Euclid 241-4260

SHEETS-ADAMS REALTORS

*Real Estate * Insurance
Appraisals*

107 W. Marlin McPherson

J.D.'S KWIK BURGER

Service Macollege Students

629 West Kansas 241-9831

HARDER

Electric Motor Service

Pulleys — Pumps — Switches

802 East Kansas McPherson

PIZZA ROYAL

We Invite You To Come

And Try Our Great Pizza

Hi-way 56 Northeast of Macollege

STUDENT INDEX

A

- Abdo, Michel, Sin El Fil, Lebanon, (Jr)
111
Achilles, Winona, McPherson, Ks., (Jr)
95
Adkins, Ronald, Long Beach, Cal., (Sr)
66
Albertson, Robert, Malaga, N. J., (So)
66
Albin, Lester, Quinter, Ks., (Sr) 95
Albin, Robert, Marshalltown, Ia., (Sr)
95
Albini, Theresa, Brackenridge, Pa., (Fr)
47
Aibright, Richard, Dallas Center, Ia.,
(Fr) 47
Aidinger, Philip, York Springs, Pa., (Fr)
127
Alexander, Sandra, McPherson, Ks.,
(Jr) 95
Allen, James, Yonker, N. Y., (Jr) 111
Allen, Karen, Perry, Ia., (Fr) 127
Allen, Patricia, Scott City, Ks., (Sr) 95
Amline, Harold, Hutchinson, Ks., (Jr)
111
Andrews, Kryste, Rocky Ford, Colo.,
(Fr) 127
Apostolidou, Noula, Episcus, Greece,
(Sr) 95
Applegate, Wayne, Luray, Ks., (Fr)
Armas, Antonio, Barcelona,
Venezuela, (Fr)
Armstrong, Gerald, Westfield, N. J., (Fr)
127
Arnesen, Susan, Oak Park, Ill., (So) 119
Attardi, John, Brooklyn, N. Y., (Fr)
Atwill, Mary, San Marino, Cal., (Jr) 111
Ayers, Margaret, McPherson, Ks., (Sp)
Ayoko, Elizabeth, Nigeria, (Sp)
Ayoko, John, Nigeria, (Jr) 111
Azouz, Abdul-Aziz, Hayel Saudi,
Arabia, (Sr) 95

B

- Bacon, Larry, Canton, Ks., (Fr) 127
Badgett, Melinda, McPherson, Ks., (Fr)
127
Badgett, Michael, McPherson, Ks., (Fr)
127
Baker, Stuart, Litchfield, Conn., (Fr)
Banks, Larry, Culver, Ind., (So) 119
Barchesky, Cynthia, McPherson, Ks.,
(Fr) 127
Barnes, Linda, McPherson, Ks., (So)
Barr, Michelle, McPherson, Ks., (Fr)
Barrick, Marjorie, Hamburg, N. Y., (So)
119
Bates, Bruce, McPherson, Ks., (Fr) 127
Beachell, James, Princeton, N. J., (Jr)
64
Beachley, Ronald, McPherson, Ks.,
(So) 119
Beavers, Lynda, Carleton, Neb., (Jr)
111
Bechtel, Kenneth, McPherson, Ks., (Fr)
119
Bockelhymer, Beth, McPherson, Ks.,
(Sp)
Becker, Cheryl, McPherson, Ks., (Sp)
Beemer, Daryl, Abilene, Ks., (Fr) 127

- Belser, John, Elizabethtown, Pa., (So)
119
Benett, Russell, Bayside, N. Y., (Fr)
Bentz, Arlan, Abilene, Ks., (Sr) 95
Bemyshek, Steven, McPherson, Ks.,
(Sr)
Berens, Franklin, Wilmington, Del.,
(Fr) 127
Berg, Martha, Parkville, Mo., (Fr) 127
Bergstrom, Jean, Buhler, Ks., (So)
Berndt, John, Simpson, Ks., (So)
Betts, Emmet, Rock Falls, Ill., (So)
Bickley, Mark, Waterloo, Ia., (Fr) 127
Bird, Frank, Somerville, N. J., (Jr) 111
Bisceglia, Mike, Worcester, Mass., (Jr)
111
Bittinger, Lee, Akron, Ohio, (Sr)
Bizek, Duane, Cedar Rapids, Ia., (Fr)
127
Black, Sherman, Tipp City, Ohio, (So)
119
Blackman, William, Passaic, N. J., (So)
Blackwell, Gary, Pawnee Rock, Ks., (Jr)
111
Blackwell, James, Lehigh, Ks., (Sp)
Blackwell, Shirley, Hillsboro, Ks., (Sp)
Blank, Sharon, Hutchinson, Ks., (Sr)
Blickenstaff, Mike, Nampa, Idaho, (Fr)
127
Blough, Markita, Waterloo, Ia., (Sr) 95
Blough, Sharon, Waterloo, Ia., (Sr) 95
Blubaugh, Dixie, Burrton, Ks., (Fr) 127
Bode, Steve, Skokie, Ill., (Fr) 127
Boese, Stephen, McPherson, Ks., (Fr)
Boese, Terry, McPherson, Ks., (Sr)
Bomberger, Lane, McPherson, Ks., (Fr)
Borger, Barrie, McPherson, Ks., (Jr)
111
Borowski, Stanley, Newark, Del., (Jr)
111
Bristol, Nancy, Burrton, Ks., (Sr)
Boughman, Loren, McPherson, Ks.,
(Jr) 66
Bower, Dana, St. Cloud, Fla., (Fr) 127
Bower, James, Auburn, N. Y., (Sr) 95
Bower, Esther, Dover, Pa., (Fr) 127
Bowliby, David, LaVerne, Cal., (Sr) 111
Brent, Baily, Arriba, Colo., (Fr) 127
Bronersky, Carl, Chicago, Ill., (So) 119
Brooks, Susan, Lafayette, Ind., (Fr)
127
Brown, Floyd, Kansas City, Ks., (Jr)
111
Brown, Larry, Converse, Ind., (Jr)
Brown, Lethia, McPherson, Ks., (Sr) 96
Brown, Lloyd, Dundee, Ill., (Fr)
Brown, Manfred, Woodbridge, Va., (Fr)
127
Brown, Mary Kay, Quarryville, Pa., (So)
119
Brown, Nancy, Concord, Mass., (Jr)
111
Brubaker, Donna, Lyons, Ks., (Jr) 111
Brubaker, Donna Jane, Rocky Ford,
Colo., (Fr) 127
Brubaker, Thomas, Rocky Ford, Colo.,
(Sr) 127
Bruce, Alma, McPherson, Ks., (Sp)
Bruce, Janet, McPherson, Ks., (So)
Brumbaugh, Alan, Norristown, Pa.,
(Sp)
Brutsman, Lynne, Ely, Ia., (Fr) 127
Bruzenas, John, Elizabeth, N. J., (So)
119

- Bryan, Marica, Canton, Ks., (Fr) 127
Bryant, James, Quinter, Ks., (Fr)
Bryer, Kathleen, Gap, Pa., (Fr) 127
Bryner, Donald, Syracuse, Ind., (Jr)
111
Bucher, Stanley, Lebanon, Pa., (So)
119
Buckingham, Eugene, Mitchellville, Ia.
(Jr) 111
Buckley, Wayne, Washington, D.C., (Fr)
127
Buckwalter, Barry, Lancaster, Pa., (Jr)
111
Buckwalter, Judy, Lititz, Pa., (Fr) 127
Burger, Richard, Perryton, Texas, (Jr)
111
Burgos, Kenneth, Pochelle Park, N. J.,
(Fr) 127
Burkholder, Annette, Preston, Minn.,
(Sr) 96
Burnham, Janice, Pierson, Ia., (Sr) 96
Burnham, Wayne, Pierson, Ia., (So)
119
Burns, John, Little River, Ks., (Jr)
Burns, Pamela, Westwood, Mass., (Fr)
128
Burr, Edward, Elkhart, Ks., (Fr) 128
Bury, Joyce, Peoria, Ill., (Fr) 128
Buss, Jimmy, McPherson, Ks., (So)
Butler, Eileen, Eldora, Ia., (Sr) 96

C

- Cable, Alan, Syracuse, Ind., (Sp)
Cable, Marilyn, McPherson, Ks., (Sr)
96
Caputo, Ralph, Yonkers, N. Y., (So) 119
Carlson, James, Glen Eilyn, Ill., (Jr)
111
Castuera, Jose, Puebla, Mexico, (Jr)
Cavert, Charles, Greenfield, Ind., (Sr)
96
Chaney, Michael, McPherson, Ks., (Jr)
Cheek, Calvin, Richmond, Ind., (Sp)
Christensen, Dianne, McPherson, Ks.,
(Fr) 128
Christiansen, Ryan, Gypsum, Ks.,
(So) 119
Christianson, Paul, Hutchinson, Ks.,
(So) 119
Christy, Lynn, McPherson, Ks., (Sr) 96
Chun, Chong Woon, Seoul, Korea, (Sp)
96
Clark, Kay, Wheaton, Ill., (Fr) 128
Clifton, Donetta, McPherson, Ks., (Sp)
Clifton, Gary, McPherson, Ks., (Jr) 96
Cobb, Carol, McPherson, Ks., (Sr) 97
Cobb, Norma, McPherson, Ks., (Sp)
Collingwood, Phyllis, Hutchinson, Ks.,
(Sp)
Colyn, Catherine, McPherson, Ks., (Fr)
128
Conley, Campbell, Pittsford, N. Y., (So)
119
Conwell, Dennis, McPherson, Ks., (Sr)
97
Cook, Carl, Dayton, Ohio, (Fr) 119
Cook, Bruce, McPherson, Ks., (So) 119
Cook, Thomas, Cedar Rapids, Ia., (So)
111
Coulter, Lynn, Ravenna, Neb., (Sr) 97
Courtet, Janet, Norristown, N. J., (Fr)
128
Crago, James, LaVerne, Cal., (Fr)

Crago, Janet, McPherson, Ks., (Sr) 97
Crago, Thomas, LaVerne, Cal., (Sr) 97
Crawford, Dale, Sedalia, Mo., (So) 119
Cripe, Manfred, Tucson, Ariz., (Sr)
Cristofori, Joseph, Scotch Plains, N.J.,
(Jr)
Crowe, Judith, McPherson, Ks., (Fr)
128
Cushing, Kathleen, McPherson, Ks.,
(So) 119

D

Dadisman, Carolyn, Astoria, Ill., (Jr)
134
Dadisman, Jane, Astoria, Ill., (Fr) 128
Daeschner, J. Ross, McPherson, Ks.,
(Jr) 111
D'Agostino, Frank, Liverpool, N.Y., (Sr)
97
Dahlquist, Dennis, Alexandria, Va., (Sr)
97
Dalton, Stanley, McPherson, Ks., (Jr)
111
Daniels, Dona, Modoc, Ks., (Fr) 128
Danziger, Clifford, Yonkers, N.Y., (Jr)
Darrow, Douglas, Hutchinson, Ks., (So)
Davidson, Stephen, Virden, Ill., (So)
119
Davis, Glenn, Dover, Del., (So) 119
Deahl, Judith, Unionville, Ia., (Jr) 112
Deal, Johanna, St. Joseph, Mo., (So)
112
Dean, Linda, Circleville, Ohio, (So) 119
DeCoursey, Rita, McPherson, Ks., (Fr)
128
DeHmey, Earl, Middletown, Pa., (Fr)
128
Dell, Carolyn, Enid, Okla., (Jr) 112
Dell, Lowell, Beatrice, Neb., (So) 119
Della Ripa, Gary, Hartford, Conn., (Fr)
128
DeMarco, Francis, Hartford, Conn.,
(Fr)
DeRico, Thomas, Penns Grove, N.J.,
(Jr) 112
DeTour, Robert, McPherson, Ks., (Sr)
97
DeTour, Lawrence, McPherson, Ks.,
(So) 60
Detwiler, Allen, New Enterprise, Pa.,
(Jr) 112
Detwiler, Joy, McPherson, Ks., (Fr) 128
DeWald, LeMayne, McPherson, Ks., (Fr)
128
Dickson, Robert, APO, N.Y., (Fr) 128
Dilger, Mary, Hutchinson, Ks., (Sr)
Dilling, Kenneth, Nanty Glo, Pa., (Jr)
112
Dimond, Cecil, Little River, Ks., (Fr)
Dirks, Sheridan, Wichita, Ks., (So) 119
Ditmars, Gwendolyn, Grundy Center,
Ia., (Fr) 119
Ditzler, Roger, Polo, Ill., (Jr)
Donovan, Gerald, Norton, Ks., (So) 119
Dowdy, Dale, Shickley, Neb., (Fr) 128
Drinen, John, Coffeyville, Ks., (Sr) 97
Drury, Patricia, Marshalltown, Ia., (Jr)
112
Dubble, Roger, Mt. Joy, Pa., (Fr) 119
Duffy, Clark, Abilene, Ks., (Fr) 128
Duffy, Jo Elaine, Abilene, Ks., (Jr) 112
Duncan, David, Mound City, Mo., (Jr)
112

Duncanson, Susan, Lewiston, Minn.,
(Jr) 112
Durepo, Jay, Avon, Conn., (Fr)
Duske, Arthur, McPherson, Ks., (Sr) 97
Dutrow, Nevin, Keymar, Md., (Fr) 128
Dyson, Marilyn, Buckingham, Ia., (So)
120

E

Eagles, David, Gypsum, Ks., (Jr) 112
Early, Fred, Lima, Ohio, (Sr)
Early, Mary, McPherson, Ks., (Jr)
Easter, Donald, Randall, Ks., (So) 120
Ebeling, Shirley, Hutchinson, Ks., (Sr)
98
Eisenbise, Cynthia, Elizabethtown, Pa.,
(Sr) 98
Elliott, Barbara, Abilene, Ks., (Jr) 112
Ely, Harold, Conway, Ks., (Sp)
Embers, Ronald, Canton, Ks., (Sp)
Emmert, Michael, Adel, Ia., (Jr) 112
Enns, Joan, Inman, Ks., (Fr) 128

F

Fairchild, Craig, McPherson, Ks., (Jr)
112
Falcicola, Frank, Ridgefield, N.J., (Jr)
112
Falen, John Mark, Delavan, Ks., (Fr)
129
Farnsworth, Carl, McPherson, Ks., (Sp)
Favuzzi, Tony, Yonkers, N.Y., (Fr) 129
Feer, Richard, Newark, N.J., (Fr)
Fick, Roger, Hutchinson, Ks., (Sp)
Fillmore, Regina, Cushing, Okla., (Jr)
112
Fisher, Sandra, Lakin, Ks., (So) 120
Fleckenstein, Neil, Union City, N.J.,
(Fr) 129
Fleischacker, Linda, Rocky Ford, Colo.,
(So) 120
Flores, Lazaro, Fallfurris, Tex., (Fr)
Florio, Arthur, Stanhope, N.J., (Fr)
Flory, Alan, Marion, Ia., (So) 120
Flory, Gary, McPherson, Ks., (Sr) 98
Flory, Christina, McPherson, Ks., (Sr)
98
Fox, Gary, Valley Center, Ks., (Fr) 129
Fox, Michael, Valley Center, Ks., (Sr)
98
Fox, Neysa, Larned, Ks., (Jr) 112
Foxall, Herbert, Stanley, N.Y., (Fr) 129
Frailey, Leslie, McPherson, Ks., (Sp)
Frank, Charles, Denville, N.J., (So) 120
Frantz, Claudia, McPherson, Ks., (Fr)
129
Frederick, Chris, Wichita, Ks., (Fr) 129
Frederickson, Karin, Essex, Ia., (Sr) 98
Fruth, Bonnie, Marion, Ks., (Sr) 98
Furnas, James, Troy, Ohio, (Jr) 98

G

Galante, Raymond, Wilmington, Del.,
(Fr) 129
Ganshorn, Monty, Warsaw, Ind., (Jr)
112
Garcia, Porfirio, Fallfurris, Tex., (Fr)
Gates, Clifford, Alexandria, Va., (Sr) 98
Gentry, David, Peach Bottom, Pa., (Sr)
120
Gerber, Carole, Portage, Ind., (Fr) 129
Gibson, Sally, Ottawa, Ks., (So) 120

Gillett, James, Waterloo, Ia., (Fr) 129
Gilette, Edward, Clayton, Ohio, (Jr)
112
Gingrich, Richard, Lebanon, Pa., (So)
120
Gish, Lois, McPherson, Ks., (Jr) 112
Gish, Stanley, McPherson, Ks., (Jr) 98
Givens, Kerry, Nickerson, Ks., (So) 120
Goehenour, Donna, Woodstock, Va.,
(Sr) 98
Godfrey, Merrin, York, Pa., (Fr) 129
Goeckler, Maurita, Galva, Ks., (Sr)
Goering, Curby, Moundridge, Ks., (Fr)
Goert, Vincette, Little River, Ks., (Fr)
129
Golaszewski, Zosia, Utica, N.Y., (Jr) 98
Goss, Lynn, Dwight, Ks., (Fr) 129
Goughour, Shirley, Union City, Ohio,
(Fr) 129
Graber, Valeria, Inman, Ks., (Jr) 112
Grant, Jerry, McPherson, Ks., (Fr) 60
Grasmick, Barbara, Rocky Ford, Colo.,
(So) 120
Green, Carlos, Cascade Locks, Oregon,
(Jr) 112
Gregg, George, Sterling, Ks., (Fr) 129
Griffith, Walter, McPherson, Ks., (So)
112
Groff, Janice, Castaner, Puerto Rico,
(Sr) 99
Groff, Joyce, Nappanee, Ind., (Fr) 129
Grove, Christine, Unionville, Ia., (Fr)
129
Grove, Phillip, Lawrens, Ia., (Sr) 99
Gufarotti, Jeffrey, Paterson, N.J., (So)
Gustafson, Trula, McPherson, Ks., (Jr)
113
Gwinn, Nancy, Wilmette, Ill., (Fr) 120

H

Hajj, Alex, Hutchinson, Ks., (Jr)
Haldeaman, James, Mannheim, Pa., (Jr)
113
Hall, Ruth, McPherson, Ks., (Sr) 99
Hansen, Kenneth, Hutchinson, Ks.,
(Sr)
Hanson, Claudia, Boone, Ia., (So) 120
Hanzlicek, Lynn, Great Bend, Ks., (Fr)
129
Harbaugh, Larry, Waterloo, Ia., (So)
120
Harris, Bonnie, McPherson, Ks., (So)
Harris, Daryl, Colorado Springs, Colo.,
(Jr) 113
Harris, Michael, Mr. Pherson, Ks., (Sr)
Hartman, Sharon, Pine Ridge, S.
Dakota, (Sr) 99
Harnwick, Bonnie, McPherson, Ks., (Jr)
113
Haster, Gary, Cedar Rapids, Ia., (So)
120
Haugen, Dennis, Staten Island, N.Y.,
(Fr) 129
Hawkinson, Donald, McPherson, Ks.,
(Sp)
Hawley, Dwaine, McPherson, Ks., (Jr)
99
Hayes, Hal, Kings, Ill., (Jr) 113
Hayes, Patricia, Geneseo, Ks., (Jr) 113
Headzai, Moe, Galva, Ks., (Jr)
Heffley, Kathalyn, Herington, Ks., (Sp)
Heidebrecht, Rachel, Haven, Ks., (Sr)
99

Heisey, Dennis, Hershey, Pa., (Jr) 113
Heistern, Christine, Clayton, Ohio, (So) 120
Henderson, Frederic, Sharpshille, Ind., (Sr) 99
Hendricks, Jean, McPherson, Ks., (Jr) 113
Henke, Sherril, Lost Springs, Ks., (Fr) 129
Henry, Ellen, McPherson, Ks., (Sr) 99
Herbers, Alma, McPherson, Ks., (So) 120
Herrick, Stephen, Scarsdale, N.Y., (So) 120
Herr, Marjorie, McPherson, Ks., (Sp) 120
Heskett, Wayne, Oakley, Ks., (Jr) 113
Hester, Virginia, McPherson, Ks., (Sp) 120
Hiebert, David, McPherson, Ks., (Sr) 99
Hill, Judith, McPherson, Ks., (Fr) 129
Hill, Patrick, Coral Gables, Fla., (So) 120
Hjerpe, Warren, McPherson, Ks., (Fr) 129
Hockman, Dennis, Cranston, R.I., (Fr) 129
Hodgson, Helen, Little River, Ks., (Sp) 129
Hoffer, Clarence, Manheim, Pa., (Fr) 129
Hoke, George, McPherson, Ks., (Jr) 113
Holderreed, Margaret, Tacoma, Wash., (So) 120
Holloway, Lynette, McPherson, Ks., (So) 120
Holloway, Sue Ellen, Gypsum, Ks., (Fr) 129
Hoover, George, Plattsburg, Mo., (So) 120
Hoover, Glee, Plattsburg, Mo., (Sr) 99
Hoover, Martin, McPherson, Ks., (Jr) 113
Hoover, Mary Nell, McPherson, Ks., (Jr) 113
Horner, Beverly, Carleton, Neb., (Jr) 113
Horton, Everett, Sebring, Fla., (Sr) 99
Hott, Harry, New Creek, W. Va., (Fr) 129
Houck, Florence, Newark, Del., (Fr) 129
Houghton, Carrol, Gypsum, Ks., (Fr) 129
Howard, Roberta, Nampa, Idaho, (Jr) 113
Howard, Wanda, Nampa, Idaho, (So) 120
Howell, Janice, St. John, Ks., (Sr) 99
Huber, David, McPherson, Ks., (Jr) 113
Huber, Maria, McPherson, Ks., (Sr) 100
Hummel, Keith, New Paris, Ind., (Sr) 100
Hungerford, Lance, Wilkes Barre, Pa., (Jr) 66
Hunter, Stanley, Hutchinson, Ks., (Sr) 100
Hutchinson, Warren, McPherson, Ks., (Jr)

I

Inloes, Dana, Quinter, Ks., (Fr) 129
Iovino, Regis, Pittsburgh, Pa., (Jr)
Irwin, Charles, Ellicott City, Md., (So) 120

J

Jackson, Gilman, Concord, Mass., (Fr) 129
Jamison, Verla, Quinter, Ks., (Fr) 129
Jasper, Celeste, Windom, Ks., (Fr) 130
Jasper, Gary, McPherson, Ks., (Jr)
Johnson, Clyde, McPherson, Ks., (Jr)
Johnson, Samuel, Mission, Ks., (Jr) 114
Johnson, Shirley, McPherson, Ks., (Jr) 114
Johnson, Terry, Wilmington, Del., (Fr) 130
Johnston, Michael, McPherson, Ks., (So)
Jones, Charles, Canton, Ks., (So) 120
Jones, John, Staten Is., N.Y., (Jr) 114
Juma, Raymond, Hutchison, Ks., (Jr)

K

Kastens, Bernard, McPherson, Ks., (Sp)
Kauffman, Marilyn, Hutchison, Ks., (Sr) 100
Kaufman, Martha, McPherson, Ks., (Sp)
Kawawa, Toshio, Japan, (Fr) 130
Keane, Thomas, Concord, N.H., (So) 120
Keith, Jean, Chicago, Ill., (Sr) 100
Keller, Henry, New Tripoli, Pa., (So) 120
Kenny, Kenneth, Inman, Ks., (Fr)
Kent, Ronald, Saddle Brk, N.J., (Fr)
Ketcham, Judith, Glendale, Ariz., (Jr) 114
Kimmel, Carole, Columbus, Ohio, (Jr) 100
Kipping, Stephen, Redfield, Ia., (Fr) 130
Kittell, Barbara, McPherson, Ks., (So) 120
Kitzel, Connie, Los Angeles, Cal., (Sr) 100
Klockars, Bruce, Glen Ellyn, Ill., (Sr) 100
Klockars, Robert, Glen Ellyn, Ill., (Sr) 100
Knechtel, Robert, Boonton, N.J., (Fr) 130
Kobe, Nicholas, Shawnee, Ks., (Sr) 100
Koehn, Harvey, McPherson, Ks., (Fr) 130
Kopp, Galen, Middletown, Pa., (So) 120
Koraski, Steven, Brooklyn, N.Y., (So) 56
Kough, John, Morgan Hill, Cal., (So)
Kramer, Jeffrey, Roslyn Hts., N.Y., (Fr) 130
Krehbiel, Homer, McPherson, Ks., (Sr)
Kreider, James, Quarryville, Pa., (So) 121
Krough, Mark, Matawan, N.J., (So)
Krueger, Harriet, Bagley, Ia., (So) 121
Kruse, Steven, Little River, Ks., (Jr) 114
Kuehl, Bruce, Waukeg, Ia., (Fr) 130
Kuehl, Peggy, Waukeg, Ia., (Jr) 114
Kugler, Mendal, McPherson, Ks., (Jr) 114
Kulik, Dimitro, Pittsburgh, Pa., (Fr)
Kurtz, Dana, Kingsley, Ia., (Fr)
Kurtz, Royce, Vinton, Ia., (Fr) 130
Kussart, Donald, Cerro Gordo, Ill., (Sr) 100

Kussart, Sandra, Cerro Gordo, Ill., (Fr) 130
Kwak, Jean, Kowloon, Hong Kong, (Sr) 100

L

Lacovara, Joseph, Brooklyn, N.Y., (So) 121
Lahman, Deanna, Quinter, Ks., (Sr) 101
Lamb, Charles, Rocky Ford, Colo., (Sr) 101
Lambert, Clifford, McPherson, Ks., (Jr) 34
Lambert, Geoffrey, Inman, Ks., (Sr) 101
Landes, Altha, Kansas City, Mo., (So) 121
Landis, Leonard, Dayton, Ohio, (Jr) 114
Lane, John, Piqua, Ohio, (Jr) 114
Lansinger, Deborah, Petersburg, Pa., (So) 121
Lanz, Jordan, Grosse Pt., Mich., (Fr) 130
Laprad, Stephen, Frankfort, Ind., (So) 121
Lavallee, Alan, Newark, Del., (So) 121
Layton, Steven, Mulvane, Ks., (Sr) 130
Leach, Don, McPherson, Ks., (Fr)
Leary, John, West Hartford, Conn., (Jr) 114
Lee, Linda, LaVerne, Cal., (Jr) 114
Lehman, John, Wiley, Colo., (Jr) 114
Leighner, Harvey, Perryton, Tex., (Sr) 101
Lemmon, Jean, Lucerne, Ind., (Jr) 114
Lengel, Dale, Burlington, Colo., (Sr) 101
Lengel, Nancy, McPherson, Ks., (Sp)
Levi, Christopher, Berryville, Va., (Sr) 101
Lewallen, Gloria, Bisbee, N. Dakota, (So) 121
Liljegren, Lonny, Lindsborg, Ks., (Jr)
Linville, Ann, Gustine, Cal., (Fr) 130
Lippy, Christine, Littleton, Colo., (Fr) 130
Little, Craig, Wichita, Ks., (So) 121
Livingston, Theodore, Macedonia, Ohio, (Jr) 34
Loganbill, Elaine, McPherson, Ks., (Sp)
Luggie, John, Brooklyn, N.Y., (Fr)
Longanecker, Harvey, Bandon, Oregon, (So) 122

Loose, Thomas, Dauberville, Pa., (Jr)
Loucks, Garry, Bremen, Ind., (Jr) 114
Loucks, Jeffrey, Bremen, Ind., (So) 122
Loveless, Michael, Mt. Ramer, Md., (So) 122
Lowe, Charleen, Hershey, Pa., (So) 122
Lucore, Donald, Arriba, Colo., (So) 122
Luebke, Darlene, Froid, Mont., (Fr) 130
Lunkley, James, Council Bluffs, Ia., (So) 122
Lusk, Rodney, Rocky Ford, Colo., (So) 122
Lydic, Gary, Dayton, Ohio, (Fr) 130
Lynch, Donald, Fairfield, Conn., (Sr) 130

M

Macklin, Donald, Canton, Ks., (Fr) 130

- MacPherson, Bruce, Winsted, Conn., (Jr) 114
 Mader, Allan, Stroudsburg, Pa., (Jr)
 Marcellus, Larry, McPherson, Ks., (Sp)
 Marcellus, William, McPherson, Ks., (Jr) 134
 Marcus, William, Hockessin, Del., (Fr) 130
 Martin, Dennis, Pasadena, Cal., (Jr) 114
 Martin, John, Canton, Ks., (Sp)
 Martin, Larry, Rome, N.Y., (So) 121
 Martin, Larry E., Dayton, Ohio, (So) 122
 Martin, Richard, Sterling, Ohio, (Sr) 101
 Mason, Stephen, Shelbyville, Mo., (Fr) 130
 Mathes, Karen, McPherson, Ks., (Sp)
 Matthews, Waldron, Freehold, N.J., (Fr)
 Matz, Karl, S. Bend, Ind., (Fr)
 Mayo, Ricci, Omaha, Neb., (Fr) 130
 McBride, Charles, Fredericksburg, Ia., (Fr) 130
 McCuller, Dorothy, Corona, N.Y., (Sr) 101
 McDonough, Wanda, Grinnell, Ia., (Jr) 114
 McGwin, Marston, N. Liberty, Ind., (Jr) 114
 McIntyre, Jacqueline, McPherson, Ks., (Sr)
 McMurray, Donald, Canton, Ks., (So) 122
 McNicholas, George, Landing, N.J., (Fr)
 McNicholas, Neva, Succunna, N.J., (So) 122
 McNish, Philip, LeRox, N.Y., (So) 122
 McParland, Joseph, New York, N.Y., (Jr) 114
 McQuilliam, Cyothia, Lyons, Ks., (Fr) 130
 Meador, Carol, McPherson, Ks., (Sp)
 Meador, Lloyd, Parrie City, Ia., (So) 122
 Meck, Ronald, Omaha, Neb., (Jr) 114
 Medley, Ray, Barrington, R.I., (Jr) 114
 Mekelburg, Leo, Yuma, Colo., (Jr)
 Meilillo, Stephen, Medway, Mass., (Sr)
 Melina, Richard, Red Bank, N.J., (Fr) 130
 Menck, Rene, Palatine, Ill., (So)
 Merchut, William, Niles, Ill., (Fr)
 Merrifield, Diana, Champaign, Ill., (So) 122
 Meyer, Elaine, Ellinwood, Ks., (Fr) 130
 Meyer, Janet, Geneseo, Ks., (So) 122
 Meyers, Richard, McPherson, Ks., (Jr)
 Miller, Craig, Waterloo, Ia., (Sr) 101
 Miller, Dennis, Lanark, Ill., (Sr) 101
 Miller, Gayle, Payette, Idaho, (So) 122
 Miller, Glencie, McPherson, Ks., (Sr) 101
 Miller, Joseph, Millbury, Mass., (Jr) 114
 Miller, Karen, Waterloo, Ia., (So) 122
 Miller, Keith, Waterloo, Ia., (So) 122
 Miller, Mary Anne, Waterloo, Ia., (So) 122
 Miller, Patricia, McPherson, Ks., (Jr) 114
 Mills, Jeanette, Hutchinson, Ks., (Jr) 114
- Mills, Joyce, McPherson, Ks., (Jr) 114
 Moffitt, Calvin, Washington, Ks., (So) 123
 Monke, Judy, Pierson, Ia., (Sr) 101
 Monke, Lowell, Pierson, Ia., (Fr) 130
 Moore, D. Council Grove, Ks., (So) 123
 Moore, Linda, Preston, Minn., (Sr) 102
 Morehan, Vince, Arlington Hts., Ill., (So)
 Morgan, Gary, Hope, Ks., (So)
 Morgan, Cynthia, Crown Point, Ind., (Fr) 130
 Morgan, Lance, Barrington, Ill., (Jr) 102
 Morris, William, Monticello, Ind., (Fr) 130
 Mosher, Nicky, Bellevue, Neb., (Fr) 130
 Mowry, James, Pekin, Ill., (So) 123
 Mowry, Jo Ann, Pekin, Ill., (Jr) 115
 Mullette, Geoffrey, Fort Lee, N.J., (Jr) 115
 Mulumba, John, Kenya, Africa, (Jr)
 Murcott, Drew, Queens VIL., N.Y., (Fr)
 Murcott, Harry, Queens VIL., N.Y., (So)
 Myers, Beverly, Denver, Colo., (Sr) 102
 Myers, J. Edward, Dixon, Ill., (Sr) 102
- N**
- Nachtigal, Suzanne, Buhler, Ks., (Fr) 130
 Neal, Carole, McPherson, Ks., (Jr) 102
 Nee, Thomas, McPherson, Ks., (Jr) 115
 Nelson, Ronald, Assaria, Ks., (Fr) 131
 Ness, Tammy, Seven Valleys, Pa., (Fr) 131
 Nettleton, Donna, Holmesville, Neb., (So)
 Nettleton, Stephen, Albert Lea, Minn., (Sr) 102
 Nettleton, Roger, Holmesville, Neb., (Sr) 102
 Neufeld, Kent, Inman, Ks., (Fr) 131
 Newkam, Camellia, Carrollton, Mo., (Fr)
 Newman, Barry, Corona, N.Y., (Fr) 131
 Nickelson, Darrell, McPherson, Ks., (Sp)
 Nigh, John, McPherson, Ks., (Jr) 115
 Nihari, Janet, Elkhart, Ind., (Fr) 131
 Nikodim, Donna, Ely, Ia., (Jr) 115
 Nilson, Judy, Gypsum, Ks., (Sr) 102
 Noffsinger, Kent, Tipp City, Ohio, (Jr)
 Norris, Martin, Wellington, Ks., (Fr)
 Nwosu, Nwosu Nnadozie, Nigeria, W. Africa, (Fr) 131
- O**
- Ognibene, Leonard, Morris Plains, N.J., (Fr) 133
 Oliver, Betty, Hutchinson, Ks., (Jr) 102
 Oliver, James, Canton, Ks., (Sr) 102
 Oltman, David, McPherson, Ks., (So)
 Oswald, Elizabeth, Hutchinson, Ks., (Sp)
 Oswalt, Carolyn P., Little River, Ks., (Fr) 131
 Otis, Paul, Denver, Colo., (Jr) 115
 Otte, Pamela, Moundridge, Ks., (Sr) 102
- P**
- Pankewich, Walter, Oakhurst, N.J., (Fr) 131
- Park, Cheol, Seoul, Korea, (Jr)
 Parker, Robert, McPherson, Ks., (Jr) 115
 Patton, Josie, Walton, Ks., (Sp)
 Paul, James, Solomon, Ks., (So) 123
 Paul, Richard, Solomon, Ks., (Fr) 131
 Pauls, Judith, Inman, Ks., (Fr) 131
 Pauls, Lorene, Inman, Ks., (Sr) 102
 Payson, Stephen, Millis, Miss., (So)
 Pearsall, Craig, Denville, N.J., (Jr)
 Pedigo, Dixie, Nampa, Idaho, (Fr) 131
 Peel, Kerry, McPherson, Ks., (So) 123
 Peitzman, Judith, McPherson, Ks., (So) 123
 Penner, Ronald, Olathe, Ks., (Fr)
 Personette, Mark, Basking Ridge, N.J., (Fr)
 Persons, Betty, Story City, Ia., (Jr) 115
 Peterson, Chas. III, Union City, N.J., (Fr)
 Peterson, John, Wethersfield, Conn., (Fr)
 Petre, Dana, Dayton, Va., (Jr) 115
 Pheanis, David, Eaton, Ohio, (Fr) 131
 Pickelsimer, Ron, Roanoke, Ind., (Fr) 56
 Pickett, Larry, Modoc, Ks., (Fr) 131
 Pierson, Susan, McPherson, Ks., (Jr) 115
 Pisher, Kathleen, Spencerport, N.Y., (Fr) 131
 Plaughter, Barbara, Peoria, Ill., (So) 123
 Porter, Prentis, Colo. Springs, Colo., (Fr) 131
 Powers, Robert, Saddle Brook, N.J., (Fr)
 Presley, Glenn, Beverly, Ks., (Fr) 131
 Prickett, James, McPherson, Ks., (Sr) 103
 Prickett, Michael, Simpson, Ks., (Fr) 131
 Prochaska, Dale, Glasco, Ks., (Jr)
 Pugh, Rebecca, Peru, Ind., (Fr)
 Putthoff, Stephen, Tonganoxie, Ks., (Fr) 131
 Pyle, Janis, Denver, Colo., (So) 123
- Q**
- Quakenbush, Gregory, Wichita, Ks., (So) 123
- R**
- Racine, Ulderic, Henniker, N.H., (So) 134
 Radatz, Linda, Galva, Ks., (Fr) 131
 Railing, Dennis, Elizabethtown, Pa., (Fr)
 Rakes, Jimmie, Bloom, Ks., (Sr) 60
 Rattia, Maija, Korpilanti, Finland, (Sr) 103
 Ratliffe, Clark, Park Ridge, Ill., (Jr)
 Ratliffe, Lavonna, McPherson, Ks., (Sr)
 Ratzlaff, Jimmie, McPherson, Ks., (Fr) 132
 Rausch, Sonya, McPherson, Ks., (So) 123
 Rawstrom, Charles, Caldwell, N.J., (So) 123
 Ray, Sharon, McPherson, Ks., (So)
 Reazin, Ruth, Geneseo, Ks., (Sr) 103
 Reed, Howard, Adel, Ia., (So) 122
 Reed, Robert, Chapman, Ks., (Fr) 132

- Reese, Donald, Barrington, N. J., (Jr) 116
- Regier, Cornelia, McPherson, Ks., (Sp) 132
- Rego, Judith, New Bedford, Mass., (Jr) 116
- Regula, Rockford, Leesport, Pa., (Jr) 116
- Reinhold, Donald, Centerville, Md., (So) 132
- Reiter, Marvin, Hutchinson, Ks., (Sp) 132
- Rhea, Brenda, McPherson, Ks., (Sp) 132
- Rhea, Terry, McPherson, Ks., (Jr) 132
- Rhinehart, William, McPherson, Ks., (Jr) 56
- Rife, Rodney, Lyons, Ks., (Jr) 116
- Rinaldi, Pasco, Providence, R.I., (Jr) 132
- Riner, Stephen, Fayetteville, W. Va., (Fr) 132
- Rippon, Jeffrey, Emiraus, Pa., (Fr) 132
- Risser, David, Mohrsville, Pa., (Jr) 132
- Robbins, Ronald, McPherson, Ks., (Jr) 116
- Robinson, Edwin, Garfield, Ks., (Sr) 103
- Rogers, Kathleen, Brooklyn, Ia., (So) 123
- Rogers, Stephen, Brooklyn, Ia., (So) 123
- Rohling, Michael, McPherson, Ks., (Sp) 132
- Rolston, Roma, Sheldon, Ia., (So) 123
- Roord, Marjorie, Denver, Colo., (Fr) 132
- Roth, Eugene, Boiling Springs, Pa., (Jr) 116
- Roth, Paul, Boiling Springs, Pa., (Jr) 116
- Royer, Patricia, Syracuse, Ks., (Sr) 103
- Ruff, Evan, Clay Center, Ks., (Jr) 132
- Rundstrom, Bernhard, McPherson, Ks., (Sp) 132
- Runyan, Carolyn, Nickerson, Ks., (Fr) 132
- Rupp, Terry, McPherson, Ks., (So) 123
- Rutter, Phillip, McPherson, Ks., (Fr) 132
- Rygas, Alex, McPherson, Ks., (Sr) 103
- S**
- Sack, Erin, Burrton, Ks., (Sp) 132
- Sacks, Gary, Altoona, Pa., (Jr) 103
- Safran, Bernard, S. Milwaukee, Wis., (So) 132
- Sales, Elaine, Peoria, Ill., (Sr) 103
- Saroer, John, Lima, Ohio, (Jr) 116
- Sauer, Carl, Sparta, N.J. (Sr) 103
- Schafer, Larry, Conway, Ks., (Sp) 132
- Schechter, Orvis, McPherson, Ks., (Sr) 103
- Scherich, Phyllis, Inman, Ks., (Sp) 132
- Schmidt, Norman, Inman, Ks., (Fr) 132
- Schradel, Keith, Elmhurst, Ill., (Sr) 103
- Schradel, Pamela, Elmhurst, Ill., (Fr) 132
- Schrag, Amelia, McPherson, Ks., (Sr) 132
- Schrag, Dale, Moundridge, Ks., (Fr) 132
- Schrock, Larry, Goshen, Ind., (Fr) 132
- Schrock, Laurel, Des Moines, Ia., (Sr) 132
- Schultheiss, Johnny, McPherson, Ks., (So) 132
- Schultz, Beth, Ely, Ia., (Jr) 132
- Schultz, Donald, Ely, Ia., (Sr) 103
- Schuster, Gary, Scotia, N.Y., (Jr) 116
- Schwarck, Jan, Eldora, Ia., (Fr) 132
- Sedlachek, Robert, Pt. Pleasant, N.J., (So) 132
- Sell, Susan, Conway, Ks., (Jr) 116
- Sellberg, Marcia, McPherson, Ks., (Fr) 132
- Serensits, Joseph, Washington, D.C., (Jr) 116
- Shaffer, Deward, Cambridge, Ohio, (Fr) 56
- Shank, Kathleen, Fayetteville, W. Va., (Sr) 104
- Sheets, James, McPherson, Ks., (Fr) 132
- Sheets, Russell, Glade Valley, N. Carolina, (Jr) 116
- Shellenberger, Joyce, Buhler, Ks., (Jr) 116
- Sheller, Dean, Eldora, Ia., (Sr) 104
- Shenetelt, Leslie, Navaree, Ks., (Jr) 116
- Shepherd, Marilyn, Fort Scott, Ks., (Fr) 132
- Shepherd, David, Fort Scott, Ks., (So) 123
- Sherfy, Marcella, McPherson, Ks., (Sr) 104
- Shetter, Sally, Marshalltown, Ia., (Jr) 116
- Shields, Galen, McPherson, Ks., (Sr) 104
- Shields, Kathleen, McPherson, Ks., (Fr) 132
- Shin, Tia Sik, Seoul, Korea (Jr) 116
- Shoemaker, Wayne, W. Manchester, Ohio (Fr) 132
- Shultz, Sarah, DeGraff, Ohio (So) 123
- Sink, Rose Ann, Elkhart, Ind., (Jr) 116
- Siracusa, Peter, Elizabeth, N.J., (Jr) 116
- Sissell, Paula, Davenport, Neb., (So) 123
- Skinner, Howard, Paterson, N.J., (Fr) 132
- Slater, Peggy, Denver, Colo., (Jr) 132
- Smalley, Twilna, Beaver, Ia., (Sr) 104
- Smith, Carol, Annville, Pa., (So) 123
- Smith, Christine, McPherson, Ks., (So) 123
- Smith, David, McCune, Ks., (So) 123
- Smith, John, McPherson, Ks., (Sr) 104
- Smith, Louise, Lyons, Ks., (Fr) 132
- Smith, Marilyn, Cedaredge, Colo., (Jr) 116
- Smith, Nellie, McPherson, Ks., (Sp) 132
- Smith, Orvil, Chase, Ks., (So) 56
- Smith, Raymond, Williamsburg, Pa., (Jr) 104
- Smith, Robert, Fredericksburg, Ia., (So) 123
- Smith, Ronald, Concordia, Ks., (Fr) 132
- Snader, Mary, Minneapolis, Minn., (Fr) 132
- Snavey, Marian, Lebanon, Pa., (So) 123
- Snyder, Carroll, Adel, Ia., (So) 123
- Snyder, Dannie, Wichita, Ks., (So) 123
- Snyder, Lesa, Liberty, Neb., (So) 123
- Somprasong, Danaisa, Bangkok, Thailand, (So) 132
- Sorenson, Gayle, McPherson, Ks., (Jr) 104
- Sovchen, David, Pittsburgh, Pa., (Jr) 116
- Spitz, Carol, Hutchinson, Ks., (Sp) 116
- Spitzer, Shirley, Hutchinson, Ks., (Sp) 132
- Stacy, Judith, McPherson, Ks., (Jr) 132
- Stalcup, Richard, Topeka, Ks., (Fr) 132
- Standafel, Lynne Dee, Worthington, Minn., (So) 123
- Standafel, Tim, Worthington, Minn., (Fr) 132
- Stauffer, James, Wichita, Ks., (So) 123
- Stauffer, Ronald, Rocky Ford, Colo., (Fr) 132
- Stead, Donald, North Brunswick, N.J., (Jr) 116
- Sleckiy, George, Hutchinson, Ks., (Jr) 116
- Steeley, Harry, Hamburg, Pa., (So) 132
- Steffen, Susan, Goshen, Ind., (Fr) 132
- Stern, Jean, Dixon, Ill., (Fr) 132
- Steward, Kenneth, Colo. Springs, Colo., (Fr) 132
- Steward, Walter, McPherson, Ks., (Sp) 132
- Stewart, Phillip, Delphi, Ind., (Fr) 132
- Stockstill, Daniel, Geneseo, Ks., (Sr) 104
- Stout, Tom, McPherson, Ks., (Fr) 132
- Strom, Jon, Worthington, Minn., (So) 124
- Strom, Thomas, McPherson, Ks., (Sr) 104
- Stromquist, Kenneth, McPherson, Ks., (So) 132
- Stucky, Philip, Pretty Prairie, Ks., (Fr) 132
- Stucky, Twilna, Moundridge, Ks., (Sp) 132
- Stull, Richard, Natoma, Ks., (Fr) 132
- Summerhays, Brian, Brockport, N.Y., (So) 124
- Sutliff, Diane, Northampton, Pa., (Jr) 117
- Swanson, John, Oak Park, Ill., (Jr) 117
- Syverson, Marion, Minot, N. Dakota, (Jr) 117
- T**
- Taplin, Linda, Piney Woods, Miss., (Fr) 132
- Taylor, Delores, Bronx, N.Y., (Sr) 105
- Taylor, Kathy, McPherson, Ks., (So) 124
- Taylor, Lawrence, St. John, Ks., (So) 124
- Terhune, Hobart, Lakeville, Conn., (So) 132
- Tetto, Frank, Montclair, N.J., (Fr) 132
- Thiessen, Sandra, Inman, Ks., (Fr) 132
- Thiessen, Sharon, Inman, Ks., (So) 124
- Thompson, Chester, Kansas City, Mo., (So) 124
- Thompson, Michael, Beloit, Ks., (So) 124
- Thompson, Ralph, McPherson, Ks., (Fr) 132
- Thornton, Johnnie, Chase, Ks., (Fr) 132
- Tice, Paul, York, Pa., (So) 124
- Tolle, Gordon, Gypsum, Ks., (Fr) 132
- Tomlinson, Georgenne, Denver, Colo., (So) 124
- Traetto, Michael, Rockaway, N.J., (Jr) 117
- Tucker, Norman, McPherson, Ks., (Sr) 132
- Tullo, Patrick, Waterbury, Conn., (So) 132
- U**
- Ubriecht, Arthur, Wantagh, N.Y., (Sr) 105
- Ullom, Rose Marie, Wiley, Colo., (So) 124

Unruh, Dea, McPherson, Ks., (So) 124

V

Varuso, Joseph, New Haven, Conn., (Fr) 132
Vandervoort, Charles, Dwight, Ks., (Fr) 132
Van Loenen, Connie, Goodland, Ks., (Jr) 132
Van Wickler, Lynn, Hicksville, N.Y., (Fr) 132
Vernick, Milton, McPherson, Ks., (Sr) 105
Vernick, Timothy, McPherson, Ks., (Fr) 132
Vernon, Larry, Big Pine, Cal., (Jr) 117
Vinchaffle, June, Gowrie, Ia., (Jr) 117
Vittoria, Michele, River Vale, N.J., (Fr) 132
Vogts, Janet, Cantori, Ks., (Sp)

W

Wagner, Alice, Newton, Ks., (Sp)
Wagner, Richard, Hummelstown, Pa., (Jr)
Wagner, Sigrid, Wiley, Colo., (So) 124
Walker, Glenn, McPherson, Ks., (Sr) 105
Walker, Linda, McPherson, Ks., (Fr) 133
Walker, Sherry, Norton, Ks., (So) 124
Walters, Nickie, Hutchinson, Ks., (Sp)
Walton, Larry, Lititz, Pa., (So) 124
Ward, Joseph, Hutchinson, Ks., (Sp)
Ware, Arthur, Silver Springs, Md., (So) 124
Ware, June, Ottumwa, Ia., (Sr) 105

Warnke, Dianne, Elgin, Ill., (So) 124
Watkins, Jane, Ottawa, Ks., (Sr) 105
Weatherbie, Jean, Salt Lake City, Utah, (So) 124
Webster, Ronald, Salina, Ks., (Fr)
Weddle, Lela, Bloom, Ks., (Sr) 105
Westergaard, Don, Oak Park, Ill., (So) 64
Westray, Barbara, Key West, Fla., (Sr) 105
Weyant, Roy, Cuba, N.M., (Fr) 56
Wheeler, Fredric, Leawood, Ks., (Jr) 117
Wheeler, Randall, Annandale, Va., (Jr) 117
Whelpley, Randall, McPherson, Ks., (Fr) 133
Widrig, June, McPherson, Ks., (Sp) 105
Wiens, Ruth, Inman, Ks., (Sr) 105
Wiggins, Janet, McPherson, Ks., (So) 124
Williams, John, McPherson, Ks., (Sr) 106
Wilson, Nancy, Lebanon, N.J., (Fr) 133
Wilson, Timothy, Lebanon, N.J., (So) 125
Wine, Sylvia, Maumee, Ohio, (Jr) 117
Winegarden, Donna, Des Moines, Ia., (Fr) 133
Winslow, Norman, McPherson, Ks., (Sp)
Winter, Diane, McPherson, Ks., (Fr) 133
Wivell, Lilli Ann, Columbia, Pa., (So) 125
Woerz, Thelma, McPherson, Ks., (So) 125
Wokaty, Terry, Conway, Ks., (Sr) 106

Wollard, Stanley, Longmont, Colo., (Sr) 106
Wood, William, Middlesex, N.J., (So)
Woodcock, Donald, Washington, Ks., (Sr) 106
Worden, Gary, Rochester, N.Y., (So)
Worthing, Connie, Inman, Ks., (Jr)
Wright, Harold, Dwight, Ks., (So) 125

Y

Yarris, Douglas, Chicago, Ill., (Fr) 133
Yasenchak, Anthony, Union City, N.J., (Fr)
Yasenchak, Richard, Union City, N.J., (So) 125
Yingling, Thomas, McPherson, Ks., (Sp)
Yingst, Douglas, McPherson, Ks., (Jr) 134
Yingst, Virginia, McPherson, Ks., (Fr) 133
Yoder, Carolyn, McPherson, Ks., (Jr) 117
Yoder, Ellis, Conway, Ks., (Fr) 133
Yoder, Engel, Conway, Ks., (Fr) 133
Yoshida, David, Nampa, Idaho, (So) 125
Yowell, Lonnie, McPherson, Ks., (Fr)

Z

Ziemann, Michael, Berlin, Germany (Sr) 106
Zimbelman, Connie, McPherson, Ks., (So) 125
Zinn, John, Houston, Tex., (So) 125
Zook, Ramon, Florence, Ks., (Fr) 133