

The
Quadrangle

NINETEEN HUNDRED SIXTY THREE



The College Seal

"Life and Light" John A. is sometimes cited as an interpretation of the Greek motto on the College Seal. The horizontal lines ($\tau\omicron\mu\beta\epsilon\rho\upsilon$) indicate life. The vertical lines ($\phi\omega\varsigma$) indicate light. An international exchange student interpreted this to mean, "We receive only to give." The light comes from above, and through us is spread to our fellow men.



The 1963 Quadrangle

Volume 46

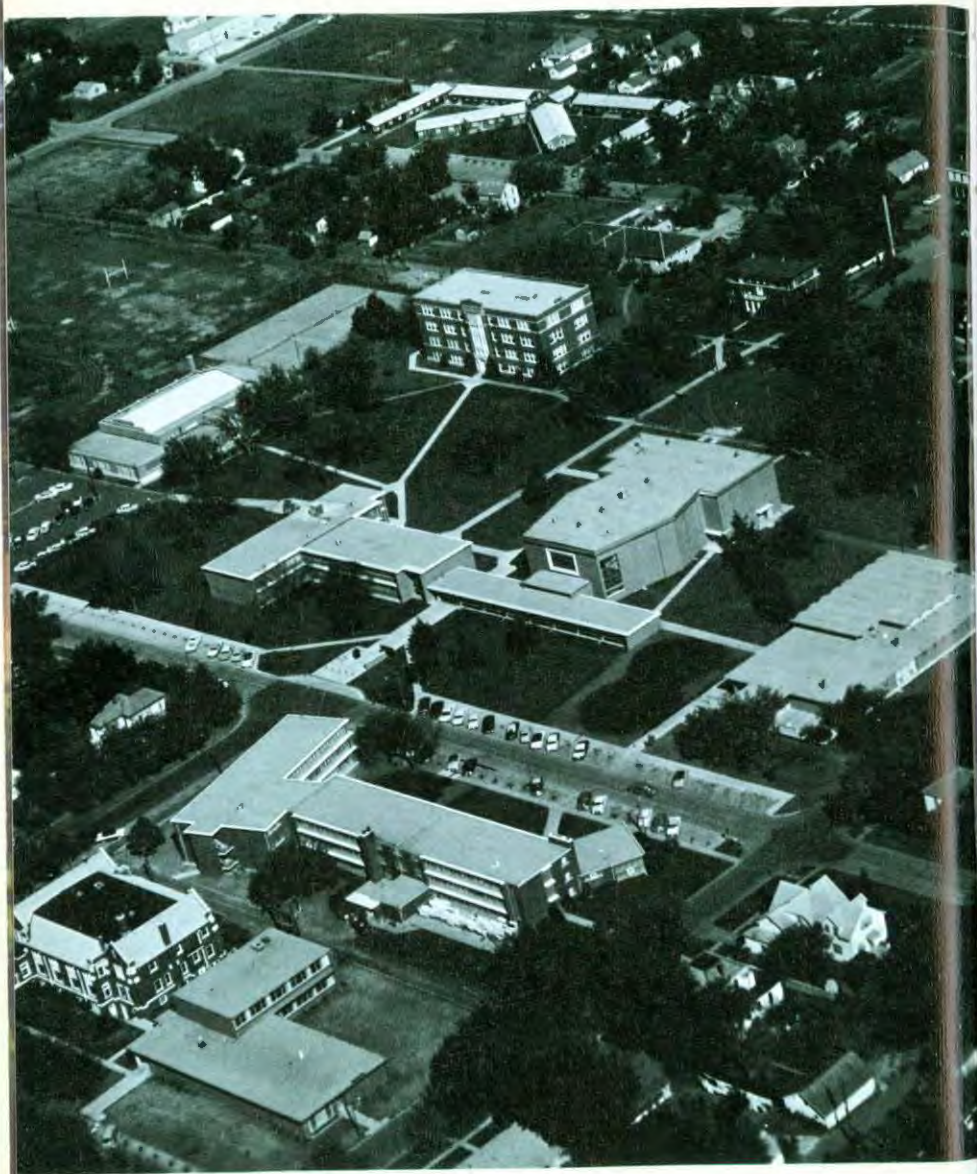
Published by Student Council

McPherson College

McPherson, Kansas

Editor . . . Kay Weber

Business Manager . . . Gary Ross





Foreword

We picture for you light and life on McPherson campus in the buildings, the students, and our activities. The campus with its surprising sparkle, midnight chimes, and D. J. Terry, and has such variety that each day something is either being discovered or being replaced. To see a thing everyday and then to discover how beautiful it looks at night or to live next door to a person for weeks and then discover how many things you have in common is college life.

The campus changes because the people change; the existing buildings are being replaced by the finest in architecture, the jovial transferred by the determined collegian, and the traditional Abe Lincoln by a mounted sword fish. Nothing tangible can be used to describe our campus, for it is like describing light itself, which we hope to reflect to you.



CONTENTS...



Faculty...10



Campus Life...18



Organizations...24



Athletics...40



Students...56



Advertising...97





BUILDINGS . . .

STUDENT UNION . . . assembler of lighthearted and hungry people



MOHLER HALL . . . activator of policies, philosophies, and politics

BEECHLY LIBRARY . . . stimulator of intellect



Campus Life Finds Centers of Learning

Students cross McPherson's quadrangle as they go to their classes. Entering Harnly, they may go through the swinging doors or to fourth floor. In Frantz students become designers, engineers, and welders. In Mohler, students express opinions of "shot-guns", air-conditioning, and blinds which distort the view. Over at Beechly Library they create term papers. In Brown Auditorium they attend chapel and special programs.

In the Union cafeteria dress-up night challenges them, lines more slowly, and people crowd. Across the campus in the gym they find active classes and intramurals.

The residence halls stand their pranks and the tensions before big events.



PHYSICAL EDUCATION... generator of action



HARNLY HALL... transmitter of sounds and smells



FRANTZ INDUSTRIAL ARTS... broadcaster of future engineers and agriculturists



DOTZOUR HALL... Important (feminine) source of social life

Some Old... Some New... House M.C.ers



FAHNESTOCK HALL...
Refuge of the upperclassmen



VANIMAN HALL... Old mansion for young men



ARNOLD HALL... Metamorphic structure for men



KLINE HALL... residential area for pairs and spares



NEW MEN'S RESIDENCE
... Warren's replacement



COLLEGE COURTS... colony for compatible living





Raymond L. Flory

Dean of Students

R. Gordon Yoder

Business Manager





Wayne F. Geisert. . . Academic Dean

*Bittinger Spends Year
Teaching In Taiwan*

While Dr. Desmond W. Bittinger, president of McPherson College, took his sabbatical leave this year, a committee--Wayne F. Geisert, Raymond L. Flory, and R. Gordon Yoder--shared the president's responsibilities and authority. Dr. Geisert served as chairman of this group and as the president's personal representative.

Dr. Bittinger and his wife left New York in June 1962 for a trip around the world. After visiting in Europe, Africa, and Asia, they taught at Tunghai University, Taipei, Taiwan, China, first semester and at National Taiwan University second semester.

FACULTY...

1962-'63

Administrators...
Professors...
Staff...



K. C. BECHTEL
Sociology



DARLENE
BLICKENSTAFF
Art



MARVIN
BLICKENSTAFF
Piano



WILLIAM BROOKS
Speech



SARAH MAY
BRUNK
English



JOHN BURKHOLDER
Biology



ELIZABETH
CHRISTENSEN
S. U. Director



DORIS COPCOCK
Phys. Ed. & Music



WESLEY
DeCOURSEY
Chemistry



VERDA
DeCOURSEY
Home Economics



S. M. DELL
Dean of Men



ELEANOR DRAPER
Ass't Librarian



CLIFFORD
DRESHER
Mathematics



DAVID EILER
Religion



CARA LOU
ELLWOOD
Ceramics



EARL FRANTZ
Capital Gifts



MERLIN FRANTZ
Education



DONALD
FREDERICK
Music



VIRGINIA HARRIS
Librarian



GUY HAYES
Dir. of Admissions



RALPH HODGE
History



GILFORD
IKENBERRY
Biology



JESSE KREHBIEL
Mathematics



FLORENCE LAUVER
Housemother



HARVEY LEHMAN
Dir. of Pub.
Relations



ALICE B. MARTIN
Registrar



BURTON METZLER
Religion



R. E. MOHLER
Curator of Museum



EDNA NEHER
Housemother



MILDRED OLSON
Commerce



OSCAR A. OLSON
Econ. & Bus. Ad.



ROBERT PORTER
Languages



MARY ANN
ROBINSON
Dean of Women



DAYTON
ROTHROCK
Education



ELIZABETH
RUSSELL
Housemother



AUDREY
SAN ROMANI
Music



MILDRED SIEK
Home Economics



SIDNEY SMITH
Coach



PAUL
SOLLENBERGER
Music



HARLEY STUMP
English



CHRISTIAN
SWENSON
Physics



IRVIN WAGNER
Music



PAUL WAGONER
Dir. of Alumni
Affairs



JOHN WARD
Agriculture



MARGUERITE
WESTFALL
Housemother



DON WIDRIG
Phys. Ed.



ALVIN WILLEMS
Ind. Arts



UNA YODER
Drama

Not pictured
Vladimir Czaplinsky
Russian
Leonor Mills
Spanish

Dr. Dayton Rothrock examines children's books in Friendship Hall





LORRETTA TIPTON... Business Office, MYRNA
HAUCK... Admissions Office



THELMA SHEETS... Public Relations Office,
ANNA MAE HULL... Alumni Office, CAROL
CHEEK... Switchboard Operator



ANITA SMITH... School Nurse



MIRIAM DELL... President's Office, BETTY BARCHESKY... Dean's Office

*They Also
Serve...*



ELMER RUHSER and KEITH CLINE
Buildings and Grounds



WILBUR LAUVER
Assistant Buildings and Grounds



FLOYD BANTZ, Regional Secretary, Church
of the Brethren, GLEE YODER, administrative
secretary



JOE CLINK, Slater Food Service Representa-
tive



SOLLENBERGER... punches tickets, a teacher's privilege.



SIEK... trains girls for home life.

Faculty Candid. . .



MARTIN... helps students register.



COPPOCK... directs many to sound as one.



GEISERT and de FLORY... appears at student conference.

IKENBERRY... throws light on subject.





CAMPUS LIFE



WAIT IN ENROLLMENT LINES...

Students...

WAIT in lines, that lead to more lines, for mail, for dates, for results.

EXPECT the Spec on Friday, phone calls, next year's classes.

CARRY books, meal tickets, activity tickets, parking tickets, concert tickets, and overdue bills

GIVE money, blood, time, talents.

MEET in the SU basement, in the cafeteria, in front of Dotzour at closing time, in Brown, or in any other place they have access to.

GO to dances, to parties, to games, to concerts, to meetings, to dorms and classes.

LISTEN to noises, to rumors, to news, to people who lead, who teach, who speak.

HOPE for grades for jobs, for homes for future life.



GIVE TALENT SHOW...



CARRY BOOKS...



MEET AT LAGOON...



EXPECT IMMUNITY...



LISTEN TO NOISE...



HOPE FOR JOBS
AND FUTURE
LIFE...



GO TO CONCERTS...





Kathy Parks and Rob Slater dine by candlelight.



Iowan cousins, John and Phil, introduce the program.

Winter Begins With Formality

In "Crystalline Twilight" on December 14, Macollege students and faculty dined and danced at the winter formal in the Student Union. After the banquet in the cafeteria and the program in the recreation area, the Stage Band, directed by Prof. Irvin Wagner, played for the dance.



Denae Rouselow serves punch to Housemother Elizabeth Russell.



CBYF ... meets on Sunday evening at the Church of the Brethren.

Pastor Harold Z. Bomberger led the Church of the Brethren Youth Fellowship in the January School of Mission.

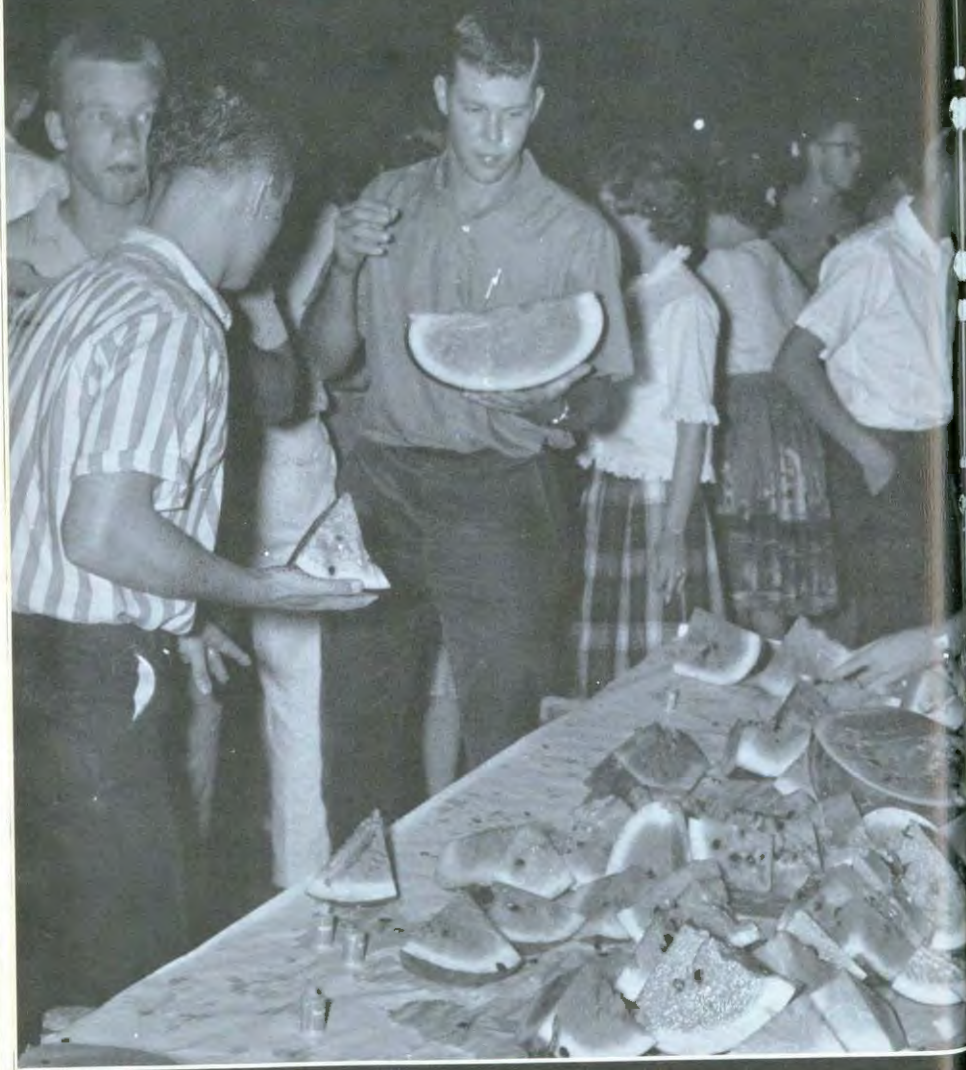


CVF STEERING COMMITTEE ... Judge, Eiler, Flory, Witmer.



MCA CABINET ... Holdeman, Alexander, Drescher, Shever, Robinson, Eiler, Beery, Eberly.

CHRISTIAN LIFE ... on campus is emphasized by McPherson Christian Association and Church Vocations Fellowship. MCA organized the "Fire-side Chats" and the spring conference for Kansas District YMCA-YWCA. Church Vocations Fellowship helped those interested in full-time church vocations.





ORGANIZATIONS



Garth Wood

STUDENT COUNCIL...Hayes, Neher, Ullom, Shobe, Emmert, Hoch, Robinson, Geis-
ert, Flory, Fruth, Christenson, Welch, Keith, Dell, Weber, Wood, Allen.

Council Directs Campus Life

Student Council, with Garth Wood president, passed decisions on dress-up night and requests for a juke box. It arranged the exchange of chapel programs and chose publications editors and business managers, and Foods and Social Committees. SoCo planned movies, WPA week, Queen's Banquet, the winter and spring formals, and dances after home games.



SOCO... Wagner, Fox, Keith, Bowen, and Marte meet in music room.



STUDENT COURT...Flory, Johnston, Gooding, Werner, Andes, Mohler, Weber, Ullom, Harrison, Bailey, Kuhlman.

STUDENT COURT... composed of nine members from the three top classes, with Dr. Flory as faculty representative and Carl Werner as court justice rendered decisions on cases of student violations.

DEMOCRATS... The newly formed Young Democrats drew up their constitution and applied for recognition in the national organization. They edited a newsletter and challenged the Young Republicans to a debate in chapel and a 50-mile hike. In March they sponsored a square dance.



DEMOCRATS... Krehmeyer, McBride, van de Velde.

REPUBLICANS... Young Republicans Club, the first organized political club on campus, began the year by publishing their paper, the "Rallymaster." In November they held an Election Party in the SU basement and watched the election returns. They worked with the local Republican County Headquarters and had Bob Wise, the county attorney, speak at their meetings.



REPUBLICANS... Holmes, Harrison, Bell, Mohler, Miller.



College Councils Work Together



Women's Council assisted Miss Mary Ann Robinson, dean of women, with campus problems and promoted good relations among the women students. It sponsored "Freshman Daze," Women's Tea, and Heart Sister Week. Men's Council, under the guidance of S.M. Dell, dean of men, discussed the problems of male students. Men's Council set up the big and little brother system and served the Men's Supper.





DEBATE. . . Under the direction of Coach William Brooks, debaters established new records.

PI KAPPA DELTA. . . members participated in intercollegiate forensic tournaments to be eligible for this honorary fraternity.



ALPHA PSI OMEGA. . . honorary dramatic society, elects to its membership students who have met standards in acting and production.

PLAYERS' CLUB. . . open to all students interested in dramatics, helped Mrs. Una Yoder with the productions of "The Miracle Worker," "Night of the Meek," and "Papa is All."





Miss Mildred Siek advises home economists.

Members Prepare For Careers Ahead

McPherson's Home Economics Chapter and the Agricultural Club bring together students interested in careers in these fields. Both groups held monthly meetings featuring guest speakers, films, and panels. Their activities included field trips and service projects. As one project, the women served the canteen for the Red Cross Bloodmobile visit to the Campus on Dec. 10.



Mrs. Simon Strouse observes Zola Fyock and Dona Hutchison serve Feusenhiser and Hadley.



Agricultural Club listens to Beverly Stagg, McPherson County agent.



MENC ... works to promote better music. President Albin leads at meetings of Music Educators National Conference. Other officers: Stump, Martin.



PHI ALPHA THETA ... Epsilon-Eta Chapter rewards excellent scholastic achievement and special attainment in history. Officers: Mohler and Allen.



SNEA ... Maurice A. Hess Chapter (Student National Education Association) attained "100 and You for '62" with 118 members. John Harrison served as state vice-president. Officers: Gooding, Dr. Frantz, Hoch, Yoder, Werner, Weber.



QUADRANGLE EDITORS. . . , Kay Weber and Marcia Yoder, confer with Mrs. Brunk, adviser, about the yearbook layout.

Changes in The 1963 Quadrangle and The Spectator began in July 1962 when Muriel Gibson, Kay Weber, and Mrs. Homer Brunk attended a publications Workshop at Kansas State University. Muriel, Kay, and Weyland Beeghly were the editors of the official school publications of the Student Council. Through their editorship of 30 issues of the Spectator, Muriel and Weyland removed the column rules, changed the headline styles, added a classified ad section, and offered the editorial page as a medium for students to express their opinions. The Quadrangle's main change was adopting a newspaper style for copy in the 112-page yearbook.

Students Publish.



SPECTATOR EDITORS. . . , Muriel Gibson and Weyland Beeghly, discuss copy and galley proofs with Mr. Ford Gass at the local printers.



Gary Ross, business manager, draws up ads for The Quadrangle.

Beverly Judge, managing editor, and Dave Anders, campus editor, discuss headlines for The Spectator.



Larry Morlan, works on his sports column, "From The Locker Room," while John Wagner, reporter, reads.

Ken Ullom, assistant business manager, and Allan Vance, business manager of The Spectator, discuss weekly beats for ads.



As class editors for The Quadrangle-- Beverly Jackson, Bonnie Hummer, and Marilyn Detwiler--compare page layouts.



Perched on her "thinking" stool, Harriett Swinger, copy editor, pecks away on Quadrangle copy.





INTERNATIONAL RELATIONS CLUB. . . interested in foreign relations, their members presented programs by showing slides, bringing food, or showing films from their native countries. In the fall they visited a Greek Orthodox church in Wichita and before Christmas vacation they invited Sterling College's International Club for a party on our campus.



GERMAN CLUB. . . through films and regular meetings strove to develop a broader knowledge of the German language and people.

SKATE CLUB. . . actively held skating parties in Hutchinson and Lyons for Maccollege students.



TROMBONE QUARTET. . .



MALE QUARTET. . .

Ensembles



CLARINET QUARTET. . .



LADIES' QUARTET' . . .



TRUMPET QUARTET. . .



LADIES' TRIO. . .



WOODWIND QUINTET. . .



FRENCH HORN QUARTET. . .



Row One: Neher, Hull, Scott, K. Andes, Huffman, L. Standafer, Gridley, Yoder, Werner, Kesler, Johnston. Row Two: Oltman, Fasnacht, Fillmore, Robison, Looker, Strom, Keith, Bechtel, Hossler, Olwin, C. Andes. Row Three: D. Standafer, Miller, Barrows, Harris, Emmert, Burkholder, Stump, Blough, Gier, Snyder. Row Four: Grout, Howell, Saffer, Hendricks, Achilles, Peters, Cannon, Ankeaman, Haldeman, Ockerman, Dusek.

Row One: Barton, Huffman, Scott, Knop, Hull, James, Blough, Gier, Burkholder, Yoder, Gridley, L. Standafer, McBride, Parks. Row Two: K. Andes, Looker, Strom, Neher, Fasnacht, Robison, Onouha, Snyder, D. Emmert, Kesler, Werner, Martin, Mohler, Bryant. Row Three: R. Emmert, N. Miller, J. Miller, Barrows, Howell, Harris, Haldeman, Dusek, Cannon, Oltman, Hess, Hummer, Keith, Geesaman, Johnston. Row Four: Bond, Bell, Fillmore, Grout, Saffer, Achilles, Hendricks, Ockerman, Ankenman, C. Andes, Hossler, Olwin, Brumbaugh, Bechtel, Swinger.



A CAPPELLA CHOIR... chosen from Choral Club, toured Kansas and Colorado and presented a spring concert. Small ensembles represented Mac college on deputation tours.

CHORAL CLUB... consisted of students who enjoyed singing. Under the direction of Miss Doris Coppock, they presented "Requiem" (by Faure with) Florene Hale and Ed Wellman as guest soloists.

CONCERT BAND. . . Miller, Brown, Rousselow, Holderreed, Parks, Chaloupka, Brown, Shobe, Hintz, Lehman, Kuseart, Weber, Werner, Wood, Miller, Neher, Keck, Oltman, Hoover, Embers, Jamison, Dusek, Dusek, Tietjens, Delp, Fletcher, Olwin, Peters, Welmer, Mars, Achilles, Cannon, Peck, Burnett, Blair, Allen, Hollis, Pfaltzgraff, Kitzel, Hardin, Dresher, Kesler, Grady, Long, Draper, Flory, Neher, Weaver, Stump, Emmert, Ockerman.



STAGE BAND. . . played for several student dances and performed at a clinic for the Kansas Music Educators' Association Convention at Kansas State University in February.

They Make Music.

WIND ENSEMBLE. . . chosen from the Concert Band, and all other instrumental groups are directed by Irvin Wagner.





Players Present

Two Productions

Under the direction of Mrs. Wilbur Yoder, Players' Club presented two major productions -- "The Miracle Worker" December 6 and 8 and "Papa Is All" March 8 and 9.

Connie Andes as Annie Sullivan and Carolyn Lunkley as the blind Helen Keller starred in the story of the dedicated teacher who transformed a blind, deaf, and vicious girl into one of America's greatest women.

The set featured a cut away of a house showing the Keller dining room and Annie's upstairs bedroom. A squeaking water pump was one of the realistic details.

Helen meets Annie.

THE MIRACLE WORKER

by William Gibson

Doctor	Vance Alexander
Kate Keller	Joyce Martin
Captain Keller	Peter Ford
Martha	Judy Atwater
Percy	Curtis Christy
Viney	Vida Sue Werner
Helen Keller	Carolyn Lunkley
James Keller	Lowell Flory
Aunt Ev	Elois Nelson
Anagnos	Richard Witmer
Annie Sullivan	Connie Andes
Beatrice	Beth Looker
Mary	Donna McBride
Alice	Elaine Groff
Laura	Emilee Solomon
Sarah	Winifred Brown
Director	Mrs. Wilbur Yoder

Annie's troubles begin.





Officer Brendle arrests Papa Aukamp.



Mrs. Yoder sings.

"Papa Is All," presented during Regional Youth Conference, showed the conflict between a strict Pennsylvania Dutch father and his family. Peter Ford's authentic whiskers and the dialect used by the characters created atmosphere for the production.

The rebellion of Emma and Jake and the gossiping of a neighbor caused Mama to question her convictions and her reactions to Papa's domineering ways.

PAPA IS ALL

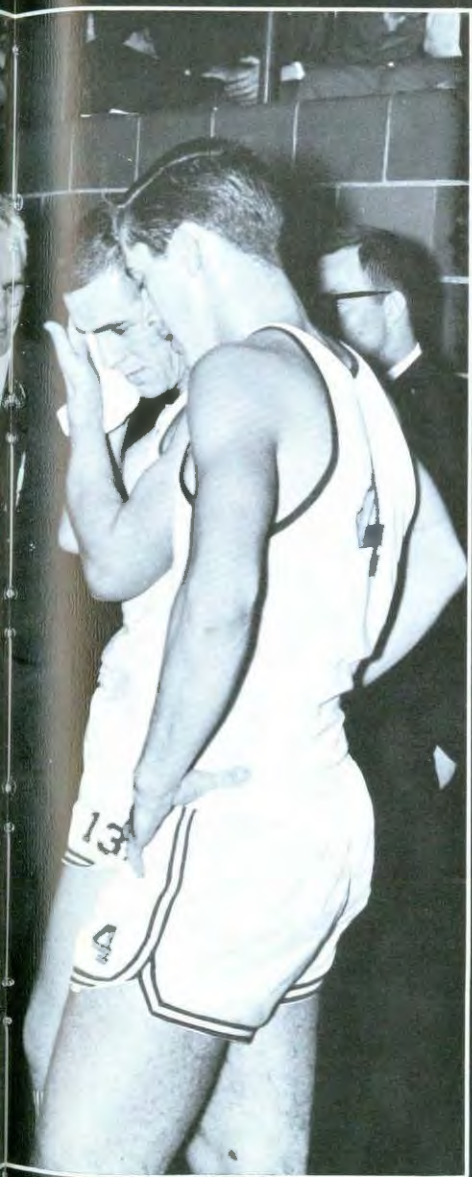
by Patterson Greene

Mama Sue Warrick
 Jake John Harrison
 State Trooper ... Edwin Mohler
 Emma Dell Ann Larsen
 Mrs. Yoder Sonja Smith
 Papa Peter Ford
 Director .. Mrs. Wilbur Yoder

Papa disciplines Jake.







SPORTS





FRESHMAN ATTENDANT... Judy Hoover



SOPHOMORE ATTENDANT... Lena Miyasaki

Homecoming Royalty Reigns Graciously

Sharon Allen, chosen from the junior class by popular vote of the Student Body, graciously reigned as Homecoming Queen. The 1962 queen, an honor roll history major from Wichita, was crowned at the Queen's Banquet by the retiring queen, Galeda Heefner. Her two attendants were Lena Miyasaki from the Sophomore class and Judy Hoover from the Freshman class. Lena, a flashing Hawaiian, majors in elementary education and during the past year succeeded in convincing students that she did not attend school in a grass hut. Judy, who glimmers as radiantly as the gold discovered in her home state of Colorado, has chosen sociology as her major.

HOMECOMING QUEEN... Sharon Allen



RETIRING QUEEN... Galeda Heefner



TRADITION RETURNS..
as preparations for Home-
coming begin with a theme..

The results . . .



. . . "a plain victory"

Three chosen girls anxiously prepare for. . .



Memories of Homecoming
are of organization displays,
leis of orchids shipped from
Hawaii, and an "Autumn
Leaves" banquet and dance.

The results. . .



. . . our royalty

Sports are...

A Spirit...



An Individual...



A Group...





ROW ONE: D. Kuhlman, Chance, H. Davidson, Pritchett, O'Neal, Steidle, Patrick, K. Davidson, Groff, McPherson. ROW TWO: Bailey, W. Kuhlman, J. Krehbiel, Rolston, Emack, Smith, Judson, Haddox, Crumrine, Perez. ROW THREE: Priddy, Johnson, Wilson, Ratzlaff, Book, S. Krehbiel, Leinen, Bowman, Petrucci, Pope. ROW FOUR: Sid Smith, Unruh, Sword, Wood, Koehn, Tinsley, Gray, Grady, Weddle, Wallace, Brumbaugh. ROW FIVE: Huffman, Hoch, Miller, Slater, Taylor, Reazin, Hoover, Harrison, Charbonneau, Warner, Don Widrig.

During their nine-game football season against Kansas Conference opponents, the Bulldogs played in three homecoming games--their own with Southwestern, Bethany's, and Ottawa's. All-Conference honors went to five seniors--Silas O'Neal, senior guard who made both offensive and defensive teams; to co-captains Larry Crumrine and Garth Wood and David Priddy and Donavon Koehn, who received honorable mention. Other seniors on the Bulldog squad were Harvey Davidson, Art Hoch, Galen Huffman, and LeRoy Weddle. The squad ended the season with a 3-6 record as College of Emporia took the conference with an undefeated record of 9-0.

		Mac
Sterling	0	12
C. of E.	39	0
K. W. U.	12	13
SW	26	7
Friends	0	39
Bethany	7	0
Baker	26	0
Ottawa	46	13
Bethel	24	6



SILAS O'NEAL . . . winner of the pair of shoes for making the most tackles at the first home game, was chosen this year for both All-Conference Teams. Silas set records while playing football two years for Macollege.

Football Brings Honors . . .

AT THE GAME . . . Co-captain Garth Wood and coaches discuss action against Bethany at Lindsborg.



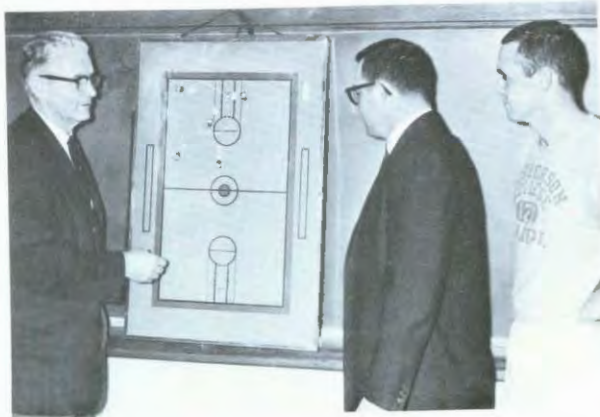


Art Hoch jumps at center.

Scores

		MAC
Bethel	72	65
SW	75	73
Sterling	79	81
Ottawa	82	66
C. of E.	61	68
Bethany	74	60
Friends	70	77
Baker	54	73
KWU	59	78
Bethel	60	68
SW	94	81
Sterling	82	78
Ottawa	73	58
C. of E.	62	66
Bethany	67	61
Friends	100	110
Baker	58	74
KWU	61	73

Coaches Sid Smith and Don Widrig worked together on all varsity sports. Larry Crumrine, trainer, observes basketball plays drawn by Sid.





BASKETBALL TEAM . . . ROW ONE: Warner, Haddox, W. Kuhlman, Knehans, Morlan, Elmore, Bailey, D. Kuhlman, Unruh. ROW TWO: Hoch, Cordill, Enke, Tegeler, Wallace, Hoover, Weddle, Mohler.

Bulldogs Set Basketball Records

Top scorers for the 1963 basketball team--sophomores Marion Enke and John Tegeler, and senior guard Deryl Elmore--helped the team average 72 points per game in a 13-12 season with a record of 10-8 in a close conference race which saw many games won in the final minutes. Seniors Art Hoch and LeRoy Weddle maintained a record of 50 per cent of their individual field goals.



VARSITY TEAM . . . ROW ONE: Knehans, Hoch, Tegeler, Enke, Elmore. ROW TWO: Cordill, Hoover, Mohler, Bailey, Weddle.



Deryl Elmore . . . in four years of basketball set many records: leading scorer for the college three years in a row, leading scorer in the conference one year, all-conference second team once, and all-conference team twice.



1962 TRACK TEAM . . . ROW ONE: Wiggins, Huffman, Frazier, Keister, Warner, Atwater, Emmert, Harrison, Heidebrecht. ROW TWO: Coach Smith, Wesselowski, Tegeler, Enke, Cordill, Pope, Rindt, Wallace, Kruse, O'Neal, Koehn, Crumrine, Coach Widrig.



GALEN HUFFMAN . . . holds the Mac college pole vault record.

Mac Athletes Show Versatility

Athletics included intramurals and individual sports as well as intercollegiate activities. The 1963 track team included Galen Huffman, holder of the school's pole vaulting record, and Lynn Warner, who ran a three-mile course in 16:01 and ran to Galva and back, a distance of 13 miles, in one hour and twenty-nine minutes. Other leading trackmen were Donavon Koehn, Marion Enke, and Dennis Wallace.



ROAD WORK . . . Marion Enke, John Tegeler, Dennis Wallace, Lynn Warner.

Dennis Wallace and John Tege-ler together supervised the in-tramural basketball, volley-ball, and softball games.



Volleyball intramurals won by College Courts provided recrea-tion for players and spectators.



Swimmers qualified for Red Cross certificates by attending classes at the local YMCA.



PHYSICAL FITNESS . . . was the watchword in 1963 from the White House to Macollege's gym and Student Union. Intramurals included league bowling this year for the first time. Eight men's and eight women's teams bowled every Tuesday afternoon during the second semester. The highest individual bowlers also competed in matches held with other colleges in the area.

TENNIS PLAYERS . . . Kelly and Priddy pause with the greenhouse in the background.

MAKE THAT SPARE! . . . Bowlers join the intramurals program.



STUDENT UNION . . . provides less vigorous exercise.

WOMEN'S BASKETBALL... ROW ONE: Nancy Miller, Karen Andes, Judy Knelson, Nancy Erritt, Shirley Vanderau. ROW TWO: Judy Claassen, Anne Kruse, Commie Andes, Judy Penny, Anna Hutchison, Jeanette Weddle.



With an undefeated record except for two tournament games with Sterling, the Macollege Women's Basketball team had a successful season with ten wins. Final statistics showed the sextet had an offensive average of 45.6 points per game and a defensive average of 32.8 points per game. Anne Kruse finished as the top scorer with a 23.3 point average.

Physical Fitness...

WAA had the concession stand during football season, and held a formal spring banquet. Throughout the year members went on outings for required points.



WOMEN'S ATHLETIC ASSOCIATION... ROW ONE: Allen, Atwater, Standifer, K. Andes. ROW TWO: Knelson, Krehmeyer, A. Hutchison, Erritt, Miller, Haun. ROW THREE: Warrick, Gibson, Clark, D. Hutchison, Fruth, C. Andes, Kruse, Albin, Coppock.



M CLUB...composed of athletic lettermen served the Watermelon Feed, gave a luncheon for their alumni members, sold cushions at football games, held a banquet, sponsored the M Club carnival, and initiated new members who had lettered in some sport during the year.



Clem Bailey shines Larry Crumrine's shoes for initiation.



Greasy fingers painted posters at Pep Club party.

PEP CLUB...created pep and enthusiasm for intercollegiate games by the Pajama Parade, the Burning of the Swede, and a Pizza Poster Party. Money-making projects consisted of selling mums at Homecoming and having the concession stand at the basketball games. Service projects were fixing the gym bulletin boards and helping to pay for a heating lamp added to the athletic department.





A-STRING CHEERLEADERS . . . Shirley Vanderau, Judy Fox, Karen Oltman, Vida Sue Werner, Charlotte Erritt.

Girls Lead School Spirit

Five girls steadily worked for the improvement of the school's spirit and the encouragement of the varsity team. Cooperating with the Pep Club, they led the pep rallies, caravans, pajama parade plus sponsoring a grade school cheerleading clinic for fourth and fifth graders. B-String, selected at mid-term, added to school spirit.



PAJAMA PARADE . . . p. j. -clad students led by cheerleaders form the traditional line down main street.



B-STRING CHEERLEADERS . . . Mary Ann Bryant, Glenna Fields, Alvin Blough, Genelle Mohler, Claudia Kimmel.





STUDENTS



THELMA STUMP . . .



GARTH WOOD . . .



ART HOCH . . .

JOE FUNDERBURK . . .



ELMER GOODING . . .

SHARON KEITH . . .





KAY WEBER . . .



CARL WERNER . . .

Nine Seniors of '63 Receive Recognition

Nine Maccollege seniors were chosen for Who's Who Among Students in American Universities and Colleges. These people received recognition, not only because of scholastic achievements in their fields, but because of leadership shown while attending Maccollege. Their abilities and interests range from the smallest atom to the complicated human body -- from teaching a child to add apples and oranges to keeping intricate figures in accounting ledgers--from creating exciting combinations of words to producing notes that convey great feeling. The spectrum of their plans and future is unlimited



STUART FRAZIER . . .



SENIOR CLASS OFFICERS... Galeda Heefner, Treasurer; David Royer, Vice President; Carl Werner, President; and Charlotte Erritt, Secretary.

Class Of 1963 Witnesses Many Campus Changes

The class of 1963 is unique since the members had classes in both Sharp and Mohler; attended chapel in both the Church of the Brethren and in Brown; watched Sharp be replaced by Brown Auditorium, Mohler Hall and the Student Union; and this year witnessed the construction of a new men's dormitory. These same students who used the Dog House and heard Sharp's creaking stairs and her wheezing whistle now see the campus with the new concrete and glass buildings, equipped with chimes and an intercom.

Like most seniors, the class of '63, juggled schedules to meet the distribution and major course requirements to obtain their diplomas. More than half of them spent nine weeks as student teachers in the McPherson area. Many were active in the clubs on campus and were the leaders in SNEA, Agricultural Club, Alpha Psi Omega, Phi Alpha Theta, Young Republicans, WAA, M Club, Women's Council, Men's Council, Skate Club, Social Committee, and Student Court, with one being the Student Council president and another the editor of the Quadrangle.



GARY BAILEY
History

MICHAEL C. BEGOLE
Business Administration

ARLO BOWEN
Agriculture

VIRGINIA BRANDENBERGER
Education and
Psychology

LEON BREWER
Elementary Education
and History

CLARICE BROWN
Music Education



DOROTHY BROWN
Philosophy and Religion

GALE BURKHOLDER
Industrial Arts

KARL BUSKIRK
Chemistry

GAIL CLARK
Elementary Education

LARRY CRUMRINE
Chemistry

HARVEY DAVIDSON
Industrial Arts





WILLIS DETWILER
History

JOHN DILLEY
Education and Psychology

PAUL EDIGER
Business Administration

DERYL ELMORE
Agriculture

PAUL ENGBORG
Business Administration

CHARLOTTE ERRITT
History



STUART FRAZIER
Math

JOE FUNDERBURK
Biology

LITSA GERMIMBESSIDOU
Home Economics

ELMER GOODING
Business Administration

MARCENE GRIDLEY
Elementary Education

BETTY GRIPE
Elementary Education



THAYNE GROFF
Math

JERALD HADLEY
Biology

LARRY HAWKINSON
Business Administration



BYRON HAYES
Philosophy and Religion

GALEDA HEEFNER
Elementary Education

JOHN HEIDEBRECHT
Business Administration

JEAN HERR
Home Economics

MARGARET HESS
Elementary Education

ROBERT HESS
Philosophy and Religion



GERALD HICKS
Industrial Arts

ALVIN HINTZ
Industrial Arts

ART HOCH
Elementary Education



LARRY HOLMES
History

JIM HUBER
Sociology

GALEN HUFFMAN
Industrial Arts

KAREN HUFFMAN
Elementary Education

EUGENE JAHN
Business Administration

CALVIN KEELING
History



SHARON KEITH
Elementary Education

DONAVON KOEHN
History

KATHRYN KREHMEIER
Chemistry

WENDELL LAUVER
Elementary Education

PERRY LONG
Agriculture

BETH LOOKER
Elementary Education



GLENN LOREI
Biology

VEVALEEN LUGNSLAND
Elementary Education

CAROLYN McPHERSON
Business Administration



MARILYN MARTIN
Elementary Education

ROBERT MATTINGLY
Economics and Business
Administration

JUDY MILLER
Elementary Education

EDWIN MOHLER
Philosophy and Religion

EDWARD MURRAY
Biology

JESS MYERS
Economics and Business
Administration



PAUL MYERS
Philosophy and Religion

ELOIS NELSON
Elementary Education

MIRIAM OLIVER
Elementary Education





LaVINA OLLENBURGER
Music Education

SILAS O'NEAL
Elementary Education

MARJORIE PARSONS
Education and Psychology

JERRY POFF
Chemistry

DAVID PRIDDY
Business Administration

PANSY PUCKETT
Education and Psychology



LOREN REGIER
Business Administration

PATRICIA ROLFS
English

GARY ROSS
Sociology

DAVID ROYER
Biology

BESSIE SCHMIDT
Elementary Education

LINDA SEBES
Elementary Education



DICK SITTS
History

DONALD SMITH
Industrial Arts

GEORGE SNYDER
Philosophy and Religion



GERDOLD STEWART
Industrial Arts

HARRY STINE
Agriculture

DUANE STRICKLER
Industrial Arts

THELMA STUMP
Music Education

CAROLYN TRAPP
English

RONALD TROSTLE
Agriculture



ERNEST VANCE
Agriculture

JUDY WADDLE
History

ROLLYN WALL
Economics and Business
Administration



JERRY WALTER
Biology

SANDRA WALTY
Elementary Education

SUE WARRICK
Biology

DON WLAVER
Agriculture

KAY WEBER
English

LEROY WEDDLE
Business Administration



CARL WERNER
English

EARL WHITELEY
Business
Administration

ELDON WIENS
Business
Administration

GARY WILLIAMS
Business
Administration

LESLIE WILSON
Industrial
Arts

GARTH WOOD
Chemistry

HIRAM WOOD
Philosophy
and Religion

JERALD WRAY
Speech





(JUNIOR CLASS OFFICERS)... Max Warner, president; Meelin Dresher, vice-president; Kay Shever, secretary; Jan Tobias, treasurer

Junior Display Wins At 1962 Homecoming

A highlight for the Junior Class was the Homecoming October 5-7. With Sharon Allen reigning as Queen and their display winning first, they encouraged the Bulldogs to "plain victory." Throughout the year, juniors served as presidents in campus organizations, including Home Economics, Pep Club, Young Democrats, Pi Kappa Delta, Players' Club, and MENC, and, as an editor-in-chief of the Spectator. They took the traditional English Proficiency Test in the fall and honored the seniors at the Junior-Senior Banquet in the spring.



Stanley Aelmore
Marilyn Albin
Donald Allen
Sharon Allen



David Anders
 Connie Andes
 Roy Backhus
 LeWayne Bartel



Lois Beery
 Jane Begole
 Bill Borth
 Ronald Boyd



Grace Brooks
 Teddi Brumbaugh
 Jim Burnett
 Jay D. Cannon

Juniors Prove Proficiency. . .



During enrollment week, juniors proved their skill in the use of language as they wrote for the English Proficiency Test.

Dorothy Chaloupka
 David Christenson
 Charles Coleman
 Linda Coulson



Merrill Coulson
 Robert Crabb
 Barbara Dilley
 Billie Dowers



Merrill Dresher
 Kathy Duncan
 Carol Duske
 Rodney Eisenbise



Barbara Elmore
 Roger Emmert
 Ken Fossenbiser
 Fred Fintrock, Jr.



Peter Ford
 Lois Fruth
 Nggido Gadama
 Faye Gibbel



Muriel Gibson
Elaine Groff
Evelyn Grove
Warren Harden



John R. Harrison
Bruce A. Holdreweed
Sheryl Hollis
Mark Holloway



Dona Hutchison
Ruth Irwin
Rev Judge
Bill Kelly

Carol Kesler
Rolland Kiracole
Marlys Klessig
Ralph Kreutziger



Don Kuhlman
Judy Lahman
Ronald R. Leonard
William Loewen



Marilyn Marsh
Lee W. Marshall
John Martin
Dan Morley



Allan Miller
Earl Miller
Steve Mohler
Wayne Moritz



Dennis Moyer
Dale Neal
Jim Neher
Orville Neufeld



Some Juniors Plan To Teach...

Meeting at 1:15 Monday, Wednesday and Friday first semester in Introduction to Education, some of the juniors studied teaching as a profession and observed classes in the public schools.





James A. O'Neal
William Perez
Dolores Priddy
John Ratzlaff



Robert Reazin
Richard W. Roller
John Sand
Orpha Schrag



Kay Shever
Ken Smucker
Carl Sorenson
Lynn Sorenson

Juniors Make Future Plans

At the Lagoon, which holds fascination to many students, plans for the future are often made.



Daryl Standafer
Janice Standafer
Ina Stump
Duane Sword



Jan Tobias
Calvin Unruh
Allan Vance
Shirley Vanderau



Robert Varner
Dennis Wallace
Max E. Warner
Dean Watkins



Jim Weaver
Mike Weimer
Myron Welch



Dallas Wine
Marcia Yoder
Virginia Zabel



SOPHOMORE CLASS OFFICERS. . . Judy Fox, secretary; Ronald Grout, treasurer; Lowell Flory, vice-president; Barry Haldeman, president, not pictured.

Sophomores Continue Their College Work

The sophomores, who hold the distinction of being the first McPherson College class to have no memories of Sharp Hall Tower and to have used the Student Union during its first year, returned in the fall to see further changes as their record-breaking class was exceeded in size by the incoming freshmen and a new men's residence hall was begun.

After helping to initiate the freshmen, the sophomores took active part in music ensembles, dramatic productions, and varsity and intramural sports. They assumed leadership in German Club, MCA, CBYF, and International Relations Club and saw other responsibilities that would soon be transferred to them. Near the end of the year, they faced the class tradition of building the float which represented McPherson College in the All Schools' Day Parade.



Vance Alexander
David Anhemman



Ellen Sell finds research material
in the stacks of Beeghly library.



Marilyn Bassett
Muriel Bechtel
Weyland Beeghly



Roberta Bell
Joyce Birkenholz
Larry Blair
Richard Blough



Sandra Bond
Jim Bosserman
Larry Bowman
Mike Brown



Winifred Brown
LaDonna Brunk
Arnold Cantu
Carol Christy

Sophomores . . .

Victorious . . .

Vigorous . . .

Judy Claassen
Clarence Clark



Margaret Dadisman
Marilyn Detwiler
Leonard Dooley



Nelson Durst
Norma Durst
Bonnie Eberly
Tomas Ehora



Dennis Emmert
Marion Enloe
Joseph Ezeke
Jan Fasnacht



Charlotte Fillmore
Laine Flory
Lowell Flory
Judy Fox





Anna Geesaman
Henry Gier
Merlin Grady
Alan Griffin



Ron Groat
Bill Grove
Max Gunter
Barry Haldeman



Lee M. Harris
Karen Henry
Margaret Hintz
Merrill Hodgden



Judith L. Hofmeister
Mark Hoover
Sandra Hoover



Nancy Hovis
Nolan Howell

Sophomores dragged the freshmen into the lagoon in Lakeside Park during the annual tug-of-war on September 20.



Sophomores . . .

Convocators . . .

Constructers . . .

Norman Howell
Delores James



Linda Jamison
Esther Jarvis
Clyde Johnson



Doyle Johnson
Edwin Johnson
Jolene Johnston
Sandra Kennedy



Barry Kimmel
Larry Kitzel
Judy Knelson
Sharon Knop



Rolland Kreider
Anne Knise
Naucy Kurtz
John Lade





Carolyn Lehman
Donna McBride
Edith Marshall
Francisco Marte



Fumitaka Matsuoka
Ron Mayner
Don Merryman
Peg Messick



Bethel Miller
John Miller
Keith Miller
Phil Miller



Lena Miyasaki
Colleen Nether
Fred Nelson



Richard Nelson
Jim Ockerman

Sophomores participate in chapel.



Sophomores . . .

Serious . . .

Studious . . .

Karen Olzman
Lynn Olwin



Shedrack Onuoha
Richard Patton
Roy Pfaltzgraff



Judy Penny
Nick Petrucci
Duane Pope
Dean Regher



Rex Reinecker
Rosetta Rogers
Earl Saffer
Mary Ellen Scott



Ellen Sell
Jim Shumard
Charles Snyder
Lowell Snyder





Roger Solomon
Leah Standifer
Cynthia Stoneback
Maralee Stron



Elva Stryker
Harriett Swinger
John Tegeler
Fook-Lim Tham



Kenneth Ullom
Betty Varner
Jeanette Weddle



Vida Sue Werner
Jerrold Wilson
Richard Witmer



Gayle Wood
Federick Wu



Freshmen Discover Life Away From Home

The embryo freshmen, arriving on campus, had to learn to adapt themselves to college activities. Becoming collegiate meant understanding the terms WPA, May Fete, pajama parade, heart sister, minutes, buttoning, proctors, and double cuts. After displaying their abilities in the Freshman Talent Show, they accepted the new way of life and contributed to extracurricular activities. Their biggest discovery was finding that their outlook on life had changed and that old familiar memories had lost their glamour.



Ron Achilles
Vernon Adams
Sylvia Albright
John Allen

Jim Anderson
Karen Andes
Judy Atwater
Jerry Barrows



Karen Barton
Annie Benton
Carol Betzen
Larry Bierwirth



Alvin Blough
Gary Boardman
Gerald Book
Glenna Boucher



Jim Brown
Toby Brown
Beth Brumbaugh
Dan Brumbaugh



Mary Ann Bryant
Russell Burkholder
Donna Byrum
Kathy Cadman



John Chance
Kirk Charbonneau
Lance Christenson
Curtis Christy





Chris Cole
Stu Courtney
Lonnie Crist
Lois Crouse

Freshmen Display Varied Talents...



Performer on drums . . . Ruth Ann Emmert used percussion talent at the Freshman Talent Show.



Profaner on femininity . . . Lane Yoder presented a satire on a girl getting ready for a date.



Promoters of sounds . . . The new sounds of the "3 C's" made their debut.

Dorothy Cullen
Kenneth Davidson
Dorothy Delp
Lois Draper



Ralph Duncan
Dennis Dusek
Judy Eddy
Joyce Eikenberry



R. Dean Elliott
James Emack
Ruth Ann Emmert
Nancy Erritt



Leonard Ewell
Dean Fasmacht
Glenna Fields
James Fike



Robert Fletcher
Paul Frederic
Dennes Frederick
Terry Froese



Zola Fyock
Larry Gillis
Arnold Groff
Lynette Grove





Steve Grove
Mary Ann Grubb
Jim Haddock
Keith Hall



Sherry Harper
Meredith Haun
David Heffley
Charles Helfrich



Francis Hendricks
Mike Hildibrand
Linda Hinder
Ronald Hodgden



Tom Hoffman
Judy Hoover
Stanley Hoover
Charles Horner



Jane Hossler
Gloria Hull
Bonita Hummer
Anna Hutchison



Beverly Jackson
Kenneth Jackson
Marjorie Keck
Joel Kettinger

Carole Kimmel
Claudia Kimmel
Jim Krebbiel
Steve Krebbiel



'66ers Wear Beanies. . .



Beanies on sale . . . Leah Standafer and Byron Hayes received one dollar from reluctant buyers.

Beanies for trouble. . . Connie Crist acquired an "M" for not wearing her beanie.



Beanies in use . . . Nancy Miller "buttoned" for upperclassmen.



Wendell Kuhlman
Donald Kussart
Wing-Kee Kwok
Ken Landes

Freshmen Communicate . . .



Communication by phone . . . David Hefley tied up the campus line to Arnold Hall.



Compensation by mail . . . In Dotzour, Bonnie Reed worked her combination for an anticipated letter.



Conversation among students . . . Lois Fruth was put on the spot by Freshmen interrogators at the Student Union desk.

Dell Ann Larsen
Richard Lawrenz
Mary Lehman
Warren Leinen



Charleen Lewis
Linda Little
Dennis Loewen
Douglas Loewen



John Long
Ramona Lowe
Carolyn Lunkley
Jeanette McBride



Dale Marrs
Joyce Martin
Bepin Mehta
Daniel Messer



Charlotte Metzker
Dale Miller
Deroy Miller
Lee Miller



Nancy Miller
Genelle Mohler
Martha Mohler
Larry Morlan





Fred Mugohi
Bernard Musselwhite
Norman Nance
Alma Noe



Ed Orr
Jamie Oxley
Kathy Parks
Ron Parrish



Laurel Patrick
Leonard Peck
Dave Peters
Rodney Peterson



Barbara Pittman
Patricia Pitts
Judy Plummer
Michael Rausch



Melvin Reazin
Bonnie Reed
Carl Reiste
Gail Renke



Eddie Reynolds
Judy Richards
Bonnie Robison
Ann Rodabaugh

Christine Rodes
 Doyle Rolston
 Lesley Rothrock
 Linda Rouch



Denae Rousselow
 Ted Royer
 Bonnie Sanders
 Maryanne Sanders



Karen Scott
 Dennis Sebes
 Robert Shank
 Keith Sheller



David Sherck
 Joyce Shobe
 Gerald Sirts
 Bob Slater



Bill Smith
 Hurley Smith
 Fred Snider
 Emilee Solomon



John Sonafrank
 Jim Steinle
 Sandra Stong
 Sue Stouffer





Tom Strom
Buddy Taylor
Helen Thomas
Phil Thompson



Galen Tinsley
Donna Trostle
Verlyn Uhrig
Roberta Vanderau



Lowell Vanderveer
Mildred Wagner
Jon Warner
Lynn Warner



Glen Weber
Dick Welch
Mark Werner
Robert L. Williams



Robert M. Williams
Gary Wilson
Lois Wood
Karen Wright



Janis Yoder
Lane Yoder
Lowell Yoder



FORMER STUDENTS... Marjorie Spears, Terry Tietjens, Larry King, and John Wagner.



UPPERCLASSMEN... Phil Zuercher, Adegbola Adejumo, Robert Krehbiel, and Rick DeTour.

New Faces...

FRESHMEN and SOPHOMORES... Rosalie Brown, Douglas Hawkinson, David Winkler, Jo Erta Krehbiel, Joan Burger, Virginia Stabenow, Gary Kaufman, Anita Joy Ledell, Buford Burnett, Jim Black, Paul Ensz, Gaylia Grant, Roger Vogt, and George Czaplinski.

Life





Gary Ross, business manager, and Daryl Standafer, assistant business manager, sell to a local merchant space in The Quadrangle.

ADVERTISING



PEOPLES STATE BANK

Complete Banking

Service Observing

100th Anniversary

Of Commercial Banking




Interior, Showing Art Display.



All I Said Was

"It Came From

Renberger
 **JEWELERS**



The

McPherson & Citizens
State Bank



Grow as we grow

Your Home
Away From Home

Swimming Pool

WHEAT STATE MOTEL

McPherson's Newest and Finest
Lester Premier, Owner

Phone CH 1-4230

Junction 81 - 56

McPherson, Kansas

STANLEY'S

Where fashion and good
taste need not be expen-
sive.



We Welcome Student Accounts and Give Student Loans



122 W. Marlin

McPherson, Kansas

ROSS And ROSS

Real Estate and Insurance

CONGRATULATIONS

McPherson College
and
Its graduating Seniors and
wishes the best to both

We offer action with
assured reactions.

3136 State Avenue

We handle complete
Fire Insurance and
Auto Insurance.
Kansas City, Kansas

MILLERS

Stationery

Printing

Books

"...reading
maketh a full man"

121 South Main
McPherson Kansas



Candlelight Dining
at

Friends Kitchen

BALL AND SON FUNERAL HOME

Glen E. Ball Eddie Ball
McPherson, Kansas

THE ENTRIKEN-PERRIN AGENCY

104 N. MAIN PHONE CH-1-2922
HOME LOANS INSURANCE

MARCIA'S GIFT CENTER

ALL Kinds of Gifts... for Someone
Special to Remember!

Westmoreland Milk Glass
Linen, Figurines, Woodcuts
Hallmark Greeting Cards
and Stationery

We Gift Wrap, and Wrap for Mailing
108 N. Main CH 1-0524 McPherson

**DON'S
CAMERA SHOP
AND STUDIO**



**CAMERAS AND PHOTO
SUPPLIES**

212 North Main



NATIONAL COOPERATIVE REFINERY ASS'N.

We Study Your
Insurance Needs

And Recommend
A Schedule To
Meet Them at
Lowest Cost

Why Not Consult us For Protection
Service Satisfaction

**METTLEN INSURANCE
AGENCY**



115 E. Marlin

DAISY'S BEAUTY SHOP

DAISY LEGGITT HELEN POPE
BLANCHE SCHNEIDER SARA DOBLINS
119 S. MAIN ANITA GUSTAFSEN CH 1-2316

SWANSON'S FOOD STORE
116 EAST EUCLID



MODERN INSULATING CO.
504 W. KANSAS—PHONE CH-1-6602
INSULATION—ROOFING—AWNINGS
STORM WINDOWS AND DOORS

MORRIS AND SON

LADIES' SPORTSWEAR
MEN'S AND BOYS' WEAR

RALEIGH'S

RELIABLE PRESCRIPTIONS

213 North Main Street
Phone CH 1-1574
McPherson, Kansas

C. R. ANTHONY CO.
"Your Friendly Department Store"
100 N. Main

THE
FARMERS
COOPERATIVE

Little River

McPherson

POWDER PUFF

Beauty Salon



"We specialize in Students
with the Personal touch!"

CH 1-0717
111 E. Elizabeth McPherson

KIT MANUFACTURING COMPANY, INC.



Homes For An Expanding America....
Building With McPherson College -For Tomorrow

1700 E. First
CH 1-1500
McPherson, Kansas



Proud to serve...

MCPHERSON COLLEGE

and more than 150 other schools,
colleges and universities across
the nation.

- Atlanta
- Baltimore
- Chicago
- San Francisco

a division of Automatic
Retailers of America, Inc.

Philadelphia 46, Pa.



Car bodies can be
Repaired or replaced
But not human bodies



Drive safely and live
Insure and save
With

ALLIANCE AGENCY

110 E. Kansas Phone CH 1-0213

Local Agents for:
Farmers Alliance Mutual Ins.
Alliance Mutual Casualty Co.
Alliance Life Ins. Co.
McPherson, Kansas

America's Liveliest, Most Care-Free!
For '63 The Lively Ones Come From Ford!

Quality Built
Quality Sold
Quality Serviced
Genuine Ford Parts
Trained Servicemen

Best Used
Cars at
lowest
prices



MERCURY

See the Lively Ones Now...

519 N. Main

ELTON LOBBAN MOTORS

Chevrolet

Jet - Smooth for '63

Oldsmobile

Something Extra About
Owing an Olds

- OK used cars
- Body Shop
- G M Service

FRED McKENNA

Chevy - Olds
Nite Service

SAN-ORE

CONSTRUCTION CO., INC.

Best Wishes

to

McPherson College

"BEHIND THE BULLDOGS ALL THE WAY"



Sales - Name Brand Sporting Goods: Wilson, Rawlings

Service-School representative: Dennis Reffner

Support - Backing the college with funds and faith

319 N. Main - McPherson, Kans. - CH 1-2300

THE WALL-ROGALSKY MILLING COMPANY

McPherson, Kansas



Make it an occasion she will always treasure!
Send her flowers from...

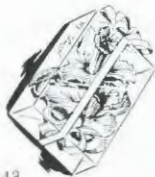
McPHERSON
FLORAL

We serve...
to serve again



515 N. Ash

CH 1-4343





Be Prepared . .
Have Your Clothing
Professionally done
by **BADER
CLEANERS**

118 E. Kans.

"Neatness Pays Dividends"

MCPHERSON BUSINESS MACHINES
Royal Typewriters
Victor Adders

"We rent typewriters as well
as selling them. See us for
student rates."

Sales
& Service

109 E. Kansas McPherson



Quality



Service



Dependability

RUPP TIRE SERVICE

Across from the Post Office.

CH 4-3237



Personal Service . .

Evening Appointments for

Your Convenience. Call Us!

CH 4-2294

214 N. Main McPherson



Tempting Foods!

Shop our

Bar - b - que

"Where your
shopping
dollar
buys more"

"True Value Meats"

Eldon's



McPherson - Lindsborg - Marquette

*J. M.
McDonald
Co.*

112 N. MAIN
CAMPUS FASHIONS
AND
SPORTSWEAR

GENERAL WELDING WORKS
416 WEST KANSAS PHONE CH-1-3838
MCPHERSON, KANSAS

"CHECK OUR BUDGET PRICES..."

Many Thanks . . .

Many thanks are due to the people who had a part in the production of this book. Special thank you's are due to Don's Studio and Myers Yearbooks, Inc. of Topeka for without their contribution this book would never have been produced.

The Quadrangle Staff



Freshman students learn directions at the first of the year.

Student

Directory

Student Directory

FRESHMEN

- Achilles, Ronald, McPherson
 Adams, Vernon, Simpson, Kan.
 Albright, Sylvia, Dallas Center, Ia.
 Allen, John, Newton, Kan.
 Anderson, James, Circleville, Ohio
 Andes, Karen, Mound City, Mo.
 Atwater, Judy, Larned, Kan.
 Barrows, Jerry, Waterloo, Ia.
 Barton, Karen, Argonia, Kan.
 Benton, Anne, Costa Mesa, Calif.
 Betzen, Carol, McPherson
 Bierwirth, Larry, Bartonville, Ill.
 Blough, Alvin, Duncansville, Pa.
 Boardman, Gary, McPherson
 Book, Gerald, Pueblo, Colo.
 Boucher, Glenn, McPherson
 Brown, Jimmie, Union, Mo.
 Brown, Toby, Wichita, Kan.
 Brumbaugh, Beth, Fruita, Colo.
 Brumbaugh, Daniel, Saxton, Pa.
 Bryant, Mary Ann, Denver, Colo.
 Burkholder, Russell, Preston, Minn.
 Byrum, Donna, Miami, Tex.
 Cadman, Kathy, St. John, Kan.
 Chance, John, DeKalb, Ill.
 Charbonneau, Kirk, Osborne, Kan.
 Childers, Larry, Liberal, Kan.
 Christenson, Lance, McPherson
 Christy, Curtis, Garrison, Ia.
 Clark, Marlane, Wheaton, Ill.
 Cole, Myranda, Bluefield, W. Va.
 Courtney, John, Garden City, Kan.
 Crist, Connie, Scott City, Kan.
 Crouse, Lois, Adel, Ia.
 Cullen, Dorothy, Holmesville, Neb.
 Davidson, Kenneth, McCune, Kan.
 Delp, Dorothy, Mauly, Ia.
 Draper, Lois, Eldora, Ia.
 Duncan, Ralph, Denver, Colo.
 Dusek, Dennis, Ravenna, Neb.
 Eddy, Judith, Minneapolis, Minn.
 Eikenberry, Joyce, Greenville, Tenn.
 Elliott, R. Dean, McPherson
 Emack, John, Cabool, Mo.
 Emmert, Dennis, Adel, Ia.
 Emmert, Ruth Ann, Adel, Ia.
 Eritt, Nancy, Somers, Ia.
 Ewell, Leonard, Conway, Kan.
 Fasnacht, Dean, Wiley, Colo.
 Fields, Glenn, Wichita, Kan.
 Fike, James, Peace Valley, Mo.
 Fletcher, Robert, Denton, Md.
 Frederic, Paul, Brooklyn, N.Y.
 Frederick, Dennes, McPherson
 Froese, Terry, Buhler, Kan.
 Fyoek, Zola, Tallmadge, Ohio
 Gillis, Larry, McPherson
 Gleve, Frank, Pittsburg, Pa.
 Goff, Gary, McPherson
 Graber, Myron, Kingman, Kan.
 Gray, Wayne, Oldale, Calif.
- Groff, Arnold, Glendale, Calif.
 Grove, Lynette, Laurens, Ia.
 Grove, Stephen, South English, Ia.
 Grubb, Mary Ann, Henshey, Pa.
 Haddox, Jim, Owensville, Mo.
 Hall, Victor, Chanute, Kan.
 Harper, Sherry, Glasco, Kan.
 Haun, Meredith, Council Grove, Kan.
 Heffley, David, Alderson, W. Va.
 Helfrich, Charles, Nampa, Id.
 Hendricks, Francis, Kingsley, Ia.
 Hildibrand, Mike, Montpelier, Id.
 Hinder, Linda, Waterloo, Ia.
 Hoogden, Merrill, McCune, Kan.
 Hoedgen, Ronald, K.C., Kan.
 Hoffman, Tom, McPherson
 Hoover, Judy, Denver, Colo.
 Hoover, Stanley, Plattsburg, Mo.
 Horner, Charles, Carleton, Neb.
 Hoessler, Jane, Akron, Ohio
 Hovis, Nancy, Waynesboro, Pa.
 Hull, Gloria, McPherson
 Hummer, Bonita, Parsons, Kan.
 Hutchinson, Anna, Thomas, Okla.
 Jackson, Beverly, McCune, Kan.
 Jackson, Kenneth, Norcatour, Kan.
 Johnson, Clyde, Collyer, Kan.
 Keck, Marjorie, McPherson
 Kennedy, Sandra, McPherson
 Kettering, Joel, Greenville, Ohio
 Kimmel, Carole, Olympia, Wash.
 Kimmel, Claudia, Olympia, Wash.
 Krehbiel, James, Healy, Kan.
 Krehbiel, Steven, McPherson
 Kuhlman, Wendell, Athol, Kan.
 Kussart, Donald, Cerro Gordo, Ill.
 Kwok, Wing-Ke, Hong Kong
 Landes, Kenneth, K.C., Mo.
 Larsen, Dell Ann, McPherson
 Lawrence, Richard, McPherson
 Lehman, Mary, Enders, Neb.
 Leinen, Warren, Simpson, Kan.
 Lewis, Charleen, Denver, Colo.
 Little, Linda, McPherson
 Loewen, Dennis, McPherson
 Loewen, Douglas, Canton, Kan.
 Long, John, Quinter, Kan.
 Lowe, Ramona, McPherson
 Lunkey, Carolyn, Udell, Ia.
 McBride, Jeanette, Pekin, Ill.
 McCoy, Linda, McPherson
 Marrs, Dale, Raveau, Neb.
 Marshall, Edith, Adel, Ia.
 Marlin, Joyce, Sterling, Ohio
 Mehta, Bepin, India
 Menue, Eric, Wichita, Kan.
 Messenger, Myron, Tampa, Kan.
 Messer, Daniel, Chicago, Ill.
 Metzker, Chartotte, Warrensburg, Mo.
 Miller, Dale, Waterloo, Ia.
 Miller, Deroy, Carleton, Neb.
 Miller, Lee, Waterloo, Ia.
 Miller, Nancy, Rocky Ford, Colo.
 Mohler, Genelle, McPherson
- Moller, Martha, Warrensburg, Mo.
 Morlan, Larry, McPherson
 Mugobl, Fred, Tanganyika
 Musselwhite, Bernard, Geneseo, Kan.
 Nance, Norman, Adel, Ia.
 Noe, Alma, Vinton, Ia.
 Orr, Ed, Turney, Mo.
 Osley, Jamie, Lamar, Colo.
 Parks, Kathy, Springfield, Mo.
 Parrish, Ronald, Denver, Colo.
 Patrick, Laurel, Marquette, Kan.
 Patton, Richard, McPherson
 Peck, Leonard, Bethel, Kan.
 Peters, David, Des Moines, Ia.
 Peterson, Rodney, Wichita, Kan.
 Pittman, Barbara, Astoria, Ill.
 Pitts, Patricia, Red Ban, N. J.
 Platero, Eva, Cuba, N. M.
 Plummer, Judy, Kansas City, Mo.
 Pope, Duane, Gypsum, Kan.
 Rauch, Michael, McPherson
 Reagin, Melvin, Lyons, Kan.
 Reed, Bonnie, Adel, Ia.
 Reiste, Carl, Adel, Ia.
 Renke, Gail, Somers, N. Y.
 Reynolds, Eddie, McPherson
 Richards, Judith, Marion, Kan.
 Robison, Bonnie, South English, Ia.
 Rodabaugh, Ann, Lanark, Ill.
 Rodes, Christine, San Francisco, Calif.
 Rolston, Doyle, Sheldon, Ia.
 Rothrock, Lesley, Davenport, Neb.
 Rouch, Linda, Edinburg, Ind.
 Rousselow, Denae, Waterloo, Ia.
 Royer, Ted, Canfield, Ohio
 Sanders, Bonnie, Windon, Kan.
 Sanders, Maryanne, Garden City, Mich.
 Scott, Karen, Mt. Etna, Ia.
 Sebes, Dennis, Hanston, Kan.
 Shank, Robert, Fayetteville, Va.
 Shelter, Keith, Eldora, Ia.
 Sherk, David, Middleburg, Ind.
 Shobe, Joyce, Conway Springs, Kan.
 Sitts, Gerald, Conway, Kan.
 Slater, Robert, Denver, Colo.
 Smith, Billy, Anthony, Kan.
 Smith, Hurley, Dighton, Kan.
 Smith, Zane, Ankeny, Ia.
 Snider, Fred, Pleasant Hill, Ohio
 Solomon, Emilee, McPherson
 Sonafrank, John, McPherson
 Steinle, Jim, McPherson
 Stong, Sandra, Des Moines, Ia.
 Stouffer, Sue, Waddams Grove, Ill.
 Stron, Thomas, Reading, Minn.
 Taylor, Granville, Thomas, Okla.
 Thomas, Helen, Wilberforce, Ohio
 Thompson, Phillip, Auburn, Wash.
 Tinsley, Galen, Canton, Kan.
 Toledo, David, McPherson
 Trostle, Donna, Nicketson, Kan.
 Uhrig, Verlyn, McPherson

Vanderau, Roberta, Plattsburg, Mo.
Vanderveer, Lowell, Milford, Ind.
Wagner, Mildred, Lenox, Ia.
Walters, Michael, Pretty Prairie,
Kan.
Warner, Jon, Union, Ohio
Warner, Lynn, Union, Ohio
Weber, Glen, Wichita, Kan.
Welmer, David, Haxton, Colo.
Welch, Richard, Delphi, Ind.
Werner, Mark, Bern, Kan.
Williams, Robert L., Geneseo, Kan.
Williams, Robert M., McPherson
Wilson, Gary, Peabody, Kan.
Wood, Lois, Panora, Ia.
Wright, Karen, Seward, Kan.
Yoder, Janis, McPherson
Yoder, Lane, McPherson
Yoder, Lowell, Conway, Kan.

SOPHOMORES

Alexander, Vance, Geneseo, Kan.
Ankenman, David, Norton, Kan.
Bailey, Clemmon, Shreveport, La.
Bassett, Marilyn, Wichita, Kan.
Bechtel, Muriel, McPherson
Beeghly, Weyland, Pierson, Ia.
Bell, Roberta, McPherson
Birkenholz, Joyce, Prairie City, Ia.
Blair, Laurence, McPherson
Blough, Richard, Waterloo, Ia.
Bond, Sandra, Bethel, Kan.
Bosserman, Jim, Marquette Heights,
Ill.
Bowman, Larry, Quinter, Kan.
Brown, Mike, Wichita, Kan.
Brown, Winifred, Hutchinson, Kan.
Brunk, LaDonna, McPherson
Cannon, Jay, York, Pa.
Cantu, Arnold, Falurrias, Tex.
Check, David, McPherson
Christy, Carol, Garrison, Ia.
Claassen, Judy, Newton, Kan.
Colvin, Gail, McPherson
Cordill, Don, McPherson
Dadisman, Margaret, Astoria, Ill.
Detwiler, Marilyn, McPherson
Doolley, Leonard, Phoenix, Ariz.
Durst, Nelson, Moundridge, Kan.
Durst, Norman, Moundridge, Kan.
Eberly, Bonnie, Fostoria, Ohio
Ebra, Tomas, Philippines
Eisenbise, Rodney, Elizabethtown, Pa.
Enke, Marion, Owensville, Mo.
Ezeka, Joseph, Nigeria
Fasnacht, Janice, Fruita, Colo.
Feasenbise, Kenneth, South Bend,
Ind.
Fillmore, Charlotte, Nampa, Id.
Flory, Elaine, McPherson
Flory, Lowell, McPherson
Fox, Judy, Garfield, Kan.
Geesaman, Ama, Bethel, Pa.
Gier, Henry, McPherson
Grady, Merlin, Waterloo, Ia.

Griffith, Alan, Carleton, Neb.
Groat, Ron, McPherson
Grove, J. William, Redfield, Ia.
Gumm, Max, McPherson
Haldeman, Barry, Manheim, Pa.
Harris, Lee, Jennings, La.
Henry, Karen, Chelsea, Ia.
Hintz, Margaret, Canton, Kan.
Hofmeister, Judith, Waukegan, Ill.
Hoover, Mark, Plattsburg, Mo.
Hoover, Sandra, Plattsburg, Mo.
Howell, Nolan, St. John, Kan.
Howell, Norman, St. John, Kan.
James, Delores, Kansas City, Kan.
Jamison, Linda, Quinter, Kan.
Jarvis, Esther, Conway, Kan.
Johnson, Doyle, Galva, Kan.
Johnson, Edwin, South English, Ia.
Johnston, Jolene, Eldorado, Kan.
Kimmel, Barry, Olympia, Wash.
Kitzel, Larry, Omaha, Neb.
Knelson, Judy, Dixon, Ill.
Knop, Sharon, Denver, Colo.
Kreider, Roland, McPherson
Krusc, Anne, Little River, Kan.
Kurtz, Nancy, Oklahoma City, Okla.
Lade, John, San Pedro, Calif.
Lehman, Carolyn, McPherson
McBride, Donna, Fredericksburg, Ia.
Marte, Francisco, Puerto Rico
Matzuka, Fumitaka, Tokyo
Mayner, Ronald, Polk City, Ia.
Merryman, Don, Shickley, Neb.
Messick, Peggy, Bethesda, Md.
Miller, Bethel, Payette, Id.
Miller, John, Waterloo, Ia.
Miller, Keith, Elkhart, Ia.
Miller, Phil, Adel, Ia.
Miyasaki, Lena, Hawaii
Neher, Colleen, Quinter, Kan.
Nelson, Fred, McPherson
Nelson, Richard, McPherson
Nightingale, Helen, McPherson
Ockerman, James, Hollansburg, Ohio
Oltman, Karen, Enders, Neb.
Olwin, Lynn, Elgin, Ill.
Onuoha, Shedrack, Nigeria
Parr, Dennis, McPherson
Penny, Judy, Garden City, Mo.
Penucci, Nick, Trafford, Pa.
Pfalzgraf, Roy, Nigeria
Powers, Sandra, Mt. Morris, Ill.
Pritchett, Ray, Grayville, Ill.
Regelar, Dean, Inman, Kan.
Reinecker, Rex, Quinter, Kan.
Rogers, Rosetta, McPherson
Ruppenthal, Ann, McPherson
Saffer, Earl, Arriba, Colo.
Scott, Mary Ellen, Warrensburg, Mo.
Seidel, Lawrence, McPherson
Sell, Ellen, Conway, Kan.
Shumard, Jim, McPherson
Smalley, Dale, McPherson

Smucker, Kenneth, Orville, Ohio
Snyder, Charles, Thomasville, Pa.
Snyder, Lowell, Adel, Ia.
Solomon, Roger, McPherson
Standifer, Leah, Rocky Ford, Colo.
Stengel, Daniel, Shickley, Neb.
Stoneback, Cynthia, McPherson
Strom, Maralee, Worthington, Minn.
Stryker, Elva, Haxton, Colo.
Swinger, Harriett, Essex, Mo.
Tegefer, John, Gerald, Mo.
Tham, Fook-Lim, Malaya
Ullom, Kenneth, Wiley, Colo.
Vanner, Betty, K.C., Mo.
Wachtman, Larry, McPherson
Warner, Mack, Union, Ohio
Weddle, Jeanette, Bloom, Kan.
Werner, Vida Sue, Winona, Kan.
Wilson, Jerold, Perry, Ia.
Witmer, Richard, McPherson
Wood, Gayle, Panora, Ia.
Wu, Fred, Hong Kong, China

JUNIORS

Aelmore, Stanley, McPherson
Albin, Marilyn, Quinter, Kan.
Allen, Donald, Hugoton, Kan.
Allen, Sharon, Wichita, Kan.
Anders, David, McPherson
Andes, Connie, Mound City, Mo.
Atkins, Fred, Nampa, Id.
Bachhus, Roy, Hope, Kan.
Bartlett, LeWayne, Buhler, Kan.
Bartlett, Virginia, Hutchinson, Kan.
Beery, Lois, Marcellus, Mich.
Bergole, Jane, McPherson
Borth, Bill, McPherson
Boyd, Ronald, Nampa, Id.
Brooks, Grace, McPherson
Brumbaugh, Tedd, Fruita, Colo.
Burnett, Jim, Geneseo, Kan.
Bybee, Betty, Hutchinson, Kan.
Chaloupka, Dorothy, Yale, Ia.
Christenson, David, Kingsley, Ia.
Coleman, Charles, Chase, Kan.
Coulson, Linda, Moravia, Ia.
Coulson, Merrill, Moravia, Ia.
Crabb, Robert, Spartanburg, S. C.
Craig, Jerry, McPherson
Dilley, Barbara, K. C., Mo.
Downs, Billie, Hutchinson, Kan.
Dresher, Merlin, Canton, Kan.
Duncan, Kathryn, Denver, Colo.
Duske, Carol, McPherson
Elmore, Barbara, McPherson
Emmert, Roger, Redfield, Ia.
Erritt, Charlotte, Somers, Ia.
Finlock, Fred, Hutchinson, Kan.
Ford, Peter, Rochester, Minn.
Friday, Patty, McPherson
Futh, Lois, Quinter, Kan.
Gadama, Nagila, Nigeria
Gibbel, Faye, Lebanon, Pa.

Gibson, Muriel, Keota, Ia.
 Goering, Kenneth, Galva, Kan.
 Gripe, Betty, McPherson
 Groff, Elaine, Glendale, Calif.
 Grove, Evelyn, Lindsborg, Kan.
 Hadley, Jerald, Scott City, Kan.
 Harden, Warren, McPherson
 Harrison, John, Beloit, Kan.
 Hess, Margaret, Bareville, Pa.
 Holderness, Bruce, Seattle, Wash.
 Hollis, Sheryl, Waterloo, Ia.
 Hoffmayer, Mark, McPherson
 Hutchison, Dona, Thomas, Okla.
 Irwin, Ruth, Pampa, Tex.
 Jahn, Eugene, McPherson
 Judge, Beverly, Marshalltown, Ia.
 Judson, Stratman, Pritchard, Ala.
 Kegin, George, McPherson
 Kelly, Bill, McPherson
 Kesler, Carol, Quinter, Kan.
 Kiracofe, Rolland, Plymouth, Ind.
 Klein, Bill, McPherson
 Klässig, Marlys, McPherson
 Knechans, Douglas, Owensville, Mo.
 Kreutziger, Ralph, Marion, Kan.
 Kuhlman, Don, McPherson
 Lahlman, Judy, Quinter, Kan.
 Leonard, Ronald, Lyons, Kan.
 Loewen, William, McPherson
 Marsh, Marilyn, Topeka, Kan.
 Marshall, Lee, Adel, Ia.
 Martin, John, Canton, Kan.
 Megli, Lois, Cawker City, Kan.
 Merkey, Daniel, Cloud Chief, Okla.
 Miller, Allan, Tulsa, Okla.
 Miller, Earl, Payette, Id.
 Miller, Margie, Hutchinson, Kan.
 Mohler, Steve, Wauersburg, Mo.
 Moritz, Wayne, Manhattan, Kan.
 Moyer, Dennis, McPherson
 Neal, Dale, Panora, Ia.
 Neher, Jimmy, Cabool, Mo.
 Neufeld, Crville, Inman, Kan.
 Oliver, Miriam, Selma, Ia.
 O'Neal, James, Hutchinson, Kan.
 Ormspach, Michael, Hutchinson, Kan.
 Parks, Kenneth, Springfield, Mo.
 Perez, William, Waukegan, Ill.
 Priddy, Dolores, McPherson
 Ratlaff, John, Buhler, Kan.
 Reazin, Robert, McPherson
 Roller, Richard, McPherson
 Reubideaux, Robert, McPherson
 Sand, John, McPherson
 Schrag, Harold, McPherson
 Schrag, Orpha, McPherson
 Shever, Kay, Correctionville, Ia.
 Snyder, George, Altoona, Pa.
 Sorenson, Carl, McPherson
 Sorenson, Lynn, McPherson
 Standafer, Daryl, McPherson
 Standafer, Janice, McPherson
 Stark, Charles, Hutchinson, Kan.

Strickler, Duane, Gaithersburg, Md.
 Stump, Ina, Cushing, Okla.
 Sword, Duane, McPherson
 Tobias, Janet, Akron, Ohio
 Unruh, Calvin, McPherson
 Vance, Allan, Imperial, Neb.
 Vanderau, Shirley, Plattsburg, Mo.
 van de Velde, Chris, Chevy Chase, Md.
 Varner, Robert, K. C., Mo.
 Wachtman, Philip, McPherson
 Wallace, Dennis, Gypsum, Kan.
 Watkins, Dean, Ottawa, Kan.
 Weaver, James, Edwardsville, Ill.
 Weimer, Dennis, Haxtun, Colo.
 Welch, Myron, Delphi, Ind.
 Wine, Dallas, Billings, Okla.
 Yoder, Marcia, McPherson
 Zabel, Virginia, K. C., Kan.

SENIORS

Balley, Gary, Laurens, Ia.
 Begole, Michael, McPherson
 Bowen, Arlo, McPherson
 Brandenberger, Virginia, Burrtown, Kan.
 Brewer, Leon, McPherson
 Brown, Clarice, Quinter, Kan.
 Brown, Dorothy, Hutchinson, Kan.
 Burkholder, Gale, Preston, Minn.
 Buskirk, Karl, McPherson
 Button, Mabel, McPherson
 Clark, Gail, Wheaton, Ill.
 Cnumrine, Larry, Hazelton, Id.
 Cummans, Eva, Hutchinson, Kan.
 Davidson, Harvey, McCune, Kan.
 Detwiler, Willis, McPherson
 Dille, John, Kansas City, Kan.
 Ediger, Paul, McPherson
 Elmore, Deryl, McPherson
 Engborg, Paul, McPherson
 Frazier, Stuart, McPherson
 Funderburk, Joe, Hutchinson, Kan.
 Germimbessidou, Liba, Greece
 Gooding, Elmer, McPherson
 Gridley, Marcene, Topeka, Kan.
 Groff, Thayne, McPherson
 Hawkinson, Larry, McPherson
 Hayes, Byron, Geneseo, Kan.
 Heefner, Galeada, Cedar Rapids, Ia.
 Heidebrecht, John, McPherson
 Herr, Jean, Moundridge, Kan.
 Hess, Robert, Bareville, Pa.
 Hicks, Jerry, McPherson
 Hints, Alvin, Canton, Kan.
 Hoch, Arthur, Junction City, Kan.
 Holmes, Larry, Leoti, Kan.
 Huber, Jim, Elida, Ohio
 Huffman, Galen, McPherson
 Huffman, Karen, McPherson
 Keeling, Calvin, McPherson
 Keith, Sharon, Chicago, Ill.
 Koehn, Donavon, McPherson
 Krehmeyer, Kathryn, Haxtun, Colo.
 Krell, Florence, McPherson
 Lauver, Wendell, McPherson
 Long, Perry, Ada, Ohio
 Looker, Beth, McPherson
 Lorei, Glenn, Ramona, Kan.
 Luginasland, Vevalen, McPherson
 Nelson, Carolyn, McLouth, Kan.
 Martin, Marilyn, McPherson
 Martingly, Robert, McPherson
 Miller, Judith, Adel, Ia.
 Mohler, Edwin, McPherson
 Murray, Edward, Cando, N. D.
 Myers, Jess, Hutchinson, Kan.
 Myers, Paul, Conway, Kan.
 Nelson, Elois, Inman, Kan.
 Ollenberger, LuVina, Buhler, Kan.
 O'Neal, Silas, Mayersville, Pa.
 Parson, Marjorie, McPherson
 Peff, Jerry, Leacock, Pa.
 Priddy, David, McPherson
 Puckett, Pansy, Hutchinson, Kan.
 Quiring, Bette, McPherson
 Regier, Loren, McPherson
 Rolfs, Jerry, McPherson
 Rolfs, Patricia, Marquette, Kan.
 Ross, Gary, Kansas City, Kan.
 Royer, David, Canfield, Ohio
 Schmidt, Bessie, Canton, Kan.
 Sebes, Linda, Hanston, Kan.
 Sitts, Dick, Conway, Kan.
 Smalley, Marjorie, McPherson
 Smith, Donatid, McPherson
 Stewart, Gerald, McPherson
 Stine, Harry, Adel, Ia.
 Stump, Thelma, Cushing, Okla.
 Trapp, Carolyn, Wichita, Kan.
 Trostle, Ronald, Nickerson, Kan.
 Uncapher, Marshall, Hutchinson, Kan.
 Vance, Ernest, Imperial, Neb.
 Waddle, Judith, Prairie City, Ia.
 Wall, Rollyn, McPherson
 Walter, Jerry, McPherson
 Walty, Sandy, Windom, Kan.
 Warrick, Sue, Limon, Colo.
 Weaver, Donald, Onorogo, Mo.
 Weber, Kay, McPherson
 Weddle, LeRoy, Bloom, Kan.
 Werner, Carl, Winona, Kan.
 Whiteley, John Earl, Garden City, Kan.
 Wiens, Eldon, Inman, Kan.
 Williams, Gary, Enders, Neb.
 Wilson, Leslie, Perry, Ia.
 Wood, Garth, Panora, Ia.
 Wood, Hiram, McPherson
 Wray, Jerald, McPherson