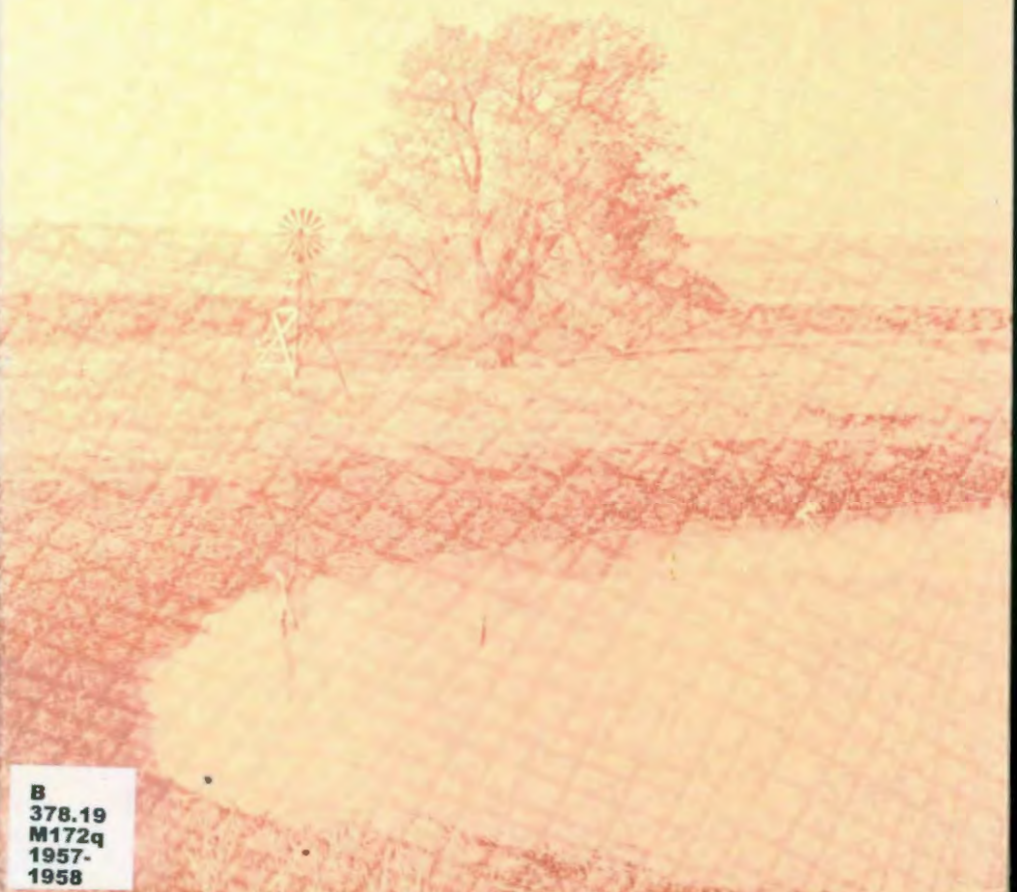


The 1958

QUADRANGLE



B
378.19
M172q
1957-
1958

the

quadrangle

m^cpherson college

m^cpherson, kansas

1958

Dedication

to The McPherson College Family

MAC

Worships Together

Studies Together

Plays Together

Grows Together

Sings Together

The Family Gathers
from a medley of states
a score of denominations
a dozen countries.

It Develops
in a mixture of work
of music and worship
of fun and fellowship.

It Goes Forth to Serve
in all walks of life
wherever service waits to be done.

May God Bless the Family!



CAMPUS LIFE





MEN'S SUPPER

An informal gathering of all men on campus when the big brothers entertain new students and frosh boys.

WOMEN'S TEA

The annual tea, as an introductory affair to acquaint old and new students with faculty members and girls.



First Week Activities

To welcome freshmen, further family spirit, and just have fun, many activities take place the first week.



The circle gets tighter, the speed faster as the pajama parade progresses.



Eating watermelons together helps form friendships. Who's got the towels!



6 Stripes and Circles at the pajama parade



Fike wins \$64,000 Question!

Monday was the Freshman Party in the Gym. Next, everyone raised his voice heavenward in song. Upperclassmen sang and performed at the all-school talent show. Following a Fike and Fancher "classic," all ate watermelon. Friday the cheerleaders helped win the Football Game from Sterling by leading the Pojama Parade the night before.



Coppock directs and the music really resounds.



This is real talent!
Oltman and Wagner blow scintillating notes.



Games in stocking feet on the Gym floor at the Freshman Party.



Watermelon can be eaten with gentility!



Freshmen make sure to get the instructions clear.



M-m-m-m... I can hardly wait!



ALL-SCHOOL PICNIC

The Macollege family spent a warm lazy afternoon and evening on the North shore of Kanapali Lake swimming and playing games. After a weiner roast all gathered quietly on the hill overlooking the lake and worshipfully directed their thoughts to a crimson sunset over the water.

Smile...!

Ah, feel that sun.





Tug-of-war results in cofusion

Freshman Daze

All Freshmen were "requested" to wear red beanies to help them feel at home. For those who failed to see the wisdom in this, there were special "treats." A tug-of-war was held in Lakeside Park, between freshmen and sophomores. Freshmen last and were required to wear their "61" beanies another week.



Fike, Council prexy, counsels freshmen to wear beanies



Girls who didn't wear beanies!



Even "contented" cows can win.

HOMECOMING

The week is very busy, but welcome by all. Campus decorations are made; the queen is chosen by the student body; and old friends are greeted. Ivadelle was crowned at the Queen's Banquet in her honor Friday night and started her reign graciously. On Saturday was the M Club luncheon for alumni, and the same evening we beat Ottawa 13 to 12.



A gathering of great minds.



Beauty reigns supreme.



We did the braves "dirt"!

Ballots float down as students reach for balloons. Who will get the lucky balloon?



WINTER FORMAL

Anne and Dennis watch the Winter Formal program from their seats of honor as Fike tells another joke.



Entertaining the royalty is the "faculty" male quartet alias College Men's Quartet.



What! Are the Student Council members bulb snatching? Oh, they are putting up decorations in front of Sharp Hall for the Christmas Season.

WITNESS FOR THE PROSECUTION



Faye Fields puts the finishing touches on Glenna's make-up before the play starts.

Leonard Vale has been accused and arrested for murder. First his wife agrees with his alibi, but in court she has another story as she testifies for the prosecution. He is acquitted, and his wife Romaine looks forward to a happy life until his girl comes into the picture. Romaine then stabs him.



Leonard Vale looks forward to a happy life now that the verdict is announced, but he does not know what his wife Romaine is doing behind his back.

Romaine surprises her husband in a meeting with his attorneys.



Police Inspector Hearne shows his credentials.



Sir Wilfrid interrogates Janet during the trial.





I
N
T
E
R
N
A
T
I
O
N
A
L

S
T
U
D
E
N
T
S

FIRST ROW: Manfred Grote, Lillian Aotaki, Blanca Paoli, Ruth Barcelo, Anna Vassiloff, Arnade Grillo. SECOND ROW: Yung Min Park, Young Yoon Kim, Bernard DeSa, Stanley Ilin, Christian Okerefor, Ramon Paoli, Gerth Riwer, Eui Young Kim, Bill Kaltsounis, Domingo Torres.



King rides again.



Not really, Fike!



Connell studies-
funny papers?



Nations eat together.

Our Homes Away



Fahnestock Hall

Dorm life is a part of college. Roommates may be odd or screwy, but they are the kind of people who make up the world. Learning to live with them is educational!



Dotzour Hall

"Ah, Blessed sleep!"

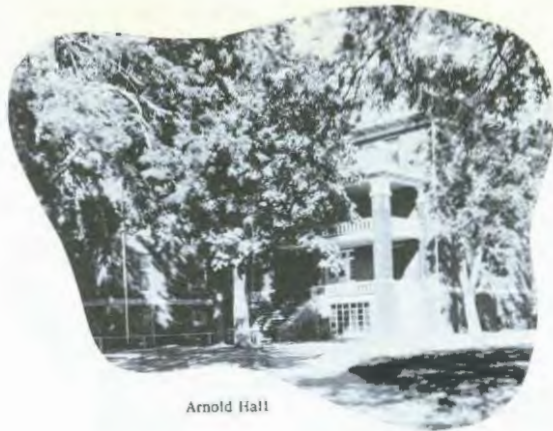


Before... After



From

Home



Arnold Hall



Fahnestock and Arnold are for men,
Dotzour is nicer; it is for women.
But men can visit there!

"She leadeth me,"

Cider-making time in Arnold.



Where We

KLINE HALL
Married and Coeds
.. a cheery home
for both alike



FRANTZ HALL
Woodworking.
Agriculture..
Shop..Welding
.. all blend
together here

COLLEGE COURTS
Domestic scenes
Babies' cries..
First home of
college couples



Live and Work



GYM
Intramurals . .
Dressing rooms . .
Basketball . .
Well-equipped
Physical Education
center

SHARP HALL
Administration . .
Chapel . . Classes
Dog House . . T.V.
S. U. R. a worthy
building, serving
many generations
of students

HARNLY HALL
Science . .
Sounds . . Smells . .
Houses Natural
Sciences, Home
Economics, Music,
Museum, classes



BEECHLEY LIBRARY
Books . . Books . .
Recently air-
conditioned, it
contains the wealth
of sages past and
present.



"Cleanliness is indeed next to Godliness".



Bob does the necessary lawn-mowing.



Judy and Vera at work in the Central Office.

"Man shall not live by bread alone."



The Student Union Room is a restful place for T, V, and study.

Students
at Work



Mary Ann takes her job of cleaning seriously.



The trampoline provides a good work out for students.

and at
Play

Snacks in the Dog House.



"It's love that makes the world go round."



RELIGIOUS



Dale Turner meets informally with students after his speech during Regional Conference.

Students take time out for daily devotions and Bible reading.

M. C. A. gives students a chance to learn and to discuss with others.

The doors of Memory Chapel are always open to those who seek God.



LIFE



The McPherson Church of the Brethren serves as a center of campus religious life.

A variety of opportunities to fellowship with God are open for the family members. Many students avail themselves of these and pause in their busy schedules to enrich their lives by personal devotions and group fellowship.

ORGANIZATIONS



Bob Dell, Danna Rhoades, Daris Davidson, Rickie Hood, and Darry Melten meet in weekly M.C.A. small group.



ROW ONE: Dean Geisert, Mrs. Bechtel, Fike, Coffman, C. Harris, Professor Dell. ROW TWO: Dr. Flory, Switzer, J. Johnson, Werner. ROW THREE: B. Oltman, W. Zuck. ROW FOUR: Hanagarne, Cotton. ROW FIVE: Goering, Nelson.

STUDENT COUNCIL

Student Council meets every Wednesday night and is the governing power of the Student Body. It is responsible for the Spectator and the Quadrangle through the Board of Publications, finances the Social Committee, supervises and maintains the Dog House and the Student Union Room. It allots funds to various campus organizations and acts as a coordinating agency for all extra-curricular activities.



President, Duane Fike
Treasurer, Carl Harris

Men's Council

A selected group of campus and town students coordinates activities for all male students. They sponsor the Men's Supper and meet regularly.

Women's Council

This active group of girls sponsors the Women's Tea, Heart Sister Week, and publishes the "Freshman Doze" booklet for all female students.



Professor Dell, Melton, Elke, Ragland, Harris, D. Oltman, M. Oltman, Wagner.



Mrs. Bechtel, Lucore, Watkins, M. Wise, Aotaki, Willems, E. Kurtz, Mohler, Monk, Wallace, Brammell, Barcelo, Peek, Furry.

Student Court

A body of students chosen by the Mac college family governs and rules on student affairs and is led by Dwight Oltman.



Melton, Sink, Zook, M. Wise, President D. Oltman, Secretary Coffman, Dr. Flaty, Wagner, Miller, Hanagame, Cotton, Bittinger.



PLAYERS CLUB

A group that is open to all who are interested in dramatic acting or production, or have the capacity for a considerable amount of hard work. They presented three one-act plays in the fall-- The Devil and Daniel Webster, The Revolt of Mother, and How to Propose. These plays had student directors to assist in the production. In the spring a major play was given by the club members.

ROW ONE: Wine, Mitchel, Walters, Hanley, Fields. ROW TWO: Harden, Hykes, Crouse, Harms, Sanders, Hawbaker. ROW THREE: Harris, Faus, Spitzer, Wallerich, King.

Hawbaker perspires for perfection in production.



The barn becomes a new house in "The Revolt of Mother."





W. Stucky, Tusing, Stafford, Hykes, Dr. Metzler, Faus, Carr, Neher, K. Holderread, Martin, DeWare, Melton.

This organization is composed of students who are studying for the Christian ministry and want experience in pastoral technique. Dr. Burton Metzler guides the group as they meet throughout the year.

MINISTRY and MISSIONS FELLOWSHIP

PHOTO CLUB

Newly organized this year under the guidance of Professor Kinzie, they took on the job of building and equipping their own dark room in Vaniman Hall. There the members developed films, studied photographic techniques, and held weekly meetings.

Price, Kolstad, Ediger, Danyluk, Ilin, Nelson, Maxey, Shellenberger.





Keim, Crouse, Straka, K. Holderread, Zook.

SOCIAL COMMITTEE

All social activities on campus are directed by this group of student leaders. Some of the main activities are the All-School Picnic, movies, winter formal, Queen's Banquet and W.P.A. week.

SKATE CLUB

Active fun is the theme of this popular club on campus. Skating parties draw many

students for an evening of frolic on wheels.



ROW ONE: H. Williams, Vanderbilt, E. Williams, Cook, Browning, Bengston, Crain, Emswiler, Blough.
 ROW TWO: T. Spitzer, Freemyer, Duncan, Gripe, Dadisman, Harden, Crouse. ROW THREE: Horton, Dolloff, Oaks, Flory, Guenther.



C. B. Y. F.

The Church of the Brethren Youth Fellowship gives college students an opportunity to continue in the fellowship and active program of the church.

They meet every Sunday night under the direction of a coordinating committee. The programs are varied, featuring student participation, outside speakers and useful projects.

M. C. A.

The McPherson Christian Association includes all students who wish to participate in religious activities on campus. Several interest groups meet weekly, and all the groups are combined for special activities arranged by the Cabinet.



M. C. A. CABINET: M. Oltman, Brammell, Watkins, Fager, Melton, Stump, Sollenberger.



ROW ONE: Carl Harris, Editor First Semester; Sherland Ng, Editor Second Semester. ROW TWO: Walters, Ferris, Negley, Vasiloff, Ilin, Browning, Hawbaker, Fields, Connell, Tusing, Duncan, Faus, Eager, Bengston, Bill Gripe, Business Manager, Arick, Ulrich, Cisner.

SPECTATOR

The Spectator Staff pours over newspapers to learn good journalistic style. The Editors discuss newspaper policies. They publish the latest campus news weekly.



QUADRANGLE

The Quad staff confers to decide the lay out for this year's annual then prepares copy to meet deadlines throughout the year.

Editor Richard Bittinger
 Assistant Editor Ronald Harden
 Business Manager Noel Grove
 Assistant Business Manager
 Kenneth Tompkins
 Staff . Crouse, Kolstad, Negley, Wise,
 Coffman, Hawbaker, Emrwiler,
 Fields, Bower, Arick, Smallwood,
 King.



ALPHA PHI GAMMA

Alpha Delta at McPherson is the first journalistic fraternity in a small school in Kansas. The school paper, the Spectator, provides the background experience for Alpha Delta members.



Negley, Ng, Fike, Gripe, Hawbaker, Harris, Walters.

PHI ALPHA THETA

Phi Alpha Theta comprises the only honorary scholastic fraternity on campus. Those who have achieved scholarship in history are eligible to join.



Herder, Dr. Flory, Sink, M. Oltman, Bittinger.

ALPHA PSI OMEGA

From the array of actors and producers, those with highest achievement comprise Alpha Psi Omega. Their wide variety of experiences have come from one-act and three-act plays covering all the phases from being in the limelight themselves to ushering at the performances.



Kruschwitz, Fike, Hildreth, M. Wise, King, Switzer.

ROW ONE: Reinke, Bittinger, Coffman, Curry, Zunkle, Lucore, E. Kim, Meils.
 ROW TWO: T. Kim, Benguon, Harnly, Larson, Brown, Straka, E. Kim, Hold-
 erread, Flory. ROW THREE: Dirksen,
 DeSa, Cotton, Riwer, Nigh, Good-
 fellow, Oltman.



INTERNATIONAL RELATIONS CLUB

REC COUNCIL

Each Monday evening members of the Recreational Council study and play together from 6:30 to 7:30. They strive for leadership ability and better recreation. Led by President Hazel Miles the group provided recreational leadership for many extracurricular activities, besides assisting in community events.

Once each month these students meet at Professor Flory's house for a supper meeting. Afterwards there are discussion periods over this year's topic of Intergroup Relations. Talks are given by students and these are discussed in the light of world problems.



Riwer, Dell, Ferris, Sanders,
 Fager, Harris, Stern, Fruth,
 Arick, Berry, Hawbaker, Mrs.
 Dell, Emmert, Peck, Negley,
 Dell, Ng, Vassiloff, Hildreth.

W.A.A.

The Women's Athletic Association busies itself in building the old Bulldag spirit. They manage the concession stand and purchase athletic equipment.

S.N.E.A.

From the Student National Education Association will come those who shape the future of our educational enterprise. Student teaching, the Block System are their constant concerns.



Blough, Davidson, Peek, Fager, Turner, Duncan, Crain, Brallier, Hanley, Hanagarne, Miller, Willems, Clouse, Davidson, Ng, Barcelo, Shenefelt, Fike, Bengston.

ROW ONE: E. Williams, H. Williams, Mohler, Nelson, Bower, Blackwell, H. Johnson, J. Johnson, King.
ROW TWO: Buskirk, Cook, Lolling, Shenefelt, Davidson, Groth, Tolle, Rodriguez, Miles. ROW THREE:
Soden, Schrock, Herder, Harris, Fike, Keim, Schwartz, Maul, Coffman. ROW FOUR: Blough, Ng, Kollman,
Heisey, Fisher, Pittman, D. Holderread, Emmert, Campbell. ROW FIVE: Rhodes, Vassiloff, E. Kurtz, D.
Rhodes, Strycker, D. Oltman, M. Oltman, Larson, Professor Frantz, Switzer.





Professor Hayes, Groth, Landrum, Harner, Walters, A. Harms, N. Harms, Hildreth, Buskirk, Hayes, Harris, Fike, D. Oltman, M. Oltman, Stern.

DEBATE

When research and argument challenge a student, he is probably on the debate squad. Debaters have

the opportunity for travel to other schools for tournaments as well as sponsoring the local Economy Tournament in January.

PI KAPPA DELTA

Achievement in the fields of debate and oratory advances to membership in Pi Kappa Delta. After becoming a "PKD" member of the lowest order, one may go on to obtain higher honors in the field of forensics.



Bittinger, M. Oltman, Keim, Hawbaker, Walters, Buskirk, Harris, N. Harms, Hayes, D. Oltman, Fike, Professor Hayes, Stern, Wise.

AG. CLUB

These are the guys who can fix anything. If old tractors need to be repaired, they do it. Soil testing, stock judging, these are their undertakings. Field trips to stock shows as well as field observation are enjoyed by this active group.



Professor Ward, M. Roberts, D. Royer, Dadisman, D. Royer, Reinecker, Bert, Harris, Myers, Butler, Hildreth, Ebbert, Schrock, Nelson, Bowman, Switzer, Harris.

HOME EC. CLUB

Girls who are interested in the domestic arts find pleasure in meeting together to share ideas among themselves. In addition, they practice interesting things such as cake decorating, listen to outside speakers, and prepare dinners for both large and small groups.



SEATED: Shellenberger, Murrey, Miss Siek, Harnly, Ewing, Rolfs, Kaufman, Tolle, Thralls, Smallwood, Hanaganne, Berry, Thompson, Davidson. STANDING: Peek, Burkholder, H. Williams, Cook, Hintz, Lucore, E. Williams, Strycker, Harding, Yoder, Pittman, Ulrich, Keim, Hickey, Royer.

Athletics



Betty Ann Wise

Danny Crouse

Ronald Harden

Mary Lou Wise



Casebeer plunges over to beat Friends 33-0.



Coaches Smith and Keim and Trainer Nelson.

Football

SPECIAL CONFERENCE HONORS

KENNETH STUCKY
Second all-star
team-Back



JERRY McPHERSON
Second all-star
team-Tackle



ED DELK
Second all-star
team-End

The McPherson College Bulldogs

The McPherson College Bulldogs completed a very good season to finish in a tie for third place in the Kansas Conference. The Bulldogs piled up a total of 118 first downs to their opponents' 110 and finished the season with a six-win and three-loss record. They scored 168 points to their opponents' 118.

In the backfield quarterback Stucky carried 83 times for an average of 4.14 yards; halfbacks Keim and Ragland carried 74 times for 5.35 yards and 44 times for 6.9 yards; and fullback Guiot carried 72 times for 4.26 yards.

Leading scorers for McPherson were Keim, with 31 points; Stucky, with 30; Ragland, with 26; and Delk, who had 25 points.

The team showed a good spirit of hard-fought determination to win and showed up very well against larger and heavier opponents.



McPherson College Football Team

FIRST ROW: Trainer Bob Nelson, George Casebeer, Ed Delk, Ed Sink, Max Grossnickle, Dick Keim, Earl Guiot, Melvin Roberts, Sid Smith. SECOND ROW: Norman Yoder, Ivan Prohaska, Wayne Grossnickle, Jerry McPherson, Don Willis, Larry Schlehuber, Rick Hood, Don Cotton, Larry Werner. THIRD ROW: Coach Sid Smith, Dennis Brunner, Gene Elliot, Tom Ragland, Kenny Stucky, Don Widrig, Dwayne Jeffries, Darry Melton, Lynn Cabbage, Earl Stump. FOURTH ROW: Assistant Coach George Keim, Gerald Fisher, Paul Kolman, Loren Zook, Larry Sams, Daryl Howell, Verlin Kolman, Melvin Rolfs, Roy Jones, Gene Snyder.

| | |
|------------|----|
| Mc PHERSON | 14 |
| Mc PHERSON | 18 |
| Mc PHERSON | 18 |
| Mc PHERSON | 0 |
| Mc PHERSON | 40 |
| Mc PHERSON | 14 |
| Mc PHERSON | 32 |
| Mc PHERSON | 13 |
| Mc PHERSON | 19 |



| | |
|--------------------|----|
| STERLING | 0 |
| DOANE | 19 |
| BETHEL | 16 |
| BAKER | 19 |
| COLLEGE of EMPORIA | 7 |
| KANSAS WESLEYAN | 33 |
| FRIENDS | 0 |
| OTTAWA | 12 |
| BETHANY | 14 |

1957 Co-Captains

Dwayne Jeffries
Jerry McPherson



HOMECOMING QUEEN



IVADELLE WISLER

A queen is both talented and gracious. Ivadelle Wisler is that kind of a queen. Her reign began well, and we know this year, her year, will be a good one all the way through.



Deanna Goering
Sophomore Attendant



Sara Ann Coffman
Retiring Queen



Rita Smallwood
Freshman Attendant

The retiring queen, Sara Ann Coffman, left the kingdom in good hands: Ivadelle Wisler, queen; Deanna Goering, Sophomore attendant, and Rita Smallwood, freshman attendant.

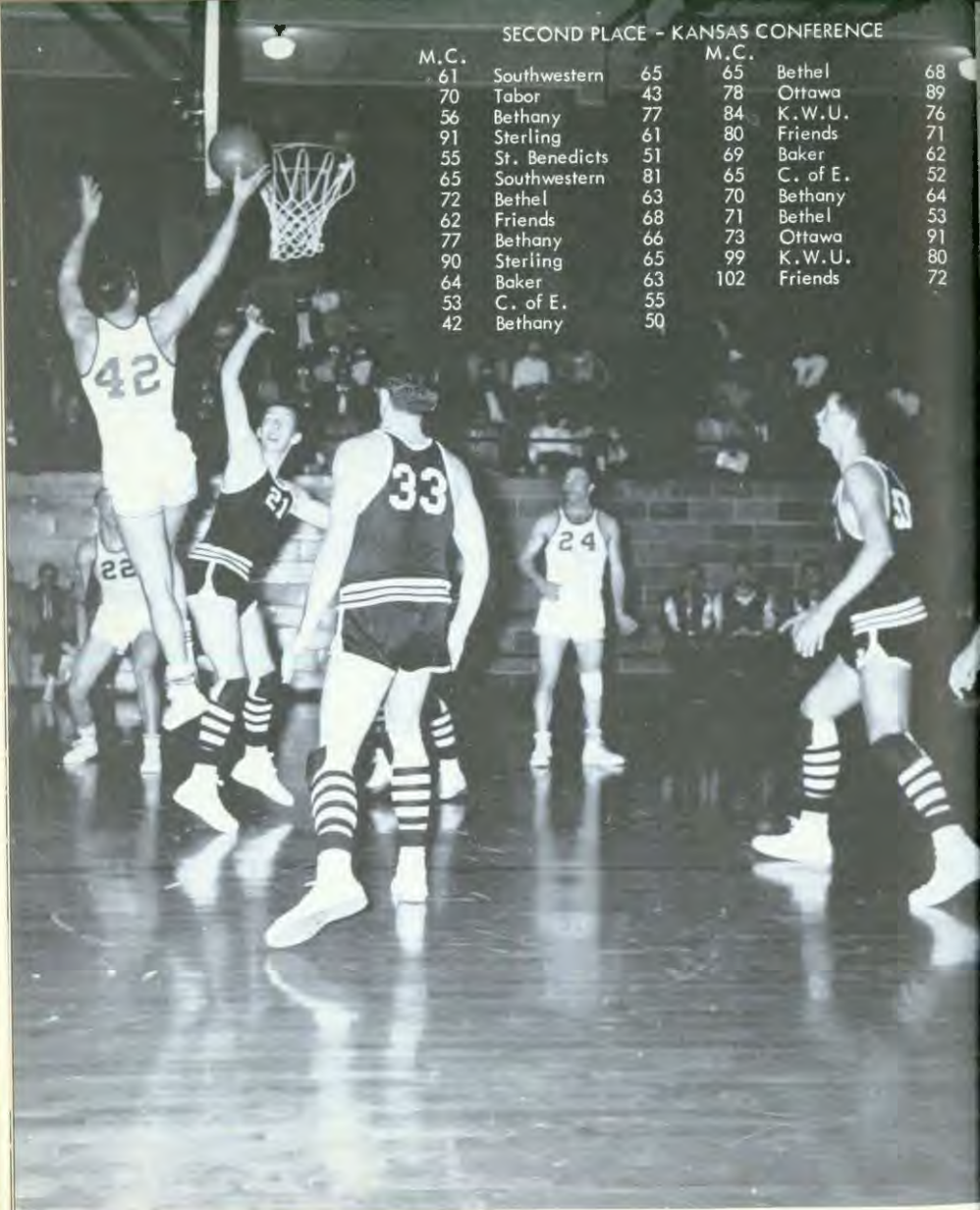
SECOND PLACE - KANSAS CONFERENCE

M.C.

| | | |
|----|---------------|----|
| 61 | Southwestern | 65 |
| 70 | Tabor | 43 |
| 56 | Bethany | 77 |
| 91 | Sterling | 61 |
| 55 | St. Benedicts | 51 |
| 65 | Southwestern | 81 |
| 72 | Bethel | 63 |
| 62 | Friends | 68 |
| 77 | Bethany | 66 |
| 90 | Sterling | 65 |
| 64 | Baker | 63 |
| 53 | C. of E. | 55 |
| 42 | Bethany | 50 |

M.C.

| | | |
|-----|----------|----|
| 65 | Bethel | 68 |
| 78 | Ottawa | 89 |
| 84 | K.W.U. | 76 |
| 80 | Friends | 71 |
| 69 | Baker | 62 |
| 65 | C. of E. | 52 |
| 70 | Bethany | 64 |
| 71 | Bethel | 53 |
| 73 | Ottawa | 91 |
| 99 | K.W.U. | 80 |
| 102 | Friends | 72 |



VARSITY



BACK ROW: Jerry McPherson, Bob Nelson, Ed Sink, Don Willits, Ed Delk, Ronald Anderson, Bernard Whirley,
FRONT ROW: Gene Elliott, Larry Werner, Kenneth Stucky, Dennis Brunner, Don Widrig.



A SQUAD CHEERLEADERS: Ron Harden, Mary Lou Wise, Betty Ann Wise, and Danny Crouse.



VARSIITY COACH: Sid Smith

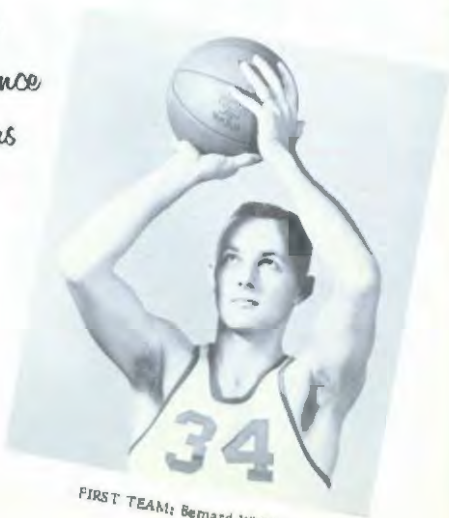


Ronald Anderson jumps to score against Ottawa as Don Widrig and Jerry McPherson look on.



SECOND TEAM: Ed Delk

*All
Conference
Honors*



FIRST TEAM: Bernard Whirley

B TEAM



BACK ROW: Lloyd Albin, Larry Schlehber, Gerald Maxey, Ivan Probaska, Max Grossnickle, Kenton Wrightsman, Nickey Dolloff, Dwight Royer. FRONT ROW: Don Jones, Larry Myers, Gary Otte, Rickie Hood, Darry Melton, Bob Erisman.

McPherson's B Team, under the leadership and coaching of George Keim, completed their season with the excellent record of 14 wins and 8 losses. They were also the winners of the Hesston College Invitational Tournament at Hesston. These boys played very good ball throughout the season and showed a real spirit of teamwork.



B COACH: George Keim



B SQUAD CHEERLEADERS: Betty Oltman, Faye Fields, Rita Smallwood, Jim Smallwood, Gery Stelling.



Sink knocks one over in a weekly volleyball game.

INTRAMURALS

Over 42% of the students participated in the intramural program this year, which included volleyball, boys' and girls' basketball, and shufflebaard and table tennis. Games were held three nights a week. The volleyball teams were composed of 5 boys and 3 girls. The winners of the volleyball league were Ken Stucky's team.

Winners of the boys' basketball was Hayes' team which won seven and lost one game. Irvin Wagner was the high scorer of the league, dunking 16 points per game. Carter and Davidson's teams tied with 3 wins - 2 loss records each in the girls' basketball league.



44 Grossnickle watches as Brunner scores.



Stucky's winning volleyball team.



Weddle lays one up.

PEP CLUB



Under the leadership of President Bob Erisman, the group wore their red and white on game days. By lending their vocal chords in enthusiastic support of our team, they created good school spirit. By selling concessions at games, the club was able to award its members megaphones, jackets, and silver disks.



M CLUB

This group of varsity lettermen met every two weeks. Their purpose was to sponsor fellowship among themselves and to help build and maintain school spirit. The group sponsored various activities throughout the year, such as a Businessmen's supper, Homecoming luncheon, spring carnival, and a formal banquet.

FIRST ROW: Oltman, Melton, Smith, Heisey, Stucky, W. Grossnickle. SECOND ROW: J. Snyder, Danyluk, Nelson, McPherson. THIRD ROW: Anderson, Bittinger, Sink, Wenger, G. Rodgers. FOURTH ROW: Casebeer, Guiot.



FRESHMAN CHEERLEADERS

FRESHMAN CHEERLEADERS: J. Smallwood, Oltman, R. Smallwood, Fields, and Stelting encourage the "B" Team to victory with their peppy enthusiasm.

WOMEN'S BASKETBALL

This group of active girls wound up their successful season by defeating Central College 41-24. This gave them a season record of six wins and three losses. The season was culminated by a tournament at Central College.

Girls' basketball players take a break before they go back for more sport and competition. LEFT TO RIGHT: V. Miller, L. Carter, S. Williams, C. Bowers, D. Davidson, M. Klotz, D. Kaufman, D. White, and D. Coppock.



Anderson First

Ronald Anderson achieved national distinction by placing first in the discus at the NAIA meet in San Diego in June. He is first in the nation among the small colleges. Ronald qualified for the meet by throwing the discus 173 feet, 3 3/4 inches at the AAU meet in Kansas City.



Colberg warms up to win another two-mile race.



SPRING SPORTS

Tracksters participated in nine meets in the spring of 1957, including such larger meets as the KU Relays. They placed third in the Kansas Conference track meet. The golf team held several meets with the neighboring schools and ended their successful season by finishing second place in the conference. Tennis players were also successful in their many meets.



Golfers Pigott, Heisey, Morris, and Danyluk discuss their views on irons.



Heidebrecht breaks the record at 6 ft. 1 3/8 in.



Ragland starts another dash.



Classes

In laboratory, museum, art studio, speech class, and food preparation, the student sets himself for growth and progress.

BIOLOGY



CHEMISTRY

HARNLY HALL





MUSEUM



DEBATE



FOODS



Harnly Hall commemorates one of our first teachers. This science hall reveals that good men's lives live on after them.

MUSIC



FIRST ROW: Keim, Thompson, Thralls, Burkholder, Blough. SECOND ROW: Stelting, Zunkel, Wagner, Strom, Dell, Larson. THIRD ROW: Kruschwitz, Wisler, Lucore, STAIRS; Goering, Carr, Albright, Grove, Coffman, Sanders, Guenther, Brallier, Berry, Harris, Groh, Gripe. FOURTH ROW: Freemyer, Rhoades, Mohler, Wallace, Miller, Fillmore, Watkins, B. King. FIFTH ROW: D. Holderread, Guthala, K. Holderread, D. Olman, Wampler. SIXTH ROW: M. Weddle, Buskirk, Reinke, Landhuis, L. King.



A CAPPELLA CHOIR

Professor Frederick's guidance blended this year's A Cappella Choir into a melodious melody of voices that presented outstanding performances for church and chapel programs. They also sang on their annual Easter tour.



CHAPEL CHOIR

ROW ONE: Applegate, Wine, Grillo, B. Oltman, Gatewood, Klotz, Bolen, Thoreen, Albin, Murrey. ROW TWO: Swinger, E. Pittman, V. Howell, C. Bowers, Vassiloff, Tinsley, D. Rhoades, M. Lehman, P. Johnson. ROW THREE: Ulrich, Strycker, Hollenbeck, Beal, Dresher, Emmert, Riwer, Hykes, Browning, Yoder. ROW FOUR: Hildreth, Reinecker, Myers, Faus, Horton, J. Guenther, Ilin, Landrum, Jahn, Ferris, J. Burkholder.

These choirs add much to the spiritual and esthetic life of McPherson. They sing in church regularly and in chapel on special occasions and combine with other choirs to help present glorious musicals.

CHURCH CHOIR

ROW ONE: Fillmore, H. Williams, S. Williams, Wine, Brallier, Howell, Groth, Lehman. ROW TWO: Jacobson, Monk, C. Bowers, Strycker, Pittman, Walters, Strom, Thoreen, Fike, Klotz, D. Rhoades. ROW THREE: Ilin, Tusing, Ferris, Carr, Grife, King, Brallier, Reinke, Landhuis, Wampler.





Gary Stelting, Irvin Wagner, Dwight Oltman, Forrest Kruschwitz.

MEN'S QUARTET

The two quartets and the trio were very active this year on the campus and throughout the region. A men's quartet was organized again, and they not only sang but played trombones as well. These groups were selected from try-outs and then spent many hours practicing together. Chapels, churches, and high schools were among the many places they performed. Each group took a week-long tour beside week-end deputation trips.

LADIES' QUARTET

Sharon Thompson, Sara Ann Coffman, Vera Mohler, Deanna Goering.



LADIES' TRIO

Barbara King, Carolyn Fillmore, Norma Watkins, Eileen Oltman, Accompanist.





Smith, Sellers, Fuchs, Frederick, Clemenz, Ray, Fields, Watkins, Weddle, Guember, Sperling, Fancher, Harms, Stelting, Emswiler, Johnson, Jacobson, Ehwell, Holderread, Albright, PAUL SOLLENBERGER, CONDUCTOR, Coppock, Kruschwitz, Bolen, Oltman, Wauger, Campbell, Nigh, Burkholder, Quitm, Clouse, Kaufman.

COLLEGE-CIVIC ORCHESTRA

The harmonics of singing strings and warm woodwinds could be heard coming from Sharp Hall each week as a group of townspeople and students met under the directorship of Paul Sollenberger to compose the College-Civic Orchestra. The orchestra participated with the combined choirs in presenting the Hymn of Praise by Mendelssohn at Regional Conference in the fall. They performed several other times for the public throughout the year.



M. E. N. C.

Music Educators National Conference is an organization whose prime purpose is the promotion of music, with the accent on better music. Its officers are Irvin Wagner, president; Dwight Oltman, vice-president; and Norma Watkins, secretary-treasurer.

LEFT TO RIGHT: J. Quinn, P. Albright, F. Kruschwitz, C. Fillmore, C. Zunkel, V. Miller, M. Guenther, Prof. D. Frederick, I. Wagner, D. Oltman, G. Stelting, Prof. P. Sollenberger, E. Jahn, N. Watkins, P. Bolen, C. Bowers, M. Klotz, Mrs. San Romani.



ROW ONE: B. Oltman, Dresler, Landrum, Albright, Miller, Fillmore. ROW TWO: Leffler, Jacobson, Kruschwitz, Lehman, Frederick, Coppock, Hintz, Turner, Igel. ROW THREE: Wagner, T. Weddie, Jahn, Dell, Johnson, Bolen, Quinn, Olmsted, Sanders, DWIGHT OLTMAN, CONDUCTOR; Zuck, Winters, Beal.

CONCERT and MARCHING BANDS

The Concert and Marching Bands bring us good music on a variety of occasions. Football games are better because the Marching Band performs with snap and vigor between halves. The Concert Band plays in chapel and at concerts. Dwight Oltman is student leader, and Don Frederick is faculty supervisor.



ADMINISTRATION



Dean Wayne Geisert

Promotes with sincere enthusiasm
Advises with ingenious foresight

President D. W. Bittinger

Counsels with fatherly concern
Motivates with distinguished aims



GEORGE ARNOLD
Guides mathematical
reasoning. . MATHEMATICS



KATHRYN BECHTEL
Influences good set. .
Dean of Women

KENNETH BECHTEL
Prompts sociological study. .
SOCIOLOGY



J. L. BOWMAN
Directs inquiring physicists
PHYSICS



JOHN BURKHOLDER
 Fascinates biological
 enthusiasts ... BIOLOGY



SARAH MAY BRUNK
 Stimulates literary
 creativeness ... ENGLISH

DORIS COPPOCK
 Provides recreational
 outlets ... PHYSICAL ED.



VERDA DeCOURSEY
 Transmits Decorating
 Principles ... DESIGN

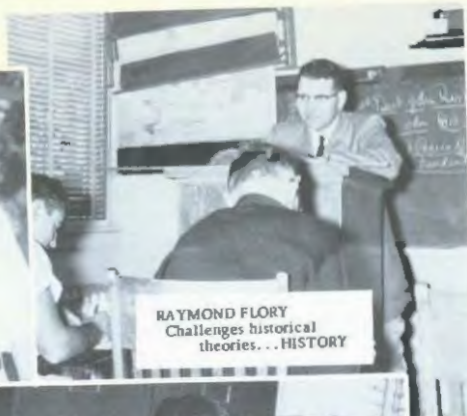


WESLEY DeCOURSEY
 Inspires exploring chemists
 ... CHEMISTRY





S. M. DELL
Creates handicraft
mastery ... IND. ARTS



RAYMOND FLORY
Challenges historical
theories ... HISTORY



MERLIN FRANTZ
Encourages prospective
teachers .. EDUCATION



DONALD FREDERICK
Correlates musical
harmony ... MUSIC



VIRGINIA HARRIS
Assists researching
students ... LIBRARIAN



GUY HAYES
Speak your way to success... SPEECH
AND EDUCATION



KENNETH KINZIE
Artistic hands mold masterpieces...
ART

ANNE KREHBIEL
Her fingers make the keyboard
sing... PIANO



DELLA LEHMAN
Sources come alive in
dramatic expression...
ENGLISH



ALICE B. MARTIN
A correlator of courses...
REGISTRAR



DR. BURTON METZLER
Guides students along Biblical
paths... RELIGION



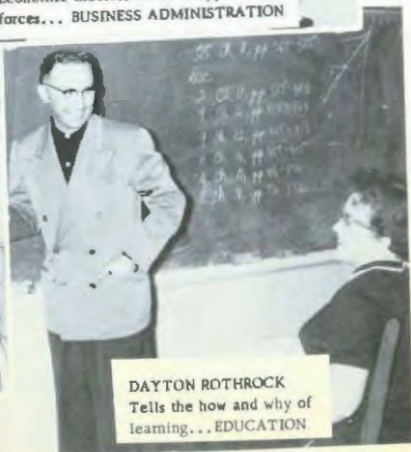
MILDRED OLSON
Master of dexterity and speed.
COMMERCE



DR. O. A. OLSON
Economic theories become applied
forces... BUSINESS ADMINISTRATION



AUDREY SAN ROMANI
Harmonics of sound are
turned to music... ORGAN



DAYTON ROTHROCK
Tells the how and why of
learning... EDUCATION



JOHN SHEETS
Records, tours, employment
... PUBLIC RELATIONS



SIDNEY SMITH GEORGE KEIM
On field and court...
They build men... COACHES



HARLEY STUMP
He guides the errant
freshman path... ENGLISH



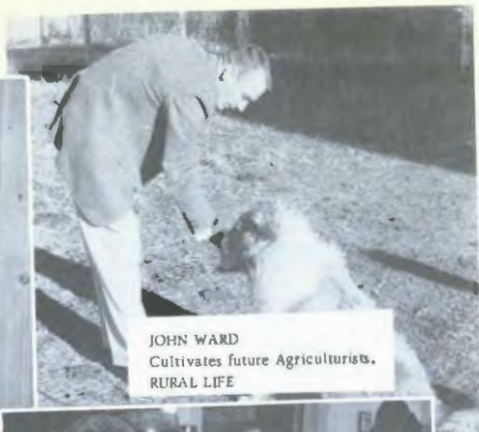
PAUL SOLLENBERGER
Trained sensitivity...
Creative expression... MUSIC



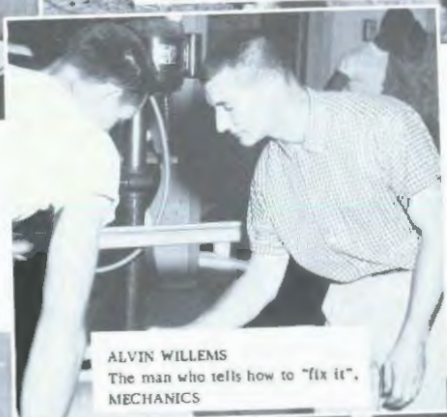
MILDRED SIEK
She trains for perfection
... HOME ECONOMICS



PAUL WAGONER
Knows what about who...
ALUMNI SECRETARY



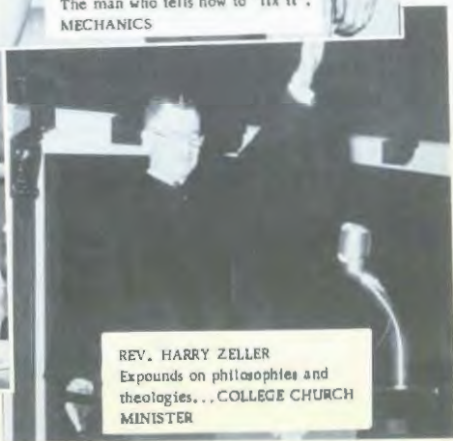
JOHN WARD
Cultivates future Agriculturists,
RURAL LIFE



ALVIN WILLEMS
The man who tells how to "fix it",
MECHANICS



R. GORDON YODER
Cheerfully takes your money...
BUSINESS MANAGER



REV. HARRY ZELLER
Expounds on philosophies and
theologies...
**COLLEGE CHURCH
MINISTER**



MISS NEHER for many years has been a "Mom" to the girls.



MRS. DELL and MRS. ARNOLD help the president and dean.



MR. NEHER helps manage and run the college farm.

MR. RUHSER and MR. CLINE keep the grounds and building looking sharp.



MRS. SLIFER sees that we are well fed.

MRS. TIPTON helps keep accounting correct.





Seniors

PRESIDENT: MARLO OLTMAN
VICE PRESIDENT: WILBUR SMITH
SECRETARY: DOROTHY BROUGH
TREASURER: DON HOLDERREAD

Who's Who



The nine seniors pictured here are McPherson College's 1957-58 representatives in Who's Who in American Universities and Colleges. Through their contributions of leadership and participation in many activities, through scholarship, integrity, and citizenship, through service to the school, and through promise of future usefulness to society they have been chosen by the faculty for this honor.

They are a constant source of inspiration to the student body. We proudly congratulate them!

MARLO OLTMAN

WILLARD STUCKY

DWIGHT OLTMAN

SID SMITH

RICHARD HERDER

DUANE FIKE

MARY LOU WISE

SARA ANN COFFMAN

ELSIE LUCORE



RONALD
ANDERSON



NADINE
BAUGHMAN



RITA
BEAM



DOROTHY
BLOUGH



JACK
BORTH



PHILLIP
BRADLEY



LeROY
BUSKIRK



EDWARD
BUTLER



PHILIP
CARR



RICHARD
CARTER

CLASS OF 1958



GEORGE
CASEBEER



VAL
CHEATHAM



SARA ANN
COFFMAN



CRAIG
COLBURN



LEE
DADISMAN



LEE
DANYLUK



KERMIT
DAUM



JUNE
DIRKS



LEWIS
DORRIS



GERALD
DOUGHTY



CHARLES
EBBERT



EDWARD
EMMERT



CAROL
FANCHER



KENNETH
FANCHER



DUANE
FIKE



GERALD
FISHER



MARY
GATEWOOD



CHARLES
GATZ



BOBBY
GEIMAN



ALMA
GOODFELLOW



BILL
GRIFE



MARDELLA
GUENTHER



IMOGENE
HAAS



NORRIS
HARMS



JACK
HAVICE



RICHARD
HERDER



BILLY JOE
HILDRETH



DONALD
HOLDERREAD



DWAYNE
JEFFRIES



HERB
JOHNSON



JOAN FORD
JOHNSON



MARION
JOHNSON

C
L
A
S
S
O
F
1
9
5
8



ANNE
KEIM



EUI YOUNG
KIM



BARBARA
KING



VERLIN
KOLMAN



OLE
KOLSTAD



STANLEY
KREHBIEL



FORREST
KRUSCHWITZ



MARLON
LANDHUIS



DELAINE
LARSON



MELVIN
LOLLING



ELSIE
LUCORE



PAULINE
LUNDBERG



BARBARA
MAUL



VERA
MOHLER



ROBERT
NELSON



WAYNE
OAK



DWIGHT
OLTMAN



MARLO
OLTMAN



DELAINE
PERKINS



ROBERT
PITTMAN



WAYNE
PRICE



SHIRLEY
RHOADES



JOE
RICH



GAYLEN
RODGERS



ANA ROSA
RODRIGUEZ



GORDALEE
ROSEBROUGH



PATSY
SCHECHTER



ROBERT DEAN
SCHROCK

C
L
A
S
S
O
F
1
9
5
8



KENNETH
SHEAFFER



NEVA
LOLLING



EDWIN
SINK



ADRIAN
SMITH



SIDNEY
SMITH



WILBUR
SMITH



EUGENE
SNYDER



JAMES
SNYDER



ROY
STERN



WILLARD
STUCKY



EDWIN
SWITZER



DEAN ANNE
VANCE



BERNARD
WHIRLEY



MARY LOU
WISE



Juniors

PRESIDENT: GENE WENGER
VICE PRESIDENT: NORMA WATKINS
SECRETARY: RUTH HANAGARNE
TREASURER: IRVIN WAGNER



Charles
Beach



Donna
Beach



Bernice
Bernstorff



Richard
Blittinger



Kathryn
Burkholder



David
Cambell



Howard
Clements



Jane
Clouse



Thelma
Clouse



Donald
Cotton



Howard
Duncan



Jerry
Dundas



Carl
Ediger



Gene
Elliott



Bobby
Erisman



Richard
Frazier



Wayne
Grossnickle



Shirley
Groth



Noel
Grove



Earl
Guilot



Ruth
Hanagame



Ann
Harms



Carl
Harris



Glenna
Hawbaker



Larry
Hayes



Harold
Heisey



Kerin
Miller



Rickie
Hood



Eugene
Johnson



Evan
Johnson



Young Yoon
Kim



Tai Kyun
Kim



Ellen
Kurtz



Lan-Ying
Fu



Vilas
Likhite



Robert
Martin

C
L
A
S
S
O
F
1
9
5
9



Jerry
McPherson



Hazel
Miles



Larry
Miller



David
Nigh



Ramon
Paoli



Kay Steele
Pazr



Delores
Peek



Harold
Pfalzgraf



Gary
Pigott



Thomas
Ragland



Donna
Rhoades



Arlene
Rolfs



Linda
Royer



Larry
Sams



Larry
Sanders



William
Sherman



Kenneth
Stucky



Vernona
Thralls



Mary Beth
Tolle



Clifford
Tusing



Anna
Vasiloff



Irvin
Wagner



Delores
Wallace



Joan
Walters



Norma
Watkins



Gene
Wenger



Donald
Widrig



Ivadelle
Wister



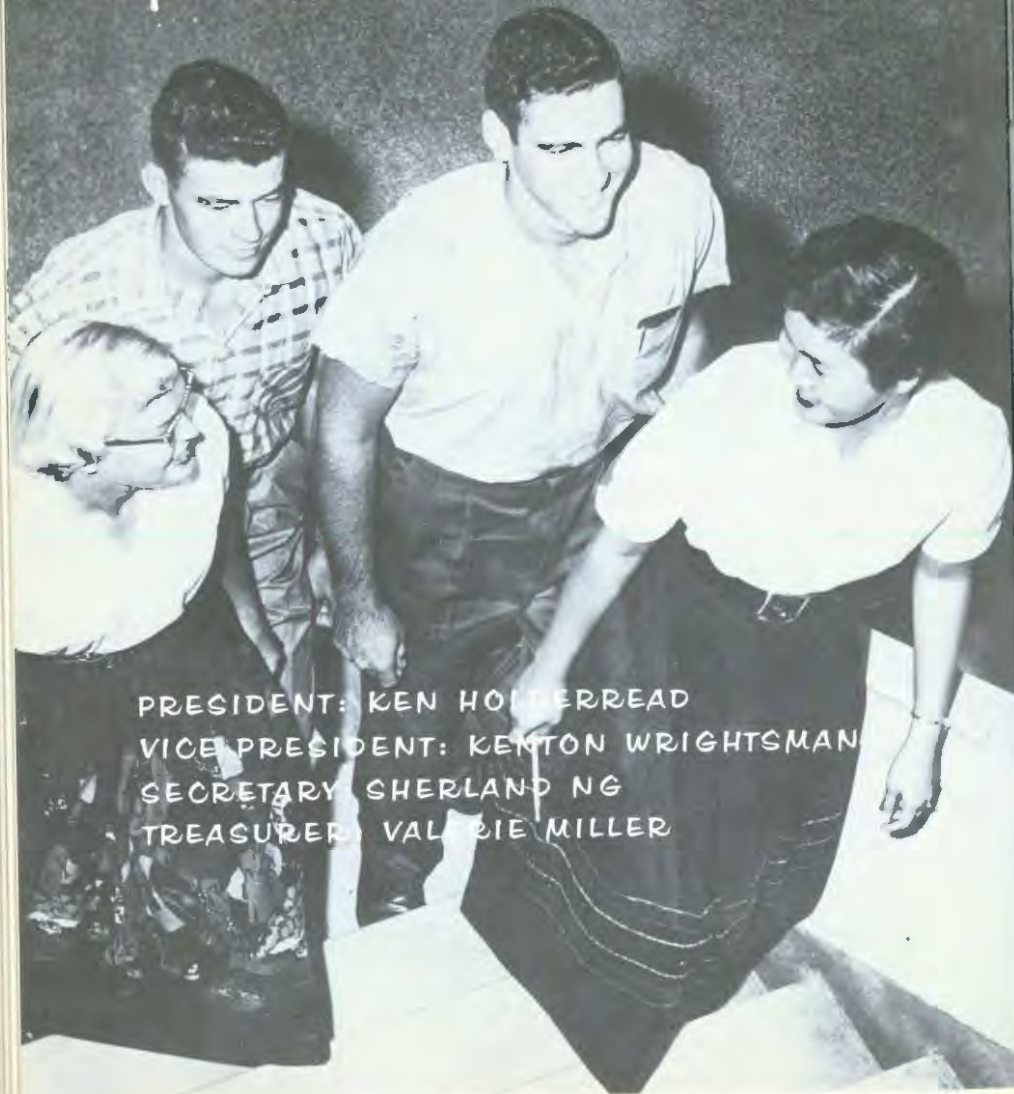
Norman
Yoder



Clara
Zunkel

C
L
A
S
S
O
F
1
9
5
9

Sophomores . . .



PRESIDENT: KEN HORDERREAD
VICE PRESIDENT: KENTON WRIGHTSMAN
SECRETARY: SHERLAND NG
TREASURER: VALERIE MILLER



Arden
Alexander



Ruth
Barcelo



David
Bastin



Joyce
Betty



Beverly
Blackwell



Janice
Bower



Jan
Brallier



Dennis
Brunner



Jon
Burkholder



Judith
Butler



Larry
Clark



Lila
Cook



Danny
Crouse



Doris
Davidson



Edmund
Delk



Janis
Emawiler



Zoann
Ewing



Lois
Fager



Richard
Ferris



Elverda
Fike



Bernard
Frazier



Paul
Freemyer



Joan
Furry



Deanna
Goering



Max
Grossnickle



Manfred
Grote



Carl
Gustafson



Mary Ann
Guthals



Ronald
Harden



Kenneth
Harris



Kenton
Harris



Kermit
Hawley



LeRoy
Hayes



Carol
Hickey



Kenneth
Holderread



Galen
Horton



Daryle
Howell



Delores
Kaufman



Larry
King



Larry
Kinzie



Ruth
Kolbe



Charles
Lauver



John
Lehman



Darry
Melton



Valerie
Miller



Sandra
Mitchel



Rossie
Monk



Rex
Morris



John
Myers



JoAnn
Negley



Sherland
Ng



Christian
Okerefor



Eileen
Oltman



Blanca
Paoli



Chester
Peckover



Vernon
Reinecker



Dwight
Royer



Doyle
Royer



Kenneth
Singleton



Roger
Smith



Wanda
Soden



Shirley
Stafford



Ralph
Stegeman



Frances
Straka



Sharon
Thompson



Maida
Tinsley



Domingo
Torres



Shirley
Turner



Marvin
Weddie



Terry
Weddie



Larry
Werner



Robert
Willems



Phillis
Willems



Ellen
Williams



Helen
Williams



Shirley
Williams



Betty Ann
Wise

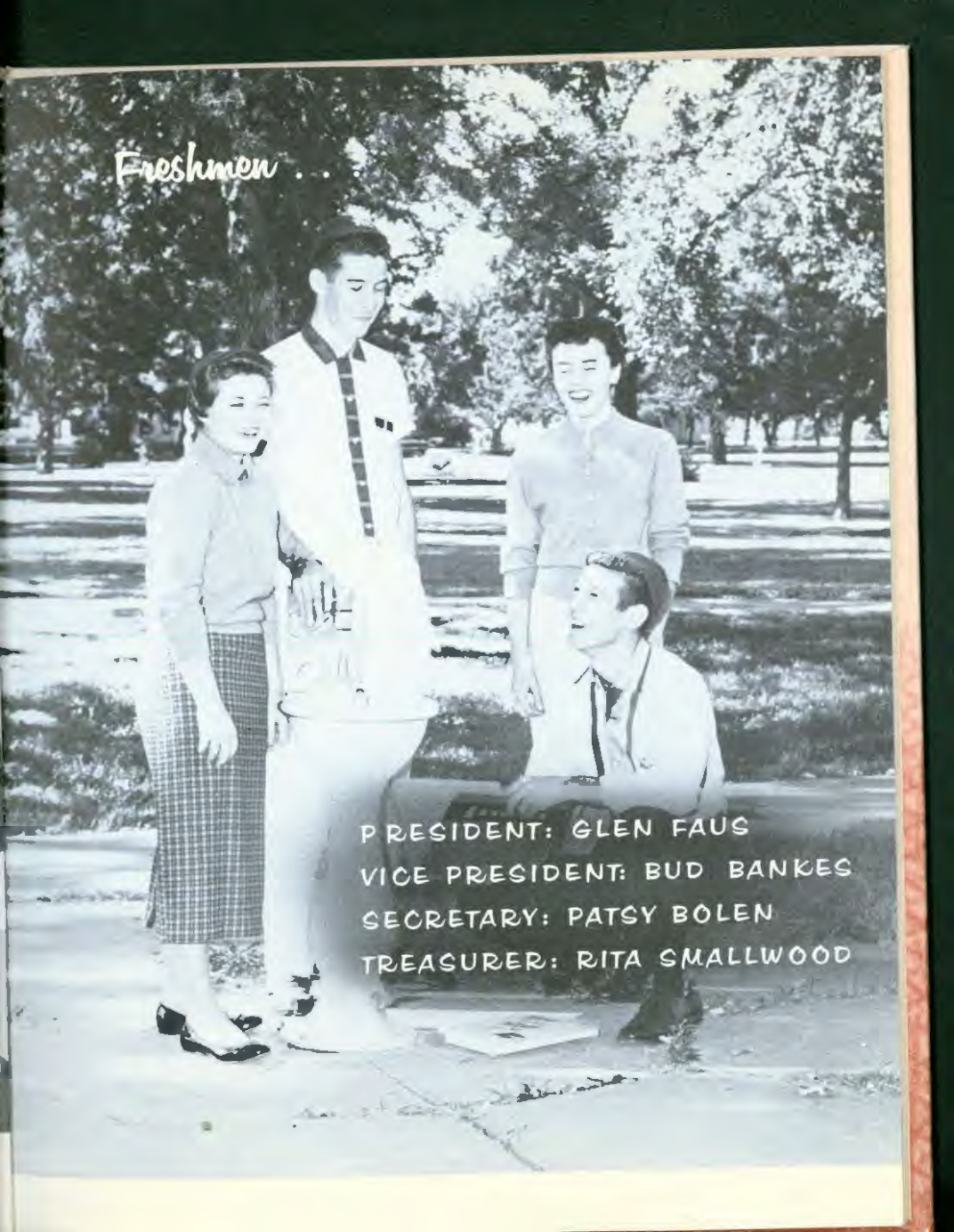


Kenton
Wrightsman



Loren
Zook

Freshmen . . .



PRESIDENT: GLEN FAUS
VICE PRESIDENT: BUD BANKES
SECRETARY: PATSY BOLEN
TREASURER: RITA SMALLWOOD



LaVonne
Albin



Lloyd
Albin



Pat
Albright



Lillian
Aotaki



Gloria
Applegate



Donelda
Arick



Roland
Bachman



Elizabeth
Bair



Charles
Banks



Winston
Beal



Georgia
Bengton



Wayne
Bert



Patsy
Bolen



Carolyn
Bowers



Ronald
Bowman



Janice
Brallier



John
Brand



Alferdeen
Brown



Diane
Browning



Lynn
Cabbage



Lorena
Carter



Duane
Cissner



Harold
Connell



Bettie
Crain



Carol
Cunningham



Robert
Dell



Dennis
Dirksen



Bernard
DeSa



Nicky
Dolloff



Larry
Dresher



Carol
Duncan



Gary
Ely



Paul
Eristman



Glen
Faus



Faye
Fields



Carolyn
Fillmore



Jerry
Flory



James
Freed



David
Fruth



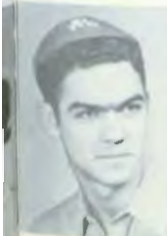
John
Fry



Darrell
Fulhage



Leslie
Funk



Ethan
Gramm



Arinade
Grillo



Jacob
Guenther



Donald
Hollenbeck



Marilyn
Hanley



Donna
Harding



Mary Lou
Harding



Carl
Harner



Sarah Lou
Harnly



Richard
Hart



Norma
Huntz



Veneta
Howell



David
Hykes



Lynda
Igel



Stanley
Ilin



Mildred
Jacobson



Eugene
Jahn



John R.
Johnson



Patricia
Johnson



Roy
Jones



Vasilios
Katsounis



Richard
Keim



Ronald
Keiser



LeRoy
Kingery



Marlene
Klotz



Paul Dean
Kolman



Dorothy
Kurtz



Richard
Landrum



Ruth
Leach



Donald
Leffer



Margaret
Lehman



Eddy
Longmire



Philip
Lowe



Gerald
Maxey



Richard
Mercer



LaVena
Murrey



Arlyn
Nelson



Charles
Nelson



Jim
Neuenschwander



Judith
Nigh



Florence
Nuckolls



Danil
Olmsted



Betty
Oltman



Jack
Oneal



Gary
Otte



Linda
Owens



Harvey
Pauls



Florence
Peel



Elizabeth
Pittman



Ivan
Prochaska



Jimmy
Quinn



Richard
Reinke



Gerth
River



Melvin
Roberts



Melvin
Rolfs



Janice
Rolston



Jerry
Rolston



Keith
Rolston



Thomas
Ruhser



Verna
Schwartz



Deanna
Shellenberger



James
Smallwood



Rita
Smallwood



John
Smith



Fred
Spate



Terry
Spitzer



Earl
Spitzer



Gary
Stelling



Sheryl
Strom



Ellen
Strycker



Harl
Stump



Annetta
Swinger



Jo Nelle
Thoreen



Kenneth
Tompkins



Joyce
Ulrich



Phyllis
Vanderbilt



Kay
Wallerich



Garland
Wampler



Dixie
White



Lewis
Williams



Donald
Willis



Glenn
Wilmoth



Glenda Rae
Wine



Elaine
Winslow



William H.
Winter



Karen
Yoder



Karen
York



Wayne
Zuck

Second Semester Students



ROW ONE: Ron Alward, Alvin Tinsley, Marvin Keck. ROW TWO: Katherine Jones, Marjory Hanley, Hazel Ely, Patricia Huber. ROW THREE: Constantine Papandreopoulos, Glenn Morland, Monsuru Disu, Lester Zook, Richard Hoppman, Ralph Park.



Pep
Rallies



Studies



Activities

*Its
Been
Fun*



Initiations



Engagements



Gab Sessions



Mischief

STUDENT DIRECTORY

FRESHMEN

ALBIN, LaVONNE-Grundy Center, Iowa
 ALBIN, LLOYD-Quinter, Kansas
 ALBRIGHT, PATTY-Pretty Prairie, Kansas
 ALWARD, WILLIAM-Herington, Kansas
 AOTAKI, ILLIAN-Lahaina, Territory of Hawaii
 APFLEGATE, GLORIA-Norton, Kansas
 ARICK, DONELDA-Saberba, Kansas
 BACHMAN, ROLAND-Bondurant, Iowa
 BAIR, ELIZABETH L.-Canton, Kansas
 BANKES, CHARLES-Abilene, Kansas
 BEAL, WINSTON-Maxwell, Iowa
 BENGSTON, GEORGIA-Sebring, Florida
 BERT, WAYNE-Detroit, Kansas
 BOLEN, PATSY-Quinter, Kansas
 BOWERS, CAROLYN-Welsh, Louisiana
 BOWMAN, RONALD-Ludlowville, New York
 BRALLIER, JANICE-Curlew, Iowa
 BRAND, JOHN R.-McPherson, Kansas
 BROWN, ALFERDTEEN-Value, Mississippi
 BROWNING, DIANE-Des Moines, Iowa
 CABBAGE, LYNN-Prairie City, Iowa
 CARTER, LORENA-Roanoke, Louisiana
 CISSNER, DUANE-Covington, Ohio
 CONNELL, HAROLD-Brooklyn, Iowa
 CRAIN, BETTIE-Waterloo, Iowa
 CUNNINGHAM, CAROL-Glasco, Kansas
 DELL, ROBERT W.-McPherson, Kansas
 DeSA, BERNARD-Bombay, India
 DIRKSEN, DENNIS-Canton, Kansas
 DOLLOFF, NICKY-Harlan, Kansas
 DRESHER, LARRY-Canton, Kansas
 DUNCAN, CAROL-Haxton, Colorado
 ELY, GARY-Inman, Kansas
 ERISMAN, PAUL-Fairview, Missouri
 FAUS, GLEN-Manheim, Pennsylvania
 FIELDS, FAYE-Wichita, Kansas
 FILLMORE, CAROLYN-Belle Plaine, Kansas
 FLORY, JERRY-Washington, Iowa
 FOLEY, VERNARD-Morrill, Kansas
 FREED, JAMES-Homestead, Oklahoma
 FRUTH, DAVID-Quinter, Kansas
 FRY, JOHN-McPherson, Kansas
 FULHAGE, DARRELL-Beloit, Kansas
 FUNK, LESLIE-McPherson, Kansas
 GRAMM, ETHAN-Detroit, Kansas
 GRILLO, ARINADE-Awe Gyo, Nigeria, West Africa
 GUENTHER, JACOB-Fredericksburg, Iowa
 GUICT, ALFRED-Glasco, Kansas
 HANLEY, MARILYN-South English, Iowa
 HANLEY, MARIORY-South English, Iowa
 HARDING, DONNA-Yoder, Colorado
 HARDING, MARY LOU-Yoder, Colorado
 HARNER, CARL W.-Lena, Illinois
 HARNLY, SARAH LOU-Miami, Texas
 HART, RICHARD-Brownington, Missouri
 HILL, MARY-McPherson, Kansas
 HINTZ, NORMA-Canton, Kansas
 HOLLENBECK, DONALD-Udeil, Iowa
 HOPPMAN, RICHARD-Surrey, North Dakota
 HOWELL, VENETA-St. John, Kansas
 HUBER, PATRICIA-Elida, Ohio
 HYKES, DAVID-Adel, Iowa
 IGEI, LYNDA-Ottawa, Kansas
 ILIN, STANLEY B.-Nampa, Idaho
 JACOBSON, MILDRED-Elmo, Kansas
 JAHN, EUGENE-Galva, Kansas
 JOHNSON, JOHN R.-McPherson, Kansas
 JOHNSON, PATRICIA-Canton, Kansas
 JONES, KATHERINE-McPherson, Kansas
 JONES, ROY-Cabool, Missouri
 KALTSOUNIS, VASILIOS-Igoumenitsa, Epirus, Greece
 KEDA, RICHARD, Jr.-Nampa, Idaho
 KEISER, RONALD-North Liberty, Indiana
 KINGERY, LEROY VERN-Greene, Iowa

KLOTZ, MARLENE-Fredericksburg, Iowa
 KOLMAN, PAUL DEAN-Narka, Kansas
 KURTZ, DOROTHY-Oklahoma City, Oklahoma
 LANDRUM, RICHARD-Hutchinson, Kansas
 LEACH, RUTH-McPherson, Kansas
 LEFFLER, DONALD-Canton, Kansas
 LEHMAN, MARGARET-Friend, Kansas
 LONGMIRE, EDDY-Dallas Center, Iowa
 LOWE, PHILIP-McPherson, Kansas
 MacDONALD, JAMES-McPherson, Kansas
 MAXEY, GERALD-Marquette, Kansas
 MERCER, GEORGE RICHARD-Wichita, Kansas
 MURREY, LaVENA-Conway, Kansas
 MYERS, LARRY-Windom, Kansas
 NELSON, ARLYN-McPherson, Kansas
 NELSON, CHARLES-McPherson, Kansas
 NEUENSCHWANDER, JIM-Canton, Kansas
 NIGH, JUDITH ANN-McPherson, Kansas
 NUCKOLLS, FLORENCE-Des Moines, Iowa
 OLIMSTED, DANIL-McPherson, Kansas
 OLTMAN, BETTY-Endets, Nebraska
 ONEAL, JACK LEE-Fredonia, Kansas
 OTTE, GARY-Galva, Kansas
 OWENS, LINDA-Lincoln, Nebraska
 PAPANDEPOULOS, CONSTANTINE-Volos, Greece
 PAULS, HARVEY-Inman, Kansas
 PEEL, FLORENCE-McPherson, Kansas
 PENCE, PATRICIA-McPherson, Kansas
 PITTMAN, ELIZABETH-Astoria, Illinois
 PROCHASKA, IVAN-Glasco, Kansas
 QUINN, JIMMY-McPherson, Kansas
 REINKE, RICHARD-Ashland, Ohio
 RIERSON, JO ROY-Galva, Kansas
 RIWER, GERTH-Kassel, Germany
 ROBERTS, MELVIN-Quinter, Kansas
 ROLFS, MELVIN-Geneseo, Kansas
 ROLSTON, JANICE-Sheldon, Iowa
 ROLSTON, JERRY-Sheldon, Iowa
 ROLSTON, KEITH-Sheldon, Iowa
 RUMSER, THOMAS-McPherson, Kansas
 SCHWARTZ, VERNA-Wiley, Colorado
 SELLERS, ARDETH-McPherson, Kansas
 SHELLENBERGER, DEANNA-Denver, Colorado
 SMALLWOOD, JAMES-Twin Falls, Idaho
 SMALLWOOD, RITA-Twin Falls, Idaho
 SMITH, JOHN A.-Lincolnville, Kansas
 SPATE, FRED-Rocky Ford, Colorado
 SPITZER, EARL-Corpus Christi, Texas
 STELTING, GARY-McPherson, Kansas
 STROM, SHERYL-Worthington, Minnesota
 STRYCKER, ELLEN-Thayer, Kansas
 STUMP, HARL G.-McPherson, Kansas
 SWINGER, ANNETTA-Kennett, Missouri
 THOREN, JO NELLE-Council Bluffs, Iowa
 TINSLEY, ALVIN-Canton, Kansas
 TOMPKINS, KENNETH-Fruita, Colorado
 TORRES, DOMINGO-Castaner, Puerto Rico
 ULRICH, JOYCE-Quinter, Kansas
 VANDERBILT, PHYLLIS-McPherson, Kansas
 WALLERICH, KAY (Mr.)-Ollie, Iowa
 WAMPLER, GARLAND-Weyers Cave, Virginia
 WHITE, DIXIE-Canton, Kansas
 WILLIAMS, LEWIS-Quinter, Kansas
 WILLIAMS, RODNEY-McPherson, Kansas
 WILLITS, DONALD-McLouth, Kansas
 WILMOTH, GLENN-McPherson, Kansas
 WINE, GLENDA RAE-Endets, Nebraska
 WINSLOW, ELAINE-McPherson, Kansas
 WINTER, WILLIAM H.-Wichita, Kansas
 YODER, KAREN-Conway, Kansas
 YORK, KAREN-Hope, Kansas
 ZOOK, LESTER-Mintot, North Dakota
 ZUCK, WAYNE-Merriam, Kansas

SOPHOMORES

ALEXANDER, ARDEN-Geneseo, Kansas
 BARCELO, RUTH-Adjuntas, Puerto Rico
 BARRAGREE, RONALD-McPherson, Kansas
 BASTIN, DAVID-West Plains, Missouri
 BERRY, JOYCE E.-Ottumwa, Iowa
 BLACKWILL, BEVERLY-Quinter, Kansas
 BOWER, JANICE-Wichita, Kansas
 BRALLIER, JAN-Gypsum, Colorado
 BRUNNER, DENNIS-Ramona, Kansas
 BURKHOLDER, ION-Preston, Minnesota
 BUTLER, JUDITH BRAMMELL-McLouth, Kansas
 CHRISTENSEN, DONALD-McPherson, Kansas
 CLARK, LARRY-Mayfield, Kansas
 COOK, LILA-Lyons, Kansas
 CROUSE, DANNY-Hutchinson, Kansas
 DAVIDSON, DORIS-McCune, Kansas
 DELK, EDMUND-Topeka, Kansas
 DOOLEY, JOE-McPherson, Kansas
 DURUS, HERBERT-McPherson, Kansas
 DUNDAS, JERRY-McPherson, Kansas
 EMSWILER, JANIS-Froid, Montana
 EWING, ZOANN-Gowrie, Iowa
 FAGER, LOIS-Clovis, New Mexico
 FERRIS, RICHARD-Elkhart, Iowa
 FIKE, ELVERDA-West Plains, Missouri
 FRAZIER, BERNARD-Charles City, Iowa
 FREEMYER, PAUL-Bedford, Iowa
 FURRY, JOAN-New Enterprise, Pennsylvania
 GOERING, DEANNA-McPherson, Kansas
 GROSSNICKLE, MAX-Laurens, Iowa
 GROTE, MANFRED-Sulingen, Germany
 GUSTAFSON, CARL-McPherson, Kansas
 GUTHALS, MARY ANN-Elmo, Kansas
 HARDEN, RONALD-McPherson, Kansas
 HARRIS, KENNETH-Colorado Springs, Colorado
 HARRIS, KENTON-Colorado Springs, Colorado
 HAWLEY, KERMIT-McPherson, Kansas
 HAYES, LEROY-Geneseo, Kansas
 HICKEY, CAROL-Adel, Iowa
 HOLDERREAD, KENNETH-Ripley, Oklahoma
 HORTON, GALEN-Sebring, Florida
 HOWELL, DARYLE-Lincoln, Kansas
 JANSSEN, WILLIAM-McPherson, Kansas
 KAUFMAN, DELORES-Scott City, Kansas
 KING, LARRY-North English, Iowa
 KINZIE, LARRY-Des Moines, Iowa
 KOLBE, RUTH-Panora, Iowa
 KOONS, FRED-Lyons, Kansas
 KUSLER, BILLIE GERALD-Yuba City, California
 LAUVER, CHARLES-Pomona, Kansas
 LEHMAN, JOHN-St John, Kansas
 MATHES, BOYD-McPherson, Kansas
 MELTON, DARRY-Asherville, Kansas
 MILLER, VALERIE-Rocky Ford, Colorado
 MITCHEL, SANDRA-Arada, Colorado
 MONK, ROSSIE-McNeil, Arkansas
 MOORS, RUSSELL-McPherson, Kansas
 MORRIS, REX-McPherson, Kansas
 MYERS, JOHN-Essex, Missouri
 NEGLELY, JO ANN-Durham, Kansas
 NG, SHERLAND JOYCE-Lahaina, Maui, Hawaii
 OKEREAFOR, CHRISTIAN-Nigeria, West Africa
 OLTMAN, EILEEN-Ender, Nebraska
 PAOLI, BLANCA-Chicago, Illinois
 PARK, RALPH-McPherson, Kansas
 PECKOVER, CHESTER-McPherson, Kansas
 REINECKER, VERNON-Quinter, Kansas
 ROGGE, JAMES-Washington, Kansas
 ROYER, DOYLE-Adel, Iowa
 ROYER, DWIGHT-Dallas Center, Iowa
 SCHEHUBER, LARRY-Marion, Kansas
 SCHROCK, JOEL-Preston, Minnesota
 SINGLETON, KENNETH-Chase, Kansas
 SMITH, ROGER-Greene, Iowa
 SODEN, WANDA-Rocky Ford, Colorado
 STAFFORD, SHIRLEY-Lonsaconing, Maryland
 STEGEMAN, RALPH-Hope, Kansas
 STRAKA, FRANCES-McPherson, Kansas
 SWINGER, MILVYN-Essex, Missouri
 THOMPSON, SCOTT-Minneapolis, Kansas
 THOMPSON, SHARON-Independence, Missouri
 TINSLEY, MAIDA-Canton, Kansas
 TURNER, SHIRLEY-Lanark, Illinois
 WEDDLE, MARVIN-Bloom, Kansas
 WEDDLE, TERRY-Bloom, Kansas
 WERNER, LARRY-Winona, Kansas
 WILLEMS, PHILLIES-McPherson, Kansas
 WILLEMS, ROBERT-Conway, Kansas
 WILLIAMS, ELLEN-Worthington, Minnesota
 WILLIAMS, HELEN-Worthington, Minnesota
 WILLIAMS, SHIRLEY-Hardin, Missouri
 WISE, BETTY ANN-Nevada, Iowa
 WRIGHTSMAN, KENTON-Holmesville, Nebraska
 YOUNG, DEAN-McPherson, Kansas
 ZOOK, LOREN-McPherson, Kansas

JUNIORS

BEACH, CHARLES-Leonard, Missouri
 BEACH, DONNA DAVIDSON-McCune, Kansas
 BERNSTORF, BERNICE-Chase, Kansas
 BITTINGER, RICHARD-McPherson, Kansas
 BROOKWATER, CURT-Creston, Minnesota
 BURKHOLDER, KATHRYN-Preston, Minnesota
 CAMPBELL, DAVID-McPherson, Kansas
 CLEMENTS, HOWARD-McPherson, Kansas
 CLOUSE, JANE-McPherson, Kansas
 CLOUSE, THELMA-McPherson, Kansas
 COTTON, DONALD-McPherson, Kansas
 DISU, MONSUR-Lagos, Nigeria
 DUNCAN, HOWARD-Haxton, Colorado
 EDIGER, CARL-McPherson, Kansas
 ELLIOTT, GENE-McPherson, Kansas
 ELY, HAZEL-Conway, Kansas
 ERISMAN, BOBBY-Fairview, Missouri
 FRAZIER, RICHARD W.-Charles City, Iowa
 FU, LAN-YING-Taiwan, Free China
 GRÖSSNICKLE, WAYNE-Laurens, Iowa
 GROTH, SHIRLEY-Independence, Kansas
 GROVE, NOEL-South English, Iowa
 GUIOT, EARL-Glasco, Kansas
 HANAGARNE, RUTH-Shiprock, New Mexico
 HARMIS, ANN SCHNAITHMAN-Haxton, Colorado
 HARRIS, CARL-Jennings, Louisiana
 HAWBAKER, GLENNA-Dallas Center, Iowa
 HAYES, LARRY-McPherson, Kansas
 HEISEY, HAROLD-Adel, Iowa
 HELLER, FRIN-McCune, Kansas
 HOOD, RICKIE-Cabool, Missouri
 JOHNSON, EUGENE D.-Courtland, Kansas
 JOHNSON, EVAN-Inman, Kansas
 KECK, MARVIN-McPherson, Kansas
 KIM, TAI KYUN-Seoul, Korea
 KIM, YOUNG YOON-Seoul, Korea

KURTZ, ELLEN E., -Oklahoma City, Oklahoma
 LKHITE, WILAS-Elgin, Illinois
 LIVERMORE, HARRY-McPherson, Kansas
 LUGINSLAND, KENNETH-Kansas City, Kansas
 MARTIN, ROBERT E., -Elkhart, Indiana
 MCPHERSON, JERRY-McPherson, Kansas
 MILES, HAZEL-Leonard, Missouri
 MILLER, LARRY-McPherson, Kansas
 MORLAND, GLENN-Union, Iowa
 NIGH, DAVID-McPherson, Kansas
 ORME, EVANGELINE-Meade, Kansas
 PAOLI, RAMON A., -Chicago, Illinois
 PARR, KAY STEELE-McPherson, Kansas
 PEEK, DELORES-Watrensburg, Missouri
 PELTZMAN, DORIS W., -McPherson, Kansas
 PFALZGRAF, HAROLD-McPherson, Kansas
 PIGOTT, GARY-McPherson, Kansas
 RAGLAND, THOMAS-Lawrence, Kansas
 RHOADES, DONNA-Rocky Ford, Colorado
 ROLES, ARLENE-McPherson, Kansas
 ROYER, LINDA-Adel, Iowa
 SAMS, LARRY-Wichita, Kansas
 SANDERS, LARRY-Des Moines, Iowa
 SHERMAN, WILLIAM M., -Kansas City, Missouri
 SNOGRASS, RUTH-Tribune, Kansas
 STUCKY, KENNETH-McPherson, Kansas
 SWENSEN, SONIA-McPherson, Kansas
 THRALLS, VERNONA-Kingsville, Texas
 TOLLE, MARY BETH-McPherson, Kansas
 TUSING, CLIFFORD-Baltimore, Maryland
 VASSILOFF, ANNA-Salonika, Greece
 WAGNER, IRVIN-McPherson, Kansas
 WALLACE, DELORES-Des Moines, Iowa
 WALTERS, JOAN-Pueblo, Colorado
 WATKINS, NORMA-Welda, Kansas
 WENGER, GENE-Myerstown, Pennsylvania
 WIDRIG, DONALD-Beloit, Kansas
 WISLER, IVADELLE-Cando, North Dakota
 YODER, NORMAN-International Falls, Minnesota
 ZUNKEL, CLARA-Denver, Colorado

SENIORS

ANDERSON, RONALD-McPherson, Kansas
 BAUGHMAN, NADINE-Salina, Kansas
 BEAM, RITA-McPherson, Kansas
 BELTZ, CAROLINE-Haven, Kansas
 BLOUGH, DOROTHY-Waterloo, Iowa
 BORTH, JACK-McPherson, Kansas
 BRADLEY, PHILLIP-McPherson, Kansas
 BUSKIRK, LeROY-McPherson, Kansas
 BUTLER, EDWARD-Eldora, Iowa
 CARR, PHILIP-North Manchester, Indiana
 CARTER, RICHARD-Ottumwa, Iowa
 CASEBEER, GEORGE-McPherson, Kansas
 CHEATHAM, VAL-McPherson, Kansas
 COFFMAN, SARA ANN-South English, Iowa
 COLBURN, CRAIG-McPherson, Kansas
 DADISMAN, LEE-Nevada, Iowa
 DANYLUK, LEE-Galva, Kansas
 DAUM, KERMIT-McPherson, Kansas
 DEWARE, JOHN-Phoenix, Arizona
 DIRKS, JUNE-Hutchinson, Kansas
 DORRIS, LEWIS-Erie, Kansas
 DOUGHTY, GERALD-Hillsboro, Kansas
 EBBERT, CHARLES-Quinter, Kansas
 EMMERT, EDWARD-Redfield, Iowa

FANCHER, CAROL-McPherson, Kansas
 FANCHER, KENNETH-McPherson, Kansas
 FIKE, DUANE-Ramona, Kansas
 FISHER, GERALD-Cuba, Kansas
 GATEWOOD, MARY-Piney Woods, Mississippi
 GATZ, CHARLES-McPherson, Kansas
 GEIMAN, BOBBY-McPherson, Kansas
 GOODFELLOW, ALMA-Lyons, Kansas
 GRIPE, BILL-Geary, Oklahoma
 GUENTHER, MARDELLA-Fredericksburg, Iowa
 HAAS, IMOGENE-Abilene, Kansas
 HARMS, NORRIS-Haxtun, Colorado
 HAVICE, JACK-Burnham, Pennsylvania
 HERDER, RICHARD-McPherson, Kansas
 HILDRETH, BILLY JOE-Ankeny, Iowa
 HILL, ROBERT-McPherson, Kansas
 HOLLERREAD, DONALD-Ripley, Oklahoma
 JEFFRIES, DWAYNE-Ringwood, Oklahoma
 JOHNSON, HERBERT-Canton, Illinois
 JOHNSON, JOAN FORD-McPherson, Kansas
 JOHNSON, MARION-Courtland, Kansas
 KEIM, ANNE-Nampa, Idaho
 KIM, EUI YOUNG-Seoul, Korea
 KING, BARBARA-Pampa, Texas
 KOLMAN, VERLIN-Narka, Kansas
 KOLSTAD, OLE-Viroqua, Wisconsin
 KREBIEL, STANLEY-Pretty Prairie, Kansas
 KRUSCHWITZ, FORREST-Grundy Center, Iowa
 LANDHUIS, MARLON-Harris, Iowa
 LARSON, DELAINE-Haxtun, Colorado
 LOLLING, MELVIN-Nickerson, Kansas
 LOLLING, NEVA SHENEFELT-Navarre, Kansas
 LUCORE, ELSIE-Atriba, Colorado
 LUNDBERG, PAULINE-McPherson, Kansas
 MAUL, BARBARA-Pampa, Texas
 MOHLER, VERA-McCune, Kansas
 NELSON, ROBERT-Nampa, Idaho
 OAK, WAYNE-Pensilosa, Kansas
 OLTMAN, DWIGHT-Enders, Nebraska
 OLTMAN, MARLO-Enders, Nebraska
 PARK, YUNG MIN-Seoul, Korea
 PERKINS, DELAINE-Hutchinson, Kansas
 PITTMAN, ROBERT-Astoria, Illinois
 PRICE, WAYNE-Salina, Kansas
 RHOADES, SHIRLEY-Rocky Ford, Colorado
 RICH, JOE-McPherson, Kansas
 RODGERS, GAYLEN-McPherson, Kansas
 RODRIQUEZ, ANA ROSA-Castaner, Puerto Rico
 ROGERS, GARY-Downs, Kansas
 ROSEBROUGH, GORDALE-McPherson, Kansas
 SCHECHTER, PATSY-Worthington, Minnesota
 SCHROCK, ROBERT-Hampton, Iowa
 SHEAFFER, KENNETH-Adel, Iowa
 SINK, EDWIN-McPherson, Kansas
 SMITH, ADRIAN-McPherson, Kansas
 SMITH, SIDNEY Jr., -McPherson, Kansas
 SMITH, WILBUR-Palmira, Pennsylvania
 SNYDER, A. EUGENE-McPherson, Kansas
 SNYDER, JAMES-McPherson, Kansas
 STERN, ROY-Fredericksburg, Iowa
 STUCKY, WILLARD-McPherson, Kansas
 SWITZER, EDWIN-Haxtun, Colorado
 VANCE, DEAN ANNE-McPherson, Kansas
 WHIRLEY, BERNARD-McPherson, Kansas
 WISE, MARY LOU-Nevada, Iowa
 YOUNG, DAN-McPherson, Kansas

ON THIS OUR 60th ANNIVERSARY YEAR WE CONTINUE TO APPRECIATE

McPHERSON COLLEGE

The Peoples State Bank was opened for business Nov. 1, 1898, and has enjoyed a close association with McPherson College.

Homer J. Ferguson, director of this bank and secretary-treasurer of the Alliance Companies of McPherson, a former student at McPherson College and member of the College Board of Trustees.

Robert E. Mohler, director of this bank and graduate of the class of 1907, for many years a professor of the college.

Earl V. Reed, director of this bank and graduate of McPherson College in the class of 1925, now a life insurance executive in Wichita.

Paul E. Sargent, president and director of this bank and graduate of the class of 1924, at present a trustee of the college.

Wilbur Yoder, cashier and director of this bank and graduate of the McPherson College class of 1934.

Dayton Yoder, director of this bank and graduate of the McPherson class of 1922.

PEOPLES STATE BANK

Member F. D. I. C.

Deposits insured up to \$10,000

Best Wishes
From

SAN-ORE CONSTRUCTION CO.



DEAL LUMBER CO.

523 West Kansas Avenue McPherson, Kansas



The Seal of Quality

for

The Flour That Is Always Good

so

For "Goodness Sake" Use "W-R" Flour

**THE WALL-ROGALSKY
MILLING COMPANY**

McPherson, Kansas

Best Wishes

From

**JOHN W. CASEBEER
AND EMPLOYEES**

McPherson, Kansas



Let Us Solve

Your Plumbing Problems

CARLSON

Plumbing and Heating

Bus. 14

Res. 615



It's easy to do business at McPherson County's most modern bank.

**McPHERSON AND CITIZENS
STATE BANK**

WE STUDY YOUR
INSURANCE NEEDS

and recommend
a schedule to
meet them at
lowest cost

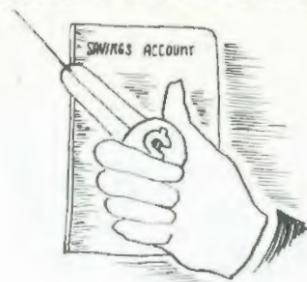
Why Not Consult Us For
Protection Service Satisfaction

CARL M. ANDERSON
—
METTLEN AGENCY

110 West Kansas Avenue

Feel Secure I Put Your Money In

**THE
HOME STATE BANK**



MEMBER F. D. I. C.

Courtesy of
J. C. PENNEY
119 North Main

Homogenized-Pasteurized-Vitamin
"D" Milk Delivered To Your Home

Ice
Cream



Fountain
Service

Open Evenings
217 South Main Phone 23

Brunko
jewelers



Artcarved®
DIAMOND RINGS

Beloved by Brides for over 100 Years

SID BACON MOTOR CO.

Dodge-Plymouth Sale and Service

Dodge Trucks

311-15 North Main Phone 1450

McPherson

Duckwalks

VARIETY STORES

Your Complete Variety Store

Fountain and Luncheonette

YOUR HOME
AWAY FROM HOME

EVERYTHING
FOR YOUR CONVENIENCE

Wheat State Motel

McPherson's Newest & Finest

LESTER PRIMER, OWNER
Phone 620

Junction 81-56 McPherson, Kansas

MILLER'S

Printing-Books-Stationery

McPherson, Kansas

121 South Main

For Landscaping, Floral Arrangements,
and Corsages, Consult



Raymond L. Buskirk, Manager

545 North Main McPherson

RALEIGH'S

DRUG STORE

Reliable Prescriptions

213 North Main Street

Phone 218 McPherson, Kansas

Best In Foods For Your Table

At

SWANSON'S FOOD STORE

116 East Euclid

HOTEL WARREN

and

COFFEE SHOP

You'll Be Satisfied Too

McPherson's Newest, Finest, and
Only Fireproof Hotel
Air Conditioned

Paul Brougher, General Manager

CAR BODIES CAN BE
REPAIRED OR REPLACED

But Auto Accidents Keep on
Maiming People

Nearly 40,000 Americans
Killed Last Year

DRIVE SAFELY AND LIVE

INSURE AND SAVE

WITH

ALLIANCE AGENCY

110 E. Kansas Phone 1400

Local Agents for:

Farmers Alliance Mutual Ins.
Alliance Mutual Casualty Co.
McPherson, Kansas

Best Wishes

from

SPRAGUE OIL SUPPLY

Distributors of Gillette Tires

(A Bear for Wear)

625 West Kansas Phone 1940

MORRIS AND SON

Ladies Sportswear

Men and Boys Wear

WESTERN STATES GAS

Propane and Butane

Keith Swinehart - Owner

HODGE FARM AND HOME STORE

204 North Main Phone 1044

BAKER'S CAFE
4:30 A.M. - 1:00 A.M.
6 days a week
All Night on Saturday

KEMP'S RESTAURANT
Corner B1 By-Pass and 56
Famous Broiled Steaks in the
Finest Restaurant in Town

SEABERG LUMBER COMPANY

316-22 East Elizabeth

Builder's Hardware-Paints-Glass

Making the most

Of what you've got

Is the shortest distance

To useful results...

Just as a straight line

Is the shortest distance

Between two points.

- Norman G. Shidle

UNIVERSAL ENGINEERING CO.

McPHERSON, KANSAS


BENNY AND CARL'S
Radio and TV Service
Everything in Sporting Goods
215 North Ash McPherson, Kansas

STROUSE'S
THE BEST STORE FOR MEN

MODERN INSULATING CO.

Insulation-Roofing

Windows & Doors


Hallmark
Cards

HUBBELL'S

DRUG STORE

104 South Main Phone 23

MILLER-KENNEDY
SALES AND SERVICE

Lincoln-Edsel

International and GMC Truck Dealer

1003 West Kansas

CHAMBER'S MOTEL

Nearest To Town And College

906 West Kansas (Highway 56)

COLLEGE INN

At Your Convenience

with good food

THE ENTRIKEN-PERRIN AGENCY

104 N. Main Phone 378

Home Loans Insurance

UNITED DAIRIES

MILK AND ICE CREAM

McPherson's Finest

SWANSON ELECTRIC COMPANY, INC.

Specialized Service

on all makes of Cars

GENERAL WELDING WORKS

416 West Kansas Phone 956

McPherson, Kansas

TANGEMAN-JANTZ, INC.
John Deere Sales and Service
Phone 284 115 West Euclid
McPherson, Kansas

LAKE SUPERIOR LUMBER CO.

301 N. Maple Phone 40

Lumber, paint, glass, and hardware

STRATTON SERVICE STATION

801 East Kansas Phone 1644

| | |
|---|--|
| <p>CO-OP COOPERATIVE CAREERS</p> <p>Offer These Advantages Security-Recognition Influence-Opportunity and the Satisfaction of Belonging to Something Bigger Than Yourself</p> <p>FARMERS CO-OP ASS'N</p> | <p>Corsages and Flowers for every occasion We Wire Flowers HUMFELDS FLOWERS Phone 172</p> |
| <p>BADER CLEANERS Fur and Wool Storage Neatness Pays Dividends Cleaning - Pressing - Alterations Across from Post Office Phone 320</p> | <p><i>Stanley's</i> Store For Women Ladies' Ready-to-Wear</p> <p>McPHERSON TRACTOR CO. Your Ford Tractor Ca. M. L. Nordstrom, Owner 801 Woodside McPherson, Kansas</p> |
| <p>YOUNG'S BAKERY Fine Pastries McPherson, Kansas</p> | <p>STEEVES-LARSON INS. AGENCY 109 E. Marlin</p> |
| <p>DALE'S TIRE SERVICE Recapping All Truck and Passenger Car Tires APCO Gas Gillette Tires 81 By-Pass</p> | <p>WHITE SWAN CAFE 204 South Main Phone 721</p> |
| <p>C. R. ANTHONY "Your Friendly Department Store" 100 N. Main</p> | <p>DAISY'S BEAUTY SHOP Individual Hair Styles For Appointment Call 788 119 South Main</p> |
| <p>HAWLEY HARDWARE 219 North Main</p> | <p>Congratulations Students You Can Trade With</p> |
| <p>CRABB'S TOWN & COUNTRY STORE McPherson, Kansas "Music, Sporting Goods, and Appliances"</p> | <p>FRED McKENNA CHEV-OLDS More People Do!</p> |

DELICATESSEN

Noon Meals
Banquets
McPherson, Kansas

GOERING PAINT AND WALLPAPER

Paints - Wallpaper - Glass - Gifts

113 East Euclid Phone 324

McPHERSON LAUNDRY
AND DRY CLEANING

The Finest in Laundry and Dry Cleaning
Adrian M. Smith, Owner
Phone 44 214 South Main

48 Hr. Delivery From

MONTGOMERY WARD

KING'S

Your Reliable Drug Store

Drug - Fountain - Cosmetic

MARCIA'S GIFT SHOP
Cameras, Picture Framing, Hallmark Cards
Gifts For All Occasions
"When You Care Enough
To Send The Very Best"



McPherson's
Newest and Finest Department Store

DON'S
CAMERA SHOP
AND STUDIO



T
H
I
S

I
S

T
H
E

P
L
A
C
E

THIS IS THE FACE

Students and Alumni
are always welcome
to discuss your
photographic problems



212 North Main

It's Clean! It's Unique!
Eat Here
Don and Carol Miller
KEN'S DRIVE-IN

GOSS MOTOR CO.
Your
Chrysler-Plymouth
Home

Phone 567 208-212 South Main

STUCKY IMPLEMENT CO.

Minneapolis-Moline Tractors & Equip.
1007 South Main . . Phone 160
McPherson, Kansas

KELLEY'S CAFE

North of 56-81 Intersection

24 Hour Service

The Sooner You Plan Your Future,
The Better Your Future Will Be

N/W NATIONAL
Life Insurance for Living

LEONARD M. LOWE 322 N. CARRIE

ROTH'S
MID-KANSAS PRODUCE AND LOCKER
Live and Dressed Poultry and Turkeys
U.S. Choice and Baby Beef
McPherson, Kansas

SUPERIOR MOTORS

Pontiac - Cadillac

318 North Main Phone 4

Best Wishes

from

KANSAS JACK, INC.

P.O. Box 110 Phone 575

Manufacturers and Distributors of
Body Shop Specialties and Accessories

BANKER'S FINANCE

Home Owned And Operated Institution

Buy Your Food

at

COLLEGE HILL MARKET

For Good Entertainment

Treat Yourself To

MAC AND MANOR THEATERS

For the "rest" of your life
SKYLARK MOTEL
Family Rates-TV-Air Conditioning
81 Bypass Phone 1041

PEARCE-LOBBAN

Your Ford Dealer

519 North Main

CULLIGAN SOFT WATER SERVICE

Marion K. Frobenius

401 North Oak Phone 467



Ken and Elsie recommend

RENBERGER'S

THE END OF A LONG TALE



FAREWELL SENIORS.....
HOWDY UNDERCLASSMEN!



Paul Wagoner and Bob Richard find the food delicious at the Banquet.

REGIONAL YOUTH CONFERENCE

The 1958 conference was the largest ever held. Over 600 young people thought it worthwhile to "Come and See." Bob Richards, the vaulting parson, was the main speaker, and the high point of the conference was the banquet and his speech Saturday night.

A full program was planned for the young people who come from all districts of the Western Region. Many students spent much time helping on committees preparing for this occasion.

A full house of "come and see'ers."

Hurry up with that food!



Where does it all go?





Stars Barb King and Norma Watkins sign work contracts with Phil Carr and Gene Snyder.

MARTHA

The three-act opera, "Martha," was presented by the Music Department to the Youth Conference audience. Music and dramatics student united their talents to the accompaniment of the orchestra. The action of the opera takes place when two noble-ladies disguise themselves as country maids to go to a fair, where they become involved with two country lads.



Going once... Going twice... Sold -- Two beautiful maidens to the highest bidders!

How about a nice donkey ride?

Beautiful charms are enhanced by lace and frill.

Always primping!



O SACRED TRUTH

Altho out on broad Kansas Plain,
Here not in vain are we,
For we will strive with might and main,
That right and truth may be.
The student loves to dream his dream
Of life that's yet to be,
Of future days and years that'll seem
The best for old M. C.

We'll hope for our M. C.
We'll cheer for dear M. C.
While winds do blow,
And sunflowers grow,
We'll long for thee M.C.