

1948

The
Quadrangle

"We have but faith we cannot
know,

For knowledge is of things we
see;

And yet we trust it comes
from thee,

A beam in darkness: let it
grow."

—IN MEMORIAM

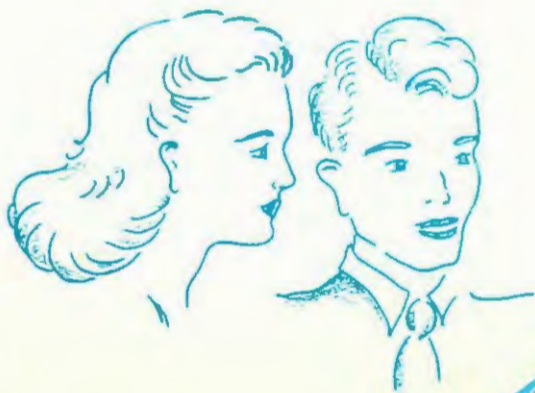
—*Alfred Lord Tennyson*

Quadrangle

1948

Betty Stonebraker
Editor

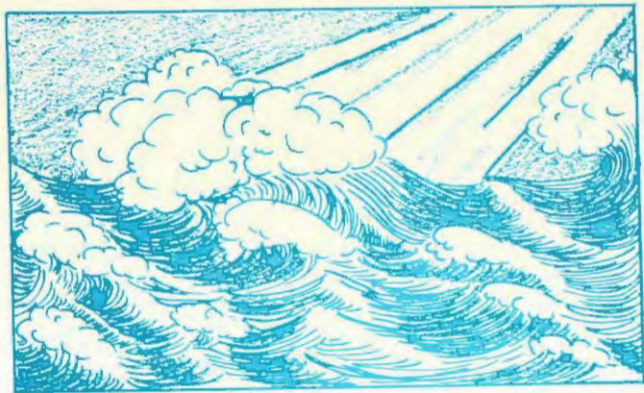
Sybil Keim
Business Manager



Annual Yearbook of

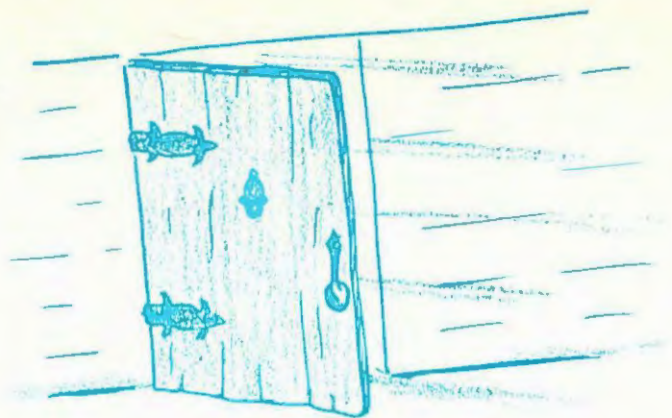


McPherson College, McPherson, Kansas



Dedication

The Quadrangle staff of 1948 dedicates this book not to things we see, but to the beam in darkness that we trust comes from Thee. As we wander down the long winding road of life gathering knowledge from things we see, let us pause a moment to challenge ourselves for knowledge of things we cannot see. Our college offers an excellent challenge for spiritual development. Without faith can we find peace and goodwill among men? Without faith can we learn to love our fellowmen? Let us take advantage of the opportunities given us by McPherson College to develop a more firm foundation for faith.



Foreword

An annual is the picture of the year's events. Keeping this in mind, we, the annual staff, have tried to bring to you a clear picture of the year's events at McPherson College. For clarity we have divided our publication into four divisions. We begin with the faculty and administration as they are indeed a most vital part of our college education. The second division is that of the classes. Perhaps the most important of all are the contacts with other students which build and shape us into personalities and bring us into maturity, equipped to take our place in the world as good citizens. Next we have the division of activities. These activities give the students an opportunity to express themselves constructively outside the classroom. And the last division is that of sports. There is little need to mention the great part sports play in our college program. As the years pass, our greatest desire is that you leaf through this year book, pausing over each page as it brings back fond memories of your college days.



Contents

- I. COLLEGE
- II. CLASSES
- III. ACTIVITIES
- IV. ATHLETICS



COLLEGE

The
Quadrangle



President W. W. Peters

Our fine institution of higher learning is under the direction of Dr. Peters, our dignified and understanding president. It was the responsibility of this administrator to direct the college through a difficult period of war years followed by a span of readjustment years. Dr. Peters solved the problems extremely gracefully through this era. Our president has shown much pride in the ability of the college to thrive and expand during the recent years.

McPherson College

W. W. PETERS, PRESIDENT

McPherson, Kansas

DEAR 1948 QUADRANGLE READERS:

In many ways the Quadrangle is an historical document in the life of McPherson College. At the time of the publication of a particular edition, it may be difficult to think of it as such; but, as the years come and go, one can detect by study and comparison of all the copies to date many evidences of social, recreational, and religious characteristics and changes.

It would be interesting for some anniversary number of the Quadrangle to illustrate the life of the college by using materials from all of the successive Quadrangles since its origin.

The thing I am concerned about, however, at this time is how significant will what we are thinking, saying, and doing in 1948 appear to our successors in 1973.

1948 is the sixtieth year in the history of McPherson College, and in the past sixty years the United States has engaged in two world wars. To avoid the humiliating and annihilating effects of a World War III, 1948 must see the speeding up of all intelligent and constructive efforts (1) to strengthen the United Nations and (2) to promote sympathetic understanding of, and mutually beneficial cooperation with, all peoples and nations. The United States must demonstrate to the world that the democratic form of government as we understand and practice it is the best guarantee of "life, liberty, and the pursuit of happiness."

No nation in the world is at present as powerful economically, industrially, agriculturally, and educationally as is the United States. It is for us to do all possible to aid the nations weakened, or all but destroyed, by World War II to become again self supporting nations. Independent and unethical competitive nationalism must give way to internationalism with the final authority as to whether or not a particular nation can go to war with another nation vested in a World Federation of Nations with a federal constitution and supporting laws, and a world court.

The youth of today will continue to live in an increasingly interrelated small "one world" in which the only guarantee of security is to be found in a community of nations, races, cultures, and religions committed to peaceful relationships. This calls for a philosophy of education and life motivated by the fact that moral and ethical values are always superior to material values and that the highest objective of life is to honor God in all areas of our activities and relationships.

W. W. Peters



Church of The Brethren

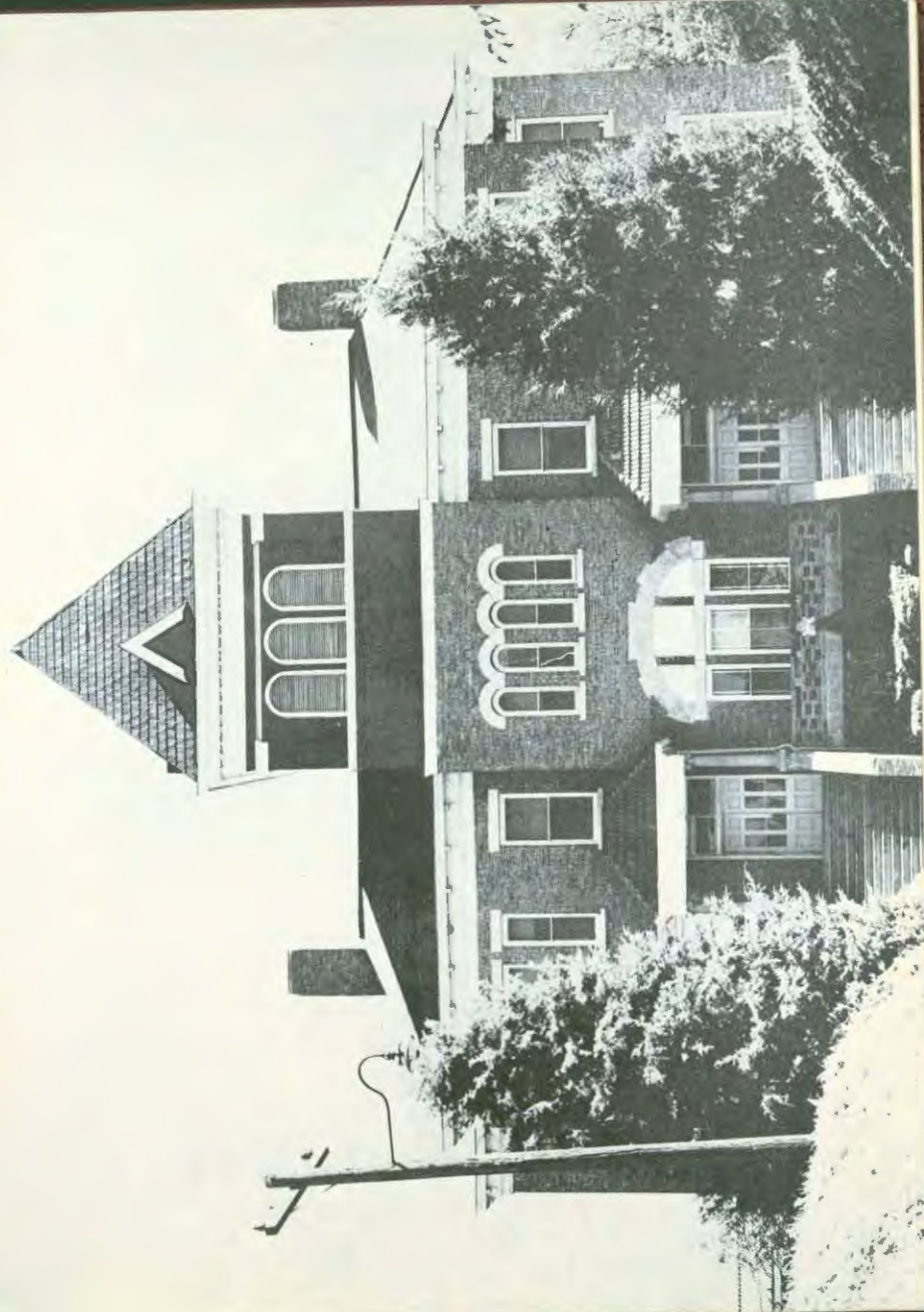
A fine piece of architecture graces the approach to our campus. It is the college church. The building and its beautiful stained glass windows are a great inspiration to the students who repair weekly to the services and attend the special worship programs planned with the interest of the students at heart. It is here that we gain a great deal of our religious and spiritual education. The ground surrounding the building offers an excellent site for vesper services in the spring.

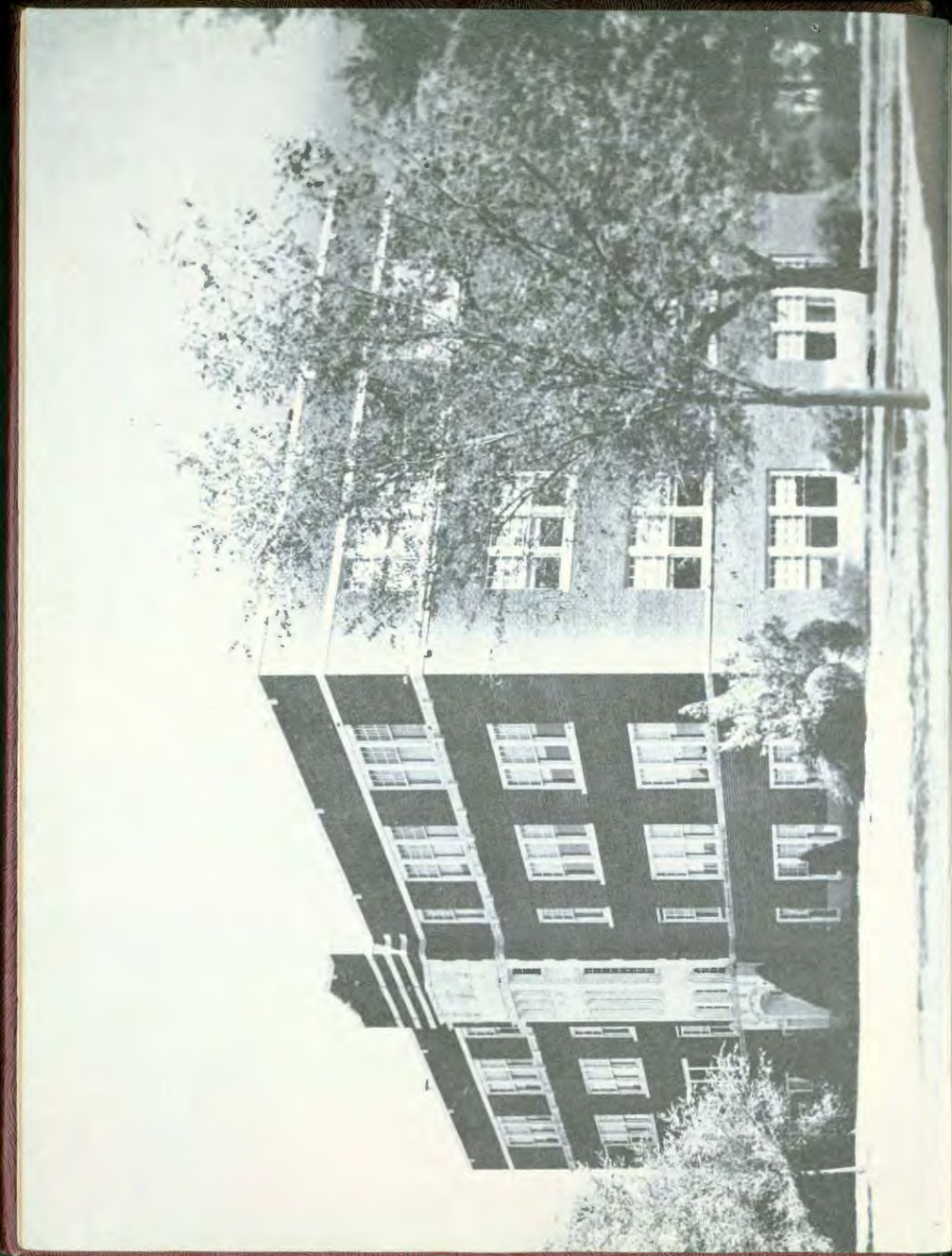
REV. DEWITT MILLER

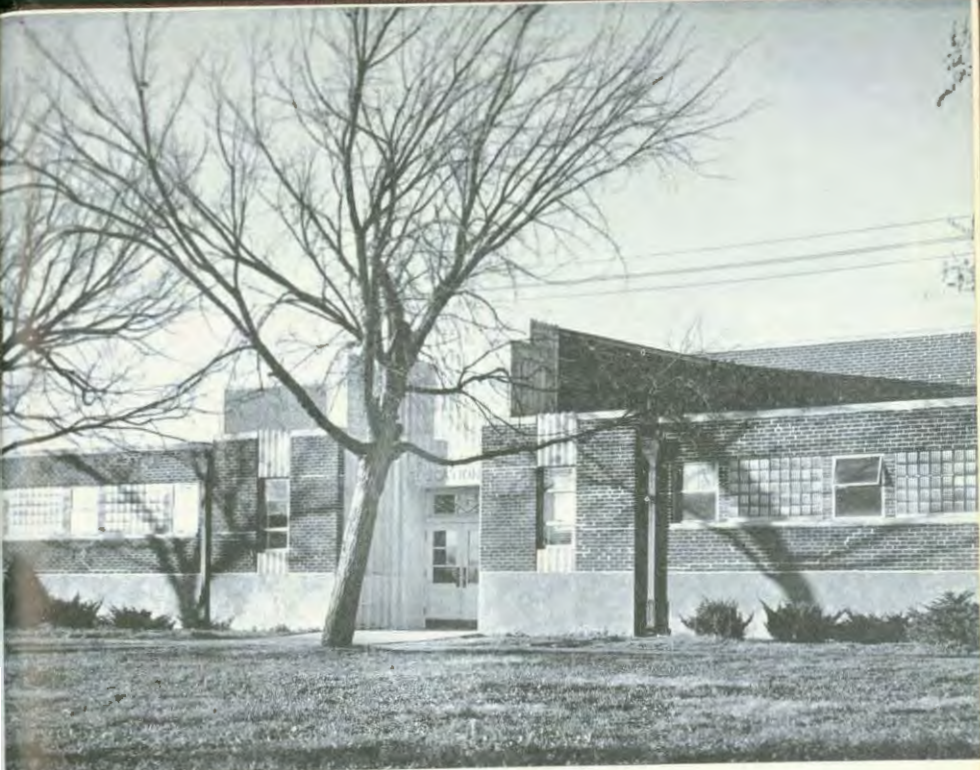


SHARP HALL

Probably the most important of our buildings is Sharp Hall, the traditional symbol of McPherson College. Offices, classrooms, chapel, food . . . all are found here.







Physical Education Building

Situated at the north end of the campus and rather aside from the other buildings is the gymnasium. This structure shelters many a jovious and active morning, afternoon, and evening of wholesome entertainment. In addition to the regular physical education classes that are held in this edifice, there are also organization meetings of the Women's Athletic Association and the M Club. Also there are carried on many socials from folk games to intramural basketball tournaments and the formal reception at the outset of the year.

To the east of the gymnasium are the tennis courts which are a relatively new addition to the campus, and behind the tennis courts is the football field, which is used by both the college and the high school.

HARNLY HALL

The largest building on the campus is the science hall, commonly known as Harnly. The activities of the Hall range from chemistry on first to music on fourth.



FRANTZ INDUSTRIAL ARTS BUILDING

Both practical arts and fine arts are taught in Frantz Hall, a small but attractive and unassuming piece of architecture on the east edge of the campus. This building also houses a convenient washing room.

The equipment for literary arts is stowed in the cheerful, well-lighted library which serves the purpose of a place to study for many students. Being a Carnegie Library, it is well stocked with reference books, periodicals, and fiction.

CARNEGIE LIBRARY





ARNOLD HALL

The women's and men's dormitories are known as Arnold and Fahnestock respectively. Besides rooms for students, the kitchen and dining hall are located in Arnold. Fahnestock is one of the most recently constructed buildings and is highly esteemed for its comely structure.

FAHNESTOCK HALL



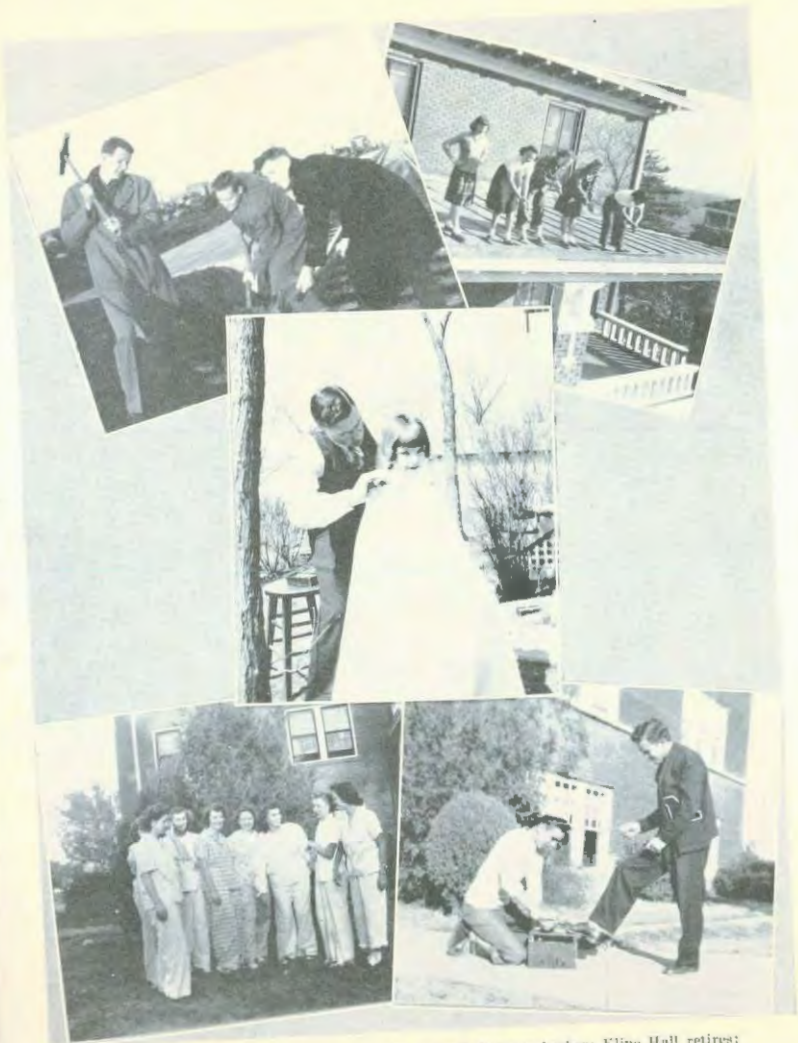


KLINE HALL.

With new apartments in Kline Hall, it is the haven for the married couples on the first two floors, and the third floor is an abode for girls. And for the many couples who are attending college, veterans' houses give students the opportunity to live close to the campus.

VETERANS' APARTMENTS





Working on the railroad; after exams?; Papa Dell turns barber; Kline Hall retires;
Shine, Shine, Shoe Shine Boy.



Dean L. Avery Fleming

Dean Fleming is always willing to lend an understanding ear to the problems of the students and to talk with them lending kindly advice. He has well proved his ability in guiding students in their academic pursuits as well as being a capable counsellor.

Coming here four years ago, he began his work as Professor of Sociology and Education. In 1946 he was appointed Dean of McPherson College. He now divides his time between his duties as dean and as professor of education.

Doctor Fee

In her two years as Dean of Women, Dr. Mary Fee has won the admiration and respect of the women of Macampus. Steadfast and unswerving, she strives always for Macollege to maintain higher social and cultural relations in all activities. Aside from her duties as Dean of Women, Dr. Fee also conducts classes in education.



Dean Dell

A ready counsellor, Professor Dell willingly listens to his students' problems with keen understanding. His kind advice, practical philosophy, and broad-minded understanding quickly win for him the friendship and confidence of all Macampus men. He may usually be found in the Industrial Arts building in his office or his shop classes.



Standing, left to right: S. Keim, T. Geisert, Dean Fleming, Howell, W. Bowman, R. Keim, Prof. Dell, M. Keim, B. Sheets, Oloerst.
Seated—Metzler, Hobbs, Wampler.

Student Council

Every Wednesday night at 6:30, the gavel of the Student Council's president falls, and the meeting is called to order. The Student Council, a legislative and executive body of students, is a working example of a belief in a representative government. The center of student activity on the campus, the council promotes understanding between the faculty and students. It handles school business from solving minor campus problems to making a budget for the student activity funds. At its annual fall budget hearing the council plays godfather to all new or needy extra-curricular activities. The council also arbitrates any dispute between campus organizations or groups. In the fall it draws up a set of rules for freshmen initiation. Other duties include supervision of campus publications and elections for Homecoming Queen and cheerleaders.

The Student Council this year has been under the able leadership of William Hobbs, president; Mary Metzler, treasurer; and Donniss Wampler, secretary. Kenneth Brown was chosen to serve as secretary for the second semester because of Donniss's resignation.



Standing, left to right— Erb, Yoder, Emmert, Davis, H. Martin, Deas Fox, Froehrig, Stator.
 Seated— D. Bowman, K. Miller, H. Rogers, Noelin, R. Mahler.

WOMEN'S COUNCIL

The Women's and Men's Councils were formed several years ago upon the realization that there existed a need for direct contact between the students and the college. The councils promote good fellowship and discuss campus problems, providing information and opportunities for practicing correct social behavior. Service is their keynote. Both Councils are active in assisting new students to become acquainted with Macampus.

MEN'S COUNCIL



First row, left to right—
 V. Fisher, W. Beam, K.
 Jackson, Lewis, Hobbs, Mar-
 tin.

Second row—Deas Doll, L.
 Geisert, W. Bowman, Hec-
 kethorne, Fluey, Tarrath-
 er, Kroschel, Husworth.

Faculty

DEPARTMENT OF NATURAL SCIENCES



Joseph L. Bowman
A. B., M. S.
A. B. McPherson College; M. S.
University of Chicago.



James M. Berkebile
A. B., A. M.
A. B. Manchester College; A. M.
Ohio State University.



Thomas C. Hayden
B. S., A. M.
B. S. University of Illinois;
A. M. University of Iowa.



Lowell V. Heisey
A. B., M. S., Ph. D.
A. B. Manchester College; M. S.
Purdue University; Ph. D. Pur-
due University.



Mrs. Lowell V. Heisey
B. S.
B. S. Iowa State College



Robert E. Mahler
A. B., M. S., Sc. D.
A. B. Mount Morris College;
M. S. Kansas State College;
Sc. D. La Verne College.



Rolla Reiling
B. S.
B. S. Eastern State Teachers
College.



Mildred Sick
B. S., M. S.
B. S. McPherson College; M. S.
University of Wisconsin.

DEPARTMENT OF SOCIAL SCIENCE



Marilyn Sandy Voth
B. S.
B. S. McPherson College



Kenneth C. Bechtel
A. B., B. D., M. Th., Ph. D.
A. B. Juniata College; B. D.
Presbyterian Theological Sem-
inary; M. Th. Bethany Biblical
Seminary; Ph. D. University of
Chicago.



Anne Elizabeth Fleming
A. B., A. M.
A. B. Juniata College; A. M.
Ohio State University.



Raymond L. Flory
B. S., A. M.
B. S. McPherson College; A. M.
University of Kansas.

Faculty



Alice B. Martin
B. S.
B. S. McPherson College



Burton Metzler
A. B., B. D., Th. B., Ph. D.
A. B. Manchester College; B. D.
Bethany Biblical Seminary; Th.
B. Princeton Theological Seminary;
Ph. D. Southern Baptist
Theological Seminary.



Oscar A. Olson
B. S., A. M., Ph. D.
B. S. Northern State Teacher's
College; A. M., Ph. D. University
of Iowa.

DEPARTMENT OF LANGUAGES, LITERATURE, AND ART



Della Lehman
A. B., A. M.
A. B. Manchester College; A.
M. University of Southern California.



Jessie Brown
B. M.
B. M. Bethany College



Bonnie Dee Burk
B. M.
B. M. Bethany College



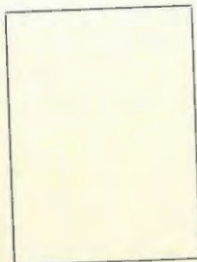
Eugene N. Crabb
B. M. E.
B. M. E. University of Kansas.



Donald R. Frederick
B. S., B. D.
B. S. Manchester College; B. D.
Bethany Biblical Seminary.



E. S. Hershberger
A. B.
A. B. Goshen College



Maurice A. Hess
A. B., A. M.
A. B. Indiana College; A. M.
University of Pennsylvania.



Helen Irene Howe
B. M.
B. M. University of Kansas

Faculty



Shirley Litan
B. S.
B. S. University of Pennsylvania.



Minnie Mugler
B. M., B. S.
B. M., B. S. McPherson College.



Audrey San Romani
B. M.
B. M. Bethany College



Esther Sherfy
A. B., A. M.
A. B. McPherson College; A. M.
Northwestern University.

OTHER MEMBERS



Sarah May Vanell
A. B.
A. B. McPherson College



Lulu Wickersham
A. B.
A. B. University of Kansas



Ira N. H. Brummel
A. B.
A. B. McPherson College



Earl M. Frantz
A. B., B. D., A. M.
A. B. McPherson College; B. D.
Bethany Biblical Seminary;
A. M. University of Chicago.



J. Howard Fries
A. B.
A. B. McPherson College



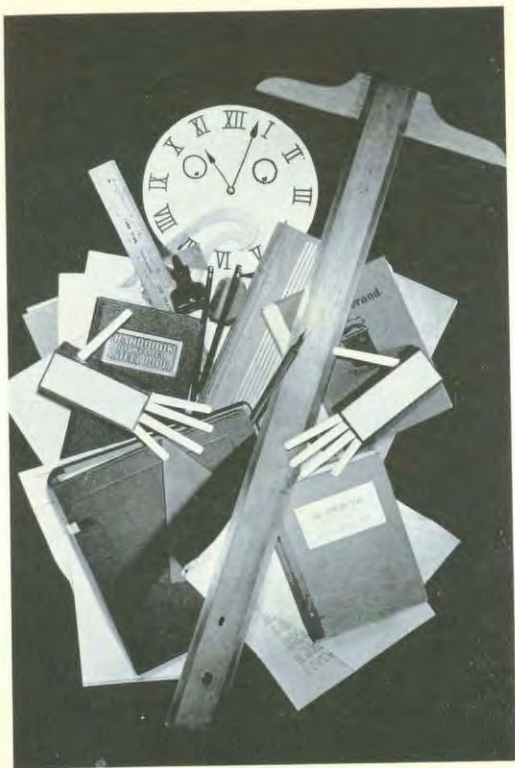
Virginia Harris
A. B., B. S. in L. S.
A. B. McPherson College; B. S.
in L. S. Louisiana State Uni-
versity.



Mrs. D. H. Sill



R. Gordon Yoder
B. S.
B. S. McPherson College



CLASSES

The
Quadrangle



GRADUATES



Class Officers

(Right to Left)

SENIORS

Flaine Brammell, Pres.; Doris Coppock,
Vice Pres.; Dorris Murdock, Sec.; Joan
Finrock, Treas.

JUNIORS

Theodore Geisert, Pres.; Donald Keim, Vice
Pres.; Ruth Holsopple, Sec.; Donald
Stern, Treas.

SOPHOMORES

Bob Martin, Pres.; Winston Beam, Vice
Pres.; Marie Miller, Sec.; Donald Guthals,
Treas.

FRESHMEN

Ellis Albright, Pres.; Donne Tammel, Vice
Pres.; Letha Miller, Sec.; Irene Richards,
Treas.





Seniors

J. WILLARD AGE *Philosophy and Religion*

Leakesville, N. C.
Student Council, 2; SCA Cabinet, 3; SCA Member, 2, 3; Recreational Council, 3, 4; Student Ministers, 2, 3, 4; Pep Club, 2; A Cappella Choir, 2; Choral Club, 2, 3.

ELAINE BRAMMELL *Sociology*

Topoka, Kansas
Class Officer, 4; SCA Member, 3, 4; Spectator Staff, 2, 3; WAA, 3, 4.

BYRON DELL *Sociology*

Beatrice, Nebraska
SCA Member, 1, 2, 3, 4; BYPD, 1, 2, 3; Choral Club, 1, 2, 3, 4; Church Choir, 1, 2; Spectator Staff, 4.

MARVIN HANSON *Music Education*

McPherson, Kansas
SCA Cabinet, 3; SCA Member, 3, 4; Choral Club, 3, 4; Orchestra, 3, 4.

JACK APPLEGATE *Biology*

Ramona, Kansas
M Club, 1, 3, 4; Football, 1, 3; Basketball, 1; Chemistry Club, 1.

CHARLOTTE CARTER *Business Administration*

Wauke, Iowa
SCA, 3; Spectator Staff, 3; WAA, 3.

JUNIOR EBERLY *History*

McPherson, Kansas

THEORA HARDY *Chemistry*

McPherson, Kansas
SCA Member, 1, 2, 3, 4; BYPD, 1, 2, 3, 4; Pi Kappa Delta, 1, 2, 3, 4; Debate Squad, 1, 2, 4; Varsity Debate, 4; Choral Club, 1, 2, 3, 4; Church Choir, 1, 2, 3, 4; WAA, 3, 4; Science Club, 1, 2; Pi Mu Society, 4.

WILLIAM ARGABRIGHT *Mathematics*

Kansas City, Mo.
BYPD, 3.

DORIS E. COPPOCK *English*

Independence, Kas.
Class Officer, 4; SCA Cabinet, 3; SCA Member, 4; BYPD, 4; Varsity Debate, 2; Women's Quartet, 1; A Cappella Choir, 4; Choral Club, 3; Band, 4; Orchestra, 2; McPherson Players, 4; WAA, 4; International Relations Club, 1.

AVIS ERE *English*

Yale, Iowa
Women's Council, 3; BYPD, 1, 2; Pop Club, 1, 2, 3; A Cappella Choir, 1, 2, 3, 4; Choral Club, 1, 2; Chapel Choir, 3; Church Choir, 1; Band, 1, 2, 3, 4; McPherson Players, 3, 4; WAA, 2.

PAUL HAWORTH *Sociology*

McPherson, Kansas
Men's Council, 3, 4; Student Ministers, 3, 4.

ALICE RUTH BAILEY *Music Education*

Hamlin, Kansas
SCA Member, 1, 2, 4; BYPD, 1, 2; Pop Club, 1, 2, 3; Men's Quartet Accompanist, 1, 2; Women's Quartet Accompanist, 1, 2, 3, 4; A Cappella Choir, 1, 2; Chapel Choir, 4; Church Choir, 1; Orchestra, 4; Choral Club, 1, 2.

GAYLORD COUGHENOUR *Business Administration*

McPherson, Kansas
Chemistry Club, 1.

JOAN FINPROCK *Home Economics*

Hutchinson, Kas.

MARVIN HEIDERBRECHT *Industrial Arts*

Inman, Kansas
M Club, 3, 4; Basketball, 1, 2.

LILLUS BERG *History*

McPherson, Kansas

CLAUDE DADISMAN *Sociology*

McPherson, Kansas
SCA Member, 1, 2, 3, 4; Student Ministers, 1, 2, 3, 4; International Relations Club, 1.

FRANKLIN FLORY *Business Administration*

Nampa, Idaho
Men's Council, 2, 4; SCA Cabinet, 3; SCA Member, 1; Science Club, 1; International Relations Club, 3; Dormitory Council, 1.

CLINTON HULL *Industrial Arts*

Galva, Kansas
M Club, 2, 3, 4; Football, 1, 2, 3, 4; Basketball, 1, 2, 2, 4; Baseball, 2.

MARVIN BLOUGH *Biology*

Nampa, Idaho

SCA Member, 1, 2, 3, 4; SCA Cabinet, 3; BYPD, 1, 2, 3, 4; Recreational Council, 1, 2, 3, 4; Student Ministers, 1, 2, 3, 4; Debate Squad, 1; Varsity Debate, 1; Choral Club, 2; Pi Mu Society, 4.

RUTH DAVIS *Home Economics*

Wichita, Kansas
Women's Council, 4; SCA Member, 1, 2, 3, 4; BYPD, 1, 2, 3, 4; Pop Club, 1, 2, 3; WAA, 1, 2, 3, 4; Dormitory Council, 3.

RUTH GILES *Elementary Education*

Hammond, Illinois
SCA Member, 2, 3, 4; BYPD, 2, 3; A Cappella Choir, 4; Choral Club, 2; Church Choir, 2, 3.

WILLIAM HOBBS *Biology*

McPherson, Kansas
Men's Council, 4; Student Council Officer, 4; Pi Mu Society, 4.

WAYNE BOWMAN *Mathematics*

Student Council, 3, 4; Class Officer, 2; Men's Council, 2, 3, 4; Recreational Council, 2, 3, 4; A Cappella Choir, 2, 3, 4; Orchestra, 4; Dormitory Council, 3.

MARIE DELAPLAIN *Education*

Peace Valley, Mo.
SCA Cabinet, 3; SCA Member, 1, 2, 3; BYPD, 1, 2, 3; Spectator Staff, 2; Quadrangle Staff, 2, 3.

WILLIAM GILES *History*

Medicine Lodge, Kas.
SCA Member, 2, 3, 4; BYPD, 1, 2, 3, 4; Student Ministers, 1, 2, 3, 4; A Cappella Choir, 1, 2, 3, 4; Choral Club, 1, 2; Chapel Choir, 2; Band, 1, 2.

DEAN HOEFLE *Biology*

Vinton, Iowa
SCA Cabinet, 1, 4; SCA Member, 1, 2, 4; BYPD, 1, 2; Choral Club, 1, 2; Church Choir, 1, 2; Band, 2; McPherson Players, 1, 2, 3.



Seniors

LEONA IKENBERRY *Sociology* McPherson, Kansas

Student Council Officer,
2; Student Council 1,
2, 3; BYPD, 1, 2; Pep
Club, 1, 2, 3; Choral Club,
1, 2; Church Choir 1, 2;
1; Spectator Staff 1, 2;
WAA 1, 2.

ESTHER MILLER *Music* Weiser, Idaho

Women's Council 3, 4;
Class Officer, 2, 3; SCA
Member 1, 2, 3, 4; BYPD,
1, 2, 3, 4; Women's Quartet,
2, 3, 4; A Cappella
Choir, 1, 2, 3, 4; Choral
Club 1, 2, 3, 4; Church
Choir, 1, 2; Orchestra, 1;
McPherson Players, 1, 2,
3.

ARLENE ROLFS *Home Economics* Geneseo, Kansas

Class Officer 2; SCA
Member 1, 2, 3, 4; BYPD,
Club 2, 3, 4; WAA 2,
3, 4; Dormitory Council
1.

MENNO STUCKY *Industrial Arts* Moundridge, Kansas

SCA Member, 1, 2, 3, 4;
Band, 1, 2, 4; Orchestra,
2; Chemistry Club, 2.

RUSSELL JARROE *Sociology* Beaver, Iowa

SCA Cabinet, 3, 4; SCA
Member, 1, 2, 3, 4;
BYPD, 1, 2, 3; Student
Minister, 2, 3, 4; Men's
Quartet 3; A Cappella
Choir, 1, 2, 3; Choral
Club 1, 2, 3; Church
Choir, 1, 2; Spectator
Staff, 1, 2, 3; Squad-
range Business Man-
ager, 2; International
Relations Club, 1, 2, 4.

MARILYN MILLER *English* Waterloo, Iowa

WAA, 1; SCA Member,
4.

EULALIA SANGER *English* Quinter, Kansas

SCA Cabinet 3; SCA
Member, 1, 2, 3, 4; BYPD,
1, 2, 3, 4; Choral Club 1;
Band 1, 2, 3; Orchestra,
3, 4; WAA, 1, 2, 3, 4;
WAA Cabinet 2, 3;
International Relations
Club 1.

DONNIS WAMPLER *Sociology* McPherson, Kansas

Student Council 1; SCA
Member 1, 2; BYPD 1, 2;
Pep Club 1, 2; Choral
Club 1; Spectator Staff,
2, 3; Spectator Editor, 3;
WAA, 1, 2, 3, 4; Inter-
national Relations Club,
1.

NINA KAGARICE *Home Economics* Hutchinson, Kas.

SCA Member 1, 3, 4; Pep
Club 3, 4; Choral Club
1, 3, 4; WAA 1, 2, 4;
Science Club 1; Dormi-
tory Council 2.

ROBERTA MOHLER *Sociology* McPherson, Kansas

Women's Council 1, 2, 3,
4; Class Officer, 3; SCA
President 1; SCA Cabinet
4; SCA Member 1, 2, 3,
4; BYPD, 1, 2; Pep Club,
1; Church Choir, 1, 2, 3, 4;
Spectator Staff, 1, 2;
WAA, 1, 2, 3, 4.

EISIE SCHNOER *Sociology* McPherson, Kansas

Student Council 2; Class
Officer, 3; SCA Member,
1, 2, 3, 4; Recreational
Council 2, 3, 4; Pep Club,
1, 2; Pi Kappa Delta 1,
2, 3, 4; Debate Squad 1,
2, 3, 4; Varsity Debate,
2, 3, 4; Spectator Staff,
2, 3; WAA, 1, 2, 3, 4;
International Relations
Club 1.

IDABELLE WARD *English* Litchfield, Nebraska

SCA Member, 1, 3, 4;
BYPD, 1, 3, 4; Pep
Club, 3, 4; Choral Club,
1; Church Choir, 1;
WAA, 3, 4.

JOHN KIWEILL *Biology* McPherson, Kansas

SCA Cabinet 1; SCA
Member, 1, 2, 3, 4; BYPD,
1, 2, 3, 4; Student Minis-
ters, 2, 3, 4; Pi Kappa
Delta, 2, 3, 4; Debate
Squad 2; Chemistry Club
2; Science Club 2, 3; Pi
Mu 3.

DORRIS MURDOCK *Music Education* Eldora, Iowa

Class Officer, 1, 4; SCA
Cabinet 1, 4; SCA Mem-
ber 1, 2, 3, 4; BYPD,
1, 2, 3, 4; Recreational
Council 2, 3, 4; Women's
Quartet 1, 2; A Cappella
Choir, 1, 2, 3, 4; Choral
Club, 1, 2, 3; Chapel
Choir 3; WAA 3.

EMIL SHOBER *Philosophy and Religion* Roanoke, Virginia

SCA Member, 3, 4; Stu-
dent Ministers, 3, 4.

RUTH WEDEL *Biology* Moundridge, Kansas

SCA Member, 1, 2, 3, 4;
BYPD, 1, 2, 3, 4; Pep
Club, 3, 4; Choral Club,
1; Church Choir, 1;
WAA, 3, 4.

MARVIN KREHBIEL *Business Administration* McPherson, Kansas

Men's Council; M Club,
2, 3, 4.

MABEL S. McMULLEN *Home Economics* McPherson, Kansas

Class Officer, 1, 4; SCA
Cabinet 1, 4; SCA Mem-
ber 1, 2, 3, 4; BYPD,
1, 2, 3, 4; Recreational
Council 2, 3, 4; Women's
Quartet 1, 2; A Cappella
Choir, 1, 2, 3, 4; Choral
Club, 1, 2, 3; Chapel
Choir 3; WAA 3.

BARBARA HOLDERREAD SMITH *English* Cushing, Oklahoma

SCA Cabinet, 2; SCA
Member, 1, 2, 3, 4; BYPD,
1, 2, 3, 4; A Cappella
Choir, 2, 3; Choral Club,
1, 2, 3, 4; Chapel Choir,
3, 4; Church Choir, 1, 2,
3.

ROBERT WRIGHT *Psychology* Santanta, Kansas

Basketball, 4.

CATHARINE LITTLE *Education* Kansas City, Kas.

SCA Member 1, 2, 3, 4;
BYPD, 1, 2, 3, 4; Pi
Kappa Delta 1, 2, 3, 4;
Debate Squad 1; Varsity
Debate 2, 3, 4; Choral
Club, 1; Spectator Staff
2; International Rela-
tions Club, 1; Dormitory
Council, 3, 4.

MASAKO NAKAMURA *Chemistry* Arroyo Grande, Cal.

SCA Member, 1, 2, 3, 4;
BYPD, 1, 2, 3, 4; Recre-
ational Council 1; Pep
Club, 2, 3, 4; WAA 1, 2,
3, 4.

REBECCA SPEAR *Music Education* Cedar Rapids, Iowa

SCA Member 1, 2; BYPD
1, 2, 3, 4; Women's Quar-
tet, 2; A Cappella Choir,
1, 2, 3, 4; Choral Club 1,
2, 3, 4; Chapel Choir, 3;
Church Choir, 1, 2; WAA,
3; Dormitory Council 4.

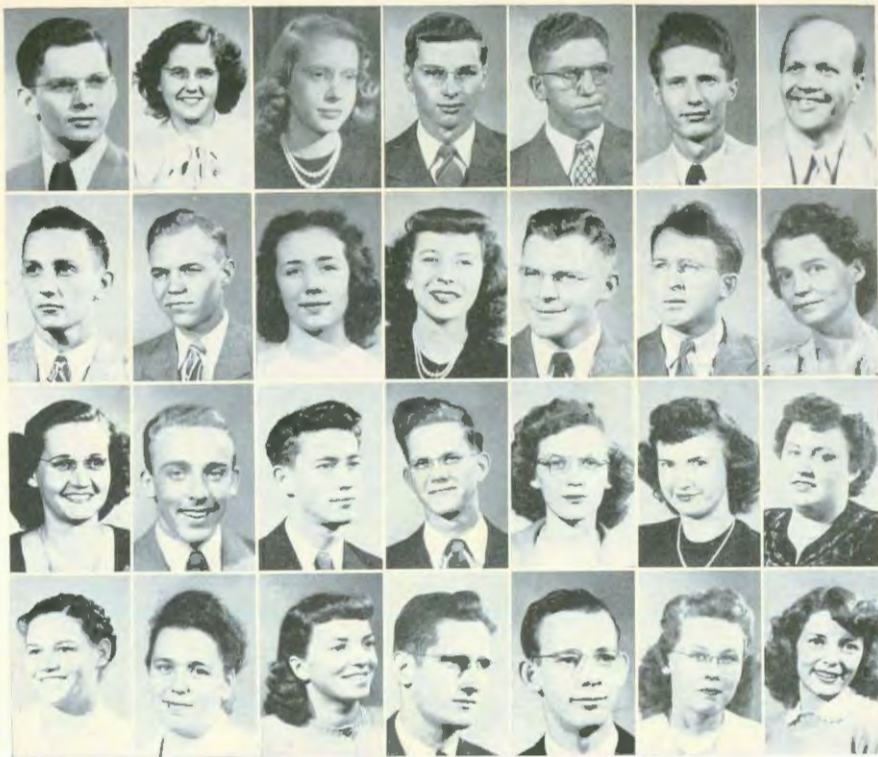
NOT PICTURED: Fries, Arthur; Hickey, Ruth; Kough, Arlene; Kough, John; N ordling, Chester; Rogers, Louis; Royer, Etta Marie; Williams, Hillis; Williams, Charles.

BEILE MILLER *Industrial Arts* McPherson, Kansas

RICHARD PRENTICE *Biology* Wayoika, Oklahoma

PHYLLIS STRICKLER *Music Education* Kamona, Kansas

Student Council Officer,
3; Student Council 3;
Class Officer 2; BYPD,
1, 2; Pep Club, 1, 2, 3;
Homecoming Queen 2;
Home Coming Attendant,
2; A Cappella Choir 4;
Choral Club 1, 2; Mc-
Pherson Players 1, 2, 3,
4; Dormitory Council 2,
4.



Juniors

FIRST ROW: Andrews, Martin, McPherson, Kansas; Bowman, Donna, McPherson, Kansas; Burger, Lois, Perryton, Texas; Burkholder, John, Octavia, Nebraska; Cook, Alvin, Waynesboro, Virginia; Dell, Carl, Circleville, Kansas; Dilley, Oliver, Conway, Kansas.

SECOND ROW: Fisher, Verlyn, McPherson, Kansas; Frantz, Marion, Beatrice, Nebraska; Freeburg, Mary Jane, McPherson, Kansas; Geis, Wilma, Durham, Kansas; Geisert, Theodore, Elmo, Kansas; Hartman, Maurice, McPherson, Kansas; Hollowell, Marie, McPherson, Kansas.

THIRD ROW: Holsopple, Ruth, South English, Iowa; Hutchison, Gerald, McPherson, Kansas; Keim, Donald, Nampa, Idaho; Keim, Robert, Nampa, Idaho; Keim, Sybil, Wichita, Kansas; Lindstrom, Bernice, McPherson, Kansas; Longenecker, Rachel, Abilene, Kansas.

FOURTH ROW: Merkey, Edith, Cloud Chief, Oklahoma; Merkey, Ruth, Abilene, Kansas; Metzler, Mary, McPherson, Kansas; Mohler, Eldon, McCune, Kansas; Moyer, Ronald, Hutchinson, Kansas; Nicholson, Lois, Filer, Idaho; Norlin, Anita Jo, Blackwell, Oklahoma.



Juniors

FIRST ROW: Oberst, Ann, McPherson, Kansas; Reinecker, Russel, McPherson, Kansas; Reist, Gordon, Eldora, Iowa; Reusser, Daniel, Hutchinson, Kansas; Reusser, Eleanor, Hutchinson, Kansas; Sanger, Merrill, Springfield, Missouri; Sheets, John, Surrey, North Dakota.

SECOND ROW: Shultz, Clifford, McPherson, Kansas; Simonton, Robert, Natchez, Mississippi; Smith, Delbert, Beaver, Iowa; Stern, Don, Fredericksburg, Iowa; Stinnette, Marianna, Denver, Colorado; Stonebraker, Betty, McPherson, Kansas; Thralls, La Vona, Billings, Oklahoma.

THIRD ROW: Treder, Lawrence, McPherson, Kansas; Wagoner, Paul, Adel, Iowa; Ward, Philip Dean, Litchfield, Nebraska; Williford, John, Hickman Mills, Missouri; Wolf, Irvin, Quinter, Kansas; Wolfe, Orrin, Waterloo, Iowa; Wright, Doris Jean, McPherson, Kansas.

NOT PICTURED: Achilles, Robert; Beattie, Wilbur, Jr.; Brown, John; Carlson, Vance; Craven, Everett; Johnson, Mort; Langley, John; Loshbaugh, Royce; Mease, Wilbur; Morse, Dale; Nordling, Leland; Ramsey, Duane; Smith, Donald; Unruh, Don; Worden, Raymond.



Sophomores

FIRST row: Alexander, Bonnie, Kansas City, Kansas; Baerg, Kathleen, Sublette, Kansas; Baldwin, Joanne, Thornville, Ohio; Beam, Winston, McPherson, Kansas; Bell, Charles, Hudson, Kansas; Best, Pauline, Cloud Chief, Oklahoma; Birkin, Joyce, Ilaxton, Colorado.

SECOND row: Bollinger, Mary, Payette, Idaho; Bowman, Winston, Quinter, Kansas; Brown, Emmert, Lamed, Kansas; Brown, Kenneth, New Plymouth, Idaho; Bruce, Robert, McPherson, Kansas; Burkholder, Wendell, Octavin, Nebraska; Burton, Barbara, Des Moines, Iowa.

THIRD row: Christy, Melvin, Garrison, Iowa; Cline, Mary Helen, McPherson, Kansas; Dalke, Ethel, Lehigh, Kansas; Dell, Mary Jo, McPherson, Kansas; Duty, LeRoy, San Diego, California; Emmert, Cora, Des Moines, Iowa; Firestone, John, Mamou, Louisiana.

FOURTH row: Fisher, Rowena, Payette, Idaho; Frantz, Lois, Holmesville, Nebraska; Furry, Theodore, New Enterprise, Pennsylvania; Garvey, James, Quinter, Kansas; Gaering, Winston, McPherson, Kansas; Goodfellow, Arlene, Lyons, Kansas; Graham, Kenneth, Quinter, Kansas.



Sophomores

FIRST row: Guthals, Donald, Elmo, Kansas; Hess, Charles, Waynesboro, Pennsylvania; Hessick, Margaret, McPherson, Kansas; High, Leland, Wichita, Kansas; Holloway, Jesse, Baldwin, Kansas; Holloway, Phyllis, Twin Falls, Idaho; Hopkins, Willard, McPherson, Kansas.

SECOND row: Ikenberry, Betty, McPherson, Kansas; Jarboe, Kenneth, Beaver, Iowa; Johnson, Donna, Plattsburg, Missouri; Jones, Marx, McPherson, Kansas; Jones, Thad, Idabel, Oklahoma; Keim, Margaret, Nampa, Idaho; Lewis, Charles, Shreveport, Louisiana.

THIRD row: Martir, Robert, McPherson, Kansas; Merkey, Vernon, Cloud Chief, Oklahoma; Mossamer, John, Pandora, Iowa; Miller, Marie, Lima, Ohio; Myers, Lynn, Formosa, Kansas; McClung, Morris, Sacramento, California; McConkey, Clarence, Quinter, Kansas.

FOURTH row: McDorald, Clarence, McPherson, Kansas; McSpadden, Ruby, Wiley, Colorado; Nicholson, Vernon, Filer, Idaho; Perkins, Inetta June, Lincoln, Nebraska; Pickens, Lawrence, Miami, Texas; Reeves, Marvin, Cleo Springs, Oklahoma; Rogers, Ivan, Wilmont, Minnesota.



Sophomores

FIRST ROW: Rogers, Ruth, Willmont, Minnesota; Sargent, Stanley, McPherson, Kansas; Shank, Max, Abilene, Kansas; Shultz, Russell, McPherson, Kansas; Snowberger, Mildred, Payette, Idaho; Steele, Julius, McPherson, Kansas; Stern, Betty Reeves, Albia, Iowa.

SECOND ROW: Stern, David, Guthrie, Minnesota; Stern, Irvin, Fredericksburg, Iowa; Stover, Helen, McPherson, Kansas; Stull, James, Jr., Beaver, Kansas; Stutzman, Gordon, Conway, Kansas; Utter, Harley, Kansas City, Kansas; Van Doren, Donald, Tescott, Kansas.

THIRD ROW: Ward, John, Litchfield, Nebraska; West, Russell, Pampa, Texas; Whitmer, Janis, Zenda, Kansas; Whitmer, Lawrence, Zenda, Kansas; Wolf, Elvin, Quinter, Kansas; Woodhatch, Emogene, Rosepine, Louisiana; Yoder, Vesta, McPherson, Kansas.

NOT PICTURED: Albright, Bill; Alexander, Lester; Blickenstaff, Vernon; Bridgens, Gilbert; Brooks, Eloise; Bruce, Robert; Collins, Lawrence; Dorsch, Gerald; Garst, Leroy; Gatz, Frederick; Gotring, Lyle; Hanson, Kenneth; Heckethorn, Harry; Hein, Clarence; Helgeson, Charles; Hill, Robert; Kough, James; Lobban, Ivan; Lowrey, Lawrence; Maust Harvey; Moffett, Wilmer; Mullinex, Chas.; McCord, Melvin; Odle, Robert; Patrick, Archie; Peverly, William; Reinecker, Gene; Shannon, Burton; Strong, James; Switzer, Calvin; Tanruther, Jean; Tillman, Carol; Turner, Robert; Webb, Galen; Webb, Wayland; Zimmerman, Robert.



Freshmen

FIRST ROW: Alailaima, Vaiao, Pago Pago, Samoa; Albright, Ardys, McPherson, Kansas; Albright, Avis, McPherson, Kansas; Albright, Ellis, Eldora, Iowa; Anderson, Robert, McPherson, Kansas; Anderson, Shirley, Des Moines, Iowa; Baerg, Betty Jean, Sublette, Kansas.

SECOND ROW: Bailey, Carol, Sabetha, Kansas; Bainer, Loren, Ottawa, Kansas; Barker, Eugene, McPherson, Kansas; Bateman, William, McPherson, Kansas; Beam, Royce, McPherson, Kansas; Bittlinger, Patricia, Elgin, Illinois; Blough, Harlan, Waterloo, Iowa.

THIRD ROW: Bowman, Marlene, Quinter, Kansas; Bradley, Arthur, Brookville, Kansas; Breon, Dorothy, Fruitland, Idaho; Bruns, Herbert, Ramona, Kansas; Burger, LaVerne, Perryton, Texas; Case, Glen, McPherson, Kansas; Chadd, Robert, McPherson, Kansas.

FOURTH ROW: Cotton, Dean, McPherson, Kansas; Couch, Norma, Kansas City, Missouri; Daggett, John, Lawrence, Kansas; Darrah, Margaret, McPherson, Kansas; Decker, Elgin, Galva, Kansas; Dell, Mildred, Beatrice, Nebraska; Dell, Paul, Beatrice, Nebraska.

FIFTH ROW: Dielman, Joyce, Galva, Kansas; Doxon, Dean, Collyer, Kansas; Doyle, Colleen, Lima, Ohio; Drake, Robert, Lincoln, Nebraska; Draper, Colleen, Grundy Center, Iowa; Duke, Dean, Durham, Kansas; Elbert, Bernard, Quinter, Kansas.



Freshmen

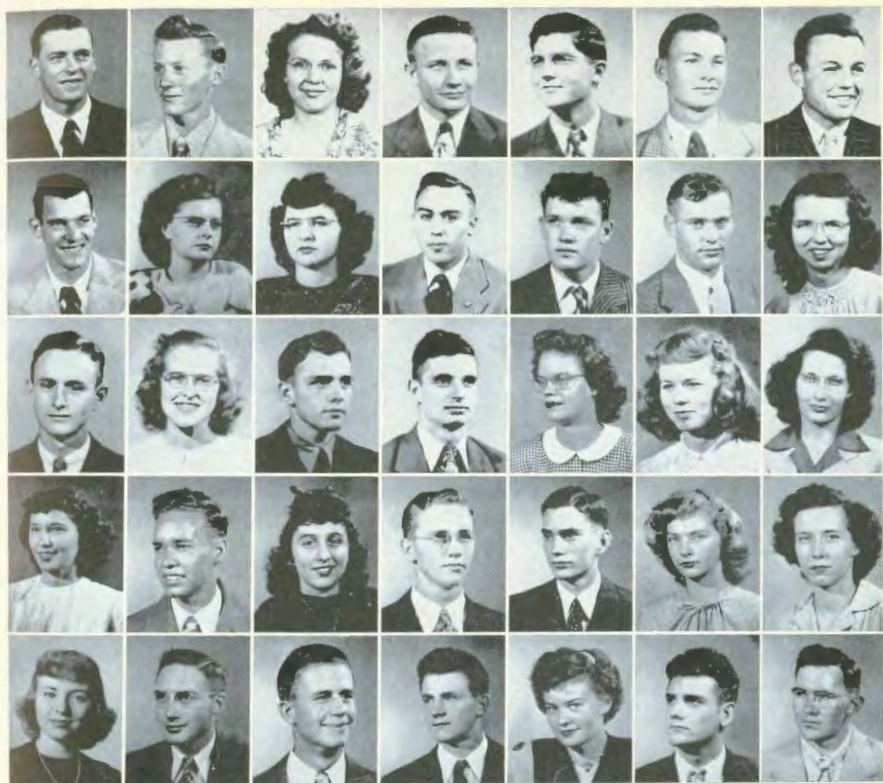
FIRST ROW: Edigar, Eldo, McPherson, Kansas; Edmonds, Ralph, McLouth, Kansas; Eggleston, Lawrence, Whitten, Iowa; Ellwood, Garth, McPherson, Kansas; Eshelman, Dale, White City, Kansas; Pike, Margery, Waterloo, Iowa; Fishburn, Melvin, Lawrence, Kansas.

SECOND ROW: Flora, Sylvus, Quinter, Kansas; Flory, Leona, Nampa, Idaho; Frantz, Byron, McPherson, Kansas; Frantz, Martha, Conway Springs, Kansas; Funk, Ralph, Wichita, Kansas; Funk, Robert, Wichita, Kansas; Gatz, Elmer, McPherson, Kansas.

THIRD ROW: Geisert, Leon, Elma, Kansas; Gentry, Patricia, Stet, Missouri; Goering, Joe, Elyria, Kansas; Green, Delores, McPherson, Kansas; Grindie, Earl, McPherson, Kansas; Haangarnie, Betty, Shiprock, New Mexico; Harner, Dave, Fredericksburg, Iowa.

FOURTH ROW: Harris, Carl, McPherson, Kansas; Hauder, Lois, Galva, Kansas; Hayden, Thomas, McPherson, Kansas; Heusinkveld, Arlyn, Preston, Minnesota; Howett, Joyce, McPherson, Kansas; Hoefle, Betty, Vinton, Iowa; Holloway, George, Baldwin, Kansas.

FIFTH ROW: Hoover, James, Robins, Iowa; Hornbaker, Gerald, Hutchinson, Kansas; Hornbaker, Joy, Stafford, Kansas; Horton, Leslie, McPherson, Kansas; Howard, Keith, Holmesville, Nebraska; Howell, Retha, Cordell, Oklahoma; Jamison, Robert, Quinter, Kansas.



Freshmen

FIRST row: Jones, Dale, Cordell, Oklahoma; Keim, Bryce, Nampa, Idaho; Kesler, Lera, Park, Kansas; Kidwell, Billy, McPherson, Kansas; Kimmel, Richard, McLouth, Kansas; Kleiber, John, Ramona, Kansas; Klingaman, Richard, Waterloo, Iowa.

SECOND row: Knapp, Harold, Minot, North Dakota; Layman, Jennine, Hardin, Missouri; Lehman, Joan, Nickerson, Kansas; Little, Ivan, Kansas City, Kansas; Longenecker, Orval, Abilene, Kansas; Munkey, David, Stet, Missouri; Martin, Bonnie, McPherson, Kansas.

THIRD row: Mason, Paul, Dawn, Missouri; Mast, Lee Anna, McPherson, Kansas; Messamer, Charles, Minburn, Iowa; Messamer, Lester, Adel, Iowa; Miller, Letha, Marshalltown, Iowa; Minnix, Wilda, Scott City, Kansas; Mohler, Arlene, McCune, Kansas.

FOURTH row: Morris, Doris Jean, McPherson, Kansas; McAuley, Max, Wichita, Kansas; McCull, Jean, Geneseo, Kansas; McCunn, Beryl, Ripley, Oklahoma; Neher, Dean, Oswego, Kansas; Neher, Rowena, Quinter, Kansas; Nemeycr, Neva, Quinter, Kansas.

FIFTH row: Nies, Gloria, Wiley, Colorado; Nettleton, John, Lewiston, Minnesota; Oltman, Dale, Enders, Nebraska; Pauls, Lester, Inman, Kansas; Perrigo, Joan, Payette, Idaho; Peters, Donald, McPherson, Kansas; Post, Richard, Chadwick, Illinois.



Freshmen

FIRST ROW: Powell, Ellis, Moulton, Iowa; Rea, John, McPherson, Kansas; Richards, Irene, Nampa, Idaho; Richards, Leona, Nampa, Idaho; Ring, Nettie Marie, McPherson, Kansas; Rogers, Albert, Wilmont, Minn; Roth, Mary, Nampa, Idaho.

SECOND ROW: Royer, Charles, Ottawa, Kansas; Ruthrauff, Melvin, Redfield, Kansas; Sun Romani, Carmina, McPherson, Kansas; Sawyer, Lowell, McPherson, Kansas; Schmitt, Donald, McPherson, Kansas; Sheaffer, James, Adel, Iowa; Sheets, Bill, McPherson, Kansas.

THIRD ROW: Showalter, John, Hutchinson, Kansas; Sitts, Leo, McPherson, Kansas; Smith, Wilma, Topeka, Kansas; Snavely, Harold, Waterloo, Iowa; Snawberger, Kenneth, Payette, Idaho; Snyder, Dale, Morrill, Kansas; Staats, Wilma, Oklahoma City, Oklahoma.

FOURTH ROW: Stein, Edward, Los Angeles, California; Sumner, Claude, Utica, Minnesota; Tammel, Donne, Preston, Minnesota; Tanruther, Robert, Waterloo, Iowa; Tharrington, Charles, Caldwell, Idaho; Thralls, Rex, Billings, Oklahoma; Turner, Roland, Quinter, Kansas.

FIFTH ROW: Unruh, Lee, Hillsboro, Kansas; Vanceil, Charles, Ottawa, Kansas; Walter, Duane, McPherson, Kansas; Watkins, Stanley, Dona Ana, New Mexico; Weaver, Darlene, Keota, Iowa; Williams, Sara Mae, Mt. Union, Pennsylvania; Yeder, Lois, Pampa, Texas.



ACTIVITIES

The
Quadrangle



First row, left to right—E. Miller, Stover, Crayton, A. Rogers, Zimmerman, W. Hawkins, J. Allen, Gentry, L. Steen, Metzler, Oberst.
 Second row—W. Smith, M. Kohn, Spang, R. Kenberry, K. Jarboe, Nicholson, Meyer, R. Kohn, Sheets, Strickler, Hubertolo, B. Stern, Professor Frederick.
 Third row—L. Richards, Murelock, R. Giles, Erb, K. Graham, M. Santos, Pures, Wassener, W. Giles, Burton, Concock, R. Rogers.

A Cappella Choir

One of the most prominent organizations on the campus is the A Cappella Choir, composed of 36 students.

Under the able direction of Professor Donald Frederick, instructor of voice, this choir has been requested to appear on numerous occasions before vast audiences. The A Cappella has taken part in the Christmas musical, "The Dawn of Hope," a spring concert, and many musical festivities.

This spring, the members left the campus for an extended tour of 10 days through Oklahoma, New Mexico, and Colorado. They made appearances at the various Churches of the Brethren and other places along their way. Through these spring concert tours, the McPherson College A Cappella Choir has become a quite well known and recognized choir.

Their beautifully blended voices have truly been inspiring and the spirit and cooperation in which they work has made all persons realize that this organization is an asset to the college.

Ladies' Quartet

Four of the college co-eds have combined talents to form an important musical organization. Their lilting rhythm and treatment of melodies make them superb singers.



Women's Quartet

Strains of familiar tunes . . . a stirring air . . . and these choristers, reminiscent of the heavenly Muses, appear to convey their feelings . . . expressions in eloquent music.



Men's Quartet: Eshelman, 1st tenor; Graham, 2nd tenor; Kern, baritone; Nicholson, bass.
Male Quartet: A. Rogers, 1st tenor; K. Jacobs, 2nd tenor; High, baritone; Moyer, bass.

Ladies Quartet: Brooks, 1st soprano; Stever, 2nd soprano; Metzler, 1st alto; R. Rogers, 2nd alto.
Women's Quartet: E. Miller, 1st soprano; W. Smith, 2nd soprano; Holsapple, 1st alto; Empsok, 2nd alto.



Men's Quartet

This distinguished foursome has appeared numerous times before large audiences, who have received them enthusiastically. Encores were always in demand.



Male Quartet

Composed of musically inclined persons, this group gave performances at churches, during conferences, and before various clubs. They were in demand frequently.



First row - M. Dell, W. Smith, Williams, Speer, Gentry, Siver, Arlys Albrecht, Ayl. Albrecht, Bowman, Layman, Cline, Nebel, Hornakus.
 Second row - E. Miller, Lindstrom, Johnson, Keeler, Hawley, B. Smith, Kaurice, P. Albrecht, Baldwin, M. J. Dell, I. Miller, Stinnette, Conch, Rogers, Frederick.
 Third row - L. Richards, McSpadden, Ditchman, Layman, Nicholson, Holloway, Goodfellow, Doyle, Muller, E. Merkey, Burton, Holopuh, Frontz, Fike, Yoske.

LADIES' GLEE CLUB

These two new additions to the college musical organizations are very welcome. Made up of vocalists with much talent, this group has done much to add to the programs on and off the campus.

These glee clubs are under the direction of Professor Frederick, and during this year they have acquired a distinction all of their own in the class of music-makers.

MEN'S GLEE CLUB



First row, left to right - Professor Frederick, Wolfe, C. Schultz, A. Rogers, Snively, Krehbiel, B. Dell, W. Bowman, Garvey, Howard.
 Second row - R. Beam, Christy, Reeves, J. Ward, E. Albright, Dell, Sumner, T. Geisert, Fike, L. Geisert.
 Third row - Hoeser, McCann, Graham, Sanger, Guthals, Jansson, Florn, Furry, Thralls, Boyer.

Orchestra

Every time the orchestra has appeared this year in its winter and spring concerts, in its smaller programs, and even in its practices, it has received much applause.

Professor Eugene Crabb brought to McPherson College something it has never known in the way of orchestration. Everyone admires Mr. Crabb for the splendid work he has done with the orchestra and band.

Not only students were eligible to join this worthy organization, but also interested people from off the campus became members. Learning to play difficult arrangements and presenting strenuous concerts has won a deep admiration for this group.

The orchestra's first concert brought an over-capacity crowd to the Chapel. The audience sat through the numbers with mixed feelings, then at the end the applause resounded throughout Sharp Hall, and congratulations were in order for the new "wonder" of the college.

First row—Bailey, Hutchinson, Emmert, Kayler, Olson, Hoxey, Frutser, Fuchs, Coppock, Johnson, Nicholson, Ruth, Ewood, Emberg, J. Bowman, Wray, Bowman, Rittiner, D. Bowman, Horby, Mrs. Langley, I. Perkins, Stevenson.
ON STAGE: First row—W. Bowman, Minnis, Sheeks, Hieb, E. Sawyer, M. Bowman, Ellwood, Boyer, Sam Bennett, Dyck.
Last row—Fristone, Nemezer, Langley, Susselager, Prof. Crabb, Hanson, Sumner, Olsann, Neher, Lawrence, E. Miller, L. Yoder.





First row—Arlis Albright, William Hornbaker, Avis Albright.

Second row—C. Shultz, Wilmore, Lindstrom, Bailey, Gasfellow, Smith, Couch, M. Bowman, Doll, Scher.

Third row—Frederick, Koehnel, Peam, L. Gebert, Gluhels, Passer, Thralls, W. Bowman, McAuley, Howar.

Fonte—Alexander.

Chapel Choir

Many times for the Wednesday Chapel program, the Chapel Choir presents songs with religious themes to the students and faculty. This group of choice voices has done splendid work since being organized and deserves unlimited credit.

On Sundays at the college church an anthem is played, and the Church Choir takes its place in the choir loft. Lovely choral sounds mix in the rendering of well-known hymns, and vitality is added to the service.

Church Choir

First row—McSpadden, M. Doll, Mohler, D. Bowman, Frederick, I. Frantz, Fike, Arlys Albright, Avis Albright.

Second row—Hinz, Frantz, Johnson, Nicholson, Gentry, Baldwin, Miller, Hornbaker, Luxman.

Third row—Christy, Eggleston, Nettleton, Snavely, C. Doll, Sumner, Thralls, Bowman.





First row—Aron, Cook, J. Kitzwell, B. Dell, Worden, J. Sheets.
 Second row—Morse, Wagoner, D. Smith, Powell, Lashbaugh, R. Krim.
 Third row—I. Stern, Giles, Daddeman, A. Rogers, D. Stern.
 Fourth row—Haworth, Ramsey, K. Brown, B. Jarboe, Florn, I. Rogers.

Student Ministers

In their twice monthly meetings, the future ministers of the college have studied various ways in which they could serve their church better. The group has had excellent discussions led by Rev. James Elrod, Rev. DeWitt Miller, Dr. Metzler, and other religious leaders of the college. In turn, they have passed their knowledge on to others, and many have obtained leading positions in their churches. Some have done well by acting as guest pastors and others by being chosen the head of certain churches.

Members of this organization have also taken an active interest in the religious phase of campus life. Their worthy philosophy, handed down by way of mouth, has proved very beneficial to the students and groups of McPherson College.

The student ministers will certainly deserve the success they will inevitably obtain, through their worthy appeal to spread the gospel to the far corners of the earth!



Seated, left to right: Birkin; Kenferry; S. Edm; Murbok; Williams; Oberst; Schnorr; Bittinger; R. Mohler, co-chairman; Martin Stanning; D. Stern; J. Burkholder; J. Kidwell; M. Frantz; T. Gessert; R. Keim; Ramsey, co-chairman; Himont, R. Jarboe.

S. C. A.

This year, as in the years past, the Student Christian Association has played a major role in campus life. McPherson College aims to train young people for membership and leadership in a Christian society, and through the SCA, this aim is attained.

Every Thursday at 6:45 a program is presented in the Student Union Room by the SCA. Many social activities are sponsored by this group during the school year, including WSSF.

Duane Ramsey and Roberta Mohler served on the SCA Cabinet as co-chairmen. Filling the secretarial position was Ann Oberst and Sara Mae Williams was treasurer.

Each Sunday evening the Church of the Brethren is the scene of the BYPD (Brethren Young People's Department) meetings. Devotional and inspirational programs were arranged to allow the students to think in terms of Christianity. The BYPD is vital to those students planning to go into church work.



B. Y. P. D.

First row, left to right—J. Layman, Minnie, Best, Howell, Schnette, Williams.
Second row—D. Bowman, R. Rogers, Coppock, Nakamura, Snowberger, Frantz.
Third row—J. Burkholder, S. Keim, J. Whitmer, Emmert, Powell, Cline.
Fourth row—Wayne Bowman, Marjorie, L. Rogers, D. Smith, A. Rogers, Hornbaker.
Fifth row—R. Keim, D. Neher, E. Albright, K. Jarboe, B. Benjarsy, M. Miller.
Sixth, Seventh, and Eighth rows—K. Snowberger, Ruthrauff, J. Kidwell, Duggott, Flora, L. Ward.



Seated, left to right: Dr. Mohler, W. Gowing, C. Hess, Andrews, Dr. Heisey.
 Standing—Stinnette, J. Kidwell, Hobbs, Harris, Longancker, Eshelman, First-time
 Members not present: Blough, Dell, Achille, J. Burkholder.

Pi Mu

Another organization, to come into being on McPherson Campus just this year, is the Pre-Medical Club or the Pi Mu Society. Primarily for those interested in the field of medicine as a career, this organization has accomplished much, although it was started rather late in the year. Outside speakers of the field of medicine favored the society at intervals, and valuable information was secured for those persons seeking a place in biological science. Charles Hess is president of this organization, and the vice president is Marvin Blough.

Planning recreation for the youth retreat, conducting games for various social events, and holding a recreational workshop in the spring were only a few projects the Recreational Council has worked so diligently on this year. Uppermost in their minds is that healthy body, as well as healthy mind, helps promote better Christian living.

RECREATIONAL COUNCIL



Seated, left to right—Professor
 Dell, D. Bowman, R. Keim, J.
 Burkholder, L. Burger, Murdock,
 I. Miller, Nakamura.

Standing — Meteler, S. Miller,
 Schuur, Blough, Wagoner, Brown,
 Wayne Bowman, Winston Bow-
 man, Agos, Stinnette, L. Richards.



Seated, left to right—McAuley, Gottron, Neher.
Standing—R. Shultz, T. Geisler, Doty, Wagoner, C. Shultz, Hardy.

Pi Kappa Delta

Membership for this honorary forensic fraternity is restricted to those debaters who have participated in three or more decisive debates. The selected entered the provincial debate tournament, held at Fort Collins, Colorado, April 1-3 and proved themselves expert.

These orators have won recognition as marvelous extemporaneous speakers and keen exhibition debaters, and their display of verbal expressions has been a handicap to all who have opposed them.

Miss Esther Sherfy has served this fraternity this year in the capacity of debate coach.

Varsity Debate Teams

Winning covered awards for McPherson College in the field of forensics, these persons of the glib tongue category have achieved their much deserved place among the efficient orators of this and other communities.



Selma & Little

Gisaret-Doty
McAuley-Shultz



Many times this excellent team waged many woeful wars of words and walked off with top honors. Exhibition and judged tournaments were the specialties of these veteran speakers, who have made their college proud of them.

Dynamic! Diversified!
Versatile! Victorious!
Words cannot fully express the efficiency with which these two collegians have operated. All the qualities that make up a good debater can be found in this meticulously coordinated team.



Constantia; To the Lovely Margaret; Pyramus and Thisbe.
52



Seated, left to right—Strickler, Stijnotte, Lehman, M. Miller, R. Merkey.
Standing—Bittinger, Eggleston, C. Shultz, Sober, Simanton, Johnson.

McPherson College Players

Again the McPherson College Players are right out in front, proving themselves worthy of the title they hold. Completely renovated, the organization has taken on new members, a new stage, new life, and new success. This year, under the direction of Miss Sherfy, sponsor, and Hillis Williams, president the Players broadened its horizons. It opened its doors to all interested in dramatics in all of its fields and now follows the policy of open membership. By the time and efforts of its members, it rebuilt the stage in the S.A.R. and there put on splendid productions.

The night of One Act Plays gave the audience an opportunity to see the Little Theatre in operation and the up and coming dramatic talent for the future productions. From these plays the McPherson Players went into rehearsal on the fall production, "Our Town," and in a burst of enthusiasm which carried them over the top successfully, put on a week of performances in the Little Theatre for the evident enjoyment of all those who attended, even for those whose faces were covered with tears. Again in the spring the Players departed from tradition by putting on a week of performances instead of the usual one performance.



Spectator Staff, left to right: P. Holloway, Circulation; Robert Simonton, Editor-in-chief second semester; John Firestone, Assistant Editor; Don Keim, Business Manager; M. Stinnette, Editor-in-chief first semester; W. Burkholder, Assistant Business Manager; M. McClung, Sports Editor; Lawrence Pickens, Circulation Manager.

Spectator

Every Friday about noon a scramble is made for the Spectator, and everyone eagerly flips through the Spec to see what the latest is on Macampus. But behind the publication of the Spectator a busy staff of editors and reporters spend hours trying to make the Spectator what the students, faculty, and friends of McPherson College want it to be.

The staff have given new touches to the paper which make the college proud of the staff. Recitals, parties, sports, and scoops—all are interpreted from a student viewpoint.



Stinnette and Simonton have been the Editors-in-Chief, Don Keim has been Business Manager; and John Firestone and Max McAuley have served in the capacity of Assistant Editors.

Journalistically inclined, these writers desire to use their experiences on the Spectator to help them in future work.

Reporters, First row, left to right: H. Martin, E. Bousser, E. Brooks, B. DonLerry, R. Morley.
Second row—Stover, Reeves, Ottman, W. Beam, Johnson.



Ruth Holstoppie, Copy Editor; Marion Frantz, Assistant Business Manager; Sybil Keim, Business Manager; Marie Miller, Assistant Editor; Betty Stonebraker, Editor-in-Chief; Lawrence Pickens, Sports Editor; Wilma Geis and Lois Burger, Picture Editors. Not pictured: Marie Delaplain, Art Editor.

Quadrangle

"Too many cooks spoil the broth." This is what we have not had on the Quadrangle staff. The small staff has worked diligently on this, their creation. Betty Stonebraker Bell, who has Editor-in-Chief written behind her name on the Quadrangle official stationery, gets a bit of satisfaction out of a job well done, more satisfaction out of the happy thought of the work which lies behind and of the load of experience. Sybil Miller Keim capably carries the title of Business Manager; she and Marion Frantz, the Assistant Business Manager have performed their duties with a will that brings the yearbook out on top.

Marie Miller, Assistant Editor, got a dose of real work in mounting besides all the odd jobs that befall the Assistant Editor. Lawrence Pickens, sports editor, like the rest of the staff was kept busy, first with Bullrangles and then with copy writing. With pen in hand, Marie Delaplain skillfully did the art work. Wilma Geis and Lois Burger worked on the individual pictures.



Gordon Yoder and Sarah Myr Vanell, Faculty Advisors to Spectator and Quadrangle.



Women's Council Tea; Homecoming Assembly; Freshmen Initiation;
Watermelon Feed; Big and Little Sisters; The Kid Party.



ATHLETICS

The
Quadrangle

HOME



Front—Ann Oberst, Queen.
Irene Richards, Freshman attendant; Phyllis Strickler, Retiring Queen; Jean Tarruther, Sophomore attendant.



COMING



During homecoming, October 31, McPherson College celebrated its sixtieth anniversary. Activities took place during the entire day, highlighted by a parade, the crowning of Miss Ann Oberst as Queen, and the football game with Bethel College.

Women's Athletic Association

Who is not afraid to get up in the morning? The answer to that question is, of course, the WAA Outing Girls. These girls are firm believers in fresh air. Whether it is on a school morning or Sunday morning, they come back from the out-of-doors completely invigorated and ready for whatever the coming day might bring and confident of their ability to stay awake in class or church. More of us could learn something from these girls.

But this is only one part of this organization. There are those who go in for a very active sport, bowling. Once a week, these girls hike down to the bowling alley where they give themselves enough exercise to last until the next week. It is fun, and it is healthful. The bowling girls think there is nothing like it to pep up their drooping energies.

Then there is swimming. This time the YMCA is the place of activity. Nearly every Thursday finds a group of girls trudging down to the swimming pool to drown all their cares in the water.

Another large part of the WAA program is that of softball. The fall and spring find a group of girls who roll up their jeans and go out to play ball, and what a grand time they have!

Archery, as a spring sport, attracts a number of girls. Upon seeing an arrow whistling through the air, you may safely come to the conclusion that the archery fans are at it again. For the development of coordination of muscles, timing, and steady nerves, archery is the sport. And if you hit the "bulls-eye" the first shot, that is just luck, some say. In that case the task is to prove that it was not just luck.

Basketball, too, is among the favorites of the WAA girls. This universally liked sport rates high on the free time calendar of the girls, and game-days find them playing among their fellow women as if their heart depended on winning the game.

And then there is volleyball. Good weather and sunshine are not required for this sport. Any day will be ideal for volleyball and a good many days see the girls enthusiastically hitting the ball back and forth across the net.

Finfruck; Nakamura, Pres.; Metzler; Roff; Lindstrom.



The tennis courts are quite alive with the patter of tennis shoes a good part of the day, quite often occupied by, yes, the WAA girls. Light feet, quick movements, perfect timing and love of the sport are requirements for this game, and from the appearance of the crowded courts the college is overflowing with people who meet these requirements.

And if none of these meet the individual tastes, other individual sports await the will and time of the girls.

And now just a word about the organization as a whole. A cabinet ably presided by Masaka Nakamura holds the various organizations within the organization together and makes it the smoothly functioning WAA Club it is. At the end of each season, new members are admitted to the club. Letters and pins are earned by participating in a specified number of activities. A banquet, held in the spring, climaxes the WAA program.





First row—Don Smith, D. Stern, D. Keim, Unruh, L. Rogers, V. Fisher, J. Brown, Hutchison, Krehbiel, L. Georing.
 Second row—Blickenstaff, C. Noordling, L. Noordling, Hill, Heidebrecht, Reinecker, Hopkins, Tillman, Lewis, Odle.

M Club

The M Club is that athletic organization made up of the proud wearers of the red letter sweaters. These men have shown their ability in athletics by lettering in the various sports of Macampus. This club has a calendar year full of events in sports and social gatherings. This year the freshmen will remember these athletic stars and their paddles because of their participation in the freshman initiation.

During the Homecoming festivities this year the M Club held its annual informal luncheon for the present and past member of this noteworthy club.

Another year of successful athletic events has been under the leadership of President Russell Reinecker. Serving as vice president this year is Verlyn Fisher, and Don Keim has served as secretary-treasurer.

Men who have lettered in various sports on the campus this year and who have become members of this organization are Dean Ward, Irven Stern, Clarence Hein, Theodore Fury, Vernon Blickenstaff, and Morris McClung.

In the spring the M Club held its annual banquet which members and their guests attended.

Pep Club and Band



M. Nakamura, La Verne Burnett, Robt. Loeblauch, M. Sauer, T. Geisert, Huseit, Luis Bruner, L. Donale, Strickler, Simonton, Freiburg, B. Benberry, Geis, Stinnette.

C. Dots, Crabb, McSpalden, R. Kern, Nurlin, Williams, Lindstrom, I. Ward, Kaerries, Kestler, Nell, W. Benn.

First row—Koeber, Irwin, M. Bowman, B. Buelfe, Minola, M. Snowberger, R. Nohr, Gajmick.

Second row—Finfrock, Robert, W. Bowman, Garzey, Howard, C. Doll, Sumner, Olman.

Third row—Mayer, Eriestone, Edmunds, R. Snowberger, Reis, A. Rogers, Hoch.

Fourth row—B. Justice, C. Hovey, Kab, Prof. Crabb, Bea, L. Messmer, Engleton.

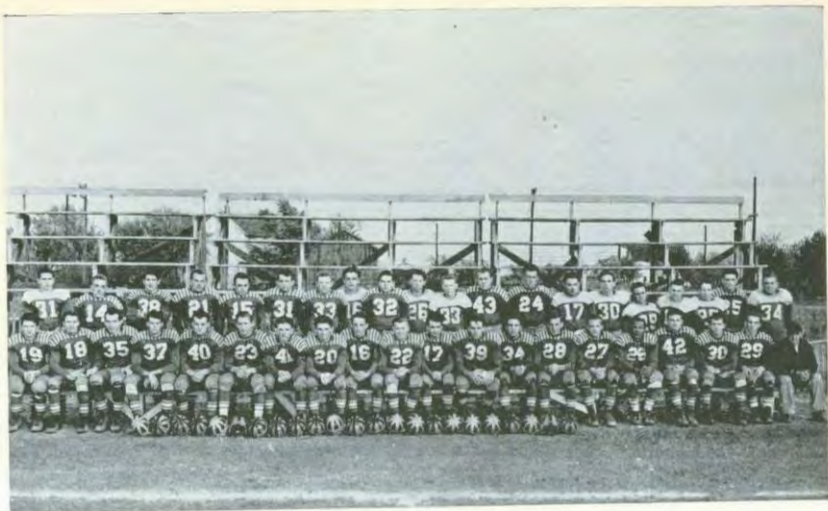


Let's strike up the band and have a tune! The McPherson College Band is under the direction of Professor Eugene Crabb. This year the band has made much progress and has proudly carried the colors of the Red and White. We thank the band for their concerts and the support that they gave the team at the games.

Cheerleaders

After hours of hard practice the cheerleaders directed the student body in yells, some new and some old. The enthusiasm that these cheerleaders have given, that backing and fighting spirit, is important. Hats off to you for your fine work!





First row—J. Goering, L. Goering, Tarruther, Odle, Hopkins, Tillman, Bickenstaff, L. Rogers, Fisher, Durah, Van Doren, Reinscker, Bruce, Furry, Nelson, Lewis, Arnold, Sullivan, Robert Funk, Coach Reiling.

Second row—McClone, Hutchison, Myers, Tharrington, Klingaman, E. Albright, Fishburn, C. Messamer, J. Brown, Barker, Bryce Keim, Heckethorn, Sawyer, Cotton, Ralph Funk, Stein, Pauls, Hayston, Anderson, P. Dell.

Football

CONFERENCE STANDING

	Won	Lost	Tied	%
Ottawa	6	0	0	100
Baker	4	1	1	75
Bethany	4	2	0	66.7
Kansas Wesleyan	3	2	1	58.3
Bethel	1	4	1	10
College of Emporia	1	4	1	10
McPherson	0	6	0	00

Red! White! Fight! Fight! With roaring cheers such as this from the excited student body, McPherson College gave the Bulldogs that fighting spirit for which they are so widely known.



The Bulldogs started the season off this year with a bang when they met and defeated Sterling 6-0 in the first game of the season which was played on the home field. The first conference game of the year was played at Baker where the Bulldogs suffered their first loss of the season by a score of 7-6. The first conference home game was with the College of Emporia. Although the Bulldogs were trailing 14-0 at intermission, they made a comeback in the second half with two touchdowns but yielded to College of Emporia 14-12. The next week the Bulldogs journeyed to Kansas Wesleyan where the Coyotes won by a 26-0 score. Then the Bulldogs dropped to Ottawa University 26-6 in the fourth conference game. Gene Arnold made the lone touchdown for the Red and White. The Homecoming game was played with Bethel College.



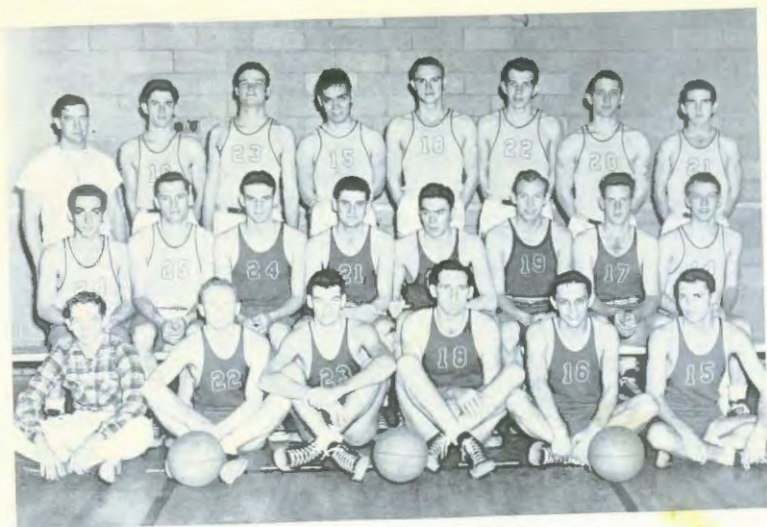
First row—L. Gearing, Hopkins, Tillman, Van Doren, L. Rogers, Reinecker, Bickenstaff.
Middle row—E. Nelson.
Last row—V. Fisher, Bruce, Urcub.

This game topped off the homecoming festivities. Even though the Bulldogs yielded to Bethel by a 12-0 loss, it was a thrill-packed game. The last game of the season was with Bethany. The Swedes took the Bulldogs for a 33-6 win.

Russell "Buck" Reinecker was captain of the Bulldogs this year. This made the second year that Buck has been captain. Coaching the Red and White this year was Coach Rolla Reiling. This was Coach Reiling's first year with the Bulldogs.

One of the most outstanding players on the Bulldog team this year was Buck Reinecker. Buck was chosen for the All-Conference team this year.

This was the second year of football since it was discontinued in 1942. With football getting back into full swing once more on the college campuses, we are looking into the future for more exciting games with a student body behind the team always giving it the needed support.



First row, left to right—Hayden, Smith, Odle, R. Reinecker, Fisher, J. Goertner.
 Second row—Hutchison, Ward, Hill, Peters, Wiebe, Wright, Sawyer, Cotzhausen.
 Third row—Coach Rollins, Holloway, Arnold, Lowrey, Betts, Tarruther, Tillman, Sullivan.

Basketball

After hours of practice and drilling on fundamentals of dribbling, shooting, passing, and pivoting, the Bulldogs made their first appearance of the season. It was at a thrilling game with Sterling that the Bulldogs made their first win of the season by a score of 65-48.

This year's season was full of thrills for basketball lovers. Each game was full of excitement, and each was played well. Forty men went out for basketball this year, eight of whom were lettermen back from last year's team.

Verlyn Fisher who was the outstanding forward on the Bulldog team led the Bulldogs to several wins. With his skill and fast maneuvering it took hard playing on the part of the other team to win a game from the Dogs. Fisher usually came out of the game as high score man.

The ease and speed with which Buck Reinecker moved about on the floor were enough to keep any team on its toes. Buck did his share in adding up the points for the Red and White.

Other outstanding men on the team this year included Smith, Hill, Odle, Goering, Wiebe, Wright, and Sullivan. Each of these men showed sportsmanship and skill. They ran up the score in each game to make it a win or a near win. The student body was behind the team with cowbells and yells giving them the support that they needed. Each game that an opposing team won was by only a few points and many times by only one point.

The team closed the season this year by a 55-54 win over the Swedes. This last game was one of the most exciting games of the season.

CONFERENCE STANDING

Place		Score	Opponent	Score
Here	McPherson	65	Sterling	48
Here	McPherson	54	Southwestern	58
There	McPherson	35	Bethel	40
Here	McPherson	44	College of Emporia	40



There	McPherson	37	Bedhary	33
There	McPherson	51	Kansas Wesleyan	75
Here	McPherson	30	Ottawa U.	32
There	McPherson	50	College of Emporia	62
There	McPherson	41	Sterling	45
Here	McPherson	37	Kansas Wesleyan	34
Here	McPherson	39	Baker	42
Here	McPherson	37	Bethel	56
There	McPherson	43	Southwestern	44
There	McPherson	39	Ottawa U.	55
There	McPherson	40	Baker	51
Here	McPherson	55	Bedhary	54





First row - Blokenstaff, McClung, Bettie, Hutchison, Conch Hayden,
Second row - D. Smith, R. Hill, Purty, Fisher, D. Ward, Weyand, Ramsey, Tilman.

Baseball

Last spring was the setting for a successful season of baseball for the team of McPherson College. The interest shown in baseball on Macampus was a dominant factor for the fine results of the season. After hours of hard training the team was ready for a winning season. Out of the nine games that the Bulldogs played, they won eight. It was one of those off days that Kansas Wesleyan won the one game the Bulldogs dropped.

Since baseball is not a sport under the Kansas Conference, the teams did not play any conference games. The other colleges with whom we competed were Kansas Wesleyan, Sterling, Friends, Bethel, and Bethany.

At the beginning of the season there were fifteen men signed up for the sport. Twelve men were active and played in each game. The Bulldogs averaged 8.1 runs per game to her opponents 2.6. Loren Weyand was the leading scorer, crossing the plate 11 times. The team batting average for the nine games was .225.

With many of the same players back on the campus this year, we are looking for another successful year in baseball.

Intramurals

Intramurals, which are a very important part of the athletic program on the college campus, got off to a good start this year. These athletic activities were under the direction of Coach Hayden and the Intramural Committee. A large number of sports were planned for the season.

The first two sports offered in intramurals this year were tennis and horse-shoes. In the tennis doubles Dick Prentice and Bill Mease came out the victorious team. Winston Beam and Bill Argabright were the well-known and hard-to-beat horseshoe players.

Ping pong received much attention this year as approximately twenty-six fellows signed up for the tournament.

Basketball is always a big item on the intramural activities list. The season started off with much interest from the various teams as well as the student body. On nights that games were played, the dorms were practically empty. Students were there, rooting for their favorite teams. At the opening of the season, ten teams signed up with Winston Beam's team favored to win. Each week was packed with a schedule full of exciting games for all.

Two of the outstanding teams this year were the Wildcats and the 4F's. The Wildcats played many hard games which put them in top standing. They started the season by taking a win over the I.P.T.'s. Next in line to be defeated were the Ramblers followed by Petersville and the Dunkards.

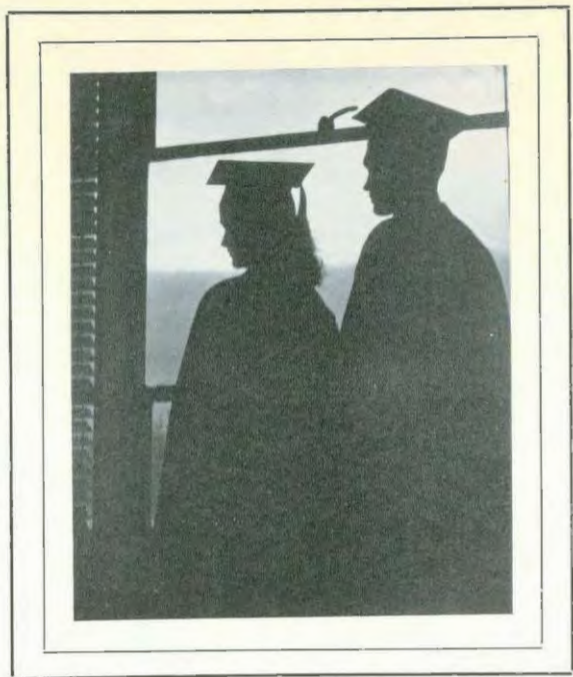
The 4F's had a winning season, too. Outstanding plays by stars such as Watkins, Daggett, and Guthals brought this team through to victory time and time again.

That fighting team, known as Dunkard Tech, made a name for itself. They kept a standing in the top three bracket.

Deforphs did not do so well this year as they did last year. They had several wins but also several losses. The members of this team were those fellows that belong to the famous Deforph Motor Co. Fishburn was the outstanding man on this team.

Other teams that participated in intramurals this year were the I.P.T.'s, Quinterites, Ramblers, Petersville, and Frantz B. of Ed.

This has been one of the most successful years of intramurals at McPherson College. This success has been due to the teams and to the students who gave them their support.



*As our day ends, we linger
recalling its accomplishments
and imperfections knowing
that tomorrow will bring new
light.*

O Sacred Truth

Altho out on broad Kansas Plain,
Here not in vain are we,
For we will strive with might and main,
That right and truth may be,
The student loves to dream his dreams
Of life that's yet to be,
Of future days and years that'll seem
The best for old M. C.

Chorus:

We'll hope for our M. C.
We'll cheer for our M. C.
While winds do blow,
And sunflowers grow,
We'll long for thee, M. C.

**BEFORE YOU
SAY "I DO"**



CALL FOR
YOUR FREE
COPY OF THE
COLUMBIA
DIAMOND
RING BRIDE'S
BOOK
TO HELP YOU
SET YOUR
PLANS.

JANZEN'S, Inc.

McPHERSON'S
LARGEST AND FINEST
JEWELERS

There's Always the Unexpected

Are you insured against
it. Call us today!

It costs you little,
may save you a lot.

Protection + Service = Satisfaction

Carl M. Anderson - Mettlen Agency

McPherson & Citizens State Bank Building

ABC CLEANERS HATTERS AND DYERS

ALWAYS BE CLEAN

24 Hour Service

119 So. Main

Phone 335

The perfect spot for a
friendly get-together
and a luscious malt.

AT

SELECT DAIRY

We make our own Ice Cream.

217 S. Main

Phone 943

DRIVE INTO GOSS MOTOR CO.

for

**CHRYSLER—PLYMOUTH
SALES SERVICE**

BATTERIES

TIRES

Phone 567

208-212 S. Main

The well-dressed Man
looks to



FOR HIS CLOTHES

FOR

Insurance,
Investments,
Bonds,
City Loans—

THINK

Fred K. Entriken Agency

**THE BEST BARBER
AND BEAUTY SHOP**

For Mac Students

**WARREN BARBER
and BEAUTY SHOP**

NU-WAY CLEANERS

Appearance Counts

214 N. Main

Phone 900

**DR. A. W. GRAVES
OPTOMETRIST**

Over Dixby, Lindsay & Co.

106 1/2 N. Main

Phone 750

Swanson Electric Co., Inc.

**AUTOMOTIVE ELECTRIC
SERVICE**

McPherson, Kansas

Phone 187

310 N. Maple

INSURANCE

REAL ESTATE

LOANS

See Us For Your Needs

ALLIANCE AGENCY

109 - 111 E. Kansas

J. R. Adell

Phone 106

R. B. Sickler

FARM IMPLEMENTS

Musical Instruments
Paints and Varnishes

Sporting Goods
Automobile Accessories

Home Appliances

**CRABB'S TOWN & COUNTRY STORE
AND**

CRABB SERVICE SYSTEM, Inc.

BEST-KNOWN
MAKES OF



Choose your favorite make and model from our comprehensive selection of fine cameras.

ROLL FILM DEVELOPING

In 9 — Out 5

Parrent's Photo Shop

114 E. Marlin

When You Buy
It For Cash At
Brown-McDonald's



Consistent Low Prices
The Year 'Round

BROWN McDONALD

FOR AN EVENING OF ENJOYMENT
AND ENTERTAINMENT

MANOR

AND

RITZ

THEATRES

FILMS

PHOTO SUPPLIES

CAMERAS

108 N. Main

ABEL'S

Phone 92

GIFTS

ART SUPPLIES

FINISHING

DELUXE CLEANERS

QUALITY CLEANING

Phone 486

111 E. Marlin

STUDEBAKER

SALES—SERVICE

SMITH MOTOR CO.

1007 S. Main

Buick Sales and Service

Fully Equipped Body Shop
Trained Repair Mechanics

MILLER-KENNEDY

MOTOR CO.

Phone 78

113 S. Main

"Where Customers Send Their
Friends"

YOU MAKE A



STRIKE!

With Us Every Time.

CARLSON PLUMBING

PHONES

Bus. 14

Res. 26

FRIENDS MEET FRIENDS

For
Doughnuts & Coffee
at

FRIENDS

SERV-UR-SELF

McPHERSON AUTOMOTIVE

AUTOMOTIVE PARTS

216 S. Main

Phone 470



**For Your
Picnics,
Banquets,
Parties**

or

Food Needs

Remember

JAMES FOOD STORE

116 E. Euclid

Self Service

LELA'S CAFE



for

**FINE FOODS
COURTEOUS AND
QUICK SERVICE**

118 N. Main

Household Goods

The store to supply you with
the best in hardware.

HAWLEY HARDWARE

219 N. Main

Phone 191

Engborg's Drug Store

Phone 218

213 N. Main

To Be Well - Groomed

COME TO

Scottie's Barber Shop

304 N. Main

THE HOME OF

Good Watches

AND

Perfect Diamonds

Bixby, Lindsay & Co.

106 N. Main

Greetings to

McPHERSON COLLEGE

Success To

The Faculty

The Students

The Institution

This Year and in

The Future

McPherson and Citizens State Bank

Member Federal Deposit Insurance Corporation

Meet Your Friends
for a coke
IN
KING'S

Your Reliable Drug Store

ELIZABETH ARDEN
DOROTHY GRAY — TABU
PRIMROSE HOUSE

See The

LATEST STYLES

In
Women's Clothing

At

JAROLD SHOP

122 N. Main

Duckwalks
QUALITY SERVICE — PRICE

VISIT OUR FOUNTAIN AND LUNCHEONETTE
COMPLETE NOTIONS, TOILETRIES, ETC.

BUY FROM CRUMPACKER

And Become

A

MONEYPACKER



WE'LL STAND ON OUR HEADS TO PLEASE YOU!

Jay Crumpacker

Dealer In

REAL ESTATE

Oil Leases and Royalties

PHONES

Office 453 Residence 1455Y

McPHERSON, KANSAS

You Save

A Cash Purchase

Is A Cash Saving

At

J. C. PENNEY CO.
INC.

E. C. Utz, Mgr.



--and you promise to honor, cherish and buy her **JEWELRY** from

HULL-BRUNK
JEWELERS

214 N. Main

HOTEL WARREN
And
COFFEE SHOP



**McPherson's Newest, Finest, and
Only Fireproof Hotel**

Air-conditioned

Paul Brougher, Gen. Mgr.

Humfeld's Flowers



For Her
On That Special Occasion

**Humfeld's Greenhouse
and Flower Shop**

515 N. Ash

Phone 172



THE SEAL OF QUALITY

For

The Flour that is Always Good

So

FOR "GOODNESS SAKE" USE "W-R" FLOUR

THE WALL-ROGALSKY MILLING COMPANY



It's a Date, Mate!

Just for fun 'n fitness try your hand at bowling. It's one sport that's right down your alley when you strike out for spare moments of pleasure! Come see us today!

McPHERSON BOWL

218 N. Ash
O. H. Morton, Mgr.



She'll be
the fairest
flower when
you send
her our
Corsage

**JOHNSON'S FLORAL
Shop**

222 N. Main

Phone 834

PEOPLE'S STATE BANK

Established 1898

November 1, 1948, will be the 50th Anniversary of The People's State Bank in McPherson. We appreciate the fine customers who have made this record possible —

Capital — \$75,000

Surplus — \$75,000

F. A. Vaniman, President — Graduated McPherson College 1898
Bert Webb, Cashier — Graduated McPherson College 1910
Paul E. Sargent, Exec. Vice Pres. — Graduated McPherson College 1923
Wilbur Yoder, Ass't. Cashier — Graduated McPherson College 1934

**PEOPLE'S BANK RELATIONS
WITH
McPHERSON COLLEGE HAVE BEEN
PLEASANT FOR 50 YEARS**

For That
College Charm

The well-dressed girl goes to

OLIVER'S

McPherson's Fabric and
Fashion Center

Phone 874 102 S. Main

When You Think of Printing
Think of
CENTRAL PRINTING

Publishers of
McPherson County News
Phone 298 210 N. Main

GREETINGS FROM

Gambles

THE FRIENDLY STORE

J.S. Dillon and Sons
FOOD STORES CO. INC.

McPHERSON'S LEADING
CASH FOOD STORE

112 E. Euclid Phone 265

EXPERT REPAIR WORK
To Suit Your Needs
American Shoe Store
108 W. Euclid

DOUGLAS M. HALE

TYPEWRITERS
Sales - Service - Rentals

Adders - Duplicators - Etc.
Phone 310 214 E. Euclid

WHERE YOU MEET YOUR FRIENDS

Up-to-the-minute Fountain Service - Complete Line of Cosmetics
The Magazines You Enjoy Reading - Hallmark Greeting Cards for Every Occasion

HUBBELL'S DRUG STORE

104 S. Main

Phone 23

RECORDS - MELODIES

The Latest and Greatest in Recordings, Sheet Music favorites, Priced to Please You.

BEDELL'S

308 N. Main

Phone 270



To make a long story short
Meet The Gang
at the
COLLEGE INN

Scrumptious Food
and
Super - Service

Phone 1662

1st and Baer

INSTRUMENTS MUSIC
MARTIN - HOLTON SACRED - SECULAR
GRETSCH BOOKS

CLEF MUSIC STORE

"KNOW YOUR MUSIC"

222 North Main

Phone 962

Feel! Secure! Put Your Money In

THE
HOME STATE BANK
McPHERSON, KANSAS

C. H. HIEBERT, President
MRS. M. G. MATHIS, Cashier



MEMBER FEDERAL DEPOSIT
INSURANCE CORPORATION

Pictures To Remember
Those Glorious College
Moments



PEARCE STUDIO
106½ N. Main Phone 348

The Spectator

EDITED BY AND
FOR THE STUDENTS

We Congratulate the Seniors of Mc-
Pherson College on your graduation
and extend greetings to all the stu-
dents at your College.

Sincerely,

**THE STUDENT BODY
OF
CENTRAL COLLEGE**

Information AND Printing

Both are necessary to a Happy and
Successful Life

The Daily Republican keeps you
informed on Affairs

Its advertisements tell you the best
Places to Buy

Its expert workmen give you the
Very Best in Printing

The Daily Republican

(Printers of the Quad)

Low Cost Service
for
McPherson
Homes
&
Industries



McPherson Water & Electric Department

Electricity is Cheap in Our Town