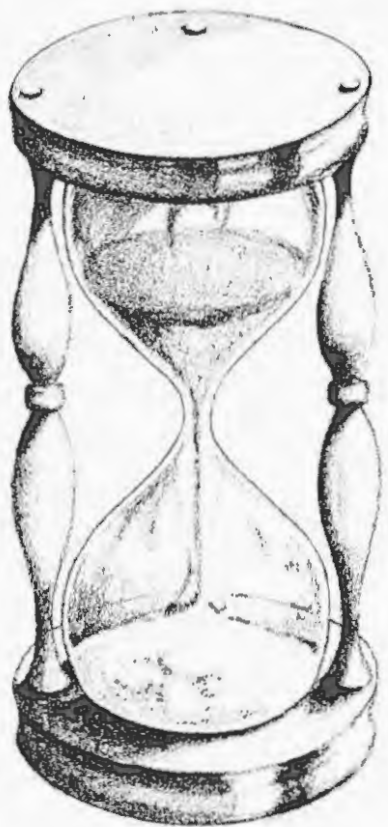


CM

1946

B
378.19
M172q
1946



Time goes you say, ah no!

Alas, Time stays, we go.

And if this were not so,

What need to chain the hours,

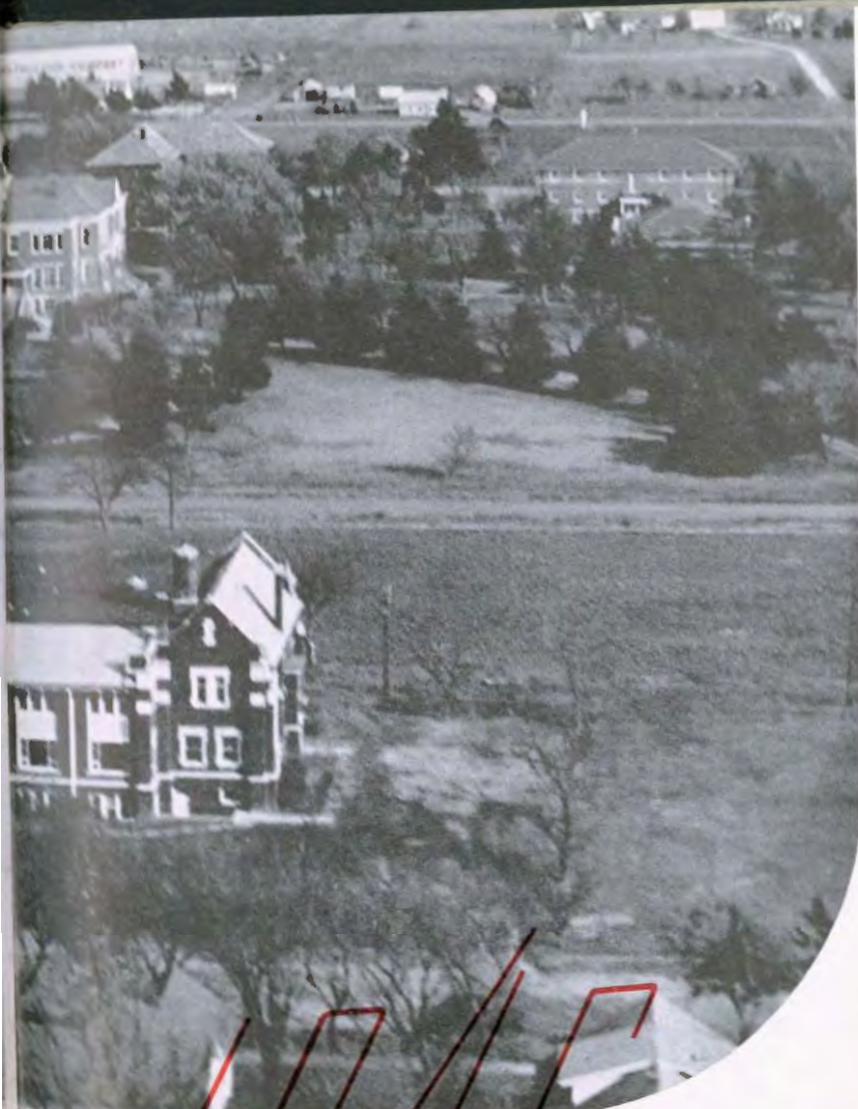
If youth were always ours.

Alas, Time stays, we go!

—Pierre de Ronsard



Quadra



angle

PATRICIA KENNEDY
EDITOR OF QUADRANGLE

J.A. VERNE LOBBAN
BUSINESS MANAGER

ANNUAL YEAR BOOK OF McPHERSON COLLEGE • McPHERSON, KANSAS

TOMORROW



the World

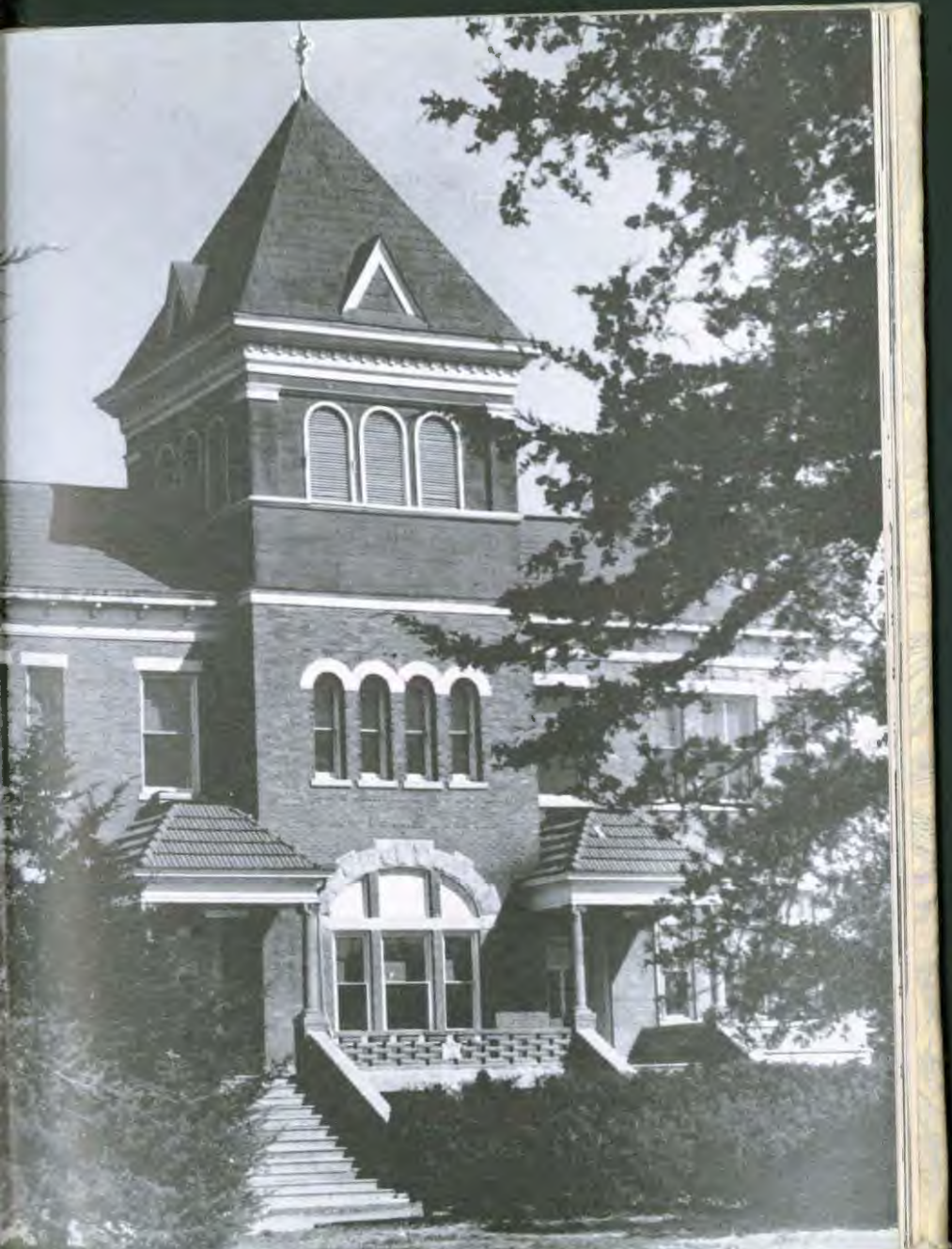
Once again the sun rises and sets upon a world at peace. The grim traffic of war which has beat down upon the soul of man has been halted.

We, the youth of today are afforded the paramount privilege of making this a peace which will not last just for today, but will last for tomorrow, and all tomorrows to come.

To the spirit of peace, we dedicate this, the 1946 Quadrangle, with the sincere hope that the triumph of the principles of truth may make peace an everlasting reality.



For all those McPherson men and women who served in this past war, not caring in what way or how, but of what they gave up and did for the rest of us, we pause and remember. Perhaps, by remembering we may strive just a little harder for this cause of peace. It must not become a mockery to their effort, but a lasting tribute to them in the eyes of all men, a living symbol of the Prince of Peace.



A large, stylized graphic in red ink. It features a tall, thin 'M' on the left and a 'P' on the right. The vertical stems of the 'M' and 'P' are filled with a fine, diagonal hatching pattern. The 'P' has a large, elegant loop that extends downwards and to the left, partially overlapping the 'M'.

Presenting[★]

OUR CAMPUS

OUR ADMINISTRATION

OUR STUDENT BODY



HARNLY HALL . . . seat of most of the daily curricular activities of the student body . . . Whether it is singing, cooking, working math, analyzing, dissecting, or learning a new language, here is where it is done . . .

FRANTZ INDUSTRIAL

ARTS BUILDING . . . with shavings on the floor and the hum of machinery in the air, the students create here with their hands as well as their minds . . . Things beautiful and useful are the result . . .



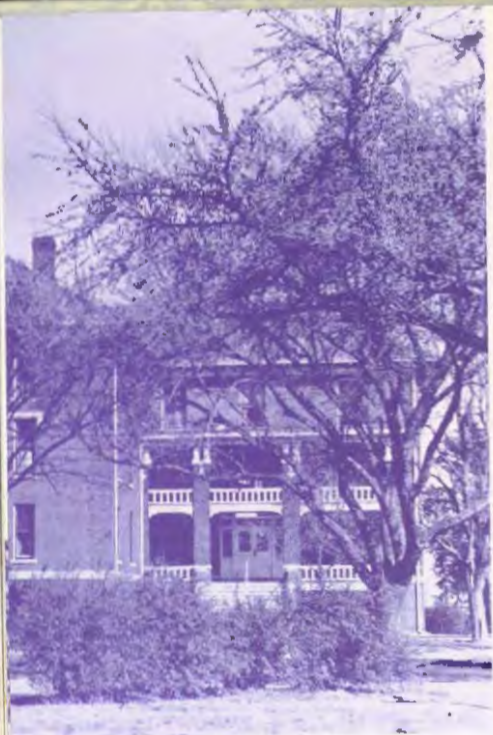
THE PHYSICAL

EDUCATION BUILDING . . . providing every convenience for exercising your way into a state of creaking joints and utter exhaustion . . . It is the hangout of WAA girls, M Club and Basketball boys, and those who just come over to get cokes . . . this new building is the center of all the sports activities on the campus . . .



KLINE HALL . . . the dormitory consisting of two floors of married couples . . . who put up with the minor chaos created by the third floor girls . . . Incidentally, these same girls have changed Kline from a place to live when Arnold was full up, into a cosy little Kline Klub . . . where there is seldom a dull moment . . .





ARNOLD HALL AND

FAINSTOCK HALL . . . the girls hold forth on the three floors of rooms over the dining hall in Arnold while the boys luxuriate in all the modern comforts of home provided in "Fanny" . . . Arnold is popular also for the daily drings in the parlor; from the music pounded out on the piano, to the pillow fights, to the shocking occasions when the students delight in rubbing their shoes on the rug and passing the electric current on to others, it is all just for fun . . .





ALTHOUGH OUT ON BROAD KANSAS PLAINS

I love my little friends . . . There's a long, long haul ahead . . . We would be building . . .
Do you believe in signs? . . . Save me a seat! . . . mainstay of McPherson . . . six hits . . . every-
one a boss . . . between piers and laughter . . .



PRESIDENT W. W. PETERS

Chief executive . . . snowed under with responsibilities . . . yet ready and willing to council and direct . . . firm when necessary . . . practical at all times . . . keen and resourceful . . . this broadminded gentleman has won the respect of all by giving his best . . . we are proud to call him President . . .



McPherson College

W. W. PETERS, PRESIDENT

NOW AND TWENTY FIVE YEARS FROM NOW

For the first time since I became President of McPherson College, it is my honored privilege to write something for the Quadrangle in reference to World Peace, when the major nations of the world are actually attempting to plan for peaceful relationships rather than participating in armed conflict.

I am writing this on December 8, 1945, which is just four years from the time it was my duty and privilege to speak in the College Chapel to the faculty and students in reference to our relationships, activities, attitudes, responsibilities, and privileges while our nation was to be engaged in World War II. I attempted to set forth as clearly as I knew how, that it was for each individual to make up his mind according to his own understanding, conviction, and conscience, as to what his attitude should be, and what he should do in reference to war. When one's decision was made, it was urged that he be consistent and that each should respect the other.

As the past four years are reviewed at McPherson, there is much for which to be grateful. The individual conscience, in reference to war, has been respected, and there has been, on the whole, an excellent fellowship among students, faculty, and townspeople in the midst of wide differences of opinion and activity in respect, both to attitude toward, and participation in, war and related activities. Young people with wide differences have fellowshipped together in dormitory life, in class and laboratory experiences, in dining hall, in chapel, and in church. They have voted one another into office; have sung together; have debated on the same and opposing teams; and have played and worked together. All prayed and hoped for the day in which armed conflict would cease, and none, or at least few, doubted the outcome so far as military victory was concerned.

Now that the guns of World War II are silenced, what are we thinking, believing, planning, and doing? It is most unfortunate that so many are talking about World War III as if war were inevitable. Some even allow themselves to believe that war is in the plan of God. Still others, while wanting peace, allow fears to rule their lives. This does not point the way to peace. We must believe that God is love, and being such, is the God of Peace. If we believe in such a God, we will have faith in His purposes for man, which are to honor Him and to be a blessing unto others. If we honor God, we will love Him, and if we love Him, we will love our neighbors. If we love our neighbors, we will respect them, and we will treat them as ends and never as means. We will believe in world peace by having active faith in God; faith in ourselves; faith in one another; faith in government; faith in the United Nations Organization; faith in world cooperation for the common good and general welfare; and faith that righteousness will triumph.

We must believe that (1) "The earth is the Lord's and the fullness thereof," and (2) that "He created of one blood all people that dwell upon the face of the earth," and then act accordingly. Acting upon such beliefs, there will be no race, national or class prejudices, and we will accept the Four Freedoms as universal rights.

The editor of this year's Quadrangle (1946) and her staff are to be congratulated and commended for selecting World Peace for their theme. May the editor and staff in 1971 be able to report with conviction that World Peace has become secure under a firmly established World Federation of Nations living together for the mutual good of all in a World Brotherhood.

To make such a statement possible, the family, the school, social life, business and professional life, and political life must be undergirded with knowledge, sympathetic understanding, kindness, and good will that develop from the morals and ethics found in the Holy Scriptures.

W. W. Peters



DEAN J. W. BOITNOTT

Take a true Southern gentleman . . . add tactful understanding and a contagious grin . . . and you have our Dean . . . Known for his slow drawl and kindly understanding . . . meeting the passing ebb and flow of student personnel with unruffled Virginia calm . . . full of genuine concern for the individual . . . yet never losing sight of the over-all cosmopolitan whole . . . this affable technician in the field of psychology guides and leads . . . always able . . . he keeps McPherson the best of liberal arts colleges . . .



Dean Boitnott's
Residence



DEANS OF WOMEN AND MEN

With their understanding of student problems, and willing helpfulness, the Deans have guided the men and women of McPherson College through another successful year . . . whether it be congratulations or the green carpet . . . both Mrs. Ikenberry and Professor Dell have given their utmost for the cause of the best . . . sanctions for socials . . . late leaves for lovers . . . guidance towards good . . . these all come in the field of their capable administration.



Faculty

(Not noted elsewhere)



James M. Berkebile, B.S., A.M.
Associate Professor of Chemistry
B.S., Manchester College, 1934;
A.M., Ohio State University,
1935.



Jessie Brown, B.M.
Professor of Piano
B.M., Berkany Conservatory,
1919.



**Virginia Harris, A.B., B.S., in
L.S.**
Librarian
A.B., McPherson College, 1939;
B.S., in L.S., Louisiana State
University, 1945.



Nevin W. Fisher, B.M.
Associate Professor of Voice
B.M., Eastman School of Music,
1949.



Thomas C. Hayden, B.S., A.M.
Professor of Physical Education
and Director of Athletics.
B.S., University of Illinois, 1925;
A.M., University of Iowa, 1932.



**Lavene K. Bowersox, A.B.,
A.M., Ph.D.**
Professor of History and Political
Science
A.B., Willamette University,
1929; A.M., Syracuse University,
1933; Ph.D., Ohio State University,
1941.



J. Howard Fries, A.B.
Business Manager and Treasurer
A. B., McPherson College, 1928.



Fanny McGaffey Stover, A. B.
House Mother of Arnold Hall
A. B., McPherson College, 1923



Joseph L. Bowman, A.B., M.S.
Professor of Mathematics and
Physics
A.B., McPherson University, 1918;
M.S., University of Chicago,
1924.



Della Lehman, A.B., A.M.
Professor of English
A.B., Manchester College, 1921;
A.M., University of Southern
California, 1924.



Alice B. Martin, B.S.
Assistant Registrar and In-
structor in Stenography
B.S., McPherson College, 1926



Earl M. Frantz, A.B., R.D., A.M.
 Director of Public Relations,
 A.B., McPherson College, 1921;
 B.S., Bethany Biblical Seminary
 1922; A.M., University of
 Chicago, 1925.



Burton Metzler, A.B., B.D., Th.B., Ph.D.
 Professor of Philosophy and
 Religion; A.B., Manchester Col-
 lege, 1920; B.D., Bethany Bibli-
 cal Seminary, 1921; Th.B.,
 Princeton Theological Seminary,
 1924; Ph.D., Southern Baptist
 Theological Seminary, 1928.



Robert E. Mohler, A.B., M.S., Sc.D.
 Assistant to the President and
 Professor of Biology
 A.B., Mt. Morris College, 1912;
 M.S., Kansas State College, 1917;
 Sc.D., La Verne College, 1941.



Minnie Munler, R.M., M.S.
 Instructor in Public School
 Music and Piano
 R.M., McPherson College, 1921;
 B.S., 1935.



Oscar A. Olson, B.S., A.M., Ph.D.
 Professor of Economics and
 Business Administration; B.S.,
 Northern State Teacher's College
 (South Dakota), 1928; A.M.,
 1932; Ph.D., University of Iowa,
 1939.



Mildred Sisk, B.S., M.S.
 Associate Professor of Home
 Economics
 B.S., McPherson College, 1935;
 M.S., University of Wisconsin,
 1948.



Marcel I. Wehrlich, A.B., A.M., Ph.D.
 Professor of Modern Languages
 A.B., University of Rome, 1934;
 A.M., 1936; Ph.D., University of
 Paris (Sorbonne), 1938.



L. Avery Fleming, A.B., A.M., Ph.D.
 Professor of Sociology and Edu-
 cation
 A.B., McPherson College, 1927;
 A. M., University of Kansas,
 1928; Ph.D., University of Kan-
 sas, 1940.

Maurice A. Hess, A.B., A.M.
 Professor of English and Latin
 A.B., Ursinus College, 1914;
 A.M., University of Pennsyl-
 vania, 1917.

E. S. Hershberger, A. B.
 Instructor of Art
 A.B. Goshen College, 1934
 Student in School of Art Insti-
 tute of Chicago 1944-45

Audrey San Romani, B. M.
 Instructor of Public School
 Music and Organ
 B.M., Bethany College, 1925, Uni-
 versity of Kansas, summer 1949

Hanna Fries, A. B.
 Assistant to Dean-Registrar
 A.B. McPherson College, 1942

Seniors

DAVID ALBRIGHT—*Philosophy of Religion*

Class Officer 1, 2; Men's Council 3, 4; SCA Co-President 4; SCA Cabinet 2, 3, 4; SCA member 1, 2, 3, 4; BYPD 1, 2, 3; Recreational Council 1, 2, 3, 4; Student Ministers 3, 4; Who's Who 3, 4; Men's Quartet 1, 2, 3, 4; A Cappella 1, 2, 3, 4; Choral Club 1, 2, 3; Theopians 3, 4; M Club 2, 3, 4; Football 2; Basketball 2, 3, 4; Track 1; Dormitory President 4.

HAROLD BOWMAN — *Mathematics*

Pi Kappa Delta 4; Debate Squad 1, 3, 4; Band 1; Quadrangle 3, 4.

DALE BROWN — *History*

Student Council 3; Class Officer 2; Men's Council 2, 3; SCA Cabinet 2, 3; SCA member 1, 2, 3; BYPD 1, 2, 3; Student Ministers 1, 2, 3; Who's Who 3; Pi Kappa Delta 1, 2, 3; Debate Squad 1, 2, 3; Varsity Debate 2, 3; Choral Club 2; Band 1, 2, 3; Spectator 2; Science Club 3; International Relations 1, 2.

WILMER BRUBAKER — *Social Studies*

SCA member 2, 2, 4; BYPD 2; Student Ministers 2, 3, 4; International Relations.

ROBERT BRUST — *Business Administration*

Student Council officer 2; Student Council 3; Class Officer 2; Men's Council 3, 2, 3, 4; SCA Cabinet 1, 3; SCA member 1, 2, 3, 4; BYPD 1, 2, 3, 4; Pen Club 1; Cheerleader 2; Debate Squad 2; Men's Quartet 1, 2, 3, 4; A Cappella 1, 2, 3, 4; Theopians 1, 2, 3, 4; Spectator 1, 2; Quadrangle 4; M Club 3, 4; Chemistry Club 2; Science Club 3, 4; International Relations 1; Choral Club 1, 2, 3, 4.

MILDRED CARTNER — *Biology*

Women's Council 2, 3, 4; A Cappella 3, 4; Choral Club 2, 3, 4; SCA Cabinet 4; Science Club 3; Class Officer 4.

CHARLES DUMOND — *Philosophy of Religion*

SCA Cabinet 2; SCA member 2, 3, 4; BYPD 2; Student Ministers 2, 3, 4; Who's Who 4; Pi Kappa Delta 2, 3, 4; Theopians 3, 4; Spectator 2, 4; Quadrangle 3; International Relations 2; Student Pastor 3, 4.

MARK EMSWILER — *Industrial Arts*

SCA Cabinet 3, 4; SCA member 3, 4; BYPD 1, 2; Student Ministers 2, 4; Pi Kappa Delta 3, 4; Debate Squad 1, 2, 3, 4; Varsity Debate 2, 3, 4; Choral Club 2, 3.

ETHMER ERISMAN — *Philosophy of Religion*

SCA member 1, 2, 3, 4; BYPD 1, 2, 3, 4; Student Ministers 1, 2, 3, 4; International Relations 1.

ELVA JEAN HARBAUGH — *Sociology*

Class Officer 2, 3, 4; BYPD 1, 2, 3, 4; SCA Cabinet 3; SCA member 1, 2, 3, 4; Recreational Council 2, 3, 4; Bikerettes 3, 4; Homecoming Queen 3; Homecoming Attendant 4; Choral Club 2, 3, 4.

GERALDINE HEDGES — *Home Economics*

Student Council 3; Class Officer 2; Women's Council 4; SCA Co-President 4; SCA Cabinet 3; SCA member 1, 2, 3, 4; BYPD 1, 2, 3, 4; Recreational Council 1, 2, 3, 4; Band 1, 2; WAA; Science Club 3.

BLAIR HELMAN — *History*

Student Council President 4; Class Officer 3; Men's Council 4; SCA Cabinet 3; SCA member 3, 4; BYPD 3; Recreational Council 3, 4; Student Ministers 3, 4; Pi Kappa Delta 3, 4; Varsity Debate 3, 4; Theopians 3, 4; Spectator 3; Editor 4; International Relations 3; Student Pastorite 3, 4; Graduate of Bethany Bible Training School.

MILDRED JONES — *Home Economics*

Class Officer 3; Women's Council 4; SCA Cabinet 4; SCA member 1, 2, 3, 4; BYPD 1, 2, 3, 4; Choral Club 1, 2, 3, 4; Chemistry Club 3, 4; Science Club 3, 4; International Relations 1, 2.

BETTY KIMMEL — *Home Economics*

Student Council 3; Class Officer 1; Women's Council 4; SCA member 1, 2, 3, 4; BYPD 1, 2, 3, 4; Bikerettes 1, 2, 3, 4; A Cappella 2; Choral Club 1, 2, 3, 4; Chemistry Club 1; Science Club 3.

ROBERT KINGSLEY — *Industrial Arts*

SCA Cabinet 3, 4; SCA member 3; A Cappella 3, 4; Choral Club 2, 3, 4; International Relations 3; Sec. to Dr. H. E. Moller.

DOROTHY KURTZ — *Sociology*

Student Council 4; Women's Council 2, 3, 4; SCA Cabinet 2, 4; SCA member 1, 2, 3, 4; BYPD 1, 2, 3, 4; Who's Who 3, 4; Debate Squad 2, 3; Theopians 2, 3, 4; Spectator 2, 3, 4; Quadrangle officer 2; WAA 2; International Relations 1.

GERALD MEASE — *History*

Student Council 2, 2, 4; Men's Council 3, 4; SCA Cabinet 4; SCA member 2, 3, 4; BYPD 2, 3, 4; Recreational Council 2, 2, 4; Football 1; Chemistry Club 1.

MAX MORSE — *Business Administration*

Theopians 1, 2, 3, 4; WAA 1, 2, 3, 4; Student Council 1, 2, 3; SCA Cabinet 3; SCA member 3, 4; Pi Kappa Delta 4; Cheerleader 2; Bikerettes 3, 4; Quadrangle 2; International Relations 4; Debate Squad 1, 2, 3, 4; Varsity Debate 3, 3, 4.

IRVA WICKMAN — *Biology*

Nursing. SCA member 1, 2, 3, 4; BYPD 1, 2, 3, 4; Student Ministers 1, 2, 3, 4; A Cappella 1, 2, 3, 4; Choral Club 1, 2, 3, 4; Band 1, 2, 3, 4; Quadrangle 1, 2, 3; Chemistry Club 3.

DONALD SCOFIELD — *Philosophy of Religion*

SCA member 1, 2, 3, 4; BYPD 1, 2, 3, 4; Choral Club 1, 2, 4; Chemistry Club 1, 2, 4; Science Club 2; International Relations 2.

RUTH UCHIDA — *Chemistry*

Touching 2, 3, 4. Student Pastorite.

BEN BOESE — *Industrial Arts*

Student Pastorite.

BERNHARD JOHANSON — *Philosophy of Religion*

Student Pastorite.

ROBERT BROWNLEWEE — *Industrial Arts*





SUMMER SCHOOL 1945

Akers, Ince
 Albright, David
 Baergen, A. B.
 Bechtelbeimer, Marjorie
 Brand, Mrs. Anna
 Brown, Dale
 Brubaker, Mrs. Maxie
 Brubaker, Wilmer
 Carre, Mary Ruth
 Cartner, Mildred
 Clark, Esther
 Corwin, Gordon
 Dittman, John
 Downs, Vera
 Drossel, Virgie
 Easterling, Bruce
 Erns, Edna
 Ericman, Edmer
 Fairbairn, Victoria
 Fowl, C. E.
 Friek, Viola
 Gates, Geraldine
 Glaze, Mrs. Olive
 Giles, William
 Harris, Virginia
 Hodges, Geraldine

Hickey, Beulah
 Hoover, Warren
 Hubberry, Ernest
 John, Rgie
 Jones, Maxine
 Just, Lillian
 Kauffman, Lois
 Kaufman, Aylene
 Kosler, Velma
 Kulwell, John
 Kirkpatrick, Golda
 Kiniey, Wilma
 Kriebel, Doris
 Kriebel, Meredith
 Kurtz, Dorothy
 Lack, Lotella
 Lobban, Lu Verne
 Lobban, Ivan
 Loshbaugh, Royce
 Martin, Mrs. Rufina
 Merkey, Ruth
 Miller, Avis
 Molins, Carl
 Morehouse, Reva
 Myers, Norma
 Nunniger, Mrs. Elsie

Pickerrill, Gladys
 Price, Kenneth
 Rife, Ellen
 Rounsavell, Lucile
 Sanger, Louise
 Scofield, Donald
 Stalock, Thelma
 Smith, Mrs. Alfreda
 Smith, Mrs. Gwendolyn
 Swinger, Glenn
 Uchida, Ruth
 Voth, Florence
 Wampler, Dennis
 Wampler, Kenneth
 Wackentime, Mrs. Etta
 Weib, Mrs. Elizabeth
 Wickman, Iren
 Wiens, Esther
 Williams, Elizabeth Ann
 Williams, Lulu Mae
 Wilson, Mrs. Hazel
 Young, Kenneth
 Young, Verne
 Zenger, Irene
 Zornig, Melvin

CLASS OFFICERS

SENIOR CLASS:

President: ELYA JEAN HARRAUGH
V. President: DAVID ALBRIGHT
Secretary: MILDRED CARINER
Treasurer: RUTH UCHIDA

JUNIOR CLASS:

President: ROBERT STOVER
V. President: ROBERT LOWE
Secretary: SUSAN KENNERBY
Treasurer: PATRICIA KENNEDY

FRESHMAN CLASS:

President: MARY ELLEN METZLER
V. President: PAUL WAGONER
Secretary: SYBIL MILLER
Treasurer: BETTY LOU JAMISON

SOPHOMORE CLASS

President: WAYNE BOWMAN
V. President: PHYLLIS STRICKLER
Secretary: ARLENE ROLFE
Treasurer: ESTHER MILLER



Juniors

Dadisman, Janice

Ditmars, John

DuBois, Jack

Hodgden, Ralph

Hoover, Warren

Lowe, Robert

Markham, Paul

Mease, Wilbur

Naylor, Kent

Petefish, Frances

Vancil, Mary

Wolf, Eula

Zigler, Carl

Allen, Edith

Bell, Jane

Blough, Lucy

Brooks, Jo B.

Buckingham, Orville

Ikenberry, Ernest

Ikenberry, Susan

Kauffman, Lois

Kennedy, Patricia

Lobban, Ila Verne

Riddlebarger, Joyce

Rothrock, Dayton

Royer, Evelyn

Schraml, Irene

Stover, Robert

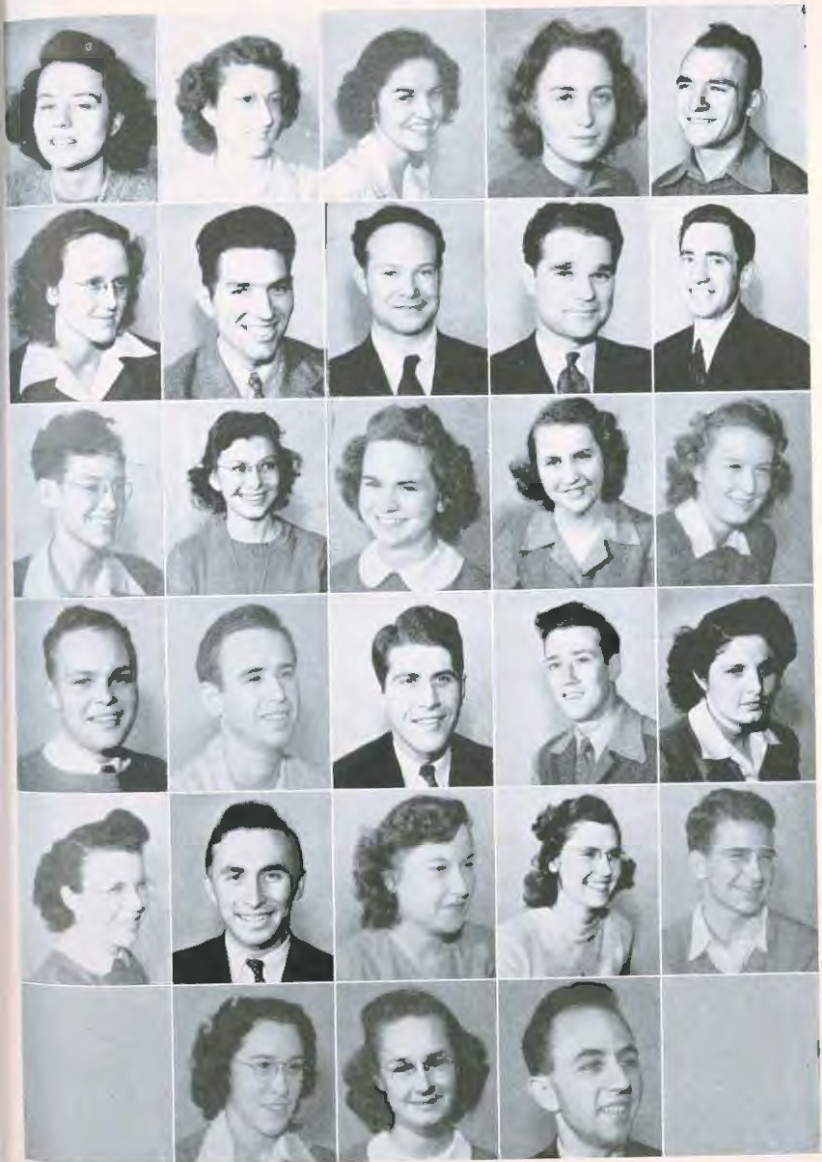
Creech, Rose Marie

Keffer, Vern

Lindberg, Wallace

Noel, Helen

Sloan, Keith



Sophomores

Baughman, Warren
Blough, Marvin
Bowman, Wayne
Bucky, Joseph
Coppock, Doris

Elrod, Bert
Engelland, Ruth
Erb, Avis
Finrock, Joan
Flory, Franklin

Klamm, Lyle
Krehbiel, Marvin
Lehman, Doris
Lichty, Ruth
Little, Catherine

Agee, Geneva
Agee, Willard
Allen, Orlo
Argabright, William
Ball, Joseph

Crist, Eulalia
Crumpacker, Doris
Dadisman, Claude
Davis, Ruth
Dell, Leona

Frantz, Dorothy
Frantz, Hazel
Grove, Dorothy
Heidebrecht, Marvin
Kidwell, John

Mezger, Evelyn
Miller, Esther
Mohler, Roberta
Murdock, Dorris
McNichol, Wallace



Sophomores

Pitzer, Kenneth
Poland, Della Mae
Prentice, Arlene
Rea, Tom

Rolls, Arlene
Royer, Etta Marie
Ruthrauff, Loreen
Schnorr, Elsie

Spear, Rebecca
Spence, Richard
Spengler, Johnette
Sprenkle, Gernelda

Van Buskirk, Esther
Strickler, Phyllis
Wampler, Donnis
Zerger, Melvin

Grosdidier, Herbert
Hardy, Theora
Hickey, Ruth
Jones, Earle

Beckwith, Thurston, Jr.
Bailey, Alice Ruth
Clark, Maurice
Coughenour, Gayland

Mathes, Marilyn
Smith, Donald
Stone, William



Freshmen

Bowers, Kathryn
Bowman, Donna Marie
Brubaker, Ruth
Burger, Lois
Clark, Norma

Fisher, Verlyn
Flory, Theda
Freeburg, Mary Jane
Geis, Wilma
Gerlock, Patil

Hoerner, Marilyn
Howard, Keith
Jamison, Betty Lou
Julian, Melba
Kagarice, Nina

Adamson, Jewell
Beaver, Maralee
Bechtold, Margaret
Beckwith, Carl
Beckwith, Glen

Corwin, Gordon
Delaplain, Marie
Ditmars, Blanche
Dixon, Bernice
Erb, Phyllis

Giles, William
Haley, Rosella
Hamer, Doris
Hildreth, Harriet
Holsopple, Elizabeth

Keim, Donald
Keim, Robert
Phyllis, Olwin
Krehbiel, Betty
Klotz, Paul



Freshmen

Loshbaugh, Royce
Merkey, Edith
Merkey, Ruth
Metz, Harry
Metzler, Mary Ellen

McMurray, Ruth
McRoberts, Marlys
Nakamura, Masako
Nelson, Dwain
Norlin, Anita Jo

Roberts, Louis
Scherer, Matt
Schraml, Virginia
Schafer, Bernadine
Sheets, John

Landes, June
Lewis, Carrie Belle
Lindstrom, Bernice
Lobban, Ivan
Longenecker, Rachel

Miles, Bernice
Miller, Sybil
Mohler, Donna
Mohler, Richard
Moyer, Ronald

Nordling, Leland
Oberst, Ann
Pitzer, Charlotte
Reist, Gordon
Reeves, Betty

Steele, Julius
Stern, Donald
Stern, Doris
Steinette, Marianna
Stonebraker, Betty





Strong, James
Thomas, Helen



Thralls, LaVona
Trowbridge, Carol



Uyeji, Saburo
Wagoner, Paul



Ward, Idabelle
Wedel, Merle



West, Waltine
Williford, John



Wolf, Irvin
Zigler, Madalene

Barr, Robert
Dubus, Jules
Fisher, Byron
Hulse, Lester
Kennedy, William
Lounsbury, Bernard
Lundquist, Marvin
Mankey, Floyd
McBroom, Kenneth
Randolph, Leon
Roth, Elmer
Unruh, Don





W
Presenting★

STUDENT GOVERNMENT
RELIGIOUS ACTIVITIES
CAMPUS CLUBS

STUDENT COUNCIL

Stabilizer of student activities . . . mediator between student-faculty relations . . . The Student Council is most important in student affairs . . . it is through this executive branch that the other organizations gain sanction for their various campus doings . . .

Meeting every Wednesday night to hash out student problems and plan the order of coming events, the student council is the behind-the-scenes generator which keeps the school year rolling on schedule . . .

Besides the general run of everyday business, the council kept a look out for ways to improve the campus . . . This year they purchased fifty folding chairs to be used in the SAR and SUR . . . made arrangements to put a snack bar counter in the basement of Sharp Hall as soon as the materials are available . . . Presiding over a most successful year we find Blair Helman, President, and Lois Kauffman as Treasurer . . .

President, Blair Helman; Treasurer, Lois Kauffman



Seated: Dr. J. W. Beifnot, Mrs. Ikenberry, Eula Wolf, Lois Kauffman, Mary Beth Lushbaugh, Betty Krehbiel, Leona Dell, Professor Dell. Standing: Dale Brown, Jerry Mann, Kent Naylor, Bob Burkholder, Blair Helman.



Back row: In Verne Lobban, Joyce Riddlebarger, Roberta Mohler, Annette Ronk, Margaret Reintz, Elva Jean Harbaugh.

Middle row: Lucy Blough, Mildred Cartner, Ione Aboos, Jerry Hedges, Betty Kimmel, Dena Ikenberry, Mary Beth Loshbaugh, Geneva Argo, Mildred Jones.

MEN'S AND WOMEN'S COUNCIL

Snack Bar twice a week for hungry students . . . A kitchen in Kline Hall for the use of culinary minded student groups . . . the big sister, little-sister program in the fall . . . Heart-sister week during February . . . these are not accidents, but visual evidence of an active Women's Council . . . Presided by Betty Kimmel, with Joyce Riddlebarger as secretary, and Annette Ronk as treasurer, and sponsored by Dean Ikenberry . . . For their major project they have sponsored the building of an out-door fireplace to be ready for food and fun by next fall . . . they even gave a party for the town girls . . .

And the men haven't been idle either . . . with Dale Brown as President and Wayne Bowman as secretary-Treasurer, they have done much to improve the social life of the college men . . . their sponsor, Dean Dell . . . the councils joined to sponsor the formal all-school banquet in the spring . . . thus concluding the year on a colorful note . . .



Back row: Carl Ziegler, Ernest Ikenberry, Gerald Mease, Dale Brown, Blair Helman, Wayne Bowman, Marvin Krehbiel.

Front row: Paul Markham, Prof. Dell, Dave Albright, Keith Burton, Kent Naylor, Byron Fleher.



Co-Presidents: Jerry Hodges, Dave Allright

THE SCA . . . one of the most active campus organizations . . . sponsor of the traditional watermelon feed and book exchange . . . backer of WSSF . . . led in action by Dave and Jerry . . . Commissions included Student Volunteers with Mary Beth and Susan . . . Political Action and Dale and Dayton . . . Twentieth Century Recreation by Tex and Wayne . . . they also acted as social chairman and turned out many fine get-togethers during the year . . . remember Sadie Hawkins? . . . Mille and Jerry handled advertisement . . . Dor and Mark provided Thursday night programs . . . Mildred took down notes and Kent balanced the books . . .

Second semester saw the addition of Keith Burton, Paul Waggoner, and Carl Zigler to the cabinet as Art, Relief, and Deputation leaders . . . the two Jerrys left, Mary B. taking over . . . Then the year the SCAers went on trips . . . both conference and deputation . . . worked for Relief . . . made soap . . . wrote congressmen . . . met in worship . . . and had an active part in the District doings . . . with Dale Brown as a co-chairman of the Kansas District . . . Summer Estes thoughts made campus winter highlights . . . The Brethren Student Volunteer conference at Manchester was the grand climax of the year . . .



Back row: Wayne Bowman, Kent Naylor, Gerald Menze, Milly Jones, Dale Brown, Dayton Bothrick, Mark Emwiler
Front row: Dorothy Kurtz, Mary Beth Lambaugh, Jerry Hodges, Ila Verne Lobban, Susan Deakberry, Dr. Metzler, Prof. Berkettle



B.
Y.
P.
D.

First row: Donna Bowman, Lucy Hough, Elva Jean Harbaugh, Jerry Hedges, Carol Trowbridge, Mary Beth Loshbaugh.
 Second row: In Verge Lohman, Blanche Dittmars, Theora Hardy, June Lantis, Betty Kimmel, Evelyn Metzger, Mack Nakamura, Doris Lehman.
 Third row: Dorothy Grove, Elizabeth Holopple, Phyllis Olwin, Phyllis Erb, Nina Kouskio, Jane Hoff, Doris Coppock.
 Fourth row: Helen Thomas, Esther Van Baskirk, Jean Yoder, Mildred Cartner, Irene Schraml.
 Fifth row: Lois Burger, Francis Pfelefeh, Bernice Miles, Marie Delandish, Mary Yandel, Marianna Stinnette.
 Sixth row: Walteena West, Milly Jones, Dorris Mardock, Robeson Spoor, Susan Ikenberry, Ruth Davis, Dorothy Frantz, Ruth Lichy.
 Seventh row: Lois Knuffman, Donna Mohler, Doris Hamer, Mary Ellen Metzler, Roberta Mohler, Arlene Rolfs, Arlene Prentice.
 Eighth row: Dennis Wampler, Eula Wolf, Kathryn Bowers, Sybil Miller, Olyvia Rothwell, Doris Stern, Mariys McRoberts, Marvin Hough.
 Ninth row: Leona Bell, Ernest Ikenberry, Robert Keim, Donald Keim, Betty Reeves.
 Tenth row: Wayne Bowman, Dick Mohler, Bill Giles, Keith Burton, Dale Brown, Paul Wakener, Irvin Wolf, John Williford.
 Eleventh row: John Dittmars, Edith Allen, Orlo Allen, Byron Fisher, Warren Hoover.

BYPD . . . the destination of all high-minded college young people at the close of every Sabbath Day . . . where they find fellowship and peace . . . and constructive thoughts about God . . . where the programs fill the needs of the students . . . give opportunities for talent expression . . . conducive to right thinking . . .

With Mildred Cartner as President, Warren Hoover as Vice-President, and Ruth Lichy as Secretary . . . the College BYPD of the McPherson Church of the Brethren has continued on in grand style this year . . . and as has been the custom, each nine weeks different students took over in planning the programs . . . Elva Jean Harbaugh, Warren Hoover, Sybil Miller, and Eula Wolf taking the honors this year . . . turning out results that have been varied and interesting, touching on many different subjects . . . vespers out-of-doors . . . hymn sings . . . Christmas caroling . . . Bible Baseball . . . informative talks . . .

Cooperating with Brethren Service, the BYPD has joined forces with the Student Volunteers in working for Relief . . . As their major project opportunity for the year, they raised fifty dollars which they sent to Rev. E. L. Ikenberry, Relief Secretary of NCC in Shanghai, to be used for the needy people of China . . . Service the keynote of BYPD . . .

RECREATIONAL COUNCIL

Games . . . retreats . . . planned parties . . . yes, you guessed it . . . the Recreational Council is behind it all . . . busily carrying on in the name of good fellowship and fun . . . this year their steering committee is headed up by vivacious Lucy Blough, and Jo B. Brooks is their winsome secretary . . . these two plus Ruth Lichty and Marvin Blough make up the complete committee . . . and it is their job to see that everything keeps running smoothly and on time . . . without any spot overlooked . . .

Every Monday night finds this congenial group meeting in the presence of their capable sponsor, Prof. Dell . . . as they delve into the depths of what it takes to be a recreational leader in the church or home community . . . these meetings take place in the form of discussion or party program . . . the pattern is varied and interesting . . .

Each year the group plans a retreat, during which they haul out their old blue-jeans and bright plaid shirts . . . to spend a weekend out in close contact with nature . . . usually out Black Canyon way . . . and thus they get apart from the daily routine of college life to learn from God's nature . . . and grow spiritually, mentally and personally . . . creating a living theme to use for life . . .

On the lighter side . . . it is usually during or shortly after the retreat that the council lives up to its name of "Dell's little matrimonial bureau" . . . setting the pace as leaders of tomorrow . . .

Front row: Dorris Murdock, Elva Jean Harbaugh, Ruth Lichty, Ina Verne Lobman, Lois Burzer, Jo B. Brooks, Elsie Schinner, Lucy Blough, Jerry Hodges.
Back row: Prof. Dell, Marvin Blough, Wayne Bowman, Paul Waggoner, Robert Kohn, Gordon Corwin, Blair Helman, Gerald Menze, Dave Allright.





Back row: William Glee, Wilbur Mease, Ralph Engelson, Paul Wagener.
 Third row: Marvin Blough, Wilmer Brubaker, Charles Diamond, Warren Hoover, John Shewis, Claude Dadisman,
 John Kidwell, Donald Seafield.
 Second row: Robert Keim, John Dittmars, Blair Helman, Donald Stuen, Gerald Mease, Willard Ager.
 Front row: Prof. Burton Metzler, Kent Naylor, Mark Emwiler, Ethmer Etuman, Dale Brown, David Albright.

STUDENT MINISTERS

Every second and fourth Tuesday during the school year found twenty-four young ministers meeting together with their sponsor, Dr. Metzler, teacher of Philosophy and Religion . . . these are the church leaders of to-morrow . . . the school knows them as willing young men . . . with enough humor to keep them going . . . and enough sense to seek out knowledge . . . of this flock of fledgling preachers, six have already served ably in surrounding churches . . . thus carrying on two full time jobs at one time . . .

They are organized into what is known as the Student Ministers Group under the leadership of Warren Hoover, Chairman, John Dittmars, Secretary, and Carl Zygler, Treasurer . . . these three made up the steering committee for this past year . . . and planned their activities for the year . . . They carried out two successful projects during the year . . . the one was to locate all Brethren students attending other colleges in the Region and let them know that their church had not over-looked them . . . even tho' they were not in a church college . . . thru this letter they contacted students in around four hundred and seventy colleges . . .

Their second accomplishment was a huge social get-together to which the college preachers invited student ministers from Bethel, Bethany, and Central Colleges, and the ministers from the local town churches . . . this created a fellowship between and above denominational barriers . . .

TOWN GIRLS

A dash of home life plus a college career . . . and you have what we fondly label our Domestic Debs . . . or more formally . . . the Town Girls. Although members of almost every other campus organization are represented in this group, they are active in their own right . . .

This year with paint and flowered chintz they "did over" their own room . . . making it one of the most congenial spots on the campus . . . their members are talented and outstanding in many ways . . . holding student offices with capableness and poise . . . cute . . . pert . . . never lacking in wit or ideas . . .

These gals have what it takes . . . are a definite part of what makes our college click . . .

They spent the first semester under the capable leadership of Ione Aker with Mary Jane Freeburg as second in command . . . while Virginia Boydston took down notes . . . but when Ione got married, Anita Jo Nordlin took over top command . . . and when a diamond lured Virginia away from school Donna Marie Bowman took to writing down the necessary notes . . . and thus the group kept on . . . ever working for better relations between the dorm girls and the Town Girls . . .

Back row: Gertrude Wilkins, Marlys McRoberts, Donna Bowman, Bernice Lindstrom, Norma Clark, Doris Crum-packer, Evelyn Mathis, Ann Olavst, Betty Krehbiel, Bernice Dixon, Mary Ellen Metzler, Betty Jane Freeburg.
Middle row: Irya Wickman, Theora Hardy, Mildred Cartner, Ione Akers, Roberta Mobler, Lucy Blough, Mrs. Kenberry.
Front row: Wilma Gulse, Elsie Behnurr, Bernadine Schaffer, Anita Norlund, Susie Kenberry.





Cheerleaders . . . Donald
Kohn, Gertrude Sprengle,
Carl Beckwith

They're always out in front, but they're behind a lot of our pep . . . They're our CHEERLEADERS . . . Three active, red and white personifications of the word "pep" . . .

Pretty, petite, filled with energy and covered with red and white attire, they're Miss Poland's little girls, the BARKERETTES . . . They occupy their section of the bleachers at each game, properly dressed and properly enthusiastic . . . They're the nucleus of our cheering section, as they sit there with their young, undergraduate faces making a nice contrast to the ferocious bulldog heads on their sweaters . . . They're the first to follow the cheerleaders into a yell, and they do their part to maintain that high pitch of tension and near riot of noise that comes under the head of cheering . . .

Back row: Gertrude Wilkins, Annette Rank, Phyllis Strickler, Patricia Kennedy, Susan Kenworthy, Betty Krehbiel, Gertrude Sprengle, Lesora Dell, Johnette Spangler, Doris Crumpler, In Verne Lubban, Ruth Davis, Max Jane Froberg, Arlene Proctor, Ruth Engstrand, Jane Bell, Dorothy Franz, Joan Finrock, Joyce Robble-Larson, Betty Kimmel.
Front row: Della Mae Poland, Betty Lou Jansson, Maako Nakamura, Geneva Aaga, Mary Meteler, Ann Ghent, Hesteria Mohler, Elsie Schauer, Mildred Jones, Arlene Bule, Ann Eick, Dennis Wambler, Betty Elrod, Marilyn Metzner, Elva Jean Harbaugh.





MP Presenting

CELEBRITIES

FORENSIC

MUSIC

DRAMA

JOURNALISM

Tomorrow's Best Citizens

To-morrow, the world! . . . and to meet it . . . we present our version of to-morrow's best citizens . . . our own Elva Jean and Kent . . . chosen by our student body to symbolize for us the spirit of the youth of to-day . . . who will make the best citizens of the world of to-morrow . . . they face the future with a clear picture of the world's present day problems and diplomatic corruptions in mind . . . yet they have a faith that the future will find a better world . . . and because they have faith . . . the world again finds hope . . .



WHO'S WHO

- GERALDINE HEDGES . . . willing and able, this comely senior miss well deserves her place . . . Co-chairman of SCA, member of A Cappella . . . and friend of all . . . she acted as head resident of Arnold with poise . . .
- DALE BROWN . . . Brownie to his friends . . . tops in debate . . . and full of brains . . . this senior man holds the essence of wit, the depth of dignity it takes to meet the world with success . . . a preacher in the making . . .
- DAVE ALBRIGHT . . . capable . . . likeable . . . efficient . . . known for his work in religious activities . . . outstanding in music and sports . . . this future preacher well deserves a place in our college Who's Who . . .
- ERNEST IKENBERRY . . . journalist of merit and distinction . . . this ruffleheaded junior edited the Spectator in grand style . . . member of Thespians and A Cappella Choir . . . this budding genius gets around . . .
- GERTRUDE CONNER WILKINS . . . music is her field and ability is her keynote. Outstanding in music all four years . . . maestro of the piano . . . she also had time for student council . . . women's council . . . Barkerettes . . . and others . . .
- CHARLES DUMMOND . . . our pet preacher . . . he has pastored a church and kept a full college schedule at the same time . . . what he says is said loudly . . . but it usually has a point . . . Chuck is also a senior . . . of worth . . .
- MARY BETH LOSHBAUGH . . . a study in contrasts she gets things done . . . outstanding in the religious field . . . she can swing from the sublime to the ridiculous in three minutes flat . . . an able thespian . . . a keen mind . . .
- ANNETTE RONK . . . Coach of women's athletics and known for her dramatic ability . . . varsity debator . . . excellent scholar . . . she still has time to make friends . . . this is her second year in Who's Who . . .
- ILA VERNE LOBBAN . . . our Tex who comes from New Mexico . . . is an active S.C. cabinet member and a whizz at sports . . . a campus diplomat who keeps things going . . . Tex fills her place in Who's Who . . .





VARSITY DEBATE

Patricia Kennedy and Annette Ronk are veteran varsity debaters . . . Ronk is outstanding for her work in extempore and discussion. Kennedy receives her laurels in the field of oratory.

Newcomers to the varsity debate team are Elsie Schnorr and Doris Coppock, both sophomores . . . These neophytes have done an excellent job in carrying on as successfully as their predecessors . . .

Another team with experience behind them is composed of Emswiler and Helman. Both men copped honors for McPherson not only in debate, but also in the realms of oratory and discussion . . .

Warren Hoover and Dale Brown meet opposition with smooth speeches and clashing rebuttals . . . This is Hoover's first year of action on a varsity team, but Brown is a veteran . . .



Back row: Mark Emawiler, Dayton Rothrock, John Shows, Robert Keim, Warren Hoover, Blair Helman, Dale Brown, John Kidwell.
Front row: Catherine Little, Doris Doppock, Elsie Scherr, Annette Bank, Patricia Kennedy, Bernadine Schafer.

DEBATE SQUAD

Debate season opened with the winning of the traditional inter-class debates by Patricia Kennedy and Warren Hoover representing the junior class . . . Dr. Bowersox made his debut as debate coach . . . annual tryouts were held for the selection of the varsity debate teams . . . the entire debate squad consisted of eight teams . . .

McPherson took honors in the Squad tournament held at Bethel College in Newton . . . entertained other schools in a Squad tournament held there in January . . . Men's varsity teams represented McPherson at Emporia Meet . . . Annual state tournament held at Bethany followed by the Province of the Plains tournament at Kearney Nebraska . . .

Five new members were taken into Pi Kappa Delta national honorary forensic society . . . Prof. Hess as Governor of the Province kept an eagle eye on the activities of the McPherson debaters . . . coached state champion Helman for anti-tobacco oratorical contest and peace contest . . .

Pi Kappa Delta initiation climaxed another successful year for McPherson in the realm of forensics . . .



Dr. L. K. Bowersox
Debate Coach

VARSITY WOMEN'S QUARTET



VARSIITY WOMEN'S QUARTET
Jo B. Brooks, Esther Miller, Lucy Blough, Doris Coppock, Alice Ruth Bailey at
the piano.

Chapel programs . . . week-end trips . . . hours of practice . . . these are all familiar to the Men's and Women's Varsity Quartettes of McPherson College . . . the singing ladies included Jo B. Brooks, Esther Miller, Doris Coppock, and Lucy Blough . . . they entertained in Iowa and Colorado . . . gave command performances at dress-up dinners . . . Keith Burton, Dave Albright, Paul Wag-
oner and Byron Fisher are the singing four from old M.C. . . . their talent and popularity is well known throughout the entire Region . . .

VARSIITY MEN'S QUARTET
David Albright, Keith Burton, Paul Wagoner, Byron Fisher

VARSIITY MEN'S QUARTET





Back row: Marvin Krebbel, Kent Naylor, Clair Power, Willard Aase, Wayne Rowman, Paul Wagoner, Keith Burton, Ernest Ikenberry, Carl Ziegler, John Slets, Robert Keim, Byron Fisher, William Giles, Charles Dumond, Donald Scofield.
 Front row: Esther Miller, Doris Murdoch, Marjole Weaver, Marilyn Melboerts, Jo E. Brooks, Bebecca Swanz, Phyllis Olson, Alice Ruth Bailey, Berntee Lindstrom, Avis Erb, Dorothy Kuriz, Lucy Shough, Jerry Helges, Evelyn Metzger, June Laadis, Doris Coppock, Gertrude Wilkins, Mildred Cartner.

The A CAPPELLA CHOIR . . . this group, consisting of the best voices in school, meets every Wenesday evening in the SAR to sing songs of every type . . . at least they meet to sing, but a goodly portion of the time (if we are to believe all we hear) passes quickly with director Nevin Fisher telling some of his favorite stories and anecdotes . . .

Standing on a small, raised dias in front of the platform, Prof. Fisher raps for attention, lifts his arms and eyebrows high, and prepares to lead the assembled singers into the enchanted realms of music . . . From folk songs and novelty numbers, to oratorio pieces and operatic arias, the A Cappella sings a little of everything. And then, once in awhile, they assemble in public and sing in chapel . . . The A Cappella open season ended this year on April 5 with the annual concert and the following banquet . . .

The work has been hard at times, but the results have been appreciated. And, following Prof. Fisher's favorite and oft-repeated saying, "Success depends upon your cooperation," the A Cappella has come through another tuneful year.



First row: Margaret Beehild, Geneva Agre, Mildred Jones.

Second row: Theora Hanly, Anne Oberst, Mary Eilon Metzler, Rozella Haley, Betty Kimmel, Phyllis Erb.

Third row: Bernadine Schaeffer, Bernice Landstrom, Mary June Fowberg, June Landis, Avis Erb, Maxaline Zicker.

Fourth row: Carrie Bell Lewis, Evelyn Royce, Marianna Sinnott, Hazel Finora, Evelyn Metzger, Della Mae Pollard.

Fifth row: Betty Reeves, Marjia McRidars, Betty Lou Jamison, Donna Bowman, Doris Murdock, Ruth Engeland.

Sixth row: Leona Dell, Nina Kannerice, Jane Bell, Mildred Carner, Wallace West, Dorothy Gross.

Seventh row: Wayne Bowman, Ernest Ekenberry, Lada Kauffman, Eula Wolfe, Jo B. Bracke, Myra Lee Weaver, Susie Ekenberry, Doris Coppock, Elva Jean Barbaugh.

Eighth row: Charles Dunning, Keith Burton, Donald Keim, Carl Beckwith, Carl Zicker, Kent Naylor.

Ninth row: Oris Allen, Marvin Blough, Byron Fisher, Dave Albricht, Franklin Flory, Marvin Krehbiel.

One hundred ten voices raised in gladsome song on an early Monday evening . . . you guessed it . . . THE CHORAL CLUB . . . Fisher up front and Cert Wilkins at the piano . . . horseplay . . . repetition . . . sour notes . . . these all had their time during the course of the year . . . The masterpiece of the year was in the form of St. Paul's Oratorio . . . from which the group selected a number of the most outstanding chorals for the backbone of their Spring Concert . . . beautiful music . . . success . . .

The BAND . . . a mainstay of the cheering section this year . . . with the bass drum and cymbals applauding every Bulldog basket, and the whole band tooting away during any intermissions, it helped to keep the pep alive and kicking and the school spirits from drooping . . . We cheerfully dodge flying drum sticks and sliding trombones, and clap along with the rousing rhythms of the band . . . Yes, sir! It's a good band this year, Mr. Dubois, and we're glad you had 'em . . .

Erb, Christ, Finzrock, A. Erb, Klets, Miller, Kauffman, Wolfe, Gies, Brown, Coppock, Kitzler.



THESPIAN CLUB

This year the Thespian Club has been working under a definite handicap in that they had no faculty sponsor to supervise and sanction . . . but the second semester found them getting into gear . . . dusting off the costumes and hauling out the grease paint . . . Annette Ronk as prexy turned director and with a capital cast consisting of Phyllis Strickler, Tom Rea, Esther Miller, Keith Burton, and Edith Merkey, put forth a polished, tensely dramatic presentation of the Broadway success, "Angel Street" . . . and then came Spring . . . the club sponsored and directed a night of rip snorting one act plays . . . congratulations were in order . . .

Other officers of the club besides Annette include Dave Albright as Vice-President and Keith Burton as Secretary-Treasurer . . . new members in the club included Betty Lou Jamison, Sybil Miller, Della Mae Pollard, Marianna Stinnette, Carol Trowbridge, Edith Merkey, Don Keim, and Gordon Reist . . . and Tom Rea came back from the army . . .

Diverse personalities . . . versatility . . . cleverness . . . these describe the Thespians . . .

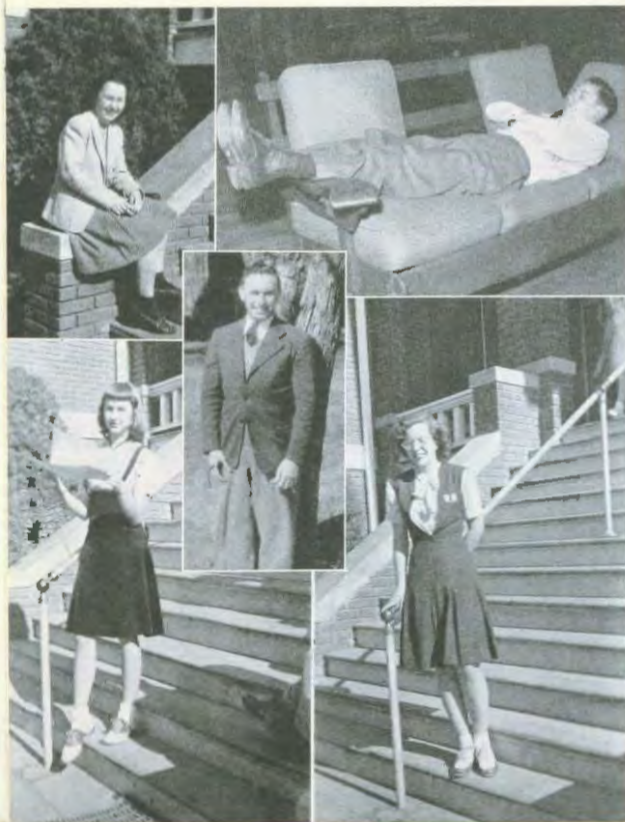
Back row: Dayton Rothrock, Keith Burton, Blair Holman, Charles Dumond, Ernest Ikenberry.
Front row: Mary Beth Lushbaugh, Esther Miller, Annette Ronk, Durl Coppock, Susan Ikenberry, Phyllis Strickler.



SPECTATOR

Deadlines . . . the Spec room with its piles and piles of debris . . . aspiring journalists spending weary hours over the "beat" typewriters in the Spec office . . . those daily trips to the Republican with that oh so meager pile of copy . . . these are only a few of the happenings which characterize the publication of the school weekly, The Spectator . . .

Della Mae Poland was the "big chief" first semester . . . second semester finds Blair Helman giving orders . . . Donnis Wampler tells the campus editor what to do . . . Dayton Rothrock, as campus editor tracks down all the stories that were supposed to be in days ago . . . and so it goes . . . features . . . editorials . . . news stories . . . and of course ads, with Roberta Mohler acting as business manager . . . put it all together and the result is a favorite on Mac campus the Spectator . . .



Donnis Wampler, Blair Helman, Della Mae Poland, Dayton Rothrock, Roberta Mohler.



In Verne Lohlan, Susan Donberry, Patricia Kennedy, Carl Beckwith, Loren Ruthrauff, Wayne Bowman, Harold Bowman, Keith Burton, Bob Keim

QUADRANGLE

Editor Pat in blue jeans giving orders between bites of candy bar . . . pictures and proofs spread all over the copy table . . . dummy pages . . . conferences with the engravers . . . photograph schedules . . . the Quad. deadlines must be met . . . Bowman takes another picture . . . Keith works at art . . . Asst. Ed. Sue typing out copy on a borrowed Spec office machine . . . the never present Copy Ed. Mike breezing in for new assignments . . . Tex and Carl down town every afternoon hunting up friendly relations with the business men . . . thus bringing in ads . . . showing that they are efficient business mgr. and able assistant . . . the Quad comes first in their minds . . . and all the threads weave the final pattern to success! . . .



OUR HEARTS WERE YOUNG AND GAY

Puppy and Mammy Yekum starred at the Sadie Hawkins Party . . . and the Penny Carnival saw Paul and Ruthie crowned King and Queen . . . McPherson Campus is a veritable Doc Patch . . . I see a full, dark Handsome Man in your life . . . 20th Century Art Masters go to the Penny Carnival . . . and surely you remember the skater's waltz . . . Pardon me, but you look like a kindergarten . . .

PHYSICAL EDUCATION



A large, stylized logo consisting of a block letter 'M' and a cursive letter 'P'. The 'M' is filled with a diagonal hatching pattern and has a red outline. The 'P' is a simple red outline. The 'P' is positioned to the right of the 'M', with its top loop overlapping the right side of the 'M'.

Presenting[★]

HOME COMING

W. A. A.

M CLUB

ATHLETICS





MULLIGAN STEW

Quiet please, genius at work . . . so strong, but oh so gentle . . . hobnobbing Profs . . .
 don't cross the bridge before you come to it, you might get a ride . . . and we thought they
 were such intelligent college students! . . . look close, the missing link is no longer missing . . .
 which one of these trees is the monkey in . . . gl'amour and amour, or, Brooks and Flory . . .



Back row: Ann Diers, Joan Yoder, Mary Vanceil, Arlene Rolf, Masako Nakamura, June Landis, Ronella Haley, Ruth Brubaker, Eulalia Crist, Nina Kagarice, Mary Ellen Metzler, Walline West, Mary Jane Freburn, Marianne Stionette, Donna Bowman, Theda Flory, Dennis Wampler, Du Yenne Lehnau, Roberta Hubler.

Middle row: Doris Hamer, Betty Kimmel, Carol Trowbridge, Leona Dell, Eula Wolf, Dorothy Frantz, Jane Bell, Avla Erb, Evelyn Metzger, Anita Norlin, Betty Lou Jamison, Mildred Jones, Joyce Riddleberger, Ruth Davis, Ruth Engelland.

Front row: Margaret Reichold, Joan Finfrock, Della Mae Poland, Annette Ronk, Betty Elrod, Elsie Schnorr, Phyllis Erb, Doris Coppock.

W A A . . . the Women's Athletic Association proudly claims a place among the most active of the campus organizations . . . this year they have "Coach" Annette Ronk as President, Eula Wolf Vice-President, Dorothy Frantz Secretary, and Eulalia Crist as treasurer . . .

Living up to their slogan, "We Are Active", they carried on four sports in each of their three successful seasons . . . The Fall season found Masa Nakamura heading up the Softball Club, Gernelda Sprengle as chief swimmer, Dennis Wampler in charge of Outing, and Ruth Engelland keeping track of the Field Hockey Girls . . .

The Second, or Winter Season was just as successful . . . the cold not stopping anybody from joining in the sports program . . . This time the sports and Heads ran like this . . . Volley Ball, Joan Finfrock . . . Outing, Tex Lobban . . . Square Dancing, Evelyn Metzger . . . Basketball, Doris Coppock . . . Spring found the girls still rarin' to go . . . the clubs being Softball, Outing, Individual Sports, and Tumbling and Track. They were led by Elsie Schnorr, Leona Dell, Ruth Engelland, and Gernelda Sprengle . . . The traditional formal M-Club . . . WAA Banquet crowned the year's activities . . .

M CLUB

The M-Club . . . made up of the muscle men of McPherson College . . . these are the men who have made our college famous on field and court and track in the realm of sports . . . these are the men who proudly wear the red sweater and big M . . . Their President this year was Paul Markham, and the Secretary-Treasurer was Kent Naylor . . . the group is sponsored by Coach Hayden . . .

This year at Homecoming the group instigated an informal luncheon for M-Club members Past and Present which they hope will soon become a tradition with the club . . .

New members gaining a position in the club this year as brand new Mac Lettermen are Kenneth McBroom, Don Unruh, Bob Barr, Verlyn Fisher, Lee Nordling, and Bill Kennedy . . . all lettered in basketball except Kennedy who rated membership in the club through his position as manager of the team this past season . . . Associate members this year are the three cheer-leaders, Gerneida Sprenkle, Carl Beckwith, and Don Keim . . .

The traditional Banquet was held in the spring . . . only this year they did not collaborate with the WAA Banquet as they have in past years . . . the spring initiation of new members topped off a successful year . . .

Back row: Merle Finrock, Duse Albright, Donald Smith, Melvin Zenger, Robert Burkholder,
Front row: Keith Burton, Paul Markham, Coach Hayden, Dayton Rothrock, Marvin Krobbiel, Kent Naylor.



BASKETBALL



Back row: William Kenneth, Matt Scherer, Bob Burkholder, Kenneth McBroom, Melvin Zenger, Lee Nordling, Don Unruh, Donald Smith, Paul Markham, Kent Naylor, Marvin Krehbiel, Coach Hayden.
Front row: Irvin Wulfö, Verlan Fisher, Wally McNeil, Dave Albright, Bob Stever, Moris Finfrueh, Bill Mease.

Have we got a basketball team this year? . . . Well I guess !!! Not only a team, but a winning team . . . the Kansas Conference champions !!!

You can tire yourself out just thinking of the many games where you almost literally held your breath to see which side was going to have that one or two-point lead when the final buzzer rang . . . But we generally came out a little in the lead, or at least enough to get the edge on Ottawa . . .

The first semester saw us with a struggling team, but reorganization and some new men at the beginning of second semester all added up to a (really good team) . . . McPherson got a new bus line and we formed the habit of following our team to out-of-town games and bounding them on to victory there as well as here at home in the Community Building . . . with Captain Paul Markham playing almost continually, the main team was worked up from five local boys . . . These five, Markham, Krehbiel, Unruh, Nordling, and McBroom, supported and supplemented by the rest of the team and encouraged by the student body, finished out a definitely successful season . . .



Coach
Thomas
Hayden

BASKETBALL

Paul Markham; Backbone of the defense, spearhead of the offense. Paul captained the Bulldogs to a Conference championship.

Wallace McNichol; Ex-AAF Gunner, Wally alternated between a guard and center spot.

Don Unruh; A Marine Corps veteran "Dolly" held down a regular guard spot the second semester.

Matt Scherer; A bulwark on defense. Matt earned his first varsity letter at Mac this year.

Robert Stover; A defensive standout, Bob throttled enemy fast breaks.

Leland Nordling; Another Nordling, another center. Lee, late of the US Army, played consistent ball at the pivot post.

Robert Burkholder; Late of the US Army Air Forces. Bob helped in the late season drive leading to a championship.

Kent Naylor; Always an offensive threat, Kent played a lot of basketball from his forward spot.

Verlyn Fisher; Ex-McPherson High speed merchant, ex-GI Fisher rolled them in after entering school the second semester.

Marvin Krehbiel; Highpoint man for the season, "Weasel" kept the Bulldog offensive in high gear.

Don Smith; Another returned GI. Don was welcome addition to the Kansas Conference Champs, and played winning ball for the Bulldogs the second semester.

Melvin Zerger; Not only a threat on offense, but also a top notcher on defense, Zeke was instrumental in winning many games.

Irvin Wolf; Irvin was known as the "Shetland Pony" of the basketball squad. This persevering freshman shows promise.

Kenneth McBroom; An ex-McPherson high star Kenny McBroom, returned GI, hit consistently from his forward spot.

Dave Albright; Fast and versatile. Dave ended his college career for the Bulldogs this year.

Wilbur Mease; Rough and rugged. Bill played a sterling defensive game.

Merle Finrock; In his last year with the Bulldogs Finny was always an offensive threat.





BLAME IT ON TRADITION

If you think they look bad, you ought to have heard them . . . maid's night off . . . pajamas on parade . . . Does your hair lack luster? . . . give them the Bullock locomotive . . . Slow! . . . the nuts on the Juk's family tree, this picture really belongs in a genetics book . . . It's all over but the eating . . . dinner on the rind . . .

INDEX

	FACULTY
Berkebile, James, M.	39, 62
Boitnott, John W.	37
Bowersox, L. K.	51
Bowman, J. L.	18
Brown, Jessie	18
Dell, S. M.	37, 38
Fisher, Nevin W.	18
Fleming, Avery L.	19
Frantz, Earl M.	18
Fries, J. H.	18
Harris, Virginia	62, 64, 65, 68
Hayden, T. C.	19
Hershberger, E. S.	19
Hess, M. A.	37, 38, 43
Ikenberry, Mrs. E. I.	18
Lehman, Della	19
Martin, Alice	39, 42
Metzler, Burton	79
Mohler, Robert E.	10
Mugler, Minnie	19
Olson, O. A.	14
Peters, W. W.	19
Seik, Mildred	19
San Romani, Audrey	19
Weinrich, M. I.	19

	SENIORS
Akers, Ione, McPherson, Kansas	21, 38, 43
Albright, David, Eldora, Iowa	21, 23, 38, 39, 41, 42, 49, 52, 54, 62, 64, 65, 67, 81
Boese, Ben, Galva, Kansas	21, 57
Bowman, Harold, Quinter, Kansas	13, 21, 37, 38, 39, 40, 42, 49, 50, 51, 54, 79
Broncewe, Robert, Frederick, Kansas	21, 42
Brown, Dale, Wichita, Kansas	21
Erubaker, Wilmer, McPherson, Kansas	37, 64, 65, 67
Ernst, Robert, McPherson, Kansas	13, 21, 38, 40, 52, 53, 54, 56, 57, 64, 81
Burkholder, Robert, Octavia, Nebraska	21, 23, 38, 39, 40, 43, 53, 54
Burton, Keith, Des Moines, Iowa	21, 42, 49, 53, 54, 55, 62
Cartner, Mildred, Abilene, Kansas	21, 39, 42, 50, 51
Diamond, Charles, Waterloo, Iowa	21, 42
Emswiler, Mark, Froid, Montana	21, 64, 65, 67
Erisman, Eshmer, Fairview, Missouri	21, 23, 38, 40, 41, 44, 47, 54, 79
Finrock, Merle, Hutchinson, Kansas	21, 38, 39, 40, 11, 49, 53, 58
Harbaugh, Elva Jean, Waterloo, Iowa	21, 37, 38, 41, 42, 50, 51, 55, 56, 79
Hedges, Geraldine, Drummond, Oklahoma	21
Helman, Blair, Windber, Pennsylvania	21, 38, 39, 40, 44, 54, 63
Hiebert, Franklin, McPherson, Kansas	21, 38, 40, 44, 54, 63
Johanson, Bernhard, McPherson, Kansas	13, 21, 54
Jones, Mildred, Cordell, Oklahoma	21, 39, 53
Kimmel, Betty, McLouth, Kansas	21, 37, 38, 39, 40, 49, 55
Kingsley, Robert, Windom, Kansas	21, 37, 38, 39, 41, 42, 79
Kurtz, Dorothy, Johnstown, Pennsylvania	21
Kurtz, Dorothy, Johnstown, Pennsylvania	21, 38, 14, 49, 50, 51, 55, 63, 79
Loshbaugh, Mary Beth, Westphalia, Kansas	21, 38, 44, 19, 50, 51, 55, 63, 79
Mease, Gerald, Lincoln, Kansas	42, 53
Morse, Max, Galva, Kansas	23
Ronk, Annette, Denver, Colorado	21, 43
Scotfield, Donald, Independence, Kansas	43, 44, 49
Uchida, Ruth, McPherson, Kansas	21, 43
Wickman, Irva, McPherson, Kansas	43, 44, 49
Wilkins, Gertrude Conner, McPherson, Kansas	25, 40, 54

	JUNIORS
Allen, Edith, Big Lake, Minnesota	25, 40, 54
Bell, Jane, Langdon, Kansas	25, 40, 44, 63



Remember your
College days!

Get your photo
Supplies from

PARRENT'S
Photo Shop



MEET THE GANG
at the
COLLEGE INN

Scrumptious Food
and
Super - Service

Phone 1662

1st and Baer

There's Always
the Unexpected!

Are you insured against
it? Call us today!

It costs you little,
may save you a lot.

CARL M. ANDERSON-
METTLEN AGENCY

McPherson & Citizens State Bank Building



**For every college student
and
For every occasion**

Advance Styles
Better Shoes

At

Sweeney's

105 N. Main

Phone 80

INDEX

Blough, Lucy, Waterloo, Iowa	25, 38, 40, 41, 43, 52, 53, 54, 62
Brooks, Jo E., Nickerson, Kansas	25, 41, 52, 53, 54, 62, 79
Buckingham, Orville, Prairie City, Iowa	26, 59, 62
Creech, Rose Marie, Bellwood, Nebraska	25
Dadisman, Janice, Marshalltown, Iowa	25
Ditmars, John, Washington, Kansas	25, 40, 42
DuBois, Jack, McPherson, Kansas	25
Hodgen, Ralph, Conway Springs, Kansas	25, 42
Hoover, Warren, Marion, Iowa	25, 40, 42, 50, 51
Ikenberry, Ernest, McPherson, Kansas	25, 38, 40, 49, 53, 54, 55
Ikenberry, Susan, McPherson, Kansas	28, 25, 39, 40, 43, 44, 54, 55, 57, 58
Kauffman, Lois, Abilene, Kansas	25, 37, 40, 45, 54, 61
Keffer, Vern, McPherson, Kansas	23, 25, 44, 50, 51, 57
Kennedy, Patricia, Marshalltown, Iowa	23, 25, 44, 50, 51, 57
Lindberg, Wallace, Galva, Kansas	25, 38, 39, 40, 41, 14, 57, 59, 63
Lobban, In Verne, Clovis, New Mexico	23, 25
Lowe, Robert, Deerfield, Kansas	25, 38, 64, 65, 67, 79
Markham, Paul, McPherson, Kansas	25, 42, 65, 67
Mease, Wilbur, Lincoln, Nebraska	25, 37, 38, 39, 42, 47, 53, 54, 64, 65, 67, 79
Naylor, Kent, Holmesville, Nebraska	25, 37, 38, 39, 42, 47, 53, 54, 64, 65, 67, 79
Noel, Helen, Fruitland, Idaho	25, 40
Petefish, Frances, Cedar Rapids, Iowa	25, 38, 44, 62
Riddlebarger, Joyce, New Plymouth, Idaho	25, 39, 40, 51, 53, 56, 64
Rathrock, Dayton, Davenport, Nebraska	25, 54
Royer, Evelyn, Dallas Center, Iowa	25, 40, 79
Sehraml, Irene, Barnum, Minnesota	23, 25, 65, 67
Sloan, Keith, McPherson, Kansas	25, 40, 63
Stover, Robert, McPherson, Kansas	25, 37, 40, 54, 59, 63, 79, 81
Vandell, Mary, Ottawa, Kansas	25, 38, 53, 54
Wolf, Eula, Quinter, Kansas	25, 38, 53, 54
Zigler, Carl, Churchville, Virginia	
Matson, Wilma	

SOPHOMORES

Agee, Geneva, Boones Mill, Virginia	27, 38, 44, 54
Agee, Willard, Leaksville, North Carolina	27, 42, 53
Allen, Orlo, Big Lake, Minnesota	27, 40, 54
Argabright, William, Kansas City, Missouri	52, 53, 62
Bailey, Alice Ruth, Hamlin, Kansas	27
Ball, Joseph, Lost Springs, Kansas	27
Baughman, Warren, Mount Auburn, Illinois	27, 40, 41, 54
Blough, Marvin, Nampa, Idaho	23, 27, 38, 39, 40, 41, 53, 54, 57, 81
Bowman, Wayne, Quinter, Kansas	27
Bukey, Joseph, Inman, Kansas	
Clark, Maurice, McPherson, Kansas	27, 40, 50, 51, 52, 53, 54, 55, 63
Coppock, Doris, Plattsburg, Missouri	
Coughenour, Gayland, McPherson, Kansas	27, 40, 54, 63, 81
Crist, Eulalia, Quinter, Kansas	27, 44
Crumpacker, Doris, McPherson, Kansas	27, 42
Dadisman, Claude, Fernald, Iowa	27, 40, 44, 63
Davis, Ruth, Wichita, Kansas	37, 37, 40, 41, 44, 54, 63
Dell, Leona, McPherson, Kansas	13, 27, 44, 54, 58, 63, 79
Engelland, Ruth, Sterling, Kansas	13, 27, 44, 53, 54, 63
Erb, Avis, Albion, Iowa	27, 44, 54, 63, 81
Finckel, Joan, Hutchinson, Kansas	13, 27, 54, 59, 62, 79
Flory, Franklin, Nampa, Idaho	27, 40, 44, 63, 69, 81
Frantz, Dorothy, Rocky Ford, Colorado	27, 40, 54
Frantz, Hazel, Holmesville, Nebraska	
Grosdidier, Herbert, Canton, Kansas	27, 40, 54
Grove, Dorothy, Keswick, Iowa	40, 48, 54
Hardy, Theora, McPherson, Kansas	27
Heidebrecht, Marvin, Inman, Kansas	
Hickey, Ruth, McPherson, Kansas	
Jones, Earle, Wichita, Kansas	

**THE BEST BARBER
AND BEAUTY SHOP**

FOR MAC STUDENTS

**Warren Barber
And Beauty Shop**

Safeway Stores, Inc.

"Distribution Without Waste"

Duckwall's
QUALITY SERVICE — PRICE

Visit Our Fountain & Luncheonette
Complete Notions, Toiletries, etc.

Lake Superior Lumber Co.

LUMBER, HARDWARE, PAINT

The best in materials for your home.

301 N. Maple

Phone 40

**I'se Reformed
My Eating Habits**

I didn't figure food
could taste so good or
look so temptin', until
I stopped in at Walk-
er's. Y-mmm.



WALKER'S CAFE

204 N. Main

WOOLWORTH'S

5c — 10c — 25c
STORES

101 N. Main

Phone 819

Greetings from

GAMBLE STORES
THE FRIENDLY STORE OWNED BY EMPLOYEES

The Friendly Store

**TO GET THOSE "TOPS"
IN QUALITY FOODS**

Go To

217
North
Main

SWANSON'S

Phones
185
186

GROCERY AND MARKET

INDEX

Kidwell, John, McPherson, Kansas	27, 42, 51
Klamm, Lytle, Detroit, Kansas	27
Krehbiel, Marvin, McPherson, Kansas	27, 38, 53, 54, 64, 67
Lehman, Doris, Enterprise, Kansas	27, 40
Lichty, Ruth, Waterloo, Iowa	27, 40, 41
Little, Catherine, Kansas City, Kansas	27, 50, 51
Mathes, Marilyn, McPherson, Kansas	43
Metzger, Evelyn, Nampa, Idaho	13, 27, 40, 44, 53, 54, 63
Miller, Esther, Weiser, Idaho	23, 27, 40, 52, 53, 55
Mohler, Roberta, McPherson, Kansas	13, 27, 38, 40, 43, 44, 56, 63
Murdock, Dorris, Eldora, Iowa	27, 40, 41, 53, 54
McNeel, Wallace, Lost Springs, Kansas	27, 65, 67
Pitzer, Kenneth, McPherson, Kansas	27
Poland, Della Mae, Junction City, Kansas	13, 27, 44, 54, 56, 63, 81
Prentice, Arlene, Aline, Oklahoma	27, 40, 44, 81
Rita, Tom, McPherson, Kansas	23, 27, 40, 44, 63, 81
Rofs, Arlene, Geneseo, Kansas	27
Royer, Eita Marie, Dallas Center Iowa	27, 57
Ruthrauff, Loren, Cedar Rapids, Iowa	13, 27, 41, 44, 51, 58, 63
Schnorr, Elsie, McPherson, Kansas	27, 64, 65, 67
Smith, Donald, McPherson, Kansas	27, 40, 53
Spears, Rebecca, Cedar Rapids, Iowa	27
Spencer, Richard, McPherson, Kansas	27, 44, 69, 81
Spengler, Johnette, Wichita, Kansas	27, 44, 69
Sprenkle, Gernelda, Quinter, Kansas	
Stone, William, Chicago, Illinois	23, 27, 35, 41, 55, 69
Strickler, Phyllis, Ramona, Kansas	27, 40
Van Buskirk, Esther, Hoxie, Kansas	13, 27, 40, 44, 54, 56, 63
Wampler, Dennis, McPherson, Kansas	40
Yoder, Johann, Manchester, Indiana	27, 64, 66
Zerger, Melvin, McPherson, Kansas	
FRESHMEN	
Adamson, Jewel, St. John, Kansas	31
Beaver, Maralee, St. John, Kansas	31, 63, 64
Beechold, Margaret, Kansas City, Kansas	31, 38, 64, 63
Beckwith, Carl, Fruitland, Idaho	31, 54, 59
Beckwith, Glenn, Fruitland, Idaho	13, 31
Bowers, Kathryn, Shickley, Nebraska	31, 40
Bowman, Donna Marie, McPherson, Kansas	31, 43, 54, 63
Brubaker, Ruth, Nampa, Idaho	31, 53, 68
Burger, Lois, Perryton, Texas	31, 40, 41
Clark, Norma, Galva, Kansas	31, 43
Corwin, Gordon, McPherson, Kansas	31, 41
Delaplain, Marie, Peace Valley, Missouri	31, 40
Dixon, Bernice, McPherson, Kansas	31, 43, 44
Dilmars, Blanche, Washington, Kansas	31, 40
Dubus, Jules, McPherson, Kansas	
Eldred, Betty, Wichita, Kansas	29, 44, 63
Erb, Phyllis, Valem, Iowa	31, 40, 54, 54, 63
Fisher Byron, Fruitland, Idaho	13, 31, 38, 40, 52, 53, 54, 79, 81
Fisher, Verlyn, McPherson, Kansas	65, 67
Flory, Theda, Lawrence, Kansas	81, 63, 81
Freeburg, Mary Jane, McPherson, Kansas	31, 43, 44, 54, 63
Geis, Wilma, Durham, Kansas	31, 43
Gerlock, Paul, Nevada, Iowa	31, 62
Giles, William, Medicine Lodge, Kansas	31, 40, 53, 54
Haley, Rosella, Wichita, Kansas	31, 54, 68
Hamer, Doris, Waterloo, Iowa	31, 40, 63
Hildreth, Harriet, St. John, Kansas	31
Holsopple, Elizabeth, South English, Iowa	31, 40, 54
Horne, Marilyn, McPherson, Kansas	31
Howard, Keith, Sylvia, Kansas	13, 31, 81
Hulse, Lester, McPherson, Kansas	

FOR QUALITY MEATS

Go To

McPherson Meat Market

Famous in meats
for over 25 years.

104 N. Main

Phone 107

The perfect spot for a
friendly get-together
and a luscious malt.

Made from

SELECT DAIRY

ICE CREAM

217 S. Main

Phone 943

DRIVE INTO

GOSS MOTOR CO.

for

CHRYSLER — PLYMOUTH
SALES SERVICE

BATTERIES

TIRES

Phone 567

208-212 S. Main



It's Modern!
It's easy on the eyes!

Get Your

Fluorescent Lamps

At

H. F. AURELL ELECTRIC CO.

106 N. Ash

Phone 1658

The Home of

**GOOD WATCHES AND
PERFECT DIAMONDS**

Bixby, Lindsay & Co.

FOR—

Insurance,
Investments,
Bonds,
City Loans —

THINK

Fred K. Entriken Agency



McPHERSON'S LEADING
CASH FOOD STORE

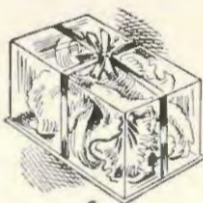
112 E. Euclid

Phone 265

INDEX

Jamison, Betty Lou, Quinter, Kansas	23, 31, 44, 54, 63
Julian, Melba, St. John, Kansas	31
Kagarice, Nina, Hutchinson, Kansas	31, 40, 54, 63
Keim, Donald, Nampa, Idaho	13, 31, 35, 40, 54, 81
Keim, Robert, Nampa, Idaho	13, 31, 35, 40, 41, 51, 53, 54, 57
Kennedy, William, McPherson, Kansas	95
Kinsey, Phyllis, Olwin, Oklahoma	31, 40
Klotz, Paul, Fredericksburg, Iowa	31, 54
Krehbiel, Betty, McPherson, Kansas	31, 37, 43, 44
Landes, June, Decatur, Illinois	33, 40, 53, 54, 63
Lewis, Carrie Belle, Weiser, Idaho	33, 54
Lindstrom, Bernice, McPherson, Kansas	33, 54
Lobban, Ivan, Clovis, New Mexico	13, 33
Longenecker, Rachel, Abilene, Kansas	33
Losbaugh, Royce, Westphalia, Kansas	13, 33
Lounsbury, Wayne, McPherson, Kansas	
Lundquist, Marvin, McPherson, Kansas	
Mankey, Floyd, Cushing, Oklahoma	33
Merkey, Edith, Cloud Chief, Oklahoma	33
Merkey, Ruth, Abilene, Kansas	33
Metz, Harry, Worthington, Minnesota	23, 23, 40, 43, 44, 54, 63
Metzler, Mary Ellen, McPherson, Kansas	33, 40, 54
Miles, Bernice, Shelbyville, Missouri	23, 33, 40, 54
Miller, Sybil, Wichita, Kansas	33, 40, 40
Mohler, Donna, Ashland, Nebraska	13, 33, 40, 81
Mohler, Richard, McPherson, Kansas	33, 54
Moyer, Ronald, Hutchinson, Kansas	65, 67
McBroom, Kenneth, McPherson, Kansas	
McFarlane, Richard, Hesston, Kansas	33, 40, 43, 53, 54
McRoberts, Marlys, Waterloo, Iowa	33, 40, 44, 63
Nakamura, Masako, Arroyo Grand, California	33
Nelson, Dwinin, McPherson, Kansas	33, 43, 63
Norlin, Anita Jo, McPherson, Kansas	33, 65, 67
Nordling, Leland, McPherson, Kansas	33, 43, 44, 54
Oberst, Ann, McPherson, Kansas	33
Pitzer, Charlotte, McPherson, Kansas	33
Randolph, Leon, McPherson, Kansas	33
Reist, Gordon, Eldora, Iowa	33, 40
Reeves, Betty, Albia, Iowa	33
Roberts, Louis, McPherson, Kansas	
Roth, Elmer, McPherson, Kansas	33, 43, 61, 54
Schafer, Bernadine, McPherson, Kansas	33, 65, 67
Scherer, Matt, McPherson, Kansas	33, 35
Schraml, Virginia, Barnum, Minnesota	33, 61, 53
Sheets, John, Minot, Minnesota	33, 42
Stern, Donald, Fredericksburg, Iowa	33, 40
Stern, Doris, Fredericksburg, Iowa	33, 40, 54, 63
Stinette, Marianna, Denver, Colorado	33
Stonebraker, Betty, Wiley, Colorado	33
Strong, James, Topeka, Kansas	34, 40
Thomas, Helen, Nampa, Idaho	34
Thralls, LaVona, Billings, Oklahoma	34, 40, 63
Trowbridge, Carol, Enders, Nebraska	85
Unruh, Don, McPherson, Kansas	33
Uyeg, Saburo, Chicago, Illinois	
Wagoner, Paul, Adel, Iowa	23, 34, 40, 41, 42, 52, 53, 58
Ward, Idabelle, Litchfield, Nebraska	34, 40
Wedel, Merle, Moundridge, Kansas	34
West, Waltine, Pampa, Texas	40, 54, 63
Williford, John, Hickman Mills, Missouri	34, 40
Wolf, Irvin, Quinter, Kansas	34, 40, 65, 67
Zigler, Madaline, Churchville, Virginia	34, 54

Humfeld's
Flowers



Tops for any special occasion
and that day of days—

**Humfeld's Greenhouse
Flower Shop**

Phone 172

HOTEL WARREN
and
**COFFEE
SHOP**

Air - Conditioned



"Party Room for your parties"

McPherson's newest, finest, and
only fireproof Hotel.

Paul Brougher, Gen. Mgr.

For Better Cookies, Cakes, and Pies

USE

INDIAN GIRL FLOUR

Milled From Select Kansas Hard Wheat

RODNEY MILLING COMPANY

K. B. R. Milling Company Division

McPherson, Kans.

YOUR BEST WHEAT MARKET

SAY YOU READ IT

in the

SPECTATOR

Your College Paper

MORRIS & SON

— MEN & BOYS WEAR —

LADIES SPORTSWEAR

FOR

REAL ESTATE
INSURANCE
OIL LEASES

SEE

ANDY PETE
DARRAH - AURELL

NOTARY PUBLIC
LOANS

105-107 W. Marlin

Phone 66

TAKE YOUR CLOTHES TO
DELUXE CLEANERS

QUALITY CLEANING

Phone 486

111 E. Marlin

NU-WAY CLEANERS

Appearance Counts

214 N. Main

Phone 990



DOLLARS in your EYES?

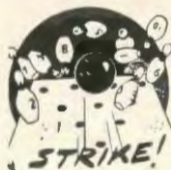
Keep 'em safe by putting 'em into
THE HOME STATE BANK

McPherson, Kansas

C. H. Hiebert, President
Mrs. M. G. Mathis, Cashier

Member Federal Deposit Insurance Corporation

YOU MAKE A



With Us Every Time.

CARLSON PLUMBING

PHONES

Bus. 14

Res. 26

For That

College Charm

The well-dressed girl goes to —

OLIVER'S

Now in our new location

102 S. Main

Phone 874

McPherson, Kans.

BUY

FROM

CRUMPACKER!



WE'LL STAND ON OUR HEADS TO PLEASE YOU!

Jay Crumpacker

Dealer In

REAL ESTATE

Oil Leases and Royalties

PHONES

Office 453

Residence 1455Y

McPHERSON, KANSAS



DAISIES WON'T TELL.

Four little maids from school are we . . . Mr. and Mrs. Donald Duck . . . where was Markham when the lights went out . . . Warring is such sweet sorrow . . . don't let your studies interfere with your college education! . . . modern portrait of the weaker sex . . . Hail, hail, the gang's all here . . . Trial by jury . . . Initiation Committee sets Byron on the spot!

INSURANCE

FOR EVERY NEED

AT

111 E. Kansas

ALLIANCE AGENCY

Phone 106

CENTRAL PRINTING CO.

Publishers of

McPherson County News

Chas. H. Branch, Owner and Editor

Phone 298

210 N. Main

The well-dressed man
looks to



FOR HIS CLOTHES

Meet your friends
for a coke

IN
KING'S

Your Reliable Drug Store

COSMETICS

DRUGS

PHARMISTRY



FOR ---

**COURTEOUS
AND
QUICK**

--- SERVICE

It's

FLAGO'S CAFE



Before the vets came back . . . what would Freud say about this? . . . lazy legs . . . pretty boy Howard . . . hocus pocus in the focus . . . a man in the corner . . . tell me a story, Daddy! . . . the four Mar-a-teers . . . love letters . . . charmed, I'm sure . . .



THE SEAL OF QUALITY
for

The Flour that is Always Good

So

For "Goodness Sake" Use "W-R" Flour

Made by

THE WALL-ROGALSKY MILLING COMPANY

The McPherson Hail Insurance Company

100% coverage from the time you sign application until the wheat is harvested—Agents wanted in unoccupied territories.

PHONE 73

WHERE YOU'LL MEET YOUR FRIENDS

Up-to-the-minute Fountain Service — Complete Line of Cosmetics
The Magazines You Enjoy Reading — Hallmark Greeting Cards for Every Occasion

HUBBELL'S DRUG STORE

104 S. Main

Phone 23

THRIFT WITH PROFIT

Pioneer Savings and Loan Ass'n.

A. W. Bremyer, Sec.

McPherson, Kans.





For Your

**PICNICS,
BANQUETS,
PARTIES**

or

FOOD NEEDS

Remember

JAMES FOOD STORE

Phone 780

116 E. Euclid

Where self-service is welcomed

We Congratulate the Seniors
of McPherson College on your
graduation and extend greet-
ings to all the students at your
College.

Sincerely

THE STUDENT BODY

of

Central College

Information AND Printing . . .

Both are necessary to a Happy and
Successful Life

The Daily Republican keeps you
informed on Affairs

Its Advertisements tell you the
best Places to Buy

Its expert workmen give you the
Very Best in Printing

The Daily Republican

(Printers of the Quad)

FILMS

PHOTO SUPPLIES

CAMERAS

108 N. Main

ABEL'S

Phone 92

GIFTS

ART SUPPLIES

FRAMES



The store to supply you with
the best in hardware.

HAWLEY HARDWARE

210 N. Main

Phone 191

DR. A. W. GRAVES

OPTOMETRIST

Over Bisby, Lindsay, & Co.

100 1/2 N. Main

Phone 759

Engborg's Drug Store

Phone 218

213 N. Main

G. O. SWANSON

Automotive Electrical
Service

McPHERSON, KANSAS

Phone 187

310 N. Maple

PARKER
AND
SHEAFFER
PENS

WATCHES
AND
DIAMONDS

At

SUPERIOR JEWELRY

Phone 1650

120 N. Main

PEOPLE'S STATE BANK

McPHERSON, KANSAS

We are proud to serve you as the college bank.

Member of Federal Deposit Insurance Corporation

Greetings to

McPHERSON COLLEGE

Success To

The faculty

The Students

The institution

This year and in

The future

McPHERSON AND CITIZENS STATE BANK

Member Federal Deposit Insurance Corporation

Spend an Evening of
Fun and Relaxation
at your
FAVORITE THEATER

MANOR

RITZ

Low cost service

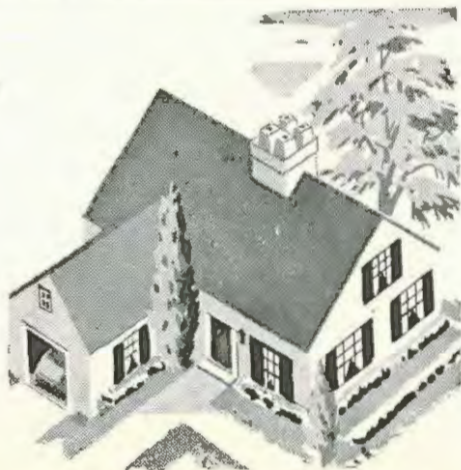
for

McPherson

Homes

&

Industries



McPherson Water & Electric Department

Electricity Is Cheap In Our Town

Dedicated to the alumni and former students of McPherson
College who have served in the armed services
of the
UNITED STATES OF AMERICA

Superior Cleaners

Houghton Baking Company

A. V. Robb

Drs. Heaston & Dyck

Dr. W. E. Quinn

Daisy Grooms Beauty Shop

Friends Serv-ur-self Drug

Vinnie Lindbeck

Dixie Bryan

McPherson Music Store

James L. Galle



ENGRAVERS TO THE QUADRANGLE