

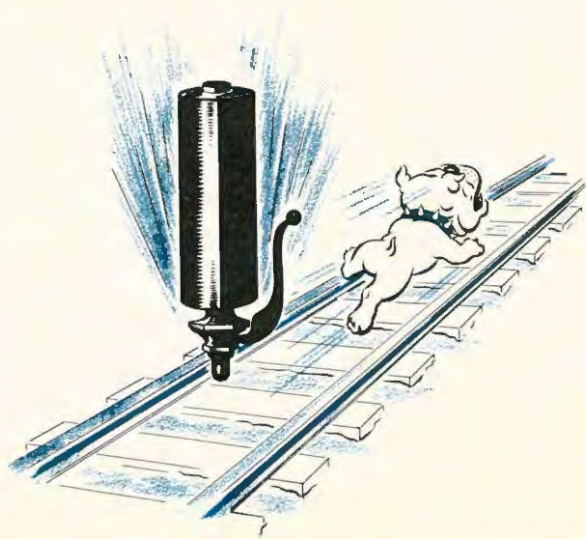


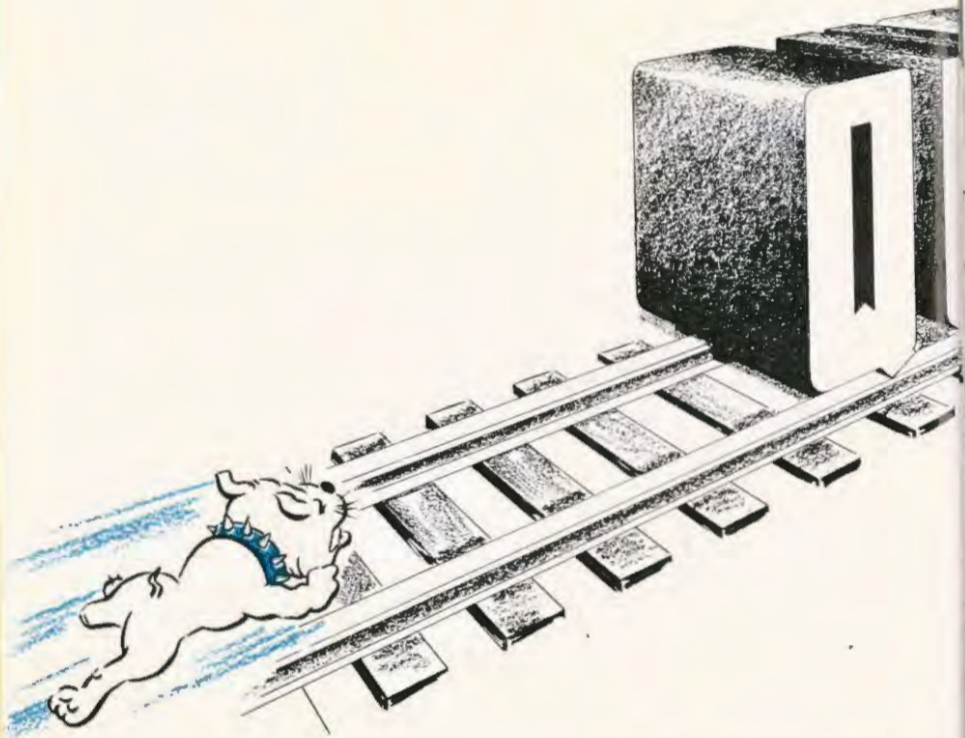
B
378.19
M172q
1945

ne

QUADRANGLE

1945





FULL STEAM AHEAD

WADDRANGLE 1945

McPHERSON COLLEGE LIBRARY

McPherson, Kansas - - Mary Beth Loshbaugh, Editor; Charles Dumond, Business Manager

1944 - 1945 -



Another Year of Scarcity

Calamity? Catastrophe? Even the sheltered lives of Mac students have been jarred albeit by the shortages and scarcities of the year 1944-45 has brought on. Most obvious scarcity is that specimen we reluctantly label "MAN." And, closely related to man are cars, tires and gas. In fact, the OPA seems to be the only thing of which there is plenty. Revamping the lives as well as the appetites of spoiled Americans, the OPA rations sugar and leather. (this applies to both steak and shoes), and other innumerable havenots. The shortage of candy bars and gums is a friend of the amour du pais, even if we do hate to admit it.

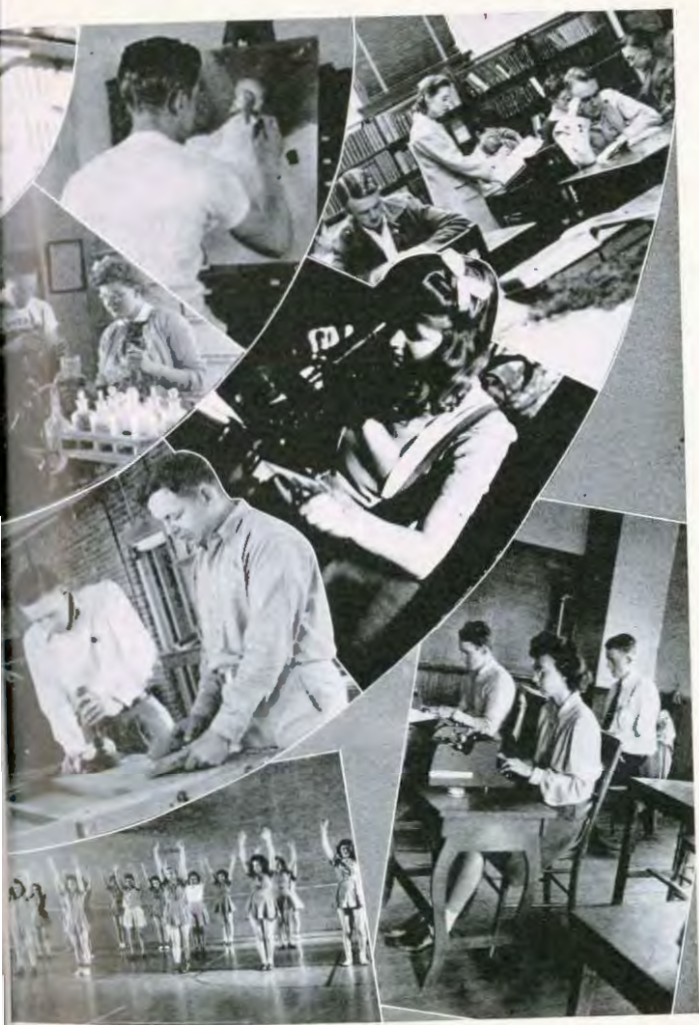


A few of the things of yesteryear
we found, no doubt, we could do without

but THERE IS NO SCARCITY OF



LEARNING AT McPHERSON—BECAUSE



M
c
P
H
E
R
S
O
N

IS THE COLLEGE OF QUALITY

In spite of shortages . . . MCPHERSON IS



BOUNTIFUL IN CULTURE



BOUNTIFUL IN SERVICE



BOUNTIFUL IN LEARNING



BOUNTIFUL IN ACTIVITIES



Dr. Woodford W. Peters, PRESIDENT

Upholding the ideals and traditions of McPherson College, with the poise and dignity becoming our president, Dr. W. W. Peters has gained the respect and admiration of the students of the college.

The friendly smile, which he wears so well, is expressive of his congenial personality and his courteous manner. Never too busy to listen, or to be listened to, our "prexy" has acquired a reputation for his keen insight into human nature and his open-mindedness concerning problems which face college students.

Combining the sterling qualities of manhood with amusing eccentricities we are proud to call this diplomatic executive, able administrator, and "proud grandfather"—our President.

FORGET THEM NOT

Reflections of bygone days, days of frolic, of sadness and of triumphant achievements . . . A vague melanchology for the life of yore . . .

Beneath old Sol's benevolent rays the campus sprawled in languid lassitude hopelessly entangled in a web of a recurring attack of Spring Fever. The carpeted expanse of green shone with the gay dandelion faces that freckled the countenance of the campus.

Students dotted the campus as they meandered from place to place or lounged on the ground, gazing dreamily into one another's eyes or into the blue nothingness of the sky.

Towering majestically, Sharp Hall reigns in ancient splendor, as cradled in the folds of Eternity, McPherson College breathes a living tribute to humanity.

SHARP HALL IN ANCIENT SPLENDOR





Be it in the white cloak of winter's fair land or the sparkling garb of spring the campus is a pleasant place for work or study. Most popular building on the campus, the gym is the constant scene of activity—parties, Bulldog practices or just "cokin'!"

Keeps the Body Fit

Around the Trees

Books, the calling card of the library! Diligent "Heslings" fray the Reader's Guide while upper classmen nonchalantly stroll hither and yon. The atmosphere serves its purpose—study!

Our
Alma Mater





Arnold Sees All



Ethel Neher



Coed melting pot! Cupid's haven! Arnold Hall hovers protectingly over the two score and ten sheltered 'neath her wings. Dark mystery cloaks midnight escapades, as an isolated few ply themselves diligently to display a wanty fund of uncoordinated knowledge—gleaned at random.

Woven into the gay pattern of dorm life is Miss Neher, presiding with ease and technique neat—and scarce a girl who has not felt her soothing touch on fevered brow. Indeed, she might well have been a nurse, so deft her ministrings to the ill.

Look gals! Men! and in this day and age too! Sure enough, we see them pouring from the doors of Falmestock Hall. For men only! and lucky they are, for "Fanny," as the dormitory is affectionately tagged, is an ideal home for Mac males.

Looks are deceiving and that dignified countenance Falmestock sports is definitely contradictory of the hilarity and pranks within. Piano, radio, magazines, checkers and chess are only the material attractions that can be found in the "dorm parlor". Featured attractions are the manly hunks of humanity that adorn the furniture.

Foster parents of the boys are none other than "Denver's own", Bob and Joyce Mays.

The boys admire, the girl's envy, and McPherson College is proud of Falmestock Hall.



Robert and Joyce Mays

FALMESTOCK WITH AN EYE TO THE FUTURE





AS OF JANUARY 22, 1945. NOT RESPONSIBLE FOR CUPID'S WHIMSEYS!!
 All's well—we hope Hold tight Broadening Horizons
 Bridal Bells Saved by Grace Oops, we slipped
 Naylor's pride—and justly so The good old days Newcome—twosome.

Past
Present
Future

Vague recollections Unexpected—Think ye not? The
forgotten past Pocket editions of absentminded prof
"Ah caint forget ah do forget" Postal Service
Nostalgias of China Homeward bound
"For many a joke had he."





INTELLECT

BLAIR HELMAN, Junior

ANNETTE RONK, Junior

Possessing the most wrinkles in their overworked craniums, Blair Helman and "Coach" Ronk were voted the "Brains of Mac Campus."

HUMORISTS

KEITH BURTON, Junior

BLANCHE GEISERT, Senior

"Live with wolves and you begin to howl." Thus we tag Keith and Gracie,—wily, witty, and wacky. This goosie twosome, voted campus cutups, always manage to find themselves on one end of a joke, often the receiving end.





DIPLOMATS

DAVID ALBRIGHT, Junior

GERALDINE THARRINGTON, Senior

Never too absorbed in themselves to smile and offer their services, Jerry and Dave have justly received the title, "Diplomats."



McPHERSON COLLEGE LIBRARY

McPherson is

BOUNTIFUL IN CULTURE



CLARA COLLINE

She touched the lives of her students with an expression of the beautiful, standing as a living tribute to her memory.



MARCELLE WEINREICH

This master linguist, and world traveler, accompanied by Linda, adds a dash of the cosmopolite to MacCampus.



DELLA LEHMAN

This lover of literature digresses from the curricular with the same nonchalance as she forgets her appointments.



"To wake the soul by tender strokes of art.
To raise the genius, and to mend the heart."

"God is its author, and not man; He laid
the key-note for all perfect harmony."



JESSIE BROWN

Consistent advocate of
diligent practice and of
skillful presentation, she
ever prods the laggard
on to perfection



NEVIN W. FISHER

With all the sophistica-
tion his artistic senses
command, he promptly
responds to "M u s i c
Maestro Please!"



MINNIE MUGLER

Strains of Bach and
Chopin echo the key-
notes of culture and
grace expressive of her
artistic appreciation.

WHO'S WHO

MARY BETH LOSHBAUGH

Demure and shy, with humor sly . . . and a trifle obstinate.

LIGRA DOBRINSKI

The ivories respond to the touch of her nimble fingers: the result, beautiful music.

FERNE ALLEN

She puts forth a conscientious effort, she maintains consistent scholarship, and she presents a congenial personality to the public.

ANNETTE RONK

Personable, pretty, and intelligent, she has made a distinct histrionic success at Mac-college.

BLANCHE GEISERT

She accentuates the positive, she eliminates the negative. She refuses to be Miss In-Between.

ANNE METZLER

She disproves the popular theory, beautiful but dumb.

GLENN SWINGER

This massive Missourian, capable and fun-loving, has maintained high Christian ideals throughout his college career.

EUNICE SWANK

Good things come in little packages. Petite and proficient she proves this age-old adage.



BERNICE GUTHALS

Queenly carriage, lovely voice, she greets her friends with grace and poise.

DAVE ALBRIGHT

His leadership, scholastic ability, breadth of interest, and diplomatic spirit have made him a success.

RUTH SHOEMAKER

With vim and vigor, life and pep. She gets things done and keeps in step.



Who—Who! That's right—It's none other than those who's who personalities cluttering up the atmosphere with intellectual tidbits. Pride of the campus, these are the people who get things done.



Ju B. Brooks, Dorris Murdock, Doris Coppock, Ruth Shoemaker.

Women's Quartet

An unusual combination, this foursome! Four states, Kansas, Iowa, Missouri, and Washington are represented, and each representative characterizes a personality which makes all their experiences together one endless surprise.

Social events innumerable have called this talented group to contribute to their listening pleasure. Trips hither and yon have made the year a truly enriching experience.

Preparing last minute programs is their speciality.

Men's Quartet

Once again the varsity male quartet, known to many as the "Singing Four," is composed predominantly of Iowa men.

Enthusiastic and concentrated rehearsals coupled with a knack for harmony fitted the men to win the praise of their audiences wherever they appeared.

Church responsibilities and critical transportation problems have made it necessary for these popular entertainers to decline many invitations to sing in neighboring states and communities.



Dave Albright, Keith Burton, Willis Unruh, Charles Dumand.

A CAPPELLA CHOIR

"Music hath charm," so said some great sage of the ancient past. The A Cappella Choir has well substantiated the contention by their superior interpretations of various musical presentations.

Adept in the art of securing group cooperation a nickel fine is levied on all who fail to appear promptly for rehearsals—hence Wednesday afternoon's are characterized by a mass scurrying Sharpward, as the members hasten to the S.A.R.

Under the capable direction of their conductor, the choir has profited much in the musical realm. Although it has taken much patience and conscientious work, on the part of director and members alike, the results have justified the time expended.

This year's A Cappella accomplishments have varied from bi-monthly appearances in chapel to the crowning glory, Samuel Richards Gaines' "The Village Blacksmith," presented May 4.

Second semester vacancies were filled by Avis Erb, first soprano, Mrs. Herbert Wilkins, alto, and Ronald Moyer, bass.

Sitting: E. Miller, Murdeck, Brooks, Bailey, Kurtz, Gilles, Metzger, Coppock, Kauffman, pianist.
Second row: Burden, Spear, Metzler, McNamee, A. Miller, Shoemaker, Cariner, Frantz, Hodges, E. Ikenberry.
Third row: Albright, Naylor, K. Wampler, Lucore, Swinger, Johnson, Unruh, Eiler, Diamond, Seefeld, Andrews.





First row: Strickler, Aurell, E. Miller, Dobrinski, Helman, Burton.
 Second row: E. Ikenberry, Swank, Swinger, W. Kuns, Coppock, Ronk.
 Third row: Dumood, Della Lehman, advisor, Albright, Metzler, Geisert, Lushbaugh.

THESPIANS

Whether it be the eighteenth century matchmaking of "Pride and Prejudice", or whether it be the spine-tingling sensations of "Ladies in Retirement" . . . the Thespians created the desired atmosphere for appreciative audiences with an adroitness which was at times side-splitting or tensely dramatic.

The beginning of the year saw three freshman girls, Phyllis Strickler, Esther Miller, and Doris Coppock, come through tryouts to rate coveted places in the club. Later as a result of their work on "Pride and Prejudice" David Albright, Blair Helman, Glenn Swinger, and Charles Dumond became members.

Jane Austen's novel was the basis for the version of "Pride and Prejudice" presented with Blanche Geisert serving as student director. Mrs. Bennet, played by Phyllis Strickler, furnished the momentum which kept this sentimental story moving throughout. Mr. Bennet, played

by Dave Albright, fulfilled the part of the henpecked but at times self-reliant husband. Anne Metzler and Blair Helman, as the prideful and the prejudiced, Elizabeth Bennet and Mr. Darcy, and Susan Ikenberry and Glenn Swinger, as Jane Bennet and Mr. Bingley, offered some of the love interest of the play.

The second semester production, "Ladies in Retirement," directed by Anne Metzler, was suspenseful and dramatic. Blanche Geisert, in the role of Ellen Creed, "stooped to murder" for the sake of her two simple-minded sisters played by Susan Ikenberry and Wilma Kuns. Keith Burton, as Ellen's "cad" of a nephew, Freda Aurell, the flirtatious maid, and Phyllis Strickler, as the cheerful victim to Ellen's criminal intents played important parts.

Experience in directing and acting was given to Thespian members in the B.Y.P.D. play, "Blessed Are They . . ." Eunice Swank directed this production.

This year the Thespians Banqueted in the Parisian Room in the McCourt Hotel. The program being presented by the initiates of the club.

Scenes from *Pride and Prejudice*: "Don't Mr. Bingley" "Pride and Prejudice bombed 'neath Darcy's kiss." "Don't we make a good looking couple?" From the B.Y. play "Blessed Are They . . ." Center, The dawn of a new light. "You—you can't be real."





First row: Albright, Bowman, Naylor, Moors, Takehara, Brown, K. Wammler.
 Second row: Rathraff, Swank, Elrod, Royer, Uchida, Wilkens, F. Allen, Miller, Creech, Harbaugh,
 Gauby, L. Dell, D. Wampler, Kirbie.
 Third row: Fillmore, Spear, Metzler, Jones, Link, H. Feautz, W. Kuns, Riddleberger, Little, Dobrinski,
 Brennan.
 Fourth row: Peterson, Hards, Bailey, Cartner, Hodges, Gillis, J. Bluckstaff, Akers, Steinert.
 Fifth row: R. Mohler, Finbrook, Lown, Coppock, Bell, Kauffman, Tharrington, Prentice.
 Sixth row: Kufs, Brooks, Metzger, Murdock, McNamee, Miller, Poland, Erb.
 Seventh row: Selzraml, Wolf, Sprengle, Lichty, Strickler, Kurtz.
 Eighth row: Emswiler, D. Seafield, E. Allen, Shoemaker, Guthals, Crist.
 Ninth row: Engelland, Damond, Swinger.

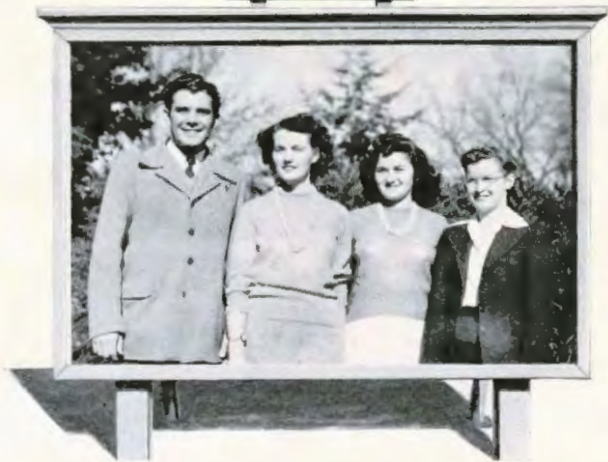
CHORAL CLUB

"Watch the expression marks" . . . "Take that high note more softly" . . . these remarks and many others, have grown familiar to over one hundred Mac-College students through their membership in one of the largest organizations on the campus, namely the Choral Club. Meeting every Monday evening at six forty-five, whether it be in the rosy dusk of a spring evening or the dark chilling cold of winter, these many voices raised in lusty song have done much to add to musical expression on the campus.

True to the Fisher spirit, something new has been added this year in the form of bright red singing books filled with gay folk songs, rowdy ballads, negro spirituals, and well loved old favorites from church choruses and hymns.

With Prof. Fisher and his jokes as the man behind the baton, and Leora Dobrinski, able accompanist, who smiles even when the going gets tough, this organization has shown that good practice and cooperation yield pleasant harmonies—as was seen from their excellent presentation of A. R. Gaul's "The Holy City."

Senior Officers



GLENN SWINGER, President
BERNICE GUTHALS, Vice President
PHYLESS HOWARD, Secretary
MARY KAY SLIFER, Treasurer

Home run! Four bubbling years of activities—with every hit a count. Their claim to fame, a well fought game. The scoreboard tells the tale of a game well played.

Playing a winning game they coped with wartime restrictions and shortages. But this is a flexible generation and even rationing—men and otherwise—they took in their stride.

Rounding the goals with remarkable speed and proficiency the score board reads as follows. First base, anticipation, green and young they eagerly pushed ahead to second where adaptation seemed the keynote. Third loomed on the horizon with capital letters, action. These people were "getting in gear" for the final run. Seniors! and characterized by a double play, chalking up achievement and accomplishments to their record. Three rahs!

BLICKENSTAFF, DANIEL

English

R. Y. P. D. 2; Basketball 1; Chemistry Club 1; Debate 1; Dormitory Council 1; S. C. M. 1; Student Council 2, 4; Student Ministers 2, 4; Tennis 2; Y. M. C. A. 1.

"Sir, I heard you are a scholar."

DIRKS, ALVINA

Home Economics

R. Y. P. D. 4; Chemistry Club 1, 2; S. C. M. 1, 4; W. A. A. Woman's Council 4.

"Night after night she bleared her eyes with books."

GAUBY, LOIS

Home Economics

R. Y. P. D. 1, 2, 3, 4; Chemistry Club 2, 4; Choral Club 2, 3, 1; Forensic Council 2, Sec. Treas.; Spectator 3; S. C. M. 1, 2, 3, 4.

"She keeps her thought to herself."

DOBROINSKI, LEORA

English

R. Y. P. D. 1, 2, 3; Choral Club 1, 2, 4; Class Officers 2; (Treas.) Dormitory Council 4; Forensic Club 1; I. R. C. 2; (V. President); Pop Club 1, 2, 3, 4; Sptetator 1, 2, 3, 4; S. C. M. 1, 2, 3, 4; Theopians 3, 4; W. A. A. 3, 4; Who's Who 1; Women's Council 3, 4; (Sec. Treas.)

"Misspell my name! I intend to change it later."

GEINERT, BLANCHE

English

R. Y. P. D. 1, 2, 3, 4; Choral Club 1, 2, 3, 4; Debate Variety 1, 2, 3, 4; Forensic 1; (Sec. Treas.); I. R. C. 1, 4; Pop Club 2, 3, 4; Pi Kappa Delta 1, 2, 3, 4; (Pres.); Spectator 1, 2, 3; (Editor-in-Chief) 4; S. C. M. 1, 2, 3; (Committee Head) 4; Student Council 4; (Pres.); Theopians 3, 4; W. A. A. 2, 3, 4; Who's Who 3, 4; Board of Publicity 3, 4.

"Survival of the fittest—call me Miss FR."

KUNN, WILMA FAYE

Biology

R. Y. P. D. 1, 2, 3, 4; Chemistry Club 1, 2, 3, 4; Choral Club 1, 2, 3, 4; Quadrangle 2; S. C. M. 1, 2, 3, 4; Theopians 2, 3, 4; W. A. A. 1, 2, 3; (Cabinet) Tumbling Head; Do-Si-Do.

"What man cares I dare."

GUTHALS, HERNIECE

English

R. Y. P. D. 1, 3, 4; Chemistry Club 1; Choral Club 1, 3, 4; Class Officers 4 (Pres.); Homecoming Queen 2; Pop Club 3, 4; Spectator 1, 3, 4 (Editor); S. C. M. 1, 3, 4; Student Council 1; W. A. A. 1; Who's Who 4; Women's Council 3, 4; K. S. T. C. '42-'43; Social Committee; Board of Publicity.

"She moves a goddess and looks a Queen."

MATS, ROBERT

Biology

R. Y. P. D. 1, 2, 3, 4; Cheer Leader 3, 4; Chemistry Club 3, 4; Dorm Council 3, 4; Football 2; Forensic 1; "M" Club 2, 3, 4; (Pres.); Men's Council 2, 4; S. C. M. 2 Treas.; 3 (Cabinet); Student Council 2, 4; (Pres.); Student Ministers 1, 2, 3, 4; Theopians 1, 2, 3, 4; Track 1, 2.

"A noisy but necessary thing."



METZLER, ANNE
English

A Cappella 3, 4; B. Y. P. D. 1, 2, 3, 4; Chemistry Club 1;
Choral Club 1, 2, 3, 4; Class Officer 1; Debate 2; Variety 4;
I. R. C. 4; Pi Kappo Delta 3, 4; Recreational Council 3, 4;
Spectator 2, 3; Editor-in-Chief 3; S. C. M. 1, 2, 3, 4; Sec.
Thespians 2, 3, 4; Who's Who 3, 4; Women's Council 2, 3.
"I may be famous yet."

REEVES, HOWARD PHYLIS
Home Economics

R. Y. P. D. 2, 3, 4; Class Officer 4; Sec. 1; Pop Club 2, 3, 4;
Sec., Treas.; S. C. M. 2, 3, 4; W. A. A. 1, 2, 3, 4; Women's
Council 4; (Pres.); Oklahoma A. & M. College 1.
"He called his loved one home."

RIDDABAUGH, EDWIN
Phil. & Religion

I. R. C. 2; Sowerator 3; S. C. M. 2, 3, 4; Student Ministers
2, 3, 4; Student Pastorale 1, 2, 3, 4; Bethany Biblical
Seminary 1, 3.
"Truth is mighty and will prevail."

SHOEMAKER, RUTH
Home Economics

A Cappella 2, 3, 4; B. Y. P. D. 1, 2, 3, 4; Chemistry Club
1, 2, 3; Choral Club 1, 2, 3, 4; Dormitory Council Vice Pres. 3;
Pres. 4; Variety Quartet 4; Recreational Council 3, 4;
S. C. M. Cabinet 2, 3; Co-Chairman 1; Student Council Treas.
2, 4; Who's Who 2, 4; Women's Council 1, 2, 4.
"Nowhere so busy a person as she."

SLIFER, MARY KAY
Home Economics

B. Y. P. D. 1, 2, 4; Chemistry Club 1, 2; Class Officer 4;
Dormitory Council President 4; Recreational Council 2, 4;
S. C. M. 1, 2, 4; W. A. A. 1, 2, 4.
"We have all forgot more than we remember."

SWANK, EUNICE
English

B. Y. P. D. 1, 2, 3, 4; Social Chairman 4; Chemistry Club 2;
Choral Club 1, 2, 3, 4; Dormitory Council 3; Kline Hall
President; Pansie Club 1, 2, 4; I. R. C. 1, 2; Rec. Council 3;
Sec. Treas.; S. C. M. 1, 2, 3, 4; Program Chairman 4;
Thespians 3, 4; W. A. A. 1; Who's Who 4; Women's
Council 4.
"Of stature - short but genius high."

SWINGER, GLENN
Social Science

A Cappella 1, 2, 3, 4; B. Y. P. D. 1, 2, 3, 4; Pres. 3;
Basketball 3, 4; Captain; Choral Club 1, 2, 3, 4; Class
Officer 3, 4; Dormitory Council 3, 4; Pres. 4; I. R. C. 4;
"M" Club 3, 4; Men's Council 1, 2, 3, 4; Quadrangle King 2;
Recreational Council 2, 3, 4; S. C. M. 1, 2, 3, 4; Co-Pres 4;
Student Council 1, 2; Student Ministers 1, 2, 3, 4;
Thespians 1; Who's Who 4.
"Lanes form on the right girls."

THARRINGTON, GERALDINE
English

R. Y. P. D. 1, 2, 4; Choral Club 1, 2, 4; Pres. 4; Dormitory
Council 2; Treas.; Pop Club 1, 2, 4; Publicity Chairman 4;
Spectator 1, 2; S. C. M. 1, 2, 4; W. A. A. 1, 2, 4; Social
Committee Sec. 4.
"My heart is not here."

Seniors not pictured:

GROSS, ALTA

"Originality is simply a pair of fresh eyes."

MOHLER, RICHARD

"Brevity is a great charm of eloquence."

YINGST, KENNETH

"Fearless climb ascent unto crowns."



SHORTAGES!



McPherson is

BOUNTIFUL IN SERVICE



"What are they?" queries a bewildered bystander gazing at the gay swags of cloth being stitched. Student Volunteers chat merrily as nimble fingers fashioned patchwork jackets for Greek relief. Serving in the little ways as well as the large is the philosophy of McPherson



EARL FRANTZ

Keeping student enrollment on the incline and books in the black, he serves the college with diplomacy plus.



ALICE MARTIN

Nucleus of the hub, repository of hidden data, regimentation and centralization take form under her consistency.



BURTON METZLER

His saintly countenance is an outward manifestation of the Christ-like soul within.



L. AVERY FLEMING

Wizard of argumentation, advocate of marital bliss, he advances educational theories with subtle humor.



DORIS DRESHER

Serving as congenial arbitrator to executive and subservient coed, her charming efficiency effaces all complaints.



J. HOWARD FRIES

Master juggler of accounting and rationing points, his proficiency is unexcelled in getting the most for the least.

THE DEANS

MRS. ERNEST IKENBERRY

Endowed with keen understanding, her motherly instincts have won the confidence of the girls. Violators of social regulations soon learn this Dickens of yesteryears can still raise the dickens.

PROF. S. M. DELL

Instigator and coordinator of student activity, he easily improvises if the occasion demands. Expounding his unusual sense of humor, he revamps student personality with his fluctuating versatility.





Amid the fret and flurry, typical in a collegiate atmosphere, the church becomes a haven of rest and spiritual peace. Here the soul may absorb the richness of the familiar organ melodies. Christ's prayer in Gethsemane gives infinite courage and renewed inspiration to the weak and weary as in silent meditation his thoughts and reasoning become elevated to a higher plane of aspiration as he holds communion with God.



First row: Albright, Takehara, Naylor, Bowman, Grone, Kidwell, Flory, Swinger, Meuse.
 Second row: Little, Erb, Metzler, Hardy, Drennan, Jones, Bailey, Rutbrauff, Huston, Creech, Royer,
 H. Crampacker, Hedges, F. Allen, E. Allen, O. Allen.
 Third row: Bell, Cartner, Uchida, Dirks, Tharrington, W. Kuns, Guthals, Dahrinski, M. Blifer.
 Fourth row: Wolf, S. Ikenberry, Loshbaugh, Peterson, Swank, Gauby, Elrod, Brooks, A. Miller,
 McNamee, Lichts, Harbaugh.
 Fifth row: Kauffman, Davis, Dalke, Riddleberger, Link, L. Frantz, Coppock, Behram, Prentice,
 Dorothy Seafield, Kuriz, Strickler.
 Sixth row: Murdeck, L. Dell, D. Wampler, H. Frantz, Metzger, Crist, Ralls.
 Seventh row: K. Wampler, W. Hoover, Spangler, Shoemaker, Muhler, Lucare, Shepherd, Hiltman,
 Kennedy, Sprengel, E. Ikenberry, Fisher, Eller, Blough.

Brethren Young Peoples Department

Realizing the need of a stabilizing and unifying influence in the realm of college activities, the B. Y. P. D. has tried to meet this need. Although primarily considered a Brethren youth organization, the College B. Y. is interdenominational.

Contrary to precedent, the cabinet did not select the program chairman, pianist, and chorister for the entire year. Rather an effort was made to give experience to the greatest number possible, therefore affording individuality in the programs and extending active participation to more. Thus they adopted a policy in which these officers served a nine-week tenure. The result has been varied and zestful programs which have not proved burdensome to anyone.

The Social Committees have provided diversified entertainments; of special note was the backward party, creating hilarity and laughter, and the traditional Christmas caroling.

A special project was the B. Y. play "Blessed Are They—" given at the District Youth Rally held here during October.

Officers were Fernie Allen, president, Mary Beth Loshbaugh, vice-president and Mildred Cartner, secretary-treasurer.

STUDENT CHRISTIAN MOVEMENT



First row: Brown, Loshbaugh, Harbaugh, Burton.
Second row: E. Ikenberry, A. Metzler, Albright, S. Ikenberry, Dumond, Swank, Naylor, Knuffman.
Third row: Berkebile, advisor, Helman, Hedges, Shoemaker, Swinger, Metzler, advisor.

The largest student organization on the campus, the S. C. M. sets forth a well-rounded program of spiritual, social and current interests, incorporated to make the most of the present situation. Its aim may well be that of creating spiritual values and in an effort to establish an atmosphere conducive to the re-valuation and formulation of a sound philosophy of life.

22222 plastered the campus at the launching of the W.S.S.F. drive sponsored by the S. C. M. A box social and public auction proved a novel and interesting way of raising funds for this humanitarian service.

Conferences far and near brought keener insight into some of the more pertinent problems of our current age. Ruth Shoemaker attended the Brethren Student Conference at Juniata College in Huntingdon, Pennsylvania.

Berniece Guthals, Jerry Tharrington and Kenneth Wampler filled second semester vacancies left by Lois Kauffman, Mary Beth Loshbaugh and Kent Naylor. Glenn Swinger and Ruth Shoemaker shared the presidential duties.

Discreet in judgment and exact in doctrine, the Student Ministers seek to promote a campus atmosphere of wholesome fellowship.

To give added zest for the year, the men's choir went on deputation trips to the churches and communities near Mac Campus. Discussion meetings, informal outings and a loyal participation in the extra curricular activities of the campus, colored a year of activity and inspiration.

Meeting every third Tuesday of the month, they discussed problems to be met when they take the responsibility of their own parishes. Some of the men have taken student pastorates, receiving practical and interesting experiences as they went out over the week-end, and conducted the services and applied fundamentals to their work.

Dr. Metzler, the faculty adviser, guided the group in stable and profitable thinking. A play night in the gym, given in honor of the ministers of the city, bound the men closer together.

First row: Don Seefield, Naylor, B. Mays, Emswiler, W. Brubaker
Second row: Brown, Erlman, D. Blickenstaff, Dr. Metzler, Dilmars, Blough, K. Wampler
Third row: Dumond, Meuse, Rodabaugh, Helman, Swinger, Albright, Hoover



STUDENT MINISTERS



Sitting: L. Dell, E. Ikenberry, F. Allen, Gebert, Burton, Rank, S. M. Dell, Lehman.
Standing: Naylor, Shoemaker, B. Mays, B. Fisher, Boltz, Wolf, Mense.

STUDENT COUNCIL

Democratic principles and ideals are embodied in the creed of McPherson College, and the Student Council is a working example of a belief in a representative government. The Student Council is composed of the President and the Treasurer of the student body, two representatives from extra-curricular activities, and two representatives from each class, and three faculty members, chosen by the administration.

The council brings understanding between the faculty and students and also handles school business ranging from minor social upsets to the more serious problem of making a budget for the student activity funds. Specific duties of the council include supervision of campus publications and the management of such elections as those for Homecoming Queen and Student Representatives.

The Student Council this year has been under the leadership of Blanche Geisert, president and Keith Burton, treasurer, other officers are Bob Mays, vice-president, and Fernie Allen, secretary. Eula Wolf was chosen to serve as secretary second semester because of Fernie's resignation.

Women's Council

First row: Howard, Dirks, Lashbaugh, Guthals, Poland, Mohler.

Second row: Carner, Mrs. Ikenberry, Gertrude, Wilkens, president.

Third row: Sharmaker, Riddelberger, Swank, Koch.

"Food around the corner" might well be the theme of those patronizing the semi-weekly snack bar, new innovation of the Women's Council. Gay yarns and charm to the burlap dressing table skirt, bench, and matching couch cover in the redecorated lounge in Hamly.

Alert to the needs of college girls, this organization has sponsored parties, teas, Heart Sister Week, and other activities, improving the relationship of on-and-off campus girls.

Too few men! Too many jobs! Too many for too few seemed the chief bottleneck confronting the Men's Council. Besides trying to pull the usual load, the Council sponsored several all-men meetings. Off to a bang they helped with the arrangements for the dinner honoring freshman men. All men received Christmas greetings bearing the Council's signature. Despite unavoidable conditions 'twas found that this organization fulfilled its function "in spite of".

Men's Council

Sitting: E. Ikenberry, Brown, Burton, W. Bowman, Moore, Albright.

Standing: S. M. Dell, H. Mays, Markham, Meese, Swinger, Naylor.





Sitting: A. Metzler, Shifer, Albright, Swank, Lichts, Harbaugh, Naylor.
Standing: Hodges, S. M. Dell, sponsor, Brooks, Mease, Blough, Shoemaker, Swinger, Helman, K. Wamsler, Takehara.

RECREATIONAL COUNCIL

The Recreational Council of McPherson College is small in number but high in quality of leadership. The members of "Rec Council" strive for an atmosphere of fellowship through service in fun, work, and worship planning.

The members of this organization, enthusiastic and inventive in the art of leadership, have many accomplishments to their credit. They have compiled a book of camp songs, printed, provided, and prepared a program guide to be used in local B. Y. groups, churches, and in the camping program of the church.

The highlight of the year is the annual fall retreat, which gives to the campers one of their best opportunities to express their philosophy of life through recreation in nature. They isolate themselves in Black Canyon to dwell in God's out-of-doors and to practice the theories of recreation.

The Recreation Council serves to develop in its members high qualities of leadership in the field of recreation so that this phase of our entire church program may be strengthened and enriched. At the present time former members are serving in the United States, Mexico, South America, Puerto Rico, and in Europe. "And He shall lead them," saith the council.



McPherson is

BOUNTIFUL IN LEARNING



DR. JOHN W. BOITNOTT
DEAN OF THE COLLEGE

Lanky, lovable Dean Boitnott, accompanied by a soft Virginian drawl, expounds fluently and convincingly on the fundamental principles and values inherent in a liberal arts institution.

Ever concerned with the student's welfare, he counsels wisely with the overambitious, tactfully advising them to "let up a bit"; with the same assiduous tactfulness he not so gently prods those academically disinclined.

Skilled in the techniques of psychology, he frequently finds the process reversed, himself the recipient. With a sheepish grin he gracefully acknowledges all such affronts as indicative of successful educational methods.



DR. BOWERSOX

With a dash of wit he applies a modern touch to ancient chapters of history by practical episodes and incidents.

MAURICE A. HESS

Cohort of punctuality he wields the flyswatter as deftly as he challenges the initiative, and response of the students.



MILDRED SIEK

Adherer of formality, connoisseur of graciousness, she presents her esthetic views with precise determination.



THOMAS HAYDEN

Coordinator of muscles and character, he maintains harmonious relations between colleges, despite competition.



JOSEPH BOWMAN

An unobtrusive delver of fact, calculator of area, gazer of the heavens his methodical mind encompasseth all.



JAMES BEKKERLE

Amid beaker and test tube, the clarity of this analytic mind casts reflections of his devoutness and sincerity.



ROBERT E. MOHLER

No vague nebulous conception of human nature has this distinctive pedagogue, his absentmindedness a tradition.



VIRGINIA HARRIS

Serving in the capacity of information please she speedily ferrets out the where and why of elusive subject matter.

Junior Officers



ELVA JEAN HARBAUGH, President
FERNE ALLEN, Vice President
GERTRUDE WILKINS, Secretary
BLAIR HELMAN, Treasurer

Pep! Vim! Vitality! characterized the junior class. From the fun and frolic of the retreat and the lovely dignity of the Junior-Senior banquet to the more somber tasks of daily lessons and those inescapable tests the juniors have "done themselves proud".

Proudly they hailed the Homecoming Queen their contribution to the festivities! Brains as well as beauty are evidenced in the class, for the title of "Intellects" was bestowed on members from their ranks. Nor must one forget the inherent humor and diplomacy gleaned from their midst.

Talented and capable, elected officers have steered them through another year of shortages and ration points. The sign board points ahead to a future richer and fuller than has yet been experienced.

Sophomore Officers



DALE BROWN, President
IRENE SCHRAML, Vice-president
RUTH UCHIDA, Secretary
JO B. BROOKS, Treasurer

Freshman Officers



MARVIN BLOUGH, President
RUTH LIGHTY, Vice President
DORIS MURDOCK, Treasurer
WAYNE LUCORE, Secretary

Gleefully leaving the green caps reposing among the moth balls, the acclimated sophomores have more than found their niche on the campus.

Not to be outdone in the interclass debate bout, they emerged triumphant over the seniors. No "daze" for them, their confidence supreme.

Using the signboards of bygone days as a guide, they have blossomed into a new and becoming maturity. These "second timers" started off with a bang as they routed the way ahead, planning a budget, electing an attendant for the Homecoming Queen and—beating the seniors!

Freshman daze! A new life launched into the depths of "hazes and mazes" of freshman careers. They have striven hard to become oriented in the Mac spirit.

The year carried the newlings into the fold through the watermelon feed, the distinguishing green "toppers", and the traditional kid-party. Here the "tikes", it is hoped not, patterned after the seniors.

The year has developed into an epic and the adept little "freshlies" have not only become the signboard but have become consumers and producers on the campus.



JUNE AKERS

"She gave with zest and sometimes her best."

DAVE ALBRIGHT "Dovic"

"All the world loves a lover."

FERNE ALLEN "Ferne"

"Prudent, quiet and ever right, always smiling and always bright."

LESLIE ANDREWS "Daddy"

"True as the needle to the pole,
Or the sun to the pole."

MAYA BRUBAKER

"Conceal-alison seems always to tire me."

WILMER BRUBAKER

"Quiet, and retiring, but a man of true worth."

KEITH BURTON "Keithner"

"The gods die young . . . My, I must take care of myself!"

MILDRED CARTNER

"And in her cheek appears a pretty dimple."

GERTRUDE CONNER WILKINS "Gertie"

"Life's a jest and all things show it;
I thought so once and now I know it."

CHARLES DEMOND "Chuck"

"You speak as one fit on poetry."

MARK EMSWILER "Pop"

"Discuss our language as we will,
'Tis women, woman rules us still."

ETHMER ERISMAN "Oscar"

"Victory belongs to the most persevering."

IMOJEAN FRANTZ "Sheller"

"Her voice was ever soft, gentle, and low, an excellent thing in a woman."

ELVA JEAN HARRAUGH "Jennie"

"Gentle in personage; soft peace she brings whenever she arrives."

GERALDINE HEIGES "Jerry"

"Almost at any time could she turn her hand."

BLAIR HELMAN "Al"

"A penny for your thoughts . . . , rolling price!"

RUTH HUSTON "Grandma"

"A infant less, there are but few who know the treasures hid in you."

MILDRED JONES "Milly"

"She has an ear in every one's heart and a finger in every man's pie."

MARY BETH LOSHRAUGH "Mary Bee"

"Her mind a vacuum, her memory null and void."

JOYCE MAYS "Mom"

"Man has his will, but woman has her way."

GERALD MEASE "Jeffrey"

"His conduct still right with his argument wrong."

ANNETTE RONK "Hatchet face"

"She is debonaire and pretty. She is full of wit and witty."

DONALD SCOFIELD "Don"

"He was a man of unbounded stomach."

DORA VANDAMANT "Dorrie"

"Not afraid to give to others the benefit of her own hard work."

IRVA WICKMAN "Nurse"

"Cheerfulness is the best promoter of health and as friendly to the mind as to the body."

Not Pictured: VERNE KEFFER

"The greatest of all human benefits is independence."





SOPHOMORES

Edith Allen "She works toward the goal, and not the prize."

Fredu Aurell—"Twitter" "A belle, a flirt, and a wot little thing."

Jane Bell—"Janie" "She is kind-hearted and agreeable in all the relations of life."

Jo B. Brooks—"Jo" "Her music hath charms to soothe the savage heart."

Dale Brown—"Brownie" "All great men are dying—I feel sick myself."

Rose Creech—"Rosie" "Like cotton, she tries to absorb all."

Jack Crozier—"Jackie" "He'll find a way."

Ethel Dalke "A sweet attractive kind of grace."

John Ditmars "A worker that need not be ashamed."

Jack DuBois "Marriage is a desperate thing."

Lucile Frantz—"Cile" "Nor Noble, nor shy, nor short, nor tall, but a nice mingling of them all."

Betty Grieg—"Flat arches" "Time elaborately thrown away."

Ernest Ikenberry—"Ikey" "The editor sat in his sanctum, his countenance furrowed with care."

Susan Ikenberry—"Susie" "How can I keep your secret when you cannot keep your own?"

Lois Kauffman "How pretty her blushing was, and how she blushed again."

Patricia Kennedy—"Pat" "With vim and snap to make things go, and warmth to make you like her so."

Dorothy Kurtz—"Dot" "Never ready, always late, but she smiles, and so you wait."

Ila Verne Lobban—"Tex" "A laugh is worth a hundred groans in any market."

Robert Lowe—"Bob" "I love to sit on the fence and watch the snails go whizzing by."

Paul Markham "Life is just one long game of basketball with time out for a lady."

Kent Naylor—"Naylorbaugh" "Work is work and must be done, yet as I work I have my fun."

Margaret Peterson—"Pete" "Coeducation is a waste of time."

Joyce Riddlebarger—"Pancho" "Study is a past-time, why ever do it?"

Evelyn Royer "She speaks, behaves and acts just as she wishes."

Irene Schraml "It's nice to be natural when you are naturally nice."

William Shepherd—"Bill" "I survived."

Norma Tillman—"Tilly" "I have no other but a woman's reason, I think him so, because I think him so."

Twila Turner "Now hear me a little, I've been silent so long."

Ruth Uchida—"Ruthie" "She's like a cork which can't be kept under any minute of the time."

Kenneth Wampler—"Kenny" "Father would like to have me pick up an hour here."

Eula Wolf "To know her is to love her. Why doesn't someone get acquainted?"





FRESHMEN

Orin Allen "Oh! How his grin does rebound from chin to chin."

Bonita Anderson "How far that little candle throws her beams."

Alice Ruth Bailey—"Bailey" "I never dare to be as funny as I know how."

Josephine Blickenstaff—"Jo" "Happy am I, from care I'm free."

Marvin Blough—"Marvina" "Man while he loves is never quite depraved."

Wayne Bowman "Not swift nor slow to change—but firm."

Jane Burkholder "I should to go with every Tom, Dick, and Marry!"

Doris Coppock "Generally speaking, she's generally speaking."

Eulalia Crisl "We all like this heartless lass."

Horia Crumppacker "She comes up smiling."

Rosalie Crumppacker—"Rosie" "In youth and beauty, wisdom is rare"

Ruth Davis "Going my way"

Leona Dell "She gets attention without intention."

Waneta Drennan "Her heart has reasons that reason does not understand."

David Eiler—"Dave" "Boys will be boys."

Betty Elrod "She is a winsome and bonny wee thing."

Ruth Engelland "She talks as if it gave her joy."

Axis Erb "A peppier lass one can't surpass."

Esther Fillmore "I speak in a monstrous little voice."

Joan Finrock—"Finny" "It is not good that man should be alone."

Bryant Fisher "One cannot know everything."

Franklin Flory—"Frankie" "I will not budge an inch."

Dorothy Frantz—"Dot" "Merry mischief sparkles in her eyes."

Hazel Frantz "Her virtues are so rare."

Roger Frazer "Worris, none; operations, one."
 Ella Mae Friesen "A happy disposition & a smile."
 Matilda Friesen "Her eyes here ever a merry twinkle."
 Marjorie Gillies "I came—I saw—and now I'm leaving."
 Harley Grono—"Grono" "Work, work where have I heard that name before."
 Esther Harder "Seldom seen in conspicuous places."

Theora Hardy "She is wiser than we know."
 Barbara Hayden "Due to certain circumstances she left us."
 Marvin Heilebrecht—"Slim" "Don't be haphful, little boy, most girls don't like"
 Warren Hoover "No wise man ever wished to be younger."
 Gerald Hutchison—"Hutch" "Rugged individualism."
 James Johnson—"Jimmy" "The girls all cried, He's quite the thing."

Mary Ann Kaufmann "Keep paugta."
 Roland Kessler "Quietly and honestly did he do his work."
 John Kidwell "A good student, and a mighty fine fellow."
 June Kirbie "She is phantoms of delight."
 Minoru Koide—"Mino" "They say miracles are past!"
 Marvin Krehbiel "A wk. athlete, and gentleman."

Lola Mae Kuns "Checked out in town."
 Ruth Lichty—"Ruthie" "Good nature is the beauty of the mind."
 Ruby Mae Link "And again she may not."
 Catharine Little "Little—but oh my!"
 Marjorie Love "What's in a name."
 Wayne Lucore "The cautious seldom err."





MARILYN MATHES—"She says what she thinks, no more, no less."
 LEROY MAXWELL—"Though vanquished, he could argue still."
 MILDRED McNAMRE—"Of her no scandal can be told."
 EVELYN METZAKE—"And unostentatious laughter shakes the dining hall."
 ARLENE MILLER—"A volume when you learn to read her."
 ESTHER MILLER—"You are the versatile, I will say."
 ROBERTA MUIRER—"Bert"—"When she comes, she's not alone."
 GEORGE MOORS—"I find the earth not grave, but rolic."
 DORRIS MURDOCK—"Bloughs"—"I dream of a contact with
 times."
 BELLA MAE POLAND—"Daiss Mae"—"Tell me, pretis maiden,
 are there sisters?"
 ARLENE PRENTICE—"Chopin or Bach—What care I?"
 WALLACE REAVES—"Walsh"—"I am not in the roll of *romany*
 moon."
 LORRAINE REED—"The useful and beautiful are never separated."
 ROSETTA REED—"Rode"—"A rose with all its sweetest leaves
 yet folded."
 ARLENE ROLF—"A maiden dark with winning ways."
 LOREEN RUTHRAUFF—"Mike"—"Small, but so is a stick of
 dynamite."
 KELSE SCHNORR—"So fair a splendor, any cause might gain."
 REBECCA SPEAR—"Becky"—"She who sings fruitless away
 her life."

JOHNETTE SPENGLER—"Johnny"—"Does not need a tonic to
 stimulate her appetite."
 ERIKA SPORN—"The very quietness of spirit."
 GENELDA SPRENKEL—"Always reflecting, always pursuing."
 DARLENE STEINERT—"A ring on the finger worth two on the
 phone."
 BETTY STONEBREAKER—"Ever her name tells industry."
 PHYLLIS STRICKLER—"Pretty girl is like a meebey."
 YO TAKEHARA—"A soul as white as heaven."
 WILLIS UNBUE—"Willie"—"He has a mind and sense it is
 himself."
 CHESTER VAN DYKE—"And when I open my lips, let no dog
 bark."
 DONNIS VAMPLER—"Let me live... and be a friend to a man."
 JEAN WILLIAMS—"Joannie"—"I lived and loved."
 Freshmen not pictured:
 FUMI ASAKAWA—"Secure what 'er she gives, she gives the best."
 CARL BECKWITH—"Beck"—"Oh this boy looks nettie to us all."
 RONALD MOYER—"I'm pretty well satisfied with life."
 MASAKO NAKAMURA—"And secret laughter tickled all my soul."
 BETTY WILLIAMS—"A demure maiden, of pensive mien."
 MELVIN ZERGER—"The most difficult thing in life is to know
 yourself."



McPherson is

BOUNTIFUL IN ACTIVITIES

Basketball Lettermen

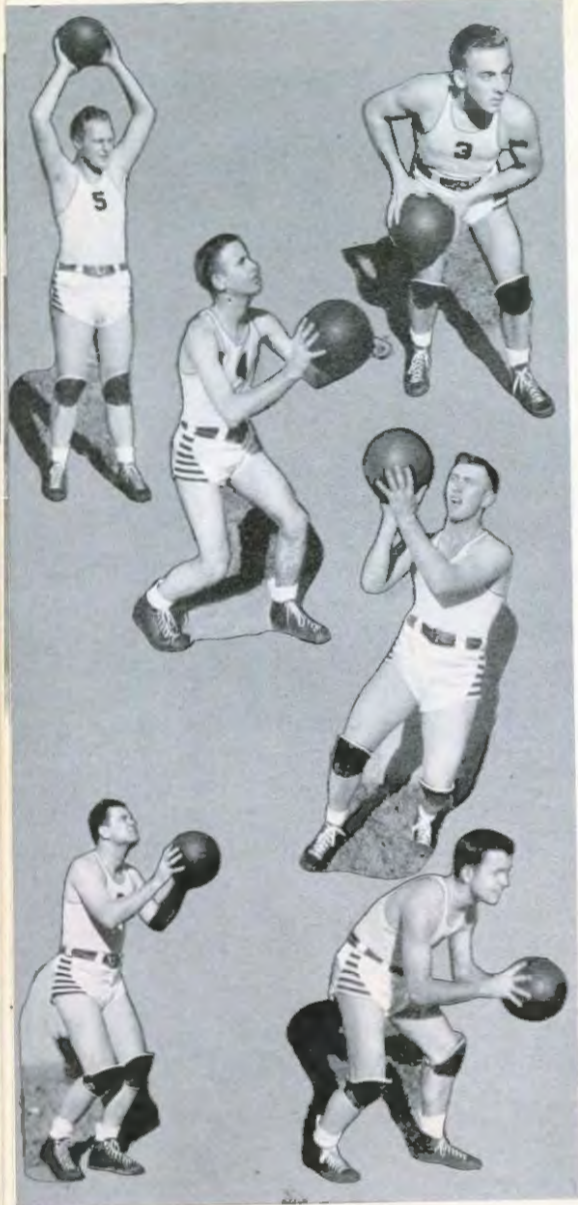
Had the Kansas College Athletic Conference functioned this year the Bulldogs would have captured the conference basketball title. As of last season Coach Tom Hayden took a squad of boys, inexperienced in college competition and developed a spunky, hard-fighting team that defeated all their Kansas Conference rivals.

Sparked by three returning lettermen: Captain Glen Swinger, Paul Markham, and Bob Lowe, the Bulldogs hit the timbers to pour a total of 814 points through the net for an enviable average of 50.75 points per game.

Coach and his boys experienced a successful season in labeling 13 of their 16 tilts as victorious. Three times they lacked the extra punch to pull themselves from the fire and landed in the "dog-house", bowing once to Herrington Air Base and twice to Wichita University.

McPherson fans backed the squad enthusiastically as the Bulldogs downed the Former Kansas Conference teams. Ottawa University Braves lost their scalps by scores of 53-39 and 62-22. Favorite rival, the Bethany Swedes, likewise bowed twice with scores 55-37 and 43-40. Liston's Baker Wildcats scratched back vigorously but started the victorious Bulldogs in the

Lowe, Hatchison, Markham, newly elected captain, Krehbiel, Swinger, graduating captain, Atbright.



1944-1945

face: final tallies, 49-30 and 59-45. Emporia State Teachers succumbed to the speedy Canines 43-35 and 62-42. The once mighty Kansas Wesleyan club suffered the worst mauling of the year at the gashing teeth of the Bulldogs, 65-22. Other colleges licked by the Red and White were Sterling and Central.

Individual scoring honors were achieved by Gerald Hutchison, young freshman ace, totaling 244 points and by Captain Swinger with 190 points. Excellent defensive ball handling was evidenced by Markham, Lowe, and Zerger, "five by five" Krehbiel added much to the fight, while Naylor and Albright made a strong reserve with a last quarter punch. Johnson barely finished the season before Uncle Sam claimed him.

An extraordinary season of good clean playing and plenty of wins, added up to an invitation to participate in the National Inter-Collegiate Basketball Tournament at Kansas City during March. Unavoidable circumstances made acceptance impossible but McPherson College feels honored by this invitation.

Letters were awarded to graduating Captain Swinger, newly elected captain Markham, Hutchison Krehbiel, Lowe, Albright, Naylor, Zerger, and Johnson.

Naylor, Johnson, Heidebrecht, Maxwell, Wampler, Frazer.



the Cantine Club three times while the terrible Bethany Sweed went down twice in sound defeat.

"Turning in a remarkable piece of fielding was Paul Markham, a clever one-hand artist, while Winston Beam, now with Lincoln, and Gerald Hutchinson both added much of the zip and pep to the spirited infield. Glen Swinger, the big Alhambra, sparked the power house, "swingin'" a wicked bickory.

The records show that during the five-game fall season Albright allowed 19 hits while the Bullhogs smacked out 64 pitches for pay-dirt. Coach Hayden's undefeated club crossed the platter for a grand total of 56 runs against a score of 17 for their opponents.

Scoreboard readings tell the tale: Bullhogs ten, Bethany one; Bullhogs seven, Bethany four; Bullhogs eighteen, seven, and fourteen, as compared to Central's scores of one, four, and five. Forward Bullhogs!

World conditions made it impossible for McTherson's Coach Hayden to build a grid team last fall; consequently he sidestepped into another field of sports and whipped up a permanent winning softball club.

Daily batting practices against a consistent high pressured Kansas breeze helped to develop the famous so called "Yankee murderer's row" in the Bullhog batting line up. Along with this power at the slugging position came a fast, snappy infield and a dependable fly-catching quarter further out on the green to form a club that was undefeated in a short but "sweet" season.

Dave Albright, stocky right hander, with good support at his back, hauled all five victories in a commendable style. Central college, from just across town, felt the crushing blows of

SPORTS



Van Dyke, Swinger, Hutchinson, Albright, Nasher, Markham, Coach Hayden, Johnson, Frenzer, Helmman.

DEBATE

McPherson College debaters have a tradition to uphold built by former brilliant and thoughtful teams representing our school. Despite enrollment decreases and war-time restrictions, debaters have added another year of successes to the annals of McPherson Debate history.

The cue for the opening of the season was the inter-class contest, from which the sophomores, represented by Patricia Kennedy and Dale Brown, emerged triumphant. Soon after this clash the following varsity teams were

selected: Annette Ronk and Blanche Geisert; Patricia Kennedy and Anne Metzler; Marvin Blough and Dale Brown; Mark Emswiler and Blair Helman.

The McPherson squad participated in the Winfield Tournament and the McPherson Economy Tournament. Varsity teams traveled to Newton, to match arguments with other teams of the Kansas League. In April McPherson was host for the Regional Tournament at which time the local varsity teams emerged triumphant.

Dr. L. Avery Fleming coached the teams during the 1944-1945 season.

Annette Ronk, Blanche Geisert, Anne Metzler, Patricia Kennedy,
Dale Brown, Marvin Blough, Mark Emswiler, Blair Helman

Sitting: Helman, Emswiler, Geisert, Ronk, Avery Fleming, Debate coach, A. Metzler, Kennedy, Brown, Blough.
Standing: Bowman, Hardy, Little, Engelhard, Brennan, Loshbaugh, Arell.
Not pictured: Hoover, Schnorr, Caspack, Staenger.





Standing: Wilkens, Elrod, Kiddlebarger, Metzger, Erb, Burkholder, Poland, Engelland, Guthals, Strickler, Love, Gillis, K. Mohler, Finfrock, Hayden.
 Sitting: Lobban, Brennan, Tharrington, Peterson, Howard, Dobrinski, Gilbert, Bailey, S. Eknerey, Fillmore, Tillman, R. Reed, Greig, Anderson, Rank, Dell, Mays, Kirbis, D. Wampler, Steinhert.

Barkerettes

Identified by their white sweaters and red bulldogs, the forty McPherson College Barkerettes keep the team on the beam with their loyal and lusty lung support.

"Tex" Lobban is the prexy of this colorful and enthusiastic organization, Betty Greig vice-president, and Dennis Wampler, secretary.

With cheerleaders to the fore they have formed

Freda Aurell, Bob Mays, Pat Kennedy



the nucleus of a cheering section that is really hep with the pep.

Proof of their ingenious temperament is evidenced in the clever pep rallies thus presented. Their backing has served as a guiding light to the entire student body.

Cheerleaders

Hats off to the cheer leaders! The vim and vigor characteristic of petite Freda Aurell, vivacious Pat Kennedy, and verbose Bob Mays has added gaiety and originality to pep assemblies. Aided and abetted in their exuberancy by the Barkerettes, they foster the Bulldog Spirit.

BAND

Right in time with the cheerleaders and Barkrettes is the band, under the direction of Jack Du Bois, assistant music professor of the college. Wednesday nights were characterized by the strange sounds emitted from the practice room. Nevertheless the band has done more than its share in supporting the Bulldogs, peppering up enthusiasm and interest with each bar and score played, so Strike up the Band, and keep that Bulldog Spirit high—The Bulldogs are marching ahead!!

Band Members: Coppock, Wolf, Seafield, D. Brown, Hurton, Du Bois, director, Wilkens, Erb, M. Friesen, Christ, Ella M. Friesen, Unruh, Finrock.

INTER-NATIONAL RELATIONS

The Mac Coeds interested in International affairs enjoyed a very successful year under the leadership of Dr. Bowersox, sponsor, and the officers: Betty Greig, president, Mino Koide, vice president, and Annette Ronk, secretary.

Dr. Wienreich and Professor Hess made worthy contributions to the programs, which were interesting and enlightening. Members of this organization were alert to current events in our rapidly changing world.

First row: Takehara, Drennan, F. Allen, Kennedy, D. Brown, Flory.
Second row: Koide, Eiler, McNamee, Greig, Uchida, E. Allen, Schnorr, Wolff.
Third row: Holman, Finrock, A. Miller, Little, Coppock, D. Wampler, Swinger.
Fourth row: Shepherd, Ronk, Ella M. Friesen, Stonebraker, Kurtz, Crisi, Bowman.



W. A. A.

After a mock basketball game, Women's Athletic Association initiates donned hockey shin guards, carried hockey sticks or golf clubs, and adorned their foreheads with glaring lipstick initials, "W.A.A.!"

Rationing of bikes and shoes (and food) did not stop this active group of girls from carrying out their usual seasonal sports, such as hiking to town for a swim in the "Y" pool, going to the gym for a good game of basket ball, an answer to a volleyball challenge, or maybe a turn at tumbling.

Keen leadership and good sportsmanship characterized the work of the various "club heads" in planning an active program for their respective sports.



First Season "Club-heads" Betty Greig, Hockey
 Wilma Kuns, Do-Si-Do Mildred Jones, Swimming
 Mary Slifer, Outing Being initiated.

Second Season "Club-heads" Jane Bell, Tumbling
 Mildred Jones, Outing Joyce Riddlebarger, Basketball
 Geraldine Tharrington, Volleyball . . . "Sweater Girls".



Fans at the Homecoming game were interested in the sudden outcropping of the new W. A. A. sweaters with their flashy red M's! They were worn proudly by the four girl ushers who had earned their letters, having obtained 1200 points by consistent participation in W. A. A. activities.

Receiving a letter and the much coveted pin are milestones in the athletic career of Mac College W. A. A. members. Those responsible for an active year were: Annette Ronk, president; Joyce Mays, vice-president; Eula Wolf, secretary; "Tex" Lobban, treasurer; Virginia Harris, sponsor; and the "club-heads."

The year brimful of sportive events was climaxed with a formal banquet in the spring with the pert little prey as toastmistress.

W. A. A.

THE QUADRANGLE

Be it Cupid's darts or O.P.A. restrictions each proved equally futile in seriously hampering the progress of the 1945 Quad. Despite



shortages, manpower and otherwise, the staff set sail on the uncharted waters of inexperience. Beset and baffled by perplexing dilemmas they contrived to edit the book—irregardless! Photographers in the minority, drafting produced a majority, hence—none pictured—all appreciated! Those pictures you didn't know were taken? culprits? Scofield, Swinger, and Mease. Congratulations boys! Koide and Bowman take a bow for the class plates, good work!

KENT NAYLOR, Assistant Editor
FREDA AURELL, Assistant Bus. Man.
PATRICIA KENNEDY, Copy Editor
MARY BETH LOSBRAUGH, Editor
CHARLES DUMOND, Business Manager



THE SPECTATOR

DELLA MAE POLAND, Man. Ed.
BERNICE GUTHALS, 1st Sem. Ed.
ERNEST IKENBERRY, 2nd Sem. Ed.
DALE BROWN, Bus. Manager
BLAIR HELMAN, Campus Editor
ILA VERNE LOBBAN, Cir. Man.

From the old 'Spec' office comes the sound of typewriters clattering off the latest news as the editor with pencil in hand checks the copy and writes heads. Yes, it's the Spectator dead line.

On entering Arnold Hall Saturday noon, one finds the lobby deserted, not a creature is stirring. Oh where! oh where! can the inmates of Arnold and Fanny be? Peeping into the parlor, one spies the little cherubs quietly absorbed in reading the weekly Spectator.

Former students and alumni who are in the Service receive the 'Spec' free of charge. In spite of a small student body and inexperienced help, the Spectator staff has pushed 'forward with McPherson College'.

"Sing a song of rationing—pocket full of points"—
nevertheless as our cooks have managed to contrive
wholesome and tasty dishes despite wartime restric-
tions. Hats off to Mrs. Slifer and the kitchen
staff as they feed us—"irregardless."





They look down their noses'



on pigtails and pinafores



but despite male protest



the maiden's mode



ALUMNI IN ARMED SERVICE

Abel, Leland '36	Ikenberry, Esthel '42	Saylor, Galen '22
Albright, Wayne '39	Kingsley, Russell '39	Saylor, Lavelle '28
Austin, Charles '33	Koons, Carroll '34	Seidel, Robert '40
Hare, Corwin '36	Krueger, Norman '41	Sheffer, Winton '40
Barngrover, Donald '38	Kubin, Milford '25	Sherfy, Paul '34
Barngrover, Floyd '30	Kurtz, Floyd '27	Stephenson, Laurence '39
Beckwith, Vernon '40	Lackie, Paul '37	Stansel, Marvin '22
Bower, Gordon '39	Landes, Ralph '29	Stern, Forest '41
Boker, Jack '42	Letkeman, Joelle '40	Stern, Galien '40
Brubaker, Crawford '22	Lewis, Leteair '35	Stern, Wilbur '39
Brunk, Homer '30	Lindell, Leland '31	Stoner, Sam '36
Buckman, John '17	Liville, Wilbur '44	Stover, Stephen '40
Bullinger, Wilbur '42	Liss, Elmer '37	Switzer, Wayne '41
Byrne, Lt. Mildred Swenson '30	Lloyd, Lewellen '38	Thompson, William P. '39
Carlson, Marlin '37	Messamer, Merle '36	Unruh, Ezra J. '25
Cassler, Winston '37	Metzger, David '37	Vetter, Jack '42
Chisholm, Emerson '37	Meyer, Anton '40	Voshell, LaVerne '40
Clark, Otho '37	Meyer, Raymond '42	Voth, George '43
Cobb, Redell '40	Miller, John '40	Voth, Harold '43
Cottingham, John '30	Minear, Cleo '34	Walker, Carroll '31
Crouse, Carroll '40	Mingonbach, John '43	Wanamaker, Rollin '41
Diehl, J. Edwin '40	Mitchell, Orville '27	Watkins, G. Earl '18
Dresher, Stanley '13	Mochlman, Lloyd '38	Webb, Glenn '36
Eddy, Orval '35	Mowbray, Herbert '32	Whiteneck, Otho '36
Eltred, Sam '40	McCoy, Don '42	Wine, Newell '34
Flaming, Willard '37	McGill, David '40	Wiggins, Leonard '35
Flory, Ronald '38	Mudra, William '23	Yodier, Gordon '39
Forror, Elizabeth Wagoner '35	Myers, Harold Keith '41	<i>Honorably Discharged</i>
Foutz, Homer S. '22	Naylor, Kirk '41	Dannelly, Paul '42
Fries, Harold '41	Newkirk, Donald '41	Hau, Lee '37
Geisert, Wayne '44	Ohmart, Bernadine '37	Jauze, Santos '44
Goering, Raymond '41	Ostlind, Asta '39	Juhnke, Ray '42
Gray, Earnest '29	Owen, La Rue '41	Schubert, Arthur '43
Hammann, Laura '26	Peterson, Ernest '42	Toland, George '38
Hayes, Guy '34	Pierce, Keith '11	Washburn, Ted '43
Hill, Marvin '31	Reed, Ernest '41	<i>Deceased</i>
Hochstrasser, Herbert '32	Regier, Marion '41	Austin, Glenn 9/17/44
Hoffert, Joe '43	Robertson, Roy '40	Oliver, Jack '40 5/15/42
Holcomb, Floyd '24	Russel, Robert '44	Vasquez, Mike 1/11/45
Horr, Richard '39	Santhoff, Addison, 39	

ALUMNI IN CIVILIAN PUBLIC SERVICE

Barley, Delbert '39	Frantz, Robert '42	Sherfy, Ralph '36
Beehler, Orville '39	Metzger, Paul '42	Vaughn, Leonard '40
Brombaugh, Donald '35	Naylor, Kurtis '38	<i>Honorably Discharged</i>
DeCoursey, Wesley '40	Ratzlaff, Elmer '41	Booz, Paul '36
Ehbert, Kurtz '43	Sheller, Charles '39	Stucky, Dale '41

FORMER STUDENTS IN ARMED SERVICE

Achilles, Robert	Beckwith, Thurston, Jr.	Brown, Elvin
Allison, Vincent	Bengston, Galen	Brown, John L.
Anderson, Paul	Berg, Lillus	Brownleece, Robert
Applegate, Jack	Berkebile, Jon	Brubaker, Merlin
Austin, John O.	Birkes, Ray	Brunton, Delbert
Austin, William	Blackman, Merrill	Brust, Robert
Barngrover, Laurence	Blough, Milan	Burger, David
Barr, Bob	Boesker, Arno	Burger, James
Barrett, Russell	Booz, Robert	Burkholder, Robert
Beau, Winston	Bowman, Harold	Burnison, Richard
Beattie, Wilbur	Brneman, Bryce	Burton, Conrad

Callen, Richard
 Callon, Gerald
 Carlsson, Junior
 Carlson, Vance
 Clark, Maurice
 Collett, Andrew
 Cook, Robert
 Colley, Maurice
 Coppock, Dale
 Coughenour, Gayland
 Crabb, Delbert
 Craik, Eldon
 Crumpacker, Frantz
 Culver, Darwin
 Dale, Ernest
 Dale, Lloyd
 Davis, Pascal
 DeGeer, Don
 Devine, George
 Dirks, Abe
 Dobrinski, Harold
 Doepfner, Tom
 Ehrsam, Arthur
 Ferguson, Dale
 Ferguson, Don
 Fields, Eldon
 Finck, Merle
 French, Junior
 Fries, Arthur
 Fulkerson, Harold
 Funk, Glenford
 Ganson, James
 Ganson, Ralph
 Garretts, Floyd
 Gayer, Lawrence
 Gibbs, Norman
 Gish, Maurice
 Hall, Henry
 Haggood, Merwin
 Hawkins, James C.
 Henston, Joe
 Heckman, David
 Hershy, Ardys
 Hessler, Winlow
 Hiebert, Franklin
 Hill, Clinton
 Hill, Lawrence
 Hodge, Kenneth
 Holloway, Jess
 Holmes, James
 Hoover, Sylvan
 Houghton, Jack
 Howerton, Ferrel
 Huxman, Ronald
 Jasper, Earl
 Johnson, Claude
 Johnson, Edsel
 Johnson, Kenneth
 Jones, Calvin
 Jones, Nathan
 Jones, Walter

Jordan, Chris
 Jordan, Curtis
 Juhnke, Roland
 Karlsson, Durward
 Kasey, Carl
 Kerk, Irwin
 Keim, Gilbert
 Keltner, Don
 Kimmel, William
 Kingsley, Robert
 Knackstedt, Duane
 Knackstedt, Merville
 Koger, Leonard
 Kohman, Donald
 Kough, Jack
 Krause, Lee
 Lacquement, Junior
 Lambert, James
 Lindberg, Wallace
 Link, Warren
 Lobban, Leslie
 Loonsbury, Ebert
 Lowber, Lawrence
 Lott, Gerald
 Macklin, Wilbur
 Markham, Francis
 Marr, Robert
 Mathiot, Earl
 Matson, Lauren
 Maupin, Thayles
 McDowell, Eldon
 McKenzie, Bob
 McMillen, Carl
 McRoberts, Richard
 Meyer, Albert
 Miller, Burr
 Miller, Dee
 Miller, Roy
 Mills, Loyd
 Mingenback, Carl
 Mishler, Donald
 Modine, Carl
 Morgan, Arthur
 Morse, Max
 Nagley, James
 Newberg, Waldo
 Ninceheler, Harland
 Ninceheler, Olan
 Nordling, Bernard
 Nordling, Chester
 Nordling, Leland
 Olson, Robert
 Peterson, Linn
 Peterson, Paul
 Pray, Charles
 Prentice, Richard
 Quillen, Robert
 Quiring, Robert
 Rakes, Estyle
 Rea, Tommy
 Reed, Lowell

Reinecker, Keith
 Reinecker, Russell
 Riddell, Marvin
 Rogers, Louis
 Roth, Earl
 Schafer, Bernard, Jr.
 Seveco, Gerald
 Sellers, Elton
 Sellers, Jean Goodsheller
 Shanks, Warren
 Shirk, Clem
 Sies, Warren
 Sloan, Keith
 Smith, Donald
 Sohburg, Robert, Jr.
 Spiller, Anale
 Stauffer, Burns
 Steinert, Marlon
 Stern, Russell
 Stratman, Robert
 Strouse, Robert
 Stutzman, Paul
 Sundahl, Edwin
 Swanson, Kenneth
 Swanson, Rodney
 Tarn, Arlos
 Taylor, Finley
 Tier, Raymond
 Tinkler, Bernard
 Unruh, Milo
 Van Blaricum, J. W.
 Voth, Milford
 Wagner, Harold
 Wallerstedt, Jack
 Weber, Clinton, Jr.
 West, Addison
 Westling, John
 Whitenack, Wilbur
 Williams, Hillis
 Wilson, Rex
 Wine, Ronald
 Woodard, Lowell
 Worden, Raymond
 Yoder, Robert
 Young, Harold
 Young, Howard
Honorably Discharged
 Albright, Miles
 Detour, Richard
 Burton, Keith
 Mohler, Richard
 Unruh, Lee
Deceased
 Stark, Sammy 11/9/44
 Compedge, Raymond 11/13/42
 Fields, Lawrence 9/15/44
 Gibson, Julius 6/27/44
 Ronk, Herbert 11/20/44
 Schapansky, Clifford 10/10/43
 Sellers, Marcell 12/13/43

FORMER STUDENTS IN CIVILIAN PUBLIC SERVICE

Baldwin, Charles
 Bowers, Lee
 Bowman, Harlan
 Buller, Walter
 Burkholder, John
 Dassenbrock, J. Henry
 Dell, Byron
 Dell, Joe
 DuBois, Eldon

Eberly, Junior
 Eisenbise, Russell
 Goughnour, Joe
 Groff, Everett
 Harvey, William
 Hoefle, Dean
 Hoover, S. G.
 Jarboe, Russell
 Mason, James
 Messamer, John

Miller, Berle
 Myers, Merlin
 Ramsey, Duane
 Reeves, Marvin
 Sanger, Merrill
 Schmidt, John
 Senger, Marvin
 Stucky, Dean
 Wolfe, Orrin

INDEX

Akers, Ione, Conway, Kansas	28, 48
Albright, Dave, Eldora, Iowa	8, 14, 18, 23, 24, 25, 26, 27, 28, 37, 38, 39, 41, 42, 48, 55, 56, 58.
Allen, Edith, Big Lake, Minnesota	8, 33, 37, 50, 61
Allen, Ferne, Big Lake, Minnesota	22, 28, 37, 40, 46, 48
Allen, Orlo, Big Lake, Minnesota	6, 7, 37, 52
Anderson, Bonita, 508 N. Maple St., McPherson, Kansas	52, 60
Andrews, Leslie, 448 Charles St., McPherson, Kansas	25, 48
Aurell, Freda, 523 N. Oak St., McPherson, Kansas	20, 26, 50, 59, 60, 64
Bailey, Alice Ruth, Hamlin, Kansas	6, 25, 28, 37, 52, 60
Bell, Jane, Langdon, Kansas	6, 28, 37, 50, 63
Berkbile, James, 324 N. Olivette, McPherson, Kansas	15, 38, 45
Blickenstaff, Daniel, Navarre, Kansas	30
Blickenstaff, Jo., Navarre, Kansas	29, 39, 52
Blough, Marvin, Nampa, Idaho	6, 14, 37, 39, 42, 47, 52, 59, 66, 81
Boltnott, John, 1309 E. Euclid, McPherson, Kansas	15, 40, 44
Bowersox, Laverne, 120 N. Charles, McPherson, Kansas	45
Bowman, J. L., 143 N. Carrie, McPherson, Kansas	15, 28, 45
Bowman, Wayne, Quinter, Kansas	6, 37, 41, 52, 59, 61
Brooks, Ju. B., Nickerson, Kansas	24, 25, 28, 37, 42, 47, 50
Brown, Dale, Wichita, Kansas	14, 27, 28, 38, 39, 41, 47, 50, 59, 61, 65
Brown, Jessie, 132 N. Charles, McPherson, Kansas	21
Brubaker, Mava, Mountain Grove, Missouri	48
Brubaker, Wilmer, Mountain Grove, Missouri	39, 48
Burkholder, Janis, 507 S. Chestnut St., McPherson, Kansas	52, 60
Burton, Keith, Des Moines, Iowa	11, 17, 24, 25, 26, 27, 38, 40, 41, 48, 61, 67, 68
Cartner, Mildred, Abilene, Kansas	25, 28, 37, 41, 48
Collins, Clara, 419 S. Chestnut, McPherson, Kansas	20
Coppock, Doris, Plattsburg, Missouri	8, 19, 24, 25, 26, 27, 28, 37, 52, 61
Creech, Rose, Bellwood, Nebraska	7, 28, 37, 50
Crist, Eulalia, Quinter, Kansas	28, 37, 52, 61
Crozier, Jack, Billings, Oklahoma	50
Crumpacker, Doris, 526 E. Kansas Ave., McPherson, Kansas	52
Crumpacker, Rosalie, McPherson, Kansas	37, 52
Dalke, Ethel, Lehigh, Kansas	37, 52
Davis, Ruth, Wichita, Kansas	37, 52, 62
Dell, Leona, 308 Eshelman, McPherson, Kansas	27, 28, 37, 40, 52, 60, 62
Dell, S. M., 308 Eshelman, McPherson, Kansas	15, 35, 40, 41, 42
Durks, Alvina, Buhrer, Kansas	6, 30, 37, 41
Ditmars, John, Washington, Kansas	37, 39, 50
Dobrzinski, Leora, Lorraine, Kansas	14, 22, 26, 28, 30, 37, 60
Drennan, Waneta, Bloom, Kansas	14, 37, 52, 59, 60, 61
Dresher, Doris, 320 N. Maxwell, McPherson, Kansas	35
DuBois, Jack, Rocky Ford, Colorado	50, 61
Dumond, Charles, Waterloo, Iowa	7, 24, 25, 26, 28, 38, 39, 48, 64
Eller, David, Nampa, Idaho	7, 23, 28, 37, 52, 61, 67, 68, 81
Elrod, Betty, Hillsboro, Kansas	27, 28, 37, 62, 60



Have
Your Wardrobe
Ready
For
All College
Occasions

Suits, Top Coats, Sport Coats,
Sweaters, Slacks, Sport Shirts,
Hosiery, Neckwear.



Suits, Coats, Sportswear,
Hosiery and Shoes

WE SELL FOR CASH AND SAVE YOU MONEY
BROWN·McDONALD
CONSISTENT LOW PRICES THE YEAR 'ROUND

INDEX

Emswiler, Mark, Poplar, Montana	27, 28, 39, 48, 59
Engelland, Ruth, Sterling, Kansas	28, 52, 59, 60
Erb, Avis, Yale, Iowa	28, 37, 52, 60, 61
Erisman, Ethmer, Fairview, Missouri	37, 39, 48, 81
Fillmore, Esther, Nampa, Idaho	28, 52, 69, 81
Finrock, Joan, Hutchinson, Kansas	28, 37, 52, 60, 61
Fisher, Bryant, 1514 Gordon Ave., McPherson, Kansas	37, 40, 52
Fisher, Nevin W., 1514 Gordon Ave., McPherson, Kansas	15, 19, 21
Fleming, L. Avery, 435 N. Lehmer, McPherson, Kansas	6, 31, 59
Forney, F. W., 409 Eshelman St., McPherson, Kansas	6
Flory, Franklin, Nampa, Idaho	4, 37, 52, 61, 81
Frantz, Dorothy, Rocky Ford, Colo.	28, 52
Frantz, Earl, 133 N. Carrie, McPherson, Kansas	31
Frantz, Hazel, Holmesville, Nebr.	28, 37, 52
Frantz, Imojean, Nickerson, Kansas	25, 19
Frantz, Lucille, Beatrice, Nebr.	37, 50
Frazier, Roger, 739 E. Kansas, McPherson, Kansas	53, 57, 58
Friesen, Ella Mae, Inman, Kansas	53, 61
Friesen, Matilda, Inman, Kansas	53, 61
Fries, J. H., 315 N. Charles, McPherson, Kansas	35
Galle, Linda, McPherson, Kansas	8, 33
Gauby, Lois, Washington, Kansas	6, 28, 30, 34, 37
Geisert, Blanche, Elmo, Kansas	14, 17, 22, 26, 30, 40, 59, 60
Gillis, Marjorie, Pampa, Texas	25, 28, 53, 60, 66
Greig, Betty, Denver, Colo.	50, 60, 61, 62
Grone, Harley, Davenport, Nebr.	37, 53
Guthals, Berniece, Elmo, Kansas	23, 28, 29, 30, 37, 41, 60, 65
Harbaugh, Elva Jean, Waterloo, Iowa	11, 28, 31, 37, 38, 42, 46, 49, 66
Harder, Esther, Hillsboro, Kansas	53
Hardy, Theora, 319 N. Carrie, McPherson, Kansas	7, 28, 37, 53, 59
Harris, Virginia, Jennings, La.	45
Hayden, Barbara, 227 N. Charles, McPherson, Kansas	53, 60
Hayden, Thomas, 227 N. Charles, McPherson, Kansas	8, 45, 55, 58
Hedges, Geraldine, Drummond, Okla.	25, 38, 42, 49, 66
Heidebrecht, Marvin, Inman, Kansas	7, 53, 57
Helman, Blair, Winber, Penn.	6, 16, 26, 27, 38, 39, 42, 46, 49, 58, 59, 61, 65
Hess, Maurice, 401 N. Carrie, McPherson, Kansas	15
Hoover, Warren, Marion, Iowa	37, 39, 53, 66
Howard, Phyllis, Cleo Springs, Okla.	6, 28, 31, 41, 60, 63
Huston, Ruth, Guthrie, Okla.	31, 37
Hutchison, Gerald, 205 N. Hartup, McPherson, Kansas	8, 53, 55, 56, 58
Ikenberry, Ernest, 1503 E. Euclid, McPherson, Kansas	25, 26, 37, 38, 40, 41, 50, 65
Ikenberry, Mrs. E. L., 1503 E. Euclid, McPherson, Kansas	15, 35, 42
Ikenberry, Susan, 1503 E. Euclid, McPherson, Kansas	27, 37, 38, 50, 60
Johnson, James, 531 E. Marlin	6, 25, 53, 57, 58
Jones, Mildred, Cordell, Okla.	6, 28, 37, 49, 61, 62, 63, 66, 67, 68
Kauffman, Lois, Abilene, Kansas	21, 37, 38, 50, 80

FILMS

PHOTO SUPPLIES

CAMERAS

221 N. Main

ABEL'S

Phone 92

GIFTS

ART SUPPLIES

FRAMES



Stores

McPherson's Leading Cash Food Store

FIND THAT FOOD ARTICLE

at

J. S. DILLON & SON

112 E. Euclid

Phone 265

For Your Outings, Picnics and
Hikes—or Food Needs—

Remember

JAMES FOOD STORE

Where Self-Service is Welcomed
PHONE 780 We Deliver

PEOPLE'S STATE BANK

McPherson, Kansas

F. A. Vaniman, President
Paul E. Sargent, Vice-President
Bert Webb, Cashier

Dale Strickler, Ass't. Cashier
Wilbur Yoder, Ass't. Cashier
Virginia Johnson, Ass't. Cashier

Member of Federal Deposit Insurance Corporation



THRIFT WITH PROFIT

PIONEER SAVINGS & LOAN ASS'N.

A. W. Bremer, Sec.

McPherson, Kans.

The Well Dressed Man

Looks to



FOR HIS CLOTHES

INDEX

Kaufman, Mary Ann, McPherson, Kansas	7, 25, 28, 53
Kennedy, Patricia, Marshalltown, Iowa	50, 59, 60, 61, 64
Kesler, Ronald, Port, Kansas	6, 53
Kidwell, John, 602 N. Eby St., McPherson, Kansas	7, 35, 37, 53
Kirby, June, Dill City, Okla.	27, 53, 60, 67, 68
Koide, Minoru, Poston, Ariz.	6, 53, 61, 80
Krehbiel, Marvin, 1022 S. Main, McPherson, Kansas	8, 53, 55, 56
Kuns, Lola Mae, Garden City, Kansas	7, 53
Kuns, Wilma Faye, Garden City, Kansas	4, 26, 28, 30, 37, 62, 63
Kurtz, Dorothy, Johnstown, Penn.	25, 28, 37, 50, 61, 81
Lehman, Della, 1514 E. Gordon, McPherson, Kansas	20, 26, 40
Lichty, Ruth, Waterloo, Iowa	28, 37, 42, 47, 53
Link, Ruby Mae, Rich Hill Missouri	28, 37, 53
Little, Katherine, Kansas City, Kansas	28, 37, 53, 59, 61
Lobban, Ila Verne, Clovis, New Mexico	7, 6, 50, 60, 65, 66, 67, 68, 81
Loshbaugh, Mary Beth, Fredonia, Kansas	7, 22, 26, 27, 37, 38, 41, 49, 59, 64
Love, Marjorie, 1208 S. Ash St., McPherson, Kansas	7, 28, 53, 60
Lowe, Robert, Deerfield, Kansas	8, 14, 50, 55, 56
Lucore, Wayne, Elizabeth, Colo.	25, 47, 53, 67, 68
Markham, Paul, 501 N. Ash St., McPherson, Kansas	8, 14, 41, 60, 55, 56, 58
Martin, Alice, 123 N. Carrie, McPherson, Kansas	34
Mathes, Marilyn, McPherson, Kansas	7, 54
Maxwell, Leroy, Quinter, Kansas	54, 57
Mays, Joyce, Denver, Colo.	6, 13, 39, 49, 60, 80
Mays, Robert, Denver, Colo.	13, 30, 40, 41, 60, 80
McNamee, Mildred, Waterloo, Iowa	25, 28, 37, 54, 61, 62
Mease, Gerald, Lincoln, Nebr.	7, 37, 39, 40, 41, 42, 49, 67, 68
Metzger, Evelyn, Meridian, Idaho	7, 25, 28, 37, 54, 60, 66, 67, 68, 81
Metzler, Anne, 145 N. Olivette, McPherson, Kansas	14, 23, 25, 26, 27, 28, 31, 37, 38 42, 59
Metzler, Burton, 145 N. Olivette, McPherson, Kansas	6, 34, 38, 39
Miller, Arlene, Waterloo, Iowa	7, 25, 28, 37, 54, 61
Miller, Esther, Weiser, Idaho	25, 26, 28, 37, 54
Mohler, Edwin, 1142 E. Euclid, McPherson, Kansas	15
Mohler, Genelle, 1142 E. Euclid, McPherson, Kansas	15
Mohler, Richard, 1142 E. Euclid, McPherson, Kansas	4, 7
Mohler, Robert, 1142 E. Euclid, McPherson, Kansas	45
Mohler, Roberta, 1142 E. Euclid, McPherson, Kansas	28, 37, 41, 54, 60
Moores, George, McPherson, Kansas	28, 41, 54
Mugler, Minnie, 406 S. Maple, McPherson, Kansas	21
Murdock, Dorris, Eldora, Iowa	14, 24, 25, 28, 37, 47, 54, 65
Naylor, Kent, Holmesville, Nebr.	14, 25, 28, 37, 38, 39, 40, 41, 42, 54, 57, 58, 64, 66, 81
Neher, Edna, McCune, Kansas	8, 15
Peters, W. W., 1203 E. Euclid, McPherson, Kansas	9
Peterson, Margaret, Weiser, Idaho	28, 37, 54, 60, 62, 81
Poland, Della Mae, Junction City, Kansas	28, 41, 54, 60, 65
Prentice, Arlene, Aline, Okla.	28, 37, 54



THE SEAL OF QUALITY

for

The Flour that is Always Good

SO

For "Goodness Sake" Use "W-R" Flour

Made by

THE WALL-ROGALSKY MILLING COMPANY



We have the right shoes
For every college student
and
For every occasion—

Come see us—we'll flatter your feet

SWEENEY'S

105 North Main

Phone 80

Bus. 14

Res. 26

**CARLSON
PLUMBING**

Plumbing—Heating—Gas
Appliances and Installations

PHONES

INDEX

Reeves, Wallace, 416 E. Sutherland, McPherson, Kansas	54
Reed, Lorraine, Galesburg, Kansas	54, 62, 67, 68
Reed, Rosetta, Linden, Iowa	54, 60, 66, 80
Riddlebarger, Joyce, New Plymouth, Idaho	28, 37, 41, 54, 60, 63, 81
Rodabaugh, Edwin, Conway Springs, Kansas	7, 31, 39
Roffs, Arlene, Geneseo, Kansas	28, 37, 51
Ronk, Anette, Denver, Colo.	6, 16, 22, 26, 40, 41, 49, 59, 60, 61, 62
Royer, Evelyn, Dallas Center, Iowa	28, 37, 54
Ruthrauff, Loreen, Cedar Rapids, Iowa	28, 37, 54
Schnorr, Elsie, 1014 S. Ash, McPherson, Kansas	54, 61
Schramel, Irene, Barnum, Minn.	14, 28, 34, 37, 47, 50, 81
Seofield, Donald, Independence, Kansas	14, 25, 28, 39, 40, 61, 66
Seofield, Dorothy, Independence, Kansas	11, 37
Shepherd, William, Twin Falls, Idaho	28, 37, 50, 61, 81
Shoemaker, Ruth, Wenatchee, Wash.	6, 23, 24, 25, 28, 31, 37, 38, 40, 41, 42, 80
Siek, Mildred, 132 N. Charles, McPherson, Kansas	6, 45
Slifer, Mary Kay, Conrad, Iowa	6, 28, 31, 32, 42, 62
Slifer, Mrs. J. F., 1503 E. Euclid, McPherson, Kansas	66
Spear, Rebecca, Cedar Rapids, Iowa	25, 28, 37, 54
Spengler, Johnette, Wichita, Kansas	6, 37, 54
Spohn, Ebbu, Windom, Kansas	54
Sprengle, Gornelda, Quinter, Kansas	28, 37, 54, 62
Steinert, Darlene, 529 E. Marlin St., McPherson, Kansas	28, 54, 60
Stonebreaker, Betty, Wiley, Colo.	54, 61
Strickler, Phyllis, Ramona, Kansas	7, 26, 27, 28, 34, 37, 54, 60
Swank, Eunice, Poplar, Montana	23, 26, 28, 31, 37, 38, 41, 42, 80
Swinger, Glenn, Essex, Missouri	8, 23, 25, 26, 27, 28, 29, 31, 37, 38, 39, 41, 42, 55, 56, 58, 61
Takehara, Yo, Poston, Ariz.	7, 28, 37, 42, 54, 61, 66, 67, 68, 80
Tharrington, Geraldine, Caldwell, Idaho	6, 18, 28, 31, 34, 37, 60, 63, 81
Tillman, Norma, Conway, Kansas	50, 60
Turner, Twila, Quinter, Kansas	50
Uchida, Ruth, Hunt, Idaho	28, 37, 47, 50, 61, 66, 80
Unruh, Willis, Moundridge, Kansas	8, 24, 25, 43, 54, 61
Vandament, Dora, Osborne, Kansas	49
Van Dyke, Chester, Conway, Kansas	51, 58
Wampler, Donnis, McPherson, Kansas	28, 37, 54, 60
Wampler, Kenneth, McPherson, Kansas	25, 28, 37, 39, 42, 50, 57
Weinrich, Marcel, 318 Lehmer St., McPherson, Kansas	20
Wickman, Irva, McPherson, Kansas	49
Wilkins, Gertrude, 717 S. Ash, McPherson, Kansas	6, 28, 41, 46, 48, 60, 61
Williams, Jean, Wichita, Kansas	14, 54
Wolf, Eula, Quinter, Kansas	28, 37, 40, 50, 61, 80
Williams, Hillis U. S. Army	14

105-107 W. Marlin St.

Telephone No. 66

Notary Public

Andy Darrah

Pete Aurell

DARRAH-AURELL

Real Estate, Insurance — Loans and Investments

Oil Leases & Royalties

McPherson, Kan.

Famous

Meats

25



McPHERSON MEAT MARKET

104 N. Main

Phone 107

in

For

Years

When You Think
Insurance, Investments,
Bonds & City Loans

THINK

Fred K. Entriken Agency

G. O. SWANSON

Automotive Electrical
Service

McPHERSON, KANSAS

Phone 187

310 N. Maple

OPEN YOUR EYES TO

H. F. AURELL ELEC. CO.

Contracting - Fixtures - Repairing

106 N. Ash

Phone 1656

Safeway Stores, Inc.

"Distribution Without Waste"

The Home of

GOOD WATCHES AND PERFECT DIAMONDS

Bixby, Lindsay & Co.

WHERE YOU'LL MEET YOUR FRIENDS

Up-to-the-minute Fountain Service — Complete Line of Cosmetics

The Magazines You Enjoy Reading — Hallmark Greeting Cards for Every Occasion

HUBBELL'S DRUG STORE

104 S. Main

Phone 23

SAY YOU READ IT
in the
SPECTATOR

Your College Paper

Buy your camera supplies and photo
hobby needs
at

Parents Photo Shop

110 E. Marlin

DR. A. W. GRAVES

OPTOMETRIST

Over Bixby, Lindsay & Co

105 1/2 N. Main

Phone 759

A Cash Purchase
is a Cash Saving
at

PENNY'S

Jarold Shop

122 N. Main

Phone 130

Buy From Crumpacker
and
Become a Moneypacker

Jay Crumpacker

REAL ESTATE
Oil Leases and Royalty

**Buy a Home With Your Rent
Money**



WE'LL STAND ON OUR HEADS TO PLEASE YOU!

Phones

Office 453

Residence 1455Y

MCPHERSON, KANSAS

it's a Puzzle!



Pon shows mom who's boss Mighty mite from Montana Yo and Mino—California's best Ruth's they are and Ruth's they be—Washington!! An Iowan—where the tall corn grows! Kuteys from Kansas, roommates too!

Lovely girl from the rippling water state . . . Pennsylvania pulls through . . . Idahoan's all, if it's the best they have it . . . "I'm from Missouri, I gotta be showed." . . . Smile—He's really irresistible! . . . Believe it or not, "Tex" is from New Mexico.



For Better Cookies, Cakes and Pies

USE

Indian Girl Flour

Milled from Select Kansas Hard Wheat

RODNEY MILLING COMPANY

K.B.R. Milling Company Division

McPherson, Kansas

Your Best Wheat Market



Low Cost Service for McPherson Homes, Churches, and Schools

McPHERSON WATER & ELECTRIC DEPT.

College Days Bring Pleasant Memories
and remind you of McPherson, Home of

Farmer's Alliance Insurance Co.

FIRE AND CASUALTY INSURANCE

CENTRAL PRINTING CO.

Publishers of

The Democrat-Opinion

Quality Job Printing

Chas. H. Branch, Owner and Editor

Phone 298

210 N. Main



You Scream — We Scream
All Scream

ICE CREAM

SELECT DAIRY

Lake Superior Lumber Company

LUMBER, HARDWARE, PAINT

The best in materials for your home

301 N. Maple

Phone 40

THE HOME STATE BANK

McPHERSON, KANSAS

SAFE, CONSERVATIVE, PROGRESSIVE

C. H. Hiebert, President

Mrs. M. G. Mathis, Cashier

Member Federal Deposit Insurance Corporation



"... and let me tell you, we had
the most delicious food afterwards

at

WALKER'S CAFE

There's where we kids always eat!"

204 North Main

Humfeld's Flowers

For Every Occasion
AS YOU LIKE THEM

CORSAGES WRISTLETS
SPRAYS HAIR SETS
BOUQUETS SINGLE BUDS

HUMFELD'S GREENHOUSE FLOWER SHOP

PHONE 172

SAY IT WITH FLOWERS



Buy a Coke
and Meet
The Folk

KING'S

Your Reliable Drug Store
COSMETICS
DRUGS
PHARMISTRY

HOTEL WARREN



COFFEE SHOP

For Your School Parties
Three Party Rooms Available
No Charge For Room
When Meal Is Served

217
North
Main

SWANSON'S Phones
185
186

GROCERY and MARKET

HAWLEY HARDWARE

The store to supply you
with hardware

219 N. Main

Phone 191

Greetings From

GAMBLE STORES

The Friendly Store

When in McPherson
Go to Engborg's

Engborg's Drug Store

Phone 218

213 N. Main

The McPherson Hail Insurance Company

100% coverage from the time you sign application until the wheat
is harvested — Agents wanted in unoccupied territories.

PHONE 73

MORRIS & SON
— MEN & BOYS WEAR —

Ladies Sportswear

DELUXE CLEANERS

CLEAN CLEAN

111 E. Marlin

Phone 335

DUCKWALL'S

Quality, Service and Price

Visit Our Fountain and Luncheonette

Complete Notions, Toiletries,
Etc.

NU-WAY CLEANERS

"Appearances Do Count!"

214 N. Main

Phone 900

WOOLWORTH'S

5c — 10c — 25c

STORES

101 N. Main

Phone 819

Greetings To McPherson College

May This
And All Years
Be Successful
To
Your Institution

McPherson & Citizens State Bank
Member Federal Deposit Insurance Corporation

HERE'S WHERE YOU'LL
FIND YOUR BRAND OF
ENTERTAINMENT!

McPherson's
Friendly
Theatres

MANOR • RITZ

INSURANCE

Protection
and
Service
Equal
Satisfaction

CARL M. ANDERSON

Insurance Agency



OLIVER'S
Ladies Wear

121 N. Main

Phone 874

Remember When . . .

The girls had a get acquainted tea? . . . Katsas was a voritable fairyland? . . . Harbaugh was Homecoming queen? . . . we went to the watermelon feed? . . . the faculty were formerly introduced? . . . Berniece kissed Keith under the mistle-toe? . . . the freshmen were initiated? . . . ditto . . . the cumpuk lay cloaked in snow? . . . the kids who stayed here for Thanksgiving had duck? . . . the royul homecoming party sat in state?





If you want shoes for style
and quality, we invite you
to visit our

CASH SHOE STORE

Dalingher & Son, Mgrs.

We Congratulate the Seniors of
McPherson College on your grad-
uation and extend greetings to all
the students at your College.

Sincerely

THE STUDENT BODY

of

CENTRAL COLLEGE

Information

AND

Printing

Both are necessary to a Happy and
Successful Life

The Daily Republican keeps you
informed on Affairs

Its Advertisements tell you the
best Places to Buy

Its expert workmen give you the
Very Best in Printing

The Daily Republican

(Printers of the Quad)

Dedicated to the alumni and former students of McPherson College
who are now serving in the armed services
of the

UNITED STATES OF AMERICA

We are grateful for your contribution in our fight for freedom

Drs. Heaston & Dyck
Dixie Bryan
Dr. E. G. Nigh
H. G. Lindgren
Johnson, Rhoades & Lehmborg
Houghton Bakery
Lee Robinson
Dr. Harold Coe
Dr. W. E. Quinn
Dr. Albert Robb
Albert Butcher
McPherson Music Shop
G. D. Johnson
John Holloway
Dr. E. L. Hodge
Vinnie Lindbeck
Mary Mingenback
J. R. Oliver
James Galle
C. H. Burkholder
C. E. Booz
Floyd Oliver





MID-CONTINENT

ENGRAVING COMPANY

WICHITA, KANSAS

ARTISTS AND ENGRAVERS
FOR PUBLICATIONS