

The
1944
Quadrangle

B

378.19

M172q


1944

at the end of . . .

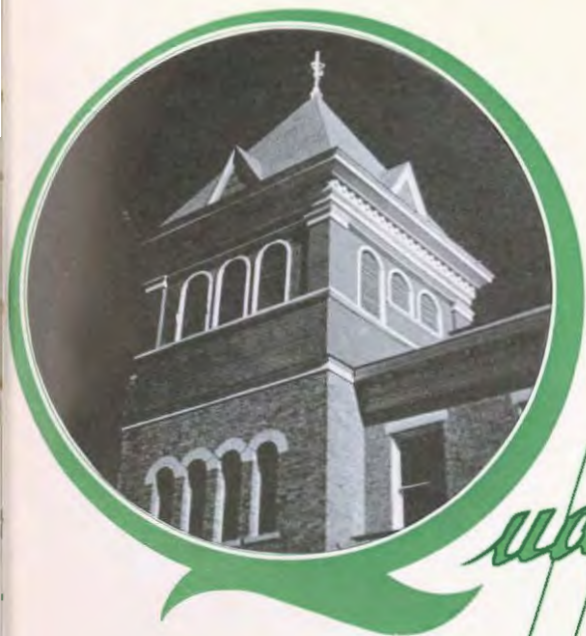


WITH THE

BULLDOGS



JEAN McNICOL EDITOR
MARILYNN SANDY BUS. MGR.



quadrangle

McPHERSON COLLEGE ★ ★ McPHERSON, KANSAS

ANNUAL PUBLICATION
OF THE STUDENT BODY

Back to School we go---

As the flame is to the moth, so is McPherson College to her sons and daughters from the cotton fields of the South to the lakes of Minnesota, from the West's craggy grandeur to Virginia's wooded hills.

Every September finds old friends as well as new acquaintances meeting at the End of Euclid, each with the hope that this year will be equal to his anticipation. Back to school each student goes with his dreams of the life he looks forward to at McPherson!







To the Bittering Family

When the Bittering family came to McPherson College's campus in the fall of 1940, they made for themselves a place which had not been there before. Now that they are gone, they leave a spot which can never be filled. This page set aside to the Bitterings' is more than a dedication of a book; it is a thank you from a student body.

Concerning the Bitterings, the very fact that their own interpretation of the good life is of more importance to them than their being McPherson College students' ideal family, accounts for the place they have won in the hearts of all. The lives of those who were in Dr. B.'s classes, who saw and knew his family will be brighter because of that experience.

From 6:30 in the morning when the light in Professor Hess' room winks at the darkness, until curfew sounds at the End of Euclid, Sharp Hall is the hub of a very busy wheel. From the knotty walled Student Union room in its basement to the chambers of higher learning on the upper floors, the Ad building attracts all.

Thoughts of McPherson College are not complete without a vision of Sharp Hall. Its tower is the apex of Euclid Avenue; within its walls is the sanctuary of our president; through its doors passes the life of the institution; under its roof many a chapel program is received and digested; in its files are records of students, past and present, perfect and imperfect; on its bulletin board have been posted announcements innumerable; through its halls flock a veritable drove of Spectator seekers every Friday noon; on its third floor a Quad office float parts company with its nearest baseboard. For these reasons, this patriarch of the College's buildings merits recognition.

• Sharp Hall





President of The College

President Peters has become an institution at McPherson College. Since he has come to the college he has proved himself an able leader and a competent executive during a period when the chair of the presidency has been anything but a comfortable seat.

Dr. Peters has been a tireless worker for the betterment of the resources of the school. Results of his efforts are nowhere better shown than in our excellent enrollment records.

He has become a part of that "certain something" that we are pleased to call true "Bulldog Spirit". Our Prexy is the friend of every student, the man behind the men and women who give McPherson College her good name.



Dean of The College

Dean Boitnott is a classroom wit of fine turn and rare ability. His grace and charm, a product of the South, are keystones in his adeptness as an advisor to students. His expression "you've got to dig in" is well worth a sophomore's second thought. Our dean is a purposeful organizer.

Seeing [★] McPHERSON





The Newest





Almost any Year at McPherson

The Spectator on its way, speaking editorially and circ-
latively . . . in art lab, place for palette, brush, and imagin-
ation . . . hats off gentlemen! A queen! . . . town and
gown . . . domesticity, as played by Fanny's head resi-
dents . . . the family skeleton, or the ghost of the fellows
who couldn't come back to school . . . Arnold Hall retires
in curlers and hairnet.





The College Outside the Catalogue

B-U-L-L-D-O-G-S! reluctant dragon plus Della equals dilemma Ye must become as a little child when the campus gets its face lifted freshman plague, belt lines romance a la dorm steps men of McPherson are toileters.





As one scientist to another



Dr. Metzler oversees the departure of an S.C.M. delegation



By their letters shall ye know them



Homecoming Queen Berniece Guthals and her court



The hand behind the hand behind the fork



The steps of Arnold witness all



Cs-Education: typical ratio



The pause in the day's occupation that is known as the walk between classes



Kline Hall domestics



Basketball champs among the females



Cheer leaders Mays, Glavier and Burton



Will Dick Trues catch Platypus?



What foods these miracle he?



Annual Conference, McPherson, 1943

The 157th recorded Annual Conference of the Church of the Brethren was held at McPherson in 1943 with W. W. Peters, Moderator, Wm. M. Beahm, Secretary, and A. C. Baugher, Reader. Standing Committee members numbered 71, church delegates 376. Of the 13 living Moderators at the time of the conference, 12 were present and of these, five have or have had direct relationship with McPherson College. All of the living presidents of McPherson College except one and all of the pastors of the McPherson Church of the Brethren were present.

Outstanding events and acts at the conference of historical significance were the following: (1) The appearance on the same program in the Church of the Brethren of representatives from the three larger branches of the German Baptist Brethren Church;

(2) The putting into operation of a retirement plan for ministers and missionaries, and a rural rehabilitation plan; (3) The initiating of a comprehensive study of the colleges with a long-time view to their continued improvement; (5) The building of reserve funds to be available for the work of missions and for agencies of reconstruction when peace comes again to the world.

Presidents of McPherson College: Dr. Edward Franke, Dr. D. W. Hurts, Dr. V. F. Schwalm, and Dr. W. W. Peters.





that "Cheerful Little Earful" from **OUR FACULTY**



Frances Bengt

A connoisseur of Latin American culture, Dr. Frances Bengt adds an air of the cosmopolite to campus and class. She is also versed in la Francais und Deutsch.

Clarity of perception, understanding of the intangible, soft peddalling of the obtrusive, accuracy and artistry characterize Miss Brown in teaching and in taste.



Jessie Brown



James M. Berkebile

A one-year letterman, Professor Berkebile has proved his mettle in the realms of test tube and beaker, question and rebuttal, and general congeniality.

Scenic beauty catches her eyes, and her hands capture fleeting glimpses of mind's eye on permanent canvas.



Clara Collins



Desmond W. Dittinger

Suave teller of tales, the tapestry of this man's life is forming a master pattern for many newer fabrics.

Students know our President's amiable secretary to be the donor of many a friendly smile. It is she who keeps the social calendar as balanced as next year's budget.



Doris Dresher



Joseph L. Bowman

Prof. Joe's subtle manner of oiling a rusty nut is hardly realized until the threads are working smoothly.

A genial link between the college proper and her outlying constituency, he has strengthened the chain in this his first year as Director of Public Relations.



Earl Franke



Nevio W. Fisher

Mrs. Alice Martin, Assistant Registrar, is keeper of the keys to the unseen word, the college record of all enrollees.

Under Prof. Fisher's upbeat comes intensive preparation and a striving for comprehension of the artistic; with his downbeat, a feeling of aesthetic satisfaction.



Alice D. Martin



J. Howard Fries

A corner stone of patient and good judgment, methinks he lives as much a part of Solomon's wisdom as he teaches.

An able juggler, Business Manager Fries has kept a nice balance between what goes up and what comes down.



Burton Metzler



Thomas C. Hayden

An application of biology to life in its abundance is the keynote of Dr. Mohler's teaching and life philosophy.

Through clean sportsmanship, a thoroughgoing interest in his boys, and staunch backing of his department, Coach has given Macollege a boost.



Robert E. Mohler



Della Lehman

Art pieces in the Louvre, Gothic churches, monasteries of the Middle Ages may be old, but Miss Mugler's tales of them are ever fresh. Her interests are musical.

The splendid talks of castle walls and snow haired summits old in story make Miss Lehman's seminars diamonds on black velvet.



Minnie Mugler



Edna Neher

Arnold Hall's head resident is a gracious hostess. She remains affable despite executive and judicial responsibilities, and duties of detection and prosecution.

Pay those fines or a stealthy stiletto may be slipped between your ribs. Z. Smith looks innocent but the library keeps its own books.



Zelma Smith



Mildred Siek

Domesticated domestics are a product of the Siek laboratory. Her plans are for tomorrow's planners. She heads home economics.

From anchorings in the Aegean to the present world conflicts, Dr. Wayland expounds historical data with accuracy.



Francis F. Wayland



S. MILTON DELL, *Dean of Men*

Professor Dell, Dean of Men, has made industrial education a vital part of the curriculum in a day when practical knowledge of mechanical arts is sorely needed.

Maurice A. Hess

Prof. Hess, Freshman obstacle course designer, has increased the stride and hurdling stretch for many a four-year man.

M c P H E R S O N B E L L E S



THOSE WHO MAKE LIFE AT McPHERSON

Exciting!



Miss Maurine Gish . . . QUAD QUEEN



Queen Runners-Up

IRENE SCHRAML GERTRUDE CONNER ELOISE MCKNIGHT



Maxine Ruehlen, Anne Metzler, Marilyn Sandy, Lucile Harris, Ruth Shoemaker,
Maurine Gish, Blanche Geisler, Jenn McNicol, Betty Burger.

"Who's Who" among the HERS

BETTY BURGER . . . boydenish in drama and wit.

BLANCHE GEISLER . . . humor in oratory.

MAURINE GISH . . . demureness in dignity.

LUCILE HARRIS . . . exuberant spirits tempered by Christian ideals.

ANNE METZLER . . . artistry in many capabilities.

JENN MCNICOL . . . abounding in mirth and girth.

MAXINE RUEHLEN . . . efficiency in versatility.

MARILYNN SANDY . . . geniality in wide scope of interests.

RUTH SHOEMAKER . . . amiable in business.



First row: Neher, Sandy, Kuelen, Callon, Metzler, Dobrinski, Lashbaugh, Gish, Tinkler.
Second row: Burger, Evelyn Swank, Cartner, Gross.

Women's Council

To orientate awe-struck freshman girls in the fall, Women's Council promoted a welcome tea for all campus sisters; to accustom Maccollegians to the dignity and finesse of formality, the Men's and Women's Councils collaborated in the giving of the formal banquet, and in honor of Leap Year sponsored an all school party in January. In February hushed whisperings of the girls announced that Heart Sister Week had arrived, and above all, not forgetting those outside the sphere of the campus, the Women's Council sponsored weekly meetings of the Red Cross.



Elsie Mast, Eloise McKnight, Jean McNeul, Lucile Harris

Women's Quartet

Whether entertainers of ladies' clubs and school folk, or a part of an inspiring worship service, the girls' quarter harmonized convincingly. Elsie Mast saw her first action as first soprano; Eloise McKnight, second soprano, Lucile Harris, first alto, and Jean McNicol, second alto, had served previous terms.



W. A. A.

First hand knowledge of sports, staunch friendships, wholesome sportsmanship, aching muscles, and very untemperate appetites are all results of membership in W.A.A.

Members of Women's Athletic Association, under the presidency of Alta Cross, in the fall participate in hockey, do-si-do, outing and swimming clubs. During the winter season the indoor sports of

W.A.A. CABINET

Boyer, publicity manager; R. Reeves, vice-president; Glasser, treasurer; Lumie, secretary; Finfruck, basketball; Himmel, volleyball; Mandy, outing; Peter, hockey; P. Reeves, softball; Klutz, tumbling; Smith, sponsor; Cross, president; Burkholder, swimming; Harris, do-si-do.



QUAD KING
Glenn Swinger

Index Cards
to
Who's Who

GEISBRT



This year's S. C. president, last year treasurer; able convincer in four years varsity debating; honor student; business head; Thespian; and practical jokester.

LICHTY



Student minister of high calibre; Christian influence through SCM co-presidency; baritone soloist and quarteter; Bulldog cage star; and student government.

LUNKLEY



Genial "Pop" to boys of Fanny; exemplifier of Christian character in student ministry, SCM work; head of 1943-1944 Men's Council; seasoned debater; and fine chorister.

FARRIS



Student Minister of promise; SCM activator; Rec. Council; bolsterer of choir tenor section; two year head resident of Kline; conscientious student.



First row: Dell, Charles Lankley, Burton, Leslie Rogers, E. Honbers.
 Second row: A. Klotz, Dale, Lichts, W. Gensert, Swinger, Max.

Men's Council

Service as a "go-between" for the men of McPherson and the college faculty is the main purpose of the Men's Council. This selected group of men from each class under the leadership of the Dean of Men meets regularly and in these particularly difficult times attempts to establish and maintain a normal pace of life on Macampus. A quiet organization this council, but there is strength in its unobtrusiveness, and these men do much to keep the entire student body on an even keel in spite of turbulent outside factors.

Men's Quartet

With three lettermen serving as its nucleus, and Kent Naylor as top tenor, the men's quartet last fall set a pace which it has never let down. Their performances have been a credit to the college.

Berths other than that of first tenor have been filled by Keith Burton, second tenor, Eugene Lichty, baritone, and Alvin Klotz, low bass.



Kent Naylor, Keith Burton, Eugene Lichty, Alvin Klotz.

Student Ministers

McPherson College is the Christian institution that it is largely because of these men. These are the men who believe the ministry to be the highest calling of man, and are here preparing themselves for service.

The student ministers are not an unorganized group of aspiring preachers, but are a systematized fellowship with leaders, a regular meeting time, definite objectives and duties. A steering committee directs the activities of the organization with the help of the faculty sponsor, Dr. Metzler. This year's steering committee is composed of Edward Murray, chairman, Edwin Rodabaugh, and Charles Dumond.

The group has been especially interested this year in sending deputation teams into the churches near McPherson. Their men's chorus has done some concertizing for programs. Seven of the student ministers have pastorates which they serve every Sunday.

First row: Kutz, M. Reeves, Metzler, Mays, H. Reeves, Rogers.
Second row: Rodabaugh, Measer, Lunkley, Dumond, Parris, Thomas.
Third row: Brubaker, Swinger, Erisman, Lichty, Franz.



Basketball

They said it couldn't be done, but the McPherson Bulldogs did it. The possibilities of a good basketball team for the 1943-44 season was just a fanciful vision a year before. Nevertheless, the team's record shows that the potentialities of a freshman team had been underestimated by some. McPherson won 14 of her 16 games. The two losses were administered at the hands of Kansas State College of Manhattan. Had there been a conference this year, McPherson would have undoubtedly been the undisputed champion having handed Baker, Ottawa, Bethany and Sterling, double defeats.

With a lack of college games to be played, Coach Hayden substituted service team games. The first game of the season, against Camp Phillips, found the Bulldog squad with eleven members; nine of them were freshmen. Gene



Coach Hayden explains the finer points of the game.

Lichty, senior, and Glenn Swinger, junior, were the upperclassmen. The Bulldogs won the game with Camp Phillips by the score of 49 to 39. This victory was the beginning of a successful season. The annual college Homecoming was climaxed with a basketball game between the Bethany Swedes and the McPherson Bulldogs. McPherson won this game with a 44 point margin, 71 to 27.

The McPherson squad lost three men to the army and gained one from another school. Vance Carlson, brilliant 17.1 point average per game forward, Bobby Barr, starting guard, and Dale Ferguson, substitute and starting forward, were all called to the Army Air Corps after the mid-year mark. Norman Gibbs, substitute guard, transferred from Missouri University in the middle of the year.

Because of injuries and men leaving for the service, the starting line up was constantly being changed. Paul Markham, Bob Lowe, Dale Ferguson, Don Keltner, and John Brown all saw service as first team starters. Fanny Markham, forward, and Glenn Swinger, center, were the dependable mainstays throughout the entire season. Fanny was the smoothest player on the squad; watching him, basket-



Coach Tom C. Hayden



First row: Ferguson, Keltner, Louis Rogers, P. Markham.
Second row: Lowe, Swinger, J. Brown, F. Markham, Gibbs, Lights, Coach Hayden.

ball seemed to take no effort at all. His speed and accuracy gave him a 15.7 point average per game, second in number only to Vance Carlson. Glenn Swinger's aggressiveness was a major reason for our team's success. Although not extraordinarily tall, Glenn's deceptiveness in shooting and handling the ball made him a positive threat for McPherson's opponents.

The McPherson Bulldogs finished the season with a total of 834 points, against their opponents 576. The average points scored per game by McPherson were 52.13, her opponents 36.0.

A great deal of recognition for such a fine team goes to Coach Thomas Hayden. It was he who turned a squad of young and inexperienced players into a victorious team. This year's team was known for its ability to play together. The reason for this asset was the fact that Coach Hayden inspired his players with the idea of being "shipmates". It was a matter of one for all and all for one. Coach Hayden also realized that with a team that was comparatively short and inexperienced, speed and the teaching of fundamentals were necessary. Many hours were spent in learning these fundamentals and in the grueling experience of being trained into condition.

Last but not least, Coach inspired all of the squad to be athletes in every sense of the word. Hard working, hard playing, gentlemen on the floor and off. A college education does not always contain the learning of sportsmanship. Twelve members of a victorious 1943-44 basketball squad have had the privilege of acquiring such an asset under the leadership of a man who converted a dream into a reality.



Dale "Rip" Ferguson, forward, the smallest, but one of the scrappiest members of the squad. He was a fast and accurate forward with a sense of humor.

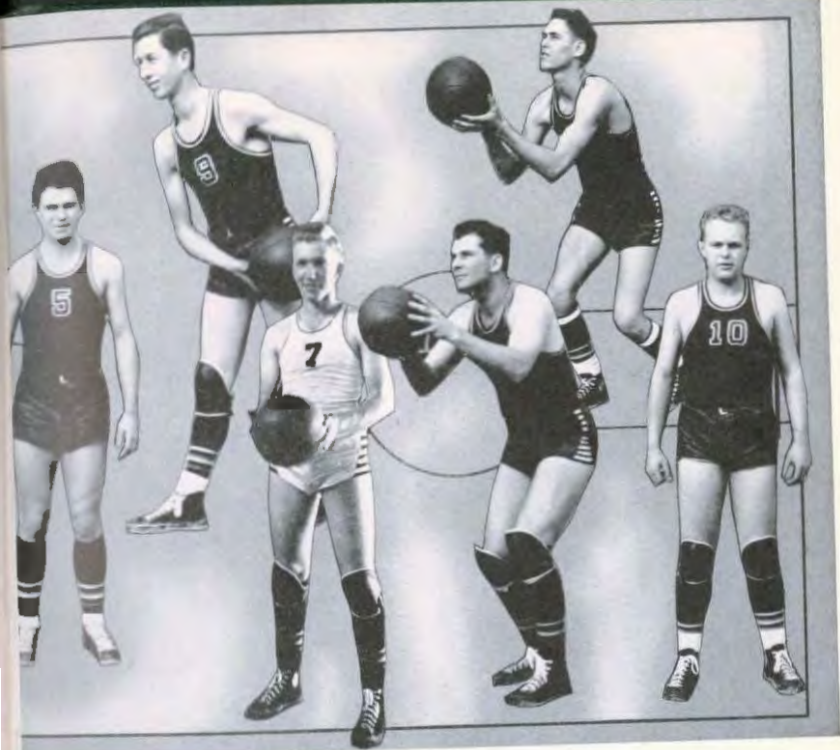
Norman "Slim" Gibbs, guard, transferred from Missouri University and the gridiron in the middle of the year. He shows promise for future seasons.

Bobby Barr, guard, always wore a grin on his face. He left for the Army Air Corps after ten games with a fine playing season behind him.

John Brown, guard, a converted football player, was a good defensive man because of his ability to break up the opponents' passes and dribbling attacks.

Paul Markham, forward, "stuck" to his man like a leech. He used a one-handed push shot with uncanny accuracy. Paul is brother of "Fanny".

Don Keltner, forward, showed true Bulldog spirit, as well as accuracy and clean sportsmanship, in his appearances on the floor.



Louis Rogers, guard, would rather play football, but he shows himself a fast and promising defensive player with a good eye for the basket.

Eugene Lichty, guard, a fast and skilful defensive man. A second year man. Gene is an excellent ball handler with an eye for intercepting the opponents' passes.

Vance "Swede" Carlson, forward, one of the finest rebounders on the court, left for the army after ten games with a 17.1 average per game.

Glenn Swinger, center, a rugged pivot man who always out-faked his opponent, scored many points because of his ability to shoot with either hand.

Francis "Fanny" Markham, forward, is a fast and deft ball handler who averaged 15.6 points per game. He played equally well on defense.

Bob Lowe, center, would rather play basketball than eat or sleep. He was a slow playing center with a good eye for making points.



Senior Men

FRANTZ, IRVIN

A Cappella choir 1, 3; B.Y.P.D. 1, 2, 3, 4; Chemistry club 2; Choral club 2, 3, 4; debate 4; I.R.C. 2; Pi Kappa Delta 1, Rec. council 2, 3, 4; S.C.M. 1, 2, 3, 4 cabinet; Student Minister 1, 2, 3, 4.

GISERT, WAYNE F.

Band 1; B.Y.P.D. 1, 2, 3, 4; Chemistry club 1; Choral club 1; Class officer 1; trans., 2; pres.;arsity debate 1, 2, 3, 4; dorm council 3; Forensic club 2, 3, 4; I.R.C. 1; Men's council 2, 3, 4; Pen club 2, 3; Pi Kappa Delta 3 vice-pres.; 4; Quadrangle 1, 2; Rec. council 3, 4; Spectator 1, 2, 3; radio; mng.; S.C.M. 1, 2, 3, 4; Student council 3; trans., 4; pres.; Who's Who 3, 4.

JUARIZ, SANTOS

Armed forces until fall of '48.

KLOTZ, ALVIN

A Cappella choir 1, 2, 3, 4; band 1, 2; director during 3, 4; Choral club 2, 3, 4; Class officer 1, pres.; 4 vice-pres.; debate 1; Forensics club 1; Men's council 2, 3, 4; Men's quartet 3, 4; S.C.M. 1, 2, 3, 4; Student council 3; Student minister 3, 4.

LICHTY, D. EUGENE

A Cappella Choir 1, 2, 3, 4; Band 1, 2; B.Y.P.D. 1, 2, 3, 4; Basketball 1, 4; Chemistry club 2; Choral club 2, 3, 4; Debate 1, 2; I.R.C. 1; Men's council 4; Men's quartet 3, 4; Rec. council 2, 4; Spectator 2; S.C.M. 1, 2, 3, 4; press.; Student council 4; Student minister 1, 2, 3, 4; Who's Who 4; Regional S.C.M. co-chairman.

LUNKLEY, CHARLES W.

A Cappella Choir 1, 2, 3; Choral club 2, 3, 4; class officer 3, 4; trans.; debate 1, 3, 4; varsity 3, 4; Men's council 1, pres.; Pi Kappa Delta 4; S.C.M. 1, 2, 3; trans.; 1; Student minister 1, 2, 3, 4; Who's Who 1; head resident of boys' dorm 3, 4.

MURRAY, EDWARD LEE

B.Y.P.D. 2, 3, 4; I.R.C. 3; S.C.M. 2, 3, 4; cab.; student minister 2, 3, 4.

PARRIS, WAYNE L.

A Cappella choir 2, 3, 4; B.Y.P.D. 1, 2, 3; Choral club 1, 2, 3, 4; varsity debate 4; I.R.C. 1, 2; Pi Kappa Delta 1; Rec. council 2, 3, 4; S.C.M. 1, 2; cab., 3, 4; Student minister 1, 2, 3, 4; track 1; Who's Who 4.

REEVES, HARRY

B.Y.P.D. 1, 2, 3; cab., 4; Choral club 2, 3, 4; debate 1, 2; football 1, 2; Forensic club 1, 2; golf 1, 2; M club 2, 3, 4; Quadrangle 1, 2, 3; Spectator 1, 2; S.C.M. 1, 2, 3; cab., 4; Student minister 1, 2, 3, 4; varsity 1, 2, 3, 4.

ROGERS, LESLIE

B.Y.P.D. 1, 2, 3, 4; Chemistry club 2; Choral club 1; Dorm, council 4; pres.; Football 2; M club 1, 2, 3, 4; Men's council 4; Rec. council 1; S.C.M. 1, 2, 3, 4; cab.; Student council 4; Student minister 2, 3, 4; track 1, 2; vocal; tom 4.

THOMAS, LEWIS

S.C.M. 2, 3, 4; Student minister 2, 3, 4.

W. A. A.

tumbling, volleyball, basketball, and do-si-do prevail; and in the spring the girls' fancies turn to softball and again to outing and do-si-do.

Athletic activity is not the sole star of W.A.A., for one of the highlights of the year is the annual spring banquet. Especially busy at this time are the secretary, Muriel Lamle, the treasurer, Annette Glasier, and publicity manager, Alice Mae Boyce.

LAY-GIRLS OF W.A.A.

Watching the birdie in a snappy game of badminton; Kuno, second semester tumbling head—with emphasis on the head; Outing-clubber Lobban anticipates a strike; she floats through the air with the greatest of ease; the upkeep is great for the man at the bottom; getting a new view of things.





Senior Women

BOYCE, ALICE MAE

Band 1; B.Y.P.D. 1, 2, 3, 4; S.C.M. 1, 2, 3, 4; publicity manager; W.A.A. 1, 2, 3, 4; publicity manager.

BURGER, BETTY DEAN

B.Y.P.D. 1, 2, 3, 4; social chairman; class officer 2; secretary; debate 1, 2, 3; varsity 1, 3; dorm. council 4; pres.; Forensic club 1; I.R.C. 1; Pi Kappa Delta 3, 4; vice pres. 4; rec. council 2, 3, 4; S.C.M. 1, 2, 3, 4; cabinet 3, 4; Student council 4; sec.; Thespians 2, 3, 4; vice pres. 4; Who's Who 1; Women's council 4.

CHAMP, ISABEL CRUMPACKER

B.Y.P.D. 1, 2, 3; Chemistry club 1, 2; Choral club 2, 3; Dorm. council 2; sec. pres. 3; view pres.; Pep club 1, 2, 3, 4; Quadrangle 2, 3, ed. 3; Sausage lady 1, 2, 3; W.A.A. 1; Women's council 2, 3; Bethany summer session of Louisiana State U. first semester senior.

FULKERSON, LILLIAN

B.Y.P.D. 1, 2, 3, 4; Chemistry club 1, 2; Choral club 1, 2, 3; Pep club 1, 2, 3, 4; S.C.M. 1, 2, 3; W.A.A. 1, 2, 3, 4.

GISL, MAURINE

A Cappella choir 2; sec. 3; B.Y.P.D. 1, 2, 3, 4; Chemistry club 1, 2; Choral club 1, 2, 3, 4; class officer 2; treas. 3, 4; sec.; debate 1; Dorm. council 3; Homecoming queen attendant 2; Quadrangle queen 4; Quadrangle queen runner-up 1; Rec. council 2, 3, 4; S.C.M. 1, 2, 3; co-pres. 4; Who's Who 3, 4; Women's council 2, 3, 4; see Nat'l. Student Volunteers 2.

GROSS, ALTA

B.Y.P.D. 1, 2; Chemistry club 1; Choral club 2, 4; dorm council 1; Pep club 2; treas. 3; vice pres. 4; W.A.A. 1, 2, 3; sec. 4; pres.; Women's council 4; vice pres.

HARRIS, LUCILE

A Cappella choir 2, 3, 4; band 2, 3; B.Y.P.D. 1, 2, 3, 4; Choral club 1, 2, 3, 4; Pep club 1, 2, 3, 4; Women's quartet 3, 4; Rec. council 1; S.C.M. 1, 2, 3, 4; co-pres.; Thespians 2, 3; treas. 4; W.A.A. 1; cabinet 2, 3, 4; Who's Who 4; Social com. 3.

LAMLE, MURIEL

B.Y.P.D. 1, 2; Chemistry club 1, 2, 3; Choral club 1; Pep club 3, 4; S.C.M. 2, 3, 4; W.A.A. 1, 2, 3; vice pres. 1; sec.



Senior Women

MADDOX, MRS. ALMA

Central College, McPherson, Colorado
 U. at Boulder, Colo.; C.S.T.C. at
 Greeley, Colo.

McNICOL, JEAN

A Cappella choir 2, 3, 4; band 2, 3, 4;
 Choral club 1, 2, 3, 4; Pep club 2, 3, 4;
 Quadrangle 4, ed.; S.C.M. 3, 4; Spec-
 tator 1, 2, 3, 4; Student council 3;
 Thespian club 1, 2, 3, 4; W.A.A. 1, 2;
 Women's quartet 2, 3, 4; Who's Who
 3, 4.

RUEHLEN, MAXINE

Class officer 4, pres.; varsity debate
 1, 2, 3, 4; Forensic club 1, 2; Pep
 club 1, 2, 3; Phi Kappa Delta 3,
 4 pres.; Spectator 1, 2, 3 coord.; 4;
 S.C.M. 1, 2, cabinet 3, 4; student
 council 3 sec.; 4 vice pres.; Thespian
 club 3, 4 pres.; W.A.A. cabinet 1, 2;
 Who's Who 3, 4; Women's council 4.

SANDY, MARILYNN

Band 1, 2, 3, 4; Chemistry club 3;
 Choral club 3; Homecoming Queen 3;
 Homecoming Queen, Attendant 4; Pep
 club 1, 2, 3, 4; Quadrangle 4, bus. mgr.;
 Spectator 1, 2, 3 coord.; 4; S.C.M. 3;
 Student council 2; W.A.A. cabinet 1,
 2, 3, 4, pres.; Who's Who 3, 4;
 Women's council 2, 3, 4.

TINKLER, ANNA MAE

B.Y.P.D. 1, 2, 3; Chemistry club 1, 2;
 Choral club 1, 2, 3; debate 2, 3, 4;
 varsity 3, 4; Forensic club 1; Pep
 club 1, 2, 3, 4; Phi Kappa Delta 3, 4;
 Quadrangle 3; S.C.M. 1, 2; W.A.A.
 1, 2, 3, 4; Women's council 3, 4.

MCRAE, KATHRYN

A Cappella choir 2, 3; band 2, 3;
 Choral club 1, 2, 3; Pep club 2, 3;
 Spectator 1, 2, 3; W.A.A. 1, 2; Women's
 council 2, 3.



The womanhood of McPherson College this year have taken on duties which never before entered a well coiffed head. This change has not been a voluntary relinquishing of the reins by a group of cowed men students, but rather an arrangement brought about by necessity. Nearly seventy per cent of the college's enrollees preface their names with "Miss".

The new roles of these girls have ranged from the more menial tasks of janitoring college buildings to the intellectualism of manning the editorial staff of the weekly news organ. In both endeavors, as well as in others, McPHERSON'S bells were expendable.



Junior Women

Top row: Gertrude Conner, Alvina Dirks, Leona Dobrinski, Sorenza Enberg,
Lois Gauby.

Second row: Blanche Geisert, Berniece Guthals, Betty Kimmel, Wilma Fae Kuns,
Anne Metzler.

Bottom row: Phyllis Reeves, Ruth Miller Reeves, Ruth Shoemaker, Eunice Swank,
Evelyn Wilson Klotz.



Sophomore Women

Row 1: Ione Akers, Ferte Allen, Virginia Bales.

Row 2: Juan Blough, Helen Burkholder, Helen Callon.

Row 3: Geraldine Corbett, Annette Glasier, Elva Jean Harbaugh.



Sophomore Women

Row 1: Mildred Helmer, Vurle Howard, Ruth Huston, Mildred Jones, Mary Beth Loshbaugh.

Row 2: Elsie Mast, Eloise McKnight, Lois Nicholson, Maye Oye, Jovce Peter.

Row 3: Mary Jane Peterson, Beulah Seitz, Roberta Stinnette, Evelyn Weaver, Mary Grace Webb, Shirley Wyckoff Finrock.



Freshman Women

Row 1: Jane Anderson, Freda Aurell, Tillie Beach.

Row 2: Jane Bell, Evelyn Bentley, Ida Mae Byer.

Row 3: Mildred Cartner, Lorine Christopher, Ruth Davis.

Row 4: Virginia Elmore, Betty Greig, Dorothy Grove.



Freshmen Women

- Row 1: Leona Holdertad, Susan Ikenberry, Norma Lea Jones, Lois Kaufman, Patricia Kennedy.
- Row 2: Eva Mae Klotz, Dorothy Kutz, Ila Verne Lobban, Lillian Mingenback, Twila Neely, Nada Marie Neil.
- Row 3: Eula Perkins, Margaret Peterson, Evelyn Royer, Irene Schrand, Evelyn Swank, Twila Turner.
- Row 4: Ruth Uchida, Margaret Williams, Eula Wolf.

SONS OF McPHER SON " " "



STRUM UP ACTIVITY ON THE BULLDOG CAMPUS



Junior Men

Row 1: Dean Hoefle, D. P. Lackey.

Row 2: Robert Mays, Edwin Rodabaugh.

Row 3: Glenn Swinger.



*I*n this section of the 1944 Quad-rangle is found one of the largest assortments of male students of the civilian variety to be found in any Kansas church related college this year.

A total of forty-two examples of young manhood braved the onslaught of superior feminine forces to enroll last September. During the year, time, tide and Uncle Sam each took its toll of this male constituency.

Although small in number, it may be truly said that they were mighty. McPherSON's sons were conscientious students, shoulderers of many responsibilities, men of varied interests, upholders of old traditions so far as their diminished ranks would permit. Their acceptance of work enough to keep a group twice their number busy, has been noble.



Sophomore Men

Row 1: Wilmer Brubaker, Keith Burton, Lloyd Dale, Charles Dumond.

Row 2: Ethmer Erisman, Claude Johnson, Gerald Mease, Don Scofield, Howard Stucky.



Freshmen Men

Row 1: Orlo Allen, Robert Barr.

Row 2: Ray Birkes, Dale Brown.



Row 1: John Brown, Vance Carlson, Dale Ferguson, Ernest Ikenberr.

Row 2: Donald Keltner, Robert Lowe, Francis Markham, Paul Markham, Eldon Mohler.

Row 3: Kent Naylor, Marvin Reeves, Louis Rogers, Rex Wilson, Robert Yoder.

AND NOW ---- *We Get Together*

*Peaches
in a basket*



*Sardines
in a Can*





First row: Gilbert, president, Shoemaker, treasurer, Burger, secretary, Mease,
Ruehlen, vice-president, Naylor, Dell.
Second row: Lichty, Marx, Lehman, Rogers, Glasier, Kimmel, Bolinott, S. Ikenberry.

Student Council

This legislative and executive body of student government states, interprets, and enforces its laws. Not a mere figurehead or spacetaker in college catalogs, the Student Council is a vital, working organization in whose hands student problems are unraveled. Through the work of this group faculty-student misunderstandings are at a minimum.

No small amount of credit for the smooth working of the Council goes to its officers. After Wayne Geisert, president, left school, his duties were taken over by Maxine Ruehlen, vice president, although he was chosen honorary president for the remainder of the school term. Ruth Shoemaker was treasurer of the organization, and Betty Burger its secretary.

Work of the Student Council reaches each student, whether he realizes it or not. Every student who participates in an extra curricular activity owes the council a vote of thanks, for the activity to which he belongs gets part of its funds from the council when, in the fall, the activity fee is apportioned to the various groups. Every student who ever reads a *Spectator*, a *Growl* or a *Quadrangle* is indebted to the Student Council and the Board of Publications directly under it, for they are responsible for publications. Supervision of elections is another of the Council's jobs.

During the school year of 1943-44, the Council has revised the administration of the Student Union Room, and has worked on a plan for putting up a curtain on the stage of the Student Assembly Room.



First row: Leslie Rogers, Burger, W. Parris, M. Parris, M. Reeves, Shoemaker, Harbaugh.
Second row: Dell, Eunice Swank, W. Geisert, Gish, Frantz, Lichty, Swinger, Harris, McKnight, Metzler.

Recreational Council

The Recreational Council is an organization made up of members chosen by its own body, whose purpose is to learn the techniques of recreational leadership in order that the churches and communities in which its members later find themselves may have trained leaders to help carry on programs for constructive leisure. Their experience is in fields which will fit them for conducting inspirational worship services, directing camp activities, and planning worthwhile and wholesome parties.

Throughout fall, winter, and spring, the "rec" council, as they are known, met every Monday evening and planned frequent social events in which the whole school might participate. In addition, individual members have been cooperative in conducting parts of programs for other groups.

As any organization needs its leaders, so with the Recreational Council. Its executive powers are invested in a steering committee composed of three members. Wayne Parris has served as chairman of the steering committee, and the other two members have been Betty Burger and Eunice Swank. Much credit for the success of the work done by the Recreational Council is due Professor Dell for his interest and helpful leadership.

The work of the council proves beyond a doubt that constructive use of leisure is one of the attributes of the good life.

Although the Junior officers have quite a line, this is the first time they have been hung up on it. From the Junior president's leading of graduates to their graduation, the other sundry duties behind the scenes, the cabinet has operated efficiently and effectively. Their concern about matters such as the Junior-Senior banquet and retreat, levying and collecting class dues, have caused more perturbation than John Doe might realize.

Juniors

Klenn Swartz, president
Kevyn Ruiz, vice-president
Lorinda Connor, secretary
Loren Bohrnkl, treasurer



And this is where the Senior class executives hang out! Upon their shoulders rested the burden of directing the Class of 44 in its last busy year of activities. They have wielded a guiding hand over such undertakings as Fresh-Senior kid party, choosing a Senior play, making plans for a Junior-Senior retreat, arranging the business concerning commencement, ad infinitum. Theirs has been a hard job well done.

Seniors

Maxine Kuehler, president
Alvin Katz, vice-president
Maurine Elich, secretary
Charles Lankey, treasurer



CLASS

OFFICERS



Keith Burton, president
Juan Blough, vice-president
Elva Jean Harbaugh, secretary
Roberta Stinnette, treasurer

Ernest Ikenberry, president
Eula Wolf, vice-president
Dale Ferguson, secretary
Twila Neely, treasurer

Sophomores

Keith and his pin-up girls, one might say! It has fallen the lot of these four to guide the policies of the upper half of the lower-classes. Their duties include the apportioning of a budget and the collecting of same from class members, planning the social activities of their class, and in general, being Sophomore leaders. In spite of the general "trends of our time", these class officers have managed to keep the social ball rolling.

Freshmen

Contrary to indications printed above, members of the Freshman cabinet are not wash-outs! Rather, they and their fellow classmates are standouts. They have played a vital part in campus life this year. Theirs has been a new and unfamiliar job, but they have, in cooperation with other organizations, kept the calendar of events revolving smoothly. Freshman initiation safely weathered, they were able to enjoy the other social activities of the year.



First row: Dr. Metzler, Shoemaker, Burger, Lietzy and Harris, co-presidents,
Lankley, Dr. Bittinger.
Second row: Hoeffle, Mays, Leslie Rogers, Swinger, Buchlen, Gish.
Third row: R. Stinmetz, E. Frantz, Metzler, A. Kloitz.

Student Christian Movement

The Student Christian Movement, which is long for S. C. M., has this year, as in past years, attracted to its ranks more members than any organization. Its broad scope of interests, its humanitarian ideals and objectives, and its inspirational leadership have made it a potent force on the campus.

New commissions have been organized which have definite bearing on personal, community, national, and international life. Studies concerning personal relations, camp leadership, race relations, and current events added a note of variety and their timeliness made the endeavor doubly worthwhile. Student Volunteer commission was again active in guiding service-minded individuals.

The major undertaking of the S. C. M. this school year was the sponsoring of five Nisei students here on McPherson's campus. These three boys and two girls have, by their presence, given students an accurate picture of the average American-Japanese youth. The college is broader because they have been here.

Heretofore unheard of, the cabinet now has a meeting place which is exclusively its own. At the blast of the eight o'clock whistle on Friday mornings, the cabinet assembles in its newly renovated room in the basement of Sharp Hall. In addition to commission meetings, S. C. M. leaders have concerned themselves with conferences, chapel programs, and social events.

At the helm of the S. C. M. this year have been co-presidents Lucile Harris and Eugene Lichty.

sunrise services; in the spring they enjoyed picnics and camping services.

In addition to their regular meetings, the group has featured seasonal activities. At Christmas time they caroled; Easter morning found them worshipping at a

song leader, and Elva Jean Harbaugh, accompanist.

Worthy of note has been the work of Elaine McKnight, treasurer, and Ruth Shoemaker has functioned in the realm of the social under-

the planning of programs. Lois Gandy has assumed the clerical duties of secretary.

Clara Swinger has served as president, Anne Metzler has insisted herself with

Among those most actively interested in B. Y. P. D. are its cabinet members,

to belong. Actively or passively interested people have equal opportunity

call their own. Actively or passively interested people have equal opportunity

for youth, and to provide youth with a part of the church organization that they

opportunities for leadership in the church, to give inspirational guidance planned

Its motto is "The Passport to Power is Service". Its function is to give

organization, this is a local unit of the Brethren churchwide youth organization.

in the program of education for living the good life. One of many similar church

The Brethren Young People's Department is an integral part of the college

being lived.

that sometimes is sounded when other standards are used as the gauge of a life

in making himself a "success". Success in this sense is not the hollow word

Christian living; religion as a way of life, is the highest that man can attain

B. Y. P. D.

First row: Swinger, president; Shoemaker, secretary; Metzler, treasurer; Mary Jane Peterson, A. Metzler, Undernack, Peter, Eunice, Frank, E. Lee, Douglas, Margaret Peterson, N. Stummel, Hannah Boye.
 Second row: A. Metzler, E. Metzler, Kaufman, Kinney, Neely, Hoover, Leslie Hoover, H. Gentry, R. Lambertz, M. Jones, Harbaugh, Hall, Mary, Stinson, Wolf, Stewart, Leah, Setzer, Howard, Lubban.
 Third row: Eva Mae Metzler, Lachy, Joyce, Hueston, Nell, Burkholder.
 Fourth row: Meloy, Lachy, Joyce, Hueston, Nell, Burkholder.
 Fifth row: Harris, Burkerson, Williams, Hilderbrand, Turner.
 Sixth row: Stofeld, H. Reeves, O. Allen, Neely, Burton, Dunham, Estaman, K. Franklin.





First row: Kuns, B. Gebert, Metzler, Glasier, S. Ikenberry, Hoeft.
Second row: McNeal, Buehler, Keltner, Harris, N. Jones, Burger.
Third row: M. Reeves, W. Geisert, Lehman, Mays.

Thespians

"All the world's a stage," but the Thespians prefer to think that a more pointed version of life as presented via footlights, grease paint, props, and clever quips is more entertaining than the common details of existence as one sees them every day.

A search for new members was the first concern of the Thespian Club as it looked forward to the 1943-44 season. Tryouts were held in September. They were stiff, but three women and three men came through the grueling experience to win coveted places in the club. They were Blanche Geisert, Susan Ikenberry, Norma Lea Jones, Dean Hoeft, Don Keltner, and Marvin Reeves.

Although assured of membership the fledglings were forced to undergo an initiation at the hands of their senior members. The rites were performed at the Warren Hotel Blue Room at the annual Thespian banquet on October 1. Hilarity reigned when, the banquet consumed, those present rendered new versions of old classic selections. The success of the formal banquet proved to be the starting gun to a winning season.

Under the leadership of Maxine Ruchlen as president, work at a high level of achievement was begun and completed. Early in the season Rotter's and Vince's "Letters to Lucerne" was chosen as first semester vehicle to be given in collaboration with the play production class, tryouts were held, the cast chosen, and rehearsals begun. As an added Homecoming attraction, it was given on December 10.

The play as a whole was well cast and convincingly interpreted. Its moral teachings prompted more than a second thought. Of special interest were the roles of Erna Schmidt, the German girl whose "letters to Lucerne" furnished the conflict of the drama, as played by Maxine Ruelhen; Felice Renoir, French antagonist as interpreted by Betty Burger; Sally Jackson, an American from the deep South, by Norma Lea Jones, and Keith Burtn and Alice Mac Boyce in their character roles of French gardener and cook.

As a second semester project the club voted to sponsor three one-act plays and throw tryouts open to non-Thespians as well as seasoned dramatists. The decision was well received, and a sufficient number of students tried out for parts to make casting difficult.

The three comedies which were given were: "Lavender and Red Pepper," "The Exchange", and "Cinderella Married". Experience in directing was given to Thespian members Blanche Geisert, Maxine Ruelhen, and Betty Burger. As the old fashioned lavender and red pepper grandmother, Mary Beth Lashbaugh endeared herself to the audience: Freda Aurell's "Imp" from "The Exchange" had others as well as herself doubling up in mirth; Louis Rogers as Cinderella's country bumpkin lover out-yokelled all yokels.

This year has seen a revival of interest among Thespians in Alpha Psi Omega, national dramatics fraternity. Maxine Ruelhen, Betty Burger, Jean McNicol, Annette Glasier, Lucile Harris, and Wayne Geisert became members.

Betty Burger vice presided the followers of Thespia this year, and Annette handled their debits and credits.



Scenes from "Letters to Lucerne" - - - -
 Mail call at Madame Ramonu's School - - - - Hellgerrent domesticity - - - -
 "Once upon a time there was a boy named Icharus Schmidt" - - - -
 "Ach, Hans! But I lof you!"



First row: Prof. Berkebile, Ruehlen, B. Geisert, Glasier, Aurell, Dr. Bittinger.
 Second row: E. Frantz, Gish, Loshbaugh, D. Brown, E. Ikenberry.
 Third row: W. Parris, W. Geisert, Diamond, Lunkley.

Debate

Praise from within ranks is of highest value and the McPherson debaters have among other colleges the reputation that they are a squad with which to be reckoned.

Illness, draft boards, and unforeseen circumstances have changed the personnel of the teams for each tournament but the Bulldog spirit has remained invincible. The sonorous voices of men debaters and the clipped speeches of the women have upheld McPherson's tradition of making an enviable record.

First event of the year was the interclass debates from which the Senior team, Betty Burger and Wayne Geisert, emerged victorious. Soon after, the tryouts followed, and varsity teams were selected: Maxine Ruehlen and Blanche Geisert, Anna Mae Tinkler and Annette Glasier, Wayne Geisert and Wayne Parris, Charles Lunkley and Robert Yoler.

The Bethel Invitation Tournament at Newton was the first intercollegiate event of the year, and on January 8 was held here the McPherson Economy Tournament. Eight Macollegians made the out of state trip to Lincoln, Nebraska, to attend the University of Nebraska Speech Tournament on February 25 and 26. Again on March 30, McPherson was the scene of activities when the Kansas Inter-Collegiate Debating League met here.

During the first semester the debate squad was under the leadership of Desmond W. Bittinger, and during the second semester James M. Berkebile took his place. As governor of the Province of the Plains for Pi Kappa Delta, Maurice Hess has guided McPherson debaters throughout the year.



Cheerleaders: Burton, Glasier, Mays, Peter, Lamlie, Evelyn Klotz, McNicol, Fulkerson, Callon, McKnight, Grieg, Conner, Sandy, Kimmel, N. Jones, B. Geisert, Guthals, Tinkler, Lobban, Burkholder, Howard.

Barkerettes

Off with the old and on with the new! The Pep Club of some several years vintage in the fall of 1943 changed its face, and the basketball team heard a newly energized organization cheering them on to a successful season.

It was early in the year that Gertrude Conner, president, Evelyn Wilson, vice-president, Shirley Wyckoff, secretary, and Betty Kimmel, treasurer, started making plans to revamp the old Pep Club. Their efforts were noticed in the metamorphosis which resulted in the Barkerettes. Barkerettes are now an exclusive, all-girl organization who appear in a body at ball games in white sweaters with bulldog monograms, and red skirts. Under the new set-up a constitution was drawn up and adopted, and regular meetings were held. Membership was restricted to those voted in by old members.

Cheer leaders are automatically Barkerettes, but the cooperation between Barkerettes and cheer leaders is not so automatic. A well synchronized yell is the result of practice, and does not happen by accident. Regular meetings of Barkerettes for special practice resulted in a nucleus of solidity for the whole cheering section.

Through the efforts of cheer leaders Bob Mays, Annette Glasier, and Keith Burton, as well as individuals within the Barkerettes, clever original pep assemblies were held before games. Olie's funeral on the day before the tussel with the Swedes, and the all-girl Swedish Sympathy Orchestra were examples of Barkerette participation.



*First row: Finfrack, Berkebile, Hazen, Kuss.
 Second row: Boyer, Neely, Mary Jane Peterson, Peter, Uchida, Conner.
 Third row: Bentes, Beach, Bell, Williams, Kimmel, Shoemaker, Reitz, Akers, Mays.
 Fourth row: Yoder, E. Mohler, E. Ikenberry, Naylor, J. Brown, Laws, Burton, Dale, Weaver, Birkes.*

Chemistry

The Chemistry Club, one of the largest organizations on the campus, was formed and chartered by the late Dr. J. W. Hershey, former head of the chemistry department. Its purpose was to draw a large number of the students together as a unit for interesting and special instruction in the recent developments in chemical research and closely allied fields; also it is a unit for entertainment. The club has been active continuously since its inauguration and is progressing as usual this year under the direction of the new department head, Professor J. M. Berkebile.

In addition to being enlightening, its bi-weekly meetings are entertaining and wholly enjoyable. At four o'clock on the Tuesday afternoons when Chemistry Club meets, the chemistry lecture room witnesses a nice blend of the formal and informal. The movie which the Chem Club goes see is instructive and constructive, but the atmosphere in which they find themselves is convivial.

Out-of-town trips which are usually a highlight in the Chemistry Club's year of activities have had to be curtailed this year because of transportation difficulties.



Dr. J. Willard Hershey

Choral Club

Wednesday evening from 6:45 until 7:45 found Macampus in the Student Assembly Room, for it was on that evening that the Choral Club, the largest musical organization of the college, rehearsed. Its purpose was to give all who have a desire to lift their voices in song a chance for practical experience under the baton of a gifted conductor. Results prove that it was a worthwhile undertaking.

At the beginning of the season, Professor Nevin W. Fisher, Choral Club director, boasted a chorus of nearly sixty voices. Since then members have come and gone, but the membership of the group has remained in the ranks with the colleges' largest choral groups of all time.

Throughout the year the chorus has worked on a variety of sacred and secular numbers, but the climax of their year's endeavors was "The Rose Maiden", a secular cantata by Frederick Cowen. It was given in the city auditorium on April 16. Soloists for the performance were Eloise McKnight, Lucile Harris, Harold Beam, and Clarence Burkholder.

Tending the executive end of the work were Wayne Parris, president, Joan Blough, secretary-treasurer, and librarians Ernest Ikenberry and Rex Wilson. Gertrude Conner has done an excellent job as accompanist.

First row: Perkins, Eunice Swank, Oye, Conner, Gauby, Davis, Beach, Harbaugh, Fisher.
Second row: Blough, Meteler, Royer, F. Allen, Evelyn Swank, Bentley, R. Reeves, Kays.
Third row: Finfrack, Bales, Burkholder, Akers, Howard, Hoderred, Kimmel, Neff, Neely, Byer, Turner, M. Jones, Kennedy, R. Geiser, E. Ikenberry, McKnight.
Fourth row: Kaufman, Shoemaker, Helmer, Guthals, Carter, Stinnette, Gross, Williams, Lamb, Nicholson, Wolf, Kurtz, Grove, McNeal.
Fifth row: Leslie Rogers, Kellner, E. Ikenberry, Burton, Hoefle, Naylor, Eva Mae Klotz, Lieht, H. Reeves, O. Allen, E. Frantz, M. Reeves.
Sixth row: W. Parris, Dumond, R. Wilson, Louis Rogers, A. Klotz, Swinger, Johnson.



Choir

All colleges have certain favorites among their institutions. The A Cappella Choir of McPherson College, in its twelfth year this season, is one of the favorites of students, faculty, townspeople, and alumni. This year's Choir, under the direction of Professor Nevin W. Fisher did not betray the confidence of its supporters.

Contrary to precedent, the Choir of this season sang not only unaccompanied numbers, but also selections with piano accompaniment, thus broadening the scope of its repertoire. Leora Dobrinski has served throughout the year as accompanist for the group.

A spring concert is usually the main objective of the A Cappella Choir, and the whole season is spent in preparation for that concert. Taking a cue from the increase in production in other fields, this year's Choir climaxed their first semester's work with the rendition of a Christmas cantata, "When the Christ Child Came", by Dr. Joseph Clokey, in addition to their concert on May 5. The cantata, with its poignant lyrics from the poem by Laura Spencer Porter, brilliant accompaniment, and novel chord combinations, was presented in the local Church of the Brethren and in a church in Lyons, Kansas.

The McPherson High School auditorium was the scene of the annual spring concert. Traditionally, the program was begun and closed with the Choir's theme song, Franz' "Dedication". Other unaccompanied numbers included Negro spirituals, selections from early church music, and a Russian number. Their most pretentious accompanied number was Harvey Gaul's musical arrangement of Walt Whitman's poem "I Hear America Singing".



First row: Maat, McKnight, Metzler, Harris, McNeal, Shoemaker, Blough, Holderread.
Second row: Naylor, Parris, Swinger, Scofield, Dumond, A. Klotz, Lichty.

Band

With a semester's experience as band leader carefully tucked in his belt, Alvin Klotz last fall started rounding up the remains of his last year's band and recruiting new members from the freshman ranks to give the 1943-44 athletic season a pep band to end all pep bands. The season was well worth his best efforts.

Even though the band was small in number, enthusiasm ran high and the din made when Klotz lifted a conducting hand was terrific. Without the pep supplied by the band, there would have been very little punch at ball games or in pep assemblies. Whether at home games or abroad, from the time "A Hot Time in the Old Town" was off to a rousing start, until the last strains of "All Hail to Thee" had faded away, the band set a high pace to follow.

By the roar of the tiger in "Tiger Rag", and the sound of "The Claxon", there could be no doubt concerning the night of the band's rehearsing, for on Monday evenings the portion of roof over the northwest corner of Sharp Hall fairly vibrated.

Two different instruments made their debut in the band this year. They were the piano accordion that Eva Mae Klotz played, and Don Keltner's bull fiddle of barber pole colors.

Other members of the band and the instruments of their choice were: trombones, Dale Brown and Eula Wolf; clarinets, Gertrude Conner, and Charles Dumond; cornets, Lloyd Dale and Kent Naylor; tenor saxophone, Evelyn Bentley; baritone, Alvin Klotz and Keith Burton; cymbals, Ila Verne Lobban; snare drum, Marilyn Sandy; bass drum, Helen Burkholder; bass horn, Don Scofield.



First row: Wolf, D. Brown, Bentley, Burkholder, Sandy, Lobban, Conner, A. Klotz, director.
Second row: Scofield, Burton, Dumond, Dale, Eva Mae Klotz, Keltner.

FUR GOSH SAKES



First row: Scofield, photography editor, Wilson, photographer, Glasier, copy editor, Fries, faculty adviser.
Second row: McNeal, editor, Sands, business manager, Keltner, sports editor.

. . . it's The QUAD Staff

College yearbook editors come and those editors go, and each bemoans his own particular trials and tribulations. Business managers tread many a weary mile on Main Street convincing business men of the benefits of advertising in "our annual". Photographers snap picture after picture—that is, if they can get the film. Copy editors ponder over verbs, commas, pronouns. Yet the outgoing staff casts a reluctant eye at the last picture as it starts to the engravers, and at that final slug of copy when it finds the Republican copy basket.

and The SPECTATOR sits in clover

Behind four pages of neatly written copy and eye-catching ads which find themselves ready for student consumption by 12:15 Friday noon, there lies a story of consistent effort, week in and week out. The Spectator, long heralded as the best news organ in the conference, sees all, hears all, and tells what the editor deems fit for the public.

Although womanned instead of manned this year the Spectator did not become effeminate. The same direct style of writing about subjects of wide appeal characterized the paper during both semesters. From Ye Eds Blanche Geisert of the first semester and Anne Metzler, second term head, through Berneice Guthals and Virginia Bales as managing and campus editors, down to the most lowly reporter, there was the feeling that "The paper must go on!"

Co-business managers Vurtle Howard and Keith Burton, with Lloyd Dale and Pat Kennedy as collectors, helped to make that possible through furnishing a firm financial foundation for the Spec.

Much appreciated by out of town, state, and country subscribers are the efforts of Helen Burkholder, circulation head and her staff of unheralded heroines.

First row: Metzler, 2nd semester editor, Howard, co-business manager, Burkholder, circulation manager.
Second row: B. Geisert, 1st semester editor, Guthals, managing editor, Bales, campus editor, Burton, co-business manager.



At the Call of Country

Alumni in Service

Axel, Leiland '36
 Albrecht, Wayne '39
 Austin, Charles '33
 Baze, Corwin '36
 Barley, Herbert '39
 Baringrover, Donald '38
 Baringrover, Floyd '30
 Baringrover, Phyllis '36
 Beckwith, Vernon '40
 Beshler, Greille '38
 Bower, Gordon '39
 Bowker, Jack '42
 Brubaker, Crawford '22
 Brumbaugh, Donald '35
 Brunk, Homer '30
 Buckman, John '17
 Bullinger, Willard '42
 Carlsons, Marlin '27
 Cassier, Winston '27
 Chisholm, Emerson '37
 Clark, Otto '37
 Cobb, Redell '40
 Cresser, Carroll '40
 Diehl, J. Edwin '40
 Dresher, Stanley '13
 Elrod, Samuel '40
 Fleming, Willard '37
 Forrer, Elizabeth Waxmer '35

Fouts, Homer S. '22
 Francis, Robert '42
 Fries, Harold '41
 Gray, Ernest '26
 Goering, Raymond '41
 Gunn, Lee '37
 Hill, Marvin '31
 Hochstrasser, Herbert '32
 Hoffert, Joe '45
 Holcomb, Floyd '24
 Horn, Richard '39
 Ikenberry, Ethel '42
 Kingsley, Russell '39
 Koops, Carroll E. '44
 Krueger, Norman '41
 Kurke, Floyd '27
 Latta, Paul '37
 Landos, Ralph '29
 Letkeman, Jewell '40
 Lewis, Lester '35
 Metzger, David '37
 Metzger, Paul '42
 Meyer, Anton '40
 Meyer, Raymond '42
 Miller, Dohn '40
 Mingsmaack, John '48
 Moshman, Lloyd '38
 Mowbray, Herbert '32

McCoy, Don '42
 McGill, David '40
 Mudra, William '23
 Myers, Harold Keith '41
 Naylor, Kirk '41
 Nantz, Keris '38
 Newkirk, Donald '41
 Ohmart, Bernadine '37
 "Oliver, Jack '46
 Ostlund, Aina '30
 Olson, LaRue '42
 Peterson, Ernest '42
 Pierce, Keith '41
 Rainsuff, Elmer '44
 Reed, Ernest '41
 Rezier, Marion '41
 Robertson, Roy '49
 Rossel, Robert '41
 Santhoff, Addison '39
 Saylor, Galen '22
 Saylor, Lavelle '42
 Schubert, Arthur '43
 Seidel, Robert '40
 Sheffer, Winton '40
 Shuffy, Paul '34
 Shufers, Ralph '36
 Stephenson, Lawrence '39
 Stern, Forrest '41

Storn, Galen '40
 Stuber, Willard '39
 Stroner, Sam '35
 Stover, Stephen '40
 Swenson, Millard '30
 Switzer, Wayne '41
 Thompson, Wm. P. '39
 Unruh, Vera J. '25
 Viques, Mike '37
 Vaughn, Leonard '48
 Verrier, Jack '32
 Verhill, Lavene '40
 Voth, George '49
 Voth, Harold '40
 Walker, Carroll '31
 Wannemaker, Rollin '41
 Watkins, G. Earl '18
 Wells, Glen '26
 Wiggins, Leonard '35
 Wine, Newell '34
 Yoder, Willard '34

HONORABLY DISCHARGED

Boss, Paul '36
 Dammiller, Paul '42
 Dunbar, Dale '41
 Dunbar, Ted '41

Former Students in Service

Achilles, Robert
 Albright, Miles
 Allison, Vincent
 Anderson, Paul
 Applegate, Jack
 Austin, John O.
 Austin, William
 Baldwin, Charles
 Baringrover, Laurence
 Barr, Bob
 Beattie, Wilbur
 Beckwith, Thurston, Jr.
 Bengston, Galen
 Berg, Lillus
 Berkebile, John
 Blackman, Merrill
 Blough, Milne
 Boesker, Arno
 Boaz, Robert
 Bowers, Lee
 Bowman, Harlan
 Bowman, Harold
 Breemann, Bryce
 Brownlowe, Robert
 Brubaker, Melvin
 Brunton, Delbert
 Buller, Walter
 Best, Robert
 Burger, James
 Burkholder, Robert
 Burton, Conrad
 Callon, Richard
 Callon, Gerald
 Carlson, Junior
 Carlson, Vance
 Clark, Maurice
 Clark, Sammy
 Colletti, Andrew
 Cook, Robert
 Cooley, Maurice
 "Copeland, Raymond
 Coughenour, Gayland
 Crabbs, Delbert
 Crank, Eldon
 Crummecker, Francis
 Culver, Darwin
 Dale, Ernest
 Davis, Forrest
 Dean, Albert

DeGeer, Don
 Dell, Byron
 Dell, Joe
 Dircks, Abe
 Dobrinski, Harold
 DuBois, Eldon
 Eberly, Junior
 Ebersson, Arthur, Jr.
 Ferguson, Dale
 Ferguson, Don
 Fields, Eldon
 Finfork, Merle
 French, Junior
 Fries, Arthur
 Funk, Glenford
 Gannon, James
 Garretts, Floyd
 Gayer, Lawrence
 Geh, Maurice
 Gieseler, Joe
 Groll, Everett
 Haggood, Merwin
 Harvey, William
 Hawkins, James O.
 Haxton, Joe
 Heckman, David
 Hershey, Ardis
 Hessler, Winlow
 Hiebert, Franklin
 Hill, Clinton
 Hill, Lawrence
 Holder, Richard
 Howser, Sylvia
 Houghton, Jack
 Howerton, Ferral
 Hunsman, Ronald
 Jarboe, Russell
 Jasper, Earl
 Johnson, Ekeel
 Johnson, Kenneth
 Jones, Calvin
 Jones, Nathan
 Jones, Walter
 Jordan, Clary
 Jordan, Curtis
 Judike, Roland
 Kasey, Carl
 Keith, Gilbert
 Kingsley, Bob

Knackstaft, Danno
 Knackstaft, Merrill
 Koger, Leonard
 Kohman, Donald
 Kozub, Jack
 Krause, Lee
 Laegemann, Junior
 Lundert, James
 Lindner, Wallace
 Livville, Willard
 Link, Warren
 Lohman, Leslie
 Lounsbury, Elbert
 Lawler, Lawrence
 Lott, Gerald
 Macklin, Wilbur
 Marr, Robert
 Mason, James
 Matson, Laurin
 Maupin, Thayne
 McKenzie, Bob
 McRoberts, Richard
 Messinger, John
 Meyer, Albert
 Miller, Bob
 Miller, Dee
 Miller, Roy
 Mills, Lloyd
 Mingsmaack, Carl
 Mohler, Donald
 Modine, Earl
 Moller, Richard
 Morgan, Arthur D.
 Morse, Max
 Myers, Merlin
 Naxson, Walter
 Nimecholer, Harlan
 Nordling, Chester
 Nordling, Kenneth
 Nordling, Leland
 Peterson, Linn
 Peterson, Paul
 Price, Clayton
 Prantler, Richard
 Quillen, Bob
 Quinno, Robert
 Ramsey, Duane
 Rea, Tommy

Reed, Lowell
 Reinecker, Keith
 Reinecker, Russell
 Rink, Marvin
 Rink, Herbert
 Roth, Earl
 Sanger, Merrill
 "Schagonsky, Clifford
 Schmidt, John
 Schaefer, Bernard, Jr.
 Sellers, Elton
 "Sellers, Marcel
 Seeger, Marvin
 Shanks, Warren
 Shirk, Clem
 Sies, Warren
 Sloan, Keith
 Smith, Donald
 Soblehy, Robert, Jr.
 Stauffer, Burns
 Stewart, Marlin
 Stein, Russell
 Strainman, Bob
 Strouse, Lawrence
 Stucky, Dean
 Sundahl, Edwin
 Swanson, Rodney
 Tarr, Arlo
 Taylor, Finley
 Tice, Raymond
 Tinkler, Bernard
 Unruh, Leiland
 Unruh, Milo
 Van Blaricum, J. W.
 Voth, Milford
 Wagner, Harold
 Weber, Dinton, Jr.
 West, Addison
 Westling, Virgil
 Williams, Ellis
 Wolfe, Ovin
 Woodward, Lowell
 Young, Harold
 Young, Howard

HONORABLY DISCHARGED

DeFour, Richard
 Justice, Santos

*Deceased 3-15-42 **Deceased 11-15-42 ***Deceased 10-16-41 ****Deceased 12-17-41

Index

Akers, Ione, Conway, Kansas	16, 33, 62, 63
Allen, Fernie, Big Lake, Minnesota	33, 57, 63
Allen, Orlo, Big Lake, Minnesota	49, 57, 63
Anderson, Jane, Osborne, Kansas	13, 36
Aurell, Freda, 523 N. Oak St., McPherson, Kansas	6, 35, 60
Bales, Virginia, Ottawa, Kansas	33, 63, 67
Barr, Robert, 909 S. Ash, McPherson, Kansas	16, 42, 44, 49
Beach, Tillie, Shelbyville, Missouri	34, 62, 63
Bell, Jane, Langelon, Kansas	29, 34, 57, 62
Benge, Dr. Frances, 1000 E. Euclid, McPherson, Kansas	20
Bentley, Evalyn, Shields, Kansas	34, 57, 62, 63, 65
Berkebile, Professor James M., Kline Hall, McPherson, Kansas	16, 20, 60, 62
Birkes, Ray, 513 S. Chestnut, McPherson, Kansas	49, 51, 62
Bittinger, Dr. Desmond W., Elgin, Illinois	8, 20, 56, 60
Bittinger, Mrs. D. W., Elgin, Illinois	8
Bittinger, Marianne, Elgin, Illinois	8
Bittinger, Patricia, Elgin, Illinois	8
Bittinger, Richard, Elgin, Illinois	8
Bittinger, Stanley, Elgin, Illinois	8
Blough, John, Waterloo, Iowa	13, 14, 16, 33, 55, 57, 63, 64
Boitnott, Dr. John W., 1309 E. Euclid, McPherson, Kansas	11, 52
Bowman, Professor Joseph L., 103 N. Carrie, McPherson, Kansas	20
Boyce, Alice Mae, Carlton, Kansas	28, 30, 57, 59
Brown, Dale, 1545 N. Grove, Wichita, Kansas	13, 49, 60, 65
Brown, Professor Jessie, 132 N. Charles, McPherson, Kansas	20
Brown, John, Geneseo, Kansas	42, 43, 44, 50, 51, 62
Brubaker, Wilmer, Mountain Grove, Missouri	41, 48
Burger, Betty Dean, Wiley, Colorado	7, 26, 27, 30, 52, 53, 56, 57, 58, 59
Burkholder, Helen, Octavia, Nebraska	14, 28, 32, 57, 61, 63, 65, 67
Burton, Keith, 3080 Douglas Ave., Des Moines, Iowa	17, 40, 48, 55, 57, 59, 61, 62, 68, 65, 67
Byer, Ida May, Bemidji, Minnesota	34, 57, 63
Callon, Helen, 801 E. First St., McPherson, Kansas	27, 33, 61
Carlson, Vance, 402 N. Olivette, McPherson, Kansas	16, 42, 45, 50
Carter, Mildred, Abilene, Kansas	27, 29, 35, 57, 63
Champ, Isabel Crumpacker, McPherson, Kansas	30
Collins, Miss Clara, 419 S. Chestnut, McPherson, Kansas	20
Conner, Gertrude, 717 S. Ash, McPherson, Kansas	25, 32, 51, 54, 61, 62, 63, 65
Corbett, Geraldine, Wiley, Colorado	33
Christopher, Lorine, 701 N. Main, McPherson, Kansas	35
Dale, Lloyd, Geneseo, Kansas	15, 40, 48, 51, 62, 65
Davis, Ruth, Wiley, Colorado	35, 63
Dell, Professor S. M., 308 Eshelman, McPherson, Kansas	20, 40, 52, 53

FILMS

PHOTO SUPPLIES

CAMERAS

221 N. Main

ABEL'S

Phone 92

GIFTS

ART SUPPLIES

FRAMES

WHERE YOU'LL MEET YOUR FRIENDS

Up-to-the-minute Fountain Service — Complete Line of Cosmetics
The Magazines You Enjoy Reading — Hallmark Greeting Cards for Every Occasion
YOUR REXALL DRUG STORE

HUBBELL'S DRUG STORE

104 S. Main

Phone 23

Hawley Hardware

If It's Hardware
—We Have It

219 N. Main

Phone 191

DR. A. W. GRAVES

OPTOMETRIST

Over Bixby, Lindsey & Co.

106½ N. Main

Phone 759

Our Pledge To You—

During present wartimes - - -

For coming peacetimes - - -

To provide you both at your college and in your homes, whether they be in McPherson or the surrounding rural districts, with the best of water and light service, difficult even though it may seem at times because of the present conditions and restrictions.

To do our utmost when peacetimes finally arrive to continue that same high quality of service and in addition to so have planned in advance for postwar activities that you will derive even greater benefits from your own water and electric utility.

**McPherson Water & Electric
Department**



Index

Dirks, Alvina, Buhler, Kansas	32
Dobrinski, Leora, Lorraine, Kansas	27, 32, 54, 57
Dresher, Doris, 320 N. Maxwell, McPherson, Kansas	20
Dumond, Charles, 1203 Randolph, Waterloo, Iowa	41, 48, 57, 60, 63, 64, 65
Elmore, Virginia, Galva, Kansas	35
Enberg, Sorenza, 403 S. Chestnut, McPherson, Kansas	32
Erisman, Ethmer, Fairview, Missouri	41, 48, 57
Ferguson, Dale, 737 E. Euclid, McPherson, Kansas	16, 42, 43, 44, 50, 55
Finrock, Shirley Wyckoff, 121 S. 5th., Osborne, Kansas	16, 34, 62, 63
Fisher, Professor Nevin W., 1514 E. Gordon, McPherson, Kansas	21, 63
Frantz, Rev. Earl, 133 N. Carrie, McPherson, Kansas	21
Frantz, Elvin, Holmesville, Nebraska	13, 41, 46, 53, 56, 57, 60, 63
Fries, Professor J. H., 315 N. Charles, McPherson, Kansas	21, 66
Fulkerson, Lillian, 1700 E. Gordon Ave., McPherson, Kansas	15, 17, 30, 57, 59, 61
Gauby, Lois, Washington, Kansas	18, 32, 63
Geisert, Blanche, Elmo, Kansas	14, 26, 32, 57, 58, 60, 61, 63, 67
Geisert, Wayne, Elmo, Kansas	14, 15, 39, 40, 46, 52, 53, 58, 60
Gilbs, Norman, 1715 Hardesty, Kansas City, Missouri	43, 44
Gish, Maurine, Belleville, Kansas	7, 15, 24, 26, 27, 30, 53, 54, 56, 57, 60
Glazier, Annette, Denver 7, Route 2, Colorado	14, 15, 17, 28, 29, 33, 52, 57, 58, 59, 60, 61, 66
Grieg, Betty, 1975 Monaco, Denver, Colorado	12, 13, 35, 51, 61
Gross, Alta, 609 Eastwood Avenue, Santa Ana, Calif.	17, 27, 28, 29, 30, 63
Grove, Dorothy, Keswick, Iowa	29, 35, 57, 63
Guthals, Berniece, Elmo, Kansas	14, 15, 16, 32, 57, 61, 63, 67
Harbaugh, Elva Jean, Waterloo, Iowa	33, 53, 55, 57, 63
Harris, Lucile, Swink, Colorado	15, 16, 26, 27, 28, 30, 53, 56, 57, 58, 59, 64
Hayden, Prof. Thomas C., 227 N. Charles, McPherson, Kansas	21, 42, 43
Helmer, Mildred, Lyons, Kansas	34, 63
Hershey, Dr. J. Willard	62
Hess, Professor Maurice A., 401 N. Carrie, McPherson, Kansas	22
Hoeffle, Dean, Vinton, Iowa	16, 47, 56, 58, 63
Holderread, Leona, Cushing, Oklahoma	36, 57, 63, 64
Howard, Vurlie, Twin Falls, Idaho	14, 34, 57, 61, 63, 67
Huston, Ruth, Guthrie, Oklahoma	16, 34, 57, 61, 63, 67
Ikenberry, Ernest, 343 Third Ave. N., Twin Falls, Idaho	40, 50, 51, 57, 60, 62, 63
Ikenberry, Susan, 343 Third Ave. N., Twin Falls, Idaho	36, 52, 57, 58, 63
Johnson, Claude, Mitchell, Kansas	48, 63
Jones, Mildred, Cordell, Oklahoma	6, 14, 34, 57, 63
Jones, Norma Lea, 711 E. Euclid, McPherson, Kansas	16, 36, 58, 59, 61
Juarez, Santos, 323 Mulberry, McPherson, Kansas	46
Kaufman, Lois, 402 N. E. 13., Abilene, Kansas	36, 57, 63

Maxine is joyfully anticipating many happy hours and occasions when she will be wearing this clever plaid frock.

You can bet she will get appropriate accessories to match here, too.

Yes, you, too, will look your best in clothes from



WE SELL FOR CASH AND SAVE YOU MONEY
BROWN·McDONALD
CONSISTENT LOW PRICES THE YEAR 'ROUND

Index

Keltner, Donald, 3632 Agnes Ave., Kansas City, Missouri	13, 15, 37, 42, 43, 44, 50 57, 58, 59, 63, 65, 66
Kennedy, Patricia, 9 South 3rd St., Marshalltown, Iowa	7, 15, 23, 36, 63
Kimmel, Betty, McLouth, Kansas	16, 28, 32, 52, 57, 61, 62, 63
Klotz, Alvin, Fredericksburg, Iowa	6, 15, 46, 41, 46, 54, 56, 57, 63, 64, 65
Klotz, Eva Mae, Fredericksburg, Iowa	29, 36, 57, 63, 65
Klotz, Evelyn Wilson, Wiley, Colorado	15, 28, 32, 54, 57, 61
Kuns, Wilma Fae, 408 Washington St., Garden City, Kansas	29, 32, 57, 58, 62, 63
Kurtz, Dorothy, 1325 Saylor St., Johnstown, Pennsylvania	36, 63
Lackey, D. P., Roxbury, Kansas	47
Lamie, Muriel, Wiley, Colorado	17, 27, 30, 61, 63
Lehman, Professor Della, 1511 E. Gordon, McPherson, Kansas	15, 21, 52, 58
Lichty, Eugene, Waterloo, Iowa	15, 16, 39, 40, 41, 42, 43, 45, 46, 52, 53, 56, 57, 63, 64
Lobban, Ila Verne, 600 West 14th St., Clovis, New Mexico	15, 29, 36, 57, 61, 65
Loshbaugh, Mary Beth, Fredonia, Kansas	16, 27, 34, 57, 60
Lowe, Robert, Deerfield, Kansas	13, 42, 43, 45, 50, 62
Lunkley, Charles, Ottumwa, Iowa	14, 15, 39, 40, 41, 40, 54, 56, 60
Lunkley, Rozella, Ottumwa, Iowa	14, 15
Maddox, Alma, Central College, McPherson, Kansas	31
Markham, Francis, 501 N. Ash, McPherson, Kansas	7, 42, 43, 45, 50
Markham, Paul, 501 N. Ash, McPherson, Kansas	7, 42, 43, 44, 50
Martin, Mrs. Alice B., 123 N. Carrie, McPherson, Kansas	21
Mast, Elsie, 720 E. Euclid, McPherson, Kansas	27, 34, 64
Mays, Robert, 1475 Humboldt, Denver, Colorado	13, 14, 17, 40, 41, 47, 52, 56, 57, 58, 61, 62
Mease, Gerald, 3119 2 Street, Lincoln, Nebraska	41, 48, 52, 57
Metzler, Anne, 145 N. Olivette, McPherson, Kansas	14, 16, 26, 27, 32, 53, 56, 57, 58, 63, 64, 67
Metzler, Dr. Burton, 145 N. Olivette, McPherson, Kansas	16, 21, 41, 56
Mingenback, Lillian, 1205 N. Walnut, McPherson, Kansas	36
Mohler, Eldon, McCune, Kansas	13, 14, 50, 62
Mohler, Dr. Robert E., 1102 E. Euclid, McPherson, Kansas	14, 22
Mugler, Miss Minnie, 406 S. Maple, McPherson, Kansas	22
Murray, Edward, 315 N. Carrie, McPherson, Kansas	46
McKnight, Eloise, Quinter, Kansas	15, 25, 27, 34, 53, 57, 61, 63, 64
McNicol, Jean, 413 E. Sutherland, McPherson, Kansas	26, 27, 31, 58, 59, 61, 63, 64, 66
McRae, Kathryn, 1810 1/2 W. 15th, Topeka, Kansas	31
Naylor, Kent, Natoma, Kansas	40, 42, 50, 52, 57, 62, 63, 64
Neely, Twila, 741 Ash, Ottawa, Kansas	36, 55, 57, 62, 63
Neher, Miss Edna, Arnold Hall, McPherson, Kansas	22, 27
Neil, Nuda Marie, Carlton, Minnesota	36, 57, 63
Nicholson, Lois, Filer, Idaho	34, 57, 63
Oye, Maye, Salem, Oregon	34, 63

Carlson Plumbing

Plumbing—Heating—Gas
Appliances and Installations

PHONES

Bus. 14

Res. 26

Hotel Warren Coffee Shop

For your School Parties.
Three Party Rooms Available

No Charge for
Room When Meal
is Served



Short hair for Spring with the soft flat
back for that cute fashioned bonnet.

You're all ready to go to any school activity when
your hair is styled by our technicians.

VOGUE BEAUTY SHOP

Make your appointment now!

The Home of

GOOD WATCHES AND PERFECT DIAMONDS

Bixby, Lindsay & Co.

Index

Parris, Melba, Waterloo, Iowa	53
Parris, Wayne, 1308 Leavitt, Waterloo, Iowa	15, 39, 41, 46, 53, 60, 63, 64
Perkins, Eula June, Canton, Kansas	36, 63
Peter, Joyce, 1015 S. Broadway, Denver, Colorado	15, 28, 29, 34, 57, 61, 62
Peters, President W. W., 1223 E. Euclid, McPherson, Kansas	10, 18
Peterson, Margaret, Weiser, Idaho	36, 57
Peterson, Mary Jane, Weiser, Idaho	34, 57, 62
Reeves, Harry, 1140 S. Washington, Denver, Colorado	41, 46, 57, 63
Reeves, Marvin, Cleo Springs, Oklahoma	41, 50, 53, 58, 59, 63
Reeves, Phyllis, Cleo Springs, Oklahoma	28, 32
Reeves, Ruth Miller, Weiser, Idaho	28, 32, 63
Rogers, Leslie, Corning, Iowa	6, 16, 40, 41, 46, 52, 53, 56, 57, 63
Rogers, Louis, Corning, Iowa	7, 13, 15, 42, 43, 45, 50, 63
Rodabaugh, Edwin, Conway Springs, Kansas	41, 47
Royer, Evelyn, Dallas Center, Iowa	29, 30, 57, 63
Ruehlen, Maxine, 401 N. Olivette, McPherson, Kansas	26, 27, 30, 52, 54, 56, 58, 59, 60
Sandy, Marilyn, 720 1/2 S. Main, McPherson, Kansas	16, 17, 26, 27, 28, 30, 61, 65, 66
Schraml, Irene, Barnum, Minnesota	25, 36, 57
Scotfield, Donald, 1226 N. 6th., Independence, Kansas	48, 57, 61, 65, 66
Seitz, Beulah, Belleville, Kansas	29, 34, 57, 62
Shoemaker, Ruth, Wenatchee, Washington	7, 16, 26, 32, 52, 53, 57, 62, 63, 64
Siek, Miss Mildred, 132 N. Charles, McPherson, Kansas	22
Smith, Miss Zelma, 1503 E. Euclid, McPherson, Kansas	22, 28
Stinnette, Nelle, 995 S. Huron Street, Denver, Colorado	57
Stinnette, Roberta, 995 S. Huron St., Denver, Colorado	6, 16, 34, 51, 55, 56, 63
Stucky, Howard, McPherson, Kansas, R. R. 2	13, 48
Swank, Eunice, Poplar, Montana	16, 32, 53, 57, 63
Swank, Evelyn, Poplar, Montana	27, 36, 63
Thomas, Lewis, 320 N. Maxwell, McPherson, Kansas	41, 46
Tinkler, Anna Mae Nickey, 1708 E. Gordon, McPherson, Kansas	15, 27, 30
Turner, Twila, Quinter, Kansas	36, 63
Uchida, Ruth, Tacoma, Washington	36, 62
Wayland, Dr. Francis F., 120 N. Carrie, McPherson, Kansas	22
Weaver, Evelyn, Haxtun, Colorado	34, 62
Webb, Mary Grace, 1315 E. Euclid, McPherson, Kansas	34
Williams, Margaret, Wenatchee, Washington	36, 57, 62, 63
Wilson, Rex, Aline, Oklahoma	50, 63, 66
Wolf, Eula, Quinter, Kansas	36, 55, 57, 63, 65
Yoder, Robert, Conway, Kansas	50, 62

105-107 W. Marlin St.

Telephone No. 66

Notary Public

Andy Darrah

Pete Aurell

DARRAH-AURELL

Real Estate, Insurance — Loans and Investments

Oil Leases & Royalties

McPherson, Kan.

Safeway Stores, Inc.

"Distribution Without Waste"

DOUGLAS M. HALE
TYPEWRITERS

RIBBONS & REPAIRS
Alliance Ins. Bldg.

MORRIS & SON

MEN & BOYS WEAR

Men's and Boys' Clothing

Information

AND

Printing

Both are necessary to a Happy and Successful Life

The Daily Republican keeps you informed on Affairs

Its Advertisements tell you the best Places to Buy

Its expert workmen give you the Very Best in Printing

The Daily Republican

Printers of the Quad!

KING DRUG CO.

Formerly Lovett Drug Co.
Your Reliable Drug Store

207 N. Main

Phone 19



THRIFT WITH PROFIT

PIONEER SAVINGS & LOAN ASS'N.

A. W. Bremyer, Sec.

McPherson, Kans.

**For Your Outings, Picnics and
Hikes—or Food Needs—**

Remember

JAMES FOOD STORE

Where Self-Service is Welcomed

PHONE 780

We Deliver

THE HOME STATE BANK



C. H. Hiebert, President

McPherson, Kansas

We Welcome
Your Business—
Congratulations.
Seniors!



Mrs. M. G. Mathis, Cashier

Member Federal Deposit Insurance Corporation

G. O. SWANSON

—
*Automotive Electrical
Service*
—

McPHERSON, KANSAS

Phone 187 310 N. Maple

Alliance Agency

Farmer's Alliance Building

(Ground Floor)

Phone 106

McPherson, Kansas



We have the right shoes
For every college student
and

For every occasion—

Come see us—we'll flatter your feet

SWEENEY'S

105 North Main

Phone 80

**HERE'S WHERE YOU'LL
FIND YOUR BRAND OF
ENTERTAINMENT!**

McPherson's
Friendly
Theatres

MANOR • RITZ

COZY INN

Short Orders and Lunch
417 N. Main Phone 435J

LOANS

AUTOMOBILE
FURNITURE

HERMAN CARTER LOAN CO.
109 East Marlin Phone 474

CENTRAL PRINTING CO.

Publishers of

The Democrat-Opinion

Quality Job Printing

Earl V. Rannells, Owner and Editor

Phone 298 210 N. Main

The Well Dressed Man

Looks to



FOR HIS CLOTHES

Greetings from

Gamble Stores

The Friendly Store

217 North Main **SWANSON'S** Phones 185 186

GROCERY and MARKET

For Better Baking

Use

Indian Girl Flour

Milled from Select Kansas Hard Wheat

RODNEY MILLING COMPANY

K.B.R. Milling Company Division

McPherson, Kansas

Your Best Wheat Market

LAKE SUPERIOR LUMBER CO.

LUMBER, HARDWARE, PAINT,
COAL

Telephone 40

McPherson, Kansas

301 North Maple

SLENDER and TALL TENDER ALL

That's Muriel all dressed up in one of OLIVER'S slick ensembles. For that matter, any of you gals who are short, chubby, and otherwise will look as pert if you get the right clothes.

You can bet you will find what you want and need at

OLIVER'S

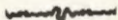
Ladies Ready to Wear
and
Dry Goods

121 North Main

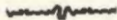
Phone 874



Greetings to McPherson College



May this
and all years
be Successful
to
Your Institution



McPherson & Citizens State Bank

MEMBER FEDERAL DEPOSIT INSURANCE CORPORATION



THE SEAL OF QUALITY

for

The Flour that is Always Good

so

For "Goodness Sake" Use "W-R" Flour

Made by

THE WALL-ROGALSKY MILLING COMPANY

CARL M. ANDERSON AGENCY



Has Served McPherson Community
for the Past 26 Years, Taking Care
of the Following Lines of Insurance:

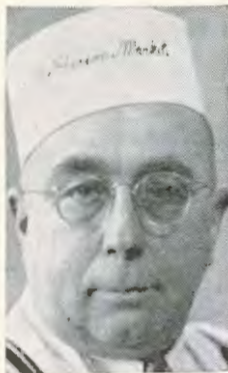
Life
Accident
Automobile, Full Coverage
Fire & Extended Coverage
All Risk Burglary Coverage
Comprehensive Personal Liability
Workmen's Compensation & Public
Liability
Bonds

PROTECTION + SERVICE — SATISFACTION

Dedicated to the alumni and former students of McPherson College who are now serving in the Armed Services of the United States of America. We are proud to honor you, who are giving your time for this immediate cause. We at home are grateful for your contribution in "Our Fight for Freedom."

Dr. J. W. Fields
Drs. Heaston & Dyck
Dixie Bryan
Doretta Harms Sandy
Loyd Burt
Dr. & Mrs. E. C. Nigh
Dr. E. F. Kubin
Julius B. Dorf
Harold J. Schafer
H. G. Lindgren
J. I. Fellers
Johnson, Rhoades &
Lehmberg
Donald S. Clark
Albert Butcher
Houghton Bakery





Leading Dealers
in
Fresh and Cured Meals

In McPherson Since
1919

•
**McPherson
Meal Market**
•



104 N. Main

OLIVER and NELSON, Props.

Phone 107 & 108

DUCKWALL'S

Quality, Service and Price
Visit Our Fountain and Luncheonette
Complete Notions, Toiletries,
Etc.

When you are in town
Go to Engborg's

Engborg's Drug Store

Phone 218

213 N. Main

For any information concerning
chattel loans - financing of home
appliances, furniture, automobiles,
or real estate improvements—and
facts concerning used automobiles.

See

**INDUSTRIAL
SAVINGS LOAN COMPANY**

109 East Kansas

PEOPLE'S STATE BANK

McPherson, Kansas

F. A. Vaniman, President
Paul E. Sargent, Vice-President
Hert Webb, Cashier

Dale Strickler, Ass't. Cashier
Wilbur Yoder, Ass't. Cashier
Virginia Johnson, Ass't. Cashier

Member of Federal Deposit Insurance Corporation

College Days Bring Pleasant Memories

and remind you of McPherson, Home of

**Farmers Alliance Insurance Company
Alliance Mutual Casualty Company**

FIRE — LIGHTNING — TORNADO INSURANCE

PATRONIZE QUADRANGLE ADVERTISERS

Who Have Helped Support This Book

Buy From Crumpacker

and

Become a Moneypacker

Jay Crumpacker

REAL ESTATE

Oil Leases and Royalty

**Buy a Home With Your Rent
Money**

Phones

Office 453

Residence 283Y



WE'LL STAND ON OUR HEADS TO PLEASE YOU!

McPHERSON, KANSAS



"- - and let me tell you, we had
the most delicious food afterwards

at

WALKER'S CAFE

There's where we kids always eat!"

204 North Main

We Congratulate the Seniors of
McPherson College on your grad-
uation and extend greetings to all
the students at your College.

Sincerely

THE STUDENT BODY

of

CENTRAL COLLEGE



FLOWERS

For Every Social Affair

**Corsages, Wristlets, Bouquets,
Sprays, Single Buds, and Hair Sets--**

Put your thoughts into a corsage
for your best girl.

Humfeld's Flower Shop

Phone 172

and Pat's Flower Shop

Phone 620

FLOWERS—AS YOU LIKE THEM!



Engravers to the Quadrangle