

QUADRANGLE

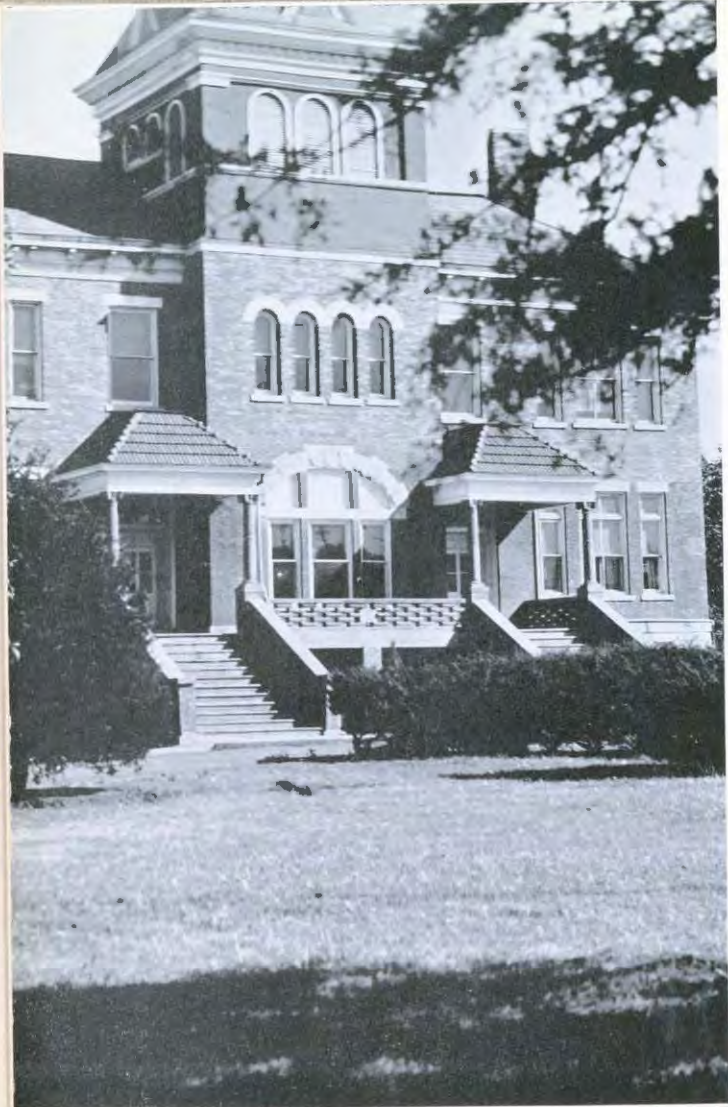
1 9 4 1

1 9 4 1



QUADRANGLE

MCPHERSON COLLEGE LIBRARY



COPYRIGHT 1941 BY VIRGINIA KERLIN, EDITOR

QUADRANGLE

1 9 4 1

From the time the familiar McPherson water tower is sighted from far out on Kansas prairies, to the time when mortarboard tassels are flicked from right to left, the Quadrangle serves as a record of events in retrospect. To the students and friends of McPherson College, the staff of the nineteen hundred and forty-one Quadrangle present this book, published by the Student Council of McPherson College, which is located in McPherson, Kansas.



CONTENTS

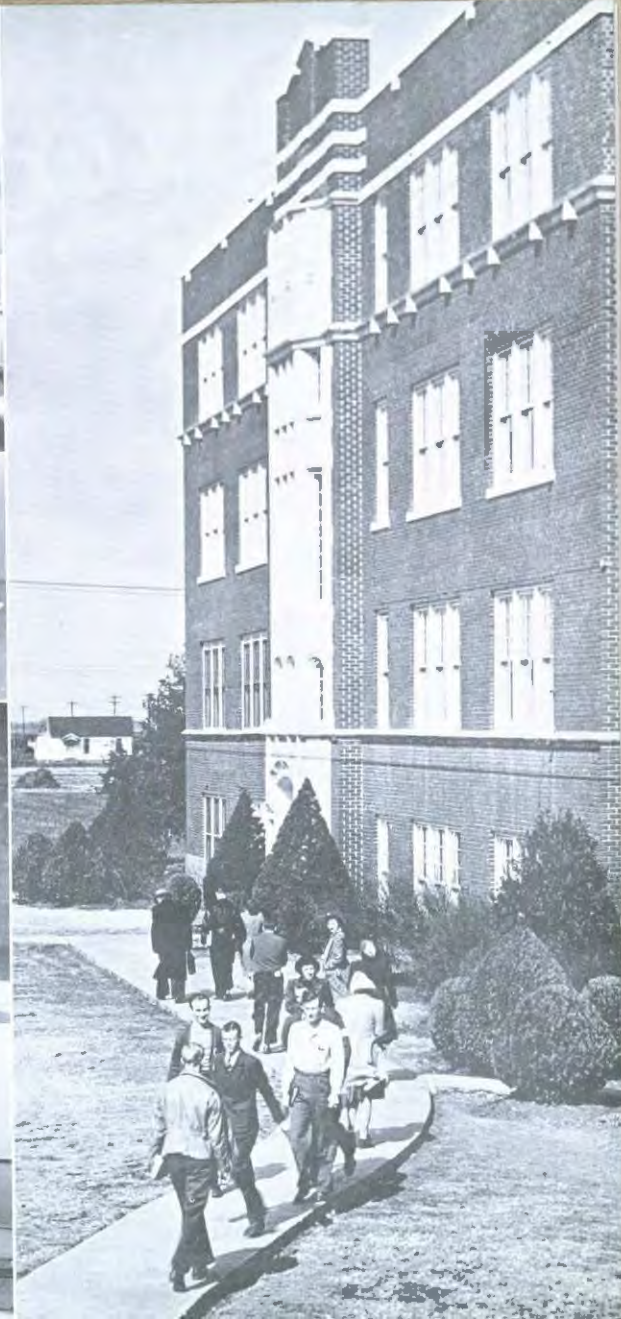
CATCH UP
ALL'S SET
STRETCH OUT
FALL IN



[EVERISH, dynamic . . . ever pushing
westward braving sun, wind, and death to
found a new empire . . . ever facing toward
new horizons of life, liberty, and the pursuit
of happiness . . . their caravan stretching from
ocean to ocean . . . each morning taking up
their trek toward the setting sun . . . following
ruts and campfire embers left by even more
adventurous souls, the tide of destiny moved
on over the prairies. To Thee, O Pioneers, do
we dedicate this book. May thy dominant
spirit sweep over the earth today and be a
torch for democracy and freedom and a light
for new trails.

D E D I C A T I O N







"Catch Up!" rolls the cry from wagon to wagon as victuals and bedding are hastily stowed away. Campfires slowly become but dying embers. A new day has begun. New land lies ahead . . . With worried frown and vacant expression, the weary student stares at calendar or clock. Oh, to be a pioneer, "Caught up!"



C A T C H U P

CARNEGIE LIBRARY



Mentally, a visitation to the storehouse of knowledge
for the four lean years.

College opens again in the fall . . . students pour in from surrounding towns and states . . . registration begins a series of new adventures . . . fill out all the questionnaires . . . choose your own subjects . . . gradually new friends join thoughts . . . consultations with faculty members commence . . .

The questionnaires are still offering headaches . . . where did the ink spots come from? . . . tear up the mimeographed sheets . . . tousle the hair . . . set down an answer of merit . . .

To pay or not to pay . . . how much is the bill? . . . line forms on the right, as usual . . . ministers, athlete, student . . . all shell out the same fees . . . ask for the receipts . . . they come in handy for future memories . . .

Silence reigns at the library . . . students once more get busy . . . industrious scholars grab the encyclopedias . . . book-worms make themselves more comfortable . . . term-papers will be due in six weeks . . . start work for exams . . .

All is not study . . . even books must receive an occasional overhauling . . . new bindings are frequently in demand . . . all forces work together to gain more knowledge . . . some industry creates new leisure . . .





DR. V. F. SCHWALM

P R E S I D E N T

"The President is dead—long live the President!" resounds once more from Maccollege men and women, for President Schwalm leaves McPherson College after completing fourteen years of unceasing service.

He envisioned great dreams. He saw those dreams fulfilled—a new gym graces Macampus; arrangements for the new

boy's dorm are completed; new professors with advanced degrees strengthen the faculty; and accreditation with the North Central Association is a reality. These achievements stand a memorial to him.

Our President encourages all with words of wisdom. He beams with geniality; he loves mankind. No student leaves McPherson College without feeling that Dr. Schwalm is his personal friend.

Dr. Schwalm has been a beacon of intellect in the Kansas educational field. His understanding of administrative problems proves the high esteem with which his colleagues regard him. He is a pillar of strength where education enters and gives himself untiringly to his work.

DEAN J. W. BOITNOTT

To the dean falls many of the hard spots of college management; but Dean Boitnott has been more than equal to the task. A few years have seen Macollege advance far in the field of education. Much of this work has been due to John W. Boitnott. He administers capably, for he is scrupulous in keeping data and records.

At heart, Dean Boitnott never fails to keep his word. In the classroom he teaches progressive methods of education. In his office he counsels Macollege men and women with the experience of many years to rely on. Man to man, he is a genial, likeable personality. He believes that he has a niche to fill, and he fills that niche.

THE DEAN



THE FACULTY



DEAN OF MEN

Whether you want a job or an evening's frolic, Professor Dell tries to get you what you want. So long as sincerity and earnestness are expressed in your appeal, you register on his sympathies.

He is a rabid exponent of Macollege quality. Believing firmly that a student is able to manage his own affairs, nevertheless Dean Dell believes that capable counseling should be at hand.

Sponsor of several clubs, backer of industrial craftsmanship as a fine art, he searches for the great truths to pass on to others.



DEAN OF WOMEN

Be the problem great or small, it makes no difference to Dean Shockley, for she handles them all. Ever alert and vigorous, she strives toward new goals for Macollege. She is modernistic in her views from which she can't be shaken.

Vivacious and witty, she likes to study people and human behavior. She strives to discover motives, or the reasons why people do the things they do; Dean Shockley believes more ready counsel comes from understanding people's motives.

Whether on campus or off, Dean Shockley is ever ready with a pleasant, friendly smile for all.



ESTHER ATKINSON

Wielder of pots and pans, seamstress of excellence, cook for all, even herself, she guides the destiny of her classes and keeps the dining hall from hunger-strikes.



JESSIE BROWN

Mainstay of fine artistry, developer of master pupils, exponent of technical skill and precision, quiet and unassuming in manner she does not pass by unheralded.



DESMOND W. BITTINGER

A writer of great promise, an authority on African life, a firm believer in fellowship of all mankind, he lives his Christian ideals as he teaches them.

Creator of graceful lines in use of oils, paints and pastels, correlator of fine painting with creative living, she brushes away the cares of life to produce works of art.



CLARA COLLINE



JOSEPH L. BOWMAN

A calculator of angles, areas, figures, lines, a delver into caliginous space, a juggler of atoms, he personifies friendliness and geniality through a ready smile to all.

A lover of classical music, a recognized composer, creator of cultured voices, his hand rhythmically guides the destiny of the A Cappella choir and the Men's Quartette.



NEVIN W. FISHER



W. EARL BREEN

Traveller of wide experience, advertiser of Macollege quality, philanthropist at heart, he insures a steady flow of funds for maintenance of a balanced budget.

Manager of financial affairs, buyer of collegiate supplies, keeper of bank accounts, he grows more and more grey headed balancing accounts for student and college alike.



J. HOWARD FRIES



THOMAS HAYDEN

Body-builder of strong manhood, example of physical fitness to classes, he worries during football and basketball seasons until track gives him a chance to escape his troubles.

Expert of dextrous keyboard playing, teacher of the art of scales, arpeggios, and octaves, she keeps the girls' quartette on the right key, and directs the choral club.



GULAR HOOVER



MARGARET HECKETHORN

Staunch guardian of the stacks, cordial helper in locating material for term-papers, she knows every inch of the library from the gable to the basement floor.

Describer of scenery, teller of 'tales of two continents', she brings human interest into the classroom and draws from written pages the tales of thousands of years.



DELLA LEHMAN



CLAXTON HELMS

Innovator of leisurely reading, books-due lists, and concentrated study methods, he has made the library a scene of industrious study for pleasure and class work.

Patternmaker for stenographers, enroller of students, recorder of college statistics, she willingly aids in all problems brought to the central office.



ALICE B. MARTIN



J. WILLARD HERSHEY

Maker of diamonds, an authority on synthetic gases, an author who inspires greater work in chemistry, he brings technical science down to the level of the classroom.

Sympathetic in his treatment of human problems, understanding in his interpretation of religion for today, he makes the Bible a real guidebook to Christian living.



BURTON METZLER



ROBERT E. MOHLER

Curator of choice curios, biologist of wide renown, magician with the microscope, he knows students and recognizes the problems that they face; his is the answer.

Seller of books, autographer of student receipts, assistant coach of the gridiron sport, he takes all kinds of money for deposit on student or college account.



CLAYTON ROCK



WALTER A. NAUMANN

A teacher of classicism, a tireless worker, a skillful interpreter of foreign languages, his joy is now supreme, coupled with a patient love for whom he long waited.

Master artist with stage make-up, a harmonizer of discords, he uses pedals, keyboard, and stops to produce melodious music from pipe or reed.



RALPH STUTZMAN



EDNA NEHER

Mother to dorm boys and girls alike, a nurse to the sick, a hostess to visitors, without worrying herself she keeps student affairs running smoothly.

Moulder of graceful bodies, coordinator of muscles, she teaches social recreation through social games and proves that good health is vital to good living.



LILYAN WARNER



OSCAR A. OLSON

MAURICE A. HESS
(Picture not shown)

Firm in his convictions, staunch advocate of peace, precise in the usage of correct English, his renown comes from producing championship debate teams.

Balancer of the budget, grader of finance papers, toiler in his office during the evenings, he cheerily greets all whom he meets in characteristic manner.

Newcomer in the field of written biography, systematizer of notes, lecturer par excellence, he correlates past and present to show the relationship with life today.



FRANCIS F. WAYLAND



MARJORIE ANDERSON
Gypsum, Kansas
Home Economics
Chem. club 1; W.A.A. 2.

DONALD BURT DAVIDSON
Lyons, Kansas
Chemistry
Chem. club 1,2,3,4; Int. Rel. club 1,2; Forensic club 1,2,3,4; (officer); Debate 1,2; B. Y.P.D. 3,4; S.C.M. 1,2,3,4 (cabinets); Spectator staff 1; Tennis 3,4; Intram. 1,2,3,4; One-net plays 4.

DORIS DOANE
Canton, Kansas
Home Economics
S.C.M. 1,2; Pep club 3,4 (pres.); W.A.A. 1,2,3,4.

VENA FLORY
Lone Star, Kansas
Music
Who's Who 4.

MAURINE ANDERSON
Burdick, Kansas
Home Economics
Chem. club 1,2; Int. Rel. club 2,4; Forensic club 3,4; S.C.M. 1,2,3,4 (cabinets); W.A.A. 2,3; Who's Who 4.

MARGARET DAVIS
McPherson, Kansas
English
Thespians club 1,2,3,4; Spectator staff 3; Cheer leader 4; Pep club 2,3,4; W.A.A. 3.

LEO F. EDGINGTON
McCracken, Kansas
Music

VERA FLORY
Lone Star, Kansas
Home Economics
Chem. club 2; S.C.M. Orchestra 1,2.

JAMES HAROLD CRILL
Potter Valley, Calif.
Mathematics

Chem. club 1,2,3,4; Debate 1; Thespians club 3,4; Rec. council 2,3,4; B.Y.P.D. 2,3; St. council 4; Spectator staff 3,4; Quid staff 2,3 (rel.); Pep club 2; Who's Who 4.

JOHN Wm. DETRICK
Dayton, Ohio
English

Int. Rel. club 2,3,4; Forensic club 3,4; Thespians club 3,4 (pres.); B.Y.P.D. 1,2,3,4 (vice-pres.); S.C.M. 1,2,3,4; Spectator staff 4; Choral club 2; Alpha Psi Omega 4.

AVIS ALETA ELLIOTT
McPherson, Kansas
Home Economics
Chem. club 2; Forensic club 3,4; S.C.M. 1,2,3,4; Spectator staff 3,4; W.A.A. 2,3.

HAROLD FRIES
McPherson, Kansas
Chemistry
Y. Dem. club 2,3,4; 1,2,3.

S E N I O R S



RAMONA RUTH FRIES
McPherson, Kansas

History
Int. Rel. club 1,2; Women's council 2,3 (pres.); Y. Dem. club 2,3,1; Spectator staff 1,2,3,4; A. Cappella choir 1,2,3,4; Orchestra 1; Pep club 3,4; W.A.A. 4.

DONNA JEAN JOHNSON
McPherson, Kansas

English
Thespians club 1,2,3,4; S.C.M. 1,2,3,4; Spectator staff 3,4; Quiz staff 3; Choral club 1; Orchestra 1; Pep club 1,2,3; W.A.A. 1,2,3; German club 2.

NORMAN LELAND
KRUIGGER
Bagley, Iowa

Chemistry
Chem. club 1,2,3,4; Int. Rel. club 1; B.Y.P.D. 1,2,3,4; S.C.M. 1,2,3,4; Intram. 3,4.

GLENFERD EARL FUNK
Conway Springs, Kan.

History
Chem. club 2,3; S.C.M. 2,3; Y. Rep. club 3,4; Band 1,2; "M" club 1,2,3,4; Football 1; 2,3,4; Track 1,2,3,4; Basketball 2,3; Intram. 3,4.

IRVIN S. KRECK
McPherson, Kansas

Industrial Arts
"M" club 1,2,3,4; Football 1, 2,3,4; Track 2; Intram. 1,2, 3,4.

JOHN WILBURN
LEWALLEN
Bisbee, North Dakota

Biology
Chem. club 4; Int. Rel. club 3; Forensic club 1,2,3,4; Debate 1,2,3,4; B.Y.P.D. 1,2,3,4; S.C.M. 1,2,3,4; Y. Rep. club 3; St. ministers 4.

RAYMOND L. GOERING
Elyria, Kansas

Mathematics
Chem. club 1; Men's council 3,4; Y. Dem. club 1,2,3,4; Spectator staff 3 (pres.); Intra. 1; Pep club 2; "M" club 1,2,3,4; Football 1,3,4.

MARIANNE L. KREUGER
Bagley, Iowa

Econ. and Bus. Adm.
Int. Rel. club 2,3; Forensic club 2,3,4 (pres.); B.Y.P.D. 1,2,3 (cabinet); S.C.M. 1,2,3,4 (cabinet); St. council 1; Y. Rep. club 2; Spectator staff 2,3; Pres. Kings Hall 4.

ELIZABETH ANN
MOHLER
McPherson, Kansas

Home Economics
Chem. club 2; Int. Rel. club 2; Rec. council 1,2,3; B.Y.P.D. 1,2,3,4; S.C.M. 1,2,3,4; St. council 3,4; Women's council 1; Spectator staff 1; Y. Rep. club 2; A. Cappella choir 1,3,4; Choral club 2; Pep club 2,3; W.A.A. 2; S.C.M. cabinet 2,3,4; Social comm. 3.

MILDRED MORRISON
Roxbury, Kansas

Chemistry
Chem. club 1,2,3,4; W.A.A. 2.

ROBERT NANCE
Roseburg, Kansas

Econ. and Bus. Adm.
Int. Rel. club 4; B.Y.P.D. 1, 2,3,4; S.C.M. 1,2,3,4; Intr. 3.

MILDRED MILLER
Raymond, Kansas

English
Chem. club 2; S.C.M. 3; Women's council 3; Pep club 2,3,4; W.A.A. 2,3; Social comm. 1.

OPAL REE MATHESON
Jordan, Montana

Education
(Picture not shown)

KIRK E. NAYLOR
Palco, Kansas

History
Chem. club 1; Int. Rel. club 3; Rec. council 2,3; S.C.M. 1; St. council 2,3,4; Men's council 4 (pres.); Y. Rep. club 2; Spectator staff 3; Basketball 1,2; Intram. 3,4; Who's Who 1.



LELAND ALVIN NELSON
Portland, Oregon
Philosophy and Religion

Rec. council 3,1; B.Y.P.D. 3, 4; S.C.M. 3 (cabinets), 4 (congress.); Men's council 1; Intram. 3,4; St. ministers 3, 1; Who's Who 4.

DONALD R. NEWKIRK
Lyons, Kansas
History

Int. Rel. club 1,2 (pres.); 3, 1; Forensic club 1,2,3,4; Debate 1,2,3,4; Men's council 2, 3,4; S.C.M. cabinet 2,3,4; Y. Rep. club 2,3,4 (pres.); Band 1; Class treas. 1; St. Social comm. 4; Class pres. 2,3,1; Who's Who 3,4.

SARA JANE OLWIN
Warrensburg, Illinois
Home Economics and Chemistry

Chem. club 1,2,3,4; Rec. council 2,3,4; B.Y.P.D. 1,2,3, 4; S.C.M. 1,2,3,4 (cabinets); Women's council 4; W.A.A. 1,2.

LARUE W. OWEN
Nashville, Kansas
Biology

Chem. club 1,2,3,4 (vice-pres.); S.C.M. 1,2,3; Y. Rep. club 2,3,4; Choral club 1,2; Pop club 2,3; Track 2; Intra. 1,2,3,4; Social comm. 2.

KEITH D. PIERCE
McPherson, Kansas
Music

Chem. club 1,2; S.C.M. 1,2; A Cappella choir 1,2,3, 3,1; Band 2,1.

ELMER A. RATZLAFF
Moundridge, Kansas
Industrial Arts

Y. Rep. club 2,3; Orchestra 1; Band 2; Pop club 2,3; "M" club 1,2,3,4; Football 1, 2; Track 1,2,3,4; Basketball 1,2.

ERNEST WARREN REED
Salina, Kansas
History

Chem. club 2; Int. Rel. club 1,2,3,1; Forensic club 1,2 (vice-pres.); 3 (pres.); Debate 1,2; S.C.M. 1,2,3,4; Y. Rep. club 1,2,3,4; Spectator staff 2,3 (pres. club); 4 (club); Quiz staff 2,3; A Cappella choir 2; Chapel choir 2; "M" club 1,2,3,4; Tennis 1,2,3,1; Intram. 3,4; Who's Who 1.

MARION EDGAR REGIER
McPherson, Kansas
Economics and Business Adm.

GENEVA E. SCHLEHUBER
McPherson, Kansas
English

S.C.M. 1,2; Y. Rep. club 2; W.A.A. 2,3,4.

MARCELL SELLERS
Galva, Kansas
Industrial Arts

ESTHER LOUISE SHERRY
McPherson, Kansas
English

Int. Rel. club 4; Forensic club 2,3; Debate 2,3; Theopian club 3,4 (sec.); B.Y.P.D. 1, 2,3,4; S.C.M. 1,2,3 (cabinets); 1; Y. Rep. club 2,3; Spectator staff 2,3; Vocal ensemble 2, 3; A Cappella choir 2,3,4; Women's quartette 4; Choral club 4; Chapel choir 1,2; Alpha Psi Omega 4; Who's Who 1.

HERBERT EDWIN SHELLEYS
McPherson, Kansas
History

Int. Rel. club 2,3,1; Debate 4; S.C.M. 1,2,3,4; Y. Rep. club 3; Spectator staff 1,2,3.

S E N I O R S



EDITH ROSE SPENGLER
Wichita, Kansas

Mathematics
Int. Rel. club 3.1; Forensic club 3.1; B.Y.P.D. 1,2,3.1; S.C.M. 1,2,3.1; Women's council 4; W.A.A. 1,2,3.1.

DALE MARLO STUCKY
Elyria, Kansas

History
Int. Rel. club 2,3.1; Forensic club 2.1; Debate 1,2,3-4 (varsity); S.C.M. 2,3-4 (captain); St. council 3.1 (pres.); Men's council 2,3.1; Y. Dom. club 2,3.1 (pres.); Spectator staff 1,2,3 (ed.); Quad staff 2,3; Choral club 2; Pop club 2; "M" club 1,2,3.1; Football 1; Intram. 4; Board of sub. 3.1; Who's Who 3.1.

VERA LUCILLE WADE
Lamar, Colorado

Music
B.Y.P.D. 3.1; S.C.M. 3.1; Y. Rep. club 3; A Cappella choir 1; Women's quartette 1; Choral club 3.1; Pop club 3.1.

ALBERT C. STUCKY
McPherson, Kansas

Chem. club 3.1

PAUL THOMPSON
Conway Springs, Kan.

Philosophy and Religion
St. ministers 3.1.

ROLLIN E. WANAMAKER
Waterville, Kansas

History
Chem. club 2; B.Y.P.D. 2,3.1; S.C.M. 2,3.1; Y. Rep. club 1; Band 1,2; "M" club 1,2,3.1; Football 1,2,3.1; Track 1.1; Basketball 1,2,3.1.

WAYNE LEROY SWITZER
Webber, Kansas

Economics and Business Adm.
Debate 3; Spectator staff 3; Orchestra 2; Band 1,2,3,4; Intram. 2.

FORREST D. STERN
Barnum, Minnesota

History
Chem. club 1; Thespian club 2,3.1; B.Y.P.D. 1,2,3.1; S.C.M. 1,2,3.1; Y. Rep. club 2,3.1.

ALBERT L. WHITMORE
McPherson, Kansas

Philosophy and Religion
Chem. club 3; Debate 3; S.C.M. 3; Choral club 4; Band 3; Tennis 3.1; Intram. 3.1; St. ministers 3.

GERALDINE SPOHN
Conway, Kansas

Home Economics
Int. Rel. club 3.1; Forensic club 2.3; Debate 1,2; Rec. council 2.3; B.Y.P.D. 1,2,3.1; S.C.M. 1,2,3.1 (captain); St. council 2; Women's council 3.1; Spectator staff 3; Pop club 2,3; W.A.A. 1,2,3.

RUTH ELIZABETH STUMP
Perryton, Texas

English
Rec. council 3.1; B.Y.P.D. 3.1; S.C.M. 2,3.1; Choral club 1; Chapel choir 4; Band 2,3; W.A.A. 2.

FREDERICK JOSEPH WILEY
St. Joseph, Missouri

Biology
Chem. club 3.1; S.C.M. 4; Intram. 2.1.

MAMIE JOY WOLFE
Eldora, Iowa

English
B.Y.P.D. 1 (captain); A Cappella choir 2,3.1; Choral club 2; Chapel choir 3; Pop club 4.



LELAND ACHILLES
McPherson, Kansas
Chemistry

MAX BRUNTON
Leavenworth,
Washington
History

RICHARD A. BURGER
Udell, Iowa
*Philosophy
and Religion*

HALEN DAVIS
Wiley, Colorado
Home Economics

WAYNE DICKERSON
Haven, Kansas
Industrial Arts

LYLE ALBRIGHT
Eldora, Iowa
*Philosophy
and Religion*

ROBERT BRUST
Claffin, Kansas
*Economics and
Business Adm.*

ROBERT H. COOK
Sidney, Iowa
History

PASCAL DAVIS
McPherson, Kansas
Music

HAROLD E. DOBRINSKI
Lorraine, Kansas
Industrial Arts

VIRGIL BRALLIER
Curlew, Iowa
*Philosophy
and Religion*

WILBUR BULLINGER
Canton, Kansas
Biology

PAUL DANSELLEY
McPherson, Kansas
English

BERNETTA DENNY
Elmo, Kansas
Home Economics

THOMAS DORFFNER
McPherson, Kansas
Mathematics

J U N I O R S



LEM ELROD
McPherson, Kansas
History

EVERETT GROFF
Lebanon, Oregon
History

HAROLD HOOVER
Ablene, Kansas
Biology

WOODBROW FRANKLIN
Eldorado, Arkansas
Biology

MARGARET HAMM
Colorado Springs,
Colorado
English

S. G. HOOVER
Plattsburg, Missouri
Biology

BOR FRANTZ
Holmesville,
Nebraska
Mathematics

LILLIAN HANDS
McPherson, Kansas
Music

J. SYLVAN HOOVER
Quinter, Kansas
*Economics and
Business Adm.*

LUCILE JUNE HORNER
Fort Worth, Texas
English

ESTHEL IKENBERRY
Quinter, Kansas
Chemistry

CALVIN JONES
Pretty Prairie,
Kansas
*Economics and
Business Adm.*

SANTOS JUAREZ
McPherson, Kansas
*Economics and
Business Adm.*

Woodcutters at work again . . . fall projects come to the fore . . . the city park profits . . . clearing out the poor stuff . . . pretty good load . . . more sparks for the fireplace . . . another truck needed . . .

The three musketeers . . . a pep rally celebration . . . the girl's trio makes a hit . . . they'd stop any team cold . . . a tri-state combination . . . all for dear old Mac . . . do or die, girls . . .



RAY JUHNKE
McPherson, Kansas
History

ALICE LINDGREN
Canton, Kansas
Home Economics

RAYMOND MEYER
Imman, Kansas
Industrial Arts

LENA BELLE OLWIN
Warrensburg,
Illinois
Home Economics

RUBY PETERSON
McPherson, Kansas
*Economics and
Business Adm.*

VIRGINIA KERLIN
Twin Falls, Idaho
English

ORVELL LONG
Hope, Kansas
History

MAX MORSE
Galva, Kansas
*Economics and
Business Adm.*

RONALD ORR
Beatrice, Nebraska
Industrial Arts

JOY SMITH
Whitten, Iowa
Home Economics

ROBERT KINGSLEY
Windom, Kansas
Industrial Arts

PAUL METZGER
Iowa, Louisiana
*Economics and
Business Adm.*

BERNARD NOHLING
McPherson, Kansas
*Economics and
Business Adm.*

TWILA PECK
Morrill, Kansas
English

ZELMA SMITH
McPherson, Kansas
Liberty Science

J U N I O R S



SHIDLEY SPOHN
Windom, Kansas
Home Economics

RICHARD VAN VLEET
Langdon, Kansas
Industrial Arts

ROWENA WAMPLER
McPherson, Kansas
Home Economics

KENNETH THOMPSON
St. Joseph, Missouri
Music

JACK VETTER
Kansas City, Missouri
*Economics and
Business Adm.*

GLADYS WIGGINS
Geneseo, Kansas
English

OLGA UNRUH
Hillsboro, Kansas
English

DORIS VOSHELL
McPherson, Kansas
Home Economics

KENNETH YINGST
Payette, Idaho
Chemistry

The fountain of youth . . . but no water of eternity . . . a refreshing stop . . . mecca between classes . . . a gentleman does the work . . . not in her face, sir . . . better luck next time . . .

Youthful zest and jollity . . . athletes and scholars gather around . . . the mid-afternoon club . . . the sun shines bright . . . discussing editorial policy . . . read the next edition . . .

(Pictures Not Shown)

CONSUELO ALFARO
Hutchinson, Kansas
English

DON MCCOY
Kansas
Chemistry



Leland Akers
Conway, Kansas

Milan Blough
Waterloo, Iowa

Robert
Bronicewe
Frederick,
Kansas

Ida Mae
Buckingham
Prairie City,
Iowa

Madelynn
Carlson
McPherson,
Kansas

Wayne Crist
Quinter, Kansas

Anne Janet
Allison
McPherson,
Kansas

Jack Bowker
McPherson,
Kansas

Kathleen
Brubaker
Nampa, Idaho

Robert
Burkholder
Octavia,
Nebraska

Arlene Cuvert
Topeka, Kansas

Ila Bernice
Crumpacker
Wiley, Colorado

Dorothy Gail
Barrett
McPherson,
Kansas

Harold Bowman
Quinter, Kansas

Opal Brubaker
Prairie City,
Iowa

Clarence
Bunyan
Wichita, Kansas

Betty Clark
Conway
Springs, Kansas

J. C. Dell
Beatrice,
Nebraska

Leta Ruth
Beckner
Holmesville,
Nebraska

Flora Mae
Brookus
Meridian, Idaho

Wilmer
Brubaker
Mountain Grove,
Missouri

Richard Callen
McPherson,
Kansas

Dessa Clum
Conway
Springs, Kansas

Byron E. Dell
Beatrice,
Nebraska

S O P H O M O R E S



Russell E. Eisenbise, McPherson, Kansas
 William Gahn, Council Bluffs, Iowa
 Winlow Hessler, McPherson, Kansas
 Ferrel Howerton, Canton, Kansas

Elsie Marie Epp, Blytheswood, Ontario, Canada
 Edna Goering, Elyria, Kansas
 Laurence Hill, Galva, Kansas
 Ethel Juhnke, McPherson, Kansas

Merlin L. Frantz, Grundy Center, Iowa
 Rachel Hamm, Rocky Ford, Colorado
 Barbara Holderreud, Cushing, Oklahoma
 Betty Kasey, McPherson, Kansas

Mildred Fries, McPherson, Kansas
 Melvin B. Hands, McPherson, Kansas
 Mary Jo Holzemer, McPherson, Kansas
 Maxine Kimmel, McLouth, Kansas

What's going on here? . . . somebody's taking a beating . . . brandishing the war-club . . . only the cheerleaders indulging in some fun . . . next game will be worse . . . protection needed here . . .

Talking over the foreign situation . . . a bike-bike . . . recreation for all . . . science hall in the distance . . . something's in the offing . . . planning a new ride . . . maybe a tea party . . . or an open house . . .



D. Eugene
Lichty
Waterloo, Iowa

James Mason
Stet. Missouri

John
Mingenback
McPherson,
Kansas

Arlene
Nicholson
Filer, Idaho

Ernest A.
Peterson
Canton, Kansas

Virginia Ritchie
Cedar Rapids,
Iowa

Wallace
Lindberg
Galva, Kansas

John M. Mason
Norborne,
Missouri

Don Mishler
Conway, Kansas

Ralph Nicholson
Norborne,
Missouri

Paul Peterson
McPherson,
Kansas

Clifford
Schapansky
McPherson,
Kansas

Wilbur Linville
Wiley, Colorado

Roy McAuley
Wichita,
Kansas

Melba Morrison
Altamont,
Kansas

Jean Oberst
Conway, Kansas

Keith Reinecker
McPherson,
Kansas

Ralph Schlichf
Cliffin, Kansas

Eleanor Macklin
Canton, Kansas

Bob McKenzie
McPherson,
Kansas

Merlin Myers
Fermosa,
Kansas

Frances
Petefish
Cedar Rapids,
Iowa

Russell
Reinecker
McPherson,
Kansas

John Schmidt
Moundridge,
Kansas

S O P H O M O R E S



Arthur Schubert Ramona, Kansas
 Keith Sloan McPherson, Kansas
 George Voth, Jr. Elyria, Kansas
 Virgil Westling McPherson, Kansas

Gathering for a session . . . before the Homecoming . . . no preaching allowed . . . canes help the situation . . . stick in your tongue, boy . . . night shirts are in order . . .

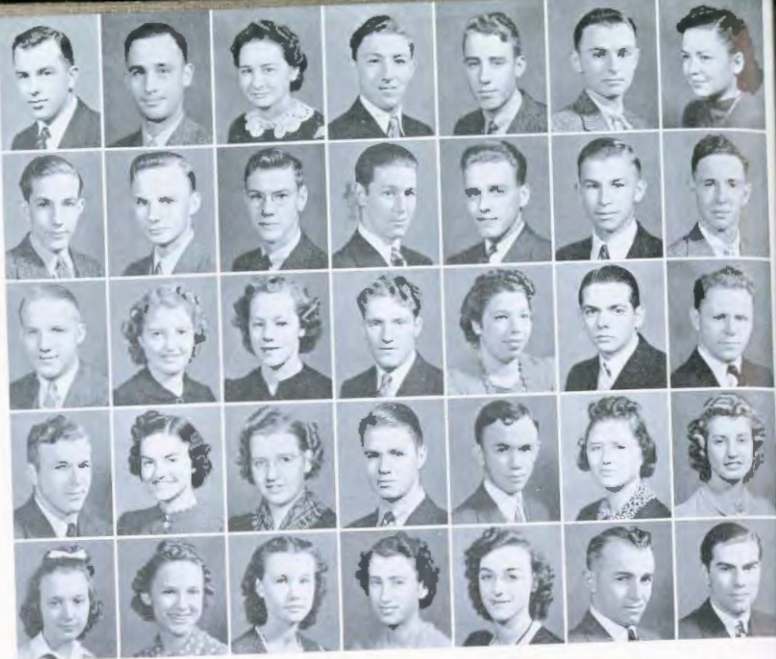
Betty Schwalm McPherson, Kansas
 Ruth Smith Topeka, Kansas
 Harold Voth Goessel, Kansas
 Genevieve Wyckoff Luray, Kansas

Pep talk before gym period . . . sun baths help the complexion . . . a run around the block might help . . . show 'em the fight, fellows . . . Monday morning quarterbacks gather around . . .

Lenora Shoemaker Weathee, Washington
 Mary Spessard Partridge, Kansas
 Ted Washburn McPherson, Kansas
 (Pictures Not Shown)
 Jake Cramer Rocky Ford, Colorado

Klinites gather for the feast . . . fair means and fowl . . . Thanksgiving comes but once a year . . . plenty of goodies from home . . . white meat or dark . . . no invitations given out . . .

Raymond Shifer Conrad, Iowa
 Arlos Tarn Gypsum, Kansas
 Junnita Weaver Wichita, Kansas
 Harold Myers McPherson, Kansas



Miles Albright Eldora, Iowa	Galen Bengston McPherson, Kansas	Mildred Brammel Ozawkie, Kansas	Doyle Brubaker Prairie City, Iowa	Jimmy Burger Wiley, Colorado	Darwin Culver McPherson, Kansas	Bernadine E. Elbert Quinter, Kansas
Vincent Allison McPherson, Kansas	Lillis E. Berg McPherson, Kansas	Bryce Breneman McPherson, Kansas	Earl Brubaker, Jr. Grand Junction, Colorado	Conrad Burton Des Moines, Iowa	Ernest Dale Geneseo, Kansas	Kurtz Ebbert Quinter, Kansas
Paul Anderson McPherson, Kansas	Opal Lee Betts Nampa, Idaho	Juno Brockus Meridian, Idaho	Merlin D. Brubaker Prairie City, Iowa	Edna Christiansen Canton, Kansas	Bud Deal St. Joseph, Missouri	Junior Eberly McPherson, Kansas
Robert Arnold McPherson, Kansas	Luev Blough Waterloo, Iowa	Betty Brockway Fredonia, Kansas	Delbert B. Brunton Levensworth, Washington	Samuel M. Clark McPherson, Kansas	Ruth Ditmars Washington, Kansas	Inez I. Fike Ramona, Kansas
Lois Aug McPherson, Kansas	Maurine Blair McPherson, Kansas	Merrial Brown Spring Hill, Kansas	Betty Dean Burger Wiley, Colorado	Isabel Crumpacker McPherson, Kansas	Richard Doramus Nampa, Idaho	Merle Finfruck Hutchinson, Kansas

F R E S H M E N



Junior French McPherson, Kansas	Maarine Gish Conway, Kansas	Marguerite Hinds McPherson, Kansas	Barbara Holderman Galva, Kansas	Peggy Jones McPherson, Kansas
Lillian Falkerson, McPherson, Kansas	Alta Gross Bowmont, Idaho	Lucile Harris Swink, Colorado	Vern Holmes Galva, Kansas	Willis Kagarice Hutchinson, Kansas
Maxine Gage Hosington, Kansas	Dorothy Gross Nampa, Idaho	William M. Harvey Jasper, Missouri	Wanda Howard Inman, Kansas	Carl Kasey McPherson, Kansas
James Ganson Canton, Kansas	Charlotte Haldeman Hope, Kansas	Jackie Hedinger McPherson, Kansas	Elizabeth Hungerford Canton, Kansas	Helen Kittell McPherson, Kansas
Wayne F. Geisert Elmo, Kansas	Barbara Hamm Rocky Ford, Colorado	Mary Ruth Herr Hope, Kansas	Edsel Johnson Bridgeport, Kansas	Alvin Klotz Fredericks- burg, Iowa

The Snake Dance winds through downtown establishments . . . behind the eight-ball . . . rake your cue . . . no luck for this game . . . a corner shot . . . the gals don't take it serious . . .

The Formal Dinner . . . no stuffing either . . . looks like a sister act, but it isn't . . . have a bit of lemon . . . two forks are needed . . . everything from soup to nuts . . . no puns please . . .



Duane
Knackstedt
Inman, Kansas

Edward C.
Leonard
Enterprise,
Kansas

Thayles
Maupin
Silver Lake,
Kansas

John Morris
McPherson,
Kansas

Mariys
McKnight
Quinter,
Kansas

Chester
Nordling
McPherson,
Kansas

Richard
Premice
Aline,
Oklahoma

Merville
Knackstedt
Inman, Kansas

Ehert
Lounsbury
McPherson,
Kansas

Albert K.
Miller
Weiser, Idaho

Eleanor Moyer
Hutchinson,
Kansas

Carl E.
McMillen
Winona,
Kansas

Kenneth
Nordling
McPherson,
Kansas

Bab Quillen
McPherson,
Kansas

Lois Kreitzer
Sabetha,
Kansas

Lawrence
Lowber
Nampa, Idaho

Carl F.
Mingenback
McPherson,
Kansas

Wendell
Mueller
Claflin,
Kansas

Jean
McNiel
Lost Springs,
Kansas

Robert Olson
McPherson,
Kansas

Bobby
Rathbun
Ellsworth,
Kansas

LaWanda
Larson
Galva, Kansas

Charles
Lunkley
McPherson,
Iowa

Richard E.
Mohler
McPherson,
Kansas

Rosalee
McCoy
McPherson,
Kansas

Kathryn
McRae
Ramona,
Kansas

Wayne L.
Parris
Waterloo, Iowa

Harry Reeves
Denver,
Colorado

Lois Lawson
McPherson,
Kansas

Marjorie
Martin
Larned,
Kansas

D. Arthur
Morgan, Jr.
Galva, Kansas

Thornton
McDaniels
Morrill,
Kansas

Anna Mae
Nickey
McPherson,
Kansas

Harriett Pratt
Kingsley, Iowa

Earl Roth
Galva, Kansas

F R E S H M E N



Maxine Ruehlen
McPherson,
Kansas

Elton Sellers
Galva, Kansas

Dean Stucky
Elyria, Kansas

Lee Unruh
Lehigh,
Kansas

Harold
Wagner
Waldo, Kansas

Marilynn
Sandy
McPherson,
Kansas

Warren Sies
Lorraine,
Kansas

Mary Ann
Stucky
McPherson,
Kansas

Milo M. Unruh
Goessel,
Kansas

John Westling
McPherson,
Kansas

Ardis Sawyer
McPherson,
Kansas

Annie Spiller
McPherson,
Kansas

Eunice Swank
Poplar,
Montana

Dora
Vandament
Covert,
Kansas

Gene Wilber
Dallas Center,
Iowa

Arlene Seidel
McPherson,
Kansas

Ojuita Marie
Stephenson,
Little River
Kansas

John Trostle
Nickerson,
Kansas

Vesta
Yannirsdel
Kingsley, Iowa

Virginia
Wilson
McPherson,
Kansas

Betty Jean
Sellers
Malaga,
Washington

Russel Stern
Fredericks-
burg, Iowa

Esther Unruh
Lehigh,
Kansas

Milford Voth
Little River,
Kansas

Lowell
Woodard
Covert,
Kansas

Wear your cap next time . . . a frosh gets the belt line . . . must be pre-season dope . . . the belts are tough enough . . . a rousing send-off . . .

Three frosh gals discuss the weather . . . no classes for them . . . might be spring fever . . . they study, too . . . look at the books . . . no time to lose . . .

(Pictures not shown)

Marvin
Atchison
McPherson,
Kansas

Finley Taylor
Bellview,
New Mexico

Lillian Taylor
Bellview,
New Mexico

Marie
Lamie
Wiley,
Colorado

Marie Wedel
Galva, Kansas

Patient oxen, skitterish mules, toughened horses are pulled in line. The still calm of expectancy settles over the circled wagon-train as the voice of the captain rings out, "All's Set" . . . A huddle in the field or on the court and a cool decision. Everything's set. The Bulldogs are ready!





ALL'S SET

MACOLLEGE GYM



Physically, where muscles and mind coordinate to
develop the art of healthful living.

Sports events need a proper boost . . . get everything set for Homecoming . . . the Snake Dance winds down Main Street as well as all the alleys . . . pick out your own pair of pajamas . . . the band whoops up the music for the festivities . . . even the officer needs a little protection . . .



Athletes save the snakeshipping for the game . . . they get in on their share of fun, though . . . freshmen to the rescue . . . the movie after the Snake Dance sounds good . . . athletes and scholars alike join in the fun . . .



Crossing the bar . . . over, over, over . . . he'll never make the bar on this page . . . well-executed form in the high jump . . . agility plus . . . a four year letterman shows how it's done . . . more points roll up for Maccollege . . .



Olie the Swede meets his fate . . . lucky stiff! . . . four pretty coeds tote him away . . . they're his downfall . . . the Amazons sure can fight . . . even the sleeves are rolled up . . . oh well, everyone gives up . . .



The game was a tough one . . . a Bulldog never gives up . . . the sun wanes with Maccollege hopes . . . waterjugs need frequent refilling . . . the man in black, a strategist . . . just wait till the next time we meet 'em . . .





Our Coach
Thomas C. Hayden



Bucking the dummy
Traditional frosh duty

COACHING

Possessing finesse and ability, Coach Thomas Hayden came to Macollege last summer to take over the coaching helm. A man highly regarded in coaching circles, he was determined to give McPherson College a winning combination.

His willingness to work hard inspired the fellows to greater efforts; his love for sports spurred them on and made them appreciate the fine art of developing physical skill. He treats all with kindness and sympathy; he is ever ready to help make the physical man aid the mental side of life.

In but a few weeks Coach Hayden had to solve the problem of familiarizing his players with a new style of play. Lettermen returning for another year had to relearn formations and

strategy. Newly arrived frosh or first-year men had to acquaint themselves with the rugged brand of collegiate sport.

In the gridiron sport, Coach Hayden instituted the short-punt formation style as his offensive strategy. On defense, he applied the traditional style. In basketball, a fast break, sublimated with a tricky system of plays, offset a round-robin type of floor management. A man to man defense was used with telling effects.

Coach Hayden possesses the genius for turning out winning combinations, and a few years will prove the worth of his system in Macollege. His boys are enthusiastic workers and can be relied on to do their best for their coach. The student body backs their coach to the limit, for they appreciate his excellent accomplishments in the field of good sportsmanship.



It's a pass in
the Big Game

Out for pigskinning practice
Comes night . . . and sizzling bulldogs

FOOTBALL

Although handicapped by insufficient time before the grid season began, Coach Thomas Hayden left a good record as football coach his first year at McPherson. Harassed by a lack of reserve strength, Hayden whipped together one of the most dangerous aggregations in the conference.

With a fairly successful season behind them, the Bulldogs are already looking forward to next season, having lost only three gridmen by graduation—Raymond Goering, Rollin Wanamaker, and Glenford Funk. A broken arm forced Irwin Keck, a fourth Senior, from active duty early in the season.

A dark-horse McPherson College team

opened its 1940 Kansas Conference season by defeating the mighty Ottawa University Braves—who, previously dominating the conference for three consecutive years, lost their first conference game since 1937. McPherson controlled the game all the way, the battle ending with the Bulldogs in possession of the ball on the Braves one-yard stripe and two downs remaining to make six more points. In this game Irwin Keck, outstanding back, dependable for his steady play, suffered a fractured arm and was lost to the Bulldogs for the season. The final score: McPherson 6, Ottawa 0.

On the Friday following their decisive Ottawa victory, the Bulldogs traveled to Baldwin to meet their second conference opponents, the Baker University Wildcats



Rollin Wanamaker



Raymond Goering



Glen Funk



Raymond Meyer

With the sun beating down on them unmercifully, the Bulldogs met the Wildcats on equal footing. Jack Vetter, Macollege backfield star, played one of his great games as he crashed through for extra yardage time after time. During the first half McPherson threatened upon several occasions with powerful drives which characterized their play the entire season; but they faltered when touchdowns were within grasp. Countering with two long passes and a pass interception, the Wildcats finally emerged victors. The final score: McPherson 0, Baker 19.

Before a large home crowd, the Bulldogs bounced back into the thick of the conference scrap with a victory over the hard-fighting Bethel College Graymaroons the following week. The Canines completely out-manuevered the Graymaroons during the first half, and at the intermission led 9 to 0. During the last quarter they staved off a desperate Bethel

rally to win. The final score: McPherson 9, Bethel 6.

The following week the Bulldogs traveled to Lindsborg, meeting their rivals to the north, the Bethany College Swedes. The game turned out to be another close Swede-Bulldog battle with a scoreless tie imminent; however, Harry Peterson, all-conference Bethany end, made a fluke pass interception as the ball left the hand of Jack Vetter and dashed sixty yards for the only touchdown of the game. The final score: McPherson 0, Bethany 6.

In a conference game at Emporia on a wet and tricky field, the Bulldogs pushed the College of Emporia Presbies all over the gridiron for the greater part of the game, but lacked the necessary scoring punch. The Macollegians scored a touchdown on a beautiful pass completion but officials called the play back because of an offside penalty. The disheartened Bulldogs faltered in the closing seconds of play

Russell Reinecker



Calvin Jones



Thyales Maupin

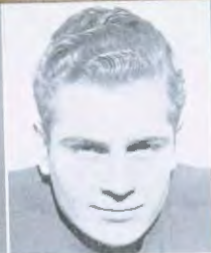


Bob Brust





Dick Callen



Jack Vetter



Irvin Keck



Bob Cook

and were upset when the Presbies scored late in the game on a well-executed lateral. The final score: McPherson 0, College of Emporia 7.

The high-g geared, champion Kansas Wesleyan Coyotes whipped the Bulldogs in their last game of the season to clinch the conference title with no defeats. With unlimited reserve strength, the Coyotes met a stubborn Bulldog eleven during the first half of the game. At half-time the Coyotes were ahead 6 to 0, the period ending with the Bulldogs on the Coyotes six-yard stripe. Wesleyan sent in several reserve teams and began their second half romp as the Bulldogs tired. The game broke a seven year winning streak which the Bulldogs held over the Coyotes. The final score: McPherson 0, Kansas Wesleyan 37.

The Bulldogs did not fare so well in their games with powerful teams from the central conference.

In their first game of the season, the Bulldogs met the powerful Southwestern Moundbuilders at the home stadium and fought them on fairly even terms throughout the sixty minute contest. Typical of early-season games, both teams fumbled many times, thereby losing several fine opportunities to score. The Bulldogs outgained their opponents throughout the game, but they lost the contest when the Moundbuilders threw a long pass over the heads of the secondary to score the only touchdown of the game and the point after. The final score: McPherson 0, Southwestern 7.

A crippled Bulldog eleven surprised the dopsters by weathering a blistering attack of the strong Pittsburg Gorillas, their third Central Conference foes, holding them to two touchdowns in the first three quarters of play. Team after team of big Gorillas, all of equal strength, trotted on the field to oppose the Bulldogs. In the fourth period Coach Hayden

Wilbur Hullinger

Eddie Leonard

Mike Unruh

Junior French

Merlin Myers





replaced the entire first team and the Gorillas pushed over a flurry of touchdowns to win. The final score: McPherson 0, Pittsburg State 40.

Coach Hayden substituted freely in the contest with Hays State, another Central Conference opponent, in an attempt to estimate the ability of his rookies. The Canines fell before the powerful attack of their foes, although they put up a stubborn fight. The final score: McPherson 0, Hays State 32.

Raymond "Squeak" Meyer, all-conference center his freshman year, again ranked on the official all-conference first team in recognition of a splendid season. Jack Vetter, McPherson's star backfield man, Raymond "Dutch" Goering, veteran guard, and Russell Reinecker, husky tackle, received various all-conference ratings. Junior French, freshman end, gained mention on some elevens.

Seventeen players received 1940 awards, monogram winners including Rollin Wana-maker, Glenferd Funk, Irwin Keck, Raymond Goering, Robert Brust, Raymond Meyer, Robert Cook, Richard Callen, Calvin Jones, Jack Vetter, Thayles Maupin, Russell Reinecker, Edward Leonard, Milo Unruh, Junior French, Wilbur Bullinger, and Merlin Meyers.

Injuries, especially in the backfield, hampered the Bulldogs to a great extent. Glenferd Funk, four-year letterman and greatest passing artist in the conference, and Robert Brust, a junior, were slowed down greatly by knee injuries. Other season-long injuries were a hindrance to Raymond Meyer, Raymond Goering, and Russell Reinecker, although all three played ball which garnered them conference honors.

Three years a letterman, Raymond "Dutch" Goering was a real sparkplug in the motor of the Bulldog team. He overcame injuries to spur on the team to greater heights.

Playing more time this year than anyone else, he was a great defensive player and a good offensive lineman. A natural leader, he put the fight into the team.

Elected unanimously by the players, his captaincy was announced at the annual "M" Club banquet.



The Coyotes haul . . . and the Bulldogs bark . . . at the Kansas Wesleyan game.

B A S K E T B A L L

With a new coach and a new system of basketball at Macollege this year, the stock of the Bulldog aggregation mounted sharply as the season got into full swing. Working out a pace-setting style of play, Coach Hayden instilled into the team the desire to win the conference championship and show their true worth.

With two lean years staring him in the face,

were evident from the smooth style of play shown throughout the season.

With his eyes ever on the future, Coach Hayden developed a team that on many nights looked like conference champions; but, because of lack of experience, the team could not maintain the pace necessary to win a conference championship.

The Bulldogs finished fifth in the conference.



Junior French
Raymond Meyer
Calvin Jones

Rollin Wanamaker
Lee Unruh
Bob Brust

Vern Holmes
Art Schubert
Jake Cramer

Coach
Hayden

the coach set his mind to the task of building a team of champions from a group of willing but inexperienced boys. Unceasing in his determination, he stressed fundamentals throughout long practice sessions. The results of this training

winning four games and losing eight. In eight non-conference games the team did not fare so well, copping but two of those contests.

For the first time in many years, Macollege followers developed a true case of spectatoritis.

The lively enthusiasm and the pep which the crowd showed, proved that the Bulldogs had the thrills to offer. Not only were the students enthusiastic, but also the business men and the townspeople supported the team with great excitement. At many of the games the fans were jittery and on edge due to the closeness of the contest.

The season, as it developed, turned out to be rather hectic at times. The close score of many games indicates that the team had the goods to deliver, but just couldn't seem to put on enough pressure to win in the final minutes of play. In six of the ball games, the Canine eaglers lost the contest by a margin of three points or less.

The Bulldogs opened the season at Eldorado against a very strong junior college five. With several freshmen in the line-up, the Canines won this game by the narrow margin of two points. Followers of the team began to pep up their talk and to look for a team with championship aspirations. In the return game played on the home court, the Macollegians lost to the strongest junior college team in the state by a limit of eight points. The Bulldogs put up a scrappy game only to lose in the final minutes of play.

During the Christmas vacation, the Bulldogs participated in an invitation tournament at Bethany College. Here they lost two games and won one, although they showed their true caliber in these contests. They defeated Bethel College, but lost to Friends University and Bethany both by close scores, the margin being but two and three points respectively.

Soon after the close of the vacation, the eaglers invaded the home of the Bethany Swedes. Working to perfection and showing their championship form, the Bulldogs kept the score closely matched throughout the contest, only to lose in the final seconds of play.

Soon after this game, the Wesleyan Coyotes invaded the kennel. In the first half the Bulldogs

beat the Coyotes at their own game of "fire-department" basketball; at the half they held a seven point lead, but again they waned in the closing minutes and lost the contest after playing a grand game.

In the first game after the beginning of the second semester, the Bulldogs invaded Newton to play Bethel. Duke Holmes, '38 letterman, became eligible for this game. With "Duke" paving the way, the Bulldogs won an easy nine-point victory. In a return game later in the week, the Canines were forced into an overtime period to defeat the Bethelites.

Looking like champions, the Bulldogs kept even pace with the Baker Wildcats in the next home game. But, with ten seconds remaining in the ball game and Baker in the lead, the Bulldogs got the ball out of bounds; it was tossed to French who shot a long, arching side shot tying up the game. The Bulldogs couldn't quite stretch

A tense moment and a jump near the basket action





The whistle shrieks and two bodies flash upward
... the game goes on ...

enough and so lost the game in the overtime period by one point.

In the season finale, the strong Fort Hays team invaded McPherson doped to win by a big margin. However the Bulldogs put on all steam and kept the tutors at edge throughout the contest. Until the closing minutes, Fort Hays was unable to penetrate the tight defense put up by the Macollegians. An upset loomed in sight; but Hays gradually put on a spurt to win a thrilling game by one point. The Bulldogs played championship style during this game, and kept the spectators in suspense most of the night. Such a game was a tribute to the team and the coach; it was a great finale.

In the scoring for the season, Junior French, a freshman with great athletic ability, lead the pack, scoring 147 points in twenty games. Following this, Arthur Schubert tallied 139 points and Robert Brust scored 96 points from the guard position. All in all, The Bulldogs proved that they had the scoring ability, but they just couldn't capitalize on the breaks of the game.

The Bulldogs scored a total of 694 points in

McPherson 34—Eldorado J.C.	42
McPherson 24—Eldorado J.C.	32
McPherson 34—Ottawa	38
McPherson 21—Hays State	47
McPherson 40—Bethel	34
McPherson 33—Friends	35
McPherson 24—Bethany	27

THE SEASON'S SCORES

McPherson 29—Friends	38
McPherson 37—Bethany	39
McPherson 45—Kan. Wesleyan	56
McPherson 35—Bethel	26
McPherson 32—Bethel	28
McPherson 35—Baker	36
McPherson 39—Kan. Wesleyan	72

McPherson 29—Ottawa	43
McPherson 41—Bethany	62
McPherson 34—C of E	33
McPherson 35—Baker	54
McPherson 38—C of E	35
McPherson 11—Hays State	42

twenty ball games to average 34 points per game.

Although no Macollegian cager made the all-conference team, several players did receive all-conference mention. Arthur Schubert placed on the second team, and Robert Brust and Junior French received honorable mention for their outstanding work on the team.

Coach Hayden recommended nine men for basketball monograms. Only one senior earned a letter: Rollin Wanamaker, outstanding in Macollege athletics for four years. Three juniors, Robert Brust, Calvin Jones, and Raymond Meyer, received letters. Arthur Schubert, Jake Cramer, and Vernon Holmes were sophomores gaining letters. Freshmen earning basketball letters for the first time were Junior French and Lee Unruh.

At their annual banquet held in a downtown hotel, the cagers elected Rollin Wanamaker for their honorary captain. Vernon "Duke" Holmes, sophomore letterman, was chosen to lead the Bulldogs through their 1941-42 season.

In order to give underclassmen experience, Coach Hayden organized a reserve team which won five games and lost five games to second teams of other colleges. The reserves were composed of Lowber, Thompson, and Burkholder at forward positions; Prentice and Hill at center; and Milo Unruh, Sies, Tarn, and Finrock at guard spots.

For his team next year, Coach Hayden will have a nucleus of eight lettermen as well as a large group of reserves to choose from. All Macollege rooters look forward to a championship season for the coming year under the skillful coaching of Thomas Hayden, Bulldog mentor.

TRACK 1940

Cinders and sod, plus April Fool's Day brought out Macollege track men for first practice; veterans who reported for duty included Voshell, Letkeman, Wanamaker, Stover, McGill, Ratzlaff, Vetter, and Funk. Young, Burger, Fasnacht, Hoover, and Blough started training at this time, also.

On April 4th the McPherson thin-clad men engaged Bethany in a dual meet, the Bulldogs winning 80 to 50. Voshell, high point man of the meet, garnered 15 points.

In a close triangular meet run during a snow storm on April 11, the track team lost to Sterling and Hutchinson, although taking seven firsts.

On May 2 McPherson trounced Bethel by making 84 points to Bethel's 47. Voshell set a new shotput record for the school by heaving the sphere 41 feet, 2 inches, 5 inches better than the former record made by George Zinn in 1931.

McPherson entered the Sterling Relays on May 3 and placed fifth, outpointing Sterling, Friends and Bethany. The Bulldogs placed in a two-mile relay, low hurdles, shuttle relay, distance medley, 440 yard football letterman



relay, the high jump and the broad jump.

On May 7 Hays outpointed McPherson 95½ to 35¼. Stover paced the mile in good time, 4:43.6.

In the conference meet at Ottawa on May 10 McPherson placed two men: Wanamaker third in the 120 high hurdles and tied for second in the high jump, and Letkeman fourth in the high hurdles and second in the low hurdles.

Burger, Fasnacht, Thompson, Oberst, Meyer, Wanamaker
Funk, Ratzlaff, Stover, Vetter, Voshell, Letkeman, Coach Astle



TENNIS 1940

Hailed the "coachless, courtless wonders", since they lacked coaching as well as the co-operation of the weather man, last year's tennis stars lost their first dual meet, but won the remainder. Bethany was the only pitfall for the Bulldog netmen last year.

Improving steadily, the Bulldogs defeated Hutchinson Junior College, Kansas Wesleyan University, and Bethel College in later dual meets. Before meeting the Macollege racket-swingers, Bethel was considered the strongest squad in the western half of the conference, since it had previously beaten Bethany in two dual meets.

Captain and top singles player on the squad was Carroll Crouse, a senior who lettered four years. Other singles players who starred last year were Ernest Reed, Albert Whitmore,

Wesley DeCoursey, and Burns Stauffer.

Teaming together to make the top doubles team were Carroll Crouse and Calvin Jones. This team was the only representative of the local squad at the conference tennis tournament, after surviving the rigorous elimination of the western regionals held in McPherson.

Ernest Reed and Wesley DeCoursey, playing as the other doubles team, made a strong bid in the regionals, only to lose a three-set match to Bethel's top doubles team.

Of last year's squad, Crouse and DeCoursey were seniors, Reed and Whitmore, juniors, and Stauffer and Jones, sophomores. Three of the squad, including Reed, Whitmore, and Jones, returned to school and are available to the squad this year.

Doubles team Jones and Crouse, Reed, Whitmore

Stauffer, Reed, DeCoursey, Jones, Crouse





Leonard, Funk (Pres.), Unruh, Reinecker, French, Vetter, Unruh, Jones, Hooyer
Meyer, Sturck, Goering, Schubert, Wanamaker, Brust, Reed, Keck, Katslaff

M - C L U B

Bring on the paddles! It's initiation time and the "M" Club prepares to swing into action. Great excitement prevails as a large, brawny tackle from the front line of last year's football team tries to skate gracefully down the sidewalk, his pigtailed flowing behind him.

Big times continue! Very bashful swains, posted at strategic spots on campus walks, propose to every girl who passes. Or, funnier still, a clever clown winds his way through the student body advertising his butting, ruminant, mammalian friend. Ho, ho! Finally, initiations concluded, paddle-swinging sessions cease and all initiates are properly inducted into the club as full-fledged members.

The "M" club, men's athletic organization of Macollege, requires its eligible members to have earned at least one monogram in some intercollegiate sport, to be enrolled in at least twelve hours of regular college work, and to participate in initiation and other "requests."

The influence of this organization is felt constantly in almost all realms of campus life. The men share actively in all phases of social and scholastic life. It is largely through the

efforts of this sturdy group that such fine school spirit exhibits itself at McPherson College.

This spring the club again held the annual banquet at the Roof Garden of the Hotel Warren. The theme was airplane in style, with all members being taken for the well-known "ride." One of the club's most ardent followers, Homer Ferguson, kept the members of the club in high spirits while acting in the capacity of toastmaster. The club was honored by having Hobbs Adams, football coach at Kansas State College, for their guest speaker.

The "M" Club group comprises men who come to college with athletic talents to offer as well as a desire for education. They are stalwarts among college men. To create a friendly spirit between athletes and other students has been the purpose of the club, headed by Glenferd Funk, assisted by Rollin Wanamaker, vice-president, Robert Brust, secretary-treasurer, and Thomas Hayden, club sponsor.

Among the many activities sponsored directly by the "M" Club are the sale of freshmen caps at the beginning of the year and the sale of refreshments which appease the appetites of spectators at home games.



It's a goal . . . Oh for the life of a sailor . . . Behind the W. A. A. Picknickin' at Coronado . . . Modern Robin Hood . . . Hold that line.

W. A. A. CLUB

Dust the cobwebs out of your eyes, girls; grab your breakfast; and come along in the early morning for a breakfast hike. Or else, hop upon a bicycle and pedal over the rolling prairie lands for an invigorating bit of recreation. Thus, the Women's Athletic Association sponsors outdoor sports for extra-lively coeds.

To fill out the well-rounded collegiate curriculum, the association provides sports for these lively coeds. The purpose is to promote the ideals of health, to stimulate interest in the participation of athletic programs, and to create a spirit of good sportsmanship.

Many interesting activities for every sports-minded girl prevail in this wide awake club: volleyball, basketball, tumbling, softball, tennis, badminton, ping-pong, bowling, shuffle-

board, to list a few of the many activities. When worst comes to worst in outdoor recreation, even snow does not stop these girls, for they always look forward to the next hike. Exciting tournaments also took a firm hold on the girls' interest, especially as the ping-pong tournament and the "round-robin" basketball contest came to a close.

Active members of the club must participate in two seasonal clubs or one yearly club.

Worthwhile friendships with other colleges and universities were effected through the Volleyball Playday held in the gym with Robin Hood and his merry band as guests of honor. Later in the year a volleyball team was sent to Southwestern College for a playday of inter-collegiate competition.

The final celebration was the annual formal banquet attended by all members of the club and their guests.

PEP CLUB

The sound of "grrr-rah-Bulldogs" announced that the exuberant, enthusiastic Pep club once more was stepping into fast action.

A prelude to the Southwestern Mound-builder game featured the spectacular "lighted out" on the football field as players stepped into the spotlight and were announced over the public address system.

The club demonstrated its hilarity and arm tugging at the human Snake-dance which wound its way through the entire downtown business district. Gales of laughter swept from spectators when a conglomeration of colors, and Grandpa's night clothes flashed by; it wasn't a style show; it was only the annual Pajama Parade. Following the evening's frolic, student and faculty alike rested in the comfortable cushions of one of the theatres.

The club played an active part in the gala Homecoming celebration, indicating the spirit which prevailed among the pepsters.

All will remember poor "Olie the Swede", burned by Bulldog Boosters to the tune of "Me-ph-er-son" at a huge pep rally the night before the Swede-Mc tangle. At one of the pep chapels Geisert defiantly stated to his worthy opponent, Crill, that after adding dainty ruffles to the basketball uniforms, bustles would be the next step!

Pascal Davis' tooting performers made the pep chapels more lively and vital to students. A section of white sweaters encouraged support of the athletic program. Such activities helped make Macampus more interesting.

Club members enthusiastically supported their officers: Doris Daane, president; Gladys Wiggins, vice-president; Leland Akers, secretary; Mildred Miller, treasurer; and Lilian Warner, sponsor.

Row 1. Fries, Davis. Row 2. Vusbell, Herr, Lindgren, Fulkerson, Niskey, Blair. Row 3. Spooner, Warner, Pres, Doane, Brubaker, Petrish, McKnight, Moyer, Beckner. Row 4. Peterson, Wiggins, Fries, Ritchie, Brubaker, Lawson, Olwin, Wade. Row 5. Kerlin, Peck, Gross, Wolfe, Harris, Ruzhien, Nicholson, Kenzors, Miller, Johnson. Row 6. Gross, Larson, Sandy, Brunton, Retzlaff. Row 7. Lounsbury, Blough, Kingles.





The whip of the curling lash blends with the agonized groans of the over-burdened prairie schooners. The captain shouts "Stretch Out" and the protective circle is broken Scurrying here and there, from one meeting to another, the MacCoe and Ed scarcely have time for their studies. But it is in extra-curricular activities that hands stretch out in friendship and minds stretch out in fellowship together.





STRETCH OUT

KLINE HALL



Socially, a mild taste of home-life and home-cooking—and
a saintly dab into the lore of sandwiches.

Work and play combined . . . Macollegians face the future . . . dishwashers in the kitchen earn their board . . . pots and pans get a healthy scrubbing . . . there are other jobs too . . . water's good for cleaning hands . . .



Some students take care of children . . . others take a big interest in all that goes on . . . the child doesn't mind . . . where's the smile? . . . that's a prospective enrollee . . . give him time to grow a little . . .



Relaxation in the boys' dorm . . . a chance to play with kings . . . music for the musician, too . . . a friendly chat has its place . . . what's the discussion all about? . . . the queen looks on . . . for the king's next move proves fatal . . .



Some students prefer to study on top of the bed . . . note taking isn't so hard apparently . . . looks interesting anyhow . . . almost like lying down on the job . . . to sleep, to dream, or to study . . . that's the question . . .



All hands on deck . . . aces wild . . . it has its place . . . even though frowned upon by the administration . . . no bets taken here . . . everything in due seriousness . . . your hid next . . . just a club will do . . . aw, have a heart . . .





Crill, Hoover, Dell, Bullinger, Crist, Trostle,
Naylor, Boitnott, Fries, Voshell, Stucky, Pratt, Olwin, Shuckley

STUDENT COUNCIL

The meeting will please come to order—if we have a quorum! The secretary will please read the minutes of the last meeting. Thus Dale Stucky, president of the Student Council opens the meeting.

Immediately following, Dr. Boitnott unwinds his long frame from the chair and speaks, "I would like to ask a question"; this turns out to be a ten minute address. Wilbur Bullinger says, "In view of the fact, that we are the duly elected representatives of the students, we should first consider the effect on them; and, in view of the fact . . . I move that we accept the report in its entirety." Miss Shuckley reminds that the social implications must be remembered. Harriet Pratt's red head bobs in approval and John Trostle conveys approval

with several, well-timed, effective but genteel uh-huhs. Then, after some learned discussion by Kirk Naylor, and a five minute filibuster by Jim Crill, Doris Voshell calls for the question, and the report is accepted. Thus, without any show, the student council has carried out quietly and efficiently the business of the entire student body.

Officers and members of the council are Dale Stucky, president; Kirk Naylor, vice-president; S. G. Hoover, treasurer; Lena Belle Olwin, secretary; Elizabeth Mohler and James Crill, senior representatives; Wilbur Bullinger and Doris Voshell, junior representatives; Wayne Crist and Mildred Fries, sophomore representative; Harriet Pratt and John Trostle, freshmen representatives.

MEN'S COUNCIL

Hosver, Dell, Naylor, Newkirk, Nelson,
Nicholson, Washburn, Stucky, Meyer,
Goering.



Come along to the Kangaroo Court! Hear the trial—not guilty! But the Men's Council pleads guilty to its avowed purpose: to foster student relationships, improve standards of scholarship, further discussions on worthwhile topics, conduct research in campus problems, and recommend steps for college improvement.

Most notable of its successes was its amalgamation with the Women's Council in fostering the Formal Dinner held annually in the parlors of the college church. The resources of the council have been so unified that every man will find the more abundant life in the activities of Macollege.

WOMEN'S COUNCIL

Süengler, Bruckus, Miller, Spohn, Muhler,
Beckner, Davis, Wiggins, Wampler, Olwin,
Shockey, Eries



Organized for the purpose of promoting good fellowship and cooperation among women students both on and off campus, the Women's Council assists the Dean of Women in understanding and interpreting problems of the girls and in suggesting ideas for improvement.

Some of the successful efforts in forwarding this purpose of the council were a tea in the fall, Campus Sister Week, Heart Sister Week, Easter Parade, Valentine's Party, and the Formal Dinner given with the Men's Council for all students and faculty members.

MEN'S QUARTETTE

Harold Hoover, first tenor;
Esthel Ikenberry, second tenor;
Lyle Albright, first bass; Keith
Pierce, second bass.



WOMEN'S QUARTETTE

Shirley Spohn, first soprano;
Lucille Wade, second soprano;
Esther Sherfy, first alto; Luey
Blough, second alto.



MUSIC

The steady, vibrant humming of the theme song, "Dedication", becomes audible to the audience; wine colored curtains slowly part; soft blue lights faintly illumine a group of figures; a 'new choir in a new setting' renders its ninth annual concert in the high school auditorium on March the seventh.

Fourteen men in classy tuxedos and sixteen



Director
Nevin Fisher

women in resplendent black and white evening gowns give their first public concert after five months of intensive, diligent practice. Following the concert, choir members and their guests retired to a local hotel for their annual dinner carried out this year in the theme of the French song, "Claire de Lune."

Thirty finely blended voices of the best musical talent on Macampus comprised the A Cappella Choir. During the program at the banquet, the choir members presented Professor Fisher with a beautifully engraved life-time fountain pen, in appreciation of his excellent work in conducting the choir.

Formerly the choir paid its own way for all trips that it took, but this year it balked at such a proposal, insisting that the college should assume all obligations for which the choir was indebted. Thus the administration took over the project of planning paying trips among the

districts so that no financial losses would be incurred from the costs of taking a tour.

The A Cappella Choir did not take any trips to sing at near-by churches and local organizations during spring vacation. The choir proposed a trip for Easter vacation, but plans did not materialize, since most of the churches already had planned their programs for the lenten season.

In retribution for the non-Easter journey to the churches in the region, a four-day trip to Southeast Kansas was taken. Profits from the tours—if any profit should exist—go into a so-called tour fund from which the choir draws at any time to go on its singing journeys.

In conjunction with several of the local musical organizations, the A Cappella helped to present the great oratorio, "Redemption,"

by Charles Gounod, at Easter time. Professor Fisher conducted the rendition presented in the community building the evening of Sunday, April 20. The choir has participated for a number of years in this work which has come to be a tradition among local groups.

The two varsity quartettes sang for church groups, local organizations and clubs, and activities in the city. Members of the A Cappella composed the two quartettes. Both made several trips to Iowa and near-by points of interest in Kansas.

With the completion of another successful season, the A Cappella Choir looks forward to another equally successful season next year and in the years to come. New choirs come, and old choirs go; but Macollege quality choirs continue forever.



A C A P P E L L A C H O I R

Lankley, Schmidt, Hoover, Ikenberry, Dannelley, Blough, Frantz, Pierce, Klotz, Slifer, Orr, Lichty
Davis, Mohler, Wiggins, Sherry, Fries, Blough, J. Smith, R. Smith, Albright
Brallier, Schwalm, Martin, Spahn, Holderread, Wade, Kerlin, Wolfe, Blair



Row 1. Director Hans Wampler, Stump, Vannoy, del. Olson, Gish, Burns
 Row 2. Cramoscher, Wenzel, Brubaker, Ritchie, Giesinger, Denny, Miller, Row 3. Nicholas, Clark, Hets, Brockus, Nicholson, Branton, Hough, Row 4. Epp, Uecknight, Kittell, Schmitt, Branton, Wagner, Madsen, Albright, Row 5. Beckner, McRae, McNeil, Whitmore, Dell, Franke, Troole, McAuley, Row 6. Davis, Smith, Nickey, Franke, Crist, Sellers, Thompson, Franklin, Bullinger, Row 7. Hessler, Bengsten, Schpansky.

COLLEGE CHORAL CLUB

Ein, zwei, drei—Singen Sie! And fifty voices of the choral club, new campus musical organization, blend into one harmonious symphony.

For an hour and a half each Monday evening the college chapel reverberates with swelling music produced by the choir under the direction of Miss Gulah Hoover. Variety, being the "spice of life" in music also, makes practice sessions more enjoyable. Both sacred and secular numbers occupy positions on the evening repertoire. Compositions by Johann Sebastian Bach, Nobel Cain, and Stephen Foster are well-known favorites.

On several occasions the choral club sang short groups of selections for special chapel programs. During Regional Conference a joint program was presented with the A Cappella choir. With the latter organization, the club held several joint rehearsals in preparation for Charles Gounod's famous oratorio, "The Redemptrion", presented Sunday evening, April 20, in the city auditorium by combined choruses of the McPherson community.

A spring concert, given in the Church of the Brethren, climaxed the year's work. The program soloists—Wilbur Bullinger, Lorene Olson, Alma Bretches, and Estelle Bacon—enriched varied and enlightening groups of selections.

Revived after one year's absence, the Choral Club is one of the most popular organizations on Macampus. Its roster includes talented members who will later form the especial ranks of the selected A Cappella choir, as well as those interested in singing classical music.

The club fulfills its purpose in giving opportunity for developing vocal abilities and affording pleasure in singing. As an incentive for regular attendance the club keeps attendance records. To retain membership, no member can exceed a limited amount of absences.

Officers elected to serve the organization include Wayne Crist, president; Arlene Nicholson, vice-president; and Leta Beckner, secretary-treasurer.

STUDENT CHRISTIAN

The Student Christian Movement feels a definite need for an integrating force to properly balance the lives of Maccollegians and endeavors to promote those principles which unify and stabilize life. In a most effective way, the movement helps students to maintain friendly, Christian relationships in all their campus associations.

The eighteen-member cabinet, directed by co-presidents Lee Nelson and Geraldine Spohn, carried out an educational and inspirational program. The Student Volunteer Commission, the Creative Leisure Commission, the Student and Personal Relations Commission, and the World Affairs Commission—which in the second semester became the commission

for training Hi-Y and Girl Reserve leaders—met varied needs of Maccollege students.

General meetings in their varied nature contributed to vital campus life. From time to time such men as Martin Harvey, Paul Bowman Jr., Paul Moritz, Kirby Page and other outstanding speakers were brought to direct and to inspire student thinking.

The S. C. M., also a social-conscious organization, sponsored the watermelon feed, the Halowe'en party, Leap Year Week-end, and other all-school functions.

In addition to cabinet meetings, several retreats were held to adequately plan and carry on the work of the Student Christian Movement.



Row 1. Metzler, Halderend, Burger, Wampler, Naylor, Shockley, Kreuzer, Olwin, Co-Presidents Spohn and Nelson.
Row 2. Lewallen, Stucky, Hurlinger, Anderson, Newkirk, Smith, Spohn, Eisenbise, Mohler, Davidson.



Row 1. Howery, Stump, Nelson, Criss, Eisenbie, McAnley, Sellers, Wampler, Otwin.

Row 2. Dell, Dwyer, Beckner, Siffert, Frantz, Burger, Abright, Ynest, Naylor, Shuckley.

RECREATIONAL COUNCIL

Recreational Council members attempt to create an atmosphere of fun, work, and worship to receive a boost to better living which they know awaits them.

This year they practiced recreational leadership on the campus and in the city churches, worked on a broader program of recreation in

the rural churches and homes, planned parties for use in connection with Young People's Sunday evening printed programs, and helped plan an overnight camp for the McPherson intermediates.

The council proves that combined recreation and worship is the basis for the good life.

FORENSIC CLUB

Every member contributes something for the benefit of all—that's the aim of the Forensic club. Readings, oratory, extemporaneous speeches, discussions, debates, aid those desiring experience.

Forensics again sponsored the champion-

ship inter-class debates, won for the second year by the Senior team of Dale Stucky and Donald Newkirk.

Marianne Kreuger served as president, Donald Davidson as vice-president and program committee chairman, and Ernest Peterson as secretary and treasurer.

Row 1. Hamm, Spengler, Fike, Elliott, Anderson, Spessard, Smith, Burger, Shoemaker, Peck, Pres, Kreuger. Row 2. Sellers, Unruh, Nickey, Ruehlen, Daeppner, Reed, Klutz, Sifer, Linville, Hrebaker, Geisert, Lewallen, Franklin. Row 3. Davidson, Peterson, Newkirk, Stucky, Eisenbie, Reeves, Bowman, Ebbert, Detrick.





Bowman, Burkholder, Gahn, Burton, Deepfner, Frantz, Reeves

Nielson, Albright, Hoover, Tristle, Lewallen, Thompson, Davidson, Berger, Mason, Crist, Kloitz, Geisert, Parris, McAuley, Bunyan Shifer, Shoemaker, Blough, Leng, Myers, Frantz, Brubaker, Nance, Mason, Stern, Orr, Brubaker, Ebelly Olwin, Albright, Olwin, Crumpacker, Peck, Kimmel, Burger, Brokus, Pratt, Spessard, Branton, Dell, Branton, Linville, Wagner Hamm, Horner, Wampler, Mohler, Denny, Gross, Gross, Harris, Betts, Holderread, Mohler, Brubaker, Miller Nelson, Spohn, Blough, Schwalm, Macklin, Clark, Spohn, Clum, Hamm, Petefish, Brubaker, Wade, Woodard, Duramus Crill, Brubaker, Meyer, Ebbert, McKnight, Haldeman, Martin, Crumpacker, Davis, Beckner, Stump, Vannorsdel, Nickes, Herre
Nielson, Blair, Kretzer, Harvey Fike, Fulkerson, Brubaker
Wolfe, Smith, Sellers, Eisenbise, Bittinger, Berger, Detrick, Lichty, Buckingham, Swank, Brockus

B. Y. P. D.

"Are ye able", said the Master—"Lord, we are able, our spirits are Thine, remold them, make us like Thee divine. Thy guiding radiance above us shall be a beacon to God of love and loyalty." This verse has become the theme song of many McPherson College young people facing the present as well as the future.

During the past year the B. Y. P. D. endeavored to carry out a program stressing service and worship. The main service project took the form of two bandage rolling socials. The group rolled bandages and sent them to the African mission stations. Missionaries will use them either on journeys over the country or at mission stations. Various groups rolled 500 bandages, the equivalent of a mile and a quarter of goods. Dr. Bittinger, B. Y. P. D. sponsor, supervised the project.

Young people from all over the United

States compose the B. Y. P. D. They have brought to the campus their many different talents, and from these the young people built their programs. Besides regular meetings, the group sponsored two programs for adults of the church, a Christmas caroling excursion and a combined social and outdoor vesper in the spring.

Officers for the year include Richard Burger, Udell, Iowa, president; John Detrick, Dayton, Ohio, vice-president; Eugene Lichty, Waterloo, Iowa, secretary-treasurer. The program committee consisted of Russell Eisenbise, McPherson; Joy Smith, Whitten, Iowa; Mamie Wolfe, Eldora, Iowa; and Betty Jean Sellers, Wenatchee, Washington. Dr. Bittinger, formerly a missionary to Africa but now professor of sociology and education in Macollege, served as advisor.



Donnelly, Lichty, Switzer, Hoover, Klutz, Washburn, Hlcugh, Pierce, Nordling
 Voth, Kinsley, Mohler, Thompson, Kagarice, Finckok, Fike, Howard,
 Aug, Allison, McRae, Geisert, Director Davis.

B A N D

Ya haven't got the pep;
 Ya haven't got the jazz;
 Ya haven't got the band
 That Macollege has.

Yes, the band does have the pep. When Pascal Davis, student director, picks up his trumpet and begins to swing into "Tiger Rag" with a vehemence, every spectator claps his hands in rhythmic staccato. Clapping hands beat time with the drummer. Tapping feet make the floor shimmy and shake. The band has 'taken off'! It keeps alive that spark of school spirit so vital to good, sportsmanlike participation.

Pep rallies, of course, featured the preludes to all sports contests. There the band kept up a lively barrage of tunes to keep the spirit of participation alive. Especially was this true at the time of the fall Snake Dance and Pajama Parade.

The familiar sound of martial music accompanied the gridiron followers during the night football games. Whenever a bit of pep needed to be injected into the spectators, the band promptly 'turned on the heat'; also the football team received greater encouragement.

At sometime Macollege will have a full-fledged marching band and a concert band. That time may not be too far distant, for the band received much commendation for this year's effort in making the McPherson band the finest in school history.

STUDENT MINISTERS

Row 1. Lichty, Burger, Metzler, Thompson, Reeves, Gahn. Row 2. Detrick, Nelson, Lowallen, Whitmore, Lunkley, Krubaker, Sifer. Row 3. Albright, Parris, Bruller, Franklin.



Recognizing the value of discussion and forum in the education of men who consider themselves "instruments of the ministry", the student ministers of McPherson College have met biweekly for the second consecutive year.

They improve themselves as ministers with

the advice of ordained pastors, through practice preaching, and through discussions on current trends of the ministry.

The McPherson College student body includes eighteen licensed ministers and several others who plan to be licensed in the near future.

INTERNATIONAL RELATIONS

Row 1. Newkirk, Doepfner, Ebert, Swank, Vannorsdel, Detrick, Shelley, Crill, Spengler, Trustle, Shuckles, Stucky, Wayland. Row 2. Hermer, Franklin, Parris, Lowallen, Barkholder, Spohn, Sherfy, Anderson, Brough. Row 3. McVical, Sellers, Hamm, Schmidt, Krueger, Crist, Gahn, Bunyan, Stucky.



To understand world affairs has been the objective of the International Relations club; thus group study and discussions of many international problems composed many programs.

Each member of the club has an active part by reporting on current happenings in countries

around the world in the "Spectator" column, "Henry speaks for I. R. C.", sponsored by the organization.

The officers for the year were Thomas Doepfner, president; Don Newkirk, vice president; Lucile Horner, program chairman; Edith Spengler, secretary-treasurer; and Dr. F. F. Wayland, faculty sponsor.



Oberst, Peterfish, Horner, Burger, Reeves, Lankley, Crill, Linville, Bowman
Lichty, Ruchlen, Brubaker, Stucky, Newkirk, Stucky, Geisert, Peterson, Coach Bitinger

DEBATE

"Ladies and gentlemen, friends, and opponents."—and another championship debate gets under way. Should the nations of the western hemisphere form a permanent union? You answer the question.

At the Winfield tourney on November 29th and 30th the men's teams received the rating of excellent, the highest award given. In the January meet held at Macollege, all debate teams but one entered and all made an admirable showing.

Ernest Peterson and Wayne Geisert won first place in the finals at the Hutchinson tournament in February. The men's varsity tied for first in the league meet at Bethel and the women's teams tied for third.

In the Pi Kappa Delta provincial meet at Newton March 20-22, the McPherson men's and women's B teams won first place in their divisions. Twenty schools from three states debated. Macollege was unanimously elected a member of Pi Kappa Delta.

To Dr. D. W. Bitinger, new debate coach goes much of the credit for a successful season. Both men's varsity teams were experienced and so more was expected of them than of the women who were inexperienced.



Women's Varsity: Horner,
Burger, Brubaker, Ruchlen.
Men's Varsity: Stucky, New-
kirk, Peterson, Geisert.

CHEMISTRY CLUB

Beakers! test tubes! burners! chemicals! smells! Membership in the Chemistry Club lies open to any students interested in chemistry. The club stimulates interest in the modern world of chemistry.

Dr. Hershey presides permanently over the club. Other officers include LaRue Owen, vice president; Mildred Morrison, secretary; Jean Oberst, program chairman; Sara Jane Olwin, social chairman; and Donald Davidson, reporter.

Each year Dr. Hershey entertains members of the club and their guests at a Christmas Party. This year about eighty guests attended.

The annual trip to Hutchinson in the spring enlarges the member's view of chemistry, for

the club visits two salt mines, a paper mill, a bottling plant, a candy factory, and the State Reformatory for Boys among other industries and institutions.

The club meets bi-weekly. The beginning class reports on recent scientific achievements; advanced students frequently discuss recent chemical trends, and also give a demonstration of "Black Magic in Chemistry." Highlights of the year are Dr. Hershey's two lectures on diamonds and radium. Outside speakers from McPherson and other cities lecture or show motion pictures about current science.

This year the membership of the club passed the one-hundred mark, making the club larger than it has been for the past several years.

Prentice, Dickerson, Unruh, Schapansky, McAuley, Geisert, Nordling, Hill, Nordling
Houwer, Allison, Ruthbun, Edgington, Albright, Trustle, Eisenhise, Schmidt, Sellers, Krueger, Lichty, Mingenback, Meyer
Olson, Breckenman, Peterson, Flary, Gahn, Morr's, Lewellen, Hessler, Callen
Here, Bengston, Brunton, Yoth, Stucky, Peterson, Akeers, Mih'ler
Larson, Brockway, Lawson, Achilles, Doepfner, Ganson, Yingst, Nicholson
Brown, Gish, Wilson, Gross, Gross, Pratt, Holderman, Hungerford, Spiller, Wyckoff, Blough, Dale
Mayer, McKnight, Crumpacker, Seidel, Hands, Sোধo, Drany, Arnold, Quillen
Crumpacker, Fulkerson, Nickey, Davis, Clark, Olwin, Harvey, Wagner
Brabaker, Hands, Eibert, Blair, Voshell, Weaver, Wampler, Eberly, Bullinger
Olwin, Barrett, Crill, Owen, Davidson, Ikenberry, Hands, Hershey





Detrick

Johnson



Sherfy

Dannelley



Slifer

Yashell



Davis

Stern



Critt

Oberst



Kerlin

Mason



Schapansky

Clark



McNicol

Geisert

THESPIANS

Whether it's the sight of a stage door to a Broadway theater, a worn out make-up kit belonging to a traveling troupe or just the lowly entrance to the costume room (in MacCollege, of course), there is something about the thought of grease paint and bright lights which sends dozens of students hurrying to the Thespian Club try-outs each fall.

Those who were fortunate enough to survive the rigid try-outs—Geisert, McNicol, Oberst, and Slifer—were able to participate in the first Thespian production of the year, "You Can't Take It With You." After rehearsing with a mad Russian, a ballet dancer, a xylophone player, two negroes, a playwright, and a manufacturer of fire crackers, the director, Ralph Stutzman, was ready to declare that a minor earthquake, a zoo, or a madhatter's tea would provide a welcome quiet.

For many years the club has looked longingly at the Alpha Psi Omega application blanks. This year the Thespian Club fulfilled its long hoped for ambition. Early in the fall a charter was granted to the Thespians; and five actors and actresses were admitted into the local chapter after a long and harassing initiation. Esther Sherfy, Margaret Davis, Donna Jean Johnson, John Detrick, and Paul Dannelley hold the honor of being charter members.

A new feature in the club program was a night of one-act plays. These were directed by club members and acted by non-Thespian

students. In this way opportunity was given for student directing as well as student acting. Had you been around at that time, you would have enjoyed seeing "Gallant Lady," "The Followers," and "Refund."

The Thespians unearthed, for their spring production, a play which created much controversy in the theater houses of fifty years ago. The club selected Henrik Ibsen's famous

"The Doll's House." Although lacking the hilarity of "You Can't Take It With You," it nevertheless taxed the abilities of the club and met with much success.

Under sponsorship of Mr. Stutzman, the club has been headed by John Detrick, president. Additional officers were Donna Jean Johnson, vice-president; Esther Sherfy, secretary; and Paul Dannelley, treasurer.

Behind the footlights with the cast of "You Can't Take It With You" . . .

Penelope Guss Bohemian
You Can't Take It With You. Kolenkov

Director Stutzman uses grapefruit invisibly
Bless this happy home





SPECTATOR

Ernest Dale, Managing Editor
 Paul Dannelley, Editor-in-Chief
 Maxine Ruehlen, Co-Campus Editor

Dean Stucky, Sports Editor
 Marilyn Sandy, Co-Campus Editor

Sylvan Hoover, Business Manager
 Gladys Wiggins, Assignment Editor

Ernest Reed, Editor-in-Chief
 (first semester)

"Dry Gulch Stucky Nabbed by Posse", screamed the headlines of the official McPherson College news organ, *The Spectator*. But gasps of dismay subsided when readers reflected they were reading from the "April Fool" page.

Bane and misfortune seemed to be the lot of the 1940-41 *Spectator*. In the form of resignation and general disruption, hard luck dogged its trail.

These jinxes were discouraging, but the in-

tense co-operative interest of staff members and staff reporters has brought the sheet through with its colors flying.

Reasonable campus coverage, live-wire features, seven popular columns, attractive advertisements, and excellent editorials were maintained in each issue all year.

Student interest in the *Spectator* was evinced by the hustling, bustling crowd which invariably was to be seen hovering about the *Spectator* box on Fridays at twelve, the hour for "scoops" to be released.

QUADRANGLE & STAFF

Besieged on every side by clicking cameras, the students soon knew that there was an annual publication on Macampus. When they ventured warily into the S. U. R. with slicked-down hair and stiff grin, they realized that the Quadrangle was their book for better or for worse.

But cameras weren't the only evidence of activity. Production started way back during the summer months, when the editor began to visualize ideas for the 1941 Quadrangle. Gradually foggy thoughts disappeared and grand ideas spurted forth in heaps. Finally, the theme resolved itself around the great spirit of the pioneer forefathers who crossed the plains in their prairie schooners.

Uptown business men became aware of an opening school year when a persistent visitor began adding up advertising. Students became aware of the same person when their at-

tention was turned from clicking cameras to clinking coins.

From September on, the Quad office presented a woeful state of appearance to the casual visitor. Besides the natural handicap of a floor which resembled the canting deck of a ship at sea, the office was littered with refuse gathered from 1920 to 1940. 'Mid the hustle and hurry of a new production, scraps of 1941 were added to the heap.

Tussling with nouns and verbs, the copy-editor finally emerged victorious . . . a story was written! And this scene was echoed in miniature by every one of the writers for circular coverage. Material rolled in from as far away as Chicago, presses roared on, and the 1941 Quadrangle came into being. Inspired by the interest and cooperation of everyone, this book tries to catch and hold the spirit and life of McPherson College.

Virginia Kerlin, Editor-in-Chief; S. G. Hoover, Sales Manager; Ernest Peterson, Business Manager, and Prof. Fries, Sponsor
Jack Bowker, Photographer; Harold Humman, Photographer; Dean Stucky, Asst. Bus. Mgr.; Raymond Slifer, Copy-Editor





The cries of the teamsters resound clearly above the din. One after another the bow-backed tops fall into line and form one sinuous ribbon of sun-bleached canvas. The march has begun . . . And throughout four years of college the majority of students have fallen in line. Here and there in our caravan of memories one stands out because of beauty, brains, or brawn, or because he's our friend and "one swell guy."



F A L L I N

CHURCH OF THE BRETHREN



Spiritually, an acknowledgement of praise to the Lord and an offer
of thanksgiving to Him.

The aesthetic carried over into debate . . . typical scene after many a tournament . . . the smiles tell a story of work well done . . . it's a nice looking trophy . . . another for the school case . . . lines of worry though on the chapel . . . but she's a brick . . .



Some baby! . . . rather big for the carriage . . . she prefers a buggy ride any day . . . all is not study . . . coeds frolic anytime . . . looks posed to me . . . but there's more on their minds than permanent waves . . .



There is time between classes for lolling in the sun . . . bull sessions on the steps . . . might be about the football season . . . the sun's in somebody's eyes . . . waiting for something . . . almost time for Jezebel . . .



College demands cooperation . . . especially at mealtime . . . here's a co-op at a grub session . . . everybody help himself . . . looks good, too . . . there's plenty to go around . . . athletes know how to eat . . . keep that scholgirl figure . . .





DONALD NEWKIRK
DALE STUCKY



ESTHER SHERRY



KIRK NAYLOR



MAURINE ANDERS

DONALD NEWKIRK



became widely known for his gifted tongue in debate work, and for his leadership in student affairs; thus Who's Who lists him for the second year. Three times president of his class, he has also gained outstanding recognition outside the campus for his interest in world affairs.

DALE STUCKY



combines scholarship and leadership to become eminent in student affairs. Forceful in manner and broad in thought, he gains Who's Who for the second year. As editor of the Spectator for two years and as President of the Student Council, he has ably demonstrated his administrative ability.

ESTHER SHERRY



establishes her claim to Who's Who by her prominence in many campus activities. A member of the Women's Quartette and the A Cappella Choir, a clever student of drama, two years a varsity debater, and a journalist par excellence, she has also made an outstanding scholastic record.

KIRK NAYLOR



personifies clean sportsmanship. He has shown keen perception in administrative problems as a member of Student Council. As Men's Council president and a friendly leader in men's activities he has enhanced the McPherson spirit of brotherhood. Thus, Who's Who greets him.

MAURINE ANDERSON



quiet, unassuming in her ways, nevertheless plays an important role in shaping Macollege student life as a member of the Student Christian Movement cabinet; thus Who's Who recognizes her. Her cheerful smile and pleasant greeting have done much to create felicity in campus association.



LILAND NELSON



ERNEST REED



VENA FLORY



JAMES CRILL

LILAND NELSON

as co-president of the Student Christian Movement, strengthens the spiritual life of students on Macampus. A leader in recreational work, he has led students to higher ideals and aims. Thus, Who's Who recognizes him. All sections of student life have felt his influence. Combining leadership and Christian living, he has guided others to finer living.

ERNEST REED

gains recognition from Who's Who for his high scholastic record and for his contributions to student life through the office of editor of the Spectator. Four years a tennis letterman, he has combined athletics with scholarship. He has done much to further the activities of his fellow students.

VENA FLORY

is recognized by Who's Who for her great contribution to McPherson College through her outstanding ability in the field of music. She has increased an appreciation for the fine arts on the campus. A pianist of repute, she has become an inspiration for other musicians through her technical skill and mastery of interpretation.

JAMES CRILL

best known for his apparent logic, applies the magic of long words with telling effect. An editor of the Quadrangle, his talents lay in the field of literature as well as in a scientific direction. Who's Who grants him recognition for his ability to govern student government, and for his contributions to the student body in the manner of free thought.



THAT'S RIGHT . . . YOU'RE WRONG

shouts KAY KYSER,

as he and his

College of Musical Knowledge

select as 1941

QUADRANGLE QUEEN . . .



SARA JANE OLWIN

Your gracious smile and charming manner
bespeak a personality as lovely as your beauty.



FOUR BEAUTIES

ANN JANET ALLISON

ARLENE CAVERT

MAURINE GISH

SHIRLEY SPOHN

HOMECOMING

MARGARET DAVIS

LETA BECKNER
Queen

MILDRED FRIES

MILDRED MILLER

DORIS VOSHILL



IN APPRECIATION

To the following individuals we are deeply indebted for their untiring services and full cooperation. We, the editor and business manager, extend to them our sincere thanks.

- PROFESSOR J. H. FRIES
Sponsor
- RAYMOND SLIFER
Copy Editor
- JACK BOWKER
Photography Editor
- HAROLD BOWMAN
JOHN TROSTLE
RONALD ORR
Photographers
- ROBERT BRUST
ROBERT BURKHOLDER
JAMES CRILL
PAUL DANNELEY
DONALD DAVIDSON
RAMONA FRIES
GLENFERD FUNK
LUCILLE HORNER
DONNA JEAN JOHNSON
D. EUGENE LICHTY
KIRK NAYLOR
LEE NELSON
SARA JANE OLWIN
ERNEST REED
BETTY JEAN SELLERS
EDITH SPENGLER
DEAN STUCKY
RUTH STUMP
OLGA UNRUH
GLADYS WIGGINS
MAMIE WOLFE
Contributing Writers
- DEAN STUCKY
Assistant Business Manager
- S. G. HOOVER
Sales Manager
- LETA BECKNER
PAUL DANNELEY
DONALD DAVIDSON
LENA BELLE OLWIN
RUTH SMITH
RUTH STUMP
Book Salesman
- KAY KYSER
Judge of Queens
- R. R. MAPLESDEN
THE BURGER-BAIRD ENGRAVING
COMPANY STAFF
- W. J. KREHBIEL
K. R. KREHBIEL
V. V. OHMART
THE REPUBLICAN PRINTING
STAFF
- THE FACULTY
- THE STUDENT COUNCIL
- THE PUBLICATIONS BOARD
- OUR ADVERTISERS

INVESTMENTS

4%

THRIFT with PROFIT

Pioneer Savings & Loan Ass'n.

A. W. Bromyer, Sec.

McPherson, Kans.

PEOPLES FOOD STORE

218 N. Main & MARKET Phone 802

Complete Line De-Monte Products
FRUITS — VEGETABLES — MEATS

Western Auto Associate Store

Quality Merchandise
Cut Rate Prices

211 N. Main

Phone 232

Best in Corsages
and
Presentation Flowers

Artistically Arranged
As You Would Like Them
We Deliver When And As You Wish

MAUD'S FLOWER SHOP
Phone 620

G. O. Swanson
ELECTRIC SERVICE

Genuine Parts for

**Magnetos, Starting and
Lighting Systems**

McPHERSON, KANSAS
Phone 187 310 N. Maple

J. C. PENNEY CO., Inc.

Where Your Dollars Go Farthest

"The Home of Values"

Your Patronage Greatly Appreciated

Greetings to McPherson College

May this and all years be
Successful to Your Institution

McPherson & Citizens State Bank

Member Federal Deposit Insurance Corporation

FEED INGREDIENTS

CUSTOM MIXING

THE FEEDOLA MILLING CO.

Phone 697

Save Money on Your Molasses and Feeds

LOANS

AUTOS — FURNITURE & CO-SIGNERS

109 East Kansas

Phone 410

A PLAN FOR EVERY NEED
Small Monthly Payments

**INDUSTRIAL
SAVINGS LOAN COMPANY**

Railway Express Agency, Inc.

Send Packages, Large or Small, Right from
Your Door. No Extra Charge.

JUST PHONE 70

FOR GOOD THINGS TO EAT, SEE

JAMES FOOD STORE

Phone 4

We Deliver

The Lischesky Dry Goods Co.

- Princess Coats
- Nelly Don Frocks
- Larkwood Hosiery
- Classy Jean Dresses

FOR GOODNESS SAKE



Use

“W-R”

FLOUR

MADE BY

THE WALL-ROGALSKY MILLING CO.

DOUGLAS M. HALE
TYPEWRITERS

Ribbons & Repairs — Alliance Ins. Bldg.

Greetings from
Gamble Stores

The Friendly Store

W. W. Musick, Pres.
C. T. Lindgren, Cashier

W. A. Leffler, V. Pres.
P. L. Ginder, Asst. Cashier

FARMERS STATE BANK

A ROLL OF HONOR BANK

CANTON, KANSAS

McPHERSON'S LEADING

MEAT MARKET

for over 20 years

McPherson Meat Market

OLIVER and NELSON, Props.

Phone 107 & 108

104 N. Main

Flowers Telegraphed

The beauty of our business is Flowers,
Styles and Selection

*Humfeld's
Flowers*

Phone
172

GREENHOUSE
515 N. ASH



Exterior View of McPherson's Municipal Electric Generating Station

The Well Dressed Man

Looks to



FOR HIS CLOTHES

Central Printing Co.

Publishers of

The Democrat-Opinion

QUALITY JOB PRINTING

Rannells and Hutchison, Props.

Phone 298

210 N. Main

PEOPLE'S STATE BANK

McPherson, Kansas

F. A. VANIMAN, President
PAUL E. SARGENT, Vice-President
BERT WEBB, Cashier

DALE STRICKLER, Ass't. Cashier
WILBUR YODER, Ass't. Cashier
VIRGINIA JOHNSON, Ass't. Cashier

Member Federal Deposit Insurance Corporation

GIFTS

ART SUPPLIES

FRAMES

Phone 92

ABEL'S

221 N. Main

FILMS

PHOTO SUPPLIES

CAMERAS

College Days Bring Pleasant Memories

and Remind you of McPherson, Home of

Farmers Alliance Insurance Company

KANSAS' LARGEST AND STRONGEST

Fire - Lightning - Tornado Insurance

Information
and
Printing

Both are necessary to a Happy and
Successful Life

The Daily Republican keeps you
informed on Affairs

Its Advertisements tell you the best
Places to Buy

Its Expert Workmen give you the
Very Best in Printing

The Daily Republican
(Printers of the Quad)

NIGHT

The Snake Dance winds around main street . . . where's the guy in the night shirt . . .

French swishes one through the hoop . . . another two points for McPherson . . . a high scorer in action . . .

Looks like the Booster Club going into action . . . somebody gets the works . . . paddles help . . .

Easy to look at . . . stars have allure all right . . . midnight revelry in the physics lab . . . got it! . . .

The astronomy class sights a constellation . . . score one for the prof . . . another good night . . .

Depth of interest in art . . . the aesthetic in color . . . a future artist, maybe . . . he hopes . . .

Early to bed . . . the Pajama Parade supper in the charm . . . what a variety of color . . . some fun! . . .

Asleep on the front porch . . . "Fanny" suffers again . . . a sample of room stacking . . . complete in detail . . .

A young local gets a neat trim . . . his mother'll be along later . . . no scalping, boys . . .



AND DAY

Gathering of the clan . . .
reading the "Spec" on Friday
. . . an after-meal habit . . .
any news? . . .

Camera study of an "A"
student . . . lucky prof . . .
the hands of an artist . . . we
need more . . .

The dorm mascot gets a ride
. . . in goes the buggy . . .
open wide ye portals . . . save
the pieces . . .

A Homecoming Game feature
. . . the downtown parade . . .
taken for the well-known
"ride" . . . whisker boys . . .

Decorating for the big game
. . . which end is that? . . .
all classes contribute . . . all
play and no work . . .

Helping get wood . . . a social
project . . . blast away ye
hearties . . . more firewood
for winter . . .

Prof. Hess reads the report
. . . his only picture . . .
another debate victory . . .
sounds pretty good . . .

A budding artist plays
the grand . . . sonata or
scherzo, it's all the same
. . . nice going! . . .



DELUXE

CLEANERS & TAILORS

111 E. Marlin

McPherson, Kans.

S & S CAFE

WELCOME COLLEGE STUDENTS

Home Cooking

215 S. Main

SILVER SPRINGS

Creamery Products

Listen to K. S. A. L., 12 Noon

For the News

We Appreciate

your patronage and will try to merit your continued good will by giving you Better Merchandise, Better Service and More for your Money every day in the year.



IT PAYS TO PAY CASH

Be Thrifty . . .

See A Good Movie

For Your Best Entertainment!

WE SPECIALIZE IN
AMUSEMENT FOR
YOUR PLEASURE!

MANOR THEATRES RITZ

Formerly Helstrom

116 N. Main

Hotel Warren

and

Coffee Shop

For Your School Parties

Our Roof Garden is one of the finest
banquet rooms in the state

Phone 830

SID BACON MOTOR CO.

Dodge-Plymouth Sales and Service
Dodge Trucks
McPHERSON, KANSAS

BIRKHOLOZ

Better Yet Bread — Pastries

114 E. Euclid Phone 318

CARLSON PLUMBING COMPANY

Plumbing — Heating — Gas
Appliances and Installations

Bus. 14 Phones Res. 26

Congratulations and Best Wishes to the Class of 1941

FROM

McPherson's Leading Department Store

WE SELL FOR CASH AND SAVE YOU MONEY

BROWN · McDONALD

CONSISTENT LOW PRICES THE YEAR 'ROUND



One of these days

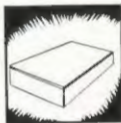
(sooner than you think) you'll be buying printing plates.

Against that day, fix in your mind the name of BURGER-BAIRD. It will then be a more important fact to you than dates (historical — not the other kind) or irregular verbs or formulae.



For while there are other good engravers, there is only one Burger-Baird.

Good plates? Yes, the best, and pride in their craftsmanship. Prompt with them, too.



But the main thing that keeps Burger-Baird the best known name among middle-west engravers seems to be—well, call it "savvy." It means interest and understanding, not merely for the engravings, but for your larger objectives as well.



People seem to like that, and so, no doubt, will you. Keep us in mind, won't you?



BURGER-BAIRD ENGRAVING CO.

Graphic Arts Building

10th & Wyandotte Streets

KANSAS CITY

Modern milkman . . . One, two, three,
and out . . . Study in black and white
. . . Phlinching in Physics lab . . .

The very newest in scarfs . . . Carrying
the pigskin . . . Whistlin' girl . . .
Against "ve portals" . . .

Any news from home? . . . Out of his
element . . . Give a big grin, Bryce . . .
And then to bed . . .

A big smile after class . . . We hear his
clumping from afar . . . A pleasant tete-
a-tete . . . Dr. Coe—speaker supreme . . .

Grocer-boy . . . What is so rare as a smile
from June . . . Study-bound . . . Mad
musician . . .

Soda-jerk . . . Intent—to all intents . . .
Stopped by the camera . . . A thriller or
a western? . . .

Exponent of married life at college . . .
Hisssss, the villain . . . Now the economic
theory . . . Turn that page, Myers . . .

Noted for tall stories . . . For shame!
. . . And everywhere the one would go
. . . Two's no crowd here . . .

Congratulations . . . Station MAC on
the air . . . Grandma verbosity . . . Why
so serious? . . .

Just a young sprout . . . Whither, Isabel?
. . . Mr. Fixit . . . Among the test tubes
. . .



A McPherson College Booster

The Family Barber & Beauty Shop

Tel. 476

210 N. Main

MIDWAY LUNCH

Formerly College Inn

DINNERS — LUNCHEES — DRINKS

We Serve To Please

ENGBORG'S DRUG STORE

FOUNTAIN — MAGAZINES

Phone 218

We Deliver

213 N. Main

McPherson Pipe and Equipment Company

David Litan

A. W. GRAVES, O. D. OPTOMETRIST

Over Bixby-Lindsay & Co.

106 1/2 N. Main

Phone 758

For
Fresh Candy
Gum
and Pennies
Visit
Our Candy Dept.

Duckwall's

"QUALITY, SERVICE AND PRICE"

Supply Your Needs
in Face Powders,
Creams, Soaps,
Handkerchiefs
and Hose

217
NORTH
MAIN

SWANSON'S

PHONES
185
186

GROCERY and MARKET

15
14
13
12
11
10
9
8
7
6
5
4
3
2
1

Hawley Hardware

219 N. Main

Phone 191

FLAGO'S CAFE

Follow the Bulldogs to
Flago's Cafe, 204 N. Main

DUNHAM STUDIO

Home of

Personality Portraits

113 1/2 N. Main

Phone 1330

LAKE SUPERIOR LUMBER CO.

GEO. H. GOODHOLM, Manager

LUMBER, HARDWARE, PAINT, COAL

Telephone 40

McPherson, Kansas

301 North Maple

STRATO-LINE

JEWELRY BY HICKOK



TOPFLIGHT SMARTNESS

Smart . . . new HICKOK tie chain with three Strato-line initials. Alligator Grip back . . . holds the tie snugly in place. In attractive gift package

\$150

MORRIS & SON

BEAU MART

BEAUTY SALON

Phone 788

110 East Euclid

THE SINGER SEWING CENTER

Offers Students a Choice of 5 Courses
Classes arranged to meet your convenience.

We Do Hemstitching and Buttonholes

Phone 634

119 S. Main

CLING AND LOWREY

The Home of Proven Brands

POEHLER — LEE — MONARCH

116 So. Main

Phone 16

Jerry's Shoe Shop

214 N. Main

McPherson

The Home Of

**GOOD WATCHES AND
PERFECT DIAMONDS**

Bixby, Lindsay & Co.

THE HOME STATE BANK

McPherson, Kansas

SAFE, CONSERVATIVE, PROGRESSIVE

Deposits of \$5,000 and under insured by the
Federal Deposit Insurance Corporation

W. A. CRARY HARDWARE

REFRIGERATORS — STOVES — RADIOS
MAYTAG WASHERS

Carpenter Motor Co.

Plymouth — De Soto

Congratulations to the Graduates. May your success and prosperity be Bountiful.

Phone 660

PHOTO/SHOP
& STUDIO

106½ North Main St.

Photography — Portrait & Commercial — Photographic Supplies

THE UNION CO-OPERATIVE OIL CO.

Phone 409

NORVIN ROLANDER, Mgr.

McPherson, Kan.

Gasoline
Kerosene
Fuel Oils

USE **Co-Op.** PRODUCTS

Lub. Oil
Grease
Tires



SEE THEM

at

PRIEST JEWELRY

115 N. Main



PURITAN CAFE & FOUNTAIN

Phone 77

108 N. Main

McPherson

MORE AND BETTER FOOD

Ask any college student, sport fan or athlete and they'll tell you that you'll get more and better food here for your money. If you can't find your friends at home, then look in the Puritan Cafe.

CONGRATULATIONS 1941 GRADUATES

“WHERE YOU'LL MEET YOUR FRIENDS”

Up-to-the-minute Fountain Service
Complete Line of Cosmetics

The Magazines You Enjoy Reading

Hallmark Greeting Cards for Every Occasion

Your Rexall Drug Store

HUBBELL'S DRUG STORE

104 S. Main

Phone 23