



19

QUADRANGLE

40



*The 1940*

# QUADRANGLE



McPHERSON COLLEGE LIBRARY

*The* QUADR  
*1940*

*Copyright* ★

JIM CRILL *Editor*

S.G. HOOVER *Bus. Mgr.*



# ANGLE

PUBLISHED BY THE  
STUDENT COUNCIL  
MC PHERSON COLLEGE

McPHERSON COLLEGE LIBRARY



# FOREWORD



*Defiant, we face our destiny without fears!  
We hear the future's reverberant challenge:  
Its strident mockery rings in our ears.  
Cursing the future's hardness,  
We laugh and play,  
Reveling in the moment's pleasure.  
Forgetting the sorrows of yesterday and today.  
We mould our ultimate destiny  
And look with fearless eyes into eternity.*



# CONTENTS

WE WORK ✓

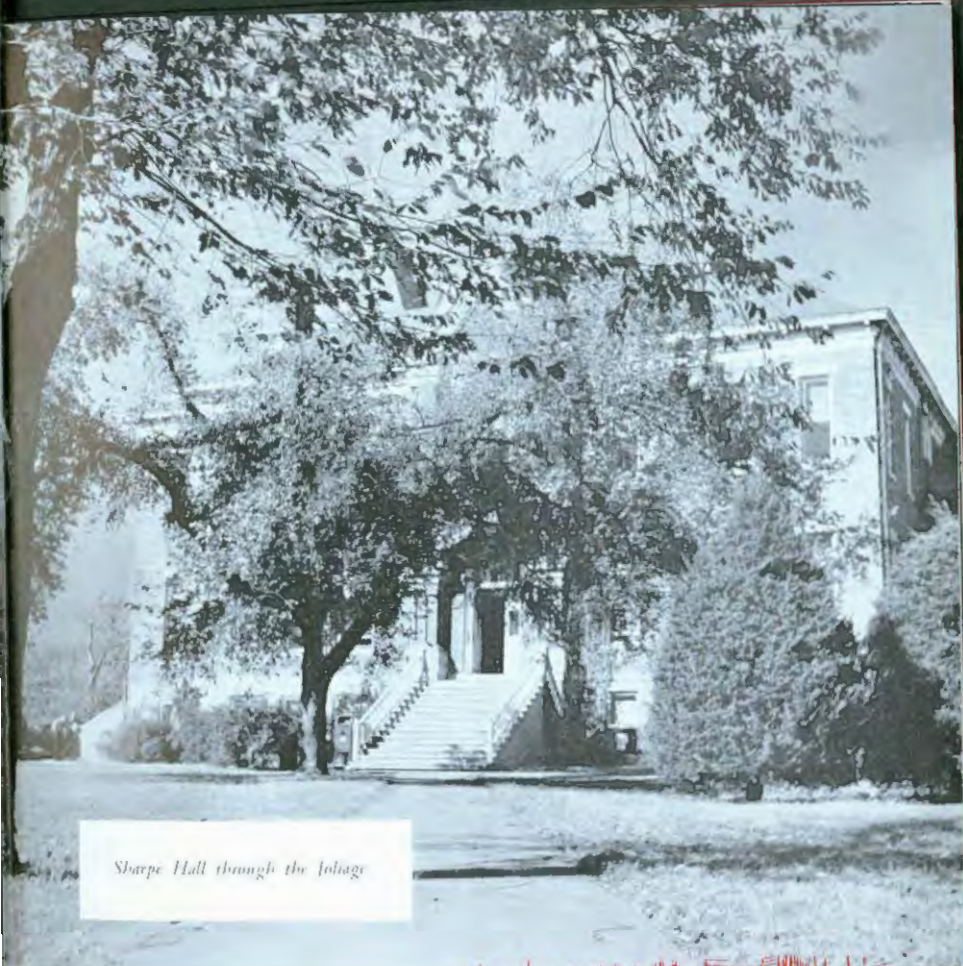
WE PLAY ✓

WE CREATE ✓

WE ARE ✓







*Sharpe Hall through the foliage*

**COLLEGE  
NERVE  
CENTER**







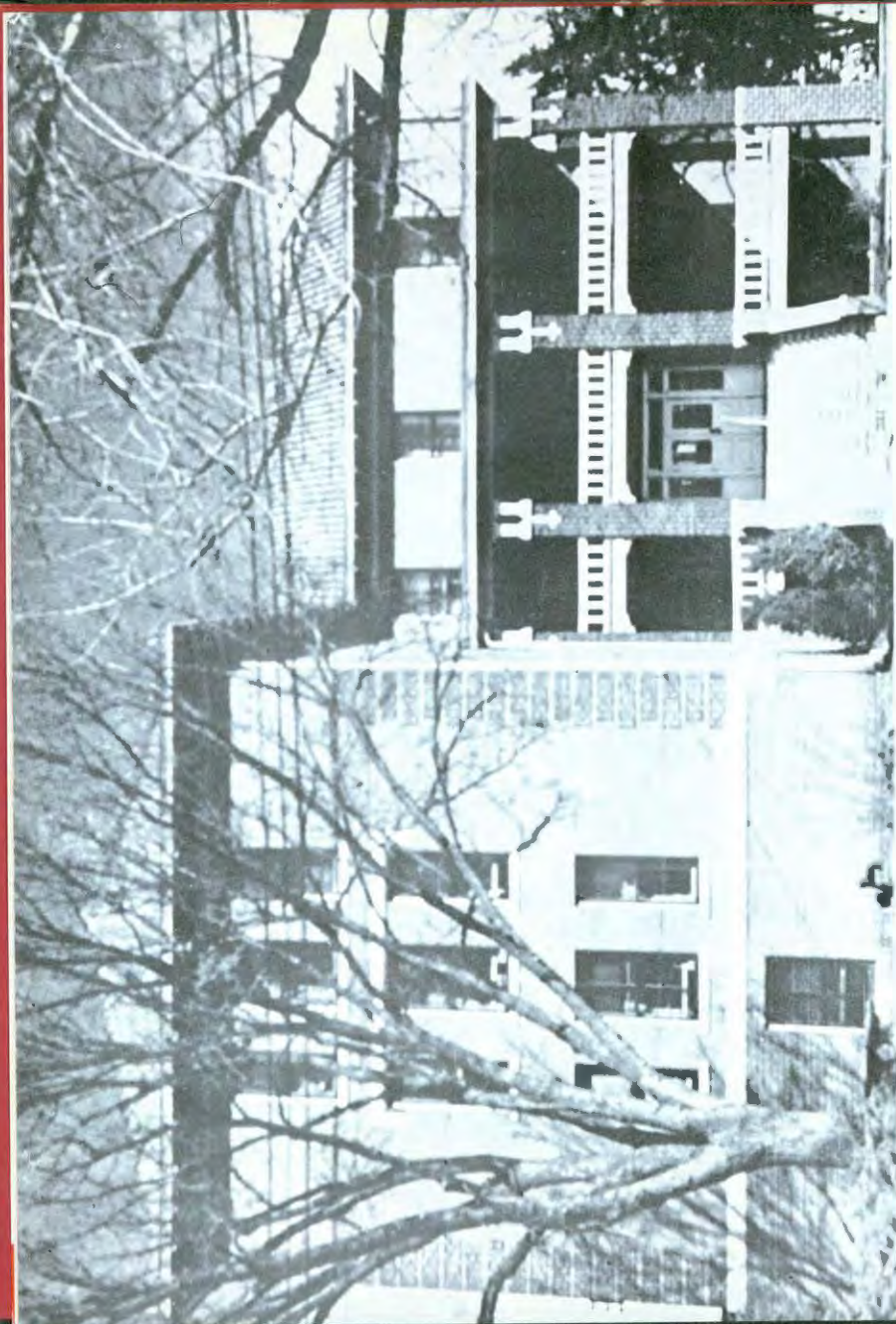


SCIENCE BUILDING

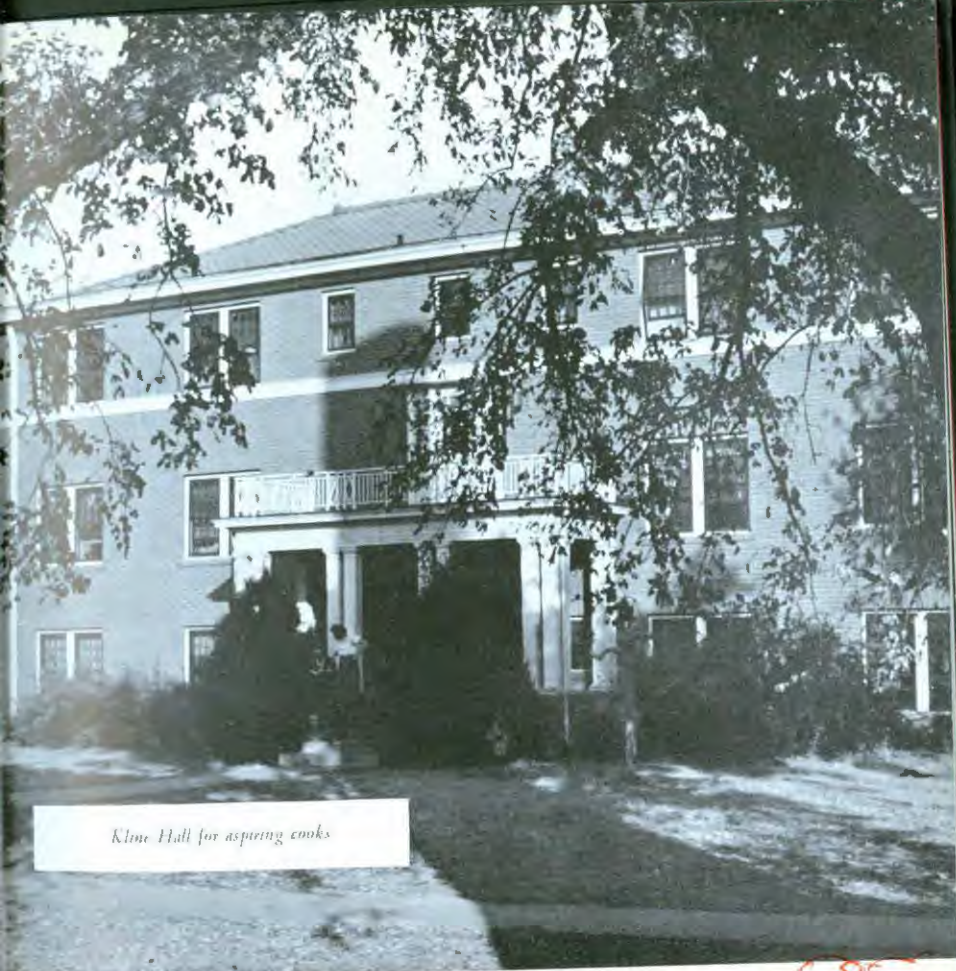
BOY'S  
DORM









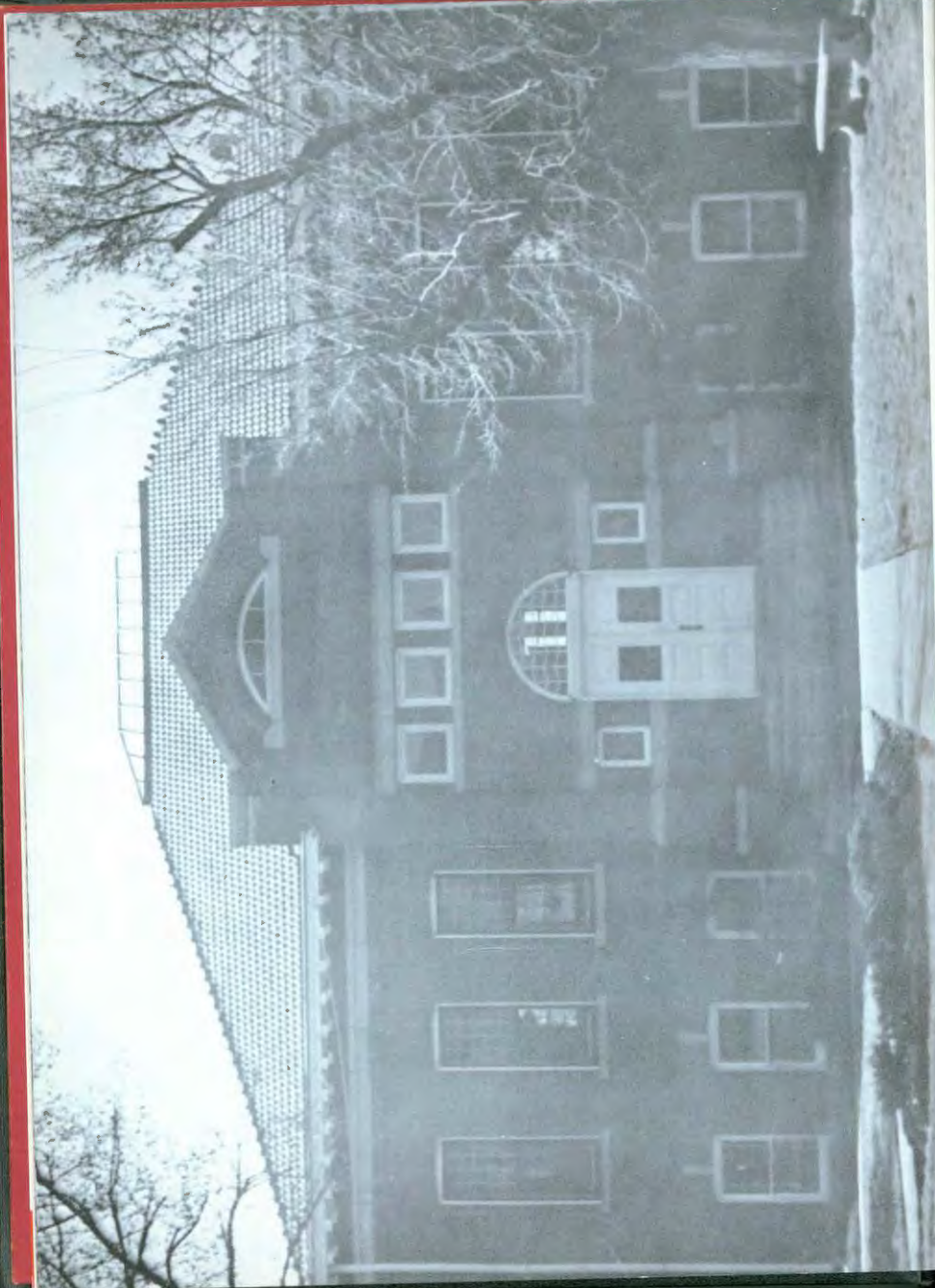


*Kline Hall for aspiring cooks*

## MARRIED AND SINGLE

GIRL'S  
DORM



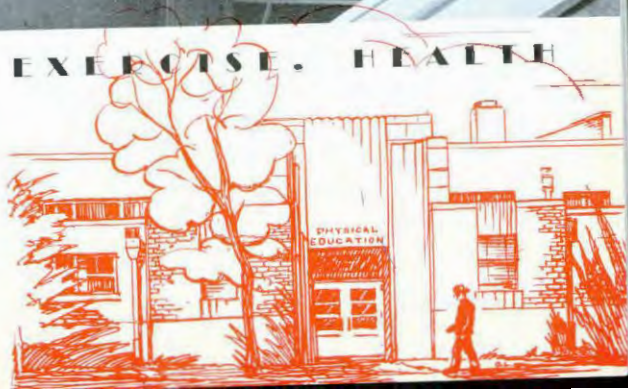




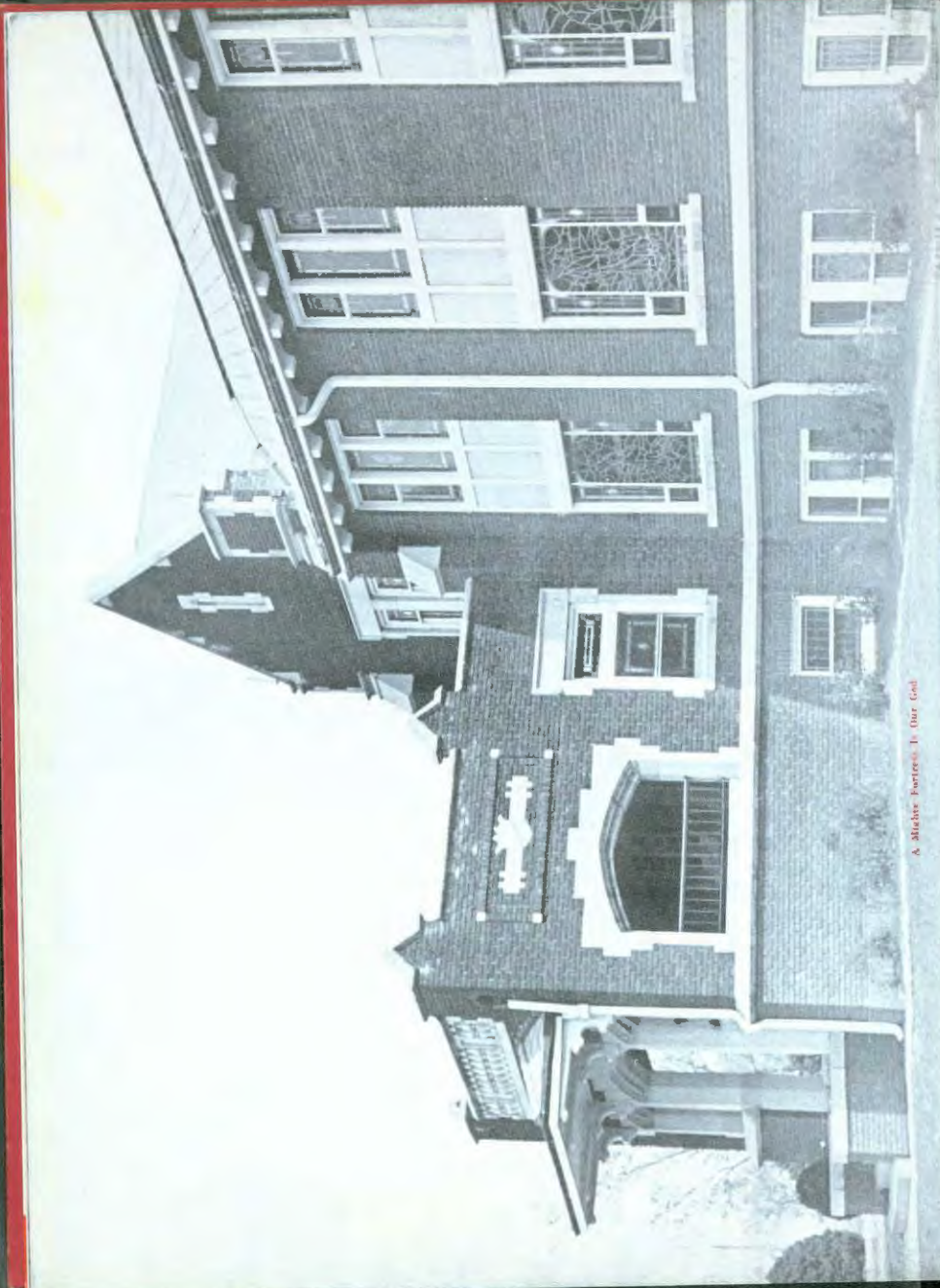


PLAY, EXERCISE, HEALTH

CARNEGIE  
LIBRARY







A. Michter, Portage, Pa. Our Goal



*We Work*





# MACOLLEGE IN NORTH CENTRAL

## Students in Outlying States May Take Their Credits Home and Have Them Accepted by School Boards and Other Colleges

On April 7th McPherson College was admitted to the North Central Accrediting Association of Colleges and Secondary Schools after a number of years of strenuous campaign on the part of the entire administrative staff notable among whom were Dr. Schwalm and business manager J. H. Fries.

One among the bigger contributions that membership in the association will make will be that of institutional self-respect and faith in its own ability. Perhaps it would be wise to say that intrinsically a college is much the same when it becomes a member of the association as it was before it was admitted, as a bank is much the same bank after inspection and approval by a federal bank inspector. But after it has been approved there is added faith and confidence on the part of the public besides increased self-assurance and self-confidence on the part of those working within.

One of the marked benefits resulting from membership is out-of-state recognition. All will realize the importance of this, for since the college lost membership in the association in 1927, the out-of-state student have been faced with the problem of getting their credits recognized by the departments of education of those same states. To obtain teaching positions must of necessity have to take additional work in a school in the state in which they proposed to teach. This has been especially true in Idaho and Iowa. In many states McPherson college graduates have been discriminated against by high schools that were members of the North Central Association. Maccollege graduates have long been discriminated against when seeking entrance into graduate schools where the college was not so well known. Some capable students have

been refused consideration for scholarships and fellowships on the sole and insignificant basis that they did not hold a diploma from an accredited school. Many have had to take entrance examinations for graduate work that they would not have if their alma mater had been a member of the powerful North Central Association. These problems exist no longer by virtue of the College's new membership in the North Central Association.

At the present time many agencies such as the American Council on Education and the United States Bureau of Education print lists of accredited colleges. In many of these lists McPherson College does not appear because it has not in the past been recognized. McPherson College will henceforth appear in these lists of accredited colleges.

Throughout the campaign for Maccollege's good fortune there has been emphasized the fact that this is not an ultimate goal but only a step in helping McPherson climb to higher levels of educational service and McPherson character training. Dr. Schwalm has warned that the college and its constituents must not rest on their past achievements. He tells the thousands who come about the college who fell out of bed and were astonished to find "I guess I was brought out here where I got up."

Maccollege is greatly indebted to the splendid work of all the faculty, trustees and alumni, student body and especially the community. Dr. Schwalm in his statement to the press said: "The fine cooperative support of the city of McPherson for the last decade, through the Booster Banquet in particular has been of inestimable value in assisting those at the college."

The Quadrangle salutes its Alma Mater.





## MACOLLEGE PRESIDENT

Those who have had some glimpse of the many things the president does in one day marvel continually at his calm and apparent unhurriedness. Troubled students, board conferences, committee meetings, consultations with other educators—all these things make their demands upon his time. But throughout all he always has time for the problems of the students and faculty. He takes the time for the personal touch that is so essential for the smooth and harmonious working of any small, well-knit organization like our McPherson College.

Dr. Schwalm has been intimately associated with collegiate folk, and, axiomatically, with collegiate problems since 1911 when he began teaching history in Manchester College. He was then made dean of the college in Manchester in 1918 in which position he served until he was made President of our Macollege in 1927. He was awarded the Ph. D. of the University of Chicago in 1926 and has since studied omnivorously and traveled widely.

His career as president of McPherson College has been fraught with depression and the consequential depopularization of classicism. Couple with this young people nourished on gasoline and reared in the feverish heat of industrial and class strife and the chaos of national vandalism, and one has delineated the problems of the modern educator. But, in spite of the impingement of these forces, Dr. Schwalm has consistently stood for the highest ideals of democracy and Christianity.

### DR. SCHWALM

Administration; Admissions; Advanced Standing, and Honors; Calendar and Public Events; Publications; Ex-officio member of Executive Board; Educational Board; Committee on Evaluating the Accrediting Procedure of North Central Association of Colleges; State Textbook Commission.



## VITALITY. INSPIRATION

### Dean of Women

Vitality and aliveness are the qualities in Dean Shockley with which the people she contacts are the most impressed. The reason is that it is probably the most characteristic thing about her. In committee meetings, in classes, and in society everyone feels the force of her aliveness. Her classes are informal and witty, yet one feels an undercurrent of force, of aggressiveness, of vigor.

Couple with this breadth of interest, depth of personality, humor, and real sympathy, and you have the reason for the continued popularity of our Dean of Women.

### Dean of Men

Summed up in brief form it can be said that Professor Dell's attitude toward his job is that it should be inspirational, not corrective. He feels that he should be a guide, not a reformer. Any one at any time can talk over his problems with Professor Dell. The only requisite is that the problem seem important to the student, and Professor Dell will listen. If you need to get something off your chest, you will find a genuinely sympathetic audience in Professor Dell. His occasional efforts in unearthing anti-social activities merely prove that it is mandatory that a reasonable degree of order be maintained.

#### MISS SHOCKLEY

Personnel Committee; Social Director; Student Council Sponsor; Sponsor S.C.M.; Sponsor B.Y.P.D.; Women's Council; Dean of Women.

#### PROF. DELL

Dean of Men; Men's Council; Recreational Council; Student Council; Student Employment; Personnel Committee; Pres. of Alumni Association.



## G E N I A L .   E F F I C I E N T

I will lift up mine eyes to the Dean whence cometh my help. He will not suffer me to have conflicts, nor will he suffer me to take subjects for which I am unprepared. Yea, though I walk through the valley and shadow of registration, I will fear no evil for his decrees and his notations are with me. All of which, is the added psalmist's way of saying the best way of getting a knotty curriculum problem solved is to go see the Dean. His sympathy, sense of humor, and unhurried efficiency, coupled with his grasp of the administrative problems of education are the things that most peculiarly fit him for the position of Dean.

In his classes he is superb. No one is ever refused the opportunity of airing his views, but they are never allowed to rule. His wit at all times makes the classes most interesting. Although the students may rave at high speed about the injustices of the teaching profession, he is the picture of calmness and amiability. Many students will remember Dr. Boitnott's long legs wrapped around the little stand from which he taught long after they have forgotten the most points of reading didactic, school administration or curriculum plans and project methods.

### DEAN BOITNOTT

Student Council Sponsor; Administration; Curriculum; Admissions; Advanced Standing; and Honors; Personnel, chairman and director of testing; Educational Board.





**W. P. ASTLE, B. S., A. M.**  
Associate Professor of Physical Education and Director of Athletics  
B. S., Kansas State Teachers College, Emporia, 1928; B.S., 1935; A. M., University of Iowa, 1936; Coaching School, Chitticothe Business College, 1929; Baker University, 1931; Topeka, 1932, 1934, 1935, 1936; Northwestern University, 1934.



**ESTHER ATKINSON, B. S., in H. E., M. S.**  
Associate Professor of Home Economics  
B. S. in Home Economics, University of Nebraska, 1932; M. S., Kansas State College, 1937.



**J. A. BLAIR, B. A., M. A.**  
Teacher Training and Public Speaking  
B. A., Kansas U., 1917; M. A., Kansas U., 1918; U. of Colorado, summer session, 1928, 1924; Iowa U., summer session, 1926; Chicago U., summer session, 1927, 1928; Greely State Teachers, 1936.



**JOHN W. BOITCOTT, A. B., A. M., Ph. D.**  
Dean of College and Professor of Education  
A. B., Bridgewater College, 1935; A. M., University of Virginia, 1928; Ph. D., Ibid., 1936.



**JOSEPH I. BOWMAN, A. B., M. S.**  
Professor of Mathematics and Physics  
A. B., McPherson College, 1918; M. S., University of Chicago, 1924; Oberlin College, 1918-1919; Yale University, 1919-20; University of Kansas, summer 1941.



**W. EARL BREEN, B. S. L., A. B., B. D.**  
Field Representative  
B. S. L., McPherson College, 1924; A. B., Ibid., 1925; B. D., Bethany Biblical Seminary, 1928-1929; Northwestern University, 1928-1929; University of Chicago, summer 1924; 1926-1927.



**JESSIE BROWN, B. M.**  
Professor of Piano  
Diploma, Bethany Conservatory, 1907; B. M., Bethany College, 1910; Piano Instructor, Ibid., 1908-1913; Student, Royal Conservatory, Leipzig Germany, 1913-1914; Special Student, Chicago, summer 1935.



**CLARA COLLINE**  
Instructor in Art  
Artist Certificate, Bethany College, student, Chicago Art Institute, 1922.



**SAMUEL MILTON DELL, B. S., M. S.**  
Dean of Men and Professor of Industrial Arts Education  
B. S., McPherson College, 1926; M. S., Iowa State College, 1934; Central Missouri State Teachers College, summer, 1927; University of Chicago, summer, 1936.



**MARY E. EMMERT**  
*House Mother and Nurse*  
 Mount Morris, 1897; St. Luke's Hospital,  
 Cedar Rapids, 1910, 1897.



**NEVIS W. FISHER**  
*Associate Professor of Voice*  
 Graduate, Peabody Conservatory of  
 Music, 1922; Johns Hopkins University,  
 1935, 1946; Eastman School of Music,  
 summers, 1924, 1937, 1937, 1938;  
 Rochester School of Music, 1939.



**MILDRED MARIE FORNEY, A. B.,  
 B. S. in Library Science.**  
*Assistant Librarian*  
 A. B. Illinois Wesleyan, 1937; B. S. in  
 Library Science, University of Illinois,  
 1938.



**J. HOWARD FRIES, A. B.**  
*Business Manager*  
 New York University, summer, 1910;  
 1910; A. B., McPherson College, 1925.



**MARGARET BECKETORN, A. B.**  
*Librarian*  
 A. B., McPherson College, 1921; stu-  
 dent, Colorado State Agricultural Col-  
 lege, summer, 1923; Columbia Univer-  
 sity, summer, 1927; University of Chi-  
 cago, summer, 1937.



**J. WILLARD HESTEY, B. S.,  
 M. S., Ph. D.**  
*Professor of Chemistry*  
 B. S., Galesburg College, 1907; M. S.,  
 Ibid., 1910; Ph. D., University of Chi-  
 cago, 1921; Harvard, 1907-1908, 1937;  
 Johns Hopkins, 1910-1911.



**DELLA LEHMAN, A. B., A. M.**  
*Professor of English*  
 A. B., Manchester College, 1921; A. M.,  
 University of Southern California,  
 1924; Ibid., summer, 1935; University  
 of Chicago, summer, 1921; University  
 of London, 1926; Harvard, summer,  
 1922; Columbia University, summer,  
 1937.



**FERN LINGENFELTER, B. M.,  
 A. B.**  
*Assistant Professor of Public School  
 Music and Piano*  
 B. M., McPherson College, 1925; A. B.,  
 Ibid., 1937; student, Peabody Conserva-  
 tory, 1926-1927; Chicago Municipal Col-  
 lege, summer, 1927, 1929; student, Uni-  
 versity of Colorado, summer, 1933;  
 special student, Chicago, summer, 1935.



**ALICE B. MARTIN, B. S.**  
*Registrar and Instructor in  
 Stenography*  
 B. S., McPherson College, 1938; K. S.,  
 T. C., Emporia, 1921-1923; Ibid., sum-  
 mer, 1928.



**BURTON METZLER, A. B., B. D.,  
Th. B., Ph. D.**

Professor of Philosophy and Religion  
A. B., Manchester College, 1929; B. D.,  
Bethany Biblical Seminary, 1931; Th.  
B., Princeton Theological Seminary,  
1934; Ph. D., Southern Baptist Theolog-  
ical Seminary, 1928.



**ROBERT ELLSWORTH MOHLER,  
A. B., M. S.**

Assistant to President in Public Rela-  
tions and Professor of Biology,  
A. B., M., Morris College, 1912; M. S.  
Kansas State College, 1917; Michigan  
State College, 1919; University of Wis-  
consin, 1925; University of Kansas,  
summer 1927; Member Seminars,  
National University, Mexico City, 1929.



**WALTER NAUMANN**  
Instructor in Modern Languages  
German High Examination, Bonn  
Ph. D. Bonn.



**O. A. OLSON, B. S., M. A., Ph. D.**  
Commerce and Economics

B. S., Northern State Teacher's Col-  
lege, 1928; M. A., U. of Iowa, 1942;  
U. of Colorado, summer session, 1945;  
Ph. D., U. of Iowa, 1939.



**CLAYTON R. ROCK, B. S.**  
Assistant in Business Office  
B. S., McPherson College, 1927.



**VERNON FRANKLIN SCHWALM,  
A. B., A. M., Ph. D.**  
President of College and Professor  
of History

A. B., Manchester College, 1913; A. M.,  
University of Chicago, 1916; Ph.D.,  
ibid., 1920; Columbia University, sum-  
mers, 1921, 1956; Dean, Manchester  
College, 1918-1927.



**IDA SHOCKLEY, A. B., A. M.**  
Dean of Women and Associate  
Professor of Psychology

A. B., Manchester College, 1925; A. M.,  
University of Chicago, 1927; Univer-  
sity of Washington, 1926-1927; ibid.,  
summers, 1931, 1932.



**RALPH STUTZMAN, A. B.**  
Instructor in Organ  
A. B. Southwestern, 1931.



**LILYAN WARNER, B. S., M. A.**  
Instructor in Physical Education  
B. S., Central Missouri State Teach-  
ers College 1936; University of Iowa,  
summers 1936, 1937, 1938, 1939.





FRANCIS F. WAYLAND, B. A.,  
M. A., Ph. D.

**History**

B. A., Bridgewater college, 1908; M. A.,  
U. of Virginia, 1911; Catholic U. of  
America, summer session, 1942; Ph.D.,  
C. of Pennsylvania, 1958.



MORTON WIDGER

**Instructor in Wind Instruments**

Student of Music at Bethany College,  
1929; in charge of double reed instru-  
ments, Bethany College 1933, assisting  
Prof. Walter Brown.

MAURICE A. HESS, A. B., A. M.

**Professor of Latin**

Graduate, Cumberland Valley Normal,  
1908; A. B., Ursinus College, 1911;  
A. M., University of Pennsylvania,  
1917; University of Chicago, summer  
1929, 1937.



"It is difficult, but I get it now  
 . . . "Ich wird erklæren"  
 . . . "Let us suppose it is  
 this, of course it doesn't have  
 to be," . . . "To be or not  
 to be, that is the question"  
 . . . Tall, lean, and lanky  
 . . . "They shall beat their  
 swords into ploughshares . . .  
 Atavism personified



# THE CLASS OF FORTY

ALLEN, GALEN Dumont, Iowa  
*Philosophy and Religion*

A Cappella Choir 1, 1; Choral Club 2, 3; Vocal Ensemble 1; Pop Club 2; Solo Singing 1; S.C.M. 2; Church choir 1.

AMOS, EVELYN Independence, Kansas  
*English*

A Cappella Choir 3, 1; Orchestra 3, 1; Pop Club 3, 4; Vocal Ensemble 1; Class Officer 1; Dormitory Council 4; Women's Council 1.

BARLEY, ARLENE Now Hampton, Iowa  
*English*

Chemistry Club 3; Choral Club 3; S.C.M. 3, 1; Spectator 1.

BECKWITH, VERNON Nampa, Idaho  
*Industrial Arts*

"M" Club 2, 1; Internat'l Relations Club 3; Intramurals 4.

COBB, REBECCAH Galva, Kansas  
*History*

Chemistry Club 1; Basketball 2; Football 2; S.C.M. 2.

CROUSE, CARROL Adel, Iowa  
*Economics and Business Administration*

Basketball 1, 3; Class Officer 3, 4; International Relations Club 1; "M" Club 2, 3, 4; Tennis 1, 2, 3, 4; Track 1; Dorm Council 1; Pop Club 4; Intramurals 4.

DADSMAN, ELMER Nevada, Iowa  
*History*

Oratory 1; World Service 1; S.C.M. 1, 2, 4; Choral Club 1; Internat'l Relations Club 2, 3, 4; Dormitory Council 3; Men's Council 4.

DEKOURSEY, WESLEY Nampa, Idaho  
*Chemistry*

Football 2; Track 2; Choral Club 2; S.C.M. 2; Church Choir 2, 3, 4; A Cappella Choir 3, 1; Band 3; Basketball 3; Chemistry Club 3, 4; Quartet 3, 4; Vocal Ensemble 4; Solo Singing 3, 4.

DIEHL, EDWIN Beaver, Iowa  
*Commerce*

Basketball 1, 3, 4; Chemistry Club 3; Choral Club 3; Pop Club 3, 4; Intramurals 1.

DRESHER, DORIS McPherson, Kansas  
*History and Economics*

Sunday School Teaching 1; S.C.M. 1, 2, 3, 4; Internat'l Relations Club 3, 1; Spectator 3, 1; W.A.A. 1, 2, 3.

DUNCANSON, HAROLD Lewistown, Minnesota  
*Industrial Arts*

Basketball 2; Track 2; S.C.M. 2; "M" Club 2; Dormitory Council 3; Intramurals 4.

EISENBERG, EUGENE McPherson, Kansas  
*Biology*

A Cappella Choir 2, 3, 4; Pop Club 2, 3, 4; Chemistry Club 1; Athletics 1; S.C.M. 2; Church Choir 1.

ELBOD, SAM McPherson, Kansas  
*Industrial Arts*

Basketball 3; Basketball 3; Football 1, 3; Intramurals 4.

ENNS, KATHERYN Fort Pierce, Florida  
*Chemistry*

Chemistry Club 2, 3; W.A.A. 1, 2, 3, 4; Pop Club 2, 3, 4.

FLORY, RAYMOND Kinross, Iowa  
*History*

A Cappella Choir 3, 4; Thespian Club 2, 3, 4; Internat'l Relations Club 3, 1; S.C.M. Cabinet 2, 3, 1; Choral Club 2; World Service 1, 2, 1; Student Council 2; Solo Singing 3; Chemistry Club 3; Class Officer 3, 3; Church Choir 2, 3.

FRANTZ, ROWENA Grundy Center, Iowa  
*Home Economics*

A Cappella Choir 2, 3, 4; Women's Council 4; Class Officer 2; Chemistry Club 3; Sunday School Teaching 1; Spectator 1, 2; Student Council 2; Thespian Club 3, 1; World Service 1, 2; Church Choir 1, 2; Chapel Choir 3; Pop Band 1.

FRIES, HAROLD McPherson, Kansas  
*Chemistry*

Chemistry Club 3.

GROFF, FORREST Lebanon, Oregon  
*Industrial Arts and Biology*

Dormitory Council 4; BYPD president 4.

GROVE, VERDA Kinross, Iowa  
*Home Economics*

Student Council 4; W.A.A. 2, 3, 4; Publications Board 4; S.C.M. 2; Band 3; Chemistry Club 3; Spectator 3.

HAMMERSLEY, JONATHAN Nevada, Missouri  
*Chemistry*

Chemistry Club 1, 2, 3, 4; S. C. M. 2; Spectator 1.

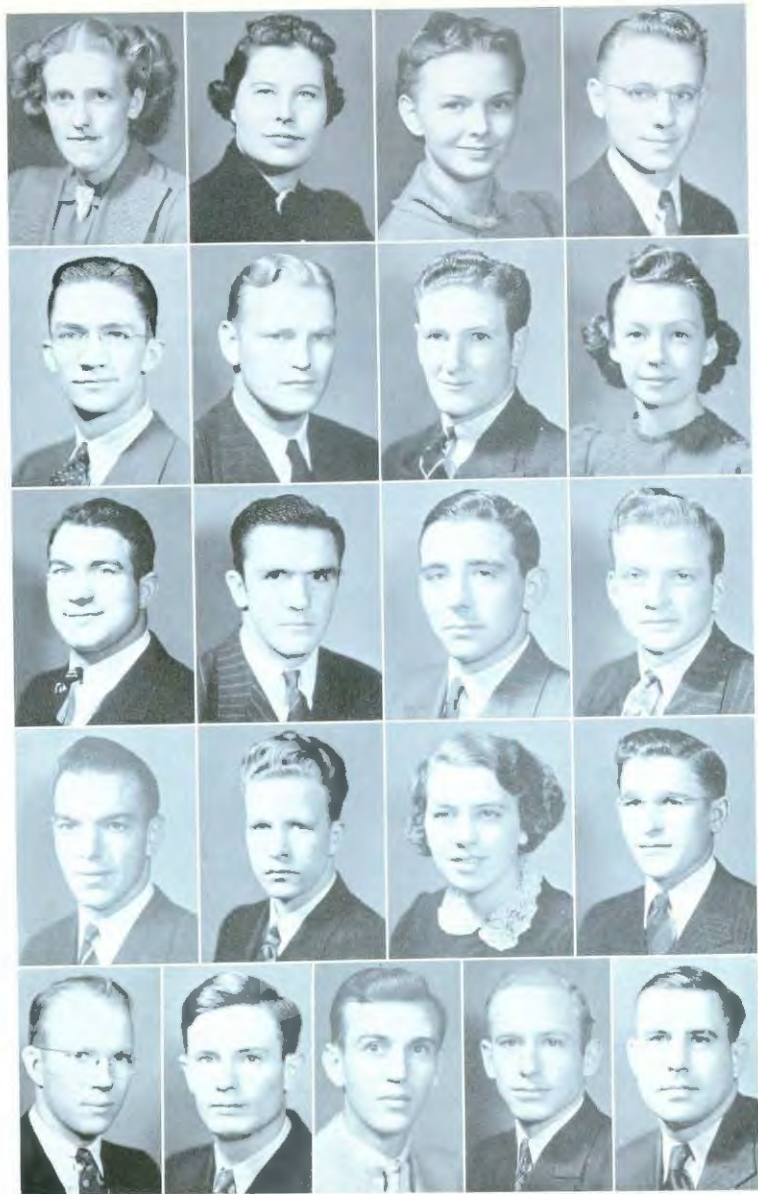
HANSON, CARRIE ALICE McPherson, Kansas  
*Psychology and Education*

Y.W.C.A. 1.



President, Oliver; Vice President, Crouse; Secretary, Mitchell; Treasurer, Amos.





HAMMANN, AUBREY McPherson, Kansas

*Home Economics*

Class Officer 3; Chemistry Club 1; Sunday School Teaching 1, 2; Women's Council 3, 1; W.A.A. 1, 2, 3, 4; Pop Club 2, 3, 4; S.C.M. 1, 2, 3, 4; Choral club 2.

KAGARICE, MARGARET Hutchinson, Kansas

*Home Economics*

W.A.A. 1, 3, 4; Dramatics Council 3; Pop Club 3, 4; International Relations Club 1, 2.

KINZIE, MARJORIE Lyons, Kansas

*History and English*

Class Officers 1, 2; Chemistry Club 1; Quiddanade 3; 4; Spectator 1, 3; S.C.M. 1, 2.

KRAUS, VERNON Pretty Prairie, Kansas

*Industrial Arts*

Band 3; Baseball 3; Solo playing and singing 4; Football 3; Intermurals 1; Athletics 1.

LETKEMAN, JOELLE Buhler, Kansas

*Business Administration*

Baseball 1, 2, 3, 4; Class Officer 3; Chemistry Club 1; "M" Club 3, 4; Track 2, 3, 4; Choral Club 3; Pop Club 3, 4; Intermurals 4.

MEYER, ANTON Tampa, Kansas

*Chemistry*

Baseball 1, 2, 3; Chemistry Club 3; Football 1, 2; Int. 2, 3; Track 1, 2, 3; W.M.C.A. 2; "M" Club 1.

MILLER, DOHN Lufry, Kansas

*History and Industrial Arts*

Baseball 2; Basketball 3, 4; Chemistry Club 2, 3, 4; Football 1, 4; Spectator 1; Athletics 1; Pop Club 3, 4; S. C. M. 1, 2, 3.

MINNICK, ELMY Hardin, Missouri

*English*

Solo Reading 1, 2, 3, 4; Class Officer 1; Devotionary 1, 2, 3, 4; Dramatics 1, 2, 3, 4; Spectator 3; Student Council 1; Theban Club 1, 2, 3, 4; S.C.M. 1, 2, 3; Choral Club 2; Play Production 1, 2, 4; Women's Council 3; Dormitory Council 3.

MYERS, PHIL Formosa, Kansas

*Commerce and Mathematics*

Dormitory Council 2, 3; Student Council 3, 4; Men's Council 4, 1; "M" Club 2, 4; Forensic Club 1; International Relations Club 4; Debate 4; Track 2; Football 3, 4.

McGILL, DAVID Saddy, Tennessee

*Industrial Arts*

Men's Council 3, 4; "M" Club 1, 2, 3, 4; Basketball 1, 2, 3, 4; Class Officer 2; Chemistry Club 3; Football 1, 2, 3, 4; Student Council 3; Tennis 1, 2; Track 2; S.C.M. 3.

OLIVER, JACK McPherson, Kansas

*Commerce*

Class Officer 1, 4; Intermurals 1; Sunday School Teaching 4.

ROBERTSON, ROY Pretty Prairie, Kansas

*Commerce*

Basketball 1, 2, 3, 4; Chemistry Club 3; Football 1, 2, 3, 4; "M" Club 1, 2, 3, 4; Tennis 2; Men's Council 3.

SEIDEL, ROBERT McPherson, Kansas

*Chemistry*

Chemistry Club 3, 4; Football 1, 2, 3, 4; "M" Club 4; Sunday School teaching 1, 2, 3, 4; Tennis 1; Track 1, 3; S.C.M. 1, 2, 3, 4; Church Choir 1.

SIEFFER, WINSTON McPherson, Kansas

*English*

International Relations Club 1; Spectator 1, 2, 3, 4; Debate 3; Solo Playing 1; Brass Quartets 1.

SMITH, AVIS Whitten, Iowa

*Home Economics*

Dormitory Council 3, 4; Women's Council 1; Recreational Council 3, 4; Chemistry Club 3; Quinary 1; Student Council 4; W.A.A. 2; World Service 1, 2; S.C.M. 1, 2, 3, 4; Choral Club 3.

STERN, GALEN Fredricksburg, Iowa

*Social Science*

Pop Club 3, 4; S.C.M. 1, 2, 3, 4; International Relations Club 2, 3, 4; Forensic Club 1; Intermurals 4; Recreational Council 1.

STOVER, STEPHEN McPherson, Kansas

*History*

Baseball 3; Class Officer 1, 2, 3; Student Council Pres. 4; Student Council 3; Men's Council 1; "M" Club 2, 4; Theban Club 2, 3, 4; International Relations Club 3, 4; Spectator 1; S.C.M. 1, 2, 3, 4; Forensic Club 1, 2; Track 4; Quadrangle 2; Orchestra 1; Debate 1, 2; Chemistry Club 2.

STUCKY, ALBERT McPherson, Kansas

*Mathematics*

VAGGIN, LEONARD Luray, Virginia

*History*

Debate 3; Theban Club 3, 4; Forensic 1; S.C.M. 3, 4; International Relations Club 1.

VOSHIEL, LAVERNE McPherson, Kansas

*Economics and Business Administration*

Band 3, 4; Basketball 1, 2, 3, 4; Student Council 4; Chemistry Club 2; Football 1, 2, 3, 4; Men's Council 3, 4; "M" Club 3, 4; Tennis 2; Track 1, 2, 3, 4; Intermurals 4; Pop Band 1, 3.

YOEER, CARL Bremen, Indiana

*History*

Intermurals.



Athlete . . . . . Scientist  
. . . . . Funpapers . . . . .  
Poet.





# THE CLASS OF FORTY-ONE

ANDERSON, MARJORIE	Gypsum, Kansas	FUNK, GLENFORD	Conway Springs, Kansas
<i>Home Economics</i>		<i>History</i>	
ANDERSON, MAURINE	Burdick, Kansas	GOERING, RAYMOND	Elyria, Kansas
<i>Home Economics</i>		<i>Mathematics</i>	
ATKINSON, DELMAR	McPherson, Kansas	HOOPER, MARY ELIZABETH	Plattsburg, Mo.
<i>Mathematics</i>		<i>Education</i>	
BOLLINGER, LA VERNE	Payette, Idaho	HUGHEY, EDITH	Bartlesville, Oklahoma
<i>Mathematics</i>		<i>Philosophy and Religion</i>	
CARLSON, MARGARET	McPherson, Kansas	JOHNSON, DONNA JEAN	McPherson, Kansas
<i>Home Economics</i>		<i>English</i>	
COLE, HELEN	Langdon, Kansas	KECK, IRVIN	Summerfield, Kansas
<i>Home Economics</i>		<i>Industrial Arts</i>	
CRILL, JAMES	Nampo, Idaho	KRUEGER, MARIANNE	Bagley, Iowa
<i>Mathematics</i>		<i>Economics and Bus. Administration</i>	
DAVIDSON, DONALD	Lyons, Kansas	LEWALLEN, WILBUR	Bisbee, North Dakota
<i>Chemistry</i>		<i>Biology</i>	
DETRICK, JOHN	Dayton, Ohio	MICHAEL, HERBERT	St. John, Kansas
<i>History</i>		<i>Mathematics</i>	
ELLIOTT, AVIS	McPherson, Kansas	MILLER, MILBRED	Raymond, Kansas
<i>Home Economics</i>		<i>English</i>	
FLORY, HAROLD	South English, Iowa	MOHLER, ELIZABETH	McPherson, Kansas
<i>Mathematics</i>		<i>Home Economics</i>	
FLORY, VENA	Lone Star, Kansas	MORRISON, MILBRED	Gypsum, Kansas
<i>Music, Psychology</i>		<i>Chemistry</i>	
FLORY, VERA	Lone Star, Kansas		
<i>Home Economics</i>			
FRANTZ, DEAN	North Manchester, Indiana		
<i>History</i>			
FRIES, RAMONA	McPherson, Kansas		
<i>Music, History</i>			
FRY, MARGARET	Lincoln, Nebraska		
<i>Music</i>			

President, Newkirk; Vice President, Spahn; Secretary, Olwin; Treasurer, Flory.



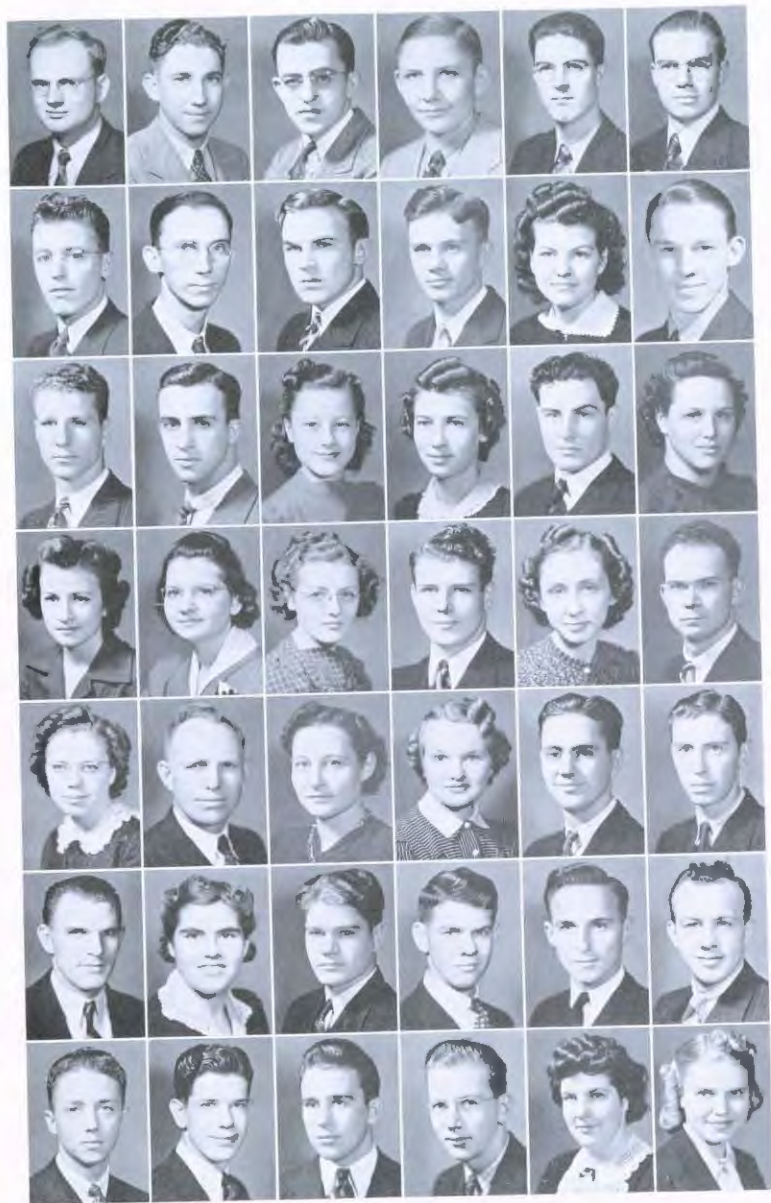


MUEHLER, HAROLD	Arkansas City, Kansas	SCHLEHUBER, GENEVIEVE	McPherson, Kansas
	<i>History</i>		<i>English</i>
NANCE, ROBERT	Reserve, Kansas	SHERFY, ESTHER	McPherson, Kansas
	<i>Economics</i>		<i>English</i>
NAYLOR, KIRK E.	Covert, Kansas	SPENGLER, EDITH	Wichita, Kansas
	<i>History</i>		<i>Mathematics</i>
NELSON, LELAND	Portland, Oregon	SPOHN, GERALDINE	Windom, Kansas
	<i>Philosophy and Religion</i>		<i>Home Economics</i>
NEWKIRK, DONALD	Lyons, Kansas	STUMP, RUTH	Perryton, Texas
	<i>History and Political Science</i>		<i>English</i>
NICKEY, EDITH	McPherson, Kansas	SWITZER, WAYNE	Webber, Kansas
	<i>Chemistry</i>		<i>Business Administration</i>
OWEN, LARUE W.	Nashville, Kansas	STUCKY, DALE	Elyria, Kansas
	<i>Biology, Chemistry</i>		<i>History and Political Science</i>
OLWIN, SARA JANE	Cushing, Oklahoma	THOMPSON, PAUL	Coway Springs, Kansas
	<i>Home Economics and Chemistry</i>		<i>Philosophy and Religion</i>
PIERCE, KEITH	McPherson, Kansas	WANAMAKER, ROLLIN	Waterville, Kansas
	<i>Music</i>		<i>History</i>
RATZLAFF, ELMER	Moundridge, Kansas	WHITMORE, ALBERT	Wheaton, Illinois
	<i>Physical Education and Industrial Arts</i>		<i>Religion and Philosophy</i>
REED, ERNEST	Salina, Kansas	WILEY, FREDRICK	St. Joseph, Missouri
	<i>History</i>		<i>Biology</i>
REGIER, MARION	McPherson, Kansas	WOLFE, MAMIE	Eldora, Iowa
	<i>Commerce</i>		<i>English</i>
SAATHOFF, EVELYN	Guthrie, Minnesota	STERN, FORREST	Barnum, Minnesota
	<i>English</i>		<i>History</i>
SHELLEY, HUBERT E.	McPherson, Kansas		
	<i>History</i>		
SELLERS, MARCELL	Galva, Kansas		
	<i>Industrial Arts</i>		



The business end of The Spectator. Lighting Olie's funeral pyre. Physiognomic manifestations of disaster. Romance at Coronado Heights.





# THE CLASS OF FORTY-TWO

Achilles, Leland, Conway, Kansas	Davis, Margaret, McPherson, Kansas	Groff, Everett, Lebanon, Oregon
Akers, Leland, Conway, Kansas	Deal, Kathryn Mae, St. Joseph, Missouri	Heckman, Mary Lou, Pasadena, California
Albright, Lyle, Eldora, Iowa	Denny, Bernetta, Elmo, Kansas	Hobbs, William, Reserve, Kansas
Blackman, Merrill, McPherson, Kansas	Dobranski, Harold, Lorraine, Kans.	Hoover, Harold, Abilene, Kansas
Briggs, Joe, McPherson, Kansas	Doll, Glennys, McPherson, Kansas	Hoover, S. G., Plattsburg, Missouri
Brunton, Max, Leavenworth, Washington	Dubois, Eldon, Rocky Ford, Colo.	Hoover, Sylvan, Quinter, Kansas
Brust, Robert, Claflin, Kansas	Duncan, Flora Mae, Zenith, Kans.	Ikenberry, Esthel, Quinter, Kans.
Bukey, Joseph, Inman, Kansas	Elrod, Lem, McPherson, Kansas	Ikenberry, Fred, Rocky Ford, Colo.
Bullinger, Wilbur, Canton, Kansas	Ewing, Irene, Waldo, Kansas	Jones, Calvin, Pretty Prairie, Kansas
Burger, Richard, Udell, Iowa	Florman, Lois, McPherson, Kansas	Johnson, Kenneth, McPherson, Kansas
Colberg, Corene, Frederick, Kansas	Franklin, Woodrow, West Plains, Missouri	Kanel, Lenora, Morrill, Kansas
Cook, Robert, Sidney, Iowa	Garrelts, Floyd, McPherson, Kans.	Kennedy, Lois, Marshalltown, Ia.
Collett, Andrew, McPherson, Kans.		
Cranmer, Jake, Rocky Ford, Colo.		
Curran, Anna Jean, Centralia, Illinois		
Dale, Ellen, Geneseo, Kansas		
Dannelley, Paul, McPherson, Kans.		
Davis, Helen, Wiley, Colorado		



President, Miller; Vice President, Brust; Secretaries, Morrison; Treasurer, Spahn.

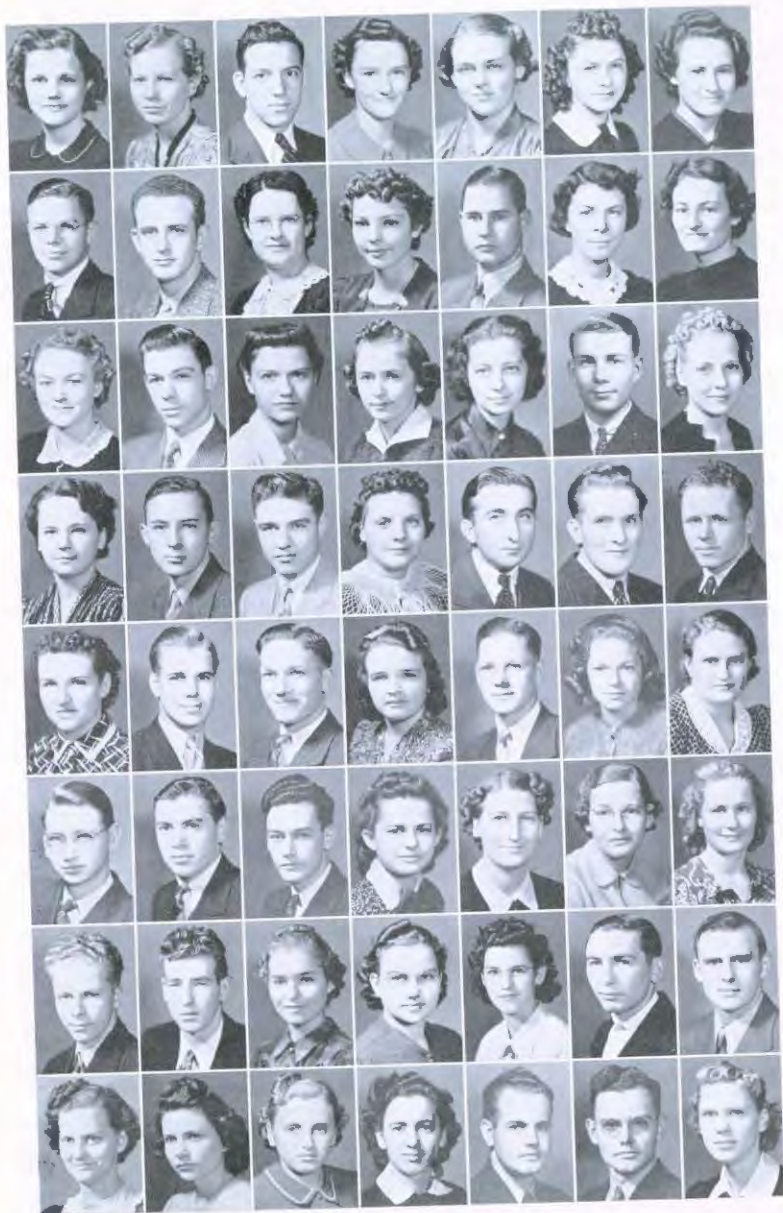




Kerlin, Virginia, Twin Falls, Idaho	Olwin, Lena Belle, Cushing, Okla.	Stauffer, Burns, Rocky Ford, Colorado
Kingsley, Robert, Windom, Kansas	Orr, Ronald, Holmesville, Nebraska	Stryker, Mabel, Haxtun, Colorado
Krueger, Norman, Bagley, Iowa	Peterson, Linn, McPherson, Kans.	Thompson, Kenneth, St. Joseph, Missouri
Kubin, Deborah, McPherson, Kans.	Peterson, Ruby, McPherson, Kans.	Vetter, Jack, Kansas City, Missouri
Lambert, Jim, Garnett, Kansas	Preston, Zona, Thomas, Oklahoma	Voshell, Doris, McPherson, Kansas
Lindgren, Alice, Canton, Kansas	Russell, Edna Mae, Galva, Kansas	Wagoner, Margaret, Red Cloud, Nebraska
Long, Orvell, Hope, Kansas	Reinecker, Keith, McPherson, Kansas	Wampler, Rowena, McPherson, Kansas
Metz, Ardys, Worthington, Minn.	Slead, Mary Ellen, Keota, Iowa	Westling, Virgil, McPherson, Kans.
Meyer, Raymond, Inman, Kansas	Sloan, Keith, McPherson, Kansas	Wiggins, Gladys, Geneseo, Kansas
Miller, Roy, Waterloo, Iowa	Smith, Joy, Whitten, Iowa	Williams, Austin, Sterling, Colo.
Mohler, Katherine, Leeton, Mo.	Stern, Margaret, Fredricksburg, Iowa	Yingst, Kenneth, Payette, Idaho
Morgan, Harry, Rolla, Kansas	Spohn, Shirley, Windom, Kansas	
Morrison, Kenneth, Gypsum, Kans.		
Morse, Max, Galva, Kansas		
Myers, Harold Keith, McPherson, Kansas		
Myers, Merlin, Formosa, Kansas		
Nelson, Lucian, McPherson, Kans.		
Nordling, Bernard, McPherson, Kansas		



Bullinger crouches . . .  
 Cheering at Ulie's cremation  
 . . . The major of "T. P.  
 O. T. F. B." . . . Smiling  
 Shirley Strides . . . S. G.  
 and his crutch . . . M.  
 club initiation.



# CLASS OF FORTY-THREE

Allison, Anne Janet  
McPherson, Kansas

Armstutz, Hazel  
Ransom, Kansas

Anderson, Irwin  
McPherson, Kansas

Andes, Rosalee  
Windom, Kansas

Barrett, Dorothy  
McPherson, Kansas

Beckner, Leta  
Holmesville, Nebraska

Brammell, Lola  
Ozawkie, Kansas

Blough, Milan  
Waterloo, Iowa

Bowker, Jack  
McPherson, Kansas

Dratton, Joyce  
Luray, Kansas

Brookus, Flora Mae  
Meridian, Idaho

Bronleewe, Robert  
Frederick, Kansas

Brubaker, Kathleen  
Nampa, Idaho

Brubaker, Hester Opal  
Prairie City, Iowa

Buckingham, Ida Mae  
Nampa, Iowa

Calton, Gerald  
McPherson, Kansas

Carlson, Edith  
McPherson, Kansas

Carlson, Madelyn  
McPherson, Kansas

Cavert, Arlene  
McPherson, Kansas

Champion, Glen  
Oskaloosa, Kansas

Clark, Betty  
Conway Springs, Kans.

Clum, Dessa  
Conway Springs, Kans.

Coughenour, Gaylord  
McPherson, Kansas

Crist, Wayne  
Quinter, Kansas

Crumpacker, Ila Bernice  
Wiley, Colorado

Dell, Byron  
Beatrice, Nebraska

Dell, Joe  
Beatrice, Nebraska

Eberly, Wayne Junior  
McPherson, Kansas

Elmore, Dorothy  
Galva, Kansas

Eisenbise, Russell  
McPherson, Kansas

Fasnacht, Roger  
Wiley, Colorado

Florman, Vera  
McPherson, Kansas

Peterson, Earnest  
Canton, Kansas

Fries, Mildred  
McPherson, Kansas

Franklin, Mabel  
West Plains, Missouri

Frantz, Elvin  
Holmesville, Nebraska

Frantz, Merlin  
Grandy Center, Iowa

Gahn, William  
Council Bluffs, Iowa

Goodsheller, Jean  
McPherson, Kansas

Gunselman, Shirley  
Blue Rapids, Kansas

Hamm, Rachel  
Rocky Ford, Colorado

Hedlund, Virginia  
McPherson, Kansas

Hessler, Winlow  
McPherson, Kansas

Hill, Laurence  
Galva, Kansas

Hoover, Ruth Lavonne  
Plattsburg, Missouri

Holderread, Barbara  
Cushing, Oklahoma

Holzmer, Mary Jo  
McPherson, Kansas

Hawerton, Ferrel  
Canton, Kansas

Jasper, Earl  
Elkhart, Iowa

Juhnke, Ethel  
McPherson, Kansas

Jones, Peggy  
McPherson, Kansas

Kasey, Betty  
McPherson, Kansas

Kaufman, Bess  
McPherson, Kansas

Kimmel, Robert  
McLouth, Kansas

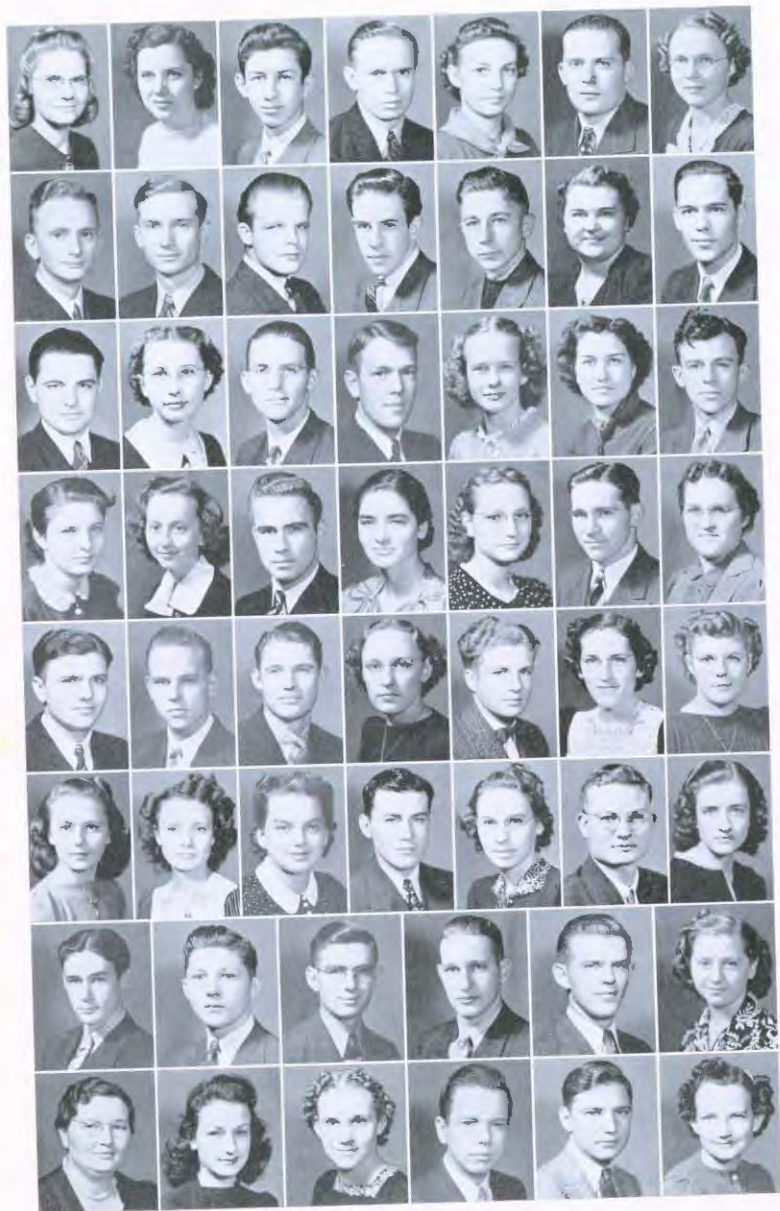
Kimmel, Bill  
McLouth, Kansas

Kimmel, Maxine  
McLouth, Kansas



President, McAuloy, Vice President, Libby; Secretary, Beckner; Treasurer, Schwalm.





Lewis, Violette Clovis, New Mexico	McKenzie, Bob McPherson, Kansas	Schapansky, Clifford McPherson, Kansas	Venable, Ewing Galva, Kansas
Libby, Virginia Little River, Kansas	Nickolson, Arlene Filler, Idaho	Schlicht, Ralph Claffin, Kansas	Voth, George Elyria, Kansas
Liehty, Eugene Waterloo, Iowa	Nickolson, Ralph Norborne, Missouri	Schubert, Arthur Ramona, Kansas	Voth, Harold Goessel, Kansas
Lindberg, Wallace Galva, Kansas	Oberst, Fayne Conway, Kansas	Schwalm, Betty McPherson, Kansas	Walker, Kenneth McPherson, Kansas
Little, Edith McPherson, Kansas	Oberst, Jean Conway, Kansas	Shanks, Warren McPherson, Kansas	Washburn, Ted McPherson, Kansas
Labban, Leslie Clovis, New Mexico	Pearce, Edna Miltonvale, Kansas	Shoemaker, Lenora Wenatchee, Wash.	Weaver, Juanita Wichita, Kansas
Macklin, Eleanor Canton, Kansas	Peterson, Paul McPherson, Kansas	Soessard, Mary Partridge, Kansas	
Mason, James Stet, Missouri	Petefish, Frances Cedar Rapids, Iowa	Stansel, Faylene Little River, Kansas	Wedel, Marie Galva, Kansas
Mason, John Norborne, Missouri	Prather, Marcia Cedar Rapids, Iowa	Stucky, Ruth McPherson, Kansas	Welton, Carolyn Geneseo, Kansas
Mingenback, Carl McPherson, Kansas	Reed, Lowell Hope, Kansas	Switzer, Yvonne Webber, Kansas	Wyckoff, Genevieve Luray, Kansas
Mingenback, John McPherson, Kansas	Reeves, Fern Cleo Springs, Okla.	Tarn, Arlos Gypsum, Kansas	Westling, John McPherson, Kansas
Mishler, Don Conway, Kansas	Ritchie, Virginia Cedar Rapids, Iowa	Taylor, Jean McPherson, Kansas	Young, Harold Imman, Kansas
Morrison, Melba Altamont, Kansas	Reinecker, Russell McPherson, Kansas	Throne, Cecil Guide Rock, Nebraska	Zumbrun, Mary Ann McPherson, Kansas
McAuley, Roy Wichita, Kansas	Sanger, Louise Springfield, Missouri	Vannorsdel, Sylvia Kingsley, Iowa	



It's Funny Really . . .  
 Winners at the kid party . . .  
 Looking the field . . .  
 Magic Mirror on the wall.



Teatime during open house . . . . . After supper on the farm steps . . . . . Nickettes in dorm room . . . . .  
 Mugsamelioration . . . . . At Wichita Art Museum . . . . . Picnic on Coronado Heights . . . . . Shookles Welcoming  
 to farmal dinner . . . . . Milling around before dinner.





*We Play*





## DISCIPLES OF APOLLO

Under the capable direction of Phil Myers, its president, the "M" Club promoted athletics on the McPherson College campus this year. One of the first enactments of the legislative body was a rule concerning the holding of the traditional belt-lines. The "M" Club decreed the belt-lines were to be held on the noon of the day on which any athletic event was to be held. This rule was enforced in a peaceable manner and eliminated the former haphazard methods of determining when belt-lines were to be held.

Ten new initiates were brought into the club in the proper manner this spring when the annual "M" Club Initiation was held. Sam Elrod of the chain gang had quite a heavy "ball and chain." Harold Young, with his entire fishing outfit, failed in his attempt to catch someone "hook, line, and sinker," as was shown later. Calvin Jones, one of the Jones girls, flirted with some and squelched other would-be admirers.

Robert Cook, impeded by a heavy mattress, was the slowest curby on Macampus. Robert Seidel, shoe-shine sambo, went about his task with cheerfulness. Rumpelstiltskin Dohn Miller finally learned how to negotiate the many stairways on Macampus.

Husky Jim Lambert couldn't seem to get used to his former toys, the skates and an old tire. Disguised as a garbage man, Art Schubert, the only freshman initiate, carried his business with him. S. G. Hoover and Richard Burger were quite ladylike in their wiles during the initiation.

Another by-law passed by the "M" clubbers, many of whom were later to rue the deed, was that a penalty of 25 cents or fifteen swats was to be paid by any member missing a regular meeting without sufficient reason.



Row 1. Stauffer, Myers, Young, Letkeman, Goering. Row 2. Elrod, Nordling, Hoover. Row 3. Robertson, Funk, Keek, Voshell. Row 4. Seidel, Wannmaker. Row 5. McGill, Reed, Beckwith, Stucky. Jones. Row 6. Schubert, Katzlaff, Crouse, Stover, Vetter, Meyer.



## BULLDOG BOOSTERS

Exuberance, enthusiasm, pep, and hilarity were at a zenith during the annual snake dance led by the Pep club in the fall of the year. Everyone was dressed in their loudest pajamas, and excitement ran so high that in comparison a New Year's celebration would have seemed as dull as "you-know-whose" classes. The human snake wound through the entire business section, stopping at the intersections to cheer and stop traffic. Large crowds were drawn to some of these. After yelling themselves hoarse, yanking their arms almost from their sockets, and parading single file through hotels and restaurants, the entire student group finally ended the evening's sport as guest of one of the local theaters.

It has been the task of the Pep club to provide for the weekly pep chapels during football and basketball season. As all remember these were all good, and some were downright ingenious. All will remember Ferdinand's command appearance, and other celebrities such as August San Romani who conducted a quiz using the basketball squad as his participants.

Poor old "Olie, the Swede" really had a hot time at his funeral and cremation when the Pep club took on the role of undertaker the night before the Swede game. A giant pep rally and assembly watched the sparks ascend and the soul of "Olie" wing its way to the Vallhalla of vanquished gladiators.

Another manifestation of the Pep club's enthusiasm was the colossal production staged in the gymnasium. A carnival, at which everything imaginable was present from bingo to throwing at milk bottles and having your fortune told by a mysterious gypsy.

Identified by their white sweaters with red bulldogs, and by their pep, the Pep club gave the teams a big boost throughout the year.



Row 1. Amos, Kinzie, Kubin, Shanks, Mohler, Morrison, Row 2. Nickey, Duane, Kagarice, Johnson, Wiggins, Stern, Row 3. Miller, Metz, Mohler, Mingenack, Washburn, Row 4. Eisenbise, Miller, Kerlin, Lindgren, Crist, Row 5. Kingsley, Letkeman, Crouse, Ikenberry, Prather, Row 6. Ratzlaff, Doll, Althright, Burger, Akers, Hoover.





## EXPONENTS OF SPORT



W. A. A. on Macampus means a great deal to the fifty girls that make up its organization.

The club's purpose is to help girls to find a sport in which they are interested and thereby make their leisure time more enjoyable. Surely there is no better place to discover the true qualities of a girl than in sports which develop leadership, sportsmanship, and physical fitness, but more than that—character.

The organization is composed of six clubs—Basketball, Volleyball, Recreational Sports, Orchestra, Outing, Softball—to enable the girls to select the club or clubs in which they are most interested.

The year of '39-40 will be remembered as a year of many interesting events.

Six delegates attended the State W. A. A. Convention held at Ottawa at which time McPherson was voted a member of the Kansas State W. A. A.

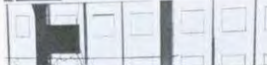
A "Mexican Fiesta" was sponsored in the fall for girls from near-by high schools. The value of learning to play together rather than against each other was clearly shown throughout the day.

December 9, '39, will be remembered by each Co-ed as the date for our annual Volleyball Play Day. Representatives of seven colleges and universities participated and helped to form a closer bond of friendship between the schools. Later in the year a Volleyball team was sent to a Play Day at Southwestern at which time McPherson placed first in the tournament.

And last, but surely not least, will be the memory of our annual W. A. A. banquet held at the Country Club in the spring.

The girls of today are not only interested in the score of the game. They are interested in a well rounded personality and they find that the W. A. A. plays a vital part in its development.

Row 1. Fries, Warner, Spengler, Yoshell, Row 2. Deal, Preston, Hammann, Peterson.



## GIRLS' INTRAMURALS

Women as well as men participated in a varied program of intramural athletics this year. Miss Lilyan Warner, head of women's athletics at McPherson College, was in charge of the program.

The most significant part of the women's intramural program was the round-robin basketball tournament. The tourney attracted about forty entrants and was won by the basketball team captained by Juanita Weaver.

Four teams were in the field. The top team, led by its star forward Genevieve Wyckoff, went through the tournament unbeaten and untied. Wyckoff and Weaver were both forwards on the first-place team.

The other teams in the tournament were the Town team, Nickey team, and the Arnold E team. The teams were composed of women divided according to their lodging places.

Two teams were from Arnold Hall.

Softball and badminton were other features of the women's intramurals. Both softball and badminton were played late in the spring.

A women's ping-pong tournament occupied the lime-light for a time during the winter. Twenty-four students participated in the ping-pong tourney. Doris Voshell, sophomore cheerleader, won the ping-pong tourney after a stiff final match with June Carlson.

Maddelyn Carlson reached the semi-finals of the tourney, where she lost to her sister, June. Ruby Peterson was defeated in the semi-finals by Doris Voshell, who was on her way to the top. Other phases of women's athletics took place in the physical education classes under Miss Warner.



Oberst and Bodine suck the celluloid . . . Beckner set to shoot one . . . Rest moment during Valley ball tourney . . . Spurdahl . . . The lassie with the classy chassis.



## BOYS • INTRAMURALS



A widespread, varied program of intramural athletics was sponsored this year by Coach W. Pierce Astle and Miss Lilyan Warner. Probably more students have participated in the intramural program than in any other single extra-curricular activity this year.

Perhaps the most spectacular part of the intramural program was the double round-robin basketball tourney for boys. Eight teams were formed, captained by various students not on the varsity basketball squad.

The team captained by the towering Harold Hoover won the tourney. At no time during the tournament was the Hoover team out of first place. On Hoover's team were Jack Oliver, Ernest Reed, Sam Elrod, Eugene Lichty, Eugene Eisenbise, Harold Duncanson, and Merrill Blackman, besides its captain.

A poll of the team captains was taken by the Spectator at the conclusion of the tourney. From this poll was determined the all-star team. Chosen captain on the mythical team was Bernard Nordling, who also set the tourney record of scoring 35 points in a single game. Russell Reinecker, another member of the mythical five, scored 34 points in another game. The other all-stars were Harold Hoover, Jack Oliver, and Carroll Crouse.

The intramural program also included tournaments in wrestling, ping-pong, and badminton. Wes De Coursey won the college title in both ping-pong and badminton.

Between halves of the traditional Fresh-Soph feud . . .  
Punching the bag . . . Horse-shoes for Seidel . . . Racquet-swingers . . . Between halves . . .  
Softball.



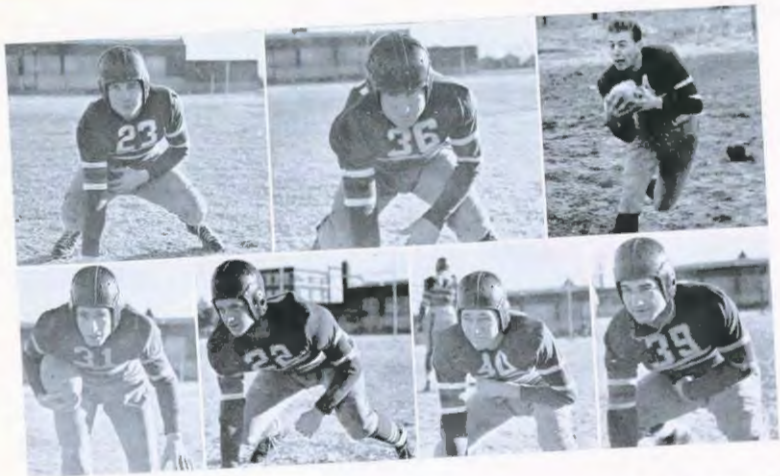
Samuel Elrod, g. 162; Irvin Keek, bb. 170; Dahn Miller, e. 185; Phil Myers, fb. 200; Roy Robertson, e. 160; Bob Seidel, g. 160; LaVerne Voshell, qb. 185; Glenford Funk, bb. 170; Harold Mueller, g. 170; Rollin Wanamaker, e. 180.



Robert Hrusi, hb. 175; Wilbur Bullinger, hb. 160; Andrew Collett, l. 185; Jake Cramer, qb. 155; Sylvan Hoover, qb. 155; Calvin Jones, hb. 190; Glen Champion, e. 170; Russell Heinkecker, t. 180; Harold Young, g. 185.



Camera-shy  
Robert Cook, e. 175; Raymond Goering, g. 170; James Lambert, l. 185; Raymond Meyer, e. 175; David McGill, e. 170; Kenneth Walker, t. 180; Jack Vetter, hb. 185.



## SCRAPPY BULLDOGS

Starting and ending strong, but slumping in mid-season, the McPherson College Bulldogs ended up their football season in sixth place in the Kansas Conference.

In the opening game of the season, the Bulldogs put on a show by scoring four touchdowns to blank the Bacone Indians of Muskogee, Oklahoma, 25 to 0. From the result of this pre-season game McPherson was considered one of the contenders for the Kansas Conference crown. In its second game McPherson held another seeded team, College of Emporia, to a scoreless tie.

The Bulldogs journeyed to Ottawa on October 6 to play the Ottawa University Braves. The game turned into a track meet with the Braves outdistancing the Bulldogs and blanking them 33 to 0. The Braves were to become the Kansas Conference football champions for the third straight year.

McPherson's next game was a home contest with the Baker University Wildcats. This game ended in the largest total score of any game played by McPherson this season. Baker came from behind in the last quarter to win the game with the score 28 to 21.

The next Friday the disheartened Bulldogs could never seem to get started and lost to the cellar team of the conference, their nemesis, the Bethel College Graymarions. The score was 16 to 6.

The next game the Bulldogs, playing to a home crowd and a host of visitors, took life and held the Bethany College Swedes to a scoreless tie. Bethany had the ball several times within McPherson's ten-yard line and once on the four-inch line but failed to cross



Above: Champion. Elrod, Brust, Voshell, Robertson, Reinecker, Myers. Below: Head coach Astle.







## FINISH SEASON BITING



Above: Keck, Mueller, Myers, Vetter, Funk, Cook. Below: Assistant Coach Rock.



into pay-dirt. Bethany, although not particularly a strong team, had previously scratched out on Kansas Wesleyan 7 to 6 and on Baker 6 to 0.

Two weeks after the Swede game, the Bulldogs journeyed to Winfield to play Southwestern College. With about a minute left to play, the Bulldogs had the ball on their own twenty-yard line and were behind 7 to 6. In three plays McPherson made a touchdown with two passes and a blocked kick recovered by Dohn Miller to pull the game out of the fire, winning by a 12 to 7 score.

The Bulldogs won their last conference game, defeating the Kansas Wesleyan Coyotes 14 to 13. This not only kept McPherson's football 7-game jinx over Wesleyan but also was praiseworthy in defeating Wesleyan, the only school to tie the conference champions and hold them scoreless. Jake Cramer, all-Conference halfback of the Bulldogs, broke his right leg badly in scoring his second touchdown.

Denver, Colorado, was the scene of the Bulldogs' last football entanglement. There McPherson triumphed over Regis College, 17 to 16. The Bulldogs won four games, lost three, and tied two.

Monogram winners in football were Robert Brust, Jake Cramer, Andy Collett, Robert Cook, Sam Elrod, Glenford Funk, Raymond Goering, Calvin Jones, Irvin Keck, Jim Lambert, Raymond Meyer, Harold Mueller, Phil Myers, David McGill, Dohn Miller, Roy Robertson, Robert Seidel, Tony Voshell, Rollin Wanamaker, and Harold Young. The seniors of the group are Sam Elrod, David McGill, Dohn Miller, Phil Myers, Roy Robertson, Robert Seidel, and Tony Voshell.



Robert Brust, f.  
Calvin Jones, f.



Raymond Meyer, c.  
David McGill, f.



Roy Robertson, f.  
Art Schubert, g.



Jack Yetter, c.  
LaVerne Voshell, g.



Rollin Wanamaker, c.  
Harold Young, f.



## BACKBOARD REBOUNDS

Vashell Shooting one from the corner.



The McPherson College varsity basketball team won its struggle to stay out of the Kansas Conference cellar in the 1940 season. For the third successive season the Ottawa University Braves were the conference basketball champions.

At the first of the season Kansas Wesleyan was considered a shoo-in for first place, and the Coyotes did win ten conference victories. But they folded up and dropped their last two conference games to Baker and Ottawa to nose-dive into second place. Ottawa went on to win her three remaining conference games and hold the title alone.

The only conference game lost by Ottawa was an early season defeat at the hands of Wesleyan, led by the towering Robert Hunt. By scoring 209 points in the conference season, Hunt, six-foot-seven center, set a new scoring record. He averaged over seventeen points a game in this phenomenal achievement.

The McPherson College Bulldogs played many fine games, but were beaten several times in close games. The Bulldogs ended their race in sixth place, two whole games out of the cellar, without





Hoover, Voshell and Burger tear the roof off with enthusiastic support of the Bulldogs.

winning a single conference game. College of Emporia ended its race in the seventh position.

None of the Bulldogs rated positions on the all-conference teams chosen, but there seemed to be little dispute that Hunt, Junior Shaw of Wesleyan, and Omer Brenton of Ottawa, would gain places on any man's team.

The Bulldog monogram winners were David McGill, Roy Robertson, Raymond Meyer, Tony Voshell, Robert Brust, Art Schubert, Rollin Wanamaker, Calvin Jones, Harold Young.

The only seniors of the group are McGill, Voshell and Robertson.



McGill goes up on a held ball toss.



## 1939 CINDER STARS

Row 1. Funk, Sanger, Weible, Stover, Reinecker, Cramer. Row 2. Astle, Seidel, Voshell, Van Vleet, Morrison, Rock, Vatter, McGill. Row 3. Wanamaker, Brust.



In dual meets near the early part of the season, the Bulldogs looked like the new track "find" of the year. Bethel, Kansas Wesleyan, Bethany, Hutchinson J. C., and Sterling were defeated in various meets. But in the Kansas Conference meet, which was won by Ottawa, the Bulldogs ranked a measly sixth.

Two records were broken last year by Maccollege tracksters. Rollin Wanamaker leaped the high hurdles in 15.7 seconds, for his second school record. The year before he had set the high jump record at 5' 11". Then Jake Cramer, Bob Brust, Elmer Ratzlaff, and Burtis Weible, members of the 880-yard relay team, set a new mark of 1:35.2.

Captain of the track team last year was Tony Voshell. Other letter winners were Glenford Funk, Rollin Wanamaker, Jake Cramer, Herbert Stauffer, Stephen Stover, Elmer Ratzlaff, Vance Sanger, Richard Van Vleet, Robert Brust, Keith Reinecker, Leslie Rogers, Burtis Weible, and David McGill.

Funk giving the javelin a mighty heave, Wanamaker in perfect form, Voshell heaves the weight, Reinecker starts the stick leap.





## 1939 NET AND LIME

Out of nine dual meets last year, the McPherson College tennis squad won five, tied one, and lost three. Two of the losses were to Bethany, a conference opponent, and one was to Colorado State, a non-conference opponent. The Bulldog netsters trounced Kansas Wesleyan and Sterling twice and College of Emporia once.



Last year Raymond Johnson, star of the Macollege racquet men, went to the semi-finals of the Kansas Conference Tennis Tournament. There he lost to Trump of Ottawa, who lost to Self of Baker. It was the second straight Kansas Conference tennis title for Spenser Self, a sophomore.

Of the six squad members who lettered last year, only Gordon Yoder was a senior. Carroll Crouse, junior netster, won his third tennis letter, while Burns Stauffer and Ernest Reed, sophomores, and Yoder, senior, earned their second letters. Calvin Jones, a freshman, and Raymond Johnson, a sophomore, won their first tennis letters last year.

Row 1, Reed, Crouse, Flory,  
Stauffer, Johnson. Row 2,  
Jones, Yoder.





We Create





## THE LEGISLATIVE BODY

Entering the homestretch of a busy year, the Student Council of 1939-40 can look back over twelve months of varied activity. Publications—Handbook, Spectator, and Quadrangle—have provided substantial contributions to the "order of business". With the Board of Publications, a sub-committee of the Council, completing its first year of service the Official Governing Power has been able to much more efficiently deal with the individual problems of each publication.

The Student Union Room has been administered by the Council, and with the assistance of the National Youth Administration a program of full-time supervision has been in operation. This popular social center is a repeated source of pride and satisfaction to everyone. Its use for informal and organized gatherings has added an undefinable spark to student life.

In accordance with the 1939 constitutional revision the Dean of the College, as well as the Dean of Men and of Women, has found a place in the membership of the Student Council. This arrangement has made possible a more direct channel for conveying opinions and ideas to and from the administration. With this body of authority relations have been more than satisfactory. Within the Council itself co-operation and spirit have been very commendable, particular interest being taken in the occasionally posted roll of honor.

Conducting student elections, greeting visitors, budgeting the activity fee, and in general keeping its finger on the Student Body pulse, the Council has maintained its prestige and played a vital part in this year's campus activities.



Row 1. Bullinger, Fries, Shockley, Mohler, Voshell, Dell. Row 2. Naylor, Grove, Hammann, Stucky, Crist. Row 3. Voshell, Beitnott, Stover.



## A C A P P E L L A C H O I R

Humming the beautiful strains of their ever-popular theme song "Dedication", by Franz, arranged by Noble Cain, the A Cappella Choir opened and closed another successful concert on March 13, 1940, in the auditorium of the McPherson community building.

Dressed in black suits and black and white formals the 58 members of this year's choir sang a program varying from religious choruses to novelty numbers on this their eighth annual concert. Special favorites were the negro spirituals, "Round de Glory Manger", featuring Miss Margaret Fry as soloist, "Nobody Knows The Trouble I See", and "Roll, Chariot". "Triumph Song" from Tschaiakowsky's Third Symphony met with great approval. Several folk songs added a lighter touch to the concert.

The first A Cappella Choir in Kansas—The McPherson College A Cappella Choir—was organized in 1932 by Alvin C. Vorad, former head of the Vocal Music Department. Since then A Cappella Choir concerts have been the most outstanding musical events of the college through the years.

The choir carried out some short trips, concertizing in the vicinity of McPherson.

The officers of this year's choir were Keith Pierce, president; Mary Ellen Slead, secretary; Raymond Flory, treasurer; Evelyn Amos, social chairman, and Wesley De Coursey, publicity manager.



Above: Row 1. Taylor, Nicholson, Bretches, Niskey, Frantz, Holzemer, Kerlin, Crawford, Fry, Fries, Wiggins, Mohler, Clark, Sherfy, Miller, Pearce, Morrison, Row 2. Hoover, Decoursey, Slead, Bacon, Nordling, Wampler, Schwalm, Prather, Burley. Below: Director Fisher





Smith, Vannorsdel, Spohn, Mohler, Saath-eff, Wolf, Amos, Kennedy, Spessard, Crist, Pierce. Row 3. Allen, Schubert, Eisenbie, Hessler, Frantz, Ikenberry, Brunton, Blough, Eisenbie, Davis, Albright, Kimmel, Orr, Frantz, Flory, Sehlcht, Fasnacht, Lichty, Bullinger, Dannelley, Yingt.

From the A Cappella Choir were selected 17 voices; this group pleased the concert-goers with a "Russian Fantasy" performed with Violin obbligato by Prof. Bengtson and Vera Flory. This group of 17 singers took a 10-day trip into Missouri, Iowa, Nebraska, and Kansas, appearing in churches, advertising the college widely in these states.

The Varsity Male Quartet, composed of Wesley De Coursey, Harold Hoover, Ronald Orr, and Keith Pierce, was quite outstanding this year. They rolled those "Wagon Wheels" to a victory at the local concert, and sang on every concert while on tour with the vocal ensemble. All the members are soloists.



## ENSEMBLE AND QUARTET

First Sopranos  
Margaret Fry  
Millicent Nurdling  
Sylvia Vannorsdel

Second Sopranos  
Virginia Kerlin  
Shirley Spohn

First Altos  
Evelyn Amos  
Edna Penree

Second Altos  
Melba Morrison  
Esther Sherry

First Tenors  
Galen Allen  
Wesley De Coursey

Second Tenors  
Harold Hoover  
Esthel Ikenberry

First Basses  
Lyle Albright  
Ronald Orr

Second Basses  
Keith Pierce  
Eugene Lichty

First Tenor  
Wesley DeCoursey

Second Tenor  
Harold Hoover

Baritone  
Ronald Orr

Bass  
Keith Pierce



# OPUS OPPORTUNISTS

Coolly, methodically, and in an undisturbed manner the library staff goes about its duties. At the desk perplexing questions are answered and hundreds of reserve and non-reserve books are checked in and out. Sometimes it takes more than method to soothe the irate student who does not receive the book he wants and surely it takes a great deal of business sagacity to keep record of the fines which students persistently acquire. The cacophonous lift, which carries books to and from the basement, connects the two parts of the library together. Downstairs book ordering, cataloging, shelving, binding, and mending takes place; magazines are checked and shelved; and non-reserve books are circulated. The new arrangement of having the stacks in the basement has received much favorable comment. Sometimes the librarians hidden away in the basement become as secluded as the forgotten man but they continue to send up the needed Bacon and Darwin.

Many interesting exhibits of books and pictures stimulate the student to do creative and leisure reading. President V. F. Schwalm loaned a collection of his books to the library for several months for student use. The "New Book" rack is of prime interest to readers. The bulletin board exhibits are changed often and show book covers of newly acquired books and other items of similar interest.

A daily record is kept of the use that is made of the library. A count of the students present is taken each hour. All books, magazines, and pamphlets are counted also. A survey of the use made of the library was taken during February to aid the staff in dealing more intelligently with problems that might arise. The motto and aim of the staff permeates its work: "The right book for the right student at the right time."



Row 1. Brunton, Breckus, Ritchie, Farnes, Heckethorne, Santhoff, McAuley. Row 2. Spengler, Bees, Petefish, Brubaker, Crumpacker, Switzer. Row 3. Peterson, Franitz, Hoover, Fasnacht, Nicholson.



# UNIFY AND STABILIZE

The Student Christian Movement, the only religious organization on the campus, played a vital part in the student life of McPherson College. A guiding purpose was to unify and stabilize the social life of the students by creating and promoting a friendly, helpful, Christian attitude among them.

The cabinet carried out a very successful program under the leadership of Elmer Dadisman and Mary Elizabeth Hoover who were the co-presidents. The four commissions, World Service, Peace, Personal and Family Relations, and A Creative Leisure, met each Tuesday morning, and a general meeting was held each Thursday evening in the Student Union Room. Each student was invited to these meetings as well as to the quiet hour sponsored by the World Service Commission.

More activities sponsored by the Student Christian Movement included a watermelon feed, Halloween party, box social, the picture "Golgotha", a used book exchange, a drive for Chinese student relief, deputation teams for nearby churches, and an exchange program with Bethel College's Student Christian Movement. Also, the Movement brought to the campus such outstanding speakers as Dr. Papenoe, who is an authority on family relations, Dr. Martin Harvey, who has attended youth conferences in Europe, and Dr. Kirby Page, who is a great contender for peace.

In addition to its weekly Friday morning meeting, the cabinet of the Movement had several retreats during the year for the purpose of gaining spiritual enrichment and planning more programs.

Six of the cabinet went to the State Training Conference at Pittsburg, Kansas, and several are planning to go to Estes in June.



Row 1. Sherfy, Olwin, Hoover, Wampler, Kruger, Barley, Spohn, Hammann. Row 2. Newkirk, Shuckley, Stucky, Mohler, Metzler, Miller, Stover. Row 3. Lewallen, Nelson, Dadisman, H. Flory, R. Flory.







Row 1. Nardling, Stover, Dadisman, Newkirk, Vashell, McGill,  
Row 2. Guering, Stucky, Dell, Myers, Hoover.

## THE MEN'S COUNCIL

Created several years back to foster student relationships, improve standards of scholarship, further discussion on worthwhile topics, conduct research in campus problems, and recommend steps for college improvement, the Men's Council has functioned admirably under the sponsorship of Professor Dell.

## THE WOMEN'S COUNCIL

The Women's Council is an organization for the purpose of promoting good fellowship and cooperation among women students on the campus.

Some of the efforts which succeeded in forwarding this purpose were a tea in the fall, Campus Sister Week, Heart Sister Week and a Valentine Party, and most important of all the Formal Dinner given with the Men's Council for all Students.



Row 1. Florman, Dresher, Fries, Shuckley, Hammann, Wampler,  
Row 2. Smith, Frantz, Amos, Kinzie, Spohn, Hoover.

Row 1. Deul, Yonast, Spohn, Nelson, Kerlin, Naylor, Olwin, McAuley, Row 2. Shockey, Barger, Smith, Miller, Mohler, Stern, Stamp, Crill, Wampler, Dell, Albright.



## R E C R E A T I O N A L C O U N C I L

Several years ago, a group of students, realizing the vital role placed by recreation, organized themselves into the Recreational Council. They felt that a religious atmosphere could be infused into recreation and have since devoted themselves to research that would disclose the best techniques of doing this. Notable among their productions have been a book of handicrafts, and a book of Church parties.

## B. Y. P. D. C A B I N E T

Aware of the necessity of a sound religious program to bind the unrest of collegiate youth with the stability the church, the B. Y. P. D. cabinet has supplied programs satisfying the worship needs of the student, yet at all times maintaining the scientific approach that is characteristic of the best thought of the day.



Row 1. Shorkles, Gruff, Kruger, Deconroy, Row 2. Spohn, Bailey, Stump.

# TOPICS OF INTEREST



"The Mouthpiece of the Student Body" is the slogan of the Forensic Club of McPherson College. In living up to its slogan the Forensic Club often devotes entire meetings to questions of campus interest only. The impromptu speeches used by the Forensic Club are another opportunity for students to express their opinions on various questions.

The interclass debate tournament, an annual feature of the Forensic Club, was held at the first of the year to stimulate interest and give some experience before the varsity tryouts. In the first round of this tournament the seniors, Jack Oliver and Edwin Diehl, lost to the Juniors, Dale Stucky and Donald Newkirk. The freshmen, Jack Bowker and Ernest Peterson, won their debate from the sophomores, Joy Smith and Wilbur Bullinger.

In the finals the highly touted Stucky-Newkirk combination gained a close decision over the strong freshmen debaters, Bowker and Peterson. All four of the debaters in the finals of this tourney gained places on McPherson College's famed debate teams.

The officers of the club are the persons solely responsible for its success. This year Ernest Reed was president of the club, after his service as vice-president and program chairman last year. The secretary, Joy Smith, held the same office this year as last year. Donald Newkirk was the new vice-president of the club.

Probably the people doing the most work for the Forensic Club are its program committee. This year Galen Stern was program chairman, with Evelyn Saathoff and Ernest Peterson serving under him on the program committee.

Row 1. Saathoff, Hoover, Duncan, Reed, Culberg, Frantz, Smith, Stern. Row 2. Anderson, Hoover, Barrett, Shery, Deal, Kerlin, Macklin. Row 3. Mason, Wiggins, Newkirk, Stucky, Spohn, Kruger. Row 4. Bullinger, Lewallen, Davidson, Eisenhise, Detrick, Stuver.







## DEBATE SQUAD

McPherson College's famed debate teams gained many achievements during this year's debate season. The varsity women debaters gained the top ranking in the league meet at Bethany for the first time in the history of the league.

The varsity men, after ranking high in tournaments at Winfield and Hutchinson, failed to please the league judges at the Bethany meet and were shoved into a second place ranking, two wins out of an undisputed title to the league meet.

The underclass varsity men's debate team, consisting of Ernest Peterson and Phil Myers, went to the semifinals of a Winfield invitational meet in which they met the stiffest competition of the year. At a statewide tourney at Hutchinson, Ernest Peterson was ranked the strongest debater in the meet.

Row 1. Sherfy, Mahler, Prather, Blair, Metz, Kerlin, Saathoff, Row 2. Lichty, Eisenhise, Newkirk, Stucky, Peterson, Myers, Bowker, Lowallen, Reed, Switzer.

Newkirk and Stucky, Myers and Peterson, Mahler and Sherfy, Kerlin and Metz.





## P R E S E N T S      O C T O R O O N

A hissing villain, a gallant hero, a martyred octoroon, negro slaves, and all that goes to make up a 'melo drama' were not lacking when the Thespian Club presented Dion Boucicault's famous play of the old south, "The Octoroon, or Life in Louisiana."

On December 8, during the week of the eightieth anniversary of its opening on Broadway, "The Octoroon" was acted in the spirit of the old-time melodramas. The audience, between mouthfuls of peanuts which were sold during the intermissions (and all good melodramas have many intermissions) by negro slaves, lustily booed the mustachioed villain, cheered the handsome hero, and wept for the beautiful octoroon. The play was directed by the club sponsor, Professor Ralph Stutzman, and coached by Elma Minnick.

High light of the year was the presentation of "The Passing of the Third Floor Back," an idle fancy by Jerome K. Jerome. It was the story of the change brought into the lives of the people in a boarding house by the coming of a kindly stranger. The P. of the T. F. B., as it was called by members of the cast, was coached and directed by Raymond Flory.

In addition to presenting for the first time two major productions in the same year, the club has been successful in securing entrance into the national honorary dramatic society, the Alpha Psi Omega. Toward this goal, the club has worked for many years.

Under the leadership of Elma Minnick, President, and Professor Stutzman, Sponsor, the Thespian Club has been exceptionally active during this year. Additional officers have been: Margaret Davis, Vice-president; Virginia Kerlin, Secretary; and Raymond Flory, Treasurer.



Row 1. Heckman, Shery, Minnick, Voshell, Kerlin, Johnson, Clark. Row 2. Vaughn, Detrick, Mason, Flory, Schapansky, Stover. Row 3. Dannelley, Frantz.

## Thespian Scenes

Scenes from the Thespian play: Mason, Stover, Dannelly, Minnieh.



The entire cast relaxing after the play was history. There was exuberance with the release of tension.



The final death scene in which Zoe, the Octoroon, dies from the poison she swallows to escape being sold as a slave to the villain.



A mob about to lynch the Indian. Delrich, Kenberry, Stover, Crill, Nicholson, Yings, Stern, Vaughn, Washburn, Gahn.







## PROGRAMS OF SCIENCE

The Chemistry Club is an organization open to all students that have an interest in chemistry without regard as to whether they are enrolled in a chemistry course. Dr. Hershey is the permanent president.

At the first meeting officers were elected. Wesley De Coursey was elected vice-president; Glennys Doll, secretary; La Rue W. Owen, program committee chairman; Sara Jane Olwin, social committee chairman; and Jonathan Hammersley as Spectator reporter.

For the second meeting, the members of the beginning chemistry class reviewed outstanding scientific accomplishments of the year.

Dr. Hershey lectured on synthetic diamonds, synthetic atmospheres, and radium. Several sound pictures were shown, as well as lectures presented by prominent local people.

The annual social given by Dr. and Mrs. Hershey in the Student Union room was an outstanding social event of the year, exceeding the attendance of some all-school functions.

The initiation of the club members consists of a trip to Hutchinson, where Dr. Hershey and the older members of the club march the initiates miles through the salt mine, salt plants, flour mill, reformatory, candy factory, etc. The new members are duly initiated if they survive the Hutchinson trip.

Row 1. Crill, Meyer, Vetter, Cneek, Jones, Johnson. Row 2. Owen, Florman, Doll, Seidel, Hammersley, Hershey, Olwin, Niskey, Decoursey, Enns, Pank. Row 3. Kubin, Achilles, Davidson, Wiley, Morrison, Akers. Row 4. Franklin, Nelson, Kenberry, Collett, Stucky, Nieholson. Row 5. Nelson, Crumpecker, Bowker, Davis, Whitmore, Carlson, Williams, Flory. Row 6. Oberst, Klassen, Fries, Cavert, Kerlin, Westling, Voshell, Garrelts, Bollinger. Row 7. Peterson, Shoemaker, Carlson, Wiggins, Young, Fisher, Sellers. Row 8. Mishler, Walker, Barrett, Anderson, Kaufmann, Thompson, Schwalm, Wampler. Row 9. Groff, Westling, Denny, Olwin, Zumbraun, Elliott, Deal, Spessard, Weaver, Frantz. Row 10. Schlichl, Kimmel, Morrison, Bratton, Wyckoff, Oberst, Stucky. Row 11. Wanamaker, Mingenback Meyer, Mingenback, McKinzie, Jasper, Shanks, McAuley, Tarn, Yngst, Throne, Schubert.

## WUXTRY! SPECTATOR!

The hour of the day when, according to Boitnott, more great events happen than at any other time is eleven a. m., and one of the contributing factors is that *The Spectator* comes out then. Students may be seen jamming around the box to secure their copy. One peek into its pages tells why it is a great event.

The *Spectator* is the problem-child of a number of students, chief among whom is Dale Stucky, the editor. His role is mainly one of cajolery, threatenng, beseeching, storming, persuasion, and finally doing it himself. His heads are always of interest, and his editorials have been so noteworthy as to be mentioned in an Associated Collegiate Press release. His able assistant has been Earnest Reed, who has functioned in the role of handy man. A versatile writer, he has contributed to sports, heads, features, and spor stories. Raymond Goering, and his assistant, Sylvan Hoover, have conducted an able sales campaign. Estler Sherfy, Lois Florman, Winton Sheffer, Donna Jean Johnson, Margaret Davis, and others have done much to make this year's *Spectator* the best the college has seen.

Reed, Stucky, Florman, Sherfy,  
Sheffer, Switzer, Goering.





## MIRROR CAMPUS HISTORY

Beset by the usual troubles, haunted by the usual ghosts, and handicapped by having to raise someone's else brain child, the Quad staff has throughout this year labored with the tenacity of our Bulldog mascot, J. Scrapiron Maccollege, to give you the nineteen-forty Quadrangle. It has been the task of the Quad staff to mirror accurately Macampus activities and to delineate such college and student history as could be made pictorial. If the staff has emphasized any item too much or left out any important event you must bear in mind their human fallability and be charitable.



A few days before school started the editor first appointed by the Student Council decided to go elsewhere to school, and early last fall the Student Council selected James Crill to assume the Quadrangle helm. S. G. Hoover, the business manager, has functioned very capably in that capacity this year. The larger share of the snapshots that are in the Quad are the work of Jack Bowker. Others who served regularly on the staff were Mary Ellen Sleed, staff typist; Marjory Kinzie, and Gladys Wiggins, circulation managers; and Margaret Davis and Lyle Albright, assistant business managers.

All will remember as a part of this year the pleasant old man that took the portraits, "Bowk's" flashlight exploding at unexpected places during parties, and other signs of activity in the Quad office.

Wiggins, Hoover, Crill, Sleed  
Doepfner.





*We Are*





Marilynn and her Dollies . . . the boys getting the lowdown during the half . . . Newkirk telling Crill what's what . . . Crowning the Pep club's king and queen . . . the Coop house . . . Scene from "Passing of the Third Floor Back" . . . West from Library . . . Macollege chorus . . . Stucky amazed.

# WHO'S WHO

**W**HO'S WHO" is a collection of biographies of the outstanding students in America. Only juniors and seniors are eligible for selection, and the number of individuals nominated from each school is limited. McPherson College's quota is seven.



## RAYMOND FLORY

His leadership, scholastic ability, breadth of interest, and rare humor have qualified him for his second year as a candidate for "Who's Who."

## AUDREY HAMMANN

Chairman of the Student Christian Movement for two years, a class officer, Audrey has always figured prominently in campus activities.

## PHILLIP MYERS

Massive, capable, and smart are adjectives that have always characterized Phil's football playing. Besides his athletic ability, he has been outstanding in student government.





# WHO'S WHO

THE characteristics considered for inclusion in "Who's Who" are character, leadership in extra-curricular activities, scholarship, and potentialities for future usefulness to business and society.

## STEPHEN STOVER

Stephen has culminated an active career in student government this year as president of the Student Body. He has also been an outstanding scholar, and athlete.



## MARY E. HOOVER

Conscientious effort, consistent scholarship, and congenial personality have made Mary Elizabeth co-chairman of the Student Christian Movement as a Junior.

## DONALD NEWKIRK

Don has been a leading debater for three years and president of his class for two years. He has also been prominent in student politics and social life.

## DALE M. STUCKY

Being editor of The Spectator for two years, athlete, debater, and president elect of the Student Body have well qualified him for membership in the "Who's Who."





This year it was felt that recognition should be given to the person who has contributed more in an unostentatious way toward making life flow more smoothly for his having been around. From three very good candidates the Best Private Citizen was chosen by popular franchise of the entire chapel-attending student body.

## CARROLL CROUSE

## BEST PRIVATE CITIZEN

This year and during years past Carroll Crouse has been quietly going his way of good sportsmanship, good fellowship, and amiability, and is accorded by all to be the Best Private Citizen.



We are deeply indebted to Mr. Jack Benny, long a famous actor, comedian, and violin player, for carefully selecting the most beautiful girl. Because the level of pulchritude was high, the choice was an extremely difficult one, and we thank him appreciatively for his considerate service.

# MARGARET DAVIS



## MOST BEAUTIFUL GIRL

Petite, personable, and pretty characterize Margaret Davis. These and other qualities have made her a distinct histrionic success here in Macollege.







*Selected as Most Handsome Men*

Paul Dannelly, Sophomore  
Harold Dolbrinski, Sophomore

Ronald Orr, Junior  
Clifford Schapansky, Freshman



*Runners-up for Most Beautiful Girl*

Betty Clark, Freshman  
Kitty Mobler, Sophomore

Marjorie Kinzie, Senior  
Faylene Stansel, Sophomore



Cut from Staff Picture by Utility

## APPRECIATION PAGE

We, the editor and business manager, make public recognition to and give thanks for the initiating services and cooperation of the following:

● PROFESSOR J. L. BOWMAN  
*Sponsor*

● JACK BOWKER  
BILL KIMMEL  
TOM DÖEPPNER  
*Photographers*

● MARY ELLEN SLEAD  
*Typist*

● MARGARET DAVIS  
*Assistant Business Manager*

● GLADYS WIGGINS  
*Sales Manager*

● ROBERT BRUST  
ROBERT COOK  
DONALD DAVIDSON  
RAMONA FRIES  
PEGGY JONES  
ROBERT KINGSLEY  
MARJORIE KINZIE  
DOHN MILLER  
LENA BELLE OLWIN  
MARY ELLEN SLEAD  
LEONARD VAUGHN  
*Book Salesmen*

● RAMONA FRIES  
JONATHAN HAMMERSLEY

DONNA JEAN JOHNSON  
J. WILBURN LEWALLEN  
EARNEST REED  
EVELYN SAATHOFF  
STEPHEN STOVER

*Contributing writers*

● MR. JACK BENNY  
*Judge of Beauties*

● R. R. MAPLEDEN  
*Engraving advisor*

● BURGER-BAIRD ENGRAVING COMPANY  
STAFF

● W. J. KREHBIEL  
K. R. KREHBIEL  
V. V. OHMART  
PRINTING STAFF  
*Printers*

● FACULTY

● STUDENT COUNCIL

● PUBLICATIONS BOARD  
FACULTY

● OUR ADVERTISERS



**Best in Corsages  
and  
Presentation Flowers**

Artistically Arranged  
As You Would Like Them

We Deliver When And As You Wish

**Maud's Flower Shop**  
Phone 629

Your Eyes are Precious—Protect them  
Have them Examined Periodically

**Dr. W. A. Reusch**  
**OPTOMETRIST**

Successor to Dr. J. L. Kirkpatrick

115 N. Main Ground Floor Phone 119

**LAKE SUPERIOR LUMBER CO.**

GEO. H. GOODHOLM, Manager

**LUMBER, HARDWARE, PAINT, COAL**

Telephone 40

McPherson, Kansas

301 North Maple

**Greetings to McPherson College**

---

May this and all years be  
Successful to Your Institution

---

**McPherson & Citizens State Bank**

(Member Federal Deposit Insurance Corp.)

## BIRKHOLZ

Better Yet Bread — Pastries

114 E. Euclid

Phone 318

Greetings from

## Gamble Stores

The Friendly Store

For  
Fresh Candy  
Gum  
and Peanuts  
Visit  
Our Candy Dept.

# Duckwall's

"QUALITY, SERVICE AND PRICE"

Supply Your Needs  
in Face Powders,  
Creams, Soaps,  
Handkerchiefs  
and Hose

## Howse Service

24-Hour Brake  
and Mechanic Service

Ralph Eberly, Lessee & Opr.

Phone 344

1205 S. Main

OPEN EVENINGS

## White Way Grocery

L. A. BROWN

703 S. Main

Phone 889

We Deliver

## Meet Your Friends at the Puritan

Quality  
Food and  
Drinks  
—  
Popular  
Prices



Where  
the  
College  
Gang  
Always  
Meets

# PURITAN

Cafe

AND FOUNTAIN

Phone 830  
**SID BACON MOTOR CO.**  
Dodge-Plymouth Sales and Service  
Dodge Trucks  
McPHERSON, KANSAS

**DR. GALEN R. DEAN**  
DENTIST  
Office Phone 68      Res. Phone 1045  
207 1/2 North Main Street  
McPherson, Kansas

## ENGBORG'S DRUG STORE

FOUNTAIN — MAGAZINES

Phone 218

We Deliver

218 N. Main

## PEOPLE'S STATE BANK

McPherson, Kansas

F. A. VANIMAN, President  
PAUL E. SARGENT, Vice-President  
BERT WEBB, Cashier

DALE STRICKLER, Ass't. Cashier  
WILBUR YODER, Ass't. Cashier  
VIRGINIA JOHNSON, Ass't. Cashier

Member Federal Deposit Insurance Corporation

## FOR GOODNESS SAKE



Use

"W-R"

FLOUR

MADE BY

**THE WALL-ROGALSKY MILLING CO.**





Just before the Ensemble embarkation . . . Absorbion . . . Open house at Kline hall . . . We walk our way  
 tru collitch . . . Freshmen lassies . . . Nuff said . . . Nickey hall takes down its hair . . . If you want  
 anything in the library, ask Edith . . . Stump digging out a skeleton

Information  
and  
Printing . . . . .

Both are necessary to a Happy and  
Successful Life . . . . .

The Daily Republican keeps you in-  
formed on Affairs . . . . .

Its Advertisements tell you the best  
Places to Buy . . . . .

Its Expert Workmen give you the  
Very Best in Printing . . . . .

The Daily Republican  
(Printers of the Quad)

## FLAGO'S CAFE

Follow the Bulldogs to  
Flago's Cafe, 204 N. Main

217  
NORTH  
MAIN

## SWANSON'S

PHONES  
185  
186

GROCERY and MARKET



## Hotel Warren

and

## Coffee Shop

For Your School Parties

Our Roof Garden is one of the finest  
banquet rooms in the state.

*it is said —*

**Motion Pictures are Your Greatest  
Entertainment**

**THE**

**Ritz**

Takes Pride In Giving You Your Entertainment In

*McPherson's Most Beautiful Theatre*

**WELCOME STUDENTS**



## We Appreciate

your patronage and will try to merit your continued good will by giving you Better Merchandise, Better Service and More for your Money every day in the year.



IT PAYS TO PAY CASH

## W. A. Crary Hardware

Refrigerators :: Stoves :: Radios  
Maytag Washers

## McPherson Pipe and Equipment Company

David Litan

## McPHERSON'S LEADING MEAT MARKET

for over 20 years

## McPherson Meat Market

OLIVER and NELSON, Props.

Phone 107 & 108

104 N. Main

## Congratulations and Best Wishes to the Class of 1940

FROM

*McPherson's Leading Department Store*

WE SELL FOR CASH AND SAVE YOU MONEY

# BROWN · McDONALD

CONSISTENT LOW PRICES THE YEAR 'ROUND

**A. W. GRAVES, O. D.  
OPTOMETRIST**

Over Bixby-Lindsay & Co.  
106 1/2 N. Main Phone 759

**CIRCLE LAKE SODA GRILL**  
800 East Kansas

Meet your friends after the games at  
"SHOTTIE'S PLACE"

**PETERSON HARDWARE CO.**

GENERAL HARDWARE AND SPORTING GOODS

Phone 191 McPHERSON 210 N. Main

**Central Printing Co.**

Publishers of

**The Democrat-Opinion**

QUALITY JOB PRINTING

Rannels and Hutchinson, Props.  
Phone 298 108 W. Kansas

**Morris & Son**

**Clothiers**

**CARLSON PLUMBING  
COMPANY**

Plumbing — Heating — Gas  
Appliances and Installations

Bus. 14 Phones Res. 26



**Heinz Millinery**  
SMART STYLES  
Style Plus Quality

221 N. Main  
McPherson, Kansas

**LOVETT DRUG CO.**

Phone 19

WHERE

Soda Fountain	S Q U E A R K Y	Stovers Candy
Stationery		Cosmetics
Leather Goods	C E N T E R S	Magazines
Parker Pens		Paints

PRESCRIPTIONS

Naumann saying a few words at  
Ole's cremation . . . She'll be  
out for the rest of the evening  
. . . An ice man can be a nice  
man . . . Augmenting the cul-  
sine . . . I don't get it . . .  
The Violin Maker preparing to  
get shellacked . . . Playing  
with the Devil's pasteboards  
The Snow began in the gloun-  
ing . . . Ole's hier in state  
. . . Power.







# One of these days

(sooner than you think) you'll be buying printing plates.

Against that day, fix in your mind the name of BURGER-BAIRD. It will then be a more important fact to you than dates (historical — not the other kind) or irregular verbs or formulae.



For while there are other good engravers, there is only one Burger-Baird.

Good plates? Yes, the best, and pride in their craftsmanship. Prompt with them, too.



But the main thing that keeps Burger-Baird the best known name among middle-west engravers seems to be—well, call it "savvy." It means interest and understanding, not merely for the engravings, but for your larger objectives as well.



People seem to like that, and so, no doubt, will you. Keep us in mind, won't you?

## BURGER-BAIRD ENGRAVING CO.

Graphic Arts Building

10th & Wyandotte Streets

KANSAS CITY

## Flowers Telegraphed

The beauty of our business is Flowers,  
Styles and Selection

*Humfelds*  
Flowers

Phone  
172

Greenhouse  
515 N. ASH

## The Well Dressed Man

Looks to

**STROUSE'S**  
THE BEST STORE FOR MEN

FOR HIS CLOTHES

## HOTEL McCOURT

We are fireproofing this hotel with complete  
installation of automatic sprinklers

—  
"Now I lay me down to sleep,  
Statistics guard my slumber sweet,  
If fire breaks out I'm not concerned  
I may get wet, I won't get burned."

## G. O. Swanson Electric Service

Genuine Parts for

**Magnetos, Starting and  
Lighting Systems**

McPHERSON, KANSAS

Phone 187

310 N. Maple

The Home Of

## GOOD WATCHES AND PERFECT DIAMONDS

**Bixby, Lindsay & Co.**

## "WHERE YOU'LL MEET YOUR FRIENDS"

Up-to-the-minute Fountain Service

Complete Line of Cosmetics

The Magazines You Enjoy Reading

Hallmark Greeting Cards for Every Occasion

Your Rexall Drug Store

**HUBBELL'S DRUG STORE**

104 S. Main

Phone 23



Laughter . . . Concentration . . . Filling the more fundamental needs . . . I will study and prepare myself, and someday my chance will come . . . In the merry month of February, (or any month) . . . Relaxation . . . Tete a tete in the S.U.R. . . . Students of the culinary art.



# THE HOME STATE BANK

McPherson, Kansas

SAFE, CONSERVATIVE, PROGRESSIVE

Deposits of \$5,000 and under insured by the  
Federal Deposit Insurance Corporation

## College Days Bring Pleasant Memories

and Remind you of McPherson, Home of

## Farmers Alliance Insurance Company

KANSAS' LARGEST AND STRONGEST

## Fire - Lightning - Tornado Insurance

## ADEQUATE RELIABLE LOW COST POWER AND WATER

The city of McPherson owns and operates a modern high-pressure, high-temperature electric generating station with steam turbine-generators for prime movers. The electric utility furnishes current to the citizens and industries of McPherson, to the surrounding rural trade territory and other cities.

McPherson is most fortunate in being located above the most prolific and abundant source of cool palatable water of medium hardness in the entire state.

### Industrial Power Rates

(Based on Monthly Consumption)

First 50,000 kwh @	1c per kwh
Next 50,000 kwh @	9 mills per kwh
Next 50,000 kwh @	8 mills per kwh
Next 50,000 kwh @	7 mills per kwh
Next 50,000 kwh @	6 mills per kwh
Excess @	5 mills per kwh

Generous discounts from the above rates are provided for the installation of power factor corrective equipment.

### Water Rates

(Based on Monthly Consumption)

First 5,000 gals. @	25c per 1,000 gals.
Next 10,000 gals. @	20c per 1,000 gals.
Next 10,000 gals. @	15c per 1,000 gals.
Next 25,000 gals. @	10c per 1,000 gals.
Excess gallons @	8c per 1,000 gals.

Industries find it convenient and profitable to be located in a city like McPherson which never has a water shortage problem.

## WATER & ELECTRIC DEPARTMENT

Operating The Water And Electric Utilities

McPHERSON, KANSAS

15c First Passenger — 10c All Others

PHONE  
455

**TAXI**

PHONE  
455

DAY OR NIGHT

For good things to eat, see

**James Food Store**

Phone 4

We Deliver

**Pauls Cafe**

Welcomes the trade of  
McPherson College

210 N. Main

**E. L. (Pete) Wolf**

Plumbing, Heating  
Air Conditioning and Cooling  
Electrical Appliances

Phone 226

219 S. Main

**MARATHON  
SERVICE STATION**

**GAS — OIL —PRESTONE**

1001 S. Main

Special Wash and Lubrication \$1.00

Liebl Bros., Mgr.

GIFTS

ART SUPPLIES

FRAMES

Phone 92

**ABEL'S**

221 N. Main

FILMS

PHOTO SUPPLIES

CAMERAS

**J. C. PENNEY CO., Inc.**

Where Your Dollars Go Farthest

*"The Home of Values"*

Your Patronage Greatly Appreciated

We, The Quad staff proudly present our Bulldog as the very best citizen ever matriculated, prominent and pugnacious. He started as



discovered by The Spectator as a write-up man . . . He was always at a loss for words, and a terrible speller besides, but with true Bulldog tenacity he finally found . . .



... *AN HONOR MAN* . . . but, alas . . . *THE GRIND WAS TOO MUCH* . . . He was then

we show you our hero, J. Scapiron Macollege.



... *THE RIGHT LETTER* . . . But, alas, like most other Bulldogs, he didn't discover that he was an athlete until the season was over. . . . Future events cast their shadows before them, and, believe me, when Molly Screwtail, Beauty Winner, came into his life, she cast a



bravely . . . *FACING HIS FUTURE* . . . He is at all times loyal to the knowledge gained, for in accordance with alumni tradition and the desires of his professors, he keeps his notes before him.

... *BIG-SHADOW* . . . And finally





# INDEX

<b>M</b>	
Martin, Mrs. Alice	21
Macklin, Eleanor	38, 66
Mason, John	38, 86
Mason, James	38, 66, 88, 89
Meitz, Ardy	34, 10, 44,
	67, 75, 85, 91
Metzler, Burton	22, 23, 63
Meyer, Anton	26, 70
Meyer, Raymond	31, 40, 70
Michael, Herbert	28
Miller, Dahn	26, 48
Miller, Mildred	28, 49, 44
Miller, Roy	38, 34, 63, 85
Mingusback, Carl	38, 44, 70
Minsenback, John	38, 39, 70, 85
Minnick, Elma	25, 26, 88, 89
Mishler, Don	38, 47, 70, 75
Mohler, Elizabeth	28, 40, 44,
	59, 61, 63, 65, 94
Mohler, Katherine	34, 40, 44,
	66, 67, 76, 81, 85, 86, 94
Mohler, Robert E.	22
Morgan, Harry	34
Morrison, Kenneth	33, 34,
	44, 55, 70
Morrison, Melba	38, 61, 86
Morrison, Mildred	28, 70
Mosse, Max	34
Muehler, Harold	30, 48
Myers, Harold Keith	34
Myers, Marlin	34
Myers, Philip	26, 27, 48, 48,
	61, 67, 76
McAuler, Roy	37, 38, 39,
	62, 65, 70
McGill, David	26, 48, 55, 61
McKenzie, Bob	38, 47, 79

<b>N</b>	
Nance, Robert	30
Nauman, Walter	22, 23
Naylor, Kirk E.	30, 59, 65
Nelson, Loden	30, 63, 65, 70
Nelson, Lovato	34, 70
Newkirk, Donald	29, 30, 40,
	65, 64, 66, 67, 75, 77,
	88, 46, 60
Nicholson, Arlene	38, 47, 62, 70
Nicholson, Ralph	30, 44, 60, 70
Niekey, Keith	34, 40, 43,
	61, 86, 94
Nordling, Millicent	60, 61, 86

<b>O</b>	
Oberst, Fanny	38, 70
Oberst, Jean	38, 46, 70
Oliver, Jack	25, 26, 75
Olson, Oscar	22, 24
Olwin, Lena Belle	34, 70, 85, 94
Olwin, Sara Jane	29, 30, 43, 65, 70
Orr, Ronald	34, 40, 60, 61, 80
Owen, LaRue W.	30, 40, 70

<b>P</b>	
Pennoe, Elma	38, 61
Peterson, Ernest	38, 62, 66, 67
Peterson, Linn	38, 34, 70
Peterson, Paul	38, 47, 70
Peterson, Ruby	34, 45
Petofish, Frances	38, 46, 62
Physical Education Building	13
Pierce, Keith	30, 61
Prather, Marcia	38, 40, 41,
	60, 67, 75, 94
Preston, Zona	31, 45

<b>R</b>	
Ratzlaff, Elmer	30, 43, 44
Reed, Ernest	30, 43, 47,
	56, 66, 67, 71, 91
Reed, Lowell	38
Reeves, Fern	28, 62
Reizer, Marion	30
Reinecker, Keith	34, 55
Reinecker, Russell	38, 38
Richee, Virginia	38, 62
Robertson, Roy	26, 32, 47, 48
Rock, Bill	55
Rock, Clayton	22
Russell, Edna Mae	34, 85

<b>S</b>	
Saathoff, Evelyn	30, 60, 62, 66, 67
Sanger, Louise	38
Schapiansky, Clifford	55, 58,
	39, 47, 88, 80
Schlehuber, Geneva	30, 94
Schlicht, Ralph	38, 47, 61, 70
Schubert, Arthur	38, 43, 60, 70
Schwalm, Betty	37, 38, 60, 70
Schwalm, Vernon Franklin	17, 22
Siddell, Robert	26, 43, 47,
	45, 48, 70, 85
Sellers, Marcell	30, 70
Sellers, Betty Jean	75
Shanks, Warren	38, 40, 44, 70
Sharp Hall	7
Sheffer, Winton	28, 27, 71
Shulley, Hulert E.	30, 86
Sherfy, Esther	30, 81, 83, 66,
	67, 68, 71, 73, 86, 94
Shockey, Ida	18, 22, 40, 59,
	63, 61, 65
Shvemaker, Lenora	28, 70
Slead, Mary Ellen	34, 60, 75, 94
Sloan, Keith	34
Smith, Avls	26, 44, 45
Smith, Jay	34, 66, 66, 86
Spangler, Edith	30, 40, 45, 62, 86
Spessard, Mary	28, 61, 70
Spohn, Geraldine	29, 30, 63,
	61, 65, 68, 80
Spohn, Shirley	31, 35, 60,
	61, 65, 86
Stamford, Burns	34, 44, 47, 56
Starn, Forrest	30, 63
Starn, Galen	26, 44, 65, 66
Starn, Margaret	34

Stover, Stephen	26, 42, 45,
	59, 63, 64, 66, 68, 77
Stryker, Mable	31
Stucky, Albert	26, 70
Stucky, Dale	30, 43, 59, 60,
	64, 65, 66, 71, 75, 77, 94
Stucky, Ruth	38, 46, 70, 94
Sturma, Ruth	39, 65, 85, 86
Switzer, Evonne	38, 62
Switzer, Wayne	30, 67, 71
Stansel, Faylene	38, 81
Stutzman, Ralph	22

<b>T</b>	
Tarn, Arlos	38, 70
Taylor, Jean	38, 60, 70
Thompson, Kenneth	34, 79
Thompson, Paul	38
Throne, Cecil	38, 70

<b>V</b>	
Vannorsdel, Sylvia	38, 40, 60, 61
Vaughn, Leonard	26, 88
Venable, Ewing	38
Vetter, Jack	34, 43
Voshell, Duris	34, 35, 40,
	45, 59, 68, 70, 94
Voshell, Tony	26, 43, 48,
	53, 55, 59, 61, 94
Yuth, George	38
Yoth, Harold	38

<b>W</b>	
Wagoner, Margaret	34, 46, 86
Warner, Lilson	22, 43
Walker, Kenneth	38, 70
Wampler, Koveva	34, 60, 65,
	65, 70, 85
Wanamaker, Rollin	30, 43,
	48, 56, 70
Washburn, Ted	38, 40, 44, 94
Wayland, Francis	22
Weaver, Junita	38, 40, 70
Webb, Marie	38
Weldon, Carolyn	38, 82
Westling, John	38, 70
Westling, Virgil	34, 70
Whitmore, Albert	30, 39, 70
Widiger, Morton	23
Wiggins, Gladys	34, 40, 44,
	60, 66, 70, 75
Wiley, Frederick	30, 70
Williams, AUSTON	34, 70
Wolfe, Mamie	30, 60
Wyckoff, Genevieve	38, 70

<b>Y</b>	
Yinest, Kenneth	34, 61, 65, 70
Yoder, Carl	26, 26
Young, Harold	38, 45, 70

<b>Z</b>	
Zumbium, Mary Ann	38, 70

## O SACRED TRUTH

*Altho out on broad Kansas Plains,  
Here not in vain are we,  
For we will strive with might and main,  
That right and truth may be,  
The student loves to dream his dreams  
Of life that's yet to be,  
Of future days and years that'll seem  
The best for old M. C.*

*Chorus: We'll hope for our M. C.  
We'll cheer for our M. C.  
While winds do blow,  
And sunflowers grow,  
We'll long for thee, M. C.*

*True soldiers once with sword of might,  
Worked for our freedom long,  
And now to keep our pages white,  
Will be our purpose strong,  
Beneath the smile of sunny days,  
Let truth and freedom reign,  
Within our College let us praise  
The deed that'll leave no stain.*

*We are an army—on the way,  
Some day the world will see us larger grown,  
And then they'll say,  
Yet 'tis the good M. C.  
Dear truth, without thee we must fall,  
O then our pillar be,  
O, truth, be thou our stay for all,  
And stand for our M. C.*