

Paradise
Paradise



11 9 3 9

1939



Quadrangle



PRESENTING THE

Quadrangle



PUBLISHED BY

THE

STUDENT

COUNCIL

OF

McPHERSON COLLEGE LIBRARY

le



McPHERSON COLLEGE

Copyright 1939

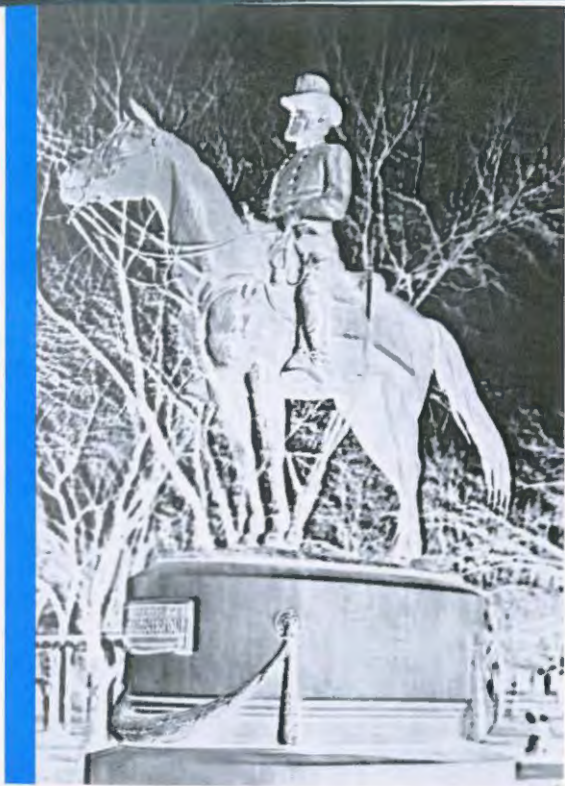
GORDON BOWER
Editor

RUSSELL KINGSLEY
Manager

Foreword

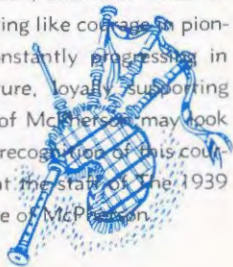
A library is a store-house, a treasury, in which the past is preserved for the future. It is a record of the thoughts and deeds, the triumphs and pleasures of yesterday kept safe for the instruction and enjoyment of tomorrow. And indispensable to a library is its catalogue: One needs a guide to the relationship of things. And so, to forestall blurring, or disorder, it is as a catalogue to your library of memories that we offer The 1939 Quadrangle to the students, faculty and friends of McPherson College. May all the hours and days of this now passing year dance to you as sunbeams and go by one by one and come back and dance again.





DEDICATION

Named for Gen. James Birdseye McPherson, dauntless leader of her founders in a great cause, herself displaying like courage in pioneering triumphs over a rigorous frontier; constantly progressing in commerce; actively forward-looking in culture, loyally supporting the best and highest in education, the City of McPherson may look upon herself with justifiable pride. It is in recognition of this courage, culture and friendliness to education that the staff of The 1939 Quadrangle dedicates this book to the people of McPherson.



★
CONTENTS

College
REEL ONE

Classes
REEL TWO

Activities
REEL THREE

Features
REEL FOUR

★



THE THRILL WHEN CHAPEL IS OVER



HE IS HOT ON THE TRAIL OF A SPLIT ATOM



ON COMPREHENSIVES



REEL ONE

College

"The Prologue" should speak recollectively of the educational vision of those who five decades and more ago brought here the beginnings of a college. It is on their foundations that those who followed them have built. The film races on. The past with its hopes and promises fades out. The present comes on. The past shall be justified; for it is the dawn of the second half-century of Methodism; the dawn of new ideas in classroom, laboratory and library; the dawn of new personalities, and maturing through contact with new students and faculty.

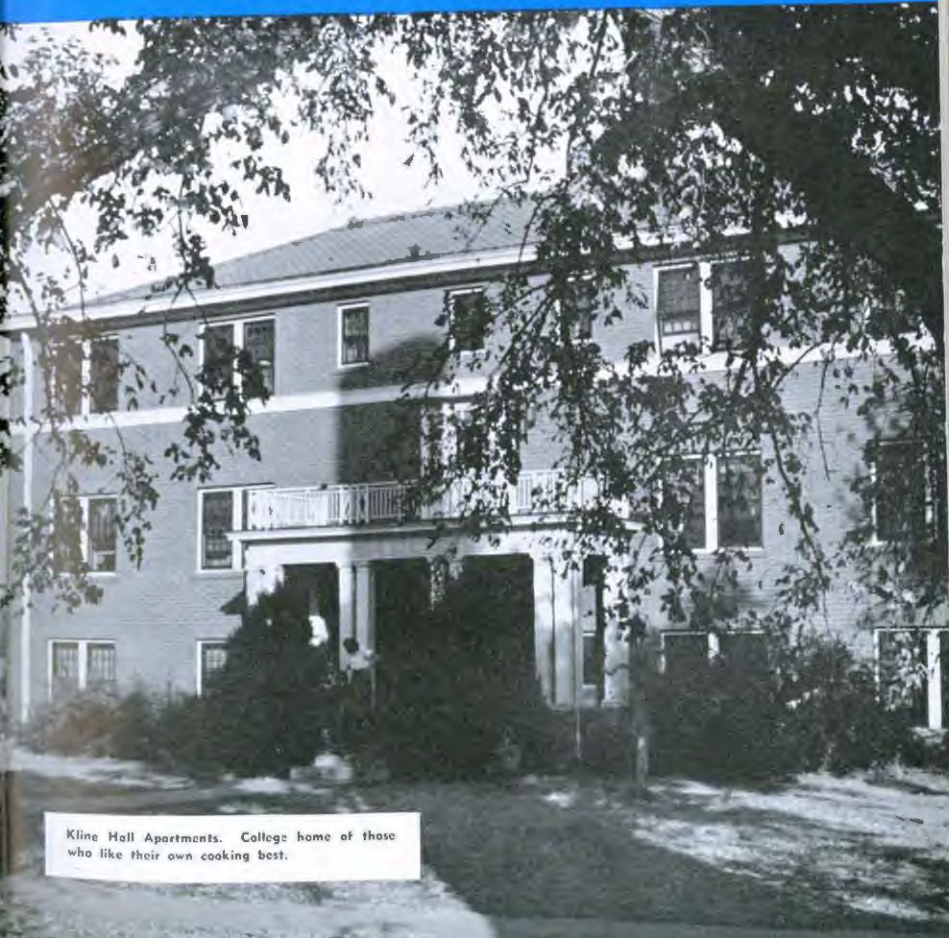


SHE CREATES DEMOCRATIC ART

Oldest building on the campus, once housing all students and all departments, Fahnstock Hall is soon to have its interior remodeled and its face lifted.

Looking up. Winter beauty on the west. "Fanny's" lobby.



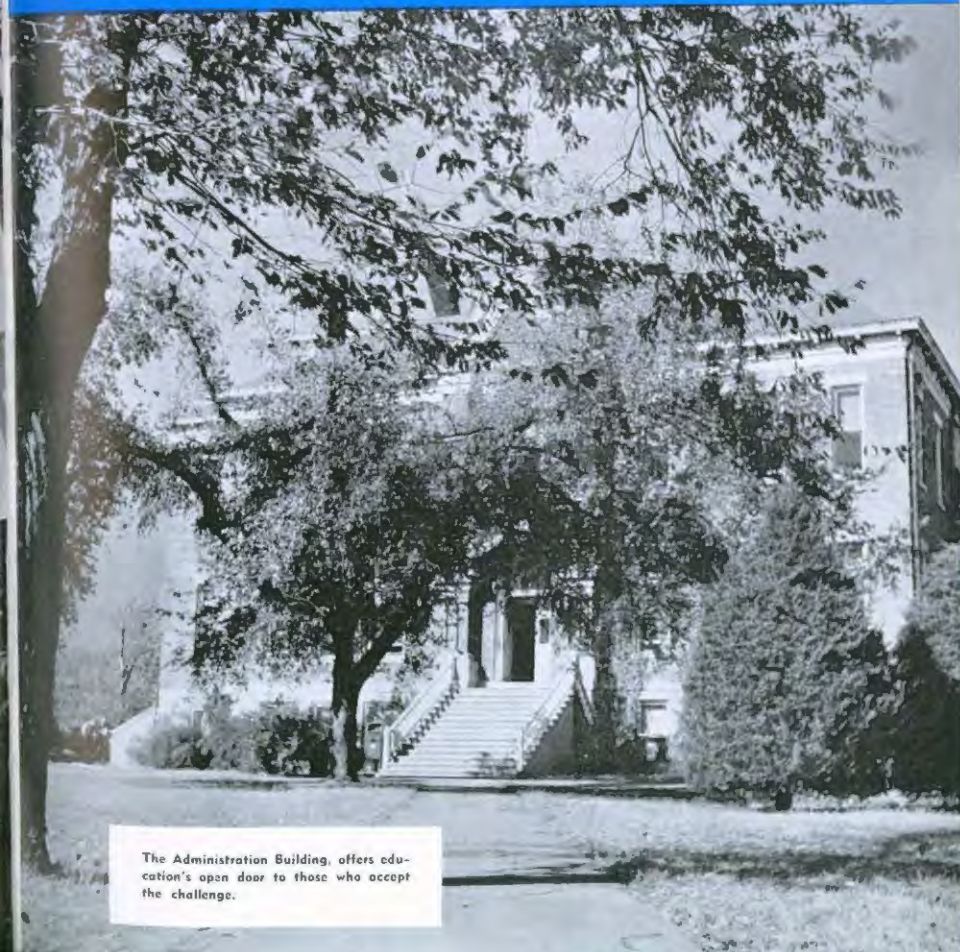


Kline Hall Apartments. College home of those who like their own cooking best.

A dizzy view of Arnold Hall—the camera is looking up, and we don't blame it.

A party is in progress. The dining hall contributes much to the joys of "dorm" life.





The Administration Building, offers education's open door to those who accept the challenge.



Which book do you want?
Through the trees. Hard at
it.

Carnegie Library.

"Remembers first to possess
his books; for without them
he's but a sop . . . nor
hath not one spirit to com-
mand."—*The Tempest*.





Looking east from the east entrance, Gethsemane. The college church is the most imposing of all college buildings.

College Church.

"Faith of our fathers living still."





PRESIDENT VERNON FRANKLIN SCHWALM

Omnivorous interests, analytical keenness, devotion to duty, and scholarly aloofness make our president a man to pilot our institution over its stormy waters. He is known in educational circles throughout the state. Conferences, tours, speeches, and lectures, along with his executive duties, make him a busy man. Yet in spite of the impingement of forces from without and agitation within, he has remained calm and unhurried, the consultant and friend of all.



DEAN OF THE COLLEGE J. DANIEL BRIGHT

Conflicts to the right of him, absences to the left of him, storming and griping, into the sanctum sanctorum, into the Dean's office, slinks the sad student. Here his heart is laid bare and his troubles are analyzed with an efficacy peculiar only to Dean Bright. The proper unguent having been applied, the happy student strides forth to wrestle again the vicissitudes of life with renewed vigor. Such is the life of our dean.



DEAN OF WOMEN IBA SHOCKLEY

The goal which college women should attain is to perfect themselves as instruments of their own destiny. Through the generous and wholesome attitude which is so characteristic of her, Miss Shockley attempts to give personal integrity to those with whom she confers. After receiving counsel, one carries away a portion of her stability and vitality.

DEAN OF MEN S. M. DELL

The Dean of Men is concerned with young men at McPherson in all of their expressions of campus life. In working toward the solution of any college problem, Dean Dell is glad to give his assistance. No matter how trivial it may be, he will listen to your problem, if listening is what you need.

He is also the official investigator of nefarious activities, including limburger cheese episodes and inter-floor dorm feuds.



Head coach in three sports, professor of physical education, W. Pierce Astle is director of athletics. "Buck," determined and a real Bulldog, produces results.



Esther Atkinson teaches co-eds the arts of feeding and frilling, and plays a gracious mother to Kline Hall's lovely maidens.

Virginia's gift to the faculty, scholarly Dr. John W. Boitnott produces much-sought-after teachers out of much inspired-by-Boitnott students.



Genial Joseph L. Bowman has for 13 years translated the ethereal abstractions of mathematics, astronomy, and physics into the nomenclature of everyday thought.

Students first acquaintance with our effective Field Representative W. Earl Broom occurred when he persuasively told them of the manifold advantages of attending the School of Quality.



Dr. J. D. Bright makes Genghis Khan a real ruffian and Francis of Assisi a living Saint. "Doc" Bright, everybody's friend and counsellor.

In her unassuming manner, Miss Jessie Brown has instilled her piano students with skill and confidence. Their well-known successes are mute testimony to her capability.



Dull brush, crayon, knife, and oil conspire and cause drab canvases to leap into vivid pictorial scenes as perspiring aspiring art students gayly dab under the diligent tutelage of Clara Colline.

Dapper and blond, violin artist, Loren B. Crawford puts sixty whole minutes into an hour of rehearsal with his popular college band and orchestra.



S. M. Dell sees that cords and cords of birdseye maple, walnut, and tiger wood become dozens and dozens of beautiful cabinets, end-tables, and chairs.



Late leaves, midnight snacks, and fire-escape excursions are the bane of motherly Mother Emmert's existence, as matron of the girl's dorm, Arnold Hall.

"The greatest musician in the Brethren Church," Professor Nevin W. Fisher has made, not only McPherson College but the city as well, conscious of good music by his active participation.



Combining a well-balance mixture of suavity, scholarliness, athletic interest, and culture, Dr. Claude R. Flory, Professor of English and literature, is indeed a gentleman.

Chief disciplinarian Miss Mildred Forney has made the library a place where silence is golden. It is now a better place for the intense cerebral machination called for by the dispensers of education.



As Business Manager, J. H. Fries is known as "guardian of the vaults." Although he is firm in his decisions, he is nevertheless fair.

Through her intense interest Miss Margaret Heckethorn has gained a thorough knowledge of the library and all its contents, which is the student's delight when he can't find the books which he desires.



Our most renowned scientist, Dr. J. Willard Hershey manages amid the activities of his research to manifest interest in the whole of collegiate life.

Thoroughness is the keynote of Professor Maurice A. Hess's outstanding success as master of our summus, colons, and conjunctions also oratory and debate. (No picture.)

Having traveled extensively, Miss Ruth Koerber is well fitted to teach the embryo travelers the languages they will need.



Miss Della Lehman has long held the role of culture dispenser. She has the knack of intertwining cultural values with scholastic values in an engaging manner.

With special music periods, public performances, and trips between Harnly Hall and downtown studio, Miss Fern Lingenfelter is busy filling the air with music.

Starting Freshmen on the right path of registration, registering credits throughout their college careers, and managing the central office are some of the many duties of Mrs. Alice Martin, assistant registrar.



Kindly and devout Dr. Burton Metzler injects religious enthusiasm into students in his classes of sociology, philosophy, and religion. His sincerity and humility radiate the life he teaches.

A community leader and friend to all students, Professor Robert E. Mohler makes biology a living subject. He has learned how to win friends and influence people with his vibrant personality and consistently pleasant attitude.



Youthful Professor Don Paden conducts his commerce and economics classes with a friendly, understanding attitude. Informality is his theme in the classroom as on the tennis court.

Making good in his alma mater is Clayton Rock, assistant business manager. Although he is firm and decisive, he is quite congenial as a business office official.



Dr. V. F. Schwalm's enforced absences from college during his many tours do not lessen his interest in students or his ardor for the advancement of McPherson College.

Combining religious devotion with an open-minded attitude, Miss Ida Shockley produces social consciousness in McPherson College through her psychology classes. Despite her winning smile, her tests are no snaps.



Friendly and handsome, Professor Ralph Stutzman makes melody flow wherever he goes.

Miss Lilyan Warner has awakened many students to the possibilities of physical education. Her classes are not abstract theories, but practical conclusions.



Few get to know Morton Widiger or of his talent unless they study music with him. His work with the wind instruments has been noteworthy.



1. Greetings from Dr. Flory.

2. Vena Flory demonstrating that "music hath charms".

3. Larsen and Darrow shaking beards at each other in "The Managers."

4. Mohler leaving, but we rejoice he has been punctually coming back for twenty-five years.

5. Metzler philosophizing upon the ramifications of metaphysical teleology.

6. Cooking Macco-eds following Lincoln's example, "I will study and prepare myself and some day my chance will come."

7. "Squeak" and Ray (at least Ray) lacquering a footstool.

8. Joe Bowman demonstrating that our physics prof. is "red hot."



1. Students hunting bugs.
2. Two fergers plying their trade.
3. Tenor Fisher encouraging bass Albright.
4. Hershey hoping his mice will lay synthetic diamonds.
5. Koerber flashing a smile that doesn't wear off.
6. Heckman and Horner have an Irish tete-a-tete in "Londonderry Air."
7. Schaffer becoming a C. P. A.



The Library Staff in Action
International Relations Club takes time from one of its regular meetings to pose for us.

PRESENTING THE JUNIOR CLASS GROUP



DIGNITY PERSONIFIED BY SENIOR OFFICERS



REEL TWO

Classes

"The Players" are always indispensable to the show. All the campus is a stage and all the students really players. First the freshmen, a well-shaded but lovable widow; next the sophomore, strutting devotee of long belt lines; then the junior, only campus fellow, free from loathing of years and maturity's stern demands; last, the senior, filled with learning, poised and confident, ready to seek the bubble gum aisle in classroom, farm and office. No one can play in featured roles but who you think could play could be the same with any new student.

SOPHOMORE OFFICERS



THE FRESHMAN CLASS OFFICERS



Seniors

TOP ROW

WAYNE L. ALBRIGHT Eldora, Iowa

Music

A Cappella Choir; Male Quartet; Track; Vice-President, Freshman Class; Student Council; Y. M. C. A. Cabinet; M-Club; Pep Club.

Bachelor of Arts

ARTHUR M. BALDWIN McFarland, California

Philosophy and Religion

Photography Editor 1939 Quadrangle; Manchester College; Modesto Junior College; Bethany Biblical Seminary.

Bachelor of Arts

ELMER R. BALDWIN Chicago, Illinois

Sociology

Honor Roll; Modesto Junior College; Bethany Biblical Seminary.

Bachelor of Arts

DELBERT L. BARLEY McPherson, Kansas

History

Honor Roll; A Cappella Choir; S. C. M. Cabinet.

Bachelor of Arts

ORVILLE E. BEEHLER Fruitland, Idaho

Industrial Arts

A Cappella Choir; Choral Club; World Service Cabinet; Recreational Council; Chemistry Club.

Bachelor of Science

R. GORDON BOWER McLouth, Kansas

Commerce

Assistant Business Manager 1939 Quadrangle; Assistant Business Manager; Spectator; Editor 1939 Quadrangle; Track; M-Club; S. C. M.; Young Republican Club.

Bachelor of Science

FRANCES L. CAMPBELL Parsons, Kansas

Public School Music

Who's Who in American Colleges; Honor Roll; A Cappella Choir; Women's Quartet; Director, Choral Club; Orchestra; String Choir; Violin Club; Student Council; Women's Council; Thespians Club; Parsons Junior College; Young Republican Club.

Bachelor of Arts

ROW TWO

GERALD E. DENNY Elmo, Kansas

Industrial Arts

Choral Club; Treasurer, Senior Class; Kansas State College.

Bachelor of Science

DORIS V. DRESHER McPherson, Kansas

History and Commerce

Spectator; W. A. A. Executive Board; Secretary, International Relations Club; Young Republican Club; S. C. M.; Chemistry Club.

Bachelor of Arts

F. ROSALIE FIELDS McPherson, Kansas

Home Economics

Spectator; Choral Club; Vice-President, Junior Class; S. C. M. Cabinet; Treasurer, President, Women's Council; Chemistry Club; W. A. A.; International Relations Club; Young Republican Club.

Bachelor of Science

LILLYS M. FRANTZ Holmesville, Nebraska

Public School Music

Accompanist, Choral Club; Orchestra; World Service; S. C. M.; W. A. A.

Bachelor of Arts

VIRGINIA J. HARRIS Jennings, Louisiana

History and English

Honor Roll; Women's Council; World Service; International Relations Club; S. C. M.; Chemistry Club.

Bachelor of Arts

LUTHER H. HARSHBARGER McVeytown, Penn.

History

A Cappella Choir; President, Choral Club; Co-President, S. C. M.; World Service; Debate; Millersville State Teachers College; Bethany Biblical Seminary.

Bachelor of Arts

VERA M. HECKMAN McPherson, Kansas

English

Spectator; Co-President, S. C. M.; Secretary, Freshman Class; President, Sophomore Class; S. C. M. Cabinet; President, Women's Council; Student Council; Thespians Club; Pep Club; Young Republican Club.

Bachelor of Arts

ROW THREE

EVELYN HERR Hope, Kansas

English

Choral Club; S. C. M.; W. A. A.; Young Republican Club.

Bachelor of Arts

OPAL RUTH HOFFMAN Abilene, Kansas

History and Latin

Who's Who; Spectator; Honor Roll; A Cappella Choir; Women's Quartet; Secretary, Student Council; Recreational Council; S. C. M. Cabinet; Treasurer, W. A. A.

Bachelor of Arts

RICHARD J. HORN McPherson, Kansas

Chemistry

S. C. M.; Chemistry Club; Young Republican Club.

Bachelor of Science

DWIGHT B. HORNER Ft. Worth, Texas

Philosophy and Religion and History

Spectator; Debate; S. C. M. Cabinet; Recreational Council; Thespians Club; International Relations Club; Bethany Biblical Seminary.

Bachelor of Arts

RILLA MAY HUBBARD Hugoton, Kansas

English

1939 Quadrangle Staff; Spectator; A Cappella Choir; Cheerleader; Secretary, Junior Class; Secretary, Senior Class; Women's Council; W. A. A. Pep Club.

Bachelor of Arts

EDNA K. KESLER Bemidji, Minnesota

Psychology

S. C. M.; Bethany Biblical Seminary.

Bachelor of Science

MIRIAM RUTH KIMMEL McLouth, Kansas

Home Economics and Piano

Quadrangle; Secretary, A Cappella Choir; S. C. M.; Chemistry Club; Pep Club; W. A. A.; Kansas University.

Bachelor of Science



Seniors

TOP ROW

RUSSELL J. KINGSLEY Windom, Kansas
Industrial Arts

Assistant Business Manager, Spectator; Business Manager, Spectator; Business Manager, 1939 Quadrangle; String Choir; Vice-President, Choral Club; Orchestra; Basketball; M-Club; S. C. M.; Pop Club; Chemistry Club; Secretary Young Republican Club.

Bachelor of Science

HAROLD A. LAIBEN Abilene, Kansas
History and Political Science

Sports Editor, Spectator; Editor, Spectator; Debate; Cheerleader; S. C. M. Cabinet; President, Thosian Club; M-Club; Pop Club; Chemistry Club; Forensic Club; Young Republican Club.

Bachelor of Arts

JOELLE LETKEMAN Buhler, Kansas
Commerce

1939 Quadrangle; Choral Club; Band; Track; Treasurer Junior Class; Vice-President, Men's Council; M-Club; S. C. M.; Pop Club; Young Republicans Club.

Bachelor of Science

ANTON A. MEYER Tampa, Kansas
Chemistry

Football; Basketball; Track; M-Club; S. C. M.; Chemistry Club; Young Republican Club.

Bachelor of Science

ASTA OSTLIND McPherson, Kansas
Biology and Chemistry

Student Council; Women's Council; Chemistry Club; Young Republican Club.

Bachelor of Science

LILLIAN M. PAULS Buhler, Kansas
Mathematics and Music

Who's Who; Honor Roll; A Cappella Choir; Ladies Trio; Ladies Quartet; Women's Council; Pop Club; Emporia State Teachers College.

Bachelor of Science

PAUL E. PRATHER Mound City, Missouri
Biology

Young Republican Club.
Bachelor of Science

ROW TWO

ELIZABETH L. ROBRICK McPherson, Kansas
History

S. C. M.

Bachelor of Arts

ADDISON B. SAATHOFF Guthrie, Minnesota
History and Economics

Who's Who; Honor Roll; Choral Club; Varsity Debate; President, Senior Class; Student Council; S. C. M. Cabinet; International Relations Club; Forensic Club; President, Young Republicans Club.

Bachelor of Arts

GLADYS F. SHANK Navarre, Kansas
Music

Spectator; Quadrangle; Honor Roll; A Cappella Choir; Ladies Quartet; Orchestra; S. C. M. Cabinet; Recreational Council; Women's Council; Thosian Club; Pop Club; Young Republican Club; University of Kansas.

Bachelor of Arts

CHARLES H. SHELLER Eldora, Iowa
Biology

World Service; S. C. M.

Bachelor of Science

LENORE SHIRE McPherson, Kansas
Home Economics

Vice-President, W. A. A.; President, W. A. A.; S. C. M.; Pop Club; Student Social Committee.

Bachelor of Science

CARL S. SMUCKER Orville, Ohio
Philosophy of Religion

S. C. M.; Akron University; Bethany Biblical Seminary.

Bachelor of Arts

EDNA STEEL McPherson, Kansas
Education

Emporia State Teachers College.

Bachelor of Arts

ROW THREE

LAWRENCE C. STEPHENSON Gaylord, Kansas
Commerce

Chemistry Club.

Bachelor of Science

WILBUR E. STERN Barnum, Minnesota
Chemistry

S. C. M.; Thosian Club; Chemistry Club; Pop Club; Young Republican Club.

Bachelor of Science

WILLIAM P. THOMPSON McPherson, Kansas
Economics and History

Who's Who; Honor Roll; Varsity Debate; Orator; Extemporaneous Speaking; President, Junior Class; Treasurer, Student Council; President, Student Council; S. C. M. Cabinet; President, Forensic Club; Men's Council; International Relations Club; Chemistry Club; Young Democrat Club; Bethel College.

Bachelor of Arts

LORENE VOSHELL McPherson, Kansas
Music

A Cappella Choir; W. A. A.; Young Democrats Club; Emporia State Teacher's College.

Bachelor of Arts

ROBERT WIEGAND Inman, Kansas
History and Education

Football; Captain, Basketball; A Cappella Choir; President, M-Club; Men's Council.

Bachelor of Arts

EMERSON D. YODER Windom, Kansas
Biology

Spectator; S. C. M.; Chemistry Club; Reson College; Hutchinson Junior College.

Bachelor of Science

R. GORDON YODER Waterloo, Iowa
Commerce

Sports Editor, Spectator; Treasurer, A Cappella Choir; President, A Cappella Choir; Mixed Quartet; Mixed Quartet; Tennis; President, Freshman Class; Student Council; Treasurer, Pop Club; Recreational Council; Student Social Committee; S. C. M.; Chemistry Club.

Bachelor of Science



Juniors

TOP ROW

GALEN ALLEN
Philosophy and Religion

Kelley, Iowa

EVELYN AMOS

Parsons, Kansas

English

ARLENE BARLEY

McPherson, Kansas

English

VERNON BECKWITH

Boise, Idaho

Industrial Arts

CARROLL CROUSE

Adel, Iowa

*Treasurer of the Class
Commerce*

ELMER DAUSMAN

Nevada, Iowa

History

WESLEY DABROW

Hutchinson, Kansas

History

ROW TWO

WESLEY DELOURSEY
Chemistry

Nampa, Idaho

EDWIN DIEHL

Beaver, Iowa

Commerce

HAROLD DUNCANSON

Lewiston, Minnesota

Industrial Arts

EUGENE EISENBERG

McPherson, Kansas

Biology and Industrial Arts

KATHRYN ESSNS

Fort Pierce, Florida

Chemistry

RAYMOND FLORY

Kintross, Iowa

*President of the Class
History*

HOWESA FRANTZ

Grundy Center, Iowa

Home Economics

ROW THREE

HAROLD FRIES
Chemistry

McPherson, Kansas

FORREST GROFF

Lebanon, Oregon

Industrial Arts and Biology

VERDA GROVE

Kintross, Iowa

Home Economics

JOSATHAN HAMBRISLEY

Nevada, Missouri

Chemistry

AUBREY HAMMANN

Roxbury, Kansas

*Vice-President of the Class
Home Economics*

CARRIE ALICE HANSSON

McPherson, Kansas

Education

EDITH HURCHY

Bartlesville, Oklahoma

Philosophy and Religion





Juniors

TOP ROW

MARGARET LOUISE KAGARICE Hutchinson, Ks.
Home Economics

IRVIN KECK Summerfield, Kansas
Commerce

MARJORIE KINZIE Lyons, Kansas
History

VERNON KRAUS Pretty Prairie, Kansas
Industrial Arts

DAVE MCGILL Soddy, Tennessee
Student Council Representative
Industrial Arts

DOHN MILLER Osborne, Kansas
Industrial Arts

ELMA MINNICK Hardin, Missouri
English

PHILIP MYERS Formosa, Kansas
Economics and Mathematics

ROW TWO

JACK OLIVER McPherson, Kansas
Commerce

ROBERT RICHARDSON Arlington, Kansas
Commerce

ROY ROBERTSON Pretty Prairie, Kansas
Commerce

ROBERT SEIDEL McPherson, Kansas
Chemistry

WINTON SHEPPER McPherson, Kansas
English

AVIS SMITH Whitten, Iowa
Student Council Representative
Home Economics

GALEN STERN Fredericksburg, Iowa
History

STEPHEN STOVER McPherson, Kansas
Secretary of the Class
History

ROW THREE

M. M. TROYER Conway, Kansas
Philosophy and Religion

J. W. VAN BLARICUM Minneola, Kansas
Chemistry

LEONARD VAUGHN Luray, Virginia
German

LA VERNE VOSHELL McPherson, Kansas
Commerce

LUCILLE WABE Lamar, Colorado
Public School Music

ADDISON WEST McPherson, Kansas
History

LA VERNE YORK Adel, Iowa
Industrial Arts





Sophomores

TOP ROW

Marjorie Anderson, Gypsum, Kans.

Maurine Anderson, Burdick, Kans.

La Verne Bollinger, Payette, Idaho

Kathryn Brallier, Curlew, Iowa

Marguerite Brower, Carrington,
North Dakota

Melba Burger, Udell, Iowa

Eugene Charbonneau, Osborne,
Kansas

Helen Cole, Langdon, Kansas

Olive Calyn, Prescott, Iowa

Raymond Coppedge, McPherson,
Kansas. Student Council

ROW TWO

James Crill, Nampa, Idaho

Donald B. Davidson, Lyons, Kans.

John Detrick, Dayton, Ohio

Kathryn Dobbins, South English,
Iowa

Doris Durst, Moundridge, Kansas

Avis Elliott, McPherson, Kansas

Autumn Fields, McPherson, Kans.
Treasurer of the Class

Harold Flory, South English, Iowa

Vena Flory, Lone Star, Kansas

Vera Flory, Lone Star, Kansas

ROW THREE

Marvin Fox, Larned, Kansas

Dean Frantz, North Manchester,
Indiana

Robert Frantz, Holmesville, Nebr.

Ramona Fries, McPherson, Kansas

Glenferd Funk, Conway Springs,
Kansas

Raymond Goering, Elyria, Kansas

Margaret Hamm, Colorado
Springs, Colorado

Lillian Hands, McPherson, Kansas

Merle Hodgen, Kansas City, Mo.

Mary Elizabeth Hoover, Platts-
burg, Missouri

ROW FOUR

Don Houghton, McPherson, Kans.

La Voun John, Fisk, Missouri

Donna Jean Johnson, McPherson,
Kansas

Santos Jaurez, McPherson, Kansas

Roland Juhnke, McPherson, Kans.

Durward Karlson, Kingsley, Iowa

Lee Kraus, Pretty Prairie, Kansas

Marianne Krueger, Bagley, Iowa

Junior Laequement, Canton, Kans.

Wilburn Lewallen, Bisbee, North
Dakota



Sophomores

TOP ROW

Opal Matheson, Jordan, Montana

Jessie Messamer, Minburn, Iowa

Paul Metzger, Iowa, Louisiana

Herbert Michael, St. John, Kansas

Mildred Miller, Raymond, Kansas

Ted Modine, McPherson, Kansas

Elizabeth Ann Mohler, McPherson, Kansas
Secretary of the Class

Mildred Morrison, Gypsum, Kans.

Lola Murrey, McPherson, Kansas

Kirk Naylor, Covert, Kansas

ROW TWO

Robert Nance, Reserve, Kansas

Donald Newkirk, Geneseo, Kansas
President of the Class

Edith Nickey, Sterling, Colorado

Olan Nincehelter, Topeka Kansas

Sara Jane Olwin, Cushing, Oklahoma

LaRue Owen, Nashville, Kansas

Keith Pierce, McPherson, Kansas

Elmer Ratzlaff, Moundridge, Kans.

Ernest Reed, Salina, Kansas

Marion Regier, McPherson, Kans.

ROW THREE

Robert Rice, Geneseo, Kansas

William Rock, Enterprise, Kansas

Geneva Schlehuber, McPherson,
Kansas

Gerald Sebree, Nampa, Idaho

Fannie Seitz, Belleville, Kansas

Marcell Sellers, Galva, Kansas

Hubert Shelley, McPherson, Kans.

Esther Sherfy, McPherson, Kans.

Edith Spengler, Wichita, Kansas

Geraldine Spohn, Windom, Kansas
Student Council

ROW FOUR

Herbert Stauffer, Grenola, Kansas

Albert Stucky, McPherson, Kans.

Dale Stucky, Elyria, Kansas
Vice-President of the Class

Ruth Stump, Perryton, Texas

Wayne Switzer, Webber, Kansas

Richard Van Vleet, Langdon, Kans.

Rollin Wanamaker, Waterville,
Kansas

Olive Wiegand, McPherson, Kans.

Carl Yoder, Bermon, Indiana

Russell Yoder, McPherson, Kansas





Freshmen

TOP ROW

Leland Achilles,
Conway, Kansas

Leland Akers,
Conway, Kansas

Lyle Albright,
Eldora, Iowa

Maurice Allison,
McPherson, Kansas

Ruth Anderson,
McPherson, Kansas

Charles Baldwin,
Morrill, Kansas

Reba Barngrover,
McPherson, Kansas

Merrill Blackman,
McPherson, Kansas

Hazel Bodine,
McPherson, Kansas

Mary Boring,
Victor, Iowa

Harold Bowman,
Quinter, Kansas

ROW TWO

Mary Alice Boyce,
Carlton, Kansas

Dorothy Braid,
Fredericksburg, Ohio

Joe Briggs,
McPherson, Kansas

Robert Brust,
Claflin, Kansas
President of Class

Joseph Bukey,
Inman, Kansas

Julia Bukey,
Inman, Kansas

Wilbur Bullinger,
Canton, Kansas

Richard Burger,
Udel, Iowa

Robert Burkholder,
Octavia, Nebraska
Student Council

Richard Callen,
Canton, Kansas

Andrew Collett,
McPherson, Kansas

ROW THREE

Robert Cook,
Sidney, Iowa

William Cooper,
Merino, Colorado

Jake Cramer,
Rocky Ford, Colorado
Vice-Pres. of Class

Anna Jean Curran,
McPherson, Kansas

Ellen Dale,
Geneseo, Kansas

J. Henry Dasenbrock,
Payette, Idaho

Helen Davis,
Wiley, Colorado

Kathryn Mae Deal,
St. Joseph, Missouri

Bernetta Denny,
Elmo, Kansas

Harold Dobrinski,
Lorraine, Kansas

Glennys Doll,
McPherson, Kansas

ROW FOUR

Eldon Du Bois,
Rocky Ford, Colorado

Flora Mae Duncan,
Sylvia, Kansas

Irene Ewing,
Waldo, Kansas

Lois Florman,
McPherson, Kansas

Marie Flory,
Kinross, Iowa

Harold Fulkerson,
McPherson, Kansas

Floyd Garrelts,
McPherson, Kansas

Mildred Geiman,
Windom, Kansas

Martha Goering,
Moundridge, Kansas

Lawrence Hawkins,
Stot, Missouri

Irene Houghton,
Madison, Kansas

ROW FIVE

William Hobbs
Reserve, Kansas

Vern Holmes,
Galva, Kansas

S. G. Hoover,
Plattsburg, Missouri
Treasurer of Class

Sylvan Hoover,
Quinter, Kansas

Fred Ikenberry,
Rocky Ford, Colorado

Charles Johnson,
Galva, Kansas

Kenneth Johnson,
McPherson, Kansas

Le Nora Kanel,
Morrill, Kansas

Duane Kasey,
McPherson, Kansas

Eimer Kauffman,
McPherson, Kansas

Muriel Keagle,
Gypsum, Kansas





Freshmen

ROW ONE	ROW TWO	ROW THREE	ROW FOUR	ROW FIVE
Lois Kennedy, Marshalltown, Iowa	Berle Miller, Cedar Rapids, Iowa	Linn Peterson, McPherson, Kansas	Bernard Schafer, McPherson, Kansas	Frances Unruh, Lehigh, Kansas
Virginia Kerlin, Twin Falls, Idaho Student Council	Elder Miller, Abbyville, Kansas	Ruby Peterson, McPherson, Kansas	Mary Jane Shropshire, McPherson, Kansas	Jack Vetter, Kansas City, Missouri
Deborah Kubin, McPherson, Kansas	Katherine Mohler, Leeton, Missouri	Zona Preston, Thomas, Oklahoma	Mary Ellen Slead, Keota, Iowa	Doris Voshell, McPherson, Kansas Secretary of Class
Jim Lambert, Garnett, Kansas	Kenneth Morrison, Gypsum, Kansas	Hester Regier, McPherson, Kansas	Keith Sloan, McPherson, Kansas	Elizabeth Wagoner, Red Cloud, Nebraska
Edward Leonard, Enterprise, Kansas	Harold Myers, McPherson, Kansas	Keith Reinecker, McPherson, Kansas	Ethel Marie Smith, Geneseo, Kansas	Margaret Wagoner, Red Cloud, Nebraska
Alice Lindgren, Canton, Kansas	Merlin Myers, Formosa, Kansas	Leslie Rogers, Corning, Iowa	Joy Smith, Whitten, Iowa	Rowena Wampler, McPherson, Kansas
Orvell Long, Hope, Kansas	Bernard Nordling, McPherson, Kansas	Miriam Rothrock, Davenport, Nebraska	Ruth Smith, Topeka, Kansas	Burtis Weible, Durham, Kansas
Eldon Maloney, Hope, Kansas	Lena Bell Olwin, Cushing, Oklahoma	Edna Mae Russell, Galva, Kansas	Shirley Spohn, Windsor, Kansas	Virgil Westling, McPherson, Kansas
Ardys Metz, Worthington, Minnesota	Maxine Ostlind, McPherson, Kansas	Nina Lea Rush, Garfield, Kansas	Margaret Stern, Fredericksburg, Iowa	Gladys Wiggins, Geneseo, Kansas
Raymond Meyer, Inman, Kansas	Eugene Owen, Valley Falls, Kansas	Vance Sanger, Wenatchee, Washington	Kenneth Thompson, St. Joseph, Missouri	Austin Williams, Sterling, Colorado
				Edward Zook, Minot, North Dakota





TOP ROW

MARGARET DAVIS, McPherson, Kansas
Sophomore

MARTHA FORNEY, McPherson, Kansas
Special

REBA GIBSON, Springer, New Mexico
Freshman

HILDED KLINZMAN, Lenox, Iowa
Special

BOTTOM ROW

DONALD KOHMAN, Hope, Kansas
Freshman

FAYLENE STANSEL, McPherson, Kansas
Special

BURNS STAUFFER, Rocky Ford, Colorado
Sophomore

MAMIE WOLFE, Eldora, Iowa
Special

SANS TUXES, SWEET AD-O-LINE-ING



ANIMATED MUGS ANTICIPATE DEAD-LINE



IT'S PIGSKIN PEPPER



REEL THREE

Activities

"Added Attractions" indeed are Athletics, Music, Debate, and sundry societies and clubs which season college life. For without them all work would surely make look a dull boy, and Jill a drab co-ed. Football and cheer can never be the "Feature" of the life of college life, but many times the "Golden Moments" are more happily remembered than the more sober drama. And we are just as enjoying with Shakespeare when we observe the profit grows where is no pleasure taken, no less the Extracurricular Activities of college-bred!



A LOVE GAME HAS ITS LETDOWN



1. Jake Cramer
2. Bob Wigand
3. Tony Voshell
4. Lee Kraus
5. Bill Rock
6. Bob Brust
7. Roy Robertson
8. Wilbur Bullinger

A whirlwind finale of three consecutive victories stamped the McPherson college 1938 football season as a preview for next year. Considered an underdog during most of the season, McPherson displayed more power to maintain third place in conference standings.

In the past grid campaign the Bulldogs piled up 74 points as compared to 71 for the opponents, none of which were able to hold more than a 12-point margin.



After losses to Haskell, Ottawa, Baker, Bethel, and Bethany and a tie with Hastings, the Canines turned back College of Emporia, Southwestern, and Kansas Wesleyan. The Bulldog mascot, Scrappy, was credited with the change in luck, although his life was short.

That McPherson was building a team for coming seasons was evidenced by the fact that only one player, Bob Wiegand, was a senior.

1. Eldon Matoney
2. Keith Reinecker
3. Raymond Meyer
4. Gene Owen
5. Bob Richardson
6. Rollin Wanamaker
7. Jack Vetter



1. Olan Ninecheiser
2. Jim Lambert
3. Glen Funk
4. Dick Callen
5. Vern Holmes
6. Dave McGill
7. La Verne York
8. Andy Collett
9. Phil Myers

More than twenty-five members of Coach (Buck) Astle's squad are expected to be available next year.

From a team which contained no outstanding stars, Dave McGill, Lee Kraus, and Raymond (Squeaky) Meyer were selected for the all-conference eleven at their respective positions of end, guard, and center. Several others received honorable mention for their service during the season.



Captain Bob Wiegand, Captain Dave McGill
Coach Claude R. Flory



Coach W. P. "Buck" Astle

Director of athletics, coach of football, basketball, and track, instructor of physical education were the numerous duties this year of Coach W. Pierce (Buck) Astle.

Not to be content with his duties as Professor of English and literature, and sponsor of many collegiate activities, Dr. Claude R. Flory is also coach of tennis.

Football captain Dave McGill and basketball captain Bob Wiegand helped to maintain team morale by their enthusiastic leadership.



1. Roy Robertson
2. Bob Wiegand

3. Jake Cramer
4. Dave McGill

5. Bernard Nordling
6. Tony Voshell
11. Rollin Wanamaker

7. Russell Kingsley
8. Jack Yetter

9. Herb Stauffer
10. Vera Holmes



Voshell garners a goal against Kansas Wesleyan. Here's Hoping

Studded with underclassmen, the McPherson college Bulldog cagers went through the 1938-39 season with only two victories while losing fifteen contests to occupy the Kansas conference cellar.

Although the season picture was not bright, the Canine basketballers are looking forward to next year, when approximately fifteen players are expected to return to the Bulldog camp. Only Captain Bob Wiegand and Russell Kingley are lost by graduation. Another pleasant feature of the season was the encouragement by the Rebounders club, an organization of downtown fans.

During the season the Bulldogs, with their famous "swing system" and squeeze-seat-score defense, scored 570 points for an average of 33.5 points per game as compared to 773 points and an average of 45.4 points per game for their opponents. Triumphs were registered over Baker and Kansas Wesleyan.

The Bulldog reserve team turned in a more impressive season with nine victories and only four losses, scoring 427 points, and average of 32.8 points per game, while their opponents made 387 points for a 29.7 point average.

Atchison, Funk, Jones, Brust, Meyer, Curch Robertson,
Ratzlaff, Miller, Burkholder, Weible, Callen



TRACK . . . 1938

With five firsts, one second, and two thirds, Coach (Buck) Astle's 1938 spiked shoe artists turned in an impressive season. McPherson was victorious in dual meets with Kansas Wesleyan, Bethel, Bethany, and twice with Hutchinson Junior College.

The Bulldog tracksters also placed second here in a season-opening quadrangular meet against Sterling, the winner, Friends, and Bethany. Then the thinly-clad placed third in both the Sterling relays and the Kansas conference meet, which was won by Ottawa.



Van Vleet, Funk, Warming up, Albright, Hower,
Voshell, Wannoy, Dave and Tony, Captain Mark Porter,
Wanamaker, Ninceholser, York, and Porter, Mile relay team

Captain of the track squad was Mark Porter, who scored 67 points for individual honors and placed third in the steeple chase feature of the K. U. relays. Rollin Wanamaker and Joelle Letkeman also were point making leaders. Wanamaker established a school high jump record when he cleared the bar at 5 feet, 11 inches.

TENNIS . . . 1938

Without the tutelage of Dr. Claude R. Flory, who was taking a year's leave of absence, the 1938 tennis team won two of six regular matches during the spring season.

Six players earned letters and four members of the group were available this year. Monogram winners were Don Barngrover, Harold Rothrock, Gordon Yoder, Carroll Crouse, Ernest Reed, and Burns Stauffer. Yoder, Crouse, Reed, and Stauffer returned to school.

In the doubles competition at the Kansas conference meet, the Barngrover-Rothrock team placed second to close the season.

Victims of the Bulldog racket swingers were Kansas Wesleyan (5-1)



Ernest Reed, Gordon Yoder, Carroll Crouse.

and Hutchinson Junior College (5-2). College of Emporia twice defeated McPherson (4-2). Hutchinson Junior College avenged the earlier loss (6-1), then Bethel trimmed the Canines (6-2).

Don Barngrover supervised the squad during Dr. Flory's absence and conducted a successful intra-mural tennis tournament.

This year Dr. Flory also sponsored an intra-mural tourney to select members of his squad. Through his leadership, Dr. Flory has inaugurated more enthusiasm for the racquet sport.

College officials hope to lay out better practice courts. All-weather courts would not require as much maintenance and would permit practice earlier in the season.



Fast Work. Bull's Eye. How'm I doin'?
Queen of Swat. When I hit that thing, I'll hit it hard!

WOMEN'S SPORTS

It is easy to tell when a girl's gym class is in session, for then it is that the boys stand in groups trying to peek through the doors into the gymnasium if Miss Warner isn't looking.

Perhaps this can be explained by the fact that this is the time that Maco-eds forget their dignity, participating in volley ball, tennis, badminton, archery, handball, aerial dares, tumbling and basketball.

Physical education besides being a pleasure, can be helpful. Miss Warner has encouraged each girl individually to correct her posture, and has conducted a class in body mechanics.

VARSITY DEBATE

Esther Sherfy

Joy Smith

Autumn Fields

Geraldine Spohn



The men's varsity teams were "tops" again and gained a tie for highest ratings in the Kansas Pi Kappa Delta Provincial tournament held at Ottawa, besides gaining a tie for second place in the league tournament held here. Although the women's teams were limited by inexperience, they gained second place in the conference competition.

The underclass debaters gained experience in tournaments at Hutchinson, McPherson, and Winfield, while the varsity debaters participated in tournaments at Winfield, McPherson, and Ottawa.



William Thompson

Donald Newkirk

Addison Santhoff

Dale Stucky



Heshler, DeCoursey, Briggs, Frantz, Albright, Eisenbise, Harshbarger, Pierce, Flozy, Reed, Barley, Shank, Frantz, Slead, Nordling, Wolfe, Hoffman, Wiggins, Kimmel, Fisher, Fries, Campbell, Kennedy, Amon,

"What, no Yoders?" was the sad lament of Dr. J. D. Bright while he, acting as toastmaster at the A Cappella banquet, suddenly remembered that with the graduation of Gordon Yoder, this year's prexy, the long line of Yoders which have sung in the organization will be broken.

Choristers and their guests listened as they gaily reveled after their beautiful presentation of the seventh annual concert of the A Cappella Choir.

Dressed in tuxedos and formals, the choir sang a program varied from religious choruses to novelty numbers.

"Oh, my honey," crooned the male quartet. Next came "Shortnin' Bread" to which the audience responded by demanding an encore. So the quartet lulled the Kentucky babe to sleep.



DIRECTOR FISHER



DeCoursey, Albright, Yoder, Pierce

Wesley De Coursey, Wayne Albright, Gordon Yoder, and Keith Pierce sang as male quartet, while in the ladies' quartet were Gladys Shank, Opal Hoffman, Frances Campbell, and Lillian Pauls.

Varsity Male Quartet



A CAPPELLA CHOIR

Yoder, Albright, Miller,
Pauls, Sherfy, Smith, Hubbard.

Probably the most widely-publicized organization on the campus, the choir was first organized by Alvin C. Voran in 1932. This year under the direction of Nevin W. Fisher, the choir enjoyed marked success in its seventh season.

Defying tradition, the choir gave its first concert away from home at Sterling College, February 17. Another new achievement of the A Cappella group was its concert given in Presser Hall, Lindsborg, May 7.

Two short trips were taken in April, one to Southeastern Kansas and the other to Northeastern Kansas.

Officers of this year's choir, besides President Yoder, were Miriam Kimmel, secretary; Dean Frantz, treasurer; Rilla Hubbard, social chairman; and Delbert Barley, publicity chairman.

Varsity Ladies' Quartet



Shank, Hoffman, Campbell, Pauls



Letheman, Stucky, Rock, Miller, Braid, Kanel, Mohler, Bodine, Lindgren,
Diehl, Cooper, Detrick, Barsbarger, Smith, Russell, Deal, Mohler, Metz,
Denny, Akers, Hawkins, Wampler, Florman, Spohn, Smith, Wade,
Director Campbell, Zook, Denny, Burger, Colyn, Rush, Kerlin, Wolfe.

CHORAL CLUB

Under the leadership of capable Frances Campbell, the Choral Club enjoyed a great amount of success during this, its second season. Although it does not have the reputation or ability of the A Cappella, it fills a definite need on this campus. It is safe to say that its value in training has always been underestimated.

The Choral Club gave two concerts this year. One was a sacred concert given in the College Church one Sunday evening. The other was entirely secular.

The organization elected Elizabeth Mohler, president; Lucille Wade, vice-president; Eldor Miller, secretary-treasurer.

The organization used two of their members as soloists in various pieces. Lucille Wade and Virginia Kerlin, both sopranos, filled this role excellently.

The Choral Club was organized only a year ago by Professor Crawford, who was the director of it the first year. Its success under a student director seems, therefore, all the more remarkable.



Hodgden, Zook, Dale, Campbell, Widiger, Flory, Stutzman, Crawford, Amos, Haldwin, Fries, Braid, Thompson, Miller, Frantz.

COLLEGE ORCHESTRA

As loyal supporters of McPherson College walked into the Convention Hall on Friday, March 31, for the Booster Banquet, they were delighted by the strains of music which reached their ears. Yes, the Booster Banquet was a success for the College, and it was aided immeasurably by the McPherson College Orchestra which furnished a background of music for the guests.

In this case and in many others the College Orchestra under the direction of Prof. Loren Crawford has proved a valuable asset to the college and community during the past year. Publicly the orchestra first appeared on Sunday, December 11, with its first concert of the year.

For several months the orchestra devoted its time to the orchestral score of the oratorio, "The Creation". Each year as a community project the citizens of McPherson and the students of the college produce "The Creation" by Haydn, being accompanied by the College Orchestra.

From the College Orchestra small groups have been selected at different times during the year to fill some of the requests of clubs and organizations for special music.



DIRECTOR CRAWFORD

COLLEGE BAND

Flashing forth in striking, new, red and white uniforms, the McPherson College Band made its initial appearance before Macampus royalty at the Homecoming football game on November 11, 1938. What band would not be a success when its first listener was the Homecoming Queen, and her attendants?

Faculty and student council support at the beginning of the year made it possible for an effective reorganization of the band under the direction of Professor Loren Crawford and his assistant, Mr. Merle Hodgden. Music was added to the band library, and weekly Monday-night practices have enabled the band to be an active organization on the Macampus.

Every pep chapel, football, and basketball game has seen the Band generously contributing to the enthusiasm, vim, and vigor of college life. The band during the past year has added much to the school functions. They added to the pep of the exuberant night shirt paraders with their music rendered from atop a large truck.

Various groups representative of the Band have presented special programs both on and off the Campus during the Year.

Thus have the twenty-five musicians, and their leader gone through and completed a successful year at McPherson College.



Bullinger, Miller, Baldwin, Pierce, Thompson, Kraus, DeCoursey, Grove, Elrod,
Crawford, Switzer, Stump, Doblins, Dale, Boyce, Miller, Bowman, Hodgden.

STUDENT COUNCIL

"Why do we have a Student Council?" Maccollegians frequently ask this question. The Student Council, a necessary student governing body, affects the life of each student although he may not recognize the fact.

A student becomes a part of the Student Council program when he pays his activity fee, when he reads the Spectator or this edition of the Quadrangle, when he chooses a Homecoming Queen, when he watches the Bulldogs in action, when he uses the Student Union room, when he attends various plays, orchestra concerts, movies, or wonder dog performances, when he enjoys an entertaining assembly program, when he purchases a community concert ticket, when he attends a formal dinner or all-school party, when he elects student officers, or when he receives flowers if he is ill.

To maintain these important activities, the Student Council, under the efficient administration of Bill Thompson, apportioned the activity funds, directed student publications, sponsored the Homecoming Queen contest, managed ticket sales, supervised the Student Union room, permitted admission prices to be charged for outstanding campus programs, cooperated with the student social committee in many social events, and coordinated the relationship of administration, board of trustees, and faculty with the students.

In addition to these accomplishments, the Council has guaranteed a more efficient student government by revising the constitution. In fact, the Student Council has been the nerve center of all Macampus student activities.

Besides President Bill Thompson, the officers were: Stephen Stover, treasurer; Gordon Yoder, vice-president; Opal Hoffman, secretary.



Smith, Kerlin, Spohn, Yoder, Myers, Stover, Shuckley, Thompson, Hoffman, Dell, Coppedge, Heckman, Campbell, McGill, Burkholder

THE SPECTATOR

Capably edited by Dale Stucky and managed by Dean Frantz, this year's Spectator became "The Biggest and Best College Newspaper in the Kansas Conference." With their contributions and cooperation members of the staff and reporters made the student newspaper one of the most interesting in the history of Macollege. Raymond (Scoop) Coppedge's sport column gave choice bits of dope on athletic frays.

Complete campus news coverage, live-wire features, five popular columns, a new, modernistic style, attractive advertisements, "scoops of timely" events, excellent editorials, and a true picture of college life were contained in each issue.

Each Friday noon on Macampus was devoted to reading the "Spec". Since it was a true representative of college life.



Danna Jean Johnson, Editor in Chief Stucky, Sports Editor Coppedge, Feature Editor Sherty
Associate Editor Fields, Business Manager Frantz



Editor Howez and Advisor Flory in a jovial mood. Associate Editor Kinzie. Business Manager Kingsley. Rilla Hubbard, James Crill, Dale Stucky, Photography Editor Baldwin.

1939 QUADRANGLE

"Sheriff nabs Bower, Baldwin Brothers," screamed the headlines of the official McPherson College organ, *The Spectator*. Tsk! Tsk! and one of them was a preacher. What had these Macollegians done that they had been accosted by the sheriff and his deputy? Although the night prowling of these Quadmen appeared to be suspicious to Sheriff McPhail they were only attempting to get a picture of General McPherson's Statue for the "Quad."

Hard luck dogged the 1939 Quadrangle all through. Cursed by resignation, appendectomy, nervous break down, mumps, and even death, the quad staff has been sorely tried by old man jinx. The misfortunes were discouraging but the intense co-operative interest of everyone has been a source of inspiration to us during the whole year.



Men's Council

Letkeman, Thompson
 Stucky, Newkirk
 McGill
 President Myers
 Advisor Dell
 Dadisman, Yushell
 Wiegand, Robertson

Weekly Charm Chats made co-eds sit up and look pert when the Women's Council decided to give them for the social improvement of college girls. Heart-sister Week and a Valentine party were February efforts of the council to promote good fellowship among women students, after they had achieved success in this goal by a tea in the fall.

A masculine counter-part of the group, the Men's Council, including men from every group, from preachers to moochers, finds for its purpose to assist the Dean of Men and to discuss student situations.

Most conspicuous success of the amalgamated efforts of the two councils was the Formal Dinner held in the college church parlors, December 2, and which met vigorous approval.

Women's Council

Hamann, Fries
 Harris, Ostlund
 Hoover
 President Fields
 Advisor Shockley
 Culy
 Secretary Mianick
 Hubbard
 Vice President Shank
 Pauls





Recreational Council

Smith, Frantz
 Sec. Kerlin, Wampler
 Co-President Yoder
 Reehler
 Sponsors Dell
 and Shuckley
 Olwin, Naylor
 Spohn, Hoffman
 Crill, Horner
 Co-President Shank

When a new idea is born, the rest of the group is the guinea pig. The recreational council functions as a fellowship and a laboratory where those interested in recreation techniques may learn it in games, group singing, crafts, hobbies, and worship. The council studies all phases of recreation for all ages.

The Brethren Young Peoples Department encourages those of the Brethren faith, and all others who are interested, to receive the benefits offered by the interchange of mutual understanding.

The student having been supplied with worship by other sources, the B. Y. P. D. endeavors to integrate the intellectual and social contacts of religion as applied to life here on the campus. As a result, speakers, group discussions, panels, student talks, and music comprise the main of B. Y. P. D. programs.

B. Y. P. D. Cabinet

President Flory
 Secretary Krueger
 Advisor Shuckley
 Sherfy
 Vice President Smith
 Crill





King, Harshbarger, Sathoff, Larsen, Shuckley, Stover, Stucks, Sherfy, Newkirk, Minnick, Fields, Barley, Shank, Flory, Hoffman, Dadisman, Burner, Mohler, Hoover, Fields, Heckman, comprise the S. C. M. Cabinet.

STUDENT CHRISTIAN MOVEMENT

Oozing water-melon from ear to ear, cracking belt lines, gay first dates, photo-flash snaps at indiscreet moments, a hilarious program with flat-foot floogies—the first all-school get-together, sponsored by the Student Christian Movement. In addition, a Hallowe'en party, picture party, box social, and many other all school functions are the result of this social-conscious organization.

Because it is the largest student group on the campus and the only religious organization, the S. C. M. is an influential force on the campus. Everyone is welcomed to its weekly meetings and commissions.

Students and outstanding speakers of all faiths participate in the general meetings on Tuesday mornings. This year the S. C. M. was instrumental in securing Warren D. Bowman for a week's stay on the campus during which time he considered with the students the problems concerning personal and family relations.

Under the leadership of Luther Harshbarger and Vera Heckman, the S. C. M. cabinet is made up of eighteen students who are the officers and the heads of the following commissions: Peace, Personal and Family Relations, Creative Leisure, and World Service. The last named commission was an incorporation of the World Service organization into the S. C. M. It supervises the deputation trips and the Quiet Hour.

The Student Christian Movement meets the religious needs on the McPherson College campus!



Goering, Noedling, Voshell, Slaver, Rock
 Van Vleet, Ratzliff, York, Charbonneau
 Meyer, Kraus, B. Stauffer, Reed, H. Stauffer, Crouse
 Wiegand, Bower, Reinecker, Sturky, Vetter, Kinsley, Keek
 Myers, Heckwith, McGill, Funk, Watanmaker, Robertson, Cramer

“M” CLUB

Members of the “M” Club really swing their paddles, according to new letter winners who were duly initiated by performing various stunts in a “hell day” this spring.

A highlight of the year, this new event provided entertainment for Macampusans and embarrassment for the initiates. Attracting much attention were Raymond (Squeaky) Meyer, dressed as an Indian chewing ten sticks of gum; Dude Jack Vetter; Beggar Bill Rock; Jake Cramer as a girl gym student; and Raymond “Dutch” Goering as a wild animal trainer.

Ernest Reed, dressed as a girl, asked the girls for permission to mend their hose; Richard (Buckshot) Van Vleet, a Chinese Coolie, transported coeds in a wheelbarrow; Bob Brust, wearing his clothes backwards, pushed a dog in a baby buggy while he walked backwards; and Herb Stauffer asked each girl for a date, then submitted a report to the club.

These and other members of the organization of lettermen proved to the students that good athletes also are good sportsmen. To create a friendly spirit between athletes and other students has been a purpose of the “M” Club, headed by Bob Wiegand, assisted by La Verne York as treasurer and “Buck” Astle as sponsor.

This spring the “M” Club again held its annual banquet as a “kickoff” for sports seasons next year at Maccollege. The club its sponsors and friends are looking forward to another year of honors.



Celyn, Olwin, Hammann, Dresher, Peterson
Spengler, Hodine, Shirk, Yushell, Sponsor Warner
make up the W. A. A. Executive Board.

WOMEN'S ATHLETIC ASSOCIATION

Sports Day, December 3, was the most important athletic event in the W. A. A. year. Held in the new physical education building, the gala day found four college volley ball teams as guests of the local organization in a round-robin tournament. Sometime later the college co-ed volley ball team was invited to an elimination tournament at Southwestern College.

The events sponsored through the year by the Women's Athletic Association were brought to a grand climax at the annual W. A. A. spring banquet at the Empire Hotel roof garden. In formal attire, the active and former members of the association celebrated another successful year under the capable leadership, and true sportsmanship.

An organization that sponsors athletics for college women, the W. A. A. strives to maintain a program which will promote physical fitness, scholarship, leadership and true sportsmanship.

The athletic program during this term of 1938-39 has been carried out by President Lenore Shirk, Vice-President Audrey Hammann, Secretary Sara Jane Olwin, Treasurer Geraldine Spohn, the executive board, and the club sponsor, Lilyan Warner.

PEP CLUB

Exuberant, enthusiastic, and dressed in a panorama of loud colors that would make a Harlem style revue look like the wares of a conservative English wool merchant, the students cheered and paraded single file through stores, hotels, and restaurants to the rhythm of the pep band.

All styles of sleeping garments were prominent from the primitive night shirt to the latest streamlined cutaways. Hundreds of people watched as the snakeline wound through the entire business district, stopping traffic with its complicated twists and turns. It was the annual pajama parade.

On another occasion students and faculty alike watched as "Olie the Swede" was solemnly given his last rites and with proper ceremonies was mourned and cremated at a giant pep rally on the evening preceding the Swede game.

The Pep Club, an organization identified by their white sweaters and by their pep and enthusiasm, contribute these activities along with many others to the atmosphere of Macampus. They were encouraged by President Audrey Hammann, Vice-President Eddie Diehl, Secretary Rilla Hubbard, Treasurer Gordon Yoder and Sponsor Flory.

Such activities help to season college life and make it interesting.



Flory, Pauls, Charbonneau, Wiggins, Diehl
Van Blaricum, Karlson, Shirk, L. Albright, Doll, G. Stern, Larson
Rice, Kingsley, Gieman, Rush, W. Stern, Amos, W. Albright, Meking
Owen, Kinzie, Hughes, Kagarice, G. Yoder, Egan, Spohn, E. Yoder, Dobbins, Smith
Hammann, Hubbard, Wiegand, D. Miller, Metz, M. Miller, Johnson, Kimmel



Vaughn, Dubois, Stover, Saathoff, Lewallen
Davidson, Stern, Bowman, Newkirk, Dausenbrock
Coppedge, Rice, Metz, Fields, Bullinger, Stucky, Detrick
Reed, Kerlin, Thompson, Smith, Spohn, Sanger

FORENSICS CLUB

"Can you imagine Harold Larsen debating against going steady in college?" Well, he did. And many other topics of a timely and interesting nature were discussed in meetings of the Forensics Club.

At the first of the year the officers decided upon a liberal interpretation of the club's constitution and occasionally had readings and music in the club's programs.

The club introduced impromptu speeches as a permanent part of the program. The person called upon took the platform. He was given two chances in drawing a favorable topic. Then he spoke for not less than two minutes and not more than four.

An annual feature of the Forensics Club is the interclass debates sponsored at the first of the year. Addison Saathoff and William Thompson, seniors, defeated Dale Stucky and Don Newkirk, sophomores, in the finals to win the school championship for the second consecutive year. It is noteworthy that Don Newkirk was in the finals two straight years, too.

The Forensic Club elected Bill Thompson as president, Ernest Reed as vice-president, Joy Smith as secretary-treasurer at the first of the year.

It can easily be said that these officers were responsible for the fact that the Forensics Club gained the reputation of being the most improved organization on the campus.



Stern, Stover, Kerlin, Horner, Fields, Vaughn
Shank, D. Frantz, Campbell, Charbonneau, Heckman, Voshell
Flory, Minniek, Larsen, Johnson, R. Frantz

THESPIAN CLUB

Young worshiper of Thespis, unpolished and friendless, has his first fling at dramatic interpretation when he finds that, to the full chapel's amusement and to his own bitter chagrin, he has stumbled over his feet in an attempt to give a serious portrayal of Macbeth, Shylock, or Cyrano d'Bergerac. The annual Thespian tryout always leaves in its wake a path of downcast faces reflecting futile efforts, but it also steers to future stage success the more polished performers. But to them the tryouts are easy roles in comparison with those they assume at initiation in front of the great god Thespis and everybody including local critic columnists. Before the critical eye of hundreds of students, they exhibit the fine art of living someone else, the art of projecting into historical reality. There they pass the test of fire.

Second to no dramatic production on the campus is the annual Thespian Club gesture, a play given each year to climax their theatrical season. Headlines this year screamed "Berkeley Square", a three act play written by John L. Balderston, and presented by the dramatic club on Friday, March 10. Coached by Vera Heckman, the play starred Stephen Stover, Margaret Davis, and was directed by Miss Della Lehman, club sponsor.

Harold Larsen was head Thespian and Donna Jean Johnson served as the vice-president, Gladys Shank, secretary; and Raymond Flory treasurer.

CHEMISTRY CLUB

Do you want a strenuous day? Go with the Chemistry Club to Hutchinson. Upon arriving you find that the rest of the group have already left the meeting place for the first factory. With great boisterousness they chatter amiably with the employees, much to their bosses chagrin. At this point in the proceedings Dr. Hershey solicitously asks everyone if they are having a good time. Of course everyone is.

The next stop is a flour mill. Here we all crowd into a small laboratory where a man, assuming that since we are a group of chemistry students, we are interested in his laboratory. He is wrong. After he talks awhile and is heard only by Dr. Hershey, he quits. No one's feelings are hurt, however, for they have been talking all the time too.

Everyone leaves the salt factory and mine with his pockets bulging with salt samples and crystals which make exquisite paperweights.

The afternoon is also filled to the brim with a pleasant round of sights including the Reformatory.

The Chemistry Club has added much to the scientific interest here on Macampus under its permanent president, Dr. J. Willard Hershey, nationally famous for research. It has sponsored lectures, trips, films, and even parties. Besides President Hershey the officers are: Richard Horn, vice-president and Sara Jane Olwin, secretary.



Blackman, Callen, Myers, Sellers, Newkirk, Diehl, Holmes
Zook, Colletti, Akers, Sloan, Naylor, Wanamaker, Funk, Nordling, Ikenberry, Peterson
Blackwell, Garrett, Atchison, Flury, Nelson, Maloney, Bollinger, Michael
Curran, Kossy, Westling, J. Smith, Miner, Rubin, Doll, Achilles
Reinecker, Karlson, Lacquement, Florman, A. Smith, Barley, A. Fields, Goering, Grove, Spohn
Houghton, Morrison, Van Blaricum, Stauffer, Enns, R. Fields, Mohler, Elliott, Lindgren, Cole, Waggoner
Anderson, Crill, Seidel, Owen, Yoder, Stern, Flury, Miller
Mulline, Hershey, Ostlund, Nickey, Olwin, Hammerley

YOUNG REPUBLICAN CLUB

In the heated political campaign last fall, Addison Saathoff, president of the McPherson College Young Republicans Club, silver-tongued in behalf of his party's candidates. His recognized oratorical ability made him a popular speaker, and his influence and that of the club no doubt helped to bring about a come-back victory for the Republican party.

The purpose of organizing the Macampus club, which attained membership of ninety-eight was to unite those interested in the Republican party into a group which enlivened political interest on the campus. The club was administered by President Saathoff, Vice-President Kingsley, and Secretary Stover.

Early last fall a meeting of young Republicans was called and the college club was organized. At this meeting Prof. R. E. Mohler, L. H. Ruppenthal, and Addison Saathoff were the speakers.

The night before election the Young Democrats and Republicans had a joint session. The main event of the evening was a debate between Addison Saathoff and Bill Thompson, Democrat Campus boss.

Six club members went to Topeka to attend the Kansas Day exercises of the convention of the Young Republicans, college division, where they succeeded in getting the treasurership of the statewide organization for Addison West.



Collett, Vaughn, A. Fields, Rice, Bower, Kenberry, Prather, Larson
Horn, Davidson, Burkholder, Heckman, Keelin, York, Stauffer, McGill, J. Smith, Dadisman
Stiers, Coppedge, Dasebrock, Herr, Seitz, Lewallen, Shank, Newkirk
Kingsley, Hoffman, R. Fields, Dresher, Reed, Stover, Mohler, Campbell, Saathoff

YOUNG DEMOCRATS CLUB

Young political genius, Bill Thompson, accomplished something when he succeeded in getting the young Democrats of Macollege to organize a club. Quietly working from the inside, "Boss" Thompson succeeded in getting Dale Stucky elected president of the embryo organization. Lorene Voshell was made secretary-treasurer of the group with Harold Fries serving as vice president.

A membership drive last fall netted sixty budding party members. Although almost submerged by the traditional hordes of G. O. P.'s on the campus, the club was active. It sponsored a watermelon feed, giving many students their fill of watermelon and maybe politics.

The Demos brought Representative John M. Houston to the campus chapel. A good sized delegation of young Democrat enthusiasts went to rallies in Wichita and other parts of the state during the campaign last fall.

On the eve of election, they furnished their share of the ammunition in the political fireworks of a co-sponsored gab-fest with the young Republicans. Addison Saathoff upheld the Republican platform, while William Thompson expounded the views of the Democrats.



Grove, DeCoursey, Miller, L. Voshell, Ruck, Morrison, L. V. Voshell
Guering, Minnick, Karlson, Van Diericum, Sebree, Enns, Anderson
Stucky, D. Voshell, Doll, Weible, Elliott

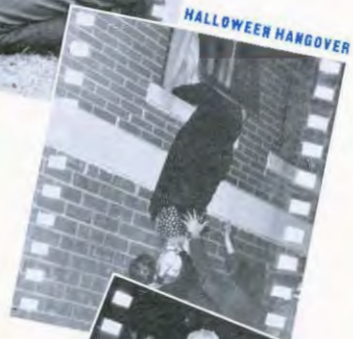
RASTUS FLORY ENTERTAINS GIRLS



OUR SUPER-SNOOPER SWITCHES A SHAP



HALLOWEEN HANGOVER



REEL FOUR

Features

"Personalities in the News" are always fair prey for the searching camera. We place the laurel crown of acclaim upon the heads of those who have impressed the vividness of their personalities upon the college community, and the award is only awarded us by being an inspiration to us in the striving. But there is long by the way the noble tasks of home; "they also were here and wait." In other words, they are beautiful; some are born brilliant, and some we just love anyway. So hand us a hand and hail to old M. C.



OLD AGE GOES ON A RAMPAGE



KATHERINE MOHLER

We congratulate you, Kitty, upon your selection as our Quad Queen. The charm and vivacity which you radiate have impressed us as they did Mr. Crosby.

FRANCES
Campbell

You disprove
the phrase
"Beautiful
but dumb."



EDITH
Nickey

A friendly
smile, a
gracious
manner





MIRIAM
Kimmel

Your comely
charm fasci-
nates us too,
Mimi.

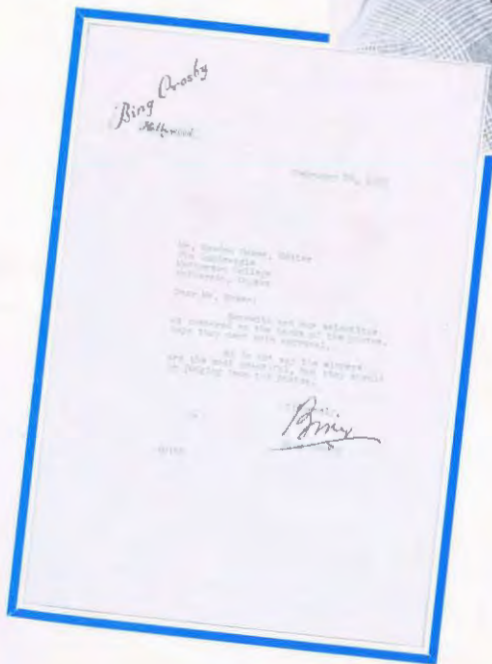


MARGARET
Davis

We like your
scintillating
personality.



Thank you "Bing Crosby",
crooner supreme; the 1939
Quadrangle appreciates
your kindness.



WHO'S WHO
IN AMERICAN COLLEGES



WILLIAM THOMPSON



ADDISON SAATHOFF



FRANCES CAMPBELL

STEPHEN STOVER



OPAL HOFFMAN



LILLIAN PAULS



RAYMOND FLORY

We Work at College



Van shows what the well-equipped JANITOR will carry . . . There's a point there Ray if you can find it . . . Mounting QUAD portraits seems to require concentration . . . Dean of FORNEY HALL . . . The BONE may be old, but it's new to the museum . . . Squeak squirts sodas . . . LIBRARY work must be a snap.

Playtime Is Gaytime

The MALE quartet renders a "hot" number . . . After all Charlie, the MAS-QUERADE (party) is over . . . Maccoed's HALLOWEEN frolic . . . Volley ball . . . Boy's HALLOWEEN frolic . . . Facewash . . . Saturday, the coed's WASHDAY . . . Young ROBINHOODS but still pretty little.



In Appreciation - -

We are deeply indebted to the following individuals for their cooperation in producing this book. We, the editor and business manager, extend to them our most sincere thanks.

●
DR. CLAUDE R. FLORY

Sponsor

●
MARJORIE KINZIE

*Associate Editor and Circulation
Manager*

●
ARTHUR BALDWIN

Photography Editor

●
CHARLES BALDWIN

JOELLE LETKEMAN
DAVE MCGILL
HERBERT MICHAEL

Photographers

●
RAYMOND COPPEDGE

JAMES CRILL
AUTUMN FIELDS
RILLA HUBBARD
DONNA JEAN JOHNSON
ERNEST REED
ESTHER SHERFY
DALE STUCKY

Contributing Writers

●
R. R. MAPLEDEN

WILBUR L. CLARK
HARVEY TRIPP
AND ENTIRE BURGER-BAIRD ENGRAVING
COMPANY STAFF

●
W. J. KREHBIEL

K. R. KREHBIEL
THE REPUBLICAN PRINTER'S STAFF

●
MR. BING CROSBY

Judge of Queens

●
THE STUDENT COUNCIL

●
THE FACULTY

●
WAYNE ALBRIGHT
FRANCES CAMPBELL
JOHN DETRICK
RAYMOND FLORY
AUDREY HAMMANN
RILLA HUBBARD
MIRIAM KIMMEL
MARJORIE KINZIE
JOELLE LETKEMAN
DAVE MCGILL

Book Salesmen

●
LYLE ALBRIGHT

Assistant Business Manager

●
OUR ADVERTISERS

Thanks To College Students

Nu-Way Cleaners

Phone 900

Represented by Russell Kingsley

DOUGLAS M. HALE

Typewriters

Phone 310

Central Printing Co.

AND NEWS STAND

Quality Job Printing

RANNELLS & HUTCHISON, Props.

Phone 298

108 W. Kansas

McPherson's Only FIRE PROOF HOTEL

Newest Hotel and Completely Remodeled
New Pine Room, Committee Room and Roof Garden

THE IDEAL PLACE FOR

Dinner — All Types of Banquets — Parties

THE EMPIRE HOTEL & COFFEE SHOP

Marlin & Maple

Phone 602

It's Fitting

That
You Look to

Strouse's

For Perfect Fit

Style & Quality
in
Young Men's
Clothes



Freshies At Work

STROUSE'S
THE BEST STORE FOR MEN

Let Sloan & Myers Help You
Select Your Wardrobe



Pitchin' The Woo

Even they take time to read the SPECTATOR . . . Good looks, ummmphh, etc., etc. . . . Uncle Elmer and Aunt Avis . . . She is WELL-armed . . . Like the Royal Mounted she gets her man . . . "HOLD TIGHT" . . . A potent brand of subtle history.

E. L. (Pete) Wolf

Plumbing, Heating
Air Conditioning and Cooling
Electrical Appliances

Phone 226

219 S. Main

James Grocery

Quality Mdse., Good Service
Makes a Pleasant Place To Trade

Phone 4

116 E. Euclid

AFTER THE GAME ALWAYS MEET YOUR FRIENDS

AT

FLAGO'S CAFE

ENGBORG'S DRUG STORE

Fountain — Magazines

Phone 218

We Deliver

213 N. Main

THE HOME STATE BANK

McPherson, Kansas

SAFE, CONSERVATIVE, PROGRESSIVE

Deposits of \$5,000 and under insured by The Federal Deposit Insurance Corporation

SILVER SPRINGS CREAMERY

Visit Our Cone Shop

ICE CREAM FOR ALL OCCASIONS

Phone 758

113 E. Euclid

City Progress
depends on the
Daily Newspaper

Enlightenment and Enthusiasm
make things grow for city and
business man as well. Sane and
persistent publicity spell
PROGRESS and PROFIT.

Daily Republican
Phone 98 W. J. Krehbiel
(Printers of the Quadrangle)

5c W. C. Simmons \$100
to **BEN FRANKLIN** and
STORE
10c McPHERSON, KANSAS UP



Headquarters for
WALLPAPER
and
Acme Paints

C. B. Bowker
Telephone 205 107 S. Main

College Days Bring Pleasant Memories

and Remind you of McPherson, Home of

Farmers Alliance Insurance Company

KANSAS' LARGEST AND STRONGEST

Fire - Lightning - Tornado Insurance

Greetings to McPherson College

May this and all years be

Successful to your Institution

McPherson & Citizens State Bank

Member Federal Deposit Insurance Corporation

Our Daily Bread



Blubber time at the "IGLOO" . . . A mess at HOERNER Hall . . . Boys HER address is 1402 East Euclid . . . COOK . . . CAN-OPENER . . . COOKIES . . . What a man. Gets his own breakfast. Girls, he'll be watching . . . Granting relief to hunger pangs in the INN.

When 3's No Crowd



BAND plays—Queens
listen . . . Guys and
gals recreate at the
HALL . . . Tux and
formal . . . Lehman is
a sissy, she uses a fork
. . . OLE was mourned
. . . Then he was
BURNED . . . QUEEN
of the Homecoming
. . . They shall beat
their swords into
plowshares, and their
spears into pruning
hooks.



Meet and Eat

at the

**LITTLE KASTLE
LUNCH**

Club Breakfasts, Lunches, Steaks

Hamburgers	5c & 10c
Coneys	5c
Little Kastle Steak with French Fried Potatoes and Salad	25c

**CARLSON PLUMBING
COMPANY**

Plumbing — Heating — Gas
Appliances and Installations

Bus. 14

Phones

Res. 26

PEOPLES STATE BANK

McPherson, Kansas

F. A. Vaniman, President
Paul E. Sargent, Vice-Pres.
Bert Webb, Cashier

Dale Strickler, Ass't. Cashier
Wilbur Yadar, Ass't. Cashier
Virginia Johnson, Ass't. Cashier

(Member Federal Deposit Insurance Corp.)



Featuring
PRINTZESS
Coats & Suits
Classy Jean
Bloomfield
Fred Block
and
Cartwright
Dresses

THE TWINS
IN
'FRED BLOCKS'

*Where Style
Reigns Supreme*

**The Hischesky
Dry Goods Co.**

Your City
Your Community
Your College

Is Judged by its Hotels

HOTEL McCOURT

McPHERSON'S FINEST

UPSHAW Furniture and Undertaking Co.

Since 1897

Phone 197

Miller Conoco Service

Germ
Process
Oil



Bronze
Gas

A 100% Bulldog Booster

321 S. Main

G. O. Swanson Electrical Service

Genuine Parts for

Magnetos, Starting and
Lighting Systems

McPHERSON, KANSAS

Phone 187

310 N. Maple

THE HOME OF

GOOD WATCHES AND PERFECT DIAMONDS

BIXBY, LINDSAY & CO.

GIFTS

ART SUPPLIES

FRAMES

Phone 92

ABEL'S

221 N. Main

FILMS

PHOTO SUPPLIES

CAMERAS

Shots on The Hill



Arboreal beauty . . .
 Painting by A. STORM
 . . . Moving in . . . Our
 Girls show their stuff
 on the DIAMOND . . .
 Owner please identify
 . . . CHING the Chi-
 nese Coolie . . . Super-
 sleuth FRANK shows
 how chapet-wrers will
 look if caught.

**Best In Corsages
and
Presentation Flowers**

Artistically Arranged
As You Would Like Them
We Deliver When And As You Wish

MAUD'S FLOWER SHOP

Phone 620

College Gang Hangout

We have enjoyed your patronage
this year and we will be looking for
you next year.

COLLEGE INN

Just Off the Campus

10c

15c

Mac Theatre

College Students are Always Welcome

**It's Not What You Get
But What You Have
. . . That Counts**

Then for future independence
Buy Class "F"

Prepaid Bond Shares

\$18.75 increases to \$25.00 in 90 months

Each purchase is a separate transaction.
You contract for nothing and you assume
no obligation—yet every 75c you invest
will return you one dollar at maturity!

Write or ask for additional information

PIONEER SAVINGS & LOAN

McPherson, Kansas — Home Office

The logical place for your savings.

A. W. GRAVES, O. D.
OPTOMETRIST

Over Bixby-Lindsay & Co.
106½ N. Main Phone 750

W. A. Crary Hardware

Refrigerators :: Stoves :: Radios
Maytag Washers

Meet Me At

The
Watkins Beaute Shoppe

All Modes of Beauty Culture
Phone 1316

111 N. Main

McPherson, Kansas

Balcony Ben Franklin Store

DELAY MAY BE DANGEROUS

You do not have to save a fortune to buy insurance. But if you buy insurance you may save a fortune.

CARL M. ANDERSON

Protection + Service = Satisfaction

McPherson Citizens Bank Building, McPherson, Kansas, Tel. 145

For
Fresh Candy,
fium,
and Peanuts,
Visit
Our Candy Dept.

Duckwall's

"QUALITY, SERVICE AND PRICE"

Supply Your
Needs in
Face Powders,
Creams,
Soaps
Handkerchiefs
and Hosi

"WHERE YOU'LL MEET YOUR FRIENDS"

Up-to-the-minute Fountain Service

Complete Line of Fine Cosmetics

The Magazines you Enjoy Reading

Hallmark Greeting Cards for Every Occasion

Your Rexall Drug Store

HUBBELL'S DRUG STORE

104 S. Main

Phone 23

WHERE COLLEGE GIRLS BEAUTIFY

Prompt
and
Courteous
Service



High Quality
Work
Reasonable
Prices

Phone 476

210 N. Main

FAMILY BEAUTY SHOP

"CHEVROLET"

Passenger Cars and Trucks
Guaranteed Used Cars

Body, Fender and Wreck Work
All Work Guaranteed



McPherson Meat Market

Leading Dealers in
Fresh and Cured Meats

In McPherson Since 1919

Oliver & Nelson, Props.

Phone 107 & 108 101 North Main

SID BACON MOTOR CO.

Dodge-Plymouth Sales & Service
DODGE TRUCKS

Phone 830

McPherson, Kansas

218 N. Ash

EMPIRE BARBER SHOP

*It Pays To
Look Well*

PHONE NO. 499



EMPIRE BEAUTY SHOP

*Always The
First in New
Hair Styles*

HOTEL EMPIRE

PETERSON HARDWARE CO.

GENERAL HARDWARE AND SPORTING GOODS

Phone 191

McPHERSON

219 N. Main

J. C. PENNEY CO., INC.

Where Your Dollars Go Farthest

"THE HOME OF VALUES"

YOUR PATRONAGE GREATLY APPRECIATED



Life on Macampus



No mourners . . . Well
DOMESTICATED . . .
Frigid splendor . . .
The PAUSE that re-
freshes . . . Magnifi-
cant heliotherapy . . .
"POP" and "MOM"
. . . At least our Quad
is NICE to write on
. . . Campus view.

Congratulations to Class 1939
For Years To Come

Keep Your Wardrobe Refreshed
AT

A-B-C

Always Be Clean

CLEANERS

Satisfaction & Master Workmanship
Phone 335 110 S. Main

LOVETT DRUG CO.

Phone 19

WHERE

Soda Fountain

Stationery

Leather Goods

Parker Pens

Stovers Candy

Cosmetics

Magazines

Paints

S
Q
U
E
R
Y

C
E
N
T
E
R
S

PRESCRIPTIONS

TYDOL - - - VEEDOIL

GLENN HAMMANN SUPER SERVICE

Special Lubricated Tydol Gasoline

CAR WASHING AND LUBRICATION A SPECIALTY

FOR GOODNESS SAKE



Use

"W-R"

FLOUR

MADE BY

THE WALL-ROGALSKY MILLING CO.

FLOWERS TELEGRAPHED

The Beauty of Our Business
is Flowers

Humfelds Flowers

Phone
172

Greenhouse
515 N. Ash

WHEN THAT

Lucky **EQUITABLE** let down occurs
The Equitable will step in

And Provide for Your Family or
For You in Your Own Old Age.

THE EQUITABLE

Life Assurance Society of the
United States

EDGAR L. MIKOW, McPHERSON, KAN.

SANTA FE TRAILWAYS



The
**Convenient
Low Cost
WAY**

Here is the convenient, low-cost transportation service to the next town or across America. Santa Fe Trailways' new cream-and-crimson-Dreamliners are the finest buses in all America, air-conditioned on the Old Santa Fe Trail. Roomier, deeper reclining chairs, winter Safety-Glass Windows, controlled ventilation, every detail for your comfort. And remember, no parking problems, no traffic worries for you.



Trailways Depot

Maple and Marlin Phone 380

Meet Your Friends at the Puritan

Quality
Food and
Drinks
—
Popular
Prices



Where
the
College
Gang
Always
Meets

PURITAN

Cafe

and Fountain

Fancy and Staple Groceries

AT
ROTHROCKS

WE DELIVER

Phone 467

302 N. Main



HOWARD RENFRO

E.
M
A
R
L
I
N

We Appreciate

your patronage and will try to merit your continued good will by giving you Better Merchandise, Better Service and More for your Money every day in the year.

C.R. Anthony Co.

IT PAYS TO PAY CASH

ADEQUATE RELIABLE LOW COST POWER AND WATER

The city of McPherson owns and operates a modern high-pressure, high-temperature electric generating station with steam turbine-generators for prime movers. The electric utility furnishes current to the citizens and industries of McPherson, to the surrounding rural trade territory and other cities.

McPherson is most fortunate in being located above the most prolific and abundant source of cool palatable water of medium hardness in the entire state.

Industrial Power Rates

(Based on Monthly Consumption)

First 50,000 kwh @	1c per kwh
Next 50,000 kwh @	9 mills per kwh
Next 50,000 kwh @	8 mills per kwh
Next 50,000 kwh @	7 mills per kwh
Next 50,000 kwh @	6 mills per kwh
Excess @	5 mills per kwh

Generous discounts from the above rates are provided for the installation of power factor corrective equipment.

Water Rates

(Based on Monthly Consumption)

First 5,000 gals. @	25c per 1,000 gals.
Next 10,000 gals. @	20c per 1,000 gals.
Next 10,000 gals. @	15c per 1,000 gals.
Next 25,000 gals. @	10c per 1,000 gals.
Excess gallons @	8c per 1,000 gals.

Industries find it convenient and profitable to be located in a city like McPherson which never has a water shortage problem.

WATER & ELECTRIC DEPARTMENT

Operating The Water And Electric Utilities

McPHERSON, KANSAS

Dear Old Faculty



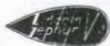
"I'll see what can be done" . . . "Now, just why were you absent?" . . . "Psychologically it is good for me to cook" . . . "In this particular instance" . . . "Call that off-tackle play" . . . "Wie geht's?" . . . "From the ridiculous to the sublime."

Bulldogs You're Tops

—SO ARE OUR PRODUCTS



MERCURY



JOE HEASTON MOTOR CO.

Phone 234

McPherson, Kansas

319-23 N. Main

LAKE SUPERIOR LUMBER CO.

GEO. H. GOODHOLM, Manager

LUMBER, HARDWARE, PAINT, COAL

Telephone 40

301 North Maple

McPherson, Kansas



Congratulations

to the Class

of

1939

FROM

McPherson's Department Store

THE BROWN-McDONALD Co.



Congratulations!

To GORDON BOWLER and RUSSELL KINGSLEY on their intelligent efforts and hard work to make the 1939 QUADRANGLE a record of the McPherson year which is more complete, realistic, and interesting.

Best wishes to you both in whatever you may now undertake. It has been very pleasant to work with and for you.

BURGER · BAIRD
Engraving Company
GRAPHIC ARTS BUILDING
KANSAS CITY · MISSOURI