

QUADRANGLE

1938



EX • LIBRIS
AFTER • FIFTY • YEARS

The 1938

PUBLISHED BY THE STUDENT COUNCIL

EDITED BY

FRED H. NACE, JR.

MANAGED BY

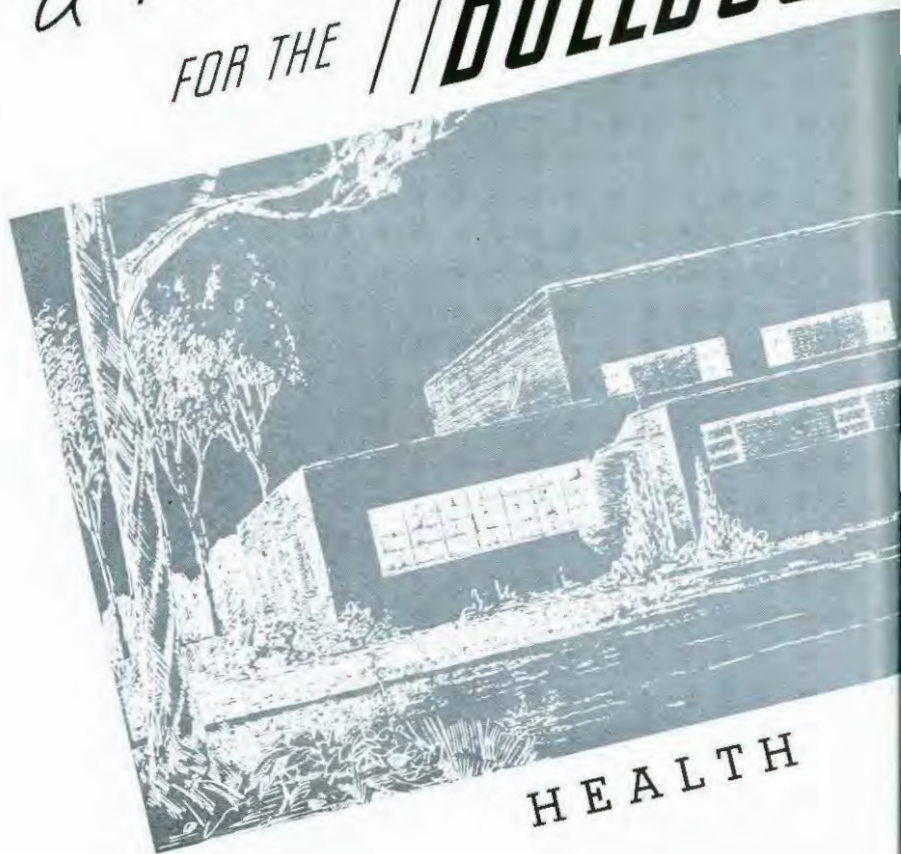
STEPHEN L. STOVER

McPHERSON COLLEGE ENTERS A NEW HALF CENTURY OF P R O G R E S S



W A D R A M G L E

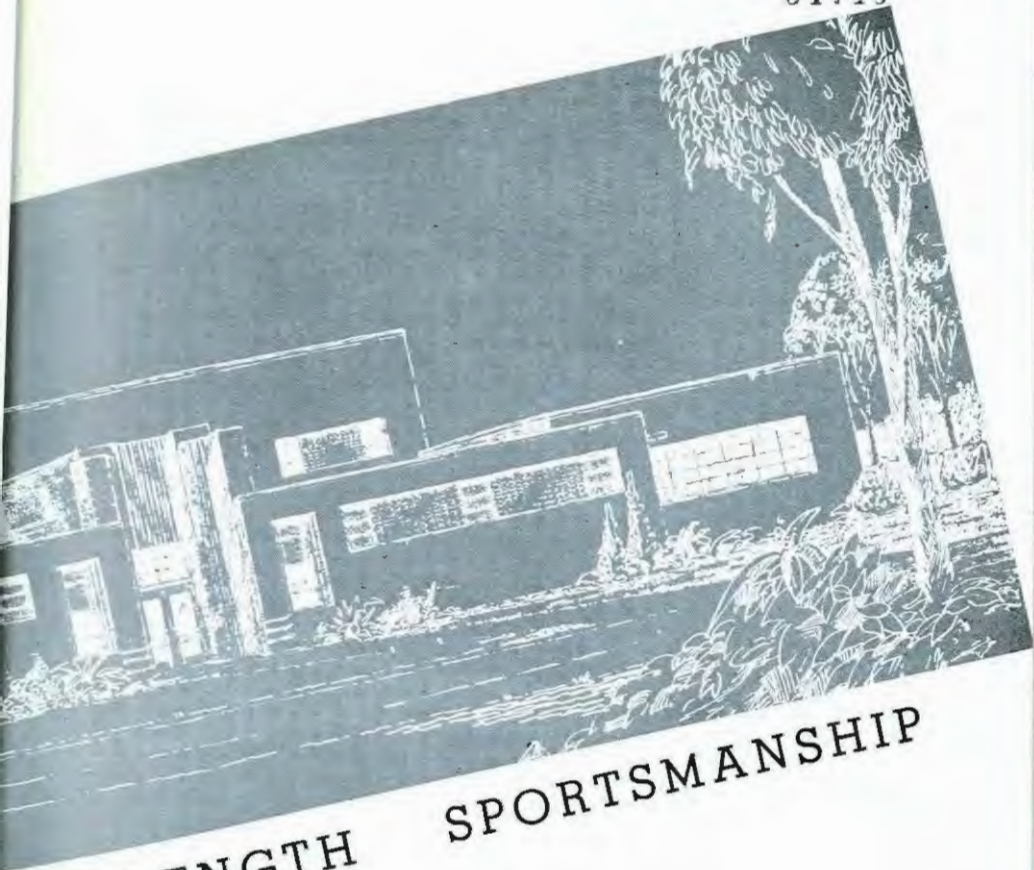
a New Gym
FOR THE **BULLDOGS**



HEALTH



BREAKING GROUND



STRENGTH SPORTSMANSHIP

THE NEW Physical Education And Health Building is the finest building of its kind to be found on any denominational college campus in the State of Kansas. This building, which has been obtained at great cost to provide a suitable place for the inauguration of an adequate health program, is really a monument to the indomitable spirit of the McPherson College Fathers who have seen a need and having seen, have been untiring in their efforts to provide.



Coach Astle

Contribution

Physical well-being is not a guaranty that any individual will make a success of his life, but it does make his chances much greater than they would be if he were laboring under the handicap of physical ills. Similarly the installation of a health program does not guarantee that every one who participates in it will necessarily possess radiant physical health, but it in its turn provides a reasonably sound basis for promotion of that end.

In the construction of the new Physical Education and Health Building, McPherson College has inaugurated a program, which though not entirely new, will be broader in scope and more truly democratic in practice than would have been possible without the splendid facilities afforded by this new and modern building.

The great contribution which this new building makes to our health program and to our campus cannot be summed up in so short a space as is here given but it is our sincere belief that the years to come will prove in terms of successful men and women the worth of its construction.



Physical Fitness

Life has unity and continuity. The intellectual life, the emotional life, the physical life and the spiritual life of the individual are all intertwined. They all react on each other. Educators have come to realize this and are now considering every phase of life in an educational program. The new emphasis on personnel work, and on a health and physical educational program for a college are indications of this new emphasis.

A life out of adjustment is often ineffective and unhappy. A life that is intellectually alert, socially adjusted, physically healthy, and spiritually harmonious has the basis for happiness. Effective counsellors in a college program are often indispensable to help untangle the skeins of a badly adjusted personality.

Health is a necessary factor in life. Modern higher education aims to do for each student whatever needs to be done so that any physical difficulties may be discovered and corrected.

It is our purpose to build the new physical education building not for play as an end, but as a building devoted to sound bodies for sound minds and well adjusted personalities.

V. F. SCHWALM



Dr. Schwalm



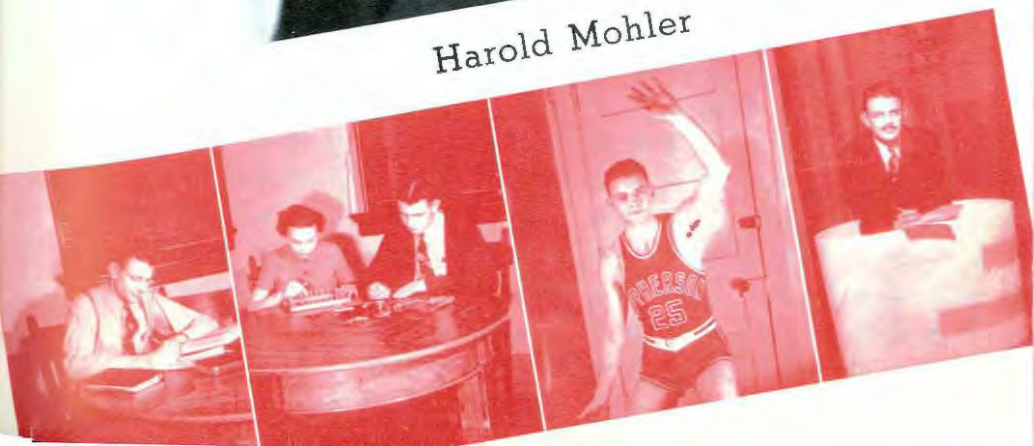


Estelle Baile





Harold Mohler



Campus King and Queen

The contest for the selection of the Campus King and Queen for 1938 was sponsored by the Quadrangle Staff. This contest was unique on our campus in that it was the first contest of that kind which was aimed solely at the selection of the most popular couple. In past years the contest had been exploited for the purpose of selling books and represented more nearly the energy of the book salesmen than it did the actual popularity of the contestants.

With the book sales taken care of by other means, the staff was free to promote a more significant contest. A nominating ballot was submitted to the student body and from this ballot five couples were chosen for the final voting. Sufficient time was allowed to elapse to enable everyone to judge which couple was most truly the campus King and Queen. Interest ran high and nearly every student voted in the final contest, which indicated that the final choice was the real one. To Harold Mohler and Estelle Baile, Mark Porter and Avis Heckman, Ira Milton Hoover and Lucille Ullery, Gordon Yoder and Glee Goughenour, and Bill Fry and Ruth Taylor went the honor of representing the student body.

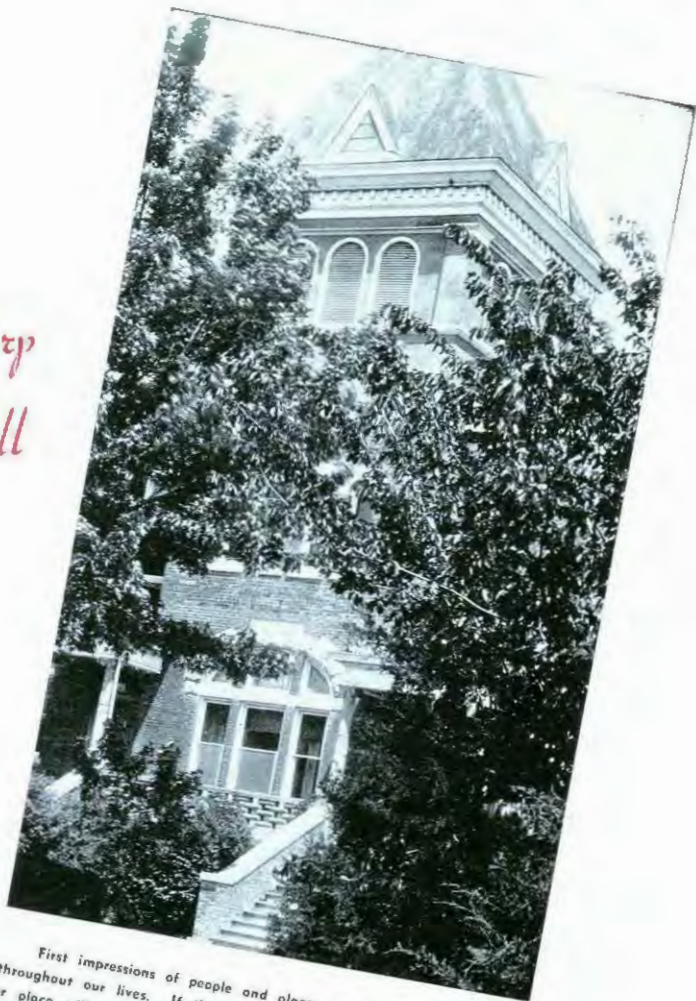
Harold and Estelle, who were elected, are most truly fitted for that honor. They have been outstanding students during their entire college days and have maintained extensive programs of extra-curricular activities as well as being good friends and willing helpers to all of their fellows.



Top Row: Glee Goughenour, Gordon Yoder
Middle Row: Lucille Ullery, Ira Milton Hoover
Front Row: Avis Heckman, Mark Porter



Sharp Hall



First impressions of people and places are often carried with us throughout our lives. If that impression is a good one that person or place will always mean just a little more than other people or places which do not so impress us. The McPherson College Administration Building nestled behind a tree bordered, circular drive, makes that desirable kind of first impression. This building to which every student must come before making his entry into the college, houses the Chapel which has been an inspiration to countless men and women who have come there to hear speakers and musicians from far flung regions of the earth. In Sharp Hall there is also the Student Union Room which was constructed largely through the money and efforts of the students. This room is the show place of the college. The walls are of knotty pine and furnish an appropriate background for the beautiful colonial period furniture.



KLINE HALL

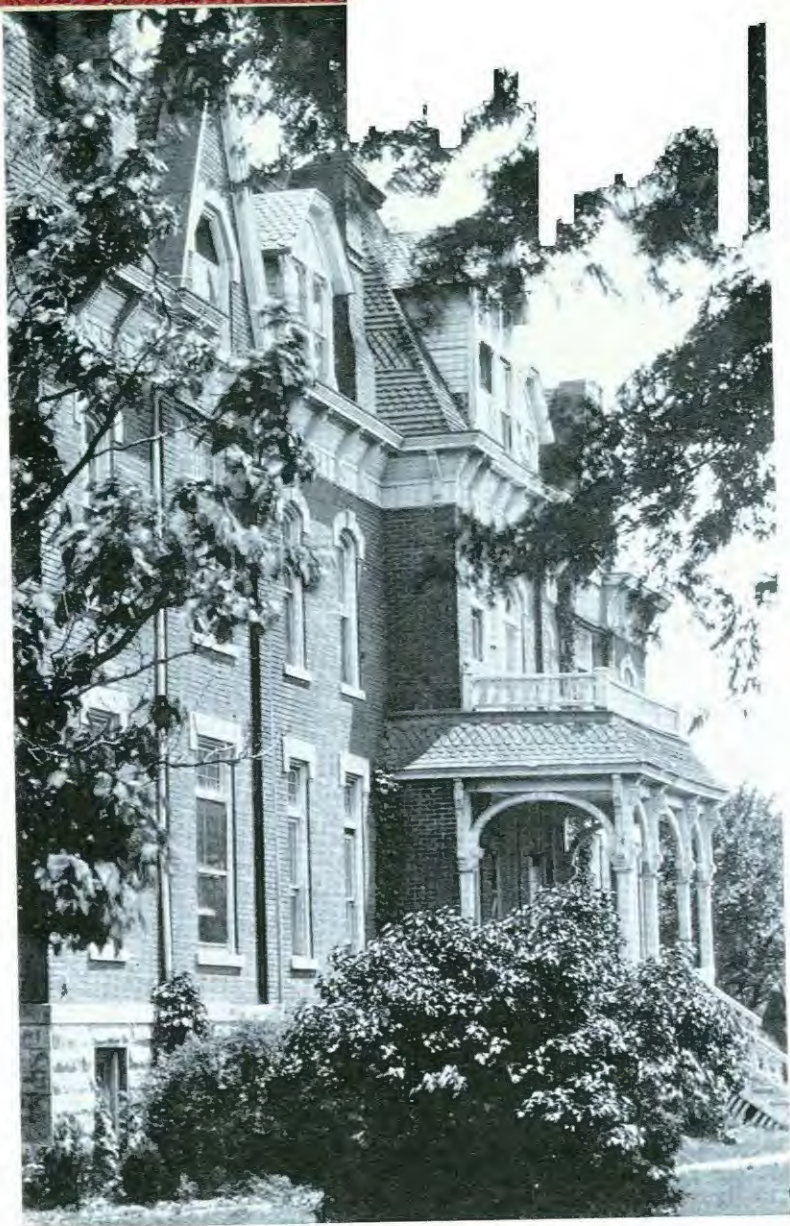
College Carnegie Library

A large portion of the study hours of the college students is spent within the walls of the library. Students at McPherson College have at their disposal the facilities of a modern library which supplies them with the best books and magazines that are to be had to-day. A competent staff provides for the care which such a library demands.

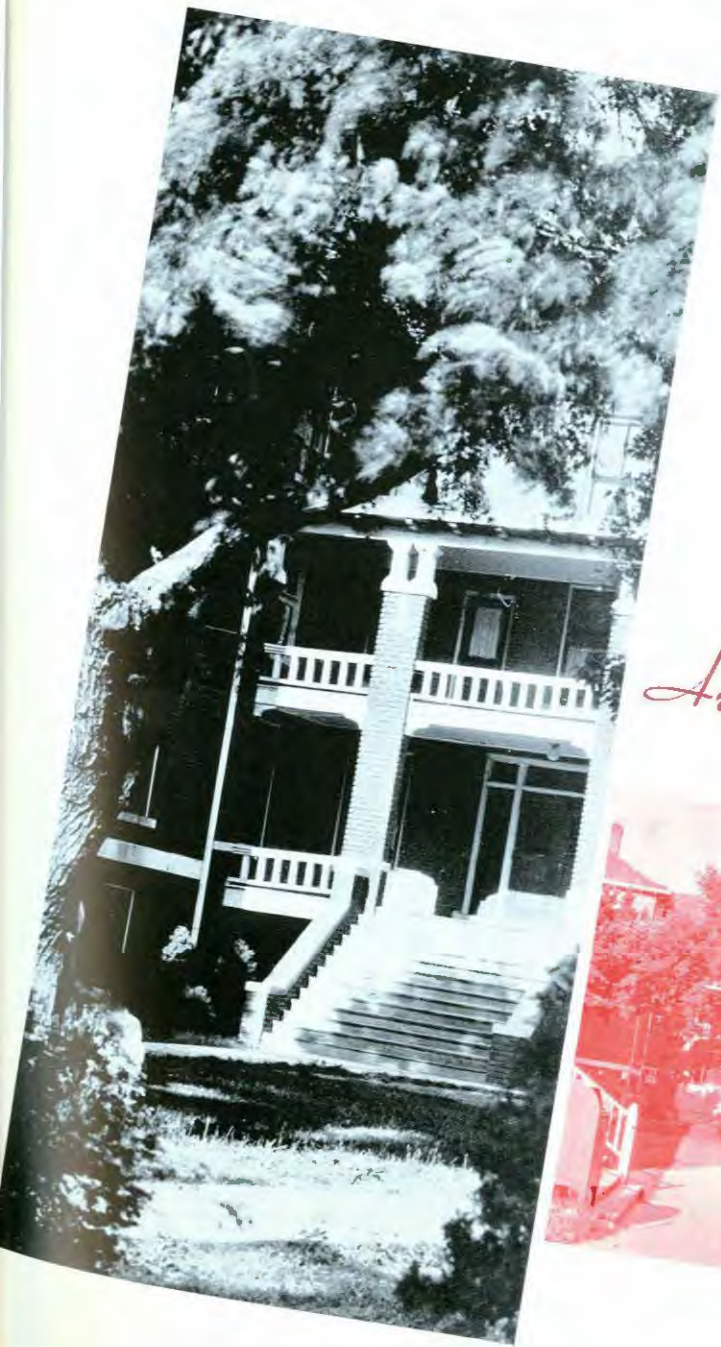
Harnly Hall

The largest artificial diamonds in the world are made at McPherson College. It is in the science building that these and many other discoveries have been and are being made by outstanding students under the direction of Dr. Hershey. The college museum, which contains many unusual specimens, is in Harnly Hall as are also the departments of Biology, Education and Fine Arts.





Fahnestock Hall



Arnold Hall



The Campus Soul

In Fahnstock, Kline and Arnold Halls live the boarding school students. It is here that some of the finest friendships of college days are formed. Kline Hall is fitted for light house-keeping and those who live there prepare their own meals. The residents of Fahnstock and Arnold eat in the college dining hall. The fellowship afforded by the dining together at a common table is one of the most integrating and interesting experiences in the life of the college student. The memories of experiences shared and lessons learned here are kept long after the affairs of the class room have ceased to be meaningful.

And lastly to the College Church where the school and the community meet in common bonds of worship to seek anew the inner strength that comes to him who has made his peace with his God and looks forward to the service which he may render to his fellow man.



THE COLLEGE CHURCH



Our Chapel Group

VERNON FRANKLIN SCHWALM

A. B., A. M., PH. D.

President of the College



To every year book editor is given the task of discovering a new way of presenting the faculty of his college. This task is not lightened by the knowledge that change alone is not enough. In any case it is the duty as well as the privilege of the editor to present that group of people in a manner which will truly express the position which they as individuals hold on the college campus and in the community at large.

By all odds Dr. Schwalm should come first on our list. For eleven years he has fought, through depression, drouth and other adversities to make McPherson College the ideal college which we all believe it can and will become. For the last three years Dr. Schwalm has spent very little time in the class room. He has, instead, gone out into the field and personally conducted a campaign to raise funds with which new and much needed equipment might be purchased and provision made for the day when McPherson College might join the North Central Association of Colleges. In his work at McPherson College Dr. Schwalm has exhibited a type of high personal standards which have been an inspiration to all who have been privileged to associate with him.

After Dr. Schwalm we must consider Dr. J. D. Bright, dean of McPherson College. To Dr. Bright must go the credit as well as the task of supervision of the teachers and the outlining of the curriculum which is offered to the students of the college. Dr. Bright has also found time to appear in the class room where he delves into the problems of civilization which have passed and which are passing. He is the history professor of the college.

To Professor S. M. Dell, B. S., M. S., newly appointed dean of men, has gone the confidence and respect of all who have dealt with him. He has been an indefatigable worker in the field as well as at school and the long list of people who seek his help and guidance attests as can no other thing to the high esteem which the students have for him. His classes in the Industrial Arts are always full of students who turn out very splendid work.

Dean Ida M. Shockley, M. A., dean of women, is a new member of the faculty. She comes to us from Washington state where she had been engaged in personnel work. Under her guidance the Women's council has been performing a real service to the women of the college. Her class room work is the field of psychology and education.

Dr. John W. Boitnott, professor of education, is one of the strongest professors on the teaching staff. His work with student teachers has been a decisive factor in the decisions of many folks who have decided to enter the teaching profession.

Dr. Miriam Smythe in place of Dr. Claud Flory, who is in Europe on leave of absence, is head of the English department. Her work is of high character and should attract many students to that department.

Maurice A. Hess, professor of Latin and debate coach par-excellence, having won nine championships and tied for first place once in the nineteen years that he has been in McPherson.

IDA M. SHOCKLEY
M. A.
Dean of Women

S. MILTON DILL
B. S., M. S.
Dean of Men



Miss Della Lehman, B. A., M. A., professor of English and head of the dramatics department, has that enviable faculty of being able to bring into her classes many of the interesting experiences which she has encountered in her travels over Europe and America.

Robert E. Mohler, A. B., M. S., retired dean of men and now professor of biology and curator of the museum is the oldest professor in point of years of service, yet he is perhaps the most actively engaged of them all.

Dr. J. Willard Hershey, professor of chemistry, has won world renown for himself and the college by his experiments with rare gases and with artificial diamonds, having made the largest in the world.

Joseph L. Bowman, B. A., M. S., professor of mathematics and physics. His work is characterized by a thoroughness that is unique.

A new professor on the campus is Dr. Burton Metzler, professor of philosophy and religion. His contribution to the intellectual life of the students has been great and will continue to grow in the years to come.

The commercial subjects are taught by professor Don Payden, A. B., M. A., Miss Alice Gill, B. A., M. A., and Miss Corrine Bowers, B. A.

The music faculty, composed of Jessie Brown, B. M., Fern Lingenfelter, B. A., B. M., Loren Crawford, B. A., B. M. and Nevin Fisher, graduate of the Peabody Conservatory of Music, have reorganized the music department so that it is an outstanding department of the college.

Ruth Koerber, M. A., professor of modern languages, has brought a great deal of extra worth to her classes by season of her long stay in Europe.

Esther Atkinson, B. S., H. S., M. S., professor of home economics, has built a strong department, besides having taken the responsibilities of house mother in Kline Hall.

Clara Colline, instructor in arts, has produced many beautiful paintings and has that unique ability to get others to do likewise.

J. Howard Fries, B. A., and Maurice Stutzman, B. A., do an able job of managing the business affairs of the college.

C. E. Davis, B. S. L., B. A., M. A., and Earl Breon, B. S. L., A. B., B. D., field representatives of the college, have done a great deal toward making the 1937-38 Freshman class the largest in the history of the school.

W. P. Astle, B. S., M. A., and Lilvan Warner, B. S., director of athletics and assistant director of physical education, have embarked upon a health program which is a credit to McPherson College.



J. DANIEL BRIGHT
A. B., A. M., PH. D.
Dean of the College



The Senior Class

The Seniors are embarking upon a period of their lives wherein the worth of their training will be put to the acid test. May God speed them in their tasks.

Lyle Brower, Secretary
Edward Jones, Treasurer
Theresa Strom, Vice-Pres.
Harold Mahler, President



CLASS OF 1938



ESTELLE BAILE, B. A., English
Warrensburg, Missouri.

Y. W. C. A. 1, 2; S. C. M. 4; Thespian Club 1, 4; A Cappella choir 1, 2, 4; World Service 1, 2, 4; Pep Club 1, 2, 4; Most Popular Girl 1; Runner up 2; Quartet (women) 4.



DONALD BARGROVER, B. S., Industrial Arts
McPherson, Kansas.

M Club 1, 2, 3, 4; Football 1, 2, 3, 4; Basketball 1, 2, 3, 4; Tennis 1, 2, 3, 4; Student Council 3; M Club President 1.

KENNETH BENSON, B. S., Chemistry
McPherson, Kansas.

Chemistry Club 1, 2, 3, 4; Tennis 3.



ERWIN BENTZ, B. S., Industrial Arts
Tampa, Kansas.

International Relations Club 1, 2, 3, 4; World Service Club 2; Y. M. C. A. 1, 2; S. C. M. 3, 4; Chemistry Club 1; Debate 1; Basketball 1, 2; Student Council 3, 4; President 1.

LAMAR BOLINGER, B. A., Commerce
Payette, Idaho.

International Relations Club 3; World Service Club 1, 2, 3, 4; Chemistry Club 1; Forensic Club 2, 3, 4; Y. M. C. A. 2; S. C. M. 3, 4; Class Officer 3; Debate 1, 2, 3; President of World Service 4.

LAWRENCE BOYER, B. A., Philosophy and Education
Hutchinson, Kansas.

M Club 2, 3, 4; Basketball 1; Football 1, 2, 3, 4; Chemistry Club 1, 2; World Service 2, 3, 4; Y. M. C. A. 2; S. C. M. 3, 4; Quadrangle 3; Spectator 2.



LYLE BROWER, B. S., Industrial Arts
South English, Iowa.

Y. M. C. A. 2; S. C. M. 3, 4; International Relations Club 2; Chemistry Club 2; A Cappella Choir 3, 4; Class Officer 4; Class Play 4.

LOWELL BRUBAKER, B. S., Industrial Arts
Grand Junction, Colorado.

Basketball 1; Y. M. C. A. 1, 2; S. C. M. 3, 4; Thespian Club 3, 4; Pep Club 3, 4; Chemistry Club 3; Quadrangle 4; Class Play 4.

LUCILE COLE, B. A., Literature and Art
Langdon, Kansas.

Chemistry Club 1; Debate 3; International Relations Club 3, 4; W. A. A. 1, 2, 3, 4; World Service 1, 2, 3, 4; Y. W. C. A. 1, 2; S. C. M. 2; Women's Council 4; Class Play 4.



ELLEN DIVINE, B. A., Education
Garden City, Kansas.

Garden City Junior College 1, 2; Spectator 3, 4; World Service 3; S. C. M. 3, 4; Secretary S. C. M. 4.

NORMAN EDWARDS, B. S., Chemistry
McPherson, Kansas.

Chemistry Club 2, 3, 4; Tennis 2, 3; Y. M. C. A. 2; Spectator 2, 3.

DALE EMBERS, B. S., Chemistry
Groveland, Kansas.

Chemistry Club 1, 2, 3, 4.

JOHN BOWERS, B. A., History and Philosophy
McLouth, Kansas
(Picture not shown)

Quadrangle 3; Spectator 3, 4; International Relations Club 3, 4; World Service 1, 2, 3, 4; Y. M. C. A. 1, 2; S. C. M. 3, 4.

CLASS OF 1938

MARJORIE FLORY, B. A., History
Rockford, Illinois.

Class Officer 3, 4; Dramatics 3, 4; International Relations 3, 4; President International Relations Club 4; Women's Council 4; S. C. M. 3, 4; Pop. Club Officer 3, 4; W. A. A. 3, 4; President W. A. A. 1; Class Play 1.

RONALD FLORY, B. A., Commerce
Rockford, Illinois.

Basketball 1, 2, 3, 4; Football 1, 2; Tennis 3, 4; M. Club 3, 4; Student Council 4.

THAD FRETZ, B. S., Chemistry

Chemistry Club 2, 3, 4.

GLEE COUGHNOUR, B. A., Education

Des Moines, Iowa

Women's Council 4; W. A. A. 1, 2, 3, 4; Y. W. C. A. 1, 2; S. C. M. 3, 4; World Service 2, 3, 4; Pop. Club 1; Spectator 4.

AVIS HECKMAN, B. A., History and English
Polo, Illinois.

A Cappella Choir 3, 4; Student Council 3, 4; W. A. A. 3, 4; International Relations Club 4; World Service 3, 4; Debate 1; S. C. M. 3, 4.

EVELYN HIGH, B. S., Music and Biology
New Plymouth, Idaho.

Pop. Club 2, 3, 4; World Service Officer 4; Y. W. C. A. 1, 2; S. C. M. 3, 4; Class Play 4.

EUGENIA HOGAN, B. S., Home Economics
Sedalia, Missouri.

Chemistry Club 3; A Cappella Choir 4; Y. W. C. A. 3, 4; S. C. M. 3, 4; World Service 3, 4; Quadrangle 4.

HERBERT IKENBERRY, B. S., Biology
Quinter, Kansas.

A Cappella Choir 1, 2, 3, 4; Chemistry Club 2; S. C. M. 3, 4; Y. M. C. A. 1, 2.

CHESTER JOHNSTON, B. S., Industrial Arts
McPherson, Kansas.

Basket Ball 1, 2, 3, 4; Football 1, 2, 3; Tennis 1, 2; Student Council 1, 2; Track 1; M. Club 1, 2, 3, 4.

EDWARD JONES, B. S., Chemistry
Canton, Kansas.

Chemistry Club 1, 2, 4; Pop. Club Officer 4; Class Play 4.

ALBERTA KELLER, B. A., History
Mineola, Kansas.

Debate 1, 2, 3, 4; Forensic Club 2, 3, 4; Y. W. C. A. 1, 2; S. C. M. 3, 4; Spectator 2, 3, 4; International Relations Club 3, 4; Class Officer 2; W. A. A. 1, 2.

LYLE KLOTZ,

ALVIN LINDGREN, (No Picture) B. A., Philosophy and Commerce
Canton, Kansas.

Debate 1, 2, 3; Forensic Club 1, 2, 3; Y. M. C. A. 1, 2; World Service 3; Northwestern University 4.



CLASS OF 1938



LEWELLEN LLOYD, B. S., Chemistry, Gaylord, Kan.
Chemistry Club 2, 3, 4; Y. M. C. A. 2; S. C. M. 3, 4.

MRS. ALICE MARTIN, B. S., Commerce, Bloom, Kan.
Emporia Teachers 1, 2, 3.

GLEN MCGONIGLE, B. S., Biology, Nickerson, Kan.
Chemistry Club 3; Dramatics 2, 3, 4; Tennis 2, 3; Y. M. C. A. 1, 2; S. C. M. 3, 4; Male Quartette 1; Forensic Club 2; World Service 1, 2, 3, 4; Track 1; Class Play 4.



LLOYD MOEHLMAN, B. S., Biology, McPherson, Kan.
Football 3; Y. M. C. A. 2; S. C. M. 3, 4.

HAROLD MOHLER, B. S., History, Leeton, Mo.
Basket Ball 1, 3, 4; Class Officer 3, 4; Dramatics 3, 4; Pep Club 3, 4; Y. M. C. A. 1, 2; S. C. M. 3, 4; (officer); A Cappella Choir 2, 3, 4; Officer 3, 4; Male Quartette 3; International Relations Club 4; Student Council 2; Class Play 4; World Service 1, 2, 3; Officer 2; Most Popular Man 4.

GERTRUDE MYER, B. A., History, Formosa, Kan.
Women's Council 2; Y. W. C. A. 1; S. C. M. 3, 4; International Relations Club 2.



FRED H. NACE, JR., B. S., Chemistry & Education, Dwight, Kan.

Chemistry Club 1, 2, 3, 4; Dramatics 1, 2, 3, 4; Thespian Club Officer 3, 4; Football 1, 2; Y. M. C. A. 1, 2; S. C. M. 3, 4; Officer 3; Student Council 3; International Relations Club 3, 4; World Service 3, 4; Pep Club 3, 4; Quadrangle 3, 4; Editor 4.

KURTIS NAYLOR, B. S., Biology, Covert, Kan.
Basketball 1, 2, 4; Class Officer 1; Debate 1; Quadrangle 2; Tennis 2, 3; World Service 2, 3, 4; Y. M. C. A. 1, 2; S. C. M. 3, 4; Pep Club 4; International Relations Club 4; M. Club 2, 3, 4.

CHARLES NETTLETON, B. A., History, Lewiston, Minn.
Male Quartette 3, 4; A Cappella Choir 2, 3, 4; Deputation 2, 3, 4; Chemistry Club 4; S. C. M. 3, 4.



MARK PORTER, B. S., Industrial Arts, Fredonia, Kan.
Independence Junior College 1, 2; Track 3, 4; S. C. M. 3, 4; M Club 3, 4; quadrangle 4; World Service 4.

LEONA SELLERS, B. S., Home Economics, Galva, Kan.
Chemistry Club 3; World Service 3, 4; Y. W. C. A. 1, 2; S. C. M. 4.

RUTH SIEGEL, B. S., Chemistry, Beatrice, Nebr.
Chemistry Club 1, 2, 3, 4; S. C. M. 3, 4; Beauty Queen 3.



EFFIE SNELL, B. S., Biology, Des Moines, Ia.
Chemistry Club 2; Y. W. C. A. 1, 2; S. C. M. 3, 4.

THERESA STROM, A. B., English, Worthington, Minn.
Debate 2, 3; Dramatics 2, 3, 4; Thespian Club President 4; Student Council 2; W. A. A. 1, 2; World Service 1, 2; Y. W. C. A. 1, 2; S. C. M. 3, 4; Officer 3, 4; International Relations Club 3, 4; Officer 4; Class Officer 4; Class Play 4.

GEORGE TOLAND, B. S., History and Industrial Arts, St. John, Kan.

Track 1, 2, 3, 4; Football 1, 2, 3; M Club 2, 3, 4; Officer 1; S. C. M. 3, 4; President 4; Pep Club 3, 4; Spectator 4; Dramatics 3, 4; International Relations Club 3; Chemistry Club 2, 3; Class Officer 3.



LUCILLE ULLERY, B. S., Biology, Sterling, Colo.

Y. W. C. A. 1, 2; S. C. M. 3, 4; Co-president 4; International Relations Club 1; World Service 1, 2, 3, 4; Class Play 4; A Cappella Choir Accompanist 2, 3, 4.

CHARLES WAGGONER, B. S., Chemistry and Biology, Hastings, Nebr.

Chemistry Club 1, 2, 3, 4; A Cappella Choir 3, 4; Y. M. C. A. 1, 2; S. C. M. 3, 4; Student Council 4.

DANIEL ZOOK, A. B., Education, Larned, Kan.

Basketball 1, 3; Track 1, 2, 4; M Club 3, 4; Pep Club 2, 3, 4; President 4; A Cappella Choir 1, 2, 3, 4; Officer 1; Class Play 4.



The Junior Class



The Juniors have come safely over three barriers and are entering the home stretch eager for the opportunity to take over where the seniors have stepped aside.

William Thompson, President
Rosalie Fields, Vice-Pres.
Rilla Hubbard, Secretary
Joelle Letkeman, Treasurer

CLASS OF 1939



WAYNE ALBRIGHT, *Music*
Eldora, Iowa.



DELBERT BARLEY, *Modern Language*.
McPherson, Kansas.

ORVILLE BEEHLER, *Industrial Arts*
Fruitland, Idaho.

GORDON BOWER, *Commerce*.
McLouth, Kansas.



ORPHA BURNS, *English*.
Hampton, Iowa.

FRANCES CAMPBELL, *Music*.
Parsons, Kansas.

PHILIP DAVIS, *Biology, Education, Psychology*.
McPherson, Kansas.

DORIS DRESHER, *History*
McPherson, Kansas

ROSALIE FIELDS, *Home Economics*
McPherson, Kansas
Vice-President of the Class



LILLYS FRANTZ, *Music*
Holmesville, Nebraska

MARGARET FRY, *Music*
Omaha, Nebraska

VIRGINIA HARRIS, *History*.
Jennings, Louisiana

CLASS OF 1939

LUTHER HARSHBARGER, *History*
McVeytown, Pennsylvania.

VERA HECKMAN, *English*
McPherson, Kansas

LA VENA HIGH, *History*
New Plymouth, Idaho

OPAL HOFFMAN, *Latin*
Ablene, Kansas

IRA MILTON HOOVER, *Industrial Arts*
Plattsburg, Missouri

DON HOUGHTON, *Chemistry*
McPherson, Kansas

RILLA HUBBARD, *English*
Hugoton, Kansas
Secretary of the Class

RICHARD HORN, *Chemistry*
McPherson, Kansas

RUSSELL KINGSLEY, *Industrial Arts*
Windom, Kansas.

HAROLD LARSEN, *History, Political Science*
Ablene, Kansas

JORILLE LETKEMAN, *Commerce*
Buhler, Kansas
Treasurer of the Class

ANTON MEYER, *Chemistry*
Tampa, Kansas
(Senior Second Semester)
Chemistry Club 1, 2, 3, 4; Basketball
1, 2, 4; Track 1, 2, 4; "M" Club 1, 2, 3,
4.



CLASS OF 1939



PHILIP MYERS, *Commerce*
Formosa, Kansas



ASTA OSTLUND, *Biology*
McPherson, Kansas



VALERA PEARCE, *History*
Conway Springs, Kansas.



MEREDITH ROGERS, *History*
Corning, Iowa.



MARTIN SEIDEL, B. S., *Industrial Arts*
McPherson, Kansas.
(Senior Second Semester)
Football 1, 2, 3, 4; "M" Club 2, 3, 4.



ADDISON SAATHOFF, *History, Commerce*
Guthrie, Minnesota



CHARLES SHELLER, *Biology*
Eldora, Iowa.



LENORE SHIRK, *Home Economics*
McPherson, Kansas



LAWRENCE STEPHENSON, *Commerce*
Gaylord, Kansas



WILBUR STERN, *Chemistry*
Bathum, Minnesota



WILLIAM THOMPSON, *History, Political Science*
Commerce
McPherson, Kansas
President of the Class



ROBERT WIEGAND, *History*
Inman, Kansas



RUBY WEIMER, *English*
St. Cloud, Minnesota



GORDON YODER, *Commerce*
Waterloo, Iowa.





The Sophomore Class

"He knows so little yet he knows it so fluently" must of necessity have been said of a sophomore. To him the world is far behind; he has not learned to measure the speed of it.

Dave McGill, President
Marjorie Kinzie, Secretary
Gladys Shank, Treasurer
Stephen Stover, Vice-Pres.



CLASS OF 1940



Galen Allen, Kelley, Iowa.

Vernon Beckwith, Boise, Idaho.

Quentin Blackwell, Hutchinson, Kansas.

Paul Bowman, Quinter, Kansas.



Rodell Cobb, Galva, Kansas.

Elmer Dadisman, Nevada, Iowa.

Dorothy Dell, Beatrice, Nebraska.

Wesley De Coursey, Nampa, Idaho.



Edwin Diehl, Beaver, Iowa.

Doris Doune, Canton, Kansas.

Harold Duncanson, Lewiston, Minnesota.

Eugene Eisenbise, McPherson, Kansas.



Samuel Elrod, Quiney, Kansas.

Kathryn Enns, Fort Pierce, Florida.

Raymond Flory, Kinross, Iowa.

Robert Fox, Larned, Kansas.

CLASS OF 1940

Rowena Frantz, Grundy Center, Iowa.

Bill Fry, Omaha, Nebraska.

Julia Frick, Durham, Kansas.

Pauline Grove, Kinross, Iowa.

Verda Grove, Kinross, Iowa.

Audrey Hammann, McPherson, Kansas.

Carrie Alice Hanson, McPherson, Kans.

Evelyn Herr, Hope, Kansas



Dwight Horner, Ft. Worth, Texas.

Edith Hughey, Bartlesville, Oklahoma.

Edith Jasper, Elkhart, Iowa.

Marjorie Kinzie, Lyons, Kansas.
Secretary of the Class.



Vernon Kraus, Pretty Prairie, Kansas.





David McGill, Soddy, Tennessee.
President of the Class.

John Miller, Osborne, Kansas.

Elma Minnick, Hardin, Missouri.



CLASS OF 1940







Charlotte Nance, Reserve, Kansas.

Jack Oliver, McPherson, Kansas.

Charles Pray, Hope, Kansas.

Mary Richards, Waldo, Kansas.







Roy Robertson, Pretty Prairie, Kansas.

Genevieve Sandy, Norborne, Missouri.

Robert Seidei, McPherson, Kansas.

Gladys Shank, Hope, Kansas.
Treasurer of the Class.







Winton Sheffer, McPherson, Kansas.

Avis Smith, Whitten, Iowa.

Galen Stern, Fredericksburg, Iowa.

Stephen Stover, McPherson, Kansas.
Vice-President of the Class.





Betty Ruth Stutzman, Conway, Kansas.

Ruth Taylor, Rocky Ford, Colorado.

Laverne Voshell, McPherson, Kansas.

Marian Washler, Langdon, Kansas.



La Verne York, Adel, Iowa.



The Freshman Class

≡ These are the raw materials from which the famous Bulldogs have come. Theirs is a heritage which is greater than they can know for untouched stores of wisdom will open to their touch.

Don Newkirk, Treasurer
Esther Sherfy, Secretary
Bruce Wood, President

CLASS OF 1941



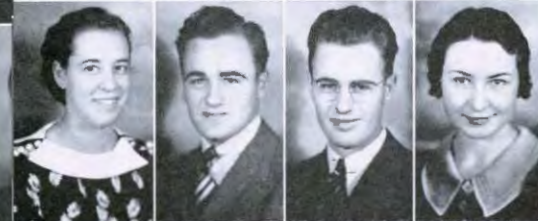
Marjorie Anderson, Gypsum, Kansas.
 Maurine Anderson, Burdick, Kansas.
 Herbert Bentz, Hope, Kansas.
 La Verne Bollinger, Payette, Idaho.



Kathryn Brallier, Curlew, Iowa.
 Melba Burger, Udell, Iowa.
 Dewey Burrous, McPherson, Kansas.
 Julia Bukey, Inman, Kansas.



Joseph Bukey, Inman, Kansas.
 Julia Brummell, Ozawkie, Kansas.
 Eugene Charbonneau, Osborne, Kansas.
 Helen Cole, Langdon, Kansas.



Olive Colyn, Prescott, Iowa.
 Eldon Crissman, Manitou Springs, Colorado.
 Ellison Crissman, Manitou Springs, Colorado.
 Miriam Davison, Dumont, Iowa.



Donald Davidson, Lyons, Kansas.
 John Detrick, Dayton, Ohio.
 Kathryn Dobbins, South English, Iowa.
 Jack DuBois, Rocky Ford, Colorado.

CLASS OF 1941

Robert Rayburn, Frankfort, Indiana.
 Harold Redinger, Olathe, Kansas.
 Ernest Reed, Salina, Kansas.
 Elva Reiste, Dallas Center, Iowa.

Robert Rice, Genesee, Kansas.
 Paul Rodabaugh, Weiser, Idaho.
 Gerald Sebree, Nampa, Idaho.
 Fannie Seitz, Belleville, Kansas.

Marcell Sellers, Galva, Kansas.
 Josephine Shirar, Nickerson, Kansas.
 Esther Sherfy, McPherson, Kansas.
 Secretary of the Class.
 Geneva Schlehuber, McPherson, Kansas.

Hubert Shelley, McPherson, Kansas.
 Ida Marie Smith, McPherson, Kansas.
 Edith Spangler, Wichita, Kansas.
 Burns Stauffer, Rocky Ford, Colorado.

Herbert Stauffer, Grenola, Kansas.
 Forrest Stern, Barnum, Minnesota.
 Dale Stucky, McPherson, Kansas.
 Wayne Switzer, Webber, Kansas.



CLASS OF 1941



Robert Berner, Waterville, Kansas.

Mildred Davis, Muncie, Indiana.

Margaret Davis, McPherson, Kansas.

Paul Dannelley, McPherson, Kansas.



Doris Durst, Moundridge, Kansas.

LeRoy Graham, Culny, Alberta, Canada.

La Von John, Fisk, Missouri.

La Rue Schmidt, McPherson, Kansas.



Geraldine Spohn, Windom, Kansas.

Leslie Sperling, Inman, Kansas.

Palene Stansel, McPherson, Kansas.

Grant Van Brunt, Kansas City, Kansas.



Alice Vanderkolk, Nampa, Idaho.

Richard Van Vleet, Langdon, Kansas.

Rollin Wanamaker, Waterville, Kansas.

Benjamin Wedell, McPherson, Kansas.



Velda Wray, Prescott, Iowa.

Verle York, Adel, Iowa.

Russell Yoder, McPherson, Kansas.

CLASS OF 1941

Olive Edgecomb, Nampa, Idaho.
 Wesley Evans, Galva, Kansas.
 Marjorie Fairchild, Hutchinson, Kansas.
 Autumn Fields, McPherson, Kansas.

Vena Flory, Lone Star, Kansas.
 Vera Flory, Lone Star, Kansas.
 Harold Flory, South English, Iowa.
 Marie Flory, Kinross, Iowa.

Marvin Fox, Larned, Kansas.
 Glenford Funk, Conway Springs, Kansas.
 Dean Frantz, Rockford, Nebraska.
 Robert Frantz, Holmesville, Nebraska.
 Vice-President of the Class.

Ramona Fries, McPherson, Kansas.
 Lillie Goering, Elyria, Kansas.
 Martin Goering, Elyria, Kansas.
 Edna Goering, Elyria, Kansas.

Florine Gnagy, Warrensburg, Missouri.
 Violet Grimes, Payette, Idaho.
 Margaret Hamm, Colorado Springs, Colorado.
 Lillian Hands, McPherson, Kansas.



CLASS OF 1941



Melvin Hands, McPherson, Kansas.
 Forest Harbaugh, Waterloo, Iowa.
 Rosie Harris, Emmett, Idaho.
 Phlorence Heibert, Buhler, Kansas.



Merle Hodgden, Kansas City, Missouri.
 Mary Elizabeth Hoover, Plattsburg, Missouri.
 Esthel Ikenberry, Quinter, Kansas.
 Verla Mae Jack, Nampa, Idaho.



Frances Johnson, Buhler, Kansas.
 Roland Juhnke, McPherson, Kansas.
 Durward Karlson, Kingsley, Iowa.
 Ivan Keck, Summerfield, Kansas.



David Kessler, Bemidji, Minnesota.
 Bill Kimmell, McLouth, Kansas.
 Lee Kraus, Pretty Prairie, Kansas.
 Norman Krueger, Bagley, Iowa.



Marianne Kruger, Bagley, Iowa.
 Junior Lacquement, Canton, Kansas.
 Wilburn Lewallen, Bisbee, North Dakota.
 Opal Matheson, Jordan, Montana.

CLASS OF 1941

Esther Metz, Worthington, Minnesota.

Paul Metzger, Iowa, Louisiana.

Jessie Messamer, Minburn, Iowa.

Herbert Michael, St. John, Kansas.



Robert Miller, Pickerell, Nebraska.

Mildred Morrison, Gypsum, Kansas.

Elizabeth Mohler, McPherson, Kansas.

Jay Moore, Caldwell, Idaho.



Raymond Moyer, Waterloo, Iowa.

Lola Murrey, McPherson, Kansas.

Jean Myers, Adel, Iowa.

Kirk Naylor, Covert, Kansas.



Robert Nance, Reserve, Kansas.

Donald Newkirk, Lyons, Kansas.
Treasurer of the Class.

Edith Niekey, Sterling, Colorado.

Harlan Nincehelsner, Meriden, Kansas.



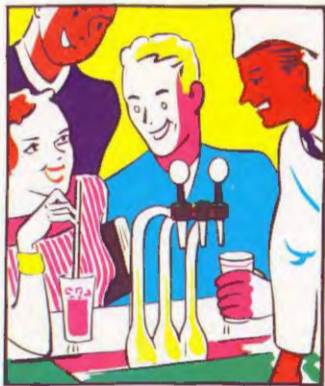
Olan Nincehelsner, Meriden, Kansas.

Sarah Jane Olwin, Cushing, Oklahoma.

Keith Pioree, McPherson, Kansas.

Elmer Ratzlaff, Moundridge, Kansas.





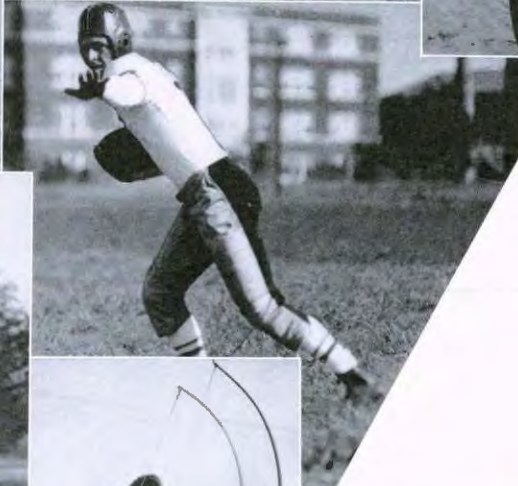
• •

Our lives are earnest
And our living is frank
As we thither and skithier,
And work for a rank.

But when classes are over
And the day's work is done,
We saunter away
For a coke and some fun.

We have our troubles,
Take the lean and the fat
For vicissitudes and Life
Are something like that.

E'EN FIFTY YEARS
AGO AND NOW?



Power and Rhythm



Back row: C. Johnston, McGill, Berner, Redinger, Wiegand, Wanamaker, Stauffer, Boyer, Barngrover (Captain), Voshell, Danelley, V. Kraus, Mathias, Albright.

Middle row: DeCoursey, Funk, Burrous, Stucky, Keck, L. York, V. York, Ninceheler, Cobb, Van Brunt, L. Kraus, M. Fox, Coach Astle.

Front row: Saunders, Van Vleet, Toland, B. Seidel, Gaering, Martin, Beckwith, M. Seidel, Meyer, Ratzlaff, Robertson, Wedel, Yoder.

FOOTBALL



1937 Football Results

Kearney	24	McPherson	0
Hastings	33	McPherson	0
Ottawa	30	McPherson	0
Baker	9	McPherson	0
Berhet	12	McPherson	13
Bethany	26	McPherson	7
C. of E.	14	McPherson	0
Haskell	7	McPherson	0
Wesleyan	0	McPherson	3
Total	155		23

McPherson College's fighting Bulldogs, under the splendid first-year tutelage of Pierce (Buck) Astle, closed their 1937 grid campaign holding down last place in the conference with one victory and four losses. Major injuries to eight players and general inexperience accounted for most of the losses. McPherson snapped a four-game losing streak against Bethel, but went into the doldrums until the final game of the season against Kansas Wesleyan on Thanksgiving Day.

First opponents of the season were the rangy Kearney, Nebraska Teachers Antelopes, who trounced the Canines 24-0 on the home gridiron. McPherson put up a game battle throughout the first half, but withered before



the invader's onslaught of the last period. On the Hastings, Nebraska, gridiron the Broncos handed the Bulldogs a second defeat by an impressive 33-0 score. Both teams were on even terms during the first and third quarters, but Hastings overpowered McPherson in the second and final frames.

For their first conference battle, the Canines journeyed to Ottawa and suffered a 30-0 lacing by the Broves. A muddy field prevented either team from displaying much offensive power, but long runs by O'Neil and Mattis spelled defeat for McPherson. But for the remarkable punting of Dan Barngrover, the score would have been even greater.

Coach Astle's proteges were blanked 9-0 by the Baker Wildcats on the college field as another last half let-down permitted the visitors to secure a touchdown. The Bulldogs penetrated enemy territory three times, but lacked the necessary punch to dwn the conference champions.

Rushing over two touchdowns in the first half by passes from Van Brunt and Mathiot to McGill, the Bulldogs broke into the win column by nosing out the Bethel Graymaroons 13-12 in a non-conference combat. McPherson staved off a brilliant last half Bethel rally, led by Tubbs and Galle, to claim its first victory of the season.

In a traditional "grudge" classic, McPherson's ancient rivals, the Bethony Swedes, humbled the Bulldogs 26-7 with an air-conditioned attack. Altenborg and Giannangelo on plunges through the line and Ireland's passes were too much for the lighter Canines. In the third quarter, Olan Ninceheler, a freshman substitute, kept McPherson from a shut-out by snagging Funk's pass over the goal line.

At the Homecoming feature and last home game of the season, the College of Emporia Presbys, coached by former mentor "Bud" Selves, trimmed Coach Astle's aggregation 14-0 in a hard-fought encounter. While the C. of E. "frosch foursome" backfield galloped down the field, the Bulldogs fumbled nine times and a last-minute rally by Mathiot was halted by the final gun.

Out-playing the Haskell Indians via the air route in an Armistice Day struggle, McPherson was defeated 7-0 in the last forty seconds of the game when a pass, Big Bear to Shoemaker, provided the winning margin for the redskins.

Making the season a success by winning their last



game and dethroning Kansas Wesleyan, the Bulldogs, aided by Van Brunt's place kick, upset the highly-touted Coyotes 3-0 in the Thanksgiving Day Battle at Salina. For Coach (Buck) Astle's gridsters, this was the first conference victory and second win of the season. McPherson's threat to score later in the game and outstanding defense by Canine linemen protected the narrow lead. In five years of competition Mackie's Coyotes have been unable to defeat McPherson and the Salina coach closed his football coaching career with another loss to his arch-rivals.

Although they were constantly handicapped by injuries the college gridsters always pushed their opponents to the limit with dash and fire that will contribute toward a successful season next year. Captain Dan Barngrover, all-conference tackle, played a consistent powerful game throughout his final college season to valiantly lead his team mates. Martin Siedel, veteran capable guard, and Lawrence Boyer, senior tackle, also turned in fine performances in a hectic season.

A feature of each game were the numerous substitu-

tions, for Coach Astle used most of the players on the squad. He believed in giving everyone a chance and the freshmen and sophomores gained valuable experience for the next season. When he issues the grid call in 1938, (Buck) will have seventeen lettermen available to build a strong team.

They are Dave (Tennessee Terrier) McGill, sophomore, Saddy, Tenn., Roy Robertson, sophomore, Pretty Prairie; and Rollin Wanamaker, freshman, Waterville, ends; Lee Kraus, freshman, Pretty Prairie, tackle; La Verne York, sophomore, Adel, Iowa and Raymond (Dutch) Goering, freshman, McPherson, guards; Bob Wiegand, junior, Inman, and Dewey Burrous, freshman, McPherson, centers; Earl (Fire Horse) Mathiat, sophomore, Peabody; Dale Stucky, freshman, McPherson; Grant Van Brunt, freshman, Kansas City; Paul Dannelley, freshman, McPherson; Phil Myers, junior, Lovewell; Olan Nincehelter, freshman, Topeka; Glen Funk, freshman, Conway Springs; Tony Voshell, sophomore, McPherson; and Irvin (Red) Keck, sophomore, Summerfield, backs.

Other players who contributed greatly to the team power were Sam Elrod, Bob Siedel, Elmer Ratzlaff, Wesley DeCoursey, Carl Smucker, Verle York, Richard (Buck-shot) Van Vleet, Vernon Kraus, and Russell Yoder. Martin Seidel has been directing most of the men in recent spring practices in order to keep them in condition and review fundamentals and signals. Of material benefit to the entire squad will be the new dressing rooms furnished by the new gymnasium, now under construction. With the past experience of the 1937 season behind them and new, better equipment in the future, all conditions point to a more fruitful season in 1938.

McPherson college sports fans join in wishing Coach Pierce (Buck) Astle and his crew a better voyage and bidding Barngrover, Seidel, and Boyer bon voyage. We are proud of our team and coach.

BASKET BALL

BULLDOG BASKETBALL SCORES

McPherson	38	Friends	29
McPherson	20	Emporia State	34
McPherson	37	Bethany	25
McPherson	46	C. of E.	44
McPherson	26	Wichita	35
McPherson	35	Ottawa	43
McPherson	53	Baker	29
McPherson	36	Bethel	28
McPherson	49	Emporia State	45
McPherson	46	C. of E.	42
McPherson	32	Ft. Hays	50
McPherson	33	Kans. Wesleyan	20
McPherson	36	Bethany	31
McPherson	59	Pittsburg	53
McPherson	28	Ottawa	45
McPherson	48	C. of E.	39
McPherson	43	Bethel	37
McPherson	50	Baker	48
McPherson	31	Bethany	36
McPherson	34	Kans. Wesleyan	40
McPherson	35	New Mexico State	50

Totals 815

802

With one of the most successful and sensational basketball seasons in the history of McPherson college, Coach Pierce (Buck) Astle's basketekers finished on top of the Kansas conference along with Ottawa and Kansas Wesleyan. Using their famous "swing system" to an advantage, the Bulldogs dashed through a 20-game schedule averaging 42 points per game, then entered the National Inter-collegiate basketball tournament at Kansas City. In that final contest, however, McPherson wilted before a terrific offensive onslaught delivered by the fast and tall New Mexico State team.

A new interesting feature during the holiday period was the four-team tournament here composed of Bethel, Bethany, College of Emporia, and McPherson. By conquering Bethany and C. of E., the Canines won their own tournament and gained a great deal of experience. Besides six triumphs and

Back row: Coach Astle, Wiegand, Barngrover, Meyers, Wanamaker, McGill.

Front row: Mohler, Naylor, Ratzlaff, Robertson, Johnston (Captain).



only four defeats in conference competition, McPherson added two Central conference foes, Emporia State and Pittsburg, to their impressive list of victims. Only Ottawa's Braves, who held a "jinx" over McPherson, was able twice to turn back the Bulldogs. Including all tournament games, McPherson garnered thirteen victories and suffered eight defeats.

When the Wichita Gridleys failed to appear for a scheduled exhibition contest the squad divided up for one of the best games of the season. Dan Barngrover's Greens eked out a 50-46 victory over Chet Johnston's Reds in a fast, free-scoring battle. Throughout the season Coach Astle used ten men in each game, in which the high scorers were evenly distributed with each player getting his share.

Captain Chet Johnston, senior, McPherson; Kurt Naylor, senior, Covert; Tony Meyer, senior, Tampa; Dan Barngrover, senior, McPherson; and Dave McGill, sophomore, Saddy, Tennessee, constituted the "first string". Roy Robertson, sophomore, Pretty Prairie; Elmer Ratzlaff, freshman, Buhler; Bob Wiegand, junior, Inman, Harold Mahler, senior, Leaton, Missouri; and Rollin Wanamaker, freshman, Waterville, were the strong reserves.

Dan Barngrover again made the first all-conference team and was made captain of the mythical five. "Barney" was a bulwark on defense and became the highest scoring guard in the conference. Chet Johnston, an able leader with an injured knee, played as forward on the second all-conference team. Others to gain a berth on the second quintet were Tony Meyer, tallest center of the conference and remarkable on retrieving rebounds, and Dave McGill, powerhouse guard working with Barngrover.

Coach Astle will have to rebuild the Bulldog quintet next year around the returning lettermen and members of the second team which was coached by Ronald Flory. This group will be aided by improved practice facilities in the new gymnasium.

BASKET BALL



Back row: Naylor, Charbonneau, Stauffer, Fox, Vashell, R. Flory (assistant coach).

Front row: Letkeman, Kingsley, Frantz, Nincehelter, Albright.



Johnston (Captain), Mohler, Meyers, Robertson, Naylor,
Ratzlaff, Wannamaker, Barngrover, Wiegand, McGill.



Back Row: Coach "Bud" Selves, H. Seidel, Carter, Vishell, Zook, Davis, Letkeman, Porter
 Front Row: Toland, Robertson, York, Albright, Bowers, Albin.

TRACK

The 1937 track season for the Bulldogs began on April 1 when McPherson played host to Sterling and Bethany in a triangular meet. The day was windy and dusty as is the usual case at that time of year which resulted in a slow track with no records being even approached. The McPherson men were off to a bad start but under the tutoring of coach "Bud" Selves the bulldog tracksters improved greatly and were later able to defeat both of these in dual meets held on their own tracks.

The McPherson Relays were discontinued in favor of the Bulldogs participation in other meets, notably the Sterling Relays where the Bulldog tracksters entered several relay teams and came away with fifth place in the meet.

For the first time in several years a team was entered in the Kansas Relays at Lawrence. Due to injuries the men were below par and did not win any laurels at this meet.

McPherson entered dual meets with Kansas Wesleyan and also with Bethel but in neither case were they able to out point their opponents and bring home a McPherson victory.

The Jinx of ill luck which followed McPherson tracksters through the early part of the season stayed on hand to go to the conference meet, which was held at Ottawa. At this meet Captain Lee Haun, one of the outstanding athletes in the conference, was unable to compete having torn a leg muscle during a practice session.

As a special reward for any one who might be able to break a school record Coach Selves offered a "steak dinner" to all who might qualify. At the end of the season these scored: Mark Porter, who broke the records in both the mile and two mile events, and the members of the Football Lettermen's Relay Team, composed of George Toland, Lee Haun, Roy Robertson, and Lavern York who had set a new mark for that event.

Those who were qualified to receive letters at the close of the season were: Freshmen, Roy Robertson and Laverne York; Sophomores, Phil Davis, Joel Letkeman, and Wayne Albright; Juniors, George Toland and Dan Zook; Seniors, Lee Haun.

1937 TENNIS

The McPherson racket swingers gave a good account of themselves in the 1937 season. Two lettermen, Barngrover and Miller, were back from last year. These two, with the addition of Naylor, Crouse and Rothrock, composed the 1937 team.

The first dual meet of the season was with Bethany team here on April 16. The Bulldogs were only able to win one match and lost the meet by a score of 1 to 5.

April 21, the racketeers fared better and defeated the Sterling team here 6 to 1.

At Salina, on April 29, the Coyotes proved too tough for the McPherson team and won the meet by a margin of 4 to 2.

On May 7, the Bulldogs journeyed to Sterling and defeated the Sterling College Netmen for the second time, this time by 5 matches to 1.

The next meet was with the Swedes at Bethany, May 12, and although the Bulldogs succeeded in winning one more match than in their first encounter, they lost the meet 4 to 2.

In the western division of the Conference tournament held at Bethany, Barngrover was the only McPherson player to get by the first round. He defeated Altenborg of Bethany 6-4, 6-4 and then lost a hard fought battle to Shaw of Kansas Wesleyan 10-8, 6-0.

The final dual meet of the season was with Bethel at Newton and the Bulldogs successfully closed the season with a 4 to 2 triumph.

A summary of the dual meets shows that Coach Flory's racket swingers won three and lost three; they won twenty individual matches and lost seventeen.

Barngrover, Miller, Dr. Flory (Coach),
Naylor, Crouse.





"M" CLUB

Back Row: Dr. Bright (sponsor), Wiegand, Boyer, Meyers, Barzgrover (pres.), Wannemaker, Voehel, Michot.
 Middle Row: McGill, Mohler, Zook, Fank, Stucky, Crouse, Larson, Keek, Letkman.
 Front Row: Flory, Naylor, Johnston, Seibel, Nineselsor, Kraus, York, Porter, Taland, Albricht, Bowers.

The "M" Club of McPherson college is the organization which has as a basis for membership the requirement of having earned at least one "letter" in some sport at McPherson College. Men who have been Cheer Leaders at McPherson are also eligible for membership.

The influence of this wide-awake organization is constantly felt in almost all realms of campus life. These men participate actively in all phases of the social and scholastic life and it is through the efforts largely of this group that the school spirit exhibited by the student body is as fine as it is at McPherson.

Among the many activities which are directly sponsored by the "M" Club is the Hallowe'en Party at which the students find a wholesome outlet for the spirit which prevails even in college people at that time of year. The "M" Club is also responsible for the sale of refreshments which appease the appetites of the "fans" at the home football games.

One of the events which annually attracts considerable attention on the campus is the initiation of new members. At this time it is not unusual to discover that the very tall girl you saw across the campus was on closer inspection really one of the stalwarts from the forward wall of the football team. Other equally amazing things such as very bashful swains posted at strategic spots proposing to every girl that passes or per chance you will find a seemingly enthusiastic doorman and wonder at his unselfish task, until you see an "M" Club paddle in the hands of a near by upper-class man.

This group of men comprises the fellows who have come to college with something to offer besides curiosity. They are indeed the stalwarts among the college men.



PEP CLUB

Back Row: Naes, Crabb, Howman, Jones, Bruhaker, Yoder, Zook (president.)

Middle Row: Lacquement, A. Heckman, Eisenbise, Baile, Shirk, Albright, E. High, Letkeman, Flory, Kimmel, Kingsley.

Front Row: Goughnour, Shank, Frick, Hubbard, Edgecomb, L. High, Keller.

On every college campus there is one particular group which identifies itself as the most interested in promoting school spirit and pep. The group which has so taken the initiative at McPherson is known as the Pep Club. This group, headed by Daniel Zook, pres., has played an active part in the school affairs this year.

Among the many services which the Pep Club has rendered this year were to provide organized programs for pep chapel and to help the cheer leaders organize the student body into an effective unit at football and basketball games.

At an early meeting a list of applicants was considered and fourteen names selected and then the club voted to take them into the fold after they had been properly initiated.

As an initiation ceremony Harold Mohlar, Eugene Eisenbise, Estelle Baile, and Meriam Kimmel were required to render a vocal quartet number at a pep chapel. At the same chapel Eugene Crabb played a trumpet solo and a melodramatic stunt was given by Olive Edgecomb, Dorris Durst, Audrey Hamman, Robert Fox, Durward Carlson, Julia Frick, Russel Kingsley, Joelle Letkeman, and J. Lacquement.

An important contribution which the club has made to the social well-being on the campus has been the ability of this organization to act as a buffer, between opposite factions which seek to dominate student policy, and has brought these rival groups into harmony.



W. A. A.

Back Row: Miss Warner (Sponsor), Marion Washler, Lucile Cole, Avis Heckman, LaVena High.
Front Row: Mary Richards, Marjorie Flory (President), Audrey Hammann, Opal Hoffman, Rilla Hubbard.

The Women's Athletic Association of McPherson College, whose purpose is to maintain for the women of the college athletic activities which will promote health, scholarship, leadership, and cooperation, has, during this term of 1937-38, sponsored athletics and many other activities for the college women.

This year the W. A. A. adopted the activity club plan. According to this plan the central organization consists of an executive board composed of a president, Marjorie Flory; vice-president, Lenore Shirk; secretary, Audrey Hammann; treasurer, Opal Hoffman; publicity manager, Rilla Hubbard; faculty adviser, Lillian Warner; and the heads of the five seasonal sport clubs who are: Softball Club, Lenore Shirk; Tennis Club, Marion Washler; Basketball, LaVena High; Volley Ball Club, Julia Frick; and Table Tennis Club, Rilla Hubbard; and the heads of the three sports clubs that function throughout the year: Hiking Club, Lucile Cole; Orchestis Club, Audrey Hammann; and Badminton Club, Glee Goughnour.

Membership in this organization is based entirely on participation. A girl who is an active member of one of the sport clubs automatically becomes a member of the Association. Each club under the leadership of its manager formulates its own program, sets its own dues, and decides what active membership shall mean. Any girl may belong to several or all clubs if she abides by the club rules.

This new plan has no point system as formerly used. The only award given by the Women's Athletic Association is the block "M", the requirements for which are: the student must have participated in eight activities or sport clubs, four of which must have been at McPherson; she must be at least a second semester junior and must have a scholastic record of C or more; she must have a posture grade of B. When the student has met these requirements, her name is brought before the board which then votes on her attitude and sportsmanship.

The goal that always is set before each member as she participates in the activities of the W. A. A. is to "play the game"—play the game for the pleasure of the game, and not for the sake of winning. For that goal, for physical fitness, and for true sportsmanship is that aim for which this organization continually strives.

The athletic program of the W. A. A. this year has been carried out through the various clubs. To "play the game" is the one ideal.

A short time after school started last fall, Lenore Shirk called together the softball fans. The weather hindered any great progress, but several home-run hitters and fast pitchers were discovered.

At about the same time Marion Washler organized the tennis club. Every afternoon several girls could be seen on the courts swinging their racquets vociferously and chasing the white ball across the road. This club was continued in the spring, with a great increase of enthusiasm.

The Orchestra club with Audrey Hammann as leader also organized last fall. Much interest was shown in this club of modern interpretive dancing.

The hiking club with Lucile Cole at its head functioned throughout the year. Their favorite time for their treks seemed to be the early morning.

A large group joined the volley ball club under the leadership of Julia Frick. The players were divided into two competitive teams, and these teams became outstanding in their ability to pass and volley the ball. To this remarkable skill and team work must be attributed the victory of the Sports Day volley ball tournament.

Basketball was repeatedly interrupted by other activities. However, La Vena High and her followers kept practicing and having a lot of fun in their scrambling games. They ended their program by sponsoring an inter-class tournament.

The ping pong club was organized in the spring by Rilla Hubbard. After practicing a few weeks, the members of this club played a tournament.

The badminton club with Glee Goughnour as manager functioned throughout the year.

By means of these clubs the purpose of the W. A. A.—to insure physical fitness and sportsmanship—was fulfilled.



From top to bottom:
Johnson, Washler
Doane, Hammann
Richards (Captain), M. Flory
Hughey, Enns

W. A. A. AT PLAY

The Women's Athletic Association brought the year's activities to a climax with their annual spring banquet, which was held on the roof garden of the Hawley Hotel, Saturday, April 30. As usual it was the big event of the year to which every girl athlete looked forward with great eagerness. This was a formal occasion to which every member and former member of the W. A. A. was invited, and to which they might bring a gentleman guest.

The most important athletic event of the year was the Sports Day. Five college volley ball teams, namely, Bethany, Bethel, Kansas Wesleyan, Sterling and Southwestern, were the guests of the McPherson W. A. A. in an elimination tournament at the Community Hall on Saturday, January 29. At noon the visiting teams and their sponsors, a total of sixty-seven guests, and the McPherson W. A. A. girls had luncheon together at the Brethren Church. The McPherson team with an excellent skill and technique in handling the ball, defeated the powerful Southwestern team in the final round and thus won the tournament. The players on the McPherson volley ball team were: Julia Frick, captain, Lenore Shirk, LaVena High, Marion Washler, Bertie Keller, Lucile Cole, Rilla Hubbard, Jessie Messamer, Pauline and Verda Groves, Audrey Hammann, and Edith Hughey. Awards were given to each team—McPherson, Southwestern, Sterling, Bethany, Kansas Wesleyan and Bethel, respectively.

Sports Day was a new event introduced on the campus this year. The purpose of the day was to bring together girls of neighboring colleges for fun and fellowship, and in order that the different schools might have an opportunity to get better acquainted with each other. It is the desire of the local association that Sports Day become an annual affair and that other colleges will take it up.

Initiation of the new members took place in the gymnasium on Friday night, March 25. After each new member had fulfilled her distasteful task to the satisfaction of the members, all were divided into small groups and sent on a scavenger hunt.

A Cake Walk for the entire student body was sponsored by the W. A. A. on Friday, April 8, to help meet the expenses of the organization. The Association in cooperation with the "M Club" also sold hot dogs, coffee and candy at all football games.

At the beginning of the term last fall the W. A. A. invited all the girls in school to go on a hike. After following blazed trails, the four different groups assembled in the park down in the "Draw." At this time every girl heard about the new activity club plan and the activities of the W. A. A., and was given the invitation to be a member of the organization.

To the W. A. A. the Student Council gave the task of initiating the freshman girls. The old custom of wearing green caps was revived and the freshmen were forced to wear their natural colors. They also learned to know what it feels like to go through the slipper line.

The building of the new gymnasium will benefit the W. A. A. considerably. It will give access to many facilities that heretofore have not been available. It will afford better equipment and more space that will enable the organization to carry out another new event that has not been tried here before—the Play Day. This is similar to the Sports Day. High school girls will be invited to come to our campus and participate in several competitive sports.

Under the able leadership of Marjorie Flory the women on this campus have shown a great interest in athletics this year.



TOP LEFT—The Hiking Club poses in conventional dress.

TOP RIGHT—First time out for the tennis club.

BOTTOM—Banquet scene after W. A. A. invitational volleyball tournament.



Back Row: George Toland, Stephen Stover, Phil Davis, Harold Larsen, Vera Heckman, Charles Pray, Gladys Shank, Raymond Flory, Josephine Shirer, Dwight Horner, Bill M. Fry.

Front Row: Donna Jean Johnson, Margaret Davis, Lowell Brubaker, Elma Minnick (Vice President), Theresa Strom (President), Fred Nace (Sec. & Treas.), Estelle Baile, Frances Campbell.

THESPIAN CLUB

The Thespian Club, under the able leadership of Theresa Strom, has had another successful year at McPherson College. This club, organized for the purpose of promoting dramatics and the furthering of interest in the reading of plays, has held a series of monthly meetings at which varied programs were given.

The outstanding event which the Thespians sponsored this year was the three-act play *R. U. R.*, by Karel Capek. This play, which could be classified as melodrama, is the fantastic story of a group of men who were making "Robots" or mechanical automatons which looked exceedingly like humans and who had human intelligence yet lacked the power to feel. The plot revolves around these men and a girl who has come to them, as a representative of a humane society, and stays to fall in love with and marry their leader. The subsequent action culminates at the end of the second act when the Robots rise and overthrow mankind. All men save one are killed. In the last act we are allowed to see that the world will go on because the Robots have taken on the characteristics of humans.

An unusual program which the Thespians brought to McPherson was the Washburn Puppeteers. This organization brought to McPherson an interesting peep into fairyland with the well-loved story of Jack and the Beanstalk.

Members of the Thespian Club also participated in an evening of one-act plays sponsored by the Dramatic Art Department of the college.

Outstanding work in the field of dramatics has been done by several members of the club. Theresa Strom and Estelle Baile each coached a three-act play besides having played important roles in other productions. George Toland and Elma Minnick entered a speech contest at Hutchinson where Elma rated highest of all the contestants. Other contributions which the club has made this year are: To add several sections of new material to the cyclorama which was badly needed to cover sections of the wall which were left exposed when doors were made in the scenery wall, twelve copies of the J. M. Barrie play "The Admirable Chrichton" left to the dramatic department, and a large group of costumes.



DEBATE

The year, 1938, again showed a marked success in the achievements of the debate squad of McPherson College, coached by Professor Maurice A. Hess. The group, as a whole, was inexperienced, having only Thompson, Saathoff, and Stover as a nucleus upon which to build the group.

Thanksgiving day found the varsity men's and women's teams in Winfield participating in an intercollegiate tournament. Here Thompson and Saathoff obtained a high rating along with similar ratings of the other teams who entered. Another varsity trip was made into Arkansas in February, where they met an extensive variety of southern opponents.

The Kansas Conference championship this year was shared with Bethany College. After both schools had tied for this honor in a tournament held at Kansas Wesleyan University an attempt was made to break the tie by debating an extra round. As this proved unsuccessful they decided to retain a co-championship honor. Saathoff and Thompson composed the team that carried Coach Hess and the school to this honor.

The rest of the squad participated in a tri-state tournament at Hutchinson, Feb. 4 and 5. Other tournaments were entered at Salina, Hutchinson, and McPherson. This year McPherson College held the largest debate contest in the history of the college. Fifty-four teams from four states were entered in this event. A decided interest was shown in achievement of Coach Hess.

Thompson met with success in the State Peace Oratorical Contest held at Friends University.

HARSHBARGER, NEWKIRK, SAATHOFF, THOMPSON,
STUCKY, SHEAR, SPOHN, HECKMAN,
GRAHAM, DAVIDSON,
REID, HORNER, SPERLING, STOVER



MUSIC



The McPherson College music department has made several steps forward in its realm during the school year 1937-1938. Every division has gone forward in its own way toward the marks of higher achievement.

Professor Loren Crawford, instructor of violin, began this year a movement toward the building of a large instrumental ensemble. As a basis, he trained a string choir and a brass ensemble. The string choir made a number of public appearances, including concerts at Winfield, Augusta, and Marquette. The brass ensemble performed in chapel, and also presented a concert during music week. The absence of cellos and violas made it impossible to organize an orchestra, but it is Prof. Crawford's plan to build in the future a symphony orchestra.

The A Cappella Choir is perhaps, by

virtue of its long standing and its numerous public appearances, the best known organization on our campus. The group, organized by Prof. Alvin Voran in 1932 and conducted by him for four seasons, enjoyed an unusual amount of public acclaim during its sixth season. The membership this year numbered thirty-two. Most of the music was in eight-part arrangements. The repertoire was varied, and included several negro spirituals, folk songs, a five-part chorale by Johann Sebastian Bach, an early seventeenth century composition by Praetorius, as well as several novelty numbers. The choir gave only one performance in McPherson this season—its annual debut, which was given February 23. Miss Margaret Fry, of Omaha, Nebraska, a former member of the organization, appeared as guest soloist, and sang one number with choral accompaniment. A tour in April included performances in



Missouri, Iowa, Nebraska, and Kansas. Officers of the choir were: Harold Mohler, president; Opal Hoffman, secretary; Gordon Yoder, treasurer; Daniel Zook, publicity chairman; Estelle Baile, social chairman.

The male quartet proved very popular, as did the ladies' quartet. Their varied repertoires, plus artistic interpretation, added much to their performances.

A new vocal group on the campus this year was the Choral Club, directed by Prof. Crawford. This chorus sang with accompaniment and gave several performances, including a full evening concert at the college church on Sunday, May 1. A male quartet within this organization was composed of Wesley DeCoursey, first tenor; Ronald Orr, second tenor; Lyle Klotz, baritone; and Raymond Flory bass. This group demonstrated unusual talent and performed on numerous occasions. The membership of the Choral Club numbered approximately forty.

An outstanding innovation for McPherson music lovers was the institution of Franz Joseph Haydn's famous oratorio, "The Creation." The chorus consisted of singers from both college choral groups, as well as from McPherson churches and surrounding communities. The chorus sang to the accompaniment of organ, piano, and orchestra. Outstanding soloists were engaged to sing the leading roles of this well-known work. These soloists were Ida Clawson Hunt, soprano; Arthur D. Hestwood, tenor; and Orcenith S. Smith, baritone. The production of "The Creation" is to become an annual event of some importance.

As an outgrowth of the Vocal Artists' Class has developed an unusual group known as the Unison Lieder Singers. Their function is to sing in unison the great art songs of master composers, to the accompaniment of two pianos. Through this medium, Prof. Fisher hopes to develop in McPherson College students a deeper appreciation of these great compositions.

In Prof. Fisher's Church Music class the objective of each student was the creation of an original worship program. To the person who planned the most suitable program went the honor of presenting it in full in public. Miss Ellen Divine received this honor, and presented her program during Regional Conference.



CHOIR

Back Row: Margaret Fry (Guest Soloist), Albright, Kenberry, Esselbise, Nettleton, Zook, Barley, Proz, D. Frantz, Nevin W. Fisher (Director), Winzand, Pierce, H. Mohler, Wagener, McGonigle, Rogers, Yowler, Brower, Ullery (Accompanist).

Front Row: Hogan, Hoffman, Kimmell, B. Frantz, Sulziman, Eggecomb, Shank, Hands, Hubbard, Heckman, Gnaug, Campbell, Baile, E. Mohler, Dell, Fries.

Miss Jessie Brown and Miss Fern Lingenfelter, instructors of piano, were fortunate in being privileged to attend master classes under such great pianists as Dalies Frantz and Ian Mininberg. The work of their departments was characterized by a great amount of activity.

A larger number of persons than ever before took advantage of the opportunities afforded by the Co-operative Concert Series. Nine programs were presented at McPherson and at Newton. The artists engaged for the concerts were Joseph Bentonelli, tenor; Panvini and Mayo, operatic duo; Santo di Primo, dramatic tenor; Dalies Frantz, pianist; Malcolm and Golden,

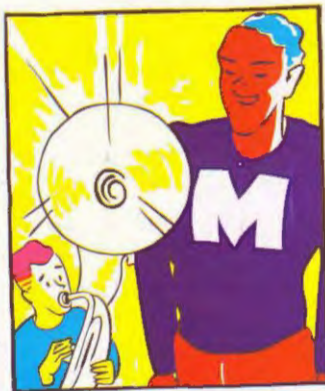
piano duo; Gitana, Spanish dancer with violin accompaniment; Dilling and Hubert, harp and cello duo; Rose Bampton, soprano; and the Russian Imperial Singers in costume. Next season's series promises to be fully as interesting as was that of the past season.

In light of this year's increased achievement, and in anticipation of next year's even greater accomplishment in the field of music, the music faculty is planning an assembly room for performances by students. With the materialization of such an objective, the music department of McPherson College will have added another to its ever-increasing collection of laurels.

LADIES' QUARTETTE



Shank, Hoffman, Baile, Campbell



• •
A bunch who work hard
To carry the torch
In keeping McPherson ahead.

In battle or symphony
On stage or a'field
You'll find our men and co-eds.

They're up and doing,
Bringing Honor and Glory
Contributing to MC's history and
story.

ATHLETICS
MUSIC
DRAMATICS



Organizations

STUDENT COUNCIL

In any democratic system of government there must be intelligent representatives if the government is to succeed. With this assumption in mind one would expect to find a highly successful governing body at McPherson College. That this is the case reflects the wisdom behind that body.

The Student Council of McPherson College has for many years, been the connecting tie between the student body and the administration which has assured the students that their wishes be given some voice. This year as in previous ones, the Council has sought to find ways to improve their service to the students and to the school. Many problems of finance have been dealt with and by careful budgeting of funds it has been able to bring such outstanding speakers to McPherson as Professor Harding, who has won world acclaim by his illustrated lectures on astronomy.

In order to make the task of publishing the Quadrangle and the Spectator less hazardous the Council has reorganized the system of their publication. It is the aim of this group to bring a better book and paper to the students by providing them with competent sponsorship which will help to avoid costly mistakes due to lack of experience. Other fields of endeavor which have been brought into scrutiny are management of the tennis teams, sponsorship of which has been turned over to the athletic board, and the provision for student janitors has changed to a more unified system.

Thompson (Treasurer), Bentz (Pres.)
Wagoner, M. Flory
Ronald Flory, A. Heckman
Sathoff, High
Raymond Flory, Frantz
Naylor, Krueger





Back Row: Lucille Illery, Asta Ostlund, Frances Campbell, Ellen Divine.
 Front Row: Miss Shockley (Sponsor), Marjorie Flory, Vera Heckman, Rosalie Fields,
 Lucille Cole.

WOMEN'S COUNCIL

The Women's Council is an organization where the problems of the college girls may be discussed by representatives from each group of girls on the campus. These members are elected by the women of the school. There are representatives from Arnold Hall, Kline Hall, McPherson girls who live in town and go to school, and those who room outside the dormitories.

In the fall an evening each week, Freshmen girls' meetings are held. Outside speakers are obtained and suggestions for orientation to campus life and to society in general are given. Also, beauty hints as to care of hair, skin and clothes are offered.

A tea is given for all girls at the beginning of the year which facilitates a better acquaintanceship among the new girls and those who have been here previously.

The largest project of the year was the formal dinner. Miss Atkinson and Miss Rankin prepared us for the dinner by talks on table etiquette, and the social graces dealing with a strictly formal occasion. A butler announced the guests, eleven waiters, the hostess and the guests of honor all added to its dignity.

The group consists of: Vera Heckman, president; Rosalie Fields, Ellen Divine, Lucille Cole, Gladys Shank, Frances Campbell, Gertrude Myers, Asta Ostlund, Marjorie Flory, and Glee Goughnour, with Miss Shockley as adviser.

STUDENT CHRISTIAN MOVEMENT

The S. C. M., as it is known on the campus, is a religious organization which places high value upon personality and much of its activities are directed toward the development of greater personalities.

The S. C. M. is organized into commissions which study various problems as they relate themselves to the lives of the students. The names of these commissions indicate as well as it can be done in brief, their nature. The names are: Personal and Family Relations; Reinterpretation of Religion; World Cooperation; Creative Leisure; and Rural Life.

Besides the work of the commission, the S. C. M. makes many contributions to other phases of campus life. At the beginning of school it provides for introduction of new students through the "Get Acquainted Party" and the watermelon feed. Later in the year other social events are sponsored such as the "Date" Party, the Box Supper and the All School Sing.

One of the greatest contributions which the S. C. M. makes is to bring to the campus through the year, outstanding personalities—people who have something worth while to leave with the students.

Left Row — Toland (Co-Pres.), Divine, Thompson, Stram, Harner, A. Heckman.

Middle Row—Ullrey (Co-Pres.), Boyer, Hogan, Davis, Goughnour, Baile, Brower.

Right Row—Hoover, V. Heckman, Brubaker, Fields, Naylor, Mohler.



WORLD SERVICE

The World Service Group is an organization of those who are seeking to find and follow the highest motives of life. Its purpose is to unite those who are interested in Christian service into a vital working body.

The World Service Group meets each week. At this time inspirational talks are given by outside leaders, by members of the faculty, or by qualified students. Panel discussions are held and open forums give an opportunity for all members to participate.

During the past year an active program concerning the work of the church has been presented. Subjects such as church music, recreational activities, the member's place in the church, intermediate activities, and the place of worship and personal devotions in the Christian's life, were discussed.

The group officers of the past year were as follows: President, Lamar Bollinger; vice president, Avis Heckman; secretary, Genevieve Sandy; treasurer, Ira Milton Hoover.

In March the officers for the coming year were elected. They are: President, Dwight Horner; vice president, Delbert Barley; secretary, Mary Elizabeth Hoover; treasurer, Bruce Wood.

The project to be carried out this coming year is the partial support of a missionary on the foreign field. The group also intends to carry on correspondence with the students of a mission school. The coming year is eagerly anticipated.

Meetings of the World Service Cabiner are held weekly. In these meetings plans are made in the interest of the organization.

There is welcome for everyone who intends to live an active Christian life of service, following the highest that life can offer.

"Holy Spirit, Truth Divine,
Dawn upon this soul of mine;
Word of God, and inward Light,
Wake my spirit, clear my sight.
"Holy Spirit, Love Divine,
Glow within this heart of mine;
Kindle every high desire;
Perish self in Thy pure fire!"

INTER— NATIONAL RELATIONS

The International Relations Club, under the leadership of Marjorie Flory, president; Theresa Strohm, secretary; and Dr. J. D. Bright, faculty sponsor, has done more to stimulate interest in international affairs than any other organization on the campus this year.

The purpose of this club is to stimulate intelligent discussion on topics of world interest, and this year, with its Sino-Japanese War, its conflict in Spain, and the seizing of Austria by Germany, has furnished material for many heated discussions. In all of the discussions an attempt was made to reach a solution to the problem which would be compatible with the ideal of world peace.

This organization is under the auspices of the Carnegie Endowment for International Peace, which makes available for its members twelve books each year on current international topics, as well as the Fortnightly Summary of International Affairs.

The club meets every two weeks and its membership is open to any who are interested in attempting to work out adequate solutions to the problems which confront the world of today.

We had on our campus this year Don Smucker of Berhel College, executive secretary of the Kansas Institute of International Relations, who spoke on the war system. Also, some of the members of the club had the privilege of hearing Kirby Page at Lindsborg speak on the European situation, and T. Z. Koo at Newton speak on the Far Eastern situation. The inspiration brought by these three speakers resulted in the sending of letters and telegrams to various Senators and Representatives protesting the trends in Congress which are leading the United States toward war.

We will not fight!
We once were cowards; we could not resist
The lies of statesmen, cries of "Pacifist!"
But now we know that war is waged for gold—
And for men's profit shall our lives be sold?
We will not fight.

We will not fight!
You may imprison us in walls of stone—
Our souls, our consciences, are still our own.
We are not heroes, only sober men,
Who vow that war must never be again.
We will not fight.

—Thomas Curtis Clark



CHEMISTRY CLUB

One of the many fine things which Dr. Hershey has done for the students of McPherson College has been to organize and sponsor a club for those students who are interested in the field of Chemistry. This club meets regularly once each month to hear reports or to review important discoveries in the scientific world. Occasionally the program is varied to include motion pictures on scientific subjects which are of interest to many people beside the club members. Dr. Hershey has been very considerate of these outsiders and has always welcomed them.

Among the most interesting meetings which the club held was the one when Dr. Hershey gave his illustrated lecture on the subject of artificial diamonds. Dr. Hershey has probably done more than any other man in the world in this field. In more recent years the Doctor has been experimenting with the effects of rare gases upon animal life and the results which have proven very interesting make the club a good place to visit as the work is often discussed there. The Chemistry Club attracts many former students who come to keep in contact with the progress made in the scientific world.

Not all the business of the club is academic however for once each year Dr. Hershey invites the members of the club to be his guests at a party. These parties are always gala affairs at which the Doctor proves himself to be quite as able as an entertainer as he is as a chemist.

The club is open to all students who have taken chemistry at McPherson College. There are no dues and the club is conducted solely at the expense of the Doctor. The officers of the club, with the exception of Dr. Hershey, who is permanent president, are elected from the members of the club at the first meeting held after school starts in the fall. The officers this year are Edward Jones, Asta Ostlund, Lew Lloyd and Norman Edwards.



J. WILLARD HERSHEY

"The Spectator" as the official school paper had a definite place in campus life during the school year 1937-1938. Its purpose was to voice the opinions of the students and to keep all informed of events and activities of greatest interest.

Harold Larsen, who succeeded himself as editor-in-chief, reorganized the staff and in all his efforts did much to make the publication worthwhile. Russell Kingsley worked with Larsen, serving as a capable business manager. Rilla Hubbard was feature editor for the second time. Her feature articles and those of other contributors added much to the enjoyment of the paper. Raymond Coppedge, sports editor, kept fans accurately informed of both intra-mural and intercollegiate events and important developments in the conference. Herbert Michael followed in the footsteps of his brother, Vernon, as circulation manager.

THE SPECTATOR

"College Daze," containing the wit and philosophy of John Bower, was eagerly looked forward to each week. Glee Goughnour's "Campus Chatter" added a spicy note to incidents of interest. A new feature of the paper was the sketching of interesting events and practices in other colleges, under the heading of "Campus Camera." These sketches were obtained through the Associated Collegiate Press, of which the Spectator is a member. Students were kept informed about the new books in the library through "McPherson College Book Shelf," a new feature.

A large group of regular contributors to "The Spectator" helped to make this year a successful one.

Top Row—Larsen (Editor), Richards, Michael, Hagan, Kingsley (Business Mgr.)
Bottom Row—Coppedge, Larsen, Kingsley, Hubbard.



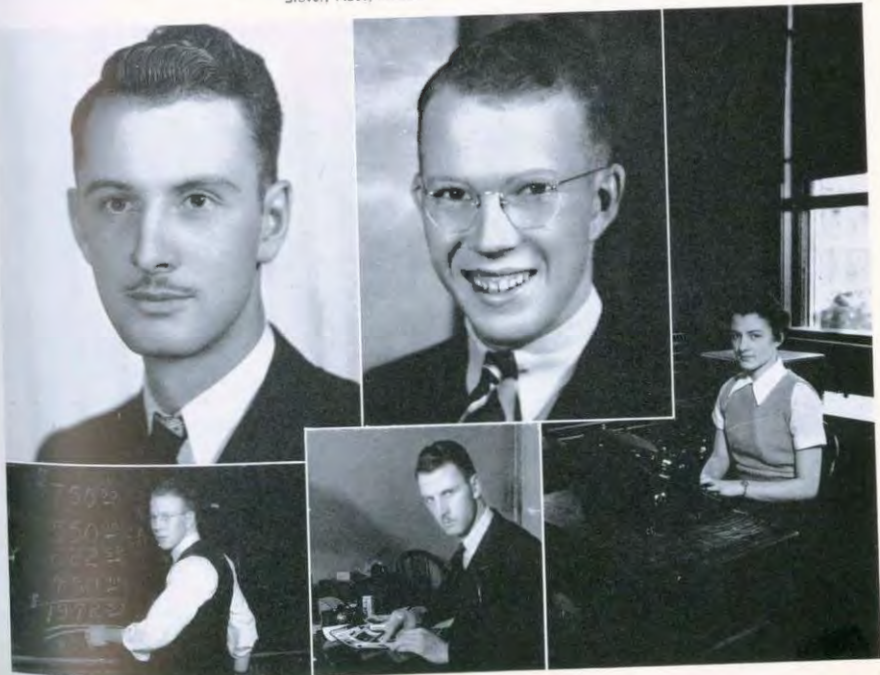
The publication of a year book is a task which demands many hours of patient toil on the part of the official staff and all those who help to bring it about. To these latter people whose only reward has been the knowledge that their work has been well done must go the real praise for whatever success this book achieves.

It is the purpose of a year book to bring, in as graphic a form as possible, the story of what goes on within the mythical four walls of college. If this story is to be meaningful and truly representative it must of necessity touch on all those factors which go to make up that complex existence which is college. It is the task of the staff to clothe that purpose with a form which will be truly expressive and at the same time within the bounds of reasonable cost to the students.

To perform this task well is the responsibility which rests upon the Editor and Business Manager of the Quadrangle. We have sought earnestly to carry out our part in this undertaking. Stephen Stover, with the competent assistance of Gordon Bowers, has turned in ample proof that his part has been well done. These fellows have worked long and faithfully to provide the funds necessary to make this publication possible. Where these funds were not forthcoming, they have helped to curtail expenses and in general to co-operate with the editor in every way possible. Especial thanks are due to Gladys Shank, Raymond Coppelge, Dave McGill, and Mark Porter, who have contributed in countless ways to the production of this book.

Nace (Editor), Stover (Business Mgr.)
Stover, Nace, Shank

THE QUAD- RANGLE





• •

Get two together and they'll form
a club.

Drag in some others and have a
hub-bub.

The human contact
Accounts for so much---

Well, what good does it do after
all.

Our ideals and objectives and am-
bitions and such

Art oft in a heap at our feet.

So we gather them up
With a shout and a sweep

And pledge the next 50 years
will be hard to beat.

STUDENT ORGANIZATIONS



-- and *Candid Shots*

Behind The Scenes





Bottom—College Humor? He Started Something, Our Future Hope?, "Ten Pretty Girls", Read the Sign, We'll Really!, Football Trip, Freshman-Sophomore Football Teams, Katy.

Top—Boys will be Boys, Domesticated, Snow Storm, Good Samaritan, Must Be Paced, Double Exposure, Deputation.

Sam—Say, Mose, what am you all doin' now?

Mose—I'se an exporter.

Sam—An exporter?

Mose—Yep, the Pullman Company dey done fire me.

When father was in school it was the three "I"'s: readin, writin, and rithmetic, but with son it is the three "I"'s: Lux, Listerine, and Lifebuoy.

Leland "Red" Miller

SERVICE STATION

Mobil Products

Phone 1675

720 N. Main

Bill Thompson says that the nation only comes to its census every ten years.

Prof. Dell—Do you take many magazines at your house?

Dr. Bright—Three at a club rate. We get one that I don't want, one my wife doesn't want and one neither of us wants all for \$7.50.

If honesty is the best policy, why not be ready to pay the premium on the policy today?

Once an Indian watched a man and his son saw wood with a cross-cut saw, then walked over and knocked the man down and gave the saw to the boy and exclaimed, "now, takem and run, him soon wake up".

Congratulations, McPherson College

from the Builders of your New Gymnasium

Frank E. Blaser Construction Co.

Wichita, Kansas

THE LISCHESKY DRY GOODS CO.

Printzess Coats and Suits

Classy Jean Dresses

La Grace Wash Frocks

Larkwood Silk Hosiery

And Other Nationally Advertised Merchandise

SILVER SPRINGS CREAMERY

Visit Our Cone Shop

ICE CREAM FOR ALL OCCASIONS

Phone 758

113 E. Euclid

Pete's Candy Kitchen

Students are Always
Welcome.

"HUMFELD'S FLOWERS"

Our Flowers and Service
are Unexcelled

Meet and Eat
of the
LITTLE KASTLE
LUNCH

Club Breakfasts, Lunches, Steaks

Hamburgers _____ 5c & 10c
Cones _____ 5c
Little Kastle Steak with French
Fried Potatoes and Salad _____ 25c

Compliments

of a

Friend

IT PAYS TO LOOK WELL

The Hawley Barber & Beauty Shop

Phone No. 499

Hotel Hawley

J. C. PENNEY CO., Inc.

•
Where Your Dollars Go Farthest

"The Home of Values"

YOUR PATRONAGE GREATLY APPRECIATED

FLORSHEIM

FREEMAN

**If it's good shoes and hosiery you want,
we have them**

Sweeney's

RED CROSS

PEACOCK

FRED D. COOK

Oldsmobile Dealer

The Home of Good Used Cars

Phone 363 205 S. Main

DOUGLAS M. HALE

Typewriters

Phone 310



Headquarters for
WALLPAPER
and
Acme Paints

C. B. Bowker

Telephone 205 107 S. Main

DON HUFF

*Women's Wear
and
Accessories*

AT POPULAR PRICES

Drug
Store No. 1
213 N. Main
Phone 218

ENGBORG'S

Store No. 2
1009 S. Main
Phone 418

Drugs — Fountain — Magazines

LAKE SUPERIOR LUMBER CO.

GEO. H. GOODHOLM, Manager

LUMBER, HARDWARE, PAINT, COAL

Telephone 40

301 North Maple

McPherson, Kansas

College Days Bring Pleasant Memories

and Remind you of McPherson, Home of

Farmers Alliance Insurance Company

KANSAS' LARGEST AND STRONGEST

Fire - Lightning - Tornado Insurance

For
Fresh Candy,
Gum,
and Peanuts,
Visit
Our Candy Dept.

Duckwall's

"QUALITY, SERVICE AND PRICE"

Supply Your
Needs in
Face Powders,
Creams,
Soaps,
Handkerchiefs,
and Hose

PETERSON HARDWARE CO.

GENERAL HARDWARE AND SPORTING GOODS

Phone 191

McPHERSON

219 N. Main

The Home Of

GOOD WATCHES AND PERFECT DIAMONDS

Bixby, Lindsay & Co.

MEET YOUR FRIENDS AT THE

PURITAN

Cafe

AND FOUNTAIN

Fine Food Well Prepared

Popular Prices

Peoples State Bank

McPherson, Kansas

We congratulate McPherson College
upon its continued progress
and

The New Physical Education and Health Building

City Progress

depends on the

Daily Newspaper

Enlightenment and Enthusiasm
makes things grow for city and
business man as well. Sane and
persistent publicity spells PRO-
GRESS and PROFIT.

Daily Republican

Phones 64 and 98

W. J. Krehbiel

(Printers of the Quadrangle)

5c W. C. Simmons \$1.00
to **BEN FRANKLIN STORE** and
10c McPHERSON, KANSAS up

W. A. Crary Hardware

Refrigerators :: Stoves :: Radios
Maytag Washers

Sally Ann Bakery

Makers of

GOLDEN KRUST BREAD

Phone 341 114 E. Euclid

BILL LOUSIGNONT, Prop.

McPherson Meat Market

Leading Dealers in
Fresh and Cured Meats

In McPherson Since 1919

Oliver & Nelson, Props.

Phone 107 & 108 104 North Main

OKERLIND-ASPEGREN

The Clothes Cleaners

SEE OUR COLLEGE AGENT

McPherson, Kansas

Phone 320

THE HOME STATE BANK

McPherson, Kansas

SAFE, CONSERVATIVE, PROGRESSIVE

Deposits of \$5,000 and under insured by The Federal Deposit Insurance Corporation

Kodak - - - As You Go

Eastman Agency

at

HUBBELL'S DRUG STORE

Lindbloom's

For "Good Things" to Eat

Where the Best Costs No More

Phone 183-184
Steak Shop 192

HOUGHTON'S

Golden Toast Bread

Fancy Pastries

Phone 137 108 S. Main

GOTHAM
GOLD STRIPE
STYLE
579



**A Beautiful
SERVICE
Stocking**

- The name Gotham Gold Stripe assures you the maximum of hosiery satisfaction.

\$1.00

Morris & Son

Clothiers

We Congratulate You, M. C.

on marking with
A NEW PHYSICAL EDUCATION PLANT
The Beginning of Another
Fifty Years
of Splendid Progress.

KEEP UP THE GOOD WORK!

McPherson & Citizens State Bank

Capital & Surplus \$150,000.00

McPHERSON, KANSAS

E. L. (Pete) Wolf

Plumbing, Heating
Air Conditioning and Cooling
Electrical Appliances

Phone 226 219 S. Main

The
10c MAC 15c
THEATRE

We Appreciate the Patronage
from the College.

UPSHAW Furniture and Undertaking Co.

Since 1897
Phone 197

Whether in School or in Business
it Pays to Look Well Dressed

Let Us Help You

De-Luxe Cleaners

Phone 486

Bulldogs, You're Tops

—so are our products



Firestone Tires

Heavy Duty Wrecker

JOE HEASTON MOTOR CO.

24-HOUR AUTHORIZED SALES AND SERVICE

Telephone 234

McPherson, Kansas

319-23 North Main

McCULLOCH-KEETH



Quadrangle
Photographer



109½ N. Main

Telephone 89

NEWS STAND

Subscriptions Taken for all
Publications

CENTRAL PRINTING COMPANY

Quality Job Printing

EARL V. RANNELLS, Prop.

Phone 298

108 W. Kansas

J. A. Cassler
A. W. Bremyer
C. P. Miller



Peter Aurell
R. B. Sickler
J. T. Gibson
C. H. Ash

PIONEER SAVINGS & LOAN ASS'N

Home Office, McPherson, Kansas



McPherson Since 1884

Fathers and Grandfathers of today's McPherson College students bought their fine clothes here.

Graduates and underclassmen still recognize this as the best store for men.

IF IT'S AT THE RITZ - IT'S THE BEST SHOW IN TOWN

Week Days
Continous
From 1 P. M.

•
Sundays
1 P. M. 'til
5 P. M.
and at 9 P. M.



Owl Shows—
Sundays
Mondays
Tuesdays

Wednesdays
Thursdays
Fridays

15c
Saturdays
Until
9:30 P. M.

"The Home of Metro and Paramount Pictures"

THE RITZ MANAGEMENT AND STAFF APPRECIATES THE
SPLENDID PATRONAGE FROM THIS COLLEGE AND YOU'LL
FIND US READY AND WILLING TO CO-OPERATE AT ALL
TIMES.

JACK JOHNSTON, Owner

"CHEVROLET"

Passenger Cars and Trucks

Guaranteed Used Cars

Body, Fender and Wreck Work

All Work Guaranteed



Boosting
McPherson College



COOK

PAINT & VARNISH CO.

Phone 161

212 North Main

G. O. Swanson Electrical Service

Genuine Parts for

**Magnetos, Starting and
Lighting Systems**

McPHERSON, KANSAS

Phone 187

310 N. Maple

Corsage and Presentation Flowers

Artistically arranged as
you would like them
We deliver when and as
you wish

Maud's Flower Shop

Phone 620

FOR GOODNESS SAKE



Use

"W-R"

FLOUR

MADE BY

THE WALL-ROGALSKY MILLING CO.

We Appreciate

your patronage and will try to merit your continued good will by giving you Better Merchandise, Better Service and More for your Money every day in the year.

C.R. Anthony Co

IT PAYS TO PAY CASH

CARLSON PLUMBING COMPANY

Plumbing — Heating — Gas
Appliances and Installations

Stewart-Warner Refrigerators

Bus. 14

Phones

Res. 26

Hastriter's Grocery

Quality Merchandise

and

Square Dealing

makes our store so popular

Phone 4

116 E. Euclid

ADEQUATE RELIABLE LOW COST POWER AND WATER

The city of McPherson owns and operates a modern high-pressure, high-temperature electric generating station with steam turbine-generators for prime movers. The electric utility furnishes current to the citizens and industries of McPherson, to the surrounding rural trade territory and other cities.

McPherson is most fortunate in being located above the most prolific and abundant source of cool palatable water of medium hardness in the entire state.

Industrial Power Rates

(Based on Monthly Consumption)

First 50,000 kwh @	1c per kwh
Next 50,000 kwh @	9 mills per kwh
Next 50,000 kwh @	8 mills per kwh
Next 50,000 kwh @	7 mills per kwh
Next 50,000 kwh @	6 mills per kwh
Excess @	5 mills per kwh

Generous discounts from the above rates are provided for the installation of power factor corrective equipment.

Water Rates

(Based on Monthly Consumption)

First 5,000 gals. @	25c per 1,000 gals.
Next 10,000 gals. @	20c per 1,000 gals.
Next 10,000 gals. @	15c per 1,000 gals.
Next 25,000 gals. @	10c per 1,000 gals.
Excess gallons @	8c per 1,000 gals.

Industries find it convenient and profitable to be located in a city like McPherson which never has a water shortage problem.

WATER & ELECTRIC DEPARTMENT

Operating The Water And Electric Utilities

McPHERSON, KANSAS

Your Book

... receives
the "stamp of approval"
when intelligently handled
and conscientiously served
by the Mid-Continent
Engraving Company, Wichita

Alliance Agency



Farmers Alliance Building

(Ground Floor)

Phone 106

McPherson, Kansas

ALMEN-LOVETT DRUG CO.

DRUGS — COSMETICS

SODA FOUNTAIN

207 N. Main

Phone 19

You Get the
Good Things First

in

CHRYSLER & PLYMOUTH

SALES & SERVICE

Goss Motor Co.

210 S. Main

Phone 567

NEW

Hotel Hawley

Fire-Proof

Roof Garden

Air Conditioned Coffee Shop

Congratulations and Best Wishes
to the Class of
1938



FROM

McPherson's Department Store

The BROWN-McDONALD CO.

Successors to B-K Co. Golden Rule

Affiliate With One Of The Major Political Parties!

OUR Party has always been the progressive party, and, as such, offers to young people with ambition, vision, and high ideals, wonderful possibilities for service to your state and nation.

Democratic State Central Committee



**Santa Fe
Trailways**

Presents
THE WORLD'S FIRST

AIR-CONDITIONED BUS FLEET

Over the Old Santa Fe Trail