

The  
1937

Madras  
1881-1937

McPherson College Library  
McPherson, Kansas

14009

B

378-19

M1722

1937

McPHERSON COLLEGE LIBRARY



QUADRANGLE

PUBLISHED BY THE STUDENT  
COUNCIL OF McPHERSON COLLEGE  
McPHERSON, KANSAS



# Dedication

To the Youth of Today and To-Morrow, who Play a Big Part in Home, Church, War, Sports, Labor, State, School, and Peace and who have the Privilege of Sharing in the Heritage of The Past, This, The Nineteen Thirty-Seven QUADRANGLE is Gratefully and Sincerely Dedicated.

McPHERSON COLLEGE LIBRARY

The  
Heritage  
of the  
PAST





## West of

THE MISSISSIPPI, a dream became reality when McPherson College was founded. For years the need for a western church college had been recognized and finally, due to the ambitions and labor of such pioneers as S. Z. Sharp, Bishop H. B. Brumbaugh, and others, the work was started in the year 1883. Many problems arose which complicated the progress of the project--among these most important was the difficulty of selecting a site with many communities bidding for the honor.

But the pioneer spirit of our forefathers was not so easily downed. McPherson was finally selected as the site, and "McPherson College and Industrial Institute" opened its doors for the first time on September 5, 1888. Of the

seventy students enrolled the first year, many later became names prominent in the church.

One milestone was passed on February 12, 1889, when the name "McPherson College" was definitely adopted. The first building to be completed was the now aged Fahnestock Hall, with Sharp Hall being completed ten years later.

Built upon a basis of sincere religious devotion and exacting discipline, the college prospered through the years. New buildings were added from time to time; enrollment increased, and the college rose in prominence in the state. Now, at the threshold of its Fiftieth Anniversary, it stands as a respected, time-honored institution, with a glorious tradition for which it can always be proud.

A true Christian pioneer, and a man who has played a big part in the history of McPherson College is S. B. Fahnestock. He was first associated with this institution in 1889, first as a teacher, and later as business manager. Prof. Fahnestock, in whose memory the first building on the campus was named, gave twenty-two years of his life in building a Christian college.





S. Z. SHARP  
1888-1896

# Men of McPherson College



C. E. ARNOLD  
1896-1902

EDWARD FRANTZ  
1902-1910

S. J. MILLER  
1910-1911

J. A. CLEMENT  
1911-1913

H. J. HARNLY  
1913-1914

Institutions must have leaders and the birth of those institutions is dependent upon farsighted and courageous men. McPherson College today shows the work of such leaders. In the dawn of her history the effort and foresight of S. Z. Sharp gave McPherson College the reality of life. After the resignation of President Sharp, he was followed by a line of able Christian Educators, such as C. E. Arnold, Edward Frantz, S. J. Miller, J. A. Clement, H. J. Harnly and D. W. Kurtz. Some of the present prominent men who

take an active part in the college in one way or the other are: E. A. Wall; Dale Strickler; J. J. Yoder; F. A. Vaniman, and a host of others.

McPherson College, from the time it was founded to the present day has devoted its energies to a definite program of scholarship and character building. The ideals and purposes for which they struggled were lofty and enduring and are the reasons for our continuance today.



D. W. KURTZ One of the most influential Christian educators of today is Dr. Kurtz, who for the past ten years has been president of Bethany Biblical Seminary at Chicago, and who has served the leadership of McPherson College as its president longer than any other man. This, the fiftieth anniversary, Dr. Kurtz returns and delivers the commencement address.

One of the most prominent men of the college is J. J. Yoder, who has been associated with this institution for the past twenty-six years. As treasurer of the college his experiences and knowledge in the field of finance have been valuable. He has made several trips around the world and holds several honorable offices as a Christian educator. Truly, J. J. Yoder is a valuable asset to the college.







COLLEGE HILL IN ITS INFANCY  
McPherson College in 1891  
View looking southwest from the Ad. Building  
Euclid Street as seen from the College

In the days when the college buildings had not echoed the voices of a thousand students at work and play, when the campus ground had not borne the foot-prints of trysting lovers of all college generations, when the Quadrangle of the campus did not have its seven buildings then the campus and all of college hill was bare, the wide endless expanse of a virgin prairie land. Those students did not enjoy in summer, the shade of grown trees, the scent of blooming flowers and shrubs, and the vast panorama of a bustling city; nor in winter the comforts of steam heated buildings, each a part of a fine college and city.

To the  
Golden Present—





VERNON FRANKLIN SCHWALM  
A. B., A. M., PH. D.  
*President of the College*

In all seriousness, McPherson College is a great school, for it has proved this in establishing itself as "The School of Quality" in the midwest. Dr. Vernon F. Schwalm has lived and spoken this testimony for the ten years he has been president. A sense of his versatility can be felt only by those who have seen the dignity of his meetings with the truly great men of contemporary America, and his complete ease with the most naive student on the campus. The glory of this is that he has never been too busy with the administrative affairs of the college to devote his time to those intimate contacts of teacher and student that have always resulted in those students gaining a new and more vital grip on life.

## A NEW CHAPTER

The past fifty years of educational development has been characterized by vast educational expansion through centralization of state control and great extension of educational facilities.

The time people can spend in educational acquisition has been greatly prolonged since facilities are now available whereby nursery schools will enroll children as young as eighteen months and the adult education programs are available for persons quite old.

With the increased span of acquisition, the curriculum offering has been constantly revised to better meet the needs of the child and of life. The curriculum has been continually enriched so that it is possible to secure nearly all kinds of classroom experiences. Students are no longer faced with rigid requirements which dominate their entire program, however requirements for graduation have risen. The extra curriculum program offers much in the way of worthwhile experiences.

The social motive now dominant in education puts a new emphasis upon the curriculum. The reforms in educational organization and methods and the reconstruction of educational theory insists that each child receives a training commensurate with his native abilities and capacities.

This has increased the provision for the education of the crippled, the blind and the feeble-minded child. Education has likewise made greater provision for the superior student and the pre-school child. More recently adult education is coming in for greater recognition and provision.

Emphasis has been given to personality development, to vocational and educational guidance so that students can better analyze and develop themselves and their opportunities. Individual differences are recognized and the pupils are treated accordingly so that misfits are less common.

The use of scientific methods in education has done much to evaluate the efficiency of the school in terms of the needs of the pupil and the community.

The results of these studies have prompted educational leaders to revise curriculums, to build new buildings, to provide for health facilities, so that the students learn how to live in a democratic society; and better still to help form such a society.



DEAN J. DANIEL BRIGHT, A. B., A. M., Ph. D.  
*Dean of the College*

DEAN J. M. SMITH, A. B., A. M., Ph. D.  
*Dean of Women*

DEAN ROBERT E. MOHLER, A. B., M. S.  
*Dean of Men*

## FACULTY



RAY C. PETRY, B. A., M. A., PH. D.  
*Professor of Philosophy and Religion*

JOHN W. BOHNOTT, B. A., M. A., PH. D.  
*Professor of Education*



J. WILLARD HERSHEY, B. S., M. S., PH. D.  
*Professor of Chemistry*

CLAUDE REHERD FLORY, B. S., M. A., PH. D.  
*Professor of English*



EARL R. BOHLING, B. A., M. A.  
*Professor of Commerce*

LILLIAN WARNER, B. S.  
*Instructor of Physical Education*



S. MILTON DELL, B. S., M. S.  
*Associate Professor of Industrial Education*

CORRINE BOWERS, B. A.  
*Registrar and Instructor in Stenography*

## FACULTY

ALICE GILL, B. A., M. A.  
*Assistant Professor of Journalism and Typewriting,  
 Secretary to the President*

JOSEPH L. BOWMAN, B. A., M. S.  
*Professor of Mathematics and Physics*

JESSIE BROWN, B. M.  
*Professor of Piano*

FERN LINGENFELTER, B. A., B. M.  
*Assistant Professor of Public School Music*

LOREN B. CRAWFORD, B. A., B. M.  
*Instructor in Violin and Theory*

NEVIN W. FISHER, Graduate of the Peabody Conservatory of Music, Baltimore, Md.  
*Professor of Music*

DELLA LEHMAN, B. A., M. A.  
*Professor of English*

MARIAN SHEETS, B. A., M. A.  
*Professor of Modern Languages*



## FACULTY



MARGARET HECKETHORN, B. A.  
*Librarian*

LESTER SELVES, B. A.

*Instructor in Physical Education, Director of Athletics*



ESTHER ATKINSON, B. S.

*Assistant Professor in Home Economics*

CLARA COLLINE,

*Instructor in Art*



J. HOWARD FRIES, B. A.

*Business Manager*

MAURINE STUTZMAN, B. A.

*Assistant in Business Office*



C. E. DAVIS, B. S. L., B. A., M. A.  
*Field Representative*

REVEREND RAY E. ZOOK

*Pastor of College Church*

## CLASS OF '37

MYRTLE BARLEY, B. S., *Education*. McPherson, Kansas.  
Manchester College, Manchester, Indiana, 1; State Teachers  
College, Bemidji, Minnesota, 2, 3; Spectator 4.

EVERETT EUGENE BROWN, B. S., *Commerce*. Wichita, Kansas.

J. EMERSON CHISHOLM, B. S., *Industrial Arts*. Roxbury, Kansas.  
Chemistry Club 2; Orchestra 1, 2, 3, 4; Quadrangle Bus-  
iness Manager 4; Y.M.C.A. 1, 2; Pep Club 3, 4, President 4.

OTHO CALVIN CLARK, B. S., *Commerce*. Oklahoma City, Oklahoma.  
Band 1, 2, 4; Orchestra 4; Spectator 3; Thespian Club 1, 2,  
3, 4; Quadrangle 2, 3, 4, Editor 3, 4; International Club 2;  
Okla. City University S'35; Central State Teachers College,  
Edmond, Okla. S'36.

CHESTER RICHARD COLWELL, B. S., *Industrial Arts*. McPherson,  
Kansas.  
Football 1, 2, 3, 4; "M" Club 1, 2, 3, 4; Spectator 2;  
Y.M.C.A. 1, 2, 3, 4.

HELEN ADELINE EATON, B. S., *Home Economics*. Chicago, Illinois.  
Bethany Bible School, Chicago, Ill., 1, 2; Chemistry Club 3;  
World Service 3, 4; Y.W.C.A. 3, 4; A Cappella Choir 3, 4.

WILLARD JOHN FLAMING, B. A., *History*. Buhler, Kansas.  
Class Officer 2, 3; Debate 1, 2, 3, 4; International Club 2,  
3, 4; Oratory 1, 2, 3, 4; Student Council 3; Y. M. C. A. 1,  
2, 3, 4; Forensic Club 2, 3, 4.

ANNA KATHERINE FUCHS, B. A., *Music*. McPherson, Kansas.  
Orchestra 2, 3, 4; Y. W. C. A. 2, 3, 4.

ALVIN ALFRED GOERING, B. A., *Mathematics*. Elyria, Kansas.  
Bethel College, Newton, Kansas 1; Y.M.C.A. 2, 3, 4; Or-  
chestra 2, 3, 4; Band 4.

MARGARET MARIE HAHN, B. A., *Education*. Inman, Kansas.  
International Club 1, 2, 3, 4; Y. W. C. A. 1, 2, 3, 4; A Cappella  
Choir 1, 2, 3, 4; Pep Club 3, 4.





CLASS OF 1937



FLOYD OLIN HARRIS, B. S., *Music*. Swink, Colorado.

Band 1, 2, 4, Director 4; Deputation 2, 4; Orchestra 1, 2, 4; World Service 2; A Cappella Choir 1, 2, 4; Colorado State College of Education, Greeley, Colo. 3.



VIOLA MARY HARRIS, B. S., *Music*. Swink, Colorado.

Dramatics 1, 2, 3, 4; Thespian Club 3, 4; World Service 2; Y.W.C.A. 1, 2, 3, 4; A Cappella Choir 2, 3, 4; Ladies Trio 2; Band 4.

LEE MARQUIS HAUN, B. S., *Industrial Arts*. McPherson, Kansas.

Football 1, 2, 3, 4, Co-Captain 4; Basketball 1, 2, 3, 4; Track 1, 2, 3, 4; "M" Club 1, 2, 3, 4; Student Council 3; Chemistry Club 2.



WANDA NAOMI HOOVER, B. A., *English*. Plattsburg Missouri.

Chemistry Club 2; Deputation 1; Spectator 2; Student Council 3; World Service 1, 2, 3, 4; Y.W.C.A. 1, 2, 3, 4.

MIRIAM HORNER, B. S., *Home Economics*. Ft. Worth, Texas.

Central State Teachers College, Edmond, Okla. 1; Texas Wesleyan College, Ft. Worth 2, 3.



VAN WILLIAM HUNT, B. S., *Mathematics*. Batavia, Iowa.

Chemistry Club 1, 2, 3, 4; Spectator 1; World Service 1, 2, 4; Y.M.C.A. 1, 4; Forensic Club 2; Class Treasurer 4; International Club 4.



HAROLD SYLVESTER JOHNSTON, B. S., *Industrial Arts*. McPherson, Kansas.

Basketball 1, 2, 3, 4, Captain 3, 4; Class Officer 2; "M" Club 1, 2, 3, 4, President 3, 4; Quadrangle 3, 4; Student Council 2; Tennis 3, 4; Track 1; Y.M.C.A. 1, 2, 3, 4.

BERNICE KEEDY, B. S., *Home Economics*. Marshalltown, Iowa.

Y. W. C. A. 1, 2, 3, 4; A Cappella Choir 2, 3, 4; Ladies Trio 2; Thespian Club 4.

ESTHER MARIE KIMMEL, B. S., *Home Economics*. Sheldon, Iowa.

Chemistry Club 1, 2; W.A.A. 2, 4; World Service 1; Y.W.C.A. 1, 2, 4; Sheldon Junior College 3.

HOMER DAVID KIMMEL, B. A., *Industrial Arts*. Sheldon Iowa.

Chemistry Club 1; Dramatics 1, 2, 3, 4; "M" Club 2, 3, 4; Quadrangle 2, 3; Thespian Club 1, 2, 3, 4; Cheer Leader 2, 3; Pep Club 3, 4.

## CLASS OF 1937

ELMER E. LISS, B. S., *Biology*. Hunter, Kansas.

Hays State Teachers College, Hays, Kansas 1, 2, 3.

ELDON LEROY MANNING, B. S., *Commerce*. Peggs, Oklahoma.

Central Academy & College, McPherson, Kansas 1, 2.

MARGARET MESSAMER, B. A., *English*. Adel, Iowa.

Dramatics 3, 4; World Service 1, 4; Y.W.C.A. 1, 3, 4;  
Women's Council 3; Thespian Club 4; Women's Council 4;  
Class Vice President 4.

DAVID LELAND METZGER, B. A., *History*. Iowa, Louisiana.

Class Officer 2, 3, President 4; Chemistry Club 1, 2, 3, 4;  
International Club 3, 4; Spectator 2; Y.M.C.A. 1, 2, 3, 4.

VERNON DWIGHT MICHAEL, B. A., *Psychology*. McPherson Kansas.

Chemistry Club 1, 2; Spectator 2, 3, 4, Editor 3, Business  
Manager 4; Y.M.C.A. 1, 2, 3, 4.

JESSIE MADELYN MILLER, B. S., *Home Economics*. Canton, Kansas.

Chemistry Club 1, 2, 3, 4; Student Council 1; W.A.A. 1, 2, 3, 4;  
Y.W.C.A. 1; Cheer Leader 3; Pep Club 2, 3, 4; Emporia  
State Teachers College, Emporia, Kansas, S'36.

PAUL EUGENE MILLER, B. A., *Philosophy*. Waterloo, Iowa.

Iowa State Teachers College, Cedar Falls, Iowa, S'32; Iowa  
State College, Ames, Iowa 1; Class Officer 3; Deputation 2;  
"M" Club 3, 4; Oratory 2, 3, 4; Spectator 2; Tennis 3, 4;  
Track 2; World Service 2, 3, 4; Y.M.C.A. 2, 3, 4; A Cappella  
Choir 3, 4; Forensics Club 4; Student Council 4.

JUNE McNAMEE, B. S., *Commerce*. Burns Kansas.

El Dorado Junior College 1, 2; Spectator 3; W.A.A. 3, 4;  
Y.W.C.A. 3, 4; A Cappella Choir 3, 4; Dramatics 4.

BERNADINE VIRGILEE OHMART, B. M., *Music*. McPherson, Kansas.

W.A.A. 1, 2, 3, 4; Y. W. C. A. 1, 2, 3, 4; Bethany College,  
Lindsborg, Kansas, S'35.

PHYLLIS RUTH POWERS, B. S., *Chemistry*. McPherson, Kansas.

Chemistry Club 1, 2, 3, 4; Student Council 2; Y.W.C.A. 1,  
2, 3, 4; Women's Council 4.



CLASS OF 1937



CLAYTON RUSSELL ROCK, B. S., *Commerce*. Navarre, Kansas.  
Football 1, 2, 3, 4; "M" Club 2, 3, 4; Spectator 3; Student  
Council 3, 4, Treasurer 3, President 4.



EMMA ELLA SCHMIDT, B. A., *English*. Moundridge, Kansas  
Debate 1, 2; International Club 1, 2, 3, 4; Spectator 2;  
Y.W.C.A. 1, 2, 3, 4; Forensic Club 2, 3.



CLARA ELIZABETH SCHURMAN, B. A., *History*. McPherson, Kansas.  
International Club 1, 2, 3, 4; Y.W.C.A. 1, 2, 3, 4; Forensics  
Club 2.

PAULINE JULIA STUTZMAN, B. S., *Home Economics*. Thomas Okla.  
Student Council 3, 4; Y.W.C.A. 1, 2, 3, 4; Pep Club 3, 4;  
Class Secretary 4.



TOSHIRO TSUBOKAWA, B. A., *English*. Japan  
Meiji Gakwin, Shiba, Tokyo. Japan 1. Hope College, Holland,  
Michigan 2.

ELZORA ELIZABETH VAN DERSMARK, B. A., Hutchinson, Kansas.  
Hutchinson Junior College 1, 2; Y.W.C.A. 3, 4.



MIEF VASQUEZ, B. S., *Industrial Arts*. Kanapolis, Kansas.  
Football 1, 2, 3, 4; Co-Captain 4; "M" Club 1, 2, 3, 4;  
Spectator 2.

VELMA LEONA WATKINS, B. A., *English*. McPherson, Kansas.  
Class Officer 3; Dramatics 3, 4; Orchestra 1; Spectator 1,  
2, 3; Thespian Club 2, 3, 4; Y. W. C. A. 1, 2, 3, 4; A Cappella  
Choir 1, 2, 3; Pep Club 3, 4; Forensic Club 4; Inter-  
national Club 4.



KENNETH FRANKLIN WEAVER, B. A., *History*. Haxton, Colorado.  
Class Officer 3; Chemistry Club 1, 2, 3, 4; Debate 1, 2, 3, 4;  
Dramatics 3, 4; International Club 3, 4; Oratory 1, 2, 3, 4;  
Spectator 1, 2, 3, 4; Thespian Club 3, 4; Y.M.C.A. 1, 2, 3, 4;  
Forensics Club 2, 3, 4.

CARROL MARCHAND WHITCHER, B. S., *Commerce*. Falfurrias, Texas.  
World Service 1, 2; Y.M.C.A. 3; Chemistry Club 1.

## Class of '38

OLIVER ANDREWS, *Music*.  
Rocky Ford, Colorado.

DONALD BARNGRÖVER, *Industrial Arts*.  
McPherson, Kansas.

KENNETH BENTSON, *Chemistry*.  
McPherson, Kansas.

ERWIN BENTZ, *Industrial Arts*.  
Tampa, Kansas.

LAMAR BOLLINGER, *Commerce*.  
Payette, Idaho.  
Treasurer of the Class.

JOHN BOWER, *History*.  
McLouth, Kansas.

LAWRENCE BOYER, *Philosophy*.  
Hutchinson, Kansas.

LYLE BROWER, *Industrial Education*.  
South English, Iowa.

LOWELL BRUBAKER, *Industrial Arts*.  
Clifton, Colorado.

LUCILE COLE, *Literature*.  
Langdon, Kansas.

DELBERT CRABB, *Music*.  
McPherson, Kansas.

ELLEN DIVINE, *Education*.  
Garden City, Kansas.

NORMAN EDWARDS, *Chemistry*.  
McPherson, Kansas.

DALE EMBERS, *Chemistry*.  
Groveland, Kansas.

MARJORIE FLOYD, *History*.  
Rockford, Illinois.  
Vice President of the Class.



CLASS OF 1938



RONALD FLORY, *Commerce*,  
Rockford, Illinois.

LOIS GNAGY, *Chemistry*,  
Youngstown, Ohio.



GLEE GOUGHNOUR, *Education*,  
Des Moines, Iowa.  
Secretary of the Class.

AVIS HECKMAN, *History*,  
Polo, Illinois.

EVELYN HIGH, *Biology*,  
New Plymouth, Idaho.



HERBERT IKENBERRY, *Biology*,  
Quinter, Kansas.

ALBERTA KELLER, *History*,  
— Minneola, Kansas.

PAUL LACKIE, *History*,  
McPherson, Kansas.

ALVIN LINDGREN, *Commerce*,  
Canton, Kansas.



LEWELLEN LLOYD, *Chemistry*,  
Gaylord, Kansas.

ANTON MEYER, *Chemistry*,  
Tampa, Kansas.

LLOYD MOEHLMAN, *Biology*,  
McPherson, Kansas.



HAROLD MOHLER, *History*,  
Leeton, Missouri.

GLEN MCGONIGLE, *Biology*,  
Nickerson, Kansas.

FRED NACE, *Chemistry*,  
Dwight, Kansas.

CLASS OF 1938

KURTIS NAYLOR, *Biology.*  
Covert, Kansas.

CHARLES NETTLETON, *History.*  
Lewiston Minnesota.

MARK PORTER, *Biology.*  
Fredonia, Kansas.

LOLA RICHWINE, *Home Economics.*  
Froid, Montana.

LEONA SELLERS, *Home Economics.*  
Galva, Kansas.

RUTH SIEGEL, *Chemistry.*  
Beatrice, Nebraska.

EFFIE SNELL, *Biology.*  
Kinross, Iowa.

THERESA STROM, *English.*  
Worthington, Minnesota.

GEORGE TOLAND, *History.*  
St. John, Kansas.  
President of the Class.

LUCILE ULLREY, *Biology.*  
Sterling, Colorado.

CHARLES WAGONER, *Chemistry.*  
Hastings, Nebraska.

AILEEN WINE, *Education.*  
Rocky Ford, Colorado.

DANIEL ZOOK, *Music.*  
Larned, Kansas.



## Class of '39



Wayne Albright, Eldora, Iowa.



Alice Almstrom, McPherson, Kansas.



Delbert Barley, McPherson, Kansas.



Orville Beehler, Fruitland, Idaho.

Gordon Bower, McLouth, Kansas.

Willis Bredfeldt, Bushton, Kansas.  
Treasurer of the Class.



Orpha Burn, Hampton, Iowa.

Frances Campbell, Parsons, Kansas.

Esther Clark, McPherson, Kansas.



Yolanda Clark, Canton, Kansas.

Phillip Davis, McPherson, Kansas.

Evelyn Dell, Beatrice, Nebraska.



Richard DeTour, McPherson, Kansas.

Doris Dresher, McPherson, Kansas.

Harold Evans, Sheldon, Iowa.



Rosalie Fields, McPherson, Kansas.

Eldred Foutz, Minneapolis, Kansas.

Lillys Frantz, Holmesville, Nebraska.

CLASS OF 1939

Margaret Fry, Omaha, Nebraska.

Henry Gass, McPherson, Kansas.

Inez Goughnour, Des Moines, Iowa.

Merwin Hapgood, McPherson, Kansas.

Lola Mae Harbaugh, Waterloo, Iowa.

Virginia Harris, Jennings, Louisiana.

Vera Heckman, McPherson, Kansas.  
President of the Class.

Evelyn Herr, Hope, Kansas.

LaVena High, New Plymouth, Idaho.  
Secretary of the Class.

Opal Hoffman, Abilene, Kansas.

Ira Milton Hoover, Plattsburg, Missouri.

Richard Horn, McPherson, Kansas.

Don Houghton, McPherson, Kansas.

Rilla Hubbard, Hugoton, Kansas.

Edward Jones, Canton, Kansas.

Louise Keim, Ottawa, Kansas.

Vivian Keller, Arlington, Kansas.

Russell Kingsley, Windom, Kansas.





CLASS OF 1939



Lucile Kistner, Sabetha, Kansas.



Harold Larsen, Abilene, Kansas.

Joelle Letkeman, Buhler, Kansas.



Milton Morrison, Roxbury, Kansas.  
Vice President of the Class.

Gertrude Myers, Formosa, Kansas.

Philip Myers, Formosa, Kansas.



Asta Ostlind, McPherson, Kansas.

Wayne Oxley, Wiley Colorado.

Valera Pearce, Conway Springs, Kansas.



Doris Pray, Hope, Kansas.

Maxine Prickett, McPherson, Kansas.

Marion Ramage, Geneseo, Kansas.



Marvin Riddell, McPherson, Kansas.

Elizabeth Rodrick, McPherson, Kansas.

Meredith Rogers, Corning, Iowa.

Ruth Rogers, Corning, Iowa.

Addison Saathoff, Guthrie, Minnesota.

Martin Seidel, McPherson, Kansas.

CLASS OF 1939

John Selzer, McPherson, Kansas.

Charles Sheller, Eldora, Iowa.

Lenore Shirk, McPherson, Kansas.



Becky Ann Stauffer, Rocky Ford, Colorado.

Lawrence Stephenson, Gaylord, Kansas.

Wilber Stern, Franklyn Grove, Illinois.



William Thompson, McPherson, Kansas.

Mary Trostle, Nickerson, Kansas.

Edgar Vaughn, Florence, Kansas.



Lorene Voshell, McPherson, Kansas.

Ruby Weimer, St. Cloud, Minn.

Robert Wiegand, Inman, Kansas.



Charlotte Wolfe, Eldora, Iowa.

Gordon Yoder, Waterloo, Iowa.

Harold Zuhars, Peabody, Kansas.



## Class of '40



Loren Abuhl, Slater, Iowa.

Earl Adkins, Cabool, Missouri.

Harold Albin, Quinter, Kansas.

Ruby Beckner, Conway Springs, Kansas.



Marjorie Bowers, McPherson, Kansas.

Paul Bowman, Quinter, Kansas.

Howard Byer, Bemidji, Minn.

Billie Carter, Pratt, Kansas.



Ruth Clark, McPherson, Kansas.

Redell Cobb, Galva, Kansas.

Ruth Colwell, McPherson, Kansas.

Dale Coppock, Rocky Ford Colorado.



Hazel Crawford, McPherson, Kansas.

Elmer Dadisman, Nevada, Iowa.

Edwin Diehl, Beaver, Iowa.

Doris Doane, Canton, Kansas.



Eugene Eisenbise, McPherson, Kansas.

Franklin Eldridge, Payette, Idaho.

Opal Ellenberger, Wiley, Colorado.

Kathryn Enns, Fort Pierce, Florida.

CLASS OF 1940

Raymond Flory, Kinross, Iowa.  
 Anna Carrol Freeburg, McPherson Kan.  
 Rowena Frantz, Grundy Center, Iowa.  
 Julia Frick, Durham, Kansas.



Harold Fries, McPherson, Kansas.  
 Bill Fry, Omaha, Nebraska.  
 LeRoy Fry, Little River, Kansas.  
 Olga Garvey, Minot, North Dakota.



Marguerite Gass, McPherson, Kansas.  
 Pauline Grove, Kinross, Iowa.  
 Bob Hall, McPherson, Kansas.  
 Jonathan Hamersley, Nevada, Missouri.



Audrey Hammann, McPherson, Kansas.  
 Carrie Alice Hanson, Roxbury, Kansas.  
 Dwight Horner, Fort Worth, Texas.  
 Donald Horst, Peabody, Kansas.



Fred Horton, Wellington, Kansas.  
 Edith Hughey, Bartlesville, Oklahoma.  
 Edith Jasper, Elkhart Iowa.  
 Margaret Kagarice, Hutchinson, Kansas.



CLASS OF 1940



Irvin Keck, Summerfield, Kansas.

Vivian Keller, Geneseo, Kansas.

Marjorie Kinzie, Lyons, Kansas.  
Secretary of the Class.

Floy Luckey, Payette, Idaho.

Earl Mathiot, Peabody, Kansas.

Florence Meyer, Lost Springs, Kansas.

Dohn Miller, Osborne, Kansas.

Elma Minnick, Hardin, Missouri.

Max Morse, Galva, Kansas.

David McGill, Soddy, Tenn.

Charlotte Nance, Reserve, Kansas.

Howard Norris, McPherson, Kansas.

Jewel Odgon, Frederick, Kansas.

Jack Oliver, McPherson, Kansas.  
Vice President of the Class.

Marjorie Paddock, Inman, Kansas.

Charles Pray, Hope, Kansas.

Mary Richards, Waldo, Kansas.

Virginia Richards, Waldo, Kansas.

Roy Robertson, Pretty Prairie, Kansas.

Harold Rothrock, McPherson, Kansas.

Carroll Saunders, Little River, Kansas.

Genevieve Sandy, Norborne, Missouri.

Donald Schmidt, Lorraine, Kansas.

John Schmidt, Moundridge, Kansas.

## CLASS OF 1940

Victor Schroeder, Frederick, Kansas.  
 Harold Schubert, Fruitland, Idaho.  
 Robert Seidel, McPherson, Kansas.  
 Marvin Senger, South English, Iowa.

Gladys Shank, Hope, Kansas.  
 Walter Shannon, Pratt, Kansas  
 John Sheaffer, Adel, Iowa.  
 Winton Sheffer, McPherson, Kansas.

Avis Smith, Whitten, Iowa.  
 Galen Stern, Fredericksburg, Iowa.  
 Stephen Stover, McPherson, Kansas.  
 President of the Class.  
 Albert Stucky, McPherson, Kansas.

Betty Ruth Stutzman, Conway Kansas.  
 Vernon Smartwood, Fruitland, Idaho.  
 Ruth Taylor, Rocky Ford, Colorado.  
 Treasurer of the Class.  
 J. W. Van Blaricum, Minneola, Kansas.

LaVerne Voshell, McPherson, Kansas.  
 Marian Washler, Langdon, Kansas.  
 Addison West, McPherson, Kansas.  
 Max Wilber, Dallas Center, Iowa.  
 Alvin Wolf, Waterloo, Iowa.  
 LaVerne York, Adel, Iowa.





## CHEMISTRY CLUB

DR. J. WILLARD HERSHEY, *President*

DAVID METZGER, *Vice-President*

LOIS GNAGY, *Secretary*

AVA OSILIND, *Program Chairman*



The Chemistry Club endeavors to interest the students in Chemistry by giving information and making a practical application of the principles and processes of science to every day living.

Under the leadership of Dr. Hershey, head of the Chemistry Department, the club had bi-weekly meetings throughout the year. These series of programs showed how chemistry enters into our every-day life. They consist of motion pictures, exciting demonstrations, and lectures. Dr. Hershey gives lectures, demonstrations and motion pictures on his research work with diamonds and synthetic atmospheres.

Once each year the chemistry classes motor to Hutchinson and review a dozen or more chemical industries, among them the paper mill, the salt mine, flour mills, bakery, and the reformatory.

The outstanding social function of the club was the annual party given by Dr. and Mrs. Hershey, being held in the Y. W. C. A. room.

In the past years Dr. Hershey has gained recognition by leading authorities in the scientific world by making the largest synthetic diamond on record.



# DEBATE

KENNETH WEAVER  
 WILLIAM THOMPSON  
 ALVIN LINDGREN  
 WILLARD FLAMING

Exhibiting the high calibre debating inspired by Debate Coach Maurice A. Hess, McPherson College varsity men again this year won state championship, thus hanging up a total of nine such victories in 18 years. The entire season was a constant success, such that Professor Hess characterized it as one of the most successful seasons in history.

First week in December saw sixteen debaters in Winfield, competing with 30 other schools from ten states. Here the girl's varsity, composed of Strom and Keller, distinguished themselves by reaching the semifinal round.

Other notable tournaments were the triangular second team tourney at McPherson; the Hutchinson tournament for junior colleges; the Pi Kappa Delta varsity regional at Hays, in which Thompson and Weaver reached semi-finals; and the victorious championship state tourney at Winfield on March 6. In the latter tourney the men's varsity took first for the third successive year, and the women's varsity ran a close second in their division.

In addition to these tournaments Miller and Davis represented McPherson in the annual radio debate with KSAC at Manhattan; and Alvin Lindgren participated in the state anti-tobacco contest at Central College.



ALBERTA KELLER  
 THERESA STROM

WEST, SAATHOFF, DAVIS, STOVER, RIDDELL, CLARK, WATKINS, HORTON

INEZ GOUGHNOUR  
 LUCILE COLE







## WORLD SERVICE

LAMAR BOLLINGER, *President*  
GLEE GOUGHNOUR, *Vice-President*  
EVELYN HIGH, *Secretary*  
AVIS HECKMAN, *Treasurer*

The World Service Group purposes to intensify the devotional life of the campus and to create an active interest in missions and definite Christian work. It aims to provide and give inspiration for worship, and an awakening to a fuller Christian experience, and a desire to live the Gospel of Love to all men.

The group meetings this year were interesting and helpful. A wide variety of programs were given for the purpose of giving the members of the group practical ideas for private devotions and participation in church activities. Recreation, summer camps, ministering to the sick, Church and the State, Peace and Music are some of the varied themes of the programs. The last ten weeks of the school year the group sponsored a Standard Leadership Training Course. A wiener roast in the autumn and a party in the winter were well attended.

In the spring the group sponsored a deputation team that gave Peace programs in various communities.

The cabinet met regularly every week and discussed personality problems. Much of the credit for the successful year goes to the sponsor and advisor, Dr. Petry.



# INTERNATIONAL RELATION

ADDISON SAATHOFF, *President*

ERWIN BENTZ, *Vice-President*

ALBERTA KELLER, *Program Chairman*

DR. J. D. BRIGHT, *Sponsor*

The International Relations Club represents the historical minded students of the campus. Its purpose is to promote intelligent discussion along the general theme of world peace as well as other world-wide problems of interest. The solution of current problems in the minds of the members of the club is held uppermost in the program of the organization. This is done by monthly meetings held in the Student Union Room. Membership has been open to all students interested in these discussions and to all history majors.

The club this year has exchanged programs with Kansas Wesleyan, held a rousing Republican-Democrat debate, and the high-spot of the season was a discussion and tea given in the home of Dr. J. D. Bright, Dean of the College, who is sponsor of the club.

This organization is under the auspices of the Carnegie Endowment for International Peace, which makes available for its members twelve books each year on current international topics.

Under the able leadership of Addison Saathoff, the club enjoyed a successful year. The year was concluded by a delegation attending the Mid-Western States Conference at Marysville, Mo.





## MUSIC

### MALE QUARTETTE

CHARLES NETTLETON, 1st tenor  
 MAX WILBUR, 2nd tenor  
 OLIVER ANDREWS, Baritone  
 HAROLD MOHLER, bass

The A Cappella Choir is gaining a name for itself here that has spread throughout Kansas and the surrounding states. The Choir here is coming to represent one of the outstanding musical groups in the middle west.

The choir is having a successful fifth season of which they have a right to feel proud. The annual formal concert given again this February carried on the fine technique and tone quality that has been characteristic of this organization these past five years of fruitful work.

Professor Nevin W. Fisher is serving his first year as director of this active group. He comes here with a fine record in both voice and piano along with his work in choirs and has added to his previous achievements.

The choir is very fortunate to have an outstanding soprano soloist like Margaret Fry. Her charming personality is well received by all audiences. She has done a great deal to add to the fame of the choir.

Within the choir are the varsity men's and ladies' quartettes. These two groups have done some excellent work this season and have appeared upon most of the programs which the choir has presented.

### PROF. FISHER, DIRECTOR

#### Back row:

MILLER, NETTLETON,  
 ALBRIGHT, IKENBERRY,  
 WILBUR, PRAY, FRY,  
 SCHUBERT, BARLEY,  
 ZOOK.

#### Front row:

McNAMEE, EATON,  
 VOSHELL, KELLER,  
 HOFFMAN, FRY, SHANK,  
 LACKEY.



LADIES QUARTETTE

FLOY JACKREY, 1st soprano  
 MARGARET FRY, 2nd soprano  
 AILEEN WINE, 2nd alto  
 FRANCES CAMPBELL, 1st alto



These singers appear in most of the city churches each spring. They also give programs in churches in the surrounding territory. One of the concerts this year was a regular lyceum number in one of the nearby towns. This is the first of this type of program but it is hoped to be done to some extent in the future.

There is a four-day trip planned for the Choir which will take them through northeastern Kansas, Missouri and Nebraska. This seems to be a fitting reward for the culmination of a year of good strenuous work in which all have shared.

In order to become a member of this organization, one must have ability in individual voice work as well as ability to read music. Each member desiring entrance must go through a personal test given by the director. This method keeps the quality of the Choir music on a high plane.

One of the aims of the Choir has been to secure some kind of uniform costume for the group to use for all public appearances. Nothing definite has been decided upon but it looks as if this aim will be realized yet this spring or next fall at the latest.

MARGARET FRY, Soloist

Back row:

PIERCE, WIEGAND,  
 MOHLER, BROWER,  
 WAGONER, ANDREWS,  
 YODER, MCGONIGLE,  
 ELDRIDGE, ROGERS.

Front row:

GOUGHNOUR, HAHN,  
 CAMPBELL, ULLERY,  
 HECKMAN, WINE,  
 VAN DERMARK,  
 HUBBARD.





## BAND

FLOYD HARRIS, *Director*

The student body of McPherson College is proud of the fact that the College Pep Band of the school year 1936-1937 is the largest and best band that the college has ever produced. In the earlier part of the school year the band was organized with only a few students reporting at rehearsals. After much enthusiasm and interest had been created within the group, other students, one by one, were interviewed and encouraged to secure instruments (from their old attic, or elsewhere) and join the band.

By the opening of football season the band was enlarged to twenty-one members. An election of officers took place and a vote was unanimously cast to purchase newly-fashioned band jackets, to be worn at all games and Thursday pep sessions. The band, under the competent direction of Mr. Floyd Harris, nobly proved itself in being a very important factor in maintaining much pep and enthusiasm among the rooters at the games by its rousing marches, novelty numbers, and special arrangements of school songs with the students' singing. Rehearsals were held twice each week.

Several small ensembles taken from the band including a trio, a quartette, a quintette, and an octette have been presented on various programs. One of these ensembles that has received much distinction and recognition by its excellent performances on deputation trips, over the radio, in chapel, full evening concerts in churches, and on other programs, is the College varsity brass quartette consisting of Floyd Harris and Winton Sheffer, Cornets; Alvin Goering, Horn; and Dale Coppock, Trombone.



# ORCHESTRA

PROF. LOREN CRAWFORD, *Director*

The McPherson College and Community Orchestra had a most successful season under the direction of Loren Crawford, of Southwestern University, Winfield, and Eastman School of Music, Rochester, New York. Professor Crawford brought a wealth of talent to McPherson, as he is an accomplished violinist as well as an able teacher and conductor.

The orchestra made several appearances this year, the most outstanding of which was the formal concert presented April 14.

Several chamber groups, organized by Professor Crawford, were very active as well. The string choir made a number of appearances including a broadcast. The choir consisted of Frances Campbell and Charles Wagoner, first violins; Margaret Fry and Florence Meyer, second violins; Floy Lackey, Russell Kingsley and Eugene Crabb, third violins; Hulse Barber, viola; and Lois Gnagy and Anna Fuchs, cellos.

A string quartette composed of Loren Crawford, Frances Campbell, Hulse Barber, and Lois Gnagy, was organized and presented a number of programs including broadcasts, and a formal concert during the Chamber Music Festival.

Another chamber group consisting of Morton Widiger, oboe; Loren Crawford and Frances Campbell, violins; Hulse Barber, viola; Lois Gnagy, cello; and Misses Jessie Brown and Fern Lingenfelter, pianos, appeared in concert.

The whole instrumental department of the college has been exceedingly active, and has provided much fine music to appreciative audiences.





MOTHER EMMERT  
*Matron of Arnold Hall*

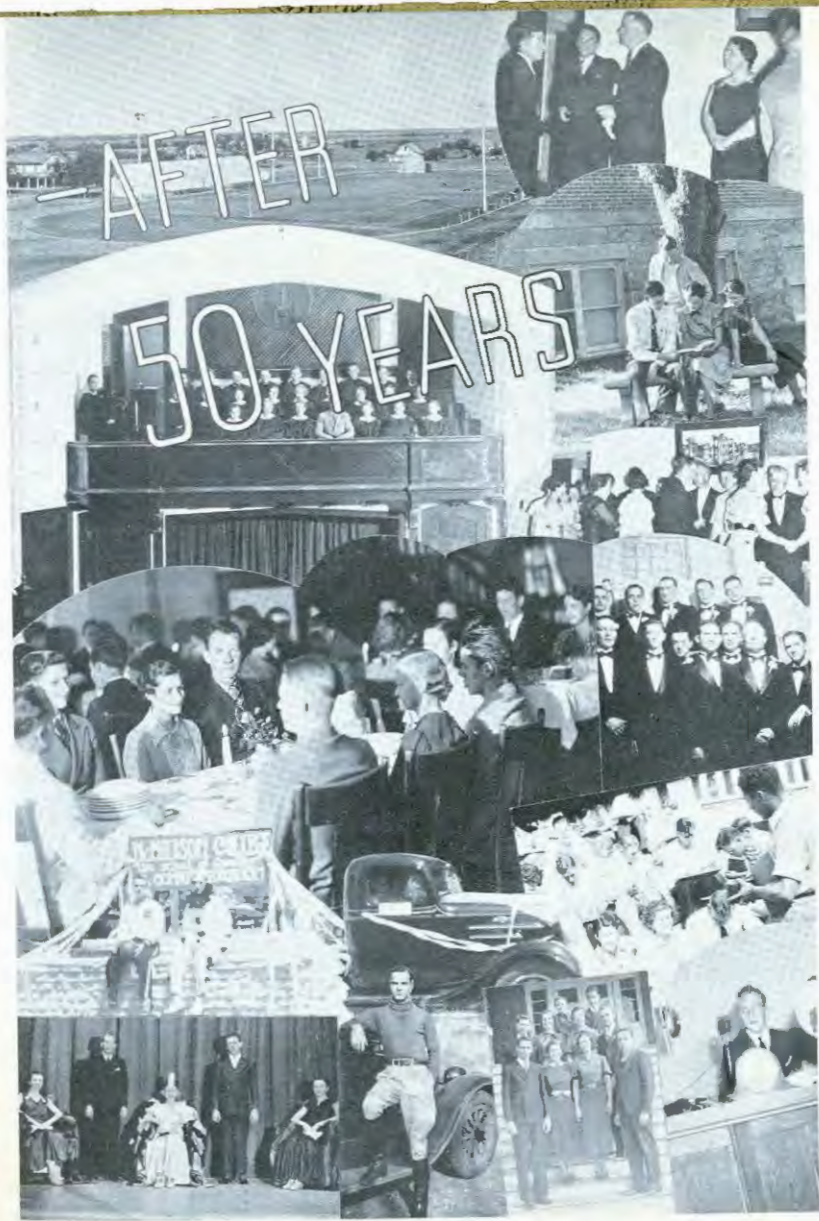


MISS ATKINSON  
*Matron of Klise Hall*

"MOM" VORAN  
*Matron of Fahnstock Hall*

Probably the persons who have to stretch their patience the furthest are the matrons of the dormitories. It is up to them to see that the students abide by the rules and regulations of the Halls, but what a time they would have if the students had to live up to the rules and regulations that were enforced forty or fifty years ago. Below are some of these rules which appeared in the first catalog of the college.

1. Students should bring with them, besides text books, a Bible or Testament, Brethren's Hymn book or Gospel Hymns, towels, and a blanket or two, and should have their garments marked with full name.
2. All students are required to be present at Chapel Exercises and all recitations; also to attend Sunday School and one church service each Lord's day, at the college chapel or at some other place, where their parents or guardian may direct in writing.
3. Students are required to go to their rooms at the ringing of the study bell and to observe order so as not to disturb others in study.
4. Students must extinguish their lights promptly at 10 o'clock P. M. unless excused by the professor in charge of the hall.
5. No lady or gentleman will be allowed to trespass on the territory of the opposite sex, except by special permission of the President.
6. Students desiring to leave the grounds or to visit other students during study hours must obtain permission from the professor in charge of their hall.
7. Ladies and gentlemen will not ride, walk, or play together except by special arrangement with the President.
8. Students will be held responsible for misconduct in their rooms and for damage done to the school property.
9. No students rooming in the dormitory shall be absent after ten o'clock P. M. unless by permission of the President.
10. Students may organize literary societies which shall be governed and controlled by a constitution and by-laws approved by the faculty.
11. Students desiring to visit the cemetery or to go to the city must obtain permission from the President, except on Saturday afternoons between the hours of one and four o'clock, when general liberty to go to the city and return is granted.
12. Visitors desiring to call upon students in the building must apply to the President.
13. All members of the Brethren or German Baptist Church are required to comply with the principles of non-conformity to the world and to conform to the general order of the church in apparel and wearing of the hair. Those who are not members of the German Baptist church are expected to make no display in the use of jewelry and to observe the laws of plainness and simplicity in their apparel.







1th row: Chisholm, President; Flory, Harris, Brubaker, Riddell, Andrews.  
 2nd row: Shirk, Stutzman, Voser, Goughnour, Shank, Toland,  
 Heckman, Stauffer, Morrison, Fry, Taylor, Hubbard.  
 3rd row: High, Enns, Jones, Wine, Miller, Keller.

CHEERLEADERS: LARSEN, HIGH

## PEP CLUB

HAROLD LARSEN, *Men's Cheerleader*

LA VENA HIGH, *Ladies Cheerleader*

"The Growlers", better known as the Pep Club, is one of the most active organizations on the campus. Each and every one of the thirty-two members is full of the real Bulldog spirit.

With spirit and enthusiasm this club has furnished a special stunt or program every Thursday morning in Pep Session throughout the entire football and basketball season. Special stunts on the football field were put on very successfully by this club.

At every football and basketball game there was practically one hundred per cent attendance. Their enthusiastic cheering inspired others to join in. Help from this group was appreciated by the cheer leaders. The pajama parade, Swedes Funeral, and other interesting and annual affairs were sponsored by the Pep Club.

The Pep Club is an organization to be proud of on the college campus, not only for the work it has done and the interest it has shown, but also as an example of a well organized group with a definite goal to promote interest and pep among the students of McPherson College.

Behind the team is the coach, and behind the cheering section is the cheer leader. The position of cheerleader is one of great responsibility because the "pep" of the school virtually hinges upon it. A good deal of the success of the school spirit goes to the cheer leaders. Harold Larsen and LaVena High.

# STUDENT COUNCIL

CLAYTON ROCK, *President*

ERWIN BENTZ, *Treasurer*

In the Student Council, we have an organization that has as its aim to promote a proper feeling between student body and the college authorities and to serve the student body in any need that the students may have, be it extra-curricular or within the regular course of studies.

This group is composed of a president and treasurer who are elected by the student body in their annual election. In addition to this there are two members chosen from each class by the individual class elections and one member each chosen from the "M" club, W. A. A., and Department of Fine Arts and one faculty advisor.

Clayton Rock has served as president this year and has done some very efficient work. He has been able to maintain a fine feeling between the students and faculty. Erwin Bentz as treasurer has given Clayton some fine assistance. As faculty advisor, Prof. Dell has done some fine work.

Recognition will be given to those participating in debate and quartettes. Also awards will be given to officers of the "Spec", "Quad", and Student Council. The Spectorator, Quadrangle, debate and some dramatics are sponsored by the Council.

Top row: Rock, Miller, Watkins, Gnagy, Nace, Albright.

Bottom row: Bentz, Ostlund, Eldridge, Minnick, Hoffman, Barngrover, Dell, advisor.





Back row: Fleming, Weaver, Mohler, Bollinger, Davis,  
 Middle row: Naege, Bantz, Miller, Toland,  
 Front row: Watkins, I. Goughnour, Schmidt, Hoover, Strom, Ullery.

## STUDENT CHRISTIAN MOVEMENT

Fused with the objectivity of educational routines, is a reflective reaching-out for the development of rich and integrated personalities through the medium of religious and social experiences.

The S. C. M. has provided for its members some means of attaining the highest fulfillment in their personal and social life through joint assembly programs, joint cabinet meetings, prominent speakers like Grace Sloan Overton, and the four commissions—namely, World Co-operation, Creative Leisure, Personal and Family Relations, and Reinterpretation of Religion. Adequate social activities, too, have been sponsored this year in the form of the watermelon feed, box supper, parties, teas, and hikes.

The epitome of the year was represented in the Student Christian Movement Conference held April 30th to May 2nd. This conference was designed to train leaders for particular positions and to give to everyone an impetus for new dynamic living through speakers like Rev. Joseph King from Lawrence, Kansas, Dr. Ben Kimpel from Kansas Wesleyan, and Dr. Ray Petry from McPherson.

A group of students, again, plan to go to Estes this year to attend the annual Student Christian Conference in order to get a breath of inspiration from the natural beauty and quiet of the Park.

It is through a World Student Christian Movement that a zealous spirit of growth and achievement is inculcated in the youth of today, as they follow in the shadow of their goals, pursuing that which lies before them, ever heedful of the road they travel to discover the "intrinsic worthfulness of life."



Back row: Hoover, A. Heckmann, Hahn, Meyers, Powers, Dell.  
Front row: Stauffer, Eaton, V. Heckman, Dean Smith, Schmitt, Wine.

## WOMEN'S COUNCIL

The Women's Council, a new addition to the McPherson College curriculum, sponsored by Dean Smith, has been a great asset to the Freshmen girls the past year. The purpose of the organization is to orient Freshmen girls into College life and to create a greater fellowship between them and upper class-women.

The regular council meetings are held in Dean Smith's office on every other Monday evening at four-thirty o'clock. The meetings for the Freshmen women and all women of the campus are held in the Student Union Room every Tuesday evening. The discussions at these meetings are for the purpose of solving everyday problems for campus women.

Dean Smith gave a Waifle Supper in December at the Hershey home for the council members. A formal dinner for all College women was given in the basement of the Church, February thirteenth. A previous discussion and lectures were given in preparation for the dinner and similar occasions.

Dean Smith with the council members has given a group of three parties which have included all of the college women. Invitations were sent to women indicating at which date they were to attend the parties. Closer relationships of campus women resulted from these parties.

Under the capable guidance of the Dean of Women and the cooperation of the women of McPherson College campus, the Freshmen girls have been able to adjust themselves to the activities, curriculum, personal life of the campus and a union of fellowship has been built up to insure complete understanding between the different classes of McPherson College Women.



## FOOT BALL

### LESTER SELVES, Coach

"Bud's" never-failing frankness and honesty and his square-dealing with all who come in contact with him, have gained for him a popularity attained by few. Although this is his first year as head athletic director he has been associated with the college for several years and has established an excellent reputation among the fans and the players. A former football star of College of Emporia and well known as a coach and athlete over the state, he is a man who is just "one of the fellows". Besides being football mentor, "Bud" is also an excellent basketball and track coach. In all three of these major athletics, he has attained great success. In football the Canines were in second position in the conference, having won three, losing one and tying one.

Back row, left to right: Johnson, Mathias, Voshell, Hall, Wierand, Deyer, Baumgrover, Colwell, Vaughn, Schroeder, Lias, Coach Selves.

Middle row: Abuhl, York, Moshiman, Carter, Miller, B. Seidel, Robertson, Ogden, Horel.  
Front row: Crabb, M. Seidel, Zuhars, Vasquez, Roek, Williams, Shannon, Keck, McGill.



MIKE VASQUEZ, LEE HAUN, Co-Captains

The past football season is probably the best the Bulldogs have had for several years, for more of her men have attained higher honors than in any other season. Three Bulldog gridsters were given All-State recognition, Mike Vasquez being placed at guard position on the first All-Kansas team, and Lee Haun made the second team with Harold Zuhars gaining honorable mention. Four players were placed on All-Conference teams. Vasquez and Haun making the first team, Vasquez having the honor of being named captain of the first All-Conference team; Barngrover and Zuhars making the second team. Some of the honor, however, should be given to the other men of the squad, for without their team work such honors could not have been attained. All in all the team had a very successful sea-



HORST  
End

HALL  
Tackle

SEIDEL  
Guard

ROCK  
Center

BARNGROVER  
Tackle



son, and with losing only four players by graduation, Rock, Haun, Vasquez, Colwell, the next season should be just as successful as this past season has been.

The season opened with the Emporia State Teachers game. The Selves speedy troop, having scored on a trick pass, led at the first half. However, much outweighed and lacking abundance of replacement material McPherson could make but little headway and the final score was Emporia Teachers 20 McPherson 7. Despite the one sidedness of the score and the ragged play which inevitably appears at times in an opening game, the game was not uninteresting and the Bulldogs deserve much credit for their persistent efforts in the face of rather overwhelming odds.

In the second game the Bulldogs, showing increased improvement and confidence, fought their way against the Bacone Indians to win by a score of 26 to 7. The Radmen proved to have a lot of power and speed and when the game was over, the Canines were filled with a wholesome respect for the prowess of our visitors from the south.

The third game resulted in a 26-7 victory against Ottawa. Weakened by the loss of many veterans, the Ottawa team was much less effective.

McGILL  
End

CRABB  
Quarter

HAPGOOD  
Fullback

ZUHARS  
Half

COLWELL  
Tackle



tive than in 1935, when the alertness and versatility of her attack kept us constantly on the jump to prevent a score.

Then came the Baker game, which we won by a six to nothing score. It was the first football victory for McPherson on the Baker field in twenty years. It was a hard-fought game and was full of thrills.

Our next game was with Bethel. The Bulldogs played up to their usual standard, and they found the Bethel Graymaroons a tough foe to conquer, but defeated them 21 to 12.

The following Friday saw the college depart for Lindsborg. If the Baker game was full of thrills that with Bethany was overflowing. The writer has witnessed a good many games from the stadium, but never another in which the supporters of both teams were in such a perpetual turmoil of excitement. The game was evenly played for nearly three quarters, neither team scoring until the final quarter, when the Swedes began a drive which led to a touchdown, the Bulldogs, desperate after the Swedes had scored, started a determined march that nearly brought them a touchdown and possible victory, but the strong Bethany line held. The final score was Bethany 7, McPherson 2.

BOYER  
Tackle

ROBERTSON  
End

WIEGAND  
Center

YORK  
Guard

VAUGHN  
End





our two points coming on a safety behind Bethony's goal line. Hard as it is to lose such a game, we could not in our hearts begrudge Bethony her victory.

The following game was with College of Emporia in which the Bulldogs managed a 14 to 13 victory. The Conines did their scoring in the first quarter, and had to fight desperately during the remainder of the game to hold that advantage.

The next game marked our third defeat for the season, that being to Kearney Teachers at Kearney, Nebraska by a score of 27 to 7.

Then came the final game of the season—Kansas Wesleyan 0, McPherson 0. The lack of scoring on the part of both teams was due to the strong defensive tactics on the opposing squads. Although Wesleyan came within four yards of scoring late in the first half, the Bulldog line held the much heavier Coyotes and kept the Salina team from scoring. It was a clean hard-fought contest, full of thrills for the spectators. So we close another successful grid season.

CARTER  
End

SHANNON  
Half

KECK  
Quarter

MATHIOT  
Half



# BASKET BALL

HAROLD JOHNSTON, Captain

The 1937 McPherson College basketball team, an aggregation whose record of games won and lost is not so impressive as those of some other Bulldog teams, but whose path through the season was filled with desperate battles in which the Canines often turned super-men to win their achievements against terrific odds.

The McPherson team won but six of the seventeen games it played, defeating Bethany twice, Kansas Wesleyan twice, and Bethel and Sterling once each. For the past three years the Canines had not been able to win over Kansas Wesleyan on their own court, always losing by one point, but this year the Bulldogs broke the jinx and got full revenge for the past three years. Although it has been a rather disastrous



Back row: Coach Selves, Barngrover, Wiesnold, McGill, Flory, H. Johnston, Haun, C. Johnston, Robertson.

Middle row: Vushell, Zook, Mohler, Diehl, Yoder, Lorkeman.

Front row: Kingsley, Naylor, Fry, Ogden, Seneer, Albright.





BARGROVER, Center      H. JOHNSTON, Guard  
C. JOHNSTON, Forward      HAUN, Forward

season, Coach Selves did excellent work, this being his first year as head basketball coach. Only two players, Lee Haun and Captain Harold Johnston, will be lost through graduation. Both these men will be greatly missed, but a large squad will return next year fighting for the conference championship.

All during the season the leadership of Captain Harold Johnston held the team together and made it a dangerous obstacle in the path of every contender for the conference title. His consistent playing and his ability to drive through the opposing defense for baskets made the Canines a dangerous team. Donald Bargrover, one of the hardest fighting centers McPherson has had for years, was a bulwark on the defense and was an accurate long range shooter. It was Chester Johnston who again and again rose to sensational form to sweep the tide to McPherson with his baskets from the corner and his neat footwork and clever dribbling. Lee Haun, McPherson's all-around athlete, is an accurate and tricky passer and an excellent drib-

FLORY, Forward  
ROBERTSON, Guard

McGILL, Guard  
WIEGAND, Center

bler. He works in fast and shoots quick. When within good shooting range his movement in getting the ball off toward the basket is almost as quick as the eye. Ronald Flory, Roy Robertson, Dave McGill, Robert Wiegand, each played an important part in the McPherson team work.

McPherson	22	Okla. City Univ.	39
McPherson	23	Ft. Hays State	38
McPherson	47	Bethel	20
McPherson	27	Kansas Wesleyan	16
McPherson	22	Baker	27
McPherson	29	College of Emporia	36
McPherson	27	Bethany	19
McPherson	42	Sterling	24
McPherson	30	Ottawa	32
McPherson	25	Bethel	31
McPherson	31	Kansas Wesleyan	27
McPherson	20	Baker	36
McPherson	21	Emporia Teachers	35
McPherson	22	Ottawa	26
McPherson	24	Emporia Teachers	37
McPherson	37	Bethany	28
McPherson	22	College of Emporia	51
Total	471		524

So we have had our hour of basketball glory, this year we have tasted defeat to the dregs. Such is basketball, and such is competitive sport in general. From it we learn to take our loss with a smile and to set our eyes on the future with the determination that next time victory shall be ours.



## 1936 TRACK

Through the season of 1936 the McPherson track squad was characterized by a few outstanding stars rather than by a well balanced team. Such men as Haun, Meyer and Toland were fairly consistent point winners in all the meets.

The first dual meet of the season with Bethel went to the Graymaroons by a 72 to 54 count. Haun's performance was the outstanding feature of the meet. He entered seven events and piled up a total of 25 points. Haun won first in the pole vault and broad jump and took second in the high hurdles, the century sprint, high jump, discus throw, and low hurdles. Toland took first in the 100-yard dash, and Meyer took first in the discus and shot put. However, this was not enough to stop the scoring runners of Bethel.

The second dual meet was with Sterling College, which the Bulldogs won by a count of 78 to 53, Haun again scoring high with 28 points. The top picture shows Toland coming in first in the 100-yard dash. The third picture shows Haun taking the high hurdles and the fourth picture shows Heckman coming in second to Sterling in the 440-yard dash.

The most interesting meet of the season was



the McPherson Relays in which six colleges participated. The activities were climaxed with the crowning of the McPherson Relays Queen, Phyllis Powers. College of Emporia placed first in the meet with a total of 69 points. Kansas Wesleyan was second with 36 points and Bethel followed close behind with 30 points. McPherson College captured fourth place with a total of 21 points. Other colleges entered were Sterling and Bethany.

The Kansas Conference Track meet was won by Baker University for the ninth time in ten years. Lee Haun, McPherson's outstanding trackman lost a pole vaulting duel to Mullins of Ottawa who cleared the bar at 12 feet 3 inches. Meyer, McPherson's towering discus thrower, won McPherson's lone first place by throwing the discus 135 feet 6 inches. Reinecker brought in third for the Bulldogs in one of the best two mile runs of his career against strong competition.

The top picture shows Haun clearing the bar at 12 feet and the third picture shows him doing one of his long jumps. The second picture reveals Meyer's preparation to toss the discus and the bottom picture shows the shot-put up in the air after leaving Meyer's hand.



## 1936 TENNIS



Fortune did not smile on the Bulldog racqueteers in 1936. Probably the most important tennis meet was the meet held in connection with the McPherson Relays. Bowen of Bethany was the victor in the singles matches. McPherson's doubles team reached the finals only to slowly bow to the Swede combination.

With Miller playing sensationally at the net and Messemer's steady driving and placing, they advanced to the finals by defeating easily the Sterling doubles combination, who had great difficulty with their serving and placements.

Corwin Bare cut and sliced his way to the quarter finals in the singles, having defeated Gault of Sterling. He was defeated, however, by McPherson's nemesis, Bowen of Bethany. Barngrover also felt the sting of defeat at the hands of Bowen in the first round.

The top picture shows a warm-up before practice, while the second picture shows the McPherson racqueteers; Barngrover, Miller, Coach Flory, Johnston, Bare, with Messemer the inserted picture. Coach Flory did an excellent piece of work in coaching and managing the team.



Back row: Flory, Colwell, Barngrover, Meyer, Boyer, Wierand, York.  
 Middle row: Miller, Albright, Larsen, D. Miller, Keck, Kimmel, ~~Toland~~  
 Front row: Rock, Haun, Dr. Flory, Coach Selver, H. Johnston, Dean  
 Bright, Vasquez, C. Johnston, Sollei.

## "M" CLUB

HAROLD JOHNSTON, President  
 LEE HAUN, Vice President  
 CHESTER COLWELL, Secretary & Treasurer  
 DONALD BARNGROVER, Student Council Repr.

The "M" Club was organized in the year of 1919 while athletics was still in her infancy. The purpose within the college is to promote a better spirit of friendship among athletes, faculty, and student body. Members of the "M" club cooperate with the athletic department and administration in encouraging the enrollment of good student athletes in the college and in maintaining the ideals of sportsmanship and fair play for which our college stands.

To an athlete who through his skill and ability has won recognition by winning a letter in any of the varsity sports goes the right of candidacy to the "M" club and upon proper initiation he is registered as a member of the club for life.

Freshmen first become aware of the club when they are required to buy their green caps from the club.

This year the club, with the help of the W.A.A., helped sponsor school socials such as the Halloween party, cake walk, and had its annual formal banquet.





# WOMEN'S ATHLETIC ASSOCIATION

AILEEN WINE, President  
LUCILE COLE, Vice-President  
MARJORIE FLORY, Secretary  
ALBERTA KELLER, Treasurer  
LILYAN WARNER, Sponsor

The Women's Athletic Association of McPherson College sponsors athletics and activities for women. The purpose of the association is to maintain for the women of the college gymnastic and athletic activities which will promote health, scholarship, leadership and cooperation.

Initiation for the new members was held the first of October and again the last of April. The annual W.A.A. banquet was held on the roof garden of the Hawley Hotel, April 16. The theme of the program was "Nautical", with a twilight lit room of beautiful decorations.

The organization in cooperation with the "M Club" sold hot dogs, coffee and candy at all football games to help finance the organization. The two organizations also sponsored a coke walk in the gymnasium.

The year has been very successful with a growing interest among the women of the college for activities and sports on the campus.

Back row: Herr, Kuzarek, Rogers, Frick, Heckman, Washler, Pabbeke, Doane, G. Gombauer, Husley, Namer, Richwin, Hoffman.  
Middle row: Ohmart, Flory, Cole, Miss Warner, Wine, Keller, Shirk.  
Front row: High, Taylor, Harbaugh, McNamee, Hubbard, Miller, Stauffer.



Women's sports of the college have been sponsored by the W.A.A. and Miss Lilyan Warner, Sponsor. Organized games include ping-pong, basketball, volleyball, tennis, baseball, aerial darts and badminton.

Teams for each game played were chosen to compete against each other. The goal in mind is to "play the game" and to insure physical fitness for college women.

Spectators have witnessed thrilling volleyball and basketball games in the old gymnasium this year. In the spring attention seemed to turn toward tennis and ping-pong. Exceptional skill was shown by many members while playing in the tournament games of these two sports.

A point system has been built up and at the end of the year different year awards were given to the members of the W.A.A. by the sponsor.





HAROLD LARSEN, *Editor*

VERNON MICHAEL, *Business Manager*



During the school year 1936-1937 the twentieth yearly issue of "The Spectator" was under the supervision of Harold Larsen as Editor. The policy of "The Spectator" was to be the voice of the school in all activities, to bring the news that was of greater interest to the student. This was aided by excellent feature writing under the guidance of Rilla Hubbard and Gladys Shank, as feature editors. Norman Edwards ably assisted as make-up editor.

Gordon Yoder, Sports editor, kept one of the most informed and detailed accounts of sport activities of the McPherson Bulldogs in the history of the Spectator. "College Daze . . ." by John Bower; Inez Goughnour's "The Gallery" and Rosalie Field's "Quest-E-Ann Boks" added seriousness, humor, and wit to the columns. Toshiro Tsubokawa, Japanese student, added the foreign element in his instructive "Culture of Japan." The assistance of Eldora Van Dermark and Ellen Divine as copyreaders also had their important part in the success of "The Spectator."

Vernon Michael carried the heavy load of Business Manager, besides editorial work. Russell Kingsley as assistant to Michael showed his ability as a salesman and a great booster for the Spectator.



# The Spectator



OTHO CLARK, *Editor*

J. EMERSON CHISHOLM, *Business Manager*

It is the task of the Quadrangle staff during the course of the school year to bring to the school a pictorial review of events and high points reached during the year. The book is built with a view of keeping fresh in our minds, when we have left these halls of learning, those associations which we held most dear while here on the campus.

This being the editor's second year editing the annual, he has done his utmost to make this book the best book ever published by the college, and he wishes to thank everyone for the work they have done and for their contributions which have made this book possible. Business manager Chisholm has been very successful in securing advertisements and has labored continually to make available sufficient funds to issue a standard Quadrangle.

Those who did definite work on the book are: Aileen Wine, Oliver Andrews, Lawrence Boyer, Milton Morrison, John Bowers. Several achievements have been accomplished by the staff this year, such contests as Jubilee Football Queen, popularity contest, selection of four beauties by Wichita artists, and the publication of the football programs, the Bullrangle.



The 1937

# QUADRANGLE



BULLRANGLE

1936





## THESPIAN CLUB

On November 8, 1921, a group of students met to organize a club for the purpose of producing plays before the general public and to study public speaking and contemporary literature.

On December 19, 1921, the new club met and adopted the constitution as presented by the committee. They chose the name "Thespians" as the official title of the Club and installed the first regular cabinet who were the officers that were elected temporarily at the first meeting.

This came into being one of the major student organizations which has played an important role in the extra curricular activities of a select group of McPherson College men and women.

Since the date of its inception, The Thespians Club has produced an average of one three act play each year and has contributed both costumes and scenery to the dramatic department of the College. The most notable of which was a cyclorama constructed under the supervision of Hobert Hughey in the school year of 1933-1934.

This year the Club has initiated a new policy, that of giving an evening of one-act plays the first semester and a three-act play the second semester, which it is hoped will be continued in the future because it allows more members active participation in the club.

A number of slight changes were made in the constitution and some old customs were revived which have seemed to give the organization a new emphasis at a time when the college is rededicating itself, after fifty years of service, to a future of significant Christian education.

The members of the Thespians Club wish to join hands with our fellows and congratulate our "Alma Mater" upon her past years of service and to look forward to an ever increasing sphere of influence.

FRED NACE  
*President*

HOMER KIMMEL  
*Vice President*

LA VENA HIGH  
*Secretary and  
Treasurer*



This year McPherson has had some excellent dramatic presentations, and a lot of the credit goes to Miss Lehman, for taking a group of college boys and girls who had little or no training whatever in dramatics, who were anything but sordid, and melancholy, and to teach them to live their parts is enough to wear out anybody's patience. The top row of pictures are excerpts taken from the play "The Gazing Globe." The middle row is taken from the play "Submerged," and the lower left is from "Suppressed Desire" while at the lower right is from "Too Much is Enough." All of these plays presented were a huge success, the first two being presented by the Thespian club and the other two by the play production class. There were several other dramas presented after this book went to press.



A high standard of scholastic excellence in every branch of collegiate work has come to be a tradition at McPherson College. As an example is the McPherson Art department with Miss Colline as instructor. McPherson College is proud of the high standard of its art department. In other fields course offerings have been selected to fit a variety of demands and always careful provision is made to care for the individual needs of each student. A well rounded student development is the goal of every course offered at McPherson College.







*Four Beauties*

HAZEL CRAWFORD

JESSIE MILLER

RUTH SIEGLE

BETTY RUTH STUTZMAN



*Most Popular*

MIKE VASQUEZ  
SENIOR



*Jubilee Foot Ball Queen*

VERA HECKMAN  
SOPHOMORE



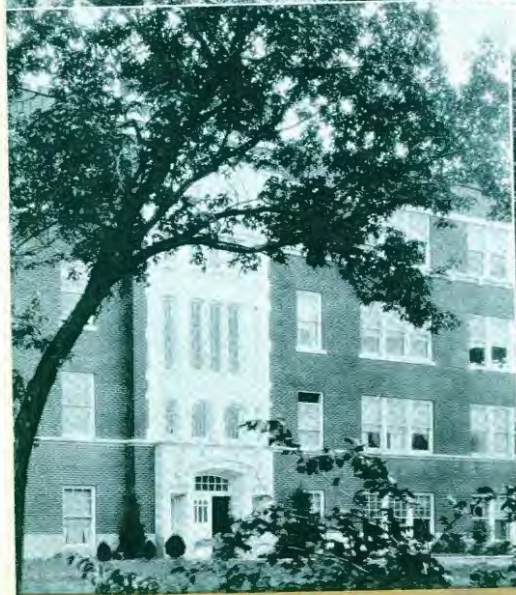
--- and Her Attendants

MARGARET FRY  
GLADYS SHANK

*Alumni Gymnasium*

*Hazely Hall*

*Sharp Hall*



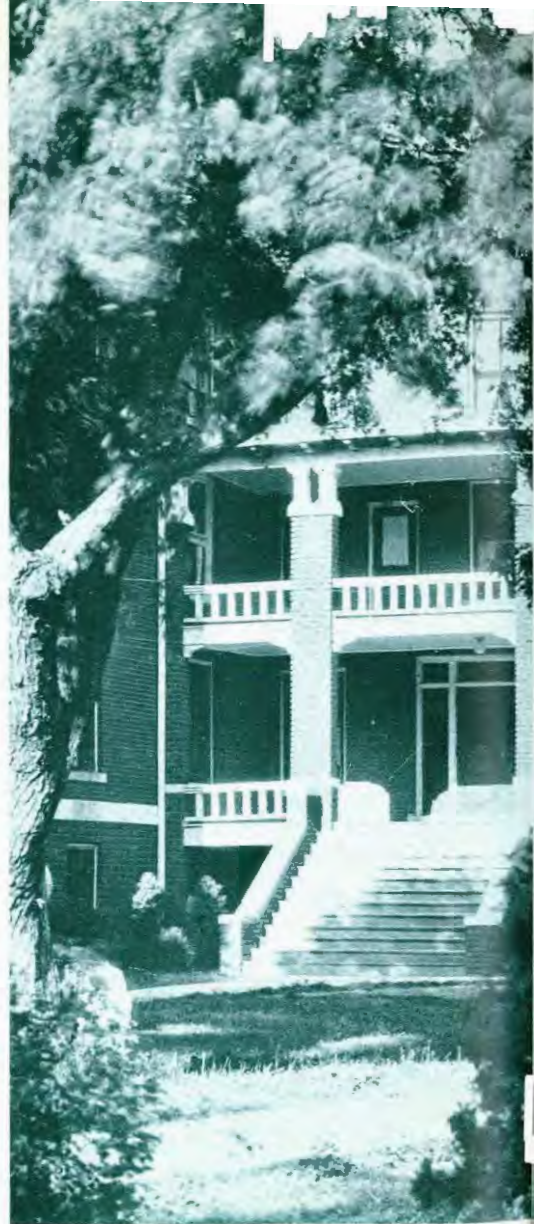


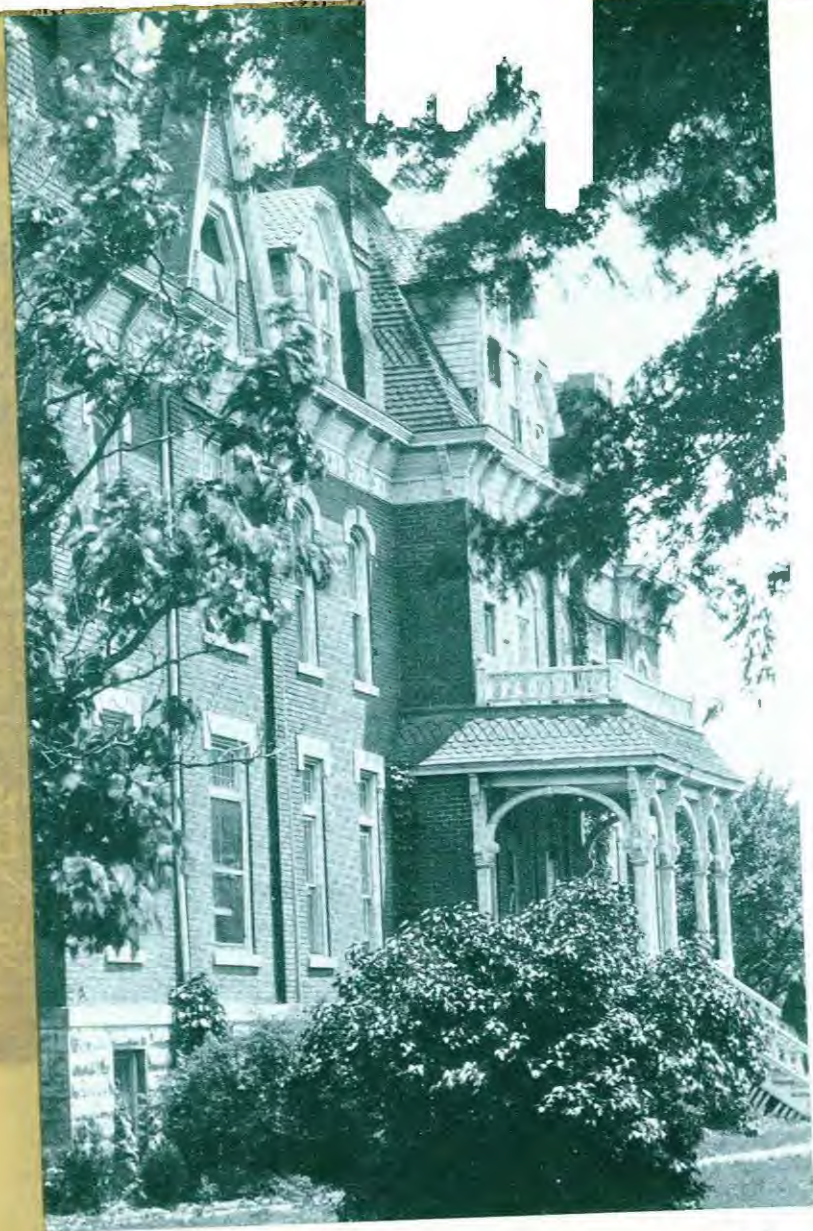
*College Carnegie Library*



College Church  
Kline Hall

Arnold Hall





*Fahnestock Hall*











There was a need for a student union room for McPherson College for a long time. There was no place that could be used for socials and as a general recreation room that was adequate for the needs of the college.

The Student Council of '34 and '35 realizing this fact set aside part of their budgets to start a fund for the construction of such a room. At the beginning of the fall term of '35 with approximately \$350 to start with, a student union room committee raised the balance of the money required through contributions of various organizations, students, and friends of the college. Many made great sacrifices to make the room possible. Some who could not give money gave their time in work on the room in order to save labor expense. The room was completed and furnished by the beginning of the fall term of 1936 at a cost of approximately \$1500.00. Several items have been given by the senior classes of '36 and '37 which adds much to the beauty of the room.

It is a place where students can take their friends, and a place the college can feel proud of. The atmosphere of the room lends itself to the best relationships among the students. It is a great room and we're proud of it.





# And On Into the Future

## *Board of Trustees*

EARI FRANTZ, Chairman	Grundy Center, Iowa
W. A. KINZIE, Vice-Chairman	Navarre, Kansas
DALE STRICKLER, Secretary	McPherson, Kansas
J. J. YODER, Treasurer	McPherson, Kansas
V. F. SCHWALM, President of College	McPherson, Kansas
Paul Brandt	Holmesville, Nebr.
O. H. Feiler	Grand Junction, Colo.
L. B. Crumpacker	McPherson, Kansas
I. V. Enos	Kansas City, Kansas
W. D. Grove	South English, Iowa
Robert Haney	Ames, Okla.
Harold Beam	McPherson, Kansas
A. W. Adkins	Cabool, Mo.
Galen T. Lehman	Cedar Rapids, Iowa
R. E. Loshbaugh	Fredonia, Kansas
Walter Mason	Norborne, Mo.
J. E. Metzger	Lake Charles, La.
D. G. Wine	Enders, Nebr.
Michael Petry	Minot, North Dakota
Richard Keim	Nampa, Idaho
B. F. Stauffer	Rocky Ford, Colo.
B. S. Trostle	Hutchinson, Kansas
Ernest Wall	McPherson, Kansas
Frank Wagner	Waldo, Kansas
Homer Ferguson	McPherson, Kansas

## *Executive Committee of the College*

J. J. Yoder	Chairman of the Board
Dale Strickler	Secretary of the Board
Harold Beam	Trustee
E. A. Wall	Trustee
L. B. Crumpacker	Trustee
V. F. Schwalm	President of the College

## *Officers of the Faculty*

V. F. Schwalm, Ph. D.	President
J. D. Bright, Ph. D.	Dean
Corrine Bowers, A. B.	Registrar
R. E. Mohler, M. S.	Dean of Men
J. M. Smith, Ph. D.	Dean of Women
J. H. Fries, A. B.	Business Manager

# "THE COLLEGE OF MY DREAMS"

BY V. F. SCHWALM

I wonder if it would be pardoned a College President if he should dream dreams. Sometimes between the feverish rush of journeys, higher and yon, I have allowed myself to dream of a college I would build if I had an Aladdin's Lamp and a Midas touch to bring to pass that for which I wish. In the world of reality we are bound and limited by the lack of filthy lucre, by the limitations of human personalities, and the lack of vision of those who have power to fix and "cinch" their limitations on your undertakings. In a dream world such practical considerations need not hamper or cramp one—you can soar to your heart's content. I shall, however, try to hold my dream for the most part within the realm of human possibility.

We shall have to start somewhere. Where shall we locate this college? Shall it be in Kansas or Indiana or California? O, let us place it here in Kansas, and as well in McPherson as anywhere. I would just as soon be here as anywhere else on earth. So our college is in McPherson, on college hill, overlooking the city—one and one-fourth miles east of the city. The first thing we will do in our dream world is to relocate all the other colleges within a radius of forty miles from McPherson into more productive areas. This would be kinder than to chloroform them—and since in a dream world we can do what we choose—we will move them. This is probably the most unreal thing about this dream.

A second question we must answer is

whether the college shall be a boys' school, a girls' school or a co-educational institution. Well, since I am interested in this college and could probably have nothing to do with a girls' school, it cannot be that. A stag college would be too uninteresting so we will make it co-educational.

The college will be partly a church related college and partly under the control of the city of McPherson, since many McPhersonites would probably enroll in this college. This dream college would be controlled by not more than eleven trustees who represented various professions and business interests—not more than two from the same line of work. At least half of the trustees should be college graduates and all of them vitally interested in building a college superior to any one now in Kansas. Absence from trustee meeting except for sickness or death and a failure to show a proper interest in the college should disqualify a trustee from continuing service. The trustee Board should meet quarterly and for such periods as necessary to transact business.

The college shall be built and the faculty shall be employed for 500 students at least 400 of whom shall be in the college department. The plant shall consist of an administration building, a science hall, a second class room building, a chapel, a gymnasium, a library and two modern dormitories. At least one dormitory shall be equipped with a cafeteria, but with no general dining hall. The heating plant is to be built at the extreme rear



of the campus and shall either be built of brick or well painted. The dormitory rooms shall have running water and single beds, and each room shall be equipped with a semi-silent radio, none of which can possibly be turned on louder than a soft whisper, and doors that close and lock automatically at a given hour. The architecture of the college buildings shall not be uniform, but it shall be harmonious. The campus shall be well kept. No cars may be parked near the dormitories and tin cans shall all be buried as soon as they are empty. In the girls' dormitory shall be a section of small rooms, four by six, containing a radio, and divan for social purposes. These rooms shall be for rent at two cents an hour, to couples. Arrangements must be made for them at least a week in advance. They shall be sound proof rooms, but the walls of these rooms shall be of transparent glass.

This dream college shall be endowed with at least \$1,500,000. Faculty members as heads of departments, shall have a salary of \$4,000. Associate professorship and assistants from \$2,500 to \$3,500. Faculty members shall have one year leave in seven and be pensioned at sixty-five.

( In this dream college there is to be a faculty of thirty-five men and women. Many of these will have attained their Ph. D. but this shall not be a prime requisite. The prime requisite shall be (1) an interest in the growth and progress of young men and women who are students in the institution. The capacity to make friends with students will be the very first qualification looked for in the faculty members. (2) A second requisite will be a many-sided intellectual curiosity—a curiosity that will have led the teacher to academic degrees and that still persists even though all the advanced degrees are a long while in the past. This intellectual curiosity must not lead teachers to seek knowledge as an end in itself but rather that through that knowledge men and women may find their lives unfolded and enriched. Then perhaps secondary qualities may come in for some consideration as for instance the teacher's

ability to teach, etc. but the above two qualifications having been cared for the others will likely come right.

The above faculty will include a physician, and a consulting psychologist, or psychiatrist, a director of athletics and Physical Education for both men and women, a director of religious activities, and a dietician. Faculty members shall not teach more than twelve hours a week and must write at least one book or a half dozen magazine articles every five years.

In this dream college there will be an enrollment in college and music of about 500 students. The prime requisite for entrance to this college shall consist of a serious, continuous and eager desire for self improvement on the part of the student. This shall be discovered by a complex system of tests and observations administered throughout the high school career of the student. Any evidence of "resistance" to learning, or being taught, shall disqualify the student from college entrance or shall lead to his dismissal if once admitted. If at any time during his college career, a student should temporarily lose interest in study he shall be allowed to withdraw from college until this interest revives whereupon he shall be permitted to return. There must be an eager, earnest desire to learn revealing itself in wide reading, in regularity in the performance of college assignments, and in faithful fulfillment of the obligations involved in at least one or two extra-curricular activities.

A second quality for admission must be a reasonable amount of mental ability to do college work as revealed through the high school record and carefully administered psychological tests. Those very low in these tests shall be carefully directed into other lines of endeavor not involving academic learning—such as trade and training schools, etc., but shall not be sent home hopeless.

Third, in order to enter, the student must give evidence of character and cooperative ability. Students with anti-social habits or tendencies which reflect themselves in acts of dissi-

pation or non-cooperation shall in no case be admitted to the college.

In this dream college there shall be no such thing as field men going out to persuade students to come to college. Only students who are eager to go to college shall be brought and only those who select this college as their one and only choice may enter. A waiting list of students who want to enter will be available in the Registrar's office, but not over 500 shall be admitted at one time. It shall be the function of field representatives to make clear that the college of our dream world is a fellowship of teachers and students in pursuit of learning and in a quest for the abundant life. It shall be his duty to make clear to all prospective students that the college is a church college and that, therefore, certain religious exercises are to be expected. Though it be a fellowship of learners this college in order to assure progress and to make possible work on the part of those who want to work and to prevent any from dissipating time and energy must have some rules. But these rules are not made with the avowed purpose to kill joy and cramp freedom. They are rather made to provide system and understanding and to promote the common good.

Students are to be welcomed to this group. There will be a continuation of our campus sister movement of our present McPherson College and for men there will be a masculine equivalent of this same movement to encourage new comers and to welcome them into the fellowship. There will be a museum on the campus and in that museum there will be a corner of distinction, where in a glass case will be an ornate copy of a wooden paddle with the letter "M". There will be a guard on constant attendance to explain to all visitors the progress made since the barbaric days when men of brawn beat individualistic freshmen into conformity to the common crowd.

In this college student government for the entire school shall be in the hands of a student council composed of representative, serious-minded students and two faculty sponsors. All

problems of conduct shall be considered by this council and all minor cases shall be disposed of by the council. Major problems involving suspension or expulsion shall be considered by the Council and recommendations shall be made to the administration. All student activities shall be supervised by this body.

In order to promote understanding between faculty and students and to insure the progress of the school, a body of five students, selected by the student council, shall meet monthly with five administrative officials who shall consider all problems of faculty-student relations and shall suggest areas in which progress may be made in the school at large.

The big word in the mind of the school shall be progress. Progress or growth shall be expected in the individual student. There shall be growth in the Institution. A static thing is usually a dead thing. Faculty and students shall understand that there must be progress every year or the college must die; and, furthermore, that progress can come about only when there is cooperative effort between trustees, faculty and students. Anyone who hangs back on the wheels of progress or who knocks when he ought to boost shall be taken out to the brow of College Hill—wherever that is—have a rope tied around his heel and be suspended for one hour over the brow of said hill.

Furthermore, another quality in our dream college will be faith in ourselves, faith in each other and faith in the college now and for the future. In our relations to other colleges let us lift up our heads and believe in ourselves. This does not mean any lack of respect for others, but a venturesome faith that believes in ourselves.

This isn't all, but I leave it. Some of these dreams are in the remote distance, probably impossible, most of them can and should be applied to McPherson College at once. I am not discouraged. We have a fine faculty and an extraordinarily fine student body, but I am not satisfied. Together we can build a college that in many of its aspects approaches the college of my dream.

Keedy—"Darling, do you love me still?"

Brownie—"I don't know—I never saw you that way."

"Vi, why aren't you going with that professor any more?"

"I learned my lesson."

Mikow—"You ought to have some insurance, now that you are getting married."

Joe E.—"I don't think she'll be that dangerous."

Mikow—"Remember, when a man marries, his wife takes his name, and everything else she can get her hands on."

Joe E.—"You can't scare me, I may not have a grain of sense, but I got sand."

A court has decided that a cow in the road has the right of way. This indi-

cates that courts are just learning what cows have always known.

In connection with the steering gear of an automobile there is one thing more dangerous than a loose bolt, and that is a tight nut.

Adam, after awakening from a deep sleep, and viewing for the first time his helpmate in all her marvelous beauty, smiled broadly in amazed admiration. Then he began counting his ribs. "I wonder," he mused, "if a man could do without all his ribs?"

Some of the busiest people in the world are only picking up the beans they spilled.

## College Crofters

*Jewelers, Engravers, Stationers*

KANSAS CITY, MISSOURI

# HENSON CHEVROLET CO.

Phone  
59



109-115  
So. Maple

SALES AND SERVICE

## 24 hr. WRECKER SERVICE

Body, Fender and Wrecks a Specialty  
Repair All Makes of Cars

THE HOME OF  
50-50  
Guaranteed Used Cars

# HENSON CHEVROLET



Phone 59

109 S. Maple

**Corsage and  
Presentation Flowers**

Artistically arranged as  
you would like them

We deliver when and as  
you wish

**Maud's Flower Shop**

Phone 620

**Everything for the Auto**

AT

**Enberg's Super Service**

20th CENTURY SERVICE

113-15-17 West Kansas Avenue  
McPherson, Kansas

Phones 71 and 72

**THE LISCHESKY DRY GOODS CO.**

Printzess Coats and Suits

Classy Jean Dresses

La Grace Wash Frocks

Larkwood Silk Hosiery

**And Other Nationally Advertised Merchandise**

**IF IT'S AT THE RITZ - IT'S THE BEST SHOW IN TOWN!**



*Continuous*

*Daily*

*1 'til 11:30 p. m.*



*Admissions*

*10 - 25 and*

*30 Cents*



**"The Home of Metro and Paramount Pictures"**

THE RITZ MANAGEMENT AND STAFF APPRECIATES THE  
SPLENDID PATRONAGE FROM THIS COLLEGE AND YOU'LL  
FIND US READY AND WILLING TO CO-OPERATE AT ALL  
TIMES.



Headquarters for  
**Acme Paints**

**C. B. Bowker**

Telephone 205      107 S. Main

You Get the  
Good Things First  
in  
Chrysler & Plymouth  
SALES & SERVICE  
**Goss Motor Co.**

210 S. Main

Phone 567

**NOTHING**  
remotely like it!



**SUITS**

\$19.75 — \$25.00

**Morris & Son**  
CLOTHIERS

## ALLIANCE AGENCY

INSURANCE FOR EVERY NEED

Local Representatives of The Farmers Alliance Insurance Co.  
Also Alliance Mutual Casualty Co.  
Two McPherson Companies

Phone 106

McPHERSON, KANSAS

109 E. Kansas

The Home Of

**GOOD WATCHES AND  
PERFECT DIAMONDS**

**Bixby, Lindsay & Co.**



Wherever men congregate there's a pre-dominance of Strouse clothing.

Let us help you dress correctly at moderate prices.

## Fred D. Cook

BUICK — OLDSMOBILE

---

Phone 363

205 S. Main

## CARLSON PLUMBING COMPANY

Plumbing — Heating — Gas  
Appliances & Installations

Stewart-Warner Refrigerators

Bus. 14

Phones

Res. 26

## We Congratulate

### McPHERSON COLLEGE

on your

### FIFTIETH ANNIVERSARY

We were just nine years old when McPherson College was founded so we feel that these institutions have grown up together, and let us look forward to many more years of greater service and accomplishments.

## McPherson-Citizens State Bank

McPherson, Kansas

City Progress  
depends on the  
Daily Newspaper

---

Enlightenment and Enthusiasm  
makes things grow for city and  
business man as well. Sane and  
persistent publicity spells PRO-  
GRESS and PROFIT.

---

Daily Republican

Phones 64 and 98

W. J. Krehbiel

(Printers of the Quadrangle)

### Lindblooms Have It

When you want good things to eat

For Fresh Meats Phone 192

Phone 183-184

*Boosting for McPherson*

### Schafers Bakery

Makers of Sonny Boy Bread

Phone 341

210 N. Main

### Sandwiches and Meals

Like Mother Makes

Get them at the

### COLLEGE INN

Just Off the Campus

MOLLIE VOSBERG

### We Appreciate

your patronage and will try to merit your continued good will by giving you Better Merchandise, Better Service and More for your Money every day in the year.

*C.R. Anthony Co*

IT PAYS TO PAY CASH

## Kodak - - - As You Go

Eastman Agency

AT

## HUBBELL'S DRUG STORE

*When graduating and after you have left college, remember*

# "Humfeld's Flowers"

**McPHERSON GREENHOUSE & FLORAL CO.**

*Regardless of the occasion our flowers and service are dependable*

Phone 172

515 N. Ash



**JOE HEASTON  
MOTOR CO.**

319-23 No. Main. Phone 234

J. A. Cassler  
A. W. Bremyer  
C. P. Miller



Peter Aurell  
R. B. Sickler  
J. T. Gibson  
C. H. Ash

**Pioneer Savings & Loan Ass'n**

Home Office, McPherson, Kansas

For Fresh  
Candy, Gum  
and Peanuts  
Visit Our  
Candy Dept.

**Duckwall's**  
"QUALITY, SERVICE AND PRICE"

Supply Your  
Needs in  
Face Powders,  
Creams, Soap,  
Handker-  
chiefs and  
Hose

**PETERSON HARDWARE CO.**

GENERAL HARDWARE AND SPORTING GOODS

Phone 191

McPherson

219 N. Main

**Congratulations and Best Wishes  
to the Class of  
1937**

FROM

*McPherson's Department Store*

**THE BROWN · McDONALD Co.**

Successors to B-K Co. Golden Rule

## Bakers Cafe

Fountain Service  
Student Meals

—  
Economical Prices  
—

317 N. Main

## G. O. Swanson Electrical Service

Genuine Parts for  
Magnetos, Starting and  
Lighting Systems

McPherson, Kansas

Phone 187

306 N. Maple

*When in Ottawa*

## Foote Coffee Shop and Nelson Hotel

Headquarters for McPherson College Students, Faculty, Friends

*Fashions  
for  
Men*

*Cramer Shotwell*  
**CLOTHIERS**

Phone 86  
209  
N. Main

MEET YOUR FRIENDS HERE

**PURITAN**  
Cafe

AND FOUNTAIN

BEST OF FOODS AND DRINKS

POPULAR PRICES

WE DO NOT SERVE BEER

## IT PAYS TO LOOK WELL

*Prompt Service*

*Sanitary Methods*

*Good Workmanship*

### The Hawley Barber & Beauty Shop

Phone No. 499

Hotel Hawley

WALKER



Quadrangle  
Photographer



# Lake Superior Lumber Co.

GEO. H. GOODHOLM, Manager

*Lumber, Hardware, Paint, Coal*

Telephone 40

McPherson, Kansas

301 North Maple

## Congratulations To McPherson College

*We hope the second fifty years will be even greater than the first*

Likewise this bank has served this community for nearly a half-century.

### PEOPLES STATE BANK

McPherson, Kansas

## FOR GOODNESS SAKE

USE



“W - R”

## FLOUR

MADE BY

### The Wall-Rogalsky Milling Co.

**The McPherson  
Candy Kitchen**

**The Best in Candy,  
Lunches and Soda**

Appreciate College Trade

**E. L. (Pete) Wolf**

**Plumbing, Heating,  
Air Conditioning and Cooling  
Electrical Appliances**

Tel. 226

219 S. Main

**"HOUGHTON'S"**

*Golden Toast Bread  
Fancy Pastries*

Phone 137

108 S. Main

**Glen Hammann's  
Service Station**

*We Carry a Complete Line  
of Shell Lubricants.*

Phone 217  
for Service Calls

725 N. Main  
McPherson, Kansas

**SILVER SPRINGS CREAMERY**

Visit Our Cone Shop

**ICE CREAM FOR ALL OCCASIONS**

Phone 758

113 E. Euclid

**ENGBORG DRUG STORE NO. 1  
ENGBORG'S STORE NO. 2**

*Store No. 1*  
213 N. Main  
Tel. 218

*Store No. 2*  
1009 S. Main  
Tel. 418

## NEWS STAND

Subscriptions Taken for all  
Publications

### CENTRAL PRINTING COMPANY

Quality Job Printing

EARL V. RANNELS, Prop.

Phone 295

108 W. Kansas

## McPherson Meat Market

Leading dealers in fresh and cured  
meats

In McPherson Since 1910

**Oliver & Nelson, Props.**

Phone 107 & 108 104 North Main

*Have your Shoes Cleaned, Shined  
and Dyed at*

## Al's Shine Shop

The Best Shine in Town

## DON HUFF

*Women's Wear*

Main and Marlin

*Boosting McPherson College*



Phone 161

212 North Main

**College Days Bring Pleasant Memories**

and Remind you of McPherson, Home of

## Farmers Alliance Insurance Company

KANSAS' LARGEST AND STRONGEST

**Fire-Lightning-Tornado Insurance**

## **Nordling's Cafe**

Invites the Bulldogs

*Home Cooking our Specialty  
Made by Home Folks*

204 N. Main    McPherson, Kansas

## **Okerlind-Aspegren**

*The Clothes Cleaners*

See Our  
College Agent

McPherson, Kansas    Phone 320

## **The Moderne Barber & Beauty Shoppe**

Anything in Beauty Work

Alice Jeffreys    —Operators—    Clara Lowry

Call 858

## **Hastriter's Cash Grocery & Produce**

Quality Merchandise and Square Dealings  
is What Makes our Store so Popular

## **HESSLER OIL CO. DICKEY GASOLINE**

Wholesale and Retail  
Oils and Greases

Phone 140

McPherson, Kansas

## **THE HOME STATE BANK**

McPherson, Kansas

**SAFE, CONSERVATIVE, PROGRESSIVE**

Deposits of \$5,000 and under insured by  
The Federal Deposit Insurance Corporation

## W. A. Crary Hardware

Refrigerators :: Stoves :: Radios  
Maytag Washers

Get a Lift for a Nickel

McPherson Bus Service

## UPSHAW

SINCE 1897

AMBULANCE

PHONE 197

## Almen-Lovett Drug Co.

---

Drugs

Cosmetics

Soda Fountain

Paints

Glass

Parker Pens

---

A Registered Pharmacist  
on Duty at all Hours.

207 N. Main

Phone 19

*Every Year the Municipal*

## WATER & ELECTRIC PLANT

Becomes a more vital part of McPherson because this department is constantly striving to achieve the ultimate goal of complete service. Only by service can any person or business succeed.

**WATER      LIGHT      POWER**

---

*McPherson Money Stays in McPherson*

---

**McPherson Water & Electric Department**



That's

All

Pals

Here's  
To You  
For the  
Next  
50 Years

Y. E. S. T.

Your  
Book

... receives  
the "stamp of approval"  
when intelligently handled  
and conscientiously served  
by the Mid-Continent  
Engraving Company, Wichita