



1934

QUADRANGLE

CONTACTS



THE ° 1934

QUADRANGLE

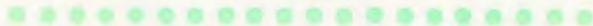
PUBLISHED MAY, 1934
BY THE STUDENT COUNCIL
MC PHERSON COLLEGE
MC PHERSON, KANSAS

A black hand is shown at the top, holding several thin, light green strings. These strings extend downwards and curve outwards to form a wide, funnel-like shape. The background is a light yellow-green gradient. A vertical red line runs down the left side of the page.

CONTACTS

To picture and describe McPherson College in all its contacts; in the classroom, on the campus, at study, at play, in leisure; has been the purpose of the Staff in creating this,

The 1934 Quadrangle





The 1934 Quadrangle is dedicated to the Students of McPherson College, who have created and made famous a distinctive student spirit combining appreciation for knowledge, love of beauty, cheerful fellowship, wholesome attitudes, and Bulldog strength and tenacity

.....



CONTENTS

CONTACTS OF INSPIRATION
CONTACTS OF PERSONALITIES
CONTACTS OF ACHIEVEMENT
CONTACTS OF PERSPIRATION
CONTACTS OF LEISURE





CONTACTS OF INSPIRATION

PRES. V. F. SCHWALM, PH. D.,

• has discovered successful methods of college administration, yet is ever ready to greet and befriend all college students.

SOURCES OF SYMPATHY

McPherson College instructors have big hearts and lots of sympathy for the "under dog." Although the profs do not make a habit of giving examinations like the one reproduced on this page, it typifies in a small way the humor, sympathy, and understanding of at least one of the faculty members.

All students wishing to maintain and extend the good work of Prof. Bohling in this departure should petition the college to that effect, and, if the students can put up a good enough argument, may success be theirs!

All Freshmen should be required to attend at least one of the bi-weekly faculty volley-ball workouts. If you have never been present, make it a point to be on hand in the gym on a Monday or Thursday night soon. The men of the faculty, stripped of their dignity and thunder and completely off guard, present a surprisingly human and childish aspect of their lives. Then too, there's

McPherson College

V. F. SCHWALM, PH. D., PRESIDENT

McPherson, Kansas.

Dear Students:

No doubt you have worried so over this test that you are on the verge of a nervous breakdown. Therefore, I shall not tax your mental state any more by asking you to write an examination. Anyways, I lost my questions and can't remember what they were. I hope you learned a lot reviewing for the test. If so, the examination would do no good.

Sincerely,

Bohling
Teacher

no offense taken at these times if you wish to laugh—and you'll surely want to laugh. When Hess misses the ball and it hits his chin, or when Fries falls flat, or when Blair starts bawling someone out—just go ahead and laugh right out loud. Everyone else will, so you'll have lots of company.

But to write in another vein—we



FACULTY

are constantly made aware that the college student has a very advantageous and opportune position among the world's young people. The college student lives in an ever-changing environment, where he learns to meet, adjust to, and solve problems of personal and social significance.

The McPherson College student is surrounded by a group of experts in leading young people to a proper consideration of their respective problems. The student's life is crowded with new contacts, new experiences, changing attitudes, and changing situations.

McPherson College has long had a faculty worthy of note. The faculty members are not only exceptionally well qualified to fill their respective positions, but they make the students' problems their problems.

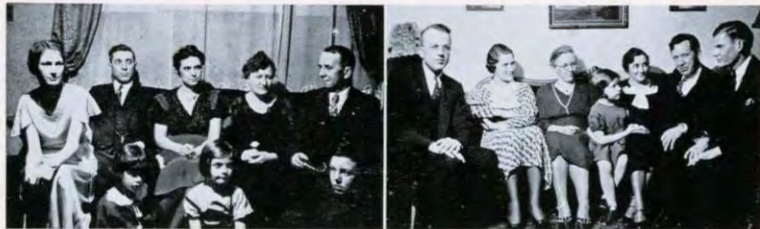
They do more than teach—they go with their students in their quest for knowledge and beauty, sharing their experiences and impressions, and shedding a truly Christian atmosphere about

them. At McPherson students have every opportunity to make proper choices.

McPherson College students make contacts with their instructors at many points. The most lasting impressions are not always those gained in the classroom. Those contacts one makes in the laboratory, on picnics, in rehearsals, on the campus, in homes, in conference, and in sport are equally important and significant. McPherson College instructors have grown to realize this, and consequently take advantage of every opportunity to make constructive contacts with students.

The college faculty regularly opens the social events of the school year with a faculty reception in which the students are encouraged to make themselves susceptible to the interesting and beneficial friendship of the instructors.

Throughout the year, the instructors are intermingling with the students at social and athletic events, as well as other entertainments; and even the sneaks find a faculty member or two in the middle of the fun!





H. J. HARNLY, B. S., A. M., Ph. D.

Dr. Harnly has taught Physiology and Geology courses, and has been curator of the Museum. His interesting stories of personal experiences and general optimistic attitude have won him a place in the lives of all students. Dr. Harnly resigned his position on the faculty this spring.



J. J. YODER, A. B., LL. D.

The treasurer of the college makes few contacts with students directly, but in the capacity of field representative, he makes contacts in the students' homes and brings the news back to homesick campus-bound students.

FREDERICK A. REPLOGLE, A. B., A. M.

Not far from being a college student himself, Dean Replogle has won the admiration and respect of every McPherson College student. He has been God-father to many college students, who, needing constructive advice, have found in Dean friendly counsel and sincere fellowship.

ROBERT E. MOHLER, A. B., M. S.

Prof. Mohler has displayed remarkable ability in doing high quality work rapidly and efficiently in the duties which are his as Dean of Men, as executive in various church and community organizations, and professor of Biology and Agriculture.

EDITH MCGAFFEY, A. B., A. M.

After a leave of absence during the year 1932-33 Miss McGaffey returned to our campus to teach English and Literature. In her duties as Dean of Women she has won the respect of McPherson College womanhood.

FACULTY

The Administration Committee, composed of President Schwalm, Vice-president Harnly, Dean Replogle, Dean McGaffey, Dean Mohler, and Business-manager Fries has been confronted with many problems of major significance during the past several years. The committee has provided proper executive leadership, handled discipline problems, and still been able to enjoy regular meals and sleep; thus ably demonstrating the versatility and optimism of the group.

FACULTY

J. DANIEL BRIGHT, A. B., A. M., Ph. D.

The Department of History is one of the strongest departments of the college. Dr. Bright's effective presentation of historical fact and his subtle humor have led many students to take majors in his department.

J. HUGH HECKMAN, A. B., B. D., Th. M., A. M.

Prof. Heckman, who died in April, 1933, was one of the outstanding religious leaders in his church as well as on the McPherson College campus. His classes in Philosophy, Religion, and Sociology, bespoke his purity of character, depth of insight, optimism, and faith.

DELLA LEHMAN, A. B., A. M.

Miss Lehman's classes in expression and German have attracted many students. Readings and dramatic performances given by her students are tributes to her coaching ability. Her students have found Miss Lehman to be a most ideally absent-minded professor.

MARGARET HECKETHORN, A. B.

The task of supplying McPherson College students and faculty with reading material has kept Miss Heckethorn busy for many years. She strives to keep her library books and magazines on hand for ready use at all times.

The fields of Social Science are fast coming to the fore both in the curriculum and in the world of experience. The departments of Education, History, and Industrial Education are very popular with McPherson College students. Man is a social being and his education must teach him to live harmoniously and happily with his fellow men. This fact is recognized in McPherson College and the humanities are taught from a very practical viewpoint.

MAURICE A. HESS, A. B., A. M.

McPherson College has an outstanding record in debate and oratory, due in large measure to the efforts of Debate Coach Hess. He gets his students to work hard by working hard and long himself. In his spare hours, Prof. Hess teaches courses in English and Latin.



JOHN A. BLAIR, A. B., A. M.

As head of the Department of Education, Prof. Blair is supervisor of practice teaching and professor of psychology and methods in teaching. His thorough presentation of material and his interesting mannerisms make his classes popular and entertaining. Students are glad Blair doesn't always insist on their agreeing with his point of view.



J. WILLARD HERSHEY, B. S., M. S., Ph. D.

We are constantly made aware of Dr. Hershey's Chemistry Department by the attractive odors emanating from the first floor of Harnly Hall. Dr. Hershey and his assistants supervise one of the largest departments of the college. His experiments in synthetic diamonds and rare gasses have drawn much attention to Dr. Hershey.



J. L. BOWMAN, A. B., M. S.

"Now let us suppose -", Prof. Bowman's illustrations of mathematical and physical law are always simple and easily understood. Recent student interest in the stars and planets have bespoken the popularity of his Astronomy class.

HELEN MCILRATH, B. S., A. M.

The Department of Home Economics isn't so exclusive now that Miss McIlrath has a special class for men only. The practicality of the courses make them a quite worthwhile and valuable part of the college curriculum.

S. MILTON DELL, B. S.

Prof. Dell is always pulling a clever stunt or telling a funny story to the unsuspecting students. The excellent workmanship of the woodwork pieces is indicative of the quality of work Prof. Dell demands.

J. HOWARD FRIES, A. B.

Go out on an athletic trip or field tour with Fries, and you won't recognize him as the fellow who so graciously relieved you of all your cash. He is really human, likeable, and interesting, and a capable administrator of college finance.

FACULTY

Through the study of the Natural Science courses in the Biology, Physics, Chemistry, and Mathematics Departments, one learns a broadening and appreciative view of the physical universe and natural law. To acquire scientific fact is not the only aim of these courses. The beauties and natural phenomena of the invisible world are as significant and worthy of consideration as are those of the visible natural world. There are untold possibilities in the unexplored realms of chemistry, radio, physics and astronomy.

FACULTY

RAY C. PETRY, A. B., A. M., Ph. D.

Dr. Petry's favorite phrase should be "To put it in every-day English." During the past year his lectures in philosophy and Bible courses have led many students to a more profound understanding of the cosmos and their place in it.

MELVIN J. BINFORD, B. S.

Binford has not only coached successfully, but he has lived in every-day contact his ideals of clean sports, stalwart manhood, and sportsmanship. The athletics section of the 1934 Quadrangle contains the record of achievement for Coach Binford.

MAURINE STUTZMAN, A. B.

The courses in stenography are not complete without Shorthand. Miss Stutzman teaches the p's and q's of Shorthand in the quiet hours of the afternoon when her services are least in demand at the bookstore.

ALICE GILL, A. B., A. M.

Typing classes learn speed, accuracy, and efficiency by following the instruction and example of the instructor, Miss Gill. The class in Journalism has been significant for its trip to Wichita, and its work with The Spectator.

Instruction in the ways and means of caring for man's economic wants is becoming more and more necessary; likewise is the knowledge of the economic laws that "make or break" one financially, valuable. The fact that these laws and principles are ever changing does not preclude their value, but it does imply that the modern student must be alert to national and world economic situations if he is to be able to understand and adjust to changing problems. The Commerce Department provides backgrounds and study habits of inestimable value.



EARL R. BOHLING, A. B., A. M.

Prof. Bohling's interpretations and criticisms of recent political and economic conditions have been quite interesting and enlightening to all students interested in economics. Many students are now studying for commerce majors, which speaks well for Prof. Bohling.



Mrs. M. W. EMMERT

The one person on the campus who must stretch her patience furthest, is Mother Emmert. As House Mother, she lives with and supervises the goings-out and comings-in of the girls of Arnold Hall. At meal times she has in addition, all the dorm fellows, who occasionally try her patience. Sick and homesick students can depend on Mother Emmert for proper care.



LEROY DOTY, A. B.

Mr. Doty has confined his duties to the areas of securing students for the college and securing work for college students. In both efforts he has been rewarded with notable success.

AUDREY GROVES

The poor Freshmen girls have had to work hard in Miss Groves' physical education classes. The exercise she gives them has made it unnecessary for all but a few students to diet.

LESTER E. SELVES, B. S.

Sharing the credit for coaching McPherson College's successful football team, is Assistant Coach "Bud" Selves. He has demonstrated his capability as an athlete and a coach in all his contacts with McPherson College men.

HERBERT F. RICHARDS, A. B., B. D.

Rev. Richards has succeeded in producing church programs that attract students into religious activity. His sermons are neither long nor dry. He taught in the college Bible department during the illness of Prof. Heckman.

FACULTY

Ministering ever to man's spiritual needs, are the religious organizations and social institutions with which we are surrounded. McPherson College has contributed materially to the spiritual lives of its students, through the Christian influences of its instructors and through the church.

Man's physical nature can not be denied or neglected. McPherson College Physical Education programs have proven successful in providing opportunity for student growth in and through athletic activity.

FACULTY

ALVIN C. VORAN, A. B., B. M.

Prof. Voran's contacts with McPherson College students have won him the respect and friendship of the entire student body. The popularity of the Varsity Quartet and the A Cappella Choir attest to Cheesy's musical talent. His enthusiasm has inspired even the Chapel sessions at times.

LOIS WILCOX, B. M.

Giving lessons in violin, rehearsing with the orchestra, and planning recitals have made a busy year for Miss Wilcox. As a recent student and booster of Bethany College, Miss Wilcox enjoyed the repeated McPherson wins over the Swedes.

FERN LINGENFELTER, B. M.

Miss Lingenfelter has continued her good work with the juvenile music students. The small students gave a most interesting and accomplished evening entertainment in the Chapel during the winter. She gives much of her time to the children, at her city studio.

CLARA COLLINE

Miss Colline works among her students in the Art Department in a quiet and unassuming manner. She is an artist worthy of note, and she succeeds in directing others in their aspirations to portray the beautiful.

Music, art, and literature are the avenues of expression through which the noblest passions and emotions of many generations have been expressed. At a time in which we may expect more and more leisure, we must prepare to use in constructive and useful pursuits the opportunities that are ours. Many people are finding opportunity for growth and self-expression in art and literature. To enable students to understand, appreciate, and contribute to, fine arts, is the aim of the Fine Arts Department.



JESSIE BROWN, B. M.

Miss Brown has displayed her remarkable ability as an instructor of superior pianists. Her students have compared quite favorably with other pianists, in local, district, and state contests. As head of the Department of Music, she plans and arranges many public recitals. Her interest in the college and college students is deep and sincere.

OFFICERS OF ADMINISTRATION

BOARD OF TRUSTEES

Fred Beck	Nickerson, Kansas
Paul Brandt, Chairman	Holmesville, Nebr.
Roy A. Crist	Quinter, Kansas
D. T. Dierdorff	Surrey, North Dakota
Ira Frantz	Fruita, Colo.
Clark Garst	Cordell, Oklahoma
W. D. Grove	South English, Iowa
H. J. Harnly	McPherson, Kansas
Glen Harris	Jennings, La.
Floyd Jarboe	Nevada, Missouri
W. A. Kinzie	Navarre, Kansas
R. E. Loshbaugh	Fredonia, Kansas
J. E. Ralston	Sheldon, Iowa
V. F. Schwalm, Pres. of College	McPherson, Kansas
H. G. Shank, Vice-Chairman	Bowmont, Idaho
E. L. Shoemaker	Plattsburg, Missouri
E. T. Peck	Falls City, Nebraska
B. F. Stauffer	Rocky Ford, Colo.
Dale Strickler, Sec'y	McPherson, Kansas
Ray C. Strohm	McPherson, Kansas
Ernest Wall	McPherson, Kansas
Ira Witmore	Rich Hill, Mo.
J. J. Yoder, Treasurer	McPherson, Kansas
Ray E. Zook	Elkhart, Iowa

EXECUTIVE COMMITTEE OF THE COLLEGE

J. J. Yoder	Chairman of the Board
Dale Strickler	Secretary of the Board
H. J. Harnly	Trustee
Ernest Wall	Trustee
Ray C. Strohm	Trustee
V. F. Schwalm	President of the College

OFFICERS OF THE FACULTY

V. F. Schwalm, Ph. D.	President
F. A. Replogle, A. M.	Dean-Registrar
R. E. Mohler, M. S.	Dean of Men
Edith McGaffey, A. M.	Dean of Women
J. H. Fries, A. B.	Business Manager

The Student Council is an organization for fostering the activities and promoting the interests of the student body. Its purpose is to ascertain the will of the students and, as their representatives, work in cooperation with

STUDENT COUNCIL



1932-33 group: Insert: Milo Stucky, President.
 Top row: D. Drescher, Ozden, P. Heckman, Stucky.
 Middle row: Lerev, R. Bowman, Zinn, E. Bowman.
 Bottom row: Walker, F. Dresler, A. Heckman, Treasurer Lackey.
 1933-34 group: Top row: R. Bowman, Turner, Treasurer Wine, W. Pauls, Yoler.
 Lower row: Edwards, G. Hoover, Hayes, V. Severson, J. Wagoner.
 Insert: Guy Hayes, President.

the faculty in making possible the realization of those desires.

The Council shares in the supervision and support of the college athletic program. The tennis courts are supervised and maintained for student use. The Council publishes the student publications, *The Spectator* and *The Quadrangle*, and sponsors a social program through the Social Committee.

The Council is the official organ of the student body in business matters and the official voice of the students in matters of school

government. The Student Council is composed of two members from each class, two from the faculty, one from the "M" Club, one from the W. A. A., one from the Music Department, and the president and treasurer elected by the student body.

Under the executive leadership of Milo Stucky and Guy Hayes, the Student Council has had two years of harmoniously quiet, yet constructive influence on the contacts of McPherson College students. Lois Lackey and Newell Wine were the treasurers of the Council during these two years.

SECRETARIES AND ASSISTANTS

Chemistry

Esther Brown
Lealand Enberg
Hope Nickel
Milo Stucky
Harvey Shank
Raymond Tice
Gladys Riddell
Arthur DeVor
Glen Webb
Martha Hursh
Jo Wagoner

Library

Bernice Dresher
Ellen Wagoner
Helen Webber
Everett Fasnacht
Dorothy Dresher
Helen Burton
Juliette Parsley
Ruth Webber
Wanda Hoover
Ralph Sherfy
Kenneth Weaver
Fern Early

Industrial Arts

Donald Dresher
Edwin Carlson
Glen Hammann
Harry Frantz

Physical Education

George Zinn
Loren Rock
Cleo Minear
Walter Pauls

Home Economics

Ada Brunk
Esther Stegeman
Edna Reiste

Physics

Robert Bowman
Book Store
Guy Hayes

Secretaries to Prof. Blair

Alice Hedge
Mildred Sellberg

Secretary to Prof. Hershey

Faith Ketterman

Secretaries to Prof. Mohler

Edith Bechtelheimer
Leone Shirk
Jo Wagoner

Secretary to Dean Replogle

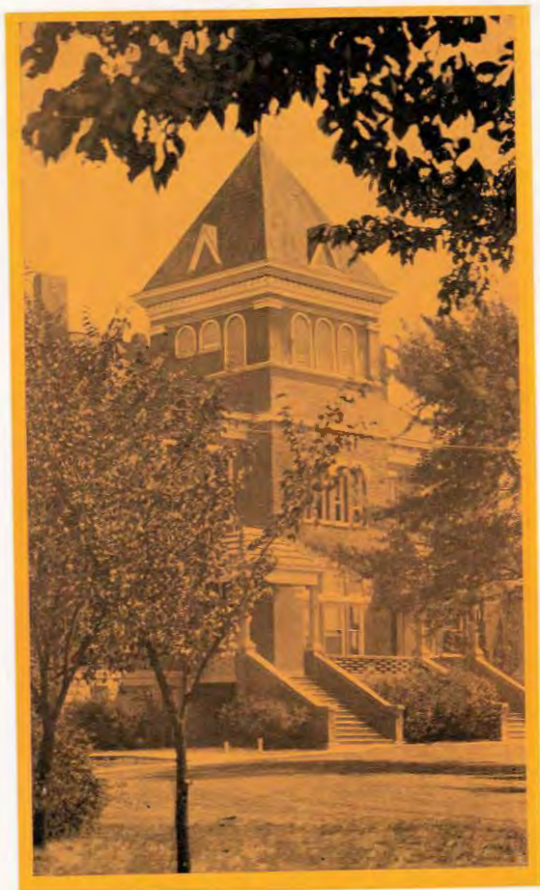
Corinne Bowers

Secretary to Pres. Schwalm

Lois Lackey

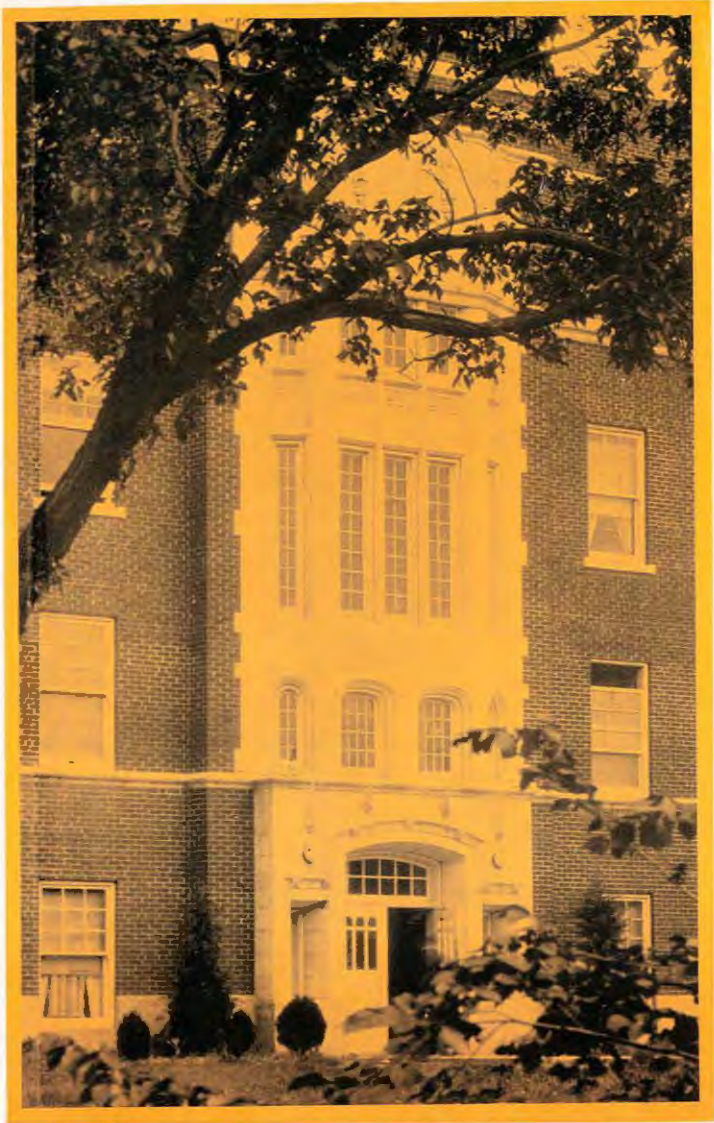
During the years 1932-'33 and 1933-'34 McPherson College students have displayed even more their ability to work at remunerative employment while attending college. Much credit is due the College Student Employment office, headed by LeRoy Doty, and the Government Civil Works Administration Student Aid Project, superintended locally by President Schwalm, for aiding McPherson College students in working their way through college.

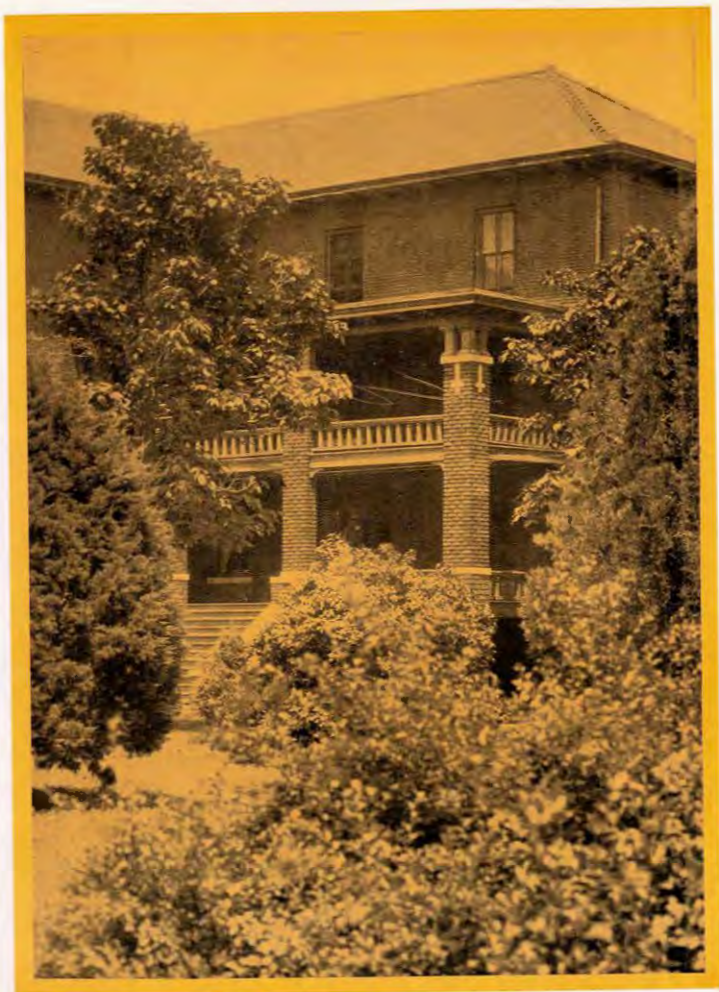
The businesses of the city also aided many students by providing opportunity for self-support.



SHARP HALL

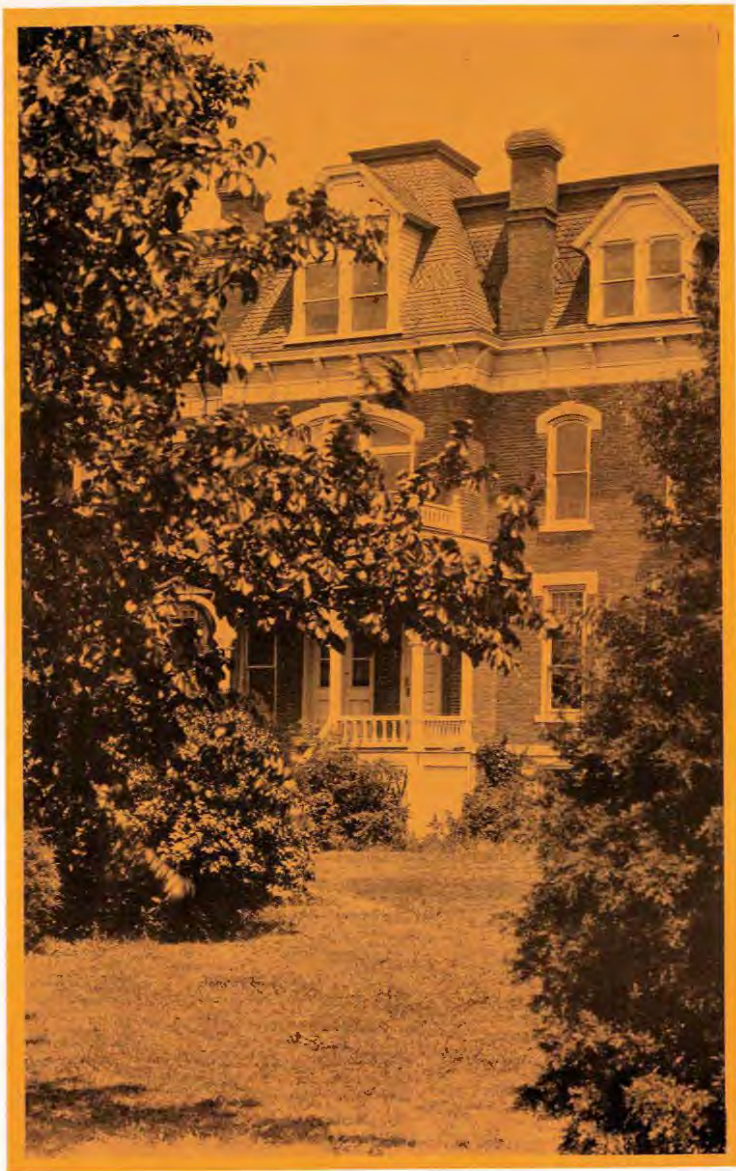
THE CAMPUS

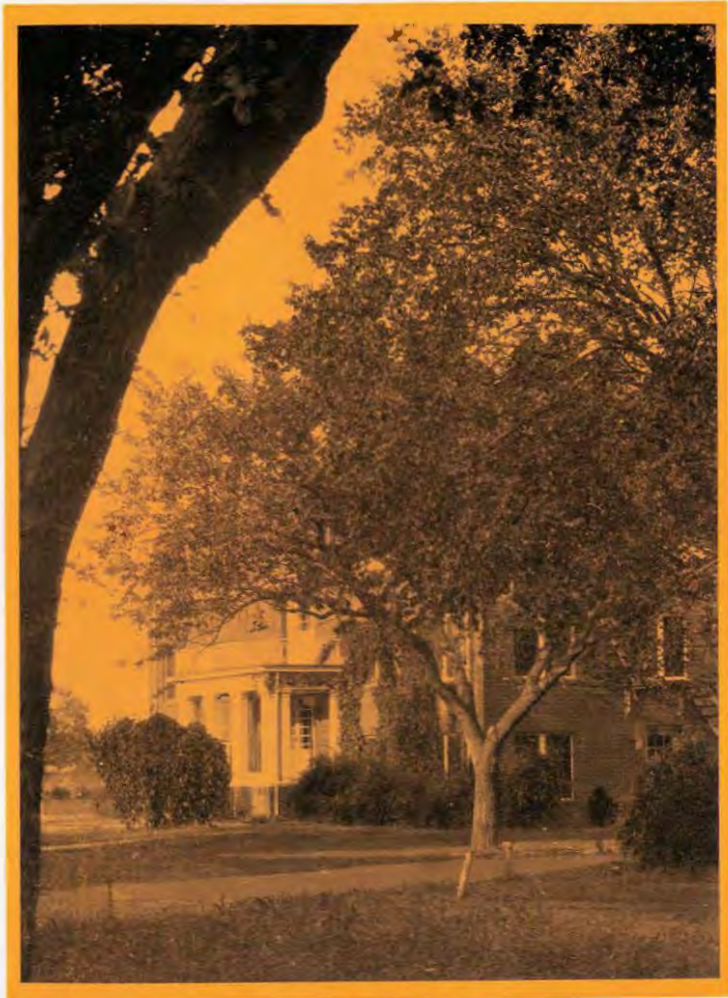




..... ARNOLD HALL

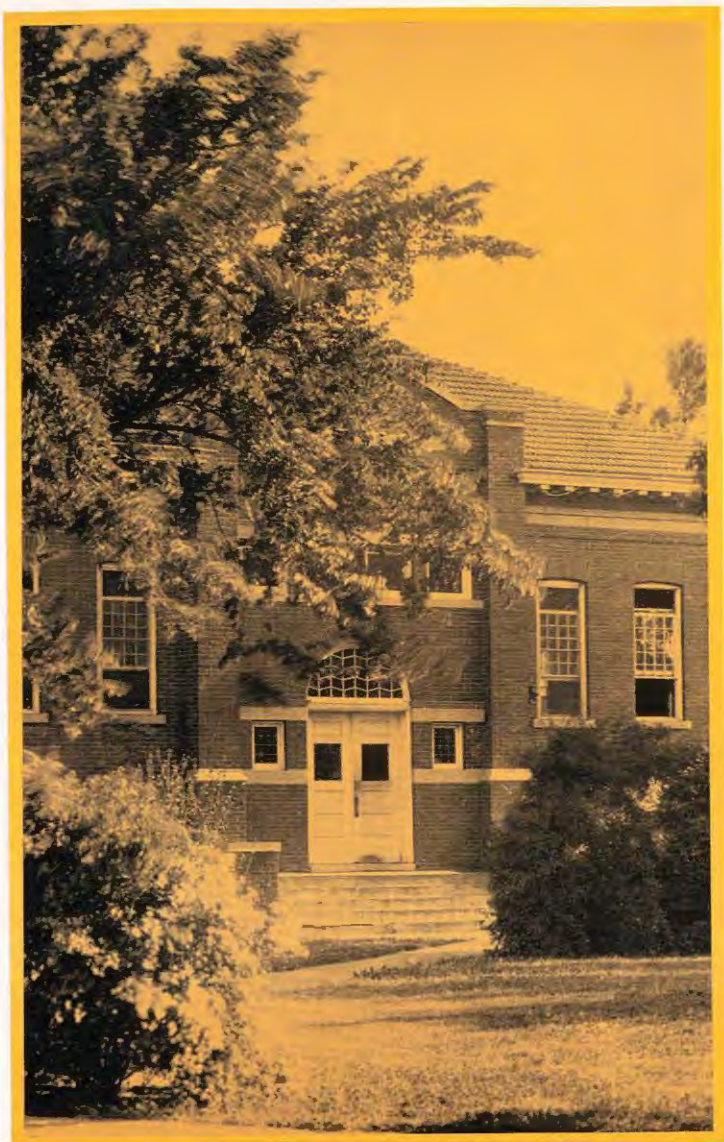
HARNLY HALL

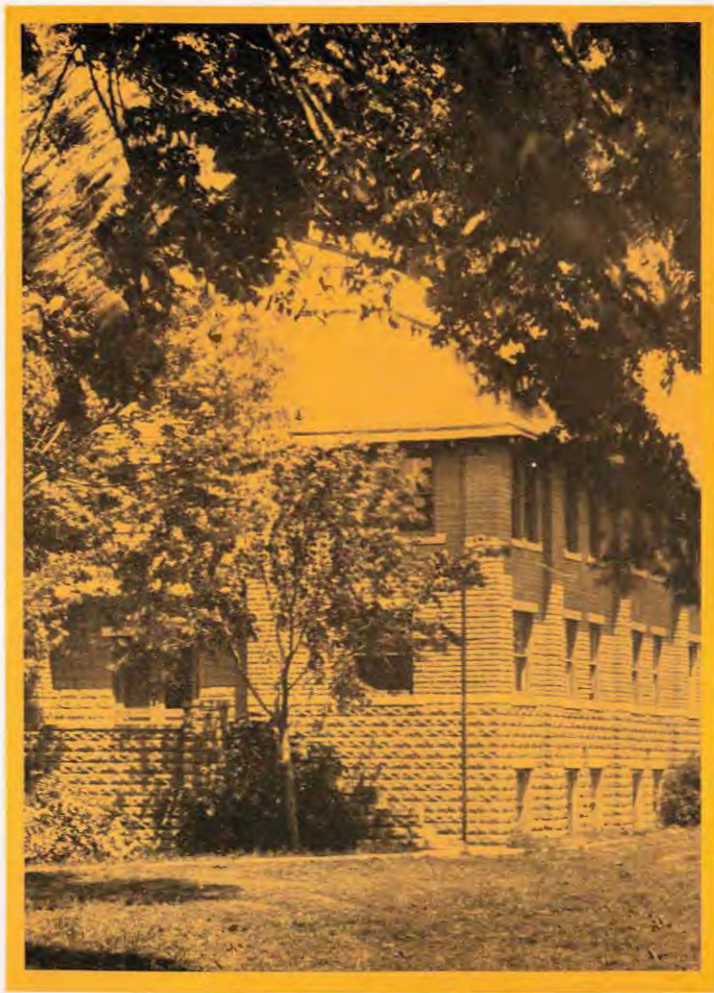




..... KLINE HALL

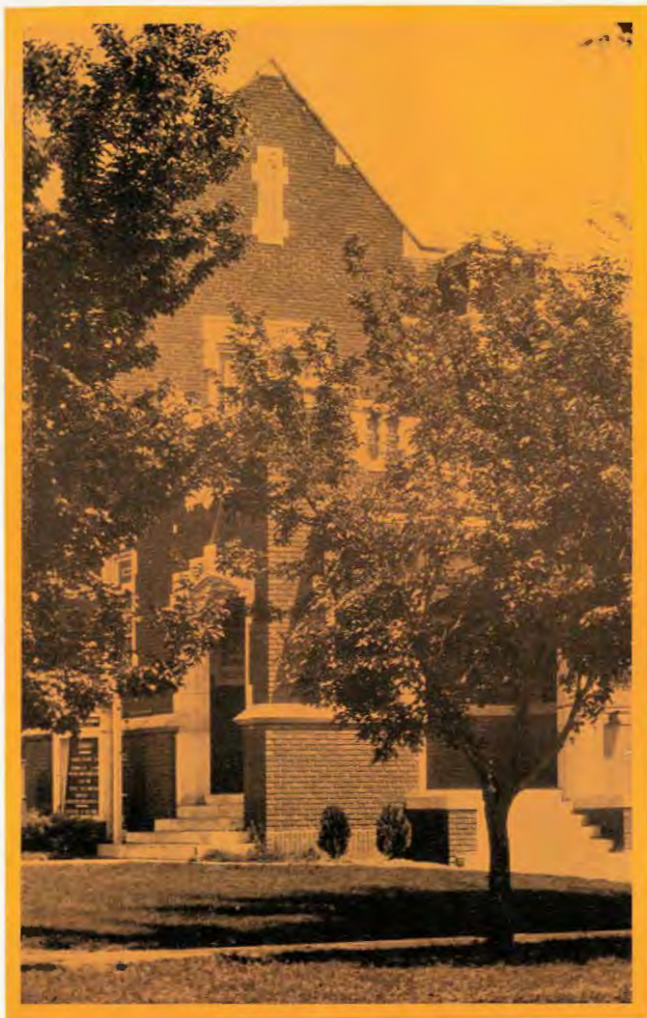
FAHNESTOCK HALL.....





. . . . ALUMNI GYMNASIUM

CARNEGIE LIBRARY



COLLEGE CHURCH



CONTACTS OF PERSONALITIES



Dr. H. J. Harnly has been a member of the McPherson College faculty since 1892. During these forty-one years Dr. Harnly has served the college in many ways; as instructor in several departments, as Dean of the College, as College Vice President, and for a time as Acting President.

Dr. Harnly is completing his last year of teaching this spring, having tendered his resignation. He will continue his connection with the college as Curator of the Museum.

SOURCES OF BALANCE



Three blind men were asked to describe their perceptions of an elephant. One, having perceived only the elephant's tail, believed the elephant to be like a rope. Another thought the elephant like a tree, and the third was equally erroneous in his conclusion. Each of the blind men was partly right, but they had not taken enough of the elephant into consideration to know his whole form.

School instructors cannot give a completely balanced picture of life. They can present a side that comes from study, research, and their personal experiences, but this is not enough; the contacts one makes with fellow-students are likewise significant. The person-

alities of one's classmates must be taken into consideration if one is to grasp a complete and balanced picture of life.

The students' appreciation of social fellowship takes on new aspects in the spring when long, warm evenings tempt students to abandon study and cares, and play tennis, go for a walk, or a picnic outing. By two's and larger groups, the girls and fellows go out to share their evenings in that first-class fellowship for which McPherson College is famous.

The significance of a student's social contacts cannot be over-emphasized. The subject is even becoming a favorite subject of Chapeau speakers.

CLASSES

The Class of 1933 graduated last spring with thirty-four members intact. The class was an outstanding one throughout its four years in college. The members of the class were found in positions of responsibility and leadership in all campus activities. The class was under the executive leadership of Blanch Harris, Eber Tice, Charles Austin, and Vernon "Dusty" Rhoades in the respective years of its career.

Wilbur Yoder was made president of the Class of 1934 during both its first years. The class graduating this spring has twenty-seven members, of which many have played important parts in athletics, forensics, publications, and the Christian organizations during their college lives. The class elected Guy Hayes and Newell Wine respectively, as class presidents, in the Junior and Senior years.

During the past year the second largest of the four classes has been the Class

of 1935, headed by John Goering. The career of the class has been notable for athletic stars. Outstanding functions of the current year were the Junior-Senior Banquet at the Hotel Hawley roof garden, and the sneak, which turned out to be more of a prison break, than a sneak.

The Class of 1936 is worthy of note despite its small size. Paul Booz, class president, successfully managed The Spectator during the past year, and will head the Y. M. C. A. next year. Leonard Lowe and Clarence Sink were elected presidents of two of the Christian organizations of the campus.

At the first of the year we wondered what the school was coming to, with so many green, uncouth Freshmen around; but we gave them a chance and the results were gratifying. They immediately won their way into prominence in forensics, athletics, music, and scholarship. The class has shown remarkable possibilities, and we're for them!



PROF. BOWMAN AND HIS ALGEBRA CLASS.



MISS MCILRATH AND CLASS, IN CLOTHING LABORATORY.

CLASS OF 1933

VERNON C. RHOADES. A. B.
Latin—N. Topeka, Kansas.

Class President 4; Class Treasurer 2; Spectator Staff 1, 2, Editor 3; Quadrangle Staff 4; Y. M. C. A. Cabinet 2, 4; Chorus 2, 3; Glee Club 2, 3; A Cappella Choir 4; Class Representative 2.

LLOYD A. LARSEN. B. S.
Commerce—Abilene, Kansas.

Class Vice-President 4; Business Manager Spectator 3; Quadrangle Staff 2; Cheer Leader 2; M Club 3, 4, Treasurer 4; Student Athletic Manager 4; Glee Club 2, 3; Class Representative 3.

LOREN ROCK. B. S.
Industrial Arts—Enterprise, Kansas.

Class Secretary 4; Y. M. C. A. Cabinet 4; Basketball 1, 2, 3, 4, Captain 4; Track 1, 2, 3, 4; Baseball 1; M Club 1, 2, 3, 4, President 4.

DELBERT W. KELLY. B. S.
Commerce—Liberal, Kansas.

Class Treasurer 3, 4; Quadrangle Staff 3, 4, Co-Editor 4; Tennis Squad 2, 3, 4; M Club 3, 4; Band 1, 2; Orchestra 1, 2; Bookstore 3, 4.

CHARLES AUSTIN. A. B.
History—Fruita, Colorado.

Class President 3; Student Council 2, 3; World Service 1, 2, 3, 4, President 4; Y. M. C. A. Cabinet 2, 3; Student Pastor 3, 4; Tennis 3, 4; M Club 3, 4; Glee Club 1, 2, 3; Chorus 1, 2, 3; Quartet 2; A Cappella Choir 4; Chemistry Club 1, 2.

ESTHER BROWN. B. S.
Chemistry & Home Economics—Hutchinson, Kan.

Class Vice-president 1; Y. W. C. A. Cabinet 3, 4; W. A. A. 1, 2, 3, 4; Chemistry Assistant 3, 4; Chemistry Club 1, 2, 3, 4.

RAYMOND BUSKIRK. B. S.
Industrial Arts—Latham, Kansas
Industrial Arts Assistant 2, 3.

GENEVIEVE CRIST. A. B.
English and Biology—Quinter, Kansas.
Forensic Club 2; Y. W. C. A. Cabinet 4; World Service 3, 4; W. A. A. 1, 2, 3, 4, President 4; Thespian 3, 4.

ODESSA CRIST. B. S.
Home Economics—Quinter, Kansas.
Spectator Staff 4; Forensic Club 1; W. A. A. 1, 2, 3, 4; Chemistry Club 1, 4.

DONALD DRESHER. R. S.
Industrial Arts—Canton, Kansas.
Y. M. C. A. Cabinet 4; Student Council 4; Glee Club 2; Industrial Arts Assistant 3, 4; Chairman of Visual Aid Committee 4.



CLASS OF 1933



DOROTHY M. DRESHER, A. B.
 Biology—Canton, Kansas.
 Spectator staff 3, 4; Y. W. C. A. Cabinet 4;
 Library Assistant 3, 4.

FLORENCE P. DRESHER, A. B.
 Home Economics—Canton, Kansas.
 Student Council 4; Glee Club 1, 2, 3; Chorus
 1, 2; Thespian Club 4.

“ ”



MILTON EARLY, B. S.
 History & Education—Norborne, Missouri.
 Y. M. C. A. Cabinet 1, 2; Track 2, 4; M Club 2,
 4; Glee Club 1, 2; A Capella Choir 4; Warrens-
 burg Teachers College 3.

CLARICE EVANS, A. B.
 Education—McPherson, Kansas.
 W. A. A. 4; Orchestra 2; A Capella Choir 4;
 May Queen 4; Kidder Junior College, Kidder
 Missouri 1; M. C. Summer school 3.

“ ”



BERNICE FOWLER, B. S.
 Education—Worthington, Minnesota.
 Y. W. C. A. Cabinet 4; Glee Club 3; Minne-
 sota State Teachers College, Mankato, Minn. 1, 2.

C. LILBURN GOTTMANN, A. B.
 History—Center, Missouri.
 Student Council 3; Debate, Second team 1, 2,
 Varsity 3, 4; World Service Group 1, 2, 3, 4;
 Y. M. C. A. Cabinet 3, 4; President 4; Tennis
 2, 3, 4; M Club 3, 4.

“ ”



GRETTA WILMA GRIFFIS, A. B.
 History—McPherson, Kansas.
 International Relations Club 3, 4; President 4;
 Eldorado Junior College 1, 2.

GRACE K. HECKMAN, A. B.
 Latin—McPherson, Kansas.
 Student Council 1, 2; Y. W. C. A. Cabinet 3, 4,
 President 4; World Service Group 2, 3, 4; Class
 Representative 3.

“ ”



TILLIE HEIDEBRECHT, A. B.
 History—Buhler, Kansas.
 Summer school 4.

ELIZABETH FRANCES HOLZEMER, B. S.
 Biology—McPherson, Kansas.
 Chorus 1; Glee Club 1, 2; A Capella Choir 4.

CLASS OF 1933

MELVIN R. LANDES, A. B.

Education & Biology—Hanlin, Kansas.
 Quadrangle Staff 3; Spectator Staff 4; Y. M.
 C. A. Cabinet 4; Chorus 2; Glee Club 3, 4.

HOPE NICKEL, B. S.

Chemistry, English & Biology—Wichita, Kansas.
 Debate 3; Thespian Club 2, 3, 4; Chemistry
 Club 1, 2, 3, 4.



RUTH HARMS NIGH, B. M.

Cornet—McPherson, Kansas.
 Orchestra 1, 4; Band 1, 4; Glee Club 1; Mixed
 Chorus 1; Bethany College, Lindsborg, Kansas
 2; Public School Music Certificate, Horner Con-
 servatory, Kansas City Mo., 3.

ELSIE C. RUMP, B. S.

Biology—Conway, Kansas.
 World Service Group 2; W. A. A. 1, 2, 3



HARVEY SHANK, B. S.

Chemistry—Carthage, Missouri.
 Quadrangle Staff 1; Y. M. C. A. Cabinet 3, 4;
 Chorus 1, 2, 3; Glee Club 2, 3; Male Quartet
 2, 4; A Capella Choir 4; Chemistry Club 1, 2, 3,
 4; Chemistry Assistant 4.

ELLEN M. STEINBERG, A. B.

Mus.—Lorraine, Kansas.
 Glee Club 1, 2, 3; Chorus 1, 2, 3; A Capella 4.



MILO STUCKY, B. S.

Chemistry—Elvira, Kansas.
 President of Student Council 4; Chemistry Club
 1, 2, 3, 4; Chemistry Assistant 4.

PEARL WALKER, A. B.

Home Economics—Omaha, Nebraska.
 Class Vice-President 3; Student Council 1; W.
 A. A. 3, 4; Omaha University, Omaha, Neb., 1.



WARD WILLIAMS, A. B.

History & Education—Ekeland, N. Dakota.
 Class Vice-President 2; Student Council 2; Var-
 sity Debate 1, 2, 3, 4; Oratory 1, 3, 4; Y. M.
 C. A. Cabinet 2, 3, 4; World Service Group 1, 2,
 3, 4; Student Pastor 2, 3, 4; Track 1, 2, 3, 4; M
 Club 2, 3, 4.

GEORGE ZINN, B. S.

Commerce—Lost Springs, Kansas.
 Student Council 4; Football 2, 3, 4, Captain 4;
 Track 2, 3, 4; M. Club 2, 3, 4; Washburn Col-
 lege, Topeka, Kansas 1.



CLASS OF 1934



NEWELL WINE, B. S.

Commerce—Enders, Nebraska.
Class president, 4; Student Council, 2, treasurer,
4; Orchestra, 1, 2, 4; Band, 2, 4; A Cappella
Choir, 3, 4; Chemistry Club, 2; Thespian Club,
4; Football, 1, 2, 3, 4; "M" Club 1, 2, 3, 4.

PAUL W. SHERFY, B. S.

Biology—McPherson, Kansas.
Class vice-president, 4; Chorus, 1; World Ser-
vice Group 1; Glee Club, 2; Y. M. Cabinet, 2;
Spectator, 1, 2.



LESTER P. POTE, B. S.

Biology—Ripley, Oklahoma.
Class secretary, 4; President Y. M. C. A. 4;
World Service Group, 3, 4; Chemistry Club, 3;
Track, 3, 4; "M" Club, 3, 4; Quadrangle, 4.

CORRINE E. BOWERS

Commerce—McPherson, Kansas.
Class treasurer, 3, 4; Class representative May
Fete, 3; Chemistry Club, 2; Y. W. Cabinet, 3, 4;
Secretary to Prof. Blair, 2; Secretary to Dean
Replogle, 3, 4.



ELIZABETH BOWMAN, A. B.

Mathematics—Quinter, Kansas.
Student Council, 3; W. A. A. 2, 3, president, 4;
Physics assistant, 4.

ROBERT H. BOWMAN, B. S.

Physics—Quinter, Kansas.
Student Council, 3, 4; Athletic board, 3, 4;
Chemistry Club, 1; Physics assistant, 3, 4;
Football, 1, 2, 3, 4; "M" Club, 3, 4.



DELVIS F. BRADSHAW, B. S.

Manual Arts—Waldo, Kansas.
World Service Group, 1, 2, 3, president, 4; Depu-
tation, 1, 2, 3, 4; Chorus, 1, 2; A Cappella Choir,
3, 4; Male Quartet, 2; International Relations
Club, 3; Thespian Club, 3, 4; "Eather", 1;
"Importance of Being Earnest", 3.

ADA BRUNK, B. S.

Home Economics—McPherson, Kansas.
Thespian Club, 2, 4, president 3; W. A. A. 1, 2,
3; Secretary to Prof. Nininger, 1; Library As-
sistant, 2; Home Economics assistant, 3; Y. W.
Cabinet, 2, 3; "Nine Till Six", 3; coached "Im-
portance of Being Earnest", 3, and "The En-
chanted April", 4.



EDWIN E. CARLSON, B. S.

Manual Arts—Little River, Kansas.
Industrial Arts assistant, 3, 4.

WAYNE CARR, B. S.

Education—Batavia, Iowa.
Thespian Club, 4; World Service Group, 4; Depu-
tation, 4; A Cappella Choir, 3; Male Quartet,
1, 2, 3; Class representative May Fete, 3; Class
secretary, 3; Mount Morris College, 1, 2.

CLASS OF 1934

MILDRED DAHLINGER

Music—McPherson, Kansas.

A Cappella Choir, 3, 4; Varsity trio, 3, 4; Glee Club, 1, 2; Y. W. Cabinet, 4; "The Lucky Jade", 1, "Esther", 1.

LOIS EDWARDS, B. M.

Public School Music—Twin Falls, Idaho.

Student Council 4; Varsity quartet, 2, trio, 3, 4; A Cappella Choir, 3, 4; Glee Club, 2; W. A. A. 1, 2, 4, secretary 3; Deputation, 1, 2; "Ruth", 2.

~ ~

EVERETT M. FASNACRT, B. S.

Education—Wiley, Colorado.

A Cappella Choir, 3, 4; Chorus, 1; Glee Club, 1, 2; Y. M. cabinet, 3, 4; World Service Group, 1, 2, 3, 4; Spectator, 1, 2, associate editor, 3; Quadrangle, 2, 3, editor 4; Track, 3, 4; "M" Club, 3, 4; "The Lucky Jade", 1; "Esther", 1.

AUDREY GROVES, B. S.

Education—McPherson, Kansas.

Girls' Physical Education Instructor, 3, 4; Orchestra, 4; K. S. T. C. Emporia, 1, 2.

~ ~

GUY HAYES, A. B.

Commerce—Geneseo, Kansas.

Class president, 2, 3; President Student Council, 4; Varsity debate, 3, 4, second team, 1, 2; College Social Committee, 3; Band, 1; Cheer leader, 2; Deputation, 2; Thespian Club, 2, 3, 4; Quadrangle Staff, 2; Football, 3, 4; Track, 3, 4; "M" Club, 2, 3, 4.

ELIZABETH FRANCES HOLZEMER, A. B.

English—McPherson, Kansas.

A Cappella Choir, 3, 4; Glee Club, 1, 2; Chorus, 1; Chemistry Club, 2; "The Lucky Jade", 1; "Esther", 1; "Ruth", 2.

~ ~

GULAH HOOVER, B. M.

Piano—Quinter, Kansas.

Class vice-president, 3; Student Council 3, 4; Y. W. Cabinet 3, president 4; Varsity trio, 3, 4; A Cappella Choir, 3, 4; Glee Club, 1, 2, Chorus, 1, 2; College Social Committee, 3; Representative student, 2; "The Lucky Jade", 1; "Esther", 1.

CARROL E. KOONS, A. B.

History—Libertyville, Iowa.

Class president, 1; Band, 2; Deputation 3; Mount Morris College, Mt. Morris, Illinois, 1, 2, 3.

~ ~

WHEELER KURTZ, B. S.

Biology—Chicago, Illinois.

Quadrangle, 4; Chemistry Club, 1, 2.

IRENE MASON, B. S.

Education—Norborne, Missouri.

A Cappella Choir, 4; Chorus, 1, 2; Glee Club, 2; World Service Group, 1, 2, 4; Central Missouri Teachers College, Warrensburg, and Univ. of Mo., Columbia, Missouri, 3.



CLASS OF 1934



CLEO G. MINEAR, B. S.
 Commerce—Canton, Kansas.
 Football, 1, 2, 3, 4; "M" Club, 2, 3, 4; Physical
 Education assistant, 4.



WARNER NETTLETON, B. S.
 Biology—Leviston, Minnesota.
 A Cappella Choir, 3, 4; Male Quartet, 3, 4; Chorus,
 1, 2; Biology assistant, 4; Mount Morris
 College, 1; Rochester, Minnesota Junior College,
 2.



DAVID C. PEARSON, B. S.
 Education—Windom, Kansas.
 Cheer leader, 1; Editor Bethany College news-
 paper, 2; Student Council 2; Varsity debate, 2;
 Editor Univ. of Iowa Magazine, 3; Research
 Assistant and Instructor, 3; Bethany College,
 Lindsborg, 1, 2; State Univ. of Iowa, Iowa City,
 Iowa, 3.



UNA H. RING, A. B.
 English—McPherson, Kansas.
 Thespian Club, 3, president 4; Spectator, 2, ed-
 itor, 3, associate editor, 4; Glee Club, 1; Y. W.
 Cabinet, 3, 4; English Assistant, 4; Representa-
 tive student, 1.



ALEX RICHARDS, B. S.
 Biology—Waldo, Kansas.
 McPherson College Natural History Trek, 2;
 Second team debate, 1; Chemistry Club, 4.



PAUL W. SHERFY, B. S.
 Biology—McPherson, Kansas.
 Spectator, 1, 2; Y. M. Cabinet, 2; Glee Club, 2;
 World Service Group, 1; Chorus 1; Class vice-
 president, 4.



CORINNE SUTER, B. S.
 Education—South English, Iowa.
 Y. W. Cabinet, 4; Deputation, 2; Mount Morris
 College, Mt. Morris, Illinois, 1, 2.



NEWELL WINE, B. S.
 Commerce—Enders, Nebraska.
 A Cappella Choir, 3, 4; Football, 1, 2, 3, 4;
 "M" Club, 1, 2, 3, 4; Thespian Club 4; Chemis-
 try Club 2; Orchestra, 1, 2, 4; Band, 2, 4; Stu-
 dent Council, 2, treasurer, 4; Class president, 4.



WILBUR C. YODER, B. S.
 Commerce—Waterloo, Iowa.
 Class president, 1, 2; Student Council, 4; Chorus,
 1; Glee Club, 2; Spectator Associate editor,
 2, 3; Sports editor, 4; Basketball, 3, 4; "M"
 Club, 3, 4; Quadrangle, 2, 3; Business Manager,
 4; Representative Student, 2.



DEAN FREDERICK ALLEN REPLOGLE,
 A. B., A. M.
 Class sponsor.

CLASS OF 1935

JOHN GOERING
President of the class
 Elyria, Kansas
 History

FAITHE KETTERMAN
Vice-president of the class
 Abilene, Kansas
 Home Economics

~ ~

AGNES BEAN
Secretary of the class
 McPherson, Kansas
 Education

GLADYS RIDDELL
Treasurer of the class
 McPherson, Kansas
 Chemistry

~ ~

MARTHA ANDES
 Mound City, Missouri
 Education

ALMA ATCHISON
 McPherson, Kansas
 English

~ ~

EDITH BECHTELHEIMER
 Sabetha, Kansas
 English

GERALDINE BURDETT
 McPherson, Kansas
 Art

~ ~

ELRAE CARLSON
 Little River, Kansas
 Home Economics

GEVENE CARLSON
 McPherson, Kansas
 Biology



CLASS OF 1935



RUSSELL CARPENTER
Sabetha, Kansas
Commerce



ARTHUR DeVOR
McPherson, Kansas
Chemistry



BERNICE DRESHER
McPherson, Kansas
Public School Music



DAVID DUNCANSON
Lewiston, Minnesota
History



ORVAL EDDY
Lewiston, Minnesota
Commerce



HARRY FRANTZ
Rocky Ford, Colorado
Industrial Arts



ROYAL FRANTZ
Fruita, Colorado
English



JOHN FRIESEN
Buhler, Kansas
Commerce



MILDRED GORDON
Carthage, Missouri
Piano



GLEN HAMMANN
McPherson, Kansas
Industrial Arts

CLASS OF 1935

HOBART HUGHEY
Bartlesville, Oklahoma
Industrial Arts

MARTHA HURSH
Cassoday, Kansas
Chemistry

VELMA KELLER
Minneola, Kansas
Education

LOIS LACKEY
Fruitland, Idaho
Commerce

ARCHIE LINDHOLM
McPherson, Kansas
Biology

MARGARET OLIVER
McPherson, Kansas
English

MILDRED PRAY
Hope, Kansas
Biology

MAXINE RING
McPherson, Kansas
History

JAMES ROBERTSON
Galva, Kansas
Mathematics

NEVA ROOT
Minneapolis, Minnesota
English

MILDRED SIEK
Hope, Kansas
Home Economics

ELMER STAATS
Sylvia, Kansas
History



CLASS OF 1935



CHARLES STRONG
Burns, Kansas
History



MARCELLA STANSEL
McPherson, Kansas
Music



RAYMOND TICE
Summerfield, Kansas
Biology



SAMUEL STONER
Ladoga, Indiana
Commerce



ELIZABETH WAGONER
McPherson, Kansas
History



RONALD VETTER
Moundridge, Kansas
Chemistry



IVA WALKER
Omaha, Nebraska
English



JO WAGONER
McPherson, Kansas
Biology



WALTER WEDDLE
Bloom, Kansas
Commerce



ARLENE WAMPLER
McPherson, Kansas
English



CARROL WHITCHER
Falfurrias, Texas
History



LEONARD WIGGINS
Geneseo, Kansas
Commerce

CLASS OF 1936

PAUL BOOZ
President of the class
McPherson, Kansas

LEONE SHIRK
Vice-president of the class
McPherson, Kansas

~ ~

EDNA BENGTON
Secretary-treasurer of the class
McPherson, Kansas

LELAND ABEL
McPherson, Kansas

~ ~

DOROTHY BONHAM
McPherson, Kansas

WILLARD BRAMMELL
Ozawkie, Kansas

~ ~

JOY CULLEN
Falcon, Colorado

GERALD CUSTER
Quinter, Kansas

~ ~

DONALD EVANS
McPherson, Kansas

LAUREL FIELDS
McPherson, Kansas



CLASS OF 1936



PASCAL DAVIS
McPherson, Kansas



LOIS FRY
Morrill, Kansas

..



MARY JANE GROVES
McPherson, Kansas



ANN HECKMAN
Rocky Ford, Colorado

..



PAUL HECKMAN
McPherson, Kansas



HAROLD JOHNSTON
McPherson, Kansas

..



BRUCE KAUFFMAN
McPherson, Kansas



MODENA KAUFFMAN
Topeka, Kansas

..



LEONARD LOWE
Morrill, Kansas



DOROTHY MATSON
McPherson, Kansas

CLASS OF 1936

GERALD MEYERS
Morrill, Kansas

HERBERT REPLOGLE
Rossville, Indiana

MILDRED SELJBERG
McPherson, Kansas

NARCELLA SEVERTSON
Galva, Kansas

VERNA MAE SEVERTSON
Galva, Kansas

RALPH SHERFY
McPherson, Kansas

CLARENCE SINK
Sabetha, Kansas

ESTHER STEGEMAN
Hope, Kansas

RUTH TICE
Summerfield, Kansas

ARCHIE VAN NORTWICK
Beattie, Kansas

HELEN WEBBER
Bazine, Kansas



CLASS OF 1937



LOYAL MILES
President of the class
Nickerson, Kansas

VICTOR MOORMAN
Vice-president of the class
Nickerson, Kansas

ESTHER BOWERS
Secretary of the class
Fruitland, Idaho



CLARENCE ANDERSON
Clovis, New Mexico

LEORA ANDERSON
McPherson, Kansas

AUTUMN ANDES
Windom, Kansas



MAXINE ATCHISON
McPherson, Kansas

DORIS BAKER
Haxton, Colorado

IRENE BALES
Claude, Texas



LUCILLE BALLARD
Sterling, Kansas

FLOYD HARRIS
Swink, Colorado

LEAH BEAN
McPherson, Kansas



ERWIN BENTZ
Tampa, Kansas

EVERETT BROWN
Wichita, Kansas

KERMIT BURROUGHS
Independence, Kansas

CLASS OF 1937

BETTY LOU CAMERON
Cedar Rapids, Iowa

EMERSON CHISHOLM
Rosbury, Kansas

OTHO CLARK
Oklahoma City,
Oklahoma



RALPH CRIFE
Whitefish, Montana

BERNICE DAPPEN
McPherson, Kansas

MAXINE DeMOTT
McPherson, Kansas



JOHN DUNN
Nickerson, Kansas

FERN EARLY
Norborne, Missouri

MARY EISENBISE
Merrill, Kansas



LUCILE FAIRCHILD
McPherson, Kansas

ROBERT FERRIS
Conway, Kansas

GALEN FIELDS
McPherson, Kansas



LAURENCE FIELDS
McPherson, Kansas

WILLARD FLAMING
Buhler, Kansas

NORMA FLORA
Quinter, Kansas



CLASS OF 1937



JACK GORDON
Des Moines, Iowa



ARTHUR GOUGHNOUR
Arkney, Iowa



VIOLA HARRIS
Swink, Colorado



VIOLA HOLDERKEAD
Cushing, Oklahoma



WANDA HOOVER
Pleitsburg, Missouri



VAN HUNT
Batavia, Iowa



CHRIS JOHANSEN
Chicago, Illinois



BERNICE KEEDY
Marshalltown, Iowa



ESTHER KIMMEL
Sheldon, Iowa



HOMER KIMMEL
Sheldon, Iowa



PAUL LACKIE
McPherson, Kansas



AARON LANDES
Adrian, Missouri



FREDERICK MCCOY
McPherson, Kansas



DARLENE MESSAMER
Dallas Center, Iowa



LUCILLE MESSAMER
Minburn, Iowa

CLASS OF 1937

DAVID METZGER
Iowa, Louisiana

ANTON MEYER
Tampa, Kansas

VICTOR MEYERS
McPherson, Kansas

LEOLA MOHLER
Fruitland, Idaho

RICHARD MOSER
Dallas Center, Iowa

BERNADINE OHMART
McPherson, Kansas

MAX OLIVER
McPherson, Kansas

LILLIAN PAULS
Buhler, Kansas

BRUCE PECK
Morrill, Kansas

BARBARA PETZ
Pretty Prairie, Kansas

PHYLLIS POWERS
McPherson, Kansas

EDNA REISTE
Dallas Center, Ia.

LOUIS ROBERTSON
Galva, Kansas

CLAYTON ROCK
Navarre, Kansas

ARLENE RUSSELL
Galva, Kansas



CLASS OF 1937



DONALD RICHARDS
McPherson, Kansas

LAURENE SCHLATTER
McPherson, Kansas

EMMA SCHMIDT
Moundridge, Kan.

" "



JOHN SCHUL
Wichita, Kansas

ESTHER SCOTT
Chase, Kansas

EMMETT SHANK
Navarre, Kansas

" "



MARIE STOVER
McPherson, Kansas

GLEN TURNER
Opal, Wyoming

JOHN WARKENTIN
Lehigh, Kansas

" "



VELMA WATKINS
Ottawa, Kansas

KENNETH WEAVER
McPherson, Kansas

HAZEL WEIMER
Lewiston, Minn.

" "



ELDON WINGERD
Navarre, Kansas

MARGARET YOUNG
Plattsburg, Missouri

JOE ZUCK
Dallas Center, Ia.

MUSIC AND SPECIALS

MUSIC GRADUATES

1932-33

Teacher's Certificate

Ronald Vetter, piano
Narcella Severtson, piano
Ellen Steinberg, public school music

Diploma

Gulah Hoover, piano

Bachelor of Music

Ruth Harms Nigh, cornet

1933-34

Teacher's Certificate

Elrae Carlson, piano
Lois Edwards, piano

Diploma

Ronald Vetter, piano
Narcella Severtson, piano

Bachelor of Music

Gulah Hoover, piano
Lois Edwards, public school music

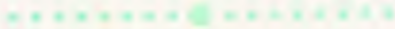
Miss Jessie Brown, head of the Music Department, has achieved remarkable success in the training of pianists. Miss Joyce Vetter, special student studying under Miss Brown, has competed successfully in many piano contests, and thus reflects the effective teaching technique of her instructor.

SPECIAL STUDENTS

Many students, not regularly enrolled in college and finding it possible to attend college part-time as special students, are receiving credit for work done in art, voice, violin, piano, and liberal arts courses. About seventy are enrolled under this system yearly. Many of these are grammar school and junior high school students. Miss Fern Lingenfelter has made a reputation as instructor of children, and may be found in her down-town studio giving many lessons each week.



CONTACTS OF ACHIEVEMENTS



EXTRA CURRICULAR ACHIEVEMENTS



Top row: Weaver, Hayes, Goering, Staats.
Middle row: Christian, Schmidt, Patterson, Riddell.
Lower row: Heckman, Fleming, Lackie, Booz.

DEBATE

Debate Coach Maurice A. Hess was confronted this year with the task of shaping debate teams out of a group of inexperienced but willing individuals. Prof. Hess adopted the new policy of concentration on the development of ability, rather than upon trying solely to develop winning teams.

The question for debate this year, "Resolved that the powers of the President of the United States should be substantially increased as a settled policy," was not determined until so late that the debators selected in the local tryouts in early November, were forced to work intensively to prepare for the Winfield tournament at Southwestern College a month later. Elmer Staats, John Goering, Kenneth Weaver, and Guy Hayes made up the two varsity teams, each team debating both sides of the question.

It is only fair to say that Professor Hess worked harder than any of the debators in preparing for the tournaments. At almost any time of the day when he was free in the month or so before the Winfield tournament he could be seen in the library poring over magazines and books on the debate subject, and jotting down notes in his little notebook. His unceasing patience in listening to the same old material over and over in practice and his valuable criticisms are to his everlasting credit. Success in debate has been in no small part due to the untiring efforts of the coach.

Elmer Staats represented McPherson at the State Peace Oratorical Contest at Southwestern College, and Willard Fleming was our representative at the Anti-Tobacco Contest held at Central College. These two orators had previously been declared winners in local tryouts.

THESPIAN CLUB

During these two years interest has been renewed in the Thespian Club, the official dramatic organization of the college for the past eleven years. Sponsored by Miss Della Lehman, the club has fostered dramatic interest on the campus.

Last year eleven new members were voted into the club. This year over forty students were present at try-outs, twelve being taken into the organization. Both years successful productions were presented in the college chapel to large audiences. A novel feature of Oscar Wilde's farce, "The Importance of Being Earnest," the 1933 play, was the second act being given in the gymnasium. The 1934 production was an unusual comedy, "The Enchanted April," by Kane Campbell. Both plays were ably coached by Ada Brunk, a member of the club. With the funds obtained

from last year's production this year's members made and presented to the school a cyclorama, which does away with the necessity for stage scenery. This year the Thespians gave a Christmas play as a chapel program. It was adapted from a magazine story and directed by Marjorie Brown. The new members showed originality this year in the character costumes in which they were requested to appear for initiation.

In these years the club has shown what an organization can do with little funds, by having the members themselves direct and stage the productions. Last year the Thespians were capably headed by Ada Brunk, president, and Hope Nickel, secretary-treasurer; this year by Una Ring, president, and Marjorie Brown, secretary-treasurer.



Top row: Eddy, Clark, Hayes, Adrian, Brown, Turner, Brunk, Wine, Kimmell, Booz.
Lower row: Bardetti, Root, Patterson, U. Ring, Dapjen, M. King, DeMott.



Play Cast, "The Importance of Being Earnest."

THE QUADRANGLE

College days are among the most eventful days of our lives. Back in the memory of our college days we can see contacts, events, dreams, ambitions, and achievements won by the students; memories which are slowly but surely fading.

Events crowd in upon us so rapidly that our minds cannot record all our thoughts, ambitions, and activities. To make it possible that the student may have a tangible record in the future, of this great college life in the past, the 1934 Quadrangle has been created.

For the first time in the history of the "Quad" the book covers the activities of two school years. Delbert Kelly, editor of the book during the 1932-'33 year, had considerable to do with the organizing and general make-up of the book. Everett Fasnacht, editor during the past year, has carried the biggest burden in carrying out the final plans in editing the book. After getting a staff member to do his part, Fasnacht was constantly checking materials, and carrying out the general plan of organization.

Vernon Rhoades helped by writing copy

for part of the 1932-'33 activities. Royal Frantz contributed by writing copy for some of this year's activities. Wheeler Kurtz had charge of individual pictures, Martha Hursh wrote copy, and Lester Pote was an efficient snapshot editor.

The burden of balancing the Quadrangle budget has rested on the capable shoulders of Wilbur Yoder. His acquaintance with the business men of the city and his systematic way of handling financial matters have helped immeasurably in making the 1934 Quadrangle financially possible.

Sam Stoner, as general sales manager, organized a good sales force that approached practically every individual on the campus. Dave Duncanson was the official typist of the staff.

The Quadrangle Staff has spent considerable time and patience in editing and publishing this book. It has been the general idea of the staff to place pictures and printing in this book that would please most of the student body. If anyone objects to what is in the book, come around and we will tell you what to do about it.



Top row: Kelly, co-editor; Fasnacht, co-editor; Pote, Stoner, Yoder business manager.
Bottom row: Rhoades, Kurtz, Hursh, Duncanson, Frantz.



THE SPECTATOR

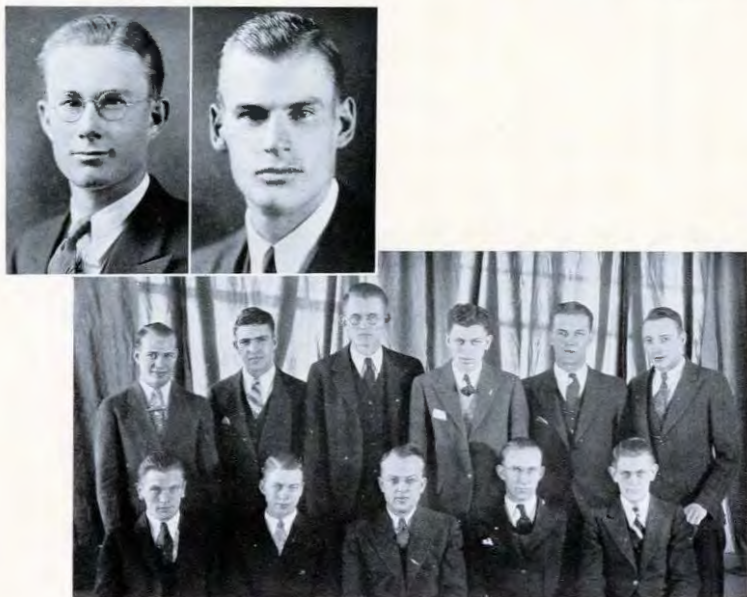
Although it is not very large and influential as newspapers go, The Spectator nevertheless holds a place of unquestionable importance in the life of McPherson College. Those in charge the past two years have made it their aim to use the influence of The Spectator to aid all worthy movements on the campus.

The staff for 1932-33 under the leadership of Una Ring and Harry Frantz published a paper which was welcomed every week by students and faculty members. The business staff found it very hard to keep up the financial end of the paper during these, the worst months of the depression, and certainly are to be complimented for the way in which they met the situation.

Elmer Staats, editor for 1933-34, has undertaken an aggressive policy of campus improvement. His weekly editorials and features on subjects of world interest served to stimulate thought and action. Paul Booz, the business manager, has succeeded in keeping the paper above board financially, a worthy achievement. Wilbur Yoder, sports writer par excellence, handled the sports page both this year and last in a superior manner. Van Hunt supervised the distribution of the papers. Royal Frantz, with his printing experience, was well qualified to do the make-up work. The Spectator will be edited by Royal Frantz and managed by Robert Booz during the coming year. Miss Gill's journalism classes aided greatly in the reporting and editing.

Interwoven in the fabric of our everyday associations and classwork is the thread of religious and moral experience and thought.

Y. M. C. A.



Inserts: Lilburn Gottmann, president 1932-33; Lester Pote, president 1933-34.
Top row: G. Meyers, Moorman, R. Frantz, Sink, Ogden, Nettleton.
Lower row: Johansen, Stants, Dr. J. D. Bright, Whitcher, P. Booz.

The growth of this, the spiritual part of student life, is supported and strengthened in a material way by the "Y" organizations.

The McPherson College Y. M. C. A. is an organization of fellows who believe they can be mutually helpful, and in an effort to do this, the Y. M. C. A. sponsors certain activities absent in the college curriculum, and supplements certain other activities which may be either deficient or of such nature that student benefit is gained mostly from student participation.

The Y. M. C. A. has been one of the campus' most active organizations during the past two years. Lilburn Gottmann and Lester Pote, the presidents during the past two years, have been outstanding student leaders, and have made their Christian influence felt in all Y. M. contacts.

Outstanding leaders that have been on our campus recently through efforts of the Y. M. C. A. and other Christian organizations, include Dr. Willard Uphaus, Paul Harris, Jr., and Sherwood Eddy.

~ ~ The Young Women's Christian Association, one of the foremost organizations on our campus, endeavors to bring the women of the college closer together spiritually and socially.

Y. W. C. A.



Top row: Ketterman, C. Ewers, M. An's, Keller, E. Dreher.
 Lower row: Bechtelmer, U. Ring, Oliver, Dahlinger, Wepster.
 Inverts: Grace Heckman, presi. art. 1912-13; Gulah Hauser, president, 1927-28.



The Y. W. girls of last year contacted the new students during the summer, and became their "campus sisters." This aided the new students in forming acquaintances and orienting themselves to college.

By means of a Christmas party a few of the children who would otherwise not have had much Christmas were entertained by the Y. W. girls. Heart-sister week made friends among many of the girls who had not become acquainted. Other happenings of the year

were the Silver Tea and All-School Watermelon Feed. All of these affairs bring the girls together in a fellowship that is helpful and creative.

One cannot live a full and creative life and not enter into the spiritual side of living. The McPherson College girl comes in contact with other girls who value the finer things of life, in the Y. W. C. A. activities on our campus.

The World Service Group unites all students who wish to grow spiritually, work in practical church situations, or get experience in any other type of activity serving the

WORLD SERVICE GROUP



Inserts: Charles Austin, president 1932-33; Delvis Bradshaw, president 1933-34.
 Top row: Hunt, Heckman, Rezier, Slek, Pate, Ogdan, Sherly, Burroughs.
 Middle row: Eisenbise, Holderread, J. Wagoner, Bradshaw, Messamer, Mason, E. Wagoner.
 Lower row: R. Frantz, Suter, W. Hoover, Early, Reiste, Whiteher.

spiritual needs of others. The group has, during the past year, met weekly in the Y. W. C. A. room, with from fifteen to thirty members present.

Under the leadership of President Bradshaw and the sponsor, Dr. Ray Petry, the group became a veritable "clearing-house" for the college courses in religious education. Open forums were based upon the building of church worship programs, church music, deputation programs, and pastoral problems. In other programs discussions were centered on student and personal worship problems.

During the last year a large group of McPherson College students have had oppor-

tunity for participation in World Service deputation projects. A male quartet, composed of Brice Peck, bass, Delvis Bradshaw, baritone, Galen Ogdan, second tenor and Wayne Carr, first tenor, traveled in three states and gave programs before more than twenty-five hundred people. All together, twenty churches, besides many high schools and secular meetings, were served by World Service deputation teams.

The World Service Group has become one of the most active and influential organizations on the McPherson College campus, largely due to the cooperation and untiring efforts of Dr. Petry.

~ ~ The Chemistry Club presents varied and interesting programs which draw gratifying student attendance. The programs have been enlightening, entertaining, and exciting.

The students of the Chemistry Club have witnessed the most significant experiments

CHEMISTRY CLUB



Top row: Hunt, Callon, McCoy, Cripe, Weaver, Pray, Keedy, Sick, D. Messamer, Reiste, Bean, Powers, Flora, E. Kimmell.
 Second row: Bentz, Daannenburg, Dana, Rock, Ferris, Webb, Sweetland, Moorman, R. Booz, Miles, G. Fields, Adrian.
 Third row: Vetter, Ketterman, Wagoner, Riddell, R. Tice, Enberg, Dr. Hershey, DeVor, B. Kauffman, Stegeman, Hales, Hursh, Friesen.
 Bottom row: L. Fields, Metzger, G. Meyers, Toland, Maser, D. Richards, Michael, A. Meyer, Strong, Zuch, H. Kimmell, Landes.
 Inset: Dr. J. Willard Hershey, President of the Club.



carried on under the direction of Dr. Hershey, permanent president of the Club. The experiments carried on in the McPherson College laboratories by Dr. Hershey and his assistants are recognized by leading authorities in the world of science.

A principal feature of the Chemistry Club is the annual supervised trip to Hutchinson. Salt mines, flour mills, a bakery, reformatory, foundry, and newspaper offices have proven to

be of extreme interest to students.

The social event of the Club is an annual party, held in the Y. W. C. A. room. Interesting games, stunts, and refreshments contribute to a delightful evening.

Notable recent programs included a demonstration of synthetic diamond making, which proved really thrilling to some; lectures on the McPherson oil pool and several series of moving pictures.

QUARTET

Prof. Alvin C. Voran, commonly known in his student days at M. C. as "Cheesy," has developed the voice department during the two years of his residence here, into one of the most popular and best known departments of the college.

Prof. Voran has trained in each year, a male quartet that presented programs of the highest type. Numbers were presented which were so outstandingly superior that audiences were given new conceptions of beauty and harmony in musical presentation. "Cheesy" is himself a popular baritone singer.

The 1932-33 Varsity Male Quartet and Prof. Voran toured seven thousand miles through McPherson College territory, presenting programs of vocal music unaccompanied, singing without score.



ALVIN C. VORAN



1932-33 quartet: Nettleton, first tenor; Carr, second tenor; Shank, baritone; Johansen, bass.



1933-34 quartet: Nettleton, first tenor; Traver, second tenor; Miles, baritone, Johansen, bass.

A CAPPELLA SINGING



Supplementing the musical programs of the A Cappella Choir, the Varsity Ladies Trio has proven an exceptional combination for the production of high-quality music. During the past two years, the trio has sung with uniformly pleasing harmony at all times. The personnel of the trio is Gulah Hoover, first soprano; Mildred Dahlinger, second soprano; and Lois Edwards, alto.

The McPherson College A Cappella Choir was first organized in 1932, by Prof. Alvin C. Voran. During the two years of its existence on the McPherson College campus it has rapidly risen in prominence and in quality of music produced. Prof. Voran has led the singers and audiences to new levels of appreciation for the art of A Cappella singing.

During the winter and spring of 1933 the choir gave many concerts in McPherson and other towns of Kansas. The choir was presented to McPherson audiences February 8, in their "Debut" program in the McPherson Community Hall. This program was significant for its dignity and majesty. On three occasions the choir has been presented to radio audiences, over radio station KFBI, Abilene.

The 1933-34 choir, enlarged to thirty-four voices, started the year by securing and learning a group of new songs. The "Year of Progress" program was given in the Community Building, February 6, before a large and appreciative audience. April 5 the choir presented the chapel program at Kansas State College, Manhattan.



Top row: Fasnacht, Harris, Nettleton, Allen, Bradshaw, Schul, Miles, Voran, Tice, Johansen.
 Middle row: Sweetland, Traver, Holzemer, Dahlinger, Okerlind, Hoover, Dresher, Watkins, Pauls, Edwards, Wine, Peck, Oliver.
 Lower row: Gordon, Weimer, Ketterman, Gustafson, E. Wagoner, Mason, Holloway, Cullen, Christian, J. Wagoner, Hahn.

ORCHESTRA



First Violins

Franklin Hiebert
 Frederick McCoy
 Ruth Crary
 Helen Burton
 Corrine Bowers
 Marlys Whitney
 John Yule
 James Reed

Second Violins

Glen Turner
 Mildred Pray
 Autumn Andes
 Joy Cullen
 Emerson Chisholm
 Ramona Fries
 Joyce Vetter
 Harold Hansen
 Ronald Vetter
 John Winning

Viola

Hulse Barber

Cellos

Anna Fuchs
 Audrey Groves
 Arlene Russel

Bassoon

Robert Nininger

Oboe

Morton Widiger

Basses

Donald Evans
 Georganna Oelrich

Clarinets

Charles Smith
 Ruth Webber
 Mrs. Berger

Flutes

Helen Webber

Trambones

Leonard Wiggins
 Archie Lindholm

Trumpets

Floyd Harris
 Newell Wine

Piano

Laurine Schlatter

Horns

Ralph Sweetlana
 George Hamburg

Miss Lois Wilcox, college instructor in Violin, worked hard in practices and out of practices to develop the McPherson College orchestra. The orchestra practiced frequently throughout the year preparing for their programs in McPherson and neighboring towns.

On March 15 the orchestra rendered an evening concert of classical selections in the college chapel. The orchestra, which is the largest the college has had in many years, displayed musical talent and technique throughout the program. Franklin Heibert was orchestra concert-master.



Varsity quartet, 1933-34
 Our male pianist
 Prezy and the boys
 "Train's a-comin'"
 Cheesy and Taffy
 Jane and Wayne
 Along the road
 Tired, hungry and
 sleepy
 The cowboy
 Little Brown Church
 Beats walkin'
 In Colorado
 Deputation quartet
 All dressed up and no
 place to go

ENTHUSIASM



Behind the team is the coach, and behind the cheering section is the cheer leader. The position of cheerleader is one of great responsibility because the "pep" of the school virtually hinges upon it. Neva Root has been especially effective in this capacity during the past year. She has constantly been busy in promoting "school spirit" by having pep chapels, bonfires, parades, and stunts of various kinds. Back of this she has the personality, originality, and executive ability to put her ideas across.

Winning teams make it easier for a cheer leader, but because the Bulldog athletic teams won a great per cent of the games this season

was not the only reason that the enthusiasm and morale of the cheering section was high during the year. In pep meetings and at games Neva was constantly saying, "Come on, gang, get in there and yell," and she got results. Whether it was "hold that line" or "we want a touchdown" the spirit of the cheering section was all the same.

The spirit of the school has been at a high ebb during the entire year and some of our best times have been when we were preparing for a hard game or celebrating for the last one. In thinking back over some of the games we can still hear the cheering section yelling "Fight! Bulldogs! Fight!"



CONTACTS OF
PERSPIRATION

.....



COACH BINFORD

REVIEW OF SEASONS

McPherson College has shown up in a remarkable way in all athletics during the last year. The capable coaching combination of Melvin Binford and Bud Selves produced a football team that made an enviable record, winning all but one conference game to cinch the runner-up place in the Kansas Conference.

The team played good consistent football, using strategy and headwork as much as weight and brawn. Three McPherson players won recognition on the all-Conference team; these were Wiggins at end, Hayes at tackle, and Carpenter in the backfield.

After a few days practice the basketball team started out in a heavy schedule. The team was fast and snappy, and played air-tight defense. Coach Binford produced seven

excellent ball players, no one of which was outstandingly superior, but all of which played good team work. College of Emporia, a new school in the Kansas Conference, tied with the Bulldogs to lead the conference.

With only one letter man, Yoder, graduating this spring, the Bulldog basketballers should fare well in the 1934-35 conference basketball race.

The 1934 track team experienced notable success. The team won two triangular meets, with Hutchinson and Bethel, and with Sterling and Bethel, respectively. The team lost to Friends and Bethel in a triangular at Wichita.

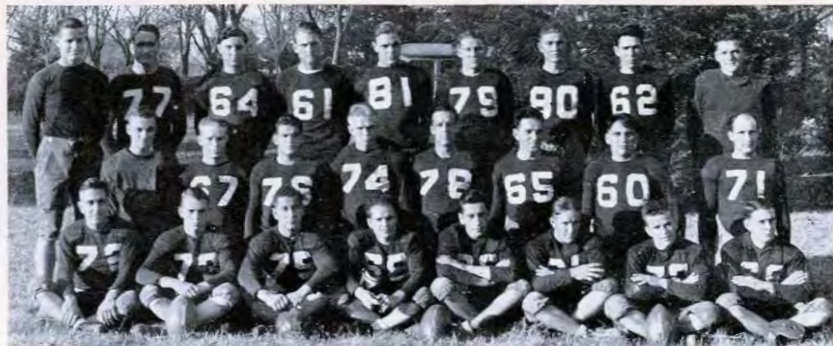
Men notable in their events were Miles in the dashes, Meyer in the discus, Wiggins in the javelin and high jump, Haun in the pole vault, and Custer in the broad jump and high jump.

In the State meet at Ottawa May 11, Haun tied for first in the vault and Miles won third in the century dash. Anton Meyer placed third in the discus throw, Custer placed third in the high jump, and Wiggins placed fourth in the javelin and tied for fourth in the high jump.

The tennis team was re-inforced this year by the return of Harold Binford. Tice, Binford, Bowman and Wiggins formed the nucleus of the team, and the tennis crew came through the year with wins from Hutchinson Junior College, Bethel, Friends, and a tie with the Swedes, last years' state champions.

Tice and Binford won the doubles in the State Tennis Tournament at Ottawa, defeating the Swedes, defending champions, in the finals. These same men tied for third in the state singles tournament.





1932 Football Squad—
 Back row: Coach Binford, Zinn, Hayes, Wine, Nelson, Reinecker, Weidle, Evans, Walstrom
 Middle row: Replogle, Carpenter, Minear, Pauls, Wiggins, Rock, Eddy, Duncanson.
 Front row: Anderson, Johnston, Keck, Rume, Bowman, Hart, Lichty, Nae.

1932 FOOTBALL

The Bulldogs started the 1932 football season with a spirit that gave promise of carrying them far toward the Kansas Conference championship. Although many of the squad were light and inexperienced, M. C. turned in three victories out of the first six games. The famous Oklahoma City Goldbugs and several of the conference teams, however, served to even things up by outscoring the Bulldogs during the latter part of the season.

Two weeks after school started the Bulldogs opened the schedule with a victory over the strong Wichita U. "B" team. With a large crowd watching to see the McPherson team in action against the Notre Dame system

used by Wichita, the Bulldogs advanced toward the goal line during the first quarter by means of splendid interference and good backfield work. A series of line smashes and off tackle thrusts put them on the two yard line, from where Carpenter plunged across the line. Wiggins kicked the extra point for McPherson, to complete the only tally of the game.

The next week they journeyed to Atchison to play the St. Benedicts Ravens, coached by "Moon" Mullins. The Bulldogs showed a great deal of flash during the first quarter, but after that the effects of their long journey the same day began to show up. On two occasions





LESTER E. "BUD" SELVES

outstanding work in the line, while Anderson and Chester Johnston could be counted upon to gain yardage from the backfield.

The Oklahoma City Goldbugs, a team with the highest rating in the Midwest the preceding season, proved too much for the challenging Bulldogs. In the third period Wiggins intercepted a pass and ran sixty-five yards for a touchdown, but for most of the rest of the game the Bulldogs were outweighed and outplayed. The score was 47 to 6.

On the next Thursday the tide turned again, with Bethel as the victims, 41 to 7. In the first quarter McPherson made two touchdowns. In the second period Bethel converted a passing attack into a touchdown. However with their 13 to 7 lead the Bulldogs played winning football throughout the second half. Every lineman played good football, and Johnston, Blume, Wiggins and Zinn all contributed to the scoring. Blume ran 70 yards around the end for the Bulldogs' third score. Many substitutes saw action in this game.

In the Homecoming game on Armistice Day, the M. C. gridsters were defeated by the Ottawa University squad, conference champions, 18 to 0. The two teams battled on fairly even terms during the first quarter, our one long gain being called back because of an off sides decision. The heavy Ottawa team scored once after a march from midfield, and again after they recovered a McPherson fumble on the 4-yard line. The third tally for the Braves followed straight football plays, Knapper going over with the ball.

The dope gave the Bulldogs a chance for an

the fleet St. Benedicts backs, McCann and Cahill, got away for long runs which netted twelve points. In each case the try for extra point was missed.

Next the Bulldogs met the Wesleyan Coyotes on the home field, determined to get even for our defeat in 1931. However Wesleyan scored three touchdowns, in a game featured by penalties on both sides. Wine, Keck, Minear, and Captain Zinn did some excellent work in the line, but the fleet-footed Robinson persisted in gaining ground, backed up by the heavy Coyote line. In the shadow of the goal at one time the Bulldog forward wall held the visitors, but a costly penalty put the ball to the one yard line, whence Robinson carried it across. The other scores which completed Wesleyan's nineteen points came after a McPherson fumble and a long end run by Robinson.

However the next week at Wichita we came back with a 7 to 0 victory over Friends U., in a game featured by McPherson's effective passing plays. The Bulldogs outplayed the Quakers even more than the score indicates. Both tackles, Wine and Nelson, and the ends, Pauls and Reinecker, did

even break with the Baker Wildcats the following week, but the Bakerites converted their breaks into scores at the expense of the Bulldogs. The yards gained from scrimmage were about equal. Although at times the Bulldogs went where they pleased through the line and at times they



ZINN, CAPTAIN, 1932



1933 Football Squad—

Back row: Coach Selves, Burreas, Wiggins, Colwell, Weddle, VanNortwick, Bowman, Wine, Hayes, Coach Binford.

Middle row: P. Prather, Haun, Eddy, Schurr, Carpenter, Kauffman, H. Binford, Vasquez, Minear, Pauls.

Lower row: Berger Duncanson, Eshelman, Johnston, Rock, Dunn, Godsey, Custer, Dannenburg.

showed a winning passing attack, they failed to take advantage of their chances as the Wildcats did. Evans showed up exceptionally well on the receiving end of the passes in this game. The final score was 19 to 0.

The "Swede" jinx still appeared to hold in the annual Turkey Day battle. McPherson had a decided advantage in the dope and played against a noticeably inferior team, for the McPherson backs went through the opposing line with ease while the Swedes failed to dent the Bulldog line. After some fumbling and a recovery by the Swedes near the Bulldog goal early in the game, Bethany converted an

around-end play into a touchdown and made the extra point. In the second half the Bulldogs came back strong and after Wine had blocked a punt for a safety and two points, the Bulldogs started a strong drive down the field from the 20-yard line. Their steady advance of about fifty yards proved to be their chief scoring threat, for they lost the ball in an attempt to pass. Although McPherson outgained the Swedes and made three times as many first downs, the Bulldogs had to be content with a 7 to 2 defeat and await another season for their chance again at the "Terrible" Swedes.





1933 FOOTBALL

With a goodly number of lettermen from the 1932 season and a few promising new men, the capable coaching combination of Melvin J. Binford and Lester E. "Bud" Selves turned out one of the best football teams in the history of the school.

Less than two weeks after the opening of school, the 1933 Bulldog football team opposed the Chilocco Indians at the McPherson Athletic park. A great crowd was out to see the Bulldog gridmen in their opening game. Early in the first quarter Carpenter scored for McPherson and again in the first quarter Binford took a pass from Burruss for another score. Haun ran half the length of the field with good interference for the third counter. Haun again scored from the two yard line in the last half. The final Bulldog score came when Burruss intercepted a pass and raced 65 yards for a score. The final count was 34-0.

After the Bulldogs had looked so promising in the Chilocco game, the fans were still wondering how the home team would show up against the strong college and university teams later in the season. Friends University came to the Bulldog camp with one of the best backfields in their history and were doped to give any of the smaller colleges of the state a real battle. Friends was first to score on a pass

that had been hit by two McPherson men and then fell into a Quaker's arms over the goal line. Later in the game Wiggins took advantage of a bad pass from the Friends center and fell on the ball over the goal line and Wiggins kicked the extra point which proved the winning margin. McPherson completely



outplayed Friends and the Quaker backs didn't have a chance against the McPherson line.

The Bulldogs went to Salina the following week and won their first conference game of the season from the Wesleyan Coyotes by a 6-0 score. During the latter part of the first quarter McPherson started a drive from near the middle of the field and marched straight to the goal line and on the first play of the second quarter Burress plunged over from the one yard line. McPherson made eleven first downs to six for Wesleyan and gained more yards from scrimmage than Wesleyan did. The entire line played good ball on both offense and defense and the work of Wiggins and Vasquez was especially outstanding.

Baker came to McPherson to decide which team would lead the conference race, temporarily, at least. This game was voiced by many as one of the best football games they had ever seen. Both teams did some remarkable punting throughout the entire game. Baker showed an offensive threat at the start of the game and Eddy was making nearly all of the tackles. When the Bulldog line got to functioning it became a great game. It was a scoreless game until about two minutes remained and a Baker back interfered with Pauls as he attempted to catch a pass that looked like it was in his arms. With the ball on the one yard line Burress plunged over and Wiggins kicked perfectly to make the score 7-0. Hayes made many tackles behind the Baker line in this game.

With a record of being the only undefeated and untied football team in the state, the Bulldogs kept their slate clean by trouncing Bethel 26-0. McPherson played a rather ragged game, but still won by a comfortable margin. Burress scored early in the second quarter and a pass from Carpenter to Pauls was



good for another score in the same quarter. Dunn saved McPherson from being scored against when he tackled Roberts from behind after a gain of 42 yards. In the last half Schurr made some beautiful runs and he scored a touchdown after a drive in which he featured. The final score came on a pass from Johnston to Pauls. The entire squad got a chance to play in this game.

The biggest game of an ordinary year is with the Bethany Swedes and the annual grudge game came on November 3. Back in 1923 was the last time that a Bulldog team had won from their rivals in this sport, but a determined and fierce bunch of Bulldogs this time won over the Swedes by a score of 39-0 which later proved the most decisive win in the conference this year. The game started out like a typical Bulldog-Swede game, but after the Binford-Selves machine started to





function it was a one-sided affair. One of the prettiest plays of the game was a long pass from Burress to Wiggins, who caught the ball on a dead run and scored a touchdown. The pass and run were good for 53 yards. McPherson gained 366 yards to 51 for Bethany and made 25 first downs to their opponents four. Scores were made by Pauls, Wiggins, Binford, Haun, Carpenter, and Schurr.

Following the win over Bethany, the Bulldogs became one of the nation's 17 undefeated

and untied teams. The championship game at Ottawa was won by the Braves by a score of 13-0. Ottawa scored both touchdowns in the first half and the second half found McPherson having the advantage but the Bulldogs were unable to score. A McPherson drive once ended on the five yard line when Ottawa recovered a fumble. Late in the game Kauffman blocked a punt and he recovered it on the four yard line. With some of the regular backfield crippled on the side line, McPherson





was unable to cross the goal line. Ottawa outgained the Bulldogs slightly in total yardage and made one more first down than McPherson.

A badly crippled Bulldog team and extremely hot Oklahoma weather helped the Oklahoma Baptist University team win over McPherson by a score of 19-0. The Bulldog lineup contained only five or six regular first team players at any one time during the game. Stark, shifty broken field runner of the Baptists thrilled the crowd with runs of 99 and 92 yards for touchdowns.

The final game of the season was played at home and the Bulldogs won from York Nebraska College by a score of 27-7. McPherson was superior in every department of this game. One of the features of this game was a 50 yard run by Haun for a touchdown. Haun did a neat piece of running, but splendid interference aided him greatly. Wine, Minear, Bowman and Hayes played their last college football in this game.

The team's record of seven wins and two defeats is the best record McPherson College has ever had in football.



BASKETBALL FOR TWO YEARS

of 30-23 in a hard-fought game. With the opening of the second semester the McPherson team was substantially strengthened with the addition of Rufus Jamison and Harold Johnston. On the home court McPherson won from



1932-33 Basketball Squad—
Back row: H. Johnston, Yoder, Coach Binford, Reinecker, Replogie.
Front row: Rock, Wiggins, Jamison, Pauls.

BASKETBALL 1932

Coach Melvin J. Binford had a limited number of men with experience during the 1932-'33 basketball season and in general the team lacked height. They gave a good account of themselves and won their share of the games, however.

St. Benedict's came here for the first game, which was played in January, and the Bulldogs lost, largely due to the goal shooting of the Ravens' substitute center. McPherson went to Wichita and defeated the Quakers by the narrow margin of 28-27. Friends led 17-5 at one time in the first half, but the famous Bulldog rally was restored. Wiggins tossed the winning goal from the center of the court just before the game ended.

Kansas Wesleyan took the measure of Binford's men at Salina by a score

Friends by a score of 35-26.

McPherson again met defeat at the hands of a Bethany athletic team by a score of 27-20. Harold Johnston played good ball and led the McPherson scorers with nine points.

Good basketball was shown by the entire team when they defeated the Baker Wildcats 24-19. A good defense and good passing was largely responsible for this win. Jamison played good ball in this game.

Ottawa showed some fancy shooting to the McPherson crowd and won by a decisive margin. Rock played good ball but couldn't get the support needed to stop the Braves. Bethel won over the Canines at Newton with Captain Rock and Reinecker playing best for McPherson.

Bethel lost to McPherson 26-25 in a thrilling game. The score was close all the way and just before the final gun Rock was fouled. With the score tied Rock missed the first free throw,

1933 B. B. SQUAD



1933-34 Basketball Squad—
Back row: C. Johnston, Haun, Yoder, Coach Binford, H. Johnston, Vasquez.
Front row: Schul, Wiggins, Meyer, Pauls, Binford.

and then sunk the second to win for McPherson.

Three games were lost on a road trip to the eastern part of the state. On consecutive nights, Baker, Ottawa, and St. Benedict's won from the Bulldogs. Pauls played good ball in all three games. After the Baker game, the team became draggy and showed little offense against the Ravens.

In a rough game Kansas Wesleyan defeated McPherson and the victory gave the Coyotes undisputed possession of the Conference championship. The Bulldogs held their own during the early part of the game, but lost out in the second half.

The big game of the season came on March 3 when the Bulldogs triumphed over their Swede rivals by the narrow margin of one point. The final score

was 35-34. The Swede jinx was not badly broken, but it looked as if it was giving way to a Bulldog reign. Yoder put the Bulldogs in the running during the latter part of the game with two long shots and led the McPherson scoring with nine points.

1933

After a successful football season, local fans anxiously awaited the opening of what promised to be a good basketball season. With six lettermen and Anton Meyer, elongated Freshman, forming the nucleus of the squad, Coach Melvin J. Binford started drilling his men for the first game which was less than two weeks away. The Bulldogs tied with College of Emporia for the Kansas Conference Championship, with each school winning eight games and losing two. Out of the conference, the



co-champions won five and lost two games.

McPherson opened their season by winning from Hastings College 31-17, after the Nebraska college had won from the Swedes the night before by a few points. Before the holidays Bethany came down for an exhibition game and Binford's entire squad experienced an extremely warm evening—Bulldogs, 52; Swedes, 14.

After the holidays the McPherson basketballers slumped a little and lost two games in a row on a road trip. Coffeyville took the Bulldogs 25-12 and on the following night Pittsburg Teachers won 41-18.

The Bulldogs opened the conference season by trouncing last year's runner-up, the Ottawa Braves, by a score of 41-26. Pauls had a good night and scored consistently. Next came Bethany and in a defensive game McPherson won by a score of 28-11; this time it was a conference game. C. of E. defeated McPherson on their box-like court to decide the conference leadership for the time being.

The following Monday night was a good night for McPherson and Bethel was defeated 30-22. Tony Meyer played good ball and scored nine points. In a hard-fought game the Bulldogs defeated Kansas Wesleyan 22-17. At one time in the second half Wesleyan led by two points, but the Bulldog rally came through. Bethel again lost to McPherson; this time by a score of 30-25. The score was close all the way.

A brilliant first half gave McPherson a 33-23 victory over Baker on the home court. Chet Johnston led the scoring with 15 points and was the spearhead of the early lead.

The tragedy of the season, and the defeat that made the Canines share the championship, came at Salina when

Wesleyan won 28-27. McPherson led by 10 points at one time in the second half, but lost in the last few minutes of the game.

In what was acclaimed the best college game on the local court for years Coach Binford's men defeated C. of E. 35-34. At half-time the Canines were on the short end of a 25-13 score, but during the last half a big rally, led by Harold Johnston, gave the Bulldogs the necessary margin to win.

During regional conference McPherson won an exhibition game from Friends by a score of 57-28. Nine men were used in this game and every man broke into the scoring column. Meyer led the scoring with 15 points.

Coach Binford's basketeers proved themselves equal to the occasion by "pulling two games from the fire" on a trip to the eastern part of the state. After trailing during most of the game at Ottawa, the Bulldogs managed to tie the score at the end of the regular playing time. In the overtime period the Braves scored four points while McPherson was getting a free throw. With 40 seconds remaining, Yoder and Binford got field goals to give McPherson a margin of one point to win. The following night Baker played on even terms with McPherson during the greater part of the game only to have the Binford crew rally in the last few minutes to win 32-27. H. Johnston and Binford played well for McPherson.

McPherson defeated Bethany in the final game of the season and assured themselves of a tie for the championship. This time the score was 28-17 and this game made the third time the Bulldog basketeers had won over the Swedes during the season. C. of E. won from Wesleyan, thus creating a tie between the Emporia school and McPherson for the conference championship.



INTRAMURAL SPORTS

• • In 1932 the McPherson College physical education department had one of the highest and most significant records of any college or university in Kansas. Eighty-one per cent of all men enrolled in the college participated in the baseball intra-mural tournament, under the direction of Coach Melvin J. Binford.

During October and November six teams in the intra-mural league played a single round-robin schedule. In December, January and February, two intra-mural leagues were organized combining ten teams. Competition was so keen that the last game in each league decided the championship in that league. Each man participated in from 12 to 15 games of basketball.

Coach Binford and student coaches selected the following all-league teams: Class A: Custer, R. Replogle, Weddle, Minear, and Kraus. Class B: M. Landes, Williams, Whitcher, Pote, and Buskirk.

An intra-mural free-throw tournament was held, and 69 men participated. In class A 37 men were entered, and Reinacker won by throwing 44 out of 50 attempts. In class B, Minear was first by throwing 33 out of 50 trials.

In the spring 32 men entered the intra-mural tennis tournament. Kelly won from Tice in the finals to win the tournament.

Another good intra-mural program was carried out in 1933. The basketball teams were organized into two leagues, with six teams in each league. The "Prexies" under the direction of Bob Bowman, took the championship of Class A league easily, with five victories and no defeats. The team was composed of Senior men: Bowman, Wine, Nettleton, Pote, Hayes, and Minear. Victor Moorman's "Freeze-outs" won the championship in Class B by winning four games and annexing a forfeit.

The intra-mural tennis tournament was held this spring with 32 men participating, Harold Binford and Leonard Wiggins won their respective halves of the bracket.

The Women's Athletic Association has provided opportunities for all girls who so desired, to participate in athletic activities such as soccer, basketball, hiking, ping-pong, horse-shoe, tennis and baseball.



"M" Club initiation day
 —but the night was
 worse
 G. Fields, Miles, Flaming,
 Moorman, Ferris,
 Weaver
 Long and short of it
 Nettleton, Hayes, Min-
 our, Bowman, Wine,
 Pote
 Dawson, Sperline,
 Weddle, Carpenter,
 Eddy
 W. A. A. initiation re-
 minder
 Eshelman, Wingerd,
 Peck, Schurr, Rock
 On the practice field
 N. McGonigle, Warkent-
 in, Michael, Prath-
 er, Hunt



Top row: Mowbray, Ohmart, Williams, Moore, VanNortwick.
Lower row: Carpenter, Taylor, Himes, Lindholm, Blume.

TRACK 1932

The Bulldogs had four dual track meets this year and sent seven men to the conference meet to finish the season. They lost their first two meets to Hutchinson Jr. College and Kansas Wesleyan. After a bad start, things became rosy and the Bulldogs finished with a successful season. They defeated Bethel 96-35 and set an all time record for our school by annihilating the Swedes 103 1-3 to 27 2-3. That procedure resulted in many sweet dreams for the Bulldog athletes.

Two outstanding men on the team were field men, Loren Rock and George Zinn. They were consistent point-getters all season and were able to place in the conference meet held at Ottawa. Loren Rock set a new conference record for the javelin, and won second in the

discus. George Zinn won second in the shot-put and fourth in the discus.

The other outstanding men on the team were Wallace McGill and Archie Van Nortwick, both distance men who won many points. McGill ran a very close second in the mile run at Ottawa. George Himes ran the high hurdles and Blume was the best man on the low hurdles.

Verle Ohmart ran the dashes and one middle race, the 440. Ward Williams was a middle distance and distance man. Both of these men competed in several events and won many points during the season.

The men who earned letters were: Verle Ohmart, Kenneth Moore, Wallace McGill, George Himes, Leonard Wiggins, George Zinn, Tommy Taylor, Edward Bradley, Archie Lindholm, Russell Carpenter, Herbert Mowbray, Archie Van Nortwick, Ward Williams, Wayne Blume, Loren Rock.





Top row: Rock, Early, Custer, Wiggins, Zinn.
Lower row: Hayes, Fasnacht, Pote, Reinecker, C. Johnston.

TRACK 1933

Coach Binford had five lettermen back from last year to build his track team around. All of these men were consistent point gainers throughout the season. We lost a dual to the strong Kansas Wesleyan team early in the season. In a triangular meet with Friends and Bethel, we placed second. We took a dual meet from Bethel, and won a triangular meet with Bethel and the Swedes.

Twelve men won their letters in track this year.

Guy Hayes ran the dashes and improved steadily throughout the year. Milton Early was good in both the 100 and 220 and the low hurdles. His firsts were very helpful. Ward Williams won points consistently in the middle distances.

Harold Reinecker was a new man who did well in the distance runs, and won third in the two-mile run in the Conference. Pote and Fasnacht, fought it out in the distance runs, both winning letters.

Gerald Custer was one of the finds of the season. He, along with Wiggins, set a new school record in the high jump, and won points in that event all season. He tied for second in the Conference in that event. Custer also won points in the broad jump and was a good pole-vaulter.

Our star trackman again this year was Loren Rock. He broke his own Conference record, by throwing the javelin 178 feet, 8 inches. He also won points in the shot-put and discus. He was an excellent all around weight man.

Leonard Wiggins won his letter in high jump and pole vault, and along with Custer set a new school record in the jump.

Pauls won his letter in the shot-put.

George Zinn was our "old reliable" in the discus and shot-put. He won five points at the Conference meet.

Chester Johnston won his letter in the high and low hurdles.

Four of the best point earners graduated this year, but Coach has good material coming on. The Bulldogs will continue to growl and be there when the records are put away.



TENNIS

1932-33



Raymond Tice
Delbert Kelly

Lilburn Gottmann
Harold Binford
Charles Austin

The last two years have been successful ones for the Bulldogs tennis men. In the spring of 1932 they played teams from Hutchinson Jr. College, Kansas Wesleyan, Bethel, Bethany, Baker and Ottawa. The teams as a whole played in thirty-six matches and won twenty, for a percentage of .560. After the dual meets were over the doubles team of Binford and Gottmann went to the conference meet held at Ottawa and won the doubles championship from Ottawa in the finals, a five set match. Binford took third in the conference singles tournament. The Bulldogs rated second in the conference in tennis. The ten-

nis team was composed of Harold Binford, Lilburn Gottmann, Charles Austin and Delbert Kelly. The doubles teams were formed in the order named.

The lack of finances owing to the depression cramped the tennis program to a certain extent in the spring of 1933. Harold Binford did not return to school. Raymond Tice set out to win a place on the team with remarkable success. Delbert Kelly, Lilburn Gottmann, and Charles Austin made the team again, completing its personnel. Austin and Kelly played doubles together again and Tice and Gottmann played together. The team was as evenly balanced this year as it has been for some time. This helped the final record of the team when matches were counted. Because of the lack of funds the team played only Bethany, Kansas Wesleyan, and Bethel. They played in twenty-six matches and won seventeen of them for a percentage of .654.

Harold Binford was a steady, consistent player who played on the team two years. He was good in both singles and doubles. His ready smile, and persistent fight were valuable assets to the team. He won the school singles tournament in 1932.

Lilburn Gottman graduated last year, after three years of tennis. He is a better doubles man than singles because of his consistent chop strokes.

Delbert Kelly had two years of varsity play to his credit. He was short but "went good" his senior year. He graduated last year. He won the school singles tournament in 1933.

Charles Austin was another senior and two letter man. He played a great deal of tennis and can be proud of his record in college.

Raymond Tice earned his letter for the first time, in 1933. He is consistent and thinks as he plays.

~ ~ The "M" Club is the organization of McPherson College fellows who have won athletic letters in one or more of the four sports. The Club stands for clean sports, sportsmanship, and athletic skill. The Club encourages all

THE "M" CLUB



Upper row: Custer, Vasquez, C. Johnston, Lindholm, Hayes, Wine, Stoner, Duncanson, Haun, Schurr, Frasier.

Middle row: H. Binford, Eddy, Bowman, Coach Binford, Dean Replogle, Weddle, Kaufman, Tee, Dunn.

Bottom row: Pote, H. Johnston, Yoder, Mincez, Wiggins, Colwell, Carpenter, Pauls, Van Nortwick.

college men to compete in the sports and do their best. There are thirty members in the Club.

Freshmen first become aware of the "M" Club when they are required to buy their green "dinkies" from the Club. The letter men have encouraged the wearing of Freshmen caps in order to create a class loyalty among the first year men.

The "M" Club generally has two initiations annually, one for the new football letter men, and one for the fellows making their first letter in basketball or a spring sport. Although the fellows generally look forward to the initiation with fear and trembling, those that live through it consider it a day of fun and a "part of the game."

The Club shares in student government through a member elected from the Club to serve on the Student Council. Dean F. A. Replogle and Coach Binford share the responsibility of sponsoring the group.



Officers for 1932-33:

Loren Rock, president; Lloyd Latsen, treasurer.

Officers for 1933-34:

Leonard Wiggins, president; Willbur Yoder, treasurer.

W. A. A.

It is the purpose of the Women's Athletic Association to interest the girls on the campus in sports of different kinds which in turn will help them to be more efficient in scholarship and may create a better fellowship between them.



Upper row: Tice, Christianson, Bonham, Carlson, Fry, Severson.
 Middle row: Bean, Ring, Sponsor McGaffey, Keller, Edwards.
 Lower row: Wampler, Andes, Bowman, Steedman, Hursh.



Officers for 1932-33:
 Genevieve Crist, president; Elsie Ramp, treasurer.

Officers for 1933-34:
 Elizabeth Bowman, president; Martha Hursh, treasurer.

The activities of 1933-34 included many sports which were open to all women of the college. Soon after school began in the fall a hike including a picnic supper was sponsored by this organization in order to interest girls in the W. A. A. and to give them some idea of the good times to be had throughout the year.

Initiation! What hadn't the girls heard about this ordeal; but this year it all ended in an informal party. Besides sports in W. A. A. the girls also get a taste of social life. The big event of the year was an Eskimo banquet. For some time before the banquet the girls began coming down with a strange heart disease known as Palpitation. The mystery of this ailment was brought to light the night of the banquet when various and unexpected dates arrived. The occasion did not seem frigid even though our igloo was made of ice.

Members like this organization because it helps to develop all sides of their personalities.



CONTACTS OF
LEISURE



McPherson College co-eds have always proved popular with college fellows. The pictures we have reproduced on this page are indicative of their popularity in the boys' rooms and in the photography studios. You really can't imagine the furor staff members incited on the part of some students while they were collecting materials for these pictures.



Upper row: Stegeman, Ring, Cameron, Mohler, Lackey.

Second row: Ohmart, Fisher, Riddell, Reiste, Flora, J. Wagoner.

Third row: Brunk, Bowers, A. Bean, Nickel, Harris.

Bottom row: Baker, Carlson, Atchison, E. Wagoner, L. Bean.

Please note: This page was supposed to picture McPherson College's most beautiful girls. Well, a Quad staff green-horn got the pictures mixed up and the editor lost the names and classifications, so we just pre-

sent them to you for your consideration and wonder. No doubt some of these pictured here will be candidates for old maidenhood, but you may have the privilege of judging, dear reader; you may judge.



● *Our Sunshine*
Absence of the jaw proved the sex!
In a stupor
The International Relations Club posed
for this shot
Ah -, er - - May we have a date tonight?
The Beau is dizzy
The one and only Prof. Maurice A. Hess
Fritz and the kid



*May Queen, throne, &
 attendants
 Queen Clarice and flower
 girls
 Modern styles for
 George Washington
 Easter bonnets and
 smiles
 Recessional
 The whole show passed
 for this one*





● *Class of 1933*

Vernon "Dusty" Rhodes, Esq., President of the class of 1933

After the sheepskin

Leaders of M. C. religious life

Dignity personified

Little help, please

"Two by two—"

Heudin' for the last round-up

Hopeful looking bunch, eh wot?



*May be a big tree some day but it's
 hard to see now
 One - time Senior presy in a
 thoughtful mood
 We have all sizes
 Wedding? No a tree planting
 Midget and big pebble
 One of his weaker moments
 Remember the snubarn?
 Advertising pageant "Progress and
 Promise"*





● *Little Pearl*

Chawming quahktet

"Come and get it"

Water's warm, as usual

Three guesses - - - um, it's Dean

Seniors on top of the world for once

Been time

The rest of the party

Kansas has an invigorating climate,

all right

"Doc" Kurtz and pals
Dignity par excellence
After dinner
Lazy Bones
Don't get excited - it's just the
morning after Hallowe'en
After the melon feed
It pays to show off
Part of the Third Floor Menagerie
The question is, to paddle or not to
paddle the Frosh
Don't weep do that!
Getting in practice in case - - -





● Paul Harris Junior
 "M" Club chain gang et. al.
 A budding romance
 When we were kids
 Smiling - - do you suppose he rated a
 date?
 Contributors to Bulldog success
 Jolly trio of musicians
 Spring's here
 Tent and Corp
 A "dignified" Senior
 Answers to many en-eds' prayers
 Storming the feminine domain



*Big turnout to see the camera
 Wheeler needs a toothpick too
 What's wrong, Lois?
 Oh! the kodak again!
 Before the fight started
 Delegation to William Jewell
 10 a. m. the morning after the
 night before
 Jake's on Rock
 Cheesy tells a big one
 What toothpaste, Wig?*





● *Freshies on the decline*
Responsible for our daily bread
Good "Bulldog" attitude
Football pals
Off to Oklahoma Baptist U.
Hot hand, etc.
Vi: "I'm on a diet,"
We don't believe in corporal punishment
A squint and a smile
Ollie Olson the Scribe, deceased November
3, 1933
Mother Emmert



*Mike, the tough gangster
Idaho and Iowa
Feast a la picnic
Zinn holds the college records
in shot and discus
Not a masquerade—Thespian
initiation
Oh, my goodness!
Bah!
What, another freak on the
campus?*





● Where women become women
 Freshmen winning their grudge battle
 Carpenter making a nice run against
 York

Active and athletic co-eds
 Come on, Bulldogs!
 Goat and three kids
 Darling big little Freshmen
 Can you play peek-a-boo, Jack?

Library's undercover
Between you and me, take that!
Evergreens are not always green
Dunc doing his duty
It's iliac time among the hedges
Dean McGaffey has lost her rep
for being hard-boiled
No wonder the cat's leaving
Feminine self-defense
Convict labor
Spec's out!
This group actually got away from
Winfield
Vi and valet





● *Midnight lurch*

Always faithful to our appetites

1932-33 cheerleaders

Joharie, the Dutch songbird

Behold! Miss Heckethorn

Third Floor Gang

The two-miler brings home the "bacon"

When the depression struck:

Annie and Ollie

Big exposure of Son and stars

Puzzle: which way is it headed?

Mike and his first haul; a chicken

Sweet sixteen



*A woman's in the middle of this
Still Marco Polo — but where's
Dorothy?*

*Big smile for a Fairchild
Weavering patterns in the snow*

Trumble's ankle-deep

Pete and Repete

Which 'er

Use Lux?





● *Joe E. in the role of proud father*
Look me over
Blair's Freshman class in supervised
gossip
Aboard the S. S. Goodwill
Joder and his most recent lady friend
College Shick
All set for another touchdown
Po, Ma, Grandma and the kids
Complete washout

LOG AND CALENDAR

1932-33

- Sept. 12: School opens with a bang and six speeches are dished out to the poor unsuspecting freshmen during the first two days. Official welcome is extended to seventeen students from former Mount Morris territory.
- Sept. 16: Boy!! and did we eat!! Y. M. and Y. W. sets 'em up at the annual All-School Get Acquainted Watermelon Social.
- Sept. 19: Rain fails to dull the gaiety of the Student-Faculty Reception. Liniment for sore right arms is needed the next morning.
- Sept. 22: Annual night shirt parade brings forth the first signs of real M. C. spirit.
- Sept. 23: Hurray!! Carpy lugs the old pill across to win the first game of the season from Wichita U. seconds (7-0).
- Sept. 30: Tough luck. St. Benedicts Ravens 12—Bulldogs 0.
- Oct. 6: Bulldogs defeat Friends 7-0 with "Teuton" and "Tuffy" starring.
- Oct. 7: Student Council decides to put Quadrangle on a two year basis after much discussion.
- Oct. 14: Coyotes show their heels to fighting Bulldogs (19-0). Cheer Ettes feed the football men sandwiches, hot chocolate, etc.
- Oct. 21: Dr. T. Z. Koa opens our eyes to some world problems. Thanks to the Y. M. C. A.
- Oct. 24: Students are surprised to find that Rep's office has been revamped into a more fitting hang-out for a college dean.
- Oct. 28: Oklahoma City Goldbugs win 47-6. Wiggins does his stuff by galloping sixty-five yards with an intercepted pass.
- Oct. 29: Slumber is about the only thing that didn't actually occur at the Y. W. slumber party in Arnold Hall.
- Oct. 31: All-School Hallows'en Party goes over big. Did Blair have flat tires or not!!
- Nov. 3: Bulldog backfield shares the honors in bringing home a 41-5 victory over Bethel.
- Nov. 8: "Mr. Chairman, ladies and gentlemen—" Gottmann, Hayes, Staats, and Williams make the varsity debate squad.
- Nov. 11: Ottawa Braves take another scalp. Ottawa 18—McPherson 0.
- Nov. 12: Freshmen forget about green caps after trouncing the sophs 13-6.
- Nov. 18: Baker 20—McPherson 0. Lyceum number brings forth a flock of new dates.
- Nov. 22: "Nine Till Six" goes over big.
- Nov. 23: The Swede Jynx still holds. We lost 7-2.
- Dec. 19: Some fellows have the first dates of their lives to the Leap Year Party.
- Dec. 22: Hurray!! Vacation is here. We hot-foot it home to get filled up for another semester siege.
- Jan. 3: Everyone is back but most of us seem to need a vacation. "Cheesy" brings Rosalie from Chicago to this "land of promise."
- Jan. 5: Everyone joins in a parade through town, with "Cheesy" and Rosalie as honor guests in the buggy at the head.
- Jan. 11: St. Benedicts Ravens take the opening basketball game 26-12.
- Jan. 13: Friends U. leads the scoring until the last thirty seconds when Wiggins leads the old Bulldog rally to win 28-27.
- Jan. 20: Kansas Wesleyan 30—Bulldogs 23. Genetics class visits the home for feeble minded at Winfield and some members have trouble in getting away.
- Jan. 23, 24, 25: Hell Week is on while exams are in session.
- Jan. 27: Bulldogs show Quakers they can do it again—we win 35-26.
- Feb. 1: Swede jynx makes a last stand but proves impregnable and they win, 27-20.
- Feb. 3: Jamison leads Bulldog basketeers to a 24-19 victory over Baker.
- Feb. 5: "Listen to the Lambs—" A Cappella Choir takes to the air via KFB.
- Feb. 8: Sub-zero weather, but those on hand praise the A Cappella Choir "Debut Concert" in the City Auditorium.
- Feb. 9: Ottawa scores 50 against our 32.
- Feb. 10: Bethel gets revenge; 38-23.
- Feb. 14: M. C. Coeds are presented a radio. Increased popularity for the Y. W. room.
- Feb. 19-24: Regional Conference and trustee pow-wow in session and we get some real meals in the dining hall.
- Feb. 21: Rock tosses the charity throw that beats Bethel in a hot 26-25 game. Quite a treat for the spectating trustees.
- Feb. 23: Baker nabs the long end of a 37-33 score.
- Feb. 24: Ottawa wins 38-26. Four Bulldogs proved to be real hitch-hikers.
- Feb. 25: St. Benedicts takes the last one on the three-day trip, 14-10.
- Feb. 28: Fahnestock Hall is quiet for a while since Harvey had his tonsils out. Kansas Wesleyan annexes title of Kansas Conference by winning from us 37-25.
- March 3: Aha! We thought the old jynx was weakening. How sweet to vanquish the Swedes 35-34, in a thriller of a game!
- March 4: McPherson debate sharks take second place in the state debate tournament at Bethel College.
- March 6: We take a double Sunday to celebrate our Swede victory.
- March 7: "Y" elections: Pote, Frantz, Staats, and Meyers to head the Y. M. C. A.; the Y. W. C. A. will be piloted by Miller, Dappen, Hoover and Ketterman.
- March 17: Athletically inclined co-eds and escorts go Irish for the W. A. A. banquet.
- March 30 & 31: Thespians give "The Importance of Being Earnest"; honest, we couldn't figure out that mix-up until the finale.

April 5: Seniors observe Arbor Day by planting trees and shrubs to beautify the campus; all their achievements for four years go into a bottle for burial.

April 11 and 12: Dr. Willard Uphaus comes to M. C. through the Y. M. C. A.

April 21: Booster Banquet goes over big though the governor forgets his speech. In the election the smoke clears away to reveal the "New Deal" candidates in every office. Hayes and Wine to run the Student Council; Staats and Bonz to worry over the Spectator; Benchy Lichty is new Yell King.

April 23: McPherson College unites in mourning the passing of its great teacher and friend, Prof. J. Hugh Heckman.

April 27: We win the opening track meet, 67-64, from Bethel, and take six straight matches in tennis.

April 28: Chemistry students go to Hutchinson, swipe candy, visit Reformatory.

April 29: High School Festival and tennis meet draws the crowd despite the wind, dust and "mud shower."

May 2: Kansas Wesleyan takes the track meet, but we hold our own in tennis.

May 3: Clarice Evans crowned May queen. We split tennis matches with the Swedes.

May 8: The juniors economize on their "sneak" by leaving part of the class at home. M. C. wins triangular track meet over Bethel and Bethany. We yield to the Swedes and take second place in tennis.

May 13: Rock heaves the javelin out of sight again to break another record at the Kansas Conference track meet.

May 17: All Schools Day provides a holiday.

May 19: Guy Hayes, toastmaster, bears the brunt of jokes at Junior-Senior banquet.

May 21: For once the seniors give 'em the slip by sneaking off on Sunday afternoon. Oh! those sunburned shoulders!!

May 24: Memorial chapel service for Professor Heckman.

May 27: Seniors have their last get-together at the President's reception.

May 28: Dr. Schwalm delivers the Baccalaureate sermon.

May 31: Senior class presents the "Pageant of Progress and Promise."

June 1: Class Day gives the seniors their last chance at the student body.

June 2: Commencement services wind up another year: President Farrell of Kansas State College is the speaker.

1933-34

Sept. 11, 12: "Happy days are here again," and we gather round 260 strong. Freshman class reaches a new high of 111. Ten lettermen and lots of new material report and work out on football field under Coaches Binford and Selves.

Sept. 13: Classes start. New faculty members in persons of Petry, Gill and Wilcox given trials by students.

Sept. 15: The "Y" melon feed gave us lots of recreation, entertainment, stomachache and clothes for the cleaner.

Sept. 18: Faculty reception at the church brings a night of handshakes. "What is the name?" and "Glad to meet you."

Sept. 21: Neva Root begins career as Leader of Bulldog cheers.

Sept. 26: McPherson city is in a turmoil when 200 McPherson college students parade in nightshirts and see a free show. Loyal Miles of Nickerson elected president of the Fresh.

Sept. 27: Chilocco Indians turned back in the first football game, 34-0.

Sept. 29: Arnold Hall is scene of hilarious pandemonium when off-campus girls are entertained at "Slumber Party."

Oct. 7: Invading Quakers defeated 7-6.

Oct. 13: Friday the 13th proved a bad day for the Coyotes; we beat them in the first conference game, at Salina, 6-0.

Oct. 17: Kurtz is master of ceremonies at the Freshman-Senior Kid Party.

Oct. 18: Paul Harris Jr. gives us the low-down on the peace situation.

Oct. 20: McPherson beats Baker 7-0 in last minutes of play. McPherson has the only undefeated football team in Kansas.

Oct. 26: Bethel is turned back 26-0 at Newton, with Pauls hooking some nice passes in the end zone.

Oct. 31: It's the usual story of the ideally quiet Hallowe'en—broken glass, fire hose, etc., don't count.

Nov. 2: Brother Brao'shaw officiates at the cremation of Olie the Swede.

Nov. 3: Revenge is Sweet! Homecoming day crowds get the thrill of their lives when McPherson wallops the Swedes, 39-0!

Nov. 9: Debate season gathers momentum rapidly with Hayes, Staats, Goering and Weaver on the varsity.

Nov. 10: Ottawa won the last conference game 13-0 to leave us in second place in the Kansas Conference. Burress is conference high scorer with 27 points in seven games to his credit.

Nov. 18: The Canine team, handicapped by injuries, is taken into camp, 19-0 by Oklahoma Baptist U. at Shawnee.

Nov. 19: Large group McPherson students take picnic outing at Salem church.

Nov. 21: Twelve new members out of 45 applicants accepted into Thespian Club. Freshmen begin third degree with intelligence tests, personality ratings, etc., being administered.

Nov. 24: The Freshmen won their annual grudge battle and ditched the caps.

Nov. 29: Thanksgiving vacation is beginning, and we have something to be thankful for.

Nov. 30: The Bulldogs close the season by decisively defeating York College, 27-7. Three McPherson men rate all-Conference team—Wiggins, Hayes, Carpenter.

Dec. 4: Cheesy Voran has been drilling the varsity quartet, composed of Johansen, Miles, Traver and Nettleton, since we don't know when.

Dec. 8: 9: Hess' debate teams journey to Winfield where the competition is a bit too strong.

Dec. 9: Male students get a break when Arnold Hall has open house, with refreshments and everything.

Dec. 11: About a dozen Genetics class students go to the State Feebleminded institution at Winfield and return all in the same day, although two of the party were recognized by the inmates there.

- Dec. 14: Basketball season opened with the Hastings teachers taking the little end of a 31-17 score.
- Dec. 15: Dr. Hershey entertained the Chem club with cards, games and refreshments.
- Dec. 16: Freshmen hold a rotary social evening with the faculty.
- Dec. 18: We have met the Swedes and they are ours, 42-14.
- Dec. 21: The campus loses many smiling faces when vacation begins.
- Jan. 3: Back again to the old grind. What's this we hear? The boys lost out on a road trip, first to Coffeyville, 25-12, then to Pittsburg, 41-16.
- Jan. 12: The Ottawa Braves were bitten when the Bulldogs won their first conference game, 41-26.
- Jan. 13: Fahnestock Hall is dressed up for open house and surely draws a crowd.
- Jan. 19: Bethel college weakened and gave us the game at 30-22.
- Jan. 24: The Swedes bit the dust again, 28-11 in a conference game.
- Jan. 24, 25, 26: Final examinations catch us, and we realize our conscience has been hurting all the time.
- Jan. 26: Upper classes enjoy a rotary party in faculty homes, with contests, music and games.
- Jan. 27: College of Emporia into conference lead, winning from the Bulldogs, 33-27.
- Feb. 2: Now they've gone and done it. Edith Bechtelheimer and Kermit Hayes are spliced by Dr. Schwalm. The Coyotes were sent home howling with a 22-17 defeat.
- Feb. 6: The A Cappella Choir surely knows how to put it on! Formals and evening dresses lend atmosphere to their program.
- Feb. 7: Baker U. falls to the Binford machine 32-23. We're on the road to the top!
- Feb. 9: The Magic Carpet at the Extravaganza reminds us of things seen before.
- Feb. 13: Enthusiasm drops to a new record low after Wesleyan takes the game, 28-27.
- Feb. 14: Dining Hall students enjoy Plantation Singers.
- Feb. 15: Twenty-two M. C. students begin C. W. A. work on the campus. Who says there's no Santa Claus?
- Feb. 16: College of Emporia gets set back with us when we beat them here 35-34.
- Feb. 18-23: Good speeches, better eats, hot water in the dorms, and lots of company continually remind us of the Regional Conference and Trustees meeting.
- Feb. 19: Regional conference crowds see the Quakers get beat in a one-sided game, 57-28.
- Feb. 23: After a game tied at 20-all, the Bulldogs get warm and win in the extra period from Ottawa, 25-24.
- Feb. 24: What a game! Bulldogs make history defeating the Baker Wildcats 32-27.
- Feb. 26: There's still some smart kids on the campus. Seven of the 14 to make the first semester honor roll are Juniors.
- Feb. 28: The Swedes are defeated for a third time, to give M. C. a conference lead.
- March 1: Two debate teams, four extemporaneous speakers, and two orators competed in the State Forensic tournament at Emporia.
- March 2: C. of E. defeated the Coyotes, to place McPherson and C. of E. together at the head of the Kansas Conference.
- March 5: W. A. A. initiation brings foolishness, embarrassment and costumes.
- March 7: Football and basketball squads get special banquet for meritorious season.
- March 9: W. A. A. banquet in Eskimo surroundings—lots of fellows scratch leap-year dates.
- March 15: McPherson College's 40-piece orchestra presented evening of music in College chapel.
- March 23: Booster Banquet, close of successful financial drive for college, finds community banquet hall crowded.
- March 29: A four-day Easter vacation was appreciated very much.
- April 8: Seven students tangle in local Peace oratory contest—Elmer Staats comes off with the honors.
- April 12: Student elections were less exciting than usual—Harry Frantz and Weddle head the Student Council, Stoner and Friesen publish the Quad, R. Booz and Royal Frantz the Spec, and Neva and Joe E. are cheerleaders.
- April 13: Thespians present "An Enchanted April" in Chapel. First track meet of season decisively won from Sterling.
- April 16, 17: Sherwood Eddy opened our eyes to lots of things we didn't know, thanks to the Religious Life committee.
- April 19: McPherson wins by small margin in triangular with Bethel and Hutch Jr. College here.—Tennis stars winning too.
- April 21: Even Mother Emmert changes her mind. Anyway the girls got a big "kick" and a lot of experience out of waiting tables.
- April 23: Of all things! The Seniors and Juniors had the indiscretion to sneak the same day.
- April 27: Caught on an off day, McPherson takes third in a triangular at Wichita with Friends and Bethel.
- April 28: Senior Festival and Banquet drew many High School Seniors to the campus.
- May 2: The tennis men split the day with the Swedes, each taking three matches.
- May 4: Annual Junior-Senior Banquet, Hotel Hawley, displays art motif.
- May 8: McPherson cleans up a triangular meet with Bethel and Sterling, at Sterling.
- May 9: The Binford tennis crew scoops the day in their matches with Friends.
- May 26: President Schwalm gives annual Senior reception.
- May 27: Baccalaureate services.
- May 28, 29, 30: Closing shop—final examinations, where we find out how little we really know.
- May 31: Senior Class day exercises. Alumni banquet, class of 1934 guests.
- June 1: Forty-sixth annual Commencement; Dean Lawson speaks to twenty-seven graduates.
- June 2: Out in the cold, cruel world.



See **AMERICA** First

The Conoco Travel Bureau



America's most complete
free Nation-Wide travel service

New and Improved
Conoco Germ Processed
Motor Oil

Conoco Bronze Gasoline
High Test

Conoco Service Station

321 S. Main—U. S. 81
Julius V. Holsinger, Manager

Appreciation

Successful blending of business and Friendship has won for us a patronage from among the McPherson College student body and its Alumni, which we greatly Appreciate.

McPherson-Citizens State Bank

McPherson, Kansas.

The day of the High School Festival, the W. A. A. girls were entertaining, and Leone Shirk directed some of the girls in Sink-opated music

"Andrew Mellon was acquitted of income tax dodging; what do you think of that?"

"That's O. K. Mellon and I are in the same boat. I've not paid any income tax either."

We didn't learn this in Home Ec, but when one makes a mess of a dinner he can put it on a lettuce leaf and call it a salad.

The Real Bargain Is Quality Merchandise

Low price doesn't always mean good value. In any purchase it is the quality of the goods which underlies real and lasting satisfaction. That is why we insist on quality first in every item we offer for sale. Only so do we feel that we are keeping faith with our customers.

Our prices are right—you will find that we give you excellent values in every line of merchandise. But quality comes first. That is our most important consideration and yours.

**The Lischesku
Dry Goods Co.**

121 N. Main

McPherson

Phone 874

Velma: Do you remember when we met in the revolving door?

Robert: Yes, that was when we first started going round together, wasn't it?

Maurine B.: Papa, are you growing taller all the time?

Prof. Blair: No, why?

Maurine: The top of your head is poking out through your hair more and more.

Weaver: What could be worse than a giraffe with tonsillitis?

Lackie: That's easy; a hippopotamus with the mumps, an elephant with sinus trouble, or a centipede with athlete's foot.

Announcing . . .

McPherson's Newest and Best Theatre

The RITZ

ABSOLUTELY FIRE-PROOF

COMPLETE WASHED-AIR COOLING

R. C. A. HIGH FIDELITY SOUND

"The Pick of the Pictures"

Direction

E. L. Jack Johnston

THE HOME OF
GOOD WATCHES AND
PERFECT DIAMONDS
BIXBY, LINDSAY & CO.

Repleg, in Orientation: I'm going to lecture on lying today. How many of you have read chapter 46 in the text?

(Nearly all the Freshmen respond)

Rep: Good. You're the bunch I wish to talk to. There's only 40 chapters in the book.

No Blatant Ballyhoo

Just Remember
GLOBE
Gasolines Will Satisfy
AND
GLOBE
OILS CAN "TAKE IT"
TRY 'EM



Globe Oil & Refining Co.

Offices: Brown Bldg.
Wichita

Refinery
McPherson



We Know Your Needs Ask Our Bulldog Friends

Prompt Service — Sanitary Methods
Good Workmanship

Hawley Barber and Beauty Shop

Sid Easterling, Proprietor

Phone 499

In Hotel Hawley Building

**Worthy
Investments**
Pioneer Savings & Loan
McPherson, Kansas

We Pay the Tax

Lincoln National Life
Insurance Company
Fort Wayne, Indiana
Paul E. Sargent, Agent
Phone 726 Grand Building

McPHERSON RECREATION

Bowling 10c Per Line

New Brunswick Bar

306 North Main

Harry's Favorite Tune

My flivver 'tis of thee
Short come to poverty
Of thee I chant;
I blew a pile of dough
On thee two years ago
And now you will not go
Or won't, or can't.

— SELLING —

Ready to Wear

Shoes

Dry Goods

Hosiery

Men's Work Clothes and Furnishings

Millinery and Regular Department Store
Merchandise

at the lowest prices but retaining
the highest quality . . .

THAT'S OUR WORK

B GOLDEN **K** RULE **C.**

STANLEY'S

A Women's Store

Quality Printing

Moderate Prices

Central Printing Co. and News Stand

Earl V. Rannells, Proprietor

Phone 298

120 North Main Street

McPherson, Kansas

Leah (to one-armed driver): Better use both hands.

Jack: Can't. Gotta drive with one.

The Theo. Poehler Mercantile Co.

WHOLESALE GROCERS

GROCERIES

for

Hikes, Feeds and Banquets

Rothrock Grocery

Phone 467

302 N. Main

Peterson Hardware Co.

H. V. Peterson, Prop.

Full Line of General Hardware
and Sporting Goods.

Phone 191

219 N. Main

Complimentary Ad

MANHATTAN RESTAURANT

SALINA, KANSAS.

McPherson's Leading Restaurant

The
PURITAN
Cafe

—○—○—○—
We take Pride in our
Home Cooking and our unexcelled
Pastry Baked in our own
Kitchens

—○—○—○—
Whether it's a Sunday dinner, a bite to eat
during an afternoon of shopping, a lunch after
the theatre, or refreshment following a hard
day of class work, you will find our menu a
tempting one, and our service without a par in
the city.

—○—○—○—
*We Like to have McPherson College
Students make Our Place of Business
their Headquarters when They are
Down Town*

Memories of M. C.

Remind You of McPherson

Home of The

Farmers Alliance Insurance Company

"Kansas' Largest and Strongest"

Fire and Tornado
Resources \$1,000,000

Profit Sharing
55,000 Members

OKERLIND AND ASPEGREN

The Clothes Cleaners

OLDEST

— LARGEST —

BEST

Phone 320

McPherson, Kansas.

Hayes: Gee, this spaghetti reminds me of football.

Tuffy: How's that?

Hayes: Ten more yards to go.

Dr. Schwalm: Come sit down in front.

Wiggins: I can't; I'm not built that way.

MILLER GRAIN CO.

We handle all kinds of Coal.

Buy Grain from us.

Dependable Service and Prompt Delivery.

Buy from
Crumpacker
and become a
money packer

Wheat, Corn and
Alfalfa farms



Homes on College Hill, small
tracts, farm and city prop-
erty, royalties and oil
leases

SEE

Jay Crumpacker

For Real Estate

WE'LL STAND ON OUR HEADS TO PLEASE YOU!

For Goodness Sake



USE

"W-R"
Flour

MADE BY

The Wall-Rogalsky Milling Co.



1884

1934

A Half-Century
of Progress

A boy's and man's store that has
met the test in clothing for every
occasion.

Let us serve
Your Every Need

Lake Superior
Lumber Co.

Geo. H. Goodholm, Manager

Lumber—Hardware—
Paint—Coal

—
Telephone 40
—

McPherson, Kansas.

Been in Business since
1890

THERE MUST BE A REASON

Grocery Meat Market
Dry Goods
Ready to Wear

**No Mend Hosiery
Tested
and Approved**

by
Better Fabrics Testing Bureau
for
Highest Quality

**Alliance Exchange
Company**

Firestone Tires

Authorized Factory Service on Buicks
Pontiacs and Oldsmobiles

One of the Best Equipped Shops
in the State.

Give Us A Trial

Jayhawk Motor Service Co

24 Hours One Stop Service
Phone 232, 234 317-323 N. Main

24 HOUR WRECKER SERVICE
McPherson, Kansas

Matron, 11:15 p. m.: Bernice, what are you doing out there?

Bernice: Looking at the moon.

Matron: Well, tell the moon to go home and come on in.

Prof. Mohler: Name five insects.

Brammell: That's easy; four fleas and a fly.

KODAK ~ ~ As You Go

Eastman Agency

AT

Hubbell's Drug Store

WALKER

Quadrangle
Photographer



The Home State Bank

McPherson, Kansas

SAFE, CONSERVATIVE, PROGRESSIVE

A department for each Financial Need. We invite your business.

Carlson Plumbing Co.

Plumbing . . . Heating . . . Gas

Appliances and Installations

Phones

Bus. 14

Res. 26

Have Your Clothes

Cleaned and Pressed

Regularly at

HULTQVIST'S

Policeman, to motorist who has just had narrow escape in passing Miss Heckethorn: Don't you know you should always give one-half the road to women drivers?

Motorist: I do when I can find out in time which half they want.

New Fireproof

Hotel Hawley

Have Your Parties and Banquets
in the Roof Garden

Phone 24 McPherson, Kansas



Watches, Clocks,
Rings

Jewelry and Watch Repairing

J. Ed. Gustafson

111 N. Main, McPherson
Large Stock of Wall Paper

ALLIANCE AGENCY

INSURANCE

For Every Need

Phone 106

McPherson

Municipal Ownership

In McPherson, Kansas, Produces Good Service at Low Rates for

Water, Light and Power

These utilities are tax free,

BUT

they return to the citizens of McPherson more than \$60,000 per year in transfer of \$40,000 to City General Fund and low rates for street lighting, fire hydrants, sewer treatment works, traffic signals and other public purposes.

WATER & ELECTRIC DEPARTMENT

Photographs

LIVE FOREVER

An Appreciative Gift
For Any Occasion

Kodaks — Kodak Finishing
Kodak Supplies

Ostlind Studio

Phone 81, McPherson

Tennis Rackets

"Ellsworth Vines"
Personal Models

This is the popular racket of this season. We also have the famous "Davis Cup" and other popular models.

WE RESTRING RACKETS

Promptly—One-day service with silk and Genuine Lamb's Gut

WE GIVE SPECIAL PRICES TO
ALL STUDENTS

on Rackets or Re-stringing

Also full line Sporting Goods—Golf—Fishing—Baseball—Basketball, etc.

BOREN SPORTING GOODS CO.

Wholesale and Retail

Hutchinson, Kansas

Phone 838

415 N. Main

Peoples State Bank

McPherson, Kansas

35 Years of Active Service To This Community

We appreciate your patronage and will try to merit your continued good will, by giving you Better Merchandise, Better Service, and More for your Money—every day in the year.

C.R. Anthony Co.
Serves You Better and Saves You More!

It Pays to Pay Cash

Schul told this one.

Allen: My brother was playing baseball one day, and he got mad at the umpire. In fact, he broke a bat over the ump's head.

John: Did that make the umpire mad?

Allen: No, he said it wasn't his bat.

Neighbor: Now Charles, how do you know it was a stork instead of an angel that brought your little brother?

Charles Binford: Because I heard Daddy say something about the big bill that came with it and angels don't have bills.

City Progress
Depends on the
Daily Newspaper

Enlightenment and enthusiasm
make things grow for city and busi-
ness man as well. Sane and persistent
publicity spells PROGRESS and
PROFIT.

Daily Republican
Phones 64 and 98 W. J. Krehbiel
(Printers of the Quadrangle)