

THE
QUADRANGLE
1932

1
2
3
4
5
6
7
8
9
10
11
12
13
14
15
16
17
18
19
20
21
22
23
24
25
26
27
28
29
30
31
32
33
34
35
36
37
38
39
40
41
42
43
44
45
46
47
48
49
50
51
52
53
54
55
56
57
58
59
60
61
62
63
64
65
66
67
68
69
70
71
72
73
74
75
76
77
78
79
80
81
82
83
84
85
86
87
88
89
90
91
92
93
94
95
96
97
98
99
100



"BE OF
(OOD)
(HEER"

McPHERSON COLLEGE LIBRARY

THE
1932

QUADRANGLE



PUBLISHED BY THE
STUDENT COUNCIL OF
McPHERSON COLLEGE,
McPHERSON, KANSAS.





FOREWORD

In times of pessimism, gloom and distrust, the inherent cheerfulness of college youth impresses itself upon observers. The staff has sought to catch this spirit and record it in these pages as a reminder of the happy days spent here to-gether.

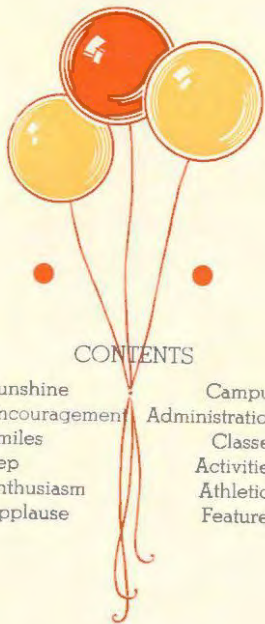




DEDICATION

To the cheerful radiant personality and inspiring example of Dean Robert E. Mohler this book is gratefully and sincerely dedicated.





CONTENTS

Sunshine	Campus
Encouragement	Administration
Smiles	Classes
Pep	Activities
Enthusiasm	Athletics
Applause	Features



SHARP HALL

Organization, guidance, inspiration are key
words in successful college administration.

SUNSHINE



FAHNESTOCK
HALL

The glory of a college is its stalwart
daring, inspired
youth. Its buildings
may crumble to ruin
but the achievements
of its men build it a
name which Time
will revere and Eter-
nity glorify.





CARNEGIE LIBRARY

"The true University of these days is a Collection of Books," and it may truthfully be added that the true Scholar is one who knows the effective use of Books.

ARNOLD HALL

Girls give color to the landscape, relieve bass monotonies with shrill tremolos, provide intellectual and social competition for boys, lend inspiration to the struggling young idealists, and drain their purses.





HARNLY HALL

To know the laws of the Universe and to control
Nature has been the dream of scientists of all ages.
Buildings, and lives are dedicated to this task.

KLINE HALL

Happy is the man whose educational interest and opportunities continue beyond marriage, and whose wife consents to keep house in a two-room apartment on a college campus to make his pursuits possible.





GYMNASIUM

"The wild free joy of living" comes only when physical energy has liberated the inspired soul and vitality and exuberance bubble over into creative action.



BRETHREN CHURCH

Quiet, dignified beauty! In this atmosphere
one may worship in the beauty of holiness and
find peace for his soul.





ENCOURAGEMENT

VERNON FRANKLIN SCHWALM

A. B., A. M., Ph.D.

President of the College

Along with his executive work Dr. Schwalm has taught several classes of history and has challenged every student to do his best.



Administration

BOARD OF TRUSTEES

Paul Brandt, Vice-Chairman Holmesville, Nebraska
Roy A. Crist Quinter, Kansas
Ira Frantz Fruita, Colorado
H. J. Harnly, Secretary McPherson, Kansas
Glen Harris Jennings, Louisiana

Orin Harvey Joplin, Missouri
Ira Hoover Plattsburg, Missouri
W. A. Kinsie Navarre, Kansas
R. E. Loshbaugh Fredonia, Kansas
Emry Martin Bloom, Kansas

H. G. Shank Bowmont, Idaho
A. L. Patrick Pampa, Texas
B. F. Stouffer Rocky Ford, Colorado
Ray C. Strohm Chairman of the Board
F. A. Vaniman McPherson, Kansas

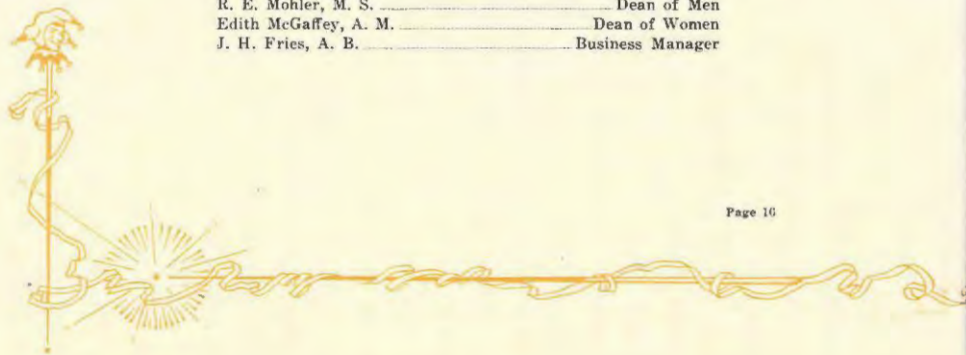
Ernest Wall McPherson, Kansas
Ira Witmore Rich Hill, Missouri
D. G. Wine Cambridge, Nebraska
J. J. Yoder, Treasurer McPherson, Kansas
V. F. Schwalm, Ex-Officio McPherson, Kansas

EXECUTIVE COMMITTEE OF THE BOARD

Ray C. Strohm Chairman of the Board
H. J. Harnly Secretary of the Board
J. J. Yoder Treasurer of the Board
F. A. Vaniman Trustee, S. W. Kansas
Ernest Wall Trustee, S. W. Kansas
V. F. Schwalm President of the College

OFFICERS OF THE FACULTY

V. F. Schwalm, Ph. D. President
F. A. Replogle, A. M. Dean-Registrar
R. E. Mohler, M. S. Dean of Men
Edith McGaffey, A. M. Dean of Women
J. H. Fries, A. B. Business Manager



Faculty



The administration officials have found this a year of problems, but through co-operation they have solved them in such a manner that the school has enjoyed an unusually harmonious year. A decidedly progressive attitude pervades the administration, a fact which the students appreciate and encourage. The changes in curriculum are indicative of the trend which is being taken by entire administrative program. The contribution of Dean Replogle has been of unusual value in building up a new educational viewpoint and harmonizing the efforts of all.

HENRY J. HARNLY, B. S., A. M., Ph. D.

Dr. Harnly, vice-president of the college and forty year veteran of the faculty, has retained a remarkable amount of youth, vigor and vision. He celebrated his seventieth birthday on Washington's bi-centennial birthday.



JOSEPH J. YODER, A. B., LL. D.

Dr. Yoder, although not actively engaged in teaching now, has an enviable record as a business man and professor of social and economic science. At present he is the treasurer of the college and labors against all odds of the depression.

FREDERICK ALLEN REPLOGLE, A. B., A. M.

Dean Replogle has displayed an unlimited capacity for work, a remarkable understanding of student problems, and some revolutionary ideas on education and curriculum building. His head may be fuzzy on top but it isn't inside.



ROBERT ELLSWORTH MOHLER, A. B., M. S.

Dean Mohler has spent more time this year than previously in teaching biological sciences. This has not diminished his interest in men and their problems. Instead, he has enlarged his field to include men in all walks of life.

MARY EDITH MCGAFFEY, A. B., A. M.

Dean McGaffey has given counsel and cheer to many perplexed or discouraged girls and has made their lives more enjoyable. In addition she is the head of the English department. She will be sincerely missed next year.



Faculty



The literature and philosophy of the ages, the historical settings from which they developed, the psychology of the minds which produced these masterpieces of thought as well as of those which endeavor to fathom the depths, and the treasury of all this vast knowledge form a major portion of the academic interest of the college students. Bible study, ethics, expression, educational methods, international problems and the ability to use a library are outgrowths of these basic academic studies which in modern life have superseded their predecessors in importance.

JOHN ALVIN BLAIR, A. B., A. M.

Professor Blair has organized one of the most efficient practice teaching departments in the state. His work in placing teachers has been unusually successful. He teaches education and psychology with an eloquent, dramatic, and oft-seen tongue.



J. DANIEL BRIGHT, A. B., A. M., Ph. D.

Doctor Bright is not only an effective history teacher; he is a professional historian, for he thinks and acts in terms of history. The number of history majors indicates his department's popularity but not the work he demands of his classes.



J. HUGH HECKMAN, A. B., B. D., Th. M., A. M.

Professor Heckman was greatly missed the first semester when illness confined him to his home. All rejoiced when he was able to take up his Bible and philosophy courses the second semester. His Christian influence is far-reaching.



DELLA LEHMAN, A. B., A. M.

Miss Lehman makes literature and expression so interesting that her classes are large and enthusiastic. Her travels and experience, so interestingly shared, have made her indispensable in all social occasions, and her readings are an un-failing source of delight.



MARGARET HECKETHORN, A. B.

Miss Heckethorn is the college student's key to the sages of the ages, for she makes their words and records available in the library. She tirelessly assists those who search, and makes things convenient for those who will not.

Faculty

Study of science claims a large portion of the time and activity of college students. It is necessary for some people to specialize in scientific endeavor; it is necessary for every well educated person to be conversant with each field. Science has come to mean more than theories of light, matter, and motion; it has come to mean the practice of the best methods of living. The science departments of the college seek to give students an understanding of and mastery over nature which will enable them to live more happily, and respect more fully the Supreme Power.

J. WILLARD HERSHEY, B. S., M. S., Ph. D.

Doctor Hershey has achieved fame in the scientific world through his careful investigation and ingenious experimentation. The loving admiration of his students is an even greater tribute to his fine spirit as scientist, teacher, and friend.



JOSEPH L. BOWMAN, A. B., M. S.

Professor Bowman revels in those abstractions of mathematics, astronomy, physics, and radio which the ordinary mind finds inconceivable. It is rumored he is a man of many words, because to date he has used so few.

HELEN McILRATH, B. S., A. M.

Miss McIlrath has labored diligently to train her pupils who aspire to household perfection in all the niceties of the profession. The tempting odors which greet one on entering Science Hall are created through the magic she teaches.

SAMUEL MILTON DELL, B. S.

Professor Dell has entered into his department with contagious enthusiasm. His originality and versatility have been helpful in many school activities; his familiarity with his field has continued its popularity.

J. HOWARD FRIES, A. B.

Business-manager Fries gets a bad start with students because he must relieve them of their cash; but when they have opportunity to get acquainted with him, they learn he is human, likable, and interested in the students' welfare.



Faculty



Making a comfortable living, living hygienically and healthfully, and helping others to live contentedly are three of the big problems of our complex civilization. It has often been true that higher education has decreased rather than increased this power; but recent movements have endeavored to stress this side of education. Departments and teachers have been established to contribute to the physical and financial welfare of the students while in school and to enable them to continue to live well. A healthy, comfortable physique is necessary to mental growth.

EARL R. BOHLING, A. B., A. M.

Professor Bohling, business economy theorist, has made his department popular because of the practical methods and views he sets forth. His chapel speeches give evidence of a sense of humor which few suspected he possessed.



MELVIN J. BINFORD, B. S.

Coach Binford has won the admiration of all his players, the student body, the faculty, and the community-at-large by his fellowship, co-operation, clean sportsmanship, tenacious optimism, and refined gentlemanliness.

ABELYN TAYLOR

Miss Taylor has strengthened the girls' physical training department by adding classes which provide training in sports and exercises having permanent value. Her experience in climbing fire-escapes at night testifies to her ability.



MRS. EARL BOHLING

Mrs. Bohling's stenographic ability is the envy of her pupils and an avocational interest to herself. Her cheery smile and clever wit help to overcome the monotony of the hours of grinding practice through which her pupils must go.

MRS. DELLA HOLSINGER

Matron Holsinger finds herself busy taking care of her girls. Answering the telephone, receiving visitors, mending, nursing, advising perplexed boys and girls, and keeping up her correspondence completely fills her time.

Music

Music and art are international languages. Through these mediums emotions and ideas have been conveyed to illiterate people. We are not often privileged to hear and see the great masters; but the interpretations which we are constantly able to hear and the reproductions of the works of art which many students make and learn to appreciate are vital factors in the lives we live in after years. The fine arts faculty is unusually efficient and decidedly human in its interest. This department has done as much as any other to "put the school on the map."

JESSIE BROWN, B. M.

Miss Brown has distinguished herself throughout the state for the number of prize piano pupils she has trained. Her arrangement of chapel numbers and public recitals provide good music for all those not primarily interested in music and develop general appreciation for music.



MARGARET SHELLEY, A. B., B. M.

Miss Shelley, violin artist, instructor and orchestra conductor, never fails to draw a hearty response from her hearers. To those who know her intimately she is charmingly girlish and fun-loving, with a decided domestic turn.

MRS. ANNA C. TATE, A. B.

Mrs. Tate has sung herself into the hearts of all who know her. Her large repertoire includes songs for all occasions. The training of glee clubs and quartets for request appearances and concerts takes unlimited patience and time.



FERN LINGENFELTER, B. M.

Miss Lingenfelter has many juvenile piano pupils who are advancing with unusual rapidity. She has trained many of the public school music graduates. Although very quiet she has a ready smile and willingly gives of her talent.

CLARA COLLINE

Miss Colline has labored diligently in an effort to teach her aspiring pupils how to wield the brush, crayon, knife, and oil, with as artistic results as she does. More of her splendid work needs to be in evidence on the campus.

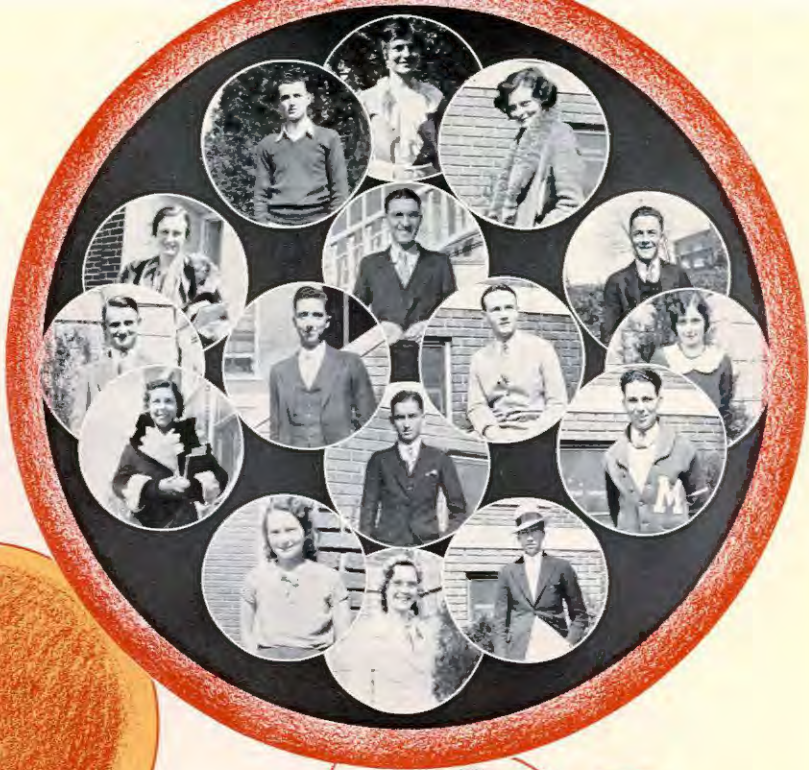




SMILES

Students, around which a college is built, meet every day, exchanging cheerful smiles, "howdy's" and "hello's". The common purpose of the students is to become better men and women, and in so doing, to incorporate happiness and cheer in their lives.





Seniors

GILBERT MYERS, A. B.
President
MCPHERSON, KANSAS

MILDRED DOYLE, B. S.
Vice President
TOPEKA, KANSAS

ADA STUTZMAN, A. B.
Treasurer
THOMAS, OKLAHOMA

JOHN KINDY, A. B.
Secretary
SAN DIEGO, CALIFORNIA

A note, a chord, a solemn procession and another class passes out into the purple foothills of history. Only yesterday it seems we were timid, awkward freshies—plainly bewildered and not a little frightened as we contemplated the great panorama that is college. But the years sped by on winged feet! Our short, short sojourn within dear M. C.'s ivy covered walls is over and today we stand on the threshold of life.

In retrospect, there are four distinct pictures which stand out in the memories of the Seniors of the Class of '32. Each picture becomes more definite and more complete than the one before until we reach that last solemn, impressive ceremony when two by two we file slowly up the aisle to receive the symbol of our academic maturity—our diploma.

What we have written, we have written! The past is gone with all its pains and pleasures, its joys and sorrows, its too few moments of nobleness and forgetfulness of self. It is to the future that we look with steady eyes—a future in which profiting by our errors of the years that lie behind, we shall ascend into a greater and larger vision in which the ideals of service and fellowship and love shall shine ever brighter and brighter and so in passing we breathe this fervent prayer—"God give us the strength and power to live up to the ideals set forth to us by our Alma Mater" as we go forth to face the sunrise of a thousand tomorrows.



Seniors



ATTILIA C. ANDERSON, B. S.

Chemistry—McPherson, Kansas.
Chemistry Club, 1, 2, 3, Vice Pres., 4; W. A. A., 1, 2, 3, 4; Glee Club, 1, 2, 3, 4; Chorus, 1, 2; Deputation, 1; Y. W. C. A., 1, 2, 3, 4; Chemistry Assistant, 3, 4; Phys. Ed. Instructor, 3; Spectator, 2.

ROY A. BARTLES, B. S.

Commerce—McPherson, Kansas.
Basketball Squad, 3, 4.



KENNETH ORLIN BITIKOFNER, B. S.

Commerce—Hesston, Kansas.
Y. M. C. A., Cabinet, 3, 4; Treasurer Student Council, 4; Hesston College, 1.

DOROTHY BROOKS, A. B.

English—McPherson, Kansas.
College of Emporia, 1, 2, 3; Second Sem., 4.



LILLIAN CARLSON, A. B.

History—McPherson, Kansas.
International Club, Sec. 3, 4; Debate Team, 3, 4; Y. W. C. A., 2, 3, 4.

ORVILLE COUNTRYMAN, A. B.

Math., Physics—Sterling, Colorado.
Football, 1, 3, 4.



NELLIE L. COLLINS, A. B.

English—Larned, Kansas.
Y. W. C. A., 1, 2, 3, 4; Thespian Club, 3, 4; W. A. A., 1, Sec. 2, Vice-Pres. 3, President, 4; Quadrangle, 4.

MILDRED DOYLE, B. S.

Chemistry—Topeka, Kansas.
Chem. Club, 1, 2, 3, 4; W. A. A., 1, 2, 3, 4; Thespian Club, 2, 3, 4; Debate Team, 3, 4; Oratory, 4; Class Vice-Pres., 4; Chorus Leader, 3, 4; Senior Play Cast.



ENOCH HERBERT EBY, A. B.

Education—McPherson, Kansas.
Chem. Club, 1; Orchestra, 1, 2, 3; Pep Band, 2; Spectator, 2, 3; International Club, 3, President, 4; Cecilian Music Club, 1, 2.

EVALYN LOUISE FIELDS, A. B.

History—McPherson, Kansas.
Glee Club, 1, 2, 3, 4; Y. W. C. A., 1, 4, Vice-Pres. 2, Cabinet, 3; Class Vice-Pres., 3; Anti-Tobacco Association, 4, President, 3; International Club, 3, 4; K. U. Fellowship.



Seniors

VERA FLORA, A. B.

Music—Quinter, Kansas.
Glee Club, 1; Class Sec., 3; Ladies Quartet, 3;
Y. W. C. A., 1, 2; LaVerne College, Calif., 2;
Rocky Mountain Summer School, 1930. Finished
in 3 years.

WILLIAM KERMIT HAYES, B. S.

Agriculture, History—Geneseo, Kansas.
Chem. Club, 1, 2; Glee Club, 1; Forensic Club, 1,
2, 3; Y. M. C. A., 1; Cabinet, 2, 3, 4; Second
Debate Team, 2; Class President, 3; International
Rel. Club, 3, 4; Class Representative, 4; Social
Com., 4; Senior Play Cast.

MYRETA HAMMANN, A. B., B. M.

Music—McPherson, Kansas.
Orchestra, 3, 4; Y. W. C. A., 1, 2, 3, 4; Glee
Club, 2; Cecilian Music Club, 1; Chem. Club, 1.

FERN HECKMAN, B. S.

Chemistry—Colorado Springs, Colo.
Chem. Club, 1, 2, Sec., 3, 4; Chemistry Assistant,
2, 3, 4; Tropicana Club, 3, 4; "Patsy," 3, Sec-
Treas., 4; W. A. A., 1, 2, 3, 4.

HERBERT HOCHSTRASSER, B. S.

Industrial Arts—Conway, Kansas.
Football, 1, 2, 4, Captain 3; Track, 1, Captain 2,
3; "M" Club, 1, 2, 3, 4.

LUTHER DALE HORN, B. S.

Chemistry—McPherson, Kansas.
Y. M. C. A., 1, 2, 3; Chem. Club, 1, 2, 3, 4.

HELEN HOLLOWAY, A. B.

English—McPherson, Kansas.
Ladies Glee Club, 1, 2, 3, 4; Chorus, 1, 2, 3, 4;
Ladies Quartet, 4; "Pinafore," 1; "Mikado," 2;
"Lucky Jade," 3; "Ruth," 4; Student Council
Sec., 3; Y. W. Cabinet, 3, 4; C. E. Cabinet, 1, 2;
Deputation, 1, 3.

POSEY JAMISON, B. S.

Industrial Arts—Quinter, Kansas.
LaVerne College, 1; Basketball, 2, Captain, 3, 4;
"M" Club, 2, Sec. 3, 4; Y. M. C. A. Cabinet, 3;
Chem. Club, 2; Class Representative, 3.

RALPH O. JOHNSTON, B. S.

Industrial Arts—McPherson, Kansas.
Basketball Squad, 1, 2, 3, 4; Football Squad, 3,
4; "M" Club, 3, Vice-Pres., 4; Industrial Arts
Assistant, 2, 3; Chem. Club, 1; Y. M. C. A., 1, 2,
3.

ELMER KECK, B. S.

Physics—Sumnerfield, Kansas.
Football, 1, 2, 3, Captain 4; "M" Club, 2, 3, 4;
Student Council, 4; Physics Assistant, 3, 4.



Seniors



RALPH W. KEEDY, B. S.

Chemistry—LaHabra, California.
Chem. Club, 1, 2, 3, 4; International Rel. Club,
3, 4; Chem. Assistant, 3, 4; President Student
Council, 4; Thespian Club, 4; World Service
Group, 3, 4; Senior Play Cast.

JOHN C. KINDY, A. B.

Education—San Diego, California.
LaVerne College, 1, 2, 1st sem. of 3; "Sun-up,"
3; Track, 3; "M" Club, 4; Thespian Club, 4; Class
Sec., 4; Senior Play Cast.



GEORGE L. LEREW, B. S.

Industrial Arts—Portis, Kansas.
Chem. Club, 1, 2; Track, 1; Y. M. C. A., 1, 2, 3,
4; Student Council, 4; Industrial Arts Assistant,
4.

PHILIP H. LAUVER, A. B.

History, Social Science—Chicago, Illinois.
Elizabethtown College, Elizabethtown, Pennsyl-
vania, 1; World Service Group, 2, President, 3,
4; Deputation, 2, 3; Y. M. C. A., 2, 3, 4; Thes-
pian Club, 2, 3, 4; "The Queen's Husband,"
"Merton of the Movies," Student Minister, 2, 3,
4; Library Assistant, 3, 4.



LAWRENCE E. LEHMAN, A. B.

English—Guthrie, Oklahoma.
Second Debate Team, 2, Varsity, 4; Men's Glee
Club, 2, 3, 4; Chorus, 2, 3; Male Quartet, 3; Depu-
tation, 2, 3; Anti-Tobacco Association, President,
2; Y. M. C. A. Cabinet, 2, 3, 4; World Service
Group, 3, 4, President, 2; "Esther," 3; "The
Lucky Jade," 3; Oratory, 4; Hesston College, 1;
Senior Play Cast.

CLARA FERN MAST, A. B.

English—McPherson, Kansas.
Y. W. C. A., 2, 3, 4; Glee Club, 3, 4; Chorus, 3.



CLARENCE S. MEINHARDT, A. B.

History—McPherson, Kansas.
Central College, McPherson, Kansas, 1, 2; Stu-
dent Minister, 3, 4.

HERBERT MOWBRAY, B. S.

Industrial Arts—McPherson, Kansas.
Track, 1, 2, 3, 4; Football, 1, 2, 3, 4; "M" Club,
2, 3, President, 4.



ELSIE MUSE, B. S.

Home Economics—McPherson, Kansas.
Y. W. C. A., 1, 2, 4; Chem. Club, 1, 2; Fullerton
Junior College, Fullerton, Calif., 1.

LESLIE G. MYERS, A. B.

Mathematics, Physics—Winford, Kansas.
Y. M. C. A., 1, 2, 3, 4; Chem. Club, 1; Glee Club,
1; Physics Assistant, 4.



Seniors

GILBERT L. MYERS, A. B.

History—McPherson, Kansas.
Spectator, 1, 2; Class President, 4; C. E. President, 2.

CONSTANCE MEYER, A. B.

History—Evanston, Illinois.



MILLICENT NYQUIST

—McPherson, Kansas.

VERLE V. OHMART, B. S.

Industrial Arts—McPherson, Kansas.
Chem. Club, 1; Y. M. C. A., 1, 3; "M" Club, 1, 2, 3, 4; Track, 1, 3, 4; Thespian Club, 2, 3, President, 1; "The Patsy," "The Queen's Husband," Business Manager Quadrangle, 1; Basketball, 1, 3, 4; Football, 1, 2, 3; Senior Play Cast.



ROY WILLIAM PEEBLER, B. S.

Biology—Wichita, Kansas.
Chem. Club, 2, 3, 4; Student Minister; Senior Play Cast.



CONSTANCE RANKIN, B. S.

Home Economics—McPherson, Kansas.
Chem. Club, 1; Cecilian Music Club, 1; Y. W. C. A., 1, 2, 3; Cabinet, 4; Home Economics Assistant, 4.

ELIZABETH LORETTA RICHARDS, A. B.

History—Waldo, Kansas.
Y. W. C. A., 1, 2; Cabinet, 4; World Service Group, 2, Sec., 4; Cecilian Music Society, 1; Finished in 3 years.



EVELYN ELIZABETH SAYLOR, A. D.

English—Marion, Kansas.
Y. W. C. A., 1, 4; Glee Club, 1, 2; Class President, 1, Sec. 3; Chorus, 1, 2.

ETHEL SHERFY, A. B.

English—Hampton, Iowa.
Y. W. C. A., 1, 2; Cabinet, 3, 4; Ladies Quartet, 3, 4; English Assistant, 3, 4; World Service Group, 1, 2, 3; Vice-Pres. 2; Thespian, 2, 3; Vice-Pres. 1; W. A. A., 1, 2, 3, 4; Quadrangle, 3; Associate Editor, 4; Spectator, 1, 2, 3; Deputation, 1, 2, 3; Glee Club, 1, 4; Chem. Club, 2; C. E. Cabinet, 2; Senior Play Cast.



CHARLES R. SMITH, A. B.

Industrial Arts—McPherson, Kansas.
Band, 2; Conductor, 4; Kansas State Agriculture College, Manhattan, 3; Senior Play Cast.



Seniors



ADA STUTZMAN, A. B.

Commerce—Thomas, Oklahoma.

W. A. A., 1, 2; Y. W. C. A., 1, 2, 3, 4; Class Treas., 4.

ADELYN TAYLOR, A. B.

English—Arlington, Kansas.

Spectator, 1, 2, 4; Quadrangle, 1, 2; W. A. A., 1, 2, 4; Y. W. C. A., 1, 2, 4; Debate, 1; Social Committee, 4; Missouri University, 3; Senior Play Cast.



CLINTON DOUGLAS TROSTLE, B. S.

Biology—Nickerson, Kansas.

Y. M. C. A., 1, Cabinet, 2; President, 3, 4; Chem. Club, 1; World Service Group, 3, 4; Quadrangle, 2; Class Vice-Pres., 2; Student Council, 3; Biology Assistant, 2.

DONALD L. TROSTLE, B. S.

Industrial Education—Nickerson, Kansas.

Chem. Club, 1, 2; Glee Club, 1, 2, 3, 4; Chorus, 1, 2, 3; Cecilian Music Club, 1; Y. M. C. A., 1, 2, 3, 4; Spectator, Associate Editor, 2, 3; Quadrangle Editor, 4; Industrial Arts Assistant, 3, 4; Senior Play Cast.



FLORENCE WEAVER, B. S.

Home Economics—Garden City, Kansas.

Registrar Assistant, 1, 2, 3, 4; W. A. A., 1, 2, 4; Treas., 3; Cheerleader, 3; Y. W. C. A., 1, 2, 3, 4.

MARY CATHERINE WEDDLE, B. S.

Home Economics—Bloom, Kansas.

W. A. A., 2, 3, 4; Chem. Club, 2; World Service Group, 3; Treas., 4; C. E. Cabinet, 3; Y. W. C. A. Cabinet, 4; Home Economics Assistant, 4.



WALTER W. WOLLMANN, B. S.

Chemistry—Freeman, South Dakota.

Freeman Junior College, Freeman, South Dakota, 1, 2; Chem. Club, 3, 4; Chemistry Assistant, 4; Varsity Debate, 3, 4; Y. M. C. A., 3, 4; Pi Kappa Delta, 3, 4.

ALBERTA F. YODER, A. B.

English—Westerloo, Iowa.

Spectator, 1, 2; Associate Editor, 3, 4; Class Sec. Treas., 2; Sec. Forensic Club, 2; Y. W. C. A., 1, 2; Vice-Pres., 3; President, 4; Quadrangle, 3; Student Council Sec., 4; Class Representative, 3.



ROYAL F. YODER, B. S.

Agriculture—Conway, Kansas.

Chem. Club, 1, 2; Orchestra, 1, 2, 3; Chorus, 3; Glee Club, 4; Y. M. C. A., Treas., 4.

J. DANIEL BRIGHT

Class Sponsor.



Juniors

CHARLES AUSTIN, History
President
FRUITA, COLORADO

PEARL WALKER, Home Economics
Vice President
OMAHA, NEBRASKA

DELBERT KELLY, Commerce
Treasurer
LIBERAL, KANSAS

VERA FLORA, Music
Secretary
QUINTER, KANSAS

September, 1929—we arrived in the far famed camp of the Bulldogs, nearly one hundred strong, eager to display what we knew and perhaps to learn more. Freshman week get-togethers, "stag" hikes, big sisters, watermelon socials—how could we keep from getting acquainted and fully oriented into the spirit and purpose of the School of Quality?

For our second year Eber Tice replaced Blanch Harris as engineer, and we began to take more responsibility for directing the affairs of the school. One member served his second year on the varsity debate team, both varsity quartets contained members of the class of '33, one headed the College Church C. E., one was a winner in oratory, one was "Quad" business manager—each student in his own way made his contribution.

And now as Juniors we have tried still further to meet our responsibilities. 1931-32 finds more of our members in responsible positions than before, while others win distinction for themselves and their school in other ways. Debate and oratory, music, scholarship, religious organizations, dramatics, publications, football, basketball, track, tennis—look at the records and count the Juniors.

Our annual "sneak," begun under shades of night amid threatening skies, but turning out to be highly successful, and our banquet in honor of the class of '32, were the biggest social events of the year.

We enter our final year of august seniorhood mindful of our past record, but looking forward to greater achievements and hoping to continue to grow in the four-fold life fostered by M. C.



Juniors



DENNIS ANDES, Chemistry
Witdom, Kansas

CHARLES AUSTIN, History
Fruita, Colorado

EDWARD BRADLEY,
Industrial Education
Brookville, Kansas



ESTHER BROWN, Chemistry
Hutchinson, Kansas

ADA BRUNK, Home Economics
McPherson, Kansas

GENEVIEVE CRIST, English
Quinter, Kansas



ODESSA CRIST, Home Economics
Quinter, Kansas

PAULINE DELL, Music
Beatrice, Nebraska

VIOLA DEVILBISS, Chemistry
Ottawa, Kansas



DONALD DRESHER,
Industrial Education
Canton, Kansas

DOROTHY DRESHER, Biology
Canton, Kansas

FLORENCE DRESHER,
Home Economics
Canton, Kansas



ESTHER EIDSE, English
Galva, Kansas

BERNICE FOWLER, Education
Worthington, Minnesota

MILTON GOERING, Physics
Elyria, Kansas



Juniors

LILBURN GOTTMANN, History
Center, Missouri

GRETTA WILMA GRIFFIS, History
McPherson, Kansas

GRACE HECKMAN, Latin
McPherson, Kansas



MELVIN LANDES, Biology
Hamlin, Kansas

LLOYD LARSEN, Commerce
Abilene, Kansas

HOPE NICKEL, Chemistry
Wichita, Kansas



VERNON RHOADES, Latin
N. Topeka, Kansas

LOREN ROCK, Industrial Education
Enterprise, Kansas

ALICE RUEHLEN, Education
McPherson, Kansas



HARVEY SHANK, Chemistry
Carthage, Missouri

ELLEN STEINBERG, Music
Lorraine, Kansas

MILO STUCKY, Chemistry
Elyria, Kansas



GENEVA SUTTLE, English
Yakima, Washington

WARD WILLIAMS, History
Egeland, North Dakota

GEORGE ZINN, Commerce
McPherson, Kansas



Sophomores



WILBUR YODER
President
WATERLOO, IOWA

J. T. WILLIAMS
Vice President
HARDIN, MISSOURI

VIVIAN STEEVES
Treasurer
MCPHERSON, KANSAS



MATTIE SHAY
Secretary
MCPHERSON, KANSAS

Ah, and with what relish we begin our second blundering year! In accordance with the depression, we dispense with any erstwhile frivolity. Only one social event, but "wot an event"!—the second yearlings were entertained at the Vaniman home.

So proud were we of our Freshman president, Wilbur Yoder, that we made him our Sophomore president as well. It seems that with our polish and refinement, which we acquire when we are moved upward and onward, we fairly took the college by storm, so that half the important school officers were elected from our class for the ensuing year. And you ask us, "Are we modest?" and we answer, "Oh, yes, indeed!"

What peace and joy comes from being a sophomore can be told only by a sophomore. The blissful knowledge that comes from knowing that one will not be swatted impartially and well as he was when a Freshman, gives docility and repose to one's facial expression and he is therefore able to cultivate his more noble instincts rather than just to submit to the humiliaties of a paddling—no matter where he be or who be the onlookers.

The Sophomore girls' quartet, the mixed quartet, men's and ladies' quartets, all have talent from our class. Track, basketball, tennis, and football have our representatives, too. Mildred Dahlinger distinguished herself at the Lindsborg Festival, Easter week.

Our sincere desire is to fulfill the faith which people may have in us. Our theme is "We would be true."



Sophomores

ROSALIND ALMEN
McPherson, Kansas

ALMA ATCHISON
McPherson, Kansas

ORPHA BEAM
McPherson, Kansas



VELMA BEAN
Waldo, Kansas

HAROLD RINFORD
Pratt, Kansas

CORRINE BOWERS
McPherson, Kansas



ELIZABETH BOWMAN
Quinter, Kansas

DELVIS BRADSHAW
Waldo, Kansas

EDWIN CARLSON
Little River, Kansas



MILDEED DAHLINGER
McPherson, Kansas

LOIS EDWARDS
Twin Falls, Idaho

EVERETT M. FASNACHT
Wiley, Colorado



BLANCH HARRIS
Nampa, Idaho

ELIZABETH HOLZEMER
McPherson, Kansas

GULAH HOOVER
Quinter, Kansas



Sophomores



FRANK HUTCHISON
Thomas, Oklahoma

LOUISE IKENBERRY
Rocky Ford, Colorado

EDNA KAUFMAN
Galva, Kansas



VELMA KELLER
Minneola, Kansas

MARCELLA LEDELL
McPherson, Kansas

GELTRUDE LONG
Chase, Kansas



ROY MASON
Norborne, Missouri

EDGAR MIKOW
McPherson, Kansas

CLEO MINEAR
Canton, Kansas



DON MYERS
McPherson, Kansas

CLELLA NELSON
McPherson, Kansas

CLARA NICKEL
McPherson, Kansas



NEOMA NORDLING
McPherson, Kansas

GEORGE PETERS
Groveland, Kansas

LESTER POTE
Ripley, Oklahoma



Sophomores

EDITH RICHARDS

Waldo, Kansas

UNA RING

McPherson, Kansas

ELSIE RUMP

Conway, Kansas



MATTIE SHAY

McPherson, Kansas

PAUL SHERFY

Hampton, Iowa

MAURICE SORENSON

McPherson, Kansas



WALTER SORENSON

McPherson, Kansas

VIVIAN STEEVES

McPherson, Kansas

MILDRED STUTZMAN

Conway, Kansas



MARY SWAIN

McPherson, Kansas

MAXELINE SWITZER

McPherson, Kansas

MARIANNA THOMPSON

McPherson, Kansas



PETER UNRUH

Goessel, Kansas

J. T. WILLIAMS

Hardin, Missouri

WILBUR YODER

Waterloo, Iowa



Freshman



HARRY FRANTZ
President
ROCKY FORD, COLORADO

ELSIE LINDHOLM
Vice-President
MCPHERSON, KANSAS

WALTON SMITH
Treasurer
MCPHERSON, KANSAS

LOIS LACKEY
Secretary
FRUITLAND, IDAHO



It is not only mythically true that Freshies are green, but it is a real and undeniable fact, as the one hundred and four members of the class of '35 discovered when they first deposited themselves on this campus so full and overflowing with memories of bygone classes.

Experiences came thick and fast, and we, too, came to a realization that the halls, and classrooms, and drives, and lawns would eventually come to hold precious memories for us.

We immediately placed ourselves under the able leadership of Harry Frantz. It was well we did for we soon found ourselves being subject to abject treatment consisting in the main of chemistry, belllines, rhetoric, stacked rooms, paddles, and red caps. The Sophomores forfeited the football game, and so the caps soon vanished.

It was in this way that we put the Sophomores in their places, and by placing members in every field of activity and a majority of fellows on both basketball and football teams we have succeeded in doing the same to the remaining two upper classes.

We came with an ambition to make the class of '35 one to be long remembered and distinguished, and we shall continue with that goal ever before us, ever beckoning us on to higher and nobler things.



Freshman

REX ANDERSON
 Dodge City, Kansas
MARTHA ANDES
 Mound City, Missouri
RUTH ARBEITER
 Durham, Kansas
JOHN AUSTIN
 McPherson, Kansas



GLEN AUSTIN
 Fruita, Colorado
MURIEL BARNES
 Galva, Kansas
CLARENCE BARTLEY
 McPherson, Kansas
AGNES BEAN
 McPherson, Kansas



ELAINE BEARD
 McPherson, Kansas
EDITH BECHTELHEIMER
 Subetha, Kansas
ONEITA BOYER
 Hutchinson, Kansas
MARJORIE BROWN
 McPherson, Kansas



VERNON BECKWITH
 Payette, Idaho
DONALD BRUMBAUGH
 Fruita, Colorado
EARLE BRUMBAUGH
 Fruita, Colorado
RUSSELL CARPENTER
 Subetha, Kansas



ALICE CHRISTIANSEN
 Durham, Kansas
MARLEAH CUSTER
 Quinter, Kansas
MARLENE DAPPEN
 McPherson, Kansas
BERNICE DRESHER
 McPherson, Kansas



JESS DUNNING
 Wenatchee, Washington
MAXINE ELLIOTT
 McPherson, Kansas
DOROTHY FEAREY
 Arnis, Kansas
BERNICE FELDT
 McPherson, Kansas



LAVERE FLORA
 Quinter, Kansas
MELVIN FLORA
 Rocky Ford, Colorado
MERLE FISHER
 Fruitland, Idaho
HARRY FRANTZ
 Rocky Ford, Colorado





Freshman

ROYAL FRANTZ
Fruita, Colorado
ALVIN GABDDERT
Inman, Kansas
JOHN GOERING
Elvria, Kansas
GLEN HAMMANN
McPherson, Kansas



FERN HANDKE
McPherson, Kansas
LOLA HAWKINS
Tampa, Kansas
EVELYN HEINY
Waterloo, Iowa
ELBERT HIMES
Quinter, Kansas



GEORGE HIMES
Quinter, Kansas
RUTH HOBART
McPherson, Kansas
HOBERT HUGHEY
Bartlesville, Oklahoma
DOROTHY HUNSINGER
McPherson, Kansas



MARTHA HURSH
Chesoday, Kansas
RUTH IDE
Hope, Kansas
HUBERT IKENBERRY
Quinter, Kansas
LACEY JENKINS
McPherson, Kansas



JAMES ROBERTSON
Galva, Kansas
FAITHE KETTERMAN
Abilene, Kansas
HENRY KITTELL
McPherson, Kansas
GORDON KRAUS
Tampa, Kansas



GRACE LEREW
Paris, Kansas
LETTEER LEWIS
Galva, Kansas
ELSIE LINDHOLM
McPherson, Kansas
ARCHIE LINDHOLM
McPherson, Kansas



PAULINE MILLER
Carlton, Nebraska
KENNETH MOORE
Teshoma, Oklahoma
LORENE MORRISON
Rosbury, Kansas
HARLOW NACHTIGAL
Huhler, Kansas



Freshman

ETTA NICKEL
McPherson, Kansas
LEETA OAKS
Ozawie, Kansas
MARGARET OLIVER
McPherson, Kansas
ZELTA MAE OXLEY
Wiley, Colorado



IMO PETERSON
Canton, Kansas
ESTHER POTE
Ripley, Oklahoma
MILDRED PRAY
Hope, Kansas
LESTER QUIGG
Daquoin, Kansas



HAROLD REINECKER
Quinter, Kansas
GLADYS RIDDELL
McPherson, Kansas
MAXINE RING
McPherson, Kansas
MILDRED RONK
Twin Falls, Idaho



LLOYD SHOEMAKER
Wanatchee, Washington
WALTON SMITH
McPherson, Kansas
BERNARD SUTTLE
Yakima, Washington
RUTH SPILMAN
Roxbury, Kansas



ELMER STAATS
Sylvia, Kansas
SAMUEL STONER
Ludoga, Indiana
DORETHA STUTZMAN
Conway, Kansas
TOMMY TAYLOR
Fruitland, Idaho



ARCHIE VAN NORTWICK
Summerfield, Kansas
EUNICE VOGT
Versailles, Missouri
ARLENE WAMPLER
McPherson, Kansas
GLENN WEBB
McPherson, Kansas



WALTER WEDDLE
Bloom, Kansas
CARROL WHITCHER
Falfurrias, Texas
LEONARD WIGGINS
Geneseo, Kansas
HOWARD WILLIAMS
Quinter, Kansas



Music



MYRETA HAMMANN, B. M.
Piano



PAULINE DELL
*Diploma
Piano*

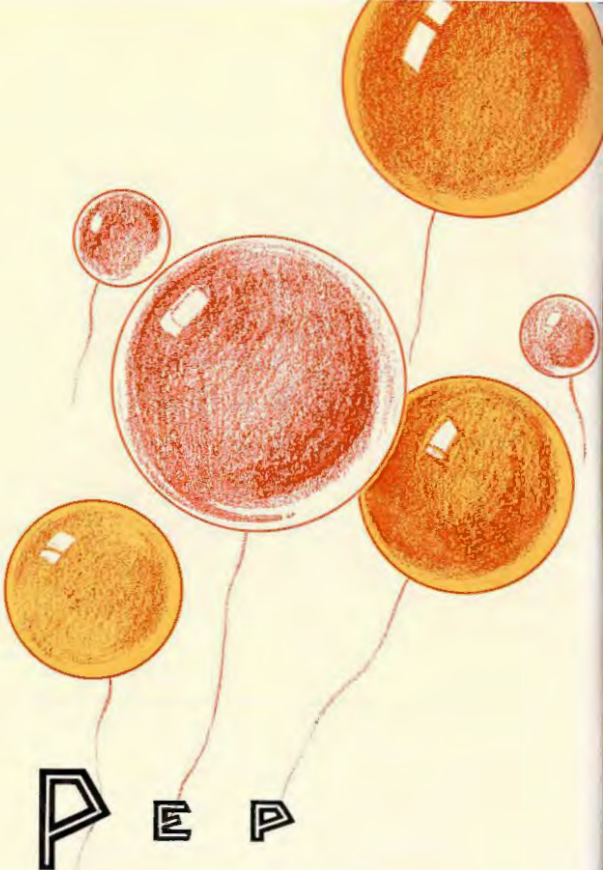


GULAH HOOVER
*Teacher's Certificate
Piano*



VERA FLORA
*Diploma
Public School Music*

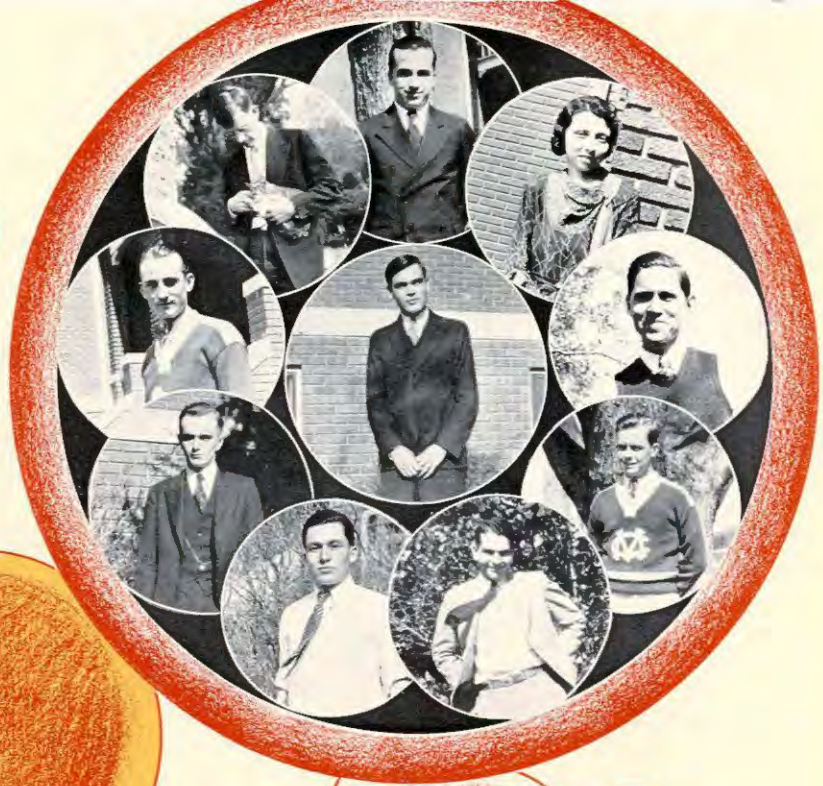




P E P

Students with an inferiority complex sometimes center their interest on things other than books. These diversions vary from attractions to the opposite sex, to debate, with intermediate variations; more interest is centered on the former than the latter. (The Staff received some good "hush" money, too).







Top: Keedy, President; Gottmann, Bright, Keller, Keck.
 Middle: Mohler, Yoder, Bittkofer, Treasurer; Lerow, Brown.
 Bottom: Hoover, Hutchison, Shoemaker, Ring, Austin.

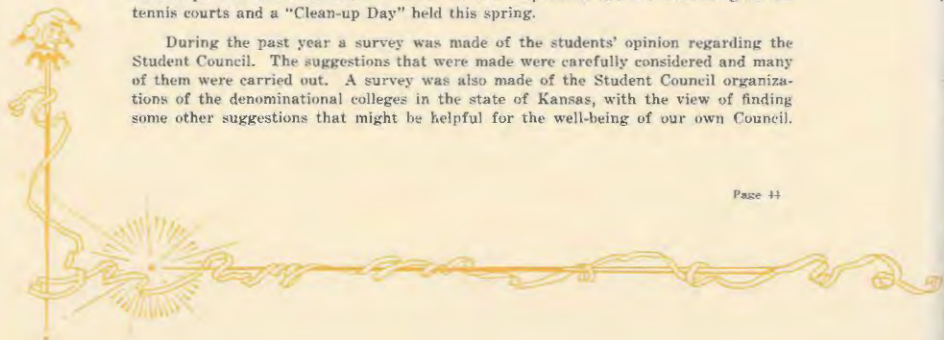
Student Council

The Student Council of McPherson College, under the leadership of Ralph Keedy and Kenneth Bittkofer, has followed a progressive student program during the past year. The Student Council is composed of two members from each class, two from the faculty, one from the "M" Club, one from the W. A. A., and one from the Music Department, and the President and Treasurer.

The duties of the Council consist of partially or fully supporting various student activities, such as Music, Dramatics, Debate, Athletics and tennis; and of general supervision of the Spectator and Quadrangle. The Council apportions its funds among the various activities according to their relative needs.

In addition to its regular duties, the Student Council in the past year has sponsored an Indian lecturer, "Braveheart," three one act plays presented by the class in Principles of Interpretation, a cantata "Ruth," presented by the college chorus, and several parties and other social events. It was responsible for the rebuilding of the tennis courts and a "Clean-up Day" held this spring.

During the past year a survey was made of the students' opinion regarding the Student Council. The suggestions that were made were carefully considered and many of them were carried out. A survey was also made of the Student Council organizations of the denominational colleges in the state of Kansas, with the view of finding some other suggestions that might be helpful for the well-being of our own Council.





Top: Gottmann, Williams, Doyle, Carlson, Lehman, Wollman.
 Bottom: Goering, Nickel, Raehlen, Peters, Staats.

Forensics

The forensic season opened at the Winfield Tournament on December 4 and 5. About 150 teams were entered from seven states. Of the six McPherson teams entered, four survived the four elimination rounds, and in the final round the silver cup for second place in the men's tournament was won by Lilburn Gottmann and Ward Williams.

In the first round of League debates the McPherson Varsity won easily from the strong Bethany team but lost the decision of the judge in an excellent debate with Wichita University. Second round debates with Bethel and Wesleyan resulted in victories for McPherson. The third round with Friends and Sterling resulted favorably for McPherson also. This gave McPherson a tie for first place in the League. On April 5, in a dual debate to break the tie, McPherson defeated Bethany at both ends, 2 to 0 and 2 to 1. This is the second successive State Championship for McPherson, the fifth in the past seven years, and the sixth since 1922.

The Women's teams held non-decision debates with the College of Emporia, Bethany, Bethel, and Hutchinson Junior College. The Second Teams had dual non-decision debates with Eldorado Junior College and Hutchinson Junior College, and debated each other with audience decisions at Groveland and Elyria.

In Oratory, Ward Williams represented McPherson at the State Anti-Tobacco Contest on March 8 and placed second. On March 11 and 12, Ward Williams, William Juhnke, Mildred Doyle and Hope Nickel entered the state tournament of oratory and extempore speaking. Ward Williams placed first in both oratory and extempore. On March 13, the Local Peace Contest with eight orators was won by Lawrence Lehman, who represented McPherson at Friends in the State Contest on April 13 and placed first.





Top: Yoder, President; Holloway, Vice President; Lehman; Shay; Saylor, Secretary; Richards, Treasurer.
Bottom: Sherfy, Rankin, Heckman, Brown, Brunk, Weddle.

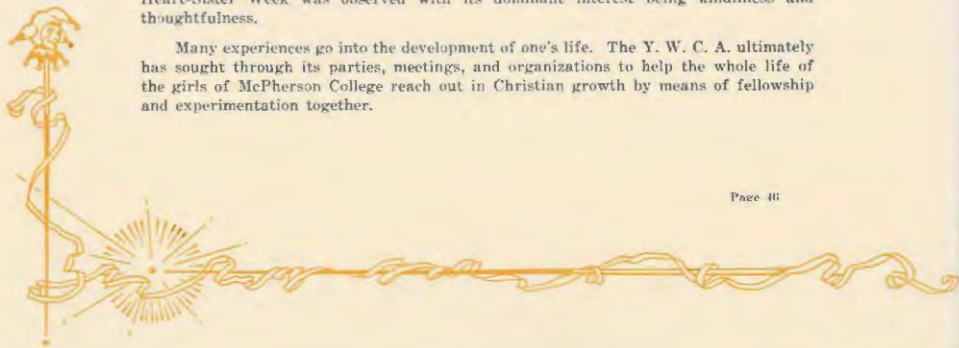
Y. W. C. A.

The Young Women's Christian Association of McPherson College is a laboratory of fellowship of college girls searching for joyous, creative life for themselves and for all people. It has brought new realms of thought, friendships, and has given deep purpose to life. As an organization the Y. W. C. A. has been a vital and significant element in the spiritual and social life of the girls of McPherson College during the past year.

The social life of the campus has been enriched by the events which the Y. W. C. A. has sponsored. Among these events are the Big and Little Sister Tea, a watermelon social, the Thanksgiving party, Mother's and Daughter's Tea, and Heart-Sister Week.

Practical attempts have been made to make Christian living the basic campus attitude. Each Freshman girl was given a Big Sister to aid in orienting her to college. A Christmas party was sponsored for poor children of the city who otherwise would have had very little Christmas cheer. Interest was fostered in the Disarmament Conference during the winter. Following a series of friendship programs the organization observed "Appreciation Week," which was a source of keen interest among the girls. Heart-Sister Week was observed with its dominant interest being kindness and thoughtfulness.

Many experiences go into the development of one's life. The Y. W. C. A. ultimately has sought through its parties, meetings, and organizations to help the whole life of the girls of McPherson College reach out in Christian growth by means of fellowship and experimentation together.





Top: Trostle, President; Yoder, Treasurer; Bright; Hayes; Lehman, Secretary; Austin, Vice President.
Bottom: Bitikofer, Williams, Sherfy, Shank, Lindholm, Gottmann.

Y. M. C. A.

The Young Men's Christian Association of McPherson College is a fellowship of students and faculty, who, believing that the spirit of love is the greatest reality in life, are earnestly seeking to discover Jesus' Way of Love for themselves and for society. It is devoted to the creation and maintenance of the ideals and attitudes of Jesus in all the relationships of life. This group feels that a vital religion is the source of the most abundant living. Its work is laid out to further the ideals of the college and to supplement the training which the regular curriculum gives the student. The central phase of its message is to inspire students to develop in their lives the spirit of love as was supremely embodied in the life of Jesus of Nazareth.

Among the activities which the organization has promoted in its endeavor to realize this purpose were the Freshman "Stag" party, the regular weekly association meetings, educational and religious motion pictures, the bringing of the regional traveling secretaries, Glenn Griffith and Felix Manly, and the bringing of Dr. James Chubb, who presented a challenge for noble Christlike living which influenced the lives of many students. In cooperation with the Young Women's Christian Association of the College, it sponsored the annual All-School Watermelon Feed, a Thanksgiving party, a joint cabinet retreat to Twin Mounds, and brought Perry Rohrer to the campus.

The cabinet is the "Inner Circle" of men who are vitally interested in carrying out the purpose of the Association. It met each week at the home of Dr. Bright, the faculty sponsor, for an inspirational discussion of problems and plans. The cabinet members' daily devotions were based upon Harry Emerson Fosdick's book, "The Manhood of The Master," and were a constant source of strength and inspiration for the tasks which faced them.





Top: Trustle, Editor; Sherfy, Associate Editor; Prof. Bohling; Landes, Associate Bus. Mgr.; Ohmart, Bus. Mgr.
 Bottom: Kelly, Fasnacht, Collins, Yoder, Shank.

Quadrangle

College days are among the most eventful and colorful days of our lives. Many friends and acquaintances contribute hourly to the sum total of our happiness. Events crowd in upon us so rapidly that we cannot take time to record all our activities, thoughts, and aspirations. As a result, many students go away with only hazy and jumbled memories of events, organizations, and people, and in later years find it impossible to recall many well-known faces or re-live many thrilling experiences.

The Quadrangle provides the tangible record and abiding evidence of the friends, deeds, and surroundings of that exhilarating experience known as college. It has been the purpose of the Staff to make that record a picture so true to life in all its details that a glance through its pages will at once recall to us whole sections of the panorama of our collegiate sojourn. Every friend appears here in the organizations which he most enjoyed, with his achievements and eccentricities appropriately recorded.

Only through the cooperation of students, faculty, and business friends has the Staff been able to reduce the mass of life and activity which surrounds us to a concise, graphic, pictorial form.

The purpose of making this book true to life led the staff to select for its theme the dominant note of college life, cheerfulness. The one impression to be gathered from association with college students is that of carefree, exuberant cheerfulness. Every effort has been made to portray this attitude in each section, picture, and drawing in the book. The editor and his staff have worked cheerfully and consistently to produce a book which will excel the superior quality of its predecessors and become a valuable part of the library of every 1931-32 student at McPherson college.





Top: Rhoades, Editor; Yoder, Associate Editor; Taylor; Hutchinson; Williams, Assoc. Bus. Mgr.; Larsen, Bus. Mgr.
Middle: Bean, Andes, De Vilbiss, Carlson, Dunning, Doyle
Bottom: Yoder, Ring, Shay, Fasnacht, Drescher, Sherfy.

Spectator

During this, the Spectator's fifteenth year, an honest effort has been made to improve the quality of the paper, at the same time maintaining the standard set in past years. Vernon Rhoades, the editor, has made it his aim to see that the news appearing in its columns was both readable and interesting. As people are always of more importance than things, facts about people and their doings were considered to have first place in the news.

Business Manager Lloyd Larsen with his assistants was confronted this year with perhaps the hardest task ever faced in the history of the paper. They have fought off the "depression blues" and managed to keep The Spectator above board financially. Assistants on the business staff were Paul Sherfy, J. T. Williams, and Jesse Dunning. Frank Hutchinson, circulation manager, and Wilbur Yoder, make-up editor, have been on the job every week to produce a well organized paper and get it properly distributed. Everett Fasnacht, in addition to serving as a faithful, efficient reporter, rendered valuable aid by doing a large part of the weekly proof reading task. Prof. Maurice A. Hess, the faculty advisor, was ever ready to provide helpful and constructive advice.

The Spectator is sponsored by the Student Council. It is designed to be a means of expressing what students think, say, and do. To accomplish this has been the aim of the staff for 1931-32, and they have given of their best that the paper might be truly worthy of a School of Quality. They have enjoyed the loyal support and spirit of co-operation continually manifested by the student body, the faculty, and the business men of McPherson who make The Spectator possible.





Top: Andes, C. Austin, G. Austin, Bean, Bechtelheimer, Bradshaw, D. Brumbaugh, E. Brumbaugh.
 Second: Crist, Dunning, Gottmann, Frantz, Heckman, Heckethorn, Ihde, Fasnacht.
 Third: Keedy, Lehman, Lauver, Oaks, Shank, Elizabeth Richards, Edith Richards, Ronk.
 Bottom: Rump, Stutzman, Unruh, Weddle, Williams, Whiteber.

World Service Group

During the first part of the school year of 1931-32 the World Service Group was most ably led by the President, Philip Lauver. Under his leadership the thirty-two members have endeavored to inculcate in the campus life the purpose of the World Service Group in cultivating a devotional life for each one, and fostering the growth of active Christian service. In the absence of the president during the entire second semester the Vice President, Charles Austin, has commendably carried on the work and spirit of the president.

Many activities have been carried on under the auspices of the Group. Deputation work held a prominent place in bringing students representing McPherson College in contact with the churches of the state. Other activities have been supplying Sunday School teachers and music for young people's groups in the various churches. The study groups have found discussions very helpful and inspirational on such subjects as "Vacation Bible School," "Church History," and "Missions." These studies were conducted by persons outside of the Group.

A splendid piece of work was done in a financial way. Through pledges the Group was able to give to the cause of missions, three hundred dollars. It is hoped that the World Service Group will do its very best to carry on its work in both a financial way as well as in the spirit of Christian service as found in the motto of the organization: "Seekest thou great things for thyself? Seek them not."





Top: Ohmart, President; Heckman, Sec.-Treas.; Kindy; Doyle; De Vilbiss.
 Middle: Keedy; Sherfy, Vice-President; Collins; Harris; Crist.
 Bottom: Austin, Brunk, Nickel, Hughey.

Thespian Club

From time immemorial people have enjoyed pretending to be someone else, dramatizing stories, and watching others present impersonations and dramatizations. The Greeks developed the drama and its production to an art representing a high level of culture. Many of their standards of merit and beauty are still accepted by dramatic artists. Thespis, a Greek, originated impersonation and developed tragedy. It is for him that the local dramatic organization is named.

For many centuries interest was lost in dramatic presentation of life situations and very little development was made. With the Renaissance and Shakespearean period the drama reached a new high point. Its artistic production has fluctuated since, but the delight of people in drama is as great as ever. The ability to appreciate and produce artistic drama is a matter of training, especially since there is so much cheap and vulgar drama presented. Little Theater groups and college dramatic societies have for some time been attempting to cultivate a taste for artistic drama.

The Thespian Club represents the McPherson College students of dramatic ability and achievement who are interested in good dramatic productions in the school. It is their purpose to study drama, both modern and old, and to bring good productions to the other students. This year they thought it better to dispense with the regular play and turn their efforts to aid the Crossroad Playmakers of the city.





Top: Anderson, Atchison, Beam, Bechtelheimer, B. Dresher, F. Dresher, Dahlinger.
 Middle: Fisher, Fowler, Fields, Holzemer, Ihle, Ketterman, Mast.
 Bottom: Ronk, Steinsberg, Suttle, Edwards, Holloway, Flora, Sherfy.

Ladies' Quartet and Glee Club

The Ladies' Glee Club, organized and directed by Mrs. Anna C. Tate, is composed of twenty selected voices which are chosen by the director. The club meets once a week for practice and each member is allowed a half-hour credit for each semester's work. The officers for the year were: President, Neoma Nordling; Vice President, Edith Bechtelheimer; Secretary-Treasurer, Faithe Ketterman; Accompanist, Evelyn Saylor.

The Ladies' Glee Club has been quite an active organization this year. It has been called upon to make public appearances at various places. In February, the Ladies' Glee Club cooperated with the other musical organizations of the school and gave a concert at the Congregational Church. The girls also entertained in chapel early in the year and were well received. The club assisted in giving the cantata early in April, which helped to prove the talent of the members of the organization. The organizing and directing of the club into a group of harmonious voices has been a task which has been accomplished very successfully by the efficient leadership of Mrs. Tate.

The Ladies' Quartet has been active this year in singing on college programs and appearing before various organizations of the city. They assisted in the local concert given by the music department and also the one broadcast from Milford, Kansas. Miss Flora, who has had a year of experience with the Ladies' Quartet of LaVerne College, will graduate from the music department this year. Mrs. Holloway and Miss Sherfy are graduating from the English department. Both have had experience in other musical activities. This is Miss Sherfy's second year on the quartet. Miss Edwards is a sophomore in the music department who is widely experienced in quartet and vocal work.





Top: J. Austin, G. Austin, Bradshaw, D. Brumbaugh, E. Brumbaugh, Dresher, Fasnacht, Flora.
 Middle: Goering, Hutchison, Landes, Larsen, Nachtigal, Rhoades, Sherfy, Suttle.
 Bottom: Lehman, Shank, Harris, C. Austin, Trastle, Wiggins, R. Yoder, W. Yoder.

Men's Quartet and Glee Club

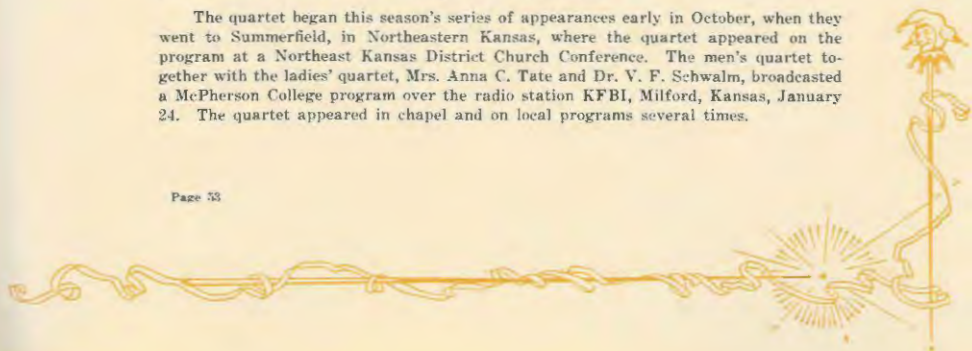
The Men's Glee Club practiced every Monday at 6:30 P. M. The Glee Club, consisting of twenty-five selected voices, took part in the McPherson College Musical Recital, in February. The members of the Glee Club took part in the cantata "Ruth," Charles Austin carrying the male lead role. The Glee Club appeared in chapel early in the year.

The group is under the direction of Mrs. Anna C. Tate, Instructor in Voice. Pauline Dell served efficiently as accompanist. The officers of the organization were Blanch Harris, president; Charles Austin, Vice-president; Dennis Andes, secretary-treasurer.

Working in the club gives excellent training of the voice. A choice of several hundred of the best songs is at hand, and many of these are used during practices.

This year's men's quartet was composed of four new men, three of them, Nachtigal, Kim, and Seimans, coming from the Buhler High School quartet of last year. The fourth member, Delvis Bradshaw, was a sophomore, and has been quite active in quartet and deputation work during his two years here.

The quartet began this season's series of appearances early in October, when they went to Summerfield, in Northeastern Kansas, where the quartet appeared on the program at a Northeast Kansas District Church Conference. The men's quartet together with the ladies' quartet, Mrs. Anna C. Tate and Dr. V. F. Schwalm, broadcasted a McPherson College program over the radio station KFBI, Milford, Kansas, January 24. The quartet appeared in chapel and on local programs several times.





Left to Right: Barnes, D. Brumbaugh, Lindholm, Shay, Dell, Smith, Robertson, Austin, E. Brumbaugh, Dappen, Fisher, Pray, Ronk, Harris, Shelley, Hammann.

Orchestra

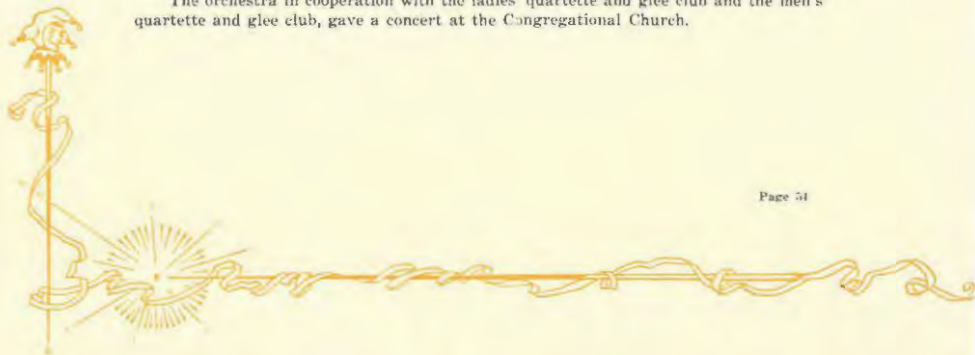
Through her skilled direction and training, Miss Margaret Shelley has developed in McPherson College this year an orchestra of unusual merit. Miss Mattie Shay has been a very efficient concert master. Represented in the orchestra are the three groups of instruments; the strings, the wind, and the reed; including violins, piano, cornets, trombone, French horn, saxophone, and clarinets.

The purpose of this organization has been to create interest, to give its members experience in ensemble playing, and to entertain at various programs.

Much interest and appreciation for this organization has been shown both on the campus and in the city. Their appearances at Friday morning chapels greatly contributed to a finer school spirit. The orchestra has also assisted in many of the musical programs, and has appeared in public performances in McPherson.

The student body appreciates its orchestra and is greatly indebted to its leader, Miss Shelley.

The orchestra in cooperation with the ladies' quartette and glee club and the men's quartette and glee club, gave a concert at the Congregational Church.





Top: Bowers, Steeves, Dahlinger, Carpenter, Mikow, Rock, Frantz, Taylor, Suttle, Staats, Goering, Robertson, Brumbaugh, G. Austin, Johnson.

Second: Horn, Fearey, Lewis, Minter, Himes, Weddle, Williams, Reinecker, Binford, Webb, Dunning, Linsuh, Stoner.

Third: Handke, Ring, Holzemer, Oliver, Nickel, Spilman, Lindholm, Morrison, Pote, Ketterman, Hawkins, Lerew, Bean, Dappen, Burkholder, Kaufman.

Bottom: Beam, De Villiss, Nickel, Doyle, Brown, Anderson, Heckman, Hershey, Wollman, Smith, Enberg, J. Austin, Pechler.

Chemistry Club

Under the leadership of Dr. Hershey, head of the Chemistry Department, the Chemistry Club had bi-weekly meetings throughout the year. The Chemistry Club endeavors to interest the students in Chemistry by giving information and making a practical application of the principles and processes of science to everyday living.

The programs for the year were varied. Perhaps the most interesting program of the year was the one showing the movie "The Components of the Atmosphere in Relation to Animal Life," which was made in the laboratories during the Thanksgiving vacation. Some other of the programs were made up of current events of science, demonstration of the diamond experiments, films on the diamond, the movie showing the process of making the diamond, an Ethyl Gasoline demonstration, a Chemistry play, spelling contests for both the beginning and the advanced Chemistry classes, and a lecture by Dr. Hershey on radium.

Once each year the Chemistry classes motor to Hutchinson and review a dozen or more chemical industries, among them the paper mill, the salt mine, and flour mills.

On December 11 Dr. Hershey entertained the Chemistry Club at a party, which was given in the Y. W. C. A. room in the Administration Building.





Back: Walker, Nelson, Mast, Okerlind, Dahlinger, Engstrom, Hertzler, Micheal, Drescher, Swenson, Keedy.

Middle: Firestone, Holzemer, Hoover, Stegeman, Butterbaugh, Bunce, Ikenberry, Moulton, Atchison, Nordling, Rinz, Mohler, Swain, Almen, Hubbard, Landes, Thompson, Tate.

Front: Fasnacht, Dawson, Voran, Steinberg, Brown, Ritz, Austin, Lehman, Bowers, Holloway, Shank, Turner, Rhoades.

"The Lucky Jade"

"The Lucky Jade," a lively musical comedy by J. B. Harrison and Don Wilson, was presented before a packed house in Community Hall on May 26, 1931. The cast and members of the chorus were drawn from the combined men's and women's glee clubs of McPherson College.

The musical score for "The Lucky Jade" was unusually pleasing, and that combined with opportunities for excellent bits of acting by the characters allowed a rendition which drew favorable comment as one of the outstanding musical programs ever given by the college. Costumes, scenery, and lighting effects were used to full advantage.

Mary Ann Courtney, a daughter of the sunny south, played by Nada Mae Ritz, brings with her a guest as she returns from a visit to New York. He is Horace Ferguson, a smooth shick who comes ostensibly to do a little hunting, but really to acquire a valuable jade ear of an old voo-doo idol, in possession of Mary Ann's old negro mammy. Horace soon crosses with Mary Ann's bashful lover, John Endicott, and before he can obtain the jade ear it disappears in other hands, with a multitude of misfortunes following its loss. Finally the plot resolves so that Horace receives his deserts, while John wins Mary Ann and some additional good fortune.

John Endicott was played by Charles Austin, and Vernon Rhoades acted the role of Horace. Other leading parts were taken by Eugenia Dawson as Liza, Ruth Turner as the French maid Fanchon, Everett Fasnacht as the Sheriff, Lawrence Lehman as Colonel Waverly, Orville Voran as the pensioner Downs, and Ellen Steinberg and Clarence Brown, who played as Mr. and Mrs. Courtney.





Corrine Bowers, Secretary to Professor Blair.

Florence Weaver, Secretary to Dean Rejogle.

Maurine Stutzman, General Office Secretary.

Lois Lackey, Secretary to President Schwalm.

Ethel Bechtelheimer, Secretary to Dean Mohler.

Secretaries and Assistants

Chemistry Department

Ralph Keedy
Fern Heckman
Attilia Anderson
Walter Wollmann
Esther Brown

Library

Ada Brunk
Velma Keller
Philip Lauver
Dorothy Dresher
Everett Fasnacht

Physics Department

Leslie Myers
Elmer Keck

Industrial Education Department

Donald Trostle
George Lerew
Harold Binford

Athletic Department

Posey Jamison
Loren Rock

Home Economics Department

Mary Weddle
Constance Rankin

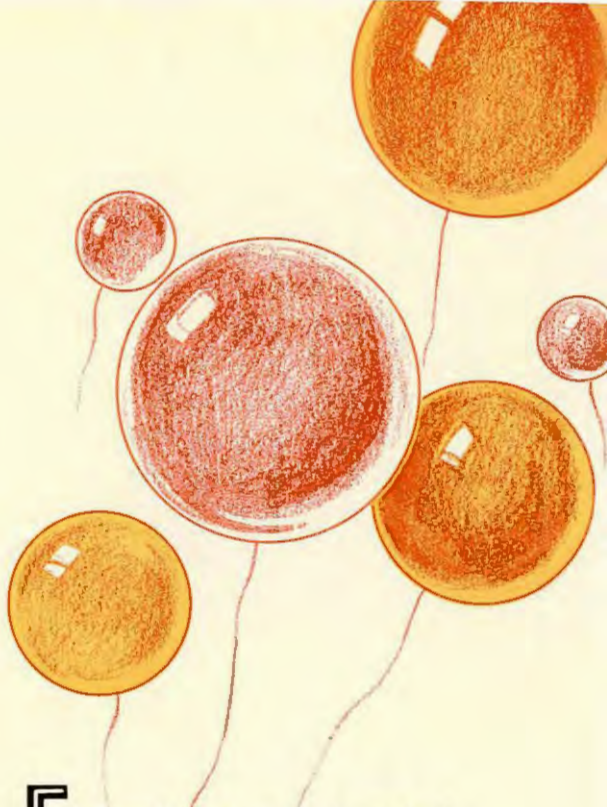
English Department

Ethel Sherfy

Book Store

Delbert Kelly





ENTHUSIASM

"Fight, Bulldogs, Fight!" "Hold that Line!" "Fight for old M. C., M. C. will win!" These and a host of other expressions typify McPherson spirit and pep when students are boosting Bulldog athletes to victory.







Top: Ohmart, Williams, McGill, Larsen, Anderson, Carpenter, Minear.
 Middle: Wiggins, Mowbray, Zinn, Gottmann, Kinoy, Hockstrasser, Reinecker.
 Bottom: Bradley, Johnston, Jamison, Coach Binford, Dean Replogle, Binford, Rock, Pauls.

"M" Club

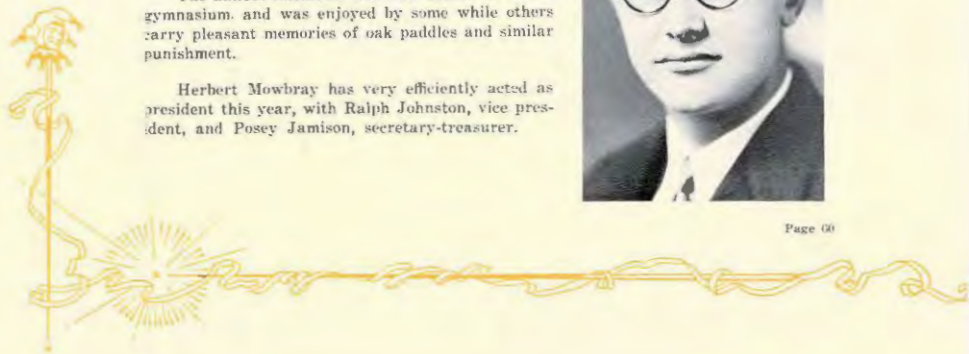
To the athlete who by his athletic ability and scholarship has won the right to wear the "M," the emblem of the college, also goes the privilege of becoming a member of the "M" Club. Scholastic standing and sportsmanship are the necessary qualifications for membership.

The purpose of the "M" Club is to promote better athletics in McPherson College, and better athletic relations among the colleges of the state.

Within the college, the purpose of the "M" Club is to promote a better spirit of friendship among athletes, faculty members, and student body. It is the duty of "M" Club members to cooperate with the athletic department in encouraging enrollment of athletes in the college, and to help maintain the ideals of sportsmanship and fair play, for which our college stands.

The annual initiation was held March 14 in the gymnasium, and was enjoyed by some while others carry pleasant memories of oak paddles and similar punishment.

Herbert Mowbray has very efficiently acted as president this year, with Ralph Johnston, vice president, and Posey Jamison, secretary-treasurer.





Top: Blume, Haws, Van Nortwick, Kim, Ass't Coach Selves, Coach Binford, Sorenson, Johnston, Dowman, Gaeldert, Moore, Peebler.

Middle: Mincar, Quize, Pauls, Binford, Mowbray, Zinn, Wiggins, Siemens, McGill.

Bottom: Ikenberry, Edizer, Carpenter, Countryman, Keck, Hockstrasser, R. Anderson, E. Anderson, Beckwith.

Foot Ball

Football at McPherson College was a great success this year even though we lost a majority of our games. Starting the season with only a few veterans and a fighting bunch of new men, Coach Binford and Selves soon developed a neat working machine.

After the first two games which were lost to Hutchinson Junior College and Kansas Wesleyan by scores of 0-0 and 47-0, the Bulldogs settled down and played a much better game.

The next three games were lost 7-0, 6-0, and 6-2 to Phillips, Baker, and Hays, improving a great deal with each game, however.



The next game was lost to Friends at 12-7 but the boys were not satisfied so they won from Ottawa 14-6 and defeated Bethel by a 13-0 score.

The Thanksgiving Day game was the annual battle with the Swedes. It was played on a specially constructed field at the airport, amidst a blizzard and snowstorm. The game ended in a scoreless tie. The Bulldogs made one more first down than their opponents but the Swedes held a scant advantage in yards gained from scrimmage.

Elmer Keck, Captain of the Bulldogs and one of the best guards in the Conference. Possessing an undying spirit of good sportsmanship, he was constantly leading his teammates to greater accomplishments. He was a threat to every team in the Conference and when the All-Conference team was picked he was given the Captaincy of the second mythical team, which he well deserved.



Herbert
Hockstrasser
Herbert Mowbray
Orville Countryman
Harold Binford

Foot Ball

Hockstrasser was one of the fastest ends in the conference. He captained the team during the 1931 season and this year his fighting spirit kept the other men trying. He was especially valuable as a man to get down on punts and on the receiving end of passes. Hockstrasser's graduation this spring marks the passing of a great end and his place will be hard to fill.

Mowbray developed into a great tackle and it was hard to get through his side of the line. He is big and rangy and he always kept up the fighting spirit. Mowbray was not a flashy player, but he had the fighting qualities and endurance that made him an outstanding player. He graduates this year and he will be greatly missed next season.

Countryman was the man that could enter the Bulldog line at guard and never slacken the pace. He is of a blocky build and has held his own against men much larger than himself. He has won the admiration of both his teammates and opponents due to his fighting qualities and good sportsmanship. This was his last year and the Bulldogs will lose a fine player.

Binford is a fine quarter-back, being especially good at finding weaknesses in the opposing team's defense. He was on the receiving end of many passes and also carried the ball for some nice gains. His drive with his weight made him a hard man to stop. He has two more years to play for his alma mater.



Cleo Minear
George Zinn
Wallace McGill
Walter Pauls



Foot Ball

"Spud" Minear was a very hard driving guard and was constantly breaking through to throw an opponent for a loss. He was exceptionally fast for a big man and many times was the first man down on punts. "Spud" was a big asset to the team and much more will be expected from him in his next two years of football.

Zinn is a great big man with a world of speed. He played in both the line and the backfield and was equally efficient at either. He was used some to back up the line and when he hits them they can figure on no further gain. He has one more year of football for M. C.

McGill was the find of the season at the center position. He is a great defensive man and his passes from center are accurate and well timed. He is not flashy, but is very consistent. McGill has two more years of inter-collegiate football.

Pauls played a great game at end during his Freshman year. He is a rangy man with considerable weight which makes him nothing less than an eye sore to all opposition. He makes many tackles before the play has gotten started.





Russell Carpenter
Leonard Wiggins
Eugene Anderson
Vernon Beckwith

Foot Ball

Carpenter at a halfback position was the flash of the Bulldog backfield. He came to McPherson with an enviable high school record and made good in his first year of college football. "Carp" ran low and hit hard, which made him exceedingly hard to stop. He was placed on the second all-Conference team.

Wiggins at the other halfback position is another Freshman that proved his worth. His punts probably averaged as much as those of any man in the Conference. He also did most of the passing for the Bulldogs, with accuracy. He is a good defensive man and also "logged" the ball at times.

Anderson is our favorite for making those gains through the center of the opponent's line. Being of a short stocky built and running very low, he was usually good for those much needed yards for a first and ten. On defense he backed up the line with equal efficiency. He will be back next year and much will be expected of Andy.

Beckwith, although very light, made up for this in speed and determination. He had a good high school record and proved his speed and ability in college. His specialty was wide end runs where his speed could be made to count. He was also good on the receiving end of passes.



Lester Quigg
Chester Siemens
Art Ediger
Rex Anderson



Foot Ball

Quigg is a great big man who played good consistent football during the entire season. Very seldom did an opponent get through or around Quigg's tackle position. He had lots of fight with his determination, which made him a big asset to the team. He will be back next year.

Siemens was the tackle that entered the game for the Bulldogs when the line lacked punch. He is a big man and he handles himself well. As a Freshman, he looked very good and much can be expected from Siemens during the remainder of his college career.

Ediger, a team-mate of Siemens during his high school days, proved to be a valuable man at an end position. He was continually "talking it up" and getting the fight into his team-mates. With his fighting spirit and ability he was very valuable to the team. He was a Freshman this year.

Anderson came to McPherson with a good reputation, having been chosen as all Ark Valley end, and played good football for the Bulldogs in his first year. He was fast in getting down under punts and his tackles were hard and sure. He was on the receiving end of many of Wiggins' passes. Rex placed on the second All-Conference team.





Top left: Larsen, Shirk, W. Yoder, Johnson, Jenkins, Tice, Pankratz.

Top right: Keck, Zinn, Minear, Mowbray, Bartles.

Bottom left: Lerew, Webb, H. Williams, Gottmann, J. Williams, R. Yoder, G. Austin, C. Austin.

Bottom right: Himes, Whiteneck, Hutchison, Hayes, Landes, Kelly, Robertson.

Intra-Mural Basketball

Early in the fall Coach Binford started an extensive program of intra-mural athletics with the idea of "athletics for all." The physical education classes were disbanded and instead the ones enrolled in physical education were given points depending upon participation in these games.

Seven basketball teams were organized and this formed the intra-mural league. The Captains of these teams were J. T. Williams, Wilbur Whiteneck, Cleo Minear, Wilbur Yoder, Wallace McGill, Gordon Kraus and Russell Carpenter. The teams were very evenly divided and as a result the four teams pictured above tied for first, each with eight wins and four losses.

At the close of the season an all-league team was picked by the members of the varsity and the captains of the intra-mural league, with the following team resulting: Forwards, Wilbur Yoder and Charles Austin. Center, George Himes (captain). Guards, Cleo Minear and Wallace McGill.

In the spring baseball was organized with the same teams plus an additional team composed of members of the faculty. The faculty plays some good baseball and will finish well up in the standings from present indications.

Melvin J. Binford, Athletic Director of the College, has created a great deal of interest in intra-mural athletics. He has kept the work progressing and it has been helpful and interesting to all the men of the College.





Top: Stoner, Binford, Coach Binford, Rock, Bradley, Ohmart.
Bottom: Wiggins, Johnston, Jamison, Paula, Reinecker.

Varsity Basketball

Basketball at McPherson College was a success, although we lost several of our games by narrow margins. The fact that the Bulldogs improved as the season progressed is a credit to any team. Time and again the Bulldogs led their opponents up until the last few minutes and then lost by one or two points. Only a few games were lost by wide margins and these games were to teams of wide reputation.

Starting the season with but a minimum of letter men and a willing bunch of Freshmen, Coach Binford developed a team that could give any team in the Conference a good game by the close of the season.



This fact was clearly shown when the Bulldogs played the final game with the Champion Bethany Swedes in the last game of the season, at Lindsborg. Earlier in the season the Swedes had won rather handily from the Bulldogs here, but a determined McPherson team gave the Champions the scare of their lives in the final game. Playing a safe, consistent, deliberate offense, the Bulldogs were able to hold the Swedes close all the way and at one time McPherson led them. Yet Bethany came back strong in the last few minutes and managed to win by a scant margin.

With most of the squad eligible for competition next year, the Bulldogs should be well up in the Conference standings at the close of the season.

Posey Jamison has been Captain of the Bulldog basketballers for two years, and has been placed on several mythical teams.





Basketball

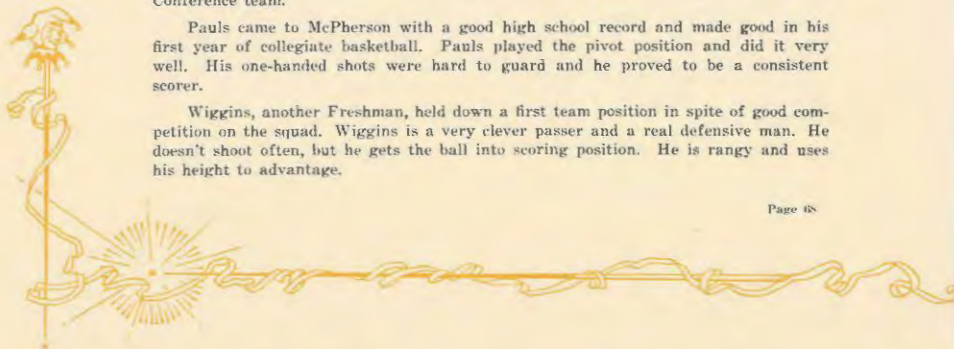
For the past two years Captain Jamison has been the backbone of the Bulldog basketball team. He is a good example of true sportsmanship and possesses an undying spirit, always encouraging his teammates. Posey is our favorite for breaking up those sure shots of the opponents under the basket.

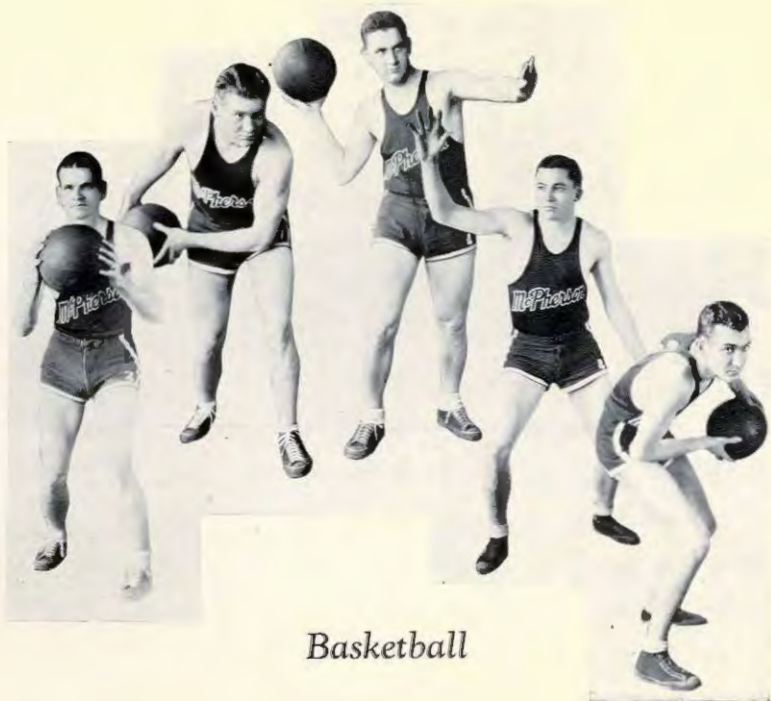
Rock is a great ball rustler in spite of his short stature. Rock sometimes led the Bulldogs in scoring and always got his share of the points. He drives hard and is a good defensive man. He has one more year to represent his alma mater.

Binford was shifted to a guard position this year and proved to be as efficient, if not more so, than he was at a forward position. He is good at working the ball through the defense and is an especially good shot. Harold has two more years which should be very good ones for him. He was chosen as guard on Kemper's second All-Conference team.

Pauls came to McPherson with a good high school record and made good in his first year of collegiate basketball. Pauls played the pivot position and did it very well. His one-handed shots were hard to guard and he proved to be a consistent scorer.

Wiggins, another Freshman, held down a first team position in spite of good competition on the squad. Wiggins is a very clever passer and a real defensive man. He doesn't shoot often, but he gets the ball into scoring position. He is rangy and uses his height to advantage.





Basketball

Bradley is a great forward with lots of ability and determination. He used a one-handed shot from the side of the court that was usually good for some points. He is a good cool player.

Reinecker added greatly to the reserve strength and when substituted he always gave all he had. He is a good passer and has a good eye for the basket. He has three more years to play for the Bulldogs.

Samuel Stoner came to McPherson from Indiana and got a letter in his first year in college. He plays forward and ranges the floor well. He should develop into a great player in the next three years.

Verle Ohmart is a fine guard and when substituted he added punch to the Bulldog offense. He is short, but has a lot of drive and determination. He has much ability, although he was not used so much in games.

Ralph Johnston closes his college basketball career this year. Johnston is very willing and has lots of fight. He works hard for the ball and always did his share. He was used at forward or center.





Top: Anderson wins the low hurdles.

Betts and McGill tie in the mile run.

Center: McGill, Williams, Zinn, Betts.

Bottom: Ohmart wins over Hockstrasser in the 100 yard dash.

Zinn takes first in meet with Bethel.

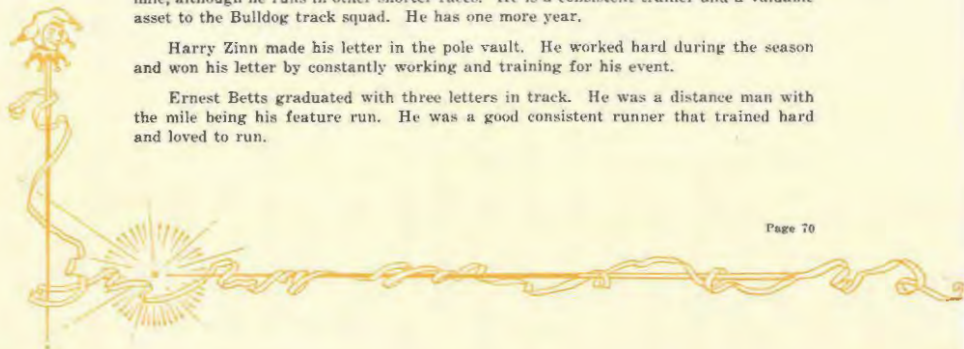
Track

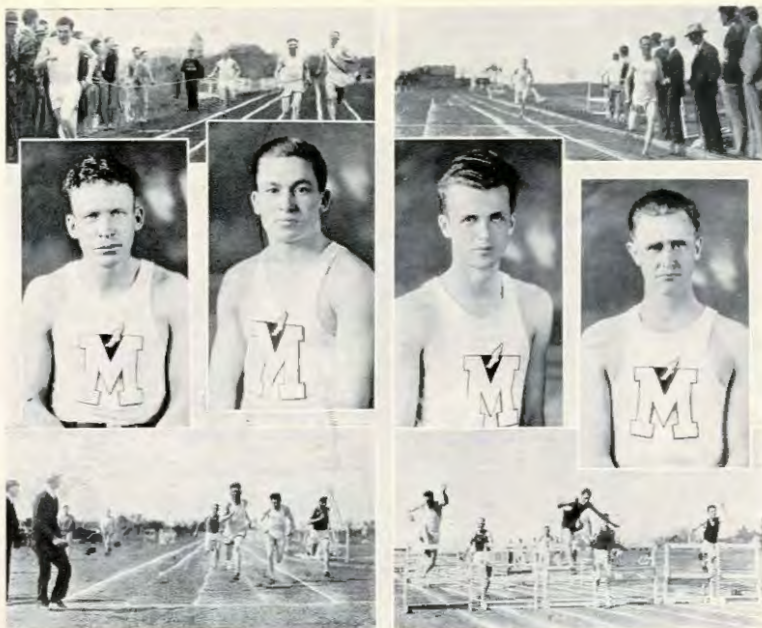
McGill was the find of the season on the Bulldog track team. He began running the quarter and finally ended by running the mile in fast time at the state meet. He has a world of endurance and speed and trains hard for his events. This was McGill's first season in Track.

Ward Williams is the star distance man of the Bulldogs. His favorite is the two mile, although he runs in other shorter races. He is a consistent trainer and a valuable asset to the Bulldog track squad. He has one more year.

Harry Zinn made his letter in the pole vault. He worked hard during the season and won his letter by constantly working and training for his event.

Ernest Betts graduated with three letters in track. He was a distance man with the mile being his feature run. He was a good consistent runner that trained hard and loved to run.





Top: Ohmart wins the 100 yard dash. Campbell takes first in the two mile.
 Middle: Hockstrasser, Ohmart, Kindy, Mowbray.
 Bottom: Hockstrasser wins the 220 yard dash over Ohmart.
 Kindy and Mowbray take second and third in the high hurdles.

Track

Hockstrasser graduates this year with an enviable record. His feature race is the quarter mile, although he also ran the 100 and 220 yard dashes. He holds the school record in the quarter mile, his time being 50.6 seconds.

Verle Ohmart ran the 100 and 220 yard dashes and sometimes the quarter mile. He is a consistent point winner and works hard for his school. He also ran on the fast Bulldog relay team.

John Kindy made his letter by constant training and hard work. His race was the high hurdles. He developed into a good hurdler although he had had no previous experience.

Herbert Mowbray was a good point-getter of the Bulldog track team. He ran the dashes, 440, and the high hurdles. He also was a fast man on the College relay team. He trains hard and benefits from it.





Top: Lehman, Binford, Gottmann, Flaming.
Bottom: Morris, Lytle.

Tennis and Golf

Tennis and golf, two of the spring sports at McPherson College, hold the attention of many of the Bulldog athletes. The McPherson tennis team had matches with Kansas Wesleyan, Bethany, and Bethel during the season and made a good record against all of these teams. John Lehman, Harold Binford, Lilburn Gottmann, Vernon Flaming, Cecil Anderson, and Frankie Morris made letters on this year's tennis team.

John Lehman, veteran of several seasons of tennis, was the mainstay of the Bulldog team and usually played the number one man of the opposition. In the spring a tournament was held within the school with Harold Binford winning the singles and John Lehman and Harold Binford winning the doubles.

In golf, McPherson was ably represented by Frankie Morris and Junior "Doc" Lytle. These men both received letters from the school in recognition of their work. Morris won first place at the state meet in golf, in the spring.



Upper group—Top: Wampler, Crist, Ikenberry, Hursh, Bean, Bowman, Rump, Richards, Hawkins, Andes, Keller, Hobart.
 Middle: Walker, Edwards, Sherfy, Weddle, DeArmand, Ibd. Oaks, Brown, Dappen, Christianson, Stutzman, Lerew;
 Bottom: Crist, Clark, Weaver, Doyle, Heckman, Collins, Lindholm, Pote, DeVilbiss, Anderson.
 Individuals—Right: Collins, President. Left: Bean, Treasurer.
 Lower group—Soccer Practice—Top: Collins, Ikenberry, Stutzman, Christianson, Crist, Bowman, Hawkins.
 Bottom: Kump, Doyle, Hursh, DeVilbiss, Anderson, Lerew.

W. A. A.

The Women's Athletic Association has filled an important place on the campus by sponsoring a program to create interest in athletics, physical efficiency, scholarship, and good fellowship. In such a program, the ultimate goal is a sound mind in an efficient body.

It promotes quite a varied program in athletics. Soccer, volley-ball, basketball, baseball, tennis and horseshoe which are played at different times during the year. Also hiking and health rules offer rewards to individuals who wish to endure them.

The W. A. A. sponsored a hike and picnic after school began which served to interest the new students in the organization, and acquaint them with the program followed during the year. The initiation in the spring proved to be a terrible experience, but sixteen girls withstood the hardships of the ordeal and became members of the organization. A "George Washington" banquet was the main social event of the year. It was a memorable occasion for the old and new members and their guests.





APPLAUSE

In acknowledgement of outstanding achievement and influence in creating cheerful attitudes on the campus, each class has selected two members of their class to represent them in this section, which is a cross-section of student life at work and play.







Kermit Hayes



Adelyn Taylor

Senior Representatives

Lloyd Larson



Grace Heckman



Wilbur Yoder



Mattie Shay

Russell Carpenter



Lois Lackey

Freshman Representatives

The BIG LAFFS



A "GIFT" UNAPPRECIATED



"HISTORY" REPEATS ITSELF



"THE EASTER BUNNY"

Humorous incidents, of which there are many on a College Campus, add zest, interest and general cheerfulness to the life of a student.

These take away the drudgery of classes and lessons and help to make a finer type of school spirit.

OF THE YEAR



***FORHNEY
GETS A BATH***



"IT WASN'T LIQUOR-- JUST SUGAR"

There are many of these laughable happenings every day which improve the sombre atmosphere of some profs and a few students.

We have endeavored to catch the most outstanding and humorous of these and record them here as "The Big Laffs of the Year."



OUR IDEAS OF WORK



*Dignity personified.
Kindergarten warfare.
A faculty trio.
Seventh heaven and the bug
house change color.
United we stand, divided we
fall.
Look pleasant now.
We don't like Kansas.
King winter pays a visit.
Forney and his put-put
wagon.
A morning after a snowfall.
Caught.
Most popular man on the
campus.*





*Pull, brother pull.
 Scrub women.
 Labor day.
 "Aw, I wanta lean on it."
 What the well dressed laborer
 is wearing—a derby.
 At the sandpit.
 Just resting.
 Farmerettes.
 The gleaners.
 The dandelion's nite-mare.
 Don't be seaved Esther, it's
 just the kodak.
 Work before pleasure.*





Goodnight, goodnight.
 In a weaker moment,
 You're telling me,
 Posing.
 Next time close both eyes.
 Eight little maids from
 school.
 Affectionate boys.
 The gospel team sets forth.
 Four grades of idiots.
 After dinner.
 The girls dream of a stair-
 way to heaven.





*The time I've lost in wooing,
In watching and pursuing
The light that lies
In woman's eyes,
Has been my heart's undo-
ing.*

*Though Wisdom oft has
sought me,
I scorned the lore she
brought me,
My only books
Were woman's looks,
And folly's all they've
taught me.*

—Thomas Moore.





Two of the biggest events held in the fall are the Fresh-Senior Kid party and the Night-Shirt parade.

These pictures are a reminder of the times when Seniors lose their dignity, Freshman can forget he needs any, and the whole school is out to prove to the town that we're back of our team.

The Bus. Mgr. shows his specialty also.





*The pajama trio.
Wanted—five men.
A slight mis-understanding.
Settin' and thinkin'.
Our twins.
What will Charles and
Loren say?
Out for a stroll.
Contortionists.
Would be school teachers.
Freshman chums.
The price of engagements—
candy bars.*



Calendar of Events

Sept. 5-6. Fords begin to roll cheerfully on to the campus from different states. Old friends and new friends say "hello".

Sept. 7. Enrollment is in order, and Prof. Fries relieves our overburdened pocketbooks. Freshmen are entertained in the homes of the faculty members.

Sept. 8. The students frolic "cheerfully" on the campus. The Y. M. sponsors a picture show in the chapel, and the Y. W. sponsors a tea for all college women.

Sept. 9. Students are advised by Dr. Schwalm to "be Scotch" and "go Dutch".

Y. M. sponsors a stag party for all new men.

Sept. 11. Everyone enjoys the annual watermelon social given by the Y. W. and Y. M.

Sept. 13. Fried chicken attracts many people to the annual harvest meeting and dinner at the church.

Sept. 14. The evening clothes parade in an endless line of hand shakes and smiles. The occasion is the faculty reception, held in honor of the students.

Sept. 18. The chapel turns into a theater, as the Y. M. sponsors the movie "When a Man's a Man".

Dan West visits the campus.

Sept. 19. The students all enjoy a social hour in the Y. W. room. Each one finishes off the evening by kiddishly licking an ice cream cone.

Sept. 20. The church people and the college people try to get a little better acquainted. The method used is a social, held in the church basement.

Sept. 24. All students join in the great parade, attired in pajamas and other suitable accessories, and give the town a sample of M. C. pep.

Sept. 25. The Bulldogs fall before Hutchinson Junior College in the first football game of the season. The score: 6-0.

Sept. 26. The Y. W. C. A. and Y. M. C. A. cabinet members "retreat" to Twin Mounds.

Sept. 30. The W. A. A. sponsors a hike for new girls. The purpose is to add members to the slim ranks of this year.

Oct. 1. The ladies entertain at a tea for all college women.

Oct. 5. Time has a relapse, and the Freshmen and Seniors mingle as kids once again.

Oct. 10. All-school social hour in the Y. W. room.

Oct. 15. The Y. M. C. A. sponsors the movie "Pilgrim's Progress".

Oct. 16. Baker "Wildcats" win a 6-0 victory over the McPherson "Bulldogs" in a hard-fought game here.

Oct. 23. The "Bulldogs" travel to Hays and mix with the "Tigers". The "Tigers" win 6-2.

Oct. 25. Dr. Charles M. Sheldon and Dr. J. Nevin Sayre speak at mass Peace meeting in McPherson.

Nov. 3. "Braveheart", a full-blood American Indian, speaks in the chapel this evening. He tells about life among the Indians.

Nov. 6. Freshman-Sophomore Sunday School classes meet in the church parlors for a party.

Nov. 10. Two veterans, Ward Williams and Walter Wollman, hold their positions on the debate team against the fierce onslaught of

competition. Lawrence Lehman and Lilburn Gottmann are the other two members.

Nov. 11. Regardless of Armistice Day, the "Bulldogs" show their fighting spirit and defeat Ottawa 14-6. Raided shows and no study is the program of the evening for the other students.

Nov. 13. Superstition fails to daunt the Seniors, and they have a party. "Cootie" furnishes amusement.

Nov. 13, 14, 15. State Christian Endeavor Convention is held in McPherson.

Nov. 17. Leaurant, a magician offers the second number of the Lyceum course.

Nov. 19, 20. "If I were King", is presented by the Crossroad Players.

Nov. 25. A funeral service is held in the chapel for Ole, the terrible Swede. His body is then cremated to the tune of "M. C. Will Shine Tonight."

Nov. 26. Thanksgiving Day and the first snow of the year come together. The "Swedes" and "Bulldogs" battled in a scoreless tie.

Nov. 27. The Y. M. and Y. W. sponsors a Thanksgiving party for all students who remained here.

Nov. 30. As a result of the game Thursday we get a day of vacation. The faculty entertain at an all-school social in the evening.

Dec. 4. The fathers entertain the sons at a banquet.

Dec. 11. Dr. and Mrs. J. Willard Hershey entertain all chemistry students at a "Cootie" party.

Dec. 18-Jan. 4. Christmas vacation, and every one starts cheerfully—somewhere.

Jan. 4. School re-opens. Students agree that a good time for a vacation is just after a vacation.

Jan. 10. Dr. A. W. Cordier, famous historian, visits McPherson. He speaks on subjects of peace.

Jan. 12. Thespian club elects three new members to its ranks.

Jan. 15. "Bulldogs" lose a game to the Baker "Wildcats". The tune was 13-15, with the "Bulldogs" running right up the scale. The song just wasn't long enough.

The Freshmen stage a leap-year party.

Jan. 17. Dr. Schwalm attends the meeting of the Association of American Colleges at Cincinnati, Ohio, from Jan. 18-21.

Jan. 20, 21, 22—(—) week is here. Every one looks worried before the exams, and more so after.

Jan. 22. A red letter night. We defeat the Ottawa "Braves". The score is 18-16.

Jan. 24. McPherson College Sunday is observed with a broadcast from Milford, Kansas. The college quartets, Mrs. Anna C. Tate, and Dr. Schwalm present the program.

Jan. 25. No classes! Not hard to keep cheerful as we take a vacation between semesters.

Jan. 26. Second semester begins

Jan. 29. The DeWillo Concert Company entertain with a musical program. The program is a feature of the Lyceum Course.

McPherson defeats Kansas Wesleyan 23-16.

Jan. 30. The girls of Arnold Hall receive friends in their rooms from 7:30 till 10:30 P. M.

Jan. 31. The Y. W. C. A. sponsors a tea in honor of the mothers.

Calendar of Events

Feb. 1-5. Regional Conference is held in McPherson. The main speaker is Dr. Paul H. Bowman, President of Bridgewater College.

Feb. 2, 3. College Board of Trustees holds its annual meeting.

Miss McGaffey is granted leave of absence.

Feb. 9. The Bethany Symphony Orchestra, directed by Prof. Arthur Uhe, gives a concert here.

Feb. 14. The first varsity debate. We beat the "Swedes" but lost to Wichita.

Feb. 17. After terrible rites of ceremony, sixteen new members are taken into the W. A. A.

Feb. 18. Dr. D. W. Kurtz lectures on the "Meaning of Culture."

McPherson loses a thrilling game to Baker, 22-23.

Feb. 20. The W. A. A. entertains with a "George Washington" banquet.

Feb. 22. Washington and Dr. Harnly are honored with a party.

Feb. 23. The Wesleyan Coyotes win over the "Bulldogs" 25-26.

Feb. 24. The musical organizations of the college unite in giving a concert.

Feb. 25. The women debate with Bethany. It was a non-decision debate.

Feb. 26. The "Bulldogs" receive another defeat at the hands of the Swedes. The score, 8-14.

March 3. Charles Austin was elected President of the World Service Group.

March 8. Ward Williams wins second place in the State Anti-Tobacco Oratorical contest.

March 10. Perry Rohrer speaks at combined "Y" meeting.

The Chemistry Club presents a play.

March 11. The Interpretation class gives three one-act plays, under the direction of Miss Della Lehman, the class instructor.

March 12. Ward Williams wins first place in both oratory and extempore at the State Old Line Contest held at Manhattan.

March 14. Ten men brave the ordeal of initiation and become members of the "M" Club.

March 16. The Welsh Imperial Singers present the last number of the Lyceum Course.

March 18. The debates are victorious again. The affirmative team wins over Friends U. and the negative team defeats Sterling.

March 20. Everett Fasnacht is elected President of the College Christian Endeavor Society.

March 23. The Y. W. C. A. and Y. M. C. A. officers are installed with an impressive installation service.

March 29. Dr. James Chubb of Southwestern University visits the campus and conducts meetings and interviews.

March 30. The Thespian Club initiates nine new members. Such expressions as, "Yes, my dears, I am the Easter Bunny," prevail.

April 1. Second Annual Booster Banquet is a great success. Dr. Burriss Jenkins of Kansas City presents the main address.

April 2. Men of Fahnestock Hall sweep out and have open house. The "dorm" really looks pretty nice.

April 3. New Christian Endeavor officers are installed this evening.

April 5. A decisive debate is held with the

Bethany "Swedes." The "Bulldogs" win at both places, thus winning the title of State Championship for the "School of Quality."

April 8. Dr. Edward F. Nickolay, Dean of the American University at Beirut, Syria, speaks in chapel on the subject of "Disarmament."

Student elections are held. Milo Stucky, Junior, heads Student Council for next year, with Frank Hutchison, Sophomore, as treasurer. Una Ring is editor of the Spectator, and J. T. Williams is Business-Manager. Cheer leaders are Etta Nickel, and Tommy Taylor, both Freshmen. Delbert Kelly, Junior, and Wilbur Yoder, Sophomore, are editor and Business Manager, respectively, of the Quadrangle.

April 11. Senator W. J. Krebhiel speaks in chapel.

April 12. All college women are guests of the Cosmos Club at a play and tea this evening.

April 13. Campus Improvement Day transforms the appearance of the grounds.

April 14. The first meeting of the 64th Annual Meeting of the Kansas Academy of Science is held in the Chapel this evening. L. E. Melchers, head of the Botany Department of Kansas State College gives an illustrated lecture on "Egyptian Oases of the Libyan Desert."

Bulldogs lose dual track meet to Wesleyan.

April 15. Science banquet held in the College Church parlors. Dr. S. A. Barrett, director of the Milwaukee Public Museum, gives an address on "Tamest Africa" in Community Building.

The most successful forensics season in the history of McPherson College is closed tonight when Lawrence Lehman, Senior, wins first place in the State Peace Oratorical contest held at Friends U., Wichita.

April 20. The Allied Campaigners visit McPherson today. Dr. Daniel A. Poline, editor of the Christian Herald and president of the International Society of Christian Endeavor, is main speaker.

Announcement is made that K. U. Fellowship is granted to Evalyn Fields.

April 23. The weather runs true to form, and rain is in order for the Annual High School Festival, held in McPherson today.

April 29. Four schools participated in the Annual W. A. A. Play Day, held at McPherson.

April 30. The members of the "M" Club hold their annual banquet.

May 6. The Chemistry class makes the annual pilgrimage to Hutchinson.

May 7. Dr. Hershey entertains the Chemistry majors and assistants.

May 22. The Baccalaureate sermon was preached by Dr. Schwalm.

May 23. Our sins of Omission are being found out.

May 24. Senior Play "The Fourth Wall" was a great success.

May 25. Final chapel.

May 26. The Seniors held their class day exercises in chapel this morning.

May 27. The Seniors get their honorable discharges, and leave the portals as graduates of the "School of Quality."

Lake Superior Lumber Co.

GEO. H. GOODHOLM, Manager

LUMBER - HARDWARE - PAINT - COAL

TELEPHONE 40

McPHERSON, KANSAS

Mildred Ronk: "I'm certainly glad I wasn't born in Russia."

Lois Edwards: "Why?"

Mildred Ronk: "Because I can't speak Russian."

Doyle: "Look out now, Posey, I'm going to scare you." (Kisses him) "Now you scare me."

Posey: "Boo!"

For Goodness Sake



USE

"W-R"
Flour

MADE BY

The Wall-Rogalsky Milling Co.

“BETTER QUALITY”

For Less



Sells Best
For Less

B GOLDEN **K** RULE **KIESEL** **C**o.

Sells Best
For Less

Phone No. 231



McPherson's
Department Store

McCoy Super Service

We Repair Any Make Car.

Washing . . . Greasing . . . Storage

209-215 S. Main

Phone 31

HULTQVIST

Cleaners . . . Tailors

Established 1887

At Your Service

CENTRAL PRINTING COMPANY

Earl V. Rannels, Prop.

"Quality Printing at Moderate Prices"

120 N. Main

Phone 298

Yoder: "I'm not shaving till Saturday."

Landes: "What's coming off Saturday?"

Yoder: "My whiskers."

Laderer
CLOTHING CO.

The Good Clothes Store

The Home of Michaels-Stern
Clothes

VALUE FIRST

Books . . . Gifts
Rental Library

FINE ARTS

Smalleys

Peoples Meat Market

Complimentary Ad

McPherson Hudson Essex Company

Dealers in
HUDSON AND ESSEX CARS
Phone 55

113-115 S. Main McPherson, Kan.

BUY
Picnic Lunches
at
Rothrock's Grocery
2 Deliveries Daily

6% Sound Investments
Pioneer Savings & Loan
McPherson, Kansas We pay the Tax

Dr. Schwalm (in chapel): "We will read the verses of the scripture in unison."
Kermit Hayes: "Say, is "unison" in the Old or New Testament?"

Ethel Sherfy: "A noted scientist says that the secret of health is to eat raw onions."

Alberta Yoder: "How could that be kept secret?"

F. A. Vaniman, Pres.

Bert Webb, Cashier

C. Vaniman, Vice-Pres.

Paul E. Sargent, Asst. Cashier

Dale A. Strickler, Asst. Cashier

Peoples State Bank

Capital Stock \$50,000.00

Surplus \$25,000.00

McPherson, Kansas

Since November, 1898 this bank has served the people of McPherson.

We have enjoyed many years of Pleasant associations with the people
of McPherson College.

We hope we are living up to our chosen motto,

Strength and Ability . . . plus . . . The Willingness to Serve

PHOTOGRAPHS
That Almost Talk

.....

an
Appropriate
Gift
for
Any Occasion.

.....

Kodaks,
Kodak Finishings,
Kodak Supplies.

.....

Ostlind Studio

Phone 81, McPherson

Parker Pens
ALMEN - LOVETT
MRS. STOVER'S CANDY
80c Lb.

McColloch
Beauty Shoppe
Our Service will Please You
422 N. Main
Phone 89 for Appointment

Keedy: "Do you make life-size enlargements from snapshots?"

Photographer: "Yes, sir, that's our specialty."

Keedy: "Fine. Here's a picture I took of the Grand Canyon."

Harvey S.: "Somebody told me something today."

Kermit H.: "Good. I didn't think any one could."

BAKING
At Home is a Nuisance.
Why not let us do the work?
IDEAL BAKERY
Trade at Home.

Quality . . . Service
VOGT'S ELECTRIC
SHOE SHOP
102 E. Euclid

The
Best Clothes

Come
From

STROUSE'S
THE BEST STORE FOR MEN

After
The Game

Hot Bouillon and
Hot Chocolate with Wafers

At

HUBBELL'S
Fountain

==
STOP--

at The

PURITAN
Cafe

For Game Returns

Good Eats

Fountain Service

The McPherson & Citizens State Bank

Capital and Surplus \$130,000.00

McPherson, Kansas

There is no substitute for a Savings Account in this Bank. Come in and see us about our Savings Plan.

Kurtz: "I'm a bachelor by choice."

Frantz: "Yeah, but it was the ladies' choice."

Tommy Taylor: "I guess the dictionary is all right, but I can't see why the author wanted to change the subject so often."

E. R. Burkholder Lumber Co.

PHONE 16

*Everything in Building Material
and Coal*

**Buy from
Crumpacker
and become a
Moneypacker**

Wheat, Corn and
Alfalfa Farms



Homes on College Hill, Small
Tracts, Farm and City Prop-
erty, Royalties and Oil
Leases

SEE

Jay Crumpacker

For Real Estate

WE'LL STAND ON OUR HEADS TO PLEASE YOU!

THE HOME OF

Good Watches and Perfect Diamonds

BIXBY, LINDSAY & CO.

Dr. Schwalm, in chapel: "Miss Shelley will now play a violin obligata."

(NOTE—she had just finished playing it.)

Nellie: "I wish God had made me a man."

Alberta: "Oh, don't worry; you'll find him yet."

Hail to the Old-Fashioned Dollar!

It rules at Penney's . But Quality rules, too!

Raw material prices have taken a parachute jump from the plane of high cost! This means savings to us . . . and we're passing them on to you!

Though prices are the lowest in years, Quality maintains an even higher level. Your dollar not only buys more in quantity . . . but it buys the **best** at Penney's!

J. C. Penney Co.

119 N. Main

**WILBUR
BARBER SHOP**

306 N. Main

**Theo. Poehler
Mercantile Company**

Wholesale Grocers

Hastriter Creamery Co.

Makers of

Golden Glo Butter

E. L. "Pete" WOLF

Plumbing . . . Heating . . .
Gas Appliances . . . Water Softeners . . .
Electric Refrigeration
Phone 226 219 So. Main

Pearl: "Don't you know there are germs in kissing?"

Kelly: "Say, Girlie, when I kiss, I kiss hard enough to kill all the germs."

Martha Hursh, after a hard fall: "Well, I can't see why water always has to freeze with the slippery side up."

Shoemaker: "Last night I dreamed that I asked the most beautiful girl in the world to marry me."

Myreta H.: "Oh Lloyd, what did I say?"

CHURCH DIRECTORY

Church Of The
BRETHREN

Rev. Richards — 1510 East Euclid

**FIRST CHRISTIAN
CHURCH**

J. H. Anderson, Minister
Phones: Church 623X; House 440Y
223 W. Kansas

FIRST BAPTIST

A SUNDAY CHURCH
Maple and Marlin
Frank L. Roper, Minister

PRESBYTERIAN

Rev. Cotton — 300 S. Main

FIRST CONGREGATIONAL

J. M. EVANS, Minister
Church Phone 466 212 S. Maple House Phone 233

WALKER



Quadrangle
Photographer



The Home State Bank

McPherson, Kansas

SAFE, CONSERVATIVE, PROGRESSIVE

A Department for Each Financial Need
We Invite Your Business

"I haven't any desire to keep that school-girl complexion," explained Rock the other night, as he proceeded to dust the powder off his coat.

Horse sense is good stable thinking

A dogma is the mother of pups.

Dr. Harnly, at close of chapel: "Let's all pass out now without music."

Peterson Hardware Co.
H. V. PETERSON, Prop.

Full Line of General Hardware
and Sporting Goods

Phone 191 219 N. Main

Where McPherson Eats
HAWLEY
COFFEE SHOP
Phone 407

MORRIS & SON

Where the Students Trade

Or Busy Corner

Phone 76

QUIRING & QUIRING

※※※

FURNITURE AND UNDERTAKING

※※※

Phone 6

J.S. Dillon and Sons

FOOD STORES CO. INC.

New

Fireproof

HOTEL HAWLEY

Have your Parties and Banquets
in the Roof Garden.

Phone 24

McPherson, Kansas

ALLIANCE EXCHANGE CO.

Been in Business 42 years . . .
There must be a Reason.

Ward Williams: "Do you think I'm conceited about my brains?"

Lilburn Gottmann: "Nonsense! I'm sure that nothing of the kind ever entered
your head."

McPherson, Kansas

The Economical Place to Live

Municipal Water & Electric Plant

Making Possible

LOW TAX LEVY
LOW WATER RATES
LOW ELECTRIC RATES

Lowest Natural Gas Rates in Kansas

Come to McPherson and enjoy the economy and pleasure of living in a clean, prosperous and beautiful city.

McPherson Water & Electric Department

City Progress
Depends on the
Daily Newspaper

Enlightenment and enthusiasm
make things grow for city and busi-
ness man as well. Sane and persistant
publicity spells P R O G R E S S and
P R O F I T.

Daily Republican
Phones 64 and 98 W. J. Krehbiel, Publisher
(Printers of the Quadrangle)

MEET AT THE
**Puritan
Restaurant**

The Home of
Juicy Steaks

Open Day and Night

Telephone 1165 111 S. Santa Fe
Salina, Kansas

Whether you are out of Gas, need a Battery, Towed In, Set of Tires, or Mechanical Repairs, you'll find us Ready at All Times to Serve you.

Mohawk Tires - - Oils and Gas

**Jayhawk
Motor Service**

**24 Hours . . . One Stop Service
317-23 N. Main**

Phone 234 Phone 232
McPherson, Kansas

Fern Heckman (as bran is passed to her): "No thanks, I'm a vegetarian."

"I'm just going to the dogs," said the flea as he grabbed his hat.

**ALLIANCE AGENCY
INSURANCE**

For Every Need

Phone 106

McPherson



**Watches, Clocks,
Rings**

Jewelry and Watch Repairing

J. Ed. Gustafson

111 N. Main, McPherson
Large Stock of Wallpaper

**Carlson
Plumbing Co.**

Plumbing . . . Heating . . . Gas
Appliances and Installations

Phones:

Bus. 14

Res. 26

Hawley Barber and Beauty Shop

SID EASTERLING, Prop.

Phone 499

Man is a worm of the dust. He comes along, wiggles around awhile, and finally some chicken gets him.

Kurtz: "He called me a liar."

Whiteneck: "Oh well, that's nothing."

Kurtz: "But he proved it."

"Dusty" (to Ethel S.): "Ethel, I've liked that dress all eight years you've worn it."

You Will Find GAS

to be the

Cheapest, Cleanest and Most Convenient Fuel for Heating,
Cooking, Water Heating and Incineration.

See Your Dealer or the Gas Company Now!

The McPherson Gas Co.

Index

- A**
- Administration 16
 Almen, Rosalind 34
 Anderson, Attilia 25, 55, 57, 73
 Anderson, Eugene 61, 69, 64
 Anderson, Rex 38, 61, 64
 Anderson, Arlene 32
 Andes, Dennis 31, 49
 Andes, Martha 38, 50, 73
 Arbeiter, Ruth 38
 Arnold Hall 10
 Assistants 57
 Atchinson, Alma Louise 34, 32
 Austin, Charles 23, 30, 31, 44, 47, 50, 53
 Austin, Glen 38, 50, 53, 54, 55
 Austin, John 38, 51, 53, 55
- B**
- Barnes, Muriel 38, 54
 Bartles, Roy 25
 Bartley, Clarence 38
 Basketball 66, 67, 68, 69
 Beam, Orpha 34, 52, 55
 Bean, Agnes 38, 40, 55
 Bean, Velma 34, 50, 73
 Beard, Elaine 38
 Bechtelheimer, Edith 38, 50, 52, 57
 Beckwith, Vernon 38, 61, 64
 Binford, Harold 31, 57, 60, 61, 62, 67, 68, 72
 Binford, M. J. 29, 39, 60, 61, 66, 67
 Bittkofer, Kenneth 25, 43, 44, 47
 Blair, J. A. 18
 Blume, Wayne 61
 Bohling, Earl 20, 48
 Bohling, Mrs. Earl 20
 Bowers, Corrine 34, 55, 57
 Bowman, Elizabeth 34, 73
 Bowman, Robert 34, 61
 Bowman, J. L. 19
 Boyer, Oneita 38
 Bright, J. D. 18, 29, 44, 47
 Bradley, Edward 31, 60, 67, 69
 Bradshaw, Delvis 34, 50, 53
 Brethren Church 14
 Brooks, Dorothy 23
 Brown, Esther 31, 44, 46, 55, 57, 73, 75
 Brown, Jessie 21
 Brown, Marjorie 38
 Brumbaugh, Donald 38, 50, 53, 54, 55
 Brumbaugh, Earle 38, 50, 53, 54, 55
 Brunk, Ada 31, 46, 51, 57
- C**
- Carlson, Edwin 34
 Carlson, Lillian 25, 45, 49
 Carpenter, Russell 38, 55, 60, 61, 64, 75, 77
- Chemistry Club** 55
Christiansen, Alice 38, 73
Clark, Othetta 73
Collins, Clara 21
Collins, Nellie 25, 48, 51, 59, 73
Contents 6
Countryman, Orville 25, 61, 62
Crist, Genevieve 31, 50, 51, 73
Crist, Odessa 31, 73
Custer, Marleah 38
- D**
- Dahlinger, Mildred 34, 52, 55
 Dappen, Marlene 38, 54, 55, 73
 DeArman, Helen 73
 Dell, Pauline 31, 41, 54, 75
 Dell, S. M. 19
 DeVilbiss, Viola 31, 49, 51, 55, 73, 75
 Doyle, Mildred 23, 24, 25, 45, 49, 51, 55, 73
 Drescher, Bernice 38, 52
 Drescher, Donald 31, 53
 Drescher, Dorothy 31, 49, 57
 Drescher, Florence 31, 52
 Dunning, Jess 38, 49, 50, 55
- E**
- Eby, Herbert 25
 Ediger, Art 61, 64
 Edwards, Lois 34, 52, 73
 Eide, Esther 31
 Elliott, Maxine 38
- F**
- Faculty 17, 18, 19, 20, 21
 Fahnestock Hall 8
 Fasnacht, Everett 34, 48, 49, 50, 53, 57
 Fearey, Dorothy 38, 38
 Feldt, Bernice 38
 Fisher, Merle 38, 52, 54
 Fields, Evalyn 25, 52
 Flora, LaVere 38, 53
 Flora, Melvin 38
 Flora, Vera 25, 30, 41, 52
 Football 61, 62, 63, 64, 65
 Forensics 45
 Fowler, Bernice 31, 52
 Frantz, Harry 23, 37, 38, 55
 Frantz, Royal 39, 50
 Freshman Class 37, 38, 39, 46
 Freshman Representatives 79
 Fries, J. H. 19
- G**
- Guedert, Alvin 39, 61
 Goering, Milton 31, 53
 Goering, John 39
 Golf 72
 Gottmann, Lilbur 32, 44, 45, 47, 50, 60, 72
- Griffis, Gretta** 32
Gymnasium 15
- H**
- Hammann, Glen 39
 Hammann, Myreta 26, 41
 Handke, Fern 39, 55
 Hands, A. W. 45
 Harnly, Dr. H. J. 17
 Harnly Hall 11
 Harris, Blanch 34, 43, 51, 53, 54
 Hawkins, Lola 39, 55, 73, 75
 Hayes, Kermit 26, 47, 76
 Heckethorn, Margaret 18, 50
 Heckman, Fern 26, 51, 55, 57, 73
 Heckman, Grace 32, 46, 50, 77
 Heckman, J. H. 18
 Heiny, Evelyn 39
 Hershey, Dr. J. W. 19, 55
 Himes, George 39, 55
 Himes, Elbert 39, 61
 Hobart, Ruth 39, 73
 Hockstrasser, Herbert 26, 60, 61, 62, 71
 Holloway, Helen 26, 46, 52
 Holsinger, Della 26, 75
 Holzemer, Elizabeth 34, 52
 Hoover, Gulah 34, 41, 44
 Horn, Luther 26, 55
 Hugsby, Hobart 39, 51
 Hunsinger, Dorothy 39
 Hursh, Martha 39, 73
 Hutchinson, Frank 35, 44, 49, 55
- I**
- Ihde, Ruth 39, 50, 52, 73
 Ikenberry, Hubert 39, 61
 Ikenberry, Louise 33, 73
- J**
- Jamison, Posey 26, 57, 59, 60, 67, 68
 Jenkins, Lacey 39
 Johnston, Ralph 26, 60, 61, 67, 69
 Johnson, Kermit 39, 54, 55
 Junior Class 30, 31, 32
 Junior Representatives 77
- K**
- Kaufman, Edna 45, 55
 Keck, Elmer 26, 44, 57, 59, 66
 Keedy, Ralph 27, 43, 44, 50, 51, 55
 Keller, Velma 35, 44, 57, 73
 Kelly, Delbert 23, 30, 48, 57
 Ketterman, Faith 39, 52, 55
 Kim, Ben 61
 Kittell, John 23, 24, 27, 51, 60, 71, 75
 Kittell, Henry 39
 Kline Hall 12
 Kraus, Gordon 39

Index

L	
Lackey, Lois	23, 37, 37, 77
Ladies' Glee Club	32
Ladies' Quartette	32
Landes, Melvin	32, 48, 53
Larsen, Lloyd	32, 43, 49, 53, 60, 77
Lauver, Philip	27, 43, 50, 57
Ledell, Marcella	35
Lehman, Della	18, 46
Lehman, Lawrence	27, 45, 47, 50, 53
Lerew, George	27, 44, 57
Lerew, Grace	39, 55, 73
Lewis, Letteer	39, 55
Library	9
Lindholm, Archie	39, 47, 54
Lindholm, Elsie	23, 37, 39, 53, 73
Lingenfelter, Fern	21
Long, Gertrude	35

M	
"M" Club	60
Mason, Roy	35
Mast, Clara Fern	27, 32
McGaffey, Edith	19
McGill, Wallace	60, 61, 63, 70
McIlrath, Helen	19
Meinhardt, Clarence	27
Men's Glee Club	53
Men's Quartette	53
Meyer, Constance	28
Mikow, Edgar	35, 55
Minear, Cleo	35, 60, 61, 63
Miller, Pauline	39
Minter, Cleason	55
Mohler, R. E.	17, 44
Moore, Kenneth	39, 61
Morrison, Lorene	39, 55
Mowbray, Herbert	27, 50, 60, 61, 62, 71
Muse, Elsie	27
Music Graduates	41
Myers, Don	35
Myers, Gilbert	23, 24, 28
Myers, Leslie	27, 57

N	
Nautical, Harlow	39, 53
Nelson, Clella	35
Nickel Clara	35, 53
Nickel, Hope	32, 45, 55
Nickel, Etta Marie	40
Nordling, Neoma	35
Nyquist, Millicent	28

O	
Oaks, Leeta	40, 50, 73
Ohmart, Verie	28, 43, 48, 51, 60, 67, 69, 71
Oliver, Margaret	40, 55

Orchestra	54
Oxley, Zelta	40

P	
Pauls, Walter	60, 61, 63, 67, 68
Peebler, Roy	28, 55, 61
Peterson, Imo	40
Peters, George	35, 45
Pote, Esther	40, 55, 73, 75
Pote, Lester	35
Pray, Mildred	40, 54

Q	
Quadrangle	48
Quizg, Lester	40, 61, 63

R	
Rankin, Constance	28, 46, 57
Reinecker, Harold	40, 60, 67, 69
Replogle, F. A.	17, 60
Richards, Edith	36, 50, 73
Richards, Elizabeth	28, 46, 50
Rhoades, Vernon	32, 43, 49, 53
Riddell, Gladys	40
Rinz, Maxine	40, 44, 55
Rinz, Una	36, 49
Rock, Loren	23, 32, 52, 53, 57, 60, 67, 68
Ronk, Mildred	40, 50, 54
Ruehlen, Alice	32, 45
Rump, Elsie	36, 50, 73

S	
Saylor, Evelyn	28, 43
Schwalm, Dr. V. F.	15
Shank, Harvey	32, 47, 48, 53
Sharp Hall	7
Shay, Mattie	23, 33, 36, 46, 49, 54, 77
Shelley, Margaret	21, 54
Sherfy, Ethel	28, 46, 48, 51, 52, 57, 73
Sherfy, Paul	36, 47, 49, 53
Shoemaker, Lloyd	40, 44
Secretaries	57
Selms, Chester	61, 64
Senior Class	24, 25, 26, 27, 28, 29
Senior Representatives	76
Smith, Charles	28, 54
Smith, Walton	23, 37, 40, 55
Sophomore Class	33, 34, 35, 36
Sophomore Representatives	78
Sorenson, Maurice	26
Sorenson, Walter	26
Spectator	49
Spilman, Ruth	40, 55
Staats, Elmer	40, 45, 55
Steeves, Vivian	23, 33, 39
Steinberg, Ellen	32, 52
Stoner, Samuel	40, 55, 67, 69
Stucky, Milo	32
Student Council	44

Stutzman, Ada	25, 24, 29
Stutzman, Doretha	40
Stutzman, Maurine	57
Stutzman, Mildred	36, 50, 73
Suttle, Bernard	40, 53, 55
Suttle, Geneva	32, 52
Swain, Mary	36
Switzer, Maxeline	36

T	
Tate, Anna C.	21
Taylor, Adeline	20, 29, 49, 76
Taylor, Tommy	40, 53
Tennis	74
Thespian Club	51
Thompson, Marianna	26
Tice, Raymond	75
Track	70, 71
Trostle, Clinton	29, 43, 47
Trostle, Donald	29, 43, 48, 53, 57
Trustees	16

U	
Unruh, P. A.	36, 50, 55

V	
Van Nortwick, Archie	40, 61
Vogt, Eunice	40

W	
W. A. A.	73
Walker, Pearl	23, 30, 73
Wampler, Arlene	40, 73
Weaver, Florence	29, 57, 73
Webb, Glenn	49, 55
Weddle, Mary	29, 43, 50, 57, 73
Weddle, Walter	40, 55
Whitecer, Carrol	40, 50
Whiteneck, Wilbur	75
Wiggins, Leonard	40, 53, 60, 61, 64, 67, 68, 75
Williams, Howard	40, 55
Williams, J. T.	23, 33, 36, 49
Williams, Ward	32, 45, 47, 50, 60, 70
Wollmann, Walter	29, 45, 55, 57
World Service Group	50

Y	
Y. M. C. A.	47
Yeller, Alberta	29, 43, 44, 46, 49
Yoder, J. J.	17
Yoder, Royal	29, 47, 53
Yoder, Wilbur	23, 33, 36, 48, 49, 53, 78
Y. W. C. A.	46

Z	
Zinn, George	32, 60, 61, 63



Autographs