

THE  
Quadrangle  
1928







# THE QUADRANGLE

Done in 1928 at McPherson,  
Kansas, by the students of  
McPherson College



Alvin Votaw  
John Wall

Editing  
Managing



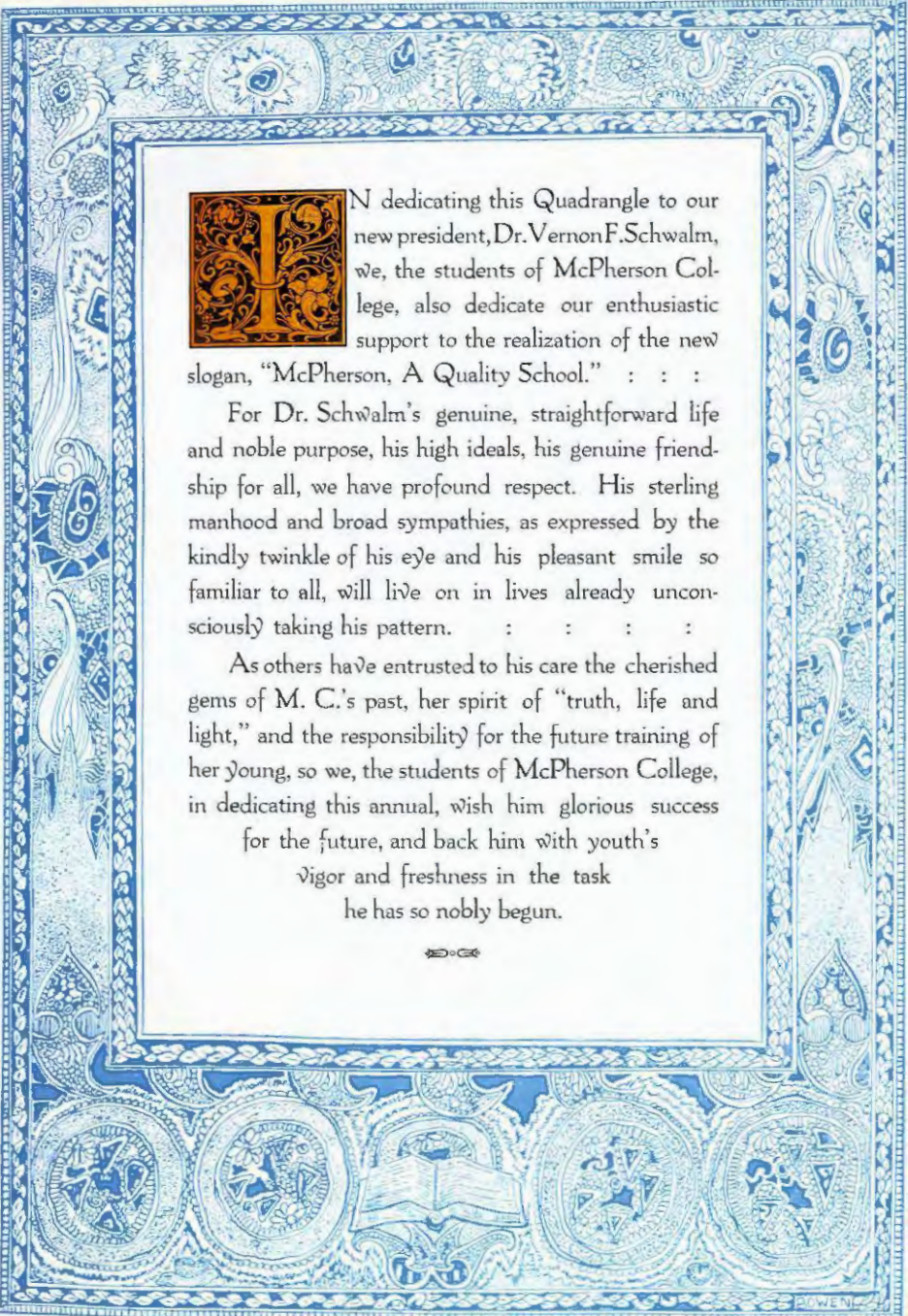


IN the nineteen-twenty-eight Quad-  
rangle the staff has tried to put forth  
the ideals and qualities represented  
in the true McPherson College, its  
faculty, management, trustees, stu-  
dents, and all others who have interest in and who help  
to sustain it.       :       :       :       :       :       :

The staff has endeavored to record accurately the  
activities of the year nineteen-twenty seven and eight.  
Since the Quadrangle is the official year book of our  
beloved Alma Mater, we feel that it should be a treas-  
ure chest in which are held pictures of familiar faces  
and records of events dear to everyone.       :       :

When, in years to come, you turn to this treasure  
chest, it is the desire of the staff that you may recall  
with deep satisfaction the varied experiences of the  
college year; its campus joys; its moments of sad-  
ness; its pinnacles of victory. With this hope the  
staff of the nineteen-twenty-eight Quadrangle  
presents this book to those who  
love McPherson College





**I**N dedicating this Quadrangle to our new president, Dr. Vernon F. Schwalm, we, the students of McPherson College, also dedicate our enthusiastic support to the realization of the new slogan, "McPherson, A Quality School." : : :

For Dr. Schwalm's genuine, straightforward life and noble purpose, his high ideals, his genuine friendship for all, we have profound respect. His sterling manhood and broad sympathies, as expressed by the kindly twinkle of his eye and his pleasant smile so familiar to all, will live on in lives already unconsciously taking his pattern. : : : :

As others have entrusted to his care the cherished gems of M. C.'s past, her spirit of "truth, life and light," and the responsibility for the future training of her young, so we, the students of McPherson College, in dedicating this annual, wish him glorious success for the future, and back him with youth's vigor and freshness in the task he has so nobly begun.



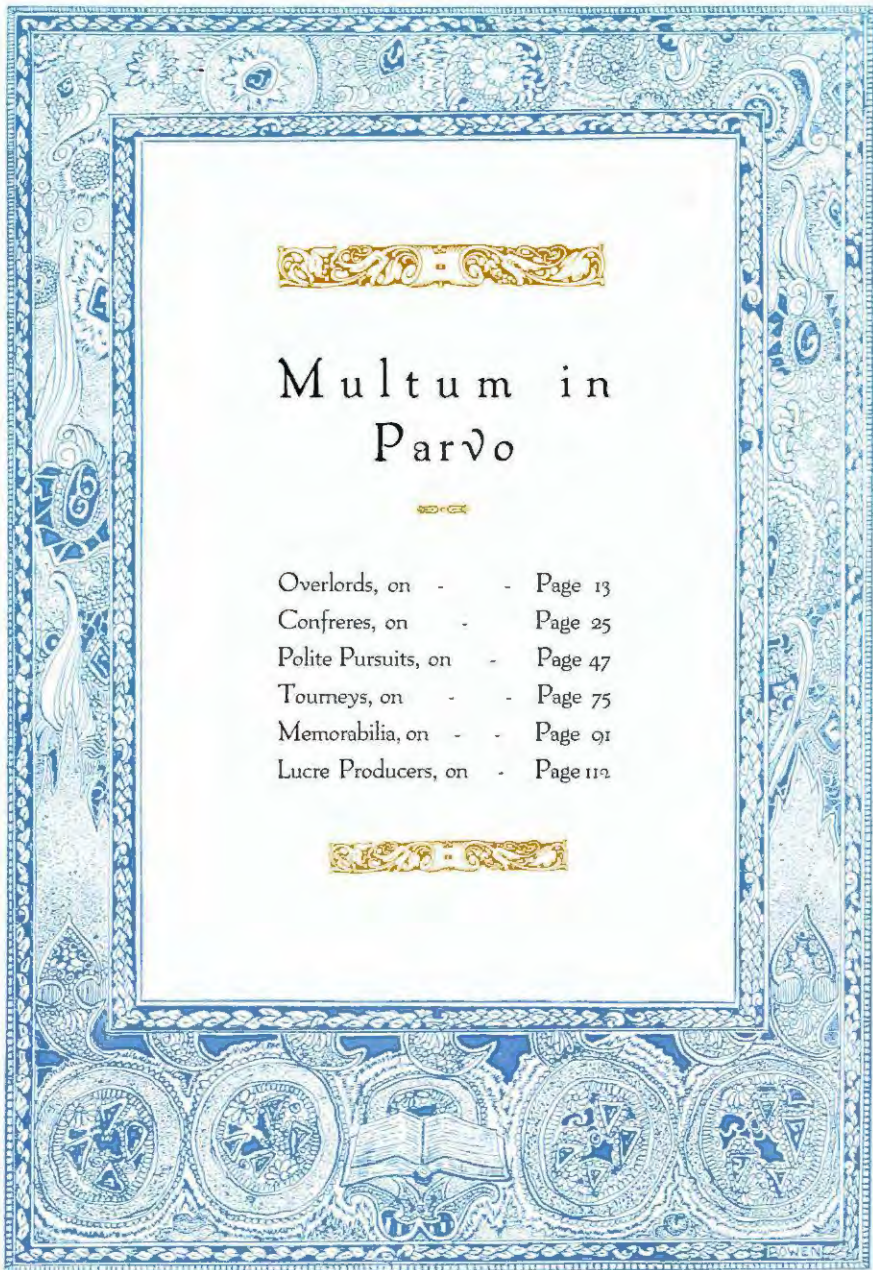




# Multum in Parvo



Overlords, on	- -	Page 13
Confreses, on	- -	Page 25
Polite Pursuits, on	- -	Page 47
Tourneys, on	- -	Page 75
Memorabilia, on	- -	Page 91
Lucre Producers, on	- -	Page 112







ADMINISTRATION





HARNLY HALL



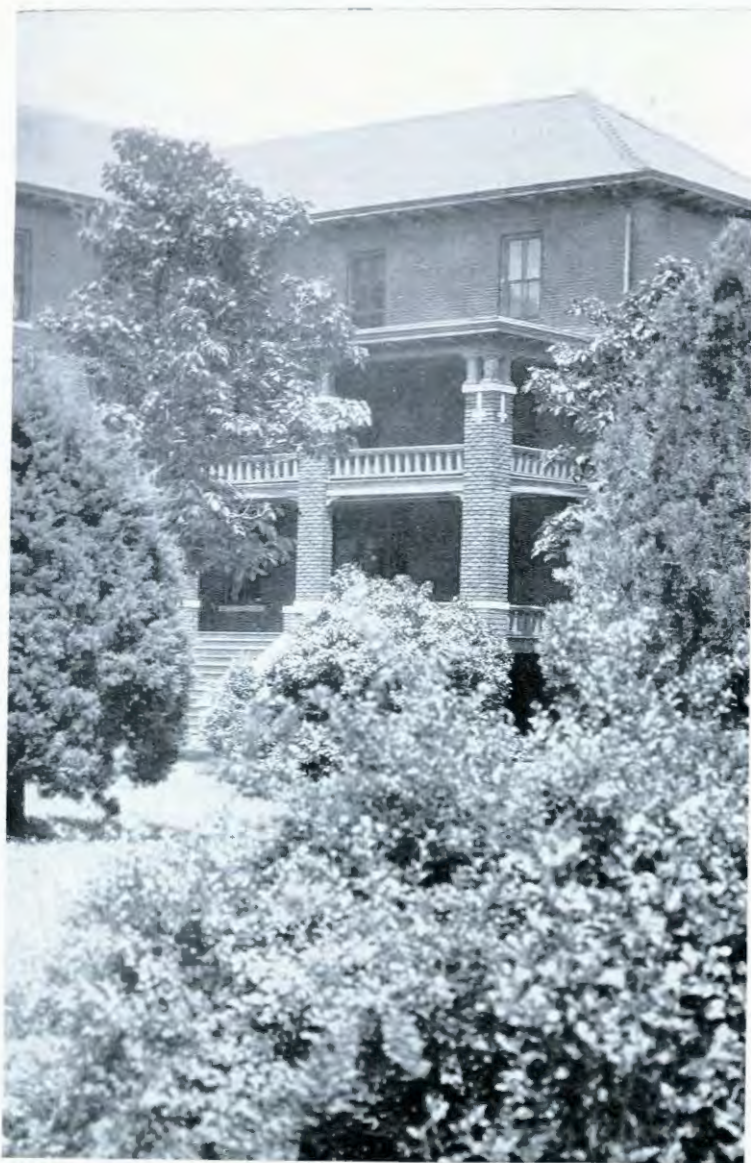


THE LIBRARY



GYMNASIUM



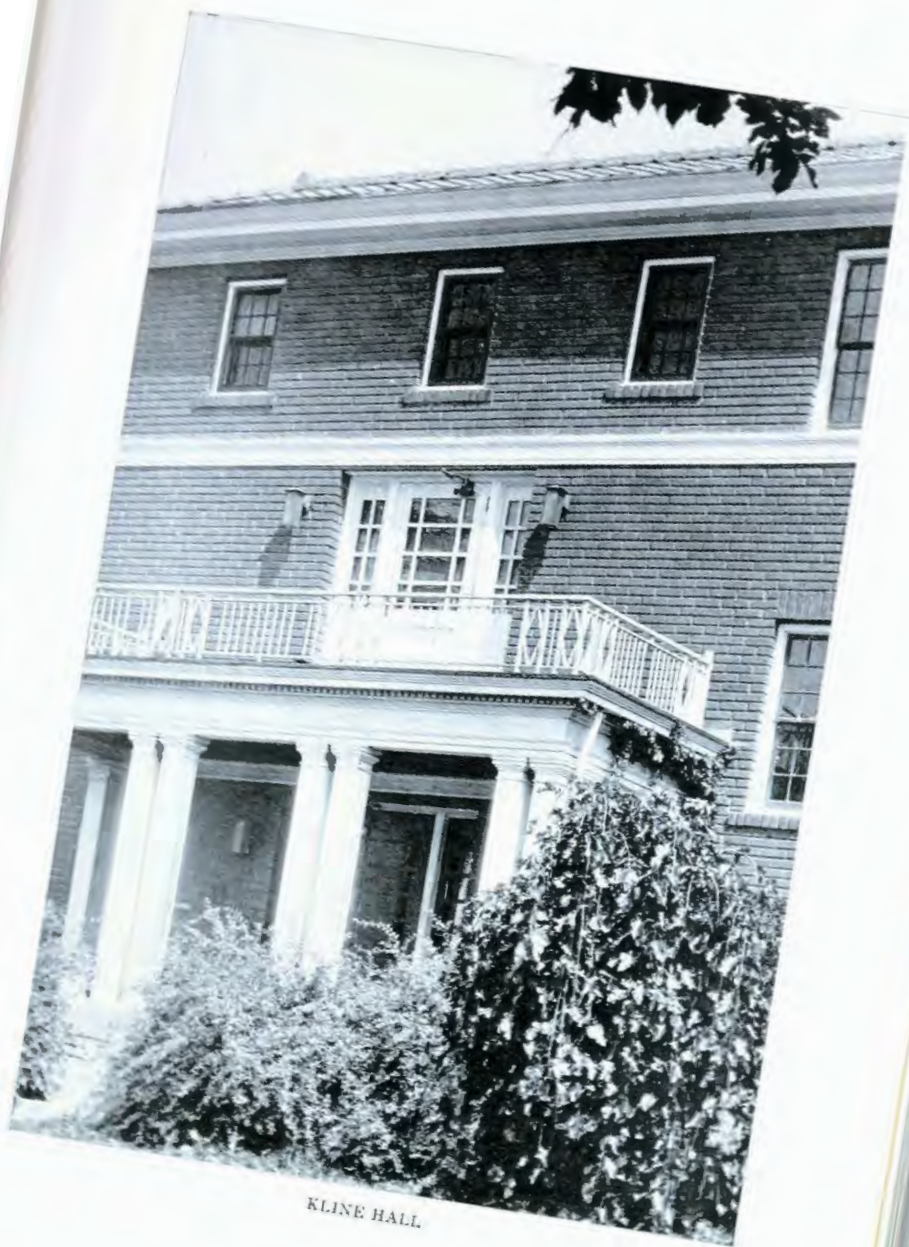


ARNOLD HALL

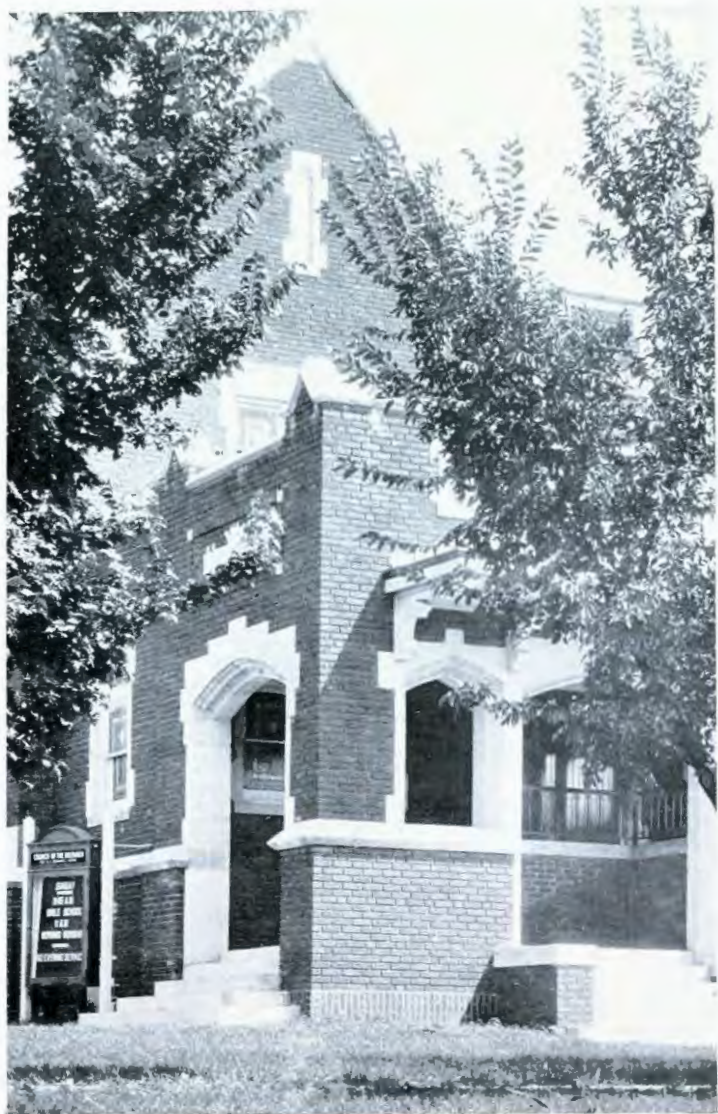


FAHNESTOCK HALL





KLINE HALL



COLLEGE CHURCH





*Our Overlords*





VERNON FRANKLIN SCHWALM PH. D.

A. B. Manchester College, 1912; A. M. University of  
Chicago, 1916; Ph. D., University of Chicago, 1920;  
Student, Columbia University, summer 1921; Dean,  
Manchester College, 1919-1927.

*President of the College*

*Professor of History*





HENRY JACOB HARNLY PH. D.  
*Vice-President of the College*  
Professor of Physiology, Bionomics, and Geology



JOSEPH J. YODER, LL. D.  
*Business Manager of the College*  
Professor of Social Science



ROBERT ELLSWORTH MOHLER, M. S.  
*Dean of the College*  
Professor of Agriculture



JOHN WILLARD HERSHEY, M. S.  
Ph. D.  
Professor of Chemistry



JOHN ALVIN BLAIR, A. M.  
Professor of Education and  
Psychology  
Registrar



MARY EDITH MCGAFFEY, A. M.  
Dean of Women  
Professor of English



J. HOWARD FRIES, A. B.  
Assistant Business Manager



MAURICE A. HESS, A. M.  
Debate Coach  
Professor of Latin



JESSIE BROWN, B. M.  
Head of the Department of Music  
Piano





GEORGE NICHOLAS BOONE,  
A. B., M. S.  
Professor of Industrial Education



G. LEWIS DOLL, B. M.  
Professor Violin and Theory and  
Director of Orchestra



HARVEY HARLOW NININGER,  
A. M.  
Professor of Biology and Curator  
of the Museum



MARGARET HECKETHORN, A. B.  
Librarian



JOHN L. HOFF, A. B., B. D., A. M.  
Professor of Religious Education



J. DANIEL BRIGHT, A. M.  
Professor of History and Political  
Science  
Dean of Men



CECIL B. WILLIAMS, B. S., M. S.  
Associate Professor of English



JOSEPH BOWMAN, A. B., M. S.  
Professor of Mathematics and  
Physics



LOUIS A. UTRECHT, A. B.  
Professor of German and French



B. O. MILLER, A. B., A. M.  
Professor of Commerce



H. F. RICHARDS, A. B., B. D.  
Professor of Bible



GEORGE B. GARDNER, A. B.  
Director of Athletics, Physical  
Training and Coach





HERRMAN BOWEN  
Instructor in Art



FERN LINGENFELTER, B. M.  
Public School Music



DELLA LEHMAN, A. M.  
Professor of Expression and  
Dramatic Art



J. HUGH HECKMAN  
A. B., B. D., Th. M., A. M.  
Professor of Theology and  
Philosophy



ROY B. TEACH, B. S. L.  
Field Secretary



MARIETTA BEYERLY, A. B.  
Professor of Home Economics



WILMA BATCHELOR, B. M.  
Instructor in Voice



MRS. IVA GILSON, B. M.  
Instructor in Piano



LORA TROSTLE  
Matron



ALBERTA HOVIS  
Instructor in Typewriting and  
Shorthand



JAMES ELROD  
Fabnestock Hall



## Board of Trustees

V. F. Schwalm, McPherson, Kansas, Ex-officio.	
H. J. Harnly, McPherson, Kansas	1928
B. S. Miller, Altamont, Kansas	1928
James Mohler, Lenton, Missouri	1928
L. J. Smith, Morrill, Kansas	1928
Ray C. Strohm, McPherson, Kansas	1928

Emery Martin, Bloom, Kansas	1929
Roy A. Crist, Quinter, Kansas	1929
E. H. Eby, St. Joseph, Missouri	1929
E. F. Weaver, Clovis, New Mexico	1929
J. J. Yoder, McPherson, Kansas	1929
Paul K. Brandt, Holmesville, Nebraska	1929

E. A. Frantz, 2622 Oakland Blvd., Ft. Worth, Texas	1930
Ira Frantz, Fruita, Colorado	1930
Stephen Miller, Carleton, Nebraska	1930
H. G. Shank, Fruitland, Colorado	1930
I. C. Snavelly, Haxtun, Colorado	1930
F. A. Vaniman, McPherson, Kansas	1930
E. A. Wall, McPherson, Kansas	1930
Ira Witmore, Carthage, Missouri	1930

### Executive Committee of the Board

Ray C. Strohm	President of Board
H. J. Harnly	Secretary of Board
J. J. Yoder	Business Manager of College
F. A. Vaniman	Treasurer of Board
Ernest Wall	Trustee of Southwest Kansas
V. F. Schwalm	President of College

### Officers of the Faculty

V. F. Schwalm, Ph. D.	President of College
H. J. Harnly, Ph. D.	Vice President of College
R. E. Mohler, A. M.	Dean of College
J. A. Blair, A. M.	Registrar
Edith McGaffey, A. M.	Dean of Women
J. Daniel Bright, A. M.	Dean of Men

## Assisting the Faculty

President Schwalm: Lucille Dunning, Secretary, Elgin, Illinois.

Dean Mohler: Florence Lehman, assistant in the Dean's office, Abilene, Kansas; D. L. Miller, Agriculture, Crowley, Colorado.

Dr. Harnly: Mabel Roskam, Physiology, McPherson, Kansas.

Dr. Hershey: Floy Brown, Hutchinson, Kansas; Philip Spohn, Inman, Kansas; Roy Trostle, Nickerson, Kansas; Robert Puckett, Hutchinson, Kansas; Ronald Warren, Waukegan, Illinois; all in Chemistry.

Professor Blair: Olive Weaver, Teachers' Placement, Garden City, Kansas; Jewell Newton, Education, Mansfield, Missouri.

Professor Nininger: Muriel Miller, Rocky Mountain Summer School, McPherson, Kansas.

Professor McGaffey: Mabel Beyer, English, McPherson, Kansas.

Professor Lehman: Doris Ballard, English, Lovewell, Kansas.

Professor Beyerly: Ruth Hoover, Foods, Overbrook, Kansas; Viola Bowser, Foods, Abilene, Kansas; Fern Shoemaker, Clothing, Wenatchee, Washington.

Professor Boone: Jessie Carney, McPherson, Kansas; Glenn Kilmer, McPherson, Kansas; Ralph Bowers, Roanoke, Louisiana; Paul Bowers, Roanoke, Louisiana; all in Industrial Arts.

Librarian Heckethorn: Lela Rhodes, McPherson, Kansas; Margaret Dresher, Canton, Kansas; Ruth Anderson, McPherson, Kansas; Hazel Countryman, Sterling, Colorado; all in Library.

Coach Gardner: Robert Puckett, Physical Education, Hutchinson, Kansas.

Harold Fasnacht, College Office, Wiley, Colorado; Jessie Churchill, College Office Secretary, Rocky Ford, Colorado.





In selecting a man for the highest position that a student may attain, the students found a wonderfully capable man in LaVerne, "Babe," Martin. This very successful Student Council year is due largely to him.

## The Student Council

The Student Council is the official organ of the student body in business matters and the official voice of the students in matters of school government. It is composed of the elected president and treasurer, two members from each class, one from the Fine Arts Department, one Athletic representative, and two faculty advisors.

The Council began the year under a heavy debt, and have succeeded in clearing it up and running through the year efficiently despite a decrease in resources. President Martin and Treasurer McGonigle have worked carefully to leave a clean slate for the succeeding Council, and have attained that objective.

Elmer McGonigle in the treasurer's chair has contributed of his ability and time to help make the student council as progressive as it has been this past year in its financial transactions.



## The Student Council

The Council has efficiently represented the student body during the past year in securing entertainment numbers, assuming responsibility for the Quadrangle and Spectator, providing tangible recognition of service rendered the school in student activities, and working for the welfare of the students in many ways.



Under the auspices of the Student Council, the Hallowe'en carnival, the Salon Orchestra the Thespian play—"The Goose Hangs High", three plays by the Dramatic Art class, and an all-school social were made available for student entertainment. The Council also fostered a drive to procure sweaters for the basketball men, repaired tennis courts, and cared for the financing of the State debate.



## The Athletic Board



G. N. BOONE

The personnel of the athletic board is as follows:

G. N. BOONE	_____	President
	_____	Representative to K. C. A. C.
B. O. MILLER	_____	Secretary
J. H. FRIES	_____	Faculty Representative
R. E. MOHLER	_____	Faculty Representative
J. J. YODER	_____	Trustee Representative
COACH GEO. GARDNER	_____	Ex officio Member
LEO CRUMPACKER	_____	Student Council Representative
DALE STRICKLER	_____	Alumni Representative

The purpose of this Board is to supervise and regulate all Inter-collegiate athletics in which the college participates. This of course means the making of schedules and of governing or supervising the various sports such as Football, Basketball, Track, Tennis, Baseball, and Golf. The W. A. A. also operates under this board. The W. A. A. manages its own organization but is responsible to this board.

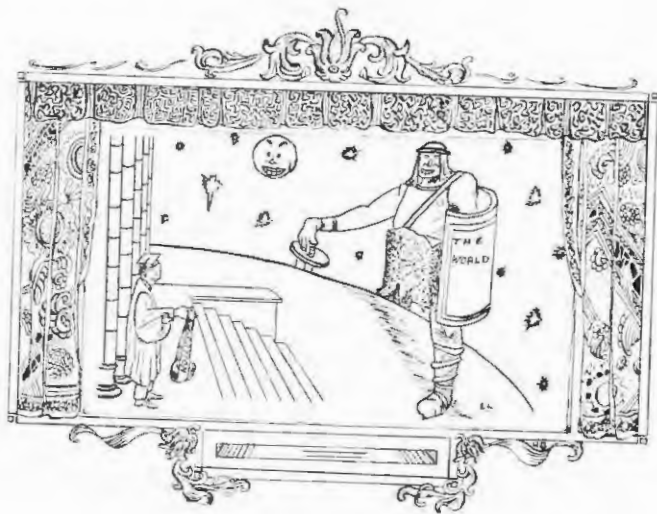
The board sets forth the rules that are the criteria for becoming eligible for a letter in the various sports. The coach can present men for their awards but the action of the board is final. The athletic board is responsible for all the awards given for all the sports to the various athletes.



*Our Confreres*







*The Seniors*



**LESLIE SAYLOR, A. B.**  
*Chemistry* Marion, Kansas  
 Class Treasurer 2; President 4; Student Council 2; Editor Quadrangle 3; Quadrangle 3; Spectator 1, 2, 3, 4; Tennis 2, 3, 4; Baseball 2, 1; Basket Ball 4; Second Debate 2; "M" Club 2, 3; President 4; Senior Play Cast.

**JOHN B. WALL, A. B.**  
*Commerce* McPherson, Kansas  
 Vice-President (Class 7); Business Manager Quadrangle 4; Orchestra 1, 2, 3, 4; Music Club 3, 4; Boys' Glee Club; College Band 1, 2; Cecilia Society 4.

**IRA CARLYLE IHDE, A. B.**  
 Hope, Kansas

*History*  
 Second Debate 1; Varsity debate 1; Oratory 2; President Forensic Club 2; Thespian 4.

**MYRTLE A. MOYERS, B. M.**  
 Ames, Oklahoma

*Music*  
 President Cecilia Music Society 4.

**RUTH PENTECOST, A. B.**  
 Leeton, Missouri  
*English*

**JESSE M. CARNEY, B. S.**  
 McPherson, Kansas  
*Manual Arts*

Industrial Arts assistant 1, 2, 3, 4.

**CLARENCE M. HAWKINS, B. S.**  
 Helena, Oklahoma

*Industrial Arts*  
 Student Council 1; Y. M. C. A. Cabinet 2, 3; Baseball 1, 2, 3, 4; Deputation team 3, 4; Football 3, 4; Music Club 1, 2, 3, 4; Mens' Glee Club 3, 4.

**MARIAH J. BURGIN, B. S.**  
 Nickerson, Kansas

*Home Economics*  
 W. A. A. 3, 4; World Service Group 4.

**IRENE ELIZABETH THACKER, A. B.**  
*English* Pratt, Kansas  
 Class Secretary 4; Orchestra 1; W. A. A. 4; Cecilia Society 4; Class May Queen 2.

**FRANKLIN F. EVANS, B. S.**  
*Agriculture* Kearney, Nebraska  
 Class Treasurer 4; Y. M. C. A. Cabinet 3, 4; Agriculture assistant 3.





HERBERT KAUFMAN, A. B.  
Basil, Kansas  
*Language*

MABEL RUTH HOLDERREAD, B. S.  
Cushing, Oklahoma  
*Home Economics*

MABEL E. BEYER, A. B.  
McPherson, Kansas

*English*

Spectator Staff 4; English assistant 1; Macosels  
2, 3, 4; Secretary to Dean Mohler 2, 3.

LLOYD D. JAMISON, B. S.  
Quinter, Kansas

*Industrial Arts*

Assistant Business Manager Spectator 3; Editor  
Spectator 4; Industrial Arts assistant 1; Tennis  
2, 3, 4; "M" Club 3, 4; Forensic 4.



LEO K. CRUMPACKER, B. S.  
McPherson, Kansas

*Chemistry*

Student Council 1, 2; Biology assistant 2; Assis-  
tant Athletic Manager 3; Football 1, 2, 3, 4,  
Captain 4; Basketball 1, 2, 3, 4; Captain 2;  
Track 1, 2, 3, 4; "M" Club 1, 2, 3, 4.

EVELYN RICHARDS, A. B.  
McPherson, Kansas

*Home Economics*

JEWELL NEWTON, A. B.  
Mansfield, Missouri

*Music*

Public School Music Certificate; Education assis-  
tant, 1; Cecilian Music Society 4.

EARL C. KINZIE, A. B.  
Navarre, Kansas

*Commerce*

Class President, 1; Student Council Treasurer, 2;  
Basketball, 2, 3; Tennis, 2; Music Club 1, 2; Glee  
Club, 2; College Male Quartette, 3; President  
Y. M. C. A., 3.

MARTIN WISE, B. S.  
Canton, Kansas

*Chemistry*

MABELLE EVELYN ROSKAM, A. B.  
McPherson, Kansas

*Chemistry*

Biology assistant, 1; Physiology assistant, 1;  
Chemistry Club, 4.



LA VERNE L. MARTIN, B. S.  
Nampa, Idaho

*Chemistry*

Student Council Secretary, 3; President, 4; Y. M. C. A. Cabinet, 1; Assistant Business Manager Quadrangle 3; Circulation Manager Spectator, 2; Assistant Editor, 4; President Radio Club, 1; Theatrical Club, 2; Forensic, 1; Dulcy, 2; Torch-bearers, 3; Senior Play Cast.

JUNE ELLIS, A. B.  
McPherson, Kansas

*English*

Class Secretary, 3; Cheer Leader, 2, 3, 4; President Maecods, 3, 4; Glee Club, 3; Music Club, 3; Theatrical Club, 3; Theatrical Play, 3; Senior Play Cast.

MELYINA GERTRUDE GRAHAM, A. B.  
Kansas City, Missouri

*Home Economics*

Art Club, 4; Maecods, 2, 3, 4; Class May Queen, 3.

JOHN S. WHITENECK JR., A. B.  
Aline, Oklahoma

*Agriculture*

Y. M. C. A. Cabinet, 1; Cheer Leader, 2; Track, 2, 3; Football, 2, 3; "M" Club; Winner State Anti-Tolmeco contest, 1; 2nd place in State Peace Contest, 2; Senior Play Cast.

GEORGE DEAN  
McPherson, Kansas

ARLENE CHURCH, A. B.  
McPherson, Kansas

*English*

W. A. A., 2, 3, 4; Maecods, 2, 3, 4; Theatrical Club, 4; Senior Play Cast.

MENNO KAUFMAN  
Moundridge, Kansas

KATHRYN S. BURGIN, A. B.  
Nickerson, Kansas

*Education*

Basketball, 2, 4; Volley Ball, 1; Baseball, 2; Student Volunteer, 3; World Service Group, 1.

PORTIA L. VAUGHN, A. B.  
McPherson, Kansas

*Music*

Entered Senior Year; World Service, 4; Quadrangle Staff, 1; W. A. A., 1; Varsity Soccer Team, 1; Maecods, 1; Civilian Society, 1; Senior Play Cast; Music Club Pianist.

GLENN M. KILMER, B. S.  
McPherson, Kansas

*Industrial Arts*

Industrial Arts assistant, 3, 4.





S. LAWRENCE BARNHART, A. B.  
New Carlisle, Ohio

*History*

Entered Senior Year; Thespan 4.

AUTUMN LINDBLOOM, A. B.  
McPherson, Kansas

*Language*

Student Council, 4; Y. W. U. A. President, 1.  
Secretary, 3; Orchestra, 1, 2, 3, 4; Ceciliaan  
Music Society, 4.

LEONA NYQUIST, A. B.  
McPherson, Kansas

*History*

HOWARD H. KEIM JR., A. B.  
Nampa, Idaho

*Commerce*

Class President, 2; Treasurer, 2; Y. M. C. A. Cab-  
inet, 2, 3, 1; Business Manager Quadrangle, 3.  
Advertising Manager, 2; Business Manager Spec-  
tator, 1; President Forensic Club, 2; Thespan  
Club, 3, 1; President World Service Group, 1;  
Duly, 2; Torch Bearers, 3; Deputation Team, 4;  
Peace Contest, 4; Senior Play Cast.



PORTER L. IIRIG, B. S.  
McPherson, Kansas

*Agriculture*

ROBERTA THELMA BROWN, A. B.  
Hutchinson, Kansas

*English*

Y. W. C. A. Secretary, 3; Maecoe, 1, 2, 3; Foren-  
sic, 1; W. A. A., 3;

RUTH E. HOOVER, B. S.  
Overbrook, Kansas

*Home Economics*

Home Economics assistant, 3; Maecoe, 1, 2, 3;  
W. A. A., 1, 2, 3; Ceciliaan Music Society, 3;  
Music Club, 3, 2, 3, 1; Ladies' Glee Club, 2, 3;  
Art Club, 3.

RAYMOND HOWARD TROSTLE, B. S.  
Nickerson, Kansas

*Chemistry*

Class Treasurer, 1; Quadrangle Staff, 1; Chem-  
istry assistant, 2, 3, 1; Thespan, 2, 3, 4; Treas-  
urer, 3; President, 1; Chemistry Club, 1, 2, 3, 4;  
Sec. 4; Senior Play Cast.

MARGARET ROSE HUGHES, A. B.  
McPherson, Kansas

*Home Economics*

Art Club, 4; Maecoe, 1, 2, 3.

VIOLA JOAN BOWSER, A. B.  
Abilene, Kansas

*Home Economics*

Student Council, 3; Y. W. C. A. Cabinet, 2, 4;  
Home Economics assistant, 1; W. A. A., Treas-  
urer, 2; Vice President, 3; President, 1; Ceciliaan  
Club, 4; Art Club, 3; Chemistry Club, 3, 4;  
Maecoe, 1, 2, 3.





**RONALD MORRIS WARREN, B. S.**  
Waukegan, Ill.

*Chemistry*

Spectator Staff, 1; Chemistry assistant, 1; Football, 4; Chemistry Club, 1, 2, 4; "M" Club, 4; Finished in 3 years.

**LELA A. RHOBES, A. B.**  
McPherson, Kansas

*English*

Library assistant, 2; Music Club, 1; Ladies' Glee Club, 1; Maecobis, 3; Art Club, 2.

**NAOMA ANN HOLDERREAD, A. B.**  
Cushing, Oklahoma

*English*

W. A. A., 4; Volunteer Group, 1, 2; World Service Group, 1.

**H. CLARK BRUMBAUGH, B. S.**  
Hartville, Ohio

*Chemistry*

Chemistry Club, 2, 3, 4; Radio Club, 1.

**ALBERT J. PHILIPPI, B. S.**  
Formoso, Kansas

*Agricultural and Industrial Arts*

Y. M. C. A. Cabinet, 1; Agriculture assistant, 1; Second prize in Anti-Tobacco Oratorical contest, 1; President Anti-Tobacco Association, 2; Student Minister, 2, 2, 1.

**MYRTLE SANGREN, A. B.**  
McPherson, Kansas

*Home Economics*

**ALVIN C. VORAN, A. B.**  
Lorraine, Kansas

*Music*

Music Club, 1, 2, 3, 4; Choral Union, 1, 2, 3, 4; Men's Glee Club, 3, 4; College Band, 1; Male Quartette, 1, 2, 3, 4; Theopian, 3, 4; Torch Bearers, 2; Cecilia Music Club, 1; Chorus Leader, 1; Senior Play Cast, President Class, 3, Vice President, 2; "M" Club, 1.

**ANNA MAE STRICKLER, A. B.**  
Ramona, Kansas

*Home Economics*

Student Council, 4; Maecobis, 2, 3, 4; W. A. A., 1, 2, 3, 4; Ladies' Glee Club, 2; 2, 4; Music Club, 2, 3, 4.

**MABEL SANGREN, A. B.**  
McPherson, Kansas

*English*

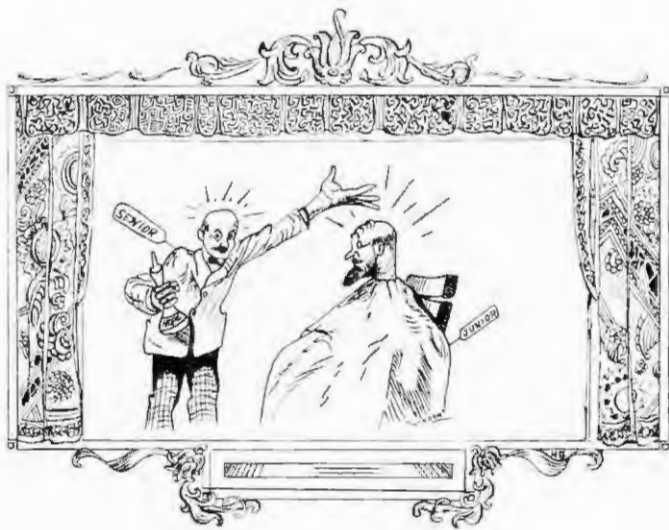
**ROY W. NININGER, A. B.**  
McPherson, Kansas

*French*

Entered Senior Year.







*The Juniors*



Marvin Steffen, Ellinwood, Kan., Chemistry, Vice President

Harold Fasnacht, Wiley, Colo., Commerce, Secretary-Treasurer

Eunice Longsdorff, Ottawa, Kan., English, President

Swanson, Carl, McPherson, Kan., Chemistry

Dorothy Swain, McPherson, Kan., Language

Francis, Berkebile, St. Johns, Kan., Commerce

Thelma Budge, St. Johns, Kan., Music  
Mercie Shatto, Istokpoga Lake, Fla., Home Economics

Ruth Bish, Rocky Ford, Colo., Home Economics

Ernest Gray, McPherson, Kan., Chemistry

Ruth Heibert, McPherson, Kan., English

Warren Sisler, Emmett, Idaho, Agriculture





Arnold Stucky, McPherson, Kan., History

Haven Hutchinson, Thomas, Okla., English

Ralph Landes, Hamlin, Kan., Industrial Arts

Floy Brown, Hutchinson, Kan., Chemistry

Ralph Bowers, Roanoke, La., Industrial Arts

Lena Beaver, St. Johns, Kan., Home Economics



Allen Morine, McPherson, Kan., Chemistry

Lois Dell, Beatrice, Nebr., Home Economics

Philip Spohn, Inman, Kansas, Chemistry

Dorothy Gregory, McPherson, Kan., Language and History

Arian Brigham, Marion, Kan., Home Economics

Barbara Richard, North Branch, Mich., Home Economics

Sylvan Hart, McPherson, Kan., English

Ida Kingsley, Inman, Kan., History

Hulse Barber, McPherson, Kan., Chemistry



Elmer McGonigle, Nickerson, Kan., Commerce

Inez Hobbisiefken, Caldwell, Kan., Education

D. L. Miller, Crowley, Colo., Agriculture

Arlene Saylor, Morrill, Kan., Home Economics

Clark Showalter, Darlow, Kan., Agriculture

Louise Potter, McPherson, Kan., Languages

Verna Carlson, McPherson, Kan., English

Lawrence Mann, Gothenburg, Nebr., Journalism

Jessie Daron, McPherson, Kan., Music

Marzella Okerlind, McPherson, Kan., Art

Robert Puckett, Hutchinson, Kan., Chemistry

Thelma Seitz, Larned, Kan.

Jessie Churchill, Rocky Ford, Colo., Commerce

Joe Yoder, McPherson, Kan., Chemistry

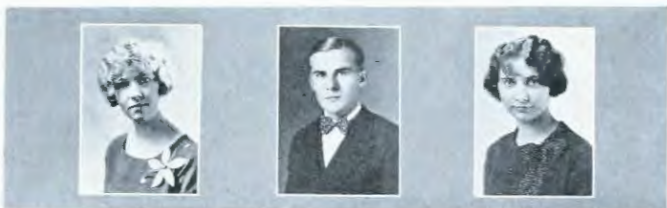
Fern Shoemaker, Wenatchee, Wash., Home Economics







*The Sophomores*



Ruth Anderson, McPherson, Kansas  
President

Margaret Devilliss, Ottawa, Kansas  
Secretary-Treasurer

Harold Crist, Friend, Kansas  
Vice President

Dwight Stutzman, Thomas, Oklahoma  
Nina Stull, Arlington, Kansas  
Walter Fillmore, Ripley, Oklahoma

Melda Mohler, Fruitland, Idaho  
Eugene Kistner, Sabetha, Kansas  
Doris Ballard, Lovewell, Kansas

John Cottingham, Tyro, Kansas  
Harriett Hopkins, McPherson, Kansas  
James Ford, Elvie, Oklahoma

Arvilla Walline, Galva, Kansas  
Lowell Frantz, Holmesville, Nebraska  
Chester Carter, Perryton, Texas





Keith Hayes, Geneseo, Kansas  
 Mary Prather, Mound City, Missouri  
 Ross Curtis, Fruitland, Idaho

Irene Gibson, Miami, New Mexico  
 Emery Metzger, Iowa, Louisiana  
 Ruth Hoffman, Dillon, Kansas

Daniel Johnson, McPherson, Kansas  
 Hazel Countryman, Sterling, Colorado  
 Gerald Eddy, Hope, Kansas



Murlin Hoover, Overbrook, Kansas  
 Bernice McClellan, Glasco, Kansas  
 Paul Bowers, Roanoke, Louisiana

Elaine Gustafson, McPherson, Kansas  
 Bill Hanna, Peabody, Kansas  
 Violet Brunk, McPherson, Kansas

Harold Melchert, Ray, Kansas  
 Fern Galle, Moundridge, Kansas  
 Irvin Albright, Pretty Prairie, Kansas

Velma Wine, Rocky Ford, Colorado  
 Sarah Moyer, Wiley, Colorado  
 Florence Lehman, Abilene, Kansas





Glenn Harris, Jennings, Louisiana  
 Evelyn Kimmel, Morrill, Kansas  
 Charles Bish, Rocky Ford, Colorado

Mildred Swenson, Little River, Kansas  
 Ethel Meyer, Canton, Kansas  
 Lila Fields, McPherson, Kansas

Wilbur McGonigle, Nickerson, Kansas  
 Cora Sell, Conway, Kansas  
 Homer Brunk, Clovis, New Mexico

Stewart Bailey, McPherson, Kansas  
 Mary Brown, Fruita, Colorado  
 Henry Hall, Partridge, Kansas

Irene Steinberg, Lorraine, Kansas  
 Fred Perry, McPherson, Kansas  
 Mabel Steiner, Hutchinson, Kansas

Walter McGaffey, McPherson, Kansas  
 Marguerite Wagoner, Hastings, Nebraska  
 Lloyd Diggs, Lyons, Kansas

Iva Crumpacker, McPherson, Kansas  
 Wilbur Bowman, Quinter, Kansas  
 Olive Weaver, Garden City, Kansas





David Campbell, McPherson, Kansas  
 Aileen Ostlund, McPherson, Kansas  
 Chester Bishop, Roxbury, Kansas

Ethel Benell, McPherson, Kansas  
 Floyd Barngrover, McPherson, Kansas  
 Jennie Yengst, Buffalo, Missouri

Clifford Negley, Larned, Kansas  
 Ray Nonken, Burns, Kansas  
 Vernon Spilman, Gypsum, Kansas



Ernest Campbell, Conway, Kansas  
 Inez Beard, McPherson, Kansas  
 Oliver Ikenberry, Rocky Ford, Colorado

Edna Myers, Windom, Kansas  
 Lawrence Lehman, Guthrie, Oklahoma  
 Virginia Campbell, McPherson, Kansas

Lloyd Johnson, Fruitland, Idaho  
 Rosa Moyers, Ames, Oklahoma  
 Harry Hinson, Wiley, Colorado

Jessie Davison, Hampton, Iowa  
 Wray Whiteneck, Aline, Oklahoma  
 Given Galle, Moundridge, Kansas



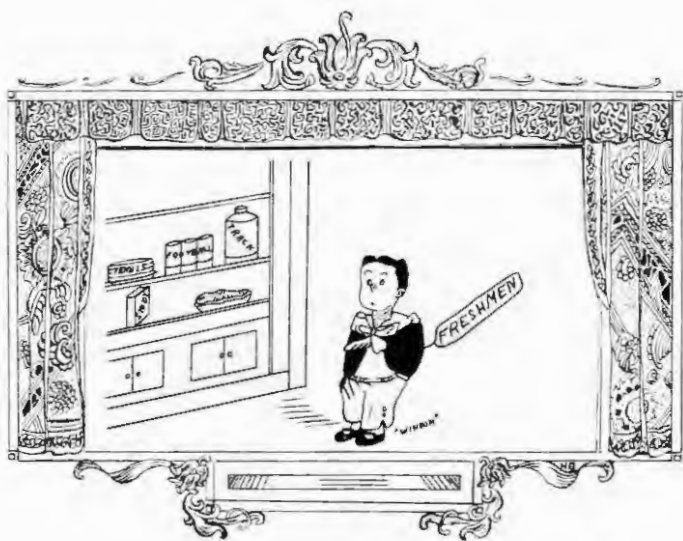
## Duty

To do your little bit of toil,  
    To play life's game with head erect;  
To stoop to nothing that will soil  
    Your honor or your self-respect;  
To win what gold and fame you can,  
But first of all to be a man.

To know the bitter and the sweet,  
    The sunshine and the days of rain;  
To meet both victory and defeat,  
    Nor boast too loudly nor complain;  
To face whatever fates befall  
And be a man throughout it all.

To seek success in honest strife,  
    But not to value it so much  
That, winning it, you go through life  
    Stained by dishonor's scarlet touch,  
What goal or dream you choose, pursue,  
But be a man whatever you do!

—Edgar A. Guest.



## *The Freshmen*





Letand Lindell, Windom, Kansas  
President

Elizabeth Hess, Morrill, Kansas  
Vice President

Mildred Wine, Rocky Ford, Colorado  
Secretary

Cecil Davisson, Hardy, Missouri  
Treasurer

Thad Fretz, Canton, Kansas

Ruth Krehbiel, McPherson, Kansas

Charles Collins, Lurned, Kansas

Irene Baker, Ozawkie, Kansas

Raymond Buskirk, Latham, Kansas

Lois Beahm, Nokesville, Virginia

Franz Crumpacker, McPherson, Kansas

Lillian Horning, Lurned, Kansas

Cletius Carney, Novelty, Missouri

Lucile Dunning, Elgin, Illinois

George Lerew, Portis, Kansas

Leta Wine, Wauneta, Nebraska



Paul Fishburn, Overbrook, Kansas  
 Sylvia Edgecomb, McPherson, Kansas  
 Ernest Watkins, Ottawa, Kansas

Freida Goering, Elyria, Kansas  
 Ruth Blickenstaff, Nampa, Idaho  
 Elizabeth Hess, Morrill, Kansas

Ralph Frantz, Rocky Ford, Colorado  
 Mildred Wine, Rocky Ford, Colorado  
 Clarence Negley, Larned, Kansas



William Graham, Fruitland, Idaho  
 Dorothy Sargent, Fruitland, Idaho  
 Royal Yoder, Conway, Kansas

Bernice Finkle, McPherson, Kansas  
 Irvin Rump, Conway, Kansas  
 Goldia Goodman, Nampa, Idaho

Glenn Seitz, Larned, Kansas  
 Margretta Okerlind, McPherson, Kansas  
 Roy Vogt, Versailles, Missouri

Ruth Trostle, Nickerson, Kansas  
 Kenneth Eisenbise, Morrill, Kansas  
 Ingeborg Swanson, McPherson, Kansas



Stanley Hartell, Plattsburg, Missouri  
 Helen Hulson, Wiley, Colorado  
 Lawrence Sargent, Fruitland, Idaho



Ada Stutzman, Thomas, Oklahoma  
 Raymond Landes, Hamlin, Kansas  
 Imo Larson, Galva, Kansas



Clifford McPhail, McPherson, Kansas  
 Helen Kline, McPherson, Kansas  
 Mervin Reed, Abilene, Kansas

Ethelyn Rostine, McPherson, Kansas  
 Clara Burgin, Nickerson, Kansas  
 Gladys Christiansen, Durham, Kansas



Edna Hoover, Overbrook, Kansas  
 Edith Murrey, Conway, Kansas  
 Elizabeth Richards, Waldo, Kansas



Nina Hamman, McPherson, Kansas  
 Ruth Lancaster, McPherson, Kansas  
 Avie Wattenbarger, Shamrock, Texas



Esther Keim, Nampa, Idaho  
 Rena Loshbaugh, Hollow, Oklahoma  
 Myrtle Ainsworth, Elmo, Kansas







Randall Taylor, Smith Center, Kansas

Raymond Taylor, Smith Center, Kansas

Prudence Strickler, Ramona, Kansas

Lucille Johnson, McPherson, Kansas

Verna Mae McCoy, McPherson, Kansas

Muriel Miller, McPherson, Kansas

Vernon Gustafson, McPherson, Kansas

William Bigham, Topeka, Kansas

Mildred Ostlind, McPherson, Kansas

Elma Oaks, Ozawkie, Kansas

Jeanette Hoover, Falls City, Nebraska



ARLENE SAYLOR

During the year a popularity contest was sponsored by the Quadrangle. Miss Arlene Saylor of Morrill, Kan., a junior, was elected by popular vote.





*Lolite Pursuits*





*Press and Pulpit*



ALVIN C. VORAN  
EDITOR

## The Quadrangle

Back in the recesses of fading memory are faces, events, dreams, ambitions, achievements, and honors cherished by the student, which are slowly but surely fading. The faces of true-blue friends become dim, jolly picnics and exciting events fade, great dreams fall before the onset of cold reality, and time wipes away the bitterness of hard work and disappointment. It is that the student may live anew in the future the things he has cherished in the past, that the 1928 Quadrangle has come to be.

When the editor-elect failed to return to school this year, the Student Council chose Alvin C. Voran. In spite of a late beginning, the members of the staff so loyally supported the work that a real issue of the Quadrangle is presented.

The Quadrangle records the ideals, activities, daily life and thought of those who have added their bit to the quality of McPherson College, and departing, have taken with them the Alma Mater's rich ideals of Christian character and service.

In John Wall, the student body found a man splendidly qualified for business manager of the Quadrangle. He has been very successful in securing advertisements and in other ways providing funds for the yearbook. Though having somewhat less finance than in previous years, his sound financial policy has completed the work without deficit. He has negotiated wisely in securing the materials and workmanship needed.

John has co-operated closely with the editor and the staff and has demonstrated fine Christian attitudes in all his work.

JOHN WALL  
BUSINESS MANAGER



One of the Quadrangle sales schemes was a popularity contest. The purchase of a Quadrangle carried with it votes toward the purchaser's favorite. The winning Lady's award was a full-page photo in the annual.

Near the close of the work, Mr. and Mrs. Walker, the Quadrangle photographers, gave the staff a fine banquet and an evening of entertainment, an event which will be very easily remembered.



Herrman Bowen  
Dorothy Swain

Lawrence Mann  
Marzella Okerlind

Marvin Steffen

Lavelle Saylor

Portia Vaughn

Doris Ballard

Warren Sisler

Raymond Trostle







Editor Lloyd Jamison has this year shown himself a very competent general. After days and nights of labor, the Spectator has found its way regularly each week into the hands of the expectant students.

## The Spectator

Accurate records of student activities of McPherson College have found a place in the weekly issues of the Spectator. Not only has it been a source of school news, humor and other literature, but it has provided a means of expression of student opinion, and printed notes of interest from other schools.

The staff had considerable training in the journalism class taught by Prof. C. B. Williams, adviser of the publication during the first semester of the year, which particularly fitted them for such work.

As an advertising medium the Spectator has served the college well. High Schools and alumni have received the paper every week, which has endeavored to give publicity to the current activities of the school and to uphold the ideals of McPherson College.

Howard Reim's past experience as the business manager of two annuals, and his high personal qualifications have made his year as business manager of the Spectator very successful.



Mildred Swenson, Reporter  
Robert Puckett, Feature Editor

Harold Fasnacht, Reporter  
Doris Ballard, Campus Editor

Adeline Taylor, Reporter  
Lawrence Mann, Sport Editor



La Verne Martin, Associate Editor  
Lloyd Diggs, Reporter

Allan Morine, Reporter  
Harriet Hopkins, Exchange Editor

Keith Hayes, Reporter  
Oliver Ikenberry, Circulation Mgr.

Mable Beyer, Copy Editor  
Charles Collins, Reporter

Warren Sisler, Reporter  
Charles Bish, Asst. Bus. Mgr.



IRA IHDE  
Negative



PHILIP SPOHN  
Affirmative



KEITH HAYES  
Affirmative



RALPH FRANTZ  
Negative

## Varsity Debate

When the Class of '27 included M. C.'s twice-championship veteran debaters, it seemed to her neighbors that she would no longer be a factor with which to be seriously reckoned, and that the sun was about to set on her wonderful forensic record. But they reckoned without Coach Hess. Although he had no way of foreseeing the results of the oncoming season, he did not graduate, nor did his principles change! So he and his new men worked on unceasingly, regardless of the small hope of continuing the brilliant record.

Undoubtedly, according to indications, K. W. U. would win on February 20. But the best of evidence is sometimes deceiving, and the Bulldogs took both ends. The neighbors took notice! Two weeks later M. C. "took Sterling into camp". Surely the strong Bethany team would stop this whirlwind! But they likewise lost both ends! On March 30, the state championship went to the "Dogs" for the third consecutive time!

This victory is the more remarkable in that it was won by a new team by all double victories in their division, and with only one dissenting judge in the state event, a record previously unequalled in McPherson College.



## Second Debate

Each year at the annual college debate try-out there is chosen in connection with the choice of the varsity four, a second team of debaters. This year's second team is Lawrence Lehman, Murlin Hoover, Henry Hall and Lloyd Diggs.

The team contested each other before a very large and attentive audience at Carlton, Kansas. The decision of the assembly made Henry Hall and Lloyd Diggs, affirmative, victorious over Lawrence Lehman and Murlin Hoover, negative.

The only interscholastic debate of the season was won from Bresee College of Hutchinson, Kansas. Lehman and Hoover, McPherson negative, won the decision of the critic judge at Hutchinson and Hall and Diggs repeated the victory at McPherson.

The question debated was, "Resolved: That the United States should cease to protect capital invested in foreign lands by armed force, except after formal declaration of war."



Murlin Hoover  
Henry Hall

Lawrence Lehman  
Lloyd Diggs

## Ladies' Debate



Nina Stull  
Fern Galle

Ruth Anderson  
Floy Brown

The McPherson College Ladies Intercollegiate Debate Team is picked each year at a special ladies debate tryout. This year Misses Nina Stull, Floy Brown, Fern Galle, and Ruth Anderson were chosen to debate the question, "Resolved that the United States should cease to protect capital invested in foreign lands by armed force, except after formal declaration of war."

The first intercollegiate debate was held on March 23, when McPherson College debated with Bethany College. The McPherson affirmative team, Nina Stull and Floy Brown met the Bethany negative team at Marquette, Kansas, the decision of the audience was for the negative. At McPherson the negative team Fern Galle and Ruth Anderson won the decision of the critic judge from the Bethany affirmative team.

The second debate was held with Kansas Wesleyan University on March 27. Misses Galle and Anderson won easily from the Wesleyan affirmative team, while Misses Brown and Stull lost the decision of the critic judge to the Wesleyan negative team at McPherson.



## Forensic Club

The Forensic Club purposes to develop and maintain a spirit of loyalty and interest in its members for debate, oratory, and other forensic activities.

For those students who are especially talented or interested in public speaking and debating, the club offers unlimited opportunities. Through this organization it is possible to discover and develop talented speakers.

The club has held its meetings every alternate Wednesday evening, and through the past year keen interest has been shown in its programs. However, the programs were not limited to oratory and debate, but included music and dramatics.

With a large membership, under the successful leadership of Harold Crist, and with the advice and assistance of Prof. Maurice A. Hess, the club has definitely established its place in our activities.

HAROLD CRIST \_\_\_\_\_ President

MARY PRATHER \_\_\_\_\_ Secretary

MILDRED SWENSON AND VELMA WINE

\_\_\_\_\_ Program Committee



## World Service Group

The World Service Group has successfully completed its first year's activities. The group was organized in the fall as rather an inclusive group of all students interested in definite Christian service. It welcomed student ministers, student volunteers, and those interested in the general fields of Christian work.

During the winter months two student discussion groups, one led by Mrs. Crum-packer and the other by Dr. Yoder, gathered once a week for some very inspirational meetings. The group meets regularly every two weeks for a program and fellowship together. It is hoped that the present membership of twenty five will be increased in the coming year and that greater service may be rendered to the student body. The officers for the year were:

HOWARD KEIM JR.	_____	President
LAWRENCE LEHMAN	_____	Vice President
LUCILLE DUNNING	_____	Secretary
LETA WINE	_____	Treasurer





JOHN WHITENECK JR.

HENRY HALL

## Oratory

The state anti-tobacco contest was held at Tabor College of Hillsboro. Henry Hall won first prize of \$35.00 and boosted McPherson's winnings to three firsts and one second in the last four years.

At the state Old Line contest held at Wichita, John Whiteneck won second, which duplicated the performance of Kenneth Rock last year.

During the year several local contests were held for elimination and for qualification. These were the anti-tobacco, won by Henry Hall; the Old Line oratorical entered by John Whiteneck, who gave his oration locally to qualify; and the Peace contest, won by Henry Hall with a close second by Howard Keim Jr., and Lawrence Lehman third.

In summing up the oratorical achievements of the season, McPherson won two firsts and a second out of three possible firsts in the state contests. This is an enviable record.

We have good average material, but above all we have a coach in Professor Maurice A. Hess who believes that when a thing is said to be impossible to do that is sufficient reason to proceed to do it. By his unceasing labor, his devotion to his students and his earnest sincerity he has established for himself, his school, and his associates a record that is envied by and marveled at by debaters and debate coaches the country wide.



*Music Division*



## Music Graduates

Jessie Daron  
 McPherson, Kansas  
 Teachers' Certificate in Piano, also  
 Teachers Certificate in Voice, also  
 Certificate in Public School Music.

Vivian Harnly  
 Zion City, Illinois  
 Diploma in Piano.

Jewell Newton  
 Mansfield, Missouri  
 Certificate in Public School Music.

Effie Thompson  
 Little River, Kansas  
 Certificate in Public School Music.

Clara Davis  
 McPherson, Kansas  
 Diploma in Piano.

Myrtle Moyer  
 Ames, Oklahoma  
 Candidate for degree Bachelor of  
 Music.

Thelma Budge  
 St. Johns, Kansas  
 Diploma in Piano, also Certificate in  
 Public School Music.





## Music Club

The Music Club is an organization composed of two organizations, namely: The Men's and the Ladies' Glee Clubs. The enrollment of the Music Club is approximately forty. The members enroll in the Music Club at the same time of enrollment for the regular college work. The roll is kept and honor points are taken from the student if he has been absent from practice more than three times during the semester. Each member is given an hour's credit for the work of the two semesters. Rehearsals are held twice a week.

During the year the Music Club sang at several of the different local centers for music. The club assisted the Salon Orchestra in a program at the Methodist Church with the numbers, "The Earth Is the Lord's," and "Send Out Thy Light."

Early in May the organization presented the opera "Martha" by Flotow. This work was a fitting culmination for the season.



## Ladies' Glee Club

The Ladies Glee Club, under the direction of Miss Wilma Batchelor, voice instructor has done faithful work the past year. They met twice each week for practice and used only the best types of music for their study.

This group of young ladies made an appearance in chapel and also in the inaugural ceremony for our president, Dr. Schwalm, which was held in February. They also in connection with the Men's Glee Club, gave a production of the opera "Martha" by Flotow in May of this year.

Besides the pleasure derived from the club work, the members are allowed a half hour of college credit for each semester's work.



## Men's Glee Club

The Men's Glee Club, under the able direction of Miss Wilma Batchelor, has experienced a successful season studying music of the best type. Membership in the club depends upon a try-out held at the beginning of the year. Attendance at practice is required twice each week as regular class work, and college credit is given for the work done in the organization. Miss Marguerite Wagoner has served as a capable accompanist for the organization.

In May the Men's Glee Club with the Ladies' Glee Club, presented the Opera "Martha" by Flotow, accompanied by the McPherson Salon Orchestra. The production was sponsored by the music faculty of the college and met with great success.





## The Cecilian Music Society

The Cecilian Music Society was organized last February under the sponsorship of the music faculty when a constitution was drawn up and officers elected. College students, faculty members, and all persons interested in music are eligible for membership. There were fifty charter members.

The society has been doing commendable work in furthering its purpose of promoting the cause of good music in the college and McPherson community. It is a member of both the Kansas and National Federation of Music Clubs.

A delegation attended the Kansas Federation Convention at Hutchinson March 22, where the McPherson Salon Orchestra gave a concert on the evening program.

Bi-monthly meetings were held in the college chapel on Thursday evenings, where programs of a study and an entertainment nature were given.

MYRTLE MOYERS	_____	President
JEWELL NEWTON	_____	Vice President
ALVIN VORAN	_____	Secretary
MARY PRATHEE	_____	Corresponding Secretary
MARGUERITE WAGONER	_____	Treasurer



## Salon Orchestra

The McPherson Salon Orchestra was organized last summer under the direction of Prof. G. Lewis Doll, violin instructor at McPherson College. The orchestra is composed of sixteen of the most talented musicians of the 1927 McPherson College Symphony Orchestra.

Experience and talent of the members in addition to the remarkable ability of Professor Doll as a director have been the contributing factors toward the success of the orchestra and have evidenced that it is one of the best McPherson has ever produced.

The orchestra is a member of both the state and national federation of music clubs. It was the first senior orchestra in Kansas to become affiliated with these organizations.

The first appearance of the orchestra was made on the chautauqua platform in McPherson during August, 1927. The orchestra played at the Kansas Federated Music Clubs Convention at Hutchinson in March, accompanied the Tabor College Oratorio Society during the Music Festival at Hillsboro, broadcasted a program from KFKB at Milford, Kansas, accompanied the McPherson Choral Society in the presentation of "Faust", and gave concerts in many of the towns of central Kansas.

O Sacred Truth!

Altho out on broad Kansas plains,  
Here not in vain are we,  
For we will strive with might and main,  
That right and truth may be.  
The student loves to dream his dream  
Of life that's yet to be,  
Of future days and years that'll seem  
The best for old M. C.

True soldiers once with sword of might,  
Worked for our freedmon long,  
And now to keep our pages white,  
Will be our purpose strong.  
Beneath the smile of sunny days,  
Let truth and freedom reign;  
Within our College let us praise  
The deed that'll leave no stain.

We are an army—on the way,  
Some day the world will see  
Us larger grown and then they'll say,  
Yet 'tis the good M. C.  
Dear Truth, without thee we must fall,  
O, then our pillar be,  
O, Truth, be thou our stay for all,  
And stand for our M. C.

CHORUS

We'll hope for our M. C.,  
We'll cheer for dear M. C.,  
While winds do blow, and sunflowers grow,  
We'll long for thee, M. C.





*The Organizations*



EARL C. KINZIE  
President

## Y. M. C. A.

The Y. M. C. A. of McPherson College is one of the fine contributing factors to the life of the college, and one which helps to make the college atmosphere that for which the college stands. It is truly a student organization and is managed by the students.

The Y. M. C. A. during the past year has tried to turn the thinking of the men of the college to the greater and nobler things of life—to get life while getting education.

To further their idea they have made it possible for some of the leading religious thinkers to come to our campus. They have brought a new realization of the value of spirit.

The most popular of them is "Dad" Elliott. He set new ideals before the college men and women and left an impress long to be remembered.

Through their progressive policies and co-operation the two organizations, the Y. M., and Y. W., have become very vital organizations in M. C. student life.

Earl Kinzie, acting in the capacity of president, has proved himself very capable and has shown his strength as a Christian leader.



AUTUMN LINDBLOOM  
President



## Y. W. C. A.



The Young Women's Christian Association of McPherson College has served as an inspiration in the lives of the girls. It has made Christ a vivid reality to its members and has helped them "to lead others to faith in God through Him."

Great interest has been shown in the inspiring weekly meetings which have radiated the love, friendship, and brotherhood of Christ. Delegates were sent to various conferences. The reports from the Detroit Conference were especially interesting and enjoyable.

The most outstanding event of the association's program this year was the three day visit of "Dad" Elliott to the campus. "Dad's" splendid messages inspired all to live a bigger and better life for Christ.

The social life in the association has also been active. On enrollment day, a tea was given to everyone. A tea was given in honor of Miss Dinsdale of Chile. The Y. W. C. A. and Y. M. C. A. gave a watermelon feed to the students during the first week of school. A pleasant Christmas party, which helped to radiate the Christmas spirit, was enjoyed by the dormitory students. Valentine week was observed by the daily secret deeds of each member's "Heart Sister." A farewell party ended the work of the social committee for 1928.





## The Thespian Club

The Thespian club, now six years old, has established itself so firmly as a necessary school activity that it is indeed an achievement to be one of its members. It has for its purpose the study, interpretation, and production of drama.

One only need think back to March nineteen and assure himself of the attraction the club has. At this time the Thespians opened the doors to any member in school whose dramatic ability permitted him to make the Thespian play, "The Goose Hangs High," when forty-three contested for entrance.

The club holds regular meetings once a month to discharge business. A number of plays are considered and thoroughly discussed before choosing one for presentation later in the year.

Because of the large number of seniors in the club, some twelve new members were initiated into membership in order to give the necessary impetus to start prompt activity next year.

Under the direction of Miss Della Lehman, college dramatic art instructor, the play, "The Goose Hangs High," by Lewis Beach, was given early in May in the new Community Hall auditorium. This was given under the auspices of the Student Council.



## Art Club

The Art Club was organized in 1926 for the purpose of studying both ancient and modern art. Since its organization, the club has been one of the active student groups. Membership of the club includes all students enrolled in the art department. At meetings held each alternate Wednesday evening particular artists and works of art were studied. Constructive designing, commercial art, Oriental rugs, and sculpturing are some of the fields that have been explored during the year.

Two exhibits were prepared by the club, the first during Bible Institute week in February, and the second during commencement week. The float made by the Art Club won first place in the McPherson College group on All School's Day in 1927.

Herman Bowen, art instructor, entertained the club at a party at his home in December.

MARZELLA OKERLIND	_____	President
RUTH HOOVER	_____	Vice President
MARGARET HUGHES	_____	Secretary-Treasurer
HERMAN BOWEN	_____	Advisor



## The W. A. A.

The Women's Athletic Association of McPherson College sponsors all athletics for women, and has for its purpose the creation of an interest in gymnastic and athletic activities among college women, as a means of promoting physical efficiency, scholarship, and good fellowship.

Since the completion of its organization in 1925, the association has added new sports to its program, and its functions have become enlarged, until it occupies an important position among college activities. There was much interest in soccer, the new sport of the year, also an increased enthusiasm was shown in volley ball, basket ball, base ball, tennis, and hiking.

The W. A. A. banquet was held in March. An interesting and peppy program was given, which followed the theme of a track meet. On the annual high school festival day the W. A. A. supervised a girls' track meet for the visiting schools. This was the first time that such an event was staged at McPherson College. In co-operation with the Young Women's Christian Association the organization sold candy at all the foot ball and basket ball games during the year.

Nine delegates attended the state convention held at Wichita in October. McPherson College had the largest group of representatives in attendance. Reports from this convention served as an impetus for work in the local organization.

VIOLA BOWSER	_____	President
JESSIE CHURCHILL	_____	Vice President
FLOY BROWN	_____	Business Manager
DOUGS BALLARD	_____	Secretary





## The Macoeds

The Macoeds are now in the third year of their existence as a student organization. All girls of the college who maintain a certain standard of scholarship, show school loyalty, and are willing to participate in the activities of the organization are eligible for membership.

Throughout the foot ball and basket ball season the Macoeds furthered their purpose to create pep and enthusiasm at the game by carrying out well planned stunts between halves.

The club has met well its responsibility of helping to create a loyal school spirit.

JUNE ELLIS	_____	President
IVA CRUMPACKER	_____	Secretary-Treasurer
PORTIA VAUGHN	_____	Stunts Committee Chairman



## “M” Club

The athlete, who by his athletic and scholastic standing has earned for himself the right to wear the “M,” the emblem of the institution, has also automatically made himself eligible for membership in the “M” Club.

Each spring the athletes who have become candidates for membership are enlisted as life members after they have received proper training at the “M” Club initiation.

The purpose of the “M” Club is to promote better athletics in McPherson College and the Kansas Conference, in order that better men shall be developed, both physically and morally.

During the football season the club edited the Bulldog Bullet. The organization assisted in carrying out the plans at all home games, track meets, tournaments and at the high school festival held in April.

Two banquets were given this year, one in the fall and the other, the traditional spring banquet, in May.

FRANK BARTON  
PHILIP SPOHN

President  
Secretary-Treasurer



## Chemistry Club

The school year of '27 and '28 marked another milestone of success for the Chemistry Club. Under the inspiring supervision of Dr. J. Willard Hershey, head of the Chemistry Department, the club not only achieved the success of former years, but was able to take many steps in advance.

The programs presented during the year were instructive and stimulated original research. The success of the programs was shown by the interest and enthusiasm of the student body.

One of the many interesting subjects discussed was, "The Chemistry of the Automobile." Sub-topics, such as The Rubber Tire, Chromium Steel, Non-breakable Glass, Petroleum, Duco Paint, Leather, etc., were assigned to members of the club for discussion. At some time during the school year each club member was asked to appear on one of the programs.

A number of outstanding events were sponsored by the Chemistry Club. Perhaps the most vivid in memory is the day spent in Hutchinson visiting the industrial plants.

One evening in March the club invited the student body to review eight reels of scientific motion pictures. Upon another occasion Dr. Hershey presented his annual address on, "Radium."

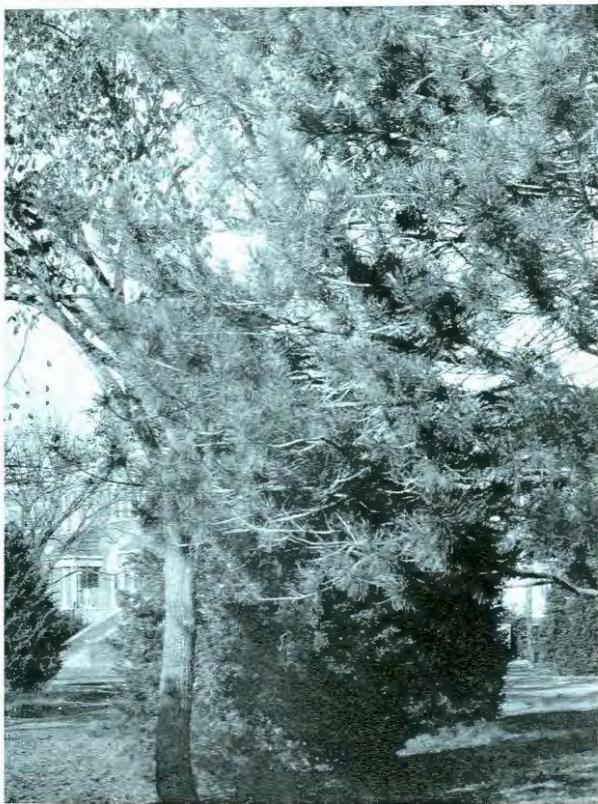
Fire crackers, colored lights, explosives, chemical gardens, and frozen eggs were featured on the Fun Program—the one time when the student chemists were given license to play.

A delightful spring party was given by the club. Refreshments were designated by their chemical formulas and served in chemical apparatus.

DR. J. WILLARD HERSHEY	President
RAYMOND TROSTLE	Secretary
ROBERT E. PUCKETT	Publicity







*Journeys*





GEORGE GARDNER

The three years of service rendered by George Gardner as head coach of athletics, bore fruit in the past season of his direction. His methods of play have been fully justified in the records of the past season. Coach Gardner represents the clean, systematic variety in sporting play and when his teams go into the contest they have the full benefit of a master in the coaching line.

George carries with him a wide reputation in a sport career, especially in basketball, where he played four consecutive years on the All-Conference team while attending Southwestern College and also as All-American forward at the National tournament in 1923.

One of the best known athletes in Kansas, Gardner is called on often to render services as a referee. His services on the McPherson Bankers team in the Kansas Independent league raised him high in the esteem of the McPherson sport faction.



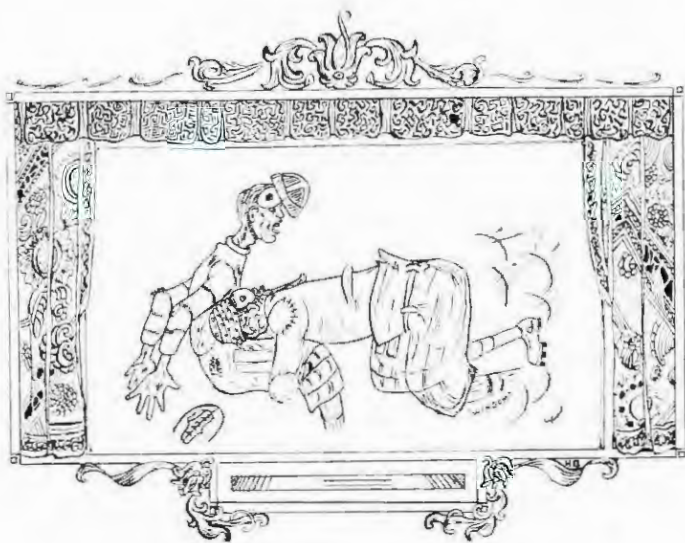


CHEER LEADERS

Probably never before have the cheer leaders of the college worked up the degree of rousing enthusiasm that June Ellis, "Berries" Crist and "Cheesy" Voran have in the past year. With Voran leading in the college songs and Crist and Ellis in the yells, the rooters strained to their last ounce in hearty support.

Through their initiative, the students were persuaded to don the snappy Bulldog pep sweaters and the cheer sections were very furnaces of cheer and spirit. Win or lose that Bulldog spirit was continually manifest at every contest, and much of the praise is due to this trio of spirit inspirers.

The school spirit reached under their guiding effort has built up a pride and loyalty in the Alma Mater that will long be felt.



## *Football Events*



MANN



WARREN



MILLER

Of the twenty-one football letter-bearers of the 1926 season but seven returned to don the moleskins for practice last September. When Coach Gardner began to whip out an eleven, he found an unusually light and inexperienced crew, Captain Leo Crumpacker, four letter man, Nonken, Hanna, W. McGonigle, Whiteneck, Hawkins, Murrey, first year men, and Barton, 1924 regular, were the nucleus for material.

Alvan wins 2-0. On October 1 the Canines opened the season in Oklahoma, where the rangers emerged from a sea of mud with the only score of the game—a safety.

Southwestern totals 21-6. A heavier, aggressive eleven from Winfield kept the Bulldogs at bay for all but a short time in the second half when the Canines marched across the field for the season's first.

LEO K. CRUMPACKER  
McPHERSON, KANSAS



CAPTAIN AND  
QUARTERBACK





SPOHN

BOWERS

GRAHAM

BIGAM

RUMP

Micks tally 18-0. The St. Mary's Micks completely bewildered the Bulldogs with a hidden ball trick. The 13th found Barton on the casualty list with a broken ankle. Late in the game, a Canine pass across the goal went astray.

Wichita U. noses out 13-7. Although three times within the one-yard line, the Canines were held until late in the final period before they scored. The heavy municipal team pushed across twice. Hawkins left the game for the season.

Bethel humbled 60-6. The Railroaders succumbed to the dazzling Bulldog attack and the Miller-Crumpacker scoring combination ran up the highest conference score of the season.





SURREY

HAWKINS

NONKEN

WHITENACK

MCGONIGLE

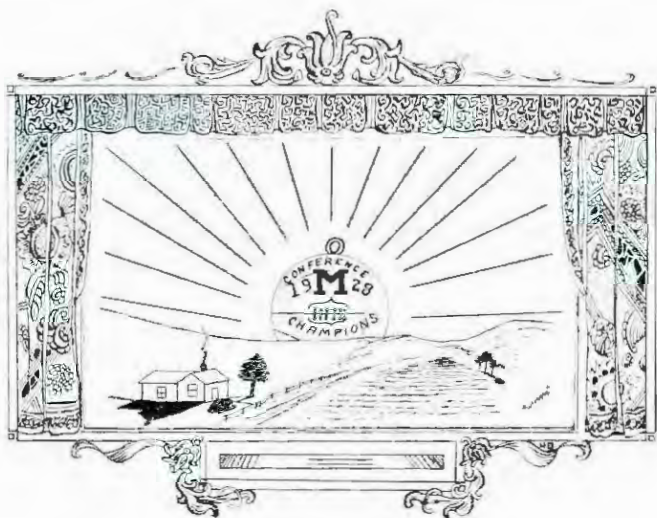
Coyotes overwhelm 35-0. The undefeated Methodists were shocked out of their daze by a menacing Canine passing attack from the kick-off. After holding on the one-yard line the fleet Isaacson and his heavy line completely crushed Canine opposition.

Sterling triumphs 12-7. Two touchdowns in the final moments of each period defeated the Canines in a near heart-breaker game. An intercepted pass with a McPherson penalty paved the way for the winning touchdown.

Swedes smother Dogs 30-0. The Swedes found themselves late in the first period and from then on their momentum increased. Fumbles and mid-field recoveries aided the Vikings in rolling up the score.

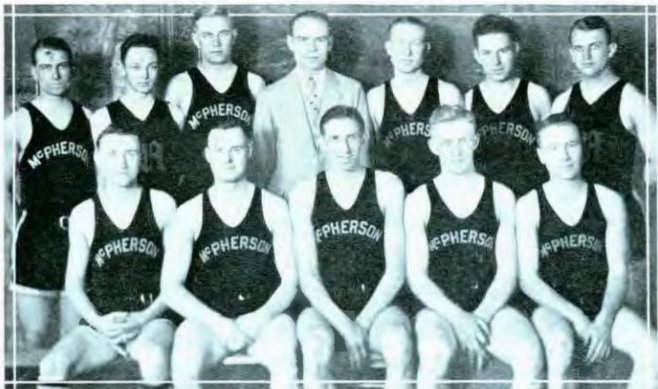


Page Eighty



*Basketball Lore*





The credit of a successful year in basket ball does not go entirely to the "five" but also to the squad that made it possible for the team to be drilled and built up to a place such as was attained this year.

The new municipal gymnasium is a wonderful asset to the city as well as to the college. This building stands contest with the best and has undoubtedly helped the Bulldogs to attain their glorious results. A few of the early games were played in the Alumni gymnasium.





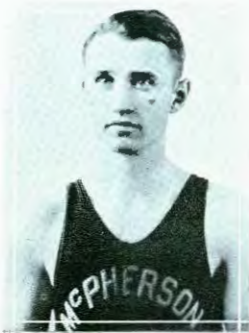
#### LEO CRUMPACKER

The headiest man on the floor and the master field general is Leo "Crummy" Crumpacker. Leo has been outstanding in every branch of sport and he understands the game. His selection as All-Kansas conference guard was well deserved. Leo is the guard who is assigned to stop the opposing scoring ace.

At the close of the previous season, the prospects for basketball for last year were indeed high as only one man was to be lost by graduation. However, when the time for practice came, Barre, Holloway, and Blickenstaff, along with Eakes, did not don the suits.

#### EARL KINZIE

Lightning basketball is Kinzie's special feature, always working hard and turning up where least expected. His brilliant floorwork was a constant marvel. Kinzie doesn't stop as a defensive player, but is continually following up, carrying through or teaming it under. His choice on the All-Kansas conference second team was much deserved.





#### RAY NONKEN

More recognition than he usually gets is due Ray Nonken. His dribbling attack has penetrated every opposing defense in opposition through the season. Ray doesn't shoot often but he gets the ball in the scoring position. "Nonk" is a fast man—he picks up speed fast and stops quick. For recovering the ball, he's unbeatable.

Couch Gardner took his men on a pre-holiday trip into Oklahoma where the fast Phillips U. quintet trimmed the Canines 11-28. From there, a trip was made to Alva and the Canines split a double header. Alva journeyed to McPherson during the holidays and lost both games to the improving Canines.

The conference season started off at Wichita against Friends U. Friends, Ottawa, Sterling, St. Benedict's, St. Mary's, all fell in a row. The catastrophe of the season happened next when Bethany managed to slip over a one-point victory to take us off the lead column.

#### MELVIN MILLER

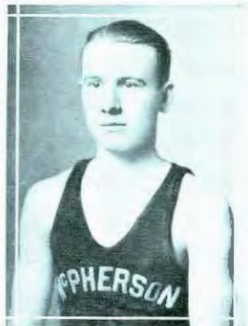
Along with his selection as All-Kansas conference center, and his selection on the third All-American, Melvin "Beak" Miller was a high point man in the conference and the National tournament. Invaluable as a floorman, at the tip-off and the follow-up, Miller is the scoring ace against all opposition.





#### ELMER CRUMPACKER

The tall man isn't always the best as Elmer well demonstrated. His play grew better as the season advanced culminating in his choice for honorable mention at the National Tourney. Difficult to guard, accurate in his shots, a surprise on the follow-ups, dependable and plucky "Little Crum" towers in playing strength.



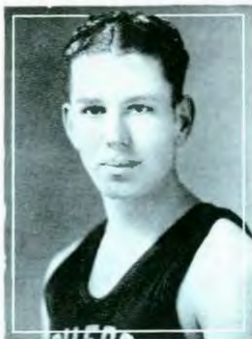
Baker came down after losing to Bethel only to fall again; St. Benedict's exuberant from trimming the Swedes, turned away disconsolate; Bethel, stunned out of the conference leadership; St. Mary's out smarted; Bethany, squeaked; Sterling, re-proved, and Bethel vanquished for the conference title.

Spirit rose to send the Canines to the National tournament where they survived to the quarter finals losing out to the Hillyards in the fourth stiff battle of the play-off. McPherson basketball had earned the respect of the fans and the players were popular to an enthusiastic following at Kansas City.



#### LAVELLE SAYLOR

When Coach Gardner called for a player to fill the breach in either forward or guard position, "Zeke" Saylor fitted into the play without any variation of pace. A neat floorman, accurate in pass work and working the ball into scoring range, he contributed plentifully to the Bulldog successes.



#### LOREN ROCK

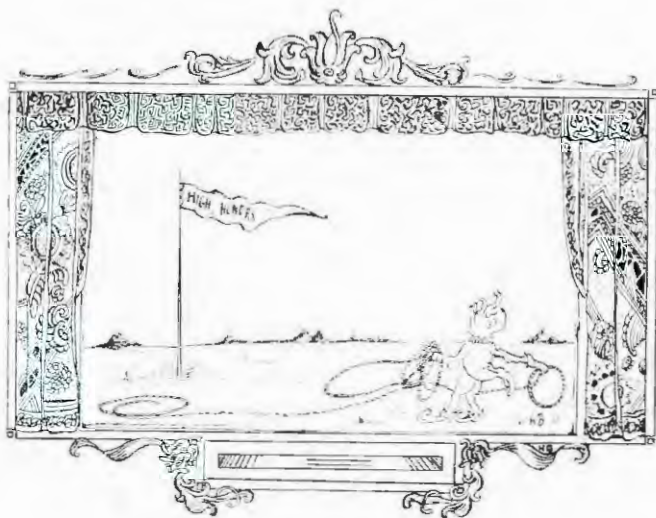
Rock contributed mightily to the Canines reserve strength. His ability to hit the basket and range the floor in neat fashion always placed him worthy of all opposition. Coming into the game with fresh strength his shiftiness and agility on the floor always put new vigor into the invincible Canine attack.

This has undoubtedly been the greatest year in basket ball in the history of the college. It has placed McPherson with the best in the country and has brought the College to a high place in the eyes of the surrounding country. This feat has not been the working of a few but of many. Those involved in this transaction were students, coach, athletes, athletic board, management, and patrons. No doubt but that we have traversed several mile stones, but the goal has not been reached.

#### ERWIN RUMP

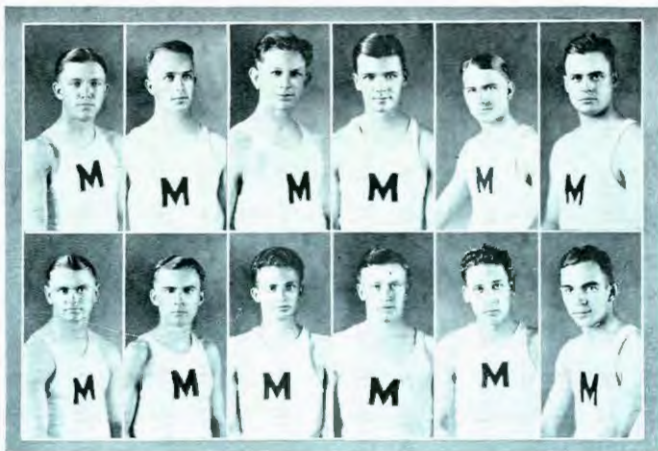
Tall and shifty is an accurate description of "Rosy", a bat-in expert and a mighty good utility man. Rump is a player who knows how to handle the ball and when he is open to shoot he hits the basket. Moreover, he is remarkably capable as a jump man and when the ball is in opposing hands, he guards his man well.





## *Other Sports*





## Track

Led by Captain Ernest Kaufman, the Canine trackmen engaged in their first meet of the season against Hays and Bethany on April 9, where Puckett, Kaufman and Rock won events to place the Canines in second place, Hays winning with 62½ points, McPherson, second with 52 and Bethany, third with 38½.

Complications arising out of changed dates deprived McPherson of Kaufman and the Wesleyan Coyotes sprang a surprise on the Canines in a dual meet on April 6 when Salina scored 85 points to McPherson 11.

Bethel fell under a heavy barrage of points on April 23 when the Bulldogs took ten of the fifteen events to total 84 points while Bethel was adding up 47.

On April 29, the Hexangular meet on the McPherson field went to the Hays Normals with 48 points, Wesleyan was second and McPherson a close third. New records were set in four events.

April 30 saw McPherson host to 1500 high school students and coaches in the annual High School Festival, an invitational meet and state elimination contest.

Southwestern copped the honors in the pentangular meet at Newton on May 11 with eight firsts, far in the lead. Puckett captured both dash events and with the help of Rock, Kaufman, Flickenger, Hutchinson and Crumpacker placed third in the meet.

At the close of the season Puckett, the high point getter for the Canines was elected track captain for the 1928 season. Puckett was the one sure point winner of the whole season, leading at the tape in the dashes.

Captain Kaufman as a quarter-miler won respect over the state. Moreover, he helped Puckett garner in the points in the dash events.

Rock, the most versatile of the track squad, placed regularly in the javelin, broad jump, hurdles, pole vault, and high jump.

Crumpacker was McPherson's capable entree in the weight events and a consistent point gainer.

Betts, Crist and Whitmeck, distance; Barngrover, vault; Flickenger, hurdles; Bowers, dashes, broad jump, and hurdles; Hutchinson and Barngrover, javelin; Fasnacht, hurdles and high jump, contributed much to the track successes.



## Baseball

As a self made sport, baseball came into its second year of existence in the college activities. As the players were limited to strict financial funds the games were all scheduled away from home. Coach Gardner coached the players along with the track squad.

Captain Barre led the men in practice and coached the new recruits in the absence of Gardner. Barre, Hawkins, Kolzow, Beckwith and Yoder were the letter men in the line-up, as Saylor and Rock were too busily engaged in other activities.

Curtis, W. Whiteneck, P. Bowers, Mann, Holloway, Nonken and King turned out for the squad.

The season opened after a long trip to Chillico, Oklahoma, to play the Indians as a special feature for their sectional track meet. Kolzow hurled a nice game to lead his team mates out to a 4-3 victory, Barre relieving him in the latter part of the game.

Two weeks later, the Canines made a two-day invasion of the diamond of the St. Mary's Micks. The first game went to the Micks in easy fashion though Kolzow pitched fine ball, but his team mates' errors gave the Irish an 8-1 advantage.

The second game of the trip was a tight struggle with Barre on the mound for McPherson and holding the Irish stickmen at bay. Two costly errors coupled with a long hit aided the Catholics to run in two scores while twice the Canine runner died on third.

The personnel of the team included, Curtis, Bowers, Spohn, and King, outfielders; Barre or Yoder, third base; Hawkins, short stop; Holloway, second base; Nonken, first base; Kalzow and Barre, pitchers; Beckwith and Mann, catchers.



## Tennis

The tennis season confronted the Canine racketeers with some unusually hard competition in the 1927 season with College of Emporia, Sterling, Friends and Bethany developing some capable teams.

The formerly invincible Friends team were tackled at Wichita on April 28, and "Zeke" and Eakes were able to wrest a doubles match from the Quakers, though the other matches went to Friends.

On May 2 Kansas Wesleyan invaded the home court, to be sent back vanquished, taking only two of the singles matches while the Canines were taking honors in the doubles and other pair of singles.

College of Emporia with one of the best teams in the state turned the Canines away on May 3 with all six losses, and played such superior ball that they were only forced to three sets in a couple of games.

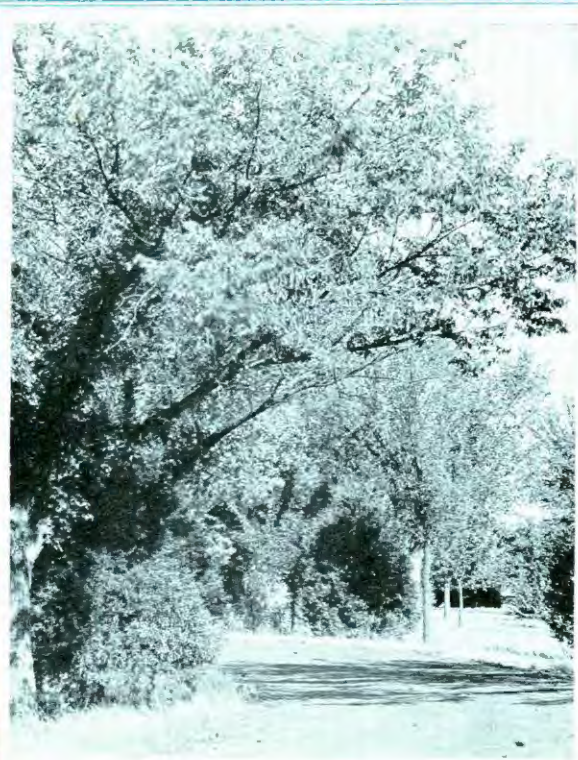
Friends returned their match in McPherson to cop all honors though "Zeke" and Eakes forced their opponents to three deuced sets in the first doubles match.

The hexangular meet, Sterling took the singles championship and Bethany took the doubles honors.

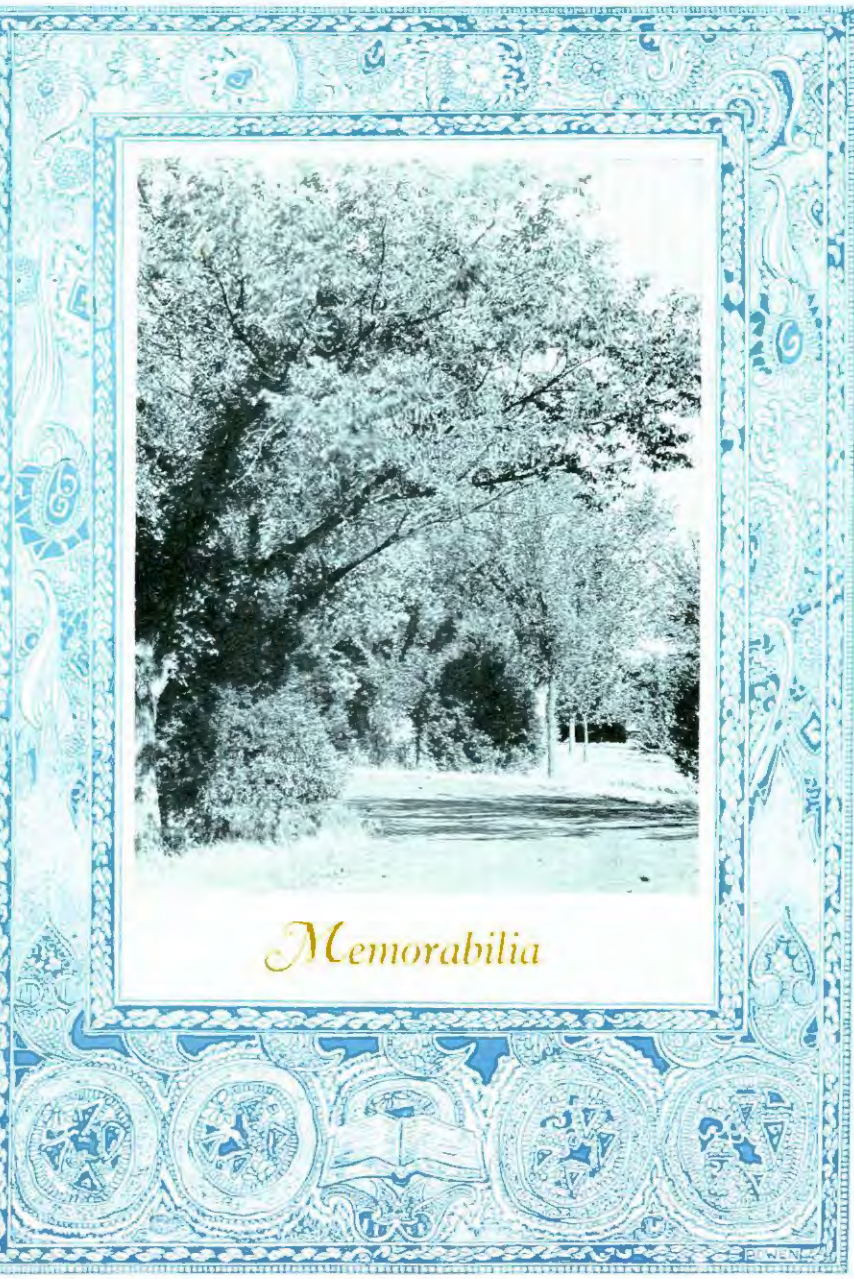
Two men comprised the team which finally met the Swedes on May 21 but all matches went to the Vikings.

In Rock, Saylor, Eakes, Jamison and Kinzie McPherson had five capable net players and, especially, "Zeke" and Eakes in the doubles always presented stiff opposition. Kinzie was a rapid racket wielder on the court. Rock played a steady reliable game at all times and Jamison threatened at all times even though confronted by stiff opposition.





*Memorabilia*





*"M." Club Initiation and So On*





*Hallow'een Brings Out Old Friends*





MY PHEERSON COLLEGE  
 M. PHEERSON COLLEGE  
 H. M. B. B.  
 BASKET BALL - STATE CHAMP.  
 DEBATE - STATE CHAMP.  
 DRATORY



*All of M. C. Hither and You*



*Some Where Around M. C.*



*Every One Must Have Fun*





*Annually—The Night Shirt Parade*



*The Enthusiasm and Fan of M. C.*



*The May Day and Its Joys*





*May Day Brings Its Features*



*Senior Kid Day Brings Many Laughs*

## Calendar

---

Throughout the summer a great unquenchable thirst burned within us, and that thirst was for knowledge and college friends, and so strong was its urge that we could scarce restrain ourselves until the catalogue said "come!" And it came to pass as we had hoped that about September 5 there was a new note in the squawk of the "gallopin' goose," and the breezy whistle of the Santa Fe and of the Rock Island suggested surprises. Green new life began to appear on the McPherson College campus.

And the word came unto us saying, "Get the habit now! Line up!" and to the newcomers, "Jump right in and make yourselves at home!" And so on September 7, the fun began.

On September 9, the Y. M. and the Y. W. gave their annual reception of welcome, and forty big fat watermelons met their Waterloo.

---

Sept. 13—Faculty reception! Howdy!

Oct. 1—First grid game. Bulldogs too short for the sticky Oklahoma mud. Alva 2; M. C. 0.

Oct. 6—"Evening dress" parade.

Oct. 7—Southwestern Moundbuilders 21; Bulldogs 6.

Oct. 13—Irish too hot for the Bulldogs. St. Marys 18; M. C. 0.

Oct. 13—M. C. Mothers and Daughters Banquet.

Oct. 28—Wichita U. 13; Bulldogs 7.

Oct. 31—Hallowe'en Carnival. The ghost that visited Peg Saylor's room was the goat this time.

Nov. 4—Every "Dog" has his day. M. C. 60; Bethel 6.

Nov. 9—The Blue Danube Singers.

Nov. 11—Coyotes took the meat. K. W. U. 35; M. C. 0.

Nov. 17—Sterling "barreled" that game, despiste a real serap from the Bulldogs. Story 12-7.

Nov. 22—"Dad" Collins blossoms out in verse.

Nov. 24—Our final grid game. The Swedes, of course! We gave them the pigskin and the long end of a 33-0 score.

Nov. 31—Hde. Ralph Frantz, Hays and Spohn will argue for M. C. on the men's varsity this season.

Dec. 2—Quadrangle popularity contest closes. Peg Saylor wins. "M" club banquets lady friends. Nearly four hundred hear Hyde and Hutcherson at the Fathers and Sons Banquet.



Dec. 7—Floy Brown, Nina Stull, Gwen Galle, and Ruth Anderson make the Ladies' Varsity, in debate.

Dec. 9—Spectator Staff Banquet.

Dec. 16-17-18—Bulldog hoopsters practice in Oklahoma. Epid 41, M. C. 28; Alva 31, M. C. 27; M. C. 34, Alva 18.

Dec. 20—MERRY CHRISTMAS!

Dec. 21-22—Alva drops two practice games to the Bulldogs in the Gym. 35-24, and 46-35.

Dec. 28-Jan. 1—Keim, Hutchison, and McGaffey represent M. C. at the Tenth Quadrennial Student Volunteer Convention in Detroit. Also six others from M. C. attended.

Jan. 3—10:30 P. M.—Vacation ends.

Jan. 4—The Tyrolese Singers set all Fahnestock yodling.

Jan. 6—Our conference B. B. opener. The Bulldogs win in a Friendly encounter at Wichita 47-24.

Jan. 13—C. E. Social. The girls take the offensive. It's Leap Year, you know!

Jan. 20—The Quakers quake again as M. C. take the game 37-25.

Jan. 19-20-21—Semester exams. That is all you know and all you need to know. A revolution!

Jan. 23—The second semester comes in on the wings of an all-school social, J. Hugh Hockman on the faculty.

Jan. 27—The Bulldogs put Sterling into the barrel and fasten them in with a 43-20 score—at Sterling.

Jan. 28—Fresh have Leap Year party.

Jan. 30—Bulldogs can't be stopped. M. C. 26, St. Benedicts 15—at Atchison.

Jan. 21—Bulldogs chew up the Irish at St. Marys. 27-17.

Feb. 1—Lyceum brings Snyder, authority on news and newspaper work. North—East—West—South.

Feb. 3—"All aboard for Sweden." They got the winning point. Score 27-20.

Feb. 8—At home. Bulldogs got Baker's bread. 39-27.

Feb. 11—M. C. 32; St. Benedicts 15, at home.

Feb. 14—Bulldogs chase Bethel off the conference pedestal, at Bethel, 28-15.

Feb. 14—Inauguration of the McPherson College President. Dr. Schwahn's "humiliation" is complete. Dean Schwegler of K. U. gives the Inaugural Address.

Feb. 16-17-18—"Dad" Elliott strikes deep chords in M. C. life.

Feb. 20—Coach Hess's boys take a double victory in debate from Salina.

- Feb. 24—The Micks from St. Marys beaten in a rough scramble. 36-21.
- Feb. 27—"Old Tenacity" quintet humbles our blond northern neighbors. M. C. 31, Swedes 17.
- Feb. 28—or thereabouts. Autumn Lindbloom is awarded the K. U. scholarship. She deserves it!
- March 1—Bulldogs beat Sterling here. Score 36-16.
- March 2—Hessites get a double victory from Sterling.
- March 3—Our last conference game. A real one! We all fought! M. C. 31, Bethel 28; Hooony! We're off to the National Tournament!
- March 11—8:20 A. M. Off to Kansas City and the National Tournament! Hurray for Leo, Elmer, Nonken, Kinzie, Saylor, Miller, Rock and Rump!
- And they set the U. S. talking! Wichita U., Liberal Lions, and Peru Teachers go down in bewilderment! Beaten by the Hillyard Independents, but not before attaining an enviable record and placing Miller at 3rd All-American center, and Crumpecker (Elmer) honorable mention.
- March 13—"Y" elections.
- March 16—Bulldogs speak, and Swedes wilt, making the Hessites their third consecutive double victory and champions of the northern division. Off for another state championship.
- March 22—The last pep meeting. "Cheesy" and June, we are going to miss you next year!
- March 23—Lady debaters of M. C. and Bethany share honors.
- March 27—K. W. U. and M. C. ladies tie.
- March 28—The senior section is not un-occupied. Darkness of early morning helps seniors get away to Halstead. Brumbaugh is the hero of the day.
- March 29—Cotton, Wheat, Finland, Electricity, Sugar, and Salt industries come before the eyes of M. C. students on the screen in the chemistry lecture room.
- March 30—The State championship debate goes to the "Dogs" for the third consecutive time.
- April 1—Oh, nothing! Just April Fool!
- April 3—Nineteen girls and seven boys make the honor roll.
- April 4—Juniors sneak to Safina.
- April 4—Coach Hess's "little boys" beat Bresee.
- April 5—Campaign speeches for student candidates.
- April 6—Student Elections! Spohn, Fasnacht, Ballard, Bish, Puckett, Steffen, Howis, and Frantz are student choices.
- April 6—Quadrangle Banquet.

April 6—C. E. Institute.

April 8—New styles for Easter. Lindell, Negley, and Hoover exhibit new gowns and pajamas at the girls dorm.

April 12—Between the Bulldogs and the police hound, that poor bunny hadn't much chance.

April 13—All-school social. The Student Council presents student awards to basketball men, debaters, Quad and Spec officers, and cheer leaders.

April 17—Track and tennis with K. W. U.

April 23—Dual meet with Bethany.

April 24—Junior-Senior Banquet.

April 28—Senior High School trackmeet.

May 8—Thespians play.

May 12—Triangular meet. Bethel, Friends, and M. C.

May 19—President's reception to college seniors.

May 22—Senior play.

May 21-22-23—Final exams.

May 24—Class day.

May 24—Alumni Banquet.

May 25—Fortieth annual commencement.



## Seriousness

---

Did you know that:

The lamb that gets curious usually becomes the husband?  
The great American desert is under the average man's hat?  
The joy of living depends on the liver?  
Moss grows where the sun does not shine?  
If you were as full of green apples as an apple tree, you would sigh too?

---

M. Hoover: Why is Chester Carter like a boat on the lake?

Ikenberry: I don't know!

M. H.: Because she can't go anywhere without drawing a lot of swells after her?

---

Melda M.: Lloyd, if I said that you could kiss me, which cheek would you choose?

Lloyd: I'd pause a long while between them!

---

Courtesy is the eye which overlooks your friend's broken gate, but sees the rose which blossoms in his garden.—Selected.

---

It is well said—Never give anyone a piece of your mind. You are likely to need it all yourself!

---

A kitchen romance:

Paper bag: Do you love me?

Sugar: Oh! I am wrapped up in you!

P. B.: You sweet thing!

---

Dumbell: How can I ever tell you?

Dumb Dora: Say it with flowers!

---

Under the name of V. F. Schwalm, Academy '10, the Aurora of North Manchester College says, "A man is known by the love letters he keeps." We wonder what she wrote.

---

A kiss will last but a day; ten pounds of candy she will eat and forget; the roses you sent will fade with the dawn; but a Persian kitty or a nice puppy will be an hourly reminder of you!

—Reliable Authority.

Elma: Albert, you should look into that!

Albert P.: What?

Elma: A mirror!

---

Stubborn: If I saw a boy beating a donkey and made the boy stop, what would you call it?

Mule: Brother love!

---

Can you imagine:

Albert Philippi in time for breakfast?

Bernice McClellan with poor grades?

Professor Hess walking slowly?

Mary Prather tall and slender?

Prof. Fries embarrassed over a bald head?

---

Blair: Define education briefly!

Ihde: I have it in a nutshell!

---

How would you like to see:

Dr. Yoder clean-shaven?

The College catalogue with a new skeleton?

Forney in white trousers and swallow-tail coat?

The Quad staff in forty years?

Yourself as others see you?

---

Ruth: Dwight, who is your favorite painter?

Dwight S.: I prefer Hoffman!

---

"If any of you white-livered imps of Satan that have been helping yourself to my kneckwear want any more, well—! you'll have to hurry! It's going fast!"—"Zeke" Saylor.

---

Keim: Is there any sweeter than an Irish Rose?—No, not one!

---

Prof: Where is Autumn Lindbloom?

Frosh: What kind of a flower is that?

---

A kiss is nothing divided by two.

Some things we'll never forget!

Swede patrol.

The battered trash cans the morning after the night before.

Dormitory hash.

College slickers.

Pep meetings.

At this end—that last fifteen minutes of the Hillyard-Bulldog game.

—

A freshman loved one of the upper class girls very much, but stuttered so that he could hardly tell her about it. His sympathetic senior roommate came to the rescue, and together they made up a poem and the freshman memorized it and proceeded hopefully on his way to meet her. Curious to see what would happen, the senior stayed at home until the freshman returned.

Soon the freshman burst radiantly into the room.

"Did you tell her?"

"N-n-no, but I -h-h-held my audience!"

—

Beau: Were you ever caught in a shower?

Chester: Yes, locked in!

—Arnold Hall won't forget!

—

Nov. 22: "Miss Jessie Daron, Miss Ellis, and Mr. Reed are engaged at J. C. Penney's."

—

All mine:

"Cheesy" \_\_\_\_\_ Voran

My favorite Brown \_\_\_\_\_ Evans

My name, until I get another \_\_\_\_\_ Hobbsiefken

"Baby Face" \_\_\_\_\_ Ruth Trostle

"June" days \_\_\_\_\_ "Zeke"

My wooden leg \_\_\_\_\_ Brumbaugh

—

It has been said: A dog's life usually gets its start in Puppy love!

—

Bernice: What's in a name?

Ray T.: Enough for two in mine!

—

March 16: Emery Metzger sits in judgment on Gerald Eddy's back for throwing snow into the Metzger-Harris apartment. Decision—His ears shall be rubbed!



Some consolation:

Don't worry if your job is small  
And your rewards are few.  
Remember that the mighty oak  
Was once a nut like you.

—Selected.

Blessed is he:

Who never got A, for he shall never know what it is to get smart.

Who never asked for a date, for he shall never have the pleasure of getting turned down.

Who never got caught rolling cans, for his consciousness will never sting.

Who got D's, for he knows it means devotions—and so does she!

Who got I's, for they stand for interest, intelligence and industry.

#### HIS CONQUEST!

In his eye was a look of determination; his breath was coming in gasps: she had eluded him, but now his hour had come and his purpose was not to be thwarted again. He rushed and threw his arms about her neck, half-dragging, half carrying her to the parson's. He kicked vigorously upon the door and when the parson came, demanded, "Do you tie knots?"

"Why, yes" said the parson.

"Then tie a good hard one on this heifer calf of yours. She's about ruined my garden."—Selected.

Here's to the girl with eyes of brown  
Ask her for a kiss and she turns you down.

Here's to the girl with eyes of gray  
Ask her for a kiss and she says "Nay nay."

Here's to the girl with eyes of black  
Ask her for a kiss and she turns her back.

Here's to the girl with eyes of blue  
Ask her for a kiss and she says, "Take two!"

At this time, (College), a man is meant to learn two things; the power of concentration, study and thought, and the power of self-mastery. If education does not help him to these, it has failed.

—A. Herbert Gray.

There is practically no danger of developing eyestrain from looking at the bright side of things.

I am the most noticed individual in school.  
I am a great news peddler.  
I bear penetrating glances all day long.  
I am the Bulletin board.

---

It takes diplomacy to get a diploma.

---

The only way to have a friends is to be one.—Emerson.

---

John went to see her one evening as the moon showed brightly in the heavens, and succeeded in getting up to her entirely unnoticed. Thinking her exceedingly lovely, he stooped and kissed her.

She arose, startled, and looked around.

"Oh, John, you scared me! . . . Scare me again!"

---

Freshman: I don't know!

Sophomore: I am not prepared today.

Junior: I don't remember.

Senior: I don't believe I can add anything to what has been said.

---

If you would keep growing, keep green.

---

Imo: I wrote home and told Dad about those gowns that have been selling for a song.

Hovis: What did he say?

Imo: He said that if I expected him to furnish the notes, I would have to sing a different tune.

---

The two faces came close together, the man's grim and tense, peering into the little white face opposite him with two slender hands pressed tightly against it. It was those frail hands that rivited the man's horrified gaze.

"Good heavens," he said, still staring, and in his voice was hopeless, stark tragedy, for those slender hands on the face of his watch told him he had missed the last bus to college.

---

Phil: She's as pretty as she can be!

Ihde: Most girls are!

Paul: Late hours are not good for one.

Ruth: But fine for two!

---

He: Why do you not use that comb I gave you for Christmas?

She: I love it so much that I can't bear to part with it!

---

Prof.: You seem very sleepy! Were you up late last night?

Spider: I had to sit up with a baby!

Prof.: Oh! I see! How old is the baby?

---

He: Something has been trembling on my lip ever since we became friends.

She: So I've noticed. Why don't you shave it off?

---

"Your teeth are like the stars," he said

The maidens eyes began to shine

"They all come out at night!"



## Reminiscence 1960

It is Christmas Eve, and I sit gazing into the jolly fire, giving my dreams full sway. A little curl of fire twists and jumps and then whisks itself away into the jaws of the night. As I watch the blazing of the fire and feel its pleasant glow, it somehow recalls the years of the past to stand at my pleasure. Almost unconsciously I reach for my old 1928 Quadrangle.

Where are they now? The friends of yesterday? I wonder what they look like now! Old Quad, you and I have become worn with use but from you their faces shine forth as they did then!

Once more as I look into my dreams, I see Nonken lope down the court amid the helplessness of the opponent, with a quick pass to Miller, who stretches for the basket. Once more Bethel threatens for a moment—and then we pass over to championship. Little Crummy is high-pointer to-night. Then on the following Sunday morning they strike out for Kansas City for the National Tournament, where they become one of eight teams left, out of the fifty-four that started, and the United States becomes aware that there was such a place as McPherson College and that they have the best College team in the tournament.

Once again "Cheesy" laughs and grins out through the years as if 'twere yesterday, and "Berkies'" voice commands the attention of the dining hall for an instant. The telephone rings persistently . . . someone stumbles up the stairs . . . Once again as we enter the door of Fahnstock Hall, potatoes speed past our ears and smash their little baked selves on the wall beyond . . . and trash cans roll as regularly as bedtime comes. Next morning the battered cans and the well-distributed trash bear mute testimony. Or, again, the din has hardly ceased ere the whacks of "Babe's" "Regards" and its kindred break in upon the startled air.

Once again at 6:15 P. M., lovers and loverless congregate on the steps of Arnold Hall to weave a new, new story in an old, old way. As the brown of winter changes to the green of spring, Lover's Lane beams upon the happy couples, and the young man "begins to dream about what the young woman has been thinking all winter." Every shady spot of the campus in the long afternoon is inhabited with life and hope.

Chapel flits into being again, with much that I had long since forgotten, as for instance Prof. Blair shaking up and down silently behind his vest, or Dr. Yoder's semiannual "Golden" sermon—or the clear-eyed Doctor behind the pulpit.

Oh yes! I remember now that last pep meeting, and still hear those last echoes of "All hail our College fair" floating away into history. Yes, M. C. We love thee! Many of our pleasantest memories were born there. And "Cheesy" and June, we appreciated your feelings that morning as you led your last pep meeting. Were there All-American cheer leaders, you should be!

And so, gentle and gentlemen that read this, allow your thoughts to wander and I presume that they will bring you back treasured memories of bright Bonnie and Sonny days or Knightly evenings in friendly winter and balmy spring, where things were said and thought and done that no one except you and she—or he—will ever know!

And now retiring from that pleasant fireside of 1960 to the ever passing present of May, 1928, may you, my friends, have your cup of pleasant memories of the brightest days of your lives filled full and brimming over. Goodnight!

—Warren L. Sisler.

## Dress Well and Succeed

---

Lord Chesterfield says:

“Correct dress is an object worthy of attention, for one cannot help forming some opinion of a man’s sense and character from his dress. Dress as well as the people of sense and fashion; dressing better is foppish, dressing worse is negligent. Dress is a thing of consequence. Making a good figure in the world of fashion is a great step toward making one in the world of business.”

**Laderer**  
CLOTHING CO.

The Good Clothes Store

## Gordon's Fashion Shop

McPherson's  
Exclusive Ladies Shop

"First of all Reliability"

## Men in School and out

want the styles while  
they're new. Good Clothes  
for Everyman with Furnish-  
ings, Hats and Shoes for  
Every occasion, here always  
first.

**STROUSE'S**  
THE BEST STORE FOR MEN



Peoples State Bank, McPherson, Kan.  
Resources over Half Million Dollars



*McPherson's Leading Restaurant*

THE  
PURITAN CAFE



We take pride in our  
Home Cooking and Our Unexcelled  
Pastry Baked in Our Own  
Kitchens



Whether it's a Sunday dinner, a bite  
to eat during an afternoon of shopping,  
a lunch after the theatre, or refreshment  
following a hard day of class work, you  
will find our menu a tempting one, and  
our service without a par in the city.



We Like To Have McPherson College Students  
Make Our Place Of Business Their Head-  
quarters When They Are Down Town

ELECTRICAL---

We have the Goods

GREEN ELECTRIC CO.

Phone 131  
107 South Main  
Courteous Service

STROHM & MUSE

Groceries, Hardware and Paint

McPHERSON, KANSAS

"Service Consistent With Good Business Economy." Our Motto.

1888

"Forty Years of Service"

1928

The Farmers Alliance Insurance Co.  
OF McPHERSON

Fire - Lightning - Tornado - Windstorm

Profit Sharing - Non Assessable

48,000 Members

Assets \$850,000.00

Quiring and Quiring

HOME FURNISHERS and UNDERTAKING

—  
"General Electric Refrigerators"

"Detroit Jewell Gas Ranges"

—  
AMBULANCE SERVICE

Office Phone 6

Residence Phones 50 and 51

Photographs—

In The  
1928 Quadrangle



Made by

Walker Studio



# APPRECIATION

McPherson appreciates McPherson College and its students. The value of the institution to the community is unestimatable and is unquestioned.

McPherson's business and professional men realize to the full the influence the college has on the every day life of the community, and that this influence plays an important part in making the city the clean living and progressive center it has come to be known as all over the middle west.

This bank joins with other business institutions of the community in congratulating McPherson College upon its past record, and assuring its officials of their loyal support and co-operation in the future.

Students are most cordially invited to avail themselves of the SERVICE this bank has to offer them.

The McPherson & Citizens State Bank

Capital and Surplus \$123,000.00

McPherson, Kansas

## For Goodness Sake



use

"W-R"  
Flour

made by

The Wall-Rogalsky Milling Co.

## Our Policy—

—  
To be conservative, progres-  
sive and as safe as can  
be devised

—  
THE  
Home State Bank  
McPherson, Kansas

McPHERSON College  
STUDENTS are entitled  
TO the esteem of this  
COMMUNITY because they  
SHOW such rare  
JUDGMENT and good  
TASTE in matters of ice  
CREAM sodas, malted  
MILKS, and other  
FOUNTAIN delicacies.

—  
THEY know good  
FOUNTAIN products  
WHEN they taste  
THEM—invariably—  
AND they also know  
THAT Hubbell's Drug  
STORE is the place  
TO find such products.

—  
NUFF sed!

# Golden Rule Co.

(The Store with a Saving Power)



Shoes and Ready-to-Wear  
for the Family



Butter cream center; covered with caramel, peanuts and chocolate.

LOOSE-WIDEX COMPANY

Rookwood Pottery

Fine Arts, Books

Birger Sandzen's  
Paintings,

Lithographs and  
Wood Cuts

Smalley's

221 N. Main      McPherson, Ks.

## IN TRUST FOR HUMANITY

"They only are loyal to this college who, departing, bear their added riches in trust for humanity."

This ideal, chiseled on the gateway which leads from the campus of a certain American college out into the world of service, is likewise inscribed in the hearts of the great majority of the students of Brethren colleges.

But how can this trust be fulfilled in the highest way?

Certainly no field of service offers greater possibilities than that of religious leadership.

**Bethany Seminary** has been established and is being maintained by the Church of the Brethren to prepare her college graduates for the most efficient service in the ministry, the mission field, religious education and other phases of Christian work.

Courses are offered leading to the degrees of Bachelor of Divinity and Master of Religious Education.

## The Bethany Bible School

3435 Van Buren Street

Garfield Park Station

Chicago, Illinois



---

A NATION-WIDE  
INSTITUTION-

# J.C. PENNEY Co.

*"where savings are greatest"*

---

## Our Selling Policy Is This:

*We hold no so-called sales of any kind nor do we name comparative prices of any kind. Goods are always sold at the lowest possible prices consistent with prevailing market conditions, and when the price of some article is marked down to its replacement value, the former price is never mentioned. We aim to give the same fair, square treatment to you every day.*

*J.C. Penney Co.*

---



FOR  
WATCHES  
CLOCKS - RINGS

Jewelry and Watch  
Repairing

SEE

**J. Ed Gustafson**

111 N. Main                      McPherson

Also a large stock of wall paper

**Okerlind &  
Aspegren**



Dry Cleaning  
and  
Steam Pressing



Phone 320  
McPHERSON, KAN.

DINNER

SUPPER

Home Made Ice Cream — All Flavors

CANDY  
PIE

**Palace of  
Sweets**

COFFEE  
SANDWICHES

Open from 7 a. m. till Midnight

First Class Soda Fountain and Frigidaire

Arch Preserver  
Shoes

For Men and Women



PEACOCK FOOTWEAR

J & K Footwear  
For Women

Florsheim Shoes  
For Men

We carry a complete stock at all times in AAAA to D

**Lawson-Sweeney Shoe Co.**

McPherson, Kansas

Buy from  
Crumpacker  
and become a  
money packer



Wheat, Corn  
and Alfalfa  
Farms

**WE'LL STAND ON OUR HEADS TO PLEASE YOU!**

Homes on College Hill, Small Tracts, Farm and City Property  
*Royalties and Leases*

SEE

**JAY CRUMPACKER**

Dealer in Real Estate, Royalties and Leases      McPherson, Kan.



# CHURCH DIRECTORY

## Church Of The BRETHREN

Rev. Richards — 1510 East Euclid

## METHODIST

Rev. Freeman — Kansas & Maple

## PRESBYTERIAN

Rev. Cotton — 300 S. Main

## CHRISTIAN

Rev. Ashley — Kansas & Walnut

## CONGREGATIONAL

Rev. Frazier — 224 S. Maple

## BAPTIST

Rev. McDaniels — Maple & Marlin

# PROFESSIONAL DIRECTORY

## Dr. W. C. Heaston Physician and Surgeon

Grand Building

Rooms 1 and 2 Phone 336

## Dr. G. H. Matchette Physician and Surgeon

Over Almen-Lovett Drug Store

Union Block—Phone 79

## Dr. W. E. Gregory Dentist

Office Phone 372; Res. Phone 295

Farmers Alliance Ins. Bldg.  
McPherson, Kansas

Office Phone 252 Res. 471

## Dr. E. L. Hodge Dentist

Modern Dentistry

Over McPherson-Citizens Bank  
McPherson, Kansas

## Dr. A. A. Freeburg Restorative and Preventive Dentistry

Office Rooms 205-207 Allison  
Building

Phones: Office 286; Res. 671Y

## The McPherson County Hospital and Training School for Nurses

Phone 53

## Printing---plus Service

Is the most satisfying to you.  
We delight in offering our experience  
to help make your printing more effective.

- just a little suggestion in helping  
develop your plan,
- just a little difference in type  
selection,
- just a little care for proper display  
and ornamentation,
- just the right kind of paper to use,
- just the right color combination,
- just a little extra pains to produce  
what you want;

these are some of the aids our trained  
workmen delight to offer for your work, large  
or small.

Discriminating buyers of printing patronize

### The Daily Republican

*(Printers for the Quadrangle)*

Carson and Smith  
Dry Cleaners  
McPherson, Kansas  
Phone 335 119 S. Main

UNION HOTEL  
Dining Hall  
Bus Headquarters  
Road and Rail Information  
201 N. Main Phones 61, 62

Almen-Lovett  
Drug Co.  
Parker Pens  
Union Block Phone 19

Darrah - Aurell  
Phone 66 105-107 W. Marlin  
Real Estate, Loans, Insurance  
Dealers in  
City Property and Farm Lands

Groceries for  
Hikes, Feed and Banquets  
Rothrock Grocery  
Phone 467 302 N. Main

Sweeney's Barber Shop  
HAIR CUTS  
Good Workmanship Our Specialty  
108½ S. Main

There is no gift more suitable than

## A Wrist Watch

But be sure it's a **fine** watch such as the **Ollendorff**.

Our assortment of wrist watches is so large  
that selection at the price you wish to pay is  
an easy matter.

### Richard Miller

Jeweler

HEASTON & CARTER MOTOR CO.  
Oakland and Pontiac  
SALES and SERVICE  
Seiberling All-Tread Tires—Protected For One Year

APPEARANCE together with  
SUCCESS, brings  
HAPPINESS

## Wilbur Barber Shop



# PHOTOGRAPHS LIVE FOREVER



An  
Appropriate  
Gift  
For  
Any Occasion



Kodaks  
Kodak Finishing  
Kodak Supplies



## Ostlund Studio

Phone 81

ASK FOR  
**Whistling Snyder Candies**

**SUNFLOWER BARBER SHOP**

120 N. Main

Phone 144

The Home of  
**Good  
Watches**  
and  
**Perfect  
Diamonds**  
Bixby, Lindsay  
& Co.

**C. A. Hultqvist**  
Tailor and Cleaner

—  
Lowest Prices

Prompt Service  
—

Agent at  
**COLLEGE**

**THEO. HARMS PRINTING CO.**  
COMMERCIAL AND JOB PRINTING

120 North Main

Phone 298

**ROYAL BARBER SHOP**

115 No. Main

E. H. Olson, Prop.

Phone 306Y



*The*  
'GOLD STANDARD'

WHAT the gold standard means in money values, the Burger imprint is to the college and school annual world. It signifies the designing genius which has created the greatest annuals, the utmost in printing plates, and a service which is truly specialized, intelligent, interested, and thorough, comprehending every phase of yearbook building and financing. ¶ This book is a product of such service. ¶ An inquiry about your book will be welcome.

**Burger-Baird Engraving Co.**

ARTISTS-DESIGNERS  
GRAPHIC ARTS BLDG.



PHOTO ENGRAVERS  
KANSAS CITY MO.