

THE
Quadrangle
1927





The Quadrangle
1927

PUBLISHED BY

The Students
of
McPherson College

LAVELLE SAYLOR, *Editor*
HOWARD KEIM, Jr., *Business Manager*

19

27



Foreword

The staff of the Fortieth Anniversary Quadrangle has endeavored to record the events of the school year, 1926-27, in such a manner that every reader, student, faculty member, or alumnus will remember pleasantly, forever, the activities throughout the fortieth year of the Alma Mater.



Dedication

To the Founders of McPherson
College, who established ideals that
have been developed and enriched
during Forty Years of fruitful growth,
we dedicate this book.

19

27



Contents

- I Faculty
- II Classes
- III Activities
- IV Athletics
- V Features

19

27



Brethren Church



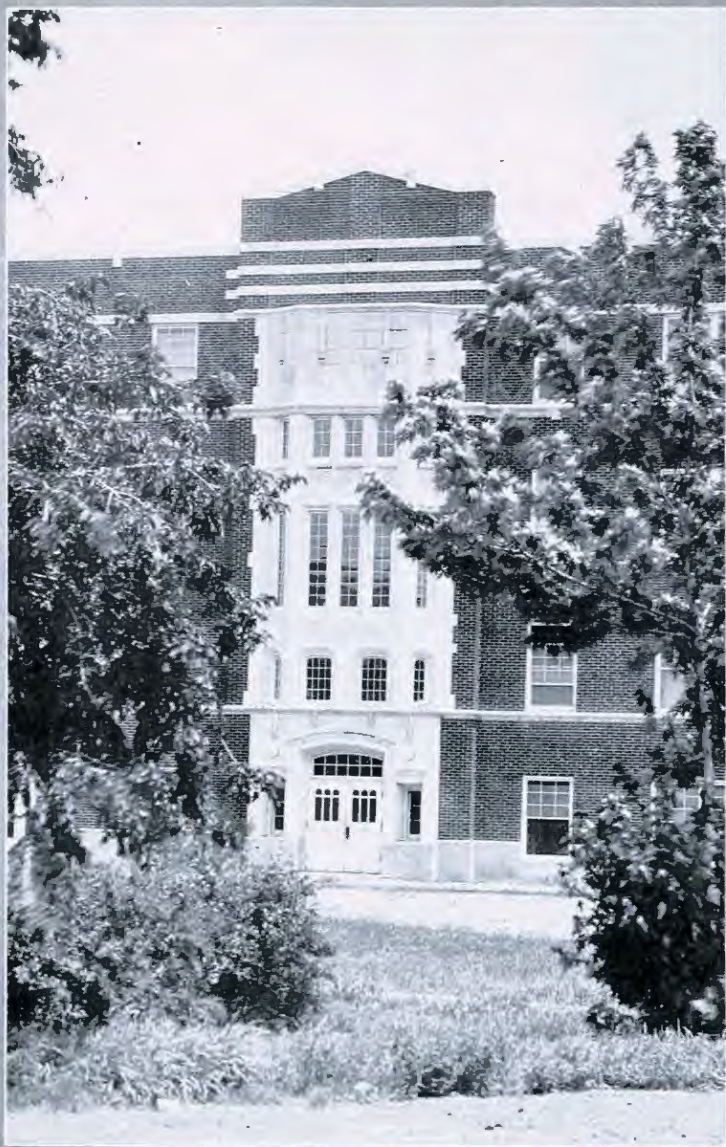
Sharp Hall



The Library



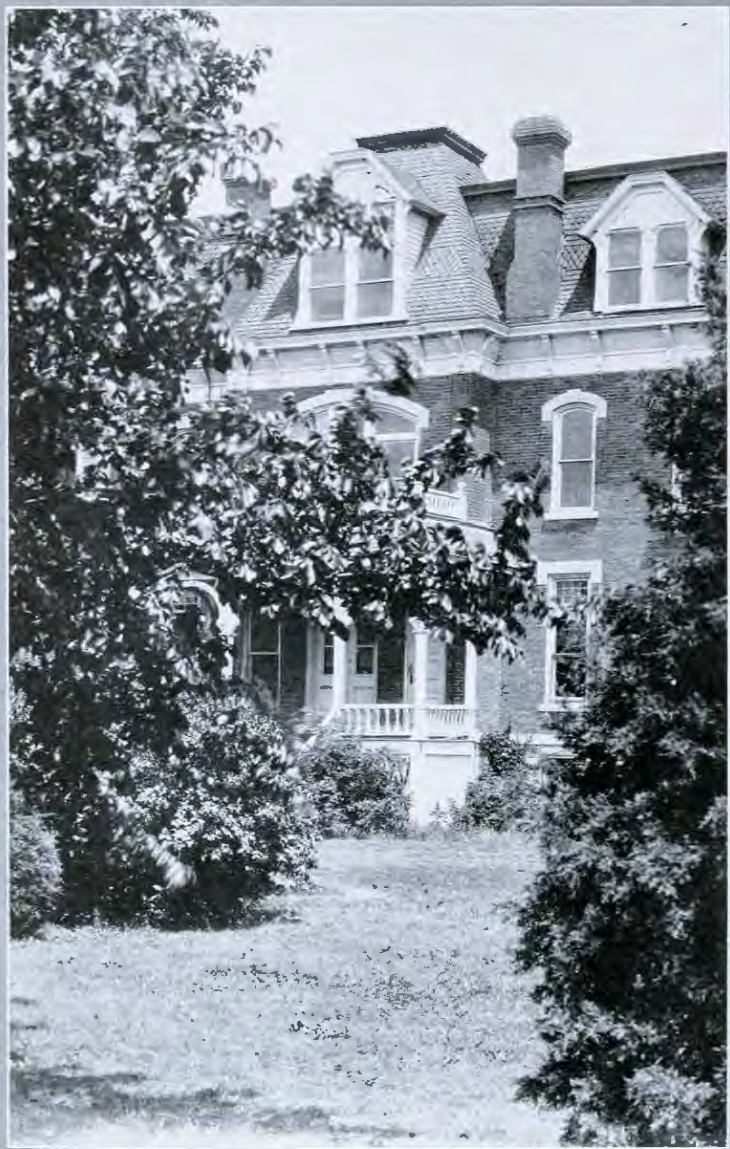
The Gymnasium



Harby Hall



Arnold Hall



Fahnestock Hall



Kline Hall



FACULTY

Board of Trustees

R. C. Strohm, McPherson, Kansas
 President.
 Representative of Southwest Kansas District.

Roy A. Crist, Quinter, Kansas.
 Vice-President.
 Representative of Northwest Kansas District.

H. J. Harnly, McPherson, Kansas.
 Secretary.
 Representative of Southwest Kansas District.

F. A. Vaniman, McPherson, Kansas.
 Treasurer.
 Representative of Southwest Kansas District.

J. J. Yoder, McPherson, Kansas.
 Business Manager of the College.
 Representative of Southwest Kansas District.

D. W. Kurtz, McPherson, Kansas. President of the College.
 Representative Ex-officio.

- E. A. Wall, McPherson, Kansas. Representative of Southwest Kansas District.
 H. R. Hostetter, Plattsburg, Missouri. Representative of Northern Missouri District.
 H. G. Shank, Fruitland, Idaho. Representative of Idaho and Western Montana.
 S. Z. Sharp, Fruita, Colorado. Representative of Western Colorado and Utah.
 L. J. Smith, Morrill, Kansas. Representative of Northwest Kansas District.
 James M. Mohler, Leeton, Missouri. Representative of Middle Missouri District.
 Stephen Miller, Carleton, Nebraska. Representative of Nebraska District.
 Ira Witmore, Carthage, Missouri. Representative of Southern Missouri District
 Paul K. Brandt, St. John, Kansas. Representative of the Alumni.
 I. C. Snavelly, Haxtun, Colo. Representative of Eastern Colorado District.
 B. S. Miller, Altamont, Kansas. Representative Southeastern Kansas District.
 E. S. Weaver, Clovis, N. M. Representative of Oklahoma District.
 John Beaver, Kismet, Kansas. Representative of Southwest Kansas District.



DANIEL WEBSTER KURTZ, D. D.

A. B., 1905, Juniata College B. D., magna cum laude 1908; Yale; A. M., 1908 Yale; student in universities of Leipzig, Berlin, and Marburg; D. D., 1911, Juniata College.

President of the College

Professor of Philosophy and Theology

We live in an unfinished world. We are co-workers with the Great Architect in building a Civilization that makes for the survival and welfare of the race. We share the dangers, and the glory of the achievement. Life is a venture. Faith is its basis; enthusiasm is its dynamic; insight is its pilot; personality is its goal; the Kingdom of God is its Cause.

Education is for Life. The purpose of the College is to create an environment that will enable the youth to touch Life at its best. The leadership of the future must inherit the Spiritual values of the past—the things that endure; and the ability to discover new truth for the enrichment of Life. Out of all civilization, two things abide—the Personality of Jesus, and the Methods of Science. The latter enables us to conquer nature; the former, to use all things for the redemption of man. The one gives us control over things; the other gives us the goal, the power, and the way of Life.

The greatest need of the world is a new race of prophets who have the courage and the insight to "know the truth", and a loyalty to Jesus Christ that they may create "the divine society."

D. W. KURTZ.



HENRY JACOB HARNLY, PH. D.
Vice-President of the College
 Professor of Physiology, Bionomics, Geology



JOSEPH J. YODER, A. B.
Business Manager of the College
 Professor of Social Science
 World Tour 1926-27



ROBERT ELLSWORTH MOHLER, M. S.
Dean of College
 Professor of Agriculture



JOHN WILLARD HERSHEY, Ph. D.
Professor of Chemistry



AMANDA FAHNESTOCK, B. D.
Dean of Women
Professor of Bible



MARY EDITH MCGAFFEY, A. M.
Professor of English



MARCELLA BAIRD
Instructor of Art



CECIL D. WILLIAMS, M. S.
Associate Professor of English



J. DANIEL BRIGHT, A. M.
Professor of History and Political
Science, Dean of Men



JOHN ALVIN BLAIR, A. M.
Professor of Education and
Psychology; Registrar



KATHERINE E. PENNER, B. M.
Instructor in Voice



J. HOWARD FRIES, A. B.
Acting Business Manager



LOUIS A. UTRECHT, A. B.
Professor of German and French



MAYME E. WELKER, A. B.
Professor of Home Economics



MERCEDES CHAPMAN, A. B.
Instructor, Physical Education
and Dramatics



JOSEPH L. BOWMAN, M. S.
Professor of Mathematics and
Physics



MARGARET HECKETHORN, A. B.
Librarian



HARVEY HARLOW NININGER,
A. M.
Professor of Biology and Curator
of the Museum



JOHN L. HOFF, A. M.
Professor of Religious Education



JOSIE YOUNG
House Mother



LORA TROSTLE
Matron



WILLIAM B. KINNEAR
Instructor of Public School Music



JESSIE BROWN, B. M.
Director of Piano Department
Dean of Music



MAURICE A. HESS, A. M.
Debate Coach and Professor of
Latin



FERN LINGENFELTER, B. M.
Instructor in Piano



G. LEWIS DOLL, B. M.
Professor of Violin



GEORGE D. GARDNER, A. B.
Director of Athletics



GEORGE NICHOLAS BOONE,
M. S.
Professor of Industrial Education



RAY S. WAGONER
Field Secretary



MILDRED PIKE, A. B.
Instructor in Spanish



B. O. MILLER, A. M.
Professor of Commerce



H. F. RICHARDS, B. D.
Professor of Bible and Social
Science



PEARL HOWARD
Instructor of Typewriting

Faculty Assistants

Elsie McConkey, Education.
Howard Sager, Chemistry.
Nellie McGaffey, English.
Orville Mitchell, Chemistry.

Kollin Brunk, Biology.
Winifred O'Connor, Home Economics.
Glenn Rothrock, Physics.
Gertrude Swander, Home Economics.

Nettie Darrah, Library.
Gilbert Brubaker, Manual Arts.
Adelaide Glasier, Chemistry.
Floyd Kurtz, Chemistry.

Moffat Eakes, Physical Training.
Julia Hollem, English.
Paul Dick, Library.
Mabel Beyer, Sec. to Prof. Mohler.

Florence Kline, Voice.
Horner Ely, Chemistry.
Ethel May Metsker, Home Economics.
Winston Cassler, Physiology.

Harold Fasnacht, Bookstore.
Jessie Churchill, Office Sec.
Jesse Carney, Manual Arts.
Aileen Ostlund, Secretary to Prof. Nininger.

Lora Shatto, Home Economics.
Franklin Evans, Agriculture.
Orpha Weaver, Sec. to Pres. Kurtz.
D. L. Miller, Agriculture.

Raymond Trostle, Chemistry.
Olive Weaver, Sec. to Prof. Blair.
Raif Martin, Manual Arts.
Edith Markham, Library.

Pearl Howard, Sec. to Prof. Nininger.
Henry Barre, Physics.
Marguerite Smith, English.
Paul Hutchison, Physics.





Glenn E. Rothrock has proved a very capable leader in discharging his duties as President of the Council. His policy has been constructive, he has had the interests of the entire student body at heart and has been consistent in upholding a sound, conservative administration plan.

Student Council

The Student Council is an organization for fostering the activities and promoting the interests of the student body. Its purpose is to ascertain the will of the students and, as their representative, to work in co-operation with the faculty in making possible the realization of these desires.

The membership of this organization is composed of a president and treasurer, elected by the student body, two representatives chosen from each of the four classes, a representative from the Fine Arts Department and two faculty members.

The Council sponsored athletic endeavors, debate and oratory. It also provided musical programs, lectures and dramatic presentations for the student body.



O'Connor
Metsker
McClellan

Prof. Boone

Lehman
Robert
Martin

Earl Kinzie has discharged his duties as treasurer of the Student Council with his characteristic promptness and dispatch. He has proved efficient in securing for the students the greatest possible benefit for money expended. His financial policy has been sound and consistent.



Student Council



Prof. Bright
Budge
Hanna

Harnly
Barce
Bosser

Entertainments provided by the Council were: Two plays by the Thespian Club, "Why the Chimes Rang" and "The Torch-Bearers"; a concert by Arthur Byle accompanied by Professor George Lewis Doll; a lecture "Carlsbad Cavern" by Professor H. H. Nihinger; "The Rose Maiden" by the Music Club; a lecture on "Liquid Air" by Dr. Cady of Kansas University; and a lecture by Dr. Kurtz.

The Student Council had charge of the two college publications, the Spectator and the Quadrangle. A sane and sensible policy featured the work of the Council throughout the year. Medals and emblems were awarded to students representing the school in inter-collegiate contests and those holding responsible positions of leadership within the school.



G. N. Boone
Faculty
B. O. Miller
Faculty

J. H. Fries
Faculty
Sanger Crumpecker
Alumni

Glen Rothrock
Student
George Gardner
Coach

R. C. Strahm
Trustee
R. E. Mohler
Faculty

Athletic Board

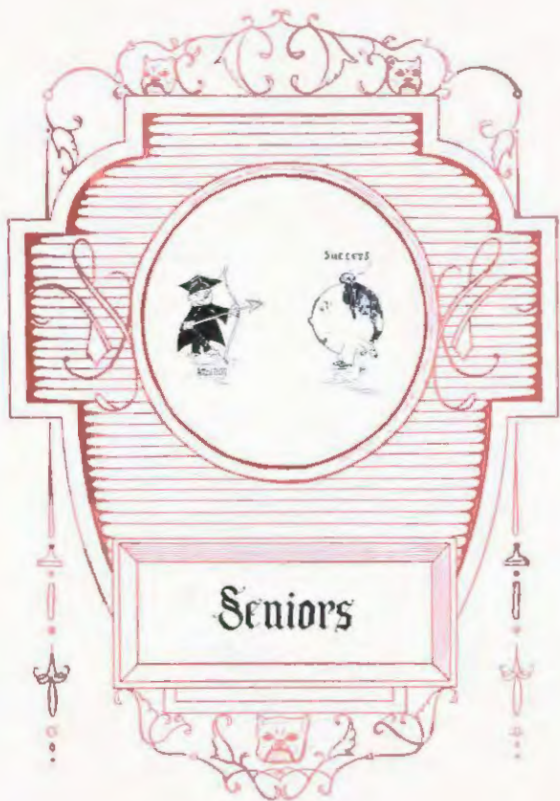
The Athletic Board of the school is composed of representatives from the various divisions of the school, and being represented thusly an athletic program in phase with the principles and ideals of the institution results.

This board meets to discuss the athletic problems of the school, to furnish the athletic budgets, and to pass a final decision upon any athletic event that will interest the college in any manner.

The functions of the board are the making of plans for all athletic events which includes, football, basketball, track, tennis, baseball, volleyball, intra-mural tournaments, athletic festivals, and meets; and the final decision on the eligibility of players, the granting of letters, blankets, sweaters and all athletic awards.



CLASSES



Seniors



GERTRUDE SWANDER, A. B.
McPherson, Kansas

Home Economics

Student Council, 3; Class May Queen, 2.

RAY S. WAGONER, A. B.
McPherson, Kansas

Education and Psychology

Field Secretary for McPherson College; Entered Senior Year.



L. AVERY FLEMING, A. B.
McPherson, Kansas

Education

Varsity Debate, State Championship '23, 2;
Fellow to Kansas University.

MARCELLA M. BAIRD, B. S.
Guymon, Oklahoma

Art

Senior Play Cast.



ELSIE MCCONKEY, A. B.
McPherson, Kansas

Education

W. A. A. I, Treasurer, 4; Thespian Play Cast, 4.

MARLIN W. CARLSON, B. S.
McPherson, Kansas

Chemistry

Football, 3, 4; "M" Club, 3, 4.



ROLLIN E. BRUNK, A. B.
Grand Junction, Colorado

Biology

HAZEL A. SCOTT, A. B., B. M.
Newton, Kansas

Music

Accompanied to Music Club, 1, 3; to Men's Glee Club, 4; to Ladies' Glee Club, 2; to Choral Union, 1; Diploma in Music, 1; Public School Music Certificate, 4.



VERA DAVISSON, B. S.
Hampton, Iowa

Home Economics

J. GILBERT BRUBAKER, B. S.
McPherson, Kansas

Manual Arts

Seniors

ANNA LENGEL, A. B.
Burlington, Colorado

Mathematics

Women's Debate Team, 3, 4, second team, 2.

J. MOFFAT EAKES, A. B.
LaJunta, Colorado

History

Football, 2, 3, 4, Captain, 4; Basketball, 1, 2, 3;
Tennis, 3; Baseball, 1; "M" Club, 1, 2, 3, 4;
Class vice-president, 2; President, 1; Assistant
Business Manager Spectator, 3.

WALTER EDWARD PECKOVER, A. B.
McPherson, Kansas

Chemistry

GLADYS VIRGINIA WILLIAMS, A. B.
McLouth, Kansas

History

JULIA HOLLEM, A. B.
Lawton, Oklahoma

History

W. A. A., Business Manager, 4.

RALPH W. HOOVER, A. B.
Rocky Ford, Colorado

Theology

President Student Ministers Association, 4;
Fellow to Bethany Bible School.

H. C. LONG, A. B.
Littleton, Colorado

Agriculture

BLANCH A. LONG, A. B.
Littleton, Colorado

Education

RUTH M. KURTZ, A. B.
Hartville, Ohio

Home Economics

Choral Union, 1; W. A. A. Secretary, 2.

HOWARD W. SAGER, B. S.
McPherson, Kansas

Chemistry

Thespian Club, 3, 1; Symphony Orchestra, 1, 2, 3.



Seniors



GEORGE MERKEY, A. B.
Larned, Kansas
Industrial Arts
Football, 3, 4.

ETHEL MAY METSKER, A. B.
Lawrence, Kansas
Home Economics
W. A. A., 3; Y. W. C. A. Vice-president, 3;
Thespian Club, 4.



FLORENCE KLINE, A. B.
McPherson, Kansas
French
President Y. W. C. A., 4; Director Ladies' Glee Club, 4; Music Club, 2, 3, 4; Student Council, Music Department Representative, 2, 3.

HARVEY C. LEHMAN, A. B.
Abilene, Kansas
English
Varsity Debate, 1, 3, 4; State Championship, 3, 4; President Y. M. C. A., 4; Class vice-president, 4; Thespian Club, 1, 3, 4; Associate Editor Spectator, 4; Vice-president Student Council, 4.



CHARLES LENGEL, A. B.
Burlington, Colorado
Commerce
Football, 3, 4; "M" Club, 3, 4, vice-president, 4; Student Council, 3.

LENA MARIE MILLER, A. B.
Lincoln, Nebraska
English



IDA M. MERKEY, A. B.
Portia, Kansas
Home Economics
Thespian Club, 4.

FLOYD E. KURTZ, B. S.
Billings, Montana
Chemistry
Debate second team, 2; Varsity alternate, 4; Associate Editor Spectator, 2; Student Council, 1; Chemistry assistant, 2.



VIRDEN J. KOLZOW, B. S.
Hope, Kansas
Manual Arts
Football, 2, 3, 4; Baseball, 1, 3; "M" Club, 1, 2, 3, 4; President, 4.

MILDRED IRENE FIKE, A. B.
Sabetha, Kansas
Language
Choral Union, 1, 2; Instructor of Spanish, 4.

Seniors

PAUL L. DICK, A. B.
Arapahoe, Nebraska

French

Choral Union, 1; Music Club, 2, 3; Men's Glee Club, 3; Associate Editor Spectator, 4.

MARY ELIZABETH HARNLY, A. B.
McPherson, Kansas

English

W. A. A., 4; Student Council, 1, 2, W. A. A. Representative, 4.

ESTER S. GEISER, A. B.
Froid, Montana

Music

Entered Junior Year

G. WALDEMAR LINDBERG, B. S.
Galva, Kansas

Social Science

ORVILLE MITCHELL, A. B.
McPherson, Kansas

Chemistry

LOIS V. MEYERS, A. B.
Lovewell, Kansas

Music

W. A. A., 4, President, 4; Choral Union, 1
Thespian Club, 4.

NELLIE MCGAFFEY, A. B.
McPherson, Kansas

English

W. A. A., 1; Student Council, 1.

PAUL E. BLICKENSTAFF, B. S.
Nampa, Idaho

Chemistry

College Orchestra, 3, 4.

ISSEI MISUMI, A. B.
Yasumura Osakura-gun, Fukuoka-
ken, Japan

Philosophy

Entered Senior Year.

KATHRYN SWOPE, A. B.
Plattsburg, Missouri

Home Economics

W. A. A., 4.



Seniors



RAY HORN, B. S.
McPherson, Kansas
Chemistry

BESSIE O. LIPSCOMB, A. B.
Froid, Montana
Mathematics

Entered Junior Year



WINIFRED O'CONNOR, B. S.
Greensburg, Kansas
Home Economics

Y. W. C. A., Vice-president 1; Class Vice-president, 3; Thespian Club, 3, 4, President, 4; Class May Queen, 3.

KENNETH M. ROCK, A. B.
Navarre, Kansas

English
Football, 4; Tennis, 2; Track, 1, 2, 3, 4; Baseball, 1, 3; Pence Oratory, 2; State Sp: Old Line Oratory, 3; Pi Kappa Delta, 4; Varsity Debate, 1, 2, 3, 4; State Championship Team 3, 4; Class President, 2; Vice-president, 1; Quadrangle Editor, 3, Associate Editor 2; Spectator Editor, 4.



HORNER M. EBY, A. B.
McPherson, Kansas

Chemistry
State secretary Inter-collegiate Anti-tobacco Association, 3; Associate Editor Spectator, 4; Senior Play Cast.

ADELAIDE L. GLASER, B. S.
Ozawkie, Kansas

Chemistry
Choral Union, 1, 2, W. A. A., 1



VIVIAN YVONNE HARNLY, A. B.
Waukegan, Illinois

English and Music
Senior Play Cast.

EVERET CLEMENS, A. B.
McPherson, Kansas

History
Football, 4.



VIRGIL S. COFFMAN, A. B.
South English, Iowa
Bible and Religious Education

RUTH G. COFFMAN, A. B.
South English, Iowa
Home Economics

Seniors

JOHN SPENCER HOLM, A. B.
McPherson, Kansas

Biology

MARY WAAS, A. B.
Fredonia, Kansas

Mathematics

Women's Debate Team, 3, 1.

BERTHA IKENBERRY, A. B.
Quinter, Kansas

Religious Education

LELLAND M. BALDWIN, B. S.
Mulberry Grove, Illinois

Agriculture

GLENN E. ROTHROCK, A. B.
Holmesville, Nebraska

Mathematics

Music Club, 3; Class President, 3; Senior Play
Cast; Student Council President, 4; Treasurer,
3; Class Representative, 2; Symphony Orchestra,
3, 4.

RUTH A. LEREW, A. B.
Portis, Kansas

Home Economics

W. A. A. 4.

ELTON L. FRY, A. B.
Cedar Rapids, Iowa

Education

EMMERT GEORGE STOVER, B. S.
Morrill, Kansas

Manual Arts

Thespian Club, 3, 4; Business Manager, 4.

WILLIS O. NEFF, A. B.
Redfield, Kansas

History

Fellow to Bethany Bible School.

LORA L. SHATTO, A. B.
McPherson, Kansas

Home Economics



Seniors



G. WINSTON CASSLER, A. B.
Hesston, Kansas

Mathematics

Accompanist for Male Quartet, 1, 2, 3; for Music Club, 2. Thespian Play Cast, 3, 4; Senior Play Cast.



MAURINE STUTZMAN, A. B.
Thomas, Oklahoma

English

Class May Queen, 1.



GOLDA A. EBBERT, A. B.
McPherson, Kansas

Education

RALPH LOSBRAUGH, A. B.
McPherson, Kansas

Bible and Theology



OTTO KAUFMAN, A. B.
Basil, Kansas

Education

EARL V. REED, A. B.
Abilene, Kansas

Commerce

Class President '25, 1; Senior Play Cast, Business Manager Spectator, 4; Assistant Business Manager College Athletics, 3.



MRS. RAY S. WAGONER, A. B.
McPherson, Kansas

Home Economics

ORA HUSTON, A. B.
Guthrie, Oklahoma

Philosophy

Peace Oration, 4; Anti-Proteco Oration, State 2nd, 3, 1st, 4; Varsity Debate, 3, 4, State Championship Team, 3, 4; President Student Volunteer Group, 1.

LEE J. CRIST, A. B.
Skidmore, Missouri

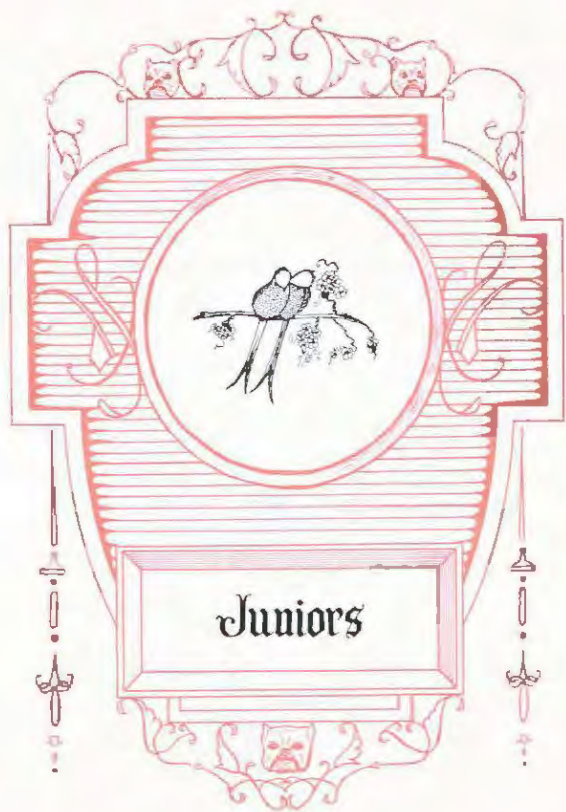
Social Science

Senior Play Cast: Entered Senior Year.

MERLE E. DAVIS, A. B.
Filer, Idaho

History

W. A. A., 3; Secretary, 4.



Juniors

Juniors



Howard Keim - - - - - Commerce
 Autumn Lindbloom - - - Language
 Alvin Voran - - - - - Music



Evelyn Richards - Home Economics
 Glen Stockham - - - - - Commerce
 Melvina Graham - Home Economics



Marden Stiffler - - - - - History
 Irene Thacker - - - - - English
 Franklin Evans - - - Agriculture



Myrtle Moyers - - - - - Music
 LaVerne Martin - - - Chemistry
 Leona Nyquist - - - - - History



John Wall - - - - - Commerce
 Mabelle Roskam - - - Chemistry
 Leo Crumacker - - - - - Chemistry



Nettie Darrah - Home Economics
 Carl Freeburg - - - - - Commerce
 Viola Bowser - - - Home Economics



Lester Vogel - - - - - Commerce
 Kathryn Burgin - Home Economics
 Lavelle Saylor - - - - - Chemistry

Juniors

Porter Ihrig - - - - Agriculture
 Anna Maye Strickler - Home Economics
 Raymond Trostle - - - Chemistry



Mariah Burgin - Home Economics
 Glenn Kilmer - - Industrial Arts
 Eleanor Caldwell - - - - English



Clark Brumbaugh - - Chemistry
 Mabel Beyer - - - - - English
 Albert Philippi - Industrial Arts



Mildred Ihde - Home Economics
 David Merkey - - - Agriculture
 Mabel Sangren - Home Economics



Ernest Kaufman - - - Education
 Myrtle Sangren - - - - - English
 John Whiteneck - - - Agriculture



Margaret Hughes - - Home Economics
 Clarence Hawkins - - Agriculture
 Sylvia Duncan - - - - - English



Menno Kaufman - - - Education
 Mrs. H. C. Lehman - Home Economics
 Paul Hutchison - - - Mathematics



Juniors



Lloyd Jamison - - - Industrial Arts
 Vera Cade - - - - Home Economics

Margaret Bowlus - - - - - Music
 H. C. Lehman - - - - - English

Martin Wise - - - - - Chemistry
 June Ellis - - - - - English

Pearl Howard - - - - - Commerce
 Carrie Feiler - - - - - Music

The Junior Class of 1927 has been a group of fifty students, that have strived to make membership in the class a unique remembrance. Each member will cherish forever the memories created at the Junior Hike in the early fall term; the St Patrick's Day party, which had escaped the notice of the social committee of the school, the monotonous drone, J-U-N-I-O-R, and the wonderful refreshments; the traditional Junior Sneak Day, which, according to the Juniors, unfailingly allows dismissal from all classes, the rain, the truck, the chicken, the boats and everything else that aided in making the day a perfect one.

Last of all, there was the Banquet. The Seniors were entertained, gorgeously in Hawaii and the members of the Junior Class suddenly acquired that dignity and realized that they too were passing thru a metamorphosis and would only too soon be hailed as Seniors.

Alvin C. Voran.....President
 June Ellis.....Secretary
 Howard Keim Jr.....Treasurer



Sophomores



Carl Swanson, McPherson, Kansas.
Ethyle McRevey, Plevna, Kansas.
Robert Puckett, Hutchinson, Kansas.



Maude McConkey, McPherson, Kansas.
Clifford Negley, Larned, Kansas.
Verna Carlson, McPherson, Kansas.



Jesse Carney, McPherson, Kansas.
Clara Davis, McPherson, Kansas.
Ralph Bowers, Roanoke, La.



Grace Early, Hardin, Missouri.
Marvin Steffen, Ellinwood, Kansas.
Floy Brown, Hutchinson, Kansas.



Hester Jones, Rocky Ford, Colorado.
Inez Hobbisiefken, Caldwell, Kansas.
Wilma Brunk, Grand Junction, Colorado.



Haven Hutchison, Thomas, Oklahoma.
Loren Beckwith, Conway, Kansas.
Ethel King, Larned, Kansas.



Philip Spohn, Inman, Kansas.
Thelma Budge, St. John, Kansas.
Ira Ihde, Hope, Kansas.



Emma Schreiner, Ramona, Kansas.
Arnold Stucky, McPherson, Kansas.
Arian Brigham, Marion, Kansas.

Sophomores

Ernest Toland, St. John, Kansas.
 Elsie Crissman, St. John, Kansas.
 Reuben Bowman, Quinter, Kansas.



Arlene Saylor, Morrill, Kansas.
 Francis Berkebile, St. John, Kansas.
 Roberta Brown, Hutchinson, Kansas.



Rush Holloway, McPherson, Kansas.
 Pauline Shirk, Plattsburg, Missouri.
 Wilbur McGonigle, Abbyville, Kansas.



Mrs. L. Avery Fleming, McPherson, Kans.
 Leslie Hunt, Valley Center, Kansas.
 Ruth Bish, Rocky Ford, Colorado.



R. D. Cullen, Homesville, Nebraska.
 Delores Baird, Guymon, Okla.
 George Couchman, Garfield, Kansas.



Dorothy Mann, Hutchinson, Kansas.
 Myron Garrelts, McPherson, Kansas.
 Lela Rhodes, McPherson, Kansas.



Millo Metsker, Quinter, Kansas.
 Lena Beaver, St. John, Kansas.
 Ernest Betts, Nampa, Idaho.



Abbie Emma Wright, Hutchinson, Kansas.
 Austin Nyquist, McPherson, Kansas.
 Marie Brubaker, Wichita, Kansas.



Sophomores



Earl Kinzie, Kansas City, Kansas.
 Mercie Shatto, McPherson, Kansas.
 D. L. Miller, Crowley, Colorado.

Edna Nyquist, McPherson, Kansas.
 Aileen Ostlind, McPherson, Kansas.
 Beth Heaston, Haxton, Colorado.

Jessie Churchill, Rocky Ford, Colo.
 George Swank, Sebring, Florida.
 Eunice Longsdorff, Ottawa, Kansas.

Jessie Daron, McPherson, Kansas.
 Louise Muck, Glen Elder, Kansas.
 Edith Markham, Partridge, Kansas.

Clara Graebner, Macksville, Kansas.
 Mildred Libby, Little River, Kansas.
 Isabel Eskeldson, Ramona, Kansas.

Mildred Johnson, Galva, Kansas.
 Lural Garrelts, McPherson, Kansas.
 Ida Markham, Partridge, Kansas.

Lela Huitquist, McPherson, Kansas.
 Fern Shoemaker, Froid, Montana.
 Esther Freeburg, McPherson, Kansas.

Harold Fasnacht, Wiley, Colorado.
 Lois Dell, Beatrice, Nebraska.
 Herman Bowen, McPherson, Kansas.

Sophomores

Marzella Okerlind, McPherson, Kansas.
 Clare Miller, McPherson, Kansas.
 Dorothy Swain, McPherson, Kansas.



Ernest Gray, McPherson, Kansas.
 Dorothy Wiltfong, Cordell, Oklahoma.
 John Harnly, McPherson, Kansas.



Ruth Hiebert, McPherson, Kansas.
 Orion High, New Plymouth, Idaho.
 Marguerite Smith, McPherson, Kansas.



Archie Blickenstaff, Quinter, Kansas.
 Oma Holderread, Cushing, Oklahoma.
 Paul Swank, Sebring, Florida.



Ruth White, McPherson, Kansas.
 Ralf Martin, Hutchinson, Kansas.
 Ester Dahlinger, McPherson, Kansas.



John Jones, Shenandoah, Iowa.
 Ruth Hoover, Overbrook, Kansas.
 R. Hulse Barber, McPherson, Kansas.



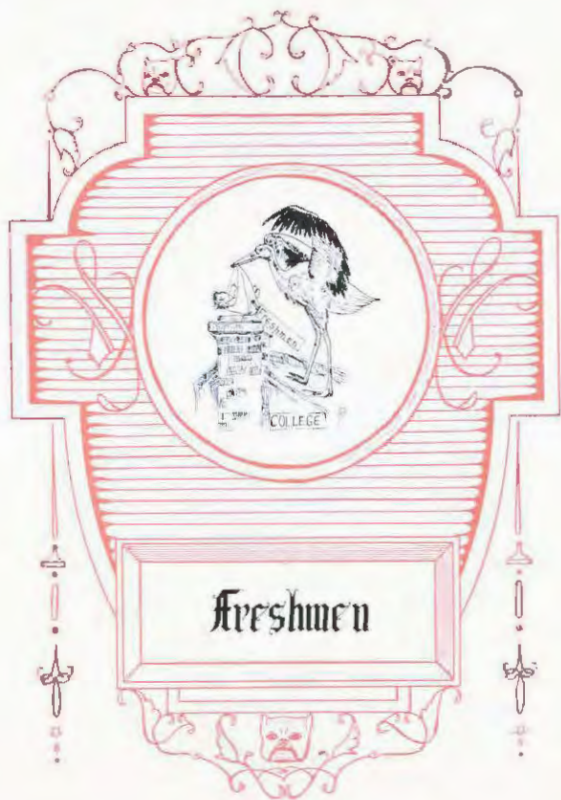
Ruth Holderread, Cushing, Oklahoma.
 Henry Barre, Tampa, Kansas.
 Margaret Garber, Burr Oak, Kansas.



Robert Puckett President
 Eunice Longsdorff Vice-President
 Harold Fasnacht Sec.-Treasurer



THE AD BUILDING IN 1911



Freshmen

Freshmen



Dwight Stutzman, Thomas, Okla.
Ethel Meyer, Canton, Kansas.
Irene Steinberg, Lorraine, Kansas.
Virgil Kinzie, Haxtun, Colorado.



Paul Kopper, Plains, Kansas.
Mary Brown, Fruita, Colorado.
Marguerite Wagoner, Hastings, Neb.
Chester Ullom, Lamar, Colorado.



Allen Morine, McPherson, Kansas.
Dorothy Tice, Springfield, Kansas.
Inez Beaird, McPherson, Kansas.
Homer Brunk, Clovis, New Mexico.



Chester Bishop, Roxbury, Kansas.
Irene Gibson, Miami, New Mexico.
Velma Wine, Rocky Ford, Colorado.
Wilber McGonigle, Nickerson, Kan.



Albin Bura, Ramona, Kansas.
Lillie Jones, Haxtun, Colorado.
Melda Mohler, Fruitland, Idaho.
Vernon Spilman, Gypsum, Kansas.



Stewart Bailey, McPherson, Kansas
Edith Meyer, McPherson, Kansas.
Opal Fannen, McPherson, Kansas.
Wray Whiteneck, Aline, Okla.



Chester Murrey, Conway, Kansas.
Martha Webb, McPherson, Kansas.
Adeline Taylor, Arlington, Kansas.
Archie Dixon, Miami, Texas.



Lester Bowman, Shickley, Nebraska.
Cora Sell, Conway, Kansas.
Mary Prather, Mound City, Mo.
Alex Richard, Waldo, Kansas.

Freshmen

Dean Van Blaricum, Minneola, Kan.
 Ruth Anderson, McPherson, Kansas.
 Virginia Campbell, McPherson, Kan.
 Gerald Eddy, Hope, Kansas.

Harold Hanson, McPherson, Kansas
 Eugenia Dawson, Hutchinson, Kan.
 Ruth Ullom, Lamar, Colorado.
 Murlin Hoover, Overbrook, Kansas.

Daniel Johnson, McPherson, Kan.
 Marie Weihe, Lorraine, Kansas.
 Lila Fields, McPherson, Kansas.
 Fred Perry, McPherson, Kansas.

Harry Hinson, Wiley, Colorado.
 Dorothy Girard, Windom, Kansas.
 Leah Schreiner, Ramona, Kansas.
 Edgar Stauffer, McPherson, Kansas.

Don Holcomb, McPherson, Kansas.
 Rosa Moyers, Ames, Okla.
 Ethel Henell, McPherson, Kansas.
 Kirby Stover, Morrill, Kansas.

Leslie Flickinger, Morrill, Kansas.
 Alice Brown, Fruita, Colorado.
 Bernice Hoag, Wichita, Kansas.
 Walter McGaffey, McPherson, Kan.

Harold Crist, Friend, Kansas.
 Bernice Hanson, McPherson, Kansas.
 Nina Stull, Arlington, Kansas.
 Loyd Johnson, Fruitland, Idaho.

Harvey King, Larned, Kansas.
 Harriett Hopkins, McPherson, Kan.
 Doris Ballard, Lovewell, Kansas.
 Lawrence Mann, Gothenburg, Neb.



Freshmen



Jack Rasor, Miami, Texas.
 Avilla Walline, Galva, Kansas.
 Edna Myers, Windom, Kansas.
 Leonard Hutchinson, Thomas, Okla.

Roy Frantz, Rocky Ford, Colorado.
 Bernice McClellan, Glasco, Kansas.
 Mabel Steiner, Hutchinson, Kansas.
 Glen Harris, Jennings, Lu.

Maynard Finkenbinder, Lucas, Kan.
 Hazel Countryman, Sterling, Colo.
 Helen Feiler, McPherson, Kansas.
 Bill Hanna, Peabody, Kansas.

Lowell Frantz, Holmesville, Neb.
 Mildred Swenson, Little River, Kan.
 Margaret Devilliss, Ottawa, Kansas.
 Ray Nonken, Burns, Kansas.

Paul Bowers, Roanoke, La.
 Grace Couchman, Garfield, Kansas.
 Orpha Weaver, Garden City, Kansas.
 Ross Curtis, Fruitland, Idaho.

Oliver Ikenberry, Rocky Ford, Colo.
 Florence Lehman, Abilene, Kansas.
 Lila Eberly, Octavia, Nebraska.
 Emery Metzger, Iowa, La.

Ernest Campbell, Conway, Kansas.
 Pearl Crumpacker, McPherson, Kan.
 Grace Vanscoyoc, Mont Ida, Kansas.
 John Cottingham, Tryo, Kansas.

Henry Hall, Partridge, Kansas.
 Ruth Hoffman, Dillon, Kansas.
 Violet Brunk, McPherson, Kansas.
 Charles Bish, Rocky Ford, Colorado.

Freshmen

Ruth Barnes, McPherson, Kansas.
Harry Stover, Morrill, Kansas.

Ted Dell, Beatrice, Nebraska.
Erwin Albright, Pretty Prairie, Kansas.

David Campbell, McPherson, Kansas.
Lloyd Diggs, Lyons, Kansas.

Orville Ruchlen, McPherson, Kansas.
Walter Fillmore, Ripley, Oklahoma.

Ellsworth Bankes, McPherson, Kansas.
Floyd Earngrover, McPherson, Kansas.



The Freshman class of the 40th anniversary school year has been a wonderful organization. The class had the honor of being the largest class to enroll in the statutes of McPherson College. They immediately proved faithful to the school and wore the Crimson and White cap, the emblem of allegiance to the school, until after the Turkey Day Game at Lindsborg.

They have been live wires, always willing to learn and to contribute as they were able to the betterment of the College life. They have been true Bulldogs.

Roy FrantzPresident.
Henry HallVice President.
Ted DellSec. and Treas.



THE DORM IN 1910



ACTIVITIES





Lovelle Saylor, of the Junior Class, who with the loyal co-operation of the staff is responsible for the nature of the Anniversary Quadrangle.

The Quadrangle

The McPherson College Annual is a combination picture and story book recording accurately the activities of the school year. It is the purpose of the Quadrangle editor to assimilate and set down in a technically correct and artistic manner all the important events of the year. It is the duty of the business manager to make possible the issuing of a creditable volume by supplying the editor with necessary funds.

This year's editor-in-chief selected a good sized, capable staff, each member of which was splendidly adapted to his specific assignments. That chosen group has striven very diligently to represent each department of the college in a fair way and devote the proper space to each organization and activity of the school. A real effort has been made to make known herein the facts concerning each major endeavor sponsored by the institution and each event that has contributed to the advancement of McPherson College. It has been the constant desire of the 1927 editor to secure all advantages from the engravers, printers and photographers that will make this volume more correct and even more elaborate in an artistic way.



O'Connor

Martin

Eby

Dick

Howard Keim Jr., Business Manager of the Anniversary Quadrangle who by close co-operation with the staff, has succeeded in adequately financing the project.



The Quadrangle

This year's business manager has labored continually to make available sufficient funds to issue a standard Quadrangle. It has been his object to sell a goodly number of Annuals by means of several cleverly advertised and well organized campaigns. He has secured a number of large size advertisements from local business men and he has let wise contracts with engravers, printers and photographers. He has co-operated with the McPherson Chamber of Commerce in advertising herein the outstanding business features of this city.

In order to avoid a hasty and imperfect editing of the accounts of recent events and in order to insure a more early issue of the year-book, the spring activities of 1926 rather than those of 1927 are included between these covers.

This year's staff has co-operated quite well in making possible a superior Quadrangle—a memory book of the school year 1926-1927 which records the major events of the annum logically and accurately. We hope that this volume may be cherished increasingly by the owner as the years come and go.



Voran

Jones

Bowen

Metsker



Kenneth M. Rock has proved to be an editor de luxe for the Anniversary Spectator. His journalistic ability in combination with his executive ability and his efficiency as an organizer, has enabled him to gain the esteem of the faculty and student body throughout the school year.

The Spectator

The Spectator, the Student Newspaper of McPherson College, purposes to recount accurately past activity and to stimulate continually future achievement.

The Spectator of 1926-27 has achieved its purpose. The efficient and talented leadership of Kenneth M. Rock, Editor-in-chief, made possible a wholesome coordination between the several members of the staff and a clear focusing of student interests on the pages of that paper. The Editorial staff was representative, all interests were given voice. Each week, the editorial columns voiced the feelings and aspirations of the students, the student Forum submitted opinions, and adequate space was provided for light and lucid literature.



Taylor
Ehr

Lahman
Puckett

Martin
Jamison

Langel
Fish

Earl V. Reed managed the publication extremely efficiently during its 1926-27 season. "Earl" profited by his acquaintance with the men of the city and kept a constant surplus of advertisements awaiting each issue. He has thoroughly exhibited business ability.



The Spectator

The finance and advertising of the Spectator was ably managed by Earl V. Reed, Business Manager, and his assistants. Mr. Reed's previous business experience and intimacy with the business houses of McPherson, enabled him to keep the Spectator on a firm financial footing. For various reasons, the Spectator has been more costly this year than in previous years and the fact that Mr. Reed has ended the year as well as did his predecessors speaks well for his efficiency.

The Spectator, as an advertising medium of the College, is invaluable. The records of aspirations, struggles and achievements which appear on its pages, must commend the college to all of its wide circle of readers.



McGaffey
Lengel

Eades
Harnly

Cassler
Diek

Eckelton
Hutchinson



CHARLES H. LENGEL
First Affirmative

Varsity Debate

The Bulldog forensic activities of the year were successful to an unusual degree. Professor Hess and his crew of debaters brought us a cherished honor when they won for the second consecutive year, the championship of the Kansas State Debating League.

The League this year used the question—"Resolved: that Congress should adopt legislation embodying the principles of the McNary-Haugen bill."

The year 1927 marks the only time in the history of the League that the same team has won the championship twice in succession. The Bulldogs are the only team ever to have won the Northern District championship four times or the state three times. These honors have all come in the last six debating seasons.

Kenneth Rock, veteran orator, closed his debating career after four years on the Bulldog team, with a characteristically clear, telling, and forceful rebuttal against the Southwestern affirmative. Rock has been a valuable man and his place will be hard to fill.



ORA I. HUSTON
Second Affirmative

HARVEY C. LEHMAN
First Negative



Varsity Debate

Harvey Lehman, colleague of Rock, has debated three years on the college team. He has also debated for M. C. in academic circles. "Harve" is a logical, cool headed thinker and his speeches always went to the mark.

Charles Lengel, the "big boy", always presented a clear case for the Bulldog affirmative and was a valuable asset to the team. Charles is a two year man, honored by having won the state championship the only two years in which he participated in debate.

Ora Huston, slightly more oratorical than his teammate, shares all his honors. Ora gave the final rebuttal, and the enemy never failed to see their case crumple before what one judge called the "tirade of the little fellow".

However, in no small measure should credit be given to Prof. Maurice A. Hess, debate coach, for the success that has come to McPherson College in debating circles. His untiring efforts in the search for material and his uncanny ability to coach his debaters into winners will always be remembered as being a hobby of Prof. Hess.

KENNETH M. ROCK
Second Negative





Waas Stull Lengel Brown Taylor Libby

Ladies' Debate

The Ladies' Intercollegiate Debate Team, which was a newly added feature to the forensic activities of McPherson College last year, has established itself this year through forceful debating. This season of Ladies' Debate shows much improvement over last year, the team as a whole making a better showing.

The question debated was, "Resolved: that Congress should adopt legislation embodying the principles of the McNary-Haugen Bill." A dual debate was scheduled between McPherson College and Bethany College, March 25, which resulted in a complete victory for McPherson. The team was composed of Misses Anna Lengel, Nina Stull, and Mary Waas, affirmative; Misses Mildred Libby, Floy Brown, and Adeline Taylor, negative. The negative team debated at Lindsborg, the affirmative at McPherson.

The dual contest between McPherson College and Kansas Wesleyan scheduled April 13, did not favor McPherson with victory. However, the team showed their knowledge of the material not only in their constructive speeches but by the ready manner in which they presented their rebuttals. Misses Lengel and Stull met Wesleyan's negative at Salina, Misses Libby and Brown the affirmative at McPherson.

Anna Lengel and Mary Waas will be lost from the team by graduation.

Mildred Libby is the only one of the lady debaters who has won a letter in varsity team debate.

Floy Brown has had experience on the team of last year as well as the one this year.

Nina Stull and Adeline Taylor are the two Freshmen debaters and give promise of being typical Bulldog debaters in the future.

Ladies debate is progressing quite rapidly and the fact that four members of the team and Coach Hess are returning to school makes it evident that the 1928 season should be a great success.



Anderson

Harnly

Hoover

Richards

Men's Second Team Debate

The McPherson College Second Debate Team is chosen every year at the annual debate tryout at which the members and alternates of the varsity and second teams are chosen.

This year Oliver Ikenberry, John Harnly, Murlin Hoover, and Alex Richards were chosen as the members of the McPherson College Second Debate Team. Later in the season, it was necessary for Oliver Ikenberry to drop debate on account of other activities and Ruth Anderson was selected to fill the vacant position.

The debates were limited and in order that the debators might acquire ease on the platform, Coach Hess arranged that the teams should debate each other in the auditoriums of the Windom and Moundridge High Schools. The decisions were made by the student body at each appearance. At Windom the affirmative won and at Moundridge the negative team was victorious. Thursday, April 7, Ruth Anderson and John Harnly, the affirmative, won from the negative team of Miltonvale College.

Miss Anderson, debating for her first year, showed ability as a constructive speaker and delivered a direct clash in rebuttal. She has three more year of debating.

John Harnly, a member of the 1925 team, showed experience, ability and coolness on the platform. He should develop into a wonderful Bulldog, forensically.

On April 8, at Miltonvale, the McPherson negative team, Murlin Hoover and Alex Richards, lost to Lewis Carter and Russel Parsons, the affirmative team of Miltonvale College.

Murlin Hoover delivered an excellent constructive speech as did Alex Richards but the critic judge decided in favor of Miltonvale.

The second team is chosen from underclassmen only, which enables Coach Hess to develop future champions in the forensic field.



The Thespian Club

The Thespian Club was organized February 1, 1922, for the purpose of conducting an intensive study in contemporary literature with special emphasis on the study and production of the drama.

The club has done some very outstanding work during the history of its organization. The outline of study has included reading and interpretation of plays, realism in American drama, famous actors, Shakespeare, the essentials of make-up and character work, poetry and one act plays.

New members are admitted to the organization each mid-semester, subject to the approval of the club. Meetings are held regularly each month. One-act plays are often presented for member criticism.

This year the club presented a very unique entertainment in the form of a Christmas party. Three one-act plays presented by the advanced dramatic art class and the expression class were the main features of the evening's program.

February 1, the Thespians presented "Why the Chimes Rang", by Elizabeth Atharp McFadden. The decided success of this play was due to the untiring efforts of Miss Mercedes Chapman, who is sponsor of the club, and the splendid cooperation of the Music Club.

The outstanding production of the year was "The Torch-Bearers", a play in three acts, by George Kelly. This was presented April 12th and 13th under the supervision of Miss Chapman, and the auspices of the Student Council.

WINIFRED O'CONNOR President
 WINSTON CASSLER Vice President
 EMMERT STOVER Business Manager
 RAYMOND TROSTLE Secretary-Treasurer



The Forensic Club

The Forensic Club was organized for the purpose of developing the persuasive powers of its members and to promote interest in general forensic activities. The club offers splendid opportunities for the student to develop his forensic talents by active participation in the programs. In providing practice in argumentation and public speaking for all students who are interested, the club produces a constant supply of material for future debating teams and orators.

During the past year programs were given every alternate Wednesday evening. They consisted of debates, speeches, and musical numbers. Every member of the organization took an active part in these programs. The membership numbered thirty-five persons while the attendance was often doubled. The interest and co-operation shown in the organization this year evidences that it has a definite place in our school activities.

MAURICE A. HESS	Faculty Advisor
IRA IHDE	President
FLOY BROWN	Vice President
ERNEST BETTS	Secretary-Treasurer



Rock

Huston

Oratory

The oratorical contest was held on March 8th in the college chapel to determine the representative of the college in the State Old Line Contest. Kenneth Rock with his oration, "The New Heroism," won first place, and a prize of \$7.00. Ire Ihde was given the second award, a prize of \$3.00. His oration was "The New Victory." In the state contest at Ottawa University, Mr. Rock and Mr. Carter of College of Emporia were tied on judges decisions but after reconsideration and by another method of judging Rock was conceded second place and Mr. Carter was ranked first.

Five orators contested for honors in the Anti-Tobacco Contest held on February 11. In this event Ora Huston with his oration, "The Fruit of the Plant" took first prize. The oration "The Increasing Peril" by Henry Hall was ranked second.

At the state contest at Miltonvale, orators from Friends University, Central, Breese, McPherson and Miltonvale Colleges were assembled. By virtue of his ability as an orator, Mr. Huston was ranked first and received a prize of \$35.00.

During the last three years McPherson College has practically proved superiority in this contest. Two years ago John Whiteneck won first prize. Last year Mr. Huston placed second and this season he was selected as the premier orator.

The local contest of the Peace Oratorical Association was held in the Church of the Brethren March 13. The winner of this contest will represent the college at the State Peace Oratorical Contest later this season. The local prizes were offered by Professors Hoff, Boone and Hess. Ora Huston, with his oration "Prostituted Ideals," won first place. Second place was awarded Henry Hall, who gave the oration, "Tomorrow's Hope." Alex Richards received the third award with his oration, "The Cost of Ignorance."

The high attainment reached by McPherson College year after year is due in a great measure to the work of Professor M. A. Hess. The past year can be looked upon as an excellent attainment in the oratorical field.



Music Graduates



Winston Cassler, Hesston, Kansas
Diploma in Piano

Hazel Scott, Newton, Kansas
Public School Music Certificate

Margaret Bowlus, McPherson, Kansas
Diploma in Piano
Public School Music Certificate

Esther Dahlinger, McPherson, Kansas
Public School Music Certificate

Vivian Harnly, Pacific Palisades, Calif.
Teacher's Certificate in Piano

Ester Geiser, Froid, Montana
Public School Music Certificate

Carrie Feiler, McPherson, Kansas
Bachelor of Music
Degree in Voice

Ruth Barnes, McPherson, Kansas
Teacher's Certificate in Piano

Clara Davis, McPherson, Kansas
Teacher's Certificate in Piano
Public School Music Certificate

Thelma Budge, St. John, Kansas
Teacher's Certificate in Piano

Myrtle Moyers, Ames, Oklahoma
Diploma in Piano

Jessie Daron, McPherson, Kansas
Public School Music Certificate



Diggs
1st Tenor

Barton
2nd Tenor

Voran
Baritone

Metsker
Bass

The Male Quartette

A male quartette has become a traditional organization in McPherson College. The last several years have probably witnessed more interest in this organization than ever before. This is due in no small extent to the able and untiring efforts of Miss Katherine Penner, director of the group. The last year's quartette undoubtedly reached one of the highest peaks of achievement since the College has had a quartette; excepting the many appearances at clubs, dinners, banquets, and services where only a few numbers were given, the quartette gave more than thirty concerts in churches, high school auditoriums, and community halls in the states of Kansas, Nebraska, Oklahoma, Missouri and Iowa.

This year's quartette was late in getting started due to the vacancy of two places. These vacancies were filled by Clarence Hawkins, first tenor, and Earl Kinze, second tenor, and rehearsals began. Mr. Barton, a two year member of the organization returned to school at the beginning of the second semester and resumed his place at second tenor. His insertion made it necessary to make a change at first tenor in order to have a well balanced unit. Mr. Diggs, a Freshman, sang first tenor to complete the group.

The quartette, composed of Messers Metsker, Voran, Barton, and Diggs and Miss Kline, accompanist, under the direction of Miss Katherine Penner, co-operated in such a way that they were able to make an important musical contribution toward the success of the school year. Besides their appearances at local churches, clubs and dinners the quartette has assisted in giving out-of-town programs and aided in giving a radio program from the Hotel Lassen, at Wichita, Kansas.



Ladies' Glee Club

The Glee Club, after three years under the excellent directorship of Miss Penner, has become a finished unit. The program extended this year has been more elaborate than any program given in years before, even as the "finish" of the group has been greater. The milestone reached this year by the Club was the program broadcast from Station KFH at Wichita. Various entertainments in neighboring towns, at the city High School and in the College Chapel have been rendered with par excellence.

Membership in the Club depends upon a try-out before a committee, ability and upon regular and prompt attendance at all rehearsals and practices. College credit is extended to those members who have met the required rules of the Club through either one or two entire semesters. Only music of standard quality is used. The numbers sung for public performances vary from the classics to melodious "close harmony" from the recognized authors of Southern songs.

The paramount success the Glee Club has enjoyed is due in large part to the director, Miss Florence Kline, and also to the supervision of Miss Penner, Head of the Voice Department.

ARLENE SAYLOR President
LELA RHODES Secretary-Treasurer



The Men's Glee Club

The Men's Glee Club has done remarkable work this year on account of the high type of music used and the wonderful co-operation of the members under the direction of Miss Penner. This organization has made its mark in the music history of McPherson College, having broadcasted from the radio station, KFH, The Hotel Lassen, at Wichita, Kansas, at two different times, in joint programs with the McPherson College Symphony Orchestra and the Music Club respectively. They have also given various programs at the churches and schools of the city. This club did excellent work during the latter weeks of session, singing at the Commencement exercises and also at the exercises during the anniversary week.

The club was organized at the beginning of the first semester and regular practices were held every Monday and Wednesday nights. Perfect attendance was necessitated in order to fulfill the requirements of the honor point system. The members of the organization were chosen by the director, Miss Penner. Some changes in membership were made at the end of the first semester, because of the inconsistency in attendance. Several new voices were added at the beginning of the second semester. The balance of the voices was remarkable, and added greatly to the proficiency of the organization.

Interest and able directing has contributed largely to the success and growth of the club. The club has been throughout the year, an enterprising and growing organization; the best of its type throughout the life of the college.

Mr. Alvin C. Voran.....President
 Miss Hazel Scott.....Accompanist
 Miss Katherine E. Penner.....Director



Music Club

The Music Club, under the able direction of Miss Katherine Penner, has had a successful season of a goodly number of recitals and concerts. The organization being composed of voice students receiving instruction in Miss Penner's department. Miss Jessie Daron proved herself a most able accompanist.

The first appearance of the Club was made in the fall at the Church of the Brethren during the revival meetings. Later, concerts were given at Lorraine, Ramona and at different gatherings in and out of the city. "The Rose Maiden", an allegorical cantata by James Cowen, was given at Bible Institute during Mid-semester as well as the music in the Thespian play "Why the Chimes Rang". On March 12th, with the assistance of other musical organizations of the school, a one hour program was broadcasted from station KFH, Hotel Lassen, Wichita.

Music for the May Fete, Beethoven Recital and Baccalaureate was furnished by this organization, closing a brilliant and successful year with the singing of Cowen's "Bridal Chorus" at their instructor's wedding.



Chapel Orchestra

"Music hath charm". So said some great sage in times past, and McPherson college students have found reason to substantiate his contention. The chapel orchestra has furnished this reason. That valuable organization has very capably altered the humdrum of the ordinary chapel period, by adding a well-rendered special selection and a march at each Friday chapel.

Professor G. Lewis Doll has charge of the orchestra, and it is through his untiring efforts and capable leadership that this small group of musicians has come to be so greatly appreciated by the student body.

The orchestra is made up by various students who have instruments, and several members of the McPherson College Little Symphony Orchestra, which is also under the direction of Professor Doll.

The Friday morning offerings by the orchestra have varied in type and in difficulty from light, simple medleys of folk-songs and southern airs, to the works of Schubert and other of the great composers.

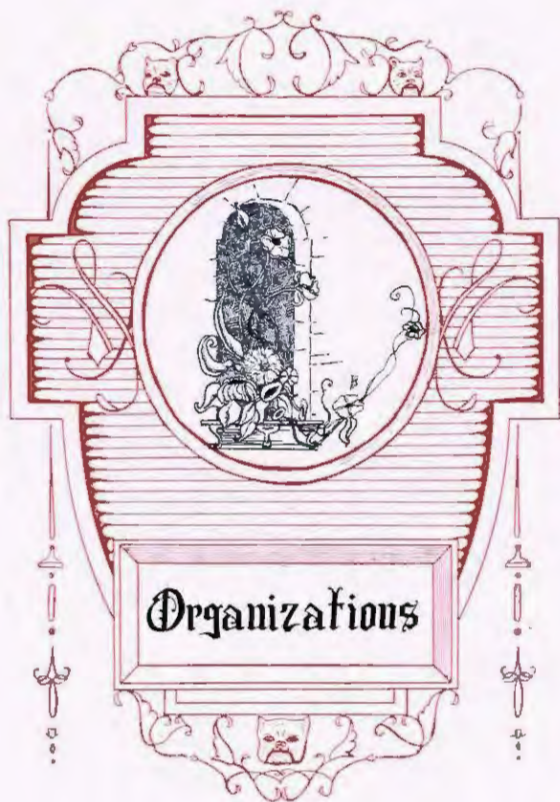


Piano Department

The Piano Department of the McPherson College School of Music has grown into one of the largest departments of the college. This development may be accredited to Miss Jessie Brown, the instructor of piano, a graduate of Bethany, and student of the Royal Conservatory at Leipzig, Germany.

Miss Fern Lingenfelter, the assistant instructor, has aided in the primary work of the department and has achieved wonderfully in this work. The two views are photos of a number of the students enrolled in this department.





Organizations



The Y. M. C. A. found Harvey Lehman a real leader of men. To know him is to appreciate his outstanding ability. It is through his leadership that the organization has enjoyed one of its most successful years.

Y. M. C. A.

Those who have attended McPherson college will need no introduction to this organization. They have already come in contact with its splendid influence, and will look back upon the organization with much appreciation for the pleasant memories, fellowships and high ideals they have received. This is especially true for the year 1926-27. It has brought each person face to face with the vital religious questions of the day, through the personnel of the different speakers. These speakers represent personages from the school, the city and other social leaders such as Al Gossard, Thomas Harrison and others from out side of our city. Within the organization, numerous discussion groups have had capable guidance and have discussed many vital questions, which will confront the student as he leaves school life. Some of the questions discussed have dealt especially with our relation to Mexico and Nicaragua.

The purpose of the Y. M. C. A. is four fold, therefore, it takes care of the social phase of life as well. One of the first things to come to life on the campus, and that welcomes the new as well as the old students is the Y. M. C. A. This is of special benefit in helping the new student to find his place, both religiously and socially. As this organization has served in the past it will serve in the future.



Keim Martin Evans Stover Hawkins Veran Huston
P. Blickenstaff Rothrock Steffen A. Blickenstaff High Kinzie

Florence Kline has been an excellent executive for the Y. W. C. A. during the past year. She has led the organization in its discussions in a most pleasing and reverent manner and has aided the women of the school to attain the high ideals of the Young Women's Christian Association.



Y. W. C. A.

The Young Women's Christian Association of McPherson College is an organization which has a deep significance to the spirit of the school and to each girl who is a member. As its name suggests, the emphasis of the association is on "Christian." Through its ideals and teachings, the girls come to know and possess more of the love, friendship, and brotherhood of Jesus Christ. The weekly meetings of the year were well attended and had much to do with the inspiration gained. An especial interest was a two day conference conducted on the campus by Dr. Gossard of the University of Wyoming, Miss Frances Perry, the regional Y. W. C. A. secretary, and Harold Colvin, state Y. M. C. A. secretary. They held many group and individual discussions, in which students received help in solving their problems, personal or social.

The social side of the association was well taken care of. On enrollment day, tea was served to everyone, and again in the winter during the Bible Normal, and to the Girl Reserves of the county in the Spring. The Y. M. C. A. and Y. W. C. A. gave a joint watermelon feed to the students the first week of school, and a farewell party at the close of the year. The girls enjoyed, in the redecorated Y. W. room, a pleasant Christmas party. The annual Goodie Shop offered a good time to the students and helped in the finances of the organization.



Lindbloom
Mann

Harnly
Saylor

O'Connor
Kurtz

Matsker
Hollern

Hiebert
Meyers



W. A. A.

This year marks the third anniversary of the Women's Athletic Association in McPherson College. It was organized for the purpose of promoting physical efficiency, scholarship and good fellowship by increasing the interest in gymnastics and athletic activities among college women. Each initiation affords a number of new members who strive to make the W. A. A. a bigger and better organization each year. A regular meeting of the members is held every month at which such questions are discussed as those concerning the numerous sports, the obtaining of awards, and other things of interest to an athletic association.

Membership can be attained by any undergraduate woman who has been in the college one semester, maintained an average grade of C and has won 125 points in accordance with W. A. A. standards. Maintenance of membership requires the continuation of a C average and the earning of at least 25 points each semester. Added to these requirements of membership are the passing of a written examination on the constitution and by-laws, and the taking of the pledge of membership.

The honors of the W. A. A. include the following points and awards: insignia, 125 points; numeral, 600 points; prerequisite for a letter, 1000 points and the completion of 90 hours of college work.

LOIS MEYERS	President
VIOLA BOWSER	Vice President
MERLE DAVIS	Secretary
JULIA HOLLEN	Business Manager



The Art Club

The purpose of the Art Club is to study both the old and modern works of Art. This Club started last year with thirty members and has been one of the most active and influential organizations on the hill.

Each second and fourth Monday evening finds the Art Club gathered in the Art Rooms discussing the great masters and various phases of design and crafts. Professor Nininger gave an illustrated lecture before the Art Club and their friends at one of the meetings. Such fascinating subjects as Oriental Rugs, Sculpturing, Constructive Design and the ever widening field of Commercial Art have been listed for study this year. Of special interest to those who plan to teach has been those meetings which dealt with the correlation of art with other subjects in the public school curriculum. On one evening the club visited several beautiful homes in the city as a study in Interior Decorating.

Besides the regular meetings the Club has two exhibits, one during Bible Institute the other at the close of school. The members of the Art Club invited their friends to a Christmas Party where a fat, jolly Santa Claus gave them all toys. On All School's Day the Art Club made the float which won first place in the McPherson College group. This affords training in the application of design and color and serves to advertise the beautiful work being done by this organization.

HERMAN BOWEN	President
MARZELLA OXERLIND	Secretary-Treasurer
LOIS DELL	Chairman, Program Committee
MARCELLA BAIRD	Advisor



Student Ministers

The Student Ministers' Club has had a profitable and valuable year. The meetings, though not frequent, have been inspiring and helpful to those who have been interested enough to attend. Rev. W. A. Frazier, pastor of the Congregational Church of McPherson has been a helpful friend to the Club, giving of his time and energy and of his store of knowledge and experience in aiding the young ministers of McPherson College to apprehend and solve the problems which must necessarily confront them as they take up work in the churches. Dr. D. W. Kurtz has also given liberally of his limited time to discuss pastoral questions with the clergymen.

RALPH HOOVER	PRESIDENT
JAMES ELROD	VICE PRESIDENT
LELLAND BALDWIN, D. D. HARNER AND L. AVERY FLEMING	PROGRAM COMMITTEE
RALPH LOSHBAUGH	SECRETARY-TREASURER



The Mission Band and Study Group

As one of the student movement groups, the Mission Band is an organization for the purpose of creating a deeper appreciation for missionary endeavors and for discussing problems of religion and moral conduct. This year there were about fifteen members in the organization and at the weekly Thursday meetings different religions of the world were discussed. The Mission Band sponsored two organizations, the mission study classes and the Deputation teams, which have gained materially in numbers and in enthusiasm.

Through the efforts of Ora Huston the mission study class this year was enlarged to include three different study groups whose weekly meetings were well attended.

The deputation organization was also a great success. There were about thirty members on the deputation teams this year and the teams not only made week end trips but made week tours in six different states, giving very fine programs.

M. C. Gospel Team

The purpose of this organization is to bring the College young people in closer contact and fellowship with the great work of our church, and to carry gospel messages to the congregations in such a way as to create a greater enthusiasm for home and foreign missionary work.

The funds raised for this work were taken as free will offerings at each church after the programs were given. The amount of each offering, after the traveling expense was deducted, was sent to the Mission Board and the full amount was accredited to each church toward their Conference Budget.

ORA HUSTON President
 HAVEN HUTCHINSON Vice President
 MARIE BRUBAKER Secretary-Treasurer



"M" Club

Skill, ability and eligibility are three requisites necessary for an athlete to become a member of the "M" Club. Upon receiving the official letter from the athletic department of the college, each Bulldog automatically becomes a candidate for membership in the Club and after being properly trained and educated at the annual spring initiation, he is given life membership in the organization.

The purpose of the club is to promote better athletics in McPherson College and the Kansas Conference. The club during the past year fostered the publication and distribution of the "M" Growl Books to all freshmen, the publication of the Bulldog Bullet before every home football game, and the sale of freshman caps. At all home games, track meets, tournaments and festivals the organization is called upon to assist in carrying out the plans.

Each year at the spring banquet the Bulldogs of the vicinity of McPherson convene to aid in the arrangement of plans for the evolution of McPherson College Athletics for the following year.

The Club prides itself in the presentation of an "M" sweater, with one service stripe, to Miss Marjorie Gardner, the one year old daughter of its honorary member, Coach George Gardner.

VIRDEN KOLZOW President
 ARCHIE BLICKENSTAFF Secretary-Treasurer



The MaCoeds

"To create pep, before, at, and after games and all other school activities," is the purpose of the MaCoeds.

This club was organized October 9, 1925 by twenty-eight girls. They elected as their president, Winifred O'Connor and started to work out their purpose. The membership was opened to any girl in the college and ninety-six girls enrolled by the end of the year.

During the football and basketball seasons the club planned and carried out stunts between the halves of each game. In co-operation with the "M" Club, the MaCoeds served a lunch to the Bulldog basketeers, their opponents, both coaches, and referee immediately following the games. The purpose being to acquaint the Bulldogs and their opponents more intimately, so that they might be better Kansas Conference athletes.

On April 1st, the MaCoeds' pie social was attended and enjoyed by many of the college students.

These are a few of the big things that one-hundred and four girls working together have done toward making a record year for this new organization.

JUNE ELLIS	President
HAZEL SCOTT	Secretary-Treasurer
DOROTHY SWAIN	Cheer Leader
ARBIE EMMA WRIGHT	Stunt Committee Chairman
MERCEDES CHAPMAN	Faculty Advisor



Chemistry Club

The Chemistry Club of McPherson College has brought to its close another year of useful activity and faithful endeavor. Under the leadership of Dr. J. Willard Hershey, head of the department of Chemistry, the Chemistry Club has endeavored to bring to the attention of the students of the College the current trend of Chemical thought and practice.

Bi-weekly meetings were held through the greater part of the school year. The programs consisted, for the most part, of the reports and discussions of the articles appearing in various scientific publications, relative to the fields of theoretical and applied chemistry.

Dr. Cady, dean of the Department of Chemistry at Kansas University visited McPherson College in February and gave an interesting talk to the Club on "The Future of Chemistry."

"The Hour of Chemical Thrills", was enjoyed by over one hundred-fifty students. Messrs. Sager, Mitchell and Trustle, prepared this display of explosives, colored powders and chemical color transformations. This demonstration was repeated at the time of the High School Festival.

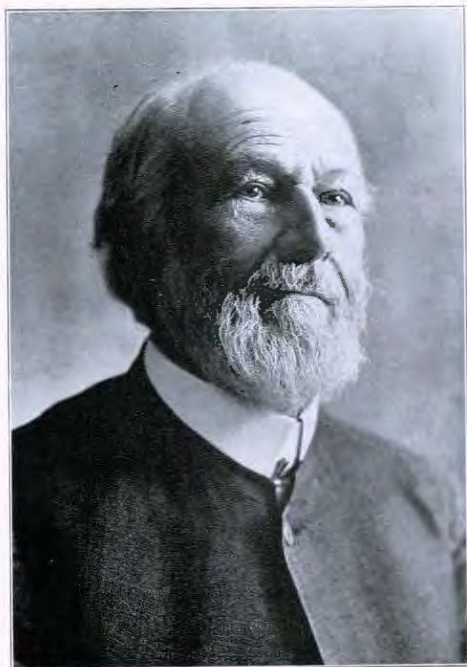
Following his custom of previous years, Dr. Hershey gave his lecture on radium, illustrated with slides and including a biography of Mme. Curie and the latest discoveries of elements.

The one and only social function of the Chemistry Club was a unique St. Patricks Day Party. Chemical games and chemical refreshments served in chemical apparatus played up the spirit of the Club.

DR. J. W. HERSHEY	President
RAYMOND TRUSTLE	Secretary
ROBERT PUCKETT	Reporter
ADELAIDE GLASER, LEO CRUMPACKER, HORNER ERY	
Program Committee First Semester	
HOWARD SAGER, PHILIP SPOHN, JOHN HARNLY	
Program Committee Second Semester	



Anniversary



S. Z. SHARP

The History of M. C.

At the Annual Conference of the Church of the Brethren, held at Ottawa, Kansas, in May, 1887, an educational meeting was held at which it was decided to establish a college in the state of Kansas. S. Z. Sharp presided. The following committee was appointed to locate the college: S. Z. Sharp, Enoch Eby, M. T. Bear, M. M. Eshelman, and G. G. Lehmer.

Seventeen locations were offered, August 11, the committee met at McPherson and unanimously decided in favor of McPherson. A charter was obtained from the Secretary of State, authorizing them to establish the McPherson College and Industrial Institute. The first trustees were: S. Z. Sharp, Mathew Eshelman, John S. Mohler, Moses T. Bear, and G. G. Lehmer.

The first Board of Instructors or faculty was: S. Z. Sharp, A. M., President, salary, \$900.00, Mental and Moral Science; Leonard Huber, A. M., Latin Greek, German and French, \$700.00; Howard Miller, Ph. D., Science and Literature, \$700.00; G. G. Lehmer, Ph. D., Mathematics, \$700.00; A. L. Snowberger, Commerce, \$700.00; Freeman G. Muir, Music; G. E. Studebaker, Business Manager; and John Kerney, Steward.

On October 19, 1887, the contract was let for the building of the dormitory now called Fahnestock Hall, which was divided to accommodate both men and women students, with space left for Chapel and recitation rooms.

September 5, 1888, the first term of school opened with sixty students enrolled.

At the beginning of the second year, Miss Frances Davidson took Howard Miller's place, and S. B. Fahnestock took charge of the commercial department and Mrs. Amanda Fahnestock, stenography and typewriting.

In 1890 Edward Frantz was secured as Professor of Mathematics, and in 1892 H. J. Harnly was elected as teacher of Natural Sciences. In the spring of 1892, the College graduated its first Academy class of three members. In 1894 the college graduated a student, who received a state certificate and a student (J. Z. Gilbert, now of Los Angeles) who received the degree of Bachelor of Arts, September 15, 1893, H. J. Harnly was elected trustee of McPherson College to fill the vacancy made by the resignation of A. W. Vaniman. February 10, 1894, F. A. Vaniman was elected business manager, salary \$50.00 per month and two meals a day in the dormitory. March, 1893, C. E. Arnold was elected to teach Mathematics at \$55.00 a month. In 1896 the school was leased to C. E. Arnold, A. C. Wiand, H. J. Harnly, S. B. Fahnestock, Edward Frantz; in 1898 it was reorganized and named McPherson College.



C. E. ARNOLD

- 1901 Sharp Administration building was completed.
- 1906 Carnegie Library built; 1909 College Farm bought.
- 1909 James Richardson donated farm for agricultural purposes.
- 1911 Alumni Gymnasium was built.
- 1912 The Board of Trustees increased to fifteen.
- 1913 Election of Trustees by District conferences.
- 1913 Departments of Agriculture and Home Economics organized.
- 1915 New Heating Plant built.
- 1916 Arnold Hall built.
- 1917 Completion of \$225,000.00 Endowment.
- 1919 Erection of Kline Hall.
- 1921 Accredited with North Central Association of Colleges.
- 1922 Harnly Hall completed; 1924 Department of Commerce organized.
- 1927 Membership in the Association of American Colleges.



EDWARD FRANTZ

The Presidents of McPherson College

S. Z. Sharp, A. M.	1888-1896
C. E. Arnold, A. M.	1896-1902
Edward Frantz, A. M. D.	1902-1910
S. J. Miller, A. M.; L. H. D.	1910-1911
(Acting President)	
John A. Clement, Ph. D.	1911-1913
H. J. Hamly, Ph. D.	1913-1914
(Acting President)	
Daniel Webster Kurtz, A. M.; B. D.	
D. D.	1914-1927

Distribution of Alumni by States and Counties (Approximately)

There are 1482 living Alumni, located in 37 states and five countries, as follows: 766, Kansas; 94, California; 59, Colorado; 59 Illinois; 58, Oklahoma; 54, Nebraska; 51, Missouri; 23, Texas; 20, Iowa; 20, Idaho; 19, China; 17, Washington; 14, Michigan; 12, Virginia; 11, Florida; 11, Indiana; 9, Pennsylvania; 7 each, Montana, Ohio and Minnesota; 6, Oregon; 5 each, Canada, New York, and India; 4 each, Arkansas, S. Dakota, Maryland, N. Mexico and Massachusetts; 3 each, N. Dakota, Philippine Islands, and Louisiana; 2 each, Wisconsin, Connecticut, Africa, and Arizona; 1 each, N. Jersey, Kentucky, N. Carolina, Cuba, Wyoming and West Virginia.

Distribution of Alumni by Occupation (Approximate)

329, house wives; 281, High School superintendents, principals, and teachers; 156, farming; 162 business men, merchants, bankers, salesmen, etc.; 81, continuing studies, graduate schools, etc.; 60 college and university teachers; 45 public school teachers; 53 pastors of churches; 30 missionaries; 22 doctors; 15 at home; 10 real estate; 11 government positions; 9 dentists; 9 nurses; 7 insurance; 6 medical students; 6 college presidents; 6 house-keepers; 5 electricians; 5 lawyers; 6 chemists; 4 oil promoters; 3 plumbers; 3 editors; 3 railroad men; 2 business managers of colleges; 2 bankers; 2 millers; 2 chiropractors; 2 artists; 2 librarians; 1 each artist, musician, plantation manager, settlement worker, motor man, conductor, sheriff, county treasurer, city clerk, interior decorator, child welfare, contractor, county clerk.

Of the 1482 alumni nearly a third are devoting themselves to teaching, preaching and missionary work. Sixty-eight are in college work, six of whom are presidents of colleges and two business managers. Nearly twenty-five percent of the alumni are teaching in high schools and colleges.



S. J. MILLER

Academy Attendance

Year	Fresh	Soph	Junior	Senior	Total
1915	42	26	24	27	119
1916	21	32	28	33	114
1917	49	33	26	46	144
1918	32	26	29	39	126
1919	30	23	15	42	110
1920	48	38	48	11	175
1921	23	42	32	51	148
1922	19	19	13	29	80
1923	17	18	18	19	72
1924	10	10	11	21	52
1925	8	4	7	10	26
1926					13

Sub-Freshmen

College Attendance

1913	17	19	10	18	64
1914	17	11	11	13	52
1915	39	12	8	10	67
1916	48	21	13	11	93
1917	45	25	17	16	103
1918	56	33	17	19	125
1919	60	47	22	21	150
1920	102	64	41	31	238
1921	81	70	60	29	240
1922	95	60	48	55	258
1923	111	78	60	62	311
1924	98	70	65	59	287
1925	151	98	41	71	346
1926	133	92	67	46	338
1927	157	109	49	73	379



JOHN A. CLEMENT

Member A. A. C.

President, D. Webster Kurtz,
McPherson College,
McPherson, Kans.

Jan. 28, 1927:

This is to advise you that by unanimous action of the Association of American Colleges, Jan. 14, 1927, you are now a member in good and regular standing of the Association of American Colleges.

ROBERT L. KELLY, Sec'y.



H. J. HARNLY

The 1926-27 Enrollment

(BY CHURCHES)	(BY STATES)		
Brethren	185	Kansas	270
Methodist	75	Oklahoma	23
Baptist	32	Colorado	22
Presbyterian	21	Nebraska	11
Congregational	17	Idaho	8
Christian	13	Missouri	6
Mennonite	12	Louisiana	4
Swedish Mission	7	Montana	4
Lutheran	7	Ohio	2
Free Methodist	3	Iowa	2
Community	2	Florida	2
Christian Science	1	Texas	2
United Breth.	1	New York	2
Universalist	1	Illinois	1
Church of Christ	1	Washington	1
No Church	1	Oregon	1
		California	1
		Japan	1

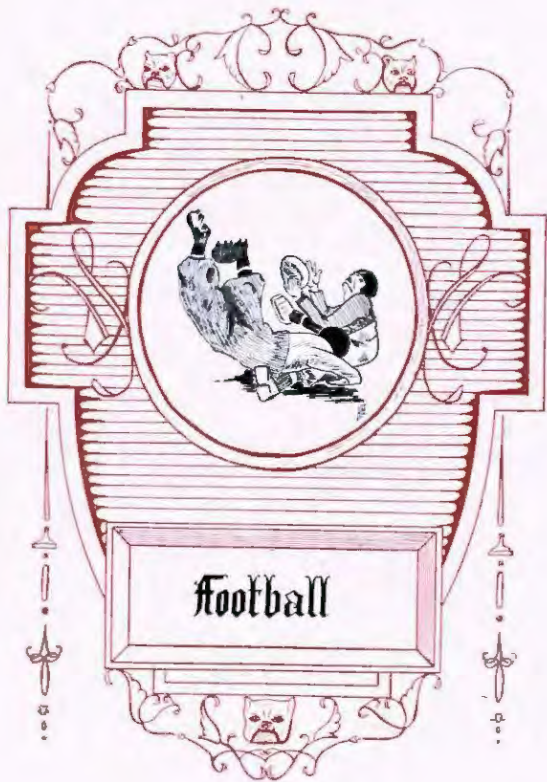


COLLEGE HILL IN ITS INFANCY

The College, Dormitory and Library, plus the College taxi in 1888.
 The ten years before 1901.
 View looking southwest from the Ad. Building.
 Euclid street as seen from the College.



ATHLETICS



Football



Coach Gardner

Coach George Gardner found his system beginning to work this year and as a result his efforts were awarded by higher standings in the conference, especially in basketball. Gardner is one of the best known athletes in Kansas, his brilliant career at Southwestern College was climaxed, when he was chosen All-American forward, at the National A. A. U. basketball tournament in 1923. While in college, he made a forward position on the first All Kansas Conference team for four successive years, and in 1926 was picked on the All-time, All-Southwestern team. "George" has for the past two years been a very prominent factor on the McPherson Bankers, the champions of the Independent League, and he has the distinction of being chosen the most valuable player to his team, in the first year of the league's organization.



Captain Moffat Eakes



Dixon

Hanna

Kolaw

Countryman

W. McGonigle

Football

The football season of '26 was looked forward to with brighter prospects than was the previous year. As a result of the organized efforts of the "M" club and of the alumni, a large number of Freshman reported at the initial work out, together with Captain Eakes and his men from the last year squad, and preparations were made for the Ranger battle less than two weeks distant.

The Rangers Fail to Get Revenge. Down across the Oklahoma border in Alva the Northwestern Teachers with sharpened knives were prepared to take the hide of the invading Bulldogs. Up and down the field the teams battled on even terms. Each team would execute some good plays, then a strong defense or a fumble would occur and all possibilities of a score would fade away. The end of the game found neither team in possession of a score.

Cats and Dogs—The Cats Go Hungry. The Baker Wild Cats came to McPherson determined to feast on Bulldog flesh. The McPherson line was out weighed twenty pounds to the man but this handicap was more than overcome by the onslaught of the midget Bulldogs. Try as they might the Baker team could not puncture the McPherson defense. A Baker drop kick had proved futile and it looked as though the game would be a scoreless tie. Then Nonken returned a punt for twenty two yards and a pass from Rasor to Crumpacker netted seventeen more, which placed the Bulldogs inside the twenty yard line. At this point Gardner made a strategic move by inserting "Dickie" Dixon. Kicking from the thirty yard line Dixon's place kick flew straight and true. Thirty more seconds and the game was over. Bulldogs 3, Wildcats 0.

The Irish Have Their Day. The St. Mary's Micks came into the Bulldog kennel with a rugged group of Irishmen. The dope favored McPherson but the Bulldogs ap-





E. McGonigle

Miller

Cramacker

Clemens

Rock

Football

peared a little over confident and the team was not functioning as it had in the Baker game. The St. Mary's line lead by their Captain, 'Shaggy' Normie, was impregnable. Both backfields played inferior football. Late in the second quarter Clemens and Kolzow, Bulldog ends, blocked an Irish punt and a Mick was tackled back of his goal line. McPherson 2, St. Mary's 0. With these two points for a stimulant the Bulldogs recovered and it looked as though the Canines would start on a march to the goal line. But fate frowned as soon as she had smiled and luck was again with the Irish. In the fourth quarter, Howard, a St. Mary's back, kicked a perfect drop kick from the twenty yard line. The Bulldogs passing game was unavailing and the end of the game found the Irish holding a meager one point margin.

Washburn Draws a Lucky 13-9. Chafing under the defeat handed by the Irish, the Bulldogs were ready to fight the death battle with the Ichabods. The big blue team held K. U. to a 14-7 score and boasted a great broken-field runner and triple threat man in the shifty Cramer. The Washburn team, which had evidently under estimated the Bulldogs, found that they could not gain through the lighter McPherson line and were repeatedly forced to punt from their goal line. Kaufman gathered in one of these punts and returned it thirty yards, to the twelve yard line. The Bulldog line held and Dixon's toe was good for a field goal. During the second half the Ichabods woke up and started a march down the field, Cramer got loose for twenty-five yards. A few more smashes and the McPherson goal line was crossed for the first time in the season. McPherson used the forward pass successfully. A long one, Rock to Kolzow, was responsible for the first Bulldog touchdown of the season. But Washburn would not be defeated and began another march to the goal. The Bulldogs were fighting fiercely—surely, they could hold that line. Then Washburn tried the forward pass which the Canines





Loneel

Kaufman

Nonken

Whiteneck

Carbon

Football

had used so effectively. A long pass dropped into the hands of a waiting Blue end and he fell across the line. The Bulldogs were defeated, but they had fought very admirably while losing.

Of Course! Bethel Lost! Bethel, wallowing in the cellar of the conference, was considered a juicy hone for the Bulldogs to crunch. They were easy but the Bulldogs jaws were tired and only at times did they have power to display good football. When they did, however, a score was the result. But the scores were of little use because fumbles and penalties made touchdowns, merely clever variations. The Bulldogs crossed the goal line twice and brought home a 12-0 victory.

When Johnie Comes Marching Home. St. Johns College of Winfield was the guest for Armistice day. With the sun shining overhead and lagoons of mud underfoot the game began. Crumpacker made a pretty return of the kick-off and end runs by Kaufman carried the ball to the one foot line, but here in a sea of mud the Canines floundered. Again they repeated the story;—off tackle thrusts and end runs brought the ball to the one yard line. But the Johnnies recovered a fumble and killed the second chance for a score. So it went until the second half, when St. Johns' returned the kick-off for fifty-four yards. The Bulldogs realized that the enemy was playing football and got down to business. But neither team scored until in the early part of the last quarter. Nonken scored the first touchdown and Crumpacker made the extra point. A few seconds before the game was over, Clemens caught a pass and scored the second touchdown and the Johnnies marched home suffering a 13-0 defeat.

How Could You! Sterling. That is the question that Bulldogs felt like asking when the fray was over. The game was doped very closely but the Barrelmakers pryed the Bulldogs jaws apart and kept them open during the entire game. In the





Hawkins

Murvey

Bowman

Merkey

Barre

Football

meantime they made three touchdowns on straight football, camouflaged by some formation hitherto unknown to the Canines. When the Bulldogs had extracted the last of the splinters the game was over and the strength of their jaws was of no avail.

The Scandinavians Meet a Fighting Bulldog. Bethany was ranked second in the conference and McPherson was several divisions below that standing when the whistle called the two teams into conflict, last Thanksgiving. But conference rating can hardly be considered when the Swedes and Bulldogs clash.

The "Terrible Swedes", were playing the brand of football that had made them champions, the year before. McPherson was still stinging from the defeat administered by Sterling.

The game began and the Swedes immediately realized that they were battling a tenacious, fighting Bulldog. Although the Swedes were strengthened by their all-state men, they could gain but slowly and found the Dogs difficult to battle throughout the game. So the Scandinavians changed their tactics and with perfect interference raced a "back" around end for the first touchdown of the game. Later in the game the play was repeated for the second touchdown.

The Bulldogs became more fierce. Every man on the squad fought as though his life was at stake. Countryman was in every play. Under the shadow of their own goal the Bulldogs held the Swedes for downs time after time because of the fact that Captain Eakes, Kolzow, Lengel, Carlson, Clemens, and Merkey, each one a senior, were playing their final game for McPherson College.

Only the witnesses of the game are able to appreciate the fighting spirit of those Bulldogs that held the "Terrible Swedes" to two touchdowns.





Basketball



Ralph Martin

June Ellis

Cheer Leaders

The student body seemed at a loss as to what to do when informed that Cheerleader "Hefty" Stienruck would be unable to return to school. But the Student Council saw the difficulty and appointed Ralph Martin as the Bulldog mentor of pep and enthusiasm. He chose June Ellis as his lady assistant and the two by working with splendid co-operation continually kept the resonant, "Fight Bulldogs, Fight," in the ears and memories of the Bulldog athletes throughout the year.

Basket Ball Squad



Saylor Harnly Gardner, Coach Eakes L. Crumpler
 Miller Barre Blickenstaff E. Crumpler
 Kinzle Holloway Nonken



CAPTAIN BARRE

"Barre", a sophomore, was unanimously selected to pilot the '27 squad. Henry, a wonderful guard, always to be relied upon, proved the same type of general. Captain "Hank" was a dangerous scorer, a powerful wall at defense and the nucleus of the Bulldog team.

CRUMPACKER.

"Crummie", having played an excellent game at the guard position, will be remembered by Bulldog fans for his sportsmanship on the court, and his general Crumpacker dexterity as a player. The Crumpacker-Barre defense was known throughout the conference. "Leo" has another year of intercollegiate basketball.



NONKEN.

"Nonk", the only freshman letter man, was indeed the find of the season. Nonken led the Gardner offense by playing the center of the court. His uncanny ability to dribble and to pass resulted continually in Bulldog scores. There is no better sport than "Ray" and he will develop into a thoroughbred Bulldog. Watch him.

BASKETBALL SEASON

Friends U.29	M. C. 27	Bethel	29	M. C. 25	Bethany	16	M. C. 27
Southwestern ..23	M. C. 20	Sterling	27	M. C. 60	C. of E.	27	M. C. 26
Emporia T.31	M. C. 25	C. of E.	48	M. C. 29	Kansas Wes. .	33	M. C. 41
Kansas Wes.20	M. C. 25	Emporia T.	40	M. C. 38	Bethany	27	M. C. 31
Friends U.25	M. C. 27	Bethel	23	M. C. 45		---	---
St. Johns	21	M. C. 31	Sterling	20	M. C. 52	Total	439 529



HOLLOWAY.

"Rush", another sophomore, was one of the scoring demons of the season. He was extremely fast, an excellent dribbler, and a dead shot for the basket. Holloway exhibited a brand of basketball that enabled him to place at the forward position on the third all-conference team, as chosen by Leslie Edmonds of the Topeka Daily Capital.

KINZIE.

"Earl" came to McPherson from Ottawa High School where he left an enviable record. Kinzie, a sophomore, played his first season of conference basketball. He proved an excellent dribbler, a continual exhibitor of the greased type of lightning and was a reliable scorer. We will hear more of Kinzie's basketball after another season.



MILLER.

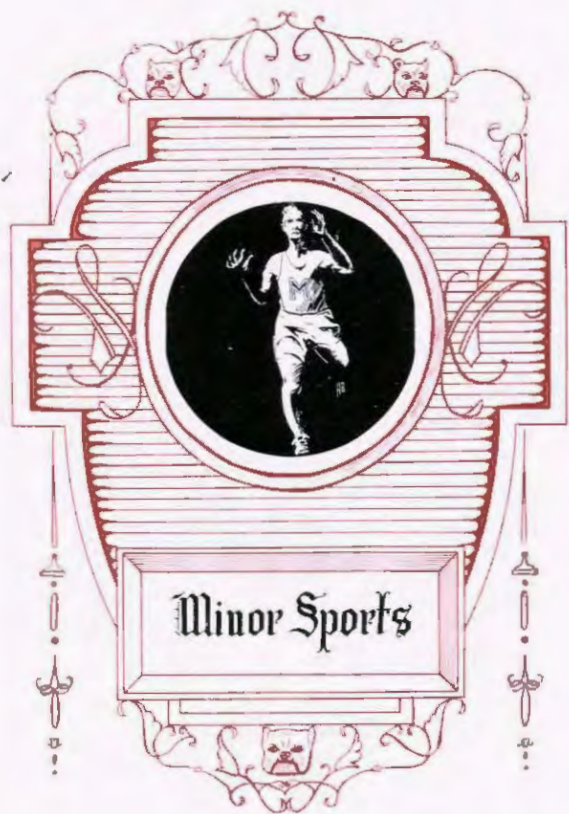
"Miller", a sophomore, having played his first season as a Bulldog, very worthily held the honor of being the high point man of the Gardner crew. "Melvin" was a valuable man on the tip-off. He was a sure shot and a clever floor man. He demonstrated his scoring ability in the Swede game when he scored eight points in less than sixty seconds.



BLICKENSTAFF

"Blick" has earned his second letter as a Bulldog basketeer. He was an excellent man at the center position and possessed that ability to "scrap it up" as a true Bulldog should. He scored regularly and played a splendid passing game. "Archie" has two more years in which to represent the Crimson and the White.





Minor Sports



Puckett

Bowers

Whitteneck

Crumpacker

Mares

Track

The Bulldog tracksters officially opened their 1926 season at Newton in a triangular meet between Bethel, Friends, and McPherson. The McPherson athletes presented a strong field in the running events but scored only in the javelin in the field. Coach Gardner's men scored 29 points, Bethel 31 points and Friends 66 points.

Vengeance was wreaked, however, upon the Mennonites in the Bethel-McPherson meet the following week. The Bulldogs amassed 68 points to the 50 points scored by Bethel. The Gardner followers won every running event from the 100 yd. dash to the 2 mile run.

May 1 found the McPherson squad battling for honors in the annual Hays, Bethany, Bethel, Sterling, Kansas Wesleyan, and McPherson, Hexangular Meet, which was held on the Sterling track. Again the speed stars scored heavily and placed McPherson well in the lead until Hays won the relay and the meet.





Hartell

Kaufman

Davis

Vogel

Jones

Track

The following week the "Terrible Swedes" fell before the vicious Bulldogs, Bethany scored only in the field while the Canines ran away from the Swedes in the races.

Davis, Vogel, Puckett, Kaufman, and Hartell represented the Crimson and White at the Kansas Conference Meet at Pittsburg, May 15. All of the men came through to the finals. In the final events, Vogel and Puckett scored third places in the mile and the 220 yd. dash respectively.

The 1926 track season featured a number of outstanding athletes. Bob Puckett, freshman sprinter, led his team mates in scoring honors. Bob usually clipped the 100 yds. in 10 seconds and the 220 yds. in about 22 sec.

John Jones, of Shenandoah, Iowa, was another star in the sprints. He proved a consistent point winner.

Ernest Kaufman was ranked one of the best quarter milers in the Kansas Conference. Ernest possessed remarkable endurance and speed which enabled him to pass his opponents in the last 50 yds. of the 440 yds. sprint.

Lester Vogel and Griff Davis handled the distance events. Vogel was a certain point winner in the half and one mile events always covering the distances in record time. Vogel holds the Hexangular records in these runs. Davis shared honors in the one mile with Vogel and reigned supreme in the two mile run.

Ronald Hartell due to injuries did not get under way until the season was practically over, but he scored several points in the distances.

Captain Rock, the most versatile and all round man on the squad scored points in the hurdles, high jump, broad jump, pole vault, and javelin. Rock was capable of a 170 ft. javelin throw and a 21 ft. leap in the broad jump.

Ralph Bowers developed into a star timber topper. He won his letter in the 220 yd. low hurdles.

Marrs and Crumpacker upheld the Crimson and White in the weight events. Marrs threw the javelin while Crumpacker scored consistently in the shot and discus.



Coach Gardner

Captain Rock



Barre Kolzow Ellwood Hill Nickel

Baseball

Baseball was a self made sport at McPherson College during the spring of 1926. There was a number of baseball enthusiasts in the school who convened, organized and selected Dale "Duke" Strickler as coach.



Hawkins Spohn Ellwood Saylor Strickler (Coach) Rock Barre 101 Kolzow Marris Beckwith Yoder Nickel Reed



Beckwith

Spohn

Saylor

Rock

Hawkins

Baseball

After two weeks of preparation, the Southwestern nine was entertained at the fairgrounds. The Bulldogs found the cover for three runs in the first inning and scored twice in the fifth, but the Moundbuilders, played midseason ball and scored eleven times during the nine innings.

Strengthened by a week of practice the Bulldogs returned the visit to the Batesmen. After a hurry trip south the Bulldogs were unable to find themselves and lost 15-7. The next day the Canines crossed bats with the St. Johns' College cohorts. This was a real exhibition of baseball, both the Dogs and the Johnnies playing errorless ball. Rock's three base hit was a feature of the game, as was the splendid working of the McPherson battery, Barre pitching, Hawkins catching. But the Southerners by taking advantage of their chances to score were able to lead 7-5 at the end of the game.

The M. C. Bulldogs celebrated the May Fete with a 4-3 victory over the McPherson City Team. Hawkins thrilled the crowds when he lifted the leather over the fence for a home run in the sixth inning. Rock's single brought in the winning score in the eighth. Kolzow was in splendid form, with nine strikeouts.

The personnel of the team included, Beckwith, Spohn, and Nickel in the outfield. Elwood, first base, Saylor, second base, Hawkins, third base, and Rock or Hill at short-stop in the infield. The battery, Kolzow, pitcher, and Barre, catcher.

With the majority of lettermen returning the season can be conceived as the one that started McPherson College anew in the Kansas Conference baseball.



Tennis

Tennis has achieved success in the East but still has to win its laurels in the sports of the Middle West. Tennis is growing at McPherson. During the season Friends won two matches from McPherson, and the Scandinavians one. At the Hexangular, however, McPherson exhibited some real tennis and crowned the season with success, with victories over Kansas Wesleyan and Bethany.



Saylor

Eakes



APART FROM
ORGANIZATIONS
FEATURES--SMILES



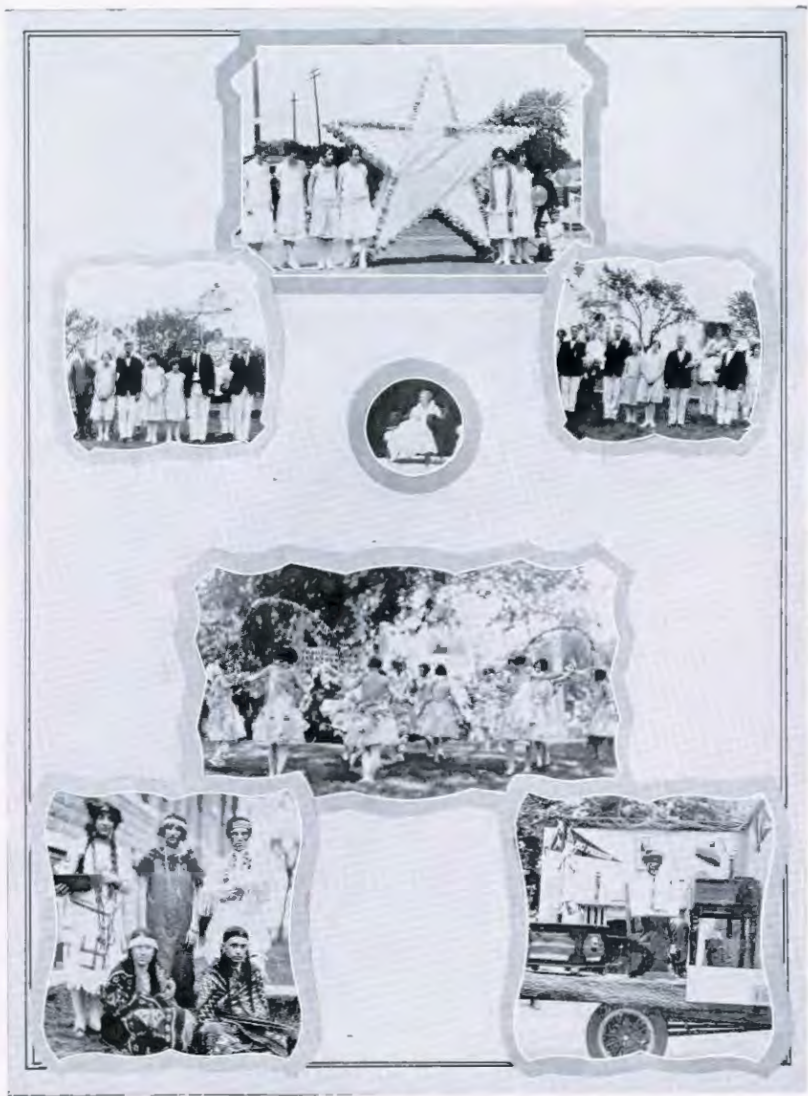
Look us over, and shout with Shakespeare:
 "Some, Cupid kills with arrows, some with traps."



Just a touch of campus high life, as it is seen before the first home game of each football season, together with the punishment of an unruly freshman.



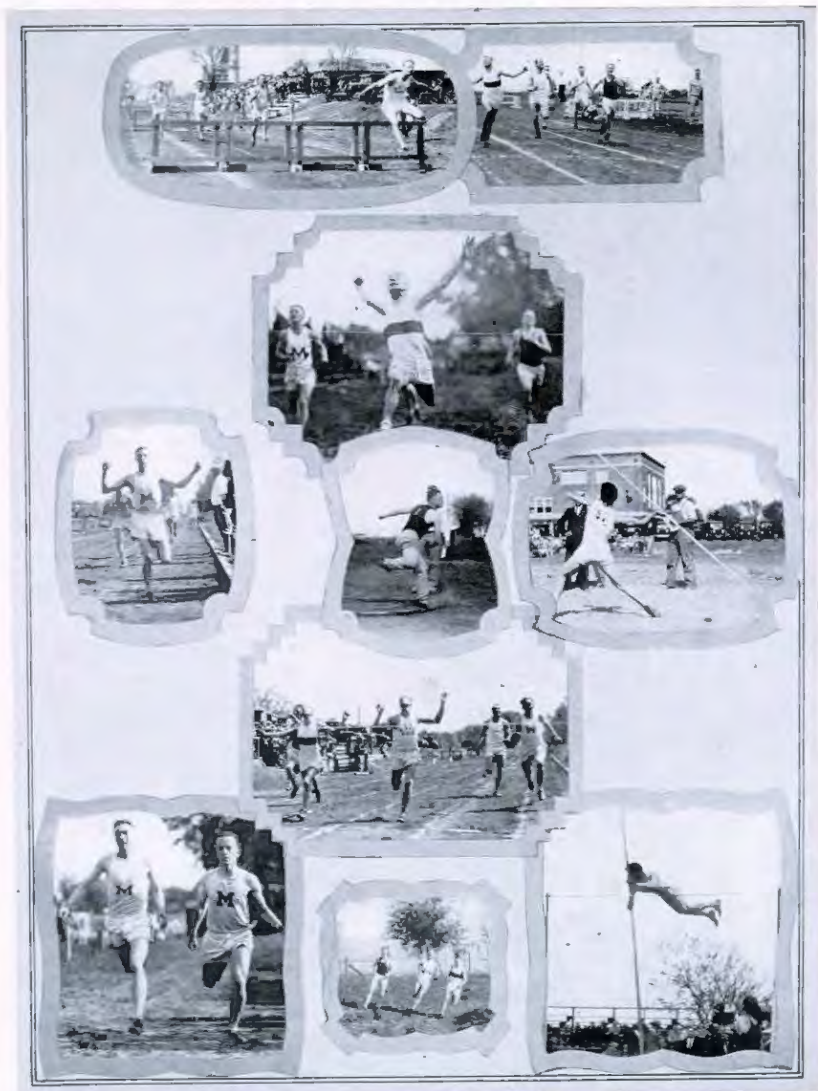
The girls parade too. Sure, why not? That view of the tourney brings back fond memories—of the quarters and half-dollars, not to mention the nickels and dimes that we left there.



*What is so rare as a day in June? That's easy, A May day in
McPherson, when it doesn't rain.*



*And the only thing on earth still rarer, is a May Queen to
 equal the queen of the Bulldog realms. Witness Her Majesty,
 in all her regal glory.*



McPherson's track stars run away with all the prizes. Rock, Crumacker, Vogel, Puckett, Jones, Bowers, and Hartell seen in action.



*For it's always fine weather, when good fellows get together.
That's why it is always pleasant at M. C.*



Four married couples—some past, some present and some future, but all married! Prince William's train, too.



Our Senior football men. "All work and no play makes Jack a dull boy" is a good rule, and it helps to beat the Swedes.



A real cage squad. Coach taps off the subs. They're all coming back, too, except Eakes.



*Picnics, pyramids, parlor parties, and paddles. "Milly" torus
Izaak Walton and digs for worms.*



Here we have life represented—Tough bunches, and sweet bunches—of daisies! Maybe you call them daisies. We like to think of them as peaches.

Bits and Bitters

By Paul L. Dick

The feature editor was on his neighbor's bed dreaming sweet dreams of the chicken dinner he had last Sunday.

Suddenly his breath began to come in short pants, plus 4's, and his slowly returning consciousness rendered him sensible to a weight on his back bouncing about in a most pagan manner.

Then the voice of Ye Ed came to his ears: "Wake up! you sleepy cuss. Why, you good for nothing lazy hound-dog, if you'd get your copy in, I could start studying again. Now, I want two pages by to-morrow."

The feature editor sniffed, snorted and rolled over, but it was no use. Ye Ed is as determined as any mule Missouri ever turned out. You can tell that by his big ears and his freckles.

So poor "we" got up and began to tax our already overladen brain for something to amuse the reading public.

Our landlady kindly fixed us a grapefruit to arouse our appetite and sharpen our wit, which set us to thinking: "How many people really know what a grape fruit is?" Came to the conclusion that a definition was in order, so here goes:

"A grape fruit is only a lemon that saw its chance and made good."

A lapse of memory sent us over to the business office to peruse the calendar, and we found the following dates of importance:

- Sept. 13-14—Enrollment. Biggest Frosh and Senior classes ever.
- Sept. 24—Canines halve the first of the season with Alva, 0-0.
- Sept. 29—Marion Talley claims five McPherson admires after Wichita concert.
- Oct. 9—Spec says "Dixon's toe brings 3-0 victory." Hurrah! Baker!
- Oct. 10—The Austins arrive for a three weeks meeting.
- Oct. 14—The Micks take a 3-2 victory. Overconfidence can get even a Bulldog down.
- Oct. 23—Music Club members return from picnic with weird tales.—Dorothy Girard joins Melody Boys.
- Oct. 29—Washburn gets a scare—but takes the pigskin. Story is 13-9.
- Oct. 30—Halloween party is scene of strange characters. Pete and Repete get the Stradivarius.
- Nov. 6—Ray! Bulldogs take 12-0 victory in Bethel Homecoming game.
- Nov. 11—Bulldogs take local Homecoming game from St. John's 13-0. Argument about final score continues until both teams are off the field, preventing the Bulldogs from making try-for-point which would have added one more counter. The touch-down came in the last 1-5 of a second.
- Nov. 18—"Veni, vidi, vici"—No, not for the Bulldogs. Too many of the team were saving up for Sweden, and Sterling got three pretty touchdowns.
- Nov. 25—Frosh lost Turkey Day game to Sophs; Bulldogs follow Frosh example and let the Swedes get by with a 14-0 victory. We'll get 'em yet.

- Dec. 4—Little Symphony and Men's Glee Club, broadcast.
- Dec. 7—Debate team is composed of Four State Champions of '26 season.
- Dec. 10—Frosh take school cage title, gaining revenge for defeat by sophs in football.
- Dec. 17—Vacation. "Mid pleasures and palaces,
Wherever you may be,
When Christmas time is over,
There's no place like M. C."
- Jan. 3—Katherine Penner sports a flashy diamond. Who?
- Jan. 4-5.—Trustees meet. Endowment keeps them busy so that dining hall speeches are brief.
- Jan. 25—Kurtz upsets himself. Prexy, why dost thou drive thus?
- Jan. 27-28-29—Examinations. Well, Bible Institute will rest us.
- Jan. 28-29—Penner sings at governor's home for Federated Womans' Clubs.
- Jan. 30—Feb. 6—Bible Institute makes company manners necessary. Thespians present "Why the Chimes Rang," Music Club, "Rose Maiden."
- Feb. 11—Crummy will captain the '27 grid squad; Floyd Kurtz has 63 honor points in one semester.
- Feb. 18—Bulldog debaters get off with a good start. K. W. U. 0, Bulldogs 2.
- Mar. 4—Bulldogs Take Three From the Swedes—Two in Debate and One in Basketball—The first one in basketball was too easy to mention.
- March 12—Music Club broadcasts.
- March 17-22—"Y" elections; cigars are on Huston, the champion "Auntie" Tobacco orator.
- March 28—Debaters are state champions for second successive year.—Southwestern 2, McPherson 4. Incidentally the ladies defeated the Swede co-eds March 25 making six victories from the flaxen haired ones this semester.
- March 31—Rush Holloway will captain the '27-'28 cage team.
- April 7-8—Oh, but we had a hot time. John Whiteneck, the dark horse, didn't get ridden at all. Frank Barton attends his first prayer meeting.
- April 8—Sorrow is manifested at Dr. Kurtz's resignation.
- April 9—Bulldogs take second in Triangular track meet, and shut out the Swedes for the seventh successive time.
- April 21—Kate Penner goes to Chicago to make phonograph records. We see where some music house gets rich.
- May 6—Junior-Senior banquet. A good time, and such a feed! Hawaii bound!
- June 4—George Merkey gets the knot tied. Now we know there is one foolish woman.
- June 9—Kate Penner will become a Barton. Congratulations, Hal, how did you make the capture?

WOULDN'T IT BE NICE IF

1. There was an elevator in Science Hall?
2. The Freshmen could O. K. their own chemistry experiments?
3. The seats in chapel were supplied with cushions?
4. Someone would return all the fountain pens that have been lost this year?
5. Money grew on trees?

Roses are red,
Violets blue,
Horses neck—
Do you?

Prof. Hershey: Has absolute zero ever been reached?
Horner Eby: Yes, in my last exam.

We always laugh at Harnly's jokes,
No matter what they be;
And not because they're funny jokes,
But because it's policy.

Rothrock: Where are the shower baths?
Cassler: I don't know. I've only been here a month myself.

Lives of Seniors all remind us,
We can make our lives sublime,
And by asking silly questions,
Take up recitation time.—A. Frosh.

It's easy enough to be pleasant,
When nothing at all goes amiss,
But the man worth while, is the man who can smile
When he reads such junk as this.

Eakes: I think there is something dovelike about you.
Scottie: Not really?
Eakes: Yes, you're pigeon-toed.

Live each day so as to shake hands with yourself every night.

P leasant personality,
E ver smiling prettily,
N ever cranky, never blue,
N ever ridiculing you,
E ver ready for some fun,
R eal sport—my poem's done.

Throughout the year, Dr. Hershey had held a daily "At Home" to the members of the Freshman Class during the past year, in honor of several of his lady friends, whose names appear below:

Miss Molly Cule
Miss Ella Sticity
Miss Dessie Meter
Miss Eva Poration
Miss Mag Netic

HOW WOULD YOU LIKE TO SEE

The library when it is quiet?
 Everyone paying attention in chapel?
 The dandelions missing from the campus?
 Butter on the dining hall table?
 "Cheese" without "Crackers"?
 Winston Cassler with a girl?
 Arlene Church paying attention in class?
 M. C. ten years from now?
 The guy that wrote this stuff?
 Dr. Kurtz in a track suit?

Van Blaricum: Well, I must be off.

Budge (yawning): That's what I thought when I first met you.

M is for the matches that are made here.
 C is only that the dorm is cold
 P is for the profs they have, to teach us.
 H is how we hate the Swedes so bold.
 E for each examination ended.
 R for Roll of Honor we ne'er make.
 S for Sharp Hall.
 O for old and outgrown.
 N for the name of old M. C.

Nonken: I wonder how old Miss McGaffey is?

Dixon: She must be quite old, because I heard her say she taught Julius Caesar.

Down where the belt clasps a little stronger,
 Down where the pants should be a little longer,
 That's where the vest begins.

Down where you wish you were a little slighter,
 Where the shirt that shows is a little whiter,
 Where each day the buttons grow a little tighter,
 That's where the vest begins.

Down where the pains are in the making,
 And each midnight hot dog will start it aching,
 That's where the vest begins.

Where each added pound is the cause of sighing,
 When you know in your heart the scales aren't lying,
 And you just have to guess when your shoes need tying,
 That's where the vest begins.

Many a true word has been spoken between false teeth.

Prof. Williams: How would you punctuate this sentence: 'Lillian, a pretty girls is walking down the street'?

Berries Crist: I'd make a dash after Lillian.

It's better to be broke than never to have loved at all.

(Wouldn't Longfellow turn over in his grave if he could read this?)

Under the outspread, shady trees
Our lover's lane extends,
And love a might law decrees,
On which the world depends,
And to the man who knows this law,
Great peace of mind it lends.

That law in brief is simply this—
When, sometime in one's life
He gets a craze to get engaged,
And then to get a wife—
A warning: "Let thy choice be good,
Or bear the storm and strife."

Now in M C it oft has chanced,
(My story soon is o'er),
A maiden fair has been intrigued,
For half a year or more.
But when the case had prospered long,
He came to be a bore.

And then, of course, she threw him down,
For thus fate e'er must be.
And long he pined his heart away—
A saddened soul was he.
But lo! He won her back, and now,
There is a unity!

Eddy (fervently): And when are you going to allow me to kiss you?
Dot: Come around Friday. That's amateur night.

Even Ella Wheeler Wilcox must suffer at the hand of the pun artist:

One man eats brown bread, another eats white,
And the selfsame baker bakes both.
'Tis the amount of the starch, the sugar and starch,
That determines the rate of growth.

Like the bread that we eat, is the work that we do,
As we wander through college life.
'Tis laziness' curse, that brings on the hearse,
And not the dorm noise and strife.

Blair's pet theory: The first essential in training a child is to have more sense than the child.

SKETCHES FROM SHAKESPEARE

You would think to read Shakespeare that he attended McPherson College when he was young. One sure thing, he ate in a dormitory somewhere:

"Epicurean cooks sharpen with cloyless sauce his appetite".

"Famine is in thy cheeks".

"No man's pie is freed from his ambitious finger".

"Eating the bitter bread of banishment".

(The staff is of the opinion from the wording of the third quotation, that Shakespeare must have met Ira Ihde sometime during his life).

Only the smell of the chemistry department, as it oderiferously wends its way up the stairs of Science Hall could have inspired this:

"The rankest compound of villainous smell that ever offended nostril".

But evidently Shakespeare didn't take up with the college idea, much, for he thought that college graduates were little short of cut-throats: "Marriage is a desperate thing". Well, don't college graduates all get married?

Still another proof of Shakespeare's disapproval of college in general and dormitories in particular, is seen in this line which Bill evidently inserted in one of his plays after Ray Nonken, Moffat Eakes and Bill Hanna had spent a night in carousal: "I have not slept one wink".

To quote Shakespeare again: "Here are a few of the unpleasant words that ever blotted paper." And the words (not from Shakespeare): Wood alcohol, trained nurses, "Lead, Kindly Light."

This one is lovingly dedicated to those members of the Freshman class who experienced difficulty in Chem. I.

The hours I study thee, old text
Are as a million years to me.
I count them over, every one apart,
My chemistry, my chemistry.

Each hour a page, each page a note
To fill the book lest I should flunk.
I take each test, unto the end,
And get an F—I'm sunk.

And then in lab, my hands I burn,
O, stinging acid, bitter stuff.
I do each task, hoping to hear Doc say,
"You've done enough, my boy, you've done enough."

And now comes a song entitled "The Sweetest Story Ever Told." It has just four lines—

"If you are growing tired of this
Take heart, my reader, and friend,
For you are soon to rest in bliss
The feature has come to an end."

—P. L. D.

These Advertisements
are Shown
BECAUSE—

-
- 1—These merchants are proud of their products.
 - 2—Only prosperous merchants can afford to advertise.
 - 3—There is a mutual benefit.

Patronize Them

Dress Well and Succeed.

Lord Chesterfield says:

“Correct dress is an object worthy of attention, for one cannot help forming some opinion of a man’s sense and character from his dress. Dress as well as the people of sense and fashion; dressing better is foppish, dressing worse is negligent. Dress is a thing of consequence. Making a good figure in the world of fashion is a great step toward making one in the world of business.”

Laderer
CLOTHING CO.

The Good Clothes Store

The Ellis Shoe Store

(McPherson's Only Exclusive Shoe Store)

Arch Preserver Shoes
for
Men and Women

Shoes That Fit and Styles That
Are in Vogue

*Fine Arts, Rookwood Pottery,
Books, Birger Sandzen's Paintings,
Lithographs and Wood Cuts*

SMALLEY'S

221 N. Main

McPherson, Kansas

APPEARANCE together with
SUCCESS brings
HAPPINESS

Wilbur Barber Shop

LIKE OTHER THINGS
**BUY PRINTING AT
 HOME**

AND BUILD THE HOME TOWN

Build the Home College by building the Home Town—a sure method. Years of experience, the best of workmen and machinery, a record of excellent work, and the desire to please are at your service with advantages no outside printery can give you.

**THE DAILY REPUBLICAN
 PRINTERY**

McPHERSON, KANSAS

(Printers of The Quadrangle)

Distinctively—

Attractive and
Outstanding
are the views
in the 1927
Quadrangle



Made by

Walker Studio

CHURCH DIRECTORY

METHODIST

Rev. Freeman Kansas & Maple

PRESBYTERIAN

Rev. Cotton 300 S. Main

CHURCH OF THE BRETHREN

Rev. Richards 1510 E. Euclid

CONGREGATIONAL

Rev. Frazier 224 S. Maple

BAPTIST

Rev. MacDoniels Maple & Martin

CHRISTIAN

Rev. Ashley Kansas & Walnut

PROFESSIONAL DIRECTORY

Dr. W. E. Gregory DENTIST

Office Phone 372 Res. Phone 295
Farmers Alliance Ins. Bldg.
McPherson, Kansas

Dr. G. H. Matchette Physician and Surgeon

Rooms over Almen-Lovett
Drug Store
Phone 79 Union Block

Office Phone 252 Res. 471
DR. E. L. HODGE
Dentist
Modern Dentistry
Office over McPherson-Citizen
Bank
McPherson, Kansas

Dr. A. A. Freeburg
Restorative and Preventative
DENTISTRY
Office Rooms 205-207 Allison
Building
Phones: Office 286; Res. 611Y

DR. W. C. HEASTON

Physician & Surgeon
Grand Bldg.
Rooms 1 & 2 Phone 336

Buy from
Crumpacker
and become a
money packer

Wheat, Corn
and Alfalfa
Farms



WE'LL STAND ON OUR HEADS TO PLEASE YOU!

Homes on College Hill, Small Tracts, Farm and City Property
see

Jay Crumpacker

Dealer in Real Estate

McPherson, Kansas

DINNER

SUPPER

Home Made Ice Cream :-: All Flavors

CANDY
PIE

Palace of Sweets

SANDWICHES
COFFEE

(Open from 7 a. m. till Midnight)

First Class Soda Fountain and Frigidaire

THE PAPER STORE FINE STATIONERY--PRINTING

Cut Papers :-: Loose Leaf Supplies :-: Fountain Pens
Dunnison Goods

CARL P. MILLER

214 N. Main

ROYAL BARBER SHOP

115 No. Main

E. H. Olson, Prop.

Phone 306Y

The Exclusive Place To Dine

Continually Striving—
and achieving our
desired aim—to Satisfy.

Puritan Cafe

THE SEMINARY

The Seminary of BETHANY BIBLE SCHOOL seeks to give to college graduates the specialized training which will fit them to be efficient leaders in the several line of Christian service.

It is the Seminary of the Church of the Brethren, and as such, offers the following unique advantages to those preparing for work in our denomination:

- (1) A Bible-centered curriculum for a Bible-centered people;
- (2) Methods, courses and practical training adapted to the situation and needs of the Church;
- (3) The opportunity for wide acquaintance with the present leaders of the Church;
- (4) Fellowship with students from all sections of the Brotherhood, representing practically all the church colleges.

The Seminary seeks to encourage a spirit of freedom in the search for truth, and with it an appreciation of the genius of the Church and a loyalty to her ideals.

No work is of greater importance than Christian work. No service merits more thoroughgoing preparation. The time and effort spent in a Seminary Course multiplies itself in the increased capacity for rendering service. We cannot expect God's best unless we offer Him our best.

A Summer Term of six weeks duration is offered in 1927, opening June 20.

Catalogue and full information regarding the school may be secured by addressing

BETHANY BIBLE SCHOOL

3435 Van Buren Street,

Chicago, Illinois

Sheet Music

Pianos

"Baldwin" Music Store

EVERYTHING MUSICAL

Accessories

Phone 299

ELECTRICAL---

Phone 131
107 S. Main

We have the Goods

Courteous Service

GREEN ELECTRIC CO.

THEO. HARMS PRINTING CO.

COMMERCIAL AND JOB PRINTING

120 NORTH MAIN

PHONE 298

YES—"IT PAYS TO LOOK WELL"

A Tip-Top Job, at the

SUNFLOWER BARBER SHOP

EAT!

SNYDER'S CANDIES

Pearson Millinery

204 North Main

First Class Hat Shoppe

Let Us Supply Your
Grocery Wants

For Hikes, Feeds and Banquets

ROTHROCK GROCERY

Phone 467 302 No. Main

FLOWERS

Our Floral Artists Are Always At
YOUR SERVICE

McPHERSON FLORAL CO.

501-517 No. Ash St. Phone 172

Sweeney's Barber Shop

HAIR CUTS

Good Workmanship Our Specialty

108 1/2 S. Main

UNION HOTEL

DINING HALL

Bus Headquarters

Road and Rail Information

201 N. Main Phones 61-62

The City Beautiful McPherson, Kansas

Fifty five years ago the land upon which the City of McPherson is now located consisted of a wide expanse of prairie, a part of the so called Great American Desert; Any direction you might have turned your eyes the same panoramic view would have been unfolded, consisting of rolling prairie lands. This is the view that presented itself to the sturdy pioneer who had come west to build a new Empire.

The above preface is made for the purpose of having you visualize this community as of a decade ago, and now you are respectfully invited to take a look at the City of McPherson as it presents itself to its visitors today.

"You Will Like McPherson" is the slogan adopted by its citizens some years ago and today the folks who call

McPherson their home are all imbued with the spirit of civic pride because of the fact that they are living in one of the most beautiful little cities in the middle west.

The City of McPherson can truly be called "The City Beautiful", because of its Beautiful Parks, Homes, Churches, Public School Buildings, Colleges, Carnegie Library, Hospital, Federal Building and Y. M. C. A. and last but not least its Paved Streets and Splendid Lawns and Parkings. In fact everything desirable and worth while to folks looking for a place in which to make their home and educate their children is to be found here. A cordial invitation is extended to you to come and look McPherson over.

YOU WILL LIKE McPHERSON

(Chamber of Commerce)



You Will Like McPherson

McPherson, Kansas, population 5,000, located in the heart of a great agricultural State. It is the county seat of McPherson county and was organized in 1872. Has a commission form of government composed of three commissioners; municipal owned water and electric plant with an abundance of pure water from deep wells and adequate electricity at a low rate for lights, cooking and power.

McPherson has four railroads radiating in six directions making it a favorable point for distributing products to this section of the country; is also located on two transcontinental highways, one running east and west known as the National Old Trails Road also designated as Federal Highway No. 50N, the other the Meridian Highway designated as Federal Highway No. 81. The former highway runs from Washington, D. C. to Los Angeles, the latter from Winnipeg, Canada to Mexico City, Mexico. Two other highways, the Midwest and the Kansas Colorado Highway form further important links for tourists. It is estimated that 50,000 tourists pass thru the city over these

highways each year.

McPherson has school facilities second to none, the public schools with four modern school buildings and an efficient staff of teachers has a complete curriculum including such special studies as music, art, agriculture, business course, typewriting, domestic science, manual training and bible study. In addition to our splendid public schools, there are two colleges located here. Students from nearly every State in the Union come here to avail themselves of the splendid facilities these institutions offer to obtain a higher education.

McPherson has an exceptional business section in that it is free from decrepid buildings common in so many cities of its size and age. The retail section is represented by all lines with well stocked stores of merchandise. Four banks with deposits of approximately \$2,600,000.00 reflect a healthy financial condition for the community. The wholesale and manufacturing industries distribute their products not only to the surrounding territory but to all part of the Union.



McPherson is surrounded by a rich general farming country with highly developed farms. Such crops as wheat, corn, oats, alfalfa and sorghums are successfully grown, making McPherson for the raising of poultry, dairy and stock cattle, hogs and sheep.

McPherson is a city of beautiful homes, well paved streets lined with fine shade trees, has more than twenty miles of paved streets within its corporate limits. Eighty percent of its people are home owners. Its beautiful parks receive more than usual favorable comment from visitors to our city.

McPherson has splendid accommodations for tourists in hotels, restaurants, garages and tourist camps. If you desire to pitch your own tent a well kept camp is provided with shelter house, water, fuel, lights, sanitary toilets and police protection. Other camps are equipped with cottages for your convenience and comfort.

McPherson has all those general civic facilities necessary for a well rounded community, such as a modern Hospital, Y. M. C. A., Carnegie Library, City



Auditorium now in process of construction, twelve Churches, Country Club, County Court House, Government Building. Has three Bands with 160 players, a number of Orchestras, an active Red Cross Chapter, headquarters of the McPherson County Farm Bureau, Elks Club, and various civic and fraternal organizations, one daily and two weekly Newspapers.

McPherson citizens show a splendid spirit of co-operation in all things that will advance the interest and welfare, physically, morally, spiritually, as well as commercially to the community and always take a keen interest in anything that will improve the conditions of the entire county.

There are many other things in McPherson which makes it an ideal place in which to make your home, educate your children and engage in business or farming, but space will not permit enumerating them here, the above are some of the high lights. A visit we believe will demonstrate to you that it is truly a "City Beautiful" and that "You Will Like McPherson."

CHAMBER
OF COMMERCE



PHOTOGRAPHS LIVE FOREVER



AN
APPROPRIATE
GIFT
FOR
ANY OCCASION

—
KODAK
FINISHING
—

Ostlund Studio

Phone 81

**BURGER IDEAS
BUILD DISTINCTIVE YEAR BOOKS**

IDEAS that lift your annual above the average, are the results of painstaking thought, effort and experience

We conceive and develop ideas in designing and engraving for the definite purpose of enlivening your annual

EXPERIENCE, MASTER CRAFTSMANSHIP AND THE PERSONAL COOPERATION IN A BURGER CONTRACT do not add to the price you pay but they do add materially to your finished book

Write us for IDEAS

BURGER ENGRAVING CO.

Boston Bldg. Kansas City.



○ Sacred Truth

Altho' out on broad Kansas plains,
 Here not in vain are we,
 For we will strive with might and main,
 That right and truth may be.
 The student loves to dream his dream
 Of life that's yet to be,
 Of future days and years that'll seem
 The best for old M. C.

True soldiers once with sword of might,
 Worked for our freedom long,
 And now to keep our pages white,
 Will be our purpose strong.
 Beneath the smile of sunny days,
 Let truth and freedom reign;
 Within our College let us praise
 The deed that'll leave no stain.

We are an army—on the way,
 Some day the world will see
 Us larger grown and then they'll say,
 Yet 'tis the good M. C.
 Dear Truth, without thee we must fall,
 O, then our pillar be,
 O, Truth, be thou our stay for all,
 And stand for our M. C.

CHORUS

We'll hope for our M. C.,
 We'll cheer for dear M. C.,
 While winds do blow, and sunflowers grow,
 We'll long for thee, M. C.