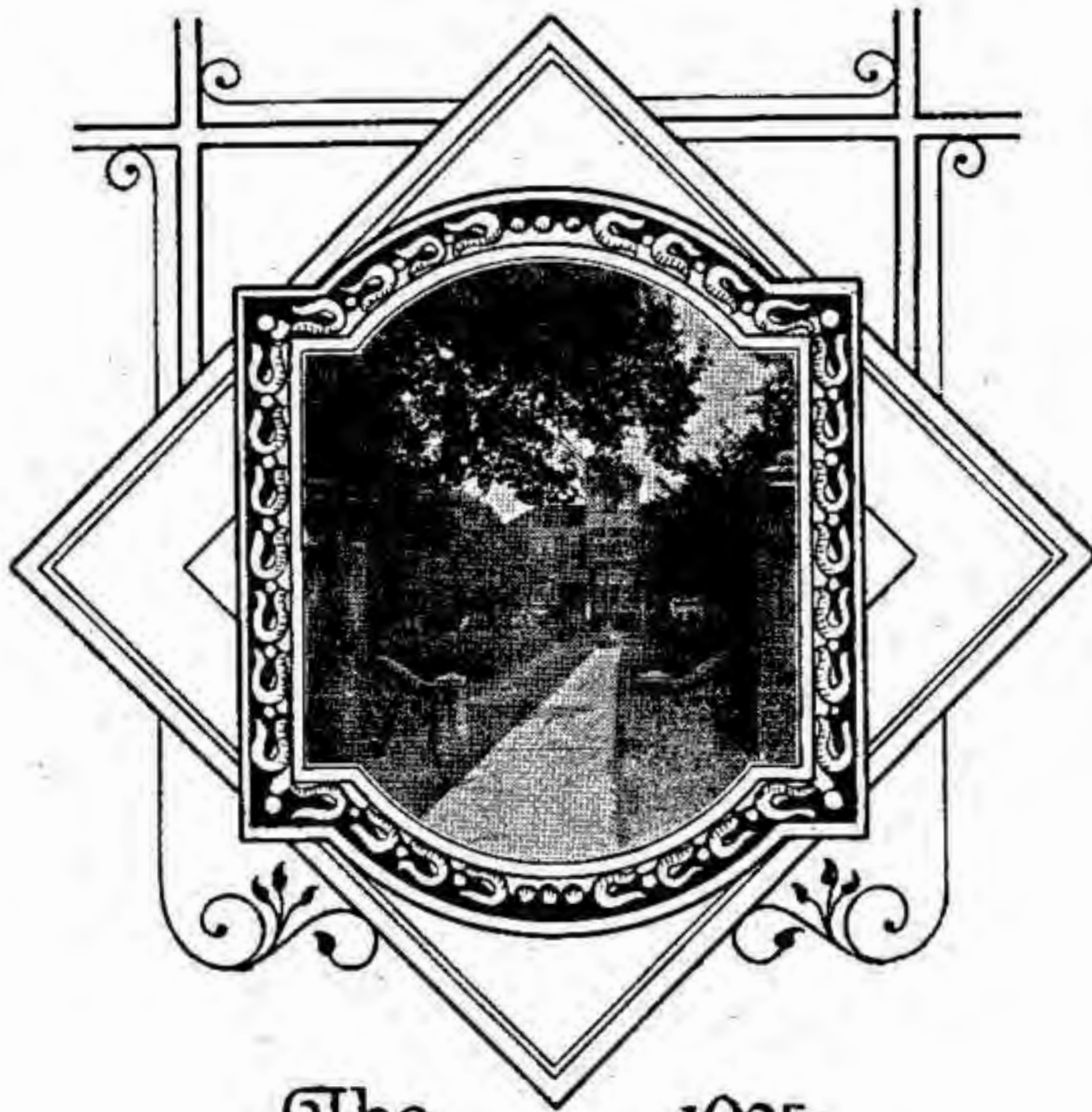


QUADRANGLE

1925



The 1925  
QUADRANGLE

McPHERSON COLLEGE LIBRARY

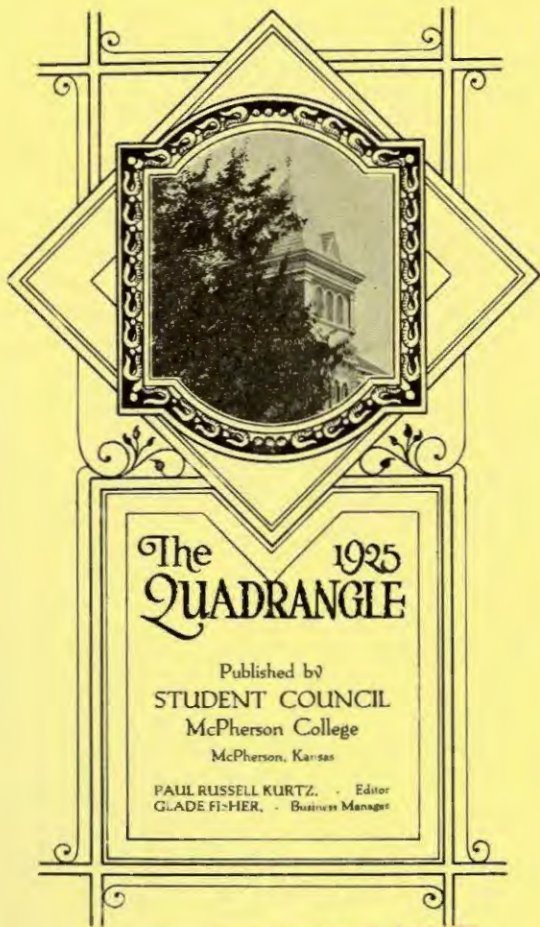


O, Sacred Truth!

Although far out on broad Kansas  
plains

Here not in vain are we,  
For we will strive with might and main  
That Right and Truth may be.  
The student loves to dream his  
dreams

Of Life that's yet to be;  
Of future days and years that seem  
The best for old M. C.



The 1925  
QUADRANGLE

Published by  
STUDENT COUNCIL  
McPherson College

McPherson, Kansas

PAUL RUSSELL KURTZ, - Editor  
GLADE FLETCHER, - Business Manager

McPHERSON COLLEGE LIBRARY





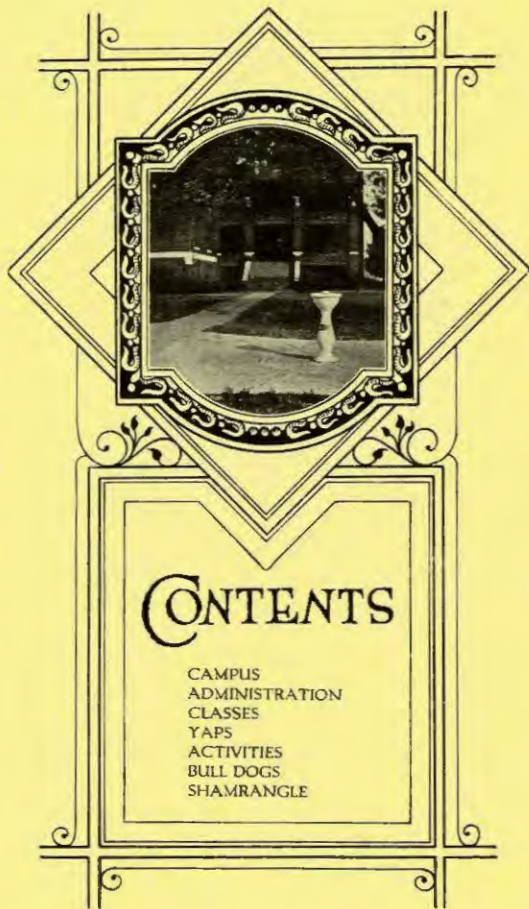
## FOREWORD

May this volume of The  
Quadrangle truly represent  
the activities and life of  
Old M. C.



# DEDICATION

To  
Robert Ellsworth Mohler,  
Dean of Men,  
Professor of Agriculture;  
Teacher, Sportsman,  
and Friend to all.



# CONTENTS

CAMPUS  
ADMINISTRATION  
CLASSES  
YAPS  
ACTIVITIES  
BULL DOGS  
SHAMRANGLE



We'll hope for our M. C.  
We'll cheer for dear M. C.  
While winds do blow  
And sunflowers grow  
We'll long for thee, M. C.





*Harnly Hall*



*Venerable Sharps*



*Mecca of Scholars*





*The "Kennel"*





*Kline Home*



*"In the Spring a young man's fancy  
lightly turns to—Arnold Hall."*



*Fahnestock—feeds—fun—philosophy.*





*Looking Out.  
Gateway to the World—and Life.*





*Administration*

## Trustees of McPherson College

President D. W. Kurtz, Ex-Officio.

Term Expires 1925

L. J. Smith, Morill, Kan., Northeastern Kansas.  
 Elder D. P. Neher, McCune, Kan., Southeastern Kansas.  
 Elder E. A. Mareky, Warrensburg, Mo., Middle Missouri.  
 H. J. Harnly, McPherson, Kan., and R. C. Strohm, McPherson,  
 Kan., S. W. Kan.

Term Expires 1926

Elder H. R. Hostetter, Plattsburg, Mo., Northern Missouri.  
 Chas. C. Clark, 120 E. 10th St., Oklahoma City, Okla., Oklahoma.  
 Elder Roy A. Crist, Quinter, Kan., N. W. Kansas.  
 Elder J. J. Yoder, McPherson, Kan., and W. H. Beaver, St.  
 Johns, Kan., S. W. Kansas.

Term Expires 1927

Elder S. Z. Sharp, Fruita, Colorado, Western Colorado and Utah.  
 Elder Ira Witmore, Carthage, Mo., Southern Missouri.  
 Stephen Miller, Carleton, Neb., Nebraska.  
 Elder H. G. Shank, Fruitland, Ida., Idaho and W. Montana.  
 F. A. Vaniman, McPherson, Kan., and Ernest Wall, McPherson,  
 Kan., S. W. Kansas.  
 Elder Paul K. Brandt, St. Johns, Kan., Alumni Trustee.  
 Elder F. G. Edwards, Sterling, Colo., East Colorado.

### EXECUTIVE COMMITTEE OF THE BOARD

Strohm, Yoder, Vaniman, Harnly, Wall, Kurtz.

### OFFICERS OF THE BOARD

President..... R. C. Strohm  
 Vice-President.....Roy. A. Crist  
 Secretary.....H. J. Harnly  
 Treasurer.....F. A. Vaniman



DANIEL WEBSTER KURTZ, A. M., B. D., D. D.

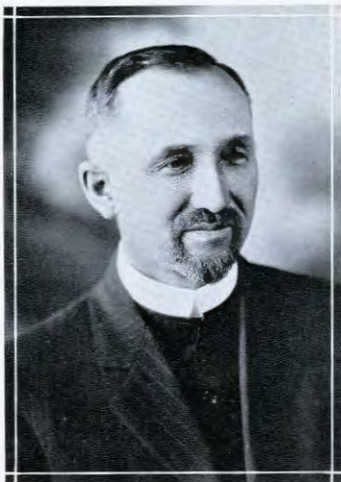
A. B., 1905, (Juniata College) B. D., *magna cum laude* 1908; (Yale); A. M., 1908 (Yale); student in universities of Leipzig, Berlin and Marburg; D. D., 1911, (Juniata College); President of the college, Professor of Philosophy and Theology.



HENRY JACOB HARNLY, B. S., A. M., Ph. D.

B. S., 1891; A. M., 1892, (Illinois Wesleyan); A. B., 1892, (Harvard); Ph. D., 1900, (Illinois Wesleyan); Special student in Leland Stanford Junior University, 1910-1911; World Tour, 1920-1921; Dean of the College; Professor of Physiology and Economics.





JOSEPH J. YODER, A. B.

A. B., 1917, (McPherson College); World Tour, 1920-1921.  
Graduate student University of Chicago, two summers. Pro-  
fessor of Social Science, Business Manager of the College.



JOHN WILBY DEETER, A. B., B. D.  
A. B., 1913 (McPherson College); B. D.,  
(Yale). Professor of Theology and Director of  
Religious Extension. Dean of men second  
semester '24-'25.



JOHN ALVIN BLAIR, A. M.  
A. B., 1917; A. M., 1918 (University of Kan-  
sas.) Professor of Education and Psychology

HARVEY HARLOW NININGER, A. M.  
A. B., 1914 (McPherson College); A. M., 1916  
(Pomona College); Graduate student Univer-  
sity of California, summer 1918. Professor of  
Biology and Curator of the Museum.



AMANDA FARNESTOCK, A. B., B. D.  
B. S. L., 1883; A. B., 1916; B. D., 1917 (Mc-  
Pherson College.) Instructor in Bible; Dean  
of Women.





JOHN WILLARD HERSHEY, M. S., Ph. D.  
B. S., 1907; M. S., 1910 (Pennsylvania College); Graduate student in Harvard (1907-1908); Johns Hopkins (1911-1912); Ph. D., 1924. (University of Chicago.) Professor of Chemistry.



MARY EDITH MCGAFFEY, A. M.  
A. B., 1918 (McPherson College); A. M., 1919 (University of Kansas); Graduate student University of Chicago, summers 1921 and 1923. Professor of English.

MAYME E. WELKER, B. S., A. B.  
B. S., 1923 in Education; (Central Missouri State Teachers College); A. B., 1924 (Kansas University.) Home Economics.



WILLARD ORAL MISHOFF, A. B., A. M.  
A. B., 1919 (Carroll College); Graduate student University of Wisconsin, summer 1920; A. M., 1923 (State University of Iowa); Graduate student State University of Iowa, summer, 1923. Professor of History and Political Science.





CHARLES STEPHEN MORRIS, A. M.  
 A. B., 1913, (Manchester College); A. M.,  
 1915 (Ohio State University); Graduate stu-  
 dent University of Chicago, summer 1916.  
 Professor of Mathematics and Physics; Sec-  
 retary of the Faculty.



ELSIE POKRANTZ, A. B., A. M.,  
 A. B., 1918 (Coe College); A. M., 1924 (State  
 University of Nebraska); Professor of Modern  
 Languages.

CELESTIA WINE, A. M.  
 A. B., 1920 (Manchester College); B. D., 1922  
 (Juniata College); A. M., 1924 (University of  
 Chicago.) English and Public Speaking.



GEORGE NICHOLAS BOONE, A. B.  
 A. B. 1921 (McPherson College); graduate  
 student Kansas Manual training school, 1923;  
 graduate student University of Wisconsin  
 summers 1923 and 1924. Professor of In-  
 dustrial Education.







ESTELLA I. ENGLE, A. B.  
A. B., 1923 (McPherson College.) Spanish  
and Typewriting.



MERCEDES CHAPMAN  
B. E., Teacher of Physical Education for  
Women, Expression and Dramatic Art.

FLOYD E. MISHLER, A. B., B. P. E.  
A. B., 1919 (McPherson College); B. P. E.,  
1923 (Y. M. C. A. Training College, Chicago);  
Graduate student University of Chicago, 1922;  
BES, Coach.



LOLA M. HILL, A. B.  
A. B., 1921 (McPherson College.) Instructor  
in German and English.





JESSIE BROWN, B. M.

Diploma from Bethany Conservatory, 1907; B. M., 1910, (Bethany); Piano instructor in Bethany, 1908-1913; Student in Royal Conservatory, Leipzig, Germany, 1913-1914. Director of Piano Department.



G. LEWIS DOLL, B. M.

Kirksville, Mo., State Teachers College, 1911-14; W. B. Kinnear, Larned, Kansas, 1914-19; B. M., 1922 (Bethany College); assistant to Arthur E. Uhe, (Bethany) 1921-22; Post graduate study under Arthur E. Uhe, 1922-24; A. G. Orrin Co. (Rockford, Illinois), publishers of compositions. Professor of Violin and Theory and Director of Orchestra.

KATHERINE E. PENNER, B. M.

B. M., 1924 (Bethany College); Student in Chicago Musical College; Student in Oscar Saenger Summer School. Director of Vocal Department.



MRS. ARCHIE SAN ROMANI

Public School Music Certificate, Bethany. Public School Music.





J. HOWARD FRIES

Graduate Cambrian Business College, Johnstown, Pa., 1913; completed course in Business Writing, Zanerian, in 1914; A. B. McPherson, 1925; Assistant Business Manager.



RAY S. WAGONER

Field Secretary.

LORA TROSTLE

Matron



MARGARET HECKETHORN, A. B.

A. B., 1924 (McPherson College.) Librarian.





E. J. UNRUH

1916, Graduate Commercial Department, McPherson College; 1917, Graduate Wichita Business College. Instructor in Shorthand and Typewriting.

LELAND L. BRIGGS, A. B., A. M.  
A. B., cum laude, 1923 (University of South Dakota); A. M., 1924 (University of South Dakota.) Professor of Commerce.



HAROLD LUNDEEN  
Student Bethany College; 1923 Art Institute of Chicago. Instructor in Art.







H. F. RICHARDS, A. B., B. D.  
A. B., 1918 (Manchester College); B. D., 1919  
(Bethany Bible School.) College Pastor.



MAURICE A. HESS, A. M.  
Graduate Cumberland Valley Normal, 1908;  
A. B., 1911 (Ursinus College); A. M., 1917  
(University of Pennsylvania). Debate Coach  
and Principal of Academy.

ERNEST F. SHERFY, B. S. L.  
B. S. L., 1919 (McPherson College.) Instructor  
in Academy Bible.



Faculty Assistants

Paul R. Kurtz, Agriculture  
 Milford Kubin, Physiology  
 LeRoy Doty, Secretary to President

Milton Dell, Agriculture  
 Laura McGaffey, Education  
 Miriam Wenrick, Office

Ruth Sollenberger, Office  
 Marlin S. Kelley, Bookstore  
 Gordon Hill, Physical Training

Stan B. Keim, Chemistry  
 Mattie Ring, Chemistry  
 Abram Hostetter, Chemistry

Harold Strickler, Chemistry  
 Floyd E. Kurtz, Chemistry  
 Paul Lentz, Biology

Curtis Ruthrauff, Manual Training  
 Mabel Griffin, Biology  
 Jesse Carney, Manual Training

Mabel Hoffman, English  
 Fern Lingenfelter, Piano  
 Lauvera Lingle, Home Economics

Vivian Long, Physics  
 Mildred Carpenter, Home Economics  
 Jay V. Eber, Physics

Marie Bradbury, Library  
 Herbert Martin, Academy  
 Inez Fulton, Library



## The Student Council

Under the efficient leadership of Jay Eller, the Student Council conducted a very successful and progressive program during the school year.

Besides maintaining an unusually strong activity ticket, two amendments to the constitution of the organization were made. These will greatly increase the ease with which that body may handle matters pertaining to programs and student government.

In co-operation with the faculty, a plan for the long felt need for curtailment of activities was adopted. The council made an extensive investigation into the different plans of student government and one of the simpler forms was adopted. It provides for the council rendering decisions on matters of discipline before they go to the faculty, thus giving the college a chance to experiment in a more democratic form of government as well as lessening the burden upon the faculty. It is hoped that this beginning will lead to a more elaborate and efficient system of student administration on the campus.



Vivian Long	Senior
Milton Dell	Senior
Mary Harnly	Junior
Leo Crumpacker	Sophomore
Fidelia Frantz	Senior
Laura Hamman	Junior
	Freshman

Eller was a veteran member of the Council before being elected president. With a full knowledge of the aims and functions of this body, he was able to keep business running smoothly and efficiently.



JAY V. ELLER, PRES.

## The Student Council

### Halloween Party

#### Football

Baker  
Hays  
Washburn  
Bethel  
Bethany

#### Basketball

Chiloeco  
Hays  
Fairmount  
Friends  
Bethany  
Bethel

#### Tennis

Friends  
Bethel

#### Track

Friends  
Bethany  
Bethel

#### Lectures

Williams Electrical  
Dr. Kurtz  
Nature Study

#### Concerts

Lindsborg String Trio  
Choral Society  
Symphony Orchestra

#### Oratorical Contest

Thespian Club Play, "In the Vanguard"

#### Debates



Glenn Rothrock	Sophomore
Florence Kline	Fine Arts
Harry Lehman	Freshman
Phillip Spohn	Academy
Royal Yoder	Academy
Vern Gladhart	Academy
Professor Boone	Faculty
Dr. Hershey	Faculty



MARLIN S. KELLEY, TREAS.

Kelly proved to be the man for the job and kept the financial end of the Student Council well in hand. He was also vitally interested in the other numerous proceedings of the Council and will be an excellent President for 1925-26.



## McPherson College Athletic Board



PROFESSOR BOONE

### OFFICERS:

G. N. Boone.....	Chairman
J. J. Yoder.....	Trustee Representative
Professor Briggs .....	Faculty
J. H. Fries.....	Faculty
Professor Mishoff .....	Faculty
Sanger Crumpacker .....	Alumni Representative
Harold Barton .....	Student Representative
Coach F. E. Mishler.....	Ex-Officio Advisor

Before the organization of the Athletic Board, the entire responsibility for the athletic program of McPherson College was in the hands of one man. Feeling a need for such an organization, the Trustees approved appointments made by President Kurtz, January, 1924.

Professor H. E. Mohler was first chairman of the Board. His thorough knowledge of the athletic needs of a college well fitted him for the position. In his absence, Professor Boone assumed the leadership of the athletic program.

Coach Mishler acts only in an advisory capacity and thus has no direct voice in the decisions rendered by the Board. His programs are usually followed closely and his recommendations are, in most cases, approved by the organization.

The direct functions of the Board are general plans for athletics in the college, decisions on eligibility of players, and granting of letters, sweaters, and blankets. A Number of representatives from the various divisions of the school are more effective in this capacity than a single individual.



*Classes*

# SENIORS





GLADYS ADAMSON, A. B.  
McPherson, Kansas  
*Major, History and English*



VELMA BAILEY, A. B.  
Enders, Nebraska  
*Major, Mathematics*  
Student Council 3; Y. W. C. A.  
Cabinet 4; W. S. A. 4; Vice Pres.  
Mission Band 4.



HAROLD R. BARTON, A. B.  
Chillico, Oklahoma  
*Major, Education*  
Pres. Y. M. C. A. 3; Music Club  
2, 3, 4; Choral Society 2, 3, 4;  
College Male Quartette 1; Varsity  
Football 2, 3, 4; Basketball 2, 3;  
Captain Baseball 3; Athletic Board  
4; "M" Club 2, 3, 4; Class Athle-  
tic Manager 3.



ZACHARIAS C. BARTEL, A. B.  
Shafter, California  
*Major, History*

VILAS D. BETTS, B. S.  
Nampa, Idaho  
*Major, Chemistry*  
Student Council 1; Vice Pres. "M"  
Club 2; Bus. Man. Spectator 2;  
Treas. Student Council 3; Class  
Treasurer 4; Track 1, 2, 3; Basket-  
ball 1, 2; Senior Play Cast.

ALICE BIRKEN, A. B.  
McPherson, Kansas  
*Major, English*  
Glee Club 1, 2, 3; Choral Society  
2, 3.

RUTH BETTS, A. B.  
Nampa, Idaho  
*Major, Music*  
Student Council 1; Faculty Assis-  
tant 3.

LEONARD BIRKIN, A. B.  
McPherson, Kansas  
*Major, English*  
Vice Pres. College Debate Club 2, 3.







W. EARL BREON, A. B.

Portis, Kansas

*Major, Philosophy and*

*Theology*

Pres. Student Ministers 2; Y. M. Cabinet 4; Junior Play Cast; Senior Play Cast; B. S. L. 1924 (M. C.)

MILDRED CARPENTER, B. S.

McPherson, Kansas

Home Economics Assistant 4.

EDNA DUNHAM, A. B.

Broughton, Kansas

*Major, Biology*

W. A. A. 4; Basketball 1, 2, 3; Basketball Manager 4; Senior Play Cast.

LE ROY DOTY, A. B.

Redmond Oregon

*Major, History*

Secretary to Pres. 1, 2, 3; Student Council 2; Class Pres. 2; Y. M. C. A. Pres. 2, 3; Y. M. C. A. Sec. 1; Track 1, 2, 3; Football 1.

LILLIE CRUMPACKER, A. B.

McPherson, Kansas

*Major, English*

Class Treasurer 1; Student Council 2; Thespian 2, 4; Basketball 1, 4.

LE ROY ALLISON CRIST, A. B.

Quinter, Kansas

*Major, Philosophy and*

*Theology*

Entered Junior year; Pres. Mission Band 3; Y. M. C. A. Cabinet 3, 4.

JAY V. ELLER, A. B.

Kansas City, Missouri

*Major, Mathematics*

Student Council 1; V. Pres. 3; Pres. 1; Y. M. C. A. Cabinet 2, 3; Y. Pres. 4; Lab. Assistant 1, 2, 3, 4; Junior Play Cast; Senior Play Cast.

SELMA ENGSTROM, A. B.

McPherson, Kansas

*Major, Language*

Spectator Staff 1, 2; U. R. Rep. Y. W. C. A. 2; Vice Pres. Thespian 3; Senior Play Cast; May Queen 4.





CHRISTIAN L. FIKE, A. B.  
McPherson, Kansas  
*Major, History*

FIDELIA FRANTZ, A. B.  
Elgin, Illinois  
*Major, English*  
Choral Society 3; Y. W. C. A. Cabinet 4; W. A. A. 4; Student Council 4; Entered Junior year.

RUTH GREENE, B. S.  
McPherson, Kansas  
*Major, Home Economics*

GLADE FISHER, A. B.  
Fruitland, Idaho  
*Major, Mathematics*  
Baseball 1, 3; Football Varsity 2, 3, 4; Class Treas. 2, 3; Radio Club 2, 3, 4; Bus. Man. Quadrangle 1.

MABEL GRIFFIN, B. S.  
Nickerson, Kansas  
*Major, Biology*  
Faculty Assistant 3, 4; Junior Play Cast; Varsity Basketball 3; Choral Society 3, 4.

RALPH N. GARMAN, B. S.  
Payette, Idaho  
*Major, Chemistry*

AENID GRAY, A. B.  
McPherson, Kansas  
*Major, Music*

LEN HARDEN, B. S.  
McPherson, Kansas  
*Major, Chemistry*



QUADRANGLES



LILA HAAS, A. B.  
Nickerson, Kansas  
*Major, Home Economics*

MARATHON HIGH, A. B.  
New Plymouth, Idaho  
*Major, Mathematics*  
Radio Club 3, 4; Junior Play Cast;  
Orchestra 1, 2; Choral Union 1, 2.

RALPH M. HIMES, A. B.  
Hope, Kansas  
*Major, Education*  
Tennis 3, 4; "M" Club 3, 4; Men's  
Glee Club 1; Music Club 3, 4;  
Choral Society 1, 2, 3, 4.

MABLE HECKETHORN, A. B.  
McPherson, Kansas  
*Major, Mathematics*

P. N. HIEBERT, A. B.  
McPherson, Kansas  
*Major, Education*

MABLE M. HOFFMAN, A. B.  
Abilene, Kansas  
*Major, English*  
Class, Sec. 2; Y. M. C. A. Cabinet  
3; Glee Club 3; Quadrangle Staff  
2, 3; Spectator Staff 2; Choral So-  
ciety 1, 2, 3; Faculty Assistant 3,  
4.

ABRAM E. HOSTETTER, B. S.  
Hope, Kansas  
*Major, Chemistry*  
Y. M. C. A. Cabinet 3, 4; Mission  
Group 3, 4; Chemistry Society 2,  
3, 4; Radio Club 2, 3; Orchestra 4;  
Band 1; Chemistry Assistant 3, 4;  
Student Council 2.

ADDIE HIMES, A. B.  
Hope, Kansas  
*Major, Language*  
Choral Society 2, 3.





QUADRANGLE



RUTH HAWKINS, A. B.  
Mooreland, Indiana  
*Major, Biology*  
Orchestra 1, 2, 3; Choral Society 1,  
2, 3; Social Service Director 3.

J. HERMAN JONES, B. S.  
McPherson, Kansas  
*Major, Agriculture*  
Editor Fresh Spec '20; Debate 2,  
3; Y. M. C. A. Cabinet 4.

HARLO KLINE, B. S.  
McPherson, Kansas  
*Major, Mathematics*

JULIA JONES, B. S.  
McPherson, Kansas  
*Major, Home Economics*

RICHARD V. KEIM, B. S.  
Nampa, Idaho  
*Major, Agriculture*  
Varsity Football 1, 2, 3, 4; Foot-  
ball Captain 3; Y. M. C. A. Cab-  
inet 3; Treasurer 4; "M" Club  
Pres. 1; Fire Chief 3, 4; Class  
Athletic Manager 1.

STANLEY B. KEIM, A. B., B. S.  
Nampa, Idaho  
*Majors, Chemistry and  
Agriculture*  
Varsity Football 1, 2, 3, 4; "M"  
Club Pres. 3; Y. M. C. A. Cabinet  
3; Bus. Man. Spec. 3; Chemistry  
Assistant 4; Senior Pres; Chem.  
Club 4.

MILFORD KURIN, A. B.  
McPherson, Kansas  
*Major, Chemistry*  
Baseball 1, 3; Captain 4; Assistant  
4.

PAUL RUSSELL KURTZ, B. S.  
Greentown, Ohio  
*Major, Agriculture*  
Treas. A. T. A. 1; Y. M. C. A. Cab-  
inet 2, 3; Spectator Staff 3; Jun-  
ior Play Cast; Football 1, 2, 3, 4;  
Track 1, 3, 4, Captain 4; Thes-  
pian 3, 4; Associate Editor Quad-  
rangle 3; Editor Quadrangle 4;  
Faculty Assistant 4; "M" Club  
3, 4.







HAROLD LUNDEEN, A. B.  
McPherson, Kansas  
*Major, Art*



LORINDA LEATHERMAN, A. B.  
Arlington, Kansas  
*Major, Home Economics*  
Class Secretary 4.



LAUVERA PEARL LINGLE, A. B.  
McPherson, Kansas  
*Major, Home Economics*  
Assistant Home Economics 3, 4.



VIVIAN A. LONG, A. B., B. S.  
Littleton, Colorado  
*Majors, Education, Mathematics*  
Faculty Assistant 3, 4; Assistant Editor Spectator 4; Student Council 4; Junior Play Cast; Senior Play Cast; Thespian 3, 4.

CHARLES McCALL, A. B.  
Richmond, Kansas  
*Major, History*  
Senior Play Cast; Entered Senior Year.

LAURA B. McGAFFEY, A. B.  
McPherson, Kansas  
*Major, History*  
Spectator Staff 1; Student Council 1; Associate Editor Quadrangle 1; Editor 3; Associate Editor Spectator 2; Editor 4; Basketball 3, 4; Faculty Assistant 4; W. A. A. 4; Fellow to Kansas University.

OCIE McAVOY, A. B.  
Thomas, Oklahoma  
*Major, English*  
Class, Sec. 1; Choral Society 1, 2, 4; Class Vice-Pres. 2; Thespian 3, 4; College Mixed Quartette 2; Glee Club 3, 4; Music Club 2, 4; College Cheer Leader 3; Y. M. C. A. Cabinet 3, Vice Pres. 4; Junior Play Cast; Associate Editor Quadrangle 4; Senior Play Cast.

EARL F. MORRIS, B. S.  
Peru, Indiana  
*Major, Chemistry*  
College Cheer Leader 2; Junior Play Cast; Spectator Staff 3, 4; "M" Club 3, 4; Quadrangle Staff 4; Thespian 3, 4; Chemistry Staff 3, 4; Senior Play Cast.





MAUDE MERKEY, A. B.  
Portis, Kansas  
*Major, Home Economics*

ROSE MOHLER, A. B.  
Lecton Missouri  
*Major, Home Economics*

BERNICE PECK, A. B.  
Fall City, Nebraska  
*Major, Music*  
Music Club Accompanist 4; Choral Society 1, 2, 3.

DELLA MAY PRATHER, A. B.  
Mound City, Missouri  
*Major, English*  
Choral Society 2, 3, 4; W. A. A. 1; Mission Band 4.

I. ELVIS PRATHER, A. B.  
Mound City, Missouri  
*Major, History*  
Choral Society 2, 3, 4; Track 2, 3, 4; A. T. A. 1; Debate Club 2, 3, 4; Mission Band 2, 3, 4.

EMMERT PAIR, B. M.  
Holmesville, Nebraska  
*Major, Music*  
Class. Pres. 1; Choral Society 1, 2, 3, 4; Orchestra 1, 2, 3, 4; Music Club 2, 3; Y. M. C. A. Cabinet 3; Thespian 3, 4.

CURTIS L. RUTHRAUFF, B. S.  
Redfield, Kansas  
*Major, Industrial Education*  
Choral Society 1, 2; Radio Club 2; Faculty Assistant 3, 4.

PEARL RHINE, A. B.  
Quinter, Kansas  
*Major, Education*  
Student Minister 1; Mission Band 1; Y. M. C. A. Cabinet 3.





FLOYE RHODES, A. B.  
McPherson, Kansas  
*Major, Education*  
Spectator Staff 4; Chemistry Society  
2; Basketball 1, 1.

MARY SHERFY, A. B.  
Mont Ida, Kansas  
*Major, English*  
Faculty Assistant 3.

ROSE STAUFFER, A. B.  
Palo, Illinois  
*Major, History*  
Spectator Staff 3, 4; W. A. A. 4.

EDITH GRACE SLIFER, A. B.  
Hagerstown, Maryland  
*Major, Home Economics*

ALBERT UNRUH, A. B., B. S.  
Hillsboro, Kansas  
*Majors, Education, Physics*  
Quadrangle Staff 4; Spectator Athletic  
Editor 3, 4; Asst. Bus. Man.  
Athletics 3, 4; "M" Club 4.

E. J. UNRUH, A. B.  
McPherson, Kansas  
*Major, History*  
Faculty 1, 2, 3, 4; Vice Pres. "M"  
Club 4; Graduated mid-year. Base-  
ball 1.

HAROLD W. STRICKLER, A. B.  
El Centro, California  
*Major, Chemistry*  
Radio Club 1; Band 1, 4; Orchestra  
1; Choral Society 2; Chemistry As-  
sistant 3, 4; Junior Play Cast.

ELBERTA VANIMAN, A. B.  
McPherson, Kansas  
*Major, English*  
Junior Play Cast; Treasurer Y. W.  
C. A. 3, Y. W. C. A. Cabinet 4;  
Quadrangle Staff; Senior Play Cast.







LESTER WALDEMIER, A. B.  
McPherson, Kansas  
*Major, History*



MARGARET WALL, A. B.  
McPherson, Kansas  
*Major, English*  
Y. W. C. A. Cabinet 3; President  
Y. W. C. A. 4; College May Queen  
2.



HERKLE WAMPLER, A. B.  
McPherson, Kansas  
*Major, Music*  
Assistant 1. 2; Choral Society 2.  
3. 4; Music Club 2, 3, 4; College  
Male Quartette 2; Bus. Man. Quad-  
rangle 3; Class Vice Pres. 4.



MIRIAM WENRICK, A. B.  
Leeton, Missouri  
*Major, Education*  
Class Sec. 3; Treas. Y. W. C. A. 4;  
Office Stenographer 2, 3, 4; Senior  
Play Cast.

PEARL WILTFONG, A. B.  
Cordell, Oklahoma  
*Major, Language*  
Choral Society 1, 2.

PERRY WILLIAMS, A. B.  
Plattsburg, Missouri  
*Major, Theology*

LEO WARNER  
McPherson, Kansas  
*Major, Agriculture*

LORETTA YODER, A. B.  
Cotway, Kansas  
*Major, Home Economics*  
Choral Society 4; Pres. Mission  
Study Group 4.





# JUNIORS



## Juniors



Amos, Jennie Lou, McPherson, Kansas  
Major, English

Bailey, F. E., Wauneta, Nebraska  
Major, Agriculture  
Old Line Oratorical Contest 3.



Burgin, Wm. R., Lawrence, Kansas  
Major, Biology  
2nd Old Line Oratorical Contest 2; Vice President  
Forensic Club 3.

Bradbury, Marie, McPherson, Kansas  
Major, Biology  
Library Assistant 3.



Cochran, Grace, Windom, Kansas  
Major, English

Ellwood, Olin, Windom, Kansas  
Major, Industrial Arts  
Football 2, 3; Basketball 2, 3; Track 2; Baseball 1  
Coach of Academy Basketball 2.



Dell, S. Milton, Beatrice, Nebraska  
Major, Agriculture  
Class President 1, 3; President Oratorical Association  
2; Y. M. C. A. Cabinet 3; Student Council 3; Agri-  
culture Assistant 1, 2, 3.

Early, Edith Mae, Stet, Missouri  
Major, Home Economics



Gnagey, Valiant, Fruita, Colorado  
Major, Chemistry  
Mixed Quartette 2; Glee Club 2.

Edgecomb, Anna Mae, McPherson, Kansas  
Major, English  
Cheer Leader 3.



Fulton, Inez F., McPherson, Kansas  
Majors, English and History  
Library Assistant 3.

Hahn, Henry, Inman, Kansas  
Major, Agriculture  
Football 1, 2, 3; Baseball 2; Spectator Asst. Business  
Manager 3; Quadrangle Photograph Manager 3.



Hale, Aubrey C., McPherson, Kansas  
Major, English

Hammann, Laura, McPherson, Kansas  
Major, English  
Class Treasurer 2; Student Council 3; President of  
W. A. A. 3; Basketball 1, 2, 3.

## Juniors

Howell, Frank D., Cloud Chief, Okla.  
 Majors, Theology and Philosophy  
 Vice President of Y. M. C. A. 1; First Old Line  
 Oratorical Contest 1; Music Club 1; Student Minister  
 1, 2; Mission Band 1, 2; Intra Mural Basketball 1.

Hoover, Lucile, Morrill, Kansas  
 Major, English

Hoover, Bernice, Plattsburg, Missouri  
 Major, English

Ingold, Lester, McPherson, Kansas  
 Major, Social Sciences

Kelly, Marlin S., Liberal, Kansas  
 Major, Commerce  
 Student Council 2; Treasurer of Student Council 3;  
 Music Club 2.

Johnson, Irene, McPherson, Kansas  
 Major, Education

Kaufman, Esther L., McPherson, Kansas  
 Major, English

Kurtz, Samuel B., Hartville, Ohio  
 Major, English  
 Football 2, 3; "M" Club 3; Cheer Leader 3; Music  
 Club 3; College Male Quartet 1, 3; Y. M. C. A. Cab-  
 inet 2; Assistant Editor Spectator 3; Thespian Club  
 1, 2, 3; Thespian Club President 3; Class Vice Pres-  
 ident 1.

Kesler, D. W., Quinter, Kansas  
 Major, Education  
 President Student Minister Association 2.

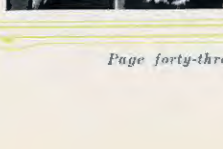
Mohler, Alta, Fruitland, Idaho  
 Major, Public School Music  
 Choral Union 1, 2; Girls Glee Club 1, 2, 3; Y. W. C.  
 A. Cabinet 1, 3; A. T. A. Secretary 1; Class Secre-  
 tary 3.

Mohler, Naomi, Maysville, Missouri  
 Major, Home Economics  
 Secretary and Treasurer Forensic Club 3.

Lentz, Paul, Leeton, Missouri  
 Majors, Biology and Chemistry  
 Spectator Reporter 3; Biology Assistant 3; Treasurer  
 Junior Class 3.

Luckett, W. T., Hutchinson, Kansas  
 Majors, History and Political Science  
 Y. M. C. A. Cabinet 1; Anti-Tobacco Association 3;  
 Oratorical Contest 3; Vice President Student Minis-  
 ters' Association.

Mohler, Harriett, Maysville, Missouri  
 Major, Home Economics  
 Y. W. C. A. Cabinet 2.





## Juniors



Nickel, Herbert, Hillsboro, Kansas  
Major, Biology

Ring, Mattie, McPherson, Kansas  
Major, Chemistry  
Chemistry Assistant 3.



Robb, Theodore, McPherson, Kansas  
Major, Industrial Arts  
Football 1.

Spitzer, Benjamin, Mount Clave, Colorado  
Major, Mathematics



Swope, Mary B., Plattsburg, Missouri  
Major, Home Economics  
Vice President Class 3: Y. W. C. A. Cabinet 3: Basketball 2, 3.

Sondergard, Sidney, Ramona, Kansas  
Major, Commerce  
Business Manager Spectator 3.



Tipton, Ernest, McPherson, Kansas  
Major, Industrial Arts  
Track 2: Basketball 2: Football 3.

Spilman, Vivian, Roxbury, Kansas  
Major, Chemistry  
Spectator Reporter 2: Debate Alternate 2: Debate Club President 3: Class Reporter 3.



Watkins, Cecila, Ottawa, Kansas  
Major, Home Economics

Wedel, Ruth, Galva, Kansas  
Major, Music  
Glee Club 1, 2, 3: Mixed Club 2, 3.



White, Rozella, McPherson, Kansas  
Major, English  
Thespian Club 2, 3: Spectator Reporter 2, 3.

Wilber, Esther G., McPherson, Kansas  
Major, Education  
Glee Club 2, 3.

### CLASS OFFICERS

President.....S. Milton Dell  
Vice-President.....Mary B. Swope  
Secretary.....Alta Mohler  
Treasurer.....Paul Lentz

Motto: Not Sunset but Dawn.



# SOPHOMORES



## Sophomores



Kenneth Rock .....	President
Moffat Eakes .....	Vice-President
Lillian Andrews .....	Secretary
Floyd Cotton .....	Treasurer
Nellie McGaffey .....	Reporter
Gordon Hill .....	Cheer Leader
Harriet Mohler .....	Chairman of Social Committee

Class Motto: "Climb though the rocks be rugged."  
 Class Emblem: Ladder  
 Class Flower: Sweet Pea

Together with the rest of the students of M. C. in the fall of 1924 one hundred and seventeen Freshmen came to her halls. At an early meeting, Leland Kuns was elected president; Kenneth Rock, vice-president; Hoyt Strickler, treasurer; Nellie Darrah, secretary; and Miss McGaffey, class advisor. The class enjoyed the usual run of parties and activities through out their first year. Among their number was a group of high school athletes who took prominent part in various college sports.

At the beginning of their second year the number had dwindled to seventy-seven, some dropping out of school and others jumping ahead to the Junior class. For the second year Kenneth Rock was chosen president; Moffat Eakes, vice-president; Floyd Cotton, treasurer; Lillian Andrews, secretary. The life of the class moved serenely on until the project of aiding the Quadrangle came along. The appeal was squarely refused at first but later in the face of much persuasion and heated argument these wayward sheep were finally gathered into the fold.

This happy go lucky bunch of people are relieved of the anxieties of a Freshman and are as yet free of the heavier responsibilities of the Juniors. Their two college years show nothing spectacular and yet nothing infamous accomplished. But when the time to award athletic letters came a large percent of those given out went to Sophomores. The girls athletics were not neglected by the fairer sex of the class, many of the girls having prominent offices in the W. S. A. and intra-mural athletics.



## Sophomores

### Class Roll

Lillian Andrews  
 Leland Baldwin  
 Rollin Brunk  
 Marlin Carlson  
 Winston Cassler  
 Ruth Coffman  
 Floyd Cotton  
 Geraldine Crill  
 Loren Curtis  
 Merle Davis  
 George Dean  
 Mabel Dunham  
 Wiletta Durst  
 Clifton Dutton  
 Moffat Eakes  
 Horner Eby  
 Virgil Ellwood  
 Mildred Fike  
 Elberta Flory  
 Eldon Fry  
 Addie Glaser  
 Mary Harnly  
 Vivian Harnly  
 Willard Hill  
 Cleo Hill  
 Gordon Hill  
 Julia Hollem  
 Spencer Holm

Ralph Hoover  
 Ray Horn  
 Anson Horning  
 Bertha Ikenberry  
 Mabel Jamison  
 Thelma Jones  
 Jacob Kaufman  
 Herbert Kaufman  
 Marianne Kittell  
 Florence Kline  
 Virden Kolzow  
 Floyd Kurtz  
 Anna Lengel  
 Charles Lengel  
 Ruth Lerew  
 Fern Lingenfelter  
 H. C. Long  
 Nellie McGaffey  
 Mildred Mast  
 Edwin Matson  
 David Merkey  
 George Merkey  
 Ida Merkey  
 Ethel Metzger  
 Constance Meyer  
 Lois Meyers  
 Orville Mitchell  
 Harriet Mohler

Naomi Mohler  
 Leon Morine  
 Alma Morrison  
 Joseph Reish  
 Kenneth Rock  
 Gilbert Rollin  
 Mary Joe Romine  
 Glenn Rothrock  
 Howard Sager  
 Leslie Sargent  
 Lora Shatto  
 Edna Smith  
 Sarah Spitzer  
 Bernice Steinberg  
 Albert Street  
 Hoyt Strickler  
 Maurine Stutzman  
 Gertrude Swander  
 Bertha Unruh  
 Ada Unruh  
 Goldie Vickers  
 Rebecca Morrison  
 Willis Neff  
 Winnifred O'Connor  
 Don Owens  
 Walter Peckover  
 Earl Reed







# FRESHMEN



Aochy



## Freshmen

President ..... John Lehman  
 Treasurer ..... Ray Trostle

With one hundred fifty members, the Freshman class of 1924-25 began an auspicious career under the guiding hand of John Lehman as president. It is by far the largest class of Freshmen ever enrolled in the historic walls of old M. C. Before the first month had rolled by, the genius and abilities of the class of '28 were already being demonstrated in athletics, debate, oratory, and classroom work.

They early showed a willingness to do their part in making McPherson College typical and adopted the green and white cap as their voluntary contribution to the campus apparel. With the zest of all new classes they entered into college and class activities. Class hikes and parties were used to further acquaint these yearlings with each other. Athletic contests found the green-capped youngsters on the bleachers and in the fray. Frosh athletes made commendable records and their achievements are not belittled by their upper class mates. They led the football and basketball squads in numbers as well as doing splendid work for their college against other varsities.

Three Freshmen proved their worth by defending the college in debating. Though a trifle later in making themselves known in literary lines they were found as responsible staff members of both college publications ere the close of the year.

As usual, these youngsters were the butt of many jokes, both warranted and otherwise, but they are now ready to enter another year of college activities where they again will prove their innate genius.



## Freshmen

### Class Roll

Anderson, Frances	Groves, Clarence	Lichty, Dorothy	Sell, Lowell
Aspegren, Clement	Hagstrom, Theodore	Lichty, Helen	Sharp, Margaret
Bengston, Irene	Haldeman, Clement	Liddell, Irene	Showalter, Clarke
Berrier, Jewell	Hammann, Zella	Lindbloom, Autumn	Showalter, Claude
Beyer, Mabel	Harnly, Wileta	Long, Mrs. H. C.	Shumate, Claude
Blickenstaff, Esther	Harrison, Gordon	Martin, LaVerne	Sisler, Warren
Bowlus, Francis	Hawkins, Clarence	McConkey, Elsie	Sloan, Bernice
Bowman, Reuben	Heaston, Marie	McMullen, Leo	Smith, Dwight
Bowser, Viola	Heidebrecht, Elmer	Miller, Juanita	Sollenberger, Ruth
Brunk, Ferne	Hill, Clarence	Miller, Ruth	Stockham, Glenn
Burroughs, Vernon	Hollowoy, Rush	Miller, Vera	Stouder, Merle
Cade, Vera	Hornbaker, Cecil	Miller, William	Stouder, Salome
Caldwell, Eleanor	Howell, Sarah	Mishler, Galen	Stover, Emmert
Coffman, Virgil	Hughes, Margaret	Mohler, Joseph	Strickler, Anna Mae
Crumpacker, Iva	Hutchison, Minnie	Mohler, Salome	Strickler, Verne
Crumpacker, Leo	Hutchison, Paul	Mohler, Sam	Stucky, Arnold
Davis, Griffith	Ihrig, Porter	Moyer, Sarah	Swope, Kathryn
Dick, Paul L.	Jamison, Ethel	Moyers, Myrtle	Tector, Judith
Dobbins, Verl	Jamison, Lloyd	Naff, Fred	Temple, Frances
Duncan, Sylvia	Jeffers, Lena	Newham, Irl	Thacker, Irene
Dutton, Darrel	Jennings, Alva	O'Keefe, Arthur	Thomas, Stella
Ebersole, Leo	Johnson, Wendell	Okerlund, Oliver	Tipton, Mildred
Elliott, Frances	Kaufman, Ernest	O'Neill, Grover	Tolle, Marion
Ellis, June	Keim, Howard	Paden, Homer	Trostle, Raymond
Ellwood, Leola	Kilmer, Glenn	Patrick, Archie	Vogel, Lester
Eschmann, Henrietta	Kimmell, Evelyn	Peters, Beulah	Voran, Alvin
Evans, Clarissa	Kline, Florence	Phillipi, Albert J.	Wagner, Eiden
Evans, Franklin	Knowles, Richard	Phillis, Roy C.	Wall, John
Feiler, Carrie	Koch, Harold	Potter, Louise	Warner, Ralph
Fishburn, Gladys	Krehbiel, Marion	Richards, Evelyn	Warren, Ronald
Freeburg, Carl	Kurtz, Ruth	Rodabaugh, Harold	Whitneek, John
Garrelts, Lural	Lehman, Harry	Root, Lula	Whitneek, Ruth
Gill, Harold	Lehman, Harvey	Royer, Lorraine	Wine, Ruth
Graham, Melvina	Lehman, John	Sager, Alta	Wise, Ralph Martin
Greene, Jay Orville	Lehman, Wilmer	Saylor, Elbert	Yancy, Olan
	Libby, Mildred	Saylor, Lavelle	







# A CADEMY



Rocky



## Seniors

**Ted Baker**  
 Belleville, Kansas  
 Class President, 2, 3; Stock Judg-  
 ing Team, 2; Debate Team, 3;  
 Choral Society, 2.

**Leanah Marie Brubaker**  
 Wichita, Kansas  
 Choral Society, 1, 2; Class Vice-  
 president, 1, 2, 3; Class Cheer  
 Leader, 2; Alternate on Debate  
 Team, 2; Debate Team, 3; Re-  
 porter, 4.

**Jesse M. Carney**  
 Novelty, Missouri  
 Class President, 1; Basketball  
 Team 2, 3, 4; Alternate on De-  
 bate Team, 2; Stock Judging  
 Team, 3.

**Clark Brumbaugh**  
 Hartville, Ohio  
 Entered Senior Year.

## Academy Hike

The McPherson Academy is one of the side features of McPherson perhaps because they sit in the side room, but never-the-less small as it is they have their social events. On one of the windiest days of early spring they went on a hike to Anderson's Grove. Before night the wind went down and the hike proved to be a success. Every one had all the buns, weiners, pickles, apples and marshmallows they wanted and after playing various games they returned to the campus in time that they did not break dormitory rules.





Seniors

Margaret Dresher  
Canton, Kansas  
Student Council, 3; Vice-president,  
4; Scholarship.

Ruth Grunwald Wine  
Chicago, Illinois  
Choral Society, 4. Finished Mid-  
year.

Mercie Mae Shatto  
Wichita, Kansas  
Secretary and Treasurer of Class,  
1, 2, 4; Secretary and Treasurer  
of Debate Club, 3; Quadrangle, 4;  
Choral Society, 4.

Herbert L. Martin  
Fruitland, Idaho  
Class President, 1, 2, 4; President  
of Radio Club, 2; Physics Assis-  
tant, 4.

Philip D. Spohn  
Inman, Kansas  
Debate Team, 3; Student Council,  
4.

Mrs. Nettie Waggnor  
McPherson, Kansas





## Academy Undergraduates

### Freshmen

Verna Johnson  
Martha Kauffman  
Cellela Nelson

### Sophomores

Florence Lehman  
Prentice Odle, President  
Royal Yoder  
Seth Reed  
Fred Perry  
Mrs. James Elrod  
Virgil Strohm

### Juniors

Truman Grogan, President  
Alice Elliott  
Vera Glathart  
Eunice Longsdorf  
James Elrod  
Alice Wright

## Academy Junior-Senior Reception

On Saturday evening, April 25, the Juniors loyally entertained the Seniors at their annual reception in the Society room of Harnly Hall. At eight o'clock the Seniors were welcomed into the room which was beautifully decorated in the class colors of gold and navy blue. The welcome address was given by Truman Grogan and the Response by Herbert Martin. Following these were: a piano solo by Vera Glathart; a reading by Eunice Longsdorf; and Class prophecy by Alice Elliott. After the program informal games were played and contests held in which all took part. At the close of an enjoyable evening dainty refreshments were served.





*Vaps*





















Rocks. Dr. Harnly posing.  
Picnic at Mushroom



"Our Handy Man"



Some caught between classes and  
others from an elevated viewpoint.







**"24 MAY DAY FETE**  
The May Day Fete began early and lasted until sundown. In the morning the boys of the different classes contested for the honor of having their chosen girl as the May Queen. The Juniors won this honor and in the afternoon with a fittingly beautiful ceremony, Margaret Wall was crowned Queen. The graceful costume drills, the splendid procession and the crowning of the May Queen by Dr. Kurtz made the occasion one of dignity and beauty and an outstanding feature of the year.





Even though Salina thought they had successfully buried the Bulldogs we have proof at the top of the page that they can't keep good men down.



Senior day was one of the rarest occasions of the year. There were grand-parents, youngsters, middle-aged folk, tom-boys, sissies, town sports, school teachers, every kind of a person a family can claim.



The Old Maids' Table was a thing of chance.







Just a breath of real Bulldog spirit. Here are our two football coaches, part of this year's hard hitting Bulldogs, our ever fighting Cheer-Leaders, one of the snake dancers, a mock football game, and "the place where Bulldogs growl," all in snappy fashion.





Our "College Mothers"



A variety of meditations

Early morning breakfast at "Sign Board Inn."





Ah, who would have thought that the dignified Seniors would so completely forget themselves and indulge so freely in an eve of such merry-making with the "kid" Freshmen.

We have picture here the fearless Kiddie Kar racers, the Freshman girl's quartette, and the most individual orchestra which all had their part in making the Freshman-Senior party one of the jolliest and most enjoyed of the year.







The third annual "Goolfie Shoppe" was a great success. Everyone thoroughly enjoyed the evening.



The mid-year gymnasium festival was great. The program consisted of group games and tumbling, drills in costumes, a Santa Claus drill, and distribution of presents. It was put on by the Physical Training departments directed by Miss Mercedes Chapman and Coach F. E. Mishler.

The "Campbell Kids" and the "Japanese" girls are shown here in costume. "Do Your Christmas Shopping Early" was the message of the "Bill Boards of America" which they delightfully portrayed along with the "Spainards" and the "Old Dutch Cleansers."





**OVER SEAS WITH DR. KURTZ**  
A party of thirty-six persons under the direction of Dr. Kurtz and Mr. M. E. Murray spent the summer in Europe. This party was composed of McPherson College Alumni and students.

Leaving Montreal June 7 on the "Doric" the party attended the World's S. S. Convention at Glasgow and then visited the prominent European attractions such as art galleries, battlefields and Alps.

The party landed at New York August 19 after a wonderfully educational trip.





The new Brethren Church nearing completion just off the campus



A fitting ceremony was held October the fourth for the laying of the corner stone to the new church. A large number of friends and alumni of the college were present. The splendid program and the bounteous basket dinner made the day greatly enjoyed. Part of those present at the morning program are pictured below.





## In the Vanguard

Portraying the awfulness of war and the impossibility of securing peace thru militarism, "In the Vanguard", a three act play by Katrinka Trask was presented at the Opera House, Tuesday evening, January 27. It was given by the Thespian Club under the supervision of Miss Chapman, who is dramatic art instructor at McPherson College.

Selma Engstrom carried her role as Elsa beautifully. Earl Morris, playing opposite her was perhaps at his best, Vivian Long, the logical business man was a prime favorite with the audience. Emmert Pair as the dying soldier, gave a representation of the other side, the enemy's side of war. His acting was superb and was enhanced by the splendid lighting and scenic effects of the stage. Hoyt Strickler as the pastor, Ocie McAvoy as the medieval wife of an irascible husband, and Sam Kurtz as the husband, played well, showing versatility and talent in their respective parts.



### The Cast

Elsa .....	Selma Engstrom	Jean .....	Eunice Almen
Mrs. Gordon.....	Ocie McAvoy	Phillip .....	Earl Morris
Betty .....	Rozella White	The Enemy.....	Emmert Pair
Elinor.....	Lillie Crumpacker	Mr. Greart .....	Vivian Long
Frances .....	Lillian Andrews	Mr. Gordon .....	Samuel Kurtz
Peggy .....	Bertha Unruh	Jack .....	Paul Kurtz
	The Rector.....		Hoyt Strickler



## "As a Man Thinks"

An epoch in dramatic art at the college was set in the presentation by the members of the Senior Class, the evening of May 26, at the McPherson Opera House, of Augustus Thomas' remarkable play, "As a Man Thinks."

Senior classes of recent years had set a high standard for the Class of '25 to aim at, and that from a standpoint of selection, acting and staging, this standard was met and perhaps excelled, was best proved by the reception given the production.

"As a Man Thinks", dealing in a most candid manner with the time-old single and double standard of morality question, offered the twelve Seniors selected for the array of difficult roles, a splendid vehicle for the exploitation of their histrionic talents. The two stage settings used for the presentation of the four acts of the drama were built and painted especially for this production, and painstaking care was plainly in evidence in all the details of properties and lighting.

The cast follows:

Mrs. Selig.....	Alberta Vaniman	Vedah Seelig.....	Ocey McAvoy
Julian Burrill .....	Charles McCall	Elinor Clayton.....	Selma Engstrom
Benjamin DeLota .....	Vivian Long	Miss Doane.....	Miriam Wenrick
Frank Clayton.....	Earl Morris	Dick .....	Edna Dunham
Judge Hoover.....	Jay Eller	Sutton .....	Elvis Prather
Dr. Selig.....	Earl Brown	Hollands .....	Vilas Betts

The production was staged under the personal direction of C. E. Oelrich.





# *Activities*





## Music Graduates



HAZEL SCOTT  
Bachelor of Music, Piano  
Moundridge, Kansas



FERN LINGENFELTER  
Bachelor of Music, Piano  
McPherson, Kansas

BERNICE PECK, Diploma  
Falls City, Nebraska

DELIA CHAVEZ, Diploma  
Moundridge, Kansas

MRS. IVA GILSON, Diploma  
McPherson, Kansas

BESSIE BREMEN,  
Diploma, Teacher's Certificate  
Roxbury, Kansas



## Music Graduates

MRS. LEWIS DOLL  
Teacher's Certificate  
McPherson, Kansas



LEWIS DOLL  
Teacher's Certificate  
McPherson, Kansas



RUTH BETTS  
Teacher's Certificate  
Nampa, Idaho

ARCHIE SAN ROMANI  
Teacher's Certificate  
McPherson, Kansas

DELIA CHAVEZ  
Teacher's Certificate  
Moundridge, Kansas

GRACE WITCHEY  
Teacher's Certificate  
McPherson, Kansas







### Quartet

After the passing of a year during which time there was no official Male Quartet, Miss Kathryn Penner, voice instructor, chose the personnel of this year's male quartet with the idea of accomplishing some real things during the year. As a result of the co-operation of the members of the quartet and director in charge, a successful year has been realized. During the first semester, the quartet was kept busy singing at local churches and in neighboring towns. The season's greatest accomplishment was the tour covering a period of seven days and consisting of eight programs given in the eastern part of Kansas and western Missouri.

Pianist .....	Winston Cassler
First Tenor .....	Samuel B. Kurtz
Second Tenor .....	Harold Barton
Baritone .....	Alvin Voran
Bass .....	Clement Haldeman





## The Music Club

Miss Katherine Penner.....Director  
 Miss Bernice Peck.....Pianist

The Music Club consists of a mixed chorus of sixteen selected voices. The work under the able direction of Miss Penner has proved exceedingly interesting and instructive. The Club appeared in recital at the Bible Institute in connection with the Choral Society. It rendered "The World's Redeemer", by Ernest A. Dieks, on Palm Sunday.

A number of programs both sacred and secular were given on concert tours in the immediate community. Only music of the highest type was used, being taken from the noted composers, Handel, Beethoven, Gounod, and Donizetti.

## The Personnel

### TENORS:

Ralph Himes  
 Samuel Kurtz  
 Harold Barton  
 Clarence Hawkins

### SOPRANOS:

Elberta Hawley  
 Ada Unruh  
 Carrie Fieier  
 Evelyn Kimmel

### ALTOS:

Florence Kline  
 Ruth Wedell  
 Helen Lichty  
 Ocie McAvoy

### BASES:

Clement Haldeman  
 Carl Freeburg  
 Herkle Wampler  
 Alvin Voran



## Ladies Glee Club

Katherine Penner ..... Director  
 Hazel Scott ..... Accompanist

The Ladies' Glee Club under the direction of Miss Penner met twice a week this year and did excellent work. The club furnished special Sacred Music during Christmas season and Bible Institute week. In the spring secular programs were rendered at home and nearby towns.

Great interest is taken in this organization, because it includes all the best voices. It also encourages the study of music, broadens the appreciation and widens the knowledge of the best music.

If a great many people in the appreciation of music would pay more attention to cultivating the spirit, that is; making themselves sensitive to things of beauty and truth that are everlasting, which is the higher function which music should always have, they would enjoy it in a fuller sense and get the best it can offer.

FIRST SOPRANO:

Elverta Hawley  
 Margaret Bowlius  
 Alta Mohler

SECOND SOPRANO:

Carrie Mae Feiler  
 Ada Unruh  
 Evelyn Kimmell

FIRST ALTO:

Florence Kline  
 Ocie McAvoy  
 Nelle Cullen

SECOND ALTO:

Esther Wilber  
 Ruth Wedell  
 Helen Lichty





## Choral Society

"The man that hath no music in himself,  
Is fit for treasons, stratagems and spoils.  
Let no such man be trusted."

The Choral Union this year rendered some of the masterful works of Mozart, Gounod, and others to a large and appreciative audience, during the special Bible Institute in January.

This organization has done creditable work—the greatest part of its success being to the able directorship of Miss Penner and Winston Cassler accompanist who so patiently worked with a group of approximately seventy-five people so that it truly would be believed that "Music hath charms."

### Bible Institute Concert, January 26, 1925

I Will Magnify Thee.....	Rogers
I Will Lift Up Mine Eyes.....	Rogers
CHORAL SOCIETY	
The Good Shepherd.....	Moore
Not a Sparrow Falleth.....	Abt
The Radiant Morn.....	Woodward
LADIES GLEE CLUB	
God Be Merciful.....	Parry
Beyond the Setting Sun.....	Smieton
TRIO: PENNER, KURTZ, HALDEMAN	
Hosanna in the Highest.....	Back
Sing Unto God, O Ye Kingdoms.....	Harken
CHORAL SOCIETY	
Send Out Thy Light.....	Gounod
Closer Still To Thee.....	Relfe
Praise Thee the Father.....	Gounod
MALE QUARTET	
Holy Art Thou (Largo).....	Handel
Glory To Thee My God This Night.....	Gounod
MUSIC CLUB	
Gloria from Twelfth Mass.....	Mozart
Build Thee More Stately Mansions.....	Andrews
CHORAL SOCIETY	



## Symphony Orchestra

Among the orchestras connected with the College, McPherson College Symphony Orchestra, is the most pretentious. The instrumentation is complete and well balanced. Standard works are studied, affording its members a rare opportunity for real orchestral experience under the expert leadership of Professor Doll. Its concerts have given evidence of thorough training, both in ensemble and artistic conception. Students from the Fine Arts Department and other musicians of the city make up its membership. This organization has acquired an enviable reputation, and Professor Doll is to be congratulated for its great success.

### Program, February 11, 1925

- Ballet Suite, from the Operas of.....*Chr. W. Gluck*
1. Iphigenia in Aulis
  2. Musette from Armide (Gluck-Mottl.)
  3. Iphigenia in Aulis-Armide
- 
- Narcissus .....*Ethelbert Nevin*  
 The Swallow (Mexican Waltz)...*Arranged by Luke*  
*Mr. Snyder and Orchestra*
- 
- Woodland Sketches .....*MacDowell*
1. To a Wild Rose
  2. At an Old Trysting Place
  3. In Autumn
  4. From an Indian Lodge
- 
- Der Erlkonig .....*Schubert*  
 The Dawn .....*d'Hardelot*
- 
- Funeral March of a Marionette.....*Gounod*  
 A Hunting Scene.....*Bucalossi*



## Chapel Orchestra

Under the direction of Professor Doll, the Chapel Orchestra was organized. This was a new department in the music line at McPherson. The organization consisted of students of music under the personal training of Professor Doll.

The music rendered periodically by this orchestra was of both classic and popular style. It brought the student body to a fuller appreciation of the activities and abilities of the College Music Department. The training and experience acquired by the members was also valuable for bases of further training.

The student body and faculty will long remember the enjoyable and inspiring progress rendered by this orchestra and heartily approve its continual appearance in following years.

### The Players

#### FIRST VIOLIN:

Autumn Lindbloom  
Wileta Durst  
Lester Vogel  
Irene Thacker

#### SECOND VIOLIN:

Emmert Pair  
Ruth Hawkins  
Helen Meyer  
Lavelle Saylor  
Abram Hostetter  
Paul Blickenstaff

#### FLUTE:

Marathon High

#### VIOLA:

Fred J. Perry

#### VIOLIN CELLO:

Carl Freeburg

#### CORNET:

Professor Briggs  
Archie San Romani

#### CLARINET:

John Wall  
Glenn Stockham

#### DRUMS:

Howard Sager

#### PIANO:

Winston Cassler

#### TROMBONE:

Gordon Hill





## The College Band

The College Band is under the direction of Mr. August San Romani. Mr. San Romani is a very capable director and has done considerable work in the organization of the band.

A college band means much to the life and spirit of a college. This is true at McPherson. The band played at the football games and helped express the loyalty of the students to the team. Music often does this better than words. The band in full uniform accompanied the team to Hutchinson to help them play a hard game against Sterling.

A band is a necessary part of a college music department and is worthy the effort and expense necessary to have a good band.

### Personnel of the Band

**CORNETS:**

Archie San Romani  
 Abram Hostetter  
 Professor Briggs  
 Orville Mitchell  
 Irl Newham  
 Sam Mohler

**SAXOPHONE:**

Albert Street  
 Loren Curtis  
 Alven Voren

**TUBA:**

Professor Doll

**DRUMS:**

Howard Sager  
 Don Owens

**CLARINETS:**

John Wall  
 Glen Stockham  
 Henry Hahn  
 Clement Aspegren  
 Ronald Warren  
 Harold Strickler

**TRUMPETS:**

Marlin Carlson  
 Gordon Harrison  
 John Harnly

**BARITONE:**

Glen Rothrock

# RELIGION



## Young Woman's Christian Association



The Association has grown immensely since its first organization in 1900. The fullest possible development of body, mind, and spirit are the ideals of the organization. These ideals have been preserved and fostered thru the energetic program which was held thruout the year.

In co-operation with the Y. M. C. A. the annual watermelon feed was given early in the year. Every Wednesday chapel period witnessed an excellent program of religious significance. These social and religious functions have helped foster the ideals of the organization.

Discussion groups were formed during the year. Problems of local campus importance were discussed. Later the subject matter for discussion was widened to national, international, and racial questions. The effort proved quite successful and helped the students get better acquainted with themselves, their fellow students, the world citizen, and their God. Their ideals were broadened and deepened thru the discussion of vital life problems.

### ADVISORY

Mrs. Morris, Miss McGaffey,  
Mrs. Hershey, Mrs. Fahnestuck,  
Mrs. Miehler, Mrs. Kurtz

Ocie McAvoy	Vice-President
Alta Mohler	Secretary
Miriam Wenrick	Treasurer
Fidella Frantz	Conference
Elberta Vaniman	Social
Nellie McGaffey	Social Service
Velma Batley	World Fellowship
Elverta Hawley	Chorister
Mary B. Swope	Program
Selma Engstrom	Undergraduate Representative



MARGARET WALL, Pres.



## Young Men's Christian Association

The Young Men's Christian Association can be called an organization of the students, by the students, and for the students. It is truly a student organization. It is the group which welcomes the students to M. C. in the fall and the one which remains long in their memories after leaving. It has for its ultimate aim, the guiding of the thought of the men into the highest channels and making of each day's work of art in the character-building of each individual man. The Freshmen were given a conspicuous place in the college association thru the Freshman Commission. All college men are heartily welcomed to the meetings which are held every week. Due to their progressive policies and splendid co-operation, the two Christian Associations have become vital organizations in the campus life.



### FRESHMAN COMMISSION

Sam Mohler  
George Merkey  
Elmer Heidebrecht



LE ROY DOTY, Pres.

### THE CABINET

Jay Eller, Vice President  
Abram Hostetter, Secretary  
Richard V. Keim, Treasurer  
J. Herman Jones, Programs  
Stanley Keim, Social  
Roy Crist, Devotional  
Gordon Hill, Extensional  
Milton Dell, Labor  
Kenneth Rock, Publicity  
Harold Barton, Athletics



## Student Ministerial Association

President.....Joseph D. Reish  
 Vice-President.....W. T. Lockett  
 Secretary-Treasurer.....Pearl E. Rhine

The Student Ministerial Association has a threefold purpose. The first purpose is that of unifying the student ministers of the college. This is done by keeping up the interest of the ministers, by acquainting them with the problems of the church, and by showing how to meet them. The second purpose is to help meet the need of greater concern for the spiritual life among the students, thru personal contact. The third purpose is to emphasize the opportunities in the field and the need of men.

To accomplish these aims the Association used two methods. There was personal work among the students. To some the ministry as a profession was emphasized; to others, the value of greater spiritual life and the supporting of religious programs. The programs consisted of lectures and discussion groups. There were two types of lectures: (1) those relating to Biblical interpretation, (2) those relating to the pastor and his work. The discussion groups proved equally helpful. The discussions were sometimes centered about hook reports but more often were centered about the current problems of the church; just what the problems were, what the causes were, and a possible solution of the problems. Great interest was shown and every one took an active part in the programs.



## Mission Band and Study Group

### MISSION STUDY OFFICERS:

Loretta Yoder .....	President
Ruth Hawkins .....	Secretary-Treasurer
Mabel Hoffman .....	Chorister

The Mission Band consists of those who have pledged themselves either to become Christian Stewards or to devote their full time to church work over seas or in America. The Band seeks to promote the mission interests and the missionary spirit of the school. Regular meetings are held in which are discussed topics of missionary interest. Public meetings were given at times which consisted of programs of songs, addresses, and pageants. The Band also does practical work in the form of co-operating with the local church in missionary activities, singing in homes where there is trouble, and the conduction of deputation work, all of which does much toward cultivating a greater spirit of consecration among the members.

On Friday morning of each week at seven o'clock the Mission Study Group has met for study and consecration meetings. All students who are primarily interested in the missionary work of the word are members of this group. Two books have been studied this year: "Our Missions Abroad" and "The Business of Missions." Missionary questions are thoroughly discussed in the light of present day economic, moral, and spiritual conditions. This is an enthusiastic and a growing class and bespeaks an optimistic outlook for the future missionary interests of the school. Under the leadership of its loyal and efficient teacher, the work of the class is both inspirational and constructive to the life of the College.

### MISSION BAND OFFICERS:

Roy Crist .....	President
Velma Bailey .....	Vice-President
Horner Ely .....	Recording Secretary and Treasurer
Ruth Hawkins .....	Corresponding Secretary
Frank Howell .....	Chorister
Della Prather .....	Reporter





PROF. HESS

## Peace Association

McPherson College is a member of the Intercollegiate Peace Association. This association has state organizations in California, Illinois, Indiana, Iowa, Kansas, Louisiana, Oregon, Ohio, Pennsylvania, and Texas. Prof. Maurice A. Hess, of McPherson College, is State Chairman for Kansas.

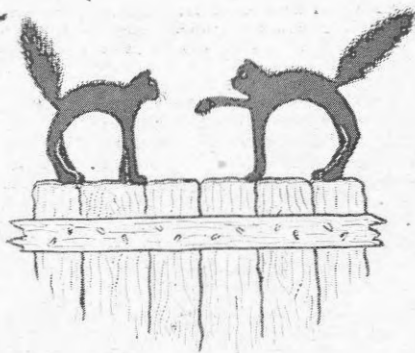
The purpose of the association is to foster an interest in the careful study of the problem of peace by college students, and to disseminate information to the general public so that they may understand clearly what their relation should be to peace.

In the furtherance of these aims, a series of Peace Oratorical Contests is held. Each institution which is a member of the State association conducts a local contest in which there must be at least three orations. The local contest of McPherson College was held, April 5, 1925. The five contestants were Horner Eby, Ralph Hoover, Frank Howell, Earl Morris, and Kenneth Rock. Local prizes given by Mr. H. Rogalsky and Maurice A. Hess were awarded as follows: 1st prize of \$7.50 to Kenneth Rock; 2nd prize of \$5.00 to Frank Howell; 3d prize of \$2.00 to Earl Morris.

The winner of first place represents McPherson College in the State Peace Contest. This contest was held at McPherson College, Friday evening, April 24, 1925. The colleges participating were McPherson, Fairmount, Southwestern, Bethel, Sterling, Kansas City University, Tabor, Ottawa University, and Friends University. The first prize of \$60.00 was awarded to Albert Penner of Bethel College, and the second prize of \$40.00 to Cecil Headrick of Southwestern College.

Winners of first places in the state contests submit their orations for a national contest on thought and composition only, with additional prizes of \$60.00 and \$40.00. In the State Contest of 1924 at Friends University, David Brubaker of McPherson College won first place, and gained the additional honor of second place in the National Contest.

# FORENSICS



Boehs



## Forensic Club

### Officers

President .....	Harry Lehman
Vice-President .....	William Birgin
Secretary and Treasurer.....	Naomi Mohler

There had been for some time a demand for an organization in which to combine the similar interests of debaters and orators and to give expression to other forensic activities not included under either category. In response to this demand, a joint meeting of the Debate Club and the Oratorical Association was called December 3 and arrangements were made to merge the two into a Forensic Club. At this meeting the officers were elected and the constitution committee appointed. The new constitution was ratified January 7, 1925.

The Forensic Club, under the leadership of Harry Lehman, successfully conducted the local Old Line Oratorical Contest and assisted in arranging for the State Peace Oration Contest, which was held at McPherson this year. In addition, several instructive programs were given on various phases of forensics.

Filling, as it does, a real need, the new organization is sure to find a secure and important place in the student life of McPherson.

### Members

Lillian Andrews  
 Esther Wilbur  
 Anna Lengle  
 Mildred Libby  
 Charles Lengle  
 John Whiteneck

Harvey Lehman  
 Howard Keim  
 Paul Lentz  
 George Merkey  
 A. L. Patrick  
 Paul Dick  
 Kenneth Rock

Samuel Mohler  
 Harold Rodabaugh  
 Fay Bailey  
 Floyd Kurtz  
 Horner Eby  
 Vivian Spilman



## Oratory in 1924-25

The public competition in Oratory at McPherson College centers around three local contests. These local contests serve to select the college, representatives to the state contests of the Kansas Intercollegiate Oratorical Association (Old Line), the Inter-collegiate Anti-Tobacco Association, and the Inter-collegiate Peace Association.

The first local contest was held January 5 for the Old Line orators. John Lehman with his oration, "The Modern Tragedy", won first place, a prize of \$7.00 and the right to represent McPherson College in the state contest. Fay Bailey with "The Unborn" placed second with a prize of \$3.00 and John White-neck with "The Tragedy of the Melting Pot" placed third. The prizes were given by Prof. W. E. Ray of Houston, Texas. In the state elimination contest on thought and composition, Mr. Lehman placed as one of the first six among thirteen member colleges, and thereby earned the right to deliver his oration at Winfield. Unfortunately, illness prevented Mr. Lehman from appearing in the state contest on March 3.

Next in order came the Anti-Tobacco Contest on February 10. The oration, "The God of Destruction", by John White-neck, was awarded first place and a prize of \$7.00. W. T. Luckett with "The Uncontested Foe" placed second with a prize of \$3.00 while Horner Eby with "The Sinister Foe" placed third. The state contest was held March 18 at Central College, McPherson, with competing orators from Miltonvale, McPherson, Central, Tabor, Sterling and Kansas Wesleyan. The orations were judged separately on composition and delivery. Mr. White-neck proved his ability as an orator by winning first place in the state by a wide margin, having five firsts out of a possible six. The honor carries with it the substantial prize of \$35.00. Second prize of \$25.00 went to Central College and third prize of \$15.00 to Kansas Wesleyan University.

The local contest of the Intercollegiate Peace Association was held April 5 with five contestants. "The New Heroism" by Kenneth Rock won first place and a prize of \$7.50. Second place and \$5.00 went to Frank Howell with "The Modern Nero", while the third prize of \$2.50 was awarded to Earl Morris with "Law, not War." The other orations were "The Creative Future", by Ralph Hoover, and "Justice and the Ethics of War", by Horner Eby. The local prizes were furnished by Mr. H. Rogalsky and Maurice A. Hess. The state peace contest was entertained by McPherson College on April 24 with nine contestants. First place and a prize of \$60.00 was awarded to Albert Penner of Bethel College with "The Old and the New." Second place and \$40.00 went to Cecil Headrick, of Southwestern College. Kenneth Rock of McPherson College placed third. Other schools represented were: Fairmount, Sterling, Kansas City University, Tabor, Ottawa and Friends.

The creditable work of the McPherson orators affords encouraging promise for the future, especially since all of the three local winners are underclassmen with possibilities for development and improvement.



John Lehman  
Kenneth Rock  
John White-neck

## Debate

## THE SEASON

February 20

Bethany Affirmative 1  
 McPherson Affirmative 1  
 Bethany Negative 0  
 McPherson Negative 0

March 5

Kansas Wesleyan Affirmative 1  
 McPherson Affirmative 0  
 Kansas Wesleyan Negative 1  
 McPherson Affirmative 0

March 20

Sterling Affirmative 1  
 McPherson Affirmative 0  
 Sterling Negative 1  
 McPherson Negative 0



KENNETH ROCK  
 MILDRED LIBBY



HARVEY LEHMAN  
 HARRY LEHMAN

The Kansas Intercollegiate Debating League consists of eight colleges and universities. Bethany, Kansas Wesleyan, Sterling, and McPherson comprise the Northern Division and Southwestern, Fairmount, Friends, and Bethel in the Southern. The winners of the respective divisions hold a contest for the championship of the state.

This year the team was able to capture but one of the possible six judge votes. Despite this seemingly defeat, the debaters, as well as the student body felt that it was victorious. Victory does not lie primarily in the winning but in the manner of the debate. The clean, hard, and consistent efforts of the team to win were above reproach.

Rock was the one veteran of the season. John Lehman had qualified for the other affirmative member but was forced out of school on account of sickness and his place was taken one week before the first debate by Miss Libby. This team did well in all its contests. This team has two and three more years of college debating and should develop considerably.

The Lehman Twins on the negative end gave a good account of their abilities in each of the three debates. Even tho not winning a single decision they have a valuable year's experience and should prove invincible in the next three years of their college career.

GENERAL ACTIVITIES



PROF. MOHLER



PROF. Mc GAFFEY

The Alumni Association

The Alumni Association of McPherson College is composed of all the students who have at any time graduated from any department of the institution. The present membership of the association is about fourteen hundred. It is directed by a Board of Directors which is a group of fifteen alumni who are elected by the Association at its annual meeting in May. Life memberships and the annual fee of one dollar from those not holding life memberships, sustain the work of the organization.

The school year of 1924-1925 found the Association in its permanent headquarters in Sharps Hall. This office was newly finished and decorated by the College. It will serve admirably in facilitating the work of the Association. The one aim of the Alumni Association is to make old M. C. grow to the fullest possibilities of which it is capable and to promote the ideal of the institution in the lives of her alumni.

Officers

- |                      |                     |
|----------------------|---------------------|
| R. E. Mohler.....    | President           |
| H. R. Stover.....    | Vice-President      |
| Edith McGaffey ..... | Secretary-Treasurer |



## The Spectator

Three essentials are known to the McPherson College student: a desire to learn, a little money, and the Spectator. "The Spectator has for its purpose to record accurately the current history of McPherson College, giving publicity to all its activities in due proportion, and to forward the best interests of and to uphold the ideals of the Alma Mater." It is the "tie that binds" the student body in a common interest in the activities, problems, ideals, and thoughts of the institution. Beyond the campus it carries the influence of the college into the high school and into other colleges of the country.

This past year Laura McGaffey has served as a most efficient editor and in directing the policy of the paper she has maintained the highest standards of editorial workmanship that has ever been embodied in a McPherson College publication. The editorials have been sound and uplifting; the news stories have been well organized; the humor has been entertaining and impersonal; and the appearance of the paper has been attractive in every detail, for the makeup editor, Sam Kurtz, has few, if any, superiors in the college newspaper work. If Addison and Steele, the first publishers of the Spectator, could see the McPherson College "Spec" surely they would wrinkle their bony physiognomies in broad smiles of pride and appreciation.



Samuel B. Kurtz	Assistant Editor
Vivian A. Long	Associate
Floyd E. Kurtz	Associate
J. Vivian Spilman	Athletics
John Lehman	Athletics
Earl Morris	Athletics
Wendell Johnson	Features
Rozella White	Features
E. Ina Dunham	Athletics
A. Paul Lentz	Forensics
Hoener Eby	Proofreader
Floye Rhodes	Exchange
Mildred Fike	Locals
Paul L. Dick	Proofreader



LAURA Mc GAffEY  
Editor

## The Spectator

The Spectator of 1924-25 was possibly the most efficiently managed of any year since its origin. Sidney Sondergard proved to be an able business man and together with his staff of assistants made the financial end of the Spectator a success. Hahn, as one of the assistant business managers became known as the logical successor to Sondergard. Undoubtedly, he will prove as efficient and capable in this capacity as did his chief.

It cannot be doubted that the Spectator is a vital factor in the life of the student body and faculty. Its news items, personals, athletic writeups, student opinions, and humor are both well-written and balanced in the editions.

Not only is the "Spec" a factor in student life, but it also carries activities of the campus to those who have left and still feel a bond of friendship binding them to their Alma Mater. The Spectator is truly a college paper in that it gives the best of M. C. to the Alumni, and to friends of the institution.



SIDNEY SONDERGARD  
Business Manager

- |                   |                  |
|-------------------|------------------|
| Henry Hahn        | Ass't. Bus. Mgr. |
| Moffat Enkes      | Ass't. Bus. Mgr. |
| Ronald Warren     | Ass't. Bus. Mgr. |
| Rose Stauffer     | Reporter         |
| Bernice Hoover    | Reporter         |
| Goldie Viekers    | Reporter         |
| Eleanor Caldwell  | Reporter         |
| Marion Krehbiel   | Reporter         |
| Hoyt Stricklee    | Reporter         |
| Mattie Ring       | Reporter         |
| Marrianne Kittell | Reporter         |
| Sam R. Mohler     | Reporter         |
| Warren Sisler     | Reporter         |
| Gladys Adamson    | Reporter         |



## The Quadrangle

The Quadrangle has become a part of the student activities. It represents the best which each school year can give in the way of students, activities, athletics, and humor. The friendships formed at our Alma Mater can never be forgotten and we wish to preserve to some extent each possible memory in some manner. The teams and activities are as vital in college life as studies and they can best be remembered thru the medium of the Quadrangle.

To represent the school life as it was during the past year has been the aim of the entire staff. Many things necessarily were forced to be left out because they were not essentially college activities. Only the major activities could be included. We hope that what criticism may be directed toward this publication may be used as suggestions for the ensuing ones.

### THE STAFF



Kenneth Rock	Art Editor
Ocie McAvoy	Senior Editor
Elbert Vaniman	Associate Editor
Earl Morris	Literary Editor
Gordon Hill	Athletic Editor
Harriet Mohler	Snapshot Editor
Morie Shatto	Academy Editor
Henry Hahn	Photograph Mgr.



PAUL R. KURTZ  
Editor



## The Quadrangle

A college annual requires an entire year's work. The staff is interested in a direct manner, but the co-operation and help of the entire student body is necessary for the best.

In the past years a need for a systematic Quadrangle publication was felt. This year a different method was used for financing than had previously been in vogue. It was an attempt to place McPherson's annual on a par with its other activities and the growth in these other activities. Whether this has been done must be judged by the students and friends of the school.

The staff appreciates the co-operation of the student body and faculty in photography, snapshots, and writing material for the various organizations. The number of faculty and students instrumental in the publication of this annual has not been limited to the staff alone, and to those we are grateful for their splendid co-operation.

### THE STAFF



Albert Unruh Ass't. Bus. Mgr.  
 Stan Keim Ass't. Bus. Mgr.  
 Edna Dunham Woman's Athletic  
 Wendell Johnson Feature Editor  
 Hoyt Strickler Ass't. Feature Editor  
 Paul Dick Proof Reader  
 Professor Morris Faculty Advisor



GLADE FISHER  
 Business Manager



## The Thespian Club

The Thespian Club was organized February 1, 1922 for the purpose of conducting an intensive study of contemporary literature with special emphasis on the study and production of drama.

During the past year, under the leadership of Sam Kurtz, this study has done much toward making worthwhile literature a source of pleasure and beauty to the members and through the medium of its public presentations the club has sought to make similar literature beautiful to others.

The peace play, "In The Vanguard" by Katrina Trask, presented during the Bible Institute was proclaimed the master work of the organization. Later in the spring an advertising program in the chapel proved interesting and entertaining and gave outsiders an idea of the purpose and work of the club. The other bi-weekly meetings were given over to the study of contemporary dramas and playwrights.

### Officers

- Sam Kurtz ..... President
- Selma Engstrom ..... Vice-President
- Earl F. Morris ..... Secretary-Treasurer

### Members

- |                   |                |
|-------------------|----------------|
| Paul Kurtz        | Emmert Pair    |
| Lillie Crumpacker | Hoyt Strickler |
| Lillian Andrews   | Ocie McAvoy    |
| Eunice Almen      | Bertha Unruh   |
| Rozella White     | Vivian Long    |



## The Radio Club

### Officers

Le Verne Martin	.....	President
Glade Fisher	.....	Vice-President
Ralph Garman	.....	Secretary-Treasurer
Elmer Heidebrecht	.....	Reporter
Verl Dobbins	.....	Reporter*
Herbert Martin	.....	Program Committee
Lowell Sell	.....	Program Committee

The Radio Club was organized at McPherson College in 1921. The purpose of the organization has been to make a detailed study of the various parts and principles of radio telegraphy and telephony.

To satisfactorily pass an examination prepared by advanced members is to qualify for membership and once in the organization, the advanced work is taken up with various awards for varying degrees of proficiency in theory and practice of receiving and transmitting electrical waves.

The method of studying the subject has been somewhat varied. The first method employed was that of having talks prepared by the members and given at the regular meetings. Later circuits were traced through the antenna and ground, condenser, inductance, and the audion tube. The second semester the book on "Radio Communication" published by the government, was studied as a text and as all through the year, interest in the subject was very manifest.

### Members

Clark Brumbaugh  
Clifton Dutton  
Leo Ebersole  
Marathon High

Leo McMullen  
Philip Spohn  
La Velle Saylor  
Abraham Hostetter

\*Second Semester.





## Society of Chemistry

The Society of Chemistry was organized in 1922 with Dr. J. Willard Hershey as the permanent chairman. A secretary, a program committee of two members, and a reporter are elected each fall by the society.

The meetings are held bi-weekly. The membership is neither limited nor compulsory and no membership fee is charged. The purpose of the organization is to make possible the study of specific problems in chemistry which is impossible in regular class work. Any one interested in the problems studied has been invited to attend and contribute to the success of the organization. Special attention is given to the current happenings in the field of chemistry. Some programs are of a technical nature while others deal, more or less, with practical science, some are entirely in the field of theoretical chemistry or research, and still others have been a study of some processes and problems in industrial chemistry. Some typical studies which have been made are: Ionization, atomic theory, fused quartz, perfumes and flavors, chemistry in leather manufacture, relation of chemistry to medicine, petroleum and its products, the use of sulphur in concrete and in waterproofing tile, many problems in household chemistry and an investigation of insulin. All these studies have helped to keep the members of the society in touch with modern chemistry and to stimulate interest in that great field.

### SECRETARY

Lauvera Lingle.....First Semester  
Loretta Yoder.....Second Semester

### PROGRAM COMMITTEE

Harold Strickler.....First Semester  
Abram Hostetter.....First Semester  
Stanley Keim.....Second Semester  
Ralph Garman.....Second Semester

### REPORTER

Ralph Garman.....First Semester  
Floyd E. Kurtz.....Second Semester



PROF. NININGER  
State President

## The Academy of Science

### OFFICERS:

President.....Dr. J. E. Ackert, Manhattan, Kansas  
 Vice President.....Dr. Elsey, Kansas University, Lawrence  
 Secretary.....Professor E. A. White, Kansas University, Lawrence

Considerable interest has been created in the college by the Kansas Academy of Science. This is an organization of the prominent scientists of the state and holds annual meetings at various places in the state which are decided at each session.

Last year the meeting was held at McPherson in recognition of the high standing of several of the college faculty men. Professor Nininger was elected president of the state organization and held the office until April of this year.

Five members of the McPherson College faculty were present at the meeting held at Manhattan April 10-11, 1925. These were: Dr. Harnly, Dr. Hershey, Professor Nininger, Professor Boone, and Professor Blair.

Dr. Hershey presented a paper on the "Effect of 99.97% Oxygen with .03% Carbon Dioxide On Animal Life." This was the result of years of original research by Dr. Hershey and his chemistry students. Nininger presented four masterpieces to the convention. His address as president of the organization was on the subject of "Observations On Meteorites with Special Reference to Kansas."

The other papers were as follows:

"The Status of the Bullock Oriole in Kansas"; "A Problematical Hybrid Grosbeak"; "A New Kansas Aerolite Referable to the Fall of November 9, 1923."

Much praise is due to those men who are recognized as leaders in their fields of study. Their prominence is due to hard and consistent work and the results of their researches together with the excellence of the presentation are indicative of the high status of McPherson College in scientific instruction and study.

In subject matter and manner of report these papers were not excelled by any in the convention. In numbers of such presentations, the McPherson delegates were surpassed only by the two large state institutions, Kansas University and Kansas State Agricultural College.

## Anti-Tobacco Association

### Officers

Elvis Prather .....	President
Paul Blickenstaff .....	Vice-President
Curtis Ruthrauf .....	Secretary-Treasurer



The Inter-Collegiate Anti-tobacco Association of which the local association is a member was first organized by McPherson College students in 1918. Since that time it has spread into other states and is now officially connected with the No-Tobacco League of America which greatly adds to both efficiency and power for good. The Kansas Association consists of five colleges: Tabor, Central, McPherson, Sterling and Kansas Wesleyan.

Each year after a local oratorical contest on the subject of tobacco the winner represents his school in the state contest held at one of these colleges. This year John White-neck won first in the local contest with his oration on the subject, "The God of Destruction." He went to the state contest at Central and won first place there.

Under the leadership of Elvis Prather, the organization has grown during the past year and the membership is quite representative of the college. With such a start this association should go on and never say quit until the tobacco evil follows the trail of the liquor traffic.

### Members

Abraham Hostetter  
 Charles Morris  
 Elsie Pokrantz  
 Cellesta Wine  
 J. Willard Hershey  
 H. H. Nininger  
 Edith McGaffey  
 Le Roy Doty  
 Ruth Hawkins  
 Eleanor Caldwell

Jay Eller  
 Stanley Keim  
 Della Prather  
 Pearl Rhine  
 Pearl Wiltfong  
 James Elrod  
 Edith Slifer  
 William Burgin  
 Horner Eby  
 John Whitneck  
 William Luckett





*Bulldogs*

## The Pep Club

Credit is due a trio of splendid cheer leaders who was ever on the job for the Red and White. They simply had to yell with Sam, Anna, and August out there leading. Thru thick and thin, tho losing or winning, the pep leaders always had the crowd cheering to the last for the athletes who played for their school.

The pep orchestra never got into action except for several basketball games. When they were present, though they were appreciated by the rooters.



KURTZ  
EDGEComb  
SAN ROMANI





## The "M" Club

### Officers

Richard Keim.....	President (First Semester)
E. J. Unruh.....	President (Second Semester)
Maurice Beam.....	Vice-President
Glade Fisher.....	Secretary-Treasurer

The "M" Club was organized in the fall of 1919, scarcely six years ago when the athletics of McPherson College were in their infancy and it had for its purpose the furthering of the spirit of brotherhood and the advent of better athletics. To those far-sighted men and professors who saw the need of rallying red blooded men to the cause of Christian Education founded on physical fitness, this organization is indebted.

Any man who has earned a varsity letter is eligible for membership and upon due initiation is taken into the club. Under the efficient coaches of the past few years, M. C.'s athletes have battled to fame bearing in their arms the name of McPherson and have placed the name of their dear Alma Mater on the highest crags of Championship, Sportsmanship, and Loyalty.

This year the "M" Club under the leadership of R. Keim the first semester and Unruh the last, has served as a pep organizaion, it has done extension work, and, under the guidance of Mr. Himes, has put out the Bulldog Bullet for each athletic event.

Two social hours, including the Annual Banquet, were held and all vouched for the efficiency of the social committee. Each year at the Banquet the best-all-around athlete is chosen and at the 1924 Banquet "SI" Sargent received this honor.

"A man with a strong mind honors the race but a man with a strong mind plus a strong body honors it more."

### Members

Lowell Sell	Virgil Kolzow	Sam Kurtz	Dale Showalter
Earl Morris	Olin Ellwood	Cleo Hill	Gordon Harrison
Paul Kurtz	Virgil Ellwood	Henry Hahn	Leo Crumpacker
Vilas Betts	Prof. Boone	Hal Barton	Richard Knowles
LeRoy Doty	Prof. Mohler	Milford Kubin	Don Owens
Theodore Robb	Floyd Mishler	Stanley Keim	Vern Strickler
Kenneth Rock	Moffat Eakes	Ralph Himes	Galen Mishler
Leon Morine	Ernest Tipton		





Coach Mishler

Coach Mishler, in his two years at McPherson College, has been instrumental in putting on a full program of Physical Education. An excellent system of gymnastics have been given those who cannot compete in the more strenuous intercollegiate games. The teams have been given full attention and the not winning conference honors in any sport, the Bulldogs have given their opponents their best at all times. Gymnasium classes, tumbling classes, interclass tournaments, and intramural basketball give every student adequate chance for physical development.

## Foot Ball

In a season featured by both good and mediocre playing, the Bulldogs won three and lost seven games with one tied. At times the teams played with the old flashing spirit which carried them to the conference championship in '23, but due to fumbles, bad interference, and tackling would many times lose their chances to score when near the goal. With 93 first downs to 54 credited to their opponents; and 1689 yards in scrimmage against 935 gained against them, the season was actually a success.



HAHN  
ELLWOOD  
R. KEIM  
S. KEIM

Baker	6	M. C.	0
Hays	0	M. C.	20
St. Marys	0	M. C.	17
Washburn	10	M. C.	0
Wesleyan	7	M. C.	0
Friends	26	M. C.	7
Bethel	6	M. C.	21
Bethany	6	M. C.	6
Sterling	14	M. C.	0
	75		71

HAHN SCORES AGAINST BETHEL



## Foot Ball

Baker's big orange team came over for the season opener. The Bulldogs outplayed them the entire route making twice as many downs and yards in scrimmage. Fumbles, however, proved their undoing near the goal. Late in the second period, Barton punted to Wright the flashy Baker back who fumbled, recovered, sidestepped the M. C. ends and ran 70 yards for the only score of the game.

The next week at St. Marys, the Bulldogs started strong and held the advantage during the first half. During the last half the storm broke. Barton, Hahn, Strickler, and Kurtz tore the Catholic line to shreds. Time after time Sam raced around end for big gains and finally went over. Barton added two field goals, a dropkick, and a touchdown to the first score. Kolzow and Big Jim looked good at the ends of long passes from Captain Hahn and were responsible for many long gains.



BARTON  
KURTZ  
MORINE  
EAKES

BULL DOGS TWIST TIGER'S TAIL





## Foot Ball



FISHER  
KURTZ  
OWENS  
TIPTON

Hays Teachers came over here with thirteen letter men and were forced to play 25 men in an effort to stop the Bulldog eleven. Three quarters were nip and tuck play with the red and white gridders slowly but surely grinding the life out of the Teacher line. The last quarter saw the result. The opposition broke and Barton slipped over for a score. Captain Hahn then got busy and ran 40 yards for another and just before the whistle blew a third touchdown raised the score to 20-0 and a decisive win.

Washburn was pointed for the Red and White. Brewster was playing star ball behind a wonderful line. The game was hard from start to finish and found the home team behind 10-0 at at the final down.

Kansas Wesleyan beat M. C. for the first time when Jones picked up a fumble and ran 50 yards for the score just three minutes before the end of a game featured by fumbles. The M. C. team was within scoring distance five times but fumbled each time for a loss.

ICHABODS FAIL TO GAIN



## Foot Ball

Friends came back strong after our touchdown and passed their way to four touchdowns. This was followed with a game with Bethel who scored in the first few minutes only to lose their start when the old red and white machine began working and pushed over three touchdowns in quick fashion.

The dope was against us in the Swede game. But that was all. After the smoke cleared away we remembered a hectic struggle in which the Blue and Gold gridders were able to shove across a score in the second quarter. But we also will remember that 80 yard march during the last 12 minutes when Showalter made the game look like a trackmeet and gained 64 yards aided by splendid interference. The reversal was too much and the Swedes didn't wake up until Hahn had slid over for the tying score. The final downs and yardage gave us the lead even tho the score was tied.



COTTON  
MISHLER  
KNOWLES  
SHOWALTER

BIG DICK STOPS ICHABODS



## Foot Ball

Five seniors played their last game for Old M. C. at Hutchinson against Sterling. Big Dick Keim and Stan gave good account of themselves there. Fisher and Barton played as never before but were unable to stop that crushing attack led by Taylor of Sterling. The final score, 14-0 does not tell the tale of a battle which drew the best from both teams, nor the M. C. offense which sent Sterling back to their ten yard zone twice in the last half.

We must remember those who played night after night to train the first team. The subs were faithful to the last game and deserve credit for their splendid spirit.

The football banquet was held in the Arnold Dining Hall two weeks after the Sterling game. Coach Bachman of the Kansas Aggies was the main speaker of the evening. Big Jim Ellwood was elected unanimously as Captain of the next year's team. He fully deserves the honor thru his splendid spirit and fight which made him a valuable member of the team of '24.



KOLZOW  
CRUMPACKER  
STRICKLER

BULL DOGS TANGLE WITH THE TERRIBLE SWEDES







Top Row—Johnson, Voran, O. Ellwood, Betts, Kolzow, Coach Mishler.  
 Middle Row—Holloway, Captain-Elect Crumpacker, Captain Hill, Eakes, Showalter.  
 Bottom Row—Jennings, V. Ellwood, Tipton, Groves.

### Basket Ball

Starting the season with several veteran players and a number of promising Freshmen, the Bulldog quintet made a good record. They were pitted from the start against the strongest teams in the state and made good showings in each game. Groves and Showalter, flashy Freshmen forwards, were high point men of the season with Captain Hill close third. Crumpacker, captain-elect, playing his first year on the Bulldog team, made an excellent record at guard. His work at that position was outstanding. Eakes and Ellwood were always to be depended upon for their share of the fight.

#### THE SEASON

Chilocco . . . . .	32	M. C. 42
C. of E. . . . .	47	M. C. 24
Hays K. S. T. C. . . . .	35	M. C. 14
Fairmount . . . . .	33	M. C. 49
Fairmount . . . . .	42	M. C. 23
Pittsburg . . . . .	42	M. C. 16
Pittsburg . . . . .	51	M. C. 24
Bethany . . . . .	10	M. C. 24
Hays K. S. T. C. . . . .	26	M. C. 22
Hays K. S. T. C. . . . .	27	M. C. 22
Friends . . . . .	37	M. C. 45
Bethel . . . . .	36	M. C. 27
Bethany . . . . .	31	M. C. 40
Friends . . . . .	24	M. C. 43
Bethel . . . . .	54	M. C. 31
Emporia Teachers . . . . .	48	M. C. 26



Captain Dick Hill playing his third year of conference basketball is one of the most consistent forwards that ever played on a Bulldog team. He is ever on the alert, is a fast dribbler, is sure of his shots and is an able leader.



GROVES, Forward, CRUMPACKER, Guard; HOLLOWAY, Forward

## Basket Ball

The season opened against the fast Chillico Indian quintet. Both teams started with flashy playing and scoring became a nip and tuck proposition for nearly the entire game. Captain Hill and Showalter did splendid work at forwards while Leo Crumpacker hit the stride in his first college game which he held thruout the season. Not until the last few minutes did the Bulldog team draw away from the close score to win 42-32.

C. of E. came down the next week and swept the Red and White team off their feet. The McPherson crew played well and gamely but were outclassed from the start. Groves got his start at center in this game and proved his value with three baskets and one free throw.

Big Jim was back in the lineup when Hays came here and started the fireworks with a basket from center. Groves at forward and Crummy at guard were playing superb ball that night and the Tigers were forced to be content with the short end of 35-14 score.

Pittsburg's Teacher team proved itself to be all its reputation held. They sent the game Bulldog team down twice in succession. In the first game, Showalter came out with high point honors. Captain Hill scored for the team in the second game but was unable to get the squad going well enough to win.



ELLWOOD, Center; EAKES, Guard; SHOWALTER, Forward

## Basket Ball

A large delegation of fans went to Lindsborg for the first of the annual series with the Swedes. Air-tight defense during the first half found the score 4-4. Groves began the fireworks in the second half and scored seven points in all. Crumpacker and Ellwood contributed to the score as well as playing a defensive game which baffled the Bethany team. With the score standing at 24-10 with the final whistle, the Bulldogs again proved their mettle with Swede competition.

Several weeks later the Bethany crew came to M. C. for the second game and were again defeated after a hard game. The team lost to Fairmount after taking the first of the series. They defeated Friends but were unable to strike the winning combination and lost to Emporia Teachers in the last game.

Coach and Mrs. Mishler gave a dinner to the team April 13. Leo Crumpacker was selected by his team mates to lead the team next season. His exceptional work at guard won him this distinction. He is a born leader and athlete and although in his first year of college has proved his mettle and value to the team.



## Base Ball



BARTON  
Captain  
KUBIN  
Captain-Elect  
STRICKLER  
FISHER

The first game against Kansas Wesleyan was played at McPherson. The team failed to get together at first and six runs were scored against them before they began to find themselves. Mast and Ellwood made several pretty plays. Kolzow and Kubin were effective in the box but poor support was responsible for the loss. The final score was 11-3.

Hays came next. The team left for a two game series, determined to win. In the first game, Kolzow pitched shutout ball until the ninth inning when a Tiger clouted the ball out of the lot. The star Bulldog hurler however had the advantage due to his own circuit hit in the third inning with Rock on base. The score was in our favor 2-1. The second game went bad. No adequate pitcher was available to take Kolzow's place and Hays walked off with a 16 to 0 score.

In the game against Bethel, Captain Barton pounded out a home run and his team ran in 20 scores to the Mennonite's 3. Kolzow was in rare form and allowed only three hits, one earned run, and fanning thirteen opponents. Mast had a perfect day at bat with three walks and two hits which were good for three runs.

The second game against Bethel was also in M. C.'s favor 7-3. The team was going good and gave splendid support to the battery.



## Base Ball

Hays came down here and stepped out to a 10-1 victory. True to form, Kolzow pitched good ball and was supported in able manner by Kubin behind the bat. A large number of McPherson errors made the going easy for the Teachers.

The second game with Wesleyan was a walk away for the Methodists. They had a very effective team with good pitching and fielding. The Bulldogs seemed at a loss to know how to get together and a number of errors coupled with poor hitting and base running were responsible for their downfall.

Even though winning only three out of the seven games, the supporters of the team felt that the season was worth while. The spirit of sportsmanship and friendliness was always in evidence in the games. The Bulldogs played hard and clean and in times showed flashes of team work and team play second to none offered by their opponents.

Support by the student body was scant due probably to the rush of the last few weeks of school and the rapidly moving events of that time. Those who did not witness the games missed experiences as thrilling as any connected with the major collegiate sports.



HARN  
KOLZOW  
EKES  
ROCK





Top Row—Rhine, R. F.; Coach Mishler; Captain-Elect Kubin, C.  
 Middle Row—Fisher, S. S.; Barton, 3B.; Rock S. S.; Strickler, 2B.  
 Bottom Row—Kolzow, P.; Hahn, U. F.; Captain Barton, L. F.

## Base Ball

### The Season

Kansas Wesleyan	11	M. C.	3
Hays Teachers	1	M. C.	2
Hays Teachers	16	M. C.	0
Bethel	3	M. C.	7
Hays Teachers	10	M. C.	1
Bethel	3	M. C.	20
Kansas Wesleyan	27	M. C.	1

After one year's absence from intercollegiate baseball circles, the Bulldog nine again took the field. Only three letter men reported for practice but the team was fortunate in the wealth of material from the Freshman class. About twenty-five men reported and competition for the team was keen.

On the field, the team played well at times but were unable to strike the winning combination in any but three games. Kolzow proved to be the mainstay of the team and pitched shutout ball in several games. Captain Barton was always in the fight and was especially effective at bat. Fisher, Rock, Sargent, Mast, and Strickler could always be depended upon for their share of the game.

Kubin was selected by the squad for the position of captain in 1925. Kubin is a fighter from the core and handled Kolzow's delivery in pretty fashion. Due to the decision of the Athletic Board to shelf baseball this spring, we are unable to know what the team could have done. A large number of athletes were disappointed due to this decision and undoubtedly a good team was not allowed to take the field for the college.





Top Row—Ruthrauff, O. Kauffman; Captain-Elect Kurtz; F. Barton;  
Coach Miehler.  
Middle Row—Dell, Dutton, Captain Crumpacker, Rock.  
Bottom Row—H. Kauffman, Daggett, Riffel.

## Track

The spring of 1925 found a large number of men working hard for the coming series of track meets. Riddlebarger, the star miler of the former season had not returned, so his position as Captain was conferred to Sanger Crumpacker. The new choice was a wise one, for Sanger was indeed the "Man with bottomless lungs." His wonderful stamina and speed in the mile, half-mile, and two-mile runs, was the talk of the conference. Not only was Sanger the best point getter of the season but he was also well versed in track lore and proved to be an able and efficient leader for the season's grind.

Due to the fact that most of the star track men had graduated the year before, the prospects were somewhat dulled. Several Freshmen showed up well in the meets and showed signs of excellent material later in their college career.

### The Season

Wesleyan . . . . .	73	M. C.	58
Bethany . . . . .	7	M. C.	51
Pentangular:			
Wesleyan, first, 57.			
Bethany, second, 48.			

## Track



CRUMPACKER  
Captain  
KURTZ  
Captain-Elect  
MUDRA

Captain Crumpacker, (Sanger), the distance runner par excellence. A true leader, a clean sportsman, and splendid athlete.

"Doc" Kurtz, Captain-Elect, ran the quarter mile, the half-mile, and the relay. Was used also in the shot and discus.

"Big Bill" Mudra was sure of points in most any dual meet in the shot and discus. This is his fourth season.

The first dual meet was with Kansas Wesleyan University at McPherson. Wesleyan took the lead from the start with first and second in the century dash. Captain Crumpacker got some of these back in the mile and repeated in the half and two mile runs for a total of 15 points and high point man for the meet. Rock showed up well in the pole vault, the high jump, broad jump and javelin. Mudra annexed eight points in shot and discus. Daggett added a second in the hurdles. The relay was an exciting race with Briscoe of Wesleyan leading Kurtz by a yard in the first lap. Tipton ran the anchor lap fast but was unable to pass the fleet Terry and lost by ten yards. The final score stood 73-53 in favor of the Coyotes.

START OF THE TWO-MILE



## Track

Rufus Dagget. . . A man who trained all year and got results. He beat Murray at Bethany and ran second to Coupe at the Pentangular. His specialty is the 120 hurdles but is also good on the quarter and dashes.

Ernest Tipton. . . 440 and 880 runner who was hard to beat and could be depended upon for a fast relay race.

Kenneth Rock. . . The Freshman flash who scored more points than any other man on the squad. His broad jump, pole vault and javelin throws will place in any dual meet.

Wesleyan's Coyotes showed the same strength in the Pentangular at Salina as they did in the dual meet. They scored 57 points and the relay. It was here that Captain Crumpacker was declared to be ineligible for the meet and M. C.'s hopes for his customary fifteen points were crushed. Rock placed in the vault and high jump while Dagget took second in the hurdles and Mudra third in the shot.

Bethany found the Bulldog tracksters stronger than they thought and were forced to their limit in many of the events. Rock scored 14 points for the Red and White squad. Daggett ran the hurdles for first place over Murray and Mudra placed six points in the weights. The relay was the feature of the meet. Tipton took the lead on the first lap but the last man was given a handicap of twelve yards behind Edlund, the fast Swede 440 man. Kurtz was unable to pass the Bethany man on the final sprint after cutting the lead to a foot, and lost the race by six inches. Final score, Bethany 77, McPherson 53.



DAGGETT  
TIPTON  
ROCK

WOODWARD OF WESLEYAN VAULTING





## Tennis



Harlan Yoder was manager of tennis in the spring of 1924 and played an excellent game. It was his fourth year on the tennis squad and his superior training and experience made him a valuable man in either singles or doubles.



Rufus Daggett. . . He had a hard time keeping up with events when he was playing tennis and running the hurdles at the Pentangular. We will remember Daggett as an all around athlete and sportsman who fought hard and clean for his Alma Mater.



Ralph Himes earned his first letter by beating Haury of Bethel in straight sets. "Poddy" is known for his consistency in play and determination to win.

YODER  
DAGGETT  
HIMES

Tennis is a popular sport at McPherson College. Last year the team was without a coach but had a successful season despite this handicap. They played in the Pentangular and gave the winners a hard match before going down to superior volleying. The doubles won at Bethel and the singles at McPherson against the same team. The Swedes proved to be as strong as ever and took all the matches played.





Fisher, Barton, S. Keim, Captain McCall, Eller Hahn, Rock

## The Vagabonds

### INTRAMURAL TOURNAMENT

Eleven teams organized for the annual intramural basketball tournament. The tournament winners of last year, the Imperial Order of Nuts and Prunes (I. O. N. A. P.) were popularly awarded the championship again, but were unable to connect with the basket and lost two of their games.

The Swishers of '24 added McCall to their lineup, changed their name to "Vagabonds", and began their series of games which carried them thru undefeated. With Barton and Rock at forwards, Captain McCall at center, Hahn and Fisher at guards, and Eller and Stan Keim as substitutes, the Vagabond lineup proved to be an enigma for opposing teams.

The closest competitors for high honors were Shakespeare's Immortal Five (Brutus, Hamlet, Shylock, Caesar, and Macbeth) and the Izzies. Each of these teams wound up their series with three wins but the latter were eliminated in the finals by the Vagabond crew.

### TEAM STANDING

Vagabonds . . . . .	5	0	1000
S. I. F. . . . .	3	1	.750
Izzies . . . . .	3	1	.750
Comets . . . . .	2	1	.667
I. O. N. A. P. . . . .	1	2	.333
Rinkeydinks . . . . .	1	2	.333
Black Circle . . . . .	0	3	.000
Academy . . . . .	0	3	.000



### Gymnasium Exhibition

In the evening of April 16, was held the twelfth annual gymnasium exhibition. It was well attended by both the Hill and the town people. In the opinion of the spectators the success of the program was greater than that of previous years. About fifty men took part in the program. These made up the various gymnasium classes and special drill groups.

The event started with a parade, which consisted of an orchestra, walking pyramids, marchers, tumblers, clowns and performances of various kinds. The program was filled with various assorted number of exercises. The Ox-Dance, a popular gymnastic drill being the favorite one. During a brief intermission the Vagabounds, winners of the Basketball tournament, went down in defeat before the High School basketballers.

The last number on the program brought all the spectators to their feet in excitement, that was the obstacle relay race, in which the Sophomores and Seniors joined forces and defeated the Juniors and Freshman. Professor Blair, then, with great eloquence presented the winners with a gorgeously decorated cake.





### Women's Athletic Association

The Women's Athletic Association was temporarily organized in the spring of 1924 but the permanent organization was completed and became functioning late in the fall of the same year. The purpose of the Association is to promote athletic activities among college women as a means of raising the standards of physical efficiency, scholarship, and good fellowship.

Membership is open to all undergraduate women who have previously earned 125 points and who maintain a C average in every college course.

Membership is maintained by continuing this average and earning at least 25 points each semester. A point is determined by the Association for persistency or proficiency in any of the Association's activities.

Awards of honor are given by the organization for points earned as follows: Numeral for 200 points. Letter for 500 points, White sweater with red M for 1000 points, and a Gold Medal for 1500 points.

#### W. A. A. Board

Athletic Director.....	Mercedes Chapman
Business Manager.....	Edith McGaffey
President.....	Laura Hamman
Vice-President.....	Ethel Mae Metsker



### Girl's Basket Ball

This year the W. A. A. voted down intercollegiate basketball but an intramural tournament was held instead. Three teams were selected and a series of six games each played.

The Jolly Janes maintained a perfect record and won the championship.

At the close of the tournament an honorary varsity team was chosen.

### JOLLY JANES

Francis Temple—F.	Lillie Crumpacker—G.
Anna Mae Strickler—F.	Bertha Unruh
Clarissa Evans—C.	Harriet Mohler
Edna Dunham—R. C.	Dorothy Licthy
Lucile Paul—G.	Melvina Graham

### Hiking Class

Hiking, as one of the sports of the W. A. A. by which women may win points, has aroused much interest and has become quite popular this year.

Sixty-five women took part in this activity. The hikes were taken in small groups as the participants arranged for and at times when it was most convenient.

Hiking is considered excellent sport for women and enables many to secure exercise without participating in the more skillful and strenuous sports.



### Girl's Basket Ball

#### FLYING DUTCHMEN

Lois Myers—F.	Mary B. Swope—G.
Floye Rhodes—F.	Nellie McGaffey
Laura Hammann—C.	Viola Bowser
Iva Crumpacker—R. C.	Juanita Miller
Leola Ellwood—G.	Della Prather

Team.	W.	L.	Pct.
Jolly Janes .....	6	0	1000
Flying Dutchman .....	3	3	.500
Kampus Katz .....	0	6	.000

#### HIKING CLASS







### Girls' Basket Ball

#### KAMPUS KATZ

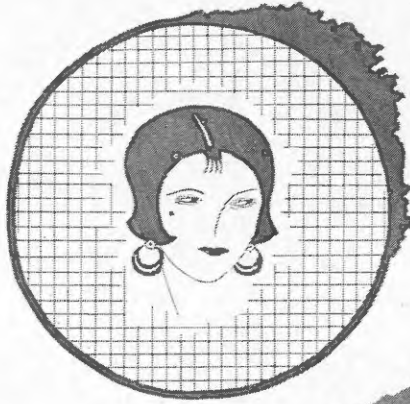
Goldie Vickers—F.  
 Mattie Ring—F.  
 Laura McGaffey—C.  
 Anna Mae Edgecomb—R. C.  
 Ethel Mae Metsker—G.  
 Mabel Griffin—G.  
 Naomi Mohler  
 Fidelia Frantz  
 Helen Lichty  
 Ruth Wedell

#### VARSIITY TEAM

	Games.	F.G.	F.T.	P.F.	T.F.
Francis Temple, forward.....	6	35	9	3	2
Lois Myers, forward.....	6	22	8	4	4
Laura Hammann, center.....	3	0	0	0	0
Edna Dunham, center.....	5	0	0	2	3
Lucile Paul, guard.....	6	0	0	3	2
Leola Ellwood, guard.....	5	0	0	5	6
Floye Rhodes.....	6	16	8	1	4
Anna Mae Edgecomb.....	6	0	0	5	7
Mary B. Swope.....	6	0	0	6	2



*Shamrangle*



The  
**SHAMRANGLE**  
'25

SMITH





Under the romantic pines where tin cans are a beautifully artistic asset



This ash heap inspires the student with a poetical fervor



A beautiful view of the Alumni Gymnasium - a place of revered antiquity

OUR  
CAMPUS  
BEAUTIFUL



Forney's dugout cheers the very center of our campus



Saturday Increase Dugout, subsiding addition to the institution



Campus lake and mud view near the boardwalk - modern Gymnasium at right

## Our Faculty



Professor Valentino, K. K. (Klever Kidder.) International Correspondence School, 1901. Professor in psychology and school management. Blue eyes, nearly bald, and says he is only forty. Is a democrat for rational reasons.



Doctor Hardy, the Traveling Doctor, A. D. S. (After Dinner Speaker.) Minneapolis Barber School, 1888. Knows his Eggs about after dinner speaking. Has been to China and India and has a lot of inside dope on those places. Gets more handsome as the years go by. Professor in physiology.



Professor M. A. Hess, C. E. (Cake Eater.) Centennial High School, 1899. Professor in English Department. Noted chapel humorist. Long distance walk-champion of the college.



Professor Shylock, B. C. (Bill Collector) and L. M. (Ladies' Man.) Educated in a pawn shop, 1881-1908. Professor in economics. Student reminder at close of each semester. Has lovely dreamy eyes.

(Continued on Page 1136)

LIKE OTHER THINGS  
**BUY PRINTING AT HOME**  
 AND BUILD THE HOME TOWN

Build the Home College by building the Home Town—a sure method. Years of experience, the best of workmen and machinery, a record of excellent work, and the desire to please are at your service with advantages no outside printery can give.

**THE DAILY REPUBLICAN PRINTERY**  
 McPHERSON, KANSAS  
*(Printers of the Quadrangle)*



**STUDENTS**

Remember the  
 10-lb. box  
 Chocolates  
 is still  
 good!

Buy this 10-acre tract close to McPherson College  
 Other places priced as follows—

8-room house .....	\$2,000.00
4-room house .....	\$1,800.00
6-room bungalow .....	\$3,000.00
5 acres improved .....	\$4,750.00

20 acres, 4 blocks from college, improved, 10 acres alfalfa land, balance pasture and improvements. Price, \$5,000.00

Wheat, Corn and Alfalfa Land, Homes on College Hill and City Residences. Before You Buy, See—

**JAY CRUMPACKER**  
 Write—Wire—Come



## The Graduates

**PAUL DICK**—One of the greatest men the institution has ever turned out, Paul says. Known to the poetry lovers as M. T. Head. Has literary aspirations it seems. A musician of Note. Majored in Egoism.



**HAROLD GILL**—The sweetest boy in college, surpassing even Dale Showalter. Has marcelled hair, sky blue eyes, and innocent desires. At present he wears knickerbockers, but, as one of the co-eds says, "He'll look just as keen in long pants!" Majored in the study of Human Nature.



**MARLIN CARLSON**—Drives a Ford sedan with Miller Balloon Tires. Well known in athletic circles; plays golf gracefully. Used to have a girl in Newton. Majored in pugalism.



**H. H. NININGER**—Noted Naturalist. Has a collection of Creamery Butterflies, Silver-plated Goldfish, and other remarkable specimens. Delivered the greatest Chapel speech in the history of M. C.: "Instead of talking to you I will let you go so that you may take a few deep breaths of the morning air!" Majored in LaFollettism.

(continued on page 1235)



Agriculture  
Industry



Education  
Achievements

### You Will Like McPherson

McPherson, Kansas, the city of homes, schools, churches and a truly beautiful little city, is located in the heart of a great agricultural State. Including a student body of nine hundred who come here to attend school it has a population of approximately 5,500.

The slogan "You Will Like McPherson" was adopted by its citizens some years ago and since then they have been building a city which for civic, municipal, educational and commercial achievements is not excelled by any other city its size in the country. Its beautiful parks, church edifices, public school buildings, municipal buildings, colleges, homes, paved streets and last but not least its fine business section, the buildings of which are occupied by up-to-date retail and wholesale establishments; react a most favorable impression on a visitor to the city invoking the declaration, "I sure like this town."

McPherson is the county seat of McPherson County, was organized in 1872, has a Commission Form of Government composed of three Commissioners, municipally owned water and electric plant and an abundance of pure water from deep wells, a low rate for electric lighting, power and cooking. It has four railroads radiating in six directions making it a very favorable point for the distribution of products to this section of the country. McPherson is a city of beautiful homes, well paved streets lined with fine shade trees, has more than twenty miles of paving within its corporate limits. Eighty per cent of its people are home owners. Its beautiful parks receive more than usual favorable comment from visitors to the city, one situated to the West and the other to the East of the business section make them available to all people of the city and they are a source of delight and enjoyment to all. A bronze statue of General James B. McPherson located in Central Park attracts the attention of every one passing through the city.

**HAS AMPLE SCHOOLS.** The schools of McPherson are second to none in the State and consist of four buildings; two Grade schools, one Junior High School and one Senior High School. These buildings are new and of the latest type in school building construction; likewise, have up-



to-date equipment. The curriculum is complete and the faculty and teaching staff is of the highest type of efficiency. In addition to our splendid Public Schools, two Colleges are located here. Students from nearly every State in the Union come here to avail themselves of the splendid facilities these institutions offer and to obtain a higher education.

The business section of McPherson is exceptional in that it is free from old and decrepit buildings so common in many cities of its size and age. The retail section is represented by all lines of business with well stocked stores of merchandise. Four Banks with deposits of more than \$2,000,000 reflect a healthy financial condition for the community. The wholesale and manufacturing industries distribute their products not only to the surrounding territory but to all parts of this country and to some of the European countries as well.

A rich County. In every direction from McPherson are found well developed farms, the county being adapted to diversified farming and while wheat is the major crop, corn, oats, alfalfa and all kinds of sorghums are successfully grown making McPherson County exceptionally well adapted for the raising of poultry, dairy and stock cattle, and hogs.

On Transcontinental Highways. Two transcontinental Highways pass through the city of McPherson, namely, The National Old Trails Road (Old Santa Fe Trail) and the Meridian Highway; the former running from Washington, D. C. to Los Angeles, California; the latter from Winnipeg, Canada to Galveston, Texas, and on to Mexico City, Mexico. Fifty thousand tourists pass through McPherson over these Highways each year. Two other Highways, the Midwest Highway and the Kansas-Colo- rado Boulevard form further important lines for tourists from Minnesota and other Northeastern States en- route to Colorado and other West- ern and Southwestern States.

For the accommodation of Tourists McPherson has splendid facilities in



hotels, restaurants, garages, a tourist park equipped with shelter house, water, lights, fuel, sewer connections and police protection.

A spirit of co-operation prevails in all things that will advance the interests and welfare, physically, morally and spiritually as well as commercially, of the community. Its citizens take a keen interest in anything that will improve the conditions of the entire county.

The McPherson County Hospital erected at a cost of \$250,000 and paid for by the people of the entire County is an outstanding example of what can be accomplished when the people of any community lay aside self- fish motives for the good of all the people. A Red Cross Nurse, County Welfare Worker, County Agricultural Agent, County Y. M. C. A., County Y. W. C. A. receive the support of the citizens of McPherson. The McPherson Chamber of Commerce furnishing the guiding hand and support when needed to help finance these organizations.

The space allotted to us is limited, hence, we are unable to enumerate the many other things McPherson has which makes it an ideal place in which to make your home, educate your children and engage in business or farming. A visit to our city we know will convince you that the statements made above are not exaggerated. You will like McPherson. The McPherson Chamber of Commerce invites you to come and look us over.





## McPherson University

The home of the good and the true and the beautiful is the Green summit of College Hill. It is located at the east end of Marcelled Drive of McPherson the broad Kansas plains. The motto of McPherson University is "Ideals High, Waistnecks Ditto", and the institution stands for the right to life, liberty, and dormitory syrup. It was founded with the creation it seems, for Horner Ehy has discovered that the history of Fahnstock Hall began sometime before the flood.

Since the coming to M. U. of Dr. D. W. Kurtz in 1914 the standard of the institution has been raised considerably; the Dr., working in co-operation with Dr. E. E. Forney, has effected such reforms as the Green Cap Rule, an improved "M" Club initiation program, and the B-average grading system. He has studied frequently that he has studied under the world's greatest teachers.

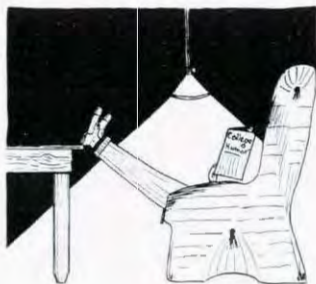
Dr. Forney made Who's Whose by his introduction into M. U. of the following curriculum during the past year:

Dept. of Music: Elements of Jazz; History of Hawaiian Classics; Cabaret Music Teaching; Saxophone Playing Technique; The Operas of Pintorumski and noted decomposers.

Dept. of Commerce: Oil Stock Salesmanship; Shorthand and Shortchanging; How to Get Rich Quick.

Dept. of Fine Arts: College Humor; Painting (lip stick and rouge puff); the Fine Art of Eating Spaghetti.

Dept. of Science: How and Why to Make Love (if at all); Political Parties and other Social Gatherings; General Chemistry and his Military Campaigns; Bygollygee.



## Social News

College Hill society was pleasantly surprised recently upon hearing of the elopment of Miss Floye Rhodes, popular M. C. co-ed and Al Unruh, notorious shiek. It all happened when Al appeared on the campus in enormous gray trousers the one day. Floye was captivated at once, and Al, having never been subject to much attention from the marceled sex before, eagerly submitted to her furious wooing and it was love on the spot. The happy couple were secretly married by Rev. Eakes and then left immediately in Marion Krebbiel's Packard. It has been rumored that Al plans to take up trapeze performing to make a living for his over-joyed mate and himself, and Floye will busy herself by holding a sponge to pick up her dear beloved the first time he makes a mis-flop.

Here's to them!

### The Puritan Cafe

WE ARE AT YOUR SERVICE

DAY OR NIGHT

AND

We Appreciate Your  
Business!

SERVICE & QUALITY

### SNYDER CANDY CO.

### LLOYD'S CAFETERIA & CANDY KITCHEN

We Serve Cafeteria Dinner and Supper

Short Order Breakfast

Ice Cream and Sodas, Hot and Cold Drinks All the Year Around

116 South Main

Phone 210

Pearson Millinery - 204 N. Main

### Remember Wilber Barber Shop

109 South Main Street

R. M. Wilber, Manager





### Student Council and Student Government

The real governing body of McPherson College is the Student Council. Many drastic measures have been introduced by this powerful body in the past year under the leadership of Ja Yeller who is said to be its president. A rule prohibiting the use of tobacco in any form in the class rooms and chapel was passed after a hard fight and enforced rigidly in spite of strong opposition. Another act of the Council which is worthy of praise was the purchase of a half dozen new thumb tacks for the bulletin boards.

But the greatest achievement of Ja Yeller and his group was the establishing of an elaborate form of student government to be headed by a president, who will receive a salary of \$00000.16, and a president's cabinet of five members, each of whom will receive \$0000.08 per year.

Officers who have been elected and appointed for next year are: Ernest Tipton, president; Clement Aspegren, secretary of discipline; Marlin Carlson, secretary of war; Harold Gill, secretary of faculty behavior; Edwin Matson, secretary of interior and exterior; Albert Street, secretary of student inactivities.

The secretary of faculty behavior, Mr. Gill, will be assisted by the members of the Back Row. Mr. Matson will be responsible for the appearance of the interior and exterior of the president's office in Forney's Dugout east of the Ad Building and will be assisted by J. J. Yoder and other unruly faculty members.

### History of Fahnestock Hall

Horner Eby, the historian from India, who makes the past look fascinating, has retraced the history of Fahnestock Hall all the way back to the flood, if not farther. The antiquity of the mansion is realized when he states that both Seth and Abram lived in it. The main beauty of the structure is in the Rock, according to the noted Asiatic historian. The plaster was made from Rothrock, and after this had been allowed to Harden the castle was completed with Pair wood and Ellwood. His many hair-curling and blood-raising legends of the past history of Fahnestock Hall would make the bravest buccaneer tremble with fear.

**BURGER IDEAS  
BUILD DISTINCTIVE YEAR BOOKS**

*IDEAS that lift your annual above the average, are the results of painstaking thought, effort and experience*

*We conceive and develop ideas in designing and engraving for the definite purpose of enlivening your annual*

*EXPERIENCE, MASTER CRAFTSMANSHIP AND THE PERSONAL COOPERATION IN A BURGER CONTRACT do not add to the price you pay but they do add materially to your finished book*

*Write us for IDEAS*

**BURGER ENGRAVING CO.**

*Boston Bldg. Kansas City.*



## Forensics

Under the coaching of Professor Hess the M. C. debate team of 1924-25 developed into an unbeatable combination and became the champion of the Hem and Haw League which is composed of the following schools: Centennial High School, International Correspondence School, Berlin University, and M. C. The debate question for the season was "Resolved, that the shore was placed close to the ocean so that the people could get on the boats." LaFollette and Dawes handled this question in a most able manner.

W. J. Bryan proved himself to be the greatest orator in the history of M. C. and brought to her and himself honor that neither has known before. His oration, "The Hand That Used to Rock the Cradle Makes Papa Do It Now," was a masterpiece and placed first in the national contest conducted by the Every-little-movement-has-a-meaning-all-its-own Oratorical Society of New York's City.

## Alumni

An educational institution stands or falls on the record of its alumni. M. C. stands! Among the noted alumni of McPherson College are Andy Gump, who wears no man's collar, and Al Unruh, who often wears no collar at all. The institution points with pride to such noted past graduates as Lenine and Trotsky, the one dead and the other forgotten. It is said that Jesse James went through this college and afterwards was heard to remark that he got a lot out of it. And it was in the English Department of M. C. that Ring Lardner acquired his remarkable command of the English language.

## The Back Row

The back row of the McPherson Collegiate Chapel was occupied during 1924-25 by the world's greatest optimists; they were always ready to laugh at their own conduct, which the faculty was never inclined to do. The faculty and the back row were two great extremes: one made much ado about nothing, and the other did the same thing, yet they never agreed, one solemn, the other hilarious, both were bappy. Often during the Chapel programs the uproar in the back row was as great as that on the front platform, but not always, for the back row was always able to make itself heard which the faculty was sometimes unable to do.

Aubrey C. Hale, president; Lowell Sell, 15th vice-president; August San Romani, secretary; Marion R. Krehbiel, press agent; Dwight Smith, devotional chairman; Zeke Saylor, chorister; Ernest Tipton, yell leader; \_\_\_\_\_, sergeant-at-arms; Guberknutts Saylor, laboratory assistant; Sam Curse, honorary member; Dr. D. W. Kurtz, faculty adviser.



## Calendar

- Sept. 15—School opens and all previous enrollment records are broken like New Year's resolutions.
- Sept. 26—Wright wins foot race and Baker beats Bulldogs 6-0.
- Oct. 3—M. C. 17, St. Marys 0.
- Oct. 17—August San Romani bursts forth in rhyme in Chapel.
- Oct. 30—Coolidge and Paulen elected to their respective offices by M. C. students.
- Nov. 11—Bulldogs make it a highly successful season by refusing to bow to the Swedes.
- Nov. 20—Harold Barton says, "She has the sweetest voice I ever heard!"
- Nov. 27-30—Thanksgiving recess.
- Dec. 5—Football banquet. Big Jim elected 1925 gridiron captain.
- Dec. 18—Dr. Kurtz delivers "Philosophy of Progress."
- Dec. 20-30—Christmas recess.
- Jan. 2—Spectator questionnaire circulated. Many suggestions received. One reader satisfied!
- Jan. 7—Bulldogs open B-B season by defeating Chilocco 42-32.
- Jan. 9—Honor point system adopted in M. C.
- Jan. 13—M. T. Head, noted poet, introduced to Spectator readers.
- Jan. 25-31—Bible Institute.
- Jan. 26-27—Enrollment. Visit to J. J.
- Feb. 6—Bulldogs 24, Swedes 10.
- Feb. 13—(Friday) Ooh!
- Feb. 19—Bulldogs 40, Swedes 31. H'ray!
- Mar. 3—Al Unruh appears in prodigious gray street sweepers—spring is here.
- Mar. 12—Dr. Kurtz delivers speech to the Back Row.
- Mar. 17—Stan Keim announces that he has been from the Atlantic to the Pacific and believes he is now on the Great Plains.
- Mar. 26—Lentz and Hahn win Spectator elections.
- April 1—Spectator exposes the Truth. M. C. shocked, ashamed, and amused. . . .  
 Quadrangle goes to press. G'bye!

## Athletics

1924-25 was by far the most successful season in the known history of M. C. athletics—the major sports—marbles and tiddley winks—were stressed especially and reported to have cleared \$000000.07 for the Athletic Association of the College. Lowell Sell of the Track Team broke a large number of records when he accidentally knocked them off the counter in Hubbell's Drug Store, and Pie Carlson of the Golf Squad made a hole in one—day. Also, Bill Mudra dropped the shot on his foot and broke seven of the ten commandments, but no records.

The Baseball Team broke up when Ted Kolzow was sentenced to thirty days in jail for stealing second base in the last Hays game. The Football Eleven had a great season, beating the Swedes 6-6. Hurricane Tipton made the All-State team at hind end. The outstanding basketball player on the Bulldoze quintet was Bill Groves who never played on anything but his mother's kitchen floor before making his debut on the sagging deck of Alumni Gymnasium. Coach Mishler has proved that athletics are essential in sport.

QUADRANGLE

WALKER  
STUDIO

Telephone 99

PHOTOGRAPHS

118½ South Main Street

KODAK FINISHING AND COMMERCIAL WORK

The  
Quadrangle  
Photographer

1925

Page one hundred forty-three



*"That's All"*