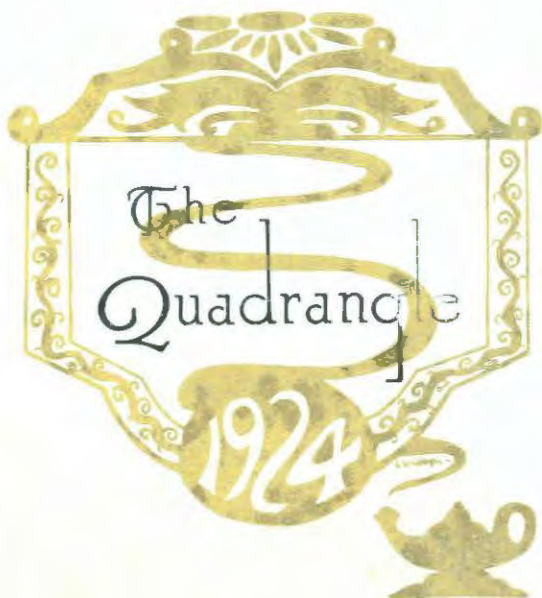


THE
QUADRANGLE
1924





Engraved
by
Burger Engraving Company
Kansas City, Missouri

Printed and Bound
by
The Daily Republican
McPherson, Kansas

1 2 2 1 NL



— VOLUME IV —

The
Quadrangle

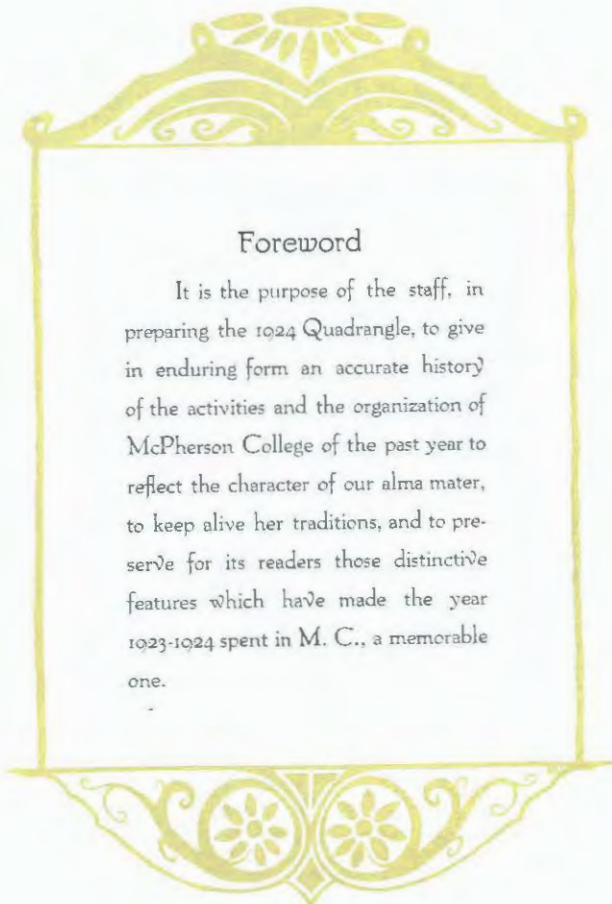
— 1924 —

Published by
The Student Council
of McPherson College
McPherson, Kansas



The Staff

EDITOR-IN-CHIEF.....	Laura B. McGaffey
ASSOCIATE EDITOR.....	Paul R. Kurtz
ASSOCIATE EDITOR.....	Eunice S. Almen
BUSINESS MANAGER.....	Herkle L. Wampler
ASSISTANT BUSINESS MANAGER.....	Rufus L. Daggett
ART EDITOR.....	Harold Lundeen
ASSISTANT ART EDITOR.....	Kenneth Rock
ATHLETIC EDITOR.....	Leonard Timmons
MUSIC AND DRAMATIC EDITOR.....	Mabel Hoffman
FEATURE EDITOR.....	Kenneth Rock
PHOTOGRAPH EDITOR.....	Richard Keim
ACADEMY SECTION EDITOR.....	Wretha Cory
FACULTY ADVISER.....	Dr. E. L. Craik



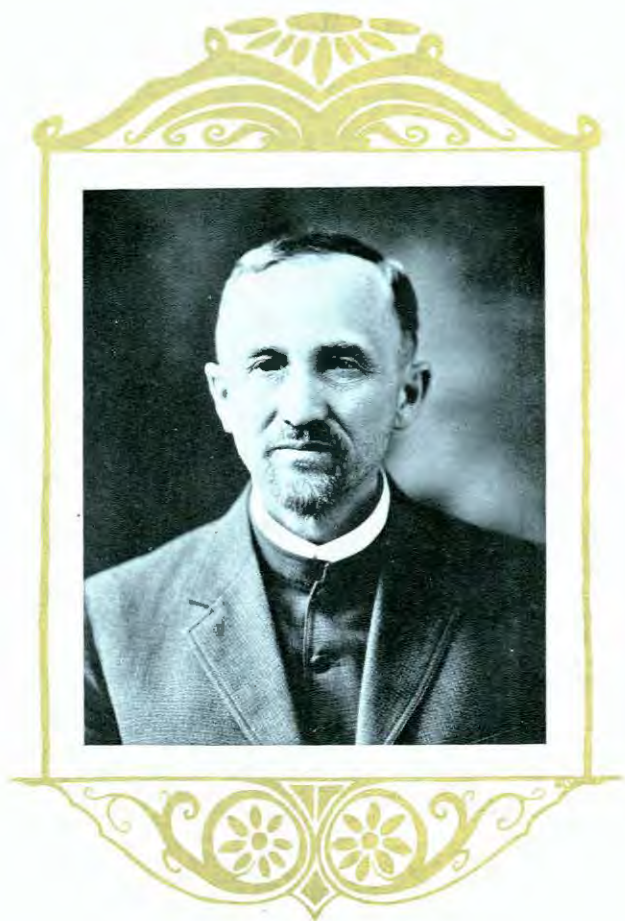
Foreword

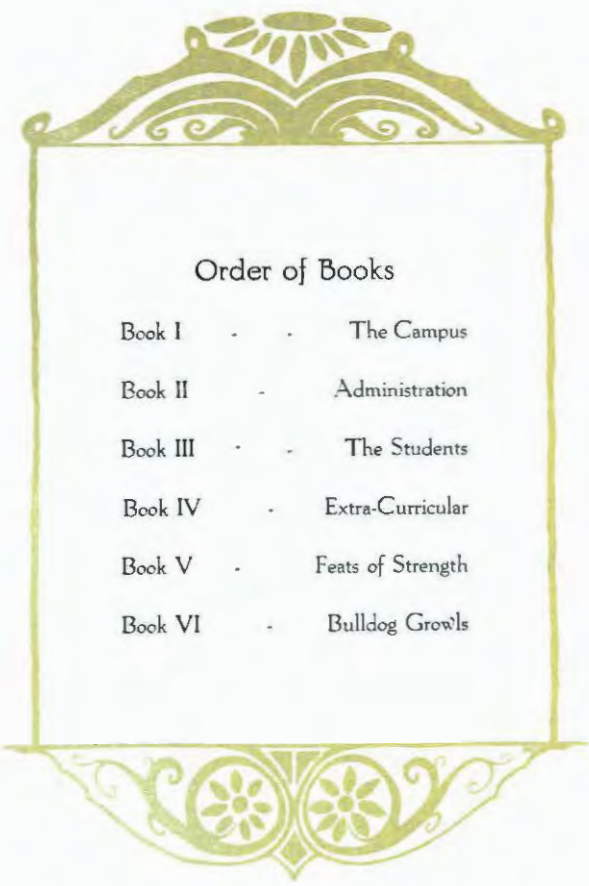
It is the purpose of the staff, in preparing the 1924 Quadrangle, to give in enduring form an accurate history of the activities and the organization of McPherson College of the past year to reflect the character of our alma mater, to keep alive her traditions, and to preserve for its readers those distinctive features which have made the year 1923-1924 spent in M. C., a memorable one.



Dedication

With a wholesome respect for his life of Christian service to McPherson College, in upholding her ideals in the classroom and in his daily life, and with appreciation of his efficient management of the College finances, we dedicate this volume of the Quadrangle to Joseph J. Yoder, A. B., Professor of Social Science, and Business Manager of the College.





Order of Books

Book I . . . The Campus

Book II . . . Administration

Book III . . . The Students

Book IV . . . Extra-Curricular

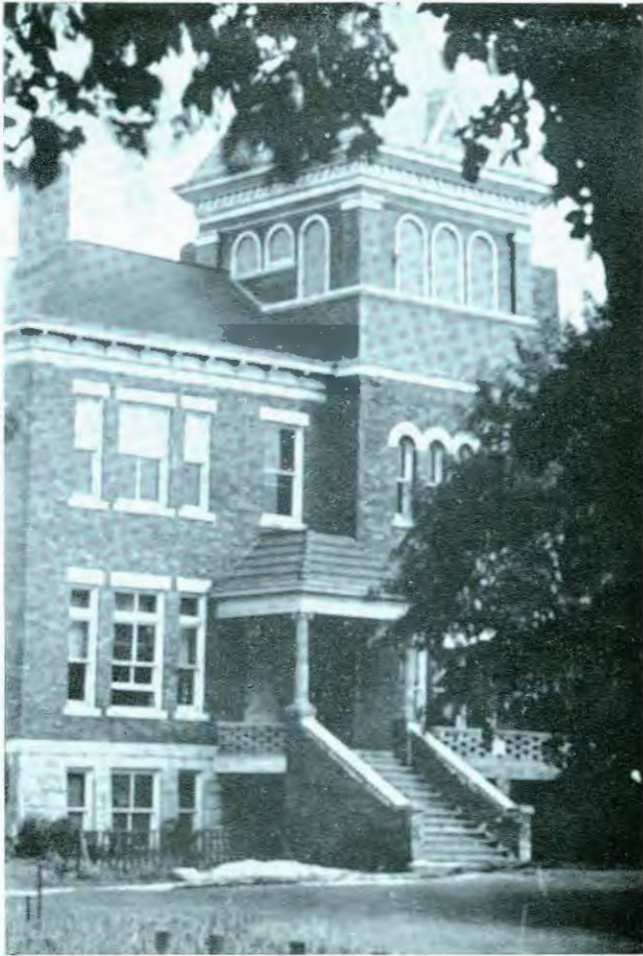
Book V . . . Feats of Strength

Book VI . . . Bulldog Growls



The Campus





Whence Cometh All Authority



Dynamo of Science



Mecca for Outside Readings



Bulldog Kennel



Kline Konservatory



Romeo—



And Juliet



OIKOS



Administration

Board of Trustees

Officers

R. C. STROHM.....	<i>President</i>
ROY A. CRIST.....	<i>Vice-President</i>
H. J. HARNLY.....	<i>Secretary</i>
F. A. VANIMAN.....	<i>Treasurer</i>

Members

W. R. Argabright.....	Fairview, Missouri
W. H. Beaver.....	St. John, Kansas
C. C. Clark.....	Oklahoma City, Okla.
Roy A. Crist.....	Quinter, Kansas
J. N. Dresher.....	McPherson, Kansas
J. S. Gabel.....	Lincoln, Nebraska
H. J. Harnly.....	McPherson, Kansas
D. W. Kurtz.....	McPherson, Kansas
E. A. Markey.....	Warrensburg, Missouri
D. P. Neher.....	McCune, Kansas
A. E. Riddlebarger.....	Nampa, Idaho
E. G. Rodabaugh.....	Norborne, Missouri
S. Z. Sharp.....	Fruita, Colorado
L. J. Smith.....	Morrill, Kansas
R. C. Strohm.....	McPherson, Kansas
F. A. Vaniman.....	McPherson, Kansas
J. J. Yoder.....	McPherson, Kansas
W. H. Yoder.....	Morrill, Kansas



DANIEL WEBSTER KURTZ

A. B., 1905, Juniata College
A. M., 1908, Yale University
B. D., *magna cum laude*, 1908, Yale University
D. D., 1911, Juniata College
Student in universities of Leipzig, Berlin and Marburg.
Professor of Greek, 1909-1910, Juniata College
Pastor First Church of the Brethren, Philadelphia, 1910-1914

*President of the College; Professor of Philosophy;
Dean of the Bible School.*



HENRY JACOB HARNLY

B. S., 1891, Illinois Wesleyan
A. B., 1892, Harvard University
A. M., 1892, Illinois Wesleyan
Ph. D., 1900, Illinois Wesleyan
1910-1911, Leland Stanford University

*Dean of the College; Professor of
Physiology and Bionomics.*



ELMER LEROY CRAIK

A. B., 1910, McPherson College
A. M., 1911, McPherson College
A. M., 1916, University of Kansas
Ph. D., 1922, University of Kansas

*Professor of History and Political
Science; Secretary of the
Faculty.*



JOHN ALVIN BLAIR

A. B., 1917, University of Kansas
A. M., 1918, University of Kansas

*Professor of Education and
Psychology; Registrar.*



ROBERT ELLSWORTH MOHLER

B. S. D., 1907, McPherson College
A. B., 1912, Mount Morris College
1913, Michigan State Agricultural
College
M. S., 1917 Kansas State Agricultural
College

*Professor of Agriculture; Dean
of Men.*



AMANDA FAHNESTOCK
B. S. L., 1903, McPherson College
A. B., 1916, McPherson College
B. D., 1917, McPherson College
Instructor in Bible; Dean of Women.



CHARLES STEPHEN MORRIS
A. B., 1913, Manchester College
A. M., 1915, Ohio State University
*Professor of Mathematics
and Physics.*



JOHN WILLARD HERSHEY
B. S., 1907, Pennsylvania College
M. S., 1910, Pennsylvania College
Professor of Chemistry.



BARTEL EDWARD EBEL
A. B., 1909, McPherson College
A. M., 1910, University of Kansas
*Professor of Ancient and Modern
Languages.*



MARY EDITH MCGAFFEY
A. B., 1918, McPherson College
A. M., 1919, University of Kansas
Professor of English.



HARVEY HARLOW NININGER
A. B., 1914, McPherson College
A. M., 1916, Pomona College
*Professor of Biology; Curator
of the Museum.*



GEORGE NICHOLAS BOONE
A. B., 1921, McPherson College
Professor of Industrial Education.



JOHN WILBY DEETER
A. B., 1913, McPherson College
B. D., 1918, Yale University
Professor of Theology.



FLOYD E. MISHLER
A. B., 1918, McPherson College
B. P. E., 1923, Y. M. C. A. Physical
Training School
*Men's Physical Training Director
and Athletic Coach.*



MINNIE WALTERS
B. S., 1910, Oklahoma State College
1921, Oklahoma State College
Professor of Home Economics.



JESSIE BROWN
B. M., 1910, Bethany Conservatory
1914, Royal Conservatory, Leipzig,
Germany
Director of Piano School.



FORREST WILLIAM GAW
Student in New York City
Student in Grosch School of Music
Director of Vocal School.



ALVVH RAY LAUER
1917, Graduate Palmer College
Student in Paris
B. M., 1921, Bethany College
A. B., 1922, McPherson College
*Professor of Violin and Theory
of Music.*



AUDREY L. WAITE
1921, Graduate Public School Music
Course, Bethany Conservatory
Professor Public School Music.



ALMA GLADYS ANDERSON
A. B., 1920, McPherson College
1921, University of Kansas
Instructor in English and Expression.



HAROLD LUNDEEN
Student Bethany College
1923, Art Institute of Chicago
Instructor in Art.



MAURICE A. HESS
A. B., 1914, Ursinus College
A. M., 1917, University of Pennsylvania.
*Principal of the Academy;
Debate Coach.*



MARGARET WALTERS
B. S., 1910, Oklahoma State College
1918, Riverside Library School
Librarian.



J. HOWARD FRIES
1913, Graduate Cambrian Business
College
*Superintendent of Commercial School.
Assistant Business Manager and
Treasurer.*



MERCEDES M. CHAPMAN
B. E., 1917, Bethany College
*Women's Physical Director and
Athletic Coach.*



LOLA M. HILL
A. B., 1921, McPherson College
Instructor in German and English.



ERNEST F. SHERFY
B. S. L., 1919, McPherson College
Instructor in Academy Bible.



E. J. UNRUH
1916, Graduate Commercial Department, McPherson College
1917, Graduate Wichita Business College
Instructor in Shorthand and Typewriting.



ESTELLA ENGLE
A. B., 1923, McPherson College
Instructor in History.



H. F. RICHARDS
A. B., 1918, Manchester College
B. D., 1919, Bethany Bible School
College Pastor.



RAY S. WAGONER
Field Secretary.



LORA TROSTLE
Matron Arnold Hall.



VIOLA TEMPLETON
Matron Kline Hall.

Faculty Assistants



RINZIE Biology	GRIFFIN Biology	FORNEY Physiology	BURGIN Taxidermy	NEHER Foods	N. SHERFY Sewing
SCHNEIDER Chemistry	STRICKLER Chemistry	RING Chemistry	HOSTETTER Chemistry	SARGENT Chemistry	
RUTHRAUFF Manual Training	DELL Agriculture	HOFFMAN English	WENRICK Stenographer	ABLEN Physical Training	MOHLER Education
LINGENFELTER Piano	LONG Physics	ELLER Physics	TRAVIS Physics	M. SHERFY Librarian	



HARLAN YODER
President.



VILAS BETTS
Treasurer.

The Student Council

- | | |
|-----------------------|-----------------------|
| HARLAN YODER | <i>President</i> |
| *VILAS BETTS | <i>Treasurer</i> |
| JAY ELLER | <i>Vice-President</i> |
| RHEA FAST | <i>Secretary</i> |
| NELLIE MCGAFFEY | <i>Reporter</i> |

College Representatives

- | | | | |
|-------------------------|--------|-------------------------|-----------|
| Rhea Fast | Senior | Lillie Crumpacker | Sophomore |
| Sanger Crumpacker | Senior | Marlin Kelly | Sophomore |
| Jay Eller | Junior | Nellie McGaffey | Freshman |
| Velma Bailey | Junior | Floyd Kurtz | Freshman |

Academy Representatives

- | | | | |
|------------------------|--------|-------------------|-----------|
| Charles Spicer | Senior | Ted Dell | Sophomore |
| Margaret Dresher | Junior | Royal Yoder | Freshman |

Special Representatives

- | | | | |
|----------------------|------------|-------------------------|---------|
| Herkle Wampler | Fine Arts | Professor Boone | Faculty |
| **Ada Miller | Commercial | Professor Hershey | Faculty |

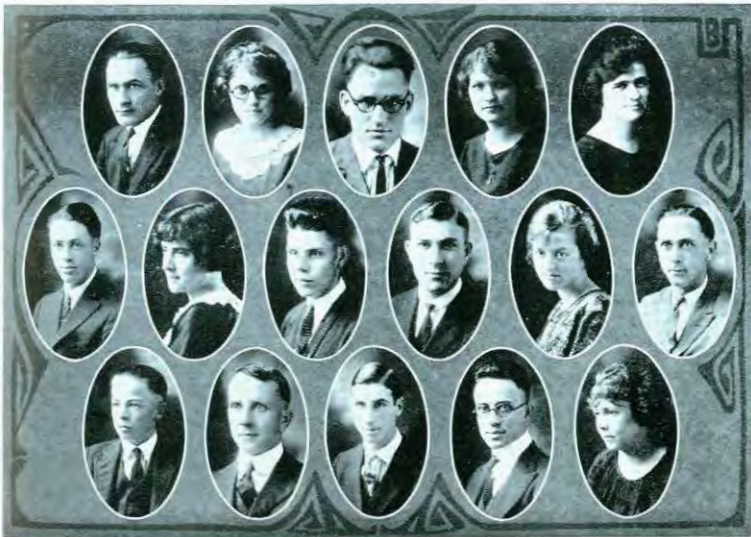
*Succeeded by Marlin Kelly.
**Succeeded by Frank Ruthrauff.

As the executive council of the student body the Student Council achieved two signal victories during the past year. In the campaign for the \$350,000 endowment, with \$20,000 apportioned to the school, the Council in one short week so organized the drive that every student made a pledge, the total amount being \$22,041.50.

The other victory of the Student Council is that of making the Student activity ticket an all-student ticket, paid for by each student on enrolment as a part of the incidental fee. This victory resulted from years of propaganda by the student body for the change. The increased number of sales will enable the Council to put on a better program than has previously been possible.

Program

- | | |
|--|---|
| <p>Football
 St. Mary's
 Kansas Wesleyan
 Canton American Legion (Second Team)</p> <p>Hallowe'en Party—All School</p> <p>Basketball
 Friends
 Fairmount
 Washburn
 Ottawa
 Bethel
 Kansas Wesleyan
 Hays
 Bethany</p> <p>Lectures
 Payne, Charles A.
 Rader, William</p> <p>Concerts
 Choral Society
 Symphony Orchestra</p> | <p>Oratorical Contest</p> <p>Dramatic Art Play</p> <p>Debates
 Sterling
 Kansas Wesleyan
 Bethany</p> <p>Academy Debates
 Tabor (Two debates)</p> <p>Baseball
 Bethel
 Kansas Wesleyan
 Hays</p> <p>Track
 Kansas Wesleyan</p> <p>Tennis
 Bethany
 Bethel</p> |
|--|---|



S. CRUMPACKER	FAST	ELLER	McGAFFEN	BAILEY
KELLY	L. CRUMPACKER	KURTZ	SPICER	DRESHER
YODER	HERSHEY	WAMPLER	BOONE	MILLEK

The Quadrangle

Arnold Hall



YODER

SHERFEY

SWOPE
Secretary

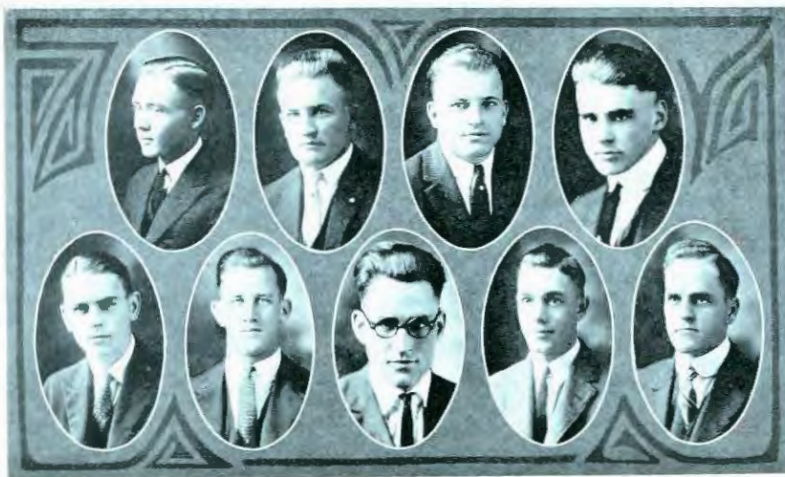
VOGT
President

FISHER
Vice-President

DOANE

Self Governing Bodies

Fahnestock Hall



H. STRICKLER
D. STRICKLER

BARTON
KEIM

ARLEN
ELLER
Chairman

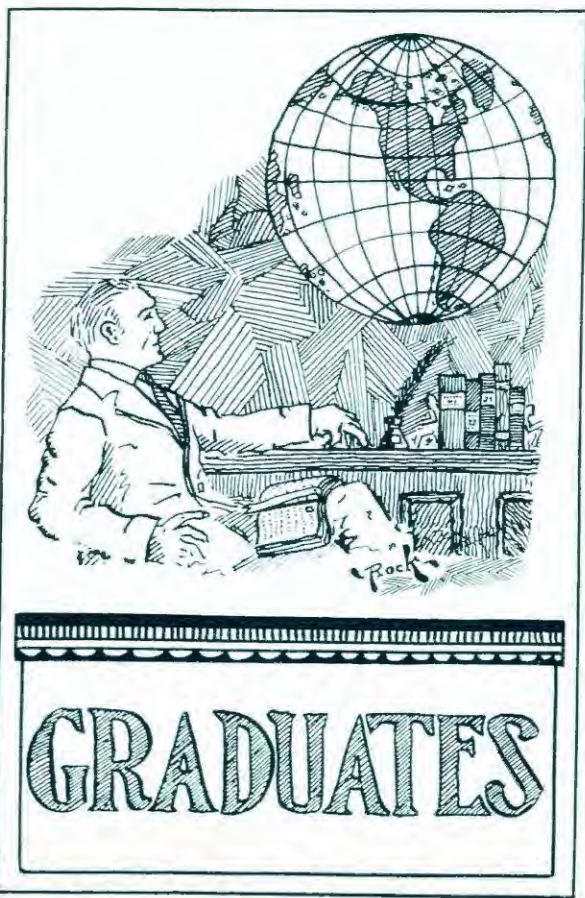
HOWELL
KURTZ

BAILEY



The Students







HELEN ELLIOTT

Fellow to Kansas University

To Helen Elliott, of the Class of '24 was awarded the fellowship to Kansas University, on the basis of excellency in scholarship. Miss Elliott's major is History.

Post Graduates

LON H. EAKES, A. B., 1897, EMERY U.
McPherson, Kansas
Theology

Mrs. EILEEN MALTRY, A. B., 1915, K. U.
McPherson, Kansas
Violin

Mrs. EFFA KUNS SHARP, A. B., 1901, K. U.
McPherson, Kansas
History



EUNICE S. ALMEN, A. B.
McPherson, Kansas

English

Class Treasurer, 1; Student Council, 3;
Choral Society, 2; U. R. of Y. W. C. A., 3;
Associate Editor Spectator, 3; Manager
Junior-Senior Banquet, 3; Associate Editor
Quadrangle, 4; Thespian, 3, 1; Senior Play.

FRANK D. BOONE, B. S.
McPherson, Kansas

Manual Training

Thespian, 4; Senior Play.

ELMER BRUBAKER, A. B.
McPherson, Kansas

Agriculture.

Football, 1, 2, 3, 4; "M" Club, 2, 3, 4.

DAVID BRUBAKER, A. B.
McPherson, Kansas

Education.

State Anti-Tobacco Oration, 1; Presi-
dent Y. M. C. A., 2; Thespian, 2, 3, 4;
Junior Play; Class President, 3, 4; Vice-
President Student Council, 3; Y. M. C. A.
Cabinet, 3, 4; Senior Play; Winner State
Peace Oration Contest, 4.

EVERETTE M. BRUBAKER, A. B.
Wichita, Kansas

Agriculture

Choral Society, 1, 2; Spectator Reporter,
2; Associate Editor Spectator, 3; President
A. T. A., 3; Treasurer Mission Band, 4;
President State I. A. T. A., 4; Assistant
Editor Spectator, 4.

SANGER W. CRUMPACKER, B. S.
McPherson, Kansas

Agriculture

Class Athletic Manager, 1, 3; Football,
1, 4; Basketball, 1, 2, 3, Captain, 3; "M"
Club, 2, 3, 4; Track, 2, 3, 4; Captain, 4;
Business Manager Quadrangle, 3; Y. M. C.
A. Cabinet, 4; Athletic Board, 4; Student
Council, 4; Academy Coach, 4.

MYRL CURTIS, A. B.
McPherson, Kansas

Manual Training

RUFUS L. DAGGETT, B. S.
Independence, Kansas

Agriculture.

Choral Society, 2; Basketball, 2, 3, 4;
"M" Club, 2, 3, 4; Junior Play; Tennis, 3,
4; Class Treasurer, 3, 4; Assistant Busi-
ness Manager Quadrangle, 4; Football, 4;
Secretary-Treasurer "M" Club, 4; Track, 4.





GARMAN DARON, B. S.
McPherson, Kansas
Biology.

DELLA DAY, A. B.
McPherson, Kansas
English.
Thespian, 3, 1.

GRACE L. EBAUGH, A. B.
McPherson, Kansas
Language.
Junior Play; Y. W. C. A. Cabinet, 4;
Class Vice-President, 4.

WALLACE ELKINS, A. B.
McPherson, Kansas
Education

HELEN D. ELLIOTT, A. B.
McPherson, Kansas
History.
Treasurer Y. W. C. A., 3; Student Council, 3; Class Secretary, 3, 4; Y. W. C. A. Cabinet, 4; Fellow to K. U.

SUMNER B. ESHELMAN, B. S.
McPherson, Kansas
Chemistry
Assistant Business Manager Spectator, 4.

RHEA MAE FAST, A. B.
Ashland, Ohio
Mathematics.
Glee Club, 2; Music Club, 3, 4; Secretary Student Council, 4; Senior Play.

SARAH E. FIKE, A. B.
Ramona, Kansas
Education.

NEVA FISHBURN, A. B.
Overbrook, Kansas
English.

MILDRED FISHER, A. B.
Fruitland, Idaho
Fine Arts.
Glee Club, 1, 3; Music Club, 2, 3.

URSULA FLÖRY, A. B.
Logansport, Indiana
History.
Entered Junior Year.

ELSIE A. FORNEY, A. B.
Los Angeles, Calif
Biology.
Y. W. C. A. Cabinet, 3, 4; Thespian, 3,
4; Junior Play; Physiology Assistant, 3, 4;
Senior Play.

WILLIAM WARREN GISH, A. B.
Belleville, Kansas
Agriculture.
Vice-President Student Ministers' Asso-
ciation, 2.

ANNA BIANCHE HALL, A. B.
Emporia, Kansas
English: Bible and Theology.
Entered Senior Year.

JOHN WENDELL HARNLY, B. S.
Waukegan, Illinois
Chemistry.
Junior Play; Cheer Leader, 3; Senior
Play.

MARGARET HECKETHORN, A. B.
McPherson, Kansas
Mathematics.
Library Assistant, 4.





CHRESSIE HECKMAN, A. B.
Colorado Springs, Colorado
Home Economics.

FLOYD HOLCOMB, B. S.
Canton, Kansas
Chemistry.

I. A. HUMBERD, A. B. and A. M.
McPherson, Kansas
Sociology and Theology.
Entered Senior Year.

MRS. ENOLA B. HUMBERD, A. B.
McPherson, Kansas
Mathematics.
Entered Senior Year.

HADDON ILSLEY, A. B.
McPherson, Kansas
Chemistry.

HELEN JACOBS, A. B.
McPherson, Kansas
English.
Spectator Reporter, 4; Associate Editor
Spectator, 4.

ROY C. KINZIE, A. B.
McPherson, Kansas
Biology.
Biology Assistant, 1, 2, 3.

MARGARET HARPER LAUER, A. B.
McPherson, Kansas
Home Economics.

WAVA MARIE LONG, A. B.

Quinter, Kansas

Education.

Basketball, 4; Y. W. C. A. Cabinet, 4.

G. EARL MARCHAND, A. B.

McPherson, Kansas

Agriculture.

Radio Club, 3.

WINONA MCGAFFEY

McPherson, Kansas

History.

Class Secretary, 2; Class Vice-President, 3; Student Extension, Y. W. C. A., 3; Secretary Student Extension Department, 3; President Y. W. C. A., 4.

ELIZABETH MOHLER, A. B.

Leeton, Missouri

Modern Language.

Entered Senior Year; Oratorical Contest, 4. Senior Play.

RUTH MOHLER, B. S. IN EDUCATION

Leeton, Missouri

History.

Entered Senior Year; Education Assistant, 4; Spectator Reporter, 4.

LELAND MOORE, A. B.

McPherson, Kansas

History.

Class Cheer Leader, 4. Senior Play.

EDNA E. NEHER, A. B.

McCune, Kansas

Home Economics.

LOTA M. NEHER, A. B.

McCune, Kansas

Home Economics.

Class Treasurer, 1; Corresponding Secretary Mission Band, 3; Vice-President Mission Band, 4; Domestic Science Assistant, 4.





DORIS M. PLUM, A. B.
 Polo, Illinois
Modern Languages.
 Entered Junior Year; Glee Club, 4.

ARTHUR B. PRATHER, B. S.
 Mound City, Missouri
Biology.
 Choral Society, 2, 3, 4; President A. T. A., 4; Senior Play.

DORIS M. RING, A. B.
 McPherson, Kansas
Chemistry.
 Basketball, 1, 3; Chemistry Assistant, 3.

LILLIAN E. SANDY, A. B.
 Norborne, Missouri
English.

CARL G. SCHNEIDER, A. B., B. S.
 Liberal, Kansas
Modern Language.
Chemistry.
 Football, 1, 2, 3; Chemistry Assistant, 3, 4; Junior Play.

ERNEST F. SHERFY, A. B.
 McPherson, Kansas
Theology.
 B. S. L., 1919; Instructor in Academy Bible, 4.

RUTH SHOEMAKER, A. B.
 Plattsburg, Missouri
Home Economics.
 Class Secretary, 1; Vice-President Irvings, 1; Secretary Irvings, 2; Student Council, 2, 3.

CARRIE M. STAUFFER, A. B.
 Polo, Illinois
History.
 Entered Senior Year.

DALE A. STRICKLER, A. B.
Ramona, Kansas

History.

Baseball, 1, 2, 4; Basketball, 2, 3, 4, Captain, 4; "M" Club, 2, 3, 4; Junior Play; Associate Editor Spectator, 3; Football, 4; Treasurer Y. M. C. A., 4; Editor Spectator, 4; Senior Play.

LELAND G. TEMPLETON, A. B.
Cerro Gordo, Illinois

Education.

President Student Ministers Association, 3; President Student Extension Department, 3.

VIOLA FRANTZ TEMPLETON, A. B.
Cerro Gordo, Illinois

Education.

Matron Kline Hall, 4.

OMER A. VANSOYOC, A. B.
Mont Ida, Kansas

History.

Junior Play; Athletic Editor Spectator, 3, 4; Track, 4.

ANNA HAZEL VOGT, A. B.
Versailles, Missouri

Education.

Basketball, 1, 4; Class Reporter, 2, 4; Junior Play; U. R. of Y. W. C. A., 3; Associate Editor Spectator, 4; President Arnold Hall Self Governing Association, 4; Senior Play.

B. F. WAAS, A. B.
Fredonia, Kansas

Education.

Debate, 1, 2, 4; President Mission Band, 4.

MRS. GLADYS VIOLA WAAS, A. B.
Fredonia, Kansas

Education.

Music Club, 3.

GERTRUDE F. WITMORE, A. B.
McPherson, Kansas

English.

Glee Club, 1, 4; Music Club, 2, 4; Student Extension, Y. W. C. A., 4; Senior Play.



The Quadrangle



HARLAN YODER, A. B.
McPherson, Kansas

History and Political Science.
Choral Society, 1, 2, 3; Basketball, 2, 3; Student Council, 2; Tennis, 2, 3, 4; "M" Club, 2, 3, 4; Manager of Tennis, 2, 3, 4; Treasurer Student Council, 3; Football, 4; Y. M. C. A. Cabinet, 3, 4; President Student Council, 4; President State Student Council of Y. M. C. A., 4.

CALVIN H. BOGGS, A. B.
Chicago, Illinois

Philosophy and Theology.
Radio Club, 3.

IRVIN E. IHRIG, A. B.
Chicago, Illinois

Chemistry.
A. T. A. Contest, 1, 2, 3; Old Line Contest, 2; Junior Play.

VICTOR VANIMAN, A. B.
Cordell, Oklahoma

Biology.
Track, 1, 2; Captain, 1; Committee of Ten, 2; Y. M. C. A. Cabinet, 3.

Class of '24

Motto: "After the vision, the task."
Emblem: Rainbow.
Colors: Purple and White.
Flower: Purple Violet.

	1921	1922	1923	1924
<i>President</i> . . .	V. BETTS . . .	J. SLIFER . . .	D. BRUBAKER . . .	D. BRUBAKER
<i>Vice-President</i> . . .	M. NEHER . . .	I. JOHNSON . . .	W. MCGAFFEY . . .	G. EBAUGH
<i>Secretary</i> . . .	E. MUSE . . .	W. MCGAFFEY . . .	H. ELLIOTT . . .	H. ELLIOTT
<i>Treasurer</i> . . .	E. ALMEN . . .	E. MUSE . . .	R. DAGGETT . . .	R. DAGGETT
<i>Adviser</i>	DR. E. L. CRAIK			



UNDER ~
GRADUATES

Juniors





Juniors

JAY ELLER	<i>President</i>
PAUL KURTZ	<i>Vice-President</i>
MIRIAM WENRICK	<i>Secretary</i>
GLADE FISHER	<i>Treasurer</i>
PROFESSOR MOHLER	<i>Faculty Advisor</i>

Motto: "Not on the heights, but climbing."

Colors: Green and gold.

Flower: White Rose.

Roll

Adamson, Gladys	Kline, Harlo
Anderson, Cordelia	Kubin, Milford
Bailey, Velma	Kurtz, Paul R.
Barton, Harold R.	Leatherman, Lorinda
Birkin, Leonard	Lingle, Lauvera
Birkin, Alice	Long, Vivian
Bishop, W. E.	Lundeen, Harold
Breon, W. Earl	Matson, Mayme
Carpenter, Mildred	McAvoy, Ocie
Carter, Carl	McGaffey, Laura
Crist, Roy A.	Merkey, Maude
Doane, Dorothy	Mohler, Rose
Eller, Jay	Miller, Veda
Fike, C. L.	Morris, Earl F.
Fisher, Glade	Pair, Emmert
Frantz, Fidelia	Peck, Bernice
Garman, Ralph	Prather, Della
Gray, Aenid	Robb, Theodore
Greene, Ruth	Ruthrauff, Curtis
Griffin, Mabel	Shirk, Pauline
Hardie, Mrs. Ethel	Slifer, Edith
Haas, Lila	Stauffer, Rose
Hawkins, Ruth	Strickler, Harold
Heckethorn, Mabel	Studebaker, Reetha
High, Marathon	Unruh, Albert
Himes, Ralph	Vaniman, Elberta
Himes, Addie	Vaughn, Portia
Hoffman, Mabel M.	Waldmeier, Lester
Jones, J. Herman	Wall, Margaret
Jones, Julia	Wampler, Herkle
Jones, Russell	Warner, Leo
Keim, Richard	Wenrick, Miriam
Keim, Stanley B.	Yoder, Loretta

Sophomores



Sophomores

ABRAM HOSTETTER	<i>President</i>
GERALDINE CRILL, DORTHA PETERS	<i>Vice-President</i>
LAURA HAMMANN	<i>Treasurer</i>
SAMUEL KURTZ, FONDA HARDEN	<i>Cheer Leaders</i>
EDITH WATKINS, ALDEN POTTER	<i>Reporters</i>
MISS ANDERSON	<i>Faculty Adviser</i>

Motto: "Not sunset, but dawn."
Colors: Gold and white.
Flower: Daffodil.

Roll

Bailey, F. E.	Ingold, Lester
Beam, Maurice	Johnson, Irene
Bradbury, Marie	Kelly, Marlin S.
Burgin, Wm. R.	Kesler, D. W.
Cochran, Grace	Kurtz, Samuel B.
Colburn, Albert	Lengel, John B.
Correll, Frank E.	Lentz, Paul
Crill, Geraldine	Lockett, W. T.
Crilly, Orral Margaret	Lundeen, Rudolph
Crumpacker, Lillie	Mikesell, Margaret
Dell, S. Milton	Mudra, William
Dirks, Margaret	Neuenschwander, Thelma
Dunham, Edna	Newton, Jewell
Edgecomb, Anna	Peters, Dortha
Edgecomb, Minnie	Potter, Alden
Engstrom, Selma	Rhine, Pearl
Enos, Opal	Rhodes, Floye
Fleming, Mabel L.	Riffel, Harry
Freeburg, Helen	Ring, Mattie
Freeburg, Paul	Scott, Fredrie
Fulton, Inez	Sherfy, Mary
Gaudreau, Willard	Sherfy, Nina
Hahn, Henry G.	Shirk, Elva
Hale, Aubrey	Smith, Orpha
Hammann, Laura	Sondergard, Sidney L.
Harden, Fonda	Spilman, Vivian
Harden, Len	Timmons, Leonard
Hawkins, Ruth	Tipton, Ernest
Heaston, J. G.	Travis, Merle
Hill, Cleo	Turcotte, Rose
Hill, Ethel	Van Nortwick, Hazel
Holloway, Cecil	Watkins, Edith
Hoover, Bernice	Wedel, Ruth
Hostetter, Abram	White, Rozella
Howell, Frank	Yancey, Huber
Huston, Bonnie	Zongker, Loretta

Freshmen



Freshmen

LELAND KUNS	<i>President</i>
KENNETH ROCK	<i>Vice-President</i>
NELLIE DARRAH	<i>Secretary</i>
HOYT STRICKLER	<i>Treasurer</i>
GORDON HILL	<i>Cheer Leader</i>
HORNER EBY	<i>Reporter</i>
PROFESSOR MCGAFFEY	<i>Faculty Adviser</i>

Motto: "Climb though the rocks be rugged."

Emblem: Ladder.

Colors: Blue and White.

Flower: Sweet Pea.

Roll

Anderson, Harvey
 Andrews, Lillian
 Baldwin, Leland
 Barnes, Velna
 Barton, Frank
 Bolinger, Edith
 Bollinger, Vesta
 Bouse, Ethel
 Brunk, Rollin
 Carlson, Marlin
 Cassler, Winston
 Cullen, Beulah
 Curtis, Loren
 Darrah, Nellie
 Darrah, Nettie
 Davis, Merle
 Dean, George
 Deardorff, Sylvia
 Dunham, Mabel
 Dutton, Clifton
 Eakes, Moffat
 Early, Edith Mae
 Early, Leta
 Early, Leta
 Eby, Horner
 Ellwood, Virgil
 Fike, Mildred
 Flory, Alberta
 Glacier, Addie
 Gustafson, Irene
 Harnly, Mary

Harnly, Vivian
 Heiny, Crete
 Hill, Gordon
 Hill, Willard
 Himler, Hilda
 Hollem, Julia
 Holm, Spencer
 Hoover, Ralph
 Horn, Ray
 Horning, Anson
 Ihde, Esther
 Ihde, Mildred
 Jones, Thelma
 Jordan, Dorance
 Kauffman, Herbert
 Kauffman, Jacob
 Kauffman, Otto
 Kittell, Marianne
 Kolzow, Virgil
 Kuns, Leland
 Kurtz, Floyd
 Lerew, Ruth
 Linholm, Stanley
 Long, Chester
 Long, H. C.
 Mast, LeMar
 Mast, Mildred
 Matson, Edwin
 McGaffey, Nellie
 Merkey, David

Merkey, George
 Merkey, Ida
 Metsker, Ethel
 Meyer, Constance
 Mitchell, Orville
 Mohler, Harriett
 Mohler, Naomi
 Morine, Leon
 Morrison, Ada
 Neff, Willis
 Nichols, Ed
 Rathbun, Ona
 Reish, Joseph
 Rock, Kenneth
 Rothrock, Glenn
 Rowland, Gilbert
 Sager, Howard
 Seitz, Thelma
 Shatto, Lora
 Steinberg, Bernice
 Street, Albert
 Strickler, Hoyt
 Stutzman, Maurice
 Swope, Mary B.
 Trentman, Howard
 Unruh, Bertha
 VanFleet, Wealtha
 Vickers, Goldie
 Woldridge, Bernena
 Yoder, Wilma



Piano

HELEN GARST
Watson, Missouri
Bachelor of Music.

FERN LINGENFELTER
McPherson, Kansas
Diploma.

HAZEL SCOTT
Moundridge, Kansas
Diploma.

ORPHA SMITH
McPherson, Kansas
Diploma.

BESSIE BREMEN
Roxbury, Kansas
Teacher's Certificate.

DELIA CHAVEZ
Moundridge, Kansas
Teacher's Certificate.

MRS. IVA GILSON
McPherson, Kansas
Teacher's Certificate.

BERNICE PECK
Falls City, Nebraska
Teacher's Certificate.

Violin

WILETA DURST
Moundridge, Kansas
Teacher's Certificate.

HELEN GARST
Watson, Missouri
Teacher's Certificate.

AUTUMN LINDBLOOM
McPherson, Kansas
Teacher's Certificate.

AGNES SANDERSON
Little River, Kansas
Teacher's Certificate.

Public School Music

FERN LINGENFELTER
McPherson, Kansas
Diploma.

MINNIE MUGLER
McPherson, Kansas
Diploma.

PORTIA VAUGHN
McPherson, Kansas
Diploma.





Commercial

Mrs. ROSE MILLER
McPherson, Kansas
Stenography.

FRANK RUTHRAUFF
Reidfield, Kansas
Bookkeeping.

Art Students





ACADEMY



FLOYD BETTS
Nampa, Idaho

VIOLA BOWSER
Ablene, Kansas
Choral Society, 1, 2; Student Council, 3;
Class Reporter, 4; Cheer Leader, 4.

WRETHA CORY
Belleville, Kansas
Commercial Graduate, 3; Quadrangle
Staff, 4.

HENRIETTA ESCHMANN
McPherson, Kansas

CARRIE FEILER
McPherson, Kansas
Choral Society, 2, 3, 4; Glee Club, 4.

GLADYS FISHBURN
Overbrook, Kansas
Class Secretary-Treasurer, 3; Secretary-
Treasurer Debate Club, 4; Alternate on
Debate Team, 1; Choral Society, 2.

MABEL GARMAN
Payette, Idaho

ALTA LAUVER
McPherson, Kansas

JOHN LEHMAN

Carlton, Kansas

Class President, 2, 4; Class Secretary-
1; Debate Team, 2, 4; President Debate
Club, 4; Stock Judging Team, 2; Basket-
ball Team, 4.

Mrs. H. C. LONG

McPherson, Kansas

JACOB RATZLAFF

Buhler, Kansas

RAYMOND SITTS

McPherson, Kansas

CHARLES SPICER

Abilene, Kansas

Class Vice-President, 2; Class President,
3; Basketball Team, 3, 4; Student Council,
4; Stock Judging Team, 4.

MERLE STOUDER

McPherson, Kansas

Student Council, 2; Class Secretary-
Treasurer, 4.

SALOME STOUDER

McPherson, Kansas
Scholarship, 4.

MARY WHITENECK

Aline, Oklahoma

Class Secretary-Treasurer, 1; Class
Vice-President, 2, 3; Secretary-Treasurer
Debate Club, 3; Secretary-Treasurer Ath-
enian Literary Society, 3.

JENNIE YIENGST

Miami, New Mexico



Juniors

THEODORE BAKER *President*
MARIE BRUBAKER *Vice-President*
FRANKLIN HAAS *Secretary-Treasurer*
MISS MARGARET WALTERS *Faculty Adviser*

Motto: "How strong and how mighty—
who never say fail."
Colors: Navy Blue and Gold.
Flower: Pansy.

Roll

Baker, Theodore	Ivins, Elsie
Brubaker, Marie	Korn Elimelech
Carney, Jesse	Mark, Fritjoff
Dresher, Margaret	Shatto, Mercie
Haas, Franklin	Spohn, Phillip
Wagoner, Mrs. Nettie	



Sophomores

HERBERT MARTIN*President*
VERA GLATHART*Vice-President*
JAMES ELROD*Secretary-Treasurer*
MISS HILL*Faculty Adviser*

Motto: Nunc aut nunquam.
Color: Cerise and Silver.
Flower: Old Rose.

Roll

Brown, Ernie
Dell, Ted
Eddy, Gerald
Elliott, Alice
Elrod, James

Glathart, Vera
Grogan, Truman
Jones, Clarence
Martin, Herbert
McFarlane, Jay



Freshmen

PRENTICE ODLE	<i>President</i>
ROYAL YODER	<i>Vice-President</i>
FLORENCE LEHMAN	<i>Secretary-Treasurer</i>
MISS HILL	<i>Faculty Adviser</i>

Motto: Step by step we climb the ladder
of success.

Colors: Lavender and Yellow.

Flower: Lily of the Valley.

Roll

Ablen, Phil

Bowser, Hubert

Elrod, Mrs. Bessie

Lehman, Florence

Meador, Elsie

Miller, Virgil

Odle, Prentice

Ruthrauff, Frank

Stouder, Lois

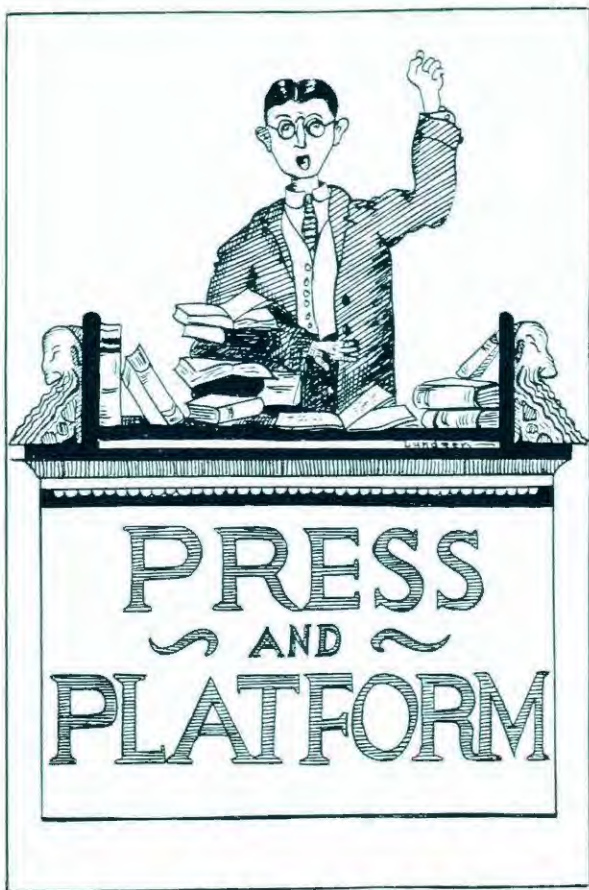
Yoder, Royal





Extra-Curricular





PRESS
AND
PLATFORM



DALE A. STRICKLER
Editor-in-Chief



STANLEY B. KEIM
Business Manager

The Spectator

DALE A. STRICKLER.....	<i>Editor-in-Chief</i>
LAURA B. MCGAFFEY.....	<i>News Editor</i>
EVERETT M. BRUBAKER.....	<i>Assistant Editor</i>
STANLEY B. KEIM.....	<i>Business Manager</i>
SUMNER ESHELMAN.....	<i>Assistant Business Manager</i>
HAZEL VOGT.....	<i>Associate Editor</i>
CORDELIA ANDERSON.....	<i>Associate Editor</i>
HELEN JACOBS.....	<i>Associate Editor</i>
W. E. BISHOP.....	<i>Literary Editor</i>
OMER VANSCHOYOC.....	<i>Athletic Editor</i>
ALBERT UNRUH.....	<i>Athletic Editor</i>
EARL MORRIS.....	<i>Athletic Editor</i>
PROFESSOR MCGAFFEY.....	<i>Faculty Adviser</i>
DR. CRAIK.....	<i>Faculty Adviser</i>

The Spectator, the weekly publication of the Student Council, is a four-page, five-column weekly newspaper which has become a real source of school news, and a medium for the expression of student opinion. Accuracy, freedom from typographical errors, proper publicity for all College activities, impersonal humor, and a consistent editorial policy which forwards the best interests of the school and the individual students is the aim of The Spectator.

The Quadrangle



VOGT UNRUH L. McGAFFEY BRUBAKER ANDERSON BISHOP
 CRAIK VANSOYOC JACOBS MORRIS ESHLEMAN E. McGAFFEY

Reporters



THIRD ROW—MOHLER, F. KURTZ, WATKINS, P. KURTZ, MIKESELL
 SECOND ROW—STAUFFER, TIMMONS, N. McGAFFEY, EBY, ENGSTROM
 FIRST ROW—FRANTZ, SPILMAN, GREENE, ROCK, STUDEBAKER



Laura B. McGaffey
Editor-in-Chief



Herkle Wampler
Business Manager

The 1924 Quadrangle



HOFFMAN	TIMMONS	ALMEN	LUNDEEN	KURTZ	ROCK
		KEIM	CRAIK	CORY	DAGGETT

Debate Club

W. E. BISHOP	<i>President</i>
LEONARD BIRKIN	<i>Vice-President</i>
MARGARET MIKESELL	<i>Secretary</i>
HORNER ERY	<i>Reporter</i>
PROFESSOR HESS	<i>Coach</i>

This year has been a successful one for the Debate Club. Under the leadership of W. E. Bishop, a new constitution was drawn up and adopted. Besides debates, the Club has enjoyed addresses from prominent men and women on various debating subjects. Most of the debates were instructive but occasionally one for entertainment was given.

The Club affords training for those who are interested in debate and public speaking. By active participation in all meetings, the members develop the habit of clear, concise, and logical thinking. Advice and criticism by Professor Hess was instructive and much appreciated by members of the Club.





KENNETH ROCK



LEONARD TIMMONS

Debate

The Kansas Inter-Collegiate Debating League consists of the Northern and Southern Divisions. Winners of the respective divisions meet in a final debate for the State championship.

Although not leading the division, McPherson's debating team made a commendable showing and lost decisions by close margins. Each team won the same number of decisions and debates, an indication of a well-balanced team. Under the splendid coaching of Professor Hess both teams developed strong constructive speeches as well as excellent rebuttals.

Kenneth Rock, the freshman wonder of the team, with high school experience, natural ability, and hard work, earned an enviable record as a first year man.

Debating his first year, Leonard Timmons was exceptionally strong in logic and rebuttal. He made a good team-mate for Rock, and will develop in his next two years on the team.

The Quadrangle



J. HERMAN JONES



B. F. WAAS

B. F. Waas has debated his third year for M. C. He was the mainstay of the team, being a clear, logical thinker, also strong in rebuttal.

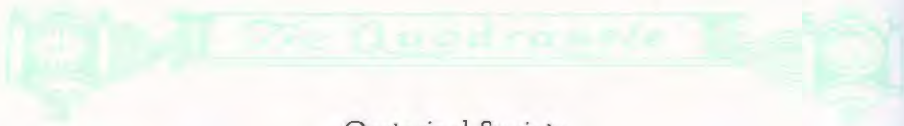
Herman Jones, the other half of the negative team, was always in the fight with the old Bulldog fight. This was his second year, and he will be better than ever next season.

SCHEDULE AND RESULTS

TEAM.	AFF.	OPP.	NEG.	OPP.
Sterling, February 7.....	3	0	1	2
Kansas Wesleyan, February 28.....	1	2	3	0
Bethany, March 21.....	0	3	0	3
TOTALS.....	4	5	4	5

STANDING OF NORTHERN DIVISION

TEAM.	DECISIONS.
Bethany	14
Kansas Wesleyan	9
McPherson	8
Sterling	5



Oratorical Society

MILTON DELL *President*
 GERALDINE CRILL *Secretary-Treasurer*
 LEONARD TIMMONS *Reporter*
 MISS ANDERSON *Faculty Adviser*

It would be a difficult task to estimate the degree in which oratory has influenced the world's history. Since the dawn of civilization, the triumphs of the tongue have rivalled if not surpassed those of the sword. The history of every nation teems with the necromantic power of oratory. Of all the efforts of the human mind there is none which demands for its success so rare a union of mental gifts as eloquence.

It cannot be said that oratory is a lost art in McPherson College. It is the aim of the Oratorical Society to promote interest and efficiency in the art of oratory, and to train orators for the state oratorical contest. This year an increasing interest was indicated by the large membership which took part in the local contest. Frank Howell won first place with his oration, "God or Mars."



Academy Debate Club

JOHN LEHMAN*President*
MARIE BRUBAKER*Vice-President*
GLADYS FISHBURN*Secretary-Treasurer*

Adequate thought and expression of thought are vital in any successful life. Realizing this, the Academy students have organized the Academy Debate Club, to promote their development in debating and public expression.

Debate develops the power of clear and logical thought in local, national, and international questions which are studied in the course of the year. Debate further develops expression of thought by delivery of forcible arguments.

The Club meets on alternate Wednesday evenings. Debate Coach Hess gives many valuable suggestions. Because of the importance of rebuttal, special stress is laid on this phase of debate. The Club develops students for the Academy Teams which compete in the Pentangular League. The record of these teams is a standing example of the value of the Debate Club to Academy students.





LEHMAN

BAKER

BRUBAKER

SPOHN

Affirmative

Negative

Academy Debate Team

The Debating League of the Academies of Central Kansas is composed of the Academies of Tabor, Bethel, Bethany, and McPherson Colleges. All were represented this year with the exception of Bethany Academy.

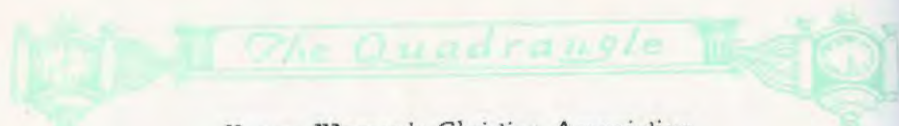
The McPherson Academy takes a great deal of pride in her debating record. Her teams have been the champions of the League for the past three years. This year the team established a league record by winning all of the decisions and eleven of the twelve judges' votes. This achievement is nothing less than remarkable when it is remembered that three of the four debaters were inexperienced in debating. Coach Hess deserves a great amount of credit for the accomplishment because his efforts were effective in developing a winning team.

The question discussed was, "Resolved, That the United States should grant complete independence to the Philippine Islands within three years." The results of the debates were as follows:

AFFIRMATIVE		
	M. C.	OPP.
February 20, Tabor at McPherson.....	2	1
March 6, Bethel at Newton.....	3	0
NEGATIVE		
February 20, Bethel at Newton.....	3	0
March 6, Tabor at McPherson.....	3	0
TOTAL.....	11	1



RELIGION



Young Women's Christian Association

- | | |
|-------------------------|-------------------------------------|
| WINONA MCGAFFEY | <i>President</i> |
| REETHA STUDEBAKER | <i>Vice-President</i> |
| MARGARET WALL | <i>Secretary</i> |
| ELBERTA VANIMAN | <i>Treasurer</i> |
| HAZEL VOGT | <i>Undergraduate Representative</i> |
| MINNIE EDGECOMB | <i>Chorister</i> |
| MARGARET WALTERS | <i>President of Advisory Board</i> |

Committee Chairmen

- | | | | |
|-------------------------|-----------------------|------------------------|---------------------------|
| HELEN ELLIOTT | <i>Social</i> | GERTRUDE WITMORE | <i>Student Extension</i> |
| REETHA STUDEBAKER | <i>Membership</i> | ELBERTA VANIMAN | <i>Finance</i> |
| GRACE EBAUGH | <i>Social Service</i> | OCIE McAVOY | <i>Religious Meetings</i> |
| ELSIE FORNEY | <i>Conference</i> | MABEL HOFFMAN | <i>World Fellowship</i> |
| WAVA LONG | | | <i>Publicity</i> |

The Young Women's Christian Association plays an important part in the Christian and social life of the girls. The spirit of co-operation and good will among the students has been fostered to a remarkable degree by this organization. The Big Sister movement has proved to be a great factor in stabilizing the social life on the campus.

The Y. W. C. A. has been hostess to visitors at the opening of school, during Bible Institute, and to the faculty. The new rest room, which the girls have worked hard to provide, has been a real help to the Association. The weekly religious meetings have been well attended, and have helped the girls to realize the true worth of Christian living.



WITMORE	WALL	ELLIOTT	McAVOY	VOGT	EDGECOMB
WALTERS		STUDEBAKER	MCGAFFEY	EBAUGH	LONG
		HOFFMAN	FORNEY	VANIMAN	

The Quadrangle

Young Men's Christian Association

HAROLD BARTON	<i>President</i>
FRANK HOWELL	<i>Vice-President</i>
DAVID BRUBAKER	<i>Secretary</i>
DALE STRICKLER	<i>Treasurer</i>
PROFESSOR EBEL	<i>Adviser</i>

Committee Chairmen

JAY ELLER	<i>Program</i>	SAMUEL B. KURTZ	<i>Extension</i>
EMMERT PAIR	<i>Social</i>	PAUL KURTZ	<i>Advertising</i>
SANGER CRUMPACKER	<i>Athletic</i>	RICHARD KEIM	<i>Labor</i>

To lead students to faith in God and Jesus Christ, and to membership in the Christian Church, to promote Bible study and prayer, and to influence men to devote their lives to Christian service is the purpose of the Y. M. C. A.

A constitution was drawn up by the cabinet and adopted by the organization this year, putting the work of the organization on a more solid foundation.

In co-operation with the Y. W. C. A. and other Christian organizations on the campus, the Y. M. C. A. is helping all students to come to a closer understanding of themselves, their fellow-students, and their God. It co-operates with the Athletic Association in promoting athletics, its labor bureau provides work for students, and Gospel teams are sent to surrounding communities.



KEIM	BRUBAKER	S. KURTZ	BARTON	HOWELL	PAIR
CRUMPACKER		ELLER		P. KURTZ	EBEL



Harlan Yoder

*President State Inter-Collegiate
Y. M. C. A.*

Harlan Yoder, son of Professor J. J. Yoder, spent the summer of 1923 touring Europe with a party of American students. This party, led by Mr. Legate, visited the largest European nations and studied their conditions.

The trip led through England, France, Switzerland, Germany, Poland, Czecho-Slovakia, and Belgium. The war ruins were viewed, the main universities were visited, and some time was spent at Geneva studying the workings of the League of Nations.

On his return, Mr. Yoder was elected president of the State Inter-Collegiate Y. M. C. A., which is an office of responsibility as well as an honor to his Alma Mater.

Mission Band

B. F. WAAS, ROY A. CRIST.....	<i>President</i>
LOTA NEHER, VELMA BAILEY.....	<i>Vice-President</i>
EVERETT BRUBAKER, HORNER EBY.....	<i>Secretary-Treasurer</i>
ABRAM HOSTETTER, DELLA PRATHER.....	<i>Reporter</i>
FRANK HOWELL, RUTH HAWKINS.....	<i>Corresponding Secretary</i>
MABEL HOFFMAN, FRANK HOWELL.....	<i>Chorister</i>

NOTE: Second name is for second semester.

The Mission Band has a large enrollment of interested members. The efficient work of the Band in the past years, shown by many missionaries on the foreign fields and church leaders at home inspires members of the Band to advance the work which they have so effectively begun.

The Mission Study Class studied two books, "Effective Workers in Needy Fields," and "The Kingdom and the Nations." The Class appreciated the efficient help of Professor Morris as teacher, who was also adviser in the activities of the Band. The Class met each Wednesday morning at seven o'clock for an hour of study and consecration.

The play, "Pill Bottle," was given again this year because of its unusual interest and intense missionary appeal. Much interest was shown in the missionary tract reading contest.

Other activities of the Band are: deputation work, Sunday afternoon visits, and singing in the homes of shut-ins.

The visit of Miss H. Frances Davidson, former faculty member, and twenty-six years missionary to Africa, was especially appreciated.



Bible Institute

The annual Bible Institute, under the auspices of McPherson College, which continued throughout the week, January 20-27, was successful in both program and attendance.

The Reverend J. W. Lear, pastor of the Bethany Church of the Brethren, of Chicago, Illinois, was the principal speaker, delivering one or more lectures each day. He delivered a series of six lectures on, "The Church, as Based on Ephesians"; and in addition, lectures on, "Supremacy of the Human Will", "Power of Self Esteem", "Discipline", and "The Need of Religion."

The Reverend Homer E. Blough, pastor of the Church of the Brethren, of Wiley, Colorado, gave six addresses on church problems. His lectures were valuable, there being a great deal of experience back of them. Two lectures on young people's work were given by the Reverend C. H. Shamberger, of Elgin, Illinois, secretary of the young people's movement in the Church of the Brethren.

Professor J. W. Deeter conducted six periods of study on, "Pauline Epistles," which were popular. The Reverend H. F. Richards, pastor of the First Church of the Brethren of McPherson, delivered three lectures on "Christian Culture."

Miss Lucy Frances Johnson, secretary of the McPherson County Welfare Board, spoke on "Co-operation between the Community and the Home in Social Work."

Miscellaneous lectures were given by members of the faculty as follows: Professor Margaret Walters, on "Reading Material for Children"; Professor Ebel, on "The Salem Witchcraft"; Dr. Craik, on "The Brethren in Kansas", and "Crises in Church History"; Professor Yoder, on "Church Finances"; Dr. Harnly, on "God's Method of Operating This World"; Professor Minnie Walters, on problems of home economics; Professors Mishler and Chapman, on physical education; Professor Boone, on manual arts; Professor Mohler, on agricultural problems; Professor Morris, on "A Visit to the Stars"; and Professor Nininger, on "Animals of the Ice Age."

Special features of the Institute were a musical, by the Choral Society; a lecture, "Peace", by Dr. Kurtz, followed by the play, "Gas", interpreted by members of the Dramatic Art Class; and an educational meeting.



MUSIC

Ladies' Glee Club

PROFESSOR GAW.....Accompanist and Director

The Ladies' Glee Club consisting of seventeen selected voices was organized at the beginning of the year. The Club appeared in recital at various places in the surrounding community and several times in the College auditorium during the year. It also made several tours to high schools within easy reach of the College.

The music was of the very best type, including both sacred and secular compositions. Numbers from Grieg, Neidlinger, Coombs, Dvorak, Nevin, Mendelssohn, Chapin, Beethoven, Harris, Kjerulf, Gounod, Gaul, and other noted composers were given.

The Club has been unusually fortunate in having Professor Gaw as its director. The thorough training he gave the members of the Club resulted in every program's being received by a large audience. The interpretation and technique of the numbers given was exceptionally good for amateur singers.



THIRD ROW—FREEBURG, ENGLE, BREMEN, EDGECOMB, PETERS, PLUM, FISHER
SECOND ROW—FEILER, JONES, HOFFMAN, F. GAW, M. GAW, WITMORE
FIRST ROW—WEDEL, HARDEN, McAVOY, HOOVER, BIRKIN

The Quadrangle

Music Club

PROFESSOR GAW *Director*
HAZEL SCOTT *Accompanist*

The Music Club, a mixed chorus of selected voices, spent a pleasant year in the music world. The work under the able direction of Professor Gaw was intensely interesting and instructive to the Club.

A number of programs, both sacred and secular, were given in the immediate community and in nearby towns. Music of the highest type only was used.

Among the sacred selections, such songs as these were given: "Sanctus", from St. Cecilia Mass, by Gounod; and settings from "Ho Everyone That Thirsteth", by Macfarlane and Martin. The secular group included songs from "The Bohemian Girl", the "Bridal Chorus", "The Rose Maiden", and Mendelssohn's four-part songs.



THIRD ROW—HILL, HIMES, N. RHODES, BARTON, M. GAW
SECOND ROW—FISHER, HAGSTROM, WITMORE, F. GAW, PAIR, WAMPLER
FIRST ROW—FREEBURG, FAST, HOWELL, ENGLE, KELLY, L. RHODES

Choral Society

PROFESSOR GAW *Director*
HAZEL SCOTT *Accompanist*

The Choral Society is a growing organization, and has made much progress under the able supervision of Professor Gaw. Any student who is interested in singing may become a member. This year membership in the society numbered over ninety. The society meets each Monday evening for an hour, and it studies only the best music.

During the year songs of Pissuti, Gluck, Mendelssohn, Elgar, and other noted composers were learned. Particular stress was laid on folk-songs of Russia, England, Scotland, and the negroes.

The society appeared in concert during the Bible Institute held in the College Chapel on January 21.



Symphony Orchestra

PROFESSOR LAUER	<i>Director</i>
GLENN ZIMMERMAN	<i>Business Manager</i>
AUTUMN LINDBLOOM	<i>Secretary-Treasurer</i>
C. A. HULTQVIST	<i>Executive Board</i>
GLENN ZIMMERMAN	<i>Executive Board</i>
GARMAN DARON	<i>Executive Board</i>
C. A. HULTQVIST	<i>Concertmeister</i>

The Symphony Orchestra, under the able leadership of Professor Lauer, is a growing organization of college students and citizens of McPherson. This year the organization numbered thirty. It met each Wednesday evening for one and one-half hours' practice.

The purpose of the Orchestra is to give training in standard orchestra work. The instrumentation is complete, and the music used is by the best composers.

In a public program given in the College Chapel on February 13, Haydn's "Symphony in G Minor" was played, with numbers by Liszt, Verdi, Granadas, Mascagni, and other great composers. The Orchestra gives a public program each semester in McPherson, and also gives programs in neighboring cities.



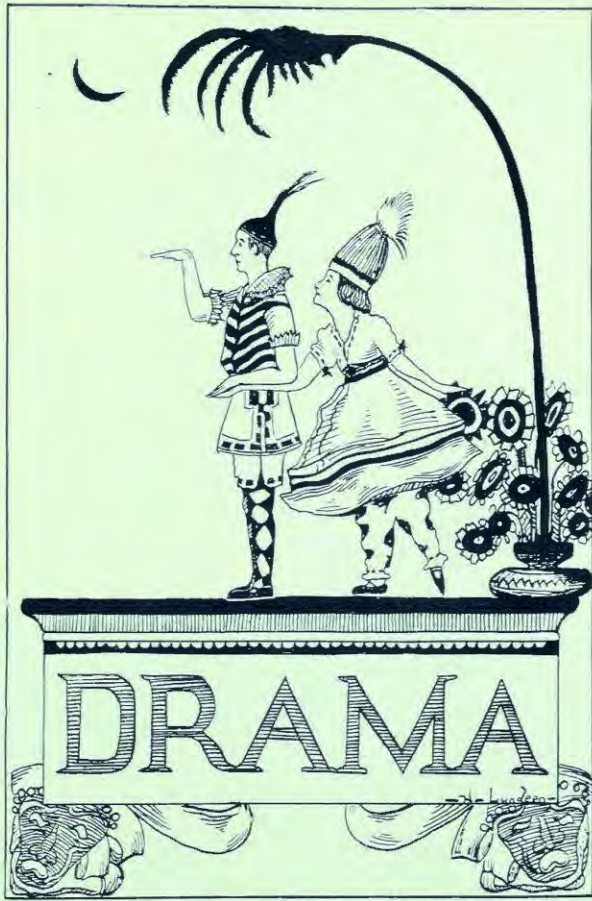
Melharmonic String Quintet

- OLIVER EBEL *First Violinist*
- AUTUMN LINDBLOOM *Second Violinist*
- DOROTHY SWAIN *Cellist*
- RUTH HIEBERT *Violinist and Reader*
- FERN LINGENFELTER *Accompanist*

This Quintet was organized to fill a demand for a stringed instrument ensemble group for community lecture courses. It filled numerous engagements in and around McPherson during the year.

Some of the representative numbers given were: "Trio in D Major", by Stounitz; "Ave Maria", by Schubert; and numbers by Nevin, Dvorak, and Mendelssohn belonging to the chamber music group.





Passing of the Third Floor Back

Presented by the Senior Class under the coaching of C. E. Oelrich, Jerome K. Jerome's three-act drama, "The Passing of the Third Floor Back" was the most ambitious dramatic production ever presented by McPherson College actors.

The Stranger, who by seeing only the best in people, calls out in them that best, personifying the entrance of Christ into one's life, was played in a masterful manner by David Brubaker. Supported by a strong cast, his acting was not that of an amateur.

Each character in the play was at his best; every part was exceptionally well portrayed; there were no minor parts. Rhea Fast, playing Stacia, was a true slut; Mrs. Sharp, played by Elsie Forney, was an incomparable cheat; Eunice Almen, as the hussy, Vivian, played her part expertly; Gertrude Witmore was a first-class snob in her interpretation of Mrs. DeHooley; Hazel Vogt, as the cat, Miss Kite; and Elizabeth Mohler, the shrew, Mrs. Tompkins, were both centers of attraction. The other male characters, Christopher Penny, the coward, played by Dale Strickler; Harry Larkom, the cad, taken by Arthur Prather; Major Tompkins, the bully, by Leland Moore; Joey Wright, the satire, by Frank Boone; and Jape Samuels, the rogue, by John Harnly were each played in a professional manner.



FIRST ROW—HARNLY, FAST, STRICKLER, ALMEN, BOONE
SECOND ROW—VOGT, FORNEY, WITMORE
THIRD ROW—BRUBAKER, OELRICH, Coach; MOORE, PRATHER

A Pair of Sixes

The Juniors, in presenting the comedy, "A Pair of Sixes", by Peple, coached by Miss Alma Anderson, caused an evening of wholesome fun, for a large audience. The staging, costumes, and make-up were exceedingly good.

Jay Eller, under the role of George Nettleton, and Earl Morris, as T. Boggs Johns, co-partners in the Eureka Digestive Pill Company, furnished a great deal of amusement by their continual quarreling over their respective contributions to the success of the Company. Vivian Long, their lawyer Vanderholt, who proposed a solution, played with his usual ability, which is unusual.

Ocie McAvoy, as Florence, the fiance of Johns, in cleverly solving the mysteries of the play, won the hearts of the audience. Elberta Vaniman, the pretty stenographer, who worried the jealous wife, portrayed by Mayme Matson, and Mabel Griffin as the homely but loving Coddles were particularly good in their parts.

Leo Warner, Marathon High, Earl Breon, Harold Strickler, and Paul Kurtz, in minor parts showed considerable talent and careful training on the stage.



THIRD ROW—KURTZ, LONG, ELLER

SECOND ROW—GRIFFIN, WARNER, BREON, HIGH, MATON

FIRST ROW—STRICKLER, VANIMAN, McAVOY, MORRIS

The Lost Paradise

"The Lost Paradise," a three-act drama by Ludwig Fulda, was presented at the Opera House March 12, as a number on the student activity program, by the Dramatic Art Class with Miss Anderson coaching.

The work of Ocie McAvoy and Samuel Kurtz, as Margaret Knowlton and Reuben Warner stood out prominently. Both interpreted their characters in a professional manner.

Earl Morris, carrying the part of Andrew Knowlton; Selma Engstrom, as Mrs. Knowlton; Rufus Daggett, as Bob Appleton; Vivian Long, as Ralph Standish; and Minnie Edgecomb, as Polly Fletcher were also particularly good in their parts.

Deserving of special praise was the work of Leonard Timmons and Rhea Fast, who, in minor roles, demonstrated their ability to perform before the footlights.

For the artistic staging and the careful training of the cast, the coach, Miss Anderson, is worthy of hearty commendation.



THIRD ROW—BOONE, HIMES, EDGEComb, DAGGETT, STRICKLER
SECOND ROW—FAST, UNRUH, ELLER, HOLLOWAY, HAMMANN, TIMMONS
FIRST ROW—MORRIS, ENGSTROM, KURTZ, McAVOY, LONG, GRAY

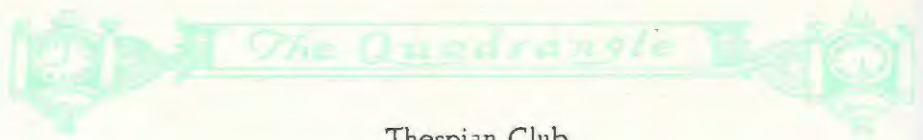
Adam and Eva

"Adam and Eva" was staged by the Dramatic Art Class on All Schools Day for the benefit of eighth grade graduates of the County. The comedy was given under the direction of Miss Anderson.

Jay Eller, carrying the title role, James King, the irate head of the family, made a large fortune with his gift for business organization, but it never occurred to him that this gift might be applied to his home. King's youngest daughter, Eva, played by Mildred Carpenter, was a spoiled younger daughter who could not decide whether to marry Dr. Delameter, carried by Dale Strickler, or Lord Andrew Gordon, by Earl Morris. Leland Kuns under the role of Adam Smith was a strange mixture of romance and common sense; he took charge of the King family in the capacity of father while King went on a vacation. Adam brought the family to their senses by moving them to a chicken farm. This helped Eva to decide to keep Adam in the family and to call him "Father."



SECOND ROW—CRUMPACKER, MORRIS, ELLER, D. STRICKLER, SCOTT
FIRST ROW—KUNS, CARPENTER, BOONE, WHITE, H. STRICKLER



Thespian Club

DAVID BRUBAKER *President*
MARGUERITE MUSE *Vice-President*
OCIE McAVOY *Treasurer*
REETHA STUDEBAKER *Secretary*

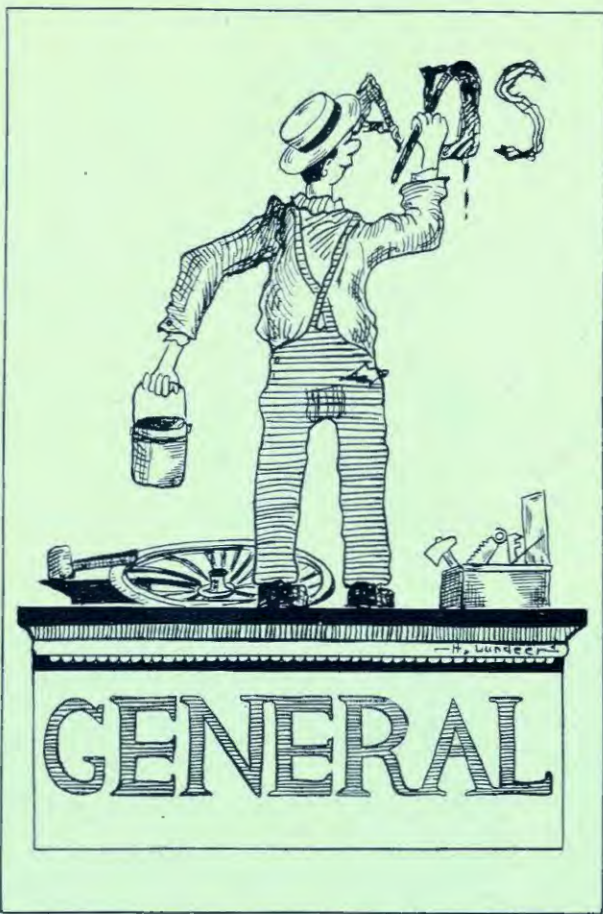
The Thespian Club was organized February 1, 1923, for the purpose of conducting an intensive study of contemporary literature with special emphasis on the study and production of the drama.

The practical work done by the Club during the past year was the presentation of the one-act play, "The Price of Coal." Owing to the presentation of plays by the Dramatic Art Department, the Club has placed special emphasis on the study of the drama as an art during the year.

The outline of study for the past year has been: reading and interpretation of plays; realism in American drama, and representative realistic dramatists; the moving picture as an art; marionettes; famous actors; and Shakespeare.



THIRD ROW—STRICKLER, MORRIS, LONG, P. KURTZ, PAIR, BOONE
SECOND ROW—S. KURTZ, FORNEY, WHITE, ENGSTROM, STUDEBAKER, UNRUH, ANDREWS
FIRST ROW—ALMEN, McAVOY, BRUBAKER, CRUMPACKER, DAY



Radio Club

HERRBERT MARTIN, HOYT STRICKLER.....*President*
 HOYT STRICKLER, HERBERT MARTIN.....*Vice-President*
 PROFESSOR MORRIS*Faculty Adviser*
 RALPH GARMAN*Secretary*

(Second name is for second semester.)

Interest and study have been the main characteristics of the Radio Club since its origin at McPherson College. Each member owns a radio set. The fundamentals as well as the latest developments of radio were studied at the meetings every Tuesday evening. The value and use of certain mechanisms were made subject to discussions. Lectures by Professor Morris gave instructive material.

The Club made use of the College radio set in the physics laboratory after the regular meetings. This is an excellent set equipped with a Magnavox which makes it possible to be heard for a great distance.

The Radio Club was organized in 1922 and is a growing organization in McPherson College. Students of science are enthusiastic over the work. Membership is obtained by election, only a limited number being allowed in the Club.



THIRD ROW—HIGH, GROGAN, FISHER
 SECOND ROW—SPOHN, MARTIN, HOSTETTER, CARNEY
 FIRST ROW—SPILMAN, STRICKLER, MORRIS, RUTHRAUFF, GARMAN

Academy Stock Judging Team

McPherson College maintains a strong Agricultural Department, due largely to the able leadership of Professor Mohler, head of the Department. Besides making a name for himself as an instructor, Professor Mohler has also won fame as a competent judge of livestock and coach of judging teams.

This year the Academy Stock Judging team won second place in the state high school and academy judging contest held at the Kansas National Livestock Exposition in Wichita. In five successive years the Academy team has made a record of three firsts and two second placements. Competition this year was keen among thirty-five teams.

Individual placements of second high point man was made by Charles Spicer and fifth placement by Jesse Carney. In addition to the individual prizes of eight and five dollars to these men, each member of the team received a silver medal.



MOHLER, Coach

CARNEY

SPICER

GROGAN



Kansas Academy of Science

H. H. NININGER
President.

McPherson College was host to the Kansas Academy of Science at its fifty-sixth annual convention, April 4 and 5, at which there was the largest attendance ever attained by the Academy in any session. To Professor H. H. Nininger, professor of biology in McPherson College, was given the distinction of being elected president of the Academy.

Scientists, almost a hundred in number, from nearly every school in the State, students, and townspeople, were present at the programs in Harnly Hall.

The following officers were elected to serve for the year:

- H. H. NININGER.....*President*
- J. E. ACKERT.....*First Vice-President*
- FRANK AGRELIUS.....*Second Vice-President*
- L. D. HAVENHILL.....*Treasurer*
- E. A. WHITE.....*Secretary*

Featuring the meeting was the annual address by the outgoing president, Dr. Cady, of Kansas University, on "The Structure of the Atom," illustrated by moving pictures and slides.

Local members appearing on the program were Professor Nininger, Professor Hershey, Dr. Kurtz, and Dr. Harnly, each of whom read papers or gave lectures before the Academy.

This was the first time in its history that the Academy has chosen for its meeting place any other than a State school, and McPherson is proud of this honor conferred on her.



Society of Chemistry

PROFESSOR HERSHEY	<i>Chairman</i>
DORIS RING	<i>Secretary</i>
CARL SCHNEIDER	<i>Program</i>
HADDON ILSLEY	<i>Program</i>
RALPH GARMAN	<i>Reporter</i>

The Society of Chemistry was organized in the fall of 1922 with Professor Hershey as permanent chairman. Its purpose is to keep its members in touch with the new developments and discoveries which are continually being made in the field of chemistry, and to stimulate thinking along scientific lines.

The Society convenes bi-weekly and has had a series of interesting and instructive programs, which consisted of reports taken from leading chemical persons of the day and reports of work done in the local laboratory. Much enthusiasm was shown and all reports were carefully prepared. This type of instruction gives students points which are not found in ordinary classes.



Social Events

Faculty Reception

The annual reception given by the faculty to the students was held Monday evening, September 17, in the College Chapel. The continuous receiving line and the decorative scheme of red and white colors which symbolize McPherson College, added to the warmth of the reception. Professor B. E. Ebel in his pleasing manner had charge of the evening program which was opened with a piano solo by Miss Lola Hill. The address of the evening, a welcome to the new as well as the old students, was given by Dr. D. W. Kurtz, in which every student was made to feel the responsibility and rare privilege of being a part of the institution. Miss Alma Anderson gave two pianologues, after which Dr. H. J. Harnly, Dean of the College, welcomed the students and described the school in its stages of development. A violin solo by Professor Lauer was followed by a welcome to the Academy students by Professor M. A. Hess. Mr. Archie San Romani concluded the program with the rendition of a cornet solo. A part of the Symphony Orchestra, conducted by Professor Lauer, contributed several splendid selections during the social hour. Light refreshments of punch and wafers were served.

Junior-Senior Banquet

The annual Junior-Senior banquet, the memorable event which unites the Seniors in a bond of greater friendship to the College, was given on April 22, at eight o'clock in Arnold Hall. The guests were received in the parlors by Professor and Mrs. R. E. Mohler, Mr. Jay Eller, Miss Margaret Wall, Master Bobby Kurtz, and little Miss Elizabeth Mohler, while Messrs. Marathon High and Emmert Pair, and Miss Fidelia Franz, gave a piano and violin recital. Retiring to the dining room which was a bower of light and beauty, the guests were seated at thirty-two quartette tables, centered with crystal vases of sweet peas, having nut baskets and hand-colored place cards as table appointments. Purple and white colors were predominant in the decorations of lattices with vining morning glories which bordered the walls and the wisteria drops from the lights. A beautiful rainbow arch, rainbow hangings, baskets of peonies and roses, bowls of violets, palms, and ferns, completed the effective decorations. A seven-piece orchestra directed by Mr. San Romani furnished excellent music, while eight sophomore girls, dressed in dainty organdie dresses of rainbow shades, and eight sophomore boys served a delicious four-course dinner. After the dinner, Professor R. E. Mohler, the Junior Class adviser, graciously presided over the program as toastmaster.

PROGRAM

"While Sunbeams Shine with Splendor"..... <i>Schumann</i>	Mr. and Mrs. Gaw
"I Cannot, Dare Not Believe It".....	Jay Eller
"I Chide Thee Not".....	David Brubaker
"Now We've Piping and Pleasure".....	Stanley Keim
"Memories".....	Helen Elliott
"Wandering Springtide".....	Dr. E. L. Craik
"All Night Long I'm Dreaming".....	Ocie McAvoy
"The Courage of the Commonplace"..... <i>Andrieus</i>	Miss Alma Anderson
"Romance" F Sharp Major..... <i>Schumann</i>	Bernice Peck

Academy Junior-Senior Reception

On Friday evening, April 18, at the home of Mr. and Mrs. J. N. Dresher on East Euclid, the Juniors entertained the Seniors at their annual reception. At eight o'clock the Seniors were welcomed into the parlors which were beautifully decorated with the class flowers of both classes, bud vases of lilies of the valley, bowls of violets, and baskets of pear blossoms. The welcome address was given by Theodore Baker and the response by John Lehman. These were followed by a solo, "The Swallows," by Mrs. Gaw; a reading, "Penrod's Letter," by Mercie Shatto; class prophecy, by Marie Brubaker; and two violin solos, Handel's "Where'er You Walk," and Martini's "Tickling Trill," by Oliver Ebel. After the program informal games were played. At the close of the evening dainty refreshments were served in which the color scheme of purple and white was carried out.

President's Reception

On the evening of May 17, Dr. and Mrs. Kurtz entertained the College Seniors at the annual reception. After the hearty reception at the door, an hour of competitive games and ice-breakers were played, under the efficient direction of Mrs. Kurtz. A short program followed which included music by the College Quartet, address of welcome by President Kurtz, response by Dr. E. L. Craik, and a reading by Miss Alma Anderson. Music on the Starr phonograph was enjoyed while dainty refreshments were served by the hostess. About sixty Seniors enjoyed the gracious hospitality of the Kurtz home, which symbolizes their relation of deep regard and sincere appreciation for Dr. and Mrs. Kurtz, and a broad knowledge and love of the institutional ideals of McPherson College.

Alumni Banquet

The Alumni banquet, honoring the College and Academy classes of 1924, was given in the spacious dining room of Arnold Hall on Thursday evening, May 22, at six o'clock. The traditional red and white colors of M. C. added to the cheery atmosphere while about one hundred and fifty guests enjoyed a delicious dinner served in cafeteria style. With Dr. E. L. Craik as toastmaster, an entertaining program of toasts and music was rendered, after which President R. E. Mohler presided over a short business session. This social function which ties the members of the graduating classes to the great band of M. C.'s loyal alumni was heartily appreciated by the Seniors of '24.



STOVER MOHLER CRAIK

Alumni Association

- R. E. MOHLER *President*
 H. R. STOVER *Vice-President*
 E. L. CRAIK *Secretary-Treasurer*

Board

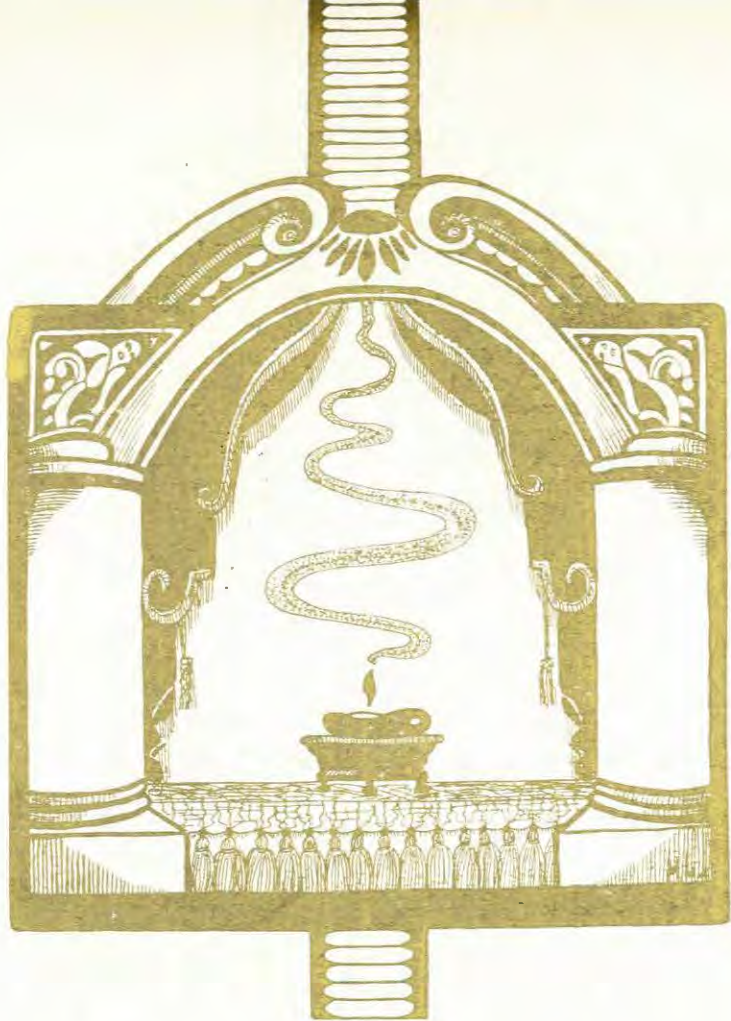
- | | | |
|-------------------|----------------|-------------------|
| F. E. Mishler | S. B. Braden | Amanda Fahnestock |
| Orville D. Pote | W. F. Vaniman | R. C. Strohm |
| Mary Durst Wilson | Grace Brubaker | Edith McGaffey |
| Marguerite Muse | Lola M. Hill | Alma G. Anderson |
| | G. N. Boone | |

The Alumni Association is composed of more than a thousand graduates from the various departments of the College. The purpose of the Association is to perpetuate the friendships that are made in College, and to maintain among the Alumni an active interest in their Alma Mater.

Alumni of recent years have been glad to avail themselves of life memberships in the Association. These memberships are secured by the payment of ten dollars within one year after graduation. The money received from life membership serves as a permanent endowment for the Association.

The Alumni are asked to take an active part in the management of the collegiate activities. Mr. Leonard Crumpacker, of McPherson, represents the Alumni on the Athletic Board, and Mr. W. H. Yoder, of Morrill, Kansas, is a member of the Board of Trustees. These men are chosen by the Association, and have equal powers with the other members in their respective organizations.

During the past year the Association has directed its interests to the plans for the fortieth Anniversary of the College in 1927, and to the Endowment Campaign. It has pledged to the Board of Trustees the raising of one hundred thousand dollars for the campaign.



Seats of Strength

Athletics



Floyd E. Mishler

Coach.

This is "Mish's" first year in M. C., and he has become a favorite of both players and students. He is an athlete, and knows how to develop athletes. A prominent athletic critic has said, "From all appearances McPherson College need never worry about the success of her athletics so long as they are under the present expert direction. "Mish" is deeply interested in all types of athletics for all types of students, and is just the sort of man that M. C. needs to direct her athletics.

Athletic Board

PROFESSOR R. E. MOHLER *Chairman*
 PROFESSOR G. N. BOONE..... *Manager*

Athletics is under the general supervision of an Athletic Board, which has charge of making schedules, granting letters, awarding sweaters, the finances, and all other details connected with athletics. Under the supervision of the Athletic Board an elaborate and efficient athletic program is carried out each year. M. C. athletics has been placed upon a firm basis both in organization and finances. Much of the success of athletics in McPherson College during the past year is due to the efficient supervision of the Athletic Board.

In February the Board was re-organized and athletics was placed under faculty supervision. The Board, as re-organized, consists of seven members, four appointed by the faculty, one by the Student Council, one by the Alumni and one by the Board of Trustees.



CHAPMAN MISHLER MOHLER BOONE
 SARGENT EDGECOMB CRUMPACKER McAVOY

M. C. Pep

Much of M. C.'s success in athletics and other school activities is due to the efforts of her cheer leaders, John Harnly and Ocie McAvoy. They were always on the job, working hardest when defeat threatened, in order to keep up the pep and instill the old fight into the players. Through their efforts new songs and yells have been woven into the College spirit, and old songs and yells have been made more effective. The annual night-shirt parade, the cremating of the Swede Jinx, numerous peppy Chapel programs, and other means of arousing college spirit were directed by the cheer leaders. Every M. C. team, before a game away from home received a lively send-off. Upon its return, whether victorious or defeated, it was received by a large group of loyal students. The cheer leaders have worked hard, and have given their best to generate in each student an unquenchable school spirit.



HARNLY

McAVOY

"M" Club

STANLEY E. KEIM.....*President*
 HAROLD BARTON*Vice-President*
 RUFUS DAGGETT*Secretary-Treasurer*
 EARL MORRIS*Reporter*

Every man who earns a letter in some sport is eligible to become a member of the "M" Club. This Club, consisting of both alumni and under-graduate letter men, has for its primary purpose the promotion and improvement of athletics in the College.

The vigilance committee works in co-operation with the cheer leaders in keeping up the pep and interest in athletics. It also has charge of intermission programs. This year it published the "Bulldog Bullet" before each basketball game. This paper contained the conference standing, the schedule, the line-up of each team, and advertisements solicited by "M" Club members.

Under the supervision of the stunt committee new members were initiated, and an "M" Club program was given at the Senior High School Festival. In March the Club launched a unique campaign in the form of a Derby race for a new athletic field.

An annual banquet is held during commencement week at which officers for the ensuing year and the all-around athlete of the College are elected.



THIRD ROW—H. BARTON, MORINE, SARGENT, MUDRA, HOLLOWAY, TIPTON, EAKES
 HARNLY, YODER, BRUBAKER
 SECOND ROW—MOHLER, MISHLER, STRICKLER, F. BARTON, MORRIS, BEAM, ELLWOOD
 HILL, BOONE
 FIRST ROW—HAHN, CRUMPACKER, S. KEIM, P. KURTZ, R. KEIM, DAGGETT



FOOTBALL

The Quadrangle

The Season

Playing its third year of conference football, M. C.'s Bulldog football team fought its way to the Kansas Conference Championship.

After a bad start with a tie and a defeat, the Bulldogs began their steady climb to the top. In their first game they played last year's champions to a tie. The second game was a mud battle, and the Bulldogs were forced to take an unmerited defeat. Although they had a hard schedule and the scores were close, the Bulldogs were not outplayed during the season.

The excellency of the Bulldog's play is shown by their record. They made twice the yardage that opponents made; they made seventy-three first downs to their opponents' thirty-two; they completed fifty-four per cent of their passes for an average of eleven and five-tenths yards, while only twenty per cent of their opponents' aerial attempts were successful—for an average of eight and five-tenths yards.

The Bulldogs were not a high scoring machine, but they nearly always scored enough to win the game. The Bulldog defense was famous throughout the conference. Only once did the opponents break through the line for more than four yards.

The greatest event of the season was the burying of the Swede Jinx. Fighting against the breaks on a foreign field, the wearers of the red and white overcame a three-point lead and vanquished the Swedish Jinx forever. M. C.'s Bulldogs are widely known for their fairness and sportsmanship. McPherson College is proud of her football team and the honor it brought to her.

KANSAS CONFERENCE STANDING

TEAM.	W.	L.	T.	Pct.
McPherson	6	1	1	.857
Friends	5	1	0	.833
Emporia Teachers	5	1	1	.833
Ottawa	4	1	2	.800
Baker	3	1	4	.750
College of Emporia	5	3	0	.625
Hays Teachers	3	3	2	.500
Pittsburg Teachers	2	2	2	.500
Fairmount	2	2	2	.500
St. Mary's	3	4	0	.429
Kansas Wesleyan	2	5	1	.286
Bethany	2	7	0	.222
Southwestern	1	5	2	.167
Bethel	0	5	0	.000
Washburn	0	6	1	.000

SCHEDULE AND RESULTS

	M. C.	Opp.
Baker at Baldwin	3	3
St. Mary's at McPherson	0	6
Hays at Hays	7	0
Washburn at Topeka	14	7
Kan. Wesleyan at McPherson	8	0
Bethel at Newton	15	0
Bethany at Lindsborg	7	3
Southwestern at Winfield	6	0
TOTAL	60	19

SECOND TEAM GAMES

Windom High School at Windom	37	0
Canton A. L. at Canton	13	7
Lyons High School at Lyons	0	35
Canton A. L. at McPherson	8	0
TOTAL	58	42

CAPTAIN "DICK" KEIM

Guard

Junior

"Dick" was chosen by Edmonds as captain of the second all-state team; of "Dick," Edmonds says, "A great open-handed fighter who smacks them around as hard as any I have ever seen; militant, but never failing to acknowledge the authority of the officials." "Dick" made a fine captain, and was liked by all.



"HEINIE" HAHN

Fullback

Sophomore

Captain-elect; a hard hitting player who was hard to stop; a good toe artist, and a power on the defense.

"DOC" HEASTON

Quarterback

Sophomore

A heady pilot; watched opponents for weaknesses, and used the right play at the right time; received honorable mention in the conference.



The Quadrangle



"SI" SARGENT

End Senior

Selected by Edmonds as end on second all-state eleven; Edmonds said, "By far the best end I have seen, both on offense and defense; a sure tackler and a great pass-grabber, with a fighting spirit all the way."



"DOC" KURTZ

Center Junior

Was a great defensive player; good at breaking up enemy plays, and responsible for the failure of many enemy drop kicks.



"JOHNNIE" LENGEL

Guard Sophomore

A typical Bulldog fighter; always got his man, and kept up the old fight all the way through.

The Quadrangle

"STAN" KEIM

Tackle

Junior

Not so big but with more fight to the square inch than any other player; he and his brother "Dick" made a wonderful pair for opening holes in the opposing line and stopping the enemy plunges.



"TOK" CARTER

Halfback

Junior

A great ball lugger and a wonderful passer; starred in almost every game, and saved the day many times; received honorable mention in the conference.

FRANK BARTON

End

Freshman

Was good on the end of a pass, and played well on the defense; was often called back to punt or drop-kick.





"DICK" HILL

Halfback

Sophomore

Could always be depended on for good gains; a good running mate for Carter; had a bad ankle twice during the season, and was able to play in only three and one-half games; nevertheless he received honorable mention in the conference.

"BILL" MUDRA

Tackle

Sophomore

A great punt blocker and pillar of defense; kept up the morale of the team, and used psychology on the opposing players; received honorable mention in the conference.



"HAL" BARTON

Fullback

Junior

M. C.'s triple threat man; played a stellar defense, and was a good ground gainer; a great source of anxiety to opposing teams.



"PEANUTS" MORINE

Guard Freshman

An old McPherson High School star who did some fine work at guard in the early part of the season; he is a good prospect for next year.



HARRY COLBURN

M. C. was fortunate in securing Harry Colburn from the city as assistant football coach; he was always on the job, and was well liked by the players; he knew football and how to coach it; he was responsible for much of the success of the Bulldogs.

TO THE "SUBS"

"Jim" Ellwood, Sanger Crumpacker, Glade Fisher, Sam Kurtz, and Moffat Eakes—all got into action but did not play enough to get letters; all were out just as much, worked just as hard, and were just as loyal to the Alma Mater as the regulars. They are the type of players in which M. C. feels confident in resting her hopes for a winning team in future years.

The Squad



THIRD ROW - MISHLER, Coach; YANCEY, MERRICK, C. LONG, DAGGETT, YODER, CRUMPACER, SONDERGARD, HOLLOWAY, ELLWOOD, V. LONG,
SECOND ROW - HAIN, COLVERN, Assistant Coach,
FIRST ROW - FISHER, HEASTON, SARGENT, S. KEIM, D. KEIM, Captain; F. KURTZ, LENGEL, F. BARTON, MAST

The Quadrangle



~Where the Suede jinx died~



~Bulldogs~



~Bullpaps~



~No they're~

~The Suede jinx~



~not calves~



~Bulldogs vs. Wildeats~



~Bullpaps vs. Ligons~

The Quadrangle



Bulldogs



Puppies



Ball pups



An 80 yard march



The first intermission talk



On the nine yard line



McPherson vs. Washburn



Mishler, Colbarn, & Co.



BASKET
~ **BALL**

The Season

KANSAS CONFERENCE STANDING

TEAM.	W.	L.	PCT.
Emporia Teachers	14	1	.923
Bethel	11	1	.917
Washburn	12	3	.800
C. of E.	13	5	.722
Bethany	10	5	.667
McPherson	8	8	.500
Southwestern	7	7	.509
Fairmount	7	8	.467
Pittsburg Teachers	7	8	.467
Ottawa	6	10	.375
Hays Teachers	5	10	.333
Baker	5	10	.333
Kansas Wesleyan	4	11	.267
St. Mary's	5	14	.250
Friends	0	10	.000

SCHEDULE AND RESULTS

	M. C.	OPP.
Friends at McPherson	41	13
St. Johns at Winfield	26	18
Southwestern at Winfield	27	35
Fairmount at Wichita	25	46
Friends at Wichita	32	19
Kan. Wesleyan at McPherson	26	21
Fairmount at McPherson	26	17
Bethel at Newton	30	31
Washburn at Topeka	14	37
Pittsburg at McPherson	25	24
Washburn at McPherson	12	24
Ottawa at McPherson	29	15
Bethel at McPherson	22	27
Hays at McPherson	29	31
Bethany at McPherson	14	20
Kansas Wesleyan at Salina	26	13
Bethany at Lindsborg	23	22

TOTAL.....427 413

The Bulldogs started the season with four letter men, a wealth of new material, and championship hopes. Facing an extremely hard schedule they found the going rough, but finished a successful season. The Hays and Bethany games found the Bulldogs crippled, but fighting to the last, only to lose by close scores. A climax to the season was the Swede classic at Bethany. With a crippled team, and with three men playing their last game for M. C., the Bulldogs fought like only Bulldogs can, and emerged victorious.



THIRD ROW—MISHLER, Coach; HOLLOWAY, LONG, KOLZOW, SARGENT, MAST
 SECOND ROW—H. BARTON, MORINE, TIPTON, HAHN, ELLWOOD
 FIRST ROW—HILL, F. BARTON, STRICKLER, Captain; EAKES, DAGGETT.

The Quadrangle

"RUFÉ" DAGGETT

Forward Senior

Played his second year as a regular; not a flashy player, but had plenty of fight all the way; displayed excellent floor work.



MOFFAT EAKES

Guard Freshman

An old McPherson High School star; plays a cool, steady game; often figured in the scoring; a valuable prospect for next year.

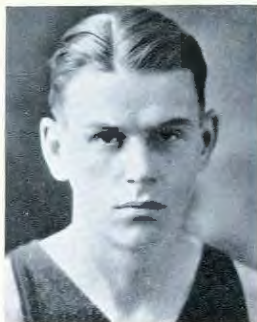
ERNEST TIPTON

Guard Sophomore

"Tippie" played last half of the season; displayed excellent floor work; noted for ability to get the ball from the tip-off; an accurate shot from the center of the court.



The Quadrangle



CAPTAIN "DUKE" STRICKLER

Guard Senior

The coolest and most consistent player in the Bulldog line-up; always led the defense and usually figured in the scoring; captain of second all-state team.



"DICK" HILL

Forward Sophomore

Captain-elect; high point man on the team; an accurate shot from the foul line; honorable mention in the conference.



"SI" SARGENT

Center Senior

Got more than his share of the tip-offs; good on follow-in shots; always managed to be at the right place at the right time.

The Quadrangle

LAMAR MAST

Guard Freshman

Hails from Galva High where he starred; took Strickler's place after his injury; looked mighty good in action; practically won the Swede game with two long ones from center; looks like a comer.



"CECE" HOLLOWAY

Forward Sophomore

Played in latter part of season; had a good eye for the basket and good on floor work.

"JIM" ELLWOOD

Forward Freshman

Product of Windom High; brother to "Big Jim" of former years; took Hill's place during the latter's illness; has lots of fight and an eye for the basket, valuable prospect for the future.



Girls' Basketball

Under the expert supervision of Miss Mercedes Chapman, M. C.'s "Chics" made an enviable record. Handicapped with a lack of funds, the girls got busy and raised money for new suits and other equipment, thus starting a precedent for girls of future years.

The "Chics" played five hard games, losing only one, to the Tampa A. C. team, whose only defeat came at the hands of the "Chics" later in the season.

They also humbled the Swedes twice, the game at Bethany being close, but that at home was decidedly in favor of the "Chics." The "Chics" have demonstrated that girls athletics can be made a success, and have given them a good boost.

SCHEDULE AND RESULTS

	M. C.	OPP.
Tampa A. C. at Tampa	11	16
Tampa A. C. at McPherson	21	11
Windom A. C. at Windom	33	6
Bethany at Lindsborg	20	19
Bethany at McPherson	38	13
TOTAL	123	65



FOURTH ROW—SHIRK, LONG, HAMMANN, GRIFFIN
 THIRD ROW—N. McGAFFEY, METSKER, SWOPE, M. EDGECOMB, Captain; RING, L. McGAFFEY
 SECOND ROW—VICKERS, HARDEN, E. McGAFFEY, Manager; CHAPMAN, Coach; VOGT, DAVIS
 FIRST ROW—DUNHAM, BOLINGER, A. EDGECOMB

Academy Basket Ball

In basketball the Academy has succeeded in producing a team entirely independent of College athletics. The team, coached by Sanger Crumpacker, an ex-Bulldog basketeer who was disqualified from playing on the Varsity squad by virtue of having earned his fourth letter in the sport, made a creditable showing. Two matched games and several practice games were scheduled. Two of the matched games were with the Bethany Academy, in which the home team won, in each case. The third was with McPherson High School third team, which won in a close game. The five men making the regular team were Charles Spicer, forward; Franklin Haas, forward; John Lehman, center; Jesse Carney, guard; and Raymond Sitts, guard. The work of captain Spicer at forward is deserving of special mention; Lehman also played well at center. To Coach Crumpacker, who adopted the squad early in the season and made out of raw material, a good working machine is due a great deal of praise.



THIRD ROW—BAKER, MILLER
 SECOND ROW—CRUMPACKER, Coach; ELROD, BOWSER, BETTS, EDDY
 FIRST ROW—SITTS, HAAS, SPICER, Captain; LEHMAN, CARNEY

The Quadrangle





SPRING
SPORTS

The Quadrangle

Announcement

With this volume of the Quadrangle, the practice of giving the report of spring athletics in the Quadrangle of the following year begins. This will make a complete report of spring athletics and an early delivery of the Quadrangle possible. Due to the fact that the athletics of the spring of 1923 was partially presented in the 1923 Quadrangle, the final results only, will be here given.—[The Editor.]

1923 Track Season

TEAM.	PENTANGULAR MEET	POINTS
Bethany		68
McPherson		50
Kansas Wesleyan		26 ½
Bethel		9 ½
Sterling		3
	DUAL MEET	
Bethany		62
McPherson		55

By making the low hurdles in 25 seconds, Ira Brammell at the dual meet broke the State record, lowering it three-fifths of a second. He was also high point man at the same meet with a total of 17 points.

Letters were awarded Captain Vaniman, I. Brammell, R. Brammell, Ellwood, Doty, Crumpacker, Sell, Riddlebarger, Daggett, Clark and Mudra.



THIRD ROW—R. BRAMMELL, KURTZ, LENGEL, CLARK
 SECOND ROW—LONBORG, Coach; DOTY, I. BRAMMELL, VANIMAN, Captain;
 FIRST ROW—CRUMPACKER, DAGGETT, RIDDLEBARGER, SELL, DELL



1923 Golf Season

In 1923 McPherson College had a golf team for the first time in its history. In the dual track between McPherson and Bethany, Maurice Beam and Gordon Heaston defeated Sward and Carroll 89-100. Beam made the low score of 41, and Heaston made next with 48. Carroll and Sward made scores of 49 and 51 respectively. At the State Golf tournament held at Ottawa, Bollinger, of Baker, finished first with a score of 177 over a 36-hole course. Beam, of McPherson, finished second with a score of 187, and was presented with a silver cup for his achievement. Lester Ingold, from McPherson, finished fifth. This year with two letter men left, Beam and Heaston, and Hill, Carlson, and Anderson as new additions, there promises to be quite a strong team. In the future golf will probably arouse considerable interest in Kansas Conference colleges.



SECOND ROW—BEAM, INGOLD, ANDERSON, POTTER
FIRST ROW—HILL, HEASTON, CARLSON, DEAN

1923 Tennis Season

Under the expert coaching of Professor Studebaker, M. C.'s racket teams gave a good account of themselves. Three conference matches were played. Washburn won the first match, Krehbiel losing to Hamilton, the State title holder, Arno Rodes to Coutts, and Yoder and Daggett to Hamilton and Coutts.

In two matches with Sterling, Sterling was the winner, Krehbiel winning and Barnes losing for McPherson, and Barnes and Hale losing in the doubles to Wilson and McConnell in the first match, and Yoder losing to Stevenson in singles and Daggett, and Lichty to Wilson and McConnell in the doubles.

In the pentangular meet, Krehbiel and Lichty were defeated by Eberhardt and Anderson, of Bethany, the winners of the cup. Rodes lost to Gardner, of Sterling.

Letters were awarded to Arno Rodes, Harlan Yoder, and Kenneth Krehbiel.



SECOND ROW—YODER, RODES, STUDEBAKER, Coach; KREHBIEL, DAGGETT
FIRST ROW—HIMES, BARNES, HALE, LIGHTY



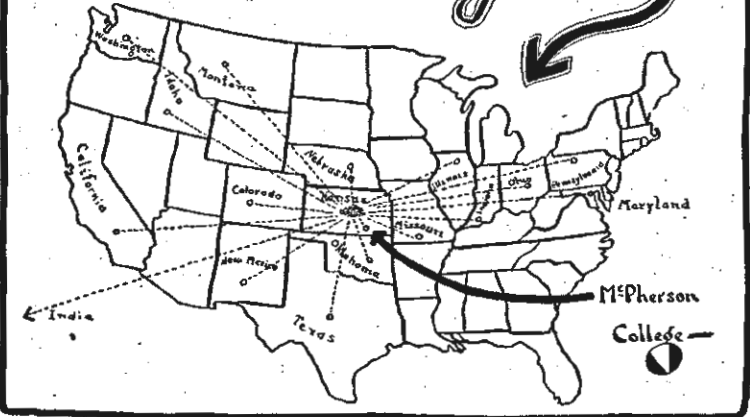
Bulldog Growls



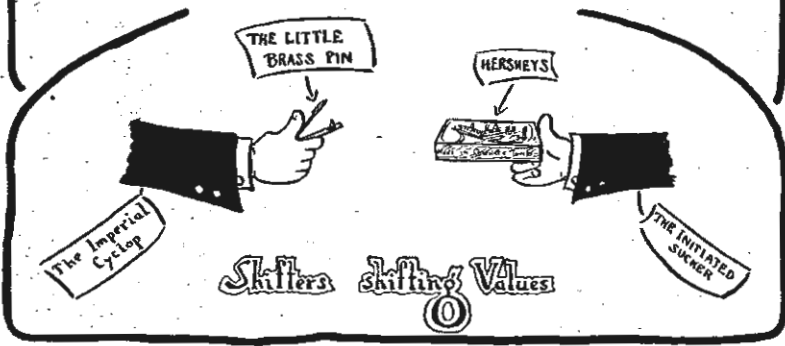
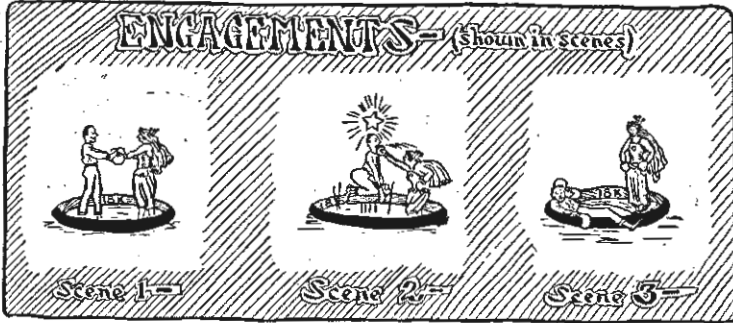
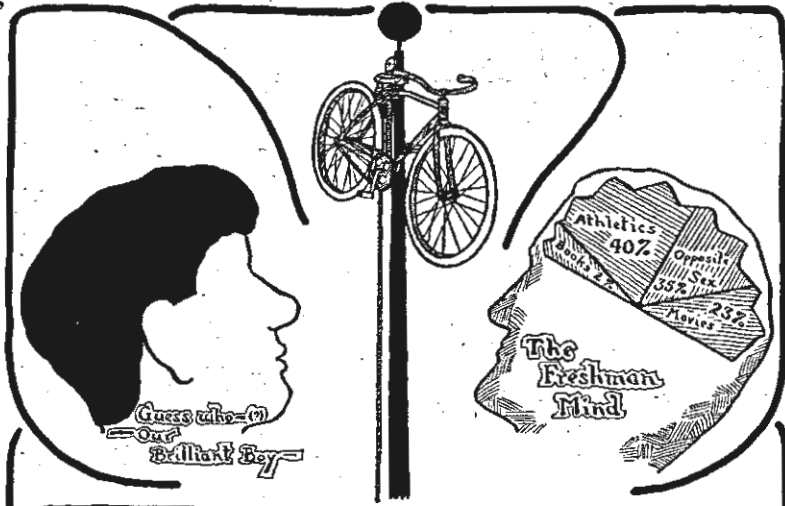
McPherson's Greater Side Shows

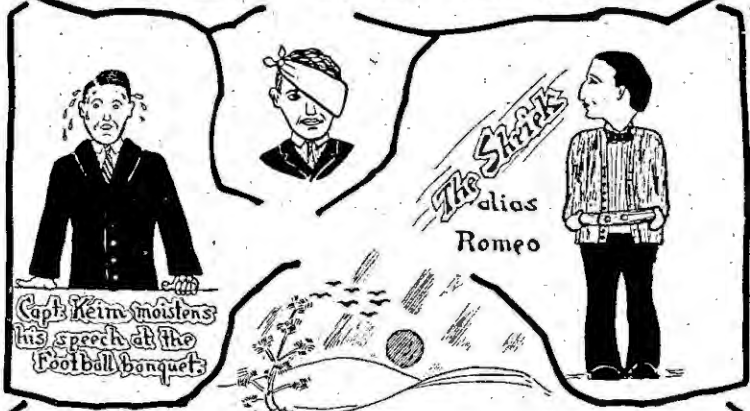


Where are we from?

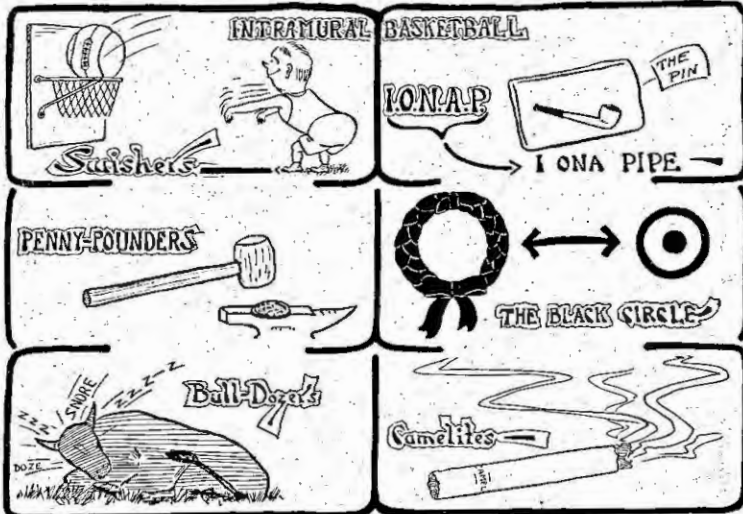


The Quadrangle

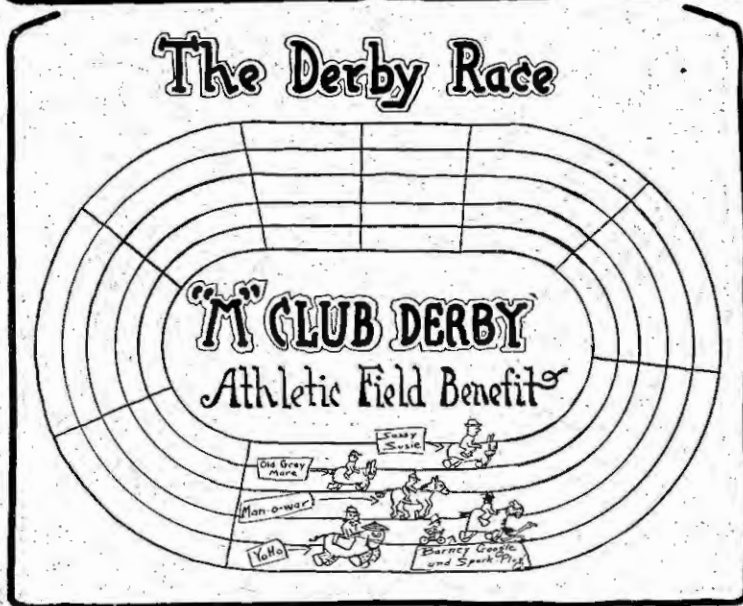




The Quadrangle



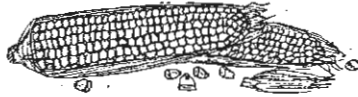
The Derby Race



GREAT MIRACLE AT THE COLLEGE

10:00 o'clock, Thurs. morning, Nov. 27, '23.

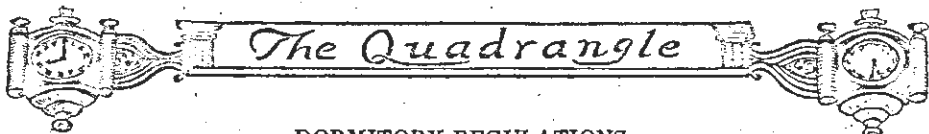
CORN SPOKE IN CHAPEL



(WITH APOLOGIES TO ELIMELECH)

CAMPUS COIFFURES





The Quadrangle

DORMITORY REGULATIONS

(The outstanding joke of the years)

Electric irons may be used as provided by the management.

—(xx! ?x)

No student who uses tobacco in any form will be permitted to occupy a room in this dormitory. This regulation will be strictly enforced.

(? ? !xx ?)

Official study hours are as follows: 8:00 to 12:30 A. M.; 1:30 to 4:30 P. M.; and 7:30 to 10:30 P. M. All students are expected to retire at 10:30 P. M. (Criminals—Bill Bishop and a few of the rest of us.)

No student may be absent from the dormitory during the evening study period. (More criminals,—???)

Any student who persists in disregarding these regulations will be asked to leave the dormitory.—(? ?xx**!!)

BY ORDER OF THE TRUSTEES.

Note: These regulations are found in every dorm room.

Classifications

Frosh	Grassy
Sophs	Brassy
Juniors	Sassy
Seniors	Classy (so-called)

Student Wins Fame in Radio Concert

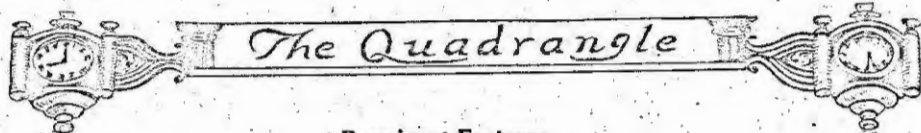
The College lyric tenor became famous in the twinkling of an eye last Sunday evening when he proved his ability as a radio entertainer. The response received from the various receiving stations proves beyond doubt that his career is only in its infancy. . . . He owes this publicity to the genius of several radio fans of Fahnestock Hall, who have recently installed broadcasting stations in their rooms. . . . In the near future, station BOOB expects to obtain a license, and the near-by towns will benefit by the concerts given by the McPherson College talent.

The Spectator

It Happens Every Day in the Dining Hall

- "Mary Whiteneck wanted at the telephone."
- Edith Slifer's table gossip.
- Worms in the shredded wheat, etc.
- Disappearance of sugar, bran, milk, etc., etc.
- "Fight, Chickies, fight!" (Not speaking to the eggs.)
- Throwing of bread, water, etc., etc., etc.
- John Harnly comes to breakfast without a shirt.
- Edith clears tables after (?) meals.





The Quadrangle

Prominent Features

Sam Kurtz's hair.
Our cheer leader's stamping.
Spilman's physique.
Big Bill's mouth.
A. Unruh's athletic ability.
Dormitory cats and dogs.
The infatuated two—Hoyt and Rozella. (Yes, we know we didn't need to tell you.)
Herb Martin breaking window panes.
Dorm grub—the same, today, tomorrow, forever.

To Be Found About the Institution

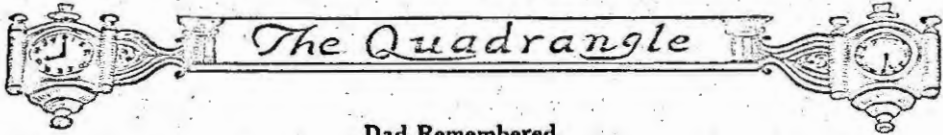
A "R(h)ea Fast" woman, the river "Jordan", several "Longs" and one "High", the country of "Frantz", several colors—"Gray", "Greene", and "White", a couple of "Fishers", a "Beam", a "Horn", a few "Hills", a "Duke", a "Pair", a "Rock" to throw at barrels and things, some "Rhodes", only one "Day", a "Street", and at times a "Bishop".

Important Dates

When Uncle Danny was at the College.
When a new "Bob" wasn't to be seen.
When Horner Eby was silent for five minutes.
When Blair failed to display his tongue.
Leap year party, Edith Slifer uses strategy.
When Daggett wasn't to be found in the parlor.
When one could go with a girl twice without being called married.
When eggs are served for breakfast in the dorm.
When Glade Fisher was seen with a girl.

A Case of Misunderstanding

"Will you let me", said the student
As he quickly doffed his hat—
But the maiden with a right hook
Handed him an awful slap,
And the student's face was crimson
As he stood before the lass
But he finished out his sentence
"Will you kindly let me pass?"



The Quadrangle

Dad Remembered

Dear Dad: I am asking you for some cash sooner than I had expected, but you see several things have come up—books, tuition, fees, etc. Please send me a check for fifty dollars.

Lovingly,

Your Son.

Dear Son: I have received your letter and am enclosing the amount you asked for. You know I was in college myself once.

With love,

Dad.

P. S.—Is she good looking?

Speaking of Identifications

You can always tell a freshman
by his green looks;
You can always tell a sophomore
by his stack of books;
You can always tell a junior
by his glum looks and such;
You can always tell a senior
but you can't tell him much.

Nothing New

Doctor Heaston: "What are the symptoms?"

Dorance Jordan: "I can't sleep

I can't study

I will eat

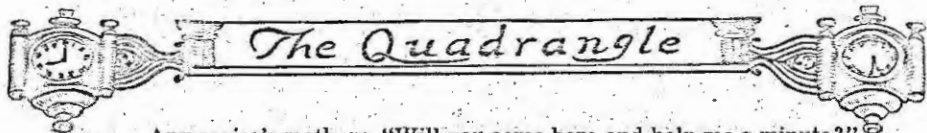
I won't work."

First student: "How do you get down off an elephant?"

Second student: "You don't get down off an elephant; you get it off a duck."

Who's Who in McPherson College

The scholar.....Dorance Jordan
The newspaper.....Big Bill
The dictionary.....Horner Eby
The bachelor maid.....Edith Slifer
The gymnast.....A. Unruh
The dude.....Marlin Carlson
The quizzers.....The Profs
The ladies man.....Harlo Kline



The Quadrangle

Any senior's mother: "Will you come here and help me a minute?"
Any senior: "I would like to very much, mother, but who will run the world while I'm gone."

Father at home: "Son, the camel can go eight days without water. Isn't that wonderful?"

Son: "Not very, father. You ought to hear Big Bill or George Merkey tell one."

Wise Sayings: (Not By the Seniors Either)

"Modern women want the floor, but they do not want to scrub it."

"You can always tell a freshman by the number of books he carries."

"Some folks learn from experience; others never recover from them."

"Brevity is the soul of wit, but not of love letters."

"If brevity is the soul of wit, there's nothing funny about chapel services."

"What is so rare as a glee club in tune."

"A word to the wise is useless."

"Where there's a will, there's a lawsuit."

"Great bluffs from little study grow."

"The female species is the most deadly on the Kale."

"Speaking of classes, the boxer isn't the only one that has been saved by the bell."

"There ought to be smoked glass for the windows in the ladies' dormitory."

"He is the best educated who knows the world in which he lives, and has learned to look with sympathy into the faces of his fellow-men."

"If the cook weighed three hundred pounds, would the stove lifter?"

"No, but Dina might."

Sanger Crumpacker (in mechanical drawing, and working with a compass)—"I don't get this thing through my head."

How inconsistent women are!
They'll shriek and scream at mice,
And then go round with large sized rats,
And think them very nice.

She: "How kind of you to bring these flowers. They are very fresh. I think there is a little dew on them yet."

He: "Yes, there is a little, but I'll pay that tomorrow."

Dorm Life

"The guy next door is a violinist,
The one across the hall is a pianist,
The one above is a soloist,
My room-mate's a linguist,
Can you wonder that
I am a pessimist?"

"Goldie is two laps ahead of Fonda in their leap year race."

"Two laps?"

"Yes, Jim's and Teddy's."

EVERYDAY

LIFE

The collage features several black and white photographs: a group of people on a porch, a man with a child, a woman in a wheelchair, a group of people in coats, a man with a rifle, a man in a suit, a man climbing a tree, a woman in a dress, and a group of people in a room. The background is dark with decorative corner elements.



Varsity Squad ??



We did

Two



of



Them



Bulldogs-14 Ichabods-7



Dor Shirt-tail Parade



Our Entrance



CAMPUS VIEWS



Sharp Hall



Arnold Hall



Heating Plant
(Dean Tracy
in charge)

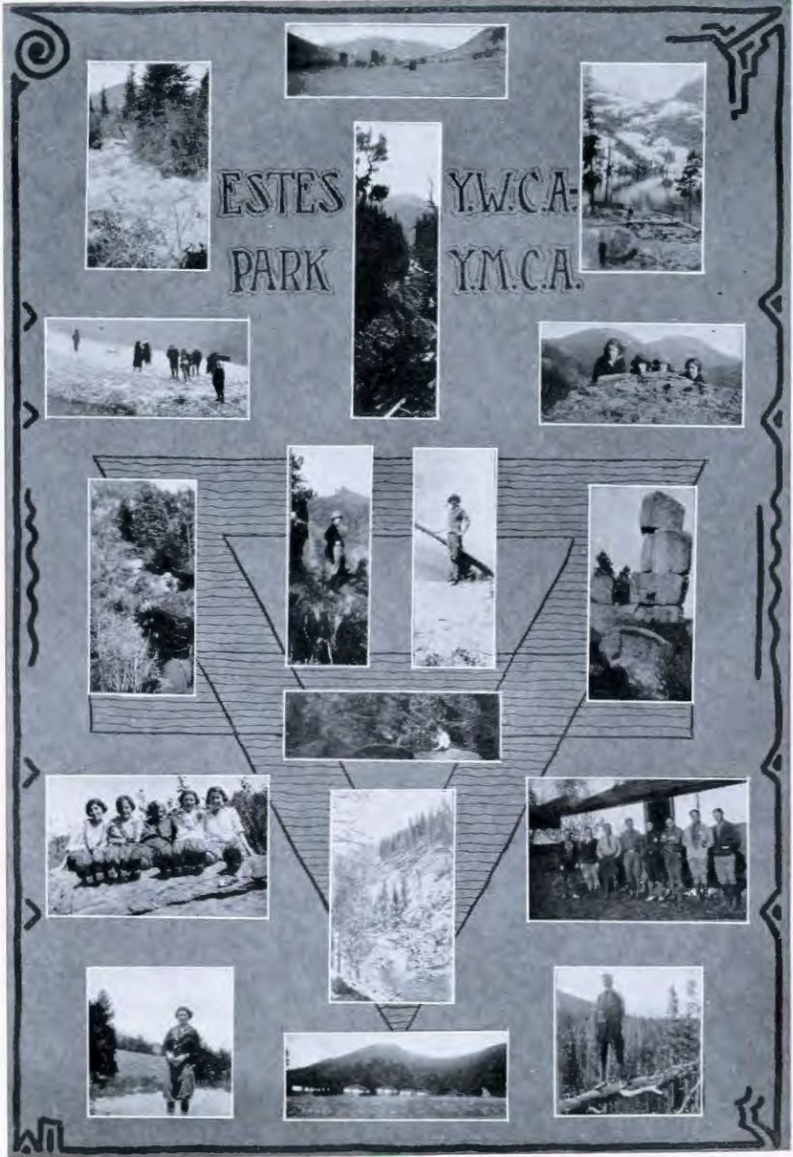


Fahnestock Hall



Conservatory

The Quadrangle





A collection of black and white photographs arranged on a dark background with decorative scrollwork in the corners. The photos are arranged in a grid-like fashion, with captions written in a cursive, handwritten style below or above them.

- Top row:
 - Left: A man in a hat and coat standing outdoors.
 - Middle: A group of people, including a woman holding a baby.
 - Right: A man in a hat and coat standing outdoors.
- Second row:
 - Left: A group of people, mostly women, standing together.
 - Middle: A man in a hat and coat standing next to a wooden barrel.
 - Right: A group of four women standing together.
- Third row:
 - Left: A man in a dark coat standing outdoors.
 - Middle: A large group of people, men and women, standing in a row.
 - Right: A woman in a light-colored dress standing outdoors.
- Fourth row:
 - Left: A man in a hat and coat standing next to a horse-drawn wagon.
 - Middle: A man in a hat and coat standing outdoors.
 - Right: A man in a hat and coat standing next to a horse-drawn wagon.
- Fifth row:
 - Left: A man in a hat and coat standing next to a horse-drawn wagon.
 - Middle: A man in a hat and coat standing outdoors.
 - Right: A man in a hat and coat standing next to a horse-drawn wagon.
- Bottom row:
 - Middle: A group of people, mostly women, standing together.

Arnold Hall Animals
(Eby-??)

Superintendent

Cooks

Mission Study Class

A Welcome Visitor

And Another

Summer School


The Inseparable Six

Pensylvania




Teasers!

Arnold and Bakewell

BEAUTY






SPOTS












No. 1 No. 2 No. 3

Lover's Leaves

Tennis Courts

5/22 *1/2/22*

The Quadrangle





Prof. Nininger and Museum



Manual Training



Domestic Science



Corner in Library



Giant Sloth
(Partially Mounted)



Art Room



Dining Room



Morris and Radio



Astronomy



Chemistry Class







WILBER BARBER SHOP

Four Doors South of People's State Bank

R. M. WILBER, Manager

Must Have Been in the Dorm

Mary had a little lamb,
A little was enough,
For the piece that Mary had
Was so very, very tough.

Quality the Best Money Can Buy

Service Excelled By None

LLOYD'S CAFETERIA & CANDY KITCHEN

We serve Cafeteria Dinner and Supper
Short Order Breakfast

We Specialize Travelers Lunches. Serve and Sell Fresh Milk and Cream.
Ice Cream and Sodas. Hot and Cold Drinks all the year around.

116 South Main We Specialize in Banquets Phone 210



Frank C. Robb

Artist in

Portraiture

Sittings Taken Day or Night.

New and Modern Equipment
at your Service
Photographer for the Quadrangle

Marks

There are marks that make us happy,
There are marks that make us blue,
There are marks that lure us, on to teardrops,
As many of them often do;
There are marks we're afraid to show our mothers,
There are marks we hate our dads to see,
But the mark that filled my life with sadness,
Was the mark that exam brought to me.

(With apologies to author of "Smiles.")

To Get a Stand-In With the Faculty

Dr. Kurtz—Be orderly.
Professor Gaw—Be musical.
Professor Hess—Argue; be thorough.
Professor Nininger—Rave about birds, bees, and grasshoppers.
Professor Ebel—Memorize Spanish and French.
Professor Yoder—Pay your bills.
Dr. Craik—Be witty and humorous.
Professor Blair—Be a flowery orator.
Dr. Harnly—Make gestures.
Professor Deeter—Quote Bible.
Professor Mohler—Converse about cattle and chickens.

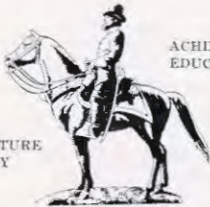
Every Graduate

As he begins his life work, should be prepared. "GET A POLICY, and then hold on to it. It means self-respect. It means that nobody will have to put something in a hat for you or your dependent ones if you should be snatched away from them."—Grover Cleveland.

The Illinois Life Insurance Company

Represented by

BACHMAN & SMITH, Halstead, Kansas.



ACHIEVEMENT
EDUCATION

AGRICULTURE
INDUSTRY

McPHERSON

YOU WILL LIKE McPHERSON

McPherson, Kansas, a beautiful little city located in the heart of a great agricultural State, has a population of approximately 5,500, including a student body of 900 who come here to obtain an education at our schools and colleges. It is the county seat of McPherson county and is surrounded by a rich, general farming community. Wheat, corn, oats and alfalfa are the principle farm products, however, all field crops adapted to Kansas are successfully grown in the County. Cattle, hogs and poultry are found on every farm; extensive herds of pure bred cattle and hogs are being developed in every community and the dairy and poultry industry is increasing very rapidly.

McPherson is a City of fine homes, with well kept lawns. The streets are nearly all paved and well lighted. Two beautiful little parks centrally located are a source of pride to every citizen. A third park

recently acquired is being developed which when completed will furnish tourists with a first class camping place while stopping over in our city.

McPherson has splendid transportation facilities both from the standpoint of railroads and automobile highways, the railroads entering our city are: the Santa Fe, Rock Island, Union Pacific and Missouri Pacific. These four railroads radiate in every direction from our city. The automobile highways are composed of two transcontinental highways; the National Old Trails Road (known as the Old Santa Fe Trail in Kansas) running from New York to Los Angeles, and the Meridian Highway with terminals at Winnipeg, Canada on the north and the City of Mexico on the south. Two Highways of less importance namely, the Kansas-Colo- rado Boulevard and the Midwest Highways also run through our city. These Highways are now being improved with the view of having the entire mileage hard surfaced through the County. Thousands of tourists pass through our city annually over these Highways.

The shipping facilities afforded by the above transportation arteries make McPherson an ideal location for any one seeking a location for the distribution of their products to Central and Western Ninety-nine per cent of Kansas can be



reached within the limits of the second postal zone.

McPherson has a flourishing retail section with stores housed in fine buildings with modern fronts and equipment. The merchants are progressive and carry complete stocks of merchandise. Jobbers, Wholesalers and Manufacturers located here do a profitable business and flour manufactured at McPherson is shipped to all parts of the world. Three News Papers, one Daily and two Weekly's always stand ready to boost for those things that will advance the interest of McPherson and its citizens.

McPherson's fame as a place for education is Nation-wide. Our Public Schools are second to none, the buildings are new and modern and composed of two grade buildings, one Junior High and one Senior High. The curriculum is complete including agriculture, commerce, manual training and domestic science.

In addition to our splendid Public Schools, two Colleges are located here. Students from nearly every state in the Union come here, to take advantage of the splendid facilities these institutions offer, to obtain a higher education.

Fourteen churches, two Carnegie Libraries and a Y. M. C. A. add to the moral as well as the intellectual uplift of the community. The McPherson County Hospital constructed at a cost of \$250,000 and equipped with all modern appliances furnishes adequate facilities to citizens of the entire County to obtain first class hospital care at a minimum of expense.

As the space allotted to us is limited we are unable to enumerate many other things McPherson has which make it an ideal place in which to make your home, educate your children and engage in business or farming. A visit to our City we know will convince you that the above brief description is not exaggerated. You will like McPherson. We invite you to come and look us over.

McPHERSON CHAMBER OF
COMMERCE



SEE
JAY CRUMPACKER
For REAL ESTATE



Farms and
City Property

Corn, Alfalfa, and
Wheat Farms

Homes on College
Hill

Buy a home with
your "Rent Money."

Phone 453

McPHERSON, KAN.

LIKE OTHER THINGS
BUY PRINTING AT HOME
BUILD THE HOME COLLEGE

By building the Home Town—a sure method. Years of experience, the best of workmen and machinery, a record for excellent work, and the desire to please are at your service with advantages no outside printery can give.

THE DAILY REPUBLICAN PRINTERY

McPHERSON, KANSAS

(Printers of the Quadrangle)

The Quadrangle

“Why are the western prairies flat?”
“Because the sun sets on them every night.”

Extree!—One of the girls of M. C. at a basketball game yelled through a sieve and strained her voice.

A woman put her tongue to a flat-iron to see if it was hot. That particular household has been remarkably quiet since.

Freshman: “I know where I can get a chicken dinner for fifteen cents.”

Senior: “Where?”

Freshman: “At the feed store.”

Another Short Story

Mule in the back yard, lazy and slick,
Boy with a pin on the end of a stick,
Creeps up behind him quiet as a mouse,
Crepe on the door of the little boy's house.

Mrs. McCulloch

Portrait Artist



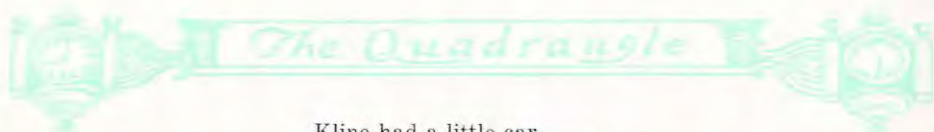
HOME OF HIGH GRADE
PHOTOS

108½ South Main

Phone 89

Kodak Finishing.

Jesso-Polychrome Art Materials.



Kline had a little car,
'Twould run both fast and slow,
And everywhere the girlies went
That car was sure to go.

Mother: "Whoever taught you to use that dreadful word?"

Sonny: "Santa Claus, mamma."

Mother: "Santa Claus?"

Sonny: "Yes, mamma, when he fell over a chair in my bedroom on Christmas eve."

Senior jitney passenger, to jitney driver: "I want to be procrastinated at the next corner."

Jitney driver: "You want to what?"

Senior: "Don't lose your temper. I had to look in the dictionary myself before I found that procrastinate means 'put off'."

The College Book Store Sells Snyder's Bars
SNYDER CANDY CO.

WE Manufacture for America's Leading Educational Institutions.

COMMENCEMENT INVITATIONS
EMBOSSED STATIONERY
PROGRAMS AND CARDS
DIPLOMAS, CERTIFICATES

ATHLETIC AWARDS
CLASS RINGS AND PINS
MEDALS AND EMBLEMS
JEWELRY NOVELTIES

Star Engraving Co.

Houston and Fort Worth, Texas



Bluff

The key to the learning for which you are yearning
Is easy to find if you look;
But never try finding that secret by grinding
Or looking for it in a book.

I'll tell you a system which surely beats this one,
A system that's easy enough—
Try looking sagacious, that's most efficacious,
That's part of the system called bluff.

CHORUS:

Bluff, bluff, bluff;
And you'll never have luck that is tough,
Just stimulate poise and make a big noise,
'Cause bluff's the stuff.

—Selected.

Have you ever seen the professor who continually shakes his hand
with that distinctly "seven come-eleven" motion?

Bethany Bible School

A Theological Seminary and Training School
Urges College Students to Consider

THE CALL AND CLAIMS OF RELIGIOUS LEADERSHIP

as the field of paramount importance for the investment of their trained capacities. Spiritual ideals are basic in our civilization. The promotion of them demands the finest quality of preparation for the ministry, missions, religious education, and Bible teaching.

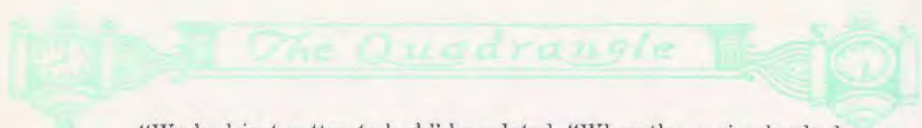
Toward larger vision and effectiveness in religious service we offer courses in the following departments:

Old and New Testament Languages, History and Literature			
Doctrinal Theology	Practical Theology	Church History	
Sociology	Ethics	Religious Education	Missions

THE TWENTIETH YEAR OPENS OCTOBER 6, 1924

Write for a catalog and complete information

BETHANY BIBLE SCHOOL,
3435 Van Buren Street,
CHICAGO, ILLINOIS



"We had just gotten to bed," he related, "When the engine hooked onto us and pulled us out." (It was a sleeping car.)

We editors may dig and toil
Till our finger ends are sore,
But some poor guy is sure to say
"I've heard that joke before."

MANN AND GEROW
ARCHITECTS

Office, Rooms 722-721 Rorabaugh-Wiley Bldg.

Phone 2156

HUTCHINSON, KANSAS

May Success Through Service
Be Your Life Goal

EVERYTHING USED IN A SCHOOL
FROM KINDERGARTEN THROUGH THE UNIVERSITY

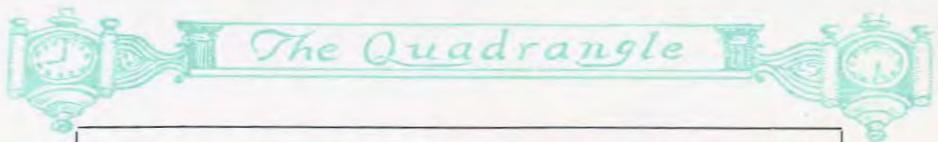
Peabody School Furniture Company

625 Quincy Street
Topeka, Kansas

Quality With Service.

This Is the Peabody Way.





**SHOOT
—A—BASKET**

and make the Guarantee your down-town college headquarters. We show you feature lines in frat clothing, Knox hats, Manhattan shirts, Cheney neckwear, Interwoven hosiery for young men Holeproof for ladies. We have largest athletic department in central Kan.

**GUARANTEE
CLO. & SHOE CO.**

No Sympathy Extended

Bishop: "I haven't slept nights."

Somebody else: "S'matter, sick?"

Another somebody else: "Naw! he sleeps mornings."

Student Caution

A cold is bad

Pneumonia is worse

Don't take them off yet

Safety first.

Walker Studio

PHOTOGRAPHS

Kodak Finishing and Commercial Work.

118½ South Main Street.

Telephone 99.



