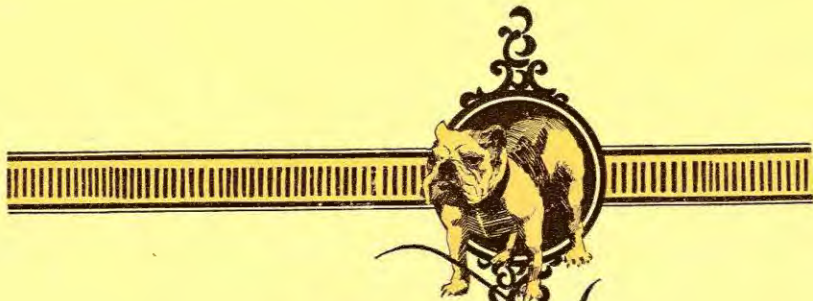




The
Quadrangle

1923

B
378.19
M172q
1923



The
Quadrangle
1923

McPHERSON COLLEGE LIBRARY

McPHERSON COLLEGE LIBRARY

Published by the
Student Council
of
McPHERSON
COLLEGE
McPherson
Kans.



Dedication

TO MRS. AMANDA FAHNESTOCK,
who, for her years of service as a teacher and her living example
of a true and noble Christian life, has endeared
herself to the student body, we grate-
fully dedicate this volume
of the Quadrangle



Foreword

McPHERSON COLLEGE LIBRARY

Believing that a College Annual
is a reflection of student life,
it is our purpose faithfully to embody in this volume of
the Quadrangle those interests and ac-
tivities that have characterized
the school year of
1922-23

In so doing we have striven to make this year-book worthy
of our Alma Mater and a never-failing source
of sacred and pleasant memories to
the college family and
its friends

THE STAFF



Contents

1. The Campus
2. Administration
3. Classes
4. Organizations
5. Activities
6. The School Year

The Quadrangle-1923



Sharp Hall



Harnly Hall





Fahnstock Hall



Carnegie Library





Arnold Hall



Kline Hall



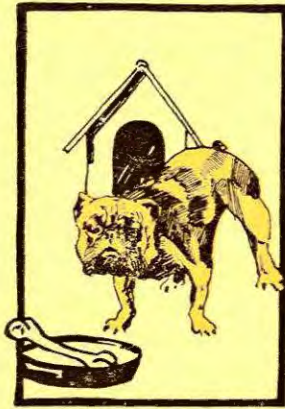


Conservatory



Gymnasium





Administration

The Board of Trustees

J. J. YODER, President
BUSINESS MANAGER AND PROFESSOR
McPherson, Kansas

Dr H. J. HARNLY, Secretary
DEAN OF COLLEGE
McPherson, Kansas

Dr. D. W. KURTZ
COLLEGE PRESIDENT AND PROFESSOR

E. G. RODABAUGH,
Pastor
Stet, Missouri

J. E. SMALL, Pastor
Oklahoma City, Okla.

G. W. BURGIN, Teacher
Burr Oak, Kansas

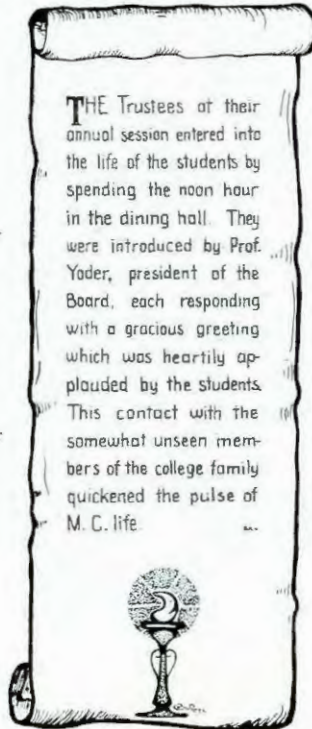
W. R. BISH, Farmer
Rocky Ford, Colorado

S. Z. SHARP, Educator
and Author
Fruita, Colorado

W. R. ARGABRIGHT,
Farmer
Fairview, Missouri

J. S. GABEL,
Business Man
Lincoln, Nebraska

A. E. RIDDLEBARGER,
Farmer
Nampa, Idaho



J. N. DRESHER,
Carpenter
McPherson, Kansas

W. H. YODER, Pastor
Morrill, Kansas

R. C. STROHM, Grocer
McPherson, Kansas

L. J. SMITH,
Farm Manager
Morrill, Kansas

D. P. NEHER, Farmer
McCune, Kansas

E. A. MARKEY, Florist
Warrensburg, Missouri

J. H. FRIES, Teacher
McPherson, Kansas

F. A. VANIMAN,
Banker
Vice President
McPherson, Kansas

RAY S. WAGONER
Field Secretary
McPherson, Kansas



M. C. Song

Arise now ye sons of old M. C.
Stand firm with true courage and strong;
Our college inspires our allegiance
Now raise high her colors with song.
Faithful now to our dear alma mater
We must stand brave and true for her fame
Till all through the world shall be lauded
With glory and honor her name.

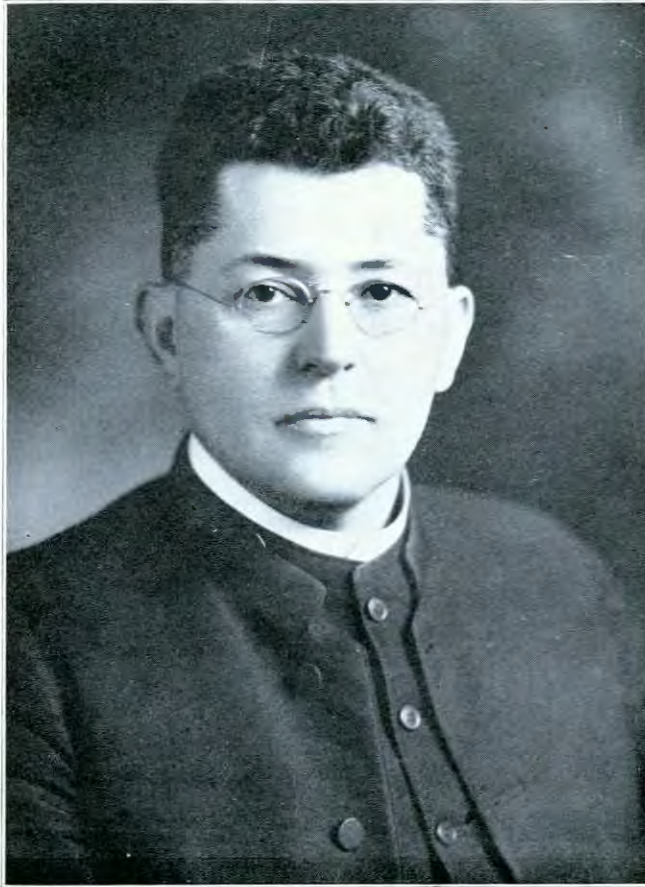
CHORUS:

M. C. M. C.
Follow her standard of truth, life, and light!
M. C. M. C.
Wave proudly her colors the dear red and white!
Now onward and upward M. C. we support thee
Go forward to victory.

Press on heart to heart for McPherson
Let her light shine abroad through the land;
Let the work of her sons and her daughters
Be noble and pure and grand
Let no blot mar her name on our annals
But contend for her honor—Be strong!
Press on—let no foe ever vanquish
For to her doth victory belong.

—Nellie V. Derrick.





DANIEL WEBSTER KURTZ

D. D. 1911, Juniata College.
B. D. *magna cum laude*, 1908, Yale University.
A. M. 1908, Yale University.
A. B. 1905, Juanita College.
Student in universities of Leipzig, Berlin, and Mar-
burg.
Professor of Greek, 1909- 1910, Juniata College.
Pastor First Church of the Brethren, Philadelphia,
1910-1914.
*President of the College, Professor of Philosophy
and Dean of the Bible School.*





HENRY JACOB HARNLY
 Ph. D., 1900, Illinois Wesleyan
 A. M., 1892, Illinois Wesleyan
 A. B., 1892, Harvard University
 B. S., 1891, Illinois Wesleyan
 1910-1911, Leland Stanford University
*Dean of the College
 and Professor of Physiology
 and Bionomics.*



AMANDA FARNESTOCK
 B. D., 1917, McPherson College
 A. B., 1916, McPherson College
 B. S. L., 1903, McPherson College
*Instructor in Bible
 and Dean of Women.*



ELMER LeROY CRAIK
 Ph. D., 1922, University of Kansas
 A. M., 1916, University of Kansas
 A. M., 1911, McPherson College
 A. B., 1910, McPherson College
*Professor of History
 and Political Science
 Secretary of the Faculty*



JOSEPH J. YODER
 A. B., 1913, McPherson College
*Professor of Bible
 and Social Science.
 Business Manager and
 Treasurer of the College.*



JOHN ALVIN BLAIR
 A. M., 1918, University of Kansas
 A. B., 1917, University of Kansas
*Professor of Education
 and Psychology; Registrar.*





ELLIS M. STUDEBAKER
A. M., 1921, University of
Chicago
A. B., 1915, McPherson Col-
lege
*Professor of Greek
and N. T. Interpretations.
Director of Religious
Extension.*



JOHN WILLARD HERSHEY
M. S., 1910, Pennsylvania
College
B. S., 1907, Pennsylvania
College
Requirements for Ph. D.,
partially completed.
Professor of Chemistry



ROBERT ELLSWORTH MOHLER
M. S., 1917, Kansas State
Agricultural College
1913, Michigan Agricultural
College
A. B., 1912, Mount Morris
College
B. S. D., 1907, McPherson
College
*Professor of Agriculture;
and Dean of Men.*



BARTEL EDWARD EBEL
A. M., 1910, University of
Kansas
A. B., 1909, McPherson Col-
lege
*Professor of Ancient
and Modern Languages.*



CHARLES STEPHEN MORRIS
A. M., 1915, Ohio State Uni-
versity
A. B., 1913, Manchester Col-
lege
*Professor of Mathematics
and Physics*





HARVEY HARLOW NININGER
A. M., 1916, Pomona College
A. B., 1914, McPherson College
*Professor of Biology
and Curator of the Museum.*



JOHN WILBY DEETER
B. D., 1918, Yale University
A. B., 1913, McPherson College
Professor of Theology.



MARY EDITH MCGAFFEY
A. M., 1919, University of
Kansas
A. B., 1918, McPherson College
Professor of English.



MAURICE A. HESS
A. M., 1917, University of
Pennsylvania
A. B., 1914, Ursinus College
*Principal of the Academy
and Debate Coach.*



HOWARD V. PATTERSON
B. S., 1920, Kansas State
Normal
*Professor of
Industrial Education.*





J. HOWARD FRIES
1913, Graduate, Cambrian
Business College
*Superintendent of
Commercial School;
Assistant Business Manager
and Treasurer.*



JESSIE BROWN
1913-1914 Student in Royal
Conservatory, Leipzig,
Germany
B. M., 1910, Bethany Con-
servatory
*Director of
Piano School.*



MINNIE WALTERS
1920-1921 Graduate Student
Oklahoma A. and M. Col-
lege
B. S., 1910, Oklahoma A.
and M. College
*Professor of
Home Economics*



ALVHH RAY LAUER
A. B., 1922, McPherson Col-
lege
B. M., 1921, Bethany College
1917, Graduate Palmer Col-
lege. Student in Paris
*Professor of
Violin and Theory of Music*



MRS. J. W. DEETER
1919 Student in Chicago
1915-1918 Student in New
Haven
B. S. D., 1913, McPherson
College
Instructor in Art





ALMA GLADYS ANDERSON
1921 Graduate Student Uni-
versity of Kansas
A. B., 1920, McPherson Col-
lege
*Instructor in
English and Expression*



FORREST WILLIAM GAW
Student in Grosch School of
Music
Student in New York City
*Director of
Vocal School*



LOLA M. HILL
A. B., 1921, McPherson Col-
lege
*Instructor in
German and English.*



E. J. UNRUH
1917 Graduate Wichita Bus-
ness College
1916 Graduate Commercial
Department McPherson
College
*Instructor in
Shorthand and Typewriting*



ARTHUR C. LONBORG
L.L. B. 1921, University of
Kansas
Athletic Coach



C. RAY KEIM
A. B. 1918 Manchester Col-
lege
B. Accts, 1917
*Instructor in
History and Psychology*





ELSIE KLINKERMAN
1922 Graduate Artist Course,
Bethany
B. M. 1921, McPherson Col-
lege
*Instructor in
Piano*



MARGARET WALTERS
1918 Riverside Library
School
B. S. State College of Okla-
homa
Librarian.



RAY S. WAGONER
Field Secretary.



LORA TROSTLE
Matron Arnold Hall.



H. F. RICHARDS
B. D. 1919, Bethany Bible
School
A. B. 1918, Manchester Col-
lege
College Pastor.



FANNIE MCGAFFEY STOVER
Matron Kline Hall.



Faculty Assistants

Assistant Librarian.....	Grace Crumpacker
Secretary to the President.....	LeRoy Doty
Office Stenographer.....	Estella Engle
Office Stenographer.....	Miriam Wenrick
Agriculture.....	Herkle Wampler
Biology.....	Foster Hoover
Biology.....	Roy C. Kinzie
Biology.....	Elsie Forney
Chemistry.....	M. Wilson Penland
Chemistry.....	Eulah Crumpacker
Chemistry.....	Carl Schneider
Chemistry.....	Paul Sargent
English.....	John Mohler
Industrial Art.....	Mark Neher
Physics.....	Hervey McClelland
Physics.....	Earl Fisher
Physics.....	Jay Eller
Girls' Physical Training.....	Isabel Knaus
Boys' Physical Training.....	Orville Pote





The Student Council

Ira Brammell	President
David Brubaker....	Vice-President
Reetha Studebaker.....	Reporter
Rowena Vaniman.....	Secretary
Harlan Yoder.....	Treasurer

Class Representatives

COLLEGE:

Clyde Rupp	Senior	Reetha Studebaker ..	Sophomore
Rowena Vaniman	Senior	LeRoy Doty	Sophomore
David Brubaker	Junior	*Laura McGaffey	Freshman
Helen Elliott	Junior	*Abraham Kliever ...	Freshman

*Succeeded by Rose Turcotte and Abram Hostetter

ACADEMY:

Franklin Evans	Senior	Merle Stouder	Sophomore
Viola Bowser	Junior	Theodore Dell	Freshman

Henry Stover	Post Graduate
Emmert Pair	Fine Arts
Percy McCarty	Commercial
J. W. Hershey	Faculty
J. W. Deeter	Faculty



The Student Council

During the past year the Student Council has attempted to determine and put into effect the will of the student body. In this attempt there has been a splendid response from the student body and also a complete co-operation on the part of the members of the Council. Two dramatic numbers and one oratorical contest were added to the events of the Student Activity Ticket this year which were greatly appreciated. Permanent recognition was given to the cheer leaders this year, consisting of a sweater for the gentleman leader and a middy for the lady. A movement was also started to secure a printing press for the council which could care for all the printing of the College except the Spectator and the College bulletin. The Student Council is assuming greater responsibility each year and promises to be a very satisfactory organization for promoting student interests on the campus.

Events of Student Activity Ticket

Football:

Baker
Bethel
Hays
Bethany
Marion
Southwestern

Lectures:

J. Smith Damron
Dr. Stephens
Dr. D. W. Kurtz

Basketball:

Southwestern
Bethel
Kansas Wesleyan
Hays (two games)
Bethany
Fairmount

Concerts:

Duggin Recital
Choral Society
College Orchestra

Oratorical Contest

All School Party—Hallowe'en

Dramatic:

Thespian Club
Dramatic Arts Class

College Debates:

Kansas Wesleyan
Bethany
Sterling
State Championship, with
Fairmount

Academy Debates:

Bethel
Central

Track:

Bethany

Tennis:

Bethany





Classes





Post Graduates

HENRY R. STOVER
A. B. McPherson College '18

C. RAY KEIM, A. M.
A. B. Manchester College '18

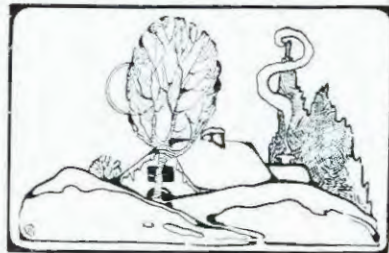
MRS. C. RAY KEIM
A. B. Manchester College '18

SAMUEL EBBERT
A. B. McPherson College '20

LON H. EAKES
A. B. Emery University 1897

SAYLOR J. NEHER
A. B. McPherson College '21

LOLA M. HILL
A. B. McPherson College '21



P. ROY BRAMMELL, A. B.
Ozawkie, Kansas

MAJOR—HISTORY

Associate Editor Spectator 2; Men's Glee Club, 2, 3; College Male Quartet 2, 3, 4; Choral Society 1, 2, 3, 4; College Mixed Quartet 4; Music Club 4; Basketball Squad 2; Track 1, 2, 3, 4; Captain 3; Y. M. C. A. Cabinet 4; Senior Operetta Cast; Class President 3, 4; M Club 3, 4.

Great thoughts, great feelings, come to him like instincts, unawares.

CLARENCE EARL FISHER, B. S.
Fruitland, Idaho

MAJOR—MATHEMATICS

College Male Quartet 4; Choral Society 2, 3; Music Club 4; Class Vice-president 1; Y. M. C. A. Cabinet 3; Business Manager Baseball 2; Junior Play 3; Physics Assistant 3, 4; Senior Operetta Cast.

Fearless as the strong-winged eagle.

MARIETTA BYERLY, A. B.
Elk City, Oklahoma

MAJOR—MATHEMATICS

Choral Society 1, 2, 3, 4; Y. W. C. A. Cabinet 1, 2; Class Secretary 4; Senior Operetta Cast.

Man delights not me, nor woman either.

CLYDE H. RUPP, A. B.
Flowella, Texas

MAJOR—ENGLISH

Class Treasurer 4; Basketball 1, 3, 4; Baseball 2, 3; Football 3; Photograph Manager Quadrangle 4; Student Council 4; Y. M. C. A. Cabinet 4; M. Club 3, 4.

*'Twas glory once to be a Roman,
'Tis glory now to be a man.*

MARYE C. ANDES, A. B.
Ft. Defiance, Virginia

MAJOR—MODERN LANGUAGE

Entered Senior year; Senior Operetta Cast; Philomathean 4.

The blushing beauties of a modest maid.

ROBERT OSCAR BLOUGH, B. S.,
A. B.

Waterloo, Iowa

MAJOR—AGRICULTURE, CHEMISTRY

Entered Senior year; Secretary A. T. A. 4; Senior Operetta Cast; Associate Editor, Quadrangle 4.

I'm standing on the verge of a great-career; will someone please push me off?





HARRY BOWERS, A. B.

McPherson, Kansas

MAJOR—MUSIC

Entered Sophomore year: Pianist College Male Quartet 2, 3; M. C. Symphony Orchestra 2; Pianist Ladies' Glee Club 3; Pianist Music Club 4; Choral Society 2, 3, 4; Junior Play 3; Pianist Senior Operetta; Senior Play.

Vaulting ambition which o'erleaps itself.

STELLA BOWMAN, A. B.

Quinter, Kansas

MAJOR—CHEMISTRY

Vice-president A. T. A. 3; Student Extension Committee 3; Volunteer Band 4; Senior Operetta.

A thing inconstant and changeable ever is woman.

EVERETT WM. BRAMMELL, A. B.

Ozwakie, Kansas

MAJOR—EDUCATION

College Band 2, 3; Annual Staff 1, 2; Choral Society 3; Vice-president A. T. A. 4; Spectator Staff 2; Assistant Business Manager Quadrangle 4; Senior Operetta.

Tho' modest, on his unembarrassed brow nature has written—Gentleman.

IRA N. H. BRAMMELL, A. B.

Ozwakie, Kansas

MAJOR—MATHEMATICS

Class President 2; Choral Society 2, 3, 4; Y. M. C. A. Cabinet 3; Basketball Squad 1, 2; Football Squad 3; Track 1, 2, 3, 4; Captain 2; Manager 3; Student Council 3, 4; President Student Council 4; M. Club 3, 4; President Fahnstock Hall Governing Body 3, 4; Senior Operetta; Senior Play Cast.

He'll suit his hearing to the hour, laugh, listen, learn or teach.

JESSIE F. BREON, A. B.

Portis, Kansas

MAJOR—BIBLE

Entered Junior Year: Mission Band Reporter 4; Senior Operetta.

A laugh is worth a hundred groans in any market.

GLADYS BRUBAKER, A. B.

McPherson, Kansas

MAJOR—HOME ECONOMICS

Class Reporter 2; Y. W. C. A. Cabinet 4; Senior Operetta.

A quiet little body with a mind of her own.



D. ELMER BRUNK, A. B.
McPherson, Kansas

MAJOR—HISTORY

Track and Field 1; Football 2, 3; Junior Play 3; Senior Operetta.

There is none like him, none.

JESSIE CARTER, A. B.
Lyons, Kansas

MAJOR—ENGLISH AND EXPRESSION

Thespian Club 3, 4; Junior Play 3.

Woman is a miracle of divine contradictions.

RAYMOND STANLEY CLARK,
A. B.

McPherson, Kansas

MAJOR—HISTORY AND SCIENCE

Football 1, 2, 3; Captain 2, 3; Track 1, 2; Vice-president M Club 4; President M Club 4; Thespian Club 4; Junior Play 3; Senior Operetta Cast; Senior Athletic Manager 4; Senior Play Cast.

I find that nonsense at times is singularly refreshing.

ADA CORRELL, A. B.
Abilene, Kansas

MAJOR—ENGLISH

Class Secretary 2; Choral Society 2, 4; Y. W. C. A. Cabinet 2, 3; President Y. W. C. A. 1; Assistant English 3; Debate Club 4; Senior Operetta Cast.

There is a majestic grandeur in tranquility.

HAROLD G. CORRELL, A. B.
Abilene, Kansas

MAJOR—EDUCATION

Choral Society 1, 2; Y. M. C. A. Cabinet 3; President Y. M. C. A. 4; Senior Operetta.

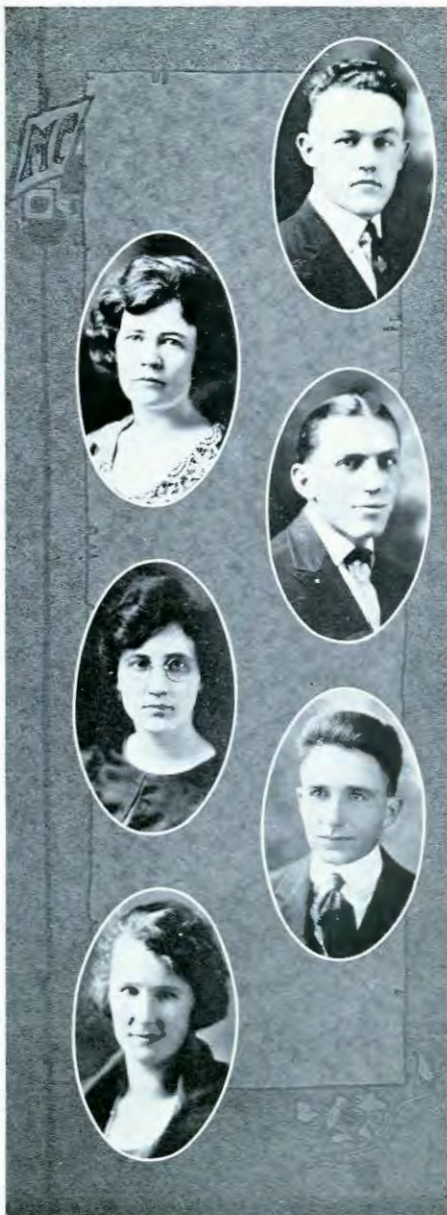
Doing nothing with a deal of skill.

RUTH CRIPE, A. B.
McPherson, Kansas

MAJOR—ENGLISH

Basketball 1, 2, 3; Captain 2, 3; Student Council 2; Spectator Staff 3; President Girls' Pep Club 3; Athletic Board 3; Thespian Club 4; Y. W. C. A. Cabinet 4; Class Historian; Quadrangle Artist 4; Senior Play Cast.

Human nature is fond of novelty.





EULAH CRUMPACKER, A. B.
McPherson, Kansas

MAJOR—CHEMISTRY
Chemistry Assistant 3, 4; Senior Operetta;
Senior Play Cast.
While I breathe, I hope.

GRACE F. CRUMPACKER, A. B.
McPherson, Kansas

MAJOR—EDUCATION
Mission Band; Assistant Librarian 4; Senior
Operetta.
Patience is the key of content.

MARIE CULLEN, A. B.
McPherson, Kansas

MAJOR—ENGLISH
College Ladies' Quartet 1, 2; Ladies' Glee
Club 1, 2, 3; Y. W. C. A. Cabinet 4;
Senior Operetta Cast 1; Thespian Club
4; Music Club 1; College Mixed Quar-
tet 4; Senior Play Cast.
*When joy and duty clash,
She lets duty go to smash.*

IVA WILDA CURTIS, A. B.
McPherson, Kansas

MAJOR—ART
Y. W. C. A. Cabinet 1; Senior Operetta.
*And mistress of herself, tho' China
fall.*

WILLA F. DAVENPORT, A. B.
McPherson, Kansas

MAJOR—HOME ECONOMICS
College Orchestra 1; Assistant Home Econom-
ics 4; Senior Play Cast.
*And not o'erstepping the bounds of
modesty.*

ETHEL GERTRUDE DAVIS, A. B.
Boulder, Colorado

MAJOR—HISTORY
Entered Senior year.
A lass with quaint and quiet ways.



CARL DELL, B. S.
Beatrice, Nebraska

MAJOR—AGRICULTURE

Men's Glee Club 3; Music Club 1; Oratorical Association 4; Senior Operetta Cast.

Don't be afraid to bend, Carl; you won't break—Virgemo.

ISAAC DIRKS, A. B.
Buhler, Kansas

MAJOR—EDUCATION

Vice-President Debate Club 4; Oratorical Association 4; College Debate Team 1, 4.

Because I will not do the wrong to mistrust any, I will do myself the right to trust none; I will live a bachelor.

ORA EAVEY, A. B.
Morrill, Kansas

MAJOR HOME ECONOMICS

Entered Senior year; Senior Operetta.

Modest humility is beauty's crown.

KATIE HIEBERT EBEL, A. B.
McPherson, Kansas

MAJOR MODERN LANGUAGE

A perfect woman, nobly planned,

To warn, to comfort, and command.

ESTELLA IRENE ENGLE, A. B.
Hope, Kansas

MAJOR MODERN LANGUAGE

Choral Society 1, 2, 3, 4; Ladies' Glee Club 3; Music Club 4; Spectator Staff 3; Junior Play 3; Office Stenographer 1, 2, 3, 4; Editor Quadrangle 4; Senior Operetta Cast.

The mere aspiration is partial realization.

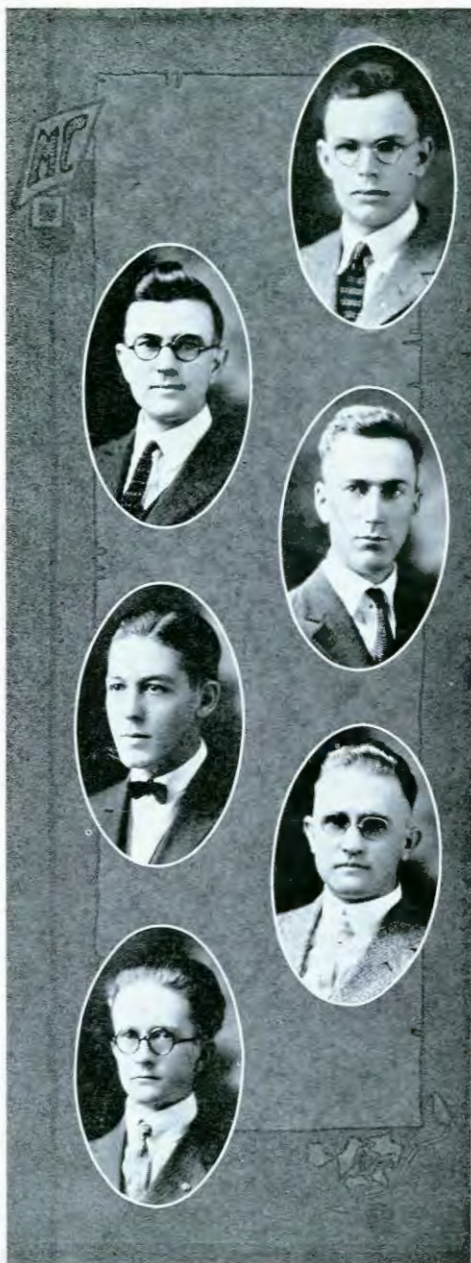
NAOMI E. FASNACHT, A. B.
Wiley, Colorado

MAJOR—EDUCATION

Y. M. C. A. Cabinet 3; Choral Society 1, 2, 3; Mission Band; Spectator Staff 4; Senior Operetta Cast.

Nothing endures but personal qualities





LEWIS W. FLORMAN, B. S.
McPherson, Kansas

MAJOR—MATHEMATICS
President Radio Club 1; Senior Operetta;
Senior Play Cast.

*True merit, like a river; the deeper
it is the less noise it makes.*

O. T. FUNKHOUSER, A. B.
Winchester, Virginia

MAJOR—AGRICULTURE
Entered Junior year. President Anti-Tobacco
Association 3.

"Marg's" little lamb.

JESSE HOWARD GARVEY, A. B.
Leeton, Missouri

MAJOR—EDUCATION
Forum 3; Philomathean 4; Debate Club 1, 2;
Student Ministers' Association 1, 2, 3,
4; Mission Band 1, 2, 3, 4; Men's Glee
Club 1, 2, 3; Choral Society 1, 2, 3, 4;
Music Club 4; Baseball 3; M Club 4;
Y. M. C. A. Cabinet 1; College Mixed
Quartet 4; Senior Operetta Cast; Senior
Play Cast.

A lengthy discourse on man.

FOSTER S. HOOVER, A. B.
McPherson, Kansas

MAJOR—BIOLOGY
Student Council 1; Basketball 1, 2; Captain
2; Football 1, 2, 4; M Club 2, 3, 4;
Biology Assistant 2, 3, 4; Y. M. C. A.
Cabinet 2, 3; Business Manager Spec-
tator 3.

I came, I saw, I conquered.

ROY P. HYLTON, A. B.
McPherson, Kansas

MAJOR—PHILOSOPHY AND THEOLOGY
President Mission Band 4; Senior Operetta;
Senior Play Cast.

*Long is the way through precepts;
short and effective through ex-
ample.*

GLENN ANDREW JOHNSON, A. B.
McPherson, Kansas

MAJOR—PHILOSOPHY
President Debate Club 3; Y. M. C. A. Cab-
inet 3; Art Editor Quadrangle 3; Sen-
ior Operetta; Senior Play Cast.

*Fine manners, like personal beauty,
are a letter of credit everywhere.*



ADA PEARL KURTZ, A. B.
Hartville, Ohio

MAJOR-HISTORY

Entered Junior Year. Secretary Debate Club
4; Secretary Oratorical Association 3;
Y. W. C. A. Cabinet 3, 4; Choral Society
3, 4; Senior Operetta; Senior
Play Cast; Fellow to K. U.

*With too much quickness ever to be
taught*

*With too much thinking to have com-
mon thought.*

CLAUDE OWEN LOWE, A. B.
McPherson, Kansas

MAJOR HISTORY

Entered Junior year. Junior Operetta 3;
Senior Operetta; Senior Play Cast.

Wisdom is better than wealth.

CECILE MARTIN, A. B.
McPherson, Kansas

MAJOR-HISTORY AND ENGLISH

Y. W. C. A. Cabinet 4; Senior Operetta.

Pending suit.

SAMUEL A. MAUST, A. B.
Waterloo, Iowa

MAJOR-HISTORY

College Orchestra 3; College Band 3; Men's
Glee Club 3; Choral Society 3; Winner
local A. T. A. Oratorical Contest 3;
President Oratorical Association 4; De-
bate Club 1; Senior Operetta.

I am the very pink of courtesy.

HERVEY H. McCLELLAND, A. B.
McPherson, Kansas

MAJOR MATHEMATICS

Fabnestock Governing Body 2; Physics As-
sistant 1, 2, 3, 4; Business Manager
Senior Play 4; Senior Operetta; Senior
Play Cast.

*Things won't turn up in this world
until someone turns them up.*

FLORENCE E. MOHLER, A. B.
Leeton, Missouri

MAJOR MATHEMATICS

Choral Society 1; Senior Operetta Cast.

*As lamps burn silent with uncon-
scious light*

*So modest ease in beauty shines most
bright.*





JOHN L. MOHLER, B. S.
Leeton, Missouri

MAJOR - CHEMISTRY

Men's Glee Club 2; Y. M. C. A. Cabinet 3;
Mission Band; Student Ministers Association;
Debate Club; Spectator Staff
3; English Assistant 4; Senior Operetta;
Senior Play Cast.

*A man, like a watch, is to be valued
for his manner of going.*

MARY ALICE MOHLER, A. B.
Leeton, Missouri

MAJOR - BIOLOGY

Debate Club; Senior Operetta.

*A face with gladness over-spread
Soft smiles by human kindness bred.*

ANNA L. MYERS, A. B.
McPherson, Kansas

MAJOR HOME ECONOMICS

Class Basketball Team 2, 1; Senior Operetta;
Senior Play Cast.

*A quiet mediocrity is still to be preferred
before a troubled superfluity.*

MILO NICE, B. S.

Columbus, Kansas

MAJOR - CHEMISTRY

*He wears his faith but as the fashion
of his hat;
It ever changes with the next
block.*

HARRY NICKEL, A. B.
Hillsboro, Kansas

MAJOR - CHEMISTRY

Entered Senior Year; Radio Club 1; Philomathean 4; Spectator Staff 4; Senior Operetta; Senior Play Cast.

*If I take care of my character, my
reputation will take care of itself.*

M. WILSON PENLAND, B. S.
McPherson, Kansas

MAJOR - CHEMISTRY

Chemistry Assistant 4.

Puzzle of critics.



ORVILLE D. POTE, A. B.

Ripley, Oklahoma

MAJOR HISTORY

Student Council 2; English Assistant 2; Editor Spectator 3, 4; Physical Training Assistant 4.

The men who make history have no time to write it.

"UNKNOWN" Strayed into the institution and got mixed with the Seniors.

PAUL E. SARGENT, A. B.

Fruitland, Idaho

MAJOR CHEMISTRY

Basketball 3, 4; Captain 3; Football 4; Music Club 4; Assistant Business Manager Spectator 4; Sport Editor Quadrangle 4; M Club 3, 4; Chemistry Assistant 4; Junior Play 3; Senior Operetta Cast; Senior Play Cast.

That tower of strength, which stood four-square to all the winds that blew.

CLARENCE SHOWALTER

Died December 3rd, 1922.

We remember Clarence for his wholeheartedness, his friendship and his devotion to duty.

FANNIE McGAFFEY STOVER,

A. B.

McPherson, Kansas

MAJOR PHILOSOPHY AND THEOLOGY

Matron Kline Hall 3, 4; Senior Operetta.

The surest pledge of a deathless name

Is the silent homage of thought unspoken.

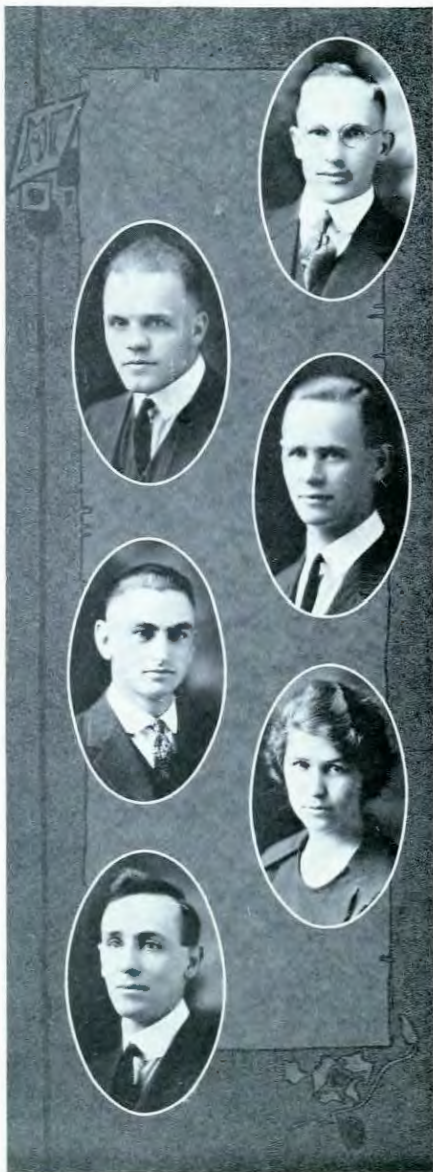
MELVIN E. TETER, A. B.

Carleton, Nebraska

MAJOR PHILOSOPHY AND THEOLOGY

Secretary-treasurer Student Ministers Association 2, 4.

For he who is honest is noble, whatever his fortune or birth.





D. RAY VANIMAN, B. S.
Cordell, Oklahoma

MAJOR—AGRICULTURE
Physical Training Assistant 2; Track 1, 2,
3, 4; Track Manager 4; Senior Oper-
etta.

*One ear heard it, and at the other,
out it went.*

ROWENA VANIMAN, A. B.
McPherson, Kansas

MAJOR—ENGLISH
Junior Play 3; Senior Operetta Cast: Y. W.
C. A. Cabinet 2, 3; Student Council 3, 4;
Thespian Club 3, 4; Senior Play Cast.

*A sunny temper gilds the edges of
life's blackest clouds.*

W. ELLIS WATKINS, A. B.
Enterprise, Kansas

MAJOR—CHEMISTRY
Entered Junior year; Radio Club 4; Debate
Club 4; Philomathean 4; Choral Soci-
ety 4; Senior Operetta.

A man's a man for a' that.

JACOB H. YODER, A. B.
Carleton, Nebraska

MAJOR HISTORY
College Orchestra 1, 2, 3, 4; College Band
2, 3; Choral Society 3, 4; Music Club
4; Men's Glee Club 3; Secretary Anti-
Tobacco Association 3; Student Min-
isters' Association; Senior Operetta
Cast; Senior Play Cast.

*Hope against hope and ask until you
receive.*

MABLE BRUBAKER, A. B.
McPherson, Kansas

MAJOR—HOME ECONOMICS
Y. W. C. A. Cabinet 3; Secretary I. P. A. 1.
*It is well to think well; it is divine
to act well.*

P. R. LANGE, A. B.
Buhler, Kansas

MAJOR HISTORY
Entered Senior year.
Let us be judged by our deeds.



BEULAH HELSTROM, B. S.

McPherson, Kansas

MAJOR—HOME ECONOMICS

A woman's strength is most potent when robed in gentleness.

MARK ELLER NEHER, B. S.

Leeton, Missouri

MAJOR—AGRICULTURE

Treasurer A. T. A. 1; Vice-president Debate Club 2; Choral Society 2, 4; Manual Training Assistant 4; Senior Operetta.

Who conquers me shall find a stubborn foe.

JOHN W. DAGGETT, B. S.

Independence, Kansas

MAJOR—AGRICULTURE

Y. M. C. A. Cabinet 4.

With just enough learning to misquote.

BERNICE MORRISON, B. S.

Canton, Kansas

MAJOR—CHEMISTRY

Entered Senior year. Choral Society 4; Senior Operetta.

Women are ever in extremes; they are either better or worse than men.

ADELYN ANDERSON

McPherson, Kansas

MAJOR—ENGLISH

Thou, who hast the fatal gift of beauty.

INEZ HEASTON

MAJOR—ENGLISH

The wants of woman are an unknown quantity.

LEONARD J. FRANZ, A. B.

Inman, Kansas

MAJOR—HISTORY

Entered Senior year.



The Quadrangle-1923



Just from the tree



continued

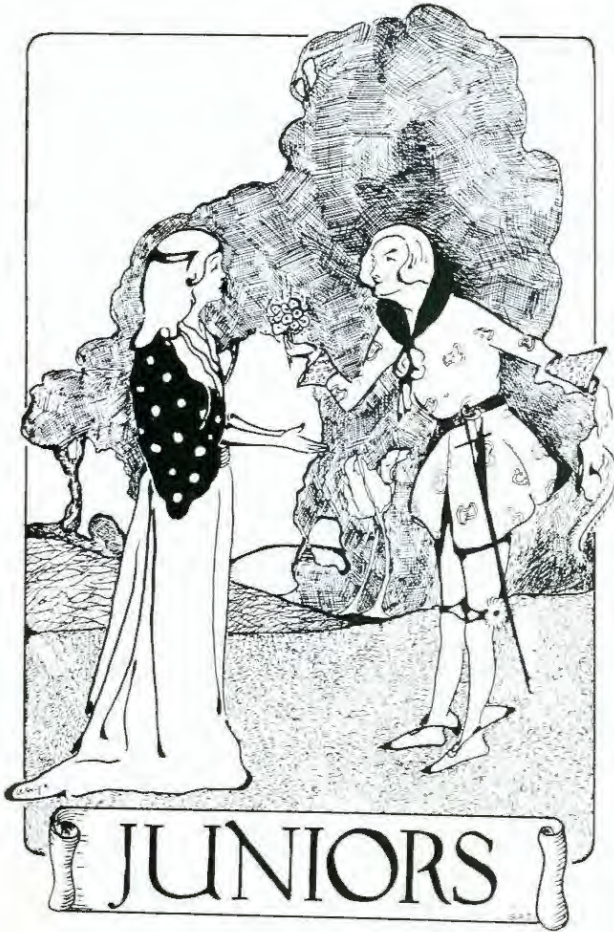


Stumped



Jerry-







Junior

David Brubaker	President
Winona McGaffey	Vice-President
Helen Elliott	Secretary
Rufus Daggett	Treasurer
Hazel Vogt	Reporter
Sanger Crumpacker	Athletic Manager
Harold Barnes	Cheer Leader
Dr. Craik	Faculty Adviser

Motto: "For value received we promise to pay."

Colors: Purple and White.

Flower: Purple Violet.



Junior

For pep, perserverance, and co-operation, the Juniors are unexcelled. The Junior class represents all classes of students in school which are combined in one solid mass of fire for M. C. They have the courage of Demosthenes, the fearlessness of Napoleon, and the tenacity of a Bull Dog. The Junior boys carried off the honors in the Inter-class Basketball tournament and the Junior-Senior girls accomplished the same feat. The boys of this class won the class meet last year also.

The Junor class, although not so large in number, has proved itself. It has shown great initiative in getting out of the old rut, leaving old customs behind and trying many new things. The juniors are an original, progressive bunch of which McPherson College may well be proud.

The Class

L. L. Alger
 Eunice Almen
 Harold Barnes
 Ruth Betts
 Vilas Betts
 Wm. Bishop
 Calvin Boggs
 David Brubaker
 Everett Brubaker
 Helen Burkholder
 Sanger Crumpacker
 Myri Curtis
 Garman Daron
 Della Day
 Rufus Daggett
 Grace Ebaugh
 Wallace Elkins
 Helen Elliott
 Elmer Enns
 Sumner Eshelman
 Rhea Fast
 Neva Fishburn
 Mildred Fisher
 Ursula Flory
 Elsie Forney
 Warren Gish
 Esther Hawkins
 Mabel Heckethorn
 Margaret Heckethorn

John Harnly
 P. N. Hiebert
 Carol Hills
 Irvin Ihrig
 Helen Jacobs
 Isabel Knaus
 Wava Long
 Earl Marchand
 Winona McGaffey
 Leland Moore
 Lota Neher
 Ralph Olsson
 Doris Plum
 Theodore Robb
 Lloyd Runyon
 Carl Schneider
 Dale Strickler
 Nellie Tecter
 Lila Tecter
 L. G. Templeton
 Mrs. L. G. Templeton
 Omer Vanscoyoc
 Hazel Vogt
 Ray Wagoner
 B. F. Waas
 Gladys Waas
 Gertrude Witmore
 Harlan Yoder





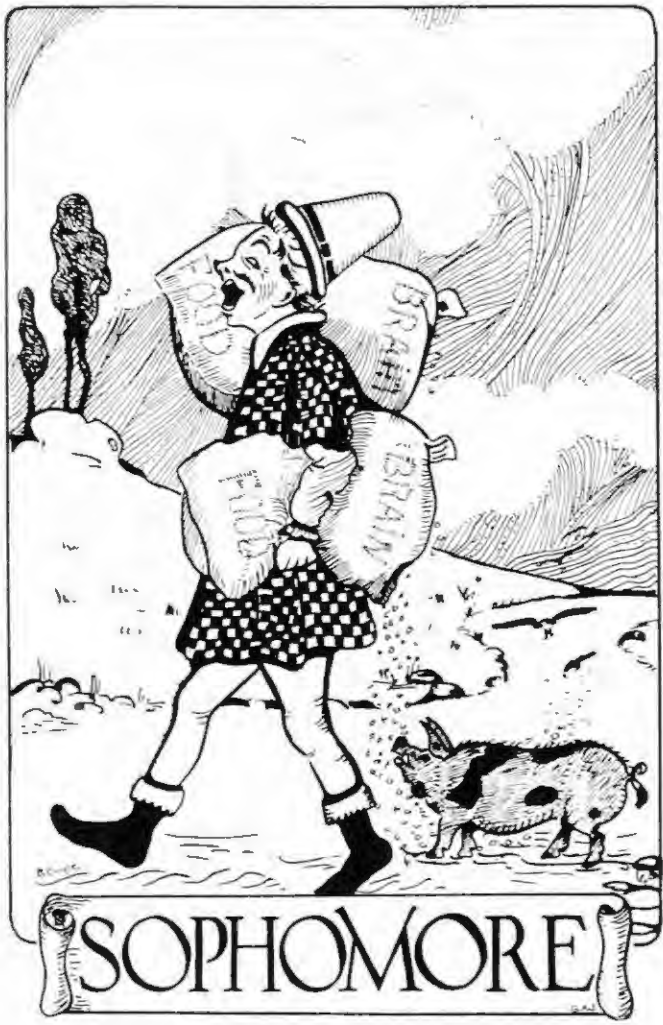
Washerwomen

well balanced.

Just imagine!

Kline Statuary





The Quadrangle-1923



Sophomore

LeRoy Doty.....	President
Ocie McAvoy.....	Vice-President
Mabel Hoffman.....	Secretary
Glade Fisher.....	Treasurer
Prof. Mohler.....	Faculty Adviser

Motto: Not on the heights, but climbing

Colors: Green and gold

Flower: White Rose



Sophomore

To take from McPherson College its illustrious name only one thing need be done—subtract the activities which come from the sophomore class, the Class of '25. An enumeration of these activities is almost impossible but for your benefit we give you its record. More than half of the first team in football were sophomores. Basketball and track, orchestra and glee clubs, Quadrangle and Spectator were also represented by this class. The boys' cheer leader for 22-23 and the girls' cheer leader for 23-24 are sophomores. In fact no M. C. activity can be mentioned in which this illustrious and talented class does not shine. We have the ability; we have the brains; and we have the fun.

Early in September the class of seventy-two members hiked to the second sand pit for a jolly good time and the renewal of acquaintances. Then the class worked. How it did work, until one day Cupid said, Hie ye, to Harnly Hall to find your "Heart." It went—it found—it grew. Juniors!

The Class

Velma Bailey	Earl Linholm
Jessie Ball	Vivian Long
Harold R. Barton	Ruth Martin
Lola M. Berg	Mayme Matson
Frank D. Boone	Ocie McAvoy
W. Earl Breon	Laura McGaffey
Mildred Carpenter	Irene Miller
Sada Correll	Lola Miller
Dorothy Doane	Alta Mohler
LeRoy Doty	Rose Mohler
Jay Eller	Earl F. Morris
Olin Ellwood	Lester Ogden
Grace Fike	Emmert Pair
Sarah Fike	Bernice Peck
Glade Fisher	Della Prather
Ralph Garman	Elvis Prather
Maude Gish	Arno Rodes
Helen Hartell	Doris Ring
Chressie Heckman	Evelyn Roberts
Marathon High	Curtis Ruthrauff
Addie Himes	Lillian Sandy
Ralph Himes	Lucella Serviss
Mabel M. Hoffman	Lucy E. Serviss
Mrs. Maxine Hoover	Edith Slifer
Julia Jones	Welcome Sondergard
Russell Jones	Harold Strickler
Carl V. Johnson	Reetha Studebaker
Richard Keim	Albert Unruh
Stanley B. Keim	Elberta Vaniman
Ruth King	Margaret Wall
Roy C. Kinzie	Leo I. Warner
Kenneth Krehbiel	Herkle Wampler
Milford Kubin	Celia Watkins
Paul Kurtz	Miriam Wenrick
Edward Lawver	Pearl Wiltfong
Lorinda Leatherman	Loretta Yoder





Lindy

concluded

stumped a Bain!

TWINS







Freshmen

S. Milton Dell.....	President
Samuel B. Kurtz.....	Vice-President
Margaret Mikesell.....	Secretary
Lillie Crumpacker.....	Treasurer
Edith Watkins.....	Reporter
William Riddlebarger.....	Cheer Leader
Prof. Lonborg.....	Faculty Adviser

Motto: "Not Sunset, but Dawn".
 Colors: Old Rose and Iron Gray.
 Flower: White Rose.



Freshman

We as a class believe in these words taken from Addison's Spectator. "A just and reasonable modesty does not only recommend eloquence, but sets off every great talent which a man can be possessed of. It heightens all the virtues which it accompanies; like shades in painting it raises and rounds every figure, and makes the colors more beautiful though not so glaring as they would be without." Therefore we will not give an elaborate history but merely the outstanding facts of our existence.

We started in the fall of 1922 as the largest class ever enrolled in the institution and soon were organized and functioning on an efficient basis. We as a class have not done any exceptional things but have taken part in all activities that were open to us and have tried at all times faithfully to live up to the ideals of our institution and always loyally to support the activities of McPherson College.

The Class

Clarence Achilles
 Gladys Adamson
 Jennie Amos
 Cordelia Anderson
 Herbert Aurell
 F. E. Bailey
 Maurice Beam
 Alice Birkin
 Leonard Birkin
 Marie Bradbury
 Wm. Burgin
 Beryl Caldwell
 Frank Correll
 Albert Colburn
 Floyd Cotton
 Jerry Crewse
 Geraldine Crill
 Lillie Crumpacker
 Milton Dell
 Margaret Dirks
 Edna Dunham
 Minnie Edgcomb
 Selma Engstrom
 Opal Enos
 Helen Freeburg
 Paul Freeburg
 Inez Fulton
 Galen Garber
 Dale Garman
 Aenid Gray
 Ruth Green
 Mabel Griffin
 Henry Hahn
 Aubrey Hale
 Laura Hammann

Fonda Harden
 Len Harden
 Ruth Hawkins
 Nina Haws
 Roy Hayes
 Gordon Heaston
 Clio Hill
 Ruth Hill
 Cecil Holloway
 Bernice Hoover
 Abram Hostetter
 Bonnie Huston
 Lester Ingold
 Irene Johnson
 Marlin Kelly
 Dennis Kesler
 Eugene Kistner
 Florence Kittell
 Jessie Kittell
 Florence Kline
 Harold Kreitzer
 Samuel Kurtz
 Charles Lengel
 John Lengel
 Paul Lentz
 Doris Lichty
 Adolf Lonborg
 W. T. Luckett
 H. E. Lundeen
 Rudolph Lundeen
 Dorothy Meyer
 Lois Meyers
 Margaret Mikesell
 Ada Miller
 Ada Morrison

Wm. Mudra
 Thelma Neuenchwander
 Alden Potter
 Pearl Rhine
 Floye Rhodes
 Wm. Riddlebarger
 Lester Reiff
 Harry Riffel
 Mattie Ring
 Virgil Ryberg
 Archie San Romani
 Leslie Sargent
 Olive Sargent
 Lowell Sell
 Mary Sherfy
 Nina Sherfy
 Vivian Spilman
 Sarah Spitzer
 Marvin Stansel
 Vallie Stovall
 Verne Strickler
 Marion Switzer
 Arnold Thornton
 Leonard Timmons
 Ernest Tipton
 Phyllis Toews
 Juanita Tracey
 Merle Travis
 Rose Turcotte
 Edith Watkins
 Ruth Wedel
 Rozella White
 Esther Wilber
 Loretta Zonzker





PRIM-ROSE

Hearts that
beat as one

LONG BLOW

Smiles

close-up

w.b.o.?





ACADEMY





EVELYN LYONS,
Siloam, Arkansas
Class President 1, 2, 3, 4; Play
Cast 1, 4; Choral Society 2, 3.
*Impulsive, earnest, prompt to act
Has made her generous tho't a
fact.*

JOHN SPICER,
Abilene, Kansas
Freshman Cheer Leader 1, Emer-
sonian 1, 2; Vice-president 1;
Fahnestock Hall Governing
Body 2.
Due reward is given to a worker.

ANNA MAY EDGECOMB,
McPherson, Kansas
Emersonian 1, 2; Class Secretary
and Treasurer 2, 3.
Full of pep and a friend to all.

LILLIAN ANDREWS,
Wray, Colorado
Entered Senior year. Athenian.
*She is not the least bit noisy
She likes to study too
She is very, very thoughtful
About all which she must do.*

HELEN CORELL,
McPherson, Kansas
Entered Senior year.
Life is long but I am short.

NORMA FINFROCK,
Darlow, Kansas
Class Cheer leader 4.
*Nobody agrees with me but the
world still moves.*

FRANKLIN EVANS,
Kearney, Nebraska
Academy Debate Club 3; Athen-
ian 3, 4; Student Council 4.
*A "woman hater" tho' you be
She'll get you yet; just wait and
see.*



ETHEL HILL,
Partridge, Kansas
Emersonian 1; Class Vice-President 3; Class Play 4.

She is such a quiet honey sort of girl

Quiet and reserved because she is a thing of pearl.

MINNIE HUTCHINSON,
Thomas, Oklahoma
Emersonian 1; Athenian 2; Student Council 2; Academy Debate Club, 2, 3; secretary-treasurer 2.

Small kindnesses and courtesies give a greater charm to character than the display of great talents.

ROSA KIM,
Moundridge, Kansas
Entered Senior year.

To know her is to love her.

EIMER KREHBIEL,
Castleton, Kansas
Academy debate team 3, 4; Vice-president Debate Club 4; Athenian 3, 4; Choral Society 4; Radio Club 4; Senior Play 4.

He has run a bluff for a considerable time, but he is one cooped chicken. In spite of his negative argument he won her.

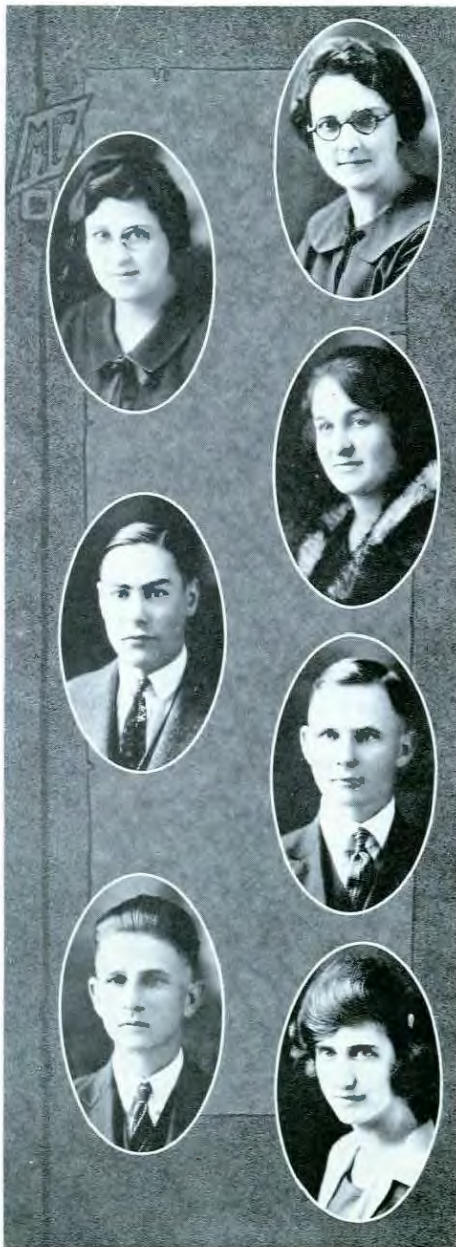
HARRY LEHMAN,
Carlton, Kansas
Emersonian 1, 2; Academy Debate team 3, 4; Senior Play 4; Stock-judging team 4; Academy Debate Club 3, 4; Vice-president 3; President 4; President Athenian Literary Society 4; Student Council 3.

He is ever ready, willing and cheerful; perseverance won her.

HARVEY LEHMAN,
McPherson, Kansas
Emersonian 1, 2; Academy Debate team 3, 4; Stock judging team 4; Academy Basketball 4; Athenian 3, 4; Academy Debate Club 3, 4; Senior Play 4.

There's honesty, manhood, and fellowship in thee.

ANNA LINGLE,
McPherson, Kansas
Ciceronian 1, 2.
Music wins the heart where all else fails.





H. C. LONG,
McPherson, Kansas
"A charge to keep I have."

RALPH MARTIN,
Wiley, Colorado
Academy Debate team 3, 4; Academy Basketball team 3, 4; Academy Debate Club 3, 4; Vice-president 4; Senior Play 4.

He is following the footsteps of his brother.

EVERETT McLELLAND,
McPherson, Kansas
Emersonian 1; Academy Basketball team 4; Captain 4.

He who daily does his best is bound to be successful.

LAURA McCLELLAND,
Emersonian 1; Class Secretary-Treasurer 1; Class reporter 2.
How 'ya gonna keep her away from the farm.

ALICE OLSEN,
Navarre, Kansas
Ciceronian 1, 2; Commercial graduate 1920; Athenian 3, 4.
The noblest mind the best contentment has.

LOYA SHATTO,
Wichita, Kansas
With deeper thoughts and purposes than her care-free air suggests.

GRACE TEETER,
Conway, Kansas
She's not what you'd call talkative.

RUTH WATKINS,
Mont Ida, Kansas
Emersonian 1; Class Vice-president 1, 2.
She hath a kindly spirit and a friendly air.





Junior

Charles SpicerPresident
Mary WhiteneckVice-President
Gladys Fishburn.....Secretary-Treasurer
Prof. Ebel.....Faculty Adviser

Motto: Not on the heights but climbing

Colors: Violet and White

Flower: Violet

The Class

Viola Bowser
Henrietta Eschmann
Minnie Eschmann
Cathyrene Esau
Marie Esau
Carrie Feiler
Gladys Fishburn

Alta Lawver
Ida Lengel
Elsie Orr
Raymond Sitts
Charles Spicer
Walter Voth
Mary Whiteneck





Sophomore

Theodore Baker	President
Marie Brubaker	Vice-president
Jesse Carney	Secretary-Treasurer
Prof. Keim	Faculty Adviser

Colors: Navy blue and Gold

Flower: Pansy

The Class

Clyde Amos	Emma Eschmann
Harold Baker	Frank Hill
Theodore Baker	Fritjoff Mark
Marie Brubaker	Philip Spohn
Jesse Carney	Edgar Stauffer
Hazel Corell	Merle Stouder
Margaret Dresher	Salome Stouder





Freshman

Herbert Martin.....	President
Rachael Dunham.....	Vice-President
Vera Glathart.....	Secretary
Mercie Shatto.....	Treasurer
Miss Lola Hill.....	Faculty Adviser

Motto: A Backbone, Not a Wishbone

Colors: Cerise and Silver

Flower: Old Rose

The Class

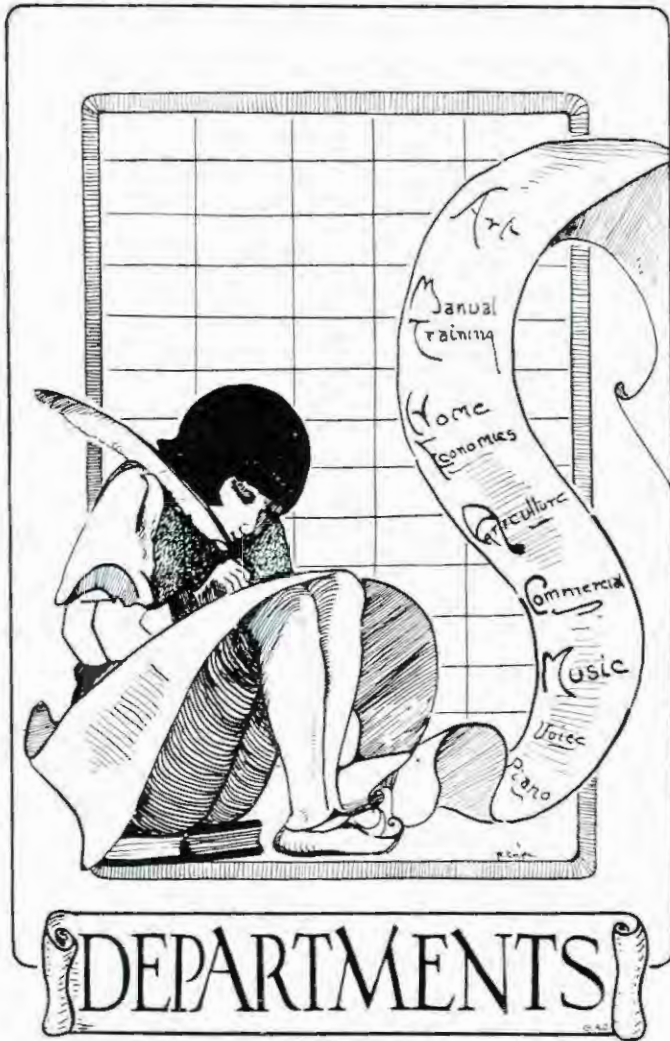
Carl Anderson
 Ted Dell
 Rachael Dunham
 Gerald Eddy
 Alice Elliott
 Carl Eschmann
 Inez Freeburg
 Vera Glathart

Truman Grogan
 Charles Hall
 Addie Johnson
 Herbert Martin
 Cora Sell
 Mercie Shatto
 Leonard Whiteneck



The Quadrangle 1923







Piano

ANNA LINGLE, B. M.
McPherson, Kansas

FERN LINGENFELTER,
Certificate
McPherson, Kansas

HELEN GARST, Diploma
McPherson, Kansas

"There's a soul-robbing thing about music,
A something I can't understand;
That calls out the best that's within us,
And makes a child out of a man.

It lifts us up out of the valley
Where darkness and shadows prolong;
And with a whole-hearted enchantment,
We live on the mountain in song."

—P. Roy Brammell, '23.





Piano

Music is an art which must be considered as an important factor in the history of the world's civilization. The Piano has possibly played a greater part in this development than any other instrument. McPherson College prides herself with having a highly developed Piano Department. The work of this department is up to the standard in every detail. Every year piano recitals are given as a part of the work of the music students. The high class of music that is played at these recitals shows the splendid work that is being done by the Piano Department.

Miss Jessie Brown has been head of the Piano Department for the past several years and has done much to make the department what it is at the present time. Miss Brown has studied under Teischmuller and Fraulein Van Eggers, two of the most noted instructors of the Royal Conservatory at Leipsig, Germany. Miss Brown was also instructor of Piano at the Bethany Conservatory at Lindsborg, Kansas for five years. Her wide study and research well fit her for the position she now holds, and M. C. feels very fortunate to have a piano instructor of such high qualifications.

Miss Elsie Klinkerman ably assists Miss Brown in the Piano Department and in addition teaches Normal Training, Ear Training, and Appreciation of Music. Miss Klinkerman is well qualified for the position she holds. She has a B. M. degree from the Piano Department of McPherson College and a similar degree from the Bethany Conservatory.





Voice

The Vocal School is one of the fast growing departments in McPherson College. Its purpose is to aid students in the development of their vocal capacities through correct methods of breathing, emission, enunciation, intonation, and resonance. Special emphasis is laid upon practice periods so that the student will fall into correct habits of voice control. Only compositions by the best composers are assigned for detailed study; thus the student, along with his vocal training, becomes acquainted with the works by the foremost composers.

Professor Gaw is head of the Vocal School; and it is under his direction that the department has grown so rapidly. Students are taking advantage of Professor Gaw's ability as an instructor, filling his schedule to the limit. A new and better type of music has been introduced, the type with which all college students are expected to be familiar. Professor Gaw has also given much time and attention to quartets, duets, music clubs, choral societies, choruses, etc., and McPherson College is indeed fortunate in having secured his services for another year.





Diolin

The department of Violin Instruction under the direction of Professor Alvhh R. Lauer is a growing department. Fifty students are numbered in this department. Standard courses are offered which are accepted in the Kansas State College Schools of Music at par. Full credit is given for orchestra and violin work.

In addition to the violin instruction, theoretical courses are offered which are the basis of all music. No credit is given for applied music unless it is preceded by some subject in theory. The school year 1922-23 saw thirty students enrolled in the theory department. Professor Lauer is assisted in the school of theory by Miss Elsie Klinkerman, assistant in the Piano school, and by Professor F. W. Gaw, head of the Vocal school.



Home Economics

The Home Economics Department of McPherson College has grown steadily under the able direction of Miss Minnie Walters since the department organization ten years ago. Until this year the department has been seriously handicapped because of insufficient equipment. But since the completion of the Science Hall it has all the facilities of any modern Home Economics Department. This has been the realization of one of Miss Walters' long-cherished hopes.

Courses in Textiles and Clothing, Dressmaking, Costume Designing, House Planning and Interior Decoration, Food Study, Dietetics, Nutrition, Child Welfare, and Household Management are offered yearly so that it is now possible for every girl to be well trained in the art of Home Making. In addition to the above mentioned courses Teaching of Home Economics is offered to those desiring to teach it in the high schools.



Art

McPherson College is proud of her Art Department which is maintained under the skillful direction of Mrs. J. W. Deeter who is well equipped for this special line of work. The purpose of this department is to satisfy the artistic instincts of those students who are endowed with such instincts; to create an appreciation of the beautiful in nature; to give an understanding of art and its meaning; and to equip the individual for practical illustrative work in educational fields.

The department occupies two large rooms on the fine arts floor of Harnly Hall which are conveniently located and well adapted to the courses of instruction which are offered. The art courses are open to all students and a large number have taken advantage of the unusual opportunity to study under Mrs. Deeter's direction. The courses offered include: Oil and Water Color, Painting, Pastel, Chalk and Crayon, China Painting, Reed Weaving, and Charcoal.

The Art Shop is one of the places of interest on the campus and many and beautiful are the articles wrought by the students enrolled in this department. An exhibition is given each year toward the close of school at which time all pictures, china, and reed work are attractively grouped. One glance at this collection of art work is sufficient to show the value of a strong department such as McPherson College maintains.





Commercial Graduates

Stenographic Department

LUCILLE BARNA,
McPherson, Kansas

MAYME MATSON,
McPherson, Kansas

PERCY McCARTY,
McPherson, Kansas

HELEN FREEBURG,
McPherson, Kansas

Bookkeeping Department

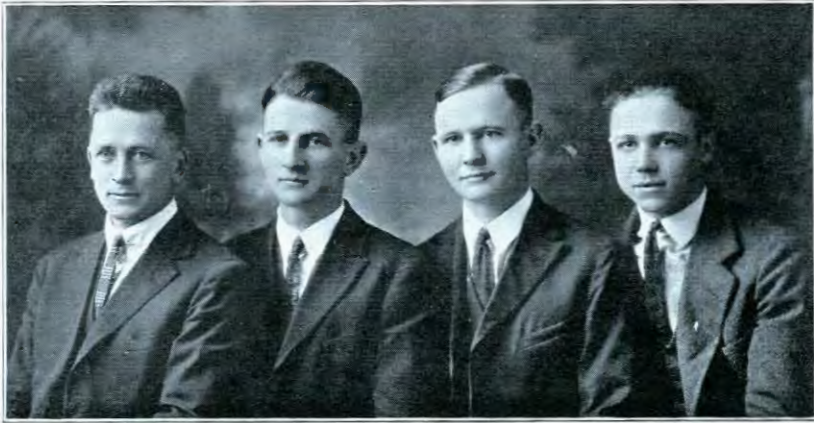
DORYCE LICHTY,
Morrill, Kansas

WRETHA CORY,
Belleville, Kansas

INEZ FREEBURG,
McPherson, Kansas

There are two ways of obtaining a business education—by attending a standard college, or by being knocked from pillar to post in that costly school of experience. In the former you have presented in a clear condensed form the best methods, customs, and the equipment of the entire machinery of business. In the latter your errors are embarrassing, expensive, and often disastrous. Opportunity comes and you are not prepared to take the step forward to a position of greater trust and honor. The Stenographic course or the Commercial course of McPherson College will prepare you to act wisely and confidently when your opportunity comes.





PROF. MOHLER

HENRY LEHMAN

HARRY LEHMAN

THEODORE BAKER

Academy Stock Judging Team.

Agriculture

Each year marks a strong improvement in the agricultural department of McPherson College. This college is very fortunate in having such a competent instructor as Professor R. E. Mohler at the head of this department. Ideas learned under Professor Mohler are not mere theories, but are things which can be and which are being put into practical use successfully by students who have taken work under him.

Evidence of the strength of this department and of the man at the head of it is very clear when we realize that in four successive years the McPherson College Academy Stock Judging Team won three first places and one second place in the state contest held at Wichita. Harvey Lehman was high point man in this contest this year. After winning first honors in the state this same team engaged in the interstate contest held at Oklahoma City where Harry Lehman was high point man. The McPherson trio took first place in this contest with a large margin; thus again they heaped laurels upon themselves, their coach, their college, and their state.



Manual Training

For a number of years our Manual Training Department has been handicapped because of lack of room. Upon the completion of Harnly Hall the Home Economics Department was transferred to the Science building and the entire basement of Fahnestock Hall is devoted to shop work. This is the first year that a large number of students have not had to be turned away because of lack of room.

The high schools of the state are calling for a large number of teachers for Manual Training work. It is the purpose of this department to train men to fill these positions. Many students are also looking forward to advanced work in engineering. The department can give elementary work along this line while they are getting their other college work.

The department is well equipped with tools and machinery. The machine room is occupied with a mortising machine, jointer, band saw, universal bench saw, and a turning lathe. The lumber room is well stocked with a number of different kinds of wood especially suited for furniture making. The recitation room is equipped with eleven benches which are supplied with the most essential tools. Another large room is used for finishing and drawing.

The department has been turning out a splendid line of furniture the past year. Again this year the boys have made the usual number of cedar chests for their "sisters." A number of taborets, music racks, tables, bookcases, hall trees, etc., have been constructed and give honor to the department.

Enthusiastic students may be found working in the department at all times of the day, where they seem to find a form of recreation and enjoyment. The work the past year has been under the direction of Professor H. V. Patterson as Instructor and Mark E. Neher as assistant.





Organizations



Young Women's Christian Association

Ada Correll..... President
 Marie Cullen..... Vice-president
 Gladys Brubaker..... Secretary
 Helen Elliott..... Treasurer
 Mrs. Alice Birkin..... Chorister

COMMITTEE CHAIRMEN

Cecile Martin.....Program	Ada Kurtz.....World Fellowship
Iva Curtis.....Social	Ruth King.....Conference
Elsie Forney.....Social Service	Ruth Cripe.....Publicity
Winona McGaffey.....Student Extension Representative	
Eunice Almen.....Undergraduate Representative	

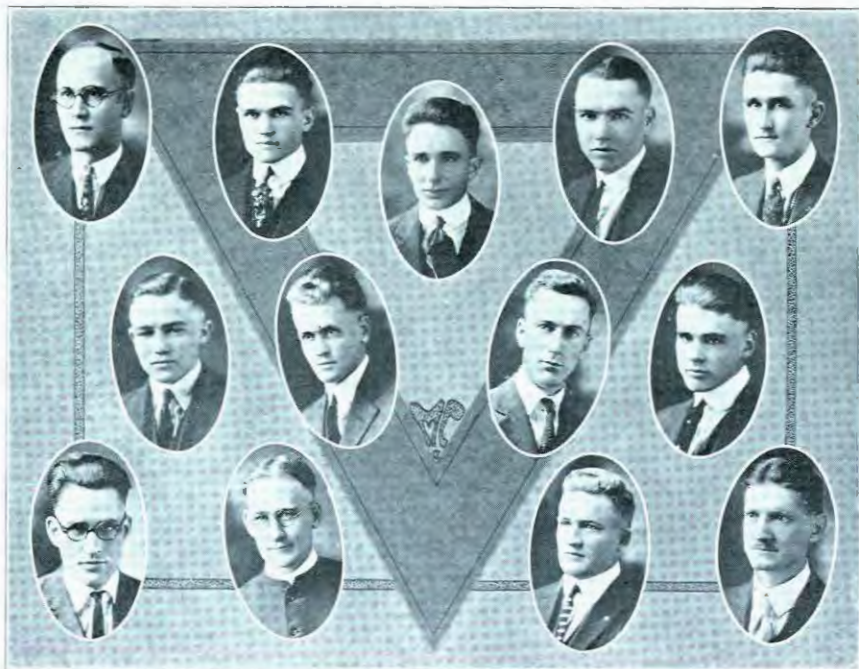
ADVISORY BOARD

Mrs. Amanda Fahnestock	Mrs. E. L. Craik	Miss Minnie Walters
Miss Edith McGaffey	Mrs. R. E. Mohler	Mrs. C. S. Morris

THE PURPOSE

1. To lead students to faith in God through Jesus Christ.
2. To lead them into membership and service in the Christian Church.
3. To promote their growth in Christian faith and character, especially through the study of the Bible.
4. To influence them to devote themselves in united efforts with all Christians to making the will of Christ effective in human society and to extending the Kingdom of God through the world.





Young Men's Christian Association

Harold Correll	President
John Daggett	Vice-President
LeRoy Doty	Secretary
Clyde Rupp	Treasurer

COMMITTEE CHAIRMEN

David Brubaker	Program	Paul Kurtz	Advertising
P. Roy Brammell	Social	Harlan Yoder	Athletic
Jesse Garvey	Music	W. T. Lockett	Student Extension

THE PURPOSE

1. To lead students to faith in God through Jesus Christ.
2. To lead them into membership and service in the Christian church.
3. To promote their growth in Christian faith and character especially the study of the Bible and prayer.
4. To influence them to devote themselves in united efforts with all Christians to making the will of Christ effective in human society, and to extending the Kingdom of God through the world.





Mission Band

Roy P. Hylton.....President	Lota Neher...Corresponding Secretary
Grace Crumpacker.....Vice-president	Naomi Fasnacht.....Chorister
Jessie Ball.....Recording Secretary	Jessie Breon.....Reporter

The organization designated above originated for a specific purpose. That purpose becomes more apparent as the life and activities of the school become more complex. Variety of interests demands that there be kept before the student who has an honest desire to fit into the world's largest needs, the vision and the inspiration of a life's task. There is great danger that many students will fail to become acquainted with the pioneering movements of the church into the great open fields of the world and it is this danger that the Mission Band seeks to avoid.

All the members of the organization are not foreign volunteers. In fact a very small percentage at present have chosen that field. Our aim is to show the needs at home and abroad and endeavor to help students to choose for themselves the task which offers the greatest challenge. No one presumes to dictate the course of any life. The field is large enough and the needs so great that none should fail to suit capacity to the task.

From the group have gone out in the past strong men and women some of whom today are great Christian statesmen leading the cause of Christ as it finds its way into the lives of men in the earth's remotest corners. The many missionaries that have gone out from McPherson College have been active in the Mission Band. Their undaunted spirits challenge us. We are not looking backward, but are pushing on towards even a larger contribution to the needy fields.





Student Ministers' Association

L. G. Templeton.....President
W. T. Lockett.....Vice-president
Melvin TeterSecretary

The Student Ministers' Association was re-organized at the beginning of this school year with L. G. Templeton, president, W. T. Lockett, vice-president, and Melvin Teter, secretary. A program committee was chosen consisting of L. L. Alger, Prof. C. R. Keim, and W. E. Breon. This committee arranged a very helpful and practical program for the year. Speakers were secured who talked upon the various problems of the ministry. Among those who have addressed the Association are Dr. Kurtz, Rev. L. H. Eakes, Rev. H. F. Richards, and Rev. Ezra Flory of Elgin, Illinois. The student ministers have been very willing to work and have supplied pulpits in various places. Three members of the Association are regular student pastors.





Anti-Tobacco Association

Everett Brubaker	President
Everett Brammell.....	Vice-president
Alta Mohler	Secretary
Robert Blough	Treasurer

The Inter-collegiate Anti-Tobacco Association is a student movement originating at McPherson College in 1918. It is getting a foothold in several states and is now officially connected with the No-Tobacco League of America for the purpose of greater efficiency in the work.

The local Association has a large membership and is doing much to create interest in the movement. A local contest was given to encourage research among the students and to train for leadership in the cause. Mr. Samuel Maust won the local contest with his oration entitled, "Reform and Progress" and represented McPherson College at the state contest at Hillsboro. He succeeded in winning third place under keen competition.

Mr. Everett Brubaker, president of the local Association has been elected president of the state inter-collegiate organization for the coming year.





The Christian Student Extension Department

L. G. Templeton.....	President
W. T. Lockett.....	Vice-president
Winona McGaffey.....	Secretary
B. F. Waas.....	Treasurer

The committee in charge of this department receives its membership from the following organizations; Y. M. C. A., Y. W. C. A., Student Ministers' Association, the Mission Band, and the Anti-Tobacco Association.

The purpose of the department is to send out gospel teams, entertainments, and educational programs to the churches and schools not too far distant.

This organization is of much benefit to both the students and the community in which they work.





Thespian Club

David Brubaker President
 Harry Bowers Vice-president
 Marie Cullen Secretary-Treasurer

The Thespian Club was organized February 1st, 1922, for the purpose of conducting an intensive study in contemporary literature with special emphasis on the study and production of the drama. Much time is spent on the biographies of prominent playwrights and interpretation of their plays. Practical work is also done in the club which centers around the production of one-act plays. An open program was given during the year and the following plays were produced: Lonesome-ike, Harold Brighthouse; Sham, Frank G. Tompkins; Slave with Two Faces, Mary Carolyn Davies.

The subjects for discussion in the meetings during the year were: Different forms of one-act plays, Late plays in New York, Modern Poetry, Pageantry, Opera, Movies, Make-up and Character Work, Religious Drama.

The following members were admitted during the year: Alice Burkholder, Ruth Cripe, Emmert Pair, Reetha Studebaker, Paul Kurtz, Ada Kurtz, William Bishop, Ocie McAvoy, Samuel Kurtz, and Eunice Almen.





College Debate Club

B. F. Waas.....	President
Isaac Dirks.....	Vice-president
Ada Kurtz.....	Secretary-Treasurer
Leonard Birkin	Reporter
Jay Eller	Critic

The Debate Club of McPherson College is a progressive organization. It was organized four years ago and has developed like a normal child of such an institution should. Last year four of its members won the state championship in debate.

The interest in debate is increasing and this year there was a full membership in the Club. New members were accepted after a trial debate before the Club. Regular meetings are held every two weeks in which debates are held on various topics. The Club offers splendid training for those who desire to develop their powers of thought and speech. Professor Ebel has given his assistance in various matters relating to the Club. Professor Hess has contributed much to the inspiration and success of this year's, as well as other year's, program.





Athenian Literary Society

William Riddlebarger President
 Geraldine Crill Vice-president
 Esther Wilber Treasurer

The history of the Athenian Literary society is short. Its organization was effected in January, 1922. The express purpose of the organization is to develop the literary talent of the academy students and the lower classmen of the college. In 1922 this society aroused much interest and enthusiasm and many good programs were rendered. This year has not been as successful as was anticipated, owing to the fact that debates and other activities have required many of the evenings on which literary programs were to be given. Therefore, few programs have been rendered. However, the energetic efforts of the society to retain the literary organizations of the college deserve much praise.





Philomathean Literary Society

Jay Eller	President
Esther Hawkins	Vice-president
Ruth Betts	Secretary
Milton Dell	Sargeant-at-arms
Arthur Prather	Sargeant-at-arms

The Philomathean Literary Society was organized in December, 1922. Any student in college or an upper classman in the Academy displaying sufficient interest to appear on a public program is eligible for membership. It is the duty of every well-organized school to have a literary society which is wide awake and growing. It is only by the development of latent talent into the more polished product that the student gets full value out of his college life.

The Philomathean Literary Society purposes to be one means of self-expression for the many impressions which each student receives every day. The name itself means lovers of knowledge and shows that the society is ever striving along the upward ways of learning.





Oratorical Association

Samuel Maust President Geraldine Crill.....Secy.-Treas.
 Oscar Lankford Vice-Pres. Ada Kurtz Reporter

Orators and Orations

Earl Linholm The Silver Eagle
 Ada Kurtz Industrial Democracy
 Samuel Maust The Great American Tragedy

From time memorial the world has been moved by the power of oratory. Socrates, Aristotle, and Plato changed the moral, ethical, and religious concepts of the Greek world by the strength of their masterful orations. Rome, for centuries maintained a strong government and unexcelled patriotism through the influence of her statesman orators. In the early days of America, Patrick Henry stirred the country to action when with masterful eloquence he said: "Give me liberty or give me death." Thus, through the ages the world has swayed to and fro to the rhythm and expression of master orators.

Since orators have done much to make the world what it is today they will undoubtedly have many more opportunities to mould world sentiment in the future. For that reason the Oratorical Association has been created, organized, and developed. For where could aspiring orators better begin to give expression to their convictions than at college where the needs of the world are always being presented or discovered.





McPherson College Radio Club

Lewis FlormanPresident
Abram HostetterVice-President
Harold StricklerSecretary-Treasurer
Jay Eller, Elmer Krehbiel.....Reporters

The McPherson College Radio Club was organized September 20th, 1922, for the purpose of bringing together the students of McPherson College who are interested in the study and advancement of radio. A meeting was called of all students interested in the science of radio and such a large number of enthusiasts responded that the club was launched immediately. Professor Morris was chosen as faculty adviser and with his assistance the organization was perfected. A man of radio ability and experience was chosen as president. He is a member of the Executive Board of the Kansas State Radio League, and he is a great asset to the club. Meetings were held once a week throughout the year. At these meetings lectures and reports explaining and illustrating various phases of radio operation and construction were given by different members of the Club.





Academy Debate Club

Elmer Krehbiel.....	President
Ralph Martin.....	Vice-President
Mary Whiteneck.....	Secretary-Treasurer
Professor M. A. Hess.....	Critic

The McPherson College Academy Debate Club was organized three years ago for the purpose of development and aid in the reasoning powers and in thinking; also to enable adequate expression of the same. The interest has been steadily growing each year. This year parliamentary laws have received special attention along with discussions of social and political problems. Meetings were held on alternate Wednesday evenings.

It is here that the students obtain the efficiency which enables them to cope with debaters from other academies. The students have won honors for themselves, as well as received a good foundation for future work along the same line.





The Alumni Association

Board of Directors

Edith McGaffey..... President
 Geo. N. Boone..... Vice-president
 E. L. Craik..... Secretary-Treasurer

Marguerite Muse
 S. B. Braden
 W. F. Vaniman
 Lola M. Hill

Grace Brubaker
 Amanda Fahnestock
 R. C. Strohm
 R. E. Mohler
 Susie Slusher Saylor

Alma G. Anderson
 J. C. Forney
 Edna Neher Charles
 W. O. Beckner

The McPherson College Alumni Association dates back to the very early years of the school. At present its membership is approximately one thousand. Every person who has finished any course of the College leading to a diploma becomes *ipso facto* a member of the Association.

The purposes of the Association are those common to associations of this character. They include such aims as the cultivation of the friendly spirit between the College and her graduates, the creation of interest in the institution on the part of prospective students, and other phases of college life. Each year during commencement season the Association holds a banquet for its members and for invited guests.

The support of the Association is derived from an annual membership fee of one dollar, supplemented by a system of life memberships which may be obtained by each member of an out-going class upon the payment of ten dollars within one year after graduation. The money obtained from these life memberships is invested by the Board of Directors and the income is used to maintain the Association.





The "M" Club

*Clarence Showalter..... President
 Ray Clark..... Vice-president
 Foster Hoover..... Secretary-Treasurer

*Succeeded by Ray Clark.

The "M" Club consists of all members of the college who have earned a letter in whatever field of activity it may be. As soon as a student wins his letter he automatically becomes a member of the Club. The local organization contains about thirty members while the entire organization numbers approximately one hundred and twenty.

The year '22-'23 has been one of the most active years of the organization. Members of the Club have aided the cheer-leaders in their work, reserving seats for the student body at games, and separating the boys from the girls in order to secure more effective cheering. During the recess between halves at a game the "M" Club has furnished entertainment for the crowd in some form or other, mostly of the nature of caricaturing the opposing team.

An "M" Club banquet is held annually when new members are received into the organization and the new officers and the captains are elected for the succeeding year.



The Quadrangle 1923





Activities



The Quadrangle

The 1923 Quadrangle Staff wishes to express a word of appreciation and recognition to those who so kindly gave of their time in making this annual possible. Those that deserve special mention are Glenn Johnson, Miss Alma Anderson, Fannie Stover, Ada Kurtz, Roy Brammell, Dr. Craik, Evelyn Lyons, Ada Correll, Ocie McAvoy, and David Brubaker. We wish to acknowledge also the work of the presidents of the various classes and organizations of the school and all others whose coöperation has made this issue a success.



The Spectator

McPHERSON COLLEGE. McPHERSON KANSAS

Published every week by the
Student Council.



Laura McGaffey
Associate Editor



Dale Strickler
Associate Editor



Everett Brubaker
Associate Editor



Orville Pote
Editor



Eunice Almen
Associate Editor



Vilas Betts
Business Manager



Paul Sargent
Assist. Bus. Manager



Edith McGaffey
Faculty Advisor



Dr. E. L. Craik
Faculty Advisor

STAFF



Reporters





R. F. WAAS

ISAAC DIRKS

OSCAR LANKFORD

W. E. BISHOP

College Debate

McPherson College is a member of the Northern Division of the Kansas Inter-collegiate Debate League, the other members being Kansas Wesleyan University, Bethany College, and Sterling College. Each team debated the opposing teams of the other schools and captured sixteen out of a possible eighteen judges' decisions.

The question for debate was: Resolved that the United States should adopt the Cabinet Parliamentary system of government. B. F. Waas, Isaac Dirks, and Leonard Birkin, alternate, upholding the affirmative, and Oscar Lankford, W. E. Bishop, and Geraldine Crill, alternate, defending the negative.

In the contest for State Championship with Fairmount College who was victorious in the Southern Division, the McPherson Debaters battled to the end, and although receiving only two votes out of six ranked higher in percentage than their opponents. The teams were coached by Professor Maurice A. Hess whose training could not have been excelled.

The Results

AFFIRMATIVE

Feb. 8, at McPherson.....	Kansas Wesleyan -	0—	McPherson 3
Mar. 2, at Lindsborg.....	Bethany - - - - -	0—	McPherson 3
Mar. 21, at McPherson.....	Sterling - - - - -	0—	McPherson 3
Total.....	Opponents - - - - -	0—	McPherson 9

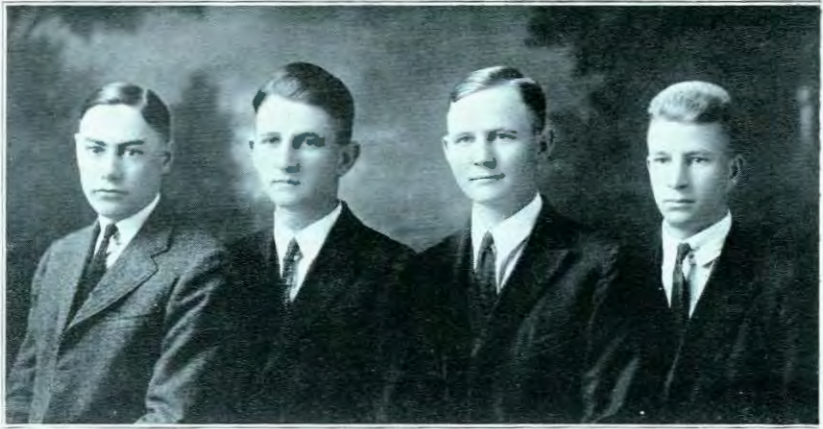
NEGATIVE

Feb. 8, at Salina.....	Kansas Wesleyan -	2—	McPherson 1
Mar. 2, at McPherson.....	Bethany - - - - -	0—	McPherson 3
Mar. 21, at Sterling.....	Sterling - - - - -	0—	McPherson 3
Total.....	Opponents - - - - -	2—	McPherson 7

CHAMPIONSHIP DEBATE, APRIL 11

Negative - - -	2—	Fairmount 1	Affirmative -	0—	Fairmount 3
----------------	----	-------------	---------------	----	-------------





ELMER KREHBIEL HARVEY LEHMAN HARRY LEHMAN RALPH MARTIN

Academy Debate

McPherson College Academy participated in the Pentangular Debate League composed of the Academies of Bethel, Bethany, Central, and Tabor colleges, and succeeded in winning the championship of the League, each Academy debating each other Academy once. Professor Maurice A. Hess coached the teams very successfully, the victory being in a large measure due to his efforts.

The question debated was: Resolved: That the government should take over the management or control of the coal industry. Those debating for McPherson were: Affirmative, Ralph Martin, Harry Lehman, and Marie Brubaker, alternate; Negative, Harvey Lehman, Elmer Krehbiel and Jesse Carney, alternate.

The Results:

AFFIRMATIVE

Feb. 23, at McPherson.....	Bethel	-	1—McPherson	2
Mar. 9, at Hillsboro.....	Tabor	-	3—McPherson	0

NEGATIVE

Feb. 23, at Lindsborg.....	Bethany	1—McPherson	2
Mar. 9, at McPherson.....	Central	0—McPherson	3
Total.....	Opponents	5—McPherson	7





The Choral Society

Professor Forrest W. Gaw.....Director
Miss Elsie Klinkerman.....Pianist

The Choral Society of McPherson College has made splendid progress under the able supervision of Professor Gaw. Any student who is interested in singing may become a member of the society. The membership this year numbered over one hundred. The society meets an hour every Monday evening and only music of the best composers is undertaken. It filled one evening on the Bible Institute program when it rendered selections from Harris, Gaul, Burleigh, and other noted composers. The Society prepared and gave Gaul's Cantata, Joan of Arc, which was rendered at a public program, May 10.





The Music Club

Professor Forrest W. Gaw.....Director
Harry Bowers.....Pianist

The year 1922-23 was the first year for the Music Club of McPherson College. It was organized by Professor Gaw and replaced the glee clubs of former years. It consisted of twenty-four selected voices. The club appeared in recital at the Bible Institute in connection with the Choral Society when it rendered the opening chorus from Hiawatha's Wedding Feast by Coleridge-Taylor; and again at the Kansas Music Teachers' Conference when the Gipsy Chorus from the Bohemian Girl was given.





McPherson College Symphony Orchestra

Professor Alvhh R. Lauer, Director

Henry Widiger Assistant Conductor
 Fritzjoff Mark Concertmaster

Concert Given at Methodist Church
 April 15th, 1923

1. Tone Poem *Roberts*
 Serenade *Schubert*
 Amaryllis (Air de Louis XIII.) *Ghys*
2. Symphony in B Minor (Unfinished) *Schubert*
 Allegro moderato.
 Andante con moto.
3. Dream of Paradise *Gray*
 Lord God of Abraham (from Elijah) *Mendelssohn*
 Forest W. Gaw
4. Serenade (Violin and horn) *Tittl*
5. Pizzicato Polka *Strauss*
 In the Silence of the Night *Rachmaninoff*
 Flower Song *Lange*
 Queen of Autumn *Bigge*

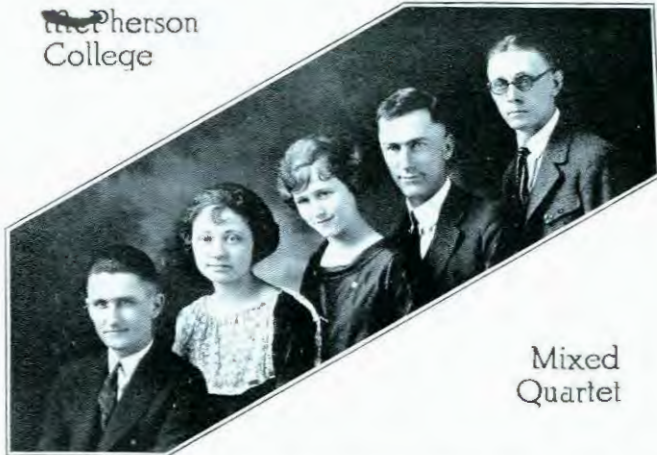


McPherson College Male Quartet



P. ROY BRAMMELL, FIRST TENOR; SAMUEL KURTZ, SECOND TENOR; HERKEL WAMPLER, BARIitone; EARL FISHER, BASS; HARRY BOWERS, ACCOMPANIST

McPherson
College



Mixed
Quartet

P. ROY BRAMMELL, TENOR; MARIE CULLEN, SOPRANO; OCIE McAVOY, ALTO; JESS GARVEY, BASS; HARRY BOWERS, ACCOMPANIST.





ATHLETICS



Athletics



R. E. MOHLER
Athletic Manager

Athletics has come to hold an important place in McPherson College activities. "Dutch" Lonborg's Bulldogs have made their bark heard and their bite felt not only in the state of Kansas but in national athletic circles as well. Their style of playing and their attitude in defeat have won for them recognition and favorable comment in the athletic world. Athletics as participated in at McPherson College develops the moral side of the men as much as the physical. No where in the country can be found a cleaner, peppier, more optimistic bunch of good sports. Much of this progress is the direct result of the unexcelled efforts of Coach Lonborg. He

has worked with the men as one of them, as an adviser, and has won the admiration and respect of the boys with whom he has worked. McPherson College has been fortunate in securing as coach one of the recognized best coaches of this part of the country.

The athletics of McPherson College are under the supervision of an Athletic Board with Professor R. E. Mohler efficiently heading the organization. The members of the Board are: R. E. Mohler, President; Reetha Studebaker, Secretary; Arthur Lonborg; Vilas Betts; Isabel Knaus. They have charge of the granting of letters, the awarding of sweaters, and all details which are connected with athletic activities.

Too much credit can not be given to the M. C. cheer leaders, Earl Morris and Irene Hawley, who have efficiently and effectively organized and directed the unbounded energy of the student body. They introduced new songs and yells and made the new college song a real part of the college spirit. With the coöperation of the "M" club they have given to the pep of McPherson College a new impulse which is bound to carry over into future years.





ARTHUR C. "DUTCH" LONBORG, COACH

Here's to "Dutch". We wanted him but could not hold him. Just the kind of a man to put the fight and confidence into a team. A Gentleman and Friend to all. We thank you, "Dutch."



Foot Ball

We were not state champions, no; but we had a real team. M. C.'s Bulldog football players attracted as much if not more attention than any other team in the Kansas Conference in the year past. Six victories and four defeats; not so bad for a team playing only its second year of Conference football. We should also remember that the defeats given us were not by a large score but the scores so close that the results might have easily been the other way. Fairmount beat us 10 to 3; Southwestern beat us 12 to 6 and won in the last twenty-five seconds of play on a forward pass half the length of the field. Sterling beat us 12 to 0 but they had a wonder team and deserved to win. Sport writers said they could have beaten any team in the state in another month. And the Swedes beat us. A game in the mud is anybody's game and they slid across for six points. Enough for alibis but we are glad there is another year coming and the battle cry of the Bulldogs on next November 11th will be "Remember the Mud." Modesty does not permit us saying much of our victories, how we beat Kansas Wesleyan in the last eight minutes of play after they had scored two touchdowns; how we beat the Catholics on their home field, the state champions of this year, in our first game and last year's state champs with the breaks against us. Well, here's to Dutch and his fighting Bulldogs because the least we can say is that they were among the best.

KANSAS CONFERENCE STANDING

TEAM.	W.	L.	T.	PCT.
Baker	7	1	0	.875
Kansas Normal	6	1	0	.857
C. of E.	5	1	2	.834
Friends	5	2	0	.714
Southwestern	5	2	2	.714
Bethany	5	3	0	.625
McPherson	5	4	0	.556
Sterling	4	4	0	.500
St. Mary's	3	3	0	.500
Pittsburg	3	4	0	.429
Fairmount	3	5	0	.375
Hays Normal	2	4	1	.333
Kansas Wesleyan	2	7	0	.222
Washburn	1	5	0	.167
Bethel	0	3	0	.000
Ottawa	0	7	0	.000

SCHEDULE AND RESULTS

	M. C.	OPP.
Baker at McPherson	7	6
Fairmount at Wichita	3	10
Hays at McPherson	16	14
Bethel at McPherson	39	6
Kansas Wesleyan at Salina	13	10
St. Mary's at St. Marys	14	12
Bethany at McPherson	0	6
Sterling at Sterling	0	12
Marion American Legion at		
Southwestern at McPherson	6	12
NON-CONFERENCE		
Marion American Legion at		
McPherson	6	0

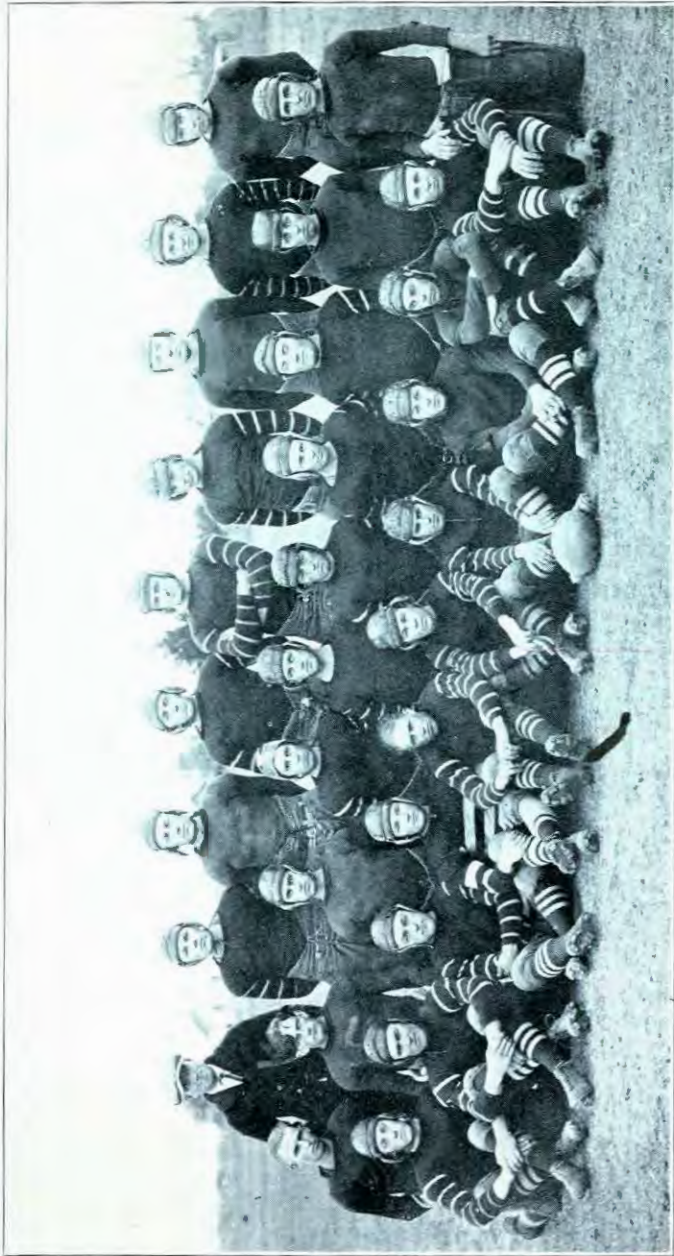




CARL CARTER
"TOKE" HALF-CAPTAIN

"Toke" was M. C.'s contribution to the All-State team. He was a good captain well liked by all. Starred in almost every game. Good on either end of a pass. The first Bulldog to make a place on the mythical All-State eleven. Enough to say is that he was good.





The Squad

TOP ROW DUTCH LONBORG, Coach; COLBURN; KLEWER; CLARK; MUDRA; KURTZ; C. LENDEL; SARGENT; HOLLOWAY.
SECOND ROW - HILL; ENNS; MORRIS; HEASTON; R. KEIM; CARTER, Captain; CROFOOT; J. LENDEL; ELLWOOD; SCHNEIDER.
BOTTOM ROW S. KEIM; STANSEL; BRUNK; FISHER; COTTON; KREUTZER; THORNTON; HOOVER; ROBB; HAIN.



ALBERT COLBURN, "Fat"—Guard

Played a mighty important part in the Bulldog defense machine. His first year out of high school and he should be even better next year.

MARVIN STANSEL, "Stan"—End

A good man for opening up holes for the backfield. Had a sticky finger for a long pass and was also fast getting down under punts.

JOHN LENGEL, "Johnnie"—Tackle

Was not eligible till the latter part of the season. Used after Mudra was hurt. Had a lot of fight and will be a regular next year.

PAUL E. SARGENT, "Si"—End

Was not used as a regular but played in enough games to get a letter. Played his first year.





WILLIAM MUDRA, "Bill"—Tackle

Big Bill was a mighty good man. Played his third year for the Bulldogs. A mighty hard tackle and fast down under punts.

HENRY HAHN, "Heinie"—Half

A star from Inman High School last year. We expect a lot from Heinie next year. A good defensive man with a good toe.

ERVIN CROFOOT, "Crow"—Center

A typical Bulldog fighter. Not so big but with fight enough to buck the best centers in the state. Will not be back so we expect big "Doc" Kurtz to take his place.

OLIN ELLWOOD, "Jim"—End

The gridiron wasn't big enough for them to run around Jim. A good man on the end of a pass. Kept getting better all the time.



RICHARD V. KEIM, "Dick"—Guard
Captain-Elect.

The only man on the team to be in every minute of play. Chosen almost unanimously to captain the Bulldogs for 1923-24. Honorable mention in conference.

ARNOLD THORNTON, "Thorn"—Quarter

A scrapping little quarter. Little in size only. They could not hit him hard enough to hurt him.

HAROLD BARTON, "Hal"—Fullback

Our triple-threat man and a power on the defense. Played so hard that he did not last the full sixty minutes in several games. He was willing to sacrifice all he had for the game. Honorable mention in conference.

RAYMOND CLARK, "Clarke"—Half

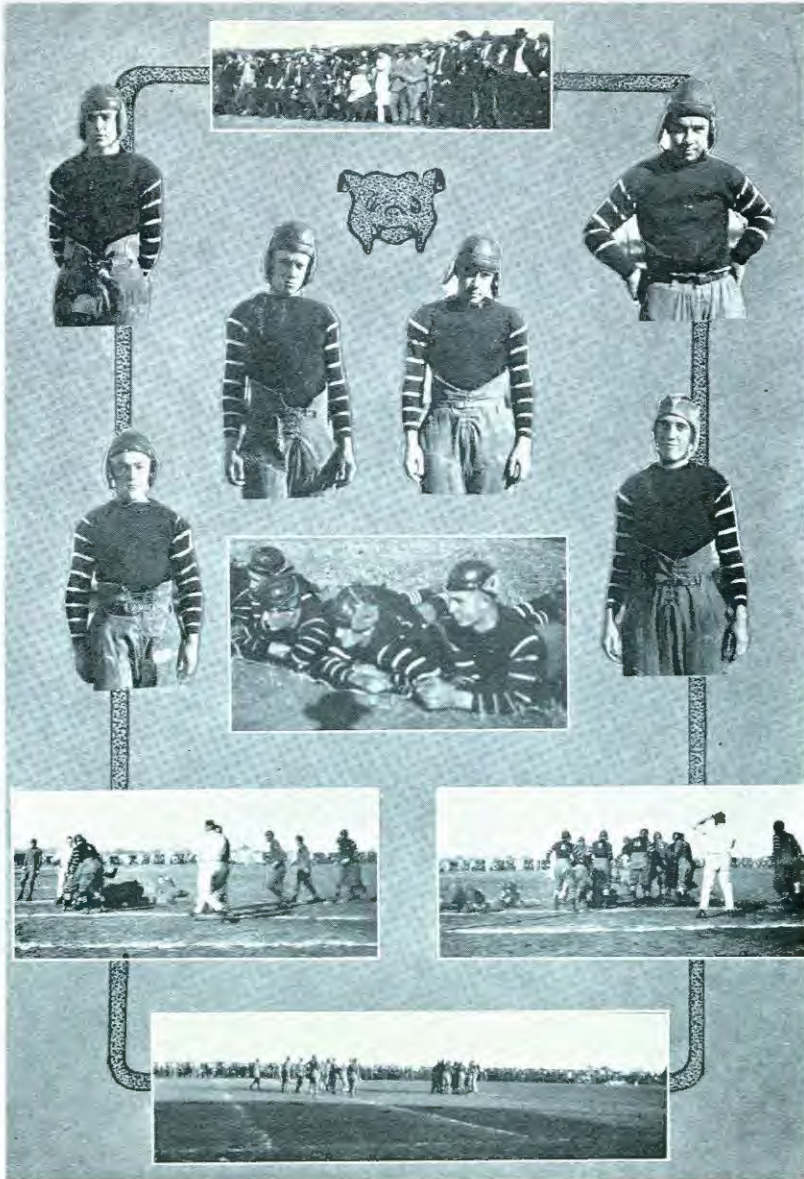
Could always be depended on to make yardage. A hard hitting backfield man. It will be no easy job to fill Clark's shoes.

STANLEY B. KEIM, "Stan"—Tackle

Not a big man but could use all he had to the best advantage. Lined up beside his brother, Dick, they made their side of the line almost impregnable.







Basket Ball

McPherson College has had another successful Basket Ball season. Again the Bulldogs came close to a conference championship but were forced to take second best honors. Facing a harder schedule than last year the record made was thirteen games won and three lost. Playing the first five games away from home three were placed in the won column and two lost the winners being the two strong Emporia teams. Our other defeat was to Southwestern the conference champions. They also beat us in the National Tournament both games being hard fought. Almost all of the teams played this year were teams in the upper division of the conference. The trip to the National Amateur Athletic Union Tournament held in Kansas City was a feature of the season and a real treat to the team after a hard season. This trip was made possible through the donations of downtown business men. Watching those teams of fast caliber and different methods of playing should prove valuable in making next year's team a championship team. For their showing in the conference the Bulldogs placed one man on the first All State team, one on the second, and two in the honorable mention column. Next year should be a championship year for the Bulldog Basketeers.

FINAL CONFERENCE STANDING

Team	Won	Lost	Pct.
Southwestern	17	1	.944
McPherson	12	3	.800
C. of E.	11	4	.733
Kansas Wesleyan	10	4	.714
Emporia Teachers	12	4	.706
Pittsburg Teachers	10	5	.667
Fairmount	8	5	.615
Bethany	8	6	.571
Bethel	5	6	.454
Washburn	7	10	.412
Hays Teachers	5	10	.333
Baker	4	11	.267
Ottawa	2	13	.133
Sterling	1	8	.111
St. Mary's	0	10	.000
Friends	0	11	.000





SANGER CRUMAKER
"CRUMMIE" FORWARD CAPTAIN

Played a mighty good floor game and showed the fight. Was a mighty good captain because of his leading the fight. Playing his last year for the Bulldogs. It will be hard to find an all-round Basket Ball player to fill his shoes. Received Honorable Mention in Conference.





The Squad

TOP ROW—"DUTCH" LONBORG, Coach; TIPTON; ENNS; RAHN
 MIDDLE ROW STRICKLER; HOLLOWAY; SARGENT; ELLWOOD; LONG
 BOTTOM ROW—A. LONBORG; HILL; CRUMPACKER, Captain; DAGGETT; RUFF; BARTON

SCHEDULE AND RESULTS

McPherson	26	Hays Normal	14
McPherson	21	Hays Normal	5
McPherson	20	Kansas Normal	26
McPherson	15	C. of E.	21
McPherson	25	Washburn	23
McPherson	20	Southwestern ..	27
McPherson	27	Fairmount	20
McPherson	29	Bethel	14
McPherson	11	Bethany	10
McPherson	26	Kansas Wesleyan ..	11
McPherson	38	Hays Normal	8
McPherson	46	Hays Normal	13
McPherson	21	Kansas Wesleyan ..	12
McPherson	32	Bethany	14
McPherson	28	Fairmount	19
McPherson	31	Bethel	11
Total.....	416	Total.....	248



DALE STRICKLER, "Duke"—Guard, Captain Elect.

Made all-state; his first year as a regular. A consistent player upon whom you could depend. A product of "Dutch." Will make a good pilot for the team of 1924.

CLIO HILL, "Dick"—Forward

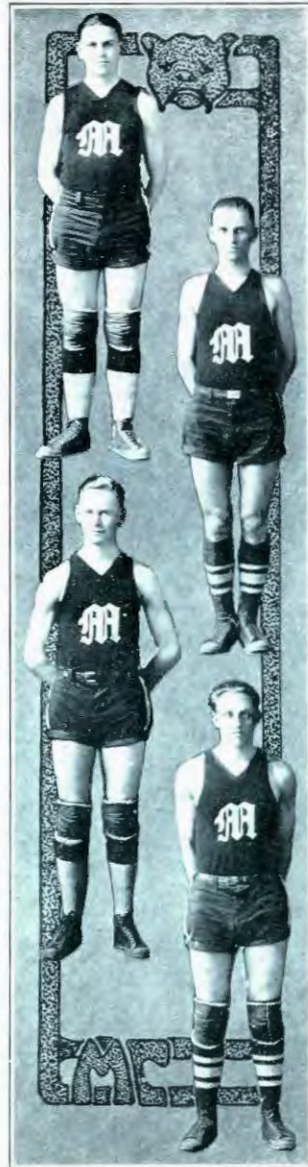
The flashiest player on the Bulldog lineup. High point man on the team although he started late as a regular. A valuable prospect for next year.

PAUL SARGENT, "Si"—Center

Played his second year for the Bulldogs. Received a place on the second mythical all-state team. Graduates this year so has played his last game for McPherson.

OLIN ELLWOOD, "JIM"—Guard

A valuable offensive as well as defensive guard. Scored consistently with his long range artillery and short follow in shots. Honorable mention in the mythical all-state teams.





Senior
2nd Tournament



Senior Athletics



Junior
1st Tournament



Freshmen



Sophomores



Freshmen
2nd Tournament



Junior-Senior
1st Tournament



Track



TOP ROW—R. BRAMMELL; KURTZ; LENGEL; CLARK
MIDDLE ROW—LONBORG, Coach; DOTY; I. BRAMMELL; VANIMAN, Captain
BOTTOM ROW—CRUMPACKER; DAGGETT; RIDDLEBARGER; SELL; DELL

With a large squad of recruits working out this spring track prospects are splendid. Dual meets have been arranged with Kansas Wesleyan, Sterling, and Bethany. The Pentangular meet takes place at Bethel College, Newton, May 5. In the Kansas University Relays held at Lawrence April 20, the Red and White tracksters succeeded in taking fourth place with very fast competition. The team competes in the state meet at Ottawa University, May 20-21.

Following is the prospective line-up:

I. Brammell—Dashes, hurdles, pole vault, broad jump.
R. Brammell—High jump, broad jump, relay.
Vaniman—Dashes, relay.
Clark—Hurdles.
Doty—High jump, relay, dashes.
S. Crumpacker, Riddlebarger—Mile and half-mile run.
Sell, Tipton, Ellwood—Dashes.
Pair, Dell, Kurtz, Travis, Lengel—Middle and long distances.
Daggett—Hurdles.



Tennis



TOP ROW YODER, RODES, PROF. STUDEBAKER, Coach, KREHBIEL, DAGGETT
BOTTOM ROW HIMES, BARNES, HALE, LICHTY

Considerable interest has been shown in tennis here this year. Part of it is caused by the good condition of the courts. But a much greater influence is the fact that we have had a good coach the last two years. Professor Studebaker has proved himself a very competent coach in these past two seasons. He is no dub in tennis as a player and as a teacher of the game he is still better. Eight matches with members of the Pentangular League are planned. The local team will enter the Pentangular tournament as usual. Judging from the number of men that are working out and the energy expended by coach and men, McPherson should have a respectable team for the Pentangular this year.



Base Ball

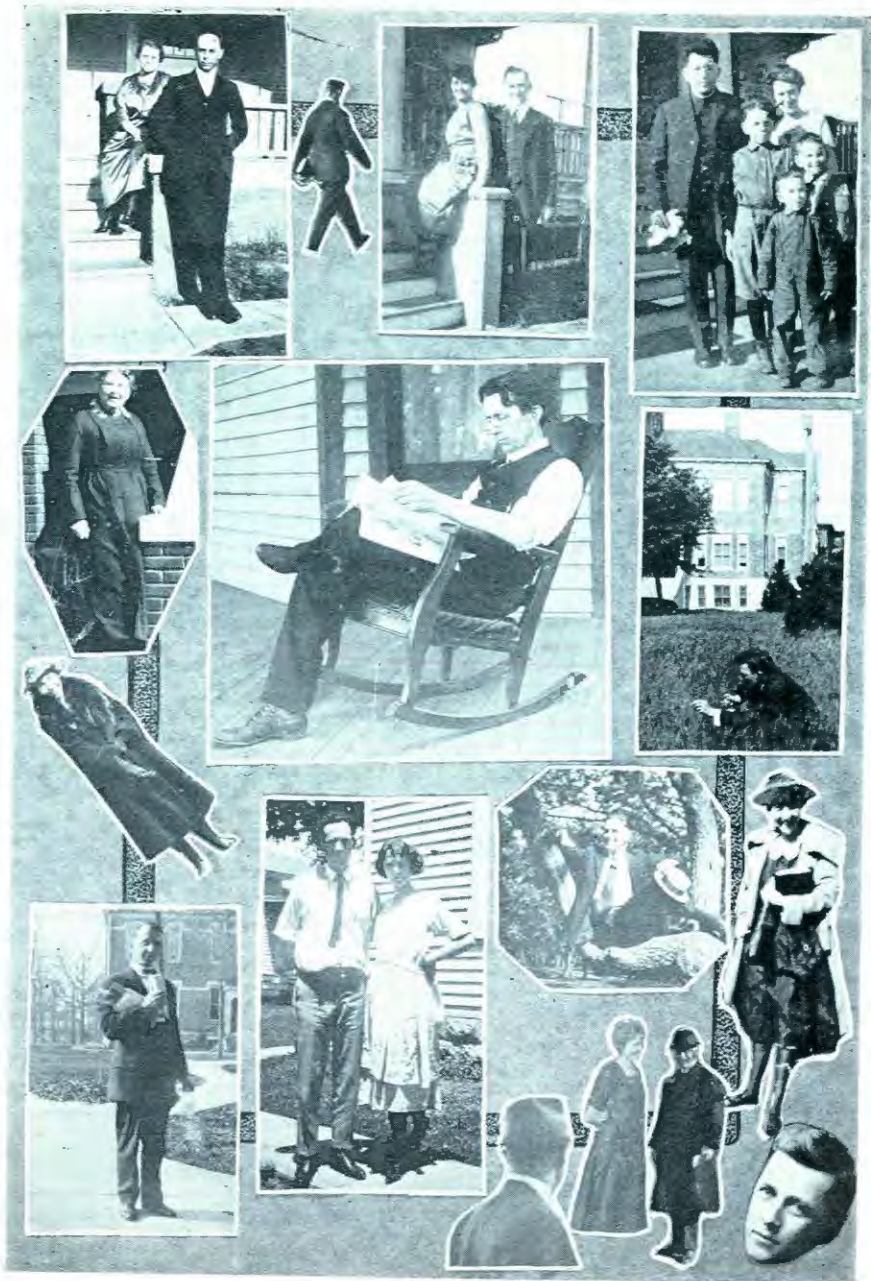
Baseball at McPherson College in the 1923 season is being conducted as an intramural sport. It was decided to follow this plan in order to release material for a successful track team as well as to give more students a chance to engage in this form of athletics. A baseball tournament will be played by six teams representing each of the four college classes, an academy team, and a team composed of members of the faculty. Each team will play five games. As this goes to press ten games have been played. The results are as follows, the scores in their respective order:

Sophomore vs. Freshmen	8	3
Faculty vs. Academy	17	7
Senior vs. Junior	7	6
Freshmen vs. Junior	3	6
Sophomore vs. Faculty	6	1
Academy vs. Senior	4	23
Sophomore vs. Academy	9	6
Senior vs. Freshmen	6	1
Junior vs. Faculty	5	9
Senior vs. Sophomore	4	3

Besides fostering an excellent class spirit, the fact that the faculty members take part in the sport helps to create a better school spirit.



The Quadrangle 1923





Dramatics

The year 1922-23 has proved that dramatics has a real place in McPherson College. Many commendable productions have been given throughout the year. The class in Dramatic Art has worked and produced twenty one-act plays, one four-act melodrama, and one three-act comedy-drama. In addition the class has studied "The Theory of the Theater," by Clayton-Hamilton, make-up, pageantry, kinds of plays, mimo-drama; and have reported on modern playwrights and their works. Miss Alma Anderson is head of the dramatic department and the success of the productions prove her ability as an instructor in this line of work.

The following outstanding plays have been publicly rendered by the Dramatic Art class:

THE MAN ON THE BOX, by GRACE FURNISS

Lieutenant Robert Worburton.....	Samuel Kurtz
Charles Henderson.....	Jay Eller
Colonial Annesley.....	David Brubaker
Count Karloff.....	Clyde Rupp
Col. Frank Raleigh.....	Ray Clark
Monsieur Pierre.....	Wm. Riddlebarger
Magistrate Watts.....	Dale Strickler
Clerk of the Court.....	Harry Nickel
Officer O'Brien.....	Harold Barnes
Officer Cassidy.....	Rufus Daggett
Betty Annesley.....	Ocie McAvoy
Nancy Worburton.....	Mildred Carptener
Mrs. Conway.....	Winona McGaffey
Cora.....	Elberta Vaniman

Lieutenant Robert Worburton returns home after his discharge. Upon his arrival he learns that his people are attending a ball in honor of Betty Annesley. Bob decides to disguise himself, drive his sister home from the ball and surprise her by jumping down and kissing her when they arrive. He gets into the wrong cab, has a runaway, and is arrested as he suddenly stops, jumps down and kisses the lady who alights. He has driven Betty Annesley's cab and is fined for disorderly conduct and reckless driving. Betty pays his fine and hires him as her coachman.

Col. Annesley loses both his and Betty's fortune gambling and agrees to sell to Count Karloff the plans for coast defense of the U. S. Betty's coachman secures the plans, loans the Colonel \$20,000, reveals his identity and proves himself the true gallant which Betty has pictured him to be.



THE LION AND THE MOUSE, by CHARLES KLEIN

Judge Rossmore.....	David Brubaker
Mrs. Rossmore.....	Winona McGaffey
John Burkett Rider.....	Jay Eller
Mrs. John Burkett Rider.....	Maude Gish
Senator Roberts.....	Dale Strickler
Kate Roberts.....	Mildred Carpenter
Shirley.....	Maxine Hoover
Miss Nesbit.....	Isabel Knaus
Jefferson Rider.....	Samuel Kurtz
Ex-Judge Stott.....	Clyde Rupp
Rev. Pontifex Deetle.....	Rufus Daggett
Jane Deetle.....	Marie Cullen
Eudoxia.....	Irene Hawley
Hon. Fitzroy Bagley.....	Wm. Riddlebarger
Jorkins.....	Harold Barnes
Expressman.....	Jerry Crewse
Maid.....	Lillie Crumpacker

John Burkett Rider rules in the world of finance and business as Napoleon and Julius Caesar did in the political world. But he cannot rule his own son, Jefferson, who is in love with the daughter of the man whom Rider is trying to have removed from the bench of the Supreme Court because of opposition to his, Rider's, interests. Shirley Rossmore has been abroad where she has met Jefferson. Upon her return she learns of her father's pending impeachment and decides to fight for him and to save him from public disgrace. She becomes the private secretary of Rider under the assumed name of Greene. While there she secures private correspondence of her father's to Rider which proves his innocence. She finally confesses who she is, which angers Rider beyond words. Before she leaves Rider sees his false position, begs of her to marry Jefferson, and rushes to Washington to save Judge Rossmore from being impeached.

HYACINTHS, by TACIE MAE HANNA

The Mother.....	Winona McGaffey
Jane.....	Fannie Stover
Lucile.....	Marie Cullen

Jane, through the diligent teaching of her mother, has religiously saved her money for a trip to New York which she will take some time. Lucile, her younger sister has an opportunity to go to New York but finds herself without sufficient money. Jane, unknown to Lucile, loans her the money to send her to the wonderland of music to feed her soul on white hyacinths. The mother and Jane remain at home and continue their practice of saving.



The Quadrangle 1923

THE HOUR GLASS, by W. B. YEATS

A Wise Man.....	Harry Bowers
A Fool.....	David Brubaker
Bridget.....	Maxine Hoover
Pupils.....	Rufus Daggett, Harold Barnes, Dale Strickler
Children.....	Geraldine Crill, Helen Hartell
The Angel.....	Eunice Almen

The Wise man has in his own mind overthrown the theory of a God by his wisdom. An Angel of God calls on him and tells him he has but one hour to live and if his soul is to be saved he must find someone within the hour who believes. He is disturbed, calls on his pupils, his wife, his children, but they are hardened by his teaching. The Fool comes in and tells him that he has seen Angels and he knows there is a God. The simple fool saves the soul of the Wise man whose soul is received by the Angel.

GAS, by FREDERICK J. POHL

Mr. Barton.....	Jay Eller
Mrs. Barton.....	Winona McGaffey
Edgar Barton.....	Dale Strickler
Alice Barton.....	Ocie McAvoy
Robert Graham.....	Samuel Kurtz
Waiter	Wm. Riddlebarger

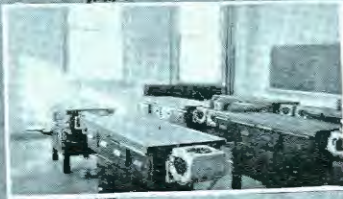
Robert Graham, Alice Barton's fiance, has enlisted for the war and has come to spend the last evening at the Barton home. While the family await the arrival of Edgar's sweetheart to complete the family circle, the city is gassed by the enemy. Edgar goes down to find his sweetheart and never returns. Bob and Alice go to find Edgar and they return to the Barton dining room to die from the effects of the gas. Mr. and Mrs. Barton are forced to leave their dead children and go up higher to escape the gas.

THE FINGER OF GOD, by PERCIVAL WILDE

Strickland	David Brubaker
Benson	Samuel Kurtz
The Girl.....	Reetha Studebaker

Strickland has fought the "thief in him" for twenty-eight years. The thief finally triumphs and he steals more than three hundred thousand dollars from his company and plans to run away with it to New York. His valet suspects the plan and calls the police. Meantime one of the office girls calls on him with some money which a poor widow is intrusting to him to invest for her. Strickland tells his story to The Girl who believes him an honest man and hands him her lifetime savings to invest for her. This wins him to the side of right and he decides to stay and face justice.





OUR AIMA MATER

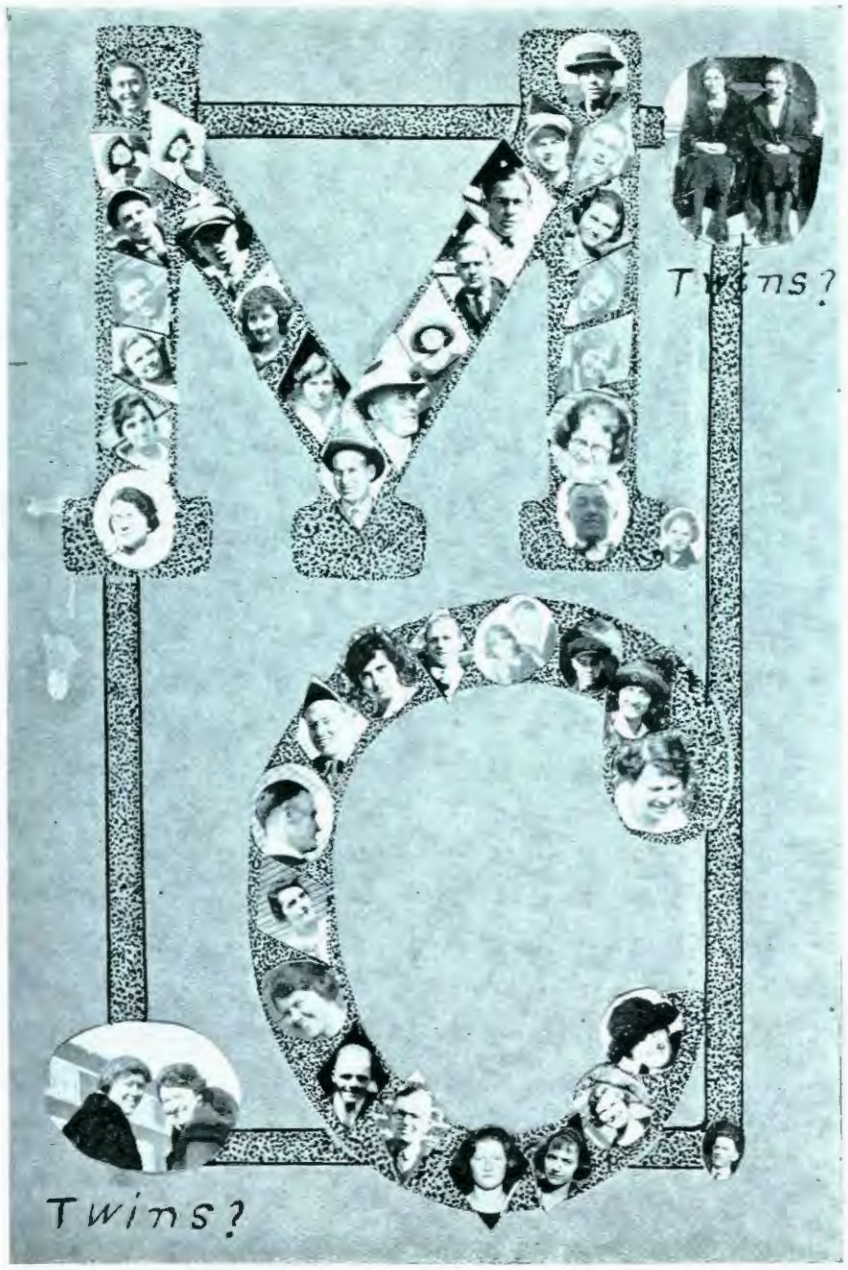


- 10 M. C. 26; Hays 14. H. S. fills Harnly Hall; everything else leaves.
11 M. C. 21; Hays 5. 2 much hot dog; Bille R. barks at visitors.
15 M. C. 20; K. S. N. 26.
16 M. C. 15; C. of E. 21. Cheer up, the worst is yet to come.
17 M. C. 25; Washburn 23. Revival of Learning.
18-19 Finals. Profs. learn new things.
20 Low grades exchanged. Kline Hall inmates fed by matron. Don't go to dining hall for a week.
21 Bible Institute opens.
24 Moundbuilders 27, Bulldogs 20. The worst has come. Sexes separated; gnashing of teeth.
28 Marie Brubaker gets shock on looking into east parlor. Two others also shocked.
31 M. C. 27, Fairmount 20. Aged, remarkably dressed lady meets Kline Hall girls; Mildred Fisher has particulars.

FEBRUARY

- 2 Ada Kurtz gets fellowship. Groundhog gives dire prophecy. M. C. 29, Bethel 14. Bums, clubs, more separation, not so much gnashing.
6 M. C. 11, Bethany 10. Garber goes to game alone. Quartet of hilarious rooters have scene with cops.
7 Coldest day of year; Vogt and Harnly begin tennis series.
8 Prof. Keim draws interesting analogy between cabbage heads and the human variety. Waas and Dirks wallop Coyote debaters 3 to 0; Bishop and Lankford take short end of 2 to 1.
9 M. C. 26, Coyotes 11. Coyotes up in the air, a la Hall.
10 Yes, children, it is snow.
11 Third floor boys, reduced to desperation, compile directory of unattached girls outside of dormitories; brighter prospects ahead. Fun and fudge for four in Arnold Hall; and then the judgment, Matron returned.
13 M. C. 38, Tigers 8. It could have been worse.
14 M. C. 16; Tigers 13. Appreciation day; how we love each other!
15 Grizzly Smith tells hair-raising tales.
16 M. C. 21, Coyotes 12. Juniors want to give play in Opera House. Seniors don't want them to.
17 Cherry-seed shooting in dining hall.
20 Cherry-seed shooters bawled out in Spectator.
21 Funkhouser starts ladies' track team.
23 Lehman and Martin, and Lehman and Krehbiel take 2 to 1 de-





cisions from Bethel and Bethany. Rah! Rah! Juniors want to give play in Opera House; Faculty doesn't want them to; Juniors want to.

- 24 M. C. 32, Bethany 14. Rah! Rah! Rah!
- 27 Garman advertises voice lessons.

MARCH

- 2 M. C. 31, Bethel 13. Unanimous decisions in debate against Bethany. Cup of joy spills over.
- 5 Coy Maid and Apollo participate in bean-bag stunt after study hours in Prof. Lauer's studio.
- 5 Bræmmells feed Fahnestock Hall inhabitants. Six hamburgers constitute refreshments.
- 6 Matron waxes eloquent in dining hall; table changed.
- 7 Y. M. and Y. W. installations. Girls do not wear middies.
- 8 Lota Neher demonstrates how to get out of locked room. Hint: Use transom.
- 9 Academy debaters win 3 to 0 against Central Academy; lose 3 to 0 against Tabor Academy; get championship of Pentangular League.
- 10 Bulldogs to Kansas City.
- 11 Strickler all-Kansas guard.
- 13 M. C. 22, Junior College of K. C. 14. Stock-judging team wins interstate contest.
- 14 M. C. 20, Southwestern 26.
- 15 Alta Mohler entertains with gum party; profitable evening spent chewing.
- 16 Jess Pugh stretches grins to limits of elasticity.
- 18 Not many at church.
- 20 "Gas." Everybody pacifist.
- 25 Paul C. Fung tells of China.
- 26 Dr. Harnly asks members of his Physiology class to divide themselves in two sections. Horrors! Request made very calmly.
- 28 Ideal girl and boy day; light thrown on old-maid situation.
- 29 Cheer leader try-out; wonderful flow of oratory. The candidates do well too.
- 30 Jay and Geraldine fall out—of the flivver.

APRIL

- 1 Good crowd at church. Easter.
- 2 Rain; Clean-up day postponed. Nuff Sed starts battle of words with Wanta Kno.
- 4 Last desperate campaigns before election. Rain and snow; Clean-up day postponed. Johnson falls off bike—quite properly.



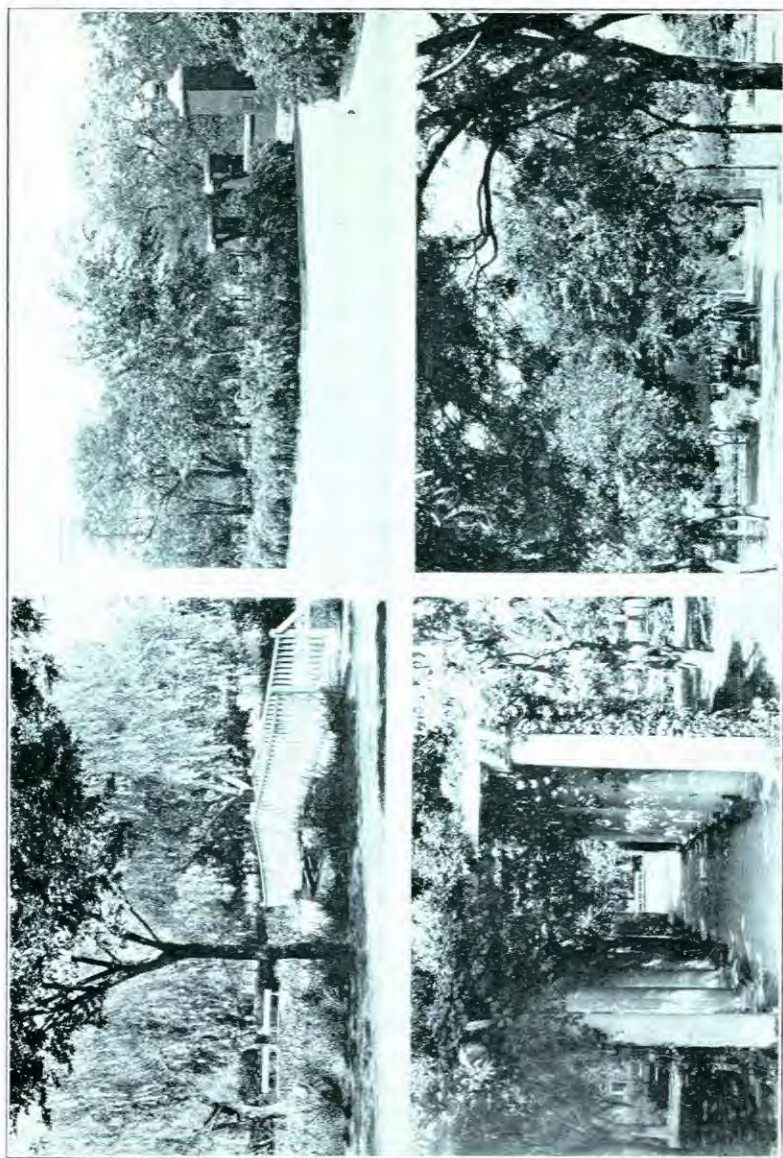


- 5 Spectator and cheer leader election. Exhausted campaign managers take a rest. Rain; Clean-up day postponed.
- 6 Windy; Clean-up day; girls display pretty aprons; boys work.
- 7 High School Senior Festival. Everybody puts on a Sunday smile.
- 8 Dr. Harnly tells how a choose a companion; good crowd at church.
- 10 Who loves violets? P. R. B. is interested. Wanta Kno gets sore and says mean things about Nuff Sed. "And two by two they went into the Thespian Club." Nuff Sed calls down spoony couple. Half dozen boys confess; really only one was meant.
- 11 State Championship Debate. M. C. 2, Fairmount 1, here—at Fairmount—let's talk about something pleasant.
- 13 Cabinet Training Conference begins.
- 16 Junior-Senior Banquet.
- 17 Junior Chapel. "Them wuz the days!"
- 19 Junior Play affords admirable opportunity for several members of the cast to act naturally.
- 20 Juniors try Flapper-Cakeeater Day. Bell-bottom trousers wilt in the rain.
- 23 Samuel Maust studies book on Furniture for Small Houses.
- 27 Junior Week tabooed by faculty. Lower classes in wrath. Senior exemptions from finals also taboo. Faculty's breakfast must have been punk. The Captain of Plymouth comes to town. The Seniors greet him.
- 30 More election campaigns. Didn't know M. C. had so much genius. Chemistry classes go to Hutchinson.

MAY

- 1 Dr. Craik makes peculiar request; asks for person to volunteer to grow a real crop of whiskers. Mystery in the air.
- 2 Seniors take long end of 4-3 score from Sophomores. Too bad?
- 3 Elections. Majority satisfied.
- 4 Ye scribe ceases being annalist and turns prophet.
- 8 Senior Acads give A Deal in Ducks.
- 16 All Schools' Day.
- 19 President's Reception. Tennis Tournament with Sterling. Rain?
- 20 Baccalaureate Sermon.
- 21 Exams.
- 22 Exams. Y. M. and Y. W. hold farewell social. "M" banquet.
- 23 Field Day. College Seniors present The Christian.
- 24 Class day. Alumni Banquet. Quadrangle comes out. Staff runs for cover.
- 25 Commencement. Sheep skins, scatterment, damp handkerchiefs. Thank goodness, it's over!





MOTHERSON CITY PARK VIEWS



BOOST FOR
THE
BULLDOGS

The Specter

TAKE HOME
YOUR
QUADRANGLE

VOLUME I.

TODAY

NO. 1.

DEAN CALMLY ORDERS WHOLESALE SUICIDE BY PHYSIOLOGY CLASS

Freshmen Show Surprising
Presence of Mind
By Refusing

The whole student body was astounded, the faculty unnerved, and the freshmen frightened, by an announcement made by Dr. Haruly in chapel requesting the members of his Physiology class to divide themselves into sections and report for dissection. Just who was expected to experiment on the verdant victims of human vivisection was never determined, for the Freshmen rose as one man and declared that they would be living sacrifices instead of apparatus in the horrors of the laboratory and demanded that cuts rather than themselves, be submitted to the artistry of the knives.

Was Probably Absent-Minded

Dr. Haruly is suspected of being absent minded as he was observed some time ago to be shouting through the receiver of the telephone, apparently angry at receiving no response. It is believed that the Dean may not have been serious in his request at chapel, probably suffering from his multiplicity at that time.

Dining Hall Treated To Little Symphony

An Enjoyable Program Rendered
By the inmates
Of Kline Home

On the morning after the night before, the Little Symphony Orchestra from Kline Hall financed by Estella Enche and Mabel Hoffman played the Ten-Cent Store Medley for the benefit of those Spartans who braved the horrors of the breakfast table. The number was vigorously applauded, but the orchestra, but newly organized, had no music ready. The members of the Orchestra are:

Harp	Jessie Ball
Drum	Marietta Ryerly
Frog	Alta Mohler
Grinders	
Florence Mohler, Mildred Fisher	
Rattle	Stella Bowman
Tap	Pearl Wiltfong
Bells	
Rose Mohler, Margaret Mikesell	
Birds	
Miriam Wenrick, Rose Turcotte	
Whistles	Lola Neher, Doris Plum
Crickets	Ada Correll, Sada Correll

EPIDEMIC SPREADS OVER COLLEGE HILL

A peculiar affliction has been exciting much speculation over College Hill this spring. It has affected a number of students in McPherson College, appearing spasmodically, especially during fair weather and when the victim is out of doors. The symptoms are an extraordinary tilting back of the head and pivoting back and forth with eyes focused at a distance. Those thus affected are often seen carrying field glasses which they use whenever symptoms appear. The immediate cause of their appearance seems to be a musical note lost among the trees or a flash of color in the air. The class in Birds are the most serious victims.

GOAT GIVES CHASE TO HELPLESS MAIDENS

Ocie McAvoy and Bernice Peck had a narrow escape from an infuriated William goat when out-strodding the other evening and only bent him to a place of safety by a hair's breadth.

Heard Thunder of Hoofs.

The girls were slowly walking down Euclid Avenue when a thud of hoofs was heard behind them. Upon looking around they were stricken dumb upon seeing the goat charging upon them, drawing nearer every moment, his eyes flashing fire.

Ran to Safety.

Grasping their skirts the terror-stricken girls sped down the walk sending up silent petitions for more speed. The speed came and with one grand sprint followed by a marvellous leap they landed on the other side of a porch rail. William, chagrined by his defeated plan, left the scene of action and the girls soon regained consciousness.

SENIORS MUST TAKE FINALS HEREAFTER

Final examinations will be forced on the seniors after this year by recent decision of the faculty after a heated discussion in their weekly faculty conference in the general office. It was decided that since the present seniors quit studying some time ago it would be inhumane treatment of dumb animals to give them third degree on short notice so they are excused from the ordeal this year.

BUMS HOLDING CLUBS FORCIBLY SEPARATE MEN FROM WIVES

No Reason Given for Attack
On the Defenseless
Women

Terror reigned in the Gymnasium on the night of the game with Southwestern when fierce looking bums with massive knotty clubs invaded the galleries and forcibly tore weeping wives from their protecting husbands and heartlessly placed them exposed among the dangerous girl rosters on the bleachers.

Attack Had Been Rumored

Before the game it was rumored that an attack was to be made but few had given it credence. Husbands and wives had scoffed at the report, firmly convinced that they could not be parted. Scarcely had they found their places in the gallery until the ferocious bums appeared and, brandishing their clubs, unceremoniously tore them apart, their struggles and cries falling on deaf ears.

Bums Left After Separation

After cruelly separating the couples the bums were apparently satisfied and no further torture was attempted. The frightened ladies recovered before the evening was over and were able to walk home after their husbands had forced apologies from the wielders of the primitive weapons.

Anonymous writers severely denounced the bums in the Spectator the following week and it is believed that they were thoroughly cowed by the opinion of several radical students.

SUSPECT HYDROPHOBIA

Bill Riddlebarger is under strict surveillance for symptoms of hydrophobia as a result of his eating too much hot dog one morning for breakfast. After devouring yards of the canine he began to run around on all fours barking furiously, to the great annoyance of a distinguished visitor. Stringent action may be taken regarding the amount of dog consumable by one person if this incident results seriously.

PHILOMATHEANS HOLD INTERESTING SESSION

The Philomathean Literary Society held an interesting program not yet. After roll call the new members were initiated. An attempt was made to decide upon a time for regular meetings and no time was agreed upon. After a general discussion consisting of hot air and nothing more, the society adjourned.



The Specter

PUBLISHED ONCE
CLASSY STUFF

Subscription: Agreement to Read.

EDITORIAL STAFF:

Bluff Chief Scriber
Stuff Scribbler
Nuff Ink Spiller

Reporters

Madam Grundy Ladies' Aid
Dame Rumor Gossip

Contributors

Wanta Kno, Nuff Sedd, Gazinku,
and Interested.

Business Staff

Shylock Business Manager
Judas Assistant Business Manager

FAMILY STRAINERS

Not Present Absent-Minded
Don't send us any correspondence; we are leaving town immediately.

LET'S BE POLITE

We don't think it was nice of the huns to use their clubs in separating husbands and wives at the game. It was a violation of a sacred law of society which should not be tolerated in this civilized country of ours. "What hath been joined to gether, let no man put asunder."

ARE YOU DEPENDABLE

Why can't everybody do things when they say they will and thus demonstrate to the world that they have the blessings of both dependability and talent? It is easier to do any amount of work one's self than to go through all sorts of agony standing over others with a big stick to see that they do what they are supposed to do.
—Stuff.

LOYALTY

Let's show our loyalty to our school in a practical way by supporting her activities, upholding her standards, and ideals, and doing well the tasks assigned to us.
Nuff.

SPEAKING OF WANTA KNO

We feel so Puffed Up; didn't Know anybody Read our Stuff before. We Thought the Editor Just used us for a Filler when our Curious Friend failed to Wonder over the usual Large Amount of Space. Well, We think we have Said Enough.
—Nuff Sedd.

Student Opinion

I think a branch of athletics much indulged in but not recognized in McPherson College should be brought to the front and given due credit. I refer to the feats performed on the railroad tracks north of the Hill. A number of students have become remarkably skilled in walking rails while others have adjusted their steps to suit each tie or to suit alternate ties, making rapid and graceful prog-

ress in their strides. Couldn't some form of competitive sport in this line be inaugurated? —Interested.

I WAS WONDERING About Nuff Sedd.

SHE MUST HAVE BEEN STUNG HARD

THE WAY she SWELLED UP and hollered LAST WEEK

I ALWAYS THOUGHT THAT it was the ONE WHO was

STUNG who SHRIEKED THE LOUDEST

HER ECHO is STILL RINGING IN MY EARS

ISN'T Nuff Sedd ENOUGH SAID

AND IF ENOUGH IS SAID ISN'T IT time

TO KEEP STILL. —Wanta Kno.

Earl Morris: "Why do they give us this same hash every day?"
Sam Kurtz: "Because we never eat it."

REMARKABLE REMARKS

Prof. Blair: "Not all abnormal people are in the asylum by any means."

Prof. Nininger: "I am not 'bugs' outside of the laboratory, too."
Hervey McClelland: "I want The Girl with Green Eyes."

Send the Specter home.

Psycho-Analysis

by

Prof. J. A. Blair

Results Guaranteed

Canoeing Taught

by the

Half Day

Earl Morris

FOR SALE

My Midnight Oil

Choice Quality
Small Quantity Left
IRA BRAMMELL

Voice Lessons

Reasonable Prices

Ralph Garman

WATCH this
SPACE
NEXT TIME

**FORDS
REPAIRED**

By EXPERIENCED Machinist

SEE JAY ELLER



The Quadrangle 1923

A DEAL IN DUCKS, by GUY L. CLEMENTS

Presented by the Senior Academy Class.

Jack Gillmore.....	Harry Lehman
Robert White.....	Elmer Krebbiel
John Hardnock.....	Harvey Lehman
Mike McConey.....	Ralph Martin
Ruth Hardnock.....	Evelyn Lyons
Betty Hart.....	Ethel Hill

Jack Gillmore, a young newspaper editor, is in love with Ruth Hardnock whose father, a retired rancher and capitalist, objects to their marriage because Jack is not rich. Jack enlists in the army and leaves his paper in the care of Robert White, a college chum. His assistants Betty Hart and Mike McConey help him in a plot to assist Jack in his love affair and by a clever deal in ducks with Mr. Hardnock they obtain for Jack sufficient capital to enable him to gain his prize.

THE CAPTAIN OF PLYMOUTH, by TIBBALS AND ELDREDGE

Presented by the Senior College Class.

Captain Miles Standish, Caesar a la mode.....	Earl Fisher
John Alden, whose position is love vs. duty.....	Roy Braumell
Elder Brewster, for whom life is only sorrow.....	Paul Sargent
Erasmus, Miles' right bower.....	Ray Clark
Wattawamut, Chief of all the Pequots.....	Jess Garvey
Stephen.....	Jacob Yoder
Gilbert.....	Lads of the Colony
Richard.....	Carl Dell
Priscilla, the cause of all the fuss.....	Jess Garvey
Katonka, one of the first women of America.....	Marie Cullen
Mercy, perhaps the first flirt of America.....	Marietta Byerly
Charity.....	Rowena Vaniman
Patience.....	Maye Andes
Mary.....	Plymouth Daisies
Martha.....	Estella Engle
Hester.....	Florence Mohler
Ruth.....	Naomi Fasnacht
	Ada Correll
	Ada Kurtz

Chorus of Puritans, Sailors, Soldiers, and Indians.

Captain Miles Standish, arrives in Plymouth with his "invincible army." He sends John Alden, who loves Priscilla, to woo her for himself and leaves to fight the Indians. He is bound to a tree and is only saved from a roasting by Katonka, an Indian princess whom he promises to marry.

Alden in trying to win Priscilla for Miles wins her for himself.



Miles returns, boasting of his victory over the Indians and is asked by Elder Brewster how he may be rewarded. Miles asks for Priscilla. The whole colony are ready to witness the marriage when Katonka rushes forward telling her story. Elder Brewster gives Priscilla to Alden and commands Miles to marry Katonka. Miles refuses on the ground that "Mr. Longfellow didn't tell me to."

THE CHRISTIAN, by HALL CAINE
Presented by the Senior College Class

John Storm, the Christian.....	Ray Clark
Lord Robert Ure.....	Paul Sargent
Horatio Drake.....	Harry Bowers
Archdeacon Wealthy.....	Jess Garvey
Brother Paul.....	Ira Brammell
Lord Storm, John's father.....	Claude Lowe
Father Lamplough.....	Glenn Johnson
Parson Quayle, Glory's Father.....	Jacob Yoder
"Faro" King.....	Clyde Rupp
Manager of the Music Hall.....	Hervey McClelland
Snike.....	John Mohler
Antiquaries.....	Lewis Florman, Roy Hylton, Harry Nickel
Glory Quayle, beloved of the Christian.....	Marie Cullen
Polly Love, sister of Paul.....	Ada Kurtz
Mrs. Collender.....	Ruth Cripe
Liza.....	Anna Myers
Mag.....	Estella Engle
Chorus Girls	
Letty.....	Rowena Vaniman
Betty.....	Eulah Crumpacker
Netty.....	Willa Davenport

John Storm enters the ministry because Glory Quayle refuses to give up her career for him. He establishes a mission in which he wins the love and respect of the poor people. Glory makes a decided success in the musical world. Lord Robert Ure, Drake, and their associates plan to purchase John's mission to erect a music hall to further Glory. John and his people stand firm. Ure circulates printed pamphlets containing false prophecies to which he has signed Storm's name. This ruins John's reputation with his people who turn against him. His mission is stormed by the angered mob. Glory sees the greatness of John's work and gives up her career to help him. She refuses Drake who gives her up to John along with a deed to the property as a wedding gift.



THE WRONG MR. WRIGHT, by GEORGE BROADHURST
Presented by the Junior College Class.

Seymour Sites, who assumes the name of Mr. Wright.....	Ray S. Wagoner
Wayland Clingstone, one of the boys of long ago.....	David Brubaker
Frederick Bonds, Sites, nephew.....	Rufus Daggett
Captain Crosby.....	Dale Strickler
Lord Brazenface, from old England.....	John Harnly
Front, bell boy.....	Harold Barnes
David Clews, a "fearless" detective.....	Omer Vanscoyoc
Julia Bonds, Sites' niece.....	Grace Ebaugh
Tillie Bird, Miss Bond's maid.....	Hazel Vogt
Arabella Clingstone, an unappropriated Angel.....	Elsie Forney
Henrietta Oliver, a <i>fin de siecle</i> detective.....	Isabel Knaus
Policemen.....	Irvin Ibrig, Carl Schneider

Mr. Seymour Sites comes to Old Point Comfort under the name of Mr. Wright to follow an employee who has stolen fifty thousand dollars. Through coincidence the thief has assumed the same name. The detective agency has placed Henrietta Oliver, a woman, on the track of the thief. She comes to the watering place where she meets Sites, alias Mr. Wright. Believing him to be her man she proceeds to lead him to a confession in a woman's way. Both succumb to mutual attraction and Henrietta weakens in her determination when Mr. Wright is arrested.

After a series of perplexing and ridiculous situations Mr. Wright succeeds in revealing his identity and wins Henrietta for himself.



The Quadrangle-1923



The School Year

SEPTEMBER

- 8 Faculty meeting; report not made public.
- 11-12 Studes arrive; enroll; red tape; purses grow thinner. Freshmen fresher than ever.
- 13 Opening chapel. Frosh learn why they came. Faculty given the once over. Ditto students. Student Council discusses weighty matters, among them the girls' cheer leader. Star gazers start star gazing.
- 14 Just one conflict after another.
- 15 Rain. Watermelon feeds post-poned.
- 16 Y. M. and Y. W. watermelon parties; eat it nigger style.
- 19 Faculty makes initial bow to students; second once-over more encouraging.
- 20 Radio club starts.
- 21 Activity ticket sale. Some girls buy; others have faith. Shirt tails on exhibition; freshmen girls stay indoors.
- 22 Bulldogs bark at Wildcats. McPherson 7, Baker 6—Jubilee.
- 23 Billy goat makes advances on Bernice and Lorinda. John Harnly offers assistance gratis to feminine Geology students.
- 25 Rules for excused absences passed without approval of student body.
- 26 Open nights fewer by action of Welfare Committee.
- 30 Bulldogs 3; Fairmount 10!!! ???

OCTOBER

- 3 Ada Kurtz fails to balance her chair properly. We won't mention the result.
- 4 Faculty hike; hot dog and a lot of other eats; come home at all (late) hours.
- 5 Cigarette drive on; Funkhouser mumbles incoherently about Bridgewater College.
- 7 Seniors entertain freshmen; frosh distinguished from Seniors by their green caps.
- 9 Seniors remind Dr. Kurtz of his birthday. They called it a serenade.
- 10 Lecture course announcement. "More talented and more expensive than ever," as usual.
- 11 School picture taken; flatters every one.



The Quadrangle-1923

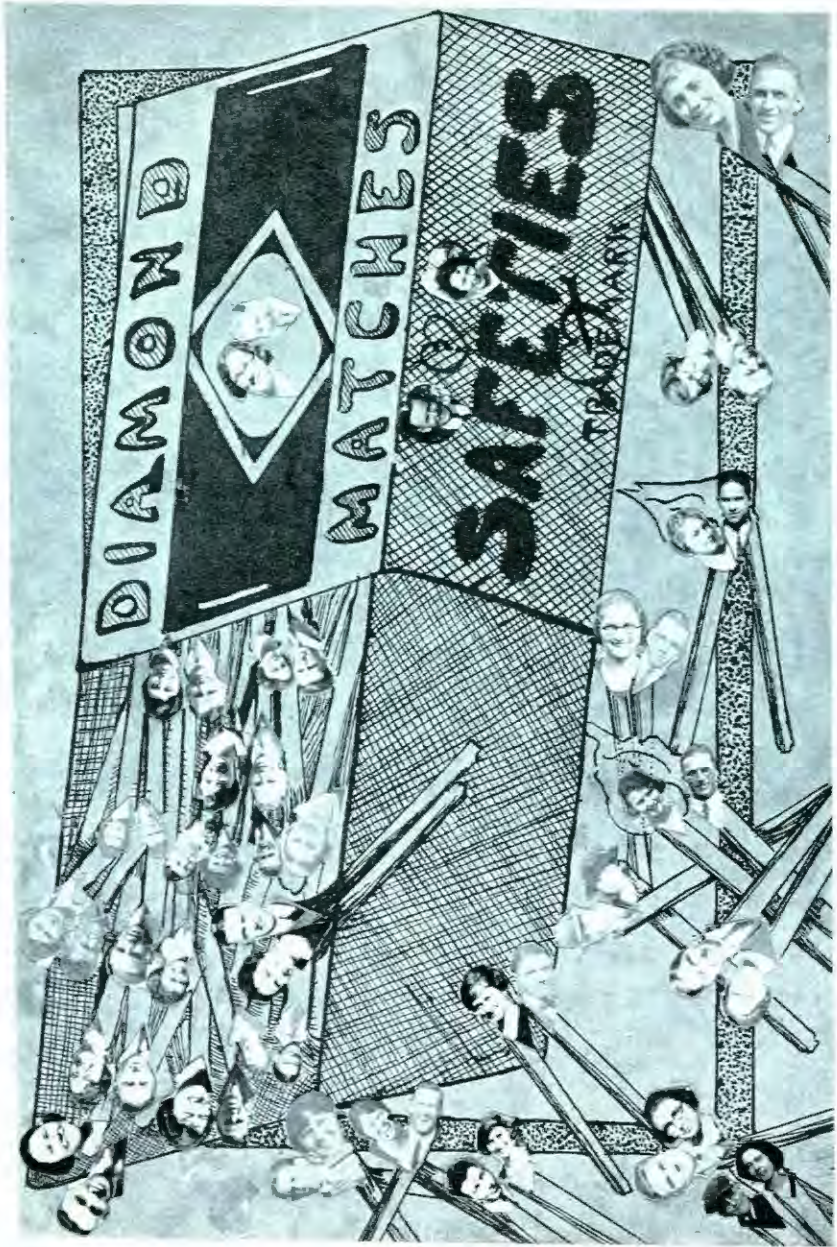


- 13 Bulldogs snap at Tigers, 16 to 14. More jubilee. "Thursday Evening" on Friday evening.
- 18 I. Knaus and Prof. Blair clash on calisthenics.
- 19 'Possum invades Fahnstock Hall. Mrs. Grinstead exhorts in chapel.
- 20 Bulldogs bite Bethel 39 to 6. Cambrea Concert Artists at Opera House. New set of dates. Prof Hess leaves for a visit.
- 21 Duggin Recital. Jessie Ball gets special delivery box, also visitor. Imagination runs wild.
- 22 Watermelon feed in Fahnstock Hall.
- 23 Seated in chapel. Family ties broken.
- 25 Kline Hall girls test mental telepathy; no positive conclusions reached.
- 26 Fortune telling in Y. W. Strange facts disclosed.
- 27 Bulldogs demolish Coyotes 13 to 10. Maude Gish displays the old fight.
- 31 Seniors stage spectacular scene, yells, songs, pep. Ghosts, goblins, screeches, in gym.

NOVEMBER

- 3 Bulldogs clean up on St. Mary's 14 to 12. Rooters raid every building. Elites bummed way to game. I. Hawley cheer leader. Everett and Lola have devotions.
- 6 Lota Neher in a hurry; misses breakfast.
- 7 Election day; fire flies in office. Row over bobbed hair in Spectator.
- 8 Prof. Hess entertains visitors.
- 9 No heat—shivers. Wonder about the heating system in heaven.
- 10 Geology hike. John Harnly gets double benefit of his hamburgers.
- 11 Swedes demolish Bulldogs, 6 to 0. Thoughts expressed in dashes.
- 12 Doty to Atlantic City. "Awful" for Alta?
- 16 Prof. Blair decrees that only married folks may sit together. Rush for court-house contemplated.
- 17 Bowers a curate and thief in same hour; stars in both Thespian plays. Onion feed in Stella Bowman's room; the secret was scented.
- 18 Wrestling match staged in Arnold Hall; outcome not known.
- 20 Prof. Morris enters Harnly Hall; joy inexpressible. Maude Gish decides that love begins at home.
- 21 Jessie Ball rejoices over full moon for Thanksgiving vacation.





- 22 Alta M. rises early to meet train.
- 23 Mother of invention causes Sam Kurtz to play basketball in football togs. Barrelmakers send Bulldogs home 12 to 0. Two of faculty witness game.
- 26 Rush on Clara Anderson. Every girl in Arnold Hall has her fortune told. Alta serves salt water taffy from Atlantic City.
- 27 J. J. reveals ancient history of the institution. Record broken! Every girl on third in Kline Hall has a date!
- 28 Ursula late to class; Bill late to class.
- 29 Mrs. Kurtz tortures girls with an account of a New England Thanksgiving dinner. Chicken feeds in Arnold Hall. "Studes" wake up crowing. Chapel attendance compulsory; take your own seat, too! Family ties re-broken. Debate tryout; budding orators blossom. "Dutch" presents St. Mary's and Salina footballs; great day.
- 30 Moundbuilders annihilate Bulldogs, 12 to 6. Gloom pervades M. C.

DECEMBER

- 1 Harnly Hall dedicated; visitors shown all over campus. Boys get pointers from girls' rooms. Open Bibles in Fahnstock Hall show boys' devotional nature. Funny it was never in evidence before.
- 6 Olsson brings book to class; given mental examination.
- 9 Boiler bursts; frigidity; overcoats; thick syrup; flies killed.
- 14 Icy walks, falls, graceful and otherwise, mostly otherwise. Tournament begins; Frosh out of luck.
- 18 Florence Kittell skates; shoe replenishes bonfire.
- 19 Mysterious sweet messages to girls in Kline Hall. Ada and Doris look wise.
- 20 Earl Morris forgets his name and tries a new one. Toy symphony in Kline Hall.
- 20 Harnly's cow refuses to give milk. Dorm boys have cream for breakfast.
- 21 Orchestra performs at breakfast. Exchange of knitted ties and pillow tops. General scatterment. Fisher to Ozawkie.

JANUARY

- 2 Hoovers advertise alarm clocks for sale. Their Ingersoll and Elgin wake Kline Hall inmate.
- 4 J. J. begs studes to pay dues; mild.
- 8 Funkhouser gets a line on a cheap diamond ring; his prospective customers not interested. Count Tolstoy at high school; platform occupied.
- 9 Spectator introduces Fine Arts Faculty. Glad to meet them.



Local Items

Glenn Johnson fell off his bicycle last week.

Wading is good on the walk in front of the library.

Milton Dell called at Kline Hall a few minutes ago.

There was a wash out on the line not long ago.

Grace Fike visited Chemistry laboratory the other day.

Hazel Vogt and John Harnly played tennis on the coldest morning of the year.

Charles Hall called on Prof. Hess several days ago.

Two students of McPherson College were so unfortunate as to be compelled to find their way down out of Harnly Hall from the fourth floor after the Superintendent of Buildings had unknowingly turned all the lights off in the building. Neither of the persons was injured by the ordeal.

Matron was gone for a short time and was missed by all.

Gordon Henston visited chapel one day this spring.

In Society

Two Entertained

He and She spent a pleasant half hour in the library during chapel in delightful conversation and so forth, mostly so forth. At ten-thirty the librarian returned and the party broke up suddenly.

Alta Mohler Gives Party.

Miss Alta Mohler entertained the inmates of the Home in her room the other evening in the usual way in which the ladies are entertained when by themselves. Delicious refreshments consisting of Wrigley's Spearmint in the color scheme of red and green were served at a late hour and the guests departed chewing their delight.

ABRACADABRA

Plagiarizing, much study is a weariness of the flesh and the more we study the more we discover our ignorance, and further, where ignorance is bliss 'tis folly to be wise, but yet, if ignorance is bliss, why is it that so many of us are unhappy?

We dare you to get any sense out of the above.

—Gazinkus.

Ah, Me!

The shades of night were falling
fast

LETTUCE

Finish Your Pictures

Hoover & Rupp

As through the town a young man passed

One eye was black, the other green
But on his lips a smile serene.

Displayed to those who stood about
That sundry teeth had fallen out.

One leg was twisted all awry,
Huge lumps festooned his starboard thigh.

But though his battered form was bent,

Still blithely on his way he went,
And fourteen others just like him,

Came limping through the shadows dim

The football game was over!

"What shape, madam, was the pocketbook you lost?"

"Flat, I'm a teacher."

Parent: "What is your reason for wanting to marry my daughter?"

Young Man: "I have no reason, sir, I am in love."

Behind the Times.

Rover: I haven't seen a lone in a dog's age, brother. I wonder what is up?

Nero: Meat, you poor boob! Why I became a vegetarian more than two months ago.

A Flyaway Affair.

A fly and a flea in a flue were imprisoned

So what could they do?

Said the flea, "Let us fly,"

Said the fly, "Let us flee,"

So they flew through a flaw in the flue.

Send the Specter home.

Various Verses

Oh, to be a bee,
To live
Up high
Where lilies dare first appear,
Dust love the violets
When once they open
Into a scheme?

—X. Y. Z.

Read our ads.

His Consolation.

Motorist: "Yes, it took me about six weeks' hard work to learn to drive my machine."

Pele-strain: "And what have you for your pains?"

Motorist: "Liniment."

Boost the Bulldogs.

**FOR SALE
MY BOOK
STAND
Good As New
GLENN JOHNSON**

**Let Me Give You
Lessons in Motoring
I Have the Benefit of
Intensive Practice
MAURICE HESS**

As I am leaving these parts I will sell at

PUBLIC AUCTION

On my plot of ground outside of the gymnasium

ANY DAY

By entire stock of white rats

Excepting Ted

To highest bidder or to anyone who will treat them kindly.

O. T. FUNKHOUSER.

TRACK PROSPECTS ARE BRIGHT AT PRESENT

Encouraging indeed is the interest shown in track this year, the student body as a whole being extremely interested in the various field and track events.

In the shot-put Albert Urcuh is showing up well. He has practised daily in the dining hall, having become quite adept in the art of throwing cherry seeds, which ought to be an aid out on the field.

For the 440-yard dash, John Darggett will probably take first place. Mr. Darggett has been on the run all winter making the dash up northwest three times every day.

The kitchen force are in good trim for the discus as they have practised with plates during bad weather. They are expected to put up some snappy opposition to any who may compete with them.

In hurdles Roy Hayes is showing up well, as is also Earl Morris. They are experts in jumping over chairs and out of windows.

The ladies under Coach Funkhouser are developing rapidly along different lines and are expecting to carry off the honors in several tournaments. Several of the ladies are particularly good in sprinting, being able to make the distance to the dormitories at ten o'clock in an immeasurably short time.

ATHLETES DISPLAYING PECULIAR BEHAVIOR

Considerable interest has been displayed in the half dozen young huskies who have been parading around the campus in neolucee or unusual attire. Combinations of Charlie Chaplin hats, dress shirts, bathrobes, ray vests, reversed and

misfitted clothing on wild-eyed athletes who heretofore have been the pride of McPherson College is odd to say the least. The decorous behavior in everything but dress is commendable in these young men and it is hoped that so soon as they become members of the "M" Club to which it is learned they are aspiring they will resort to the old order of things and appear clothed in their right minds. Those men affording the entertainment are Harold Barton, Earl Morris, Lowell Sell, John Lenzel, and Henry Hahn.

ELECTION RESULTS
Walking Encyclopedia

- Dr. Crank unanimous
- Advisory Board
- Elith Slifer
- Elsie Forney
- William Bishop
- Earl Morris
- Margaret Walters
- Mabel Griffin
- Night Watchman
- Frank Forney unanimous
- Newspaper
- Jessie Ball
- Ralph Himes

FREE!

Excuses to all who wish them

DR. H. J. HARNLY

PATRONIZE

Our

ADVERTISERS

We Carry a Complete Assortment
OF

TOILET ARTICLES

BERG & WHITE

Call And Let Me Demonstrate

How to Get

DOUBLE FOOD VALUE

From Your Hamburgers

Satisfaction Guaranteed

JOHN HARNLY



Definitions.

Hash: A compound consisting of everything it is not possible to utilize by itself; is served to dorm students as food.

Dorm: The place where most college people spend the time between 10:00 p. m. and 8:00 a. m.

Gym: Something to get out of if possible.

Flunking: The successful failure to attain a standard of mental ability arbitrarily determined by a teacher.

Bluffing: The tactics used by all students who do not flunk.

A Romance.

"Do you love me?" asked the paper bag of the sugar.

"I'm wrapped up in you."

"You sweet thing," murmured the paper bag.

Stanley Keim: "Why don't we have soup any more?"

Marathon: "They've lost the bone."



Frank C. Robb

Artist in

Portraiture

Sittings Taken Day or Night.

New and Modern Equipment
at your Service
Photographer for the Quadrangle



McPHERSON, KANSAS

Population 5,000.

The County Seat of McPherson County, Kansas, is a Modern Little City, Situated in the Heart of a Rich General Farming Community.

McPHERSON

Has Splendid Transportation Facilities, with Four Railroads: the Santa Fe, Rock Island, Union Pacific and Missouri Pacific. Also Four Automobile High-



GRADE SCHOOL BUILDINGS JUST COMPLETED
AT A COST OF \$90,000.



ways; the National Old Trails Road (Old Santa Fe Trail), Meridian Highway, Kansas-Colorado Boulevard and the Midwest Highway, Furnishing Well Marked Highways for Auto Travel to all Parts of the Country.

McPHERSON

Offers Educational Advantages, unexcelled by any Other City in Kansas. Two Colleges and Four Modern Public School Buildings with Competent Instructors has Placed McPherson in the Front Ranks as an Educational Center.

McPHERSON

Is a City of Fine Homes, Beautiful Parks, Well Paved Streets, Unlimited Supply of Pure Water and with Sanitary Sewers to all Parts of the City. Has a Carnegie Library, Y. M. C. A. Building, Modern Equipped Hospital and Splendid Churches.

McPHERSON

Has an Up-to-date Retail Section. The Merchants being Progressive and Carry Complete Stocks of Merchandise. Products from our Wholesale Houses are Shipped to the Western Half of Kansas and Eastern Colorado. Wheat Flour Manufactured in McPherson is Shipped to every part of the World.

McPHERSON

Has Splendid Auto Tourists Accommodations of all Kinds. Good Hotels, Restaurants, Garages and a Well Equipped Tourist Camp Ground.

McPHERSON

Is Just The Place In Which To Locate And Educate Your Children. Write for Descriptive Booklet.

McPHERSON
CHAMBER OF COMMERCE
McPherson, Kansas.

YOU WILL LIKE McPHERSON



County Hospital Carnegie Library Junior High School Y. M. C. A. Senior High School



To Be Copyrighted.

Prof. Morris—Let's count.

Miss Anderson—Well, it's all very, very interesting.

Dr. Craik—A preposition is a poor word to end a sentence "with."

Prof. Mohler—It reads something like this, I assure you.

Big Bill—My soul!

Associate Editor, (looking at her photograph) : "Horrible, isn't it?"

Editor: "Yes, but a very good likeness."

Coöperative

Established 1890

DEALERS IN:

Dry Goods, Shoes, Men's Work Clothing
Fancy and Staple Groceries

Meats

Hardware

THE ALLIANCE EXCHANGE CO.

Phones: 39, 168

SEE

JAY CRUMPACKER

For REAL ESTATE



Homes on College
Hill

Farms and
City Property

Buy a home with
your "Rent Money".

McPHERSON, KAN.



A Short Story

Algy met a bear.
The bear was bulgy.
The bulge was Algy.

J. H.: "Why so down in the mouth?"

O. T. F.: "My white rat died today.

J. H.: "Oh, I am sorry."

O. T. F.: "I held a funeral, and buried it in the back yard. I put some flowers on its grave, but I knew they would wither, so I left its tail sticking out for a marker."

Quality the Best Money Can Buy

Service Excelled By None

LLOYD'S CAFETERIA & CANDY KITCHEN

We serve Cafeteria Dinner and Supper
Short Order Breakfast

We Specialize Travelers Lunches Serve and Sell Fresh Milk and Cream,
Ice Cream and Sodas. Hot and Cold Drinks all the year around.

116 South Main Home Made Candies Phone 210 McPherson

ROMANCE OF CO-OPERATION

The story of the pursuit of the dollar holds human attention longer and more intense than any other form of business life. Through and by coöperation ambition for the big things in life are realized; genius is inspired to master strokes again by and through it human hands has hung the mighty one hundred thousand ton Mogul steam engine on the brow of the mountain side even where the spider couldn't hang its web.

Coöperation is for the people. It stimulates and enervates and thrills, because it shares all its gains with its associates.

The FARMERS ALLIANCE INSURANCE COMPANY in 34 years has written \$360,000,000.00, saving for its policyholders \$2,250,000.00, each one of whom received the coöperator's share of the profits.

We want you to join with us and help increase our 40,000 policyholders. Our gain will be mutual. Write us for our plan of business romance.



Quizz Paper Information:

"Elizabeth is well known in literature. She patronized Shakespeare and encouraged Sidney. She was dearly fond of hawks and horses and hounds, chivalry, and cavalry and other animals of the chase. In glory and honor and majesty we see her strut in her German garden. Raleigh set his cloak for her, but Elizabeth fondly died a maiden Queen."

"The backbone is something that holds up the head and ribs, and keeps one from having legs clear up to the neck."

"Geometry is that branch of the mathematics that deals with angels."

"Longfellow was a full-blooded American poet. He wrote 'The Salmon of Life.'"

"The Pilgrims came to America so that they might persecute their religion in peace."

"Electricity is a current of very strong stuff."

The House of "Peabody"



WISHES YOU SUCCESS THRUOUT LIFE

We Commend To You Our Ideal of
"SERVICE"

As The Foundation for Your Life Work
"Everything Used In or By Schools"

THE PEABODY SCHOOL FURNITURE CO.
Topeka, Kansas



"Sir Isaac Newton invented gravitation out of an apple."

"An axiom is something that is always so even if it isn't so."

"The descendants of the ancient Britons are to be found today in the British museum."

"Soft water is made hard by freezing."

"Isinglass is a glass used by doctors to look into their patients' eyes with."

"The midnight sun is usually called the moon."

"In the United States of America people are put to death by elocution."

"Immigrants who live in America a certain number of years become natives."

Jake—"May I call you by your first name."

Fonda—"Yes, by your last if you wish."

McPherson College

Registration for the First Semester of 1923-24
September 10 and 11.

STANDING: Fully accredited by the State University, the state Board of Public Instruction, and the North Central Association of Schools and Colleges.

COURSES OFFERED: Full and complete courses are offered in the Liberal Arts, Fine Arts, and Bible. Twenty-two Departments.

FACULTY: Twenty-six full time Instructors; Everyone a Specialist.

EQUIPMENT: Seven large modern buildings including one of the best and most modern Science Halls in the state. Adequate library facilities and a beautiful campus.

SCHOOL SPIRIT: The school spirit of McPherson College is a household word with all old students. An adequate and well balanced athletic program is offered, and plenty of pep is always in evidence. Debating, Literary and Fine Arts Societies give all an opportunity for self expression.

ENVIRONMENT: The environment is pleasant, wholesome, and decidedly Christian.

Write to

McPHERSON COLLEGE
McPherson, Kansas



Favorite Topics.

Prof. Nininger—Grasshoppers.
Idahoans—Out Where the West Begins.
Funkhouser—Rats.
Earl Morris—My girl.
Robert Blough—Myself.

The Fair One: "I see where a man married a woman for money. You wouldn't marry me for money, would you?"

The Square One: "Why, no, I wouldn't marry you for all the money in the world."

MANN AND GEROW

ARCHITECTS

Office, Rooms 722-721 Rorabaugh-Wiley Bldg.
Phone 2156

HUTCHINSON, KANSAS

PRINTING OF QUALITY

Anyone can set type and print it, but it takes years of experience, unusual equipment, good materials and brainy workmen to make *Printing That Pleases* the quality kind that comes from

THE DAILY REPUBLICAN PRINTERY

MCPHERSON, KANSAS

(Printer of the Quadrangle)



**BURGER IDEAS
BUILD DISTINCTIVE YEAR BOOKS**

IDEAS that lift your annual above the average, are the results of painstaking thought, effort and experience

We conceive and develop ideas in designing and engraving for the definite purpose of enlivening your annual

EXPERIENCE, MASTER CRAFTSMANSHIP AND THE PERSONAL COOPERATION IN A BURGER CONTRACT do not add to the price you pay but they do add materially to your finished book

Write us for IDEAS

BURGER ENGRAVING CO.

Boston Bldg. Kansas City.



Rules For Freshmen.

1. Come late to class habitually, rush in, and leave early frequently. It looks so important.
2. Call the faculty members "Prof." and you will appear to be on familiar terms with them.
3. Don't study your lessons, or don't let anyone find it out if you do. It is a sign of childishness, also you will be considered a "book worm."
4. Be sure to crab about the "dorm" eats. This proclaims you to be a dyed-in-the-wool college student.
5. Appeared bored in class; it seems so sophisticated.

N. B. The above rules if followed religiously will insure a howling success of any freshman.

Prof. Keim: "In what battle did General Wolfe, when hearing of victory cry, "I die happy?"

Aspiring student: "I think it was his last battle."

J. Garvey: "This stuff is killing me by inches."

S. Neher: "Don't worry, you'll last the rest of the year."

DR. C. F. MAHLER

(Osteopath Physician)

Office over Miller's Book Store, Phone 149 Red. Res., 248 Green

THE EBERHARDT CONSTRUCTION Co.

GENERAL CONTRACTORS

SALINA, KANSAS

Builders of Harnly Hall, McPherson County Hospital, Roosevelt High School and New Million Dollar High School at Wichita, Kansas, Lindsborg, Shellabarger, Robinson, Weber, Kaul and Midland Mills, and many others.





Rocky Mountain Summer School of McPherson College

JUNE 19, 1922, is an epochmaking date, for then the Rocky Mountains were added to the equipment of McPherson College. With the romantic environment, the invigorating climatic conditions, and the unsearchable resources of the Rocky Mountains, McPherson College is now equipped to offer Summer Courses under conditions admirably adapted for the ambitious student, the care-worn teacher, and the adventurous explorer.

Spend a summer in the Mountains and earn 12 hours of college credit.

Daily excursions under the direction of Professors constitutes a part of the course.

Trips to the following points may be made with the school for the small sum of \$10.00.

Perry Park, by auto.

Winding Stairs, on horseback.

Petrified Forest, by auto.

Gem Mines and Fossil beds, by auto.

Woodman Sanitorium, Garden of the Gods,
Cave of the Winds, Mineral Springs, and
South Cheyenne Canyon, in one trip, by
auto.

The Loop, on horseback.

The Plack Forest, by auto.

Balanced Rock, on horseback.

All for \$10.00

The cool environment of the Romantic Rocky Mountains offers unparalleled opportunities for recreation and study.



Nature in A Playful Mood Piled Up
Rocks 100 Feet High



