

E
378.19
M172q
1922

QUADRANGLE

PREVIOUS VOLUMES

Dandelion	-	1911
M. C. Spirit	-	1917
Life and Light	-	1920
The Quadrangle	-	1921

— VOLUME FIVE —

The Quadrangle

— 1922 —

Published by
The Student Council
McPherson College
McPherson, Kansas

1922

Contents

Book I	-	-	The College
Book II	-	-	The Classes
Book III	-	-	Organization
Book IV	-	-	Athletics
Book V	-	-	Facts and Follies



Dedication

In token of our gratitude and sincere
appreciation of

PROFESSOR ELMER LE ROY CRAIK

Christian gentleman, teacher, and friend,
whose life among us has been so wholesome and unselfish an
embodiment of the ideals of scholarship and loyalty and
service for which our College stands, we lov-
ingly dedicate this volume of
the Quadrangle



Foreword

This year of 1921-22 has been a memorable one for McPherson College. It has been a year of growth and achievement, both in the history of the institution and in the lives of her students. The Staff of the "Quadrangle" has had for its purpose the production of a year book worthy of this growth and achievement, worthy of the ideals and traditions for which our Alma Mater stands. In so doing we hope that we have recorded and interpreted college activities in such a way that in the future the 1922 Quadrangle will bring true memories of the days in College. And if this volume will help in a small way to strengthen the bond of interest and sympathy that must always exist between each of us and our Alma Mater, the Staff will feel that its effort has not been in vain.

Book One
College





ADMINISTRATION

Administration



Board of Trustees

President D. W. Kurtz, Ex-officio

Elder E. G. Rodabaugh.....	Stet, Missouri
Elder G. W. Burgin.....	Burr Oak, Kansas
Elder J. E. Small.....	Oklahoma City, Oklahoma
Elder J. J. Yoder.....	McPherson, Kansas
W. R. Bish.....	Rocky Ford, Colorado
Norman Saylor.....	Morrill, Kansas
Gideon Shirky.....	Madison, Kansas
Elder W. W. Holsopple.....	Versailles, Missouri
Dr. H. J. Harnly.....	McPherson, Kansas
R. C. Strohm.....	McPherson, Kansas
Elder W. H. Yoder.....	Morrill, Kansas
Elder S. Z. Sharp.....	Fruita, Colorado
Elder W. R. Argabright.....	Fairview, Missouri
J. S. Gabel.....	Lincoln, Nebraska
S. A. Rhodes.....	Nampa, Idaho
F. A. Vaniman.....	McPherson, Kansas
J. N. Dresher.....	McPherson, Kansas

Administration



DANIEL WEBSTER KURTZ

D. D. 1911, Juniata College.

B. D. 1908, Juniata College.

A. M. 1908, Yale University.

A. B. 1905, Juniata College.

Student in universities of Leipzig, Berlin, and Marburg.

Professor of Greek, 1909-1910, Juniata College.

Pastor First Church of the Brethren, Philadelphia, 1910-1914.

President of the College, Professor of Philosophy, and Dean of the Bible School.

Faculty



HENRY JACOB HARNLY

Ph. D. 1903, Illinois Wesleyan.
 A. M. 1892, Illinois Wesleyan.
 A. B. 1892, Harvard University.
 B. S. 1891, Illinois Wesleyan.
*Dean of the College and Professor of
 Physiology and Bionomics.*



AMANDA FAHNESTOCK

B. D. McPherson College.
 A. B. 1916, McPherson College.
 B. S. L. 1903, McPherson College.
Instructor in Bible and Dean of Women



ELMER LE ROY CRAIK

A. M. 1916, University of Kansas.
 A. M. 1911, McPherson College.
 A. B. 1910, McPherson College.
 Candidate for Ph. D. University of Kansas, June, 1922.
*Professor of History and Political
 Science; Secretary of the Faculty.*



JOSEPH J. YODER

A. B. 1913, McPherson College.
*Professor of Bible and Social Science;
 Business Manager of the College.*

QUADRANGLE

Faculty



JOHN ALVIN BLAIR

A. M. 1918, University of Kansas.
A. B. 1917, University of Kansas.

*Professor of Education and Psychology;
Registrar.*



ELLIS M. STUDEBAKER

A. M. 1921, University of Chicago.
A. B. 1915, McPherson College.

*Professor of Greek and N. T. Interpretation;
Director of Religious Extension.*



ROBERT ELLSWORTH MOHLER

M. S. 1917, Kansas State Agricultural
College.

A. B. 1912, Mount Morris College.
B. S. D. 1907, McPherson College.

Professor of Agriculture; Dean of Men.



BARTEL EDWARD EBEL

A. M. 1910, University of Kansas.
A. B. 1909, McPherson College.

Graduate Student, Harvard University,
1914-1916.

Professor of Ancient and Modern Languages.

1922

QUADRANGLE

Faculty



MINNIE WALTERS

B. S. 1910, Oklahoma A. & M. College.
Professor of Home Economics.



MARY EDITH McGAFFEY

A. M. 1919, University of Kansas.
A. B. 1918, McPherson College.
Professor of English.



JESSIE BROWN

B. M. 1910, Bethany Conservatory.
Student in Royal Conservatory, Leipsig,
Germany, 1913-1914.
Director of Piano School.



J. HOWARD FRIES

Graduate, Cambrian Business College.
*Superintendent of Commercial School;
Assistant Business Manager.*

1922

QUADRANGLE

Faculty



AMMON SWOPE

A. M. 1914, University of Chicago.
A. B. 1912, Mount Morris College.

Professor of Industrial Education.



CHARLES STEPHEN MORRIS

A. M. 1915, Ohio State University.
A. B. 1913, Manchester College.

Professor of Mathematics and Physics.



JOHN WILLARD HERSHEY

M. S. 1910, Pennsylvania College.
B. S. 1907, Pennsylvania College.

Professor of Chemistry.



JOHN WILBY DEETER

B. D. 1918, Yale University.
A. B. 1913, McPherson College.

Professor of Theology.

1922

Faculty



LOLA M. HILL

A. B. 1921, McPherson College.
Instructor in German and English.



MRS. J. W. DEETER

B. S. D. 1913, McPherson College.
Student in New Haven and Chicago.
Instructor in Art.



MAURICE A. HESS

A. B. 1917, University of Pennsylvania.
A. B. 1914, Ursinus College.
Principal of the Academy.



ALVHH RAY LAUER

Graduate, 1917, Palmer College.
Student in Paris.
Professor of Violin.

QUADRANGLE

Faculty



DAVID HENRY HOOVER

Th. D. 1920, Southern Baptist Theological Seminary.
B. D. 1918, University of Chicago.
M. S. 1916, Vanderbilt University.
A. M. 1914, Bridgewater College.

Professor of Social Science.



HARVEY HARLOW NININGER

A. M. 1916, Pomona College.
A. B. 1914, McPherson College.

Professor of Biology and Curator of the Museum.



ALMA GLADYS ANDERSON

A. B. 1920, McPherson College.

Instructor in English.



PAULINE VANIMAN

B. M. 1919, Bethany College.
B. M. 1917, McPherson College.
Student in Oberlin Conservatory, 1920-1921.

Instructor in Piano and History of Music.

Faculty



E. J. UNRUH

Instructor in Shorthand and Typewriting.



FORREST WILLIAM GAW

*Student in Grosch School of Music.
Student in New York City.*

Director of the Vocal School.



ROGER D. WINGER

*A. M. 1920, University of Chicago
B. D. 1918, Bethany Bible School
A. B. 1916, Manchester College*



TILLIE INEZ HADLEY

*B. F. A. 1920, University of Nebraska.
Graduate State Normal, Pern, Nebraska.*

Instructor of Art.

QUADRANGLE

Faculty



LORA TROSTLE

Matron of Arnold Hall.



MRS. FANNIE STOVER

Matron of Cline Home.



RAY S. WAGONER

Field Secretary.



ARTHUR C. LONBORG

LL. B. 1921, University of Kansas.
Athletic Coach.

Faculty

Faculty Assistants

Librarian.....	Marguerite Mohler
Assistant Librarian.....	Ruth Kilmer
Assistant Librarian.....	Grace Entriken
Secretary to President.....	Le Roy Doty
Office Stenographer.....	Estella Engle
Agriculture.....	Herkle Wampler
Biology	Olive Holmes
Biology.....	Foster Hoover
Biology.....	Ralph Strohm
Chemistry.....	Leslie Blackman
Chemistry.....	De Witt Sager
Chemistry.....	Eulah Crumpacker
English.....	Ada Correll
Home Economics.....	Ruth Miller
Industrial Art.....	Earl Crumpacker
Industrial Art.....	Sam Merkey

Athletics



QUADRANGLE

Athletics



TRACK SQUAD, 1922

TOP ROW—DOTY, R. BRAMMELL (CAPTAIN), I. BRAMMELL (MANAGER),
L. CRUMPACKER, LONBORG (COACH).
MIDDLE ROW—CLARK, BETTS, MUDRA, KURTZ, STANSEL.
BOTTOM ROW—DELL, SLIFER, VANIMAN, S. CRUMPACKER, PAIR.

Track Results, Season 1922

April 21 at McPherson	Sterling College	25	McPherson 92
May 5 at McPherson	Pentangular Meet		
	Bethany College	63½	points
	McPherson College	49	points
	Kansas Wesleyan	19½	points
	Bethel College	14	points
	Sterling College	13	points
May 12 at Lindsborg	Bethany College	72	McPherson 45

The track season of 1922 was looked upon from the beginning to be a very successful one. This hope was based on the remarkable record that was made last year. With practically the same material back, together with some splendid new material, Old M. C. cast her hat in two dual meets and the Pentangular meet held this year at McPherson. We soon learned that Bethany had a better balanced team than we had, and we were forced to take a second place in the Pentangular, after we had easily won from Sterling, and lost to Bethany in dual meets.

Athletics



IRA AND ROY BRAMMELL

In the Brammell brothers M. C. has two consistent point winners in this spring sport. I. Brammell is the all-around track man of the team. Besides ranking either high point man, or near that coveted position, in each meet, he very successfully managed the team this season. His events are: 100 yard dash, 120 and 220 hurdles, pole vault, broad jump, and shot put.

Captain Roy Brammell was always a contender in the broad jump, high jump, and a very valuable asset on our relay team, which was undefeated, save at the State meet. The Brammells have one more year of track in the future.

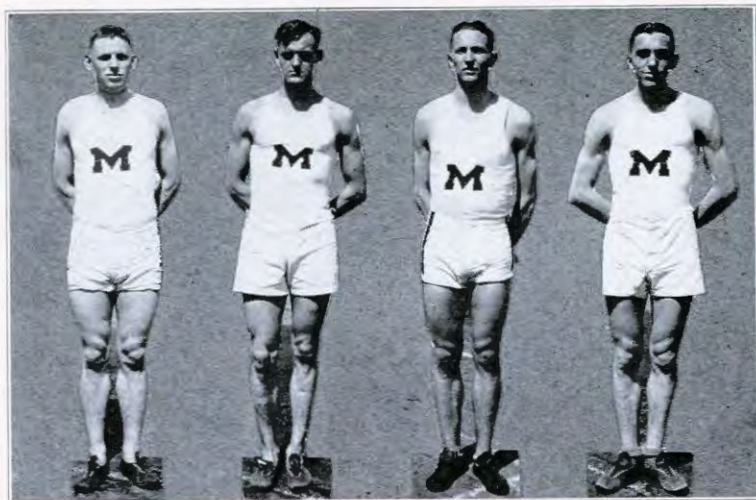
Sanger Crumpacker entered track for his first season this year and he proved a very valuable man in the distances. He took first in the mile in the two duals and second in the Pentangular. "Crummy" has one more year of track.

Dell also was a distance man in his first year of track experience.



DELL AND CRUMPACKER

Athletics



L. CRUMPACKER, MUDRA, BETTS, CLARK



VANIMAN

"Massive" Crumpacker represented the Maroon and White in the half mile. He took a first in a dual and a second in the Pentangular. He also was on the relay team. Crummy has two more years to enter track.

Mudra is our field man. He enters the shot put, discus, and javelin. It is possible for M. C. to have two more years of service from him.

Clark entered the low and high hurdles. He has one more year of track ahead of him.

Betts is a contestant in the dashes, and also a very valuable man on the relay team. Betts is a Sophomore.

Ray Vaniman shows pretty form and plenty of speed in the dashes. His events are: 100, 220, 440 yard dashes and the relay. Ray has two more years of track.

Athletics



STANSEL, KURTZ, PAIR, DOTY.

Stansel, Kurtz, Pair and Doty were other members of the squad entering the meets. Their events are: Stansel, javelin and discus; Kurtz, half mile; Pair, mile; and Doty, high jump, half mile and relay.

Slifer is the only Senior on M. C.'s track team. He has represented us in the distances for the past two years.



SLIFER

QUADRANGLE



9' 6" WINS FIRST



BRANNELL



BRANN'S MID BUD



"SOME BIRD"



A CLOSE RACE



"A SWED IN THE LEAD"



"DUTCH"

HARD-EUCH JONES



TOO MUCH SKILLINGS



"ON THE MARK"



"GET SET"



FIRST IN PENTAGULAR MEET



TEAM WORK



BASE BALL

Athletics



BASEBALL SQUAD

TOP ROW—D. STRICKLER, G. STRICKLER (CAPTAIN), SAYLOR, LONBORG (COACH)
 MIDDLE ROW—TRAPP (MANAGER), STANSEL, SARGENT, GARVEY, UNRUH
 BOTTOM ROW—C. RUPP, FISHER, RUMP, E. RUPP, KUHN.

Base Ball Schedule and Results

C. K. I. B. I.

April 12 at McPherson	Sterling College	22	McPherson	8
April 14 at Salina	Kansas Wesleyan	16	McPherson	4
April 20 at Lindsborg	Bethany College	22	McPherson	4
May 4 at McPherson	Kansas Wesleyan	15	McPherson	1
May 9 at McPherson	Bethany College	12	McPherson	1
Total	Opponents	87	McPherson	18

OTHER CONFERENCE GAMES

May 16 at McPherson	Hays Normal	5	McPherson	3
May 17 at McPherson	Hays Normal	8	McPherson	7

Athletics



GIRLS' BASKETBALL TEAM, 1922
 BACK ROW—RUMP (COACH), CRIPE (CAPTAIN), RING, MUSE.
 FRONT ROW—RHODES, EDGEComb, CRUMPACKER.

Girl's Basket Ball and Tennis

Girl's Basket Ball Schedule - Season 1922

Feb. 2 at Sterling Sterling College 33	McPherson 20
Feb. 9 at McPherson Bethany College 20	McPherson 32
Feb. 17 at McPherson Southwestern 24	McPherson 16
March 7, at Lindsborg Bethany College 32	McPherson 11
Total Opponents 109	McPherson 79

Girl's Basket Ball has been taking a back step in Kansas High Schools, and undoubtedly the opposition to this sport is having its effect on College Basket Ball for Girls. However, this year M. C. had a team in the ring, and altho the majority of games were lost, none of them were one-sided, by any means. The one victory over the Swedes, gave us enough joy to over-shadow the other slight defeats. Besides the six letters awarded the group above, the following made up the squad: Anna Edgecomb, Evelyn Lyons, Neva Yoder, Grace Miller, Viola Bowser, Lorinda Leatherman, Edith Watkins, and Julia Jones.

Tennis

Tennis is one of the spring sports that merits proper attention. It is doubtless one of the cleanest and most invigorating sports that can be indulged in. The courts were reworked this spring and were in excellent condition for the pentangular track and field meet held at McPherson May 5, 1922. Arno Rodes, College Freshman, took the cup in the singles, winning from Bethany by a good margin. Our doubles men were Ralph Lehman and Kenneth Krehbiel, who played a good game but were unable to place. Clarence Showalter and Harlan Yoder are also among M. C.'s tennis stars.

QUADRANGLE



1922

Book Five
Facts and Follies



QUADRANGLE

Reunion



MRS. HARDY RUSSELL, MRS. DR. HEASTON, C. VANIMAN, JOHN OSTLIND, MRS. VAUGHN,
F. VANIMAN.
EFFIE SHARP, MRS. DR. GREGORY, MRS. ROBT. SOHLBERG, DR. DEAN, CHAS. HELSTROM,
DR. HEASTON.
MRS. CLARA RIDDELL, MRS. DR. CLARK, DR. SHARP, MRS. ROBT. MATTHEWS, R. MATTHEWS

Pioneer Students

The College was very fortunate this year in having as its guest McPherson College's first president, Dr. S. Z. Sharp, who is now over eighty years of age and is a resident of Fruita, Colorado. The history of the College dates back to 1887, when at the Annual Conference of the Church of the Brethren held at Ottawa, Kansas, Dr. Sharp was elected as president of a college to be established at McPherson. Dr. Sharp continued as President until 1896, taking the College through a crucial period of eight years, after which its success was a consequence. At present, Dr. Sharp is a member of the Board of Trustees.

During Dr. Sharp's visit in January, a reunion was held of all those who were students of the College during the time of Dr. Sharp's presidency, and the accompanying picture was taken. Prof. J. J. Yoder should have been in the group, but was unable to be present at the time.

Calendar—

September

5. Coach Lonborg whistles out the Bulldogs for the first round. Prospects good.
- 12-13. Enrollment. Meet J. J. Annual endurance grind for students begins.
14. Formal opening. Dr. Kurtz gives address. Everybody resolves to become a master. Students "invited" to read pages 28 and 29 in the catalog.
15. Freshmen, Freshmen everywhere.
16. Y. M. and Y. W. watermelon stews. Good time to look the new maidens over.
19. Faculty reception, smiles, pasty, fixed and weary.
21. Student Council meets for first time. Discusses the Ticket.
23. Hot dogs for breakfast, hear the Bulldogs growl.
24. Baker, 3; M. C., 0.
25. Wine sits in the sun to bring out the gold in his hair.
26. Senior-Freshmen Reception. All Freshmen not engaged attend. Great display of H. S. graduating dresses.
27. Nightie parade down Euclid.
Faculty proposes recommendations for Literary Societies. "Oh dreadful apparition why do you trouble me so?"
28. Stag prayer meeting in Strick Bros. room, preparatory to opening number of lecture course date season.
30. Activity Tickets out. Cases cinched for the year.

October

1. Death agonies of Literary Societies arouse pity.
2. Everybody at church. Not much doing.
5. College Debators organize.
6. Catholics, 17; Bulldogs, 14. Gloom on campus.
8. Literary program in chapel.
9. Chicken for dinner.
11. Quadrangle appears as a vision.
12. Academy debators organize.
Y. M. and Y. W. stage race to raise budget. No one hurt.
13. Faculty steps on absentees. It must be nearly Thanksgiving.
14. The jynx at Hays.
15. More Literary Society propaganda. Some free thinkers want to kill them dead. Monstrous!
16. Wonder if anyone reads the Calendar?
18. Rotarians banquet Bulldogs.
Junior lollypop, doll and toy day. H. Bowers appears in a straight role.

QUADRANGLE

Facts and Follies

21. Reforms, 0; Bulldogs, 75. Lonborg makes a speech.
22. Them ding-busted Literary Societies again. Ebel's smile wears thin.
23. Gnagey seen at church by several persons, matter referred to the Student Council.
25. Meeting called of all loyal Irvings. Four attend. Subject for intercollegiate debate chosen.
26. Literary Societies formally disband. Ebel's smile is ragged. Clubs peep up through the debris, receive withering welcome.
27. Skimmy takes Fos and Maxine riding in his pop buggy. Fos rides on soft pine rail.
28. Romped on Kansas Wesleyan, 19-0!!! Red blankets sported in splendorous glory.
29. Adelphics send in a complaint against settee monopoly. Candy Kid Club gets sore, doesn't make fudge for two nights.
31. Hallowe'en masquerade.

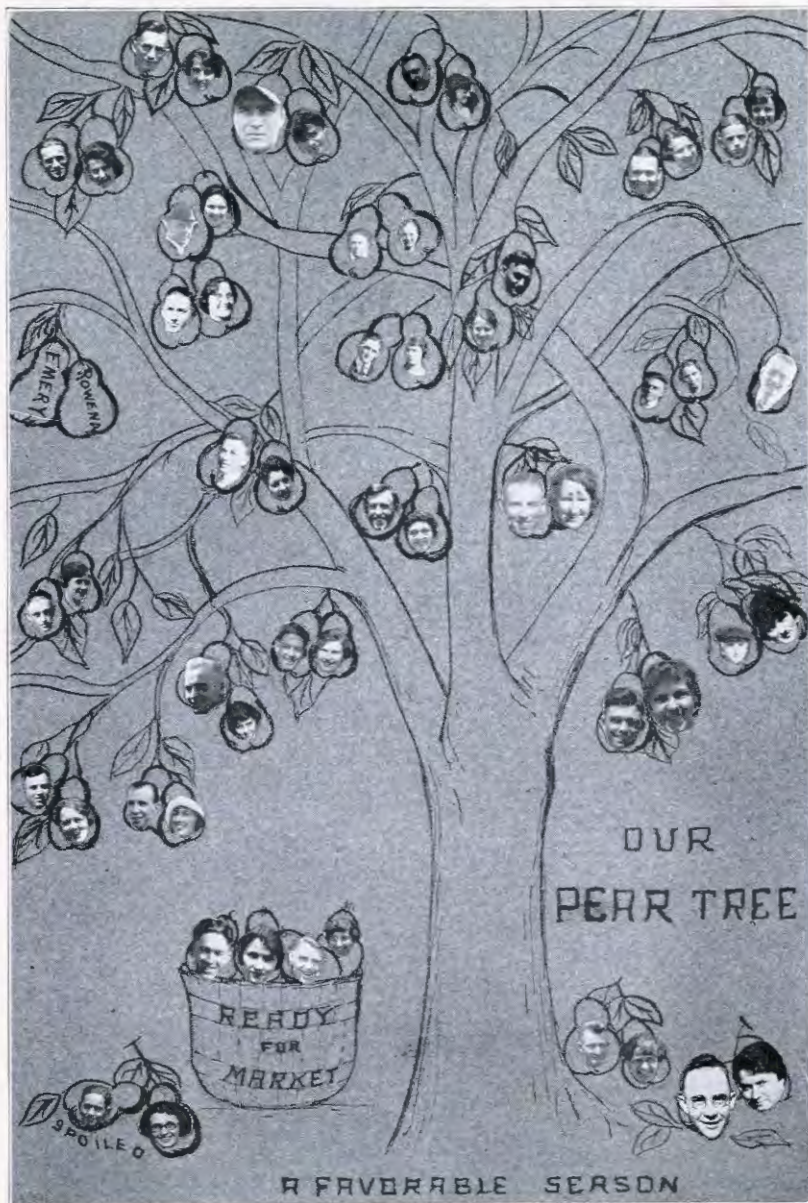
November

1. Quadrangle becomes a Cause.
- 3, 4, 5. Teachers' Meeting. Not enough went to give us vacation.
9. Uncle Danny returns after two weeks spent in California, says he hasn't seen it yet.
10. Biscuits and gravy are getting stale. Ott tells why chocolates cost \$1.00 per pound. Hereafter girls are doomed to receive peppermints in sacks.
11. The Swedes—but pardon us we just can't print it. Should have had another touchdown but that didn't count.
12. The day after. Everybody thick-headed.
14. Drive for Science Hall begins.
15. Phrenologist gives dry rub to ten men in Fahnestock Hall.
16. Nininger and Wagoner lecture one hour for one dollar.
17. M. C., 21; St. Johns, 7.
22. Science Hall drive passes \$40,000 mark.
24. Turkey! Homecoming Day! Indians, 0; M. C., 35.
26. Science Hall assured, fund passes \$57,000 mark.
27. Revival start. Time for exams to begin coming.
29. Revival services. Profs gave exams as prophesied. Basket tossers begin practice. Dr. Harnly advertises Mother Sills Sea Sick Remedy in Chapel.
30. Annual is assured. Members of college debate team chosen.

December

1. Dramatic Club proposed. No vaudeville stuff for this Institution.
6. Babe Saylor, Glenn Strickler, and Si Sargent receive honorable mention for being among the prettiest girls in school.

1922



QUADRANGLE

Facts and Follies

9. Soon it will be Christmas, girls are spending spare time making pongee handkerchiefs and knitting ties. We extend our sympathies to the men.
10. Disarmament Conference in Chapel.
Good speech week came and went and no one knew the difference.
11. Revivals close. No more exams until the finals.
13. Basket ball schedule out. Discover we have three licks at Hays.
14. Academy debate team chosen.
15. Contract let for Science Hall.
16. Intelligence Tests. A lot of raw brain power? Yes, exceedingly raw!
17. Questionnaires for Spectator come in. Studes want more free thinkers, society news, and fewer ads. Don't bite the hand that's feeding you.
Roy Doty called at Adelphian House.
19. Carl Carter elected Captain of football team, 22-23, at the M. Club banquet.
20. Dutch Lonborg advertised as giving a course in elementary law the second semester. All unattached maidens revise schedules.
21. Students pack to go home.
22. Unpack and pack up again.
23. Letters presented to Bulldogs. Tice leaves—what? A diamond. Mad rush of hurried Merry Xmas'es and Thank You's, those who didn't cut and go earlier catch trains and stand up all the way home.
- 23-Jan. 3. Eats, presents, home, etc., etc.

January

3. Back again. New display of rings and pongee handkerchiefs.
4. Study for finals. Life is real, life is earnest.
10. Stella Stopwatch insists that her piano is a Baldwin.
Article on "How Diamonds are Mined" published in Spec in response to popular demand.
12. M. C., 27; Pittsburg, 15.
13. M. C., 35; Sterling, 18. Red panties make their debut.
17. Some straight-laced reformers want us to stop saying Dad! Everybody balks.
19. M. C., 32; Hays, 20. And two more chances at their neck!
- 19-20. Finals, most everyone passed, miracles still happen.
21. Forum organizes.
22. Bible Institute. Dr. Sharp visits the College again.
24. Investigation shows that boys earn higher grades than girls. Write-up in Topeka Daily Capital on M. C. sportsmanship by Edmunds.
Everyone elated.
26. Southwestern, 29; M. C., 17. Gloom on Campus, but we're pretty sure of second berth.
27. M. C., 28; Sterling, 20. Hum, hum, just the way we like it.

QUADRANGLE



1922

QUADRANGLE

Facts and Follics

30. Trustees meet. Name Adelphian House, Kline Hall. Inmates are outraged.
31. Bible Institute proves a success. Spectators said so, that's final.

February

2. M. C., 23; Swedes, 18. Too full for utterance. Gym didn't cave in, much to everyone's surprise. Good old Bulldogs.
7. Jay Tracey awarded fellowship to K. U.
8. Pithecanthropus Erectus discovered in sandpit by Kurtz, Harnly and Stover. Great find for the new museum.
13. Both debates from the Swedes by two to one decisions.
14. Prof. Craik objects to moving Arkansas closer to McPherson. We all get valentines, palpitation rampant.
15. Grace says that Ted is just perfect, mentally, morally and physically.
17. M. C., 21; Bethel, 19.
20. Pie supper for Student Friendship Fund. Marie basks in the sunlight of Scott's smile.
21. Edith Watkins receives the Academy Scholarship.
24. Hays, 19; M. C., 22.—Continued.
25. Hays, 6; M. C., 25.—The end. "We sure done it" (a la Si) Dime Day. Urged to give dimes and not buy Hersheys. Sad enough.
28. New Catalog out.
29. Peggy says girls will fall every time if you set a Trapp for them. Grace Scribner says we have too much money. She wasn't joking, either.

March

2. Y. M. and Y. W. officers installed. Very solemn.
3. Zueblin describes the popular American indoor sport, i. e.—Killing Presidents.
6. Win double-header debate from Coyotes.
7. Special train to Lindsborg, Hill deserted. Swedes smothered 40-13! Excavation begins for Science Hall.
10. M. C., 26; Coyotes, 16. Second place in Conference cinched. Second only to Southwestern.
11. Academy forensic fiends secure twin victories from Bethany and Bethel. Bertha leaves to visit Stubby.
14. "The World and His Wife" to be Senior Play.
15. Babe gets a hair cut, ruins his looks for a day and a half. Rodney Martin wins first place in the State Anti-Tobacco Contest.
16. Tice and Foutz are trying for "schools for two."
17. Academy debaters take four decisions from Hillsboro. Win Championship of the Pentangular Debating League.
19. Bertha returns.

QUADRANGLE



"PRISCILLA"



"FALSE ALARM"



"TOPSY"



"CHIEF"



"MARVELOUS"



"RUTH'S PET"



"HEM!"



"O"



"WINE - WOMEN AND - SONG!"



"S"

1922

Facts and Follies

24. College debators win Championship in the Northern Division of the State Intercollegiate Debating League.
25. Ida Johnson declares her love for Cave Man style. Whip up, Elmer!
28. Summer school in Rockies announced. Everybody wants to get married and spend their honeymoon there.
Pete Neilson's room burns out. Pete decided to stop smoking "Little Pills for Satisfaction."
29. Warm spring day. Ten new cases along with sixteen old ones seen on the Campus.

April

1. What fools we mortals be!
4. Choral Union gives Concert.
5. Rain, Elections, usual crop of mediocre politicians and campaign dope resurrected.
6. Annual clean-up day. Dandelions, tin cans and Hershey papers go to —! Some folks still think its sophisticated to just walk around and look on, or puff some Ford smoke in someone's face.
7. Rain, rain and more rain.
Miss Walters and her squad spend hours on angel foods and chix, getting ready for the Senior festival.
8. Rain. Festival put off.
Kline inmates have a House Party.
Bad boys repent, say they are sorry they ate the angel foods.
Prof. Unruh announces that he has been east and is a member of the National Geographical Society.
9. Chicken which the H. S. Seniors should have eaten.
10. Last of the chicken.
Academy Junior-Senior banquet.
11. M. C. wins State Championship from Fairmount. Delirious joy in camp.
12. Celebration. Hess and his four form a triumphal march into chapel.
Dirks makes speech. Competes with Blair in flowing words and gestures.
14. Interclass track meet. Juniors win spurs.
15. Festival postponed.
Basketball letters, sweaters and blanket given out. Gussie receives blanket. Amen.
16. Easter, i. e., morning sing, eggs and the Messiah.
18. Will someone please toss "Variety" a soft pumpkin?
22. Senior Festival.
All-Student Ticket passes by huge majority.
25. Baseball game reports delegated to the fourth page in Spec. Enough said.
28. Dr. Kurtz annual lecture.

QUADRANGLE



1922

Facts and Follies

IHRIG - JITNEY - LINE

Schedule trips to College every day.
Want to save your soles?—Ride With us.

Phone 520 RED

May

1. Junior Banquet.
3. Junior Play.
4. Junior Chapel.
5. Pentangular Track Meet.
12. Academy Senior Play, "Persuasive Peggy."
16. Senior College studies stop class work.
20. Dr. Kurtz's reception to seniors.
22. Senior College Operetta, "Sylvia."
- 22-23. Finals.
24. Field Day.
Senior College Play, "The World and His Wife."
25. Class Day. Alumni Banquet.
26. Commencement.

Variety a la Spectator

I chatter, chatter as I go
To one and then another,
Sometimes fast and sometimes slow
But on and on forever.

—Cecile Martin

MANN AND GEROW ARCHITECTS

Office, Rooms 722-721 Rorabaugh-Wiley Bldg.
Phone 2156

HUTCHINSON, KANSAS

Variety A la Spectator

Miss Walters (discussing the double standard): "I tell you no man would dare to propose to me for fun."

Olive Boone: "I've been combing my hair off and on for two hours."

"It took ten million years to make a man out of a monkey."

"It takes a woman just fifteen minutes to make a monkey out of a man."

Dr. Harnly, calling roll:

"Mr. Eshelman."

"Mr. Eshelman?"

"What's the matter, has Mr. Eshelman no friends?"

Johnnie Olson: "Say, Prof., I don't think I deserve that zero."

Prof.: "Neither did I, but that was the lowest mark I could give you."

The only trouble with the pace that kills is that it doesn't kill enough of them.

Some cases must make Cupid laugh in his sleeve. But not the Cupid whose pictures we have seen.

John: "I wish I could read your thoughts."

Winona: "So do I, but goodness knows I've tried to help you all I could."

THE EBERHARDT CONSTRUCTION CO.

GENERAL CONTRACTORS
AND ENGINEERS

SALINA, - - - KANSAS

Work now under course of construction

Electrical Laboratory—Kansas University, Lawrence, Kansas.

Presbyterian Church, Wichita, Kansas.

National Bank of America, Salina, Kansas.

Harnly Hall, McPherson, Kansas.

Masonic Temple, Salina, Kansas.

Presbyterian Church, Salina, Kansas.

Mill—Lindsborg M. & E. Co., Lindsborg, Kansas.

Kansas Wesleyan Adm. Bldg., Salina, Kansas.

Reconstruct High School, Marquette, Kansas.

TOTAL AMOUNT OF ABOVE CONTRACTS

One Million, Five Hundred Twenty Five Thousand
Dollars

Facts and Follies

Variety a la Spectator

When Emma was a small child she was discovered by her mother engaged in a spirited encounter with her sister.

"Don't you know, dear," said her mother, "that-that was wicked? Satan told you to pull sister's hair."

"Maybe so," admitted Emma, "but kicking her shins was entirely my own idea."

Ruth Martin (on the verge of tears): "Oh, Miss McGaffey, God doesn't love me any more."

Miss M.: "Oh, yes He does, Ruth; I'm sure He does."

Ruth: "No, He doesn't, I *know* he doesn't. I tried him with a daisy."

To Men Only: The best way to win a girl's love:

- a. If she's under twenty, write poetry in her honor.
- b. If she's over twenty, make money.

Judge: "Where did the automobile hit you?"

Rastus: "Well, Jedge, if I'd been carrying a license numbah, it would busted into a thousand pieces."

Miss Hill: "What is the pronoun?"

Evelyn Lyons: "I!"

Prof.: "I am beautiful. What tense is that?"

Frosh: "Past!"



PRINTING OF QUALITY

Anyone can set type and print it, but it takes years of experience, unusual equipment, good materials and brainy workmen to make *Printing That Pleases* the quality kind that comes from

THE DAILY REPUBLICAN PRINTERY

McPHERSON, KANSAS

(Printers of the Quadrangle)

Facts and Follies

Variety a la Spectator

Trapp: "Am I good enough for you?"

Peggy: "No, but you're too good for anybody else."

Babe: "Dad, I'm engaged."

Dad: "Babe, you're too young to think of getting married."

Babe: "Who said I was thinking anything about marriage?"

Director: "Aren't you the boy who was here last week looking for a position?"

Glenn S.: "Yes, sir."

D.: "Didn't I tell you then that we wanted an older person?"

G.: "Yes, sir, that's why I'm here now."

"How did they ever happen to marry?"

"Same old story; started out to be good friends and changed their minds."

Fahrney Slifer wrote back after seeing Kansas City: "Kansas City is a great place, but I wish I had come here before I was converted."

Freshman composition on fly (after Dr. Harnly's lecture on disease carriers): "The fly is an insect. He has six legs. He is more dangerous than a lion, but I had rather a fly would bite me than a lion."

PEABODY SCHOOL FURNITURE COMPANY

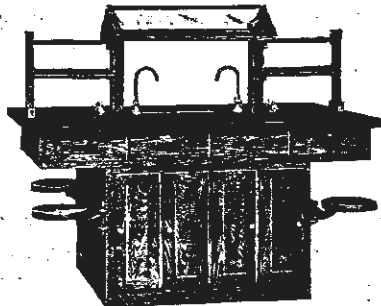
of Topeka, Kansas

Peabody Service The Result of 20 Years of Serving

Strong
In Construction

Artistic
In Finish

Planned
By Experts



Our
Laboratory
Experts
Are Ready
To Assist
You.

E. H. Sheldon Chemistry Table

SCIENTIFIC EQUIPMENT—FURNITURE—SUPPLIES

—EVERYTHING USED BY—
Kindergarten or University

ONLY QUALITY PRODUCTS FROM PEABODY

Write for Our Catalog and New Price List

Facts and Follics

McPHERSON COLLEGE

Registration for First Semester 1922-23
September 12 and 13

COURSES OFFERED: Full and complete courses are offered in Agriculture, Bible, Biology, Bionomics, Commercial Education, Physiology and Geology; Chemistry, Economics and Sociology; Education and Psychology, Vocational Education, English, Language and Literature, History and Political Science; Mathematics, Astronomy and Surveying; Philosophy, Physics and Public Speaking.

STANDING: McPherson College is a member of the North Central Association of Schools and Colleges, and the Credits earned there are accepted at any standard College or University.

The seventh building on the campus is now under construction, a beautiful Science building. It is to be ready for use by Sept. 1. The college will be equipped to care for a larger number of students than heretofore.

Write to

McPherson College,

McPherson, Kansas

1922

Facts and Follies

Variety a la Spectator

Frank Boone: "What do we play next?"

Prof. Lauer: "Sousa's Grand March."

Frank: "Gosh all hemlock, I just played that!"

Emery (in a rhapsody): "I adore everything that is beautiful, exquisite. I love the serene, the perfect—"

Rowena (cooly): "Oh, Emery! How can I refuse when you put it so beautifully?"

At an evening party the hostess had coaxed a protesting guest to sing. After the song she rushed to him, gushing: "Oh, Mr. Himes, you need never tell me again you can't sing; I know now!"

Edith Slifer: "There's a great idea back of everything I write."

Weary Prof.: "Yes, all the way from one to two thousand years back."

"Mamma," queried Warren anxiously, "is papa going to die and go to heaven?"

"Why, Warren!" exclaimed his mother, "of course not! What on earth put such an absurd idea into your head?"

Prof. Hershey: "Mista Brunk, will you please describe water?"

Elmer: "Water is a white fluid that turns black when you put your bands in it."

If you can't change the world, short change it. Let us prey.



Frank C. Robb

Artist in

Portraiture

New and Modern Equipment
at your Service

Photographer for the Quadrangle



ACHIEVEMENT

The goal of every ambitious man and firm is typified in the rapid growth of the Jahn & Ollier Engraving Company—the universal esteem in which their art and plates are held by the large national advertisers—and the enviable reputation for prompt deliveries which they enjoy.

Delivering this same high quality and careful personal supervision to schools has built up for us the largest college and high school annual engraving business in America—400 books yearly.

Thirty thousand square feet of floor space (4 floors) and over two hundred and fifty skilled employees are required to meet the constant demand for "J&O" commercial photographs, art, color process plates and photo engraving (one complete floor is devoted to color process work).

Intelligent supervision of all work by many skillful office service men eliminates your troubles. Sales service men sent everywhere.

JAHN and OLLIER ENGRAVING CO
352 West Adams Street
CHICAGO

TELEPHONE MAIN 3608

QUADRANGLE

Facts and Follies



ACHIEVEMENT
EDUCATION

AGRICULTURE
INDUSTRY

McPHERSON

YOU WILL LIKE McPHERSON

McPherson, Kansas, a beautiful little city located in the heart of a great agricultural State, has a population of approximately 5,500, including a student body of 900 who come here to obtain an education at our schools and colleges. It is the County seat of McPherson County and is surrounded by a rich, general farming community. Wheat, corn, oats and alfalfa are the principle farm products, however all field crops adapted to Kansas are successfully grown in the County. Cattle, hogs and poultry are found on every farm; extensive herds of pure bred cattle and hogs are being developed in every community and the dairy and poultry industry is increasing very rapidly.

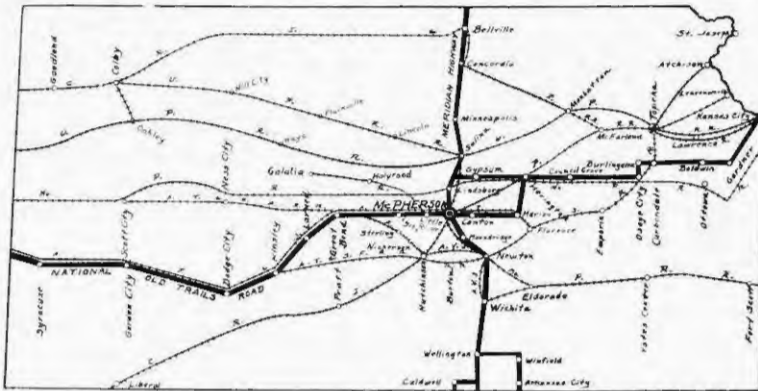
McPherson is a City of fine homes, with well kept lawns. The streets are nearly all paved and well lighted. Two beautiful

little parks centrally located are a source of pride to every citizen. A third park recently acquired is being developed which when completed will furnish tourists with a first class camping place while stopping over in our city.

McPherson has splendid transportation facilities. Four railroads, namely the Santa Fe, Rock Island, Union Pacific and Missouri Pacific enter the City and radiate in every direction here. A look at the map of Kansas will verify this statement. These shipping facilities make McPherson an ideal location for anyone seeking a location for the distribution of their products to central and Western part of Kansas and Eastern Colorado. 99% of Kansas can be reached within the second postal zone.

In addition to our splendid railroad facilities, two trans-continental automobile highways are routed through the City, namely the National Old Trails Road (also known as the Old Santa Fe Trails Road), running from New York to Los Angeles and the Meridian Highway with terminals at Winnipeg, Canada, on the north and Galveston, Texas, on the south. Thousands of tourists pass through our City annually over these highways.

McPherson has a flourishing retail section with stores housed in fine buildings



1922

Facts and Follies

with modern fronts and equipment. The merchants are progressive and carry complete stocks of merchandise. Jobbers, Wholesalers and Manufacturers located here do a profitable business and flour manufactured at McPherson is shipped to all parts of the world. Three News Papers, one Daily and two Weekly's always stand ready to boost for those things that will advance the interest of McPherson and its citizens.

McPherson's fame as a place for education, is Nation wide. Our Public Schools are second to none, the buildings are new and modern. The curriculum is complete, including agriculture, commerce, manual training and domestic science. Two new grade school buildings are to be built this summer, when these buildings are completed they will give us four modern buildings as follows: 1 Senior High, 1 Junior High and 2 Grade buildings. In addition to our splendid Public Schools, two colleges are located at McPherson. Students from nearly every state in the Union come here to take advantage of the splendid facilities these institutions offer to obtain higher education. Parents contemplating sending their children to College, will make no mistake in choosing McPherson as the place to send them. Fourteen churches, a Y. M. C. A. and Carnegie Library add to the moral as well as the intellectual uplift of the community. A \$250,000.00 County Hospital, equipped with all modern appliances, furnishes adequate facilities to citizens of the entire County to obtain first class hospital care at a minimum of expense.

The space allotted to us will not permit the enumeration of many other things McPherson has, which make it an ideal place in which to make your home, educate your children and engage in business. A visit to our City we know will convince you that the above brief description is not exaggerated. We invite you to come and look us over.

McPHERSON
CHAMBER OF COMMERCE



County Hospital—Carnegie Library—Junior High School—Y. M. C. A.—Senior High School

*"In every work regard the writer's End,
Since none can compass more than they intend:
And if the means be just, the conduct true,
Applause, in spite of trivial faults, is due."*

QUADRANGLE

Administration



The Student Council

OFFICERS

Henry Stover	President
Ira Brammell	Vice-President
Maxine McGaffey	Secretary
Clarence Showalter	Treasurer
Emery C. Wine.....	Reporter

Administration

The Student Council

REPRESENTATIVES

Sam Merkey Post-Graduate	W. T. Lockett Senior Academy
Emma Tousley Senior College	Harry Lehman Junior Academy
Emery Wine Senior College	Minnie Hutchinson Sophomore Academy
Rowena Vaniman Junior College	Dorsey Hoover Freshman Academy
Ira Brammell Junior College	Tillie Hadley Art
Eunice Almen* Sophomore College	Bertha Frantz Music
Harlan Yoder Sophomore College	Effie Miller Commercial
Maxine McGaffey Freshman College	Ammon Swope Faculty
Jay Eller Freshman College	J. Willard Hershey Faculty

*Resigned and vacancy filled by Ida Johnson

The Student Council is rapidly becoming the most important student organization of McPherson College. During the year 1921-1922, under the efficient leadership of Henry Stover, a very successful and progressive program was conducted. The main achievement was the proposal made by the student body to the Trustees that the student activity ticket be made a part of the regular tuition, thus enabling the Council to place a ticket in the hands of every student. Other work carried on by the Council, beside the maintenance of a strong activity ticket, was the remodeling of the constitution, choosing a new college song, making the "Pep" Clubs supreme student organizations, and establishing a more democratic system of public elections.

Events Put On By The Student Council

<p>Concerts College Orchestra Choral Society Aistro de Marco</p> <p>Lectures Dr. Kurtz Dr. Devine Dr. Lackland Dr. Whiting Grace Scribner</p> <p>Chalk Talk—A. R. Ebel</p> <p>All School Party—Halloween</p> <p>College Debates Bethany Kansas Wesleyan Sterling State Championship—Fairmount</p> <p>Academy Bethel Tabor Bethany</p>	<p>Exhibition—Tommy Ryan</p> <p>Football Games Fairmount State Reformatory Kansas Wesleyan Sterling St. John's American Legion Chillico Indians</p> <p>Basketball Games Pittsburg Normal Sterling Hays Normal Southwestern Bethany Bethel</p> <p>Baseball Games Hays Normal Bethany Kansas Wesleyan Sterling</p> <p>Track Meet Sterling</p>
--	---

Book Two
Classes





SENIORS

QUADRANGLE

Classes

Senior Class Officers

1922

President.....Galen Tice, Emery Wine
Vice President.....Oliver W. Trapp
Secretary.....Mayme King
Treasurer.....Elmer Rupp

1921

President.....Paul M. Pair
Vice President.....Ruth Miller
Secretary.....Emma Tousley
Treasurer.....Ralph Holsinger

1920

President.....Henry Stover
Vice President.....Mayme King
Secretary-Treasurer.....Fern Miller

1919

President.....Joy Smith, Galen Tice
Vice President.....Paul M. Pair, Oliver Trapp
Secretary-Treasurer.....Ruth Kilmer

Class Motto: "Ad astra" (To the stars)

Class Colors: Navy Blue and Gold

Class Flower: Yellow Snapdragon

1922

Classes

ELMER BATHURST, A. B.
McPherson, Kansas

MAJOR—HISTORY

Preceptor of Central College; Fellowship to Iowa University.

"Too busy with the crowded hour to fear to live or die."

HAROLD BEAM, A. B.
Holmesville, Nebraska

MAJOR—BIOLOGICAL SCIENCE

Irving. College Quartette, 3, 4; College Band 3, 4; Junior Play cast, Biology assistant 3; Glee Club 3, 4; Senior Operetta cast.

"Odds bobs! Woman, thou ensnarest me!"

LESLIE BLACKMAN, A. B. and B. S.

MAJOR—CHEMISTRY

Irving Literary Society; Ass't in Chemistry 3, 4; Ass't conductor College Band 4; Conductor College Band 3.

"Married and satisfied."

CRAWFORD F. BRUBAKER, A. B.
McPherson, Kansas

MAJOR—EDUCATION

Iconoclast; College Debate Team 1, 3, 4; Student Council 2; Theme reader English Dept. 2; Y. M. C. A. cabinet 3; Spectator reporter 4.

"Nuff said!" (to be continued)

MRS. CRAWFORD F. BRUBAKER,
A. B.

McPherson, Kansas

MAJOR—HOME ECONOMICS

Iconoclast.

"She's wed—(concluded)"

MAUDE CRIST, A. B.
Skidmore, Missouri

MAJOR—PHILOSOPHY

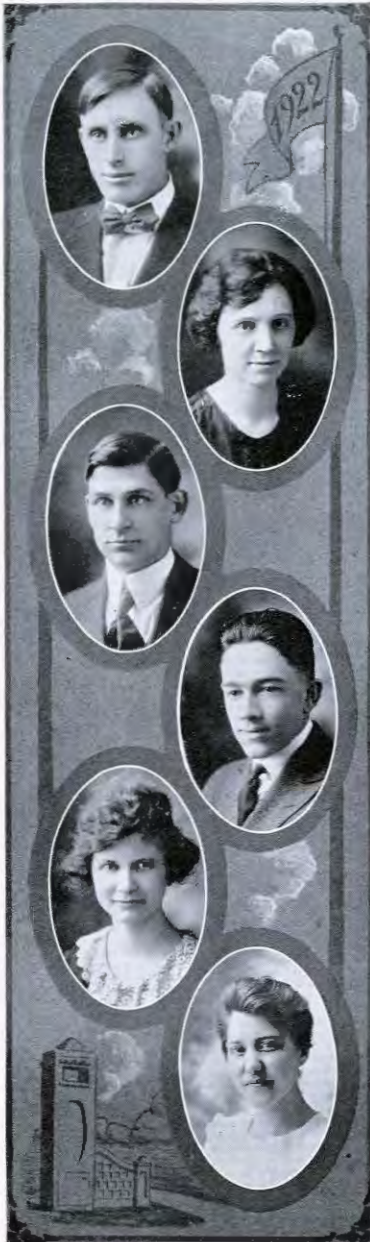
Iconoclast; Glee Club.

From Skidmore there came a Crist,

*A scholar rare I wist,
Who altho from our ranks is now missed
Is nevertheless on the list.*



Classes



LLOYD CRUMPACKER, A. B.
McPherson, Kansas

MAJOR—EDUCATION

Iconoclast: Varsity Basket Ball 1, 2, 3, 4;
I. P. A. 1, 2.

*"Pessimist—the fellow who dug for a
oil of happiness and found a dry
hole."*

NELLIE CULLEN, A. B.
McPherson, Kansas

MAJOR—MUSIC

Iconoclast: Secretary of Choral Club (2);
Ladies' Glee Club 1, 2, 3, 4; College
Ladies' Quartette 1, 2, 3; Y. W. C. A.
Cabinet 4; Graduate of Normal Voice
Course 1; Grad. Certificate Course in
Piano 3; Operetta Cast 4.

Brown eyed, laughing Nell.

CLARENCE ESHELMAN, A. B.
McPherson, Kansas

MAJOR—THEOLOGY

Iconoclast: Pastor at Wichita 1, 2; Pastor
at Galva 3, 4; President of Ministerial
Union 3.

*"Blest with temper whose unclouded ray
Can make tomorrow as cheerful as to-
day."*

HOMER S. FOUTZ, A. B.
Guide Rock, Nebraska

MAJOR—CHEMISTRY

Class Vice-President 1; Y. M. C. A. cabinet
3; College Cheer Leader 2; Junior play
cast; Spectator Staff 3; Finished col-
lege in three years.

"Good looks will win its way".

BERTHA A. FRANTZ, A. B.
Conway Springs, Kansas

MAJOR—ENGLISH

Ladies Glee Club 1, 2, 3, 4; Choral Club 1,
2, 3, 4; Ladies Quartette; 2; College
mixed quartette 2, 3; Graduate Voice
course 2; Y. M. C. A. cabinet 4; Stud-
ent council 4; Senior operetta.

*"A taste for books,
A taste for looks,
Always sweet
And can't be beat."*

BERTHA M. FRANTZ, A. B.
Chicago, Illinois

MAJOR—BIBLE AND THEOLOGY

Classes

LETHA HECKMAN, A. B.
Garden City, Kansas

MAJOR—EDUCATION
Iconoclast Sec'y 3; Treak of Mission Band
3; Corresponding Sec'y of Mission
Band 4.

*Always true and steady,
Never wrong and always ready.*

FRITZ J. HJELM, A. B.

MAJOR—THEOLOGY AND PHILOSOPHY

*"A workman that needeth not to be
ashamed."*

OLIVE HOLMES, A. B.

McPherson, Kansas

MAJOR—BIOLOGY

Iconoclast Choral Union 4; Forum 4; Vice-
President Mission Band 4; Assistant
in Biology 4.

*God gave her power to soothe and bless
And the calm strength of gentleness.*

RALPH HOLSINGER, A. B.

Agra, Oklahoma

MAJOR—THEOLOGY

Iconoclast; Class Treasurer 3; Vice-Presi-
dent of Iconoclast 3; Y. M. C. A. Cab-
inet 4; President of Mission Band 4;
Associate Editor Quadrangle 4.

*Holsinger, Holsinger,
He's surely a dinger.*

BERNICE JOHN, A. B.

Springdale, Arkansas

MAJOR—ENGLISH

Y. W. C. A. Cabinet 4.

*"The gladness of her gladness when
she's glad, the sadness of her sad-
ness when she's sad, is nothing to
the madness of her madness when
she's mad."*

JOSEPHINE JOHNSON, A. B.

McPherson, Kansas

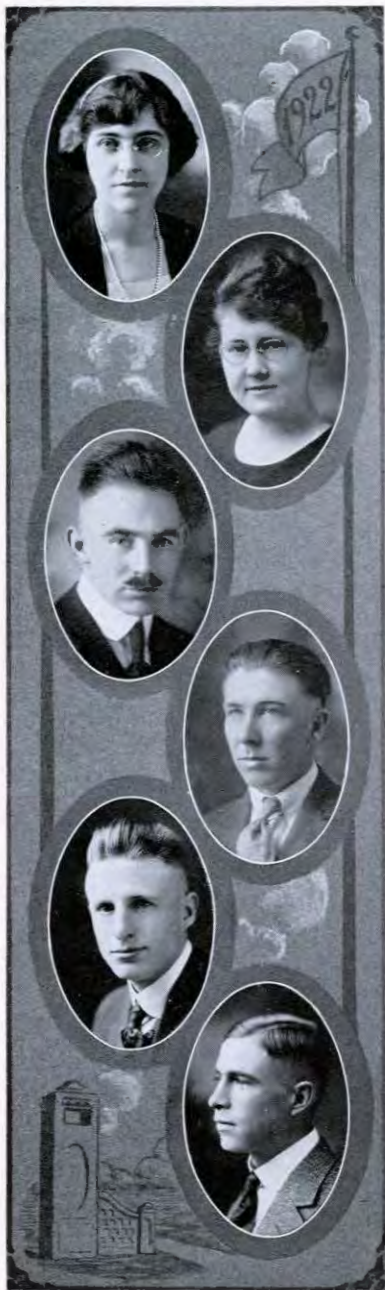
MAJOR—LANGUAGE

Irving, Chairman Memorial Committee 4.

*"Yes, stars, 'tis to be forgiven if we oe'r
reach our mortal state and claim a
kinship with you."*



QUADRANGLE



Classes

RUTH KILMER, A. B.
McPherson, Kansas

MAJOR—ENGLISH

Irving; Y. M. C. A. Cabinet 2, 3, 4; Spectator Staff 2; Library Assistant 3, 4; Secretary Athletic Board 4; Thespian Club 4.

Ruth, being interpreted a friend, cheers the world.

MAYME KING, A. B.
Larned, Kansas

MAJOR—ENGLISH

Iconoclast; Secretary Anti-Tobacco Ass'n 1; Vice-President Mission Band 2; Vice-President Class 1; Secretary of Class 3; Ladies' Quartette 1, 2, 3; Choral Union 1, 2, 3, 4; Junior Play 3; Thespian Club 4; Operetta Cast 4.

"A King and yet a Queen."

ALVHH RAY LAUER, A. B.
Creston, Iowa

MAJOR—GERMAN
Instructor in Violin.

"320 rods make a mile.

How many rods were spared on this child?"

GERHARDT LUNDEEN, B. S.
McPherson, Kansas

MAJOR—BIOLOGICAL SCIENCE

RODNEY C. MARTIN, A. B.
Wiley, Colorado

MAJOR—PHILOSOPHY AND THEOLOGY

Irving; College Debate team 1; Y. M. C. A. cabinet 3; President Anti-Tobacco Association 3; Men's Glee Club 1, 2, 3, 4; Class play 3, 4; First place in local and State Anti-Tobacco Oratorical contest 4; Vice-President of the State Anti-Tobacco Ass'n 4; Vice-President, Volunteer Band 4; President of Oratorical Society 4; Senior Operetta.

Whenever reform is scented he is on the spot.

SCOTT, MARTIN, A. B.
Wiley, Colorado

MAJOR—THEOLOGY

Iconoclast; Choral Union.

"Self-contained and full of mystery."

QUADRANGLE

Classes

GRACE MILLER, B. S.
Canton, Kansas

MAJOR—CHEMISTRY

"Dolly, Dolly, quite contrary!"

DOROTHY MILLER, B. S.
Canton, Kansas

MAJOR—CHEMISTRY

MARY MILLER, A. B.
Blackwell, Okla.

MAJOR—ENGLISH

Iconoclast; Y. W. C. A. cabinet 3, 4; Sec'y
Anti-Tobacco Ass'n 3; Choral Union
1, 2; Operetta cast 4.

*"Her smile was a harbinger prodigal of
summers shine."*

RUTH MILLER, A. B.
Blackwell, Okla.

MAJOR—HOME ECONOMICS

Iconoclast; Choral Union 1, 2, 3; Glee Club
3, 4; Class Vice-President 3; Y. W.
cabinet 3; Sec'y of Iconoclast 1; Ass't
Home Economics 4.

*"She that was ever fair and never proud,
Had tongue at will, and yet was never
loud."*

CATHARYNE MOHLER, A. B.
Grand Junction, Colorado

MAJOR—ENGLISH

Iconoclast; Choral Union 4.

*"When she will, she will;
When she won't, she won't."*

MARGUERITE MOHLER, A. B.
Plattsburg, Mo.

MAJOR—ENGLISH

Irving; Class Sec'y 1; Spectator Staff 1,
2, 3; Irving President 1; Library As-
sistant 1, 2; Librarian 2, 4; Glee Club
2, 3, 4; Y. W. C. A. Vice-President 3;
Student Council Vice-President 2.

*"Twixt her play and study, she has time
To take a course with cupid."*



1922

QUADRANGLE



Classes

MRS. CHAS. S. MORRIS, A. B.
McPherson, Kansas

MAJOR—ENGLISH

Iconoclast: Ladies' Glee Club 1, 2, 3; Ladies' Quartette 2, 3; Mission Band; Choral Club 1, 2, 3, 4; Senior Operetta.

*"Woman holds man with cookery,
And trains him with crockery."*

MARGUERITE MUSE, A. B.
McPherson, Kansas

MAJOR—ENGLISH

Irving: Vice-President Y. W. C. A. 2; Choral Club 1, 2, 3; Assistant Expression department 3, 2; Athletic Board 2; Spectator Staff 3; Sec'y Student Council 3; Junior Play cast 3; Senior Play cast; Thespian Club; President Y. W. C. A. 3.

What doth she think—no man can tell.

ARTHUR MYERS, A. B.
McPherson, Kansas.

MAJOR—MATHEMATICS

MARGUERITE MEYERS, A. B.
McPherson, Kansas

MAJOR—ENGLISH

Irving: Quadrangle Staff, 4.

*Great works are performed not by
strength but by perseverance.*

ROY NEHER, B. S.
McCune, Kansas

MAJOR—AGRICULTURE

Iconoclast: Basket Ball 1; Y. M. C. A. Cabinet 1; Six-in-one Committee 3; Mission Band; Debate Club.

Truly said, Roy is Neher.

SAYLOR NEHER, A. B.
Leeton, Mo.

MAJOR—PHILOSOPHY AND THEOLOGY

Iconoclast: Y. M. C. A. cabinet 1; Class reporter 2; Men's Glee Club 1, 2, 3, 4.

*"I tells 'em what I'se gwine tell 'em and
next I tells 'em, and then I tells 'em
what I told them."*

QUADRANGLE

Classes

PAUL M. PAIR, A. B.
Beatrice, Nebraska

MAJOR—PHILOSOPHY

Irving; Business Manager of Spectator 1; Student Council 1, 2; Choral Union 1, 2, 3; Tres. Irving Literary Society 1; Vice-President of Class 1; Y. M. C. A. Cabinet 2, 4; President of Class 3; College Band Librarian 3; Business Manager of Band 4; Spectator Staff 3; President of Men's Pep Club 4; Senior play cast 4; Business Manager Quadrangle 1.

"Soon will be a Pair indeed."

AUGUST RUMP, B. S.
Conway, Kansas

MAJOR—AGRICULTURE

Iconoclast; Varsity Basket Ball 1, 2, 3, 4; Baseball 2, 4; Track 1; Fire Brigade 2, 4; Class Athletic Manager 1, 4; Assistant Coach 4; Football 3, 4.

"Safe, strong, steady and sure."

ELMER RUPP, A. B.
Flowella, Texas

MAJOR—CHEMISTRY

Iconoclast; Treas. Anti-Tobacco Association 2; Vice-President Iconoclast Society 3; Junior play; Vice-President Anti-Tobacco Association 3; Baseball 3, 4; Treas. Y. M. C. A. 4; Treas. Senior Class 4; President of M. Club 4.

"Co-education is the thief of time."

DE WITT SAGER, B. S.
McPherson, Kansas

MAJOR—CHEMISTRY

Irving; Chemistry Ass't 3, 4; Certificate Normal Music 3; Diploma Collegiate Music 4; Symphony Orchestra 4.

"May the ladies never be caught like bees—by mere noise."

GALEN SAYLOR, A. B.
Carleton, Nebr.

MAJOR—HISTORY

Iconoclast; Junior Play Cast; Spectator Staff 4.

"A taste for books which is still the pleasure and glory of my life."

LLOYD SAYLOR, A. B.
Carleton, Nebr.

MAJOR—INDUSTRIAL EDUCATION

Iconoclast; Basket Ball squad 1, 2, 3, 4; Football squad 3, 4; Junior Play cast.

"Trained for either camp or court, Skilled for each manly sport."



1922

QUADRANGLE



Classes

FAHRNEY SLIFER, A. B.
Nickerson, Kansas

MAJOR—HISTORY

Iconoclast; College Debate Club 1, 2; Junior Play cast; Track team 3; Awarded prize for naming College Annual 3; Y. M. C. A. Cabinet 4; College Quartette 4; Athletic Board 4; Mens' Glee Club 4.

"And by the twinkling of his eye you recognize a wag."

IRA D. STILES, A. B.
McPherson, Kansas

MAJOR—CHEMISTRY

Irving; Ex-Service man.

"My mind to me a kingdom is."

HENRY ROY STOVER, A. B.
McPherson, Kansas

MAJOR—THEOLOGY

Iconoclast; Deputation Team 1, 2, 3; Choral Club 1, 2, 4; Men's Glee Club 1, 2, 3; Vice-President Y. M. C. A. 1; Debate Club Reporter 4; Basket Ball 1, 2; Captain 1; Class Basket Ball 1, 2, 3, 4; Football 3, 4; Debate Team 2, 3; Class President 2; Class Play 3; President Mission Band 3; Vice-President Student Council 3; President Student Council 4.

"Always there; can't make him over; truly four-square—is Henry Stover."

GLENN STRICKLER, B. S.
Ramona, Kansas

MAJOR—CHEMISTRY

Iconoclast; Junior Play cast; Baseball 3; Basket Ball 4; Baseball Captain 4; Spectator Staff 4; Senior Play.

*"Hickory, Dickory, Dick,
Nothing can beat ol' 'Strick.'"*

RALPH STROHM, A. B.
Redfield, Kansas

MAJOR—CHEMISTRY

Iconoclast President 2; Reserve Team 2; Assistant in Chemistry 3; Y. M. C. A. Cabinet 3; Junior Play cast; Senior Play cast 4; Ass't Biology 4; Fire Captain 3, 4.

"Accused of smoking in a chemical Laboratory!"

IVA STUDEBAKER, A. B.
Waverly, Virginia

MAJOR—HISTORY

Spectator Staff 1; Secretary; Irving Literary Society 1.

A sure 'nuff little girl.

1922

QUADRANGLE

Classes

ROY TERFLINGER, A. B.
Monmouth, Kansas

MAJOR—ENGLISH

"Makes a good Bud Means."

EMMA TOUSLEY, A. B.

Alma, Michigan

MAJOR—ENGLISH

Iconoclast; Class Reporter 2; Class Sec'y
3 Student Council 4; Y. M. C. A. Cab-
inet 4; Thespian Club 4.

*"She likes birds of all kinds, especially
a martin."*

GALEN TICE, A. B.

Summerfield, Kansas

MAJOR—CHEMISTRY

Captain Football Team 3; Junior Play Cast 3;
Senior Play Cast 4; Class Pres. 1, 4; Glee
Club, 1, 2, 3; Choral Society, 1, 2; Cheer
Leader 2; Bus. Mgr. Spec. half of 4; Quad-
rangle Staff 2, 3; Y. M. Cab. 2, 3.

*"Loves nothing better than foot ball ex-
cept—Do you suppose he will change
to baseball and follow in the foot-
steps of a Ruth?"*

JAY W. TRACEY, A. B.

Twin Falls, Idaho

MAJOR—HISTORY

Irving; Editor of Spectator 3; Editor of
Quadrangle 4; Senior Play Cast 4;
College Quartette 4; Men's Glee Club
1, 2, 3, 4; Choral Society 1, 2, 4; Class
Basket Ball 1, 2, 3; Fellow to K. U.

*"I thot I smelled powder!" "Yes, Capt.
Beaulieu!"*

OLIVER W. TRAPP, A. B.

Wichita, Kansas

MAJOR—BIOLOGY

Iconoclast; Y. M. C. A. Vice-President
2; Y. M. C. A. Cabinet 2, 3, 4; Basket
Ball Reserves 1; Team 2, 3; Football
2; Baseball 2, 3, 4; Vice-President of
Class 1, 4; President of Student Coun-
cil 3; Athletic Board 3; Spectator
Staff 1, 3; Quadrangle Staff 4; Pres-
ident "M" Club 3; Debate Club 4;
Business Manager Basket Ball 4;
Business Manager Baseball 1, 4; Glee
Club 2, 3, 4; Ass't Academy Physics
2.

*"A rare combination
To know him, needs association."*

ETHEL WHITMER, A. B.

Zenda, Kansas

MAJOR—ENGLISH

Iconoclast; Entered Sophomore year;
Girls' Glee Club 2, 3, 4; Choral Club
2, 3, 4; Vice-President Y. W. C. A. 3,
4; College Cheer Leader 3, 4; Jun-
ior Play Cast 3; Senior Play Cast 4.

*"She's on the crew, she's on the team,
Her classes show her far from stupid
And surely it doth seem
She still has time for cupid."*



1922

QUADRANGLE

Classes



IRMA WHITMORE, A. B.
McPherson, Kansas

MAJOR—CHEMISTRY

Bethany Bible School.

*"With serious air she thinks,
With serious mind she works,
With serious zest she plays."*

EMERY WINE, A. B.
Woodside, Delaware

MAJOR—HISTORY

Irving: Entered Sophomore year. Cheer
Leader 3; Class Play 3, 4; President
of Class 4; President Thespian Club
4; Associate Editor Quadrangle 3;
Associate Editor of Spectator 4; Mem-
ber of Student Council 4.

"Of the vintage of 1901."

DAYTON YODER, B. S.
McPherson, Kansas

MAJOR—CHEMISTRY

PROF. R. E. MOHLER
CLASS ADVISER

1922

Classes



"The World and His Wife"

BY CHARLES FREDERIC NIRDLINGER

Senior College Play

Presented May 24, 1922

CAST OF CHARACTERS

Don Julian Galen Tice
 Donna Teodora, his wife Ethel Whitmer
 Don Severo Rodney Martin
 Donna Mercedes, his wife Marguerite Muse
 Don Pepito, their son Paul M. Pair
 Captain Beaulieu, of the British Embassy: Jay W. Tracey
 Don Earnesto Emery Wine
 Genero, concierge Ralph Strohm
 Servant Glenn Strickler

Play Director Miss Alma G. Anderson
 Business Manager Oliver W. Trapp
 Stage Manager Jay W. Tracey

QUADRANGLE

Classes



"Sylvia"

BY W. RHYS-HERBERT

Senior College Operetta

Presented May 22, 1922.

CAST OF CHARACTERS

Sir Bertram de Lacey, the court poet	Oliver W. Trapp	
Prince Tobbytum, a Man of Consequence	Harold Beam	
William, an honest farmer	Rodney Martin	
Sylvia, betrothed to de Lacey	Bertha Frantz	
Betty, betrothed to William	Ethel Whitmer	
Arabella, a lady of the court	Ruth Miller	
Araminta, her sister	Mrs. Chas. Morris	
Polly	} Farmers' daughters	
Molly		
Dolly		
	} Nellie Cullen	
		Mayme King
		Mary Miller

Chorus: Farm lads, farmers' daughters, and haymakers

1922

QUADRANGLE



1922

QUADRANGLE

Classes



IRA ARNOLD

TILLIE HADLEY

LON. EAKES

JOHN LUNDEEN

SAM MERKEY

Post Graduates

JOHN LUNDEEN

A. B. McPherson College, 1913.

LON H. EAKES

A. B. Emery University, 1897.

IRA ARNOLD

A. B. McPherson College, 1913.

TILLIE INEZ HADLEY

B. F. A. University of Nebraska, 1920.

SAM MERKEY

A. B. McPherson College, 1921.

1922



UNDERGRADUATES

1922



Junior Class Roll

Stella Bowman
 Harry Bowers
 Everett Brammell
 Ira Brammell
 P. Roy Brammell
 Jessie Breon
 Gladys Brubaker
 Elmer Brunk
 Marietta Byerly
 Jessica Carter
 Carl Carter
 Raymond Clark
 Ada Correll
 Ruth Cripe

Earl Crumpacker
 Eulah Crumpacker
 Grace Crumpacker
 Marie Cullen
 Iva Curtis
 Willa Davenport
 Carl Dell
 Golda Ebbert
 Estella Engle
 Grace Enriken
 Naomi Fasnacht
 Earl Fisher
 Lewis Florman
 O. T. Funkhouser

Jess Garvey
 Floyd Holcomb
 Foster Hoover
 Roy Hylton
 Glenn Johnson
 Ada Kurtz
 Ralph Lehman
 Hervey McClelland
 Cecile Martin
 John Mohler
 Mark Neher
 Milo Nice
 N. Wilson Penland
 Orville Pote

Arthur Prather
 Clyde Rupp
 Paul Sargent
 Albert Schermerhorn
 Earnest Schermerhorn
 Clarence Showalter
 Norma Smith
 Fannie Stover
 Lawrence Vaniman
 Pauline Vaniman
 Rowena Vaniman
 Victor Vaniman
 Jacob Yoder

QUADRANGLE

Classes



Junior College

OFFICERS

Roy Brammell	President
Ralph Lehman	Vice President
Grace Entriken	Secretary
Foster Hoover	Treasurer
Edith McGaffey	Class Adviser

Class Motto: "Impossible is Un-American"

Class Colors: Green and White

Class Flower: White Chrysanthemum

QUADRANGLE

Classes



Sophomore Class Roll

L. L. Alger	Carrie Eshelman	Edith Muse
Eunice Almen	Sumner Eshelman	Peter Nielson
Vilas Betts	Rhea Fast	Ralph Olsson
Ruth Betts	Neva Fishburn	Ruth Pentecost
William Bishop	L. Avery Fleming	Theodore Robb
Calvin Boggs	Elsie Forney	Varo Shores
Olive Boone	Valliant Gnagey	Lillian Sandy
David Brubaker	Theodore Hiebert	Carl Schneider
Eimer Brubaker	Cecil Hayes	John Slifer
Everett Brubaker	Irvin Ihrig	Ben Spitzer
Gilbert Brubaker	Haddon Ilsey	Beulah Spurgeon
Clyde Cline	Helen Jacobs	Blanche Spurgeon
Harold Correll	Ida Johnson	Dale Strickler
Mrs. L. B. Crumpacker	Roland Jones	Nora Stump
Mrs. W. L. Crumpacker	Lila Kinzie	Mrs. L. G. Templeton
Leonard Crumpacker	Ralph Loshbaugh	L. G. Templeton
Sanger Crumpacker	Emaleigh Maxwell	E. J. Unruh
Merle Curtis	Samuel Maust	Ray Vaniman
Rufus Daggett	Earl Marchand	Omer Vanscoyoc
Della Day	Winona McGaffey	Bennie F. Waas
Nellie Derrick	Belle McKinney	Mary Waas
Carl Draegert	Maude Merkey	Wilbur Ellis Watkin
Grace Ebaugh	H. D. Michael	Lola Warwick
Helen Elliott	Ida Moyer	Harlan Yoder
	Bertha Mugler	

QUADRANGLE

Classes



Sophomore College

OFFICERS

John Slifer	President
Ida Johnson	Vice-President
Winona McGaffey	Secretary
Edith Muse	Treasurer
Professor Craik	Class Adviser

Class Motto—"For value received we promise to pay"

Class Flower—Purple Violet

Class Colors—Purple and White

1922

Classes



Freshman Class Roll

Jessie Ball
 Lola Mae Berg
 Ida Blouch
 Frank Boone
 Iva Brammell
 William Burgin
 Mildred Carpenter
 F. A. Colburn
 Sada Correll
 Lee Crist
 Ervin Crofoot
 Garman Daron
 George Diller
 Dorothy Doane
 LeRoy Doty
 Keith Ecton
 Jay Eller
 Olin Ellwood
 Grace Fike
 Glade Fisher
 Mildred Fisher
 Elsie Forney
 Eunice Frey
 Ralph Garman
 Maude Gish
 Warren Gish
 John Harnly
 Marjorie Hawthorne
 Chessie Heckman
 Marathon High

Addie Himes
 Ralph Himes
 Mable Mae Hoffman
 Helen Hartell
 Herman Hartell
 John Humbarger
 Carl Johnson
 Russell Jones
 Julia E. Jones
 Richard Keim
 Stanley Keim
 Ruth King
 Roy C. Kinzie
 Roy Kistner
 Kenneth Krehbiel
 Milford Kubin
 Paul Kurtz
 Edward Lauver
 Lorinda Leatherman
 Anna Lengle
 Earl Linholm
 Vivian Long
 Ocie McAvoys
 Harold McBride
 Maxine McGaffey
 Ruth Martin
 Mayme Matteson
 H. D. Michael
 Louis Mikow
 Alma Miller
 Lola Miller

Alta Mohler
 Rose Mohler
 Earl Morris
 Ada Morrison
 Lester Ogden
 Emmert Pair
 Bernice Peck
 Wilbur Peck
 Doris Ring
 Arno Rodes
 Curtis Ruthrauff
 Lucilla Serviss
 Lucy Serviss
 Edith Slifer
 Varo Shores
 Welcome Sondergard
 Reetha Studebaker
 O. J. Swander
 W. I. Thomas
 Arnold Thornton
 Albert Unruh
 Elberta Vaniman
 Margaret Wall
 Herkle Wampler
 Leo Warner
 Celia Watkins
 Miriam Wenrick
 Pearl Wiltfong
 Gertrude Witmore
 Glenna Wrightsman

QUADRANGLE

Classes



Freshman College

OFFICERS

Emmert Pair	President
Vivian Long	Vice President
Ocie McAvoy	Secretary
Reetha Studebaker	Treasurer
Prof. Mohler	Class Adviser

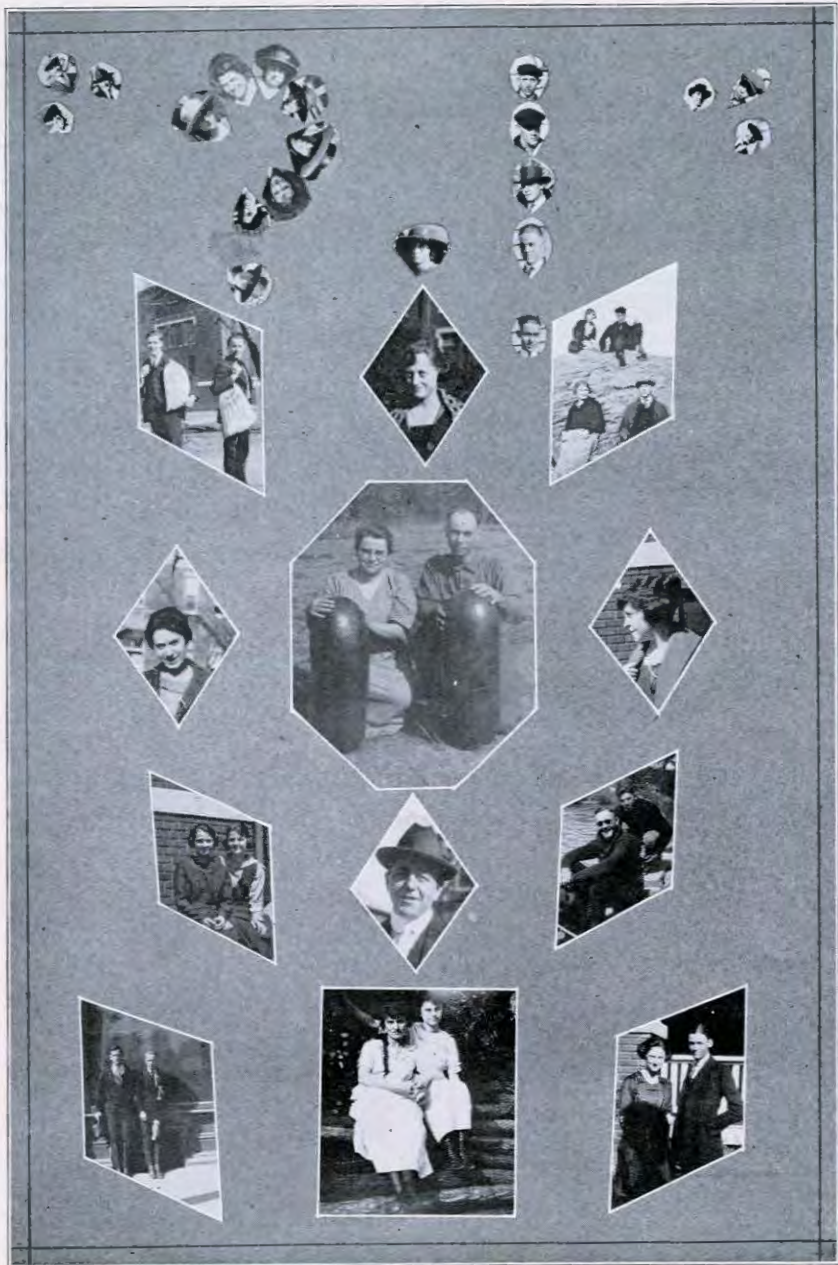
Class Motto: "Not on the heights but climbing"

Class Colors: Green and Gold

Class Flower: White Rose

1921

QUADRANGLE



1922



ACADEMY

QUADRANGLE

Classes



Senior Academy

GLADYS ADAMSON
McPherson, Kansas

JENNIE L. AMOS
McClave, Colorado

MRS. ALICE BIRKIN
McPherson, Kansas

LEONARD BIRKIN
McPherson, Kansas.

LAURA B. BOWMAN
Hardin, Missouri

W. EARL BREON
McPherson, Kansas.

LEO F. CRUMPACKER
McPherson, Kansas.

LILLIAN V. CRUMPACKER
McPherson, Kansas.

S. MILTON DELL
Beatrice, Nebraska

MINNIE E. EDGECOMB
McPherson, Kansas.

EARL P. FINKLE
Galva, Kansas

WEALTHY L. FLEMING
McPherson, Kansas.

IRENE JOHNSON
McPherson, Kansas.

CHARLES H. LENGEL
Burlington, Colorado

JOHN B. LENGEL
Burlington, Colorado

1922

QUADRANGLE

Classes



Senior Academy

WILLIAM T. LUCKETT
Wichita, Kansas

WILLIAM V. MUDRA
Oak Park, Illinois

GEORGE WILBUR PECK
Reserve, Kansas

FLOYE F. RHODES
McPherson, Kansas.

LESLIE E. SARGENT
Fruitland, Idaho

MARVIN M. STANSEL
Inman, Kansas

VIOLA STUMP
Wawaka, Texas

ETTA SUE VAN PELT
Richmond, Missouri

MAYE GERTRUDE VANSCHOYOC
Mont Ida, Kansas

NELLIE EDITH WATKINS
Mont Ida, Kansas

RUTH WEDEL
Galva, Kansas

SADIE WEDEL
Galva, Kansas

FLOYD A. WESTRICK
Belleville, Kansas

EUNICE E. WRAY
Pomona, Kansas

NEVA M. YODER
Conway, Kansas

Classes



All-of-A-Sudden Peggy

BY EARNEST DENNY

Presented by the Senior Academy Class

May 12, 1922

CAST OF CHARACTERS

Anthony Lord Crakenthorpe	Charles Lengel
Peggy	Eunice Wray
Jimmy Keppel	Earl Finkle
Lady Crakenthorpe	Laura Bowman
Major Archie Phipps	Floyd Westrick
Jack Menzies	Leslie Sargent
Parker	Earl Breon
Lucas	Milton Dell
Millicent Keppel	Gladys Adamson
Mrs. Colquhoun	Minnie Edgecomb
Mrs. O'Mara	Etta Van Pelt

QUADRANGLE

Classes



Junior Academy

OFFICERS

Evelyn Lyons	President
Ethel Hill	Vice-President
Anna Edgecomb	Secretary-Treasurer
Prof. Gaw	Class Adviser

Class Motto—"Onward and upward"

Class Colors—Pink and Green

Class Flower—Pink Carnation

Class Roll

Carl Barnhart
Russell Brand
Anna Edgecomb
Franklin Evans
Norma Finfrock
Ethel Hill
Harry Lehman

Harvey Lehman
Anna Lingle
Evelyn Lyons
Elmer McGonigle
Alice Olson
John Spicer
Grace Teeter

1922

Classes



Sophomore Academy

OFFICERS

John Lehman	President
Mary Whiteneck	Vice-President
Raymond Sitts	Secretary
Minnie Hutchinson	Treasurer
Prof. Ebel	Class Adviser

Class Motto—"Not on the heights but climbing"

Class Colors—Violet and White

Class Flower—Violet

Class Roll

William Austin	John Krehbiel
Viola Bowser	Alta Lauver
Henrietta Eschmann	John Lehman
Minnie Eschmann	Ida Lengel
Gladys Fishburn	Everett McClelland
Franklin Haas	Laura McClelland
Clarence Hawkins	Beauford Miller
Minnie Hutchinson	Raymond Sitts
Edna Johnson	Ruth Watkins
Elroy Johnson	Mary Whiteneck

Classes



Freshman Academy

OFFICERS

Jesse Carney	President
Marie Brubaker	Vice-President
Kathryn Thompson	Secretary
Miss Hill	Class Adviser

Class Roll

Ida Bowman
 Marie Brubaker
 Jesse Carney
 Vernon Crabb
 Margaret Dresher
 Emma Eschmann
 Ferris Freu

Selma Hanson
 Dorsey Hoover
 Norvin Parr
 Ned Sitts
 Edgar Stauffer
 Merle Stouder
 Salome Stouder

Kathryn Thompson

QUADRANGLE



JUNIOR CHAPEL



STUDIE HARNLY HESS



HOLD UP



SPORTS!



ROSE? THORN ROSE?



"JONSIE"



"JET"



BOUGHT AND PAID FOR



WATCHFUL WAITING?



HINT WE GOT FUN?



DEPARTMENTS

Fine Arts



Music Graduates

GRADUATION RECITALS

Piano Department

Teachers Certificate Course

MISS HELEN GARST

ASSISTED BY

MISS LEORA ROBINSON, Violinist
 PROF. FORREST W. GAW, Voice

Monday, May 15, 1922

PROGRAM

Sonata, op. 2, no. 3 *Beethoven*
 First Movement, Allegro e con ario.

MISS GARST

Playera *Sarasati*
 Kniawaik *Wienawski*

MISS ROBINSON

Novelette, op. 11, No. 2. *Rimsky-Koruskow*
 Traumerei, op. 9, no. 4 *Strauss*
 Praeludium *MacDowell*

MISS GARST

Dream in Twilight *Strauss*
 Sunset Lights the West *Robt. Franz*

PROF. GAW

Sposalizue *Liszt*
 MISS GARST

Diploma Course

MR. DE WITT SAGER

ASSISTED BY

MR. A. CLAIR SAGER

READER

Tuesday, May 16, 1922

PROGRAM

Sonata, op. No. 1. *Beethoven*
 Allegro motto e con ario.

MR. DEWITT SAGER

Gunga Din *Kipling*
 On The Road to Mandalay *Kipling*

MR. A. CLAIR SAGER

Intermezzo, from Sonata, op. 8. *Brahms*
 Polonaise A major *Chopin*

MR. DEWITT SAGER

Laska *Frank Besping*
 Richelieu *Edward Bulwer-Lyton*

MR. A. CLAIR SAGER

Liebestraume, A Flat Major. *Liszt*
 MR. DEWITT SAGER

Fine Arts

Piano

The piano school has been under the direction of Miss Jessie Brown since 1915. During this period it has made a phenomenal growth and success, so much so that last year it was necessary to add an additional instructor in that department. This year in addition to Miss Brown the school was fortunate in having the splendid instruction of Miss Pauline Vaniman.

The study of the pianoforte is an important part of a musical education. It is practically indispensable to the singer and very valuable to other musicians. Emphasis is laid upon starting right and great care taken as to the tone quality. Drill is given in the different kinds of finger, wrist and arm touches. Also, the department aims to keep in touch with the best methods of instruction and to give style, finish, and artistic interpretation.

The school is divided into three courses, the preparatory, certificate, and degree.

Fine Arts

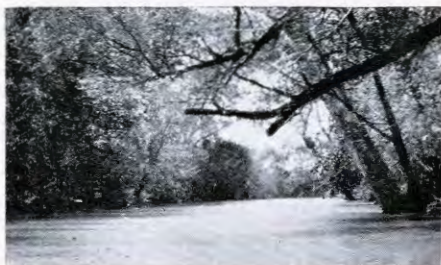
Voice

The purpose of the vocal school is to train the voice to respond to the wishes of the production of beautiful and flexible tones for interpreting musical compositions.

The fundamentals of vocal instruction necessary for good singing are: correct breathing, free emission, pureness of intonation, resonance, and distinct enunciation. Compositions from the best composers are used in the study of interpretation with special attention given to phrasing, enunciation and rhythm.

Length of a course in vocal music depends upon the special talent of the individuals and exercises are given as the individual case necessitates. To be eligible for graduation with a diploma in voice candidates must have a high school diploma or its equivalent and have given a satisfactory recital before the music faculty.

The vocal school has been greatly strengthened this year through the patient and untiring efforts and efficient leadership of Professor Gaw.

Fine Arts

Department of Art

The Art Department of McPherson College has grown steadily under the able direction of Mrs. J. W. Deeter since the department's organization in 1920. This year, Mrs. Deeter has had a very capable assistant in Miss Hadley. A type of work has been produced which is a credit to both the students and instructors.

Instruction is given in China Decorating, Water Color, Pastel Painting, Chalk Drawing, Drawing and Charcoal, Reed Weaving, and Oil Painting. Thus the students of this department learn to appreciate art in a most practical way.

Classes



Commercial Graduates

STENOGRAPHIC COURSE

Jennie Amos
Ida Blouch
Eunice Frey

Addie Himes
Ida Johnson
Ruth Martin

Effie D. Miller
Meriam Wenrick
Hazel Warwick

BUSINESS COURSE

Russell Clark

Everett Brammell

Walter Anderson

In this age of dispatch and accuracy, with the development of industrial enterprises more rapidly than ever, the business world is sending out a challenge to many thousands of young men and women—to young men and women who have equipped themselves with the right kind of an education—to conduct the world's business in the future. Never in the history of McPherson College have there been better prospects for the Commercial Department. The demand for this type of education is growing rapidly and with the proposed increase in space and equipment, in conjunction with the high class instruction available, students have the opportunity of claiming ownership of an excellent training for business needed by present and future business men and women for the carrying on of the world's commerce.

Classes



STOCK JUDGING TEAM

EARL BREON

PROF. MOHLER, COACH

JOHN LEHMAN

MILTON DELL

Agriculture

Gradually the Agricultural Department is becoming a stronger factor in McPherson College. Professor Mohler, who has been head of the department from its beginning in 1913, is an exceptionally strong man. His practical methods of teaching vocational agriculture has made it possible for students to go out and put farming on a more productive and efficient basis.

In the state high school stock judging contests at Wichita this year the Academy team took second place, losing first place by only ten points. In the past three years McPherson has taken two first prizes and one second in this contest.

The college farm of 173 acres, located just south of the campus, is under the direct supervision of Professor Mohler. It is well equipped and stocked with pure bred and high grade animals. Last year this farm realized a fairly large labor income when most of the farms of McPherson county failed to realize any. This shows the farm to be a practical demonstration of the best farming methods, such as are taught in the college.

Departments

Home Economics

Nine years ago the Department of Home Economics came into existence at McPherson College. Miss Minnie Walters, the present head of the department, soon became its sponsor, and it has grown under her able and untiring direction. In its beginning Home Economics had to give way very often, to the "more important phases of education." But, now that womankind is awakening to the need of training for that highest and noblest profession of "The Home", the department is growing steadily.

The hopes and ambitions of Miss Walters are being realized one by one, and with the completion of the Science Hall a long-cherished milestone will be reached, for, in the Science Hall, the Department will have a new and larger home. Three well-equipped rooms have been planned to accommodate the various phases of the Home Economics work. During this year over three hundred girls were enrolled in the Department, and much has been accomplished. Courses in Textiles and Clothing, House Planning and Furnishing, Clothing Appreciation, Dressmaking, Food Study, Nutrition, Dietetics, Child Welfare, Home Nursing, and Household Management were offered this year, and large classes were the result.

Departments



Manual Training

There are three reasons why the Manual Training Department has been organized in McPherson College: first, to train teachers for industrial work in the high school; second, as a try-out course, and third, to give elementary engineering instruction.

Laboratory courses are offered in woodworking, wood-finishing, mechanical and architectural drawing. Lecture courses are given in industrial and vocational guidance. The department is growing rapidly and cannot accommodate all the students that wish to enroll. It has made wonderful advancement under the direction of Professor Swope and is now equipped with a band saw, jointer, speed lathe, universal saw table, mortising machine, and all modern machinery for which there is room.

The department is open to both boys and girls who make use of their time very profitably and efficiently in making all kinds of furniture and numerous other articles of a useful nature.

QUADRANGLE



1922

Book Three
Organizations





DEVOTIONAL

QUADRANGLE

Devotional



Young Men's Christian Association

CABINET

David E. Brubaker.....	President
Foster Hoover.....	Vice President
Ira Brammell.....	Secretary
Elmer Rupp.....	Treasurer
Earl Fisher.....	Devotions
Harold Correll.....	Boys' Work
Paul M. Pair.....	Social
Oliver W. Trapp.....	Athletics
Fahrney Slifer.....	Student Extension Representative
Saylor Neher.....	Music
Glenn Johnson.....	Advertising
Ralph Holsinger.....	Labor
Clarence Showalter.....	Reporter
Prof. Ebel.....	Faculty Advisor

1922

QUADRANGLE

Devotional



Young Women's Christian Association

OFFICERS

Marguerite Muse.....	President	Ada Correll.....	Treasurer
Ethel Whitmer.....	Vice-President	Bertha Frantz.....	Chorister
Ada Kurtz.....	Secretary	Marguerite Muse.....	Undergraduate Representative

CHAIRMEN OF COMMITTEES

Mary Miller.....	Religious Meetings	Grace Entriken.....	Publicity
Ruth Kilmer.....	Social Service	Mayme King.....	World Fellowship
Rowena Vaniman.....	Social	Naomi Fasnacht.....	Bible Study
Emma Tousley.....	Student Extension Representative	Ida Johnson.....	Conference
	Edith McGaffey, Faculty Adviser		

1922

Devotional



Mission Band

Ralph HolsingerPresident
 Olive E. HolmesVice-President
 Grace CrumpackerSecretary-Treasurer
 Letha Heckman.....Corresponding Secretary

The Mission Band of McPherson College is an organization of those students who have proposed under God's guidance to devote their lives to a distinctive Christian vocation.

The purpose of the band is to further the missionary spirit in the college and to encourage those who have already decided for Christian service to continue their preparation. It attempts to show the student the joy and happiness that accompanies this type of work.

The organization holds weekly meetings of a very inspirational type. The band has been fortunate this year in having a number of messages and lantern pictures from Dr. Harnly and Professor Yoder relating to their tour around the world. Also we have heard from returned missionaries from both India and China. Their presence has added much to the spirituality of the entire student body.

This group is a vital factor in raising the missionary ideals of the school by co-operating with other organizations in practical Christian service, by their sympathetic study of the conditions of both the home and foreign field and by inspiring students to dedicate their lives to the advancement of the kingdom of God in the world.



Student Ministers Association

OFFICERS

Earl BreonPresident
 W. W. Gish.....Vice-President

The Student Ministers Association of McPherson College was organized during the school year of 1918-1919 through the efforts of Oliver H. Austin, who became its first leader and president. All divinity students and student ministers of the college are considered members of the association.

The purpose of the association is to acquaint the student minister with the problems of the church today, to discuss the religious, social and political conditions of the world and their relation to the task of the Christian Church, to discuss personal problems and assist one another, to keep before the members the bigness and sacredness of the Christian Ministry, and to cultivate the spirit of common interest among all classes of students.

The association meets one evening each month for conference or programs of varied type. Lectures, addresses, and discussions of the minister's problems are features of the programs. The following of our student ministers are doing pastoral work in connection with their school work: Earl Breon, C. A. Eshelman, W. T. Lockett, B. F. Miller, Roy P. Hylton, H. D. Michael, and L. G. Templeton.



Student Christian Extension Department

Fahrney Slifer	President	Y. M. C. A.
Emma Tousley	Secretary	Y. W. C. A.
Marietta Byerly	Treasurer	Mission Band
L. Avery Fleming	Student Ministers	
Stella Bowman	Student Volunteers	
Paul Kurtz	Anti-Tobacco Association	

The Student Christian Extension Department is composed of representatives from the six religious organizations of McPherson College. It has for its purpose the extension of Christian influence from the college to the churches of the college district. Deputation teams giving varied programs are sent out frequently. A great influence is effected by the department in thus unifying the various activities of the college.

During the past year this department co-operated with the President of the Christian Workers Association of the college church in preparing the Sunday evening programs of the Association. Also, the department took an active part in entertaining the high school seniors who were the guests of the college at the Annual Senior Festival.

Devotional



Anti-Tobacco Association

O. T. Funkhouser	President
Stella Bowman	Vice President
Jacob Yoder	Secretary
Paul Kurtz	Treasurer

The Intercollegiate Anti-Tobacco Association is an indigenous student movement originating at McPherson College in 1918. It is getting a foothold in several states and is now officially connected with the No-Tobacco League of America for the end in view of greater efficiency.

The local association has a membership of nearly 200 and is doing practical work of real value. A local oratorical contest was given to inspire research among the students and to train for active leadership in the cause. Mr. Ralph Strohm in behalf of the movement made a lecture tour during the year as far east as Ohio traveling over 2000 miles delivering 23 lectures in high schools, colleges, and churches. The local association is also actively organizing the neighboring colleges of Kansas in this movement wherever possible.

Mr. Rodney C. Martin won the local oratorical contest and represented McPherson College in the state contest at Salina. He resigned his position as Vice-President of the State Association in order to do this. He succeeded in carrying off state honors by winning first place, thus upholding McPherson's record of four consecutive victories in the State contest.

Devotional



Student Volunteer Band

Irma Witmore Leader
 Stella Bowman Secretary

This organization is a part of the national organization known as the United Student Volunteers. The purpose of the band is threefold: To enrich the spiritual life of the school, to keep world needs and world problems before the students, and to recruit the ranks of workers in foreign fields.

They co-operate with the Mission Band and other organizations in putting on such programs as will deepen and enliven the religious life of the students.

Thirty-eight former students of McPherson College are now engaged in foreign service. It means that the influence of our college is being felt in every part of the world and that the Volunteer Band is serving a worthy purpose.



PUBLICATIONS

THE SPECTATOR

Published by McPHERSON COLLEGE, McPHERSON, KANSAS

TUESDAY, SEPTEMBER 20, 1922

The Spectator
Published every week at McPherson College by the Student Council.



Portrait of a young man in a suit and glasses.

COLLEGE AUTHORITIES ALMOST BRING GREAT DISCOVERY TO LIGHT

...AND EMPLOYED RESEARCHERS TO ...



Portrait of a young woman in a dark dress.

LONGBORO'S WARRIORS DEFEAT HAYS NORMAL

A Romance in Campus Terminology

...If you talk about ...

...Mental L...

ALL STAR ATHLETE TO COACH BOYS

THE SCOUTS TO ADJUDICATE PROMISES

TENNIS II

...The tennis team ...

BULLDOGS COMPLETE CONFERENCE

OF WITH 35-0 VICTORY

CHILCOCCO INDIANS FROM OKLAHOMA SMOTHERED IN HOMECOMING DAY



Dr. W. C. Heaston
Physician and Surgeon.
Rooms 1 and 3 over Martin-Sherman Store, McPherson, Kansas.

LONGBORO'S WARRIORS DEFEAT HAYS NORMAL

A Romance in Campus Terminology



Group photograph of several young men and women in formal attire.

FEDERAL ARKANSAS OPENS WITH A GIFT

...To the greatest ...

BEARS PLAY HAYCOCK

EMERSON PLAYERS

BEAT THE SWEDS

WHAT! MOVE ARKANSAS CLOSER TO McPHERSON

JUST A LAY

IT MUST BE DONE

BEAT THE SWEDS

A DOLLAR FROM A LETTER

WHAT! MOVE ARKANSAS CLOSER TO McPHERSON

Home State Bank

Wants your Business

JAMES LANE DAYBROED

WON BOTH DE W BETHANY ENING BY CISIONS

C. A.

Opinion

...A college ...

...THE SPECTATOR'S ...

SCIENCE HALL FUND PASSES \$57,000 MAR

BEAT THE SWEDS

WHAT! MOVE ARKANSAS CLOSER TO McPHERSON

JUST A LAY

IT MUST BE DONE

BEAT THE SWEDS

A DOLLAR FROM A LETTER

WHAT! MOVE ARKANSAS CLOSER TO McPHERSON

Home State Bank

Wants your Business

JAMES LANE DAYBROED

WON BOTH DE W BETHANY ENING BY CISIONS

C. A.

Opinion

...A college ...

...THE SPECTATOR'S ...

QUADRANGLE

Publications



The Quadrangle Staff

Jay W. Tracey	Editor-in-Chief
Paul M. Pair	Business Manager
Marguerite Meyer	Associate Editor
Maxine McGaffey	Associate Editor
Ralph Holsinger	Associate Editor
Oliver W. Trapp	Athletic Editor
Glenn Johnson	Art Editor
Clarence Showalter	Sales Manager
Edith McGaffey	Faculty Advisor

The Staff of the 1922 Quadrangle wishes to take this opportunity to thank the following people, who, although not being on the staff, worked faithfully in the publication of this volume of the Quadrangle: Ethel Whitmer, Tillie Hadley, Marguerite Muse and Ruth Cripe.

1922

QUADRANGLE



1922



LITERARY



College Debate Team

The colleges admitted into the Northern Division of the Kansas Inter-Collegiate Debating League were McPherson, Bethany, Salina Wesleyan and Sterling, and those of the Southern Division were Fairmount, Friends, Bethel and Southwestern.

The question debated was one of national interest: Resolved, That Federal legislation should be enacted embodying the principles of the Kansas Court of Industrial Relations. Mr. L. Avery Fleming and Mr. William E. Bishop were McPherson's representatives to support the affirmative side of the question, and Mr. B. F. Waas and Mr. Crawford Brubaker defended the negative side.

The team well deserves many words of praise, for after having met and defeated the other three teams of the Northern Division, they succeeded in winning the State Championship from Fairmount, who were champions of the Southern Division. Such a victory was not gained in a day, but was the result of months of faithful and untiring effort in developing clear thinking and logical conclusions, wherein lay their power.

Professor Hess, who so ably coached the teams, deserves much credit for the work that he did in training the debaters.

February 13 at McPherson	McPherson Affirmative 2	Bethany Negative 1
February 13 at Lindsborg	McPherson Negative 2	Bethany Affirmative 1
March 6 at Salina	McPherson Affirmative 2	Kansas Wesleyan Negative 1
March 6 at McPherson	McPherson Negative 2	Kansas Wesleyan Affirmative 1
March 24 at McPherson	McPherson Affirmative 3	Sterling Negative 0
March 24 at Sterling	McPherson Negative 0	Sterling Affirmative 3
April 11 at Wichita	McPherson Affirmative 2	Fairmount Negative 1
April 11 at McPherson	McPherson Negative 3	Fairmount Affirmative 0



College Debating Club

Glenn Johnson.....	President
Mark Neher.....	Vice-President
Ralph Lehman.....	Secretary
Roy Neher.....	Treasurer

The McPherson College Debating Club is in the third year of its organization. Interest in debate in M. C. has never been found wanting but this year there has been exceptional interest in this field.

Regular meetings were held on alternate Friday evenings, at which spirited and interesting discussions have been held throughout the year. The membership of the club consists of thirty people.

The purpose of the organization is to develop the persuasive powers of its members and to promote interest in general in forensic activities. In previous years students have won honor for themselves and for the institution in the field of argumentation. The debating club insures a constant supply of material for future debating teams, in providing practice in argumentation and public speaking for all students interested in this type of expression.

The experience and advice of Professor Hess has been a valuable asset to the club.

Debates



Academy Debating Teams

AFFIRMATIVE	NEGATIVE
Harvey Lehman	Harry Lehman
Elmer Krehbiel	John Lehman
W. Earl Breon	Charles Lingle

McPherson Academy is a member of the Pentangular Debating League which is composed of the academies of the following schools: Bethany, Bethel, Central, Tabor and McPherson. Each school meets every other school once in debate, all having the same question. This year Central Academy was not represented by a team.

The final results of the debates this year show McPherson to have won first place in the league. Each member of the teams did splendid work in all of their debates and are to be congratulated for their success. Also Professor Hess deserves much credit for his untiring efforts in coaching the teams for the contests.

The question debated this year was: Resolved, That with respect to immigration and naturalization the United States should accord the same treatment to the Japanese subjects that it accords to the subjects of the European nations.

The debates and their results:

- March 10. At McPherson—McPherson affirmative vs. Bethany negative
 McPherson 3, Bethany 0.
 At Bethel—Bethel affirmative vs. McPherson negative
 McPherson 3, Bethel 0.
- March 17. At McPherson—Tabor affirmative vs. McPherson negative
 McPherson 3, Tabor 0.
 At Hillsboro—McPherson affirmative vs. Tabor negative
 McPherson 1, Tabor 2.

Debates



Academy Debating Club

Harry Lehman.....	President
Elmer Krehbiel.....	Vice-President
Minnie Hutchinson.....	Secretary-Treasurer
Professor Hess.....	Critic

The McPherson Academy Debating Club has been an important factor in our college activities. McPherson stands for the type of training which debate only can give. The academy students have taken advantage of their opportunity and have organized a debate club.

Much interest and enthusiasm has been in evidence in this field during the year. The club is limited in membership to twenty-five. Bi-weekly meetings have been held, the programs consisting of debates, discussions and a study of the principles of debating.

It acts as a training school for the Academy debating teams as well as laying a foundation for more advanced work in the college. McPherson College should not lack for future debating material so long as the Academy supports this phase of literary activity as it has in the past.

Literary



Thespian Club

The Thespian Club was organized February 1, 1922, after the College Literary Societies had been abolished. It was felt that the interest in the study of contemporary literature had grown to such an extent that it justified the organization of a student club for such study. The general purpose of the club is the conducting of an intensive study of contemporary literature with special emphasis on the study and production of the drama.

OFFICERS

Emery Wine President
 Harry Bowers Vice-President
 Ruth Kilmer Secretary-Treasurer

MEMBERS

Harry Bowers	Ruth Kilmer
David Brubaker	Mayme King
Jessica Carter	Marguerite Muse
Ray Clark	John Slifer
Ruth Cripe	Beulah Spurgeon
Marie Cullen	Emma Tousley
Grace Entriken	Emery Wine
Rowena Vaniman	

Literary



Athenian Literary Society

Earl Breon.....	President
Harry Lehman.....	Vice-President
Neva Yoder.....	Secretary
Leonard Birkin.....	Treasurer
Mrs. Alice Birkin.....	Music Coach
Minnie Hutchinson.....	Expression Coach
Charles Lengel.....	Debate Coach
Edith Watkins.....	Reporter
Elmer McGonigle, John Lengel.....	Sergeants-at-arms
Mary Whiteneck, B. F. Miller.....	Membership Committee
Olive Howard, Elmer Krehbiel.....	Social Committee

Motto—"Nothing venture, nothing have"

Colors—Emerald Green and Silver Gray

Flower—Pansy

The Athenian Literary Society was organized in January, 1922. All students of the Academy rank and lower classmen of the College are eligible to membership. Programs suited to the development of the various types of literary talent have been given each alternate Saturday since the organization of the society.

Literary



Oratorical Contest

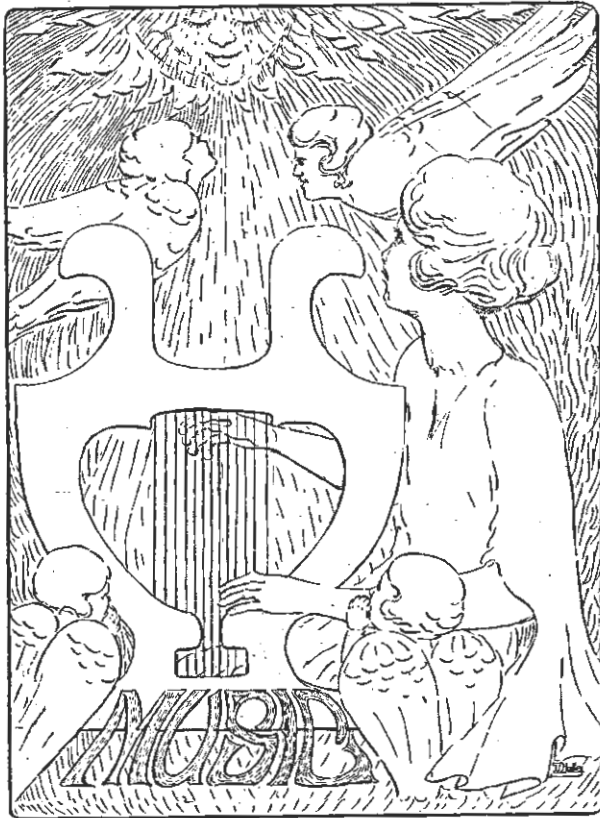
OFFICERS

Rodney Martin President
 Ada Kurtz Secretary

MEMBERS

William Bishop	Earl Linholm
Earl Breon	Ralph Loshbaugh
David Brubaker	Rodney Martin
Rufus Daggett	Samuel Maust
Virgil Diller	William Mudra
Irvin Ihrig	Varo Shores
Ada Kurtz	John Slifer

The Old Line Oratorical Society was organized during the winter of this year, and a splendid interest has been shown in the work of the Society. The Society is fostered in McPherson College for the purpose of stimulating interest and promoting efficiency in the art of declamation. The state oratorical contest offers an adequate incentive to the members, and it is the plan of the Society to definitely train orators for this contest in future years.



Glee Clubs



Men's Glee Club

Professor Forrest W. Gaw.....Director
 Harry BowersAccompanist

FIRST TENOR

P. Roy Brammell
 Oliver W. Trapp
 Jacob Yoder
 N. S. Rhodes

SECOND TENOR

Harold Beam
 Ralph Himes
 John Mohler
 Saylor Neher

FIRST BASS

Fahrney Slifer
 Rodney Martin
 Clarence Showalter
 Valiant Gnagey
 Carl Dell

SECOND BASS

Jess Garvey
 Sam Maust
 Cecil Hayes
 Jay W. Tracey

Glee Clubs



Ladies Glee Club

Professor Forrest W. Gaw Director
 Pauline Vaniman Accompanist

FIRST SOPRANO

Marie Cullen
 Mrs. Marie Gaw
 Mrs. Alice Birkin
 Alta Mohler
 Bertha Frantz

SECOND SOPRANO

Ethel Whitmer
 Laura Bowman
 Mildred Fisher
 Minnie Edgecomb
 Mrs. W. O. Lockett

FIRST ALTO

Rhea Fast
 Ruth Miller
 Nellie Cullen
 Mayme King

SECOND ALTO

Estella Engle
 Marguerite Mohler
 Maude Crist
 Gertrude Witmore
 Ruth Wedel

Band



McPherson College Band

SOLO CLARINET

Jacob Yoder
Earl Linholm

FIRST CLARINET

John Wall
Mahlon Jacobs

SECOND CLARINET

Duke Widiger

ALTO SAXOPHONE

Albert Street

BASSOON

Garmon Daron

ALTO

Glenn Zimmerman
Jack Montgomery
Harold Hanson

BASS

Harvey Anderson

DRUMS

John Lehman

SOLO CORNET

Leslie Sweeney
Lawrence Vaniman
Carl Draeggert

FIRST CORNET

Russell Jones
Louis Mikow

SECOND CORNET

Everett Brammell

THIRD CORNET

Glenn Strickler

TENOR SAXOPHONE

Loren Curtis

BARITONE SAXOPHONE

Theodore Harms

BARITONE

C. E. Sweeney
Frank Boone

TROMBONES

Leslie Blackman
Harold Beam
Paul Pair
Lee Crist

Prof. Alvhh Lauer	Director
Harold Beam	President
Jacob Yoder	Secretary-Treasurer
Paul M. Pair	Business Manager
Everett Brammell	Librarian

QUADRANGLE

Orchestra



McPherson College Symphony Orchestra

Alvhh Ray Lauer, Conductor

FIRST VIOLIN

C. A. Hultquist
Leora Robinson
Arthur Linnel
Mr. Selberg
Elberta Hawley
Irene Thacker
Oliver Ebel
Emmert Pair

SECOND VIOLIN

Chas. Remmer
Lloyd Studebaker
Autumn Lindbloom
Indus May Hollingsworth
Mrs. W. D. Wade
Ralph Garman
Herbert Spencer
Leslie Vogle

CELLO

Clarence Burkholder
Ray Wright
Forrest Gaw

BASS

Frank Hapgood
Zelma Daron

FLUTE

Marathon High
John Hultquist

OBOE

Morton Widiger

ENGLISH HORN

Clarence Hapgood

CLARINET

John Manning
Elenora Caldwell
Jacob Yoder

BASSOON

Garmon Daron

ALTO CLARINET

Amy Marsh

VIOLA

Jessie Daron

BASS CLARINET

Mrs. Henry Widiger

TRUMPETS

Archie San Romani
Leslie Sweeney
Carl Draeggert

FRENCH HORN

Glenn Zimmerman

TROMBONES

Henry Widiger

Leslie Blackman

PIANO

Fern Lingenfelder

HARMONIUM

DeWitt Sager

TIMPANI

John Lehman

DRUMS AND BELLS

Francis Hapgood

LIBRARIAN

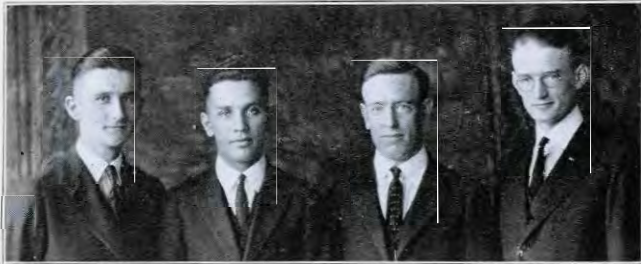
Elsworth Banks

Glenn Zimmerman.....	Business Manager
Autumn Lindbloom.....	Secretary
Ray Wright.....	Treasurer
Jacob Yoder.....	Reporter

1922

QUADRANGLE

Quartette



McPherson College Male Quartette

Prof. Forrest W. Gaw Director
 Harry Bowers Accompanist

Roy Brammell, First Tenor Fahrney Slifer, Baritone
 Harold Beam, Second Tenor Jay W. Tracey, Bass and Bus. Mgr.

Program

- "Winter Song" Bullard
 "The Old Road" Scott
 QUARTETTE
 Solo—"Mattinata" Tosti
 MR. BRAMMELL
 Trombone Solo Selected
 MR. BEAM
 "The Lord Is My Light" Adams
 "Rock of Ages" Adams
 "King Most Merciful" Adams
 QUARTETTE
 Reading—"Speaking of Operations" Cobb
 MR. BOWERS
 Duet—"In this Solemn Hour"
 From "The Force of Destiny" Verdi
 MR. BRAMMELL AND MR. BEAM
 "Last Night" Kjerulf-Parks
 "Two Roses" Werner
 "Little Gray Home In the West" Lohr
 QUARTETTE
 Piano Solo Selected
 MR. BOWERS
 Solo—"The Two Grenadiers" Schumann
 MR. BEAM
 "The Huntsmen's Farewell" Mendelssohn
 "Sea Fever" Andrews
 QUARTETTE
 Solo—"Trade Winds"
 From "Three Salt Water Ballads" Keel
 MR. TRACEY
 "Where My Caravan Has Rested" Lohr
 "Lullaby" Brahms
 "Good Night" Op. 66 Dudley Buck
 QUARTETTE

1922

QUADRANGLE

Junior College Play



"Eliza Comes to Stay"

BY H. V. ESMOND

Junior College Play

Presented May 3, 1922

Honorable Sandy Verrall	Harry Bowers
Alexander Stoop Verrall	Earl Fisher
Montague Jordan	Ray Clark
Herbert, the Valet	Paul Sargent
Expressman	Elmer Brunk
Eliza Vandam	Rowena Vaniman
Lady Pennybroke	Jessica Carter
Vera Lawrence	Ruth Cripe
Mrs. Allaway	Estella Engle
<hr/>	
Coach	Miss Mercedes Chapman
Business Manager	Foster Hoover
Property Managers	Miss Iva Curtis and Miss Ada Kurtz
Construction Manager	Hervey McClelland

1922

QUADRANGLE

Alumni



OFFICERS

Edith McGaffey President
 George N. Boone Vice President
 E. L. Craik Secretary-Treasurer

BOARD OF DIRECTORS

TERM EXPIRES 1923
 Lola M. Hill, A. B. 1921.
 George N. Boone, A. B. 1921.
 Amanda Fahnestock, A. B. 1917.
 R. C. Strohm, B. S. D. 1903.

TERM EXPIRES 1924
 R. E. Mohler, B. S. D. 1907.
 Edith McGaffey, A. B. 1918.
 Alma G. Anderson, A. B. 1920.

TERM EXPIRES 1923
 J. C. Forney, A. B. 1919.
 Edna Neher Charles, A. B. 1919.
 W. O. Beckner, A. B. 1909.
 Sue Slusher Saylor, A. B. 1896.

TERM EXPIRES 1922
 Homer G. Engle, A. B. 1918.
 Lily O. Hawkinson, A. B. 1915
 G. C. Dresher, B. S. D. 1902.
 Lewis Naylor, A. B. 1921.

The Alumni Association of McPherson College is composed of all persons who have graduated at any time from any department of the institution. The membership at the present time numbers about nine hundred. The aim of the Association is to bind more closely the tie between the alumni and McPherson College and to foster their mutual loyalty and friendship. An annual fee of one dollar is asked of every graduate as an annual membership fee, although life memberships may be secured by paying fifteen dollars to the Association. Rev. W. H. Yoder of Morrill, Kansas is the Alumni Association representative on the Board of Trustees of the College.

Book Four
Athletics





ARTHUR C., "DUTCH" LONBORG, COACH

Athletics



"Bobie" Mohler

From the standpoint of Athletics, the year 1921-22 has undoubtedly been the most successful, in the history of McPherson College. The great strides that Old M. C.'s athletic program has made in recent years, has been due in no small way to the efforts of our General Manager, Professor Mohler. He was largely responsible for securing the most popular coach in the Kansas Conference, Arthur C. Lonborg. The splendid co-operation between the citizens of McPherson and the personnel of M. C. is largely due to his efforts. A man with understanding of human nature, vision and ideals for a clean Athletic program, is our manager. We look forward with you, Professor Mohler, to a greater McPherson College, from an athletic standpoint.



ATHLETIC BOARD

Slifer Showalter Mohler, chairman
 Kilmer Lonborg Cripe Trapp

Athletics

M. C.s' Pepsters



1921-22 was one of M. C.'s most successful years in athletics and student support ran high throughout the year. This student backing was directed by Peggy Whitmer. There have been yell leaders and yell leaders, but Peggy is by far the best leader who ever stood before a crowd of M. C. boosters. Always on the job and running over with "pep" and new ideas—through thick and thin, Peggy led the McPherson rooters. "If you never saw Peggy in action, you don't know what pep is."

The Pep Clubs together with the cheer leaders deserve honorable mention for the splendid work they did in organizing the pep of the school. Cheering, parades and night shirt promenades, were a result of their efforts.

Boys' Pep Club President Paul M. Pair
 Girls' Pep Club President Ruth Cripe

In little Georgana Oelrich, M. C. has found a loyal supporter, and a very clever little yell leader.



QUADRANGLE

Athletics

BASKETBALL

Barnhill, G. E.
 Betts, Vilas
 Bowman, Curtis
 Brandt, W. E.
 Brubaker, Warnie
 Crumpacker, Leonard
 Crumpacker, Lloyd
 Crumpacker, Sanger
 Daggett, Rufus - '22
 Dettler, Clinton
 Ditch, Chester
 Hearsb, Elmer
 Hoffman, Herbert
 Hoover, Foster
 Howell, Fred
 Eichelberger, Dave
 Jones, Galen
 Jones, Rowland
 Mishler, Floyd
 Moors, Chas.
 Moors, Chester
 Moors, Melvin
 Neighbors, Pete
 Royer, Wm.
 Rump, August
 Russell, Robert
 Sargent, Paul - '22
 Saylor, Lloyd
 Showalter, Clarence
 Sorensen, E.
 Staatz, Arthur
 Stansel, Marvin - '22
 Stover, Henry
 Suffield, Chas.
 Swanson, Carl
 Trapp, Oliver
 Way, P. B.
 Wilson, Claude
 Yoder, Dayton

TRACK

Betts, Vilas
 Brammell, Ira
 Brammell, Roy
 Clarke, Raymond
 Crumpacker, Leonard
 Crumpacker, Sanger - '22
 Doty, Le Roy - '22
 Jones, Rowland
 Maxcy, J. W.
 Moors, Chas.
 Mudra, Wm.
 Price, John

Riddleberger, Wm.
 Rump, August
 Slifer, August
 Stansel, Fahrney
 Vanman, Marvin - '22
 Vaniman, Roy
 Wine, Ernest

BASEBALL

Blickensstaff, Carl
 Bowman, Curtis
 Bowman, D. L.
 Bowman, Olin - '22
 Ellwood, Harold
 Engstrom, Harold
 Fisher, Glade - '22

Garvey, Jesse - '22
 Hawkins, Henry
 Hoffman, Herbert
 Howell, Fred
 Mishler, Floyd
 Maxcy, J. W.
 Maxcy, Paul
 Rump, August
 Rupp, Clyde
 Rupp, Elmer
 Sargent, Paul
 Stansel, Marvin - '22
 Strickler, Dale
 Strickler, Glenn
 Stutzman, Milo
 Trapp, Oliver
 Unruh, E. J. - '22
 Vaniman, Wilbur
 Vasey, David

FOOTBALL

Brubaker, Elmer
 Brunk, Elmer
 Carter, Carl - '21
 Clarke, Raymond
 Crofoot, Ervin - '21
 Hiebert, Wm.
 Hoover, Foster
 Jones, Rowland
 Keim, Richard - '21
 Keim, Stanley - '21
 Mudra, Wm.
 Robb, Theodore - '21
 Rump, August
 Schermerhorn, Albert
 Schermerhorn, Ernest
 Slifer, John - '21
 Stansel, Marvin - '21
 Stover, Henry
 Thornton, Arnold - '21
 Tice, Galen
 Trapp, Oliver
 Voth, Jacob

TENNIS

Bowman, Curtis
 Gilbert, Harry
 Krebbiel, Kenneth - '22
 Lehman, Ralph
 Rhoades, Arno - '22
 Showalter, Clarence
 Vaniman, Lawrence
 Vaniman, Wilbur
 Yoder, Harlan

Wearers of the "M"

1922



FOOT BALL

Athletics



FOOTBALL SQUAD 1921

BACK ROW—RUMP, SAYLOR, R. KEIM, TICE, BETTS, CROGGOT, S. KEIM.
 MIDDLE ROW—J. LIEGEL, KURTZ, MUDRA, LONGBORG (coach), C. LENGEL, STANSEL, CLARK
 BOTTOM ROW—HIEBERT, ROBE, DOTY, BRUNKE, SLIFEK, BRIDAKEL.

QUADRANGLE

Athletics

Conference Games and Results

Sept. 24 at Baldwin City	Baker University.....	3	McPherson	0
Oct. 1 at McPherson	Fairmount College	24	McPherson	0
Oct. 7 at St. Mary's	St. Mary's College	17	McPherson	14
Oct. 14 at Hays	Hays Normal	32	McPherson	0
Oct. 28 at McPherson	Kansas Wesleyan	0	McPherson	19
Nov. 4 at McPherson	Sterling College	0	McPherson	13
Nov. 11 at Lindsborg	Bethany College	7	McPherson	6
Total	Opponents	83	McPherson	52

Non-Conference Games

Oct. 21 at McPherson	State Reformatory ..	0	McPherson	75
Nov. 18 at McPherson	St. John's A. L.	7	McPherson	21
Nov. 24 at McPherson	Chilocco Indians ...	0	McPherson	35
Total	Opponents	7	McPherson	131

Conference Standing

TEAM	Won	Lost	Tied	Pct.
Hays Normal	5	0	0	1.000
Kansas Normals	6	1	0	.857
Pittsburg Normals	4	1	1	.800
College of Emporia	4	1	1	.800
Fairmount	4	2	0	.667
Southwestern	4	3	0	.572
Washburn	3	3	1	.500
Baker	3	3	1	.500
Friends	3	3	0	.500
Bethany	3	3	0	.500
McPherson	2	5	0	.286
St. Mary's	2	5	0	.286
Ottawa	1	4	1	.200
Sterling	1	5	0	.167
Kansas Wesleyan	0	6	0	.000

When "Dutch" Lonborg, who had won all possible letters in the University of Kansas with the exception of track, was secured as coach for McPherson College practically every sport writer in the state prophesied that McPherson would cause a "shape up" in the Kansas Conference. The above record of football history easily confirms this prophesy. With "Dutch" back next year McPherson, with practically all her old material and much new, will be far more able to take a place in the upper division of the Conference standing.

STANSEL "SNAKE," Weight 170. Left Half. Should prove to be a valuable player in coming seasons. Played in the state and played three years of conference football in the future.

GARTER "TOM," Captain. Elong. Weight 195. M. C. was limited fortunate in her time of Captain. He played in the state and played three years of conference football in the future.

THORNTON "ANNIE B." Weight 190. Quarter back. In Thornton, "Dough" found an easy way to get the ball and he was a consistent, dependable punter and kicker. He played in the state and played his first year of conference football.

SCHREIBER "E." "SAWMY." Captain. Weight 185. Right Half. He was not permitted to play in the state and played his first year of conference football.

ROBEY "TAT." Weight 185. Right Back. Robey was a position of half despite his great handicap of "the knees." Robey is a player who has played in the state and played his first year of conference football.

KEIM "DUCK." Weight 175. Right Half. He was not permitted to play in the state and played his first year of conference football.

RUDEY "GUSSEY." Weight 170. Right End. Rump remained on the side line about half the season. He was not permitted to play in the state and played his first year of conference football.

SLAYER "JOHN." Weight 185. Right Half. Played in the state and played his first year of conference football.

CROFOOT "ERWIN." Weight 185. Center. This was forced to remain on the side line for about a month. He was not permitted to play in the state and played his first year of conference football.

BRUNK "EAMER." Weight 170. Left Guard. Brunk, one of the mainstays on Lombard's crew team, was not permitted to play in the state and played his first year of conference football.

SCHREIBER "E." "SAWMY." Captain. Weight 185. Right Half. He was not permitted to play in the state and played his first year of conference football.

FOOTBALL MANAGER - Prof. R. E. Mohler.

KEIM "DUCK." Weight 175. Right Half. He was not permitted to play in the state and played his first year of conference football.

CLARK "RAY." Weight 185. Full Back. Clark was not permitted to play in the state and played his first year of conference football.

THESE "GARY." Weight 185. Center. This was forced to remain on the side line for about a month. He was not permitted to play in the state and played his first year of conference football.

CROFOOT "ERWIN." Weight 185. Center. This was forced to remain on the side line for about a month. He was not permitted to play in the state and played his first year of conference football.

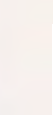
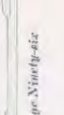
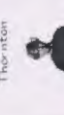
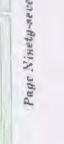
BRUNK "EAMER." Weight 170. Left Guard. Brunk, one of the mainstays on Lombard's crew team, was not permitted to play in the state and played his first year of conference football.

GALLEN "TIC." Weight 185. Right Half. He was not permitted to play in the state and played his first year of conference football.

LONGBORE "COACH." "DUTCH." Head Coach.

KEIM "DUCK." Weight 175. Right Half. He was not permitted to play in the state and played his first year of conference football.

CLARK "RAY." Weight 185. Full Back. Clark was not permitted to play in the state and played his first year of conference football.



QUADRANGLE



"SHINNY"



SQUAD 1921



FULLBACK JONES



BETWEEN QUARTERS



"BLANK"



OFF FOR ST. MARKS



"DUTCH"



FAV'S MASSACRE



MANAGER "BOBBIE"



BULLDOGS ON TOP



"BUTCH"



ONE BALL



FIRST AND TEN



HOLD THAT LINE



BASKET BALL

QUADRANGLE

Athletics



BASKETBALL TEAM

BACK ROW—LONBORG (COACH), BETTS, SARGENT (CAPTAIN), STANSEL, L. CRUMPACKER, TRAPP (MANAGER).
 BOTTOM ROW—RUPP, D. STRICKLER, RUMP, S. CRUMPACKER, DAGGETT.

Individual Records

	Games	F. G.	F. T.	Fouls
Rump, g.	12	23	54	22
Sargent, c.	12	36	1	19
S. Crumpacker, f.	11	33	0	15
Stansel, f.	6	20	0	12
Daggett, f.	7	13	0	9
L. Crumpacker, g.	12	8	0	39
Showalter, f.	2	2	0	5
Betts, c.	2	0	0	0
D. Strickler, g.	2	0	0	1
Long, f.	1	0	0	0

1922

Athletics

Basket Ball Standing

Of Kansas Athletic Conference, Season 1922

TEAM	Won	Lost	Pet.
Southwestern	15	1	.938
McPherson	11	1	.917
Fairmount	9	2	.818
C. of E.	10	4	.714
Ottawa	11	5	.698
K. S. N.	9	5	.643
Baker	8	7	.533
Washburn	8	8	.500
Kansas Wesleyan	8	10	.444
Friends	7	9	.438
Bethel	4	7	.364
Pittsburg	5	12	.294
Bethany	3	10	.231
Hays	3	10	.231
St. Mary's	2	8	.200
Sterling	0	14	.000

The showing that McPherson made in the Kansas Conference of Colleges would speak well for the remarkable record that "Dutch" Lonborg made in the 1922 season. During the last two seasons M. C. held an undisputed claim to the cellar position and a jump from the sixteenth to the second place is nothing short of the remarkable.

Besides having a splendid coach the team received 100% support from the student body and the citizens of McPherson. The student body, the coach and the team realize that the splendid record would not have been possible perhaps had it not been for this unprecedented support.

The team did not have an outstanding star on it but the splendid team work in a five man defensive and a four man offensive game was the determining factor of the success. Had McPherson played more up state teams she undoubtedly would have placed more men on conference teams.

With practically the entire squad back and the leadership of Coach Lonborg the team promises to bid high for first place in the conference for next year. The lone defeat by Southwestern College was the only hinderance to this attainment during the season of 1922.

QUADRANGLE

Athletics

Sargent, "Si," Center

Because of injuries received during football season, Captain-Elect Jones was forced to stay out of basket ball and Sargent was called upon to "captain" M. C.'s quintet. With his height he proved a very valuable man at center, getting the tip off in practically every game. He played a strong defensive game and coupled with this secured the largest number of field baskets of any man on the team. He is a Junior with one year of basket ball yet to play.



Rump, "Gussie," Guard

"Gussie" and "Massive" hung up the remarkable record of 31 field goals while allowing their opposing forwards but 39. Rump secured more than his man. His 23 baskets together with "gift throws" gave him the position of high point man. "Gussie" is the lone Senior on the team and M. C. loses with his graduation a man who has very faithfully served the Maroon and White for four years.



Crumpacker, "Massive," Guard

"Massive" won the name he deserved because of the form of his buxom physique as it charged backward and forward on the court causing every opponent to give it a free passport. He was a most outstanding feature in the Bulldog Team, being exceptionally adapted to getting up after rebounds, and when the ball was in his possession no opposing force could wrest it from him. He was awarded a position on the Kansas All State Third Team. M. C. may have the privilege of two more years of service from "Crummy."



Athletics

Stansel, "Stan," Forward

At the beginning of the season Stansel was doped as the most promising wearer of the Maroon and White, and he was leading his team mates in field goals when at the end of the sixth game he was forced because of sickness to quit basket ball. M. C. may have his services for three more years.



Crumpacker, "Crummy," Forward

Little "Crummy" was the speed demon of the team. He played in all games, was second only to "Si" in field goals and besides, played a very exceptional floor game. "Crummy" has but one year of basket ball ahead of him.



Daggett, "Rufus," Forward

Daggett proved to be the solution to the perplexing problem which "Dutch" had to solve when "Stan" was forced out of the game. Although he did not play a flashy game at the outset, at the end of the season he was a great puzzle to the guard attempting to keep him from scoring. It is possible for him to play two more seasons of basket ball.



QUADRANGLE

Athletics



BASKETBALL SQUAD, SEASON 1922

BACK ROW—LONBORG (COACH), SARGENT, LLOYD CRUMPACKER, BETTS, TRAPP (MANAGER).
 MIDDLE ROW—G. STRICKLER, L. CRUMPACKER, D. STRICKLER, LONG, SAYLOR, CRIST.
 BOTTOM ROW—SHOWALTER, RUPP, RUMP, DAGGETT, S. CRUMPACKER, YODER.

Basket Ball Results, Season 1922

Jan. 12 at McPherson	McPherson 27	Pittsburg Normal	15
Jan. 13 at McPherson	McPherson 35	Sterling	18
Jan. 19 at McPherson	McPherson 32	Hays Normal	20
Jan. 26 at McPherson	McPherson 17	Southwestern	29
Jan. 27 at Sterling	McPherson 28	Sterling	20
Feb. 2 at McPherson	McPherson 23	Bethany	18
Feb. 11 at McPherson	McPherson 29	Bethel	13
Feb. 17 at Newton	McPherson 22	Bethel	19
Feb. 11 at McPherson	McPherson 29	Hays Normal	19
Feb. 25 at Hays	McPherson 25	Hays Normal	6
Mar. 7 at Lindsborg	McPherson 40	Bethany	13
Mar. 9 at Salina	McPherson 26	Kansas Wesleyan	16
Total	McPherson 325	Opponents	206