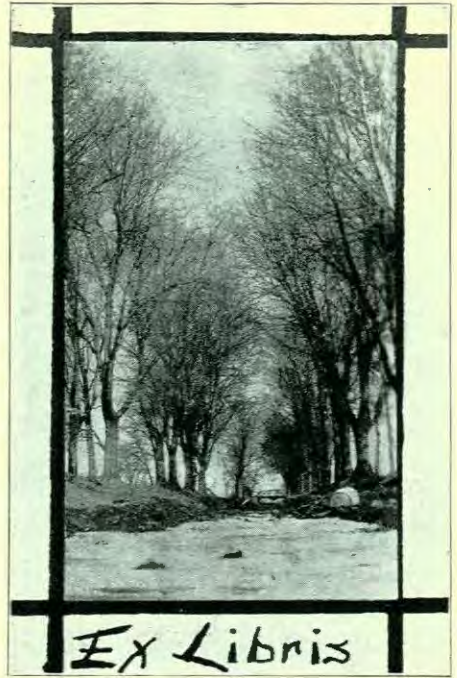


The
Quadrangle
1921

B
378.19
M172q
1921 .



PREVIOUS VOLUMES

Dandelion	-	1911
M. C. Spirit	-	1917
Life and Light	-	1920

VOLUME FOUR
The Quadrangle
- 1921 -

Published by
The Student Council
McPherson College
McPherson, Kansas

Foreword

These golden budding days of developing manhood and womanhood, when the rich sap of the glorious fullness of the meaning of life begins to surge thru our beings, are known as College Days.

In the midst of the serious, which increases with maturity, we find interspersed thickly the sunshine of the humorous. "The Quadrangle" attempts to faithfully reproduce both the warm sunshine of fun and the gray of deliberation, as found in this cycle of college days.



Dedication

With respect and affection we dedicate
this volume to

DR. A. J. CULLER

as an expression of the appreciation
of the student body
of McPherson College



Contents

Book I	-	-	The Faculty
Book II	-	-	The Students
Book III	-	-	Organizations
Book IV	-	-	Activities

The Staff

Editor	-	-	Alice Burkholder
Associate Editor	-	-	Ray Cullen
Associate Editor	-	-	Emery Wine
Business Manager	-	-	G. N. Boone
Sales Manager	-	-	Galen Tice
Art Editor	-	-	Marie Hope
Athletic Editor	-	-	Theodor Burkholder
Faculty Advisor	-	-	Edith McGaffey





DANIEL WEBSTER KURTZ

B. D. 1908, Juniata College
A. M. 1908, Yale University
D. D. 1911, Juniata College

Student in universities of Leipzig, Berlin, Marburg
Professor Greek 1908-10, Juniata
Pastor First Church of the Brethren 1910-14,
Philadelphia

*President of the College and Professor of Philosophy
since 1914*



ARTHUR JEROME CULLER

B. D. 1911, Union Theological Seminary
Ph. D. 1912, Columbia University
*Dean of the Bible School, Pastor, Professor
Theology*



ELMER LEROY CRAIK

A. M. 1916, University of Kansas
*Professor History and Political Science, and
Acting Dean of the College*



AMANDA FAHNESTOCK

A. B. 1916, McPherson College
B. D. 1917, McPherson College
Instructor in Bible, and Dean of Women



HENRY JACOB HARNLY

B. S. 1891, Illinois Wesleyan
A. M. 1892, Illinois Wesleyan
A. B. 1892, Harvard University
Ph. D. 1900, Illinois Wesleyan
*Dean of the College, and Professor Biology
Leave of Absence for Oriental tour*



J. HOWARD FRIES

Graduate, Cambrian Business College
Superintendent Commercial School, and Acting Business Manager



JOHN ALVIN BLAIR

A. M. 1918, University of Kansas
Professor Education and Psychology, and Registrar



JOSEPH J. YODER

A. B. 1913, McPherson College
Professor Bible and Social Science, and Business Manager

Leave of Absence for Oriental tour



EDITH MCGAFFEY

A. M. 1919, University of Kansas
Professor English



ROBERT ELLSWORTH MOHLER

B. S. 1907, McPherson College
A. B. 1912, Mount Morris
M. S. 1917, K. S. A. C.
Professor Agriculture, and Dean of Men



AMMON SWOPE

A. M. 1914, University of Chicago
Professor Industrial Education, and Principal of Academy



CHARLES S. MORRIS

A. M. 1915, Ohio State University
Professor Mathematics and Physics



JESSIE BROWN

B. M. 1910, Bethany Conservatory
Director Piano School



JOHN WILBY DEETER

A. B. 1913, McPherson College
B. D. 1918, Yale University
Professor Theology



MAURICE A. HESS

A. M. 1917, University of Pennsylvania
Assistant Principal of Academy



J. WILLARD HERSHEY

M. S. 1910, Pennsylvania College
Professor Chemistry



GERTRUDE MILLER

Teacher in Elizabethtown College
Instructor Stenography and Typewriting



BARTEL EDWARD EBEL

A. M. 1910, University of Kansas
Professor Languages



DAVID H. HOOVER

A. M. 1914, Bridgewater College
M. S. 1916, Vanderbilt University
B. D. 1918, University of Chicago
Th. D. 1920, Southern Baptist Theological Seminary
Professor Social Science and Philosophy



RUTH FRANTZ

A. M. 1919, University of Wisconsin
*Professor Public Speaking, and Associate
Professor English*



MARTHA ELMA HOLLINGER

B. S. 1920, Purdue University
Professor Home Economics



A. RAY LAUER

Graduate 1917, Palmer College
Studied in Paris
Professor Violin



WALTER E. DANIEL

Four Years, Lake Geneva, Wisconsin,
Summer Institute Physical Training
Physical Director 1908-21 at follow-
ing Y. M. C. A.'s: Carthage, Spring-
field, St. Louis, Helena, Grand Is-
land, McPherson
Coach, Polytechnic, Fort Worth, one year
*Director Physical Training, and Athletic
Coach*



ALMA G. ANDERSON

A. B. 1920, McPherson College
Instructor English and History



MRS. J. W. DEETER

B. S. D. 1913, McPherson College
Student in New Haven and Chicago
Instructor Art



BENJAMIN R. TILBERG

A. B. 1918, Bethany College
B. M. 1921, Bethany Conservatory
Professor Voice



ELLIS M. STUDEBAKER

A. B. 1915, McPherson College
Professor Greek, Bible, and Director Religious Extension
Leave of Absence.



LATHA DANIELS

B. M. 1921, Bethany Conservatory
Instructor Theory, History of Music, and Piano



LORA TROSTLE

Matron Arnold Hall



HARVEY HARLOW NINGER

A. M. 1917, Pamona College
Professor Biology



RÖGER D. WINGER

A. B. 1916, Manchester College
B. D. 1918, Bethany Bible School
A. M. 1920, University of Chicago
Professor Religious Education, third term



MRS. W. E. DANIEL

Matron Adelpian House



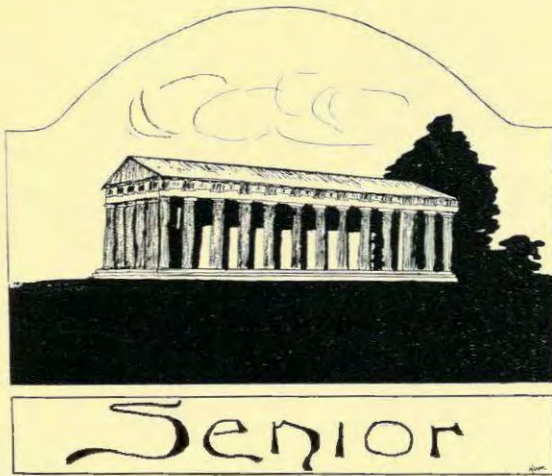
WILLIAM O. BECKNER

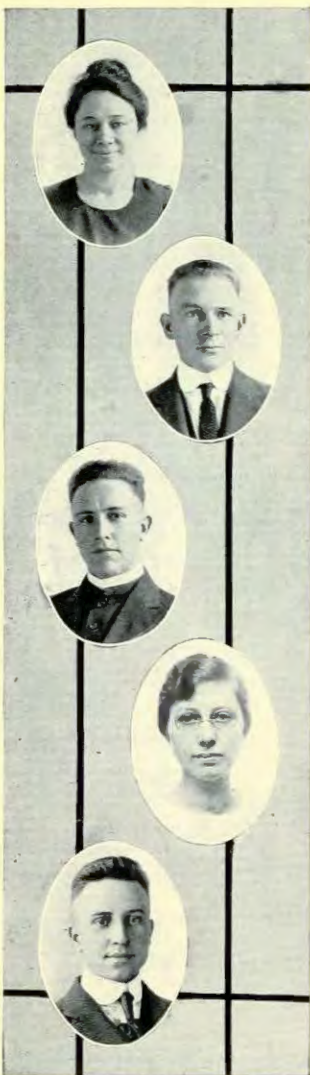
A. M. 1915, McPherson College
Field Secretary

Faculty Assistants

Harold Beam	Biology
Leslie Blackman	Chemistry
Earl Crumpacker	Manual Training
Lucile Gnagey	Home Economics
Mrs. Holsopple	English
Foster Hoover	Biology
Marie Hope	Art
Ruth Kilmer	Asst. Librarian
Hervey McClelland	Physics
Marguerite Mohler	Librarian
Orville Pote	English
DeWitt Sager	Chemistry
Ralph Strohm	Chemistry
Edward van Pelt	Agriculture
Paul Yoder	Physics







ADA BECKNER, Overbrook

Liberal Arts—Education

Secretary Volunteer Band 1; Y. W. C. A. Cabinet 1, 3; Secretary Student Council 3; President Y. W. C. A. 4; Iconoclast.

*If all the world would smile like she,
There miles and miles of smiles would be.*

GILBERT L. BETTS, Nampa, Idaho

Liberal Arts—Chemistry

Circulation Manager Mt. Morris annual; entered M. C. 2; Ex-service.

*Why not live while you're living,
for you may be a long time dead.*

MILES BLICKENSTAFF, McPherson

Liberal Arts—Philosophy

President Mission Band 3; Secretary Ministers' Association 3; Chairman Six-In-One Committee 4.

How can I rest while China's Millions die?

NETA CULLEN BOONE, Oberlin, Ohio

Liberal Arts—English

Y. W. C. A. Cabinet 2; Vice President Iconoclast 2; Oberlin University 3, 4; degree in absentia.

Though absent in body, her bright smile lifts us still.

GEORGE N. BOONE, McPherson

Liberal Arts—Chemistry

Class President 1, 2; Cheer Leader 1; Y. M. C. A. Cabinet 1, 2, 3, 4; Glee Club 1, 2, 3; Treasurer Iconoclast 2; Assistant Mathematics 2; President Iconoclast 3; Business Manager "Quadrangle" 4.

Although a farmer, I have plenty of time for Fermus.

IDA BOWMAN, Quinter

Liberal Arts—English

Y. W. C. A. Cabinet 1; Secretary Six-In-One Committee 4; "Melting Pot" cast 4; Iconoclast.

A true and merry heart doeth good like medicine.

D. LOUIS BOWMAN, Quinter

Liberal Arts—Chemistry

President Iconoclast 3; Y. M. C. A. Cabinet 3; Base Ball 3; Debate Club 4; Secretary M Club 4; Six-In-One Committee 4; Class President 4; "Melting Pot" cast 4.

I room with the smartest guy in school.

GRACE BRUBAKER, McPherson

Liberal Arts—English

Student Council 1; Choral Union 1, 2; Class Secretary 2; Y. W. C. A. Cabinet 3; Debate Club 3; Iconoclast.

They are never alone who are continually accompanied by noble thots.

WARNIE E. BRUBAKER, McPherson

Science—Manual Arts

Basket Ball Team 1, 2; Assistant Gymnasium Instructor 1, 2; Athletic Board 1, 2; Vice President Iconoclast 2; Vice President Mission Band 2, 3; Six-In-One Committee 3.

Class architect, spends his time in the manual arts room just "messin' around".

ALICE E. BURKHOLDER, McPherson

Liberal Arts—Philosophy

President Irving 3; Vice President class 3; Student Council 2; Spectator Staff 3, 4; Glee Club 4; "Melting Pot" cast 4; Editor "Quadrangle" 4; B. M. 1919 Bethany Conservatory; Director Piano Department, Central College 4.

Nobody agrees with me but the world still moves.





RAY C. CULLEN, McPherson

Liberal Arts—Philosophy

College in three years; Debate team 1; Class President 1, 2; President Iconoclast 1; President Y. M. C. A. 1, 2; College quartette 1, 2, 3; Glee Club 1, 2, 3; Business Manager "Life and Light" 2; Chairman Men's Booster Clubs 3; Associate Editor "Quadrangle" 3; "Melting Pot" cast 3; Ex-service.

Speaks, behaves, and acts just as he ought—sometimes.

OLIVIA DICKENS, Haverhill, Mass.

Liberal Arts—English

Master of Arts—Philosophy

Spectator Staff 3, 4; Debate 3, 4; Glee Club 3; Mission Band 3, 4; President Foreign Volunteers 4; Graduate Music Department, M. C. 1920.

I can berries (Ikenberrys) for future use.

CHARLES D. DEAN, McPherson

Liberal Arts—History and Political Science

Irving: "Melting Pot" cast 4.

I'm one of the College Bad Boys and I'm not ashamed to deny it.

J. HOWARD ENGLE, Abilene

Liberal Arts—Education

President Iconoclast 1; Secretary State I. A. T. A. 1; Glee Club 1, 2, 3; President State I. A. T. A. 2; Treasurer Y. M. C. A. 2; first prize State Anti-Tobacco Oratorical Contest 2; Student Council 1, 2; Cheer Leader 2; Mixed Quartette 2, 3; General Secretary I. A. T. A. 2, 3, 4; President Y. M. C. A. 3; Male Quartette 3, 4; President State Student Volunteers 4; Inter-state oratorical contest I. A. T. A. 3; "Melting Pot" cast 4.

Until I came the world was incomplete.

LOLA M. HILL, McPherson

Liberal Arts—English

Irving: Graduate Normal course Music, M. C., 1919.

Good nature is the medium of a good mind.

SUSIE FIKE, Ramona

Liberal Arts—English

Debate Club President 4; Student Council 4; Secretary Athletic Committee 4; Class Secretary 4; Iconoclast.

Silence and a chaste reserve is a woman's genuine praise.



EARL M. FRANTZ, Holmesville, Neb.

Liberal Arts—Philosophy

Irving; Student Minister; "Melting Pot" cast 4; College Field Work.

Lives in the present and believes this is the best world he has ever seen.



HARRISON FRANTZ, Holmesville, Neb.

Liberal Arts—Philosophy

Irving; Student Minister; McPherson Director Field Work of Forward Movement.

Common sense is a man's greatest asset and should be common.



A. LUCILE GNAGEY, Fruita, Colorado

Liberal Arts—Chemistry

Irving; Treasurer Y. W. C. A. 4; Choral Union 3, 4; Assistant Home Economics.

A wander in both home economics and domestic silence.



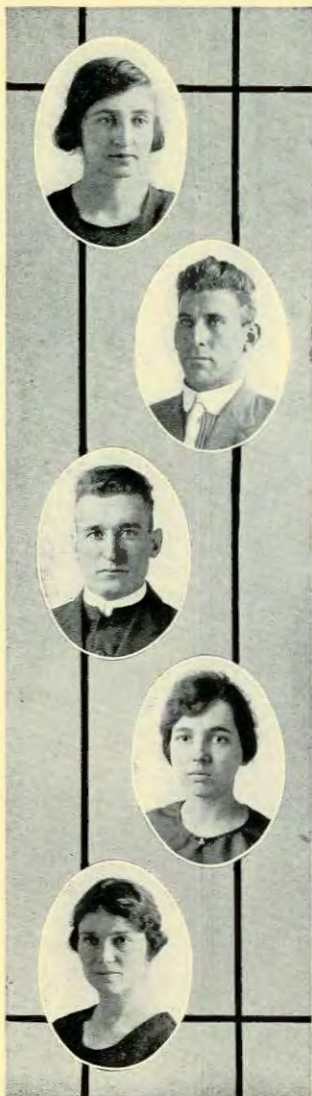
CHESTER HOLSOPPLE, Versailles, Mo.

Liberal Arts—Philosophy

Iconoclast; Labor Bureau; Gospel Team; Glee Club 2, 3; Choral Union 1, 2, 3; Y. M. C. A. Cabinet 3; Class Treasurer 3.

Should be strong enuf to eat meat, but still lives on milk.





ROCKLA JOHN, Springdale, Arkansas
 Liberal Arts—English

Graduate Academy Music, M. C.; Graduate Bethany Conservatory 1917; Y. W. C. A. cabinet 1; Pianist Junior Operetta "Pauline" 3.
Even if I am little, my ideal is big.

SAM MERKEY, Cloud Chief, Oklahoma
 Liberal Arts—English

Iconoclast: Y. M. C. A. Cabinet 2, 3; Business Manager "Spectator" 4; College Bookstore 2, 3, 4.
The dependable man who does cheerfully what everyone else wishes were done but hates to do.

LEWIS NAYLOR, Portis
 Liberal Arts—English

Iconoclast: Ministerial Association; Student Council 2; Mission Band; Treasurer Alumni Association 2, 3, 4; Bookstore Manager 2, 3, 4.
You can depend on him for honest service through honest goods at honest prices to honest customers.

M. MAUD STUMP—Wawaka, Texas
 Liberal Arts—Education

Iconoclast: Mission Band; Vice President Foreign Volunteers 3.
*Peaceful, thoughtful, and resigned,
 Always modest, sweet, and kind.*

MARTHA UREY—Seattle, Washington
 Liberal Arts—Mathematics

Iconoclast: Debate Club; President Y. W. C. A. 2; "Melting Pot" cast 4.
A lovable disposition, particularly sensitive to ultra—Rays.

EDWARD VAN PELT, McPherson

Science—Agriculture

BB. Squad 1, 2; Alternative debate team 1; Debate team 2; Y. M. C. A. cabinet 1, 2, 3; Chairman Six-in-one Committee 3; President Student Volunteer Band 3; Agriculture Assistant 1, 2, 3, 4.

Leans toward agriculture, has fallen for matrimony, and is bound for India.

JACOB VOTH, Buhler

Liberal Arts—History

Ex-service; Irving-Iconoclast oratorical contest 2; "Pied Piper" cast 2; letter man Football 4.

If I don't change my mind, I'll be a big Dutchman.

PAUL R. YODER, Sabetha

Liberal Arts—Mathematics and Physics

Iconoclast; Mission Band; Student Ministers; Secretary Six-in-one Committee 3; Treasurer Student Council 4; Assistant Physics Department 3, 4; Fellowship to K. U. 4.

Without Waves in the world, life would soon be monotonous.

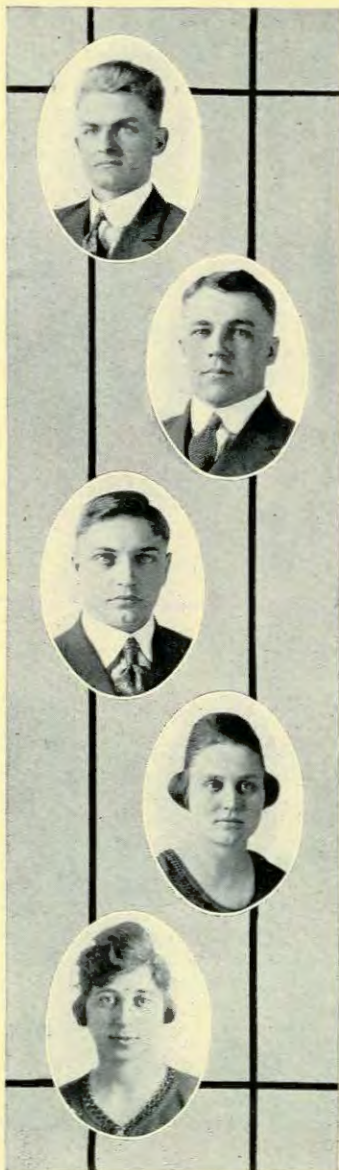
GOLDA ZOOK, Kansas City, Kansas

Liberal Arts—English

Iconoclast; Y. W. C. A. cabinet 1; Chairman Girls Rooter Club 4; "Melting Pot" cast 4.

Pep personified.

MISS RUTH FRANTZ—Class Adviser



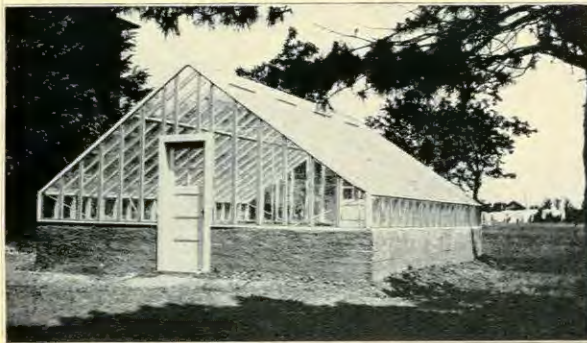
Senior Diary of Socials

October. First hike of the year. One and a half tons of the happiest Seniors who ever set foot on a truck motored out in the country to make real acquaintance. All indulged in refreshments until they couldn't rest, games until they couldn't stand, and ghost stories till they couldn't sleep. Martie broke state record for Travelers' costume race and in the 3 crackers plus whistle Merkey had it on everyone. The party returned thru town and every citizen within four blocks declared it must have been a howling success.

November. Seniors entertain the Freshies. The "Good old Days" were completely brot back as all noted the fellowship between Matron and Maid, also Patriarch and Son. When the youngsters were chucked full of chewing gum, ice cream cones, all day suckers, and apple sass bread, all were properly conducted to their anxious parents.

December. Our class men, Blickenstaff and Naylor, and their wives gave the class a delightful evening. While all lacked that final dignity which might have otherwise eliminated barrels of fun, neither providence nor special order could have made the evening more complete.

May. The hike of hikes. Eighty miles on a truck combining the comfort of a limousine with the accommodations of all out-of-doors. When tired of sitting they stand; and tired of standing they walk; and so on in geometric progression to infinity. On the grounds base ball, mumble peg, horse shoe (not plug), and rook, together with rowing, motor boating, fishing, and swimming kept each as busy as he liked. Why mention eats? They became so common, no one was interested. Had not dignity restrained all levity, no day could have been more perfect. Goodbyes as the sun went down. Boo hoo!



SENIOR MEMORIAL
GREENHOUSE



PAUL YODER
FELLOW TO K. U.



The Melting Pot

BY ISRAEL ZANGWILL

Presented May 25, 1921

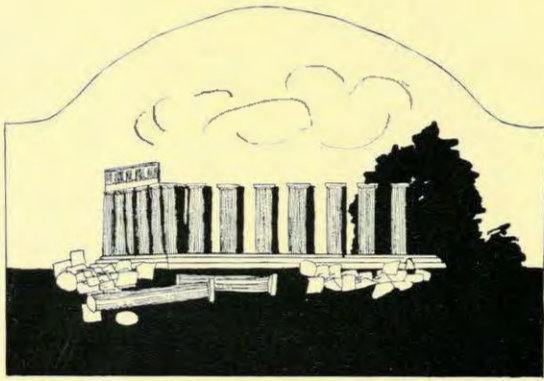
Cast of Characters

David Quixano.....	J. Howard Engle
Mendel Quixano, David's uncle.....	Earl Frantz
Baron Revendal, Russian Baron.....	Ray Cullen
Quincy Davenport, Jr.....	Charles Dean
Herr Pappelmeister.....	Louis Bowman
Vera Revendal, daughter of the Baron.....	Martha Urey
Baroness Revendal.....	Alice Burkholder
Frau Quixano, Mendel's Mother.....	Golda Zook
Kathleen O'Reilly, the maid.....	Ida Bowman

Play Director.....	Miss Ruth Frantz
Business Manager.....	Louis Naylor
Stage Manager.....	Charles Dean



College Seniors



Undergraduates



Junior College

Paul Pair	President
Mayne King	Vice-President
Emma Towsley	Secretary
Ralph Holsinger	Treasurer
Professor Mohler	Class Adviser

Motto—Ad Astra

Colors—Navy Blue and Gold

Flower—Yellow Snapdragon

Emblem—Gold Star in Circle

Class Roll

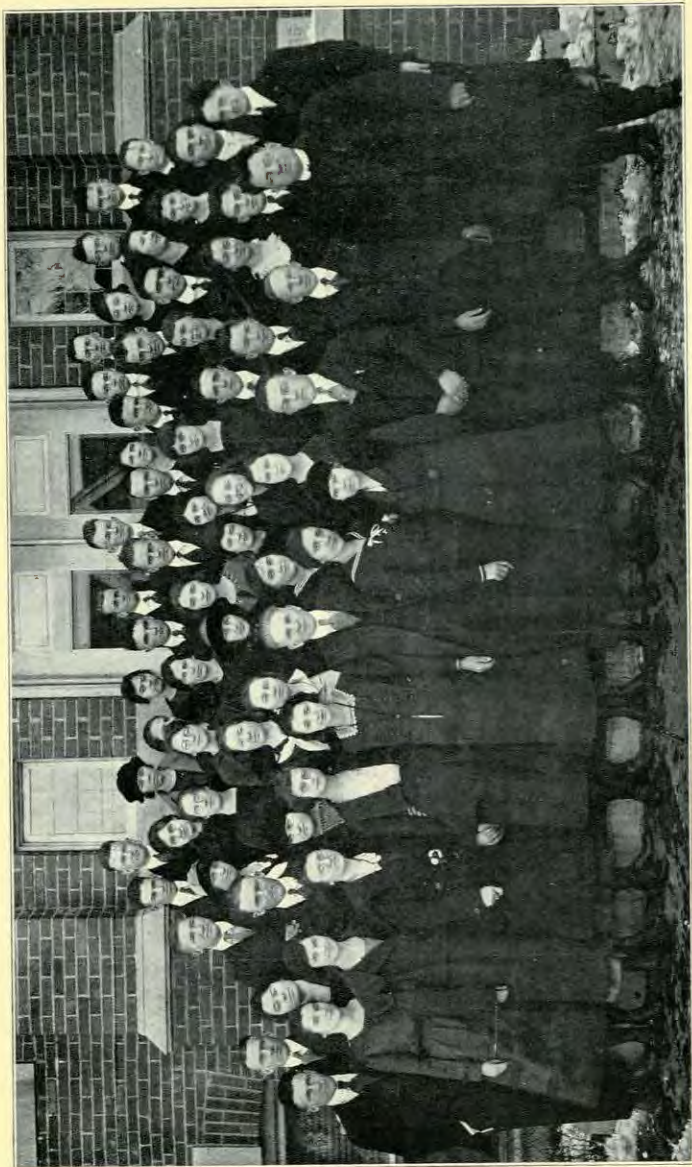
Harold Beam	Mary Mohler
Leslie Blackman	Mrs. Miriam Morris
Crawford Brubaker	Marguerite Muse
Mrs. C. Brubaker	Roy Neher
Theodor Burkholder	S. J. Neher
Maude Crist	Addie Nininger
Nellie Cullen	Paul Pair
Isaac Dirks	Elmer Rupp
Mrs. Ebel	DeWitt Sager
Clarence Eshelman	Edward Saylor
Homer Foutz	Galen Saylor
Bertha Frantz	Lloyd Saylor
Mary Geiman	Farhney Slifer
F. J. Hjeim	Ira Stiles
Olive Holmes	Henry Stover
Ralph Holsinger	Glenn Strickler
Bernice John	Ralph Strohm
Josephine Johnson	Melvin Teeter
Ruth Kilmer	Roy Terflinger
Mayme King	Galen Tice
Rodney Martin	Emma Towsley
Scott Martin	Jay Tracey
Grace Miller	Oliver Trapp
Mrs. M. L. Miller	Mrs. Bessie VanPelt
Mary Miller	Ethel Whitmer
Ruth Miller	Emery Wine
Florence Mohler	



College Juniors



College Sophomores



Sophomore College

Ira Brammell	President
Rachel Stratton	Vice-President
Ada Correll	Secretary
Ralph Lehman	Treasurer
Dr. Culler	Class Adviser

Motto—"Impossible is Un-American"

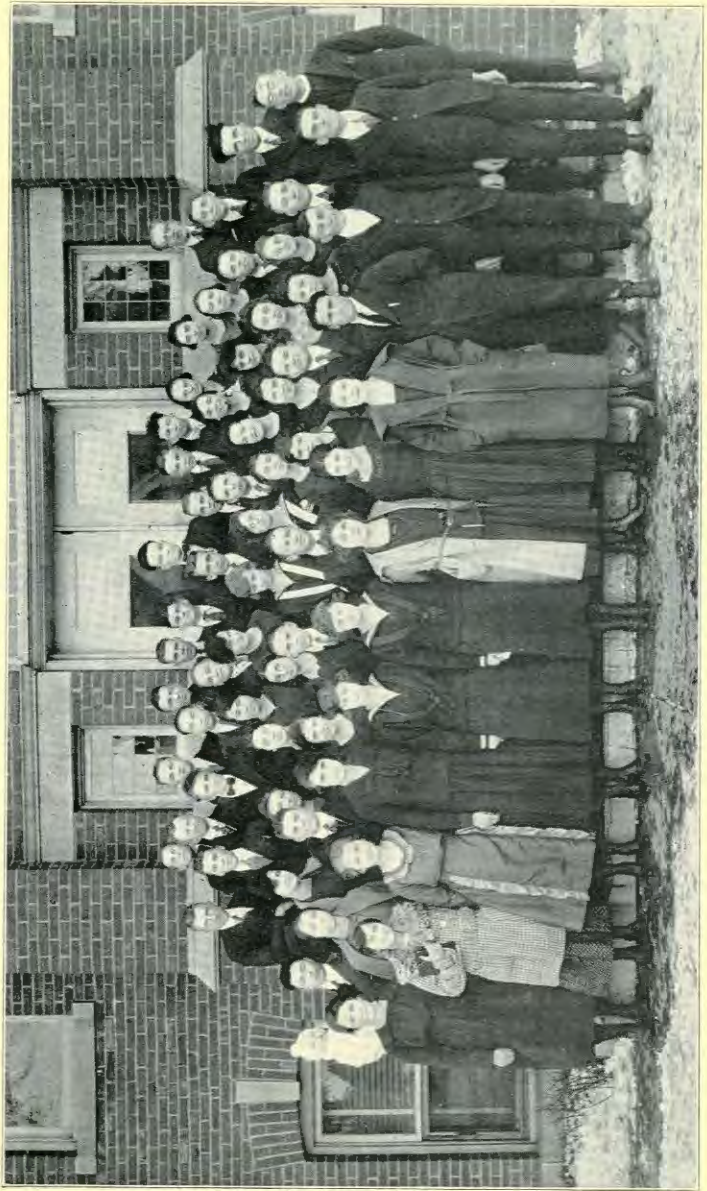
Colors—Green and White

Flower—White Chrysanthemum

Emblem—White Elephant

Class Roll

Adelyn Anderson	Foster Hoover
Harold Barnes	Marie Hope
Margaret Bish	Glenn Johnson
Stella Bowman	Herman Jones
Everett Brammell	Harold Kurtz
Ira Brammell	Ralph Lehman
Roy Brammell	Cecile Martin
Elmer Brunk	Hervey McClelland
Jessie Carter	Marguerite Meyer
Ada Correll	Marguerite Mohler
Ruth Cripe	John Mohler
Earl Crumpacker	Gladys Naylor
Eulah Crumpacker	Edna Neher
Grace Crumpacker	Lota Neher
Marie Cullen	Milo Nice
John Daggett	Marcellus Penland
Willa Davenport	Orville Pote
Carl Dell	John Price
Golda Ebbert	August Rump
Estella Engle	Clyde Rupp
Grace Entrikin	Albert Schermerhorn
Nora Evans	Earnest Schermerhorn
Naomi Fasnacht	Clarence Showalter
Earl Fisher	Arthur Staatz
Louis Florman	Mrs. Fannie Stover
Jess Garvey	Rachel Stratton
Gertrude Gleckler	Iva Studebaker
Betty Harnly	Rowena Vaniman
Irene Hawley	Victor Vaniman
Inez Heaston	Jesse Wales
Letha Heckman	Irma Witmore
Bill Hiebert	Jacob Yoder
Floyd Holcomb	



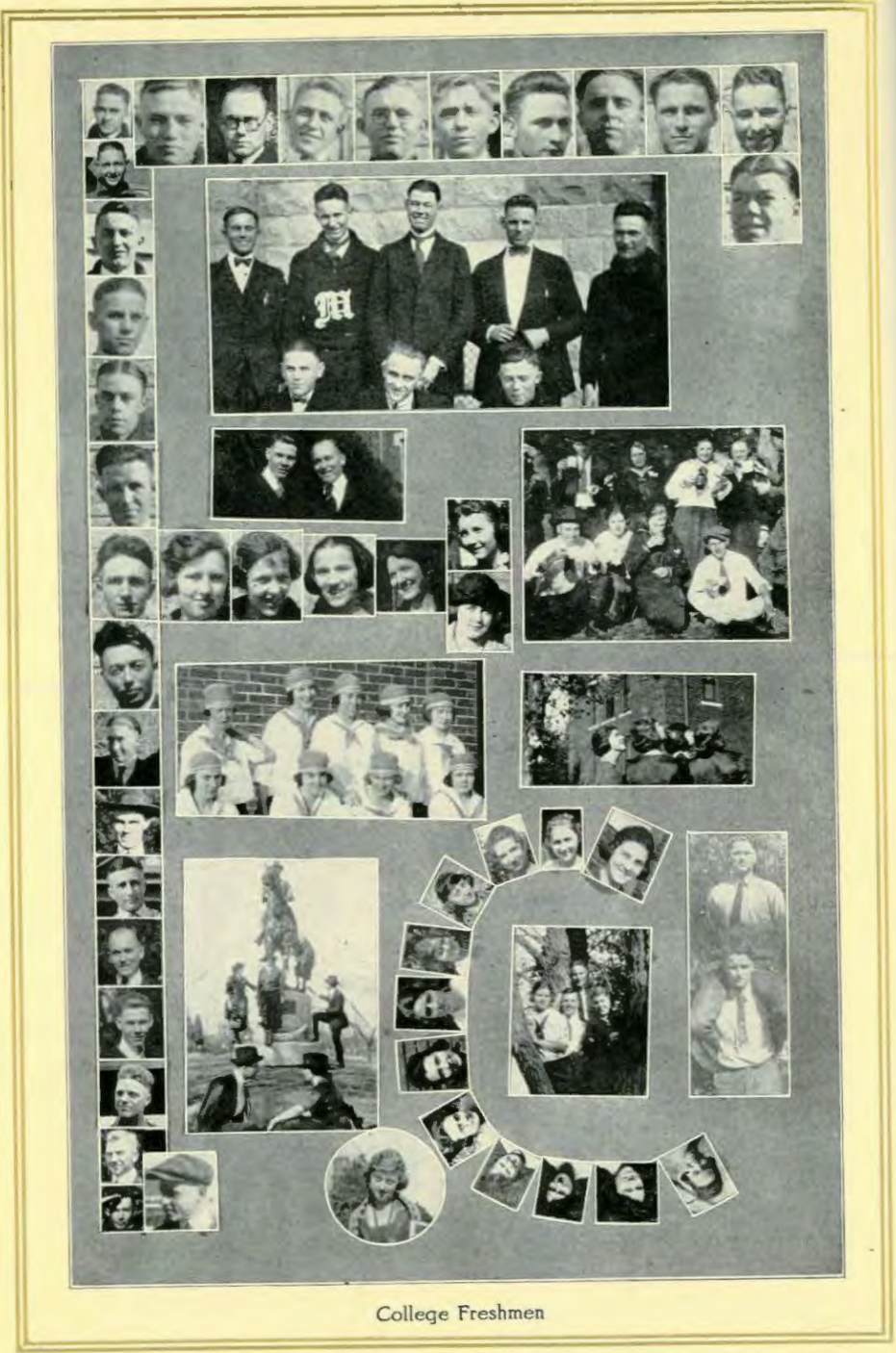
Freshman College

Vilas Betts	President
Mark Neher	Vice-President
Edith Muse	Secretary
Eunice Almen	Treasurer
Professor Craik	Class Adviser

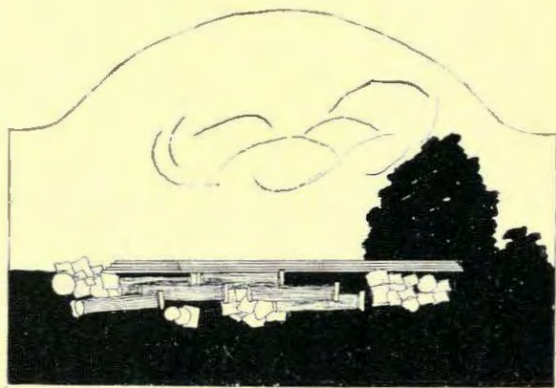
Motto—"For value received we promise to pay".
 Colors—Purple and White.
 Flower—Purple Violet.

Class Roll

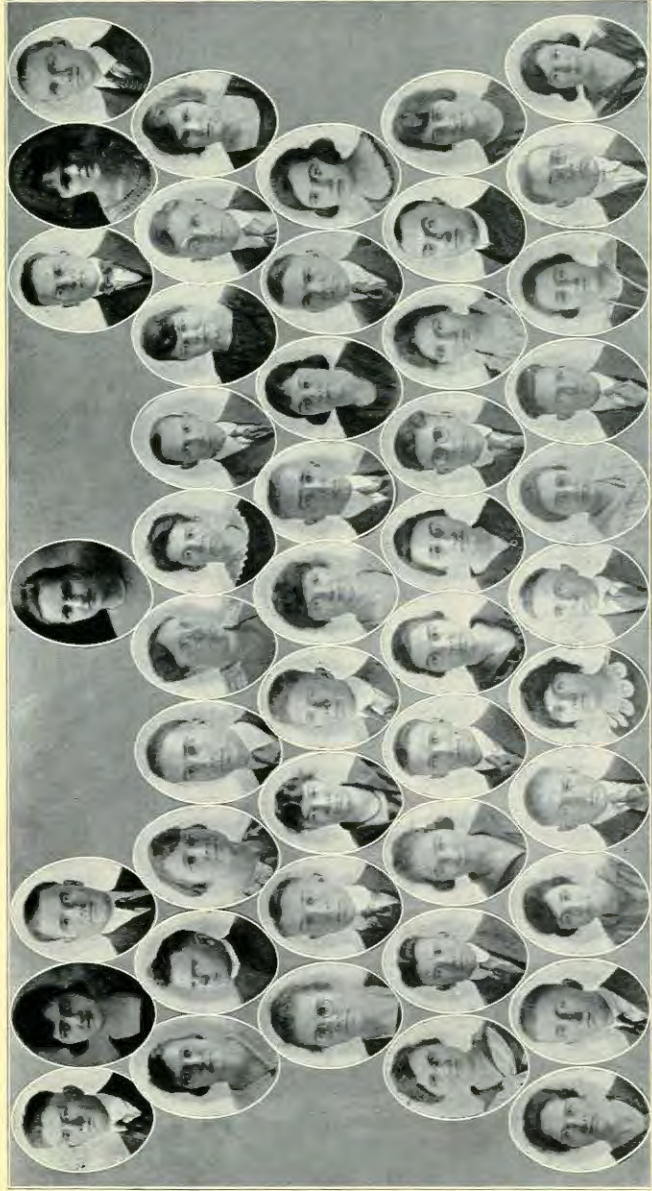
Eunice Almen	Helen Jacobs
Marguerite Barker	Esther Johnson
Vilas Betts	Ida Johnson
W. E. Bishop	Roland Jones
Olive Boone	Katherine Loshbaugh
D. E. Brubaker	Ralph Loshbaugh
Elmer Brubaker	Earl Marchand
Everett Brubaker	Samuel Maust
Gladys Brubaker	Iva McKitrick
Gilbert Brubaker	Maude Merkey
Daisey Carley	S. D. Michael
Toy Carver	Eunice Moors
Raymond Clark	Dora Moyer
Harold Correll	Edith Muse
Clyde Crumpacker	Anna Myers
L. B. Crumpacker	Mark Neher
Mrs. L. B. Crumpacker	Walter Peckover
Sanger Crumpacker	Ruth Pentecost
Myrl Curtis	Elvis Prather
Rufus Daggett	Theodor Robb
Vera Davisson	Goldie Scarborough
Marie Dennis	Norma Smith
Carl Draegert	Robert Shirky
Grace Ebaugh	Beulah Spurgeon
Gladys Edwards	Blanche Spurgeon
Helen Elliott	Carl Schneider
Sumner Eshelman	Benjamin Spitzer
Rhea Fast	Dale Strickler
Ruth Frantz	Harold Strickler
Cecil Hayes	Bruce Tharrington
Howard Hawkins	Dorothy Thornton
Lloyd Hawley	Harold Tice
Theodor Hiebert	Ray Vaniman
George Hodges	Omer Vanscoyoc
Irvin Ihrig	Hazel Vogt
Bertha Ikenberry	Mary Waas
Christian Ikenberry	Jessie Winder
Mrs. Ruth Ikenberry	Harlan Yoder
Hadden Ilsley	Gene Young



College Freshmen



Academy



Mikow, Muzler, Fox, Brammel, Fleming, Slaybough, Johnson
 Moon, Boggs, Crumpacker, Wampler, Himes, Slifer, Waas, Oberland, Schroeder, McGaffey
 Kinzie, Crist, Longle, Boone, Turcotte, Neher, Shirk, Long, Garst
 Driles, Merkey, Stansbury, Rhodes, Foxroad, Correll, Lauver, Fleming, Gibb, Longle
 Turcotte, Davon, Witmore, Garmon, Lauver, Correll, Hutchinson, Eller, Baron, Himes, Pitzer

Senior Academy

L. Avery Fleming	President
Haven Hutchinson	Vice President
Minnie Mugler	Secretary
Frank Boone	Treasurer
Professor Swope	Class Adviser

Motto—"The ladder to success isn't running; take the stairs."

Colors—White and Gold.

Flower—Daffodil.

Mascot—Coyote.

Class Roll

Calvin Boggs	Eva Lauver
Frank Boone	Anna Lingle
Iva Brammell	Lauvera Lingle
Frank Correll	Vivian Long
Sada Correll	Maxine McGaffey
Lee Crist	David Merkey
Laura Crumpacker	Louis Mikow
Garmon Daron	Esther Moors
Zelma Daron	Minnie Magler
Helen Dirks	Simon Neher
Jay Eller	Mabel Okerlund
Avery Fleming	Ruth Rexroad
Mabel Fleming	Arno Rhodes
Lee Fox	Victor Schroeder
Dale Garman	Elva Shirk
Helen Garst	Adria Slaybaugh
W. W. Gish	Edith Slifer
Addie Himes	Clara Stansbury
Ralph Himes	Rose Turcotte
Haven Hutchinson	Thelma Turcotte
Carl Johnson	Bennie Waas
Lila Kinzie	Herkle Wampler
Ed Lauver	Gertrude Witmore

Class Report of 1943

Frank Boone—World wide renowned philosopher.
Calvin Boggs—Doctor of Divinity
Iva Brammell—Fishing on Puget Sound.
Lee Crist—Jewish Merchant.
Frank Correll—Ladies man and Professor of Biology in
the University of China
Sada Correll—Stage Dancer
Laura Crumpacker—Pedagogy
Helen Dirks—Pearl Seeker
Garmon Daron—Charlie Chaplin
Zelma Daron—Dressmaker
Jay Eller—Professor of Etiquette in Berlin
L. Avery Fleming—Chimney Sweep
Mable Fleming—Winner of world's swimming contest
Lee Fox—Professional Flirt
Dale Garmon—Mother's Boy
Helen Garst—Six feet and two inches tall
W. W. Gish—Piano Tuner
Addie Himes—Artist's model and hot lunch lecturer
Ralph Himes—U. S. Attorney General
Haven Hutchinson—Lady of the Land
Carl Johnson—Hair Dyer
Lila Kinzie—Red Cross Nurse
Eva Lawver—Contralto singer in New York
Edward Lauver—Successful M. D.
Anna Lingle—Protector of birds. (especially Martins)
Vivian Long—Married to Miss Short
Maxine McGaffey—Maker of Dreams
David Merkey—Book Agent
Louis Mikow—Stingy Miser
Esther Moors—Governess
Minnie Mugler—Won K. U. Scholarship
Simon Neher—Weather Reporter
Mable Okerlind—Fish Doctor
Ruth Rexroad—Manager of a beauty shop
Arno Rhodes—Captain of Fire Department
Victor Schroeder—Boot Black
Adria Slabaugh—Aviator
Edith Slifer—Hair Dresser
Elva Shirk—Kindergarten teacher
Clara Stansbury—Society Belle
Rose Tureotte—Tight Rope Walker
Thelma Turcotte—Collector of Beetle Eggs
Bennie Waas—High Priest at Rome
Herkle Wampler—Veterinarian
Gertrude Witmore—Tourist
Lauvera Lingle—Multimillionaire



Academy Seniors



Junior Academy

Laura BowmanPresident
Neva YoderVice-President
Maggie BrubakerSecretary

Motto—"Rowing, not drifting".
Colors—Purple and Gold
Flower—Sunburst Rose

Class Roll

Gladys Adamson
Jennie Amos
Susie Blickenstaff
Carl Blickenstaff
Laura Bowman
Maggie Brubaker
Lillie Crumpacker
Leo Crumpacker
Milton Dell
Minnie Edgecomb
Julia Ikenberry
Irene Johnson
Olive Howard

Helen Mohler
Perry Rauland
Floyd Rhodes
Vada Shirk
Matilda Sorenson
John Unruh
Anita Vaniman
Etta Van Pelt
Florence Wiegand
Eunice Wray
Mae Vanscoyoc
Neva Yoder





Academy Juniors



Academy Sophomores



Sophomore Academy

Evelyn Lyons	President
Charley Spicer	Vice-President
Harvey Lehman	Secretary
N. B. Geiman	Treasurer
Professor Blair	Class Adviser

Motto—"Onward and upward".

Colors—Green and Gold

Flower—Yellow Rose

Class Roll

Alice Beal	Orpha Loshbaugh
Leonard Birkin	Bessie Lockett
Mrs. L. Birkin	W. T. Lockett
Russell Brand	Evelyn Lyons
Lola Carlson	Ralph Martin
W. E. Daniel	M. L. Miller
Anna Edgecomb	Howard Oakes
Norma Finrock	Oliver Okerlund
Mrs. L. A. Fleming	Alice Olson
A. I. Geiman	Jacob Ratzliff
N. B. Geiman	Charles Spicer
Ethel Hill	John Spicer
Porter Ihrig	Mabel Stansbury
Edna May Johnson	Mrs. Grace Teeter
Harry Lehman	Ruth Ullom
Harvey Lehman	Vera VanNess
Charles Legle	Walter Voth
John Lengle	Edith Watkins
Annie Lingle	Floyd Westrick





Freshman Academy

Elmer McGoniglePresident
Ruth WatkinsVice-President
John LehmanSecretary
Mary WhiteneckTreasurer

Motto—"Not on the heights, but climbing"
Colors—Blue and White
Flower—Violet

Class Roll

Elvin Brown
Howard Brown
Benjamin Dirks
Henrietta Eschemann
Minnie Eschemann
Ralph Flessa
Carl Freeburg
Edna Funderburgh
Clarence Hawkins
Henry Hawkins
Ralph Hoover

Beulah Keedy
John Lehman
Ida Lengel
Elmer McGonigle
William Mudra
Ina Slaybaugh
Ida Swoveland
Victor Ullom
Ruth Watkins
Glenn Wellington
Mary Whiteneck





Just Kids in General



Departments.



Stock Judging Team
L. CRUMPACKER, E. MCGONIGLE, J. ELLER
PROFESSOR MOHLER

Department of Agriculture

McPherson College has a live man at the head of this department, —Professor Mohler, who manages the college farm as well as his teaching.

This year Professor Mohler purchased some pure bred stock for the farm. Among this stock was one Holstein cow, Cornucopia, which has produced 12,800 pounds of milk, which amounts to \$460; she would have produced 530 pounds of butter if the milk had been separated.

The campus is being beautified through Professor Mohler's efforts. He has directed the planting of 250 shrubs around the buildings, and also 100 trees.





EDWARD VAN PELT

He is also getting splendid results from his school work. He and Mr. Van Pelt coached the stockjudging team which took first honors at the Wichita stockjudging contest in January. This is the second consecutive year that his team has taken first place.

Mr. Van Pelt is the first college man to major in the agriculture department. He will be Professor of Agriculture at Bridgewater College next year.

The department of agriculture is becoming more important each year because of the teaching ability of Professor Mohler, and the popularity of his practical courses, and the realization of the students that agriculture is a fundamental occupation.

There are six or eight undergraduates who are planning to major in agriculture. It is only a lack of room and equipment that prevents this department from growing more rapidly.



Department of Art

The Art Department of McPherson College has grown in strength and popularity under the very efficient supervision and sincere efforts of Mrs. J. W. Deeter who has had ample experience and training in this line of work. Her field of experience and training has not been confined to the west. Some of her work has been under instructors in New Haven, Conn., and Miss Estabrooks of Chicago, who studied art in Italy.

Students of this department learn to appreciate the beautiful in the most practical way. An aesthetic relation is sensed in the most common everyday surroundings. The work leaves unmeasured, aesthetic and refining impressions in the lives of students in addition to practical and commercial value. Instruction is given in oil, water color, pastel, chalk, china painting and reed weaving.

This year, near the close of school a program was given by students of the department, the representative feature being chalk talks both serious and comic. A splendid exhibit was given Commencement week, displaying pictures in oil, water color and pastel, many pieces of decorated china, and large and small articles in reed such as baskets, trays, tea wagons, ferneries and rockers.



Department of Home Economics

Home economics is an art which has been pushed aside from time to time to make room for something "more important" as those people say who do not have the home and its welfare truly at heart.

A healthy body should be the inheritance of every American citizen. Then, since all other activities depend on this for the realization of their success, it is the business of everyone who is in any way responsible to be fully prepared to protect life, by a study of hygiene and the laws of health and sanitation, by a knowledge of the highest nutritive values of food in proportion to its cost, and by a knowledge of labor saving and time saving devices for the home.

Few people think of calling an untrained physician to their home; and the up-to-date farmer must have a course in agriculture if he would get the best results from his land; no less important is it, that the housewife be trained by a good course in Home Economics.

Miss Minnie Walters took this department in its infancy and successfully developed and improved it. During her absence this year, Miss Martha Hollinger has shown the same devotion and has been instrumental in adding to its efficiency.

With the completion of the new Science Hall, McPherson College will be much better prepared to offer courses in this department.





Department of Commerce

- E. Roy Johnson, Lindsborg, Kansas.
 "Born with the gift of silence."
- Emmett Ostlund, McPherson, Kansas.
 "I was not born for great affairs,
 I eat and sleep and say my prayers."
- Toy Carver, Canadian, Texas
 "Toy is winning, gentle, and devoid of sins,
 Having more good points than a paper of pins."
- Leah Winters, Lehigh, Kansas
 "Loved by each one, young or old,
 For her heart is one of gold."
- Victor Schroeder, Canton, Kansas
 "None but him can be his parallel."
- Carl Schneider, Liberal, Kansas
 "There are smiles that make us happy."
- Earl Peterson, McPherson, Kansas
 "Blessed are they who say nothing, for they shall not
 be quoted."
- Daisey Carley, Wiley, Colorado.
 "Her friends are many; her foes—are there any?"
- William Lowery, McPherson, Kansas
 "Smiling, singing, loving,
 Onward thru life he goes,
 Each morning sees a romance begun,
 Each evening sees its close."
- Esther Johnson, McPherson, Kansas
 "Johnie is a good girl, whom we all admire for her
 good nature, humor, and smiles."
- Carl Blickenstaff, Quinter, Kansas
 "His broad smile, and good disposition are
 directly proportional to his height."
- Nina Beaver, Kismet, Kansas
 "All her ways are ways of pleasantness, and all her
 paths are peace."



Department of Manual Training

The Department of Industrial Art is growing so fast that its capacity is far too small to meet the demands. The prospects for next year are twice as many students as it will accommodate. Its work is becoming widely known; the calls for teachers of manual training could not be filled. Two of the graduate students will teach manual training in High Schools of the state next year.

Training in Mechanical Drawing, Architectural Drawing, Bench work, Wood Turning, Wood Finishing, and Carpentering is offered. The students this year have designed and constructed many first class projects, as dressing tables, sewing cabinets, bookcases, floor lights, stand lights, hall trees, cabinets, and children's toys. Students efficient in wood turning have turned out splendid articles, such as collection plates, candle sticks, hair receivers, jewel trays, napkin rings.

For some of the students there was a double incentive to produce much fine work—their work was to be the nucleus of a little nest.

The equipment was increased this year by adding a new planer. This, in addition to the old equipment of band saw and turning lathe, furnishes the use of the best up-to-date machinery.



PIANO STUDENTS



LOLA HILL, ELSIE KLINKERMAN, MINNIE MUGLER
Bachelor of Music

Department of Music

May 10—Recital, Dewitt Sager, Nell Cullen

May 19—Graduating Recital, Lola Hill.
Assisted by Peggy Muse, Reader

May 20—Graduating Recital, Elsie Klinkerman
Assisted by Rose McKinney, Soprano

May 24—Graduating Recital, Minnie Mugler
Assisted by Jessica Carter. Reader



Primary Piano Students

Music should be to the child as a language—it should be the natural way for him to express himself. With this idea in mind, last fall the children's classes in piano were organized under the direction of Latha Daniels. Each class meets twice every week and the work very closely follows the plan used at Lindsborg by Miss Ellen Strom.

The children first learn to clap and step to music with different tempi and rhythms. Then the great staff is taught along with the keyboard. All the little pieces and exercises have words, so the children from the first learn to play with good phrasing and with expression. A demonstration was given at a recital and the children played the following numbers:

Good night, Mama
Sleigh Ride
DARRELL JONES

Good night, Mama
Bunny Tracks
Brown Seeds wee
BYRON ESHELMAN

Tag, You're it
Up the ladder
Bunny Tracks
WENDELL DEETER

Two duets,
Up the ladder
Bunny Tracks
DELBERT CULLER



MRS. MORRIS, MAYME KING, NELL CULLEN, MARIE CULLEN

College Quartettes



ROY BRAMMELL, HAROLD BEAM, J. HOWARD ENGLE, RAY CULLEN



EDGEComb, EDWARDS, CRIST, BOWMAN, BURKHOLDER
 LUCKETT, GARVEY, N. CULLEN, FRANTZ, M. CULLEN
 MOHLER, McKINNEY, WHITMER, CARVER, KING, TILBERG

College Glee Clubs



BRAMMELL, MUDRA, BURKHOLDER, TRACEY, GARVEY
 HOLSOPPLE, MARTIN, STOVER, BOONE, CULLEN, TICE
 BRUBAKER, SLIFER, BEAM, TILBERG, UNRUH, NEHER



McPherson College Band

Leslie Blackman.....	Director
Carl Draeggart.....	President
Jacob Yoder.....	Secretary-Treasurer
Harold Beam.....	Business Manager
Samuel Maust.....	Reporter
Paul Pair.....	Librarian

C. G. Draeggart—Solo Cornet
 L. J. Mikow—Solo Cornet
 Ernest Schroeder—First Cornet
 Garman Daron—Second Cornet
 Everett Brammel—Second Cornet
 Harold Strickler—First Clarinet
 Jacob Yoder—First Clarinet
 Victor Schroeder—Second Clarinet
 William Heibert—Flute

Theodore Heibert—Alto
 John Unruh—Alto
 Frank Boone—Baritone
 Harold Beam—First Trombone
 Paul Pair—Second Trombone
 George Boone—Second Trombone
 Lee Crist—Third Trombone
 Loyd Hawley—Alto Saxophone
 Samuel Maust—Snare Drum
 Walter Voth—Bass Drum



College Orchestra

Prof. Ray Lauer..... Director
 Harry Bowers..... Pianist

Final Program, May 18

- | | |
|--|-----------|
| a. Battle of Guinquito..... | Fleming |
| b. Pilgrim's Song of Hope..... | Baptiste |
| c. Turkish Love Song..... | Wheeler |
| d. Gavotte de Concert..... | Devere |
| ORCHESTRA | |
| a. Elegy | Massenet |
| b. Open thy blue eyes..... | Massenet |
| MISS THRASHER WITH ORCHESTRA | |
| a. Concert Stuck..... | Weber |
| b. Moment Musical..... | Schubert |
| c. Serenade | Haydn |
| MOZART STRING QUARTETTE | |
| a. Welcome Pretty Primrose..... | Pinsuti |
| b. Rosary | Nevins |
| c. Bridal Chorus..... | Cowen |
| LADIES GLEE CLUB | |
| a. Souvenir | Drdla |
| b. Andante Pathetique | Uhe |
| c. A la Mazur..... | Uhe |
| MR. LESLIE SCOVILLE | |
| a. Evening Star | Wagner |
| Trombone solo by Mr. Leslie Blackman with | |
| ORCHESTRA | |
| b. Selections from the "Firefly"..... | Friml |
| c. Battle of the Nations..... | Paul |
| ORCHESTRA | |
| a. Waltze Romantique..... | King |
| b. Barcarolle from "Tales of Hoffman"..... | Offenbach |
| c. Dance Mexicano..... | Rolyn |
| d. Breezes from the South..... | Berry |
| ORCHESTRA | |



Devotional



Cabinet of the Y. M. C. A.

Ray Cullen	President
Galen Tice	Vice President
Ralph Strohm	Secretary
Ralph Lehman	Treasurer
Oliver Trapp	Ch. Membership Committee
Homer Foutz	Ch. Social Committee
Foster Hoover	Ch. Devotion Committee
Crawford Brubaker	Ch. Bible Study Committee
Louis Bowman	Ch. Labor Committee
John Mohler	Advertiser
Rodney Martin	Music Director
George Boone	Boys Work
Bill Hiebert	Athletics



Cabinet of the U. W. C. A.

Ada Beckner	President
Ethel Whitmer	Vice President
Grace Crumpacker	Secretary
Lucile Gnagey	Treasurer
Nellie Cullen	Chorister
Della Evans	Religious Meetings
Ethel Whitmer	Membership
Ruth Kilmer	Social
Ida Bowman	Social Service
Rowena Vaniman	Publicity
Rachel Stratton	Conferences
Ada Correll	Six-In-One Committee
Ruth Miller	Mission Study



Student Volunteer Band

Olivia Dickens President
 Warnie Brubaker Vice President
 Gladys Edwards Secretary-Treasurer

This is an organization of those who have signified their purpose to give their lives in foreign service by signing the declaration of the Student Volunteer Movement. They band together to deepen their spiritual life, to keep true to their purpose, and to interest others.

The band meets twice a month, takes charge of every fourth program of the Mission Band, and has special meetings when the traveling secretaries or missionaries on furlough visit McPherson.

McPherson was fortunate in having J. H. Engle president of the Kansas Union this year. Consequently she was well represented at the State Convention which met at Lindsborg, February 11, 12, 13.

The thirty-six McPhersonites on the foreign field and the two planning to sail next July show that the band is fulfilling its purpose.



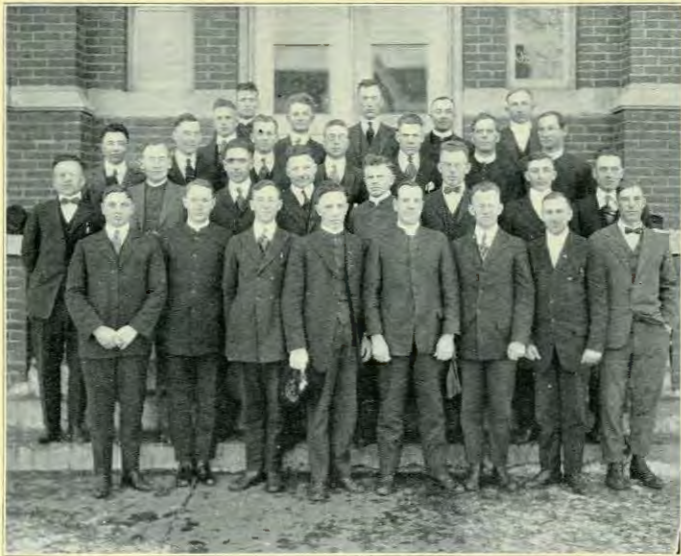
Mission Band

Henry R. Stover	President
Mayme E. King	Vice President
Letha Heckman	Secretary-Treasurer
Ida Bowman	Corresponding Secretary

The personnel of this organization consists of those students who have purposed under God's guidance to give their lives to distinctly Christian vocations, or to become foreign missionaries.

The purpose of the organization is to interest students in various Christian vocations; to encourage an intelligent and sympathetic study of missions; to encourage students definitely to consecrate their lives to distinctly Christian vocations; to strengthen the spiritual life and missionary purpose of its members; and to cooperate with other organizations of the school in practical Christian service.

This group is a vital factor in the spiritual life of the school and includes within its membership of sixty-nine many of the leaders of the college. The purpose of the body is cultivated by weekly meetings conducted by students, faculty members, Christian leaders outside the school, and by missionaries from the field. Practical experience is gained by helping in the city Mexican Sunday-School, and in Deputation Team work among the churches.



Student Minister's Association

Clarence Eshelman President
 Melvin Teeter Secretary

Program Committee:
 Harrison Frantz, John W. Deeter
 J. Howard Garvey

The Student Minister's Association of McPherson College was organized during the school year of 1918-19 upon the suggestion of Oliver H. Austin, who then became its first leader and president. All divinity students and student ministers of the college are considered members of the association. We have this year forty-five such members.

The association meets one evening each week for conference or programs of varied type. Lectures, addresses, book reviews, discussions of the outlook for the minister and his field, and of the general problems of leadership are features of the programs. Kindly constructive criticism of each other in respect to mannerisms or characteristic tendencies is a very helpful feature of the year's program.

The aim of the association is (1) to enlist all student ministers, (2) to impress upon them the dignity, opportunity, and responsibility of the Christian ministry, (3) to encourage stability and steadfastness of purpose in thoro preparation for definite work, (4) to do such expressional work as may come within its province, and (5) to cultivate the spirit of common interest among all classes of students.



Student Christian Extension Department

Miles BlickenstaffPresident—Student Volunteers
Roy NeherTreasurer—Mission Band
Ida BowmanSecretary—Anti-Tobacco Association
Ada CorrellY. W. C. A.
Louis BowmanY. M. C. A.
William LockettStudent Ministers

The Student Christian Extension Department Committee is made up of representatives from the six religious organizations of the school. Its purpose is to form a connecting link between the college and the surrounding churches. This is effected by sending out deputation teams from the school, which bring to the churches new life, and enthusiasm, and college pep. The teams give one, two, or three programs of readings, chalk talks, orations, and lectures. They have been enthusiastically received wherever they have gone and the movement has been a pronounced success.

During the past year, the "Six-In-One" committee has sent out six deputation teams, including twenty-nine people. Seven churches were visited and sixteen programs were given. All expenses were met by the churches visited.



Anti-Tobacco Association

Rodney C. Martin	President
Elmer Rupp	Vice President
Mary Miller	Secretary
Mark E. Neher	Treasurer

The Intercollegiate Anti Tobacco Association is an indigenous student movement originating at McPherson College in 1918. It is getting a foothold in several states, and at the State Convention in March affiliated itself with the No Tobacco League of America, for the sake of greater efficiency in its work.

The local association has a membership of 250, and is doing practical work of real value. Teams are sent out in the interests of the association to nearby churches to sing, demonstrate, and give orations against tobacco, and they are always given a royal reception.



Mr. David Brubaker represented McPherson College in the State Oratorical Contest held at Winfield, Kansas, and won first place against some real opposition.

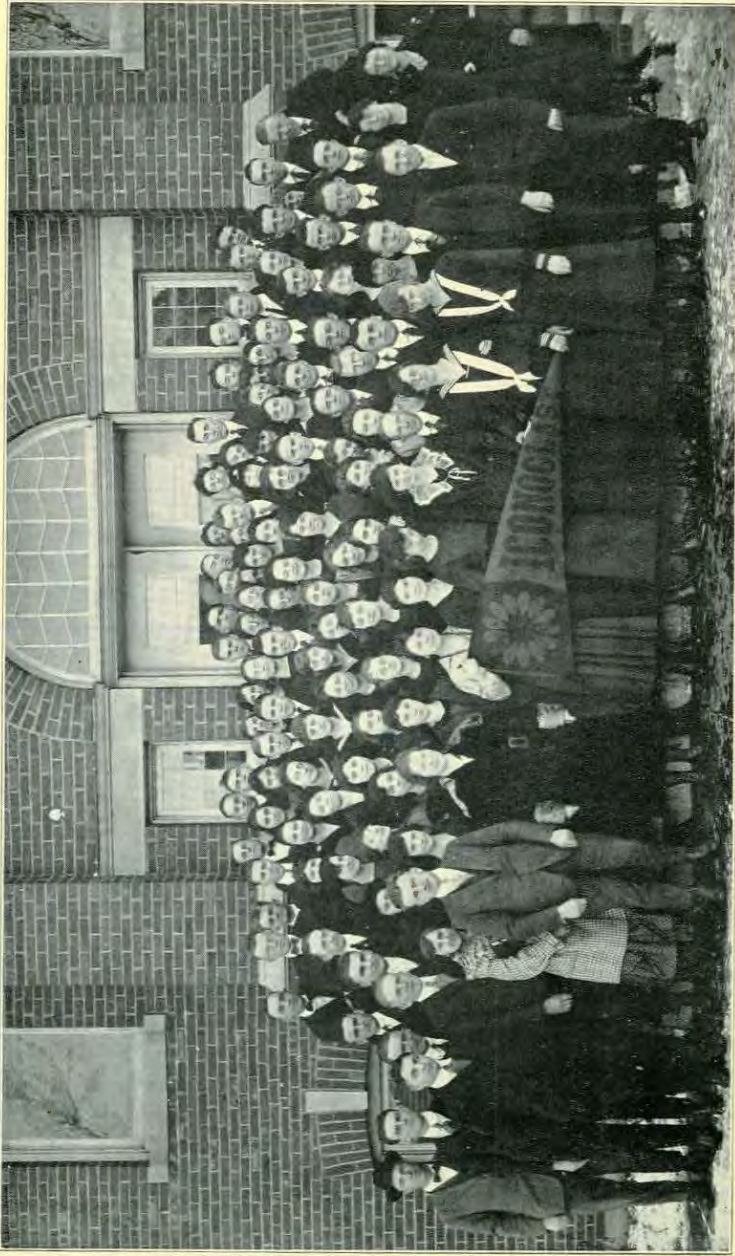
This makes the third consecutive time M. C. has carried off state laurels.



Literary



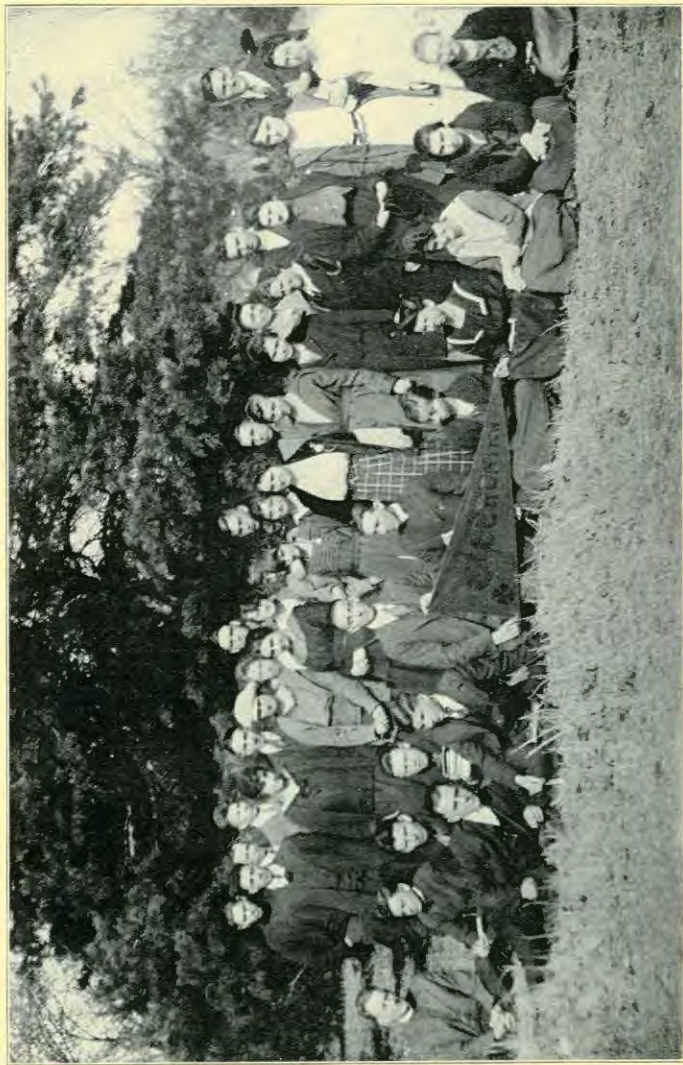
IRVING LITERARY SOCIETY



ICONOCLAST LITERARY SOCIETY



EMERSONIAN LITERARY SOCIETY



CICEROIAN LITERARY SOCIETY



College Debating Club

Susie Fike.....	President
Louis Bowman.....	Vice President
Roy Terflinger.....	Secretary
Farhney Slifer.....	Treasurer
Professor Hess.....	Coach

The McPherson College Debating Club was organized in 1919 at the request of interested students. Membership is limited to twenty-five, and is secured thru try-outs conducted by a faculty committee.

Regular bi-weekly meetings are held in which debates are scheduled and different phases of debating are discussed. The Club has charge of the debating activities of the college, altho representatives on the college teams are not limited to club members. The Club also furnishes debates for literary society programs.

The club offers splendid opportunities for the student to develop his talent along the lines of argumentation and public speaking, and to develop quick, logical and clear thinking, and to learn parliamentary law.

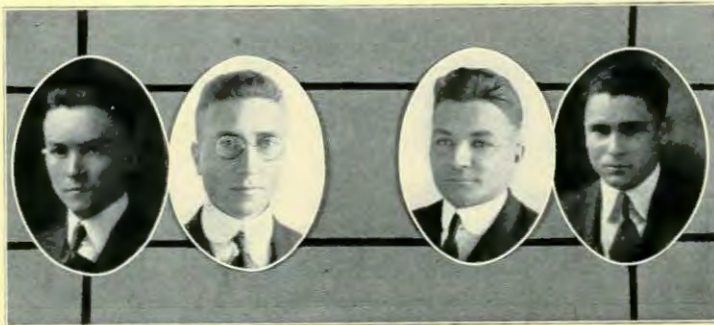
The club considers itself fortunate to have the valuable assistance of Coach Hess.

M. C. is a member of the Kansas Intercollegiate Debating League. The question debated in the league

Resolved—That the principle of the open shop should be made obligatory by federal statute.

McPherson Affirmative 2.....	Sterling Negative 1
February 10 at McPherson	
McPherson Negative 0.....	Sterling Affirmative 3
February 10 at Sterling	
McPherson Negative 2.....	Bethany Affirmative 1
March 7 at McPherson	
McPherson Affirmative 1.....	Bethany Negative 2
March 7 at Lindsborg	
McPherson Affirmative 3.....	Kansas Wesleyan Negative 0
March 25 at McPherson	
McPherson Negative 3.....	Kansas Wesleyan Affirmative 0
March 25 at Salina	

The State is divided into the Northern and Southern Districts. In the Northern Division M. C. tied Sterling for first place with ten points each. The tie was decided by percentage, and since Sterling had 7 more points than M. C., M. C. received second place in the Northern Division.



H. JONES, C. BRUBAKER
NEGATIVE

H. STOVER, W. BISHOP
AFFIRMATIVE



Academy Debating Club

Ruth Rexroad.....	Lauvera Lingle.....	President
W. W. Gish.....	Bennie Waas.....	Vice President
Lauvera Lingle.....	Anna Lengel.....	Secretary
Jay Eller.....	David Merkey.....	Treasurer

The McPherson Academy Debating Club was organized in 1919. The membership of the club was limited to twenty-five. The club meets every alternate Friday evening for a program of debates and discussions.

In the fall of 1920 a meeting of the representatives of Tabor, Central, Bethel, Bethany, and M. C. Academies was held at M. C. A league was formed between these academies and a contract for a pentangular debate each year for the three years was made. Prof. Hess was chosen chairman of the league.

The purpose of the club is to train the minds of its members to quick, logical, thinking, and to teach the principles of debating in preparation for the Debating Teams of the Academy and College.



LEHMAN (ALT.), ELLER, BOWMAN, GISH
NEGATIVE TEAM

Arrangements were made for a pentangular debate with the Academies of Tabor, Central, Bethany, Bethel, and McPherson. The question was: Resolved: That labor should have a share in the management and profits of incorporated industries.

The Negative team was composed of: Laura Bowman, Jay Eller, W. W. Gish, and Harry Lehman, alternate.

The Affirmative Team was composed of: Helen Dirks, Anna Lengel, Leonard Birkin, and Hoover, alternate.

The first debate was held March 11. The negative team lost to Bethany at Bethany, while the affirmative took the decision from Bethel here. On March 17, the last debates were held, the negative losing to Central here and the affirmative taking the decision at Tabor.

In the final results, M. C. received second place in the Pentangular.



HOOVER (ALT.), DIRKS, LENGEL, BIRKIN
AFFIRMATIVE TEAM



Close Ups



Administrative



HERSHEY, YODER, FIKE, STOVER, MUSE, SWOPE
BETTS, FRANTZ, TRAPP, CRIPE, POTE
REXROAD, WRAY, HOLSOPPLE, BIRKIN, WATKINS

Student Council

Oliver Trapp.....	President
Paul Yoder.....	Treasurer
Susie Fike.....	Secreary

Representatives

Paul Yoder.....Senior College	Ruth Rexroad.....Senior Academy
Susie Fike.....Senior College	Iva Wray.....Junior Academy
Marguerite Muse.....Junior College	Mr. Birkin.....Sophomore Academy
Henry Stover.....Junior College	Edith Watkins.....Freshman Academy
Orville Pote.....Sophomore College	Oliver Trapp.....Music
Ruth Cripe.....Sophomore College	Mrs. Holsopple.....Post Graduate
Ruth Frantz.....Freshman College	Prof. Hershey.....Faculty
Vilas Betts.....Freshman College	Prof. Swope.....Faculty

The Student Council is fast becoming the most vital student organization of McPherson College. It is interesting to turn the leaves of the secretary's book back to the records of 1911-12 when the council was first organized. Here we see, after several years of vain attempts, of adjournments, or of dropping the matter for good, the final materialization of the student ticket. Here the old problem of the literary societies was attacked; here the council attempted to solve the so-called social problems of M. C. By means of this backward look we realize the growth of the Council.

In this year of 1920-21, with Mr. Trapp at the helm, this little craft has cleared its decks for action; and, perhaps for the first time in its history, has been placed on a working basis.

According to Article Two of the Constitution "The purpose of this organization shall be to draw the students into closer relationship." Keeping this in mind, the Student Council created boys' and girls' pep clubs which made M. C.'s first year of football truly a grand and glorious one.

The student ticket is a remarkable improvement over past years, in that it furnishes a very high class lecture course, as well as football, basketball, track, and baseball events. Through it we had the pleasure of hearing such artists as Mr. Scianti, the Italian pianist; Mr. MacMurray Professor of Public Speaking at Kansas University; and the lecturers, Dr. Devine, Mr. Raine, and Sylvester Long.

Changes were made this year in the recognition of students who had taken prominent part in student activities. Formerly, medals were handed out promiscuously; now they are limited to a small number of officers. Only the editor of the Spectator, the editor of the Annual, and the president of the Student Council will hereafter receive all school medals; orators and debaters will receive special medals.

A change was made in the constitution in regard to the election of the officers. The president and the treasurer of the Student Council will now be elected by the student body, instead of by the members of the Council.

By means of questionnaires, the Student Council studied the student government of the big schools and Universities, and have attempted to make ours always "provide for the general welfare of the student organization, work for the best interest and support of McPherson College, and reflect student sentiment in all matters of concern to the students of McPherson College."

Events put on by the Student Council.

Football game—Reno	Basketball Game—Bethany
Football game—Lyons	Basketball Game—St. John's
Football game—Moundridge	Basketball Game—Bethel
Football game—Little River	Basketball Game—Fairmount
Football Game—Burton	College Debate—Bethany
(Thanksgiving Game)	Lecture—Dr. Banks
Lecture—Doctor Devine	Academy Debate—Bethel
College Orchestra Program	Academy Debate—Central
Piano Recital—Silvio Scionti	Lecture—Dr. Reine
Basketball game—Salina	College Debate—Salina Wesley-
Reading—Ben Hur—Prof. Mac-	an
Murray	Concert—College Band
Basketball game—Canton	Concert—Choral Union—Holy
Basketball Game—Southwestern	City
College Debate—Sterling (Coop-	Baseball Game—Bethany
er)	Baseball Game—Salina
Basketball Game—Sterling	Dual Track Meet—Bethel
(Cooper)	Dual Track Meet—Salina
Basketball Game—Moundridge	



Fahnestock Hall Self Governing Body

Hervey McClellandChairman
 Professor MohlerFaculty Representative

Vilas Betts	Orville Pote
Ira Brammell	August Rump
Irvin Ihrig	Clyde Rupp
Ralph Lehman	John Spicer
Victor Vaniman	

Ten men, known as the "Committee of Ten", were appointed by the management to constitute a self governing body for the men. Professor Mohler, Dean of Men, represents the faculty.

This committee has at heart the interests of the men living in the dormitory, and has directed its work toward that goal. Much to the credit of the school, very little action, concerning the conduct of the men, has had to be taken.

The great need of shrubbery and vines to beautify the campus was one of the problems tackled by the committee. Thru the noble co-operation of the men several varieties of shrubbery and vines were purchased and planted around the different buildings.

THE SPECTATOR

Published by SUTHERTON COLLEGE, McPHERSON, KANSAS

Tuesday, Oct. 26, 1926

THE SPECTATOR
Published every week by the Sutherland College, McPherson, Kansas.
Editorial office: 212 South Third Street, McPherson, Kansas.
Subscription price: \$2.00 per year in advance.
Single copies: 10 cents.
Advertising rates: See page 10.
Copyright, 1926, by Sutherland College.
Printed at the Sutherland College Press, McPherson, Kansas.
Postmaster: Please send address changes to THE SPECTATOR, 212 South Third Street, McPherson, Kansas.
Second-class postage paid at McPherson, Kansas, October 26, 1926.
Acceptance for mailing at special rate of postage provided for in Act of October 3, 1917, authorized on July 27, 1926.
Postoffice at McPherson, Kansas, established July 27, 1926.
Class of material: Second-class.
Postage paid at McPherson, Kansas, by Sutherland College.
Permit No. 105.
SUTHERTON COLLEGE
McPHERSON, KANSAS

Poet's Corner

BROKEN FRIENDSHIP



With all your prying
And with all your prying
And with all your prying
And with all your prying

ARE YOU TALKING?

THE WAY TO REASON

OUR TO MY REMEMBRANCE

WOMAN'S SILENT LABORER

CORRECT ENGLISH

REQUIREMENTS FOR STATE VERIFICATION

COLLEGE RATIONS TO BE IMPROVED

NEW SCIENCE IN BAKING

GRANDMOTHER

PIGMENT TEST FOR STUDENTS

Children's Spirit

LIBRARY LECTURE FUND

LLOYD'S Candy Kitchen

NORLINKNOWLES Restaurant

McPherson Steam Laundry



HUBBELL'S Drug Store

The Quizzical Ed

DON'T MISS THE BIG SALE NOW ON AT HUBBELL'S

SHOOT YOUR FRIENDS

Dr. B. J. Allen

A. J. McKinney



THE SPECTATOR

Published by McPHERSON COLLEGE, McPHERSON, KANSAS

VOLUME 4

TUESDAY, NOV. 26, 1929

Did You Know?



There are several of our alumni in the United States... They are...
There are several of our alumni in the United States... They are...
There are several of our alumni in the United States... They are...

Athletics

NOTICE
The Athletic Union will meet...



THE BULL DOGS WALK OFF THE...
TENNIS CHAT
CRICKETS GOSSIP

Literary And Art

MOONLIGHT AND GHOSTS
CHRISTMAS QUARTET

JANUARY NUMBERS



SERIAL ART EXHIBITION
FIRST SHALL WE SING?
THE MIRROR
N. C. WILSON CLUB

Local Notes



Miss Lillian...
Miss Lillian...
Miss Lillian...

Organizations

UNION BAPTIST CHURCH
LANSING LECTURE
Mr. C. B. Lansing...



TRYING SOCIETY
The Invocational
BAND ENSEMBLES

Exchanges

EXCHANGES
On Tuesday evening, Oct. 1, 1929...



MEETING A PRIORITY ISSUE
The Invocational...
BAND ENSEMBLES

Society Notes

WAFERS, WAFFLES, WAFFLES!
The author...
PANELISTS SPEAK



WAFERS, WAFFLES, WAFFLES!
The author...
PANELISTS SPEAK

CHAPEL

In a message to the students...
Prof. N...
Rev. A. E. ...



WAFERS, WAFFLES, WAFFLES!
The author...
PANELISTS SPEAK



Ex-Service Men and Nurses

Gilbert L. Betts; Cpl. Co. B, 12 Inf. 8th Div.
George N. Boone; Pvt. Infantry, U. S. A.
E. M. Brammel; Pvt., Camp Utilities, Camp Funston
Crawford F. Brubaker; Pvt., Med. Detach. 323, Camp Funston
David E. Brubaker; Pvt., Aux. Remount Depot, Camp Funston
Harold Carrell; Pvt., Med. Dept., Camp Funston
R. S. Clark; Sgt. R. O. T. C.
Ray C. Cullen; H. A., 1st C., Medical, U. S. N.
Charles Dean; Pvt., S. A. T. C.
Homer S. Foutz; E., 2nd C., (R) U. S. N. R. F.
Lee E. Fox; U. S. M. C., 1st Marine Av. Force, Field D, France
Lloyd Hawley; Mechanic 101, 12th Div., Com. 15
Floyd Holcomb; Pvt., S. A. T. C.
Ralph Holsinger; Cpl., Medical Corps, various camps
Chester Holsopple; Pvt., S. A. T. C.
Glenn A. Johnson; Pvt., 4th Co., Oct. Replacement draft
Samuel A. Maust; Pvt., Co. B, 45th, Engineers, A. E. F.
John L. Mohler; Pvt., Base Hospital, Fort Riley
Roland S. Parry; Co. F, 127 Inf., 35th Div.
Jacob J. Ratzlaff; Medical Corps, Camp Grant
E. W. Schermerhorn; U. S. Naval Av., C. M. I. C., Pensacola
Forney Slifer; Fireman 1st C., Engineers Force, U. S. N.
Arthur Staatz; Pvt. S. A. T. C.
M. E. Teeter; Pvt. Ambulance Co. 354, 314 San. Tr., 89th Div., A. E. F.
Bruce Tharrington; Pvt. Quartermaster Corps, U. S. A.
D. R. Vaniman; Pvt., Co. 258 Field Hospital, 15th Div., Camp Logan
Benajah Waas; Pvt. 87th San. Squad, 10th Div., Camp Funston
Jacob H. Yoder; Sgt. Utilities, Camp Funston
Miss Emma Campbell; Reserve Nurse, Army Nurse Corps
Miss Olive Holmes; Reserve Nurse, Army Nurse Corps
Miss Emma Tousley; Reserve Nurse, Army Nurse Corps



The Alumni Association

The Alumni Association of M. C. is composed of all persons who at any time have received a diploma or degree from any department of the institution; membership comes by virtue of graduation, and now numbers about eight hundred.

The officers for 1920-21 are: Robert E. Mohler, President; Edith McGaffey, Vice President; Alma G. Anderson, Treasurer; E. L. Craik, Secretary. The Board of Directors, each serving four years, is: Robert E. Mohler, Edith McGaffey, Alma Anderson, J. Clyde Forney; Edna Neher Charles, W. O. Beckner, Sue Slusher Saylor, Homer G. Engle, Lily O. Hawkinson, Lewis Naylor, G. C. Dresher, R. C. Strohm, Amanda Fahnestock, E. F. Sherfy, and F. E. Mishler. The Secretary is not a member of the Board. Rev. W. H. Yoder, '15, represents the Association on the Board of Trustees of the college.

The Alumni Association is sustained by two sources. The first is the annual fee of one dollar, payable on April 1st, which is asked of all members who have not purchased a life membership. The second is the life membership. Seniors, upon graduation, may pledge to pay ten dollars within the year, and upon payment of the same, are forever exempt from the annual fee. Members who did not pledge the ten dollars at graduation, may, at any time thereafter, pay fifteen dollars and thereby become life members. Funds secured thru these life memberships are not spent for running expenses but are set aside as the nucleus of an endowment, to enable the Association to undertake larger things for our Alma Mater.

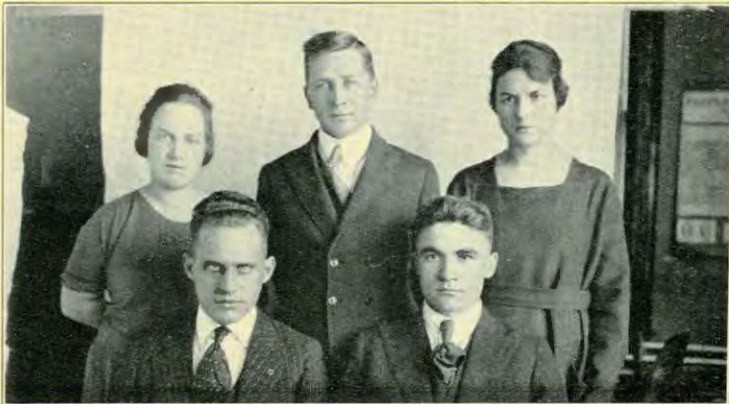
Among the needs of the Association may be listed the following: (1) A permanent room to serve as headquarters for the Association; (2) Endowment enough to employ a secretary on at least part time; (3) A more generous response on the part of the Alumni to the program of the Association; (4) A keener realization on the part of the college authorities of the future possibilities of the Association as an asset to the college.

Coach W. E. Daniel



"Little but mighty," has become the expression used to describe Coach Daniel. His ability to handle men doesn't depend upon the size of his stature. As he finishes this successful year and passes the reins to Dutch Lonborg, we congratulate him on his efforts and splendid work. His congenial personality, his pleasant smile, and cheery word will be hard to replace. He developed M. C.'s first football team into terrors of the gridiron and worked up a winning track team. He has the best wishes of every student and faculty member as he leaves us.

"Dutch" Lonborg of K. U. has been engaged for next year. Lonborg is an athlete of wide repute and we are expecting him to do great things for M. C.



GLECKLER, MOHLER, FIKE
E. SCHERMERHORN, WM. HIEBERT

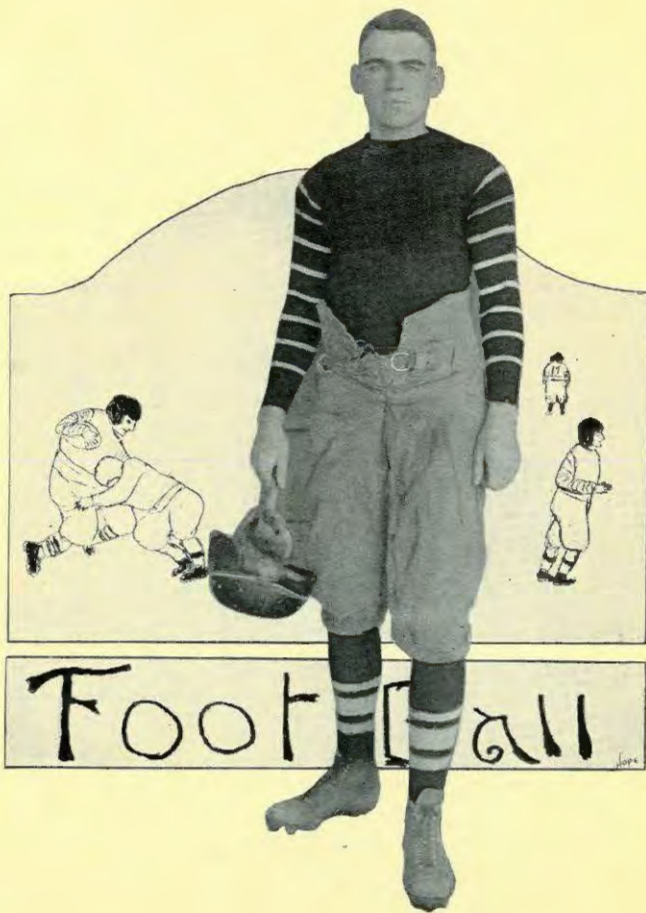
Athletic Council

"M" Club

Barnhice, G. E.	Moors, Chas.
Betts, Vilas	Moors, Chester
Bowman, Curtis	Moors, Melvin
Bowman, D. L.	Neighbors, Pete
Brammel, Ira	Riddleberger, Wm.
Brammel, Roy	Royer, Wm.
Brandt, W. E.	Rump, August
Brubaker, Warnie	Russell, Robt.
Brunk, Elmer	Sargent, Paul
Crumpacker, Leonard	Saylor, Lloyd
Crumpacker, Lloyd	Sorrenson, E.
Crumpacker, Sanger	Schermerhorn, E.
Detter, Clinton	Stover, Henry
Ditch, Chester	Stutzman, Milo
Engstrom, Harold	Suffield, Chas.
Gilbert, Harry	Swanson, Carl
Hoffman, Herbert	Trapp, Oliver
Hoffman, Paul	Vaniman, Lawrence
Hearsh, Elmer	Vaniman, Wilbur
Hoover, Foster	Vaniman, Victor
Howell, Fred	Vasey, David
Eichelberger, Dave	Way, P. B.
Jones, Galen	Wilson, Claude
Mishler, Floyd	Wine, Ernest
Maxcy, J. W.	Yoder, Dayton
Maxcy, Paul	

Men receiving first letters during
year 1920-21.

Blickenstaff, Carl	Rupp, Elmer
Brubaker, Elmer	Schermerhorn, A.
Clarke, Ray	Showalter, Clarence
Hawkins, Henry	Slifer, Fahrney
Hiebert, Wm.	Staat, Arthur
Jones, Rowland	Strickler, Dale
Lehman, Ralph	Strickler, Glenn
Mudra, Wm.	Tice, Galen
Price, John	Voth, Jacob
Rupp, Clyde	Yoder, Harlin





Coach Daniel, E. Sebermerhorn, D. Brubaker, A. Sebermerhorn, Hoover, Robb,
F. Brubaker, Steyer, Snyder, Betts, Burkholder, Mudra, Yoth, Rump, Saylor, Brunk
Stautz, Hiebert, Trapp, Tiew, Jones, Clark, S. Crumpacker, L. Crumpacker (not included)

Foot-Ball Schedule 1920

At McPherson	Oct. 8—M. C.	26		Canton	0
At Marion	Oct. 15—M. C.	3		Marion	27
At McPherson	Oct. 22—M. C.	6		Reno	6
At Canton	Oct. 28—M. C.	13		Canton	13
At McPherson	Oct. 30—M. C.	0		Lyons	21
At Little River	Nov. 11—M. C.	34		Little River.....	0
At Salina	Nov. 16—M. C.	14		Weslyan	14
At McPherson	Nov. 18—M. C.	49		Little River	0
At Sterling	Nov. 20—M. C.	15		Cooper	0
At McPherson	Nov. 25—M. C.	35		Burrton	14
TOTAL.....	M. C.	195		Opponents	95

Football Manager—Prof. R. E. Mohler

The Cheer Leaders and Boosters Clubs deserve honorable mention for their efficient work in organizing the pep in athletics in the school. Good cheering, parades, night shirt promenades, etc. are due to their excellent direction. Golda Zook was chairman for the girl's club and Ray Cullen for the boys'.



WINE, WHITMER, FOUTZ

The Cheer Leaders



TICE
CENTER
170
CAPTAIN

RUMP
END
173

TRAPP
QUARTER
165



HOOVER
END
155

M. C.'s hat is in the ring and her Eleven is on the gridiron. From the very beginning of the year the pig-skin was the center of popularity. At the first call a score and five husky young sons of the sod donned their glad rags and set out to make famous the name "BULLDOG". The material looked fine and after some well-directed grilling it was easy to see that there were great possibilities in our first official football squad.

In the first game, with the Canton Legionaires, we discovered that we





E. SCHERMERHORN
HALF BACK
168
CAPTAIN-ELECT

JONES
FULL BACK
155

CLARK
FULL BACK
165

had underestimated the ability of our team both in fighting spirit and in technique. A glance at the results of the season shows that it was decidedly successful, with just enough defeats to make it interesting. On Thanksgiving day the Burrton Legionaires came for our final game. It was the best game of the season, both teams playing to their limits with a thousand rooters on the side lines backing them up. Again the





VOTH
TACKLE
165

STOVER
GUARD
175

A. SCHERMERHORN
END
150

Bulldogs were victorious and the season closed in triumph. Counting the total scores, M. C. piled up 195 to her opponents' 95 during the season.

It would be difficult to pick any particular stars from the squad, all played such a good game, although few had much previous experience. The purpose was not to develop an all-star team this year, but to get the men lined up and to give





HIEBERT
HALF BACK
155



BRUBAKER
GUARD
165



BRUNK
GUARD
175

them training and to put things in shape for next season. One thing is certain, football called forth more latent pep in M. C. than we ever dreamed was there.

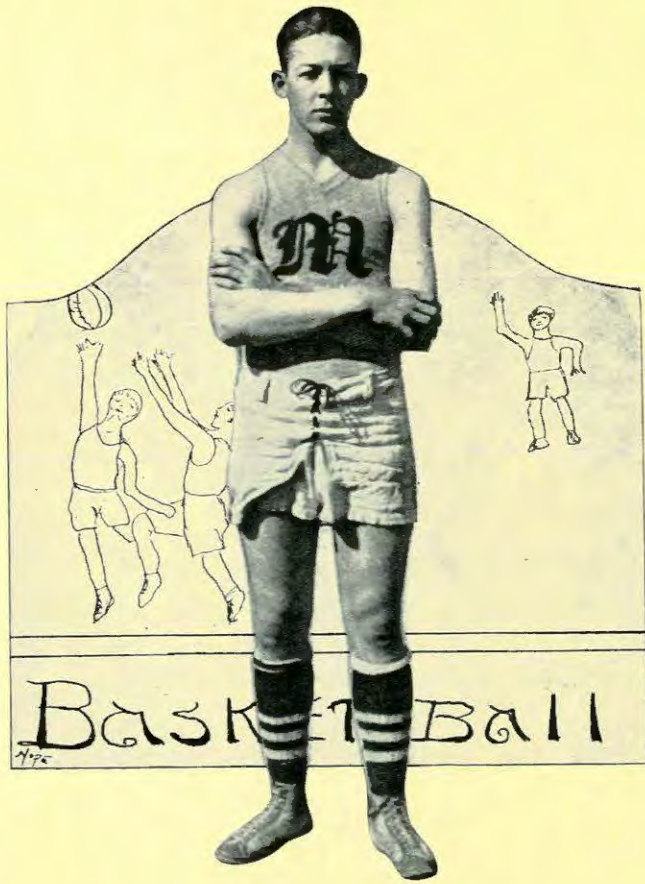
Prospects for next year are far better than they were this year. There is no better material in the schools of M. C.'s class in the state, and under Dutch Lonborg's coaching the Bulldogs should clean up their schedule. The season of 1921 is already booked, most of the games with teams that have won fame on the gridiron. Watch our Eleven next fall.



MUDRA
TACKLE
210









BETTS, TRAPP, MUDRA, STAATZ, L. CRUMPACKER
 I. BRAMMEL, RUMP, JONES, SAYLOR, R. BRAMMEL, COACH DANIEL,
 P. RICE, SHOWALTER, HOOVER, S. CRUMPACKER
 Basket Ball Squad 1920-21

Basket Ball Schedule 1920-21

Jan. 7	At Hays	M. C. 12	—Hays Normal	21
Jan. 8	At Hays	M. C. 15	—Hays Normal	16
Jan. 12	At Topeka	M. C. 21	—Washburn	46
Jan. 13	At St. Mary's	M. C. 23	—St. Mary's	35
Jan. 14	At Ottawa	M. C.	—Defeated.	
Jan. 15	At Baldwin	M. C. 20	—Baker	26
Jan. 19	At Lindsborg	M. C. 14	—Bethany	21
Jan. 22	At McPherson	M. C. 21	—K. W. U.	13
Feb. 9	At McPherson	M. C. 18	—Southwestern	44
Feb. 14	At Newton	M. C. 18	—Bethel	48
Feb. 15	At Wichita	M. C. 17	—Fairmount	58
Feb. 19	At McPherson	M. C. 35	—Bethany	33
Feb. 21	At McPherson	M. C. 25	—Cooper	28
Feb. 22	At McPherson	M. C. 19	—St. John	32
Feb. 26	At McPherson	M. C. 22	—Bethel	24
Mar. 5	At McPherson	M. C. 26	—Fairmount	40

Basket Ball Manager—Wm. Hiebert.

Winners of the Inter-Class Tournament—College Sophomores.



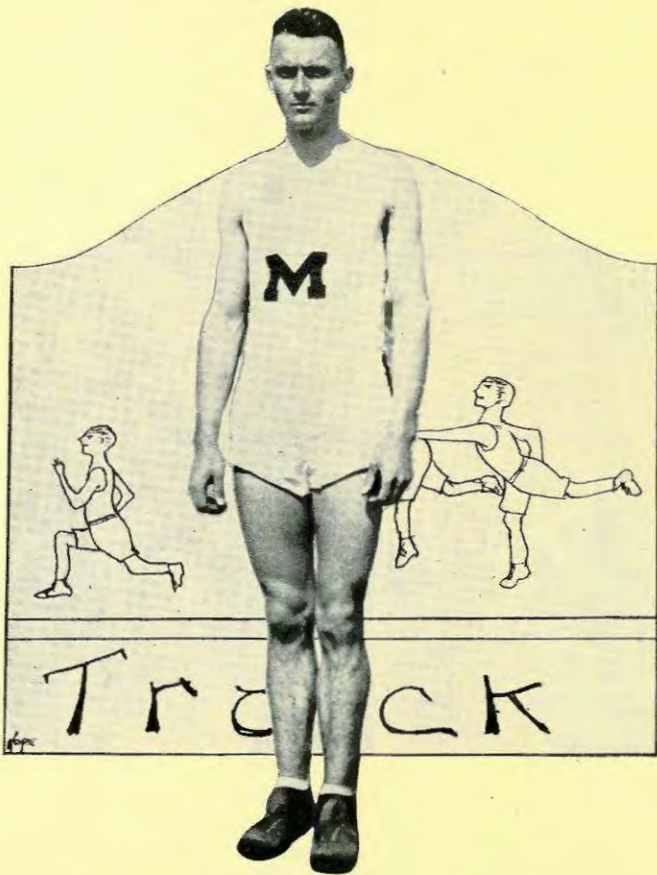
The
Academy
Team

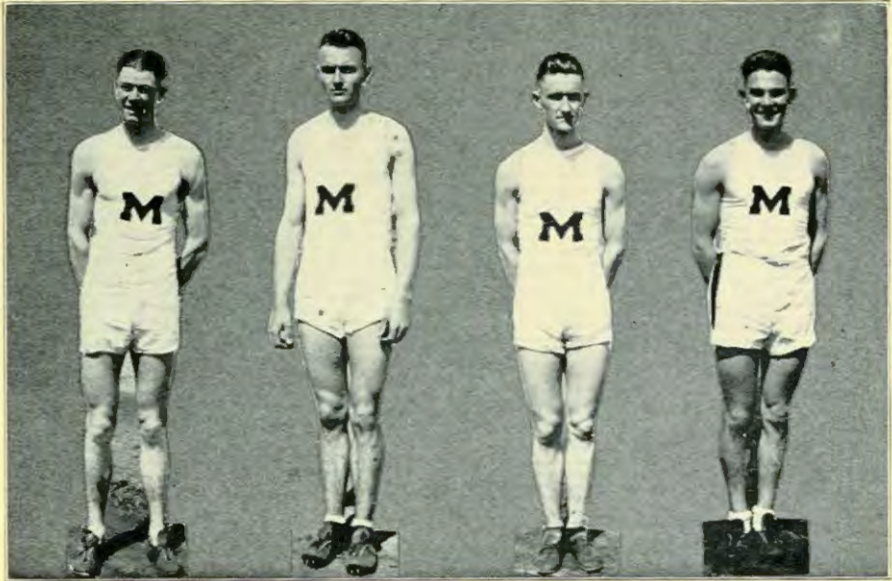


Pajama
Parade



The
Athletic
Orchestra





JONES

I. BRAMMEL
Captain

R. BRAMMEL
Captain-elect

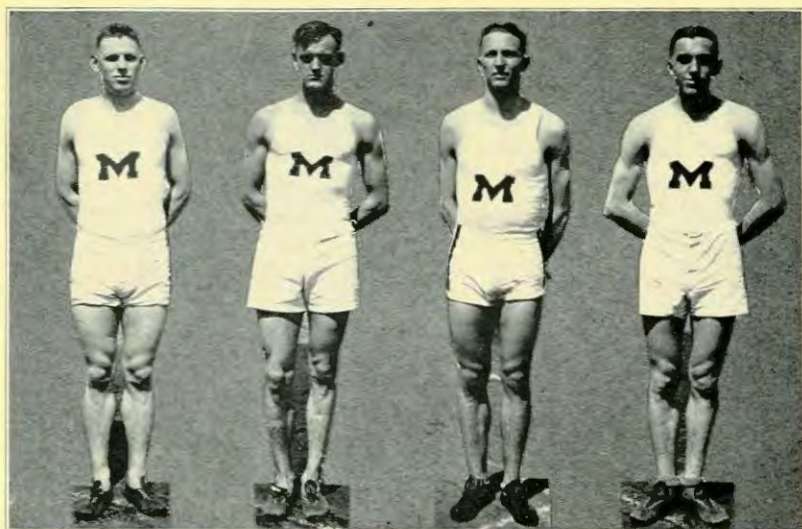
PRICE



VANIMAN

The season of 1921 was a very successful one for M. C.'s track team. They easily won all of the local track meets, including the Quadrangular Meet at Lindsborg. Many new records were established this year. Five of our men entered the State Meet, but it was their "off-day" and they came home with only three points. The opinion is that our men would have won the relay if they had not been compelled to run in the ninth track.





CRUMPACKER

MUDRA

BETTS

CLARK

The Brammels were big assets to the teams this year; Capt. Ira Brammel being high point man repeatedly. Jones and Clark made excellent speed on the hurdles. Price is an exceptional distance man. Betts, Mudra, Crumpacker, Slifer, and Vaniman also made names for themselves in various events.



SLIFER



COACH DANIEL, BETTS, MUDRA, JONES, CRUMPACKER,
CLARK, HODGES, R. BRAMMEL, I. BRAMMEL, SLIFER, PRICE.

Track Squad 1921

Track Schedule 1921

Apr. 25	At Sterling:	M. C. 94—Cooper	41
May 6	At Lindsborg:	Quadrangular Meet.	
		McPherson	66 points.
		Bethany	38½ points.
		Sterling	27½ points.
		Bethel	5 points.
May 11	At McPherson:	M. C. 89—Bethel	45
May 14	At McPherson:	M. C. 76—K. W. U.	55
May 20 and 21.	At Emporia:	State Meet.	
		McPherson	3 points.

Track Manager—Vilas Betts.





Tennis

We regret that we have no tennis pictures to adorn this page. Tennis is the universal exercise, for either sex, for shark or beginner, anyone can enjoy it with any degree of physical exertion they wish to apply to the game. McPherson College has five smooth clay-sand courts as good as one will find anywhere. Whenever the weather permits, these courts are filled almost continually.

Showalter and Yoder won the tournament doubles in competition with eight other teams in M. C. Ralph Lehman won the singles from twelve competitors. These men represented the school in the same capacity. They were unable to carry away any honors at the Quadrangular Meet.







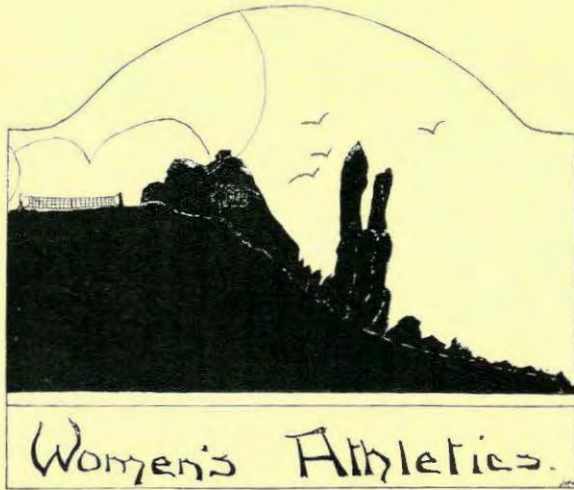
BISHOP GARMAN TRAPP FOX RUMP
 Captain G. STRICKLER HAWKINS D. STRICKLER E. RUPP C. RUPP
 Captain-elect

Base Ball Squad 1921

Base Ball Schedule 1921

April 15,	M. C.	1—Windom	3
May 3,	M. C.	3—Bethany	7
May 7,	M. C.	5—K. W. U.	11
May 12,	M. C.	1—K. W. U.	8





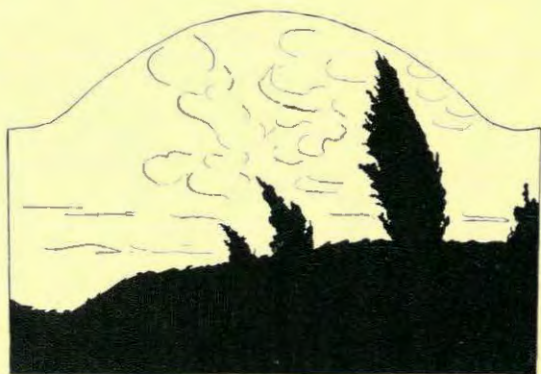


The girls who made letters on the Girls' Basket Ball Team are as follows:— Guards: Ruth Cripe (Captain), Esther Johnson, and Lily Crumpacker. Centers: Lota Neher, Daisy Carly, and Susie Blickenstaff. Forwards: Olive Boone (Captain-elect), Minnie Edgecomb, and Floy Rhodes. The team won six games and lost three during the season.

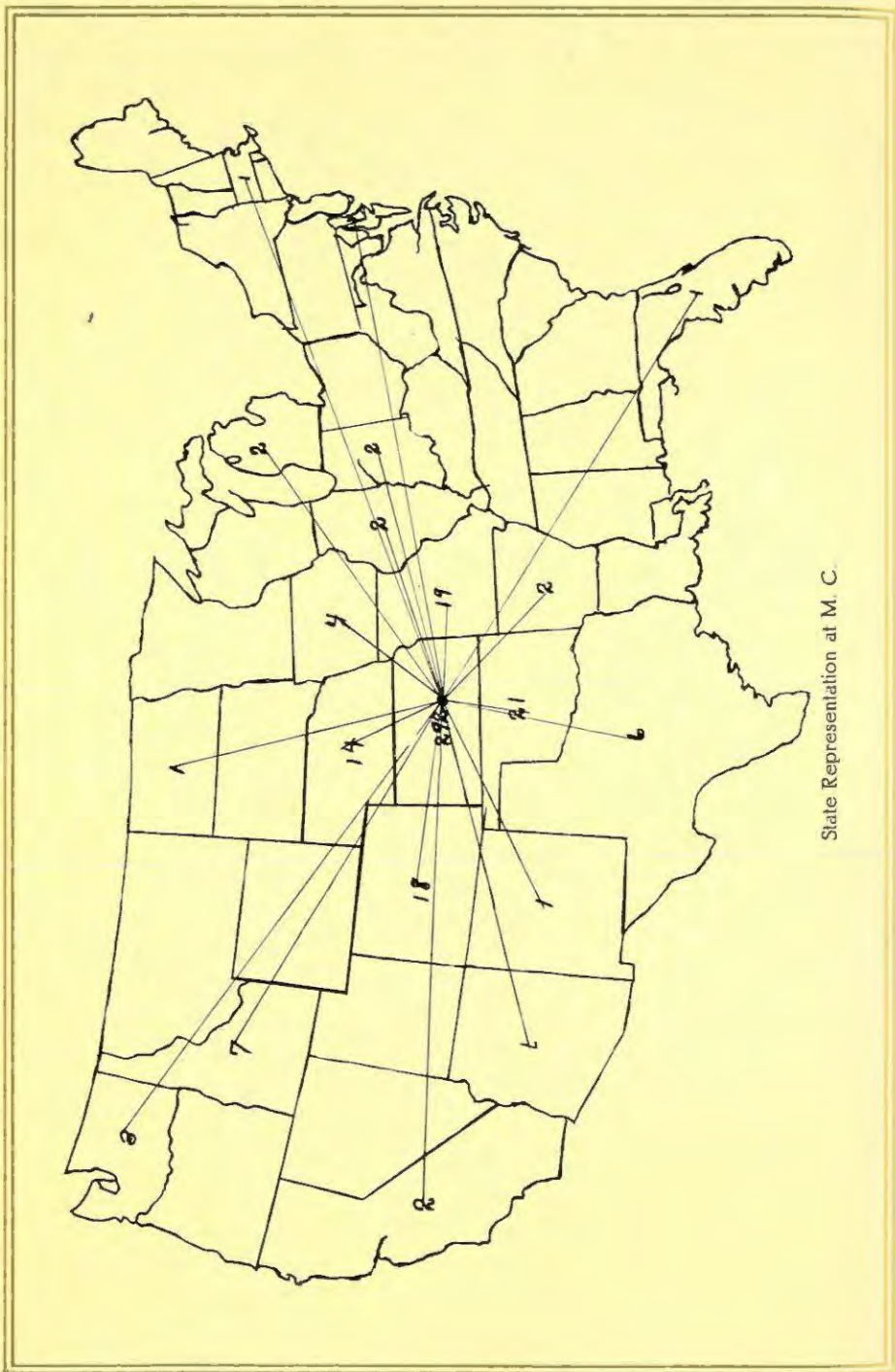
The tennis tournament was never finished. Ida Johnson and Alice Burkholder were competing in the finals.

A Girls' "M" Club was organized this year. The officers for the year 1921-22 are Olive Boone, president; Iva Brammel, secretary; Susie Blickenstaff, treasurer.

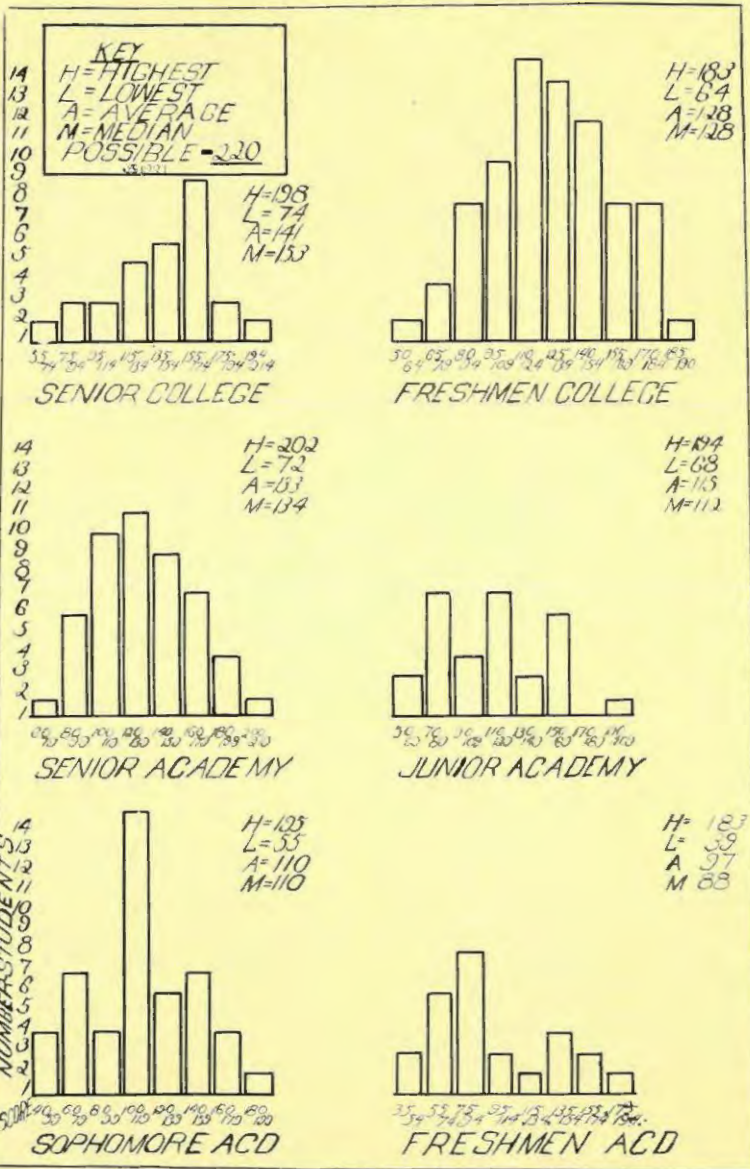




Features



State Representation at M. C.



Intelligence Tests and Rating



No, this is not a page of squirrel food from the family tree of M. C. It is the crooked staff. Galen, who is not Ruth-less; Ray, the preacher man; George, the stable business man; Ted, slow but with Grace; Marie, the artistic; Emery, the T. N. T. who can Row-e'n-a boat; Edith, the sensible; and the chief crook of all, the Bolshevistic maid-of-all-work.

The staff seemed to agree better among themselves than with others. But, after many trials and sore tribulations, and much sweat of the brow, they ground out the Quadrangle; and here, O Pilgrim, is the Book.



HOME



"Our Bull Dog"
Becomes
A Cur March 31, 1921.



AN M.C. STUDENT



Alice Trying to sell an Annual



Nightmare of Business Managers



M.C. SPIRIT

You didn't know that there could be such remarkable artists among laymen, did you? I didn't either, till I set them to work.

The first masterpiece, entitled "Home", is an idealized reproduction of the dilapidated annual room—not as it is, but as we wish it were—whole and sound, dustproof and clean—no crax to admit real estate and mice. It is done by Rembrandt (alias Cullen).

The second is a realistic pathetic production which eloquently speaks volumes about the annual name. The master that produced it is Velasquez (alias Wine.)

The third is a portrait of one of the Seniors, done by Bonheur (alias Alice), while she should have been listening to the recitation.

The fourth is another heartrending masterpiece, showing the pathos of being salesmger. It reveals intense inside information on the part of Millet (Tice).

The fifth is a masterly piece of horrible realism, stirring the spectator to agony in sympathy with the victim. Our bus. mgr. has vividly set down upon this canvas, his inner experiences. Michaelangelo (alias Boone) is the artist.

The sixth and last is a futuristic, cubistic study of deep moral meaning and fertile imagination. It smacks of Exhaust-ion, and is done by Whistler (alias Ted).

Note—We wouldn't let the art ed. compete in this exhibition—she knows too much about drawing.

You Will Like McPherson

McPherson with a population of 5500, including a student body of 900 who come here to attend college nine months of the year, is situated near the center of the great agricultural state of Kansas. McPherson county, of which it is the county seat, contains 275,289 acres of rich loam farming land on which wheat, corn, oats, alfalfa and in fact all other field and forage crops adapted to Kansas, are successfully grown. Cattle, hogs and poultry are found on every farm, extensive herds of pure bred cattle and hogs are being developed in every community and the dairy industry is increasing very rapidly.

The farms are well improved, hundreds of modern country homes having been built the past few years. Every farm is reached by rural telephone and mail routes. Four railroads enter the county, making 122 miles of main line track within its borders, connecting up twelve other towns and marketing places in the county with McPherson and making it convenient for farmers in all parts of the county to market their products. There are 125 school districts (most of them standard schools), 63 churches, and 1 daily and nine weekly papers, in the county.

McPherson is located 197 miles southwest of Kansas City and is the junction point of two of the popular transcontinental automobile highways, namely, the National Old Trails Road, (known as the Old Santa Fe Trail in Kansas), running from New York to Los Angeles, and the Meridian Highway with terminals at Winnipeg, Canada, and Galveston, Texas. Thousands of tourists pass through our city annually over these highways.

McPherson has four railroads, Santa Fe, Rock Island, Union Pacific and Missouri Pacific. These railways radiate in every direction from McPherson giving exceptionally fine shipping facilities to our Wholesalers and Jobbers who distribute their products to the central and western part of Kansas and eastern Colorado. Our flour mills have the advantage of being able to mill wheat in transit from four railroads. Our jobbers have the same jobbing rate as jobbers in other cities in this section of the state. A look at the map of Kansas will convince you that McPherson offers great advantages as a distributing point.

McPherson has fourteen passenger



County Hospital—Carnegie Library—Junior High School—Y. M. C. A.—Street Scene—Hotel Building.

and twelve regular freight trains entering and departing from the city every twenty-four hours. Traveling salesmen find this a convenience and many of them are located here.

McPherson has a flourishing retail, wholesale and jobbing business with retailers and wholesalers organized through a modern Chamber of Commerce and Merchants Association for civic and trade promotion and the elimination of trade abuses. The mercantile stocks are complete and are housed in well equipped buildings with modern fronts. The retail territory has a population of 35,000.

McPherson offers exceptional inducements to anyone looking for a good clean city in which to locate and educate their children. Our public school buildings are new and modern. The curriculum is complete, including agriculture, commerce, manual training, domestic science and art. Two colleges offer an opportunity to obtain a college education at a minimum of expense. Both of these institutions are manned by high class instructors whose characters give these schools an unusual moral environment.

McPherson is noted for its civic improvements. Its citizens are cosmopolitan and thoroughly progressive, as evidenced by its many institutions, fine homes, well kept lawns and many civic organizations. The streets are clean and well lighted, two centrally located parks have been established, which are truly real beauty spots and a source of pride to every citizen. Land for a third park has recently been purchased. Pure water and cheap electricity is supplied from a municipally owned electric and water plant. A city owned cemetery is well taken care of. Fourteen churches, a Y. M. C. A. and Carnegie Library add to the moral as well as intellectual uplift of the community. Three newspapers, one daily and two weeklies, always stand ready to boost for those things that will advance the interests of McPherson and its citizens.

A \$250,000 county hospital, equipped with all the modern appliances furnishes adequate facilities to the citizens of the entire county to receive first class hospital care at a minimum of expense.

We will be pleased to furnish further information.

McPHERSON
CHAMBER OF COMMERCE.



Business Views of McPherson



Some of the Churches of McPherson



Santa Fe Station—Court House—Senior High School
—Government Building—Elks Home



Views of McPherson Parks



Shot in Action

Seedless Dates—

September

13. Registration—700 students anticipated!

October

4. Evelyn Trostle returns from Armenia.
6. Senator Capper in political speech.
7. Pajama parade. Dr. Kurtz opens the Tokio S. S. Convention.
8. First football game.
9. Harding at Wichita—big McPherson representation.
19. Ralph Strom caught carrying cigarettes! (for a lecture).
G. W. Eggers, director of Chicago Art Institute, lectures in city.
25. Barbecue—tons of beef absorbed.
26. Sidney Landon on the lyceum course.
27. Culler and Blair debate in chapel on politics—15 pounds of perspiration lost.
31. Gov. Allen in political speech.

November

4. Election day. Radio bugs get returns by wireless. Harpsichord recital at Lindsborg by F. P. Jones.
5. Break sod for church.
11. Reception for Dr. Kurtz on his return from Japan.
15. Herbert Leake on Lyceum. Dr. Kurtz sat in a box that night; the next day an Acad. was heard to say, "Did you see Dr. Kurtz in that cage last night?"
19. Reed Miller and Nevada van der Veer in concert.
23. Mrs. Profs. entertain their husbands.
25. Thanksgiving football game—mop up on Burton Legion.
27. "Mikado" presented by Dunbar Co.
29. Football banquet.

December

5. "Pilgrim and the Book" presented by the college.
7. Bill Mudra claims that movies don't make his heart flutter anymore.
16. Decide to call the annual "The Skunk", because of its evil reputation.
18. Prof. Craik insists that we should speak of the Missouri Pacific R. R. reverently for it was created long ago: "On the fourth day there was created every creeping thing."
22. (and Jan. 5.) Only skating of the year occurs for two days during vacation.

January

1. Prof. Hoover starts the new year aright by bringing his newly acquired better half to M. C.
4. Dr. Culler distinguishes himself in the Rotary Club Minstrel downtown.
5. Which is a greater joy? Anticipation or realization? Prof. Hoover says it is a debatable question.
6. Welsh male chorus in concert.



Caught in the Act

7. Red letter day for annual—Assoc. Ed. has an idea.
8. Dr. Filmore in chapel: "Tell Mother I'll be there"; he declares that because a man writes a piece of music, he is not necessarily a singer, any more than a man who invents a washing machine is a washer woman.
10. Decide to call the annual "Geography" because it is so full of physical maps.
12. Piano recital by Silvio Scionti.
13. Photographer for the annual gives us a vacation, thereby demoralizing the dignity of the school.
14. Criterion quartet on Lyceum.
23. Bible School opens—the main fe-e-e-t-ure is Prof. Nininger's lecture on the "human understanding".
25. Dr. Kurtz lectures on Japan.
26. Maud Ballington Booth on Lyceum.
28. Edgecomb resigns as jitney driver.
29. Senior play committee unanimously decides to give "The World and his Wife".
30. When asked what he would take the second semester Stubby replied, "I think I'll probably take cold."

February

2. Annual Staff decides to call the annual "Anon".
11. Student Volunteer Convention at Lindsborg.
13. Very sunny and warm; took off woolens.
14. Clear but decidedly cold; put 'em back on.
19. Bulldogs win basketball battle from Terrible Swedes.
20. Annual staff chooses for its motto while trimming photos, "If a foot offend thee, cut it off".
22. Piano recital of John Powell at Lindsborg.
23. La Scala Orchestra of Milan, Italy, at Wichita.
25. Senior play committee, with one dissenting vote, decides to give "The Melting Pot."
27. First meeting of the Exhaust-Ed.

March

2. Zoellner String quartette at Lindsborg.
5. Second meeting of the Exhaust-Ed.
Last basket ball game of the season.
9. Austins visit school; Oliver heard singing on the campus.
10. Latha Daniels has a feed of liver and onions—
Editor not able to have a staff meeting for a week.
11. Clean up day—half holiday—Yoder and Harnly absent—day a success.
12. Hershey solves the problem of the cosmos in chapel.
Third meeting of the Exhaust-Ed., met at the spacious home of Tarzan—(Jungles),—the Exhaust a sure thing.
13. Fourth Meeting of the Exhaust-Ed.
19. Fifth meeting of the Exhaust-Ed.
20. Eriki Morini at Lindsborg.
22. Five couples put under campus quarantine for exhibiting terpsichorean tendencies.



Dorm Hash: A Little Bit of Everything

23. M. C. admitted to the North Central Assoc. of Colleges.
 24. Science Hall parade. Students raise \$3,000. Faculty-students baseball game.
 26. Sixth meeting of the Exhaust-Ed.
 27. Florence Macbeth at Lindsborg.
 28. Scandal sheet went to press; scandal sheet came off said press—off on the midnight to Canton; on again, off again, Hooligan.
 31. March goes out like a Bulldog. "You gotta quit kickin' my dawg aroun'."
- The Yellow Peril appears at midnight under cover of darkness.

April

1. Exhausted.
2. Student body names the annual "Quadrangle."
4. Big "Washout" in front of boy's dorm, deluge returns to some of its inmates. Dorm very quiet all evening.
5. Lengel boys give Strohm and Trapp severe grilling.
6. Derby Delegation arrives—price of derbies advances at clothing stores.
8. Hamburgers and onions for sale on campus by Y. W. Jet, Kilmer, and Eitter Hemlock are locked up by Tice in his studio—they lock it from inside, and stack it. Tice repentant.
9. Seniors break ground for Greenhouse.
15. Annual speech by the Treasurer on Pay Your Bills—Yoder and Gilbert absent—otherwise complete success.
16. Dr. Whiting in chapel—lecture on Korea.
- Volunteers sell pies after chapel—everyone very pious.
17. Y. W. convention at Wichita closes—Tice rushes to Burron.
19. Basketball letters given out generously. First evening of one-act plays by drama class.
21. Memorial services for J. H. B. Williams. Eclipse of the moon.
23. Coach Lonborg in chapel.
24. Culler's sermon on women.
25. "The World and His Wife" in movies.
26. Campaign speeches in chapel for Spec. Ed. Originality and Potentiality figure. Second evening of one-act plays.
28. Mrs. Shaw in chapel.
29. Election day—Black Friday for Assoc. Ed. Ladies Glee Club concert.
30. Irvings take all laurels in Declamatory Contest.

May

2. Junior Senior College Banquet—Japanese garden.
3. Junior Chapel—faculty mimicked.
4. Junior play "Ingomar", in "outdoor stadium".
5. Junior hike to Halstead. Sandpaper and Ichabod go to Hutchinson.
6. Quadrangular track meet at Lindsborg—Bulldogs win by 27 points—two cups brot home.
7. Cups received in chapel—M Club demonstrates its lung capacity—followed by flowery speeches, etcetera.
- 8, 9, 10. Belated April showers—"We don our rubber boots."



Latest Reel Released

11. Straw hats appear.
12. County Hospital dedication. "Go and Get It" movie.
13. Seniors appear in caps and gowns in chapel. Culler's speech on awarding of medals. Senior acad. play, "Miss Somebody Else".
14. Lauer makes debut behind pulpit—his little fiddlers make a hit.
16. First pages of annual go to press. Sophs go to Halstead and come back with a "crash". Lecture by Sylvester Long.
17. Seniors missed in chapel—found at Halstead, getting acquainted with Mother Nature.
18. Orchestra concert at opera house.
19. Track team goes to Emporia state meet; comes back the worse for the wear.
20. Charlie and the Kid in movies.
21. "Move up day"—Seniors go out into the cold hard world. Annual reception for seniors by Dr. Kurtz.
22. Baccalaureate sermon by Dr. Kurtz. Seniors swelter in caps and gowns.
23. Exams and the "Holy City" by Choral Union.
24. M Club banquet. Question of the hour is, Shall the Seniors write the exam. in Systematic Theology?
25. All Schools May Day in city. "Melting Pot" given by the Seniors at opera house.
26. Final meeting of the Exhaust-Ed., Tell mother I'll be there. Alumni banquet and reunion of class of '07. Senior class day program and presentation of memorial.
27. Commencement. Address by Chancellor Lindley of K. U. Bitter Hemlock exposed.
28. Trains full. Dorm gives last call to dinner. Everybody weepy. Ed. works day and night on Quadrangle.
29. Business manager gets married.

June

4. Last dope in the press—We're off, Hooray!!



"INGOMAR": JUNIOR PLAY

THE EXHAUST

SUCCESSOR TO THE INEDITA INFAMA

Vol. I GAL.

APRIL FOOL'S DAY

NO. A6666 KAN.

Exposed In Chapel

CONFESSION AFTER CRILLING

Two culprits confessed to writing a severe letter to the Editor. He was surprised at the indignation of the Editor. The Editor was surprised at the confession. The Editor was surprised at the confession. The Editor was surprised at the confession.

They loved their complaints. They loved their complaints. They loved their complaints. They loved their complaints. They loved their complaints.

WARNING to them, appeared in the

I'LL SAY SHE DOES when she was

LADIES FIRST they were expected to

STICKY FINGERS they were expected to

NON-SKID DEFINITIONS they were expected to

AMEN CORNER they were expected to

BUILDING DOVE COTES they were expected to

SOME PEOPLE THE EDITOR they were expected to

APPRECIATES they were expected to

GREAT MERCHANT they were expected to

HIT OR MISS they were expected to

THE 8-SET ORGANIZE they were expected to

FREE FOR ALL they were expected to

TO WHOM IT SHOULD DISCERN they were expected to

THE SPOOK they were expected to

THE SPOOK they were expected to

THE SPOOK they were expected to

TO BE SPLICED Groom Denies It! Step Lively Please

WAIT YOUR TURN if you are in a hurry, you will find that the Editor is not in a hurry. The Editor is not in a hurry. The Editor is not in a hurry.

STICKY FINGERS they were expected to

NON-SKID DEFINITIONS they were expected to

AMEN CORNER they were expected to

BUILDING DOVE COTES they were expected to

SOME PEOPLE THE EDITOR they were expected to

APPRECIATES they were expected to

WAIT YOUR TURN if you are in a hurry, you will find that the Editor is not in a hurry. The Editor is not in a hurry. The Editor is not in a hurry.

STICKY FINGERS they were expected to

NON-SKID DEFINITIONS they were expected to

AMEN CORNER they were expected to

BUILDING DOVE COTES they were expected to

SOME PEOPLE THE EDITOR they were expected to

APPRECIATES they were expected to

Scandal! The Mudscow. The Sandpaper. The Yellow Peril!



On (Un)Dress Parade: Boy, Page the Censor!



Facultorum at Easum

Punts—

Kurtz: Some people worship the Bible so much, they never even disturb the dust on it.

—PUNTS—

Student (in Hebrew History): Why did the Jews cease to sacrifice at that time?

Mrs. Fahnstock: Because there were no priests and animals to sacrifice.

—PUNTS—

After the Glee Club concert.

She: What did you think of our singing?

He: It was like some couples—you sometimes got together.

—PUNTS—

Culler: The reason I liked Armenia so well was because I felt at home among the bright colors.

—PUNTS—

Jet: Oo-oo-oooh,—I'm cold. I'm sure going to freeze before I get home.

Emery: Never mind. I have my coat of arms.

—PUNTS—

Blessed is the man that sticks to it, for he shall get there.

—PUNTS—

Ruth: Now Galen, I didn't make you do that!

Galen: Maybe you didn't make me, but you've done some remodeling since.

—PUNTS—

Skimmy II: Irish's music surely moves Babe.

Betty: Is that so?

Skimmy II: Yes, soon you'll see him rushing out the door.

—PUNTS—

After the Sterling game, Feb. 11.

Fox comes down the gym stairs to the dressing room, cussing a blue streak.

Prof. Hess (innocently): Who won?

—PUNTS—

Kurtz: The first book agents were the crass men who sold indulgences in the Middle Ages.

—PUNTS—

At Senior play practice.

Stubby: Well, Lou, how does it look up there?

Lou (from the third gallery): It looks mighty low down.

—PUNTS—

Dr. Culler in Systematic Theology: This subject of Hell is a deep problem, and scarcely belongs in today's lesson; we will talk of it further when we get to Hell—I mean in the book.



And Two by Two They Went Into the Ark

Corduroy Avenue, commonly known as Euclid, is college street; it is one mile long, and two miles up and down.

PUNTS

A dismal howling toward the moon.

1st victim: Now, Harry, don't you try to sing. Somebody's liable to throw a shoe—

2nd victim: Not to mention fits.

PUNTS

French Prof. (calling roll): Trapp?

Oliver Trapp: Ici.

Prof.: No, O. W., isn't it?

PUNTS

Bryan: Yes, I'm a Presbyterian, and a faithful one. But there's one thing I cannot understand—that's their doctrine of election.

PUNTS

Fillmore, displaying big luscious red apple during his chapel speech: I suppose it's cruelty to dumb animals to show this here.

PUNTS

Kurtz in an unguarded moment: C— T—, that concave faced man with dim eyebrow on his lip—I hate to waste time talking about him!

PUNTS

Skimmy II: Did you know that Blanche is going to join the navy?

Irish: No, what makes you think so?

Skimmy II: Well, she's decided to become a Saylor.

PUNTS

Prof. Craik discussing the hops plant: Rather obsolete now. (Loud applause from his prohibition audience). —At least that kind of hops; but another kind is still in vogue (referring to the five couples campused for dancing)'

PUNTS

Prof. Blair in chapel speech on "Sympathy": What we need is more taffy and less epitaphy.

PUNTS

Dr. Culler in chapel after reading a list of names: Now if there are any of these that are absent, just stand up and we'll notify you.

PUNTS

Sylvester Long: A lot of people would add much to the enjoyment of life if they would subtract themselves.

PUNTS

Kurtz: Didn't you know that it says in the Bible, Go to Hell?

Incredulous Freshie: No-o-o.

Kurtz: Well, look up in Matthew, Depart into everlasting punishment.

"Every Man is Odd" — but we can fit him.

The mention of just a few of the well-known lines of men's wearing apparel is sufficient to show the quality of our store—

Hart Schaffner & Marx Clothes

Bloch Clothes

Griffon Clothes

Sherman Clothes

Stetson Hats

Schoble Hats

Cohen & Blumenfield

Caps

Wilson Bros. Shirts

Phoenix Hose

Wilson Bros. Hose

Wilson Bros. Underwear

Carter Holmes Neckwear

Fashion Knit Neckwear

Keller Sweaters

Jersild Sweaters

Hanan Shoes—Walk-Over Shoes.

Laderer Clothing Co.,

The Quality Store.

MRS. C. V. McCULLOCH

**Photographer
and Portrait Artist.**

Special Rates to Students.

McPHERSON, KANSAS

422 NORTH MAIN ST.



FOR SALE

Homes close to McPherson College where you can keep a cow and some chickens.

**JAY CRUMPACKER,
FOR REAL ESTATE**

Office over Sorensen's
Grocery

McPHERSON, KAN.

J. E. GOENS, President,

A. C. DAGGETT, Sec. and Treas.

Eugenia Oil & Gas Company

INDEPENDENCE, KANSAS.

A corporation organized under the laws
of Delaware.

Capitalization \$2,000,000.00

Authorized to do business in Kansas under the
Blue Sky Law.

Owens over 8,000 acres of proven territory leases in Montgomery and Wilson Counties, Kansas. Also 1,760 acres of finest prospective leases in Oklahoma. Good small acreage in Burk-burnett field.

The company owns its own drilling machines, engines, and gasoline transforming plants. Ninety-six oil and gas wells producing on twenty-one leases, fully supplied with tanks and piping.

Best possible acreage in Kansas. Proven territory only one-tenth developed.

About \$500,000 worth of stock remaining to be sold. \$1.00 per share, fully paid and non-assessable. A gilt edged investment combined with large prospects for good speculation.

Directors: J. E. Goens, A. C. Daggett, Independence, Kans.; C. A. Ball, Belleville, Kans.; A. J. Culler, McPherson, Kans.; David Ikenberry, Quinter, Kans.; H. H. Kimmel, McLouth, Kans.

Write for prospectus and information.

RAY CRAMER LEE HENDRYX

ROYAL BARBER SHOP

"ALWAYS A BOSS
ON THE JOB"

ART STEEL FRANK GILLILAN

Dr. V. N. Robb & Son

EXCLUSIVE OPTOMETRISTS

Modern Methods and Instruments. We grind our own lenses and duplicate lenses immediately.



FOR SALE

Single Comb White Leghorn Eggs

Prize Winners Good Layers.
D. W. Young Strain.

JAY CRUMPACKER
McPherson, Kan.

H
E
A
L
T
H

I
N



P
E
R
F
E
C
T

S
P
I
N
E
S

DR. B. J. ALLEN CHIROPRACTOR

Office 105½ N. Main

Phone 63

House 63½

Punts—

Do you know why so many of the boys want to get married?

It's to get to move into the new dorm.

PUNTS—
Jeering Egyptian: Let's see, I believe your forefathers left here all in a bunch once; if I remember correctly, they took a lot of property with them which has never been paid for.

Disraeli, quickly: Oh, yes, it has. They gave you a check on the banks of the Red Sea.

PUNTS—
Blair: What is the chief element of play?

Student: Imitation.

Blair: Well, when my boy went around doing that crazy stunt, I'm sure he never saw me do it!

Student: Maybe he saw some other animal do it.

Punts—

Do you remember what Ebel said in chapel about loving your parents? Well, I went home; threw my arms around Dad's neck, and said: Dear Dad, how I love you!

Dad, gruffly: Well, how much do you want now?

———— PUNTS ————

Monsieur Marchand visiting French class: Who can say their alphabet?

Harold Beam: I can. A, B, C, D, E, F,—(etc.)

———— PUNTS ————

Woman scandalized at children playing marbles in the street: Why, the Bible says they shouldn't!

Parson: O, does it? I didn't know that.

Woman: Why, yes. It says, Marble not, I say unto you.

FRANK C. ROBB

ARTIST IN
PORTRAITURE

McPherson, Kan.

Bring us your
Kodak Finishing

SUNFLOWER BARBER SHOP

EAST SIDE—THREE CHAIRS

M. F. ALMQUIST
PROPRIETOR



PRINTING OF QUALITY

Anyone can set type and print it, but it takes years of experience, unusual equipment, good materials and brainy workmen to make *Printing That Pleases* the quality kind that comes from

THE DAILY REPUBLICAN PRINTERY

McPHERSON, KANSAS

(Printers of the Quadrangle)

QUALITY ENGRAVINGS
 and prompt delivery have built for us one of the largest engraving and art establishments in the country. Courtesy, co-operation and personal interest in our customers are additional inducements we offer in return for your business.

JAHN & OLLIER ENGRAVING CO.
 554 WEST ADAMS STREET, CHICAGO, ILLINOIS
Sales offices in many principal cities



Cut Where the West Begins

