

M. C. SPIRIT



B
378.19
M172q
1917

Carlton Falger sent this to us
on Nov 2-1970

M. C. SPIRIT

McPHERSON COLLEGE

MAY, 1917

McPHERSON, KANSAS.



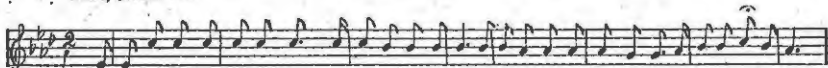
—THE ANNUAL STAFF—

Editor-in-Chief	- - -	J. Estel Jones
Literary Editor	- -	Lester F. Kimmel
Associate Editor	- -	Edith McGaffey
Associate Editor	- -	J. W. L. Maxcy
Business Manager	-	Herbert Hoffman
Business Manager	-	Wilbur Vaniman

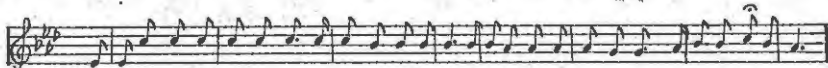
O SACRED TRUTH

McPherson College Song.

Words by J.A. Clement.



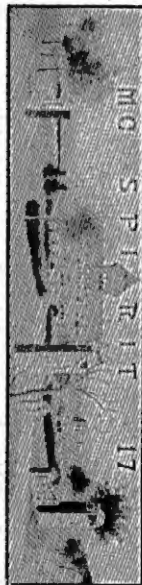
1. Altho' out on broad Kansas plains, Here not in vain are we, For we will strive with might and main, That right and truth may be.
2. True soldiers once with sword of might, Worked for our freedom long, And now to keep our pages white, Will be our purpose strong.
3. We are an army - on the way, Some day the world will see Us larger grown and then they'll say, Yet 'tis the good M. C.,



The student loves to dream his dream Of life that's yet to be, Of future days and years that'll seem The best for old M. C.
Beneath the smile of sunny days, Let truth and freedom reign, Within our College let us praise The deed that'll leave no stain.
Dear Truth, without thee we must fall, O, then our pillar be, O, Truth, be thou our stay for all, And stand for our M. C.

Chorus.

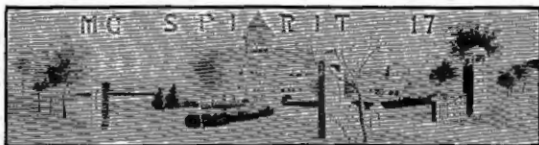
We'll hope for our M. C., We'll cheer for dear M. C., While winds do blow, And sunflowers grow, We'll love for thee, M. C.





Foreword

We, the staff, present to the faculty, students, and friends of McPherson College this annual which we have been pleased to call "M. C. Spirit." We have labored to produce this book not with the purpose of making money, for that would be impossible, nor for personal aggrandizement, but with the definite purpose of promoting the interests of our beloved Alma Mater. Our one desire is that this book may serve as a valuable souvenir of the school year 1916-1917, and that it may bind each student closer to his College. To this end have we worked.



Dedication

This issue of M. C. Spirit is dedicated to
the President of our College,

Doctor Daniel Webster Kurtz,

in recognition of his noble character, of his
life of sacrifice, and of his inestimable serv-
ice to McPherson College and to the cause
of Christian education.



D. W. KURTZ, A. M., B. D., D. D.,
President of McPherson College and Professor
of Philosophy and Pedagogy.



An Appreciation of Dr. Kurtz

The first of September, 1914, Dr. Kurtz began his work as President of McPherson College. The men who preceded him in that position were strong men and had spent their life energies to build an institution of learning. Out of their lives of service a firm foundation was laid.

Upon this foundation Dr. Kurtz began his labor. Under his masterful leadership McPherson College has made rapid progress. During the past two years the enrollment has almost doubled. Thru his untiring efforts he has put McPherson College on a standard basis, financially and educationally.

In the class room, on the platform, or in conversation, his life is an inspiration to others. His geniality and altruism are contagious. His example as an apostle of righteousness and peace can well be emulated. Hundreds of lives are being influenced for the better thru association with him. As a scholar, an executive, a lecturer, a Christian gentleman, one who stands firmly on his convictions, we admire him and give him due respect.

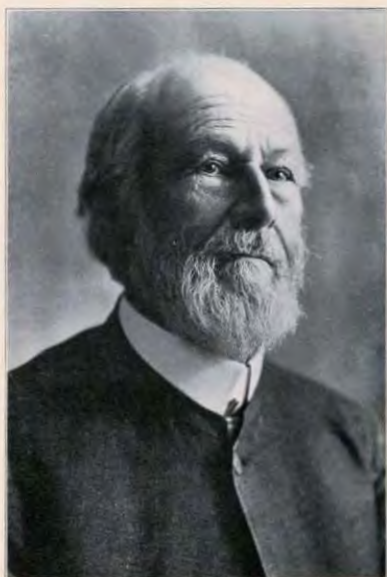


In Memoriam.



ELDER J. EDWIN JONES
January 12, 1872—November 6, 1916.

Trustee of McPherson College from the South-
western District of Kansas and South-
eastern Colorado, 1914-1916.



REV. S. Z. SHARP, A. M.
First President of McPherson College.



SHARP ADMINISTRATION BUILDING.



CARNEGIE LIBRARY.





ARNOLD HALL.



FARNESTOCK HALL.





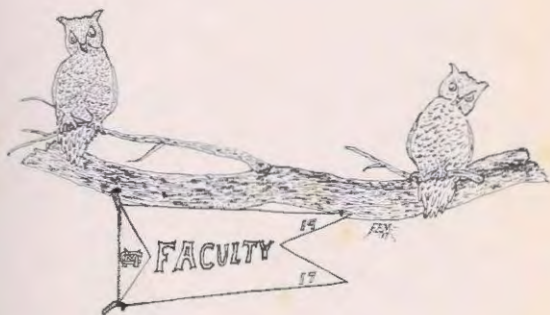
Sharp Administration Building. Arnold Hall. Fahnestock Hall. Carnegie Library.





GENERAL VIEW OF CAMPUS.







H. J. HARNLY, A. M., Ph. D.,
Dean of the College and Professor of Biology.



J. J. YODER, A. B.,
Business Manager, Dean of Bible Department and
Professor of Social Sciences.



A. J. CULLER, A. M., B. D., Ph. D.
Pastor of the Church and Professor of English.



A. B. FRIZELL, A. M., Ph. D.,
Professor of Mathematics.



E. I. CRAIK, A. M., Ph. D.,
Professor of History.



J. C. RUSSEL, M. S.,
Professor of Chemistry and Physics.





ROBERT E. MOHLER, M. S.,
Professor of Agriculture.

AMMON SWOPE, A. M.,
Professor of Psychology and Education.



CHARLES MORRIS, A. M.,
Professor of Mathematics, 1917-18.



EVELYN TROSTLE, A. M.,
Professor of English and Latin.



ELLIS M. STUDEBAKER, A. B.,
Professor of History and Greek, and Di-
rector of Religious Extension.



MRS. S. B. FAHNESTOCK, B. D.,
Instructor in Bible.





J. HOWARD FRIES
Superintendent of Commercial School.

CHARLES L. ROWLAND
Director of Vocal Music.



JESSIE BROWN, B. M.,
Director of Piano School.





JOSEPH BRAGERS
Director of Violin School.



DAISY P. RIDER
Director of School of Art.



ANNE O. McVEY
Instructor in Expression.





MINNIE WALTERS, B. S.,
Instructor in Domestic Science and Art.

V. GRACE NEHER, B. Accts.,
Instructor in Shorthand and Typewriting.



G. ARTHUR PRICE
Assistant in Voice.



W. O. BECKNER, A. M.
Field Worker and Lecturer.

F. H. CRUMPACKER AND WIFE
Home on furlough from China Mission
Field. Mrs. Crumpacker takes her
Masters' degree from M. C. this spring.



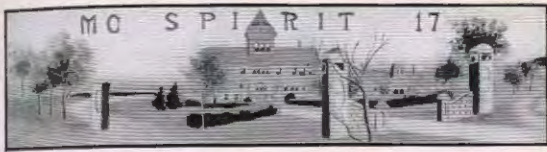


REV. AND MRS. OLIVER H. AUSTIN
College Evangelist and Singer.

MISS LORA TROSTLE
Matron.



GRETA ESHELMAN
Secretary to Prexy.





College Seniors

Class Motto: "By courage and faith."

Class Flower: Sweet pea.

Class Colors: Yale Blue and White.

President.....J. Estel Jones

Vice-President.....Faye Sister

Secretary.....Nan Swanson

Treasurer.....Fayanna Snader

The Senior Class began the College course with a membership of about twelve. They were a verdant number. But green things have a tendency to grow and instead of decreasing in size the class roll has increased until we now number fifteen.

The States of Kansas, Missouri, Colorado, Nebraska and California are represented.

There are four ministers in the class, all of whom expect to enter some field of active church work. Others in the class expect to teach; one or two have their aims toward the mission field. Several intend to continue in active preparation for their specific work.

With our motto as our guide we press forward to take active part in the work of the world.



J. ESTEL JONES, A.B. McPherson
"Jonesy."

Iconoclast—President iconoclast Literary Society—1; Secretary and Treasurer Choral Union—2, 3; Y. M. C. A. Cabinet—2, 3; President Student Council—2, 4; Class President—3, 4; Editor-in-Chief McColpa—4; Editor-in-Chief M. C. Spirit—4; Instructor Academy English—2, 3, 4; Wee Tappa Kaig—4.

"He was a scholar and a ripe and a good one;

Exceeding wise, fair spoken and persuading."

SUPT.—RAMONA SCHOOLS.



MRS. AMANDA FAHNESTOCK, B.S.L.,
 A.B., B.D., McPherson
 Instructor in Bible in McPherson College,
 McPHERSON COLLEGE.



PAYE SISLER, A.B., Richmond
"Sis."

Irving—Treasurer Irving Literary Society—2, 3; Class Vice-President—3, 4; Student Council—4

"If a woman have long hair it is a glory."

MATRIMONY





NINA SWANSON, A. B., McPherson
"Nan."

Irving—Class Secretary and Treasurer—2; Critic Irving Memorial Literary Society—2, 3; Secretary Student Council—2; Class Secretary—4; Secretary Athletic Board—4; Assistant College English—2.

"Her voice is soft and low—an excellent thing in woman."

BRUCE ESHELMAN, A. B.,
Red Cloud, Nebraska

Irving—Third place Prohibition Oratorical Contest—2; President Irving Literary Society—2; Yell leader—3; Advertising Manager McColpa—3; Y. M. C. A. Cabinet—3; President Student Council—3; Vice-President I. P. A.—4; College Reporter—4; Wee Tappa Kaig—4.

"Woman, why hast thou ensnared my soul?"



FAYANNA SNADER, A. B.,
Santa Ana, California
"Dolly."

Irving—Class Secretary and Treasurer—1, 2, 4; Girls' Glee Club—2, 3; Student Council—2, 3; Associate Editor McColpa—3; First place Irving Iconoclast Declamation Contest—3; Class Treasurer—4; Atia Beta Pi—4.

"A daughter of the gods, divinely tall."

TEACH—CLIMAX, KANSAS.





LULU ELLOM, A.B., Lamar, Colorado
 Iconoclast—President Choral Union—2;
 Student Council—2; Portia Debating Club—
 2; President Y. W. C. A.—2, 3; Vice-Presi-
 dent Volunteer Band—3, 4; Librarian—2,
 3, 4.

*"The warmth of genial courtesy,
 The calm of self-reliance."*

McPHERSON COLLEGE



ALICE HOERNER, A.B., McPherson
 Irving—Secretary Student Council—1;
 Girls' Glee Club—1, 2; Secretary Athletic
 Board—1, 3; Vice-President Irving Literary
 Society—4; Y. W. C. A. Cabinet—1, 2, 3, 4.

*"A stern countenance but a generous
 heart."*

McPHERSON



ABRAHAM HARMS, A.B., Hillsboro
 Iconoclast—College Debating Team—4;
 Instructor Academy German—4.

"It is the mind that makes the man."

TEACH—PEABODY.





JOHN H. HOOVER, A.B.,
Warrensburg, Missouri

"On their own merits modest men are dumb."

KANSAS UNIVERSITY

MARTIN BEYER, A.B., McPherson
Irving—Mortar and Pestle Club—3; Col-
lege Band—4; Assistant Physiology Labora-
tory—4.

"Born with the gift of silence."

K. U. MEDICAL SCHOOL.



MANNIE MILLER, A.B., Canton
"Cy."

Irving—Baseball—2; Basketball, Second
Team—1, 2, 3; Captain Bull Dog Re-
serves—4.

*"Oh, it is excellent to have giant's
strength."*





FRANK E. MOHLER, A.B., Leeton, Missouri
"Doc."

Irving—Cyrenaic—President Choral Club—1; College Quartet—1; College Reporter—3; Irving-Iconoclast Debate—3; Glee Club—3, 4; President Irving Literary Society—4; Assistant Instructor Physics—3; Instructor Civics—4.

It is a thing divine to have a smile. "Tut, tut."

VANDERBILT UNIVERSITY.



HARVEY M. BRUBAKER, A.B., McPherson
Iconoclast—President M. C. D. L.—1;
Y. M. C. A. Cabinet—2; Critic Iconoclast
Literary Society—3.

"An honest man is the noblest work of God."

COLLEGE EVANGELIST



ARTHUR H. WENDT, A.B., Inman
Irving—President Normal Class—1; Mor-
tar and Pestle Club—3.

*He consecrates his hours by vigorous ef-
fort and honest aim.*

TEACH—ROXBURY.





PAULINE VANIMAN, McPherson

"Polly."

Irving—Bachelor of Music, B. M.; Academy graduate—1917; Secretary Irving Literary Society; Secretary Student Council; Girls' Glee Club; Second place in Piano Contest, Wichita.

"Music's golden tongue."



ROYCE EMERSON KURTZ, McPherson
Class Mascot.

By the testimony of his father, a master in expression.



ALICE NADENE VOGT, A.B.,
Versailles, Missouri

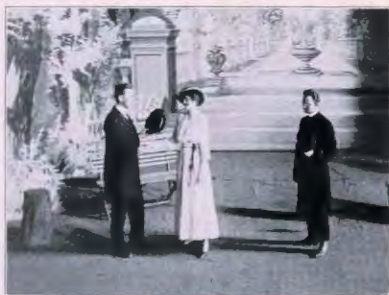
Iconoclast—Student Council—1; Vice-president Iconoclast Literary Society—1, 4; Y. W. C. A. Cabinet—1, 2, 3, 4; President Porcia Debating Club—3; Eight Week Club Leader—3, 4; Assistant Librarian—3, 4.

Verily, verily, akin to Minerva. A veritable goddess of wisdom.

FELLOW TO K. U.



Scenes from "In the Van Guard."





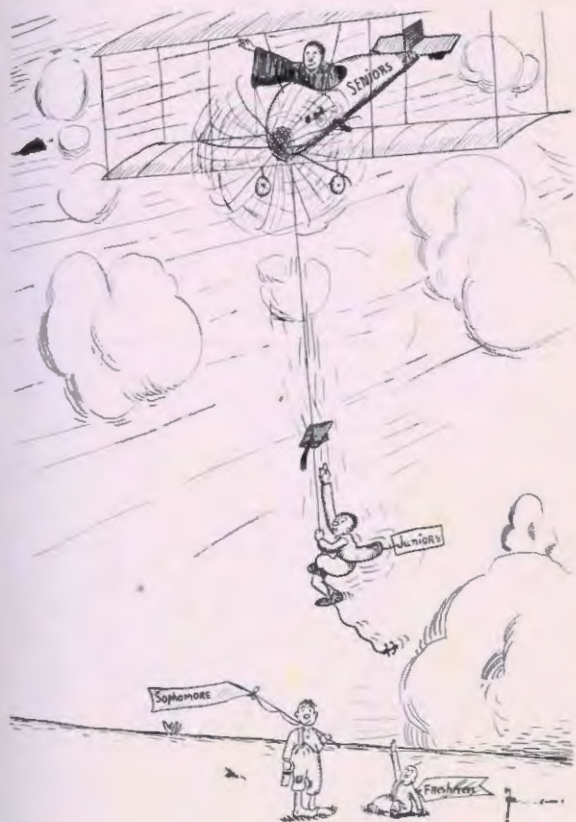
Class Play of the Class of 1917

"IN THE VANGUARD"

PERSONNEL

Phillip.....	J. Estel Jones
Elsa.....	Fayanna Snader
Jack.....	Bruce Eshelman
Mr. Greart.....	Abraham Harms
The Rector.....	Frank E. Mohler
The Enemy.....	Arthur Wendt
The General.....	Mannie Miller
Mr. Gordon.....	Bruce Eshelman
Mrs. Gordon.....	Nan Swanson
First Girl.....	Lula Ullom
Second Girl.....	Alice Vegt
Third Girl.....	Pauline Vaniman
Rector's Daughter.....	Alice Hoerner
Minnie.....	Faye Sisler
First Soldier.....	Bruce Eshelman
Second Soldier.....	Arthur Wendt
Third Soldier.....	Mannie Miller
Enemy Girl.....	Marguerite Muse
Girls and Boys.....	

"In the Vanguard" is a very forceful play written by Katrina Trask. The true aim of the play is to give a sane philosophy concerning war, and it shows that war is logically inconsistent. The serious tone of the play is made lighter by occasional touches of good humor. The love story heightens the human interest in the play. The Seniors will give this play during Commencement Week.





COLLEGE JUNIORS

President Morris Harny
Vice-President Lester F. Kimmel
Secretary-Treasurer Adra Boone

Colors: Black and Gold.
Flower: Yellow Rose.

YELL

M-C-M-X-V-I-I-I,
Juniors, Juniors,
Ki, Yi, Yi!



DELBERT CULLER
Class Mascott.

MO SPIRIT 17



ADRA BOONE—Iconoclast; Y. W. C. A.—1, 2, 3; I. P. A.—1; Y. W. C. A. Cabinet—1, 2; Iconoclast Secretary—1, 2.

"How sweet and gentle even in common speech."

JOSEPH L. BOWMAN—Iconoclast; Y. M. C. A.—1, 2, 3; I. P. A.—1, 2, 3; Mortar and Pestle Club—2; Iconoclast President—2; Irving-Iconoclast Oratorical Contest—2; Pentangular Debate—3; Student Council—1, Treasurer—3; Y. M. C. A. Secretary—2, Vice-President—3.

"A good man's character is the world's common legacy."

SAMUEL BOWMAN—Iconoclast; Y. M. C. A.—1, 2, 3; Y. M. C. A. Cabinet—3; President Volunteer Band—3.

"Frequently within my brain, I gently think a thought."

PAUL DANDELLEY—Irving; Irving Quartet—2, 3; Glee Club—2, 3; Mortar and Pestle Club—2; I. P. A.—2; Y. M. C. A.—2.

"Peel yer lamp—beliecc muk, I'm the tough gink."



HOMER G. ENGLE—Iconoclast; I. P. A.—1, 2, 3; Y. M. C. A.—1, 2, 3; Glee Club—1; Iconoclast Censor—1, 2; Y. M. C. A. President 1, 2; Iconoclast President—3.

"I want a little bungalow." — (Continued.)

MORRIS H. HARNLY—Irving; I. P. A.—1, 2, 3; Y. M. C. A.—1, 2, 3; Irving Critic—1, 2; Athletic Board of Control—2, 3; Peace Oratorical Contest—2; I. P. A. Oratorical Contest—3; Irving-Iconoclast Oratorical Contest—2; Associate Editor The McColpa—2; Irving President—2; Flying Squadron—2; Class Vice-President—2, President—3; I. P. A. President—2, Publicity Man—3, Yell Leader—3.

"And then he will talk—ye gods, how he will talk."

MYRTA S. HILDEBRAND—Iconoclast; I. P. A.—1; Y. W. C. A.—1, 2, 3; Y. W. C. A. Cabinet—2, 3; Iconoclast Assistant Secretary—3.

"Where the red, red roses grow."—(The end.)

CHAUCER G. JOHN ("Choker")—Irving; Y. M. C. A.—1; I. P. A.—2; Irving Sergeant—1, Critic—3.

"A hair! A hair! My kingdom for a hair!"
"Benedict, the married man."



GALEN JONES ("Bookstore Jones")—Iconoclast; Y. M. C. A.—1, 2, 3; I. P. A.—1, 2, 3; Iconoclast President—1; Baseball—1; Glee Club—1, 2, 3; Class President—1; Y. M. C. A. Cabinet—2; Bull Dogs—1, 2, 3; Pentangular Debate—3; Student Council—3; Chairman Class Play Committee—3; Wee Tappa Kaig—3.

"It is wind after all that does the work of the world."

LESTER F. KIMMEL ("Curley")—Irving; Y. M. C. A.—1, 2, 3; I. P. A.—1, 2, 3; Student Council—2; Editor The McColpa—2; M. C. Spirit—3; Irving Critic—1; Treasurer—2, President—3; Class Vice-President—3; Wee Tappa Kaig—3.

"Wit, not loud, but deep."

H. ROY PHILLIPPI ("Pi")—Irving; Y. M. C. A.—3; Chairman Junior Night—3; entered Junior year.

"Haw! Haw! Haw!"

CARL N. REXROAD ("Rex")—Iconoclast; Y. M. C. A.—1, 2, 3; I. P. A.—1, 2, 3; Y. M. C. A. Treasurer—1; Peace Oratorical Contest—2; Irving-Iconoclast Oratorical Contest—2; Mortar and Pestle Club—2; Student Council—2; Chairman "Moving Up Day"—3; Pentangular Debate—3; Iconoclast Vice-President—3; I. P. A. President—3.

"He with the lean and hungry look who never had a girl."





JONATHAN D. SCHMIDT—Iconoclast; Y. M. C. A.—1, 2, 3; I. P. A.—1, 2, 3; Glee Club—1, 2, 3; Iconoclast President—1; Music Director Iconoclast—2; Y. M. C. A. Cabinet—1, 2; Chairman Junior Chapel—3.

"Orlando—I am he that is so love shaked, I pray you tell me your remedy."

KATHRYNE V. THOMAS ("Kathleen")—Irving; I. P. A.—2; Y. W. C. A.—2, 3; Chairman Junior-Senior Banquet—3.

"Yet once more, O ye talcum, and once more."

"A rosebud set with little willful thorns."

WILBUR F. VANIMAN ("Web")—Irving; I. P. A.—1; Y. M. C. A.—1, 2, 3; Glee Club—1, 2, 3; Irving Secretary—1, President—2; Y. M. C. A. Treasurer—3; Baseball—1, 2; Tennis Team—2, 3; Associate Business Manager The McColpa—3; M. C. Spirit '17—3; Choral Union President—3; Chairman Class Hike—3.

"Everybody likes the girl I like."

GEO. EARL WATKINS ("Wattle")—Iconoclast; I. P. A.—2; Y. M. C. A.—2, 3; Baseball—2, 3; College Band—3; Wee Tappa Kaig—3.

"Another one of these safely anchored cases."



"Nice Closes"



Ernie and Galard



Last Sad Rites



Our Engineer



Honey

C
o
l
l
e
g
e



E
v
a
n
g
e
l
i
s
t

The Sincere Milk
of the Word



The Little Heafhen



Post no bills



COLLEGE SOPHOMORES.





College Sophomores

President	Floyd Mishler
Vice-President	Iona Ebaugh
Secretary-Treasurer	Edith McGaffey

CLASS ROLL

- Elery Becker—"He argues much, but uses little logic."
- Amos Boone—"Upon his shoulders rests the dignity of the class."
- Eva Boone—"Her eyes will win someday for her a happy home."
- Ellwood Brandt—"The most handsome duck in school."
- Martin Brechbill—"He finds no need for women."
- Lloyd Crumpacker—"Within his brain lie dormant great 'gaubs' of knowledge. If he only had access to it!"
- Iona Ebaugh—"Brains—yes, but no boys."
- Harold Engstrom—"A laboratory and a pipe is all he wants."
- Edmund Flickner—"Good boy. Plays with his rattle for hours at a time."
- J. Clyde Forney—"He can give you what you want: a sermon on leadership, a prayer for service, or make of himself a fifteen-piece menagerie."
- Leland Haldeman—"He's music from head to foot, and that's saying a deal."
- Helen Hawkinson—"The most affectionate girl in school."
- Margaret Heckethorn—"Her favorite is 'I Need Sympathy'."
- Herbert Hoffman—"Wee Tappa Kalg. "A jovial man of business."
- Scott Martin—"Behold he sleepeth—sound the Klaxon."
- J. Wesley Maxey—"Makes regular appearance on green carpet."
- Edith McGaffey—"She works as though she loves to do it."
- Dorothy Miller—"She has a will all her own, and is the broadest person in College."
- Floyd Mishler—"He lacks but little that makes a man." Wee Tappa Kalg.
- Chester Moors—"Good-natured spareribs. The highest jumper in the Kansas Conference."
- Glenn Neighbors—"A miniature edition. His bond is as good as his word(?)."
- Lawrence Vaniman—"Jitney driver for the 'Ata Bita Pl.'"
- Claude Wilson—"Takes work under Swope. Has one hand tied to the classroom ceiling."



COLLEGE FRESHMEN.





College Freshmen

OFFICERS

President.....	Eldon Engle
Vice-President.....	Carl Wickman
Secretary.....	Paul Hoffman
Treasurer.....	Ruth Williams

Class Motto: "Mastering the Unmastered."

Class Flower: Lily of the Valley.

Class Colors: Yale Blue and Gold.

CLASS ROLL

Gayman Eaffe.....	Eoli Specialist
Wilber Baldwin.....	Wisdom Personified
Ruth Leery.....	Human Graphophone
Curtis Bowman.....	Enthusiastic Dissector
Ida Bowman.....	The Lighthouse
Lewis Bowman.....	Voice Specialist
Paul Brandt.....	Samsonian Demosthenes
Ruth Brubaker.....	Forney's Idol
Roy Brubaker.....	Derby Hall Tree
Mabel Brubaker.....	Not Harmless
Bertha Cline.....	Human Screech Owl
Cecil Durst.....	A Man Hater
Eldon Engle.....	Class Pastor
Lowell Frantz.....	Pretty Baby
Edward Girard.....	Teacher's Pet
Grace Greenwood.....	Militant Suffragette
Gladys Heaston.....	Hershey Flend
Irene Hoffman.....	Henrietta Joyrider
Lester Hoffman.....	Our Arguifer
Paul Hoffman.....	Fatless Wonder
Martha Harms.....	Skylark
Gilberta Horton.....	Tiny
Ernest Ikenberry.....	Iken-talk
Thekol Jensen.....	Hawkinson's Jitney Driver
Glenn Johnson.....	Class Flirt
Lillian Kasey.....	Slim Jim
Myrl Klepinger.....	Fanciful Dreamer
Violet Knaus.....	Skinny
Fabian Lacquement.....	God of Love
Cecil Maxey.....	Flashlight
Mae I. Rowe.....	Fatty
Callie Riddlebarger.....	Sid's Car Observer
Ruth Shoemaker.....	Webb's Cobbler
Rufus Sloniker.....	Hash Consumer
Milo Stutzman.....	Miniature Duckling
Ruth Talhelm.....	Sky-gazer
Nina Teeter.....	Heart-breaker
Roy Wampler.....	Fatty's Favorite
Carl Wickman.....	Bookworm
Ruth Williams.....	Princess of Beauty
Paul Yoder.....	Prince of Jealousy



College Debating Teams

Back Row: Ernest Ikenberry, Abraham Harns, Galen Jones, Paul Brandt.
Front Row: Joseph Howman, Prof. Swope (Coach), Carl Rexroad.





Intercollegiate Debate

A new interest in debate was created when, in 1916, McPherson College entered a pentangular union with Fairmount College, Cooper College, Bethel College, and Friends University.

The contract provides that each school shall submit a question from which a selection shall be made. The question submitted by McPherson was chosen, and is as follows: "Resolved, That at the close of this present European war the great world powers should unite in a Hague Federation with police powers to enforce its decisions."

Nine men entered the preliminary tryout, from which six were selected for the final. From this number Galen Jones and Paul Brandt were chosen to support the affirmative, and A. J. Harnis and E. L. Ikenberry to defend the negative. Carl Rexroad and Joseph Bowman were named alternates.

These teams met in class session two hours per week for one term. The principles of debate were studied and the question used as an example. The final analysis of the question was as follows:

Affirmative—Such a Hague Federation is the next logical step in government, because it offers a feasible and possible plan for adoption, combines the desirable features of all other proposed plans, and offers the only sound basis for the limitation of armaments. The world has developed to the place where she is ready for it. Politics have always been ultra-conservative, never developing in a steady evolution, but by a series of upheavals and changes. Nationalism has failed. Two courses remain open to the nations: peace must be secured either on a democratic basis, or we must recognize the other possible course—an absolute autocracy. The war has proved the latter impossible.

Negative—A Hague Federation is wrong in principle since it advocates peace by means of armed force and opens the way to a more bitter struggle than the present one, involving all nations. A Hague Federation cannot be put into practice, for nations cannot agree upon representation and will not yield to enforced decisions. The world will not be ready for it, for there is no communal spirit on which to build. Such a federation will prove disastrous to the United States, for it will involve us in every European broil and endanger the Monroe Doctrine. We would be forced to fight at the call of a council in which we would be in the minority. The League to Enforce Peace is a better plan than that proposed by the affirmative.

In the first series of debates McPherson College won in a 3 to 0 decision over Friends University of Wichita, and in the second series in a 2 to 1 decision over Cooper College of Sterling.

Our school owes a debt of gratitude to these men who have not only won these decisions, but have raised the standard of intercollegiate debate placing us in the front rank.



McPherson College Orators



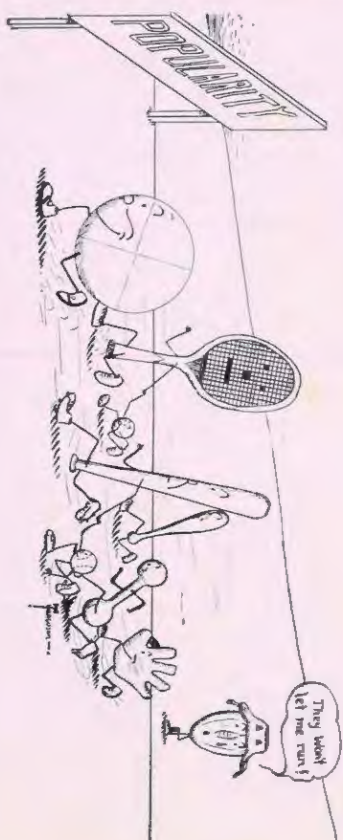
J. WESLEY MAXCY

Mr. Maxcy is the seasoned orator of the College, for he has taken active part in nearly every contest since he entered the College. He has won first place in every contest which he has entered in the school. Mr. Maxcy is a graduate of the Expression Department of the College and is a very efficient reader. This training has been invaluable to him in his work in oratory. He has represented McPherson College in State Peace Contest and twice in the State Prohibition Contest. In the Prohibition Contests he won second place both times, last year in our own chapel and this year at Cooper College. It can be truly said that he is "the McPherson College Orator."

AMOS R. BOONE

Mr. Boone made his first appearance in the oratorical field this year. His oration, "Our Relations with Mexico," took first place in the local contest, and he represented M. C. in the K. L. O. A. contest, which was held at Newton, Kansas, this spring. In this contest he took fourth place among fourteen contestants. He is to be congratulated upon his excellent work. He has a promising future in forensic activities.







Athletics



E. D. VERINK, COACH

McPherson is fortunate in having so efficient a coach as Mr. Verink. His athletic work at Coe College, his Alma Mater, was brilliant and shows that he knows athletics and can sympathize with the athlete. His work as coach at McPherson has resulted in a highly successful season and in more recognition for our school over the state than ever before. We earnestly hope we can keep Coach Verink for many more years, that he may build up an athletic system of which our college may be proud.

BEN, MASCOT

Ben was a great favorite at the games and on the trips. He was the ideal for the boys this season. They emulated him so well that at the close of the season they had well earned the sobriquet, "Bell dogs."



MAXCY AND HARNLY, CHEER LEADERS

These boys were the big factors in our pep and support of the team. M. C. had better cheering this year than any of her opponents, and it is largely owing to their efforts. They have that admirable quality of infusing pep where there is no pep.



MISHLER (Captain), '18

Guard. "Mish" is a boss of a guard. He always plays a clean, consistent game, and when the final whistle blows his man's record is very slender. His man made 19 goals in 13 games, and he threw 16 himself. He made guard on the third all-state team. With him as captain, the team will always pilot-d in a sportsmanlike way. M. C. will have his services one more year.



HOFFMAN, '19

Guard. "Herb" is one of the most aggressive men on the team. He took to the game so seriously that oftentimes his opponents thought he was rough. He is an adept at breaking up the other team's plays and at holding his man to a very low score. The few coaches who saw him play thought well enough of him to give him honorable mention. He will be with us two more years.



NEIGHBORS, '19

Forward. "Pete" is our midget forward, but instead of his size being a handicap it is an asset. He squeezes and worms his way through holes that the opponents do not know are there. Rapidity of motion is his chief characteristic—so rapid that his opponents do not know where he is. Pete was bothered with a bad knee this season, but got away well at that. He is a forward on the third all-state team. He has two more years of basketball before him.

JONES, '18

Forward. "Jonesie" is one of the surest shots on the team. He has been a consistent scorer all season—a good man to "feed 'em to." His guard had to keep an eye on him, for you never could tell how he was going to make his goal. He is a very clean player and has very few personals chalked up against him. Next year is his last season.





MOORS, '19

Center. "Ches" is so tall that you can count on him out-jumping the opposing center. And that is not all. He plays the pivot position well in all other ways. He has an ironclad defense and this year developed a great deal in offensive. "Ches" is never a sensational player, but always relies on team-work to accomplish the purpose. He will be in college two more years.



CRUMPACKER, '21

Forward. "Crummie" is one of the finds of the season. Last year he was playing on a tournament team, but the coach saw his good qualities and turned his attention toward developing them. M. C. fans have good reason to believe that in him they have a future star. He has been used in enough games this year to keep him cool, and next year may find him indispensable to the team.



MOORS, '21

Guard. "Mel" is another man the coach has brought out this season. His work could be compared favorably to that of the regular guards, and he will be better next year for this season's experience. He is a cool, heady player always found in the right place. Some of his assets are close guarding and excellent team-work.

DETTNER, MANAGER

Detter showed his business ability by piloting the team successfully in a financial way. The season was a draw, the books being in balance at the end. This is a great feat for a small college, and Detter is entitled to praise.





RESERVES.



Basket Ball Practice to a Reserve

'Twas a cold night in December,
How well do I remember,
When I took my flimsy garments
To the basement of the gym.
It was frigid, Oh, how frigid,
And my back was very rigid,
But the squad was all there dressing,
And they told me to begin.

I started dressing, shaking, shaking,
While my bones were quaking, quaking,
For the heat had long abandoned
Such a cold and dreary place.
One by one we finally finished
With our spirit undiminished;
One by one we reached the gym floor
And the winter wind to face.

Through the cracks the wind was blowing
And outside it sure was snowing,
But no heat could be found coming
Through the register at all.
The coach then started us to pacing,
Around in rings we went a-racing;
No one seemed to be so lucky
As to correctly guide the ball.

Soon each one was puffing slightly
Like an engine, only lightly,
Then the coach called out the first team
For the usual signal practice.
So we huddled all together
Like freezing birds without a feather,
Watched them miss 'most every signal
Till almost all ambition left us.

Then we all went out to play them,
Not in the least did it dismay them.
Immediately we started fighting
To keep that ball from in their goal.
Likewise they all started working,
Darting, jumping, never shirking;
Occasionally we touched the leather
Enough to give it one short roll.

After much continued struggling,
Dashing, sliding, passing, juggling,
We were all at last exhausted,
So we stopped with much delight.
Then the coach began by telling,
While our chests were swelling, swelling,
How to eat and keep in training,
And, "all be out tomorrow night."

—Wilbur Baldwin.

MC SPIRIT 17



T
o
u
r
n
a
m
e
n
t



T
e
a
m
s

Academy Seniors



College Freshman



Net mads



Ichu boys



BASE BALL SQUAD.





Tennis

McPherson is now well equipped with tennis apparatus. We are now in possession of five excellent courts, and this is sufficient to take care of our tennis fans fairly well. The courts well constructed, have good backstops, and are constantly kept in the best of condition.

Tennis is rapidly growing in favor with the students. Almost any fine day in the autumn or spring the courts are swarming with players and the sidelines with spectators.

M. C. is entering intercollegiate tennis this spring for the first time in her career. A fairly complete schedule has been planned. Games have been scheduled with Cooper, Bethel, Salina Wesleyan, and Bethany. This schedule will give opportunity for athletic activity to students who do not care for baseball.



From this distance it looks as though Wilbur and Lawrence Vaniman would compose the first team. They have had more experience than any other players in school and also possess a great deal of ability. Lawrence is a shining star at the end of the court and covers ground in a way that is phenomenal. He is an artist at back-hand returns. Wilbur is a consistent, heady player who can take up the burden anywhere on the court. He is quick and makes an especially good man at the net. M. C. will be well represented by these men in intercollegiate tennis.

Prof. Mohler has purchased four loving cups and will use them as tennis prizes this spring. The plan is not yet clearly formulated, but it is expected that the contest will be between the societies in the Academy and inter-class in the College. A cup will also be awarded to the best ladies in singles.





ATHLETIC ASSOCIATION.



MC SPIRIT 17



Guess who

WE WON IT



Grub-mates.

M.C. Acrobats

Have some?



The McColpa Staff

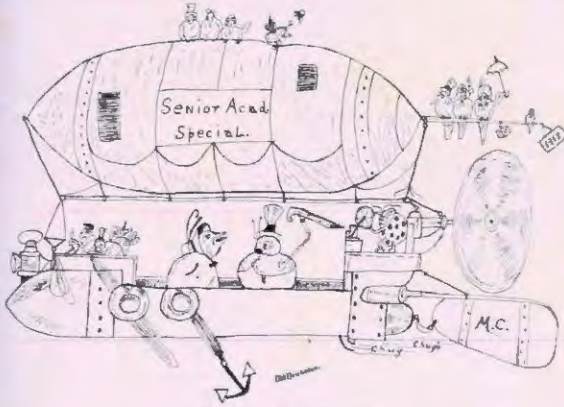
Back row: Herbert Hoffman, Edith McGaffey, J. Wesley Maxey.
Lower row: J. Estel Jones, Editor-in-Chief; W. F. Vaniman.



CENTRAL PARK, McPHERSON.



MAYOR'S RESIDENCE AND WALNUT STREET.



Senior Academy

CLASS OFFICERS

President	Ray Cullen
Vice-President	Edward Van Pelt
Secretary	Bessie Brubaker
Treasurer	Crawford Brubaker
Cheer Leader	Galen Evans

Class Flower: Yellow Rose.

Class Colors: Lavender and Gold.

CLASS ROLL

Anderson, Alma
Wagner, Anna
Pitzer, Alice
Bjekenstaff, Miles
Brubaker, Bessie
Boyd, Bertha
Buckman, John
Brubaker, Crawford
Cullen, Ray
Smith, Carrie
Stutzman, Dellah
Brubaker, Dewitte
Heshore, Edith
Merkey, Ella
Evans, Galen

Clark, Faye
Merkey, George
Hylton, Roy
Breon, Jessie
Heckman, Letha
Neher, Leta
Moore, Leland
Crumpacker, Leonard
Lehman, Ralph
Moors, Melvin
Muse, Marlan
Daggett, Mary
Sherfy, Mary
Sherfy, Nina
Merkey, Samuel

Naylor, Lewis
Holmes, Olive
Vaniman, Pauline
Hoffert, Phoebe
Neher, Ruby
John, Rockla
Rexroad, Edward
Flora, Susie
Vaniman, Ray
Van Pelt, Edward
Brubaker, Warnie
Wilkie, Clarence
Andes, Orpha
Neher, Roy
Pollock, Mrs. Myrtle I.



RAY CULLEN. Academy.
Emersonian.

Class President—4; Gospel Team—4;
Y. M. C. A. Cabinet—3, 4; Senior Male
Quartet.

"His life was gentle, and the elements so
mixed in him that Nature might stand up
and say to all the world, 'This was a man.'"

DELILAH STUTZMAN. Academy.
'Dee."

Emersonian.

"There's just one subject that I like better
than Physics, and that's Geometry."

EDWARD VAN PELT. Academy,
Agriculture.

"Van."

Ciceronian.

Iconoclast President—2; Ciceronian Presi-
dent—4; Y. M. C. A. Cabinet—3, 4; Debate
Team—3, 4; Senior Basketball Team; Agri-
culture Graduate.

"Oh, for Pat's sake! Here's another con-
stitution to operate on."

BERTHA BOYD. Academy.
Ciceronian.

Secretary Ciceronians—4; Y. W. C. A.
Cabinet—4; Leader Eight Weeks Club—4.
"To know her is to love her."



LELAND MOORE. *Academy.*
Emersonian.

Class President—3.

"Like a school master of old, on sweet At-
burn's hill,
Even tho' vanquished he would argue still."

ROCKLA JOHN. *Academy.*
Irving.

"To her deft touch the keys respond
With strains of vibrant joy prolonged."

LEWIS NAYLOR. *Academy.*
Ciceronian.

Ciceronian President—4.

"Married and perfectly happy with his
P. A. degree."

SUE FLORA. *Academy.*
Emersonian.

Y. W. C. A. Cabinet—4; Senior Basketball
Team.

"I live for those who love me."





ROY NEHER. *Academy, Agriculture.*
Ciceronian.

Class Basketball; President Agriculture
Class—4; Class President—2; Y. M.
C. A. Cabinet—3, 4; President Commercial
Class—2.

"Always to be depended on to do his duty."

OLIVE HOLMES. *Academy.*
Ciceronian.

Ciceronian Secretary—4; Y. W. C. A. Cab-
inet—4.

"She who soothes the pain of the sick
brings heaven near the earth."

GALEN EVANS. *Academy.*
Emersonian.

Class President—3; Y. M. C. A. Cabinet—
4; Class Yell Leader—2, 3, 4; Senior Male
Quartet.

"His broad smile and good disposition are
directly proportional to his height."

JESSIE BREON. *Academy.*
Emersonian.

"Good deeds immortal are;
They cannot die."

MO SPIRIT 17



JOHN BUCKMAN. *Academy.*
Clerontian.

Class President—1; Men's Glee Club—3,
4; Senior Male Quartet.

"When I take both, they say, 'Which one?'
When I take one, they ask, 'Where's the
other?'"

LOTA NEHER. *Academy.*
Emersonian.

Secretary Juncoelast—2; Treasurer Emer-
sonian—4; Captain Senior Basketball Team.

"Fine people, like fine deeds,
Need no trumpets."

RALPH LEHMAN. *Academy.*
"Slim."

Emersonian.

"Tall, blue-eyed and slim,
I never saw the like o' him."

MARIAN MUSE. *Academy.*
Clerontian.

Y. W. C. A. Cabinet—2; Member Student
Council—2, 3; Senior Basketball Team.

"A winning way, a pleasant smile,
Dressed so neat, and quite in style."



SAM MERKEY. *Academy.*
Ciceronian.

"We have positive evidence that he once had a girl."

BESSIE BRUBAKER. *Academy.*
"Oklahoma Bessie."
Emersonian.

Class Secretary—4; Emersonian Secretary—4; Girls' Glee Club—3.

"She is always in for fun,
And is a friend of everyone."

GEORGE MERKEY. *Academy.*
Ciceronian.

Ciceronian Yell Leader.

"George is proud to say that his name is registered in the speed cop's court with that of the faculty."

ANNA WAGNER. *Academy.*
Emersonian.

"Peaceful, thoughtful and refined,
Always modest, sweet and kind."



RAY VANIMAN. *Academy.*
Emersonian.

"His chief failing is falling in love, and
his delight is found in teasing the girls."

RUBY NEHER. *Academy.*
"Sap."

Ciceronian.

Girls' Glee Club; Senior Basketball Team.
"Believe me, if you get a man,
Hang onto him, they are hard to get."

DE WITTE BRUBAKER. *Academy.*
Agriculture.
Emersonian.

Class Treasurer—2, 3; Vice-President
Commercials—2; Student Council—2, 3, 4;
Assistant in Zoology and Botany—3, 4.

"Fond of his books. He can be found
studying when there's nothing else to do."

ALICE FITZER. *Academy.*
Ciceronian.

"A thoughtful lassie, but full of fun."





EDWARD REXROAD. *Academy.*
Emersonian.

"I'm not going to kill myself working;
No! Not even if I never die."

LETHA HECKMAN. *Academy.*
Ciceronian.

"Simplicity and truth dwell in her heart."

MILES BLICKENSTAFF. *Academy.*
Ciceronian.

Member Student Council—3; Preacher.
"What is there in the tale of life
Half so delightful as a wife?"

MARY DAGGETT. *Academy.*
Emersonian.

Y. W. C. A. Cabinet—4; District Sunday
School Secretary—4; Teacher Bible Study
Class—4.

"She was—but words would fail to tell the
what;
Think what a woman should be—she was
that."



WARNIE BRUBAKER. *Academy.*
Agriculture.
Ciceronian.

Basketball Reserve—1, 2, 3; Senior Basketball Team; Agriculture Graduate; Ciceronian Vice-President.

"What shall I do to be forever known,
 And make the age to come my own."

FAYE CLARK. *Academy.*
Emersonian.

Vice-President Commercials—4; Senior Basketball Team.

"Laughter on her lips and soul within her eyes,
 Witty little lass and sunny as the skies."

CRAWFORD BRUBAKER. *Academy.*
"Baby."
Emersonian.

Emersonian President—4; President Debate Club—4; Debate Team—2, 4; Class Treasurer—4.

"I dare do all that may become a man,
 Who dares do more is none."

CLARENCE WILKE. *Academy.*
Ciceronian.

Class Tennis; Class Basketball.

"If thou hast begun, go on,
 'Tis the end that crowns us, not the fight."





CARRIE SMITH. *Academy, Expression.*
"Smithie."

Emersonian.

Class Secretary—3; Y. W. C. A. Cabinet—
4; Senior Basketball Team.

"Willing to act and cheerful while she acts."

NINA SHERFY. *Academy.*
Emersonian.

Alternate Academy Debate Team—4.

"Whate'er the faults that may attend her,
From duty's paths you cannot bend her."

ELLA MERKEY. *Academy.*
Emersonian.

"They say her affections to man do not
lean."

MARY SHERFY. *Academy.*
Ciceronian.

"Always on and never back,
The path she takes must lead."



LEONARD CRUMPACKER. *Academy.*

"Crum."

Ciceronian.

Varsity Basketball—4; Class Basketball—3, 4.

"Verily, verily, I say unto thee, that he who sitteth on a tack shall also rise again."

ALMA ANDERSON. *Academy.*

Ciceronian.

Expression Graduate; Y. W. C. A. Cabinet—1, 2, 3; Secretary I. P. A.—1.

"Daddy, why hast thou thus ensnared my soul?"

EDITH BESHORE. *Academy.*

Emersonian.

Debate Team Alternate—3, 4; Secretary Debate Club—3; Corresponding Secretary Debate Club—4; Senior Basketball Team.

"A good student, interested in Domestic Science, but more so in debate."

PHOEBE HOFFERT. *Academy.*

Ciceronian.

Class Poet—3, 4; Class Reporter—4.

"Phoebe is our poet, and we are proud to tell That everything she undertakes, she does it very well."





ROY HYLTON. *Academy.*
Emersonian.

Elite President—1; Senior Male Quartet;
Y. M. C. A. Cabinet—3, 4; I. P. A. Oratorical
Contest—4.

"He paddles his own canoe and paddles it
well."

ORPHA ANDES. *Academy.*
Ciceronian.

MELVIN MOORS. *Academy.*
Ciceronian.

Commercial Graduate; Basketball—4;
Captain Reserves—4; Senior Athletic Man-
ager; Senior Basketball Team.

"I'm a little bashful. A little encourag-
ment is necessary."

CLARENCE E. BAILEY.
"Billy."
Emersonian.
Advanced Commercial.



GLEN R. FINFROCK.
"Flu."
Ciceronian.
Advanced Stenographic.

ARNOLD A. FREEBURG.
"Dinky."
Commercial.

LEONARD R. LINDBLAD.
"Lindy."
Commercial.

LESTER L. SHAW.
"Shaw."
Emersonian.
Stenographic.





MARTHA BLICKENSTAFF,

Voice.

Ciceronian; Secretary Academy Debate Club—2; Y. W. C. A. Cabinet—3.

ALMA FESSER,

Conway

Normal Music.

MARY DURST,

Moundridge

Normal Music.

Expression.

Voice.

Iconoclast; Secretary I. P. A.—1; Secretary Iconoclast—1; Music Director Iconoclast—1, 2; Student Council—2.

ESTHER WHITE,

Hesston

Ciceronian.

Normal Music.



MRS. MYRTLE I. POLLOCK.
Academy.
 Nurse, China Mission Field.

GODFRED O. SWANSON.
Commercial.

PROF. J. C. RUSSEL.
 Here's to Professor Russel, so genuine and true;
 Who advised us and helped us and guided us through;
 We shall ever remember his counsel and praise,
 And treasure his friendship to the end of our days.





JUNIOR ACADEMY.





Junior Academy

OFFICERS

President.....	J. Howard Engle
Vice-President.....	Mayme King
Secretary-Treasurer.....	Marguerite Muse

Colors: Blue and Gold.

Name	Nickname	Characteristic	Cause of Fame
Howard Engle	Stubby	Obliging	Vocalist
Mamie King	King	Sanguine	Singing
Albert Orr	f Gold Dust	Subtle wit	Loud socks
Paul Pair	f Twins	Sporty	Skating
Carrie Mugler	Carl	Neatness	Good looks
Ruth John	"Pretty"	Womanliness	Pianist
Vero Shores	V.P.	Sober	Practical suggestions
Nina Jones	Frizzes	Observing	Pink cheeks
Lola Warwick	Curis	Thoughtfulness	Storywriter
Modena Heckman	Denie	Quietness	Latin shark
Oscar Barnhardt	Oc	Studious	Joining Juniors
Leah Miller	Giggles	Optimistic	Art of story telling
Della Weddle	Weddle	Blushes	Good grades
Sidney Colebank	Coalle	Jollity	Poetry
Kathryn Shirkey	Sister Shirkey	Big heartedness	Social service
Rosa Gatz	Taffy	Gentleness	Wearing Glasses
Marguerite Muse	Peggy	Care free	Reader
Della Day	Irish	Witty	Humor
John Eller	Dutch	Pestication	Assistant cook
Mr. Hennard	Father	Docile	Wife and family
Lawrence Baker	Lazy Lawrence	Sarcastic	Good English (?)
Bernice John	Johnny	Short and sweet	Pleasantness
Isaac Dirks	Fat	German brogue	Debating
Mamie Gauby	Bobby	Harmless	School teaching



SOPHOMORE ACADEMY.





Sophomore Academy

CLASS OFFICERS

President.....	Clay Orr
Vice President.....	Grace Entrikin
Secretary-Treasurer.....	Emma Tousley
Student Council.....	Henry Stover
Faculty Advisor.....	Miss Walters

Class Colors: Black and Gold.
 Class Flower: Yellow Rose.
 Motto: "On time."

CLASS YELL

Ki yi, Ki yi.
 Ki yi yip,
 Nineteen, nineteen,
 Let 'er rip,
 Sophomores!

CLASS ROLL

Baker, Agnes	Oxley, Charles
Erubaker, Sarah	Peel, Henry
Brubaker, David	Pair, Amy
Bllickenstaff, Carl	Reiman, Cadie
Coover, Paul	Rump, August
Entrikin, Grace	Shirkey, John
Fifer, Lizzie	Stover, Henry
Flora, Myrtle	Sitts, Chester
Ikenberry, Bertha	Tousley, Emma E.
Keim, Vergie	Teeter, Ruby
McAvoy, R. B.	U'Hom, Fern
Orr, Clay	



FRESHMAN ACADEMY.





MC SPIRIT 17

Freshman Academy

Motto: "To higher things."

Colors: Purple and White.

CLASS OFFICERS

President	John Snowberger
Vice-President	Elsie Forney
Secretary and Treasurer	Edna Eller
Faculty Advisor	Prof. E. M. Studebaker

Name	Nickname	Characteristic
Calvin Gauby	Jupiter	Honesty and truth at any price.
Sanger Crumpacker	Crum	"His bashfulness can't be beat."
Kenneth Muse	Slim	Caught musing.
Albert Williams	Wearly Willie	Please don't come this way.
Walter Baker	Walt	Tall and scientific(?).
Mae Hollar	Missouri	Show me.
Bernice Keim	Bernie	"Oh, if there wasn't such a thing as work!"
Elizabeth Boyd	Beth	So near and yet so far.
Menno Shelley	Dutch	A year to make a date, O my!
Laura Bowman	Valentine	Never "Rex"-less.
Edmund Bowman	Ed	Business is business.
Martha Mugler	Fraulein	Always jolly and light-hearted.
Zelma Daron	Dot	Cold, distant, and haughty.
Clara Hollar	Fatty	Where in the world is Mae?
Hazel Vogt	Sis	Gabble, gabble, gabble.
Lillian Sandy	Blue Ribbon	Chief failing—falling in love.
Va McAvoy	Spat	Here for a good time.
Bertha Frantz	Betty	A friend of everyone.
Oscar Oxley	Astronomer	And still he gazed.
Ernest Schermerhorn	Skinmy	His laugh is rare, but oh! what hair!
Loretta Yoder	Betta	Stole the cake and got a Crum.
Herman Jones	Plato	Verily I say unto you, "Love me not."
Le Roy Baringer	Roy	No time for frivolous affairs.
Eunice Moors	Cy?	Well, I don't know, but—
Myrtle Marlow	Myrt	Generosity and kindness.
Grace Sheets	Gracie	Measles and carnations.
Peter Neilsen	Pete	The witty Dane.
Floy Shirkcy	Smiley	Always smiling, yet grumbling.
Fannie McGaffey	Curtis	Our poetess.
Edna Eller	Bugs	Everywhere, anywhere, nowhere.
John Snowberger	Snow	Dignified, but not distant.
Elsie Forney	Muggins	Always and forever, "Oh, piffle!"
Irene Mishler	Mish	I should worry.
Lois Sandy	Pet	To know her is to love her.
Hervey M. Clelland	Runt	Pet expression, "This here."
William Muse	Bill	It seems the girls are scarce.
Albert Moyer	Bert	How I love to study.
Albert Kinzie	Snowball	Dormitory lasses.
Gladys Bowser	Chubbie	Short and fat, but happy.
Ernest Atkerky	Giggles	Oh, for a motley coat!



ACADEMY DEBATING CLUB

Lower Row: Negative Team, Edward Van Pelt, Nina Sherfy, (Alt.); David Brubaker, Prof. E. M. Studebaker, (Coach.) Affirmative Team, Isaac Dirks, Edith Heshore, (Alt.), Crawford Brubaker.





The Academy Debating Team

The department of the Academy bids fair to make a record this year, as evidenced by the bellicose spirit of its debating team. The team as a whole shows evidence of the invincible. With two of the fair and four of the ruddiest of our titans of argument slingers we have no fear of a German invasion on the debating floor. The fighting spirit has been high all the year and is still at the flood tide. The air about the campus has been charged to the point of explosion since the Debate Club first met last fall. Prof. Studebaker injected into the ambitious club the dynamic which spells defeat for all our daring opponents. Before these words will have had time to evaporate and lose the odor of printer's ink that doom will be sealed with the seven seals that no man can break.

The personnel of the team is of that type which knows not the meaning of the word defeat. All possibility of the unexpected has been provided for. The alternates, Miss Edith Besbore and Miss Nina Sherfy, are prepared to stand back of the team to the last. Three of the men were on the team last year and distinguished themselves as real debaters, although not favored by the Judges' decision. With the addition of the big German, Dirks, our confidence is complete.

In ye olden days of oratory when was speech more clothed with fire than are the flaming words that fall from Isaac's tongue? He is possessed with the spirit of the Fatherland and the same bull-dog tenacity that characterizes the Von Hindenburg Line. There is David, with that quiet confidence exhibited by the immortal giant killer. He has breathed the air of a higher altitude and when he speaks his words are like the sting of musket fire. There is a winsomeness about Crawford's smile which we have reason to hope will captivate the judges with the same spell as it holds one of the Senior girls. Last, but not least, is Edward, whom the angels named Patrick H. Although he divides his time impartially between the girls and debate, he is made of the stuff that wins. He is a true representative of Missouri's "Show me" stock.

Words would fail if we should attempt to summarize all the merits of the Academy Debating Team and our modesty will not permit a more elaborate expression of the truth. What words will not express, let confidence clarify. When we have met our opponents on the field of conquest then will have been proved our faith is not ungrounded nor our confidence misplaced.

ROY P. HYLTON.

Affirmative team, Crawford Brubaker and Isaac Dirks.

Negative team, David Brubaker and Edward Van Pelt.



Advanced Cooking Class.



Bertha Boyd
Iona Ebaugh Olive Holmes
Ruby Neher

Domestic Science

Under the direction of Miss Walters the Domestic Science Department of the College has made rapid progress and bids fair to become one of the strongest in the school. There is opportunity for anyone to learn the latest and best methods in the line of Domestic Life and Economy. The work in this Department is of as high a standard as the other departments of the school. The enrollment this year was over fifty. There will probably be graduates from the department next year.



DOMESTIC SCIENCE AND ART STUDENTS.



COMMERCIAL ROOM.



Commercial Department

It is interesting to note the development of commercial education, especially within recent years. There are many among us today who well remember when commercial education was limited to the small private business school, whose course of study was made up of bookkeeping, penmanship, arithmetic and spelling, and could be completed within three to five months. Our high schools, colleges and universities within recent years have awakened to the fact that efficient men cannot be produced to meet the needs of modern industries by these short and elementary courses of training. They are now offering two, three and four-year courses, equivalent to other academy and college courses. McPherson College is at present offering an elementary course of one year and also an advanced course requiring two years. Our students have access to other courses in the academy and college by which they are enabled to extend their work so as to give them the equivalent of a three or a four-year course. That our students are appreciating the value of the most extensive course is evidenced by the fact that two of our present class of five are graduating from the advanced course with additional credit for work done in the other departments.

CLASS ROLL

BOOKKEEPING. 1918-1917

Blickenstaff, Carl
 Bailey, Clarence
 Burger, Chris
 Barringer, LeRoy
 Baldwin, Wilbur
 Barnhart, O. S.
 Decker, Leslie
 Finfrock, Glen
 Freeburg, Arnold
 Folger, Carleton
 Forehand, Buel
 Falls, William
 Grant, Eric
 Hollar, Clara
 Henard, J. A.
 Hulse, Charles
 Heckman, Letha
 Johnson, Tober
 Kinzie, Archie
 Kinzie, Albert

Kleopfer, Eva
 Lindeblad, Leonard
 Lacquement, A. P.
 Muse, Kenneth
 Marlow, Myrtle
 Mishler, Irene
 Moody, Jesse
 McClelland, Hervey
 Moore, Leland
 Nelson, Peter
 Oxley, Oscar
 Pair, Paul
 Shaw, Lester
 Swanson, G. O.
 Schermerhorn, Ernest
 Sheets, Grace
 Vogt, Hazel
 Wilson, C. E.
 Yoder, Loretta



The Endowment

During the past year McPherson College has faced and successfully met one of the greatest crises of her career. Previously the State Board of Education had announced that, unless all colleges of Kansas had to their credit at least \$300,000 worth of productive endowment, they would cease to be fully accredited by the State University. Obviously this would work a great hardship, for students would not care to attend a college where their work did not count for its full value and the graduates of such schools would have to duplicate much work when they attended other schools.

The management faced the situation squarely. They remembered times in the history of the school when the very existence of our college seemed threatened and were not to be daunted by this serious situation.

It was decided that President D. W. Kurtz and Field Secretary W. O. Beckner were to be the men who were to work the districts from which McPherson College draws her sustenance. Both men were well equipped in geniality, enthusiasm, and persuasiveness for the work and both lent a willing shoulder to the wheel.

The plan was to canvas all the smaller churches, those lying most distant from McPherson and those of lesser financial valuation first, and then depend upon the closer and wealthier churches to make up what was lacking. This was the first time any organized campaign for funds for the college had been attempted and the outcome was uncertain. Most people caught the vision of Christian Education in its true proportions and gave liberally. Some sacrificed that the cause might not be stunted. The campaign was not without its discouraging features, however. Men were met who opposed the cause of Christian Education, some thought more of their live stock than of their children, and still others made false statements in regard to their possessions. One of two were dealt with who, in comparison, would cause Ananias and Saphira to stand out as veritable angels of mercy. The money came in quite slowly at first, and by the latter part of November there yet remained about \$50,000 to be secured.

During the last few weeks of the campaign it was remarkable how much was accomplished. Donations from \$100 to \$1000 came in with but little soliciting, and churches gave unexpectedly large amounts. Men who had before given liberally increased their donations. Then the management was greeted with a pleasant surprise. The students, at their own instigation, raised \$11,545 for the fund. The campaign was carried on by classes, and there was not a class that did not respond liberally. This sacrifice on the part of the students who count their wealth not in present but in future terms presents one of the most loyal chapters in the history of our school.

On January 1 the goal was safely reached, and by the time of Bible Normal \$226,362 had been raised. That week was a season of great rejoicing for M. C. The crisis had come and had been successfully met, the students and supporters of the college had been proved loyal, and the cause of Christian Education was to go on unhampered.

MC SPIRIT 17





J. W. L. MAXCY.

LELAND HALDEMAN.

ARTHUR PRICE.

CECIL MAXCY.

College Quartet

For several years McPherson College has maintained a male quartet. Little note was taken of it until the spring of 1915, when the boys took first prize in the state contest at Wichita, Kansas.

The personnel of the quartet is as follows: C. C. Maxcy, first tenor; J. W. Maxcy, second tenor; Arthur G. Price, first bass, and Leland H. Haldeman, second bass.

These men gave several programs over the state of Kansas this season, and were very enthusiastically received by all.



GLEE CLUB.

Men's Glee Club

Ray Cullen
 Lowell Frantz
 Claude Wilson
 Leland Haldeman
 Galen Jones
 Eldon Engle
 Wilbur Yanlman
 Howard Engle
 Clyde Forney

John Puckman
 Floyd Mishler
 Jonathan Schmidt
 Frank E. Mohler
 Cecil Maxcy
 Paul Dannelley
 J. Wesley Maxcy
 Amos Boone
 Arthur Price



CHORAL UNION





McPherson College Vocal Music Department

The Vocal Music Department of McPherson College has made a steady healthy growth during the last several years that Professor Rowland has been at the head of it. Mr. Rowland is a man of splendid training, having had special work under some of the best vocalists of America. He, furthermore, is a teacher with high ideals, noble ambitions, and untiring effort.

The work of this department is receiving state wide recognition. Not long since the students of Professor Rowland carried away from the Wichita festival nearly \$200.00 in prizes. This season Mr. Rowland will be one of the judges at the contest of the colleges of the state at Wichita, Kansas.

The heads of all of the departments of music in the college, namely, voice, piano, and violin, are fully accredited in the Kansas State Music Teachers' Association. This season C. L. Rowland gave an address on "The Value of Choral Music" at the annual convention of this association at Salina, Kansas.

The theoretical work for both Voice and Piano Departments is taught by Mr. Arthur Price. Mr. Price is a graduate of the three-year course in the Art of Singing. He is a man of considerable experience and is a splendid baritone soloist.

The Choral Union has already given "The Creation," and it is the plan of the department to give "Belshazzar" this spring. The Choral Union is made of people of the city, who are musically inclined, and the regular music students of the college. This chorus consists of nearly one hundred voices. It always gives its numbers to an enthusiastic audience.



PIANO STUDENTS.





VOICE STUDENTS.



COLLEGE BAND.





Expression



STORY TELLING CLASS.





JUNIOR EXPRESSION



Lilly and people



Highness



Yoked



Spring is here



"Ma"



Happy go lucky



Dressing Bunches



Prof Hunter in riding time



Fr. to Heavly



Foot



A little bit pulling



John W. Hunter



GREEN GLASSES WORN BY COWS
SAVES FEED BILLS, AS THEY
WILL EAT SANDS AND
SHAYINGS.



Sanitary
Fountain
for the
livestock



PROF. MOHLER DOING THE CHORES.



FURFE
FEED



A FRUIT TREE AFTER BEING UNDER FROM
MOHLER'S CARE FOR AWHILE, WILL
GROW ANYTHING, FROM
GRAPES TO SQUASHES.



AGRICULTURE GRADUATES.

Back row: Carleton Folger, Warnle Brubaker, Edward Van Pelt.
Front row: Dewitte Brubaker, Professor H. E. Mohler, Roy Neher.





Agricultural Department

Columella, the Spanish-Roman writer of the first century A. D., said that three things were essential to successful farming: knowledge of the profession, capital, and a love for the calling. His statement is as true today as 1,900 years ago. Until very recent years the last two conditions, if met, were all that was considered necessary for the average farmer, but with the dawn of the twentieth century we enter upon a new era, one that demands an education for the farming class. It was to meet this demand that McPherson College saw fit to establish the Agricultural Department.

The Agricultural Department of McPherson College was established in 1913. The beginning of the work, as is common with most new departments in a small college, was somewhat handicapped, due to a lack of equipment and general interest of the public. The above difficulties have been rapidly overcome. At the present time twenty acres of the College Farm, consisting of 150 acres, has been set aside for experiment purposes, and the laboratory has become sufficiently equipped to meet the needs of the department in a standard college.

The trustees of the college are at the present time carrying on a campaign to raise \$6,000 to equip the farm. When this sum has been raised and the equipment placed on the farm, the department can truly be considered one of the strongest in the College. Kansas State Agricultural College recognizes our work and is doing much to make the department a success.

The 1917 senior class, consisting of five members, is made up of men that have spent their entire four years in M. C. The fact that this number comprises about half of the original number that started the course four years ago speaks well for the work that is being done.

The department under the present leadership has developed until thorough training is given in the following courses: Soils, Farm Crops, Animal Husbandry, Dairying, Entomology, Farm Management, and Farm Mechanics.

The attitude of the students towards the department is shown by the act of one senior in the department, when he offers two scholarships for the department next year. The future of the department is assured.



A bunch of grins



Turned Helen



Fishing



The modern way



Peeping



On a spring day



One, two, three, four, five



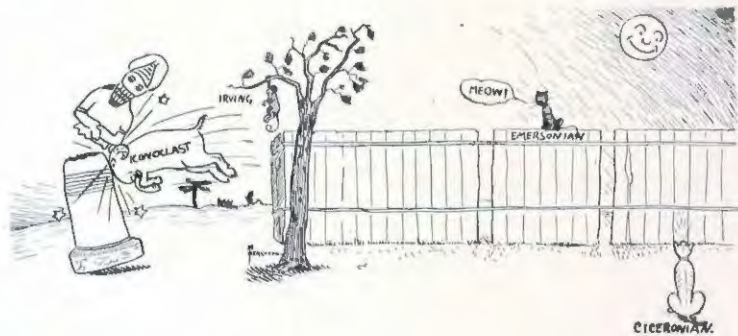
College Lake





AGRICULTURAL LABORATORY.







IRVING LITERARY SOCIETY.





Irving Memorial Literary Society

Motto: "Once an Irving, always an Irving."

Colors: Blue and White.

	President	Vice-President	Secretary	Critic
1st. Qr.	Frank E. Mohler	Herbert Hoffman	Pauline Vaniman	G. Arthur Price
2d Qr.	Lester Kimmel	Alice Hoerner	Greta Eshelman	Nan Swanson
3d Sem.	Lester Hoffman	Myrl Klepinger	Irene Hoffman	Floyd Mishler

ROLL CALL

Maxcy, J. W.
 Wilson, Claude
 Harnly, Morris
 Eshelman, Bruce
 Slisler, Faye
 Engle, Eldon
 Frantz, Lowell
 Baldwin, Wilbur
 Dettler, Clinton
 Kimmel, Lester
 Shoemaker, Ruth
 Williams, Ruth
 Swanson, Nina
 Mishler, Floyd
 Thomas, Kathryn
 Hoffman, Lester
 Hoffman, Paul
 Hoffman, Herbert
 Vaniman, Wilbur
 Snader, Fayanna
 Price, Arthur
 Vaniman, Lawrence
 Hoerner, Alice
 Rowe, May
 Kasey, Lillian
 Maxcy, Cecil
 Houston, Gladys

Dannelley, Paul
 Girard, Edward
 Hoffman, Irene
 John, Chaucer
 Byers, Martin
 Mohler, Frank
 Eshelman, Greta
 Phillipl, Roy
 Vaniman, Pauline
 Neighbors, Glenn
 Lacquement, Fay
 Engstrom, Harold
 Klepinger, Myrl
 Wampler, Roy
 Hawkinson, Helen
 Jensen, Turk
 Wendt, Arthur
 Haldeman, Leland
 Horton, Gilberta
 Harms, Martha
 John, Rockla
 Moors, Chester
 Cline, Bertha
 Knaus, Violet
 Brandt, Elwood
 Miller, Mannie



ICONOCLAST LITERARY SOCIETY.





Iconoclast Literary Society

	President	Vice-President	Secretary	Treasurer
1st Qr.	Homer Engle	J. Estel Jones	Ida Bowman	Ernest Ikenberry
2d Qr.	Amos Boone	Elery Becker	Grace Greenwood	Paul Yoder
3d Qr.	Amos Boone	Alice Vogt	Mabel Brubaker	Curtis Bowman
4th Qr.	Curtis Bowman	Rufus Slonker	Cecil Durst	Louis Bowman

ROLL CALL

Brubaker, Mabel
 Bowman, Louis
 Brubaker, Ruth
 Brandt, Paul
 Beery, Ruth
 Bowman, Joe
 Halle, Gayman
 Brubaker, Roy
 Boone, A. R.
 Boone, Adra
 Boone, Eva
 Becker, Elery
 Brechbill, Martin
 Bowman, Ida
 Bowman, Samuel
 Crumpacker, Lloyd
 Durst, Mary
 Durst, Cecil
 Engle, Homer
 Forney, J. C.
 Flickner, Edmund
 Greenwood, Grace

Hildebrand, Myrta
 Ikenberry, E. L.
 Jones, Galen
 Jones, Estel
 Johnson, Glenn
 McGaffey, Edith
 Martin, Scott
 Miller, Dorothy
 Rexroad, Carl
 Riddlebarger, Callie
 Schmidt, Jonathan
 Troster, Nina
 Taihelm, Ruth
 Ullom, Lulu
 Vogt, Alice
 Watkins, Earl
 Wickman, Carl
 Yoder, Paul
 Neher, V. Grace
 Harms, A. J.
 Slonker, Rufus
 Bowman, Curtis



EMERSONIAN LITERARY SOCIETY.





Emersonian Literary Society

Colors: Emerald green and silver gray. Motto: "Nothing venture; nothing have."

	President	Vice-President	Secretary	Treasurer
1st Qr.	Crawford Brubaker	Ray Cullen	Bessie Brubaker	Clay Orr
2d Qr.	Crawford Brubaker	Galen Evans	Marguerite Muse	Palph Lehman
3d Qr.	Clay Orr	Clarence Bailey	Della Waddie	Lota Neher
4th Qr.	Clarence Eselman	Roy Hylton	Carrie Mugler	Amy Pair

ROLL CALL

Bowman, Edmond
 Bowman, Laura
 Crumpacker, Sanger
 Daron, Zelma
 Falls, William
 Fillmore, Oliver
 Frantz, Bertha
 Frantz, E. M.
 Kleopfer, Eva
 McClelland, Hervey
 Mugler, Martha
 Mishler, Irene
 Proffitt, Saloma
 Sheets, Grace
 Sandy, Lillian
 Shirkey, Floy
 Eselman, Clarence
 Freeburg, Arnold
 Frantz, Lottie
 Hensley, Pearl
 Kinzie, Archie
 Lindblad, Leonard
 Manon, Birdie
 Melbride, Clarence
 Shaw, Lester
 Wilke, Lillie
 Bailey, Clarence
 Moody, Jessie
 McAvoy, R. B.
 Frantz, Ida
 Blickestaff, Carl
 Brubaker, Sarah
 Dirks, Isaac
 Pfifer, Lizzie
 Orr, Clay
 Ikenberry, Bertha
 Pair, Amy
 Rump, August

Shirkey, John
 Sitts, Chester
 Tousley, Emma
 Colebank, Sidney
 Baker, Lawrence
 Day, Della
 Eichenberger, Cedric
 Fox, Lee
 Gutz, Rosa
 Jones, Nina
 John, Ruth
 Moore, Leland
 Muse, Marguerite
 Orr, Albert
 Shores, Vero
 Vaniman, Ray
 Waddie, Della
 Warwick, Loin
 Mugler, Carrie
 Hylton, Roy
 Breen, Jessie
 Brubaker, Dewitte
 Brubaker, Crawford
 Brubaker, Bessie
 Beshore, Edith
 Cullen, Ray
 Clark, Fave
 Flora, Susie
 Lehman, Ralph
 Morkey, Ella
 Neher, Lota
 Rexroad, Edward
 Smith, Carrie
 Sherry, Nina
 Wagner, Anna
 Evans, Galen
 VanPelt, Luther
 Yoder, Loretta



CICERONIAN LITERARY SOCIETY.





Ciceronian Literary Society

Colors: Irish green and old rose.

Motto: Rowing, not drifting.

Emblem: Four Leaf Clover.

	President	Vice-President	Secretary	Treasurer
1st Qr.	Edward VanPelt	David Brubaker	Leah Millie	Alfred Frantz
2d Qr.	Henry Stover	Roy Neher	Mamie King	Lewis Naylor
3d Qr.	Roy Neher	Lewis Naylor	Olive Holmes	Modena Heckman
4th Qr.	Lewis Naylor	Warnie Brubaker	Bertha Boyd	Bertha Boyd

ROLL CALL

Anderson, Alma	King, Mayme
Andes, Orpha	Kinsinger, Harold
Baker, Agnes	Kinzie, Albert
Baker, Walter	Jarlowe, Myrtle
Burger, C. D.	McGaffey, Fannie
Blickenstaff, Mrs. Miles	McMurray, L. D.
Blickenstaff, Martha	Merkey, Ernest
Blickenstaff, Miles	Merkey, George
Boyd, Bertha	Merkey, Sam
Boyd, Elizabeth	Miller, Leah
Howser, Gladys	Moors, Melvin
Brubaker, Fern	Moors, Eunice
Brubaker, David	Moyer, Albert
Brubaker, Warnie	Muse, Kenneth
Buckman, J. F.	Muse, Marlan
Clark, Russel	Naylor, Lewis
Conver, Paul	Naylor, Mrs. Lewis
Crumpacker, Leonard	Neher, Ruby
Eller, John	Neher, Roy
Eller, Edna	Oxley, Charles
Entrikin, Grace	Oxley, Oscar
Engle, Howard	Pair, Paul M.
Finfrock, Glen	Pitzer, Alice
Flora, Myrtle	Reiman, Cadie
Flory, J. A.	Sandy, Lois
Folger, Carleton	Schermerhorn, Ernest
Forney, Elsie	Shelley, Meno
Frantz, Edna	Sherfy, Ernest
Gauby, Mamie	Sherfy, Mary
Gauby, Calvin	Shirky, Robert
Glick, Vera	Shirky, Kathryn
Heckman, Letha	Snowberger, John
Heckman, Modena	Stover, Henry
Henard, J. A.	Stutzman, Dellah
Henard, Mrs. J. A.	Teeter, Ruby
Hoffert, Phoebe	Ullom, Fern
Hollar, Mae	VanPelt, Edward
Hollar, Clara	Vogt, Hazel
Holmes, Olive	White, Esther
Hulse, Charles	Williams, Albert
John, Bernice	Wilke, Clarence
Keim, Bernice	Young, J. E.
Keim, Virgie	



Short and Sweet



Ata Eita Pi



How my makes



Love me, Honey?



'Chief'



Weg Tappa Keig



Going up!



How Day??



Mary Jones



STUDENT COUNCIL.

Student Council

President.....J. Estel Jones
 Vice-President.....Galen Jones
 Secretary.....Pauline Vaulman
 Treasurer.....Joseph Bowman

ROLL

Senior College:
 Faye Sisler
 J. Estel Jones

Junior College:
 Adra Boone
 Galen Jones

Sophomore College:
 Iona Ebaugh
 J. Clyde Forney

Freshman College:
 Ruth Shoemaker
 Paul Brandt

Senior Academy:
 Devette Brubaker

Junior Academy:
 Pauline Vaulman

Sophomore Academy:
 Henry Stover

Freshman Academy:
 Bertha Frantz

Expression:
 Mary Durst

Music:
 Martha Blikenstaff

Faculty Members:
 Prof. E. M. Studebaker
 Prof. J. C. Russell



Y. M. C. A. CABINET.





Y. M. C. A.

Motto: "The men of McPherson College for the man of Galilee."

The object of the Association:

1. To lead students to faith in God through Jesus Christ as their Divine Lord and Savior, according to the Holy Scriptures.
2. To lead students into membership and service of the Christian church.
3. To promote their growth in the Christian faith and character, especially through the study of the Scriptures.
4. To train them for work and leadership in applying the principles of Christ to the problems of human society.
5. To win their life devotion to the purpose of Christ for the evangelization of the world.

Organization.

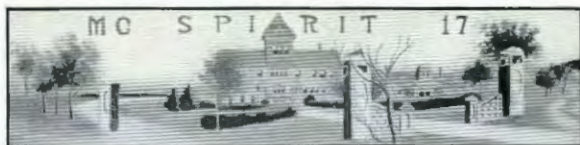
J. Clyde Forney, President.
J. L. Bowman, Vice-President.
Curtis Bowman, Secretary.
Galen G. Evans, Treasurer.
Roy Neber, Devotional Committee.
A. R. Boone, Music Committee.

Roy P. Hylton, Bible Study.
E. L. Ikenberry, Mission Study.
Ray R. Cullen, Social Committee.
E. B. Van Pelt, Labor Committee.
Eldon Eagle, Membership Committee.
Faculty Advisors, Dr. Cutler and Prof. Mohler.



V. W. C. A. CABINET.





Y. W. C. A.

OFFICERS

President	Edith McGaffey
Vice-President	Mary Darst
Secretary	Leah Miller
Treasurer	Mary Daggett
Chorister	Martha Blickenstaff
Social Service	Bertha Ikenberry
Social	Emma Tousley
Bible Study	Eva Boone
Mission Study	Ernal Blickenstaff
Association News	Ruth Brubaker
Religious Meetings	Olive Holmes
Advisory Board	
	Mrs. Falmestock, Mrs. Mohler, Mrs. Swope

Our Purpose

The purpose of the Young Women's Association shall be to unite the women of the institution in unflinching loyalty to Jesus Christ, to lead them to accept Him as their personal Savior, to build them up in the knowledge of Christ, especially thru Bible study and Christian service, that their character and conduct may be consonant with their belief. It shall thus associate them with the students of the world for the advancement of the Kingdom of God. It shall further seek to enlist their devotion to the Christian Church and to the religious work of the institution.



VOLUNTEER BAND





The Volunteer Band

The Volunteer Band is one of the oldest organizations in the school. Ever since it was organized it has year after year been performing an important work in McPherson College. It is true that some years there were not a great number to keep the work going, but the missionary spirit has nevertheless been steadily growing. Through the previous efforts of the band the Elys, Vanmans, Florys, Crumpackers, Horning and Hofferdt have gone into active service in the foreign field of India and China, while a still greater number have gone into the work of the home field.

This year the band is the largest it has ever been. Its membership consists of regular members—those who have definitely pledged themselves for the foreign field—and associate members—those who have pledged their service to the Master in whatever work they may enter. The membership this year numbers close to fifty, with an average attendance of about thirty-five. The weekly meetings on Thursday nights have been full of inspiration and help. F. H. Crumpacker, Mrs. Crumpacker, Traveling Secretary Miller, Miss Himmelbaugh, J. J. Yoder, W. O. Beckner, Dr. Fuller and Oliver Austin have shown us the bigness and nobility of the missionary work.

The primary aim of the band has been to stimulate a missionary spirit among the students, but this year the band has set a new and more definite goal. It has decided to supply from the McPherson Band a complete corps of workers, as soon as possible, for the manning of a station in either China or India, or possibly in both fields. We believe that men and women who learn to work together while in college will be able to accomplish a much greater work through their combined efforts in the mission field. The idea has appealed strongly to many members of the band, for it removes, to a large extent, the abstractness of the idea of being a missionary—that idea of going off to the ends of the earth to work single-handed among the heathen.

Believing, however, that we are not only preparing to live, but are really living now, the band has strongly emphasized the service side of the work. This has largely taken the form of deputation work. Teams consisting of a quartette or more have gone to Centennial, Groveland, Ramona, Darlow, St. John, Larned, Wichita, Monitor, Newton and Holland, and Beatrice, Neb. This work has been most helpful to those who have gone to these places, and, judging from the interest and financial response from these churches, they have appreciated it even more.



I. P. A. OFFICERS.

Intercollegiate Prohibition Association

Officers as they come in the picture: Mabel Drubaker, Treasurer; Bruce N. Eslieman, Vice-President; Carl Rexroad, President; Morris H. Harnly, Publicity Man; Alma Anderson, Secretary.

Among the many illustrious student organizations we must here mention the intercollegiate Prohibition Association. The I. P. A. of McPherson College was organized in 1904 and has been in active service each year throughout its history. Each year a rousing oratorical contest is held, from which the winning orator is sent to the state contest.

This year an unusually good local contest took place. Judging from the yells and songs of various kinds we would conclude that the prohibition spirit runs high, and McPherson College is a leader in the prohibition work. The orators in the local contest were J. W. Maxey, first; Morris Harnly, second; Roy Hylton and Arthur Wendt. Mr. Maxey went to the state contest at Sterling, where he won second place.

Besides the oratorical contests the I. P. A. gives programs at various places, and buys books on the subject for the library.

Through the efforts of some of the I. P. A. members at the District Conference held at Wichita, money was raised to send the voters among the students from Nebraska and Missouri home to vote for state-wide prohibition.

Last year a Flying Squadron was sent to Nebraska under the auspices of the I. P. A. in a campaign for state-wide prohibition. This organization consisted of four members from the I. P. A. They were gone ten days, speaking eighteen times, in seventeen different cities and towns, and to between 3,000 and 5,000 people.

We are living in a "bone dry" state, but nevertheless we work for prohibition, shout prohibition, and pray for prohibition.



STUDENT MINISTERS



Baby Pictures of Annual Staff.



J. E. JONES.



EDITH MCGAFFEY.



J. W. L. MAXCY.



L. F. KIMMEL.



HERBERT HOFFMAN.



W. E. VANIMAN.



The Staff

The staff of our College Annual
Are stern, hard-working crooks,
They may always be recognized
By their harassed and care-worn looks.

The chief is tall and handsome,
And knows it all, we ken,
He's the only Senior on the Staff,
This busiest of men.

John Westley Levi Massey,
The writer of "Smear O' Ink,"
Sings in the quartet and orates,
Oh! he's some man, we think

The only fair one of the lot
Is proud of her Irish descent,
She bosses the chief, advises the rest,
And to work does always consent.

Herb is Judas and carries the bag,
While Wilbur dupes the town,
They say, "Patronize M. C. Spirit,
And you will have renown."

Very small but mighty is Cheryl,
The favorite of them all,
We like his wit and humor,
But he can't play basket-ball.

—FANNIE McGAFFEY.



MARRIED STUDENTS AND THEIR FAMILIES



THE OLDEST STUDENT, J. C. FLORY.



INTERIOR OF THE LIBRARY



"Hoomies"



Old Maids



Sunday 11.30 AM



Hold up.



Reform Brethren.



Anna.



"Pals"



In the park



We don't care



Hey!



Our wives have gone to the country 'Hoary'!

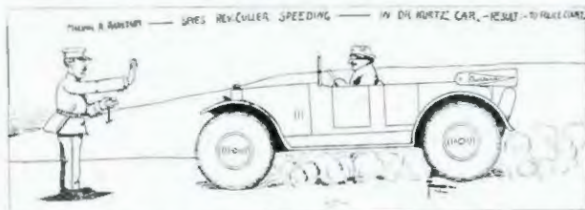


1916

The Log Book

1917

- Sept. 11. Students pour in from all points. Osculatory processes of the students over-worked. Bubbling joyousness everywhere in the ascendancy.
- Sept. 12. Registration begins. The verdant ones ask how much credit they get for chapel and the location of the campus. Faculty waxes bleary-eyed and crabby under the strain. Thirty-five per cent increase in enrollment.
- Sept. 13. Opening address by Dr. Kurtz. Students gasp at high ideals set forth by proxy.
- Sept. 15. Dr. Kurtz caught speeding. Couldn't talk the judge out of it. Irvings hold first social of year in Price's pasture.
- Sept. 16. Iconoclasts hold social in chapel. Eagle very clearly sets forth the standings of the two "sister" societies for the benefit of the new students.



- Sept. 18. Dragnet of the law reaches out and captures Dr. Collier. A finely worked out psychological argument failed to convince judge he wasn't speeding. Y. M. C. A. social in gym. Boys fill to overflowing with watermelon. Cedric was to have recited his poem on "Sunnybrook Farm," but was overcome with modesty.



- Sept. 20. Y. W. C. A. social at Hoerner's. Literary societies reorganized. Weeping, wailing and gnashing of teeth as family ties are broken.



- Sept. 21. Verink hired to coach basket-ball. Yoder pinched for speeding. Management holds indignation meeting.
- Sept. 22. Brethren fellowship meeting in chapel. Beckner turns in much kale toward endowment fund.
- Sept. 25. Harnly to Texas on real estate business. Wilson Club organized. Juniors have picnic under cottonwood tree east of town. Galen, Wilbur, et al., stay late.
- Sept. 27. Yoder makes first speech in chapel, urging students to "settle up." Flag pole unjointed. Kathryn Shirkey assumes duties in capacity of chairman of Social Service Committee.
- Sept. 30. Bell leaves town on the freight train while the cop sleeps. After gentle hint from prexy, boys slip out in dead of the night and set up flag pole.
- Oct. 3. Mrs. Trus read in chapel. Cedric receives chicken from home and sends piece to Miss Bowman enclosed in poetry inscribed tissue paper.
- Oct. 5. Academy Freshies have first get-together social. A peeping party held outside dorm parlor window during prayer meeting hours. Peepers reported most wondrous sights.
- Oct. 6. Irving Iconoclast ball game. Irving's, 10-6. J. E. Jones, M. U.'s most idealistic student, "separated them little boys."
- Oct. 10. W. J. Bryan spoke in Opera House at 10 a. m. Prof. Yoder and Mrs. Fahnstock hold a very quiet and orderly chapel service.
- Oct. 12. Most of faculty attend District Meeting. Junior and Senior Aes stage barbaric fracas at Circle Lake.
- Oct. 13. Much vociferous, vehement and vituperative talk. Senior Aes very meek and humble.
- Oct. 16. Seniors entertain Freshies in gym. Fresh imbibe huge quantities of doughnuts and punch. Prexy and Beckner come in with juicy endowment scalps.
- Oct. 17. Bleak and chilly.
- Oct. 18. Republican-Democratic ball game. Republicans, by borrowing several Wilson men, succeed in tying score. Bowman wisely "wushies" more would join Volunteer Band.
- Oct. 21. Cedric entertains poetical aspirants in Macey's room. The muses are outraged. Some iconways strive strenuously to change name to "Hiley Memorial." Alice Nadene filibusters the movement.
- Oct. 23. Morris makes speech in chapel for Hughes. Eagle screams and walloh howls. Audience very enthusiastic.
- Oct. 27. Very unusual occurrence. Turk and Helen sit together in chapel.
- Oct. 31. Halloween social held in gym at request of Dr. Harnly and Joseph Andes to keep boys out of mischief. Witches, bats, ghosts, and cornfodder in abundance.
- Nov. 2. Dr. Harnly to Texas on real estate business. Basket-ball pep meeting. Mishler makes stirring address urging the organization of a band.
- Nov. 4. Emersonians entertain Ciceroians. Irvings, after two months' deliberation, adopt a constitution.
- Nov. 7. Partisan spirit runs high. Nebraska students to Nebraska to vote down John Barleycorn.
- Nov. 8. Dr. Kurtz has first attack of the la grippe. Mishler, Hoffman and Kimmel take sick in Hutchinson.
- Nov. 10. Exams.





- Nov. 11. More exams. Miss McVey to Carleton, Nebraska.
- Nov. 15. Senior Aes take Sophomores into camp 20-19. Sophs too sure of themselves. Yoder calls upon students to settle up.
- Nov. 16. Miss Rider leads chapel services today. Reads students a very helpful and instructive chapter from Hezekiah.
- Nov. 18. New Irving officers elected. Doc decides to do the remainder of his literary work at the "Forum."
- Nov. 20. Boys hunt rabbits on college ammunition. Sad day for the snowy seated quadrupeds.
- Nov. 23. Dorm students are growing long ears and hairy paws owing to the vast quantities of rabbit inhibited. Very alarming.
- Nov. 24. Endowment fund within \$25,000 of the goal. Mr. Hyde of Wichita addresses students.
- Nov. 25. Dr. Kurtz conducts ladies' class on "Relations with the Young Men" after chapel. Maxey is cornered and accused of leading the ladies astray.
- Nov. 28. Dr. Kurtz: "If a man lost a foot, would he lose a part of his soul?"
Chaucer John: "He would lose one sole."
- Nov. 30. Great Turkey Day game between M. C. and Bethany Swedes results in a score of 6-0 for M. C. Rooters go wild. (In reality, students spend quiet day hunting rabbits.)
- Dec. 2. Dr. Kurtz has second attack of the grippe. Seniors appear in chapel in caps and gowns. Forget to remove caps during prayer.
- Dec. 5. Reform club appears in chapel. Double goggled minister tells us what he'd do if he were in college again. Prof. Hielert gives first number of the lecture course.
- Dec. 6. Basket-ball practice begins. Crummie grunts vociferously as coach plumps ball into his stomach.
- Dec. 10. Clyde Forney, the "Intellectual giant," gives Wichita flock a message on "The Fundamental Psychological Imponderable Teleological Interpretation of the Psychology of the Theistic Ontological Proof of a Peanut." Explains terms to ignorant audience.
- Dec. 12. Prof. Yoder asks students to settle up before starting on Xmas shopping. Morris Haruly spends fifteen minutes cleaning his nose today.
- Dec. 13. Y. W. C. A. Bazar starts. Students swindled out of money shamelessly through "art exhibit."
- Dec. 14. Fayanna leaves for California. Arthur very downcast. Students launch endowment campaign. Loyalty galore. Edison concert.
- Dec. 16. Dr. Culler prays sixteen minutes in chapel. Irvings cleaned up on footways, 26-25. Juniors pull taffy at Vaniman's.
- Dec. 18. "The Creation" at Opera House. Bidding young soloists very awkward in evening dress.
- Dec. 19. Dormitory social. Rooms receive quarterly cleaning. Freshies appear in skull caps.
- Dec. 21. Holidays. Students leave for dad's table with thankful hearts. Few unlucky ones fare sumptuously in dormitory.
- Jan. 2. Students gather in. Those on College Hill are very weary and careworn after the mad social whirl of the cousin bunch during the holidays.
- Jan. 4. Uncle Danny struggling under third attack of the grippe. Morris Haruly blessoms forth in corduroys and flannel shirt.



Dormitory Evolution





- Jan. 5. Martin Brechbill's hands are painfully burned sliding down a rope from the third floor of the girl's dorm.
- Jan. 6. Twenty-five Irvings turned out to the program tonight. Weather too stormy for a trip to the "Mikado."



- Jan. 8. Subdued excitement. Pep meeting in chapel preparatory to the morrow's game. Roy Brubaker purchases a fine new Charley Chaplin hat. Struts back and forth between Library and Sharp Hall very much pleased with his appearance. Admiring girls encompass him round about.
- Jan. 10. M. C. 20—Bethany 18. Terrible Swede's goat is got. Wild enthusiasm.
- Jan. 11. "Bethany Holiday" is declared. Maxcy and Dr. Harnly with noses rubbing engage in fierce wordy battle. Forney, acting in the capacity of the Pres. of the Y. M. C. A., leads the faint-hearted students back to the fold at the psychological moment.
- Jan. 13. College debaters' try-out. Old line contest held behind closed doors. College Juniors decided to have a "Junior Week."
- Jan. 16. M. C. 37—Salina Wesleyans 24.
- Jan. 18. Washburn takes M. C. to first cleaning of the season.
- Jan. 19. Exams, that's all.
- Jan. 20. Same as yesterday.
- Jan. 21. Uncle Danny in the clutches of the fourth attack of the grippe this morning. Preaches wonderful sermon on, "The Challenge to the Churches." Visiting brethren gather in.
- Jan. 23. "Bossy" gives students several much appreciated readings in chapel. Dr. Kurtz delivers lecture on "The Meaning of Culture" in chapel.
- Jan. 24. Some visiting brethren view with alarm the short pants of the basket-ball boys. Advanced Chorus gives recital in chapel.
- Jan. 25. Arnold Hall dedicated. Other buildings on campus honored with names. Heating plant and fire department building slighted.
- Jan. 26. Results of endowment campaign officially announced. \$226,362. Much rejoicing. Dr. Schwegler lectures on "Adolescence."
- Jan. 27. Dr. Sharp informs teachers they must not eat students' dinners for them. Dr. Frizell takes notice.
- Jan. 30. Trustees have stormy session. War and rumors of war. Basket-ball boys are afraid they will have to put on sleeves and sew ruffles on their trousers.
- Feb. 2. Very warm and pleasant. Greta and Daisy decide to sleep out in open to ward off tuberculosis. Slumbers disturbed by rude boys with Pyrene fire extinguishers.



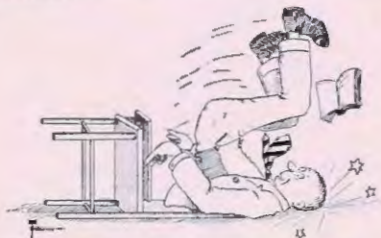
- Feb. 3. M. C. 30—Washburn 23. Students presented with measles germ. Very grateful.
- Feb. 5. McPherson College transported bodily to Lindsborg via Henrietta route. Swedes humbled 20-11. Students wish to die while they are happy.
- Feb. 7. Prof. Rowland purchases new Henrietta. First assault made upon Billie Brandt by the ladies. He refuses to give up the ship. Morris Harnly nearly chokes to death upon an apple dumpling. Decides to be a better boy.
- Feb. 9. Cooper eats M. C.'s dust 27-12. Prim Cooper students shocked at rudeness of our boys in taking the game from them. Ben buys victoriously after game.
- Feb. 10. Prof. Craik addresses students in chapel. Jokes put the Peruna almanac and the Faultless Starch books to shame. Irving "Longfellow Program" fizzles out. Irvings to Mikado.
- Feb. 11. Dr. Culler pours hot shot down throats of Irvings. They are very meek and humble.
- Feb. 12. Basket-ball pep meeting. Dr. Culler advises students to cut studies if they interfere with athletics.
- Feb. 14. M. C. 42—Cooper 18. Uncle Danny, after a visit to an osteopath, finds one leg is shorter than the other. Starts to limp forthwith.
- Feb. 16. A desperate assault waged on Billie by certain ladies today. He remains steadfast. Bethel 36—M. C. 20. !! ♪ (/) !! ————— !!!
- Feb. 17. Local Prohi Contest. Much pep. Maxcy wins.
- Feb. 20. J. J. uncurls some eloquent oratory in chapel. Accepts Prof. Studebaker's clock.
- Feb. 22. Washington Program in chapel. Student recital. Freshies entertain themselves.
- Feb. 23. Dr. Fritzell makes hit with students by reading for three-quarters of an hour from a psychology in chapel. Hayes Normal pushes M. C. close. 23-19.
- Feb. 24. Dr. Kurtz to Boston convention. Dr. Harnly has charge of chapel exercises. Thumps chapel desk vigorously as he holds forth to students for fifteen minutes on the desirability of coming to chapel on time.
- Feb. 27. Team defeated.
- Feb. 28. Another defeat. Dr. Harnly's bones rattle as he vigorously denounces late chapel comers.
- Mar. 1. Third consecutive defeat. Maledictions!!!



- Mar. 3. Dr. Harnly gets hysterical as he shrieks to students the value of getting to chapel on time. Hastens to Texas on land business.
- Mar. 4. Dee and Fayanna with many misgivings spend joyful day in the country. Watkins does not take dinner at Uncle John's today.



- Mar. 5. Arthur and Fayanna, after heartrending talk in the matron's room, decide to dissolve partnership pending such time when Fayanna shall "make good." Much talk pro and con, mostly con. Dr. Harmon lectures on "Making Men."
- Mar. 6. Yoder makes famous address concerning tampering with bell system. Juniors take notes.
- Mar. 7. Y. M. C. A. election. Fayanna and Arthur are taking sly and longing peeps at one another today.
- Mar. 8. Beautiful day. Half holiday declared to take pictures for Annual. College debaters have final try-out.
- Mar. 9. Many visitors. McPherson County B. B. Tournament. Moundridge wins. Fayann and Arthur have "heart to heart" talk in parlor. Almost persuaded.
- Mar. 10. Basket-ball squad banqueted in dining hall by school.
- Mar. 11. "Grenfell of Labrador" service. Arthur and Fayanna now entirely reconciled. Fayanna has "made good." Students change subject.
- Mar. 14. Chalk talk.
- Mar. 16. Sophs have St. Patrick's party at Hawkinson's.
- Mar. 18. Prof. Russel inspects soli on the College Farm.
- Mar. 20. Adra accompanies Jonathan to his home for family inspection. Family put "O. K." on her.
- Mar. 22. Debates. M. C. vs. Friends U. Unanimous decision for M. C. M. C. vs. Fairmount. Unanimous decision for Fairmount.
- Mar. 24. Homer takes Myrta home with him for family inspection. Family puts "O. K." on her.
- Mar. 27. Dr. Culbertson lectures in chapel. Uncle Danny's short leg gives way in Theism class today.



- Mar. 28. Gymnasium exhibition. Wilbur Vanman dreamed he was a papa in English class and rocked his chair over. Great was the fall thereof.
- Mar. 29. The philosophers decide to try a spread on Uncle Danny to see if he can be worked out of giving them an exam. He can.
- Mar. 30. Much real estate changes hands. Dr. Kurtz lows as how a Kansas dust storm is an abomination in the sight of Jehovah. Maxey takes second in state I. P. A. contest at Sterling.
- Mar. 31. Dr. Frizell comes to chapel without tie today. Great rejoicing among orthodox brethren. Bruce and Kathryn play hide and seek. Bruce gets sore and runs home. Kathryn quits right now.
- Apr. 1. The two Rattis go buggy riding with Mishler. The "boos" gets sore.



Apr. 3. Very windy today. Uncle Danny taxes his short leg and wind severely in chasing down his sky piece. J. J. "georges" him about it. Debates. M. C. vs. Cooper at McPherson. Two to one for M. C. M. C. vs. Bethel at Newton. Two to one for Bethel.

Apr. 4. Martial spirit pervades campus as war cloud lowers. Annual staff working at break-neck pace.

Apr. 6. Dr. Harnly slips into bookstore unobserved and slyly reaches into rack after a Hershey. Gets finger into a mouse trap. Loud screeches and a skinned hand.

Apr. 7. An extraordinary happening! Results of a stark system of bookkeeping on the part of Prof. Yoder comes to light. Undercharges a student. Marvel of marvels, what won't happen next?

Apr. 10. Annual to press. Into thy hands, O students, we commend our "Spirit."

The College Store



Copyright Talbot Park

is showing a New
Hart Schaffner &
Marx Sport Suit—

Notice the general
lines,

—Not loud

—Not too quiet—
not too severe

—Not too plain.
Price \$25.00

Wear one of these
Sport Suits and feel
SATISFIED.

Laderer-White Clo. Co.

—The Good Clothes Store
—Under the Big Wire Sign.

L. HELMER EK

Piano Tuner and Repairer

8 Years Continuous Experience.
Player Pianos a Specialty.

725 East Marlin St.
Phone 246 White

McPherson, Kansas.

Phone No. 66

FALK & CO.

SANITARY PLUMBING

Steam and Hot Water Heating

Plans Made and Estimates
Furnished.

McPHERSON, KANSAS.



F. C. ROBB

Photographer for This
Annual.

McPHERSON,
KANSAS.

**Lumber--
Coal--**

All Kinds of Building
Material and Fuel.

Long years of practical Experience behind our business. We carry large stock of the highest grade material—buy in large quantity for cash only and sell at a moderate profit. Try the Home Yard—

**McPherson
Lumber Co.**

North of Jail. Phone 18.

**JEWELRY
AND MUSIC STORY**

Watches, Clocks, Jewelry, Spectacles,
Sheet Music, Talking Machines
and Musical Instruments.

J. E. JOSEPH

118 South Main St.

BEE HIVE GROCERY

Staple and fancy groceries,
fresh fruits and vegetables in
season—Lowest of Prices.

Best of SERVICE.

All Orders Delivered

Phone No. 230.

McPHERSON COLLEGE

THE STANDARD COLLEGE

**Accredited by the State Board of Education
—Its graduates receive State Certifi-
cates.**

And are admitted to the graduate schools of all Un-
iversities. Thirty-six Professors and Instructors. A Fac-
ulty of EXCEPTIONAL STRENGTH—

**Six Modern Buildings—Departments Col-
lege, Academy, Normal, Bible, Agricul-
ture, Domestic Science, Vocal and In-
strumental Music, Art, Expression.**

**Splendidly Equipped Laboratories— A good
Library—Two Good Modern Dormitor-
ies—A Large Gymnasium.**

Located in one of the most beautiful and morally
clean towns in Kansas. COST VERY MODERATE. Ov-
er four hundred students. \$225,000 interest-bearing en-
dowment.

Write for our New Illustrated Catalogue.

ADDRESS McPHERSON COLLEGE

McPherson, Kansas.

THE REPUBLICAN

By W. J. KREHBIEL

Daily and Weekly

McPHERSON'S PRINTERY.



Society Brand Clothes

Graduates and Under Class Men

... will find the new
Spring Suits from
The House of
Kuppenheimer &
Society Brand
just the thing for
Dress-Up occasions.

\$20 to \$35

STROUSE'S
THE BEST STORE FOR MEN

QUALITY

and

CLEANLINESS

before everything—that's why we
lead and the rest follow when it comes to

LUNCHEES

Candies and Drinks, we can prove the
above by a trial. Something new—
Ice Cream Sandwiches.

LLOYD'S

Hubbell's

THE REXALL STORE

- Johnston Chocolates
- Lowney Chocolates
- Kodaks and Films
- Martha Washington Candies.

"W-R" FLOUR



That there is merit and lots of it to "W-R" Flour there can be no doubt. If it wasn't up to the standard claimed for it, the sales would not keep up. Our sales are increasing all the time, and we hear nothing but praise for "W-R" Flour from our customers.

Wall-Rogalsky Milling Co.

Citizens State Bank

—of—

McPHERSON, KANSAS.

Carry your Bank
Account With
this Bank.

Deposits Guaranteed

Thos. C. Sawyer, President.
Carl A. Grant, Cashier.
E. L. Kreuter, Ass't. Cashier.
Geo. Allison, Ass't. Cashier.

**CUT FLOWERS
A SPECIALTY**

**Chas. A
Simonson**
—FLORIST—

Phone No. 172 501 North Ash
McPherson, Kansas.

FRANK O. JOHNSON

—ATTORNEY—

Admitted to the State and U. S.
Supreme Courts.

Office over McPherson Bank.

A little trouble now and then
 Will benefit the best of men;
 Smooth sailing leads to careless ways,
 If you had sunshine all your days,
 And never knew the gloom of night;
 You'd not appreciate the light.
 The man who falls and finds his feet,
 Is thenceforth twice as hard to beat;
 The soul that can survive despair,
 In time becomes immune to care.
 You must be seasoned in the storm,
 Adversity produces form.
 Make stamina, and in might
 Get up again, you're still all right;
 Stand fast and screw your courage tight,
 Wade in and wage a winning fight.

—(ANONYMOUS.)

Houston-Morrison Lumber Co.



Insist on getting the
 BEST Flour—

**ALWAYS ASK FOR
 THE FAMOUS
 BIG "B."**

Capital and Surplus, \$37,000.00

SWEDISH-GERMAN STATE BANK McPherson, Kansas.

Solicits Your Business.

OUR POLICY

To be conservative, progressive and
 as safe as can be devised.

All Deposits Guaranteed.

HAWLEY BROS.

for base ball and tennis
 supplies. Also full line
 of hardware, cutlery,
 etc.

Phone No. 24.

223 North Main St.

THE A. J. SHAW INSURANCE AGENCY

General Hail Agents, Oklahoma, Kansas, and Nebraska.

McPHERSON, KANSAS.

Agents Wanted in Unoccupied Territory.

STOP—LOOK—LISTEN!

Danger of losing that **High-Priced Crop** of Wheat by **Hail Storm.**

Protect it by one of our **GUARANTEED POLICIES.** Our Motto:

"Service." Our Slogan: "Safety First."



Mrs. C. V. McColloch

Photographer and Portrait
Artist

Special Rates to Students.

McPHERSON, KANSAS.

422 North Main St.,

ARE YOU HUNGRY?

We can fill your wants.
Fresh bread, cookies,
candy and pastry.

KYDD'S BAKERY

Frank Hamlin, Proprietor.

**HASTRITER'S
CASH GROCERY**

For

Good Things to Eat

**Bring Us Your Poultry,
Eggs and Cream.**

JAHN & OLLIER ENGRAVING COMPANY

*Designers and Engravers
of Highest Quality
ANNUALS*



Makers of
Illustrations, Designs
Photographs
Half-tones, Line and
Ben Day Zinc Etchings
Three and Four Color
Process Plates -
Acid Blast Quality

Main Office and Plant CHICAGO *Atlanta - Dayton - Kansas City*
554 W. Adams Street *Milwaukee - South Bend - Toledo*



F. A. Vaniman, President
Peoples State Bank.



C. Vaniman, Cashier
Peoples State Bank.

DEPOSITS GUARANTEED

Capital and Surplus, \$45,000.00.

Students Welcome.

**We Buy and Sell All Kinds of
Garden and Field Seed**

ALFALFA SEED A SPECIALTY

All Kinds of Feed—we claim
a share of your patronage.

Phone No. 68.

McPherson Feed and Seed Store

Harmon & Helsel, Prop.

WE CATER TO THE STUDENTS' TRADE

We guarantee to save you money
on Watches, Diamonds, Jewelry, Cut
Glass, Silverware, Etc.

Bring us your Kodak Films for de-
veloping. Eyes tested free and Glasses
properly fitted.

R. O. BROWN JEWELER & OPTICIAN.

Sunflower Barber Shop

Employ None but leading Ton-
sorial Artists.

120 N. Main Street

W. A. Rausch, Proprietor.



F. A. Vaniman, President
Peoples State Bank.



C. Vaniman, Cashier
Peoples State Bank.

DEPOSITS GUARANTEED

Capital and Surplus, \$45,000.00.

Students Welcome.

We Buy and Sell All Kinds of
Garden and Field Seed

ALFALFA SEED A SPECIALTY

All Kinds of Feed—we claim
a share of your patronage.

Phone No. 68.

McPherson Feed and Seed Store

Harmon & Helsel, Prop.

WE CATER TO THE STUDENTS' TRADE

We guarantee to save you money
on Watches, Diamonds, Jewelry, Cut
Glass, Silverware, Etc.

Bring us your Kodak Films for de-
veloping. Eyes tested free and Glasses
properly fitted.

R. O. BROWN JEWELER & OPTICIAN.

Sunflower Barber Shop

Employ None but leading Ton-
sorial Artists.

120 N. Main Street

W. A. Rausch, Proprietor.



Teachers and Students Are
Always Welcome at

Matthews Millinery

Where you will be shown distinctive, original, practical and beautiful styles.

McPherson College Needs You!!!

MOVE TO McPHERSON

Own your home and pay for it the same as you pay rent.

I have lots close to the College!

I have money to loan!!

I will build you a house according to your plans!!

So why pay rent and be uncertain where you will live next year?

For information, write or call on—

ROY C. KINZIE
McPherson, Kansas.

INSURANCE A SPECIALTY

Life	Fire
Health	Hail
Accident	Tornado

WATCHES JEWELRY

J. ED. GUSTAFSON

Fine Watch Repairing
a Specialty

McPherson, Kansas.

DR. W. C. HEASTON

PHYSICIAN AND SURGEON

Rooms 1 and 2 over The Grand

McPherson, Kansas.

Hudson Super-Six

If you buy a car in the Hudson class you are bound to want this Hudson. You will not find a rival in sight of it.

McPherson Motor Co.
Milan Riddell, Manager.

A DUTY—

It is as much our duty to improve the homes of this community as it is that of the local preacher to improve its morals—let's talk business.

LAKE SUPERIOR LUMBER CO.

Home of High-Grade Building
Material.

Phone No. 40. 123 East Martin.

WE SELL COAL!