

Fiftieth Anniversary Campaign

1887

1937

SERIES XXV

NOVEMBER, 1936

NUMBER 9

Fiftieth Anniversary Occasion for Review of McPherson College as It Is Today

Full Standardization of School Is Goal of Campaign

Our College—McPherson College—was founded by S. Z. Sharp and associates in 1887. It is located at McPherson, Kansas, the county seat of McPherson County, a town of about 7500 population, situated approximately 200 miles southwest of Kansas City. The College is owned and controlled by the Church of the Brethren in thirteen states between the Mississippi and the Rockies, including Idaho which lies west of the Rockies. This area has about 21,000 Brethren people in seventeen church districts.

The college is directed by 24 trustees, 17 of which are elected by the respective districts, five by the above trustees, and one by the alumni association. The president of the College is an ex-officio member.

During the 49 years of its existence, the College has accumulated considerable capital. There are eight

buildings on the campus which comprises from ten to fifteen acres. The campus and buildings are valued at \$441,150. The College has a productive endowment of about \$227,523, annuities valued at \$88,591, assets left by the closing of Mt. Morris College valued at \$69,777, and a special purpose fund amounting to \$2,842.

The College has had an annual

This is approximately half of the strictly collegiate students. The number of Brethren students has increased by about 50% during the past five years.

McPherson College has graduated 2029 students. Of these 1054 have been graduated from the college course with a bachelor's degree and 975 have graduated from other courses. Of the total number of

graduates 161 are deceased, 523 are homemakers, 404 are in educational work—teaching and administrative work—174 are farmers, 93 are business men, 71 are ministers, 31 are physicians, 20 are chemists, 10 are dentists, 9 are editors and 9 are missionaries. In addition to the graduates there are thousands of students who have spent one or more years at McPherson and

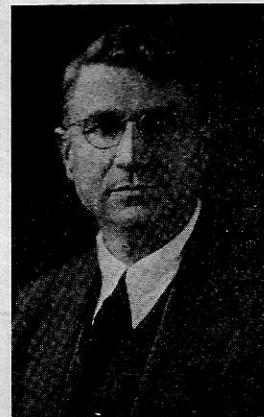
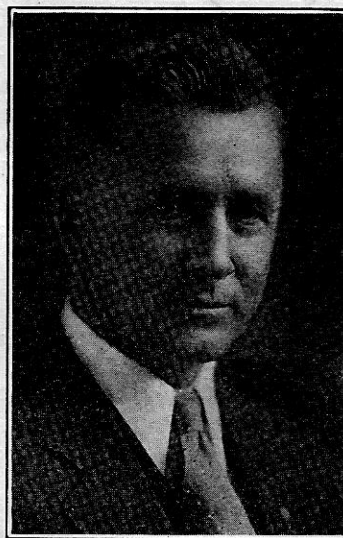
have caught the spirit of idealism here.

Through this half century McPherson College has wielded an enormous influence in its territory and in many Brethren localities

ALUMNI PROJECT COMMITTEE



Miss Corrine Bowers
R. E. Mohler
C. H. Dresher



enrolment during the past two years of 400 students not including summer school. This number includes the Fine Arts department. The College enrolls students from all denominations, the largest group of course being Brethren. Last year there were 146 Brethren students enrolled.

(Continued on Page Four)

McPherson College Bulletin

Published monthly except July and September by McPherson College at McPherson, Kansas. Entered as second class matter Feb. 16, 1912. at the postoffice of McPherson, Kansas, under act of July 16, 1894.

Why A Financial Campaign Now?

Many people will wonder why McPherson College should attempt a financial campaign now. We are apparently on the tail end of a seven year depression. Agriculture has been suffering a slump since 1921. We have had two or three years of drought. The past summer was the worst of all.

To those not in touch with the College and the immediate problems facing her, it seems futile if not foolish to attempt a campaign now. But to those who know the story intimately, the campaign is not only desirable but imperative for the following reasons: (1) The State Department of Education asks all colleges of the state who wish to certify teachers to become members of the North Central Association of Colleges at the earliest possible moment. (2) Representatives of the North Central Association after two inspections insisted upon improvements in our buildings and in one or two cases practically required new buildings. They recommend that the faculty salaries be fully paid and in some cases that salaries be raised; they insist upon increased educational expenditure per student; upon a better health program as well as other minor improvements. (3) Nearly all other Kansas Colleges are now members of the Association. (4) High School graduates increasingly demand that a college be fully accredited before they will attend it. (5) Some schools, especially outside of Kansas will employ only teachers who are graduates of colleges now members of the North Central Association.

McPherson College is the only Brethren College between the Mississippi and the Rockies. We believe it is needed by our church in this area. But we cannot keep it going and growing unless it be standardized so that our young people will want to attend it. We must and can standardize it. It can be done and now is a good time for a great forward

movement. It is a good time, for the following reasons:

1. Recovery is on the way. Roger Babson says now is the time to plan ahead. A great period of prosperity is before us. Institutions and businesses that plan big things now will share in the new prosperity.

2. This is the fiftieth year since the founding of the College. A worthy way to celebrate the heroism and sacrifice of our fathers is to carry on to greater success the work they started. We must move forward or perish and perish we will not.

Who Should Give To Campaign?

1. **Alumni who have jobs.** There are 2000 or more of them. If each alumnus were to give a votive offering of \$100, a sum of \$200,000 could be raised by them alone. If they gave but \$50 each, it would make up the entire sum we are setting as our goal for 1936-37. Surely they will not fail their Alma Mater in this hour!

2. **Men and women of considerable wealth** throughout our entire territory. Most of our people are poor. But in nearly every community are a few who have been blessed with considerable wealth, a part of which could well be contributed to the cause of Christian education. Some of them give in terms of \$100 to \$10,000. They would find happiness in helping a good cause.

3. **Many other people in various parts of our church territory** who have not been seriously affected by the recent drought can give in smaller amounts. There will be many of these and many gifts which, when combined, will make a large total.

4. **The people of McPherson County and City.** A college brings opportunities and benefits to the community where it is located. Many of our students are local people. Business houses have benefited by the presence of the college. These people have been generous in their aid to the college and we believe they will help now. We plan for substantial aid from them in the campaign.

Others will help. If all do their part the Fiftieth Anniversary should find McPherson college set forward on the pathway to progress.

Shall We Maintain Our Church Colleges?

(Some people feel that the day of the church college is about over and that as a church we might just as well close our colleges, save the expense, and educate all of our children in state and independent institutions. This column will deal with this question from time to time. Watch for it.)

Dr. William Chalmers Covert, General Secretary of the Board of Christian Education of the Presbyterian Church in the United States of America had this to say in an address before the General Assembly of his church:

"If the concept of God and a sense of the reality of the spiritual world die out of the hearts of the children and youth of this generation, smothered beneath the doubts and negations of a godless learning, the very foundations of our faith will be broken up. If we fail to bring Christ into the buoyant and responsive life situations of the campus and classroom through the life and work of godly teachers and a new appreciation of the Bible, we have given over our youth to the possible disillusionments and the bitter despair of a pagan culture that today is blighting the hope and faith of many so-called intellectuals."

"Has the church seen and realized the picture of a wholly secularized campus? Does she know what it means to her total moral life? Has she weighed her disadvantages in the premises when it comes to spiritualizing and christianizing the teaching staff, the materials, and the objectives in a tax-supported school over against the liberty and opportunity in her own colleges chartered on Christian principles, committed to religious teaching and practice in the individual and collective life of the school? Our Christian colleges must have fresh consideration at the hands of the church."

Directors of Athletics Describe Needs for Health Education

(The alumni of McPherson College are attempting this year, as a part of the fiftieth anniversary campaign, to raise enough money for an adequate Physical Education plant for the College. The following two articles by the directors of men's and women's Physical Education at McPherson College explain something of the need for a new gymnasium.)

By Coach Lester Selves

We who are directly connected with athletics and Physical Education at McPherson College feel that we need a more extensive program in Physical Education and intramural sports. In order to accomplish this end, we must have a more adequate gymnasium.

Our present Physical Education plant is very inadequate for our needs. Dressing rooms are too small to accommodate our athletes. We have no place to store equipment from one season to another, and the available equipment room is so small and poorly heated that gym suits and other supplies cannot dry out from one day to the next. During the winter months we are even forced to discontinue classes because of insufficient heat in the gymnasium.

These conditions must be remedied soon if we are to build the type of Physical Education Department that will draw students to McPherson College.

By Miss Lilyan Warner, Director Women's Physical Education

If education is interested in the "whole" student rather than the mere training of mind, if education attempts to help persons do well those major life activities which they most need to do, then health and physical education have an important place in the college curriculum.

The tremendous increase in leisure time during the last decade is well known. College graduates, along with non-graduates undoubtedly will have the opportunity to enjoy various types of leisure. Use of leisure time is one of the most outstanding social problems of this and

future generations. Physical Education can be listed with literature, music, fine arts, drama, and countless other hobbies among the desirable leisure time activities of education.

To attain the best objectives, the women's Physical Education department of McPherson College has the following needs:

1. A small gymnasium and a large gymnasium if possible. If not possible, then one large one.
2. Adequate dressing room space.
3. Private showers (10 or 12) in room adjoining dressing room.
4. Swimming pool.
5. A special room for "correctives."
6. A room equipped with cots for rest.
7. Class rooms for formal instruction.

If McPherson College is going to keep up with sister colleges in providing a type of education that is becoming universal in its demand, it will very soon have to provide an adequate plant for its students. We of the faculty are looking forward to the building of a gymnasium which will make possible the best kind of health training.

February 21-26 is the date which has been set for the annual Regional Conference. Outstanding speakers who have been procured for the occasion are Professor W. W. Slaybaugh of Chicago and Rufus Bowman of Washington D. C. Other speakers to appear on the program will be announced later.

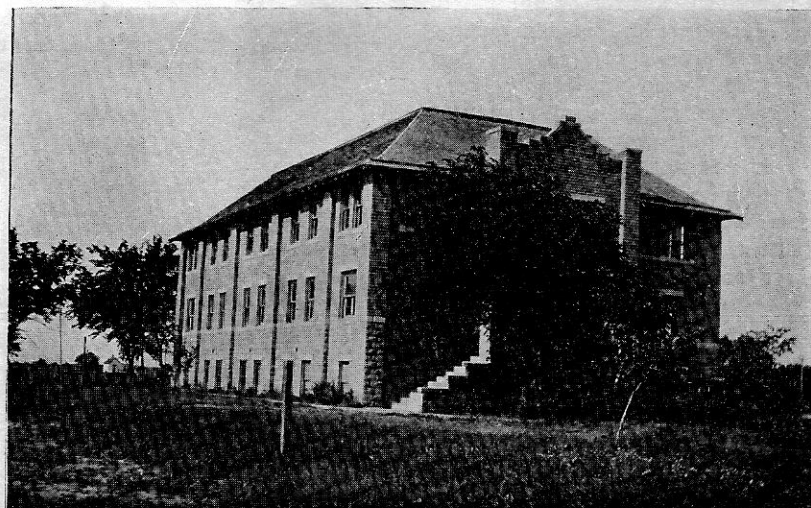
November sees Campaign Definitely Under Way In Territory

The Fiftieth Anniversary Campaign for \$100,000 is definitely under way. During October President Schwalm, J. J. Yoder, and C. Ernest Davis were in the field in North-eastern Kansas, working in the Navarre, Buckeye, Lone Star, Washington Creek, Overbrook, and Ottawa churches and communities. Everywhere they were received with interest and enthusiasm. People appreciate the reel of motion pictures, showing life around the college, and the addresses given by the college representatives. It was discovered that there is a decided disposition to support the campaign and that many people are looking to McPherson College as a school in which to educate their children. More than \$1325 has been raised and to date the proportion of cash to pledges is nearly two to one. As a result of their experience in this actual field try-out, the campaign committee is convinced that this campaign can be made a success.

Dr. Schwalm and Mr. Davis left on Oct. 29 for Idaho where they opened a campaign on November 1 that will run for more than two weeks. On their way home they will give attention to the Western Colorado District Meeting and canvass the churches in that section.

The campaign is being further strengthened by the bringing in of

(Continued on Page Four)



ALUMNI GYMNASIUM CONSTRUCTED IN 1911

Homecoming Celebration Dates Scheduled for November 25-26

Plans have been made at McPherson College for an unusually large and interesting Homecoming program Wednesday and Thursday, November 25 and 26. Since this is the beginning of McPherson's fiftieth anniversary year, we anticipate at this program and other alumni and public functions throughout the year a much larger attendance than has been usual on these occasions before.

The featured entertainment on the Homecoming bill will be the Thanksgiving day football game with Kansas Wesleyan University. It seems probable now that this game may have a definite bearing on the conference championship; but however that may be, it is sure to prove one of the most exciting gridiron contests in central Kansas this year.

The Homecoming program will begin on Wednesday evening with a pep meeting-entertainment, probably featuring several brief alumni talks and the crowning of the Football Queen. Following the game Thursday afternoon, there will be a general alumni-student banquet—with all the proper decorations, enough music, and not too much speaking.

The College is offering to alumni and former students a combination game-banquet ticket for \$1.00, which measured against the regular game admission price of seventy-five cents will be recognized as a bargain. Naturally, we shall have to know how many banquet places to plan for. It is imperative therefore that you send your reservations for game-banquet tickets to J. H. Fries, Business Manager of the College as soon as possible.

Anniversary Occasion For Review

(Continued from Page One)

through its presidents, faculty members, students and alumni. In almost every church there are outstanding alumni who are carrying on the work more effectively because of their experience at McPherson College.

It is a well known fact that no college student pays his entire way to college. In state schools this difference is made up through income from taxes. In private colleges it has to be made up through income from endowment, and if the college does not have sufficient endowment, it must supplement this with gifts from individuals and organizations.

This is the situation in which McPherson College finds itself. The trustees of McPherson College have, therefore, decided to use this fiftieth anniversary as the occasion during which they are going to attempt to improve the plant and increase the endowment of the college so as to make possible full standardization of McPherson College and to insure its further growth and stability.

November Finds Campaign Under Way

(Continued from Page Three)

O. P. Williams, Jr., Class of 1925, who will give particular attention to the Alumni part in the campaign to raise \$45,000 to build and equip a new physical education plant. Mr. Williams will also assist with the work among the churches as time will permit.

At the District Meeting of Southwest Kansas held recently at Darlow, the Women's Work of the District voted to raise \$300 for the College's Fiftieth Anniversary Campaign.

Conference Football Standings

	W	L
Kansas Wesleyan	3	0
McPherson	2	1
Bethany	2	1
Ottawa	1	2
Baker	1	2
C. of E.	0	3

Future Dates

Homecoming November 25-26
 Regional Conference .. Feb. 21-26
 Baccalaureate May 30
 Edward Frantz of Elgin, Ill.,
 Speaker.
 Commencement May 31
 Dr. D. W. Kurtz of Chicago,
 Speaker.

Mr. and Mrs. P. G. Hufford of Seward, Kansas, have recently donated to McPherson College two lots on College Hill. The lots are located on east Euclid street near highway 50.

These lots have been in the Hufford family for a long time and have come to the college with taxes paid up to date. For this generous gift we are grateful and hope that it may inspire others to give likewise.

Mr. Leland Enberg, a former student of McPherson College, has recently made arrangements with the college to provide a yearly research scholarship for some student in the department of chemistry. Mr. Enberg, a graduate of the University of Louisiana last spring, is now employed as head chemist at the Carey Salt Laboratories in Hutchinson.

According to the terms of the agreement between Mr. Enberg and the College, the candidate for the scholarship will be selected by the head of the chemistry department and approved by the Administration of the College.

This gift is very much appreciated by the College. It is a real contribution to research in the field in which many students are interested.