

---

*McPherson College Bulletin*

Series XIX

Supplement

Number 3.

---

McPHERSON COLLEGE  
SUMMER SCHOOL



ADMINISTRATIVE BUILDING

The Summer Session, Eight Weeks

June 9 - July 25

1936

*Earn Eight Hours Credit*

---

The College Bulletin is issued in Feb., May, August  
and November of each year.

Entered as second class matter Feb. 16, 1919, at the postoffice  
of McPherson, Kansas, under act of July 16, 1904

---



THE CAMPUS ENTRANCE

# McPherson College Summer School

## THE TEACHING STAFF

- V. F. SCHWALM, A. M., Ph. D.  
Manchester College, Columbia University, University of Chicago.  
*President, McPherson College.*
- J. A. BLAIR, A. B., A. M.  
Kansas University, Colorado University, Iowa University.  
*Director of Summer School, Education and Psychology.*
- J. HUGH HECKMAN, A. B., B. D., Th. M., A. M.  
Mount Morris College, Bethany Bible School, University of Chicago, Columbia School of Expression.  
*Philosophy and Social Science.*
- J. W. HERSHEY, M. S., Ph. D.  
Gettysburg College, Harvard, John Hopkins, Chicago.  
*Science.*
- KAY C. PETRY, A. B., A. M.  
Manchester College, University of Chicago, Graduate student University of Chicago 1926-1929.  
*History and English.*
- J. H. FRIES, A. B.  
McPherson College.  
*Business Manager of Summer School.*
- GEORGE NICHOLAS BOONE, A. B., M. S.  
McPherson College, Kansas State Teachers' College, University of Wisconsin.
- MARY FEE, B. S. in Ed.  
State Teachers College, Emporia, Life Certificate, 1928: Kansas University.  
*Elementary Education.*
- JESSIE BROWN, B. M.  
Bethany Conservatory, Royal Conservatory, Leipzig, Germany.  
*Director of Piano Department.*
- FERN LINGENFELTER, B. M.  
McPherson College, Bethany Conservatory, Chicago Musical College.  
*Public School Music, Piano.*
- CLARA COLLINE,  
Private Teacher (Mrs. A. Bass, Wichita, Kansas), Chicago Art Institute, 1922. Special Work (Sandzen) Bethany College. Artists certificate, Bethany College, 1927.

## Summer Session, 1930

### GENERAL STATEMENT

McPherson College is located at McPherson near the geographical center of the state of Kansas. McPherson is a rapidly growing city of from seven to eight thousand population and is famed for its beauty and the spirit of progress which is manifested in all its enterprises. It is easily accessible from all parts of the country, since it is served by the following railroads: Rock Island (main line), Santa Fe, Union Pacific, Missouri Pacific. It is also located at the cross road of the Meridian Highway and the old historic Santa Fe Trail. Splendid bus service is maintained through the city north and south across the state.

### A STANDARD ACCREDITED COLLEGE

McPherson College is a standard accredited college. Its work is accepted at par by the State University and the State Department of Public Instruction and leading Universities. It is also a member of the Association of American Colleges.

### ADVANTAGES OF SUMMER STUDY

Summer study is becoming more popular each year. Long vacations are now generally considered uneconomical from the educational as well as from the social and industrial points of view. Most colleges and universities have made the summer term an integral part of the regular college organization with equal standards for academic accomplishment. The courses offered in McPherson College Summer School are similar and in most instances identical with those offered in the regular semesters.

The Summer Session provides opportunities for students and teachers to pursue work toward the realization of the following objectives:

- (1). The wise investment of a part of the summer in study enables the student to complete work required for a Bachelor degree in three years.
- (2). To adjust irregularities in courses and fulfill group and major requirements.
- (3). To qualify for advanced grade of certificates.



ADMINISTRATION BUILDING

(4). To meet requirements for renewal of various types of certificates.

(5). To keep constantly growing in the teaching profession. This must be the primary qualifications of all progressive teachers.

(6). To review the common branches in preparation for the county examinations.

#### THE FACULTY

The Summer Session of McPherson College, which will open June 2 and continue for a period of eight weeks, will be in charge of efficient and experienced instructors.

We have secured men and women whose training and experience fit them to be of greatest value to the public school teacher. In addition to the regular members of the college faculty we have secured the services of an instructor who is especially trained and experienced to make a real contribution to students and teachers in her particular specialty.



V. F. SCHWALM  
*President of McPherson College*

Miss Mary Fee has been secured to teach courses in elementary methods and serve as critic teacher in the demonstration school for students pursuing courses in Supervised Observation and Teaching. Miss Fee is a young lady with excellent training. She spent several years in Kansas State Teachers College, Emporia, and holds the Bachelor of Science in Education degree from Kansas University.



MISS MARY FAE  
*Elementary Education*

The school year 1929-1930 was spent in graduate study in Kansas University. One of her instructors speaks of her as "one of the best if not the best student he ever had at the University".

She has had broad practical experience as a teacher and administrator, having served as both grade teacher and grade principal. One of her superintendents refers to her "as a teacher in a thousand".

She has a strong personality and a pleasing appearance. We feel fortunate in being able to bring Miss Fae to McPherson for the summer term and we are confident every teacher will receive invaluable help from her wide variety of training and wealth of experience.

General supervision of the Summer Session will be in charge of J. A. Blair. He has served as Director for several sum-



J. A. BLAIR  
*Director of Summer School*



**J. HUGH HECKMAN**  
*Philos. and Social Science*

ment and students find him sympathetic to their needs and gives a kindly consideration to all problems of administration effecting each student as well as the school as a whole. Professor Blair also teaches courses in education and Psychology. He is acquainted with the different types of teaching having had experience in all types of schools from elementary to higher.

Philosophy and Social Science will be

taught by Prof. J. Hugh Heckman whose ability to inspire students and make students think and rejoice in the process of thinking is a well established fact of the campus. He is a clear thinker, a skillful interpreter of truth, and a sympathetic friend and counselor.

Dr. J. Willard Hershey will have charge of instruction in science. His affable manner, splendid scholarship, and untiring energy and per-



**J. WILLARD HERSHEY**  
*Science*





C. RAY PETRY  
*English and History*

sistence make him one of the most popular campus figures. During the past year he has gained an international reputation by reason of a number of chemical discoveries, one of which is the making of the largest synthetic diamond known to science.

Prof. Ray C. Petry has been engaged to give instruction in History and English. Prof. Petry came to us at the beginning of this year from the University of Chicago, and few teachers in so short

a time succeed in making their presence felt in the classroom in such a remarkable manner. He motivates his teaching in such a way that students work for the joy of working. He makes the story of history pulsate with real life and romance.

Excellent opportunities will be available to all summer school students to further their music education. Miss Jessie Brown, Director of the Piano Department, will give instruction in Piano during the summer term. Miss Fern Lingenfelter will also give instruction in Piano as well as courses in Public School Music.

Possibly few types of work offers more practical help to the elementary teacher than a course in arts



MISS JESSIE BROWN  
*Piano*



MISS FERN LINGENFELTER  
*Piano and Public School Music*

#### REVIEWS

McPherson College offers annually during the summer session a thorough review of the common branches to prepare for the County Teachers examination. The work is arranged to provide a four-week review of ten or twelve of the more difficult subjects. Classes recite continuously from seven in the morning until noon. From a class of approximately twenty persons who took these reviews last

and crafts. The courses in Industrial Art for Primary Teachers and Industrial Art for Elementary Teachers have been very popular in past years. Miss Clara Colline, a very efficient and experienced teacher, will give instruction in this department.

The physical well-being of the students of the Summer Term will be looked after by J. H. Fries, Business Manager of the College, in his usually efficient and considerate manner.



MISS CLARA COLLINE  
*Art*



summer there was not a single failure in the County examination. They all wrote creditable examinations and secured certificates.

**J. H. FRIES**  
*Business Manager*

**GEORGE N. BOONE**  
*Industrial Education*

Prof. G. N. Boone is an efficient and popular instructor and his retention for the Summer term will be appreciated by many students who have been privileged to know him and profit by his instruction.



#### CERTIFICATION

The following certificates are issued by the State Board of Education upon the recommendation of McPherson College.

(1) Three year elementary certificates are issued upon the completion of sixty semester hours of college work provided the student has included in

this sixty hours the following courses in education: General Psychology, three hours; Elementary Methods, three hours; School Management, three hours. The candidate for the certificate must submit a minimum of forty-five hours in non-educational courses.

(2) Three year high school certificates renewable for life are issued to students who have graduated with the Bachelor's degree provided they have included in their college course not less than eighteen semester hours of educational courses. The following courses are required: General Psychology, three hours; Educational Psychology, three hours; High School Administration, three hours. The remaining nine hours may be elective courses in education.

#### RENEWAL OF CERTIFICATES

Courses are organized in our Summer School to provide opportunities to complete work for the renewal of the various certificates issued by the State Board. The Normal Training Certificates and the Three year Elementary certificates are renewable upon completion of eight hours of additional work before the expiration of the original certificate.

#### TEACHERS PLACEMENT BUREAU

McPherson College maintains a Teacher Placement Bureau which is at the services of all teachers who are enrolled in the summer session.

#### LIVING ACCOMMODATIONS

Three dormitories are maintained on the campus for the accommodation of students. These buildings are modern and the rooms are equipped with all needful furnishings except necessities of a personal nature. Each individual student should bring pillows, pillow-cases, sheets, window curtains, and such blankets as may be needed for the summer season. Board, room, and lighting are provided for summer students at the unusually low rate of five dollars and fifty cents per week.

## EXPENSES

The tuition rates are very reasonable. A nominal incidental fee is paid by all who enroll in the academic departments. Items of expense are as follows:

## Tuition:

Reviews (no incidental fee)	\$22.00
College (for each semester hour)	4.00

## Music:

Piano and Violin	\$12.50 - \$25.00
Public School Music	12.50 - 50.00

## Incidental fee

\$3.00

## Laboratory fees:

General Chemistry	\$8.00
Organic Chemistry	5.00
Quality Analysis	5.00

## Board and room (a week)

5.50

## THE COURSES

A list of the courses offered during the 1930 summer session is given below. It may be necessary to make some minor changes to meet the demands which are impossible to anticipate at this date, but such changes will be few. The number of hours credit which each course bears is indicated in parenthesis. B courses are Junior College courses. A courses are Senior College courses.

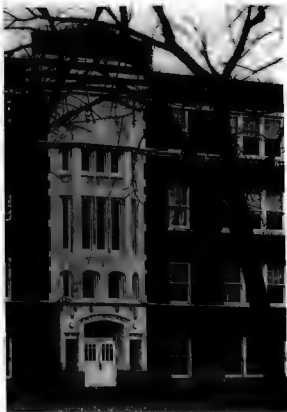
## EDUCATION

B—Introduction to Psychology—A general survey of the science. The course aims to acquaint the student with the fundamental facts and problems of the science and the method by which new facts in this field are ascertained and evaluated. (3 hours).

A—Educational Psychology—A general course in the study of mental development as related to the learning process and the technique of teaching. (3 hours).

B—Elementary Methods—A course designed to provide training in general methods, for presenting the elementary school subjects in the light of modern principles and investigations. (3 hours).

B—Primary Methods—This course embodies the principles of teaching the subjects in the first three grades. (3 hours).



**THE SCIENCE HALL**

One of the best equipped science buildings to be found in any institution.

**B—Handwork**—Practical work for teachers in hand work that will correlate with Language, Reading, and Nature Study in Primary grades. (3 hours).

**A—High School Methods**—A course designed to present to the prospective high school teacher modern and economical methods of high school instruction. Text-book, recitation, library references, and reports. (3 hours).

**A—School Administration**—This course is a study of the problems of organization and supervision of school systems, including state, county, city, and local units. (3 hours).

**B—School Management**—A course which attempts to give the student a knowledge of the technique of successful school management in the light of accepted principles. The following and kindred topics are discussed in detail: the problem of attention, the conduct of the recitation, school government, order and discipline, school incentives, offenses and penalties, routine and habit, and testing results. (3 hours).

**A—Educational Tests and Measurements**—How to measure the results of classroom teaching and how to employ such measurements as a means of improving teaching, constitute the two-fold aim of the course. (3 hours).

**B—Supervised Observation and Teaching**—Observations and actual teaching in the primary and elementary grades under the direct supervision of a critic teacher. (3 hours).

#### ENGLISH

**B—American Poets**—Masterpieces of the Golden Age of American poetry will be studied, with the aim of arousing an interest in and a love for the best poetry of this country. (2 hours).

**A—Romantic Poets**—A study of selections from the Romantic poets, with special attention to Wordsworth, Coleridge, Byron, Shelley, and Keats. (3 hours).

## PHILOSOPHY

A—Introduction to Philosophy—An examination of the chief theories regarding the nature of reality. Care is taken to show how all subjects of study contribute to the search after truth and meaning in the world. (3 hours).

A—Ethics—A study of the motives and manners of human conduct in particular relation to the social environment and psychological nature. The aim of the course is to give help in daily living. (3 hours).

## SCIENCE

B—Physiology—A cultural and practical study of the human body, its anatomy, physiology and hygiene. The course consists of textbook, lectures, and laboratory demonstrations. This is a very helpful course for all public school teachers. (3 hours).

B—Botany—A general course in plant life. The morphology of the plant is largely emphasized. This course may be taken either with or without the laboratory work. Given only if a sufficient number request it. (3 or 4 hours).

B—General Chemistry—This course is designed as a prerequisite to all other courses in chemistry and as a subject of general culture. Its aim is to prepare the student for medicine, home economics, agriculture, engineering, pharmacy, etc. Those who have had high school chemistry or Chemistry I may take the second half of the course including qualitative analysis. (3 to 5 hours).

B—Organic Chemistry—This is a general course in organic chemistry for medical students, those taking Home Economics, Agriculture, etc. (3 to 6 hours).

B—Inorganic Chemistry and Qualitative Analysis—Continuation of General Chemistry. Several weeks are devoted to qualitative analysis. Lectures and quizzes, three hours; four hours laboratory work. (5 hours).

Students desiring a course in Quantitative Analy-





ARNOLD HALL

sis can make special arrangements with Dr. Hershey for the same.

**B—Physics**—This is a general college physics course directed towards the following ends: (1) the training of students competent to fill positions as teachers of physics in secondary schools, (2) the training of pre-medical and pre-engineering students, (3) the training of the general student of the physical science in the modern world. (3 or 5 hours).

#### SOCIAL SCIENCE

**B—Principles of Sociology**—A general introduction to the field of Sociology, dealing with the nature of the subject, its most important problems and an effort to discover the direction in which social progress lies. (3 hours).

**B—Modern European History**—Europe since 1700. The beginning importance of Eastern Europe, the Industrial Revolution, the French Revolution and Napoleon, and the tremendous political and social changes of the nineteenth century. (3 hours).

**A—The Renaissance and Reformation**—A more detailed study of these movements than is given in the general European history courses. Some attention will be paid to the developments in art and literature as well as politics and philosophy of the Renaissance. The latter half of the course will be a detailed study of the religious reformation led by Luther, Zwingli, Calvin, Knox and others. (3 hours).

#### INDUSTRIAL AND APPLIED ART (NORMAL ART)

**B—Industrial Arts Problems for Primary Teachers**—Methods of using water color, elements of design, black board drawing, weaving, modeling, paper cutting and lettering. (2 hours credit).

**B—Industrial Art for Intermediate Teachers**—Problems adapted to children from fourth to eighth grades. (2 hours credit).

**B—Industrial Art for High School Teachers**—Problems in design and construction adapted to high school pupils. (2 hours credit).

**B—Painting**—Still life-oil, water colors, pastel. Landscape-oil, water colors, or pastel. (2 hours credit).

B—Charcoal—Drawings from casts, still life, etc. (2 hours credit).

B—China Painting—Two hours credit.

B—History of Art or Painting—Two hour-credit.

#### MUSIC

The department of Music offers standard courses in Music and is maintained with the express idea of offering the best in the way of aesthetic instruction. Realizing the increased importance of the above course in the college curriculum the system of credits and of work has been regulated best to agree with the requirements of the North Central Association of Colleges. All work is accredited.

Besides its relation with the college department the Music Department offers courses leading to a Teachers Certificate, which is a recognition of the student's qualifications as a teacher; Diploma, in which the student is recognized as a performer and as a general musician; and Degree, in which the student is qualified to go out as a director of music with the full assurance that the school will stand ready to offer recommendations up to the full limit of the student's power professionally.

#### PIANO

The study of the pianoforte is and must remain in a certain sense the most important part of a musical education. It is indispensable to the singer, invaluable to the composer, and a great help to the organist and instructor.

It is the purpose of the department to begin aright. Great stress is laid on slow practice, and much care is taken as to the tone quality. The pupil is well drilled in the different varieties of finger, wrist, and arm touches.

It is the aim of this department to keep closely in touch with the most enlightened methods of instruction, to impart style, finish, and artistic interpretation.

The course of study is divided into Certificate, Diploma, and Degree Courses.

---

# McPherson College

*(The School of Quality)*

43rd Year Opens Sept. 8, 1930

Fully accredited by The State  
Department of Education and  
by Leading Universities.

---

## LIBERAL ARTS COURSES

MUSIC      DRAMATIC ART      COMMERCE  
HOME ECONOMICS      ATHLETICS  
ETC.

*Laboratory Equipment and Facilities  
modern in every way.*

---

FOR CATALOG OR VIEWS WRITE

**Pres. V. F. Schwalm**

McPherson, Kansas

---