

THE  
MC PHERSON COLLEGE

# spectator

Volume 69  
Sept. 21, 1984  
Issue 1

## New Writer's Block Formed

"The Writer's Block", a newly formed support group for the promotion of creativity on campus, will hold its second meeting Wednesday, Sept. 26 at 7:15 p.m. in Miller 106.

The group meets regularly twice a month and is currently in the process of planning several extra activities.

The main purpose of the group

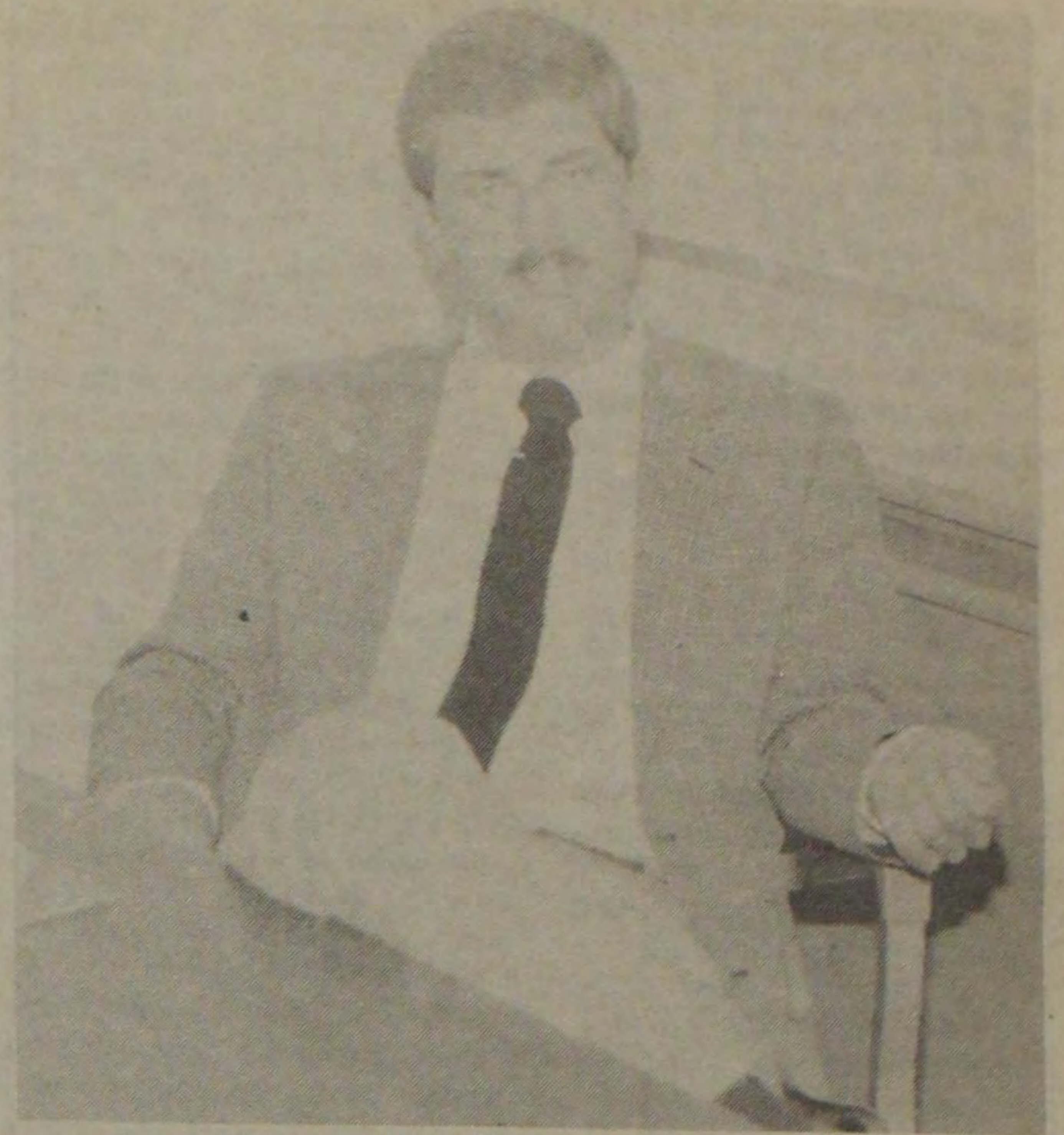
is to provide an audience for sharing one's personal writings — poetry, short story, drama, or any other genre of creative communication.

As a goal, the group hopes to contribute significantly to *The Midland Bard*, the ACCK Creative Arts magazine.

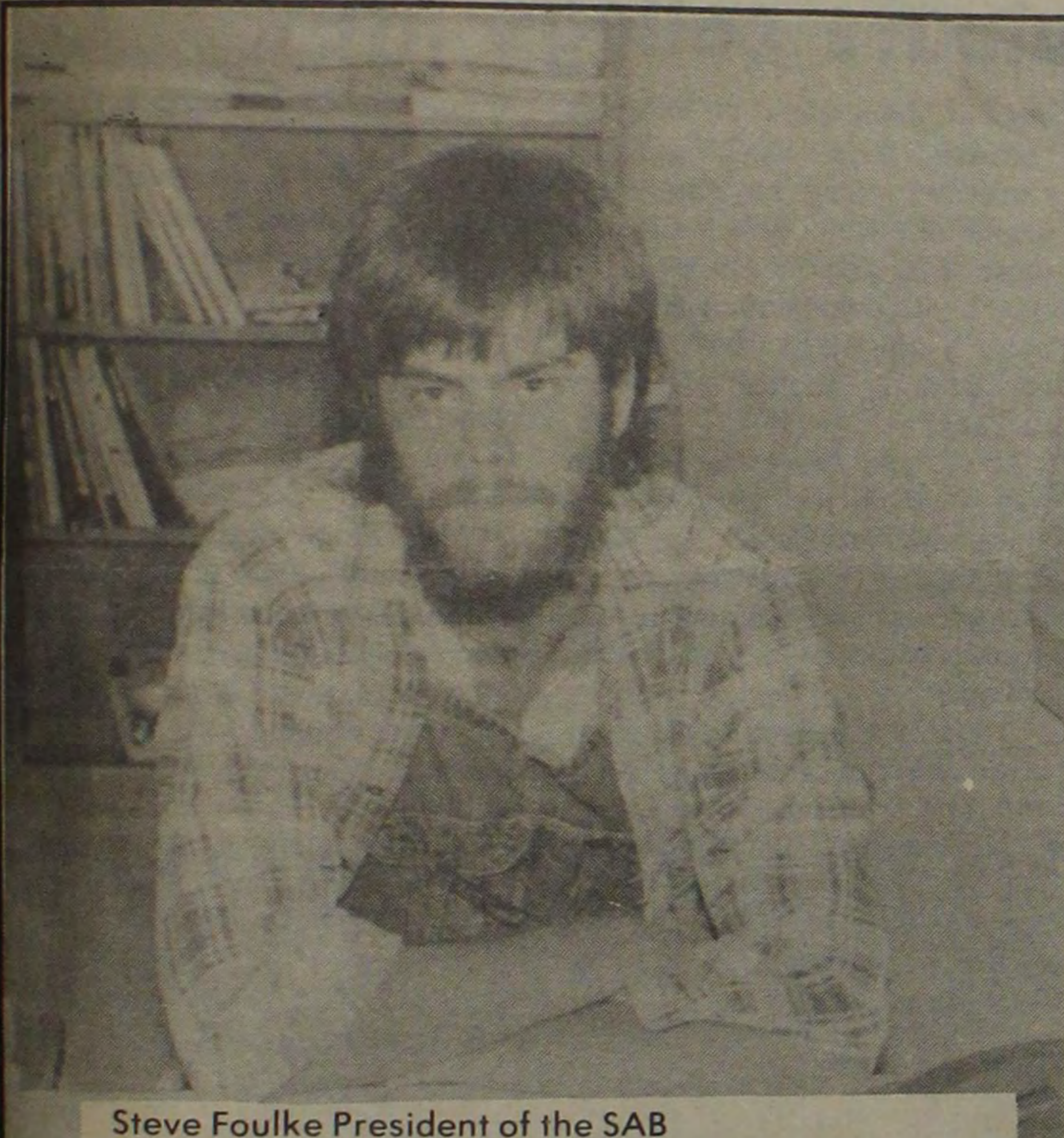
"We want to keep the club as

informal as possible," states Kerri Snell, co-chairperson of the organization. "We are still in the planning stage as to which direction we really want to go in, and I feel that this is going to be a good thing."

Anyone who is interested in the group can contact Kerri Snell, Steve Foulke or Professor Bruce Clary, the Faculty Advisor.



Bruce Clary Faculty Advisor to the Writer's Block



Steve Foulke President of the SAB

## SAB Plans Ahead

Get ready . . . get set . . . and let's go to some of the exciting activities planned by the Student Activities Board. They're for everyone, and they're going to be fun!

This one sounds like fun — a scavenger hunt! It will be held September 21st, and will start in the Student Union. Who knows what adventures await us . . . ?

September 26th will bring us the original movie, "The Thing". This one was made in the 50's; come to the Student Union's big screen TV for a good scare or a good laugh.

For all those who are not afraid of the dark, there will be a campus campout in the quadrangle on September 28th.

Tents will be provided by the local Boy Scouts. There is a possibility that there will be a barbeque, too.

And if you've been wondering how to spend your Fall Break, here's the answer. SAB will be providing transportation and discount tickets to Kansas City's World of Fun. They will stay overnight in Kansas City and spend Sunday at the Nelson Art Gallery or the Plaza. So hop on the bus and come along!

"We're always looking for interested people to participate on the SAB board, and are always open to ideas and comments," says Steve Foulke. "We have some interesting things planned; it's going to be a good year!"

## CROP 1984

On Sunday, September 30, the Church Rural Overseas Program — CROP — gets its annual CROP Walk underway. This event begins at 1:00 p.m. at St. Ann's Episcopal Church. Registration begins at 12:30.

Those participating in this year's event have three options from which to choose: a twenty mile bicycle jaunt, a ten mile walk and a three mile walk. An added attraction is a visit by an as of yet undisclosed political dignitary.

The money raised by all this work will go mostly to Third World countries, purchasing farm equipment through the Church World Service. Some of the money will also go to the World Hunger Relief.

Last year McPherson County raised upwards of \$100,000 for these causes. This year's faculty and staff contacts are John Burkholder and Cheri Miller, respectively. Students can contact Jim Mack, Andy McKinnel and Shelly Branhorst.



Linda and Keith Funk

"I'd like to finish up here, sums up Keith's feeling about the school. He feels the same way about the RD position. If things go as smoothly as they have for the first month, he could see his family as the RD's "for the duration."

## Singers and Sackbuts Play in Park

The McPherson College Madrigal Singers and Sackbuts will be performing Saturday and Sunday, September 22 and 23, at the Renaissance Festival of Kansas City.

Sponsored by the Kansas City Art Institute, the annual festival is held in a wooded setting on the Agricultural Hall of Fame grounds at Bonner Springs, Kansas, during six weekends in September and October.

The festival imitates the life-style of the Renaissance period, complete with authentic costumes, conversations in Old

English, food typical of the period without benefit of silverware, and jousting knights-in-armor.

The madrigal Singers under the direction of Professor Stephanie Graber and the Sackbuts directed by Professor Larry Kitzel were invited to appear this year after performing at the festival three consecutive years. They will perform music from the 14th, 15th, and 16th centuries.

Members of the group will participate in an all school assembly on Friday, September 21.

## Funks enjoy Fanny community

by Steve Foulke

"We sense a strong community here, and we like that."

Keith and Linda Funk are the most noticeable new faces in Fahnestock Hall this year. They are not the only Funks in Fanny, their daughters Kylie, five, and Lacey, four, are also part of the team.

Being a student, Keith is a little older than other freshmen. He has attained the status of being a licensed minister in the Church of the Brethren.

Keith related the circumstances that preceeded the move to McPherson. "I had heard about the school through church ties. We came down to visit the school and heard about an RD (Resident Director) position opening up. We went back home (Lincoln, Neb.) and Dr. Butler came up and we

visited about the job."

Once hired, the Funks had to adjust to the college and the community. Linda was at first impressed with the friendliness of the people associated with the college, "I like this community, the people are very nice. I've met some of the mothers at Kylie's school and everyone has been very friendly."

Kylie and Lacey give the dorm a younger touch, and Linda thinks the girls are enjoying the experience. She says the girls "like to talk" and delight in the chance to converse with residents. Keith sees this experience as a "real growing time" for the girls.

The size of the dorm has been helpful for Linda. "The smallness of the dorm has given me a chance to learn all the guys' names and have a chance to talk with them."



## Editorial Quips

"Something old, something new, something borrowed, something blue. . ."

I'm borrowing the name of this column, "Editorial Quips," from my predecessor — Matt Howell — who traded in his late-night Spectator duties for an English advising position in Japan. Must've been a really hard decision to make. Matt, if you get a copy of this — write us a letter!

As for the old, I guess that I'm an old-timer in Spec time, since I am returning as an editor for my second semester. There's an unspoken rule among Spec people which reads something like: "Anyone who agrees to become an editor is naive and gullible; anyone who returns for a second time is of questionable mentality; and if you return for a third or fourth time, watch out for this person!"

Kevin Burton has become a delightful tradition as Sports

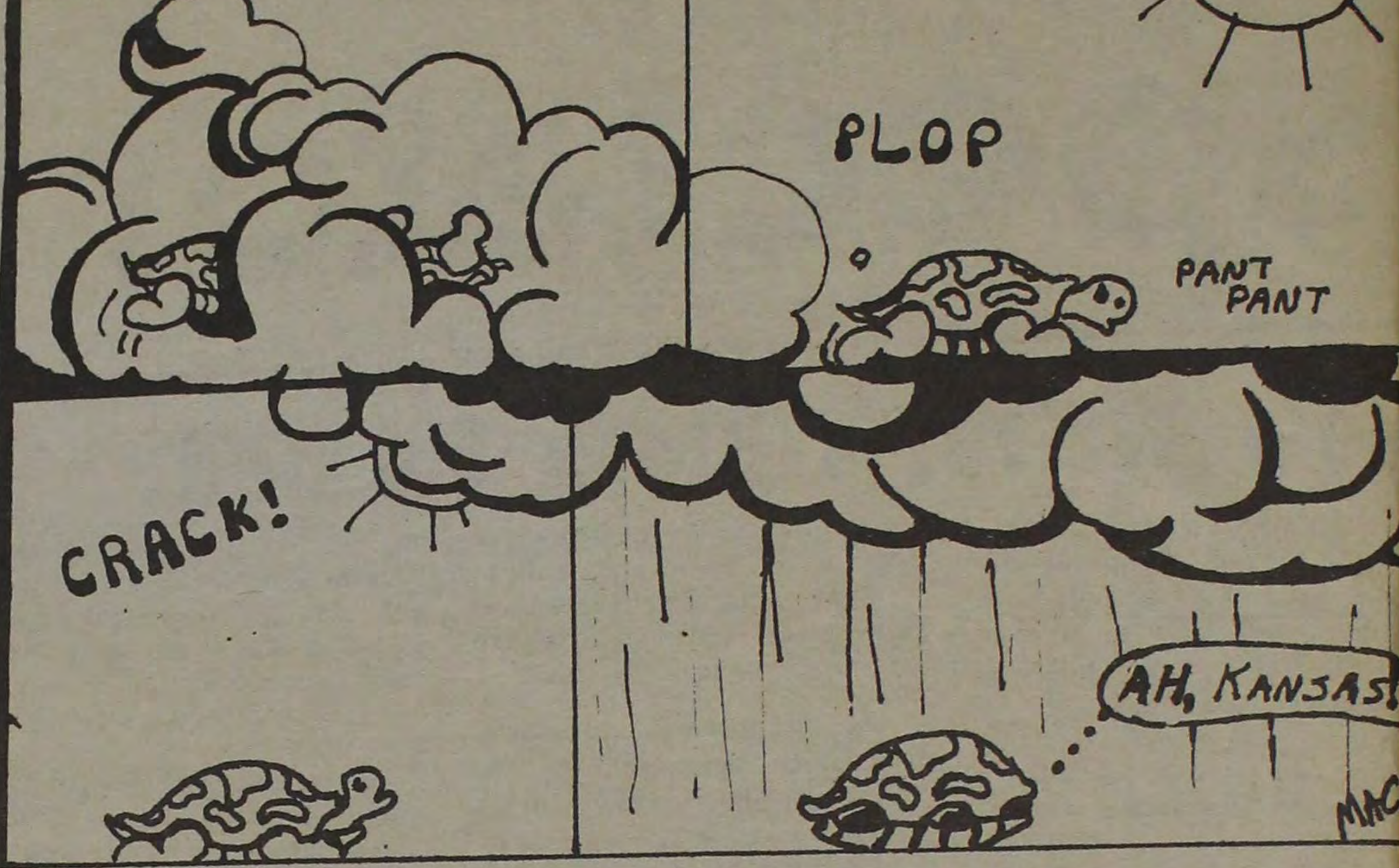
Editor for the Spectator, so much so that no one really wants him to graduate and move on to his higher aspirations. Well, at least we've got him for one more semester. Enjoy!

So much for the old, now for the new. . . One way to assure that this editorial page covers a wide range of topics and voices a balance of different opinions is for you, the readers, to contribute to the editorial section of the newspaper. This is a forum for ideas, and you don't have to wait for me to bring up your idea of interest before you write it.

If you're not up to a letter to your editor, send a message to anyone about anything (well almost) by taking advantage of our "Personals" section.

Something Blue? I am wearing a blue garter underneath my dress as I write this. There, now, this column is off to a sanctimonious start!

## SYLVESTER THE TURTLE



## Freshmen evaluate college life

by Terri Vinson

It's that time of year again. Time for an underpaid if not unbiased reporter to ask probing, personal questions (for inquiring minds like yours) of the new people on campus known collectively if not always correctly (transfer students are often targets of mistaken identity) as freshmen.

This year's group of newcomers seem cooperative and relatively at ease about having their publicized I can remember days of dodging Spec reporters for fear of being misquoted, or some "skeleton in my closet" emerging which might provoke a presentation of the "Green Weenie" award in convocations.

Many new students including Brenda Blevins (Halstead), Dawn Koop (Wiley, Co.), and Stacy Swain (Indianapolis, Ind.), commented that they were pleased with the atmosphere at McPherson College and the individual attention and extra opportunities that a small college provides.

Others, such as Peggy Peters (Hoxie), Sandy Ashbaugh (Van West, Oh.), and Jay Sharrock (Stillwater, Ok.), felt the new friendships formed at college were the most favorable aspect of campus life.

Darren Roe (La Salle, Co.), finds the cafeteria milk a favorite. Obviously, he was raised on that powdered stuff.

Most of the new students commented that they didn't mind going to convo, which means that either convos have improved or the "Phil Donahue Show," which airs at convo time, is losing its universal appeal among college students.

This is not to suggest that there weren't legitimate concerns raised by those interviewed.

Jeff Sroufe (soph., Holcomb) stated that pay pool tables in the

student union would be an asset because they would enable students to play anytime. This would be especially beneficial to those of us who find the clanking sounds of pocket billiards much more conducive to studying than the looming silence of Miller Library.

An almost universal concern was that of the weather and many students, such as Buck Rogers (Ft. Morgan, Co.) thought air-conditioning in all the dorms would be a positive innovation.

One's first semester of college is an unforgettable experience, and one which involves adap-

tation to many different circumstances. For those new students who wish to blend with the masses as soon as possible here are a couple suggestions:

Do not dress for dinner. This is a dead give-away that you are a newcomer and are confused about the dress code at Rick Place.

Also, never arrive at a class with wet clothes. Everyone will automatically assume that you haven't been on campus long enough to learn the intricate trials of meandering through the sprinkler system.



STUCO PRES. — Gary Long (sr. Kansas City KS)

Photo by Jerel Eller

College is the beginning point of a process that changes us from children to adults. It is in college that we first take charge of our lives.

This year can be one of the most productive years of our lives, but each of us must take initiative. Student Council is an avenue available for students to

channel their ideas or complaints.

As your student council president, I want to invite you to become involved and attend meetings which are on Tuesday mornings at 9:30.

Come join us!

Gary Long  
Student Council President

## Personals . . .

Leigh and Terri,  
"Heaven on the 2nd row . . ."  
Jerry and Dewey

Wanted: warm bodies with lively minds for an exciting college experience! Contact Jewelene Anglemeyer or Lori Kravets, 241-0093.

Pic,  
Some things must be believed to be seen . . .

Jerel,  
Thanks for the overtime.  
Spec editors



CHIT CHAT — Julie Moyer, Brenda Blevins, and Jackie Alo meet between classes for "girl talk."

## the McPHERSON COLLEGE spectator

(USPS 509-880)

Vol. 69 Sept. 21, 1984 Issue 1

Official publication of McPherson College, McPherson, Kansas 67460, published at 1600 E. Euclid by the Student Council weekly (20 issues) during the school year, allowing for the interruption of breaks. Second class postage paid at McPherson, Kansas.

Campus office — Student Union basement.

EDITORS:

News Editor: . . . . . Mike Kravets

Opinions/Editorial Editor: . . . . . Kerri Snell

Features Editor: . . . . . Janet Powell

Sports Editor: . . . . . Kevin Burton

Reporters: Brenda Blevins, Sarah Baile, Deanie Holloway, Steve Foulke, Jana Pate, Lois Lehman, Terri Vinson, Kathy Moore

Photographers: Jerel Eller, Jackie Alonzo, Mike Kravets

Cartoonist: . . . . . Merrie Cline

Business Manager: . . . . . Greg Phillips

Faculty Advisor: . . . . . Susan Taylor

## VERN WINTER CAR WASH



IN GOOD HANDS

- coin operated
- tire cleaner
- engine cleaner
- wax
- full lighting for 24 hr. use

2088 S. Front St.  
(behind Happy Chef)



# Improvements made in cafeteria

Lehman  
come back to school,  
one! Welcome back to  
life, new faces, the endless  
of stairs to 4th floor  
ly, and, yes, . . . cafeteria  
But wait! Have you noticed  
changes? There've been a  
you know.

most obvious changes of  
e, are in decor. The  
age bar, including the  
shingle canopy, is brand  
And so are the condiment  
and the dessert bar. (No  
overcrowding at the salad  
And there are even signs  
to help you figure out exactly  
is where. And I'm sure that  
y's missed the ice cream  
er over by the condiment  
There are already distinct  
of the carpet being worn  
n that area.

one of the improvements in  
physical aspects of the  
eria aren't quite as obvious  
ist students. This summer,  
kitchen was retiled and new  
ement — "Hopefully, it'll  
lend the food taste better";  
Jones, manager for D.M.  
pleier — was purchased and  
led.

There's more to come. As  
u areas possible, there will be a  
nfus fountain attached to the ice  
Rickine. And one more surprise  
e a week (lunchtime only),  
a cl will be novelties — fudge  
ne w popsicles, ice cream  
at yiches — in the ice cream  
sler, instead of the regular  
te trits of ice cream.

of course there's the  
what controversial new 19-  
plan, as opposed to the 21-  
plan that many of us  
ne accustomed to. The  
on to introduce the  
end brunch was made by  
Dodson, business manager,  
a Food Committee com-  
of selected faculty, staff,  
students.

some study on the

matter, and especially in light of  
complaints from late-risers that  
they were getting cheated out of  
breakfast on weekends, the Food  
Committee decided that we  
should follow the lead of most  
major colleges and make the  
change to a 19-meal plan. (Don't  
complain; some schools only  
serve 17 or 18 meals per week.  
It's okay for commuter  
colleges . . .)

As for the food itself, well, Rick  
Jones is making changes there,  
too. Currently, he is ex-  
perimenting with a new menu  
cycle. He's trying to get away  
from so much fried food, and is  
also spreading the specific dishes  
out over a period of time so that  
there's more variety. For now,  
the brunch will consist of a few  
entrees and mostly breakfast  
items, as that is what seems to  
work best for most cafeterias  
that feature a brunch. So no, the  
food won't be the same as it was  
last year.

Rick Jones, food service  
manager, is hoping to get out a  
student survey soon. He really  
wants to know students' opinions  
on the brunch, the serving hours,  
and the food. Until then, the  
brunch will definitely be with us  
for at least a couple more weeks.  
So start thinking about it. What  
do you like? What don't you like?  
Here are a few students'  
opinions:

"No comment. I work there!"  
Mitch Hartman (soph., Camben,  
Ind.)

"The brunch is a very good  
idea. I must say that the 'Fresh  
Salad' sign is very entertaining."  
Sylvia McPherson (sr., from  
"somewhere in Oklahoma")

"I think that the brunch is a  
good idea, especially for the  
large number of people who don't  
get up on Saturday mornings."  
Julie Oltman (fr., Buhler.)

"The food is much better this  
year . . . the fresh fruit and the ice  
cream are delicious. And the

food's even being served hot."  
Dave Schrock (jr., LaMesa,  
Calif.)

"The atmosphere has im-  
proved, but the food hasn't."  
Robert Taylor (sr., Colorado  
Springs, Colo.)

"I never complained about the  
food last year, because I came  
from a college where the food  
was really bad. But now . . . I'd  
much rather have good food than  
all the redecorating they did."  
Jill Burns (sr., Moulton, Iowa)

"I did see an improvement in  
the dining room setup — the  
visual aspects are really nice.  
The idea of the brunch is good,  
but those people who want to get  
up and work, study, or go to  
church miss out on breakfast.  
There has been an overall im-  
provement; it's the best we've  
had here in three years." Sarah  
Baile (sr., Warrensburg, Mo.)

"The hours need to be changed,  
especially for people with 11:30  
classes, so that they could eat  
before class, especially if they  
have a 12:30 class like choir. The  
food quality seems to be better  
compared to last year," David  
Steele (jr., Martinsburg, Pa.)

"I like to have breakfast on the  
weekends, especially because I  
work in the morning on Satur-  
days. Otherwise I get a terrible  
headache! And when I sit in  
church, my mind turns toward  
my starving stomach instead of  
the Spirit of God. A note of en-  
couragement — I think that  
breakfast is the best meal they  
have; that's why I would really  
like to be able to eat it on  
weekends as well as during the  
week." Marty Moyer (jr.,  
Souderton, Pa.)

### FOOD SERVICE HOURS

Mon-Fri 7:00 - 8:30  
..... 11:30 - 12:45  
..... 5:00 - 6:30  
Sat-Sun 10:30 - 1:00  
..... 4:30 - 5:30



**TYLER'S FOLLY** — Galen Switzer and Allison Shepard perform in Tally's Folly, showing Friday, Saturday and Sunday.  
Photo by Jerel Eller

## Lady Red second at Hutch

by Kevin Burton

The Lady Red volleyball team earned second place last weekend at the Hutchinson Invitational Tournament.

New coach Dan Hoffman took a young but talented team to Hutchinson, and the team nearly took the tourney. Mac defeated host Hutchinson 15-9, 15-9. They came from behind to down Colby 6-15, 15-2, 15-10, before Dodge City won the day by upending Mac in the finals, 15-5, 15-4.

Early inconsistency has made it hard to determine how well McPherson will do in conference this year. "Some days we play so well," says Hoffman, "but some

days we just play terribly. I'm sure there's a reason for that, I just haven't figured it out yet."

Setter Peggy Sanders, captain of the Lady Red offers, "Individually we have outstanding players. Getting everyone to have a good night at the same time has been the problem. If we ever do get everyone together, watch out opponents. We really have a lot of talent."

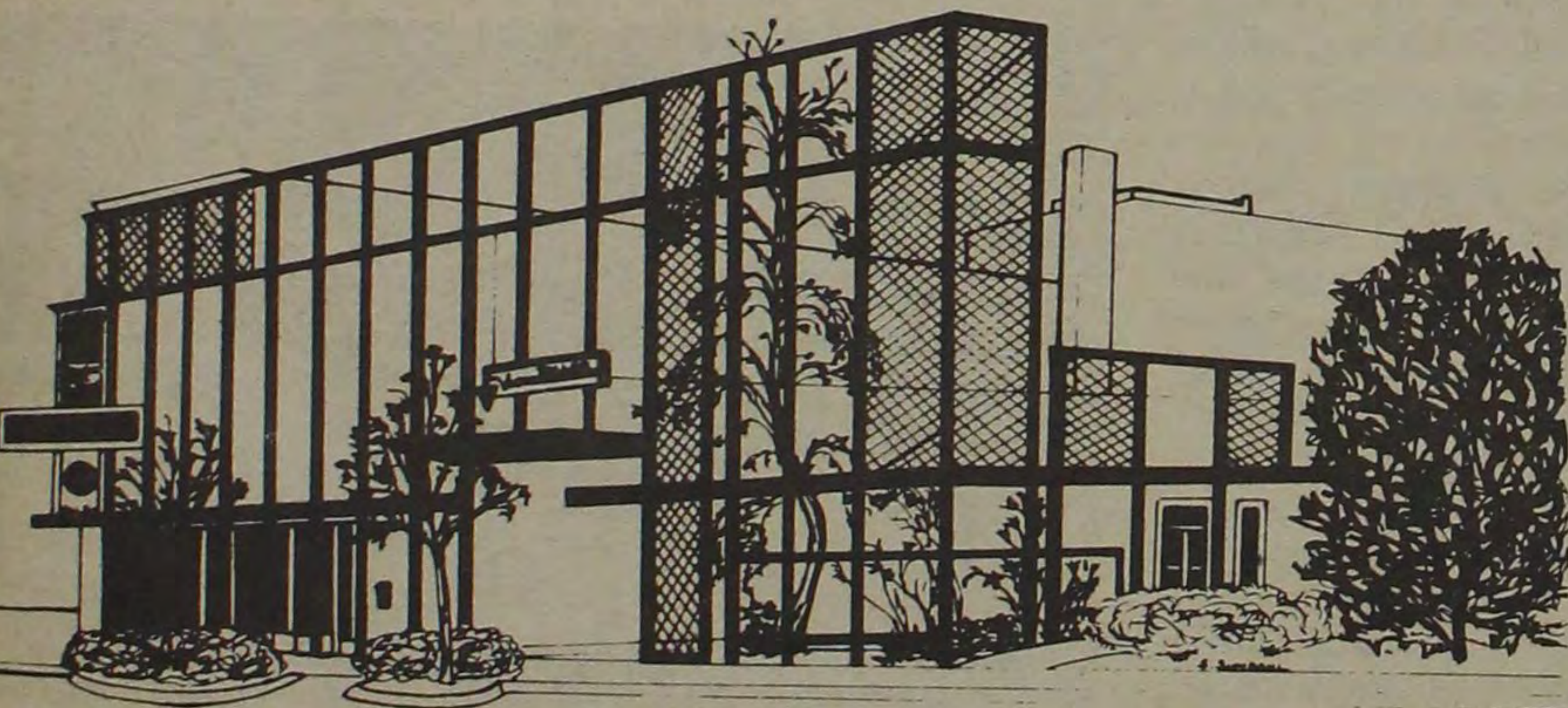
Stephanie Ostmeyer, also a setter, comes to Mac from Barton County, where she was all conference last year. Hitters include Denise Race, Cindi Harrison, Sandy Nichols, Tina Troxel, Vivian Benson and freshman Janet Cordell.

Karen Walters, Kay Davis, Kayla Corbett and Sue Masterson have also seen some action for McPherson.

This weekend Mac will travel to Winfield for the Southwestern Invitational. They will display their talent in front of the home folks for the first time as the KCAC schedule begins on September 26. Bethel and Bethany will invade the Sport Center beginning at 6 p.m.

### UP 'n' Coming

S.A.B. Scavenger Hunt 7 p.m.  
Saturday Dotzour Hall  
MAC Bulldogs at Ottawa  
Saturday 1:30 p.m.  
Monday 9:30 a.m. Convo  
features Governor Carlin  
Wednesday evening at 7:15  
p.m. "Writer's Block" meeting in  
Miller Library Basement.  
Thursday evening 5:30-6:30  
Spanish Fable at dinner.



*Peoples Bank and Trust Company*

"CHECK WITH US FOR CHECKING ACCOUNTS"

Special student accounts  
VIA card

Main & Kansas

241-0431

**Spiral** 241 2652  
• Mc PHERSON, KS. •

Showtimes:  
Sun-Thur 7:30 p.m.  
Fri-Sat 7:30 & 9:30 p.m.  
Sunday Matinee 2:00  
All Seats \$1.75 at  
Matinees

**NOW SHOWING**

"TAUT, TENSE AND TERRIFIC!"  
-Pat Collins, CBS Morning News, CBS TV

CLINT  
EASTWOOD

**TIGHTROPE**

FROM WARNER BROS.  
A WARNER COMMUNICATIONS COMPANY  
© 1984 Warner Bros. Inc. All Rights Reserved



# Mac tennis team scores early wins

by Anthonia Ekwensi  
 Watch out for the 1984 McPherson College women's tennis team! The team is made up of excellent performers who have won two games out of three played.

The Mac team started the '84 season with a 7-2 victory over Bethel, in a home match. Jean Rowland opened the victory roll with a 6-4, 6-0 win over Bethel's Kay Schroeder.

Also winning singles matches were Cindy Powell 6-2, 6-2 over Carolyn Heidi; Cindy Griffis 6-1, 6-0 over Cindy Schwartz; Lisa Jerreth 6-0, 6-2 over Carla Schrag and Julie Oltman 6-0, 6-4 over Sally Mallam. Tara Wedel won

the only singles match for Bethel, defeating Shelley Garlow.

The home team also took two of the three doubles matches, with Powell-Oltman defeating Schwartz-Heidi 6-0, 6-1 and Jarrett-Griffis downing Schrag-Mallam 6-1, 6-2. Schroeder-Wedel defeated Mac's Rowland-Garlow 1-6, 6-3, 6-4 for Bethel.

Two days later, Mac triumphed over Tabor 8-1.

In singles, number one Jean Rowland defeated Kerry Langhofer 6-0, 6-1. Number two, Ralene Reimer of Tabor defeated Shelly Garlow of Mac 3-6, 6-3, 6-0. Number three Cindy Powell of Mac defeated Diane Harms of Tabor 6-0, 6-4.

Number four Cindy Griffis of Mac defeated Penny Gudger of Tabor 6-0, 6-2. Number five Lisa Jarrett of Mac defeated Tammy Kroeker of Tabor 6-1, 6-0.

Number six Julie Oltman of Mac defeated Michelle Jancer of Tabor 6-2, 6-2.

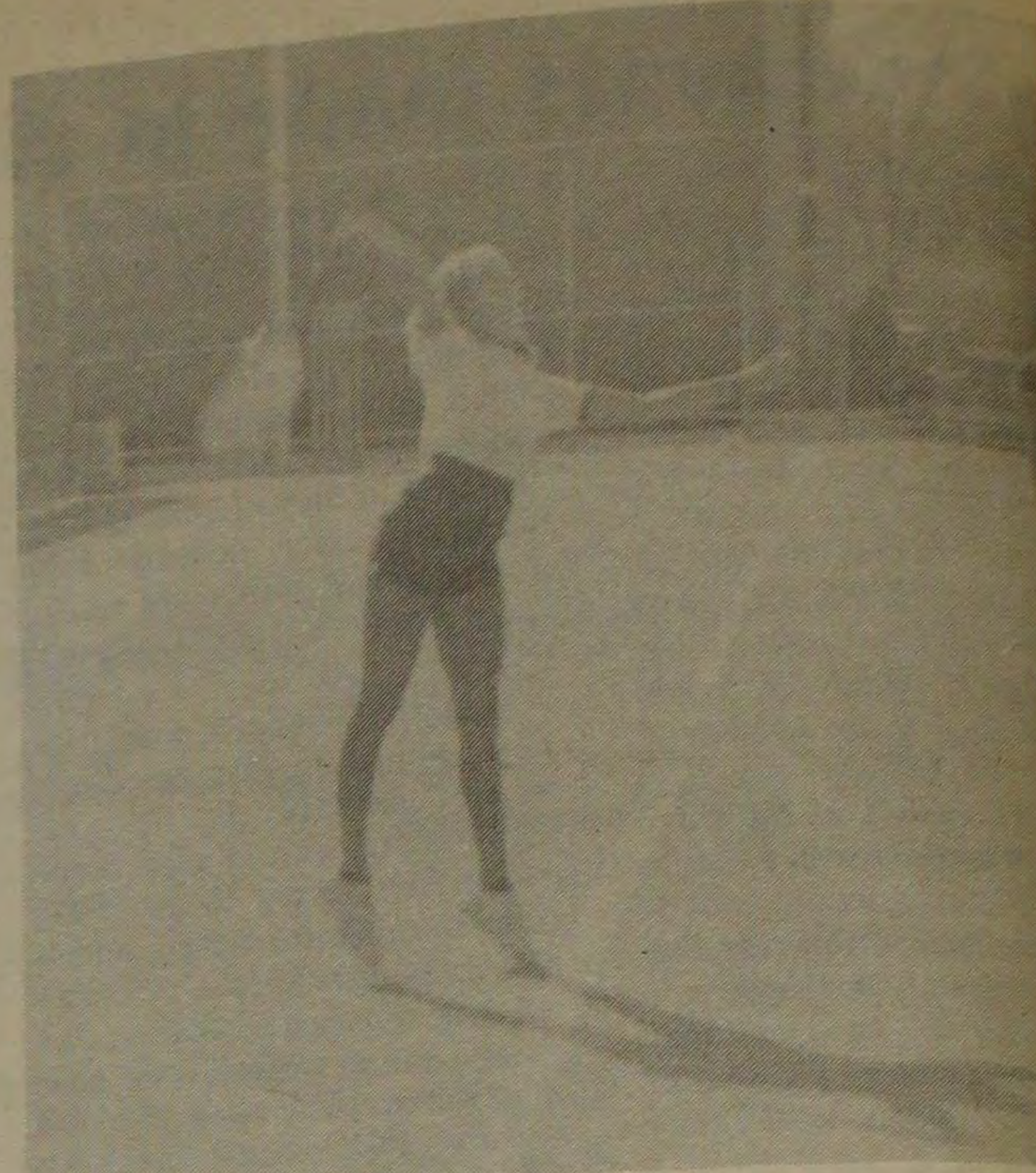
In doubles, Rowland-Garlow of Mac defeated Langhofer-Reimer of Tabor 4-6, 6-4, 7-6 (7-3); Powell-Oltman of Mac defeated Harms-Kroeker 6-3, 6-4; and Jarrett-Griffis of Mac defeated Jancer-Gudger of Tabor 6-2, 6-0.

In the match against Washburn, the Mac women lost, bringing their record to 2-1 (at presstime).

Future action which does not appear on the previously released tennis schedule includes a home match October 8, against Fort Hays, and a match at Emporia October 12.

This year the team is shooting for a record above the .500 mark.

This weekend, the Mac women are in Emporia taking part in a tournament.



**TENNIS HER RACKET** — Julie Oltman and the rest of the Red tennis team has had a good start to the 1984 season. Photo by Jere

## Just for you . . . .

by Kevin Burton

Working under the theory that brilliance in all its forms should be shown and not hidden, Kerri Snell (page 2 editor) and I have decided to enlighten you with our weekly NFL picks.

Nothing is at stake here except the honor of getting the most correct. We don't give points or anything like that. Here are the week's picks. (S is for Snell, B for Burton) — K.B.

Kansas City (B) — Denver (S);

Houston — Atlanta (SB); L.A. Rams (S) — Cincinnati (B); Minnesota — Detroit (SB); N.Y. Jets (SB) — Buffalo; Pittsburgh (SB) — Cleveland; St. Louis (SB) — New Orleans; San Francisco (SB) — Philadelphia; Washington (B) — New England (S); Chicago (S) — Seattle (B); Green Bay — Dallas (SB); Indianapolis — Miami (SB); Tampa Bay — N.Y. Giants (SB); San Diego (S) — L.A. Raiders (B).

# Bulldogs drop opener to Falcons

by Kevin Burton

The Bulldogs scored first, but the Friends Falcons scored most, on their way to a 34-7 rout last weekend.

If football games were fifteen minutes long, the 'Dogs would have won their season-opener. As it turned out, they were thoroughly dominated by a team which wasn't expected to be a KCAC power. It was not a particularly pleasant debut for first-year head coach Steve Phipps, but he's a long, long way from panic.

"It was only the first game," said Phipps. "We've got eight to go, and we've got principally freshmen and sophomores. Most of the people who played against Friends will be also playing J.V., to get what we need most, experience."

"We're hesitant on the field, and that's one thing that comes from not having a lot of game experience."

The Falcons already had a game under their belt. It's a fact that was not lost on Phipps, who stated that the Bulldogs "looked an awful lot like Friends did the week before" as they went down to defeat in their opener.

Friends came out of the gate playing giveaway. Twice in the first five minutes the Bulldogs recovered Falcon fumbles. But the Mac offense, setting a pattern for the rest of the game, could not move. After a long field goal attempt failed, Friends took over and drove into McPherson territory.

It was the third and final Falcon turnover that provided the Bulldogs with their only score.

Mike Hall made a juggling interception, then sprinted 70 yards down the sideline to paydirt.

"Mike did a superior job in getting to that ball," said Phipps. "Then we showed his running ability by being able to go the 70 yards without being caught. Excellent play."

The visitors had no time to savour the score however. On the ensuing kickoff, the momentum swung dramatically and permanently back to the Falcons, as Daren Watkins returned the ball 55 yards, into Bulldog territory.

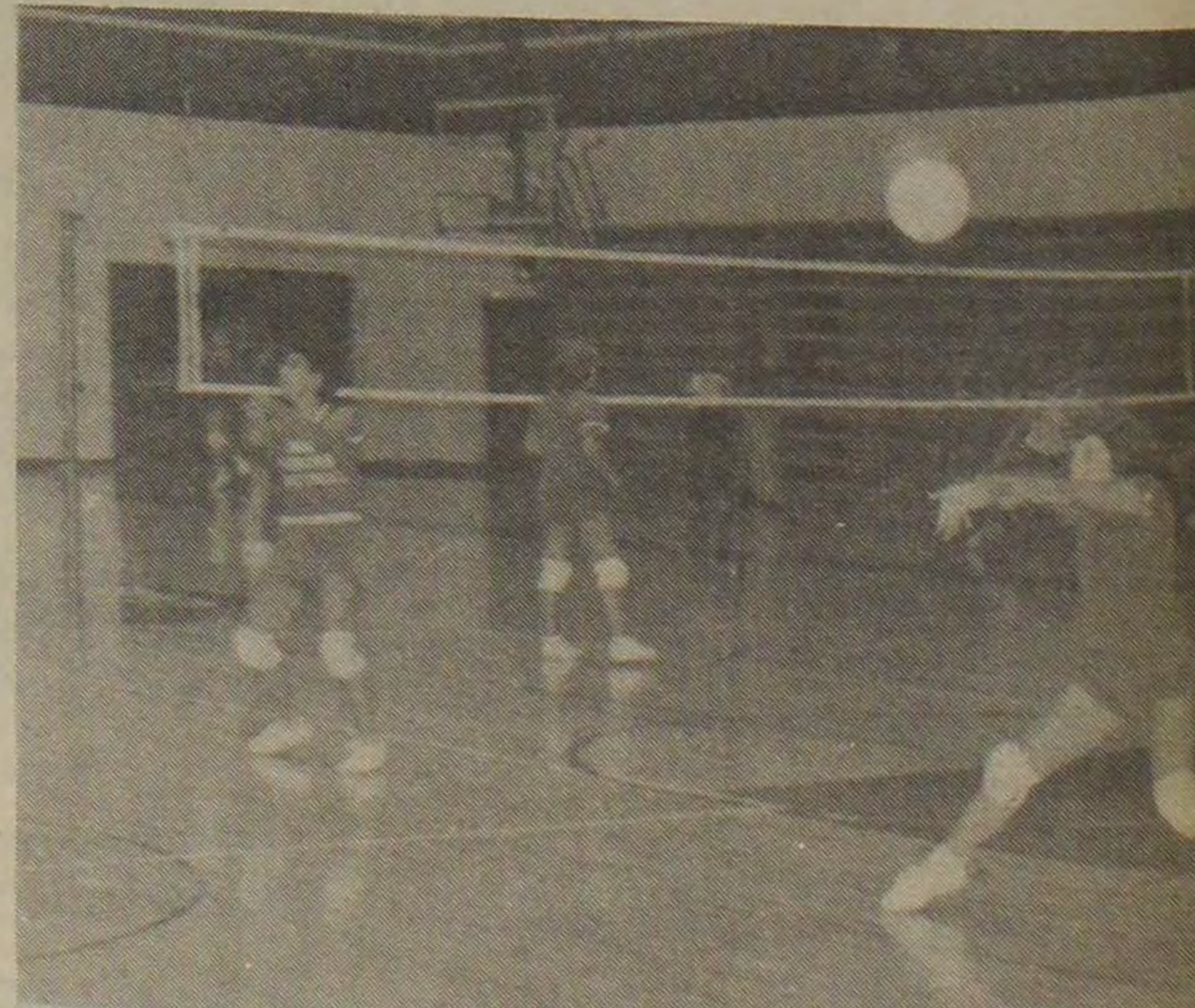
From then on, the Falcons moved at will on a tired Bulldog defense. The halftime score was 21-7. That fourteen point deficit seemed larger than it really was, because on this night, the Mac offense just was not moving. The

final score was representative of Falcon dominance.

Coach Phipps has stated he would like to pass the ball 40 to 50 percent of the offense. (Mac passed 40 percent of the plays against Friends.) "A kind of diversity would tend to open up more avenues for McPherson."

The key for the season will be how much the play of the offensive line improves. Phipps says the defense should be better showings in the future provided they aren't on the field as long as they were last weekend. Halftime adjustments did provide at least one drive without consequences during the second half, but in order for the Bulldog offense to really take off, the play must improve.

The Bulldogs travel to Ottumwa tomorrow to do battle against the Braves. Kickoff time will be



**SWEDES IN OUR DOGHOUSE!** — Janet Cordell and the Red volleyball team open conference play against Bethany this Wednesday at the Sport Center. (story on page 6) Photo by Jere

**All New Card Section**  
 Large selection of cards, notes, invitations, announcements and stationery.

AMERICAN GREETINGS

MATHIS

PHARMACY

113 W. First 241-1625

9:00 a.m. to 7:00 p.m. Daily 9:00 a.m. to 6:00 p.m. Sat.  
 9:00 a.m. to 8:30 p.m. Thursday Closed Sunday

Kelly Mathis, Pharmacist/Owner

FREE Prescription Delivery!