

Greetings alumni and friends

THE
MC PHERSON COLLEGE

spectator

Volume 65

October 17, 1980

Issue 4

Trustees gather for Homecoming

by Trudy Christy

As the Homecoming weekend approached, many students talked of the impending arrival of the Trustees as if it were some event to be dreaded.

However, it is simply because many students do not understand who the Trustees are and what they do that they are viewed with such confusion.

The members of the Board of Trustees arrived on campus Thursday and it appears that they are a group of 32 men and women just like any other.

But there is an important difference — this group is committed to strengthening the quality, to extending the service, to widening the influence, and to expanding the very growth of McPherson College.

Because McPherson College is a corporate entity, it is owned and managed by its own Board of Trustees whose members range from farmers and homemakers to medical doctors and educators.

The board consists of members nominated by the Church of the Brethren, the Alumni Association, and the Board of Trustees itself. In addition, the college president and three Church of the Brethren district executives serve on the board because of their positions.

Many of the Trustees are alumni of McPherson College and all are respected for their leadership.

All the Trustees are here twice each year, once in the fall and again in the spring, for meetings of the entire board, to make sure the purposes and goals of the college are being fulfilled. Committee meetings are held whenever the need arises and the board's main work is done in those designated committees.

Making sure the purposes and goals of the college are being met is a major responsibility of the board. And it is important to note that the Board of Trustees, in meeting that responsibility, only sets general policies, not specific rules.

McPherson College's mission, as stated on page five of the current academic catalogue, is general policy and was formulated by the Trustees.

On the other hand, specific things such as open dorm hours or curriculum matters are the

responsibility of the administration which is headed by the president.

Selecting the president is a second major responsibility of the Board of Trustees. The president is the Trustees' representative appointed to carry out the policies set by the board.

Therefore, the president presents reports to the Trustees for their approval, concerning what specifics the administration has implemented for carrying out the general policies.

At the meetings during this Homecoming the Trustees will be hearing reports on all areas of activities. They will be careful to note whether the college is going in the direction in which the goals and mission state it is to go. And they will be interested to hear of any need in curriculum, student services or in any other area of the college.

The Trustees are always very interested in the morale and attitudes on campus and the feelings of the administration, faculty, staff and students.

A third major responsibility of the Board of Trustees is to see that the college stays financially sound. The Trustees hold in trust the assets of the college and are responsible for the investment of funds and the management of the facilities.

Music fills the air around quartet

by Vic Williams

If you have a special place in your heart for someone this weekend, let them know it by sending them a singing telegram. The singing telegram will be sung to the special person of your choice with the special song of your choice by a quartet of excellently dressed MENC members, for only one dollar.

For two dollars, the quartet will not only sing to your special person, but also have a beautiful carnation for him or her. Singing telegrams will be sold at the lunch line throughout the homecoming weekend while they last.

What more can you ask for, it's an excellent time for you to show someone that you really do care enough to send the very best.

The Trustees make sure that the spending of funds and the planning of facilities reflect the aims of the college. For example, they probably would not approve funds for a Buddhist Temple on the campus since the mission states that McPherson College "affirms a Christian identity."

The Trustees also aid in fund raising and many of the board members are leaders in giving. Their substantial financial support shows that the Trustees believe in McPherson College.

The Trustees play a vital role in the life of the college and as Norma Tucker, Vice President of Academic Services observed, "They love this place and you can tell it when they're here."

Stuco attempts to 'cushion' budget

by Don Stinnette

If you would like to keep your rear end warm (if the weather is cold) or cool (if the weather is hot) - well, let's just say well-insulated - and support the Student Council and the clubs it has not been able to offer funding to yet at the same time, buy a cushion. (Buy a dozen!)

Stuco, driven this semester to try to raise some extra bucks on its own, has purchased a number

Improvements over summer help make student life better

by Chuck Telk

As with any educational institution, McPherson College has made many campus improvements over the last year. Some of these improvements were required to correct safety violations, while others were just general campus improvements.

These improvements obviously required money, and this money came from two funds; the restricted fund and the unrestricted funds. The restricted fund consists of pledged donations that must be spent on a designated area. The unrestricted fund is money from the general budget, which can be spent anywhere it is needed.

Some of the safety improvements include emergency lighting improvements in Bittinger Hall, Dotzour Hall, the Student Union, Miller Library and Templeton Hall, extensive roofing work on Dotzour Hall, Harnly Hall, and Miller Library, and a fire escape for Fahnestock Hall.

General campus improvements included new carpeting in Bittinger Hall, Miller Library, and the Student Union,

new drapes and tables for the Student Union, retiling of the restrooms in Dotzour Hall, a new projection system for Brown Auditorium, and new boilers for the heat plant.

Science majors will be glad to hear that almost \$36,500 was spent in the biology laboratory and chemistry department from the restricted fund. This does not include over \$100,000 National Science Foundation Grant received by the science department.

Altogether, the general appearance of McPherson College is good. Dr. Norma Tucker, Vice President of Academics, praises the maintenance crew for their work.

"Our maintenance crew has done an exceptionally good job of keeping up the physical appearance of McPherson College," stated Dr. Tucker.

As a final note, for those of you who were tired of getting muddy feet, to keep from walking thirty feet, the Mohler Hall to Student Union sidewalk was constructed, costing \$1,241, from unrestricted funds.

of McPherson College Bulldog cushions to sell during this Homecoming weekend.

Look for them at a Stuco booth tomorrow morning at the Homecoming Fair and at the football game, where Stuco members will be peddling their wares.

These fine cushions feature the latest in modern, long-wearing, bright red poly-vinyl, complete with an inch of luxurious foam impregnated with thousands of

softness cells, and featuring clean white lettering and an easy-carry built-in handle.

For four bucks (yes, folks, that's only four bucks!) you can get change back from a five. Where can you find a deal like that nowadays? And who could find a worthier cause?

Support your school! Support your Stuco! Win, Bulldogs, win! Yea! Clap, clap! Whistle, whistle!



Reaching above goal

Dave Mollhagen, jr., Lorraine, cheerfully prepares to have his very life's blood drained from his body (although only a pint). The Red Cross Bloodmobile made one of its twice-yearly runs to McPherson College last Monday. Once again,

the college exceeded its expected quota. Final figures for the total number of donors and results of the competition between the dorms will be released soon.

Photo by Trudy Christy

Drama production will be world-stopper

by Kathy Whitacre
guest writer

Delightfully entertaining and thought provoking, "Stop the World, I Want to Get Off" will be presented Friday and Saturday at 8 p.m. in Brown Auditorium this Homecoming weekend.

The action of the "play within a play" evolves around Littlechap, played by sophomore Jeff Frazier, a typically English young man aspiring to become a typically English Lord with all the rights and prestige thereof.

His climb to success is facilitated by his position as an executive, membership in the elitist Snobbs Club and the bestowment of a title. Blinded by success, he destroys his relationship with his wife Evie, played by junior Patty Lusk, Rocky Ford, Colo., while covorting with the women he meets on business trips.

The realization of the emp-

teness of his life encroaches upon him only after Evie is dead and he has missed the opportunity to communicate to her how much he truly needs and loves her.

The show ends on a positive note as Littlechap begins anew his struggle for fulfillment.

The players are, besides Jeff and Pattie:

Susan - Ida Yarbrough, soph. Hutchinson

Jane - Deb Neher, fr., Quinter

Chorus

Jennifer Willes, fr.

Pam Thies, soph., Evergreen, Colo.

Marie Neher, soph., Grundy Center, Iowa

Lynn Carlson, fr.

Mik Hoffman, fr.

Aaron Gragg, jr., Quenemo

Dan Masterson, soph., Oregon, Illi.

Glen Wright, jr., Kansas City, Kans.



Jennifer Willes, fr., Colo. Springs, a member of the chorus, (Littlechap) during a rehearsal of "Stop the World, I Want to Get Off", to be presented tonight and tomorrow night at 8 p.m. Photo by Trudy Christ

Sports Fans Against Nature

Is this a club, a movement, or a way of life?

featuring Mike "Scoop" Higgins

Once again, I've been asked to write an article which will capture the imagination of the patrons of this newspaper. This week, I've chosen as my topic a new club which is exciting, bewildering and intriguing the

young men and women of this campus. The club — Sports Fans Against Nature (or SFAN).

After a "questions and answers" session with two of the brains behind the club, Carolyn Lingle and Russell Cogswell, many of the goals, ideas and

aspirations of SFAN began to emerge.

The first question I posed these two bright young people was, "What is the purpose of your club?" Carolyn summed things up, stating, "Completely abolish nature in any form."

This, according to Russell, would mean, "covering the entire face of the earth with Astro-Turf." Carolyn hinted that the club intended to start by "building football fields in the Sequoia National Forest."

I then asked, "How will you fund this quest to totally eradicate nature?" Carolyn expressed hopes of "finding some wealthy benefactors — college alumni and the like." Russell suggested that Stuco may soon be getting a visit; "After all, we'd be doing the campus a favor."

A big function slated for the upcoming week is the picketing of Dillon's supermarket since it sells granola, "which is way too natural."

What does the future of SFAN look like? With easy entry to the club (one only has to give Greg Finno a penny to receive Official Membership Card), a "unanimous appeal", Russell feels their club "will catch on." Carolyn is also confident, adding "It (the club) will grow by leaps and bounds."

In conclusion, I will say that the club which 1) supports Ed Campbell for President, 2) sells canned smog as a fund-raiser,

3) throws parties when trees are chopped down, definitely has something to say to us, but when one looks at the deep message will the real "natural" meaning be found.

Dorm hour issue is reopened

Dear Editor:

Last Friday, there was supposed to be a convocation, but for many apathetic reasons, it was called off. The subject was to be the open dorm hour proposal and a debate was to be the tool of examining both sides of the issue.

Unfortunately, the Interdorm Council members could not find enough people to perpetuate such an event.

One of the opinions of a faculty survey was that we are attempting to ride on past students' reasoning and not truly looking at both sides of the issue. Well, we have little to say when we can't

find the interest to set up a debate.

I feel that the fault lies with the students. It cannot be blamed on the council members. Such a proposal must have driving student support and those interested should be in touch with the council members to push it through.

We're not going to do all the work. That is not the way things go.

Of course, one might conclude that we already have the answer. Apparently people are satisfied with the present dorm hour situation. All things considered, that is the way it appears.

However, the council is taking another survey that will hopefully portray a sincere picture of peoples' feelings instead of "Yes" or "No." Please fill this out when you get it. Sorry to sound like a politician, but we want to know how you feel.

The open dorm hour proposal was produced last March. The way things are going now, it seems that the students' attempt back then was simply a childish case of spring fever.

Sincerely,
Dan Masterson

Interdorm Council Chairman

End of the line, please

To whom is my concern:

I know that you are hungry. I'm hungry, too. I know that you arrived when the line to eat was long. It was long when I arrived, too.

I know that you are out for a popular autumn sport. I am not. I know that some of you are three times bigger than I am.

But please do not pretend to talk to one of your buddies and nonchalantly assume his position in line. (Editor's note for the benefit of those reading this article: "non-chalantly" has a meaning similar to "casually.") I've been waiting in line for ten minutes, so have the people in front of me and behind me.

Why should you, who just came in, be able to get into the cafeteria without waiting like the

rest? Am I overlooking a rule in the student handbook that states, "During the course of a single sport season, those persons participating in that sport are entitled to enter the cafeteria with the least waiting possible"? I do not think there is such a rule, but some of you evidently do.

I wonder whether or not you would crowd in line if you heard the snide and demeaning things people who wait say about you. Of course you don't hear them because you are a frightening lobby.

And of course I will sign this "anonymous" because you do indeed frighten me. I have heard and seen what you are capable of doing to those you dislike. I wish you would stop this irritating practice.

Not only are you giving yourself a bad name, but you degrade your non-crowding teammates, as well. I would now ask those of you out for the sport who do not crowd to please tell your sporting counterparts to wait in line with the others, no matter how long it takes, because they are giving you and a McPherson College popular sport a very substandard name.

If you are out for this popular autumn sport and do not crowd in line (you guys are in the majority), please do not take offense. If you are in the crowding minority, please do.

John Q. Anonymous
Editor's note: the "Q" in Mr. Anonymous' name may stand for "Quivering" or "Quaking" out of fear, if his real name is revealed.

GLOW-LIGHTS, INC.



"NAW, I DON'T BELIEVE IN UFO'S... WHY DO YOU ASK?"

This week the Spectator proudly announces the introduction of Glow-Lights, Inc., a cartoon to be a regular feature of the Spec by the talented Washington, Jr., Kansas City, Kans.

One more alternative offered

To the Spectator:
 With the election date approaching I would like to introduce this campus to a fourth party which offers alternatives and rational solutions to serious problems. The Citizens Party is a broad-based coalition of all the millions of Americans who feel disenfranchised by the backwardness, timidity, and corporate control of the present political establishment. It speaks for the millions concerned about the neglect of unemployment, urban decay, solar energy, consumer rights, abortion rights, nuclear power plant dangers, FBI and CIA encroachment on our freedom, environmental pollution, poisoning by pesticide and chemical waste, curbs on racial and sexual freedom and equality, and the threat of nuclear war doomsday. The Citizens Party candidates are Barry Commoner and LaDonna Harris. They adopted as their platform tangible and workable solutions to the above stated troubles. Two basic sources of the above difficulties are double-digit inflation and the present supremacy of corporate

interests over the national interest. They noted, in looking at the first basic cause, that there is an energy 'crisis' but not an energy 'shortage.' The present energy crisis is simply due to the fact that we are running out of cheap energy in the form of first the domestic and then the imported oil that has fueled our national growth for half a century. Add the increasingly expensive oil to the inflationary impact of trillions for nuclear overkill capability and inflation is inevitable. Abraham Lincoln said, "I believe in the man and I believe in the dollar. But I believe in putting the man ahead of the dollar." The Citizens Party believes in private interests when they are not socially harmful. We must put the national interest ahead of the private interests and we have been failing to do so. Citizens Party members believe that political power belongs in the hands of the voters, not the corporations. They believe in the basic strength of our democratic institutions. And they believe in using them to bring democracy to bear on the

economic decisions that govern our lives. This election year The Citizens Party needs 5 percent of the total vote for President and Vice President. This will qualify it for up to \$3.9 million in federal funds to repay campaign debts. In addition, it will receive close to \$1 million to maintain the Citizens Party between 1980 and 1984, and over \$5 million to wage its 1984 presidential campaign. The choice is ours in determining our future. A vote for the Citizens Party acknowledges your demand for new approaches to this and the next century's problems. If interested and wanting more details please see me. Yours, Dan Rogers

The joy of life is within you, share it

The joy of life is not found in material objects, they have no feelings to share. The joy of life is not in disillusioned selfishness taking whatever you can to satisfy your own hunger, for that is cruel and unnecessary. The joy of life is not in treating others as unfeeling machines, for that is cold and uncaring. The joy of life is receiving unwarranted love. The joy of life is giving love freely. The joy of life is found in a community that is willing to open each life to each other to share successes and to learn from mistakes. Have you repeated your mistakes, or have you learned. Have you squandered your successes, or have you shared them. Have you demanded reciprocity, or have you freely loved. These questions you need to answer for yourself, but this I know is true, that you have received unwarranted love. Spiritually, psychologically, and biologically you have been conceived and raised by the actions of love for your creation and on your behalf. You have the start for the joy of life. Share it!
 Bruce Fahnestock
 (10-9-80)

Song's criticism is criticized

Dear Mr. Colflesh,
 I don't know where your touch with reality has gone to, but it must have been gone while you wrote your article for last week's Spec. You may have read a poem about oppression, but you clearly didn't see it for what it was. Firstly, the poem wasn't meant to be taken seriously. Its purpose was for entertainment. If its rhythm wasn't very good, maybe it wasn't supposed to be very good. And as to your remark about "grade school poets," you should talk to a few of them so they can teach you some grammar. They would have used "very bad" in place of your "really bad." Secondly, where is the law saying all works for the Spec

must be signed. Many of the greatest authors have not used their names on their works. They may have been proud of their works, but you'll still never find the records of the birth of Mark Twain. Thirdly, while we do receive a copy of the Community Code, some people must have only read part of it. While the code does list the campus rules, it also makes a statement of the aims of the college. Cutting down another college doesn't seem to be one of them. Do you have some ill feelings about Fort Hays State or did you pick the name out of thin air? In closing, I hope I can open your eyes to a fact you seem to be blind to. As a newspaperman, it is your duty to print news and

complete a newspaper. It is not your duty to judge a story, that is the public's job. And if you had need of five inches of space to fill be glad someone was willing to write something to fill it.
 Thomas J. Netolicky

ACKLEY'S

BOOKS MAGAZINES GIFT ITEMS

Come in and see our large supply of leisure reading.

Ask about our book ordering service.

10 E. Euclid McPherson, Ks. 67460 241-6602

McPherson College
spectator

(USPS 509-880)

Vol. 65 October 17, 1980 Issue 4

Official student publication of McPherson College, McPherson, Kansas 67460, published at 1600 E. Euclid by the Student Council weekly (24) during the school year, except during college recesses. Second class postage paid at McPherson, Kansas. Campus office — Student Union basement. Editor-in-chief: Don Stinnette. Managing Editor: Matt Howell. Campus Editor: Tina Schmidt. Reporters: Harold Briscoe, Trudy Christy, Mark Colflesh, Ken Funderburk, Matt Geisert, Mike Higgins, Bruce Switzer, Chuck Telk, Boniface Wawely, Lori Whittiker. Business Manager: Kent Nicholson. Assistant Business Manager: Dan Coffman. Photographers: Trudy Christy, Sid Gauby, Jeff Thill, Tom Mason.

THE SPECTATOR — Page 3
 October 17, 1980



Hey Gals!!!

Still don't have your ears pierced?

George sez: Brunk Jewelers will pierce them **FREE** with purchase of your first pierced earrings.

Stop by Brunk's today and see the many styles to choose from and start enjoying your own ear fashion fun.

— No appointment necessary. —



"Bringing You The Best"

214 N. MAIN
 McPHERSON, KANSAS 67460
 PHONE: 241-2294

GEORGE & ROBERTA WILLARD
 OWNERS

PIZZA



'AAAH'

Your Home Town
Pizza Hut

2215 E. Kansas
 241-5588

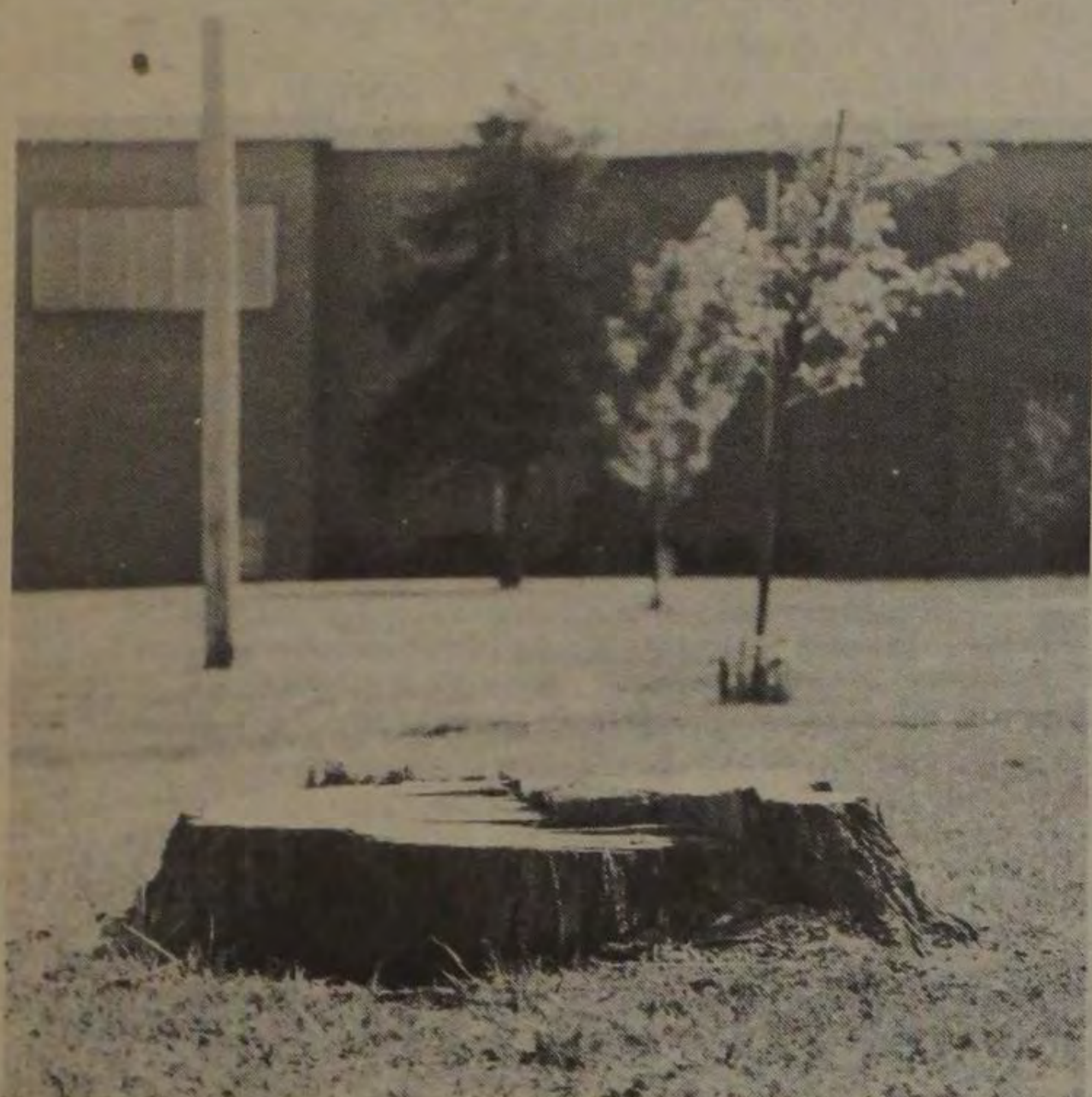


Morgan Quinn
 for guys 'n gals

Color • Brown Smooth Leather

McNichols SHOES
 McPHERSON'S FINEST SHOE STORE

'Souvenirs Through Time'



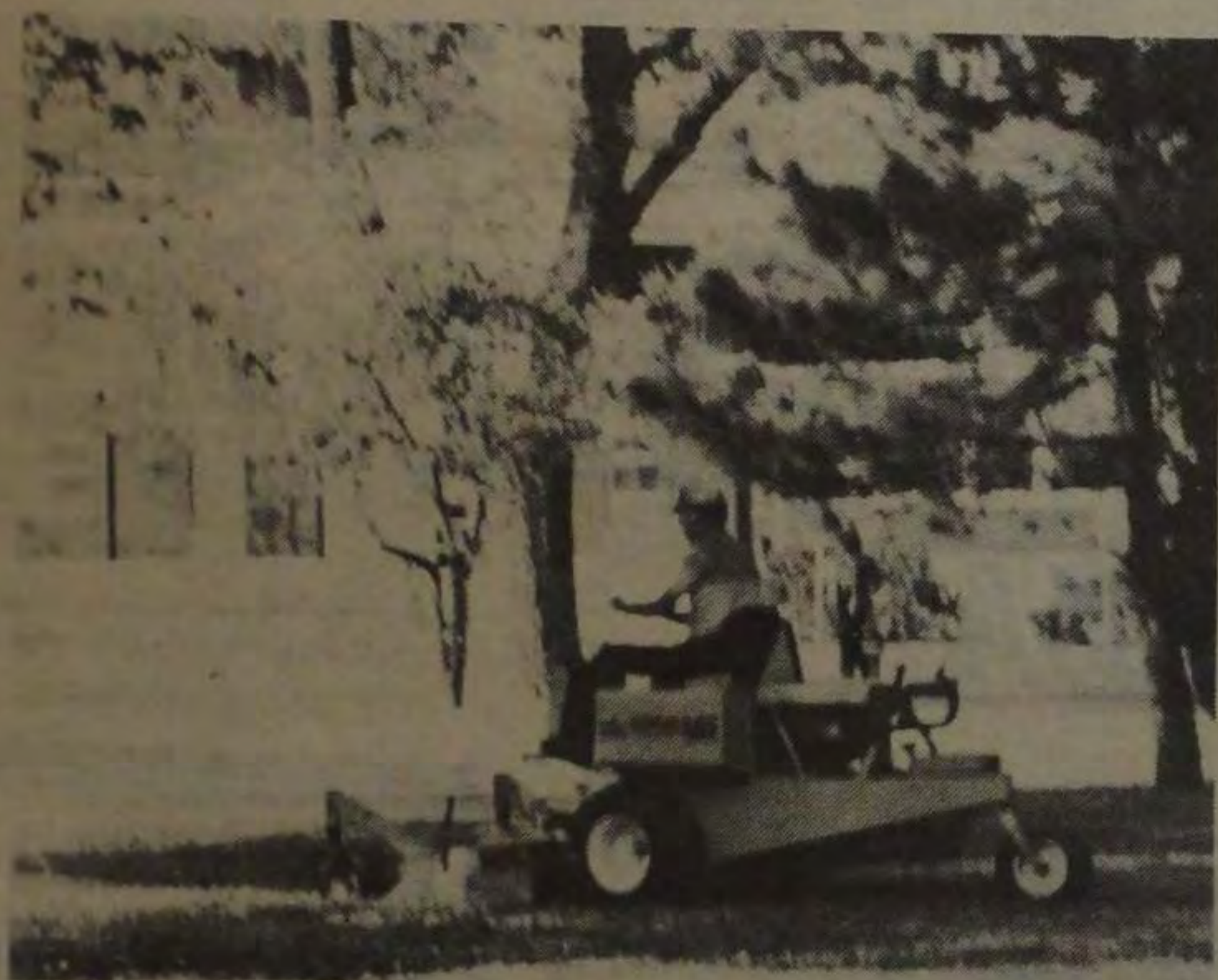
Question for alumni: Can you find something missing in this picture? Probably. But you're even sharper if you recognize two things missing. Not one, but two of the grand old elms in the Quadrangle area finally succumbed to the dreaded Dutch Elm Disease during the summer. The last traces of these magnificent trees — the stumps — were recently removed. The Quad area may seem more spacious, but perhaps the most precious of "souvenirs through time" are the memories of things that have been.

Photo by Jeff Thill



Who will reign over Homecoming, 1980? The candidates for Homecoming king are, from left to right, Joel Miller, jr., Rocky Ford, Colo., Larry Shick, jr., Lawrence, and Pierre France, jr., Okla. City. Queen candidates include, from left to right, Celeste Lewallen, jr., Bisbee, N.D., Tami Roesch, jr., Quinter, and Karla Wilson, jr., Valley Center.

Photo by Jeff Thill



Merrin Godfrey makes the rounds with a mower to help keep the campus's appearance in top shape as Homecoming approaches.

Photo by Jeff Thill



Ah, Fanny . . . Always a pivotal part of Homecoming. What's up your sleeves this year, guys?

Photo by Jeff Thill

THE SPECTATOR — Page 4
October 17, 1980

M
MYLLER
Office Supply

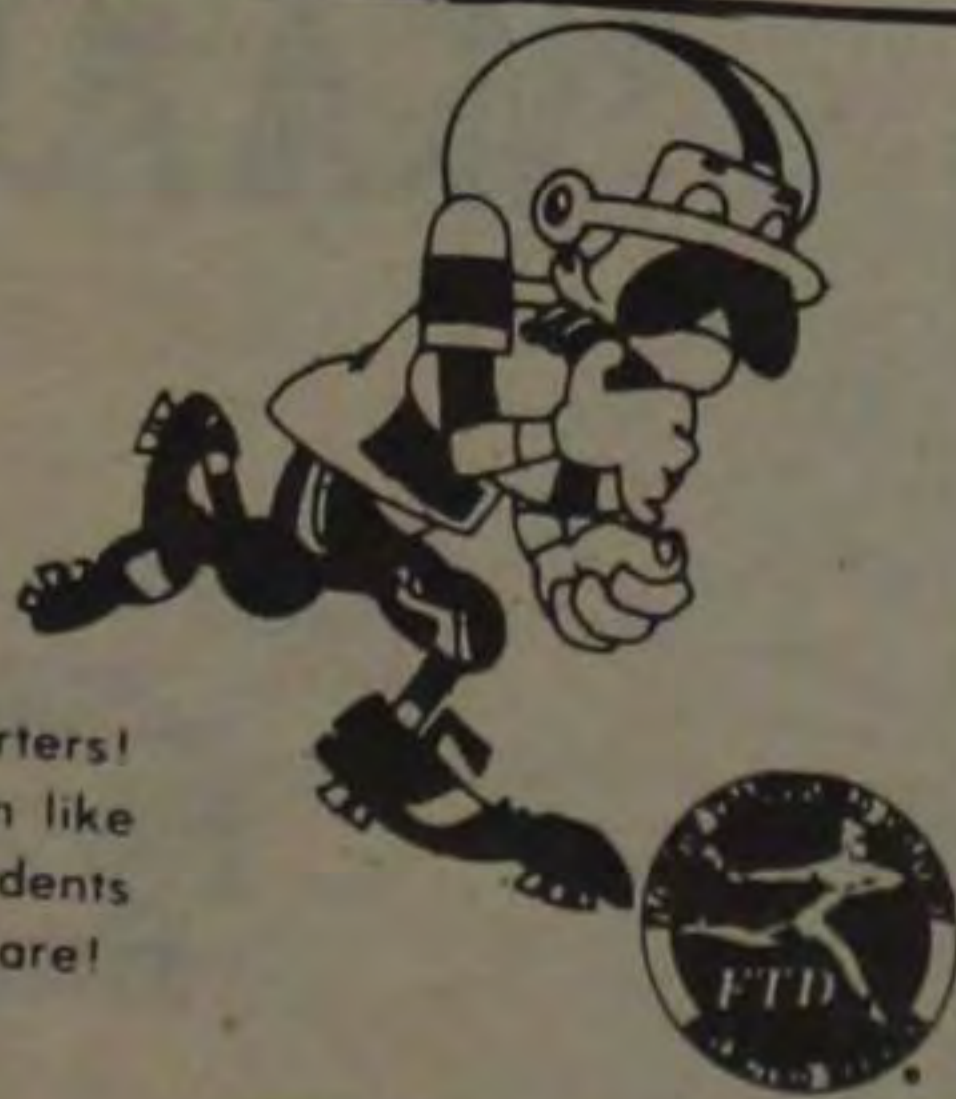
- * Duplicating Service
- * Office Supplies
- * Furniture

Good luck on Saturday's game

117 E. Euclid/Tele. 241-1482
McPherson, Ks. 67460

CORSAGES
BOUTONNIERES—
EVERYTHING FOR
HOMECOMING

Make us your Homecoming headquarters! Nothing will thrill your date or Mom like flowers, at prices to suit a student's budget. Stop in or phone today - we care!



McPherson Floral

104 South Main
McPherson, Ks.

241-4343

The Olde Deli

123 SOUTH MAIN

PHONE 241-5252

**BEST SANDWICHES IN TOWN
MEATS AND CHEESES**

By the pound
with salad bar and soups

HOMECOMING SPECIAL

Ham & Swiss cheese sandwich
with choice of bread

\$1.79

Preparing for Homecoming, 1980



Freshman attendants include Joe Heckman, Lee Holt, Scott Plumber, Vashti Phenice, Jane Roth, and Kelley Vassey.

Photo by Jeff Thill



Karla Wilson, jr., Valley Center, sparks Bulldog fans at a recent game. The Homecoming gridiron contest will be tomorrow at 2 p.m. against Friends University.

Photo by Trudy Christy



Sophomore attendants are Bruce Bauman, Chapman, Jeff Berggren, Bruce Appel, Curlew, Iowa, Kent Nicholson, Wichita, Dani Powell, Kingsley, Iowa, Dawn Gaeddert, Inman, and Cindy Dell.

Photo by Jeff Thill



Cindy Dell, soph., and Janice Ebbert, soph., demonstrate the ultimate in modern fashion during "Clash Day" of Spirit Week. Other days included Dress-up Day, yaD sdrawkcaB, Overall Day and Spirit Day.

Photo by Trudy Christy

THE SPECTATOR — Page 5
October 17, 1980



**In Need of
a Stereo?**

Boogie on down
to Poor John's and see our
Sanyo & Pioneer stereos
or
Rent a T.V., stereo
and other appliances



Poor John's

302 N. Main

241-2920

**Stanley's
fashions**

Did you know . . .

The Landing Shop at Stanley's
Fashions has designs for you.
Come see our sportswear and
dresses fashioned for you.

You Babes - Tops - Shirts, Slacks
Fritzi - Blouses - Slacks
Topioca Sweaters
Lucy Dresses
Dresses by Stellas



The Flower Fair
Don't Forget
Our
Friday Cash
and Carry
Special

\$2⁹⁹

Welcome
Alumni, Parents & Friends
to
McPherson's Homecoming

Come in and see us
Ramona Lowe Pope
305 North Main
241-6828

Media Center offers services to students and campus staff

by Lori Whittiker

One segment of the McPherson campus that many students may not be informed about is the Media Center.

The McPherson College Media Center was put into production in 1970. The original director, Herb Johnson, is still directing the operation of the Center. He wanted to have an organized, central place with one person to be responsible for audio-visual equipment and software.

Another reason the center was started was the technological revolution in education through films, television, audio tapes, etc. Mr. Johnson also established the audio-communications major about six years ago. So far, eight students have graduated with an

Audio-visual communication major.

The Media Center equips McPherson College with projectors, viewers, slide carousels, tape recorders, as well as delivery and pick-up services. Mr. Johnson and his staff, consisting of four secretaries and seven assistants, will try to help students and faculty in any way they can.

The center asks that all requests be made at least 24 hours in advance if possible to be sure of availability. Equipment may not be checked out by students, but may be used in the Media Center or Audio-visual Library area.

The Media Center includes the office, studio and three

classrooms in the lower level of Miller Library. These classrooms are available to professors for their use, although they need to check with the center for room and equipment schedules.

Hours for the Media Center are:

Monday-Thursday:

7:30-12:00 a.m.

1:00-4:30 p.m.

6:30-9:30 p.m.

Friday:

7:30-12:00 a.m.

1:00-4:30 p.m.

There are members of the staff present at all times during these hours to assist you.

Mr. Johnson says that the center is in a holding pattern and he doesn't anticipate an expansion of services.

The Media Center is for the whole campus, students as well as faculty, and would also like to serve the community as well.



Ron Washington, jr., Kansas City, Kans., makes an adjustment at the control panel of the Media Center's main studio. Several students help run the Center, which serves the entire campus community.

Photo by Trudy Christy

Thomas relates 'saga' of year's food program

by Vic Williams

Saga is one of the largest contract feeding programs made for colleges, large eastern high schools, hospitals, and other related systems. It stands fourth as a national food service and is backed by such companies as Black Angus, Pizzeria, and Sirloin of America.

Jim Thomas, McPherson's Saga food director, is having his first year here at Mac college. He thinks that it can be a good year but he does have a few comments about a few of the rules and regulations which the administration of the college back firmly in order to have a good food service program. It isn't too often that a food service director can receive such a strong backing from the administration for some food programs.

The sack lunch program here at the college has been misused in the previous years. This year it is being rebuilt again so that it can be beneficial to those who really do need it. The sack lunch program is provided for people who are unable to come to a meal.

In previous years the program has been misused; people used the program for little picnics or a free lunch on the trip home. The policy is that a sack lunch can be fixed for athletics, field trips, and other college related activities.

Another problem in the food service is that people are taking food and drinks out of the cafeteria. People have misused the policy by filling their jugs with beverages and also taking food to eat later at the dorms. The policy is that no food or drinks are to leave the cafeteria no matter what the reason, for it will not be tolerated.

A snack bar has been provided in the basement of the Student Union for this reason. It is open Monday thru Friday from 9:30-11:00 a.m. and again from 2:30-3:30 p.m. There are a variety of things to eat and drink and everyone is encouraged to use this privilege.

Mr. Thomas states: "I would like some student participation in the food program. There has been a food committee organization here on campus started by some of the college students.

I am glad that I have some help from the students. If you have a complaint the committee will listen to it and bring it to me. If you cannot contact the committee and have a complaint I am always willing to listen as long as it is a legitimate excuse.

There are 355 students on the food service program and there are 12 full time employees along with about 30 college students that help to serve each one of them.

We all have to eat three times a day and out of that three times not everyone is going to like the food that is being served. In closing, Thomas had one thing to say, "There is no way we can cook like each of your mothers, but we'll do our very best!"

THE SPECTATOR — Page 6
October 17, 1980

CHBOOKS STORE
BOOKS ARE GIFTS
OPENED MORE
THAN ONCE!
"Good Moving, Lord"
Books.
Gifty Books that are
Always Welcome!
121 S. Main 241-1685

HIEBERT'S

319 North Main
McPherson, Kansas 67460
October 1, 1980

Dear McPherson College,

It is with a great deal of pleasure that I announce the opening of

HIEBERT'S

Home Appliance and Sports Center

(formerly Crabb's Sptg. Goods & Appliance)

Look to HIEBERT'S for these famous brand names

Appliances

G.E.
ROPER
PANASONIC
LITTON

T.V. & Stereo

R.C.A. G.E.
SONY

Sports Apparels

NIKE
CONVERSE
PUMA
SPALDING

Sports Equipment

WILSON SPORTSCRAFT
VOIT EVERLAST

It is my purpose in the coming year to serve not only your personal needs - but the needs of the McPherson College as well. When you're in the neighborhood, drop in to say "Hello!"

Sincerely

Donald D. Hiebert

Appropriate Gifts
for your Homecoming needs

EBAUGH'S GIFTS

Hallmark Cards ∞ Picture Framing
Infants Wear ∞ Russell Stover Candies

108 North Main St. / McPherson, Kansas

College credit for work experience bringing both worlds together

by Matt Geisert
Experience Based Education (E.B.E.) is a program designed to provide the student with an opportunity to gain work experience and receive credit for

the experience. This program is designed to gain educational knowledge that can't be obtained in the classroom. This information will help in the transition from the classroom to the

job. Dr. Edward Butler, Vice President of Student Services said that pay for the work experience is between the student and the employer.

Any type of work that can be demonstrated to have a potential to be of educational value in the student's field of study is acceptable as E.B.E. work experience. Work in which a student has had previous experience will not be viewed as having the potential to make a significant educational contribution.

To be eligible the student must hold a junior classification of above 10 hours and have a minimum 2.2 G.P.A. overall. Transfer students also must have completed at least 12 semester hours of work at McPherson College.

The number of credit hours awarded for the E.B.E. program is based upon the amount of time committed to the experience. Students working forty hours a week will receive one credit hour up to a maximum of 12 hours, for every two weeks of experience.

Students working less than forty hours a week, but who are enrolled as full time students at

McPherson College will receive one credit for four weeks of work. Students not enrolled full time will get up to six credit hours.

A maximum of 15 hours of E.B.E. can be counted toward graduation. Due to the above restrictions on the maximum credit to be awarded, accumulation of more than 12 credit hours would require the student to participate in at least two E.B.E. programs.

In the event a student should wish to participate in more than one E.B.E. program he must complete a minimum of 12 hours of academic work at McPherson College between placements.

The procedure for enrolling in E.B.E. is to visit Mr. Cripe, career and life planning counselor, or Dr. Butler, Vice President of Student Services and picking up some information. Then one must talk to the faculty advisor assigned to the student and get his approval. Dr. Butler said, "Mr. Cripe is taking on many of the responsibilities of the E.B.E. program".

After enrollment the student must set out his goals for the work experience. Dr. Butler said, "Each student has to apply for his own job. The jobs are not just handed out. Being interviewed for a job is part of the education."

The counselor will set up either a pass-fail format or a letter grade and will determine how many hours the student will want to work.

If the student wants a letter grade then he must keep a log of what he did and learned each day. This is turned in twice during the work experience to the faculty advisor. Besides the log the supervisor rates the student on his performance.

"Any student that needs financial aid should stop by the financial aid office. He might receive some money that could be used for E.B.E.," said Dr. Butler. The money earned exceeds the expense of the education.

THE SPECTATOR — Page 7
October 17, 1980

After the Game
Enjoy a Pizza
at



1st & Mulberry in McPherson
241-2242



Peoples Bank and Trust, as it looked in the early 1900's. The same location and building are still utilized by Peoples Bank today. Peoples has been serving the McPherson community since 1898, and we take this opportunity to thank McPherson for helping us grow and change to meet the challenges of our economy. Congratulations to a great community for having the foresight to maintain our heritage through renovation of our existing structures such as our court house . . . and Peoples Bank and Trust.

adv.

For your convenience



HOME STATE BANK & TRUST

HOME STATE BANK NORTH, 1300 NORTH MAIN

ATTENTION COLLEGE STUDENTS

Tired of hittin the books?
Tired of cafeteria meals?

This is your invitation to
get in on something good!

Effective Oct. 2, 1980

COUNTRY KITCHEN

Travitz Country Kitchen
2118 E. Kansas Ave.

will be observing

"College Night"
every Thursday evening from

4 p.m. to 8 p.m.

This will allow you a 20% discount on any menu price. We want to give a student a break.

See You There!



Freshman standout Deb Rettele pounds a vicious spike between the hands of opposing defenders during McPherson's first conference victory of the season, over Sterling. The

team fell barely short of achieving another victory against Kansas Wesleyan Tuesday in a three game match.

Photo by Jeff Thill

Moundbuilders defeat Bulldogs

by Ken Funderburk

Last Saturday the Battling Bulldogs lost a high-scoring slugfest to Southwestern, 34-20. With that loss the Bulldogs fell to 1-2 in the conference standings, 1-3 overall.

The Bulldogs struck early in the game with a 67 yard punt return by Walt Gaston, jr., Mounds, Okla. But those were the

only points McPherson could manage until late in the fourth quarter.

The Moundbuilders capitalized on nine Bulldog turnovers and scored 34 unanswered points.

Finally, in the last quarter, the 'Dogs showed signs of their explosive offense. Freshman halfback Greg Grant scored two short-yardage touchdowns to make the score somewhat

respectable.

Coach Lee Dobyns stated that he was somewhat pleased with the way the team came back late in the game.

Tomorrow the Battling Bulldogs will face Friends University in its Homecoming contest. Friends also comes into the game with a 1-3 record. Kickoff is scheduled for 2 o'clock at the stadium.

Soccer squad shuts out Sterling

by Boniface Waweru

This time it was a record breaker for this season; the soccer team received no score against it. McPherson did score, however, four times in defeating Sterling last Sunday.

Bill Snyder, soph., Chesterland, Ohio, exhibited a wonderfully talented performance in the goal. The hot shots of the Sterling Strikes couldn't keep Bill from diving successfully for every ball.

McPherson's opening score came in the first half when Captain Charles Ogowang, soph., Uganda, fired the ball into the

saying, "I need ten more minutes, then you will all count three scores."

Within those ten minutes he had converted his words into action, scoring McPherson's third goal.

In the second half Ogowang struck like thunder, having another hot kick hit the goal post; it was a score but due to some confusions it wasn't officially counted.

The fourth score was a long forty-yard shot by Procopios "Greek" Pelavas, soph., Cyprus. The talented "Greek" made the tricky score just a few minutes before the end of the game.

The whole team played very well; the players' talents continue to improve game after game. They hope to continue to do so in the next game, their own Homecoming on Sunday at 3 p.m.

THE SPECTATOR — Page 8
October 17, 1980



Mid-Kansas Sports & Awards Inc.

Stop in and see our new line of Tigers, Bravado

Warm-ups
Hats
Jackets

Good Luck from MKSA
to the Mac College
Football Team and Fans
This Homecoming Weekend

102 N. Main
241-7700



opponent's net. This hot kick left the goalkeeper in confusion, and made Sterling's entire team reorganize, with the coach, who was the mid-fielder, changing his position to play on defense.

This did no good, as Sterling couldn't stop Joe Opiyo, soph., Kenya, who dribbled the ball smartly, making the second score. As spectators from Mac cheered Joe, he shouted back

Spikers gain first win

by Mark Colflesh

McPherson's volleyball team gained its first victory of the season last Tuesday, as they defeated Sterling College 15-4, 9-15, 15-5.

The Bulldogs dropped the final match of the triangular to Kansas Wesleyan 15-7, 6-15, 12-15, as a strong comeback effort fell short.

Deb Rettele's, fr., strong net play and the consistent setting of Cindy Royer, soph., Lincoln, Neb., keyed the Bulldogs' victory as they ended a seven game losing skid.

"Our hard practice payed off," commented Head Coach Paul Graber. "We played with intensity, very heads up. We made fewer errors and played aggressively.

McPherson, now 1-8, travels to Newton this Monday for a 6:00 p.m. tri-meet with Bethel and Tabor.

McPherson's volleyball team continued to struggle as they lost both ends of a triangular meet with St. Mary's of the Plains and Bethany, at home on Oct. 8.

In the opener, McPherson was blown out by St. Mary's 3-15, 3-15.

But against Bethany the Bulldogs faired somewhat better as they won the first game 15-11 before having comeback efforts fall short in losing the final games 12-15 and 9-15.

After the loses, Head Coach Paul Graber stated, "This has been a rough two weeks. We've had some injury problems but in the second game the girls played with enthusiasm. I think we're turning the corner.

Netters dumped in meet

by Matt Howell

McPherson had beautiful weather for tennis last Saturday, but the women's tennis team dropped all but one game in a triangular competition.

McPherson lost 1-8 to Bethel in a conference competition, and lost all its matches to a tough Benedictine team in non-conference play.

Teresa Goodfellow, soph.,

Lyons, won in singles to keep McPherson from being completely skunked in the competition. One reason for some McPherson losses may be the absence due to injury of Susie Morales, soph., Lyons, an integral part of the tennis team.

The team competed in the KCAC tournament held in Wichita, Wednesday and yesterday.

It's not too late to get your Homecoming outfit

DESIGNER JEANS

- * Calvin Klein
- * Gloria Vanderbilt
- * Sasson



BLAZERS

- * Corduroy
- * Wool Tweed

SOLID & PLAIDS

FASHION COORDINATES

- * Corduroy
- * Wool
- * Suede Cloth

BEAUTIFUL COLORS

and

Much, Much More!

Best wishes to Homecoming Royalty



THE CLOTHES TREE

102 South Main