

Pres. Snell resigns

Trustees face complex issues

During their fall meeting last weekend the Board of Trustees had to deal with many expected and unexpected issues. Dr. Galen Snell commented, "It was probably one of the hardest working times ever for the board as they wrestled with difficult questions for the future of the college. The one hundred per cent participation they demonstrated was tremendous and will help ensure the future of the college."

Among the time consuming issues were Dr. Snell's resignation, setting up a task force and selection committee and open dorm hour discussion. Since all work was not completed another trustee meeting has been scheduled for Dec. 13.

Dr. Galen R. Snell, president of McPherson College since 1972, announced his intention to resign as of Sept. 1, 1976 to trustees, faculty and students last Friday.

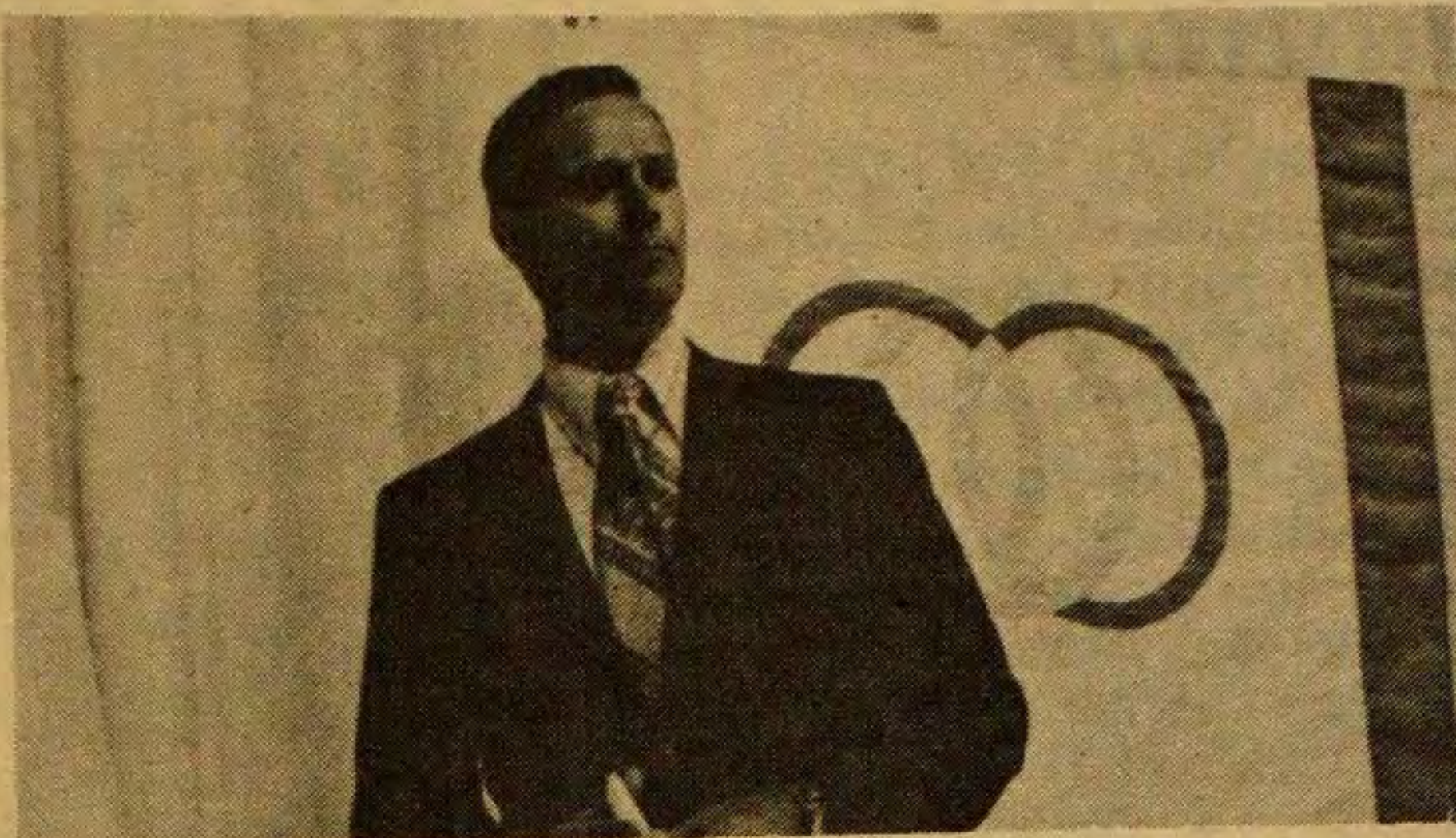
"I came as president with two primary goals," Dr. Snell stated in his Oct. 11 letter of resignation. "The first was to achieve financial stability in order to give McPherson College strength to face the future.

"Second, I came to establish a value base on which the college could be continued. I have spoken of and attempted to live that type of life which I think is the basis of a Christian college."

On the day his resignation was made public and after seven years of serving McPherson, Dr. Snell said, "my work is done. I've accomplished what I came to do."

In the latter 1960's Dr. Snell was employed by McPherson College as a psychology professor and Dean of Students. Prior to that he was teaching and counseling at Scottsdale Community College in Arizona when "I received the call from McPherson. I accepted the challenge but I never really wanted to be president.

"I came as president against all the emotion inside me for administrative tasks. I came because I thought I understood the



Dr. Snell launches two million dollar development campaign to students, faculty and trustees before television cameras and newspaper reporters.

situation, had those qualities needed to establish confidence, and felt it a call of God.

"I have worked hard with all at the college to bring new life here. That life has come. I do not have the emotional desire to carry the college on through the next steps necessary for intended growth."

Dr. Snell explained that he had informed the trustees upon his selection that he wished only to be a "short-term" president. "I knew I could not be president more than four or five years," he said. His final decision to resign was made last summer.

year long internship in a mental hospital to complete a clinical psychology degree and part-time farming.

Though soon to be relieved of his administrative duties, Dr. Snell expressed mixed feelings at leaving McPherson College. He gestured toward a large aerial photograph of the campus and said, "It's pretty hard to look at that picture and not imagine myself walking across it."

He continued, "Seven years are a good many years in a working person's life. I have a deep affection for every group I've had the pleasure of working with.

"I've seen the growth of so many students. It's been a great joy. I've also seen the growth of myself as I've been taught by many. That's also been a great joy.

"I've appreciated the opportunity the college has given me to be of service. I don't know whether I've done well but I know I've done something—only time will tell."

Trustee explains dorm issue refusal

Ed. Note — The following was written by Trustee Kathy Ball, chairperson of the Campus Life Committee, to inform students of the board's discussion and action on the open dorm proposal.

The Campus Life Committee brought to the Board of Trustees a recommendation on the proposal for more open dorm hours. It was as follows:

"The Campus Life Committee strongly recommends that the board increase open dorm hours by six hours with the stated understanding that the Board of Trustees is responsible for policy making decisions but does encourage students' views and contributions in campus life by their involvement and participation through proper channels.

"We make this recommendation with the feeling that this issue is not an important enough issue to be the focal point for a 'power struggle' and feel that if most of the Board has the understanding that this is a 'power struggle' and would be interpreted as students having won the battle that the recommendation be defeated."

We would like to compliment the student body for their deep and sincere interest in the life of the college and would hope that in the future their energies will be expended on issues which we would see as being much more significant than the present issue.

Students gave many reasons for wanting more hours and no item received a greater amount of time than this issue. Some trustees would prefer no dorm hours and some do feel it is a moral issue.

Some reasoning for voting against open dorm hours has to do with past history. During the sixties the college drifted to the left, partly because students demanded changes saying they would leave and would not recommend the college to prospective students. Rules and regulations were changed to student wishes and we still experienced a decline in enrollment. At this period we lost support from our constituency because of the direction the college was heading. We began operating with a deficit budget.

At this time the board felt the need to change the direction of the college and Dr. Snell accepted the challenge. As you know he has "mended many fences" with the total constituency. Support has come with the \$2 million development campaign and we now have a stable financial base and a balanced budget.

Some trustees also felt a dorm hour increase would not create a severe problem with the direction and philosophy the college has taken in the last three years. They also felt it could be explained to most of the constituency.

However, on the other side of the issue is the problem that students would consider the increase in hours a "victory" in the 'power struggle' and may again come to the board with additional requests for more "liberal" campus life. We could find ourselves back in the same situation we were four years ago with decreasing financial support and a deficit budget.

Each of the many trustees had different reasons for his vote. The vote on the increase was negative by a very close margin and then the board voted that open dorm hours remain as they are now.

Every member of the board appreciates the time and the input from Steve (Burkholder) and Christy (Young) and felt they did an excellent job of representing the student body.

We hope now that students will move on to more constructive areas of concern.

THE MC PHERSON COLLEGE spectator

Vol. 60 Issue 7

McPherson, Ks. 67460

Oct. 31, 1975

Selection Committee designated to initiate search for president

A Selection Committee has been appointed by the Executive Board to begin procedures for securing a person to fill the presidential position to be vacated by Dr. Galen Snell on Sept. 1, 1976.

Chairing the committee will be Erwin and Betty Porter. Serving along with three other trustees will be faculty members Dr.

Raymond Flory, professor of history and political science, and Dr. Gilford Ikenberry, professor of biological sciences. Student delegates are Student Council president and vice president Steve Burkholder and Christy Young.

A special meeting of the entire Board of Trustees has been scheduled for Dec. 13. According

to J. Paul Jewell, chairman of the board, this meeting will be to work on guidelines for selecting a new president and to determine "where the board stands today and where we want it to stand in the future."

Because of lack of time the committee was able to only outline their objectives. Mr. Jewell stressed that they were still just very general statements.

Included was that the primary goal of the college is "educating" the student body and that McPherson College would retain their relationship with the Church of the Brethren. It also states that the board would be the policymaking body of the college and that the administration and president are charged with the responsibility of implementing the policies of the board.

Also among the twelve statements are that the top priorities of the college include academic excellence and a growing experience in the Christian faith and that McPherson will continue its curricular emphasis on integrating liberal arts education and vocational preparation.

Halloween activities/

'Quad' pictures / Trivia

winner / Senior Check /

Thanksgiving dinner . . .

SPECTATOR SIDELINES

Halloween activities planned for this evening include a jack-o-lantern carving contest at 10 p.m. for which prizes will be awarded. There will also be free refreshments and the midnight movie, "Whatever Happened to Baby Jane?"

Individual pictures will be taken for the yearbook on Tues. Freshman, sophomores and juniors will be photographed from 11 a.m. to 4 p.m., and seniors at 7 p.m. All pictures will be taken in the Quiet Room.

Campus Trivia Bowl winners for this year are freshmen Karen Burkholder, Cindy Correll, Pam Pettit and Cheryl Ferguson.

At least 50 per cent of the senior class have not yet made appointments to check over their graduation requirements. Any senior who expects to finish before August 1976 must make an appointment with the registrar this semester to go over his transcript.

Any student from out of state who would like to spend Thanksgiving in a home atmosphere should contact Roy Harden, minority counselor, as soon as possible.

Students perplexed over resignation

Since the latter 1960's open dorm hours have been a highly emotional issue for all segments of the college community — trustees, administration, faculty and students. Emotions climaxed on all sides this year as the usual homecoming anticipation gained intensity as students rallied for attendance at all trustee committee meetings to support this and other issues.

However, in the midst of one of our best planned homecoming weekends our buoyancy was slowly deflated. Not only did we lose our open dorm proposal but we lost our president.

Perplexed, the first question we pondered was "Why?" and in trepidation we hoped the answer wouldn't be "Us." The open dorm defeat, an issue which had concerned us for years, took second priority as student government leaders, newspaper staffers and other upperclassmen examined their roles to see if they had somehow played a part in the president's resignation.

Student participation and enthusiasm had been higher in all areas this year than it had been since the close of the sixties. And though the open dorm proposal did coincide with Dr. Snell's resignation we knew expressing our views wasn't wrong. We knew this — but did others?

We'd heard that some might blame the students for Dr. Snell's resignation. But surely they realize that it would take much more than one issue to make a man quit who had presided over McPherson College in such a crucial time . . . don't they?

Cindy Mines

'The Who By Numbers' is LP of powerful new singles

THE WHO
The Who By Numbers
(MCA)

by James Marinovich

In a fortunate departure from the epic-nature of their last original offering, the rock-opera "Quadrophenia," the new Who album is a collection of impressive single material, a new batch of well-crafted tunes. This shouldn't be surprising, considering that Pete Townshend has long been a venerable master of the three-minute song genre.

For the quality which separates Townshend from other, more redundant songwriters who emerged from the sixties, is his distinct ability to express various psychological attitudes—adolescent, adult, carnal or spiritual—through a number of musical forms, pulling them all off successfully.

From randy rockers to poignant ballads, "Who By Numbers" sustains a high quality which, as of late, has been sadly lacking in rock. Of the ten songs on this album, you'll be hard-pressed to uncover even one reject cut or filler, and five of the songs are nothing short of masterpieces.

"Dreaming From the Waist" combines hard rocking riffs with a gentle, ethereal refrain and Roger Daltrey's harsh, dominant vocal matched with Townshend's own light, silver harmonies. Whereas "Quadrophenia" dealt essentially with the disillusioning experiences of adolescence, many of the tracks on "Numbers" focus on growing old in the world of rock 'n' roll.

For instance, in "Dreaming" we find the aging pop-star drowning in his own schizophrenic lifestyle (Meher Baba in the mind and a pretty young thing in the eye), when "I'm too old to give it, but too young to rest—I'm dreaming of the day that I can control myself."

This theme is further explored in "They Are All in Love," in which Townshend blends wry humor with playful self-mockery: "Where do you fit in the magazines — Where the past is a hero and the present a queen. . . Goodbye all you punks, stay young, stay high — Hand me my check book and I'll crawl off to die." This is scored with multi-tracked acoustic guitars, a graceful Nicky Hopkins piano, and

even a more subtle drumming from Keith Moon (which is quite an achievement for this lunatic thumper!).

Other euphoric cuts include "How Many Friends" and "In a Hand or A Face," which closes the album. Power-chords reminiscent of the Who of old explode through the latter and the soaring chorus "I am going round and round and round" is literally an echo of "I can see for miles and miles and miles" of eight years ago.

All this serves to emphasize the concept of the cyclic nature of our lives. However, the peak of the record, the crowning achievement, has to be the devastating "Imagine A Man," which features some outstanding vocal work by Daltrey and Townshend, as well as an immediately gripping melody line and powerful lyrics.

All in all, of the many albums to come out this year, many might have one or two distinguished cuts, perhaps even one superb SIDE, but . . . "The Who By Numbers" is the only LP, the whole of which, I can unreservedly and unabashedly recommend — it's that good.

READERS RESPOND...

THE McPHERSON COLLEGE

spectator ...to homosexual student's acceptance

Vol. 60 October 31, 1975 Issue 7

Official student publication of McPherson College, McPherson, Kansas 67460, published at 1600 E. Euclid by the Student Council weekly (24) during the school year, except during college recesses. Second class postage paid at McPherson, Kansas. Campus office — Student Union basement. One year subscription in U.S.A. — \$3.00. One semester subscription in U.S.A. — \$1.50. Subscriptions for full-time students are included in tuition.

EDITORIAL STAFF
Editor-in-chief: Cindy Mines
Managing Editor: Kent Wagener
Campus Editor: Linda Pfalzgraf
Advertising Manager: Cathy Hamm
Business Manager: Ann Lobban
Photographer: Anne Erisman

... to open dorm issue

Dear Editor:
We just heard that the open dorm issue failed by only two votes. One reason for the defeat could be that the trustees were afraid of students interpreting it as a triumph over the administration. But it was the students who first recognized the issue as a power struggle and it was this term that probably defeated the issue.

If the issue is ever renewed maybe the students will take it to the trustees in the proper perspective. And then maybe the faculty, administration and trustees will deal with it for the issue itself and not as a power struggle and not an attempt by students to change the "direction of the college."

For years the issue has been blown entirely out of proportion on all sides and if the issue comes up again hopefully all will be able to deal with it in a more realistic manner.

Disappointed students

Ed. Note — The following letter was sent to the editor and asked to be forwarded to the former McPherson College student who was interviewed for the homosexual story which appeared in the Oct. 17 issue of the "Spectator." The student gave permission for the publication of its contents:

Dear Anonymous One,
I write this after reading an editorial in the "Spectator" referring to you and your feelings and experiences. Since I haven't talked to you personally I don't know if I can really speak to what is inside of you but let me try.

I know you've got something here you are powerless to change. I know it is tough not to be accepted. I want to be able to love you simply because you are a person and need my love. You can have it and I won't try to make you conform to certain standards before I accept you.

I probably do have some tendency to want you to conform, but that is wrong, so please forgive me.

I am writing because I feel it is a

... to homecoming

Dear Editor:
I have been employed by McPherson College since 1968 and have been to eight homecomings. In my opinion, this past week's student homecoming activities were the best I have ever seen.

The floats were well done, half-time activities were impressive, the play, the special meals, all were just great. Any alumnus should have had a warm feeling about this homecoming. To every student who made it possible—you did a great job!
Jerry Holman

mistake to encourage you and others in homosexuality because I believe it does not bring the true depth to life and the deep kind of love God would bring us into. Christ gives us the possibility to become what we cannot do under our own power.

Let me go back to what I believe is homosexuality's failure. I am newly married. In my courtship and marriage I have learned many things about coming out of my self-centered shell by taking responsibility for a woman who has needs and feelings peculiar to a woman — needs and feelings complementary to a man's personality. I've learned that when you can make someone else's happiness more important than your own, that's beautiful.

I've used my imagination in the past wondering what it would be like to have certain members of my own sex as a constant companion and I found that if I were to desire such a thing it would be because they built me up and I guess in a sense gave me an ego trip. However, I wouldn't have learned the things about taking responsibility and selflessness I have with my wife.

Now you speak of the minister saying homosexuals are "condemned to the blazing of hell." Yes, because homosexuality prevents us from loving to the fullest, it is sin and sin has its penalty. . . The fact is, as long as we are in this life we will be doing something wrong, so to say God accepts us because we do the "right" things is deceiving ourselves. He accepts us because Christ died for us and ONLY for that reason.

You can be free of homosexuality if that helps you know God's love for you. God gives us what we need. You prayed for

God to take away your homosexuality. You say He didn't. Why did you ask that? I have a feeling maybe you wanted to be "straight" because you felt if you didn't sin, God would accept you.

But God loves you too much to let you get away with settling for a cheap love from Him like that.

God loves you, not because you are good, because you aren't and neither am I, but because you need His love and He wants you to have it. If He had taken your homosexuality away then you'd have failed to see that God really loves YOU.

He can take it away and he will when it is safe to and you realize He loves you without your earning it. I really struggled with that too;

in fact, I spent a short time in a mental hospital and I finally gave up and quit trying to deserve His love. The joy I know now was worth all that pain. . .

Now the hard part. What about other people who don't accept you? That is tough and shows their failure. It is hard but if you can love them and give them the help and support they need, even though they fail you, it will be a beautiful thing every time it happens.

Maybe I've preached at you. I hope it doesn't feel that way and I hope it wasn't any more than honest help offered. But with an eye to bringing you more joy I'll risk offending you.

Gary Frantz

...to trustee meetings

Dear Students,

Last Saturday morning I had the opportunity, as vice president of Student Council, to meet with the Board of Trustees. Spending a limited five hours with that group was probably one of the most growing, yet difficult experiences of my life.

First, my job was to represent the McPherson College student body. As I sat listening, speaking, explaining and trying to absorb the emotion and action around me, I knew my task was impossible. Yes, I tried. Fighting my deep-seated emotions, I tried to represent you to my greatest ability. Yet just as each Trustee has his individual opinion, so does each student. My representation hopefully was for the majority, yet even so, the varied student opinion is difficult to represent.

Yet most important to me was the constant inner struggle of representing the students yet reaching a realization of the diversity and sincerity of the board. I deeply wish each student could have the opportunity to meet with the Trustees and see them as a body in action. Too often, we, as students, are perhaps willing to make judgments without considering the whole, and each of its unique parts.

We, as students, are a part of that whole just as is the Board of Trustees, the administration, the faculty, the alumni, the constituency and the many other varied parts. Only by working together and attempting to understand each other's thoughts and actions can we live together in this Christian community.

With deep concern,
Christy Young
StuCo vice president

'Hey look me over!'



"Two-faced" tubas overlook the college band who is entertaining spectators at halftime of the homecoming game. Directed by Prof. Larry Kitzel they also marched in the parade.

New prof from varied past

by Lynn Willoughby

After being educated in Peru and Chile, setting up two Spanish communities in New York and being chaplain to Indiana migrant workers, Anthony Stefany has become the most recent addition to McPherson College's Foreign Language Department as an

assistant professor of Spanish. Expeditions to portions of the Peruvian-Brazilian jungle to provide teaching materials for the school such as snakes, birds, butterflies, wild flowers, special ferns and medicinal herbs."

While in Puno, he served as a staff member of a special government program, "Normal

chaplain of two large hospitals. He worked in Gary, Cedar Lake, La Forte and east Chicago.

Prof. Stefany also did work in the cities of New Orleans, Baton Rouge and Maerero in Louisiana as well as in Los Angeles, Calif.

But, because of his desire for time to write on his life, work, and travels, and "because I always desired to be on my own," Prof. Stefany asked for and received permission to withdraw from the priesthood.

In June 1975 he married Elaine Flory, a school psychologist in Rice County. Prof. Stefany met Miss Flory while working at a migrant mission in Michigan. They now live in Lyons and he commutes to McPherson College to teach Spanish I and III. Next semester he will teach levels II and IV.

Prof. Stefany says he has received inspiration and satisfaction in his teachings, studies, and travels, both here in the United States and in South America. He is also grateful "for the opportunities to be of assistance and spiritual consolation to others."



Prof. Anthony Stefany illustrates a new word on the board for his Spanish class.

assistant professor of Spanish.

Prof. Stefany, born in Italy, received his Bachelors Degree in the areas of Natural Science and Music in Lima, Peru in 1944 as a member of a world-wide Catholic organization, Salesians of Don Bosco. Afterwards he studied four years in Puno and Cruzco, Peru to receive his teaching certificate by the Peruvian Government.

"I then went to Chile in 1948 for the last stage of my formal education at the International Institute for Theological Studies, which is affiliated with the Catholic University of Chile in Santiago." After receiving his M.S. in Theology in 1952, Prof. Stefany returned to Peru to teach biology, chemistry and music, and to work as a vice principal.

During his four year training in Peru Prof. Stefany "accompanied jungle experts on private ex-

peditions to portions of the Peruvian-Brazilian jungle to provide teaching materials for the school such as snakes, birds, butterflies, wild flowers, special ferns and medicinal herbs."

While in Puno, he served as a staff member of a special government program, "Normal Rual Para Indigenas," organized to train rural teachers for the Peruvian Altiplano or high plains. Prof. Stefany did not teach long in Peru. "There was an exchange of personnel because of the need for English teachers in Peru and Spanish teachers in the United States. Because most of my relatives were already in the States, I requested and received permission to go."

On March 5, 1959 Prof. Stefany began his work as a teacher and parish priest in the United States, and worked in New York, California, Louisiana and Indiana.

In New York he organized and directed two Spanish communities. Besides New York City he has worked in Fort Chester, Manhattan and Brooklyn.

"In Indiana for four summers I served as a chaplain to migrant workers." He also served as a

Consortium sponsors Poet Nick Lindsay

The letter began: Thanks for the invitation ... I am selling across the agent's table for \$500-day plus expenses

There was a man had a daughter of surpassing beauty, and all, even kings, of the surrounding territory came to court her A prince came to court her, "Let me marry her, I'll give you ten thousand dollars."

"It's not enough."
"I'll give you her weight in gold, and make your grandchildren kings."

"It's not enough."
"I'll give you three cities with all their rents and revenues ..."
"No price is high enough: she is my daughter and of surpassing wisdom and beauty."

"Give her to me then as a gift."
"With all my heart."

... as a carpenter, my wage runs \$5-hour. \$100-day is beyond what any non-union carpenter has in mind, and so my thanks to you, too. We can bargain for that

The letter is from the pen of Nick Lindsay, poet in residence and assistant professor at Goshen College, Goshen, Ind.

Sponsored by the Associated Colleges of Central Kansas, Lindsay will be touring the six ACCK campuses next week and will be at McPherson College on Wednesday. He will meet with the "Writing In and About Nature" class in the afternoon and with English majors and other interested persons in the evening.

Son of poet Vachel Lindsay, Nick has published seven books of poetry including "Yes" (1969), "Prince of Darkness" (1969) and "Bread, Sweat and Money" (1972).

The younger Lindsay calls

THE SPECTATOR — Page 3
October 31, 1975

himself a "student of the U.S. myth reality" and is what the older Lindsay terms the "voice of the soul of the U.S.A."

Nick writes, "This voice speaks clearly in the sacrament of sweat, grain of wood, yoke of labor payday, struggle with the bossman and living wage — passion's fine wounds."

Lindsay is no stranger to "the sacrament of sweat" or the "grain of wood." As a third part of his "triple life" he works as a carpenter and electrician. He was previously owner-carpenter of the Edisto Island Boat Company in South Carolina—an ideal life according to him.

"At first my wife DuPose and I were the crew. We built and repaired houses, churches, stores and some boats. We had six children then—three in the paint buckets and three the school bus let off wherever we were working."

In addition to carpentry work, Lindsay has taught school in both North and South Carolina and worked as a language specialist in New York City. He also founded Penny Pinch Press, Inc., which has published all of his works as well as thirty "non-Lindsay" titles.

Read **SPECTATOR**
Ads for
'Spec'tacular
Bargains!

reduced rates
for college groups

The Spectator
McPherson, Ks.

Bowled Over by the High Price of Fun?



Starlite Lanes
Pins Down the
High Cost of
Entertainment
Now Bowl for
50c a game with
student ID at

Starlite Lanes

900 W. Kansas
McPherson, Ks.

Mobil



Ladies Day
Every Tuesday

With Any
Gasoline
Purchase

Exterior
Car Wash,
Jet Spray
Wax & Dry

Open
6 Days
A Week
For You

Coach House Car Wash
East of Consolidated Motors

122 S. Elm

McPherson, Ks.

FLASH!



Underclassmen's portraits
for **THE QUADRANGLE**
will be taken Tues., Nov.
4, from 11 a.m. - 5 p.m.;
Seniors from 6 p.m. - 7:30
p.m.

S.U.
Quiet Room

Bulldogs to meet Friends

Moundbuilders roll over Mac, 17-9

by Lisa Gaskill

A tough, veteran Friends University team will be waiting to take on the Bulldogs tomorrow in Wichita. They won the conference last season and were expected to win it again this year, but with their current 3-2 conference record, that is improbable.

Returning all-conference quarterback Doug Bacon leads the Friends attack. They boast 13 other returning starters.

"To win the game we must control Bacon's pitchouts and passing," said Bulldog Head Coach Don Rominger. "If we put out as much effort against Friends as we did with Southwestern we can win."

The Bulldogs had a good thing going against the Moundbuilders last Saturday until late in the third quarter when turnovers and injuries started taking their toll. Early in the first quarter Monte Spangler took off for 60 yards and a touchdown to give Mac the lead, but the extra point was no good. The Bulldogs scored again in the third quarter with a 40-yard field goal by Steve Herman.

Then Southwestern got in gear and took advantage of Bulldog turnovers and scored two touchdowns and a field goal in the last two quarters to win the game, 17-9.

Injuries played a key role in the game. Quarterback Mike Ewing was injured on the second play from scrimmage and had to play the rest of the game because there was no replacement. Starting quarterback Al Hurt will be out again this week due to a knee

injury suffered two weeks ago, but should be back next week.

"Our team gave the kind of effort that was needed to win against Southwestern last week. They did as well as they could, and I was pleased with the way they played," said Rominger. "We came out of the game with our heads held high."

"The defense did a tremendous job. Casey Jaworski had 24 assisted and unassisted tackles and Bobby Groves had 19. Frank Kobza blocked his man all but one or two times the whole game and he was outweighed by 20 or 30 pounds. Mark Goodheart also had an excellent game at linebacker in recovering two fumbles.

"The offensive line did a good

job of blocking. The execution was poor at times but it was not from lack of effort," Rominger said. "We had eight turnovers; when we eliminate the turnovers, we'll win."

"Dennis Colon was injured in the Wesleyan game so he didn't see much action Saturday but Burl Stephen did a good job in the backfield. Monte Spangler ran better than he has all year even though

he had the flu all last week."

Spangler carried the ball 13 times for 101 yards; Stephen carried 11 times for 43 yards and Colon gained 21 yards in four carries.

McPherson had nine first downs to Southwestern's 12. The Bulldogs gained 183 yards rushing to 142 for Southwestern and 45 in passing to their 34.

Next week's intramural volleyball schedule:

- | | | |
|------------------|---------------|---------------------------------------|
| Monday | 8 p.m. | Renegades vs. Roachclippers |
| | 9 p.m. | FBI vs. Dotzour Dames |
| Wednesday | 8 p.m. | S.N.A.F.U.'s vs. Faculty I |
| | 9 p.m. | N. Grosbach vs. College Courts |

THE SPECTATOR — Page 4
October 31, 1975

Come trick or treating tonight at the

Q-ROOM



All costumed spooks will receive a free treat starting at 8 p.m.

307 N. Main McPherson, Ks.

Women's cross country

one of five in Kansas

Six McPherson College females competed this year on the college's first women's cross country team. Prior to this season only individuals had competed.

Coaching both the men's and women's cross country squads is Art Ray. He explained, "The season lasts for about two months and we pick meets to attend as they are available. There aren't too many though as there are only five women's collegiate cross country teams in Kansas."

Kansas State University, Wichita State University, Kansas University and Dodge City Community Junior College also

field women cross country squads.

Before this year McPherson never had an officially sponsored and funded team. The squad members are Sandy Loshbaugh, sr.; Lesley Goodrich, Jeanne Suellentrop, Pam Medford, jr.; Karen Ward, soph. and Janell Baldner, fr.

According to Coach Ray, Janell is the most consistent runner on the team. She finished second at the McPherson Invitational on Sept. 26.

In the first meet of the season at WSU the women finished third, only seven points behind the KU squad. At a dual meet here WSU women barely ran past McPherson, 26-27.

Various reasons such as running in preparation for another sport were cited for the women's interest in cross country. Coach Ray added, "The girls are running because of interest or because of the end results of running. Cross country helps a person become a better competitor and get in better physical condition. You have to learn to hurt a little or you won't do well."

team goes to Sterling to face Tabor, Sterling and Bethel. Then on Nov. 10, the women go to Bethany for their last match of the season.

"The team played very well against Bethany," said Coach Ann Killingsworth, "Now that we have a taste of victory, hopefully this will carry us through the last half of the season and give the team confidence."

Women capture first KCAC win

The McPherson College women's volleyball team captured their first win of the season in a KCAC match at Bethany. After suffering losses at the hands of St. Mary's, Southwestern, and in a close match to Kansas Wesleyan, the Mac team defeated Bethany 15-6, 15-8. Bethany defeated Kansas Wesleyan University in an earlier match.

Next Tuesday the McPherson

Record Breaking Discount Prices With This Coupon!



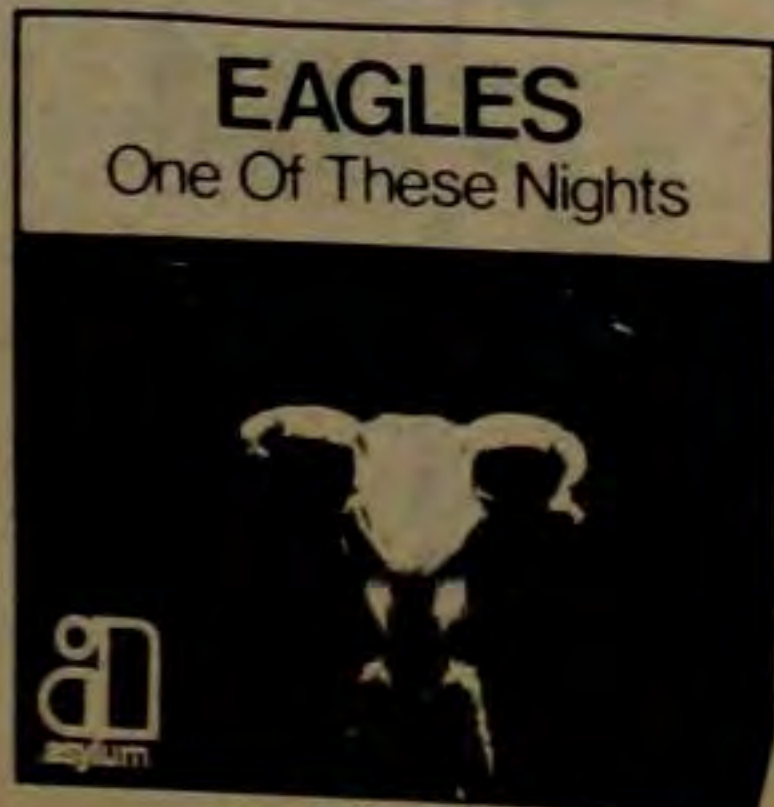
\$1.00 off any Album
or
any 45 for 77¢

Limit 2 per coupon
Complete album selection and
Top 40 45's

Tapecases, tapeplayers Soundesign or
Panasonic at Discount Prices.



611 N. Main

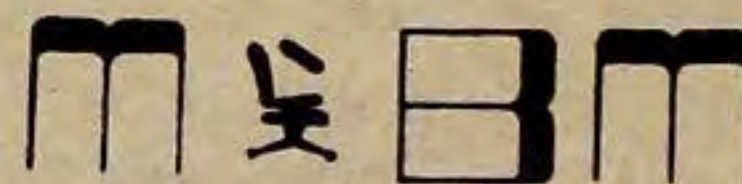


ASYLUM

McPherson, Ks.

Don't Let Complex Math Problems Slow You Down!
Let McPherson Business Machines

Be Your Headquarters for Portable Calculators for Accounting, Scientific Work and All Your Math Needs



205 N. Main

McPherson, Ks.

SNOW SKIING ENTHUSIASTS
Two Exciting Color Skiing Films



Will Be Shown
Sat., Nov. 1,
7 P.M.

at the
Y.M.C.A.

Everyone Welcome - Free

220 N. Walnut

McPherson, Ks.

\$33,500,000 Unclaimed Scholarships

Over \$33,500,000 unclaimed scholarships, grants, aids, and fellowships ranging from \$50 to \$10,000. Current list of these sources researched and compiled as of Sept. 15, 1975.

UNCLAIMED SCHOLARSHIPS

11275 Massachusetts Ave., Los Angeles, CA 90025

I am enclosing \$9.95 plus \$1.00 for postage and handling.

PLEASE RUSH YOUR CURRENT LIST OF UNCLAIMED SCHOLARSHIPS SOURCES TO:

Name _____

Address _____

City _____ State _____ Zip _____

(California residents please add 6% sales tax.)