

# Improvement priorities approved

Now that McPherson College is regaining some of its financial security, it is beginning to attend to some needed physical changes on campus.

The Campus Planning committee has been formed in order to designate priorities for the almost 1½ million dollars which has been donated. The members of the committee include Jerry Holman, Director of Development, Dr. Wes DeCoursey, professor of chemistry, Dr. Merlin Frantz, vice-president, Dr. Leland Lengel, dean of academic affairs, Coach Art Ray, professor of physical education and Dean Reynolds, business manager.

Dr. Dayton Rothrock, professor of education, Dr. Galen Snell, president, Professor Paul Sollenberger, professor of music and Dr. Alvin Willems, professor of industrial arts, are also members of the committee, which has tentatively approved a list of 23 improvements.

"This is not a building campaign," said Jerry Holman, chairman of the committee. "The money will be spent for facility and equipment needs."

Work has already begun on some of the proposed items. The Student Union renovation is almost complete, and resurfacing of the tennis courts was finished in

time for the start of the women's tennis season. The stadium also received a "face lift" in time for the Bulldogs' first home game.

In the area of physical education, re-surfacing of the track has been proposed along with the addition of a multi-purpose of gnasium room.

Beeghly Hall's renovation has been suggested including the re-location of the pipe organ and its repair.

Harnly Hall was listed among the halls due for some changes. In addition, the updating of the east chemical laboratory, the establishment of an agricultural soils laboratory, the renovation of

the biology lab, plus the establishment and equipment for an animal room for biology and psychology. The home economics department, too, has requested changes in that department and hopes to expand its equipment.

The art department is another area which has come under the committee's consideration. The remodeling and updating of Arnold Hall and an art display storage area in Friendship Hall are among the items proposed.

Miscellaneous suggestions have also included a conference center in Miller Library, new auditorium curtains, relocation and modernization of the admissions office

complex, the establishment of an audio tutorial lab and additional equipment, including a new projector, for the audio visual program.

"We must stress that these are only tentative proposals," said Holman. "First of all, the two million dollars must have either been pledged or received before the projects can be undertaken. The earliest date by which we will know whether or not we have reached our goal is June."

"Secondly, we must receive the final cost figures before the committee can take steps toward actually initiating these projects," concluded the director of development.

# the Spectator

## Board okays grants for women athletes

by Stanley Eugene Adams

A proposal to allot money towards women's athletics was accepted by the Board of Trustees in the meeting of October 18 on the McPherson College campus.

Women participating in tennis, volleyball, basketball, and track will be eligible for grants under the new program which shall go into effect in the fall of 1975.

The new program was presented to the Board by the McPherson College Athletic Committee which unanimously passed the proposal in a meeting on October 15. There was also a slight adjustment in the men's athletic grant policy. If and when the cost of tuition increases, part of the extra money will be applied towards grants for golf

and tennis.

In other topics of discussion, Admissions Director Joe Johnston reported the enrollment figure of 457, a decrease from the 1973 count of 507.

Campus Life Committee, which met on Thursday, Oct. 18th, submitted several items for discussion, including dorm visitation hours, equal rights for women, the Mac Shack, recruitment policies, and campus maintenance problems.

The two million dollar fund drive, announced earlier this year, will be directed through seven area campaigns as planned by the Campaign Policy Making Committee. These key areas are, McPherson, Wichita-Hutchinson,

western Kansas, Iowa, Kansas City-Topeka, Colorado and southern California.

Student body president Dave Wine, when asked to evaluate the Trustees meeting, replied, "I was extremely pleased with the Board in the fact that the student problems and the student needs seemed to occupy a high priority. I also appreciated the way the Board acted on the issues brought before them instead of just discussing them, and money did not seem to be the most important factor during the meeting. It was really a good feeling when they treated me as a member of the Board and asked for the student point of view."

## Student dj's plan, tape WHN music broadcasts



Scott Robinson and Gary Ratzlaff "quack" a few jokes during the taping of their noontime radio program.

"What's what's what's Happening happening happening Now now now! Quack, quack quack!"

These are just a few of the strange noises that assault the unsuspecting lunchtime diner as he trudges to another round of Slater's. WHN, ("What's Happening Now") the campus radio station, now broadcasts four times each week under the operation of Scott Robinson, soph, Ellinwood, and Gary Ratzlaff, also a sophomore, from Wichita. Scott and Gary are now broadcasting soul music and top 40 hits at the noon time meal every Monday, Tuesday, Thursday and Friday.

"We feel we are doing some good for the campus," said the amateur dj's. This, coupled with four hours of credit, help keep their enthusiasm high, although the six to eight hours weekly they spend taping can be trying.

"I think that we're doing our part to help the social atmosphere here at McPherson, because it definitely needs something," said Scott.

Each day's show starts with a planning sheet on which are listed the songs and albums each disc jockey wants to play. He then adds the times of all the songs together to determine how many more songs or how much dialogue he needs to total about one hour.

The day before the show, everything is taped. Played on the Student Union public address system, the program then entertains the lunch-eating students.

Scott, who broadcasts on Mondays and Thursdays, says that he hopes people will come to Gary or himself with editorials, song dedications, announcements or anything that will help put personality into the broadcasts.

after student survey tallied

## Stuco proposes more hours

A vast majority of the students living in the residence halls at McPherson College favor an increase in visitation hours according to a recent Student Council survey.

The survey was composed of questions designed by a committee and was determined to be valid by the psychology department and Stuco. The survey was intended only to ascertain the interest in increasing visitation hours.

The questionnaire was distributed in order for Stuco to take a stand on the visitation hours dispute. Stuco President Dave

Wine said that Stuco plans to back an increase in open dorm hours and immediately submit a proposal to MCCC at its next meeting.

Survey results showed near unanimous responses in favor of dorm hours and the principle behind visitation hours. Only three responses indicated that open dorms were an invasion of their privacy.

Responses tallied about four-to-one favoring increased visitation hours and against having visitation hours remain the same. Two-thirds replied that

increased open dorm hours would in no way affect their study habits.

Stuco now supports increasing visitation hours, but the proposal is now completely in the hands of MCCC. It will be up to this faculty-administration-student advisory committee to determine if more hours will be given and when.

Stuco has not decided upon the amount of hours to be proposed in its submitted article to MCCC. There are now 12 hours a week in the open dorm policy. Stuco is open to all suggestions on the dorm hour increase.

# Discrimination still exists on campus

A giant step forward for womankind has taken place. With the Board of Trustees recent action in the area of women's athletics, Mac College women may now receive athletic grants similar to those men have been receiving for years.

However, there still exists one glaring inequality in the treatment of men and women on this campus. Under Title IX of the Education Acts Amendments of 1972 - the same one which governs athletic grants - the legality of hours for women is questionable.

According to the July 1, 1974, issue of "Newsweek", "One regulation . . . declares that no college may set hours for women unless it sets them for males as well. The regulations cover every educational institution in the nation from kindergarten through graduate school . . ."

Any woman who enters Dotzour or Kline after 11 p.m. weeknights and 1 a.m. weekends knows that she will not be able to get in unless her parents have signed a permission form. No such provision exists for men.

Most women have unlimited card use, true, so why create an issue where none exists? The answer, of course, lies in understanding the implications these restrictions contain for women.

Someday women may be legally recognized as men's equals. Until that time, however, the women on the McPherson College Campus will be forced to live under conditions which are humiliating, degrading and morally devastating.

Cathy Hamm

## Macalendar

**Saturday, Oct. 26** — The Barbershop Chorus will clip a few numbers in Brown Auditorium at 7:30 p.m. No appointments necessary.

District Ten Cross Country meet in Salina at 11 a.m.

The Bulldogs hope to flatten the Moundbuilders of Southwestern in a KCAC tilt in Winfield at 7:30 p.m.

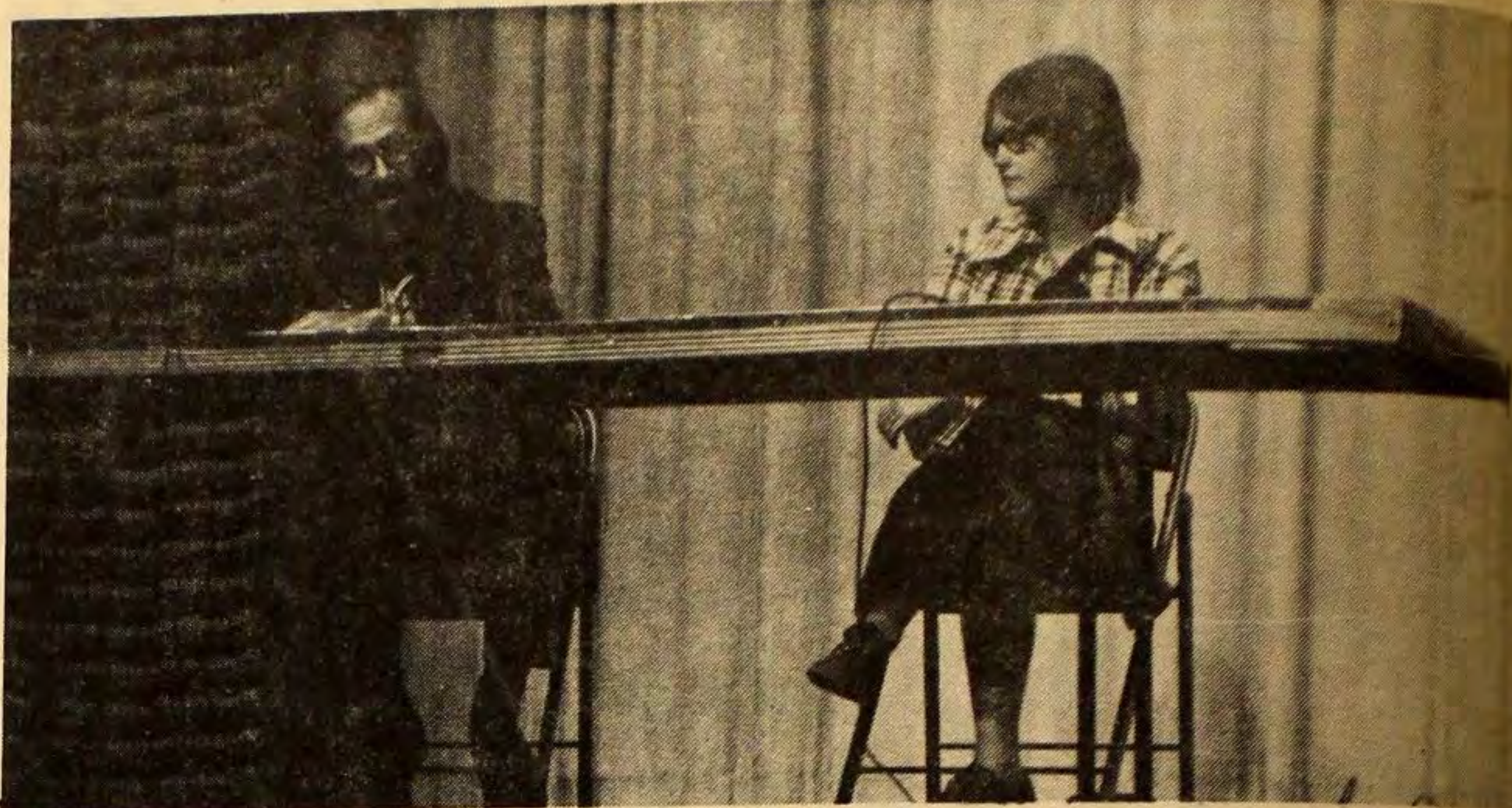
**Monday, Oct. 28** — First women's volleyball game in the gym at 7 p.m.

**Tuesday, Oct. 29** — Mid-term grades due in registrar's office at high noon.

Yearbook pictures will be taken in the SU Quiet Room from 10 a.m. to 4 p.m.

**12 MIDNIGHT** — First run fright feature film "Curse of the Werewolf" will be shown at the witching hour in Brown Auditorium.

**Thursday, Oct. 31** — KNEA Convention in Wichita.



Professor Duane Friesen of Bethel College charges Professor John Cameron with a "copout" during Tuesday's World Population Convocation. Prof. Cameron suggested that population problems

might be solved by increased economic growth but also said that it was more than a matter of academics. While the panel discussed the issue, 20 per cent of the world's population was starving.

## We get letters Says thanks

Beautiful weather; a football game victory; many parent and alumni guests; student and faculty cooperation in planning and hosting — all of these, and other ingredients combined in bringing about a very successful 1974 Homecoming celebration.

However, there is a special group of persons that deserve our expression of appreciation. These are the members of the Homecoming committee who planned and gave hours of time for this special occasion. On behalf of all the students and faculty I am writing to express our thanks to the following committee members: Steve Smith, Pam Barkdoll, Stan Adams, Eileen Snyder, Linda Garland, Rande Short and Dave Wine.

Paul Wagoner  
Alumni Director

## The Spectator

Vol. 59 October 25, 1974 No. 5

Official student publication of McPherson College, McPherson, Kansas, 67460, published at 1600 E. Euclid by the Student Council weekly (24 issues) during the school year, except during college recesses. Second class postage paid at McPherson, Kansas. Campus office — Student Union basement.  
One year subscription in U.S.A. — \$3.00.  
One-semester subscription in U.S.A. — \$1.50.  
Subscriptions for full-time students are included in tuition.

## Mac quota 110 pints

"The Vampiremobile" also known as the Bloodmobile is scheduled for a visit to the campus November 5. The donation center will be the basement of the Church of the Brethren. This year's quota is 110 pints.

Persons willing to donate blood may sign up next Thursday and Friday, Oct. 31 and Nov. 1, with Pam Barkdoll, Kline Hall; Jean Burchard, Dotzour Hall; Jeff Vance, Fahnestock; Rod Moore and Jerry Shick, Metzler; Stan Adams, Bittinger; Jim Jones, College Courts; Barb McCall, Faculty and Staff. Off campus students may sign up in the bookstore.

"Although giving a pint of blood does not damage your body, an uptight or run down person may feel weak or faint," said Pam Barkdoll. In order to avoid these undesirable side affects, the Red Cross recommends a good night's sleep and a hearty breakfast. In case of any mishaps, however, the medical staff is well prepared.

Drugs frequently taken such as aspirin, diet pills, birth control pills and vitamins are not disqualifying. Oral antibiotics, however, must not be taken within 48 hours. Donors must be free of infection, must be at least 18 years old and weigh 110 pounds.

## Spec run Trivia Test

After a recent inspiration from the Trivia Bowl, "The Spectator" is running the first (and possibly the last) in a series of trivia tests. The questions will run along the same intellectual level as those presented to contestants last Friday

1. After what famous person is the Pulitzer Prize named?
2. In what state is the annual Kentucky Derby run?

3. For whom, in the movie "Dr. Zhivago," was the song "Laura's Theme" written?

4. If Ben Franklin actually had 17 illegitimate children, who is the real father of our country?

5. How often does the "Chicago Daily Sun" publish per week?

A \$100 prize will be presented to the first entrant with 100 per cent correct answers. Submit all entries to Box 12.

# 'Charlie Brown' delights audience

by Cindy Mines

"You're a Good Man, Charlie Brown," directed by Karlene Morphew Tyler and produced by the McPherson College Players, highlighted the 1974 Homecoming Weekend.

The music and drama departments combined for a thoroughly enjoyable performance of the musical based on Charles Schultz's comic strip, "Peanuts." Author Clark Gesner incorporated only a small cast, making it essential for each part to play to its fullest potential, and all six college players lived up to these expectations.

The Van Pelts, Linus and Lucy, did an excellent interpretation of the brother-sister duo. Les Dell, jr, Beatrice, Neb., had no difficulty in shedding 15 years to become the intellectual Linus. His expressions and "little kid" mannerisms greatly enhanced several scenes, and his "My Blanket and Me" was

a favorite of the audience.

Exhibiting impressive talent in the role of Lucy was Debbie

Dusenberry, fr, Kansas City. She was outstanding as the "super crab" in several scenes with Linus

including the "Queen Lucy" and "Little Known Facts" segments. Strong vocal numbers were

presented by both Roger Helstern, sr, Dayton, Ohio, as Snoopy and by Dan Sheets, jr, Nappanee, Ind. as Charlie Brown. Both dog and owner did quite well in their first act solos — Roger in "Snoopy" and Dan in "The Kite." Roger's rendition of "Supertime" was one of the highlights of the second act.

Holly "The Enigma" Grone's enthusiasm as Patty greatly enhanced scenes she was in, including "Glee Club Rehearsal." The closing number of the first act, "The Book Report" featuring Linus, Lucy, Charlie Brown and Kent Wagoner, fr, Adel, Iowa, as Schroeder was well coordinated.

Overall the interpretation of Charles Schultz's immortal comic strip with philosophical overtones was well done and deserving of the standing ovations it received on both Thursday and Saturday



# Seniors fall as underclass romps

by Linda Schoof

Freshman Lisa Gaskill was the star of the fourth annual powder puff football game last Sunday. She passed for three touchdowns and slammed through the line for another score as the freshmen and sophomores, dressed in white, trounced the juniors and seniors, dressed in cardinal, by a score of 26-0.

Although the jr-sr team had previously been undefeated, they just could not hold their rough, blood hungry adversaries.

During the first quarter both teams looked equally good. Qu Baham, center for the junior and senior team, broke through the line several times to put pressure on the underclassmen's quarterback.

The first indication that the jr-sr teams were getting "behind,"

however, came when Laura Sundahl deflected a punt off of the center's end. The ball was then called dead at the cardinal's six-yard line. The fr-soph team provided good blocking for the first score, a quarterback run into the end zone.

Three penalties totaling 45 yards hindered the jr-sr team early in the second quarter. Gaskill capitalized upon this and connected with Jeanne Sulentrop, soph, for two touchdown passes.

By the end of the third quarter the jr-sr team was tiring due to a lack of substitutes. The younger team again scored on a run by sophomore Sheila Thompson.

The cardinal team, later known as the black and blue team, retired in a hard fought but nonetheless humiliating defeat to a younger, stronger and meaner team.



Senior Jan Foley, No. 44, gets caught in the crunch between two "brick walls," Pam Medford and Lisa

Gaskill. The freshmen and sophomores defeated the juniors and seniors 26-0.

# Begins alcohol study

The nation's number one drug problem, alcoholism, will be the subject of a study conducted by a Church of the Brethren committee appointed at the Annual Conference.

Dave Wine, secretary of the group, went to Elgin, Illinois, Oct. 3, 4, and 5 for the first meeting. He reported that the committee is to prepare a detailed study for the 1975 Conference, along with positive approaches to dealing with the nation's approximately 10 million alcoholics.

The three areas of discussion Dave attended included 1) how alcoholism relates to Biblical studies and the idea that, "I am my brother's keeper," 2) church background and abstinence, and 3) legislative and advertising approaches.

Dave said that campus ministers and congregational ministers will be surveyed on the prevalence of alcohol on their campus or in their congregation.

THE SPECTATOR — Page 3  
October 25, 1974

We Wish To Welcome  
Freshmen and Returning  
Students to McPherson.

We'll Be Open After  
The Games.



Need waiters and  
waitresses - starting  
wages are \$1.65 plus  
tips




\$24.99

*Menichols*  
SHOES  
McPHERSON'S FINEST SHOE STORE

**NEED TO SELL  
SOMETHING?**

Advertise in  
The Spectator!

**McPherson Laundromat**

**Drop Off  
Dry Cleaning**

by the piece 808 E. Kansas

Buy  Get 

**FREE  
TACO**

with coupon



Bring this coupon into Taco Tico and we will give you ONE FREE TACO when you buy one!

Clip this coupon

-----

BUY ONE . . . Get One FREE!



**TACO**

A crisp tortilla shell, chock full of delicately seasoned taco meat, cheese, topped with lettuce, tomato and your choice of sauces.

Limit - One Free Taco per Customer

OFFER EXPIRES **November 1, 1974**

**We have Rock & Country Western**

**Sounds  
of 1974**

(at discount prices)

**GIBSON'S**

# Return sparks 'Dogs' victory

by Joe Hale

The McPherson Bulldogs delighted the Homecoming crowd last Saturday afternoon with their second victory of the season by defeating Kansas Wesleyan 24-20.

Trailing 17-3 late in the first half, the Bulldogs looked finished for the day. The Coyotes from Salina had just completed a 50-yard touchdown drive in seven plays. With six seconds left on the clock, Ron Hovis fielded the ensuing kick-off and rambled 90 yards for the Mac score. Steve Herman's extra point closed the gap to seven at the half.

Bob Tschudin wasted no time in getting the Bulldogs on the scoreboard in the second half. On the third play from scrimmage, Scott Robinson caught a quick pass from Tschudin and outran the Coyote secondary 59 yards to the end zone. Herman's kick barely cleared the crossbar to tie the game 17-17.

The Coyotes racked up 61 yards

in nine plays before booting a tiebreaking 22-yard field goal early in the fourth quarter.

Less than six minutes remained in the contest, and the Bulldogs' hopes for a victory looked dim. But then, Glenn Anderson retrieved a Coyote fumble and returned it to Mac's own 46-yard line.

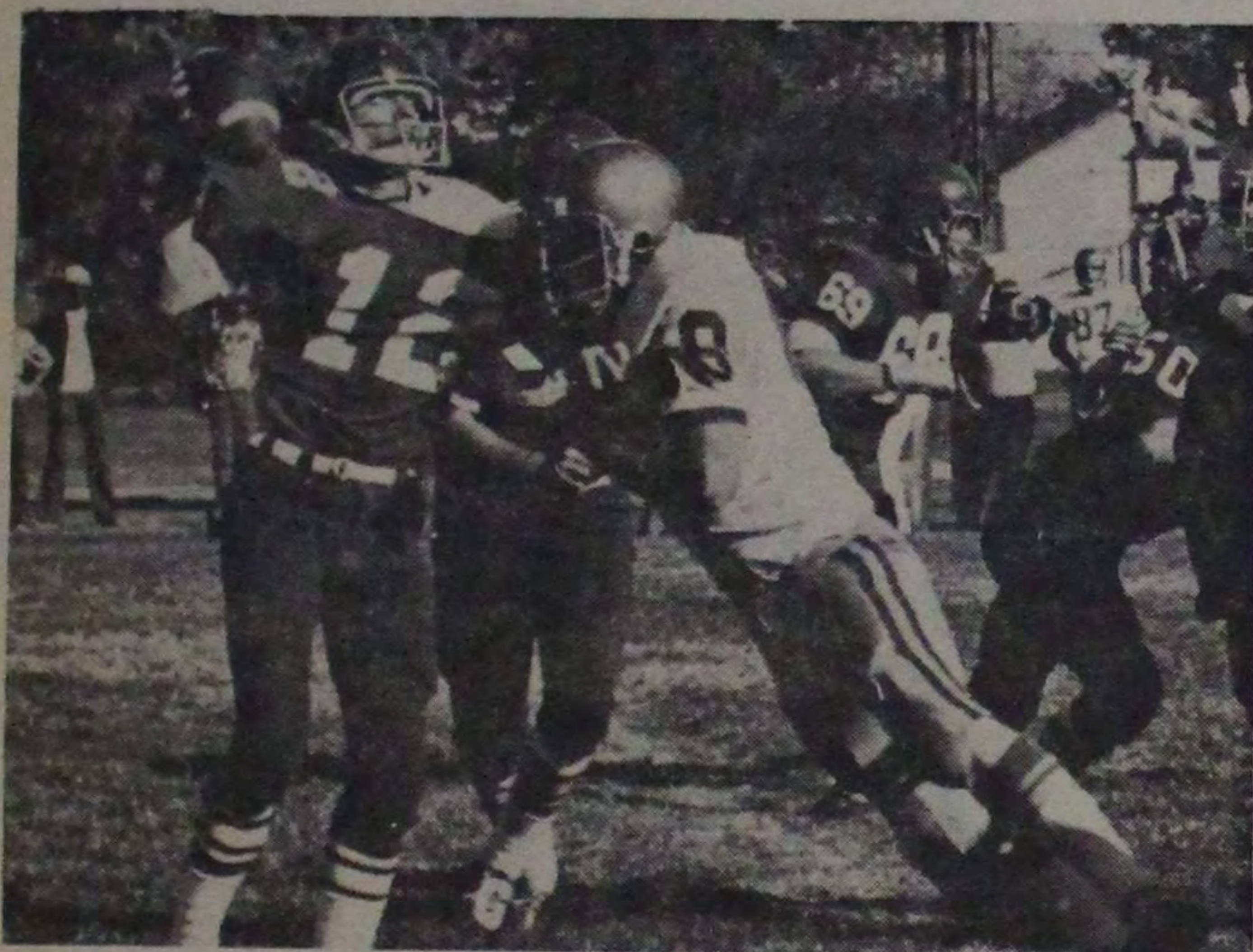
Ray Gibbs ended the Bulldogs' scoring drive with 3:06 left in the ball game as he plunged into the end zone from the six inch line. Gibbs led the bulldog rushers with 50 yards on 13 carries.

Ron Hovis was named offensive player of the week. Other than his 90 yard kick return, Hovis rushed eight times for 36 yards and caught one pass for eight yards. Steve Burkholder nabbed defensive player of the week honors with 11 unassisted tackles and three assists.

Mac meets the Moundbuilders of Southwestern in Winfield this Saturday evening at 7:30 p.m.



No. 23, Steve Cameron, attempts to elude a Coyote tackler. . .



. . . but No. 12, Quarterback Bob Tschudin, is not quite as lucky, as the Kansas Wesleyan Coyotes manage to break through the Bulldogs' line to sack the quarterback. The Bulldogs beat the Coyotes 24-20 in a Conference game.

## Sundahl, Foley, Zavala win; tennis team second at State

by Lisa Gaskill

Two points came between first place and the McPherson women's tennis team at the State Tennis Invitational.

The women took second place behind Ft. Hays State to end the 1974 season. Hays had 30 points, Mac 28, Washburn University 23 and Marymount 9.

Laura Sundahl took number one singles by defeating her opponent 6-2, 6-1, and Jan Foley also picked up first place points for Mac with a

close score of 7-5, 7-6.

CeCe Zavala also collected a first place win in singles with a 4-6, 6-2, 6-3 win.

Lisa Gaskill picked up a second place win after losing in the championship game, 6-1, 4-6, 6-0. Lori Brown also placed second after losing in the championship game, 6-4, 6-4. Ann Lobban picked up a third place win with a 6-2, 6-3 win.

The doubles team of Foley and Sundahl combined for a third

place victory in doubles, winning 6-0, 6-3 in the consolation bracket after losing to Fort Hays.

Ann Lobban and Lori Brown came up against some tough competition from Hays in the championship game in number two doubles and lost 6-1, 6-2.

The number three doubles team of CeCe Zavala and Lisa Gaskill placed second, losing in the championship game, 6-1, 6-2.

THE SPECTATOR — Page 4  
October 25, 1974

FINEST  
**CLEANING**  
AND  
**LAUNDRY**

McPherson Laundry  
& Dry Cleaners  
214 S. Main 241-2749

Education is Everybody's  
Business

Join S.E.A.  
Watch for posted  
details

For the Best in  
Family Dining - -

**T H E P L A Z A**  
**RESTAURANT**

Our Specialty is  
**Chicken Fried Steak**

**HUTCHERSON'S**  
**SAFETY LANE**

**Brake Service and**  
**Wheel Alignment**

310 N. Main

241-2870

Let Us Help To Make Your Day

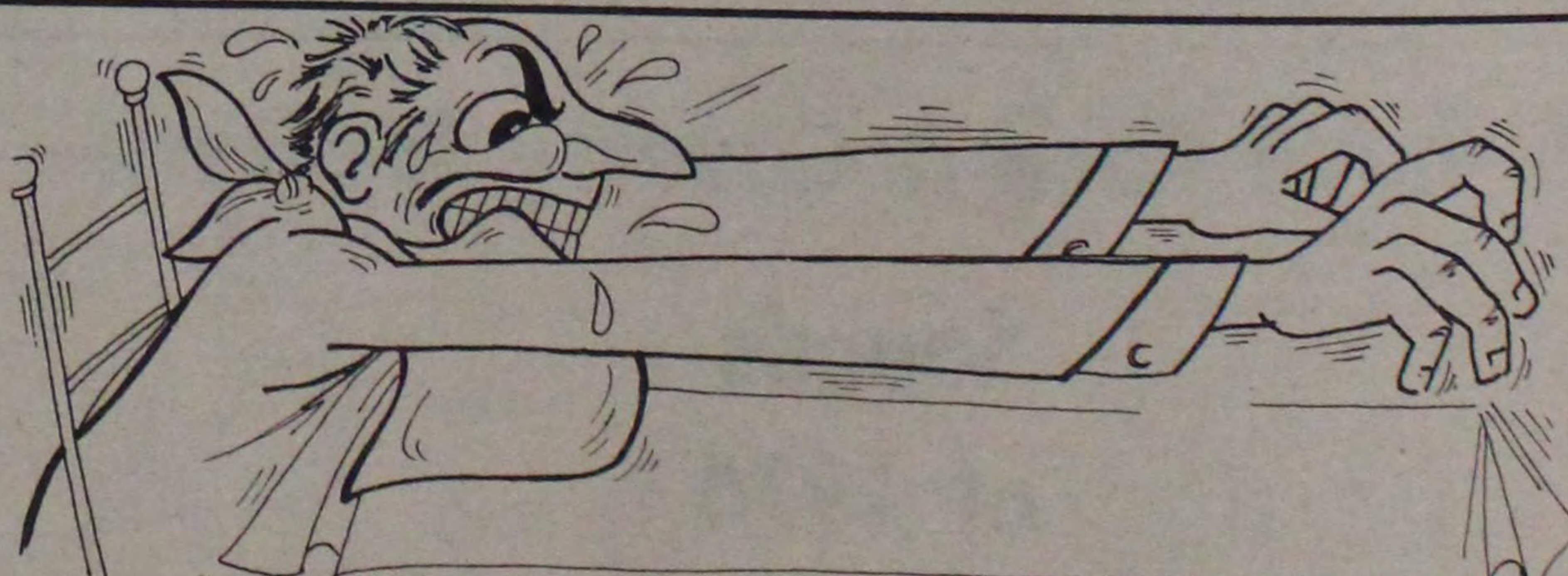
-A Better Day-

**Y M C A**

Join Us Now In Our

1974-75 Membership Drive

(College Membership Rate - \$10 per sem.)



"A-A-ARGH! STARVATION! HUNGER PAINS! STOMACH RUMBLES!  
I WISH A FRESH-CRUSTED, THICK CHEESED, EXTRA SAUCY PIZZA  
WOULD APPEAR RIGHT BEFORE MY VERY EYES!"

**IN CASE OF SUCH EMERGENCY, CALL 241-5588**

**WE'LL RUSH YOUR WISH RIGHT OUT TO YOU.**

**PIZZA**  
**HUT**



We deliver  
the Goods!