

# The Spectator

Vol. 59

March 21, 1975

No. 17



Tillie, played by Christy Young, and Ruth, Donna Miller, argue about who must take care of the Manny, Paul Keim, during rehearsals for the production, "The Effect of Gamma Rays on Man-

in-the-Moon Marigolds" to be presented tonight and tomorrow night in Brown Auditorium. Curtain time is 8 p.m.

## Curtain opens tonight for tragic drama production

Gamma rays have many different ways of affecting marigolds; they can either produce strong, beautiful flowers or wither and destroy them.

"The Effect of Gamma Rays on Man-in-the-Moon Marigolds," will be presented tonight and tomorrow night at 8 p.m. in Brown Auditorium. The title is an analogy of the effect of gamma rays on marigolds compared with the effect of a mother on her two teenage daughters.

Beatrice, the mother, played by Karlene Tyler, sr., is a tragic character. The rays she projects on her daughters, Ruth and Tillie, are filled with bitterness and resentment.

Ruth, Donna Miller, soph., is interested in members of the opposite sex. In contrast, is Tillie, played by Christy Young, jr., who is a serious science student.

Paul Keim, soph., appears as an 89-year-old man who is senile and must be cared for at all times. Sheree Holman, soph., plays a student entered in the same science fair as Tillie.

Central to the plot is a live rabbit whom both of the girls are very attached to. The mother is constantly threatening to get rid of the rabbit.

Tillie's science project on the effect of gamma rays on marigolds has been chosen to be entered in the science fair. The big question is, who in the family is going to go to the fair and who is going to stay home with the old man? After an argument, Ruth ends up going to the fair after she tells her mother that everyone will laugh at her if she goes.

The play concludes with a tragic ending, with the effects of the mother on each of her daughters' lives coming to light.

## Dormitories to receive cable television next fall

"CATV should be in the dorm by next fall," said Dr. Merlin Frantz, vice president of McPherson College. "Mrs. W. H. Lehman has given an amount that will make it possible to bring cable TV into each building on campus," he said.

The gift, in memory of Mrs. Lehman's late husband, came from their interest in McPherson College and its students. "Neither of my grandparents attended McPherson College," explained Sally Correll, fr., Abilene, the granddaughter of the Lehman's.

"They lived on a farm between McPherson and Abilene and boarded students from the College," she said.

The cable TV will bring to campus McPherson College football and basketball games and campus and local news on Channel 11, the station in McPherson. Silent and mystery movies and educational programs also makeup a bulk of cable TV programming, as well as 24-hour weather and news. Cable TV should make a meaningful addition to dorm life, said Dr. Frantz.

## Educational Resources Information expands library research material

E.R.I.C. has become a part of McPherson College. The Educational Resources Information Center is a national information system established to provide fast access to the rapidly increasing number of valuable but generally hard-to-find research and development reports relevant to education.

Through ERIC, educators and researchers have a single source through which they can first identify and then obtain copies of significant documents and locate articles in more than 500 journals and yearbooks.

In addition to providing access to many English-language educational reports and

periodicals, ERIC also prepares interpretations and reviews of trends and developments in critical areas of education and disseminates newsletters, bibliographies, and regular columns in professional journals featuring significant developments in specialized fields.

A search of the ERIC data base will result in a computer-generated bibliography, including an abstract and acquisition data for each item selected.

A.C.C.K. has already contracted with ERIC for a minimum of twenty searches to be used by faculty members, administrators and students of the six A.C.C.K. colleges, at no cost to the in-

dividual requesting the search.

Each school will initially have three searches to be used before June 30, 1975. A credit for document purchases of \$20 per school is also available as a part of this A.C.C.K. contract; however, all material obtained through this contract will remain the property of the A.C.C.K. college initiating the search.

## Macalendar

Friday, March 21 — Track Meet with Barton Junior College and Hesston; "The Effects of Gamma Rays on Man-in-the-Moon Marigolds," a convo-credit play at 8 p.m. in Brown Auditorium; Regional Youth Conference today through Sunday.

Saturday, March 22 — Fifties Dance in the Student Union from 9 p.m. till Midnight. Best dressed male and female both get a \$5 prize.

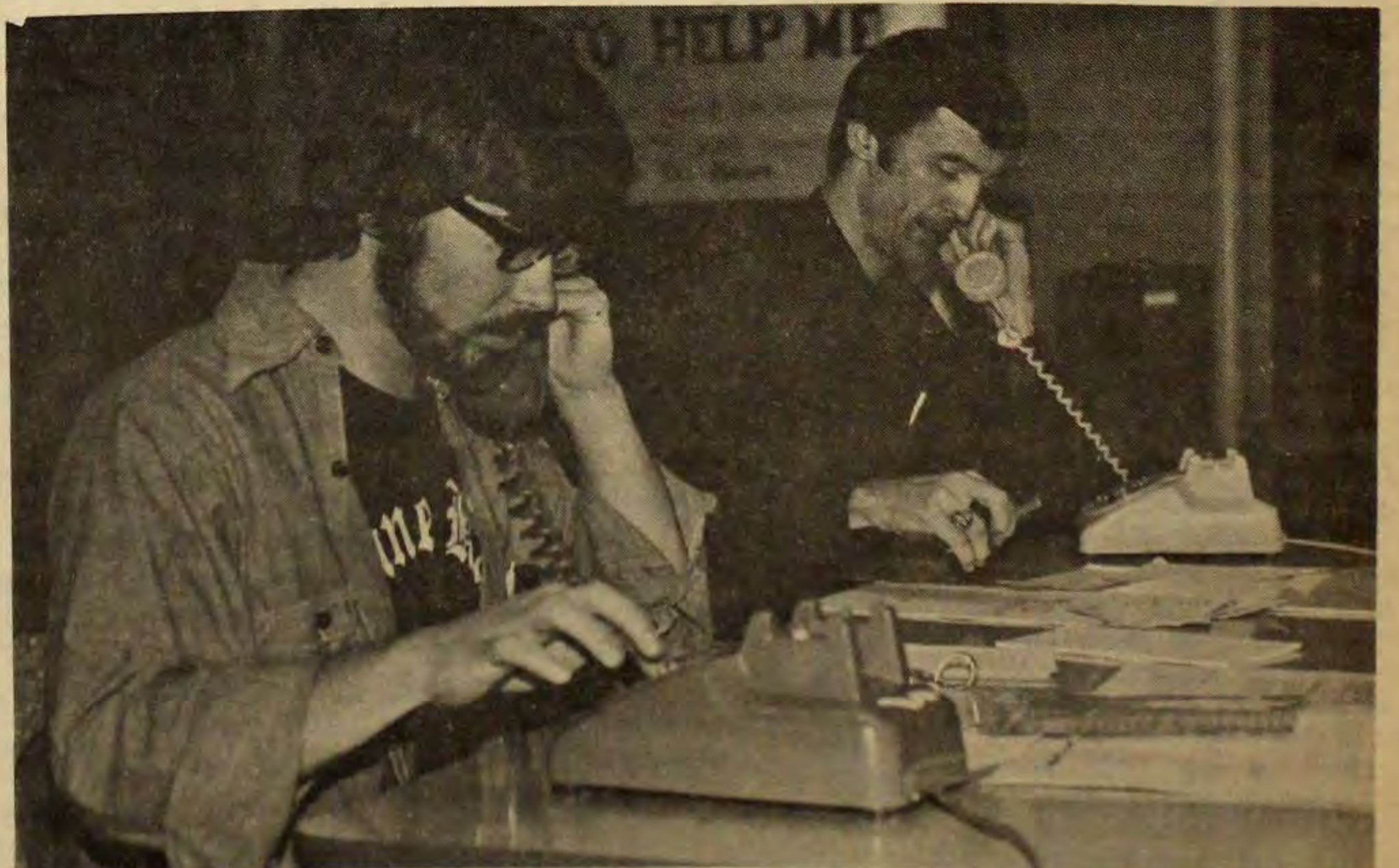
Sunday, March 23 — Soccer game here with Escadra Mexicana at 2 p.m.

Monday, March 24 — 9 a.m. convo, Edmundo Vasquez, whose topic will be "Education and the Minorities of America."

Tuesday, March 25 — Track Meet at Bethel, 12 p.m.

Wednesday, March 26 — Vesper Service at 6 p.m., speaker will be Dr. Merlin Frantz.

Friday, March 28 — Beginning of Mid-term vacation.



Bob Strause, sr., Lebanon, Penn., and Joe Johnston, director of development, ring up prospective pledges during the final week of the Make A

Commitment Telethon. Tonight marks the end of the three-week Telethon campaign.

# We get letters



# and more letters;

To the Editor,  
The time has come for the students on this campus to ask the question, "What is McPherson College's uniqueness?"  
Of course, an obvious answer to this is that the philosophical direction of the school is what makes our college unique.  
Dr. Snell's philosophy is bound to be singular, since no two men think exactly alike. Why, then, should everyone on campus be

titudes and the administration is encouraging these attitudes by their open dorm policy.  
It has been said that students on this campus are apathetic. This is partly true, but they have also been partially brainwashed. Students are constantly asked to think of the good of the College. People tell us to compromise, but the only compromising I see going on is by the students. I am beginning to believe that the

have become alarmed at the amount of "power of persuasion" his office holds.

Another point that I would like to make is that, in my opinion, Christianity is a doctrine of love and assistance to one's fellow man. Christianity breeds faith in God and this faith is strengthened by overcoming the obstacles in life. Christians must experience problems, and with God's help they will overcome them.

I am concerned that the philosophy of McPherson College is not wholly Christian. Christianity is not a vacuum from the rest of the world and neither is our campus. Sex, alcohol and dishonesty are a part of the world. We must experience these aspects of life to deal with them. I realize that the school may have to make a stand on these issues, but are they attempting to remove these obstacles from our path? If they are, I feel that it is a grave mistake. School should be an experience of every aspect of life. Recruiting only one type of student will not aid in this ex-

perience, nor will rules that attempt to make a person moral.  
In conclusion, I am a student who is concerned. Let's everyone evaluate the priorities of this school. Is this school becoming a morality factory or are we truly free to "discover the world within us?" I hope that solving the financial problems of the school does not lead to a college that lives outside the reality of life. I

plays only a small part in the total development of an individual during his college years. Instead, it is my opinion that a person learns and develops much more by relating to persons from diverse backgrounds, and by coming into contact with ideas and beliefs that are in opposition to his own.  
In the past, the recruiting done by McPherson College reached into a large number of cultural

## ***'Why even have a Student Council or MCCC if they don't have any more power than a penguin in bondage?'***

expected to take on the personality of Dr. Snell?

Those of us who have been here for a couple of years should be able to see that there has been a limitation on the range of students recruited, and the cut-back has been completely from the liberal student ranks. So I, for one, want to say that I am opposed to such conservatism around here, as was recently shown by the Student Council initiated, MCCC passed, 80 per cent student backed proposal for increased open dorm hours that was rejected. (How many of the Trustees would be willing to live under our dorm visitation rules?)

If there is to be a limitation on liberal thought, I will try to oppose this trend because I think that the real uniqueness of McPherson College is the students. We come here to learn, but if we are all the same, what is there to be learned?

I close by saying, "Why even have a Student Council or MCCC if they don't have any more power than a penguin in bondage?" If they are to function as discussion groups, fine, but don't ever tell us again about student representation!

Russ Hunt

To the Editor:

To be proud of Mac College does not mean that a person agrees with everything the school stands for. I am extremely proud to be a part of Mac College; I consider it a part of Me. I am also concerned about Mac College. I believe a dramatic change is taking hold of the College and I am not sure people realize that it's happening.

As a junior I have a little perception on the situation and I know that it frightens me. I strongly believe that the College is becoming more conservative under the disguise of Christianity; these terms are not synonymous.

I believe that a few questions need to be asked. Does this college believe that open dorm hours will increase the sexual promiscuity of its students? In most cases I feel that the College is hiding behind this issue when actually the real motive for the "thumbs down" policy is merely in keeping with, or moving toward, a conservative stand.

In my opinion, the unhealthy, limited number of dorm hours adds to the problem. For example, how many girls on this campus feel at ease enough to walk down the halls of any men's dorm looking for someone to talk with? And how many of the boys think that all they are after is a pickup?  
Why don't more girls go to the S.U. after meals? I'm saying that the separation of sexes on this campus adds to unhealthy at-

administration feels that it is in a position where it doesn't have to compromise.

For example, did three-fourths of the Board of Trustees actually feel that increased open dorm hours were bad for the College, or were they merely respecting the wishes of Dr. Snell? My admiration for Dr. Snell and his accomplishments run deep, but I

## **LETTERS LETTERS LETTERS LETTERS**

The torrent of letters that have been received by the Editor since Pres. Snell's State of the College Address last week is much-needed proof that students are at least willing to express an opinion. I hope that students will continue to use the Letters-to-the-Editor column as an organ for expression of student values and ideas. However, I would like to add my thoughts on the situation discussed in the letters printed this week.

I believe that those who are blaming recruiting practices for the limited social interaction, or for "recruiting only one kind of student" have made a worthwhile observation, but failed to see to the roots of the situation.

I firmly believe that Joe Johnston and the admissions people do not purposely exclude students who fail to fit in with McPherson College's ideals. If anyone can prove that any applicant has ever been rejected because of his ideals, then a point will have been made.

Rather, the reasons for there being "only one type of student" at Mac is inherent in the behavioral expectations placed on students after reaching campus and the "constituent before student" attitude that students have had to cope with during the College's battle to reach financial stability.

It seems that the administrators' decisions about campus life are made with the donors having priorities over the students. The administrators have looked at the over-all situations and decided which elements are the most necessary and what elements hurt the least, from the viewpoint of the College. What has been necessary has been raising money, and what was hurt the least has been over-riding student wishes (even when the overwhelming majority of students have said they favor such a change, i.e., the open dorm proposal).

The students have not been fair to administrators in accusing them of denying student rights when they are trying the best they know to efficiently run the College. But the administration has also been highly insensitive to the feelings that such a policy instills in students.

Ultimately, students have felt defeated by a "monolithic structure" which failed to even consider students' wishes, even when well-presented through elected Stuco and MCCC representatives.

Thus, students either have left Mac, or have settled down to the realization that all the fighting and surveys are for naught, so why try? In my opinion, this is what has been called "only one kind of student" on campus.

This situation can not be blamed only on students or the administration. It is apparent that both will need to make changes in past attitudes. Students should continue to write letters to the "Spectator," run for student offices, or if not a member, attend Stuco and MCCC meetings. In return, the administration must give reinforcement to students that they also are a vital part of Mac. Like Rick Doll, I would like to see compromising, not just giving-in.

The Editor

## ***'I feel a dramatic change taking hold of the College and I am not sure people realize that it is happening.'***

definitely feel that the atmosphere of the College is conservative. Become aware of what is happening and help keep Mac College a "balanced" institution.

Rick Doll

Dear Editor,

During my four years of college, I have come to the conclusion that, although it is extremely significant, classroom learning

situations. But McPherson College, with its new "upward" movement, has done a complete about-face by setting its sights on one particular type of student, which it can shelter for four years while the student is being directed down the right path.

In "accentuating the positive," I would like to say that McPherson College has a faculty which is well qualified to provide students with an academic education. But, by aiming its forces at a single type of student, the College will be cheating everyone as far as social learning is concerned.

How much insight into the real world can a person gain by relating to only 499 persons almost identical to himself? And how can a person's ideas be strengthened if all those around him have the same beliefs? I hold that if a person's beliefs are rooted deeply enough, challenging them can only make them stronger. And if his beliefs are not that strong, maybe they need to be questioned.

The defeat of the open dorm proposal and the reminder to MCCC that they are merely a "recommending body" are only two issues which have made students aware that they have very little say in the direction of the college. This coupled with the disappearance of student diversity tends to make college seem like a factory in mass production rather than the learning experience that it should be.

If this is the direction that the College is going to take, I would propose that the administration consider hiring a new faculty member to hold Friday and Saturday night classes in knitting and crocheting. True, the price of yarn has risen considerably in past years, but program costs could be taken out of the "broken window" fund since this single type of student would not engage in that type of activity.

(Continued on Page 3)

### The Spectator

Vol. 59 March 21, 1975 No. 17

Official student publication of McPherson College, McPherson, Kansas, 67460, published at 1600 E. Euclid by the Student Council weekly (24 issues) during the school year, except during college recesses. Second class postage paid at McPherson, Kansas. Campus office — Student Union Basement.  
One year subscription U.S.A. — \$3.00.

#### EDITORIAL STAFF

Editor-in-Chief	Bruce Clary
Managing Editor	Stan Adams
Campus Editor	Kent Wagner
Photographer	Larry Rhodes
Artist and Cartoonist	Deb Dadds
Faculty Adviser	Norma Tucker

#### BUSINESS STAFF

Business Managers	Eric Anderson
	Snady Loshbaugh
	Rick Slater
	Emma Hofer

#### WRITERS AND REPORTERS

Lisa Gaskill	Leslie Goodrich
Dianne Gronc	Holly Gronc
James Marinovich	Cindy Mines
Virginia Neufeldt	Dawn Officer
Linda Pfalzgraf	Scott Robinson

# Students question direction of Mac

Finally, I would like to say that it seems as though most students have taken on an attitude of merely accepting the decisions of the administration without question. They are either too busy, or they're tired of trying.

Is this the philosophy of McPherson College?

Holly Grone

Editor,

This letter is directed to the entire McPherson College community and is in no way an attack on individual personalities. I am writing because I am concerned about the philosophy and direction of MC. The whole college community needs to evaluate the direction the college is heading and ask ourselves if this is what we want. I have had three great years at this school, but I do not like some of the things MC now

stands for and the direction we seem to be moving in.

If we are really going to be a Christian institution, we need to say so and really be one. But if we are going to be something else, such as a conservative college, let's admit it and move in that direction. I think there is a real difference between the two. Dr. Snell stated in last week's convo that MC's philosophy is "the philosophy of Galen Snell," yet even he could not define it.

While many agree that people are MC's strength, I wonder exactly what kind of people we are speaking of. I feel our uniqueness has been our diversity — but I see this diversity becoming a thing of the past on our campus.

A Christian education should provide much more than academics. To me, it means

growing and learning through interaction between different cultures and religions. Christ mixed with all types of people. He did not just associate himself with those who were "like" Him.

If MC is really preparing young men and women for the real world awaiting us, a world filled with conflict and different cultures and religions, then we must actively try to deal with the real world in our college experience. Instead of shutting our doors to different people and opinions, we need to openly face reality.

I see MC closing its doors a little more every day to beliefs contrary to the school's philosophy. This makes it extremely difficult to discover the real world, let alone "the world within you." Where have so many of our minorities gone, let alone those wierdos a

little left of center (sometimes known as radicals)?

I hate to bring the issue of open dorms up because we are such a one-issue campus. But we need to deal with the issues at hand rather than create new issues for the sake of controversy. It is really frustrating for 80 per cent of the student body to be told that we are not mature enough to make some of our own decisions, especially when we hear the reasoning for the no-increase decision. I seriously question whether students are having any voice in policy-making decisions.

The present social life is also something that needs to be dealt with. Besides the cafeteria and the library, there is really little interaction among the student body. Good, honest fun has gone over very big on this campus, but there

has been far too little of it. It is too bad that students have either had to go home to find "action" or have had to at least take it off campus. The results of such off-campus activities have hurt our campus.

Dr. Snell feels our campus attitude is one of neutrality and wants to see it move in a positive direction. My attitude of McPherson College has always been very positive, but change must soon take place for it to remain so. It is time for all of us to speak out for what we believe and make MC what it should be. I say all of this because I hope the college will always remain a vital part of my life.

Stephen K. Burkholder

THE SPECTATOR — Page 3  
March 21, 1975

## Success unfolds for Karlene

by Linda Pfalzgraf

"The Effect of Gamma Rays on Man in the Moon Marigolds," is just one in a long line of productions, Karlene Morphew Tyler, senior drama major, has appeared in. Karlene will portray the lead character, Beatrice, when the curtain goes up on the Mac Player production tonight.

Drama has not always been a major interest for Karlene. She did not act in a play until college. In fact, after high school, Karlene did not even want to go to college.

"I wanted to go to Europe, so a girl friend and I went to London and worked," said Karlene. "We were not getting to see enough of Europe so we traveled overland

for two months to India. Traveling had a big effect on my life. I think it is important for everyone to travel," she said.

When she came back from Europe, Karlene worked for an insurance agency, but decided that college would be better than working. "I came to college with a really negative attitude, but I made a lot of friends. Most of them left that year, but I decided to stick it out another year."

During her freshman year, Karlene became involved in music and drama. She played the lead in "Barefoot in the Park," and also appeared in the lead in a one-act.

As a sophomore, Karlene continued her acting by appearing as Tony in "Cactus Flower," and in the lead in the musical, "The Amorous Flea." She also appeared as a witch in "The Dark of the Moon."

By the end of her sophomore year, Karlene was really involved in drama, and besides her love of acting, she was attracted to the field by her future husband, Rick Tyler, also a drama major.

Karlene became involved with directing as she directed a one-act and co-directed "Carnival" with Rick. She also played Amanda in the "Glass Menagerie" which she considers one of her most meaningful parts.

Earlier this year, Karlene

directed the musical, "You're a Good Man Charlie Brown."

"The Effect of Gamma Rays on the Man in the Moon Marigolds," is one of the most meaningful plays McPherson College has presented since I have been here," said Karlene.

"Beatrice is a very bitter mother, she is divorced, and she resents her children and thinks they are "stones around her neck."

"It is a really strong play and has a great deal to say about life in general to everyone."



**WALKIN' BOLD**  
NATURE SOLE FROM PEDWIN

Pedwin's natural leather oxford with the contoured Nature Sole. It sets you back on your heels and gives the feeling of barefoot comfort. Experience it.

Sizes to fit men and women. 5-12,13

**\$27<sup>99</sup>**

Saddle Tan

**McNichols**  
SHOES  
McPHERSON'S FINEST SHOE STORE

Leather refers to uppers

**TACO TICO**

For Tacos, Sanchos or any Mexican Tasty Dish try

**Taco Tico**

**COPELAND SUPPLY INC.**

519 N. Main

**AUTO PARTS**

Industrial Supply

**EBAUGH'S**

Gifts • Hallmark Cards  
Picture Framing

We have Everything For Your Gift Needs  
Come Browse Around

108 N. Main

Headquarters For

**Jeans**

Levi - Wranglers - Lee

EVERYTHING TO WEAR

**LITWIN'S**

117 N. Main

master charge  
BANK AMERICARD

**COME TO BULLDOG NIGHT**  
**Tuesday, March 25th**  
**8 Till Closing**  
-At The-  
**Q ROOM**  
"THE STUDENTS' CHOICE"

Relax With Our Special  
**Tues. - Fri - Sat.**  
**3:00 Till Closing**  
307 N. Main

**While at Regional Youth Conference**

**COME TO PIZZA HUT**  
**For the Best Pizza In McPherson**

(We now deliver) SPAGHETTI and CAVATINI too!

**PIZZA HUT**

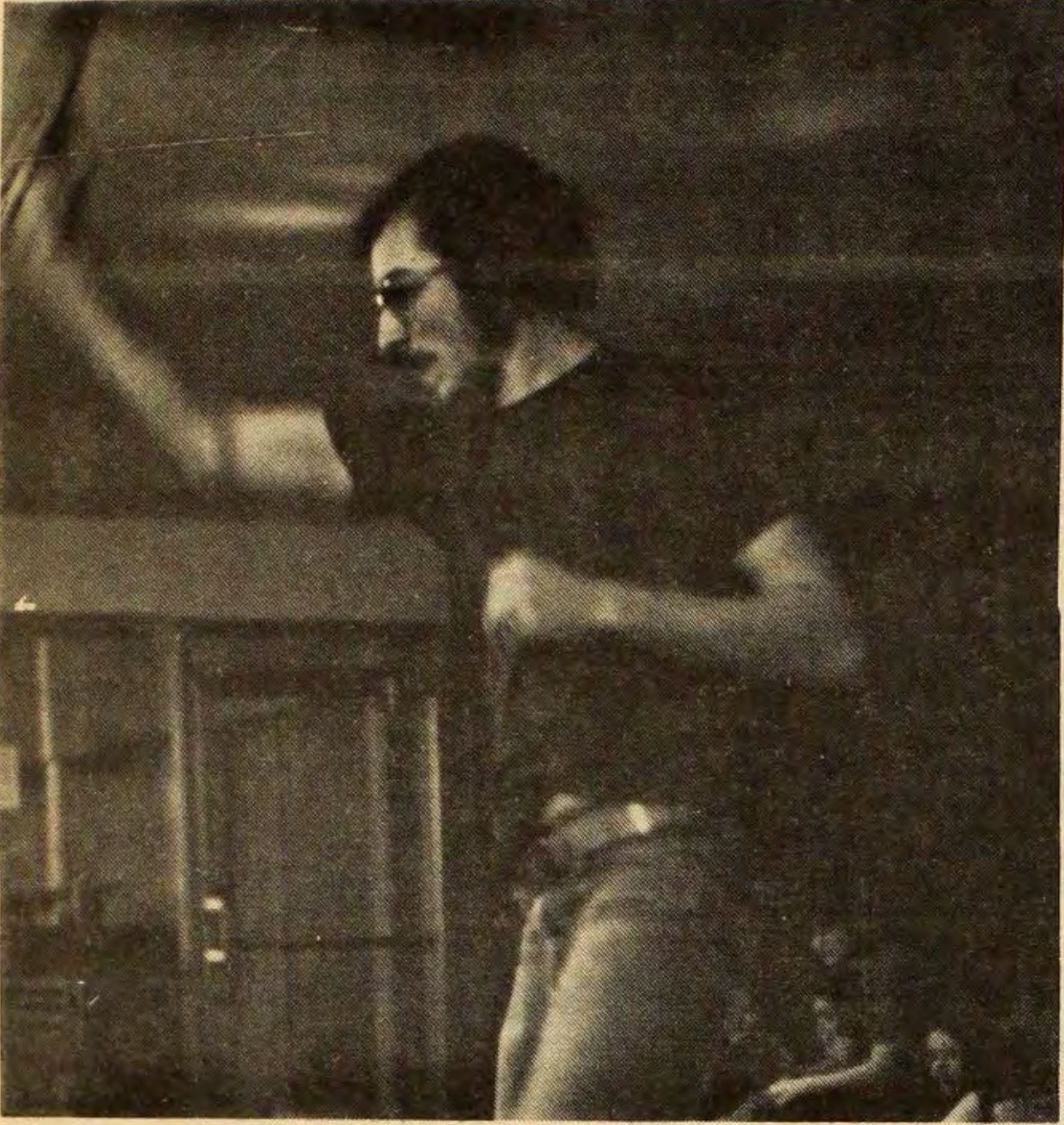
For Delivery Call 241-5588



# Ping-pong team slams Sterling

The McPherson College Ping-pong team earned its first victory of the young season last Saturday night, defeating Sterling College, 5-4. The teams split the singles matches 3-3. The outcome of the meet was in doubt until the final game of the last doubles match. The team of Luis Queveda-Don Swank won the final game to give Mac the decision.

Left, Merle Giles slams a return to his opponent during the meet.



THE SPECTATOR — Page 4  
March 21, 1975



**HOLIDAY MANOR**  
Motel - Restaurant  
316 241-5343

**PARENTS VISITING?  
SUGGEST**



**Wheat State Motel**  
Junction 81-56 McPherson, Kansas  
Phone 316 241-4230

**Raleighs**  
Drug Store  
**Inflation Fighting  
Prices On  
Prescriptions**

213 N. Main St.  
241-1547

**Sir  
Roberts**

Invites RYCers  
to visit us  
during  
your stay in  
McPherson

2045 E. Kansas

**THINK!**

**STARLITE  
RESTAURANT**

Wonderful Food

900 West Kansas  
Call: 241-1520

**Free 25¢ DRINK**

With The Purchase of ONE of  
The Following Items:  
French Fry, Onion Rings, Hamburger  
With This Coupon

**SONIC DRIVE-IN**

610 N. Main  
McPherson  
241-4420

**SUPERIOR  
CLEANERS**  
109 S. Ash Street  
CLOSED SATURDAY

**McPherson Health  
Foods**  
**214 E. Euclid**  
Phone 241-6692

Fine Clothing For Men and the Young Men



**GUY'S SHOP**  
106 N. Main

**HUTCHERSON'S  
SAFETY LANE**

**Brake Service and  
Wheel Alignment**

310 N. Main  
241-2870



**Mobil**


Ladies Day  
Every Tuesday  
Free Car Wash  
With Any Purchase

Exterior  
Car Wash,  
Jet Spray  
Wax & Dry

East of Consolidated Motors  
122 So. Elm

You Will Find The Best  
In Gifts That Last

At



**Renberger  
JEWELERS**

115 N. Main

**"Under The Sunflower"**



**ZACHARIE**

102 1/2 E. MARLIN  
MCPHERSON, KANSAS

FINEST  
STEREO  
EQUIPMENT  
AND  
ACCESSORIES  
AVAILABLE

**DISCOUNT  
PRICES  
ALBUMS  
CASSETTS  
8 TRACK  
TAPES**

"ANY ALBUM or TAPE  
AVAILABLE"  
Largest Selection in  
McPherson County