

Dotzours open 1974 Telethon

Royer and Edna Dotzour, Norwich, Kansas, have donated \$25,000 to encourage donations for McPherson College during the fifth annual McPherson College Telethon, to match each dollar of first-time giving and each dollar of increased giving, up to a maximum of \$50 per donor or increases. Mr. and Mrs. Dotzour will also be honorary chairpersons of the 1974 McPherson College National Telethon.

Four telethon centers have been established, from which alumni and friends of the college will be called. Calling began March 3 at McPherson, under the leadership of Kathy Ball and will continue through March 7. The Kansas City center, directed by Paul Jewell and Lowell Flory, and the Wichita center, directed by Pat and Harriet Hill, will call from March 17 through March 21. The Des Moines center will call alumni and friends from March 31 - April 4, under the direction of Martin Gauby and Galen Kinzie.

Many alumni and friends in each of the four areas will work with the leaders to contact persons across the nation. Last year more than \$37,000 was donated during the Telethon, and the Dotzours hope their challenge will increase that amount by \$50,000.

The Dotzours have made many previous donations to the college. In 1953, they provided funds needed to build a residence hall for women on campus and, in 1970, they gave \$600,000 in the form of a unitrust. In addition, they released their life interest in land valued at more than \$200,000 which had been donated in 1952. Their total gifts amount to the largest single contribution in the history of the college.

And why does McPherson College mean so much to the Dotzours? "Because that is where Royer and I met," explains Mrs. Dotzour. Mrs. Dotzour graduated from McPherson College in 1909 and her husband graduated in 1916. In the years after graduation, Dotzour taught school and farmed, then engaged in real estate sales in Florida until the nation's economy broke in the 1920's. At that time the couple returned to Kansas and to farming. Their labors resulted in extensive agricultural operations.

Throughout the years, the Dotzours have been active in church work, Farm Bureau and the Production Credit Association, 4-H Club Work, historical societies, the Lions and Kiwanis Clubs, and many other community activities.

Hoover granted Board seat as Trustees fulfill request

McPherson College trustees, in the Feb. 28 - March 1 Board meeting, authorized student representation on the board, approved a tuition increase and acted upon such matters as faculty promotion and tenure.

After students requested representation on the Board, the trustees authorized Dr. Galen Snell, president of the College, to invite the President of Student Council to participate in all board meetings except executive sessions.

The Board approved a tuition increase of \$37.50 per semester (beginning next fall), but determined that room, board and fees would remain the same, despite rising costs.

Mrs. Emma Hofer, assistant

professor in economics, was promoted to associate professor and the following faculty were awarded tenure: Bob R. Green, associate professor in English; Mrs. Hofer, professor in economics; Mrs. Corinne Highbanks, associate professor of languages; Arthur Ray, association; and Mrs. Una Yoder, associate professor in speech and drama.

The Board of Trustees also approved the budget and authorized a major financial campaign starting next year. Details of the campaign will be announced later.

"Bar" to offer wider variety

Tonight the Snack Bar in the Student Union will begin serving its new expanded menu. The menu will include a wider assortment of sandwiches and pizzas. The Snack Bar will also be serving free ice cream tonight only with toppings so students can make their own sundaes.

Student Council President, Donald Hoover, was instrumental in having the menu expanded. He hopes that this will help stimulate more student interest in the Student Union and that with more interest the plans for the renovation of the Union can continue to be developed.

When 250 high-school students and their sponsors arrive by carloads to a small college campus student life is inevitably altered. Every spring, McPherson College students make way for such an invasion of Brethren high-schoolers from a fourteen-state region.

"Tune In On Life" is the theme for this year's Regional Youth Conference, which is open to high school students from Arkansas, Louisiana, Texas, Minnesota, Nebraska, Iowa, the Dakotas, Montana, Missouri, Kansas, Colorado, Oklahoma, and New Mexico.

Rather than incorporating small groups as in previous years, the structure of 1974's conference is featuring general



Larry Brubaker, fr., Rocky Ford, Colo., the faculty-trustee banquet last Saturday converses with trustee members prior to night.

the Spectator

Vol. 58

McPherson College, McPherson, Ks. March 8, 1974

No. 17

Trustees, MCC meet; discuss campus issues

by Diane Tharrington

In the seminar room of the library on Thursday, February 28, a trustee meeting was held that included some members from the MCCC. The students of the MCCC were invited to discuss the concerns they had, pertinent campus issues and complaints.

One of the issues discussed was the remodeling of the Student Union. Trustees asked why students wanted the remodeling project. Students responded to the need to explain needs — such as trying to renew interest in coming to the S.U. basement and make it a more comfortable place for students to get together. Also it was suggested that the Mac Shack could be incorporated into the S.U. somehow.

Another issue discussed was having student directors at the dormitories instead of dorm parents. This year Metzler will

be losing their house parents, and it was suggested that a student director be put in charge instead of another set of house parents. It was thought that this could create campus unity through activities instigated by the dorms.

Next a question was brought up about the general quiet or apathetic feeling on campus. One explanation was that it was not an apathetic attitude altogether, but that the freshmen were a more serious group of students than in past years, and this studious feeling has spread around the campus. It was stated that the grade point average on campus had gone up a substantial amount from years in the past.

A question asked, "Due to this feeling on campus is it the responsibility of MCCC or any other organization to find activities for the students?" The answer — a majority of the students tended to say no.

One student stated "Forced or

planned activities will go over well to a certain extent, but after a while they get old." Another responded, "I believe that a majority of students that attend Mac are from small high schools and small towns. These students were involved in everything in high school. Now they are in college and they just want to sit back and watch and not get involved in everything — they are tired!"

The problem of transferring students was brought up, but no solution was found. One student explained, "You cannot keep students from transferring and you cannot change the ideals and concepts of the college to please everyone. There are many small colleges over the U.S. and each college teaches education in their own particular way, which will suit only a certain number of students. The students who do not agree with the way the college is will transfer and perhaps find a college closer to what they want."

RYC theme "Tune in on Life"

by Holly Grone

assemblies followed by seminars of a wide topical variety. David Wine, jr., Wauneta, Nebr. this year's co-ordinator, explained that the reason for doing away with small groups stems from his belief that "the small group is out-dated and has been over-used." This opinion was generally supported by high school students and McPherson College freshmen interviewed by Wine who had attended the conference in past years.

The format requires that all participants attend the general assemblies to be led by Tim Reiman, chairman of the Philosophy and Religion Department at Manchester College of North Manchester, Indiana. These assemblies will feature music inspirations by Rosa Page Welch, a black gospel singer from Denver, who is a nationally-known recording star.

Each student may attend the seminars of his choice. These seminars will be led by faculty members and college students, and the topics are: Brethren History by Dr. Lengel, Bible Study on Relationships by Dr. Goldsmith, Environment (pollution) by Dr. DeCoursey, Human Sexuality by Professor Burden and Dave Bowman, Charismatic Movement by Iris Jackson, Music and Worship by Don Frederick, and a seminar by the Brethren Action Movement. Wine believes that the faculty members and their talents have been neglected in previous years, and that, through the seminars, their resources can be utilized.

Registration begins at 3:00 p.m. on Friday, March 15, and the closing activity is the church service at 10:00 a.m. on Sunday morning, March 17.

The committee organizing the conference includes co-chairman, Dan Lichty; housing, Kathy Ramsey and Joyce Johnson; correspondence, Marlene Wine; art, Jana Porter; registration, John Snell and Bruce Blocker; and food, Barb Moore and Diane Frantz.

Dave Bowman, campus minister, summarized the objectives of the conference: (1) to provide a religious experience through which students will broaden their awareness of what it is to be a Christian by hearing resource people and talking with others; (2) to draw the youth together for a good time; and (3) to let the high school students get to know what college life is here at McPherson. Wine commented, "We want to bring them together in a sharing experience of fellowship and inspirational growth."

Building, not burning strengthens morale

This week our campus was alive with activities that brought hibernating students out for what greatly resembled real social interaction.

The Trustees Meetings brought friends and relatives to our campus, and this, combined with Dotzour Hall's "all-night-party" and co-operating weather, gave students a good reason to get out and have fun.

It is too bad that this can't happen more frequently — but I believe it can if students acquire the proper morale. The attitude I am speaking of is not only that of student unity, but also the feeling that we can trust and put our faith back into the administration.

We students have been pushing our heads into the ground in order to live with the problem at hand. I think it is time to come out and take pride in our college community rather than tear it down endlessly. Of course anyone who comes here is going to think this is a boring place because if they don't find this out on their own, a McPherson student will be sure to fill him in. We've lived in this atmosphere of constant complaints and criticism so long that we've started to believe our campus can't be any other way.

I feel the student morale displayed this week disproved the belief that our college is boring.

If every student decided he was going to bury the torch he's been flagging around instead of telling everyone he's going to burn the college down with it, we might all take on a brighter attitude — and like it.

Macalendar

Friday, March 8 — Film "The Twelve Chairs," 8:00 p.m. Brown.

Saturday, March 9 — "Latin American Day" 10:00 a.m. — 3:00 p.m. — Soccer Tournament 7:00 p.m. — Film "Torero" followed by record dance in Fellowship Hall.

Saturday, March 9 — Free Concert, Student Union, 9:30 p.m.

Sunday, March 10 — Soccer Tournament, 10:00 a.m. - 3:00 p.m.

Monday, March 11 — Newton Mid-Kansas Orchestra Concert in Hillsboro.

Monday, March 11 — "Carnival," Full rehearsal with orchestra, 7:00 p.m.

Tuesday, March 12 — Convocation - Kathleen Croom, 10:00 a.m., Brown

National fad hits campus Mac 'streakers' take title

Fifty-one McPherson College students broke the national record for small college campuses in a "streaking marathon" last Wednesday night.

At 11:30 p.m., as the streakers readied themselves in stocking caps, socks, and shoes. Women in Dotzour Hall and the more modest men of campus stood along Dotzour's sidewalks, peered off of the balconies, and hung out of dorm windows to get a more than adequate view of the bare flesh jogging by. Most of the streakers, couldn't be identified because of their head wear.

Most observers were amazed at the courage of the fifty-one naked men trotting by. Said observer Brent Peterson, "I think the spectators were more perturbed than the participants."

Steaking was a custom initiated by the Greeks in an effort to welcome and celebrate the coming of Spring. University and college campuses however began this epidemic to advocate the impeachment of President Nixon.

Previously Nebraska Wesleyan held the record when 50 students streaked around their campus.

Trustees listen

Trying to make oneself heard on this campus is oftentimes a frustrating and maddening experience. Thursday, I attended the Educational Policies meeting of the Board of Trustees expecting the worst.

Much to my surprise, I found that the trustees were willing to listen to what the students had to say about McPherson College. In fact, they were actually interested in what was being said. For the first time, somebody not only listened to student opinion but heard at the same time.

I commend the trustees for their open minds and ears, for two way communication is the first step toward understanding.

Cathy Hamm

"Carnival" crew works to meet opening

by Brent Peterson

With the rapid approach of the opening night of the musical, Carnival, the pace of the rehearsals and other preparations are reaching an unbelievable frenzy. Many man hours of labor have been put in acting, set construction, painting, directing and the wide array of tasks that must be completed.

Brad Wille, sr., Manhattan, is in charge of set construction. His major task has been supervising the building of two large circus wagons. One wagon is the stage of the puppets, and the other is for the magician and the souvenir salesman.

Janell Schrock, fr., Harmony, Minn., has the job of seeing that all of the painting has been completed. Her work includes painting of the two wagons and five large circus posters that name the various circus acts.

Judy Sherlock, sr., McPherson carries the responsibility of teaching all of the dancers the steps they need to know. Her

can-can girls hold promise of being one of the highlights of the show.

The crazy actions of the puppets, who have their strings pulled by Gordon Hornbaker, Judy Kimmel, Dewayne Jackson and Donna Miller, are really quite unique. They could well be the key to the success of the show.

The lead roles are being held down by Holly Grone, Sherry Lockwood, Gordon Hornbaker and Roger Helstern. Gordon plays a double role as a puppet and as a puppeteer. De-

Director Rick Tyler stated, "The leads are doing fine, and that at this point their area for development lies in the mannerisms that make the roles unique."

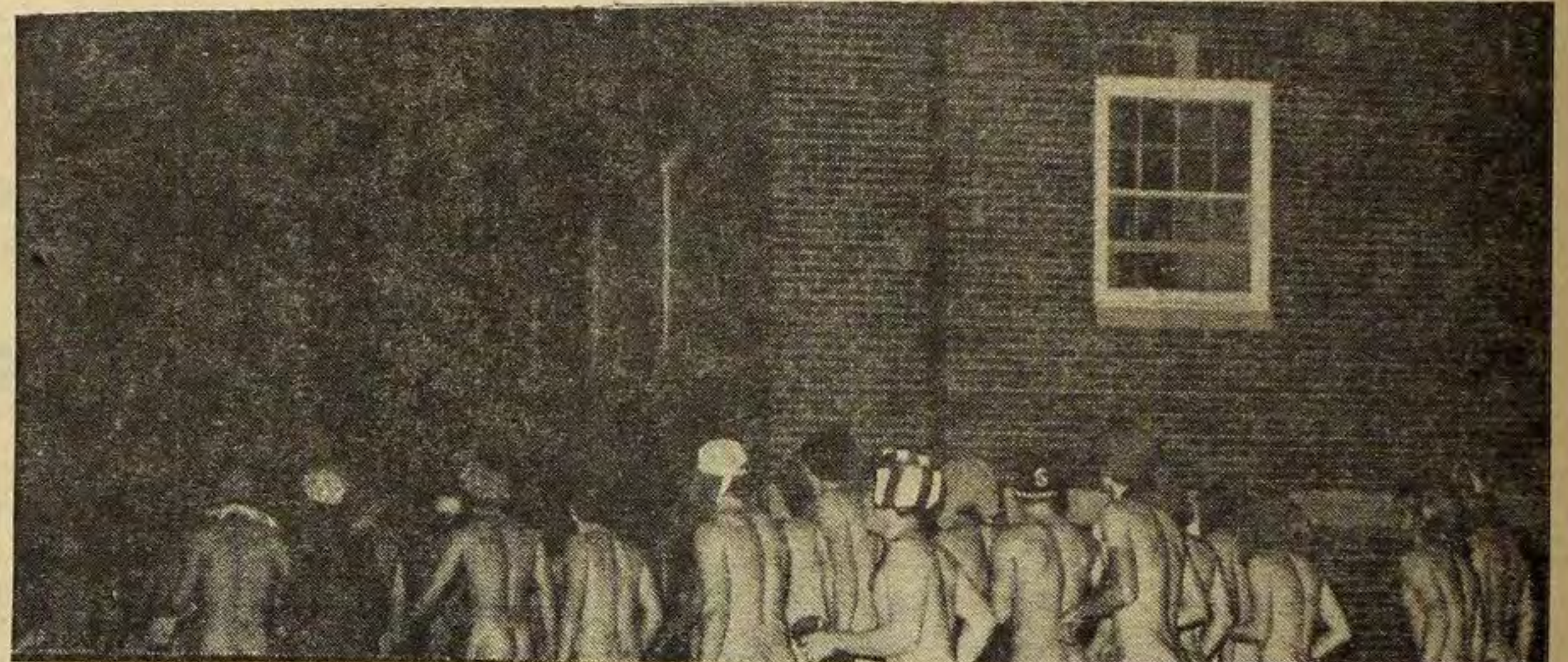
He goes on to say, "Rehearsals have been going as well as can be expected considering the number of people that have been showing up. Working with large groups of people can have its problems, but everyone has

been cooperative when present."

Co-director, Karlene Morphew has had charge of direction of the musical numbers. She has been assisted by Steve Fulmer, who has been providing the piano accompaniment during the early rehearsals. In the production, the vocalists will be accompanied by a full orchestra under the direction of Bruce Kitzel.

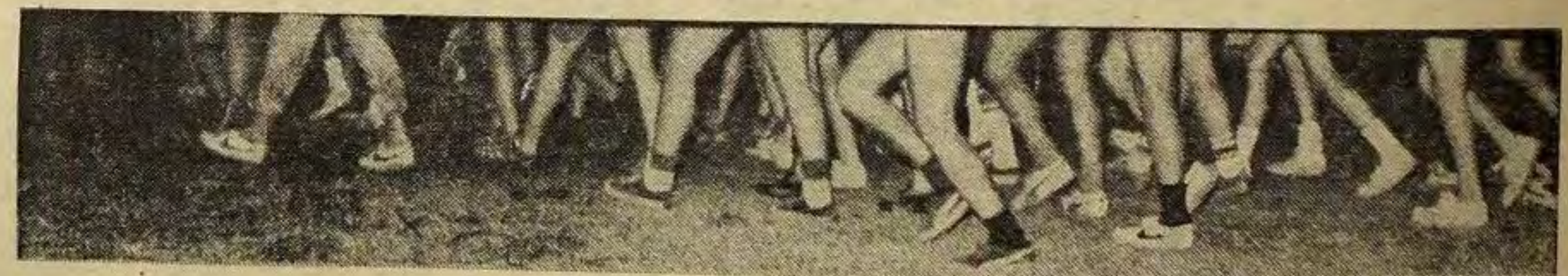
Tyler also said, "the drama department would like to see a total involvement of the student body in this production. This can be accomplished by students loaning different types of toys and nick nacks that can be used by the souvenir salesmen. Material and sewing skills could be used on the costumes and circus banners."

"This is the first full-scale musical that has ever been presented in the history of McPherson College. It is hoped that this production will be a real success so it will lead to other productions of this type in the future."



S-T-R-E-A-K

McPherson hits winning



Sex education offered

Sex is always a topic of discussion and now Dotzour Hall is organizing sex education classes for all interested males and females.

The courses were begun in response after a recent survey of residents indicated a real desire for sex education.

The classes began March 6 and will continue every Wednesday at 7 p.m. in the Student Union cafeteria.

The basic areas that will be covered by a variety of resource personnel are anatomy, intercourse, conception and child birth, male and female views of sex and how they differ, premarital sex and contraceptives. In addition, topics on homosexuality, human liberation, adoption and abortion, physiological aspects of physical relations, sexual adjustment in marriage, sex education at home, religious aspects of sex and legal aspects of rape, abortion and divorce will be discussed.

We get letters

Baker "annoyed, shocked" at Editor's editorial lament

Dear Editor,

I was shocked and annoyed by last week's lament about a "30 inch hole" in the editorial page and the lack of printable material. I think this is understandable when you consider the fact that five of my cartoons are presently on your desk, and four of them have been there over a month. Two at least met your approval, but they're still sitting there, too.

It is true they will have to be

photographed and reduced but I have talked with a former Spec staff photographer, and she assured me it was a relatively simple process. It is in fact, I have found, the usual procedure with cartoons. I also have submitted two poems to your office. Those are less defensible, however. At any rate, I felt you wasted a lot of space complaining which could actually have been better filled.

Charles L. Baker

We get letters

"Carnival" directors search for missing cast members

Dear Editor:

Four weeks have come and gone and we were wondering if you have any chorus members hiding out in the Spec office. We seem to have a shortage of them here in the auditorium. We still hold the idealistic hope that it is possible for a full cast rehearsal with all members present.

Since the editors seem to be keeping such late hours, we wondered if you would report any of

these delinquent cast members to the proper authorities. There must be some of them prowling about in the S.U. after the curfew hour. Please consult the rehearsal schedule on the S.U. bulletin board for what the curfew hour is in your locality.

Still hoping for some participation,
Karlene Morphew
Rick Tyler

The Spectator
Vol. 58 March 8, 1974 No. 17

Official student publication of McPherson College, McPherson, Kansas, 67460, published at 1600 E. Euclid by the Student Council weekly (24 issues) during the school year, except during college recesses. Second class postage paid at McPherson, Kansas. Campus office — Student Union basement.

One year subscription in U.S.A. — \$3.00
One semester subscription in U.S.A. — \$1.50.

Subscriptions for full-time students are included in tuition.

NIH seeks volunteers

by Brent Peterson

If you have a desire to learn about medical research, National Institutes of Health (N. I. H.) in Bethesda, Maryland may be offering just the opportunity for you. Through its Normal Volunteer Program, individuals have a chance to gain first hand information on medical research.

This is a program where qualifying individuals are studied as the control element of a series of medical research experiments. The volunteer must choose a career assignment from a listing of available assignments. These assignments are essentially research assistantships.

Stephen Guyer, a 1973 graduate of McPherson College, participated in this program this past summer, and he was involved with eye research. The purpose was to study the electrical impulses developed by the retina of the eye. Diana Frantz (jr.) was also involved with the same research program. Beverly Guyer (sr.) was involved with research in regard to allergies.

Steve said that a tour of duty lasts 12 weeks and that the pay for the summer of 1973 was \$7.50 per day, seven days a week. Room and board were also included. One drawback was that volunteers had to be in by midnight on weekdays and by 1 a.m. on weekends. However, weekend passes were available. Steve also said the volunteers had the opportunity to attend many cultural events in the Washington D. C. area.

Diane Frantz commented, "The volunteer program was one of the greatest experiences

of my life." She continued, "The experience could be of value to anyone, and one does not have to be a science major to participate."

If you are interested, a general information meeting with the Chief of the Normal Volunteer program, Delbert L. Nye, will be held next Tuesday evening at 7:00 p.m. in Room 304, Harnly Hall. Mr. Nye will be interviewing possible volunteers on Wednesday. Appointments for the interviews can be made with Mrs. Barchesky in the Academic Dean's Office.

Other students from McPherson College who have participated in this program are Sandra Hamm, Marie Kimmel, Mary Hoover, Michael Nokela and David Longenecker.

Students will have the chance to attend a concert in the upstairs of the S.U. Saturday night, March 9 at 10 p.m., which will feature bluegrass, boogie and rock music.

Two of the bands to perform are Lead Feather headed by Monte Wedel, and Doctor Phibes Folk Group lead by Cecil Schoen.

RALEIGH'S
Drug Store
Reliable Prescriptions
213 North Main Street
McPherson, Kansas
Phone 241-1574

DICTIONARIES WEBSTER

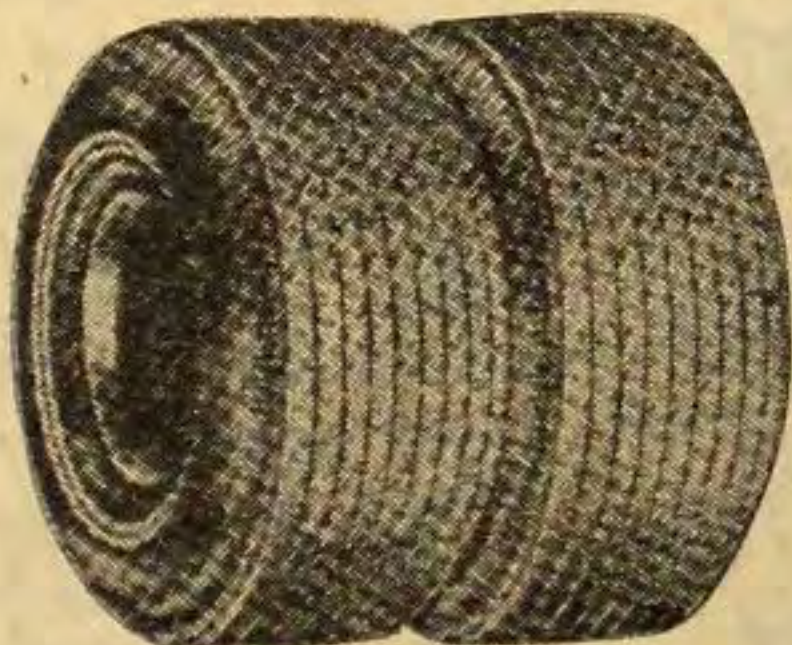
Library size 1973 edition, brand new, still in box.
Cost New \$45.00

Will Sell for \$15

Make Checks Payable to
DICTIONARY LIQUIDATION
and mail to
SPECTATOR
McPherson College
McPherson, Ks. 67460

C.O.D. orders enclose 1.00 good will deposit. Pay balance plus C.O.D. shipping on delivery. Be satisfied on inspection or return within 10 days for full refund. No dealers, each volume specifically stamped not for resale. Please add \$1.25 postage and handling.

Bargain Days



On
Director 120
Series

Coop's Premium Non-Radial Tire
Prices Starting As Low As
\$47.44 Per Tire. You Save
\$16.96

Mid Kansas Coop

S 81 Bypass

241-9868

SUPERIOR CLEANERS

109 S. Ash Street

CLOSED SATURDAY

Your Car Gets
Special Care!



Pampering pays. If you don't believe it, trust your car to our staff. Then listen to it purr!

Malm Automotive

210 E. Euclid

Strause organizes services

by Velma Bunch

Voluntary chapel services started this past Wednesday, March 6, in the Chapel of the Church of the Brethren. These are informal in the sense that attendance is voluntary and the leading of the services is also voluntary. Dave Bowman, campus minister led the first service. They will be held every Wednesday from 12:45 — 1 p.m.

The format of the services consists of an opening hymn, reading scriptures and discussion, prayer and a final hymn.

The college community, students, faculty and administration are encouraged to attend and if interested, to lead the services. The organizers hope to have someone different each week to lead the services.

"We don't want this to form

into just one small group or clique; anyone interested can take part. I feel this is a good chance for people to get together during the week," said Bob Strause, jr, Lebanon, Pa.

"I'd like to stress the voluntary part; in the past there were compulsory chapel services, then voluntary, and finally they were done away with. I'm opposed to compulsory services but would like to see these voluntary ones continuing," added Bob.

Bob Strause is chiefly responsible for organizing the services, and anyone interested in leading a service may contact him. The chapel is located in the north part of the Church of the Brethren.

THE SPECTATOR — Page 3
March 8, 1974

Mobil



Coach House CAR WASH

Exterior
Car Wash,
Jet Spray
Wax & Dry

East of Consolidated
Motors
122 So. Elm

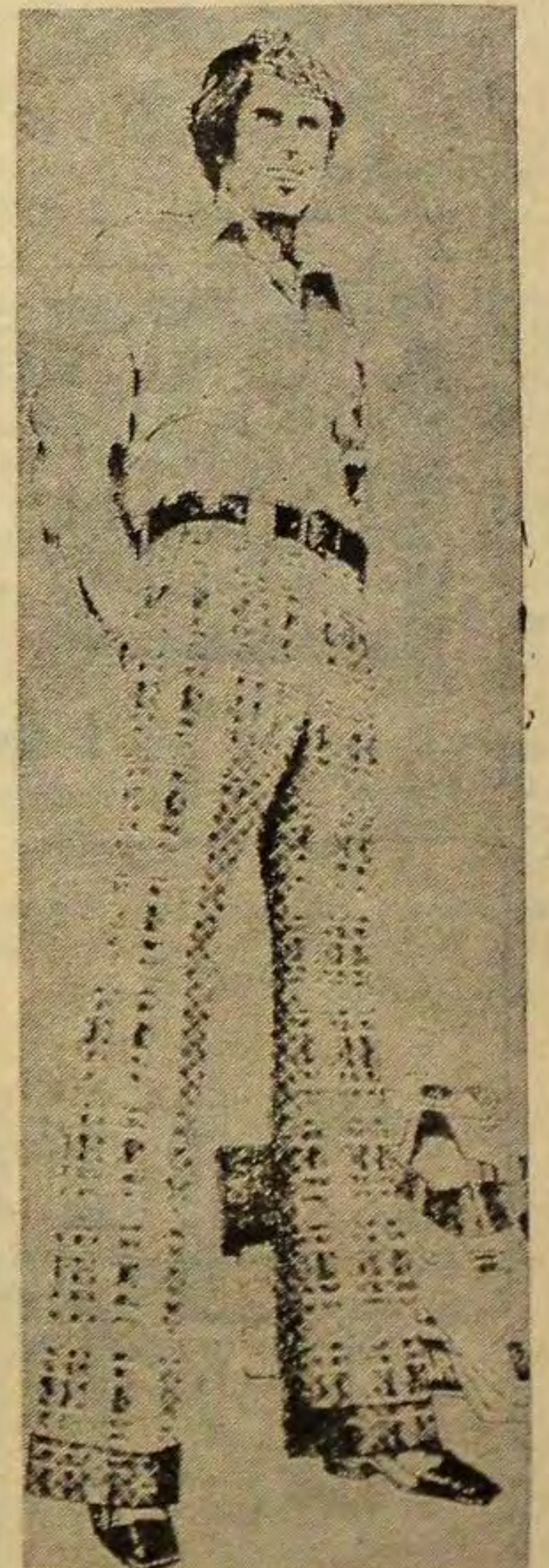


Your FTD
Florist Has
The Right
Combination
For You.

The
Flower
Fair

241-6828

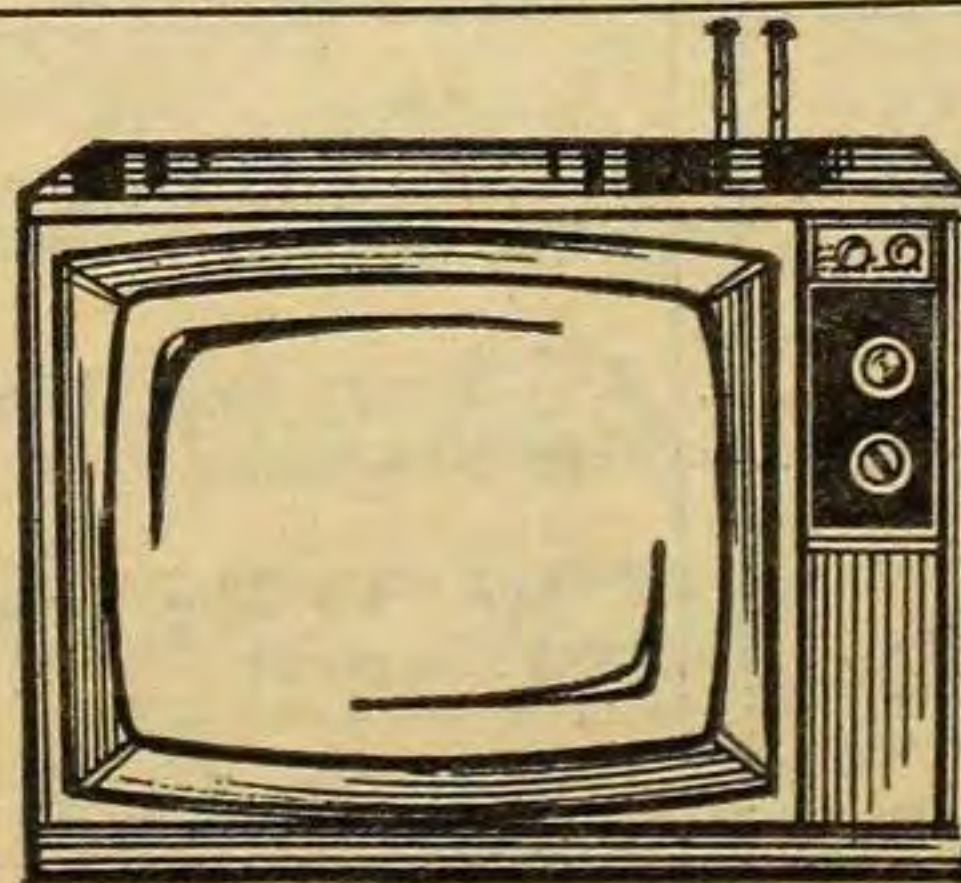
305 N. Main



GENTLEMEN START YOUR ENGINES and head straight away in Haggard Mustang WIDE TRAKS®, Clan Tartans in a woven Forever Prest® blend of Fortrel® polyester and cotton that gets you in-gear with the times. Fast pace styling from the extra wide cuffs to the comfortable trim fit. Machine washable and primed for action. \$14.

Morris & Son

113 N. Main



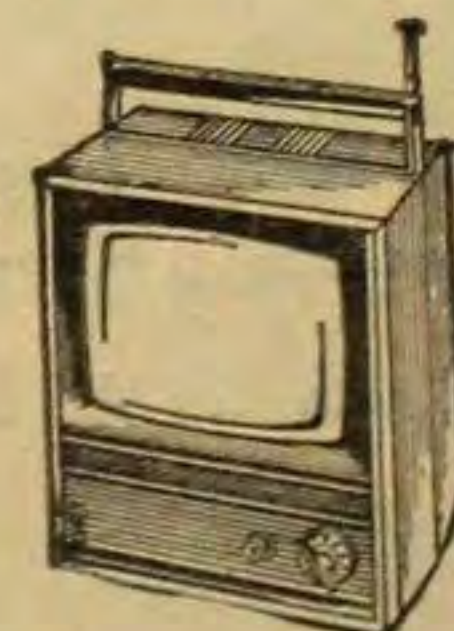
RCA

14"
Color

Only
\$24800

General
Electric
12" Black & White

\$7700



Crabb's Town & Country

319 N. Main

241-2500

Stiff competition faces Holman's racqueteers

by Stan Adams

Six Mac College team members and Coach Jerry Holman open the 1974 tennis season today against Emporia State at Emporia.

McPherson will face stiff competition all throughout the scoring, meeting the likes of Fort Hays, Emporia State and Washburn University as well as a loaded Kansas Conference schedule. Tabor and arch rival, Bethany, should prove the biggest obstacles between the Bulldogs and the conference crown.

Three lettermen, Mark Mel-

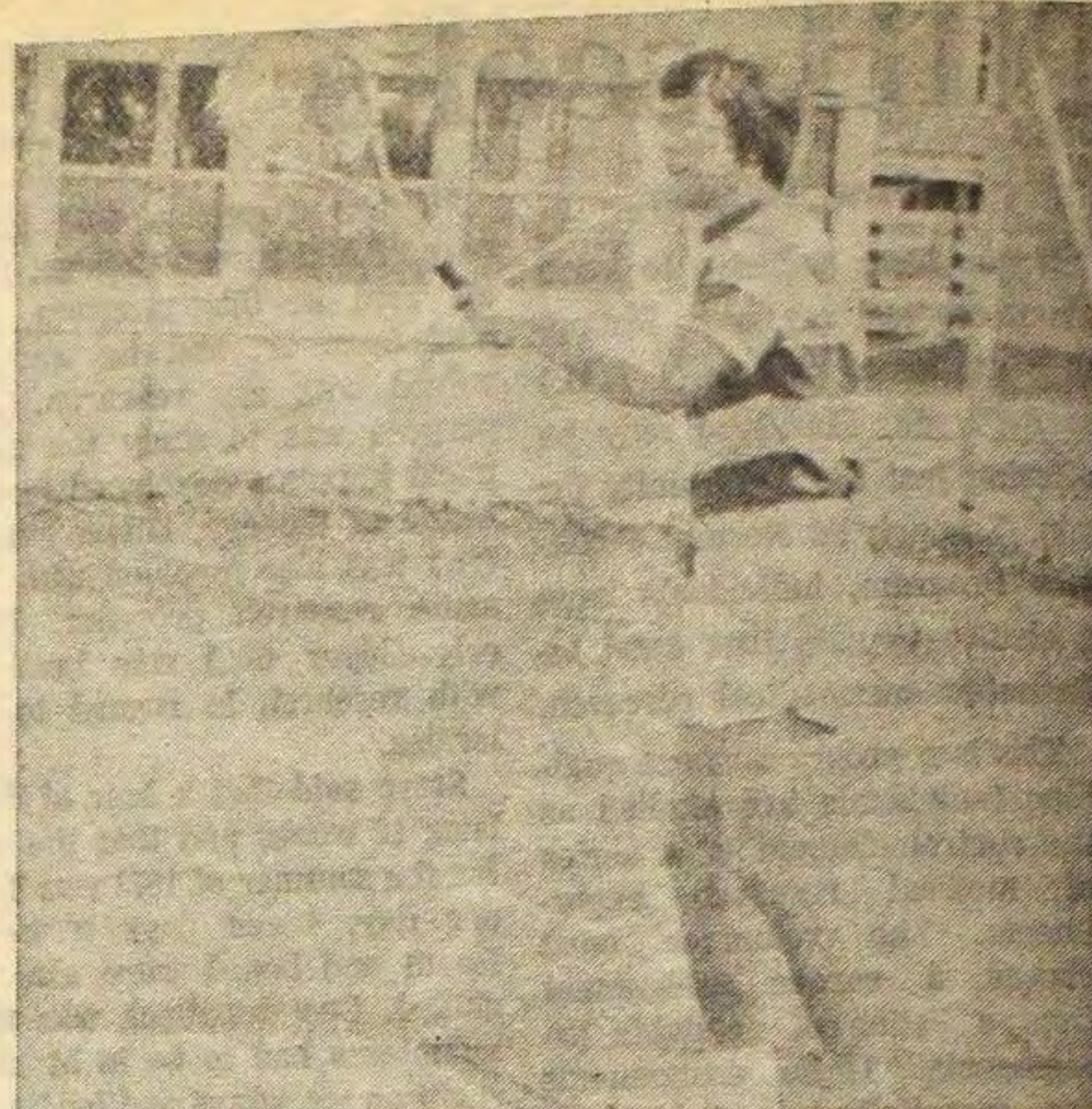
hour, jr., McPherson, Larry Rolander, jr., McPherson, and Steve Burkholder, soph. Buhler will be returning and provide the nucleus for the team.

Doug Grothe, fr., Wamego, Rick Doll, soph., Wamego, and Scott Kunze, fr., Ft. Collins, Colorado, will be expected to provide the depth.


When asked to evaluate the squad, Holman replied, "Our team is as strong as it was last year when we finished second in dual competition and third in the Conference playoffs. We will depend a lot on Burkholder, who was our winningest

player last year at the number two spot. Our returning lettermen will naturally be the anchors of this team, although all of our men did well in high school. If Melhorn can bring his singles ability up to that of his doubles, it will help immensely and Rolander's steady ground strokes are very important. We may not have quite as much depth as last year, but really we are close enough right now that the difference between winning and losing will depend on how hard we work in practice."

THE SPECTATOR — Page 4
March 8, 1974



Steve Burkholder, soph, Buhler, smashes a stinging return in tennis practice. The tennis team had its first meet today in Emporia.



Experience In Selection Makes Our Diamonds The Right Diamonds For You!

Renberger
JEWELERS

When Money Is YOUR Problem We're Your Answer



Home State Bank
Member FDIC

Your FTD Florist Has The Bouquet For You.



McPherson Floral
104 S. Main
241-4343



U.S. MALE JEANS
JUST LIKE THE BOYS
Denims — Plaids
Brushed — Faded

Junior Shop

Ask for your FREE copy of our fuel savings test data at any outlet listed below!

The Firestone STEEL RADIAL 500 can give you up to **30 Extra Miles** from every tankful of gas!

This gas savings is based on a car with 20-gallon fuel capacity and currently averaging 15 miles per gallon. Naturally, your savings will depend on how much stop and start driving you do. SEE THIS GREAT TIRE TODAY!

TUCKER'S FIRESTONE
301 N. Main
241-3210



Flights Are Filling Up Fast, So Plans Should Be Made Soon! If You're Planning On Traveling Home Or Away, Phone Us As Soon As Possible.

Perrin World Travel Service
104 N. Main
241-2830

		Compounding
4 Years And Over (\$1,000 Minimum)	7.25%	7.63%
2½ Years And Over (\$500 Minimum)	6.50%	6.81%
1 Year To 2½ Years (\$500 Minimum)	6.00%	6.27%
3 Months to 1 Year (\$500 Minimum)	5.50%	5.73%
Golden Passbook (90-Day Withdrawal—\$500 Minimum)	5.50%	5.73%
Passbook Savings	5.00%	5.20%

All Deposits At People's State Are Insured Up To \$20,000 By The Federal Deposit Insurance Corp.

NOTE: A substantial interest penalty is required for early withdrawal of any certificate.

Peoples STATE BANK
Main and Kansas
McPherson