



Amazed by the vittles at the Hillbilly Festivity Monday, students wolf down such eat-ins as greens, rabbit, corn bread, apple

cider and punkin pie, Sadie Hawkins week activities continue with the tug-of-war this evening and a hayride tomorrow night.

## Mac offers majors in nursing, actuary

This fall Mac is offering two new majors — nursing and actuarial science.

The new nursing program will combine the traditional academic studies with technical training. Before this year, Mac's nursing students had to transfer to another school after a two year pre-nursing program at Mac.

Under the new program, students attend McPherson for a year and then go into Hospital Program at the Wesley Hospital of Nursing, Wichita, or another school of nursing approved by the College. Upon completion of their hospital training, the students would return to Mac for two additional years of study.

Dr. John Burkholder, professor of biology, emphasized that the quality of this degree could open avenues in many nursing careers.

"This program allows the students to get the same training as the Registered Nurse in connection with the baccalaureate degree," said Dr. Burkholder. "Their vocational training and college work gives the graduates professional opportunities which would not be available to the RN. Graduate work, teaching and supervisory positions are some of them."

McPherson is the first college in Kansas to offer a degree in actuarial science.

In this insurance-oriented society, this degree offers opportunities for those interested in becoming actuaries — those professionals involved with calculating insurance risks and losses.

"Actuaries are amongst the highest paid professionals," said David Stobie, consulting actuary. Dr. Jesse Krebbiel, professor of mathematics, added that the program is designed for students with top mathematical ability, because "most actuaries eventually become the brains of the business. They make the rules and programs for their companies."

"This program has received a most favorable response from the numerous insurance companies based in Kansas," remarked Merlin Frantz Dean of Academic Affairs, and stated that it is regarded as a step towards meeting the needs of business in the State of Kansas and in the surrounding areas.

The specialized portions of the program comprises 61 hours of economics, mathematics and computer science courses.

Dr. Krebbiel sees exciting possibilities for those talented people who really like to think.

# the Spectator

Vol. 57

McPherson College, McPherson, Ks. October 12, 1972

No. 4

## New recruiting brings results

Zack Meyer's tuition fee was reduced \$400 when four of his friends accompanied him to McPherson College this Fall.

Under the new student incen-

tive program established by the College last Spring, Zack and three other students were able to receive monetary rewards for new students that they recruited to come to McPherson.

"Although we didn't have a lot of student recruitment through the incentive program, I consider it a success," stated Dennis Heisey, admissions director. "We are going to offer the program again this year, very similar to what it was last year."

A four week course will begin Oct. 19 where students

learn all aspects of curriculum, history and financing of the college. Heisey will conduct the course that will meet in Mohler at 6 p.m. every Thursday evening. These class sessions are open to everyone except first semester freshman. Another class of this type will be scheduled again next semester for any freshman who would like to be involved in student recruitment.

Four students received monetary rewards totaling \$800 this year through the incentive program. Tuition costs were re-

duced \$100 for each student brought in under the student recruitment program.

Heisey does not feel that Mac students would recruit other students just for the money involved. "To bring a fellow student to McPherson, the recruiter must feel sure that he will like the college," he remarked.

The Student recruitment program was prompted by the idea that college students relate better to high school seniors than paid admissions counselors sent out by the College.

## Workshop features Paul Engle

Paul Engle, the only poet on the National Council of Arts, will be featured in an ACCK writers' workshop, Oct. 19-21, on the Mac campus. His wife, Hualing Nieh Engle, will share the spotlight at the conference for ACCK students and members of the community who are interested in writing.

The workshop will give local

creative writers a chance to share ideas and to study with the Engles. Students may submit manuscripts for critical evaluation at one of the sessions. Anyone wishing to have his work evaluated is requested to bring 25 or 30 duplicate copies of their work for sharing in the workshop.

Manuscripts should be typed double space with the student's name and institution in the upper right hand corner.

At other sessions Engle will lecture and share some of his poetry.

Engle is not only a well known poet but he also helps others through his Creative Writing and International Writing programs at the University of Iowa. The talents of such noted writers as Tennessee Williams, Flannery O'Connor, and Philip Roth have grown under his guidance.

Persons who are interested in the workshop may contact Mrs. Norma Tucker, workshop di-

rector, or any member of the English faculty for more information. There will be no charge for students enrolled full-time in ACCK schools. Others will pay a workshop fee of \$20. The public is welcome at the evening lectures.

## Macalendar

**Thursday, October 12** — Tug-of-War, 6 p.m., lagoon.

**Friday, October 13** — Women's Tennis, Kansas State, 2 p.m., There.

**Friday, October 13** — Hayride, 8 p.m., meet in front of Miller Library, 25c per couple.

**Saturday, October 14** — Carnival, 1 p.m., Quadrangle.

**Saturday, October 14** — Football, KWU, 7:30 p.m. here.

**Saturday, October 14** — Square Dance, 10 p.m., S.U.

**Tuesday, October 17** — Convocation, Wichita Jazz Arts Ensemble, 1 p.m., Brown Aud.

**Thursday, October 19** — Convocation, "A Renaissance of Lute Song," 1 p.m., Brown Aud.

**Elections for a representative-at-large will be held next Thursday to fill a recently vacated position on Student Council. Any student is eligible to run according to Stuco secretary Sue Cook, if they obtain enough signatures on a petition and turn it back to her by next Tuesday.**

**Petitions may be obtained from members of the election committee which consists of Diane Tharington, Cheri Jestmore, Carol White and Sue Cook.**

**Reps-at-large have no special duties other than to attend all Stuco meetings and represent the student body. This spot on student council was left open when Dave Sharma resigned.**

## Water safe at lagoon

A report from the County Health Department last week refuted rumors of typhoid in water at Lakeside Park Lagoon.

Inquiry about the conditions of the water was made by the Rev. Jim Tomlinson after students informed him of the rumors. Tomlinson also consulted with the Park Board Chairman and the City Clerk, who agreed with the CHD report.

"They all laughed," said Tomlinson. "They thought the idea of typhoid around here was ridiculous."

The source of the rumor is not known, but some students speculated that its persistence prevented the traditional dunking of newly engaged men at the College.

A rumor of there being a \$2 fine for being thrown into the lagoon proved unfounded.

# Tradition falls; Time now flies

Recently a time-honored tradition, in fact a "timeless" tradition at Mac, came to an abrupt end when two students and a long-haired bearded member of the Mac faculty took matters into their own hands and grossly mis-handled one of our "invariable" campus traditions — the broken clock in the SU lobby.

Working in cahoots with a downtown businessman who is known for tinkering with other peoples' valuables, the three Mac activists literally cut the "heart" out of the tradition, and then transported it to the tinkerer's shop. When the tradition was returned to the College, it had been "defaced" and was completely changed in appearance and function.

Gone now is the easy reassurance that - if you don't know what time it is, you're never late. No longer do politicians have a "built-in" campaign promise.

In place of this source of such fond memories, we now have a clock — a working clock — an agonizing reminder of time fleeing . . .

We students need to put an end to this sort of "runaround" activity. We need a reminder of times past. We need to see that even at McPherson College, time can stand still.

In short, we of the Mac community need to maintain a "hands-off" policy towards our ageless traditions.

Taking tongue out of cheek, the Spec wishes to thank Gail Winecker and Gary Best, student directors of the SU, Rev. Jim Tomlinson, campus minister, and Brunk Jewelers of McPherson for financing and fixing the clock in the SU lobby.

It had not run for at least four years because it lost its hands and no one replaced them.

## The Apoplectic

"My son" said I,  
"Everyone must pay  
everyone must  
for every blade  
of grass  
that springs from the hills  
only to be  
pounded  
deep into its birthplace  
again.  
For every hearty laugh  
that escapes  
a cheerful person  
and is then put aside  
by a thoughtless  
"thinker"  
who rallies himself  
to the attack.  
For the thousands  
and thousands  
of men and women  
who have given their  
lives  
to our country  
for the  
preservation of that  
intangible gift  
of freedom  
and are doomed never to  
live and "see" that  
freedom."  
"My father" said he,  
"are you sure that  
everyone pays?"

MIKE NICKLOS

We get letters

## SC wary of live concerts

Dear Editor,  
Billy Joe Royal was in concert last Saturday night in Brown Auditorium and the place was packed.

Yes, 65 people were there. (He told the few that were there that he was making a live recording at this performance and he would call it "Dead At McPherson.") Though I am sure he found it hard to perform for

such a small audience, he did a fantastic job - it was a very warm concert.

What is past can't be helped; bear in mind, however, that when you — the College Community — ask for a concert, Social Committee will think at least twice before agreeing to promote another one.

Iris Jackson  
Social Committee Chairman

We get letters

## Visiting hours too restrictive

I am fed up with this 12 hours a week of "open dorms."

As long as we are a part of this community and are compelled to live on campus and in dorms, we should have the right to have some influence in the rules governing our life pat-

terns.

There are people on this campus who like to visit, study and talk with their friends in privacy, comfort and convenience, and for most of us these conditions exist only in our dorm rooms.

It just so happens that good relationships exist within this community that cross the sexual "lines." Because of the restrictive open dorm policy, the need or desire to visit is often squelched because it involves a friend of the opposite sex. One is forced to keep in mind the hours of the week when open dorm exists and time the desire to visit to coincide.

I think that each dorm should set up its own dorm hours to suit its residents' wishes without any maximum or minimum suggested by the administration.

I know that there are bigger things in this community and world to be concerned with and seek changes for, but open dorms is one of those trivial things that I think should be changed and gotten out of the road.

Michael A. Stadler

THE SPECTATOR — Page 2  
October 12, 1972

## Low blow for Billy Joe small turn out at concert

by Ellen Gill

He came, he saw but he did not conquer.

Who is this person? Billy Joe Royal, that's who. He came Saturday, October 7 and only 65 people showed up or had the common decency to welcome him to McPherson. What if this were the only taste of Kansas he had — would anyone "ame him if he did not return?"

In any case, he came. When he left, he left me with a deep sense of pride that there is a Billy Joe Royal. His backup group should also be commended for an excellent job, though I do not feel that I am qualified to criticize rock bands.

Billy Joe blended some hard rock (a version of 'Honky Tonk Woman' in the styles of Elton John and the Rolling Stones) and soft ballads ('Rock 'n' Roll

Lullaby') in a very well balanced program. He also did a medley of his own hits such as 'Cherry Hill Park', 'Hush', and later on in the show, 'Down in the Boondocks.'

Billy Joe is a prime example of what is called a "Southern Gentleman," a man of mild manners but how could he help but feel bitter at his reception here.

What if some really big group somehow managed to do a "gig" here, would we treat them the way we did Billy Joe?

## Flag, banner policy

At the request of College president Galen Snell, the Spectator is publishing the Board of Trustees' policy on displaying flags and banners at the college. President Snell feels that it is necessary to inform the college community of the rules that the board accepted last May.

1. Flag etiquette should be observed as published in the pamphlet "Let's be Right on Flag Etiquette," distributed by the National Americanism Commission.
2. The State Flag of Kansas should be displayed in accordance with state regulations.
3. The display of any other flags or banners on the college flagpole needs the written approval of the President of McPherson College. The display of these flags or banners shall be in agreement with points 1 and 2 of this policy statement.
4. Only authorized college personnel shall display any flag, banner, or other item on the McPherson College flagpole.

## Poor choice - - Poor turnout

Billy Joe Royal, whose star has been twinkling on the horizon for sometime — (whether it's coming up or going down is hard to tell) — certainly deserved more than 65 people in the audience last Saturday, but if the Social Committee had stopped and thought about it, they really couldn't have expected too big a turnout.

At best, Billy Joe is supposed to have a Tom Jones image — the sort of image that appeals to little ol' ladies — not to college audiences.

The poor turnout does not mean there is no interest in live entertainment at Mac — the interest is simply in different sorts of music — groups like Dust and Ashes have been consistently well-received. In the past their concerts have been free, but even at \$2 a head, their kind of music would certainly draw more than 65 people.

Though many people would just as soon forget about Saturday's fiasco, it ought to be a learning experience — students won't pay to see something just because it's on campus.

We get letters

## Flag merits respect

Dear Editor:

The student flag protesting nationalism (Spec, Sept. 28) in my opinion was an outright disgrace to the Mac College community, including the Church of the Brethren.

Whatever the convictions of some students may be, the whole college need not be subjected to them. Anyhow, the belief that there's no need for nationalism because this causes nations to work for the betterment of one people is insipid. As modern history has shown, nations first work for themselves and then for other nations. Besides a flag of a nation identifies the whole nation as an individual group.

Sure enough, if we had one government for the world then we may have one flag but as long as the world remains di-

vided, it is only right that there be unidentical symbols for all nations. The major irrelevance in my opinion of the flag was its fluttering on the college flag mast. Why wasn't it flown on the Post Office flag post?

And about the "cherry-picker" and the ladder business— what if that particular "some" student had broken his neck while climbing up to remove the unofficial flag? Everyone must agree that the cherry picker was more convenient.

Truly yours,

Dave Sharma

**CORRECTION:** Bitteringer has open dorm from 1-5 p.m. Sunday instead of 1-5 p.m. Saturday as it was reported in the Oct. 5 Spec.

### The Spectator

Vol. 57 Oct. 12, 1972 No. 4

Official student publication of McPherson College, McPherson, Kansas, 67460, published at 1500 E. Euclid by the Student Council weekly (24 issues) during the school year, except during college recesses. Second class postage paid at McPherson, Kansas. Campus office — Student Union basement.

Member of the Associated College Press.

One year subscription in U.S.A. — \$2.50.

One-semester subscription in U.S.A. — \$1.25.

Subscriptions for full-time students are included in tuition.

#### Editorial Staff

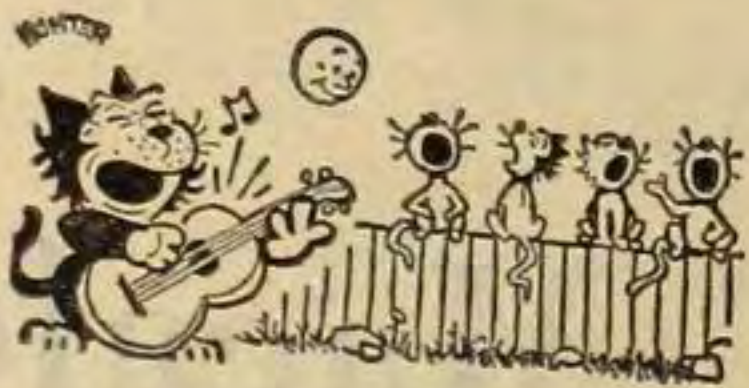
Editor-in-chief — Sue Stover  
Managing Editor — Mary J. Hoover  
Campus Editor — Lois Pierson  
Photographers — Debby Snyder  
Mike Statler  
Norma Tucker

#### Business Staff

Business Manager — Ellis Porter  
Faculty Adviser — Emma Hofer

#### Writers and Reporters

Joyce Betzen — Bach Moore  
Steve Burkholder — Lois Pierson  
Ellen Gill — Dave Sharma  
Cathy Hamma — Serge Sokil  
Robert Heid — Anisa Suleman  
Steven McCadney — Garry Wallace  
DeeDee Yoder



# McGovern rally draws Mac supporters to KC

by Serge Sokil

Ten McPherson students drove to Kansas City last weekend to attend a political rally for presidential candidate George McGovern.

A crowd estimated at 25,000 waited up to four hours for McGovern to appear, another 10,000 people waited outside the hall unable to squeeze in to see him. The crowd was made up mostly of young, loyal McGovern supporters but a few Nixonists also showed up.

A young child, not more than ten years old, gave an endorsing speech for McGovern that many considered ridiculous. McGovern arrived afterwards at 9:30 p.m.

McGovern spoke about the war, about Nixon (he seems not

to like him), about America—calling her to "come home" (home from where?) and stated that America cannot afford four more years of a Republican administration.

"It was just a political speech, kind of like a ballgame where everyone screams and hollers just to communicate that you support the team. After standing for four hours most people couldn't have tolerated a very intellectual speech," observed Floy Ditmars, So., Grundy Center, Ia.

Karen Quakenbush, So. Wichita was disappointed by McGovern's speech. "He had too many cliches and he sounded too much like other politicians," she said. "More than emphasizing the positive, he brought out the negative in the Nixon administration. I'm going to vote for him but I'm not nearly as enthusiastic as before," she added.

In asking the young people who attended the Kansas City rally why they support McGovern the same reply was heard most of the time. "If we vote for McGovern it just means we don't want Nixon anymore. We really have no choice. Not voting for McGovern is giving one more vote to Nixon. Anyway,

he can hardly be worse than Nixon."

Various banners at the rally displayed this anti-Nixon sentiment, rather than a pro-McGovern slogans. One banner asked, "Milhaus Who?" Another read "Nixon was the one in 1968, he is a bigger one in 1972."

On Saturday McPherson students joined groups of volunteers to canvass the KC area for McGovern—taking door to door surveys and leaving plastic packages with registration information and democratic propaganda. Conclusions showed that McGovern will win in Kansas City and perhaps the whole state of Missouri.

Those who helped with the canvassing received tickets to a concert that night where approximately 300 young people gathered to hear folk singer Phil Ochs. The audience was enthusiastic though Ochs was an unknown to some in the crowd and many would have preferred a rock concert.

McPherson students had been promised food and lodging but because so many people turned up for the rally they were left to find accommodations for themselves. They ended up spending the night in the Church of the Brethren at Kansas City.

Those attending the rally from Mac included Carolyn Harnley, Serge Sokil, Floy Ditmars, Maureen Ditmars, Pam Barkdoll, Cindy Enberg, Karen Quakenbush, Gary Giles, Mike Nokela and Debi Horner.



Even surrounded by the hard competition and the grueling work involved in every week of football games, little boys still have fun playing football. Here two Lindsborg athletes provide an impromptu half time show at the McPherson-Bethany game last Saturday.

THE SPECTATOR — Page 3  
October 12, 1972

The Finest Print Can Be Read At Miller's Book Store.

For All Your Book Store Needs

**MILLER'S BOOK STORE**  
131 South Main • Phone 241-1482



**Hutcherson's Safety Lane**

**BRAKE SERVICE AND WHEEL ALIGNMENT**

Don't Take A Chance With Faulty Brakes  
310 N. Main 241-2870

**Peoples STATE BANK**

Main and Kansas McPherson  
For Those Who Want That Extra Something

Going To Announce Your Engagement At Homecoming Time? Get Your Diamond



115 N. Main

**STEREO EQUIPMENT**

Your SIGHT AND SOUND HQTS. For

Dual Sony Panasonic  
Garrard Sylvania Electro-Phonic  
Kenwood Motorola Craig

**CEE JAY CO.**

205 N. Main 241-1865

**SUPERIOR CLEANERS**  
109 S. Ash Street  
CLOSED SATURDAY

**Morris & Son**  
113 N. Main 241-4547

**HEALTH FOODS**  
So Good For You  
McPherson Health Foods  
Come In Soon  
520 N. Main

**McPHERSON STATE BANK & TRUST COMPANY**  
Member F.D.I.C.  
When it comes to banking...Come to McPherson Bank & Trust  
122 W. Marlin  
• Checking & Savings  
• Complete Loan Services  
• Safe Deposit Boxes

**BLACK LIGHTS POSTERS CANDLES INCENSE**

AT



**C & C.**

114 N. Main  
McPHERSON, KANSAS 67460

# Kansans outrun Saturday at Oklahoma invitational

by Jim Ochse

McPherson's cross-country team traveled to Oklahoma City last Saturday to compete in the Oklahoma Christian Invitational. Oklahoma State was the winner of the meet with Oklahoma Christian taking second. Central State University finished third, Southwestern Oklahoma was fourth and McPherson and Southwestern College of Kansas tied for fifth place.

Despite the low finish, the

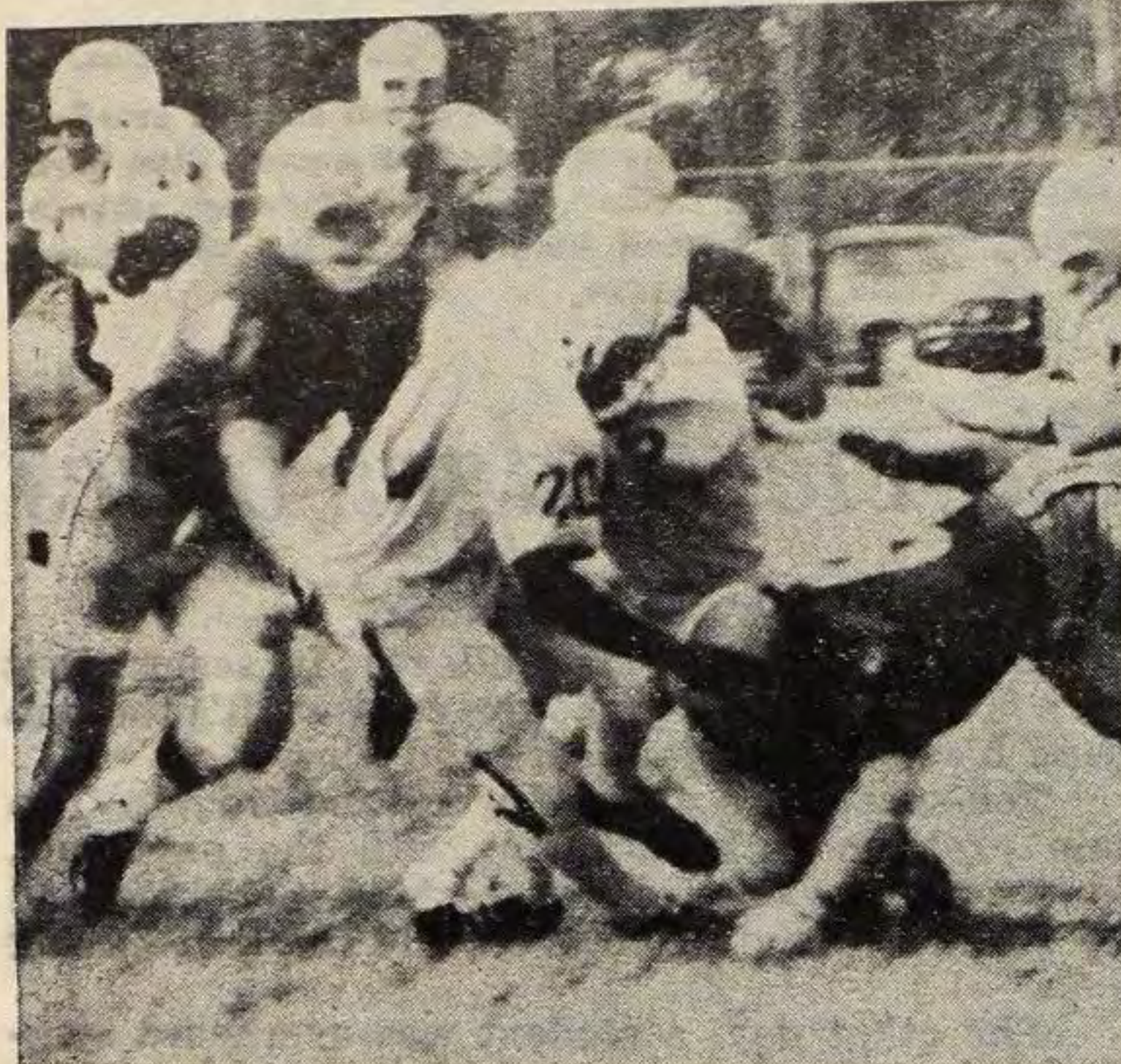
Mac harriers were only ten points behind the third place finisher, CSU.

The top twenty runners received trophies for their performances. McPherson's Vic Doll placed 14 with a time of 22:11. Following Doll were Jim Ochse (22), Augie Hirt (26), Randy Porter (27) and Rich Randolph (37).

Six teams competed on the four mile course on the campus of Oklahoma Christian.

Mac harriers will travel to Salina to take part in the NAIA District 10 cross-country meet.

THE SPECTATOR — Page 4  
October 12, 1972



Larry Frisby hits the dirt after making a substantial gain against the Bethany Swedes in last Saturday's game at Bethany.



Serge Sokil guards Paul LeBrun as he dribbles towards a perspective goal in a recent soccer practice. Serge, Paul and other soccer fans at McPherson have been playing soccer together for the last two weeks and hope to form a team good enough to meet Central College in a match around Homecoming time.

The team's immediate need is to find a good goalie and two fullbacks. The front line appears to be well formed and the team practices will be scheduled if matches can be scheduled against other schools. Anyone interested in playing on the team is urged to contact Serge Sokil in Fahnestock Hall.

## Swedes sweep by Mac 20-0

by Steve Burkholder

Bethany College whipped the Mac Bulldogs 20-0 last Saturday afternoon before a large homecoming crowd in Lindsborg. Bethany's record is now evened out at 2-2 and Mac is down in the KCAC cellar with an 0-4 mark.

It was a frustrating day for McPherson, especially for the Bulldog offense, which netted a mere 43 yards in the first three quarters. The passing attack all but backfired as Mac passers hit on only 8 of 31 pass attempts for 64 yards.

The Bulldog defense, was slightly more effective, but never really established itself. Ed Rogers carried the offensive load with 57 yards in 12 rushes.

The Bulldog defense, which is currently ranked third in the conference, did a good job con-

sidering the circumstances under which it played.

The offense gave Bethany its first TD of the game and also left the defense in poor field position throughout most of the game. The defense never allowed Bethany a long offensive drive and forced the Terrible Swedes to settle for field goal attempts several times. Mac defenders also recovered three Swedish fumbles and picked off four interceptions.

Leading the defense were two familiar faces, Kelly Cowan and Lee Everett. Bookworm had 13 tackles (11 in the second half), four assists and one interception. Cowan was second in tackles with 11, an incredible number for a safety. He also picked off two Swedish passes, boosting his season total to five.

Waverly Hatcher turned in his

best performance of the season with seven tackles and seven assists. Roland Forti intercepted another pass this week and had six tackles and three assists. Stan Sauk had five unassisted tackles before he was knocked out cold midway in the second quarter. His absence was especially felt in the second half.

Mac faces another tough foe this Saturday night when the Battling Bulldogs host Kansas Wesleyan University, last years KCAC champs. Kickoff time is slated for 7:30 at McPherson College Stadium.

### Register To Vote

Friday, Oct. 13 11 a.m. - 2 p.m.

### STUDENT UNION

Officials from county clerk's office will be present to register voters and give information about absentee ballots.

Ad sponsored by Friends of McGovern



### SWIM PARTY

2:00 - 4:00  
Sat. October 14

**FREE**

At The

**YMCA**

220 N. Walnut

### Good Service Pays

It Doesn't Cost

Special Student Discount

**Fred McKenna**  
Chevrolet - Olds



See Our

**U. S. Male**

Jeans (Just Like Boys)  
Hip-Huggers  
Button Fronts

Wide Cuff Still Only \$6.98



### Holiday Manor

Motel - Restaurant

Cantonese &  
American Food

(316) 241-5343

Junction I-35W &  
U.S. 56 Highways  
McPherson, Kansas

**Mobil**



**Coach House**  
CAR WASH

Exterior  
Car Wash,  
Jet Spray  
Wax & Dry

East of Consolidated  
Motors



**FREE**  
ICE  
SCRAPER

**Firestone**  
TOWN & COUNTRY RETREADS

**2\$19.50**  
FOR

6.00-13  
Blackwall  
Plus 30¢ per tire F.E.T.  
and 2 recappable tires  
off your car.

6.50-13 7.00-13	\$21.50 FOR	6.95-14 8.00-15	\$23.40 FOR
7.35-14, 15 7.75-14, 15	\$25.20 FOR	8.25-14 8.25-15	\$27.00 FOR
8.55-14 8.55-15	\$28.50 FOR	8.85-14, 15 9.50-14	\$30.50 FOR

Blackwall. All prices plus 37¢ to 67¢ per tire Fed. Ex. tax  
and 2 recappable tires off your car.

WHITEWALLS ONLY \$1.50 PER TIRE MORE

**HURRY! LIMITED TIME OFFER**

"See Us For

Home and Farm Needs"

**TUCKER'S Firestone**

301 N. MAIN

CH1-3210