

# THE SPECTATOR

Vol. 54

McPherson College, McPherson, Ks., March 12, 1970

No. 19

## Trustees face student issues

At the Annual Trustee Meeting of the McPherson College Board of Trustees on March 6-7, the trustees reached decisions in regard to Long Range Planning, student involvement, and other issues.

The board took the following action:

1) We commend students for their present interest and concern in education, including 225-1500 program.

2) We have approved the hiring of the educational consultants for completion of the self-study and Long Range Planning as soon as possible, beginning in March 1970.

3) We support the participation of greater student involvement through democratic processes in the total educational experience and in the determination of social life.

This action does not mean they have approved the specific Student Council amendments and proposals, but they believe these items should be negotiated with the administration and students. Thus the board also acted on the following:

1) A time will be scheduled next year for the board members and the students to meet

for a general discussion, similar to that which was held this year.

2) Student Council is invited to present concerns which will be placed on the agenda for consideration by the trustees. Students are invited to present their concerns when these appear on the agenda.

The trustees showed that they cared after they found out that the students are planning to match Claire Miller's challenge-gift of \$1500 with \$1000. The trustees assured the payment for the first phase of the consultant program by pledging and giving \$3510 toward the long range study.

Central College with regret did not see how they could participate in this project at this time. The reason as to this decision is that any money they have for the consultants will be used to obtain accreditation from the North Central Association as a junior college.

The trustees changed the by-laws to double the number of trustees selected at large from five to ten. This action was taken in order to get more breadth and depth of experience of those who serve on the board.

## Mac students raise \$850

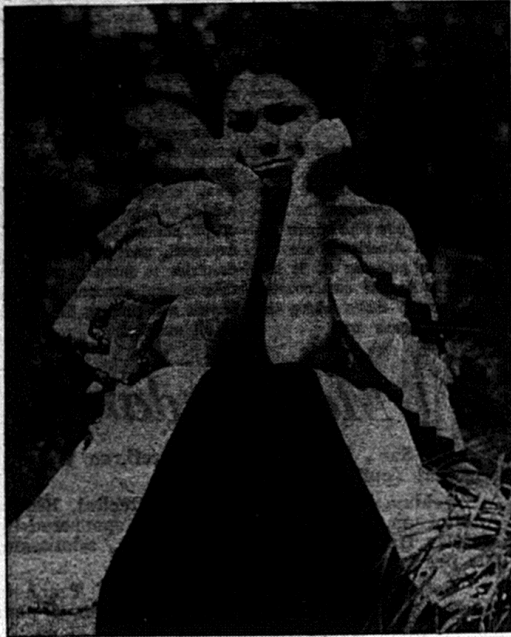
The 2.25 - 1500 drive to raise \$1500 toward hiring a consulting firm to study and make suggestions for the future of McPherson College has been in progress for three weeks.

Students thus far have raised \$850 of the \$1500 goal.

The drive will continue to solicit donations from students until the \$1500 goal has been reached. If you have not yet contributed your share, contact Graig Little and show your support for a better McPherson College!

## Metzler will sponsor dance

Metzler Hall is sponsoring an all-school dance in the 3. U. basement on March 13, at 9 p.m. The admission will be \$5.00. Music will be provided by tapes and records. A casual atmosphere will be created by the use of posters and lights. Plan to attend.



## Soprano sings here

Martha Towery Sharp, a lyric soprano from Tulsa University, will present a program of vocal music for the March 19 Convocations.

"Marti" is the granddaughter of Elizabeth Russell, residence director of Fahnestock Hall.

Presently a senior at Tulsa University, Mrs. Sharp has participated in many of the civic and university musical programs, including the lead roles in several important operas.

She will sing the role of "Bertha" in the opera "Ill Barbiere di Siviglia" on March 12

and 14 in Tulsa.

Some of her honors include the Tulsa University Music School Scholarship and the Tulsa Opera Scholarship, and this year she was voted "the outstanding vocal student" by the Tulsa U. Faculty.

Her music professor, Dan Wright, a piano accompanist, and an instrumental accompanist will also be helping in the program.

Martha Sharp is the wife of Steven Sharp, who is also an accomplished musician and a senior at Tulsa University.

## Youth invade campus

"Invasion" will be the proper term for the events of this weekend when over 200 high school students will visit Mac campus to attend the Western Regional Youth Conference sponsored annually by McPherson College for the Church of the Brethren youth in a thirteen state area.

The conference will officially begin with registration from 3-5 p.m. on March 13. The first general assembly will begin after the music program which will be given by some McPherson College music students.

The student recital will be in Brown Auditorium at 7 p.m. The students participating and their repertoire selections are as follows: Paul Tice, sr., York, Pa., trombone, "Sonata No. 1" by

Galliard, and "Prelude and Allegretto" by Telemann; Adrian Harper, fr., Panora, Ia., mezzo, "A Legend" by Tchaikovsky; Caroline Harnly, fr., Napa, Calif., piano, "Prelude in C Major" by Bach, "Prelude in C Minor" by Chopin, and "Etude in D Minor" by Liszt;

Marge Roorda, soph., Denver, Colo., soprano "The Disappointed Serenader" by Brahms; Linda Grove, soph., Washington, Ia., piano, "Intermezzo in C Major" by Brahms, and "Minsirels" by Debussy; Roy Rowland, fr., Hagerstown, Md., bass "How Heaven in Fullest Glory Shone" by Haydn. Janice Bailey, soph., Morrill, will be the accompanist for the vocalists.

"Surfing" is the theme of the conference and the goal of the

meetings is to help the youth keep above the "waves" which are the topics of the different assemblies: Friday at 8 p.m. Jim Tomlinson will speak about drugs; Saturday at 9 a.m. Leon Neher speaks about race and campus revolt; at 3:30 p.m. both speakers focus their thoughts on draft and war; Sunday at 9 a.m. Leon Neher sums up the conference by talking about the successful surfer.

Leon Neher, McPherson graduate of 1957, has attended seminary, taught at Manchester College, and is presently living in Quinter where he assists on the family ranch and commutes to Colby Community Junior College where he teaches.

All college students are invited to participate in the conference if they are interested.

## No more initiation

Last week at the regular Student Council meeting, held in the Mac Shack, the Council decided to abolish the freshman initiation program.

The issue has been debated on campus since last semester, and members of the council came to a decision after considering the problems which always arise when upper classmen do not limit their initiation activities to what has been arranged by the Student Court.

Other complaints about initiation have been its tendency to degrade the freshman, its failure to fulfill the purpose of making freshmen feel a part of the campus.

The tug-of-war may be adopted as part of either homecoming activities or the all-school picnic. It may continue to be between under- and upper-classmen, or may be held between faculty or community members and students.

## Mac to give musical spoof

A musical spoof on the mystery thrillers of our younger years, "Who Cares," will be given in Brown Auditorium on Friday and Saturday, March 20 and 21.

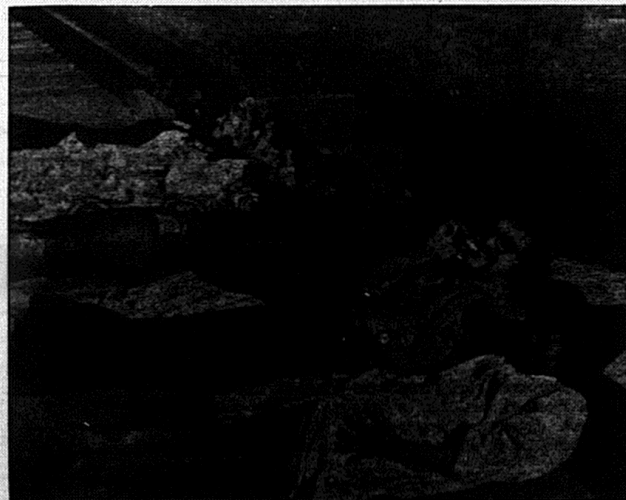
This musical-mystery-comedy, written by Charles Fischer with additional lyrics by Terry Johnson, features Nancy Drew, master detective, also assisted by the Hardy Boys.

The ensemble, playing many

parts, will consist of John Petersen, Debbie Morris, Terry Johnson, Carol Ann Klemmetzen, Ralph Dickerson, Alice Krump, John Hurley, Ava Moore, Gary Lydic, and Jerri Wall.

Music in the play comes from various Broadway plays.

Linda Taplin and Kerri Clanin are in charge of costumes, and publicity will be handled by Frank Berens, Mary Krehbiel, Linda Taplin, Pat Keltner, Terry Johnson, and Keith Holmes.



Players in "Who Cares," a musical-mystery-comedy to be given March 20 and 21, stretch out across the stage.



# Stuco move ends initiation

Thank you, Stuco, and welcome, Class of '74, to McPherson College — without initiation.

The Council meeting of March 4 passed a motion that completely abolishes freshman initiation after a study was presented by Royce Kurtz and Mike Loveless.

Although it might not have done so without the efforts of these two non-Council members, Stuco's decision is one of their more important achievements of the year.

The ineffectiveness of initiation in unifying students along with its harmful and degrading effects on many freshmen justifies and even demands its abolition.

Fortunately, Stuco realized the futility of reforming initiation; any remnant would still carry a painful stigma.

This does not, however, mean students cannot become involved in helping new students become adjusted to college life. Hopefully, they will work with the new, improved orientation program being planned for next fall.

The total picture points towards an improved situation for new students and the entire college community.

## President voices concerns

Dr. J. Jack Melhorn, president of the College, stated to the trustees and at the faculty and trustee annual banquet that "after four years as the president of McPherson College, there are some concerns which I would like to share with you." These are as follows:

- 1) Because of the diversity of obligations upon several members of the administration, a few areas of need are not receiving adequate attention. In part, this is due to having minimum staff because of financial limitations, emergencies which demand immediate attention, and a lag in the acceptance of new management techniques and philosophy.
- 2) We need an educational model which will be more attractive to students, provide objectives to evaluate the faculty, and outline means of additional financial support. The Long Range Planning Committee has worked these items, but outside consultant assistance is a necessity.
- 3) The faculty and staff are dedicated people. During past years we have made substantial increases in salaries, but more needs to be done to meet rais-

ing salary schedules across the country which limits our recruitment. Salary increases this year are only minimal.

4) Much of our anxiety over budget could be alleviated if our endowment were larger. Our present endowment of \$1,377,000 should be \$8,000,000. The income from this amount of endowment would enable us to reduce our charges and increase our salaries. We are pleased with growing gift totals in recent years, especially the response of alumni, but more must be done. More trustees must become involved.

5) There is a growing interest in the part of students to become more involved in their own education and in making their own decisions about their personal lives.

Another item is as to whether or not McPherson College should take a position on social and political issues in the McPherson community and in society.

What will McPherson College be like in the next ten years? How will it come to grips with the formidable array of issues that confront it? Can it make the painful decisions that meeting those issues requires?

## AAUP meets here

The local chapter of the American Association of University Professors met at McPherson College last week in one of its regular sessions.

This meeting was concerned with how administration and faculty committees are organized at McPherson and who members of these committees should be.

This group recommended to the College that members connected with each department of the College should be on all committees.

For instance, the Library Committee should consist not only of persons concerned with the library, but also with So-

cial Sciences, applied arts, humanities, etc.

This chapter is the local representative of the national AAUP. Dr. Wesley DeCoursey is president, Prof. Thomas W. Deal, vice-president, and Prof. Vernon Friesen, secretary.

The association functions through five committees: faculty planning and space allocation, professional practices and ethical standards, common teaching loads, student concerns, and criteria for promotion and tenure.

In the future this group will be working on concerns expressed by the students of McPherson College.

# Pollution-threat to world

by Bud Dzi konski

One of the newest problems being faced by the Vietnamese people in the war is the ever increasing use of defoliating agents by the U. S. and South Vietnamese forces.

These agents cause the plant life, "where sprayed," to die and the trees to shed their leaves. This enables the planes flying in the area to spot "Charlie" more effectively and to help curtail his movements of troops and supplies into and out of certain areas.

Due to the chemical nature of these defoliating agents, some of them related to DDT, many Vietnamese women are producing mutant children.

These women are affected by the chemical agents that are washed into the streams and rivers by the rainfall, of which there is plenty.

This polluted water is used by these people for personal hygiene, for cattle and other domesticated animals, and to supply needed moisture to their farm crops such as rice and the fish they use for a source of protein.

Along the way, how many of its alumni will give it the understanding and support it must have if it is to survive? Even if they do not always agree in detail with its decisions, will they grant it the strength of their belief in its mission?

Dr. Melhorn feels that at McPherson College the challenges are commanding, the situation is stimulating, the potential is powerful, and the accomplishments are abounding.

Without this water these people would not be able to survive. Their whole way of life depends upon the water from the rivers and streams, and they are becoming increasingly more poisonous through the increased use of these defoliating agents.

This year, our President has stated that we will start concentrating our efforts to help Nautre clean up our water, soil, and air for the sake of our survival in the ecological scheme of our country.

What about the rest of the world?

This whole planet is one large ecosystem, known as the biosphere, the thin film where life exists, and Americans are the leaders in polluting it. It has shown up in our own country first because that's where the most Americans are.

We are also helping the other countries of the world to pollute themselves.

Our technological society travels to many countries and, with the use of our brains and funds, tries to set up economic systems such as ours, based on getting the most out of the least in regards to raw materials and natural resources.

Examples can be read in the daily newspaper and magazines and may be found in one's own community.

I suggest that the governments of the world unite in a common effort to help decide what ecological factors are needed to help right the wrongs of all nations in the pollution explosion, and to teach other countries to learn to conserve their natural resources for their benefit and perhaps the benefit of all mankind.

## Macalendar

Fri.-Sun., March 13-15 — Brethren Western Regional Youth Conference.

Friday, March 13 — Student Recital, Brown Auditorium, 7 p.m.; All school dance, sponsored by Metzler Hall, in SU basement, 9 p.m., admission, 50c per person.

Saturday, March 14 — Spanish Teachers Meeting, Talent Show, Brown Auditorium, 8 p.m.

Sunday, March 15 — Kline Hall open house, 7-9 p.m.; Math and Physics Club attending Hutchinson Planetarium.

Monday, March 16 — ACCK Insurance Seminar, Room 227, Mohler Hall, 7-9 p.m.

Tuesday, March 17 — Chapel, 9 a.m., Brown Auditorium.

Thursday, March 19 — Convocation, Martha Towry Sharp, lyric-soprano, 9 a.m., Brown Auditorium.

Fri.-Sat., March 20-21 — Musical comedy, "Who Cares?" Brown Auditorium, 8 p.m.

# Student life to decide

by Terri Eichelberger

The proposal concerning cards for all sophomore and second semester freshman women was presented to the Dean of Women two weeks ago. She, in turn, presented the proposal (along with the 460 student signatures) to the Student Life Committee meeting of Feb. 25.

On March 4, discussion and consideration was begun; five students attended the meeting to present the proposal on behalf of the student body. They were Becky Durbon, Mary Krehbiel, Mark Hochwender, Becky

Keim, and Terri Eichelberger.

We presented the proposal as an alternative life-style to the life-style now in effect for sophomore and freshman women, and contended that in order to choose between the two, one must know what those two life-styles are.

And the only way in which life-styles can really be known is by actual experience. On the basis of this argument, we suggested an experimental approach to this new extension of the card system.

Some of the members of the Student Life Committee did not seem too impressed by this idea and, instead, started discussions of already existing problems with the card system and the major question of freshmen maturity and responsibility.

Of the former topic, we agreed that the existing rules should be rigidly enforced and the violators of the rules should be treated accordingly by the dorm council. We suggested that the idea of honor be promoted to a greater extent; other than this, we felt that this subject was not directly relevant to our proposal.

Concerning the latter topic of discussion, it cannot be said that any definite judgment was made. Everyone was speculating and questioning the point of where

to draw the line separating the immature from the mature. We again stressed the importance of parental permission in our proposal as a guide to draw that line.

It is interesting to note that one member of the committee was eager to abolish the discrepancy between the sexes by placing dorm hours on freshman men.

We were questioned about our "real" intentions in presenting this proposal. Were we merely using this proposal as a "tactic" to get more and more freedom?

"Tactic" doesn't seem like the right word even though we realize that change must come about gradually at McPherson College. We also recognize, though, the adjustment from high school to college and the fact that females are more protected than males up through high school.

For this reason, we proposed that first semester freshman women may obtain cards only twice per month.

We requested that a decision be reached on this matter in time for action to be taken immediately following Easter vacation, and generally, this request was accepted.

The same students attended the Student Life Committee meeting yesterday.

## The Spectator

Vol. 54 March 12, 1970 No. 19

Official student publication of McPherson College, McPherson, Kansas 67400, published at 1600 E. Euclid by the Student Council weekly (26 issues) during the school year, except during college recesses. Second class postage paid at McPherson, Kansas. Campus office—Student Union basement.

Member of the Associated Collegiate Press.  
One-year subscription in U.S.A. — \$2.50.

One-semester subscription in U.S.A. — \$1.25.

Subscriptions for full-time students are included in tuition.

Editorial Staff  
Editor-in-chief — Susan Krehbiel  
Managing editor — Karen Guthrie  
Campus editor — Debbie Strahm  
Faculty adviser — Sarah May Brunk

Reporters  
Martha Adkins — Denise Robbins  
Clark Babo — Rifaat Somjee  
John Miller — Jean Winegarden  
Arlan Wine

Business Staff  
Business manager — Marilyn Shepherd  
Circulation manager — Joyce Bury  
Faculty adviser — Emma Hofer



## Around campus

**KLINE HALL** will hold their formal open house on Sunday, March 15 from 7 p.m. - 9 p.m. The theme will center around Saint Patrick's Day.

Ruth Ann Stillwell, soph, Califon, N.J., the social chairman of Kline Hall, is in charge of open house.

Other members of the dorm council are as follows: Roberta Strickler, sr, Manchester, Ind., president; Shirley Matile, soph, Madison, vice-president; Connie Van Loenen, sr, Goodland, secretary; Alice Crump, soph, Kansas City, Mo., treasurer; Diana Garza, soph, Falfurrias, Tex., resident assistant; and Anita Redmon, fr, Mulvane, freshman representative.

**WITH THE APPROACH** of spring, employment bargaining begins to get underway. Bakersfield City Schools, from Bakersfield, Calif., are interviewing teaching candidates today.

Yesterday saw the arrival of Clifton, Kansas, schools; Barnes, Kansas, schools; the Firestone Tire & Rubber Co.; and Northwestern Mutual Life Insurance Co.

**FRIDAY, MARCH 13th**, the home economics department will appear on television Channel 12 at 7:00 a.m.

Sherry Walker, Vickie Becker, Linda Hawkins and Kay Troyer will be representing McPherson. They along with Miss Mildred Siek will discuss the courses offered through the ACCK.

Some of the courses are Home Management, The Pre-School Child, and Methods of Teaching Home Economics.

**AT THE ANNUAL FACULTY**-trustee Dinner on March 6 the announcements of the following promotions were made. From associate to full professor: Alvin E. Willems, industrial arts education; and from assistant to associate professor: Thomas W. Deal, philosophy and religion; and Galen R. Soell, psychology.

Recognition was given to the following faculty members for their years of service at Mac: Doris Coppock, professor of physical education, 20 years; Guy Hayes, 20 years as director of financial aids; Paul Wagoner, associate director of development, 15 years; Ann Mae Hull, secretary, office of publicity and alumni affairs, 10 years; and Donald Widrig, associate pro-

fessor in physical education, head basketball coach, 10 years.

**SATURDAY, MARCH 14**, teachers from over the state will gather in Brown Auditorium as McPherson hosts the Kansas Chapter of the American Association for Teachers of Spanish and Portuguese.

The Play Production class gave a series of cuttings from "Cat on a Hot Tin Roof" by Tennessee Williams for the Written Communication classes at 11:30 a.m. and 12:30 p.m. Wednesday, March 11.

Scenes were directed by Gary Lydic and Bob Powers. Charles Fischer, supervisor of the project, narrated and bridged the scenes with criticism of Williams' work.

# Econ lecturer speaks

by Arlan Wine

Dr. Richard Leftwich, a visiting economics lecturer from Oklahoma State University, spoke on "The Poverty Problem in the United States" for the first of two talks on Monday, March 2.

While both the percentage and number of poor people have dropped from a level of 39.5 million (22.9 percent) in 1959 to 25.4 million (12.8 percent) in 1968, poverty remains a very painful problem.

Non-economic causes often are involved in producing income inequalities, as prejudice and job discrimination often put

down economically - competent people.

According to Dr. Leftwich, the main reasons why there are rich people and poor people is that the rich are able to produce goods and services which are in demand, while the poor cannot do this.

There are two basic attacks on poverty which are used by the government to improve the lives of the poor: the income of the poor can be supplemented, or training programs and helps can make them more productive.

One technique which Dr. Leftwich supports very much is the

negative income tax. According to him, it would be cheaper and more efficient to wipe out poverty in this way than with the present plethora of government helps.

"Economic Theory—Luxury or Necessity?" was the subject of Dr. Leftwich's second talk.

It is the economist's acquaintance with economic theories—those sets of proven relationships between economic phenomena—which is largely responsible for the ability of the economist to avoid the pitfalls of a layman's "common sense."

As an example of this, Dr. Leftwich cited the attempt of some VISTA workers to enact a law setting fixed "fair" prices on low-cost housing while strictly enforcing building codes.

By applying certain simple economic "facts of life" to these proposals, however, one could predict that the result of their enactment would be harmful rather than advantageous to the poor who live in low-cost housing.

The "slumlords" would find their costs sharply rising, the rents staying the same, and their profits dwindling.

## ESACCK meets, discusses plans

A FSACCK meeting was held in the Coffeehouse on Saturday afternoon, March 7.

The student representation on ACCK administrative committees was discussed further. The one student for each of the six committees was to be chosen (one from each school). There was a recommendation to have two student members on each committee in order to lighten the burden of each student trying to represent all the students from all 6 schools. This request was to be relayed on to the ACCK Central Office.

The May 1-2 Student Leadership Conference was planned. It will include the Student Government Officers from all 6 schools (both old and new officers).

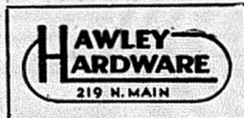
Friday, May 1, the discussion will center around the FSACCK and its purposes. Saturday the discussion will concern the relevancy of student governments and their uses on a small college campuses. Speakers will be hired for the conference. Pos-

sibly some of the speakers will be from the National Student Association (NSA).

A cooperative membership in the NSA was discussed. This would lessen the costs for each school and would enable all to benefit from the NSA conferences. No action was taken.

A report was given by the McPherson representatives on the activities on this campus from the closing of Student Council up to the meeting with the Board of Trustees. The organization expressed interest in the changes taking place at Mac.

Page 3, The Spectator,  
March 12, 1970



Shop At  
**Duckwalls**  
McPherson's Finest  
Variety Store  
With Complete  
Fountain —  
Luncheonette



321 N. Elm  
Student Linen Rental  
Program

**Gibson's — Boogaart's Discount Center**  
"Where Students Can  
Buy The Best For Less"

611 N. Main 601 N. Main

**Elton Lobban Motors, Inc.**

"Get Good Ford Buys From Good Ford Guys"  
519 N. Main 241-1042  
Ford — Lincoln — Mercury

... One weekend Major Smith, Lt. Schaffer, and a beautiful blonde named Mary decided to win World War II ...

Richard Burton Clint Eastwood

"WHERE EAGLES DARE"

This Fri., Sat., Sun.

at the **SPIRAL** THEATRE

**Peoples**  
STATE BANK  
McPHERSON, KANSAS 67460  
**CONVENIENT**  
**BANKING**  
(and borrowing)  
on the corner of Main and Kansas

**Jewelry**  
Headquarters



Authorized Artcarved Jeweler

**PIONEER**  
SAVINGS & LOAN ASSOCIATION

"A new location, but built  
on years of experience."

You owe yourself a more secure future.



1970 OLDSMOBILE CUTLASS Holiday Sedan

**THE "YOUNG MOBILE!"**



1970 OLDSMOBILE CUTLASS Supreme Convertible

Join the Now Generation

**Fred McKenna**  
Chevy - Olds.

"Your Sports Car Headquarters"

## Women beat Hays 51-30, draw top tourney spot

McPherson is the No. 1 seeded team in the state college women's tournament to be held at Manhattan tomorrow and Saturday, March 13-14.

The McPherson College wo-

## Agents give seminar

ACCE Insurance Career Seminar will be held on McPherson College campus March 16 at 7 p.m. in room 227, Mohler Hall.

The seminar is jointly sponsored by the McPherson Association of Independent Insurance Agents, the Kansas Association of Independent Insurance Agents, and the Kansas Insurance Association. Juniors and seniors who are interested in this field are urged to attend.

The moderator for the seminar will be F. Wayne Holecik of Duguid Investment Co., Inc. Mr. Marilyn (Pete) Storm, Hays, Kansas State Education Director will begin the seminar by telling what the meeting is about. At 7:10 p.m., Mrs. Betty Samuelson of High Plains Insurance, Inc., Hays, will speak about the role of women in insurance.

Preston M. Bacon, president of Wells-Bacon, Inc., Newton, will speak at 7:30 p.m. about the viewpoint of the local insurance agency. Bill Adams of Crum and Forster Insurance Companies, Wichita, at 8 p.m. will talk about the possibilities for a college graduate in a branch or home office.

The last speaker, at 8:30 p.m., will be W. J. Bellehan, manager of personnel and education of the General Adjustment Bureau, Inc., Dallas, Texas. He will inform the group of opportunities in insurance adjusting.

Questions may be asked at the conclusion of each presentation. Through the courtesy of the McPherson Association, snacks will be furnished during a visitation time at 9:05 p.m.

Members of the McPherson Association of Independent Insurance Agents are as follows: Alliance Agency, Inc.; Duguid Investment Co., Inc.; McInteer, Jukes and Kennedy Insurance Service; Mettlen Insurance Agency; Perrin Agency; Pioneer Savings and Loan Association; Sheets-Adams Realtors; Thompson General Insurance; and Wegley Insurance Agency.

## Math club sponsors events

The Math and Physics Club is planning the following events for the month of March.

On Sunday, March 15, all interested persons are invited to go to the Hutchinson Planetarium. The program is "Stones from the Sky." Transportation will be provided and will leave from the Student Union at 1:45 p.m. The cost will be \$.75.

Wednesday, March 25, the club is having a dinner in the private dining room. The speaker will be Dr. Beard, head of the K.U. Physics department. The cost is \$.50 for those on the food plan and \$2.00 for those not on the food plan.

Anyone may register for either of these events by signing up on the sign in the Student Union.

men's basketball team defeated Fort Hays 51-30 Thursday, March 5, on the College court. This was the 10th victory out of 11 games for the coeds.

McPherson led Fort Hays all the way, 13-4 at the end of the first quarter, 23-9 at half time and 33-18 at the end of the third quarter.

Mary Hutchison was high scorer with 21 points and Kathy Rogers had 13. McPherson made 43 percent of its field goals and 70 percent of its free throws.

## Mowry named all-conference

Jim Mowry, a senior from Pekin, Ill., was a unanimous choice for the 1969-70 Kansas Conference all-star team. Mowry, a 6-3 forward led the team in scoring with a 21.5 average and finished fifth in the conference.

Four other players were unanimous choices for the 1969-70 Kansas Conference all-star team. The selections were made from among twelve players nominated by the basketball coaches in the conference.

## WAA makes Spring plans

Women's Athletic Association met Tuesday, March 3 to discuss and decide upon coming spring activities. Spring sports and sport heads will be: Tennis Ann Herbst, soph, LaVerne, Calif.; Team sports, Chris Elliot, fr., Versailles, Mo;

Gymnastics and exercise—Raynell Houck, jr, Newark, Del.; Individual sports—Kathy Rogers, sr, Brookyn, Iowa. The sportheads will post the time for their activities. Non-members as well as members are invited to participate.

Kansas Athletic and Recreation Federation of College Women is sponsoring a conference at Rock Springs March 20-21. There will be discussion of women's athletics and recreation will be provided. Delegates from Mac will be Mary Hutchison, soph, Thomas, Okla. and Pam Burns, jr, Westwood, Mass.

A carpool for this spring is now being planned. The planning committee will be headed by Ann Herbst.

Page 4, The Spectator, March 12, 1970



# the decision maker

Someone who's not afraid to think creatively using sound, factual data as a starting point.

... who's not afraid to stray from the beaten path with new ideas.

... who's not afraid to start in a management position.

... who can design, create, program or supervise on his own.

Make the right decision.

See the Southwestern Bell interviewer on campus.



**Southwestern Bell**  
An Equal Opportunity Employer

At Southwestern Bell, we START college graduates on decision-making jobs with responsibility...no kidding.