

## New Dorm Highlights Campus Improvements

By Bob Crabb

Students and faculty have seen several changes around campus as McPherson College opened its doors for the '64 fall term.

The new men's dorm, completed the first week of August, stands on its site east of Arnold and Fahnestock Halls.

Built through a United States federal grant and private donations, it houses 158 students.

The dorm's three floors contain one public and three private

lounges, a guest room, television, two study rooms, an infirmary, laundry room, and Mrs. Marguerite Westfall's apartment.

Mrs. Westfall, the new dorm's first housemother, has been at McPherson for the past two years.

Her two years as housemother in Arnold Hall were preceded by five years as housemother at Washburn University, Topeka.

Mrs. Westfall described the building as "beyond description and the fulfillment of a dream." The dorm will be dedicated Homecoming Day, Oct. 19, following the football game.

Next spring the McPherson College tennis team will be playing on three new tennis courts. These courts under construction at the present time are located east of the gym.

The new grass-tex courts are blacktop with asphalt base and are the latest development in tennis court construction.

During the summer a 75 ton air conditioner was installed. This water-cooled, centrally controlled conditioner will cool any or all parts of the Student Union.

The machine is one of three now in operation in the state of Kansas.

## Fall Drama Tryouts Start This Monday

Tryouts for "Solid Gold Cadillac," a two-act comedy by Howard Tichman and George S. Kaufmann will begin Monday, Sept. 16, 3:30 p.m., in Mohler, Room 227. Tryouts will continue at 6:30 p.m., Tuesday, Sept. 17.

For the first time, a dramatic production will be featured during the Homecoming celebration as the production will be given Friday and Saturday, Oct. 18 and 19.

Main character of the play is an older woman who can be portrayed by someone without previous experience in a leading role.

"She is not an ordinary heroine," according to Mrs. Una Yoder, director of dramatics.

"Solid Gold Cadillac" had a successful run on Broadway in the 1950's. It is based on a hilarious spoof of big business.

"Freshmen are welcome to try out for these parts. Last year, several of the leading characters in the dramatic productions were portrayed by freshman students," stated Mrs. Yoder.

Copies of the play are on reserve in the college library.

## Five Top List With All A's

Five McPherson College students led the honor roll for the spring semester last year with straight A, or 3.0 averages.

Those students are Charlotte Erritt, Lowell Flory, Elmer Gooding, Beverly Judge, and Vida Sue Werner.

Other students named to the honor roll include Elaine Flory, 2.94; Joe Funderburk, 2.83; Don Merryman, 2.82; Janis Yoder, 2.81; Kathy Cadman and Garth Wood, 2.8.

David Weimer, 2.79; Anita Joy Ledell, 2.75; Warren Harden, 2.74; Connie Andes, Larry Blair, and Larry Holmes, 2.68; Emilee Solomon, 2.67; Mike Brown and Sue Warrick, 2.65.

Art Hoch, 2.64; Wing - Kee Kwok, 2.63; Margaret Daddis-man, Sandra Hoover, and Dean Watkins, 2.61; Lois Fruth, 2.6; Muriel Bechtel and Carol Christy, 2.59; Sharon Allen Poff, 2.57; Harry Stine, 2.56.

Linda Coulson, Dale Marrs, and Ellen Sell, 2.53; Kenneth

Goering, Robert Hess, Marjorie Spears, and Thelma Stump, 2.5.

Thirty-four students who maintained grade point averages of 2.25 to 2.49 were named to the honorable mention list.

These students are: William Grove, 2.47; Paul Ediger, 2.46; Merlin Dresher, Dennis Moyer, Karen Oltman, and Myron Welch 2.44; Vevaleen Luginstand, 2.42; Steve Mohler, 2.41.

Ruth Irwin, Rolland Kreider, Wendell Lauver, Carolyn Trapp Dooley, and Gary Wilson, 2.4; Jean Herr and Daniel Merkey, 2.39; Nancy Erritt, Byron Hayes, Donovan Koehn, Jan, Stand- after, Kenneth Ullom, and Gayle Wood, 2.38.

Ron Leonard and Judith Wad- dle, 2.36; Edward Murray, 2.35; Dorothy Brown and Linda Jamis- on, 2.33; Donna Byrum and Evelyn Grove, 2.31; Sharon Keith, 2.3; John Harrison, 2.29; Joyce Martin, 2.28.

Esther Jarvis, Barbara Pitt- man, and Roger Solomon, 2.25.

## Convocations Calendar

Tuesday, Sept. 17—Assembly. Greetings from Mayor G. G. Dixon. The Rev. George Stoneback, pastor of the Congregational Church, will speak on how McPherson was named.

Friday, Sept. 20—Assembly. Student Council program, Steve Mohler in charge.

## Work Starts for Eleven As New Faculty, Staff

Eleven new faculty and staff members are beginning work at McPherson College this month.

Robert Edwards has been appointed assistant professor of piano and organ, replacing Marv-ing Blickenstaff who accepted a similar position at Fort Hays State College.

Professor Edwards received his Bachelor of Music and Master of Music degrees from Wichita University. He also took undergraduate work at Colorado College, Colorado Springs.

During the past two years, he has been a piano instructor as a graduate assistant at Wichita University.

Miss Constance Hsu, assistant librarian, holds a degree in Library Science from Kansas State Teachers College of Emporia and English literature degree from National Taiwan University, Taiwan, China.

A citizen of China, Miss Hsu was Junior Research Assistant at the Institute of Ethnology, Academia Sinica, Taiwan, China, from 1957 to 1961.

Leland Lengel, assistant professor of history and political science, is a McPherson College graduate and holds a master's degree from Duke University. He has completed his Ph.D. requirements at the University of Oregon.

Miss Edith Martin, a native of Canton, has joined the faculty as instructor in Business and English. Also a McPherson College graduate, Miss Martin has received her master's degree from Emporia State College.

Dean Reynolds has replaced Mrs. Alice Martin as registrar of the college. Mrs. Martin resigned to accept a position on the staff of the Institute of Logopedics at Wichita.

Mr. Reynolds, a '57 Mac graduate, was an accountant for the Firestone Rubber Co., Des Moines, Iowa, for six years.

R. R. Rush, instructor in physics, also teaches part time at Central College, McPherson. He holds his AB and MA degrees from the University of Texas, and for thirty years, he was head of the Physics Department at Southwest Texas State College.

The Rev. Kenneth Yingst, director of development, replaces the Rev. Harvey Lehman who resigned to accept the pastorate at the Lincoln, Neb., Church of the Brethren.

He has held pastorates in Idaho, Indiana, Nebraska and Illinois. Beginning in 1957, he served as the organizing pastor of the Boulder Hill Neighborhood Church in Aurora, Ill.

Miss Marilyn Engel will be a part-time instructor in Spanish at Macollege. She is also the new Spanish instructor at McPherson High School.

Ivan Simmonds, in his fifth year as high school principal at Inman will teach in the secondary school area.

Mr. Simmonds has had 33 years of teaching and administrative experience. He will continue his work at Inman.

Mrs. Winifred Toledo is the housemother at Arnold Hall and serves as school nurse. Mrs. Toledo is a registered nurse.

Mrs. Maude Baldwin, McPherson graduate, as an assistant to Miss Edna Neher, housemother at Dotzour Hall.

Mrs. Baldwin's husband, the late L. M. Baldwin, was a Church of the Brethren minister.

Leslie Wilson, '63 Mac Graduate, is a new member of the Maintenance Department.

## Additions to Staff



KENNETH YINGST, Dean Reynolds, Mrs. Maude Baldwin, and Miss Constance Hsu, have undertaken duties in their respective departments. (staff photo. More pictures page 2)

## Eight Courses Available During Evening Sessions

McPherson College students and area residents may take advantage of eight courses being offered in evenings this semester.

Enrollment for these classes held Monday and Wednesday evenings will be made at the registrar's office during the first thirty minutes of the first session of the class.

In addition, enrollment during the regular office hours of the college will be accepted at the registrar's office throughout the days immediately preceding the beginnings of these courses.

No enrollment will be approved after the second session of each class.

Tuition fees for night courses are \$22 per semester hour except for regularly enrolled students who pay \$20 per semester hour.

Two lower level language courses will be offered on Monday and Wednesday evenings, beginning Monday, Sept. 16.

Second Year Russian, a three hour course, will be taught by Vladimir Czaplinski at 7:25-9:05 p.m., Monday and Wednesday.

Elementary Spanish will be taught at the same time for three hours credit. Miss Marilyn Engle is the instructor.

Beginning Wednesday, Sept. 18, five courses for three hours credit each will be offered.

Dr. Burton Metzler will teach Prophets of the Old Testament from 4:50 to 7:15 p.m. At the same time, Dr. K. C. Bechtel will teach Social Psychology in Harnly, Room 302.

Night courses offered from 7:25 to 9:50 p.m. on Wednesday will be Geology taught by Dr. Wesley DeCoursey, Medieval History taught by Leland Lengel, and Shakespeare, taught by Mrs. Homer Brunk.

A one-hour Seminar in Biology for Biology majors and others who have consent of the instructors will be offered on Monday evenings beginning Sept. 16.

Dr. Gilford Ikenberry and Dr. John Burkholder will teach the class.

## Parents Receive Invitations To Attend Parents' Day

Parents of Macollege students will be given the opportunity to visit their son or daughter on the campus during Parents' Day, Saturday, Sept. 28.

Open house in the dormitories will be held Saturday morning, and during the afternoon, parents will meet with the professors under whom their children study.

In addition, parents will be

able to have private discussions with the professors in the morning.

A Saturday evening program will feature entertainment by faculty and students.

Parents who arrive Friday evening will attend a football game between Mac and Kansas Wesleyan University. Following the game, a coffee hour will be held in the Student Union cafeteria.

A committee of parents who are helping plan the activities is composed of Mr. and Mrs. Myron Garretts, Mr. and Mrs. Tom Harden, and Mr. and Mrs. W. J. Morlan.

In addition, a faculty and staff planning committee is headed by Paul Wagoner, director of public relations and alumni affairs.

Other members are Dr. and Mrs. D. W. Blittinger, Mrs. Homer Brunk, Guy Hayes, and Prof. Jesse Krehbiel.

## Juniors to Take Proficiency Test

Macollege juniors will meet in Mohler, Room 125, tomorrow at 8 a.m., for the English Proficiency Test.

All graduates are required to pass the test which will consist of an essay section and an objective grammar test.

Students must establish a 50 percentile rating on the objective part, and their essay must receive a satisfactory rating from two members of the English Department.

Those who fail to pass the test will be automatically enrolled in 00 English Review.

## Faculty Reception Closes Annual Opening Events

McPherson College faculty and students annually arrange several programs at the beginning of the fall semester of school.

Freshmen will be given an opportunity to display their talents at the annual Freshman Talent Program, Monday, Sept. 16, 7:30 p.m. in Brown Auditorium.

Student Council, sponsoring the program, chose a three-man committee to organize the program. Members include Lois Fruth, Junior Hendricks, and Dick Welch.

A three-man freshman committee was selected to co-ordinate the individual shows of talent with the Student Council Committee.

Following the Talent Program will be a watermelon feed sponsored by the M Club of McPherson College. The feed, to be held on the gym parking lot will feature cold watermelons.

A formal faculty reception for students will be held in Brown Auditorium at 7:30 p.m., Thursday, Sept. 19. As students enter Friendship

Hall for this annual event, they will be greeted by faculty members and will then proceed into the auditorium for a brief program.

The program, presented by the music department, will feature Paul Sollenberger, associate professor of music theory and string instruments, Robert Edwards, assistant professor of piano; and Irvin Wagner, director of bands and orchestra.

Dr. Merlin Frantz, professor of education and psychology, serves as chairman of the planning committee.

## Coming . . .

Friday, Sept. 13—First Home Football Game (Sterling), 7:30 p.m.

Monday, Sept. 16—Freshman Talent Program, 7:30 p.m., Brown Auditorium followed by Watermelon Feed, Parking Lot near Gym.

Thursday, Sept. 19 — Faculty Reception and Program for Students, 7:30 p.m. — Brown Auditorium.

# College Newspapers Examine Responsibilities to Readers

The role of the student newspaper has undergone considerable scrutiny in colleges across the country this past year.

Journalism departments have fought and thought over the responsibility to and relationship of the newspaper to students, administration and faculty, and constituents of the college.

We too have taken a serious look at our responsibility and relationship to all of our readers, and as a result offer this list of functions of The Spectator.

a. To serve the students, the faculty, and the administration of McPherson College as an organ of communication for campus news; and at the same time, to present for all readers an image of McPherson College which is as fair and accurate as possible.

b. To serve each student and faculty member

as a person to be treated with respect and concern.

c. To uphold the Christian and academic ideals of McPherson College, yet to present the news of the college honestly and fairly.

d. To give recognition to students and faculty who make outstanding achievements.

e. To help promote campus activities by giving publicity according to their relative value and interest within the college community.

f. To stimulate mature, intellectual thinking and expression of opinions on campus issues and on other current issues.

g. To be an example of good standards of journalistic writing and to give students experience in reporting and editing.

h. To give students an opportunity to develop desirable qualities of leadership by taking responsibility in editorial and business positions.

## Home Ec Club Holds Hike, Picnic Sept. 17

A progressive hike and picnic is scheduled for the first meeting of the McPherson College Home Economics Chapter, Tuesday, Sept. 17.

The group will meet in front of Harnly Hall at 5 p.m.

Women majoring in areas other than home economics are invited to become members.

## Campus Bulletin Board

College Bookstore, first floor, Mohler Hall, is open 8:40 a.m.-12 noon and from 1:15-4 p.m. Monday through Friday. On Saturday, Bookstore hours are 9 a.m.-12 noon.

Students may charge all books and school supplies until the last part of September. Stamps and clothing may not be charged. The date when accounts are due will be announced later.

Dormitory closing hours at Dotzour Hall are 10 p.m. Sunday through Thursday, and 12 p.m. on Friday and Saturday.

Snack Bar, located in Student Union cafeteria, is open from 9:10-30 a.m.; 2:30-30 p.m.; and 8:30-30 p.m. Monday through Saturday, except during special events when the Snack Bar will be open as long as necessary to accommodate students and friends.

Hours for Sundays are 2:30-30 p.m. and 8:30-30 p.m.

Student Union office is open from 9 a.m.-10 p.m., Monday through Thursday. On Friday and Saturday, hours are 9 a.m.-12 p.m.

Recreation equipment may be checked out in the office from

11 a.m.-12 p.m. everyday except Saturday when students may check out equipment at 9 a.m.

On Sunday, the Student Union building is closed from 8:45-11:10 a.m. then remain open until 10 p.m.

The Student Union building opens in accordance with breakfast serving time in the cafeteria.

Cafeteria hours for 1963-64 are as follows:

Breakfast—6:45-8 a.m., Monday through Friday

7:15-8:30 a.m., Saturday

7:30-8:30 a.m., Sunday

Lunch—11:30 a.m.—1 p.m., every day

Dinner—5 p.m.—6:30 p.m., Monday through Saturday

5 p.m.—6 p.m., Sunday

Administrative offices in Mohler Hall are open from 8 a.m.-12 noon, and 1:15-5 p.m., Monday through Friday, and from 8 a.m.-12 noon, Saturday.

Library hours, Monday through Thursday, 7:40 a.m.-9:50 p.m. Friday, 7:40 a.m.-9 p.m. Saturday, 8 a.m.-5 p.m.

## Men of Math Receive Honor in Unique Book

By Jesse Krehbiel

Asst. Prof. of Mathematics MEN OF MATHEMATICS, by E. T. Bell, Simon and Schuster, 1937.

This is not a history book nor a technical book on mathematics, but rather a book about the lives of outstanding mathematicians.

From the preface, "The lives of mathematicians presented here are addressed to the general reader and to those who may wish to see what sort of human beings the men were who created modern mathematics.

"Two criteria have been applied in selecting names for inclusion: the importance for modern mathematics of a man's work and the human appeal of the man's life and character.

"Some qualify under both heads, ... when these criteria overlap ... the second has been given precedence as it was primarily interested here in mathematics as human beings."



## Dear McPherson Student

We welcome you warmly to McPherson College!

If you are a freshman this move into college and into the college atmosphere should be a long step toward that illusive thing called "adulthood," or "maturity."

If you are a senior, or a member of one of the classes in between, this should be a further step in that direction.

For your comfort you should know that none of us ever really reach complete "maturity;" there are many lingering "juvenilities" in all of us.

But to strive in a forward direction, to help carry our civilization, our world culture, toward maturity is one of the purposes of education. It is a particular purpose of a Christian focused college.

So welcome to a year of work! of fun! of broadening friendships! of increasing knowledge! of progress toward personal and cultural maturity!

Sincerely  
D. W. Bittering  
President

## The Spectator

Vol. 48, No. 1, September 13, 1963

Official student publication of McPherson College, McPherson, Kansas, 67460, published at 1600 E. Euclid by the Student Council weekly (50 issues) during the school year, except during college recesses. Second class postage paid at McPherson, Kansas. Campus office—Student Union basement.

Member of the Associated Collegiate Press.

One-year subscription in U.S.A.—\$2.50

One-semester subscription in U.S.A.—\$1.25

Subscriptions for full-time students are included in tuition.

### Editorial Staff

Editor-in-chief ..... Beverly Judge  
Managing Editor ..... David Anders  
Campus Editor ..... Mike Hildebrand  
Faculty Adviser ..... Sarah May Brunk

### Business Staff

Business Manager ..... Ken Ullom  
Asst. Business Manager ..... J. Barrows  
Faculty Adviser ..... Gordon Yoder

### Reporters and Writers

Carolyn Lehman ..... Jamie Oxley  
Bob Crabb ..... Clarence Clark

# Retreat Initiates New Faculty



R. R. RUSH, (center) instructor of physics, meets retired professor, Dr. Burton Metzler, and William Brooks, who is on leave of absence. (staff photo)



MISS EDITH MARTIN, instructor in business and English, receives a welcome from Prof. Harley Stump, English Department head. (staff photo)

New faculty and staff members received greetings from veterans of campus life at McPherson College, Sept. 4, at a carry-in dinner in the Student Union.

Approximately 250 attended, including wives and children of the 1963-64 faculty and staff.

The dinner, a part of the annual Faculty Retreat, was followed by an address by Dr. D. W. Bittering, president, on "Teachers I Have Known."

Faculty Retreat continued Thursday with an all-day meeting during which the discussion centered on the topic, "Improve-

ment of Teaching."

Reports and discussions of various problems associated with college teaching continued throughout the day.

Cheating, grades, term papers, and outside reading were some of the topics presented and discussed by the faculty.

Dr. Raymond L. Flory, professor of history and political science, and Miss Doris Coppock, director of physical education for women, have been granted sabbatical leaves.

William Brooks, associate professor of speech and debate, is working toward his Ph.D. at Ohio University, Athens, Ohio.



Robert Edwards



Leland Lengel

## We Get Letters . . .

Letters to the editor from students, faculty members, or others are welcomed. All letters must be signed, but the name of the writer need not appear in print.

Letters may be submitted to the editor or placed in the campus mail. Contributions do not necessarily reflect the policy or opinion of The Spectator, the administration, or the faculty of McPherson College.

## Hey Parents!

check this opportunity

Retrace the journey your student took in '63-'64. Purchase the '64 McPherson College Quadrangle, and cherish forever the memories captured there.

Mail \$5.50 to:  
Daryl Standafer  
Quad Business Manager  
McPherson College  
McPherson, Kans. 67460

Quad will be mailed to you in May 1964  
(Deadline—Oct. 15th)



# Bulldogs Rely Heavily Upon Speed, Stamina

Speed and determination, not size, are the main assets the Bulldogs will need to rely upon this year as they meet their football foes.

Coaches Sid Smith and Don Widrig will be depending on their eleven returning lettermen to carry the brunt of the load.

Returning lettermen who will bolster the offensive line are Duane Pope, 6'2", 190 lb. end from Roxbury; Merlin Grady, 6'3", 205 lb. tackle from Waterloo, Iowa.

John Harrison, 5'10", 170 lb. center, Beloit; Edwin Johnson, 6', 175 lb. guard, South English, Iowa; Duane Sword, 6'2", 195 lb. tackle McPherson; and Dennis Wallace, 6'3", 200 lb. tackle, Gypsum.

Expected to be the workhorses in the backfield are lettermen Buddy Taylor, quarterback, Thomas, Okla.; Don Kuhlman, 5'11", 155 lb. quarterback, Athol; Calvin Unruh, 6', 175 lb. halfback, Moundridge.

Jim Steinel, 5'8", 165 lb. halfback, McPherson; Larry Bowman, 5'10", 170 lb. fullback, Quinter.

The remainder of the squad are Eddie Lee Johnson, Forest, Miss.; Russell Burkholder, Preston, Minn.; John Chance, De Kalb, Ill.; Rick Detour, McPherson; Bob Fox, Garfield; Jerry Murphy, Hope.

Carl Merrifield, Champaign, Ill.; Laurel Patrick, Marquette; Nick Petrucci, Trafford, Pa.;

## BSCM Group Will Gather In November

Plans will be made for a Macollege delegation to the Brethren Student Christian Movement Conference at Manchester College North Manchester, Ind., Nov. 28-Dec. 1.

Dr. Martin E. Marty, member of the Christian Century editorial staff and faculty member of the University of Chicago, will be the featured speaker on the topic, "No Graven Images." The discussions will center on the "acculturation" of the church.

As featured speaker, Dr. Marty replaces Dr. Will Herberg, Drew University, who was forced to cancel because of ill health.

A fee of \$23 will cover registration, travel pool, and room and board.

BSCM Conference is an annual event attended by students from the Brethren colleges, Bethany Theological Seminary, and other colleges and universities.

Last year's conference was held on Macampus.

Tom Reazin, Lyons; Robert Detour, McPherson; Phil Zenger, McPherson; and Bill Lawrence, Manassas, Va.

Guards are Arnold Groff, Quinter; Wendell Kuhlman, Athol; Jamie Oxley, Lamar, Colo.; Sam Wise, Minburn, Iowa; Jon Warner, Union, Ohio; and Bob White, McPherson.

Tackles are John Long, Quinter; Jerry Persons, Ames, Iowa; Carl Ross, Kansas City, Mo.; Allen Sword, Eldora, Iowa; and John Beckwith, McPherson.

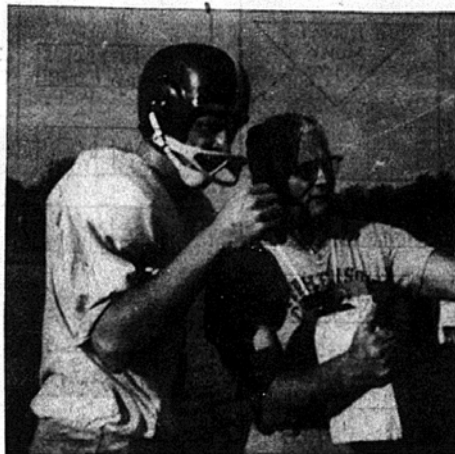
Ends are Duane Lewis, Wakefield, Iowa; Dale Prochaska, Glasco; Ronald Sehman, Dallas Center, Iowa; Fred Vander-au, Plattsburg, Mo.; Tom Worthing, Wamego, and Dean Fasnacht, Wiley, Colo.

Centers are Doyle Ralston, Sheldon, Iowa, and Francis Hendricks, Kingsley, Iowa.

Since the squad began practicing on Sept. 2, the coaches have concentrated on teaching the Macollege offensive and de-

fensive maneuvers to many inexperienced players.

This year's squad promises to give the fans well-played, exciting games throughout the season beginning with the Sterling Warriors tonight.



DUANE SWORD, senior tackle, consults head football coach, Sid Smith, during an early morning scrimmage held last week. (staff photo)

## Church to Offer Small Classes To Collegians

A series of elective church school classes for college students will begin Sunday, Sept. 15. These classes will repeat a pattern of leadership that has been successful in the past.

Two students will serve as discussion leaders for each section, and an older adult will work with them as a resource person.

The books, Your Face in the Mirror, A Stranger in My House, Modern Rivals to Christian Faith and The Big Difference will be used as text books for the classes.

Morning worship for Sunday is a sermon on "The Dangerous Age," by Dr. R. E. Mohler, professor emeritus of biology and curator of the museum.

Evening activities will be a student reception in member's homes. Students meet at the church at 7:15 and will be assigned to host families in smaller groups.

## Art Exhibit to Feature Original Graphic Work

An original graphic art exhibit will be on display in Friendship Hall from Sept. 15-Sept. 30.

The exhibit contains beautiful examples by internationally famous artists now living in Paris and who are becoming contemporary masters of this era.

Approximately 50 items will be on display ranging in price from \$15 to \$100.

## Parents Receive First Issue of The Spectator

Copies of this first issue of The Spectator are being sent to all parents of Macollege students.

Anyone may subscribe to The Spectator by filling out the subscription blank found on page 3 and returning it to The Spectator, McPherson College, McPherson, Kansas, 67460.

Subscription rates are \$1.25 per semester or \$2.50 per year for mailing within the United States.

## 42-Year Rivalry Continues As Sterling Meets Mac

A 42-year rivalry continues tonight when the McPherson College Bulldogs play host to the Sterling Warriors for the twenty-third time.

McPherson holds the edge in the series with eleven wins, nine losses, one tie, and one season with no record.

Although heavily outweighed, the Bulldogs will nevertheless be the favorite. The Sterling line boasts of Eral Davis, a 6'3", 220 lb., senior letterman, Harvey Long, a 6', 200 lb. guard, Larry McCreight, a 6'1", 200 lb. tackle, and Frank Johnson a 5'9", 200 lb. guard.

Larry Sneed, a 6'1", 200 lb. fullback, and Jerry Binnum, a 5'10", 170 lb. halfback, are mainstays in the Sterling backfield.

Coach Sid Smith of McPherson predicts that this will be a hard fought game with Sterling trying to improve on its record of eight losses in the last nine games with McPherson.

Although most of the McPherson squad will see action, the probable starters for the bulldogs are: ends—Duane Pope and Duane Lewis, tackles — Merlin Grady and Duane Sword, guards — Jon Warner and Edwin Johnson, center — John Harrison, backs — Buddy Taylor, Eddie Lee Johnson, Cal Unruh, and Jerry Murphy.

Other games scheduled for this season are:

Saturday, Sept. 21 — McPherson at Emporia.

Friday, Sept. 27 — Wesleyan at McPherson.

Saturday, Oct. 5—McPherson

at Southwestern. Saturday, Oct. 12 — McPherson at Friends.

Saturday, Oct. 19 — Bethany at McPherson. (Homecoming)

Saturday, Oct. 26—McPherson at Baker.

Friday, Nov. 1 — Ottawa at McPherson.

Saturday, Nov. 9 — McPherson at Bethel.

## Series Ticket Sales Open This Month

Ticket sales for the 1963-64 Community-College Cultural Series will be opened to Macollege students late in September.

The five-number series will begin Oct. 13, with the Wichita Symphony Orchestra, directed by James Robertson.

Thomas Schumacher, American pianist, will appear Nov. 19.

A performance by Miss JoAnn Grillo, mezzo-soprano, will be featured Jan. 18.

The fourth event will be a lecture by Gordon Hall on Feb. 10.

Concluding the series will be a performance by the Porgy and Bess Singers, April 7.

Price for Macollege students who purchase season tickets will be \$4. Adults pay \$7 and children's tickets are also \$4.

Price for individual programs is \$2.

Tickets will be sold in the Public Relations and Alumni Office, Room 104, Mohler Hall.

## Male Seniors May Apply For Danforth Fellowships

Inquiries about Danforth Graduate Fellowships for careers in college teaching are invited. Dean Wayne F. Geisert, McPherson College Liaison Officer, has announced.

The fellowships, offered by the Danforth Foundation of St. Louis, Missouri, are open to male college seniors or recent graduates preparing for a career of teaching, counseling, or administrative work at the college level.

Applicants may be planning to major in any field of study common to the undergraduate liberal arts and sciences curriculum, at the American graduate school of their choice, but may not have already undertaken graduate work.

Nominations close October 15. Approximately 100 fellowships will be awarded to outstanding candidates nominated by Liaison Officers of accredited colleges and universities in the United States this year.

Nominees will be judged on intellectual promise and per-

sonality, integrity, genuine interest in religion, and high potential for effective college teaching.

Winners will be eligible for up to four years of financial assistance, with an annual maximum of \$1500 for single men and \$2000 for married men plus dependency allowances for up to three children, and tuition and fees.

Students without financial needs are also invited to apply. The Danforth Foundation, one of the nation's ten largest educational Foundations, was founded in 1927 by the late William H. Danforth, St. Louis businessman and philanthropist.

The Foundation's primary aim is to strengthen higher education through programs of fellowships and workshops, and through grants to colleges, universities and other educational agencies.

## Staff to Take Quad Pictures

All student pictures for the Quadrangle will be taken Wednesday, Sept. 25 and Thursday, Sept. 26, in the Conference Room in the Student Union basement. Pictures will be taken according to dormitories. Roommates must be present at the same time.

Girls will wear black pullover sweaters.

Boys are to wear dark suits over white shirts. A full-length tie should be worn instead of bow ties.

The full schedule for picture taking will be posted around campus.

## Coppock Fulfills Teaching Duties While at SUI

Miss Doris Coppock, director of women's physical education has received a one-quarter time teaching appointment as a graduate assistant in the Physical Education Department of the State University of Iowa, Iowa City.

Miss Coppock, presently on a sabbatical leave from McPherson College, has completed her comprehensives and is now fulfilling graduation requirements for a Ph. D. degree in physical education.



Coin Operated  
**Tidy**  
Laundry  
and  
Dry Cleaning

**"WE ARE ALWAYS HAPPY TO SERVE YOU"**

414 W. Kansas Avenue

**★ STARVIEW ★**

Drive In Theatre  
NORTH ON HIGHWAY 81

Sept. 12-14 Thur-Sat.

"Burn Witch Burn"  
Plus  
"Sword of the Conqueror"

Coming  
Wednesday Sept. 18

"The Main Attraction"  
Plus  
"Savage Guns"

McPherson, Kans.,



College Students  
Faculty Members  
College Libraries

Printed in  
BOSTON  
LOS ANGELES  
LONDON

**SUBSCRIBE NOW AT HALF PRICE**

Clip this advertisement and return it with your check or money order to:  
The Christian Science Monitor  
One Newbury St., Boston 15, Mass.

1 YEAR \$11  6 mos. \$5.50

COLLEGE STUDENT

FACULTY MEMBER

P.C.N.

McPherson College  
6 Colors  
**Sweatshirts**

Crabb's Town & Country  
Records-Sporting Goods-Special Orders

**ARE YOU SURE YOU WILL KNOW?**

Will letter writers keep you informed about all of the happenings that fill the school year? Subscribe to the Spectator now, and be certain that you will be well informed about McPherson College.

I'm enclosing \$2.50 for one year subscription to  
**THE SPECTATOR**

Name \_\_\_\_\_

Address \_\_\_\_\_

City \_\_\_\_\_ Zip Code No: \_\_\_\_\_

Mail To:  
Spectator, McPherson College, McPherson, Kan.

# Our Friendly Merchants Enjoy Serving You

**Stanley's**  
**Junior Petite Shop**  
**SWEATERS — SKIRTS**  
**BLOUSES — CARCOATS**

**Renberger Jewelers**  
 Your Diamond  
 Fashion Center

**Don's Studio**  
 And  
**Camera Shop**  
 Photography In The  
 Modern Manner

**Duckwalls**  
 Headquarters  
 For  
**School Supplies**  
 Fountain Luncheonette

**McPherson & Citizens**  
**State Bank**  
 Inquire About Our  
**EZ**  
 Checking Accounts

**Friends Rexall**  
 Serv-Ur-Self

**McPherson's Superior**  
 Drug Store

**Miller's Shoes**  
 AND  
**Men's Wear**  
 Styles And Prices  
 That Are Always Right

**McPherson Laundry**  
 Dry Cleaners  
 Finest Coin-op  
 Dry Cleaning  
 214 S. Main

**SPECIAL**  
 at the  
**PETER PAN**  
 Sept. 16, 17 & 18  
**SUNDAES**  
 16c  
 805 N. Main

**J.D.'s**  
**KWIK BURGER**  
 10 A.M. to 12 P.M.  
 7 Days A Week  
 629 W. Kansas  
 Phone CH 1-9831

Swanson Electric  
 Crabb's Town & Country  
 American Shoe Shop  
 We Develop Your Film  
 Hutcherson's Safety Lane  
 Triple M News  
 Vogt Shoe

Home State Bank  
 Barnes H'ware  
 Western Auto  
 Friendship House Cafeteria  
 Brunk's Jewelers  
 Don's Camera  
 It Makes a DIFFERENCE where you SAVE!

Warren Hotel  
 Coffee Shop  
 Fashions for young men & women  
 Mac's only exclusive Family Shoe Store  
 Litwin's Clothing  
 Renberger Jewelers  
 Morris & Son Stanley's Fashions  
 Duckwalls  
 Sweeney's Shoes  
 Woolworth's  
 Miller's Shoes  
 Pioneer Savings and Loan  
 McDonald's Dept.  
 Marcia's Gift  
 JUNIOR DEPT. STORE  
 HOME OF GRACIOUS GIVING  
 McPherson Business Machines  
 Post Office  
 Anthony's Dept.

Calvert's Dept.  
 Hubbell's Drug  
 Quality since 1916  
 People's State Bank  
 Beauty by Appointment CHI-0717  
 Daisy's Beauty Salon  
 Miller Printing  
 Bader Cleaners  
 Powder Puff

YMCA  
 White Swan Cafe  
 McPherson Laundry Cleaners  
 Beau Mart Salon  
 McPherson Sextinel 301 S. Main

**King Drug Store**  
 Prescription Specialists  
 FOUNTAIN SERVICE

**American Shoe Shop**  
 MEN'S SHOES  
 EXPERT SHOE Repair

**Hutcherson's Safety Lane**  
 Wheel Aligning & Balancing  
 Brake Bonding

**Home State Bank**  
 We Welcome Student Accounts  
 Member of F.D.I.C.

**Brunk Jewelers**  
 Make Us Your Jewelry Headquarters  
 214 N. Main

**C. R. Anthony Co.**  
 Your Friendly Department Store  
 Serves You Better Saves You More

**Daisy's Beauty Shoppe**  
 McPherson's Finest Hair Stylists  
 Phone CH 1-2316

**White Swan Cafe**  
 Delicious Hamburgers  
 Homemade Pies  
 Good Steaks  
 Art & Billie Ollek

**Peoples State Bank**  
 McPherson College Backers For Over 60 Years  
 Member Of F.D.I.C.

**Superior Cleaners**

**Green's Appliance Store**  
 TV Radio  
 Stereos & Records  
 118 S. Main CH 1-3284

**O'Dell's LAUNDRY**  
 321 N. Elm  
 Student Linen Rental Program  
 See Nolan Howell  
 New Men's Dorm, Room 105

PARKING Lot

Jail and County Offices  
 Court House

Maple Street

Main Street

Ash Street

