

# McPherson Hosts Regional Youth

Welcome  
Regional  
Conference!

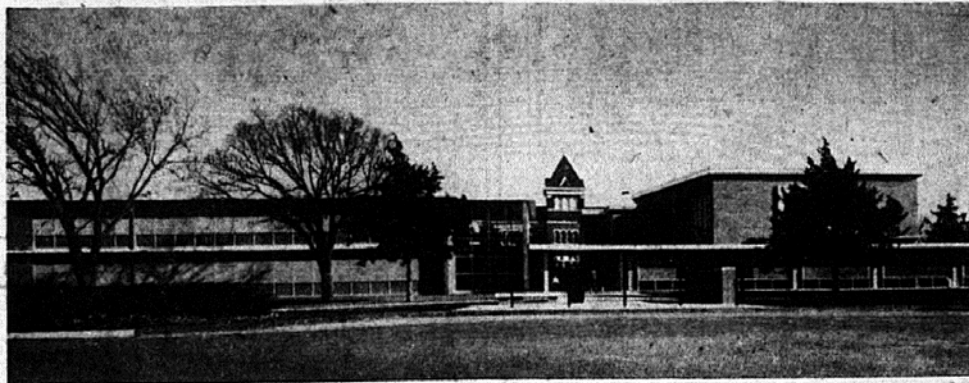
## The Spectator

A Cappella  
Concert  
Tonight

Volume XLV

McPherson College, McPherson, Kansas, March 10, 1961

No. 22



Mac's New Face Greet's Weekend Guests

### A Cappella Choir Presents Concert Tonight In Brown

A Cappella Choir will appear in a concert tonight at 8 in Brown Auditorium. This program will be one of the main features of the Regional Youth Conference now in session. Included in the concert will be the following numbers:

Ave Maria, by Vittoria; How Lovely 'Is Thy Dwelling Place, by Brahms; I Want Jesus to Walk with Me, by Jonson; Hosanna to the Son of David, by Gibbons; Prayer of Supplication, by Litten; The Hour of Night, by Kortkamp; My Soul Doth Magnify the Lord, by Purcell; Salutation, by Gaines; Glory Be to God, by Berger; Keep in the Middle, by Norman.

Sound of Music (selections), by Rodgers; Walking at Night, by Fisher; and Musical Trust, by Clokey.

Director of the choir is Don Frederick, professor of voice. He is assisted by Miss Doris Coppock, professor of physical education and instructor of music.

Activity cards admit students.

Tickets for others are 50 cents.

### Globe Erected At Entrance

A world friendship globe has been erected on the marble block at the main west entrance of Brown Auditorium and Mohler Hall.

Mr. Alvin W. Willems, assistant professor of rural life and mechanics, built the outer structure of metal key stock which represents the latitudinal and longitudinal lines.

Brass welding rods were used for the continents' outline. In order to shape the continents correctly, the rods had to be cut and bent for each curve.

The globe, which is a part of the original building plan, is bolted to the marble block and will not revolve.

### Nine Weeks' Exams

Nine weeks' examinations will be given during the week of March 20. Grades will not be in until the week after Easter vacation.

### Coming . . .

Friday, March 10 — Regional Youth Conference continues, highlighted by the A Cappella Concert, 8:15 p.m. in Brown Auditorium.

Saturday, March 11 — Dr. D. W. Bittinger speaks at Regional Youth Conference Banquet, 6:15 p.m. at Convention Hall.

Sunday, March 12 — Regional Youth Conference closes at 12 noon.

Friday and Saturday, March 17 and 18 — McPherson College Players present "Hamlet," 8 p.m. in Brown Auditorium.

### In Chapel Next Week

Tuesday — Five students of the college speaking deputation group will present the program.

Friday — Mr. Fawzi Abu Diab, representative of the Arab Information Center, Chicago, will be the speaker.

### Professors Attend Meeting At Wichita

Dr. Merlin Frantz, associate professor of education and psychology and Dayton Rothrock, assistant professor of education, will attend an Association for Student Teaching meeting at Wichita today and tomorrow, March 10-11.

The meeting is for college people as well as those who supervise student teaching in public schools.

### Three Seniors Acquire Jobs For Next Year

Three McPherson College seniors have acquired jobs for next year.

Judy Nigh, McPherson, and LaVena Murrey, Conway, will teach primary grades at the Westside Community Schools, which is a district suburb of Omaha, Neb.

Veneta Howell, St. John, will begin July 5 as the McPherson County Associate Home Economics Agent, which includes teaching home demonstration units and teaching 4-H leaders.

### Dan West Is Speaker For Conference

Dan West, counselor for the Central Region Youth Cabinet and originator of the Heifer Project, is the main speaker of the Regional Youth Conference continuing on Macampus until Sunday, March 12.

West, a graduate of Manchester College, North Manchester, Indiana, also attended the Columbia, Chicago, Ohio State, and Cornell Universities.

Before beginning work on the General Brotherhood Board of the Church of the Brethren, West taught in high schools for several years.

Following a six-year term as Director of Youth of the Church of the Brethren, West became the church's Field Representative. He later served as Director of Leadership and Training under the Brethren Service Commission.

West has also worked in overseas relief, and he has been a leader in the summer camping program of the Church of the Brethren for several years. Many articles written by West have been used by Brethren and other publications.

West and his family live on a farm near Goshen, Indiana.

### Conference Index

2 p.m. — Speech Contest, "Religious Freedom for All"

3:30 — College tour

4:30 — Regional Cabinet Meeting

Tonight:

8:15 — A Cappella Choir Spring Concert

9:45 — Folk Games

Closing Worship

Saturday:

8:45 — Play "Which Way the Wind?" Brown Auditorium

10:00 — "Seekers on the Path(s) to God", Dan West, Brown Auditorium

11:20 — Service in Slides, BVS workers, Brown Auditorium

2 p.m. — Open Forum with Dan West, Church

3:30 — McPherson College Concert Band, Brown Auditorium

—Regional Cabinet Meeting, Church Basement

6:15 — Banquet, "Mars Hill", Dr. D. W. Bittinger, Convention Hall

Singspiration and Closing Worship, Brown Auditorium

Sunday:

9:45 a.m. — Church School, Church of the Brethren

Installation, Floyd Bantz

Discussion, Dan West

10:50 — Worship, "Building Temples Not Made with Hands"

Rev. Harold Z. Bomberger

12 — Conference Closes

### Regional Youth Conference Is In Full Swing At Mac

Activities are in full swing for the 350 high school and college students participating in Regional Youth Conference, being held March 9-12 on McPherson College campus.

"Religious Freedom for All" is the theme of the speech contest being held this afternoon in Brown Auditorium. Winners will be announced at the banquet Saturday night.

The rest of the afternoon will be used for discussion of Trail Hike, for an organized tour of the MacCollege campus and departments, and for Regional Cabinet meeting.

College A Cappella Choir, which recently returned from a three-state tour, will present its Spring Concert this evening at 8:15 in Brown Auditorium. Folk games and a closing worship will follow in the gym.

"Which Way the Wind?" a

peace play presented by Bethel College, Newton, is scheduled to begin Saturday's activities.

West Is Speaker

Dan West will be featured twice Saturday. At 10 a.m. he will speak on "Seekers on the Path(s) to God". At 2 p.m. he will conduct an open forum "Loose-ends Session," in the Church.

Slides by former BVS workers and a concert by the McPherson College Concert Band will complete the schedule.

Highlighting the Conference activities will be the banquet Saturday at 6:15 p.m. in Convention Hall. Dr. D. W. Bittinger, McPherson College president, will speak on "Mars Hill." Following the banquet, a singspiration and worship will be held in Brown Auditorium.

Installation

To conclude the Conference, installation of Regional Cabinet officers by Floyd Bantz, and discussion led by Dan West are planned for Church School, Sunday at 9:45 a.m.

At the morning worship at 10:50 Rev. Harold Z. Bomberger, pastor of the McPherson Church of the Brethren, will speak on "Building Temples Not Made with Hands."

This will conclude the Regional Youth Conference which began Thursday afternoon with registration and continued with Bible sessions, a panel discussion, and general sessions with West.

### Construction Continues On Buildings

Construction of the new Student Union Building and the addition to Dotzour Hall is progressing ahead of schedule as favorable weather has enabled work to continue through the winter.

Foundation walls, including the concrete support for the first floor of the Student Union, have been poured. Scaffolding and forms are being constructed for the pouring of the first floor.

A tunnel from the site of the new building to Mohler Hall has been completed. This will enable the Student Union to be heated by the Forney Heating Plant.

Foundation and the first floor of the addition to Dotzour Hall have been poured. Forms and steel reinforcing for the second floor are being prepared. After the forms and reinforcing are completed, the second floor will be jacked into position.

Construction of the third floor and the roof will precede this, and they will later be placed above the second floor.

Both buildings are expected to be completed this summer before the beginning of the 1961-62 school year.



Responsible for the Youth Conference on McPherson's campus this weekend is the Regional CBYF Executive Committee composed of Miss Doris Coppock, counselor; Billie Mitchell, sophomore from Denver, Colo.; Bob Dell, president, senior from McPherson; Treva Brown, junior from Wichita; Larry Elliott, junior from Fredericksburg, Iowa; Lyle Dobson, sophomore from Stromsburg, Neb.; and Edwin Mohler, sophomore from McPherson.



## Mac Debutante Greet Regional Conference Guests

By Marilyn Rhinehart

Like a debutante at her coming-out party, McPherson College this year has been graciously welcoming guests with a beautiful, new, shining face to exhibit her growth.

Regional Youth are special guests of the year, for many of you are becoming acquainted with McPherson College for the first time and many also are making plans to attend our college in the future.

We are confident that you will like Mac's new look—not only for its beauty but also for its service value and convenience.

McPherson College has not stopped growing with the completion of Mohler Hall and Brown Auditorium. Construction again is already well underway for a new Student Union and an addition to the girls dormitory.

We at Mac think our college is doing a wonderful job of growing—with buildings, with education, and with social values. That's why we are here!

We hope you will enjoy your visit on our campus and will decide to come to McPherson College to participate in its promising future.

## McPherson College Enlarges From 2 To 17 Buildings

McPherson Campus has enlarged from 2 to 17 buildings in a period of 75 years beginning in 1887 when the College was founded.

One of the first two buildings, made of cement blocks. When on the campus was the Main Building (later known as Sharp Hall) which was completed in 1897. It was 94 by 117 feet and "sufficiently far advanced" for chapel and recitation purposes.

A dormitory, a "convenient" building, 40 feet wide, 100 feet long and four stories high was the first building. Both boys and girls stayed in this building.

Chapel, recitations rooms, the library, and laboratory rooms were in the Main Building in 1898. The college office and reception room were located in the dormitory.

**Third Building**  
Carnegie Library, the third building, was built during the 1906-1907 season. The 56 by 60 foot building of pressed brick, stone and concrete housed over 10,000 volumes.

At this time, the gymnasium was located in the basement of Sharp Hall. The basement room was 30 by 70 feet with a bath and dressing-room annex 25 by 35 feet.

These "three large substantial buildings" furnished "ample accommodations" for the students.

An Auditorium - Gymnasium, built in 1911, was a three story building, 48 by 76 feet, and was

located in the basement of the library, the museum consisted of mammals, birds, fossils, sea shells, and relics. These were loaned the college by Mr. and Mrs. Thurston of McPherson. The collection was valued at \$5,000. In addition to the Thurston Collection, were other relics, many of them being from former students who were on the mission field.

**Arnold Hall**  
In 1916 a ladies' dormitory was erected of pressed brick, trimmed in Bedford limestone. It was 32 by 70 feet with a wing 32 by 40 feet and was three stories high with a basement. This building is what is now known as Arnold Hall. The men's dormitory was called Old Fahnestock Hall.

Erected in 1922, Harnly Hall was a four-story edifice 128 by 54 feet with brick veneer. There were 50 rooms which housed the science departments, fine arts departments, history department, and the museum on fourth floor.

The seventh building to be erected on campus was Kline Hall. It was a "commodious" three story brick building and contained seven suites of two rooms each and 11 single rooms. In the summer of 1938 the

## LITTLE MAN ON CAMPUS



Alumni Gymnasium was razed. The new Physical Education and Health Building was ready for the 1938-1939 academic year. The 153 by 102 structure included a gymnasium, class rooms, offices for the athletic director and instructors in physical education.

**Swimming Pool?**  
In the 1938 College Catalogue this statement was included: "...and before long an indoor swimming pool in the right wing." In the next couple additions of the catalogue, the statement read: "an unfinished room which can later be converted into a swimming pool." In the 1949-1950 catalogue, there was no mention of a swimming pool.

During the summer of 1935, a new modern athletic field was completed. It was located in the north part of the campus. It had a Bermuda-grass football gridiron, a quarter-mile track with a 220 yard straightaway. A new stadium type stand located on the west side of the field accommodated 1200 spectators, and bleachers and extra seats were located on the east side and ends.

After Old Fahnestock Hall was condemned, New Fahnestock Hall was built and was dedicated on Feb. 24, 1942. It accommodated 62.

**Industrial Arts**  
Frantz Industrial Arts Building was dedicated Feb. 23, 1943. The building was constructed mainly from salvaged materials from

Fahnestock Hall. During the year 1950, the library underwent complete renovation and reconstruction. It was then renamed Beeghly Library.

A new stone structure, the J. C. Dell Rural Life Laboratory, connected to the Frantz Industrial Arts Building, was constructed in 1950-1951. The building serves as a laboratory for the expanding Rural Life Program of the college.

Forney Heating Plant, a new brick heating plant, was completed in 1949. It contains two large boilers "with sufficient capacity to head the present college buildings and several others which may eventually be built upon the campus," stated the 1951 College Catalogue.

**Dotzour Hall**  
Royer and Edna Dotzour Hall was completed in 1953. It is a women's dormitory 180 feet by 60 feet with wings in addition for lounge accommodation, for trunk storage, and for furnace, incinerator, water softeners and heater. Dotzour houses 108 girls. At this time Arnold Hall was made into a dormitory for 66 men.

Vaniman Hall the three-story home of the F. A. Vanimans was given to the college by the Vaniman heirs. In 1953, it was made into a fine arts hall. It is now used as a girls' dormitory.

The last building, the president's home, was given the college by

## Pondering With The President

## Pinkerton's Detective Agency

By D. W. Bittinger

I have on my desk a letter from Pinkerton's Detective Agency. Pinkerton's has been famous since Civil War days. They correlate somewhat with Scotland Yard in reputation.

Pinkerton's are now employed on many college campuses, they tell me in their letter. They suggest that we find out how reasonable the Pinkerton service is for college campuses.

I wondered whom it was they protect on a college campus.

This seemed to me an enigma of our age and time. Our news is filled with stories of violence. When you do not agree with someone you should oppose him violently; even damage his head or his reputation if you can. In our communities labor is often arrayed against management, race against race, religion against religion; in our world governments are set against other governments and economic group against economic group.

Even in some colleges apparently we now begin to need someone to protect us from each other.

I enjoy teaching a course called, "Growth of Culture". Sometimes I wonder in which direction our growth is headed.

Can we discover a way to make culture grow in the right direction?

## First Winter Again

One half of the sky  
Draws up to the other  
And at that pinched place  
Where they close  
Comes the crying of sick kittens.

Popped corn fungi  
Spew opal spittle  
On stale hall stones:  
They jostle in tight white circles

And are carved into little bruises of rain.

Big snow hisses down  
And plants winter's heel prints  
On the acne of the Earth's face.  
This poem, written by Harvey Hess, senior at McPherson College, placed in the National Poetry Association Contest and was published in the American College Poetry Anthology.

the Heaston heirs. It has become the place where hundreds of students meet in groups or with the president's family for discussions, socials, and counseling.

Now in 1961, Mohler Hall and Brown Auditorium are being added to this long list of McPherson College buildings. Also, a new Student Union and an addition of Dotzour Hall are under construction.

## Triumph Of Love

Though stubbornly I kept my thoughts from thee,  
Despairing love cried out within my soul;

Ecstatic feelings begged rights to extol

In boundless ways, with me upon my knee.

Not knowing where to find the proper key

With which to win imperious control,

Enraptured passion could not find console

And hopefully expressed a mortal plea.

My joy leaped to the sky as your reply

Exclaimed the likeness of our deep desires.

A gift of God from heaven up above

Will brighten all the sky and show how high

Our hopes have climbed above life's earthly mires,

Within the great enigma of our love.

This poem, written by Robert D. Cain, Jr., sophomore at McPherson College, placed in the National Poetry Association Contest and was published in the American College Poetry Anthology.

## THE SPECTATOR

Official student publication of McPherson College, McPherson, Kansas. Published every Friday during the school year by the Student Council. Subscription \$2.00 a year.

1960



1961

**THE EDITORIAL STAFF**  
Editor-in-chief: Marilyn Rhinehart  
Managing Editor: Carolyn Trapp  
Campus Editor: Beverly Judge  
Photographer: Gary Williams  
Faculty Advisor: Sarah May Brunk

**THE BUSINESS STAFF**  
Business Manager: Eleanor Draper  
Asst. Bus. Man.: Nolan Howell  
Circulation Mgr.: Trina Wynne  
Faculty Advisor: Gordon Yoder

## REPORTERS AND WRITERS

Carolyn Cotton  
Judy Nigh  
D. W. Bittinger  
John Harrison  
Lester Zook

Ruth Irwin  
Vena Catherine Wray  
Sue Warrick  
Gary Ross

Vance Yoder  
La Donna Krushwitz  
Arnold Gault  
Muriel Gibson  
Ray Harner

## ELTON LOBBAN MOTORS, Inc.

YOUR FORD MERCURY DEALER

519 No. Main

McPherson

Before You Buy, Give Us A Try

## Crabb's Town and Country

Musical Instruments

Sporting Goods

Phonograph Records

## NEED DRY CLEANERS?

See  
LARRY McPHERSON OR CAROLYN McPHERSON  
We Represent

SUPERIOR DRY CLEANERS

## McPHERSON LUMBER COMPANY

LUMBER-PAINT-HARDWARE

416 N. Cherry

Phone CH 1-2577

## Bounce Ville Trampoline Center

700 W. Kansas

4:00 P.M. — 11:00 P.M. Weekdays

Sat. & Sun. 2:00 P.M. — 11:00 P.M.

## American Shoe Shop

112 W. Euclid

McPherson, Kansas

## Goering Paint & Wall Paper Co.

Paints - Wall Paper - Glass  
McPHERSON, KANSAS

## McPherson Cab Co.

CH 1-2353

301 E. Euclid

## YOUNG'S

Your Home Bakery

CH 1-0275

## Three Players Break 300 In Total Bulldog-Scoring

Three McPherson College players racked up a total of over 300 points each during this school year's basketball season, and one team member broke the 600 mark in game points.

Deryl Elmore, sophomore from Greeley, Colo., finished the season with a total of 608 points giving him an average of 21.7 points a game. Garth Werner, senior from Winona, averaged 13.1 points per game with a total of 367 for the season.

A total of 316 points gave Tom Richards, junior from Niles, an average of 11.3 per game. Stuart Frazier, junior from Charles City, Iowa, scored a game average of 10.2 points with a total of 286.

Ivan Prochaska, senior from Glasco, finished the season with a total of 176 points and an average of 8 per game. Scoring an average of 5.1 points, Ralph Rindt, junior from Herrington, totaled 128 points.

**Seventh in KCAC**  
The Bulldogs scored a total of 2013 points in 28 games making an average of 71.9 points per game. They ended the season with a record of 12 wins and 16 losses and placed seventh in the KCAC.

McPherson College players committed 507 fouls and made 62.6 per cent of the 826 free throws attempted.

Werner led the Bulldogs in collecting 277 of the 839 rebounds taken by the team during the

season. Prochaska claimed 147 rebounds and Elmore and Frazier got 134 and 130 respectively.

## ABC Begins New Series

"Meet the Professor" is the title of a new television series produced by the ABC network in cooperation with the Association for Higher Education of the NEA.

Thirteen half-hour programs, which began Feb. 5, will be shown on Sunday afternoons over the ABC network.

Dean Russell M. Cooper, University of South Florida and chairman of the AHE committee on Teaching in College and Universities, stated that these programs are "designed to provide the public with a deeper understanding of the profession of college teaching by presenting the professor in a natural relationship to his students and to his scholarly pursuits."

Featuring a teacher from a different college or university each week, the program will present actual teaching experiences in addition to a profile of the professor.

## Boys Hold Intramural Tournament

Boys' intramural tournament is underway this week. Tom Weselowski and Elmer Gooding drew byes in the tournament, and Bill Miller lost to Maurice Moeckly, 52-27.

Ernest Vance lost to Merlin Dresher, 50-44. The tournament will end this week.

Standings as of Monday are:

	W	L
Bill Miller	2	3
Maurice Moeckly	2	2
Larry Ikenberry	0	4
Ernest Vance	2	2
Dave Christenson	1	3
Elmer Gooding	4	1
Larry Dresher	3	2
Tim Weselowski	4	1

## Girls Finish Season Of Intramural Ball

In the last set of games for this season in girls' basketball intra-

## Czaplinski Is Top Man For Mac Bullpups

George Czaplinski, McPherson High School student and son of Mr. Vladimir Czaplinski, Macollege Russian instructor, is high point man on the local high school basketball team. He has an average of 16.1 points for each of the 18 games the team has played this season.

McPherson High has won the Central Kansas League championship for the second season in a row.

Macollege girls' basketball team won their last two games of the season by beating Sterling 60-41 and Central 40-33. This leaves the Mac girls with a season record of seven wins and two losses.

McPherson girls trounced Sterling 60-41 in a return game with them on Mac's home court, Saturday, March 4. This was Mac's second win over Sterling this season. Sixty points is the highest score made by Mac in any game this season.

	W	L
Hutchison	4	2
Fillmore	4	2
Warrick	3	3
Lahman	2	4

## Mac Girls' Team Completes Season With 7-2 Record

Macollege girls' basketball team won their last two games of the season by beating Sterling 60-41 and Central 40-33. This leaves the Mac girls with a season record of seven wins and two losses.

McPherson girls trounced Sterling 60-41 in a return game with them on Mac's home court, Saturday, March 4. This was Mac's second win over Sterling this season. Sixty points is the highest score made by Mac in any game this season.

## Lehigh, Inman Receive State Debate Honors

Lehigh and Inman received state honors at the state Class B high school debate tournament at Sterling, Jan. 30-31.

Lehigh, coached by William Juhnke, a former student of Macollege, rated first, while Inman, coached by Noel Grove, a '59 Macollege graduate, placed Third.

Prof. Guy Hayes, professor of speech and debate, was a judge at this tournament.

Shirley Reynolds, junior, Des Moines, Iowa; and publicity, Pat Hoover, sophomore, Denver, Colo.

Announcement of new officers will be made at the WAA Banquet planned for Saturday, April 15. Miss Doris Coppock, associate professor and director of physical education for women, is the WAA sponsor.

The complications of modern life are epitomized in a traffic sign at an intersection of super-highways near Chicago: "To Make a Left Turn Make Two Right Turns."

Wilma Miller's left-hand shooting dunked 13 baskets for a total of 24 points. Connie Andes scored 16 points as did Delores Lahman. Delores Edmonds added four points to the total.

Guards whose defensive maneuvers held down Sterling's top shots were Gail Fillmore, Francis Hutchison, Dona Hutchison, Diane Patton, Gail Clark, and Sue Warrick.

**Beat Central**  
Mac girls won their last game of the season by beating Central 40-33 last Tuesday evening, March 7. The game was played in the new gym at Central.

Higher scorer for Mac was Wilma Miller with 13 points. Running a close second was Connie Andes with 12 points. Delores Lahman scored ten points, Diane Patton, three points, and Delores Edmonds, two points.

Guards were Gail Fillmore, Francis Hutchison, Shirley Vanderau, Dona Hutchison, Gail Clark, and Sue Warrick.

**Season Record**  
At the end of the 1961 basketball season, the Macollege varsity girls' team has a season record of seven wins and two losses.

## Music Department Uses New Brown Auditorium

McPherson College's Music Department is now located beneath Brown Auditorium.

Moving from fourth floor Harnly, Professor Paul Sollenberger and Professor Donald Frederick now occupy the two offices adjoining the department.

One of the two main music rooms is at the north end of the basement. This room contains chairs for classroom use. Adjacent to the north room is a storage closet for the A Cappella Choir robes.

At the south end of the basement is another large room which contains graduated permanent risers. All choirs practice in this room as well as all bands, orchestra, and conducting and woodwinds classes.

Band instruments are stored in

a large walk-in closet adjacent to this room.

**Record Room**  
Connecting these two main rooms is a hallway, which has several small rooms from it. These include a work room for student assistants and a record room with a hi-fidelity record player and shelves of record albums used especially for the Music Appreciation class.

"Student recitals have been held in both main rooms for experimentation," explained Prof. Sollenberger. "The next recital might even be held in the main auditorium." We are trying to find out which of the rooms puts forth the most inspiring sound."

## WAA Members Complete Second Season's Activities

WAA ended the second of its three seasons Tuesday, Feb. 28. During the season the four sports the members participated in were individuals, double individuals, team, and outings.

Individuals include any activity that a person can do by herself, such as ping pong, golf, bowling, skating, or swimming.

Intramurals are included in team sports. Ten points are given for the first five times the member participates in a sport. On the sixth activity a bonus of 50 points is given. Thus, 100 points can be accumulated for each sport each season.

Leaders of the sports and officers acquire extra points. A letter is received after a member has accumulated 750 points, a pin is presented for 1500 points, and a blazer or blanket for 3000 points.

**Spring Initiation**  
WAA members are required to be active in one sport per season

## Hawley Hardware

219 N. Main

**Stanley's**  
Ready-To-Wear  
See Us For  
SWEATERS  
SKIRTS  
BLOUSES  
Taper Pants  
First For Fashion

**Green's**  
Appliance Store  
Television  
Radios  
Records  
Record Players  
All Kinds Of Electrical  
Appliances  
118 S. Main

**Gifts And Hallmark**  
Cards For Every  
Occasion  
We Gift Wrap And  
Wrap For Mailing  
**Marcia's**  
Gift Center  
108 N. Main  
Phone CH 1-0524

**Kemp's Restaurant**  
McPherson, Kansas  
Open 5:30 A.M. To 11:00 P.M.  
Closed Monday

**We Have The**  
**Newest Spring Styles**  
in  
**Shirts and Slacks**  
Come and see our  
vast assortment of  
color and styles.  
**Morris and Son**

**O'Dell's**  
LAUNDRY  
Complete One-Stop  
Service  
Contact Solicitors  
At College

**Calvert's**  
Department Store

**Cee Jay Co.**  
Portable Stereo's  
Only \$38.88  
The Place Where  
Prices Are Born;  
Not Raised

**BACON AUTO**  
PARTS  
New - Used - Rebuilt  
Chrome Accessories  
307 N. Ash

**MAC**  
Fri. March 10  
"The World  
of Susie Wong"  
With William Holden  
And Nancy Kwan  
We Urge You To Enter  
"The World Of  
Susie Wong"  
At The Beginning

WELCOME TO McPHERSON  
We Are Glad For Student Accounts  
**PEOPLE'S STATE BANK**  
McPherson, Kansas  
Deposits Insured Up To \$10,000.00

  
We Not Only  
SELL  
But Also  
RENT  
**TYPEWRITERS**  
By The Wk. \$3.00 — By The Month \$6.00  
And 3 Mo. For Only \$15.00  
**McPHERSON BUSINESS MACHINES INC.**  
109 E. Kansas Phone CH 1-4630



## Fillmore, Foley Have Leads For "Hamlet," March 17-18

Vernard Foley, a senior from Morrill, will portray Hamlet in a play by the same name written by William Shakespeare. Carolyn Fillmore, senior from Belle Plain, will play Ophelia.

To be given on March 17-18, the play will be presented in Brown Auditorium by the McPherson College Players.

Hamlet's father was killed by Claudius, the King of Denmark who was Hamlet's uncle. After Claudius marries Gertrude, Hamlet's mother, Hamlet finds out that his father was murdered by Claudius. Hamlet tries to get revenge.

Ophelia is the daughter of Polonius who is the lord chamber and played by Melvin Longmire, senior from McPherson.

### Other Cast Members

Ray Harner, junior from Lena, Ill., will represent Bernardo, one of the officers, and the player villain, Edwin Mohler, sophomore from McPherson, will portray Francisco, a soldier and also Osric, one of the courtiers.

Other courtiers are Rosencrantz played by Kenneth Smucker, freshman from Orrville, Ohio, and Guildenstern and player king played by Beth Kenzie sophomore from Des Moines, Iowa.

Orville Neufeld sophomore from Inman, will be playing Marcellus, the other officer. Horatio, a friend to Hamlet, will be enacted by Mike Begole, sophomore from McPherson. The Ghost of Hamlet's Father and also the player king will be dramatized by Richard Reinke, senior from Ashland, Ohio.

Terrill Phenice, junior from Welsh, La., will perform the part of Claudius, the King of Denmark. Karen York, senior from Hope, will play Gertrude, Queen of Denmark and Mother to Hamlet.

Laertes, son of Polonius, will be personated by Donald Hollenbeck, senior from Udell, Iowa.

Stage Crew  
Stage manager for the production will be Bill Winter. Head

of the light crew is Bob Dell, McPherson, and assisting him will be Glen Faus, senior, McPherson, and Jim Weaver, freshman, Marion, Ohio.

Activity tickets will admit students to the play. Admission for the public is Adults \$1, Students 50 cents.

## Cafeteria To Prepare Hawaiian Meal

Mr. Charles Herman, manager of Slater's Food Service at MacCollege, has selected March 20 as the date for the cafeteria's Hawaiian night.

Features of the evening may include a gymnasium decorated by campus organizations with flowers from Hawaii, music provided by the music department, an area to sit on the floor and eat (bring your sofa pillows), and a Hawaiian menu.

It is hoped that students will dress Hawaiian style, and gather in the gymnasium at the same time. Faculty members are invited to come to the meal after 6 p.m.

## Publication Positions Are Available

MacCollege's Board of Publications has announced the following openings for positions starting next fall: Assistant Business Manager, Spectator; Campus Editor, Spectator; Assistant Business Manager, Quadrangle; Associate Editor,



Prof. Donald E. Frederick, director of the McPherson College A Cappella Choir, converses with music majors: Margaret Lehman, senior from Warrensburg, Mo.; Delores Lahman, junior from Quinter; and Marvin Weddle, senior from McPherson; as they prepare for the Concert to be presented tonight in Brown Auditorium.

## Mac Students, Alumni Have Family Additions

John Clayton was born to Mr. and Mrs. Al Guio, McPherson, March 2. Al is a senior history major at MacCollege, and Nancy attended McPherson last year.

Rebecca Sue was born February 28 to Mr. and Mrs. Carl Harner of Sebring, Fla. Carl is a 1960 Mac graduate.

### Quadrangle.

Mrs. Homer Brunk and Delores Lahman will answer any questions concerning the positions and will accept applications from interested students.

Deadline for the applications will be March 24. Selections for the positions, to be made by the Board of Publications, will be announced after Easter vacation.

## Home Ec History To Be Program Topic

"Through the Years with Home Economics" will be the program at the Home Ec. Club, March 14, at 6:45 p.m. in Harnly.

Veneta Howell, senior from St. John and president of the Mac Club, wrote a paper on the Home Ec. history and its fields, which will be the basis for the program.

Experts who have timed it say a wink takes a 40th of a second. Do you know a quicker way to get into trouble?

## Don's Studio

212 N. Main  
CH 1-3714

## White Swan Cafe

Chicken Basket  
Specialty

Open From 5:30 A.M.  
To 10:00 P.M.  
Closed Saturdays

204 So. Main  
McPherson, Kansas

Follow the  
Bulldogs  
in the  
McPherson  
Sentinel

New Or Used

Complete Satisfaction Guaranteed

Finest Service

All Makes

FRED McKENNA

Chevrolet-Oldsmobile



Lumber, Paint,  
Glass

HARDWOODS

WALNUT

BIRCH

PARINA

OAK

MAHOGANY

PETERS LUMBER CO.

## Summer Service Projects Still Open To Students

More than 40 summer service opportunities in this country and 35 overseas supported by the Brethren Service Commission are still open to students in Brethren Colleges.

Volunteers are sought for community rehabilitation in Baltimore, visitation and recreational leadership in Brooklyn, inner city activities in Chicago, and service to migrants in Fresno, Calif., and Hartsville, Ohio.

Students in these projects provide their own maintenance which is \$50-\$75 plus transportation and incidental costs.

The mental hospital unit at Elgin, Ill., already is filled but a

few openings remain in the normal control unit at Bethesda, Md. These two projects, which offer modest remuneration, involve another 40 youth.

### International Camps

Some 25 young persons between 17 and 30 will be accepted for international work camps in West Germany, Austria, Berlin, France, Morocco, and Italy, and for peace seminars in West Germany, Austria, and Berlin.

Participants in these programs will tour Holland, West and East Germany, Poland, Czechoslovakia, Hungary, Austria, and Italy. Total cost, including the four and round trip by air is \$995.

The commission also has openings for work campers at Calderon, Ecuador, in construction and recreation at the Church of the Brethren mission. Cost, including transportation is \$350.

### Applications Due

Applications for the domestic service openings are due by April 1 and for the foreign assignments, by March 15. Forms and detailed information may be secured by contacting the Brethren Service Commission, Church of the Brethren General Offices, Elgin, Ill.

**SID BACON MOTOR CO.**

DODGE POLARA TRUCKS  
LANCER DART GUARANTEED USED CARS

311 North Main Phone CH 1-0371

**Toughest Driver in Town!**

Careful Percy McFidget—who would believe that he's harder on his car than anybody in town? Why, he never goes over 35 or takes a trip over 10 miles! Actually this kind of driving is very hard on a car engine because the engine seldom gets "warmed up" sufficiently. The oil tends to be sluggish. Sludge forms in the crankcase. The way is open for dangerous wear and corrosion. But there's something you can do about this, to protect your motor. If you have to do a lot of start-and-stop driving at low speeds, as most of us do, use Trop-Artic Motor Oil. It flows fast... resists sludge formation... helps your car run better, longer. Get Trop-Artic Motor Oil at any station where you see the Phillips 66 Shield. \*A trademark

**Phillips 66**

**Marten "66" Service**

Phone 1633 401 South Main

**Headquarters For  
STATE FARM  
Insurance Companies**

Arthur Rolander - 214 E. Euclid

**Hallmark  
Cards**

**HUBBELL'S**

Rexall Drug Store  
McPherson, Kansas

**Daisy's  
Beauty  
Shope**

Daisy Leggitt  
Sue Crowther  
Blanch John  
Cathy Davis

119 South Main

**Coin-O-Matic**

**Laundry**

(Home Owned)

110 E. Euclid

**Grade 'A' Vitamin 'D'**

**MILK**

By Your Door  
Or At Your Store

Always Insist On  
**Select Dairy**

**MILK AND  
ICE CREAM**

Call CH 1-3820  
For Home Delivery  
And Special Events

217 S. Main  
McPherson, Kansas

**Complete Satisfaction Guaranteed**

Finest Service

All Makes

**FRED McKENNA**

Chevrolet-Oldsmobile

**Lumber, Paint,  
Glass**

**HARDWOODS**

WALNUT  
BIRCH  
PARINA  
OAK  
MAHOGANY

**PETERS LUMBER CO.**