

This is the new student union building which will be started soon. The building will house a new cafeteria, snack bar, recreational facilities, student offices and a music listening room.

Contract For New Buildings Let; Work To Begin Soon

The contract for the construction of the new student union building and the addition to Dotzour Hall has been let and work on the two new campus buildings will begin soon.

Johnson Builders, Inc., of Salina was awarded the contract at the public letting held last Thursday afternoon in Brown Auditorium.

Must Be Approved

The contract is subject to approval of the Housing and Home Finance Agency of the federal government but this is expected to require only a few days.

Johnson Builders' low bid was \$570,000 and the second low bid was \$577,735. The highest bid was \$737,000 by a Kansas City firm. Ten bids were submitted at the letting. Three other construction companies had taken drawings and specifications but did not submit bids.

Work Order

A work order on the project cannot be issued until after the federal agency, from which a loan was obtained by the college to help finance the building project, has approved the contract and the insurance required in connection with the construction. However, actual work on the project, such as breaking ground, may be started before the work order is issued.

Completion Date

According to the contractor winning the contract his company plans to start work on the two buildings as soon as possible.

Tomorrow Is Deadline For Exchange Applications

Deadline for applications of students who are interested in studying in Germany next year as an exchange student sponsored by the MCA is tomorrow, Dec. 10.

Applications may be given to any member of the MCA cabinet or Prof. Dale Brown. Letters of application should include: reasons for going, language studies, special interests, future plans, ability to pay costs, intention of attending McPherson College the following year, and any important qualifications.

Attend Goettingen School

The student who is chosen will attend a teacher's training school in Goettingen, Germany, free of tuition charge. He will pay his transportation cost which will be

The contract specifies that the building must be completed in 250 consecutive calendar days.

The new student union, cafeteria will be built on the south side of the campus between the library and Dotzour Hall and the new wing to Dotzour will be constructed at the north end of the building running from a south-west to northeast angle.

Pre-Enrollment Deadline Is Today

Today is the final day for pre-enrollment for second semester. Materials will then be ordered and classes planned. Pre-enrollment is tentative and may be changed during actual enrollment, Jan. 9-13.

Students who have not done so should pick up their pre-enrollment card and the sheet of courses offered next semester in the Registrar's office.

The pre-enrollment card should be filled out with the help of the student's counselor. The card is to be left with the counselor.

If a student does not plan to enroll for second semester he should notify the Registrar's Office as soon as possible.

approximately \$400 and personal expenses.

While in Germany, the student will receive \$50 a month from the German government.

Jim Nettleton, Albert Lea, Minn., Lois Fager, Fresno, Calif., and Elsie Lucore Holderread, secretary to the dean were Macollege exchanges.

Keim Is Current Exchangee
Lois Keim, from Illinois who was a Sophomore at Macollege last year is now studying at the University of Goettingen as this

Xmas Vacation To Begin Next Friday

Christmas vacation begins at 5 p.m. Friday, Dec. 16 and will continue for a day longer than previously announced as a result of a decision by the college administration to make allowance for the legal holiday that falls on Monday this year.

Classes will convene again at 7:45 a.m. Wednesday, Jan. 4.

All dorms will be closed during the vacation, and those students who are planning to remain on campus should make arrangements now for lodging during this time.

The dormitories will be closed from 10 p.m. Saturday, Dec. 17 to noon on Tuesday, Jan. 3. On Friday evening, Dec. 16, the library will close and not open again until Jan. 4 at 7:45 a.m.

The cafeteria will close following the evening meal on Friday and reopen for the evening meal on Tuesday, Jan. 3.

Art Displays Initiate New Gallery In Brown

A display of Japanese prints, the McPherson high school art display, and a wall mural painted by Danny Crouse, former Mac student, are now initiating the new art gallery located in Friendship Hall.

The display of Japanese prints is being sponsored by the college art department and through Mr. T. T. Kitigawa, Minneapolis, Minn., a dealer in Japanese prints.

The works are reproductions taken from blocks of masters such as Kano of the 15th century to Hiroshige and Hokusai of the 19th century.

All of the prints on display are authenticated for authorship and the period of time in which they were printed.

McPherson College has the opportunity of obtaining these prints at low cost—some for 75 cents. All of the prints that are on display are for sale and may be purchased by contacting Miss Eleanor Kravig, professor of art at the college.

The McPherson High School art display was held in connection with the school's performance of "South Pacific" in the new auditorium on Tuesday and Wednesday night.

The wall mural was painted by Danny Crouse of Hutchinson who is currently enrolled at Kansas

"Winter Fantasy" To Feature Evening Of Music, Dancing

Coming . . .

Tonight, Dec. 9 — Basketball, Sterling at McPherson, "B" game at 6:15, "A" game at 8 p.m.

Tomorrow, Dec. 10 — Christmas Formal in Gym at 8:15 p.m.

Sunday, Dec. 11 — Open House at Arnold Hall, Kline Hall 2-4 p.m. Open House at Parsonage from 2-5 p.m. Choral Concert, Brown Auditorium at 8 p.m.

Tuesday, Dec. 13 — Home Ec. Club Meeting Mohler Hall at 7 p.m. with special speaker.

Basketball, McPherson at Ottawa.

Wednesday, Dec. 14 — Christmas Buffet in College Cafeteria for all college students, faculty members and public. Serving from 5-7 p.m.

Thursday, Dec. 15 — Basketball with College of Emporia at McPherson. "B" game at 6:15 and "A" game at 8 p.m.

Friday, Dec. 16 — Christmas Vacation begins at 5 p.m.

In Chapel Next Week

Tuesday — Festive Christmas Program.

Friday — Dr. D. W. Bittinger to speak.

SNEA To Feature Student Teacher Panel

Tales of Student Teachers will be the title of the monthly SNEA meeting Monday night, Dec. 11, at 7 p.m. in 227 Mohler Hall. A panel of students doing their student teaching now will relate some of their experiences.

Morse To Talk At Meeting Of Home Ec

Dr. Richard L. D. Morse, professor and head of the Family Economics department at Kansas State University will speak at the regular monthly meeting of the Macollege Home Economics Club on Tuesday, Dec. 13, at 7 p.m. in Mohler Hall.

Dr. Morse will speak on the topic of "Federal and State Laws That Protect The Consumer." Besides being a professor at Kansas State he is chairman of the Consumer Interest Committee of the Kansas Home Economics Association and President of the Council on Consumer Information, a private organization of consumers across the nation.

The meeting is open to all interested students and faculty members and will be held on second floor in Mohler. Students enrolling in the Family Finance class next semester are urged to attend.

"Winter Fantasy" is the theme of the winter formal to be held tomorrow night at 8:15 in the college gymnasium. The program for the evening consists of special musical presentations and social dancing.

Arnold Hall Holds Open House Sunday

Arnold Hall holds its open house, Sunday, Dec. 11, from 2 to 4 p.m.

A girls' dormitory until Tuesday, Dec. 15, 1963, Arnold Hall housed 64 girls, contained room's for an apartment for the house-mother, Miss Edna Neher, a dispensary and an isolation room for medical services.

Forty-three men moved into Arnold from College Courts, Hoerner Hall and private homes downtown.

First houseparents for the men of Arnold Hall were Mr. and Mrs. Dean Neher. Present head resident is Mrs. Opal Miller. Her son David, also resides in Arnold Hall.

Sixty-four men are now living in Arnold Hall which was named after C. E. Arnold, a former Professor of Macollege.

Gary Bailey, President, Jim Huber, Secretary, and George Snyder, counselor, head the list of officers at Arnold.

Shakespearean Drama To Be Given At Salina

"Merchant of Venice," by Shakespeare will be presented by Players Incorporated who will be at Marymount College in Salina on Monday, Dec. 12.

The performance will begin at 2:15 p.m. and student tickets are \$50. All tickets should be purchased before-hand and seats will be sold on a priority basis as they are purchased.

Choral Club, Orchestra To Present Concert Sunday

McPherson College's Choral Club, Glee Clubs, A Cappella Choir, and Orchestra will be heard in the Christmas Choral Concert Sunday evening, Dec. 11 at 8 in Brown Auditorium.

The program includes Ave Maria, Hosanna to the Son of David, How Lovely Is Thy Dwelling Place, and Jesu Bambino sung by the Choral Club.

Also on the program are Adornamus Ie; Jehovah, Hear Our Prayer; and Selections: Ceremony of Carols by the Women's Glee Club.

The Men's Glee Club will sing Let Thy Holy Presence, The Last Words of David, and I Want the Lord to Be Near.

A Cappella

The A Cappella Choir will sing Glory Be to God, My Soul Deth Magnify, I Want Jesus to Walk

Dean Anderson and J. W. Cobb from Little River will be the featured guests on the program with a bell-ringer and marimba act. Anderson has performed his act on the Lawrence Welk television show.

A trumpet trio from Buhler High School, the Macollege Male Quartet, and Trombone Quartet will also appear on the program.

Sharon Keith will serve as Mistress of Ceremonies for the evening and the McPherson College Stage Band will provide music for dancing.

No Admission

No admission will be charged. Throughout the evening refreshments of cookies and cranberry punch will be served.

The formal is an annual event sponsored by the Social Committee, who has assigned students to committees in charge of various duties.

Committees

Members of the decoration committee are: Sheryl Hollis, Nolan Howell, Bob Hess, Sonja Sheryl, Ina Stump, and Roger Emmert.

Lois Fruth, Dennis Moyer, and Jan Tobias comprise the program committee, and the dance committee consists of Roger Brammell and Larry King. Lucy Hess, Charlotte Erritt, and Janee Flory are in charge of refreshments.

Kline Hall Residents To Hold Open House

Kline Hall will hold open house Sunday, Dec. 11 from 2 to 4 p.m. Mr. and Mrs. Hudson Sadd are dorm parents.

Eight married couples live on the first two floors. The third floor houses 16 fellows with Mike Powers serving as dorm president.

and Night and A Lonely Star. Also on the program will be a piano and organ prelude played by Joe Funderburk and Vance Yoder, the Male Quartette, Flute Trio, Trombone Quartette, and an Organ interlude between presentations by the large groups.

Choral Club

The program will end with the Choral Club, accompanied by the Orchestra, singing the Festival Song of Praise, and the Glory of the Lord, and the Hallelujah Chorus.

The concert is under direction of Prof. Don Frederick, professor of music, assisted by Prof. Doris Coppock.

What Does Support Mean? It Can Make A Difference

SUPPORT — what is it? Webster defines support as "To keep (a person) from fainting, sinking, yielding, or the like; to comfort or strengthen."

Many college students really don't know what this powerful seven letter word means. Support can make or break an idea, a game or a college.

Without support a new idea soon dies and is forgotten along with many others. Even though an idea could be earth shaking change, if the majority of the people don't support it, it is doomed.

The same may be said for an athletic game. A team without backing, isn't liable to be a championship team. Support for our college athletic teams this year has very definitely been lacking.

Where were you and what were you doing Tuesday night when the Bulldogs battled Southwestern? If you were at the game you most likely didn't over-exert yourself by giving the team the support it needed.

It was very evident when the Bulldogs were ahead that the crowd would come alive and give the team support. But, whenever the team got behind the crowd wasn't about ready to give them the extra support they needed to start a rally that could have won the game.

After all when the fellows are behind they need the support even more than when they are ahead. They know when the crowd is behind them and when they are not.

Tonight the college plays Sterling at home and there is no reason why you can't be there to give the team support. The weekend is here and if you need to study you will have plenty of time tomorrow.

Just what kind of a team do you want? It depends upon you.

Poll Shows Opinions Vary Regarding Chapel Fines

In a poll taken on campus of college students and college faculty members the majority of those polled favored a compulsory chapel, but feelings were mixed when asked about a \$1 fine.

The following question was asked of those students and professors participating in the Spectator survey: "Do you think chapel attendance at McPherson should be compulsory for all students? What would be your opinion of establishing a \$1 fine for each time a student misses chapel?"

Ed Khaw, senior—"This should be compulsory since it is one of the requirements of our college. So, I think a \$1 fine for each absence is good."

Doris Coppock, associate professor of physical education and music—"Absolutely. This is a church college. My suggestion for discipline would be much stronger than a \$1 fine. It would be one of two things: If a student does not wish to attend chapel, he can attend another college.

Or eight credits for chapel—or

one per semester for attendance here—can be required for graduation. Without this requirement satisfied, a degree would not be conferred."

Art Hoch, sophomore—"Yes I think chapel attendance should be compulsory, but students should not be fined \$1 for missing chapel."

Jim Freed, senior and student council president—"Yes, I am in favor of compulsory chapel attendance because of the religious, educational, and social benefits received from such attendance.

I do not think a \$1 fine would be an effective penalty for those students who miss chapel for some students could easily afford and would pay \$36 a semester to be able to miss chapel with no penalty to themselves and with no

LITTLE MAN ON CAMPUS



"ALL RIGHT! WHO LEFT THE WATER RUNNING IN THE SPECIMEN TANKS?"

Correction . . .

Chairman of the cafeteria committee in last week's Spectator should have read Jake Guenther instead of Larry Ikenberry as reported.

one benefiting from the fine except possibly the chapel committee.

Rather, I would favor a system something similar to the idea suggested in one of our recent student council meetings, that of having a certain amount of "chapel credits" necessary for graduation, with credit given on each student's records for adequate chapel attendance each semester and an "F" given to those students who have missed a certain number of chapels.

Those delinquent in chapel credits would be required to fulfill these requirements by enrolling in philosophy, religion, sociology or other related courses."

Don Elliott, junior, and John Harrison, freshman—"At the present time absences from chapel are punishable. We feel that this is necessary to provide the proper atmosphere through compulsory attendance. However, rather than using the present system of punishment we feel that a new system is needed.

The procedure we would recommend would be one whereby a student who is negligent in attending chapel would suffer through a loss of grade points only.

We feel that a fine should not be imposed on those students who fail to attend chapel because there are those students on campus who are actually living from day to day with the hope that their money will hold out.

These students are financially insecure, yet if they were to miss

chapel for any reason, either legitimate or otherwise, they would be fined and placed in an even more precarious financial position.

Under the present plan, one's transcript is blemished with degrading remarks concerning lack of character and personality. We feel that this is derogatory and such practices should be discontinued.

If compulsory chapel attendance is to be continued, it should be the obligation of those in charge to provide for the student body programs which they will either enjoy or derive a great deal of inspiration from.

We realize that chapel is a necessary part of college life, but the administration of its negligence should be comparable to a college course.

Connie Andes, freshman—"I definitely believe that chapel attendance at Mac should be compulsory. It seems fitting that a church college should devote some of its time to worship and meditation. All students are aware of compulsory chapel attendance before they came to college. If this does not meet their approval, perhaps it would be better for them to seek another college.

A dollar fine for missing chapel seems to be a poor punishment to me. Monetary values should not be placed on basic principles of an institution. A more effective punishment might be to cut grade points for persistence in non-attendance.

Tomorrow Is

(Continued from Page One)
year's exchange student to Germany.

Werner Kruse is now attending MacCollege as an exchange student from Germany.

Pondering With The President

'Unto Us' Is Age Old Verse Full Of Challenge

By D. W. Bittinger

One of the remarkable things about the angel song which surrounds Christmas, or the psalmist songs which lead up to Christmas, is that they include over and over in their challenging choruses the words, "Unto us", or "Unto you".

Through the centuries, as man has quested for God, he has allowed himself to believe that the God he quested for was unfriendly to him. In fear he offered sacrifices; grain, doves, cattle, even his own children or the members of his household. This was true among almost-all primitive peoples, reaching apexes among the Aztec and among the Hebrews.

Now in the Christmas story we have the picture reversed. It is the God who offers the sacrifice unto man. It is for man's sake that he brings His own Son down the stairway of heaven and says, "Unto you a child is given".

He must have done this because He had faith that man could rise to be like God; in fact, His son, when He grew up, said, "Be ye perfect as I am perfect".

This makes Christmas a tremendous challenge. "Unto us" a Great Gift is given.

It is given in order that we might become like the Gift and like the Giver.

We are a long ways from that this Christmas. Discriminations, hatred, suspicions, pilings up of food and wealth at one place and acute hunger and lack in another; all of these attest to how far we are from the intent of the Christmas gift.

May we grow to be worthy of this Christmas Gift that was given "unto us".

Letters To The Editor

Is Brown Aud. Just For Show And Looks?

Dear Editor,

I have been informed that we have been blessed with the most beautiful Brown Auditorium, however, I am sure I would not know.

Whenever I take the time to examine and appreciate the auditorium it has to be done with my nose pressed against the panes because the auditorium is constantly under lock and key.

Other than chapel and a few other assorted programs the students are unable to enter Brown Auditorium. Brown Auditorium seems to be a fragile ornamental figurine placed in the center of our campus simply for show rather than student use.

I am sure that Miss Jessie Brown, who contributed a large

sum of money for the building did not intend for the building to be just an ornament and a show off for our campus.

Just why is this building locked up all the time? Is there a good reason?

I suppose the people in charge of Brown are afraid that college students are going to slash the seats, and destroy property.

I certainly hope that the administration and those involved realize that college students are mature enough to appreciate and properly treat the facilities of Brown Auditorium.

"Ask, and it will be given; seek, and you will find; knock, and it will be opened to you."

—One who is tired of knocking

MALM
Automotive Service
CH 1-4035
210 E. Euclid

McPHERSON LUMBER COMPANY
LUMBER-PAIN-T-HARDWARE
416 N. Cherry Phone CH 1-2577

Bounce Ville Trampoline Center
700 W. Kansas
4:00 P.M. — 11:00 P.M. Weekdays
Sat. & Sun. 2:00 P.M. — 11:00 P.M.

Green's Appliance Store
Television Radios Records Record Players All Kinds Of Electrical Appliances
118 S. Main

Marcia's Gift Center
108 N. Main Phone CH 1-0524

Gifts And Hallmark Cards For Every Occasion
We Gift Wrap And Wrap For Mailing

ELTON LOBBAN MOTORS, Inc.
YOUR FORD MERCURY DEALER
519 No. Main McPherson
Before You Buy, Give Us A Try

THE SPECTATOR
Official student publication of McPherson College, McPherson, Kansas. Published every Friday during the school year by the Student Council. Subscription \$2.00 a year.

1960 1961

THE EDITORIAL STAFF
Editor-in-chief: Larry Elliott
Managing Editor: Marilyn Rhinehart
Campus Editor: Carolyn Trapp
Photography: Gary Williams
Faculty Advisor: Sarah May Brink

THE BUSINESS STAFF
Business Manager: Eleanor Draper
Asst. Bus. Man.: Roger Brammell
Circulation Mgr.: Irma Wynmore
Faculty Advisor: Gordon Yoder

REPORTERS AND WRITERS
Verna Catherine Wray
Vance Yoder
Jerry Edwards
Miriam Oliver
John Dilley
Arnold Cantu
Sue Warrick
Marjell Gibson
Gary Ross
Beverly Judge
Lois Van Fleet

Marjela Yoder
Pat Hoover
D. W. Bittinger
Judy Cupp
Leta Barkdoll

Bulldogs Clash With Warriors Tonight

Mac Travels To Ottawa, Hosts C. of E. Next Week

Tonight the McPherson College Bulldogs will be trying to win their first conference game when they take on the Sterling Warriors at 8 p.m. on the McPherson High School Gym.

The Bulldogs go into the game with a 2-1 record. So far this season they have downed Tabor 71-62, and Bethany 59-54 to win the Moundridge Tourney. Tuesday night the Bulldogs were downed by Southwestern 58-54.

The Bulldogs finished fourth in the Kansas Conference last year and the Warriors finished in a tie for sixth place.

Starting Lineup

The probable starting lineup for the Bulldogs will be Garth Werner, senior center; Stuart Frazier, junior forward; Ralph Rindt, junior forward; Tom Richards, junior guard and Deryl Elmore, sophomore guard.

Tuesday night Sterling beat Bethel in a KCAC game 58-50 and the Warriors have seven returning lettermen to bolster their team.

They are Ronald Ham, a 5'9" senior; Milton Tenopir, a 6'4" junior; Larry Kaywood, a 6'4" junior; James Irwin, another 6'4" junior, and three sophomores 6'3" Kenneth Becker, 6' Bob McCreery, and 5'11" Ron Rolfs.

Placed 3rd

Tuesday night December 13, the Bulldogs will travel to Ottawa and meet the Ottawa Braves. Ottawa placed 3rd in the conference last year and have a record of 1-2 for the year.

The Braves are coached by Bill Frear in his sixth year at Ottawa. His club is not a tall club, and they are expected to depend on speed this year, and will use a fast breaking offense.

The Braves have six returning letter winners. They are Al Lewis, a 5'10" senior; John McAninch, a 5'10" junior; Ed Hampton and Mike Brown, both 6'3" juniors; Tom Kinder, a 6'3" sophomore; and Dean Erwin, a 6'5" sophomore.

The Braves will play the Bethel Threshers tonight in a game at Sterling.

The Bulldogs will host the Presbies from College of Emporia on Thursday night, Dec. 15 at the high school gym.

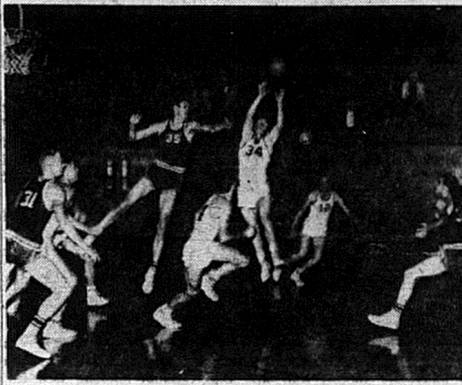
New Coach

The Presbies are coached by Robert A. Johnson who last year coached at Emporia High. Coach Johnson has eight returning lettermen from last year's second

place team to bolster his hopes.

They are Maurice Higgins, a senior center; Art Nichols, a senior forward; Dave Muck, a senior forward; Jerry Baker, senior guard; Everett Ware, a senior guard; Glen Davis, a junior guard; Maurice Elliott, a junior forward; and Bob Motely a sophomore guard.

The Presbies will be playing Kansas Wesleyan at Salina tonight and will play Bethel Tuesday night before meeting the Bulldogs next Thursday night.



Tom Richards, junior guard for the Bulldogs, grabs the ball away from Southwestern's 6'8" center as Stuart Frazier, left, and Deryl Elmore, right, look on.

Mac Captures Crown 59-54 In Overtime Bethany Battle

McPherson College Bulldogs won their season's opener over Tabor 71-62, followed by a second victory over Bethany 59-54, to capture the championship of the Moundridge Tournament Dec. 1-3.

In the first game of the tournament, the Bulldogs defeated Tabor College 71-62 to advance to the finals. Bethany, the winner of the three-year permanent trophy, advanced to the finals after banding Bethel College a beating, 70-67.

Two Overtimes

Maccollege Bulldogs upset the highly-favored Bethany Swedes in the finals with a score of 59-54. This game, which resulted in an all-time tournament record of two overtimes, declared Mac to be the winner of the 10th Annual Central Kansas Collegiate Moundridge Tournament.

Third place went to Bethel College which had been defeated earlier in the Tournament by Bethany. Tabor fell into fourth place after their 59-63 loss to Bethel.

Half-time saw the Bulldogs barely ahead of Bethany with a score of 26-25. Free throws by Tom Richards, Deryl Elmore and Garth Werner granted a tie of 45-45 for the first overtime period.

Marvin Daniels gained a second tie for Bethany with free throws and a score of 52-52. Elmore's two free throws with 24 seconds remaining to be played in the second overtime, cinched the win and trophy for the Bulldogs.

High point men for Maccollege were: Garth Werner and Deryl Elmore both scoring 15 points.

Tryouts For Hamlet To Be Jan. 11-12

Tryouts for "Hamlet," Maccollege's next major production of the year, will be held Jan. 11 and 12 at 8 p.m. in Mohler 227.

All students interested in dramatics are invited to try out for this Shakespearean play with a large cast.

German Club Meets After Game Tonight

Maccollege German Club will meet in front of Dotzour this evening at 7:30 and go to the game together. After the game there will be a Christmas Party in lounge of Arnold Hall, with Werner Kruse, exchangee from Germany telling about Christmas celebration in Germany.

Faculty Families Grow With New Additions

The George Arnold family and the Don Widrig family have grown recently with the birth of a child.

Susan Joann, 5 pound 13 ounce baby girl, was born Nov. 19 to Mr. and Mrs. George Arnold of 532 N. Eshelman. Mr. Arnold is associate professor of physics and math at the college.

Gregory Don, 8 pound 4 ounce baby boy and the first child of Mr. and Mrs. Don Widrig, 651 East Simpson, was born Sunday, Dec. 4. Mrs. Widrig is assistant coach of athletics at Maccollege.

Read and heed Spec ads.

Moundbuilders Down Mac 58-54 In First Home Game

The highly favored Southwestern Moundbuilders handed the McPherson College Bulldogs their first defeat of the 1960-61 basketball season Tuesday night 58-54.

McPherson's Bulldogs got off to a slow start and were trailing 11-4 before they rallied to take the lead 17-16. The two teams battled back and forth for the lead and Southwestern held a slim 26-25 halftime lead.

Southwestern Led

The Bulldogs again got off to a slow start in the second half and the Moundbuilders grabbed a 38-34 lead. A Southwestern rally put them ahead by 9 points, 44-35.

McPherson once again came alive and managed to pull within two points, 44-42 on a free throw by Werner, and fielders by Rindt, Elmore and Richards with eight minutes to play.

Trade Baskets

The two teams traded baskets and the score was 48-46 before Southwestern dumped in six straight points to lead 54-46.

In the closing minutes a fairly effective stall by the Moundbuilders allowed them to hold McPherson back and the final score was 58-54.

Elmore Led Attack

Deryl Elmore, sophomore guard, led the Bulldog scoring attack with 17 points. He was followed by Ralph Rindt with 14, Garth Werner 11, Stuart Frazier 7, and Tom Richards 5.

Southwestern's six foot eight inch center, Cleaver led the Moundbuilder attack with 19 points.

McPherson shot 38 per cent in the first half to Southwestern's 33 per cent, but in the last half the Moundbuilders shot 52 per cent to the Bulldogs 31 per cent.

In the B game Don Kuhlman led the Maccollege scorers as they tied Southwestern's B team 64-64 in a game called because there was not enough time.

**THE WARREN
COFFEE SHOP
FOR YOUR SCHOOL
PARTIES**

Calvert's
Department Store

**KING'S
DRUG STORE**
207 N. Main

SID BACON MOTOR CO.
LANCER DODGE DART POLARA TRUCKS
GUARANTEED USED CARS
311 North Main Phone CH 1-0371

**Sweater Gifts
Score
At Christmas**

There's nothing he or she would like better than a sweater... Especially if you choose from our bev'y of bulky-knit beauties.

Choose one now at

MORRIS AND SON

**The Home
State Bank**

**We Invite
Student
Accounts**

**M. G. Mathis
Cashier**

**C. H. Hiebert
President**

Member Federal
Deposit Insurance
Corporation

MAC

Dec. 9-10
FRI. - SAT.

Jungle Cat

Plus
**Hound That Thought
He Was Raccoon**

Dec. 11-13
SUN. - TUES.

Sons and Lovers

Starts Sun. - Dec. 18
Under Ten Flags

**For Gifts You
Can Give With Pride
Let**

**Brunk
JEWELERS**
McPHERSON, KANSAS

Be Your Guide

**O'Dell's
LAUNDRY**

Complete One-Stop
Service
Contact Solicitors
At College

Crabb's Town and Country

Musical Instruments
Sporting Goods — Phonograph Records

NEED DRY CLEANERS?

See
LARRY McPHERSON OR CAROLYN McPHERSON
We Represent
SUPERIOR DRY CLEANERS

**McPherson Cab
Co.**
CH 1-2353
301 E. Euclid

STROUSE'S
THE BEST STORE FURNISH

Cee Jay Co.
Portable Stereo's
Only \$38.88
The Place Where
Prices Are Born;
Not Raised

Mother Of National Spelling Champ Attends Macollege

National Spelling Champion in 1957, State Spelling Champ in 1956 and 1957, and winner of \$8,000 on the \$64,000 Question — this is what the 17 year old high school daughter of Mrs. Milton Schlehuber, Macollege junior, has accomplished.

Mrs. Schlehuber's daughter, Jolitta, brought fame to her family, school, and the city of McPherson when she won the National Spelling Bee in 1957 at Washington, D. C.

After trying four times in her quest for the national championship, Jolitta finally attained her goal when she was in eighth grade. Previous to winning the national bee Jolitta had won her local school contest for four years, the McPherson County contest for three years, and the state contest two years.

Mrs. Schlehuber commented, "Jolitta always liked spelling. When she was in second and third grade she played railroad spelling. This was spelling one word and the next player would pick up the last letter of the word and spell a new word beginning with that last letter."

Teacher Challenged

When she was in fifth grade her teacher challenged her by writing on her report card, "Hope to see you in Washington, D. C."

By winning the state spelling contests in 1956 and 1957 Jolitta won an "Encyclopedia Britannica" and an all expense paid trip to Washington, D.C. for herself and her mother.

In 1956 Jolitta won \$100 by placing fourth in the national contest. By winning the 1957 National Spelling Bee Jolitta won a \$1,000 scholarship, a diamond studded fountain pen, a weekend trip to New York City for herself and her mother and \$100 for spending money.

While Mrs. Schlehuber and Jolitta were in New York City the officials of the \$64,000 Question contacted them and wanted Jolitta to spell on the show. Jolitta had won the national meet on Saturday and then Tuesday appeared on the television program.

The first night she spelled through the \$4,000 plateau. The next week she returned and spelled her \$8,000 word correctly. The show was then closed for the summer and Jolitta decided to stop and take the \$8,000.

Jolitta is now a junior at the McPherson High School and has plans of going into Christian service work upon graduation.

Now a Junior
Mrs. Schlehuber is an elementary education major at McPherson.

Dotzour Girls To Hold Annual Party

The girls of Dotzour Hall will hold their annual Christmas party Wed. night, Dec. 14 after dorm hours.

All girls who desire to do so will go carolling to the other dorms on campus to begin the party. Following the carolling, refreshments will be served at Dotzour.

Also on the program will be group singing of Christmas carols and a visit from Santa Claus.

The exchange of gifts will end the party. There is no limit on the price of these gifts as each girl determines her own costs.

All girls living off-campus are invited to this party with the exception of the Vaniman girls who will have their own Christmas party. Those coming to the festivities from off-campus are asked to make arrangements to exchange gifts with another girl at the party.

Roberta Varner is in charge of the refreshments, and Bonnie Hodgden will lead the singing.

son this year. Several years ago she attended McPherson College for one year and then transferred to Emporia State Teachers College where she obtained a teaching certificate. Then she taught kindergarten at Kingman and McPherson for eight years before returning to Macollege.

Mrs. Schlehuber's husband is a farmer and they are the parents of two other children besides Jolitta. Cameron is a 11 year old sixth grader and Vivian is a 9 year old fourth grader.

Mrs. Schlehuber teaches a sixth grade Sunday School class at the local Baptist Church and is a junior BY sponsor.

When asked about her hobbies, she replied, "I enjoy doing all kinds of community work."



Mrs. Milton Schlehuber, Macollege junior and her 17 year old daughter, Jolitta, who won the National Spelling Bee in 1957 and appeared on the \$64,000 Question look over some of the prizes which she won.

Parsonage To Observe Open House Sunday

Open house will be observed Sunday, Dec. 11, from 2 to 5 p.m. at the parsonage of the Church of the Brethren located at 1322 E. Euclid.

Rev. and Mrs. Harold Z. Bomberger, pastor, moved to McPherson last August from Pennsylvania. The Bombergers have three children, Warren, 14; Harold Lane, 11; and Vernona, 9.

Art Displays

(Continued from Page One)

University and is a former student of Macollege. Art study is the main interest of Mr. Crouse.

The mural depicts the story of the modern Good Samaritan. Students from McPherson College have had training in service through religious campus activities. Christ is seen in modern carpenter's clothing.

Representing all walks of life, students are aware of the need of others as they begin their life's journey and seek to aid mankind.

Mr. Crouse painted the mural during the summer of 1960, with Macollege students posing for him. The thought of the mural moves from left to right.

There is one way to be a gentleman, and a hundred ways not to be.

Holiday Buffet To Be Held At Cafeteria

Plans are now underway for a Christmas Buffet to be served Wednesday night, Dec. 14, at the college cafeteria.

The buffet will be an all-school Christmas party and will be served from 5-7 p.m. Everyone attending is asked to dress up and it will be open to all college students, faculty members and their families, and the public.

Various kinds of Christmas foods will be served and on display at the buffet will be a whole roast pig with an apple in its mouth, decorated hams, a lobster and other foods.

Mr. Charles Herman, manager of the cafeteria stated, "Everyone is perfectly welcome to attend and to invite their friends. However anyone who does not regularly eat at the cafeteria should make reservations with us before 9 a.m. on Monday, Dec. 12.

Students will decorate the cafeteria tomorrow afternoon, Dec. 10, and anyone interested in helping us is invited to come."

Don's Studio Best In Photography

212 N. Main
CH 1-3714

White Swan Cafe

Chicken Basket
Specialty

Open From 5:30 A.M.
To 10:00 P.M.
Closed Saturdays

204 So. Main
McPherson, Kansas

JAROLD SHOPS

Ladies' Ready-to-Wear
Coats, Suits, Sportswear
Lingerie, Hosiery
Handbags

122 N. Main CH 1-3251

GOSS MOTOR COMPANY

"The Senior Auto Dealer in McPherson County"

Chrysler - Valiant - Plymouth

Factory Trained Mechanics
208-10-12 S. Main CH 1-3953

Applications Due Tomorrow For Position On Spectator

Deadline for applying for the position of campus editor of the Spectator for next semester is Saturday, December 10.

A regularly enrolled student may apply for this position which includes work on the Spectator for three semesters. The Campus Editor becomes Editor-in-Chief the third semester.

Duties of the campus editor include assigning stories to the reporters. The campus editor is also responsible for seeing that the reporters get their stories in before the deadline.

Advances Each Semester

Second semester, the campus editor advances to the position of managing editor. The managing editor corrects all copy handed in by reporters and types the slug sheet and headlines the stories.

The Managing Editor of the second semester becomes Editor-in-Chief the third semester. The Editor-in-Chief is responsible for the over-all work of the paper.

Anyone interested in this position may turn in his letter of application to any member of the Board of Publications, Mrs. Homer Brunk, advisor, or Larry

Elliott, Editor-in-Chief. Letters should include previous journalistic experience, reasons for applying, and any other pertinent information.

Salary of \$80

The Board of Publications of the Student Council will select the campus editor from the applications submitted. The editor-in-chief receives a salary of \$80 for the semester from the Student Council.

Powers, Deemy

Mr. and Mrs. Orval Powers of Boxholm, Iowa, announce the engagement of their daughter, Jo Ann Kay to Richard Deemy, son of Mr. and Mrs. M. R. Deemy of Iowa City, Iowa.

Richard is a freshman at Macollege studying music and Jo Ann is employed at National Travelers Life Co., Des Moines, Iowa.

Social Work Class

Takes Trip To Salina

Dr. Bechtel accompanied his class in social work on a field trip to the Saline County Guidance Center in Salina, Tuesday, Dec. 6.

Twenty-four students are enrolled in this course which offers a general survey of the field of social work, including a study of methods and of applications.

Stanley's

Ready-To-Wear
See Us For

- SWEATERS
- SKIRTS
- BLOUSES
- Taper Pants
- First For Fashion

BACON AUTO PARTS

New - Used - Rebuilt
Chrome Accessories
307 N. Ash

Swanson Electric

Phone CH 1-6247
We Specialize In
Motor Tune-Ups
Speedometer
And All Automotive
Electrical Work
310 N. Maple

Coin-O-Matic

Laundry

(Home Owned)
110 E. Euclid

Complete Satisfaction Guaranteed

Finest Service

All Makes

FRED McKENNA

Chevrolet-Oldsmobile

United Dairies

McPherson's Finest

Milk - Ice Cream

Goering Paint & Wall Paper Co.

Paints - Wall Paper - Glass
McPHERSON, KANSAS

Headquarters For STATE FARM Insurance Companies

Arthur Rolander - 214 E. Euclid


HUBBELL'S
 Rexall Drug Store
 McPherson, Kansas

Hawley Hardware

219 N. Main

American Shoe Shop

112 W. Euclid
McPherson, Kansas

VOGT SHOE SERVICE

Fine Shoe Repair
Shoe Supplies
103 E. Euclid

For The Finest
 In Beauty Care
 Call
**The Beau Mart
 Beauty Salon**
 207 So. Main
 Phone CH 1-3535

YOUNG'S

Your Home Bakery
CH 1-0275

JAROLD SHOPS

Ladies' Ready-to-Wear
Coats, Suits, Sportswear
Lingerie, Hosiery
Handbags


122 N. Main CH 1-3251

GOSS MOTOR COMPANY

"The Senior Auto Dealer in McPherson County"

Chrysler - Valiant - Plymouth

Factory Trained Mechanics
208-10-12 S. Main CH 1-3953

For "Goodness Sake"
 Use

**"W-R"
 FLOUR**
 MADE BY
The Wall-Rogalsky Milling Co.