



Ag Club Throws Barn Party At College Farm Tomorrow

A folk game instructor from Geneseo will provide professional aid for the barn party sponsored by the Ag Club tomorrow night at 7:30 at the college farm.

Ed Switzer, chairman of the program committee, said tentative plans include such things as folk games, various games and contests. A liars contest and a hay bale throwing contest are under consideration.

Western dress will be the style and awards will be given the best western dressed person.

Clifford Tusing, junior, Ballimore, Md., and Lewis Dorris, McPherson, will provide guitar music. Janis Emswiler, sophomore, Froid, Mont., will play the accordion and sing. The Chaff

trio is expected to aid the program also.

Present plans call for a hay ride as transportation to the party.

The college farm is two miles West of the 81-by-pass on First Street.

Lee Dadisman is chairman of the foods committee. Refreshments for the evening will consist of doughnuts and cider.

Officers of the Ag Club are: Charles Ebbert, president is a senior from Quinter; Edward Butler, vice president, is a senior from Eldora, Iowa; and Kenton Harris, secretary - treasurer, is a sophomore from Colorado Springs, Colo.

Class Of '58 Is Largest To Graduate At Macollege

With a membership of 103 students, the 1957-58 Macollege senior class will be the largest class to graduate from Macollege.

Bachelor of Arts degrees will be given to 51 of the students. Fifty-two students will receive a Bachelor of Science degree.

Baccalaureate services will be held on Sunday, June 1, at 10:45 a.m. in the McPherson Church of the Brethren. Dr. D. W. Bittinger will be the speaker. His topic will be "Hands".

The Commencement exercises

will be the same evening at 7:30 in the Church of the Brethren. Dr. Galen Jones, the staff director of the Council for Advancement for Secondary Education, from Washington, D. C., will deliver the graduating address. His topic will be "Religion and Education."

Citations will be given to Dr. Ralph Y. Strom, Dr. H. H. Ninger, Dr. Galen Jones, and Mr. Lester Kimmel.

Rev. Alvin Lindgren will receive an honorary degree.

Educational Building Will Be Dedicated Next September

Dedication services for the new Church of the Brethren Educational Building now under construction will be held Sept. 23. Speaker for the services will be Norman Baugher, Elgin, Ill.

The dedicatory address will be the opening services for Christian Education Week, Sept. 28 - Oct. 4. Mr. Baugher is the General Secretary of the General Brotherhood of the Church of the Brethren.

Although plans have been made to use the building during the summer, dedication services will be delayed until the college students return from summer vacation.

The Educational Building will include Sunday school classrooms for the smaller children through high school seniors, a fellowship room, the pastor's study, the church office, a conference room, and a small kitchenette.

Prof. S. M. Dell is chairman of the building committee for the Educational Building.

Sister College Expanding Present Facilities Also

McPherson College is not the only college in the Brotherhood that is expanding its present facilities. Our sister college, Elizabethtown College in Elizabethtown, Pa., will dedicate their new Bible Science Hall addition on September 16.

Twice the present floor space in biology, chemistry, and physics will be available for students' use when the new wing is completed.

The new addition will be opened for visitors and inspection on May 10, although the landscaping and walks will not be finished.

The total cost of the wing will be approximately \$250,000. "Elizabethtown College is fortunate in having on hand all necessary funds for this much-needed addition, without borrowing from outside sources," remarked Dr. A. C. Baugher, President.

Today Is Deadline For Pre-Enrollment

Today is the deadline for pre-enrollment for the fall term of 1958-59 at Macollege.

Students should turn in their material to the Central Office before 5 p.m. today.

Debate Team Featured On TV

Prof. Guy Hayes and the ladies' debate team were featured on the KTVH-TV program, "Community Window," May 1, 1958. The ladies' team is composed of Joan Walters and Shirley Groth.

The girls discussed the past debate season, with particular emphasis on the Pi Kappa Delta honorary forensic fraternity. Schools in this state which belong to Pi Kappa Delta will be mentioned.

Various other speech activities which were in tournaments, such as extempore, impromptu speaking, discussion, and oratory were also discussed.

Miss Lehman To Set Sail For Europe On June 6

Miss Della Lehman, head of the English department, has completed arrangements for the tour she is going to lead through Europe this summer.

The group will sail from Quebec on June 6 to begin their 53-day tour of 11 countries. The first stop will be in London will spend four days there and in nearby Shakespeare country.

After arriving in Holland the group will have a private bus with English - speaking guides for traveling on the continent.

One day will be spent in Brussels, Belgium, at the World's Fair. While in Germany the group will take a trip up the Rhine to Heidelberg.

There will be stops in Switzerland and Austria before going to Italy. The party will visit the cities of Venice, Rome, Florence, and Nervi in Italy.

The party will spend four days in Paris before going to Le Havre to board the ship home.

In addition to Miss Lehman, Anne Keim and Duane Fike, both graduating seniors, will be going. Graduates include Ruth Bish, Sheridan, Wyo.; Kenneth Rock, Abilene, Kas.; his wife and two sons; and LaFugne Hubbard, Wichita, Kas.

Others include Dennis Hubbard, Hugoton, Kas.; Ruth Lavon Hoover, Plattsburg, Mo.; Gayna Billue and Silba Belle Billue, Dallas, Texas; and Anne Lamar, Norman, Okla.

Also going are Rachel Crown,

College Calendar

Tonight at 7, Junior - Senior banquet at Hotel Bisonte in Hutchinson.

Tomorrow night, Ag Club Barn Party at the College Farm at 7:30.

Wednesday, May 7, Senior Recital in Chapel at 7.

Friday, May 9, Movie in Chapel at 7:30.

Friday, May 9, Freshman-Sophomore annual spring picnic at the college farm at 3:15.

Saturday, May 10, Orchestra concert in Chapel.

Instructors Attending Science Meet In Salina

Three McPherson College and one McPherson High School instructors are attending the Kansas Academy of Science Annual Meeting at Ottawa University in Ottawa today and tomorrow.

The Macollege professors include Dr. Wesley DeCoursey, professor of chemistry, Dr. John Burkholder, professor of biology, and George Arnold, assistant professor of mathematics and physics. Mr. C. H. Drescher, high school instructor, is also in attendance at the KAS meeting.

Peek Elected To Head SNEA At Macollege

Delores Peek, a junior from Warrensburg, Mo., was elected president of the SNEA for 1958-59 school year. Ed Switzer, a senior from Haxton, Colo., is the retiring president.

Other newly elected officers include: Vernard Foley, freshman, Morrill, Kas., vice president; Lynda Igel, freshman, Ottawa, Kas., secretary; Linda Owens, freshman, Lincoln, Neb., treasurer; and Norma Hintz, freshman, Canton, Kas., historian.

Merlin Frantz, associate professor of education and psychology, is the SNEA's faculty sponsor.

Rec Council Elects Next Year's Officers

Glenna Hawbaker was elected president of Rec Council for the 1958-59 school term at the regular meeting of the Rec Council members Monday evening, April 28. She will succeed Hazel Miles, this year's president.

Donelda Arick will succeed Glenna Hawbaker as vice-president.

New secretary elect is Pat Huber who will succeed Delores Peek. Don Hollenbeck was elected treasurer and will succeed Carl Harris.

Geisert To Speak Tonight At Junior-Senior Banquet

Faith Is CBYF Topic For Sunday Night

"Our Faith Tremendous," the theme of the National Youth Conference, is to be the CBYF topic for Sunday, May 4, at 6:30 p.m. in the church social rooms.

Leon Neher, Western Region Youth Director, will, through the use of pictures, explain the purpose and program of the National Youth Conference to be held August 25-29.

Everyone is invited to attend and join the group in fellowship.

Rural Life Department Adds Milling Machine

A Brown and Sharp vertical milling machine has been a recent addition at the college according to Prof. Alvin Willems of the Rural Life Department.

"The milling machine is the universal type which is not a production but a tool room type, the most ideally suited for McPherson College shop use," said Professor Willems.

Shop administrators had been looking for a machine of this type for about three and one-half years.

DeCoursey Accepts Summer Employment In California

Dr. Wesley DeCoursey, professor of chemistry, has accepted summer employment as a park ranger naturalist at Sequoia and Kings Canyon National Parks in California.

Dr. DeCoursey has spent two summers as a park ranger at Wind Cave National Park in the Black Hills of South Dakota.

His duties there were mainly guiding and interpreting the cave to visitors. This summer's duties will be guiding and interpreting the flora and fauna of the Big Trees area to visitors and giving campfire lectures.

Kings Canyon National Park includes the highest mountain in the United States, Mt. Whitney, and tremendous canyons carved in granite rock in a large, rugged, primitive area in the Sierra Nevada Mountains.

Sequoia National Park preserves very large trees and beautiful timber land and several caves as well.

The DeCoursey family will live in two tent houses furnished by the Park Service, one for cooking and one for sleeping. The DeCoursey furnished home in McPherson will be for rent this summer.

Dr. DeCoursey states that if you are interested in this kind of paid vacation you should fill

Dean Wayne F. Geisert will be the speaker at the Junior-Senior Banquet this evening at 7 p.m. at the Hotel Bisonte in Hutchinson.

The theme for the banquet is "End of the Rainbow." The table decorations will be the different colors of the rainbow. A large rainbow will be behind the speakers' table.

Carl Harris will be the Master of Ceremonies. Gary Stelling and Forrest Kruschwitz with Jerry will be featured on the program.

Gene Wenger will give the welcome from the juniors and Marlo Oltman will give the response for the seniors. Joan Walters will give a farewell to the seniors.

The Junior-Senior Banquet is an annual affair sponsored by the juniors in honor of the graduating seniors.

College Band To Play At Tuesday's Chapel

Tuesday's chapel program will feature the McPherson College Band under the direction of Dwight Oltman, senior from Emporia, Neb.

On Friday, May 9, the College of Emporia will bring an exchange chapel program.

out Civil Service Form 57A and send it to the superintendent of the park you are interested in.

Two years of college is a basic requirement for park rangers. However, many college students find employment in the parks as waiters and waitresses in concessions at the parks.

This employment has no college education requirement and it is not a Civil Service job, but you can obtain the information from the park superintendent about such employment.

Applications should be made as early as February for the following summer. The pay varies and is not especially high, but students find the experience educational and relaxing. The fellow workers are especially congenial also.

Ceramics Class Sees Wichita Art Exhibit

Members of the ceramics division of the Macollege Art Department attended the Decorative Arts and Ceramics Exhibition of the Wichita Art Association April 17.

Mrs. Garth Ellwood, instructor of ceramics, accompanied two car loads of students.

Silver smithing, ceramics and weaving were the principal entries in the national show.

Bulldogs Defeat Swedes In Dual Track, Field Meet

The McPherson College Bulldogs clawed back to defeat the Bethany College Swedes 73½ to 57½ in a dual track and field meet in the College Stadium, breaking a two meet losing streak.

McPherson took nine out of fifteen events in the win. Tom Hagland gathered three firsts for McPherson by winning the 100 yard dash, 220 yard dash, and the broad jump. Ronald Anderson took two firsts by winning the shot put and the discus.

Widrig won the 440 yard dash. Oltman won the 880 yard run. Elliott won the pole vault while Smith and Brunner of McPherson tied for first in the high jump.

Bethany dominated the distance events.

Summary of Meet

Mile run — 1. Nelson, Bethany; 2. Melton, McPherson; 3. Danielson, Bethany. Time 4:57.9 minutes.

440-yard dash — 1. Widrig, McPherson; 2. Jacobson, Bethany; 3. Otte, McPherson. Time 55.0 seconds.

100-yard dash — 1. Ragland, McPherson; 2. Owens, Bethany; 3. Mahone, Bethany. Time 10.3 seconds.

Low hurdles — 1. Stoecher, Bethany; 2. Smith, McPherson; 3. Longmire, McPherson. Time 16.1 seconds.

880-yard run — 1. Oltman, McPherson; 2. Nelson, Bethany; 3. Albin, McPherson. Time 2:09.7 minutes.

220-yard dash — 1. Ragland, McPherson; 2. Owen, Bethany; 3. Geiman, Bethany. Time 23.4 seconds.

Two-mile run — 1. Danielson, Bethany; 2. Melton, McPherson; 3. Cabbage, McPherson. Time 11:28.2 minutes.

High hurdles — 1. Stoecher, Bethany; 2. Smith, McPherson; 3. Keim, McPherson. Time 27.3 seconds.

Mile relay — 1. Bethany; 2. McPherson. Time 3:46.1 minutes.
Shot — 1. Anderson, McPherson; 2. Blake, Bethany; 3. McPherson, McPherson. Distance 41 feet, 2¼ inches.

Discus — 1. Anderson, McPherson; 2. R. Anderson, Bethany; 3. D. Anderson, Bethany. Distance 147 feet, 11 inches.

Javelin — 1. Griffith, Bethany; 2. Widrig, McPherson; 3. Stacher, Bethany. Distance 176 feet, 9 inches.

Pole vault — 1. Elliott, McPherson; 2. LaMar, Bethany; 3. Keim, McPherson. Height 11 feet, 8 inches.

Broad jump — 1. Ragland, McPherson; 2. Widrig, McPherson; 3. (tie) Mahone, Bethany; and Dresher, McPherson. Distance 21 feet, 1½ inches.

High jump — 1. (tie) Smith and Brunner, McPherson; 3. Blake, Bethany. Height 5 feet, 7¼ inches.

Mrs. Brunk Attends Topeka Teachers Meet

Mrs. Homer Brunk attended the Kansas College Teachers English Association at Washburn University, Topeka, Kas., April 18-19.

The certificate requirements for teachers of English were explained. Kansas is raising requirements for teachers of B and C schools.

Spring Sport Events Continue Next Week

McPherson College Bulldog track team will compete in the Doane relays, May 6, the same day the golf team will meet its last opponent, C. of E. at Emporia.

The tennis team also winds up its schedule when it meets C. of E. at Emporia in a dual match.

The Bulldog track team will meet Bethel and Sterling in a triangular track and field meet at Newton, May 9.

The track team met Sterling and Bethany at Sterling last Wednesday. The tennis team also went to Sterling for a dual match with Sterling.

Golf Team Wins; Downs Swedes

The McPherson College Bulldog golf team defeated the Bethany College Swedes 8-4 at the McPherson Country Club April 28 in a dual match.

The following is a summary of the match:

Name	School	Score	Point
Ken Carmichael,	Bethany	78	½
Lee Danyluk,	McPherson	76	2½

Walt Wendel,	Bethany	81	3
Jack Havice,	McPherson	86	

Keith Rasmussen,	Bethany	102	½
Gary Pigott,	McPherson	92	2½

Dennis Schmitt,	Bethany	91	
Rex Morris,	McPherson	85	3

Tennis Team Loses Twice

The McPherson College Bulldog tennis team absorbed two defeats when the Bethany College Swedes defeated McPherson 8-1 at Lindsborg, April 25, and Tabor College defeated the Bulldogs 5-4, April 28, on the college courts.

The Bulldog tennis team has compiled a two win four loss record thus far this season.

Mac-Bethany Meet

Singles

Dahlsten, Bethany, defeated Likhite, McPherson, 6-2, 6-1.

Robinson, Bethany, defeated Wenger, McPherson, 6-1, 6-0.

Leaf, Bethany, defeated Smith, McPherson, 6-1, 6-2.

Lauson, Bethany, defeated Crouse, McPherson, 6-1, 6-2.

Jabuen, Bethany, defeated Yoder, McPherson, 6-1, 6-2.

Weddle, McPherson, defeated Bengtson, Bethany, 6-3, 6-4.

Doubles

Dahlsten - Lauson, Bethany, defeated Likhite - Wenger, McPherson, 6-3, 6-0.

Robinson - Leaf, Bethany, defeated Smith - Crouse, McPherson, 6-0, 6-1.

Jabuen - Bengtson, Bethany, defeated Yoder - Weddle, McPherson, 6-2, 6-1.

Tabor-Mc Meet

Singles

Likhite, McPherson, defeated Braun, Tabor, 6-1, 7-5.

Nickel, Tabor, defeated Wenger, McPherson, 7-9, 6-4, 9-7.

Guede, Tabor, defeated Smith, McPherson, 6-4, 6-4.

Crouse, McPherson, defeated

M-Club Athletes Promote Sportsmanship, Fellowship

The purpose of the M-Club is twofold. First, its members strive to promote fellowship within the group as a whole. Through this fellowship they hope to inspire strong school spirit in students and faculty.

Second, the club seeks to aid and maintain an athletic program which McPherson college and the City of McPherson can be proud.

The club strives also to promote better relations between the college athletic program and the public.

Some of the activities sponsored by the M-Club are the M-Club Penny Carnival, M-Club Banquet, a concession stand at the May Day Parade, and the Annual Snack Fest.

The club serves the watermelon, prints basketball and football programs, and operates rent-a-seat at the home games.

Each year the club selects a

project to support. Thus far this year the club has not selected a project.

The M-Club raises money to support its program by selling ads to be placed in the programs, money raised through the Penny Carnival, and the booth at the May Day Parade.

An athlete who through his athletic and scholarship ability earns an "M" in any varsity sport at McPherson College is eligible for membership in the "M" Club.

Six boys completed the requirements for membership and were initiated into the club April 23 to bring the active membership total to 37. The new members are Don Willits, LeRoy Hayes, Max Grossnickle, Larry Sums, Danny Crouse, and Ron Harden.

This year's officers are Sid Smith, president; Ed Sink, vice-president; and Jerry McPherson, secretary-treasurer.

Dick, Tabor, 6-3, 6-4.

Weddle, McPherson, defeated

Friesen, Tabor, 6-4, 6-0.

Hamm, Tabor, defeated Yoder,

McPherson, 6-4, 6-0.

Doubles

Braun - Nickel, Tabor, defeat-

ed Likhite - Wenger, McPherson, 6-3, 6-0.

Guede - Hamm, Tabor, defeated

Smith - Crouse, McPherson, 6-4, 6-1.

Weddle - Yoder, McPherson, defeated

Dick - Friesen, Tabor.

MORRIS & SON

Men's Women's and Children's Wear

NEW OR USED

Complete Satisfaction Guaranteed

You Can Deal With Us
More People Do

Fred McKenna

CHEVROLET — OLDSMOBILE

For the Most Romantic Purchase
of Your Life
Buy Her a Diamond from

Remberger
JEWELERS

Exquisite originations in engagement rings.
Low down payment.
Easy terms.
"Sure—We'll keep your secret".

The Spectator

1957 1958



Official Student Publication of
McPherson College,
McPherson, Kansas
Published every Friday dur-
ing the school year by the Stu-
dent Council.

THE FRIENDLY SCHOOL
1957 1958

HOME OF THE BULLDOGS

The Editorial Staff

Sherland Ng Editor in Chief
JoAnn Negley Managing Editor
Harold Connell Campus Editor
Bill Winder Sports Editor
Sarah May Brunk Faculty Advisor

Reporters and Writers

Lillian Aotaki Dr. D. W. Bittinger
Dorenda Arieck Chester Peckover
Faye Fields Ana Rosa Rodriguez
Mary Ann Guthals Joyce Ulrich
Shirley Groth Glenda Wine
Glenna Hawbaker Glen Faus
Patricia Huber Janice Bower
Vernard Foley Carl Harris

The Business Staff

Bill Gripe Business Manager
Howard Duncan Asst. Business Mgr.
Diane Browning Circulation Manager
Gordon Yoder Faculty Advisor

MALM
Automotive
Service

210 E. Euclid Ph. 983

Delicatessen
Noon Meals

McPherson, Kansas

Skate - Skate!

Regular skate session—7:30
'til 9:30 p. m. Tuesday thru
Saturdays. Sunday — 1:30
'til 4 p. m.

Monday Nite Parties Only

Enberg's Rollarena

140 Virginia, Lyons
Call 14 Day 030 Nite

Revlon
Products

Graves
Drug
Store

White Swan Cafe

Regular Meals
and
Short Orders
Open Mondays
Closed Saturdays
from 6:30 to 10:00
McPherson, Kansas

Green's

Appliance Store

Television
Radios
Records

Record Players

All kinds of electrical
appliances.

118 S. Main

**Business Machine Co.,
Inc.**

RENTALS - SALES - SERVICE
STUDENTS INQUIRE
RENTAL PURCHASE PLAN.

New and Used
Standards & Portables

109 E. Kansas Phone 1234

Welcome To McPherson College Students

Peoples State Bank

Member of FDIC

McPherson College Boosters Since 1898

Montgomery Ward

Everything Ward's sell may be purchased
on credit.

Headquarters for Sweaters and Shoes.
Phone 1600 209 N. Main

Miller-Kennedy

1003 West Kansas — Phone 1426

Your Lincoln-Etdsel Dealer

All late model cars one year guarantee.

Pondering With The President . . .

What Happened To Kansas?

By Dr. D. W. Bittinger
In the past, Kansas has had her ups and downs as a state among other states, but in general, her record has been good. When one traveled in other parts of the United States and said, "I'm from Kansas," he could say it with some pride.

Our fellow Americans thought of us as coming from a state which was hot, had plenty of dust, and was subject to tornadoes.

In more recent years, however, they have begun to modify this picture and to think of Kansas as a state where wheat grows bountifully and with considerable profit, where oil underlies productive wheatland, and where people take time to enjoy themselves.

In fact, the people of every state now sing our song, "Home

on the range . . . where never is heard a discouraging word, and the skies are not cloudy all day."

Kansas has begun to be given credit for a very good educational system, for a much higher than average percentage of young people who go to college, for increasingly better roads, for an unusual desire for individual freedom, for better and better higher educational facilities, and for general progressivism.

Recently, this tenor of thought is changing somewhat, and people are asking what has happened to Kansas.

This has been brought about by an unusually prolonged "playing with politics" at Topeka. This "playing with politics" cannot be laid at the door of either party; both parties are doing it.

Our last governor, who was a Republican, apparently could get along with no one. This seems strange, for he appears to be a personable fellow. Our present governor, likewise, even though a very personable man, seems to be completely stymied with his legislature.

Consequently, we have only disagreement, vetoes, arguments, and confusion.

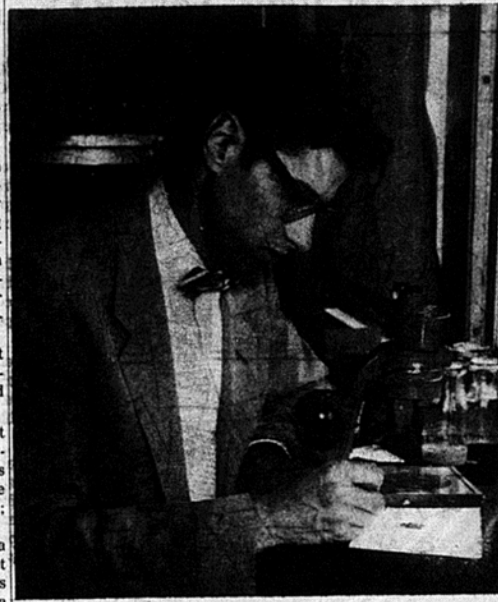
When one travels in other states, either east or west, comment is made, with good humor but with increasing disdain, concerning the political situation in Kansas.

Perhaps this is the fault of those of us who vote. Have we not been ashamed of our political situation about long enough?

We, who are the citizens, ought to do something to improve it.

It is not as important which party is in power as whether those who govern are concerned primarily with the welfare of the people of Kansas rather than with the welfare of their own party or of themselves individually.

What has happened to Kansas? We rightfully must be ashamed of ourselves. Let us do something to rectify it.



Prof. John Burkholder, pictured above, has interests not limited just to the science field. He also enjoys leisure reading and photography.

Mac Biology Professor Was Once Nebraska Farm Boy

"I always liked plants and animals; they interested me," says John Burkholder, professor of biology at MacCollege.

Prof. Burkholder, a farm boy from Octavia, Nebr., feels that his rural background is one of the factors that stimulated his interest in nature.

"Science particularly has interested me for a long time," admitted this able teacher. He quickly went on to say that his high school had a rather weak science department and that it was not until he had a class under Dr. R. E. Mohler at MacCollege that he definitely decided to major in science.

Prof. Burkholder's interests, however, are not limited to the science field. He enjoys doing non-professional outside reading, and he lists photography among his hobbies.

A visit to this professor's home immediately shows that Prof. Burkholder and his wife find satisfaction in gardening, taking care of their lawn, and improving their home.

Prof. Burkholder's wife is the former Donna Bowman, daughter of Prof. and Mrs. Joseph Bowman. Their marriage took place in 1950, and they now have three sons who are named David, Phillip, and Douglas.

Prof. Burkholder graduated from MacCollege in 1949. Following graduation he attended graduate school at the University of Chicago.

In 1953, he came back to MacCollege to begin his teaching career. By going to school the next two summers, he was able to earn his Ph. D degree in Zoology in 1954.

As a student at MacCollege, Dr. Burkholder was a biology assistant. In his senior year, he taught a freshman class of both biology and chemistry.

Also during this time, Prof. Burkholder and his then future wife were co-chairmen of the Student Christian Association.

Dr. Burkholder says this about teaching: "It's a matter of helping people. I don't enjoy it unless they learn."

He goes on to say that he enjoys teaching most when he can stimulate the joy of learning. Prof. Burkholder likes to see students make first-hand observations about the world around them and then think up explanations for their observations.

Mac Alumnus Receives Theological Fellowship

Leland L. Lengel, a 1956 graduate of MacCollege, has been awarded a Rockefeller Brothers Theological Fellowship for the 1958-59 school year.

Mr. Lengel plans to attend Divinity School of Duke University, Durham, N. C., on this all-expense fellowship which was granted to him as the result of a nationwide competition.

Mr. Lengel, a history major, was a member of the A Cappella Choir and male quartet, president of Alpha Psi Omega, national honorary dramatic society, and secretary-treasurer of Pi Kappa Delta, national forensic organization.

Since graduation from MacCollege he has been employed in the Brethren Service Commission Office, Elgin, Ill.

Mrs. Leland Lengel, the former Nancy Keim, graduated from McPherson College in 1957.

Botany Students Study Nature

After some weeks of careful study of the various types of trees on the McPherson College campus by the members of Dr. John Burkholder's botany class, the group visited a local nursery on Thursday, April 4.

Most of the students spent more than the regular class hour learning many fascinating things about nature. The visit was a help and a great opportunity for the class to see what they had been laboring for days to learn in the text book.

The interests of the students were coupled by many scientific questions asked the owner for the purpose of clearing some points.

It was determined by the class in completing their project of naming all the trees on Macam-

Della Lehman Is Guest Of Honor At Dinner

Miss Della Lehman was the honored guest of a dinner party at the Hangar. There were twenty ladies in attendance at the dinner which was held Friday, April 25, 6:30 p.m.

The ladies of the McPherson College faculty and the ladies working in the various college offices were present. Mrs. Bittinger, Mrs. Geisert, Minnie Mugler, and Miss Brown attended, also.

pus that there are more different species of trees than many realized. Many of these trees are native to America.

The class is now busy studying various kinds of algae, fungi, and bacteria and their economical importance to human and higher plant life.

King's Drug Store

YOUNG'S
Your Home Bakery
Phone 82

Calvert's
Quality Since 1910
McPherson's Newest and Finest
Department Store
Ready-to-Wear
Lingerie - Hosiery
Jewelry - Piece Goods
Home Furnishings

GOERING PAINT & WALL PAPER CO.
Paints - Wall Paper - Glass
McPHERSON, KANSAS

Superior Dry Cleaners
—Above the Ordinary—
Howdy Folks Contact Jerry or Vernona

A & W Root Beer Drive In
For noon Lunch and Evening Meal — Sandwiches
Hot Dogs, Ice Cream and Root Beer

United Dairies
McPherson's Finest
Milk - Ice Cream

Crabb's Town and Country
Musical Instruments
Sporting Goods — Phonograph Records

McPherson Lumber Company
Lumber - Paint - Hardware
416 N. Cherry Phone 282

Faculty Serve As Pastors Also

Nine faculty members of McPherson College have served as interim or full-time pastors. They are Paul Wagoner, Merlin Frantz, Earl Frantz, Raymond Flory, John Sheets, Harley Stump, Burton Metzler, Kenneth Bechtel, and D. W. Bittinger.

Paul Wagoner, alumni secretary, served the Larned Church of the Brethren in Larned, Kas., for two years. Merlin Frantz, professor of education, was pastor of the Salem Community Church, in Nickerson, Kas., for two years.

Earl Frantz, public relations, has been at the Buckeye Church of the Brethren situated north of Abilene.

Raymond Flory, professor of history and political science, while a student at McPherson College held pastorates at Green and Sheldon, Iowa. He has also been at the Ottawa, Newton, Lone Star, and Monitor, Kas., churches.

Harley Stump, professor of English, was pastor for two years at the Waka, Texas church, five years at Cordell, Okla., seven years at Oklahoma City, Okla., and three years at Empire, Calif. He now serves the Pleasant View Church of the Brethren.

John K. Sheets, director of public relations, has been pastor of the Surrey and York, N. Dak., churches, and the Pleasant View and Darlow, Kas., churches.

Burton Metzler, professor of philosophy and religion, served the Middlebury, Ind., Church of the Brethren for three years and the Wakarusa, Ind., church for a year and six months.

Kenneth Bechtel, professor of sociology and languages, was pastor of the Girard, Ill., church for three years and the Sterling, Ill., church for eight years.

American Shoe Shop
Allison Radio Service
112 W. Euclid
McPherson, Kansas

The Home State Bank
M. G. Mathis,
Cashier
C. H. Hiebert,
President
Member Federal
Deposit Insurance
Corporation

Best Quality at Lowest Price
Anthony's

BECKER'S JEWELRY
Expert Watch & Clock Repairing
Cuckoo, Electric, 400 Day
or Antique Clocks
1st Door North of Mac Theatre

Follow the Bulldogs in the McPherson Daily Republican

Chaff Raises Cane, Etc.

Dissertation On Dirt

By Faus, Foley, and Harris

With Spring here again, every one's fancy turns to gardening? Gardening is the greatest American outdoor sport, with its return to nature, and close communion with the good earth.

Gardening involves considerable expenditure for seed, tools, fertilizer, . . . and all that old rot.

The first step in gardening is acquiring a plot of ground. Since the price of land is high, if you do not already own land, we recommend that you try removing the cement floor from your basement.

The basement floor is an all too often neglected area and should be put to good use, but when working with it, be sure to leave sewer pipes and other things intact.

The next step is acquiring tools with which to till the good earth. The kind of tools you must buy depends on the kind of ground you have.

For muddy ground, we recommend a scoop shovel and a plumber's friend. If you have rocky ground, Chaff may be available to work on all sorts of rock piles after the next student court session.

The third step in gardening is choosing the seeds you wish to plant. Here most landowners make the mistake of trying to grow too large a variety of crops with the result that they try to grow crops not suited to their soil.

For instance, bananas and coconuts do not produce well in this area, mainly because the nights are too long.

Therefore, we recommend that you stick to the old standard crops of mangos, pineapple, mint, julep, okra, seaweed, etc.

We especially recommend the last one, etc. Have you ever et cetera?

Cetera is the amazing new wonder food with low, low, calorie content. As a matter of fact, if you eat a meal containing 500

calories plus 5 ounces of Cetera, you will end up with a total of 93 calories, because Cetera robs calories from the other foods you have eaten.

For example, one man ate nothing but Cetera for a whole day, and within 3 1/2 hours he lost 300 pounds. He is the author of the popular song, "I Was A Big Man Yesterday, But Boy, You Ought to See Me Now."

You may have already heard of this new food, Cetera, because it has been built up with a terrific publicity campaign. Its trademark, Etc., has been prominently displayed in many recent literary works.

It was especially plugged by Yul Brynner in the movie "The King and I." Even President Eisenhower put in a good word for Etc. in his latest speech when he said, "What this country needs to bring it out of the current recession is a more realistic farm program, etc."

In fact, we expect Cetera to sweep the nation by storm. This is because Cetera will grow anywhere, under any conditions. We planted some in a potful of crushed lath turnings and got a growth higher in iron content than a pound of calves liver.

Remember, the next time you run to your grocer, ask for Cetera; Your grocer, if he has Cetera, will gladly unload all he has. Pure food and drug laws, you know.

If you want enemies, excel your friends; if you want friends let your friends excel you.

I would rather have someone steal my car than for them to pass on a story which would ruin my reputation.



Hubbell's
Rexall Drugs

Turkeys and
Poultry
**QUALITY
MEATS**

Also

Beef and Pork
at Special Rates

MID-KANSAS
Produce & Locker
Plant
310 N. Oak Ph. 38

LITTLE MAN ON CAMPUS



Three Classes Take Field Trips

Three classes went on fieldtrips last week as part of their class activities.

The elementary education majors, enrolled in the Educational seminar course visited elementary schools in Haven and Hutchinson last week, Tuesday, April 22. Professor Rothrock accompanied the group.

The Growth of Culture class, under the direction of Dr. D. W. Bittinger visited the Indian burials, in Lindsborg. They also vis-

ited the Birger Sandzen Memorial Art Gallery.

A third group that went on fieldtrip Tuesday afternoon, April 22, was the Reporting class. They visited the Hutchinson News.

Among the things which impressed the students were the large amount of paper in storage and the huge press.

Members of the class are Faye Fields, Shirley Groth, Chester Peckover, and Ana Rosa Rodriguez.

Bill Winter and Harold Connell also went with the group. Mrs. Homer Brunk, faculty advisor for the Spectator accompanied the group.

BABYLAND

The Children's Shop
Bring your "little" problems
to us
119 South Main



Complete One-Stop
Service
Contact Solicitors
At College

GOSS MOTOR COMPANY
"The Senior Auto Dealer in McPherson County"
Chrysler - Plymouth
Factory Trained Mechanics
208-10-12- S. Main Phone 567

The McPherson and Citizens

State Bank

Member of F.D.I.C.

122 W. Marlin

Phone 682

Bloodmobile Receives 134 Pints In Mac

Miss Marie Blick, Assistant Chief Nurse of the Wichita Blood Center, said the April 14 bloodmobile visit to college hill was a success.

There were 134 pints of blood obtained from 142 persons who reported for the donation. Eight persons were rejected for various reasons.

Statistics showed 137 persons had registered before the donations, 115 on the schedule reported, and 27 drop in or unscheduled persons reported.

Individuals totaling 27 requested their donations be used as specific replacements for various persons who have used Red Cross blood.

Miss Blick expressed Red Cross appreciation for the cooperative spirit shown by the students and faculty as well as others. Several who could not give helped the program procedure in numerous ways.

Anyone who wished to give, but missed the bloodmobile will have another opportunity in about three months when the unit will again be in this community.

Total casualties for the day consisted of a few "Pale-faces."

The quota for the community was 160 pints.

MAC

Sunday 2:00-7:00-10:00
Weekdays 8:00 Only
For 1 Week
Winner of 7
Academy Awards
"The Bridge On
The River Kwai"

manor

SUN. THRU WED.
Comedy of the year!
Doris Day, Clark Gable
"Teachers Pet"
THURS.-FRI.-SAT.
Victor Mature
"The Long Haul"

Student Works At Radio Station

News casting, platter spinning, and spot commercial writing are the principal activities of Larry Hayes, junior, McPherson, while working at the local radio station.

A good speech background serves Larry in his position. Oratory and debate and various speaking contests have provided much of his training.

As a senior in high school, Larry served as co-emcee for the high school radio show, a live show over the local station.

Much of Larry's time is divided between classes, working, and his family, however, he finds time to work as a lab assistant and to serve as president of the McPherson Pi Kappa Delta chapter also.

Larry, son of Guy Hayes, professor of speech, is a biology major with the field of medicine as his objective.

Read and heed the Spec ads.



GRADE "A" VITAMIN "D"
MILK
BY YOUR DOOR—
OR AT YOUR STORE
ALWAYS INSIST ON
Select Dairy
Milk and
Ice Cream

TO BE SURE
Call 943
FOR HOME DELIVERY
AND SPECIAL EVENTS
A FULL LINE OF
QUALITY MILK PRODUCTS
217 S. Main McPherson, Kans.

Welcome Students
McDONALD'S
Dept. Store

Hotel Warren
and
Coffee Shop
For your school parties.
Three party rooms
available.
No charge for room
when meal is served.

Stanley's Just
arrived!
CATALINA
ROSE MARIE
REED
BRADLEY
SWIM SUITS

For "Goodness Sake"

Use

"W-R"

MADE BY

The Wall-Rogalsky Milling Co.



SID BACON MOTOR CO.

Dodge — Plymouth — Dodge Trucks

Sales — Service

311 North Main

Phone 1450