

# The Spectator

VOL. XIII

McPHERSON COLLEGE, McPHERSON, KANSAS, WEDNESDAY, JAN. 8, 1930

NO. 15

## READING CONTEST THE LAST OF THIS MONTH

**Humorous And Dramatic Reading Contest Sponsored By Dramatic Department**

**\$15 IN PRIZES GIVEN**

**Readings Are To Be From Eight To Twelve Minutes In Length**

Fr., Dec. 20—A humorous and dramatic reading contest, sponsored by the expression department, for the purpose of furthering interest in oral interpretation in worthwhile literature, was announced this morning. Prizes totaling fifteen dollars will be given and competition is open to any regularly enrolled student.

The contest is divided into two divisions, one of humorous reading, and the other the dramatic reading contest. The humorous reading contest will be held in the chapel Wednesday, January 29 and prizes of \$5.00 for first and \$2.50 for second place will be given. The readings are to be from eight to twelve minutes in length.

The dramatic reading contest will be held February 6. This will include those selections that are not humorous but something that is worthwhile from the literary standpoint. Prizes of \$5.00 and \$2.50 will go to first and second winners and the reading is to be from eight to twelve minutes in length.

Contestants will be judged by three judges; one may be from the college faculty and it is hoped that the other two may be secured from outside sources.

Miss Della Lehman, who is in charge of the contest, stated that all contestants should have their names and the title of their selection in her hands by January 19.

This is the first contest of its kind held on the McPherson campus in a number of years.

## BULLDOGS PLAY PHILLIPS WEDNESDAY EVENING

Wednesday night at eight o'clock the McPherson college basketball team will be seen in action for the first time at home this year. They will meet Phillips University quarter on the local court at Convention Hall. Three weeks ago Phillips defeated the Bulldogs 18 to 26 on their court. The Bulldogs have played six games since then and have gained a world of experience on a twelve day trip which they finished yesterday. Phillips always has a strong team and they are going to be hard to beat even on our floor.

Saturday, January 11th the Bulldogs match their strength and skill with the Knights at St. Mary's. In the opening conference game for both schools, St. Mary's is a deadly foe on their own court, in years past the Canine teams have come more nearly dropping their games to the Irish than to any other school and this year can be no exception for both teams have about the same line up as last year with slight changes to begin with.

The second conference game will be played here with Kansas Wesleyan on January 14, one week from tonight.

## RUNNING 12 INCH CASING AT COLLEGE OIL TEST

Mon., Jan. 6—The Darby Petroleum Corporation at their McPherson College No. 1, n.w. sec. 13-20-2, with the Patton Drilling Company in charge, is drilling at 1672 feet this morning. The 12 inch casing will now be run.

## LOCAL ORATORICAL CONTESTS ANNOUNCED BY HESS

Mon., Jan. 6—Prof. Maurice A. Hess announced this morning that the local Anti-tobacco oratorical contest would be held in the chapel Wednesday evening, February 12. The local Peace oratorical contest will be held in the Church of the Brethren Sunday evening, March 9.

## THE SPIAN CLUB WILL PRESENT "THE QUEEN'S HUSBAND" MONDAY EVENING— ONE OF THE GREATEST DRAMATIC PRODUCTIONS PRESENTED BY THE CLUB

**Dramatic Critics Throughout The Country Say That It Is A Powerful Production And A Successful One Yet Found In The World**

### EXPERIENCED CAST

**Elaborate Costumes And Especially Constructed And Painted Scenery Will Be Used**



**MURLIN HOOVER**

Mr. Hoover is playing the part of the King. While in high school at Overbrook, Kansas, he was in the junior and senior play, and a member of the high school dramatic club. After being graduated from high school he organized a dramatic club in his local school district and took part in two plays the organization presented. He became a member of the Thespian Club when a sophomore and carried parts in many one-act plays given by the dramatic art class.

### PARLOR REMODELED IN MEN'S DORMITORY

Santa Claus apparently remembered the men's dormitory this year when he made his rounds, for when the men returned they found, to their surprise, an enlarged, remodeled parlor.

Before the Christmas vacation, through the efforts of the Y. M. C. A., arrangements were made to remodel the former parlor. Emery Metzger, Glen Harris and F. W. Forney removed the partition between the parlor and the room to the south and cased a large double doorway, combining the two rooms into one. The woodwork was repainted and furniture added.

Through the efforts of Dr. V. F. Schwalm money was raised among the friends of the college and a good second hand piano was purchased. Dr. W. C. Heaston presented a lounge to help in the furnishings. Draperies were made by Miss Lora Troutle.

### BULLDOGS WIN LAST GAME ON TOUR

Kansas City, Kan., Jan. 6—McPherson College Bulldog cagers defeated the Bowman Athletic Club 25 to 27 here tonight, winding up their long vacation trip. They play in McPherson Wednesday night with Phillips University of Enid, Oklahoma.

The results of the Bulldogs' trip are like this:

- Dec. 26, McPherson 24, Maryville 27.
- Dec. 27, McPherson 17, Maryville 27.
- Dec. 28, McPherson 22, Strandberg 41.
- Jan. 2, McPherson 15, Cripe's Bakery 26.
- Jan. 4, McPherson 29, Cudahy 42.
- Jan. 6, McPherson 25, Bowman 27.

With elaborate costumes and especially constructed and painted scenery the Thespian Club will present the play "The Queen's Husband" by Robert Emmet Sherwood, one of the greatest dramatic productions ever attempted by the club, in the Community Hall, Monday evening at 8:15. The play is a three act comedy under the personal direction of Mrs. Lawrence H. Gates, instructor in dramatic art.

"The Queen's Husband" has enjoyed a very successful season on Broadway in New York and is very highly recommended by dramatic critics throughout the country. Last year it was given at Iowa University and K. S. A. C., Manhattan, two of the strongest drama centers in this part of the country.

Mr. Herbert L. Drake, president of the Kansas City Center of the Drama League of America and former director of the Kansas City Little Theatre, wrote: "We had a most successful production of 'The Queen's Husband' at the Kansas City Little Theatre a year ago last December and I am glad to learn that you are attempting it for it is a splendid play".

The play deals with the governmental affairs of an imaginary island in the North Sea, north of the British Isles. It is not an ancient play but is strictly modern and takes place at the present time. The attraction centers around the "honored" king whose nation is ruled by the guiding hand of the Queen. The trying times of a civil revolution are very humorously manifested while the Queen is visiting in America. The character of the King is very ably played by Murlin Hoover and the ruling Queen is Ruth Hickenstaff.

Along with the civil strife a intermingling thread of romance is carried on by the King's secretary, Granton, and the king's own daughter, Princess Anne.

With a great deal of experience in dramatic work, Miss Beth Hess is acting the character of Princess Anne. Playing opposite her is Leland Lindell. Mr. Lindell comes from Windom with four years' experience

(Continued on Page Four)

A Scotch traveling salesman, held up in the Orkney Islands by a bad storm, telegraphed to his firm in Aberdeen: "Marooned here by storm wire instructions".

The reply came: "Start summer vacation as from yesterday".



**BETH HESS**

Playing the part of Princess Anne. Has had a wide experience in dramatic work. Miss Hess has played in the junior and senior high school play at Morrill, Kansas. She carried the lead in a church organization play and an all-school play, in the same community. Last year she was voted a member of the Thespian Club and carried a minor part in the club play last year. Beth has also taken private lessons in expression.

### CHURCH CHOIR PRESENTS CHRISTMAS CANTATA

Wed., Dec. 12—The choir of the Church of the Brethren, under the direction of Mr. Lawrence E. Turner, presented the Christmas cantata "The Birthday of the King" by Norwood Dale, in the college chapel this evening before a fairly large audience.

Solo parts were sung by Miss Ruth Turner, soprano; Miss Helen Eberly, alto; Mr. Lloyd Diggs, tenor, and Mr. Ross Curtis, bass.

The cantata was divided into three divisions, part one, "The Prologue", part two, "The Nativity", and part three, "The Star".

### SPECTATOR BECOMES MEMBER NATIONAL PRESS ASS'N

THE SPECTATOR has become a charter member of the National Scholastic Press Association, a national organization for the purpose of furthering the interests of all forms of collegiate and scholastic journalism.

Briefly, the services of the association are these: (1) The making of a yearly critical analysis, with the aid of a comprehensive score book, of each publication which is a member of the association. The standards and methods for this analysis are improved and revised as rapidly as the progress made in scholastic journalism permits. This yearly service feature is known as the All-American Critical Service and Contest.

(Continued on Page Three)

## NININGER UNEARTHS LARGE METEORITES

**It Is Believed To Be The Largest One Yet Found In The World**

### FOUND IN SINALOA

**Finds Many Other Specimens In Different Parts Of Mexico**

Wed., Dec. 18—It was learned today that Prof. H. H. Nininger, meteorologist and naturalist of McPherson college, had unearthed what is believed to be the largest meteorite yet found in the world, in the state of Sinaloa, Mexico.

Prof. Nininger is of the opinion that the newly unearthed meteorite is larger than a 35 1/2-ton specimen in the American Museum of New York City, which the Arctic explorer, Peary, brought to the United States from Greenland. The McPherson meteorologist has estimated that the large meteorite may weigh fifty tons. The Mexican government is guarding it and is constructing a building over it.

Besides the large specimen, Prof. Nininger has found five other important meteorites in Mexico. These were found by the early Spaniards in the sixteenth and seventeenth centuries, and were worshiped as idols by the Indians. Four of these were found in the state of Chihuahua and the other in Zacatecas. They weigh 22,000 pounds, 30,000 pounds, 16,000 pounds, 7,000 pounds and 1,000 pounds respectively.

The McPherson professor also visited Xiquipico, state of Mexico, where, in prehistoric times, a shower of meteorites fell, of which the Indians made tools, some of which still are in use. He has acquired from an Indian a "barrota" made of meteoric metal and will add this to his private collection of meteorites, one of the most complete in the United States.

## CHRISTMAS, DOMINANT NOTE IN Y. W. C. A. PROGRAM

Tues., Dec. 17—Christmas was the dominant note in the Y. W. C. A. program this morning. Closely linked with it was the relationship with Germany. Mrs. Tate sang "Silent Night, Holy Night" in German. Irene Mason discussed "Conditions in Germany". Germany is like a weather-beaten ship. She is noble and capable, else she could not have come back as she has. Her appearance implies wealth—but actual conditions are not so, for she is politically torn and shattered. Other countries must lend a hand to put her economic condition on a sound basis.

"Christmas in Germany and other lands", was discussed by Una Morine. The origin of many of our present day customs come from European countries. Some are pagan in their origin. As in all other matters, so in the matter of Christmas celebration, the United States has been the melting pot of all nations.

## HOOVER VISITS McPHERSON COLLEGE CAMPUS TWO DAYS

Wed., Dec. 18—Mr. Lyman Hoover, regional Y. M. secretary visited on the campus today and yesterday. He brought several messages which received most favorable comment.

At Y. M. meeting yesterday he discussed problems which his experience has taught him that students encounter. They were problems on our campus. The first, the need for a scale of values in school. He said that interests and activities should not be engaged in which dissipate the student's energies.

There are a number of tests which may be applied to any activity: (1) How lasting? Will the experience be of value after school days? (2) Do I need development along this line? (3) Can I make a contribution here? (4) Will it satisfy or will I be disgusted with it? (5) Is it an activity the world needs?

(Continued on Page Two)

## HEREBY RESOLVED

Hello little 1929! I see you are just as peppy as a dame as any of the last sweet hearts of old Sugar Daddy 1929. Yeah, we're all set to show you the best time in the world for 265 days, and maybe you don't think that old M. C. isn't right on the map when it comes to the rozzie-dozzie time. So crawl right back into the cheese 1929 for there is a big hole missing. Baby 1930 is going to roll her own career and she is going to be the oyster's ice-skates while she does it. Old 1929 we told you your back would break carrying our nerve around. Besides you neglected to dust off your line and we crave originality. No sir, 1929, we aren't flattering you—don't tell us we have been eating grapes because we talk in bunches. There is an unanimous motion carrying the house which asserts that little slinky 1930 is the fishes foot prints and of grandpa 1929 doesn't annoy himself and raise a wrinkle for he has tooted his trick horn plenty long.

Now 1930, get down to business and rake out the old inspiration and make some New Year's Resolutions for the gang guaranteed not to slip for at least six days.

I Herby Resolve throughout the coming year to study faithfully, and if I don't study faithfully to make the profs. believe I have anyhow, and if I don't make them believe I have, not to worry about it.

For boys only—I Herby Resolve not to take any girls in my roadster and if I do take them out not to

make them walk home, and if I do make them walk home not to make them walk very far—in fact not more than ten miles.

I Herby Resolve that throughout the coming year I shall be a model student unless I am tempted not to be; that I shall be a good example at least once a month; that as a feature writer I will not try more than two wise cracks a week gleaned from Humor Magazines of America.

On the air the other night it was learned that a peanut is the little brother of a coconut with its whiskers shaved off.

A cauliflower is a collegiate cabbage.

Casually speaking—the thing a co-ed enjoys doing most is more.

The girl who looks upon love as a circus usually finds out, after all, that it is only one-ring affair.

Oscar says—A wall flower is a good girl with no place to go wrong.

Here! Here! What has happened—a resolution has popped—oh well! You can always make more resolutions but there is only one time to pass on a wise crack.

Happy New Year? Rats! That term theme too has to ankle in eventually. Inspiration! Where art thou? My Kingdom for it.

What's the use?

Yours till the New Year resolutions get a break.

Sea-See.

# The Spectator

The Home of the  
Bulldogs



The School of  
Quality

The Student Newspaper of McPherson College, published by the Student Council—purpose to record accurately past, present and future activities—to stimulate continually future achievement—to uphold sane and constructive student opinion—to stimulate organizations for the betterment of the student body—to emphasize further campus improvements—in activities—to be a good sport—win or lose—to recognize all activities and organizations—to live and cherish our one code—"The School of Quality".

Entered as second class matter November 28, 1917, at the postoffice at McPherson, Kansas, under the act of March 3, 1907.  
Subscription rates: \$1.50 Per Year.

Address all correspondence to  
**THE SPECTATOR**  
McPherson, Kansas.

EDITORIAL STAFF		BUSINESS STAFF	
Editor-in-Chief	Leland E. Lindell	Business Manager	Ernest E. Watkins
Associate Editor	Mildred Swanson	Asst. Business Manager	Fred Anderson
Associate Editor	Donald L. Trout	Circulation Manager	Carroll D. Walker

REPORTERS			
Ethel Skofy	John Berkebile	Ruth Hess	Bernice McClellan
Chester Carter	Attilia Anderson	Gilbert Myers	Marilyn Hooyer
Faculty Adviser			Alberta Yeager

**NOW WHAT?**

Wasn't it grand to once more push your feet under Mother's table and eat those good old dumplings and homemade bread? Wasn't it great? Gee! Didn't it feel fine to see Dad and Mother again and tell them all about your glorified old days at M. C.? It was too bad, however, when those old cotton whiskers fell off when playing Saint Nick for the kiddies. They didn't mind. That scarf Dad gave you, and that tie from cousin John, but say, didn't Mother "hit the spot" with those half dozen pair of socks. Aren't they coming in handy? Wasn't your roomie surprised when you came back wearing a pair of those abbreviated gadders—spats. Yes! He had a pair too. That wrist watch with the stones in it (yes, we heard Amos and Andy too) was just the thing. Christmas is great, isn't it?

Now what? You are back in the swing again—don't it feel good to be back—and it is less than three weeks till the first semester is over—then exams. It was nice you could write that term paper while you were home but that does not mean you won't have anything to do now. Work and study while you can, for next semester will be crowded with all kinds of activities—banquets, plays, picnics, sneaks and a host of other events. Of course you will all go to the first big dramatic production of the season Monday evening.

The new year's resolution you made—start living up to it now. Now is the time to do your best. Today is the time. You are not concerned about your past or what has happened; nor are you worrying about what will happen after you are gone. The one great medium that dominates your heart and soul is the present. Now. Today. You are concerned what you will or are doing. Do it well and the future will take care of itself.

You can make your resolutions from Christmas to New Year's, but it will take you from New Year's till Christmas to prove their worth.

**DORMITORY IMPROVEMENT REALIZED**

The improvement to the parlor in Fahnestock Hall is a betterment that has been in great need for a number of years. It comes not only as a gift from the men of the dormitory but also from friends the college has in other parts of the country, showing that they had sensed the need of such an improvement. Different members of our own faculty liberally contributed to a fund they called the Christmas gift to Fahnestock Hall.

The new parlor has been anticipated for a great while by the men of the dormitory so it is up to them to treat it not only as their own property but as the property of others—outsiders—friends of M. C. Let it stand as a memorial to those who have been graduated and a welcome to them whenever they may return.

**GREETINGS 1930!**

Now is the time of year when all business concerns are taking an inventory of their stock and calculating what percent of their income is profit.

Now is the time of year when all energetic people are making New Year resolutions. Before one makes his resolution he should take an inventory of his past year, calculate his percent of profit or loss. What has he gained as a result of the past year? Is there a gain or is there a loss? Is your stock of worldly achievements increased over that of the year previous and should you increase your present stock? Will your balance sheet show an even balance or will you have a deficit to repent or carry over into the next year? A thousand other questions may be asked before one has completed his inventory.

Now comes the New Year's resolution. Nearly everybody makes a resolution at this time of year because it is the starting of a new course. We might say that a majority of vows made are broken.

We have been noting a number of resolutions that some of our prominent statesmen have been making. Some of them are not making any because they say they will not keep them. Mr. John Pershing, Commander of the American Expeditionary Forces in France during the World War, who is now visiting in London, has presented the best resolution we have so far noticed. When approached by a reporter and asked what his New Year's resolution was to be he merely replied that he wasn't going to make any resolutions, but if he did make one it would be, simply stated, "Mind Your Own Business".

Such a resolution might apply to any one of us. If we "mind our own business" and let others take care of their own, then the friction between all concerned will be lessened.

**HOOVER VISITS CAMPUS**

(Continued from Page One)

Another problem was how to develop fellowship that will bring out the best in the individual. How can he be helped to think for himself?

Mr. Hoover was unable to suggest a complete remedy but said the best fellowship is in an organization such as the Y. M. should be.

This morning in chapel Mr. Hoover attempted to point out a few reasons for lack of interest in Christianity.

One reason is that the negative side has been emphasized. Refraining from evil is not the whole of Christianity—you must do something constructive.

Another reason is that most peo-

ple don't get beyond the practice period—they waste their energies practicing for Christian living but never get to play in the real game.

A third reason is that too many people "get religion" or think they are saved and the rest is just a monotonous hanging-on affair.

A fourth reason is that people try to get along without food or rest. At times they attend a meeting and gorge themselves with good things and then starve until the next gorge.

Mr. Hoover spoke in several classes and met with the Y. M. and Y. W. cabinets.

President V. F. Schwalm expressed his delight and satisfaction with Mr. Hoover's work on the campus.

**Bulldogmas**



A member of the staff suggested that the chess was certainly porous—yes, probably the poorest they could get.

Our idea of a formal notification is this:

Mr. Rump:  
Your chapel seat is south side row five seat number eight, numbered from the center aisle.—R. E. Mohler.

We are worried to death to hear that shirts are to be lengthened—in fact we feel it is dangerous to the health of our fair coats. Why just the other day we noticed a girl walking around on crutches—she must have tripped on her new skirt.

Men are funny creatures—yes, and there is only one thing funnier—women.

**CRADLE ROLL**

Beulah Blickenstaff	Jan. 9
Cora Sell	Jan. 9
John Andew	Jan. 11
Bernadene Van Blaricum	Jan. 17

**SANTA BRINGS GIFTS TO Y. W. C. A. GIRLS**

Thursday, Dec. 19—With joyful smiles Santa himself appeared this afternoon at the Christmas Y. W. C. A. party, and in spite of his warning that only the good little girls would receive presents, every one in the room was remembered—perhaps out of the kindness of his heart, or perhaps because every member of the organization fitted his description.

As soon as the girls had assembled at four thirty o'clock, Helen Eberly led in singing a familiar carol after which Velma Elaine Wine gave the reading "And a Little Child Shall Lead Them".

While the group was singing "Jingle Bells" Santa burst into the room with his pack on his back and a jolly greeting for everyone.

**LOCAL DRAMATIC CRITIC SPEAKS OF THESPIANS PLAY**

Miss Selma Engstrom, '25, who studied in dramas last year at the University of Iowa and who has been on the stage of a chautauqua company in the presentation of "The Fool", has recently issued the following statement concerning the Thespian play, "The Queen's Husband".

"Robert Sherwood's comedy 'The Queen's Husband' was eminently the most successful play given by the University Players at the University of Iowa last year.

"It is a play highly satirical in nature and throws light upon some of the petty dynasties and kingdoms of present-day Europe. Although the play is light and written in a humorous vein, it is full of significant truths and might almost be said to contain a moral.

"The play carries with it the usual ear mark of Sherwood's comedies, sparkling with witty dialogue. The contrast between the imperious, dictatorial queen and her droll, retiring and modest little king is reflected in many amusing situations.

"This play is one that is worthy the efforts of any college or civic organization."

Signed: Selma Engstrom.



**RUTH BLICKENSTAFF**

Coming to McPherson college in the fall of '27 with two years experience work in high school in Nampa, Idaho, and a member of the senior play cast. In the spring of '28 Ruth was taken into the Thespian Club and made the club play cast of "The Goose Hangs High". Miss Blickenstaff is carrying the part of the Queen in "The Queen's Husband".

**SPECulations**

Prof. Bohling recommends married life to every student at M. C. We imagine he is drawing his conclusions too soon—for does he know the texture of his wife's biscuits, nor has he found out that she cannot be outspoken.

Jessie Churchill is looking at the world through rose colored glasses. Everything is "Rosie" now.

Prof. Fries is compelled to wear glasses in the business office every since Christmas. He says Jessie's sparkler hurts his eyes. We wonder how it affects "Rosie's" eyes.

When you are invited out to dinner it's easy to tell which salad is yours. If you start eating the one on the right, the one on the left is yours.

Christmas vacation brought to light one more great truth. Another theme song has been invented—"Singing in the Bath Tub". It is destined to become unpopular next week—if the life of former songs is considered.

**THE WORLD IN YOUR HOME**

**Majestic**

**GREEN ELECTRIC COMPANY**

**UPSHAW**

**Furniture and Undertaking Co.**

Ambulance Service Day or Night

S. T. Boston J. W. Uphaw

Established 1897 Office Phone 197

**McPherson, Kansas**

IF IT'S NEW WE SHOW IT

**GORDON'S FASHION SHOP**

First of all—Reliability

**Professional Directory**

<p><b>Dr. W. C. HEASTON</b> PHYSICIAN AND SURGEON Over Hultquist's Res. 533 — Phones — Office 336</p>	<p><b>Dr. L. G. REIFF</b> DENTAL SURGEON Over Laderer's Clothing Store Office Phone 736 — Res. 887</p>
<p><b>Dr. L. F. QUANTIUS</b> PHYSICIAN AND SURGEON 10 to 12 A. M. 5 to 6 P. M. Sunday 10 to 11 A. M. 5 to 6 P. M.</p>	<p><b>Dr. A. A. FREEBURG</b> Restorative and Preventative DENTISTRY Allison Building Phones: Office 286; Res. 379X</p>
<p><b>E. L. HODGE</b> DENTIST Over McPherson Citizens Bank Office Phone 252 — Res. 238 1/2</p>	<p><b>Drs. V. N. &amp; A. V. ROBB</b> OPTOMETRISTS 8 to 12 A. M. 1 to 6 P. M. Phone 190</p>
<p><b>J. H. Powers, M. D.</b> Physician and Surgeon Res. 355—Phones—Off. 264</p>	<p><b>W. E. GREGORY</b> DENTIST Office Over Farmers Alliance Insurance Company—Phone 373</p>

**DR. HARNLY, VICE-PRES. OF McPHERSON COLLEGE,  
INSTRUCTOR FOR THE LAST THIRTY-EIGHT YEARS**

**First Introduced Science Department In The College And Has  
Seen It Advance To One Of The Best Equipped  
Departments In Kansas**

**EDITOR'S NOTE**

This is the third of a series of articles concerning interesting persons on the campus, both faculty and students.

**BY ALBERTA YODER**

In turning the pages of history back twenty, thirty and nearly forty years and reading in the files of time the miseries and hardships and pleasures and happiness of our own dear college and scanning the roll of faculty members we come across one who is the oldest active instructor in McPherson College.

Thirty-eight years ago Dr. H. J. Harnly came to McPherson college as teacher of Natural Sciences. During these years Dr. Harnly has seen the college make outstanding growth in many fields of endeavor. He was particularly interested in science and in 1892 when he came to McPherson the science department did not have any apparatus. However, there was a microscope which had been obtained from a Youth's Companion subscription. All departments of the college were located in the Sharp Administration building. At that time the old part of the Y. W. C. A. room was in two parts. The north side Dr. Harnly fitted up as a chemistry laboratory and the south side was used by all other departments of science.



DR. H. J. HARNLY

Dr. S. Z. Sharp, the first president of McPherson college, was president when Dr. Harnly came to the institution. There were seven other members of the college faculty. The science department grew until it was spread out covering the entire basement of the Administration building. Later the room now used as Prof. J. A. Blair's class room was also used by the science department.

As the department grew, laboratory equipment of the best kind was added. More instructors were also added to the science department. As Dr. Harnly labored and achieved in the interest of science building for McPherson college. In 1922 one of the best equipped science buildings in the state was completed. This building was named Harnly Hall in honor of Dr. Harnly for long and valued services to McPherson college.

Dr. Harnly gave his life to a service of growth. There were times in the early years of the school when the institution seemed to totter and the future of the college looked doubtful but Dr. Harnly was one of the few men who stayed by in the trying times and now he has seen the college make remarkable advancement.

When asked what he considered his greatest satisfaction through these years, Dr. Harnly said, "The association and friendship with young people who are interested in Christian education has been an inspiration to me. I have also seen the science department grow from virtually nothing until it is one of the best equipped science departments in the state". Dr. Harnly has, as students, young people whose parents are alumni of the school.

In 1891 he received a B. S. degree from Illinois Wesleyan and in 1892 he received his A. M. degree from the same institution. From Harvard he received an A. B. degree in 1892 and in 1900 he received his Ph. D. from Illinois Wesleyan. In 1910-11 he was a special student in Leland Stanford University. Dr. Harnly made an extensive World Tour in 1920-21, studying problems in other nations.

Dr. Harnly is now vice-president of the college and also professor of physiology, bionomics, and geology. In 1913-14 he was acting president. As a teacher he presents his points with intensity and clearness of fact.

No amount of money in establishing memorials or libraries can offset almost four decades of honest, sincere, devoted, Christian service as a teacher in a college. Even after so long a period of service Dr. Harnly still retains full physical vigor and optimistic fervor.

**SPECTATOR BECOMES MEMBER**

(Continued from Page One)

(2) The conducting of a question and answer bureau by means of a continuous service to problems are which they may submit their individual problems, if these problems are presented in the form of specific, not general questions.

(3) The extending of help to state scholastic press associations and to all organized groups of members interested in the advancement of scholastic journalism.

(4) The holding of a national convention which is in reality a short course in scholastic publishing.

**FACULTY SPEND VARIED FORMS OF VACATIONS**

Not only did many students go to distant parts of the United States for Christmas but also several faculty members spent the holidays in distant parts.

Prof. J. A. Blair and family traveled by auto to his former home at Chambersburg, Pennsylvania, where they visited with relatives.

Prof. George N. Boone and family drove to Bienville, Louisiana, where they visited at the home of Mr. Boone's sister, Mrs. Bowers. Paul Bowers accompanied the Boones.

Dr. J. Willard Hershey and Dr. J. H. Harnly left December 26 for Des Moines, Iowa, where they spent one week attending a meeting of the American Association for the Advancement of Science. The remaining time they spent in McPherson.

Miss Della Lehman, visited with friends in North Manchester, Indiana and also at Detroit, Michigan.

Coach George Gardner and family visited at Pratt, Kansas and Joplin, Missouri, the latter half of the vacation Gardner was with his basketball team.

Prof. J. Hugh Heckman was in McPherson during the vacation and spent his time writing for the General Educational Board of the Church of the Brethren.

Miss Thurow spent the vacation at her home in Macksville, Kansas.

Miss Shelley went to her home at Elmdale, Kansas.

Dr. V. F. Schwalm, Dr. J. J. Yoder, Prof. J. L. Bowman, Prof. L. A. Utrecht, Miss Edith McGaffey, Miss Fern Linenfelder, and Miss Heckethorn spent the Christmas holiday in McPherson.

**SCHAFFER'S HOME TOWN**  
Bread and Pastries  
Phone 344

**McPherson Floral Co.**  
Everything in  
Cut Flowers, Plants  
We Telegraph Flowers  
Anywhere.  
Phone 172 F. T. D. Service

**Franklin XX Ice Cream**  
**Eastman Kodaks and Films**  
**Geo. Hultqvist**

**Sid's Barber Shop**  
We do our work to please  
you  
Prompt Service  
Sanitary Methods

**ORIE J. ABEL**  
Picture Frames Made to Order  
At Smalley's Art Shop

**THE ROYAL BARBER SHOP**  
The Student's Choice

**Parker Fountain Pens Stationery**  
**Almen-Lovett Drug Co.**

**Okerlind & Aspegren**  
The Clothes Cleaners  
See WHITEBECK, College Agt.

**Wilbur Barber Shop**  
Moved From  
109 S. Main to 305 N. Main  
An Up-to-date Salitary Shop.  
We Welcome College Students

We appreciate  
Student Trade  
**Sunflower Barber Shop**  
W. A. RAUSCH, Prop.

**J.C. PENNEY CO.**  
119 North Main McPherson, Kansas

**A Million Women Approve  
Our Outstanding Values in  
Full-Fashioned  
HOSIERY**

And a million women can't be wrong! They know that a their J. C. Penney Store they can find a smart, thrifty answer to every hosiery problem. Come in and let us show you!

**No. 444**  
Is Semi-Sheer  
A pure silk hose  
with mercerized  
top and sole. And  
only a pair—  
**98c**

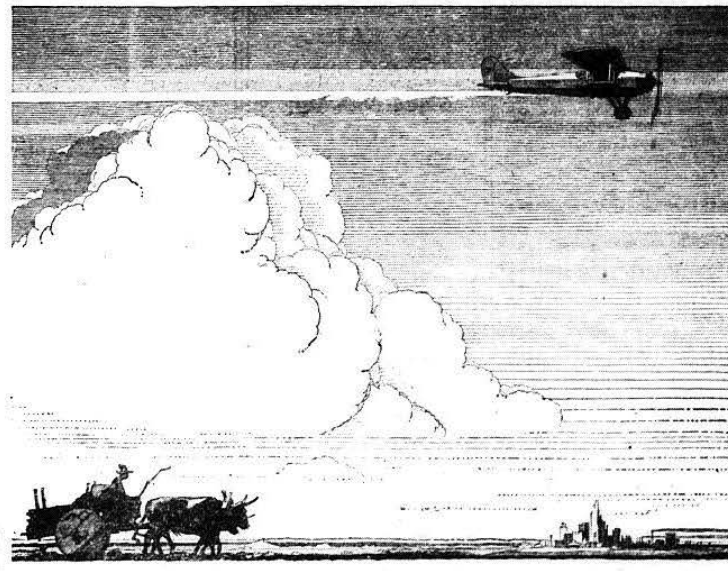
**No. 449**  
Service Weight  
Ever popular!  
Good-looking and  
well-wearing. Pure  
silk, mercerized  
top. Pair,  
**\$1.49**

All in the Smart Shades of the Season!

Other Popular Numbers

**No. 445**—Silk - and - Rayon Hose. Pair... 98c  
**No. 447**—Semi-sheer, silk-to-the-top! A wide favorite! Pair .....\$1.49  
**No. 455**—Clear chiffon to the top, with a picot edge! Pair .....\$1.49

**REAL HOME COOKING  
BAKER'S CAFE**



**UP FROM THE OXCART**

"Acceleration, rather than structural changes, is the key to an understanding of our recent economic developments."—From the report of President Hoover's Committee on Recent Economic Changes

**YESTERDAY**, the rumble, creak, and plod of cart and oxen. To-day and to-morrow the zoom of airplanes. Faster production. Faster consumption. Faster communication.

Significant of electricity's part in the modern speeding-up process is the fact that during the last seven years, consumption of electric power increased three and one-half times as fast as population.

General Electric and its subsidiaries have developed and built much of the larger apparatus that generates this power as well as the apparatus which utilizes it in industry and in the home.

The college-trained men who come every year to General Electric take a responsible part in the planning, production, and distribution of electric products, and at the same time receive further technical or business training.

JOIN US IN THE GENERAL ELECTRIC HOUR, EVERY SATURDAY AT 7 P.M., E.W. ON A NATION-WIDE BROADCAST

**GENERAL ELECTRIC**

GENERAL ELECTRIC COMPANY, SCHENECTADY, NEW YORK

# SPORTS

## BULLDOGS PLAY STRONGEST TEAMS IN MID-WEST

Christmas Day—Coach George Gardner, accompanied by eight of his strongest Bulldog cagers, left this afternoon for a twelve day trip to eastern Kansas, Missouri, and Iowa where they will play six of the hardest games ever to be scheduled for a Kansas college team of any kind. Gardner has arranged to play the strongest teams with which he could secure games in order to whip his team into shape for the coming Kansas conference season. The experience gained from a trip like this should harden the Canines to the place where their conference games can be handled with apparent ease. This trip is not to be a display of means of some definite coaching strength for the Bulldogs but a experimentation with many different combinations of plays with which they have been noted in past years. All is being done in an effort to repeat what has already been done twice in the Kansas conference.

On the present trip the Bulldogs will play two games with the Marysville Teachers, last year's champions of the Missouri conference, on Dec. 26th and 27th at Marysville, Mo. On Monday night, Dec. 30th the Bulldogs will meet the Strandberg team at Kansas City, Mo., which team was formerly known as the Cooks' Painters and for the past two years holders of the national championship. On Thursday night, January 2nd the Canines face the Cripe's Bakery five at St. Joseph, Mo., better known as the Hillyards who for two years held the national championship and who played against the Bankers two years ago and who eliminated the Bulldogs from the national tournament the same year. Saturday night, January 4th, the Bulldogs are pitted against one of the strongest of all the independent teams, the Guday Athletic Club team at Sioux City, Iowa and on their return trip will play the Howman Athletic Club team at Kansas City, Kansas, on Monday night, January 6th. The Bulldogs will return home on January 7th for their first home game on January 8th when they will play the strong Phillips University five from Enid, Oklahoma.

### THE DOPE BUCKET

By the Sport Editor

Several slight changes have been brought about in the basketball rules for the coming season. The five-point play or the play which made possible a five point play is no longer legal. When a fouled player is granted two free throws, the ball goes back to center regardless of whether the last throw is made good or not, thus doing away with the possibility of a tip-in. By the old rule a man might be fouled while shooting and if his shot was good, get two points, then be awarded two free throws with a possibility of three more points. Then there is a no-tip rule that he been proposed and assigned to several schools to try out this season before final adoption. The purpose of this rule is to eliminate the high ball at center. The way it works is something like this: at the beginning of each half the ball is tossed up at center. The scored-on quarter will put the ball in play under the basket they defend. The toss up following a "held ball" will still be used.

Home Made Candy  
Hot Lunches  
Chili  
Fancy Boxes of Chocolates  
**Palace Of Sweets**

Twentieth Century  
Poetry  
Edited by  
John Drinkwater  
Henry Seidel Canby  
William Rose Benet  
A comprehensive anthology of modern English and American poetry.  
**\$4.00**

**Smalley's**  
133 Telephone 221 North Main

## THESPIAN PLAY MONDAY

(Continued from Page One)

in high school dramatic work. He has carried parts in four high school plays, having the lead in three, including the senior play. Last spring he made the play cast of "He and She" and became a member of the Thespians Club. He also carried a part in "Daddy Long Legs", all-school play last May.

Mr. Hoyt Strickler plays the part of the dominating Premier, General Northrop. While in high school he carried parts in and a speaking part in an operetta given his senior year. The first two years of his college career he took dramatic art courses. The second semester of his freshman year he became a member of the Thespians Club, and during his junior year was vice-president of the club. Mr. Strickler was a member of the cast for "Adam and Eve", his freshman year. While attending La Verne college, California, he carried a part in the play "The Fool", by Channing Pollack.

John Lehman, the revolutionist leader Dr. Fellman in "The Queen's Husband", is an actor of high caliber. "Jack" has taken part in a number of dramatic art one-act plays. Last spring he became a member of the Thespians Club after securing a position in the play "He and She", carrying one of the leading parts. He also played the leading part in "Daddy Long Legs", all-school play sponsored by the Chamber of Commerce.

The new scenery for the play was constructed by "Casey" Voran and Ralph Johnson. The art work and scenery painting has been done by Ada Brunk and Charles Mattox. The special scenery adds a touching significance to this popular production. Wednesday morning the Thespians

**EAT THORO-BREAD**  
Made With Milk  
Baked by  
**IDEAL BAKERY**

**ALTERING CLEANING PRESSING**



Moderate Prices  
Quick Service

**Hultqvist**  
Cleaner — Tailor  
Phone 56  
Diggs—College Agent

**Rothrock Grocery**  
ECONOMY and SERVICE  
is our Motto  
We Deliver

The Gift For Her



Ladies' and Men's wrist and strap watches.  
New Waldemar chains, rings and bracelets.

**J. Ed. Gustafson**  
111 N. MAIN STREET

plan Club will have charge of the chapel period at which time they may give parts of the play and explain it to a certain extent.

The cast of characters is as follows:  
King Eric VIII — Murlin Hoover  
Queen Marie — Ruth Blickenstaff  
Princess Anne — Beth Hess  
Frederick Granton — Leland Lindell  
General Northrop — Hoyt Strickler  
Palps — Phillip Lauver  
Prince William — Edmar Kjera  
Dr. Fellman — John Lehman  
Laker — Harold Crist

Lord Birten — John Berkebile  
Major Blint — Veral Ohmart  
First Lady-in-Waiting — Bernice McClellan  
Second Lady-in-Waiting — Sylvia Edgecomb  
Petley — Mildred Doyle

Mrs. Anna Tate spent the holidays in Illinois. Prof. Roy C. Petry visited in Indiana. Prof. Bohling was out of town visiting relatives and friends.

Pajamas will not be popular as a street costume for men until provided with pockets for a watch, key-ring, fountain pen, pencil, billfold, the twelve-ride railroad ticket, the driver's license, and the little red memorandum book stuffed with newspaper clippings.

For Insurance See **Carl M. Anderson**

**Lake Superior Lumber Company**  
Building Material and **COAL**  
Phone 40

Old and New  
We are proud of the NEW vault and fixtures just installed and want you to inspect them when you visit us. But we also value the OLD principles and standards of sound banking which have been tested by our thirty years experience.

**Peoples State Bank**  
The Student bank

**Bulldog Barks**  
Vacation indulgence in irregular hours—petted and spoiled by adoring parents, is now history. Year half gone—got to make hay this last semester! Altho Ben Franklin put out the "early to rise" propaganda 'way back in 1750, it still bears the O.K. label in 1930.



**The Farmers Alliance Insurance Co.**  
FIRE — LIGHTNING — TORNADO

A Pen that will Last You a Lifetime  
Get a Sheaffer Lifetime from us and your Pen worries are over. . . They are guaranteed for life.  
**BIXBY, LINDSAY & CO.**

**BASKET BALL SHOES**  
\$1.25 — \$3.50  
**Lawson-Sweeney**

**BOOST THE BULLDOGS**  
To Victory over Phillips U.  
Watch the Bulldogs play . . . then dine with us.  
**PURITAN Cafe**

Quality Printing Economically Done  
Anything that is printed is Worth Printing Well  
We offer you for the production of your printing requirements, our many years experience, plus an up-to-date equipped plant, with quick service and right price.  
**The Daily Republican**  
McPherson, Kansas

**Skaggs Safeway Stores**  
"Distribution without Waste"  
Quality Groceries and Efficient Service at a Saving.  
Phone 895 121 S. Main  
McPherson, Kansas

**McPherson Laundry**  
Chas. L. Austin,  
College Agent  
Basket in boy's dorm.

**Sweeney Barber Shop**  
108 1/2 South Main Street

**Baldwin Music Store**  
Sheet Music Accessories  
Columbia Records  
Phone 299

**Carson & Smith**  
Guarantee to satisfy with Prompt Service and Good Work.  
College Agents,  
**Gene Dawson;**  
**Kermit, Guy Hayes**

The **McPherson & Citizens State Bank**  
of McPherson, Kansas  
Capital and Surplus \$125,000.00  
The problem of the Student is our chance to apply the "Golden Rule". Come in.

Heat With **GAS**  
and have your home comfortable this winter  
**McPherson Gas Co.**

**Phoenix Hosiery**  
\$1.50 — \$1.95  
**STANLEY'S**

Your Patronage Appreciated  
**Home State Bank**

Have those old shoes repaired at the **Charles Daron Shoe Shop**