

# The Spectator

McPHERSON COLLEGE,

McPHERSON, KANSAS

VOL. XI

TUESDAY, MARCH 6, 1928

NO. 24

## Bulldogs Conference Champs

### DOGS PLAY BANKERS FOR TOURNEY TRIP

Benefit Game To Send Conference Champs To National Tournament At K. C.

#### FAST GAME IS EXPECTED

Entrées For Competition In Crack Basketball Are Rapidly Swelling The List At K. C.

Tonight on the Convention Hall court, McPherson fans are to be treated with a game concerning which the fans have been discussing all season. At eight o'clock the championship college team will go up against the McPherson Bankers, champions of the Kansas Independent League in a contest for city supremacy.

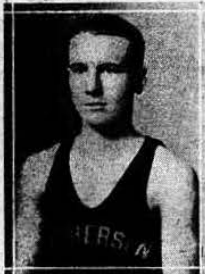
Along with this game comes the announcement that the proceeds are to go to the college as a benefit to help defray the expenses for McPherson College to enter the National Tournament at Kansas City next week.

General admission is to be fifty cents with seventy five cents for reserved seats. The probability of a Banker-College game has held the attention of the fans for some time and as the proceeds are to be used for tournament expenses the attraction is certain to draw a large attendance.

Moreover, in this game, the College will be given an acid test outside of collegiate circles to determine just how well they can perform against a team that has stood up under fire from some of the prominent contending teams for national honors in the past and who will compete again this year.

Coach Gardner and the Bulldog squad are well deserving the opportunity of competing for national honors. The local supporters are behind them on their way.

Entries are sending in their names every day to swell the list of crack basket players from all over the nation. The tournament is to be March 12-17 inclusive with the All-American selection taken from the entrées.



ELMER CRUMACKER

Playing against opponents who tower above him in height, Elmer Crumacker is not at all handicapped for playing strength. The diminutive, red-headed, left handed forward is the most dexterous player on the floor. He's the hardest man on the floor to guard as he can get clear so easily. Elmer substituted on last year's team and has just been coming into his own toward the last of the season. In the Bethel game, he came through as the high point getter. A sophomore, carrying on a brilliant high school record, he's a dangerous basket shooter, with side shots as his special trick. He's a plucky player and his height doesn't seem to diminish his power at all as a follow-up man.



MELVIN MILLER

Along with his selection as All-Kansas Conference center, Melvin Miller, when the final reports come in on the conference, will rank right up amongst them for high point honors if he doesn't top the list. Miller carries a record over from last year when in the Swede game he scored eight points in less than sixty seconds. Miller is invaluable as a floor man and at the tip off. He has an uncanny ability to twist the ball in from under the goal. He shoots from any position and his follow-ups and bat-ins are just about as accurate. If he feels that way he spills the ball in from the center of the floor with deadly accuracy. Yea, "Spider" doesn't waste any opportunities to score.

### M. C. DEBATE MEN MAKE STERLING BOW

Ihde, Frantz, Spohn, And Hays Hang Up Second Victory Of Season

Sterling Team Has Best Debators In Years Says Coach Hess Of McPherson College

Professor Hess' quartet of debators last Friday night won, both ends of the argument with Sterling.

The Bulldog's affirmative team composed of Phillip Spohn and Keith Hays journeyed to Sterling and there convinced the judge that the question should be settled in the affirmative. The judge gave them the decision by a safe margin.

The negatives were up against a strong team. Prof. Hess said, "This is the best team from Sterling in the last eight years." Ralph Franz was the first speaker on the negative and Ira Ihde the second.

In giving his decision the judge gave some very constructive criticisms. It seems that the negative had a small edge on the affirmative in their main speeches. But in the rebuttal they led by a much larger margin, thus winning by a good comfortable lead.

Dr. Schwalm was chairman of the debate. The judge was Ross of Emporia Teachers College.

### COSMOS CLUB ENTER-TAINED LAST FRIDAY

The Cosmos Club entertained their husbands or their friends with a dinner Tuesday night in the basement of the Brethren Church.

The patriotic idea was carried out in cherry and hatched nut cups and place cards and red candles on the tables. The room was lighted with candles and floor lamps.

The program consisted of the Welcome by Mrs. G. N. Boone, Response by Prof. R. E. Mohler, piano solo by Miss Jessie Brown, toast on Lincoln's humor by Mrs. L. A. Ulrecht, reading by Mrs. L. J. Hoff, vocal solo by Miss Wilma Bachelor, and a toast on Miss Prof. J. A. Blair. The evening came to a close with the singing of a stanza of "Home Sweet Home" and "My Country 'Tis of Thee." With "Good Night Ladies," the party adjourned.

- ALL-KANSAS CONFERENCE
- First Team
- Forwards — John Buller, Bethel (captain) and Carl Steuber, Baker.
- Center — Melvin Miller, McPherson.
- Guards — Arthur Fulton, Baker, and Leo Crumacker, Second Team
- Forwards — Earl Kinzie, McPherson, and Virgil Alexander, Ottawa.
- Center — Alfred Young, Baker.
- Guards — William Vauke, Bethany, and John Goetz, Baker (captain).
- Third Team
- Forwards — Herman Stade, Kansas Wesleyan (captain), and Charles Salley, Friends.
- Center — Clifford Blinn, Ottawa.
- Guards — Meuli, Kansas Wesleyan, and Harry Lisle, St. Benedict's.



COACH GEO. GARDNER

George Gardner, All-American forward with Southwestern College in 1922. In college he made the All-Conference forward position for four consecutive years. His work here along with his playing with the McPherson Bankers, champions of the Kansas Independent League, has been largely instrumental in raising basketball to the great prominence it now holds in McPherson. He's known all over Kansas for his sportsmanship and athletic prowess. If there is any coach in the whole state who can coach it is George Gardner. We've seen him perfect a smooth machine to take the conference and he's the man responsible. We can thank George Gardner for this accomplishment.



EARL KINZIE

The hardest working Bulldog on the floor is Earl Kinzie. He covers the center position after the tip-off and his lightning moves have broken up opposing defenses repeatedly. His ranking on the All-Kansas Conference second team is well deserved. Kinzie is a reliable scorer and teams with his mates beautifully. When you think of floorwork, you think of Kinzie for there is where he shines. He keeps the opponents' guessing throughout the game. Kinzie is playing his second year at the forward position and he also graduates this year. Earl has a habit of taking the ball straight into the center and stopping dead for his shots. He's always getting his hand on the ball and causing a jump-up.



LEO CRUMACKER

In about every branch of sport Leo has hung up an enviable record, but generalship is his long suit. "Crummy" is noted as a hard player. It was Leo who stepped up and rang the goal this season when the forward offense was held down. Leo is a guard, a real guard, and his choice on the All-Kansas conference five was practically certain. Leo was the man who was assigned to stop the star of the opposing teams this season and the conference title tells how well he did it. Leo is an aggressive, clear-headed player, resourceful for all conditions.

He graduates this year with his fourth letter in basketball along with a like number in the other major sports. He's gonna' be missed.

### CANINE BASKETBALL SEASON OUTSTANDING

Thirteen Victories Bring Coach Gardner's Quintet To Top Of List

Perfect Teamwork And Hard Work Is Responsible For Successful Season Of Cagers

At the close of last year's season, McPherson was resting in an unusual position for the 1928 schedule. Not a single letterman was to be lost by graduation. Moffat Eakes was the only member of the squad to get his sheepskin. However, when the squad turned out for practice this year, the ranks were considerably shattered. Captain Holloway was away from school teaching in Oklahoma and the uncertainty of his return finally was assured when he did not report at the beginning of the second semester. Henry Barre, captain of the '27 team took up his work in Manhattan at the Aggies and Archie Blickenstaff did not return.

So of last year's squad, Coach Gardner had Leo Crumacker, three-letter man at guard, Ray Nonken, one-letter man at forward, Melvin Miller and Earl Kinzie, one letter men at center and forward, along with Saylor and E. Crumacker, substitute forwards. In new material, Rump, of McPherson High School's Central Kansas League Champions, Barngrover, a sophomore from Chase, and Rock and Eisenbise, freshmen recruits.

Dec. 15, Phillips 41, M. C. 28  
Dec. 16 Alva 18, M. C. 34  
Dec. 17 Alva 21, M. C. 27  
Dec. 21 Alva 24, M. C. 25  
Dec. 22 Alva 35, M. C. 46  
Jan. 6 Friends 24, M. C. 27  
Jan. 20 Friends 25, M. C. 37  
Jan. 24 Ottawa 21, M. C. 49  
Jan. 27 Sterling 20, M. C. 43  
Jan. 30 St. Benedict's 15, M. C. 26  
Jan. 31 St. Mary's 17, M. C. 27  
Feb. 3 Bethany 27, M. C. 26  
Feb. 8 Baker 28, M. C. 29  
Feb. 11 St. Benedict's 15, M. C. 32  
Feb. 14 Bethel 15, M. C. 28  
Feb. 24 St. Mary's 21, M. C. 36  
Feb. 27 Bethany 17, M. C. 31  
Mar. 1, Sterling 16, M. C. 36  
March 2, Bethel 28, M. C. 34

### GARDNERS FIVE BEAT BETHEL IN LAST GAME

Wind Up Season By Downing Gray Maroons In A 34-28 Defeat

SCORE IS 23 TO 15 AT HALF

E. Crumacker And Buller Make 7 Goals Each—Score 28-20 With Two Minutes To Play

Emerging out of the most bitterly contested game of the whole season's schedule by a 34 to 28 victory over the Bethel Graymaroons, the McPherson College Bulldogs definitely acquired the first conference title of the reorganized Kansas Conference Saturday night in Convention Hall.

By virtue of this last game McPherson annexes the title with thirteen victories and one defeat, whereas Baker and Bethel have two defeats already chalked up against their teams with a week of conference play left. Had McPherson dropped the game last Saturday to Bethel, the title would have reverted to Baker as the Wildcats and Bethel already had two defeats but the Baldwin crew having one more game on their schedule, would have taken the honors with a higher per centage.

John Buller, captain and brilliant scorer for the Graymaroons, was traveling at a mighty speed, caging seven field goals and a free throw to lead the Bethel men into several tense moments for the McPherson fans. The score was tied at eight all and again the Newton cagers took a one-point lead 13-12 only to drop behind at the half, 23 to 16. Again in the last ten minutes of play the Section Hands staged a scoring drive to threaten at 25 to 22 and the fans were thrown into a howling pandemonium when Graber and Buller poured the ball into the goal three consecutive times to trail the Bulldogs 29 to 28 with less than two minutes to play.

At the critical time the Bulldog defense stiffened and Elmer Crumacker, on whom the Bulldog offense had concentrated during the

(Continued on Page Four)



RAY NONKEN

When you see a Bulldog streak down the court, to dribble through the entire opposition to mark up a score for the Bulldogs, you'll know its Ray Nonken. Nonken it is who completely shatters what seems to be an air-tight defense with his quick dashes. A sophomore in college and already deserving more recognition than he gets he's been largely responsible for most of the Bulldog victories this season. He doesn't shoot often but he puts the ball in the scoring position, "Swede" is a mighty fast man—he picks up speed and stops quick. He's always breaking in to recover the ball for a reverse toward the other goal. Nonken came to his greatest glory in the Bethel game which decided the conference title.

**The Spectator**



The Student Newspaper of McPherson College, purporting to recount accurately past activity—and to stimulate continually future achievement.

Entered as second class matter November 29, 1917, at the postoffice at McPherson, Kansas, under the act of March 3, 1879.

Subscription Rate -- \$1.50 per year.

Address all correspondence to  
**THE SPECTATOR**  
McPherson, Kansas

TUESDAY, MARCH 6, 1928

**LETTER FROM W. H. YODER**

Meritt, Kansas, March 1 1928.  
Dr. V. F. Schwalm,  
McPherson, Kansas,  
Dear Dr. Schwalm:-

Just a line to tell you that we had Bro. Teach with us Sunday morning and believe he made a very fine impression for McPherson College.

He also gave a very fine sermon that was an inspiration to everybody. Today he speaks to the upper classmen of our high school and also to the High school at Sebeha. May the good work go on.

You may be surprised how some of us who are at some distance from McPherson College scan the papers for victories for the debate team of old M. C. and th basketball team, march right on up to the top of the conference. Fifteen rah's for M. C. Sincerely,  
W. H. YODER

**SALON ORCHESTRA HAS BIG THREE-DAY MUSICAL**

Last Thursday and Friday evenings the McPherson Salon Orchestra assisted in the three-day Musical Festival of Tabor College at Hillsboro.

Thursday evening the Orchestra, with Edwin Johnson assisting on the violin, Ruth Holbert reader, Noble Carlson cornetist, and Howard Snyder whistler, furnished the second of the three concerts. Friday evening they played the orchestral accompaniment to the sacred cantata, "The Holy City," by Gault. They were appreciated by the large audience, and enjoyed a royal reception. Most of the Orchestra stayed over from Thursday evening to Friday evening as the guests of Tabor College, and much appreciated the wonderful hospitality shown them. Professor Doll is well acquainted there having taught in the Hillsboro High School and Tabor College for two years.

March is a busy month for the orchestra. On March 15 they give a concert at Lyons, and March 22 in Hutchinson at the convention of the Kansas Federation of Music Clubs. March 30, they go to Buhler.

**MISS MAUD SHEERER READS AT LYCEUM**

Miss Maud Sheerer, as the fourth number on the Lyceum course, read "He and She", by Rachael Crothers Friday night at the Methodist Church. Miss Sheerer is a native Kansan, and she expressed a particular delight to come back to her home state to put on programs. She has won considerable success as a dramatic reader. She read "He and She" because it was her favorite of the fifteen plays that she reads. She interpreted the play quite realistically, and her presentation was artistic. The play was a social play dealing with the problem of a career for women.

**W. A. A. HAS MEETING**

Several important questions were considered in the W. A. A. meeting last Wednesday evening. It was definitely decided that the W. A. A. should have a banquet for its members soon, and plans were made in preparation for it. A committee was appointed to report at a later meeting on the advisability and resources for having a May Day celebration this year. The question of including

archery or hockey in the list of W. A. A. activities was also laid aside until a later meeting.

**Chapel Echoes**

Several students appeared slightly disconcerted when Rev. Frazier of the Congregational Church announced at the beginning of chapel Monday that his speech would be for the benefit of those who were not at church on Sunday. "The danger of church cuts" might be called the title of Rev. Frazier's message. One striking definition was "An expert—a very ordinary man away from home."

Dr. Dean Hutton, representative from Oklahoma University, spoke Wednesday on "The joys and Glories of Service". He gave incidents from the lives of great people such as Paderewski and Florence Nightingale to illustrate his theme. An outstanding quotation was "The human soul is like a harp of a thousand strings."

**MANERISMS**

That Miami Athletic Club team from Florida came up to the very home of basket ball to show some of these strong Kansas teams just how they play the game in the East. Well, they're taking the measure of all we have before entering the A. A. U. tournament at Kansas City. The squad are coming to McPherson Thursday to tangle with the bankers and from the way the crowds turned out to see the Hillyards game, they'll probably turn out again. For the Miamas are ever so much as good as the Hillyards if not better.

One of the season's most remarkable come-backs was staged at Bethany last week when the Swedes beat the Bethel College five 34 to 22. At the half Bethany led 16 to 3, yes, 16 to 3. Yet the final score was 34 to 22. Yes, from our game here Saturday, we well know that Bethel isn't beaten until the final gun goes off.

The sport editor of the Salina Journal made an unofficial guess at the All-Kansas selection in Saturday's paper. It is quite interesting to note how near he came to hitting right. He placed Baller of Bethel and Young of Baker as forwards, Miller, McPherson as center, Leo Crumpacker, McPherson as guard and Captain and Falton of Baker as the other guard. We can't help but see that would make a fine five. It would be really interesting to hear a little range in selection after the conference is over. Now, it may be entirely out of my class to conjecture on who would be named if the vote had been taken after the season's play but here goes. I may be prejudice but I'd place Crumpacker and Nonken as guards, then I'd put Miller at center and captain, and for forwards on would go Elmer Crumpacker and Earl Kinzie. They've whipped every team in the conference, so why shouldn't they get first mention? And to be even more serious, I'm utterly disgusted with the coaches for utterly overlooking to place Ray Nonken and in my opinion the only just desert for him—be a first team berth. I believe there are many others who expected to see Nonken in that place.

Not to be sarcastic, but somehow, I think it would be just as well to have each coach vote for his own men and send them in to Edmonds and then let him pick out the All-

"Say It With Flowers"  
**McPherson Floral Co.**  
C. E. CHARLSON, Proprietor  
Choice Cut Flowers and Floral Designs

**Greeting Cards For All Occasions and Fancy Candies**  
Geo. Hultqvist  
Book Store

Conference selection!

Well, anyway there isn't anything too good for those fellows who played that whale of a game Saturday as a grand finale to their conference season by virtue of which they mark McPherson in the annals of glory.

I'll have to retract a former statement I made in a write-up—Baller isn't all Ball!

Do you realize the National Basketball tournament is to be held in Kansas City March 12 to the 18? Just one week.

**BALDWIN MUSIC STORE**  
(Home of Baldwin Pianos)  
Everything in Music

**ORIE J. ABEL**  
Picture Frames Made to Order  
At Smalley's Art Shop

**Typewriters Sold - Rented - Repaired**  
D. M. HALE  
Buy a Royal

for your Athletic Equipment come to the Recognized Authority  
H. J. HOFFMAN  
618 Grand Avenue

We Guarantee To Please You  
**Wilber's Barber Shop**

**CHAS. DARON'S SHOE SHOP**  
Expert Repair Work

**Duckwall's**  
Quality - Service - Price  
We carry a complete line of 5 and 10c store items also Silk Hose, Hats and all Variety store items.  
Visit this store, you are always welcome.

Have your soles shaved and be heeled—at  
**J. W. Halley Shoe Store**  
108 E. Euclid

**Perfect Relief** when **Carson & Smith** cleans them  
**Bowser and Steffen**  
College Agents

**Sweeney Barber Shop**  
For First Class Work  
108½ S. Mairr St.

**Everyman's Library**  
A large selection of the world's best literature in attractive bindings.

**80c per volume**  
Ask For Complete List  
**SMALLEY'S**

Now **Waner's Baseball Game**  
**Almen-Lovett Drug Co.**

**The McPherson & Citizens State Bank**  
of McPherson, Kansas  
Capital and Surplus \$120,500.00  
The problem of the Student is our chance to apply the "Golden Rule". Come in.

**McPherson Steam Laundry**  
Raymond Landes, Agt.  
Basket at Boys' Dorm

**Pies—Home Made** and the best coffee at the **GEM LUNCH**

**For Spring**



\$7.50

**Laderer**  
CLOTHING CO.  
The Good Clothes Store

*Little Essays on Money and Banking*  
**Elasticity of Bank Notes**

Although many serious evils in our currency system prior to the Civil War were eradicated and a perfectly safe medium of payment secured, the National Banking Act failed to give us an elastic currency necessary to meet the needs of business.

The amount of circulation required in a country will vary between rather wide limits. Regularly each year, at the time known as the evap moving season, heavy demands are made upon the banks for currency and coin, largely because of the number and volume of transactions between people who are not in the habit of dealing with each other regularly. Under the National Banking Act the amount of notes in circulation was primarily determined by the price of the bonds required as security. As a consequence more than one panic was precipitated by rumors of currency scarcity arising out of natural conditions and due to the fact that we did not have a currency system that would contract or expand to meet seasonal requirements. The total amount of money in circulation at all times should be in proportion to the volume of exchanges. An elastic currency is almost a necessity in view of cyclical and seasonal variations in business. Under the National Banking Act the currency was conspicuously inelastic. One purpose of the Federal Reserve Act, passed in 1913, was to correct this evil. The Federal Reserve note provides elasticity.

**Peoples State Bank**

**Professional Directory**

**Dr. A. A. Freeburg**  
Restorative and Preventive DENTISTRY  
Office Rooms 265-267 Allison Building  
Phones: Office 286; Res. 671 Y.

**Dr. L. F. Quantius**  
PHYSICIAN and SURGEON  
Office Hours:  
10 to 12 A. M. 3 to 5 P. M.  
Sunday  
10 to 11 A. M. 5 to 6 P. M.

**Dr. V. N. Robb & Son**  
OPTOMETRISTS  
Office Hours  
8 to 12 A. M. 1 to 6 P. M.  
Phone 149Y

**Dr. L. G. REIFF**  
DENTAL SURGEON  
Over Laderer's Clothing Store  
Office Phone 738 — Res. 246J

**E. L. HODGE**  
DENTIST  
Office Over McPherson Citizens State Bank  
Office Phone 232 — Res. 25214

**W. E. GREGORY**  
DENTIST  
Office Over Farmers Alliance Insurance Company  
Phone 372

**Dr. W. C. Heaston**  
PHYSICIAN and SURGEON  
Rooms 1 and 2  
Over Grand Building  
Res. 523 — Phones — Office 336  
McPHERSON, KANSAS

**Clinton R. Lytle**  
Physician and Surgeon  
Grand Building

**A. Engberg, M. D.**  
Optician  
Ear, Nose and Throat Specialist  
Phone 2

Baker has been continuing up to form even if Bethel and McPherson were able to inflict defeat upon them. Last Tuesday, the Wildcats invaded the Benedictines court and took away the bacon 45 to 26.

(Continued from Page One)  
**GARDNERS FIVE MEN'S BASKETBALL** evening, slipped two devastating field goals through the Husarites and a free throw by Leo Crumpacker added to blast the hopes of a Bethel conquest.

Bethel concentrated their defense on Miller; McPherson, on Buller and more than once during the game it became evident to the spectators that two of the mightiest basket artists in the conference were in pitched battle. Kinzie went out on personals late in the first period but only after he had played outstandingly in, breaking up the Bethel plays and outwitting the Newtonians with clever ball work. Erwin Rump jumped into the breach with lots of fire—didn't look at all like a substitute. Miller was watched like a hawk all the game, but all the eyes on the floor couldn't prevent him from caging five field goals and a free throw along with his being instrumental in his teammates' scoring. Elmer Crumpacker was a sure fire during the whole game. That diminutive wrong-handed forward out-Miller-ed Miller with seven field goals to his record.

Nonken was everywhere on the floor. He was the riddle at Newton when McPherson completely surprised the Railroaders with a 28-15 score. His dribbling attack was probably the most responsible one thing for the Bulldog victory Saturday for it was he who repeated time and again to team down the floor with a teammate to shatter the opposing defense. Those last two field goals were results of Nonken's ability to pierce Bethel's defense and team with "Little Crum" for the winning counters.

Leo Crumpacker was assigned to stop Buller. Well, no man can stop Buller playing in the form he was last Saturday but Leo stopped Buller from winning the game as he generally does against conference teams. Leo was playing his usual style of a heady game and his demonstration of general floorwork is to be highly commended.

Nonken started the game off last Saturday with a smashing dribble through the Bethel five for a score on the first play. The writer must sing to his glory on the next play which almost went the same way. Buller took a hurried chance and Nonken took the ball to carry it down and slip it to Elmer Crumpacker for a neat side-shot. Bethel called time just two and a half minutes after play started. Score, 4-0. Nonken fed Miller for a basket but the play was called back for traveling. Elmer sphered a long side shot. Schiender opened the Bethel tally with a bat-in. Miller pulled an uncanny shot back over his head which just lacked a hair's breadth from going in. Miller took the ball through to feed "Little Crum" for a basket after Schiender missed Kinzie's foul shot. Buller pushed a high running one-handed basket. Graber took a point on Nonken's foul. "Crum" failed on a long chance. Buller was sure again for a goal. Schiender scored a point on Kinzie's holding. Buller blocked Nonken—he missed the throw. Miller popped the ball in from out-of-bounds play. He scored again. McPherson failed several. Schiender scored a gift shot on Kinzie. Bethel took a flock of misses. "Spider" fouled Miller of Bethel but failed on the throw. Dettweiler got clear for a score. Buller slapped a one-handed shot. "Spider" whipped a duplicate shot.

"Spider" carried the ball through to score. Time again for Bethel. Score, 16 to 13.

Kinzie dropped a hesitating shot. Bethel got a tip-off break but threw the ball out of bounds. The Millers took a pass at each other and are called for a double foul. Both succeeded at the throw. Nonken weaved through for a tally. Kinzie fouled Miller and Rump took his place on as it was the fourth personal. Miller scored his free throw. Elmer Crumpacker stopped on the run and lifted the ball in. Half score, 23 to 15.

Graber grabbed a basket on the opening play. Buller got a clean long hurl. McPherson took several misses until Miller scored on an out-of-bounds play again. "Crum" and Buller divided failures. Crumpacker failed Graber's charity shot. He pulled a neat recovery play for the Bulldogs. Elmer travelled out of a hit. McPherson took time. Score 25 to 19 with less than eleven minutes to play. Buller got a point on Miller's charge. Buller got clear for a basket. Rump slipped a "daisy" from the foul line. Elmer Crumpacker teamed with Nonken for a basket. Six minutes to play and the score, 29 to 22.

Graber scored on a backhand shot. McPherson was losing the tip. Buller pushed a long ringer. McPherson long pass went out of bounds. Miller barely missed. Buller gets away from "Crum" for a setup. Score was 28-29, about two minutes to play.

Elmer Crumpacker and Nonken teamed the ball through for two successive baskets. Leo fouled Graber who misses the throw. Wedel fouled Leo who scored a point. The game ended as McPherson was taking the ball under on a fast play.

The lineup of the championship game follows:

	FG	FT	F
Bethel (28)	9	3	0
Schiender f	2	1	1
Graber f	7	1	0
Buller c	0	2	3
Miller c	1	0	1
Wedel f	1	0	0
Dettweiler f	1	0	0
Total	11	6	5
McPherson (34)	FG	FT	F
Kinzie f	1	0	4
E. Crumpacker f	7	0	0
Miller c	5	1	2
Nonken c	2	0	1
L. Crumpacker c	0	1	1
Rump f	1	0	0
Total	16	2	8

**THE ROYAL BARBER SHOP**  
 The Student's Choice

**SWEETS**  
 Of a Better Quality  
 AT  
**SNYDER CANDY COMPANY**  
 DISTRIBUTORS

**Extra Fancy**  
 candies  
 Dinners and Suppers  
 Palace of Sweets

Fresh Candy and Cookies  
 Everything you will need for your picnics and parties.  
**ROTHROCK GRO.**  
 Phone 167 We Deliver

**BLUE CRANE**  
 PURE SILK HOSEIERY  
 "X" Line

Dreams! X-tra clear textured Chiffons—X-tra durable Service Hose. See the X-quisite "X" Line, made by a new process. Newest Parisian colors.



Blue Crane \$1.00 a pair  
**ALLIANCE EXCHANGE CO.**

**SUNFLOWER BARBER SHOP**  
 For Better Barber Service.

Phone 140  
**IT'S BERG**  
 The Battery-Man



Ladies' and Men's wrist and strap watches. New Waldemar chains, rings and bracelets.

**J. Ed. Gustafson**  
 111 N. MAIN STREET

**Okerlind & Aspegren**  
 The Clothes Cleaners  
 See WHITECK, College Agt.

**EAT THORO-BREAD**  
 Made With Milk  
 Baked by  
**IDEAL BAKERY**

**Carl M. Anderson**  
 Insurance with Service  
 Phone 145

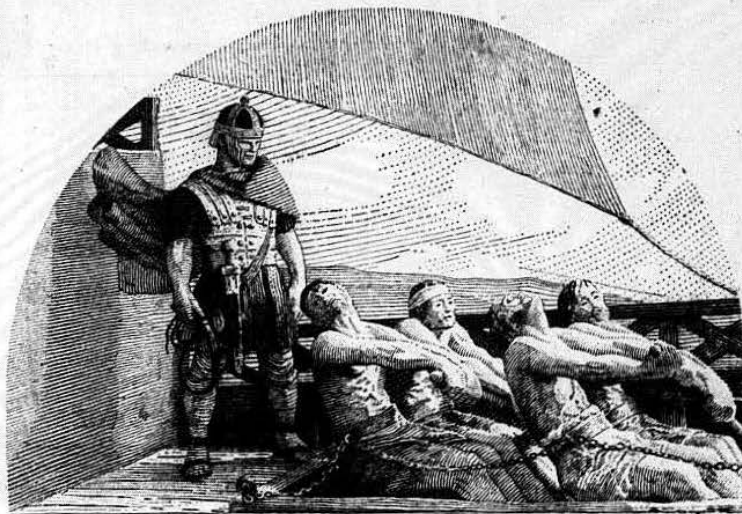
"For Goodness Sake" use **"W-R" Flour** made by **The Wall Rogalsky Milling Co.**

Phone 296 **Harms Printing Co.** 120 N. Main  
 Exclusive line of stationery.  
 We can print cards to match your invitations.

**UPSHAW**  
 Furniture and Undertaking Co.  
 Ambulance Service Day or Night  
 S. T. Boston J. W. Uphaw  
 Established 1897 Office Phone 197  
 McPherson, Kansas

**If You Appreciate**  
 Quality, Service and Fair Prices  
 you will eventually buy  
 at  
**Golden Rule Co.**

**TIP TOP INN**  
 Short Orders, Sandwiches, Cold Drinks  
 A Clean Place to Eat  
 113 W. Marlin



**Galley Slaves**

Chained to their seats, cringing under the lash, the galley slaves slowly propelled the heavy hull of a Roman warship.

Today, the electric motors of an American battleship have the energy of a million men, and drive thousands of tons of steel through the water at amazing speed.

Man is more than a source of power in civilized countries. Electricity has made him master of power. In coming years, the measure

of your success will depend largely on your ability to make electricity work for you. Competition everywhere grows keener, and electricity cuts costs and does work better wherever it is applied.

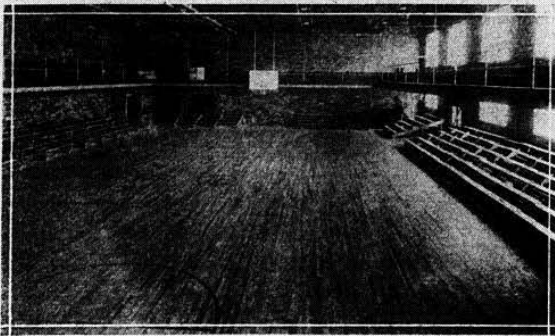
In industry, transportation, the professions, the arts, and in the home, you will find General

Electric equipment helping men and women towards better economies and greater accomplishments.



**GENERAL ELECTRIC**  
 GENERAL ELECTRIC COMPANY, SCHENECTADY, NEW YORK

New McPherson Court Where Games Were Played



**MACMEN TAKE 36-16  
GAME FROM STERLING**

**Barrelmakers Weaken After  
Fierce Struggle—Miller In  
Tip-Top Form**

**Visitors Alternate Entire Team In  
Effort To Tire Dogs, But  
To No Avail**

In a hard fought battle last Thursday night the Bulldogs played through to another decided victory. However the 36-16 score does not indicate as close and hard fought a battle as was really waged. The Barrelmakers played fast and furiously and no basket was made by either side during the first four minutes of play. But the Red and Blue quintet could not stand the pace and after one lone basket did not score again until well along toward the finish of the first half. They were given two free tosses and made both.

The Bulldogs were in top form with Miller and E. Crumpacker receiving passes for set-ups and consistently putting them through the hoop. The Bulldogs made most of their counters from the set-up position. A feature of the Bulldogs play was the absence of long shots. Only a few tries were made back of the free throw line.

From the first tip off the game is fast and furious, just a little too fast for making counters. And during the first four minutes of play no score is made. Each team is given a try from the free throw position and both miss. Miller makes a clean shot from the sideline and Barton evens the tally by dropping one through from the field. It begins to look like an interesting game. Miller gets a charity throw. Kinzie takes a gift shot but the ball is stubborn. Nonken makes a flashy dribble through for a set up. The Barrelmakers defense crumbles when Elmer is fed for three consecutive set-ups. Miller adds two more points from the gift line. The ball is passed to Miller and having no one to pass to he takes the set-up for himself.

In an effort to stop this avalanche of scoring five new Staves are sent in. Miller makes a counter under the basket. Sterling takes a gift shot. The Dogs take two charity shots and make both. Elmer takes another two points under the basket.

Saylor, Rump, Rock and Barngrover go in for L. Crumpacker, Miller, Kinzie and E. Crumpacker. Rump makes a counter from the side line as the half ends. Score 22 to 4.

The regulars on both teams start the second half. Sterling starts the scoring with a field goal. Nonken tries a free throw and misses. Sterling gets two tries and makes one. Kinzie dribbles through and gives Elmer another set-up shot; he makes it. L. Crumpacker's long try is forced into the basket by Miller. Sterling takes a point the unmolested way. They add two more when Carder pushes a stubborn ball from the backstop into the basket. Elmer tries for a gift shot but misses. Sterling duplicates. Miller makes a beautiful over-handed shot and follows this with another clean shot from the side line. Time out for Kinzie to tie his shoe. On a held ball Carder bats the ball directly into the basket from the extreme side of the court. Nonken decides to dribble thru for a try but is fouled. He makes the counter. L. "Crummy" is given two throws, he makes the first and then misses. Kinzie is given

en two but misses both. Kinzie makes a nice pass to Elmer for another basket. Sterling gets a free throw but misses. They make a basket on a one hand shot.

The second team go in in the last three minutes. They make a basket but Sterling retaliates with a similar feat. Game: 36-16.

**SUBSTITUTES**

When Coach Gardner sends in his second string play goes on just about as steady as when the regulars are in. Erwin Rump, freshman is a valuable man in any position. He's tall and he's shifty. He handles the ball and he hits the hoop. "Zeke" Saylor has seen considerable play this season and fills the guard or forward position with plenty of capacity. As a senior, he passes out of our basketball play, but he's left his mark. Floyd

Barngrover has seen service on the squad. "Barney" is a light fast man with his smooth ability and an eye for the basket. Barngrove, a sophomore, is available for service in the next season. Rock, freshman, comes in for some favorable comment as a neat floorman. He handles the ball with rapid movement and knows what the game is all about. Last of the men is Eisenble, freshman guard, who slips into the game to hold its own with the best. Along with other substitutes, he has filled a regular's berth with but one little change of pace.

It was said at the time of the Swede victory at Lindsborg some time ago that the Swedes were "pretty lucky." I guess last Monday's game very definitely verifies the statement. There couldn't be any haggling over the way the game here turned out.



**Up to the Minute Styles**

Smart youthful lines predominate in our entire collection of new creations for the Spring Season.

Hats - Suits - Dresses - Coats—for Children, Misses and Ladies. You will be pleased to select your new wardrobe from such smart styles and good values as these.

You Are Always Welcome

**Matthew's**  
Millinery-Ready to Wear

**Honey Beige Kid**

The correct color for Spring  
Now showing many new styles  
in this popular color.

\$4.95 to \$11.00

**Lawson-Sweeney Shoe Store**

**Suits — Overcoats — Dresses  
Cleaned and Pressed \$1.00**

Other Prices Proportionately Low  
All articles returned same day.

See—Ralph Landes  
agent for

**Hultqvist's Cleaners & Tailors**

**Gordon's Fashion Shop**

A Store You Ought To Know

"If It's New We Show It"

122 N. Main

**Dress Up Your Wrist Watch**

With a snappy new Strap or better yet get a complete  
new watch from our snappy late arrivals.

**Bixby, Lindsay & Co.**

**COLUMBUS DID**

We are frequently reminded that Christopher "took a CHANCE" when he steered his little fleet across the briny deep in search of a new world.

He DID take a chance, and he WON, which accounts for the front page space which he occupies in History. But we don't hear so much about the fellow who takes a chance and LOSES.

"Only partly covered by insurance" is the usual post mortem of the man takes a CHANCE by carrying too little or no insurance on his HOME or BUSINESS—and LOSES.

**The Farmers Alliance Insurance Co.**  
of McPherson

**DINE**

with the rest of the Bulldogs at the

**PURITAN**  
Cafe

Where The Students Like To Eat

Stationery, Circulars, Cards, Booklets,  
Loose Leaf Sheets and Covers. Book  
and Catalog Work promptly and neatly  
done.

**The Republican**

Phone 98  
The House of Quality Printing!

**STUDENTS!**

Your patronage will be appreciated.

**The Home State Bank**

**Lake Superior Lumber Co.**

BUILDING MATERIAL & COAL

Phone 40

For anything in meats  
call

**Peoples Meat Market**

Phone 223

We Deliver

216 N. Main

**Radios and Everything Electrical**

J. A. McCOY ELECTRIC CO.

Phone 173

218 N. Main

PHOTOGRAPHS  
and  
KODAK FINISHING  
at

**Walker Studio**

**SAVE YOUR SHOE LEATHER**

College Bus—Ride Every Trip—\$1.00 Per Week

Bus will leave College at 7:00 returning after the picture show to college. Fare for night ride 15c, 2 for 25c. If you ride by the week, night ride to shows are included, all for \$1.00 per week.